



HAL
open science

IC-Layout Render: Image rendering tool for integrated circuit layout in Python

João R. Raposo de O. Martins, Francisco Alves, Pietro Maris Ferreira

► To cite this version:

João R. Raposo de O. Martins, Francisco Alves, Pietro Maris Ferreira. IC-Layout Render: Image rendering tool for integrated circuit layout in Python. 2021, 10.5281/zenodo.5618267 . hal-03471381

HAL Id: hal-03471381

<https://hal.science/hal-03471381v1>

Submitted on 8 Dec 2021

HAL is a multi-disciplinary open access archive for the deposit and dissemination of scientific research documents, whether they are published or not. The documents may come from teaching and research institutions in France or abroad, or from public or private research centers.

L'archive ouverte pluridisciplinaire **HAL**, est destinée au dépôt et à la diffusion de documents scientifiques de niveau recherche, publiés ou non, émanant des établissements d'enseignement et de recherche français ou étrangers, des laboratoires publics ou privés.

Copyright

IC-Layout Render: Image rendering tool for integrated circuit layout in Python

João R. R. O. Martins^{1, 2}, Francisco Alves^{1, 2}, and Pietro M. Ferreira^{1, 2}

¹ Université Paris-Saclay, CentraleSupélec, CNRS, Lab. de Génie Électrique et Électronique de Paris, 91192, Gif-sur-Yvette, France ² Sorbonne Université, CNRS, Lab. de Génie Électrique et Électronique de Paris, 75252, Paris, France

DOI: [10.5281/zenodo.5618268](https://doi.org/10.5281/zenodo.5618268)

Software

- [Release](#) 
- [Repository](#) 

Submitted: N/A

Published: N/A

License

Authors of papers retain copyright and release the work under a Creative Commons Attribution 4.0 International License ([CC BY 4.0](https://creativecommons.org/licenses/by/4.0/)).

Summary

Graphic Design System (GDSII) from ([Calma Company, 1987](#)) is a common database file format to stream out integrated circuit (IC) masks, also called layout, before fabrication. Being an essential part of circuit development, designers are often familiarized in how to generate this binary file on computer-aided design (CAD) tools. This output file contains planar geometric shapes which represent physical 3D layers from a specific process design kit (PDK). Commercial PDK usually presents more than 50 layers, which are 2D visualized in CAD tools.

Reading a layout in those CAD tools is not a simple task, however high-quality graphical image is available in such tool. Thus, an IC designer is capable to understand the data representation and point out improvements for the IC. Nevertheless, IC documentation is often delivered in a lower quality 2D image depicted in a PDF file. Once the PDF is generated; the circuit layout becomes hardly readable even for experienced IC designers.

Scientific communications require accurate and repeatable results to be considered prior publication. In microelectronics research field, a layout picture is mandatory. While illustrations should be a vectorial graph like, IC layout is often depicted from a low-quality bitmap obtained from a screenshot or an image saving through the CAD tool. In this scenario, having an accurate, readable, and reproducible layout result are a challenge. Most publications illustrate IC layouts in lower standards than the other illustration results, which hinders the required physical solution to address state-of-the-art IC performance.

The tool `icLayoutRender` aims to a user-friendly transcription of a GDSII file in a pdf file. Developed in Python 3, the image rendering requires an input GDSII file `<cellName.gds>` and the PDK layer color file `<LayerColor_PDK.map>` to produce an output PDF file `<cellName.pdf>`. The GDSII layers will be rendered using the available PDK layer colors. Missing layers will be neglected.

The tool `icLayoutRender` does:

1. confirm the entered values;
2. convert the `.gds` to a `.tex` file;
3. call LuaTeX or pdflatex to generate a `.aux`, and `.pdf`

The tool `icLayoutRender` requires:

1. Python3 installed with devel options;
2. `gdspy`, `pandas`, `math`, and `GDSLatexConverter` ([Vollmer, 2020](#)) Python libraries installed;
3. `TexLive` for a Linux installation, or `MikTEX` for a Windows installation;
4. `tikz` LaTeX package to compile the output `*.pdf` file.

Several examples using icLayoutRender are freely available on the official website. Layer color file generation is also explained in the user manual, as installation procedure and the tool operation in Linux and Windows. The icLayoutRender image rendering tool has been used in recent scientific communication ([Martins et al., 2021](#)) and the illustration readability is remarkable.

Overview of icLayoutRender tool

In commercial CAD tools, the GDSII file is obtained following a common procedure File->Export->Stream. The output stream file should be named as <cellName.gds> and selected as the top cell to be exported from an available layout. The GDSII file should be saved in the same folder as the proposed tool for a user-friendly operation.

The LayerColors.map file is created for a specific PDK. Commercially available PDK, as ([XFAB Mixed-Signal Foundry Experts, 2019](#)), has the layers: diffusion in lime, poly-Si in red, n-type implantation in gold, p-type implantation in pink, and others. The layer color file format is depicted in the following code.

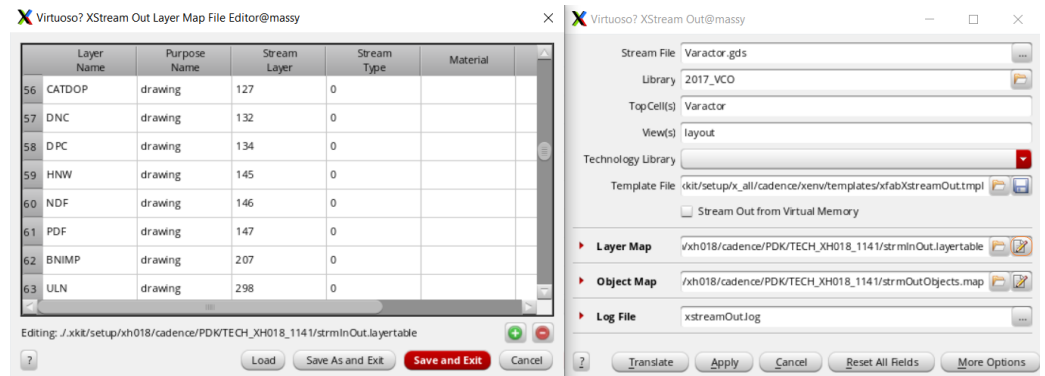
```
GDSNumber!Layer!Collor
4!DIFF!{rgb:red,0;green,255;blue,0}
5!POLY!{rgb:red,255;green,0;blue,0}
6!NIMP!{rgb:red,217;green,204;blue,0}
7!PIMP!{rgb:red,255;green,191;blue,242}
```

One may notice that lime, red, gold, and pink colors are represented in RGB color code. GDS layer number and name are available in the PDK layer map file (see Fig. 1(a)), while the color and its code are obtained in the technology file (see Fig. 1(b)). A user-friendly layer window (LSW) is often available aid both files translation in the requested LayerColors.map. One may implement an automation tool for such translation. However, this procedure is only run once per PDK. GDS number, layer name, and color do not change between different PDK versions. Moreover, CAD tools usually uses the color code proposed in the example. Thus, this procedure is only required in the installation of a new PDK. The GDS number is the data that mostly change between different PDK files. The layer colors are usually similar in commercial PDK as in ([XFAB Mixed-Signal Foundry Experts, 2019](#)).

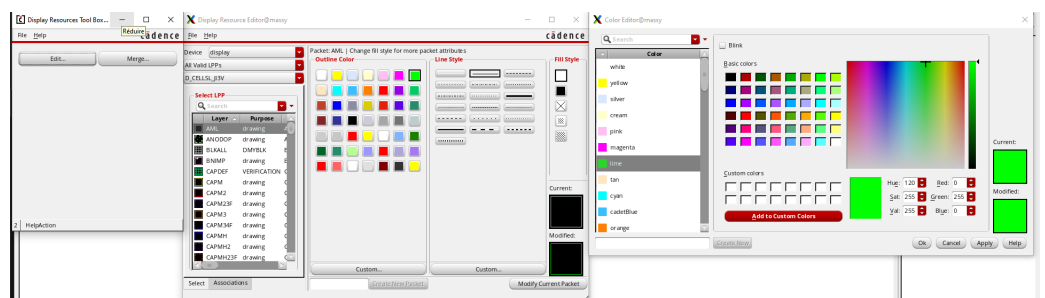
The first scientific paper using he icLayoutRender image rendering tool is from the authors in ([Martins et al., 2021](#)), where a voltage-controlled oscillator (VCO) is designed. Figure 2 illustrates such VCO and includes details about the required pattern ground shield. Such structure is mandatory for radio frequency circuits, such as a VCO, and is only readable if a high quality vectorial image is available. That's the original motivation of the authors in proposing icLayoutRender tool.

To prove the advantage of using icLayoutRender tool, the authors have rendered the IC layout known as StrongArm latched comparator and proposed in ([Fonseca et al., 2017](#)). The original image file is reproduced in Fig 3(a) using a gray color scale. Figure 3(b) depicts the same IC layout rendered by the proposed tool using gray scaled version of the rendering. A full-color version of this example is depicted in Fig. 4(a). Figure 4(b) IC layout rendered by the proposed tool in full color map.

Another common example depicted in scientific papers is the operational amplifier. Figure 5(a) illustrates an layout example of an amplifier known as OTA Miler ([Ferreira et al., 2019](#)) in its full-color version. One may observe the readability improvements in Fig. 5(b), where IC Layout Render tool is used.



(a)



(b)

Figure 1: Layer colors map creation using a commercial PDK, where one can verify (a) the layer numbers and (b) the layer colors.

Conclusion

Scientific communications require accurate and repeatable results, where microelectronics research field requires a high-quality layout illustration. The proposal demonstrated a user-friendly tool to a GDSII transcription in a vectorial graph quality image saved as a pdf file. All illustration examples in this work were obtained from an IC design using the PDK of (XFAB Mixed-Signal Foundry Experts, 2019). However, layer maps can be easily adapted to any commercial PDK. One may assert the illustration quality by increasing zoom over Fig. 2, 3 and 4 in the PDF file or by printing them in a poster-sized version. The vectorial graphical rendering is obtained by the proposal in which standard tools are unable to attain.

References

- Calma Company. (1987). *GDSII™ Stream Format Manual* (February). http://bitsavers.informatik.uni-stuttgart.de/pdf/calma/GDS_II_Stream_Format_Manual_6.0_Feb87.pdf
- Ferreira, P. M., Martins, J. R. R. O., Mostafa, A., & Juillard, J. (2019). Process-Voltage-Temperature Analysis of a CMOS-MEMS Readout Architecture. *Proc. IEEE Design, Test, Integration & Packaging of MEMS/MOEMS*, 1–4. <https://doi.org/10.1109/DTIP.2019.8752699>
- Fonseca, A. V., Khatlaji, R. E., Afshari, W. A., Barúqui, F. A. P., Soares, C. F. T., & Ferreira, P. M. (2017). A Temperature-Aware Analysis of Latched Comparators for Smart Vehicle Applications. *Proc ACM IEEE Symp. Integr. Circuits Syst. Design*, 1–6. <https://doi.org/10.29292/jics.v13i1.8>

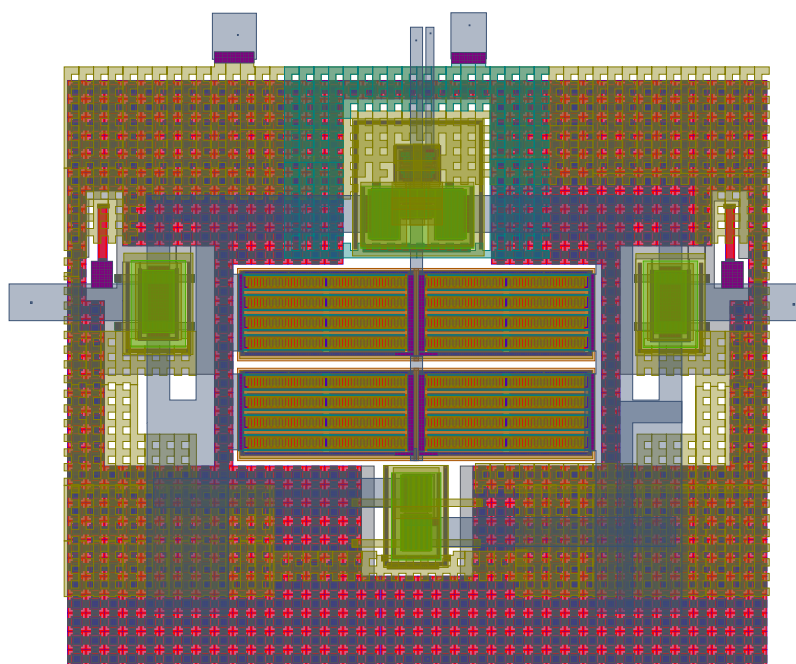


Figure 2: Layout illustration of a VCO from (Martins et al., 2021), including a pattern ground shield.

Martins, J. R. O. R., Alves, F., & Ferreira, P. M. (2021). A 237 ppm / °C L-Band Active Inductance Based Voltage Controlled Oscillator in SOI 0.18 μm . *Proc ACM IEEE Symp. Integr. Circuits Syst. Design*, 1–6. <https://doi.org/10.1109/SBCCI53441.2021.9529990>

Vollmer, R. (2020). *GDSLatexConverter*. <https://github.com/Aypac/GDSLatexConverter>

XFAB Mixed-Signal Foundry Experts. (2019). *XH018 - 0.18 Micron Modular Analog Mixed HV Technology* (pp. 1–22). <https://www.xfab.com/technology/cmos/018-um-xh018/>

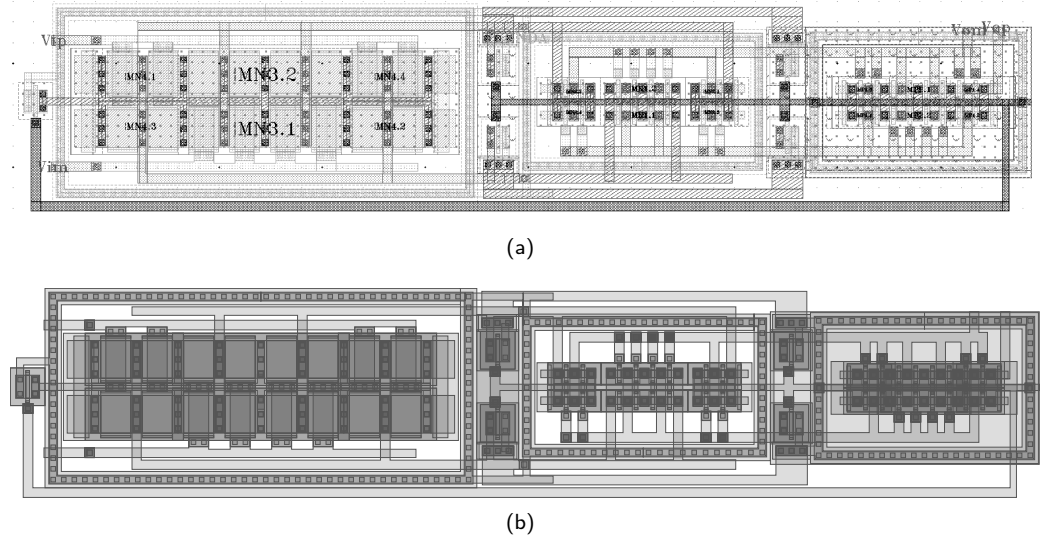


Figure 3: Layout illustration of StrongArm latched comparator proposed in (Fonseca et al., 2017)(a) as its original illustration and (b) using IC layout render tool with gray scale color map.

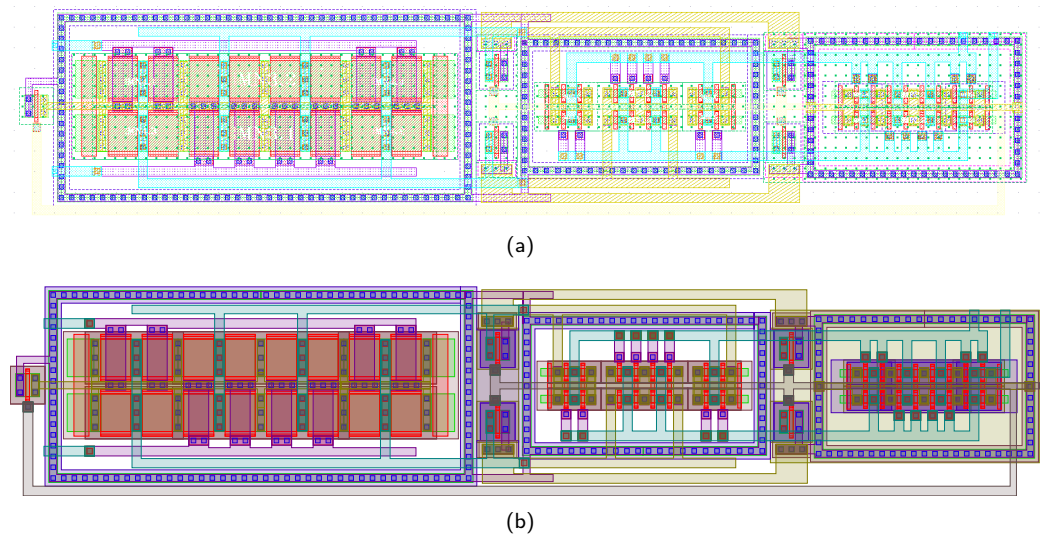


Figure 4: Layout illustration of StrongArm latched comparator proposed in (Fonseca et al., 2017)(a) in full-color version and (b) using IC layout render tool with a full-color map.

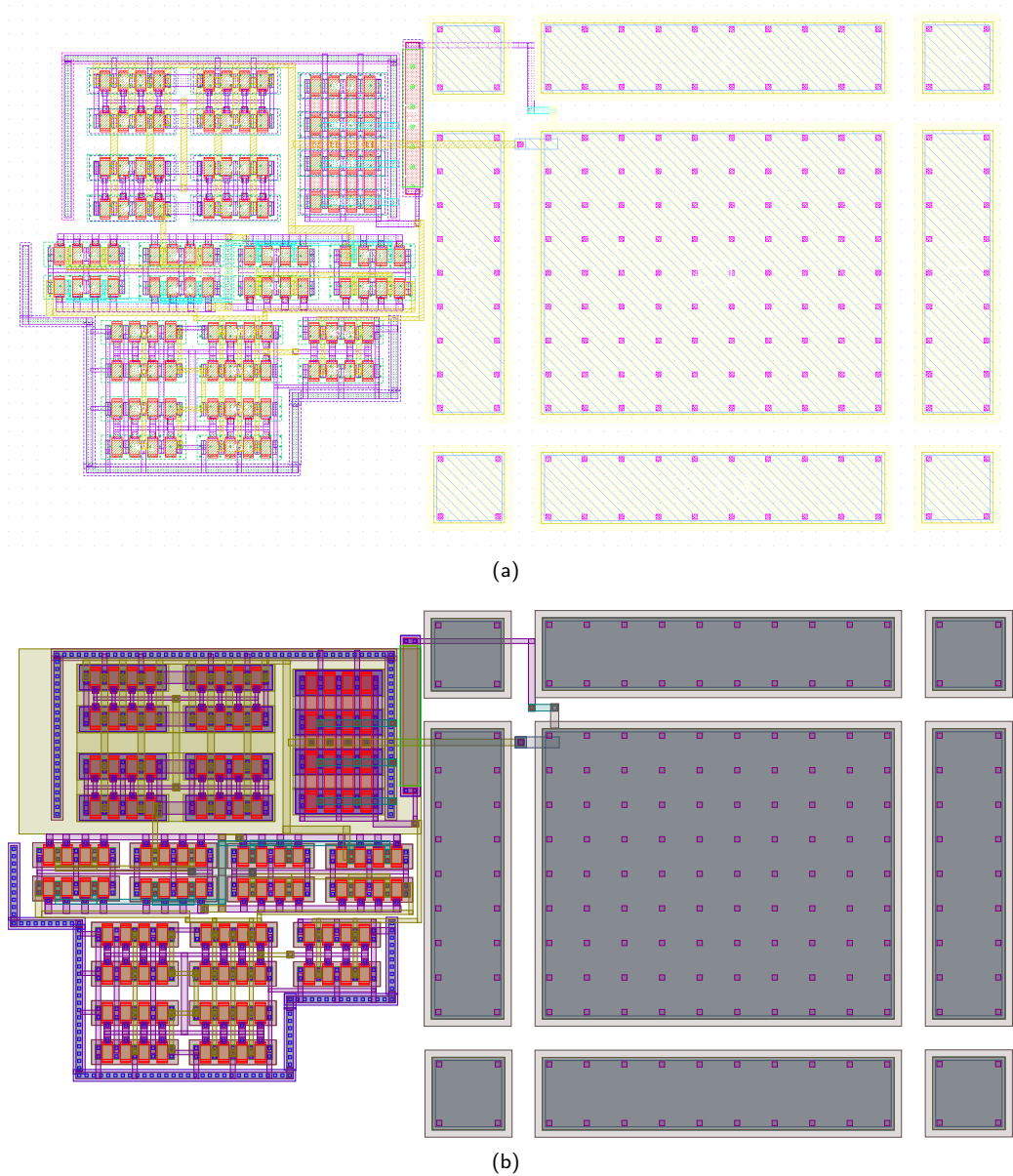


Figure 5: Layout illustration of original OTA Miler amplifier layout proposed in (Ferreira et al., 2019) (a) in full-color version and (b) using IC layout render tool with a full-color map.