

SUPPLEMENTARY DATA

Table S1. Antibodies for Western Blot analysis

Primary antibody	Clone	Company
AXL	C44G1	Cell Signaling Technologies
pY ₇₇₉ AXL	713610	R&D Systems
STAT5	sc-835	Santa Cruz Biotech
pY ₆₉₄ STAT5	9351	Cell Signaling Technologies
FLT3	8F2	Cell Signaling Technologies
pY ₅₉₁ FLT3	33G6	Cell Signaling Technologies
ERK	L34F12	Cell Signaling Technologies
pT ₂₀₂ /Y ₂₀₄ ERK	D13.14.4E	Cell Signaling Technologies
AKT	9272	Cell Signaling Technologies
pSer ₄₇₃ AKT	D9E	Cell Signaling Technologies
β actin	AC-15	Sigma
Secondary antibody	Clone	Company
Rabbit IgG-HRP	7074	Cell Signaling Technologies
Mouse IgG-HRP	7076	Cell Signaling Technologies

Table S2. Antibodies for flow cytometry analysis

Primary antibody	Clone	Company
hCD33-PE	WM53	Biolegend
hCD45-FITC	HI30	Biolegend
mCD45-APC-Cy7	30-F11	Biolegend
mCD117-APC	2B8	Biolegend
mSca-1-BV421	D7	Biolegend
mCD48-AF700	HM48-1	Biolegend
mCD150-PE-Cy7	TC15-12F12.2	Biolegend
mFlt3-PE	A2F10	Biolegend
mCD34-FITC	RAM34	BD
mCD11b-Biotin	M1/70	Biolegend

mCD4-Biotin	GK1.5	Biolegend
mB220-Biotin	RA3-6B2	Biolegend
mCD5-Biotin	53-7.3	Biolegend
mCD8a-Biotin	53-6.7	Biolegend
mGr-1-Biotin	RB6-8C5	Biolegend
mTER-119-Biotin	TER-119	Biolegend
Streptavidin-BV605		Biolegend
Streptavidin-PerCP-Cy5.5		Biolegend

Table S3: Clinical and biological features of primary AML samples

Num	Gender	Age	WBC	FAB	Blasts	Karyotype	FLT3
AML#1	F	49	37	2	96	46,XY [20]	ITD
AML#2	F	53	58	2	97	46,XY [25]	ITD
AML#3	H	71	150	2	91	46,XX [25]	ITD
AML#4	H	27	114	2	91	46,XX [25]	ITD
AML#5	H	37	95	5	78	46,XY [25]	ITD
AML#6	F	46	266	1	70	46,XX [25]	ITD

Age: in years, M: male, F: female, WBC: white blood cell count (G/L), FAB: French American British classification, ITD: internal tandem duplication, blasts: BM blasts (%)

Figure S1 : Complete Blood Count at day 4, 18 and 31 after the end of TKI treatment in non-transplanted NSG mice

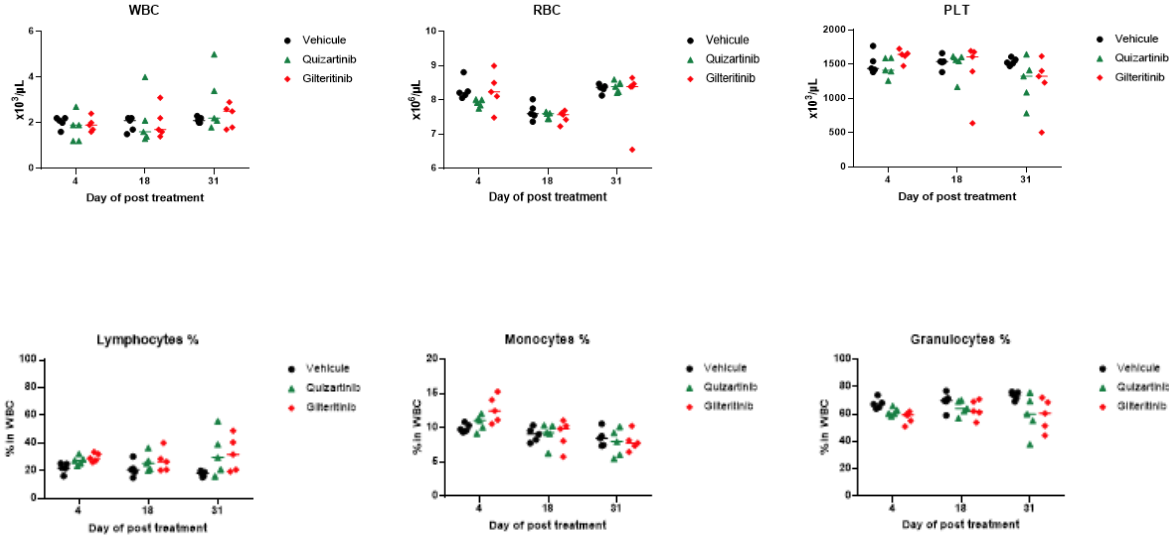


Figure S2 : Complete Blood Count during TKI treatment in non-transplanted C57Bl/6J mice

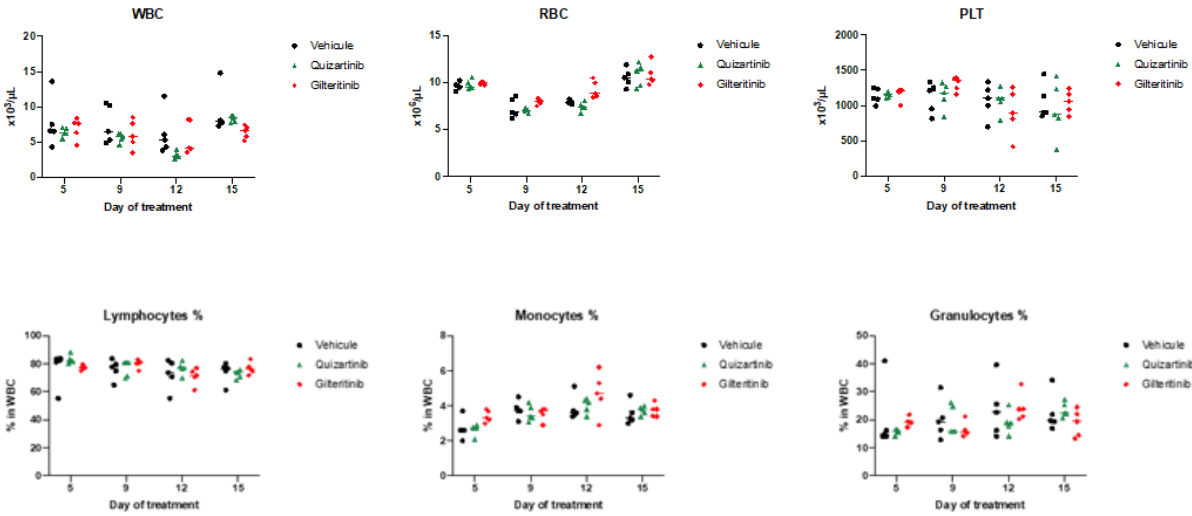


Figure S3: Normal hematopoiesis analyses : (A) Gating strategy used to analyze BM (1 femur, 1 tibia and 1 hip) of primary AML PDX recipient mice 3 days post-treatment. (B) Gating strategy used to analyze BM (1 femur, 1 tibia and 1 hip) of C57BL/6J mice 3 days post-treatment.

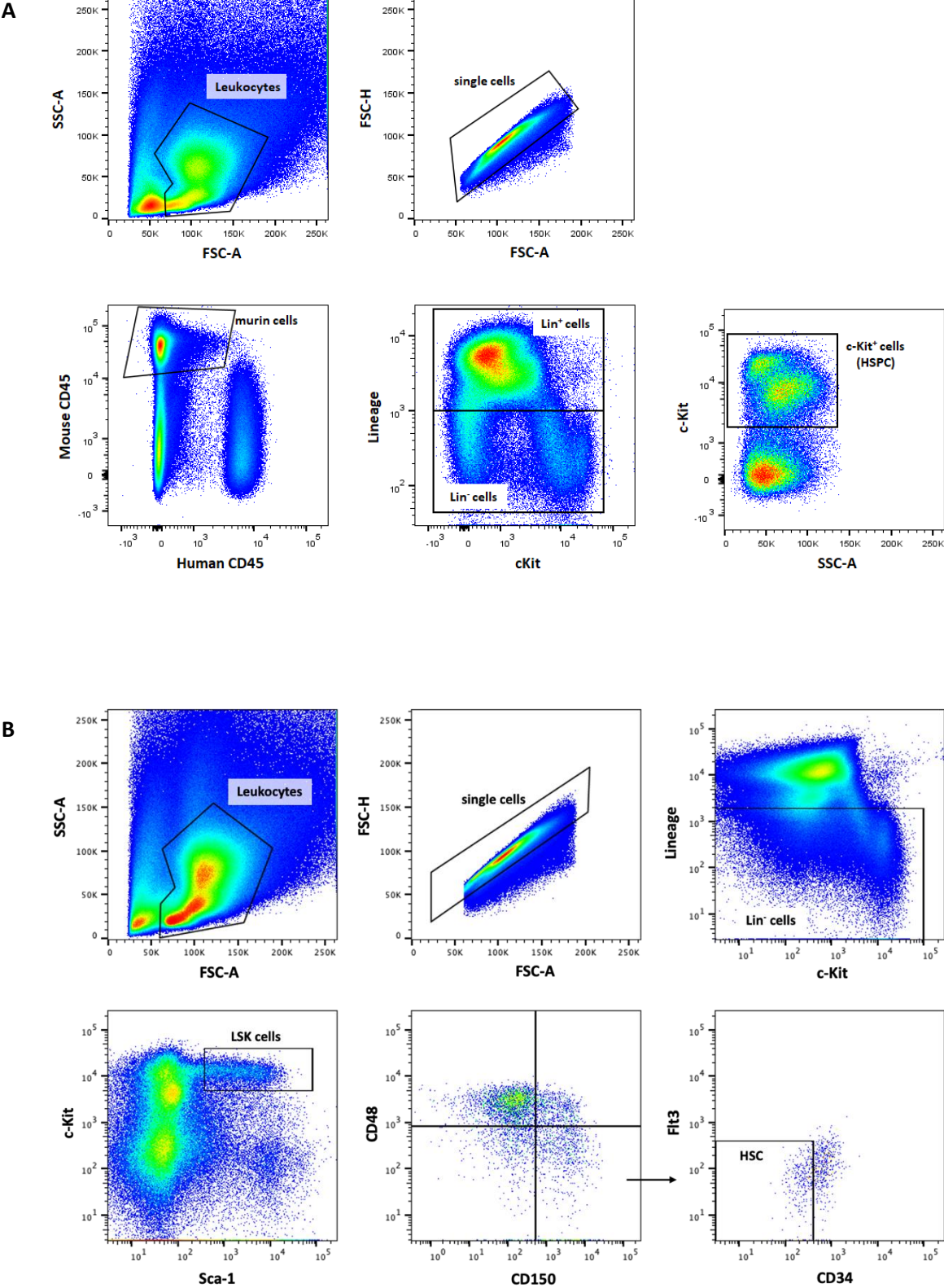


Figure S4: Representative flow cytometry profile of BM of secondary AML PDX recipient mice for each treatment.

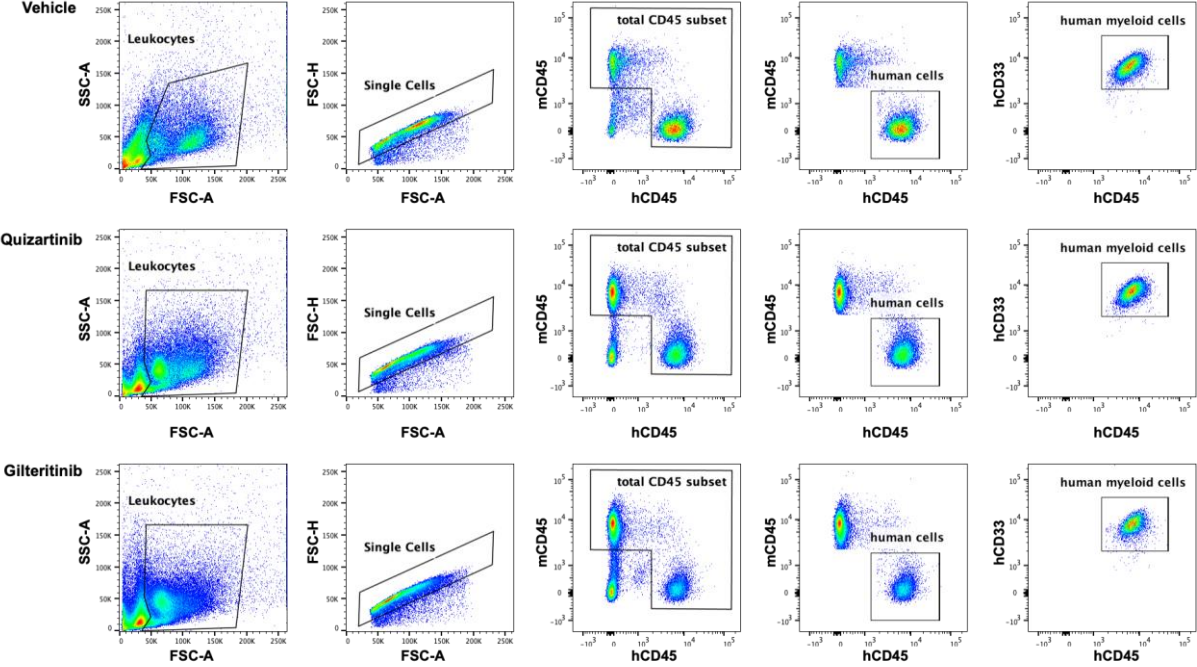


Figure S6: Whole Membranes for Figure 1C

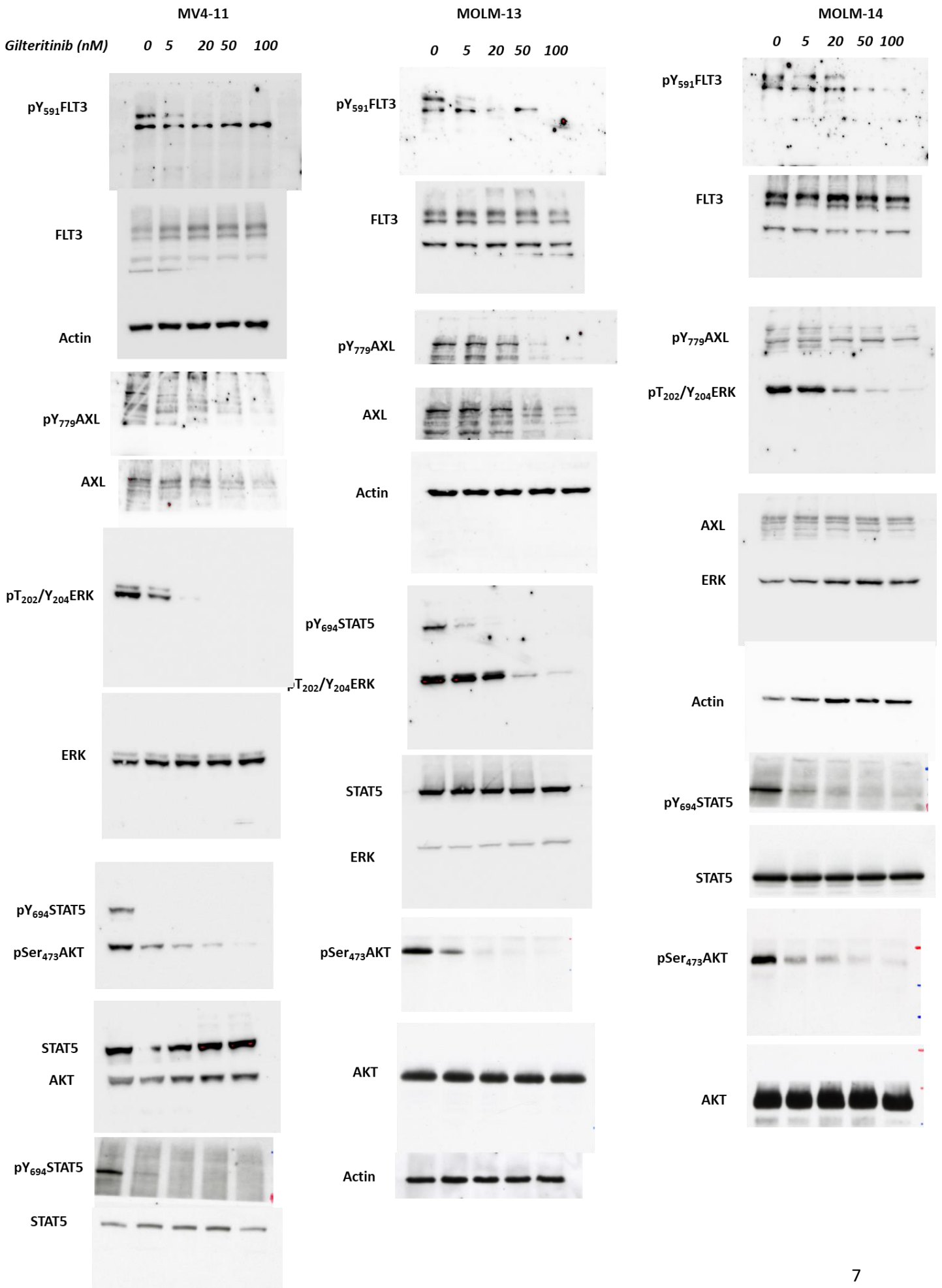


Figure S7:

Whole Membranes

for Figure 2B

