



HAL
open science

Individual recognition is associated with holistic face processing in *Polistes* paper wasps in a species-specific way

Elizabeth Tibbetts, Juanita Pardo-Sanchez, Julliana Ramirez-Matias, Aurore Avarguès-Weber

► To cite this version:

Elizabeth Tibbetts, Juanita Pardo-Sanchez, Julliana Ramirez-Matias, Aurore Avarguès-Weber. Individual recognition is associated with holistic face processing in *Polistes* paper wasps in a species-specific way. *Proceedings of the Royal Society B: Biological Sciences*, 2021, 288 (1943), pp.20203010. 10.1098/rspb.2020.3010 . hal-03453397

HAL Id: hal-03453397

<https://hal.science/hal-03453397>

Submitted on 28 Nov 2021

HAL is a multi-disciplinary open access archive for the deposit and dissemination of scientific research documents, whether they are published or not. The documents may come from teaching and research institutions in France or abroad, or from public or private research centers.

L'archive ouverte pluridisciplinaire **HAL**, est destinée au dépôt et à la diffusion de documents scientifiques de niveau recherche, publiés ou non, émanant des établissements d'enseignement et de recherche français ou étrangers, des laboratoires publics ou privés.

Research



Cite this article: Tibbetts EA, Pardo-Sanchez J, Ramirez-Matias J, Avarguès-Weber A. 2020 Individual recognition is associated with holistic face processing in *Polistes* paper wasps in a species-specific way. *Proc. R. Soc. B* 20203010.
<https://doi.org/10.1098/rspb.2020.3010>

Received: 2 December 2020
 Accepted: 10 December 2020

Subject Category:
 Behaviour

Subject Areas:
 behaviour, cognition

Keywords:
 configural processing, visual cognition, insect cognition, *Polistes dominula*, *Polistes fuscatus*

Authors for correspondence:

Elizabeth A. Tibbetts

e-mail: tibbetts@umich.edu

Aurore Avarguès-Weber

e-mail: aurore.avargues-weber@univ-tlse3.fr

Electronic supplementary material is available online at rs.figshare.com.

Individual recognition is associated with holistic face processing in *Polistes* paper wasps in a species-specific way

Elizabeth A. Tibbetts¹, Juanita Pardo-Sanchez¹, Julliana Ramirez-Matias¹ and Aurore Avarguès-Weber²

¹Ecology and Evolutionary Biology, University of Michigan; Ann Arbor, MI USA

²Centre de Recherches sur la Cognition Animale (CRCA), Centre de Biologie Intégrative (CBI), Université de Toulouse; CNRS, UPS, 118 Route de Narbonne, 31062 Toulouse, France

EAT, 0000-0002-5625-892X; AA, 0000-0003-3160-6710

Most recognition is based on identifying features, but specialization for face recognition in primates relies on a different mechanism, termed ‘holistic processing’ where facial features are bound together into a gestalt which is more than the sum of its parts. Here, we test whether individual face recognition in paper wasps also involved holistic processing using a modification of the classic part-whole test in two related paper wasp species: *Polistes fuscatus*, which use facial patterns to individually identify conspecifics, and *Polistes dominula*, which lacks individual recognition. We show that *P. fuscatus* use holistic processing to discriminate between *P. fuscatus* face images but not *P. dominula* face images. By contrast, *P. dominula* do not rely on holistic processing to discriminate between conspecific or hetero-specific face images. Therefore, *P. fuscatus* wasps have evolved holistic face processing, but this ability is highly specific and shaped by species-specific and stimuli-specific selective pressures. Convergence toward holistic face processing in distant taxa (primates, wasps) as well as divergence among closely related taxa with different recognition behaviour (*P. dominula*, *P. fuscatus*) suggests that holistic processing may be a universal adaptive strategy to facilitate expertise in face recognition.

1. Introduction

Primates are particularly efficient at learning and remembering the unique faces of conspecifics [1,2]. For example, humans can learn an individual face in seconds, remember the face for years and recognize it again even if the face is shown from a new perspective. The remarkable capacity for face recognition has been attributed to configural processing of faces [1,3,4]. During configural processing, both the features and the spatial relationships among features influence recognition. For example, face recognition involves recognizing components of the face (e.g. big nose, brown eyes) and relationships among these components (e.g. wide-set eyes). There are three levels of configural face processing [1]. The first type is sensitivity to first-order relationships that define a face (i.e. two eyes above a nose and mouth). The second type is termed ‘holistic processing’ and implies that the features are bound together into a gestalt which is more than the sum of its parts. The third type is sensitivity to second-order relationships, which means that distances between facial features are perceived and used for discrimination.

Humans primarily rely on the first level of configural processing for categorizing visual objects, but use all three types of configural processing to identify human faces [1,3]. Incorporating the relationships among features into the visual representation of faces is thought to facilitate accurate face recognition [5]. Configural processing also allows humans to consistently identify individuals despite changes in viewpoint (e.g. front view versus rotated face) [6]. In particular, holistic processing increases sensitivity to subtle variations so

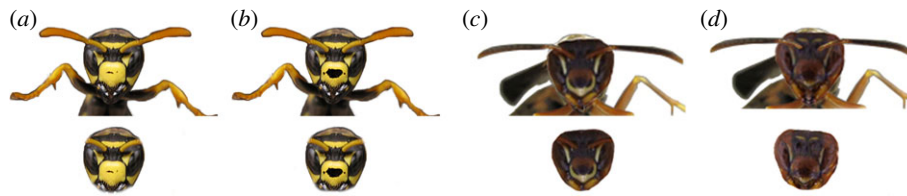


Figure 1. Images of *Polistes dominula* (a,b) and *Polistes fuscatus* (c,d) used for training and testing. All variation is in the inner part of the faces. The outer parts (legs, body position, antennae, background) are identical between the pair of faces from each species. (Online version in colour.)

humans can detect small differences in second-order relations between facial features (e.g. distance between eyes) [4]. There is much debate about how frequently holistic processing is used to recognize non-face objects [7–10]. While most non-face objects are not processed holistically, holistic processing may be used to help recognition of similar objects such as birds, dogs or cars [10]. Importantly, the viewer needs extensive experience identifying fine variation in the objects for holistic processing to occur [11]. Thus, the mechanisms originally evolved for face recognition may be mobilized to identify specific, non-face objects. Interestingly, neuronal networks thought to be specialized for face processing are also activated during recognition of non-face objects when the viewer has extensive experience with those objects [11].

Holistic processing is typically tested by assessing recognition of experimentally manipulated stimuli. For example, human face recognition is dramatically reduced when part of the face is presented in isolation rather than in the context of the whole face (part-whole effect). Humans easily discriminate between two noses when the noses are presented in a whole face, but have difficulty discriminating between the same noses when the noses are presented in isolation [3]. Similarly, holistic processing disrupts feature extraction, so it is more difficult to recognize that facial features are identical when the features are presented in a context of a different face (composite-face effect) [12]. Many primates were shown to rely on holistic processing to identify faces, as they are sensitive to both the composite and the part-whole effect specifically when discriminating faces [2,13,14].

Although diverse species recognize conspecifics using facial features, little previous work has tested whether non-primates use holistic processing during face recognition. Conspecific face recognition has been found in primates, sheep, dogs, fishes and paper wasps [2,15–18], but there is currently no evidence that holistic processing is used for conspecific face recognition in these taxa. Non-primates may use holistic processing to recognize heterospecific human faces with extensive experience. Dogs are sensitive to the part-whole effect with human faces [18] as are honeybees [19–21] and *Vespula vulgaris* wasps [20,22]. The research in honeybees and *Vespula* wasps is notable because it suggests that even small-brained insects can use sophisticated configural processing with sufficient experience. However, holistic processing in honeybees and wasps is not linked to individual recognition but rather to visual object expertise. Honeybees and *Vespula* wasps also do not naturally recognize human faces, so these species provide limited information about how face recognition strategies evolve.

Polistes paper wasps are ideal models for studying the evolution of configural face processing because some *Polistes* species use individual face recognition, while other species do not, despite similar visual abilities. *Polistes fuscatus* wasps

recognize individual conspecifics based on facial pattern variation [16]. During individual recognition, *P. fuscatus* learn the unique facial features of conspecifics, associate the facial features with specific information about their rival, then recall both the face and the rival-related information during subsequent interactions. Previous work indicates that *P. fuscatus* may process conspecific faces differently than other visual stimuli, as *P. fuscatus* learn conspecific faces faster and more accurately than other images. Even minor alteration of face images (e.g. rearranging features or removing antennae) reduces face learning [23], which already suggested the involvement of configural processing. By contrast, other *Polistes* species, including *Polistes dominula*, do not learn and remember unique conspecific faces during social interactions [24]. Instead, *P. dominula* have facial patterns that signal fighting ability [25,26]. Strong wasps have different facial patterns than weak wasps. Although *P. dominula* are attuned to conspecific faces, they assess rival fighting ability without learning and remembering specific conspecific facial patterns [26]. Previous work also suggests *P. dominula* do not use specialized mechanisms for learning conspecific faces [27], (but see [28]). The natural variation in face learning and face specialization makes paper wasps a perfect system to understand the evolution of configural face processing independently of the primate brain evolution.

Here, we test holistic face processing for conspecific and heterospecific face images in two *Polistes* species: *Polistes fuscatus*, which have individual face recognition, and *Polistes dominula*, which do not have individual face recognition. If holistic face processing is an adaptation to facilitate individual face recognition, we predict *P. fuscatus* will use holistic face processing for conspecific face images, while *P. dominula* will not. We also test the specificity of holistic face processing by assessing holistic processing for heterospecific face images. We predict that holistic face processing is highly specific, so neither species will use holistic processing for heterospecific face images.

We use an adaptation of the classical part-whole method that accounts for the wasp's visual acuity to test configural processing. The part-whole method provides evidence of holistic face processing when features (e.g. eyes, nose) are recognized more accurately in the context of a face than in isolation [1,12]. We trained wasps to discriminate between wasp face images that were experimentally altered so the outer part of the face (antennae, background, legs) were identical and the inner part of the face (clypeus, frons, inner eye) had natural levels of variation (figure 1). If wasps use featural mechanisms for face recognition, they will be equally adept at identifying the whole face and central face because all the featural differences between the two face images occur in the central part of the face. If wasps use holistic mechanisms for face recognition, they will identify the whole face more accurately than the central face.

127 2. Methods

128 (a) Species

129 *P. fuscatus* use visual face signals for individual recognition
130 [16,29]. Wasps use individual recognition to minimize conflict in
131 groups of cooperating foundresses [16,30] and to assess potential
132 rivals via social eavesdropping [31]. *P. fuscatus* often nest in large
133 cooperative groups where each foundress has a unique social role
134 [32]. Individual recognition allows foundresses to keep track of
135 individual social relationships, including division of aggression,
136 food and work on nests [16]. Outside nests, individual recognition
137 is used to assess rivals via social eavesdropping and memory of
138 past interactions [31].

139 *Polistes dominula* also have visual signals, but these signals
140 convey information about fighting ability rather than individual
141 identity. Strong *P. dominula* have more broken black facial patterns
142 than weaker *P. dominula* [25]. Signals of fighting ability are used to
143 minimize the costs of conflict when animals interact with unfami-
144 liar rivals [26]. Signals of fighting ability are quite different from
145 signals of individual identity. First, the facial patterns that signal
146 fighting ability have insufficient variation for individual recog-
147 nition [24]. Second, signals of individual identity require wasps
148 to learn and remember unique faces, while signals of fighting
149 ability do not require learning and memory. For example,
150 during individual recognition, wasps learn the unique facial
151 features of conspecifics, associate the facial features with specific
152 information about their rival, then recall both the face and
153 the rival-related information during subsequent interactions.
154 Effective signals of fighting ability only require wasps to assess
155 whether the signal of an unknown rival indicates that the rival
156 is strong or weak, not to learn or remember the faces of social
157 partners [26]. As a result, having a signal of fighting ability is
158 unlikely to influence their ability to learn and remember faces,
159 as quality signalling does not involve face learning and previous
160 experiments have shown that *P. dominula* are not capable of
161 individual face recognition in any sensory modality [24].

162 (b) Collection

163 *P. fuscatus* and *P. dominula* wasps used in the experiment were col-
164 lected from areas surrounding Ann Arbor, MI. After collection,
165 wasps and their nests were housed in individual containers
166 under a natural day/night cycle and fed *ad lib* with sugar and
167 caterpillars. All experiments were performed with nest-founding
168 queens prior to worker emergence.

169 (c) Stimuli

170 Wasps from both species were trained to discriminate between
171 pairs of *P. fuscatus* or *P. dominula* face images species and then
172 tested for their recognition abilities both with the whole faces
173 or with the inner part only (figure 1). The particular face was
174 chosen as the correct stimulus was swapped across wasps. Face
175 images were photographs of wasps from Michigan, USA. Face
176 images were altered in Adobe Photoshop so all the differences
177 between the two face images occurred in the central inner part
178 of the face. The outer part of the faces (antennae, background,
179 legs) was identical between both faces, while the inner part of
180 the face (colours on the clypeus, frons, inner eye) had natural
181 levels of variation. All images were printed at life size (face
182 approx. 3.5 mm wide) using a commercially available Sony
183 Picture Station photo printer that uses ink cartridges.

184 (d) Training and testing procedure

185 Wasps were initially individually trained to discriminate a pair of
186 whole face images (figure 1) using the same setup used in [27,33]
187 (electronic supplementary material, figure S1). During training,
188 wasps were placed in a 2.5 wide × 4 long × 0.7 height cm wood
189

and plexiglass box with six identical stimuli glued onto the
inside walls. Two longer sides had two face pictures each,
while two shorter sides had one face picture each. In half of
the bouts, the wasp was placed in the box with only incorrect
face stimuli (CS+) and received a mild electric shock from an
electrified pad for 2 min. The entire floor was electrified. The
electrified pad was made of anti-static conductive foam electri-
fied by two copper wires connected to a Variac transformer,
which provided continuous 0.4 volt AC current. The boxes
were shallow so that wasps could not escape the shock by
flying or climbing the walls. The mild electric shock is aversive
but not harmful to the wasp. In the other half of the bouts, the
wasp was placed in a box with only the correct face stimuli
(CS-) for 2 min while the pad was not electrified. Between
each bout, the wasp was given a 1 min break in a holding con-
tainer. This sequence of one CS+ and one CS- bouts was
repeated three times per wasp, so wasps experienced three CS+
and three CS- bouts in total. After training, the wasp was
given a 45 min break in a holding container with access to
sugar and water.

Each wasp was then tested twice: once using whole face
stimuli and once using inner face stimuli. The testing order was
randomized so that half the wasps were initially tested on
whole faces and half were initially tested on inner faces. Whether
a stimulus was tested first or second did not influence perform-
ance (see results). Learning performance was assessed by
measuring whether the wasp approached the correct (CS-) or
incorrect (CS+) image over 10 trials separated by 1 min breaks.
After the first bout of 10 testing trials, each wasp was given a
45 min break, then tested for 10 trials on the second set of stimuli.
Testing occurred in a 3 × 10 × 0.7 cm rectangular box. One end
of the rectangle displayed the correct stimulus (CS-) while the
other end of the rectangle displayed the incorrect stimulus
(CS+). The entire floor of the rectangle was electrified except the
2.25 cm zone closest to the correct stimulus, the 'safety zone'.
The correct choice was associated with safety to ensure learned
preferences from the initial training were not extinguished
during the 10 trials test. Receiving a shock while choosing a
preferred stimulus can rapidly extinguish learned preferences.

The centre of the rectangle had two removable, clear
partitions that confined the wasp. At the beginning of each
trial, the wasp was placed in the centre of the rectangle between
the clear partitions, the electric shock was turned on for five
seconds, both partitions were removed simultaneously, and the
wasp was free to walk through the rectangle. Providing an elec-
tric shock ensured wasps' motivation to look for the correct,
'safe', stimulus. Wasps who learned to discriminate the faces
during the training phase typically turn toward the correct
stimulus while confined in the centre and quickly walk toward
it as soon as the partitions were removed. A choice was scored
when the wasp's head entered one of the 2.5 cm zone closest
to each stimulus, at each end of the rectangle. The stimuli
subtended a visual angle of approximately 30° at the 2.5 cm dis-
tance. Wasps are scored as making a choice before they reach the
non-shocking safety zone to ensure wasps made choices based
on learned stimuli preferences rather than directly assessing the
presence or absence of shock. Wasps made quick choices (typi-
cally less than 5 s). After a wasp made a choice, it was
removed from the testing arena and given a 1 min break in a
holding container. The placement of the correct (CS-) and incor-
rect (CS+) stimuli (right or left side) was determined randomly
and changed between trials. This ensures that wasps did not
associate a particular direction with correct choices.

185 (e) Statistical analysis

186 Twenty-three *P. dominula* were trained on *P. dominula* faces.
187 Twenty-three *P. dominula* were trained on *P. fuscatus* faces.

190 Twenty-one *P. fuscatus* were trained on *P. dominula* faces. Fifteen *P.*
191 *fuscatus* were trained on *P. fuscatus* faces. Each wasp was tested on
192 both whole and inner face stimuli.

193 The data were analysed using generalized mixed linear
194 models (GLMM) with a binomial error structure—logit-link func-
195 tion (*glmer* function of R package *lme4*) [34]. The dependent
196 variable was the number of correct choices out of 10. The independ-
197 ent variables (fixed factors) were *Species* trained (categorical:
198 *P. fuscatus* or *P. dominula*), *stimuli* species (categorical: *P. fuscatus*
199 or *P. dominula*), *whole* versus *inner* face (called *test*, categorical:
200 whole or inner) and *order* (continuous: first or second stimuli
201 tested). *Wasp ID* was included as a random factor to account
202 for the repeated-measure design as each wasp was tested on
203 both whole and inner faces. Several models were run by testing
204 interactions between factors and by dropping each factor sub-
205 sequently to select the significant model with the highest
206 explanatory power (i.e. the lowest AIC value) (See statistical
207 tables in electronic supplementary material).

207 Tukey post hoc tests using the *ghlt* function (*multicomp*
208 R package) [35] were run on the best models after splitting the
209 data between species to compare tests performance between
210 conditions. A Wilcoxon test was used to compare directly the
211 performance of both species for the *P. fuscatus* faces.

212 We finally compared performance in each test to the 50 : 50
213 random expectation using a binomial test. The binomial test
214 provides an exact test of whether the number of correct versus
215 incorrect choices differs from the 50 : 50 random expectation.

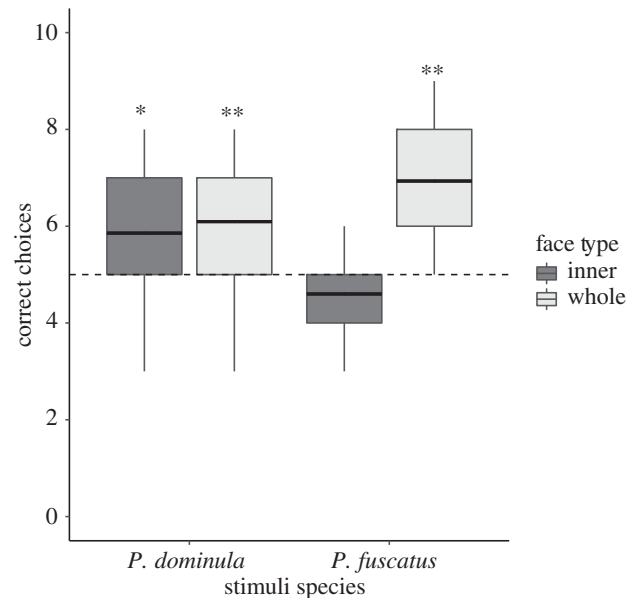
216 All statistical analyses were performed with R 3.4.2
217 (R Development Core Team, 2016).

218 3. Results

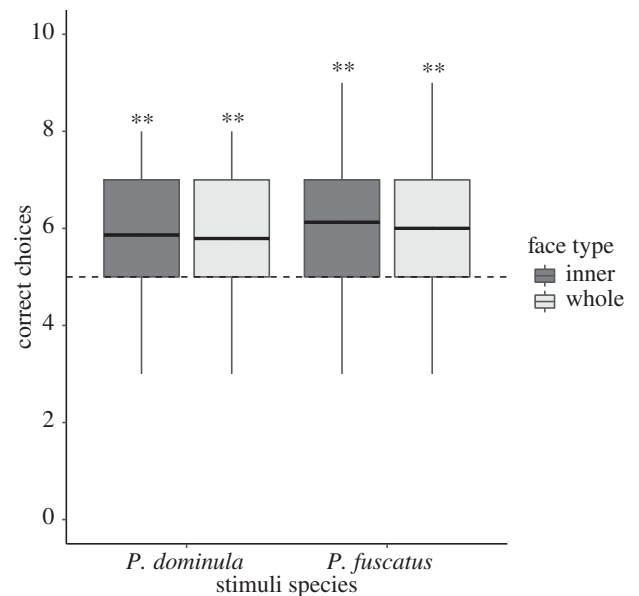
219 There are significant differences in how *P. fuscatus* and
220 *P. dominula* process faces (figures 2 and 3). Face recognition
221 was influenced by the three-way interaction between species
222 trained, stimulus species and whole versus inner face ($\chi^2 =$
223 14.35, $p = 0.006$; electronic supplementary material, table S1).
224 However, discrimination performance was not influenced by
225 the order of the tests ($\chi^2 = 0.04$, $p = 0.85$; electronic sup-
226 plementary material, table S1). We further analysed the data
227 by examining the performance of each species separately.

228 *P. fuscatus* process conspecific faces holistically but do not
229 use holistic processing for heterospecific faces (figure 2).
230 Indeed, there was a significant interaction between the stimuli
231 species and the whole or inner face stimuli tests ($\chi^2 = 7.94$, $p =$
232 0.005; electronic supplementary material, table S2). The sig-
233 nificant interaction occurs because *P. fuscatus* recognize
234 whole *P. fuscatus* faces more accurately than they recognize
235 inner *P. fuscatus* faces (figure 2, $Z = 4.05$, $p < 0.001$). By contrast,
236 *P. fuscatus* recognize whole and inner *P. dominula* faces with
237 similar accuracy (figure 2, $Z = 0.50$, $p = 0.96$). Indeed, *P. fusca-*
238 *tus* succeeded in discriminating whole *P. fuscatus* faces (0.69
239 $\pm 0.03\%$ of correct choices (mean \pm s.e.m.); $p = 0.006$) but not
240 partial *P. fuscatus* faces ($0.46 \pm 0.02\%$; $p = 0.36$). *P. fuscatus*
241 also discriminated both whole and inner *P. dominula* faces
242 better than expected by random chance (whole: $0.61 \pm 0.03\%$,
243 $p = 0.01$; inner: $0.59 \pm 0.03\%$, $p = 0.01$).

244 *P. dominula* do not process either conspecific or heterosp-
245 ecific faces holistically and face processing consequently did
246 not differ across stimuli. Performance was not influenced by
247 the interaction between stimulus species and whole versus
248 inner face (figure 3, $\chi^2 = 0.06$, $p = 0.81$; electronic supplemen-
249 tary material, table S3), by the stimuli species ($\chi^2 = 0.005$, $p =$
250 0.95), the type of test (whole versus inner face, $\chi^2 = 0.11$,



251 **Figure 2.** *P. fuscatus* face discrimination when wasps are tested on
252 *P. dominula* and *P. fuscatus* whole and inner face stimuli after being trained
253 with the whole faces. Box: 1Q, mean, 3Q. Whiskers: min/max. Dotted line
254 represents the 50 : 50 random choice expectation. Stars reflect significant
255 difference from random choice * $p < 0.05$, ** $p < 0.01$.



256 **Figure 3.** *P. dominula* face discrimination when wasps are tested on *P. dom-*
257 *inula* and *P. fuscatus* whole and inner face stimuli after being trained with
258 the whole faces. Box: 1Q, mean, 3Q. Whiskers: min/max. Dotted line rep-
259 represents the 50 : 50 random choice expectation. Stars reflect significant
260 difference from random choice ** $p < 0.01$.

261 $p = 0.74$) or the order of the tests ($\chi^2 = 0.13$, $p = 0.72$). The
262 lack of significant interaction illustrates that *P. dominula* use
263 the same processing mechanisms for learning conspecific
264 and heterospecific faces. *P. dominula* discriminated all types
265 of stimuli: *P. dominula* faces (whole: $0.59 \pm 0.03\%$, $p = 0.01$,
266 inner: $0.60 \pm 0.03\%$, $p = 0.002$) and *P. fuscatus* faces (whole:
267 $0.60 \pm 0.02\%$, $p = 0.006$, inner: $0.60 \pm 0.02\%$, $p = 0.004$).

268 Finally, *P. fuscatus* learned to discriminate whole conspe-
269 cific faces more accurately than *P. dominula* discriminate the
270 same stimuli ($W = 250$, $p = 0.02$), consistent with holistic face
271 processing providing a learning advantage.

4. Discussion

P. fuscatus wasps use holistic processing to identify conspecific, but not heterospecific faces. *P. fuscatus* easily differentiated whole conspecific face images. However, *P. fuscatus* were unable to differentiate faces when only the inner part of the face was available. The inability to discriminate inner face images was somewhat surprising because the images were experimentally manipulated to ensure the inner face images contained the same amount of information as whole face images because the outer part of the face was identical across stimuli. Further, there is nothing inherently difficult about recognizing inner face images, as *P. fuscatus* recognized whole and inner heterospecific faces with similar accuracy. Therefore, results of part-whole face discrimination tests suggest that *P. fuscatus* wasps use holistic processing to identify conspecific but not heterospecific faces. *P. fuscatus* encode conspecific facial features as integral parts of the face rather than as separate features. As a result, wasps do not identify conspecific facial features outside of the context of a face.

Although many taxa may use first-order configural information during object recognition [2,21,36], this study provides the first evidence to our knowledge of holistic processing of conspecific faces in a non-primate species. Holistic face processing is key to fast, accurate individual face recognition in humans [1,5] and likely serves a similar function in paper wasps. Individual face recognition is indeed an important aspect of the social life of *P. fuscatus*, as wasps learn and remember the unique facial patterns of many individuals on and off nests [16,31]. The species specificity of holistic face processing in *P. fuscatus* matches previous work in primates [2]. Like wasps, humans naturally use holistic face processing to identify conspecific faces, but do not naturally use holistic processing for heterospecific faces [37].

Our results also demonstrate that *P. dominula*, a related species of *P. fuscatus*, do not use holistic processing to identify conspecific or heterospecific faces (figure 3). Instead, *P. dominula* use featural processing to identify all face images. The lack of holistic processing in *P. dominula* is consistent with the hypothesis that holistic processing is an adaptation to facilitate individual face discrimination. *P. dominula* provide a particularly interesting comparison to *P. fuscatus* because they are closely related and both species use facial patterns for social interactions. Nevertheless, the species differ in holistic processing for conspecific faces, likely because *P. fuscatus* learn and remember the unique faces of many conspecifics, while *P. dominula* do not. Instead, facial patterns in *P. dominula* are status badges that signal fighting ability. Strong wasps have different facial patterns than weak wasps [25,26]. Wasps gain information about fighting ability without learning and remembering specific conspecific facial patterns. Consequently, holistic face processing likely provides no evolutionary benefit to *P. dominula* wasps, in contrast with *P. fuscatus*.

Importantly, the difference in performance between species and face stimuli probably do not arise from the characteristics of the face stimuli. Both *P. fuscatus* and *P. dominula* faces have general characteristics that are thought to facilitate configural processing. Previous work suggests that features are more likely to be processed using configural mechanisms when features are predictably arranged with variation in specific areas [21]. For example, human faces have a predictable arrangement (eyes above nose above mouth). Face variation occurs in the size and shape of features as well as

their spacing. In *P. dominula*, wasps vary in the size and shape of black clypeus spots [25]. In *P. fuscatus*, faces vary in the brown, black, and yellow coloration in four facial areas (clypeus, frons, inner eye and outer eye) [16]. The predictable variation facilitates categorization and visual search because it is straightforward for receivers to focus on the most informative visual features. As a result, stimuli that have predictable configurations may favour the evolution of specialized mechanisms to extract relevant information [38].

This study thus adds to previous work in wasps suggesting that individual recognition is linked to specific face processing mechanisms. For example, *P. fuscatus* learn normal conspecific faces faster and more accurately than altered faces (jumbled facial features, antennae digitally removed), other biologically relevant visual objects such as prey items or simple geometrical forms [23]. Less work has examined face processing in *P. dominula*, though *P. dominula* seem also to have difficulty in learning face stimuli when the antennae are removed [28]. The current study used controlled stimuli with identical antennae and body position, finding no evidence of specialized face processing in *P. dominula*.

Paper wasps also allow us to study the role of experience in the development of specialized face processing. Testing the role of experience in face specialization is difficult in primates [7,39,40]. Previous studies have shown that *P. fuscatus* wasps raised in isolation without social contact lost their facility for individual face recognition [33]. Additionally, raising *P. fuscatus* wasps with *P. dominula* prevented the development of specialized conspecific face processing [27]. In parallel, *P. dominula* individuals raised with *P. fuscatus* did not show specialized processing for *P. fuscatus* faces but did improve *P. fuscatus* face learning performance [27]. Therefore, face specialization is influenced by both experience and innate, species-specific differences.

In conclusion, this study illustrates that species-specific evolutionary adaptation plays a key role in the development of holistic processing. Selection for efficient individual recognition has favoured the adaptive evolution of holistic face processing in *P. fuscatus*. Our results also confirm that holistic processing did not emerge with the development of large, sophisticated brain in primates. Instead, holistic face processing provides a remarkable example of convergent evolution between wasps and mammals. Although mammals and wasps have different sensory and neural structures, holistic processing has arisen independently in both groups suggesting the efficiency of such mechanism for accurately learning a large number of similar visual objects. Future work should explore whether face-processing specialization in wasps relies on the development of specific neuronal networks as found in primates.

Ethics. Our protocols comply with standard welfare practice in our field.

Data accessibility. The datasets supporting this article have been uploaded as part of the electronic supplementary material.

Authors' contributions. A.A.W. conceived the project. A.A.W. and E.A.T. designed the experiments. J.R.M. performed the experiments. E.A.T. and A.A.W. analysed the data. A.A.W., E.A.T. and J.P.S. wrote the manuscript.

Competing interests. We declare no competing interests.

Funding. The project was supported by the Fyssen foundation and by the National Science Foundation under grant number IOS-1557564.

Acknowledgements. Thanks to Janine Kerr and Elijah Thompson for help collecting and caring for wasps.

References

1. Maurer D, Le Grand R, Mondloch CJ. 2002 The many faces of configural processing. *Trends Cogn. Sci.* **6**, 255–260. (doi:10.1016/S1364-6613(02)01903-4)
2. Parr LA. 2011 The evolution of face processing in primates. *Phil. Trans. R. Soc. B Biol. Sci.* **366**, 1764–1777. (doi:10.1098/rstb.2010.0358)
3. Tanaka JW, Farah MJ. 1993 Parts and wholes in face recognition. *Q. J. Exp. Psychol. Sec. a-Hum. Exp. Psychol.* **46**, 225–245. (doi:10.1080/14640749308401045)
4. Richler J, Gauthier I. 2014 A meta-analysis and review of holistic face processing. *Psychol. Bull.* **140**, 1281–1302. (doi:10.1037/a0037004)
5. Richler J, Cheung O, Gauthier I. 2011 Holistic processing predicts face recognition. *Psychol. Sci.* **4**, 464–471. (doi:10.1177/0956797611401753)
6. McKone E. 2008 Configural processing and face viewpoint. *J. Exp. Psychol. Hum. Percept. Perform.* **34**, 310. (doi:10.1037/0096-1523.34.2.310)
7. Gauthier I, Nelson CA. 2001 The development of face expertise. *Curr. Opin Neurobiol.* **11**, 219–224. (doi:10.1016/S0959-4388(00)00200-2)
8. Kanwisher N. 2010 Functional specificity in the human brain: a window into the functional architecture of the mind. *Proc. Natl Acad. Sci. USA* **107**, 11 163–11 170. (doi:10.1073/pnas.1005062107)
9. McKone E, Kanwisher N, Duchaine BC. 2007 Can generic expertise explain special processing for faces? *Trends Cogn. Sci.* **11**, 8–15. (doi:10.1016/j.tics.2006.11.002)
10. Kanwisher N. 2000 Domain specificity in face perception. *Nat. Neurosci.* **3**, 759–763. (doi:10.1038/77664)
11. Gauthier I, Skudlarski P, Gore JC, Anderson AW. 2000 Expertise for cars and birds recruits brain areas involved in face recognition. *Nat. Neurosci.* **3**, 191–197. (doi:10.1038/72140)
12. Rossion B. 2012 The 'Parts and Wholes' of face recognition: a review of the literature. *Vis. Cogn.* **21**, 139–253. (doi:10.1080/13506285.2013.772929)
13. Dahl C, Wallraven C, Bühlhoff H, Logothetis N. 2009 Humans and macaques employ similar face-processing strategies. *Curr. Biol.* **19**, 509–513. (doi:10.1016/j.cub.2009.01.061)
14. Burke D, Sulikowski D. 2013 The evolution of holistic processing of faces. *Front. Psychol.* **4**, 11. (doi:10.3389/fpsyg.2013.00011)
15. Wang M-Y, Takeuchi H. 2017 Individual recognition and the 'face inversion effect' in medaka fish (*Oryzias latipes*). *eLife* **6**, e24728. (doi:10.7554/eLife.24728)
16. Tibbetts EA. 2002 Visual signals of individual identity in the wasp *Polistes fuscatus*. *Proc. R. Soc. Biol. Sci. Ser. B* **269**, 1423–1428. (doi:10.1098/rspb.2002.2031)
17. Kendrick K, daCosta A, Leigh A, Hinton M, Peirce J. 2001 Sheep don't forget a face. *Nature* **414**, 165–166. (doi:10.1038/35102669)
18. Racca A, Amadei E, Ligout S, Guo K, Meints K, Mills D. 2010 Discrimination of human and dog faces and inversion responses in domestic dogs (*Canis familiaris*). *Anim. Cogn.* **13**, 525–533. (doi:10.1007/s10071-009-0303-3)
19. Avarguès-Weber A, Dyer AG, Ferrah N, Giurfa M. 2015 The forest or the trees: preference for global over local image processing is reversed by prior experience in honeybees. *Proc. R. Soc. B* **282**, 20142384. (doi:10.1098/rspb.2014.2384)
20. Avarguès-Weber A, d'Amaro D, Metzler M, Finke V, Baracchi D, Dyer A. 2018 Does holistic processing require a large brain? Insights from honeybees and wasps in fine visual recognition tasks. *Front. Psychol.* **9**, 1313. (doi:10.3389/fpsyg.2018.01313)
21. Avarguès-Weber A, Portelli G, Benard J, Dyer A, Giurfa M. 2010 Configural processing enables discrimination and categorization of face-like stimuli in honeybees. *J. Exp. Biol.* **213**, 593–601. (doi:10.1242/jeb.039263)
22. Avarguès-Weber A, d'Amaro D, Metzler M, Garcia J, Dyer A. 2017 Recognition of human face images by the free flying wasp *Vespula vulgaris*. *Anim. Behav. Cogn.* **4**, 314–323. (doi:10.26451/abc.04.03.09.2017)
23. Sheehan MJ, Tibbetts EA. 2011 Specialized face learning is associated with individual recognition in paper wasps. *Science* **334**, 1272–1275. (doi:10.1126/science.1211334)
24. Sheehan MJ, Tibbetts EA. 2010 Selection for individual recognition and the evolution of polymorphic identity signals in *Polistes* paper wasps. *J. Evol. Biol.* **23**, 570–577. (doi:10.1111/j.1420-9101.2009.01923.x)
25. Tibbetts EA, Dale J. 2004 A socially enforced signal of quality in a paper wasp. *Nature* **432**, 218–222. (doi:10.1038/nature02949)
26. Tibbetts EA. 2013 The Function, Development, and Evolutionary Stability of Conventional Signals of Fighting Ability. In *Advances in the study of behavior*, Vol 45 (eds HJ Brockmann, TJ Roper), pp. 49–80. (doi:10.1016/B978-0-12-407186-5.00002-1)
27. Tibbetts EA, Den Uyl J, Dwartz M, McLean C. 2019 The development and evolution of specialized face learning in paper wasps. *Anim. Behav.* **147**, 1–7. (doi:10.1016/j.anbehav.2018.10.016)
28. Sheehan MJ, Sholler D, Tibbetts EA. 2014 Specialized visual learning of facial signals of quality in the paper wasp, *Polistes dominula*. *Biol. Lett.* **113**, 992–997. (doi:10.1111/bij.12394)
29. Injaian A, Tibbetts EA. 2014 Cognition across castes: individual recognition in worker *Polistes fuscatus* wasps. *Anim. Behav.* **87**, 91–96. (doi:10.1016/j.anbehav.2013.10.014)
30. Sheehan MJ, Tibbetts EA. 2009 Evolution of identity signals: Frequency-dependent benefits of distinctive phenotypes used for individual recognition. *Evolution* **63**, 3106–3113. (doi:10.1111/j.1558-5646.2009.00833.x)
31. Tibbetts EA, Wong E, Bonello S. 2020 Wasps use social eavesdropping to learn about individual rivals. *Curr. Biol.* **30**, 3007–3010. (doi:10.1016/j.cub.2020.05.053)
32. Jandt JM, Tibbetts EA, Toth AL. 2014 *Polistes* paper wasps: a model genus for the study of social dominance hierarchies. *Insectes Soc.* **61**, 11–27. (doi:10.1007/s00040-013-0328-0)
33. Tibbetts EA, Desjardins E, Kou N, Wellmann L. 2019 Social isolation prevents the development of individual face recognition in paper wasps. *Anim. Behav.* **152**, 71–77. (doi:10.1016/j.anbehav.2019.04.009)
34. Bates D, Mächler M, Bolker B, Walker S. 2014 Fitting linear mixed-effects models using lme4. arXiv 1406.5823.
35. Hothorn T, Bretz F, Westfall P. 2008 Simultaneous inference in general parametric models. *Biom. J.* **50**, 346–363. (doi:10.1002/bimj.200810425)
36. Peirce J, Leigh A, Kendrick K. 2000 Configurational coding, familiarity and the right hemisphere advantage for face recognition in sheep. *Neuropsychologia* **38**, 475–483. (doi:10.1016/S0028-3932(99)00088-3)
37. Dufour V, Pascalis O, Petita O. 2006 Face processing limitation to own species in primates: a comparative study in brown capuchins, Tonkean macaques and humans. *Behav. Process.* **73**, 107–113. (doi:10.1016/j.beproc.2006.04.006)
38. Yang H, Zelinsky G. 2009 Visual search is guided to categorically defined targets. *Vision Res.* **49**, 2095–2103. (doi:10.1016/j.visres.2009.05.017)
39. Hoehl S, Peykarjou S. 2012 The early development of face processing - What makes faces special? *Neurosci. Bull.* **28**, 765–788. (doi:10.1007/s12264-012-1280-0)
40. Sugita Y. 2008 Face perception in monkeys reared with no exposure to faces. *Proc. Natl Acad. Sci. USA* **105**, 394–398. (doi:10.1073/pnas.0706079105)