



Connectivity and selfing drives population genetic structure in a patchy landscape: a comparative approach of four co-occurring freshwater snail species

P Jarne, Ana Lozano del Campo, Thomas Lamy, Elodie Chapuis, Maxime Dubart, Adeline Segard, Elsa Canard, Jean-Pierre Pointier, Patrice David

► To cite this version:

P Jarne, Ana Lozano del Campo, Thomas Lamy, Elodie Chapuis, Maxime Dubart, et al.. Connectivity and selfing drives population genetic structure in a patchy landscape: a comparative approach of four co-occurring freshwater snail species. 2021. hal-03451321v1

HAL Id: hal-03451321

<https://hal.science/hal-03451321v1>

Preprint submitted on 11 Feb 2021 (v1), last revised 26 Nov 2021 (v5)

HAL is a multi-disciplinary open access archive for the deposit and dissemination of scientific research documents, whether they are published or not. The documents may come from teaching and research institutions in France or abroad, or from public or private research centers.

L'archive ouverte pluridisciplinaire **HAL**, est destinée au dépôt et à la diffusion de documents scientifiques de niveau recherche, publiés ou non, émanant des établissements d'enseignement et de recherche français ou étrangers, des laboratoires publics ou privés.

**Connectivity and selfing drives population genetic structure in a patchy landscape:
a comparative approach of four co-occurring freshwater snail species**

Jarne P.¹, Lozano del Campo A.^{1*}, Lamy T.^{2*}, Chapuis E.^{1,3}, Dubart M.^{1,4}, Segard A.^{1,5},
Canard E.⁶, Pointier J.-P.⁷, David P.¹

* Equal contribution

¹ CEFÉ, UMR 5175, CNRS-Univ Montpellier-Université P. Valéry Montpellier-IRD-EPHE,
1919 route de Mende, 34293 Montpellier cedex 5, France

² Marine Science Institute, University of California, Santa Barbara, California, 93106, USA

³ MIVEGEC IRD (UMR 224)-CNRS (UMR 5290)-Univ Montpellier, 911 Avenue Agropolis,
BP 64501, 34394 Montpellier Cedex 5, France

⁴ Univ. Lille, CNRS, UMR 8198 - Evo-Eco-Paleo, F-59000 Lille, France

⁵ INTERTRYP, IRD, Cirad, Univ Montpellier, Campus international de Baillarguet-34398
Montpellier Cedex, France

⁶ IGEPP, UMR INRA-Agrocampus Ouest-Université Rennes 1, Agrocampus Ouest, 65 rue de
Saint-Brieuc, 35042 Rennes cedex, France

⁷ CRIOBE, USR 3278 CNRS-EPHE, PSL Research University, Université de Perpignan,
66880 Perpignan cedex, France

Corresponding author: Philippe Jarne, Centre d'Ecologie Fonctionnelle et Evolutive, UMR
5175, CNRS-Univ Montpellier-Université P. Valéry Montpellier-IRD-EPHE, 1919 route de
Mende, 34293 Montpellier cedex 5, France. E-mail: philippe.jarne@cefe.cnrs.fr

26 **Keywords:** genetic variation, metapopulation, interspecific comparison, microsatellites,
27 connectivity, mating systems, freshwater snails

28 **Running title:** comparative population genetic structure

29 **Word count (text):** 8250

30 **Table count:** 3

31 **Figure count:** 3

32 **Supplementary information:** see file Lozano et al_Supplementary Information (11 tables and
33 one figure)

34

Abstract (291 words)

The distribution of neutral genetic variation in subdivided populations is driven by the interplay between genetic drift, migration and extinction / colonization. The influence of environmental and demographic factors has also been increasingly examined in empirical studies, but generally focusing on a single species. An open question is whether these factors will similarly, or idiosyncratically, affect a guild of species occupying the same geographical space and exhibiting different traits, mating systems and histories. We addressed it by comparing the population genetic structure of the four most common species of hermaphroditic freshwater snails in Guadeloupe (Lesser Antilles), which occupy a network of patchily distributed sites experiencing temporal variation in water availability. We analyzed microsatellite variability in 21 to 43 populations per species, and built predictions on how several environmental and demographic variables, quantified from a long-term annual survey, as well as species traits, may affect the distribution of genetic variation. These species displayed similarities, such as fairly high levels of variation, but with marked differences among sites, as well strong genetic differentiation and limited isolation by distance, which can be explained by passive dispersal (strong role of site connectivity), extinction/colonization dynamics and variation in local population size. They also exhibit differences, largely due to the mating system with less genetic diversity and more genetic differentiation in the two selfing species when compared to the two outcrossing ones. These differences can also be attributed to interspecific interactions resulting from the ongoing invasion of Guadeloupe by one of the species studied, which affects the demography of other species, and, to a limited extent, to local environmental factors. Our comparative approach shows both differences and uniqueness in the way species occupy the same landscape, and provides a possible entry to interspecific interactions in community assembly.

Introduction

The evolutionary dynamics of species occupying patchily distributed habitats has been the subject of a large body of both experimental and theoretical work (Hanski & Gaggiotti, 2004; Bell, 2008; Charlesworth & Charlesworth, 2010), highlighting the role of finite size of populations and migration, and of their spatial and temporal variation. Metapopulation approaches also consider the role of population extinction and colonization, which roles depend particularly from the origin of the propagule pool (Levins, 1969; Whitlock & Barton, 1997; Hanski & Gaggiotti, 2004). These demographic processes may also occur at the scale of whole metapopulations, for example in situations of biological invasions (e.g., Davis, 2008; Facon & David, 2006), with possible variation loss at migration front due to founder effects. Other factors, such as the mating system or environmental parameters (e.g., through local adaptation), should also be considered (e.g., Pannell, 2002; Hanski & Gaggiotti, 2004; Foll & Gaggiotti, 2006).

In this context, we will analyze here how the spatial distribution of neutral variation in a patchy landscape is affected by the following factors: (i) environmental factors, especially local ones, (ii) invasion dynamics, and (iii) traits, especially mating systems. (i) Variation in population size, as well as extinction / colonization dynamics, may affect the strength of both genetic drift and gene flow, and therefore genetic variation (Barton & Whitlock, 1997; Hanski & Gaggiotti, 2004). Both processes may depend on environmental variables and their temporal variation (Hanski & Gaggiotti, 2004; Lamy et al., 2013a). The role of local factors is increasingly accounted for in analyses of population genetic structure (e.g., Foll & Gaggiotti, 2006; Frichot, Mathieu, Trouillon, Bouchard, & François, 2014). An example of local factor is site size, which affects both population demography and migration (large sites can harbor larger populations and are larger targets for migrants). At larger scale, the connectivity of local sites to the whole network impacts gene flow and colonization. Connectivity can be evaluated based

on local features of accessibility, but also through some form of geographic distance, possibly taking into account landscape elements modulating dispersal (Barton & Whitlock, 1997; Rousset, 1997; Balkenhol, Cushman, Storfer, & Waits, 2015; Manel & Holderegger, 2013). (ii) Extinction and colonization may also occur at metapopulation scale in situations of regional invasion or extinction, both leaving traces in the distribution of genetic variability. For example, invasion is often associated with founder effect and variation loss at invasion front (Roman & Darling, 2007; Pannell, 2015), with increased frequencies of some alleles through genetic drift (Excoffier & Ray, 2008). (iii) Mating systems can vary widely among species, even closely related ones, or even within species, which affects the distribution of genetic variability, as they interact in a complex manner with both environmental factors and demography (see e.g. Charlesworth & Charlesworth, 2010). Self-fertilization is a striking example, on one hand decreasing the effective population size, and thus modulating the impact of demography on genetic diversity and population structure (see Charlesworth, 2003; Jarne, 1995). On the other hand, it may affect population demography itself (Abu Awad & Billiard, 2017), and increased selfing rates may be a way to cope with lack of partners / pollinators, protecting from local extinction and giving an advantage in colonizing situations (Jarne, 1995; Pannell, 2015). Other specific traits might be considered, such as the capacity to withstand bad conditions (e.g., escaping dryness through aestivation or seed banks), modulating the extinction dynamics (Lamy et al., 2013a; Fréville et al., 2013).

An important point in the perspective presented above is that the distribution of diversity is considered within species, and most studies of population focus on single species (see e.g. in Bell, 2008; Charlesworth & Charlesworth, 2010). We may wonder to what extent different species occupying the same landscape differ with respect to genetic diversity within and among populations, since they can both be differentially be affected by local and regional factors and exhibit different traits. This issue can be addressed through a comparative analysis of a species

set occupying the same landscape. The taxonomic range of the species set matters, since species belonging to very different groups (e.g., arthropods, gastropods and amphibians in freshwater habitats) are usually so different, for example with regard to migration, that even the delimitation of local populations strongly differs. The issue is much less trivial when considering closely related species (e.g., within arthropods, or gastropods, or amphibians). We report in Table S1 the few examples of multispecies studies analyzing genetic diversity at small geographic scale that we were able to find, which, incidentally, includes mostly studies conducted in freshwater organisms. These comparative analyses evaluated whether the environmental parameters mentioned above (e.g., affecting local population demography) are more important than species traits such as the mating system (e.g., monogamous *vs.* polygamous reproduction) in shaping population genetic structure. For example, connectivity and habitat patchiness play a role in structuring population structure in orthopterans from central Spain (Ortego, Garcia-Navas, Nogueras, & Cordero, 2015), while turtle species studied in the USA were sensitive to water availability (Reid, Mladenoff, & Peery, 2017; see Table S1). Note that a fraction only of these studies considers closely related species, and, even fewer, species sets occupying the same landscape.

We here conduct such a multispecies (comparative) analysis of population genetic structure in a guild of freshwater pulmonate snails (*Hygrophila*) occupying a patchy landscape in Guadeloupe (Lesser Antilles). Freshwater habitats, especially lentic ones (e.g., ponds), are appropriate systems for such a purpose, because the available habitats are clearly delimited from the inhospitable matrix and a wide variety of environmental parameters can be considered (see references in Table S1). In a pond network, snails disperse essentially passively through either more or less temporary waterways connecting sites, or aerial vectors such as birds (Jarne & Delay, 1991; Figuerola & Green, 2002; Kappes & Haase, 2012; Van Leeuwen et al., 2013). Importantly, our sampling covers the whole space occupied by freshwater snails from Grande-

Terre of Guadeloupe, meaning that migration takes place essentially at this scale, with limited ‘natural’ input from outside Grande-Terre, except through occasional introductions, essentially through aquarium trade or birds (see e.g. Duggan, 2010). Moreover, we focused on the four most common snail species in this landscape, with reasonably similar occupancy at metapopulation scale (50-70% of occupied sites), certainly because sampling is easier, but also because genetic and demographic parameters can more precisely be estimated than in rare species (Heino et al., 2015). The Guadeloupe system has been well characterized through a long-term survey of snail distribution on an island scale, as well as population genetics, demographic and ecological studies (Chapuis et al., 2017; Dubart et al., 2019; Lamy et al., 2012; Lamy et al., 2013a; Pantel et al., submitted).

We characterized microsatellite variation in 21 to 43 populations in these four species. They experience the same variation in environmental parameters, such as site size and connectivity, which may influence the distribution of genetic variation (Lamy et al., 2012). This variation may however be affected by differences among species (see Chapuis et al., 2017; Dubart et al., 2019; Lamy et al., 2012; Lamy et al., 2013a; Pantel et al., submitted). First, they exhibit demographic differences, for example in extinction and colonization rates, but also similarities (e.g., similar metapopulation occupancy, as mentioned above). Second, two of them are mainly outcrossing, while the remaining two are mainly self-fertilizing. They also differ in their aestivation capacity in dry sites. Third, one of them (*Physa acuta*) is an introduced species in the process of rapidly invading the whole Grande-Terre, while the other three are native and rather stable in terms of metapopulation occupancy. Our objective is to quantify genetic variation within and among populations within species in order to characterize the factors and processes to which these species react similarly vs. idiosyncratically (a comparative approach). We consider the role of mating systems and traits, population demography, and several environmental and landscape characteristics, building predictions on their influence (e.g., site

size should be associated with larger or more accessible populations and therefore more variation). Four species is certainly not a sufficient number to draw conclusions on the factors driving species differences in genetic structure in general. However, we suggest conducting more comparative studies, up to now rather rare, to evaluate the generality of these factors. We also discuss how such a comparative approach should help to progress towards a more integrated eco-evolutionary perspective on community building and species interaction (Hendry, 2017; Vellend, 2016).

Materials and Methods

Long-term survey of snail communities

The biological system, surveys and species studied have been described in papers spanning the last five decades (see Pointier & Combes, 1976; Pointier & David, 2004; Pointier, 2008; Chapuis et al., 2017; Dubart et al., 2019; Lamy et al., 2012; Lamy et al., 2013a; Pantel et al., submitted), and we provide here the relevant information for the current analysis. We initiated in 2001 a long-term yearly study of the guild of freshwater snails from the geographically close islands of Grande-Terre and Marie-Galante (Guadeloupe archipelago, Lesser Antilles). Grande-Terre is a plateau of about 800 km² harboring a network of ponds (*ca.* 2000) of various sizes, and a few small rivers (mostly temporary) and swamp grasslands connected to mangroves (back-mangroves). Marie-Galante is a smaller island (160 km²) with a similar topography and pond network. Water availability varies widely in time with the highest water level at the end of the rainy season (August to November or December). A fraction of sites completely dry out either yearly, or more irregularly, and stay dry for up to several months.

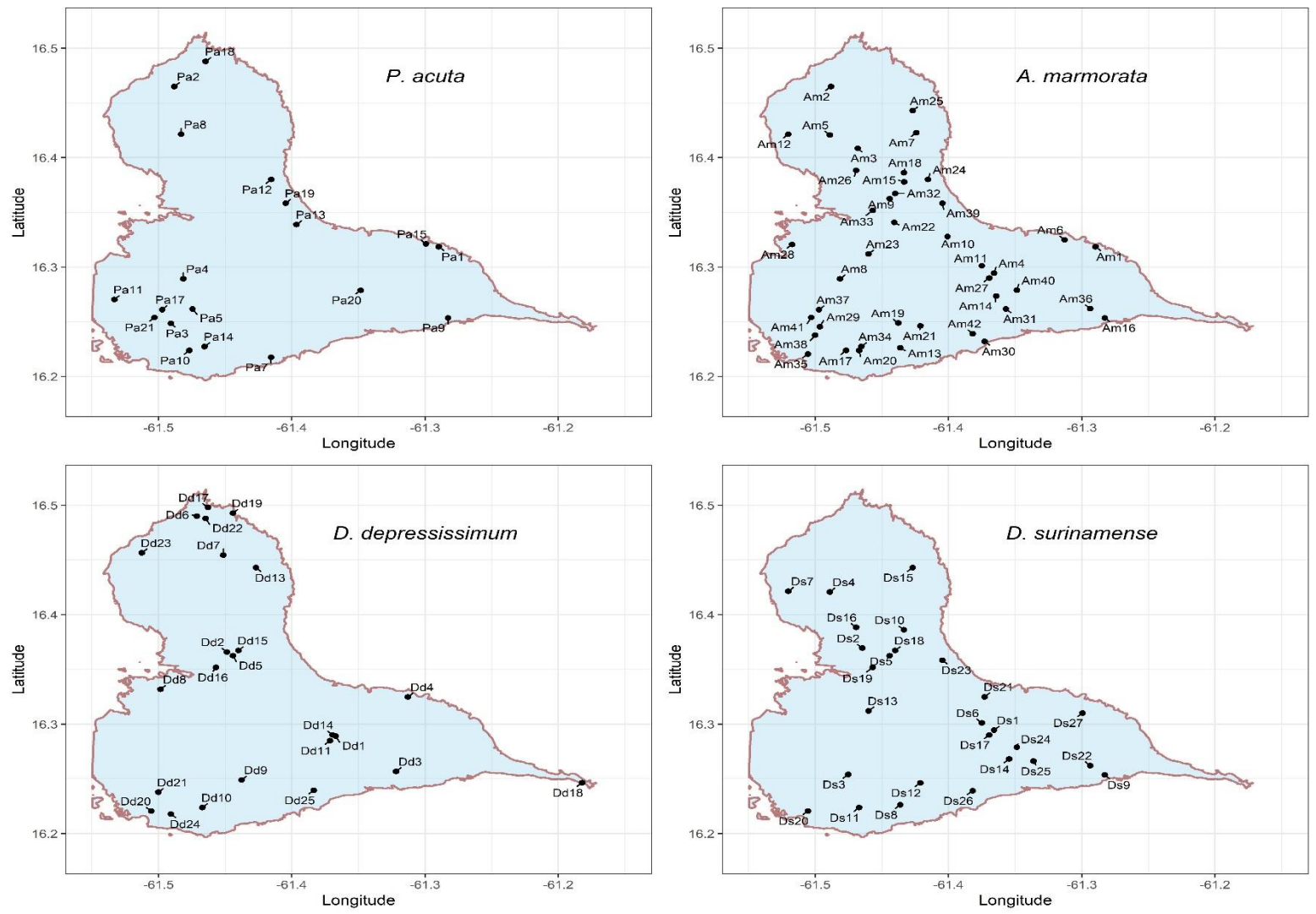
This long-term survey includes almost 280 sites, 245 of which are in Grande-Terre (Lamy et al., 2012; Lamy et al., 2013a). Field sampling takes place in January-February when these communities peak in abundance. They include 24 mollusc species, which makes up the

major part of the macrobenthos. Each site was explored by three persons for at least 15 min at each visit (total searching time: 45 min). The presence and density of snails were estimated by foraging both the sediment and plant strata using a scoop, and rock surfaces or floating debris were visually surveyed. Snail density was estimated on a semi-log scale (no individuals, < 1 ind. / m², 1 to 5 ind. / m², 5 to 10 ind. / m² ...). Several environmental parameters were characterized per site (detailed in Table S2) including size, aquatic vegetation cover, water connectivity to neighboring watersheds, hydrological regime, and density of favorable habitats. Site stability was defined based on the first four variables. From snail density and site size, we built a demographic parameter called 'long-term population size'.

The species studied and population sampling

Our analysis bears on two pairs of closely related species (Morgan et al., 2002; Wethington and Lydeard, 2007): *P. acuta* and *Aplexa marmorata* from the Physidae family, and *Drepanotrema depressissimum* and *Drepanotrema surinamense* from the Planorbidae family. In each pair, species are ecologically and morphologically similar, but do not hybridize. *Physa acuta* and *D. depressissimum* are outcrossers, while *A. marmorata* and *D. surinamense* are selfers (Escobar et al., 2011). These four species are the most common ones in the Guadeloupe metacommunity, occupying ca. 50-70% of sites on average, and co-occur in a large number of sites (Dubart et al., 2019; Pantel et al., submitted; Pointier & David, 2004). *Physa acuta* originates from the Eastern-central USA and has markedly increased its range over the last two centuries to now be cosmopolitan (Bousset et al., 2014; Ebbs, Loker, & Brant, 2018; Vinarsky, 2017). We observed it in two sites from Grande-Terre in 2001, but this figure increased to ca. 60% of sites in 2017. The three other species are neotropical and are considered native in the Lesser Antilles (Pointier 2008). The two Physid species have been shown to interact in Guadeloupe, most likely through direct reciprocal competition, with a depressing effect of *P. acuta* on the demography

210 **Figure 1.** Distribution of the sites studied in Guadeloupe (Grande Terre). Species name is indicated for each panel, and population acronyms are
211 provided in Table S3. The four sites sampled in Basse Terre of Guadeloupe and Marie-Galante (Table S3) are not represented.
212



214 **Table 1.** Predictions on the influence of mating system, site (environmental) characteristics and demographic factors on population genetic diversity
215 and structure in the four species studied. The rationale for these predictions is given in the main text. Although predictions for several characteristics
216 are identical (e.g., size and connectivity), they are presented separately for the sake of clarity. The effects are given on genetic diversity within
217 populations (Div) and differentiation among populations (Diff). Predicted effect: positive (+), negative (-), limited, and unclear (?).
218
219

Characteristics	<i>Physa acuta</i> (outcrosser)		<i>Aplexa marmorata</i> (selfer)		<i>Drepanotrema depressissimum</i> (outcrosser)		<i>Drepanotrema surinamense</i> (selfer)	
	Div	Diff	Div	Diff	Div	Diff	Div	Diff
Mating system	High	Weak	Low	Strong	High	Weak	Low	Strong
Effect of site characteristics								
Size	+	-	+	-	+	-	+	-
Vegetation cover	-	+	+	-	+	-	+	-
Connectivity	+	-	+	-	+	-	+	-
Stability	+	-	+	-	Limited	Limited	Limited	Limited
Density of favourable habitats	+	-	+	-	+	-	+	-
Effect of demographic factors								
Invasion age / years since <i>P. acuta</i> invasion	+	-	-	+	?	?	?	?
Long-term population size	+	-	+	-	+	-	+	-

of *A. marmorata*, but a predicted stable co-existence (Dubart et al., 2019) and a character displacement (life-history traits) towards more 'r-strategy' in *A. marmorata* within sites, following the arrival of *P. acuta* (Chapuis et al., 2017). The two *Drepanotrema* species also resist better in dry sites than the two Physids, aestivating under rocks or vegetation (Pointier & Combes, 1976). This invasion allowed to introduce a second demographic variable in our analyses, the time in years since the first detection of the invasive *P. acuta* - referred to as 'invasion age' in this species and 'time since *P. acuta* invasion' in the other species (Table S2). We considered two classes, not or recently invaded by *P. acuta* vs. invaded for more than two years, as in Chapuis et al. (2017). In *A. marmorata* and *Drepanotrema* spp., populations of the first class are unlikely to show a detectable evolutionary response to the presence of *P. acuta* because of the limited number of generations (Chapuis et al., 2017).

The four species were sampled in Grande-Terre during the yearly field surveys in 74 sites in which one to three of the four species were co-occurring (Figure 1, Tables S3 and S4; 1.57 species per site). Four sites from Basse-Terre and Marie-Galante were also considered in the study of *P. acuta* (three sites) and *A. marmorata* (one site). *Physa acuta*, *A. marmorata*, *D. depressissimum* and *D. surinamense* were sampled in 21, 43, 25 and 27 sites respectively, from 2007 to 2010. Individuals were killed just after sampling in 80°C water for 1 minute and preserved in 95° ethanol. The genetic analysis was conducted on at least 10 individuals per population for a total of 459 individuals in *P. acuta* (mean per population \pm s.d.: 21.86 ± 5.51), 781 in *A. marmorata* (18.14 ± 6.42 s.d.), 749 in *D. depressissimum* (29.96 ± 2.73 s.d.), and 365 in *D. surinamense* (13.52 ± 6.3). Less than 10 individuals were available in three populations (Table S4).

Note that the population genetic data used in this paper have partly been published: a full analysis of population structure in *D. depressissimum* in Guadeloupe is reported in Lamy et al. (2012) and population genetic richness of both *D. depressissimum* and *A. marmorata* is

used in Lamy et al. (2013b). However, we will present all the genetic data for the sake of clarity, and refer to previous work when required.

Microsatellite characterization

DNA extraction and allele characterization have been described in Sourrouille et al. (2003), Bousset, Henry, Sourrouille, & Jarne (2004), and Escobar, Nicot, & David (2008) for *P. acuta*, in Dubois, Nicot, Jarne, & David (2008) for *A. marmorata* and in Nicot, Jarne, & David (2009) and Lamy et al. (2012) for *D. surinamense* and *D. depressissimum*. Briefly, DNA was extracted using a Chelex method (Bio-Rad). Genotypes were obtained at polymorphic microsatellite loci giving reproducible results, seven in *P. acuta* (Pac1, Pac2, Pac5, Sourrouille et al. 2003; AF108762, AF108764, Monsutti & Perrin, 1999; Pasu1-11, Pasu1-2, Escobar et al., 2008), eight in *A. marmorata* (Ama1, Ama4, Ama7, Ama9, Ama10, Ama12, Ama13, Ama14, Dubois et al., 2008), 10 in *D. depressissimum* (DDE03, DDE04, DDE06, DDE09, DDE12, DDE14, DDE16, DDE20, DDE22, DDE23, Lamy et al., 2012), and 12 in *D. surinamense* (DSU01, DSU02, DSU04, DSU05, DSU07, DSU09, DSU11, DSU12, DSU13, DSU14, DSU15, DSU16, Nicot et al., 2009). Allele reading was performed independently by two persons.

Genetic diversity and differentiation

The analyses were conducted in the same way in the four species, except when otherwise stated. We computed the number of polymorphic loci, allelic richness (rarefied to the smallest sample size per species (R_A , Petit, El Mousadik, & Pons, 1998; 8, 10, 14 and 7 diploid individuals in *P. acuta*, *A. marmorata*, *D. surinamense* and *D. depressissimum* respectively) per population and species using FSTAT 2.9.3.2 (Goudet, 2001). Gene diversity (unbiased H_e ; Nei, 1987) and genotypic disequilibrium for locus pairs (Weir, 1996) were computed using GENEPOP 4.4 (Rousset, 2008). In the two selfing species (*A. marmorata* and *D. surinamense*), we also

estimated the genotypic diversity (R_G ; i.e. the number of genotypes) rarified to sample size of 10 and 7 respectively. We calculated the correlation between R_A and H_e in each species, as well as with R_G in the selfing species, using Pearson's correlation coefficient.

Deviations from Hardy-Weinberg equilibrium (HWE) were tested at each locus using exact tests (Raymond & Rousset, 1995), and a global P -value for all loci was obtained using Fisher's exact test and Markov Chain algorithm with GENEPOP 4.4. A multilocus estimate of Wright's inbreeding coefficient (F_{IS}) was estimated following Weir and Cockerham (1984). The selfing rate (S) was calculated based on David, Pujol, Viard, Castella, & Goudet (2007)'s method, which is insensitive to null alleles, an acute issue in outcrossing species, and less of a problem in selfing species since null alleles are readily detected when occurring in the homozygous state (see Jarne & David, 2008). S was here derived from the g_2 method using RMES (David et al., 2007).

Genetic differentiation between population pairs and overall differentiation was assessed in each species based on exact tests using GENEPOP 4.4, and their magnitude was estimated based on the estimator θ of F_{ST} , which was calculated following Weir and Cockerham (1984). Hereafter, we refer to the estimates between populations pairs as pairwise F_{ST} . We also estimated the genetic differentiation between each local population and all other sampled populations, hereafter site-specific F_{ST} , using the Bayesian method implemented in GESTE 2.0 (Foll & Gaggiotti, 2006). We calculated Pearson's correlation coefficient between site-specific F_{ST} and genetic diversity (H_e) in each species. The geographic distribution of genetic diversity was evaluated first by testing for isolation by distance in each species based on pairwise distance matrices (linear geographical distance and $F_{ST}/(1-F_{ST})$) using a Mantel test (1000 permutations) in *Vegan* R package (Oksanen et al., 2015; R Development Core Team, 2005 version 3.6.3). We also examined visually the pairwise F_{ST} matrix after they have been restructured based on a seriation approach implemented with *seriation* in R (R Development

Core Team, 2005) – the occurrence of population clusters would be evidenced by population blocks with lower intra-block F_{ST} than with other populations. This also allows building cladograms to better visualize population relationships using the “complete” method of *hclust* (R Development Core Team, 2005). We also used a more formal clustering approach, sNMF, proposed by Frichot et al. (2014). This method reconstitutes population clusters based on ancestry coefficients. This method is not sensitive to strong inbreeding, and was previously successfully used in the highly selfing snail *Biomphalaria pfeifferi* (Tian-Bi et al., 2019) – this is the reason why we preferred it to popular approaches such as STRUCTURE (Pritchard et al., 2000). sNMF was implemented using the R package *LEA* (Frichot & François, 2015 ; R Development Core Team, 2005). We used a target number of clusters varying from 1 to 10, a regularization parameter of 50, 50 runs were performed per analysis, and several analyses were performed per species. Based on the optimal number of clusters, we drew barplots of average ancestry coefficients per population, and reported these values as piecharts on the Grande-Terre maps using the *gdal* R package (R Development Core Team, 2005).

Environmental and demographic drivers of genetic diversity

We assessed the influence of several site characteristics and demographic factors (described above; see Table S2) on allelic richness (R_A) and on genetic differentiation (site-specific F_{ST}) in the four species, but also on genotypic richness (R_G) in the selfing *A. marmorata* and *D. surinamense*. The site characteristics were size, vegetation cover, connectivity, stability and density of favorable habitats, and the demographic factors were invasion age and long-term population size. Given that our first genetic sampling was performed in 2007, we used the value per site of these variables over the 2001-2007 period (averaged for those variables for which we got a value per year; Table S5). Because environmental data were missing, the following populations were excluded from the analyses: Sainte Rose (Basse-Terre) for *P. acuta*, Ravine

Vinty (Basse-Terre) for *A. marmorata* and Pointe des Chateaux (Grande-Terre) for *D. depressissimum*.

We built general predictions on genetic diversity and structure, based on (i) the mating system, (ii) environmental parameters, and (iii) demographic parameters (Table 1). (i) We expect less diversity and more divergence in selfing than in outcrossing populations, as detailed in Introduction. (ii) The predictions depend on the model of population genetic structure underlying species dynamics, especially on how the environmental variables are affected by the demography and traits of species. However, we expect that site size, site connectivity, and density of favorable habitats should contribute positively to intrapopulation variability and negatively to differentiation among populations, because they positively affect effective population size and gene flow. Stability might have the same effect than the first three parameters in the two physids. The two *Drepanotrema* species are dwelling well in unstable sites, because of their aestivating capacity (Pointier & Combes, 1976), which should limit (perhaps annihilate) the effect. These predictions can be refined on the basis of previously obtained estimates of extinction and colonization rates at metapopulation scale per species (Dubart et al., 2019; Pantel et al., submitted). In most cases, these environmental parameters did not affect these rates, and when they did, this was in the direction of the predictions above (Table S6). For example, site size positively affect colonization in three species, which should contribute positively to genetic diversity. Vegetation cover should also have the same effect in *A. marmorata* and the two *Drepanotrema* species, but the reverse one in *P. acuta*, given its incidence on extinction and colonization (Table S6). (iii) Invasion age is predicted to affect the two *Physa* species. In the invasive *P. acuta*, young populations should be less diverse than old ones reflecting temporary founder effects at the colonization front. Both demographic population size and colonization rates are negatively affected in *A. marmorata* by the competition with *P. acuta* (Chapuis et al., 2017; Dubart et al., 2019), which should depress

diversity in sites that have been invaded by the latter for a longer time. The expectation is less clear in the two *Drepanotrema* species, since the arrival of *P. acuta* only slightly affects their density ($P = 0.051$ and 0.038 respectively vs. 1.2×10^{-4} in *A. marmorata*; see Chapuis et al., 2017 for details). Long-term population size should have the same effect as site size.

We compared size, vegetation cover, connectivity and stability over all sites studied between the 2001-2007 and 2008-2015 periods using a paired *t*-test to check for temporal homogeneity. The other variables were not considered, either because they do not vary in time (density of favorable habitats), or because the comparison is irrelevant (e.g., invasion age). All variables were compared between the populations studied for genetic variation and all other populations from the long-term survey using linear models. We evaluated the effect of environmental and site variables on genetic variability (R_A in *P. acuta* and *D. depressissimum* and both R_A and R_G in *A. marmorata* and *D. surinamense*) using linear models. We first built models with the five site variables (size, vegetation cover, connectivity, stability and density of favorable habitats), and then added invasion age and long-term population size in turn in order to avoid considering too many variables compared to the number of data points. The most parsimonious combination of explanatory variables was retained based on AIC (Akaike, 1974). Explanatory and response variables were standardized in order to obtain comparable regression coefficients in the linear models. All statistical analyses were performed using R (R Development Core Team, 2005).

Results

Genetic diversity within populations and species

Summary results on genetic diversity in the four species are reported in Table 2, and full results in Table S4. Much more variation was detected in the two outcrossing species (especially in *D. depressissimum*, due to highly variable tetranucleotide loci), with all loci polymorphic in all

populations, than in the two selfing species. Some populations of these two species even showed no variation at all, i.e. exhibited a single, fully homozygous, multilocus genotype. The average allelic richness (R_A) per population was 3.287 (minimum 1.982 / maximum 4.426), 1.588 (1.000 / 2.555), 11.052 (6.260 / 14.160) and 2.039 (1.000 / 3.193) in *P. acuta*, *A. marmorata*, *D. depressissimum* and *D. surinamense* respectively. As a comparison, the mean number of alleles, averaged over loci, was 9.29, 6.00, 37.20, and 9.08 respectively. Genotypic diversity ranged from 1.000 to 8.816 in *A. marmorata*, and from 1.000 to 7.000 in *D. surinamense*. The average gene diversity (H_e) was 0.530 (minimum 0.311/ maximum 0.658) in *P. acuta*, 0.169 (0.0 / 0.504) in *A. marmorata*, 0.865 (0.736 / 0.921) in *D. depressissimum*, and 0.271 (0.00 / 0.471) in *D. surinamense*.

Significant deviations from HWE ($P < 0.05$) were observed in most populations of *P. acuta* (18 out of 21), and heterozygote deficiencies were low to moderate (mean $F_{IS} = 0.159$; Tables 2 and S4A). However, the selfing rates estimated with RMES were not significantly different from zero (mean $S(g_2) = 0.030$), suggesting that the significant heterozygote deficiencies are due to null alleles, as reported previously in this species (Bousset et al., 2004, 2014; Escobar et al., 2008). The selfing rates estimated with RMES were similarly very low in *D. depressissimum* (mean $S(g_2) = 0.012$), significantly departing from zero in a single population out of 25 (Table S4C). This corresponds to low F_{IS} values (mean = 0.036) with only four populations in which Hardy-Weinberg proportions were rejected at $P < 10^{-3}$ (Lamy et al., 2012). The situation was very different in the other two species: most tests of departures from Hardy-Weinberg equilibrium were highly significant (Tables S4B and S4D). The estimates of F_{IS} were accordingly very high (0.970 in *A. marmorata* and 0.922 in *D. surinamense*; Table 2), and the selfing rates as well (0.984 and 0.950 respectively). The selfing rates estimated with RMES were high and significantly different from zero in the subsets of populations of *A. marmorata* and *D. surinamense* in which it was possible to successfully run the analysis (Tables

S4B and S4D). Exceptions are one population for each of these two species in which a selfing rate estimated with F_{IS} matched with an absence of selfing with the RMES approach.

Population genetic differentiation

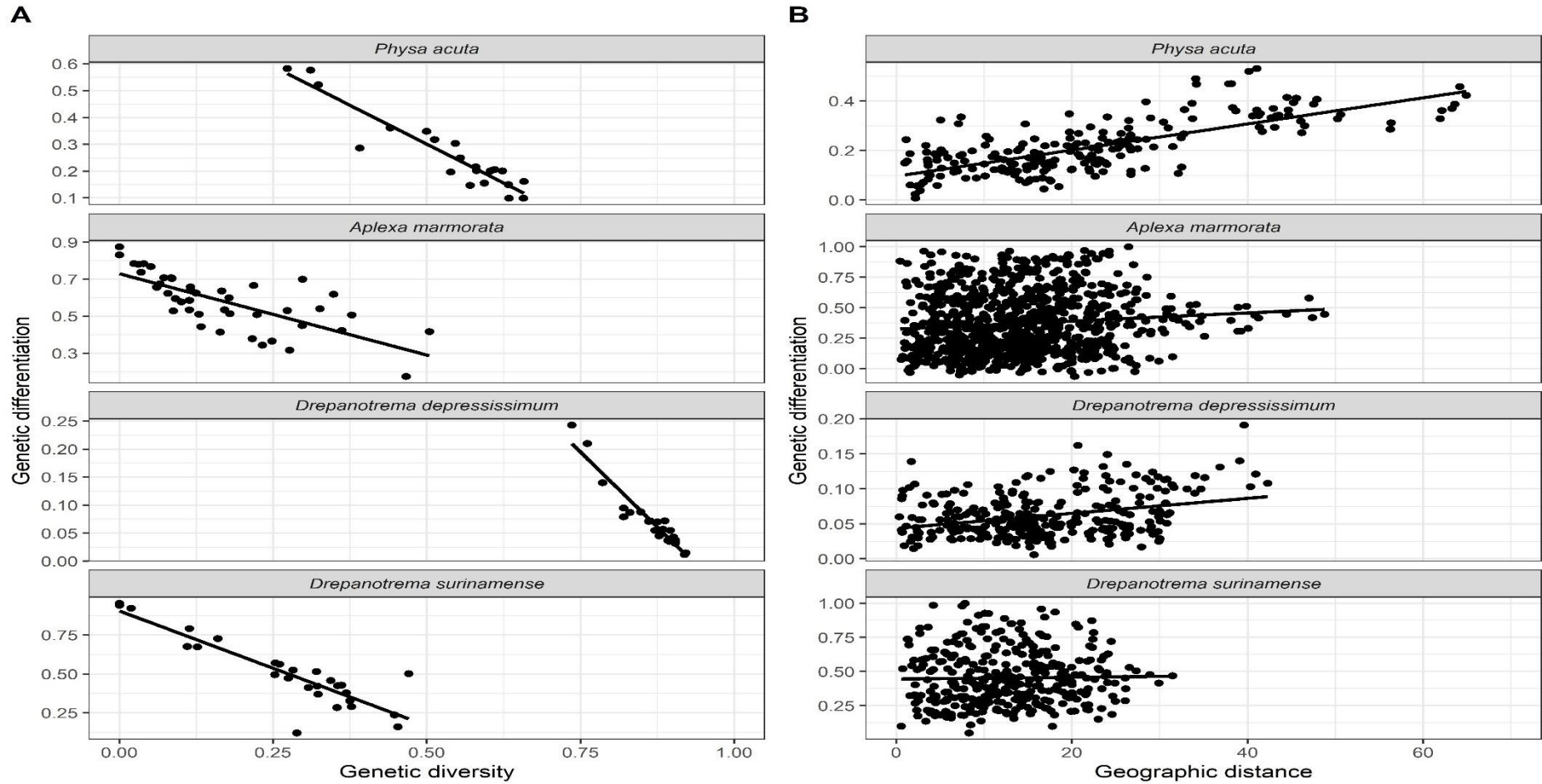
Highly significant genetic differentiation was detected between most population pairs in *P. acuta* and the two *Drepanotrema* species (Table S7). In both *P. acuta* and *D. surinamense*, a single P -value was higher than 0.01, and none in *D. depressissimum*. The situation is somewhat different in *A. marmorata* with 142 tests out of 841 with $P > 0.05$ (Table S7). Fourteen populations out of 43 were involved in more than 10 such tests (out of 42 per population), especially Favreau, Grand Maison, and Sainte Rose Est (18, 22, and 17 such results). Interestingly, eight of these fourteen populations are located in the Eastern part of Grande-Terre (Figure 1). The average estimate of pairwise genetic differentiation (θ) between *P. acuta* populations was 0.213 (range: 0.007 / 0.533; Table 2). The two populations from Marie-Galante contributed significantly to this differentiation, since it went down to 0.170 when excluding them. The same estimates were 0.371 (0.000 / 1.000) in *A. marmorata*, 0.062 (0.006 / 0.191) in *D. depressissimum*, and 0.453 (0.049 / 1.000) in *D. surinamense*. Matrices of pairwise F_{ST} estimates in the four species are reported in Table S7. The average site-specific F_{ST} was 0.249 (range: 0.100 / 0.562) in *P. acuta*, 0.547 (0.215 / 0.872) in *A. marmorata*, 0.071 (0.012 / 0.243) in *D. depressissimum*, and 0.506 (0.121 / 0.954) in *D. surinamense*, and are not very different from the mean pairwise values. The average genetic diversity predicted quite accurately the site-specific differentiation, with more scattered data in *A. marmorata* than in the other species (Table 2, Figure 2).

Mantel test revealed isolation by distance in *P. acuta* populations ($r = 0.710$, $P = 0.001$; Figure 2), even when populations from Marie-Galante were excluded ($r = 0.301$, $P = 0.011$). Mantel test was significant in *D. depressissimum* ($r = 0.318$, $P = 0.020$), but neither in *A.*

Table 2. Mean values (range) of population genetic parameters in the four species studied. N_{pop} and N_{loc} are the number of populations and microsatellite loci studied. Other parameters are mean values across populations (minimum / maximum): n is the number of individuals, R_A the allelic richness, R_G the genotypic richness (in selfing species only), H_e the gene diversity, F_{IS} Wright's inbreeding coefficient, S the estimate of the selfing rate based on F_{IS} , $S(g_2)$ the estimate of the selfing rate based on David et al. (2007)'s method, and the population-pairwise F_{ST} . Negative values of F_{IS} were set to 0 when estimating the average S value, and negative values of F_{ST} were set to 0 when estimating the average F_{ST} . NC: not calculated because the values can be estimated in too few populations.

Parameter	<i>Physa acuta</i>	<i>Aplexa marmorata</i>	<i>Drepanotrema depressissimum</i>	<i>Drepanotrema surinamense</i>
N_{pop}	21	43	25	27
N_{loc}	7	8	10	12
n	21.86 (8 / 32)	18.14 (10 / 31)	29.96 (22 / 32)	13.52 (7 / 32)
R_A	3.287 (1.982 / 4.426)	1.588 (1.000 / 2.555)	11.052 (6.260 / 14.160)	2.039 (1.000 / 3.193)
R_G	-	4.336 (1.000 / 8.815)	-	4.662 (0.233 / 7.000)
H_e	0.530 (0.273 / 0.658)	0.169 (0.000 / 0.504)	0.865 (0.736 / 0.921)	0.271 (0.000 / 0.470)
F_{IS}	0.159 (-0.050 / 0.253)	0.970 (0.783 / 1.000)	0.036 (-0.003 / 0.096)	0.922 (0.483 / 1.000)
S	0.266 (0.000 / 0.404)	0.984 (0.878 / 1.000)	0.070 (0.000 / 0.075)	0.955 (0.651 / 1.000)
$S(g_2)$	0.030 (0.000 / 0.206)	NC	0.012 (0.000 / 0.168)	NC
F_{ST}	0.213 (0.007 / 0.533)	0.371 (0.000 / 1.000)	0.062 (0.006 / 0.191)	0.453 (0.049 / 1.000)

Figure 2. Genetic diversity, genetic differentiation, and spatial distance in the four species studied. A. Genetic differentiation (population-centered F_{ST}) as a function of genetic diversity (H_e). B. Genetic differentiation (pairwise-population F_{ST}) as a function of geographical (Euclidean) distance between population pairs. The black lines represent linear regression lines. Note that the y-scale differs among species.



1 *marmorata* ($r = 0.037$, $P = 0.236$; $r = 0.074$, $P = 0.130$ when excluding the single population
2 outside Grande-Terre), nor in *D. surinamense* ($r = -0.077$, $P = 0.857$; Figure 2). The seriation
3 and clustering approach did not allow detecting clear patterns of population differentiation
4 (results not shown). The few indications are consistent with the results of the more quantitative
5 sNMF approach, and we therefore rely on the latter, considering each species in turn. In *P.*
6 *acuta*, the optimal number of ancestral populations is four (Figure S1A). The two populations
7 from Marie-Galante belong to a single cluster (V2). One cluster (V1) is largely represented in
8 the North of Grande-Terre, and one (V3) in the South-West, while V4 is widespread. A lower
9 optimal number of clusters was detected in *A. marmorata* ($K = 2$; Figure S1B), with the smallest
10 cluster rather distributed in the South-West of Grande-Terre, but not only. A single cluster was
11 detected in *D. depressissimum*, suggestive, together with the limited isolation by distance, of
12 an even distribution of genetic diversity at Grande-Terre scale. The pattern is much more
13 complex in *D. surinamense* with eight clusters (Figure S1C), few populations (e.g., Belin or
14 Poucet) belonging to a single cluster and no obvious population structure. Moreover, this
15 analysis did not suggest common geographic patterns of clustering among species. Even when
16 enforcing a fixed number of clusters for all species (e.g., $K = 2$, as in *A. marmorata*), no
17 common pattern emerged (data not shown).

19 *Environmental and demographic drivers of genetic diversity*

20 The mean values of site characteristics (Table S4) for the 2001-2007 period did not differ
21 significantly from those of the 2008-2015 period in the same set of sites (Table S8), suggesting
22 temporal stability over our survey. It should be added that no temporal variation in cumulative
23 rainfall over both the rainy season and the little rainy season has been detected over the same
24 period (Pantel et al., submitted). We also compared values for these sites with those of all other
25 sites in our survey over the 2001-2007 period, and detected no difference, except for stability:

the genotyped populations were in more stable sites than the others (Table S8), presumably because unstable sites are often dry by definition, limiting the possibility of sampling. With this exception, the sites in which genetic analyses were conducted therefore seem representative of all sites in our survey. We conducted the same two series of tests for each species separately. No differences were detected (all $P > 0.05$; results not shown), except when comparing the sites studied in *A. marmorata* and *D. depressissimum* and all other sites for vegetation cover ($t = -3.039$, $P = 0.004$ and $t = -4.009$, $P = 3 \times 10^{-3}$ respectively): the sites sampled for genetic analyses showed less vegetation cover. We detected correlations between some of these variables when considering all genotyped populations (Table S9). Unsurprisingly, stability was positively correlated with size and vegetation cover, and connectivity was positively correlated with invasion age. It is less expected to find a negative correlation between size and connectivity and a positive one between stability and density of favorable habitats.

In both *P. acuta* and *D. depressissimum*, all descriptors of genetic diversity and differentiation (R_A , H_E and site-specific F_{ST}) were highly correlated, F_{ST} being negatively correlated to the other two descriptors (R^2 of linear regression of F_{ST} on H_E was 0.882 in *P. acuta*, and 0.909 in *D. depressissimum*, and the corresponding value for the regression of F_{ST} on R_A was 0.926 and 0.910; Figure 2 and Table S10). The same was true for R_G , H_E and F_{ST} in *A. marmorata* and *D. surinamense* (R^2 of F_{ST} on H_E was 0.529 in *A. marmorata*, and 0.784 in *D. surinamense*, and the corresponding value for the regression of F_{ST} on R_G was 0.539 and 0.530; Figure 2 and Table S10). When two species co-occurred in a large-enough number of populations, we tested for correlations between species pairs for these descriptors: the only significant correlation was found for *P. acuta* and *A. marmorata* (R^2 was between 0.300 and 0.326 for the three descriptors; $N = 11$ sites). We analyzed how genetic diversity and differentiation was affected by the environmental and population variables (Table S2) using linear models (results in Tables 3 and S11). The results were not qualitatively affected by

considering, or not, the populations outside Grande-Terre in *P. acuta* and *A. marmorata*. The most influential variable was connectivity with a positive effect on genetic diversity in three species (marginally significant for R_A in *P. acuta*; Figure 3), except *D. surinamense*. Similarly, connectivity affected negatively population differentiation in *A. marmorata* and *D. depressissimum*. Vegetation cover had a significant positive effect on diversity, and a negative one, on differentiation in *D. depressissimum*. Long-term population size had the same effect in *D. depressissimum*, but that on differentiation was no more significant when vegetation cover and connectivity were included in the model. More surprisingly, this factor also had a positive effect on differentiation in *A. marmorata*. Allelic and genotypic diversity were higher in *A. marmorata* populations recently or never invaded by *P. acuta* than in those that have been invaded for longer. However, invasion age had no effect on *P. acuta* itself. These results can be compared to the expectations proposed in Table 1, and most were not fulfilled with a majority of non-significant effects. However, significant effects (15 situations) went in the expected direction, except that of long-term population size on differentiation in *A. marmorata*.

Discussion

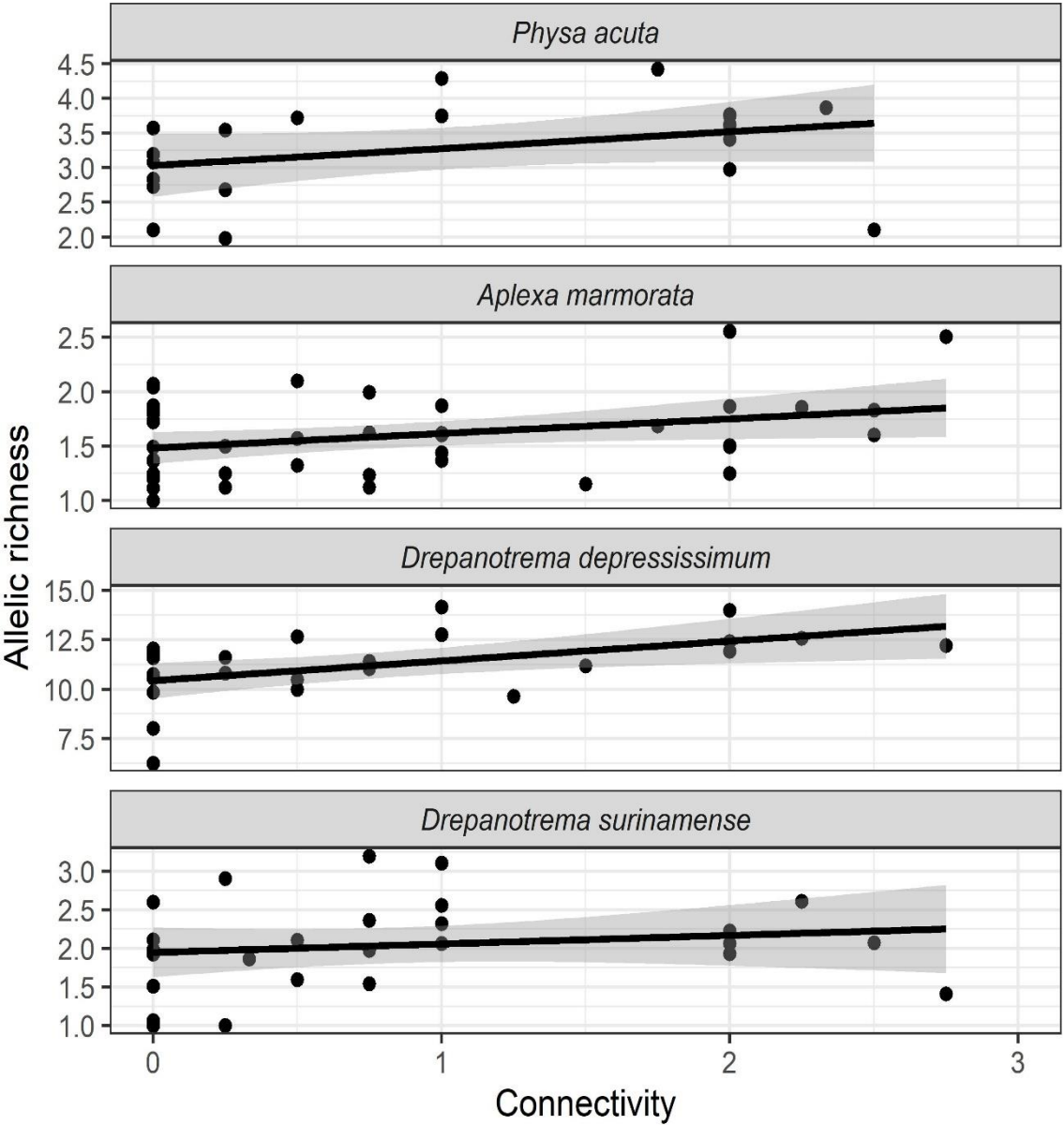
A comparative multispecies approach to population genetic structure

The most classical approach for deciphering the neutral population genetic structure has been, and remains, to study several populations of a single species sampled at a given time, and to infer population processes based on signatures in molecular markers (Charlesworth & Charlesworth, 2010; Lewontin, 1974). These signatures have been in many cases related to traits, for example the mating system, sex or dispersal, but also to population demography, spatial distribution and environmental variables, using more and more sophisticated statistical approaches (Hanski & Gaggiotti, 2004; Foll & Gaggiotti, 2006; Balkenhol et al., 2015; Manel & Holderegger, 2013). We here analyzed genetic variation in several species at once, a

Table 3. Effect of environmental and population variables on genetic diversity and differentiation in the four species studied. Results are reported for R_A and site-specific F_{ST} in *P. acuta* and *D. depressissimum*, and for R_A , R_G and F_{ST} in *A. marmorata* and *D. surinamense*. Results are from linear models (see text for explanation), and the best models were evaluated based on Akaike Information Criterion. The significant (positive or negative) effects are indicated by + or - ($P < 0.05$), and by ++ or -- ($P < 0.01$). NS indicates no effect. The P -value for connectivity in *P. acuta* was indeed 0.08, and 0.07 for invasion age in *A. marmorata*. Full models and effect sizes are reported in Appendix Table S11. All significant effects were in the Direction predicted in Table 1, except the effect of invasion in *D. surinamense* for which we had no specific prediction.

Variable	<i>Phyllanthus acuta</i>	<i>A. marmorata</i>	<i>Drepanotrema depressissimum</i>	<i>Drepanotrema surinamense</i>
Size	NS/NS	NS/NS/NS	NS/NS	NS/NS/NS
Vegetation cover	NS/NS	NS/NS/NS	+/--	NS/NS/NS
Connectivity	+/NS	++/++/-	++/-	NS/NS/NS
Stability	NS/NS	NS/NS/NS	NS/NS	NS/NS/NS
Density of favorable habitats	NS/NS	NS/NS/NS	NS/NS	NS/NS/NS
Invasion age	NS/NS	-/-/+	NS/NS	NS/+/NS
Long-term population size	NS/NS	NS/NS/+	+/-	NS/NS/NS

Figure 3. Relationship between allelic richness and connectivity in the four species studied. Each point is a population. The black lines are simple linear regressions (with 95% SE as grey overlay). Connectivity is measured on an increasing scale (from 0 to 3).



94 comparative approach that remains relatively rare (Table S1). The four species studied display
95 rather high levels of genetic variation within populations, but with strong variance among
96 populations, suggesting a variable effect of genetic drift within sites, as already observed at
97 similar spatial scale in *P. acuta* (Bousset et al., 2004; Escobar et al., 2008). The extremely high
98 variation in *D. depressissimum* is largely due to highly variable (tetranucleotide) loci (Lamy et
99 al. 2012). In the two remaining species, we do not know of previous studies to which our values
100 can be compared. The marked differentiation among populations was associated with no to
101 limited isolation by distance and an absence of clear geographic patterns. Moreover, most of
102 genetic differentiation, especially in the two selfing species, is due to differences in within-
103 population diversity, irrespective of geographic position, and therefore probably driven by
104 population-specific factors. We can therefore suggest that the genetic structure of the four
105 species at Guadeloupe scale corresponds more to an asymmetric island or a metapopulation
106 model than to other models (e.g., a single panmictic population), as may be expected for
107 freshwater snails occupying ponds (Jarne & Delay, 1991; Lamy et al., 2012). In the former
108 models, we indeed expect marked variation in genetic diversity among populations and no
109 marked geographic structure. Note, however, that cautiousness is required with *P. acuta* since
110 quasi-equilibrium has probably not been reached because of its expanding dynamics. We
111 previously show that the asymmetric island model should be favored over a metapopulation
112 model in *D. depressissimum*, based on both spatial and temporal genetic data (Lamy et al. 2012).
113 Temporal data are not available in the three other species, preventing further distinction in
114 models of population structure – noting that the conditions under which the metapopulation
115 model actually applies are rather narrow (Fronhoefer et al., 2012). In our study, we also
116 observed large differences in genetic diversity and differentiation, lower and higher respectively
117 in *A. marmorata* and *D. surinamense* than in *P. acuta* and *D. depressissimum*. These similarities
118 and differences will be discussed below with regard to environmental parameters, demography

and the mating system.

Connectivity is a major driver of the distribution of genetic variability

We proposed in Table 1 how several environmental factors may affect genetic variation following the logic of Lamy et al. (2012). We found essentially no effect in *P. acuta* and *D. surinamense*, and two to three significant effects in the two other species. The most marked effect is that of connectivity, detected in three species, affecting both genetic diversity and population differentiation. Our definition of connectivity is based on local landscape structure, i.e. site accessibility linked to local topography, and therefore falls in the ‘structural connectivity’ category (see e.g., Storfer et al., 2007). In a comparative study of freshwater fish and invertebrates from Australia, structural connectivity corresponds to realized connectivity, estimated with genetic markers, in 50% of the 110 studies taken into account (Hughes, Huey, & Schmidt, 2013). It can therefore be considered as a rather good indicator of the distribution of genetic variation, as observed in our study. The central effect of connectivity on genetic variation was already highlighted by Lamy et al. (2012) in *D. depressissimum* in Guadeloupe, but also by Bousset et al. (2004) and Escobar et al. (2008) in southern France populations of *P. acuta*. Sites with high connectivity index are indeed connected during the rainy season, and the effective size of local populations is probably much enlarged by these connections. It is perhaps less obvious why *D. surinamense* is not affected by connectivity. This species might disperse less efficiently through flood or more actively through bird transportation. However, this should apply to *D. depressissimum*, since the two species have similar ecology and aptitude to colonize empty sites and an extinction/colonization dynamics driven by the same environmental factors (Pantel et al., submitted). Interestingly, colonization is not affected by connectivity, except in *P. acuta*, even if the colonization rate is higher in physids than in planorbids (Table S6; neither is extinction with no difference among species). This suggests that the effect of connectivity is

not mediated by the extinction/colonization dynamics – we already noticed that the latter has little influence on the distribution of genetic variability in *D. depressissimum* (Lamy et al., 2012). Moreover, there was no correlation in genetic diversity among species, except between the two physids. Overall, these results might be explained by the fact that dispersal is mostly passive (through water currents or birds), and leads to colonization or migration events that are both occasional and occurs at random with regard to both species and geographic scale.

The impact of the mating system

Our analysis confirms that the observed genetic patterns are consistent with an outcrossing mating system in *P. acuta* and *D. depressissimum* and a selfing one in *A. marmorata* and *D. surinamense*, as previously recognized (Escobar et al., 2011; Lamy et al., 2012). Genetic diversity is extremely similar in the two selfers, and comparable to what has been observed in other selfing snails (Charbonnel et al., 2002; Lounnas et al., 2017; Tian Bi et al., 2019). The results on population structure (F_{ST}) mirror those obtained with within-population variation, unsurprisingly given the strong correlations between within- and among-population variation in the four species, especially in *D. depressissimum*. We observed both lower diversity and higher differentiation in the two selfing than in the two outcrossing species. This was expected because of reduced effective population size and increased selective interference in selfers than in outcrossers (review in Jarne, 1995; Charlesworth, 2003; Ingvarsson, 2002). Interestingly, if we assume a neutral island model and an effective population size divided by two in selfers compared to outcrossers, based on the differentiation measured in the selfing species, F_{ST} in the outcrossers should be that observed in *P. acuta* (see below the role of invasion in this species). Even if this reasoning is only approximate, the mating system alone might explain this difference. However, we observed strikingly large intrapopulation diversity and low differentiation value in *D. depressissimum*. Both could be due to a higher mutation rate,

consistent with the extremely large number of alleles detected, but also to a higher regional demographic size. This latter can be estimated as the product of the number of occupied sites multiplied by the number of individuals per site. The first does not differ markedly among the four species with 50-70% of occupied sites per species (Pantel et al., submitted). The second can be approximated through long-term population size (Table S2), which, however, was lower in *D. depressissimum* than in the other species. Demographic size therefore does not seem to be an explanation to the higher diversity / lower differentiation, except if the ‘genetic size / demographic size’ ratio is much higher in *D. depressissimum*. One cause might be aestivation since this species survives very well in dry sites (Lamy et al., 2013a), but this is also true of *D. surinamense* (Pantel et al., submitted). We also note that long-term population size did not affect genetic variation within species, suggesting that this estimator of demographic size does not capture adequately effective population size. As mentioned above, the four species differ in their colonization rate (not in extinction rates), but the difference is between the two families, not between selfers and outcrossers (Pantel et al., submitted). Since the difference is not between the two taxonomic families, it is likely that demographic extinction and colonization do not affect genetic variation strongly, as already shown in *D. depressissimum* (Lamy et al., 2012), but rather modulate the influence of the mating system. Overall, this latter seems to strongly influence genetic variation in the four species studied, due to its effects on effective population size.

Which other factors affect genetic variation?

We tested the influence of other factors than the mating system and connectivity with mostly identical expectations in the four species (Table 1). Most are not fulfilled (no effect), but when they are, it is generally in the right direction (Table 3). Vegetation cover shows the expected effect in *D. depressissimum* only. It should in principle favors large population size;

it indeed favors both population permanence in all species, except *P. acuta* (no effect; Pantel et al., submitted), and colonization in *D. surinamense*. A possible explanation is that the ‘vegetation cover’ variable aggregates several plant and algae species (Pantel et al., submitted), and that the four species react to different types of vegetation. It is also somewhat unexpected that site size, site stability and the density of favorable habitats did not affect genetic variation, all the more that stability is positively correlated with both site size and density of favorable habitats. Site size might be a poor indicator of population size, as suggested by the fact that long-term population size, which beyond size also includes population density, is connected to genetic variation in two species. Stability is perhaps of limited impact, because the three native species studied might have developed strategies allowing coping with drought (Pointier & Combes, 1976; Lamy et al., 2013a). The absence of effect of density of favorable habitats is suggestive of a limited role for passive dispersal through birds compared to passive dispersal through water flow, given the strong effect of connectivity (the two variables are not correlated). More generally, our work indicates that both common and idiosyncratic effects of the environment, space and interspecific interactions on genetic variability can be detected, calling for detailed studies. For example, Haag, Riek, Hottinger, Pajunen, & Ebert (2005) showed that genotypic richness increases with population age in two *Daphnia* species, but that other factors (e.g., presence of competitor species) did not. Other examples are mentioned in Introduction and can be found in Table S1.

The distribution of genetic variation may also be affected by species invasion, especially in the invasive species *P. acuta*. In terms of site occupancy at landscape scale, *P. acuta* has been spreading since our first survey in 2000, and still shows an invasive dynamics in Grande-Terre (Dubart et al., 2019; Pantel et al., submitted). This dynamics might be associated with variation loss (Dlugosch & Parker 2008; Estoup et al., 2016; Wares, Hughes, & Grosberg, 2005;), but limited loss has been observed in invasive populations of this species at worldwide

scale (Bousset et al., 2014; Ebbs et al., 2018). Moreover, the average variability of Guadeloupe populations (e.g., $H_e = 0.530$) is similar to that observed in the two studies conducted at similar scale (Bousset et al., 2004; Escobar et al., 2008). It therefore seems that the invasion of *P. acuta* in Guadeloupe is ancient enough – the species presence has been noted in some restricted areas since the early 1970's (JP Pointier, pers. obs.), and involved a large number of propagules as perhaps the result of several invasion origins. Theory also predicts a loss of variation at invasion front as a consequence of bottlenecks (Excoffier & Ray, 2008; Nei, 1975). However, we did not detect an effect of invasion age on genetic variability (except perhaps in the two populations of Marie-Galante, which are poorly variable), suggesting that site colonization involves large number of propagules.

A last point is whether this invasion may affect genetic variation in native species. The two physid species indeed showed competitive interactions through modified extinction and colonization when the other species is present (Dubart et al., 2019). Moreover, Chapuis et al. (2017) showed that, although the number of sites occupied by *A. marmorata* is stable, population density has strongly been affected by the invasion of *P. acuta*. Moreover, this study highlighted an evolution of life-history traits in *A. marmorata* in response to this invasion. This was mirrored in the present study by a loss of neutral genetic variation in *A. marmorata*. Such an effect was not detected in the two *Drepanotrema* species, although their population density is slightly affected by the invasion of *P. acuta*. This suggests that the effect might occur in *Drepanotrema* with some delay. Invasive species may have a negative effect on population densities of native species in introduction areas, which in turn may affect the dynamics of genes and induce rapid evolution (e.g., Strauss, Lau, & Carroll, 2006; Stuart et al., 2014). A rapid shift in life-history traits has previously been documented in *A. marmorata* as a result of the invasion of *P. acuta* (Chapuis et al., 2017). Whether the reduction in neutral genetic variation documented here is related to this shift remains an open question, but documenting such

decreases in other bioinvasions might be a first approach to analyzing their evolutionary impact.

Conclusion and perspectives

The comparative approach developed here leads towards a more general perspective on population genetic structure than proposed in studies focusing on single species. Indeed, it allows detecting common and idiosyncratic effects of the environment, space and interspecific interactions on the distribution of genetic variation in sets of species occupying the same space with limited migration from outside. The four species studied here displayed striking similarities in genetic structure, with marked variation in genetic diversity among sites and strong genetic differentiation, due to passive dispersal, extinction/colonization dynamics and erratic variation in local population size. Differences are due to the mating system that amplifies local drift in selfing populations, interspecific interactions, and to a very limited extent local environmental factors. We also detected little geographic coherence in the distribution of genetic variation among species. In studies conducted at the same (not too large) geographic scale (Table S1), the effect of traits on genetic variation was detected in some cases (e.g., lifespan in Reid et al., 2017), but landscape structure (e.g., habitat fragmentation in Ortego et al., 2015) and demographic factors (e.g., population age in Haag et al., 2006) also play a role. However, none of these studies, with the possible exception of the last two studies cited, carry out a comparative analysis to detect common genetic patterns and the role of idiosyncratic vs. common influences among species. We suggest extending these comparative approaches, moving towards comparative landscape genetics (see e.g. Burkhart et al., 2016; Ortego et al., 2015).

We also suggest to include in such studies the impact of interspecific interactions, as we did here and in previous genetic and demographic studies (Chapuis et al., 2017; Dubart et al., 2019; Lamy et al., 2013a). Our approach constitutes a first entry into the processes shaping

these interactions, i.e. upscaling from population ecology to community ecology. The similarity between forces acting at species and community level has long been recognized (e.g. Bell, 2001; Hubbell, 2001), particularly when considering reasonably similar species occupying the same matrix (i.e. a metacommunity), and is at the heart of community genetics (Agrawal, 2003; Vellend, 2010; Vellend & Geber, 2005). Studying the relationships between species and genetic diversity and assessing how they are affected by environmental parameters and space is one way of highlighting these similarities (Lamy et al., 2017; Vellend & Geber, 2005). In the meta-community of Guadeloupe, this approach highlighted (again) the influence of connectivity (Lamy et al., 2013b; Lamy, Laroche, David, Massol, & Jarne, 2017). Taking into account eco-evolutionary dynamics would be an alternative path - at this stage they have essentially been studied at the intraspecific level (Hendry, 2017). The evolution of life-history traits and the demographic decline of *A. marmorata* following the invasion by *P. acuta* is an example of such eco-evolutionary dynamics (Chapuis et al., 2017). Integrative approaches, including long-term genetic, demographic and ecological studies, have been carried out in other species groups, such as guppies (Bassar, Simon, Roberts, Travis, & Reznick, 2017) or anoles (Pringle et al., 2019) in the Caribbean, to name just a few well-known examples, thus providing an insight into the links between population biology and community ecology. They should be continued and generalized to other model systems, including more complex communities.

Acknowledgements

We thank the SMGE platform at Cefe and the GenSeq platform from LabEx Cemeb for providing all facilities and technical advices for genotyping, and the numerous persons who participated to our long-term survey in Guadeloupe. T. Lamy was supported by a PhD fellowship from the French Ministry of Research, and E. Chapuis by an AXA postdoctoral fellowship. Our work has been financially supported over the years by grants to PD and PJ from

the French Ministry of Environment (Invabio, ECOFOR and Ecosystèmes tropicaux programs), the region Occitanie (Chercheurs d’Avenir), the French national agency for research (ANR grants JCJC-0202 and AFFAIRS 12SV005) and by CNRS.

Contributions

PJ and PD framed the study and supervised all analyses. TL, EC, MD, JPP, PD and PJ did field sampling and were involved in the long-term monitoring in Guadeloupe. TL, EC, AS, and EC did the genetic analyses. PJ, ALdC, TL, and MD ran the statistical analyses. PJ wrote the manuscript with input from all other authors, especially PD, at all stages of writing.

Data accessibility

The Zenodo archive (<https://zenodo.org/; 10.5281/zenodo.4534421>) contains all information analyzed in this paper (microsatellite genotypes of the four species, environmental and demographic data).

Conflict of interest

The authors of this article declare that they have no financial conflict of interest with the content of this article.

References

- Abu Awad, D., & Billiard, S. (2017) The double edged sword: The demographic consequences of the evolution of self-fertilization. *Evolution*, 71, 1178-1190. doi:10.1111/evo.13222.
- Agrawal, A. A. (2003) Community genetics: New insights into community ecology by integrating population genetics. *Ecology*, 84, 543-544.
- Akaike, H. (1974) A new look at the statistical model identification. *IEEE Transactions on Automatic Control*, 19, 716-723.
- Balkenhol, N., Cushman, S., Storfer, A., & Waits, L. (2015) Landscape genetics: Concepts, methods, applications. Wiley Blackwell.
- Barton, N. H., & Whitlock, M. C. (1997) The evolution of metapopulations. In Hanski I, Gilpin M (Eds.), *Metapopulation biology: Ecology, genetics and evolution*. (pp. 183-210). New York: Academic Press.
- Bassar, R. D., Simon, T., Roberts, W., Travis, J., & Reznick, D. N. (2017) The evolution of coexistence: Reciprocal adaptation promotes the assembly of a simple community. *Evolution*, 71, 373-385. DOI 10.1111/evo.13086.
- Bell, G. (2001) Neutral macroecology. *Science*, 293, 2413-2418.
- Bell, G. (2008) *Selection - the mechanism of evolution*, 2nd edn.: Oxford University Press.
- Bousset, L., Henry, P.-Y., Sourrouille, P., & Jarne, P. (2004) Population biology of the invasive freshwater snail *Physa acuta* approached through genetic markers, ecological characterization and demography. *Molecular Ecology*, 13, 2023–2036.
- Bousset, L., Pointier, J.-P., David, P., & Jarne, P. (2014) No variation loss associated to the worldwide invasion of *Physa acuta* from its native North America. *Biological Invasions*, 16, 1769-1783.
- Burkhart, J. J., Peterman, W. E., Brocato, E. R., Romine, K. M., Willis, M. M. S., Ousterhout, B. H.... (2016) The influence of breeding phenology on the genetic structure of four

- 337 pond-breeding salamanders. *Ecology and Evolution*, 7, 4670-4681. DOI:
 338 10.1002/ece3.3060.
- 339 Chapuis, E., Lamy, T., Pointier, J.-P., Segard, A., Jarne, P., & David, P. (2017) Bioinvasion
 340 triggers rapid evolution of life histories in freshwater snails. *American Naturalist*, 190,
 341 694-706. DOI: 10.1086/693854.
- 342 Charbonnel, N., Angers, B., Rasatavonjizay, R., Bremond, P., Debain, C., & Jarne, P. (2002)
 343 The influence of mating system, demography, parasites and colonization on the
 344 population structure of *Biomphalaria pfeifferi* in Madagascar. *Molecular Ecology*, 11,
 345 2213-2228.
- 346 Charlesworth, B., & Charlesworth, D. (2010) *Elements of evolutionary genetics*: Roberts &
 347 Company Publishers.
- 348 Charlesworth, D. (2003) Effects of inbreeding on the genetic diversity of populations.
 349 *Philosophical Transactions of the Royal Society of London B*, 358, 1051-1070.
- 350 David, P., Pujol, B., Viard, F., Castella, E., & Goudet, J. (2007) Reliable selfing rate estimates
 351 from imperfect population genetic data. *Molecular Ecology*, 16, 2474-2487.
- 352 Davis, M. A. (2008) *Invasion biology* Oxford: Oxford University Press.
- 353 Dlugosch, K. M., & Parker, M. (2008) Founding events in species invasions: genetic variation,
 354 adaptive evolution, and the role of multiple introductions. *Molecular Ecology*, 17, 431–
 355 449. doi: 10.1111/j.1365-294X.2007.03538.x.
- 356 Dubart, M., Pantel, J. H., Pointier, J.-P., Jarne, P., & David, P. (2019) Reciprocal competition,
 357 niche differentiation and coexistence between invasive and resident species analysed
 358 through two-species metapopulation models. *Ecology* 100, e02700.
 359 DOI:10.1002/ecy.2700.

- 360 Dubois, M.-P., Nicot, A., Jarne, P., & David, P. (2008) Characterization of 15 polymorphic
361 microsatellite markers in the freshwater snail *Aplexa marmorata* (Mollusca,
362 Gastropoda). *Molecular Ecology Resources*, 8, 1062-1064.
- 363 Duggan, I. C. (2010) The freshwater aquarium trade as a vector for incidental invertebrate
364 fauna. *Biological Invasions*, 12, 3757-3770.
- 365 Ebbs, E. T., Loker, E. S., & Brant, S. V. (2018) Phylogeography and genetics of the globally
366 invasive snail *Physa acuta* Draparnaud 1805, and its potential to serve as an
367 intermediate host to larval digenetic trematodes. *BMC Evolutionary Biology*, 18, 103.
368 <https://doi.org/10.1186/s12862-018-1208-z>.
- 369 Escobar, J. S., Nicot, A., & David, P. (2008) The different sources of variation in inbreeding
370 depression, heterosis and outbreeding depression in a metapopulation of *Physa acuta*.
371 *Genetics*, 180, 1593-1608.
- 372 Escobar, J.-S., Auld, J. R., Correa, A. C., Alonso, J. M., Bony, Y. K., Coutellec, M.-A.... (2011)
373 Correlations among selfing rate, inbreeding depression and delayed selfing: patterns of
374 mating-system evolution in hermaphroditic animals. *Evolution*, 65, 1233-1253.
- 375 Estoup, A., Ravigné, V., Huftbauer, R., Vitalis, R., Gautier, M., & Facon, B. (2016) Is there a
376 genetic paradox of biological invasion? *Annual Review of Ecology, Evolution, and*
377 *Systematics*, 51-72. 10.1146/annurev-ecolsys-121415-032116.
- 378 Excoffier, L., & Ray, N. (2008) Surfing during population expansions promotes genetic
379 revolutions and structuration. *Trends in Ecology and Evolution*, 23, 347-351. doi:
380 10.1016/j.tree.2008.04.004.
- 381 Facon, B., & David, P. (2006) Metapopulation dynamics and biological invasions: A spatially
382 explicit model applied to a freshwater snail. *American Naturalist*, 168, 769-783.
- 383 Figuerola, J., & Green, A. J. (2002) Dispersal of aquatic organisms by waterbirds: a review of
384 past research and priorities for future studies. *Freshwater Biology*, 47, 483-494.

- 385 Foll, M., & Gaggiotti, O. (2006) Identifying the environmental factors that determine the
 386 genetic structure of populations. *Genetics*, 174, 875-891.
- 387 Fréville, H., Choquet, R., Pradel, R., & Cheptou, P.-O. (2013) Inferring seed bank from hidden
 388 Markov models: new insights into metapopulation dynamics in plants. *Journal of*
 389 *Ecology*, 101, 1572-1580. 10.1111/1365-2745.12141.
- 390 Frichot, E., & François, O. (2015) LEA: AnR package for landscape and ecological association
 391 studies. *Methods in Ecology and Evolution*, 6, 925-929. doi: 10.1111/2041-
 392 210X.12382.
- 393 Frichot, E., Mathieu, F., Trouillon, T., Bouchard, G., & François, O. (2014) Fast and efficient
 394 estimation of individual ancestry coefficients. *Genetics*, 196, 973-983. doi:
 395 10.1534/genetics.113.160572.
- 396 Fronhofer, E. A., Kubisch, A., Hilker, F. M., Hovestadt, T., & Poethke, H. J. (2012) Why are
 397 metapopulations so rare? *Ecology*, 93, 1967-1978.
- 398 Goudet, J. (2001) FSTAT, a program to estimate and test gene diversities and fixation indices.
- 399 Haag, C. R., Riek, M., Hottinger, J. W., Pajunen, V. I., & Ebert, D. (2005) Genetic diversity
 400 and genetic differentiation in *Daphnia* metapopulations with subpopulations of known
 401 age. *Genetics*, 170, 1809-1820.
- 402 Hanski, I., & Gaggiotti, O. E. (2004) Ecology, genetics and evolution of metapopulations, p.
 403 696. Elsevier Academic Press.
- 404 Heino, J., Melo, A. S., Siqueira, T., Soininen, J., Valanko, S., & Bini, L. M. (2015)
 405 Metacommunity organisation, spatial extent and dispersal in aquatic systems: patterns,
 406 processes and prospects. *Freshwater Biology*, 60, 845-869. doi:10.1111/fwb.12533.
- 407 Hendry, A. P. (2017) *Eco-evolutionary dynamics*: Princeton University Press.
- 408 Hubbell, S. P. (2001) *The unified neutral theory of biodiversity and biogeography* Princeton,
 409 NJ: Princeton University Press.

- 410 Hughes, J. N., Huey, J. A., & Schmidt, D. J. (2013) Is realised connectivity among populations
 411 of aquatic fauna predictable from potential connectivity? *Freshwater Biology*, 58, 951-
 412 966. doi:10.1111/fwb.12099.
- 413 Ingvarsson, P. (2002) A metapopulation perspective on genetic diversity and differentiation in
 414 partially self-fertilizing plants. *Evolution*, 56, 2368-2373. doi:10.1111/j.0014-
 415 3820.2002.tb00162.x.
- 416 Jarne, P. (1995) Mating system, bottlenecks and genetic polymorphism in hermaphroditic
 417 animals. *Genetical Research*, 65, 193-207.
- 418 Jarne, P., & David, P. (2008) Quantifying inbreeding in natural populations of hermaphroditic
 419 organisms. *Heredity*, 100, 431-439.
- 420 Jarne, P., & Delay, B. (1991) Population genetics of freshwater snails. *Trends in Ecology and*
 421 *Evolution*, 6, 383-386.
- 422 Kappes, H., & Haase, P. (2012) Slow, but steady: dispersal of freshwater molluscs. . *Aquatic*
 423 *Sciences*, 74, 1-14.
- 424 Lamy, T., Gimenez, O., Pointier, J.-P., Jarne, P., & David, P. (2013) Metapopulation dynamics
 425 of species with cryptic life stages. *American Naturalist*, 181, 479-491.
- 426 Lamy, T., Jarne, P., Pointier, J.-P., Huth, G., Laroche, F., Segard, A.... (2013) Variation in
 427 habitat connectivity generates positive correlations between species and genetic
 428 diversity in a metacommunity. *Molecular Ecology*, 22, 4445-4456. DOI:
 429 10.1111/mec.12399.
- 430 Lamy, T., Laroche, F., David, P., Massol, F., & Jarne, P. (2017) The contribution of species-
 431 genetic diversity correlations to the understanding of community assembly rules. *Oikos*
 432 126, 759-771.
- 433 Lamy, T., Pointier, J.-P., Jarne, P., & David, P. (2012) Testing metapopulation dynamics using
 434 genetic, demographic and ecological data. *Molecular Ecology*, 21, 1394-1410.

- 435 Levins, R. (1969) Some demographic and genetic consequences of environmental
 436 heterogeneity for biological control. *Bulletin of the Entomological Society of America*,
 437 15, 237-240.
- 438 Lewontin, R. C. (1974) *The genetic basis of evolutionary change* New York: Columbia
 439 University Press.
- 440 Lounnas, M., Correa, A. C., Vázquez, A. A., Dia, A., Escobar, J. S., Nicot, A.... (2017) Self-
 441 fertilization, long-distance flash invasion and biogeography shape the population
 442 structure of *Pseudosuccinea columella* at the worldwide scale. *Molecular Ecology*, 26,
 443 887-903. doi: 10.1111/mec.13984.
- 444 Manel, S., & Holderegger, R. (2013) Ten years of landscape genetics. *Trends in Ecology and*
 445 *Evolution*, 28, 614-621. DOI:10.1016/j.tree.2013.05.012.
- 446 Manier, M. K., & Arnold, S. J. (2006) Ecological correlates of population genetic structure: a
 447 comparative approach using a vertebrate metacommunity. *Proceedings of the Royal*
 448 *Society B*, 273, 3001–3009. doi:10.1098/rspb.2006.3678.
- 449 Monsutti, A., & Perrin, N. (1999) Dinucleotide microsatellite loci reveal a high selfing rate in
 450 the freshwater snail *Physa acuta*. *Molecular Ecology*, 8, 1076-1078.
- 451 Morgan, J. A. T., DeJong, R. J., Jung, Y. H., Khallaayoune, K., Kock, S., Mkoji, G. M.... (2002)
 452 A phylogeny of planorbid snails, with implications for the evolution of *Schistosoma*
 453 parasites. *Molecular Phylogenetics and Evolution*, 25, 477-488.
- 454 Nei, M. (1987) *Molecular evolutionary genetics* New York: Columbia University Press.
- 455 Nei, M., Maruyama, T., & Chakraborty, R. (1975) The bottleneck effect and genetic variability
 456 in populations. *Evolution*, 29, 1-10.
- 457 Nicot, A., Jarne, P., & David, P. (2009) Development of polymorphic microsatellite loci in the
 458 hermaphroditic freshwater snails *Drepanotrema surinamense* and *Drepanotrema*
 459 *depressissimum*. *Molecular Ecology Resources*, 9, 897-902.

- 460 Oksanen, J., Blanchet, F. G., Kindt, R., Legendre, P., Minchin, P. R., O'Hara, R. B.... (2015)
 461 Vegan - Community ecology package: Ordination, diversity and dissimilarities.
- 462 Ortego, J., Garcia-Navas, V., Nogueras, V., & Cordero, P. J. (2015) Discordant patterns of
 463 genetic and phenotypic differentiation in five grasshopper species codistributed across
 464 a microreserve network. *Molecular Ecology*, 54, 5796-5812. doi: 10.1111/mec.13426.
- 465 Pannell, J. R. (2002) The evolution and maintenance of androdioecy. *Annual Review of Ecology*
 466 *and Systematics*, 33, 397-425.
- 467 Pannell, J. R. (2015) Evolution of the mating system in colonizing plants. *Molecular Ecology*,
 468 24, 2018-2037. doi: 10.1111/mec.13087.
- 469 Pantel, J. H., Lamy, T., Dubart, M., Pointier, J.-P., Jarne, P., & David, P. Metapopulation
 470 dynamics of multiple species in a heterogeneous landscape. Submitted to *Ecological*
 471 *Monographs*.
- 472 Petit, R. J., El Mousadik, A., & Pons, O. (1998) Identifying populations for conservation on the
 473 basis of genetic markers. *Conservation Biology*, 12, 844-855.
- 474 Pointier, J.-P. (2008) *Guide to the freshwater molluscs of the Lesser Antilles* Hackenheim,
 475 Germany: Conchbooks.
- 476 Pointier, J.-P., & Combes, C. (1976) La saison sèche en Guadeloupe et ses conséquences sur la
 477 démographie des mollusques dans les biotopes a *Biomphalaria glabrata* (Say, 1818),
 478 vecteur de la bilharziose intestinale. *Revue d'Ecologie (Terre et Vie)*, 30, 121-147.
- 479 Pointier, J.-P., & David, P. (2004) Biological control of *Biomphalaria glabrata*, the
 480 intermediate host of schistosomes, by *Marisa cornuarietis* in ponds of Guadeloupe:
 481 long-term impact on the local snail fauna and aquatic flora. *Biological Control*, 29, 81-
 482 89.

- 483 Pringle, R. M., Kartzinel, T. R., Palmer, T. M., Thurman, T. J., Fox-Dobbs, K., Xu, C. C. Y....
 484 (2019) Predator-induced collapse of niche structure and species coexistence. *Nature*,
 485 570, 58-64. doi: 10.1038/s41586-019-1264-6.
- 486 Pritchard, J. K., Stephens, M., & Donnelly, P. (2000) Inference of population structure using
 487 multilocus genotype data. *Genetics*, 155 945-959
- 488 R Development Core Team (2005) *R: A language and environment for statistical*
 489 *computing* Vienna, Austria.
- 490 Raymond, M., & Rousset, F. (1995) An exact test for population differentiation. *Evolution*, 49,
 491 1280-1283.
- 492 Reid, B. N., Mladenoff, D. J., & Peery, M. Z. (2017) Genetic effects of landscape, habitat
 493 preference and demography on three co-occurring turtle species. *Molecular Ecology*,
 494 26, 781-798. doi: 10.1111/mec.13962.
- 495 Roman, J., & Darling, J. A. (2007) Paradox lost: genetic diversity and the success of aquatic
 496 invasions. *Trends in Ecology and Evolution* 22, 454-464.
- 497 Rousset, F. (1997) Genetic differentiation and estimation of gene flow from F-statistics under
 498 isolation by distance. *Genetics*, 145, 1219-1228.
- 499 Rousset, F. (2008) Genepop'007: a complete re-implementation of the genepop software for
 500 Windows and Linux. *Molecular Ecology Resources*, 8, 103-106.
- 501 Sourrouille, P., Debain, C., & Jarne, P. (2003) Microsatellite variation in the freshwater snail
 502 *Physa acuta*. *Mol Ecol Notes*, 3, 21-23.
- 503 Storfer, A., Murphy, M. A., Evans, J. S., Goldberg, C. S., Robinson, S., Spear, S. F.... (2007)
 504 Putting the 'landscape' in landscape genetics. *Heredity*, 98, 128-142.
- 505 Strauss, S. Y., Lau, J. A., & Carroll, S. P. (2006) Evolutionary responses of natives to
 506 introduced species: what do introductions tell us about natural communities? *Ecology*
 507 *Letters* 9, 357-374.

- 508 Stuart, Y. E., Campbell, T. S., Hohenlohe, P. A., Reynolds, R. G., Revell, L. J., & Losos, J. B.
 509 (2014) Rapid evolution of a native species following invasion by a congener. *Science*,
 510 6208, 463-466. DOI: 10.1126/science.1257008
- 511 Tian-Bi, Y.-N., Konan, J.-N., Kouassi, A. B., Utzinger, J., N’Goran, E. K., & Jarne, P. (2019)
 512 Spatio-temporal population genetic structure, relative to demography and schistosome
 513 prevalence, in the freshwater snail host *Biomphalaria pfeifferi* in Western Côte d’Ivoire.
 514 *Genetica*, 147, 33-45. DOI 10.1007/s10709-018-0049-4.
- 515 Van Leeuwen, C. H. A., Huig, N., Van der Velde, G., Van Alen, T. A., Wagemaker, C. A. M.,
 516 Sherman, C. D. H.... (2013) How did this snail get here? Several dispersal vectors
 517 inferred for an aquatic invasive species. *Freshwater Biology*, 58, 88-99.
- 518 Vellend, M. (2010) Conceptual synthesis in community ecology. *Quarterly Review of Biology*,
 519 85, 183-206.
- 520 Vellend, M. (2016) *The theory of ecological communities*. Princeton, USA: Princeton
 521 University Press.
- 522 Vellend, M., & Geber, M. A. (2005) Connections between species diversity and genetic
 523 diversity. *Ecology Letters*, 8, 767-781. doi: 10.1111/j.1461-0248.2005.00775.x.
- 524 Viard, F., Justy, F., & Jarne, P. (1997) The influence of self-fertilization and population
 525 dynamics on the genetic structure of subdivided populations: a case study using
 526 microsatellite markers in the freshwater snail *Bulinus truncatus*. *Evolution*, 51, 1518-
 527 1528.
- 528 Vinarski, M. V. (2017) The history of an invasion: phases of the explosive spread of the physid
 529 snail *Physella acuta* through Europe, Transcaucasia and Central Asia. *Biological*
 530 *Invasions*, 19, 1299-1314. DOI 10.1007/s10530-016-1339-3.
- 531 Wares, J. P., Hughes, A. R., & Grosberg, R. K. (2005) Mechanisms that drive evolutionary
 532 change: insights from species introductions and invasions. In Sax DF, Stachowicz JJ,

- 533 Gaines SD (Eds.), *Species invasions: insights into ecology, evolution, and*
534 *biogeography*. (pp. 229–257). Sunderland: Sinauer Press.
- 535 Weir, B. S. (1996) *Genetic data analysis II* Sunderland, Massachusetts: Sinauer & Associates.
- 536 Weir, B. S., & Cockerham, C. C. (1984) Estimating F-statistics for analysis of population
537 structure. *Evolution*, 38, 1358-1370.
- 538 Wethington, A. R., & Lydeard, C. (2007) A molecular phylogeny of Physidae (Gastropoda :
539 Basommatophora) based on mitochondrial DNA sequences. *Journal of Molluscan*
540 *Studies*, 73, 241-257.
- 541 Whitlock, M. C., & Barton, N. H. (1997) The effective size of a subdivided population.
542 *Genetics*, 146 427-441.
- 543