



HAL
open science

Dire wolves were the last of an ancient New World canid lineage

Angela R. Perri, Kieren J. Mitchell, Alice Mouton, Sandra Álvarez-Carretero, Ardern Hulme-Beaman, James Haile, Alexandra Jamieson, Julie Meachen, Audrey T. Lin, Blaine W. Schubert, et al.

► To cite this version:

Angela R. Perri, Kieren J. Mitchell, Alice Mouton, Sandra Álvarez-Carretero, Ardern Hulme-Beaman, et al.. Dire wolves were the last of an ancient New World canid lineage. *Nature*, 2021, 591 (7848), pp.87-91. 10.1038/s41586-020-03082-x . hal-03451211

HAL Id: hal-03451211

<https://hal.science/hal-03451211>

Submitted on 23 Sep 2022

HAL is a multi-disciplinary open access archive for the deposit and dissemination of scientific research documents, whether they are published or not. The documents may come from teaching and research institutions in France or abroad, or from public or private research centers.

L'archive ouverte pluridisciplinaire **HAL**, est destinée au dépôt et à la diffusion de documents scientifiques de niveau recherche, publiés ou non, émanant des établissements d'enseignement et de recherche français ou étrangers, des laboratoires publics ou privés.

Dire wolves were the last of an ancient New World canid lineage

<https://doi.org/10.1038/s41586-020-03082-x>

Angela R. Perri^{1,44}✉, Kieren J. Mitchell^{2,44}✉, Alice Mouton^{3,44}, Sandra Álvarez-Carretero^{4,44}, Ardern Hulme-Beaman^{5,6}, James Haile⁷, Alexandra Jamieson⁷, Julie Meachen⁸, Audrey T. Lin^{7,9,10}, Blaine W. Schubert¹¹, Carly Ameen¹², Ekaterina E. Antipina¹³, Pere Bover¹⁴, Selina Brace¹⁵, Alberto Carmagnini⁴, Christian Carøe¹⁶, Jose A. Samaniego Castruita¹⁶, James C. Chatters¹⁷, Keith Dobney^{5,18,19,20}, Mario dos Reis⁴, Allowen Evin²¹, Philippe Gaubert²², Shyam Gopalakrishnan¹⁶, Graham Gower², Holly Heiniger², Kristofer M. Helgen²³, Josh Kapp²⁴, Pavel A. Kosintsev^{25,26}, Anna Linderholm^{7,27}, Andrew T. Ozga^{28,29,30}, Samantha Presslee³¹, Alexander T. Salis², Nedda F. Saremi²⁴, Colin Shew³, Katherine Skerry²⁹, Dmitry E. Taranenko³², Mary Thompson³³, Mikhail V. Sablin³⁴, Yaroslav V. Kuzmin^{35,36}, Matthew J. Collins^{16,37}, Mikkel-Holger S. Sinding^{16,38}, M. Thomas P. Gilbert^{16,39}, Anne C. Stone^{28,29,40}, Beth Shapiro^{24,41}, Blaire Van Valkenburgh³, Robert K. Wayne³, Greger Larson⁷, Alan Cooper⁴² & Laurent A. F. Frantz^{4,43}✉

Dire wolves are considered to be one of the most common and widespread large carnivores in Pleistocene America¹, yet relatively little is known about their evolution or extinction. Here, to reconstruct the evolutionary history of dire wolves, we sequenced five genomes from sub-fossil remains dating from 13,000 to more than 50,000 years ago. Our results indicate that although they were similar morphologically to the extant grey wolf, dire wolves were a highly divergent lineage that split from living canids around 5.7 million years ago. In contrast to numerous examples of hybridization across Canidae^{2,3}, there is no evidence for gene flow between dire wolves and either North American grey wolves or coyotes. This suggests that dire wolves evolved in isolation from the Pleistocene ancestors of these species. Our results also support an early New World origin of dire wolves, while the ancestors of grey wolves, coyotes and dholes evolved in Eurasia and colonized North America only relatively recently.

Dire wolves (*Canis dirus*) were large (around 68 kg) wolf-like canids and among the most common extinct large carnivores of the American Late Pleistocene megafauna¹. Dire wolf remains are present in the North American palaeontological record from at least around 250,000 to about 13,000 years ago, at the end of the Pleistocene epoch, particularly in the lower latitudes⁴ (Fig. 1a). Other canid species that were present in Late Pleistocene North America include the slightly smaller grey wolf (*Canis lupus*), the much smaller coyote (*Canis latrans*) and the dhole (or Asiatic wild dog; *Cuon alpinus*), although dire wolves appear to have been more common overall¹. For example, more than 4,000 individuals have been excavated from California's fossil-rich Rancho La Brea tar seeps alone, where they outnumber grey wolves more than 100-fold^{5,6}.

Despite the abundance of dire wolf fossils, their origins, taxonomic relationships and ultimate driver of their extinction remain unclear. Dire wolves are generally described as a sister species to^{7–10}, or even conspecific with, the grey wolf¹¹. The leading hypothesis to explain their extinction is that, owing to their larger body size compared with grey wolves and coyotes, dire wolves were more specialized for hunting large prey and were unable to survive the extinction of their megafaunal prey^{12–14}. To test this hypothesis, we performed geometric morphometric analyses of more than 700 specimens. Our results indicate that although specimens of dire wolves and grey wolves can

be differentiated, their morphology is highly similar (Fig. 1b, Supplementary Information, Supplementary Figs. 1–6 and Supplementary Data 3–12). Although this morphometric similarity may be driven in part by allometry (Fig. 1b, Supplementary Information), the lack of distinctiveness between grey wolves and dire wolves has been interpreted to be a result of a close evolutionary relationship^{9,11}. Alternatively, a competing hypothesis maintains that these morphological similarities are the result of convergence, and that dire wolves instead are a species that belongs to a separate taxonomic lineage (classified in the monotypic genus *Aenocyon*, 'terrible' or 'dreadful' wolf¹⁵).

To resolve the evolutionary history of dire wolves, we screened 46 sub-fossil specimens for the presence of preserved genomic DNA (Supplementary Data 1). We identified five samples from Idaho (DireAFR & DireGB), Ohio (DireSP), Tennessee (DireGWC) and Wyoming (DireNTC), dating to between 12,900 and more than 50,000 years ago, that possessed sufficient endogenous DNA to obtain both mitochondrial genomes (between around 1× and 31× coverage) and low-coverage nuclear genome sequences (approximately 0.01× to 0.23× coverage) using hybridization capture or shotgun sequencing methods (Supplementary Information). All of these samples displayed molecular damage profiles that are typical of ancient DNA (Supplementary Figs. 8, 9). Although we did not successfully sequence DNA from dire wolf

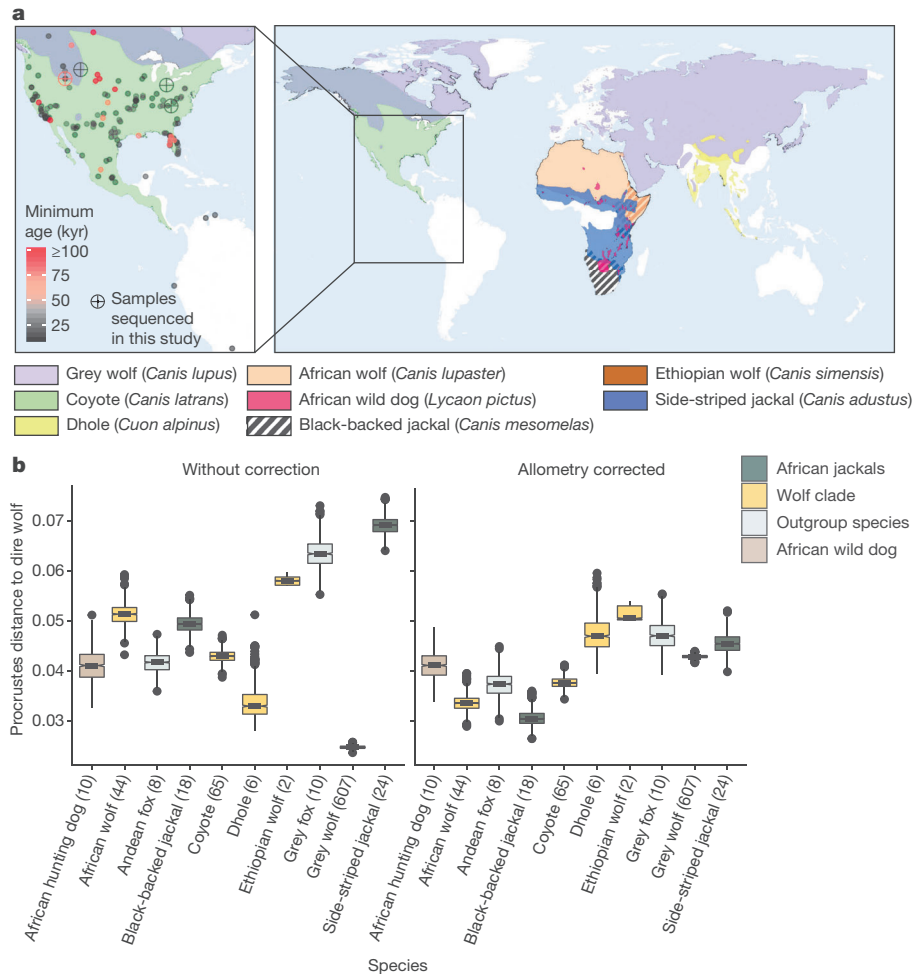


Fig. 1 | Map of dire wolf remains and morphological differentiation with wolf-like canids. a, Right, map representing the geographical range of the canid species investigated in this study. The data (shape file) for this plot were obtained from the IUCN Red List database³⁶ and plotted using R³⁷. Left, map representing the distribution of sites in the Americas where dire wolf remains (*Canis dirus*) have been identified (Supplementary Data 1, 2). Coloured circles represent the locations and approximate ages of the remains, with crossed circles representing the five samples from Idaho (2), Ohio (1), Tennessee (1) and Wyoming (1) that yielded sufficient endogenous DNA to reconstruct both mitochondrial genomes and low-coverage nuclear genome sequences. **b**,

Procrustes distances between the combined mandible and M¹ shape of dire wolf and other extant canid species. Pairwise Procrustes distances were calculated by superimposing landmarks from molar and mandibular shapes between pairs of specimens and by computing the square root of the squared differences between the coordinates of corresponding landmarks, with and without correction for allometry (Supplementary Information). The centre of the box represents the median, the box bounds represent the quartiles, the whiskers represent maximum and minimum values ($\pm 1.5 \times$ the interquartile range) and dots represent outliers.

specimens from the La Brea tar seeps, one specimen did contain type-I collagen (*COL1*) that was suitable for sequencing using palaeoproteomic methods (Supplementary Data 1 and Supplementary Information).

Analyses of the dire wolf *COL1* sequence suggested that they were not closely related to grey wolves, coyotes, African wolves (*Canis lupaster*) or dogs (*Canis familiaris*) (Supplementary Fig. 7). These data, however, could not confidently resolve the relationships between more distantly related canids owing to a lack of lineage-specific amino acid changes among these species¹⁶. Phylogenetic analyses of the mitochondrial genomes indicated that dire wolves form a well-supported monophyletic group that is highly divergent from grey wolves and coyotes (Supplementary Fig. 10; see Supplementary Data 13 and Supplementary Tables 2–4 for a list of the 13 species and their coverage used in this analysis), contradicting recent palaeontological analyses^{7–9} (Fig. 1b). Canid mitochondrial phylogenies, however, may not represent the true evolutionary relationships of the species as both admixture and incomplete lineage sorting have been shown to affect canid phylogenetic topologies^{3,17}.

To resolve the phylogenetic relationships of dire wolves, we analysed the nuclear genomic data of the dire wolves together with previously published genomic data from eight extant canids: grey wolf, coyote, African wolf, dhole, Ethiopian wolf (*Canis simensis*), African wild dog (*Lycaon pictus*), Andean fox (*Lycalopex culpaeus*) and grey fox (*Urocyon cinereoargenteus*—an outgroup). Of these species, the geographical ranges of grey wolves, coyotes, dholes and grey foxes overlapped with that of dire wolves during the Pleistocene epoch (Fig. 1a). We also generated new nuclear genome sequences for a grey wolf from Montana and the two endemic African jackals—the black-backed and side-striped jackal (*Canis mesomelas* and *Canis adustus*, respectively)—to ensure representation of all extant members of the ‘wolf-like canid’ clade (comprising *Canis*, *Lycaon*, *Cuon* and their extinct relatives) (Supplementary Data 13). Supermatrix analyses, based on nuclear sequence alignments of 70 kb to 28 Mb (depending on overall coverage for each dire wolf genome; Supplementary Tables 5, 7) confirmed a distant evolutionary relationship between dire wolves and the other wolf-like canids (Fig. 2a, Supplementary Fig. 11 and Supplementary Figs. 15, 16). This analysis, however, could not definitively resolve whether dire wolves were the

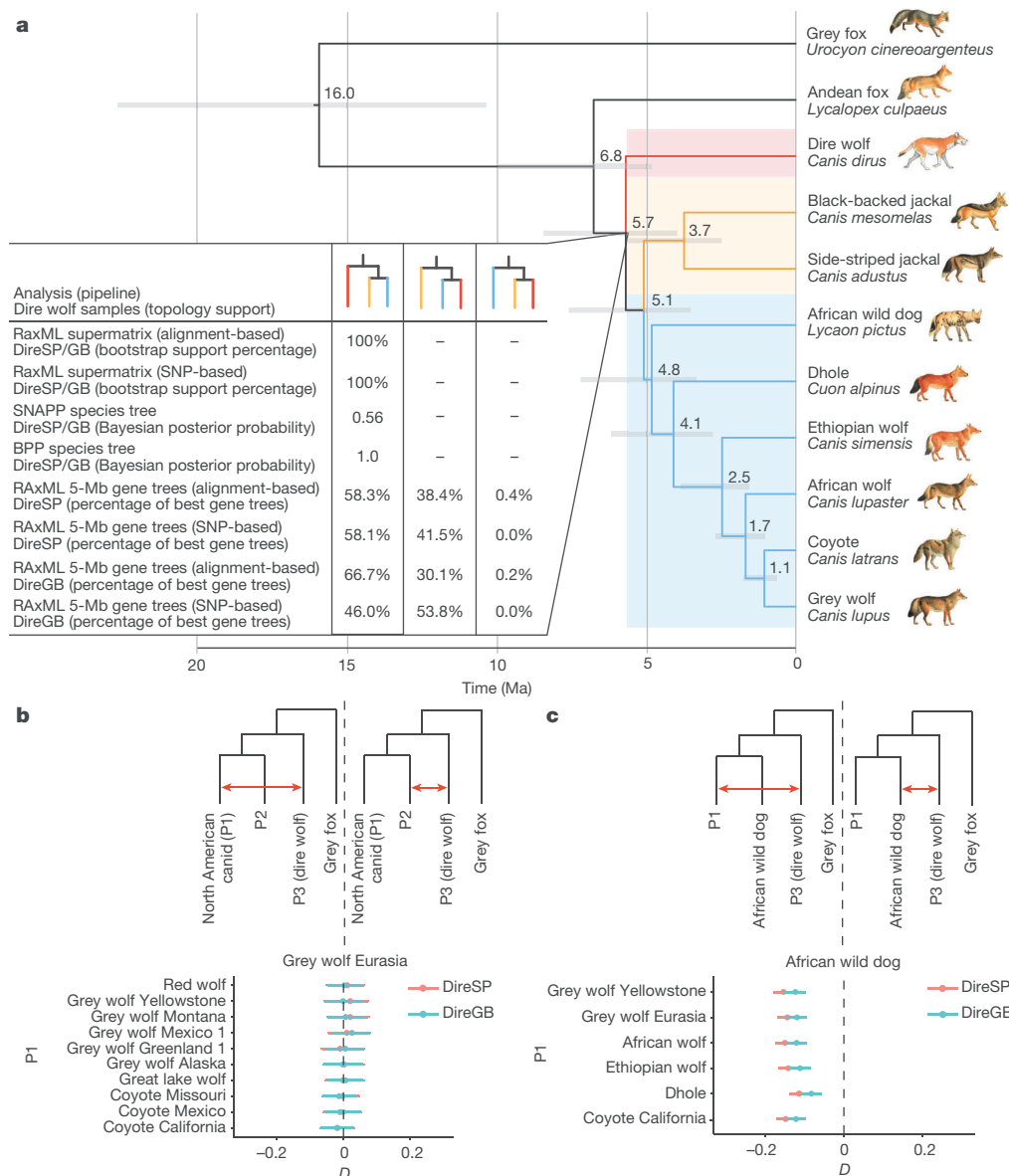


Fig. 2 | Relationships among living and extinct wolf-like canids.

a, Time-scaled nuclear phylogeny generated in MCMCtree based on the best-scoring maximum likelihood species tree topology obtained from BPP and SNAPP. Values associated with nodes are mean age estimates (millions of years before present) and bars represent 95% highest posterior densities. The inset table shows the levels of support for the three possible arrangements of the dire wolf (red), the African jackals (orange) and the remaining wolf-like canids (blue) that we obtained using different analytical frameworks when including either one or both of our two highest coverage dire wolf samples (DireSP and DireGB). Although only one dire wolf branch is depicted in the tree, multiple dire wolf individuals were included in some analyses as they form a monophyletic clade (for example, Supplementary Figs. 12, 13, 15). **b**, Results of D -statistics used to assess the possibility of gene flow between the dire wolf and extant North American canids. Each dot represents the mean D calculated

along the genome and the error bar represents 3 standard deviations computed using a weighted block jackknife procedure over 5-Mb blocks across the genome. Z values of $|Z| > 3$ were considered significant. These plots show that the dire wolf genomes do not share significantly more derived alleles with extant North American canids compared to Eurasian wolves (values of D were not significantly different from zero), suggesting that no hybridization occurred between the dire wolf and the ancestor of extant North American canids. Non-significant D -statistics were also obtained using an alternative reference genome and using the African wolf as P2 (Supplementary Fig. 18 and Supplementary Data 14). **c**, Results of D -statistics showing the existence of an ancient gene flow event between the ancestor of the dhole, Ethiopian wolf, African wolf, grey wolf and coyotes and the lineage of the dire wolf (consistently non-zero values of D regardless of P1). P1, P2 and P3 in the tree schematic represent genomes that are used in the admixture test.

basal members of the wolf-like canid clade or the second lineage to diverge after the common ancestor of the two African jackals.

We investigated canid phylogenetic relationships in greater detail using a range of species tree analyses^{18,19} and D -statistics (Supplementary Information). These approaches produced concordant trees that support the monophyly of three primary lineages: dire wolves, African jackals and a clade comprising all other extant wolf-like canids (Fig. 2a, Supplementary Tables 6–8 and Supplementary Figs. 11–16). Although

our species tree analyses provided equivocal results regarding the relationships among these lineages, grey wolves (genus *Canis*) are more closely related to African wild dogs (genus *Lycan*) (Supplementary Fig. 19), dholes (genus *Cuon*) (Supplementary Fig. 21) and Ethiopian wolves (Supplementary Fig. 22) than to either dire wolves or African jackals (both genus *Canis*). This finding is consistent with previously proposed designations of the genera *Lupulella*²⁰ for the African jackals and *Aenocyon*¹⁵ for dire wolves.

To assess the timing of divergence among the major wolf-like canid lineages, we performed a Bayesian clock-dating analysis using MCMC-tree²¹. Although the dire wolf sequences are low coverage and include post-mortem damage, extensive simulations indicated that this is unlikely to affect the time of divergence estimates inferred by MCMC-tree (Supplementary Information, Supplementary Tables 9–11 and Supplementary Fig. 17). This analysis confirmed that the initial divergences of the three primary wolf-like canid lineages occurred rapidly, which contributes to the poor resolution of the tree as a result of incomplete lineage sorting (Fig. 2a). The dire wolf lineage last shared a common ancestor with extant wolf-like canids around 5.7 million years ago (95% highest posterior density (HPD), 4.0–8.5 million years ago) (Fig. 2a), followed by the divergence of African jackals around 5.1 million years ago (95% HPD, 3.5–7.6 million years ago) (Fig. 2b).

Given the tendency for sympatric canid species to interbreed^{2,3,22}, we tested for genomic signals of admixture between extant North American canids and dire wolves using *D*-statistics²³ (Supplementary Information) on a dataset that included 22 modern North American grey wolves and coyotes, three ancient dogs^{24–26} and a Pleistocene wolf²⁷ (Supplementary Data 13). Specifically, we computed statistics of the form *D*(outgroup (grey fox); dire wolf; North American canid (grey wolf or coyote); African wolf/Eurasian wolf) and found no significant excess of shared derived alleles between dire wolves and any extant North American canid (Fig. 2b, Supplementary Fig. 18 and Supplementary Data 14). This result indicates that the dire wolves sequenced in this study did not possess ancestry from grey wolves, coyotes or their recent North American ancestors. Although we cannot exclude the possibility that some unsampled canid population has some dire wolf hybrid ancestry, the lack of a hybridization signal in our broad set of genomes suggests that admixture is unlikely to have occurred. Although we did not find evidence of recent admixture, we did find that African wild dogs share fewer derived alleles with dire wolves than with grey wolves, coyotes, African wolves, dholes or Ethiopian wolves (Fig. 2c, Supplementary Fig. 20 and Supplementary Data 15, 16). This indicates that an episode of ancient admixture between the ancestor of dire wolves and the ancestor of wolves, coyotes and dholes occurred at least around 3 million years ago (based on the lower bound of the 95% HPD on the age of their common ancestor) (Fig. 2a), which may have contributed to the challenge of resolving the branching order of the basal wolf-like canid lineages (Fig. 2a).

Hybridization is common among wolf-like canid lineages when their ranges overlap. For example, modern grey wolves and coyotes hybridize readily in North America². Genomic data also suggest that gene flow occurred between dholes and African wild dogs during the Pleistocene epoch³, millions of years after their divergence. Consequently, our finding of no evidence for gene flow between dire wolves and grey wolves, coyotes or their common ancestor—despite substantial range overlap with dire wolves during the Late Pleistocene—suggests that the common ancestor of grey wolves and coyotes probably evolved in geographical isolation from members of the dire wolf lineage. This result is consistent with the hypothesis that dire wolves originated in the Americas^{1,6,28,29}, and probably belonged to the same lineage as the extinct Armbruster's wolf (*Canis armbrusteri*)⁷.

Long-term isolation of the dire wolf lineage in the Americas implies that other American fossil taxa, such as the Pliocene *Canis edwardii*, a proposed relative of the coyote⁷, may instead belong to the dire wolf lineage. Thus, the diversification of the extant wolf-like canids probably occurred in parallel outside of the Americas, and perhaps began earlier than hypothesized. The living *Canis* species may have descended from Old World members of the extinct genus *Eucyon*, which first appeared in the fossil record of Africa and Eurasia at the end of the Miocene epoch³⁰. Geographical isolation since the late Miocene is consistent with our molecular estimates for the age of the dire wolf lineage, and may have allowed dire wolves to evolve some degree of reproductive isolation before the arrival of grey wolves,

coyotes, dholes and *Xenocyon* (another extinct wolf-like canid) in North America during the Late Pleistocene.

Despite their overall phenotypic similarities, grey wolves and coyotes survived the Late Pleistocene megafaunal extinctions whereas dire wolves did not. One possible reason may be that both grey wolves and coyotes possessed greater morphological plasticity and dietary flexibility, thus allowing them to avoid extinction and become the dominant terrestrial predators in North America^{14,31}. This scenario is supported by the date that we obtained from the DireGWC specimen (12,820–12,720 calibrated years before present), which suggests that dire wolves survived until at least the Younger Dryas cold reversal, a period that also witnessed the latest known dates for other specialized North American mega-carnivores such as the American lion (*Panthera atrox*) and giant short-faced bear (*Arctodus simus*)^{32,33}. Alternatively, grey wolves and coyotes may have survived as a result of their ability to hybridize with other canids. Through adaptive introgression with dogs, North American grey wolves are known to have acquired traits related to coat colour, hypoxia and immune response^{34,35}. Specifically, enhanced immunity may have allowed grey wolves to resist diseases carried by newly arriving Old World taxa. Because our results demonstrate that dire wolves did not derive any ancestry from other wolf-like canid species, it is plausible that reproductive isolation prevented dire wolves from acquiring traits that may have allowed them to survive into the Holocene epoch.

Online content

Any methods, additional references, Nature Research reporting summaries, source data, extended data, supplementary information, acknowledgements, peer review information; details of author contributions and competing interests; and statements of data and code availability are available at <https://doi.org/10.1038/s41586-020-03082-x>.

- Dundas, R. G. Quaternary records of the dire wolf, *Canis dirus*, in North and South America. *Boreas* **28**, 375–385 (1999).
- vonHoldt, B. M. et al. Whole-genome sequence analysis shows that two endemic species of North American wolf are admixtures of the coyote and gray wolf. *Sci. Adv.* **2**, e1501714 (2016).
- Gopalakrishnan, S. et al. Interspecific gene flow shaped the evolution of the genus *Canis*. *Curr. Biol.* **28**, 3441–3449 (2018).
- Meachen, J. A., Brannick, A. L. & Fry, T. J. Extinct Beringian wolf morphotype found in the continental U.S. has implications for wolf migration and evolution. *Ecol. Evol.* **6**, 3430–3438 (2016).
- Leonard, J. A. et al. Megafaunal extinctions and the disappearance of a specialized wolf ecomorph. *Curr. Biol.* **17**, 1146–1150 (2007).
- Kurtén, B. & Anderson, E. *Pleistocene Mammals of North America* (Columbia Univ. Press, 1980).
- Tedford, R. H., Wang, X. & Taylor, B. E. Phylogenetic systematics of the North American fossil Caninae (Carnivora: Canidae). *Bull. Am. Nat. Hist.* **325**, 1–218 (2009).
- Prevosti, F. J. Phylogeny of the large extinct South American Canids (Mammalia, Carnivora, Canidae) using a ‘total evidence’ approach. *Cladistics* **26**, 456–481 (2010).
- Zrzavý, J., Duda, P., Robovský, J., Okřínová, I. & Pavelková Řičánková, V. Phylogeny of the Caninae (Carnivora): combining morphology, behaviour, genes and fossils. *Zool. Scr.* **47**, 373–389 (2018).
- Álvarez-Carretero, S., Goswami, A., Yang, Z. & Dos Reis, M. Bayesian estimation of species divergence times using correlated quantitative characters. *Syst. Biol.* **68**, 967–986 (2019).
- Goulet, G. D. Comparison of temporal and geographical skull variation among Nearctic modern, Holocene and Late Pleistocene gray wolves (*Canis lupus*) (and selected *Canis*). (1993).
- Graham, R. W. & Mead, J. I. in *North America and Adjacent Oceans During the Last Deglaciation* (eds Ruddiman, Q. F. & Wright, H. E. Jr.) 371–402 (Geological Society of America, 1987).
- Barnosky, A. D. in *Mass Extinctions: Processes and Evidence* (ed. Donovan, S. K.) 235–254 (Belhaven, 1989).
- DeSantis, L. R. G. et al. Causes and consequences of pleistocene megafaunal extinctions as revealed from Rancho La Brea mammals. *Curr. Biol.* **29**, 2488–2495 (2019).
- Merriam, J. C. Note on the systematic position of the wolves of the *Canis dirus* group. *Bull. Dept. Geol. Univ. California* **10**, 531–533 (1918).
- Buckley, M., Harvey, V. L. & Chamberlain, A. T. Species identification and decay assessment of Late Pleistocene fragmentary vertebrate remains from Pin Hole Cave (Creswell Crags, UK) using collagen fingerprinting. *Boreas* **46**, 402–411 (2017).

17. Koepfli, K.-P. et al. Genome-wide evidence reveals that African and Eurasian golden jackals are distinct species. *Curr. Biol.* **25**, 2158–2165 (2015).
18. Bryant, D., Bouckaert, R., Felsenstein, J., Rosenberg, N. A. & RoyChoudhury, A. Inferring species trees directly from biallelic genetic markers: bypassing gene trees in a full coalescent analysis. *Mol. Biol. Evol.* **29**, 1917–1932 (2012).
19. Yang, Z. The BPP program for species tree estimation and species delimitation. *Curr. Zool.* **61**, 854–865 (2015).
20. Geraads, D. A revision of the fossil Canidae (Mammalia) of north-western Africa. *Palaeontology* **54**, 429–446 (2011).
21. Yang, Z. PAML 4: phylogenetic analysis by maximum likelihood. *Mol. Biol. Evol.* **24**, 1586–1591 (2007).
22. vonHoldt, B. M. et al. A genome-wide perspective on the evolutionary history of enigmatic wolf-like canids. *Genome Res.* **21**, 1294–1305 (2011).
23. Patterson, N. et al. Ancient admixture in human history. *Genetics* **192**, 1065–1093 (2012).
24. Sinding, M. S. et al. Arctic-adapted dogs emerged at the Pleistocene–Holocene transition. *Science* **368**, 1495–1499 (2020).
25. Ni Leathlobhair, M. et al. The evolutionary history of dogs in the Americas. *Science* **361**, 81–85 (2018).
26. Frantz, L. A. F. et al. Genomic and archaeological evidence suggest a dual origin of domestic dogs. *Science* **352**, 1228–1231 (2016).
27. Skoglund, P., Ersmark, E., Palkopoulou, E. & Dalén, L. Ancient wolf genome reveals an early divergence of domestic dog ancestors and admixture into high-latitude breeds. *Curr. Biol.* **25**, 1515–1519 (2015).
28. Nowak, R. M. North American quaternary *Canis*. *Monograph of the Museum of Natural History* (Univ. Kansas, 1979).
29. Nowak, R. M. in *Wolves: Behavior, Ecology, and Conservation* (eds. Mech, L. D. & Boitani, L.) 239–258 (Univ. Chicago Press, 2003).
30. Sotnikova, M. & Rook, L. Dispersal of the Canini (Mammalia, Canidae: Caninae) across Eurasia during the Late Miocene to Early Pleistocene. *Quat. Int.* **212**, 86–97 (2010).
31. Saunders, J. J., Styles, B. W. & Baryshnikov, G. F. *Quaternary Paleozoology in the Northern Hemisphere* (Illinois State Museum, 1998).
32. Cooper, A. et al. Abrupt warming events drove Late Pleistocene Holarctic megafaunal turnover. *Science* **349**, 602–606 (2015).
33. Schubert, B. W. Late Quaternary chronology and extinction of North American giant short-faced bears (*Arctodus simus*). *Quat. Int.* **217**, 188–194 (2010).
34. Schweizer, R. M. et al. Natural selection and origin of a melanistic allele in North American gray wolves. *Mol. Biol. Evol.* **35**, 1190–1209 (2018).
35. Anderson, T. M. et al. Molecular and evolutionary history of melanism in North American gray wolves. *Science* **323**, 1339–1343 (2009).
36. IUCN. *The IUCN Red List of Threatened Species* version 2019-2 <https://www.iucnredlist.org> (2019).
37. R Core Team. *R: A Language and Environment for Statistical Computing* <http://www.R-project.org/> (R Foundation for Statistical Computing, 2013).

¹Department of Archaeology, Durham University, Durham, UK. ²Australian Centre for Ancient DNA, School of Biological Sciences, University of Adelaide, Adelaide, South Australia, Australia. ³Department of Ecology and Evolutionary Biology, University of California, Los Angeles, CA, USA. ⁴School of Biological and Chemical Sciences, Queen Mary University of London, London, UK. ⁵Department of Archaeology, Classics and Egyptology, University of Liverpool, Liverpool, UK. ⁶School of Natural Sciences and Psychology, Liverpool John Moores University, Liverpool, UK. ⁷The Palaeogenomics & Bio-Archaeology Research Network, Research Laboratory for Archaeology and History of Art, The University of Oxford, Oxford, UK. ⁸Department of Anatomy, Des Moines University, Des Moines, IA, USA. ⁹Department of Zoology, University of Oxford, Oxford, UK. ¹⁰Department of Anthropology, National Museum of Natural History, Smithsonian Institution, Washington, DC, USA. ¹¹Center of Excellence in Paleontology & Department of Geosciences, East Tennessee State University, Johnson City, TN, USA. ¹²Department of Archaeology, University of Exeter, Exeter, UK. ¹³Institute of Archaeology, Russian Academy of Sciences, Moscow, Russia. ¹⁴ARAID Foundation, Instituto Universitario de Investigación en Ciencias Ambientales (UCA) - Aragosaurus Group, Universidad de Zaragoza, Zaragoza, Spain. ¹⁵Department of Earth Sciences, Natural History Museum, London, UK. ¹⁶Section for Evolutionary Genomics, The GLOBE Institute, University of Copenhagen, Copenhagen, Denmark. ¹⁷Applied Paleoscience, Bothell, WA, USA. ¹⁸Department of Archaeology, University of Sydney, Sydney, New South Wales, Australia. ¹⁹Department of Archaeology, University of Aberdeen, Aberdeen, UK. ²⁰Department of Archaeology, Simon Fraser University, Burnaby, Canada. ²¹Institut des Sciences de l'Évolution - Montpellier, CNRS, Université de Montpellier, IRD, EPHE, Montpellier, France. ²²Laboratoire Evolution & Diversité Biologique, UPS/CNRS/IRD, Université Paul Sabatier, Toulouse, France. ²³Australian Museum Research Institute, Australian Museum, Sydney, New South Wales, Australia. ²⁴Department of Ecology and Evolutionary Biology, University of California Santa Cruz, Santa Cruz, CA, USA. ²⁵Institute of Plant and Animal Ecology, Urals Branch of the Russian Academy of Sciences, Yekaterinburg, Russia. ²⁶Ural Federal University, Yekaterinburg, Russia. ²⁷Department of Anthropology, Texas A&M University, College Station, TX, USA. ²⁸Center for Evolution and Medicine, Arizona State University, Tempe, AZ, USA. ²⁹School of Human Evolution and Social Change, Arizona State University, Tempe, AZ, USA. ³⁰Halmos College of Arts and Sciences, Nova Southeastern University, Fort Lauderdale, FL, USA. ³¹Department of Archaeology, University of York, York, UK. ³²Institute of Systematics and Ecology of Animals, Siberian Branch of the Russian Academy of Sciences, Novosibirsk, Russia. ³³Idaho Museum of Natural History, Idaho State University, Pocatello, ID, USA. ³⁴Zoological Institute of the Russian Academy of Sciences, St Petersburg, Russia. ³⁵Sobolev Institute of Geology and Mineralogy, Siberian Branch of the Russian Academy of Sciences, Novosibirsk, Russia. ³⁶Tomsk State University, Tomsk, Russia. ³⁷McDonald Institute for Archaeological Research, University of Cambridge, Cambridge, UK. ³⁸Greenland Institute of Natural Resources, Nuuk, Greenland. ³⁹NTNU University Museum, Trondheim, Norway. ⁴⁰Institute of Human Origins, Arizona State University, Tempe, AZ, USA. ⁴¹Howard Hughes Medical Institute, University of California Santa Cruz, Santa Cruz, CA, USA. ⁴²South Australian Museum, Adelaide, South Australia, Australia. ⁴³Palaeogenomics Group, Department of Veterinary Sciences, Ludwig Maximilian University, Munich, Germany. ⁴⁴These authors contributed equally: Angela R. Perri, Kieren J. Mitchell, Alice Mouton, Sandra Álvarez-Carretero. [✉]e-mail: angela.r.perri@durham.ac.uk; kieren.mitchell@adelaide.edu.au; laurent.frantz@gmail.com