



HAL
open science

Palaeobotanical experiences of plant diversity in deep time. II: How to measure and analyse past plant biodiversity

Heather S Pardoe, Christopher J Cleal, Christopher M Berry, Borja Cascales-Miñana, Basil a S Davis, Jose B Diez, Mariana V Filipova-Marinova, Thomas Giesecke, Jason Hilton, Dimiter Ivanov, et al.

► To cite this version:

Heather S Pardoe, Christopher J Cleal, Christopher M Berry, Borja Cascales-Miñana, Basil a S Davis, et al.. Palaeobotanical experiences of plant diversity in deep time. II: How to measure and analyse past plant biodiversity. *Palaeogeography, Palaeoclimatology, Palaeoecology*, 2021, 580, 10.1016/j.palaeo.2021.110618 . hal-03448637

HAL Id: hal-03448637

<https://hal.science/hal-03448637>

Submitted on 25 Nov 2021

HAL is a multi-disciplinary open access archive for the deposit and dissemination of scientific research documents, whether they are published or not. The documents may come from teaching and research institutions in France or abroad, or from public or private research centers.

L'archive ouverte pluridisciplinaire **HAL**, est destinée au dépôt et à la diffusion de documents scientifiques de niveau recherche, publiés ou non, émanant des établissements d'enseignement et de recherche français ou étrangers, des laboratoires publics ou privés.

Palaeobotanical experiences of plant diversity in deep time. II: How to measure and analyse past plant biodiversity

Heather S. Pardoe^{a§}, Christopher J. Cleal^b, Christopher M. Berry^c, Borja Cascales-Miñana^d, Basil A.S. Davis^e, Jose B. Diez^f, Mariana V. Filipova-Marinova^g, Thomas Giesecke^h, Jason Hiltonⁱ, Dimiter Ivanov^j, Evelyn Kustatscher^k, Suzanne A. G. Leroy^{l,m}, Jennifer C. McElwainⁿ, Stanislav Opluštil^o, Mihai Emilian Popa^p, Leyla J. Seyfullah^q, Ellen Stolle^r, Barry A. Thomas^s and Dieter Uhl^t

^a Department of Natural Sciences, National Museum Wales, Cardiff CF10 3NP, UK, heather.pardoe@museumwales.ac.uk

^b School of Earth Sciences, University of Bristol, Life Sciences Building, Tyndall Avenue, Bristol, BS8 1TQ, UK, chris.cleal@bristol.ac.uk

^c School of Earth and Ocean Sciences, Cardiff University, Cardiff CF10 3AT, UK, berrycm@cardiff.ac.uk

^d CNRS, Univ. Lille, UMR 8198, Evo-Eco-Paleo, F-59000, Lille, France, borja.cascales-minana@univ-lille.fr

^e Institute of Earth Surface Dynamics IDYST, University of Lausanne, Bâtiment Géopolis CH-1015, Lausanne, Switzerland, basil.davis@unil.ch

^f Department of Marine Geosciences and Land Management, Universidade de Vigo, 36310 Vigo, Spain, jbdiez@uvigo.es

^g Varna Regional Museum of History, 41 Maria Louisa Boulevard, 9000 Varna, Bulgaria, marianafilipova@yahoo.com

^h Palaeoecology, Department of Physical Geography, University of Utrecht, P.O. Box 80115, 3508 TC, Utrecht, The Netherlands, t.giesecke@uu.nl

ⁱ School of Geography, Earth and Environmental Sciences, University of Birmingham, Birmingham, B15 2TT, UK, j.m.hilton@bham.ac.uk

^j Institute of Biodiversity and Ecosystem Research, Bulgarian Academy of Sciences, Acad. G. Bonchev Street, 23, 1113 Sofia, Bulgaria, dimiter@gbg.bg

^k Museum of Nature South Tyrol, Bindergasse/Via Bottai 1, Bozen / Bolzano, 39100, Italy, evelyn.kustatscher@naturmuseum.it

^l Laboratoire méditerranéen de préhistoire Europe Afrique, Ecosystèmes Quaternaires LAMPEA (UMR 7269) MMSH, 5 rue du Château de l'Horloge, CS90412, 13097 Aix-en-Provence Cedex 2, France, suzleroy@hotmail.com

^m School of Environmental Sciences, University of Liverpool, L69 3GP Liverpool, UK

ⁿ School of Biology and Environmental Science, University College Dublin, Ireland, jennifer.mcelwain@gmail.com

^o Institute of Geology and Palaeontology, Charles University, Albertov 6, 128 43 Prague 2, Czech Republic, stanislav.oplustil@natur.cuni.cz

^p Southwest Petroleum University, School of Geosciences and Technology, 8, Xindu Ave., 610500 Xindu, Chengdu, China; University of Bucharest, Faculty of Geology and Geophysics, Department of Geology and Doctoral School of Geology, Laboratory of Palaeontology, 1, N. Bălcescu Ave., 010041, Bucharest, Romania, mihai@mepopa.com

^q Department of Palaeontology, University of Vienna, Althanstraße 14, 1090 Vienna, Austria, leyla.seyfullah@univie.ac.at

^r *EP Research, 59320 Ennigerloh-Westkirchen, Germany, e.stolle.research@mail.de

^s Institute of Biological, Environmental and Rural Sciences, University of Aberystwyth, Aberystwyth SY23 1NL, UK, bat@aber.ac.uk

^t Senckenberg Forschungsinstitut und Naturmuseum, 60325 Frankfurt am Main, Germany, dieter.uhl@senckenberg.de

[§] Corresponding author

Abstract

Determining the diversity of past floras helps with interpreting both the history and predicting the future of vegetation change. For global-scale and regional-scale diversity studies especially, secondary data are often used but local-scale studies tend to be based on survey data that require rigorous sampling. The correct sampling strategies depend on the types of fossils being investigated, including their physical size, and whether the aim is to determine taxonomic richness or relative abundance. Describing and comparing diversities can use a range of different metrics, depending on whether binary presence / absence or abundance data are available. Each metric provides a different insight into the diversities and the choice of which to use depends on the research question being investigated. Various

3.

numerical approaches are available for identifying spatial and stratigraphical diversity patterns, mainly classificatory techniques (e.g., cluster and parsimony analyses) and ordination (e.g., Detrended Correspondence Analysis, Nonmetric Dimensional Scaling). The choice of technique again depends on the research question, but often it has proved useful to run both types of analysis in tandem. This article is illustrated by past biodiversity case studies from throughout the fossil record, dealing with floras ranging in age from the Devonian to the last few centuries.

Keywords: Palaeobotany: Palynology: Taxonomy: Taphonomy: Ordination: Classificatory analysis

1 Introduction

A major agenda-item in palaeobotany and palynology is determining how plant diversity has developed over geological time to produce the vegetation that we see today. This was the subject of a workshop entitled *Tracking changes in plant diversity over the last 400 million years*, held in Cardiff in 2014. In a previous paper that arose from this meeting, we looked at exactly what is meant by plant diversity and the extent to which we can investigate it using the plant fossil record (Cleal et al. 2021). This second paper from the meeting will review the background to some of the methods that are used to collect and analyse the diversity data from the plant fossil record. It is not intended as a methodological “cookbook”; relevant guides are published elsewhere (e.g., Magurran 2004; Palmer 2004; Hammer and Harper 2006). Rather, it aims to look at some of the methods that have been used, to see how they affect the interpretation of diversity data and to note representative case studies. The numerical techniques that we mention are all available in software packages such as PAST (Hammer et al. 2001), TWINSpan (Hill 1979), MVSP (Kovach 1999) and various R-language routines such as VEGAN (Dixon 2003).

2 Sampling strategies

Even with living vegetation, accurately measuring species diversity can be challenging because of sampling issues (Gotelli and Colwell 2001), but detailed and systematic sampling of plant fossils will indisputably improve the understanding of past vegetation (Hicks et al. 2004; DiMichele and Gastaldo 2008). Choosing the appropriate sampling strategy will be influenced by the type of plant fossils being investigated, in particular their size.

2.1 *Microfossils and Mesofossils*

Microfossils are the smallest plant fossils up to 500 μm in size (e.g., pollen, microspores, phytoliths, micro-charcoal) that are best studied under a high-powered microscope, whilst mesofossils are plant remains 0.5–1.0 mm in size (e.g., megaspores, small seeds, cuticle fragments, fusainised flowers) that can be seen with the naked eye but are usually studied using a low-powered dissecting microscope or a Scanning Electron Microscope (SEM). Quaternary palynologists often include the latter within microfossils (Birks 2007; Mauquoy et al. 2010) but, as they are usually studied using microscopes, they will be referred to here as mesofossils (Wellman et al. 2003; Crepet et al. 2004; Friis et al. 2019).

Large samples of microfossils and mesofossils can potentially be obtained from a relatively small amount of material (less than a kg, usually a few g), and so the problem in diversity studies tends to be when to stop counting a particular sample to avoid unproductive work. There have been attempts to analyse numerically the errors in mineral point counts in petrological slides (e.g., Howarth 1998) and a similar approach was used to determine a reasonable sample size for palynological counts (Maher 1972; Dimitrova et al. 2005; Keen et al. 2014). The sample size will be at least partly influenced by the number of taxa present and must be enough to ensure consistency of results (Birks and Birks 1980, p. 165); most Cenozoic palynologists use counts between 300 and 1000 per sample (e.g., Fig. 2), although pre-Cenozoic palynology studies sometimes have to use smaller samples because of limited availability of material.

Rarefaction analysis can be used to adjust diversity measurements in different sample sizes (Birks and Line 1992; Wing and Harrington 2001; Seppä and Bennett 2003; Barreda et al. 2012; Matthias et al. 2015; Giesecke et al. 2019). This is where a graph is plotted of how many new taxa are found as progressively more specimens are examined. It is then possible to determine the taxonomic richness in each sample at a pre-determined sample size. It has also been suggested that pollen taxonomic richness should be standardised for a set area and time of sediment accumulation (van der Knaap 2009), but this requires accurate estimates of sediment accumulation, which can be difficult to determine. None of these methods solve the problem of differential pollen productivity and dispersal in different plant groups that can hinder the translation of palynological data into vegetation diversity (Odgaard 1999, 2001, 2013; Seppä and Bennett 2003; Weng et al. 2006; Cleal et al. 2021).

It can be effective to exclude tree pollen, especially in open situations where long-distance pollen dominates, but this inevitably reduces the pollen sum and requires higher counts to give statistically reliable results. It can, moreover, be difficult to be certain from palynological data whether or not past vegetation was open and that the tree pollen should be excluded (Magri and Parra 2002; Pardoe 2014). The local presence of a particular taxon is often identified by its pollen reaching a threshold percentage (e.g., > 0.5%) but this value may vary between taxa (Lisitsyana et al. 2011). Macrofossil evidence can also be used as an indicator of local presence, especially of trees, since seeds and other remains are heavier than pollen and less easily dispersed.

It is also often routine in Quaternary studies to exclude obligate aquatics from the calculation of percentages since (1) they are frequently over-represented, especially in lake

sediments, and (2) the aim is often to reconstruct terrestrial (rather than aquatic) vegetation. Samples can also be contaminated by pollen reworked from older sediments, especially in extreme environments with high rates of catchment erosion such as occurred in the late glacial. In many cases however these unusual and often 'older' looking corroded exotic grains can be identified and excluded.

Pre-Quaternary studies have usually analysed the entire sample, although Dimitrova et al. (2011) selectively analysed "exotic" pollen and spores from a set of late Carboniferous palynofloras to try and determine patterns of extra-basinal vegetation. By comparing time-equivalent Permian strata and their palynoflora, Stolle (2010, 2011) discovered exotic Gondwana elements and "European" pollen, but in biogeographically atypical regions. The sampling and investigations were based on selected areas with different miospore diversity spectra. Other investigations in lake settings separated well-preserved pollen grains (most likely air-borne just prior to deposition) to obtain the seasonal signal from reworked pollen grains (mostly water-transported) which have been around a longer time before deposition (López-Merino et al. 2016). This approach often required counting more than 1500 pollen grains per sample.

Inconsistencies in pollen identifications can be partly overcome by using translation tables that transform modern plant species into known distinguishable pollen or spore types – so-called pollen equivalents (Felde et al. 2014; Birks et al. 2016; Giesecke et al. 2019). Other problems include poorly preserved pollen (e.g., *Tsuga* pollen that has been preferentially oxidised in outcrop but is preserved in cored sequence; Brugal et al. 1990; Leroy and Seret 1992), large numbers of reworked elements (Hoyle et al. 2018), or gritty samples. Preparation techniques can also cause problems, such as when unusually large pollen (e.g., Palaeozoic medullosalean *Schopfipollenites*) gets lost through sieving (Dimitrova et al. 2010) or where delicate palynomorphs are lost during maceration (Mertens et al. 2012).

Where exotic spikes such as *Lycopodium* tablets are used to calculate absolute pollen values, the number of *Lycopodium* tablets added could make a significant difference (Hicks et al. 1999). The statistical confidence with which pollen concentration (per unit of weight or volume) and influx (per unit of time) can be calculated increases with the number of *Lycopodium* spores counted; so, the more tablets that are added to the sample, the more statistically accurate the pollen calculations will be. The number of tablets required depends on the pollen concentration, with the aim of reaching a *Lycopodium* count of more than 100

per sample; once 500 *Lycopodium* spores have been counted there are only very small increases in the reliability of the count (Maher 1972).

2.2 *Macrofossils*

These are the type of hand specimens that dominate most museum collections, including adpressions, casts, moulds and anatomically-preserved petrifications. They may be anything above 2 mm in size, but in practice are typically between 1 cm and 1 m. An assemblage of such fossils is known as a macroflora.

Sampling macrofloras in taxonomic diversity studies is usually by an individual-based protocol: specimens are sequentially taken and each new taxon is recorded until a representative sample size is achieved. What constitutes a representative sample size can be estimated using rarefaction analysis (Fig. 1): a graph is plotted of how many new taxa are found as progressively more specimens are examined and a representative sample size has been reached when the graph flattens-off (e.g., Burnham 1994; Cleal et al. 2012; Opluštil et al. 2014).

The relative abundance of taxa is determined using a sample-based protocol, where every individual is counted within a particular sample. Sufficiently large samples can avoid some inherent sampling problems; for instance, Davies (1929) recorded every macrofossil found in several tonnes of roof shales above upper Carboniferous coals, resulting in individual macrofloras of up to 30,000 specimens (Thomas, 1986; Cleal 2007; Cleal et al. 2012; King et al. 2012). But such large samples are exceptions and more usually the relative abundance of taxa has to be standardised according to the sample size, using similar approaches to those adopted in plant microfossils (Section 2.1) such as rarefaction analysis (e.g., McElwain et al. 2007; Uhl and Lausberg, 2008; Currano et al. 2011; DiMichele et al. 2021). Alternatively, standard-size samples are measured, such as using botanical survey quadrats (Scott, 1978), or pseudo-quadrats created by exposing rectangular areas of bedding plane (Gastaldo et al. 2004a) or bringing together specimens until a quadrat-sized area is filled (Iwaniew 1985; Bashforth et al. 2010, 2011). Alternatively, proxy quadrats have been based on “normal size” hand-specimens (Pfefferkorn et al. 1975; Wing and DiMichele 1995; Uhl and Lausberg, 2008; Barbacka 2011, 2016; DiMichele et al. 2016, 2021; Cleal et al. 2012; Bashforth and Nelson 2015; DiMichele et al. 2019a,b; Koll and DiMichele 2021) or borehole cores of a set diameter (DiMichele et al. 2000). Various counting strategies have been used, with either all specimens in a quadrat being counted (Dräger 1964; Oshurkova 1967; DiMichele et al. 2007;

8.

Stiles et al. 2020), the specimen numbers per quadrat being weighted according to the size of each fragment (Spicer and Hill 1979; Pryor and Gastaldo 2000), or a randomly selected number of specimens per quadrat being counted (Scott 1978, 1979, 1984).

Whilst such quadrat and quadrat-like techniques appear to give numerical rigour to the analyses, and have particular benefits with floras dominated by compound foliage that has undergone various levels of fragmentation (Wing and DiMichele 1995), distortions may be introduced according to the technique used (Lambooy and Lesnikowska 1988). For instance, quadrat methods appear to lead to more even species distributions (DiMichele et al. 1991) and quadrat size can have a marked effect on taxonomic richness (Wing and DiMichele 1995). Nevertheless, provided there is a consistency in the methods used, quadrats and allied techniques offer one of the best means of comparing relative abundances of fossil taxa between floras.

Another method used in botanical habitat work, especially with groundcover of herbaceous plants, is line-intercept survey (Floyd and Anderson 1987; Etchberger and Krausman 1997). A frame bearing regularly-spaced strings that are marked-off at regular intervals (e.g., 20 mm) is placed on the ground and each increment along each string is scored according to the plant species it crosses. A similar approach has been used in palaeobotanical surveys (e.g., Wing et al. 2012).

The relative taxonomic abundances and biomass in anatomically-preserved macrofossils can be measured by point counting across the slide at set increments (e.g., Slater et al. 2015) using a microscope with a calibrated stage, where the slide holder can be moved either manually or by motor. Alternatively, the thin section or polished surface can be examined beneath a clear plastic or glass sheet marked with a 1-cm grid, and the plant remains present in each quadrat recorded (e.g., DiMichele and Phillips 1988; Willard 1993; Willard et al. 2007).

However, because macrofloras usually occur in allochthonous plant beds, they have been subjected to varying levels of sorting, differential preservation and time averaging (Gastaldo 1988; Gastaldo et al. 1995; Behrensmeyer et al. 2000; Spicer 2017; Thomas et al. 2019a; Cleal et al. 2021). Consequently, no matter how systematically the macroflora is sampled, it can usually only provide a distorted glimpse of the parent vegetation (Burnham 1993). Choosing the appropriate sampling strategy and size must depend on the research question being investigated (DiMichele and Gastaldo 2008). This can be even more problematic with

(older) museum collections where the sampling strategy has not been recorded (e.g., Uhl and Lausberg 2008).

2.3 *Megafossils*

Megafossils are the largest plant fossils, such as the tree trunks found in in-situ fossil forests (e.g., Becker 1993; DiMichele and Falcon-Lang 2011; Macdonald 2013) or as logjams in fluvial systems (Falcon-Lang and Bashforth 2005; Kędzior and Popa 2013; Gastaldo and Degges 2007). Because of their physical size and weight, such fossils tend to be studied in situ, although there can be exceptions (e.g., Thomas and Seyfullah 2015; Roberts et al. 2016). Where the area of exposure is sufficiently large, local-scale tree density can be measured directly (e.g., Gastaldo 1986a; Hinz et al. 2010; Thomas 2014; Opluštil et al. 2020). Alternatively, it can be measured as trees become progressively exposed by advancing working faces in active quarries and mines (e.g., Gastaldo 1986b; DiMichele and Demaris 1987; Mosbrugger et al. 1994; DiMichele et al. 2007; Gastaldo et al. 2004b) or in eroding cliffs (e.g., Francis 1984; Calder et al. 2006; Falcon-Lang 2006; Grey and Finkel 2011). There are also late Quaternary submerged forests exposed in coastal areas by storms (Hayworth 1985, 1986, Nayling et al. 2007, Sherlock 2019; Bailey et al. 2020), along rivers by erosion (Vassio et al. 2008) or in freshwater lakes (Kaiser et al. 2018).

Tree density and distribution are measured either through traditional surveying methods (DiMichele et al. 1996a; Thomas 2013; Berry and Marshall 2015) or photogrammetry (Fernández-Lozano and Gutiérrez-Alonso 2017). There is the potential for future use of satellite technology such as Landsat or Sentinel-2 data, although the pixel resolution generally available is too coarse to see individual fossils (e.g., Landsat 32 x 32 m, pan-sharpened to 16x16 m; Sentinel 10 x10 m); aerial photography and high-resolution satellite data such as Google Earth have greater possibilities. Determining taxonomic diversity from fossil forests can be more problematic as the characters necessary for species or genus identification are often not preserved; the groundcover and understory vegetation has also usually been removed by the flooding event that entombed the trunks. In unstable depositional environments it is, moreover, necessary to ensure that the trunks are autochthonous and have not been deposited in an upright position by mudflows or lahars (Fritz 1980).

3 Databases

Although most local-scale and landscape-scale diversity studies use survey data, regional and global-scale studies require larger samples extracted from secondary datasets. The potential problem with such studies is quality control and this is becoming an increased danger with on-line access to many databases; it has become too easy simply to download and analyse large quantities of data without checking the reliability of the identifications and the provenance of the fossils, and what plant parts and/or preservation states are being recorded. Without detailed checks on the robustness of the records, any diversity analysis using such data is likely to be worthless.

3.1 *Palynology*

Late Quaternary vegetation studies have been transformed over the last 30 years through the development of large databases covering broad geographical areas and temporal ranges, such as the European Pollen Database (EPD), the European Modern Pollen Database (EMPD), the Eurasian Modern Pollen Database (EMPD) and the North American Pollen Database (NAPD) (Fyfe et al. 2009; Davis et al. 2013, 2020; Giesecke et al. 2014a; Grimm et al. 2013). These are being incorporated into the Neotoma palaeoecological database (Williams et al. 2018). Although the taxon names are standardised as each new regional database is added to Neotoma, because the records are from disparate sources their reliability and consistency can be difficult to assess; there are also some issues with uneven spatial and temporal coverage. Nevertheless, combined with improved radiocarbon dating and age – depth modelling (e.g., BACON; Blaauw and Christen 2011), these databases are allowing pollen records to be integrated from widely separated areas using a common age scale (e.g., Grimm et al. 2013; Giesecke et al. 2014b; Blarquez et al. 2014) and so significantly improving the modelling of vegetation dynamics (e.g., Davis et al. 2013; Walsh et al. 2019), which in turn can be compared with climate data (Fig. 3).

The most notable attempt to collate pre-Quaternary palynological data was the “Catalog of fossil spores and pollen”, initiated in 1957 by Gerhard Kremp and which continued up until the mid-1980s (Traverse et al. 1970; Riding et al. 2016). The DOS-based “Taxon.exe” database was also a valuable source on older records, but has not been updated lately and seems now to be unavailable. In more recent years, online research via PALYNODATA (<https://paleobotany.ru/palynodata>), a bibliographic database that was continued at least until 2006, also based on Gerhard Kremp's initial research, and compiled since 1974 by Palynodata

Inc. (J.M. White), has been established. There is also available the CIMP slide collection, an archive of 382 images of holotypes of Palaeozoic miospore species scanned by M. Streel (see more details on the websites of the Laboratory of Palaeobotany, Moscow, Russia). More recently, a collaborative database PalyWeb has been created for Palaeozoic palynological records (Steemans and Breuer 2007) and is an on-going project.

3.2 *Macrofloras*

The only comprehensive data resource on macrofloral species distributions now available is the Plantae part of the Fossilium Catalogus. Initiated in 1913 by Wilhelmius Jongmans, this has attempted to document every published macrofloral record including remarks on their occurrences, as well as relevant taxonomic and nomenclatural issues (Wagner and van Amerom 1995). The project has continued up to today under the editorships of S. Dijkstra, and then H. van Amerom and J. van der Burgh, and currently (as of 2021) runs to 115 volumes (“pars”). Some of the volumes are now available on-line via the Biodiversity Heritage Library and/or Google Books.

Some macroflora records have been included in the Paleobiology Database (PBDB; Alroy 2003) and this has been used in some palaeobotanical biodiversity studies (e.g., Raymond et al. 2006; Silvestro et al. 2015), but the palaeobotanical coverage remains very patchy in terms of completeness and rigour and consistency of identifications. The Geobiodiversity database (GBDB; Xu et al. 2020) has been available since 2007 and includes detailed accounts of fossil plant occurrences, primarily from within China. Unlike the PBDB, the GBDB records are tied to geological sections, allowing stratigraphy-based diversity comparison to be made within formations and between geological sections. Most recently, a planned Integrative Paleobotany Portal (PBot) aims to provide a means of recording palaeobotanical data but at the time of writing its exact remit and how it relates to the PBDB and GBDB remains unclear.

Global compilations of fossil-species appear also to have been attempted by Niklas et al. (1980, 1983, 1985) and used in diversity analyses, but the data were never published. In contrast, Devonian and Carboniferous floristic studies by Mosseichik (2010, 2012, 2014, 2019) gave detailed metadata, allowing the records to be verified. Data on global records of fossil-species near the Permian – Triassic boundary are given as supplementary data accompanying Nowak et al. (2019) and are available for download from the journal web site. Global compilations of fossil-genera were published for particular Palaeozoic time-intervals

by Raymond (1985), Raymond et al. (1985a,b) and Rowley et al. (1985) and used in floristic analyses. Other diversity analyses of particular taxonomic groups and/or regional areas exist (e.g., Lidgard and Crane 1990; Martinetto and Vassio 2010; Barbacka et al. 2014) although, again, not all of the datasets have been published or updated.

The stratigraphical distribution of plant families was documented in Harland (1967 – Fossil Record) and Benton (1993 – Fossil Record 2), and for the gymnosperms by Anderson et al. (2007). These record the first and last occurrences of each known family, with full bibliographic details allowing the evidence to be assessed and verified. The Benton (1993) dataset is now available on-line and, although it has not been updated since the original publications, a modified version of the palaeobotanical part was provided with the on-line version of Cascales-Miñana and Cleal (2014).

Data-mining for diversity analyses can be facilitated by using reference managers such as Endnote, Mendeley or Zotero. Endnote is particularly flexible in configuring dedicated fields for recording taxa in references of any type (Popa 2011), while new versions enable detecting taxa directly from attached PDF files associated with reference records. Queries can therefore provide lists of references covering species, genera and families, as well as higher taxa. Online queries directly from dedicated reference managers also enable rapid and robust searches for diversity data; coupling Endnote with portals such as Web of Knowledge / Web of Science can produce rapid records and data conversions.

4 Diversity metrics

There are two aspects to understanding the vegetational taxonomic diversity: the diversity of individual floras and the comparison between floras. Each aspect has its own set of metrics.

4.1 The diversity of a flora

A range of metrics are available to express taxonomic diversity in both palaeobotany and palynology (Magurran 2004; Santini et al. 2017). The following discussion will mainly deal with local-scale diversity, often referred to as α -diversity (Cleal et al. 2021).

The taxonomic diversity of a flora consists of its taxonomic richness and its taxonomic evenness (Simpson 1949). Taxonomic richness (the number of taxa present, also termed the standing diversity) is regarded as an important guide to ecological change in modern-day vegetation (Magurran 2004) and has also been used in palaeobotanical studies (summarised

by Cleal et al. 2021). The main problem tends to be of sampling: are enough specimens being examined to reveal both rare and the more abundant taxa (see Section 2)?

Taxonomic evenness of a flora (whether there are numerous equally abundant taxa, or just a few dominant taxa) is ecologically important as it may affect how the vegetation will respond to environmental change (Magurran 2004). The level of evenness can be judged graphically by plotting a rank abundance distribution curve (or Whittaker Plot), which shows the relative abundance of each taxon ordered sequentially by increasing abundance, plotted against either a logarithmic (Magurran 2004) or linear (Koll and DiMichele 2021; DiMichele et al. 2021) scale. Such plots have been modelled mathematically using probability distributions for ranked data (e.g., broken stick and Zipf-Mandelbrot distributions) to understand how modern-day plant communities become established (Mouillot and Lepretre 2000; Magurran 2004) and a similar approach was this was used with palaeobotanical data by McElwain et al. (2009).

Various metrics combine taxonomic richness and evenness, referred to as taxonomic heterogeneity indices (Good 1953; Hill 1973a; Shi 1995; Magurran 2004; Colwell and Elsensohn 2014). Simpson's Index is a widely used heterogeneity metric, which ranges from 0 to 1 with increasing evenness, and is in essence the probability that any two samples drawn randomly from the flora will belong to the same taxon. This benefits from being conceptually straightforward and so easy to interpret, and has been used in palaeobotany and palynology (e.g., Wing and DiMichele 1995; Uhl and Lausberg, 2008; Pardoe 2021). The main problem is that the Simpson Index can be overly sensitive to the more abundant taxa in a flora, which could be a problem if the rarer species are of interest (Whittaker, 1965). The Simpson Index is sometimes converted to what is called a Diversity Index, either by subtracting its value from 1 (e.g., Whittaker, 1965) or using its reciprocal value (N_2 of Hill, 1973a) and so increases with decreasing evenness; the former has been used in palaeobotany by Pryor and Gastaldo (2000).

The Shannon heterogeneity metric not only takes into account the relative numbers of taxa, but also of individuals in the sample, and usually varies from 1.5 to 3.5 with increasing unevenness. However, this was not founded on ecological theory but uses information theory to try and estimate unevenness from the observations (Lande 1996). Although this is not a significant drawback with large samples (Peet 1974), it tends to be rather less sensitive to unevenness than the Simpson Index; it can often overemphasise the effect of the rarest taxa in a flora and so give greater emphasis to taxonomic richness (Nagendra 2002). There have been

attempts to overcome this issue (e.g., Pielou's Index which is the Shannon metric divided by the log of the number of taxa; and N_1 of Hill, 1973a, which is the exponential value of the Shannon metric), but there remain fundamental problems with the Shannon index and its derivatives (Lande 1996; Magurran 2004).

Both Simpson and Shannon indices are affected by sample size and therefore by sampling effort, and so several non-parametric indices have been developed that only reflect the taxonomic evenness (Magurran 2004; Buzas and Hayek 2005; Chiarucci et al. 2011; Birks et al. 2016; Santini et al. 2017). The simplest are the Berger – Parker Index (the ratio of the number of specimens of the dominant taxon to the total sample size) and the Chao Estimators (which take into account the proportion of singleton and doubleton taxa; Chao 1984, 1987); Chao estimators have been used in palaeobotanical studies by Wing and DiMichele (1995) and Mander et al. (2010).

Each of these diversity metrics produce different insights into the taxonomic structure of the assemblage and so in their way are equally valid. However, each of the main metrics has a different mathematical structure and so it is difficult to combine them into a unified scheme. Hill (1973a) therefore proposed a unified system of Hill Numbers based on the main existing metrics but with more compatible mathematical structures: N_0 , which is the taxonomic richness; N_1 , which is the exponential of the Shannon metric; and N_2 , which is the reciprocal of the Simpson heterogeneity metric. Jost (2006) referred to N_1 and N_2 as the "effective number of species" in a community; they represent the number of equally-common species required to give a particular value of an index and so may be regarded as the true level of taxonomic diversity.

Whilst it is relatively easily to measure taxonomic evenness in the plant fossil record, interpreting it in terms of vegetation evenness and its ecological impact is less straightforward. Even with living vegetation, taxonomic evenness can be difficult to interpret as the physical size and therefore biomass of each plant will affect its ecological impact (Hill, 1973a): a small number of trees will have a much greater effect on a habitat than the same number of herbaceous plants. Furthermore, the ecological impact of biomass varies according to the plant-part: the same biomass of leaves, reproductive structures and woody stems will have significantly different ecological impacts on a habitat. Although some attempts have been made to portion out biomass taxonomically in macrofloras with the aim of improving diversity analyses (Baker and DiMichele 1997; Niklas 2006), in practice it is very difficult, if

only because our understanding of the full growth form of most of those fossil plants tends to be incomplete.

Interpreting taxonomic evenness in palynofloras is also difficult because of the large variations between plant groups in pollen (and spore) productivity and dispersal (Matthias et al. 2015). Where a large pollen producer (e.g., *Betula*) is replaced by a plant with low pollen production (e.g., *Tilia*), the evenness of the vegetation may not change but the evenness of the resulting pollen sample will be noticeably different. Correction factors (Davis 1963; Andersen 1970) or models of pollen dispersal with relative productivity estimates (Broström et al. 2008; Gaillard et al. 2008) can reduce this problem (Matthias et al. 2015; Felde et al. 2016) and have been used in Holocene (Marquer et al. 2014) and Palaeozoic (Willard 1993) studies, but is difficult with extinct groups where the relative or absolute pollen productivities are unknown.

4.2 *Comparing the diversities of two floras*

Diversity metrics are only really meaningful if they can be compared between different floras. Pair-wise comparisons of taxonomic richness are simple, provided the sample sizes are sufficient to be representative or have been standardised (see Section 2), but this provides only limited insight into the difference between the floras.

Usually it is more instructive to compare the taxonomic composition of two floras, for which at least 39 similarity indices are available, each placing different emphasis on the comparison (Shi 1993a,b; Harper 1999). For binary (presence / absence) data, the conceptually simplest is the Jaccard coefficient, which is the ratio of the number of taxa that are shared by two floras to the total number of taxa in the two floras combined, and was regarded by Shi (1993b) as the most robust for palaeoecological studies. Alternatively, DiMichele and Phillips (1988) and McElwain et al. (2007) used the Dice-Sørensen coefficient that gives greater emphasis to co-occurrences of taxa than mismatches. For taxonomic abundance data, several indices are available (reviewed by Hammer and Harper 2006) but each tends to give a relatively different emphasis to sample size and so can produce rather different results; for instance, the Euclidean distance can be strongly influenced by large differences between rare taxa, the Bray-Curtis tends to be very sensitive to abundant taxa (e.g., DiMichele et al. 2021) and the squared chord distance gives more weight to the overall composition of the samples (e.g., Pardoe et al. 2010). As with many of these

numerical techniques, when interpreting similarity indices, it is essential to understand exactly what the selected index is emphasising.

In themselves, these indices provide no measure of statistical significance; could the observed difference be explained merely through chance? If Shannon information metrics have been used to characterise the diversities, there is a t-test available that will provide a probability of significance of the comparison (Hutcheson 1970). With other metrics, bootstrapping can be used where the comparison is repeatedly done on randomly selected subsets of the data, from which a confidence interval can be calculated (Harper 1999).

For floras documented using rank abundance plots (Section 4.1), the curves can be compared statistically using the χ^2 test (e.g., Gastaldo et al. 2004a; Willard and Phillips 1993). However, this approach assumes data must be counts not percentages, that the categories are independent, and that the sample sizes are sufficiently large. Alternatively, the non-parametric Kolmogorov-Smirnov test that will compare univariate distribution curves and is free of these assumptions (Magurran 2004) as was done by DiMichele et al. (2021).

5 Spatial diversity patterns

Although comparing the diversity of two floras can provide valuable information, comparing floras from different places and habitats can reveal patterns that may be of wider ecological and floristic interest

5.1 Local-scale spatial diversity

Comparing the taxonomic diversities of fossil floras at local scale is usually aimed at identifying the past plant communities in the landscape, but this can be difficult as most fossil floras are fragmented and allochthonous. Nevertheless, by integrating evidence of the relative spatial distribution of the fossils with their sedimentological context, consistent ecogroups of fossil-taxa may be recognisable (Abbink et al 2004; Barbacka 2011; Barbacka et al. 2016; Franz et al. 2019). By relating such ecogroups to the habitat preferences of the component taxa determined from autochthonous floras and / or anatomical details, conceptual models of vegetation communities can be developed. Ecogroups can sometimes be identified in ex-situ spoil tip material (e.g., Procter 1994) or museum collections (e.g., Opluštil et al. 2007; Costamagna et al. 2018; Strullu-Derrien et al. 2021) but the best results are normally obtained from plant beds that can be directly sampled (see Section 2).

Spatial patterns in taxonomic diversity can be identified non-metrically by simply tabulating the diversity for each plant bed (e.g., Opluštil et al. 2007, 2009a,b, 2020; DiMichele et al. 2017a; Thomas et al. 2019a) or localities (e.g., Dix 1934; Kerp and Fichter 1985). How much of the landscape-scale diversity is accounted for by the differences in local-scale diversity of the individual localities is traditionally referred to as β -diversity. At its simplest, β -diversity can be represented by the Whittaker Index, which is the ratio of the landscape-scale diversity to the average local-scale diversity (Whittaker 1960), but a range of other metrics have since been developed (Koleff et al. 2003). However, diversity patterns across a landscape are best revealed by numerical analysis, particularly ordination (Section 5.3.1).

5.2 *Floristics*

Identifying regional- or global-scale floristic (phytogeographical) patterns in the Cenozoic can be guided by the distribution and ecological tolerances of nearest living relatives (e.g., the Coexistence Approach of Mosbrugger and Utescher 1997; see also Manchester and Tiffney 2001; Tiffney and Manchester 2001; Liang et al. 2003). A derived approach, widely used in modern ecological modelling, is the identification of Plant Functional Types (PFT) based on traits and physiological capacities of nearest living relatives, and this has been used to reconstruct Cenozoic vegetation patterns (e.g., Utescher & Mosbrugger 2007; François et al. 2011; Popova et al. 2013; Utescher et al. 2017, 2021). However, this becomes increasingly difficult with geologically older floras and floristic patterns have to be determined from intrinsic distributional data obtained directly from the fossil record.

Traditionally, floristic patterns were recognised non-metrically, based mainly on the experience of palaeobotanists who had studied a large number of floras (e.g., Gothan 1925, 1954; Vakhrameev et al. 1978; Meyen 1987; Mai 1995; Vakhrameev 2006). In essence their approach was to recognise nested sets of floristic units (phytochoria) similar to those used with living floras, in descending order of rank kingdom (or realm), area, province and district (terms anglicised as in Meyen 1987): examples of such studies were by Chaloner and Lacey (1973), Chaloner and Meyen (1973), Meyen (1987), Wnuk (1994), Iannuzzi and Rösler (2000), Mosseichik (2010) and Christiano-de-Souza et al. (2014). As pointed out by Raymond et al. (1985b), however, palaeobotanical phytochoria are conceptually different from those defined on today's vegetation because of the incompleteness of the fossil record. Consequently, Cleal and Thomas (in Cleal 1991, p. 26) suggested that Meyen's (1987) terms for the fossil phytochoria should be modified by adding the prefix "palaeo-". In this modified

sense, a palaeokingdom is not just an ancient floristic kingdom, but is a phytochorion defined exclusively on the composition of the fossil floras. These palaeofloristic units should bear some similarity to the floristic structure of the original vegetation, but this relationship is hypothetical and cannot be tested directly. Deciding on the rank of a fossil phytochorion is subjective, but Cleal and Thomas (2019) suggested that, if it is distinguished largely by supra-generic taxa it is a palaeokingdom; if by fossil-genera it is a palaeoarea; if by fossil-species it is a palaeoprovince; and if by just a few fossil-species it is a palaeodistrict.

Biomes (or biome formations) are more complex concepts than phytochoria as they are defined by the distribution of the faunas, floras, and various environmental factors such as climate, elevation and substrate conditions (e.g., Whittaker 1962). It has sometimes been possible to recognise modern-day biomes in the Cenozoic record (e.g., Neumann and Bamford 2015). There have also been attempts to recognise biomes in the fossil record (e.g., Rees and Ziegler 1996; Rees et al. 2000; Rees 2002; DiMichele et al. 2008; Nowak et al. 2020), but the fossil record is usually too incomplete for any rigorous delineation of biomes in the sense that they are used with today's biotas.

5.3 *Numerical analysis of spatial data*

Because of the complexity of the data, most modern palaeofloristic studies tend to use numerical analysis. The data are usually given in a matrix with rows of floras and columns of taxa (either presence / absence or abundances). It is possible simply to calculate a series of similarity coefficients (Section 4.2) between the floras (e.g., Czier 2002, 2016); but the underlying structure of the data is usually shown better using multivariate numerical methods. There are two broad classes of numerical method: ordination that tries to identify linear trends within the data, and classificatory analyses that attempt to identify clusters. Neither is better than the other; they are just providing different insights into the structure of data and Shi (1993b) has recommended that it is often best to use both ordination and classificatory analyses in parallel (e.g., Fig. 4).

5.3.1 *Ordination*

Ordination aims to find linear trends within a multivariate dataset and can be a particularly powerful tool for palaeoecological and floristic studies. Several ordination methods are available (Gauch 1982; Shi 1993b, 1995; Davis 2002; Palmer 2004; Hammer and Harper 2006). One of the simplest is unconstrained seriation analysis that takes a presence / absence matrix and rearranges the columns and rows so that the presences tend to occur in a broadly

diagonal arrangement (Brower and Kile 1988); it is in effect a one-dimensional ordination (Fig. 5). More usually, however, ordination tries to arrange the data in a multidimensional geometric space.

One of the first multidimensional ordination methods to be developed was Principal Components Analysis (PCA; Pearson 1901). The original data can be seen as floras plotted in a multidimensional geometrical space where each axis represents a taxon. PCA uses a mathematical procedure (eigenanalysis) to rotate the multidimensional space so the new orthogonal axes (eigenvectors) more efficiently reflect the structure of the data. Rather than each axis representing a single taxon as in the original matrix, each of the eigenvectors now represents several taxa; how much each taxon is represented on an eigenvector is called its loading. It should now be possible to understand the relationships between the floras by how they plot on much fewer axes (the eigenvectors) compared with the original matrix, making the floristic or ecological structure easier to interpret. PCA has been used in plant palaeoecological studies (e.g., Spicer and Hill 1979; Spicer 1981; Birks and Gordon 1985; DiMichele et al. 2002; Barbacka 2014). However, PCA assumes that there is a continuous linear transition in the floras along each eigenvector, which rarely happens in nature (Palmer 2004). It is more usual for the floras to show a unimodal distribution, forming clear peaks along the eigenvectors, and will result in a significant curvature in the ordination plots known as the horseshoe-effect (Gauch 1982).

Conceptually simpler is Correspondence Analysis (CA) that in its original form uses reciprocal averaging to generate the new geometrical space (Hill 1973b; ter Braak in Jongman et al. 1995; Rees and Ziegler 1999). The sample rows in the data matrix are sorted according to the weighted average of its taxon scores, and then the taxon columns are sorted according to the weighted average of the sample scores. This reciprocal re-scoring and re-sorting of the taxon columns and of the sample rows is repeated until the arrangements of rows and columns stabilise. The resulting taxon and sample scores are then both plotted along what becomes the first axis of the ordination. CA then repeats the re-scoring / re-sorting on the variance not explained by the first axis to establish the second and subsequent, mutually orthogonal axes. As with PCA, most CA studies only use the first few axes, each of which often seems to reflect a significant ecological or floristic gradient. Although this is the conceptually easiest way to calculate and think about CA, the same result can be more efficiently obtained by an eigenanalysis of a matrix of the χ^2 distances between the floras (Greenacre 2010). This is now used in most CA software.

CA has the benefit of being relatively free of distributional assumptions: it can deal with binary (presence / absence), abundance and categorical data, does not require data normality or equivalence of variance between samples, and is tolerant of incomplete data (Shi 1995). Unlike PCA, moreover, it assumes that each taxon will show a unimodal rather than linear distribution along the eigenvectors (De'ath 1999), which is what normally occurs in nature. But perhaps of greatest benefit is that CA shows which taxa are responsible for the arrangement of the floras along the eigenvectors, which most other ordination methods do not.

Although CA has been used in palaeobotanical studies (Rees et al. 2000, 2002; Coiffard et al. 2008), the ordinations can be difficult to interpret because the technique tends to compresses the data towards either end of each eigenvector and the data are plotted in an arched configuration (albeit less extreme than the horseshoe effect seen in PCA). To overcome this, Hill and Gauch (1980) introduced Detrended Correspondence Analysis (DCA), which flattens-out the CA plot and decompresses the data at the ends of the eigenvectors (e.g., Fig. 6). This detrending has been criticised as it is imposing linear gradient structures on the data that may not be reflecting reality, and the underlying structure may be better shown in un-detrended CA ordinations in higher-dimensional spaces (T. Olszewski, pers. comm. 2021). Furthermore, DCA may distort the ecological distances between the floras along the eigenvectors (Minchin 1987) although their relative rank-order remains the same. The initial arrangement of the data matrix can also affect DCA ordinations (Oxanen and Minchin 1997) but this can be overcome by standardising the arrangement of the rows in the data matrix using unconstrained seriation analysis before running the ordination (Cleal 2008b,c). Uneven abundance data can also sometimes cause problems but Burnham (1994) found that this can be mitigated by using log transformations. The many advantages of DCA generally outweigh these drawbacks, and it has been used in many palynological (Caseldine and Pardoe 1994; Pardoe 1996, 2006; Dimitrova et al. 2007, 2011), macrofloral (DiMichele and Phillips 1988, 1996; Burnham 1994; Gemmill and Johnson 1997; DiMichele et al. 1996b; Willard et al. 2007; Barbacka 2011; Looy & Hotton 2014; Saxena et al. 2019; Strullu-Derrien 2021), and floristic studies (Thomas 2007; Cleal 2008b,c; Thomas et al. 2019b).

Canonical Correspondence Analysis (CCA) is another modification of CA where each flora is assigned one or more known environmental variables. The ordination is then done on axes that are linear combinations of the environmental variables. This approach has been used to relate palynological data to variables such as precipitation or altitude of a site (Gaillard et

al., 1994; Hjelle, 1999; Court-Picon, 2004; Finsinger 2007). More recently, CCA has been used to relate clusters of pollen taxa to specific plant communities (Pardoe 1996, 2006, 2014).

Non-Metric Multidimensional Scaling (NMDS) is an alternative to DCA that uses a matrix of distance indices between the floras rather than of taxon occurrences /abundances in the floras (Kruskal 1964). Firstly, it must be decided how many axes and what distance index are to be used. The floras are then arranged in the geometrical space, either randomly or in a configuration pre-determined using another ordination method (e.g., DCA). The rank-order of the geometrical distances between the floras in this configuration is compared with the rank-order in the original distance matrix, and the level of mismatch is given by a metric referred to as stress. The positions of the data in the geometrical space are then adjusted to try to reduce the mismatch between the rank-orders, and the stress re-calculated. This process is repeated until the stress has been minimised.

NMDS is numerically straightforward and will reveal gradations in the data in a low-dimensional space, but will not reveal the detailed structure of the data as well as DCA, especially if the latter is interpreted using more than two dimensions (Ruokolainen and Salo 2006). A more significant drawback is that NMDS is based on a matrix of distance indices rather than of taxon occurrences or abundances, and so it does not reveal which taxa are producing the structure resolved by the ordination. It is also not so robust as DCA with noisy data, and the results can vary in different runs and depending on how many dimensions are being used (Shi 1993b). Some of these problems can be resolved (e.g., by making repeated analyses and using the ordination with the lowest stress value). Some authors now use NMDS where DCA may previously have been used in palaeoecological (Willard 1993; DiMichele et al., 1991, 2007, 2017b; Pryor 1996; Bashforth et al. 2011; Barreda et al. 2012; Sala-Pérez et al. 2020) and floristic studies (Cúneo 1996; Barbacka et al. 2014). However, when DCA and NMDS have been compared, they have produced broadly similar ordinations (e.g., DiMichele et al. 1991) and so, given the advantages of DCA (notably that it shows which taxa are exerting the greatest influence on the ordination) it would seem to be preferable.

Other ordination methods have occasionally been used with macrofloral studies. Polar Ordination (PO) produces a series of orthogonal eigenvectors from a distance matrix on which the floras can be plotted, and was used by Raymond et al. (1985a,b), Rowley et al. (1985), Raymond (1987) and DiMichele and Phillips (1988). However, defining the PO axes can be subjective (Shi 1993b) and the method has fallen out of fashion in palaeobotany.

Principle Coordinates Ordination (PCO) as used by Stiles et al. (2020) is similar to NMDS (it is sometimes referred to as Metric Dimensional Scaling) but uses the absolute values rather than rank-order of the floras in a distance matrix, and suffers from the same drawbacks as NMDS.

5.3.2 Classificatory analysis

The most widely used classificatory technique, especially in floristic studies, is R-mode cluster analysis, which shows the relationships between floras using a one-dimensional dendrogram (Fig. 6). Various cluster strategies are available (Shi 1993b) but the most commonly used is the Unweighted Pair-Group Method with Arithmetic Mean (UPGMA; Sokal and Michener 1958). Similarity coefficients for all pairs of floras are calculated and the most similar two floras are combined. The mean distance between this pair and all the other floras is then compared, and the most similar flora joins the first pair to form a second cluster. The process is repeated until all of the floras are combined into a single cluster. Particularly for presence / absence data, Shi (1993a,b) recommended Jaccard's similarity coefficient and this was used by Cleal and Shute (1995) with Pennsylvanian-age medullosaleans. Raymond (1987) instead used Dice-Sørensen coefficients to analyse Devonian floras (based on traits rather than strict taxonomy) as these tend to give greater emphasis to co-occurrences of taxa. Various other similarity metrics are available (Shi 1983a,b) but these often have difficulties handling uneven sample sizes (Hammer and Harper 2006). The least sensitive to uneven sample sizes are Raup-Crick Coefficients, which show how often a comparable level of similarity occurs in randomly replicated (by "Monte-Carlo" simulation) samples of the same size (Raup and Crick, 1979; Hohn 2008); these have been used in palaeofloristic studies by Thomas (2007) and Cleal (2008b,c).

Although a basic cluster analysis may reveal evidence of phytochoria, it does not show which taxa are characterising the floras. This can partly be revealed by performing a Q-mode analysis (i.e., clustering the taxa against the floras) and plotting the resulting dendrogram at right-angles to the R-mode analysis – a procedure known as two-way clustering. This has been used in a number of palaeozoological studies (e.g., Dominici et al. 2008; Danise and Holland 2017)

An alternative classificatory approach is parsimony-based cladistic vicariance biogeography (Humphries and Parenti 1999). Although the results are shown as a cladogram that can superficially resemble a cluster analysis (Fig. 7), the dendrogram is generated in a

very different way: rather than looking at the overall similarity between floras, it tries to identify geographical areas with shared taxa. A drawback is that it assumes that a phytochorion develops through the progressive acquisition of taxa, which may not always be the case. On the other hand, the theoretical background to the parsimony algorithm is well established through its use in phylogenetics, and also has the benefit of giving at least some indication of the taxa that are producing the phytochoria. There have been a few attempts to use parsimony in palaeobotanical floristics (Drinnan and Crane 1990; Coiffard et al. 2008) but, where it has been compared with cluster analysis (Hilton and Cleal 2007), the results have not differed significantly.

5.3.3 TWINSPAN

This is in some ways a hybrid approach, sharing aspects of ordination and classificatory analysis. Hill (1979), who developed the technique, referred to it as “a dichotomized ordination analysis”. It is a DCA-like iterative approach but, instead of using reciprocal re-scoring and re-ordering of the floras and taxa, it successively divides the floras into categories, and then divides the species into categories based on the flora classification. Unlike traditional classificatory techniques, therefore, it is a divisive rather than a clustering algorithm.

Several palynological studies have used the method to ordinate vegetation and pollen data (Caseldine 1992; Pardoe, 1996, 2006, 2014; Hjelle 1999; Connor et al. 2004; Connor and Kvavadze 2009). For instance, Caseldine and Pardoe (1994) used it together with DCA to differentiate between groups of surface pollen samples from glacier foreland sequences in southern Norway. These groups were subsequently compared to Holocene pollen data from cores and soil profiles (which were treated as passive samples) to indicate Holocene vegetation and climatic changes. It was also used by Lenz et al. (2006) with high resolution palynological data from Messel, showing a clear succession of middle Eocene plant communities colonizing and invading the area, which had been devastated by the volcanic eruption forming the maar lake.

5.3.4 Statistical significance

Both ordination and classificatory methods are exploratory approaches aimed at revealing structure within the complex dataset; they do not in themselves provide a statistical measure of significance of any groupings that may be revealed. Cluster analysis results can be tested by bootstrapping where the analysis is repeatedly done on a subset of the data and will show

how many replicates are supporting each node on the dendrogram, but this is still not a measure of statistical significance. That significance can be explored using confirmatory or hypothesis-testing methods such as Discriminant Function Analysis, sometimes known as Multivariate Analysis of Variance – MANOVA (e.g., DiMichele and Aronson 1992) but there are problems with this approach with ecological/palaeoecological studies as the data rarely fulfil the necessary underlying distributional assumptions (Anderson and Walsh 2013); preferable are non-parametric comparisons such as PerMANOVA (Anderson 2001; e.g., Cleal 2008b,c). But it must always be remembered that these methods are only revealing statistical significances – the observed differences and/or similarities could be simply the result of incomplete sampling; they do not show whether the differences are botanically meaningful.

6 Analysing diversity stratigraphically

6.1 Stratigraphical trends in diversity

Plant biostratigraphy is often regarded merely as a tool for stratigraphical correlation (Cleal 1991, 1999, 2018; Traverse 2007; Opluštil et al. 2021) but it may also be seen as providing evidence of the dynamic changes in plant diversity. Biostratigraphy has much in common with biogeography in that both are seeking patterns in complex distributional data, but there is one fundamental difference: whereas biogeographical data have three-dimensional relationships, biostratigraphical data series are unidirectional as the present cannot influence the past (Dornelas et al. 2013).

At its simplest, biostratigraphical data are purely the presence or absence of taxa at different stratigraphical levels, and this may be all that is needed in local-scale diversity studies (Fig. 8). Especially with plant macrofossils, however, individual assemblages are unlikely to be fully representative of landscape-scale vegetation at any one time (Cleal et al. 2010). In taxon richness studies, it is normal, therefore, to use range-through data (Boltovskoy 1988): in a stratigraphical sequence of floras A, B, C, if a species is found in A and C but not B, it is still recorded as present in B. The logic is that a particular taxon is unlikely to disappear and then reappear from a landscape at this temporal scale – although we may not see the species in a fossil flora, it was probably still present somewhere in the landscape and was not recorded there because of incomplete collecting, taphonomic factors affecting preservation or local ecological factors. Although this may result in some

smoothing of the observed taxonomic diversity curves, it has proved a useful way of investigating broad patterns in landscape-scale vegetation change (DiMichele et al. 1996; Cleal 2005, 2007, 2008a; Gastaldo et al. 2009; Uhl and Cleal 2010; Opluštil et al. 2017; Nowak et al. 2018). The degree to which the range-through method is distorting data can be represented by a Sample Completeness Metric (SCM; Benton 1987), which is simply the ratio of those taxa that are actually observed in a particular fossil assemblage to those taxa that “should” be present (e.g., Cleal et al. 2010; Xing et al. 2016).

A related issue is the uncertainty as to the start (First Appearance Datum – FAD) and end (Last Appearance Datum – LAD) of the stratigraphical range of a taxon. If sampling is perfect and taphonomy is having little effect, the FAD and LAD of a taxon’s range should reflect the actual distribution of the taxon, but such criteria are rarely met. This incompleteness in the record will, for instance, explain the “edge-effect” seen in many stratigraphical sequences, where a clear reduction in taxonomic richness occurs towards the top of a stratigraphical sequence (for instance at the top of Fig. 9) or as a hiatus in the record is approached (e.g., Wilf and Johnson 2004). It has little to do with a decline in actual diversity but is simply because of incomplete sampling of the floras near to the stratigraphical break or change. There are numerical methods of assessing the confidence intervals for the FAD and LAD of a taxon (Straus and Sadler 1989; Marshall 1990, 1997) and this was used by Wilf and Johnson (2004) in a study of vegetation responses in Dakota (USA) to the end-Cretaceous biotic crisis.

With palynological data, samples are often at a high temporal resolution and so changes in the presence of rare taxa may not be caused by rapid environmental change but is simply a sampling effect. This can be overcome using a taxon-accumulation curve, where the numbers of taxa are summed over consecutive samples and plotted against the accumulated sample count representing sampling effort (Giesecke et al. 2012). These accumulation curves can be described with power functions and deviations from the theoretical relationships may be reflecting past environmental changes such as the onset of human land use (Giesecke et al. 2014a). Where the focus of the investigation includes rare pollen types, it may be convenient to combine samples into larger units and even combining pollen diagrams to derive regional taxonomic pools (Giesecke et al. 2012). In the latter case it is crucial to work with pollen diagrams that are harmonized to the same taxonomic rank.

Biostratigraphical distributional data are usually represented as range charts (Fig. 8). Early examples of such range charts show the temporal distribution of high-ranked taxa (e.g.,

Bronn 1849) but their use with species in palaeobotany was pioneered by Dix (1934) and it is now a fairly standard way of recording stratigraphical distributions of taxa (e.g., Cleal 1978, 1984, 2005, 2007, 2008a; Wagner et al. 1983; Willis and Niklas 2004; Bertini 2010). Such charts can be easily used to extract range-through taxonomic diversity data by simply counting how many range bars cross each stratigraphical level. This can then be documented as a graph plotted alongside the stratigraphical column. In principle, the significance of such changes in taxonomic diversity can be determined using standard statistical tests, but in many cases the datasets will fail the required conditions such as normality of distribution and so nonparametric bootstrap tests are usually preferable (Buckland et al. 2005). Also problematic are the uneven sedimentation rates, which make it difficult to use stratigraphical thickness as a time scale against which the diversity changes can be plotted and assessed. Wang et al. (2005) suggested a partial metric to overcome uneven sedimentation rates in different sections, but a simple visual assessment of the stratigraphical trends will usually provide a reasonable indication of any changes in taxonomic diversity through a sequence.

It can often be important to determine how the taxonomic balance of fossil floras changes through a sequence. For instance, palynological data are often expressed as a series of parallel diversity curves each representing a particular taxon or groups of interest (Fig. 10; e.g., Willard et al. 1995; Rull 2000; Schneebeili-Hermann *et al.* 2017). Alternatively, stacked graphs have been used to show the changing diversity of the major plant groups as well as of the flora as a whole (Fig. 8; e.g., Cleal 2005, 2007, 2008a; Opluštil et al. 2017).

Biostratigraphical changes are often expressed in terms of biozones. There are several different types of zones (discussed by Cleal 1999 in a palaeobotanical context) but most tend to be assemblage range zones defined by taxa with overlapping stratigraphical ranges and usually delineated by discontinuities in the overall pattern of the stratigraphical ranges. Traditionally these discontinuities would be recognised by visual inspection of range charts, but this can be rather subjective (Gordon and Birks 1972; Bennett 1996). An alternative approach is to calculate the taxonomic similarity coefficients between adjacent floras through a stratigraphical sequence, where discontinuities will be marked by unusually low values; DiMichele and Phillips (1995) used Jaccard coefficients in this way. Discontinuities can also be recognised using constrained cluster analysis of the coefficients (CONISS), which is an R-mode clustering algorithm (usually UPGMA) but with the order of samples kept in their original stratigraphical sequence (Fig. 11; Gordon and Birks 1972; Kovach 1993; Bennett 1996; Leroy and Roiron 1996; Leroy et al. 2009; Cleal et al. 2012; Mander et al. 2013).

Jaccard and Sørensen-Dice coefficients have been used for presence / absence data (e.g., Gastaldo et al. 2009a,b), and Euclidean coefficients have been used with abundance data (e.g., Quattrocchio et al. 2013). Raup-Crick coefficients were used by Cleal et al. (2012) and Opluštil et al. (2017), which produced clearly demarcated biozones that largely coincided with the Wagner (1984) non-metric biostratigraphy. The level of taxonomic similarity within the cluster analysis that is used to separate zones is largely subjective, although bootstrapping can provide some evidence of the robustness of the different clusters. Bennett (1996) has also suggested numerical methods for determining how many zones will maximise the explanation of the variance of biostratigraphical data (see also Seppä and Bennett 2003).

Another non-parametric way of seeking discontinuities in the plant fossil record, especially if caused by extrinsic factors, is pseudo-cohort analysis (Hoffman and Kitchell 1984; Cascales-Miñana and Cleal 2011), a modification of cohort analysis of Raup (1975, 1978). This is based on the idea that taxa (like individual organisms) have a mean life expectancy and that the taxa in an assemblage will stochastically become extinct with time (Van Valen 1963). A survivorship curve of all the taxa in a flora plotted through the succeeding stratigraphical interval should form a monotonic curve, as the taxa progressively disappear from the record (Fig. 12). If such curves are plotted for each successive flora, the result should be a series of more-or-less parallel lines; but, if there has been a significant environmental disruption, a marked deflection appears in the lines. Although there may be some questions about the underlying assumptions on which this is based, the technique has proved useful in revealing significant diversity changes both at the level of global extinctions (Cascales-Miñana 2011; Cascales-Miñana and Cleal 2011) and in the study of how specific floras responded to climate and landscape change (Cleal et al. 2012).

Ordination has also been applied to identify significant trends in plant biostratigraphical data (Kovach 1993). For instance, DCA has been used to investigate macrofloral evidence of vegetation responses to climate change across the Triassic – Jurassic boundary (McElwain et al. 2007); also, in various Carboniferous (Dimitrova and Cleal 2007), Palaeogene (e.g., Wing and Harrington 2001; Wilf and Johnson 2004; Jaramillo et al. 2010), Neogene (Quattrocchio et al. 2013) and Quaternary (Pidek and Poska 2013; Leroy et al. 2009) palynological studies. As with spatial studies, some authors have now opted to use NMDS rather than DCA for biostratigraphy (e.g., DiMichele and Aronson 1992). Since the data rarely fulfil the underlying assumptions of linear distribution, PCA on its own has not been widely used for plant biostratigraphical studies. An exception has been the use of PCA on transposed datasets

(taxa in rows, floras in columns) to try to identify the main palynological assemblages of co-existing taxa rather than groupings of the floras (Festi et al. 2015; López-Merino et al. 2016).

Yet another numerical method for recognising biozones is Unitary Associations (Guex 1977, 1991). This uses a matrix of taxon occurrences through several stratigraphical sequences and attempts to identify series of assemblage zones that maximise stratigraphical resolution whilst minimising conflicts in the ranges between sections. This has been occasionally applied to palynology (da Silva-Caminha et al. 2010; Kachniasz and da Silva-Caminha 2017) but never with macrofloras. Another numerical method for identifying biozones in palaeozoology is Appearance Event Ordination, which is similar to CA but makes use of both species-associations and stratigraphical data instead of just taxonomic presence – absence data (Alroy 1996) but again has had little application in palynology or palaeobotany.

6.2 *Taxonomic origination and extinction*

Investigating long-range vegetation diversity dynamics, for instance in the search for responses to mass extinctions or global climatic changes, requires a different approach to traditional biostratigraphy. Because of the large number of floras involved, it is usual to analyse data that have been binned into stratigraphical intervals such as stages or series. However, this binning of the data can distort the detailed pattern of taxonomic originations and extinctions, which can in turn distort diversity patterns; extending species ranges to the boundaries of the stratigraphical units may cause artificially high origination and extinction rates at those boundaries (Raup 1972). In principle, this boundary effect can be minimised by using smaller time intervals, but small time-intervals will provide poorer samples of diversity and thus also, potentially, distort the diversity signal. Varying time intervals represented by each stratigraphical unit will also alter the observed taxonomic diversities in the bins (Raup 1972; Raymond and Metz 1995; Cascales-Miñana and Diez 2012). The observed taxonomic diversity can be standardised against the duration of the stratigraphical bin (e.g., Xiong and Wang 2011) but until recently this has been difficult because the available radio-isotopic dating was not accurate enough. However, far better radio-isotopic dating is now available, which can be combined with Milankovitch-cycle sedimentary sequences to provide a temporal accuracy of up to 0.01% or better (Davydov et al. 2010; Waters and Condon 2012; Hoyle et al. 2020). This offers considerable potential for standardising diversity metrics by time.

Various metrics have been proposed to deal with data binning and other sampling issues (Hammer and Harper 2006; Cascales-Miñana et al. 2013), but these can themselves distort the extinction and origination metrics (Foote 1994, 2000). A comparative analysis has suggested that no ideal metrics are available for this type of study (Cascales-Miñana et al. 2013) but the best results seem to be provided by range-through methods discounting singleton taxa (Van Valen 1984; Gilinsky 1991; Foote 1994, 2000). However, the omission from diversity studies of singleton taxa based on exceptionally preserved floras (e.g., from Rhynie Chert) can significantly distort taxonomic extinction and origination patterns. As with selecting biodiversity metrics, the choice of extinction / origination metrics should be made with an awareness of the strengths and weakness of each, and taking into account the underlying aims of the study.

Estimating origination and extinction rates can alternatively use Bayesian methods, which take all fossil occurrences of taxa (including singletons) and uses these to model sampling heterogeneity within the sequence (Silvestro et al. 2014a). Such methods help compensate for uneven sampling and taphonomic distortions, and so are particularly useful when dealing with large-scale but incomplete databases such as the Paleobiology Database (e.g., Silvestro et al. 2014b, 2015).

In addition to broad changes in taxonomic richness through geological time, models have been developed that suggest that large-scale groupings of higher-ranked taxa (usually families) can be recognised that form coherent faunal and floral communities, each with its characteristic diversity pattern. The idea was first developed by Sepkoski (1981) who used factor analysis on a database of Phanerozoic marine invertebrate families. Factor analysis is in some ways similar to PCA, but starts with the presumption that there is an underlying set of variables (called latent factors) that can be used to explain the correlations between the observed samples. Determining how many factors to use is often regarded as a contentious issue; in principle, it can be decided beforehand if a specific model is to be tested. However, more normally in an exploratory factor analysis (e.g., Sepkoski 1981) the decision is based on how much of the total variance is being explained (e.g., how many factors will explain, say 80 % of the total variance in the data). The designated number factors are then extracted by identifying where there are maximal correlations between the floras. The factors are then rotated to “improve” the ordination. There are various rotation strategies, but the simplest (and arguably the most objective) is VARIMAX that aims to achieve “simple structure”, where a maximum number of floras have high loadings on only one factor, and a maximum

number of factors have high loadings for only a few floras (Pedhazur and Schmelkin 1991). The loadings of the floras on each factor (i.e., how much of each flora is represented by the factor) are then adjusted by the amount of the variance unique to that factor.

Although factor analysis is conceptually more complex than most other ordination methods, the combination of factor rotation and identifying the variance unique to each factor has proved particularly effective in revealing large-scale floristic and faunal patterns in time and space – emphasising the associations of taxa whose mutual correlations support the floras / faunas, whilst reducing the influence of the other groups of taxa. Using this method, Sepkoski (1981) identified three large-scale Evolutionary Faunas among marine invertebrates, which was subsequently modified by Rojas et al. (2019) into a four-factor model by incorporating spatial data. Cleal and Cascales-Miñana (2014) used the same approach on a global dataset of plant family distribution (modified from Benton 1993, and Anderson et al. 2007) and extracted five Evolutionary Floras, which were named the Eotracheophytic (formerly Rhyniophytic), Eophytic, Palaeophytic, Mesophytic and Cenophytic (the last three being related to concepts originally introduced by Gothan 1912). These Evolutionary Floras have proved useful in describing the broad trajectory of Phanerozoic vegetation history (Cleal and Thomas 2019; Cleal 2021). More recently, a similar analysis has been done on Silurian – Devonian genera and has revealed a more finely-resolved Evolutionary Flora model for the early terrestrial vegetation (Capel et al. 2021).

An issue with such studies on long-range diversity trends in the palaeobotanical and palynological records is that they require robust evidence of the relative ages of the fossil floras being studied. As pointed out by Cleal et al. (2021) this can be a problem with terrestrial stratigraphical sequences as the dating is sometimes based on palaeobotanical and/or palynological evidence; there is clearly the potential for circular argument when trying to document vegetation changes against a temporal framework that is itself established on data derived from vegetation changes. It is therefore essential that the stratigraphical relationships of the fossil floras are verified and, where possible, confirmed by independent data such as from radioisotopic dates and/or biostratigraphy of other organismal groups.

7 Conclusions

Modelling past vegetation diversity is not just an abstract, “ivory-tower” exercise; it has real implications for predicting the future response of today’s vegetation to major

environmental change, whether that be to fluctuating CO₂ concentrations, climatic parameters, seasonality or plant disease. Improved understanding of fossil diversity will have an impact on how the present and future biodiversity changes are understood and forecasted. But the first step in any such endeavour must be the compilation of robust data on the diversity of plant fossils. This can be based on either data from reliable secondary sources, or data obtained from field surveys provided they are acquired using rigorous sampling strategies and with an understanding of the biases that taphonomy introduces.

Fossil diversity can be expressed either as taxonomic richness (how many taxa are present), taxonomic composition (what taxa are present) or taxonomic abundance (how much of each taxon is present). Taxonomic richness is the easiest of these to measure and can provide some evidence of ecological and climatic significance, especially if the richness measures are broken down into taxonomic or ecologically-constrained groups. Taxonomic composition is also relatively easy to determine (provided the palaeobotanist is familiar with the taxonomy of the relevant floras) and has given valuable data for floristic and biostratigraphical diversity studies. Taxonomic abundance is the least easy to determine from the fossil record because of the way that plants fragment, and is often extremely difficult to interpret in terms of the original vegetation. Except for the very few available autochthonous macrofloras, it must be stressed that taxonomic abundance is often more informative of the taphonomy (especially biostratigraphy) of the fossil assemblage than of the diversity of the original vegetation.

Deciding the analytical approach to use to find patterns in the diversity data can be confusing as there is often no right or wrong method – each will be showing a different and often legitimate insight into the structure of the data, and the choice of approach will depend on what the investigator is trying to show. At a basic level, the choice is between a classificatory approach which tries to find breaks and groupings with the data, and ordination which tries to find linear trends within the data. In most cases, however, both groupings and trends are being sought, and it often makes sense to run both types of analyses in tandem, provided it is kept in mind exactly what type of pattern each analysis is yielding.

Numerical analyses of the record will be revealing diversity changes of the fossils and this will only partially reflect the diversity of the original vegetation. There has, for instance, been clear evidence that some plant taxa flourished in habitats only rarely represented in the fossil record and whose ranges are therefore different from those of the plant fossils (e.g., Mamay and Bateman 1991; Zhou 1994; Hamad et al. 2008). Nevertheless, by integrating the data

with sedimentological and geochemical evidence, it is possible to start taking the first steps towards developing synecological models for past vegetation at local-, landscape-, regional- and global-scales (Spicer 1989; Krassilov 2003; DiMichele and Gastaldo 2008).

Acknowledgements

The authors are grateful to the European Science Foundation for supporting the Exploratory Workshop entitled *Tracking changes in plant diversity over the last 400 million years*, held in 2014 at National Museum Wales, Cardiff, UK. Thanks go to Tom Olszewski (IDA Science and Technology Policy Institute, Washington DC) for advice on drawbacks in detrending in ordination analyses. The paper is a contribution to National Museum Wales Research Project NS25 *Plant diversity through 450 million years of Earth history*.

References

- Abbinck, O.A., van Konijnenburg-van Cittert, J.H.A., Visscher, H., 2004. A sporomorph ecogroup model for the Northwest European Jurassic-Lower Cretaceous: concepts and framework. *Netherlands Journal of Geosciences* 83, 17–31.
- Alroy, J., 1994. Appearance event ordination: a new biochronologic method. *Paleobiology*, 20, 191–207.
- Alroy, J., 2003. Global databases will yield reliable measures of global biodiversity. *Paleobiology* 29, 26–29.
- Andersen, S.T., 1970. The relative pollen productivity and pollen representation of North European trees, and correction factors for tree pollen spectra determined by surface pollen analyses from forests. *Danmarks Geologiske Undersøgelse II* 96, 1–99.
- Anderson, M.J., 2001. A new method of non-parametric multivariate analysis of variance. *Austral Ecology* 26, 32–46.
- Anderson, M.J., Walsh, D.C., 2013. PERMANOVA, ANOSIM, and the Mantel test in the face of heterogeneous dispersions: what null hypothesis are you testing? *Ecological Monographs* 83, 557–574.
- Anderson, J.M., Anderson, H.M., Cleal, C.J. 2007. Brief history of the gymnosperms: classification, biodiversity, phytogeography and ecology. *Strelitzia* 20, 1–279.

- Bailey, G., Momber, G., Bell, M., Tizzard, L., Hardy, K., Bicket, A., Tidbury, L., Benjamin, J., Hale, A., 2020. Great Britain: The intertidal and underwater archaeology of Britain's submerged landscapes, in: Bailey, G., Galanidou, N., Peeters, H., Jöns, H., Mennenga, M. (eds), *The archaeology of Europe's drowned landscapes*. Coastal Research Library, vol 35. Springer, Cham. doi.org/10.1007/978-3-030-37367-2_10
- Baker, R.A., DiMichele, W.A., 1997. Biomass allocation in Late Pennsylvanian coal-swamp plants. *Palaios* 12, 127–132
- Barbacka, M., 2011. Biodiversity and the reconstruction of Early Jurassic flora from the Mecsek Mountains (southern Hungary). *Acta Palaeobotanica* 51, 127–179.
- Barbacka, M., Bodor, E., Jarzynka, A., Kustatscher, E., Pacyna, G., Popa, M.E., Scanu, G. G., Thévenard, F., Ziaja, J., 2014. European Jurassic floras: statistics and palaeoenvironmental proxies. *Acta Palaeobotanica* 54, 173–195.
- Barbacka, M., Popa, M. E., Mitka, J., Bodor, E. Püspöki, Z., McIntosh, R.W., 2016. A quantitative approach for identifying plant ecogroups in the Romanian Early Jurassic terrestrial vegetation. *Palaeogeography, Palaeoclimatology, Palaeoecology* 446, 44–54.
- Barbacka, M., Pacyna, G., Kocsis, Á.T., Jarzynka, A., Ziaja, J., Bodor, E., 2017. Changes in terrestrial floras at the Triassic-Jurassic Boundary in Europe. *Palaeogeography, Palaeoclimatology, Palaeoecology* 480, 80–93.
- Barreda, V.D., Cúneo, N.R., Wilf, P., Currano, E.D., Scasso, R.A., Brinkhuis, H., 2012. Cretaceous/Paleogene floral turnover in Patagonia: drop in diversity, low extinction, and a *Classopollis* spike. *PLoS One* 7(12), e52455. doi:10.1371/journal.pone.0052455.
- Bashforth, A.R., Nelson, W.J., 2015. A Middle Pennsylvanian macrofloral assemblage from below the Rock Island (no. 1) coal member, Illinois: resolving the Bolsovian-Asturian boundary in the Illinois Basin. *Review of Palaeobotany and Palynology* 222, 67–83.
- Bashforth, A.R., Falcon-Lang, H.J., Gibling, M.R., 2010. Vegetation heterogeneity on a Late Pennsylvanian braided-river plain draining the Variscan Mountains, La Magdalena Coalfield, northwestern. *Palaeogeography, Palaeoclimatology, Palaeoecology* 292, 367–390.
- Bashforth, A.R., Drábková, J., Opluštil, S., Gibling, M.R., Falcon-Lang, H.J., 2011. Landscape gradients and patchiness in riparian vegetation on a Middle Pennsylvanian braided river plain prone to flood disturbance (Nýřany Member, Central and Western Bohemian Basin, Czech Republic). *Review of Palaeobotany and Palynology* 163, 153–189.

- Beals, E.W., 1984. Bray-Curtis ordination: an effective strategy for analysis of multivariate ecological data. *Advances in Ecological Research* 14, 1–5.
- Becker, B., 1993. An 11,000-year German oak and pine dendrochronology for radiocarbon calibration. *Radiocarbon* 35, 201–213.
- Behrensmeyer, A.K., Kidwell, S.M., Gastaldo, R.A., 2000. Taphonomy and paleobiology. *Paleobiology* 26, 103–147.
- Bennett, K.D., 1996. Determination of the number of zones in a biostratigraphical sequence. *New Phytologist* 132, 155–170.
- Benton, M.J., 1987. Mass extinctions among families of non-marine tetrapods: the data. *Annales de la Société Géologique de France, N. S.* 150, 21–32.
- Benton, M.J., (ed.) 1993. *The Fossil Record 2*. Chapman & Hall, London.
- Berry, C.M., Marshall, J.E., 2015. Lycopoid forests in the early Late Devonian paleoequatorial zone of Svalbard. *Geology* 43, 1043–1046.
- Bertini, A., 2010. Pliocene to Pleistocene palynoflora and vegetation in Italy: state of the art. *Quaternary International* 225, 5–24.
- Birks, H.J.B., 2007. Plant macrofossil introduction, in: Elias, S.A. (ed.), *Encyclopedia of Quaternary Science*. Elsevier, Amsterdam, pp. 49–74.
- Birks, H.J.B., Birks, H.H., 1980. *Quaternary Palaeoecology*. Arnold, London.
- Birks, H.J.B., Gordon, A.D., 1985. *Numerical methods in Quaternary pollen analysis*. Academic Press, London
- Birks, H.J.B., Line, J.M., 1992. The use of rarefaction analysis for estimating palynological richness from Quaternary pollen-analytical data. *The Holocene* 2, 1–10.
- Birks, H.J.B., Felde, V.A., Bjune, A.E., Grytnes, J.A., Seppä, H., Giesecke, T., 2016. Does pollen-assembly richness reflect floristic richness? A review of recent developments and future challenges. *Review of Palaeobotany and Palynology* 228, 1–25.
- Blaauw, M., Christen, J.A., 2011. Flexible paleoclimate age-depth models using an autoregressive gamma process. *Bayesian Analysis* 6, 457–474.

Blarquez, O., Carcaillet, C., Frejaville, T., Bergeron, Y., 2014. Disentangling the trajectories of alpha, beta and gamma plant diversity of North American boreal ecoregions since 15,500 years. *Frontiers in Ecology and Evolution* 2, doi.org/10.3389/fevo.2014.00006.

Boltovskoy, D., 1988. The range-through method and first-last appearance data in paleontological surveys. *Journal of Paleontology* 62, 157–159.

Bronn, H.G., 1849. *Index palaeontologicus : oder Übersicht der bis jetzt bekannten fossilen Organismen*. Schweitzerbart, Stuttgart.

Broström, A., Nielsen, A.B., Gaillard, M.J., Hjelle, K.L., Mazier, F., Binney, H.A., Bunting, J., Fyfe, R., Meltsov, V., Poska, A., Räsänen, S., Soepboer, W., von Stedingk, H., Suutari, H., Sugita, S., 2008. Pollen productivity estimates of key European plant taxa for quantitative reconstruction of past vegetation: a review. *Vegetation History and Archaeobotany* 17, 416–478.

Brower, J.C., Kile, K.M., 1988. Seriation of an original data matrix as applied to palaeoecology. *Lethaia* 21, 79–93.

Brugal J.-P., Ambert P., Bandet Y., Leroy S., Roiron P., Suc J.-P., Vernet J.-L., 1990. Mammifères et végétaux du maar pliocène final de Nogaret (Escandorgue, Hérault, France). *Géobios* 23(2), 231–247

Buckland, S.T., Magurran, A.E., Green, R.E., Fewster, R.M., 2005. Monitoring change in biodiversity through composite indices. *Philosophical Transactions of the Royal Society B: Biological Sciences* 360, 243–254.

Burnham, R.J., 1993. Reconstructing richness in the plant fossil record. *Palaios* 8, 376–384.

Burnham, R.J., 1994. Paleocological and floristic heterogeneity in the plant-fossil record: an analysis based on the Eocene of Washington. *US Geological Survey Bulletin* 2085B, 1–36.

Buzas, M.A. Hayek, L.A.C., 2005. On richness and evenness within and between communities. *Paleobiology* 31, 199–220.

Calder, J.H., Gibling, M.R., Scott, A.C., Davies, S.J., Hebert, B.L., Greb, S.F., DiMichele, W.A., 2006. A fossil lycopsid forest succession in the classic Joggins section of Nova Scotia: paleoecology of a disturbance-prone Pennsylvanian wetland. *Special Papers-Geological Society of America* 399, 169–195.

Capel, E., Cleal, C.J., Gerrienne, P., Servais, T., Cascales-Miñana, B., 2021. A factor analysis approach to modelling the early diversification of terrestrial vegetation. *Palaeogeography, Palaeoclimatology, Palaeoecology* 566, p.110170.

Cascales-Miñana, B., 2011. New insights into the reading of Paleozoic plant fossil record discontinuities. *Historical Biology* 23, 115–130.

Cascales-Miñana, B., Cleal, C.J., 2011. Plant fossil record and survival analysis. *Lethaia* 45, 71–82.

Cascales-Miñana, B., Cleal, C.J., 2014. The plant fossil record reflects just two great extinction events. *Terra Nova* 26, 195–200.

Cascales-Miñana, B., Diez, J.B., 2012. The effect of singletons and interval length on interpreting diversity trends from the palaeobotanical record. *Palaeontologia Electronica* 15(1), 6A.

Cascales-Miñana, B., Gerrienne, P., 2017. *Teruelia diezii* gen. et sp. nov.: an early polysporangiophyte from the Lower Devonian of the Iberian Peninsula. *Palaeontology* 60, 199–212.

Cascales-Miñana, B., Muñoz-Bertomeu, J., Ros, R., Segura, J., 2010. Trends and patterns in the evolution of vascular plants: implications of a multilevel taxonomic analysis. *Lethaia*, 43, 545–557.

Cascales-Miñana, B., Cleal, C.J., Diez, J.B., 2013. What is the best way to measure extinction? Reflection from the palaeobotanical record. *Earth-Science Reviews* 124, 126–147.

Caseldine, C.J. 1989. Pollen assemblage-plant community relationships on the Storbreen glacier foreland, Jotunheimen Mountains, southern Norway. *New Phytologist* 111, 105-118.

Caseldine, C.J., Pardoe, H.S., 1994. Surface pollen studies from alpine/sub-alpine southern Norway: applications to Holocene data. *Review of Palaeobotany and Palynology* 82, 1–15.

Chaloner, W.G., Lacey, W.S., 1973. The distribution of Late Paleozoic floras, in: Hughes, N.F. (ed.), *Organisms and continents through time. Special Papers in Palaeontology* 12, 271–289.

- Chaloner, W.G., Meyen, S.V., 1973. Carboniferous and Permian floras of the northern continents, in: Hallam, A. (ed.), Atlas of palaeobiogeography. Elsevier, Amsterdam, pp. 169–186.
- Chao, A., 1984. Non-parametric estimation of the number of classes in a population. *Scandinavian Journal of Statistics* 11, 265–270.
- Chao, A., 1987. Estimating the population size for capture-recapture data with unequal catchability. *Biometrics* 43, 783–791.
- Chiarucci, A., Bacaro, G., Scheiner, S.M., 2011. Old and new challenges in using species diversity for assessing biodiversity. *Philosophical Transactions of the Royal Society, Series B: Biological Sciences* 366, 2426–2437.
- Christiano-de-Souza, I.C., Ricardi-Branco, F., Silva, A.M., Dash, E., Gentry, L., Faria, R.S., 2014. New approach for the study of paleofloras using geographical information systems applied to *Glossopteris* Flora. *Brazilian Journal of Geology* 44, 681–689.
- Cleal, C.J., 1978. Floral biostratigraphy of the upper Silesian Pennant Measures of South Wales. *Geological Journal* 13, 165–194.
- Cleal, C.J., 1984. The Westphalian D floral biostratigraphy of Saarland (Fed. Rep. Germany) and a comparison with that of South Wales. *Geological Journal* 19, 327–351.
- Cleal, C.J. (ed.), 1991. Plant fossils in geological investigation: the Palaeozoic. Ellis Horwood, Chichester.
- Cleal, C.J., 1999. Plant macrofossil biostratigraphy, in: Jones, T.P., Rowe, N.P. (eds), Fossil plants and spores: modern techniques. Geological Society, London, pp. 220–224.
- Cleal, C.J., 2005. The Westphalian macrofloral record from the cratonic central Pennines Basin, UK. *Zeitschrift der Deutschen Gesellschaft für Geowissenschaften* 156, 387–410.
- Cleal, C.J., 2007. The Westphalian-Stephanian macrofloral record from the South Wales Coalfield. *Geological Magazine* 144, 465–486.
- Cleal, C.J., 2008a. Westphalian-Stephanian macrofloras of the southern Pennines Basin, UK. *Studia Geologica Polonica* 129, 25–41.
- Cleal, C.J., 2008b. Palaeofloristics of Middle Pennsylvanian lyginopteridaleans in Variscan Euramerica. *Palaeogeography, Palaeoclimatology, Palaeoecology* 261, 1–14.

- Cleal, C.J., 2008c. Palaeofloristics of Middle Pennsylvanian medullosaleans in Variscan Euramerica. *Palaeogeography, Palaeoclimatology, Palaeoecology* 268, 164–180.
- Cleal, C.J., 2018. A global review of Permian macrofloral biostratigraphical schemes, in: Lucas, S.G., Shen, S.Z. (eds), *The Permian timescale*. Geological Society, London (Special Publications 450), pp. 349–363
- Cleal, C.J., 2021. Paleozoic plants, in: Elias, S., Alderton, D. (eds), *Encyclopaedia of Earth sciences (Vol. 3)*. Academic Press, London, pp. 461–475.
- Cleal, C.J., Cascales-Miñana, B., 2014. Composition and dynamics of the great Phanerozoic Evolutionary Floras. *Lethaia* 47, 469–484.
- Cleal, C. J., Thomas, B.A., 2019. *Introduction to plant fossils*. Second edition. Cambridge University Press, Cambridge.
- Cleal, C.J., Uhl, D., Cascales-Miñana, B., Thomas, B.A., Bashforth, A.R., King, S.C., Zoderow, E.L., 2012. Plant biodiversity changes in Carboniferous tropical wetlands. *Earth-Science Reviews* 114, 124–155.
- Cleal, C.J., Pardoe, H.S., Berry, C.M., Cascales-Miñana, B., Davis, B.A.S., Diez, J.B., Filipova-Marinova, M.V., Giesecke, T., Hilton, J., Ivanov, D.A., Kustatscher, E., Leroy, S.A.G., McElwain, J.C., Opluštil, S., Popa, M.E., Seyfullah, L.J., Stolle, E., Thomas, B.A., Uhl, D., 2021. Plant diversity in deep time: experiences from the fossil record. I: How well can we distinguish past plant diversity from the fossil record? *Palaeogeography, Palaeoclimatology, Palaeoecology* 576, p.110481.
- Coiffard, C., Gomez, B., Nel, A., Kvaček, J., Neraudeau, D., Thévenard, F., 2008. Application of the Wagner's Parsimony Method in fossil plant assemblages from the Cretaceous of Europe. *Review of Palaeobotany and Palynology* 148, 1–12.
- Colwell, R.K., Elsensohn, J.E., 2014. EstimateS turns 20: statistical estimation of species richness and shared species from samples, with non-parametric extrapolation. *Ecography* 37, 609–613.
- Connor, S.E., Kvavadze, E.V. 2009. Modelling late Quaternary changes in plant distribution, vegetation and climate using pollen data from Georgia, Caucasus. *Journal of Biogeography* 36, 529-545. <https://doi.org/10.1111/j.1365-2699.2008.02019.x>
- Connor, S.E., Thomas, I., Kvavadze, E.V., Arabuli, G.J., Avakov, G.S., Sagona, A. 2004. A survey of modern pollen and vegetation along an altitudinal transect in southern Georgia,

- Caucasus region, *Review of Palaeobotany and Palynology* 129, 229-250.
<https://doi.org/10.1016/j.revpalbo.2004.02.003>. Costamagna, L.G., Kustatscher, E., Scanu, G.G., Del Rio, M., Pittau, P., van Konijnenburg-van Cittert, J.H., 2018. A palaeoenvironmental reconstruction of the Middle Jurassic of Sardinia (Italy) based on integrated palaeobotanical, palynological and lithofacies data assessment. *Palaeobiodiversity and Palaeoenvironments* 98, 111–138.
- Court-Picon, M., Buttler, A., & De Beaulieu, J. 2006. Modern pollen/vegetation/land-use relationships in mountain environments: An example from the Champsaur valley (French Alps). *Vegetation History and Archaeobotany* 15, 151-168.
- Crepet, W.L., Nixon, K.C., Gandolfo, M.A., 2004. Fossil evidence and phylogeny: the age of major angiosperm clades based on mesofossil and macrofossil evidence from Cretaceous deposits. *American Journal of Botany* 91, 1666–1682.
- Cúneo, N.R., 1996. Permian phytogeography in Gondwana. *Palaeogeography, Palaeoclimatology, Palaeoecology* 125, 75–104.
- Currano, E.D., Jacobs, B.F., Pan, A.D., Tabor, N.J., 2011. Inferring ecological disturbance in the fossil record: a case study from the late Oligocene of Ethiopia. *Palaeogeography, Palaeoclimatology, Palaeoecology* 309, 242–252.
- Czier, Z., 2002. The floristical Affinity Method – a new comparative method. *Nymphaea, Folia naturae Bihariae* 29, 11–17.
- Czier, Z., 2016. European paleofloristic affinities of the Romanian Jurassic macroflora. *Nymphaea, Folia naturae Bihariae* 43, 13-66.
- Danise, S., Holland, S.M., 2017. Faunal response to sea-level and climate change in a short-lived seaway: Jurassic of the Western Interior, USA. *Palaeontology* 60, 213–232.
- da Silva-Caminha, S.A., Jaramillo, C.A., Absy, M.L., 2010. Neogene palynology of the Solimões basin, Brazilian Amazonia. *Palaeontographica Abteilung B* 284, 13–79.
- Davies, D., 1929. Correlation and palaeontology of the Coal Measures in east Glamorganshire. *Philosophical Transactions of the Royal Society of London, Series B* 217, 91–153.
- Davis, B.A.S, Zanon, M., Collins, P., Mauri, A., Bakker, J., Barboni, D., Barthelmes, A., Beaudouin, C., Bjune, A.E., Bozilova, E., Bradshaw, R.H.W., Brayshay, B.A., Brewer, S., Brugiapaglia, E., Bunting, J., Connor, S.E., de Beaulieu, J.-L., Edwards, K., Ejarque, A., Fall,

P., Florenzano, A., Fyfe, R., Galop, D., Giardini, M., Giesecke, T., Grant, M.J., Guiot, J., Jahns, S., Jankovská, V., Juggins, S., Kahrman, M., Karpińska-Kołaczek, M., Kołaczek, P., Köhl, N., Kuneš, P., Lapteva, E. G., Leroy, S.A.G., Leydet, M., López Sáez, J.A., Masi, A., Matthias, I., Mazier, F., Meltsov, V., Mercuri, A. M., Miras, Y., Mitchell, F.J.G., Morris, J. L., Naughton, F., Nielsen, A.B., Novenko, E., Odgaard, B., Ortu, E., Overballe-Petersen, M. V., Pardoe, H.S., Peglar, S.M., Pidek, I.A., Sadori, L., Seppä, H., Severova, E., Shaw, H., Świąta-Musznicka, J., Theuerkauf, M., Tonkov, S., Veski, S., van der Knaap, W.O., van Leeuwen, J.F.N., Woodbridge, J., Zimny, M., Kaplan, J.O., 2013. The European Modern Pollen Database (EMPD) project. *Vegetation History and Archaeobotany* 22, 521–530.

Davis, B.A.S., Chevalier, M., Sommer, P., Carter, V.A., Finsinger, W., Mauri, A., Phelps, L.N., Zanon, M., Abegglen, R., Åkesson, C.M., Alba-Sánchez, F., Anderson, R.S., Antipina, T.G., Atanassova, R.R., Beer, R., Belyanina, N.I., Blyakharchuk, T.A., Borisova, O.K., Bozilova, E., Bukreeva, G., Bunting, M.J., Clò, E., Colombaroli, D., Combourieu-Nebout, N., Desprat, S., Di Rita, F., Djamali, M., Edwards, K.J., Fall, P.L., Feurdean, A., Fletcher, W., Florenzano, A., Furlanetto, G., Gaceur, E., Galimov, A.T., Gałka, M., García-Moreiras, I., Giesecke, T., Grindean, R., Guido, M.A., Gvozdeva, I.G., Herzsuh, U., Hjelle, K.L., Ivanov, S., Jahns, S., Jankovska, V., Jiménez-Moreno, G., Karpińska-Kołaczek, M., Kitaba, I., Kołaczek, P., Lapteva, E.G., Latałowa, M., Lebreton, V., Leroy, S., Leydet, M., Lopatina, D.A., López-Sáez, J.A., Lotter, A.F., Magri, D., Marinova, E., Matthias, I., Mavridou, A., Mercuri, A.M., Mesa-Fernández, J.M., Mikishin, Y.A., Milecka, K., Montanari, C., Morales-Molino, C., Mrotzek, A., Muñoz Sobrino, C., Naidina, O.D., Nakagawa, T., Nielsen, A.B., Novenko, E.Y., Panajiotidis, S., Panova, N.K., Papadopoulou, M., Pardoe, H.S., Pędziszewska, A., Petrenko, T.I., Ramos-Román, M.J., Ravazzi, C., Rösch, M., Ryabogina, N., Sabariego Ruiz, S., Salonen, J.S., Sapelko, T.V., Schofield, J.E., Seppä, H., Shumilovskikh, L., Stivrins, N., Stojakowits, P., Svobodova Svitavska, H., Świąta-Musznicka, J., Tantau, I., Tinner, W., Tobolski, K., Tonkov, S., Tsakiridou, M., Valsecchi, V., Zanina, O.G., Zimny, M., 2020. The Eurasian Modern Pollen Database (EMPD), version 2. *Earth System Science Data* 12, 2423–2445.

Davis, J.C., 2002. *Statistics and Data Analysis in Geology* (3rd Edition). J. Wiley, London.

Davis, M.B., 1963. On the theory of pollen analysis. *American Journal of Science* 261, 897–912.

- Davydov, V.I., Crowley, J.L., Schmitz, M.D., Poletaev, V.I., 2010. High-precision U-Pb zircon age calibration of the global Carboniferous time scale and Milankovitch band cyclicality in the Donets Basin, eastern Ukraine. *Geochemistry, Geophysics, Geosystems* 11, 1–22
- De'ath, G., 1999. Principal curves: a new technique for indirect and direct gradient analysis. *Ecology* 80, 2237–2253.
- DiMichele, W.A., Aronson, R.B., 1992. The Pennsylvanian-Permian vegetational transition: a terrestrial analogue to the onshore-offshore hypothesis. *Evolution* 46, 807–824.
- DiMichele, W.A., DeMaris, P.J., 1987. Structure and dynamics of a Pennsylvanian-age *Lepidodendron* forest: colonizers of a disturbed swamp habitat in the Herrin (No.6) Coal of Illinois. *Palaios* 2, 146–157.
- DiMichele, W.A., Falcon-Lang, H.J., 2011. Pennsylvanian 'fossil forests' in growth position (T0 assemblages): origin, taphonomic bias and palaeoecological insights. *Journal of the Geological Society, London* 168, 585–605.
- DiMichele, W.A., Gastaldo, R.A., 2008. Plant paleoecology in deep time. *Annals of the Missouri Botanical Garden* 95, 144–198.
- DiMichele, W.A., Phillips, T.L., 1988. Paleoecology of the Middle Pennsylvanian-age Herrin Coal Swamp (Illinois) near a contemporaneous river system, the Walshville paleochannel: *Review of Palaeobotany and Palynology* 56, 151–176.
- DiMichele, W.A., Phillips, T.L., 1995. The response of hierarchically structured ecosystems to long-term climatic change: a case study using tropical peat swamps of Pennsylvanian age, in: Stanley, S.M., Knoll, A.J., Kennett, J.P. (eds), *Effects of past global change on life*. National Research Council, Washington DC (Studies in Geophysics), pp. 134–155.
- DiMichele, W. A. & Phillips, T. L. 1996. Climate change, plant extinction and vegetational recovery during Middle-Late Pennsylvanian transition: the case of tropical peat-forming environments in North America, in: Hart, M.B (ed.), *Biotic recovery from mass extinction events*. Geological Society, London (Special Publication 102), pp. 201–221.
- DiMichele, W.A., Phillips, T.L., McBrinn, G.E., 1991. Quantitative analysis and paleoecology of the Secor coal and roof-shale floras (Middle Pennsylvanian, Oklahoma). *Palaios* 6, 390–409.

- DiMichele, W.A., Eble, C.F., Chaney, D.S., 1996a. A drowned lycopsid forest above the Mahoning coal (Conemaugh Group, Upper Pennsylvanian) in eastern Ohio, U.S.A. *International Journal of Coal Geology* 31, 249–276.
- DiMichele, W.A., Pfefferkorn, H.W., Phillips, T.L., 1996b. Persistence of Late Carboniferous tropical vegetation during glacially driven climatic and sea-level fluctuations. *Palaeogeography, Palaeoclimatology, Palaeoecology* 125, 105–128.
- DiMichele, W.A., Chaney, D.S., Dixon, W.H., Nelson, W.J., Hook, R.W., 2000. An Early Permian coastal flora from the central basin platform of Gaines County, west Texas. *Palaios* 15, 524–534.
- DiMichele, W.A., Phillips, T.L., Nelson, W.J., 2002. Place vs. time and vegetational persistence: a comparison of four tropical mires from the Illinois Basin during the height of the Pennsylvanian Ice Age. *International Journal of Coal Geology* 50, 43–72.
- DiMichele, W.A., Falcon-Lang, H.J., Nelson, W.J., Elrick, S.D., Ames, P.R., 2007. Ecological gradients within a Pennsylvanian mire forest. *Geology* 35, 415–418.
- DiMichele, W.A., Kerp, H., Tabor, N.J., Looy, C.V., 2008. The so-called “Paleophytic–Mesophytic” transition in equatorial Pangea—Multiple biomes and vegetational tracking of climate change through geological time. *Palaeogeography, Palaeoclimatology, Palaeoecology* 268, 152–163.
- DiMichele, W.A., Bashforth, A.R., Eble, C.F., Nelson, W.J., 2016. A Middle Pennsylvanian (early Asturian) tropical dry forest, Atokan-Desmoinesian boundary, Illinois Basin, USA. *Spanish Journal of Palaeontology* 31, 41–84.
- DiMichele, W.A., Chaney, D.S., Lucas, S.G., Nelson, W.J., Elrick, S.D., Falcon-Lang, H.J., Kerp, H., 2017a. Middle and Late Pennsylvanian fossil floras from Socorro County, New Mexico, USA, in: Lucas, S.G., DiMichele, W.A., K. Krainer, K. (eds), Carboniferous-Permian transition in Socorro County, New Mexico. *New Mexico Museum of Natural History and Science Bulletin* 77, 25–100.
- DiMichele, W.A., Elrick, S.D., Nelson, W.J., 2017b. Vegetational zonation in a swamp forest, Middle Pennsylvanian, Illinois Basin, USA, indicates niche differentiation in a wetland plant community. *Palaeogeography, Palaeoclimatology, Palaeoecology* 487, 71–92.
- DiMichele, W.A., Hook, R.W., Kerp, H., Hotton, C.L., Looy, C.V., Chaney, D.S., 2019a. Lower Permian flora of the Sanzenbacher Ranch, Clay County, Texas, in: Krings, M.,

- Harper, C.J., Cúneo, N.R., Rothwell, G.W. (eds), *Transformative Paleobotany*, 2018. Academic Press, pp. 95–126.
- DiMichele, W.A., Hotton, C.L., Looy, C.V., Hook, R.W., 2019b. Paleoecological and paleoenvironmental interpretation of three successive macrofloras and palynofloras from the Kola Switch locality, lower Permian (Archer City Formation, Bowie Group) of Clay County, Texas, USA. *PalZ* 93, 423–451.
- DiMichele, W.A., Donovan, M.P., Schachat, S.R., Schneider, J.W., Lucas, S.G., 2021. Plant-fossil taphonomy, Late Pennsylvanian Kinney Quarry, New Mexico, USA, in: Lucas, S.G., DiMichele, W.A. Allen, B.D. (eds), 2021, Kinney Brick Quarry Lagerstätte. *New Mexico Museum of Natural History and Science Bulletin* 84, 125–152.
- Dimitrova, T.K., Cleal, C.J., 2007. Palynological evidence for late Westphalian–early Stephanian vegetation change in the Dobrudzha Coalfield, NE Bulgaria. *Geological Magazine* 144, 513–524.
- Dimitrova, T.Kh., Cleal, C.J., Thomas, B.A., 2005. Palynology of late Westphalian – early Stephanian coal-bearing deposits in the eastern South Wales Coalfield. *Geological Magazine* 142, 809–821.
- Dimitrova, T.K., Zodrow, E.L., Cleal, C.J., Thomas, B.A., 2010. Palynological evidence for Pennsylvanian (Late Carboniferous) vegetation change in the Sydney Coalfield, eastern Canada. *Geological Journal* 45, 388–396.
- Dimitrova, T.Kh., Cleal, C.J., Thomas, B.A., 2011. Palynological evidence for Pennsylvanian extra-basinal vegetation in Atlantic Canada. *Journal of the Geological Society, London* 168, 559–569.
- Dix, E., 1934. The sequence of floras in the Upper Carboniferous, with special reference to South Wales. *Transactions of the Royal Society of Edinburgh* 57, 789–838.
- Dixon, P., 2003. VEGAN, a package of R functions for community ecology. *Journal of Vegetation Science* 14, 927–930.
- Dominici, S., Conti, C., Benvenuti, M., 2008. Foraminifer communities and environmental change in marginal marine sequences (Pliocene, Tuscany, Italy). *Lethaia* 41, 447–460.
- Dornelas, M., Magurran, A.E., Buckland, S.T., Chao, A., Chazdon, R.L., Colwell, R.K., Curtis, T., Gaston, K.J., Gotelli, N.J., Kosnik, M.A., McGill, B., 2013. Quantifying temporal

change in biodiversity: challenges and opportunities. *Proceedings of the Royal Society B: Biological Sciences* 280 (1750), p. 20121931.

Dräger, K., 1964. Pflanzensoziologische Untersuchungen in den Mittleren Essener Schichten des nördlichen Ruhrgebietes. *Forschungsbericht des Landesamts Nordrhein-Westfalens* 1363, 1–295.

Drinnan, A.N., Crane, P.R., 1990. Cretaceous paleobotany and its bearing on the biogeography of austral angiosperms, in: Taylor, T.N., Taylor, E.L. (eds), *Antarctic paleobiology*. Springer, New York, NY, pp. 192–219.

Etchberger, R.C., Krausman, P.R., 1997. Evaluation of five methods for measuring desert vegetation. *Wildlife Society Bulletin* 25, 604–609.

Falcon-Lang, H.J., 2006. Latest mid-Pennsylvanian tree-fern forests in retrograding coastal plain deposits, Sydney Mines Formation, Nova Scotia, Canada. *Journal of the Geological Society, London* 163, 81–93.

Falcon-Lang, H.J., Bashforth, A.R., 2005. Morphology, anatomy, and upland ecology of large cordaitalean trees from the Middle Pennsylvanian of Newfoundland. *Review of Palaeobotany and Palynology* 135, 223–243.

Felde, V.A., Peglar, S.M., Bjune, A.E., Grytnes, J.-A., Birks, H.J.B., 2014. The relationship between vegetation composition, vegetation zones and modern pollen assemblages in Setesdal, southern Norway. *The Holocene* 24, 985–1001.

Felde, V.A., Peglar, S.M., Bjune, A.E., Grytnes, J.-A., Birks, H.J.B., 2016. Modern pollen-plant richness and diversity relationships exist along a vegetational gradient in southern Norway. *The Holocene* 26, 163–175.

Fernández-Lozano, J., Gutiérrez-Alonso, G., 2017. The Alejico Carboniferous Forest: A 3D-terrestrial and UAV-assisted photogrammetric model for geologic heritage preservation. *Geoheritage* 9, 163–173.

Festi, D., Kofler, W., Bucher, E., Carturan, L., Mair, V., Gabrielli, P., Oegg, K., 2015. A novel pollen-based method to detect seasonality in ice cores: a case study from the Ortles glacier, South Tyrol, Italy. *Journal of Glaciology* 61, 815–824.

Filipova-Marinova, M., Pavlov, D., Slavova, K., Chtere, K., 2021. 53. Deep water zone of the western Black Sea: the last 20 000 years of vegetation history. *Grana*. doi.10.1080/00173134.2020.1836022

- Finsinger, W., Heiri, O., Valsecchi, V., Tinner, W. and Lotter, A.F., 2007. Modern pollen assemblages as climate indicators in southern Europe. *Global Ecology and Biogeography* 16, 567–582. doi.10.1111/j.1466-8238.2007.00313.x
- Floyd, D.A., Anderson, J.E., 1987. A comparison of three methods for estimating plant cover. *Journal of Ecology* 75, 221–228.
- Foote, M., 1994. Temporal variation in extinction risk and temporal scaling of extinction metrics. *Paleobiology* 20, 424–444.
- Foote, M., 2000. Origination and extinction components of taxonomic diversity. *Paleobiology* 26, 74–102.
- Francis, J.E., 1984. The seasonal environment of the Purbeck (Upper Jurassic) fossil forests. *Palaeogeography, Palaeoclimatology, Palaeoecology* 48, 285–307.
- François, L., Utescher, T., Favre, E., Henrot, A.-J., Warnant, P., Micheels, A., Erdei, B., Suc, J.P., Cheddadi, R., Mosbrugger, V., 2011. Modelling Late Miocene vegetation in Europe: Results of the CARAIB model and comparison with palaeovegetation data. *Palaeogeography, Palaeoclimatology, Palaeoecology* 304, 359–378.
- Franz, M., Kustatscher, E., Heunisch, C., Niegel, S., Röhling, H.-G., 2019. The Schilfsandstein and its flora; arguments for a humid mid-Carnian episode? *Journal of the Geological Society* 176, 133–148.
- Friis, E.M., Crane, P.R., Pedersen, K.R., 2019. The Early Cretaceous mesofossil flora of Torres Vedras (NE of Forte da Forca), Portugal: A palaeofloristic analysis of an early angiosperm community. *Fossil Imprint* 75, 153–257.
- Fritz, W.J., 1980. Stumps transported and deposited upright by Mount St. Helens mud flows. *Geology* 8, 586–588.
- Fyfe, R.M., de Beaulieu, J.L., Binney, H., Bradshaw, R.H.W., Brewer, S., Le Flao, A., Finsinger, W., Gaillard, M.J. Giesecke, T., Gil-Romera, G., Grimm, E.C., Huntley, B., Kuneš, P., Kuhl, N., Leydet, M., Lotter, A. F., Tarasov, P. E., Tonkov, S., 2009. The European pollen database: past efforts and current activities. *Vegetation History and Archaeobotany* 18, 417–424
- Gaillard, M.-J., Birks, H.J.B., Emanuelsson, U., Karlsson, S., Lagerås, P., Olausson, D., 1994. Application of modern pollen/land-use relationships to the interpretation of pollen

- diagrams—reconstructions of land-use history in south Sweden, 3000-0 BP. *Review of Palaeobotany and Palynology* 82, 47-73. [https://doi.org/10.1016/0034-6667\(94\)90019-1](https://doi.org/10.1016/0034-6667(94)90019-1).
- Gaillard, M.J., Sugita, S., Bunting, M.J., Middleton, R., Broström, A., Caseldine, C., Giesecke, T., Hellman, S.E., Hicks, S., Hjelle, K., Langdon, C., 2008. The use of modelling and simulation approach in reconstructing past landscapes from fossil pollen data: a review and results from the POLLANDCAL network. *Vegetation History and Archaeobotany* 17, 419–443.
- Gastaldo, R.A., 1986a. An explanation for lycopod configuration, “Fossil Grove” Victoria Park, Glasgow: *Scottish Journal of Geology* 22, 77–83.
- Gastaldo, R.A., 1986b. Implications on the paleoecology of autochthonous lycopods in clastic sedimentary environments of the early Pennsylvanian of Alabama: *Palaeogeography, Palaeoclimatology, Palaeoecology* 53, 191–212.
- Gastaldo, R.A., 1988. A conspectus of phytotaphonomy, in: DiMichele, W.A., Wing, S.L. (eds), *Methods and applications of plant paleoecology: notes for a short course*. Paleontological Society Special Publication 3, 14–28.
- Gastaldo, R.A., Degges, C.W., 2007. Sedimentology and paleontology of a Carboniferous log jam. *International Journal of Coal Geology* 69, 103–118.
- Gastaldo, R.A., Pfefferkorn, H.W., DiMichele, W.A., 1995. Taphonomic and sedimentologic characterization of roof-shale floras. *Memoirs of the Geological Society of America* 185, 341–352.
- Gastaldo, R.A., Stevanović-Walls, I.M., Ware, W.N., Greb, S.F., 2004a. Community heterogeneity of Early Pennsylvanian peat mires. *Geology* 32, 693–696.
- Gastaldo, R.A., Stevanović-Walls, I.M., Ware, W.N., 2004. Erect forests are evidence for coseismic base-level changes in Pennsylvanian cyclothems of the Black Warrior Basin, U.S.A., in: Pashin, J.C., Gastaldo, R.A. (eds), *Sequence stratigraphy, paleoclimate, and tectonics of coal-bearing strata*. AAPG Studies in Geology 51, 219–238.
- Gastaldo, R. A., Purkyňová, E., Šimůnek, Z., Schmitz, M.D., 2009a. Ecological persistence in the Late Mississippian (Serpukhovian, Namurian A) megafloreal record of the Upper Silesian Basin, Czech Republic. *Palaios* 24, 336–350.

Gastaldo, R.A., Purkyðová, E., Šimùnek, Z., 2009b. Megafloreal perturbation across the Enna Marine Zone in the Upper Silesian Basin attests to late Mississippian (Serpukhovian) deglaciation and climate change. *Palaios* 24, 351–366.

Gauch, H.G., 1982. *Multivariate Analysis and Community Structure*. Cambridge University Press, Cambridge.

Gemmill, C.E., Johnson, K.R., 1997. Paleoecology of a late Paleocene (Tiffanian) megafloora from the northern Great Divide Basin, Wyoming. *Palaios* 12, 439–448.

Giesecke, T., Wolters, S., Jahns, S., Brande, A., 2012. Exploring Holocene changes in palynological richness in Northern Europe – did postglacial immigration matter? *PLoS One* 7 e51624. Doi:10.1371/journal.pone.0051624.

Giesecke, T., Davis, B., Brewer, S., Finsinger, W., Wolters, S., Blaauw, M., de Beaulieu, J.-L., Binney, H., Fyfe, R., Gaillard, M.-J., Gil-Romera, G., van der Knaap, W. O., Kuneš, P., Kühl, N., van Leeuwen, J.F.N., Leydet, M., Lotter, A.F., Ortu, E., Semmler, M., Bradshaw, R.H.W., 2014a. Towards mapping the late Quaternary vegetation change of Europe. *Vegetation History and Archaeobotany* 23, 75–86.

Giesecke, T., Ammann, B., Brande, A., 2014b. Palynological richness and evenness: insights from the taxa accumulation curve. *Vegetation History and Archaeobotany* 23, 217–228.

Giesecke, T., Wolters, S., van Leeuwen, J.F.N., van der Knaap, P.W.O., Leydet, M., Brewer, S., 2019. Postglacial change of the floristic diversity gradient in Europe. *Nature Communications* 10, 5422. <https://doi.org/10.1038/s41467-019-13233-y>.

Gilinsky, N.L., 1991. The pace of taxonomic evolution, in: Gilinsky, N.L., Signor, P.W. (eds), *Analytical paleobiology*. Paleontological Society, Knoxville (Short Courses in Paleontology), pp. 157–174.

Good, I.J., 1953. The population frequencies of species and the estimation of population parameters. *Biometrika* 40, 237–264.

Gordon, A.D., Birks, H.J.B., 1972, Numerical methods in Quaternary palaeoecology I. Zonation of pollen diagrams. *New Phytologist* 71, 961–979.

Goswami, S., Saxena, A., Singh, K.J., Chandra, S., Cleal, C.J., 2018. An appraisal of the Permian palaeobiodiversity and geology of the Ib-River Basin, eastern coastal area, India. *Journal of Asian Earth Sciences* 157, 283–301.

- Gotelli, N.J., Colwell, R.K., 2001. Quantifying biodiversity: procedures and pitfalls in the measurement and comparison of species richness. *Ecology Letters* 4, 379–391.
- Gothan, W., 1912. Paläobotanik, in: Korschelt, E., Linck, G., Schaum, K., Simon, H.T., Verworn, M., Teichmann, W. (eds), *Handwörterbuch der Naturwissenschaften*. G. Fischer, Jena, pp. 408–460.
- Gothan, W., 1915. Pflanzengeographisches aus der paläozoischen Flora mit Ausblicken auf die mesozoischen Folgefloren. *Englers Botanische Jahrbücher* 52, 221–271.
- Gothan, W., 1954. Pflanzengeographisches aus dem mitteleuropäischen Karbon. *Geologie* 3, 219–257.
- Greenacre, M., 2010. *Biplots in practice*. Fundación BBVA, Bilbao.
- Grey, M., Finkel, Z.V., 2011. The Joggins Fossil Cliffs UNESCO World Heritage site: a review of recent research. *Atlantic Geology* 47, 185–200.
- Grimm, E.C., Bradshaw, R.H.W., Brewer, S., Flantua, S., Giesecke, T., Lézine, A-M., Takahara, H., Williams, J.W., 2013. Databases and their application. *Encyclopedia of Quaternary Science*, 3, 831–838.
- Guex, J., 1977. Une nouvelle méthode d'analyse biochronologique. *Bulletin de Géologie de Lausanne* 224, 309–322.
- Guex, J., 1991. *Biochronological correlations*. Springer Verlag, Berlin.
- Hamad, A.A., Kerp, H., Vörding, B., Bandel, K., 2008. A late Permian flora with *Dicroidium* from the Dead Sea region, Jordan. *Review of Palaeobotany and Palynology* 149, 85–130.
- Hammer, Ø., Harper, D., 2006. *Paleontological data analysis*. Blackwell, Oxford.
- Hammer, Ø., Harper, D.A.T., Ryan, P.D., 2001. PAST: Paleontological Statistics Software Package for Education and Data Analysis. *Palaeontologia Electronica* 4(1), 9 pp.
- Harland, W.B., (ed.) 1967. *The Fossil Record: a symposium with documentation*. Geological Society, London.
- Harper, D.A.T. (ed.), 1999. *Numerical palaeobiology*. Wiley, London.
- Hayworth, A., 1985. *Submerged forests: a dendrochronological and palynological investigation*. Ph.D. Thesis. University of Aberystwyth.

- Heyworth, A., 1986. Submerged forests as sea-level indicators, in: van de Plassche, O. (eds), *Sea-level research*. Springer, Dordrecht. doi.org/10.1007/978-94-009-4215-8_13
- Hicks, S., Tinsley, H., Pardoe, H., Cundill, P., 1999. *European Pollen Monitoring Programme: Supplement to the Guidelines*. Oulu Univ. Press, Oulu.
- Hicks, S. Goslar, T., van der Borg, K., 2004. A near annual record of recent tree-line dynamics from northern Finland. *Acta Palaeobotanica* 44, 299–316.
- Hill, M.O., 1973a. Diversity and evenness: a unifying notation and its consequences. *Ecology* 54, 427–432.
- Hill, M.O., 1973b. Reciprocal Averaging: An eigenvector method of ordination. *Journal of Ecology* 61, 237–249.
- Hill, M.O., 1979. *TWINSPAN: A Fortran program for arranging multivariate data in an ordered two-way table by classification of individual and attributes*. Cornell University Press New York.
- Hill, M.O. Gauch, H.G., 1980. Detrended correspondence analysis: an improved ordination technique. *Vegetatio*, 42, 47–58.
- Hilton, J., Cleal, C.J., 2007. The relationship between Euramerican and Cathaysian tropical floras in the Late Palaeozoic: Palaeobiogeographical and palaeogeographical implications. *Earth–Science Reviews* 85, 85–116.
- Hinz, J., Smith, I., Pfretzschner, H.-U., Wings, O., Sun, G., 2010. A high-resolution three-dimensional reconstruction of a fossil forest (Upper Jurassic Shishugou Formation, Junggar Basin, Northwest China). *Palaeobiodiversity and Palaeoenvironments* 90, 215–240.
- Hjelle, K.L., 1999. Modern pollen assemblages from mown and grazed vegetation types in western Norway. *Review of Palaeobotany and Palynology* 107, 55–81.
- Hoffman, A., Kitchell, J.A., 1984. Evolution in a pelagic planktic system: a paleobiologic test of models of multispecies evolution. *Paleobiology* 10, 9–33.
- Hohn, M.E., 2018. Binary coefficients redux, in: Sagar, B.S.D., Cheng Q., Agterberg, F. (eds), *Handbook of mathematical geosciences*. Springer, Cham, pp. 143–160.
- Howarth, R.J., 1998. Improved estimators of uncertainty in proportions, point-counting, and pass-fail test results. *American Journal of Science* 298, 549–607.

Hoyle, T.M., Leroy, S.A.G., López-Merino, L., Richards, K., 2018. Using fluorescence microscopy to discern in situ from reworked palynomorphs in dynamic depositional environments — an example from sediments of the late Miocene to early Pleistocene Caspian Sea. *Review of Palaeobotany and Palynology* 256, 32–49.

Hoyle, T.M., Leroy, S.A.G., López-Merino, L., Miggins, D., Koppers, A., 2020. Vegetation succession and climate change across the Plio-Pleistocene transition in Eastern Azerbaijan, central Eurasia (2.77–2.45 Ma). *Palaeogeography, Palaeoclimatology, Palaeoecology* 538, 109386.

Humphries, C.J., Parenti, L.R., 1999. *Cladistic biogeography*. Oxford University Press, Oxford.

Hutcheson, K., 1970. A test for comparing diversities based on the Shannon formula. *Journal of Theoretical Biology* 29, 151–154

Iannuzzi, R., Rösler, O., 2000. Floristic migration in South America during the Carboniferous: Phytogeographic and biostratigraphic consequences. *Palaeogeography Palaeoclimatology Palaeoecology* 161, 71–94.

Iwaniw, E., 1985. Floral palaeoecology of debris flow dominated valley-fill deposits in the Lower Cantabrian of NE León, NW Spain. *Anais da Faculdade de Ciências de Porto, Suppl.* 64, 283–357.

Jaramillo, C., Ochoa, D., Contreras, L., Pagani, M., Carvajal-Ortiz, H., Pratt, L.M., Krishnan, S., Cardona, A., Romero, M., Quiroz, L., Rodriguez, G., et al., 2010. Effects of rapid global warming at the Paleocene-Eocene boundary on neotropical vegetation. *Science* 330, 957–961.

Jongman, R.H.G., ter Braak, C.J.F., van Tongeren, O.F.R., 1995. *Data analysis in community and landscape analysis*, 2nd edition. Cambridge University Press, Cambridge.

Jost, L., 2006. Entropy and diversity. *Oikos* 113, 363–375.

Kachniasz, K.E., da Silva-Caminha, S.A.F., 2017. Palinoestratigrafia da Formação Solimões: Comparação entre bioestratigrafia tradicional e o método de associações unitárias. *Revista Brasileira de Paleontologia* 19, 481–490.

Kaiser, K., Oldorff, S., Breitbach, C., Kappler, C., Theuerkauf, M., Scharnweber, T., Schult, M., Küster, M., Engelhardt, C., Heinrich, I., Hupfer, M., Schwalbe, G., Kirsche, T., Bens, O., 2018. A submerged pine forest from the early Holocene in the Mecklenburg Lake

- District, northern Germany. *Boreas* 47, 910–925. Kędzior, A., Popa, M.E., 2013. Sedimentology of the Early Jurassic terrestrial Steierdorf Formation in Anina, Colonia Cehă Quarry, South Carpathians, Romania. *Acta Geologica Polonica* 63, 175–199.
- Keen, H. F., Gosling, W.D., Hanke, F., Miller, C.S., Montoya, E., Valencia, B.G., Williams, J.J., 2014. A statistical sub-sampling tool for extracting vegetation community and diversity information from pollen assemblage data. *Palaeogeography, Palaeoclimatology, Palaeoecology* 408, 48–59.
- Kerp, H., Fichter, J., 1985. Die Makroflora des saarpfälzischen Rotliegenden (? Ober-Karbon-Unter-Perm; SW-Deutschland). *Mainzer Geowissenschaftliche Mitteilungen* 14, 159–286.
- King, S.C., Cleal, C.J., Hilton, J., 2011. Common ground between two British Pennsylvanian wetland floras: using large, first-hand datasets to assess utility of historical museum collections. *Palaeogeography, Palaeoclimatology, Palaeoecology* 308, 405–417.
- Koleff, P., Gaston, K.J., Lennon, J.J., 2003. Measuring beta diversity for presence-absence data. *Journal of Animal Ecology* 72, 367–382.
- Koll, R., DiMichele, W.A., 2021. Dominance-diversity architecture of a mixed hygromorphic-to-xeromorphic flora from a botanically rich locality in western equatorial Pangea (lower Permian Emily Irish site, Texas, USA). *Palaeogeography, Palaeoclimatology, Palaeoecology*.
- Kovach, W.L., 1993. Multivariate techniques for biostratigraphical correlation. *Journal of the Geological Society* 150, 697–705.
- Kovach, W.L., 1999. MVSP—A Multivariate Statistical Package for Windows, ver. 3.1. Kovach Computing Services, Pentraeth, Wales, UK.
- Krasilov, V.A., 2003. *Terrestrial palaeoecology and global change*. Pensoft, Sofia.
- Kruskal, J.B., 1964. Multidimensional scaling by optimizing goodness of fit to a nonmetric hypothesis. *Psychometrika* 29, 1–27.
- Lamboey, W.L., Lesnikowska, A., 1988. Some statistical methods useful in the analysis of plant paleoecological data. *Palaios* 3, 86–94.
- Lande, R., 1996. Statistics and partitioning of species diversity, and similarity among multiple communities. *Oikos* 76, 5–13.

- Legendre, P., Legendre, L., 1998. Numerical ecology (2nd edition). Elsevier, Amsterdam.
- Lenz, O., Wilde, V., Riegel, W. 2007. Recolonization of a Middle Eocene volcanic site: quantitative palynology of the initial phase of the maar lake of Messel (Germany). *Review of Palaeobotany and Palynology* 145, 217-242. <https://doi.org/10.1016/j.revpalbo.2006.11.001>.
- Leroy, S.A.G., Roiron, P., 1996. Final Pliocene macro and micro floras of Bernasso (Escandorgue, France). *Review of Palaeobotany and Palynology* 94, 295–328.
- Leroy, S., Seret G., 1992. Duration and vegetation dynamic of the Nogaret Interglacial (1.9 Ma, S. France). Tentative correlation with stage 75, in: Kukla, G., Went, E. (eds), *Start of a Glacial. Proceedings of the NATO Advanced Research Workshop on Correlating Records of the Past* (Cabo Blanco, Mallorca, Spain, April 4–10, 1991). Springer Verlag, Heidelberg (NATO ASI Series I, 3), pp. 113–125.
- Leroy, S.A.G., Boyraz, S., Gürbüz, A., 2009. High-resolution palynological analysis in Lake Sapanca as a tool to detect earthquakes on the North Anatolian Fault. *Quaternary Science Reviews* 28, 2616–2632.
- Liang, M.M., Bruch, A., Collinson, M., Mosbrugger, V., Li, C.S., Sun, Q.G., Hilton, J., 2003. Testing the climatic estimates from different palaeobotanical methods: an example from the Middle Miocene Shanwang flora of China. *Palaeogeography, Palaeoclimatology, Palaeoecology* 198, 279–301.
- Libertín, M., Opluštil, S., Pšenička, J., Bek, J., Sýkorová, I., Daškova, J., 2009a. Middle Pennsylvanian pioneer plant assemblage buried in situ by volcanic ash-fall, central Bohemia, Czech Republic. *Review of Palaeobotany and Palynology* 155, 204–233.
- Libertín, M., Daškova, J., Opluštil, S., Bek, J., Edress, N., 2009b. A palaeoecological model for a vegetated early Westphalian intramontane valley (Intra-Sudetic Basin, Czech Republic). *Review of Palaeobotany and Palynology* 155, 175–203.
- Lidgard, S., Crane, P.R., 1990. Angiosperm diversification and Cretaceous floristic trends: a comparison of palynofloras and leaf macrofloras. *Palaeobiology* 16, 77–93.
- Lisitsyna, O.V., Giesecke, T., Hicks, S., 2011. Exploring pollen percentage threshold values as an indication for the regional presence of major European trees. *Review of Palaeobotany and Palynology* 166, 311–324.

Looy, C.V., Hotton, C.L., 2014. Spatiotemporal relationships among late Pennsylvanian plant assemblages: palynological evidence from the Markley Formation, West Texas, USA. *Review of Palaeobotany and Palynology* 211, 10-27.

López-Merino, L., Leroy, S.A., Eshel, A., Epshtein, V., Belmaker, R., Bookman, R., 2016. Using palynology to re-assess the Dead Sea laminated sediments—indeed varves? *Quaternary Science Reviews* 140, 49–66.

MacDonald, G.M., 2013. Plant macrofossil methods and studies. Megafossils, in: Elias, S.A., Mock, C.J. (eds), *Encyclopedia of Quaternary Science (Second Edition)*. Elsevier, Amsterdam, pp. 621–629.

Magri, D., Parra, I., 2002. Late Quaternary western Mediterranean pollen records and African winds. *Earth and Planetary Science Letters* 200, 401–408.

Magurran, A.E., 2004. *Measuring biological diversity*. Wiley-Blackwell, Oxford.

Maher, L.J., 1972. Nomograms for computing 0.95 confidence limits of pollen data. *Review of Palaeobotany and Palynology* 13, 85–93.

Mai, H.-D., 1995. *Tertiäre Vegetationsgeschichte Europas: Methoden und Ergebnisse*. Gustav Fischer Verlag, Jena.

Mamay, S.H. Bateman, R.M., 1991. *Archaeocalamites lazarii*, sp. nov: the range of Archaeocalamitaceae extended from the lowermost Pennsylvanian to the mid-Lower Permian. *American Journal of Botany* 78, 489–496.

Manchester, S.R., Tiffney, B.H., 2001. Integration of paleobotanical and neobotanical data in the assessment of phytogeographic history of holarctic angiosperm clades. *International Journal of Plant Sciences* 162, S19–S27.

Mander, L., Kürschner, W.M., McElwain, J.C., 2010. An explanation for conflicting records of Triassic–Jurassic plant diversity. *Proceedings of the National Academy of Sciences* 107, 15351–15356.

Mander, L., Kürschner, W.M., McElwain, J.C., 2013. Palynostratigraphy and vegetation history of the Triassic–Jurassic transition in East Greenland. *Journal of the Geological Society* 170, 37–46.

Marquer, L., Gaillard, M.-J., Sugita, S., Trondman, A.-K., Mazier, F., Nielsen, A.B., Fyfe, R.M., Odgaard, B.V. Alenius, T., Birks, H.J.B., Bjune, A.E., Christiansen, J., Dodson, J.,

- Edwards, K.J., Giesecke, T., Herzsuh, U., Kangur, M., Lorenz, S. Poska, A. Schult, M., Seppä, H., 2014. Holocene changes in vegetation composition in northern Europe: why quantitative pollen-based vegetation reconstructions matter. *Quaternary Science Reviews* 90, 199–216.
- Marshall, C.R., 1990. Confidence intervals on stratigraphic ranges. *Paleobiology* 16, 1–10.
- Marshall, C.R., 1997. Confidence intervals on stratigraphic ranges with nonrandom distributions of fossil horizons. *Paleobiology* 23, 165–173.
- Mauquoy, D., Hughes, P.D.M., Van Geel, B., 2010. A protocol for plant macrofossil analysis of peat deposits. *Mires and Peat* 7, 1–5.
- McElwain, J.C., Popa, M.E., Hesselbo, S.P., Haworth, M., Surlyk, F., 2007. Macroecological responses of terrestrial vegetation to climatic and atmospheric change across the Triassic/Jurassic boundary in East Greenland. *Paleobiology* 33, 547–573.
- McElwain, J.C., Wagner, P.J., Hesselbo, P.J., 2009. Fossil plant relative abundances indicate sudden loss of Late Triassic biodiversity in Greenland. *Science* 324, 1554–1556.
- Mertens, K.N., Price, A.M., Pospelova, V., 2012. Determining the absolute abundance of dinoflagellate cysts in recent marine sediments II: further tests of the *Lycopodium* marker-grain method. *Review of Palaeobotany and Palynology* 184, 74–81.
- Martinetto, E., Vassio, E., 2010. Reconstructing “Plant Community Scenarios” by means of palaeocarpological data from the CENOFITA database, with an example from the Ca’ Viettone site (Pliocene, Northern Italy). *Quaternary International* 225, 25–36.
- Matthias, I., Semmler, M.S.S., Giesecke, T., 2015. Pollen diversity captures landscape structure and diversity. *Journal of Ecology* 103, 880–890.
- Meyen, S.V., 1987. *Fundamentals of Palaeobotany*. Chapman and Hall, London and New York.
- Minchin, P.R., 1987. An evaluation of the relative robustness of techniques for ecological ordination. *Vegetatio* 69, 89–107.
- Mosbrugger, V., Utescher, T., 1997. The coexistence approach—a method for quantitative reconstructions of Tertiary terrestrial palaeoclimate data using plant fossils. *Palaeogeography, Palaeoclimatology, Palaeoecology* 134, 61–86.

- Mosbrugger, V., Gee, C.T., Belz, G., Ashraf, A.R., 1994. Three-dimensional reconstruction of an in-situ Miocene peat forest from the Lower Rhine Embayment, northwestern Germany—new methods in palaeovegetation analysis. *Palaeogeography, Palaeoclimatology, Palaeoecology* 110, 295–317.
- Mosseichik, Y.V., 2010. Rannekamennougol'nie fitochorii Severnoi Evrazii: struktura, Sistema, evolutsia. *Lethaia rossica* 2010(2), 1–32.
- Mosseichik, Y.V., 2012. Ranne- i srednekkamennougol'nie flori Kitaya i Yugo-Vostochnoi Azii: proiskhozhdenie, mesto v sisteme fitokhoorii i evolutsiya. *Lethaia rossica* 2012(7), 1–24.
- Mosseichik, Y.V., 2014. Rannekamennougol'nie flori Gondvani: sostav, evolutsuia i geografitseskoe raznoobrazie. *Lethaia rossica* 2014(9), 1–20.
- Mosseichik, Y.V., 2019. Flori perekhoda ot devona k karboni: sostav, stratigrafiya i fitogeografia. *Lethaia rossica* 2019(18), 1–15.
- Mouillot, D., Lepretre, A., 2000. Introduction of relative abundance distribution (RAD) indices, estimated from the rank-frequency diagrams (RFD), to assess changes in community diversity. *Environmental Monitoring and Assessment* 63, 279–295.
- Nagendra, H., 2002. Opposite trends in response for the Shannon and Simpson indices of landscape diversity. *Applied Geography* 22, 175–186.
- Nayling, N., Manning, S., Kromer, B., Ramsey, C.B., Pearson, C.L. Talamo, S., 2007. Dating the submerged forests: dendrochronology and radiocarbon 'wiggle-match' dating, in: Bell, M. (ed.), *Prehistoric coastal communities: the archaeology of Western Britain 6000–3000 cal BC*. CBA Research Report 149, 90-102.
- Neumann, F.H. Bamford, M.K., 2015. Shaping of modern southern African biomes: Neogene vegetation and climate changes. *Transactions of the Royal Society of South Africa* 70, 195–212.
- Niklas, K.J., 2006. Phyletic perspective on the allometry of plant biomass-partitioning patterns and functionally equivalent organ-categories. *New Phytologist* 171, 27–40.
- Niklas, K.J., Tiffney, B.H., Knoll, A.H., 1980. Apparent changes in the diversity of fossil plants. *Evolutionary Biology* 12, 1–89.

- Niklas, K.J., Tiffney, B.H., Knoll, A.H., 1983. Patterns in vascular plant diversification. *Nature* 303, 614–616.
- Niklas, K.J., Tiffney, B.H., Knoll, A.H., 1985. Patterns in vascular plant diversification: an analysis at the species level, in Valentine, J.W (ed.), *Phanerozoic diversity patterns: profiles in macroevolution*. Princeton University Press, pp. 97–128.
- Nowak, H., Schneebeli-Hermann, E., Kustatscher, E., 2019. A non-extinction event for plants during the end-Permian mass extinction. *Nature Communications*, doi.org/10.1038/s41467-018-07945-w
- Nowak, H., V erand, C., Kustatscher, E., 2020. Palaeophytogeographical patterns across the Permian–Triassic boundary. – *Frontiers in Earth Science, section Paleontology, Frontiers in Earth Sciences* 10.3389/feart.2020.613350
- Odgaard, B.V., 1999. Fossil pollen as a record of past biodiversity. *Journal of Biogeography* 26, 7–17.
- Odgaard, B.V., 2001. Palaeoecological perspectives on pattern and process in plant diversity and distribution adjustments: A comment on recent developments. *Diversity and Distributions* 7, 197–201.
- Odgaard, B.V., 2013. Reconstructing past biodiversity development, in: Elias, S., Mock, C.J. (eds), *The Encyclopedia of Quaternary Science* (2 ed.). Elsevier, Amsterdam, pp. 816–820.
- Opluřtil, S., Pěenička, J., Libert n, M., řim nek, Z., 2007. Vegetation patterns of Westphalian and lower Stephanian mire assemblages preserved in tuff beds of the continental basins of Czech Republic. *Review of Palaeobotany and Palynology* 143, 107–154.
- Opluřtil, S., Pěenička, J., Libert n, M., Bashforth, A.R., řim nek, Z., Dr bkov , J., Dařkov , J., 2009a. A Middle Pennsylvanian (Bolsovian) peat-forming forest preserved in situ in volcanic ash of the Whetstone Horizon in the Radnice Basin, Czech Republic. *Review of Palaeobotany and Palynology* 155, 234–274.
- Opluřtil, S., Pěenička, J., Libert n, M., Bek, J., Dařkov , J., řim nek, Z., Dr bkov , J., 2009b. Composition and structure of an in situ Middle Pennsylvanian peat-forming plant assemblage in volcanic ash, Radnice Basin (Czech Republic). *Palaios* 24, 726–746.
- Opluřtil, S., Pěenička, J., Bek, J., Wang, J., Feng, Z., Libertin, M., řim nek, Z., Bureř, J., Drabkova, J., 2014. T 0 peat-forming plant assemblage preserved in growth position by

volcanic ash-fall: A case study from the Middle Pennsylvanian of the Czech Republic. *Bulletin of Geosciences* 89, 773–818.

Opluštil, S., Šimůnek, Z., Pšenička, J., Bek, J., Libertín, M., 2017. A 25 million year macrofloral record (Carboniferous–Permian) in the Czech part of the Intra-Sudetic Basin: biostratigraphy, plant diversity and vegetation patterns. *Review of Palaeobotany and Palynology* 244, 241–307.

Opluštil, S., Wang, J., Pfefferkorn, H.W., Pšenička, J., Bek, J., Libertín, M., Wang, J., Wan, M., He, X., Yan, M., Wei, H., 2020. T⁰ Early Permian coal-forest preserved in situ in volcanic ash bed in the Wuda Coalfield, Inner Mongolia, China. *Review of Palaeobotany and Palynology*, p.104347. doi.org/10.1016/j.revpalbo.2020.104347.

Opluštil, S., Cleal, C.J., Wang Jun, Wan Mingli, 2021. Carboniferous macrofloral biostratigraphy – an overview. Geological Society, London (Special Publications, 512), doi.org/10.1144/SP512-2020-97

Oshurkova, M.V., 1967. Paleofitologicheskoe obosnovanie stratigrafii verkhnikh svit kemennougol'nikh otlozhenii Karagandinskogo basseina. *Vsesyuenii Nauchno-Issledovatel'skii Geologicheskii, Institut (VSEGEI), Leningrad.*

Oxanen, J., Minchin, P.R., 1997. Instability of ordination results under changes in input data order: explanations and remedies. *Journal of Vegetation Science* 8, 447–454.

Palmer, M.W., 2004. *Ordination methods: an overview.* University of Toronto Press, Toronto, Canada.

Pardoe, H.S., 1996. Micro-scale patterns of modern pollen deposition within three alpine plant communities. *New Phytologist* 132, 327–341.

Pardoe, H.S., 2006. Surface pollen deposition on glacier forelands in southern Norway I: local patterns of representation and source area at Storbreen, Jotunheimen. *The Holocene* 16, 1149–1161.

Pardoe, H.S., 2014. Surface pollen deposition on glacier forelands in southern Norway II: Spatial patterns across the Jotunheimen-Jostedalsbreen region. *The Holocene* 24, 1675–1685.

Pardoe, H.S., 2021. Identifying floristic diversity from the pollen record in open environments; considerations and limitations. *Palaeogeography, Palaeoclimatology, Palaeoecology* p.110560.

Pardoe, H.S., Giesecke, T., van der Knaap, W.O., Svitavská-Svobodová, H., Kvavadze, E.V., Panajiotidis, S., Gerasimidis, A., Pidek, I.A., Zimny, M., Świeta-Musznicka, J., Latalowa, M., Noryskiewicz, A.M., Bozilova, E., Tonkov, S., Filipova-Marinova, M.V., van Leeuwen, J.F.N., Kalniņa, L., 2010. Comparing pollen spectra from modified Tauber traps and moss samples: examples from a selection of woodlands across Europe. *Vegetation history and Archaeobotany* 19, 271–283.

Pearson, K., 1901. On lines and planes of closest fit to systems of points in space. *Philosophical Magazine, Series 6* 2, 59–572.

Pedhazur, E.J., Schmelkin, L.P., 1991. *Measurement, design, and analysis: An integrated approach*. Lawrence Erlbaum, Hillsdale, NJ.

Peet, R.K., 1974. The measurement of species diversity. *Annual Review of Ecology and Systematics* 5, 285–307.

Pfefferkorn, H.W., Mustafa, H., Hass, H., 1975. Quantitative Charakterisierung oberkarboner Abdruckfloren. *Neues Jahrbuch für Geologie und Paläontologie, Abhandlungen* 150, 253–269.

Pidek, I.A., Poska, A., 2013. Pollen based quantitative climate reconstructions from the Middle Pleistocene sequences in Łuków and Zdany (E Poland): Species and modern analogues based approach. *Review of Palaeobotany and Palynology* 192, 65–78.

Popa, M.E., 2011. Field and laboratory techniques in plant compressions: an integrated approach. *Acta Palaeontologica Romaniae* 7, 279–283.

Popova, S., Utescher, T., Gromyko, D., Mosbrugger, V., François, L., 2019. Dynamics and evolution of Turgai-type vegetation in western Siberia throughout the Early Oligocene to earliest Miocene—A study based on diversity of plant functional types in the carpological record. *Journal of Systematics and Evolution* 57, 129–141.

Procter, C., 1994. Carboniferous fossil plant assemblages and palaeoecology at the Writhlington Geological Nature Reserve. *Proceedings of the Geologists' Association* 105, 277–286.

Pryor, J.S., 1996. The Upper Pennsylvanian Duquesne Coal of Ohio (USA): Evidence for a dynamic peat accumulating swamp community. *International Journal Coal Geology* 29, 119–146.

- Pryor, J.S., Gastaldo, R.A., 2000. Paleocological analysis of two Early Pennsylvanian mineral-substrate wetlands. *Palaios* 15, 3–13.
- Quattrocchio, M.E., Martínez, M.A., Hinojosa, L.F. Jaramillo, C., 2013. Quantitative analysis of Cenozoic palynofloras from Patagonia, southern South America. *Palynology* 37, 246–258.
- Raup, D.M., 1972. Taxonomic diversity during the Phanerozoic. *Science* 177, 1065–1071.
- Raup, D.M., 1975. Taxonomic survivorship curves and Van Valen's Law. *Paleobiology* 1, 82–96.
- Raup, D.M., 1978. Cohort analysis of generic survivorship. *Paleobiology* 4, 1–15.
- Raup, D., Crick, R.E., 1979. Measurement of faunal similarity in paleontology. *Journal of Paleontology* 53, 1213–1227.
- Raymond, A., 1985. Floral diversity, phytogeography, and climatic amelioration during the Early Carboniferous (Dinantian). *Paleobiology* 11, 293–309.
- Raymond, A., 1987. Paleogeographic distribution of Early Devonian plant traits. *Palaios* 2, 113–132.
- Raymond, A., Metz, C., 1995. Laurasian land-plant diversity during the Silurian and Devonian: mass extinction, sampling bias, or both? *Paleobiology* 21, 74–91.
- Raymond, A., Parker, W.C., Barrett, S.F., 1985a. Early Devonian phytogeography, in Tiffney, H. (ed.), *Geological factors and the evolution of plants*. Yale University Press, New Haven, pp. 129–167.
- Raymond, A., Parker, W.C., Parrish, J.T., 1985b. Phytogeography and paleoclimate of the Early Carboniferous, in Tiffney, H. (ed.), *Geological factors and the evolution of plants*. Yale University Press, New Haven, pp. 169–222.
- Raymond, A., Gensel, P., Stein, W.E., 2006. Phytogeography of Late Silurian macrofloras. *Review of Palaeobotany and Palynology* 142, 165–192.
- Rees, P.M., 2002. Land-plant diversity and the end-Permian mass extinction. *Geology* 30, 827–830.
- Rees, P.M., Ziegler, A.M., 1996. Jurassic floral gradients and climates. *The Paleontological Society Special Publications* 8, 319–319.

- Rees, P.M., Ziegler, A.M., 1999. Palaeobotanical databases and palaeoclimatic signals, in: Jones, T.P., Rowe, N.P. (eds), *Fossil plants and spores. Modern techniques*. Geological Society, London, pp. 240–244.
- Rees, P.M., Ziegler, A.M., Valdes, P.J., Huber, B.T., MacLeod, K.G., Wing, S.L., 2000. Jurassic phytogeography and climates: new data and model comparisons, in: Huber, B.T., MacLeod, K.G., Wing, S.L. (eds), *Warm climates in earth history*. Cambridge University Press, Cambridge, pp. 297–318.
- Rees, P.M., Ziegler, A.M., Gibbs, M.T., Kutzbach, J.E., Behling, P.J., Rowley, D.B., 2002. Permian phytogeographic patterns and climate data/model comparisons. *The Journal of Geology* 110, 1–31.
- Riding, J.B., Chaloner, W.G., Farley, M.B., Rich, F.J., Strother, P.K., 2016. A biography and obituary of Alfred Traverse (1925–2015). *Palynology* 40, iii–xi.
- Roberts, R., Appleton, P., Buttler, C., 2016. Root and branch reform for Brymbo fossil. *Earth Heritage Magazine* 45, 7–9.
- Rojas, A., Calatayud, J., Kowalewski, M., Neuman, M., Rosvall, M., 2019. Low-latitude origins of the Four Phanerozoic Evolutionary Faunas. *bioRxiv* 866186, <https://doi.org/10.1101/866186>.
- Rowley, D.B., Raymond, A., Parrish, J.T., Lottes, A.L., Scotese, C.R., Ziegler, A.M., 1985. Carboniferous paleogeographic, paleogeographic, and paleoclimatic reconstructions. *International Journal of Coal Geology* 5, 7–42.
- Rull, V., 2000. Ecostratigraphic study of Paleocene and Early Eocene palynological cyclicity in northern South America. *Palaios* 15, 14–24.
- Ruokolainen, L., Salo, K., 2006. Differences in performance of four ordination methods on a complex vegetation dataset. *Annales Botanici Fennici* 33, 269–275.
- Sala-Pérez M., Lattuada M., Flecker R., Anesio A., Leroy S.A.G., 2020. Dinoflagellate cyst assemblages as indicators of environmental conditions and shipping activities in coastal areas of the Black and Caspian Seas. *Regional Studies in Marine Science* 38, 101472.
- Santini, L., Belmaker, J., Costello, M.J., Pereira, H.M., Rossberg, A.G., Schipper, A.M., Ceaușu, S., Dornelas, M., Hilbers, J.P., Hortal, J., Huijbregts, M.A., 2017. Assessing the suitability of diversity metrics to detect biodiversity change. *Biological Conservation* 213, 341–350.

- Saxena, A., Singh, K.J., Cleal, C.J., Chandra, S., Goswami, S., Shabbar, H., 2019. Development of the *Glossopteris* flora and its end Permian demise in the Tatapani–Ramkola Coalfield, Son–Mahanadi Basin, India. *Geological Journal* 54, 2472–2494.
- Saxena, A., Murthy, S., Singh, K.J., 2018b. Floral diversity and environment during the early Permian: a case study from Jarangdih Colliery, East Bokaro Coalfield, Damodar Basin, India. *Palaeobiodiversity and Palaeoenvironments*, DOI: 10.1007/s12549-019-00375-6.
- Schneebeil-Hermann, E., Hochuli, P.A., Bucher, H., 2017. Palynofloral associations before and after the Permian–Triassic mass extinction, Kap Stosch, East Greenland. *Global and Planetary Change* 155, 178–195.
- Scott, A.C., 1978. Sedimentological and ecological control of Westphalian B plant assemblages from West Yorkshire. *Proceedings of the Yorkshire Geological Society* 41, 461–508.
- Scott, A.C., 1979. The ecology of Coal Measure floras from northern Britain. *Proceedings of the Geologists' Association* 90, 97–116.
- Scott, A.C., 1984. Studies on the sedimentology, palaeontology and palaeoecology of the Middle Coal Measures (Westphalian B, Upper Carboniferous) at Swillington, Yorkshire. Part 1. Introduction. *Transactions of the Leeds Geological Association* 10, 1–16.
- Sepkoski, J.J., 1981. A factor analytic description of the Phanerozoic marine fossil record. *Paleobiology* 7, 36–53.
- Seppä, H., Bennett, K.D., 2003. Quaternary pollen analysis: recent progress in palaeoecology and palaeoclimatology. *Progress in Physical Geography* 27, 548–579.
- Sherlock, S.J., 2019. A submerged forest on the foreshore at Redcar, NZ 60302570, Yorkshire. *Archaeological Journal* 91, 162–166.
- Shi, G.R., 1993a. A comparative study of 39 binary similarity coefficients. *Memoir, Association of Australasian Palaeontologists* 15, 329–341.
- Shi, G.R., 1993b. Multivariate data analysis in palaeoecology and palaeobiogeography—a review. *Palaeogeography, Palaeoclimatology, Palaeoecology* 105, 199–234.
- Shi, G.R., 1995. Spatial aspects of palaeobiogeographical data and multivariate analysis. *Memoirs of the Association of Australasian Palaeontologists* 18, 179–188.

Silvestro, D., Cascales-Miñana, B., Bacon, C.D., Antonelli, A., 2015. Revisiting the origin and diversification of vascular plants through a comprehensive Bayesian analysis of the fossil record. *New Phytologist* 207, 425–436.

Silvestro, D., Salamin, N., Schnitzler, J., 2014a. PyRate: a new program to estimate speciation and extinction rates from incomplete fossil data. *Methods in Ecology and Evolution* 5, 1126–1131.

Silvestro, D., Schnitzler, J., Liow, L. H., Antonelli, A., Salamin, N., 2014b. Bayesian estimation of speciation and extinction from incomplete fossil occurrence data. *Systematic Biology* 63, 349–367.

Simberloff, D., Dayan, T., 1991. The guild concept and the structure of ecological communities. *Annual Review of Ecology and Systematics* 22, 115–143.

Simpson, E.H., 1949. Measurement of diversity. *Nature* 163, 688.

Slater, B.J., McLoughlin, S., Hilton, J., 2015. A high-latitude Gondwanan Lagerstätte: the Permian permineralised peat biota of the Prince Charles Mountains, Antarctica. *Gondwana Research* 27, 1446–1473.

Sokal, R.S., Michener, D.M., 1958. A statistical method for evaluating systematic relationships. *University of Kansas Science Bulletin*. 38, 1409–1438.

Spicer, R.A., 1981. The sorting and deposition of allochthonous plant material in a modern environment at Silwood Lake, Silwood Park, Berkshire, England. *Professional Papers of the U.S. Geological Survey* 1143, 1–77.

Spicer, R.A., 1988. Quantitative sampling of plant megafossil assemblages, in: DiMichele, W.A., Wing, S.L. (eds), *Methods and applications of plant paleoecology*. Paleontological Society, Knoxville (Special Publications No. 3), pp. 29–51.

Spicer, R.A., 1989. The formation and interpretation of plant fossil assemblages. *Advances in Botanical Research* 16, 96–191.

Spicer, R.A., Hill, C.R., 1979. Principal components and correspondence analyses of quantitative data from a Jurassic plant bed. *Review of Palaeobotany and Palynology* 28, 273–299.

- Stemans P., Breuer P., 2007. PalyWeb: A palynomorph database project on the web, in: Stemans P., Javaux E. (eds), Recent advances in palynology. Carnets de Géologie, Brest (Mémoire 2007/1).
- Stiles, E., Wilf, P., Iglesias, A., Gandolfo, M.A., Cúneo, N.R., 2020. Cretaceous–Paleogene plant extinction and recovery in Patagonia. *Paleobiology* 46, 445–469.
- Stolle, E., 2010. Recognition of southern Gondwanan palynomorphs at Gondwana’s northern margin—and biostratigraphic correlation of Permian strata from SE Turkey and Australia, in Shen, S.-Z., Henderson, C.M., Somerville, I.D. (eds), Lopingian (Late Permian) stratigraphy of the world, major events and environmental change. *Geological Journal* 45, 336–349.
- Stolle, E., 2011. Pollen-dominated “European” palynological assemblages from the Permian of NW Turkey (Asia Minor) – palaeogeographical context and microfloral affinities. *Geological Quarterly* 55, 181–186.
- Strauss, D., Sadler, P.M., 1989. Classical confidence intervals and Bayesian probability estimates for ends of local taxon ranges. *Mathematical Geology* 21, 411–421.
- Strullu-Derrien, C., Cleal, C.J., Ducassou, C., Spencer, A.R.T., Stolle, E., Leshyk, V.O., 2021. A rare late Mississippian flora from Northwestern Europe (Maine-et-Loire Coalfield, Pays de la Loire, France). *Review of Palaeobotany and Palynology*.
- Thomas, B.A., 1986. In search of fossil plants: the life and works of David Davies (Gilfach Goch). National Museum of Wales, Cardiff.
- Thomas, B.A., 2007. Phytogeography of Asturian (Westphalian D) lycophytes throughout the Euramerican belt of coalfields. *Geological Magazine* 144, 457–463.
- Thomas, B.A., 2013. In situ stems: preservation states and growth habits of the Pennsylvanian (Carboniferous) calamitaleans based upon new studies of *Calamites Sternberg, 1820* in the Duckmantian at Brymbo, North Wales, UK. *Palaeontology* 57, 21–36.
- Thomas, B.A., Seyfullah, L.J., 2015. *Stigmaria* Brongniart: a new specimen from Duckmantian (Lower Pennsylvanian) Brymbo (Wrexham, North Wales) together with a review of known casts and how they were preserved. *Geological Magazine* 152, 858–870.
- Thomas, B.A., Appleton, P., Cleal, C.J., Seyfullah, L.J., 2019a. The distribution of plant fossils and their distribution in Duckmantian (Bashkirian, Lower Pennsylvanian) strata at Brymbo, North Wales, UK. *Geological Journal* 55, 3179–3207.

- Thomas, B.A., Judd, N.A., Seyfullah, L.J., 2019b. A comparison of Asturian lepidodendroid lycophytes from the USA and the Euramerican Variscan Front. *Geobios* 56, 31–48.
- Tiffney, B.H., Manchester, S.R., 2001. The use of geological and paleontological evidence in evaluating plant phylogeographic hypotheses in the Northern Hemisphere Tertiary. *International Journal of Plant Sciences* 162, S3–S17.
- Traverse, A., 2007. *Paleopalynology* (2nd edition). Springer, Dordrecht.
- Traverse, A., Ames, H.T., Spackman, W., 1970. The Catalog of fossil spores and pollen — History and status. *Review of Palaeobotany and Palynology* 10, 165–173.
- Uhl, D., Cleal, C.J., 2010. Late Carboniferous vegetation change in lowland and intramontane basins. *International Journal of Coal Geology* 83, 318–328.
- Uhl, D., Lausberg, S., 2008. Land plant diversity in selected Latest Pennsylvanian ? – Permian deposits from the Saar-Nahe Basin (SW-Germany) and the German Zechstein Basin. *Studia Geologica Polonica* 129, 81–106.
- Utescher, T., Erdei, B., Francois, L., Henrot, A.-J., Mosbrugger, V., Popova, S., 2021. Oligocene vegetation of Europe and western Asia – Diversity change and continental patterns reflected by plant functional types. *Geological Journal* 56, 628–649.
- Utescher, T., Erdei, B., Hably, L., Mosbrugger, V., 2017. Late Miocene vegetation of the Pannonian Basin. *Palaeogeography, Palaeoclimatology, Palaeoecology* 467, 131–148.
- Utescher, T., Mosbrugger, V., 2007. Eocene vegetation patterns reconstructed from plant diversity—A global perspective. *Palaeogeography, Palaeoclimatology, Palaeoecology* 247, 243–271.
- Vakhrameev, V.A., 2006. *Review of Jurassic and Cretaceous floras and climates of the Earth*. Cambridge University Press, Cambridge.
- Vakhrameev, V.A., Dobruskina, I.A., Meyen, S.V., Zaklinskaja, E.D., 1978. *Paläozoische und mesozoische Floren Eurasiens und die Phytogeographie dieser Zeit*. G. Fischer, Jena [Originally published in Russian, in 1970].
- van der Knaap, W.O., 2009. Estimating pollen diversity from pollen accumulation rates: a method to assess taxonomic richness in the landscape. *The Holocene* 19, 159–163.
- Van Valen, L., 1973. A new evolutionary law. *Evolutionary Theory* 1, 1–30.
- Van Valen, L., 1984. A resetting of Phanerozoic community evolution. *Nature* 307, 50–52.

- Vassio, E., Martinetto, E., Dolezych, M., Van der Burgh, J., 2008. Wood anatomy of the *Glyptostrobus europaeus* “whole-plant” from a Pliocene fossil forest of Italy. *Review of Palaeobotany and Palynology* 151, 81–89.
- Wagner, R.H., 1984. Megafloral zones of the Carboniferous. *Compte rendu 9e Congrès International de Stratigraphie et de Géologie du Carbonifère (Washington, 1979)* 2, 109–134.
- Wagner, R.H., van Amerom, H.W.J., 1995. Wilhelmus Josephus Jongmans (1878-1957): paleobotanist, Carboniferous stratigrapher, and floral biogeographer, in: Lyons, P.C., Morey, E.D., Wagner, R.H. (eds), *Historical perspectives of early twentieth century paleobotany in North America. Geological Society of America Memoirs*, 185, 75–90.
- Wagner, R. H., Fernandez-Garcia, L., Eagar, R.M.C., 1983. *Geology and palaeontology of the Guardo Coalfield (NE León - NW Palencia), Cantabrian Mts. Instituto Geologico y Minero de España, Madrid.*
- Walsh, K., Berger, J.F., Roberts, C.N., Vannièrè, B., Ghilardi, M., Brown, A.G., Woodbridge, J., Lespez, L., Estrany, J., Glais, A., Palmisano, A., 2019. Holocene demographic fluctuations, climate and erosion in the Mediterranean: A meta data-analysis. *The Holocene* 29, 864–885.
- Wang J., Pfefferkorn, H.W., Xu A., Zhang Y., 2005. A note on Permian plant macrofossil biostratigraphy of China. *The Nonmarine Permian. New Mexico Museum of Natural History and Science Bulletin* 30, 352–355.
- Waters, C.N., Condon, D.J., 2012. Nature and timing of Late Mississippian to Mid-Pennsylvanian glacio-eustatic sea-level changes in the Pennine Basin, UK. *Journal of the Geological Society* 169, 37–51.
- Wellman, C.H., Osterloff, P.L., Mohiuddin, U., 2003. Fragments of the earliest land plants. *Nature* 425, 282–285.
- Weng, C., Hooghiemstra, H, Duivenoorden, J.F., 2006. Challenges in estimating past plant diversity from fossil pollen data: statistical assessment, problems, and possible solutions. *Diversity and Distributions* 12, 310–318.
- Whittaker, R.H., 1960. *Vegetation of the Siskiyou Mountains, Oregon and California. Ecological Monographs* 30, 279–338.
- Whittaker, R.H., 1962. Classification of natural communities. *The Botanical Review* 28, 1–239.

Whittaker, R.H., 1965. Dominance and diversity in land plant communities. *Science* 147, 250–260.

Wilf, P., Johnson, K.R., 2004. Land plant extinction at the end of the Cretaceous: a quantitative analysis of the North Dakota megafloral record. *Paleobiology* 30, 347–368.

Willard, D.A., 1993. Vegetational patterns in the Springfield coal (Middle Pennsylvanian, Illinois Basin): comparison of miospore and coal-ball records. *Geological Society of America, Special Paper* 286, 139–152.

Willard, D.A., Phillips, T.L., 1993. Paleobotany and palynology of the Bristol Hill Coal Member (Bond Formation) and Friendsville Coal Member (Mattoon Formation) of the Illinois Basin (Upper Pennsylvanian). *Palaios* 8, 574–586.

Willard, D.A., Phillips, T.L., Lesnikowska, A.D., DiMichele, W.A., 2007. Paleoecology of the Late Pennsylvanian-age Calhoun coal bed and implications for long-term dynamics of wetland ecosystems. *International Journal of Coal Geology* 69, 21–54.

Williams, J.W., Grimm, E.C., Blois, J.L., Charles, D.F., Davis, E.B., Goring, S.J., Graham, R.W., Smith, A.J., Anderson, M., Arroyo-Cabrales, J., Ashworth, A.C., Betancourt, J.L., Bills, B.W., Booth, R.K., Buckland, P.I., Curry, B.B., Gieseck, T., Jackson, S.T., Latorre, C., Nichols, J., Purdum, T., Roth, R.E., Stryker, M., Takahara, H., 2018. The Neotoma Paleocology Database, a multiproxy, international, community-curated data resource. *Quaternary Research* 89, 156–177.

Willis, K.J., Niklas, K.J., 2004. The role of Quaternary environmental change in plant macroevolution: the exception or the rule? *Philosophical Transactions of the Royal Society B Biological Series* 359, 159–72.

Wing, S.L., DiMichele, W.A., 1995. Conflict between local and global changes in plant diversity through geological time. *Palaios* 10, 551–564.

Wing, S.L., Harrington, G.J., 2001. Floral response to rapid warming in the earliest Eocene and implications for concurrent faunal change. *Paleobiology* 27, 539–563.

Wing, S.L., Strömberg, C.A., Hickey, L.J., Tiver, F., Willis, B., Burnham, R.J., Behrensmeyer, A.K., 2012. Floral and environmental gradients on a Late Cretaceous landscape. *Ecological Monographs* 82, 23–47.

Wnuk, C., 1996. The development of floristic provinciality during the Middle and Late Paleozoic. *Review of Palaeobotany and Palynology* 90, 5–40.

Xing, Y., Gandolfo, M.A., Onstein, R.E., Cantrill, D.J., Jacobs, B.F., Jordan, G.J., Lee, D.E., Popova, S., Srivastava, R., Su, T., Vikulin, S.V., 2016. Testing the biases in the rich Cenozoic angiosperm macrofossil record. *International Journal of Plant Sciences* 177, 371–388.

Xiong, C.H., Wang, Q., 2011. Permian–Triassic land-plant diversity in South China: Was there a mass extinction at the Permian/Triassic boundary? *Paleobiology* 37, 157–167.

Xu, H.-H., Niu, Z.-B., and Chen, Y.-S., 2020. A status report on a section-based stratigraphic and palaeontological database – the Geobiodiversity Database. *Earth System Science Data* 12, 3443–3452.

Zhou, Y.X., 1994. Earliest pollen-dominated microfloras from the early Late Carboniferous of the Tian Shan Mountains, NW China: their significance for the origin of conifers and palaeophytogeography. *Review of Palaeobotany and Palynology* 81, 193–211.

Captions

Fig. 1. Rarefaction analysis of macrofloras from above the Abergorky and Hafod coal seams (Pennsylvanian-age, South Wales Coalfield, United Kingdom) giving an indication of the number of specimens needed to represent the species richness of each flora. N = number of specimens counted in each flora; dashed line represents 95% confidence intervals of species richness values. Redrawn from Cleal et al. (2012).

Fig. 2. Example of pollen counting sheet. As the counting proceeds, new arrows are added from the left to the right representing new transects on the microscope slide and taxon names are added to the first column left. Each black tick represents an observation. The count is deemed optimal when it reaches at least 300 terrestrial pollen (excluding unknown, reworked, aquatics, spores), and when the counting effort does not add significant new taxa. The orange line has been added to the counting sheet to underline the high number of new taxa at the beginning of the count, and the absence of new taxa at the end of the count. Drawn by S. Leroy.

Fig. 3. Distribution of modern pollen samples recorded in the Eurasian Modern Pollen Database (part of the European Database) across different biomes in (A) geographical space and (B) climate space. Such databases, illustrating the relationship between modern pollen assemblages and climatic variables, are invaluable to support studies of past climate, land cover and land use based on Quaternary pollen records (see Davis et al. 2020).

Fig. 4. Asturian-age palaeofloristic model for Variscan Euramerica based on distribution of medullosalean and lyginopterdalean species. The analyses, using a combination of Detrended Correspondence Analysis and cluster analysis (Fig. 6) was described in Cleal (2008b,c).

Fig. 5. Example of unconstrained seriation analysis where the occurrences of species are arranged in a diagonal across the matrix, indicating the main trend in the variance in the data. Redrawn from Cleal (2008c).

Fig. 6. Floristic analysis of Medullosales from the upper Asturian (middle Pennsylvanian) of Variscan Euramerica based on cluster analysis (upper) and Detrended Correspondence Analysis. From Cleal (2008c).

Fig. 7. Vicariance biogeographical analysis of Carboniferous and Permian anatomically preserved floras from Euramerica and China, with tree plotted against age, showing strict

consensus of 15 most parsimonious 162 step trees. Number 1 – 6 designate the sequence of significant floral events as the wetland vegetation evolved. From Hilton and Cleal (2007).

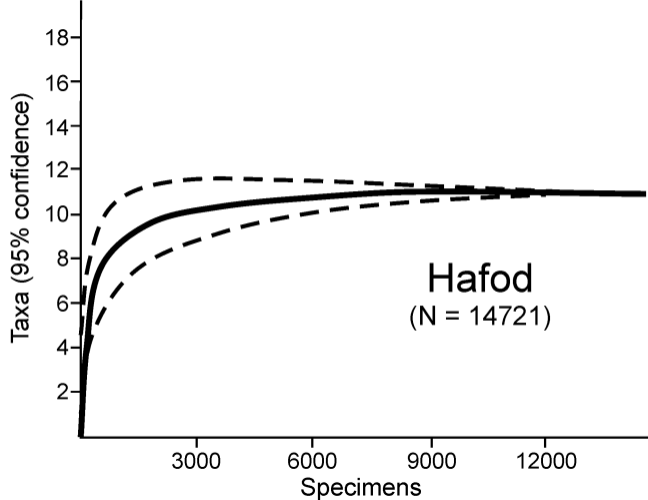
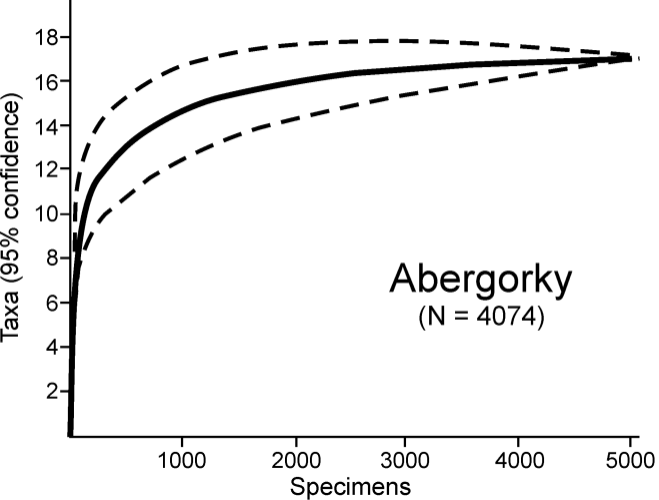
Fig. 8. Part of a range chart showing the distribution of late Bashkirian (early Westphalian) macrofloras through the sequence in the South Wales Coalfield (United Kingdom). The range-through species diversity for any stratigraphical level can be determined by counting across the number of range bars that cross that level; the absolute species diversity is determined by counting the number of black circles. From Cleal (2007).

Fig. 9. Stacked diversity curve for the Pennsylvanian-age South Wales coalfield (United Kingdom) showing changing species richness through the succession broken down into the major plant groups. Redrawn from Cleal (2007).

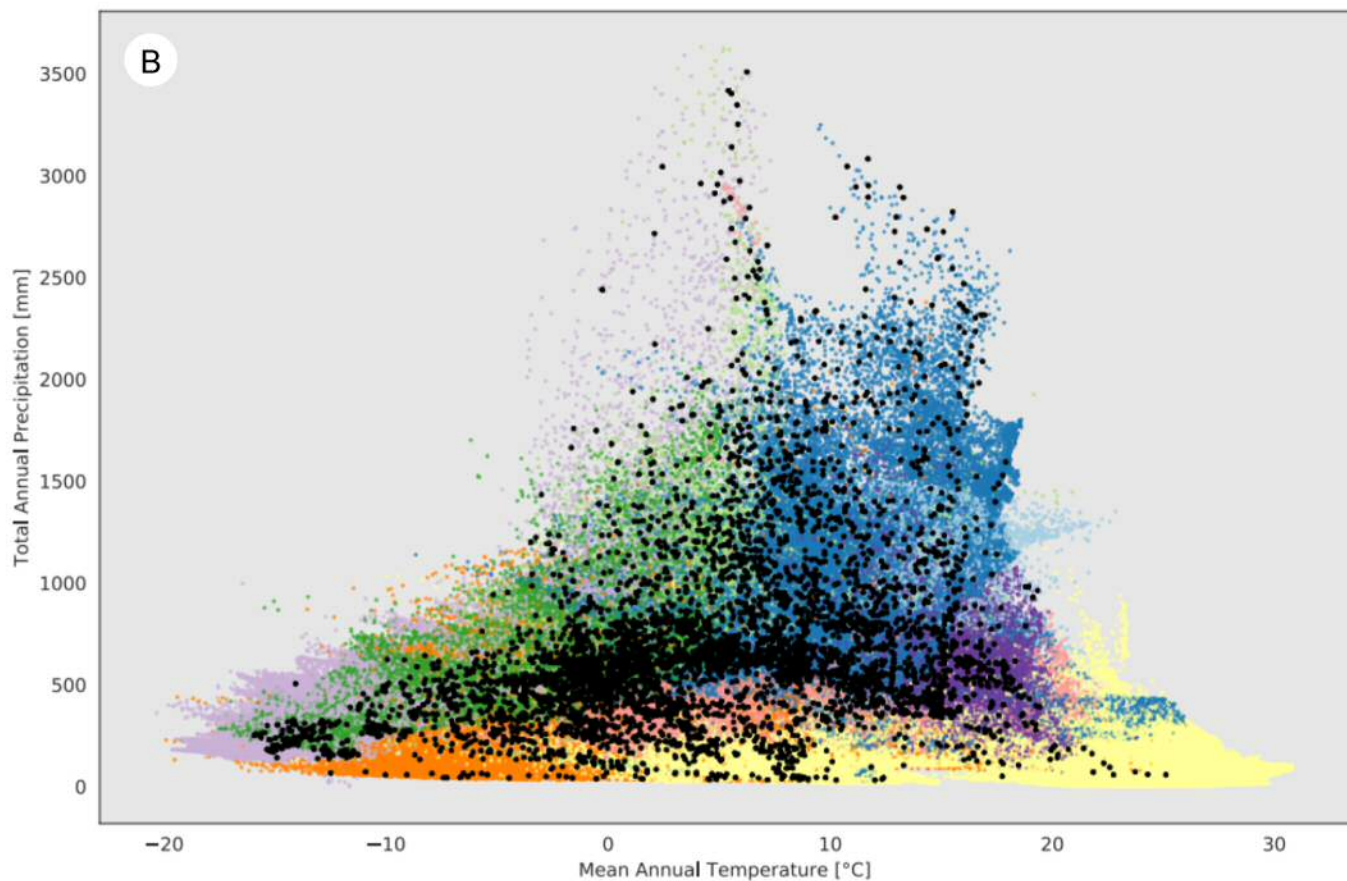
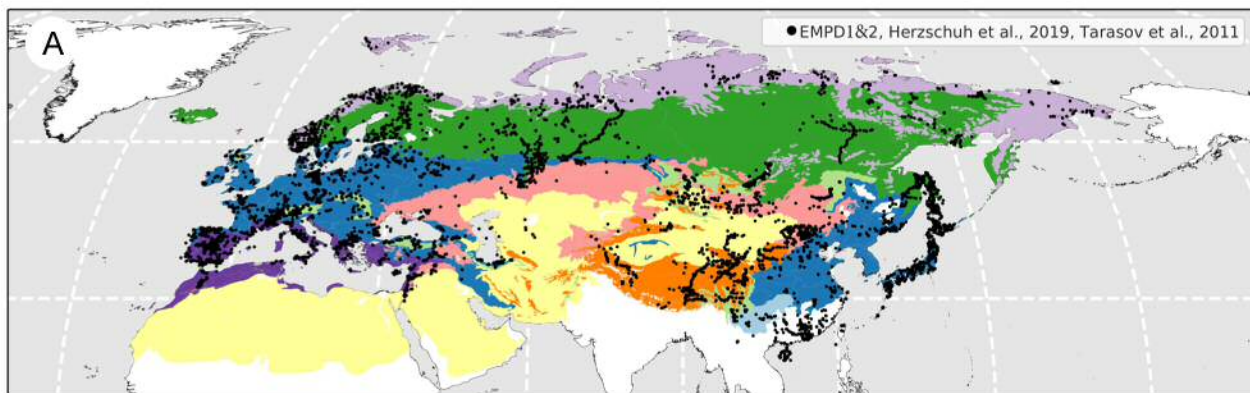
Fig. 10. A percentage spore-pollen diagram showing changes in the representation of pollen and spore taxa through a sediment core (AKAD 11-17) collected from the deep-water zone of the western Black Sea, indicating the vegetation history over the last 20,000 years. Redrawn from Filipova-Marinova et al. (2021).

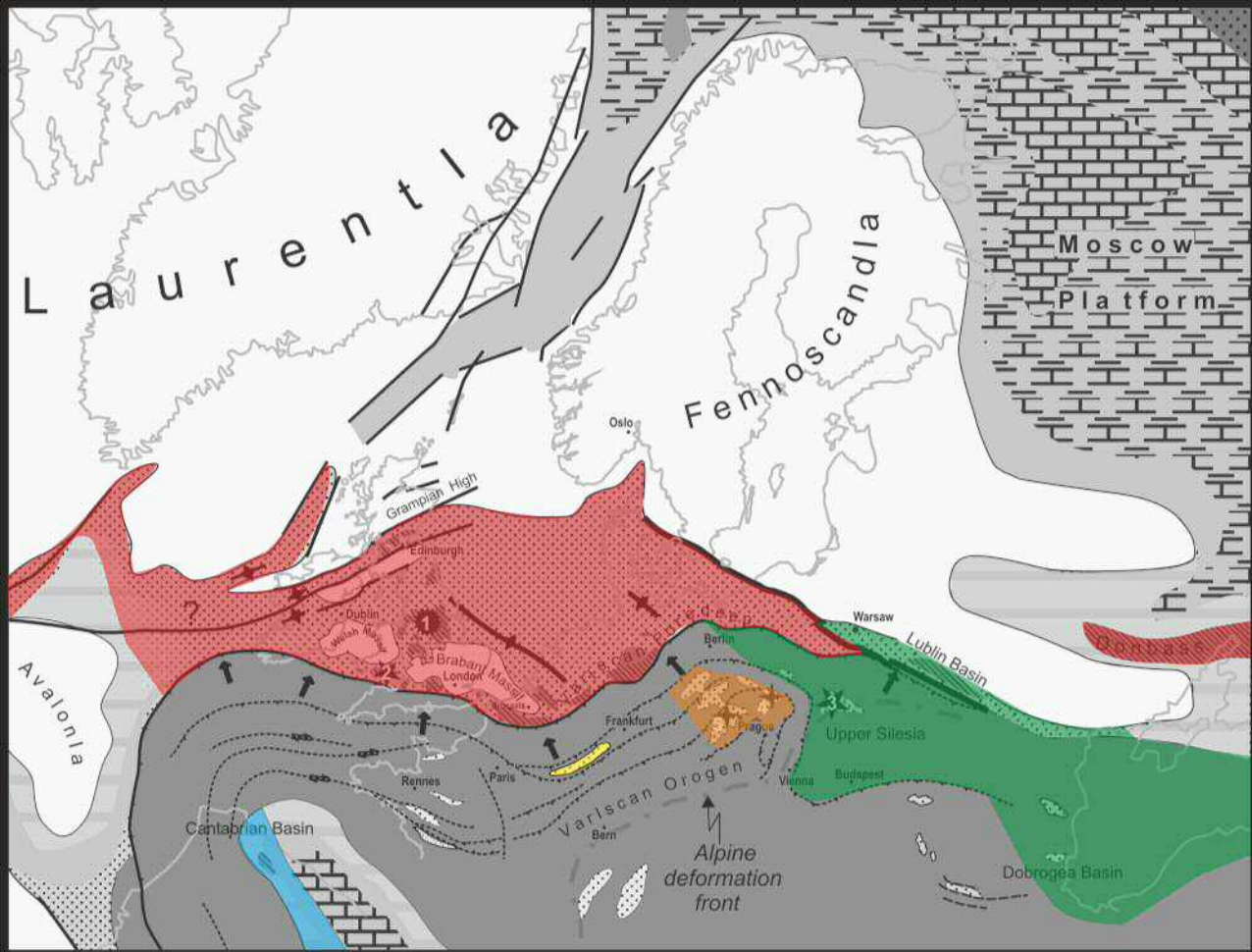
Fig. 11. Constrained cluster analysis used to distinguish macrofloral biozones in the Pennsylvanian – Cisuralian Intra-Sudetic Basin, Czech Republic. Grey intervals correspond to red-beds. The clustering used the UPGMA algorithm on Raup-Crick Coefficients representing the taxonomic similarity of each pair of floras. From Opluštil et al. (2017).

Fig. 12. Pseudo-cohort analysis of Pennsylvanian-aged macrofloras of the Ruhr Coalfield (Germany) showing biostratigraphical events in the floras as a whole, and in the main plant groups. From Cleal et al. (2012).



Site and sample Name	Counting date	Type of microscope and magnification	Analyst name
Alnus			
Deciduous Quercus			
Carpinus betulus			
Poaceae			
Asteraceae tubul.			
Amaranthac.			
Monoete psilate			
Parrotia persica			
Polygonum persicaria			
Convolvulus			
Cistus			
Cerealia			
Potamogeton			
Ulmus-Zelkova			
Reworked			
Fagus			
Pterocarya			
Cyperaceae			
Unknown			
Artemisia			
Pinus			
Pteridium aquilinum			
Juglans			
Vitis			
Ilex			





Based on Ziegler 1990, modified

Areas of erosion

- Cratonic, mostly low relief
- Orogenic belt including pre-Variscan terrains mostly high relief

Areas of deposition

- Marine, carbonate dominant
- Marine, carbonate and shales
- Marine, shales dominant
- Paralic, mixed continental and shallow marine sediments
- Continental, fluvial-dominated mainly
- Coalfields in the cratonic and foreland basins

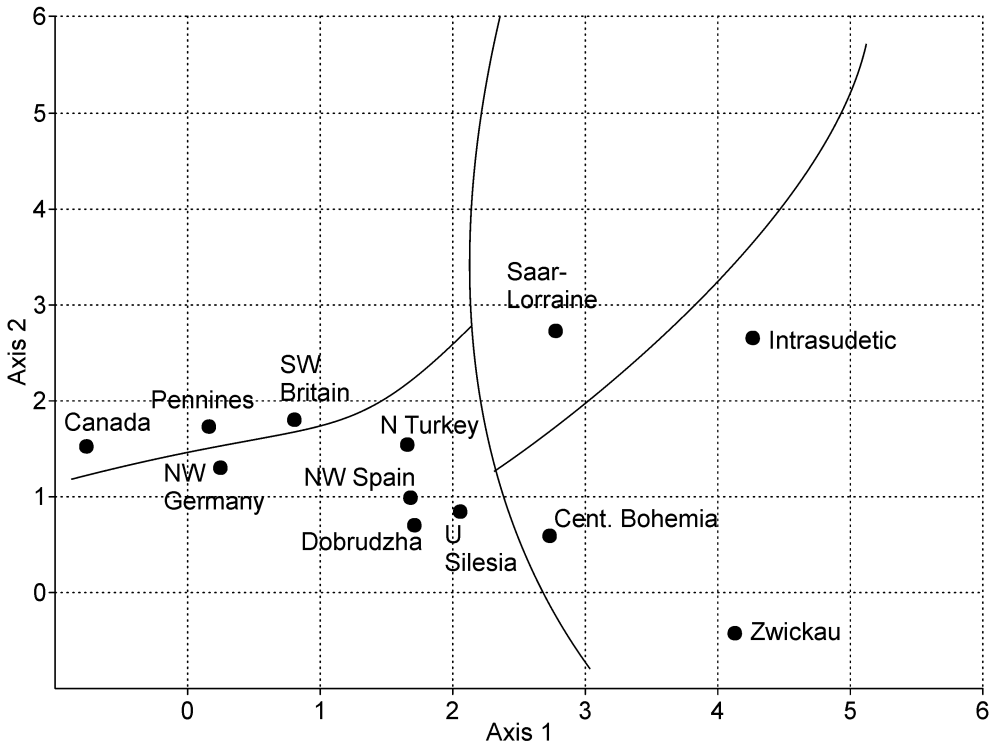
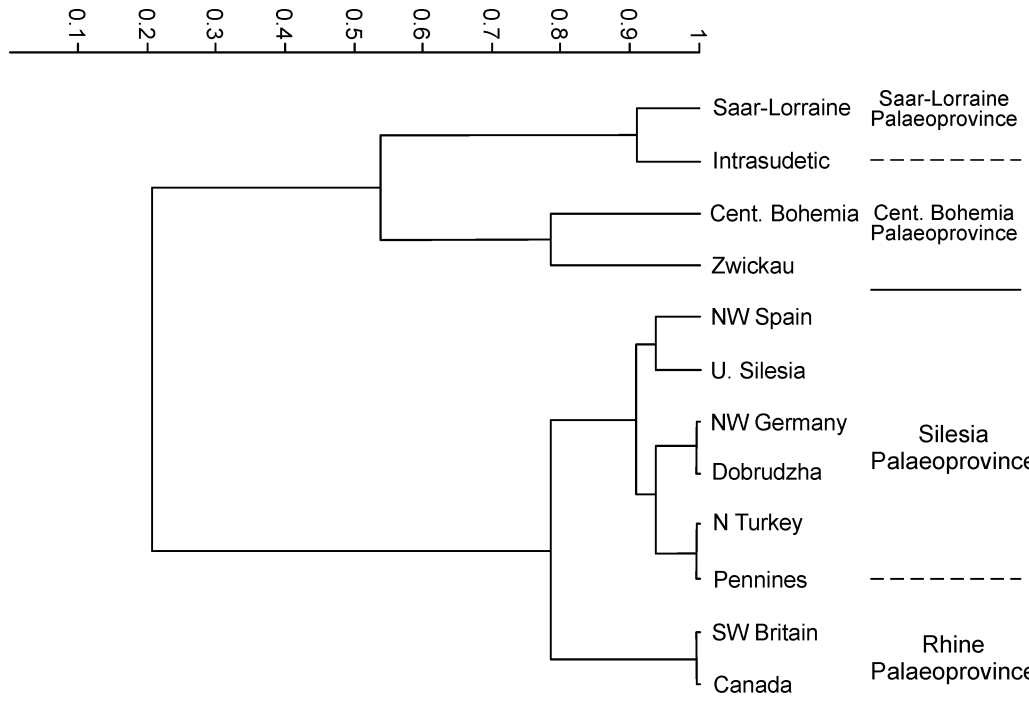
Basins under the study:

- Cratonic
- Foreland
- Fault-related
- 1. Pennine, 2. South Wales, 3. Upper Silesia, 4. Intra Sudetic, 5. Central and Western Bohemia

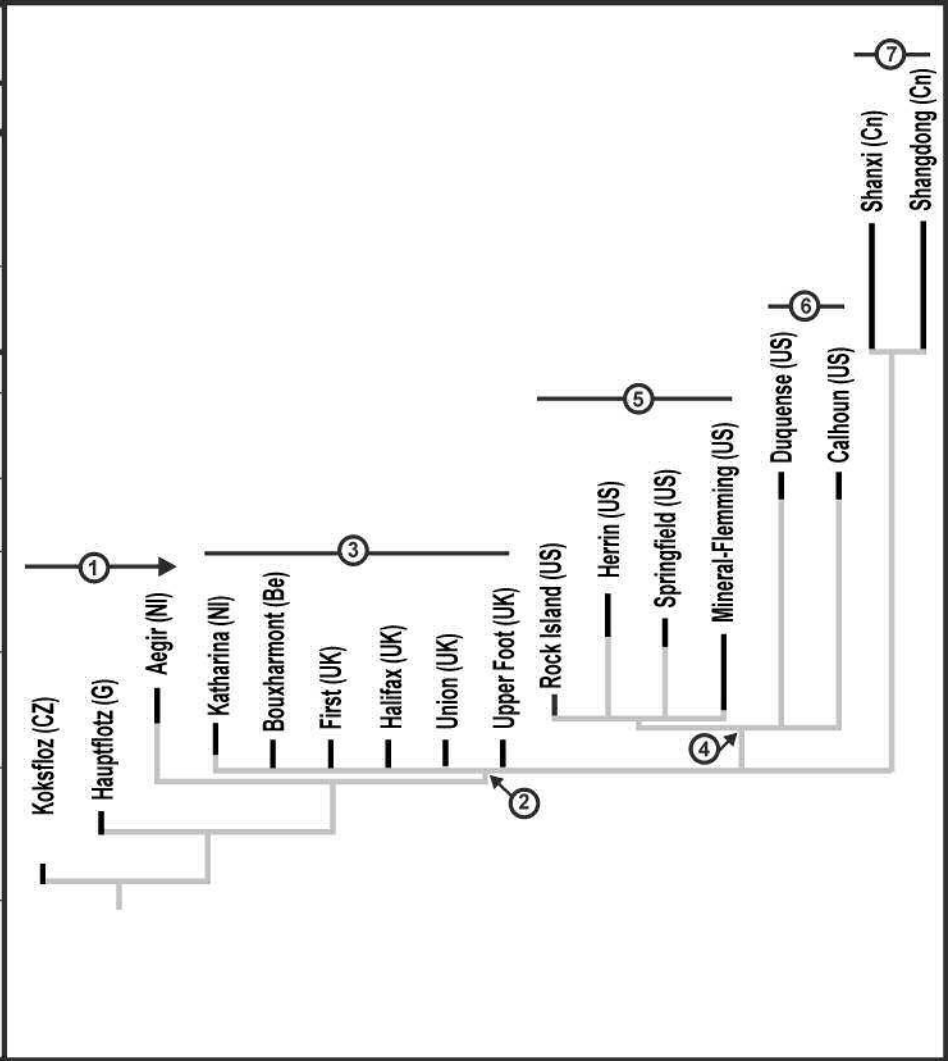
- Ruhr Province
- Silesia Province
- C. Bohemia Province
- Saar-Lorraine Province
- Iberia Province

	<i>Neuropteris flexuosa</i> Sternberg	<i>Alethopteris robusta</i> Lesquereux	<i>Macroneuropteris macrophylla</i> (Brongniart) Cleal et al.	<i>Alethopteris nevesii</i> Wagner	<i>Alethopteris serlii</i> (Brongniart) Goepfert	<i>Laveineopteris dussartii</i> (Laveine) Laveine	<i>Alethopteris ambigua</i> Lesquereux	<i>Laveineopteris rarinervis</i> (Bunbury) Cleal et al.	<i>Neuropteris ovata</i> Hoffmann	<i>Macroneuropteris scheuchzeri</i> (Hoffmann) Cleal et al.	<i>Alethopteris pseudograndinioides</i> Zodrow and Cleal	<i>Linopteris obliqua</i> (Bunbury) Zeiller	<i>Neuropteris</i> ex gr. <i>obliqua</i> (Brongniart) Zeiller	<i>Alethopteris lonchitica</i> Sternberg	<i>Callipteridium aramasii</i> (Zeiller) Wagner	<i>Callipteridium jongmansii</i> (Bertrand) Wagner	<i>Linopteris elongata</i> Zeiller	<i>Linopteris palentina</i> Wagner	<i>Neuropteris resobae</i> Cleal	<i>Linopteris neuropteroides</i> (Gutbier) Potonié	<i>Margaropteris coemansii</i> (Andrae) Gothan	<i>Alethopteris grandinii</i> (Brongniart) Goepfert	<i>Neuropteris plicata</i> Sternberg	<i>Neuropteris subauriculata</i> Sterzel	<i>Odontopteris reichiana</i> Gutbier	<i>Neuropteris britannica</i> (Gutbier) Daber	
Canada	X	X			X		X	X	X	X	X																
SW Britain	X	X	X	X	X	X	X	X	X	X	X			X	X	X											
Pennines					X		X	X	X	X	X			X													
NW Germany						X	X	X	X	X	X		X														
N Turkey							X	X	X	X	X		X	X	X												
Dobrudzha							X	X	X	X	X		X	X							X						
U Silesia								X	X	X	X			X	X	X					X						
NW Spain							X	X	X	X	X		X	X	X	X	X	X	X								
Saar-Lorraine									X					X	X	X											
Central Bohemia										X	X			X	X	X					X		X	X	X	X	X
Intra-sudetic																X							X	X	X	X	X
Zwickau															X	X				X					X	X	X

Raup-Crick Similarity Coefficients



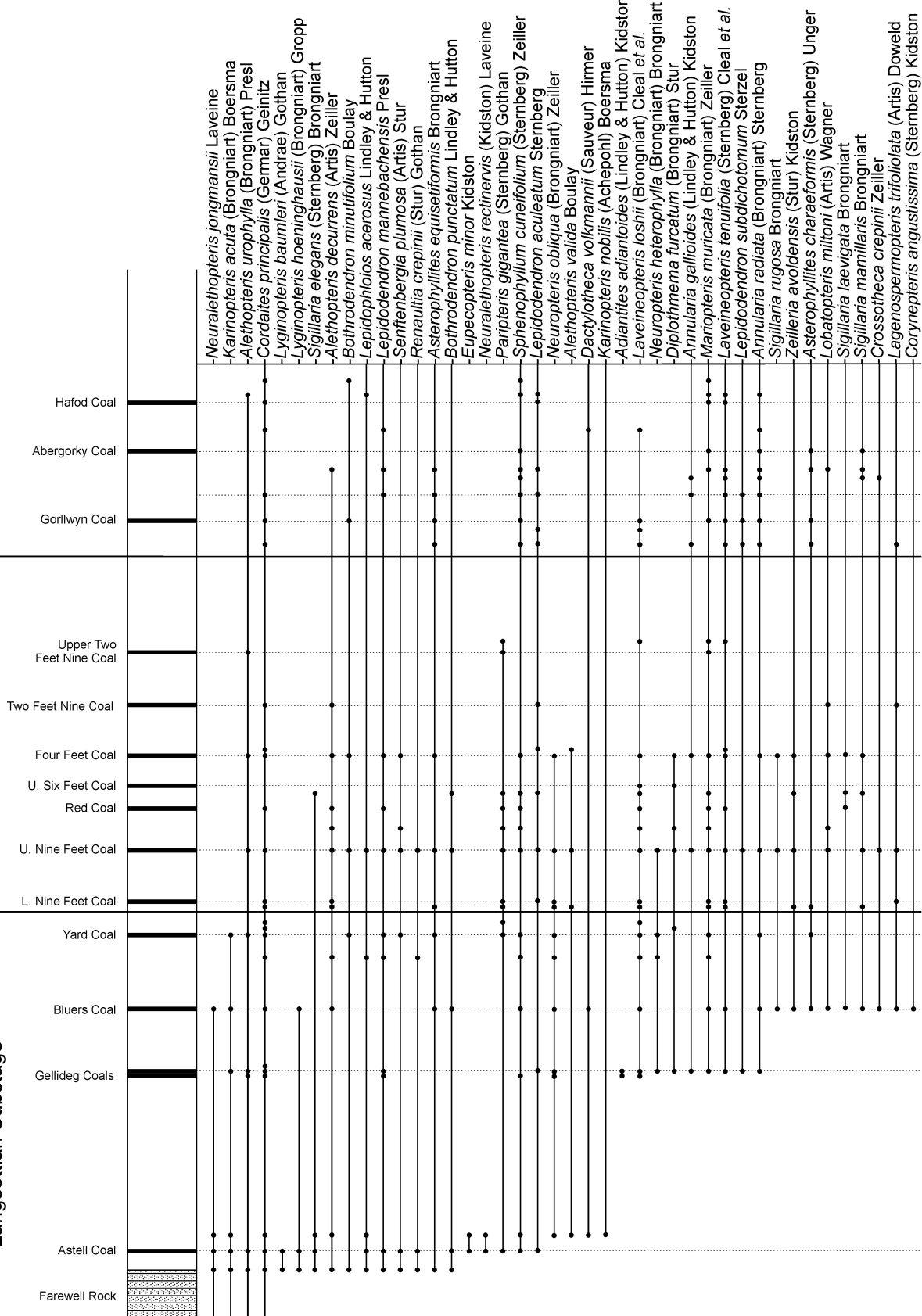
Age	Global Stage	Regional substages				
		Western Europe	North America			
Permian	Sakmarian					
	Asselian	Lebach	Bursumian			
Pennsylvanian	Gzhelian	Stephanian Autunian	Kuzel	Virgillian		
			Stephanian	C	Stephanian	
	B					
	A			Barruelian	Missourian	
	Kasimovian		Cantabrian			
	Moscovian		Westphalian	D	Asturian	Desmoinesian
				C	Bolsovian	Atokan
				B	Duckmantian	
				A	Langsettian	
	Bashkirian		Namurian	Yeodonian		Morrowan
				Marsdenian		
Kinderscoutian						
Alportian						
Chokierian						
Mississippian	Serpukhovian		Arnsbergian	Chesterian		

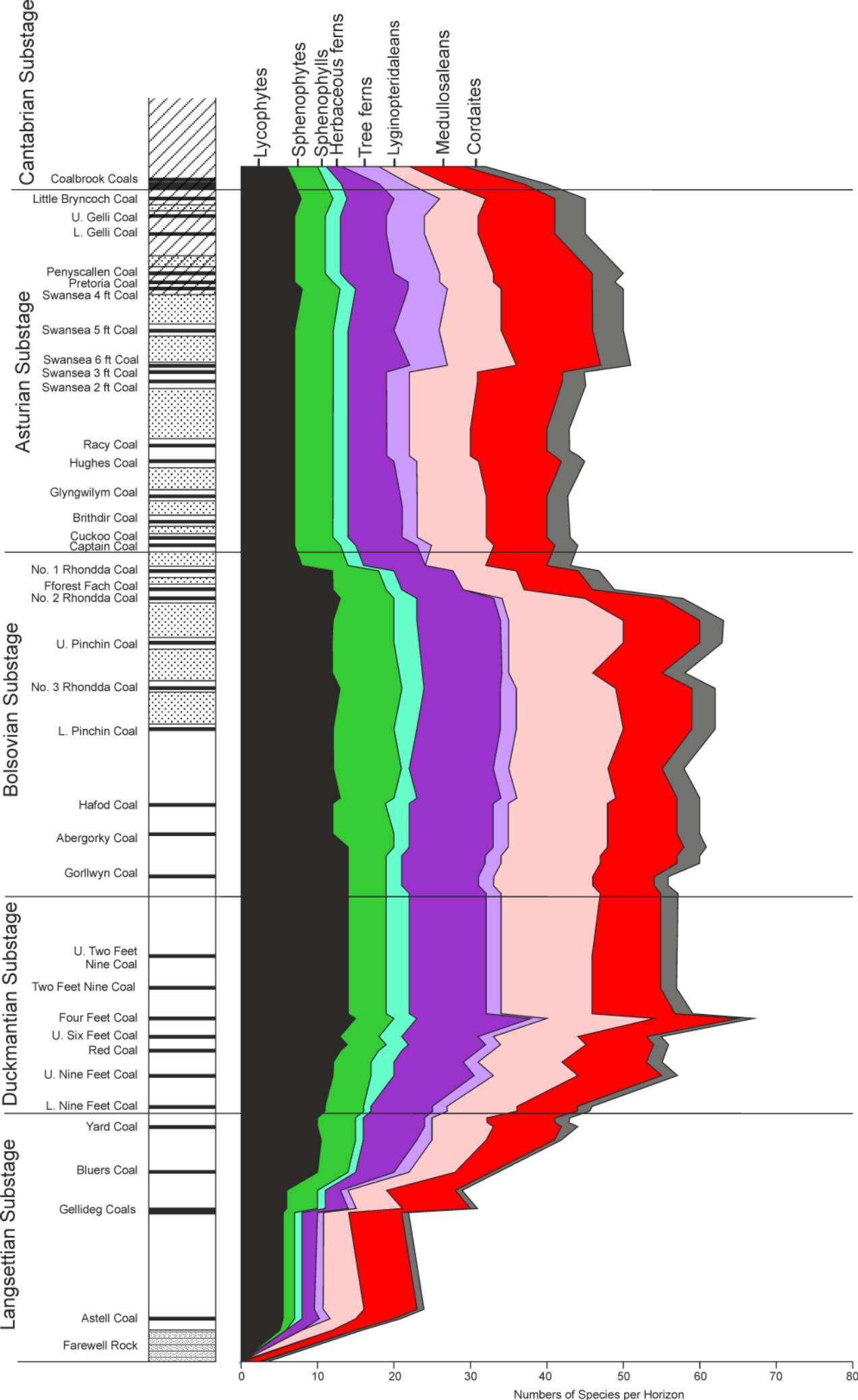


Bolsvian Substage

Duckmantian Substage

Langsettian Substage





Similarity

0.1
0.2
0.3
0.4
0.5
0.6
0.7
0.8
0.9

