



**HAL**  
open science

## Palaeobotanical experiences of plant diversity in deep time. 1: How well can we identify past plant diversity in the fossil record?

Christopher J Cleal, Heather S Pardoe, Christopher M Berry, Borja Cascales-Miñana, Basil a S Davis, Jose B Diez, Mariana V Filipova-Marinova, Thomas Giesecke, Jason Hilton, Dimiter Ivanov, et al.

### ► To cite this version:

Christopher J Cleal, Heather S Pardoe, Christopher M Berry, Borja Cascales-Miñana, Basil a S Davis, et al.. Palaeobotanical experiences of plant diversity in deep time. 1: How well can we identify past plant diversity in the fossil record?. *Palaeogeography, Palaeoclimatology, Palaeoecology*, 2021, 576, pp.110481. 10.1016/j.palaeo.2021.110481 . hal-03448617

**HAL Id: hal-03448617**

**<https://hal.science/hal-03448617>**

Submitted on 25 Nov 2021

**HAL** is a multi-disciplinary open access archive for the deposit and dissemination of scientific research documents, whether they are published or not. The documents may come from teaching and research institutions in France or abroad, or from public or private research centers.

L'archive ouverte pluridisciplinaire **HAL**, est destinée au dépôt et à la diffusion de documents scientifiques de niveau recherche, publiés ou non, émanant des établissements d'enseignement et de recherche français ou étrangers, des laboratoires publics ou privés.

1 **Palaeobotanical experiences of plant diversity in deep time. 1:**

2 **How well can we identify past plant diversity in the fossil record?**

3 Christopher J. Cleal<sup>a§</sup>, Heather S. Pardoe<sup>a</sup>, Christopher M. Berry<sup>b</sup>, Borja Cascales-Miñana<sup>c</sup>,  
4 Basil A.S. Davis<sup>d</sup>, Jose B. Diez<sup>e</sup>, Mariana V. Filipova-Marinova<sup>f</sup>, Thomas Giesecke<sup>g</sup>, Jason  
5 Hilton<sup>h</sup>, Dimiter Ivanov<sup>i</sup>, Evelyn Kustatscher<sup>j</sup>, Suzanne A. G. Leroy<sup>k</sup>, Jennifer C. McElwain<sup>l</sup>,  
6 Stanislav Opluštil<sup>m</sup>, Mihai Emilian Popa<sup>n</sup>, Leyla J. Seyfullah<sup>o</sup>, Ellen Stolle<sup>p</sup>, Barry A.  
7 Thomas<sup>q</sup> and Dieter Uhl<sup>r</sup>

8 <sup>a</sup> Department of Natural Sciences, National Museum Wales, Cardiff CF10 3NP, UK,  
9 chris.cleal@museumwales.ac.uk, heather.pardoe@museumwales.ac.uk

10 <sup>b</sup> School of Earth and Ocean Sciences, Cardiff University, Cardiff CF10 3AT, UK,  
11 berrycm@cardiff.ac.uk

12 <sup>c</sup> CNRS, Univ. Lille, UMR 8198, Evo-Eco-Paleo, F-59000, Lille, France, borja.cascales-  
13 minana@univ-lille.fr

14 <sup>d</sup> Institute of Earth Surface Dynamics IDYST, University of Lausanne, Bâtiment Géopolis  
15 CH-1015, Lausanne, Switzerland, basil.davis@unil.ch

16 <sup>e</sup> Department of Marine Geosciences and Land Management, Universidade de Vigo, 36310  
17 Vigo, Spain, jbdiez@uvigo.es

18 <sup>f</sup> Varna Regional Museum of History, 41 Maria Louisa Boulevard, 9000 Varna, Bulgaria

19 <sup>g</sup> Palaeoecology, Department of Physical Geography, University of Utrecht, P.O. Box 80115,  
20 3508 TC, Utrecht, The Netherlands, t.giesecke@uu.nl

21 <sup>h</sup> School of Geography, Earth and Environmental Sciences, University of Birmingham,  
22 Birmingham, B15 2TT, UK, j.m.hilton@bham.ac.uk

23 <sup>i</sup> Institute of Biodiversity and Ecosystem Research, Bulgarian Academy of Sciences, Acad.  
24 G. Bonchev Street, 23, 1113 Sofia, Bulgaria, dimiter@gbg.bg

25 <sup>j</sup> Museum of Nature South Tyrol, Bindergasse/Via Bottai 1, Bozen / Bolzano, 39100, Italy,  
26 evelyn.kustatscher@naturmuseum.it

27 <sup>k</sup> Aix Marseille Univ, CNRS, Minist Culture, LAMPEA, UMR 7269, 5 rue du Château de  
28 l'Horloge, 13094, Aix-en-Provence, France, leroy@msh.univ-aix.fr; School of  
29 Environmental Sciences, University of Liverpool, L69 3GP Liverpool, UK

30 <sup>l</sup> School of Biology and Environmental Science, University College Dublin, Ireland,  
31 jennifer.mcelwain@gmail.com

32 <sup>m</sup> Institute of Geology and Palaeontology, Charles University, Albertov 6, 128 43 Prague 2,  
33 Czech Republic, stanislav.oplustil@natur.cuni.cz

34 <sup>n</sup> Southwest Petroleum University, School of Geosciences and Technology, 8, Xindu Ave.,  
35 610500 Xindu, Chengdu, China; University of Bucharest, Faculty of Geology and  
36 Geophysics, Department of Geology and Doctoral School of Geology, Laboratory of  
37 Palaeontology, 1, N. Bălcescu Ave., 010041, Bucharest, Romania, mihai@mepopa.com

38 <sup>o</sup> Department of Palaeontology, University of Vienna, Althanstraße 14, 1090 Vienna, Austria,  
39 leyla.seyfullah@univie.ac.at

40 <sup>p</sup> \*EP Research, 59320 Ennigerloh-Westkirchen, Germany, e.stolle.research@mail.de

41 <sup>q</sup> Institute of Biological, Environmental and Rural Sciences, University of Aberystwyth,  
42 Aberystwyth SY23 1NL, UK, bat@aber.ac.uk

43 <sup>r</sup> Senckenberg Forschungsinstitut und Naturmuseum, 60325 Frankfurt am Main, Germany,  
44 dieter.uhl@senckenberg.de

45 <sup>§</sup> Corresponding author

46

## 47 **Abstract**

48 Palaeobotany and palynology are the main direct sources of evidence for studying  
49 vegetation diversity dynamics through geological time. However, plant fossil diversity is

50 affected by various factors other than vegetation diversity, which need to be taken into  
51 account in such studies. The use of fossil-taxa will potentially inflate perceived plant  
52 diversities, requiring taxonomic lists to be normalised. Autochthonous floras provide the  
53 most direct evidence of vegetation diversity but these are rare; most plant beds are  
54 allochthonous with plant remains that have been subjected to varying levels of fragmentation,  
55 transportation and time averaging. Local-scale vegetation diversity is especially difficult to  
56 determine from the fossil record, even with rigorous sampling protocols and detailed  
57 sedimentological analysis. Landscape-scale and regional-scale vegetation diversities are more  
58 reliably determined but usually at the rank of family. Macrofossil and palynological data tend  
59 to reveal evidence of different aspects of plant diversity, and the best results are obtained if  
60 the two diversity signals are integrated. Despite the inherent difficulties, the plant fossil  
61 record provides clear evidence of the dynamic history of vegetation through geological times,  
62 including the effects of major processes such as climate changes and mass extinctions.

63

64 Keywords: Palaeobotany, Palynology, Biodiversity, Taxonomy, Taphonomy, Vegetation

65

## 66 1 Introduction

67 Vegetation has played a central role in the evolution of the Earth's biosphere, atmosphere  
68 and landscape (Beerling 2007; Davies and Gibling 2010; Wellman 2010; Willis and  
69 McElwain 2013); whilst it is possible to envisage a world having evolved with plants but no  
70 animals, a world of animals without plants could not function. The raised public awareness of  
71 the important ecosystem services provided by vegetation, including carbon capture to help  
72 mitigate climate change, providing the foundations of all terrestrial trophic systems, and the  
73 psychological benefits it brings to humanity, has resulted in a global research programme on  
74 today's plant diversity and ecology (Antonelli et al. 2020). However, this only provides a  
75 snapshot of a continuous ecological and evolutionary play that has taken place through some  
76 500 million years of "Deep Time". To appreciate properly the significance of events such as  
77 the current biodiversity crisis ("the 6<sup>th</sup> mass extinction") and to anticipate potential outcomes,  
78 it is vital that we understand this history of vegetation evolution.

79 Research into vegetation history started over two centuries ago (for summary see  
80 Andrews 1980) but with the primary focus on plant phylogeny (Taylor et al. 2009; Cleal and  
81 Thomas 2019). In recent years, interest in the study of plant fossil diversity has grown (as  
82 summarised by Wing and DiMichele 1992; Willis and McElwain 2013) but investigating it  
83 remains challenging (Wing and DiMichele 1995).

84 This is one of two papers arising from a workshop on past plant diversity entitled  
85 *Tracking changes in plant diversity over the last 400 million years*, which brought together  
86 specialists on diversity studies in fossil floras ranging in age from Devonian to Quaternary.  
87 The aim was to explore the different analytical methodologies and interpretative approaches  
88 used to investigate Phanerozoic plant diversity dynamics. The present contribution addresses  
89 what exactly we mean by biodiversity and to what extent can we extract biodiversity patterns  
90 from the plant fossil record. We will attempt to look at the relevant issues surrounding both

91 plant macrofossils (i.e. fossils that can normally be seen with the naked eye, including  
92 compressions / impressions / adpressions, casts / moulds and anatomically preserved fossils –  
93 see Cleal and Thomas 2019) and microfossils (pollen, spores and phytoliths). The issues  
94 surrounding sampling and analytical methods used will be discussed in our second paper (in  
95 preparation).

## 96 **2 What is biodiversity?**

97 In biology, biodiversity is sometimes used to refer to functional diversity (the range of  
98 traits in an assemblage) or phylogenetic diversity (the evolutionary breadth of an assemblage)  
99 (Dornelas et al. 2012; Vellend et al. 2011, 2017). Palaeobotanists also sometimes investigate  
100 trait diversity, such as the use of leaf physiognomy for estimating past climatic temperatures  
101 (Wolfe 1993; Glasspool et al 2004). But diversity analyses of the plant fossil record tend to  
102 be overwhelmingly of taxonomic diversity, and it is on this that we will focus here.

103 Taxonomic diversity in ecological studies consists of two factors: taxonomic richness  
104 and taxonomic evenness (Tuomisto 2012). Taxonomic richness (the number of taxa present)  
105 might be expected to be relatively easy to measure in both modern-day habitats and the fossil  
106 record; Magurran (2004) has suggested that this alone can be a sensitive indicator of  
107 ecological change. However, total richness can be difficult to determine if there are rare  
108 species present, as these may be missed in surveys. A far more nuanced understanding of the  
109 functioning of a flora will be obtained by determining its taxonomic evenness using  
110 measurements such as Simpson's Index (e.g. Lande 1996; Veech et al. 2002) but this is only  
111 really meaningful if it is reflecting the relative numbers of organisms present. Variations in  
112 the productivity of pollen, foliage and seeds between different plant parts (Fig. 1) mean that  
113 taxonomic evenness of fossil-taxa in a fossil flora will bear little or no relationship to the  
114 taxonomic evenness of the original vegetation. The situation is particularly complex with

115 foliage, especially in pre-Cenozoic floras where the leaves are often compound structures that  
116 fragmented in different ways during abscission, transportation and preservation. Taxonomic  
117 evenness of a fossil flora may therefore be strongly influenced by taphonomy and how the  
118 plants fragmented post-mortem; although such data may provide some evidence as to relative  
119 biomass allocation within the vegetation (e.g. Baker and DiMichele 1997), its value for  
120 determining taxonomic evenness is limited.

121       Scale will clearly be critical in any diversity study, whether palaeontological or  
122 biological (Bennington et al. 2009). R.H. Whittaker (1960) developed the most frequently  
123 used concepts of taxonomic diversity for extant biotas, broadly recognised as  $\alpha$ -diversity  
124 (diversity in particular habitats) and  $\beta$ -diversity (diversity between habitats within a  
125 landscape); these were then integrated to provide a  $\gamma$ -diversity (overall diversity within the  
126 landscape). R.H. Whittaker (1977) later extended this scheme to include  $\delta$ -diversity (diversity  
127 between landscapes in a biogeographical province) and  $\epsilon$ -diversity (overall diversity within  
128 that province). However, R.H. Whittaker's (1960) terms were intentionally rather vague and  
129 as a consequence have been used by different scientists in different ways (see Swingland  
130 2001; Magurran 2004; Hamilton 2005 for reviews).

131       In an attempt to introduce taxonomic diversity concepts that more realistically reflect the  
132 plant fossil record, Cleal et al. (2012) adopted a more flexible approach similar to those used  
133 by R.J. Whittaker et al. (2001); see also Birks et al. (2016a,b) (Fig. 2):

134       (1) Local-scale diversity: the diversity of plant fossils observed in a single locality and  
135 which probably reflects plant diversity within c. 1000 m<sup>2</sup> (c. 30 m x 30 m). In a palynological  
136 context, it might more realistically refer to vegetation within up to 1 km<sup>2</sup>. This will broadly  
137 equate to the  $\alpha$ -diversity of the parent vegetation.

138 (2) Landscape-scale diversity: the diversity of plant fossils observed within a typical  
139 depositional basin and which probably reflects plant diversity within up to c.  $10^5$  km<sup>2</sup> (c. 300  
140 km x 300 km) This will broadly equate to the  $\gamma$ -diversity of the parent vegetation.

141 (3) Regional-scale diversity: the diversity of plant fossils observed within a  
142 palaeofloristic province and probably reflects plant diversity within more than  $10^5$  km<sup>2</sup>. This  
143 will broadly equate to the  $\varepsilon$ -diversity of the parent vegetation.

144 It is important to remember that the diversities observed in the fossil record (both  
145 macrofloral and palynological) represent the diversities of the fossils, and only partially  
146 reflect the diversities of the parent vegetation (Gastaldo 1992; Birks et al. 2016). Some of the  
147 resulting issues will be discussed later in this paper (Section 4).

### 148 3 Taxonomic problems

#### 149 3.1 Macrofossil taxonomy

150 The concept of biodiversity is inevitably tied to taxonomy (Khuroo et al. 2007). In  
151 neobotany this is relatively straightforward as the taxonomy is based on whole-organism taxa  
152 in which their lifecycles and development can be observed. There will always be  
153 disagreements among botanists as to whether a particular genus of plants contains one or  
154 more species, or a group of species belong to one or more genera, but at least botanists have  
155 whole organisms against which to test their taxonomies.

156 With Cenozoic macrofloras (including Quaternary) it is often still possible to work with  
157 whole-plant taxa (e.g. Huang et al. 2016) but the situation is more difficult with older floras  
158 where palaeobotanists are dealing with extinct groups. Only rarely are completely  
159 reconstructed organisms available to work with; even if a whole, articulated plant is  
160 preserved (e.g. the early seed plant *Elkinsia* – Fig. 3) anatomical details are never completely  
161 present. Palaeobotanists working on these stratigraphically older floras therefore use a



162 different taxonomic approach. Although this has changed in detail over the years (Cleal and  
163 Thomas 2010), the underlying principle has in effect remained the same since the time of  
164 Sternberg (1820) and Brongniart (1822): different parts of the plant are classified and named  
165 separately as fossil-taxa (Turland et al. 2018, Art. 1.2). Mostly these are fossil-species and  
166 fossil-genera, although in principle they can be of any rank (see Cleal and Shute 2012 for an  
167 example of using fossil-families).

168 Exactly how a fossil-taxon is defined is a subjective matter and is not covered by the  
169 regulations in the *International Code of Nomenclature* (Turland et al. 2018), but then this is  
170 no different from neobotany. Because of the constraints of the fossil record (e.g. the inability  
171 to test hypotheses relating to reproductive isolation or molecular phylogenetics) fossil-taxa  
172 have to be defined largely on morphological and/or anatomical criteria (Bateman and Hilton  
173 2009). As with neobotanical systematics (Williams and Ebach 2020, p. 354), however,  
174 distributional discontinuities can be helpful guides as to the best morphological and/or  
175 anatomical criteria for circumscribing natural taxa of fossils; for instance, it makes little sense  
176 to regard fronds of Carboniferous and Triassic ferns with morphologically similar pinnae as  
177 conspecific or even cogenetic. However, since most diversity studies at the rank of species or  
178 genus tend not to be making comparisons over such long time-scales, this is probably not a  
179 significant problem here.

180 The problem with using fossil-taxa for diversity studies is that a simple summation of the  
181 names listed in published taxonomic lists will both significantly overestimate the number of  
182 biological taxa represented, and distort the relative representation of the different plant  
183 groups present (Cleal et al. 2012). For instance, in Carboniferous arborescent lycopsids, a  
184 single biological species may be represented by up to six separate compression fossil-species,  
185 whereas sphenopsids in the same flora may only have four fossil-species (Fig. 4; Table 1). An  
186 added complication is that the fossil-taxa of the different plant parts are probably indicative

187 of different taxonomic ranks of the original organism: for instance, *Stigmaria ficoides*  
188 (Sternberg) Brongniart is a fossil-species of phylogenetically conservative lycopsid rootstock  
189 that effectively cannot be distinguished across many members of the order, whereas the stems  
190 and cones have more sophisticated combinations of derived evolutionary characters and so  
191 their fossil-species probably correlate better with the biological species of the organisms.

192 One solution would be only to study whole reconstructed plants (DiMichele and  
193 Gastaldo 2008). This is feasible when dealing with higher-ranked taxa such as families (e.g.  
194 Anderson et al. 2007) but at the present time there are too few reconstructions to provide  
195 meaningful diversity data at the rank of species or genus. A solution is to normalise the  
196 dataset by identifying, for each plant group, the plant part whose fossil-taxonomy is most  
197 likely to reflect the original, whole-organism taxonomy (e.g. Hilton and Cleal 2007; Cleal et  
198 al. 2012). For instance, the study of the late Carboniferous tropical swamps focussed mainly  
199 on foliage taxa, except with the arborescent lycophytes for which the outer periderm layer  
200 (“bark”) of their trunks was used (Table 1; Cleal 2005, 2007, 2008a). Leaf morphotypes have  
201 also been successfully used in this way with Cretaceous and Palaeogene angiosperms (e.g.  
202 Johnson 2002). Although these vegetative fossil-taxa may not provide the best evidence of  
203 phylogenetic relationships (reproductive structures would probably be better for this – e.g.  
204 Meyen 1984), they are probably providing a robust reflection of the plant species diversity  
205 (Cleal et al. 2012). This will inevitably be imperfect; for instance, cuticle studies of  
206 Carboniferous *Cordaites* and *Selaginella* foliage have shown that diversities will be  
207 significantly underestimated if the identifications are based purely on morphological data  
208 (e.g. Thomas 2005; Šimůnek 2007). There is no easy solution to this issue and simply has to  
209 be accepted in such diversity studies.

210 The situation is further complicated in that the same plant preserved in different ways  
211 (e.g. petrifications and compressions) will be recorded as different fossil-taxa (Galtier 1986;

212 Bateman and DiMichele 1992; Bateman et al. 1992; Bateman and Hilton 2009; Thomas and  
213 Cleal 2020). It is critical, therefore, to ensure that assessments of diversity do not duplicate  
214 fossil-taxa in the same assemblage or locality that are preserved in different ways; for  
215 instance, if an assemblage should include lycopsid cones as both compressions and  
216 permineralisations, the taxonomic list should be normalized so that diversity is not artificially  
217 inflated by “double counting”.

### 218 3.2 *Palynotaxa*

219 Palynological studies on Quaternary floras tend to use whole-plant taxa, based on  
220 morphological comparisons with pollen that have been extracted from living plants. It is  
221 sometimes possible to distinguish pollen from closely related plant species based purely on  
222 morphology but often palynological studies tend to focus mainly on differentiating plants at  
223 the generic rank. Attempts have been made to use DNA barcoding to improve the taxonomic  
224 resolution in Quaternary studies (e.g. Seppä and Bennett 2003); for instance, Petit et al.  
225 (2002) demonstrated that the modern genetic diversity of oak is consistent with the pollen  
226 evidence in a study of post-glacial oak migration. However, most Quaternary palynological  
227 studies remain essentially morphology-based.

228 With older floras, the known relationship between the pollen / spores and their parent  
229 plants is less certain and so palynologists have developed separate taxonomic schemes  
230 (Chaloner 1999). Some proposed taxonomies are completely artificial with the taxa defined  
231 purely on morphological criteria with a non-Linnaean nomenclature, such as used in many  
232 oil-company palynological databases and in the Biorecords methodology of Hughes (1963)  
233 (see Traverse, 2007 for a review). Other taxonomies use a Linnaean-style nomenclature but  
234 with taxa that were still essentially morphological (e.g. Potonié 1956, 1958, 1960) and it is  
235 this approach which is most usually widely used today in pre-Neogene studies (e.g. Jasper et  
236 al. 2010; Stolle 2007, 2012, 2016; Hochuli et al. 2016).

237        Because the botanical affinities of many pre-Neogene palynotaxa are uncertain, it can be  
238 difficult to translate observed palynodiversity trends into floristic trends. Thomas (1987) and  
239 Mander and Punyasena (2014) suggested that the situation could be improved by revising the  
240 diagnoses of palynotaxa based on evidence from in situ palynomorphs in fructifications, data  
241 which is now being increasingly collated (e.g. Balme 1995; Bek 2017). Experience with  
242 Palaeogene and Neogene pollen and spores has also shown that a combination of light  
243 microscopy and scanning electron microscopy based on individual grains (Ferguson et al.  
244 2007), although very time consuming, can also help to improve their assignment to a  
245 particular plant genus or family, or perhaps even to map it into an established framework  
246 represented by one or more phylogenetic trees. (e.g. Grímsson et al. 2011a,b, 2015a,b).  
247 Chemical analysis such as using FTIR (Fourier Transform Infra-Red) and fluorescence  
248 spectroscopy can also be helpful in determining affinities of particular palynomorphs (e.g.  
249 Mitsumoto et al. 2009; Steemans et al. 2010; Urban et al. 2010). This approach has shown  
250 that more traditional approaches utilizing only light microscopy tend to underestimate the  
251 number of taxa present in a palynoflora (Hofmann and Gregor 2018).

252        An added complication is the variation in morphology of pollen and spores during  
253 maturation, as shown for instance in the fern *Weichselia reticulata* (Stokes and Webb)  
254 Fontaine (Fig. 5). This is not an issue in most diversity studies on dispersed palynofloras, as  
255 plants do not normally release their pollen or spores before they are fully mature. However, if  
256 a plant has been subjected to trauma such as a storm, immature pollen and spores may be  
257 prematurely released and preserved, and this could inflate the diversity of a palynofloras.  
258 Although labour intensive, it is possible to determine whether different morphologies  
259 represent different states of maturity or just variability of miospore forms within a species  
260 using sporoderm ultrastructure analysis (e.g. Zavialova et al. 2010).

261 Because of the problems of classifying stratigraphically older palynotaxa a number of  
262 purely morphological suprageneric classifications have been developed (see Traverse 2007  
263 for a review). Especially in Palaeozoic palynofloras, a nested hierarchy of morphological  
264 groups (anteturma, turma, subturma, etc.) developed by Potonié (1934) is still widely used,  
265 and provides a useful framework for descriptive studies. However, as these groups are strictly  
266 morphological, they rarely relate to botanical suprageneric groups and so are of limited use in  
267 diversity studies.

### 268 3.3 *Taxonomic rank*

269 Because of the problem of relating pollen and spores to particular plant species, using  
270 palynology for species diversity studies can be difficult (Mander and Punyasena 2014); even  
271 in the Quaternary where the relationship between pollen and parent plants is better-known,  
272 most palynological diversity studies tend to be at the rank of genus or even family (Giesecke  
273 et al. 2014). Such studies have nevertheless provided valuable evidence of vegetation  
274 dynamics especially at the landscape-scale (Section 5.2).

275 Local- and landscape-scale plant macrofossil diversity studies tend to be based on  
276 normalised inventories of fossil-species or possibly fossil-genera (Section 3.1). However,  
277 species are currently impractical when dealing with diversity changes at regional- or global-  
278 scales, and over longer time-scales, as the datasets become too large to collate and check  
279 objectively by any individual scientist or team. Even where a large amount of species data  
280 has been historically accumulated, such as for the Pennsylvanian Subsystem (see comments  
281 by Pfefferkorn et al. 2017), there have been few attempts to collate them coherently and  
282 critically. Where such collations have been attempted (e.g. Niklas et al. 1980; Lidgard and  
283 Crane 1990), methodological and sampling issues occurred (see comments by Niklas and  
284 Tiffney 2010; Cascales-Miñana et al. 2013). Moreover, these early collations were not

285 published and so cannot be subjected to subsequent critical taxonomic re-assessment, making  
286 the robustness of the resulting analyses difficult to judge.

287       The situation may potentially improve with the development of large-scale computer  
288 databases of fossil occurrences, such as those for Cenozoic angiosperms (Xing et al. 2016;  
289 Williams et al. 2018). Palaeobotanical data have also been included in the Paleobiology  
290 Database (Alroy 2003) although its coverage for plant fossils remains uneven, and is far  
291 below that in other groups such as fossil vertebrates. Various numerical approaches have  
292 been investigated that aim to overcome the issues of incomplete sampling of such databases  
293 (e.g. Silvestro et al. 2015; Beri et al. 2020) but the intractable problem remains of verifying  
294 the taxonomic robustness of the data; if the data cannot be trusted, how can the results of any  
295 analysis? This is an area where palaeobotany needs to improve in order to catch up with other  
296 fossil groups and make sustained impact in analytical methodologies.

297       In the absence of usable databases, the solution adopted in many regional- and global-  
298 scale macrofloral diversity studies is to analyse changes at the rank of family. Family is the  
299 lowest rank of fossil-taxa based almost exclusively on whole organisms and so potentially the  
300 dynamics of the fossil-families should be comparable with those of the original parent  
301 families. A number of global collations of plant fossil-family distributions through geological  
302 time are available (e.g. Harland 1967; Benton 1993; Collinson 1996; Anderson et al. 2007)  
303 and they include the evidence on which the records were based and so can be subjected to  
304 later critical assessment and potential revision (Cascales-Miñana and Cleal 2014).

305       But how closely do family dynamics mirror diversity dynamics at lower taxonomic  
306 ranks? Analyses on modern-day tropical forests suggest that family and species diversity  
307 patterns are broadly similar (e.g. Enquist et al. 2002; Jantz et al. 2014) especially if the data  
308 are log transformed to reduce the effect of dominant families (La Torre et al. 2007); see also  
309 comments by Giesecke et al. (2019) and Reitalu et al. (2019) on Holocene data from Europe.

310 However, this does not take into account the taphonomic filter that fossil floras have been  
311 subjected to; many Palaeozoic and Mesozoic plant fossils cannot be assigned to families due  
312 to missing, or difficult to deduce, features of reproductive organs or cauline anatomy,  
313 suggesting the fossil record of families is incomplete. On the other hand, regional- and  
314 global-scale vegetation analyses (e.g. Cascales-Minana et al. 2013) may benefit from using  
315 family data because they may help smooth out some of the sampling problems encountered in  
316 such large-scale analyses. This is clearly a subject that needs further investigation.

#### 317 **4 Representativeness of data**

318 There have been many studies looking at the effects of representativeness on diversity  
319 studies in the macrofossil record, such as the effects of sampling and taphonomy, but mainly  
320 dealing with faunas, notably marine invertebrates (e.g. Kowalewski et al. 2006). However,  
321 the issues surrounding such faunal studies are fundamentally different from those facing  
322 palaeobotanists and palynologists, as most palaeozoologists have the luxury of dealing with  
323 the remains of whole organisms (or at least their hard-parts, such as shells or exoskeletons);  
324 even vertebrate palaeozoologists tend to deal with whole-organism taxa. Palaeobotanists and  
325 palynologists, in contrast, deal almost exclusively with allochthonous and fragmentary  
326 remains; there are exceptions, as we will discuss, but these tend to be rare and scattered, and  
327 difficult to use in diversity studies. This means that diversity studies on the plant fossil record  
328 are addressing quite different questions to those being usually asked by palaeozoologists:  
329 palaeobotanists and palynologists tend to be looking at the broad composition of vegetation  
330 either in terms of taxa or biomass rather than looking at changing community structure in  
331 terms of individual organisms (e.g. Bambach 1977).

332 4.1 *Macrofloral data*

333 Autochthonous floras (sometimes misleadingly referred to as “Lagerstätten”) provide the  
334 most reliable data on original plant diversity, especially at a local-scale, but these are rare.  
335 One of the best documented is the Devonian Rhynie Chert (e.g. Edwards et al. 2018;  
336 Garwood et al. 2019; Strullu-Derrien et al. 2019) where an in situ and almost complete  
337 terrestrial biota is preserved including relatively small, herbaceous plants. Autochthonous  
338 fossil floras with larger, woody plants are much rarer. There are exceptions, such as the  
339 Palaeozoic swamp forests that were rapidly covered by volcanic ash (see Sections 5.1, 5.2);  
340 but more usually, the so-called T<sup>0</sup> fossil or submerged forests (DiMichele and Falcon-Lang  
341 2011) are only partly autochthonous. They form where an area of forests has been engulfed  
342 by a flood of sediment and casts of the stumps have been preserved in situ (e.g. Fig. 6; for  
343 other examples see Heyworth and Kidson 1982; Francis 1983; Gastaldo 1985; Pole 2001;  
344 Calder et al. 2006; Wagner and Diez 2007; Moir et al. 2010; Stein et al. 2012; Berry and  
345 Marshall 2015; Thomas and Seyfullah 2015; Falcon-Lang et al. 2016), but most of the  
346 herbaceous ground-cover and liana species have been winnowed-out (Thomas 2014). Other  
347 types of “fossil forests” consist of petrified logs preserved as log-jams that have been subject  
348 to varying degrees of transportation (e.g. Falcon-Lang and Bashforth 2005) and thus also  
349 difficult to use for diversity studies.

350 More typically, plant beds occur in fluvio-lacustrine deposits, where disarticulated plant  
351 remains have accumulated after varying degrees of transportation either by wind or water  
352 (Burnham 1989; Gastaldo et al. 1995, Kędzior and Popa 2013, 2018; Thomas and Cleal  
353 2015). This is in marked contrast to many fossil faunal communities, which tend to be much  
354 less prone to transportation (Kidwell and Holland 2002). Many attempts at palaeoecological  
355 studies on such plant beds have documented in great detail the sedimentological context  
356 where the fossils occur (e.g. Scott 1978, 1989; Gomez et al. 2012; Kędzior and Popa 2013,



357 2018). Detailed, three-dimensional sampling such as in underground coal mines along  
358 directional and transversal galleries and in coal extraction chambers in particular can provide  
359 valuable data (e.g. Gastaldo 1985; DiMichele and Nelson 1989; Popa 1998, 2011, 2014;  
360 DiMichele et al. 2007, 2017; Barbacka et al. 2016).

361 However, the plant remains will have been transported over varying distances, making it  
362 difficult to translate the observed distribution of the fossils into original plant diversity  
363 (Gastaldo 1992). In a few cases, the fossils in such plant beds seem to have been subjected to  
364 only limited transport, such as where a river-bank bank has collapsed and the plant remains  
365 have become entombed in a crevasse-splay (e.g. Cleal and Thomas 1988; Laveine and Belhis  
366 2007). More usually, however, the plant remains are at least partly allochthonous. Actualistic  
367 studies suggest they will include only a variable representation of the immediately local  
368 vegetation (e.g. Burnham 1989, 1994) mixed with remains derived from riparian vegetation  
369 growing some distance upstream (Spicer 1980, 1981; Scheihing and Pfefferkorn 1984;  
370 Ferguson 1985; Gastaldo et al. 1987; Gastaldo and Huc 1992).

371 By carefully documenting the co-occurrence of species within individual beds, the  
372 composition of individual plant communities can be estimated (e.g. Procter 1994; Bashforth  
373 et al. 2010, 2011; Barbacka 2012; Barbacka et al. 2016; Thomas et al. 2020). However,  
374 locating those communities in the original vegetation / habitat matrix requires a detailed  
375 understanding of the sedimentology of the deposits (DiMichele and Gastaldo 2008; Reitalu et  
376 al. 2014) and is at best difficult. Moreover, taphonomic factors may distort the observed  
377 diversities. Variations in edaphic conditions can cause variable post-mortem decay of the  
378 plant tissue (Gastaldo 1992; Gastaldo and Demko 2011). It has been suggested that  
379 differential decay of plant groups may distort the species composition (Scott 1979; Wing and  
380 DiMichele 1995) although the effect of this may have been exaggerated (Locatelli et al. 2016;  
381 Tomescu et al. 2018). More significant may be differential sorting of the plant remains during

382 transportation: smaller plant fragments will tend to travel further and softer, heavier plant  
383 fragments sink more quickly (e.g. Steart et al. 2002). Some element of time-averaging may  
384 even occur within a single plant bed depending on depositional rates of the sediment.

385 Plant remains preserved in shallow marine deposits are usually fragmentary and not  
386 concentrated into distinct plant beds, although there can be exceptions caused by storm surges  
387 (e.g. Kustatscher et al. 2010). Fossil floras preserved in marine deposits can include the  
388 remains of coastal vegetation such as mangroves (e.g. Collinson 1993). During late Permian  
389 times, climatic conditions were unfavourable for plant growth in continental Europe and so  
390 vegetation tended to be concentrated in coastal areas; remains of this vegetation has been  
391 found in shallow marine deposits, preserved particularly during transgression phases  
392 (Kustatscher et al. 2017).

393 Some plant macrofossils preserved in marine strata have been interpreted as plant  
394 remains washed down from hinterland vegetation (e.g. Rothwell et al. 1996; Rice et al. 1996;  
395 Cleal and Rees 2003) and are notably different from what is seen in fluvio-lacustrine plant  
396 beds. “Exotic”, extra-basinal plant remains have also sometimes been reported from fluvio-  
397 lacustrine plant beds (e.g. Cleal and Thomas 2004; Uhl 2006; Opluštil et al. 2007). Generally,  
398 however, plants growing in places away from rivers or lakes are poorly represented as  
399 macrofossils. For instance, grasses, which are obviously major components of terrestrial  
400 vegetation today, have a very poor macrofossil record and much of what we know of their  
401 evolution is based on palynology (Section 4.2) or dispersed phytoliths derived from their  
402 leaves (e.g. Piperno and Pearsall 1998; Strömberg 2004, 2011).

403 Fossil floras can also occur in maar lake deposits (e.g. the Messel World Heritage Site –  
404 Collinson et al. 2012). Such lakes are caused by phreatomagmatic explosions resulting from  
405 the interaction of erupting magma and water, and can occur almost anywhere within a  
406 landscape and thus may be surrounded by a different type of vegetation to that growing

407 adjacent to lakes formed in fluvio-lacustrine settings. For instance, the late Oligocene Norken  
408 fluvio-lacustrine deposits contain predominantly remains of riparian and swamp vegetation  
409 (Uhl et al. 2018) but these are almost totally absent from the nearby, almost contemporary  
410 Enspel maar lake deposits (Köhler and Uhl 2014). Plant remains in such lakes also  
411 experience less hydro-mechanical stress due to water transport and so can preserve delicate  
412 plant structure such as flowers (e.g. Uhl 2015).

#### 413 4.2 *Palynological data*

414 Palynology has been widely used for Quaternary landscape-scale diversity studies  
415 (Giesecke et al. 2014); but translating the data into vegetation patterns can be problematic  
416 because of significant variation in pollen productivity from year to year (Andersen 1970;  
417 Sugita 1993; Hicks 1985; Barnekow et al. 2007; Pidek et al. 2010; Giesecke et al. 2014).  
418 However, this is partly mitigated by most sediment samples representing several years; for  
419 example, in the Lake Sapanca sequence (N-W Turkey) sub-annual samples taken at a 5 mm  
420 resolution revealed no seasonality in the palynology signal, probably due to bioturbation of  
421 the lake sediment (Leroy et al. 2009). On the other hand, in the alternating black and white  
422 sediment layers of the Dead Sea (López-Merino et al. 2016), the seasonality of the pollen  
423 production was used to determine if the lamina couplets were varves or a laminated sediment.

424 Another problem is the great variation in pollen productivity between different plant  
425 species. Current evidence for northern and temperate latitudes suggests that Quaternary  
426 palynological data are particularly robust for most trees (with a few notable exceptions such  
427 as *Larix*) and wind-pollinated taxa, and provide a good measure of broad-scale plant richness  
428 over several thousands of kilometres (Reitalu et al. 2019); this is less so for tropical  
429 environments due to the higher number of insect-pollinated plants. Among herbs, the Poaceae  
430 are the most abundant wind-pollinated plants, and their pollen can be widely dispersed.  
431 However, the source of Poaceae and Cyperaceae pollen can be difficult to elucidate because

432 these species occur in a wide range of plant communities. It can also be impossible to identify  
433 their pollen to species level other than in cultivated cereals (Pardoe 2001; Sjögren et al.  
434 2015), although phytoliths can be of help here (see below). Most other herbs tend to be under  
435 represented in pollen spectra (Leroy and Roiron 1996) as the pollen are dispersed by other  
436 vectors and so are not so abundantly produced; they also often have a lower preservation  
437 potential. There have been relatively few studies of the representation of herbs in pollen  
438 assemblages (Pardoe 2001; Bunting et al. 2016) but the presence of so called “indicator taxa”  
439 in pollen samples can give strong evidence that such plants were growing locally (Pardoe  
440 1996, 2001, 2006). Data can also be supplemented by evidence from in situ pollen from  
441 flowers (e.g. Herendeen et al. 1994) and in exceptional cases from fossils of pollinating  
442 animals (e.g. Grímsson et al. 2017).

443       Recent initiatives such as the Pollen Monitoring Programme (PMP) are now helping us  
444 gain a greater understanding of the relationship between pollen, vegetation and environmental  
445 variables. The PMP has been instrumental in the publication of several decades-long records  
446 from across Europe (Hicks et al. 1996; Giesecke et al. 2010). The PMP has addressed a  
447 variety of problems including the representation of individual taxa (Hicks et al. 1994; Hicks,  
448 2001, Ertl et al 2012; Pidek et al. 2010), the representation of plant communities (van der  
449 Knaap et al. 2001; Pidek 2004; Gerasimidis et al. 2006), and the influence of sampling  
450 medium on palynological diversity (Pardoe et al. 2010; Litsitsyna et al. 2012).

451       Although not strictly palynological, phytoliths are another type of plant microfossils that  
452 provide valuable evidence of terrestrial vegetation (Strömberg et al. 2018). There can be  
453 taphonomic issues due to silica dissolution (Cabanes and Shahack-Gross 2015) but they are  
454 nevertheless essential indicators of grass diversity in Cenozoic vegetation, which are usually  
455 poorly represented as pollen and macrofossils (Piperno and Pearsall 1998; Piperno 2002;

456 Strömberg 2004, 2011; Rashid et al. 2019). There are also records of pre-Cenozoic phytoliths  
457 (e.g. Carter 1999) but their affinities remain uncertain.

458 In principle, palynodata can be corrected using R-coefficients (sensu Davis 1963)  
459 representing the ratio between the observed pollen abundances and the abundance of plants in  
460 the parent vegetation. R-coefficients can be estimated for Quaternary data based on  
461 actualistic comparisons between surface pollen data and field vegetation surveys (although  
462 even here problems may occur because of some of the mathematical assumption involved –  
463 Parsons and Prentice 1981). Such an approach is more difficult with tests on the robustness of  
464 pre-Quaternary palynodata as often no independent measure of vegetation composition can  
465 be used to calculate the R-coefficients. Nevertheless, it has been attempted with the late  
466 Carboniferous swamps where available autochthonous macrofloras allow the coefficients to  
467 be estimated (Willard 1993; Opluštil et al. 2009). Palynofacies signals can also help in  
468 determining the robustness of palynological data by indicating the depositional and  
469 palaeoenvironmental situation of the studied strata (e.g. Stolle et al. 2012, pl. 1, fig. 2).

#### 470 4.3 *Pollen and macrofossil data compared*

471 When diversity data from the macrofloral and palynological records are compared (e.g.  
472 Leroy and Roiron 1996; Dimitrova et al. 2005; Birks and Bjune 2010; Xiong et al. 2013;  
473 Bjune 2014; Looy et al. 2014; DiMichele et al. 2018) rather different signals are often  
474 revealed both in the plant groups represented and the relative proportions of those plant  
475 groups (Fig. 7). The macrofloral record is regarded as giving a more detailed picture of plant  
476 species richness, especially at a local-scale (Birks and Birks 1980). However, this tends to  
477 represent only a fairly narrow band of habitats, and the much smaller sample sizes usually  
478 available compared with palynology will often be insufficient to capture diversity patterns.  
479 Palynology, in contrast, will give a better understanding of vegetation patterns across a wider  
480 range of habitats and at a landscape-scale (Dimitrova et al. 2010; Costamagna et al. 2018).

481 Because palynological samples may contain palynomorphs from different habitats, it can be  
482 difficult to determine the local-scale vegetation patterns within individual habitats; it may  
483 also help explain why palynospectra tend to be more diverse than the macrofloras found in  
484 the same bed (e.g. Dimitrova et al. 2005). However, as our understanding of the natural  
485 affinities of many palynotaxa is improving, palynology is providing increasingly refined  
486 evidence of landscape-scale vegetation diversities (Section 5.2).

487 It is evident that one data source is not better than the other for diversity studies: rather,  
488 that palaeobotany and palynology are complementary, and are best investigated in tandem  
489 (Birks 2000; Kustatscher et al. 2010; Reitalu et al. 2014; Costamagna et al. 2018).

## 490 **5 Diversity studies**

491 It is beyond the scope of this paper to review all examples of palaeobotanical and  
492 palynological diversity studies; the following discussion aims merely to illustrate some of the  
493 types of analyses that have been attempted.

### 494 *5.1 Local-scale diversity*

495 Most allochthonous fossil macrofloras tend to reflect local-scale plant diversity (Cleal et  
496 al. 2012). However, the complexity of the sedimentary systems in which they usually occur  
497 (Section 3.1) means that the diversity of each individual bed needs to be analysed separately  
498 as each flush of sediment is likely to have remains from a different set of plant communities.  
499 Even if the plant beds are rigorously sampled (e.g. Scott 1978, 1979), a detailed  
500 understanding of the sedimentology is required before it is possible to unscramble the local-  
501 scale plant diversity patterns from the mosaic of habitats represented in most allochthonous  
502 plant bed (Kędzior and Popa 2013, 2018).

503 Palynological data tend to be even more problematic for local-scale diversity studies due  
504 to variations in how far the palynomorphs have been transported. For instance, pollen of

505 modern-day *Picea* has been found in the Canadian Arctic, 3000 km from its source  
506 (Campbell et al. 1999); in the Palaeozoic, conifer pollen appears to have been blown in from  
507 a considerable distance (e.g. Bless et al. 1977); some pollen in Carboniferous tropical  
508 palynofloras even appear to have originated from high-latitude, Gondwana vegetation  
509 (Dimitrova et al. 2011). Even long-distance water transportation of pollen has been reported;  
510 for example, Holocene *Podocarpus* pollen that have been found in Nile delta deposits may  
511 have been transported > 2,000 km along the river from their source in the Ethiopian  
512 Highlands (Leroy 1992). Although such exotics will normally be rare in palynofloras, they  
513 represent the end-members of a gradational spectrum of palynomorph abundances reflecting  
514 differences in transportation distances, making it difficult to extract local-scale diversity  
515 patterns, especially in fluvial and delta settings (Weng et al. 2006).

516       Local-scale past plant diversity is best determined in the rare autochthonous fossil floras  
517 although even here the data are often incomplete (Section 4.1). Some of the best examples of  
518 autochthonous floras preserving forest vegetation including both the trees and herbaceous  
519 plants are in Palaeozoic volcanic ash-fall deposits (e.g. Wagner 1989; Rössler and Barthel  
520 1998; Wang et al. 2012; Luthardt et al. 2016). Examples studied in great detail are in an ash  
521 band in the early Moscovian Radnice Coal in the Czech Republic, where about 0.5 m of  
522 volcanic ash engulfed an area of swamp vegetation. The lower part of the deposit contains in  
523 situ stumps and the groundcover vegetation, which, because the ash fell almost vertically,  
524 was mostly not winnowed out. The upper parts of the ash band, in contrast, includes remains  
525 of the upper parts of the trees, together with epiphytes and lianas, brought down by the  
526 weight of the ash sometime after the deposit had fallen (Pšenička and Opluštil 2013). A  
527 careful survey of the plant remains in different levels of the ash deposit (Fig. 8) not only  
528 allowed the reconstruction of the taxonomic composition, spatial distribution and density of

529 vegetation cover, but also revealed evidence of plant to plant interactions and living strategies  
530 in extraordinary detail (Opluštil et al. 2007, 2009a,b, 2014; Libertín et al. 2009a).

531 Many coals (but not all – Glasspool 2003) are the remains of parautochthonous peat and  
532 so, as with modern-day peat deposits (e.g. Mauquoy et al. 2010), have the potential to reveal  
533 local-scale plant diversity. When the peat has changed into coal through compaction and  
534 diagenesis, however, the plant remains become homogenised and so difficult to identify.  
535 Notable exceptions are when the peat has been subjected to early mineralisation that  
536 preserves the anatomy of the plant remains in often exquisite detail. Sometimes most or all  
537 the peat deposit has been mineralised (e.g. Galtier 2008; Slater et al. 2015) but more  
538 commonly the mineralisation is localised, such as in the coal balls (mainly calcitic nodules)  
539 found in some Palaeozoic coal seams. There have been several local-scale diversity studies  
540 on coal balls (e.g. DiMichele and Phillips 1988; DiMichele et al. 1991; Willard 1993; Baker  
541 and DiMichele 1997; DiMichele et al. 2002; Willard et al. 2007), which produced evidence  
542 of biomass allocation within the peat, which in turn gave some localised evidence of species  
543 diversity.

544 Coal deposits often yield well-preserved palynomorphs, which have been extensively  
545 used for biostratigraphical studies revealing evidence of the temporal changes in vegetation  
546 (e.g. Smith and Butterworth 1967). If intercalated fine-siliciclastic (shaley) coal-bearing  
547 samples are also included, palynological assemblages can be particularly species rich. As  
548 with the macrofloras, regional to exotic palynomorphs derived from extra-basinal vegetation  
549 (Fig. 9) may also be present, which can be ideal for palynological correlation purposes (e.g.  
550 Stolle 2007, 2010), but can confuse local-scale micro-macro diversity analyses and the  
551 interpretation of vegetational distribution patterns (e.g. Dimitrova et al. 2005). Palynology  
552 has also been used to investigate the ecological development of the swamps (e.g. Smith 1962,  
553 1968; Habib and Groth 1967; Jasper et al. 2010; Johnston et al. 2017; Eble et al. 2019) and to



554 look at plant diversity at the rank of genus and higher (e.g. Dimitrova and Cleal 2007;  
555 Libertín et al. 2009b; Thomas and Dimitrova 2017), but direct translation of the resulting  
556 palynological spectra into plant species diversity is difficult.

557 Another distinctive parautochthonous source of plant remains is amber, mainly of  
558 Cretaceous to Neogene age. Amber can be produced by both conifer (Sadowski et al. 2017)  
559 and angiosperm trees (Rust et al. 2010), and can result in exquisite preservation, especially of  
560 delicate structures such as flowers (Poinar 2002; Gandolfo et al. 2018), fern sori (Sadowski et  
561 al. 2019) and even microscopic algae (Schmidt et al. 2006). Some of these deposits have been  
562 studied since the middle 19<sup>th</sup> century, but amber can be a very selective fossil trap (e.g.  
563 Solórzano Kraemer et al. 2018) and so our understanding of the plant diversity of these  
564 forests is still incomplete.

## 565 5.2 *Landscape-scale diversity*

566 Studies on adpression fossil diversities across depositional basins (e.g. Cleal 2005, 2007,  
567 2008a; Goswami and Singh 2013; Huang et al. 2016; Opluštil et al. 2017; Goswami et al.  
568 2018; Roopnarine et al. 2018; Saxena et al. 2020) tend to be based on plant remains from a  
569 narrow band of habitats. For instance, adpressions from the Pennsylvanian swamps of  
570 Euramerica appear to have been dominated by remains of the vegetation growing on clastic  
571 substrates such as flood-plains, levees and sand banks, whereas the peat-substrate vegetation,  
572 which in fact dominated these swamps, is often poorly represented (Cleal et al. 2012); the  
573 peat-substrate vegetation is, in contrast, better represented in the coal ball floras and  
574 palynospectra. This is not a problem if the main aim is to document extrinsic effects such as  
575 climate or landscape changes, particularly if the sampled habitats are tightly constrained  
576 ecologically, but care must be taken not to over-generalise the results in terms of overall  
577 vegetation patterns.

578 One of the best sources of detailed data on Palaeozoic landscape-scale diversity are the  
579 ash deposits in the Czech Radnice Coal (mentioned in Section 5.1), which have been  
580 recorded from numerous localities in both historical collections and several recent  
581 excavations. These have allowed lateral variation in the swamp vegetation at one  
582 stratigraphical level to be investigated; for instance, studies at the Štílec and Ovčín localities,  
583 about 20 km apart, yielded two contrasting assemblages, representing different stages of  
584 vegetation succession (Opluštil et al. 2007, 2009a,b, 2014; Libertín et al. 2009a). A similar  
585 situation is present in the earliest Permian Wuda ash bed that occurs over an area of more  
586 than 60 km<sup>2</sup>, enabling distinct assemblages to be recognised both vertically and laterally  
587 (Wang et al. 2012; Opluštil et al. 2020).

588 Floras with anatomically preserved petrifications and permineralisations are more  
589 difficult to use for landscape-scale diversity studies. Most such floras tend to be isolated  
590 localities reflecting the exceptional conditions that caused the preservation, and so usually  
591 only reflect local-scale diversity. The most notable exceptions are the Pennsylvanian-age coal  
592 balls floras that occur extensively across the Late Palaeozoic tropical belt but, although they  
593 have been the subject of a number of taxonomic collations (e.g. Phillips 1980; Galtier 1997),  
594 no detailed landscape-scale diversity studies have been attempted. In palaeozoological  
595 studies, such preservational “hot-spots” have proved a problem by suggesting abnormally  
596 high diversities at particular stratigraphical levels, often referred to as the “Lagerstätte effect”  
597 (e.g. Benton 1995; Butler et al. 2013), but evidence of this distorting effect on plant fossil  
598 diversities is less clear (see comments by Cascales- Miñana and Gerrienne 2017).

599 Palynology can provide a more representative picture of landscape-scale diversity as the  
600 sediment will contain the pollen from plants growing across the area (Weng et al. 2006). This  
601 has proved particularly useful in Quaternary studies where the botanical affinities of the  
602 various pollen types are well known (Section 4.2). For instance, palynology has been used to

603 map distribution changes across Europe during the Holocene by Huntley and Birks (1983),  
604 and there have been numerous species-specific studies (Hicks 2001; Brewer et al. 2002;  
605 Giesecke and Bennett 2004; van der Knaap 2004; Latałowa and van der Knaap 2006; Tinner  
606 and Lotter 2006; Giesecke et al. 2007; Pidek et al. 2010; Poska and Pidek 2010). Reitalu et al.  
607 (2019) have demonstrated in their study of modern pollen and plant richness across northern  
608 Europe that the highest correlations were for trees and shrubs and of wind-pollinated taxa,  
609 suggesting that these are the best measures of broad-scale plant richness over several  
610 thousands of kilometres.

611 Improvements in our knowledge of the general affinities of many pre-Neogene  
612 palynotaxa (Section 3.2) now allow palynology to identify broad patterns of landscape-scale  
613 plant diversity (Abbink et al. 2004; Dimitrova et al. 2005, 2010; Dimitrova and Cleal 2007;  
614 Kustatscher et al. 2010; Beri et al. 2018; Franz et al. 2019). However, remaining uncertainties  
615 about variations in palynomorph productivity and dispersal between species, and the  
616 morphological variation of palynomorphs within plant species, make it difficult to use some  
617 taxa for detailed landscape-scale plant diversity studies (Section 4.2).

### 618 5.3 *Regional-scale and global-scale diversities (Evolutionary floras)*

619 Studies on global-scale faunal diversity (e.g. Sepkoski 1978, 1979, 1984, 1988; Bambach  
620 1977; Powell and Kowalewski 2002) have shown a progressive increase in species diversity  
621 through the Phanerozoic due to an increase in the spatial density of organisms, especially in  
622 shallow marine environments (Holland and Sclafani 2015). Similar global and regional  
623 studies at the species rank have been attempted in palaeobotany (e.g. Knoll et al. 1979; Niklas  
624 et al. 1980) but were hindered by the lack of suitable, taxonomically robust data sets (Section  
625 3.3); also by the failure to take into account geographical (especially latitudinal) variations in  
626 taxonomic diversity, as has been shown to be an issue with marine invertebrate diversity  
627 dynamics (Close et al. 2020). Analogous palaeobotanical studies would, moreover, be

628 unlikely to answer the same sorts of questions of changes in community structure that were  
629 being investigated in the faunal record (Section 4).

630 Analyses within narrow taxonomic (e.g. Cleal 2008b,c) or stratigraphical (e.g. Cleal et al.  
631 2010; Barbacka et al. 2014) limits have been attempted at the regional-scale, which make it  
632 practical for the taxonomic robustness of the data to be critically assessed. However, most  
633 larger-scale studies have tended to be based at supra-generic ranks, usually family. For  
634 instance, global Phanerozoic plant diversity dynamics were interpreted using Evolutionary  
635 Floras (Fig. 10), identified from a factor analysis of a plant family dataset (Cleal and  
636 Cascales-Miñana 2014), and these have been used to describe the broad trajectory of  
637 vegetation history (Cleal and Thomas 2019; Cleal 2019). More recently, a similar study on  
638 pre-Carboniferous floras at the rank of genus is revealing further details of the early phases of  
639 plant terrestrialisation (Capel et al., this volume).

640 There are a number of problems with such large-scale plant diversity studies. The  
641 taxonomic robustness of the data used is often uncertain, although for plants this is partly  
642 avoided by using family-rank data sets (Section 3.3). More difficult is the robustness of the  
643 stratigraphical correlations between widely separated floras. Most fossil floras occur in  
644 predominantly terrestrial sequences that lack absolute dating or independent  
645 biostratigraphical control (e.g. by marine faunas). In local-scale and landscape-scale studies  
646 this is less of a problem as lithostratigraphical correlations are often sufficient to provide a  
647 temporal framework for comparisons, but these are inadequate for regional-scale and global-  
648 scale studies. The palaeobotanical and palynological evidence is itself sometimes used to  
649 provide the correlations, but when this is used as the temporal context for the vegetation  
650 changes, the arguments become circular. A classic example is the Panchet Formation in India,  
651 which is often quoted as justifying the persistence of glossopterids into the Triassic Period,

652 but for which there is in fact no evidence that it is Triassic other than some debatable facies  
653 changes and the floras themselves (Saxena et al. 2018).

## 654 **6 Why study plant diversity in deep time?**

655 Studies of past plant diversity dynamics are particularly important for providing a  
656 comparison with models used to describe the response of vegetation to recent climate change  
657 (Willis et al. 2010; Reitalu et al. 2014). For instance, the Quaternary record has indicated that  
658 glacial-interglacial changes have induced large-scale shifts in plant distributions (Willis and  
659 Bhagwat 2009; Giesecke et al. 2017), although there was sometimes a lag between climatic  
660 change and vegetation change (Leroy et al. 2011). Some warm-loving and cold-loving  
661 deciduous tree species became extinct in Europe during glacial phases (Willis and Niklas  
662 2004; Bertini 2010), due not only to climate change, but also to disease, competition and  
663 extreme conditions in refugia (Leroy 2007). For those species that survived the glacial  
664 phases, refugia such as in southern Europe were essential (Bennett et al. 1991; Leroy and  
665 Arpe 2007). In contrast, conifers and some climatically less sensitive angiosperm trees found  
666 refugia further north in Europe during glacial phases (crypto-refugia; Willis et al. 2000;  
667 Bhagwat and Willis 2008) whereas herbaceous species typical of tundra and steppe  
668 vegetation have been forced into upland refugia during the forest dominated phase of the  
669 Holocene (Bennett and Provan 2008). It is evident that these refugia have been vital for the  
670 shaping of present-day biogeographical patterns and the assemblage of extant communities  
671 (Willis and Bhagwat 2009). Refugia have also been used to explain the responses of  
672 vegetation to climate changes in Carboniferous tropical swamps (e.g. Falcon-Lang and  
673 DiMichele 2010; Looy et al. 2014).

674 Palynological research has revealed anthropogenic effects on Holocene plant diversity  
675 (Giesecke et al. 2012, 2019). For example, Filipova-Marinova et al. (2014) described an

676 8,000-year long record of vegetation change at Varna Lake (Bulgaria) and showed how the  
677 vegetation was strongly influenced by human activity, both through woodland clearance and  
678 the establishment of agriculture.

679 Rull (2011, 2013) has explored the drivers of neotropical diversity since early Neogene  
680 times, and concluded that it is the result of complex ecological and evolutionary trends  
681 initiated by tectonic events and palaeogeographical reorganisations, and was maintained by  
682 Pleistocene climatic changes. The palynological record during the Palaeocene – Eocene  
683 Thermal Maximum indicated an increase in diversity in tropical (Jaramillo et al. 2010) and  
684 polar vegetation (Willard et al. 2019), whereas in temperate latitudes the effects were less  
685 marked (e.g. Wing et al. 2003) except sometimes for a change to more fire-prone vegetation  
686 (Collinson et al. 2009).

687 Further back in geological time, the analyses are more difficult because we are looking at  
688 plants that are only distantly related to modern-day vegetation, but the comparisons can  
689 nevertheless be insightful. Many Mesozoic studies have focussed on how vegetation  
690 recovered from the Permian – Triassic and Triassic – Jurassic biotic crises (e.g. Grauvogel-  
691 Stamm and Ash 2005; Yu et al. 2015). For instance, Hochuli et al. (2016) showed the  
692 complex pattern of recovery of the post-extinction, Early Triassic vegetation. Various other  
693 floral changes were recorded at the Triassic – Jurassic boundary in Greenland (McElwain et  
694 al. 2007) and at the Hettangian-Sinemurian boundary in the South Carpathians (Popa 2000).

695 In the Palaeozoic, most attention has been directed to the effect of the Late Palaeozoic  
696 Ice Age on plant diversity: did the observed Pennsylvanian – Cisuralian diversity changes in  
697 the tropical vegetation cause climate change (e.g. Cleal and Thomas 1999, 2005), or did the  
698 climate change cause the vegetation changes (e.g. Pfefferkorn et al. 2008, 2017), or were the  
699 two interlocked through feedback loops (Cleal et al. 2010)? Other links that have also been  
700 explored are between the diversification of the first woody forests in Late Devonian times

701 and a significant change in ocean water chemistry that caused major reduction in marine  
702 faunal diversity (Algeo and Scheckler 1998); and between the very early development of  
703 plant diversity during Ordovician times and global cooling and glaciation (Servais et al.  
704 2019).

705 Another major theme of research has been the effect of mass extinctions on vegetation  
706 (McElwain and Punyasena 2007; Cascales-Miñana et al. 2013). Clearly extensive destruction  
707 of vegetation occurred during three of the five classic “mass extinctions” of Sepkoski (1978,  
708 1979, 1984): at the boundaries between the Permian – Triassic (e.g. Looy et al. 1999; Hochuli  
709 et al. 2016, 2017), Triassic – Jurassic (e.g. McElwain et al 2007; Mander et al. 2013;  
710 McElwain 2018) and Cretaceous – Palaeogene (e.g. Vajda and Bercovici 2014). However, a  
711 key criterion for recognising a true mass extinction (Raup and Sepkoski 1982) is that it  
712 should significantly disrupt the overall trajectory of evolution and this did not occur with  
713 plants at most of these biotic crises (McElwain and Punyasena 2007; Cascales-Miñana 2011,  
714 2012; Cascales-Miñana and Cleal 2011; Cascales-Miñana and Diez 2012; Cascales-Miñana et  
715 al. 2013). Only at the Permian – Triassic boundary does there seem to have been any  
716 significant clade disruption (Cascales-Miñana and Cleal 2014; Cascales-Miñana et al. 2016),  
717 and even here the pattern of extinction was more complex than with the marine faunas  
718 (Hochuli et al. 2016; Nowak et al. 2019). The fossil record seems to suggest that plants were  
719 much less vulnerable to biotic crises compared with faunas (Traverse 1988; McElwain and  
720 Punyasena 2007; McElwain et al. 2007; Cascales- Miñana et al. 2018).

721 Identifying vegetation diversity patterns at all scales from the plant fossil record is  
722 clearly not easy; whatever the sampling protocol and analytical methods used, the fact will  
723 remain that the observed diversity patterns are of the fossils rather than purely of the original  
724 vegetation. Nevertheless, the fossil record is the only direct evidence we have of how  
725 vegetation has changed through time. By bringing together data from the palaeobotanical and

726 palynological records and interpreting it within the context of the taphonomic filter through  
727 which the fossils have passed (Fig. 11) will allow us to understand better how plant-life has  
728 responded to changes in climate, landscape and continental configurations, and to the  
729 dramatic ecological crises often referred to as mass extinctions.

## 730 **7 Conclusions**

731 A deeper appreciation of the history of vegetation dynamics can inform present-day  
732 landscape management and predictions of future biodiversity and climate. For example, the  
733 plant fossil record can provide evidence of the speed at which plants can track climate change  
734 and this may prove valuable to predict the response of today's plant vegetation to global  
735 warming. It can also provide empirical data to help support and improve models of the  
736 dynamic interactions of modern-day vegetation, atmosphere and climate. Evidence from the  
737 fossil record clearly has the potential for making a significant contribution to understanding  
738 the world today, and emphasises the importance of close co-operation between  
739 palaeoecologists and ecologists (Reitalu et al. 2014). Provided that the context of the data is  
740 properly understood, including the taxonomy of the fossils (not just the taxonomic names  
741 used but what the fossil-taxa mean), the taphonomic processes that caused the fossil to be  
742 preserved, and the detailed temporal (stratigraphical) correlations, an underlying signal of  
743 vegetation diversity remains waiting to be discovered.

## 744 **Acknowledgements**

745 The authors are grateful to the European Science Foundation for supporting the  
746 Exploratory Workshop entitled *Tracking changes in plant diversity over the last 400 million*  
747 *years*, held in 2014 at National Museum Wales, Cardiff, UK. This is a contribution to  
748 National Museum Wales Research Project NS25 *Plant diversity through 450 million years of*  
749 *Earth history*.



**750 8 References**

- 751 Abbink, O.A., van Konijnenburg-van Cittert, J.H.A., Visscher, H., 2004. A sporomorph  
752 ecogroup model for the Northwest European Jurassic-Lower Cretaceous: concepts and  
753 framework. *Netherlands Journal of Geosciences* 83, 17–31.
- 754 Algeo, T.J., Scheckler, S.E., 1998. Terrestrial-marine teleconnections in the Devonian: links  
755 between the evolution of land plants, weathering processes, and marine anoxic events.  
756 *Philosophical Transactions of the Royal Society of London. Series B: Biological Sciences*  
757 353, 113–130.
- 758 Alroy, J., 2003. Global databases will yield reliable measures of global biodiversity.  
759 *Paleobiology* 29, 26–29.
- 760 Andersen, S.T., 1970. The relative pollen productivity and pollen representation of north  
761 European trees, and correction factors for tree pollen spectra. *Danmarks Geologiske*  
762 *Undersøgelse, Raekke* 2, 1–99.
- 763 Anderson, J.M., Anderson, H.M., Cleal, C.J., 2007. Brief history of the gymnosperms:  
764 classification, biodiversity, phytogeography and ecology. *Strelitzia* 20, 1–279.
- 765 Andrews, H.N., 1980. *The fossil hunters. In search of ancient plants.* Cornell University  
766 Press, Ithaca and London.
- 767 Antonelli, A., Fry, C., Smith, R.J., Simmonds, M.S.J., Kersey, P.J., Pritchard, H.W., Abbo,  
768 M.S., Acedo, C., Adams, J., Ainsworth, A.M., Allkin, B., Annecke, W., Bachman, S.P.,  
769 Bacon, K., Bárríos, S., Barstow, C., Battison, A., Bell, E., Bensusan, K., Bidartondo, M.I.,  
770 Blackhall-Miles, R.J., Borrell, J.S., Brearley, F.Q., Breman, E., Brewer, R.F.A., Brodie, J.,  
771 Cámara-Leret, R., Campostrini Forzza, R., Cannon, P., Carine, M., Carretero, J., Cavagnaro,  
772 T.R., Cazar, M.-E., Chapman, T., Cheek, M., Clubbe, C., Cockel, C., Collemare, J., Cooper,  
773 A., Copeland, A.I., Corcoran, M., Couch, C., Cowell, C., Crous, P., da Silva, M., Dalle, G.,

774 Das, D., David, J.C., Davies, L., Davies, N., De Canha, M.N., de Lirio, E.J., Demissew, S.,  
775 Diazgranados, M., Dickie, J., Dines, T., Douglas, B., Dröge, G., Dulloo, M.E., Fang, R.,  
776 Farlow, A., Farrar, K., Fay, M.F., Felix, J., Forest, F., Forrest, L.L., Fulcher, T., Gafforov, Y.,  
777 Gardiner, L.M., Gâteblé, G., Gaya, E., Geslin, B., Gonçalves, S.C., Gore, C.J.N., Govaerts,  
778 R., Gowda, B., Grace, O.M., Grall, A., Haelewaters, D., Halley, J.M., Hamilton, M.A.,  
779 Hazra, A., Heller, T., Hollingsworth, P.M., Holstein, N., Howes, M.-J.R., Hughes, M.,  
780 Hunter, D., Hutchinson, N., Hyde, K., Iganci, J., Jones, M., Kelly, L.J., Kirk, P., Koch, H.,  
781 Krisai-Greilhuber, I., Lall, N., Langat, M.K., Leaman, D.J., Leão, T.C., Lee, M.A., Leitch,  
782 I.J., Leon, C., Lettice, E., Lewis, G.P., Li, L., Lindon, H., Liu, J.S., Liu, U., Llewellyn, T.,  
783 Looney, B., Lovett, J.C., Łuczaj, Ł., Lulekal, E., Maggassouba, S., Malécot, V., Martin, C.,  
784 Maser, O.R., Mattana, E., Maxted, N., Mba, C., McGinn, K.J., Metheringham, C., Miles, S.,  
785 Miller, J., Milliken, W., Moat, J., Moore, P.G.P., Morim, M.P., Mueller, G.M., Muminjanov,  
786 H., Negrão, R., Nic Lughadha, E., Nicolson, N., Niskanen, T., Nono Womdim, R., Noorani,  
787 A., Obreza, M., O'Donnell, K., O'Hanlon, R., Onana, J.-M., Ondo, I., Padulosi, S., Paton, A.,  
788 Pearce, T., Pérez Escobar, O.A., Pieroni, A., Pironon, S., Prescott, T.A.K., Qi, Y.D., Qin, H.,  
789 Quave, C.L., Rajaovelona, L., Razanajatovo, H., Reich, P.B., Rianawati, E., Rich, T.C.G.,  
790 Richards, S.L., Rivers, M.C., Ross, A., Rumsey, F., Ryan, M., Ryan, P., Sagala, S., Sanchez,  
791 M.D., Sharrock, S., Shrestha, K.K., Sim, J., Sirakaya, A., Sjöman, H., Smidt, E.C., Smith, D.,  
792 Smith, P., Smith, S.R., Sofu, A., Spence, N., Stanworth, A., Stara, K., Stevenson, P.C., Stroh,  
793 P., Suz, L.M., Tambam, B.B., Tatsis, E.C., Taylor, I., Thiers, B., Thormann, I., Trivedi, C.,  
794 Twilley, D., Twyford, A.D., Ulian, T., Utteridge, T., Vaglica, V., Vásquez-Londoño, C.,  
795 Victor, J., Viruel, J., Walker, B.E., Walker, K., Walsh, A., Way, M., Wilbraham, J., Wilkin,  
796 P., Wilkinson, T., Williams, C., Winterton, D., Wong, K.M., Woodfield-Pascoe, N.,  
797 Woodman, J., Wyatt, L., Wynberg, R., Zhang, B.G., 2020. State of the world's plants and  
798 fungi 2020. Royal Botanic Gardens, Kew. DOI: <https://doi.org/10.34885/172>

- 799 Appleton, P., Malpas, J., Thomas, B.A., Cleal, C.J., 2011. The Brymbo fossil forest. *Geology*  
800 *Today* 27, 107–113.
- 801 Baker, R.A., DiMichele, W.A., 1997. Biomass allocation in Late Pennsylvanian coal-swamp  
802 plants. *Palaios* 12, 127–132.
- 803 Balme, B.E., 1995. Fossil in situ spores and pollen grains: an annotated catalogue. Review of  
804 *Palaeobotany and Palynology* 87, 81–323.
- 805 Bambach, R.K., 1977. Species richness in marine benthic habitats through the Phanerozoic.  
806 *Paleobiology* 3, 152–167.
- 807 Barbacka, M., 2012. Biodiversity and reconstruction of Early Jurassic flora from the Mecsek  
808 Mountains (southern Hungary). *Acta Palaeobotanica* 51, 127–179.
- 809 Barbacka, M., Bodor, E., Jarzynka, A., Kustatscher, E., Pacyna, G., Popa, M.E., Scanu, G.G.,  
810 Thévenard, F., Ziaja, J., 2014. European Jurassic floras: statistics and palaeoenvironmental  
811 proxies. *Acta Palaeobotanica* 54, 173–195.
- 812 Barbacka, M., Popa, M.E., Mitka, J., Bodor, E., Püspöki, Z., McIntosh, R.W., 2016. A  
813 quantitative approach for identifying plant ecogroups in the Romanian Early Jurassic  
814 terrestrial vegetation. *Palaeogeography, Palaeoclimatology, Palaeoecology* 446, 44–54.
- 815 Barnekow, L., Loader, N.J., Hicks, S., Froyd, C.A., Goslar, T., 2007. Strong correlation  
816 between summer temperature and pollen accumulation rates for *Pinus sylvestris*, *Picea abies*  
817 and *Betula* spp. in a high-resolution record from northern Sweden *Journal of Quaternary*  
818 *Science* 22, 653–658.
- 819 Bashforth, A.R., Falcon-Lang, H.J., Gibling, M.R., 2010. Vegetation heterogeneity on a Late  
820 Pennsylvanian braided-river plain draining the Variscan Mountains, La Magdalena Coalfield,  
821 northwestern Spain. *Palaeogeography, Palaeoclimatology, Palaeoecology* 292, 367–390.

- 822 Bashforth, A.R., Drábková, J., Opluštil, S., Gibling, M.R., Falcon-Lang, H.J., 2011.  
823 Landscape gradients and patchiness in riparian vegetation on a Middle Pennsylvanian  
824 braided-river plain prone to flood disturbance (Nýřany Member, Central and Western  
825 Bohemian Basin, Czech Republic). *Review of Palaeobotany and Palynology* 163, 153–189.
- 826 Bateman, R.M., DiMichele, W.A., 1992. The rhizomorphic lycopsids: A case-study in  
827 paleobotanical classification. *Systematic Botany* 21, 535–552.
- 828 Bateman, R.M., Hilton, J., 2009. Palaeobotanical systematics for the phylogenetic age:  
829 applying organ–species, form–species and phylogenetic species concepts in a framework of  
830 reconstructed fossil and extant whole–plants. *Taxon* 58, 1254–1280.
- 831 Bateman, R.M., DiMichele, W.A., Willard, D.A., 1992. Experimental cladistics-analysis of  
832 anatomically preserved arborescent lycopsids from the Carboniferous of Euramerica – An  
833 essay on palaeobotanical phylogenies. *Annals of the Missouri Botanical Garden* 79, 500–559.
- 834 Beerling, D., 2007. *The emerald planet: how plants changed Earth’s history*. Oxford  
835 University Press, Oxford.
- 836 Bek, J., 2017. Paleozoic in situ spores and pollen. *Lycopsidea. Palaeontographica Abteilung B*  
837 296, 1–111.
- 838 Bennett, K.D., Provan, J., 2008. What do we mean by refugia? *Quaternary Science Reviews*  
839 27, 2449–2455.
- 840 Bennett, K.D., Tzedakis, P.C., Willis, K.J., Quaternary refugia of north European trees.  
841 *Journal of Biogeography* 18, 103–115.
- 842 Bennington, J.B., Dimichele, W.A., Badgley, C., Bambach, R.K., Barrett, P.M.,  
843 Behrensmeyer, A.K., Bobe, R., Burnham, R.J., Daeschler, E.B., Dam, J.V., Eronen, J.T., et  
844 al., 2009. Critical issues of scale in paleoecology. *Palaios* 24, 1–4.

- 845 Benton, M.J. (Ed.), 1993. *The Fossil Record 2*. Chapman and Hall, London.
- 846 Benton, M.J., 1995. Diversification and extinction in the history of life. *Science* 268, 52–58.
- 847 Beri, A., Martínez-Blanco, X., Tejera, L., Piñeyro, A., Souza, P.A., 2018. Palynodiversity  
848 patterns and paleoclimatic changes in the late Paleozoic in Brazil and Uruguay. *Boletín*  
849 *Geológico y Minero* 129, 599–614.
- 850 Beri, Á., Martínez-Blanco, X., Varela, L., di Pasquo, M., de Souza, P.A., 2020. Sampling  
851 biases and Paleozoic sporomorphs diversity dynamics in Western Gondwana strata. *Journal*  
852 *of South American Earth Sciences* 98, doi.org/10.1016/j.jsames.2019.102457.
- 853 Berry, C.M., Marshall, J.E., 2015. Lycopsid forests in the early Late Devonian  
854 paleoequatorial zone of Svalbard. *Geology* 43, 1043–1046.
- 855 Bertini, A., 2010. Pliocene to Pleistocene palynoflora and vegetation in Italy: state of the art.  
856 *Quaternary International* 225, 5–24.
- 857 Bhagwat, S.A., Willis, K.J., 2008. Species persistence in northerly glacial refugia of Europe:  
858 a matter of chance or biogeographical traits? *Journal of Biogeography* 35, 465–482.
- 859 Birks, H.H., Birks, H.J.B., 2000. Future uses of pollen analysis must include plant  
860 macrofossils. *Journal of Biogeography* 27, 31–35.
- 861 Birks, H.H., Bjune, A.E., 2010. Can we detect a west-Norwegian treeline from modern  
862 samples of plant remains and pollen? Results from the DOORMAT project. *Vegetation*  
863 *History and Archaeobotany* 19, 325–340.
- 864 Birks, H.J.B., Birks, H.H., 1980. *Quaternary Palaeoecology*. Edward Arnold, London.
- 865 Birks, H.J.B., Felde, V.A., Seddon, A.W., 2016a. Biodiversity trends within the Holocene.  
866 *The Holocene* 26, 994–1001.

- 867 Birks, H.J.B., Felde, V.A., Bjune, A.E., Grytnes, J.A., Seppä, H., Giesecke, T., 2016b. Does  
868 pollen-assemblage richness reflect floristic richness? A review of recent developments and  
869 future challenges. *Review of Palaeobotany and Palynology* 228, 1–25.
- 870 Birks, H.J.B., Line, J.M., 1992. The use of rarefaction analysis for estimating palynological  
871 richness from Quaternary pollen-analytical data. *The Holocene* 2, 1–10.
- 872 Bjune, A.E., 2014. After 8 years of annual pollen trapping across the treeline in western  
873 Norway: are the data still anomalous? *Vegetation History and Archaeobotany* 23, 299–308.
- 874 Bless, M.J.M., Loboziak, S., Streef, M., 1977. An upper Westphalian C ‘hinterland’  
875 microflora from the Haaksbergen-1 Borehole (Netherlands). *Mededelingen Rijks*  
876 *Geologische Dienst* 28, 135–147.
- 877 Brewer, S., Cheddadi, R., de Beaulieu, J.L., Reille, M., 2002. The spread of deciduous  
878 *Quercus* throughout Europe since the last glacial period. *Forest Ecology and Management*  
879 156, 27–48.
- 880 Brongniart, A., 1822. Sur la classification et la distribution des végétaux fossiles en général,  
881 et sur ceux des terrains de sédiment supérieur en particulier. Introduction, Chapitre I.  
882 *Mémoires du Muséum d’Histoire Naturelle* 8, 203–240.
- 883 Bunting, M.J., Grant, M.J., Waller, M.P., 2016. Pollen signals of ground flora in managed  
884 woodlands. *Review of Palaeobotany and Palynology* 224, 121–133.
- 885 Burnham, R.J., 1989. Relationships between standing vegetation and leaf litter in a  
886 paratropical forest: implications for paleobotany. *Review of Palaeobotany and Palynology* 58,  
887 5–32.
- 888 Burnham, R.J., 1994. Paleoecological and floristic heterogeneity in the plant-fossil record: an  
889 analysis based on the Eocene of Washington. *U.S. Geological Survey Bulletin* 2085, B1–  
890 B35.

- 891 Butler, R.J., Benson, R.B., Barrett, P.M., 2013. Pterosaur diversity: untangling the influence  
892 of sampling biases, Lagerstätten, and genuine biodiversity signals. *Palaeogeography,*  
893 *Palaeoclimatology, Palaeoecology* 372, 78–87.
- 894 Cabanes, D., Shahack-Gross, R., 2015. Understanding fossil phytolith preservation: The role  
895 of partial dissolution in paleoecology and archaeology. *PLoS ONE* 10(5), e0125532
- 896 Calder, J.H., Gibling, M.R., Scott, A.C., Davies, S.J., Hebert, B.L., Greb, S.F., DiMichele,  
897 W.A., 2006. A fossil lycopsid forest succession in the classic Joggins section of Nova Scotia:  
898 paleoecology of a disturbance-prone Pennsylvanian wetland, in: Greb, S.F., DiMichele, W.A.  
899 (Eds), *Wetlands through time*. Geological Society of America Special Paper 399, pp. 169–  
900 195.
- 901 Campbell, I.D., McDonald, K., Flannigan, M.D., Kringayark, J., 1999. Long-distance  
902 transport of pollen into the Arctic. *Nature* 399, 29–30.
- 903 Carter, J.A., 1999. Late Devonian, Permian and Triassic phytoliths from Antarctica.  
904 *Micropaleontology* 45, 56–61.
- 905 Cascales-Miñana, B., 2011. New insights into the reading of Paleozoic plant fossil record  
906 discontinuities. *Historical Biology* 23, 115–130.
- 907 Cascales-Miñana, B., 2012. Disentangling temporal patterns in our perception of the fossil  
908 history of gymnosperms. *Historical Biology* 24, 143–159.
- 909 Cascales-Miñana, B., Cleal, C.J., 2011. Plant fossil record and survival analysis. *Lethaia* 45,  
910 71–82.
- 911 Cascales-Miñana, B., Cleal, C.J., 2014. The plant fossil record reflects just two great  
912 extinction events. *Terra Nova* 26, 195–200.

- 913 Cascales- Miñana, B., Gerrienne, P., 2017. *Teruelia diezii* gen. et sp. nov.: an early  
914 polysporangiophyte from the Lower Devonian of the Iberian Peninsula. *Palaeontology* 60,  
915 199–212.
- 916 Cascales-Miñana, B., Cleal, C. J., Diez, J.B., 2013. What is the best way to measure  
917 extinction? A reflection from the palaeobotanical record. *Earth-Science Reviews* 124, 126–  
918 147.
- 919 Cascales-Miñana, B., Diez, J.B., Gerrienne, P., Cleal, C.J., 2016. A palaeobotanical  
920 perspective on the great end-Permian biotic crisis. *Historical Biology* 28, 1066–1074.
- 921 Cascales- Miñana, B., Servais, T., Cleal, C.J., Gerrienne, P., Anderson, J., 2018. Plants—the  
922 great survivors! *Geology Today* 34, 224–229.
- 923 Cascales-Miñana, B., Diez, J.B., 2012. The effect of singletons and interval length on  
924 interpreting diversity trends from the palaeobotanical record. *Palaeontologia Electronica* 15  
925 (1), 6A.
- 926 Chaloner, W.G., 1999. Taxonomic and nomenclatural alternatives, in: Jones, T.P., Rowe,  
927 N.P. (Eds.), *Fossil plants and spores. Modern techniques*. Geological Society, London, pp  
928 179–183.
- 929 Cleal, C.J., 2005. The Westphalian macrofloral record from the cratonic central Pennines  
930 Basin, UK. *Zeitschrift der Deutschen Gesellschaft für Geowissenschaften* 156, 387–410.
- 931 Cleal, C.J., 2007. The Westphalian-Stephanian macrofloral record from the South Wales  
932 Coalfield. *Geological Magazine* 144, 465–486.
- 933 Cleal, C.J., 2008a. Westphalian-Stephanian macrofloras of the southern Pennines Basin, UK.  
934 *Studia Geologica Polonica* 129, 25–41.



- 935 Cleal, C.J., 2008b. Palaeofloristics of Middle Pennsylvanian Lyginopteridales in Variscan  
936 Euramerica. *Palaeogeography, Palaeoclimatology, Palaeoecology* 261, 1–14.
- 937 Cleal, C.J., 2008c. Palaeofloristics of Middle Pennsylvanian medullosaleans in Variscan  
938 Euramerica. *Palaeogeography, Palaeoclimatology, Palaeoecology* 268, 164–180.
- 939 Cleal, C.J., 2019 (in press). Paleozoic plants. In *Encyclopaedia of Earth sciences*. Elsevier,  
940 Amsterdam.
- 941 Cleal, C.J., Cascales-Miñana, B., 2014. Composition and dynamics of the great Phanerozoic  
942 Evolutionary Floras. *Lethaia* 47, 469–484.
- 943 Cleal, C.J., Rees, P.M., 2003. The Middle Jurassic flora from Stonesfield, Oxfordshire, UK.  
944 *Palaeontology* 46, 739–801.
- 945 Cleal, C.J., Shute, C.H., 2012. The systematic and palaeoecological value of foliage anatomy  
946 in Late Palaeozoic medullosalean seed-plants. *Journal of Systematic Palaeontology* 10, 765–  
947 800.
- 948 Cleal, C.J., Thomas, B.A., 1988. The Westphalian fossil floras from the Cattybrook Claypit,  
949 Avon (Great Britain). *Geobios* 21, 409–433.
- 950 Cleal, C.J., Thomas, B.A., 1999. Tectonics, tropical forest destruction and global warming in  
951 the Late Palaeozoic. *Acta Palaeobotanica, Supplement* 2, 17–19.
- 952 Cleal, C.J., Thomas, B.A., 2004. Late Carboniferous palaeobotany of the upper Bideford  
953 Formation, north Devon: a coastal setting for a Coal Measures flora. *Proceedings of the*  
954 *Geologists' Association* 115, 267–281.
- 955 Cleal, C.J., Thomas, B.A., 2005. Palaeozoic tropical rainforests and their effect on global  
956 climates: is the past the key to the present? *Geobiology* 3, 13–31.

- 957 Cleal, C.J., Thomas, B.A., 2010. Botanical nomenclature and plant fossils. *Taxon* 59, 261–  
958 268.
- 959 Cleal, C.J., Thomas, B.A., 2019. Introduction to plant fossils. Second edition. Cambridge  
960 University Press, Cambridge.
- 961 Cleal, C.J., Opluštil, S., Thomas, B.A., Tenchov, Y., 2010. Late Moscovian terrestrial biotas  
962 and palaeoenvironments of Variscan Euramerica. *Netherlands Journal of Geosciences* 88,  
963 181–278.
- 964 Cleal, C.J., Uhl, D., Cascales-Miñana, B., Thomas, B.A., Bashforth, A.R., King, S.C.,  
965 Zодrow, E.L., 2012. Plant biodiversity changes in Carboniferous tropical wetlands. *Earth-  
966 Science Reviews* 114, 124–155.
- 967 Close, R.A., Benson, R.B.J., Saupe, E.E., Clapham, M.E., Butler, R.J., 2020. The spatial  
968 structure of Phanerozoic marine animal diversity. *Science* 368, 420–424.
- 969 Collinson, M.E., 1993. Taphonomy and fruiting biology of recent and fossil *Nypa*. *Special  
970 Papers in Palaeontology* 49, 165–180.
- 971 Collinson, M.E., 1996. "What use are fossil ferns?" - 20 years on: with a review of the fossil  
972 history of extant pteridophyte families and genera, in: Camus, M.G., Johns, R.J. (Eds.),  
973 *Pteridology in perspective*. Royal Botanic Gardens, Kew, pp. 349–394.
- 974 Collinson, M.E., Manchester, S.R., Wilde, V., 2012. Fossil fruits and seeds of the Middle  
975 Eocene Messel biota, Germany. *Abhandlungen der Senckenberg Gesellschaft für  
976 Naturforschung* 570, 251 pp.
- 977 Collinson, M.E., Steart, D.C., Harrington, G.J., Hooker, J.J., Scott, A.C., Allen, L.O.,  
978 Glasspool, I.J., Gibbons, S.J., 2009. Palynological evidence of vegetation dynamics in  
979 response to palaeoenvironmental change across the onset of the Paleocene- Eocene Thermal  
980 Maximum at Cobham, Southern England. *Grana* 48, 38–66.

- 981 Costamagna, L.G., Kustatscher, E., Scanu, G.G., Del Rio, M., Pittau, P., van Konijnenburg-  
982 van Cittert, J.H., 2018. A palaeoenvironmental reconstruction of the Middle Jurassic of  
983 Sardinia (Italy) based on integrated palaeobotanical, palynological and lithofacies data  
984 assessment. *Palaeobiodiversity and Palaeoenvironments* 98, 111–138.
- 985 Davies, N.S., Gibling, M.R., 2010. Cambrian to Devonian evolution of alluvial systems: the  
986 sedimentological impact of the earliest land plants. *Earth-Science Reviews* 98, 171–200.
- 987 Davis, M.B., 1963. On the theory of pollen analysis. *American Journal of Science* 261, 897–  
988 912.
- 989 Diez, J.B., Sender, L.M., Villanueva-Amadoz, U., Ferrer, J., Rubio, C., 2005. New data  
990 regarding *Weichselia reticulata*: Soral clusters and the spore developmental process. *Review*  
991 *of Palaeobotany and Palynology* 135, 99–107
- 992 DiMichele, W.A., Falcon-Lang, H.J., 2011. Pennsylvanian 'fossil forests' in growth position  
993 ( $T^0$  assemblages): origin, taphonomic bias and palaeoecological insights. *Journal of the*  
994 *Geological Society, London* 168, 585–605.
- 995 DiMichele, W.A., Gastaldo, R.A., 2008. Plant paleoecology in deep time. *Annals of the*  
996 *Missouri Botanical Garden* 95, 144–198.
- 997 DiMichele, W.A., Nelson, W.J., 1989. Small-scale spatial heterogeneity in Pennsylvanian-  
998 age vegetation from the roof shale of the Springfield Coal (Illinois Basin). *Palaios* 4, 276–  
999 280.
- 1000 DiMichele, W.A., Phillips, T.L., 1988. Paleoecology of the Middle Pennsylvanian-age Herrin  
1001 coal swamp (Illinois) near a contemporaneous river system, the Walshville paleochannel.  
1002 *Review of Palaeobotany and Palynology* 56, 151–176.

- 1003 DiMichele, W.A., Philips, T.L., McBrinn, G.E., 1991. Quantitative analysis and paleoecology  
1004 of the Secor coal and roof shale floras (Middle Pennsylvanian, Oklahoma). *Palaios* 6, 390–  
1005 409.
- 1006 DiMichele, W.A., Phillips, T.L., Nelson, W.J., 2002. Place vs. time and vegetational  
1007 persistence: a comparison of four tropical mires from the Illinois Basin during the height of  
1008 the Pennsylvanian Ice Age. *International Journal of Coal Geology* 50, 43–72.
- 1009 DiMichele, W.A., Falcon-Lang, H.J., Nelson, W.J., Elrick, S.D., Ames, P.R., 2007.  
1010 Ecological gradients within a Pennsylvanian mire forest. *Geology* 35, 415–418.
- 1011 DiMichele, W.A., Elrick, S.D., Nelson, W.J., 2017. Vegetational zonation in a swamp forest,  
1012 Middle Pennsylvanian, Illinois Basin, USA, indicates niche differentiation in a wetland plant  
1013 community. *Palaeogeography, Palaeoclimatology, Palaeoecology* 487, 71–92.
- 1014 DiMichele, W.A., Hook, R.W., Kerp, H., Hotton, C.L., Looy, C.V., Chaney, D.S., 2018.  
1015 Lower Permian Flora of the Sanzenbacher Ranch, Clay County, Texas, in: Krins, M., Harper,  
1016 C.J., Cúneo, R., Rothwell, G.E. (eds.), *Transformative paleobotany: papers to commemorate*  
1017 *the life and legacy of Thomas N. Taylor*. Elsevier, Amsterdam, pp. 95–126.
- 1018 Dimitrova, T.K., Cleal, C.J., 2007. Palynological evidence for late Westphalian–early  
1019 Stephanian vegetation change in the Dobrudzha Coalfield, NE Bulgaria. *Geological*  
1020 *Magazine* 144, 513–524.
- 1021 Dimitrova, T.K., Cleal, C.J., Thomas, B.A., 2005. Palynology of late Westphalian – early  
1022 Stephanian coal-bearing deposits in the eastern South Wales Coalfield. *Geological Magazine*  
1023 142, 809–821.
- 1024 Dimitrova, T.K., Cleal, C.J., Thomas, B.A., 2011. Palynological evidence for Pennsylvanian  
1025 extra-basinal vegetation in Atlantic Canada. *Journal of the Geological Society* 168, 559–569.

- 1026 Dimitrova, T.K., Zodrow, E.L., Cleal, C.J., Thomas, B.A., 2010. Palynological evidence for  
1027 Pennsylvanian (Late Carboniferous) vegetation change in the Sydney Coalfield, eastern  
1028 Canada. *Geological Journal* 45, 388–396.
- 1029 Dornelas, M., Magurran, A.E., Buckland, S.T., Chao, A., Chazdon, R.L., Colwell, R.K.,  
1030 Curtis, T., Gaston, K.J., Gotelli, N.J., Kosnik, M.A., McGill, B., 2012. Quantifying temporal  
1031 change in biodiversity: challenges and opportunities. *Proceedings of the Royal Society B:*  
1032 *Biological Sciences* 280, 20121931
- 1033 Eble, C.F., Greb, S.F., Williams, D.A., Hower, J.C., O’Keefe, J.M., 2019. Palynology,  
1034 organic petrology and geochemistry of the Bell coal bed in Western Kentucky, Eastern  
1035 Interior (Illinois) Basin, USA. *International Journal of Coal Geology* 213, 103264.
- 1036 Edwards, D., Kenrick, P., Dolan, L., 2018, History and contemporary significance of the  
1037 Rhynie cherts-our earliest preserved terrestrial ecosystem. *Philosophical Transactions of the*  
1038 *Royal Society of London. Series B* 373(1739), 20160489.
- 1039 Enquist, B.J., Haskell, J.P., Tiffney, B.H., 2002. General patterns of taxonomic and biomass  
1040 partitioning in extant and fossil plant communities. *Nature* 419, 610–613.
- 1041 Ertl, C., Pessi, A.M., Huusko, A., Hicks, S., Kubin, E., Heino, S., 2012, Assessing the  
1042 proportion of “extra-local” pollen by means of modern aerobiological and phenological  
1043 records — An example from Scots pine (*Pinus sylvestris* L.) in northern Finland. *Review of*  
1044 *Palaeobotany and Palynology* 185, 1–12.
- 1045 Falcon-Lang, H.J., Bashforth, A.R., 2005. Morphology, anatomy, and upland ecology of  
1046 large cordaitalean trees from the Middle Pennsylvanian of Newfoundland. *Review of*  
1047 *Palaeobotany and Palynology* 135, 223–243.
- 1048 Falcon-Lang, H.J. and DiMichele, W.A., 2010. What happened to the coal forests during  
1049 Pennsylvanian glacial phases? *Palaios* 25, 611–617.

- 1050 Falcon-Lang, H.J., Kurzawe, F., Lucas, S.G., 2016. A Late Pennsylvanian coniferopsid forest  
1051 in growth position, near Socorro, New Mexico, USA: tree systematics and palaeoclimatic  
1052 significance. *Review of Palaeobotany and Palynology* 225, 67–83.
- 1053 Ferguson, D.K., 1985. The origin of leaf assemblages – new light on an old problem. *Review*  
1054 *of Palaeobotany and Palynology* 46, 117–188.
- 1055 Ferguson, D.K., 2005. Plant taphonomy: ruminations on the past, the present, and the future.  
1056 *Palaios* 20, 418–428.
- 1057 Ferguson, D.K., Zetter, R., Paudyal, K.N., 2007. The need for SEM in palaeopalynology.  
1058 *Comptes Rendus Palévol* 6, 423–430.
- 1059 Filipova-Marinova, M.V., Kvavadze, E.V., Connor, S.E., Sjögren, P., 2010. Estimating  
1060 absolute pollen productivity for some European Tertiary-relict taxa. *Vegetation History and*  
1061 *Archaeobotany* 19, 351–364.
- 1062 Francis, J.E., 1983. The dominant conifer of the Jurassic Purbeck formation, England.  
1063 *Palaeontology* 26, 277–294.
- 1064 Franz, M., Kustatscher, E., Heunisch, C., Niegel, S., Röhling, H.G., 2019. The  
1065 Schilfsandstein and its flora; arguments for a humid mid-Carnian episode? *Journal of the*  
1066 *Geological Society* 176, 133–148.
- 1067 Galtier, J., 1986. Taxonomic problems due to preservation: comparing compression and  
1068 permineralised taxa, in: Spicer, R.A., Thomas, B.A (Eds.), *Systematic and taxonomic*  
1069 *approaches in palaeobotany*. Oxford University Press, Oxford (Systematics Association,  
1070 *Special Volume 31*), pp. 1–16.
- 1071 Galtier, J., 1997. Coal-ball floras of the Namurian-Westphalian of Europe. *Review of*  
1072 *Palaeobotany and Palynology* 95, 51–72.

- 1073 Galtier, J., 2008. A new look at the permineralized flora of Grand-Croix (Late Pennsylvanian,  
1074 Saint-Etienne basin, France). *Review of Palaeobotany and Palynology* 152, 129–140.
- 1075 Gandolfo, M.A., Nixon, K.C., Crepet, W.L., Grimaldi, D.A., 2018. A late Cretaceous  
1076 fagalean inflorescence preserved in amber from New Jersey. *American Journal of Botany*  
1077 105, 1424–1435.
- 1078 Garwood, R.J., Oliver, H., Spencer, A.R.T., 2019. An introduction to the Rhynie chert.  
1079 *Geological Magazine* 157, 47–64.
- 1080 Gastaldo, R.A., 1985. Implications on the paleoecology of autochthonous lycopods in clastic  
1081 sedimentary environments of the Early Pennsylvanian of Alabama. *Palaeogeography,*  
1082 *Palaeoclimatology, Palaeoecology* 53, 191–212.
- 1083 Gastaldo, R.A. 1992. Taphonomic considerations for plant evolutionary investigations. *The*  
1084 *Palaeobotanist* 41, 211–223.
- 1085 Gastaldo, R.A., Demko, T.M., 2011. The relationship between continental landscape  
1086 evolution and the plant-fossil record: long term hydrologic controls on preservation, in:  
1087 Allison, P.A., Bottjer, D.J. (Eds.), *Taphonomy. Process and bias through time*. Springer  
1088 Netherlands, pp. 249-285.
- 1089 Gastaldo, R.A., Douglass, D.P., McCarroll, S.M., 1987. Origin, characteristics, and  
1090 provenance of plant macrodetritus in a Holocene crevasse splay mobile delta, Alabama.  
1091 *Palaios* 2, 229–240.
- 1092 Gastaldo, R.A., Huc, A.-Y., 1992. Sediment facies, depositional environments, and  
1093 distribution of phytoclasts in the Recent Mahakam River Delta, Kalimantan, Indonesia.  
1094 *Palaios* 7, 574–590.

- 1095 Gastaldo, R.A., Pfefferkorn, H.W., DiMichele, W.A., 1995. Taphonomic and sedimentologic  
1096 characterization of roof-shale floras. *Memoirs of the Geological Society of America* 185,  
1097 341–352.
- 1098 Gerasimidis, A., Panajiotidis, S., Hicks, S., Athanasiadis, N., 2006. An eight-year record of  
1099 pollen deposition in the Pieria mountains (N. Greece) and its significance for interpreting  
1100 fossil pollen assemblages. *Review of Palaeobotany and Palynology* 141, 231–243.
- 1101 Giesecke, T., Ammann, B., Brande, A., 2014. Palynological richness and evenness: insights  
1102 from the taxa accumulation curve. *Vegetation History and Archaeobotany* 23, 217–228.
- 1103 Giesecke, T., Bennett, K.D., 2004. The Holocene spread of *Picea abies* (L.) Karst. in  
1104 Fennoscandia and adjacent areas. *Journal of Biogeography* 31, 1–26.
- 1105 Giesecke, T., Hickler, T., Kunkel, T., Sykes, M.T., Bradshaw R.H.W., 2007. Towards an  
1106 understanding of the Holocene distribution of *Fagus sylvatica* L. *Journal of Biogeography* 34,  
1107 118–131.
- 1108 Giesecke, T., Fontana, S.L., van der Knaap, W.O., Pardoe, H.S., Pidek, I.A., 2010. From  
1109 early pollen trapping experiments to the pollen monitoring programme. *Vegetation History*  
1110 *and Archaeobotany* 19, 247–258.
- 1111 Giesecke, T., Wolters, S., Jahns, S., Brande, A., 2012. Exploring Holocene changes in  
1112 palynological richness in Northern Europe – did postglacial immigration matter? *PLoS One* 7  
1113 e51624. Doi:10.1371/journal.pone.0051624.
- 1114 Giesecke, T., Davis, B., Brewer, S., Finsinger, W., Wolters, S., Blaauw, M., de Beaulieu, J.-  
1115 L., Binney, H., Fyfe, R.M., Gaillard, M.-J., Gil-Romera, G., van der Knaap, W.O., Kuneš, P.,  
1116 Kühl, N., van Leeuwen, J.F.N., Leydet, M., Lotter, A.F., Ortu, E., Semmler, M., Bradshaw,  
1117 R.H.W., 2014. Towards mapping the late Quaternary vegetation change of Europe.  
1118 *Vegetation History and Archaeobotany* 23, 75–86.



- 1119 Giesecke, T., Wolters, S., van Leeuwen, J.F., van der Knaap, P.W., Leydet, M., Brewer, S.,  
1120 2019. Postglacial change of the floristic diversity gradient in Europe. *Nature*  
1121 *Communications* 10(1), 1–7.
- 1122 Glasspool, I.J., 2003. Hypautochthonous–allochthonous coal deposition in the Permian,  
1123 South African, Witbank Basin No. 2 seam; a combined approach using sedimentology, coal  
1124 petrology and palaeontology. *International Journal of Coal Geology* 53, 81–135.
- 1125 Glasspool, I.J., Hilton, J., Collinson, M.E., Wang, S.J., 2004. Foliar physiognomy in  
1126 Cathaysian gigantopterids and the potential to track Palaeozoic climates using an extinct plant  
1127 group. *Palaeogeography, Palaeoclimatology, Palaeoecology* 205, 69–110.
- 1128 Gomez, B., Gillot, T., Daviero-Gomez, V., Coiffard, C., Spagna, P., Yans, J., 2012.  
1129 Mesofossil plant remains from the Barremian of Hautrage (Mons Basin, Belgium), with  
1130 taphonomy, paleoecology, and paleoenvironment insights, in: Godefroit, P. (Ed.), *Bernissart*  
1131 *dinosaurs and Early Cretaceous terrestrial ecosystems*. Indiana University Press,  
1132 Bloomington, pp. 97–112.
- 1133 Goswami, S., Singh, K.J., 2013. Floral biodiversity and geology of the Talcher Basin, Orissa,  
1134 India during the Permian–Triassic interval. *Geological Journal* 48, 39–56.
- 1135 Goswami, S., Saxena, A., Singh, K.J., Chandra, S., Cleal, C.J., 2018. An appraisal of the  
1136 Permian palaeobiodiversity and geology of the Ib-River Basin, eastern coastal area, India.  
1137 *Journal of Asian Earth Sciences* 157, 283–301.
- 1138 Grauvogel-Stamm, L., Ash, S.R., 2005. Recovery of the Triassic land flora from the end-  
1139 Permian life crisis. *Comptes Rendus Palevol* 4, 593–608.
- 1140 Grímsson, F., Zetter, R., 2011a. Combined LM and SEM study of the Middle Miocene  
1141 (Sarmatian) palynoflora from the Lavanttal Basin, Austria: Part II. Pinophyta (Cupressaceae,  
1142 Pinaceae and Sciadopityaceae). *Grana* 50, 262–310.

- 1143 Grímsson, F., Zetter, R., Baal C., 2011b. Combined LM and SEM study of the Middle  
1144 Miocene (Sarmatian) palynoflora from the Lavanttal Basin, Austria: Part I. Bryophyta,  
1145 Lycopodiophyta, Pteridophyta, Ginkgophyta, and Gnetophyta. *Grana* 50, 102–28.
- 1146 Grímsson, F., Grimm, G.W., Meller, B., Bouchal, J.M., Zetter, R., 2015a. Combined LM and  
1147 SEM study of the middle Miocene (Sarmatian) palynoflora from the Lavanttal Basin, Austria:  
1148 Part IV. Magnoliophyta 2 – Fagales to Rosales. *Grana* 55, 101–63.
- 1149 Grímsson, F., Meller, B., Bouchal, J.M., Zetter, R., 2015b. Combined LM and SEM study of  
1150 the middle Miocene (Sarmatian) palynoflora from the Lavanttal Basin, Austria: part III.  
1151 Magnoliophyta 1 –Magnoliales to Fabales. *Grana* 54, 85–128.
- 1152 Grímsson, F., Zetter, R., Labandeira, C.C., Engel, M.S., Wappler, T., 2017. Taxonomic  
1153 description of *in situ* bee pollen from the middle Eocene of Germany. *Grana* 56: 37–70.
- 1154 Habib, D., Groth, P.K., 1967. Paleoecology of migrating Carboniferous peat environments.  
1155 *Palaeogeography, Palaeoclimatology, Palaeoecology* 3, 185–195.
- 1156 Hamilton, A.J., 2005. Species diversity or biodiversity? *Journal of Environmental*  
1157 *Management* 75, 89–92.
- 1158 Harland, W.B. (Ed.), 1967. *The Fossil Record: a symposium with documentation*. Geological  
1159 Society, London.
- 1160 Herendeen, P.S., Crepet, W.L., Nixon, K.C., 1994. Fossil flowers and pollen of Lauraceae  
1161 from the Upper Cretaceous of New Jersey. *Plant Systematics and Evolution* 189, 29–40.
- 1162 Heyworth, A., Kidson, C., 1982. Sea-level changes in southwest England and Wales.  
1163 *Proceedings of the Geologists' Association* 93, 91–111.
- 1164 Hicks, S., 1985. Modern pollen deposition records from Kuusamo, Finland I. Seasonal and  
1165 annual variation. *Grana* 24,167–184.

- 1166 Hicks, S., 2001. The use of annual arboreal pollen deposition values for delimiting tree-lines  
1167 in the landscape and exploring models of pollen dispersal. *Review of Palaeobotany and*  
1168 *Palynology* 117, 1–29.
- 1169 Hicks, S., Ammann, B., Latałowa, M., Pardoe, H., Tinsley, H., 1996. *European Pollen*  
1170 *Monitoring Programme: Project Description and Guidelines*. Oulu University Press, Oulu.
- 1171 Hicks, S., Helander, M., Heino, S., 1994. Birch pollen production, transport and deposition  
1172 for the period 1984-1993 at Kevo, Finland. *Aerobiologia* 10, 183–191.
- 1173 Hilton, J., Cleal, C.J., 2007. The relationship between Euramerican and Cathaysian tropical  
1174 floras in the Late Palaeozoic: palaeobiogeographical and palaeogeographical implications.  
1175 *Earth–Science Reviews* 85, 85–116.
- 1176 Hochuli, P.A., Sanson-Barrera, A., Schneebeli-Hermann, E., Bucher, H., 2016. Severest crisis  
1177 overlooked—Worst disruption of terrestrial environments postdates the Permian–Triassic  
1178 mass extinction. *Nature Scientific Reports*, 6:28372 | DOI: 10.1038/srep28372.
- 1179 Hochuli, P.A., Schneebeli-Hermann, E., Mangerud, G., Bucher, H. 2017. Evidence for  
1180 atmospheric pollution across the Permian-Triassic transition. *Geology* 45, 1123–1126.
- 1181 Hofmann, C.-C., Gregor, H.J., 2018. Scanning electron microscope investigations of pollen  
1182 from an atypical mid-Eocene coal facies in Stolzenbach mine (PreußenElektra) near Borken  
1183 (Kassel, Lower Hesse, Germany). *Review of Palaeobotany and Palynology* 252, 41–63.
- 1184 Holland, S.M., Sclafani, J.A., 2015. Phanerozoic diversity and neutral theory. *Paleobiology*  
1185 41, 369–376.
- 1186 Huang, Y., Jia, L., Wang, Q., Mosbrugger, V., Utescher, T., Su, T., Zhou, Z., 2016. Cenozoic  
1187 plant diversity of Yunnan: a review. *Plant Diversity* 38, 271–282.
- 1188 Hughes, N.F., 1963. The assignment of species of fossils to genera. *Taxon* 12, 336–337.

- 1189 Hughes, N.F., 1976. *Palaeobiology of angiosperms*. Cambridge University Press, Cambridge.
- 1190 Huntley, B., Birks, H.J.B., 1983. *An Atlas of Past and Present Pollen Maps for Europe: 0-*  
1191 *13000 Years Ago*. Cambridge University Press, Cambridge.
- 1192 Jantz, N., Homeier, J., Behling, H., 2014. Representativeness of tree diversity in the modern  
1193 pollen rain of Andean montane forests. *Journal of Vegetation Science* 25, 481–490.
- 1194 Jaramillo, C., Ochoa, D., Contreras, L., Pagani, M., Carvajal-Ortiz, H., Pratt, L.M., Krishnan,  
1195 S., Cardona, A., Romero, M., Quiroz, L., Rodriguez, G., et al. 2010. Effects of rapid global  
1196 warming at the Paleocene-Eocene boundary on neotropical vegetation. *Science* 330, 957–  
1197 961.
- 1198 Jasper, K., Hartkopf-Fröder, C., Flajs, G., Littke, R., 2010. Palaeoecological evolution of  
1199 Duckmantian wetlands in the Ruhr Basin (western Germany): A palynological and coal  
1200 petrographical analysis. *Review of Palaeobotany and Palynology* 162, 123–145.
- 1201 Johnson, K.R., 2002. The megafloora of the Hell Creek and lower Fort Union formations in  
1202 the western Dakotas: Vegetational response to climate change, the Cretaceous-Tertiary  
1203 boundary event, and rapid marine transgression, in: Hartman, J.H., Johnson, K.R., Nichols,  
1204 D.J. (Eds.), *The Hell Creek Formation and the Cretaceous-Tertiary boundary in the northern*  
1205 *Great Plains: An integrated continental record of the end of the Cretaceous*. Geological  
1206 Society of America, Special Papers 361, 329–391.
- 1207 Johnston, M.N., Eble, C.F., O'Keefe, J.M., Freeman, R.L., Hower, J.C., 2017. Petrology and  
1208 palynology of the Middle Pennsylvanian Leatherwood coal bed, Eastern Kentucky:  
1209 Indications for depositional environments. *International Journal of Coal Geology* 181, 23–38.
- 1210 Kędzior, A., Popa, M.E., 2013. Sedimentology of the Early Jurassic terrestrial Steierdorf  
1211 Formation in Anina, Colonia Cehă Quarry, South Carpathians, Romania. *Acta Geologica*  
1212 *Polonica* 63, 175–199.

- 1213 Kędzior, A., Popa, M.E., 2018. An Early Jurassic braided river system from Mehadia, South  
1214 Carpathians, Romania. *Geological Quarterly* 62, 415–432.
- 1215 Khuroo, A.A., Dar, G.H., Khan, Z.S., Malik, A.H., 2007. Exploring an inherent interface  
1216 between taxonomy and biodiversity: current problems and future challenges. *Journal for*  
1217 *Nature Conservation* 15, 256–261.
- 1218 Kidwell, S.M., Holland, S.M., 2002. The quality of the fossil record: implications for  
1219 evolutionary analyses. *Annual Review of Ecology and Systematics* 33, 561–88.
- 1220 Knoll, A.H., Niklas, K.J., Tiffney, B.H., 1979. Phanerozoic land-plant diversity in North  
1221 America. *Science* 206, 1400–1402.
- 1222 Köhler, J., Uhl, D., 2014. Die Blatt- und Karpoflora der oberoligozänen Fossillagerstätte  
1223 Enspel (Westerwald, Rheinland-Pfalz, W-Deutschland). *Mainzer naturwissenschaftliches*  
1224 *Archiv, Beihefte* 35, 1–87.
- 1225 Kowalewski, M., Kiessling, W., Aberhan, M., Fürsich, F.T., Scarponi, D., Wood, S.L.B.,  
1226 Hoffmeister, A.P., 2006. Ecological, taxonomic, and taphonomic components of the post-  
1227 Paleozoic increase in sample-level species diversity of marine benthos. *Paleobiology* 32,  
1228 533–561.
- 1229 Kustatscher, E., van Konijnenburg-van Cittert, J.H.A., Roghi, G., 2010. Macrofloras and  
1230 palynomorphs as possible proxies for palaeoclimatic and palaeoecological studies: A case  
1231 study from the Pelsonian (Middle Triassic) of Kühwiesenkopf/Monte Prà della Vacca (Olang  
1232 Dolomites, N-Italy). *Palaeogeography, Palaeoclimatology, Palaeoecology* 290, 71–80.
- 1233 Kustatscher, E., Bernardi, M., Petti, F.M., Franz, M., van Konijnenburg-van Cittert, J.H.A.,  
1234 Kerp, H., 2017. Sea-level changes in the Lopingian (late Permian) of the north-western  
1235 Tethys and their effects on the terrestrial palaeoenvironments, biota and fossil preservation.  
1236 *Global and Planetary Change* 148, 166–180.

- 1237 Lande, R., 1996. Statistics and partitioning of species diversity, and similarity among  
1238 multiple communities. *Oikos* 76, 5–13.
- 1239 Latałowa, M., van der Knaap, W.O., 2006. Late Quaternary expansion of Norway spruce  
1240 *Picea abies* (L.) Karst. in Europe according to pollen data. *Quaternary Science Reviews* 25,  
1241 2780–2805.
- 1242 La Torre, M.D.L.Á., Herrando-Pérez, S., Young, K.R., 2007. Diversity and structural patterns  
1243 for tropical montane and premontane forests of central Peru, with an assessment of the use of  
1244 higher-taxon surrogacy. *Biodiversity and Conservation* 16, 2965–2988.
- 1245 Laveine, J.P., Belhis, A., 2007. Frond architecture of the seed-fern *Macroneuropteris*  
1246 *scheuchzeri*, based on Pennsylvanian specimens from the Northern France coal field.  
1247 *Palaeontographica, Abteilung B* 277, 1–41.
- 1248 Leroy, S.A.G., 1992. Palynological evidence of *Azolla nilotica* Dec. in recent Holocene of  
1249 eastern Nile Delta, and its environment. *Vegetation History and Archaeobotany* 1, 43-52.
- 1250 Leroy, S.A.G., Arpe, K., 2007. Glacial refugia for summer-green trees in Europe and south-  
1251 west Asia as proposed by ECHAM3 time-slice atmospheric model simulations. *Journal of*  
1252 *Biogeography* 34, 2115–2128.
- 1253 Leroy, S.A.G., Arpe, K., Mikolajewicz, U., 2011. Vegetation context and climatic limits of  
1254 the early Pleistocene hominin dispersal in Europe. *Quaternary Science Reviews* 30, 1448–  
1255 1463.
- 1256 Leroy, S.A.G., Boyraz, S., Gürbüz, A., 2009. High-resolution palynological analysis in Lake  
1257 Sapanca as a tool to detect earthquakes on the North Anatolian Fault. *Quaternary Science*  
1258 *Reviews* 28, 2616–2632.
- 1259 Leroy, S.A.G., Roiron, P., 1996. Final Pliocene macro and micro floras of Bernasso  
1260 (Escandorgue, France). *Review of Palaeobotany and Palynology* 94, 295–328.

- 1261 Libertín, M., Opluštil, S., Pšenička, J., Bek, J., Sýkarová, I., Daškova, J., 2009a. Middle  
1262 Pennsylvanian pioneer plant assemblage buried in situ by volcanic ash-fall, central Bohemia,  
1263 Czech Republic. *Review of Palaeobotany and Palynology* 155, 204–233.
- 1264 Libertín, M., Dašková, J., Opluštil, S., Bek, J., Edress, N., 2009b. A palaeoecological model  
1265 for a vegetated early Westphalian intramontane valley (Intra-Sudetic Basin, Czech  
1266 Republic). *Review of Palaeobotany and Palynology* 155, 175–203.
- 1267 Lidgard, S., Crane, P.R., 1990. Angiosperm diversification and Cretaceous floristic trends: a  
1268 comparison of palynofloras and leaf macrofloras. *Paleobiology* 16, 77–93.
- 1269 Litsitsyna, O.V, Hicks, S. Huusko, A., 2012. Do moss samples, pollen traps and modern lake  
1270 sediments all collect pollen in the same way? *Vegetation History and Archaeobotany* 21,  
1271 187–199.
- 1272 Locatelli, E.R., Krajewski, L., Chochinov, A.V., Laflamme, M., 2016. Taphonomic variance  
1273 between marattialean ferns and medullosan seed ferns in the Carboniferous Mazon Creek  
1274 Lagerstätte, Illinois, USA. *Palaios* 31, 97–110.
- 1275 Looy, C.V., Brugman, W.A., Dilcher, D.L., Visscher, H., 1999. The delayed resurgence of  
1276 equatorial forests after the Permian–Triassic ecologic crisis. *Proceedings of the National  
1277 Academy of Sciences* 96, 13857–13862.
- 1278 Looy, C.V., Stevenson, R.A., van Hoof, T.B., Mander, L., 2014. Evidence for coal forest  
1279 refugia in the seasonally dry Pennsylvanian tropical lowlands of the Illinois Basin, USA.  
1280 *PeerJ* 2, p.e630.
- 1281 López-Merino, L., Leroy, S.A.G., Eshel, A., Epshtein, V., Belmaker, R., Bookman, R., 2016.  
1282 Using palynology to re-assess the Dead Sea laminated sediments - indeed varves? *Quaternary  
1283 Science Reviews* 140, 49–66.

- 1284 Luthardt, L., Rößler, R., Schneider, J.W., 2016. Palaeoclimatic and site-specific conditions in  
1285 the early Permian fossil forest of Chemnitz — Sedimentological, geochemical and  
1286 palaeobotanical evidence. *Palaeogeography, Palaeoclimatology, Palaeoecology* 441, 627–  
1287 652.
- 1288 McElwain, J.C., 2018. Paleobotany and global change: Important lessons for species to  
1289 biomes from vegetation responses to past global change. *Annual Review of Plant Biology* 69,  
1290 761–787.
- 1291 McElwain, J.C., Punyasena, S.W., 2007. Mass extinction events and the plant fossil record.  
1292 *Trends in Ecology and Evolution* 22, 548–557.
- 1293 McElwain, J.C., Popa, M.E., Hesselbo, S.P., Haworth, D.M., Surlyk, F., 2007.  
1294 Macroecological responses of terrestrial vegetation to climatic and atmospheric change across  
1295 the Triassic/Jurassic boundary in East Greenland. *Paleobiology* 33, 547–573.
- 1296 Magurran, A.E., 2004. *Measuring biological diversity*. Wiley-Blackwell, Oxford.
- 1297 Mander, L., Punyasena, S.W., 2014. On the taxonomic resolution of pollen and spore records  
1298 of Earth's vegetation. *International Journal of Plant Sciences* 175, 931–945.
- 1299 Mander, L., Kürschner, W.M., McElwain, J.C., 2013. Palynostratigraphy and vegetation  
1300 history of the Triassic–Jurassic transition in East Greenland. *Journal of the Geological*  
1301 *Society* 170, 37–46.
- 1302 Mauquoy, D., Hughes, P.D.M., Van Geel, B., 2010. A protocol for plant macrofossil analysis  
1303 of peat deposits. *Mires and Peat* 7, 1–5.
- 1304 Meyen, S.V., 1984. Basic features of gymnosperm systematics and phylogeny as evidenced  
1305 by the fossil record. *Botanical Review* 50, 1–111.



- 1306 Mitsumoto, K., Yabusaki, K., Aoyagi, H., 2009. Classification of pollen species using  
1307 autofluorescence image analysis. *Journal of Bioscience and Bioengineering* 107, 90–94.
- 1308 Moir, A., Leroy, S.A.G., Brown, D., Collins, P., 2010. Dendrochronological evidence for a  
1309 lower water table on peatland around 3200-3000 BC from sub-fossil pine in northern  
1310 Scotland. *The Holocene* 20, 931–942.
- 1311 Niklas, K.J., Tiffney, B.H., 2010. The quantification of plant biodiversity through time.  
1312 *Philosophical Transactions of the Royal Society of London, Series B* 345, 35–44.
- 1313 Niklas, K.J., Tiffney, B.H., Knoll, A.H., 1980. Apparent changes in the diversity of fossil  
1314 plants. *Evolutionary Biology* 12, 1–89.
- 1315 Nowak, H., Schneebeli-Hermann, E., Kustatscher, E., 2019. A non-extinction event for plants  
1316 during the end-Permian mass extinction. *Nature Communications*, doi.org/10.1038/s41467-  
1317 018-07945-w.
- 1318 Opluštil, S., Pšenička, J., Libertín, M., Šimůnek, Z., 2007. Vegetation patterns of  
1319 Westphalian and lower Stephanian mire assemblages preserved in tuff beds of the continental  
1320 basins of Czech Republic. *Review of Palaeobotany and Palynology* 143, 107–154.
- 1321 Opluštil, S., Pšenička, J., Libertín, M., Bashforth, A., Šimůnek, Z., 2009a. A Middle  
1322 Pennsylvanian (Bolsovian) peat-forming forest preserved in situ in volcanic ash of the  
1323 Whetstone Horizon in the Radnice Basin, Czech Republic. *Review of Palaeobotany and*  
1324 *Palynology* 155, 234–274.
- 1325 Opluštil, S., Pšenička, J., Libertín, M., Bek, J., Dašková, J., Šimůnek, Z., Drábková, J.,  
1326 2009b. Composition and structure of an *in situ* Middle Pennsylvanian peat-forming plant  
1327 assemblage in volcanic ash, Radnice Basin (Czech Republic). *Palaios* 24, 726–746.
- 1328 Opluštil, S., Pšenička, J., Bek, J., Wang, J., Feng, Z., Libertín, M., Šimůnek, Z., Bureš, J.,  
1329 Drábková, J., 2014. T<sup>0</sup> peat-forming plant assemblage preserved in growth position by

- 1330 volcanic ash-fall: A case study from the Middle Pennsylvanian of the Czech Republic.  
1331 *Bulletin of Geosciences* 89, 773–818.
- 1332 Opluštil, S., Šimůnek, Z., Pšenička, J., Bek, J., Libertín, M., 2017. A 25 million year  
1333 macrofloral record (Carboniferous–Permian) in the Czech part of the Intra-Sudetic Basin;  
1334 biostratigraphy, plant diversity and vegetation patterns. *Review of Palaeobotany and*  
1335 *Palynology* 244, 241–307.
- 1336 Opluštil, S., Wang, J., Pfefferkorn, H.W., Pšenička, J., Bek, J., Libertín, M., Wang, J., Wan,  
1337 M., He, X., Yan, M., Wei, H., 2020. TO Early Permian coal-forest preserved in situ in  
1338 volcanic ash bed in the Wuda Coalfield, Inner Mongolia, China. *Review of Palaeobotany and*  
1339 *Palynology*, p.104347. doi.org/10.1016/j.revpalbo.2020.104347.
- 1340 Pan, Y.-L., Hill, S.C., Pinnick, R.G., House, J.M., Flagan, R.C., Chang, R.K., 2011. Dual-  
1341 excitation-wavelength fluorescence spectra and elastic scattering for differentiation of single  
1342 airborne pollen and fungal. *Atmospheric Environment* 45, 1555–1563.
- 1343 Pardoe, H.S., 1996. Micro-scale patterns of modern pollen deposition within three alpine  
1344 plant communities. *New Phytologist* 132, 327–341.
- 1345 Pardoe, H.S., 2001. The representation of taxa in surface pollen spectra on alpine and sub-  
1346 alpine glacier forelands in southern Norway. *Review of Palaeobotany and Palynology* 117,  
1347 63–78.
- 1348 Pardoe, H.S., 2006. Surface pollen deposition on glacier forelands in southern Norway I:  
1349 local patterns of representation and source area at Storbreen, Jotunheimen. *The Holocene* 16,  
1350 1149–1161.
- 1351 Pardoe, H.S., Giesecke, T., van der Knaap, W.O., Svitavská-Svobodová, H., Kvavadze, E.V.,  
1352 Panajiotidis, S., Gerasimidis, A., Pidek, I.A., Zimny, M., Świeta-Musznicka, J., Latalowa,  
1353 M., Noryskiewicz, A.M., Bozilova, E., Tonkov, S., Filipova-Marinova, M.V., van Leeuwen,

- 1354 J.F.N., Kalniņa, L., 2010. Comparing pollen spectra from modified Tauber traps and moss  
1355 samples: examples from a selection of woodlands across Europe. *Vegetation history and*  
1356 *Archaeobotany* 19, 271–283.
- 1357 Parsons, R.W., Prentice, I.C., 1981. Statistical approaches to R-values and the pollen—  
1358 vegetation relationship. *Review of Palaeobotany and Palynology* 32, 127–152.
- 1359 Petit, R.J., Brewer, S., Bordacs, S., et al., 2002. Identification of refugia and post-glacial  
1360 colonisation routes of European white oaks based on chloroplast DNA and fossil pollen  
1361 evidence. *Forest Ecology and Management* 156, 49–74.
- 1362 Pfefferkorn, H.W., Gastaldo, R.A., DiMichele, W.A., Phillips, T.L., 2008. Pennsylvanian  
1363 tropical floras from the United States as a record of changing climate, in: Fielding, C.R.,  
1364 Frank, T.D., Isbell, J.L. (Eds.), *Resolving the Late Paleozoic Ice Age in Time and Space*.  
1365 *Geological Society of America Special Paper* 441, 305–316.
- 1366 Pfefferkorn, H.W., Gastaldo, R.A., DiMichele, W.A., 2017. Impact of an icehouse climate  
1367 interval on tropical vegetation and plant evolution. *Stratigraphy* 14, 365–376.
- 1368 Phillips, T.L., 1980. Stratigraphic and geographic occurrences of permineralized coal-swamp  
1369 plants—Upper Carboniferous and Europe, in: Dilcher, D.L., Taylor, T.N. (Eds.),  
1370 *Biostratigraphy of fossil plants*. Hutchinson & Ross, Stroudsburg, PA, pp. 25–92.
- 1371 Pidek, I.A., 2004. Preliminary results of pollen trapping in the region of the Roztocze  
1372 National Park (SE Poland). *Annales of the University M. Curie-Sklodowska, Sect. B* 49,  
1373 143–159.
- 1374 Pidek, I.A., Svitavská-Svobodová, H., van der Knaap, W.O., Noryskiewicz, A.M., Filbrandt-  
1375 Czaja, A., Noryskiewicz, B., Latałowa, M., Zimny, M., Święta-Musznicka, J., Bozilova, E.,  
1376 Tonkov, S., Filipova-Marinova, M., Poska, A., Giesecke, T., Gikov, A., 2010. Variation in

- 1377 annual pollen accumulation rates of *Fagus* along a N–S transect in Europe based on pollen  
1378 traps. *Vegetation history and Archaeobotany* 19, 259–270.
- 1379 Piperno, D.R., 2002. Phytoliths, in: Mulholl, S.C, Rapp, G. (eds.) *Tracking environmental*  
1380 *change using lake sediments*. Springer, Dordrecht, pp. 235–251.
- 1381 Piperno, D.R., Pearsall, D.M., 1998. The silica bodies of tropical American grasses:  
1382 morphology, taxonomy, and implications for grass systematics and fossil phytolith  
1383 identification. *Smithsonian Institution, Washington DC (Contributions to Botany 85)*.
- 1384 Poinar, G., jr, 2002. Fossil palm flowers in Dominican and Baltic amber. *Botanical Journal of*  
1385 *the Linnean Society* 139, 361–367.
- 1386 Pole, M., 2001. Repeated flood events and fossil forests at Curio Bay (Middle Jurassic), New  
1387 Zealand. *Sedimentary Geology* 144, 223–242.
- 1388 Popa, M.E., 1998. The Liassic continental flora of Romania: Systematics, stratigraphy and  
1389 paleoecology. *Acta Botanica Horti Bucurestensis* 1997–1998, 177–184.
- 1390 Popa, M.E., 2000. Aspects of Romanian Early Jurassic palaeobotany and palynology. Part III.  
1391 *Phytostratigraphy of the Getic Nappe*. *Acta Palaeontologica Romaniae* 2, 377–386.
- 1392 Popa, M.E., 2011. Field and laboratory techniques in plant compressions: an integrated  
1393 approach. *Acta Palaeontologica Romaniae* 7, 279–283.
- 1394 Popa, M.E., 2014. Early Jurassic bennettitalean reproductive structures of Romania.  
1395 *Palaeobiodiversity and Palaeoenvironments* 94, 327–362.
- 1396 Poska, A., Pidek, I.A., 2010. Pollen dispersal and deposition characteristics of *Abies alba*,  
1397 *Fagus sylvatica* and *Pinus sylvestris*, Roztocze region (SE Poland). *Vegetation History and*  
1398 *Archaeobotany* 19, 91–101.

- 1399 Potonié, R., 1934. Zur Morphologie der fossilen Pollen und Sporen. Arbeiten aus dem Institut  
1400 für Paläobotanik und Petrographie Brennsteine 4, 5–24
- 1401 Potonié, R., 1956. Synopsis der Gattungen der Sporae dispersae, Teil 1: *Sporites*.  
1402 Geologisches Jahrbuch 23, 1–103.
- 1403 Potonié, R., 1958. Synopsis der Gattungen der Sporae dispersae. II. Teil: *Sporites*  
1404 (Nachträge), *Saccites*, *Aletes*, *Praecolpates*, *Polypliates*, *Monocolpates*. Geologisches  
1405 Jahrbuch 31, 1–114.
- 1406 Potonié, R., 1960. Synopsis der Gattungen der Sporae dispersae: III. Teil: Nachträge *Sporites*,  
1407 Fortsetzung *Pollenites* mit Generalregister zu Teil I-II. Geologisches Jahrbuch 39, 1–189.
- 1408 Powell, M.G., Kowalewski, M., 2002. Increase in evenness and sampled alpha diversity  
1409 through the Phanerozoic: comparison of early Paleozoic and Cenozoic marine fossil  
1410 assemblages. *Geology* 30, 31–334.
- 1411 Procter, C.J., 1994. Carboniferous fossil plant assemblages and palaeoecology at the  
1412 Writhlington Nature Reserve. *Proceedings of the Geologists' Association* 105, 277–286.
- 1413 Pšenička, J., Opluštil, S., 2013. The epiphytic plants in the fossil record and its example from  
1414 in situ tuff from Pennsylvanian of Radnice Basin (Czech Republic). *Bulletin of Geosciences*  
1415 88, 401–416.
- 1416 Rashid, I., Mir, S.H., Zurro, D., Dar, R.A., Reshi, Z.A., 2019. Phytoliths as proxies of the  
1417 past. *Earth-Science Reviews* 194, 234–250.
- 1418 Raup, D.M., Sepkoski, J.J., 1982. Mass extinctions in the marine fossil record. *Science* 215,  
1419 1501–1503.

- 1420 Reitalu, T., Bjune, A.E., Blaus, A., Giesecke, T. Helm, T., Matthias, I., Peglar, S.M.,  
1421 Salonen, J.S., Seppä, H., Väli, V., Birks, H.J.B., 2019. Patterns of modern pollen and plant  
1422 richness across northern Europe. *Journal of Ecology* 107, 1662–1677.
- 1423 Reitalu, T., Kuneš, P., Giesecke, T., 2014. Closing the gap between plant ecology and  
1424 Quaternary palaeoecology. *Journal of Vegetation Science* 25, 1188–1194.
- 1425 Rice, J., Rothwell, G.W., Mapes, G., Mapes, R.H., 1996. *Suavitas imbricata* gen. et sp. nov.,  
1426 an anatomically preserved seed analogue of putative lycophyte affinities from Upper  
1427 Pennsylvanian marine deposits. *American Journal of Botany* 83, 1083–1090.
- 1428 Roopnarine, P.D., Angielczyk, K.D., Weik, A., Dineen, A., 2018. Ecological persistence,  
1429 incumbency and reorganization in the Karoo Basin during the Permian-Triassic transition.  
1430 *Earth-Science Reviews* 189, 244–263.
- 1431 Rößler, R., Barthel, M., 1998. Rotliegend taphocoenoses preservation favoured by rhyolitic  
1432 explosive volcanism. *Freiberger Forschungshefte, Paläontologie, Stratigraphie, Fazies C*  
1433 474(6), 59–101.
- 1434 Rothwell, G.W., Mapes, G., Mapes, R.H., 1996. Anatomically preserved vojnovskyalean  
1435 seed plants in Upper Pennsylvanian (Stephanian) marine shales of North America. *Journal of*  
1436 *Paleontology* 70, 1067-1079.
- 1437 Rull, V., 2011. Neotropical biodiversity: timing and potential drivers. *Trends in Ecology and*  
1438 *Evolution* 26, 508–513.
- 1439 Rull, V., 2013. Some problems in the study of the origin of neotropical biodiversity using  
1440 palaeoecological and molecular phylogenetic evidence. *Systematics and Biodiversity* 11,  
1441 415–423.
- 1442 Rust, J., Singh, H., Rana, R.S., McCann, T., Singh, L., Anderson, K., Sarkar, N.,  
1443 Nascimbene, P.C., Stebner, F., Thomas, J.C., et al., 2010. Biogeographic and evolutionary

- 1444 implications of a diverse paleobiota in amber from the early Eocene of India. *Proceedings of*  
1445 *the National Academy of Sciences* 107, 18360–18365.
- 1446 Sadowski E.-M., Schmidt A.R., Seyfullah L.J., Kunzmann L., 2017. Conifers of the ‘Baltic  
1447 amber forest’ and their palaeoecological significance. *Stapfia* 106, 1–73.
- 1448 Sadowski, E.M., Seyfullah, L.J., Regalado, L., Skadell, L.E., Gehler, A., Gröhn, C., Hoffeins,  
1449 C., Hoffeins, H.W., Neumann, C., Schneider, H., Schmidt, A.R., 2019. How diverse were  
1450 ferns in the Baltic amber forest? *Journal of Systematics and Evolution* 57, 305–328.
- 1451 Saxena, A., Singh, K.J., Cleal, C.J., Chandra, S., Goswami, S., Shabbar, H., 2018.  
1452 Development of the Glossopteris flora and its end Permian demise in the Tatapani–Ramkola  
1453 Coalfield, Son–Mahanadi Basin, India. *Geological Journal* 54, 2472–2494.
- 1454 Saxena, A., Murthy, S., Singh, K.J., 2020. Floral diversity and environment during the early  
1455 Permian: a case study from Jarandih Colliery, East Bokaro Coalfield, Damodar Basin, India.  
1456 *Palaeobiodiversity and Palaeoenvironments* 100, 33–50.
- 1457 Scheihing, M.H., Pfefferkorn, H.W., 1984. The taphonomy of land plants in the Orinoco  
1458 Delta: a model for the incorporation of plant parts in clastic sediments of Late Carboniferous  
1459 age of Euramerica. *Review of Palaeobotany and Palynology* 41, 205–240.
- 1460 Schmidt, A.R., Ragazzi, E., Coppelotti, O., Roghi, G., 2006. A microworld in Triassic amber  
1461 – Amber as old as the first dinosaurs captured the diversity of microbial life 220 million years  
1462 ago. *Nature* 444, 835–836.
- 1463 Scott, A.C., 1978. Sedimentological and ecological control of Westphalian B plant  
1464 assemblages from West Yorkshire. *Proceedings of the Yorkshire Geological Society* 41, 461–  
1465 508.
- 1466 Scott, A.C., 1979. The ecology of Coal Measure floras from northern Britain. *Proceedings of*  
1467 *the Geologists' Association* 90, 97–116.

- 1468 Sepkoski, J.J., jr, 1978. A kinetic-model of phanerozoic taxonomic diversity I. Analysis of  
1469 marine orders. *Paleobiology* 4, 223–251.
- 1470 Sepkoski, J.J., jr 1979. A kinetic-model of phanerozoic taxonomic diversity II. Early  
1471 phanerozoic families and multiple equilibria. *Paleobiology* 5, 222–251.
- 1472 Sepkoski, J.J., jr, 1984. A kinetic-model of phanerozoic taxonomic diversity III. Post-  
1473 Paleozoic families and mass extinctions. *Paleobiology* 10, 246–267.
- 1474 Sepkoski, J.J., jr, 1988. Alpha, beta, or gamma: where does all the diversity go? *Paleobiology*  
1475 14, 221–234.
- 1476 Seppä, H., Bennett, K.D., 2003. Quaternary pollen analysis: recent progress in palaeoecology  
1477 and palaeoclimatology. *Progress in Physical Geography* 27, 548–579.
- 1478 Serbet, R., Rothwell, G.W., 1992. Characterizing the most primitive seed ferns. I. A  
1479 reconstruction of *Elkinsia polymorpha*. *International Journal of Plant Sciences* 153, 602–621.
- 1480 Servais, T., Cascales-Miñana, B., Cleal, C.J., Gerrienne, P., Harper, D.A., Neumann, M.,  
1481 2019. Revisiting the Great Ordovician Diversification of land plants: Recent data and  
1482 perspectives. *Palaeogeography, Palaeoclimatology, Palaeoecology* 534, 13 pp.
- 1483 Silvestro, D., Cascales- Miñana, B., Bacon, C.D., Antonelli, A., 2015. Revisiting the origin  
1484 and diversification of vascular plants through a comprehensive Bayesian analysis of the fossil  
1485 record. *New Phytologist* 207, 425–436.
- 1486 Šimůnek, Z., 2007. New classification of the genus *Cordaites* from the Carboniferous and  
1487 Permian of the Bohemian Massif, based on cuticle micromorphology. *Sborník Národního*  
1488 *Muzea v Praze, Serie B, Přírodní Vědy* 62, 97–210.



- 1489 Sjögren, P., van der Knaap, W.O., van Leeuwen, J.F.N., 2015. Pollen dispersal properties of  
1490 Poaceae and Cyperaceae: first estimates of their absolute pollen productivities. *Review of*  
1491 *Palaeobotany and Palynology* 216, 123–131.
- 1492 Slater, B.J., McLoughlin, S., Hilton, J., 2015. A high-latitude Gondwanan lagerstätte: the  
1493 Permian permineralised peat biota of the Prince Charles Mountains, Antarctica. *Gondwana*  
1494 *Research* 27, 1446–1473.
- 1495 Smith, A.H.V., 1962. The palaeoecology of Carboniferous peats based on the microspores  
1496 and petrography of bituminous coals. *Proceedings of the Yorkshire Geological Society* 33,  
1497 423–474.
- 1498 Smith, A.H.V., 1968. Seam profiles and seam characters, in: Murchison, D.G., Westoll, T.S.  
1499 (Eds.), *Coal and coalbearing strata*. Oliver and Boyd, Edinburgh, pp. 31–40.
- 1500 Smith, A.H.V., Butterworth, M.A., 1967. Miospores in the coal seams of the Carboniferous  
1501 of Great Britain. *Palaeontological Association, (Special Papers in Palaeontology 1)*.
- 1502 Solórzano Kraemer, M.M., Delclòs, X., Clapham, M., Arillo A., Peris, D., Jäger, P., Stebner,  
1503 F., Peñalver E., 2018. Arthropods in modern resins reveal if amber accurately recorded forest  
1504 arthropod communities. *Proceedings of the National Academy of Sciences* 115, 6739–6744.
- 1505 Spicer, R.A., 1980. The importance of depositional sorting to the biostratigraphy of plant  
1506 megafossils, in: Dilcher, D.L., Taylor, T.N. (Eds.), *Biostratigraphy of fossil plants*. Dowden,  
1507 Hutchinson and Ross, Stroudsburg PA, pp. 171–183.
- 1508 Spicer, R.A., 1981. The sorting and deposition of allochthonous plant material in a modern  
1509 environment at Silwood Lake, Silwood Park, Berkshire, England. *Professional Papers of the*  
1510 *U.S. Geological Survey* 1143, 1–77.

- 1511 Steart, D.C., Boon, P.I., Greenwood, D.R., Diamond, N.T., 2002. Transport of leaf litter in  
1512 upland streams of *Eucalyptus* and *Nothofagus* forests in south-eastern Australia. *Archiv für*  
1513 *Hydrobiologie* 156, 43–61.
- 1514 Steemans P., Lepot, K., Marshall, C.P., le Herissé, A., Javaux, E.J., 2010. FTIR  
1515 characterisation of the chemical composition of Silurian miospores (cryptospores and trilete  
1516 spores) from Gotland, Sweden. *Review of Palaeobotany and Palynology* 162, 577–590.
- 1517 Stein, W.E., Berry, C.M., Hernick, L.V., Mannolini, F., 2012. Surprisingly complex  
1518 community discovered in the mid-Devonian fossil forest at Gilboa. *Nature* 483, 78.
- 1519 Sternberg, K.M. von, 1820. Versuch einer geognostisch–botanischen Darstellung der Flora  
1520 der Vorwelt, Vol. I. 1. F. Fleischer, Leipzig
- 1521 Stolle, E., 2007. Regional Permian palynological correlations: Southeast Turkey – Northern  
1522 Iraq. *Comunicações Geológicas* 94, 125–143.
- 1523 Stolle, E., 2010. Recognition of southern Gondwanan palynomorphs at Gondwana’s northern  
1524 margin – and biostratigraphic correlation of Permian strata from SE Turkey and Australia, in:  
1525 Shen, S.-Z., Henderson, C.M., Somerville, I.D. (Eds.), Lopingian (Late Permian) stratigraphy  
1526 of the world, major events and environmental change. *Geological Journal* 45, 336–349.
- 1527 Stolle, E., 2012. Co-occurrence of *Sinusspores sinuatus* (Artüz) Ravn, 1986 with established  
1528 palynological markers indicating younger strata: AK-1X well section (Pennsylvanian,  
1529 Zonguldak Basin, NW Turkey) and the correlation to the stratigraphic system. *Geologia*  
1530 *Croatica* 65, 375–385.
- 1531 Stolle, E., 2016. Çakraz Formation, Çamdağ area, NW Turkey: early/mid- Permian age,  
1532 Rotliegend (Germany) and Southern Alps (Italy) equivalent—a stratigraphic re- assessment  
1533 via palynological long- distance correlation. *Geological Journal* 51, 223–235.

- 1534 Stolle, E., Yalçın, M.N., Kozlu, H., 2012. Palynofacies and bulk organic geochemistry of  
1535 Permian clastics in the eastern Taurids: Implications for hydrocarbon potential, in: Yalçın,  
1536 M.N., Çorbacıoğlu, H., Aksu, Ö., Bozdoğan, N. (Eds.), Paleozoic of northern Gondwana and  
1537 its petroleum potential. Turkish Association of Petroleum Geologists, Ankara (Special  
1538 Publication 6), pp. 119–122.
- 1539 Strömberg, C.A., 2004. Using phytolith assemblages to reconstruct the origin and spread of  
1540 grass-dominated habitats in the great plains of North America during the late Eocene to early  
1541 Miocene. *Palaeogeography, Palaeoclimatology, Palaeoecology* 207, 239–275.
- 1542 Strömberg, C.A., 2011. Evolution of grasses and grassland ecosystems. *Annual Review of*  
1543 *Earth and Planetary Sciences* 39, 517–544.
- 1544 Strömberg, C.A., Dunn, R.E., Crifò, C., Harris, E.B., 2018. Phytoliths in paleoecology:  
1545 analytical considerations, current use, and future directions, in: Croft, D.A., Su, D., Simpson,  
1546 S.W. (Eds.), *Methods in paleoecology*. Springer, Cham, pp. 235–287.
- 1547 Strullu-Derrien, C., Kenrick, P., Knoll, A.H., 2019. The Rhynie chert. *Current Biology* 29,  
1548 1218–1223.
- 1549 Sugita, S.A., 1993. Model of pollen source area for an entire lake surface. *Quaternary*  
1550 *Research* 39, 239–244.
- 1551 Swingland, I.R., 2001. Biodiversity, definition of, in: Levin, S.A. (Ed.), *Encyclopedia of*  
1552 *biodiversity*. Volume 1. Academic Press, San Diego, pp. 377–391.
- 1553 Taylor, T.N., Taylor, E.L., Kings, M., 2009. *Paleobiology. The biology and evolution of*  
1554 *fossil plants*. [Second Edition]. Academic Press, Burlington.
- 1555 Thomas, B.A., 1987. The use of in-situ spores for defining species of dispersed spores.  
1556 *Review of Palaeobotany and Palynology* 51, 227–233.

- 1557 Thomas, B.A., 2005. A reinvestigation of *Selaginella* species from the Asturian (Westphalian  
1558 D) of the Zwickau coalfield, Germany and their assignment to the new sub genus  
1559 *Hexaphyllum*. *Zeitschrift der Deutschen Gesellschaft für Geowissenschaften* 156, 403–418.
- 1560 Thomas, B.A., 2014. In situ stems: preservation states and growth habits of the  
1561 Pennsylvanian (Carboniferous) calamitaleans based upon new studies of *Calamites*  
1562 Sternberg, 1820 in the Duckmantian at Brymbo, North Wales, UK. *Palaeontology* 57, 21–36.
- 1563 Thomas, B.A., Cleal, C.J., 2015. Cyclones and the formation of plant beds in late  
1564 Carboniferous tropical swamps. *Palaeobiodiversity and Palaeoenvironments* 95, 531–536.
- 1565 Thomas, B.A., Seyfullah, L.J., 2015. *Stigmaria* Brongniart: a new specimen from  
1566 Duckmantian (Lower Pennsylvanian) Brymbo (Wrexham, North Wales) together with a  
1567 review of known casts and how they were preserved. *Geological Magazine* 152, 858–870.
- 1568 Thomas, B.A., Cleal, C.J., 2020. The nomenclature of fossil- taxa representing different  
1569 preservational states: *Lepidodendron* as a case- study. *Taxon*, doi.org/10.1002/tax.12291.
- 1570 Thomas, B.A., Dimitrova, T.K., 2017. Ecological changes in Pennsylvanian (Asturian and  
1571 early Cantabrian) coal floras inferred from lycophyte microspore abundances. *Earth Science*  
1572 *Reviews* 171, 646–662.
- 1573 Thomas, B.A., Appleton, P., Cleal, C.J., Seyfullah, L.J., 2020. The distribution of plant  
1574 fossils and their palaeoecology in Duckmantian (Bashkirian, Lower Pennsylvanian) strata at  
1575 Brymbo, North Wales, UK. *Geological Journal* 55, 3179–3207.
- 1576 Tinner, W., Lotter, A.F., 2006. Holocene expansions of *Fagus sylvatica* and *Abies alba* in  
1577 Central Europe: where are we after eight decades of debate? *Quaternary Science Reviews* 25,  
1578 526–549.
- 1579 Tomescu, A.M., Bomfleur, B., Bippus, A.C., Savoretti, A., 2018. Why are bryophytes so rare  
1580 in the fossil record? A spotlight on taphonomy and fossil preservation, in: Krings, M.,

- 1581 Harper, C.J., Cuneo, N.R., Rothwell, G.W. (Eds.), Transformative paleobotany. Elsevier,  
1582 Amsterdam, pp. 375–416.
- 1583 Traverse, A., 1988. Plant evolution dances to a different beat. Plant and animal evolutionary  
1584 mechanisms compared. *Historical Biology* 1, 227–301.
- 1585 Traverse, A., 2007. *Paleopalynology* (2<sup>nd</sup> edition). Springer, Dordrecht.
- 1586 Tuomisto, H., 2012. An updated consumer's guide to evenness and related indices. *Oikos*  
1587 121, 1203–1218.
- 1588 Uhl, D., 2006. Some considerations on the taphonomy of conifer remains from the Late  
1589 Permian of Europe. *Neues Jahrbuch für Geologie & Paläontologie, Monatshefte* 08/2006,  
1590 483–502.
- 1591 Uhl, D. 2015. Preliminary note on fossil flowers and inflorescences from the Late Oligocene  
1592 of Enspel (Westerwald, W-Germany). *Palaeobiodiversity and Palaeoenvironments* 95, 47–53.
- 1593 Uhl, D., Cleal, C.J., 2010. Late Carboniferous vegetation change in lowland and intramontane  
1594 basins. *International Journal of Coal Geology* 83, 318–328.
- 1595 Uhl, D., Krüger, P.S., Wuttke, M., 2018. Epidermal anatomy of *Glyptostrobus europaeus*  
1596 (Brongn.) Unger from the late Oligocene of the Westerwald (Rhineland-Palatinate, W-  
1597 Germany). *Fossil Imprint* 74, 334–340.
- 1598 Urban, M.A., Nelson, D.M., Jiménez-Moreno, G., Châteauneuf, J.J., Pearson, A., Hu, F.S.,  
1599 2010. Isotopic evidence of C<sub>4</sub> grasses in southwestern Europe during the Early Oligocene–  
1600 Middle Miocene. *Geology* 38, 1091–1094.
- 1601 Vajda, V., Bercovici, A., 2014. The global vegetation pattern across the Cretaceous–  
1602 Paleogene mass extinction interval: A template for other extinction events. *Global and*  
1603 *Planetary Change* 122, 29–49.

- 1604 van der Knaap, W.O., van Leeuwen, J.F., Finsinger, W., Gobet, E., Pini, R., Schweizer, A.,  
1605 Valsecchi, V., Ammann, B., 2005. Migration and population expansion of *Abies*, *Fagus*,  
1606 *Picea*, and *Quercus* since 15000 years in and across the Alps, based on pollen-percentage  
1607 threshold values. *Quaternary Science Reviews* 24, 645–680.
- 1608 Vellend, M., Cornwell, W.K., Magnuson-Ford, K., Mooers, A.Ø., 2011. Measuring  
1609 phylogenetic biodiversity, in: McGill, B.J., Magurran, A. (eds.), *Biological diversity:  
1610 frontiers in measurement and assessment*. Oxford University Press, Oxford, pp. 194–207.
- 1611 Vellend, M., Baeten, L., Becker-Scarpitta, A., Boucher-Lalonde, V., McCune, J.L., Messier,  
1612 J., Myers-Smith, I.H., Sax, D.F., 2017. Plant biodiversity change across scales during the  
1613 Anthropocene. *Annual Review of Plant Biology* 68, 563–586.
- 1614 Wagner, R.H., 1989. A late Stephanian forest swamp with *Sporangiostrobus* fossilized by  
1615 volcanic ash fall in the Puertollano Basin, central Spain. *International Journal of Coal  
1616 Geology* 12, 523–552.
- 1617 Wagner, R.H., Diez, J.B., 2007. Verdeña (Spain): Life and death of a Carboniferous forest  
1618 community. *Compte Rendu Palevol* 6, 495–504
- 1619 Wang Deming, Qin Min, Liu Le, Liu Lu, Zhou Yi, Zhang Yingying, Huang Pu, Xue  
1620 Jinzhuang, Zhang Shuhui, Meng Meicen, 2019. The most extensive Devonian fossil forest  
1621 with small lycopsid trees bearing the earliest stigmarian roots. *Current Biology* 29, 2604–  
1622 2615.
- 1623 Wang Jun, Pfefferkorn, H.W., Zhang Yi, Feng Zhou, 2012. Permian vegetational Pompeii  
1624 from Inner Mongolia and its implications for landscape paleoecology and paleobiogeography  
1625 of Cathaysia. *Proceedings of the National Academy of Sciences* 109, 4927–4932.
- 1626 Wellman, C.H., 2010. The invasion of the land by plants: when and where? *New Phytologist*  
1627 188, 306–309.

- 1628 Weng, C., Hooghiemstra, H., Duivenvoorden, J.F., 2006. Challenges in estimating past plant  
1629 diversity from fossil pollen data: statistical assessment, problems, and possible  
1630 solutions. *Diversity and distributions* 12, 310–318.
- 1631 Whittaker, R.H., 1960. Vegetation of the Siskiyou Mountains, Oregon and California.  
1632 *Ecological Monographs* 30, 279–338.
- 1633 Whittaker, R.H., 1977. Evolution of species diversity in land communities. *Evolutionary*  
1634 *Biology* 10, 1–67.
- 1635 Whittaker, R.J., Willis, K.J., Field, R., 2001. Scale and species richness: towards a general,  
1636 hierarchical theory of species diversity. *Journal of Biogeography* 28, 453–470.
- 1637 Willard, D.A., 1993. Vegetational patterns in the Springfield coal (Middle Pennsylvanian,  
1638 Illinois Basin): comparison of miospore and coal-ball records. *Geological Society of*  
1639 *America, Special Paper* 286, 139–152.
- 1640 Willard, D.A., Donders, T.H., Reichgelt, T., Greenwood, D.R., Sangiorgi, F., Peterse, F.,  
1641 Nierop, K.G., Frieling, J., Schouten, S., Sluijs, A., 2019. Arctic vegetation, temperature, and  
1642 hydrology during Early Eocene transient global warming events. *Global and Planetary*  
1643 *Change* 178, 139–152.
- 1644 Willard, D.A., Phillips, T.L., Lesnikowska, A.D., DiMichele, W.A., 2007. Paleoecology of  
1645 the Late Pennsylvanian-age Calhoun coal bed and implications for long-term dynamics of  
1646 wetland ecosystems. *International Journal of Coal Geology* 69, 21–54.
- 1647 Williams, D.M., Ebach, C.M., 2020. *Cladistics. A guide to biological classification.*  
1648 Cambridge University Press, Cambridge (Systematics Association, Special Volume 88).
- 1649 Williams, J.W., Grimm, E.C., Blois, J.L., Charles, D.F., Davis, E.B., Goring, S.J., Graham,  
1650 R.W., Smith, A.J., Anderson, M., Arroyo-Cabrales, J., Ashworth, A.C., 2018. *The Neotoma*

- 1651 Paleocology Database, a multiproxy, international, community-curated data resource.  
1652 *Quaternary Research* 89, 156–177.
- 1653 Willis, K.J., Bennett, K.D., Bhagwat, S.A., Birks, H.J.B., 2010. Perspective 4°C and beyond:  
1654 What did this mean for biodiversity in the past? *Systematics and Biodiversity* 8, 3–9.
- 1655 Willis, K.J., Bhagwat, S.L., 2009. Biodiversity and climate change. *Science* 326, 806–807.
- 1656 Willis, K.J., McElwain, J., 2013. *The evolution of plants* (2nd edition). Oxford University  
1657 Press, Oxford.
- 1658 Willis, K.J., Niklas, K.J., 2004. The role of Quaternary environmental change in plant  
1659 macroevolution: the exception or the rule? *Philosophical Transactions of the Royal Society B*  
1660 *Biological Series* 359, 159–72.
- 1661 Willis, K.J., Rudner, E., Sümegi, P., 2000. The full-glacial forests of central and southeastern  
1662 Europe. *Quaternary Research* 53, 203–213.
- 1663 Wing, S.L., DiMichele, W.A., 1992. Ecological characterization of fossil plants, in:  
1664 Behrensmeier, A.K., Damuth, J.D., DiMichele, W.A., Potts, R., Sues, H.-D., Wing, S.L.  
1665 (Eds.) *Terrestrial ecosystems through time*. University of Chicago Press, Chicago, pp. 139–  
1666 180.
- 1667 Wing, S.L., DiMichele, W.A., 1995. Conflict between local and global changes in plant  
1668 diversity through geological time. *Palaios* 10, 551–564.
- 1669 Wing, S.L., Harrington, G.J., Bowen, G.J., Koch, P.L., 2003. Floral change during the initial  
1670 Eocene thermal maximum in the Powder River Basin, Wyoming, in: Wing, S.L., Gingerich,  
1671 P.D., Schmitz, B., Thomas, E. (Eds.), *Causes and Consequences of Globally Warm Climates*  
1672 *in the Early Paleogene*. Geological Society of America, Boulder, Colorado, (Special Paper  
1673 369), pp. 425-440.



- 1674 Wolfe, J.A., 1993. A method of obtaining climatic parameters from leaf assemblages. U.S.  
1675 Geological Survey Bulletin 2040, 1–71.
- 1676 Xing, Y., Gandolfo, M.A., Onstein, R.E., Cantrill, D.J., Jacobs, B.F., Jordan, G.J., Lee, D.E.,  
1677 Popova, S., Srivastava, R., Su, T., Vikulin, S.V., 2016. Testing the biases in the rich  
1678 Cenozoic angiosperm macrofossil record. *International Journal of Plant Sciences* 177, 371–  
1679 388.
- 1680 Xiong C., Wang D., Wang Q., Benton, M.J., Xue J., Meng M., Zhao Q., Zhang, J., 2013.  
1681 Diversity dynamics of Silurian–Early Carboniferous land plants in South China. *PLoS One*  
1682 8(9), p.e75706.
- 1683 Yu, J., Broutin, J., Chen, Z.Q., Shi, X., Li, H., Chu, D., Huang, Q., 2015. Vegetation  
1684 changeover across the Permian–Triassic Boundary in Southwest China: extinction, survival,  
1685 recovery and palaeoclimate: a critical review. *Earth-Science Reviews* 149, 203–224.
- 1686 Zavialova, N., Kustatscher, E., van Konijnenburg-van Cittert, J.H.A., 2010. Spore  
1687 ultrastructure of *Selaginellites leonardii* and diversity of Selaginellalean spores. *Geo.Alp* 7,  
1688 1–17.
- 1689

1690 Figure captions

1691 Fig. 1. Variation in productivity of different organs of a plant as illustrated by the pollen,  
1692 flowers, leaves, shoots, stem and roots of a hypothetical modern-day angiosperm tree.

1693 Redrawn and adapted from Hughes (1976, fig. 3.6) and Cleal and Thomas (2019, fig. 10.4).

1694 Fig. 2. Three types of diversity that can be recognised in the plant fossil record, using the  
1695 Middle Pennsylvanian (c. 310 Ma) swamp vegetation of Variscan Euramerica, based on Cleal  
1696 et al. (2012).

1697 Fig. 3. Partial reconstruction of the Late Devonian seed plant *Elkinsia* based on associated  
1698 fronds, ovulate structures and anatomically preserved stems. Drawn from by Annette  
1699 Townsend (based on Serbet and Rothwell 1992).

1700 Fig. 4. Examples of the differences in the fossil-genera represented by Carboniferous  
1701 arborescent lycopsids and sphenopsids. Adapted from Cleal and Thomas (2019).

1702 Fig. 5. Spores of fern *Weichselia reticulata* (Stokes and Webb) Fontaine showing different  
1703 maturation stages; Escucha Formation (Albian), Escucha, northern Teruel Province, Spain. A,  
1704 General view of a soral cluster up to 2 mm in diameter showing tightly packed peltate  
1705 indusia. B, Tightly-packed spores grouped inside a receptaculum. C, Inaperturate, discoidal  
1706 spores with smooth exine and lacking trilete mark. D, Packed spores showing different  
1707 ontogenetic stages. D, E, Fully-developed tetragonal spores with well-rounded corners and  
1708 clear trilete scar. Original unpublished material from the study in Diez et al (2005) with  
1709 permission of the authors.

1710 Fig. 6. T<sup>0</sup> fossil or submerged forests of arborescent lycopsids in the Carboniferous of the  
1711 UK. A, Fossil trees rooted in a coal seam being exposed at Brymbo, north Wales (Appleton et  
1712 al. 2010). B, Excavated trees in the Victoria Park, Glasgow (Thomas and Seyfullah 2015).

1713 Fig. 7. Comparison of palynological and macrofloral spectra obtained from roof-shales  
1714 overlying four Moscovian-age coal seams in South Wales, UK, between the Daren Ddu Seam  
1715 at the base and the Llantwit No. 1 Seam at the top. Palynomorphs not represented are extra-  
1716 basinal, mainly pollen (e.g. conifers). Macrofossils not represented are indeterminate  
1717 remains. Redrawn from Dimitrova et al. (2005, fig. 4).

1718 Fig. 8. Palaeozoic wetland vegetation preserved in the lower unit of the early Moscovian  
1719 Whetstone Horizon (Bělka tuff), Ovčín, Central Bohemia, Czech Republic. A, Remains of  
1720 cordaites and arborescent lycopsids plotted out on an exposed area of the tuff divided into 1  
1721 m<sup>2</sup> quadrats; the small number against each specimen represents the height above the base of  
1722 the tuff that the fossil occurred. B, Reconstruction of forest based on the type of plots shown  
1723 in Fig. 7A. From Opluštil et al. (2014), reproduced with permission from Bulletin of  
1724 Geosciences.

1725 Fig. 9. Range of basinal and extra-basinal vegetation represented in Moscovian (late  
1726 Carboniferous) palynospectra from the Sydney Coalfield, Cape Breton, Canada (Dimitrova et  
1727 al. 2011).

1728 Fig. 10. The Evolutionary Floras model of vegetation evolution based on a factor analysis of  
1729 global plant-family distribution through the Phanerozoic (Cleal and Cascales-Miñana 2014).

1730 Fig. 11. Factors that affect how we interpret past vegetation diversity from the macrofloral  
1731 and palynological records, demonstrating the importance of integrating the two sets of data.

Table 1. Fossil-genera assigned to different parts of six representative plants from the main groups in the late Carboniferous tropical coal swamps. The fossil-genera selected to represent each plant group in taxonomic diversity studies (e.g. Cleal et al. 2012) designated by an asterisk (\*). This does not include the pollen/spores produced by these plants.

		Lycospids	Calamites	Sphenophylls	Marattialeans	Medullosaleans	Cordaites
Stems		<i>Lepidophloios*</i>	<i>Calamites</i>	<i>Sphenophyllum*</i>	<i>Caulopteris</i>	-	<i>Artisia</i>
Foliage		<i>Cyperites</i>	<i>Annularia*</i>			<i>Alethopteris*</i>	<i>Cordaites*</i>
Reproductive structures	Female	<i>Lepidocarpon</i> <i>Lepidostrobophyllum</i>	<i>Calamostachys</i>	<i>Bowmanites</i>	<i>Cyathocarpus*</i>	<i>Trigonocarpus</i>	<i>Cardiocarpus</i>
	Male	<i>Lepidostrobus</i>				<i>Whittleseya</i>	<i>Cordaitanthus</i>
Rooting structures		<i>Stigmaraia</i>	<i>Pinnularia</i>	-	-	-	-
Total fossil-genera		6	4	2	2	3	4



Pollen  
Quantity available for burial:  $10^7$   
Time of availability: 2 weeks / year  
Durability: Durable

Flower  
Quantity available for burial:  $10^1$   
Time of availability: 1 week / year  
Durability: Ephemeral



Leaf  
Quantity available for burial:  $10^6$   
Time of availability: 4 weeks / year  
Durability: Durable

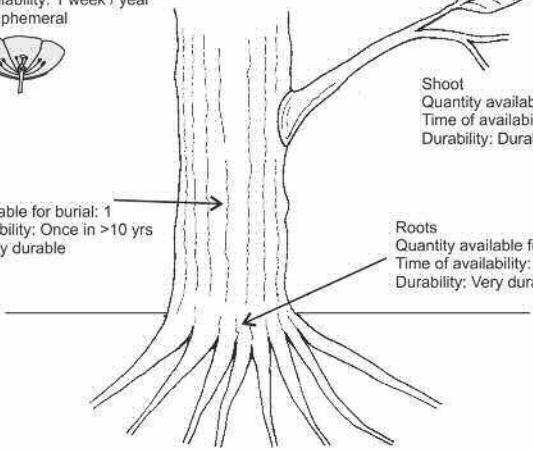


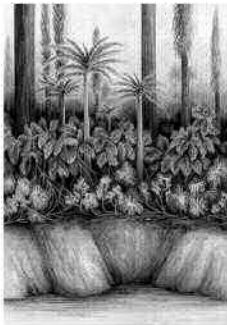
Shoot  
Quantity available for burial:  $10^2$   
Time of availability: 2 weeks / year  
Durability: Durable

Woody trunk  
Quantity available for burial: 1  
Time of availability: Once in >10 yrs  
Durability: Very durable



Roots  
Quantity available for burial: 1  
Time of availability: Once in > 10 years  
Durability: Very durable

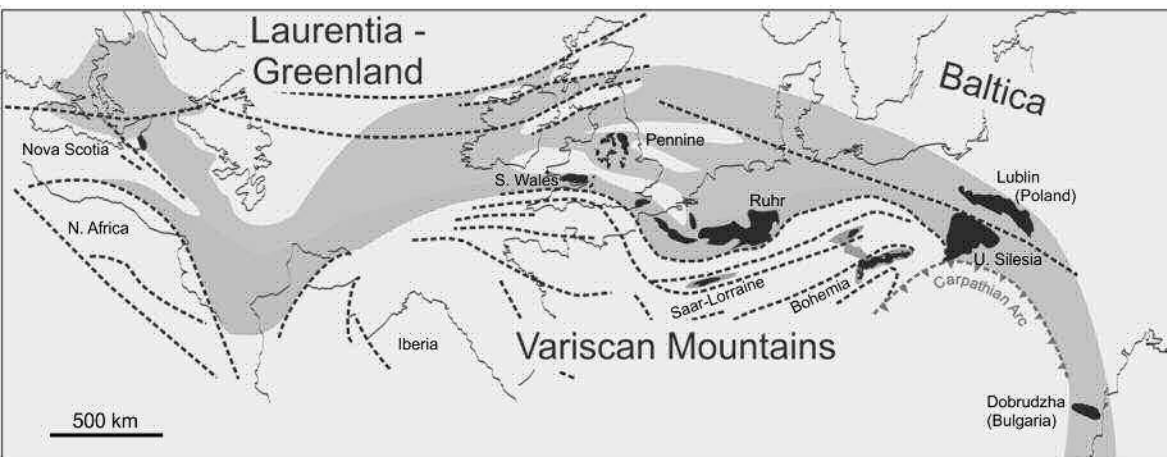




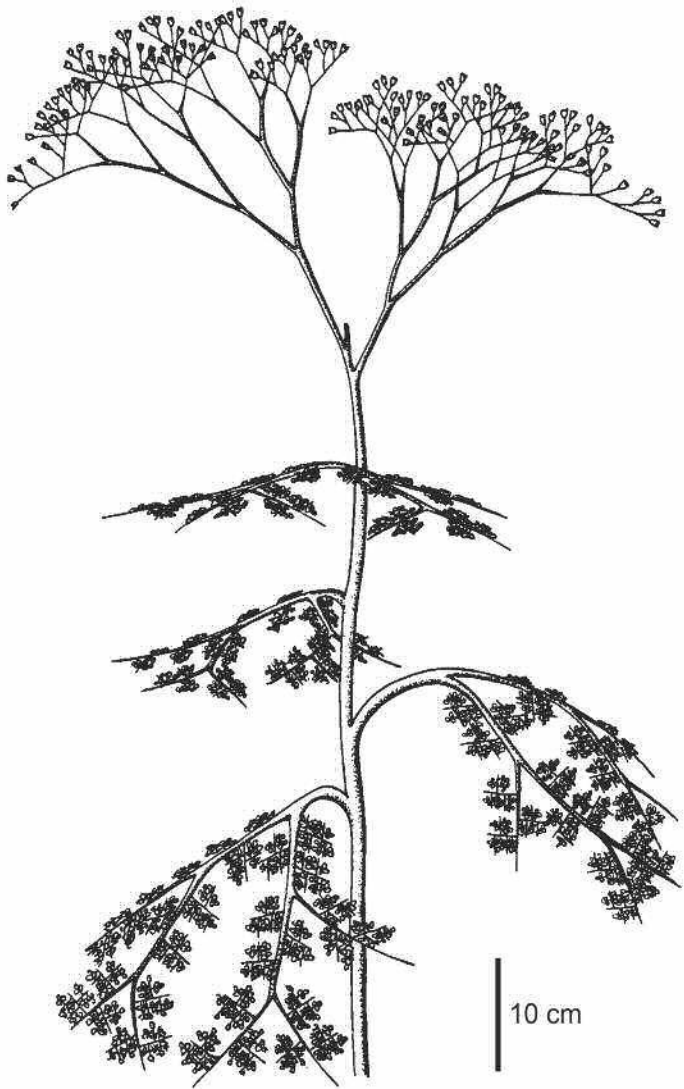
Local-scale diversity ( $< 10^3 \text{ km}^2$ )  
 $\equiv \alpha$  diversity



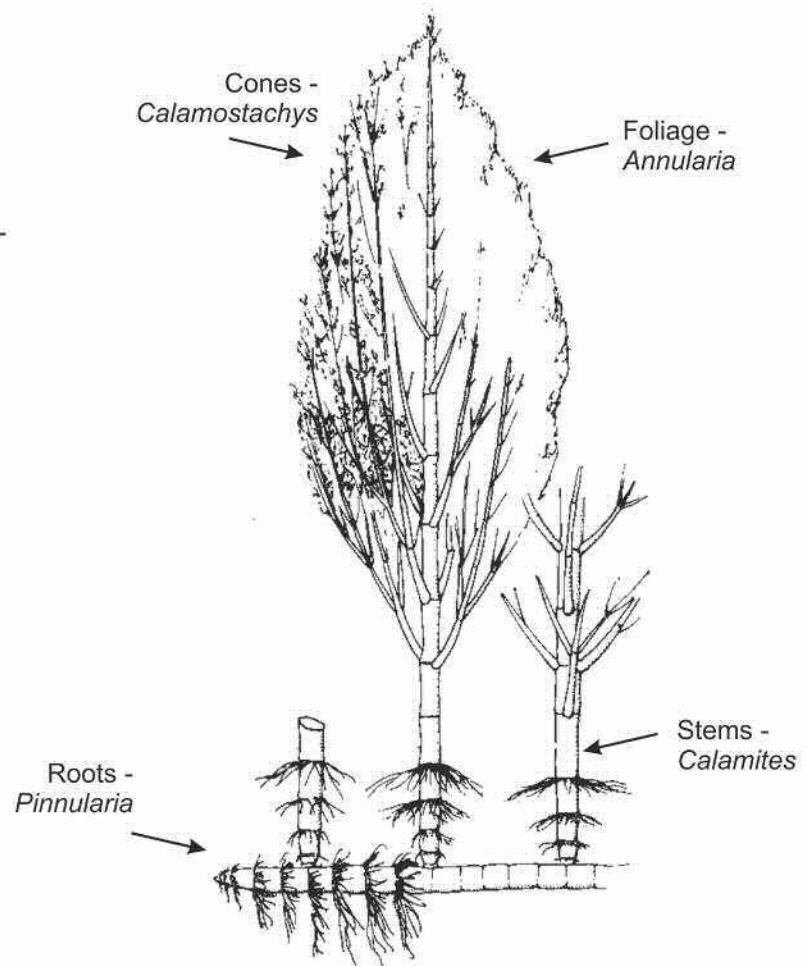
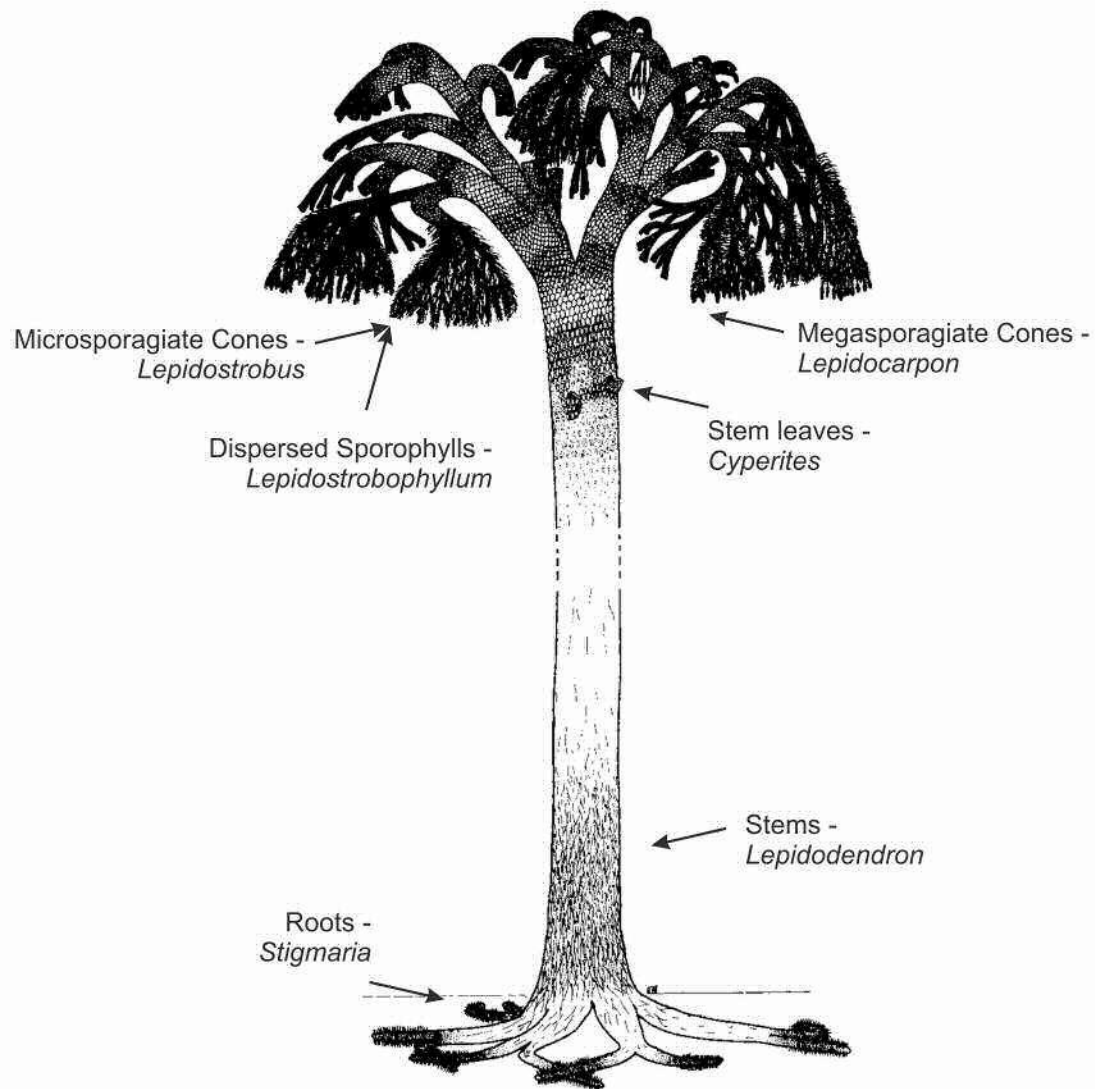
Landscape-scale diversity ( $10^3 - 10^5 \text{ km}^2$ )  
 $\equiv \gamma$  diversity



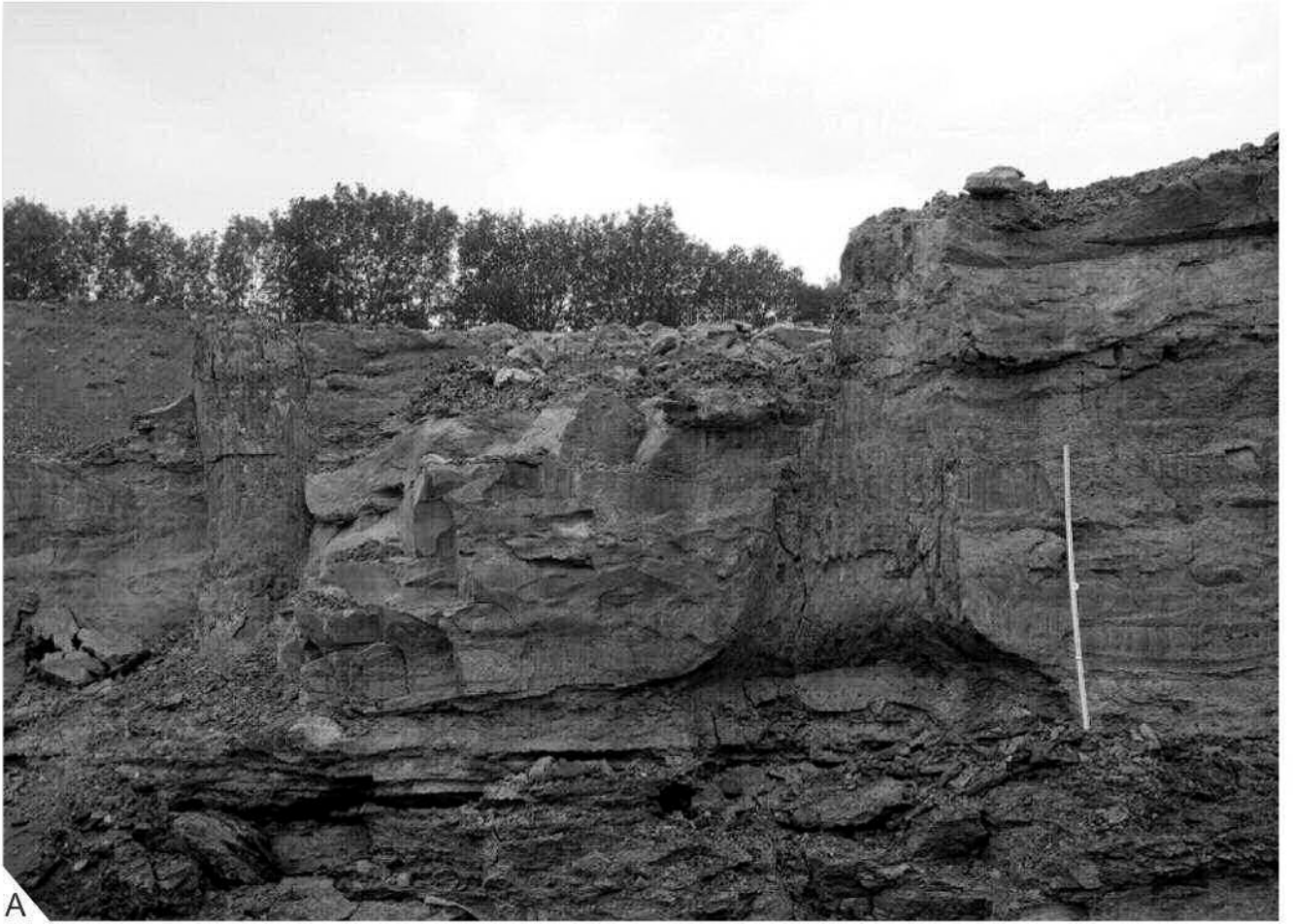
Regional-scale diversity ( $< 10^5 \text{ km}^2$ )  $\equiv \epsilon$  diversity



10 cm







A



B

