



**HAL**  
open science

## Mesophotic coral communities escape thermal coral bleaching in French Polynesia

Gonzalo Pérez-Rosales, Héloïse Rouzé, Gergely Torda, Pim Bongaerts, Michel Pichon, Valeriano Parravicini, Laetitia Hédouin

► **To cite this version:**

Gonzalo Pérez-Rosales, Héloïse Rouzé, Gergely Torda, Pim Bongaerts, Michel Pichon, et al.. Mesophotic coral communities escape thermal coral bleaching in French Polynesia. Royal Society Open Science, 2021, 8, 10.1098/rsos.210139 . hal-03445496

**HAL Id: hal-03445496**

**<https://hal.science/hal-03445496v1>**

Submitted on 24 Nov 2021

**HAL** is a multi-disciplinary open access archive for the deposit and dissemination of scientific research documents, whether they are published or not. The documents may come from teaching and research institutions in France or abroad, or from public or private research centers.

L'archive ouverte pluridisciplinaire **HAL**, est destinée au dépôt et à la diffusion de documents scientifiques de niveau recherche, publiés ou non, émanant des établissements d'enseignement et de recherche français ou étrangers, des laboratoires publics ou privés.

Research



**Cite this article:** Pérez-Rosales G, Rouzé H, Torda G, Bongaerts P, Pichon M, Under The Pole Consortium, Parravicini V, Hédouin L. 2021 Mesophotic coral communities escape thermal coral bleaching in French Polynesia. *R. Soc. Open Sci.* **8**: 210139.

<https://doi.org/10.1098/rsos.210139>

Received: 1 February 2021

Accepted: 11 October 2021

**Subject Category:**

Ecology, conservation and global change biology

**Subject Areas:**

ecology/environmental science

**Keywords:**

coral bleaching, mesophotic coral communities, spatial refuge, climate change, French Polynesia

**Author for correspondence:**

Gonzalo Pérez-Rosales

e-mail: [gonzalo.prb@gmail.com](mailto:gonzalo.prb@gmail.com)

<sup>†</sup>Under The Pole Consortium is listed below the Acknowledgements.

<sup>‡</sup>Equal contribution as last authors.

Electronic supplementary material is available online at <https://doi.org/10.6084/m9.figshare.c.5678374>.

# Mesophotic coral communities escape thermal coral bleaching in French Polynesia

Gonzalo Pérez-Rosales<sup>1,2</sup>, Héloïse Rouzé<sup>1,2</sup>, Gergely Torda<sup>3</sup>, Pim Bongaerts<sup>4</sup>, Michel Pichon<sup>5</sup>, Under The Pole Consortium<sup>6,†</sup>, Valeriano Parravicini<sup>2,‡</sup> and Laetitia Hédouin<sup>1,2,‡</sup>

<sup>1</sup>PSL Research University, EPHE-UPVD-CNRS, USR 3278 CRIOBE, BP 1013 Papetoai, 98729 Moorea, French Polynesia

<sup>2</sup>PSL Université Paris: EPHE-UPVD-CNRS, USR 3278 CRIOBE, Université de Perpignan, 52 Avenue Paul Alduy, 66860 Perpignan, France

<sup>3</sup>ARC Centre of Excellence for Coral Reef Studies, James Cook University, Townsville, QLD 4811, Australia

<sup>4</sup>California Academy of Sciences, San Francisco, CA 94118, USA

<sup>5</sup>Biodiversity Section, Queensland Museum, Townsville, QLD 4811, Australia

<sup>6</sup>Under The Pole, 29900 Concarneau, France

GP-R, 0000-0001-6577-3416; HR, 0000-0003-3380-0883; GT, 0000-0002-4585-3045; PB, 0000-0001-6747-6044; VP, 0000-0002-3408-1625; LH, 0000-0001-6565-3633

Climate change and consequent coral bleaching are causing the disappearance of reef-building corals worldwide. While bleaching episodes significantly impact shallow waters, little is known about their impact on mesophotic coral communities. We studied the prevalence of coral bleaching two to three months after a heat stress event, along an extreme depth range from 6 to 90 m in French Polynesia. Bayesian modelling showed a decreasing probability of bleaching of all coral genera over depth, with little to no bleaching observed at lower mesophotic depths (greater than or equal to 60 m). We found that depth-generalist corals benefit more from increasing depth than depth-specialists (corals with a narrow depth range). Our data suggest that the reduced prevalence of bleaching with depth, especially from shallow to upper mesophotic depths (40 m), had a stronger relation with the light-irradiance attenuation than temperature. While acknowledging the geographical and temporal variability of the role of mesophotic reefs as spatial refuges during thermal stress, we ought to understand why coral bleaching reduces with depth. Future studies should consider repeated monitoring and detailed ecophysiological and environmental data. Our study demonstrated how increasing depth may offer a level of protection and that lower mesophotic communities could escape the impacts of a thermal bleaching event.

# 1. Introduction

Warming sea surface temperature leading to spatially and taxonomically widespread bleaching events is one of the major drivers of the loss of reef-building corals [1]. Corals, the habitat engineers of one of the most diverse marine ecosystems of our planet, live in obligate symbiosis with unicellular dinoflagellates from the family Symbiodiniaceae. This symbiosis readily breaks down under unfavourable environmental conditions, most commonly during anomalously high temperature and light-irradiance exposure events [2–4]. With the loss of dinoflagellates from the host tissue, corals are nutritionally compromised and, unless the environmental conditions improve, they die [5,6]. Bleaching susceptibility is taxon- and location-specific [7–10] and mass bleaching events lead to rapid compositional shifts in the benthic community [11]. With the ever-increasing frequency and severity of bleaching events, shallow corals are disappearing at an alarming rate [1,12–14], and the quest to identify thermally tolerant corals and coral reefs is of great interest for conservation and management [15,16].

Because temperature and light attenuate with depth, it has been proposed that mesophotic coral assemblages (i.e. below 30 m; [17]) may act as a spatial refuge for corals during global and local bleaching events [18]. However, despite extensive debate regarding the overlap in community structure [19,20] and connectivity between shallow and mesophotic coral habitats [21,22], there are very few studies that actually assess bleaching well into lower mesophotic depths [23,24]. Here, we address this knowledge gap by conducting scleractinian coral surveys to 90 m depth during a mass bleaching event in French Polynesia in 2019. We test the hypothesis that bleaching impacts decrease with depth; assess taxonomic patterns in bleaching susceptibility over depth and determine whether a decrease in bleaching impacts over depth leaves deeper mesophotic communities unaffected.

## 2. Material and methods

### 2.1. Study locations and sampling protocol

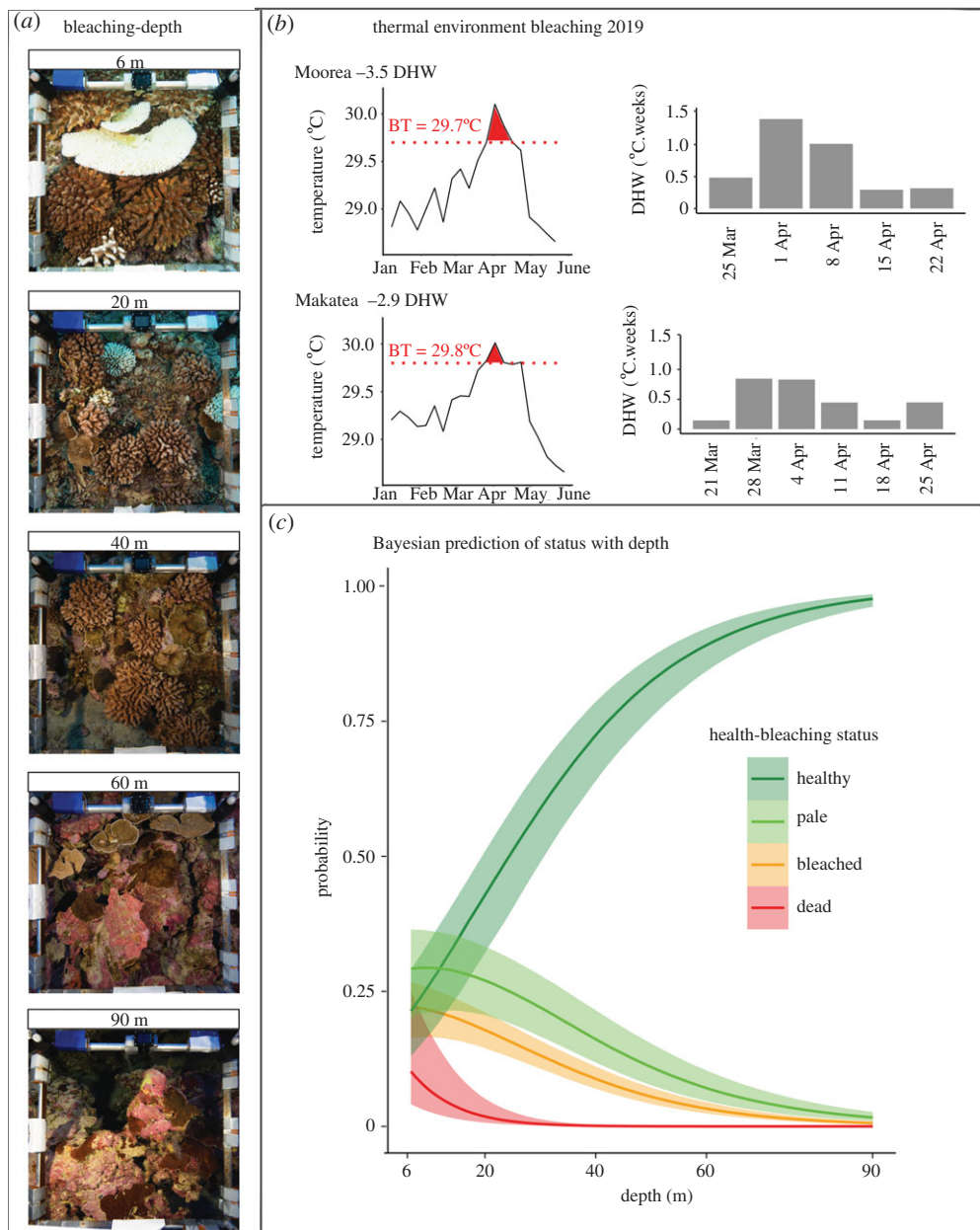
Benthic bleaching surveys were conducted at two locations in French Polynesia: Moorea (Society Archipelago: 17°28.631' S, 149°51.067' W) and Makatea (Tuamotu Archipelago: 15°49.383' S, 148°16.758' W) from 6 to 90 m depth (electronic supplementary material, figure S1A). The forereefs of the north coast of Moorea are characterized by a gentle slope (40–60°) from the surface down to 70–80 m depth, where it drops almost vertically. The reefs of the northwest side of Makatea are characterized by a very gentle upper slope (less than 10°) until about 10 m depth, where it drops off almost vertically. Coral bleaching surveys were done once at each location on the 14 and 15 June 2019 in Makatea and 12 and 13 July 2019 in Moorea, two to three months after the peak in sea surface temperature that triggered a mass bleaching event in March–April 2019. Thirty photo-quadrats (0.75 × 0.75 m) were randomly taken at each of five different depths (6, 20, 40, 60 and 90 m; a total of 150 photos at each location), with constant sampling effort at each depth, covering around 17 m<sup>2</sup> per isobath and 85 m<sup>2</sup> per location (figure 1a). Deep dives were done by the Under the Pole team using mixed-gas and closed-circuit rebreathers. Quadrat photos were white balance corrected using a white reference plate attached to each quadrat.

### 2.2. Environmental parameters

We characterized the temperature regime that induced bleaching at our sites using different techniques. First, we computed the cumulative heat stress as degree heating weeks (DHW) from NOAA Satellite Sea Surface Temperatures [25,26]. Second, because satellite measurements are relevant only for shallow waters, we also deployed *in situ* temperature (HOBO Water Temperature Pro v.2 Data) and light (DEFI2-L JFE Advantech) loggers that measured light for photosynthetically active radiation (PAR) at the different sampling depths. A detailed explanation of how these data were collected, normalized according to 6 m depth because it was the departing reference for loggers and bleaching assessments and processed using the Beer–Lambert equation [27,28] are available in electronic supplementary material, figures S2 and S3.

### 2.3. Coral bleaching classification and statistical analysis

We were interested in exploring the relationship between depth and the likelihood of corals to bleach. In each photo-quadrat, we counted the number of colonies larger than 5 cm [29] and identified them to the



**Figure 1.** (a) Sample photo-quadrats at different depths. (b) Thermal environment with degree heating weeks (DHW) values using Satellite Coral Reef Watch Temperature. (Left) Sea surface temperatures during the bleaching episode. Red fill colour shows the exposure period above the bleaching threshold marked with a dotted line. (Right) Weekly development of the DHW. (c) Bayesian prediction probability of the likelihood of corals to be healthy, pale, bleached or dead as a function of depth.

highest taxonomic resolution possible (i.e. at least genus level and, in several cases, species level). We classified each colony using reference colour cards [30]. Although natural changes of coloration can vary with depth, we considered as references the previous healthy colours observed in the photo-quadrats of the DEEPHOPE expedition [31]. Coral colonies were considered 'healthy' when fully pigmented with their normal colour; 'pale' when colonies had lost part of their pigmentation, but Symbiodiniaceae were still visible in their tissues; 'bleached' when completely white showing their skeleton through the tissue; and 'recently dead' when no living tissues remained over the skeleton, but still had discernible skeletal structure even if colonies started to be covered by turfing algae to varying extents. By contrast, colonies overgrown by thick and dark turf, crustose coralline algae and boring organisms were excluded from the analysis as their mortality probably predates the studied thermal coral bleaching event. Finally, when colonies were patchily pigmented, they were classified by the most severely bleached patch (e.g. a colony 25% bleached and 75% pale was considered as

bleached and colonies 30% pale and 70% healthy as pale). To prevent potential observer bias, all photo-quadrats were analysed and scored by a single observer who had been previously trained with the analysis of 2880 quadrats from the DEEPHOPE expedition [31].

To explore the relationship between the likelihood of bleaching and depth, we fitted a Bayesian model in R, using the *brms* package [32] with a multinomial logit link function, a random intercept for the 'location' factor and a random intercept and a random slope for the 'genus' factor. We used uninformative priors and ran the model for four MCMC chains using 7000 iterations per chain after 3000 iterations of warm-up. We used the posterior likelihood of being healthy at the shallowest occurrence of each genus as a benchmark to account for genus-specific bleaching resistance. Similarly, for each genus, we calculated the posterior likelihood of being healthy at their deepest occurrence to evaluate depth-driven health benefits. All analyses were performed in RStudio. Data and codes are available in [https://github.com/gonzalopr/Deep\\_Bleaching\\_French\\_Polynesia](https://github.com/gonzalopr/Deep_Bleaching_French_Polynesia).

## 3. Results

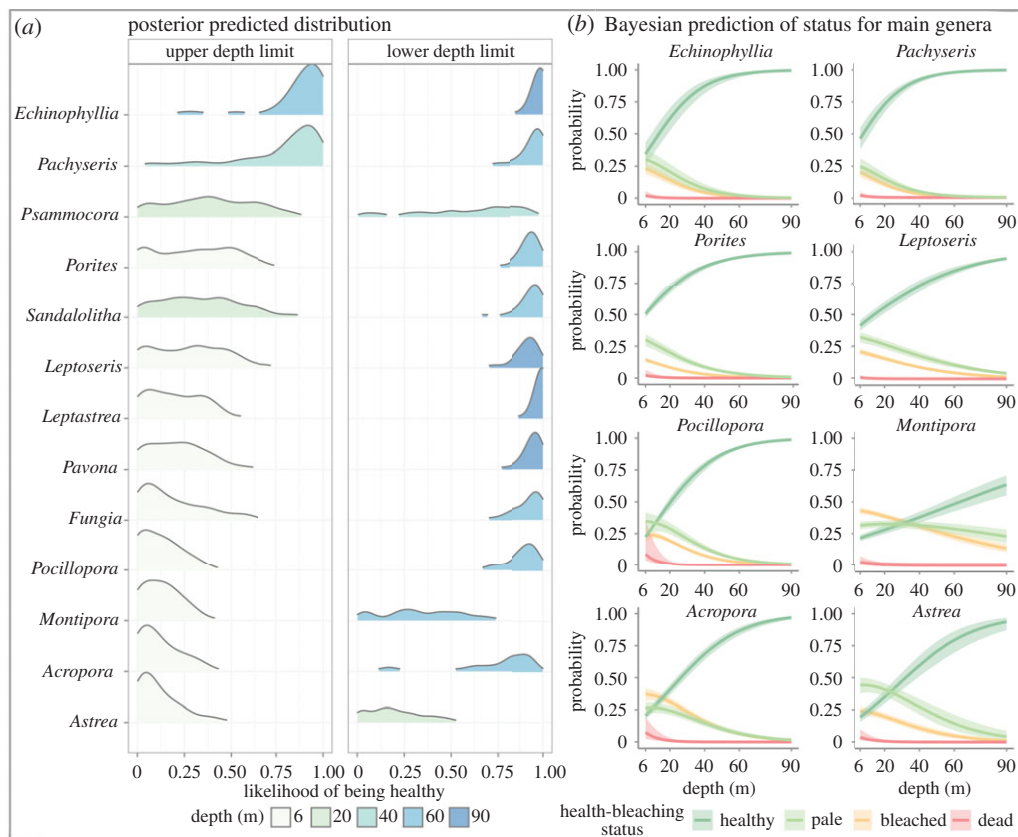
### 3.1. Environmental characteristics

Both locations experienced heat stress with sea temperatures above their bleaching threshold (BT). Peak sea surface temperature anomalies occurred at the end of March–April 2019 both in Moorea and Makatea. During the bleaching event, Moorea experienced a cumulative heat stress of 3.5 DHW and Makatea of 2.9 DHW (figure 1*b*). During the bleaching survey, sea surface temperatures had decreased below the BT. Temperatures were similar at both locations, with circadian variations of 0.3°C down to 40 m and high variability below 60 m (electronic supplementary material, figure S2). Vertical profiles revealed that temperatures slightly decreased or were constant from the surface to 60 m depth (greater than 95% of surface temperatures). These temperature values were consistent with the vertical conductivity, temperature and depth (CTD) profile in Makatea (Pearson = 0.95,  $p$ -value = 0.0007) (electronic supplementary material, figure S3). Light decreased exponentially with increasing depth. Relative to the value at 6 m, PAR was about 25% at 40 m and only 4% at 90 m. These light values were also consistent with the results obtained from a vertical CTD profile (PAR was less than 20% of the surface light at 40 m and less than 3% at 90 m; Pearson = 0.99,  $p$ -value =  $4.8 \times 10^{-7}$ ) and well fitted with the Beer–Lambert equation (electronic supplementary material, figures S2 and S3).

### 3.2. Bleaching along the depth gradient

The proportion of colonies impacted by bleaching dramatically declined with depth at both locations (electronic supplementary material, figure S1*B*). Despite differences between the two locations in the numbers of colonies over depth (e.g. decreasing in Moorea below 40 m, and remaining constant in Makatea with a maximum number at 60 m), they did not significantly affect the proportional measures of coral bleaching with depth. Consistently, our model shows that the overall probability of bleaching across all coral genera, or dying shortly before the survey period, presumably due to bleaching, decreases with depth (figure 1*b*). At 6 m, the probability for a coral colony to be bleached or healthy is almost identical (0.25), while at 20 m, the probability of bleaching reduces by more than half and the probability of being healthy doubles to  $0.44 \pm 0.2$  standard error estimate (SEE). At 40 m, the probability of being healthy is  $0.73 \pm 0.2$  SEE, and at 90 m,  $0.98 \pm 0.02$  SEE.

Additionally, our model detected a remarkable variation in the bleaching sensitivity among genera (figure 2). Accounting for genus-specific zonation patterns (i.e. upper and lower depth limits of coral genera), we found that corals only present at mesophotic depths were the least sensitive to bleaching, i.e. *Echinophyllia* ( $0.94 \pm 0.05$  SEE) and *Pachyseris* ( $0.91 \pm 0.05$  SEE). Among the genera present at 6 m, *Porites* ( $0.51 \pm 0.06$  SEE) and *Leptoseris* ( $0.42 \pm 0.09$  SEE) were the most resistant to bleaching, while *Astrea* ( $0.2 \pm 0.09$  SEE), *Acropora* ( $0.21 \pm 0.07$  SEE) and *Montipora* ( $0.21 \pm 0.05$  SEE) were the most sensitive. Colonies of all coral genera were healthier at their lower depth limits and the benefit of depth was stronger for depth-generalists than for genera with narrow depth ranges. For instance, the probability of a *Pocillopora* colony to be healthy increased by 0.7 from its upper limit at 6 m ( $0.22 \pm 0.02$  SEE) to its lower limit at 60 m ( $0.92 \pm 0.03$  SEE). By contrast, the probability of an *Astrea* colony only increased by 0.16 from 6 m ( $0.2 \pm 0.09$  SEE) to 20 m ( $0.36 \pm 0.11$  SEE) (figure 2*a*). Although the increasing probability of being healthy, and a decreasing probability of suffering bleaching effects with depth was a trend shared by all coral genera, there were genus-specific differences in the benefits



**Figure 2.** (a) Bleaching sensitivity of coral genera based on the posterior likelihood of being healthy. Predictions are displayed for the extremes of the depth range specific to each coral genus (i.e. upper and lower depth local limits). Cases with less than 25 replicates per depth and/or less than 100 replicates total were removed. (b) Bayesian prediction probability of the likelihood of corals to be healthy, pale, bleached or dead as a function of depth. The most bleaching-tolerant coral genera are *Echinophyllia* and *Pachyseris*. The most bleaching-sensitive genera are *Acropora* and *Astrea*. *Porites*, *Leptoseris*, *Pocillopora* and *Montipora* are the most common genera in the coral assemblages of the surveyed sites.

provided by depth regardless of the extent of the depth range. For instance, despite *Acropora* and *Montipora* having similar depth distributions and thermal sensitivities in shallow waters, *Acropora* benefited from depth more than *Montipora* at 40 m; *Acropora* already had a approximately 0.75 probability of being healthy, while the probability of *Montipora* colonies to be healthy was still less than 0.5 (figure 2b).

## 4. Discussion

This study shows a decrease in the incidence of coral bleaching across an extreme depth range (i.e. 6–90 m) in French Polynesia, as measured two to three months after the peak of a heat stress event. Consistent with previous findings, our results suggest that the probability of coral bleaching is reduced with increasing depth [29,33–35]. However, while previous studies were limited to the boundaries of non-technical diving (i.e. 30–40 m depth), we surveyed coral assemblages down to 90 m [23,24,36]. In the upper mesophotic zone (40 m), we found no signs of recent mortality, and bleaching (i.e. bleached or pale) was 3.4-fold less common than in shallow water, in concordance with previous studies [29,33]. At the mid-lower mesophotic zone (60 m) and below, we found no signs of recent mortality and bleaching was virtually absent.

Our Bayesian model predicts taxon-specific sensitivity of corals to bleaching along their respective depth ranges. We show that the reduction in the prevalence of bleached colonies is not simply an effect of taxonomic zonation [37], at least not at genus level. Coral genera inhabiting exclusively the mesophotic zone, from 40 to 90 m, often suffer bleaching at the upper end of their depth range and decrease in bleaching towards their deepest occurrence. While several studies have tried to classify the sensitivity of corals to bleaching [7,8,38–42], few studies have so far explored how bleaching

sensitivity varies across the depth gradient [33,43]. Incorporating random intercept and slope for taxon allowed us to isolate the probability of coral bleaching from the depth distribution of a given genus. Our predicted results corroborated earlier studies that Acroporidae (for the purposes of this study, *Acropora* and *Montipora*) are extremely sensitive to bleaching [41,44], but also showed that *Montipora* benefits less from the effect of depth than *Acropora*. Moreover, we found that higher probability of detecting healthy colonies with increasing depth was a common trend for all genera regardless of their depth distribution (extending the work by Frade *et al.* [33]; but see Crosbie *et al.* [43]). Finally, we found that depth-specialist coral genera were the least sensitive to bleaching; and that the health status of depth-generalists improved more with increasing depth than that of depth-specialists. Such generic patterns could be elaborated in future studies, including the interspecific bleaching variability within genera [45].

The reduction of coral bleaching from the surface to depth can be attributed to changing environmental conditions, the physiological capacities of corals or the interplay of the two [46]. By assessing the impact of bleaching two to three months after the peak of heat stress, we have a snapshot view of the effect of heat stress on corals along the depth gradient. The timing of our surveys does not allow us to differentiate unaffected corals from those that recovered quickly following the peak of the thermal stress [47]. Nevertheless, we reliably identify the most susceptible coral genera to bleaching along an unprecedented depth gradient because corals severely bleached during the heat stress will die or remain bleached for months before the symbionts come back [47,48]. During the survey, sea surface temperatures were below the BT, and it is unlikely to see healthy corals bleach because of temperature without heat stress. Anomalously high sea surface temperatures are usually considered the primary driver of coral bleaching but are not the only abiotic parameter involved [2–4]. For instance, the severe bleaching observed in shallow coral assemblages, despite the relatively low values of DHW [26], was probably due to the interaction between temperature and light irradiation. This interaction could explain why corals bleached, with no mortality, in 2016 at even lower DHW values at some sites of French Polynesia [49–51]. Vertical profiles from the limited environmental data at our study sites showed stable temperatures from the surface to 40 m and significant temporal variability at lower mesophotic depths (60–90 m). This high variability (e.g. up to 1 or 2°C within minutes; electronic supplementary material, figure S2) may provide relief from high temperatures and/or increase organisms' stress tolerance [52–54]. The variability is probably associated with the common internal tidal/gravity waves of the Pacific Islands [55–58], which have proved to reduce heat stress in several locations [54,59,60]. Additionally, the thermocline's depth recorded in our study corresponded to depths reported for the region [57,61,62]. Although both phenomena appear too deep to have an effect at the timepoint of observations, they might have provided extensive heat relief before our measurements. Therefore, more rigorous and long-term studies are necessary to understand the role of oceanographic processes in reducing heat stress on corals and, hence, identify reefs less affected by coral bleaching [42,54,59,60,63,64].

Coral bleaching is a stress response to the increasing concentration of toxic by-products of photosynthesis, most commonly brought about by high temperature, compounded by other factors such as light intensity and water chemistry [3,5,6,65]. By contrast to temperature, and in accordance with the Beer–Lambert law [28], light levels decreased exponentially with depth (electronic supplementary material, figure S2). This reciprocal trend to the likelihood of being healthy suggests that light was a stronger predictor of bleaching than temperature in this study (electronic supplementary material, figure S4). The reduction of PAR with depth [21,66] implies that corals experienced less stress with the decrease of excessive photosynthetic activities [65], indicating that light might be a key contributor to deep coral refuges [29]. In this context, recent literature suggested that ultraviolet radiation might be more important than PAR alone to explain bleaching [67–69]. While challenging to undertake such studies over large depth ranges [70], future work should include repeated monitoring surveys and endeavour to integrate additional environmental and biological parameters to further understand the observed decrease in bleaching over depth.

Mesophotic coral ecosystems are unlikely to provide long-term refugia from the ever-increasing frequency of thermal stress events [15,20]. However, they may still play a role as short-term refuges from bleaching. Our study has contributed to this still controversial concept by extending the depth-related decrease in bleaching incidence to lower mesophotic depths and demonstrating that bleaching is less prevalent towards the lower end of the depth range of coral taxa. While recognizing the geographical limitations of this study, and acknowledging the variability in bleaching susceptibility among genera, species and regions, the dampening impact of bleaching over depth may nonetheless be critical in preventing local species extinctions and safeguarding the unique fauna associated with mesophotic depths in some locations.

Ethics. Our work was done through the DEEPCORAL (ref. no. 3111) and the DEEPHOPE (ref. no. 168722) programmes. The present work consists of photo-quadrats (pictures) and environmental parameters only, and no export permits apply on French Polynesia for these data.

Data accessibility. Data and relevant code for this research work are stored in GitHub: [https://github.com/gonzalopr/Deep\\_Bleaching\\_French\\_Polynesia](https://github.com/gonzalopr/Deep_Bleaching_French_Polynesia) and have been archived within the Zenodo repository: <https://doi.org/10.5281/zenodo.5211676>.

Authors' contributions. G.P.-R., H.R. and L.H. planned the study. G.P.-R., H.R. and UTP collected the data, G.P.-R. and V.P. analysed the data. G.P.-R., V.P. and G.T. wrote the first draft of the manuscript. All authors contributed to improve the study and the manuscript. All authors agree to be held accountable for the content herein and approve the final version of the manuscript.

Competing interests. The authors declare that there are no competing interests.

Funding. This research was funded by the ANR DEEPHOPE (ANRAAPG 2017 grant no. 168722), the Délégation à la Recherche DEEPCORAL, the CNRS DEEPREEF, the Agence Française pour la Biodiversité POLYAFB, the EPHE and the IFRECOR.

Acknowledgements. We sincerely thank the team of the Under The Pole Expedition III. Under The Pole Consortium: G. Bardout, J. Fauchet, A. Ferucci, F. Gazzola, G. Lagarrigue, J. Leblond, E. Marivint, A. Mittau, N. Mollon, N. Paulme, E. Périé-Bardout, R. Pete, S. Pujolle, G. Siu.

## References

- Hughes TP *et al.* 2018 Spatial and temporal patterns of mass bleaching of corals in the Anthropocene. *Science* **359**, 80–83. (doi:10.1126/science.aan8048)
- Brown BE. 1997 Coral bleaching: causes and consequences. *Coral Reefs* **16**, 129–138. (doi:10.1007/s003380050249)
- Hoegh-Guldberg O, Smith GJ. 1989 The effect of sudden changes in temperature, light and salinity on the population density and export of zooxanthellae from the reef corals *Stylophora pistillata* Esper and *Seriatopora hystrix* Dana. *J. Exp. Mar. Bio. Ecol.* **129**, 279–303. (doi:10.1016/0022-0981(89)90109-3)
- Suggett DJ, Smith DJ. 2020 Coral bleaching patterns are the outcome of complex biological and environmental networking. *Glob. Change Biol.* **26**, 68–79. (doi:10.1111/gcb.14871)
- Weis VM. 2008 Cellular mechanisms of Cnidarian bleaching: stress causes the collapse of symbiosis. *J. Exp. Biol.* **211**, 3059–3066. (doi:10.1242/jeb.009597)
- Baird AH, Bhagooli R, Ralph PJ, Takahashi S. 2009 Coral bleaching: the role of the host. *Trends Ecol. Evol.* **24**, 16–20. (doi:10.1016/j.tree.2008.09.005)
- Loya Y, Sakai K, Yamazato K, Nakano Y, Sambali H, Van Woesik R. 2001 Coral bleaching: the winners and the losers. *Ecol. Lett.* **4**, 122–131. (doi:10.1046/j.1461-0248.2001.00203.x)
- van Woesik R, Sakai K, Ganase A, Loya Y. 2011 Revisiting the winners and the losers a decade after coral bleaching. *Mar. Ecol. Prog. Ser.* **434**, 67–76. (doi:10.3354/meps09203)
- Madin JS *et al.* 2016 A trait-based approach to advance coral reef science. *Trends Ecol. Evol.* **31**, 419–428. (doi:10.1016/j.tree.2016.02.012)
- Muir PR, Done T, Aguirre JD. 2021 High regional and intragenetic variation in susceptibility to mass bleaching in Indo-Pacific coral species. *Glob. Ecol. Biogeogr.* **30**, 1889–1898. (doi:10.1111/GEB.13353)
- Hughes TP *et al.* 2019 Ecological memory modifies the cumulative impact of recurrent climate extremes. *Nat. Clim. Change* **9**, 40–43. (doi:10.1038/s41558-018-0351-2)
- Clair DC, Szostek L, McDevitt-Irwin JM, Schanze JJ, Baum JK. 2018 Global patterns and impacts of El Niño events on coral reefs: a meta-analysis. *PLoS ONE* **13**, e0190957. (doi:10.1371/journal.pone.0190957)
- Sully S, Burkepile DE, Donovan MK, Hodgson G, van Woesik R. 2019 A global analysis of coral bleaching over the past two decades. *Nat. Commun.* **10**, 1–5. (doi:10.1038/s41467-019-09238-2)
- Eakin CM, Sweatman HPA, Brainard RE. 2019 The 2014–2017 global-scale coral bleaching event: insights and impacts. *Coral Reefs* **38**, 539–545. (doi:10.1007/s00338-019-01844-2)
- Palumbi S *et al.* 2009 Managing for ocean biodiversity to sustain marine ecosystem services. *Wiley Online Libr.* **7**, 204–211. (doi:10.1890/070135)
- Camp EF, Schoepf V, Mumby PJ, Hardtke LA, Rodolfo-Metalpa R, Smith DJ, Suggett DJ. 2018 The future of coral reefs subject to rapid climate change: lessons from natural extreme environments. *Front. Mar. Sci.* **5**, 4. (doi:10.3389/fmars.2018.00004)
- Bongaerts P *et al.* 2019 Mesophotic.org: a repository for scientific information on mesophotic ecosystems. *Database (Oxford)* **2019**, baz140. (doi:10.1093/database/baz140)
- Bongaerts P, Ridgway T, Sampayo EM, Hoegh-Guldberg O. 2010 Assessing the 'deep reef refugia' hypothesis: focus on Caribbean reefs. *Coral Reefs* **29**, 1–19. (doi:10.1007/s00338-009-0581-x)
- Rocha LA, Pinheiro HT, Shepherd B, Papastamatiou YP, Luiz OJ, Pyle RL, Bongaerts P. 2018 Mesophotic coral ecosystems are threatened and ecologically distinct from shallow water reefs. *Science* **361**, 281–284. (doi:10.1126/science.aag1614)
- Laverick JH *et al.* 2018 To what extent do mesophotic coral ecosystems and shallow reefs share species of conservation interest? A systematic review. *Environ. Evid.* **7**, 15. (doi:10.1186/s13750-018-0127-1)
- Bongaerts P, Smith TB. 2019 Beyond the 'deep reef refuge' hypothesis: a conceptual framework to characterize persistence at depth. In *Mesophotic coral ecosystems: coral reefs of the World* (eds Y Loya, K Puglise, T Bridge), pp. 881–895. Cham, Switzerland: Springer.
- Holstein DM, Paris CB, Vaz AC, Smith TB. 2016 Modeling vertical coral connectivity and mesophotic refugia. *Coral Reefs* **35**, 23–37. (doi:10.1007/s00338-015-1339-2)
- Lang JC, Wicklund RI, Dill RF. 1988 Depth- and habitat-related bleaching of zooxanthellate reef organisms near Lee Stocking Island, Exuma Cays, Bahamas. 3. In *Proc. 6th Int. Coral Reef Symp., Townsville, Australia*. 3, 269–274.
- Bunkley-Williams L, Morelock J, Williams Jr EH. 2011 Lingering effects of the 1987 mass bleaching of Puerto Rican coral reefs in mid to late 1988. *J. Aquat. Anim. Health* **3**, 242–247. (doi:10.1577/1548-8667(1991)003<0242:LEOTMB>2.3.CO;2)
- Liu G *et al.* 2018 Predicting heat stress to inform reef management: NOAA coral reef watch's 4-month coral bleaching outlook. *Front. Mar. Sci.* **5**, 57. (doi:10.3389/fmars.2018.00057)
- Liu G, Rauenzahn J, Heron S, Eakin C. 2013 NOAA coral reef watch 50 km satellite sea surface temperature-based decision support system for coral bleaching management. NOAA Technical Report NESDIS 143. March 2013. See <http://data.nodc.noaa.gov/coris/library/NOAA/CRCP/project/20370/NOAACRW50kmsSatSSTemp-NESDITechReport143.pdf>.
- Rouzé H *et al.* 2021 Symbiotic associations of the deepest recorded photosynthetic scleractinian coral (172 m depth). *ISME J.* **15**, 1–5. (doi:10.1038/s41396-020-00857-y)
- Gordon HR. 1989 Can the Lambert-Beer law be applied to the diffuse attenuation coefficient of ocean water? *Limnol. Oceanogr.* **34**, 1389–1409. (doi:10.4319/lo.1989.34.8.1389)
- Muir PR, Marshall PA, Abdulla A, Aguirre JD. 2017 Species identity and depth predict bleaching severity in reef-building corals: shall the deep inherit the reef? *Proc. R. Soc. B* **284**, 20171551. (doi:10.1098/rspb.2017.1551)
- Siebeck UE, Marshall NJ, Klüter A, Hoegh-Guldberg O. 2006 Monitoring coral bleaching



- using a colour reference card. *Coral Reefs* **25**, 453–460. (doi:10.1007/s00338-006-0123-8)
31. Pichon M, Rouzé H, Pérez-Rosales G, Hédouin L. 2021 Deep diving in paradise shines new light on the twilight zone: preliminary results of the 'Deepphope' mesophotic programme in French Polynesia. In *14th Int. Coral Reef Symp., Bremen, Germany*. Abstract ICRS2021-1731; Lives stream session 6B-C.
  32. Bürkner P-C. 2017 Advanced Bayesian multilevel modeling with the R package brms. *R J.* **10**, 395–411. (doi:10.32614/RJ-2018-017)
  33. Frade PR, Bongaerts P, Englebert N, Rogers A, Gonzalez-Rivero M, Hoegh-Guldberg O. 2018 Deep reefs of the Great Barrier Reef offer limited thermal refuge during mass coral bleaching. *Nat. Commun.* **9**, 1–8. (doi:10.1038/s41467-018-05741-0)
  34. Giraldo-Ospina A, Kendrick GA, Hovey RK. 2020 Depth moderates loss of marine foundation species after an extreme marine heatwave: could deep temperate reefs act as a refuge? *Proc. R. Soc. B* **287**, 20200709. (doi:10.1098/rspb.2020.0709)
  35. Baird A *et al.* 2018 A decline in bleaching suggests that depth can provide a refuge from global warming in most coral taxa. *Mar. Ecol. Prog. Ser.* **603**, 257–264. (doi:10.3354/meps12732)
  36. Smith TB, Gyory J, Brandt ME, Miller WJ, Jossart J, Nemeth RS. 2016 Caribbean mesophotic coral ecosystems are unlikely climate change refugia. *Glob. Change Biol.* **22**, 2756–2765. (doi:10.1111/gcb.13175)
  37. Edmunds PJ, Leichter JJ. 2016 Spatial scale-dependent vertical zonation of coral reef community structure in French Polynesia. *Ecosphere* **7**, e01342. (doi:10.1002/ecs2.1342)
  38. Guest JR, Baird AH, Maynard JA, Muttaqin E, Edwards AJ, Campbell SJ, Yewdall K, Affendi YA, Chou LM. 2012 Contrasting patterns of coral bleaching susceptibility in 2010 suggest an adaptive response to thermal stress. *PLoS ONE* **7**, e33353. (doi:10.1371/journal.pone.0033353)
  39. Swain TD *et al.* 2016 Coral bleaching response index: a new tool to standardize and compare susceptibility to thermal bleaching. *Glob. Change Biol.* **22**, 2475–2488. (doi:10.1111/gcb.13276)
  40. Furby KA, Bouwmeester J, Berumen ML. 2013 Susceptibility of central Red Sea corals during a major bleaching event. *Coral Reefs* **32**, 505–513. (doi:10.1007/s00338-012-0998-5)
  41. Marshall PA, Baird AH. 2000 Bleaching of corals on the Great Barrier Reef: differential susceptibilities among taxa. *Coral Reefs* **19**, 155–163. (doi:10.1007/s003380000086)
  42. Hughes TP *et al.* 2017 Coral reefs in the Anthropocene. *Nature* **546**, 82–90. (doi:10.1038/nature22901)
  43. Crosbie A, Bridge T, Jones G, Baird A. 2019 Response of reef corals and fish at Osprey Reef to a thermal anomaly across a 30 m depth gradient. *Mar. Ecol. Prog. Ser.* **622**, 93–102. (doi:10.3354/meps13015)
  44. Pratchett MS, McCowan D, Maynard JA, Heron SF. 2013 Changes in bleaching susceptibility among corals subject to ocean warming and recurrent bleaching in Moorea, French Polynesia. *PLoS ONE* **8**, e70443. (doi:10.1371/journal.pone.0070443)
  45. McClanahan TR *et al.* 2020 Highly variable taxaspecific coral bleaching responses to thermal stresses. *Mar. Ecol. Prog. Ser.* **648**, 135–151. (doi:10.3354/meps13402)
  46. Page CE, Leggat W, Heron SF, Choukroun SM, Lloyd J, Ainsworth TD. 2019 Seeking resistance in coral reef ecosystems: the interplay of biophysical factors and bleaching resistance under a changing climate. *Bioessays* **41**, 1800226. (doi:10.1002/bies.201800226)
  47. Claar DC, Baum JK. 2018 Timing matters: survey timing during extended heat stress can influence perceptions of coral susceptibility to bleaching. *Coral Reefs* **38**, 559–565. (doi:10.1007/S00338-018-01756-7)
  48. Sakai K, Singh T, Iguchi A. 2019 Bleaching and post-bleaching mortality of *Acropora* corals on a heat-susceptible reef in 2016. *PeerJ* **7**, e8138. (doi:10.7717/PEERJ.8138)
  49. Hédouin L *et al.* 2020 Contrasting patterns of mortality in Polynesian coral reefs following the third global coral bleaching event in 2016. *Coral Reefs* **39**, 939–952. (doi:10.1007/s00338-020-01914-w)
  50. Donovan MK, Adam TC, Shantz AA, Speare KE, Munsterman KS, Rice MM, Schmitt RJ, Holbrook SJ, Burkepille DE. 2020 Nitrogen pollution interacts with heat stress to increase coral bleaching across the seascape. *Proc. Natl Acad. Sci. USA* **117**, 5351–5357. (doi:10.1073/pnas.1915395117)
  51. Pérez-Rosales G, Brandt SJ, Chancerelle Y, Siu G, Martinez E, Parravicini V, Hédouin L. 2021 Documenting decadal disturbance dynamics reveals archipelago-specific recovery and compositional change on Polynesian reefs. *Mar. Pollut. Bull.* **170**, 112659. (doi:10.1016/j.marpolbul.2021.112659)
  52. Wall M, Putchim L, Schmidt GM, Jantzen C, Khokiattiwong S, Richter C. 2015 Large-amplitude internal waves benefit corals during thermal stress. *Proc. R. Soc. B* **282**, 20140650. (doi:10.1098/rspb.2014.0650)
  53. Safaie A, Silbiger NJ, McClanahan TR, Pawlak G, Barshis DJ, Hench JL, Rogers JS, Williams GJ, Davis KA. 2018 High frequency temperature variability reduces the risk of coral bleaching. *Nat. Commun.* **9**, 1–12. (doi:10.1038/s41467-018-04074-2)
  54. Reid EC, DeCarlo TM, Cohen AL, Wong GTF, Lentz SJ, Safaie A, Hall A, Davis KA. 2019 Internal waves influence the thermal and nutrient environment on a shallow coral reef. *Limnol. Oceanogr.* **64**, 1949–1965. (doi:10.1002/lno.11162)
  55. Pichon M. 2019 French Polynesia. In *Mesophotic coral ecosystems: coral reefs of the World*, vol. 12 (eds Y Loya, K Puglise, T Bridge), pp. 425–443. Cham, Switzerland: Springer.
  56. Talley LD, Pickard GL, Emery WJ, Swift JH. 2011 *Descriptive physical oceanography: an introduction*, 6th edn. San Diego, CA: Academic Press.
  57. Leichter JJ, Stokes MD, Hench JL, Witting J, Washburn L. 2012 The island-scale internal wave climate of Moorea, French Polynesia. *J. Geophys. Res.: Oceans* **117**, C06008. (doi:10.1029/2012JC007949)
  58. Wolanski E, Delesalle B. 1995 Upwelling by internal waves, Tahiti, French Polynesia. *Cont. Shelf Res.* **15**, 357–368. (doi:10.1016/0278-4343(93)E0004-R)
  59. Schmidt GM, Wall M, Taylor M, Jantzen C, Richter C. 2016 Large-amplitude internal waves sustain coral health during thermal stress. *Coral Reefs* **35**, 869–881. (doi:10.1007/s00338-016-1450-z)
  60. Wyatt ASJ, Leichter JJ, Toth LT, Miyajima T, Aronson RB, Nagata T. 2020 Heat accumulation on coral reefs mitigated by internal waves. *Nat. Geosci.* **13**, 28–34. (doi:10.1038/s41561-019-0486-4)
  61. James AK *et al.* 2020 An island mass effect resolved near Moorea, French Polynesia. *Front. Mar. Sci.* **7**, 16. (doi:10.3389/fmars.2020.00016)
  62. Schramek TA, Colin PL, Merrifield MA, Terrill EJ. 2018 Depth-dependent thermal stress around corals in the tropical Pacific Ocean. *Geophys. Res. Lett.* **45**, 9739–9747. (doi:10.1029/2018GL078782)
  63. Hock K, Wolff NH, Ortiz JC, Condie SA, Anthony KR, Blackwell PG, Mumby PJ. 2017 Connectivity and systemic resilience of the Great Barrier Reef. *PLoS Biol.* **15**, e2003355. (doi:10.1371/journal.pbio.2003355)
  64. Colin PL. 2009 *Marine environments of Palau*. San Diego, CA: Indo-Pacific Press.
  65. Smith DJ, Suggett DJ, Baker NR. 2005 Is photoinhibition of zooxanthellae photosynthesis the primary cause of thermal bleaching in corals? *Glob. Change Biol.* **11**, 1–11. (doi:10.1111/j.1529-8817.2003.00895.x)
  66. Warner ME, Fitt WK, Schmidt GW. 1999 Damage to photosystem II in symbiotic dinoflagellates: a determinant of coral bleaching. *Proc. Natl Acad. Sci. USA* **96**, 8007–8012. (doi:10.1073/pnas.96.14.8007)
  67. Courtial L, Roberty S, Shick JM, Houlbrèque F, Ferrier-Pagès C. 2017 Interactive effects of ultraviolet radiation and thermal stress on two reef-building corals. *Limnol. Oceanogr.* **62**, 1000–1013. (doi:10.1002/LNO.10481)
  68. D'Croz L, Maté JL. 2002 The role of water temperature and UV radiation in the recovery of the experimentally bleached coral *Pocillopora damicornis* from the eastern Pacific Ocean. In *Proc. 9th Int. Coral Reef Symp. Bali, Indonesia. 2*, 1111–1116.
  69. Fitt WK, Warner ME. 1995 Bleaching patterns of four species of Caribbean Reef Corals. *Biol. Bull.* **189**, 298–307. (doi:10.2307/1542147)
  70. Pyle RL. 2019 Advanced technical diving. In *Mesophotic coral ecosystems: coral reefs of the World* (eds Y Loya, K Puglise, T Bridge), pp. 959–972. Cham, Switzerland: Springer.