



HAL
open science

Mass transfer from a sheared spherical rigid capsule

Clément Bielinski, Lumi Xia, Guillaume Helbecque, Badr Kaoui

► **To cite this version:**

Clément Bielinski, Lumi Xia, Guillaume Helbecque, Badr Kaoui. Mass transfer from a sheared spherical rigid capsule. *Physics of Fluids*, 2022, 10.1063/5.0078550 . hal-03443825

HAL Id: hal-03443825

<https://hal.science/hal-03443825>

Submitted on 18 Oct 2022

HAL is a multi-disciplinary open access archive for the deposit and dissemination of scientific research documents, whether they are published or not. The documents may come from teaching and research institutions in France or abroad, or from public or private research centers.

L'archive ouverte pluridisciplinaire **HAL**, est destinée au dépôt et à la diffusion de documents scientifiques de niveau recherche, publiés ou non, émanant des établissements d'enseignement et de recherche français ou étrangers, des laboratoires publics ou privés.

Mass transfer from a sheared spherical rigid capsule

Clément Biellini,¹ Lumi Xia,¹ Guillaume Helbecque,¹ and Badr Kaoui^{1,*}

¹*Biomechanics and Bioengineering Laboratory,
CNRS - Université de Technologie de Compiègne,
60200 Compiègne, France*

(Dated: January 22, 2022)

Solute mass transfer from a spherical fluid-filled rigid capsule subjected to shear flow is studied numerically, while considering unsteady, continuous and nonuniform boundary conditions on its surface. Here, the capsule acts as a reservoir with its initially encapsulated solute concentration decaying over time. This scenario differs from the classical case study of either constant concentration or constant mass flux at the surface of the particle. The flow and the concentration field are computed using fully three-dimensional lattice Boltzmann simulations, where the fluid-structure two-way coupling is achieved by the immersed boundary method. Effects of the flow and the boundary conditions on mass transfer efficacy are quantified by the Sherwood number (the dimensionless mass transfer coefficient), which is found to increase due to the combined effects of forced convection and the rotation of the capsule. Having continuity of both the concentration and the mass flux on the capsule significantly decreases the Sherwood number as compared to the case with constant and uniform boundary condition. All the obtained results can be applied to heat transfer in case of cooling an initially hot spherical particle, for which the concentration must be replaced by the temperature and the Sherwood number by the Nusselt number.

I. PROBLEM STATEMENT

Mass transfer from particle suspensions under flow conditions is encountered in many natural phenomena and industrial processes. It has motivated multiple applied, as well as fundamental studies. For example, mass transfer from a spherical particle subjected to shear flow has been studied theoretically by Acrivos and co-workers [1–3] in the limit of small Reynolds numbers ($Re \rightarrow 0$), and at either low Péclet numbers ($Pe \rightarrow 0$) or high Péclet numbers ($Pe \rightarrow \infty$). They have derived analytically asymptotic relations for the Sherwood number (Sh) or the Nusselt number (Nu), which are respectively the mass and the heat transfer dimensionless coefficients. Batchelor [4] has obtained similar correlations using a different approach. Later, Polyanin and Dil'man [5] used an advanced fitting procedure to bridge the gap between the correlations of Acrivos, which are derived in the limits of $Pe \rightarrow 0$ and $Pe \rightarrow \infty$. Subramanian and Koch [6] have extended these works to finite Reynolds numbers and to report inertia effect. Longest and Kleinstreuer [7] have investigated the effect of the walls using numerical simulations. They have proposed Sherwood number correlations as a function of the blockage ratio. Recently, Wang and Brasseur [8] studied numerically mass transfer from a freely rotating sphere in shear flow and have proposed correlations valid over a wide range of the Péclet number. All these studies, and others summarized in Ref. [9], are limited to particles whose surface is maintained at either constant concentration or constant mass flux.

In the present article, mass transfer from a spherical particle freely suspended in shear flow is studied numeri-

cally, while considering unsteady, continuous and nonuniform boundary conditions. Under these conditions a particle acts as a reservoir with an initial solute load that decays over time. Such scenario is known for oxygen and carbon dioxide transport by red blood cells, and it is increasingly used in medicine for drug delivery by particles and in food and cosmetic industry for controlled release of chemical substances using capsules. Design of such particles with desired capacity of encapsulation and release rate present technological challenges in absence of models and studies that take into account the exact conditions under which these particles operate.

One of the author has proposed numerical methods based on the lattice Boltzmann method to study solute release from steady and moving particles with unsteady and nonuniform boundary conditions at their surface. He has considered both particles with zero-thickness membrane [10, 11] and with thick shell [12]. This latter has then been recently extended to cover a larger range of the Reynolds number and to highlight the contribution of the shell solute permeability on mass transfer coefficient correlation [13]. Here, these studies are extended to fully three-dimensional case of a neutrally-buoyant and free-torque spherical rigid capsule rotating under simple shear flow, see Fig. 1. The present study focuses on the effects of the shear flow and the unsteady, continuous and nonuniform boundary conditions on mass transfer efficacy. The flow and the concentration field are computed with fully three-dimensional lattice Boltzmann simulations, where two-way fluid-structure coupling is achieved using the immersed boundary method. The capsule membrane is considered to be of zero thickness and of infinite permeability to solute, and to be impermeable to the solvent. The present used method and the obtained results can be applied to the case of heat transfer as well thanks to the mass/heat transfer analogy.

* badr.kaoui@utc.fr

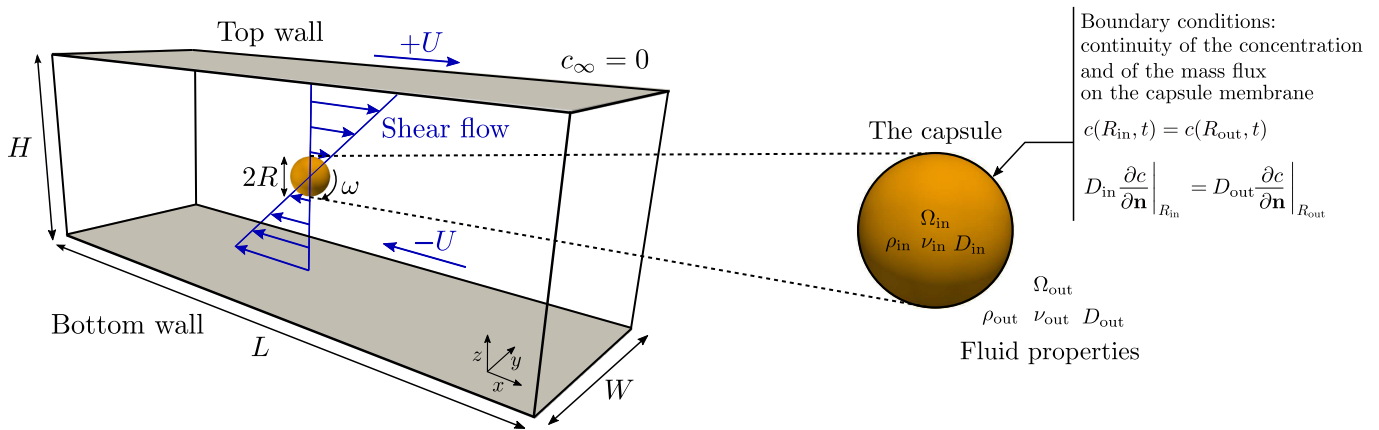


FIG. 1. Numerical setup of the problem. A spherical rigid capsule of radius R is suspended in the center of a channel of length $L = 30R$, width $W = 10R$ and height $H = 10R$. The upper and lower walls translate in the x -direction at a velocity $+U$ and $-U$, respectively. This generates a simple linear shear flow that triggers the rotation of the capsule with respect to the y -axis at an angular velocity ω . ρ and ν are respectively the mass density and the kinematic viscosity of the fluid. D is the solute diffusion coefficient, and \mathbf{n} the outward-pointing normal unit vector on the capsule surface. Subscripts “in” and “out” refer respectively to the properties of the inner encapsulated fluid Ω_{in} , and the outer surrounding fluid Ω_{out} of the capsule. Continuity of both the concentration and the mass flux is considered at the membrane, in contrast to the constant boundary conditions largely used in the literature, see Subsection IID for more details.

The article is organized as follows. The problem setup and the mathematical formulation are introduced in Section II. Results and discussions are reported in Section III, where the effects of the flow and the boundary conditions on mass transfer are quantified and analyzed. Conclusions are given in Section IV. The details about the numerical method and its validation are given in the Appendix.

II. MATHEMATICAL FORMULATION

A. Problem setup

Figure 1 shows the numerical setup of the problem. A non-Brownian neutrally-buoyant spherical rigid capsule of radius R is placed at the center of a channel of length $L = 30R$ and of equal width and height $W = H = 10R$. The top and bottom walls translate along the x -axis at constant velocity U , but in opposite directions so that they generate simple linear shear flow. By setting $H = 10R$, the walls are placed far enough from the particle to have negligible effect. Because the center of mass of the capsule is set at the zero velocity plane of the flow, the capsule will not translate. It can only rotate with an angular velocity ω . The capsule is initially loaded with a uniform solute concentration c_0 , while the surrounding medium is free from solute. This establishes a concentration gradient that triggers unsteady solute diffusion from the capsule towards the bulk. The initial encapsulated load is not sustained, but it decays over time. Continuity of both the concentration and the mass flux at the membrane of the capsule is considered in this study, and how it alters the mass transfer efficacy in comparison with the

constant surface concentration is reported.

B. Governing equations

The encapsulated and the external fluids are assumed to be incompressible Newtonian fluids, of the same type, and their flow is described by the Navier-Stokes equations,

$$\frac{\partial \mathbf{u}}{\partial t} + \mathbf{u} \cdot \nabla \mathbf{u} = -\frac{\nabla p}{\rho} + \nu \nabla^2 \mathbf{u} + \mathbf{f}, \quad (1)$$

$$\nabla \cdot \mathbf{u} = 0, \quad (2)$$

where $\mathbf{u} = \mathbf{u}(\mathbf{r}, t)$ is the local fluid velocity, $p = p(\mathbf{r}, t)$ is the local pressure and $\mathbf{f} = \mathbf{f}(\mathbf{r}, t)$ the local body force acting on the fluid at the position $\mathbf{r} = (x, y, z)$ and at time t . ρ and ν are the mass density and the kinematic viscosity of the fluid, respectively. The mass transfer, inside and outside the capsule, is governed by the advection-diffusion equation,

$$\frac{\partial c}{\partial t} + \mathbf{u} \cdot \nabla c = \nabla \cdot (D \nabla c), \quad (3)$$

where $c = c(\mathbf{r}, t)$ is the instantaneous solute concentration and $D = D(\mathbf{r})$ the local diffusion coefficient. All these equations are solved in both the external medium Ω_{out} , as well as inside the capsule Ω_{in} . In the following, the inner and the outer fluids are assumed to have the same physical properties, and, thus, $\nu = \nu_{\text{in}} = \nu_{\text{out}}$, $\rho = \rho_{\text{in}} = \rho_{\text{out}}$ and $D = D_{\text{in}} = D_{\text{out}}$. In the present article, the solutions of these equations are computed with the lattice Boltzmann method (LBM), see the Appendix for more technical details.

C. Initial conditions

The initial condition for the mass transfer part is,

$$c(\mathbf{r}, t = 0) = \begin{cases} c_0, & \text{if } \mathbf{r} \in \Omega_{\text{in}} \\ 0, & \text{if } \mathbf{r} \in \Omega_{\text{out}} \end{cases}. \quad (4)$$

This condition models a uniformly loaded capsule immersed in a solute-free fluid. It establishes a gradient that triggers mass transfer of the solute from the capsule to the external fluid. In this study, the surface of the capsule is not maintained at either constant concentration or mass flux in contrast to previous studies. Thus, the concentration within the sphere decays over time until reaching equilibrium with the external fluid concentration. For the flow part, the velocity field is initialized with the linear shear flow in the whole domain,

$$\mathbf{u}(\mathbf{r}, t = 0) = (\gamma z, 0, 0), \quad (5)$$

where $\gamma = 2U/H$ is the shear rate.

D. Boundary conditions

The two parallel plates that bound the domain in the z -direction (see Fig. 1) move in opposite directions along the x -axis at constant velocity U ,

$$\mathbf{u}(x, y, \pm H/2) = (\pm U, 0, 0). \quad (6)$$

No-slip boundary conditions and impermeability to fluid are set on the membrane of the capsule,

$$\mathbf{u}_{\text{m}} = \mathbf{u}_{\text{in}} = \mathbf{u}_{\text{out}} \quad \text{on} \quad \partial\Omega_{\text{in}}, \quad (7)$$

where \mathbf{u}_{m} is the velocity of the capsule membrane. \mathbf{u}_{in} and \mathbf{u}_{out} are respectively the velocities of the fluid adjacent to the inner and outer sides of the capsule membrane. As the capsule center of mass is located in the middle of the computational domain, the whole capsule rotates with respect to the y -axis without translating. Periodic velocity boundary conditions are set at the domain edges $x = \pm L/2$ and $y = \pm W/2$. For the mass transfer part, the boundaries of the channel are maintained at constant concentration $c_{\infty} = 0$ to model sink condition that corresponds to placing a small particle in a large domain. Moreover, continuity of both the concentration and the mass flux emerges spontaneously at the capsule membrane in absence of any interfacial resistance,

$$c(R_{\text{in}}, t) = c(R_{\text{out}}, t) \quad \text{and} \quad D_{\text{in}} \left. \frac{\partial c}{\partial \mathbf{n}} \right|_{R_{\text{in}}} = D_{\text{out}} \left. \frac{\partial c}{\partial \mathbf{n}} \right|_{R_{\text{out}}}, \quad (8)$$

where R_{in} and R_{out} refer respectively to the inner and the outer sides of the membrane. $\partial c / \partial \mathbf{n}$ refers to the derivative of the concentration in the direction normal to the

outer surface of the capsule. These continuous boundary conditions are unsteady and lead to different mass transfer scenarios compared to the largely used constant Dirichlet boundary condition. They enable to model solute release, in contrast to assuming constant concentration and solving the concentration field only in the external medium.

E. Key physical quantities

The present problem is expected to be governed by two key dimensionless parameters, the particle-based Reynolds number Re ,

$$\text{Re} = \frac{\gamma R^2}{\nu}, \quad (9)$$

and the Schmidt number Sc ,

$$\text{Sc} = \frac{\nu}{D}. \quad (10)$$

The explored range of the Reynolds number is $0.01 \leq \text{Re} \leq 1$, while the Schmidt number is hold constant at $\text{Sc} = 10$. Re and Sc are related via the Péclet number $\text{Pe} = \text{ReSc} = \frac{\gamma R^2}{D}$ that measures the relative importance of advection and diffusion. The time t is scaled and expressed as $\text{T} = \frac{Dt}{R^2}$.

Three local observable quantities are measured at the surface of the capsule to characterize and analyze the mass transfer. The instantaneous surface concentration $c_{\text{s}}(\theta, \phi, t)$, which is evaluated using trilinear interpolation of the concentration computed with the LBM at on-lattice grid points. The variables θ and ϕ refer respectively to the colatitude and the longitude of the spherical coordinates on the capsule surface. From $c_{\text{s}}(\theta, \phi, t)$, one can compute the mass flux at the surface of the capsule as,

$$\varphi(\theta, \phi, t) = -D \left. \frac{\partial c}{\partial \mathbf{n}} \right|_{r=R_{\text{out}}}. \quad (11)$$

The local Sherwood number that is the dimensionless mass transfer coefficient is defined as,

$$\text{Sh}(\theta, \phi, t) = \frac{2R}{D} \left[\frac{\varphi(\theta, \phi, t)}{c_{\text{s}}(\theta, \phi, t) - c_{\infty}} \right]. \quad (12)$$

The instantaneous average Sherwood number is computed by integration of $\text{Sh}(\theta, \phi, t)$ over the surface of the capsule $\partial\Omega_{\text{in}}$,

$$\text{Sh}(t) = \frac{1}{4\pi R^2} \int_{\partial\Omega_{\text{in}}} \text{Sh}(\theta, \phi, t) dS. \quad (13)$$

The present mathematical formulation holds also for heat transfer problem, by replacing the concentration by the temperature, the solute diffusion coefficient by the thermal diffusivity, the Schmidt number by the Prandtl number, and the Sherwood number by the Nusselt number. The initial and boundary conditions studied in this article correspond to cooling a hot spherical particle by a cold sheared fluid.

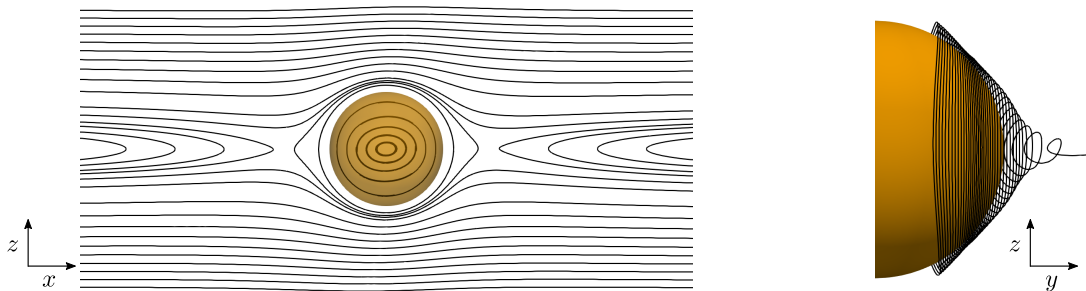


FIG. 2. Induced flow streamlines inside and around the capsule under applied shear flow at $Re = 1$. Left: streamlines in the x - z plane passing by the center of the capsule. Right: streamlines in the y - z plane exhibiting the spiraling nature of the flow. Similar type of streamlines topology is obtained within the range $0.01 \leq Re \leq 1$.

III. RESULTS AND DISCUSSIONS

The effect of flow on solute mass transfer from a spherical capsule freely suspended in a sheared fluid is studied here. The Reynolds number is varied within the range $0.01 \leq Re \leq 1$ by varying solely the wall velocity U , while keeping all the other parameters constant. The Schmidt number is set to $Sc = 10$ so that the Péclet number varies from 0.1 to 10 in order to cover both diffusion and advection dominated regimes. The initial concentration of the solute in the capsule is set to $c_0 = 1$.

A. Fully developed flow pattern

Figure 2 shows the flow streamlines computed at $Re = 1$, which are the typical patterns in the range $0.01 \leq Re \leq 1$. The left panel of Fig. 2 depicts the streamlines in the x - z plane that passes by the center of the capsule. The encapsulated fluid flow exhibits closed ellipsoidal lines as the capsule membrane rotates under the applied external shear flow. There is a region of closed streamlines around the particle, that tend to elongate and adopt an eye-shaped pattern. Because closed streamlines are known to hinder transport by advection, mass transfer is thus diffusion-dominated in the vicinity of the particle. The region of closed streamlines is surrounded by a pair of recirculating wakes, originating from inertial forces [6]. These recirculations are expected to transport the solute far away from the capsule and to enhance mass transfer by forced convection. The streamlines remain parallel to the channel walls far away from the particle, as in a simple shear flow in absence of any obstacle. The rotation of the capsule membrane generates a spiraling flow in its neighborhood, as illustrated in the right panel of Fig. 2. The streamlines emerge from the surface of the capsule forming spirals up to the far flow field. The computed streamlines within the present study have similar topology as in Refs. [6, 8, 14, 15].

B. Effect of flow on solute spatial distribution

The effect of flow on the solute spatial distribution is shown in Fig. 3 by reporting the concentration isocontours at various Reynolds numbers $Re = 0.01, 0.4$ and 1 computed at the same arbitrary dimensionless time $T = 0.65$. For comparison purposes, simulations performed with constant concentration at the capsule surface, as extensively considered in the literature, are also shown at the steady regime (right column). Qualitatively the obtained concentration distribution, outside the capsule, is almost similar for both boundary conditions. However, the overall concentration is higher for the case of Dirichlet boundary condition that sustains the initial concentration to $c_0 = 1$. For $Re = 0.01$, mass transfer is dominated by diffusion. Thus, the resulting concentration contours are radial and centered with respect to the capsule center of mass. At higher Reynolds numbers, advection is the dominant mass transfer mechanism. The solute is transported efficiently by the flow far away from the capsule. It exhibits stretched concentration isocontours along the elongational direction of the shear flow. This direction inclines towards the channel centerline as the Reynolds number is increased since the solute has less time to diffuse in the transverse direction. The concentration is nonuniform inside the capsule and decays over time when considering continuous boundary conditions (left column), compared to the case of Dirichlet boundary condition (right column).

C. Surface mass transfer quantities

The concentration $c_s(\theta, \phi, t)$, the mass flux $\varphi(\theta, \phi, t)$ and the Sherwood number $Sh(\theta, \phi, t)$ at the surface of the capsule measured at an arbitrary dimensionless time $T = 0.65$ are plotted in Fig. 4 for various Reynolds numbers $Re = 0.01$ (left column), 0.4 (middle column) and 1 (right column). At low Reynolds numbers, for example at $Re = 0.01$, these quantities are uniform all over the surface of the capsule because the solute mass transfer takes place mainly by diffusion. At high Reynolds numbers, the contribution of advection to mass transfer

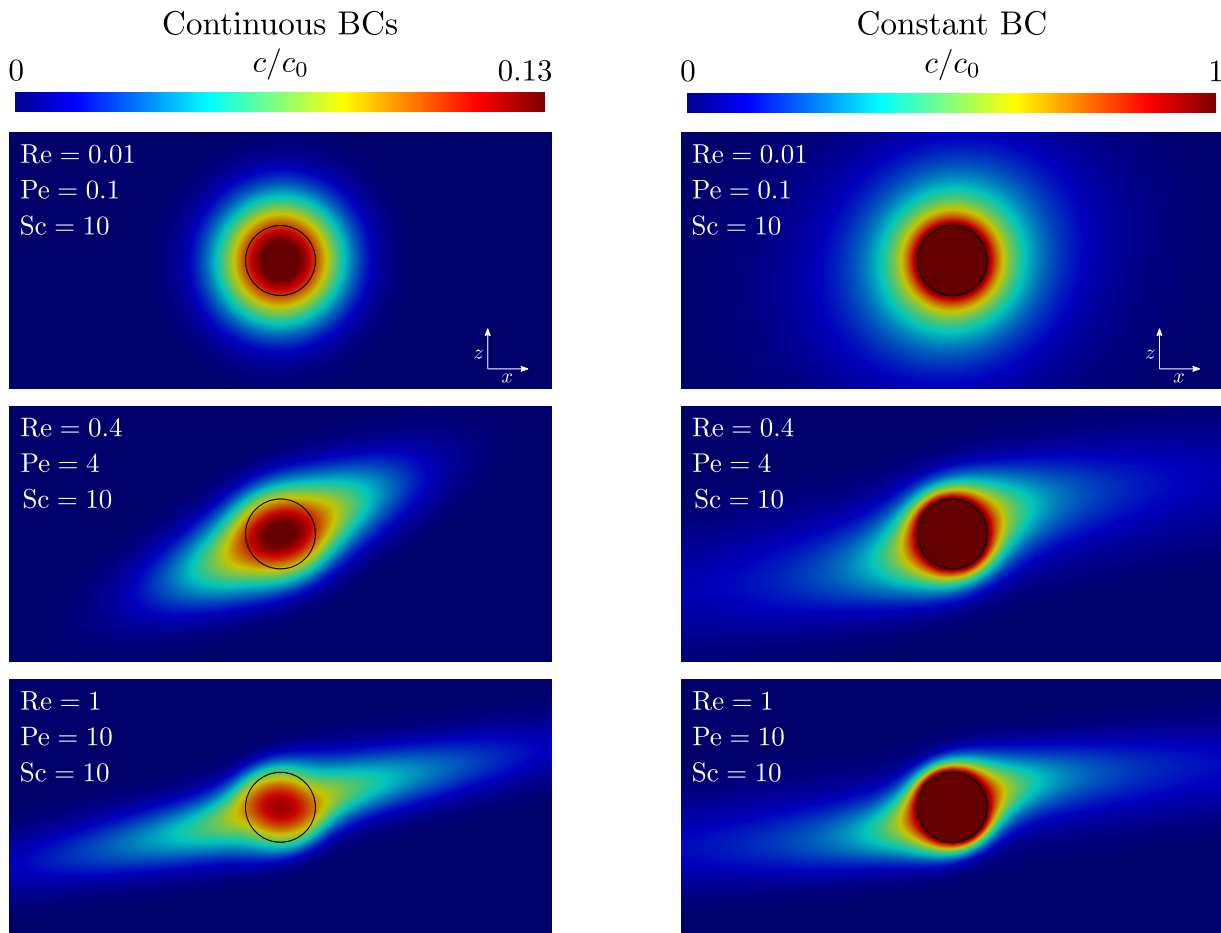


FIG. 3. Snapshots of solute concentration fields computed at an arbitrary dimensionless time $T = 0.65$ under various Reynolds numbers $Re = 0.01, 0.4$ and 1 when considering continuous boundary conditions (left column). The steady concentration fields computed under the same Reynolds numbers, but with constant Dirichlet boundary condition (right column) at the surface of the capsule. The Schmidt number is set to $Sc = 10$ so the Péclet number Pe varies from 0.1 to 10 to cover both diffusion and advection dominated regimes.

becomes important and the resulting local surface quantities show strong spatial variations. The surface concentration is maximal in the two dark red opposite areas, where the solvent pressure is low. There, mass transfer is dominated by diffusion and the released solute is weakly transported by convection. Thus, the solute accumulates and remains in these regions resulting in weak mass flux and Sherwood number. The areas of maximal concentration inclines towards the channel centerline ($z = 0$) as the Reynolds number is increased. On the contrary, the concentration is minimal on the two diametrically opposed surfaces that are the most exposed to the flow (dark blue). They are located at approximately 90 degrees from the regions of maximal concentration. In these regions, advection prevails and the newly released solute is efficiently transported by the flow. The mass flux is, thus, particularly high there resulting in a maximal Sherwood number. The shear flow enhances mass transfer in these regions on the capsule, which renders all the mass transfer quantities anti-symmetric with respect

to the plane of zero velocity.

D. Steady Sherwood number

The instantaneous average Sherwood number $Sh(t)$, Eq. (13), reaches a steady value Sh as the concentration boundary layer adopts a steady thickness around the capsule. For the unsteady continuous boundary conditions, the concentration boundary layer is steady only for a while during the release of the encapsulated solute and before its complete exhaustion inside the capsule. Sh is reported in Fig. 5 as a function of the Reynolds and the Péclet numbers in logarithmic scale with $Sc = 10$. Because forced convection and rotation of the particle enhance the mass transfer, the steady value increases with the Reynolds number. For comparison purposes, the values of Sh computed when considering constant concentration at the surface of the capsule are also represented, along with the correlations of Wang and Brasseur [8],

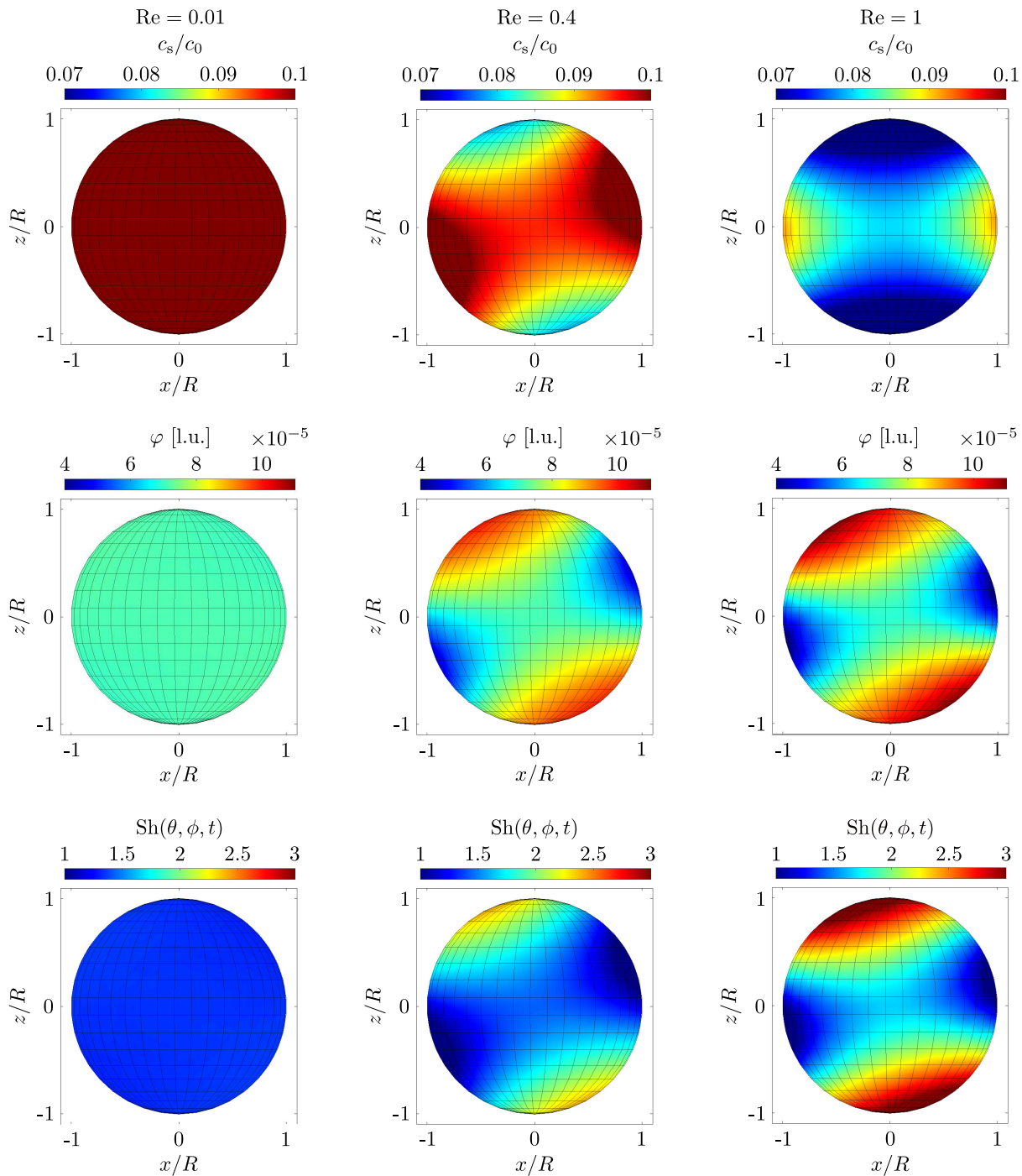


FIG. 4. Local mass transfer quantities computed on the capsule surface at arbitrary dimensionless time $T = 0.65$ for various Reynolds numbers $Re = 0.01$ (left column), $Re = 0.4$ (middle column) and $Re = 1$ (right column). From top to bottom: normalized surface concentration $c_s(\theta, \phi, t)/c_0$, surface mass flux $\varphi(\theta, \phi, t)$ and local Sherwood number $Sh(\theta, \phi, t)$. The shear flow enhances mass transfer in some regions on the capsule, which renders these quantities nonuniform. The Schmidt number is $Sc = 10$. [l.u.] means LBM lattice units.

Polyanin and Dil'man [5], and Longest and Kleinstreuer [7], which are given by,

- Correlation of Wang and Brasseur [8]:

$$Sh = Sh_0 + 0.03748Pe^{0.674}Re^{0.583-0.032 \ln Pe}, \quad (14)$$

where Sh_0 is the Sherwood number in the limit of

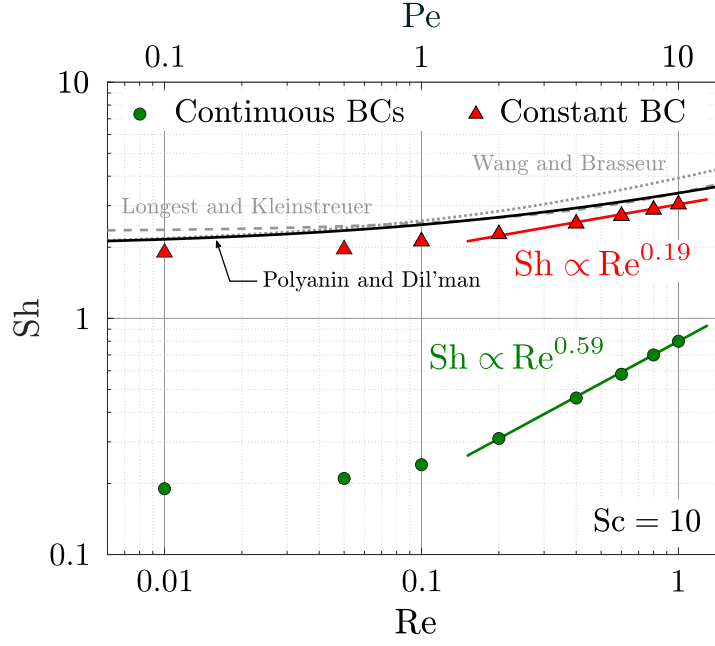


FIG. 5. The steady average Sherwood number Sh vs. the Reynolds number Re and the Péclet number Pe computed at a Schmidt number $Sc = 10$, while considering either unsteady continuous (circles) or constant Dirichlet (triangles) boundary conditions at the surface of a spherical capsule rotating under shear flow. The correlations of Wang and Brasseur [8], Polyanin and Dil'man [5], and Longest and Kleinstreuer [7] are obtained for constant boundary condition and are shown for comparison purposes. Sh is dramatically altered by the type of the boundary conditions set at the particle surface. It is lower for continuous boundary conditions. The figure suggests $Sh \propto Re^{0.59}$ for continuous boundary conditions and $Sh \propto Re^{0.19}$ for Dirichlet boundary condition in the advection-dominated regime ($Pe > 1$). This latter is consistent with the exponent 0.187 obtained by Wang and Brasseur [8].

$Re \rightarrow 0$,

$$Sh_0 = \begin{cases} 2 + 0.580Pe^{0.5} & Pe \leq 5 \\ 2.438Pe^{0.187} & 5 \leq Pe \leq 100 \\ 9 - 16.128Pe^{-0.349} & Pe \geq 100 \end{cases} \quad (15)$$

- Correlation of Polyanin and Dil'man [5]:

$$Sh = 2 + \frac{0.52Pe^{1/2}}{1 + 0.057Pe^{1/2}}, \quad Re \rightarrow 0, \quad 0 < Pe < \infty \quad (16)$$

- Correlation of Longest and Kleinstreuer [7]:

$$Sh = C_1 + C_2 Re_d^{C_3} Sc^{0.333}, \quad (17)$$

with,

$$C_1 = 1.92 + 1.03B, \quad (18)$$

$$C_2 = 0.42 \exp(-2.08B), \quad (19)$$

$$C_3 = 0.53 + 0.47B, \quad (20)$$

where $Re_d = \frac{\gamma d^2}{\nu}$, h is the half distance between the moving walls, d is the particle diameter and $B = d/h$ is the blockage ratio. This correlation is valid for $0 \leq Re_d \leq 32$, and $0.1 \leq B < 1$.

For both boundary conditions, two distinct behaviors are observed depending on the Péclet number. When $Pe < 1$, mass transfer is dominated by diffusion and the Sherwood number is barely affected by the flow. It is relatively low and increases slowly with Re . For $Pe > 1$, advection becomes the dominant mass transfer mechanism and the resulting Sh increases linearly in the logarithmic scale. These two characteristic behaviors have also been reported for other types of particles subjected to various flow conditions, see e.g. Ref. [9]. However, Fig. 5 highlights for the first time how the Sherwood number depends strongly on the boundary conditions set at the surface of a particle. Because the mass flux is lower when the concentration at the capsule surface is not sustained at its initial high value, the unsteady continuous boundary conditions show a dramatic reduction in Sh . But, they lead to a stronger dependency of Sh on Re in the advection-dominated regime ($Pe > 1$),

$$Sh \propto Re^{0.59}, \quad (21)$$

with a greater exponent than 0.19 obtained when setting constant concentration at the capsule surface. By the way, this latter is consistent with 0.187 obtained by Wang and Brasseur [8] (dotted line).

In the advection-dominated regime, the present numerical data obtained for constant boundary condition (triangle symbols) are slightly lower than the correlations of

Polyanin and Dil'man [5] (continuous line) and Longest and Kleinstreuer [7] (dashed line). But, this deviation is not as significant as the one induced by the type of the boundary conditions set at the capsule surface. For constant boundary condition, $Sh \rightarrow 2$ as $Re \rightarrow 0$, which is the expected known value for pure diffusion from a sphere sustained at constant concentration [9]. For the unsteady continuous boundary conditions, Sh tends rather to a lower value than 2 as $Re \rightarrow 0$.

IV. CONCLUSIONS

A numerical method is proposed to study unsteady solute release from a spherical rigid capsule subjected to shear flow. It is based on three-dimensional and two-component lattice Boltzmann method to compute both the flow and the solute advection-diffusion inside as well as outside the capsule, and on the immersed boundary method for the fluid-structure interaction two-way coupling. The method allows to model unsteady and continuous boundary conditions on the membrane of the capsule, which differ from the constant and uniform surface concentration (Dirichlet boundary condition) or mass flux (Neumann boundary condition) largely considered in the literature. These boundary conditions are adapted to model solute release from particles, for which the solute concentration inside decays over time.

The effect of the flow on concentration, mass flux and Sherwood number at the capsule surface are also reported and discussed. Continuity of both the concentration and the mass flux at the surface of the capsule leads to significantly lower Sherwood numbers compared to surface constant concentration. Unsteady continuous boundary conditions also result in a stronger dependency of the global Sherwood number on the Reynolds number measured by a larger exponent. In the advection-dominated regime, Sh is found to scale with a large exponent $Re^{0.59}$ under the continuous boundary conditions, while it scales as $Re^{0.19}$ under constant Dirichlet boundary condition. The present numerical method remains valid when considering solute absorption by a capsule or heating/cooling of a sphere.

ACKNOWLEDGMENTS

The authors thank the Ministère de l'Enseignement Supérieur, de la Recherche et de l'Innovation (MESRI), the Biomechanics and Bioengineering Laboratory (BMBI) and the Agence Nationale de la Recherche (ANR-20-CE45-0008-01) for financial support.

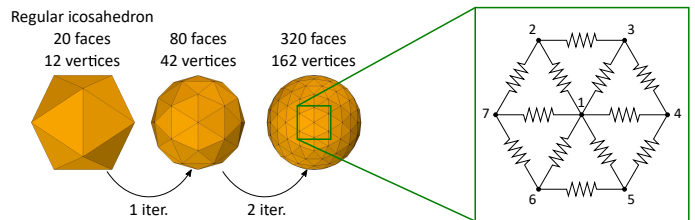


FIG. 6. Meshes of the capsule obtained after successive subdivisions of a regular icosahedron. The nodes of the mesh are connected together by a spring network accounting for the capsule dynamics.

AUTHOR DECLARATIONS

Conflict of interest

The authors have no conflicts to disclose.

APPENDIX A: NUMERICAL METHOD

1. Lattice Boltzmann method

Both the flow and the solute advection-diffusion are computed using the lattice Boltzmann method (LBM) [17–21], which is based on the lattice Boltzmann equation (A1) that gives the evolution in time and space of a distribution function χ_i ,

$$\chi_i(\mathbf{r} + \mathbf{e}_i, t + 1) - \chi_i(\mathbf{r}, t) = \Omega_i, \quad (\text{A1})$$

where \mathbf{r} is the discrete position, \mathbf{e}_i is the i th discrete velocity direction, t is the time, and Ω_i the collision operator. In this study, Ω_i is approximated by the Bhatnagar-Gross-Krook (BGK) collision operator [22],

$$\Omega_i = -\frac{\chi_i - \chi_i^{\text{eq}}}{\tau}, \quad (\text{A2})$$

with χ_i^{eq} the equilibrium distribution function, and τ the microscopic characteristic relaxation time.

The present studied problem is multiphysics. It couples fluid flow, mass transfer and fluid-structure interaction. It requires solving two lattice Boltzmann equations: one for the flow Eq. (A3), and the other for the concentration field Eq. (A9). This two-component LBM approach has already been successfully used by the authors in Refs. [10–13, 16]. The associated distribution functions for the flow and mass transfer parts are respectively f_i and g_i . Here, the D3Q19 lattice is opted with 19 discrete velocity directions $i = 0 - 18$.

The distribution function f_i represents physically the probability to find a population of pseudo-fluid particles at position \mathbf{r} , at time t , and with the discrete velocity \mathbf{e}_i . The lattice Boltzmann equation associated to f_i is,

$$f_i(\mathbf{r} + \mathbf{e}_i, t + 1) - f_i(\mathbf{r}, t) = -\frac{f_i - f_i^{\text{eq}}}{\tau_\nu} + \frac{\omega_i}{c_s^2} (\mathbf{f} \cdot \mathbf{e}_i), \quad (\text{A3})$$

where \mathbf{f} is the body force exerted on the fluid. For the D3Q19 lattice, the lattice speed of sound is $c_s = 1/\sqrt{3}$, and the weight factors ω_i are $1/3$ for $i = 0$, $1/18$ for $i = 1 - 6$ and $1/36$ for $i = 7 - 18$. The relaxation time τ_ν is related to the fluid kinematic viscosity via the relationship,

$$\nu = c_s^2 \left(\tau_\nu - \frac{1}{2} \right), \quad (\text{A4})$$

and the equilibrium distribution function f_i^{eq} is given by,

$$f_i^{\text{eq}} = \omega_i \rho \left(1 + \frac{\mathbf{e}_i \cdot \mathbf{u}}{c_s^2} + \frac{(\mathbf{e}_i \cdot \mathbf{u})^2}{2c_s^4} - \frac{\mathbf{u} \cdot \mathbf{u}}{2c_s^2} \right). \quad (\text{A5})$$

The local mass density ρ and the local velocity \mathbf{u} are respectively computed as the zeroth and the first order moments of f_i ,

$$\rho(\mathbf{r}, t) = \sum_{i=0}^{18} f_i(\mathbf{r}, t), \quad (\text{A6})$$

$$\mathbf{u}(\mathbf{r}, t) = \frac{1}{\rho(\mathbf{r}, t)} \sum_{i=0}^{18} f_i(\mathbf{r}, t) \mathbf{e}_i, \quad (\text{A7})$$

and the local hydrodynamic pressure is given by the equation of state $p = \rho c_s^2$. The upper and the lower walls are translated in opposite directions to generate shear flow thanks to Ladd's bounce-back boundary condition [23],

$$f_{-i}(\mathbf{r}, t+1) = f_i^*(\mathbf{r}, t) - 6\omega_i \rho \frac{\mathbf{e}_i \cdot \mathbf{u}_w}{c_s}, \quad (\text{A8})$$

where $\mathbf{e}_{-i} = -\mathbf{e}_i$, \mathbf{u}_w is the desired wall velocity such as $\mathbf{u}_w = (U, 0, 0)$ at the top wall and $\mathbf{u}_w = (-U, 0, 0)$ at the bottom wall. The superscript $*$ refers to the postcollision state. For the mass transfer part, the corresponding lattice Boltzmann equation is,

$$g_i(\mathbf{r} + \mathbf{e}_i, t+1) - g_i(\mathbf{r}, t) = -\frac{g_i - g_i^{\text{eq}}}{\tau_D}, \quad (\text{A9})$$

with no source terms in absence of any interfacial resistance [11], and where the relaxation time τ_D is related to the solute diffusion coefficient by,

$$D = c_s^2 \left(\tau_D - \frac{1}{2} \right), \quad (\text{A10})$$

and the corresponding equilibrium distribution function is,

$$g_i^{\text{eq}} = \omega_i c \left(1 + \frac{\mathbf{e}_i \cdot \mathbf{u}}{c_s^2} + \frac{(\mathbf{e}_i \cdot \mathbf{u})^2}{2c_s^4} - \frac{\mathbf{u} \cdot \mathbf{u}}{2c_s^2} \right). \quad (\text{A11})$$

The local concentration is computed as the zeroth order moment of the distribution function g_i ,

$$c(\mathbf{r}, t) = \sum_{i=0}^{18} g_i(\mathbf{r}, t). \quad (\text{A12})$$

Zero concentration is set at the simulation box edges using the Zhang's bounce-back boundary condition [24],

$$g_{-i}(\mathbf{r}, t+1) = -g_i^*(\mathbf{r}, t) + 2\omega_i c_w, \quad (\text{A13})$$

where c_w is the desired wall concentration. This scheme has also been used to run simulations with constant concentration at the capsule surface, as largely used in the literature and for comparison purpose with the unsteady continuous boundary conditions studied in the present article. The BGK relaxation times in the lattice Boltzmann equations (A3) and (A9) are set to $\tau_\nu = 1$ and $\tau_D = 0.55$, respectively. These values are carefully chosen to ensure both the accuracy of the computed solution and the stability of the numerical scheme.

2. Immersed boundary method

The surrounding flowing fluid exerts a force on the membrane of the capsule, which in turn exerts a feedback reaction force on the fluid. The two-way coupling between the fluid flow and the capsule dynamics is achieved with the immersed boundary method (IBM) [25]. The capsule membrane is approximated by a set of marker points $\{\mathbf{r}_j(t)\}$ that constitute a Lagrangian mesh. This mesh is generated by performing successive subdivisions of a regular icosahedron [26], as illustrated in Fig. 6. At each iteration, the edges of the polyhedron are split in their midpoint, and the newly created vertices are radially projected on the circumscribed sphere of desired radius R . This process ensures the perfect symmetry of the mesh. The mechanics of the capsule's membrane is accounted for by a spring network connecting the Lagrangian markers, as represented in Fig. 6. The velocity of each Lagrangian marker $\dot{\mathbf{r}}_j(t)$ is an interpolation of the flow velocities $\mathbf{u}(\mathbf{r}, t)$ computed on the Eulerian mesh grid points with the LBM,

$$\dot{\mathbf{r}}_j(t) = \sum_{\mathbf{r}} \mathbf{u}(\mathbf{r}, t) \Delta(\mathbf{r}_j(t), \mathbf{r}), \quad (\text{A14})$$

where Δ is a smooth approximation of the Dirac distribution function given by $\Delta(\mathbf{r}_1, \mathbf{r}_2) = \delta(x_1, x_2)\delta(y_1, y_2)\delta(z_1, z_2)$ with,

$$\delta(a, b) = \begin{cases} \frac{1}{4} \left(1 + \cos \frac{\pi(a-b)}{2} \right) & \text{if } |a-b| \leq 2 \\ 0 & \text{else} \end{cases}. \quad (\text{A15})$$

The new position of each Lagrangian marker at time $t+1$ is obtained using the explicit Euler scheme,

$$\mathbf{r}_j(t+1) = \mathbf{r}_j(t) + \dot{\mathbf{r}}_j(t). \quad (\text{A16})$$

After the advection step, the Lagrangian markers exert a force back on the fluid, which is obtained by extrapolation using again the function Δ ,

$$\mathbf{f}(\mathbf{r}, t) = \sum_j \mathbf{f}_j(t) \Delta(\mathbf{r}_j(t), \mathbf{r}), \quad (\text{A17})$$

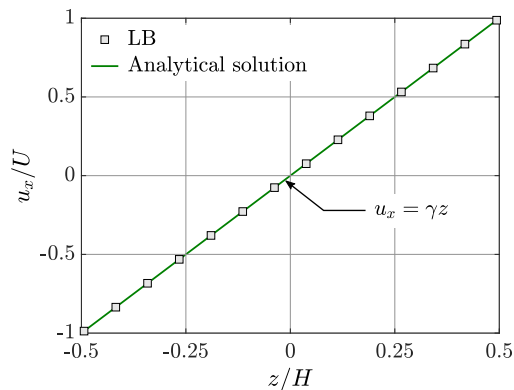


FIG. 7. Velocity profile of the linear shear flow computed by the LBM (squares) along with the analytical solution (solid line). Excellent agreement is achieved between the LBM result and the analytical solution, which validates the flow solver.

\mathbf{f}_j being the force acting by the Lagrangian marker j on the Eulerian mesh points \mathbf{r} . It is computed as the sum of the spring forces acting on the node j , see Fig. 6,

$$\mathbf{f}_j = - \sum_{i \neq j} \kappa (\|\mathbf{r}_{ij}\| - \|\mathbf{r}_{ij}^0\|) \frac{\mathbf{r}_{ij}}{\|\mathbf{r}_{ij}\|}, \quad (\text{A18})$$

with κ the spring constant and $\mathbf{r}_{ij} = \mathbf{r}_i - \mathbf{r}_j$. The summation is over nodes i that are connected to the node j by a spring. Superscript “0” refers to the initial undeformed state. The force density \mathbf{f} is then included into the lattice Boltzmann equation (A3) to compute the new flow field, modified by the capsule dynamics. The capsule mesh is an icosphere with 320 triangular faces and 162 vertices (see Fig. 6) that allows a good compromise between acceptable accuracy and reasonable simulation run time. The spring constant is set to $\kappa = 7$ to model a nondeformable spherical capsule.

3. Validation of the numerical method

The validation of the numerical method consists of three parts: the flow solver, the fluid-structure interaction solver, and the mass transfer solver. First, the flow solver is validated by comparing the velocity profile computed in absence of the capsule to the expected analytical solution for shear flow in the x -direction,

$$\mathbf{u} = (\gamma z, 0, 0). \quad (\text{A19})$$

Figure 7 shows perfect match between the computed numerical solution and theory. This confirms the implementation of the LBM flow solver is correct.

The next step in the validation process concerns the fluid-structure coupling part, which is achieved by the IBM. For this, a capsule is suspended in a fluid subjected to simple shear. The resulting angular velocity ω

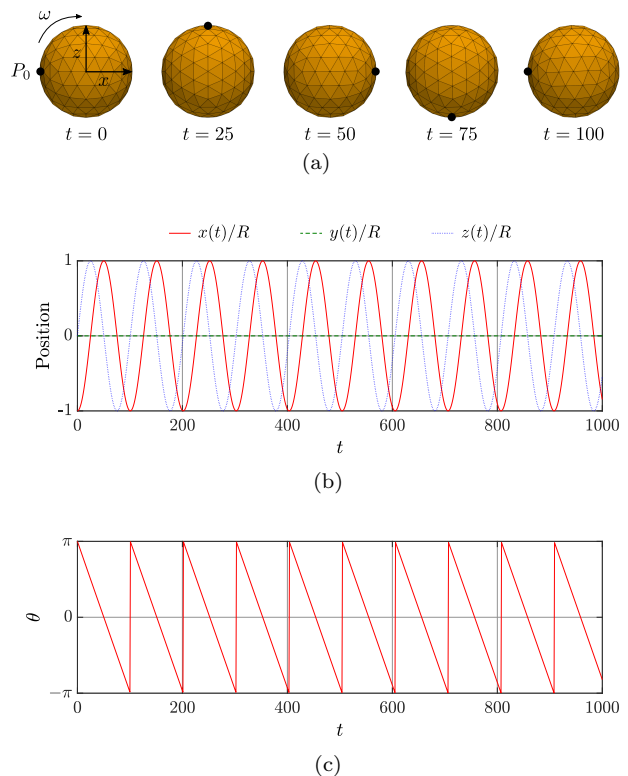


FIG. 8. (a) Snapshots showing the rotation of a spherical capsule under shear flow. (b) Normalized position of the point P_0 initially located at $\mathbf{r} = (-R, 0, 0)$ on the capsule membrane. (c) The instantaneous angular position θ of this point. The capsule rotates around the y -axis at an angular velocity $\omega = \dot{\theta} = 6.227 \times 10^{-4}$ l.u. for the applied wall velocity of $U = 0.05$ l.u. (LBM lattice units). The figures demonstrate the robustness and the numerical stability of the computer code when the capsule undergoes multiple rotational cycles.

of the capsule is measured for various applied shear rates γ . The latter is varied by varying solely the wall velocity U from 0.01 to 0.05, while holding all the other parameters constant. For an unbounded domain, and in the Stokes flow limit ($\text{Re} \ll 1$), the angular velocity ω of a sphere rotating due to simple shear flow is [9], $\omega = \gamma/2$. Hereafter, it is explained how this quantity is computed in the present work. Figures 8a and 8b represent the

U	$\text{Re} (\times 10^{-1})$	$\gamma (\times 10^{-4})$	$\omega (\times 10^{-4})$	ω/γ	E (%)
0.01	0.97	2.532	1.259	0.497	0.6
0.02	1.94	5.063	2.515	0.497	0.6
0.03	2.92	7.595	3.762	0.495	1.0
0.04	3.89	10.13	5.000	0.494	1.2
0.05	4.86	12.66	6.227	0.492	1.6

TABLE I. Angular velocity ω of a capsule under shear flow at various wall velocities U . The ratios ω/γ are very close to the expected theoretical value $1/2$, which validates the implementation of the fluid-structure coupling. The relative error E does not exceed 2% for the highest Reynolds number. U , γ and ω are expressed in LBM lattice units.

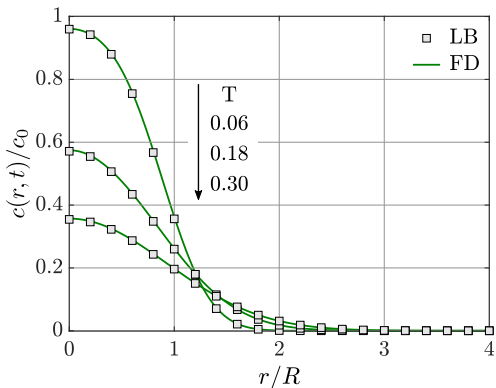


FIG. 9. Computed concentration profiles by LBM (squares) and FDM (solid lines) in the case of solute release from a spherical capsule in a fluid at rest.

dynamics of a point P_0 on the membrane of the capsule that is initially located at $\mathbf{r} = (-R, 0, 0)$. For these simulations the spring stiffness is set to $\kappa = 7$, which is large enough so that the capsule does not deform and remains spherical. This allows to recover the analytical solution, which is derived originally for a spherical rigid particle. The x and z coordinates of the point undergo regular oscillations, while the y coordinate stays at 0, indicating

the capsule does not translate along the y -axis. This confirms that the mesh remains symmetric and the computer code is robust and numerically stable after many cycles of rotations. Similar results, but with different oscillations frequencies are obtained at all other wall velocities. The instantaneous angular position of the point is then computed as $\theta = \arctan\left(\frac{z}{x}\right)$, and it is reported in Fig. 8c. This figure shows periodic oscillations in time meaning the capsule rotates at constant angular velocity $\omega = \dot{\theta}$. The obtained angular velocities ω at various flow shear rates γ , and the ratios ω/γ are reported in Table I. The computed ratios ω/γ are all very close to the expected theoretical value $1/2$, which means the fluid-structure interaction part is well resolved. The slight deviation from $1/2$ (that never exceeds 2%) observed when increasing the Reynolds number is explained by the fact that the theory is valid only in the Stokes flow limit ($\text{Re} \ll 1$) and for an unbounded domain.

Finally, the mass transfer part is validated by comparing the concentration profile obtained by LBM with the solution computed by the finite difference method (FDM), in the case of solute release from a capsule in the absence of flow ($\text{Re} = 0$). For this case, the diffusion is purely radial and the solution adopts a spherical symmetry. Figure 9 shows both the LBM and FDM normalized concentration profiles computed at various dimensionless times. Both solutions are in excellent agreement, and thus, validating the mass transfer solver.

-
- [1] N. A. Frankel, A. Acrivos, Heat and Mass Transfer from Small Spheres and Cylinders Freely Suspended in Shear Flow, *The Physics of Fluids* **11**(9), 1913 (1968)
- [2] A. Acrivos, Heat transfer at high Péclet number from a small sphere freely rotating in a simple shear field, *Journal of Fluid Mechanics* **46**, 233 (1971)
- [3] G. G. Poe, A. Acrivos, Closed streamline flows past small rotating particles: Heat transfer at high Péclet numbers, *International Journal of Multiphase Flow* **2**, 365 (1976)
- [4] G. K. Batchelor, Mass transfer from a particle suspended in fluid with a steady linear ambient velocity distribution, *Journal of Fluid Mechanics* **95**, 369 (1979)
- [5] A. D. Polyinin, V. V. Dil'man, New methods of the mass and heat transfer theory- II. The methods of asymptotic interpolation and extrapolation, *International Journal of Heat and Mass Transfer* **28**(1), 45 (1985).
- [6] G. Subramanian, D. Koch, Inertial effects on the transfer of heat or mass transfer from neutrally buoyant spheres in a steady linear velocity field, *Physics of Fluids* **18**, (2006)
- [7] P. W. Longest, C. Kleinstreuer, Interacting effects of uniform flow, plane shear, and near-wall proximity on the heat and mass transfer of respiratory aerosols, *International Journal of Heat and Mass Transfer* **47**, 4745 (2004).
- [8] Y. Wang, J. G. Brasseur, Enhancement of mass transfer from particles by local shear-rate and correlations with application to drug dissolution, *AIChE Journal* **65**(8), (2019)
- [9] R. Clift, J. R. Grace, M. E. Weber, Bubbles, drops, and particles, (Academic Press, New York, NY, 1978)
- [10] B. Kaoui, Computer simulations of drug release from a liposome into the bloodstream *The European Physical Journal E* **41**(2), 20 (2018)
- [11] B. Kaoui, Algorithm to implement unsteady jump boundary conditions within the lattice Boltzmann method, *The European Physical Journal E* **43**, 23 (2020)
- [12] B. Kaoui, Flow and mass transfer around a core-shell reservoir, *Physical Review E* **95**, 063310 (2017)
- [13] C. Bielinski, N. Le, B. Kaoui, Unsteady mass transfer from a core-shell cylinder in crossflow, *Physical Review Fluids* **6**, 023501 (2021)
- [14] B. Kaoui, J. Harting, C. Misbah Two-dimensional vesicle dynamics under shear flow: effect of confinement *Physical Review E* **83**, 066319 (2011)
- [15] H. Haddadi, J. F. Morris, Topology of pair-sphere trajectories in finite inertia suspension shear flow and its effects on microstructure and rheology, *Physics of Fluids* **27**, 043302 (2015)
- [16] C. Ferrari, B. Kaoui, V. S. L'vov, I. Procaccia, O. Rudenko, J.H.M. ten Thije Boonkkamp, F. Toschi, Analytical modeling for the heat transfer in sheared flows of nanofluids *Physical Review E* **86**, 016302 (2012)
- [17] D. A. Wolf-Gladrow, Lattice-gas cellular automata and lattice Boltzmann models: An Introduction (Springer, Germany, 2000)
- [18] S. Succi, The lattice Boltzmann equation for fluid dynamics and beyond (Oxford University Press, Oxford,

- UK, 2001)
- [19] M. C. Sukop, D. T. Thorne, Lattice Boltzmann modeling (Springer, Berlin, 2006)
- [20] A. A. Mohamad, Lattice Boltzmann method: Fundamentals and engineering applications with computer codes (Springer, New York, 2011)
- [21] T. Krüger, H. Kusumaatmaja, A. Kuzmin, O. Shardt, G. Silva, E. M. Vigen, The lattice Boltzmann method - Principles and practice (Springer, Switzerland, 2016)
- [22] P. L. Bhatnagar, E. P. Gross, M. Krook, A model for collision processes in gases. I. Small amplitude processes in charged and neutral one-Component systems, Physical Review **94**, 511 (1954).
- [23] A. J. C. Ladd, Numerical simulations of particulate suspensions via a discretized Boltzmann equation. Part 1. Theoretical foundation, Journal of Fluid Mechanics **271**, 285 (1994)
- [24] T. Zhang, B. Shi, Z. Guo, Z. Chai, J. Lu, General bounce-back scheme for concentration boundary condition in the lattice-Boltzmann method, Physical Review E **85**, 016701 (2012)
- [25] C. S. Peskin, Numerical analysis of blood flow in the heart, Journal of Computational Physics **25**(3), 220 (1977)
- [26] wil (2021). Icosphere, MATLAB Central File Exchange, <https://www.mathworks.com/matlabcentral/fileexchange/50105-icosphere>