



**HAL**  
open science

## Monitoring ice-calving at the Astrolabe glacier (Antarctica) with seismological and Sentinel-2 satellite data

Floriane Provost, Jean-Philippe Malet, Dimitri Zigone, Emmanuel Le Meur,  
Clément Hibert

### ► To cite this version:

Floriane Provost, Jean-Philippe Malet, Dimitri Zigone, Emmanuel Le Meur, Clément Hibert. Monitoring ice-calving at the Astrolabe glacier (Antarctica) with seismological and Sentinel-2 satellite data. 5èmes Rencontres Scientifiques et Techniques Résif, Nov 2021, Obernai (67210), France. hal-03442663

**HAL Id: hal-03442663**

**<https://hal.science/hal-03442663v1>**

Submitted on 23 Nov 2021

**HAL** is a multi-disciplinary open access archive for the deposit and dissemination of scientific research documents, whether they are published or not. The documents may come from teaching and research institutions in France or abroad, or from public or private research centers.

L'archive ouverte pluridisciplinaire **HAL**, est destinée au dépôt et à la diffusion de documents scientifiques de niveau recherche, publiés ou non, émanant des établissements d'enseignement et de recherche français ou étrangers, des laboratoires publics ou privés.

# Monitoring ice-calving at the Astrolabe glacier (Antarctica) with seismological and Sentinel-2 satellite data.

Floriane Provost<sup>1</sup>, Jean-Philippe Malet<sup>2,3</sup>, Dimitri Zigone<sup>2,3</sup>, Emmanuel Le Meur<sup>4</sup>, Clément Hibert<sup>2,3</sup>

**1** : Université Laval, Département de Génie Civil et des Eaux, Québec, Canada

**2** : Institut Terre et Environnement de Strasbourg (ITES), CNRS UMR 7063, Strasbourg.

**3** : Ecole et Observatoire des Sciences de la Terre (EOST), CNRS UMS 830, Strasbourg.

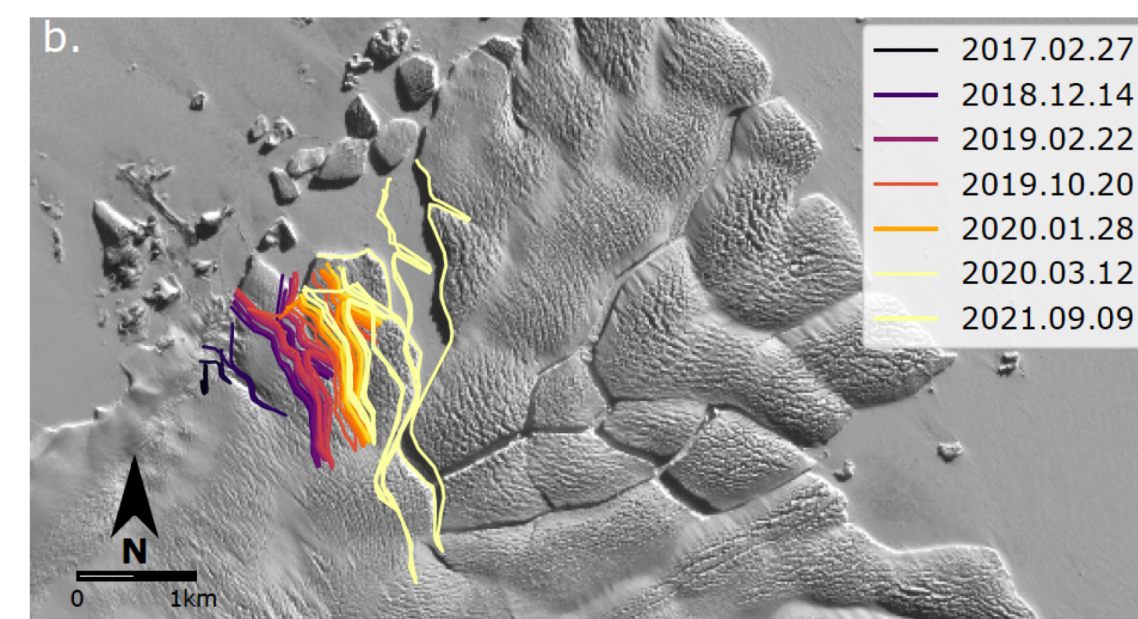
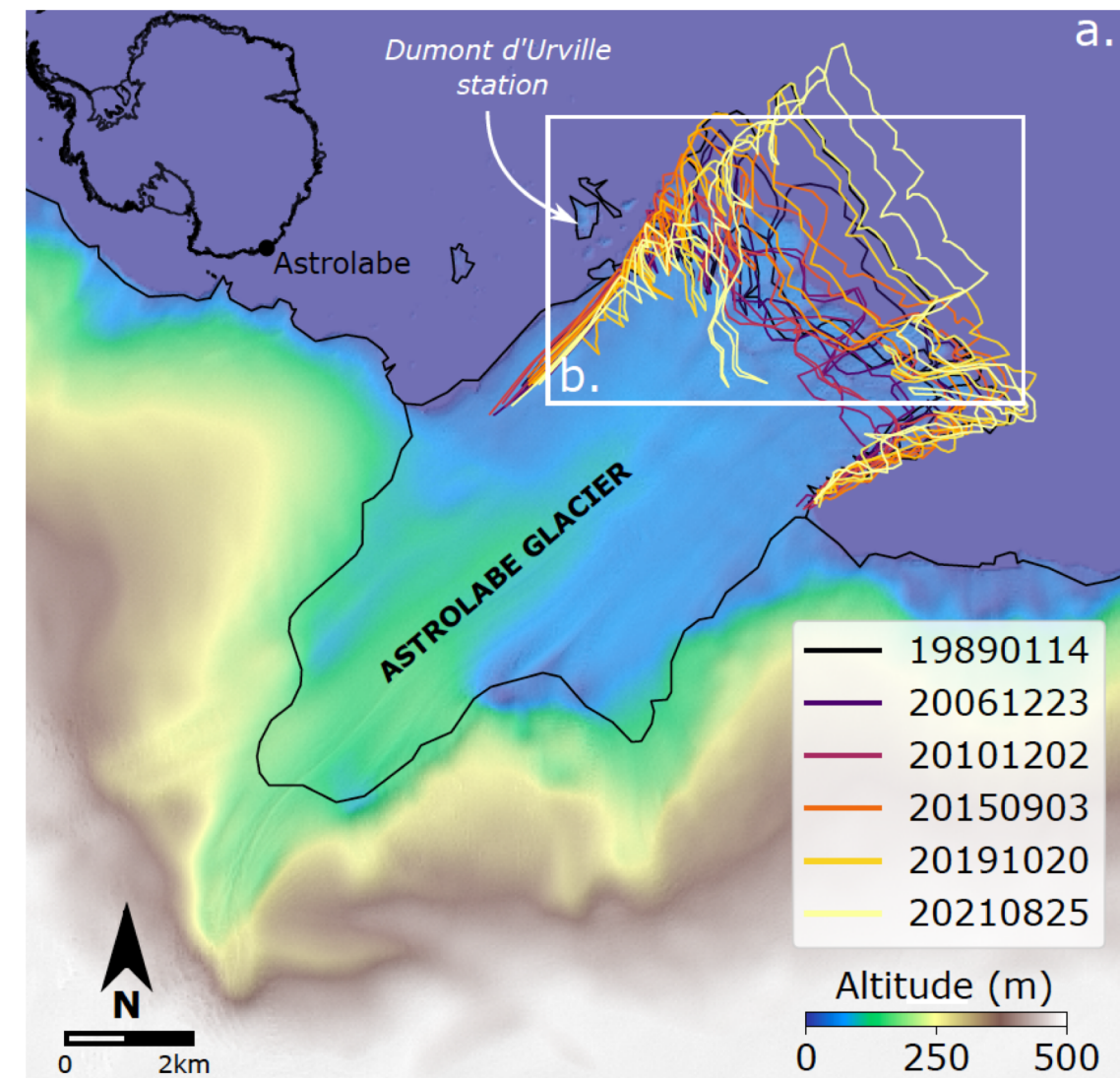
**4** : Institut des Géosciences de l'Environnement, Université Grenoble Alpes, CNRS UMR 5001, Grenoble.



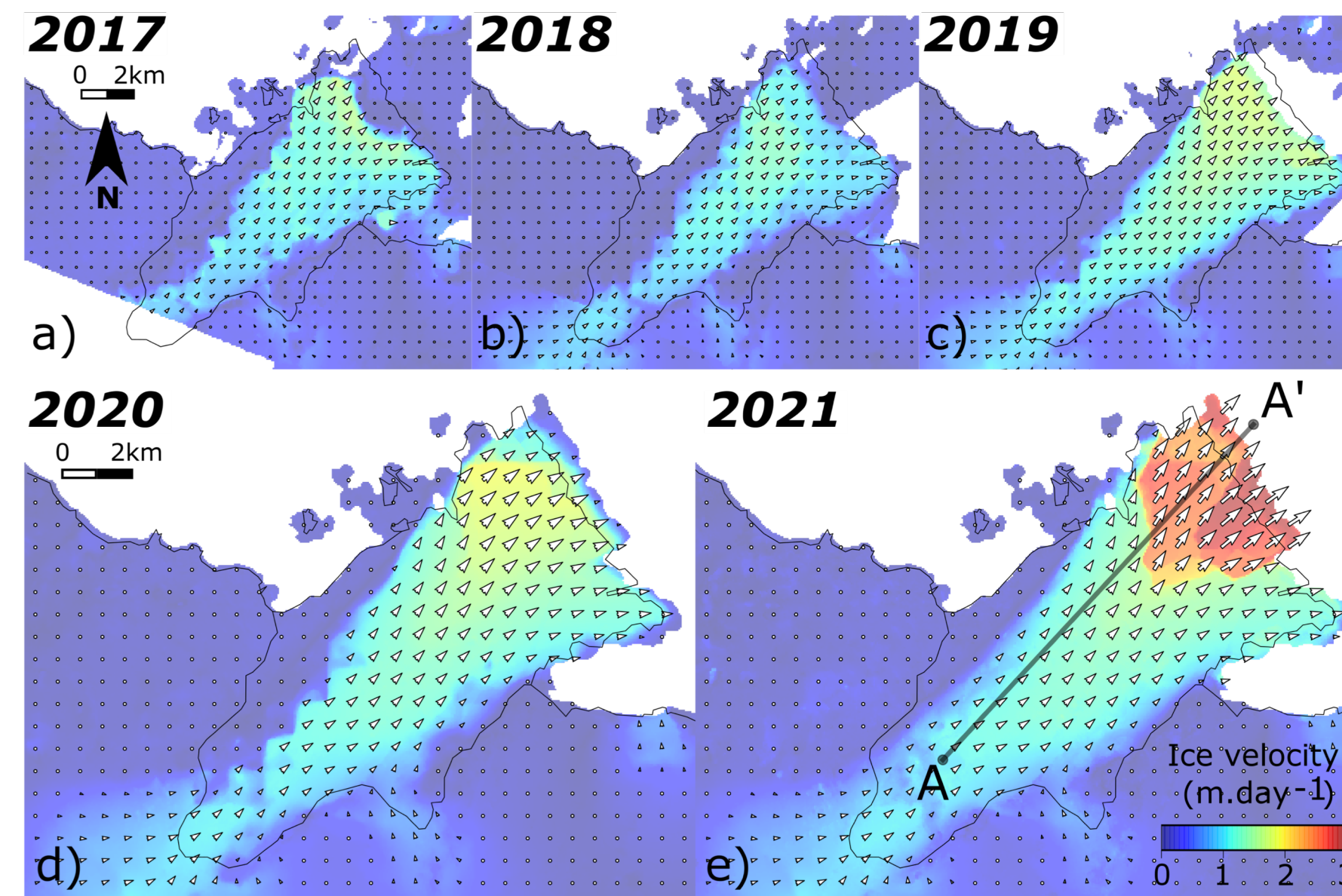
UNIVERSITÉ  
LAVAL



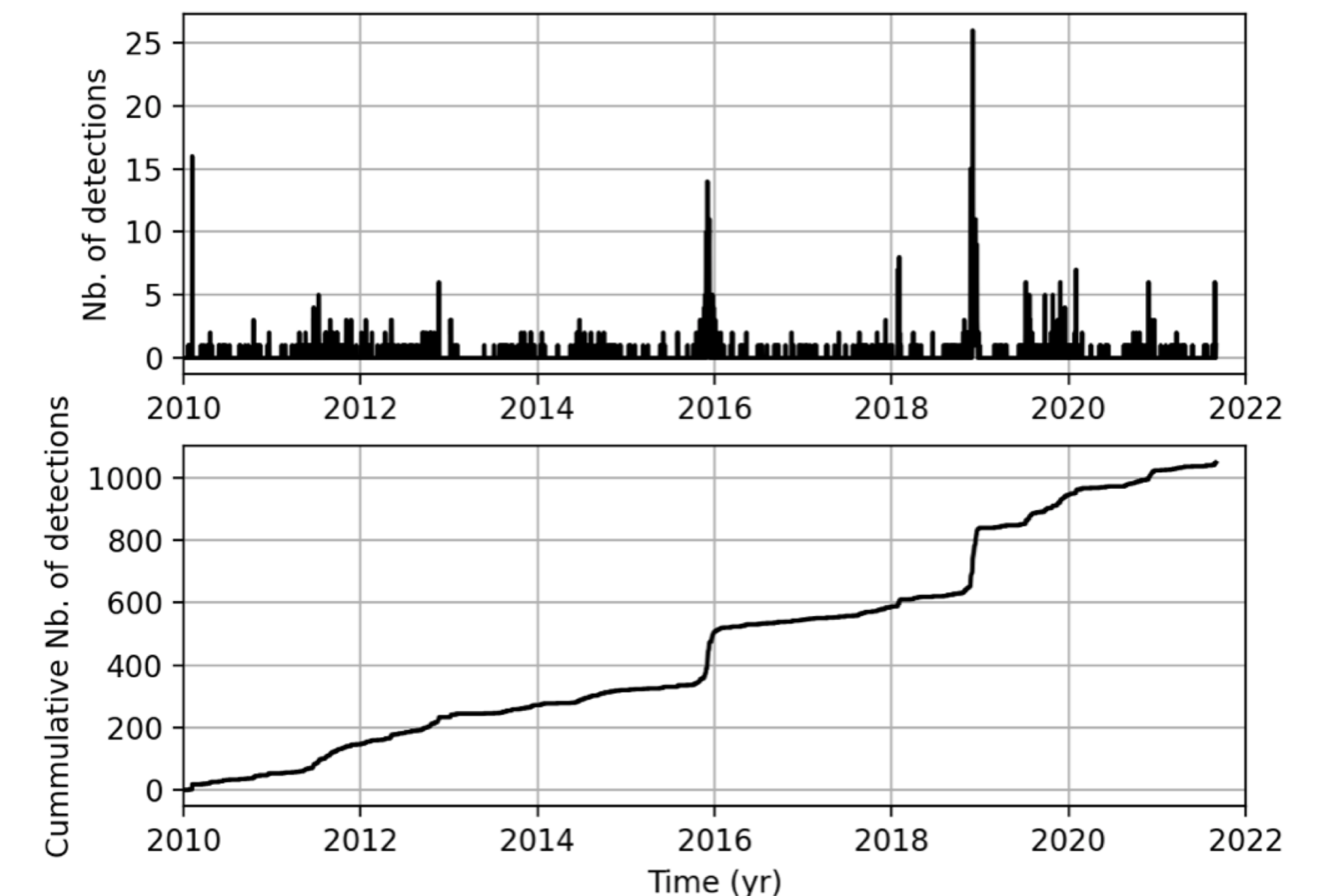
Institut Terre & Environnement  
de Strasbourg | ITES | UMR 7063  
de l'Université de Strasbourg  
& CNRS & ENGEEES



The Astrolabe is a small ice sheet (16 km x 6 km) located in South-East part of Antarctica in the vicinity of the Dumont D'Urville observatory. In January 2019, a large fissure was detected in the tongue of the ice sheet. We analyzed satellite image time series (Sentinel-2, 10 m spatial resolution) and seismological data to understand the recent dynamics of the glacier.



Detected Calving events Astrolabe glacier 2010-2021



The ice velocity is computed with optical image correlation technique using the MPIC-OPT-ICE service on the the Sentinel-2 archive from February 2017 to September 2021. The seismological data from 2010 to 2021 are analyzed using cross-correlation techniques to detect calving events. The reference signal for the cross-correlation is taken as an event that has been witnessed by observers in the field in January 2019.