



## **Toward a new seismic hazard model for Guadeloupe: Model development and sensitivity analysis**

Caroline Kaub, Saroj Maharjan, Christophe Martin, Gabriele Ameri, Kristell  
Le Dortz, David Baumont

### **► To cite this version:**

Caroline Kaub, Saroj Maharjan, Christophe Martin, Gabriele Ameri, Kristell Le Dortz, et al.. Toward a new seismic hazard model for Guadeloupe: Model development and sensitivity analysis. 5èmes Rencontres Scientifiques et Techniques Résif, Nov 2021, Obernai (67210), France. hal-03442145

**HAL Id: hal-03442145**

**<https://hal.science/hal-03442145>**

Submitted on 23 Nov 2021

**HAL** is a multi-disciplinary open access archive for the deposit and dissemination of scientific research documents, whether they are published or not. The documents may come from teaching and research institutions in France or abroad, or from public or private research centers.

L'archive ouverte pluridisciplinaire **HAL**, est destinée au dépôt et à la diffusion de documents scientifiques de niveau recherche, publiés ou non, émanant des établissements d'enseignement et de recherche français ou étrangers, des laboratoires publics ou privés.



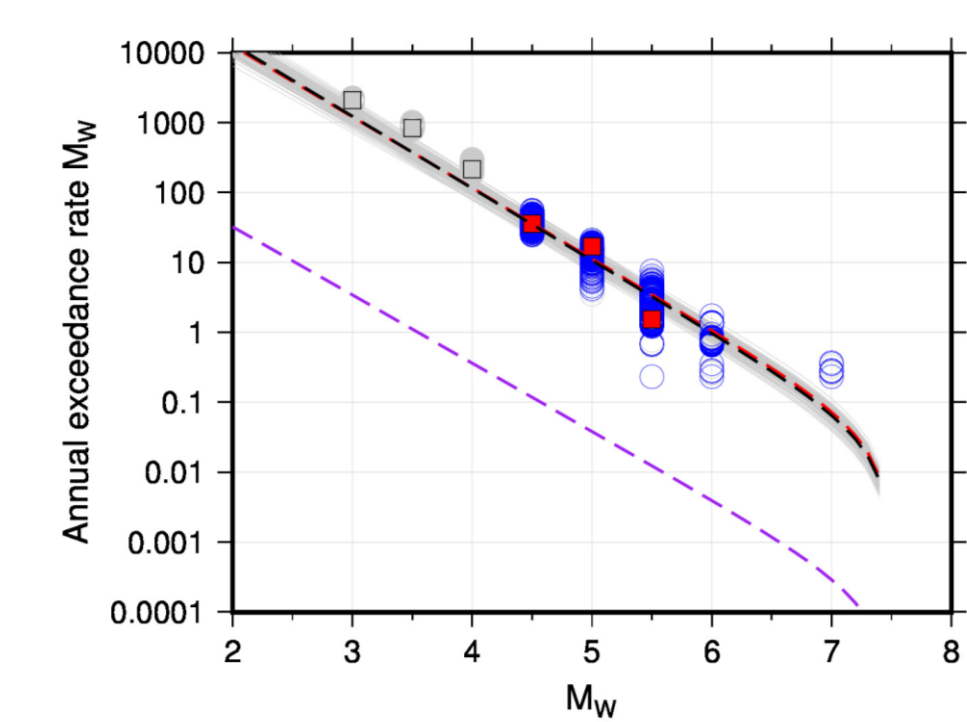
## Abstract

The official probabilistic seismic hazard model made for the purpose of the EC8 enforcement in France was based on the state of knowledge at the beginning of 2000. Based on that model the French ministry established the French seismic zonation which classifies the territory in 5 zones where the highest level is assigned to the Antilles. Since then, relevant progresses have been made in the acquisition of new data and in the development of new models and methods to be used in probabilistic seismic hazard assessment (PSHA). Moreover, PSHA practice evolved significantly particularly in terms of treatment and consideration of uncertainties.

In this contribution we present the development of a new seismic hazard model for Guadeloupe. We focus on the development of a homogenized earthquake catalogue, the integration of recent studies to develop seismic source models for both subduction and crustal sources and the consideration of new ground motion models.

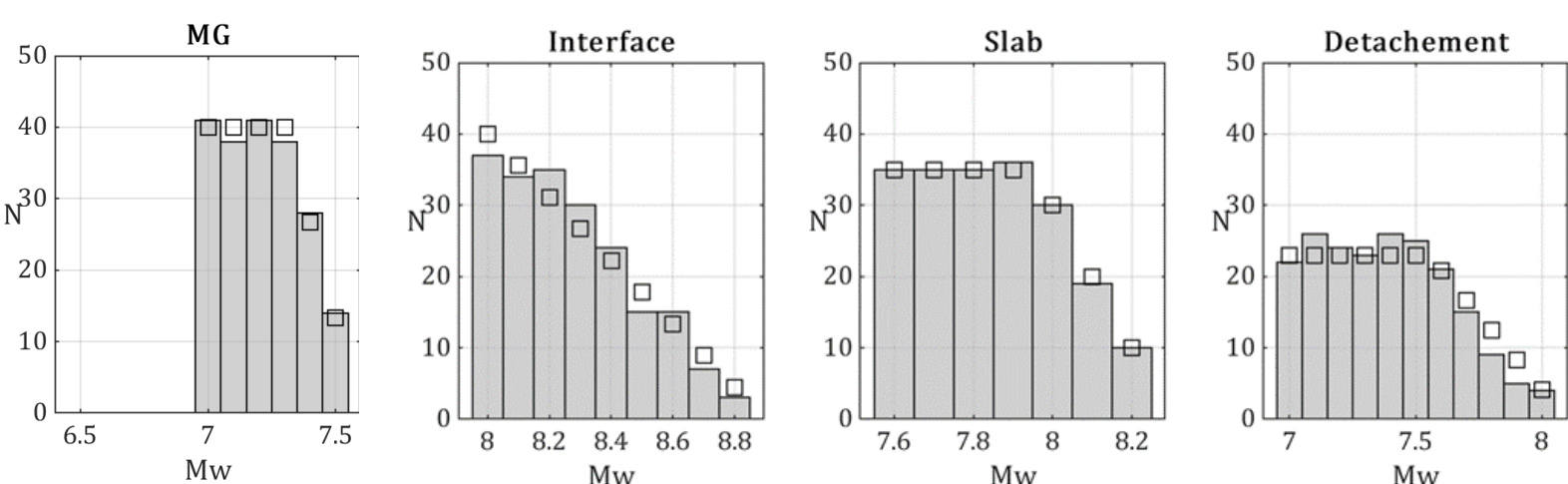
A sensitivity analysis shows the impact of alternative models on the resulting hazard. Preliminary results at 475 years return period are compared to the official French zonation & GEM hazard maps at selected location.

## Magnitude-Frequency Distribution



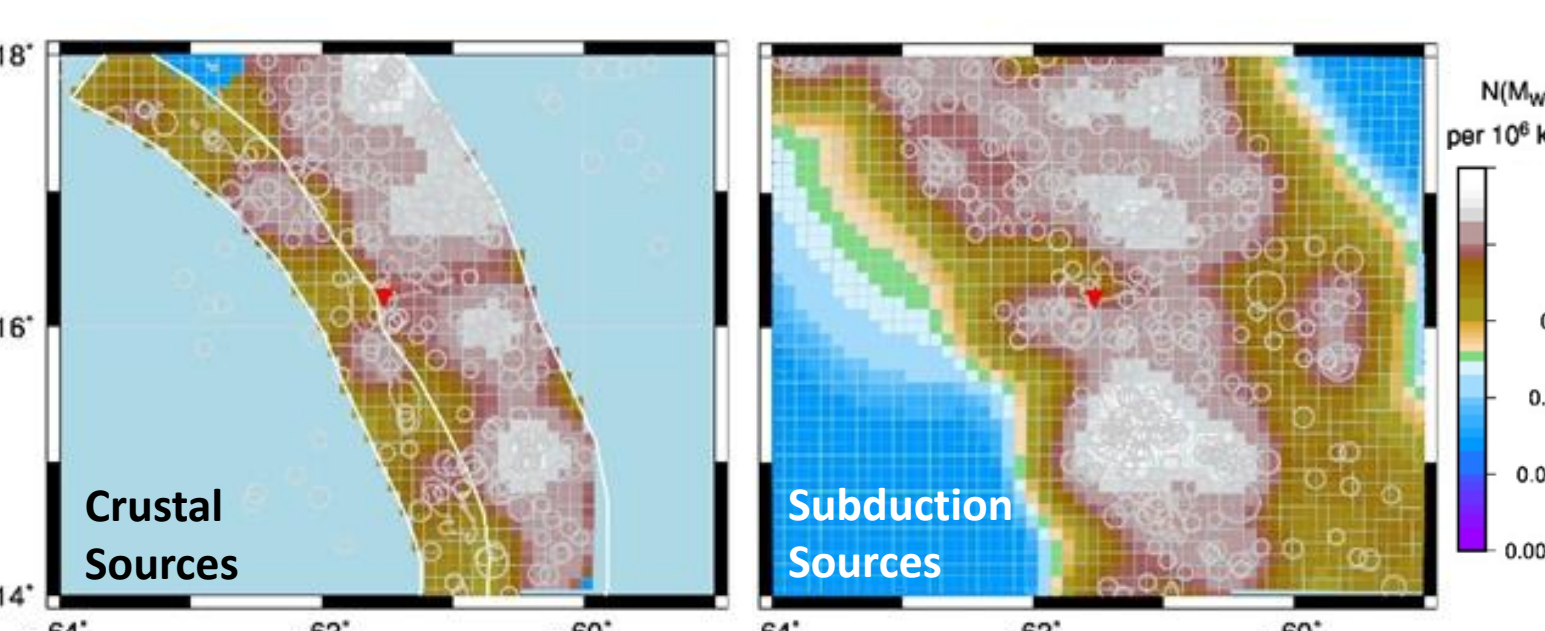
**Figure 5 : G-R fitting for STR 2021 catalogue and crustal zone MG (mean fit (black line) of modeled G-R curves (gray line), global SCR<sup>9</sup> (purple dashed line), stochastic (blue circles) and original catalogue (red).**

The a & b values of the Gutenberg-Richter models are determined based on a maximum likelihood approach with a prior b-value. The correlation between a & b values is considered in the uncertainty propagation.



**Figure 6 : Mmax distributions (left-most) of crustal zone MG, (right) for subduction zones propagated with 200 random Monte-Carlo samples.**

## Smoothed Seismicity

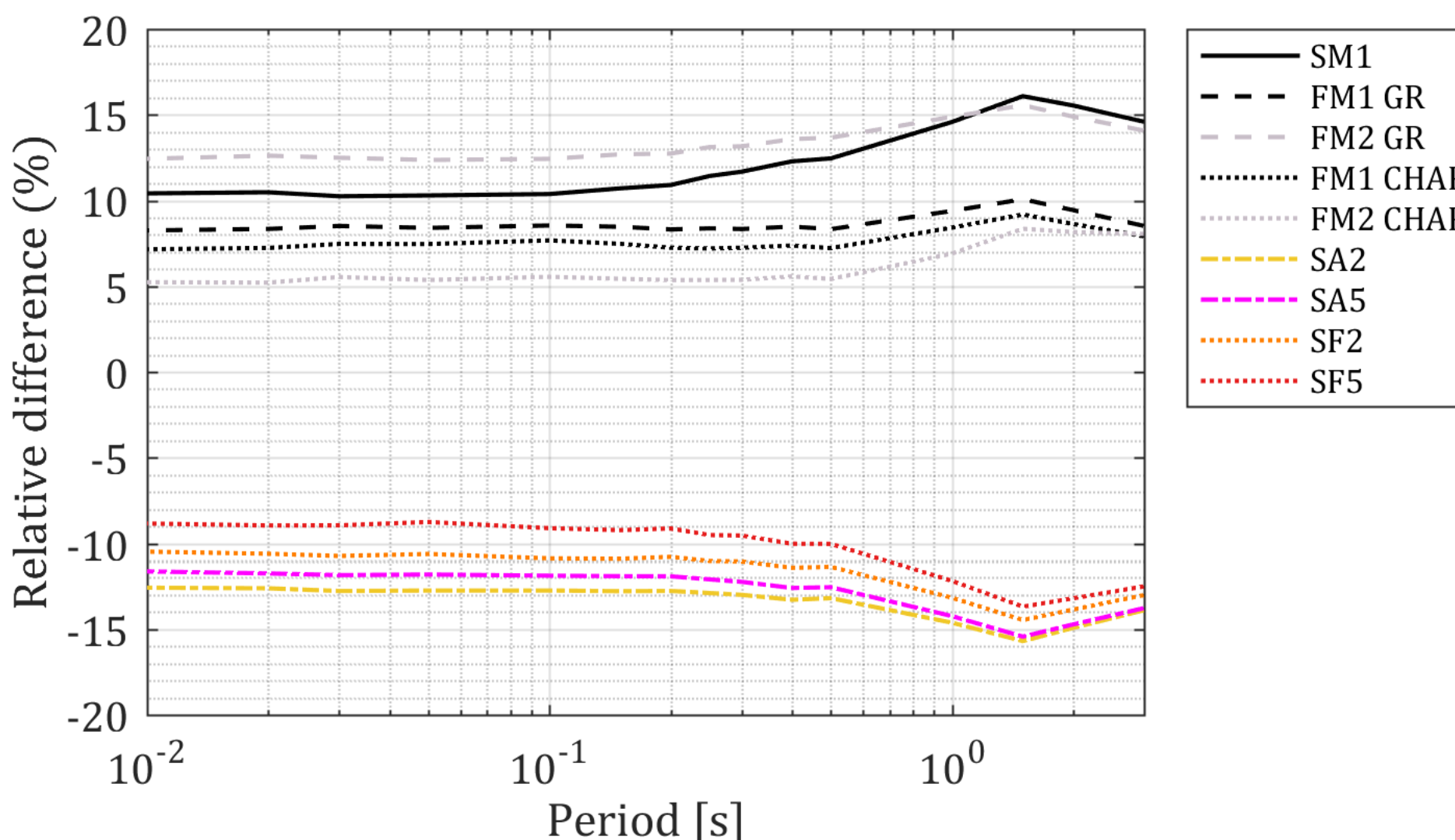


**Figure 7 : Example of annual activity rates for Mw ≥ 4.5 using the adaptive kernels<sup>10</sup> at the distance of the 2 nearest neighbors to determine the smoothing length (red triangle is city of Pointe-à-Pitre).**

The smoothing approach is an alternative to the source zone seismotectonic model allowing to capture the local variability of seismic rates. A wide range of kernels were adopted to better account for the epistemic uncertainties in the activity rate estimates. The smoothing is based on macrozones, to limit the seismicity with a strict boundary between the active arc and the pre-arc for crustal zones (left). No spatial limits are used to compute the rates for deep seismicity (right).

## Sensitivity Analysis

The sensitivity analysis was carried out in order to better characterize the center, body and range and to identify the components of the SSC models that affect the most the hazard estimate variability.



**Figure 12 : Sensitivity tests on different SSCs, using STR 2021 catalogue for a return period of 475 years at the Pointe-à-Pitre site (n°1).**

## Updated Seismic Catalogue

A new catalogue of earthquakes (STR 2021) covering the historical and instrumental periods is compiled up to end of 2020 to be able to work with a robust seismic sample to establish the correlations between the different magnitude scales and the moment magnitude Mw. When possible, the hypocentral location estimates from the local seismic networks like CDSA, IPGP were given priority over the location from global seismic database.

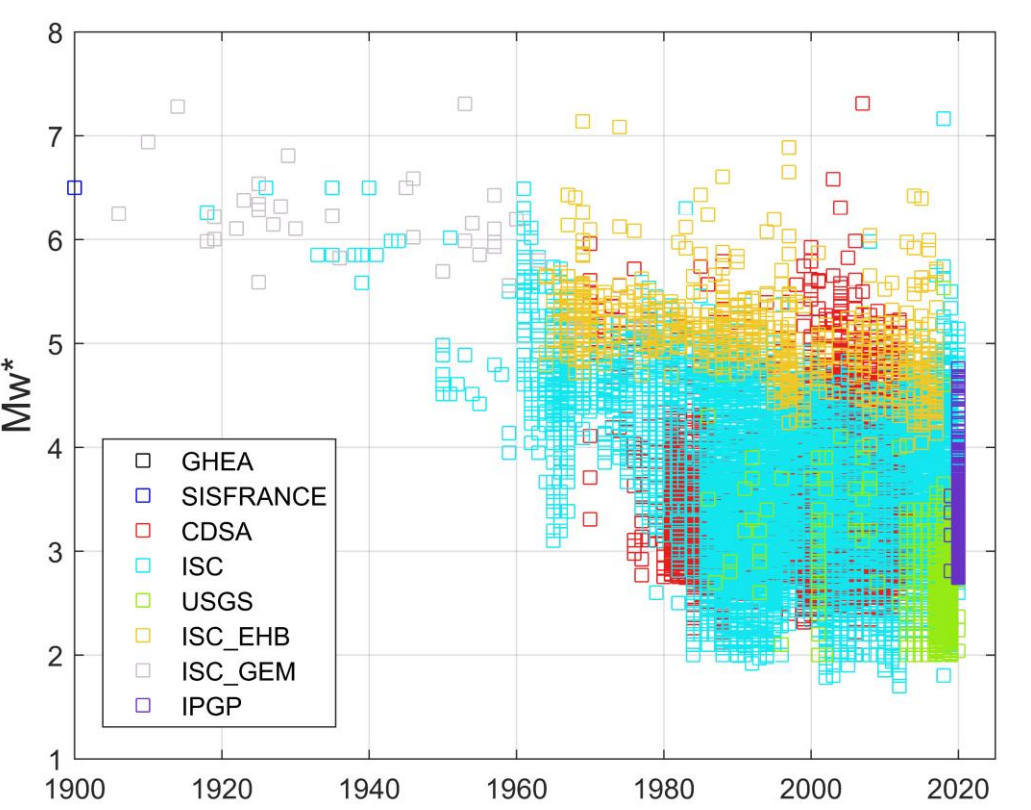
The project EQ catalogue is composed of crustal events (typically shallower than 33 km) and events related to the subduction process (interplate events typically shallower than 50 km or intraplate events with depth ranging from a few km down to more than 250 km).

In the project catalogue ~30% events were converted from Md to Mw. Given the large uncertainties affecting the determination of Md-Mw, relationship proposed by Drouet et al. (2011)<sup>1</sup> conversion was replaced by a bilinear regression more consistent with the dataset.

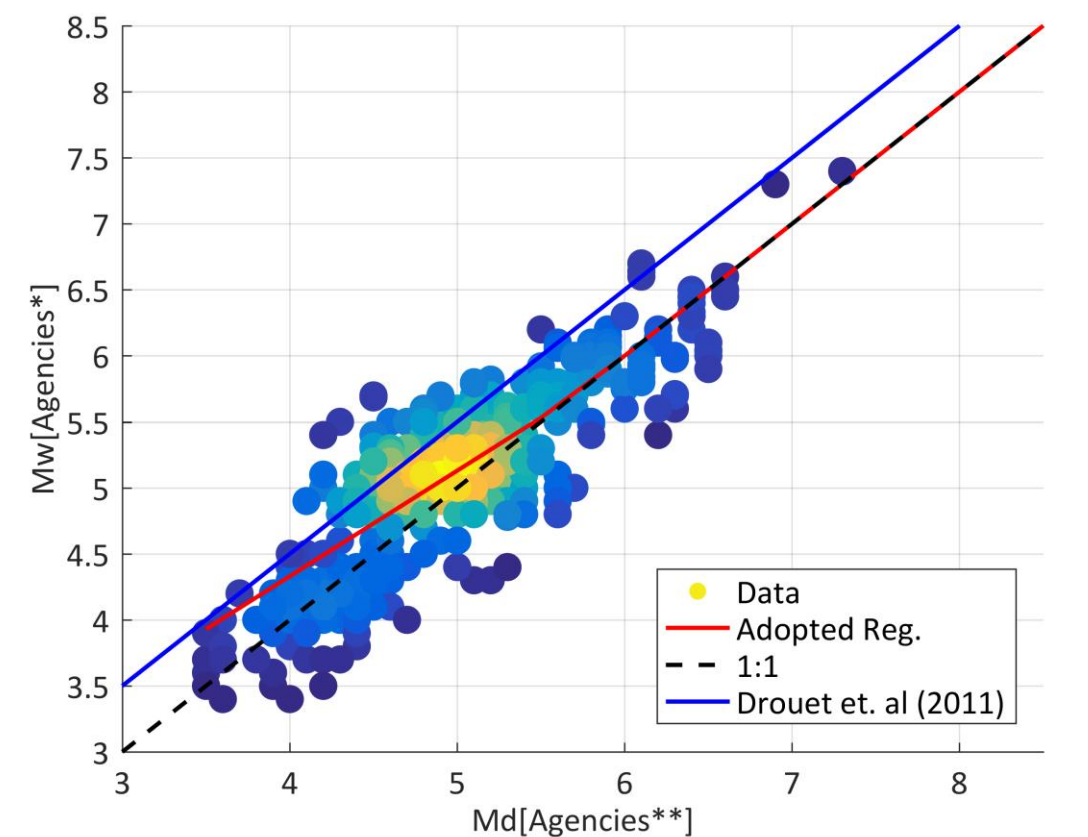
Agencies\* : GCMT, USGS, NEIC, NEIS, IPGP, ISC-EHB and ISC-GEM.

Agencies\*\* : FDF, INET, OSPL, RSPP, EIDC, IASPEI, SDD, SFS and USGS.

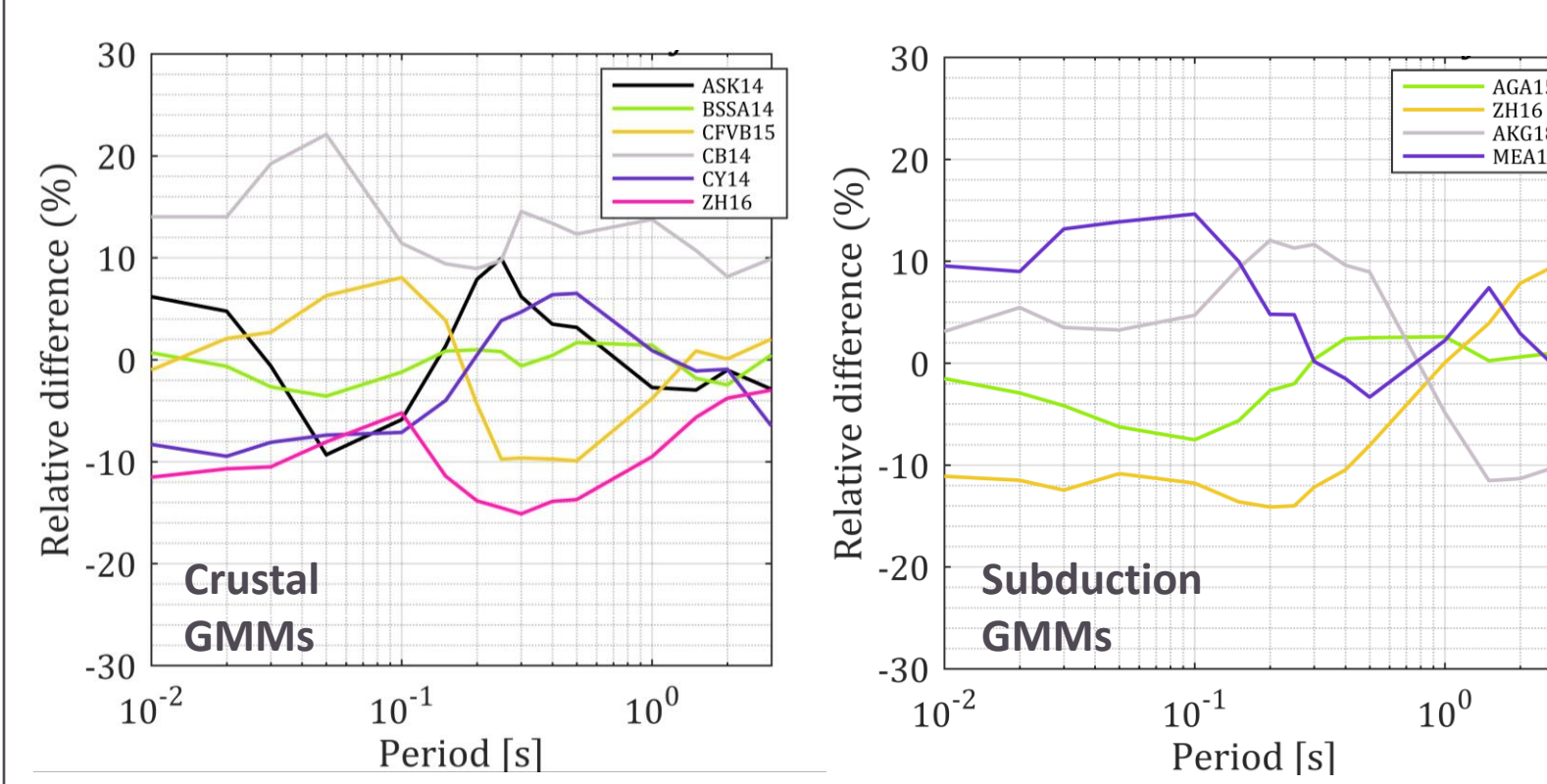
**Figure 1 : Location sources (events > 1900 A.D.).**



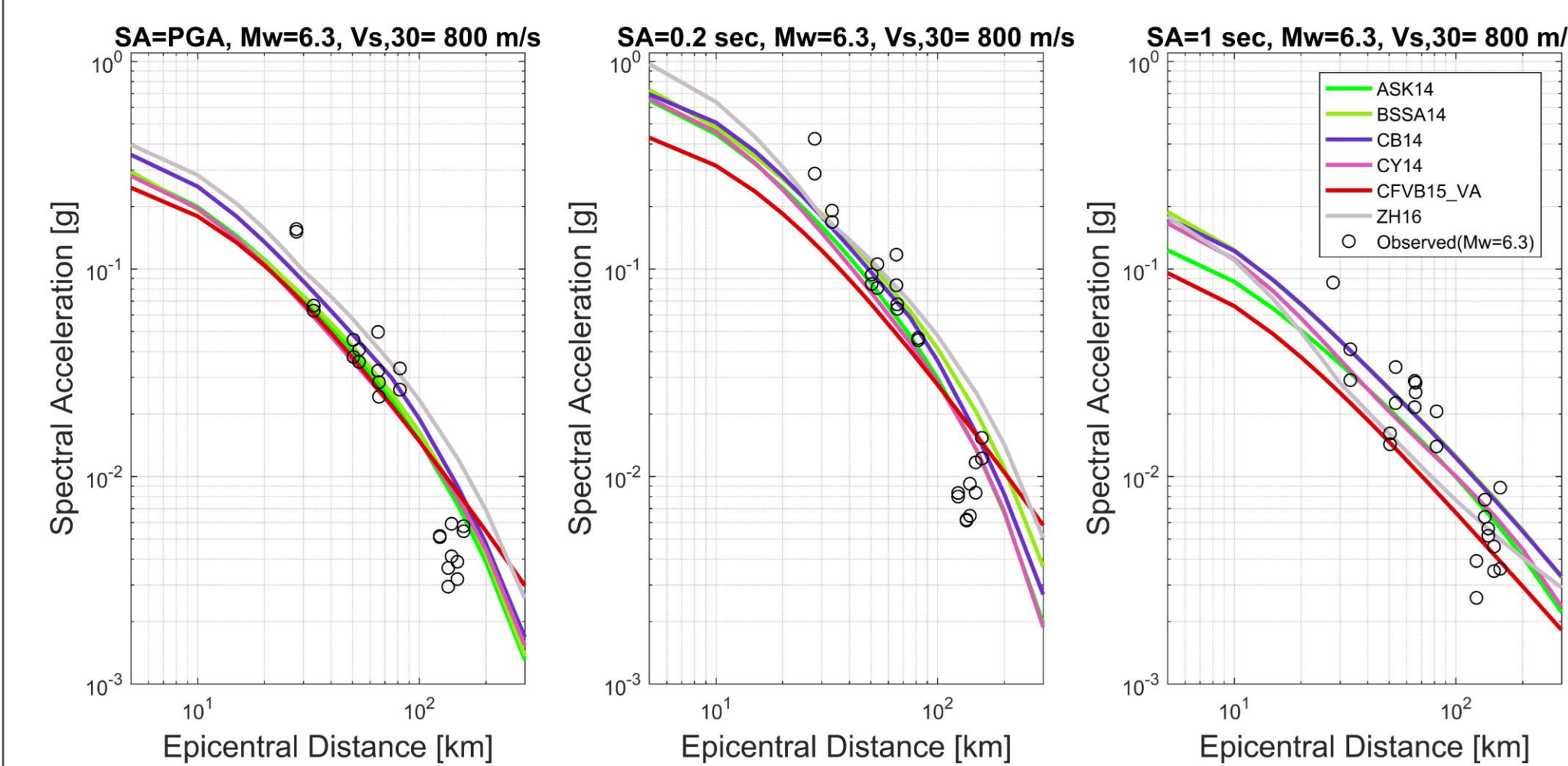
**Figure 2 : Regression of Md to Mw.**



## Ground Motion Models



**Figure 8 : Relative variability of GMPEs adopted (left: ACR GMPEs, right: Subduction GMPEs). Return period of 475 years.**



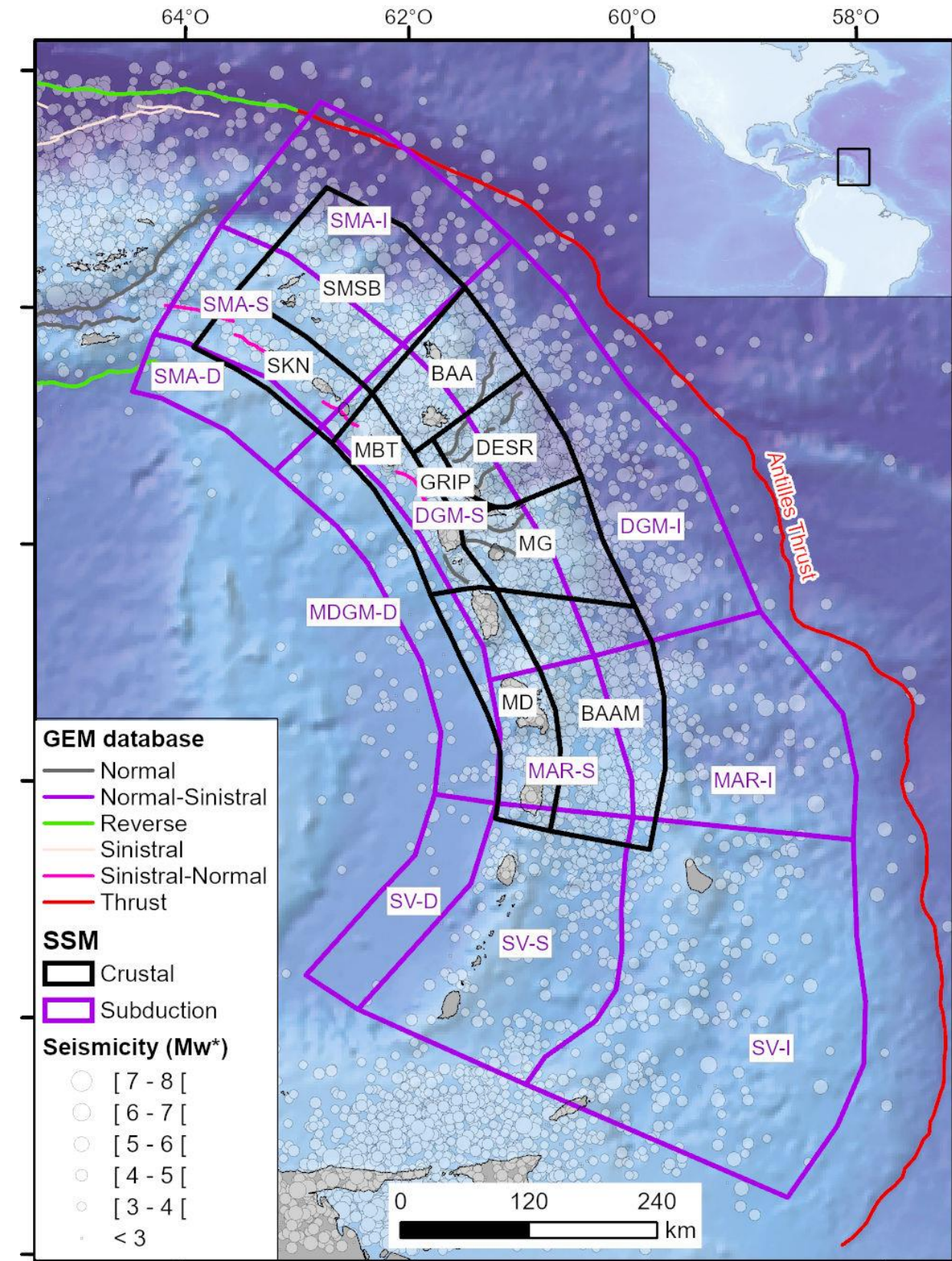
**Figure 9 : Comparison between spectral acceleration observed and estimated from the ACR GMPEs for the event Les Saintes de 21/11/2004, Mw 6.3. PGA (left), SA at T=0.2s (center) and SA at T=1s (right). Vs,30= 800 m/s.**

Active Shallow Crustal Domain	Subduction domains	Sigma Model
Abrahamson et al. (2014) ASK14 0.166	Abrahamson et al. (2015) AGA15 0.25	
Boore et al. (2014) BS14 0.166	Abrahamson et al. (2018) AKG18 0.25	
Campbell & Bozorgnia (2014) CB14 0.166	Montalva et al. (2017) MEA17 0.25	Native
Chiou & Youngs (2014) CY14 0.166	Zhao et al. (2016) Z16 0.25	
Cauzzi et al. (2015) CV15 0.166		
Zhao et al. (2016) Z16 0.166		

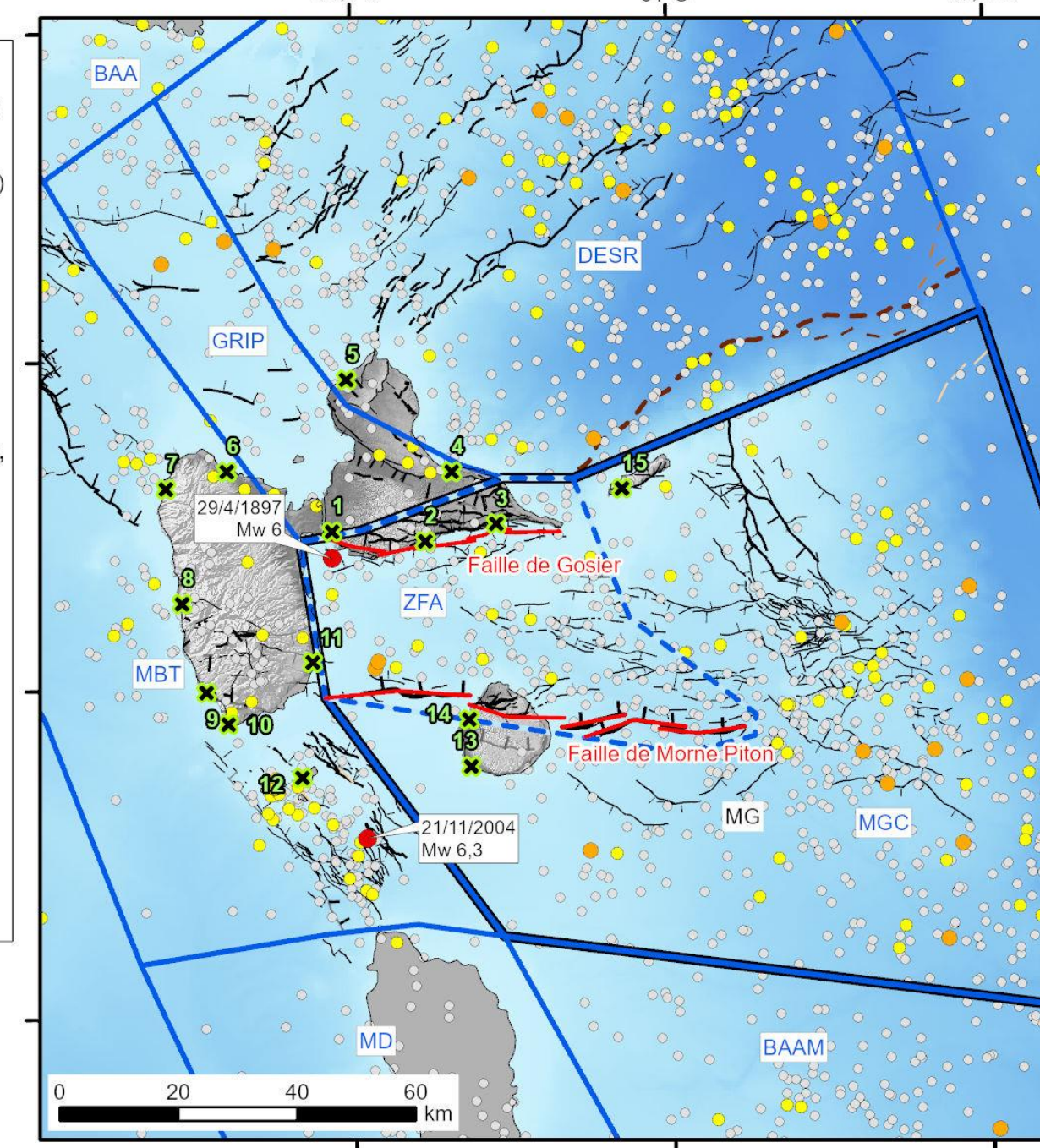
**Figure 10 : GMM logic tree. Equal weight are assigned to each GMPEs at this stage.**

A weighting scheme based on the distribution of sum of different branches of the LT for each return period for given GMPE will be adopted to further refine the GMPE logic-tree. The corresponding value on a normal pdf allows to unambiguously weight the GMPE.

## Seismic Source Models

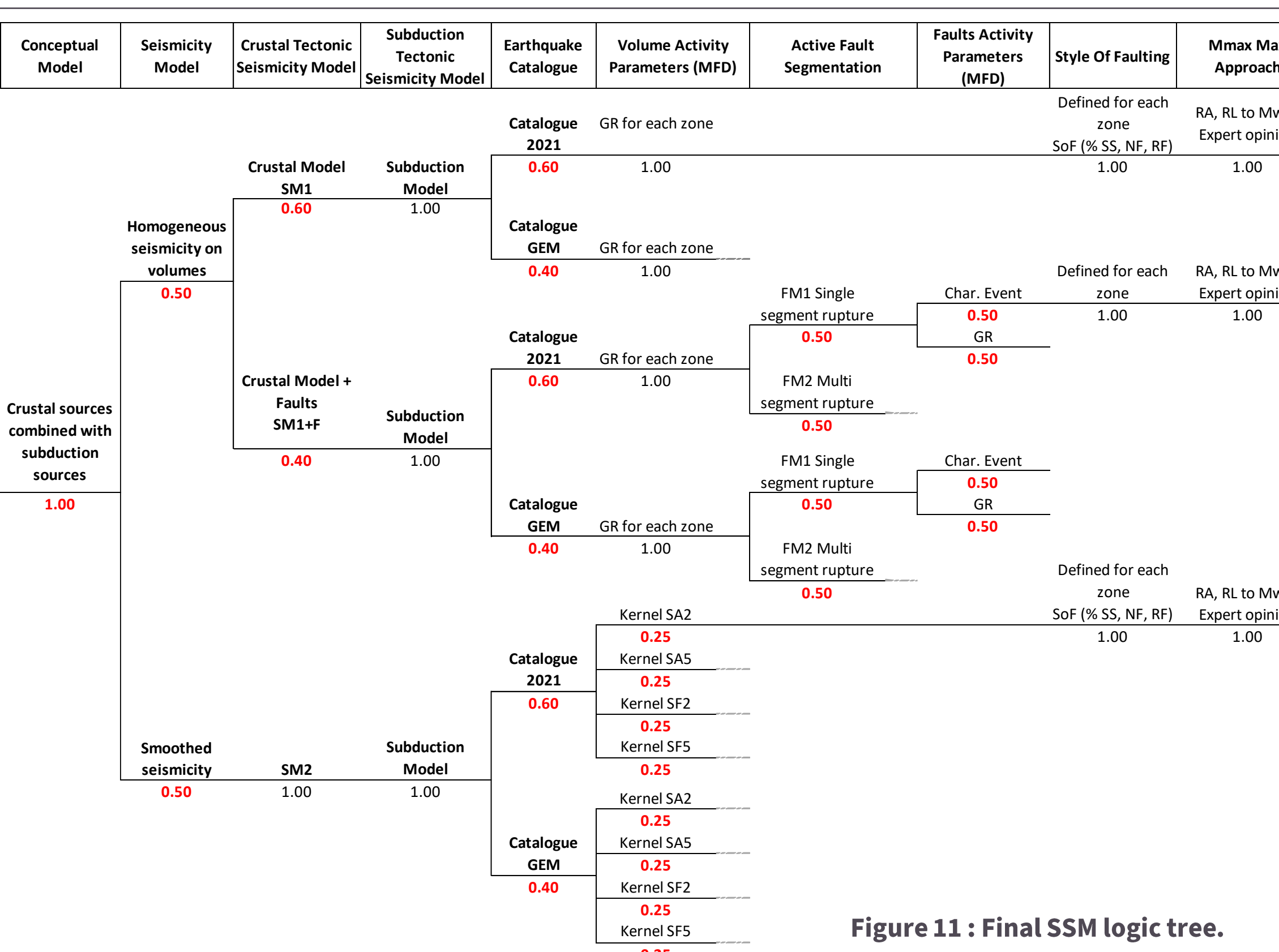


**Figure 3 : Earthquake catalogue (1690-2020) and crustal and subduction SSM of the Lesser Antilles developed in this study based on the GEM active fault database<sup>2</sup>, local studies about faults<sup>3,4,5,6</sup>, and seismicity and subduction geometry<sup>7</sup>.**



**Figure 4 : Fault sources<sup>3,4,5,6</sup> and major earthquakes in the Guadeloupe archipelago.**

## SSM Logic Tree



**Figure 11 : Final SSM logic tree.**

The SSM logic tree is composed of a branch considering homogeneous volume sources and a branch considering smoothed seismicity. A fault model is also considered and coupled with the crustal background volume zonation. Each crustal branch is coupled with the subduction source model. For the fault model, two alternatives are considered for the determination of activity parameters using a characteristic and a Poissonian (G-R) approach. The logic tree is also composed of two catalogues (this study and GEM<sup>11</sup>).

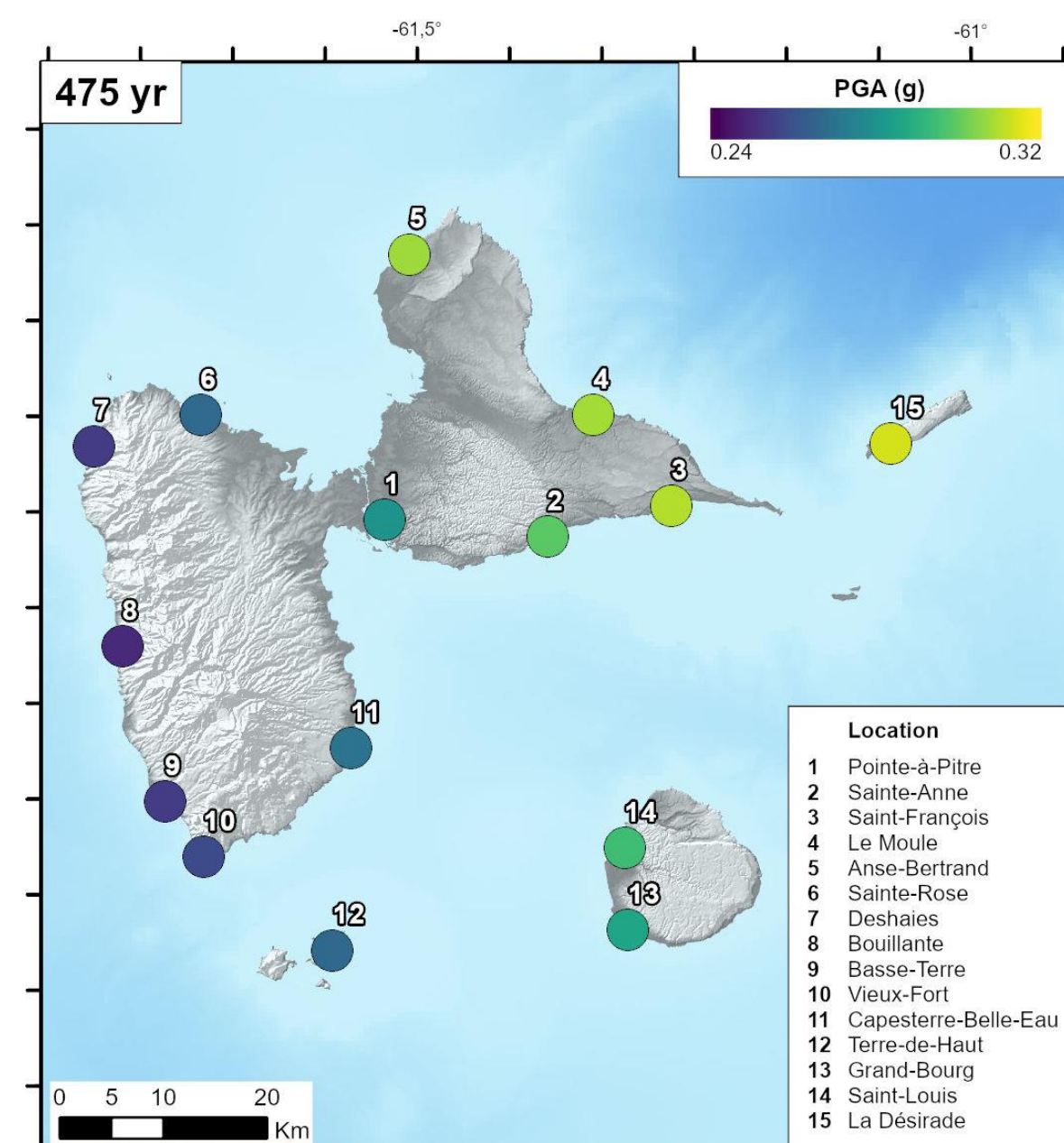
## Discussion & Conclusions

The PSHA calculations were carried out following the final logic tree at 15 points corresponding to the main cities of the Guadeloupe archipelago. At return period of 475 years, a gradual increase of the hazard from SSW to NNE is observed which can be attributed to a larger contribution of the subduction interface events.

In general, these values are in same order of magnitude and hence consistent with the GEM hazard maps<sup>12</sup> (mean PGA of 0.20 to 0.35 g). However, this study shows a higher resolution hazard range across the Guadeloupe archipelago.

Moreover, it is noted that, the mean hazard level at 475 years for standard rock condition (Vs,30=800 m/s) has increased compared to the results from Martin et al. (2002)<sup>8</sup>. This increase can be attributed to various components namely updated seismotectonic models, use of new and updated GMPEs, more robust observed seismicity, evolution of PSHA methodology, etc.

Hence, further research and studies should focus on harmonization of seismicity data in the Lesser Antilles region, development of the fault model and specific GMPEs applicable in Guadeloupe archipelago. The significant improvement of the regional accelerometric database authorizes the migration of the GMPEs model toward a non-ergodic model. Such efforts would be relevant to confirm these preliminary results and to further improve the hazard model.



**Figure 13 : Seismic hazard map of the Guadeloupe archipelago (Lesser Antilles), PGA for return period of 475 years (Vs,30=800 m/s).**