



HAL
open science

Electrochemical characterization of individual oil micro-droplets by high-frequency nanocapacitor array imaging

Christophe Renault, Cecilia Laborde, Andrea Cossettini, Luca Selmi, Frans Widdershoven, Serge G Lemay

► To cite this version:

Christophe Renault, Cecilia Laborde, Andrea Cossettini, Luca Selmi, Frans Widdershoven, et al.. Electrochemical characterization of individual oil micro-droplets by high-frequency nanocapacitor array imaging. Faraday Discussions, 2021, 10.1039/D1FD00044F . hal-03437451

HAL Id: hal-03437451

<https://hal.science/hal-03437451>

Submitted on 19 Nov 2021

HAL is a multi-disciplinary open access archive for the deposit and dissemination of scientific research documents, whether they are published or not. The documents may come from teaching and research institutions in France or abroad, or from public or private research centers.

L'archive ouverte pluridisciplinaire **HAL**, est destinée au dépôt et à la diffusion de documents scientifiques de niveau recherche, publiés ou non, émanant des établissements d'enseignement et de recherche français ou étrangers, des laboratoires publics ou privés.

Electrochemical characterization of individual oil microdroplets by high-frequency nanocapacitor array imaging

Christophe Renault^{1,2}, Cecilia Laborde¹, Andrea Cossetti^{3,4}, Luca Selmi⁵, Frans Widdershoven⁶ and Serge G. Lemay^{1*}

¹ MESA+ Institute for Nanotechnology, University of Twente, P.O. Box 217, 7500 AE Enschede, The Netherlands

² Laboratoire de Physique de la Matière Condensée, Ecole Polytechnique, CNRS, IP Paris, Route de Saclay, 91128, Palaiseau, France

³ Integrated Systems Laboratory, ETH Zürich, Gloriastrasse 35, 8092 Zürich, Switzerland

⁴ DPIA, via delle Scienze 206, Università degli Studi di Udine, 33100 Udine, Italy

⁵ DIEF, University of Modena and Reggio Emilia, Via Vivarelli 10, 41125, Modena, Italy

⁶ NXP Semiconductors, Technology & Operations/CTO office, High Tech Campus 46, Eindhoven 5656 AE, The Netherlands

* s.g.lemay@utwente.nl

Abstract: CMOS-based nanocapacitor arrays allow locally probing the impedance of an electrolyte in real time and with sub-micron spatial resolution. Here we report on the physico-chemical characterization of individual microdroplets of oil in a continuous water phase using this new tool. We monitor the sedimentation and wetting dynamics of individual droplets, estimate their volume and infer their composition based on their dielectric constant. From measurements before and after wetting of the surface, we also attempt to estimate the contact angle of individual micron-sized droplets. These measurements illustrate the capabilities and versatility of nanocapacitor array technology.

Introduction

Electrochemical impedance spectroscopy (EIS) is a powerful and flexible technique for probing electrochemical processes at the surface and in the vicinity of an electrode. The nature of the information that is probed depends on the frequency f at which a measurement is performed. This is characterized by the frequency $f_1 = 1/2\pi R_e C_e$, where C_e and R_e are the electrical double layer (EDL) capacitance and the solution access resistance of the electrode, respectively. For $f < f_1$, the measured response is dominated by C_e and the technique is primarily sensitive to the structure of the EDL. For $f > f_1$, the response is instead dominated by R_e and in this case the composition of the solution away from the electrode is probed. Since the electric field falls off slowly with distance r from the electrode, the interaction with the sample is long-ranged and extends many times the radius of a disk electrode, r_e , into the solution. EIS measurements at a nanoelectrode thus provide a very local probe of either the properties of a solid-liquid interface or of an electrolyte in the vicinity of the electrode, depending on the choice of frequency. In practice these measurements are technically very challenging to implement for a nanoelectrode, however, for two main reasons:

1. *The desired signal is easily obscured by parasitic current pathways.* The capacitance of a nanoelectrode in aqueous media is of order $C_e \sim 10^{-15}$ F. In conventional measurements based on standard EIS instrumentation, this is dwarfed by the capacitance of the interconnects to the electrode. As a rough illustration, the capacitance of coaxial cable is $\sim 10^{-12}$ F/cm, so even 1 cm of cable causes a background current that is 1000 times larger than the target signal. A nanoelectrode thus contributes only a very minor fraction of the total current flowing through the system, making it difficult to distinguish its contribution from the large background current.
2. *Reaching the regime $f > f_1$ becomes increasingly difficult with decreasing electrode size.* The parallel-plate component of the electrode's EDL capacitance scales with electrode radius as $C_e \propto r_e^2$ while the spreading

access resistance scales as $R_e \propto r_e^{-1}$, hence $f_1 \propto r_e^{-1}$. Shrinking the electrode size from $r_e = 10 \mu\text{m}$ to 10nm thus requires accessing 1000 times higher frequencies in order to probe the solution beyond the EDL.

Two main approaches have been used to overcome these challenges. Frequency mixing methods employ an active material (a field-effect transistor) as electrode. The nonlinear response of the current through the transistor to the EDL potential allows applying high-frequency voltages yet reading out the resulting response at much lower frequencies via heterodyne methods.¹ In a more direct approach, we have previously reported a platform in which nanoelectrodes and their readout circuitry are closely integrated on a single silicon chip. This allows reducing the length of the interconnects between the electrodes and the relevant readout circuit elements to $\sim 1 \mu\text{m}$, in turn reducing the stray capacitance to a very small value of order $\sim 10^{-15} \text{F}$.²⁻⁶

Our platform is based on complementary metal–oxide–semiconductor (CMOS) technology and offers important additional capabilities. Using a switched capacitor architecture allowed implementing an array of 65,536 individually addressable 180nm diameter nanoelectrodes. These can be actuated at frequencies of up to 50MHz , which is sufficient to reach $f > f_1$ even at high (*e.g.* physiological) salt conditions. When interfaced to external pulse generators, the platform also demonstrated operating frequencies up to 500MHz .⁷ Simultaneous measurements over the array function in a manner analogous to a digital camera, where each nanoelectrode plays the role of a single pixel. This permits a form of EIS imaging where objects ranging from synthetic microparticles to living cells can be imaged in real time and at sub- μm spatial resolution. Here we further demonstrate the capabilities of this platform using oil micro-droplets as model system.

Emulsions are ubiquitous in our daily life. They are present in food,⁸ cosmetics⁹ and drugs.¹⁰ They also find important roles in petroleum recovery,¹¹ nonaqueous phase liquid transport¹² and material synthesis.¹³ Study of the composition, structure, dynamics and more importantly the interaction of oil (or water) droplets with a given environment is thus of critical importance. Different techniques are usually necessary to fully characterize an emulsion. Droplet size can be obtained by dynamic light scattering (DLS), provided that the sample is reasonably mono-disperse, or by more time-intensive and costly techniques such as cryo-electron microscopy.¹⁴ Optical microscopy, Coulter counters, ultrasounds, NMR and sedimentation are also commonly used depending on the size and transparency of the sample.¹⁴ The interaction between an emulsion and a surface is typically characterized by the contact angle measured with a single large droplet deposited on a surface of interest. Despite of all these techniques, however, the study of emulsions still suffers several limitations. First, only the combination of these relatively expensive methods (k\$5-100/instrument + highly qualified operator) allows complete characterization of an emulsion. Second, most of these measurements are performed in a laboratory and cannot be easily implemented in demanding environments (high temperature, humidity, vibrations or small spaces). Third, none of the aforementioned techniques can probe emulsions with both high temporal and spatial resolution. Alternative methods of characterization are thus desirable.

Pushing in this direction, Bard and coworkers proposed a purely electrochemical method to characterize individual sub-micron droplets of ionic liquid, nitrobenzene, benzene, cyclohexane and tripropylamine in water.¹⁵⁻¹⁸ Analysis of the electrochemical response produced by the impact of droplets at the surface of an ultra-microelectrode (UME) was employed to estimate the size and redox content of the droplets as well as the area of contact between a droplet and a surface.^{17, 18} This method has the advantage of working in nearly any liquid medium (even with very low conductivity) for both insulating and redox-active droplets, and allows the study of highly disperse populations at the single-particle level. However, the low currents (pA to nA) and the mode of detection based on faradaic reactions requires a highly controlled environment and the presence of a redox reporter either in the droplet or in the continuous phase.

Impedance measurements provide an elegant and reagent-free alternative to the faradaic approach. Variations of the capacitance of the electric double layer (EDL) are commonly used to monitor surface functionalization's (*e.g.* self-assembled monolayers)¹⁹ or for detection of small analytes such as proteins.²⁰ However, this kind of measurement is not selective toward the adsorbate and thus extremely sensitive to nonspecific adsorption. Moreover the capacitance is affected by small changes of the electrolyte concentration in the sample. Finally, probing the ionic composition of the few nanometers thick EDL is relatively inefficient for the detection of objects much larger than the EDL such as microspheres, a common label for sensors. One way to tackle simultaneously these limitations is to measure impedance at high frequencies. Particularly interesting are frequencies so high that the ions do not have time to respond significantly to the alternating electric field. In this case the electrical current is dominated by the displacement current caused by the polarization of the solvent, as characterized by its permittivity ϵ . This occurs when the frequency satisfies $f > f_2 = \sigma/2\pi\epsilon$, where σ is the conductivity of the electrolyte (in practice $f_2 > f_1$). An application of high-frequency measurements is the detection of water content in oil.^{21, 22} Because the measurement is less affected by the presence of ions in solution, simple analytical models can be used to determine the average content of water in oil. However, no information at a single water droplet level is obtained in this case.

Here we employ polydisperse oil-in-water emulsions made from different oils, namely 1,2-dichlorobenzene (oDCB), nitrobenzene and silicone oil. We demonstrate the capabilities of the nanocapacitor array platform by simultaneously determining the size and shape of individual oil micro-droplets as well as their dielectric constant at the micron scale. Simultaneously we evidence various dynamical behaviors of individual droplets including sedimentation, convection, wetting and merging. Finally, we explore a way to estimate *in situ* the contact angle of individual micro-droplets of only few pL while typical contact angle measurements require μL^3 's.

Materials and Methods

Chemicals and Materials. Ortho-dichlorobenzene (>99%), nitrobenzene (>99%), isopropanol (99.9%), toluene (anhydrous, 99.8%) and chloroform (anhydrous, >99%) were purchased from Sigma-Aldrich. Silicone oil (BC 5 cS) was purchased from Basildon Chemicals. and Tetrabutylammonium toluene-4-sulfonate (>99%) was obtained from Fluka. All chemicals were used without further purification. DI-water (18.2 M Ω .cm, 2-4 ppb total organic content) was produced with a Milli-Q Advantage A10 (Millipore) purification system. The capacitance imaging was performed with CMOS-based microchips and readout board described previously.^{2, 5}

Emulsion preparation. Emulsions were prepared by adding 10 μL of the desired oil in 990 μL of DI-water and sonicating one minute in a sonication bath (Branson 1510DTH). The size of droplets that sedimented on a glass slide was measured with an optical microscope (50X objective). The stability of the emulsion was monitored by visual inspection of the turbidity of the solution over a period of 1h and by optical microscopy. For all the emulsions the size of the droplet was stable at least up to 15 min. The emulsions were prepared immediately before the measurement and the chip was incubated within less than a minute after sonication.

Characterization. The scanning electron microscope (SEM) image of the nanoelectrode array was obtained with a LEO Gemini 1550 FEG-SEM equipped with a field emission gun. The electron acceleration voltage and the probing current were 1.5 kV and 50 pA, respectively. The lateral resolution was approximately 2 nm. The static contact angle between a 1 μL oDCB and the surface of a CMOS chip was measured with an OCA-15 goniometer (DataPhysics Instruments) in a chamber filled with DI-water at 25 °C. The surface of the chip was cleaned immediately before the measurement by rinsing with acetone and isopropanol and drying in an air stream. Three independent chips were used and the measurement was repeated three times on each chip. The contact angle was determined using the software Scan20. A baseline correction and 5 points ellipsoid fitting procedure was used.

Data processing and simulations. Data analysis was performed with OriginPro 9.1 and in-house codes running on Matlab 2012. Numerical simulations were performed with ENBIOS, a custom 3D control-volume finite element solver of the Poisson-Boltzmann (PB) and Poisson-Nernst-Planck (PNP) equations.²³⁻²⁵ ENBIOS solves self-consistently the PB-PNP equations in DC and small-signal AC regimes also accounting for the salinity, temperature and frequency dependence of the electrolyte. Nanoelectrodes were modeled as disks on the simulation boundary; Dirichlet boundary conditions set the electrodes' voltage. We considered simulation domains of 25 \times 35 nanoelectrodes, with intra-electrodes pitch of 600 nm and 890 nm along the x- and y- directions, respectively. Oil droplets were modeled as spheres at a vertical distance $dz = 10$ nm from the array surface. We mimicked the operating principle of the biosensor platform by applying a small-signal AC voltage (V_{AC}) on a row of nanoelectrodes while keeping all others grounded; simulations were repeated multiple times, each time activating a different row of the simulated array. From each simulation we recorded the AC current (I_{AC}) flowing through the active electrodes. Results were then provided as an effective capacitance $C_{eff} = |I_{AC}/\omega V_{AC}|$ measured at each nanoelectrode, where ω is the angular excitation frequency. Simulating the whole array allowed obtaining effective capacitance maps, which could be directly compared to experiments. Two procedures were attempted to estimate the size of the droplets based on the simulations (second moment method; projected area method), as reported in the Supporting Information.

Results and Discussion

High-frequency capacitive imaging of oil micro-droplets. The electrochemical measurement was performed with complementary-metal-oxide-semiconductor (CMOS) chips as shown in the optical micrograph of Figure 1A. At the center of the chip is located an array of 256 by 256 gold disk electrodes of 180 nm in diameter. The array has a pitch of 600 nm by 890 nm or 600 nm by 720 nm. A portion of the array, imaged by scanning electron microscopy (SEM), is shown in Figure 1B. Here nine gold nanoelectrodes appear as bright disks while the Si_3N_4 between the nanoelectrodes appears dark. For our experiments the chip was inserted in a polyether ether ketone (PEEK) holder (CSP/ μ BGA Test & Burn socket, Aries Electronics) with an opening at the center to expose the nanoelectrode array to the liquid. Figure 1C shows a cross-sectional schematic of the holder (striped pattern) and chip (purple rectangle). The nanoelectrode array (thick orange line) is exposed to an emulsion solution (blue with red dots). A polydimethylsiloxane (PDMS) gasket (green rectangles) ensured the seal between the holder and the chip.

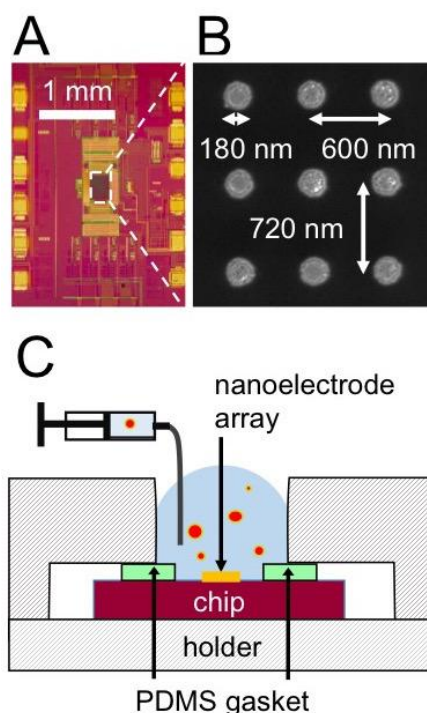


Figure 1. (A) Optical micrograph of the CMOS chip. (B) SEM image of a portion of the nanoelectrode array. (C) Cross-sectional schematic of the chip holder showing how the array of nanoelectrode is incubated in an emulsion solution.

The AC response of each nanoelectrode was measured independently as follows. Each electrode was charged and discharged at a frequency $f = 50$ MHz with a modulation voltage step of $\Delta E_{\text{mod}} = 245$ mV. The discharging current was integrated to obtain a charge and then digitalized with an on-chip analog-to-digital converter. The effective capacitance C was calculated by dividing the charge per cycle by the modulation voltage. The total impedance has two contributions in parallel: the stray capacitance from the metal interconnects in the CMOS chip and the impedance resulting from the nanoelectrode/solution interface. Although the stray capacitance is maintained at an extremely low level (typically 400 aF/nanoelectrode), we removed its contribution by subtracting a reference signal recorded in pure isopropanol. The relative capacitance scale used in the article is thus the effective capacitance measured with an emulsion, C_{ems} , minus the capacitance measured in pure isopropanol, C_{IPA} ($\Delta C = C_{\text{ems}} - C_{\text{IPA}}$). This procedure allows not only to remove the stray capacitance but also to calibrate each individual electrode with a well-defined electrode/solution interface.

For representation, the capacitance value measured at each electrode was converted into a colored pixel and an image was reconstructed. A full frame (2^{16} electrodes, area $228 \mu\text{m} \times 154 \mu\text{m}$) was acquired every 0.2 s. Figure 2A shows a typical capacitance image taken with a chip incubated 1 min in an *o*DCB in water emulsion. An example of raw data (before C_{IPA} subtraction) is also provided as Figure S1 in the Supporting Information. This emulsion is used as a benchmark because of its relative stability (> 15 min), its simple chemical composition (neither surfactant nor ions

added) and its large range of droplet sizes. The diameter of the *o*DCB droplets, measured by optical microscopy (Figure S2 in the Supporting Information), is comprised between 1 and 40 μm . Here the polydispersity of the emulsion and the rapid sedimentation of the large droplets (density of *o*DCB 1.3 g/mL)²⁶ forbids characterization by DLS. The presence of *o*DCB droplets sedimented at the surface of the array is revealed by large capacitance variations, as seen in Figure 2A. The blue background has an average capacitance of 120 ± 29 aF and corresponds to the water/electrode interface. The presence of *o*DCB droplets at the surface of the array is revealed by a decrease of the capacitance (green to red color Figure 2A). Three distinct capacitance fingerprints are produced by the *o*DCB droplets. For each type of fingerprint, a typical capacitance image and the associated capacitance profile are provided in the top and bottom row of Figure 2B, respectively. Cross-sectional schematics depicting the corresponding systems are shown Figure 2C.

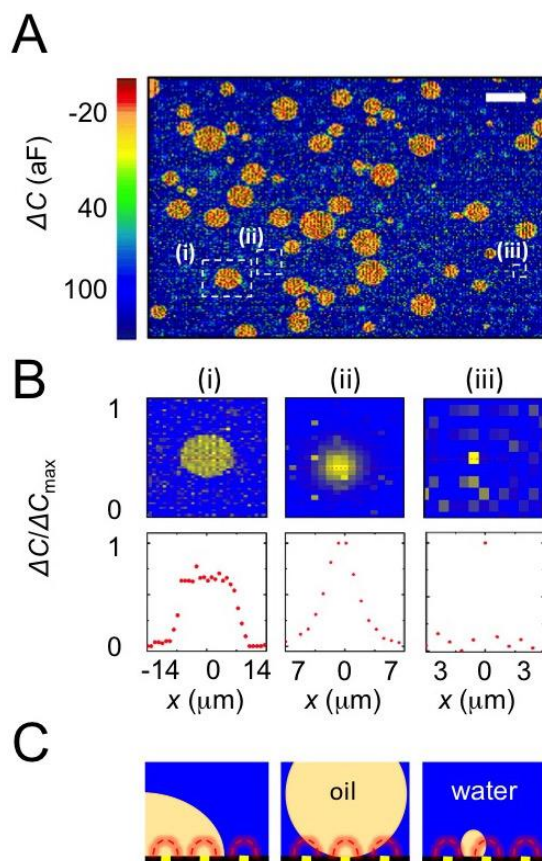


Figure 2. (A) Capacitance image obtained with a chip incubated 1 min in an *o*DCB emulsion. Each pixel in this image represents one separately addressable electrode. The scale bar represents 20 μm . (B) Capacitance image (first row) and line profile (second row) of the individual *o*DCB droplets shown in the dashed white rectangles in Figure 2A. The capacitance image is plotted with a color scale that maximizes the contrast between *o*DCB and water. The line profiles have been normalized to the maximum capacitance in the whole array while the zero is set to the minimum value of the array. (C) Cross-sectional schematic depicting the systems producing the capacitance responses shown Figure 2B. The red dashed line represents schematically the volume of solution probed by each nanoelectrode (yellow squares). The schematic is not to scale.

The capacitance image, ΔC , and the corresponding line profile in Figure 2B column (i) show a large spot with a sharp transition between water and *o*DCB as well as an homogeneous relative capacitance value (-10 ± 26 aF) inside the *o*DCB droplet. The typical diameter of such droplets varies between 3 and 20 μm . This fingerprint corresponds to the situation depicted in the schematic Figure 2C column (i) with a droplet wetting the array. In this case the volume of solution probed by the nanoelectrodes (volume represented by the dashed red hemispheres in Figure 2C) contains either pure *o*DCB or water and hence a two-level capacitance response is observed.

On the other hand, droplets that are not wetting the array produce a bell-shaped capacitance fingerprint (Figure 2B, column (ii)). This profile, observed in a previous study of rigid polystyrene spheres, is caused by the spherical shape of the droplet in suspension (scheme in Figure 2C column (ii)). It can be intuitively understood by the increasing content of water in the probing volume of a nanoelectrode when the electrode is further from the center of the droplet. The FWHM of these Gaussian-like profiles is typically 5-10 μm . The actual diameter of a suspended droplet can be estimated by 3D finite-element simulations. Further details about the ENBIOS simulations and the determination of

the droplet diameter are provided in Supporting Information (Figures S3 and S4). The estimated radius of the fully resolved, non-wetting *o*DCB droplets (see below and Supporting Information) is comprised between 2 μm and 10 μm . Another important value is the capacitance at the center of the droplet, about 65 ± 37 aF. This value, intermediate between the capacitance of pure water (120 aF) and pure *o*DCB (-10 aF), confirms that the droplet remains suspended and that a small amount of water lies between the nanoelectrode array and the bottom of the suspended droplet.

Finally, individual pixels (or less than 3 adjacent pixels) display capacitance changes values ranging from -35 to 90 aF, as shown Figure 2B column (iii). These spikes are attributed to droplets of *o*DCB smaller than the pitch of the array and hence not spatially resolved (schematic Figure 2C). In this case the droplets are too small to contribute significantly to the signal at remote electrodes.

Mapping the local relative permittivity. The large contrast of capacitance between *o*DCB and water observed Figure 2A clearly indicates that the magnitude of the capacitance change strongly depends on the composition of the solution near each electrode. The influence of the permittivity on the capacitance response of our CMOS chip was investigated by preparing emulsions with different oils having a relative permittivity comprised between 2.4 (toluene) and 34.8 (nitrobenzene). A list of the different oils and their permittivity is provided Table 1. Figure 3A shows the capacitance measured at the center of large oil droplets and plotted as a function of the relative permittivity of the oil. The error bars represent the standard deviation between three independent measurements on different chips. The measured signal increases monotonically with the permittivity of the solution. A perfectly linear relationship between measured capacitance and permittivity is not observed, however. This could be caused by nonlinearities in the chip's readout circuitry⁵ that become particularly significant here because of the significant variations in current levels encountered for the different oils. Nonetheless, the experimental curve of Figure 3A can be used to calibrate the response of the chips and hence determine the relative permittivity of individual droplets a few microns in diameter. Interestingly, the coefficient of variation between chips (standard deviation/average value) is $\sim 12\%$, indicating that a reliable estimate of the dielectric constant can be obtained.

To illustrate that point a chip was successively incubated with an emulsion of silicone oil ($\epsilon_r = 2.5$) and an emulsion of nitrobenzene ($\epsilon_r = 34.8$). The capacitance image of the chip, shown Figure 3B, clearly evidences two distinct populations of droplets corresponding to the two different solvents. Silicone oil droplets display an electrode capacitance of -21 ± 2 aF (red spots) while nitrobenzene droplets have a capacitance of 24 ± 3 aF relative to isopropanol. Based on the calibration curve (Figure 3A) the corresponding value of ϵ_r for the silicone oil and nitrobenzene droplets are 6 ± 1 and 34 ± 3 , respectively. The permittivity of nitrobenzene is in excellent agreement with the calibration value ($\epsilon_r = 34.8$), while for the silicone oil a larger discrepancy is found (expected value $\epsilon_r = 2.5$). The origin of this discrepancy in the mixture is not known at this time. Interestingly, the capacitance image of Figure 2B also shows a large droplet composed of two phases with distinct values of permittivity (bottom right), one corresponding to silicone oil and the other to nitrobenzene. The boundary between these two phases can be clearly observed with an accuracy of about a micron, which corresponds to the pitch of the array.

Table 1 Parameters associated with the different emulsions²⁷

Solvent	ϵ_r (at 25 °C)
water	80.1
nitrobenzene	34.8
isopropanol	17.9
<i>o</i> -dichlorobenzene	9.9
chloroform	4.8
toluene	2.4

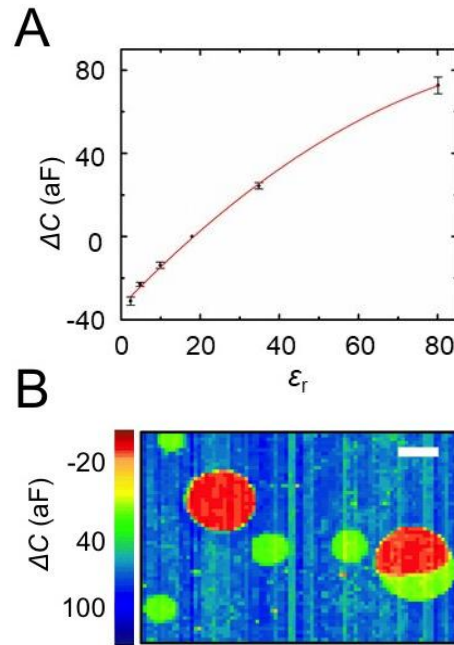


Figure 3 (A) Capacitance as a function of the relative dielectric constant of the medium. The red line is a guide to the eye. (B) Capacitance image of a chip incubated successively in a silicone oil and nitrobenzene emulsion. The scale bar represents 20 μm .

Dynamics of individual droplets. We can take advantage of the temporal resolution of the capacitance imaging (0.2 s) to observe the electrostatic interactions between the surface of the chip and the *o*DCB droplets. This is illustrated in Figure 4. Since the Si_3N_4 surface ($\sim 95\%$ of the total surface of the array) is negatively charged at pH 5.5 – 7 (isoelectric point 8)²⁸ and that the droplets do not instantly wet the surface, we conclude that the droplets are also negatively charged. This is in agreement with a value of zeta-potential of -53 mV measured on chlorobenzene in water droplets stabilized with a nonionic surfactant.²⁹

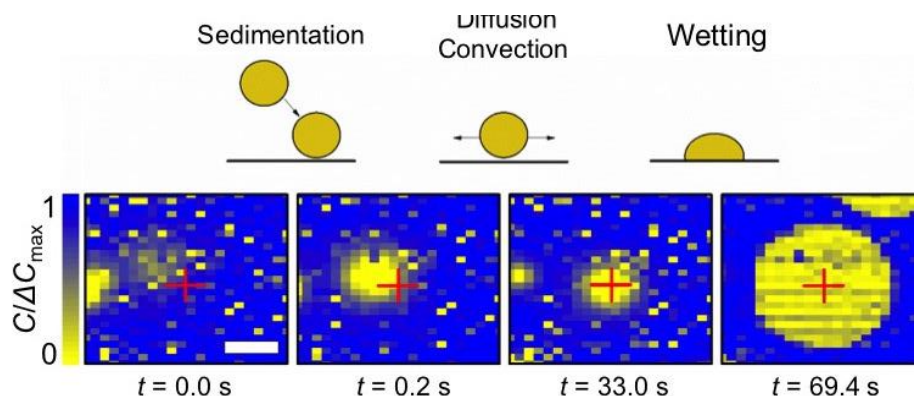


Figure 4. Illustration of the wetting dynamics. A droplet gradually approaches the surface of the array (first frame from the left), hovers and diffuses for some time above the surface (second and third frames) and eventually wets the array (right-most frame). The scale bar represents 3.3 μm .

While the rapid dynamics of the wetting event itself do not allow its detailed analysis, it is possible to monitor the droplets' movement before wetting. We used a particle tracking code (see Movie S2 in Supporting Information) to automatically find the position of the droplets in each frame and reconstitute their trajectories over an entire movie. Figure 4 shows typical frames in such a trajectory. The capacitance images display small droplets (less than 3 pixels) and larger ones comprised between 3 and 20 μm . The small droplets were not moving, while the movement of the larger droplets was sometimes caused by convection as evidenced by their quasi-linear trajectories and the linear dependence of the displacement with time. Convection was caused by the injection of the emulsion solution with a syringe and the subsequent elastic relaxation, inducing flow in the incubation chamber. Note also that some large droplets seemed not to move at all or stopped moving after a period of time. These droplets could be either pinned by a local defect on the array or move extremely slowly by sole diffusion.

The capacitance movies also reveal interactions between droplets. Frames taken with an oDCB emulsion containing 1 mM of tetrabutylammonium toluene-4-sulfonate are shown Figure 5. These consecutive images show five oDCB droplets that merge together to form one large droplet. Interestingly the first frame reveals that some oDCB droplets have high-capacitance inclusions inside the oDCB. The value of the capacitance, ca. 100 aF, corresponds to the permittivity of water. We thus conclude that some oDCB droplets contain smaller water droplets. Examination of Figure 5B provides an important clue about the formation of these inclusions. The large droplet formed after merging contains four large inclusions and a smaller one near its center. We observed on several events like the one shown Figure 5 that the number of inclusions roughly matches the number of merging droplets. We thus conclude that these inclusions are formed by trapping some water between the droplets when they are merging. As shown Figure 5B the resulting droplet adopts an intermediate shape between a hemispherical shape that minimizes its surface area and the original position of the parent-droplets. The examination of several frames reveals that several seconds are necessary for such a large droplet to finally reach a quasi-spherical shape as shown Figure 5C. Such slow dynamics are typical for capillary relaxation.³⁰

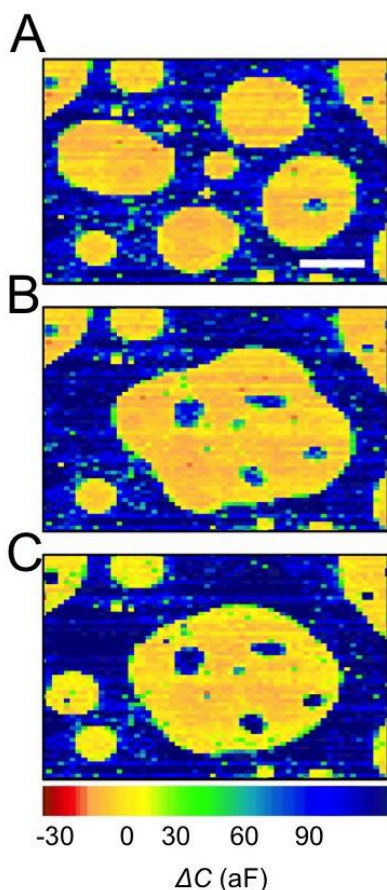


Figure 5. Capacitance images of *o*DCB droplets taken at 0 s (A), 0.2 s (B) and 5.1 s (C). The scale bar is the same for all images and represents 10 μm . The *o*DCB contains 1 mM of tetrabutylammonium toluene-4-sulfonate.

Electrochemical contact angle measurement. An interesting consequence of being able to spatially resolve an individual droplet before and after wetting is the possibility of determining its contact angle θ . Some advantages of measuring contact angles at the μm scale, which is difficult using optical methods, include the possibility to reveal local (μm) inhomogeneities of the surface, simultaneous measurements on many droplets, and completely excluding gravitational effects (droplet deformation under its own weight). Spatially resolved electrochemical techniques such as SECM could also be employed in theory to measure the contact angle. However this would require the use of sub-micron sized tips (fragile and prone to fooling), an extremely skilled operator and several hours per droplet.

To attempt to measure the contact angle, we followed the strategy presented Figure 6. The micrograph on the left shows a microdroplet of *o*DCB hovering at the surface of the array. At this stage the droplet did not wet the array yet and its shape was still spherical (sphere of radius r_0) as depicted on the schematic on the left. Once the droplet wetted the array the situation depicted on the right was obtained. The droplet still tends to keep a spherical curvature to minimize its surface but the radius r_{wet} is increased while its height h is reduced so that the total volume of the droplet is kept constant. The relation between θ , h and r_{wet} is given by (Supporting Information)

$$\theta = 2 \arctan \left(\frac{h}{r_{\text{wet}}} \right) \quad (1)$$

The value of r_{wet} can be directly measured from capacitance images. The radius of the droplet before spreading, r_0 , is deduced from numerical simulations of the capacitance image (Supporting Information). The value of h can then be calculated from r_0 and r_{wet} using equation S5 in the Supporting Information.

This procedure is illustrated for several droplets in Table 2. Unfortunately, a significant systematic uncertainty is introduced in practice by the determination of the radius before wetting, r_0 . Two independent numerical approaches were employed based on either the second moment of the capacitive signal or the projected area of the particle in the image (Supporting Information). Table 2 indicates that the first method systematically yields droplet radii that are smaller than those of the second method. The origin of this discrepancy is not known at this point. It is possible that some physical properties of the system are not captured by the simulations. For example Maxwell–Wagner–Sillars polarization, which enhances the dielectric response of multiphase systems at 50 MHz, could play a role.³¹

For comparison we also measured the contact angle of large oDCB droplets with a goniometer (Figure S6). The average contact angle measured on three different chips and droplets (three per chip) is $115 \pm 1^\circ$. The contact angle measured with the chip on 6 droplets is estimated at $122 \pm 9^\circ$ using the projected area method (Table 2). The results on large droplets (1 μL) thus appear compatible with those on microscopic droplets (< pL).

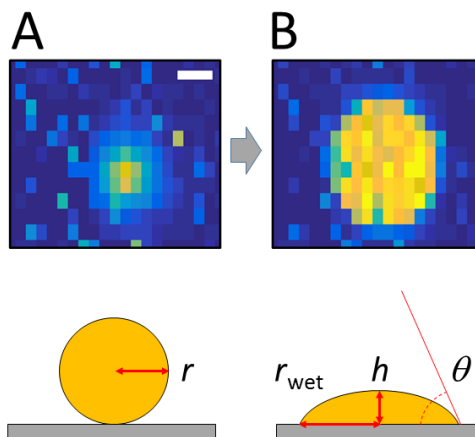


Figure 6. Capacitance image of an oDCB droplet before (A) and after (B) wetting the array. The schematics show the geometrical parameters that are obtain from the analysis of the CCD view. Scale bar represents 2.4 μm .

Table 2. Estimated contact angle of individual oDCB microdroplets from capacitance imaging

#	r_{wet} (μm)	Second moment method			Projected area method		
		r_{col} (μm)	h (μm)	θ	r_{col} (μm)	h (μm)	θ
1	2.1	3.6	6.6	145	2.2	3.4	117
2	2.4	4.2	7.7	145	3.1	5.3	131
3	3.0	4.8	8.7	142	3.8	6.4	130
4	4.0	6.9	12.6	145	4.8	8.0	127
5	5.8	7.7	13.2	133	5.7	8.5	112
6	5.9	8.1	14.1	134	5.9	8.9	113

Conclusions and outlook

Using oil micro-emulsions as prototypical systems, we have demonstrated several capabilities of the CMOS nanocapacitor array platform. These include the ability to image droplets of a few micrometers in size; detect individual sub-micrometer-sized droplets; obtain information on the composition of individual micro-droplets based on their physical parameters (in this case the dielectric constant); and observe the transport and wetting dynamics of droplets. By combining geometric information from before and after wetting, it is also in principle possible to infer the wetting angle of individual microdroplets, although additional work is needed to turn this approach into a quantitative assay. All of these observations are made possible by a combination of several strengths of nanocapacitor arrays, in particular the ability to reproducibly fabricate large arrays of nanoelectrodes, a high degree of integration that allows independently addressing these electrodes, and high-frequency operation. If mass-produced, these can serve as low-cost consumables for the characterization of a variety of hard-, soft- and biological-matter systems.

Acknowledgments. The authors thank H.A. Verhoeven for providing the holder and PDMS gaskets, M. Cirelli for the contact angle measurement and M.A. Smithers for the SEM measurement. We further gratefully acknowledge financial support from the European Research Council (ERC) under project number 278801.

Conflicts of interest. F.P.W declares the following financial interest. He is the (co-)inventor of multiple patents on which the CMOS nanocapacitor platform is based and is employed by NXP, where it was developed.

References

1. G. S. Kulkarni, W. Zang and Z. Zhong, *Acc. Chem. Res.*, 2016, **49**, 2578-2586.
2. F. Widdershoven, D. Van Steenwinckel, J. Uberfeld, T. Merelle, H. Suy, F. Jedema, R. Hoofman, C. Tak, A. Sedzin, B. Cobelens, E. Sterckx, R. van der Werf, K. Verheyden, M. Kengen, F. Swartjes, F. Frederix and I. Lee, in *2010 International Electron Devices Meeting - Technical Digest*, 2010.
3. C. Laborde, F. Pittino, H. A. Verhoeven, S. G. Lemay, L. Selmi, M. A. Jongsma and F. P. Widdershoven, *Nat Nano*, 2015, **10**, 791-795.
4. S. G. Lemay, C. Laborde, C. Renault, A. Cossettini, L. Selmi and F. P. Widdershoven, *Acc. Chem. Res.*, 2016, **49**, 2355-2362.
5. F. Widdershoven, A. Cossettini, C. Laborde, A. Bandiziol, P. P. v. Swinderen, S. G. Lemay and L. Selmi, *IEEE Transactions on Biomedical Circuits and Systems*, 2018, **12**, 1369-1382.
6. A. Cossettini, C. Laborde, D. Brandalise, F. Widdershoven, S. G. Lemay and L. Selmi, *IEEE Sensors Journal*, 2021, **21**, 4696-4704.
7. A. Cossettini, D. Brandalise, P. Palestri, A. Bertacchini, M. Ramponi, F. Widdershoven, L. Benini and L. Selmi, in *2020 IEEE Sensors*, 2020, pp. 1-4.
8. R. S. H. Lam and M. T. Nickerson, *Food Chem.*, 2013, **141**, 975-984.
9. J. Knowlton and S. Pearce, in *Handbook of Cosmetic Science & Technology*, Elsevier, 1993, DOI: <http://dx.doi.org/10.1016/B978-1-85617-197-7.50013-7>, pp. 95-118.
10. C. W. Pouton, *Advanced Drug Delivery Reviews*, 1997, **25**, 47-58.
11. P. K. Kilpatrick, *Energy & Fuels*, 2012, **26**, 4017-4026.
12. Y. Ouyang, R. S. Mansell and R. D. Rhue, *Critical Reviews in Environmental Science and Technology*, 1995, **25**, 269-290.
13. A. Imhof and D. J. Pine, *Nature*, 1997, **389**, 948-951.
14. D. J. McClements, *Food emulsions: principles, practices, and techniques*, CRC press, 2015.
15. J. E. Dick, C. Renault, B.-K. Kim and A. J. Bard, *Angew. Chem. Int. Ed.*, 2014, **53**, 11859-11862.
16. B.-K. Kim, A. Boika, J. Kim, J. E. Dick and A. J. Bard, *J. Am. Chem. Soc.*, 2014, **136**, 4849-4852.
17. B.-K. Kim, J. Kim and A. J. Bard, *J. Am. Chem. Soc.*, 2015, **137**, 2343-2349.
18. Y. Li, H. Deng, J. E. Dick and A. J. Bard, *Analytical Chemistry*, 2015, **87**, 11013-11021.
19. T. Kakiuchi, M. Iida, S.-i. Imabayashi and K. Niki, *Langmuir*, 2000, **16**, 5397-5401.
20. B. A. Ivarsson, P.-O. Hegg, K. I. Lundström and U. Jönsson, *Colloids and Surfaces*, 1985, **13**, 169-192.
21. P. Patil, M. Gorek, M. Folberth, A. Hartmann, S. Forgang, C. Fulda and K. Reinicke, *SPE Drilling & Completion - SPE DRILL COMPLETION*, 2010, **25**, 380-390.
22. W. Q. Yang, A. L. Stott, M. S. Beck and C. G. Xie, *Rev. Sci. Instrum.*, 1995, **66**, 4326-4332.
23. F. Pittino and L. Selmi, *Computer Methods in Applied Mechanics and Engineering*, 2014, **278**, 902-923.
24. P. Scarbolo, F. Pittino, M. Dalla Longa, A. Cossettini and L. Selmi, ENBIOS-1D Lab, DOI: 10.4231/D3Z02Z963.
25. A. Hoxha, P. Scarbolo, A. Cossettini and L. Selmi, ENBIOS-2D Lab, DOI: 10.4231/D3V11VM7D.
26. W. M. Haynes, *CRC handbook of chemistry and physics*, CRC press, 2014.
27. Engineering_ToolBox, Dielectric constants of liquids https://www.engineeringtoolbox.com/liquid-dielectric-constants-d_1263.html.
28. P. Greil, R. Nitzsche, H. Friedrich and W. Hermel, *J. Eur. Ceram. Soc.*, 1991, **7**, 353-359.
29. P. H. Elworthy, A. T. Florence and J. A. Rogers, *J. Colloid Interface Sci.*, 1971, **35**, 23-33.
30. V. V. Khatavkar, P. D. Anderson and H. E. H. Meijer, *Journal of Fluid Mechanics*, 2007, **572**, 367-387.
31. C. Grosse and A. V. Delgado, *Curr. Opin. Colloid Interface Sci.*, 2010, **15**, 145-159.