



HAL
open science

Expression Analysis of $\alpha 5$ Integrin Subunit Reveals Its Upregulation as a Negative Prognostic Biomarker for Glioblastoma

Nelly Etienne-Selloum, Julien Prades, Diana Bello-Roufai, Mathieu Boone, Henri Sevestre, Stéphanie Trudel, Pascal Caillet, Alexandre Coutte, Christine Desenclos, Jean-Marc Constans, et al.

► **To cite this version:**

Nelly Etienne-Selloum, Julien Prades, Diana Bello-Roufai, Mathieu Boone, Henri Sevestre, et al.. Expression Analysis of $\alpha 5$ Integrin Subunit Reveals Its Upregulation as a Negative Prognostic Biomarker for Glioblastoma. *Pharmaceuticals*, 2021, 14 (9), pp.882. 10.3390/ph14090882 . hal-03436842

HAL Id: hal-03436842

<https://hal.science/hal-03436842>

Submitted on 25 Nov 2021

HAL is a multi-disciplinary open access archive for the deposit and dissemination of scientific research documents, whether they are published or not. The documents may come from teaching and research institutions in France or abroad, or from public or private research centers.

L'archive ouverte pluridisciplinaire **HAL**, est destinée au dépôt et à la diffusion de documents scientifiques de niveau recherche, publiés ou non, émanant des établissements d'enseignement et de recherche français ou étrangers, des laboratoires publics ou privés.



Article

Expression Analysis of $\alpha 5$ Integrin Subunit Reveals Its Upregulation as a Negative Prognostic Biomarker for Glioblastoma

Nelly Etienne-Selloum ^{1,2,*}, Julien Prades ³, Diana Bello-Roufai ³, Mathieu Boone ³, Henri Sevestre ⁴, Stéphanie Trudel ⁵, Pascal Caillet ⁶, Alexandre Coutte ⁷, Christine Desenclos ⁸, Jean-Marc Constans ⁹, Sophie Martin ¹, Laurence Choulier ¹, Bruno Chauffert ³ and Monique Dontenwill ^{1,*}

- ¹ Laboratory of Bioimaging and Pathology, Faculty of Pharmacy, University of Strasbourg, UMR7021 CNRS, 67400 Illkirch, France; sophie.martin@unistra.fr (S.M.); laurence.choulier@unistra.fr (L.C.)
 - ² Service de Pharmacie, Institut de Cancérologie Strasbourg Europe, 67200 Strasbourg, France
 - ³ Service d'Oncologie Médicale, CHU Amiens-Picardie, 80000 Amiens, France; ju-prades@hotmail.fr (J.P.); bellodiana@yahoo.fr (D.B.-R.); Boone.Mathieu@chu-amiens.fr (M.B.); chauffert.bruno51@gmail.com (B.C.)
 - ⁴ Service d'Anatomie et Cytologie Pathologique, CHU Amiens-Picardie, 80000 Amiens, France; Sevestre.Henri@chu-amiens.fr
 - ⁵ Laboratoire d'Oncobiologie Moléculaire, CHU Amiens-Picardie, 80000 Amiens, France; trudel.s@chu-toulouse.fr
 - ⁶ Service Epidémiologie, Hygiène Hospitalière et Santé Publique, Registre du Cancer de la Somme, CHU Amiens-Picardie, 80000 Amiens, France; pascal.caillet@chu-nantes.fr
 - ⁷ Service de Radiothérapie, CHU Amiens-Picardie, 80000 Amiens, France; Coutte.Alexandre@chu-amiens.fr
 - ⁸ Service de Neurochirurgie, CHU Amiens-Picardie, 80000 Amiens, France; Desenclos.Christine@chu-amiens.fr
 - ⁹ Service de Radiologie et Imagerie Médicale, CHU Amiens-Picardie, 80000 Amiens, France; Constans.Jean-Marc@chu-amiens.fr
- * Correspondence: nelly.etienne-selloum@unistra.fr (N.E.-S.); monique.dontenwill@unistra.fr (M.D.); Tel.: +33-3-68-85-42-67 (M.D.)



Citation: Etienne-Selloum, N.; Prades, J.; Bello-Roufai, D.; Boone, M.; Sevestre, H.; Trudel, S.; Caillet, P.; Coutte, A.; Desenclos, C.; Constans, J.-M.; et al. Expression Analysis of $\alpha 5$ Integrin Subunit Reveals Its Upregulation as a Negative Prognostic Biomarker for Glioblastoma. *Pharmaceuticals* **2021**, *14*, 882. <https://doi.org/10.3390/ph14090882>

Academic Editor: Serge Mordon

Received: 28 July 2021

Accepted: 27 August 2021

Published: 30 August 2021

Publisher's Note: MDPI stays neutral with regard to jurisdictional claims in published maps and institutional affiliations.



Copyright: © 2021 by the authors. Licensee MDPI, Basel, Switzerland. This article is an open access article distributed under the terms and conditions of the Creative Commons Attribution (CC BY) license (<https://creativecommons.org/licenses/by/4.0/>).

Abstract: Integrin $\alpha 5\beta 1$ was suggested to be involved in glioblastoma (GBM) aggressiveness and treatment resistance through preclinical studies and genomic analysis in patients. However, further protein expression data are still required to confirm this hypothesis. In the present study, we investigated by immunofluorescence the expression of integrin $\alpha 5$ and its prognostic impact in a glioblastoma series of patients scheduled to undergo the Stupp protocol as first-line treatment for GBM. The integrin $\alpha 5$ protein expression level was estimated in each tumor by the mean fluorescence intensity (MFI) and allowed us to identify two subpopulations showing either a high or low expression level. The distribution of patients in both subpopulations was not significantly different according to age, gender, recursive partitioning analysis (RPA) prognostic score, molecular markers or surgical and medical treatment. A high integrin $\alpha 5$ protein expression level was associated with a high risk of recurrence (HR = 1.696, 95% CI 1.031–2.792, $p = 0.0377$) and reduced overall survival (OS), even more significant in patients who completed the Stupp protocol (median OS: 15.6 vs. 22.8 months; HR = 2.324; 95% CI 1.168–4.621, $p = 0.0162$). In multivariate analysis, a high integrin $\alpha 5$ protein expression level was confirmed as an independent prognostic factor in the subpopulation of patients who completed the temozolomide-based first-line treatment for predicting OS over age, extent of surgery, RPA score and O-6-methylguanine-DNA methyltransferase (MGMT) promoter methylation ($p = 0.029$). In summary, for the first time, our study validates that a high integrin $\alpha 5$ protein expression level is associated with poor prognosis in GBM and confirms its potential as a therapeutic target implicated in the Stupp protocol resistance.

Keywords: biomarker; glioblastoma; integrin $\alpha 5$; Stupp protocol resistance

1. Introduction

Advances in molecular characterization technologies allowed a better definition of biomarkers, which led to the 2016 update of the World Health Organization (WHO) clas-

sification of Tumors of the Central Nervous System (CNS) integrating both histological and molecular information. Glioblastoma (GBM), a grade IV diffuse glioma, belongs to the most refractory tumors to conventional or targeted therapies [1]. Histological hallmarks of GBM include frequent mitosis, pseudo-palisades, necrosis and neoangiogenesis [2]. At the level of molecular biomarkers, GBMs are defined first by an IDH1 wild-type status. In these tumors, a marked overall genomic profile heterogeneity led to the definition of four molecular subclasses, mesenchymal, pro-neural, neural and classical forms of GBM, with the mesenchymal one being the most aggressive [3]. The prognosis of GBM patients remains very poor and has been mainly improved by the application of the Stupp protocol (temozolomide-based concomitant radiochemotherapy followed by temozolomide adjuvant therapy), which has become the standard of care [4,5], and more recently by tumor treating fields (TTFields)/Optune, which is registered in the EU and the US [6], together with likely optimization of supportive care. Numerous clinical trials targeting aberrant GBM oncogenic signaling pathways have been mostly unsuccessful, and patient survival remains short (under 20 months) [7]. New treatments are urgently required, and the definition of GBM subpopulations is supposed to be better responders to the targeting of specific pathways.

Integrins are $\alpha\beta$ heterodimeric transmembrane proteins connecting environmental cues with cell behavior. They have remarkable dynamic properties and exist in multiple interconvertible forms, with remodeling in response to extracellular matrix (ECM) changes [8]. Integrin-mediated microenvironment sensing enables cells to adapt to stress situations by modulating cell adhesion, proliferation, survival, migration and differentiation. Integrins were initially thought to only be involved in adhesion, but they are now recognized as signaling receptors involved in numerous intracellular pathways. These pathways and the corresponding cell outcomes are critically deregulated in cancer cells. Integrin and ECM expression patterns can be highly altered in cancer cells, and integrins have been shown to strongly contribute to tumor growth and resistance to treatment [9–11]. Although expressed on tumor cells, several integrins are also overexpressed in tumor neovessels but poorly expressed in surrounding normal vessels, supporting a role as anti-angiogenic targets [12]. Many preclinical data support the ability of integrin antagonists to disrupt integrin signaling pathways, allowing the inhibition of angiogenesis and/or tumor growth and sensitization to treatments. The family of RGD integrins (recognizing the arginine–glycine–aspartate (RGD) motif of fibronectin, vitronectin, osteopontin etc.) is the most studied in cancer [13] and comprises among others $\alpha v\beta 3/\beta 5/\beta 6/\beta 8$ and $\alpha 5\beta 1$ integrins. Integrin $\alpha v\beta 3$ was the lead target in GBM due to its preclinically supported implications in tumor growth and neoangiogenesis. Its antagonist cilengitide was the first integrin inhibitor reaching a phase III clinical trial, called CENTRIC, but failed to show any improvement in progression-free survival (PFS) and overall survival (OS) in a patient population selected on the basis of a methylated MGMT (O-6-methylguanine-DNA methyltransferase) promoter, the well-established predictive biomarker of temozolomide [14]. A summary of integrin expression in GBM has recently been proposed [15], which includes the relationships between The Cancer Genome Atlas (TCGA) Affymetrix mRNA data and patient OS. Importantly, a group of 184 patients with newly diagnosed primary GBM treated with the standard temozolomide-based radiochemotherapy (Stupp protocol) was included in the study. The results of this analysis pointed out the impact of mRNA overexpression of ITGB1, ITGB3, ITGA5, ITGAV and ITGA3 integrin genes on the patient OS decrease, confirming previous results [10,16–18]. In addition, another study identified, in the same patient population, ITGB8 having similar characteristics [19].

Even if those evaluations at the genomic level attribute a role to integrins as therapeutic targets in GBM, very sparse characterizations of these integrin expressions at the protein level can be found in the literature. Several decades ago, $\alpha v\beta 3$ integrins and their preferred ligand vitronectin were proposed to be overexpressed in GBM tissues but in small cohorts of patients, with 5 to 12 tumors of grade IV compared to about 10 tumors of grade II or III [16,20,21]. Then, works on human glioma explants [22] and patient

paraffin-embedded specimens [23] proposed that $\alpha 5\beta 1$, $\alpha v\beta 5$ and $\beta 8$ integrins were the predominantly over-expressed subtypes, while $\alpha v\beta 3$ appeared in a much lower number of cases and cells [24]. Interestingly, expression analysis using rabbit monoclonal antibodies against αv -series integrins [25] revealed that although $\alpha v\beta 3$, $\alpha v\beta 5$ and $\alpha v\beta 8$ integrin proteins are all overexpressed in GBM relative to the lower grades, only the $\alpha v\beta 3$ integrin had negative prognostic significance in a cohort of about 50 patients [26], which was confirmed in another study [27]. More recently, $\alpha 3$ and $\beta 5$ integrin protein expression were associated with tumor grade and patient survival, respectively, in a cohort of 68 [18] and 78 [28] WHO grade III and IV patients.

Although the integrin $\alpha 5\beta 1$ has been suggested to be implicated in GBM aggressiveness and treatment resistance through preclinical studies [17,29] and evaluation of the genomic data bank [17,30], no data are available to confirm this hypothesis at the protein level. In glioma cell lines, we demonstrated that $\alpha 5\beta 1$ integrin antagonists not only inhibit cell migration but also induce sensitization to chemotherapies. This occurs in part by alleviating the inhibition caused by the $\alpha 5\beta 1$ integrin on p53 pathways [17].

In order to confirm the impact of $\alpha 5\beta 1$ integrin overexpression on the clinical outcome of GBM patients, we conducted an analysis by immunofluorescence of the expression of the $\alpha 5$ subunit (which only associates with the $\beta 1$ subunit) in a multi-center cohort of 95 patients and correlated the data with the clinical parameters of those patients. Importantly, only the patients for whom treatment with the standard protocol (Stupp protocol [4,5]) was planned were included in this study. We found that an overexpression at the protein level of this integrin was statistically associated with a worse PFS and OS as it was the case for its mRNA evaluation in the TCGA data bank. Furthermore, the clinical impact of integrin overexpression was even more significant if patients were able to receive the full course of temozolomide treatment under the Stupp protocol.

2. Results

2.1. Patient Demographics and Tumor Information

To quantitatively assess integrin $\alpha 5$ expression in glioblastoma using immunofluorescence, a large retrospective cohort of glioblastoma tissues was obtained and annotated with demographic, molecular, clinical and follow-up information (Table 1). A total of 95 patients, consisting of 34 women (36%) and 61 men (64%) with a median age of 58 years at the time of diagnosis (minimum age, 26 years; maximum age, 70 years), were evaluated in this study (see Figure 1 for patient selection). MGMT promoter (methylated or un-methylated) and P53 status were investigated when the appropriate material was available at the time of diagnosis. Only 18 tumors were usable for the detection of the P53 antigen, indicating gene mutation in 13 cases when more than 10% of cells were positively stained by immunohistochemistry (standard procedure of hospital pathology laboratory). Tumor MGMT promoter methylation status was obtained from the medical records of 59 patients, showing that almost half of these tumors displayed an un-methylated MGMT promoter (28/59).

Table 1. Clinicopathological features of the 95 GBM (glioblastoma) patients, comparing low integrin $\alpha 5$ and high integrin $\alpha 5$ groups according to median expression level (median of MMFI) as the cut-off threshold.

Clinicopathological Features	Total No. of Patients	With	With	<i>p</i> -Value *
		Low $\alpha 5$	High $\alpha 5$	
		Expression	Expression	
n	95	47	48	
Age, n (%)				
≥60	36 (38)	19 (40)	17 (35)	0.6752
<60	59 (62)	28 (60)	31 (65)	

Table 1. Cont.

Clinicopathological Features	Total No. of Patients	With	With	<i>p</i> -Value *
		Low α 5 Expression	High α 5 Expression	
Gender, n (%)				
Male	61 (64)	26 (55)	35 (73)	0.0891
Female	34 (36)	21 (45)	13 (27)	
Resection degree, n (%)				
Biopsy	20 (21)	6 (13)	14 (29)	
Partial resection	34 (36)	18 (38)	16 (33)	0.1410
Macroscopic resection	41 (43)	23 (49)	18 (38)	
RPA score, n (%)				
<V	37 (39)	17 (36)	20 (42)	
\geq V	37 (39)	19 (40,5)	18 (37)	0.8575
Unknown	21 (22)	11 (23,5)	10 (21)	
MGMT promoter status, n (%)				
Methylated	31 (33)	17 (36)	14 (29)	
Un-methylated	28 (29)	14 (30)	14 (29)	0.6962
Unknown	36 (38)	16 (34)	20 (42)	
P53 gene status, n (%)				
Mutated (antigen detected in >10% cells)	13 (14)	3 (6)	10 (21)	
Wild-type (<10% cells)	5 (5)	2 (4)	3 (6)	0.0912
Unknown	77 (81)	42 (90)	35 (73)	
Stupp protocol, n (%)				
Completed	58 (61)	28 (60)	30 (63)	
Un-completed	24 (25,5)	12 (25)	13 (27)	0.4670
None	4 (4)	1 (2)	2 (4)	
Unknown	9 (9,5)	6 (13)	3 (6)	
Recurrence treatment, n (%)				
None	35 (37)	14 (30)	21 (44)	
Second-line treatment	40 (42)	19 (42)	20 (42)	
-Chemotherapy	30 (32)	14 (30)	16 (33)	0.2103
-Bevacizumab	23 (24)	9 (19)	14 (29)	
Unknown or NA	20 (21)	14 (30)	7 (15)	
α 5 expression level (A.U.) Mean \pm SE	320 \pm 17	213 \pm 4	425 \pm 28	<i>p</i> < 0.0001

MMFI: Mean of mean fluorescence intensity; RPA: recursive partitioning analysis; MGMT: O-6-methylguanine-DNA methyltransferase; TMZ: temozolomide; BEV: bevacizumab; AU: arbitrary unit; NA: not applicable; SE: standard error *. Chi-square test was used to evaluate independency between clinico-pathological features and integrin α 5 expression level, and Mann-Whitney test was used to compare expression level (MMFI) of integrin α 5 between low- and high-expression subgroups.

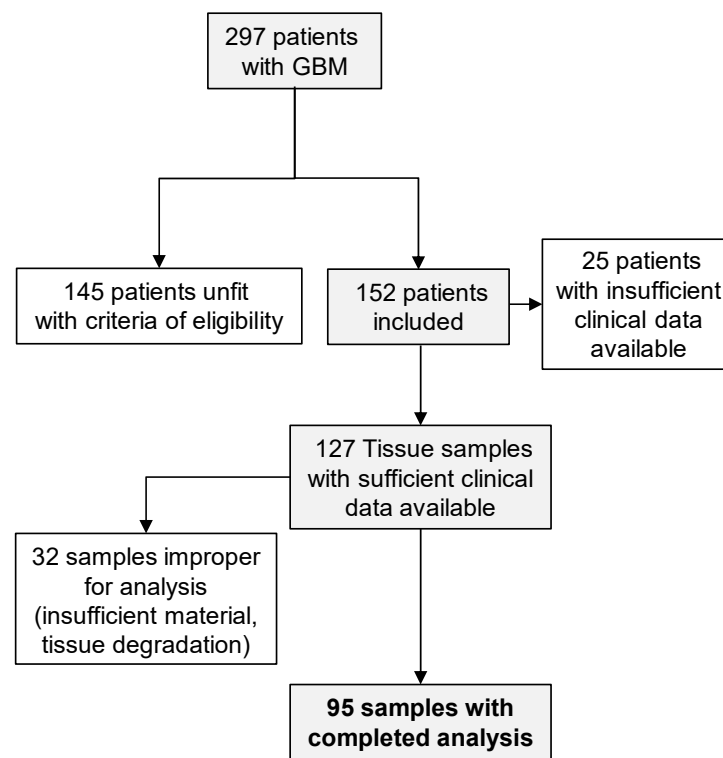


Figure 1. Schematic representation of tumor selection for immunohistofluorescence analysis. Glioblastoma (GBM); inclusion criteria: age between 18 and 70 years, primary glioblastoma and initially programmed for the standard Stupp protocol treatment; exclusion criteria: enrolled in clinical trial and non-standard treatment, including bevacizumab extensively off-label used in the study period in France.

2.2. Integrin $\alpha 5$ Protein Expression

Immunohistofluorescence staining of each paraffin-embedded tumor sample was applied to detect the integrin $\alpha 5$ protein by using AB1928 as the primary antibody. AB1928 antibody specificity (positive control) was assessed by the immunostaining of GBM-PDX tissues expressing high (TC7) and low (TC22) levels of the $\alpha 5$ integrin (Figure 2a) as shown previously [31]. The differential expression level of the $\alpha 5$ integrin in TC7 and TC22 xenografts was confirmed by Western blot analysis (Figure 2b). Secondary antibody specificity was checked by the very low fluorescence intensity (mean of mean fluorescence intensity, MMFI = 28 ± 5 A.U. from three independent tumors) observed in the immunostaining of the tumor sample in absence of the primary antibody (negative control). Nuclei counterstaining with DAPI allowed us to select several fields per tumor with homogeneous tissue distribution for further analysis (Figure 3a). The mean fluorescence intensity (MFI), which takes advantage of the independent assessment of the expression level from a pathologist reading, was determined for each sample. Interestingly, the median coefficient of variation for MFI is 44% (min 12%; max 103%), showing strong intra-tumoral heterogeneity in $\alpha 5$ integrin expression in GBM. To observe the relationship between integrin $\alpha 5$ expression and patient outcome in a similar manner to that used for immunohistochemical data, but also in a rigorous manner for continuous data, we needed to define the optimal cut-off threshold. In absence of a clear overexpression of integrin $\alpha 5$ in a subpopulation, we decided to use the median of MMFI of the all cohort (275 A.U.) as a cut-off to distinguish two groups characterized by low (MMFI = 213 ± 4 A.U.) and high (MMFI = 425 ± 28 A.U.) integrin $\alpha 5$ expression levels (Figure 3b). A Mann–Whitney test indicated that MMFI regarding integrin $\alpha 5$ protein expression is statistically significantly different ($p < 0.0001$) between integrin $\alpha 5$ low- and high-expression groups. Representative images of the MMFI of both subpopulations are presented in Figure 3a. As indicated

in Table 1, patient demographics (age < or > 60, gender) and molecular characteristics of the tumor (MGMT promoter and P53 gene status), as well as resection degree and RPA prognostic factor, are not differently distributed ($p > 0.05$) between both subpopulations with low and high integrin $\alpha 5$ protein expression levels.

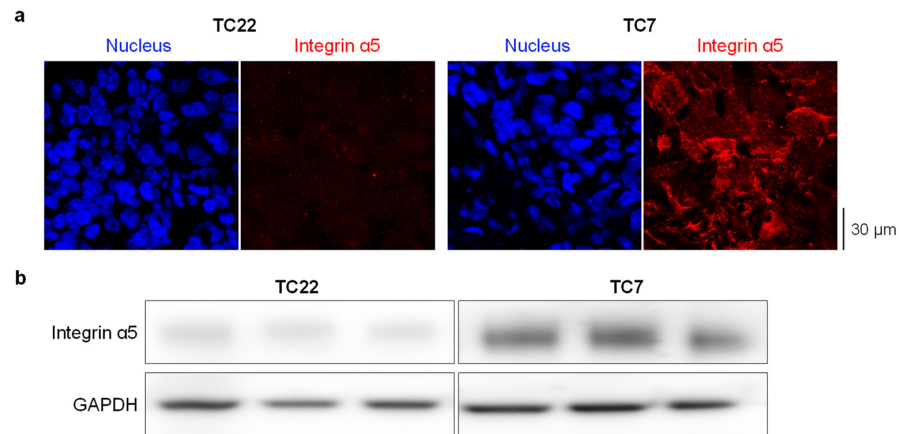


Figure 2. Immunofluorescence (a) and Western blot (b) on GBM-PDX tumor TC7 and TC22 presenting high and low levels of $\alpha 5$ integrin, respectively. In immunofluorescence, detection of integrin $\alpha 5$ (in red) was realized with AB1928 antibody followed by a secondary antibody coupled to Alexa Fluor[®] 647. DAPI staining is shown in blue. One representative image per condition is shown (magnification $\times 63$). In Western blot, detection of integrin $\alpha 5$ was realized in 3 xenografts from 3 different mice with H104 antibody. Anti-GAPDH antibody was used as a loading control antibody.

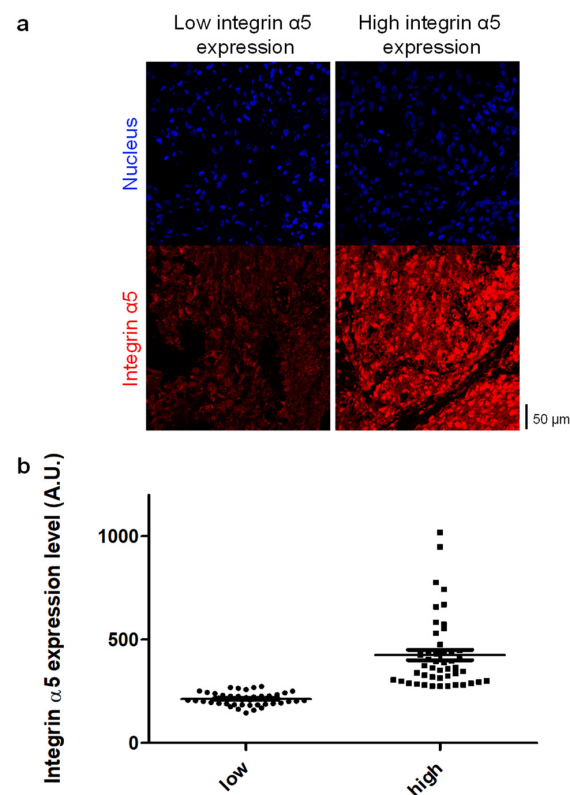


Figure 3. Quantification of integrin $\alpha 5$ protein expression level in glioblastoma. (a) Representative cases of low and high integrin $\alpha 5$ immunostaining (magnification $\times 40$) and (b) distribution of cumulative data for integrin $\alpha 5$ expression level (MMFI expressed as arbitrary units/A.U.) in glioblastoma samples. The median of MMFI of the all cohort (275 A.U.) was used as a cut-off to distinguish 2 groups characterized by low and high integrin $\alpha 5$ expression levels.

2.3. Treatment

Surgical and medical treatments are summarized in Table 1. Most of the patients underwent surgical resection of their lesion, either macroscopic (43%) or partial (36%). For the remaining patients (21%), when a surgical procedure was not indicated, tumor material was obtained by biopsy only. All the patients were selected according to inclusion criteria, including the intention of treatment by temozolomide-based radiochemotherapy followed by temozolomide adjuvant treatment (Stupp protocol) as a first line of treatment following surgery or biopsy. However, in the overall cohort, the Stupp protocol was completed in full in only 58 patients (61%) and partially completed in 24 others (25%), and, for the remaining patients, first-line treatment was either unknown (9 patients) or absent (4 patients), as indicated in the medical records. Although recurrence of the disease is almost inevitable, there is no consensus for treatment of recurrent GBM. Thirty-five patients did not receive any further treatment at recurrence (only supportive care), and data were missing for 20 other patients. The remaining patients received chemotherapy (32%) and/or bevacizumab (24%) as the second line of treatment. There were no statistically significant differences observed between the two groups (with low and high integrin $\alpha 5$ expression levels) according to the extent of surgery ($p = 0.1410$), the completion of the Stupp protocol ($p = 0.4670$) or the treatment choice at recurrence ($p = 0.2103$, Table 1).

2.4. Survival

With a mean follow-up period of 19.6 months (95% CI, 16.7–22.5) for the 95 patients analyzed in this study, the median progression-free survival (PFS) time was 10.1 months and the median overall survival (OS) time was 17.8 months. To assess the correlation between integrin $\alpha 5$ protein expression and the clinical characteristics in GBM, we performed univariate and multivariate Cox regression analyses. Tables 2 and 3 present the PFS and OS results based on the Cox proportional hazard model. P53 gene status, available only for a few patients, did not show any difference in survival. Differences in PFS were found in the univariate analysis for age (worst prognosis if >60 years old in the 76 patients analyzed, HR = 1.827, 95% CI 1.040–3.210, $p = 0.0359$); for MGMT promoter status when these data were available ($n = 47$, lower PFS if un-methylated, HR = 2.194, 95% CI 1.135–4.243, $p = 0.0195$); and for integrin $\alpha 5$ protein expression level, with high expression associated with a high risk of recurrence in the all cohort (HR = 1.696, 95% CI 1.031–2.792, $p = 0.0377$). The extent of surgical resection only had a significant impact on OS ($p < 0.001$) and not PFS ($p = 0.3289$), with better prognosis associated with partial or macroscopic resection versus biopsy. The same results were obtained with RPA class <V (recursive partitioning analysis, taking into account age, surgery extent and Karnofsky performance status; $p = 0.1596$ for PFS and $p = 0.0120$ for OS). The benefit of a methylated MGMT promoter in the tumor for patient survival was also observed in OS when data were available (59/95 patients, HR = 2.217 un-methylated vs. methylated, 95% CI 1.031–2.792, $p = 0.0377$). A high integrin $\alpha 5$ protein expression level was associated with a decreased OS in the all cohort (median survival: 15.6 vs. 19.2 months, Figure 4a) but not significantly ($p = 0.0508$). However, univariate subgroup analysis based on first-line treatment indicated that the difference in survival based on integrin $\alpha 5$ protein expression was even more significant if the Stupp protocol [4,5] was completed (temozolomide-based radiochemotherapy plus temozolomide adjuvant treatment, median survival: 15.6 vs. 22.8 months; HR = 2.324; 95% CI 1.168–4.621, $p = 0.0162$, Figure 4c). All variables with $p < 0.05$ observed in the univariate survival analysis (age, resection degree, RPA, MGMT promoter status and integrin $\alpha 5$ protein expression level) were included in the multivariate analysis. Methylation of the MGMT promoter was the only significant prognostic factor for PFS in both the all cohort (HR = 4.71; 95% CI 1.43–8.93, $p = 0.0065$) and the subgroup of patients treated by the Stupp protocol (completed or not, HR = 4.46; 95% CI 1.68–11.84, $p = 0.0027$). The benefit of MGMT promoter methylation was confirmed for OS in every patient and even more significantly in Stupp-treated patients (median survival: 15.6 vs. 25.7 months, HR = 6.95; 95% CI 2.45–19.72, $p = 0.0002$). In the multivariate analysis, a high expression level for integrin $\alpha 5$

was identified as an independent prognostic factor for OS but only in the subpopulation of patients who completed the standard first-line treatment, the Stupp protocol (HR = 4.77; 95% CI 1.17–19.44, $p = 0.029$, Figure 4c).

Table 2. Univariate analysis of factors associated with survival and progression.

Variables	PFS				OS			
	<i>n</i>	HR	95% CI	<i>p</i> *	<i>n</i>	HR	95% CI	<i>p</i> *
Age								
≥60 years vs. <60 years	76	1.827	1.040–3.210	0.0359	95	1.989	1.195–3.308	0.0093
Resection degree	76			0.3289	95			<0.0001
Biopsy vs. Partial	39	1.521	0.646–3.579	0.3367	54	7.764	3.344–18.170	<0.0001
Biopsy vs. Macroscopic	47	2.113	0.848–5.265	0.1084	61	9.925	3.900–21.820	<0.0001
Partial vs. Macroscopic	66	1.150	0.682–1.940	0.5995	75	1	0.598–1.672	0.9996
RPA	76			0.1596	95			0.0120
≥V vs. <V	59	1.560	0.868–2.803	0.1367	74	2.106	1.230–3.607	0.0066
P53 gene status	76			0.7537	95			0.8356
Mutated vs. Non Mutated	15	0.597	0.151–2.360	0.4622	18	0.597	0.128–2.784	0.5118
MGMT promoter status	76			0.0834	95			0.0690
Un-Methylated vs. Methylated (All)	47	2.194	1.135–4.243	0.0195	59	2.217	1.184–4.151	0.0129
Un-Methylated vs. Methylated (Stupp)	45	2.547	1.292–5.021	0.0069	53	2.497	1.278–4.880	0.0074
Un-Methylated vs. Methylated (Completed Stupp)	31	2.083	0.926–4.682	0.0759	35	2.062	0.872–4.872	0.0992
Integrin α5								
High vs. Low expression (All)	76	1.696	1.031–2.792	0.0377	95	1.598	0.998–2.558	0.0508
High vs. Low expression (Stupp)	72	1.771	1.055–2.975	0.0307	83	1.805	1.106–3.096	0.0191
High vs. Low expression (Completed Stupp)	53	1.635	0.879–3.040	0.1206	58	2.324	1.168–4.621	0.0162

PFS: progression-free survival; OS: overall survival; HR: hazard ratio; 95% CI: 95% confidence interval; y: year; RPA: recursive partitioning analysis; MGMT: O-6-methylguanine-DNA methyltransferase. * log-rank test, $p < 0.05$ was considered as significant.

Table 3. Multivariate Cox regression analysis for survival.

Variables	PFS			OS		
	HR	95% CI	<i>p</i> *	HR	95% CI	<i>p</i> *
All patients						
Age (≥60 years vs. <60 years)	1.38	0.51–3.72	0.52	1.35	0.54–3.33	0.52
Resection degree (low vs. high)	2.03	0.95–4.35	0.0683	3.72	1.60–8.64	0.0023
RPA (≥V vs. <V)	1.97	0.80–4.86	0.14	1.43	0.61–3.35	0.42
MGMT (Un-Methylated vs. Methylated)	4.71	1.43–8.93	0.0065	4.71	1.85–11.90	0.0011
Integrin α5 (high vs. low)	1.28	0.57–2.88	0.55	1.11	0.51–2.40	0.79
Stupp						
Age (≥60 years vs. <60 years)	1.28	0.45–3.69	0.64	1.31	0.48–3.60	0.58
Resection degree (low vs. high)	1.87	0.86–4.07	0.12	3.73	1.52–9.16	0.0040
RPA (≥V vs. <V)	1.83	0.69–4.88	0.22	1.71	0.45–3.07	0.75
MGMT (Un-Methylated vs. Methylated)	4.46	1.68–11.84	0.0027	6.95	2.45–19.72	0.0002
Integrin α5 (high vs. low)	1.28	0.55–3.01	0.57	1.22	0.51–2.91	0.66
Completed Stupp						
Age (≥60 years vs. <60 years)	2.48	0.61–10.09	0.20	2.20	0.53–9.09	0.27
Resection degree (low vs. high)	1.41	0.54–3.68	0.48	2.04	0.60–6.90	0.25
RPA (≥V vs. <V)	1.16	0.31–4.28	0.83	3.12	0.73–13.25	0.12
MGMT (Un-Methylated vs. Methylated)	2.58	0.76–8.76	0.128	4.27	1.08–16.83	0.038
Integrin α5 (high vs. low)	2.09	0.63–6.90	0.22	4.77	1.17–19.44	0.029

PFS: progression-free survival; OS: overall survival; HR: hazard ratio; 95% CI: 95% confidence interval; y: year; RPA: recursive partitioning analysis; MGMT: O-6-methylguanine-DNA methyltransferase. * multivariate COX regression analysis, $p < 0.05$ was considered as significant.

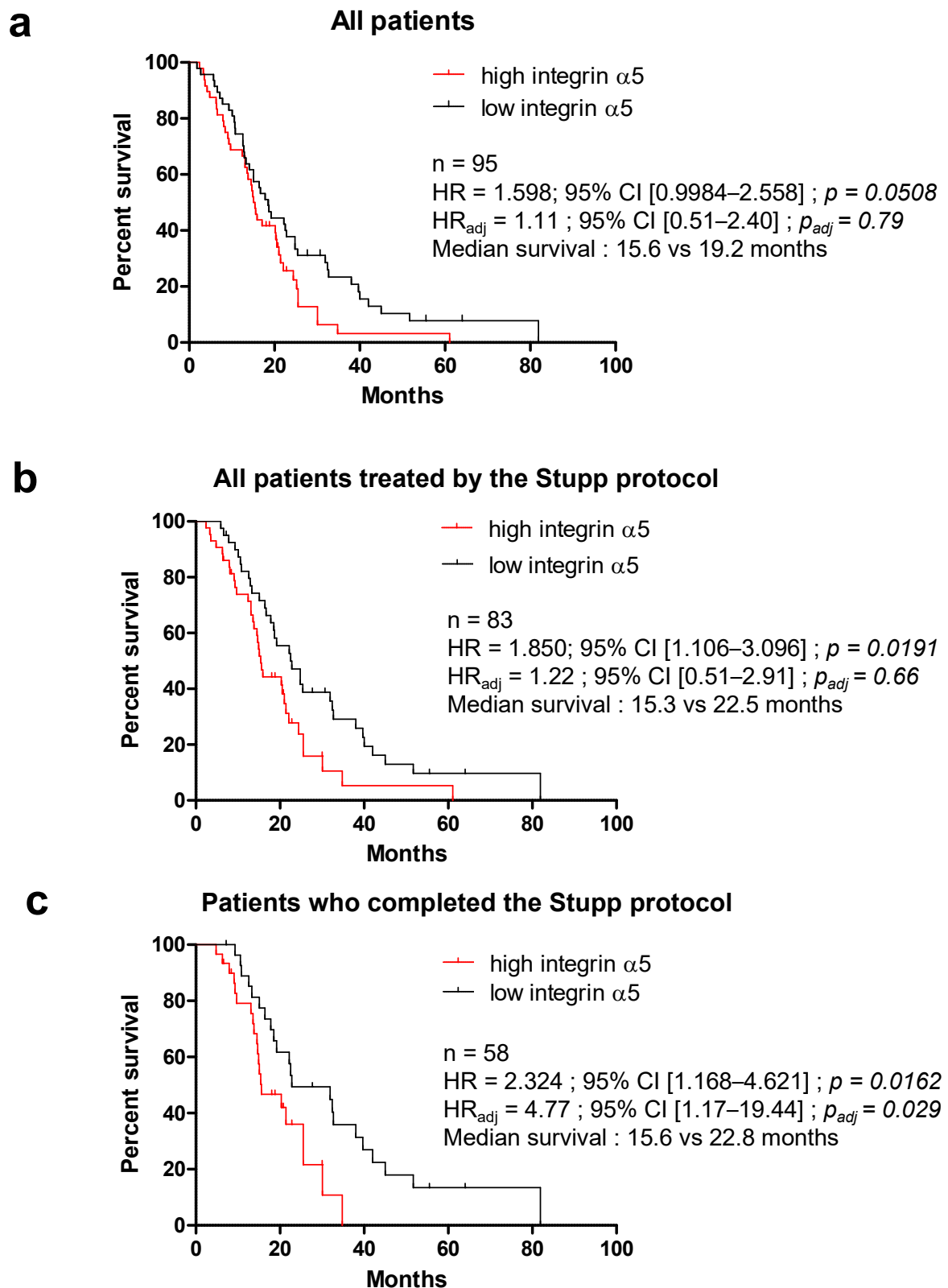


Figure 4. Overall survival (OS) estimated according to the expression level of integrin $\alpha 5$ and the completion of the Stupp protocol. Kaplan–Meier survival analysis for high and low expression levels of integrin $\alpha 5$ in the all cohort (a) in patients treated by the Stupp protocol (b) and in patients who completed the Stupp protocol (c); HR: hazard ratio in univariate analysis; HR_{adj} : adjusted hazard ratio in multivariate analysis; CI: confidence interval. Survivals were compared using the log-rank (Mantel–Cox) test. p -values < 0.05 were considered as significant.

3. Discussion

Several factors are attributed to GBM prognosis, depending on clinical and biological patient parameters, such as age and extent of resection, or based on the characteristics of the tumor at the molecular level, such as IDH mutation or MGMT promoter methylation. According to our results and the data available, the cohort we examined was consistent with previous results [32–34].

Although several integrins are described as pertinent therapeutic targets in GBM, the first clinical trial with an $\alpha v \beta 3$ integrin antagonist failed [14,35]. Other integrins may be at the forefront for fighting GBM, but their real implication in the clinical outcome of patients has to be confirmed before the proposal of new targeted therapies. We and others proposed the $\alpha 5 \beta 1$ integrin as an additional player in the aggressiveness of GBM and showed that a high level of ITGA5 mRNA correlated with a worse outcome of patients [17,30]. Our previous preclinical results also pointed to its role in tumor growth and resistance to glioma therapies [17,36]. We show here for the first time that the protein overexpression of the $\alpha 5$ integrin subunit in the tumor cells of GBM is linked to worse PFS and OS of patients, especially those submitted to the standard Stupp protocol. This result is the first step to confirm that targeting the $\alpha 5 \beta 1$ integrin may be of interest in the field of GBM.

Other arguments are already available based on clinical sample investigations. The ITGA5 gene is found in the signature of the mesenchymal subclass of GBM [3,15], considered as the most aggressive and resistant phenotype until now. Hence, single cell-derived clonal analysis described a drug and radiation resistance phenotype for cells overexpressing the $\alpha 5 \beta 1$ integrin [37,38]. In fact, we observed in our series of samples that some of them had a high index of intra-tumoral heterogeneity with areas of intense staining close to unstained regions, as indicated by a high coefficient of variation of Mean Fluorescence Intensity (MFI). The fluorescent staining intensity used for the present study consists of a mean of the different area intensities, which may underestimate the final analysis. Spatial (perivascular vs. perinecrotic niches, tumor core vs. tumor edge) and temporal (primary and recurrent tumors) molecular and functional heterogeneity of a given tumor is nowadays acknowledged to be part of clinical trial failures [39]. Obviously, intra- or inter-tumoral heterogeneity of the $\alpha 5 \beta 1$ integrin or other integrin expression may have implications in the failure of targeted therapies in unselected populations of patients.

As an example, in the CENTRIC phase III clinical trial, cilengitide (an $\alpha v \beta 3 / \beta 5$ specific inhibitor), administered in combination with the Stupp protocol in GBM with a methylated MGMT promoter, failed to show improved outcomes, although previous phase II studies had encouraging results [14]. Similarly, the CORE phase II clinical trial, with cilengitide in patients with unmethylated MGMT GBM, showed negative results [35]. Interestingly, evaluation of the $\alpha v \beta 3$, $\alpha v \beta 5$ and $\alpha v \beta 8$ integrin expressions in the tumor tissues from both trials led to the conclusion that only overexpression of $\alpha v \beta 3$ in tumor cells (and not in the endothelial cells) in the CORE trial was predictive of the beneficial effect of cilengitide [40]. Moreover, a recent elegant study revealed that the overexpression of the $\beta 3$ integrin subunit in GBM may be coupled with an addiction of the tumor to glucose through Glut3 to render the tumor sensitive to cilengitide [41]. Whether overexpression of the $\alpha 5 \beta 1$ integrin is coupled to other signaling pathways that may be targeted simultaneously remains to be determined. Work is in progress in our laboratory to determine synthetic lethality partners of this integrin, but data from the literature can already point to some examples [42–46].

Glioblastoma oncogenesis has long been linked to epidermal growth factor receptor (EGFR) gene amplification, mutations and constitutive activation. Nevertheless, nimotuzumab targeting EGFR in a phase III clinical trial (NCT00753246) proved unable to improve PFS and OS when administered with the standard Stupp protocol [47]. Interestingly, crosstalk between integrins and growth factor receptors, including EGFR, has been largely described in several solid tumors, including glioma [42]. Cooperation between $\beta 1$ integrins and EGFR led to resistance to EGFR-targeted therapies through different molecular pathways [42,43]. It is thus tempting to propose that the $\alpha 5 \beta 1$ integrin and EGFR inhibitors may be included in a combination protocol for selected patients.

Angiogenesis is a key feature of GBM, and its associated signaling pathways rapidly became potential targets for therapy [48]. The $\alpha\beta3$ integrin was described as a marker of tumor neoangiogenesis and cilengitide proposed as an anti-angiogenic agent [49]. This concept was controversial [50], and overexpression of the $\alpha\beta3$ integrin on tumor vessels did not correlate with the improved effects of cilengitide [14,35]. Conversely, the $\alpha5\beta1$ integrin behaves as such a marker without ambiguity [51,52]. Unfortunately, no clinical data are available to check the anti-angiogenic effects of $\alpha5\beta1$ inhibitors. The prominent molecule activating tumor angiogenesis is VEGF [53]. Bevacizumab, targeting circulating VEGF, was evaluated in two phase III clinical trials, AVAGLIO and RTOG-0825. Both trials gave similar results, showing an improvement in PFS not accompanied by an improvement in OS [54,55]. Recently, analysis of the OS of patients treated with bevacizumab in the GBM-IDH wild-type TCGA cohort indicated a significant improvement when VEGFA was overexpressed [56]. Unfortunately, the response to bevacizumab is only transient and recurrence due to resistance occurs [48]. Microarray transcriptional analysis of paired naïve and recurrent tumors revealed two different populations of resistant tumors. One of them exhibited enhanced expression of the $\alpha5$ integrin and its ligand fibronectin [44]. In line with this, targeting the $\beta1$ integrin (with which $\alpha5$ integrin dimerizes) has been proposed to circumvent resistance to bevacizumab in GBM [45], either as a monotherapy for naïve tumors naturally resistant to bevacizumab or combined with bevacizumab to reduce the risk of acquired resistance [46]. From this last example, our immunological analysis of $\alpha5$ integrin expression may be the basis of a combined bevacizumab– $\alpha5$ integrin inhibitor proposal for tumor patients highly expressing VEGF/ $\alpha5$ integrin.

Heterogeneity of GBM at the molecular level highlights the need for patient selection to identify a subgroup of patients with true target-specific dependency [3]. Interestingly, post hoc evaluations of subgroups in the above trials tend to confirm that evaluation of not only the target expression at the protein level but also its associated or cross-reacting signaling pathways must be taken into consideration [40,44]. Concerning the $\alpha5\beta1$ integrin in GBM, some lines of approach may be considered for future investigations. Firstly, it may be suggested that a prominent role of this integrin will be found in mesenchymal GBM inasmuch as probes of a correlation between mRNA and protein levels will be given in this subclass of tumors; secondly, extrapolation from our preclinical results on the negative relationships between the integrin and p53 signaling may indicate that blocking the integrin in a p53 WT background in addition with reactivation of p53 signaling (as for example with mdm2 inhibitors) will be more effective [17,36]. As shown in the examples above, other combined therapies may be useful to fight GBM inasmuch as partners are identified on the targeted tumors.

Our results support the integrin $\alpha5\beta1$ as a pertinent target in GBM to circumvent standard Stupp protocol resistance, but further work is needed before proposing clinical trials in order to determine if a selected subpopulation of patients may be suitable for them. Interestingly, phase II clinical trials have already been carried out with specific anti- $\alpha5\beta1$ integrin inhibitors, such as volociximab [57] and MINT1526A [58], two antibodies that block the interaction between the integrin and its extracellular matrix ligands. Both trials reported safe administration and an absence of adverse events as monotherapies in patients with advanced solid tumors, but clinical benefit was still insufficient. In these trials, GBM was not included. Such drugs may be proposed as targeted therapies in selected high $\alpha5$ integrin expressers based on our results.

4. Materials and Methods

4.1. Patients and Tissue Samples

We retrospectively screened a total of 297 patients with glioblastoma treated by radiotherapy in five different referral centers (University Hospital Center from Amiens and four local Hospital Centers from Compiègne, Compiègne-Creil, Saint Quentin and Beauvais) between January 2006 and December 2013. Among these, 145 cases were excluded according to inclusion criteria (age between 18 and 70 years, primary glioblastoma and initially pro-

grammed for the standard Stupp protocol treatment) and exclusion criteria (enrolled in a clinical trial and non-standard treatment, including bevacizumab extensively off-label used in the study period in France). An additional 57 cases were excluded due to non-complete medical records or unavailable or insufficient tumor material for immunofluorescence analysis (Figure 1).

For each of the 95 selected patients, the following clinico-histopathological data were recorded and anonymized prior to analysis: gender, age, molecular biology (p53 and MGMT status) when available, type of surgery (macroscopic, subtotal resection or biopsy), adjuvant treatment and treatment at recurrence. RPA (recursive partitioning analysis) score was also calculated. Complete patient clinical data are reported in Table 1. The medical records of all patients included were checked up to 20 June 2015 to determine the follow-up period. All patients were asked at the time of diagnosis to give their consent for using a portion of the tumor tissue sample initially obtained for diagnosis, not needed for further clinical use but for research or potential future research. At the time of study, alive patients were additionally asked to confirm their consent to the study, and the absence of any opposition for other patients was checked. The corresponding ethical consent is available in the University Hospital Center from Amiens, France. The study protocol was approved by a local French ethical committee for the evaluation of non-interventional research, a sub-commission of the committee for the protection of individuals, on 10 December 2015.

4.2. Patient-Derived Xenografts

Two patient-derived ectopic xenografts (PDXs) were used to establish antibody specificity [29]. TC7 and TC22 GBM-PDXs expressing high and low levels of the $\alpha 5$ integrin, respectively, were produced, paraffin-embedded and mounted on glass slides as previously described [17,59].

4.3. Immunohistofluorescence

All tissues (biopsies, excised tumors) were provided by the Pathology Department of the University Hospital Center from Amiens as formalin-fixed paraffin-embedded (FFPE) tumor sections (5 μm thickness). TC7 and TC22 GBM-PDXs were also used as FFPE tumor sections. Both human tumors and GBM-PDX FFPE sections were deparaffinized, rehydrated and subjected to unmasking antigen protocol using Dako retrieval solution (Tris/EDTA) pH9 (Agilent Technologies, Les Ulis, France). Next, blocking buffer (5% goat serum, 0.1% Tween-20, PBS) was applied for 1 h at room temperature. The integrin $\alpha 5$ protein was labeled with rabbit antibody directed against the $\alpha 5$ integrin cytoplasmic tail (AB1928, 1/300, Merck-Millipore, Molsheim, France) by overnight incubation at 4 °C. After washing in PBS-Tween 0.1%, tissue sections were incubated for 1 h with the appropriate secondary antibody (goat anti-rabbit IgG Alexa Fluor[®] 647, 1/200, Invitrogen—ThermoFischer, Coutaboeuf, France). Nuclei were counterstained with DAPI (10 mg/mL, Sigma-Aldrich, St Quentin Fallavier, France), and coverslips were mounted onto tissue section using Permafluor Aqueous Mounting Medium (Fisher Scientific, Illkirch, France). Images were acquired using a confocal laser scanning microscope Leica TCS SPEII at 40 \times magnification (objective $\times 20$ N.A. 0,7, HCX PL APO CS; zoom $\times 2$) from the PIQ Quantum Efficiency Strasbourg platform (<http://quest.igbmc.fr/>, accessed on 2 July 2021). The following settings were applied for DAPI and Alexa Fluor[®] 647, respectively: DAPI: excitation wavelengths = 405 nm, laser power of 15%, emission spectrum = 430–480 nm, gain = 630 volts, off-set = -0.36 ; Alexa Fluor[®] 647: excitation wavelengths = 635 nm, laser power of 19.5%, emission spectrum = 647–740 nm, gain = 830 volts, off-set = -0.53 . The speed of the scanner was 400 Hz (512 \times 512 pixels). All confocal microscope settings were maintained constant between each staining experiment. Approximately 10 (6 to 20) different fields per slide were randomly selected according to both the size of the tissue section (low amount of tissue in the case of biopsies) and the heterogeneity of the tumor tissue (more images captured if staining was heterogeneous). The abundance of the integrin $\alpha 5$ protein was estimated as the mean red fluorescence intensity (MFI) per field by

using ImageJ software version 1.50 [60], and the mean of MFI (MMFI) was calculated for each tumor.

4.4. Western Blot

Frozen TC22 and TC7 GBM-PDX tissues from 3 different mice were ground in liquid nitrogen and lysed in RIPA buffer. Proteins were then extracted and analyzed by Western blot as previously described [17,31]. Briefly, 10 µg of protein was separated by SDS-PAGE (Bio-Rad, Schiltigheim, France) and transferred to polyvinylidene fluoride (PVDF) membranes (Bio-Rad, Schiltigheim, France). Blots were probed with antibodies to $\alpha 5$ integrin (H104, Santa Cruz Biotechnology, Heidelberg, Germany) and to glyceraldehyde 3-phosphate dehydrogenase (GAPDH; Merck-Millipore, Molsheim, France), the latter used as the loading control for the tissue lysate samples. Horseradish peroxidase (HRP)-coupled secondary antibody from Promega (Charbonnières, France) allowed us, through enhanced chemiluminescence, to visualize the protein with the LAS4000 imager.

4.5. Statistical Analysis

We used the mean (\pm standard error of the mean, SEM) values and frequencies (percentages) for the description of continuous and categorical variables, respectively. Means and proportions were compared using the Mann–Whitney test and the chi-squared test (or Fisher’s exact test, if appropriate), respectively. Progression-free survival (PFS) was estimated from the date of surgery to the date of the first recurrence. Overall survival (OS) was defined as the time between the date of surgery and the date of the last follow-up or the date of death from any cause. If no event was observed, patients were censored at the last follow-up. Survival curves were built using the Kaplan–Meier method and compared using the log-rank test. Survival was described by median with 95% confidence interval (CI) for PFS and OS. Hazard ratios were used to calculate the relative risk of death or progression. All variables with $p < 0.05$ observed in the univariate survival analysis were included in a multivariate Cox regression model with stepwise backward elimination to estimate HR with a 95% CI and to select potential prognostic factors. p -values < 0.05 were considered as significant. Analyses were performed with GraphPad Prism software version 5.04 and R software version 3.6.0.

5. Conclusions

Overall, our study confirms that overexpression of the $\alpha 5$ integrin subunit in GBM is associated with worse survival, especially in patients undergoing the standard Stupp protocol, strengthening the argument for a role of this integrin in resistance to temozolomide and/or radiotherapy. Integrin $\alpha 5\beta 1$ thus remains a promising therapeutic target for GBM treatment, and optimized preclinical and clinical research is mandatory to identify and validate new drug candidates.

Author Contributions: Conceptualization, N.E.-S., B.C. and M.D.; data curation, J.P., D.B.-R., M.B., H.S., S.T., P.C., A.C., C.D., S.M., L.C. and J.-M.C.; formal analysis, N.E.-S. and J.P.; funding acquisition, N.E.-S. and M.D.; investigation, N.E.-S., J.P., S.M., L.C. and H.S.; methodology, N.E.-S., J.P. and P.C.; project administration, N.E.-S.; resources, J.P., D.B.-R., M.B., H.S., S.T., P.C., A.C., C.D., S.M., L.C., J.-M.C. and B.C.; supervision, N.E.-S., B.C. and M.D.; visualization, N.E.-S. and M.D.; writing—original draft, N.E.-S. and M.D.; writing—review and editing, J.P., D.B.-R., M.B., H.S., S.T., P.C., A.C., C.D., S.M., L.C., J.-M.C. and B.C. All authors have read and agreed to the published version of the manuscript.

Funding: The research leading to these results received funding from Société Française de Pharmacie Oncologique (SFPO), Institut National du Cancer under Grant Agreement No INCA_11527, Ligue contre le Cancer (CCIR Est), Association pour la Recherche contre le Cancer, CNRS under Grant Agreement 80/PRIME-2019, the University of Strasbourg (France).

Institutional Review Board Statement: The study was conducted according to the guidelines of the Declaration of Helsinki and approved by a local French ethical committee for the evaluation of non-interventional research, a sub-commission of the committee for the protection of individuals, on 10 December 2015.

Informed Consent Statement: This research study was conducted retrospectively from data obtained for clinical purposes. Informed consent was obtained from all individual participants included in the study.

Data Availability Statement: All data are contained within the article.

Acknowledgments: We thank Fatma EL AZUMI and Romain VAUCHELLE for valuable technical help with immunohistofluorescence and confocal microscopy. We thank the patients and their caregivers for their participation and contributions to the study.

Conflicts of Interest: The authors declare no conflict of interest.

References

1. Louis, D.N.; Perry, A.; Reifenberger, G.; von Deimling, A.; Figarella-Branger, D.; Cavenee, W.K.; Ohgaki, H.; Wiestler, O.D.; Kleihues, P.; Ellison, D.W. The 2016 World Health Organization Classification of Tumors of the Central Nervous System: A Summary. *Acta Neuropathol.* **2016**, *131*, 803–820. [[CrossRef](#)]
2. Brat, D.J. Glioblastoma: Biology, Genetics, and Behavior. *Am. Soc. Clin. Oncol. Educ. Book* **2012**, *32*, 102–107. [[CrossRef](#)]
3. Verhaak, R.G.W.; Hoadley, K.A.; Purdom, E.; Wang, V.; Qi, Y.; Wilkerson, M.D.; Miller, C.R.; Ding, L.; Golub, T.; Mesirov, J.P.; et al. Integrated Genomic Analysis Identifies Clinically Relevant Subtypes of Glioblastoma Characterized by Abnormalities in PDGFRA, IDH1, EGFR, and NF1. *Cancer Cell* **2010**, *17*, 98–110. [[CrossRef](#)]
4. Stupp, R.; Mason, W.P.; van den Bent, M.J.; Weller, M.; Fisher, B.; Taphoorn, M.J.B.; Belanger, K.; Brandes, A.A.; Marosi, C.; Bogdahn, U.; et al. Radiotherapy plus Concomitant and Adjuvant Temozolomide for Glioblastoma. *N. Engl. J. Med.* **2005**, *352*, 987–996. [[CrossRef](#)] [[PubMed](#)]
5. Stupp, R.; Hegi, M.E.; Mason, W.P.; van den Bent, M.J.; Taphoorn, M.J.B.; Janzer, R.C.; Ludwin, S.K.; Allgeier, A.; Fisher, B.; Belanger, K.; et al. Effects of Radiotherapy with Concomitant and Adjuvant Temozolomide versus Radiotherapy Alone on Survival in Glioblastoma in a Randomised Phase III Study: 5-Year Analysis of the EORTC-NCIC Trial. *Lancet Oncol.* **2009**, *10*, 459–466. [[CrossRef](#)]
6. Stupp, R.; Taillibert, S.; Kanner, A.; Read, W.; Steinberg, D.M.; Lhermitte, B.; Toms, S.; Idbaih, A.; Ahluwalia, M.S.; Fink, K.; et al. Effect of Tumor-Treating Fields Plus Maintenance Temozolomide vs Maintenance Temozolomide Alone on Survival in Patients With Glioblastoma: A Randomized Clinical Trial. *JAMA* **2017**, *318*, 2306. [[CrossRef](#)] [[PubMed](#)]
7. Cruz Da Silva, E.; Mercier, M.-C.; Etienne-Selloum, N.; Dontenwill, M.; Choulier, L. A Systematic Review of Glioblastoma-Targeted Therapies in Phases II, III, IV Clinical Trials. *Cancers* **2021**, *13*, 1795. [[CrossRef](#)]
8. Kim, C.; Ye, F.; Ginsberg, M.H. Regulation of Integrin Activation. *Annu. Rev. Cell Dev. Biol.* **2011**, *27*, 321–345. [[CrossRef](#)] [[PubMed](#)]
9. Blandin, A.-F.; Renner, G.; Lehmann, M.; Lelong-Rebel, I.; Martin, S.; Dontenwill, M. B1 Integrins as Therapeutic Targets to Disrupt Hallmarks of Cancer. *Front. Pharmacol.* **2015**, *6*, 279. [[CrossRef](#)]
10. Desgrosellier, J.S.; Cheresch, D.A. Integrins in Cancer: Biological Implications and Therapeutic Opportunities. *Nat. Rev. Cancer* **2010**, *10*, 9–22. [[CrossRef](#)] [[PubMed](#)]
11. Hamidi, H.; Ivaska, J. Every Step of the Way: Integrins in Cancer Progression and Metastasis. *Nat. Rev. Cancer* **2018**, *18*, 533–548. [[CrossRef](#)]
12. Avraamides, C.J.; Garmy-Susini, B.; Varner, J.A. Integrins in Angiogenesis and Lymphangiogenesis. *Nat. Rev. Cancer* **2008**, *8*, 604–617. [[CrossRef](#)]
13. Nieberler, M.; Reuning, U.; Reichart, F.; Notni, J.; Wester, H.-J.; Schwaiger, M.; Weinmüller, M.; Räder, A.; Steiger, K.; Kessler, H. Exploring the Role of RGD-Recognizing Integrins in Cancer. *Cancers* **2017**, *9*, 116. [[CrossRef](#)]
14. Stupp, R.; Hegi, M.E.; Gorlia, T.; Erridge, S.C.; Perry, J.; Hong, Y.-K.; Aldape, K.D.; Lhermitte, B.; Pietsch, T.; Grujicic, D.; et al. Cilengitide Combined with Standard Treatment for Patients with Newly Diagnosed Glioblastoma with Methylated MGMT Promoter (CENTRIC EORTC 26071-22072 Study): A Multicentre, Randomised, Open-Label, Phase 3 Trial. *Lancet Oncol.* **2014**, *15*, 1100–1108. [[CrossRef](#)]
15. Malric, L.; Monferran, S.; Gilhodes, J.; Boyrie, S.; Dahan, P.; Skuli, N.; Sesen, J.; Filleron, T.; Kowalski-Chauvel, A.; Cohen-Jonathan Moyal, E.; et al. Interest of Integrins Targeting in Glioblastoma According to Tumor Heterogeneity and Cancer Stem Cell Paradigm: An Update. *Oncotarget* **2017**, *8*, 86947–86968. [[CrossRef](#)]
16. Gladson, C.L.; Cheresch, D.A. Glioblastoma Expression of Vitronectin and the Alpha v Beta 3 Integrin. Adhesion Mechanism for Transformed Glial Cells. *J. Clin. Investig.* **1991**, *88*, 1924–1932. [[CrossRef](#)]
17. Janouskova, H.; Maglott, A.; Leger, D.Y.; Bossert, C.; Noulet, F.; Guerin, E.; Guenot, D.; Pinel, S.; Chastagner, P.; Plenat, F.; et al. Integrin A5β1 Plays a Critical Role in Resistance to Temozolomide by Interfering with the P53 Pathway in High-Grade Glioma. *Cancer Res.* **2012**, *72*, 3463–3470. [[CrossRef](#)]

18. Zhou, P.; Erfani, S.; Liu, Z.; Jia, C.; Chen, Y.; Xu, B.; Deng, X.; Alfaro, J.E.; Chen, L.; Napier, D.; et al. CD151-A3 β 1 Integrin Complexes Are Prognostic Markers of Glioblastoma and Cooperate with EGFR to Drive Tumor Cell Motility and Invasion. *Oncotarget* **2015**, *6*, 29675–29693. [[CrossRef](#)] [[PubMed](#)]
19. Malric, L.; Monferran, S.; Delmas, C.; Arnauduc, F.; Dahan, P.; Boyrie, S.; Deshors, P.; Lubrano, V.; Da Mota, D.F.; Gilhodes, J.; et al. Inhibiting Integrin B8 to Differentiate and Radiosensitize Glioblastoma-Initiating Cells. *Mol. Cancer Res.* **2019**, *17*, 384–397. [[CrossRef](#)] [[PubMed](#)]
20. Paulus, W.; Baur, I.; Schuppan, D.; Roggendorf, W. Characterization of Integrin Receptors in Normal and Neoplastic Human Brain. *Am. J. Pathol.* **1993**, *143*, 154–163. [[PubMed](#)]
21. Schnell, O.; Krebs, B.; Wagner, E.; Romagna, A.; Beer, A.J.; Grau, S.J.; Thon, N.; Goetz, C.; Kretzschmar, H.A.; Tonn, J.-C.; et al. Expression of Integrin Alpha ν beta3 in Gliomas Correlates with Tumor Grade and Is Not Restricted to Tumor Vasculature. *Brain Pathol. Zur. Switz.* **2008**, *18*, 378–386. [[CrossRef](#)]
22. Mattern, R.-H.; Read, S.B.; Pierschbacher, M.D.; Sze, C.-I.; Eliceiri, B.P.; Kruse, C.A. Glioma Cell Integrin Expression and Their Interactions with Integrin Antagonists: Research Article. *Cancer Ther.* **2005**, *3A*, 325–340.
23. Riemenschneider, M.J.; Mueller, W.; Betensky, R.A.; Mohapatra, G.; Louis, D.N. In Situ Analysis of Integrin and Growth Factor Receptor Signaling Pathways in Human Glioblastomas Suggests Overlapping Relationships with Focal Adhesion Kinase Activation. *Am. J. Pathol.* **2005**, *167*, 1379–1387. [[CrossRef](#)]
24. Roth, P.; Silginer, M.; Goodman, S.L.; Hasenbach, K.; Thies, S.; Maurer, G.; Schraml, P.; Tabatabai, G.; Moch, H.; Tritschler, I.; et al. Integrin Control of the Transforming Growth Factor- β Pathway in Glioblastoma. *Brain J. Neurol.* **2013**, *136*, 564–576. [[CrossRef](#)] [[PubMed](#)]
25. Goodman, S.L.; Grote, H.J.; Wilm, C. Matched Rabbit Monoclonal Antibodies against V-Series Integrins Reveal a Novel $\alpha\nu\beta$ 3-LIBS Epitope, and Permit Routine Staining of Archival Paraffin Samples of Human Tumors. *Biol. Open* **2012**, *1*, 329–340. [[CrossRef](#)]
26. Schittenhelm, J.; Schwab, E.I.; Sperveslage, J.; Tatagiba, M.; Meyermann, R.; Fend, F.; Goodman, S.L.; Sipos, B. Longitudinal Expression Analysis of Av Integrins in Human Gliomas Reveals Upregulation of Integrin Av β 3 as a Negative Prognostic Factor. *J. Neuropathol. Exp. Neurol.* **2013**, *72*, 194–210. [[CrossRef](#)] [[PubMed](#)]
27. Ducassou, A.; Uro-Coste, E.; Verrelle, P.; Filleron, T.; Benouaich-Amiel, A.; Lubrano, V.; Sol, J.-C.; Delisle, M.-B.; Favre, G.; Ken, S.; et al. Av β 3 Integrin and Fibroblast Growth Factor Receptor 1 (FGFR1): Prognostic Factors in a Phase I-II Clinical Trial Associating Continuous Administration of Tipifarnib with Radiotherapy for Patients with Newly Diagnosed Glioblastoma. *Eur. J. Cancer* **2013**, *49*, 2161–2169. [[CrossRef](#)]
28. Zhang, L.-Y.; Guo, Q.; Guan, G.-F.; Cheng, W.; Cheng, P.; Wu, A.-H. Integrin Beta 5 Is a Prognostic Biomarker and Potential Therapeutic Target in Glioblastoma. *Front. Oncol.* **2019**, *9*, 904. [[CrossRef](#)] [[PubMed](#)]
29. Blandin, A.-F.; Noulet, F.; Renner, G.; Mercier, M.-C.; Choulier, L.; Vauchelles, R.; Ronde, P.; Carreiras, F.; Etienne-Selloum, N.; Vereb, G.; et al. Glioma Cell Dispersion Is Driven by A5 Integrin-Mediated Cell-Matrix and Cell-Cell Interactions. *Cancer Lett.* **2016**, *376*, 328–338. [[CrossRef](#)]
30. Ellert-Miklaszewska, A.; Poleszak, K.; Pasierbinska, M.; Kaminska, B. Integrin Signaling in Glioma Pathogenesis: From Biology to Therapy. *Int. J. Mol. Sci.* **2020**, *21*, 888. [[CrossRef](#)] [[PubMed](#)]
31. Fechter, P.; Cruz Da Silva, E.; Mercier, M.-C.; Noulet, F.; Etienne-Seloum, N.; Guenot, D.; Lehmann, M.; Vauchelles, R.; Martin, S.; Lelong-Rebel, I.; et al. RNA Aptamers Targeting Integrin A5 β 1 as Probes for Cyto- and Histofluorescence in Glioblastoma. *Mol. Ther. Nucleic Acids* **2019**, *17*, 63–77. [[CrossRef](#)]
32. Filippini, G.; Falcone, C.; Boiardi, A.; Broggi, G.; Bruzzone, M.G.; Caldiroli, D.; Farina, R.; Farinotti, M.; Fariselli, L.; Finocchiaro, G.; et al. Prognostic Factors for Survival in 676 Consecutive Patients with Newly Diagnosed Primary Glioblastoma. *Neuro-Oncology* **2008**, *10*, 79–87. [[CrossRef](#)]
33. Mirimanoff, R.-O.; Goria, T.; Mason, W.; Van den Bent, M.J.; Kortmann, R.-D.; Fisher, B.; Reni, M.; Brandes, A.A.; Curschmann, J.; Villa, S.; et al. Radiotherapy and Temozolomide for Newly Diagnosed Glioblastoma: Recursive Partitioning Analysis of the EORTC 26981/22981-NCIC CE3 Phase III Randomized Trial. *J. Clin. Oncol.* **2006**, *24*, 2563–2569. [[CrossRef](#)]
34. Sanai, N.; Polley, M.-Y.; McDermott, M.W.; Parsa, A.T.; Berger, M.S. An Extent of Resection Threshold for Newly Diagnosed Glioblastomas: Clinical Article. *J. Neurosurg.* **2011**, *115*, 3–8. [[CrossRef](#)]
35. Nabors, L.B.; Fink, K.L.; Mikkelsen, T.; Grujicic, D.; Tarnawski, R.; Nam, D.H.; Mazurkiewicz, M.; Salacz, M.; Ashby, L.; Zagonel, V.; et al. Two Cilengitide Regimens in Combination with Standard Treatment for Patients with Newly Diagnosed Glioblastoma and Unmethylated MGMT Gene Promoter: Results of the Open-Label, Controlled, Randomized Phase II CORE Study. *Neuro-Oncol* **2015**, *17*, 708–717. [[CrossRef](#)]
36. Renner, G.; Janouskova, H.; Noulet, F.; Koenig, V.; Guerin, E.; Bär, S.; Nuesch, J.; Rechenmacher, F.; Neubauer, S.; Kessler, H.; et al. Integrin A5 β 1 and P53 Convergent Pathways in the Control of Anti-Apoptotic Proteins PEA-15 and Survivin in High-Grade Glioma. *Cell Death Differ.* **2016**, *23*, 640–653. [[CrossRef](#)]
37. Meyer, M.; Reimand, J.; Lan, X.; Head, R.; Zhu, X.; Kushida, M.; Bayani, J.; Pressey, J.C.; Lionel, A.C.; Clarke, I.D.; et al. Single Cell-Derived Clonal Analysis of Human Glioblastoma Links Functional and Genomic Heterogeneity. *Proc. Natl. Acad. Sci. USA* **2015**, *112*, 851–856. [[CrossRef](#)] [[PubMed](#)]
38. Segerman, A.; Niklasson, M.; Haglund, C.; Bergström, T.; Jarvius, M.; Xie, Y.; Westermark, A.; Sönmez, D.; Hermansson, A.; Kastemar, M.; et al. Clonal Variation in Drug and Radiation Response among Glioma-Initiating Cells Is Linked to Proneural-Mesenchymal Transition. *Cell Rep.* **2016**, *17*, 2994–3009. [[CrossRef](#)]

39. Wen, P.Y.; Weller, M.; Lee, E.Q.; Alexander, B.M.; Barnholtz-Sloan, J.S.; Barthel, F.P.; Batchelor, T.T.; Bindra, R.S.; Chang, S.M.; Chiocca, E.A.; et al. Glioblastoma in Adults: A Society for Neuro-Oncology (SNO) and European Society of Neuro-Oncology (EANO) Consensus Review on Current Management and Future Directions. *Neuro-oncology* **2020**, *22*, 1073–1113. [[CrossRef](#)] [[PubMed](#)]
40. Weller, M.; Nabors, L.B.; Gorlia, T.; Leske, H.; Rushing, E.; Bady, P.; Hicking, C.; Perry, J.; Hong, Y.-K.; Roth, P.; et al. Cilengitide in Newly Diagnosed Glioblastoma: Biomarker Expression and Outcome. *Oncotarget* **2016**, *7*, 15018–15032. [[CrossRef](#)] [[PubMed](#)]
41. Cosset, É.; Ilmjärv, S.; Dutoit, V.; Elliott, K.; von Schalscha, T.; Camargo, M.F.; Reiss, A.; Moroishi, T.; Seguin, L.; Gomez, G.; et al. Glut3 Addiction Is a Druggable Vulnerability for a Molecularly Defined Subpopulation of Glioblastoma. *Cancer Cell* **2017**, *32*, 856–868. [[CrossRef](#)]
42. Cruz da Silva, E.; Dontenwill, M.; Choulier, L.; Lehmann, M. Role of Integrins in Resistance to Therapies Targeting Growth Factor Receptors in Cancer. *Cancers* **2019**, *11*, 692. [[CrossRef](#)]
43. Blandin, A.-F.; Cruz Da Silva, E.; Mercier, M.-C.; Glushonkov, O.; Didier, P.; Dedieu, S.; Schneider, C.; Devy, J.; Etienne-Selloum, N.; Dontenwill, M.; et al. Gefitinib Induces EGFR and A5β1 Integrin Co-Endocytosis in Glioblastoma Cells. *Cell. Mol. Life Sci.* **2021**, *78*, 2949–2962. [[CrossRef](#)]
44. DeLay, M.; Jahangiri, A.; Carbonell, W.S.; Hu, Y.-L.; Tsao, S.; Tom, M.W.; Paquette, J.; Tokuyasu, T.A.; Aghi, M.K. Microarray Analysis Verifies Two Distinct Phenotypes of Glioblastomas Resistant to Antiangiogenic Therapy. *Clin. Cancer Res. Off. J. Am. Assoc. Cancer Res.* **2012**, *18*, 2930–2942. [[CrossRef](#)] [[PubMed](#)]
45. Carbonell, W.S.; DeLay, M.; Jahangiri, A.; Park, C.C.; Aghi, M.K. 1 Integrin Targeting Potentiates Antiangiogenic Therapy and Inhibits the Growth of Bevacizumab-Resistant Glioblastoma. *Cancer Res.* **2013**, *73*, 3145–3154. [[CrossRef](#)] [[PubMed](#)]
46. Jahangiri, A.; Aghi, M.K.; Carbonell, W.S. B1 Integrin: Critical Path to Antiangiogenic Therapy Resistance and Beyond. *Cancer Res.* **2014**, *74*, 3–7. [[CrossRef](#)]
47. Westphal, M.; Heese, O.; Steinbach, J.P.; Schnell, O.; Schackert, G.; Mehdorn, M.; Schulz, D.; Simon, M.; Schlegel, U.; Senft, C.; et al. A Randomised, Open Label Phase III Trial with Nimotuzumab, an Anti-Epidermal Growth Factor Receptor Monoclonal Antibody in the Treatment of Newly Diagnosed Adult Glioblastoma. *Eur. J. Cancer* **2015**, *51*, 522–532. [[CrossRef](#)] [[PubMed](#)]
48. Plate, K.H.; Scholz, A.; Dumont, D.J. Tumor Angiogenesis and Anti-Angiogenic Therapy in Malignant Gliomas Revisited. *Acta Neuropathol.* **2012**, *124*, 763–775. [[CrossRef](#)]
49. MacDonald, T.J.; Taga, T.; Shimada, H.; Tabrizi, P.; Zlokovic, B.V.; Cheresch, D.A.; Laug, W.E. Preferential Susceptibility of Brain Tumors to the Antiangiogenic Effects of an Av Integrin Antagonist. *Neurosurgery* **2001**, *48*, 151–157. [[CrossRef](#)] [[PubMed](#)]
50. Robinson, S.D.; Hodivala-Dilke, K.M. The Role of B3-Integrins in Tumor Angiogenesis: Context Is Everything. *Curr. Opin. Cell Biol.* **2011**, *23*, 630–637. [[CrossRef](#)]
51. Li, L.; Welser-Alves, J.; van der Flier, A.; Boroujerdi, A.; Hynes, R.O.; Milner, R. An Angiogenic Role for the A5β1 Integrin in Promoting Endothelial Cell Proliferation during Cerebral Hypoxia. *Exp. Neurol.* **2012**, *237*, 46–54. [[CrossRef](#)]
52. Parsons-Wingerter, P.; Kasman, I.M.; Norberg, S.; Magnussen, A.; Zanivan, S.; Rissone, A.; Baluk, P.; Favre, C.J.; Jeffry, U.; Murray, R.; et al. Uniform Overexpression and Rapid Accessibility of A5β1 Integrin on Blood Vessels in Tumors. *Am. J. Pathol.* **2005**, *167*, 193–211. [[CrossRef](#)]
53. Carmeliet, P. VEGF as a Key Mediator of Angiogenesis in Cancer. *Oncology* **2005**, *69*, 4–10. [[CrossRef](#)] [[PubMed](#)]
54. Chinot, O.L.; Wick, W.; Mason, W.; Henriksson, R.; Saran, F.; Nishikawa, R.; Carpentier, A.F.; Hoang-Xuan, K.; Kavan, P.; Cernea, D.; et al. Bevacizumab plus Radiotherapy–Temozolomide for Newly Diagnosed Glioblastoma. *N. Engl. J. Med.* **2014**, *370*, 709–722. [[CrossRef](#)] [[PubMed](#)]
55. Gilbert, M.R.; Dignam, J.J.; Armstrong, T.S.; Wefel, J.S.; Blumenthal, D.T.; Vogelbaum, M.A.; Colman, H.; Chakravarti, A.; Pugh, S.; Won, M.; et al. A Randomized Trial of Bevacizumab for Newly Diagnosed Glioblastoma. *N. Engl. J. Med.* **2014**, *370*, 699–708. [[CrossRef](#)] [[PubMed](#)]
56. García-Romero, N.; Palacín-Aliana, I.; Madurga, R.; Carrión-Navarro, J.; Esteban-Rubio, S.; Jiménez, B.; Collazo, A.; Pérez-Rodríguez, F.; Ortiz de Mendivil, A.; Fernández-Carballal, C.; et al. Bevacizumab Dose Adjustment to Improve Clinical Outcomes of Glioblastoma. *BMC Med.* **2020**, *18*, 142. [[CrossRef](#)]
57. Bell-McGuinn, K.M.; Matthews, C.M.; Ho, S.N.; Barve, M.; Gilbert, L.; Penson, R.T.; Lengyel, E.; Palaparthi, R.; Gilder, K.; Vassos, A.; et al. A Phase II, Single-Arm Study of the Anti-A5β1 Integrin Antibody Volociximab as Monotherapy in Patients with Platinum-Resistant Advanced Epithelial Ovarian or Primary Peritoneal Cancer. *Gynecol. Oncol.* **2011**, *121*, 273–279. [[CrossRef](#)]
58. Weekes, C.D.; Rosen, L.S.; Capasso, A.; Wong, K.M.; Ye, W.; Anderson, M.; McCall, B.; Fredrickson, J.; Wakshull, E.; Eppler, S.; et al. Phase I Study of the Anti-A5β1 Monoclonal Antibody MINT1526A with or without Bevacizumab in Patients with Advanced Solid Tumors. *Cancer Chemother. Pharmacol.* **2018**, *82*, 339–351. [[CrossRef](#)]
59. Leuraud, P.; Taillandier, L.; Medioni, J.; Aguirre-Cruz, L.; Crinière, E.; Marie, Y.; Kujas, M.; Golmard, J.-L.; Duprez, A.; Delattre, J.-Y.; et al. Distinct Responses of Xenografted Gliomas to Different Alkylating Agents Are Related to Histology and Genetic Alterations. *Cancer Res.* **2004**, *64*, 4648–4653. [[CrossRef](#)]
60. Schneider, C.A.; Rasband, W.S.; Eliceiri, K.W. NIH Image to ImageJ: 25 Years of Image Analysis. *Nat. Methods* **2012**, *9*, 671–675. [[CrossRef](#)]