



HAL
open science

Metformin Attenuates Postinfarction Myocardial Fibrosis and Inflammation in Mice

Halyna Loi, Solomiia Kramar, Charlotte Laborde, Dimitri Marsal, Nathalie Pizzinat, Daniel Cussac, Jerome Roncalli, Frederic Boal, Helene Tronchere, Oleksandra Oleshchuk, et al.

► **To cite this version:**

Halyna Loi, Solomiia Kramar, Charlotte Laborde, Dimitri Marsal, Nathalie Pizzinat, et al.. Metformin Attenuates Postinfarction Myocardial Fibrosis and Inflammation in Mice. *International Journal of Molecular Sciences*, 2021, 22 (17), pp.9393. <10.3390/ijms22179393>. <hal-03435550>

HAL Id: hal-03435550

<https://hal.science/hal-03435550v1>

Submitted on 19 Nov 2021

HAL is a multi-disciplinary open access archive for the deposit and dissemination of scientific research documents, whether they are published or not. The documents may come from teaching and research institutions in France or abroad, or from public or private research centers.

L'archive ouverte pluridisciplinaire **HAL**, est destinée au dépôt et à la diffusion de documents scientifiques de niveau recherche, publiés ou non, émanant des établissements d'enseignement et de recherche français ou étrangers, des laboratoires publics ou privés.



HAL Authorization



Article

Metformin Attenuates Postinfarction Myocardial Fibrosis and Inflammation in Mice

Halyna Loi ¹, Solomiia Kramar ¹, Charlotte Laborde ^{2,3}, Dimitri Marsal ^{2,3} , Nathalie Pizzinat ^{2,3}, Daniel Cussac ^{2,3} , Jerome Roncalli ^{2,3}, Frederic Boal ^{2,3} , Helene Tronchere ^{2,3} , Oleksandra Oleshchuk ¹, Mykhaylo Korda ¹ and Oksana Kunduzova ^{2,3,*}

¹ Department of Pharmacology and Clinical Pharmacology, I. Horbachevsky Ternopil National Medical University, 46009 Ternopil, Ukraine; loy@tdmu.edu.ua (H.L.); kramar.solomija@gmail.com (S.K.); lesyaoleh@gmail.com (O.O.); Mykhaylo.Korda@tdmu.edu.ua (M.K.)

² National Institute of Health and Medical Research (INSERM) U1297, CEDEX 4, 31432 Toulouse, France; charlotte.laborde@inserm.fr (C.L.); Dimitri.Marsal@inserm.fr (D.M.); Nathalie.Pizzinat@inserm.fr (N.P.); Daniel.Cussac@inserm.fr (D.C.); Jerome.Roncalli@inserm.fr (J.R.); Frederic.Boal@inserm.fr (F.B.); Helene.Tronchere@inserm.fr (H.T.)

³ University of Toulouse III, CEDEX 9, 31062 Toulouse, France

* Correspondence: Oxana.Koundouzova@inserm.fr

Abstract: Diabetes is a major risk factor for the development of cardiovascular disease with a higher incidence of myocardial infarction. This study explores the role of metformin, a first-line antihyperglycemic agent, in postinfarction fibrotic and inflammatory remodeling in mice. Three-month-old C57BI/6J mice were submitted to 30 min cardiac ischemia followed by reperfusion for 14 days. Intraperitoneal treatment with metformin (5 mg/kg) was initiated 15 min after the onset of reperfusion and maintained for 14 days. Real-time PCR was used to determine the levels of COL3A1, α SMA, CD68, TNF- α and IL-6. Increased collagen deposition and infiltration of macrophages in heart tissues are associated with upregulation of the inflammation-associated genes in mice after 14 days of reperfusion. Metformin treatment markedly reduced postinfarction fibrotic remodeling and CD68-positive cell population in mice. Moreover, metformin resulted in reduced expression of COL3A1, α SMA and CD68 after 14 days of reperfusion. Taken together, these results open new perspectives for the use of metformin as a drug that counteracts adverse myocardial fibrotic and inflammatory remodeling after MI.

Keywords: metformin; myocardial infarction; fibrosis; inflammation; cardiac remodeling



Citation: Loi, H.; Kramar, S.; Laborde, C.; Marsal, D.; Pizzinat, N.; Cussac, D.; Roncalli, J.; Boal, F.; Tronchere, H.; Oleshchuk, O.; et al. Metformin Attenuates Postinfarction Myocardial Fibrosis and Inflammation in Mice. *Int. J. Mol. Sci.* **2021**, *22*, 9393. <https://doi.org/10.3390/ijms22179393>

Academic Editors: Marianna Lauricella and Antonella D'Anneo

Received: 22 July 2021

Accepted: 26 August 2021

Published: 30 August 2021

Publisher's Note: MDPI stays neutral with regard to jurisdictional claims in published maps and institutional affiliations.



Copyright: © 2021 by the authors. Licensee MDPI, Basel, Switzerland. This article is an open access article distributed under the terms and conditions of the Creative Commons Attribution (CC BY) license (<https://creativecommons.org/licenses/by/4.0/>).

1. Introduction

Diabetes mellitus is a major risk factor for the incidence of myocardial infarction (MI) and cardiovascular morbidity and mortality [1]. Patients with diabetes have over twice the risk of developing heart failure (HF) than patients without diabetes mellitus [2]. Experimental and clinical investigations suggest that the diabetic heart is more sensitive to ischemic injury than the nondiabetic heart [3]. Myocardial ischemia/reperfusion (I/R) injury is a complex pathophysiological event, resulting in serious acute and chronic myocardial damage linked to adverse myocardial remodeling processes [4–6]. Cardiac remodeling is defined as a group of molecular, cellular and interstitial changes that contribute to the progression of heart disease [7]. Patients with diabetes frequently have echocardiographic evidence of adverse myocardial remodeling; both increased left ventricular mass and dilatation have been reported [8], and these phenotypes are well-known predictors of HF.

Cardiac fibrosis and inflammation are central to the pathogenesis of cardiovascular and metabolic disorders. Activated fibroblasts and immune cells are critically involved in the resolution of aberrant remodeling processes leading to the decline in cardiac function [9]. The inflammatory components vary across different fibrotic conditions but share macrophage-mediated responses, with the abundant release of profibrotic factors as a

common feature after cardiac injury [10,11]. The inflammatory component is primarily composed of time-dependent infiltration of neutrophils and macrophages in the ischemic heart [12]. Several studies have shown significant elevation of CD68 expression in macrophages in response to inflammatory stimuli [13]. Inflammation-associated cytokines including tumor necrosis factor- α (TNF- α) and interleukin6 (IL-6) trigger additional cellular inflammatory cascades and activate matrix metalloproteinases that contribute to the development of fibrotic reprogramming of the heart and dysfunction [14,15]. In fibrotic tissue remodeling, activated cardiac fibroblasts change their phenotype and differentiate into myofibroblasts, characterized by expression of α -smooth muscle actin (α SMA) and production of extracellular matrix (ECM) proteins [16–19]. Cardiac myofibroblasts contribute to the structural and functional changes in the heart by increased deposition of ECM components, predominantly collagen types I and III, within the interstitium by regulating autocrine/paracrine factors [20,21].

Metformin, a first-line pharmacological agent for type 2 diabetes mellitus (T2D) [22] has been reported to reduce major cardiovascular events and death [23]. Metformin preserves cardiac function and prevents the incidence of MI in patients with diabetes [23]. Compared with other glucose-lowering agents, the use of metformin is associated with a reduced risk of cardiovascular mortality and morbidity in patients with T2D [24]. Both the link between diabetes and HF and the molecular mechanism of action of metformin remain incompletely understood. Inflammation and fibrosis are the final common pathological manifestations in diabetes and HF [25], and interventions aimed at reducing fibrotic and inflammatory remodeling are of paramount importance.

In the present study, we demonstrate that posttreatment with metformin counteracts fibrotic and inflammatory remodeling in a mouse model of cardiac I/R injury.

2. Results

2.1. Metformin Treatment Decreases Fibrotic Remodeling in a Mouse Model of Cardiac I/R Injury

To examine the translational potential of metformin, an *in vivo* study was designed to determine whether treatment with metformin (5 mg/kg *i.p.*) initiated 15 min after the onset of reperfusion and maintained for 14 days counteracts I/R-induced fibrotic and inflammatory responses in mice. Post-MI cryosections of the hearts were stained by both wheatgerm agglutinin (WGA) and Sirius Red. Quantification of fibrotic tissue in cardiac sections using fluorescent probe WGA (Figure 1A,B) revealed that I/R increased collagen accumulation in the myocardium ($14.43 \pm 1.95\%$ in I/R group versus $0.35 \pm 0.05\%$ in C group, $p < 0.001$), while metformin treatment prevented fibrotic remodeling in mice subjected to I/R ($2.20 \pm 0.48\%$ in I/R + Mgroup versus $14.43 \pm 1.95\%$ in I/R group, $p < 0.001$).

Histological analyses of cardiac sections stained with Sirius Red (Figure 2A,B) demonstrated that I/R triggered myocardial fibrosis ($12.26 \pm 3.36\%$ in I/R group versus $0.33 \pm 0.07\%$ in control (C) group, $p < 0.01$). Treatment of mice with metformin was able to attenuate I/R-induced collagen deposition in the myocardium ($2.49 \pm 1.13\%$ in I/R + Mgroup versus $12.26 \pm 3.36\%$ in I/R group, $p < 0.05$).

Increased collagen deposition in I/R group is associated with a significant increase in Col3 and α -SMA mRNA expression as compared to the control group. However, metformin treatment reduced I/R-induced Col3 and α -SMA expression levels (Figure 3A,B).

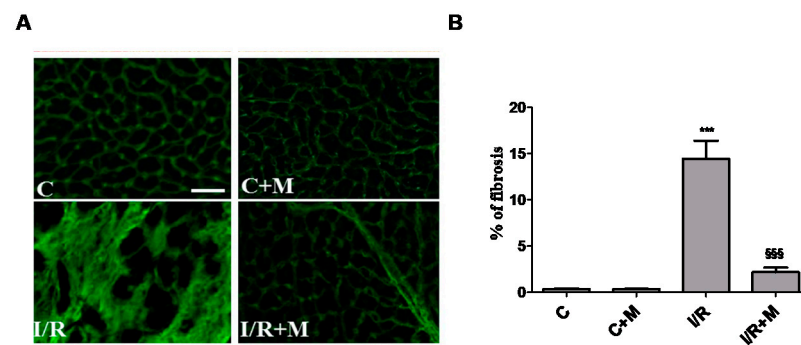


Figure 1. Metformin treatment prevents fibrotic remodeling in postinfarcted myocardium. (A) Representative images of wheat germ agglutinin (WGA) staining of frozen heart tissue sections; scale bar is 25 μ m. Frozen sections from vehicle- or metformin-treated mice subjected to 30 min of cardiac ischemia and 14 days of reperfusion were stained with WGA. Metformin treatment (5 mg/kg, i.p.) started 15 min after the onset of reperfusion and continued for 14 days. (B) Quantification of fibrotic area from (A), $n = 3$ –5. Data are presented as mean \pm SEM. One-way ANOVA followed by Bonferroni's post hoc test: *** $p < 0.001$ vs. control (C), §§§ $p < 0.001$ vs. I/R.

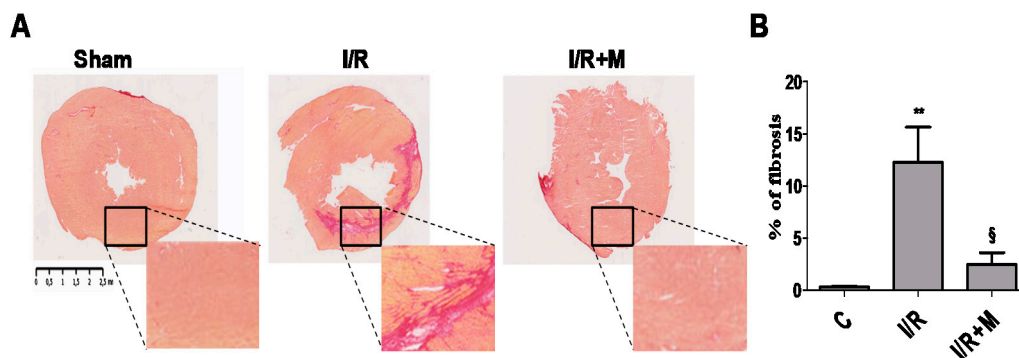


Figure 2. Metformin attenuates cardiac fibrosis in postinfarcted myocardium. Metformin treatment prevents fibrotic remodeling in postinfarcted myocardium. (A) Representative images of Sirius Red staining of frozen heart tissue sections from vehicle- or metformin-treated mice subjected to 30 min of cardiac ischemia and 14 days of reperfusion. Metformin treatment (5 mg/kg, i.p.) started 15 min after the onset of reperfusion and continued for 14 days. (B) Quantification of fibrotic area from (A), $n = 4$ –5. Data are presented as mean \pm SEM. One-way ANOVA followed by Bonferroni's post hoc test: ** $p < 0.01$ vs. control (C), § $p < 0.001$ vs. I/R.

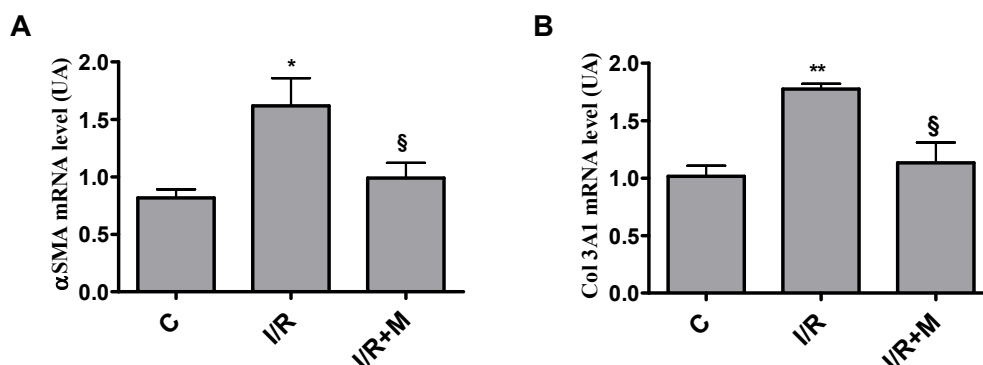


Figure 3. Metformin treatment downregulates profibrotic genes in postinfarcted myocardium. (A) qRT-PCR quantification of the expression level of the myofibroblast marker α SMA. (B) qRT-PCR quantification of the expression level of the collagen type III. Data are presented as mean \pm SEM. One-way ANOVA followed by Bonferroni's post hoc test: * $p < 0.05$ vs. control (C), ** $p < 0.01$ vs. control (C), § $p < 0.05$ vs. I/R.

2.2. Metformin Exerts Anti-Inflammatory Activity in Cardiac Section

We next explored the role of metformin in inflammatory processes after cardiac I/R injury. Analysis of CD68 immunostaining revealed a significant increase in the number of inflammatory CD68-positive cells (Figure 4A,B) in I/R mice ($38.80 \pm 4.30\%$) as compared to control mice ($2.4 \pm 0.75\%$), $p < 0.001$. Our data demonstrated a reduction in inflammatory cell population in cardiac section after I/R from metformin-treated mice ($14.40 \pm 2.32\%$ in I/R + M group versus $38.80 \pm 4.30\%$ in I/R group, $p < 0.001$).

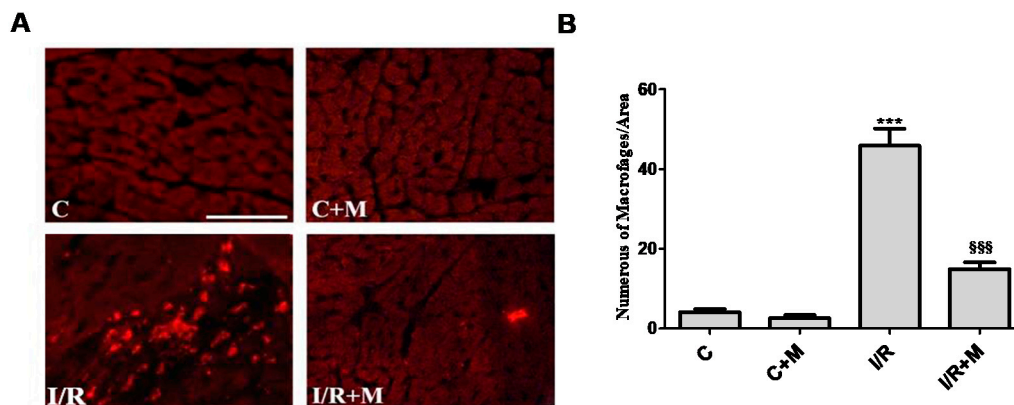


Figure 4. Metformin exerts anti-inflammatory activity in postinfarcted myocardium. (A) CD68 immunostaining was performed in order to detect inflammatory cell populations in cardiac sections from vehicle- or metformin-treated mice subjected to 30 min of cardiac ischemia and 14 days of reperfusion. Metformin treatment (5 mg/kg, i.p.) started at 15 min of reperfusion and continued for 14 days. Scale bar is 100 μ m. (B) Quantification of inflammatory cells from (A), $n = 4-5$. One-way ANOVA followed by Bonferroni's post hoc test: *** $p < 0.001$ vs. control (C), §§§ $p < 0.001$ vs. I/R.

As shown in Figure 5A, cardiac I/R induced CD68 mRNA expression in cardiac tissue as compared to control mice. However, treatment with metformin prevented an increase in CD68 mRNA level in cardiac sections after I/R. In addition, cardiac expression of key proinflammatory genes, including TNF- α and IL-6, was evaluated in cardiac sections from vehicle- or metformin-treated mice after 14 days of I/R (Figure 5B,C). As shown in Figure 5B,C, we found that I/R promoted upregulation of TNF- α and IL-6. However, we did not detect significant differences in TNF- α and IL-6 mRNA expression levels after 14 days of I/R.

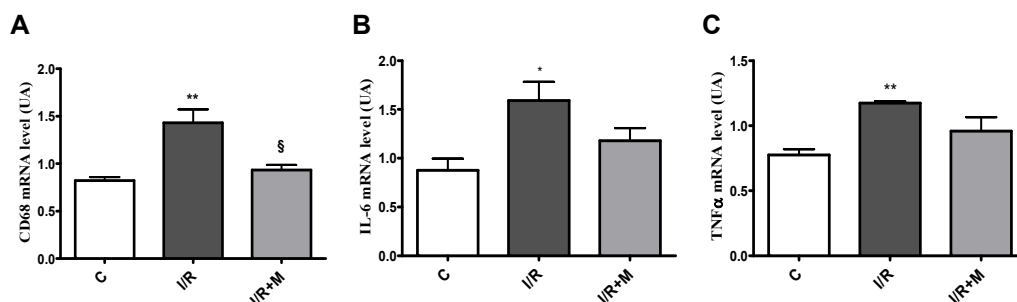


Figure 5. Effect of metformin treatment on cardiac expression of CD68, IL-6 and TNF- α in a mouse model of I/R injury. qRT-PCR quantification of the expression level of CD68 (A), IL-6 (B) and TNF- α (C), $n = 4-5$. Data are presented as mean \pm SEM. One-way ANOVA followed by Bonferroni's post hoc test: * $p < 0.05$ vs. control (C), ** $p < 0.01$ vs. control (C), § $p < 0.05$ vs. I/R.

We next compared the cardiac function in vehicle- and metformin-treated mice subjected to 14 days of I/R (Figure 6). As shown in Figure 6A–C, echocardiographic assessment of cardiac function showed a decline in ejection fraction (EF) and fraction shortening (FS) in I/R-challenged mice as compared to control. In metformin-treated mice, both EF and FS

tended to increase following I/R injury, but this did not reach significance (Figure 6B,C). The echocardiographic parameters are shown in Supplementary Table S1.

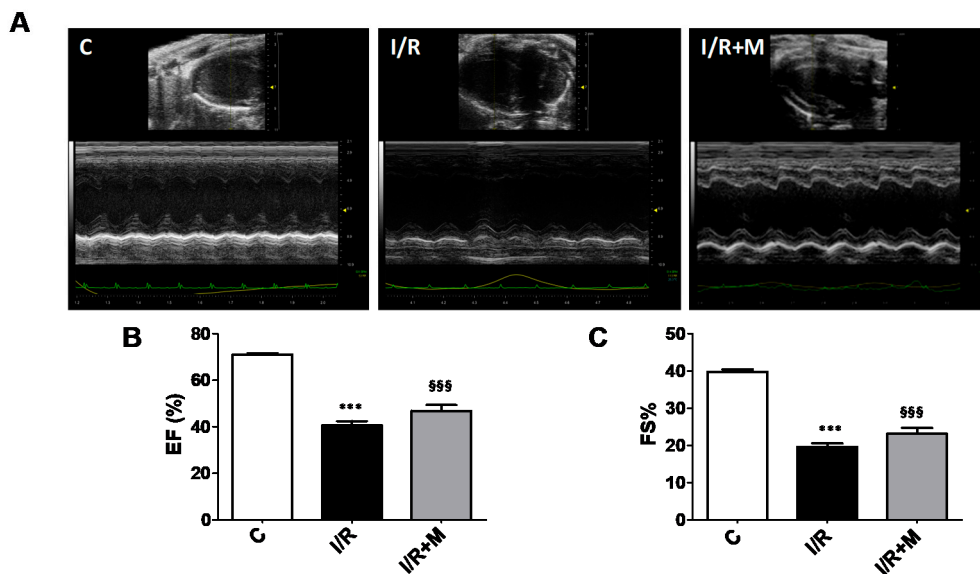


Figure 6. Echocardiographic functional parameters of mice after 14 days of cardiac I/R. (A) Representative 2D-M-Mode echocardiographic images of vehicle- or metformin-treated mice subjected to 14 days of I/R. (B) Ejection fraction (EF) and (C) fractional shortening (FS) in vehicle- or metformin-treated I/R mice ($n = 3$ per group). Data are presented as mean \pm SEM. One-way ANOVA followed by Bonferroni's post hoc test: *** $p < 0.001$, §§§ $p < 0.001$ vs. control (C).

3. Discussion

Metformin, the most widely prescribed drug therapy for T2D, has pleiotropic benefits, in addition to its capacity to lower elevated blood glucose levels [26]. Nonetheless, uncertainty still exists with regard to its effects on reactive cardiac remodeling linked to HF. In the present study, we show that low-dose metformin counteracts abnormal myocardial fibrosis in postinfarcted hearts in mice. In addition, we demonstrate that metformin blunts inflammatory response in injured myocardium by decreasing macrophage accumulation. These findings indicate that metformin treatment attenuates myocardial cardiac fibrotic remodeling associated with inflammation in the early postinfarction period.

In response to the loss of cardiac cells following MI, the cardiac interstitium is dynamically remodeled and contributes to the pathogenesis of HF. In acute MI, ischemia leads to initial cell death, followed by an inflammatory response with replacement fibrosis in the infarct region in the myocardium [21]. The cellular changes prime both the infarcted and noninfarcted areas for progressive ventricular dysfunction that eventually can lead to HF [4,7]. Accumulating evidence indicates that altering the initial cellular responses to I/R may enhance cardiomyocyte survival and ultimately preserve cardiac function following MI [27]. We have recently demonstrated that metformin prevents apoptotic cell death in both in vitro and in vivo models of myocardial I/R injury, suggesting a role of metformin in cardiomyocyte death. Furthermore, we have shown that metformin protects against postinfarct cardiac hypertrophy and regulates myocardial expression of brain-like natriuretic peptide (BNP) [28]. It is well known that pathological hypertrophy is closely associated with apoptotic and necrotic cell death and the loss of myocytes is replaced with excessive collagen accumulation in the myocardium, resulting in interstitial fibrosis [29]. Although the initial activation of fibrotic machinery is crucial for preventing rupture of the ventricular wall, an exaggerated fibrotic response and reactive fibrosis outside the injured area are detrimental as they lead to progressive impairment of cardiac function and eventually to heart disease [30]. In this study, we found that metformin blunts pathological fibrotic remodeling in mice subjected to 14 days of cardiac I/R. These findings are in line with previous evidence from an animal model of HF suggesting that metformin

attenuates myocardial fibrosis [31,32]. The fundamental mechanism underlying the excessive fibrotic remodeling after I/R injury is largely obscure but has been the subject of intense research. The majority of studies assign a key role in fibrotic progression to TGF- β , which executes its biological function by downstream activation of the Smad signaling pathway [31]. TGF- β 1, the most abundant isoform of TGF- β family members, can be secreted by cardiac cells and infiltrated inflammatory cells [33]. Inhibition of TGF- β 1 or its downstream signaling pathways substantially limits tissue fibrosis in a wide range of disease models, whereas overexpression of TGF- β 1 induces fibrotic remodeling [33]. In the context of myocardial fibrosis, Wang et al. reported that metformin can counteract the TGF- β 1-Smad3 signaling pathway including TGF- β 1 production, phosphorylation of Smad3 and nuclear translocation of Smad3 [31]. Metformin might also activate AMPK, which is expressed in cardiac tissue. Several studies have demonstrated that metformin protects the heart against myocardial I/R injury by suppressing oxidative stress and inflammation through AMPK activation [34–36]. However, the AMPK inhibitor (compound C) and adenovirus transduction with AMPK α 1-DN did not reverse the inhibitory effect of metformin on collagen synthesis, suggesting that the suppressor effect of metformin on collagen production may be independent of AMPK activation [31]. More research is needed to refine our understanding of the molecular mechanisms of antifibrotic activity of metformin.

A central event in cardiac fibrotic remodeling is the accumulation of activated myofibroblasts at the site of injury [37–39]. The myofibroblasts, a subset of activated fibroblasts characterized by the expression of α -SMA, are the principal cell type responsible for the synthesis and deposition of collagen during tissue fibrosis [40]. Extensive infiltration of the infarct area with myofibroblasts is a consistent feature of the cardiac remodeling after MI and a prominent characteristic in human myocardial scars [19]. Myofibroblasts produce large amounts of interstitial collagens which alter the geometry of the myocardium and contribute to remodeling in the remote areas of the ventricular wall [18]. According to the results obtained in our study, metformin attenuates mRNA expression of α SMA and collagen type III in cardiac sections from I/R-challenged hearts, suggesting that metformin can counteract the activation of the profibrotic gene program in the failing myocardium. Cardiac fibrosis is closely associated with inflammatory response linked to I/R injury [17]. Complementary to fibrosis analysis, myocardial expression of inflammatory genes was performed to explore the connection between fibrotic remodeling and inflammatory status in postinfarct cardiac tissue. Current work has mainly focused on fibrosis phenotype and expression profile of CD68, a histochemical/cytochemical marker of inflammation associated with the involvement of monocytes/macrophages. Abundant macrophage infiltration into the heart correlates with excessive collagen deposition and ultimately with HF [12]. CD68 is a glycoprotein that is highly expressed in macrophages and other mononuclear phagocytes [13]. We found that metformin reduced the number of CD68-positive cells and CD68-mRNA expression in fibrosis-challenged hearts, suggesting a link between fibrotic and inflammatory responses to I/R injury. Interestingly, we found that in a mouse model of myocardial I/R, metformin treatment for 2 weeks tended to improve cardiac function, but this did not reach significance at 14 days of I/R. We note that we used low doses of metformin (5 mg/kg/day, i.p.) in our study, and perhaps a two-week treatment course is not enough to achieve the improvement of ventricular function. Previously, Xiao et al. reported that chronic treatment for 6 weeks with metformin (200 mg/kg/day, subcutaneously) improves cardiac function in a pressure overload-induced model of HF [31], suggesting that metformin preserves ventricular performance in a time-related manner. Many reports for the different classes of antidiabetics highlight the similar chronic effects of metformin, sodium-glucose cotransporter-2 inhibitors (SGLT-2i) and dipeptidyl peptidase-4 (DPP-4) inhibitors on the heart, which contribute to cardioprotection [41,42]. From a clinical perspective, the detailed investigation of the underlying mechanisms may be an important rational basis for the specific combination of antidiabetic classes.

In summary, metformin counteracts collagen and macrophage accumulation in I/R-challenged myocardium in mice. These findings demonstrate that metformin could protect the heart against abnormal fibrotic and inflammatory remodeling after MI.

4. Materials and Methods

4.1. Animals

Animal investigations conformed to the Guide for the Care and Use of Laboratory Animals published by the U.S. National Institutes of Health (NIH Publication No. 85-23, revised 1985) and were performed in accordance with the recommendations of the French Accreditation of the Laboratory Animal Care (approved by the local Centre National de la Recherche Scientific ethics committee).

Three-month-old wild-type male C57BI/6J mice purchased from Janvier Labs (Le Genest-Saint-Isle, France) were maintained in a temperature-controlled room (25°C) with a natural day/night cycle and fed a standard chow diet and given ad libitum access to water. Animals were subjected to cardiac ischemia/reperfusion (I/R) for 14 days.

Animals were randomly divided into 4 groups as follows:

- (1) Control + PBS (C) group ($n = 5$);
- (2) Control + metformin (C + M) group ($n = 5$);
- (3) Ischemia/reperfusion + PBS (I/R) group ($n = 5$);
- (4) Ischemia/reperfusion + metformin (I/R + M) group ($n = 5$).

Mice then received for 14 consecutive days intraperitoneal injections of vehicle (PBS) or metformin (5 mg/kg/day) in a final volume of 100 μ L. Treatment with metformin started after 15 min of reperfusion. The dose–response study was performed to establish a rational choice for metformin concentration in mice.

4.2. Experimental Protocol

A mouse model of I/R was used as previously described [43]. The mice were intubated and placed under mechanical ventilation after undergoing general anesthesia with an intraperitoneal injection of ketamine (125 mg/kg) and xylazine (10 mg/kg). A left parasternotomy was performed to expose hearts, and a 0.4 mm polyethylene suture was placed around the left anterior descending coronary artery. A snare was placed on the suture, and regional myocardial ischemia was produced by tightening the snare. After 30 min of ischemia, the occlusive snare was released to initiate reperfusion up to 15 min. Sham-operated control mice underwent the same surgical procedures except that the snare was not tightened.

4.3. Echocardiography

Mice were anesthetized with 2% isoflurane and examined with noninvasive echocardiography (Vivid 7 ultrasound, GE; vevo2100 Visual Sonics).

Immunofluorescence and Histological Studies

Heart tissues were embedded in optimal cutting temperature compound (OCT) (Sigma-Aldrich, Saint-Quentin-Fallavier, France) under ice-cold 2-methylbutane. For CD68 staining, frozen sections (10 μ m) were fixed in 4% paraformaldehyde, followed by permeabilization and blocking in PBS with 0.02% FBS, 1% bovine serum albumin and 0.3% Triton X-100 at RT. Sections were immunostained overnight with anti-CD68 (MCA1957GA) followed by secondary Alexa fluor antibodies (Molecular Probes, Invitrogen, Cergy-Pontoise, France). Images were acquired by confocal Microscope Zeiss LSM 780 and ZEN image analysis software (Zeiss, Marly le roi, France). Four representative assessment zones were established in relation to the infarcted area: two peri-infarct zones, one zone in the middle of the infarct and a zone in the posterior segment of the interventricular septum representing a noninfarcted control area of the tissue slice. Quantification of the total number of CD68-positive cells per field of view was performed by counting the total number of positive cells in each field using the ImageJ software. Cardiac fibrosis was assessed on

10 µm heart cryosections using Sirius Red staining as previously described [44]. Additionally, fluorescent wheat germ agglutinin (WGA) staining was performed according to [45]. Briefly, cardiac sections were fixed in 4% paraformaldehyde for 10 min and stained with WGA Sigma Aldrich, Saint-Quentin-Fallavier, France solution for 1 h at room temperature in darkness, washed with PBS three times and coverslipped with an antifading mounting medium. The extent of cardiac fibrosis was quantified using ImageJ software (Bio-Rad Services, Marnes la Coquette, France).

4.4. Reagents and Antibodies

Anti-CD68 (MCA1957GA) antibodies from Bio-Rad (Marnes-la-Coquette, France) were used in this study. Oregon Green 488 coupled-wheat germ agglutinin (WGA) labeling and DAPI were from Life Technologies (Villebon sur Yvette, France).

4.5. Quantitative RT-PCR Analysis

Total RNAs were isolated from mouse hearts using the GenElute Mammalian Total RNA Miniprep Kit (Sigma Aldrich, Saint-Quentin-Fallavier, France). Total RNAs (500 ng) were reverse transcribed using High Capacity cDNA Reverse Transcription Kit (Applied Biosystems, Villebon sur Yvette, France) in the presence of random hexamers. Real-time quantitative PCR was performed as previously described [46]. The apical region of the heart was used for RNA extraction. The expression of target mRNA was normalized to GAPDH mRNA expression. Sequences of the forward and reverse primers are as follows:

COL3A1:

Forward—5'-AAGGCGAATTCAAGGCTGAA-3';

Reverse—5'-TGTGTTTAGTACAGCCATCCTCTAGAA-3'

α-SMA:

Forward—5'-GTCCCAGACATCAGGGAGTAA-3';

Reverse—5'-TCGGATACTTCAGCGTCAGGA-3';

CD68:

Forward—5'-AAAGGCCGTTACTCTCCTGC-3';

Reverse—5'-ACTCGGGCTCTGATGTAGGT-3';

GAPDH:

Forward—5'-CTTTGTCAAGCTCATTTCCTGG-3';

Reverse—5'-TCTTGCTCAGTGTCTTGC-3';

TNF-α:

Forward—5'-TGGGACAGTGACCTGGACTGT-3';

Reverse—5'-TTCGGAAAGCCATTGAGT-3';

IL-6:

Forward—5'-GCCACCAAGAACGATAGTCA-3';

Reverse—5'-CAAGAAGGCAACTGGATGGAA-3'.

4.6. Statistical Analysis

Statistical comparison between groups was performed by one-way ANOVA followed by a Bonferroni's post hoc test using GraphPad Prism version 5.00 (GraphPad Software, Inc. (San Diego, CA, USA). Data are expressed as mean ± SEM.

5. Conclusions

Taken together, these data provide evidence that post-treatment with metformin attenuates cardiac fibrotic remodeling associated with inflammatory responses induced by I/R injury. Moreover, metformin counteracts activation of the gene program that is involved in pathological cardiac remodeling linked to HF.

Supplementary Materials: The following are available online at <https://www.mdpi.com/article/10.3390/ijms22179393/s1>.

Author Contributions: Conceptualization, O.K. and O.O.; methodology, O.K., F.B. and H.T.; software, H.L.; validation, H.L.; formal analysis, H.L.; investigation, H.L.; resources, H.L.; data curation, echocardiographic measurements D.M.; writing—original draft preparation, H.L., C.L., N.P., D.C. and J.R.; writing—review and editing, H.L. and O.K.; visualization, S.K. and H.L.; supervision, O.K., M.K. and O.O.; project administration, O.K., M.K. and O.O.; funding acquisition, O.K. All authors have read and agreed to the published version of the manuscript.

Funding: This research was funded by the INSERM, Région Midi-Pyrénées and ERASMUS+.

Institutional Review Board Statement: The study was conducted according to the Guide for the Care and Use of Laboratory Animals published by the U.S. National Institutes of Health (NIH Publication No. 85-23, revised 1985) and were performed in accordance with the recommendations of the French Accreditation of the Laboratory Animal Care (approved by the local Centre National de la Recherche Scientific ethics committee).

Informed Consent Statement: Not applicable.

Data Availability Statement: <https://drive.google.com/drive/folders/1vZjt2gmzRL2CRmBOayNJ8rJzonAmUUmY>.

Conflicts of Interest: The authors declare no conflict of interest. The funders had no role in the design of the study; in the collection, analyses, or interpretation of data; in the writing of the manuscript; or in the decision to publish the results.

References

- Haffner, S.M.; Lehto, S.; Rönkä, T.; Pyörälä, K.; Laakso, M. Mortality from Coronary Heart Disease in Subjects with Type 2 Diabetes and in Nondiabetic Subjects with and without Prior Myocardial Infarction. *N. Engl. J. Med.* **1998**, *339*, 229–234. [[CrossRef](#)]
- Dei Cas, A.; Khan, S.S.; Butler, J.; Mentz, R.J.; Bonow, R.O.; Avogaro, A.; Tschoepe, D.; Doehner, W.; Greene, S.J.; Senni, M.; et al. Impact of diabetes on epidemiology, treatment, and outcomes of patients with heart failure. *JACC Hear Fail.* **2015**, *3*, 136–145. [[CrossRef](#)]
- Paulson, D.J. The diabetic heart is more sensitive to ischemic injury. *Cardiovasc. Res.* **1997**, *34*, 104–112. [[CrossRef](#)]
- Ding, M.; Lei, J.; Han, H.; Li, W.; Qu, Y.; Fu, E.; Fu, F.; Wang, X. SIRT1 protects against myocardial ischemia–reperfusion injury via activating eNOS in diabetic rats. *Cardiovasc. Diabetol.* **2015**, *14*, 1–12. [[CrossRef](#)] [[PubMed](#)]
- Frank, A.; Bonney, M.; Bonney, S.; Weitzel, L.; Koeppen, M.; Eckle, T. Myocardial ischemia reperfusion injury—From basic science to clinical bedside. *Semin. Cardiothorac. Vasc. Anesth.* **2012**, *16*, 123–132. [[CrossRef](#)] [[PubMed](#)]
- Raedschelders, K.; Ansley, D.M.; Chen, D.D. The cellular and molecular origin of reactive oxygen species generation during myocardial ischemia and reperfusion. *Pharmacol. Ther.* **2012**, *33*, 230–255. [[CrossRef](#)]
- Cohn, J.N.; Ferrari, R.; Sharpe, N. Cardiac remodeling—Concepts and clinical implications: A consensus paper from an international forum on cardiac remodeling. *J. Am. Coll. Cardiol.* **2000**, *35*, 569–582. [[CrossRef](#)]
- Lindman, B.R.; Arnold, S.V.; Madrazo, J.A.; Zajarias, A.; Johnson, S.N.; Pérez, J.E.; Mann, D. The Adverse Impact of Diabetes Mellitus on Left Ventricular Remodeling and Function in Patients with Severe Aortic Stenosis. *Circ. Heart Fail.* **2011**, *4*, 286–292. [[CrossRef](#)]
- Gjesdal, O.; Bluemke, D.; Lima, J.A. Cardiac remodeling at the population level—risk factors, screening, and outcomes. *Nat. Rev. Cardiol.* **2011**, *8*, 673–685. [[CrossRef](#)]
- Enomoto, S.; Yoshiyama, M.; Omura, T.; Matsumoto, R.; Kusuyama, T.; Kim, S.; Izumi, Y.; Akioka, K.; Iwao, H.; Takeuchi, K.; et al. Effects of eplerenone on transcriptional factors and mRNA expression related to cardiac remodeling after myocardial infarction. *Heart* **2005**, *91*, 1595–1600. [[CrossRef](#)]
- Frangogiannis, N.G. The inflammatory response in myocardial injury, repair, and remodeling. *Nat. Rev. Cardiol.* **2014**, *11*, 255–265. [[CrossRef](#)]
- Lambert, J.M.; Lopez, E.F.; Lindsey, M.L. Macrophage roles following myocardial infarction. *Int. J. Cardiol.* **2008**, *130*, 147–158. [[CrossRef](#)]
- Chistiakov, D.A.; Killingsworth, M.C.; Myasoedova, V.; Orekhov, A.N.; Bobryshev, Y.V. CD68/macrosialin: Not just a histochemical marker. *Lab. Invest.* **2016**, *97*, 4–13. [[CrossRef](#)]
- Nian, M.; Lee, P.; Khaper, N.; Liu, P. Inflammatory Cytokines and Postmyocardial Infarction Remodeling. *Circ. Res.* **2004**, *94*, 1543–1553. [[CrossRef](#)]
- Eguchi, M.; Kim, Y.H.; Kang, K.W.; Shim, C.Y.; Jang, Y.; Dorval, T.; Kim, K.J.; Sweeney, G. Ischemia-Reperfusion Injury Leads to Distinct Temporal Cardiac Remodeling in Normal versus Diabetic Mice. *PLoS ONE* **2012**, *7*, e30450. [[CrossRef](#)] [[PubMed](#)]
- Gandhi, M.S.; Kamalov, G.; Shahbaz, A.U.; Bhattacharya, S.K.; Ahokas, R.A.; Sun, Y.; Gerling, I.C.; Weber, K.T. Cellular and molecular pathways to myocardial necrosis and replacement fibrosis. *Heart Fail. Rev.* **2010**, *16*, 23–34. [[CrossRef](#)]

17. Steffens, S.; Montecucco, F.; Mach, F. The inflammatory response as a target to reduce myocardial ischaemia and reperfusion injury. *Thromb. Haemost.* **2009**, *102*, 240–247. [[CrossRef](#)] [[PubMed](#)]
18. Talman, V.; Ruskoaho, H. Cardiac fibrosis in myocardial infarction—from repair and remodeling to regeneration. *Cell Tissue Res.* **2016**, *365*, 563–581. [[CrossRef](#)] [[PubMed](#)]
19. Shinde, A.V.; Frangogiannis, N.G. Fibroblasts in myocardial infarction: A role in inflammation and repair. *J. Mol. Cell. Cardiol.* **2014**, *70*, 74–82. [[CrossRef](#)]
20. Pchejetski, D.; Foussal, C.; Alfaro, C.; Lairez, O.; Calise, D.; Guilbeau-Frugier, C.; Schaak, S.; Seguelas, M.-H.; Wanecq, E.; Valet, P.; et al. Apelin prevents cardiac fibroblast activation and collagen production through inhibition of sphingosine kinase 1. *Eur. Heart J.* **2011**, *33*, 2360–2369. [[CrossRef](#)]
21. Pandya, K.; Kim, H.S.; Smithies, O. Fibrosis, not cell size, delineates β -myosin heavy chain reexpression during cardiac hypertrophy and normal aging in vivo. *Proc. Natl. Acad. Sci. USA* **2006**, *103*, 16864–16869. [[CrossRef](#)]
22. American Diabetes Association. Pharmacologic Approaches to Glycemic Treatment: Standards of Medical Care in Diabetes-2020. *Diabetes Care* **2020**, *43* (Suppl. S1), S98–S110. [[CrossRef](#)] [[PubMed](#)]
23. Holman, R.R.; Paul, S.; Bethel, M.A.; Matthews, D.R.; Neil, H.A.W. 10-Year Follow-up of Intensive Glucose Control in Type 2 Diabetes. *N. Engl. J. Med.* **2008**, *359*, 1577–1589. [[CrossRef](#)]
24. King, P.; Peacock, I.; Donnelly, R. The UK Prospective Diabetes Study (UKPDS): Clinical and therapeutic implications for type 2 diabetes. *Br. J. Clin. Pharmacol.* **1999**, *48*, 643–648. [[CrossRef](#)]
25. Boyle, J.G.; Salt, I.P.; McKay, G.A. Metformin action on AMP-activated protein kinase: A translational research approach to understanding a potential new therapeutic target. *Diabet Med.* **2010**, *27*, 1097–1106. [[CrossRef](#)] [[PubMed](#)]
26. Kirpichnikov, D.; McFarlane, S.I.; Sowers, J.R. Metformin: An Update. *Ann. Intern. Med.* **2002**, *137*, 25–33. [[CrossRef](#)] [[PubMed](#)]
27. Epelman, S.; Mann, D.L. Communication in the Heart: The Role of the Innate Immune System in Coordinating Cellular Responses to Ischemic Injury. *J. Cardiovasc. Transl. Res.* **2012**, *5*, 1–14. [[CrossRef](#)] [[PubMed](#)]
28. Loi, H.; Boal, F.; Tronchere, H.; Cinato, M.; Kramar, S.; Oleshchuk, O.; Korda, M.; Kunduzova, O. Metformin protects the heart against hypertrophic and apoptotic remodeling after myocardial infarction. *Front. Pharmacol.* **2019**, *10*, 154. [[CrossRef](#)]
29. Weber, K.T.; Sun, Y.; Bhattacharya, S.K.; Ahokas, R.A.; Gerling, I.C. Myofibroblast-mediated mechanisms of pathological remodeling of the heart. *Nat. Rev. Cardiol.* **2012**, *10*, 15–26. [[CrossRef](#)]
30. Borne, S.W.M.V.D.; Diez, J.; Blankesteyn, W.M.; Verjans, J.; Hofstra, L.; Narula, J. Myocardial remodeling after infarction: The role of myofibroblasts. *Nat. Rev. Cardiol.* **2009**, *7*, 30–37. [[CrossRef](#)]
31. Xiao, H.; Ma, X.; Feng, W.; Fu, Y.; Lu, Z.; Xu, M.; Shen, Q.; Zhu, Y.; Zhang, Y. Metformin attenuates cardiac fibrosis by inhibiting the TGF1-Smad3 signalling pathway. *Cardiovasc. Res.* **2010**, *87*, 504–513. [[CrossRef](#)]
32. Wang, X.; Yang, L.; Kang, L.; Li, J.; Yang, L.; Zhang, J.; Liu, J.; Zhu, M.; Zhang, Q.; Shen, Y.; et al. Metformin attenuates myocardial ischemia-reperfusion injury via up-regulation of antioxidant enzymes. *PLoS ONE* **2017**, *12*, e0182777. [[CrossRef](#)]
33. Dobaczewski, M.; Chen, W.; Frangogiannis, N.G. Transforming Growth Factor (TGF)- β signaling in cardiac remodeling Introduction: The biology of TGF- β . *J. Mol. Cell Cardiol.* **2011**, *51*, 600–606. [[CrossRef](#)] [[PubMed](#)]
34. Zhou, G.; Myers, R.; Li, Y.; Chen, Y.; Shen, X.; Fenyk-Melody, J.; Wu, M.; Ventre, J.; Doebber, T.; Fujii, N.; et al. Role of AMP-activated protein kinase in mechanism of metformin action. *J. Clin. Investig.* **2001**, *108*, 1167–1174. [[CrossRef](#)]
35. Gundewar, S.; Calvert, J.; Jha, S.; Toedt-Pingel, I.; Ji, S.Y.; Nunez, D.; Ramachandran, A.; Anaya-Cisneros, M.; Tian, R.; Lefer, D.J. Activation of AMP-Activated Protein Kinase by Metformin Improves Left Ventricular Function and Survival in Heart Failure. *Circ. Res.* **2009**, *104*, 403–411. [[CrossRef](#)]
36. Nesti, L.; Natali, A. Metformin effects on the heart and the cardiovascular system: A review of experimental and clinical data. *Nutr. Metab. Cardiovasc. Dis.* **2017**, *27*, 657–669. [[CrossRef](#)]
37. Moore-Morris, T.; Guimarães-Cambo, N.; Banerjee, I.; Zambon, A.C.; Kisseleva, T.; Velayoudon, A.; Stallcup, W.B.; Gu, Y.; Dalton, N.D.; Cedenilla, M.; et al. Resident fibroblast lineages mediate pressure overload-induced cardiac fibrosis. *J. Clin. Investig.* **2014**, *124*, 2921–2934. [[CrossRef](#)]
38. Rockey, D.C.; Bell, P.D.; Hill, J.A. Fibrosis—A Common Pathway to Organ Injury and Failure. *N. Engl. J. Med.* **2015**, *372*, 1138–1149. [[CrossRef](#)]
39. Kanisicak, O.; Khalil, H.; Ivey, M.; Karch, J.; Maliken, B.D.; Correll, R.N.; Brody, M.; Lin, S.-C.J.; Aronow, B.J.; Tallquist, M.D.; et al. Genetic lineage tracing defines myofibroblast origin and function in the injured heart. *Nat. Commun.* **2016**, *7*, 12260. [[CrossRef](#)]
40. Hinz, B.; Lagares, D. Evasion of apoptosis by myofibroblasts: A hallmark of fibrotic diseases. *Nat. Rev. Rheumatol.* **2019**, *16*, 11–31. [[CrossRef](#)] [[PubMed](#)]
41. Verma, S.; Mazer, C.D.; Yan, A.T.; Mason, T.; Garg, V.; Teoh, H.; Zuo, F.; Quan, A.; Farkouh, M.E.; Fitchett, D.H.; et al. Effect of Empagliflozin on Left Ventricular Mass in Patients with Type 2 Diabetes Mellitus and Coronary Artery Disease: The EMPA-HEART CardioLink-6 Randomized Clinical Trial. *Circulation* **2019**, *140*, 1693–1702. [[CrossRef](#)]
42. Koska, J.; Sands, M.; Burciu, C.; Reaven, P. Cardiovascular effects of dipeptidyl peptidase-4 inhibitors in patients with type 2 diabetes. *Diabetes Vasc. Dis. Res.* **2015**, *12*, 154–163. [[CrossRef](#)]
43. Martinelli, I.; Timotin, A.; Moreno-Corchado, P.; Marsal, D.; Kramar, S.; Loy, H.; Joffre, C.; Boal, F.; Tronchere, H.; Kunduzova, O. Galanin promotes autophagy and alleviates apoptosis in the hypertrophied heart through FoxO1 pathway. *Redox Biol.* **2021**, *40*, 101866. [[CrossRef](#)]

44. Goto, P.L.; Cinato, M.; Merachli, F.; Vons, B.; Jimenez, T.; Marsal, D.; Todua, N.; Loi, H.; Santin, Y.; Cassel, S.; et al. In vitro and in vivo cardioprotective and metabolic efficacy of vitamin E TPGS/Apelin. *J. Mol. Cell. Cardiol.* **2019**, *138*, 165–174. [[CrossRef](#)]
45. Emde, B.; Heinen, A.; Gödecke, A.; Bottermann, K. Wheat germ agglutinin staining as a suitable method for detection and quantification of fibrosis in cardiac tissue after myocardial infarction. *Eur. J. Histochem.* **2014**, *58*, 2448. [[CrossRef](#)]
46. Alfarano, C.; Foussal, C.; Lairez, O.; Calise, D.; Attané, C.; Anesia, R.; Daviaud, D.; Wanecq, E.; Parini, A.; Valet, P.; et al. Transition from metabolic adaptation to maladaptation of the heart in obesity: Role of apelin. *Int. J. Obes.* **2014**, *39*, 312–320. [[CrossRef](#)]