



HAL
open science

Occupation during the Lower and Middle/Late Palaeolithic period in the Sufrat Valley (Adam region, Sultanate of Oman)

Stéphanie Bonilauri, Tara Beuzen-Waller, Jessica Giraud, Marion Lemée,
Guillaume Gernez, Eric Fouache

► To cite this version:

Stéphanie Bonilauri, Tara Beuzen-Waller, Jessica Giraud, Marion Lemée, Guillaume Gernez, et al.. Occupation during the Lower and Middle/Late Palaeolithic period in the Sufrat Valley (Adam region, Sultanate of Oman). Proceedings of the Seminar for Arabian Studies, 2015, Papers from the forty-eighth meeting of the Seminar for Arabian Studies held at the British Museum, London, 25–27 July 2014, 45, pp.21-34. hal-03433497

HAL Id: hal-03433497

<https://hal.science/hal-03433497>

Submitted on 17 Nov 2021

HAL is a multi-disciplinary open access archive for the deposit and dissemination of scientific research documents, whether they are published or not. The documents may come from teaching and research institutions in France or abroad, or from public or private research centers.

L'archive ouverte pluridisciplinaire **HAL**, est destinée au dépôt et à la diffusion de documents scientifiques de niveau recherche, publiés ou non, émanant des établissements d'enseignement et de recherche français ou étrangers, des laboratoires publics ou privés.

Occupation during the Lower and Middle/Late Palaeolithic period in the Sufrat Valley (Adam region, Sultanate of Oman)

S. BONILAURI, T. BEUZEN-WALLER, J. GIRAUD, M. LEMÉE, G. GERNEZ & E. FOUACHE

Summary

This paper reports the results of surveys undertaken on the Palaeolithic periods in the Adam region (north central Oman) carried out since 2013 by the French Mission of Adam. The aim of these surveys was to provide a basic overview of these sites, in terms of their geographical scope and relative chronological limits. The Adam region (north interior Oman) is already well known for its sites of the Neolithic and protohistoric periods; the discovery of an area very rich in Palaeolithic industries (the Sufrat Valley, located on the western side of the Jabal Salekh), positioned our region of study as a suitable strategic territory for human occupation that has occurred since the prehistoric periods. The favourable environmental frame, including in particular the hydrological network of this region, certainly constitutes the principal factor for human establishments from prehistoric periods until today. Even if the Sufrat Valley's lithic industries lie exclusively on surfaces (hence their lack of chrono-stratigraphical context), the typo-technological traits has allowed most of these artefacts to be assigned to the Middle or Late Palaeolithic and, for some pieces, to the Lower Palaeolithic. These ancient lithic remains bear witness to Palaeolithic occupations on the eastern side of the Arabian Peninsula, situated at the crossroads between Africa, the Middle East, and Asia.

Keywords: Sultanate of Oman, Adam region, Sufrat Valley, Middle/Late Palaeolithic, Lower Palaeolithic

1. Introduction

The French Mission of Adam (successively run by Dr Jessica Giraud and then by Guillaume Gernez) has conducted survey programmes, excavations, and research since 2007 in the Adam (Ādam) region, a region of transition located between the Hajar Mountains (Jibāl Ḥajar) and the margins of the Rub al-Khali (al-Rub^ḥ al-Khālī) desert. Its activities led to the identification of numerous archaeological sites attributed from the Neolithic to the pre-Islamic periods (e.g. Giraud et al. 2012). In 2010 some lithic artefacts related to the Palaeolithic period were discovered on the south-eastern foothills of the Sufrat Dishshah (Sufrat Dishshah, one hill of the Sufrat Valley/Wādī al-Ṣufrāt); this event introduced the development of an axis of research focused on prehistoric occupations in the Sufrat Valley (Fig. 1). The first investigations conducted in the Sufrat Valley highlighted several areas of high-density lithic artefacts, that sometimes lie in surface undisturbed, all included in a geographical sector of more than 10 km². In our current state of research, systematic surveys and analyses have only been done on a part of the Sufrat Valley, mostly radiating around the south-eastern area of the Sufrat

Dishshah (the location of our first findings) (Fig. 1/c). Our initial results denoted the presence of numerous lithic artefacts found on hill summits as well as on slopes and piedmonts that have typo-technological traits attributable to the Middle Palaeolithic — and perhaps form the Late Palaeolithic period — and certainly, for some of them, to the Lower Palaeolithic period. They bring forward the geographic importance of the Sultanate of Oman, more notably the northern part, in terms of occupation during the Lower and Middle Palaeolithic periods. Indeed, during the last decades research conducted in Oman has highlighted a significant number of Palaeolithic sites (e.g. Biagi 1988; 1994; 2004; Doe 1976; Edens 1988; Jagher 2009; Jagher & Pümpin 2010; Maggi 1990; Rose 2007; Rose & Usik 2009; Rose & Hilbert 2014; Smith 1977; Usik et al. 2012; Whalen 2003; Whalen, Zoboroski & Schubert 2002), with the main part of these sites attributable to the Lower and Middle Palaeolithic periods located in the south of the Huqf region (e.g. Biagi 1994; Jagher 2009; Jagher & Pümpin 2010; Whalen 2003) and in the centre of the Dhofar region (e.g. Hilbert 2012; 2014; Hilbert, Rose & Roberts 2012; Hilbert et al., in press; Rose 2007; Rose & Usik 2009; Rose & Hilbert 2014; Usik et al. 2012). Until recently, however, similar findings were

extremely unusual in the northern part of the Sultanate of Oman. Consequently, even if they were found lying on surfaces and without a chrono-stratigraphical context, this discovery still remains fundamental to complete the understanding of Palaeolithic occupation in this region and more generally in the Arabian Peninsula.

2. Setting and environment

The Adam region is an area of transition between the mountains and the desert environment. Located at the southern piedmont part of the Hajar Mountains (northern Oman), it is characterized by an anticlinal chain (the Salekh Arch/Jabal Salakh), which is the last southern mountain fold before the expansive Rub al-Khali desert, and by an alluvial plain sectioned from north to south by seasonal wadis that originate from the Hajar Mountains. Our area of study, the Suftrat Valley, consists of several low marly hills that are defined by flat-top summits which provide elevated spots overlooking the valley and the Wādī Umayri (Wādī ʿUmayrī) passage, one of the most important watercourse in this region (Fig. 1). These low hills also offer a rich geological setting that supplies raw materials. The lithic resources in this valley are abundant and consist of radiolarian chert outcrops organized in veins or chert nodules. Thanks to differential erosion and deflationary processes, these nodules (either whole or fractured) are freed from their chalky matrices and are therefore readily available. The quality of siliceous material is excellent, marked by a brown colour with perfectly homogeneous fine grains; it has largely been exploited by prehistoric people for flake or blade debitage as well as bifacial production.

Even if the current deserted landscape presents the valley as inhospitable, several geomorphological formations inherited from past pluvial periods have been identified along the dried-out watercourses, indicating that cooler/wetter conditions had an impact on the Suftrat valley environment. This testifies that a higher fluvial activity existed, as much in the interior valley as in Wādī Umayri, which today presents itself as an ecological niche. In light of its raw materials and past water resources, this valley was certainly an ideal place for human group settlements. Geomorphological and palaeoecological investigations are still in process.

3. Methods

The principal aim was to obtain an overview of the archaeological area and its chronology, firstly by defining

the geographical scope and limits of the area with archaeological potential, secondly by estimating the density of some punctual sites, and finally by evaluating lithic remains, notably through the study of technological and typological features. As a result, various scales of study were used, ranging from regional to micro-local: 1) a regional survey conducted in the whole of the Suftrat Valley without artefact sampling, was made by car, on foot, and through satellite imagery; 2) a local survey, in this case focusing on one small hillside (south-eastern slope of the Suftrat Dishshah) where the most significant materials were collected; 3) systematic surface collections undertaken in 1 x 1 m² areas.

These different methods of analysis allowed a preliminary delimitation of the area with archaeological potential in the Suftrat Valley, estimated at more than 10 km²; an evaluation of the density of lithic remains for each topographical unit (summit, slope, and piedmont) of the south-eastern flank of the Suftrat Dishshah; and finally, also for this area, a typology of the artefacts found during systematic collection, which will be presented below.

4. Lithic artefacts

4.1 An area with a high density of lithic remains

Lithic artefacts were found both on the flat-top summits of the Suftrat Dishshah and on its slopes and piedmonts areas. The highest density of materials was found on the summits (with an average of eighty artefacts per square metre) (Fig. 2). This high density can be partially explained by the phenomena of chronological overlapping caused by deflationary processes. Despite the lack of stratigraphical context, these artefacts appear unremoved and may certainly be mostly undisturbed surface scatters. Furthermore, they were generally well preserved, without any apparent post-depositional alterations with the exception of patina.

When looking at the Suftrat Dishshah slopes, they are characterized by both a high and a medium density of artefacts (forty-eight artefacts per square metre). They were found mixed with rock and debris deposits that had been disturbed by slope dynamics and gravity (Fig. 3). The majority of them certainly come from upper tabular surfaces, which are gradually shredded by erosion processes. In light of these dynamics, two types of conservation states were observed: one that is well-preserved, undoubtedly related to slow perturbation that characterizes artefacts found *in situ*; and one less well-preserved that applies to rolled and fractured artefacts, disturbed by slope dynamics.

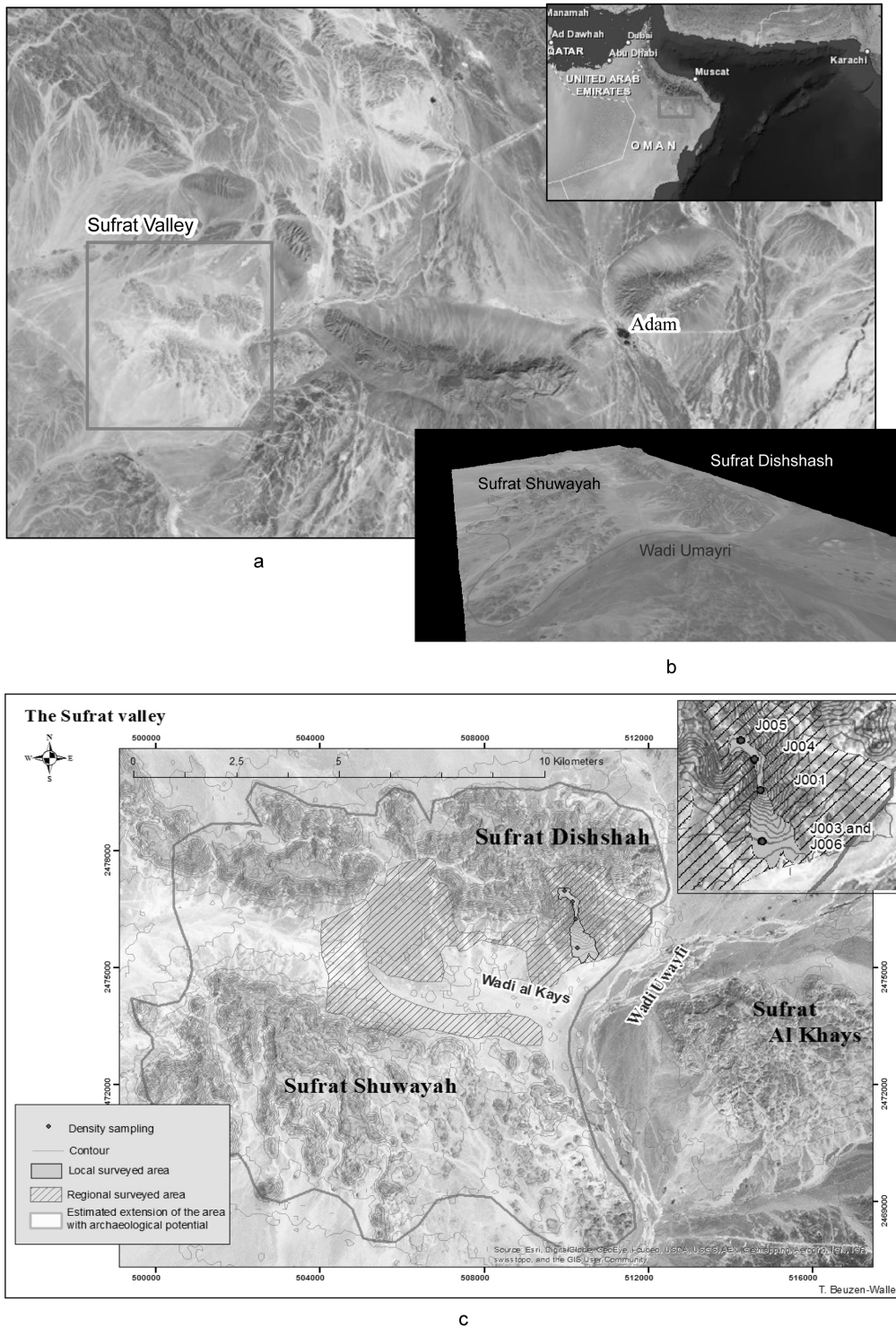


FIGURE 1. Maps of the Adam region, Sufrat Valley, and Sufrat Dishshah: **a.** the location of the Adam region and Sufrat Valley in the Sultanate of Oman; **b.** a view of the Sufrat Valley; **c.** a view of Sufrat Dishshah and the area of survey in Sufrat Dishshah.

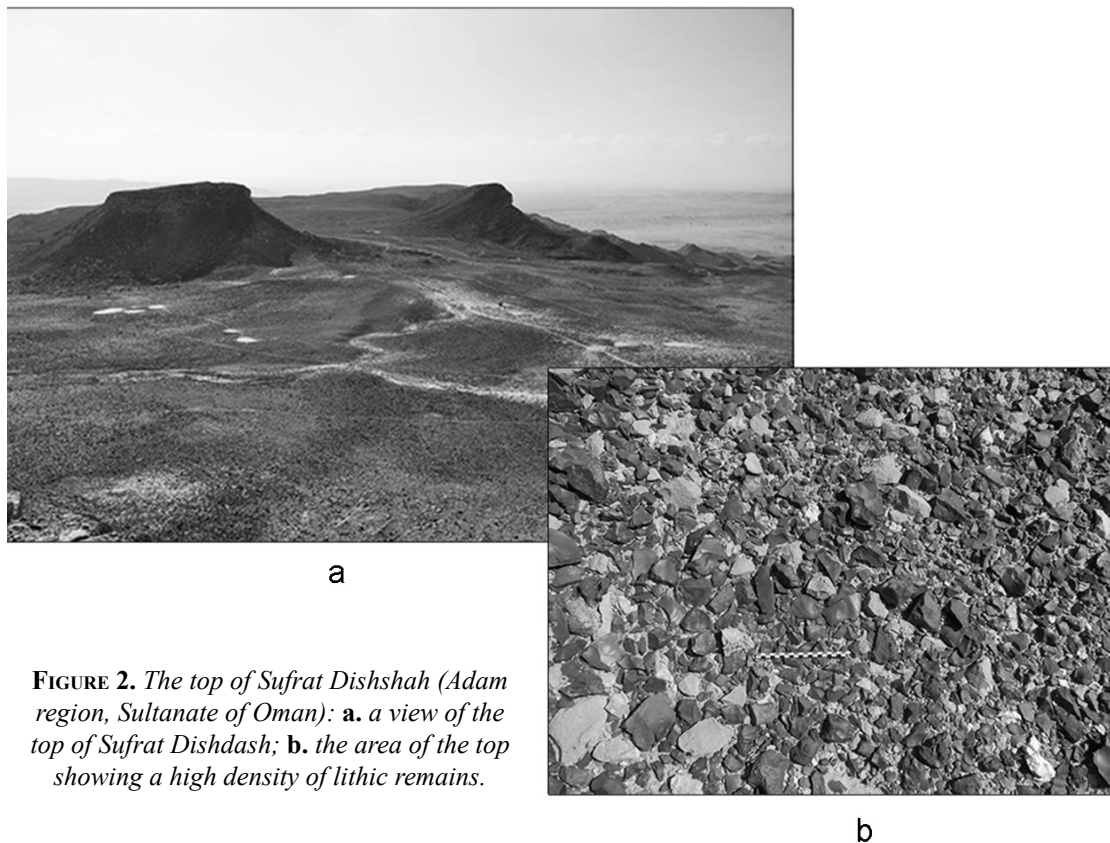


FIGURE 2. *The top of Sufrat Dishshah (Adam region, Sultanate of Oman): a. a view of the top of Sufrat Dishdash; b. the area of the top showing a high density of lithic remains.*

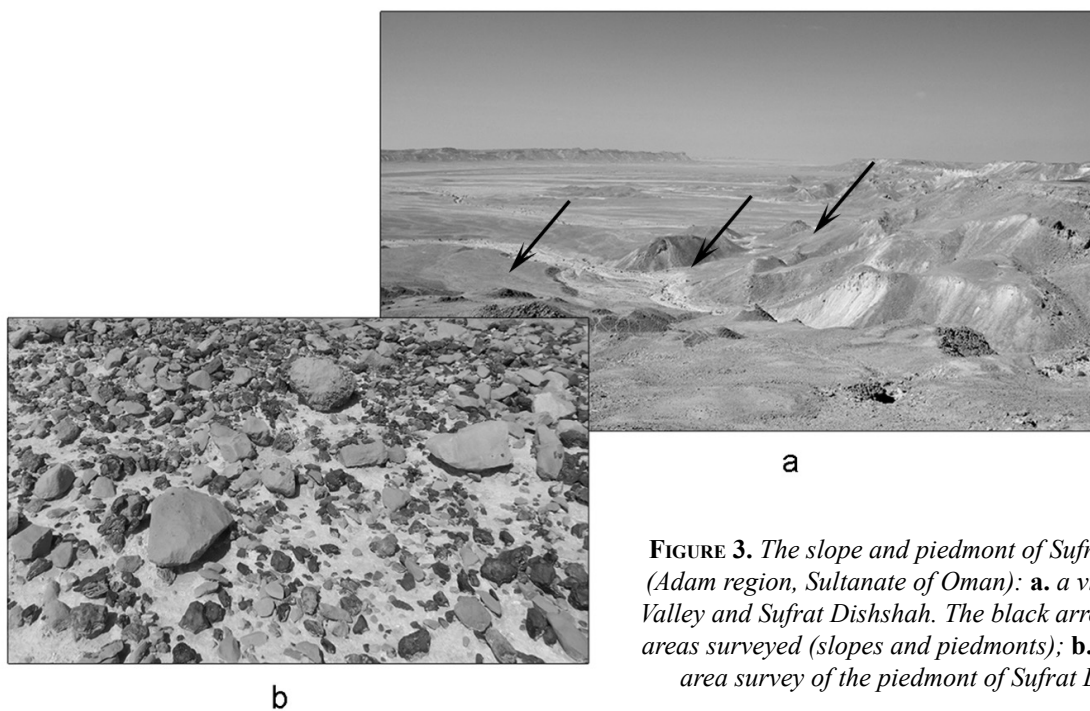


FIGURE 3. *The slope and piedmont of Sufrat Dishshah (Adam region, Sultanate of Oman): a. a view of Sufrat Valley and Sufrat Dishshah. The black arrows show the areas surveyed (slopes and piedmonts); b. a view of an area survey of the piedmont of Sufrat Dishshah.*

4.2. Types of lithic remains

Many types of artefacts were discovered lying on the surface in the midst of each topographical unit of the Sufrat Dishshah (summits, slopes, piedmonts). Their typo-technological characteristics enable us to link them from the Lower Palaeolithic to the Middle and maybe to the Late Palaeolithic period, even despite the lack of a clear stratigraphic context. The most significant materials of the Sufrat Valley and their characteristics will be presented below.

Levallois remains

Levallois products present a certain number of cores dominated by a Levallois debitage of a unique preferential flake. The objectives here are to produce predetermined removals of various contours, whereby they are convergent and non-convergent. Convergent products, including Levallois points with three removals (e.g. Boëda, Bourguignon & Griggo 1998) and triangular flakes, are characterized by a convergent unipolar preparation. Non-convergent products including wide or oval flakes and elongated Levallois flakes are

characterized by a centripetal preparation (Figs 4 & 5).

In addition, we also find centripetal, bipolar, and convergent unipolar recurrent Levallois cores. The aims of these cores are also to produce predetermined removals of various contours such as convergent flakes and non-convergent flakes. Convergent products, including ‘constructed’ Levallois points (e.g. Boëda, Bourguignon & Griggo 1998) and triangular flakes, are characterized by a convergent unipolar and centripetal preparation. On the other hand, non-convergent products, including wide or elongated removals, are characterized by a centripetal and a bipolar preparation (Figs 4 & 5). Many Levallois flakes of various contours (Levallois points, triangular flakes, and wide Levallois flakes) are also identified and often found in association with Levallois cores. Some of these flakes are retouched but most of them remain unretouched (Fig. 4).

These types of Levallois remains, their preparation method, and the production objectives identified on several of the cores are similar to those discovered in neighbouring regions such as Hadramawt in Yemen (e.g. Amirkhanov 1994; Crassard 2007; 2009) or in the Shabwa region (e.g. Inizan 1989; 1997; Inizan & Ortlieb 1987). Those types of Levallois artefacts, in particular convergent products,

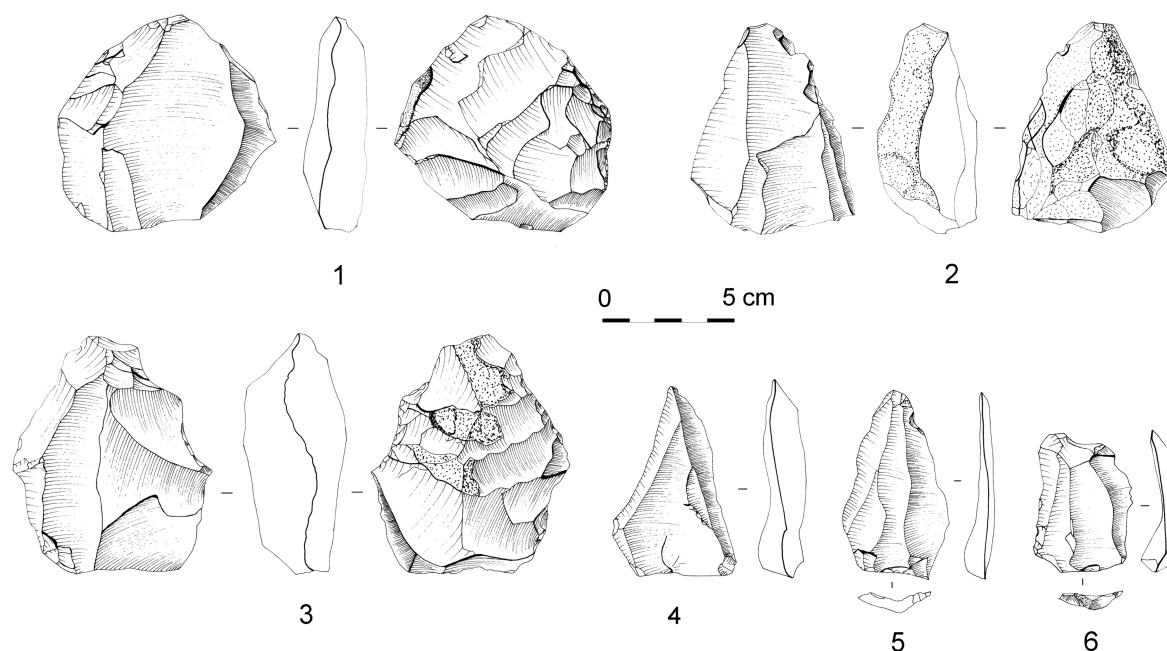


FIGURE 4. *Levallois artefacts (Sufrat Dishshah, Adam region): 1–2. preferential Levallois cores; 3. a recurrent Levallois core; 4–5. convergent Levallois flakes; 6. a non-convergent Levallois flake.*

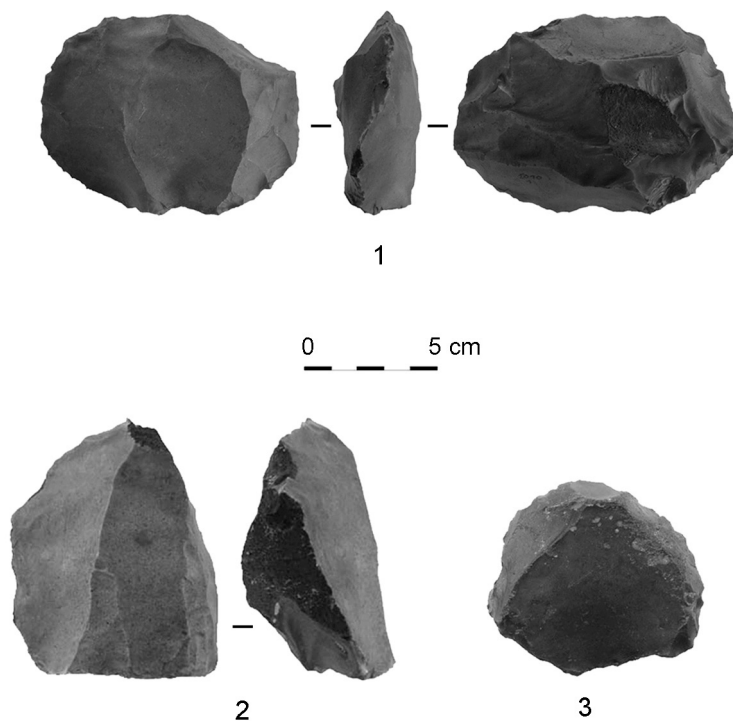


FIGURE 5. *Levallois preferential cores (Sufrat Dishshah, Adam region).*

may also be closely linked to the Levantine Mousterian culture. This emblematic technical culture of the Near East occurred during the recent middle Palaeolithic and was orientated towards the production of convergent products. It notably included ‘constructed’ Levallois points, points with three removals, and triangular flakes (e.g. Boëda, Bourguignon & Griggo 1998; Meignen 1995; 1998).

Significantly, there seems to be a complete absence of Nubian products even though one would have expected to find Nubian cores. Indeed, Nubian products are well represented in others sites of the Arabian Peninsula, such as in central Saudi Arabia (Crassard & Hilbert 2013), the Hadramawt region in Yemen (e.g. Crassard 2009; Crassard & Thiébaud 2011), and the south of Oman, in the Dhofar (Zufār) region (e.g. Rose et al. 2011; Rose & Hilbert 2014; Usik et al. 2012). Their absence in the Adam region still remains unexplained.

Wa^ʿshah types remains

Numerous types of Wa^ʿshah cores, similar to those studied in Wādī Wa^ʿshah (Wādī Wa^ʿshah, the Hadramawt region in Yemen) were discovered (e.g. Crassard 2007;

2008). They are characterized by a preferential unipolar convergent laminar debitage that aims to produce predetermined elongated convergent products with three removals, with the result that they are relatively narrow (Fig. 6). The volumetric conception of the cores (two ranked secant debitage surfaces) and the platform surface (with technical predetermination criteria; left/right lateral convexities; distal convexities) are for us similar to the Levallois debitage and in particular the preferential convergent Levallois debitage. In effect, the preparations of these cores are made through lateral unipolar removals (that lead to a favourable rib). Moreover, this method of preparation has already been studied and identified on Middle Eastern convergent Levallois cores.

Despite these observations leading to rank the Wa^ʿshah cores types into the Middle Palaeolithic period, we remain cautious as certain authors (e.g. Crassard 2007; 2008) view the laminar debitage conception and the probable use of indirect percussion as a production conception of an Upper or Late Palaeolithic conceptualization or in a more recent conceptualization of the Holocene age (e.g. Crassard 2007; 2008; Hilbert 2012; Hilbert, Rose & Roberts 2012; Hilbert et al., in press).

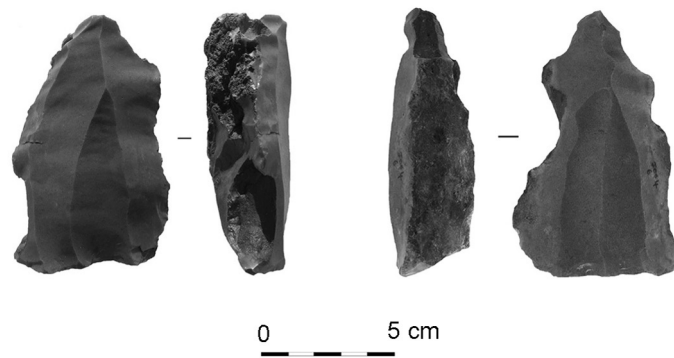


FIGURE 6. *Wa'shah* cores (Sufrat Dishshah, Adam region).

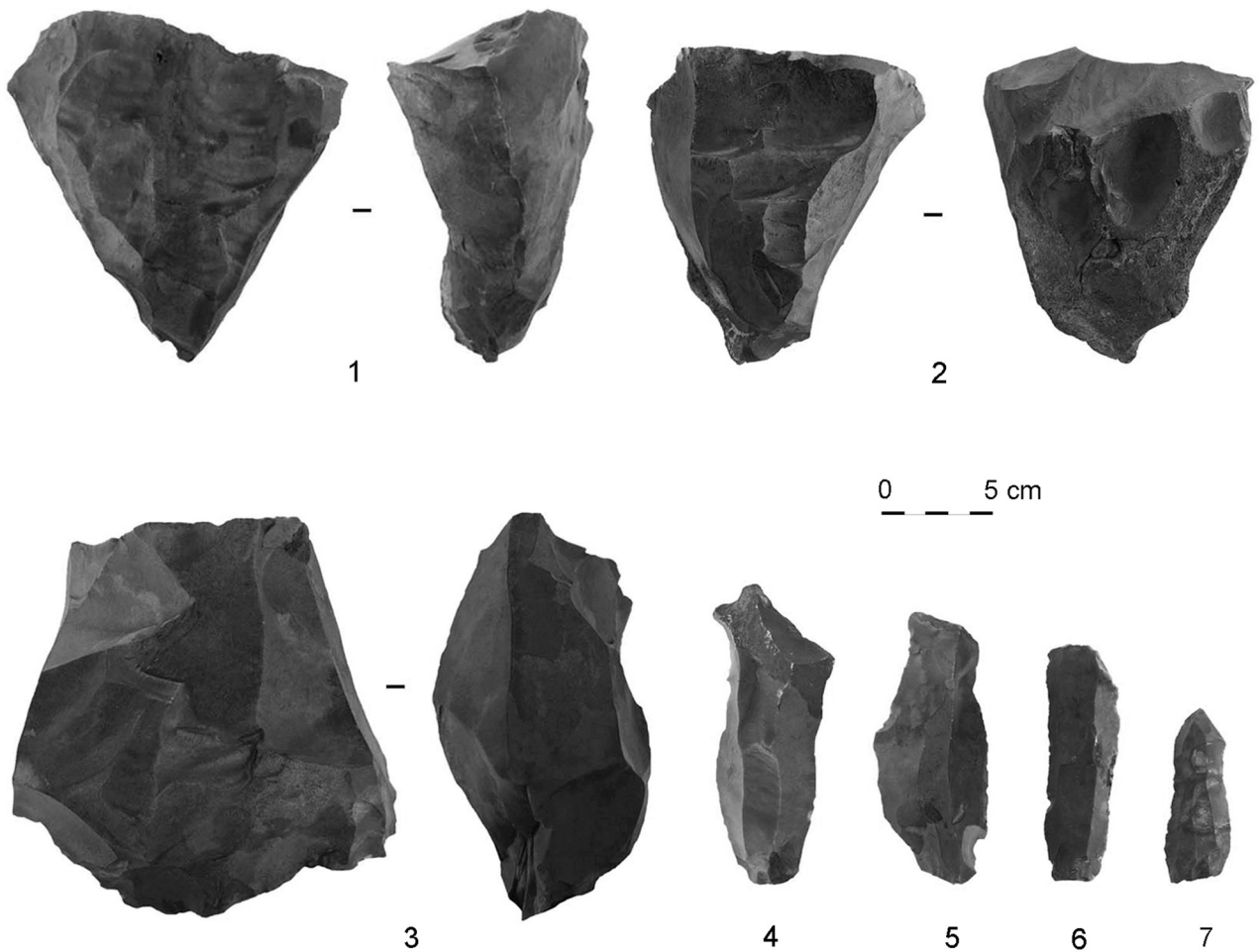


FIGURE 7. *Laminar* artefacts (Sufrat Dishshah, Adam region): 1–3. blade cores; 4–6. unretouched non-convergent blades; 7. an unretouched convergent blade.

Laminar remains

Numerous laminar remains (blade and laminar cores) were systematically identified in association with Levallois and bifacial remains. Their cores (triangular in nature) have a platform surface or an opposed platform surface. Debitage is made through internal percussion with a hard hammer and in line with recurring bipolar or unipolar production methods (convergent or non-convergent). The principal aim is to produce a series of laminar removals from each debitage surface, whether they are convergent or not. Numerous blades were also identified; they are relatively thick and, with a few exceptions, never retouched (Fig. 7). Those remains are relatively rare in the Arabian Peninsula but nevertheless have been identified in close outlying regions, specifically in central Oman (e.g. Jagher 2009; Jagher & Pümpin 2010; Rose & Usik 2009; Hilbert 2012).

If it is difficult to attribute these remains to a defined chronological period, it is interesting to note that they

possess common typo-technical traits with a laminar industry found in central Syria (e.g. Boëda 2005). This laminar industry was uncovered under a Levallois stratigraphic layer. It has been linked to an ancient Middle Palaeolithic industry, contemporary with or prior to the Hummalian technical phenomenon (characterized by exclusive blade production). The Hummalian phenomenon is peculiar to the ancient Middle Palaeolithic in the Levant and has been dated around 200,000–150,000 years BC (e.g. Hours 1982; Le Tensorer 2005; Copeland & Hours 1983). Even if these remains were found without a chrono-stratigraphic context, this laminar industry could still be associated to the Middle Palaeolithic period.

Bifacial remains

In association with Levallois and laminar remains, numerous bifacial pieces were discovered. They measure on average between 80 and 120 mm in length and between 40 and 80 mm in width. These pieces are

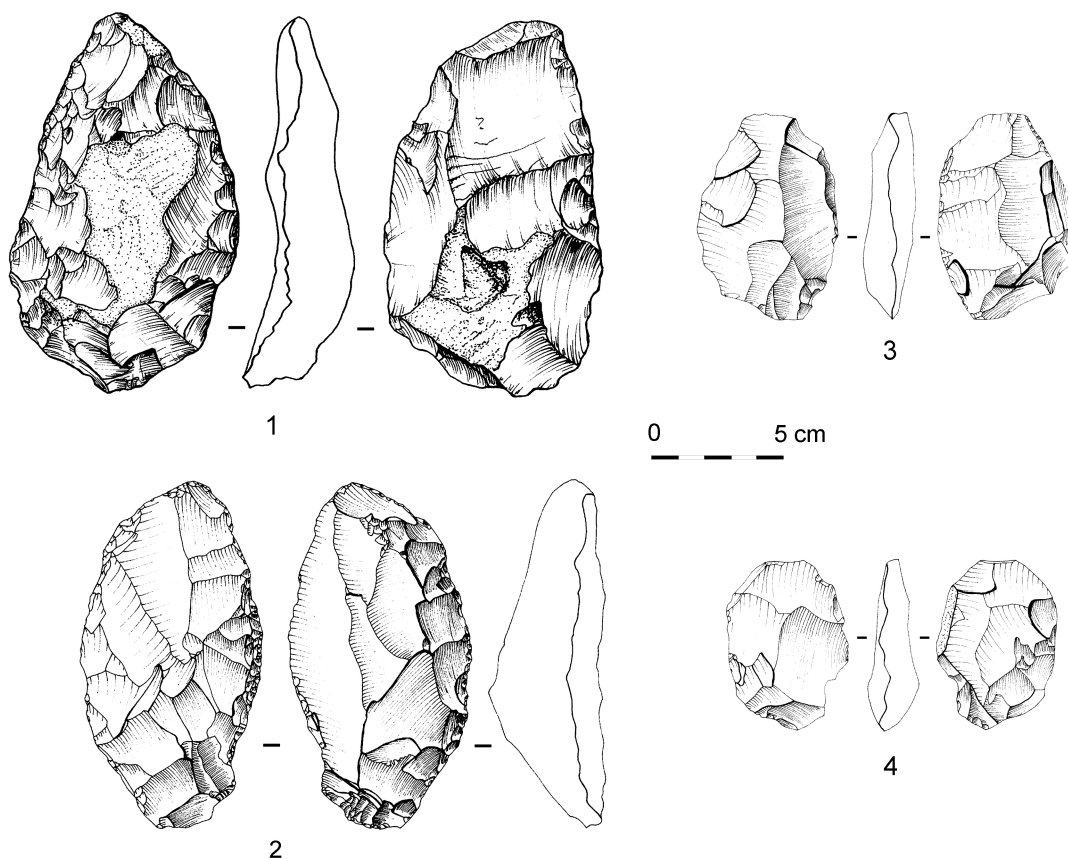


FIGURE 8. Bifacial pieces (Sufrat Dishshah, Adam region): 1–2. convergent bifacial pieces; 3–4. non-convergent bifacial pieces.

entirely shaped and have diverse morphologies (large or narrowly elongated and/or oval in shape). Their lateral edges are convergent or non-convergent and have some varied delineations (convex, concave, straight) (Fig. 8). It is important to note that the plan section of some convergent pieces are plano-convex, such as some eastern European micoquian bifacial pieces that have been dated to the recent Middle Palaeolithic. On the other hand, still in central Syria (e.g. Boëda 2005), similar industries in terms of technical characters have been uncovered at the level containing laminar industries located under a Levallois layer. These Middle Eastern bifacial industries were attributed to the ancient Middle Palaeolithic.

Finding those bifacial pieces is far from a rare occurrence. In fact, they were commonly found in other Palaeolithic industries that were studied, for example in the south of the Arabian Peninsula, in Oman (e.g. Biagi 1994; Rose 2004; Rose & Usik 2009; Jagher 2009; Hilbert 2014; Hilbert et al., in press), in the United Arab Emirates (e.g. Armitage et al. 2011; Scott-Jackson, Scott-

Jackson & Rose 2009; Wahida et al. 2009), and in Yemen (e.g. Crassard 2007). From our point view, they could even constitute a kind of ‘regional specificity’ during the Middle Palaeolithic but also during the Late Palaeolithic and the Early Holocene. Indeed, it is likely that among all the bifacial pieces found in the area of Adam but also in other parts of the Arabian Peninsula, some of them correspond to the Middle Palaeolithic, while other bifacial pieces would correspond to a late Palaeolithic or a Holocene age such as those discovered in the southern Najd in Oman (Hilbert 2014; Hilbert et al., in press).

Bifacial remains from the Lower Palaeolithic

In the south-eastern foothills of the Sufrat Dishshah two bifacial pieces were found in association with many large elongated flakes and a few flake cores (cores with one striking platform and a single flaking surface for the detachment of one or two wide thick removals). The two bifacial pieces of amygdaloid and oval contours are

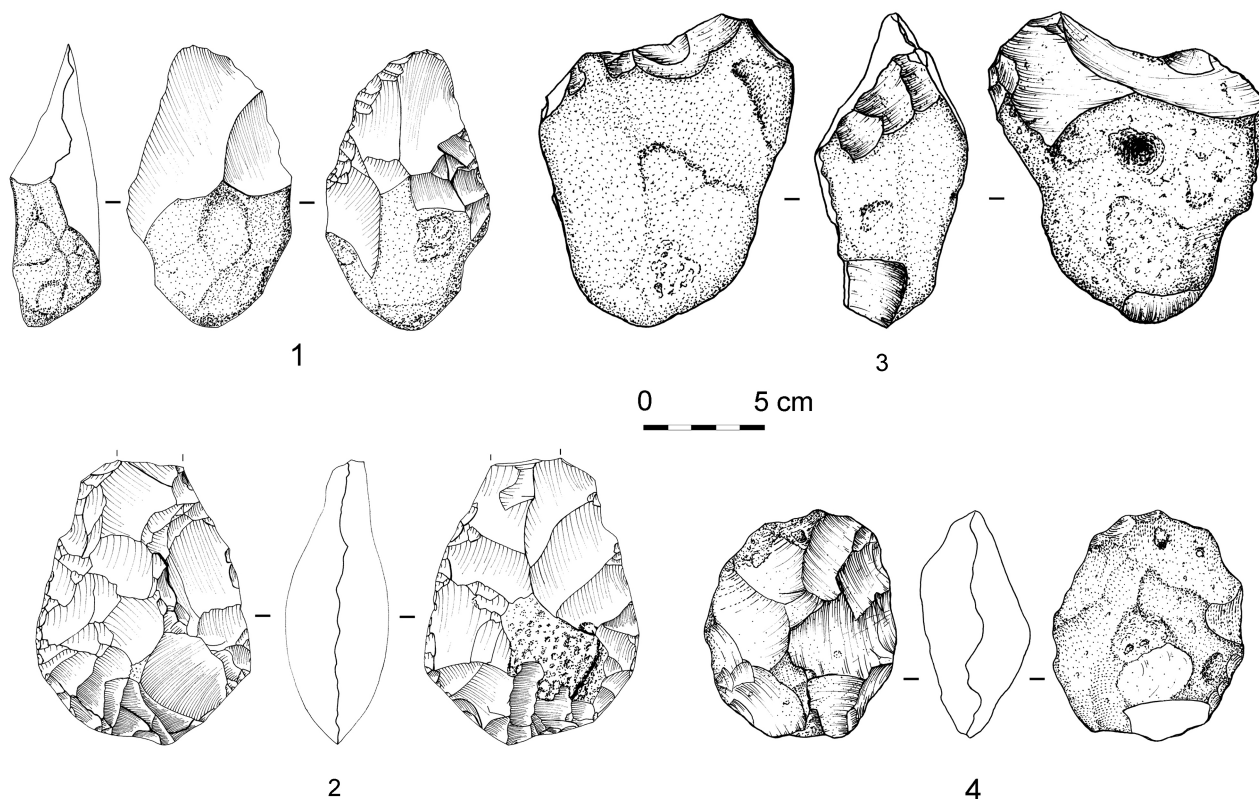


FIGURE 9. Handaxes and cores (Sufrat Dishshah): 1–2. handaxes; 3–4. flake cores.

formed by two relatively convex secant surfaces and are shaped by an internal and tangential percussion (Fig. 9). Their volumetric configuration and their technical traits are similar to those on certain Lower Palaeolithic bifacial pieces of the Arabian Peninsula, in East Africa, the Near East, and Pakistan, to cite only the neighbouring regions. Indeed locally, in south-west Oman, Yemen, and particularly in Saudi Arabia, similar artefacts have been reported, for example, the sites of Wādī Fatimah (Wādī Fāṭimah, e.g. Whalen et al. 1988; Petraglia 2003), Dawadmi (al-Dawādīmī, e.g. Petraglia 2003; Petraglia, Drake & Alsharekh 2009; Whalen et al. 1983; Whalen, Siraj-Ali & Davis 1984; Zarins et al. 1980), Saffāqah (Saffāqah, e.g. Whalen et al. 1983; Whalen, Siraj-Ali & Davis 1984; Zarins et al. 1980; Petraglia 2003; Petraglia, Drake & Alsharekh 2009), or in the Nefud desert (Ṣaḥrā' al-Nafūd) in northern Arabia (e.g. Shipton et al. 2014). Outside the Peninsula in the Near East, certain volumetric and technical similarities can be observed between these two pieces and those at Latamné (al-Laṭāminah, e.g. Clark 1966*a*; 1966*b*), Nahal Zihor (e.g. Ginat, Zilberman & Saragusti 2003; Grosman, Smikt & Smilansky 2008), and Nadaouiyeh Aīn Askar (al-Nadwiyyah ʿAyn ʿAskar, e.g. Le Tensorer 2006; 2009). Technical similarities are also identifiable, for example between these two bifaces and those found in north-east Pakistan in the Jhelum Basin at the sites of Dina and Jalapur (e.g. Allchin 1995).

These bifacial pieces discovered in the Adam region, although limited, are nonetheless important since with the recent discoveries in the central region of Sharjah (al-Shāriqah) in the UAE (e.g. Bretzke 2015), they are current evidence of one of the eastern extensions of the bifacial phenomenon of the Lower Palaeolithic on the Arabian Peninsula and attest to Lower Palaeolithic occupations on the edge of the Asian continent.

5. Conclusion

As an outcome of the first Palaeolithic survey campaigns conducted by the French Mission of Adam, the Sufrat Valley has been defined as a vast area (more 10 km²) where numerous large lithic surface scatters of high density have been identified on each topographical unit of the valley. The study of these lithic remains has enabled

us to attribute them to the Middle/Late Palaeolithic period and, for two pieces, to the Lower Palaeolithic. In this region of north central Oman, similar findings remain extremely rare and the site of the Sufrat Valley is, for the moment, the most easterly of the Arabian Peninsula. All the pieces identified are certainly the reflection of many technical facies, considering that the Lower and Middle Palaeolithic periods are two large entities comprising several cultural and technical facies. For this reason they are evidence of the successive occupation of the territory by different cultural human groups.

In addition, the Levallois, laminar, and bifacial remains discovered in the Sufrat Valley share some technical similarities with other remains found in close or far outlying regions, as seen in the Middle East. Based on these technological resemblances, some links could be drawn between the west and the east but also the north and the south during different periods. They can be the results of various scenarios: 1) some technical convergences resulting from the invention or reinvention in different places of one or several technical ideas, without any of these ideas being passed on to different groups; 2) the dissemination of ideas through connections between different human groups; 3) the successive anthropological phenomenon of hominids. At the crossroads between the east of Africa and the Middle East, the Arabian Peninsula has always been occupied by Palaeolithic populations and has often been considered as a turning point in the diffusion of cultural streams and/or population migration from eastern Africa to the Middle East and to western and eastern Asia.

Acknowledgements

We would like to thank His Excellency Salim Mohameed al-Mahrooqi and Sultan Saif al-Bakri, for their aid and support and especially for permitting us to export a few Palaeolithic artefacts from the Sultanate of Oman. We would also like to thank the Ministry of Heritage & Culture, the French Minister of Foreign Affairs, the MEDEE programme (MEr, DEsert, Environnement supported by the French Ministry of Foreign Affairs) and the ANR programme, L'altérité technico-culturelle du continent asiatique, for their financial and logistical support.

References

- Allchin B.
1995. Early Human occupation in the northern Punjab, Pakistan. An overview of the Potwar Project of the British Archaeological Mission to Pakistan (1981–1991). Pages 150–157 in S. Wadia, R. Korisettar & V.S. Kale (eds), *Quaternary environments and geoarchaeology of India*. Bangalore: Geological Society of India.
- Amirkhanov K.A.
1994. Research on the Palaeolithic and Neolithic of Hadramaut and Mahra. *Arabian Archaeology and Epigraphy* 5: 217–228.
- Armitage S.J., Jasmin S.A., Marks A.E., Parker A.G. et al.
2011. The Southern Route ‘Out of Africa’. Evidence for an Early Expansion of Modern Humans into Arabia. *Science* 331: 453–455.
- Biagi P.
1988. Surveys along the Oman coast. Preliminary report on the 1985–1988 campaigns. *East and West* 38: 271–291.
1994. An Early Palaeolithic site near Saiwan (Sultanate of Oman). *Arabian Archaeology and Epigraphy* 5: 81–88.
2004. Surveys along the Oman coast: a review of the prehistoric sites discovered between Dibab and Qalhat. *Adumatu* 10: 29–50.
- Boëda E.
2005. Scientific report from the Umm el Tlel/El Meirah mission. French Ministry of Foreign Affairs. [Unpublished].
- Boëda E., Bourguignon L. & Griggo C.
1998. Activités de subsistance au Paléolithique moyen: couche VI3b’ du gisement d’Umm-el-Tlel (Syrie). Pages 243–258 in J.P. Brugal, L. Meignen & M. Pathous-Mathis (eds), *Economie Préhistorique: les comportements de subsistance au Paléolithique. XVIII^e Rencontres Internationales et d’Histoire d’Antibes*. Sophia Antipolis: APDCA.
- Bretzke K.
2015. Paleolithic assemblages from the central region of the Emirate of Sharjah (UAE) and implications for human settlements dynamics in southern Arabia. Pages 105–125 in N.J. Conard & A. Delagnes (eds), *Settlement Dynamics of the Middle Paleolithic and Middle Stone Age*. Tübingen: Publications in Prehistory.
- Clark J.D.
1996a. The Middle Acheulian occupation site at Latamne, northern Syria. *Annales Archéologiques arabes syriennes* 16/2: 31–75.
1996b. Further excavations (1965) at the Middle Acheulian occupation site at Latamne, northern Syria: general results, definitions and interpretations. *Annales archéologiques arabes syriennes* 16/2: 75–113.
- Copeland L. & Hours F.
1983. Le Yabroudien d’El Kowm et sa place dans le Paléolithique du Levant. *Paléorient* 9: 21–37.
- Crassard R.
2007. Apport de la technologie lithique à la définition de la préhistoire du Hadramawt, dans le contexte du Yémen et de l’Arabie du Sud. PhD thesis, University of Paris 1 – Panthéon-Sorbonne. [Unpublished].
2008. The ‘WaKshah method’: an original laminar debitage from DaPramawt, Yemen. *Proceedings of the Seminar for Arabian Studies* 38: 3–14.
2009. The Middle Paleolithic of Arabia: The View from the Hasramawt Region, Yemen. Pages 151–168 in Petraglia & Rose 2009.
- Crassard R. & Hilbert Y.H.
2013. A Nubian Complex site from central Arabia: implications for Levallois taxonomy and human dispersals during the Upper Pleistocene. *PLoS ONE* 8/7: e69221. doi: 10.1371/journal.pone.0069221.

- Crassard R. & Thiébaud C.
2011. Levallois points production from eastern Yemen and some comparisons with assemblages from East-Africa, Europe and the Levant. Pages 131–142 in J-M. Le Tensorer, R. Jagher & M. Otte (eds), *The Lower and Middle Palaeolithic in the Middle East and neighbouring regions*. Liège: ERAUL 26.
- Doe B.
1976. Gazetter of sites in Oman 1976. *The Journal of Oman Studies* 3: 35–57.
- Edens C.
1988. Archaeology of the sands and adjacent portions of the Sharqiyah. *Journal of Oman Studies*, Special Reports 3: 113–130.
- Ginat H., Zilberman E. & Saragusti I.
2003. Early pleistocene lake deposits and Lower Paleolithic finds in Nahal (wadi) Zihor, Southern Negev desert, Israel. *Quaternary Research* 59: 445–458.
- Giraud J., Charbonnier J., Gernez G., Lemée M. & Righetti S.
2012. Occupation ancienne dans la région d'Adam (Sultanat d'Oman) du Néolithique à la période pré-islamique. *Arabian Humanities* 17: 1–23.
- Grosman L., Smikt O. & Smilansky U.
2008. On the application of 3-D scanning technology for the documentation and typology of lithic artifacts. *Journal of Archaeological Science* 35: 3101–3110.
- Hilbert Y.H.
2012. An investigation of Late Palaeolithic stone tool assemblages from the Nejd Plateau, Southern Oman. Ph.D thesis, Institute of Archaeology and Antiquity, University of Birmingham. [Unpublished].
2014. *Khashabian: a Late Paleolithic Industry from Dhofar, Southern Oman*. (British Archaeological Reports, International Series, 2601). Oxford: Archaeopress.
- Hilbert Y.H., Rose J. & Roberts R.G.
2012. Late Palaeolithic core-reduction strategies in Dhofar, Oman. *Proceedings of the Seminar for Arabian Studies* 42: 1–18.
- Hilbert Y.H., Parton A., Morley M.W., Linnenlucke L.P. et al.
(in press). Terminal Pleistocene and Early Holocene archaeology and stratigraphy of the southern Nejd, Oman. *Quaternary International*.
- Hours F.
1982. Une nouvelle industrie en Syrie entre l'Acheuléen supérieur et le Levallois-Moustérien. Pages 33–46 in M. You (ed.), *Archéologie au Levant, Recueil R. Saidah*. Lyon: Maison de l'Orient.
- Inizan M-L.
1989. Premiers éléments de Préhistoire dans la région de Shabwa (R.D.P. du Yémen). *Raydan* 5: 71–77.
1997. Esquisse du peuplement préhistorique du Yémen. *Chroniques Yéménites* 1996–1997: 54–61.
- Inizan M-L. & Ortlieb L.
1987. Préhistoire dans la région de Shabwa au Yémen du sud (R.D.P. Yémen). *Paléorient* 13: 5–22.
- Jagher R.
2009. The Central Oman Paleolithic Survey: Recent Research in Southern Arabia and Reflection on the Prehistoric Evidence. Pages 139–150 in Petraglia & Rose 2009.
- Jagher R. & Pümpin C.
2010. A new approach to central Omani prehistory. *Proceedings of the Seminar for Arabian Studies* 40: 145–160.
- Le Tensorer J-M.
2005. Le Yabroudien et la transition du Paléolithique ancien au Paléolithique moyen en Syrie: l'exemple d'El Kowm. *Munibe, Anthropologica-Arkeologia*: 71–82.
2006. Les cultures acheuléennes et la question de l'émergence de la pensée symbolique chez Homo erectus à partir des données relatives à la forme symétrique et harmonique des bifaces. *Comptes Rendus Palevol* 5: 127–135.
2009. L'image avant l'image: réflexions sur le colloque. *L'Anthropologie* 113: 1005–1017.

- Maggi R.
1990. The chipped flint assemblage of RH6 (Muscat, Sultanate of Oman): some considerations on technological aspects. *East and West* 40: 293–300.
- Meignen L.
1995. Levallois lithic production systems in the Middle Paleolithic of the Near-East: the case of the unidirectional method. Pages 361–380 in H. Dibble & O. Bar-Yosef (eds), *The definition and interpretation of Levallois technology*. (Monographs in World Archaeology, 23). Madison, WI: Prehistory Press.
1998. Le Paléolithique du Levant sud et central: que nous apprennent les données récentes? Pages 685–708 in M. Otte (ed.), *Préhistoire d'Anatolie. Genèse de deux mondes*. Liège: ERAUL.
- Petraglia M.D.
2003. The Lower Paleolithic of the Arabian Peninsula: occupations, adaptations, and dispersals. *Journal of World Prehistory* 17/2: 141–179.
- Petraglia M.D. & Rose J.I. (eds).
2009. *The Evolution of Human Populations in Arabia. Paleoenvironments, Prehistory and Genetics*. Dordrecht: Springer.
- Petraglia M.D., Drake N. & Alsharekh A.
2009. Acheulean landscapes and large cutting tool assemblages in the Arabian Peninsula. Pages 197–219 in Petraglia & Rose 2009.
- Rose J.
2004. The question of Upper Pleistocene connections between East Africa and South Arabia. *Current Anthropology* 45: 551–555.
2007. The Arabian Corridor Migration Model: archaeological evidence for hominin dispersals into Oman during the Middle and Upper Pleistocene. *Proceedings of the Seminar for Arabian Studies* 37: 1–19.
- Rose J. & Hilbert Y.H.
2014. New prehistoric sites in the southern Rub' al-Khali desert, Oman. *Antiquity Project Gallery*. <http://journal.antiquity.ac.uk/projgall/rose341> (accessed 26 October 2014).
- Rose J. & Usik V.
2009. The Upper Paleolithic of South Arabia. Pages 169–185 in Petraglia & Rose 2009.
- Rose J.I., Usik V.I., Marks A.E., Hilbert Y.H. et al.
2011. The Nubian Complex of Dhofar, Oman: an African Middle Stone Age industry in southern Arabia. *PLoS ONE* 6/11.
- Scott-Jackson J., Scott-Jackson W. & Rose J.I.
2009. Paleolithic Stone Tool Assemblages from Sharjah and Ras al Khaimah in the United Arab Emirates. Pages 125–138 in Petraglia & Rose 2009.
- Shipton C., Parton A., Breeze P., Jennings R. et al.
2014. Large Flake Acheulean in the Nefud Desert of Northern Arabia. *PaleoAnthropology* 446–462.
- Smith G.H.
1977. New prehistoric sites in Oman. *The Journal of Oman Studies* 3: 71–81.
- Usik V.I., Rose J.I., Hilbert Y.H., Van Peer P. & Marks A.E.
2012. Nubian Complex reduction strategies in Dhofar, southern Oman. *Quaternary International* 30: 1–23.
- Wahida G., Al-Tikriti Y., Beech M.J. & Al Meqbali A.
2009. A Middle Paleolithic Assemblage from Jebel Barakah, Coastal Abu Dhabi Emirate. Pages 117–124 in Petraglia & Rose 2009.
- Whalen N.M.
2003. Lower Palaeolithic Sites in the Huqf area of Central Oman. *Journal of Oman Studies* 13: 175–182.
- Whalen N.M., Siraj-Ali J.S. & Davis W.
1984. Excavation of Acheulean sites near Saffaqah, Saudi Arabia, 1403 AH 1983. *Atlatl* 8: 9–24.
- Whalen N.M., Zoboroski M. & Schubert K.
2002. The Lower Palaeolithic in southwestern Oman. *Adumatu* 5: 27–34.

Whalen N.M., Sindi H., Wahida G. & Siraj-Ali J.S.

1983. Excavation of Acheulean sites near Saffaqah in ad-Dawadmi 1402–1982. *Atlat* 7: 9–21.

Whalen N.M., Siraj-Ali J., Sindi H.O., Pease D.W. & Badein M.A.

1988. A complex of sites in the Jeddah-Wadi Fatimah area. *Atlat* 11: 77–85.

Zarins J., Whalen N., Ibrahim M., Jawad Mursi A.A. & Khan M.

1980. Comprehensive archaeological survey program, preliminary report on the Central and Southwestern Provinces survey: 1979. *Atlat* 4: 9–36.

Authors' addresses

Stéphanie Bonilauri, UMR 7041 ArScan, AnTET (Anthropologie des techniques, des espaces et des territoires au Pliocène et au Pléistocène), Maison de l'Archéologie et de l'Ethnologie, 21 allée de l'Université, 92023 Nanterre Cedex, France.

e-mail stephanie.bonilauri@gmail.com

Tara Beuzen-Waller, Paris-Sorbonne University, UMR 8185 ENeC (Espaces, Nature et Culture), 17 rue de la Sorbonne, 75005 Paris, France.

e-mail tara.beuzen@gmail.com

Jessica Giraud, Archéologie et Histoire de l'Antiquité, Institut Français du Proche-Orient, Erbil, Iraq, Consulat de France, Erbil, Irak - IFPO-Iraq La Valise Diplomatique, 13 rue Louveau, 92438 Chatillon Cedex, France.

e-mail j.giraud@ifporient.org

Marion Lemée, INRAP Grand-Ouest, 37 rue du Bignon, CS 67737, 35577 Cesson-Sévigné cedex, France.

e-mail marion.lemee@inrap.fr

Guillaume Gernez, Paris I Panthéon-Sorbonne, UMR 7041 ArScan, VEPMO, Maison de l'Archéologie et de l'Ethnologie, 21 allée de l'université, 92023 Nanterre cedex, France.

e-mail guillaume.gernez@univ-paris1.fr

Eric Fouache, Paris-Sorbonne University Abu Dhabi, UMR 8185 ENeC (Espaces, Nature et Culture), 17 rue de la Sorbonne, 75005 Paris, France.

e-mail eric.fouache@psuad.ac.ae