



HAL
open science

Incidence, clinical characteristics, and outcome after unexpected cardiac arrest among critically ill adults with COVID-19: insight from the multicenter prospective ACICOVID-19 registry

Jonathan Chelly, Gaetan Plantefève, Toufik Kamel, Cédric Bruel, Saad Nseir, Christopher Lai, Giulia Cirillo, Elena Skripkina, Sébastien Ehrminger, Fernando-Daniel Berdaguer-Ferrari, et al.

► **To cite this version:**

Jonathan Chelly, Gaetan Plantefève, Toufik Kamel, Cédric Bruel, Saad Nseir, et al.. Incidence, clinical characteristics, and outcome after unexpected cardiac arrest among critically ill adults with COVID-19: insight from the multicenter prospective ACICOVID-19 registry. *Annals of Intensive Care*, 2021, 11 (1), pp.155. 10.1186/s13613-021-00945-y . hal-03427527

HAL Id: hal-03427527

<https://hal.science/hal-03427527>

Submitted on 14 Nov 2021

HAL is a multi-disciplinary open access archive for the deposit and dissemination of scientific research documents, whether they are published or not. The documents may come from teaching and research institutions in France or abroad, or from public or private research centers.

L'archive ouverte pluridisciplinaire **HAL**, est destinée au dépôt et à la diffusion de documents scientifiques de niveau recherche, publiés ou non, émanant des établissements d'enseignement et de recherche français ou étrangers, des laboratoires publics ou privés.

Incidence, clinical characteristics, and outcome after unexpected cardiac arrest among critically ill adults with COVID-19: insight from the multicenter prospective ACICOVID-19 registry

Jonathan Chelly^{1*}, Gaetan Plantefève², Toufik Kamel³, Cédric Bruel⁴, Saad Nseir⁵, Christopher Lai⁶, Giulia Cirillo⁷, Elena Skripkina⁸, Sébastien Ehrminger⁹, Fernando-Daniel Berdaguer-Ferrari¹⁰, Julien Le Marec¹¹, Marine Paul¹², Aurélie Autret¹³ and Nicolas Deye¹⁴ on behalf of the ACICOVID-19 study group

Abstract

Background: Initial reports have described the poor outcome of unexpected cardiac arrest (CA) in intensive care unit (ICU) among COVID-19 patients in China and the USA. However, there are scarce data on characteristics and outcomes of such CA patients in Europe.

Methods: Prospective registry in 35 French ICUs, including all in-ICU CA in COVID-19 adult patients with cardiopulmonary resuscitation (CPR) attempt. Favorable outcome was defined as modified Rankin scale ranging from 0 to 3 at day 90 after CA.

Results: Among the 2425 COVID-19 patients admitted to ICU from March to June 2020, 186 (8%) experienced in-ICU CA, of whom 146/186 (78%) received CPR. Among these 146 patients, 117 (80%) had sustained return of spontaneous circulation, 102 (70%) died in the ICU, including 48 dying within the first day after CA occurrence and 21 after withdrawal of life-sustaining therapy. Most of CA were non-shockable rhythm (90%). At CA occurrence, 132 patients (90%) were mechanically ventilated, 83 (57%) received vasopressors and 75 (51%) had almost three organ failures. Thirty patients (21%) had a favorable outcome. Sepsis-related organ failure assessment score > 9 before CA occurrence was the single parameter constantly associated with unfavorable outcome in multivariate analysis.

Conclusions: In-ICU CA incidence remains high among a large multicenter cohort of French critically ill adults with COVID-19. However, 21% of patients with CPR attempt remained alive at 3 months with good functional status. This contrasts with other recent reports showing poor outcome in such patients.

Trial registration: This study was retrospectively registered in ClinicalTrials.gov (NCT04373759) in April 2020 (<https://www.clinicaltrials.gov/ct2/show/NCT04373759?term=acicovid&draw=2&rank=1>).

Keywords: In-hospital cardiac arrest, Intensive care unit, SARS-CoV-2, COVID-19

*Correspondence: jonathan.chelly@ch-toulon.fr

¹ Intensive Care Unit, Centre Hospitalier Intercommunal Toulon-La Seyne sur Mer, Hôpital Sainte Musse, 54 rue Henri Sainte Claire Deville, 83056 Toulon, France

Introduction

Before the Coronavirus disease 2019 (COVID-19) outbreak, incidence and mortality of unexpected cardiac arrest (CA) occurring in intensive care unit (ICU)

varied widely according to clinical setting [1–4]. Since the beginning of the COVID-19 outbreak, small or mono-centric reports from China and the USA, have uniformly described the dramatically poor outcome of patients hospitalized for COVID-19 pneumonia (including patients admitted to general/unmonitored wards or to ICU) who experienced in-hospital cardiac arrest (IHCA) [5–8]. Among these reports, IHCA incidence was around 20% [5] and survival with good neurological status ranged from 0 to 0.7%, leading to discussions regarding the futility of cardiopulmonary resuscitation (CPR) attempt in such patients [9–15]. More recently, the authors of a large multicenter study have reported a 14% incidence of in-ICU CA among 5019 patients admitted for severe COVID-19 in the USA. Among the 400 patients with CPR attempt included in this cohort, survival to hospital discharge and survival with good neurological status were only 12 and 7%, respectively [16]. In another North American multicenter cohort of 260 IHCA patients, survival at hospital discharge reached 15% among the 166 patients who experienced in-ICU CA [17]. These outcomes warrant further investigations into the risks and benefits of performing CPR in such patients, especially because the CPR process could generate an important risk of transmission of COVID-19 for healthcare professionals [18]. Moreover, there are currently scarce data regarding the characteristics and outcomes of in-ICU CA in patients with COVID-19 in Europe [19].

This French multicenter cohort study was designed to report the incidence of in-ICU CA among adults with confirmed COVID-19 pneumonia, and to report the outcome of patients experiencing such CA with CPR attempt.

Methods

Study setting and population

Thirty-five French ICUs participated to the ACI-COVID-19 registry (see Additional file 1: Table S1 in the online supplemental data describing ICUs characteristics). The ethical board of the French Intensive Care Society approved the study that was registered in ClinicalTrials.gov (NCT04373759). The number of patients admitted in ICU with a laboratory-confirmed COVID-19 pneumonia from March 1st to June 30th, 2020 (i.e., the first French wave), was prospectively reported by each center, while all patients experiencing in-ICU CA were included. In-ICU CA was defined as patients experiencing an unexpected CA occurring during the ICU stay and requiring CPR attempt, regardless of sustained return of spontaneous circulation (ROSC) achievement. Patients who did not receive CPR (because of a “do-not-resuscitate” order, a withdrawal of life-sustaining therapy [WLST] decision, or CPR considered as futile when

death was expected because of end-stage or multi-organ failure) were excluded. All patients or relatives were informed and approved the inclusion of their data in the ACICOVID-19 registry.

Data collection

All data on CA were prospectively recorded as previously recommended following the Utstein guidelines [20]. If a patient experienced more than one CA, only the first was considered. CA characteristics were recorded as follows: last available clinical and biological parameters, sepsis-related organ failure assessment score (SOFA) and organ failures (defined as SOFA organ sub-score ≥ 3) within the hour before CA occurrence, ongoing treatments at the time of CA, time from collapse to CPR (no-flow duration corresponding to the measured—using the monitor—or the estimated duration between the ventricular fibrillation/tachycardia or asystole alarm and the first CPR initiation) and from first CPR to ROSC (low-flow duration), CPR management, and suspected or confirmed etiology of the in-ICU CA. Sustained ROSC was defined as the possibility to maintain ROSC with an identifiable pulse for more than 20 min [20].

Objectives and outcome variables

We aimed to report the incidence of in-ICU CA among patients admitted for COVID-19 pneumonia, and the clinical characteristics and outcome of such CA patients. The incidence of in-ICU CA was defined as the ratio between the number of in-ICU CA occurrence and the number of patients admitted for COVID-19 in participating ICUs. Vital and functional status were collected using the modified Rankin scale (mRS) [21] at ICU discharge and at day 90 after CA. Favorable and unfavorable outcomes were defined as mRS ranging from 0 to 3 and from 4 to 6, respectively. Our secondary objective was to identify risk factors associated with an unfavorable outcome at day 90 after in-ICU CA. Additionally, to better define patients’ long-term outcome, the mRS at day 180 after CA was also collected.

Statistical analysis

Categorical variables were expressed as number and proportions (%) and compared using either a Chi-square test or a Fisher’s exact test. Continuous variables were expressed as median [25–75% interquartile range] and compared using Student’s *t* test or nonparametric Mann–Whitney test if needed. A multivariate logistic regression was performed to investigate factors associated with unfavorable outcome at day 90 after CA. According to our limited cohort size, factors of clinical relevance were selected among all significant univariate factors with $p \leq 0.01$ and included in the initial model.

A stepwise backward elimination approach that gradually reduces the initial model was used. Variables that did not achieve statistical significance in multivariate analysis were removed from the model. Odds ratios (OR) were expressed with their 95% confidence intervals (CI). Significance of all statistical tests was considered with $p < 0.05$. All analyses were performed using SAS[®] version 9.4 (SAS Institute, Cary, NC, USA).

Results

In-ICU CA incidence

Among the 2425 patients admitted to the 35 participating ICUs with confirmed COVID-19 pneumonia during the study period, 186 (8%) experienced CA (including 18 patients with CA occurring the first day after ICU admission), 146 (6%) patients had CPR attempted and 117 (5%) patients had sustained ROSC (Fig. 1). CA incidence varied from 2 to 20% of patients admitted with COVID-19 in the 35 participating ICUs, with a median incidence of 6% [4–10]. As detailed in the Additional file 1: Figure S1 (online supplemental data), the younger was the patient the most frequent was the CPR attempt.

Patients' characteristics at ICU admission

General characteristics at ICU admission of the 146 in-ICU CA patients with CPR attempt according to outcome are provided in Table 1 and Additional file 1: Table S2 in the online supplemental data. Median age was 62 years [55–70], BMI 29 kg/m² [26–33], and the female/male ratio was 1/5. At ICU admission, median simplified acute physiology score 2 and SOFA were 42 [32–57] and 7 [4–11], respectively. Respiratory, neurologic, and circulatory failure were the most frequent organ failures at ICU admission.

Patients with an unfavorable outcome had more diabetes and more previous chronic treatment with calcium channel blockers and betablockers than those with favorable outcome (25 vs. 7%, and 20 vs. 0%, respectively).

In-ICU CA history and characteristics

Patients' characteristics at in-ICU CA occurrence according to outcome are described in Table 2 and Additional file 1: Table S3 in the online supplemental data. At the time of in-ICU CA, SOFA was 11 [7–15] and 75 patients (51%) suffered from almost three organ failures. The median delays between in-ICU cardiac arrest occurrence and the first COVID-19 symptoms,

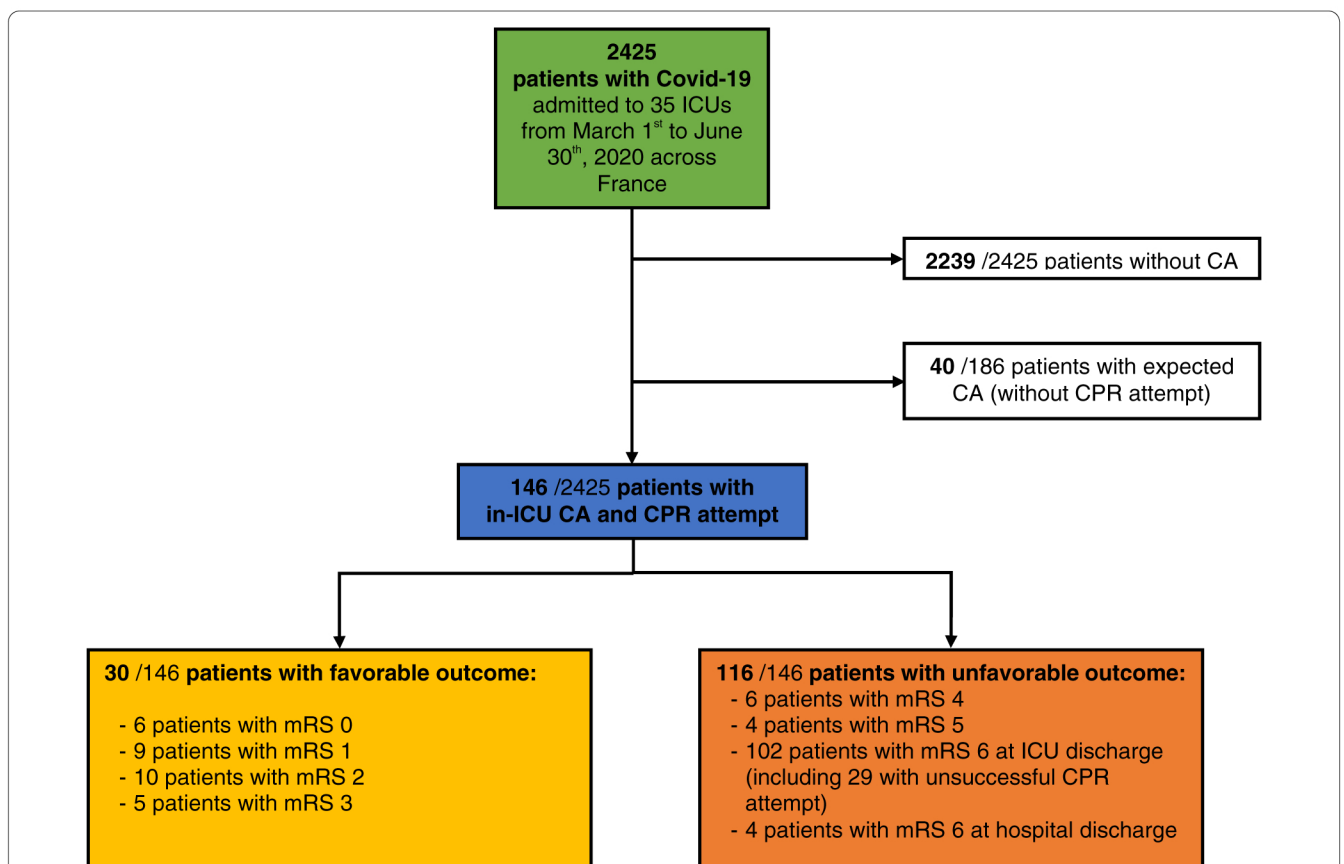


Fig. 1 Study flowchart. ICU intensive care unit, CA cardiac arrest, mRS modified Rankin scale

Table 1 Main general characteristics at ICU admission of overall patients and according to outcome at day 90 after in-ICU CA

Characteristic	All patients (N = 146)	Favorable (N = 30)	Unfavorable (N = 116)	p value
Demographics				
Age, years	62 [55–70]	61 [54–69]	63 [56–69]	0.51
Male gender	118 (81)	25 (83)	93 (80)	0.70
Body mass index, kg/m ²	29 [26–33]	30 [26–33]	29 [26–33]	0.66
Previous comorbidities				
Hypertension	80 (55)	12 (40)	78 (67)	0.07
Diabetes	49 (34)	5 (17)	44 (38)	0.03
Respiratory disease	17 (12)	4 (13)	13 (11)	0.75
Malignancy	15 (10)	2 (7)	13 (11)	0.47
Ischemic heart disease	13 (9)	2 (7)	11 (9)	0.63
Moderate to severe chronic kidney disease ^a	8 (5)	2 (7)	6 (5)	0.75
Chronic heart failure	2 (1)	1 (3)	1 (1)	0.30
Charlson comorbidity index	3 [2–4]	2 [1–4]	3 [2–4]	0.20
Chronic previous treatments				
Angiotensin conversion enzyme/receptor blocker	51 (35)	7 (23)	44 (38)	0.14
Calcium channel blocker	31 (21)	2 (7)	29 (25)	0.03
Beta blocker	23 (16)	0 (0)	23 (20)	0.008
Corticosteroid	8 (5)	0 (0)	8 (7)	0.14
Severity of illness at ICU admission				
SAPS-2	42 [32–57]	41 [32–44]	43 [30–61]	0.14
SOFA	7 [4–11]	6 [4–10]	7 [4–12]	0.41
Organ failures (SOFA organ sub-score ≥ 3)				
Respiratory	104 (71)	21 (70)	83 (72)	0.30
Neurologic	47 (32)	10 (33)	37 (32)	0.82
Circulatory	47 (32)	8 (27)	39 (34)	0.27
Renal	22 (15)	3 (10)	19 (16)	0.28
Hematologic	2 (2)	0 (0)	2 (2)	0.44
Hepatic	1 (1)	0 (0)	1 (1)	0.59
SOFA > 9	30 (21)	8 (27)	22 (19)	0.34

Results are expressed as N (%) or median [25–75% interquartile range] unless expressed otherwise. Favorable outcome: modified Rankin scale ranging from 0 to 3 at day 90 after CA; unfavorable outcome: modified Rankin scale ranging from 4 to 6 at day 90 after CA; ICU: intensive care unit; CA: cardiac arrest; SAPS-2: simplified acute physiology score 2; SOFA: sepsis-related organ failure assessment score

^a Moderate = creatinine > 3 mg/dl (270 μmol/l); severe = on dialysis

the hospital admission, and the ICU admission were 21 days [14–31], 13 days [6–24], and 11 days [5–22], respectively. In-ICU CA mostly occurred after non-shockable rhythm (90%), with witnessed CA (89%), and immediate CPR (median no-flow interval 0 min [0–0]) with a low-flow duration of 4 min [2–10].

Etiologies of in-ICU CA are detailed in Table 2. At least one cause was identified in 132 in-ICU CA patients (90%), hypoxia being the most frequent cause (40%). No significant difference was observed between favorable and unfavorable outcome according to CA etiologies, except for more CA related to massive pulmonary embolism and less CA related to drug side

effect in unfavorable outcome compared to favorable outcome (20 vs. 3%, and 4 vs. 17%, respectively).

Before CA occurrence, patients with an unfavorable outcome compared to those with a favorable outcome had more frequently almost 3 organ failures (59 vs. 20%, respectively), including lower PaO₂/FiO₂ ratio (98 [62–175] vs. 210 [141–747], respectively), lower mean arterial pressure (73 mmHg [60–87] vs. 86 mmHg [77–94], respectively) and were most frequently treated with vasopressors and renal replacement therapy (53 vs. 40%, and 22 vs. 3%, respectively). Patients with an unfavorable outcome had prolonged low-flow durations and more epinephrine boluses compared to those with a favorable

Table 2 Main patients' characteristics at in-ICU cardiac arrest occurrence according to outcome at day 90

Characteristic	All patients (N = 146)	Favorable (N = 30)	Unfavorable (N = 116)	p value
Severity of illness at the time of CA				
SOFA score	11 [7–15]	7 [4–9]	12 [8–15]	<0.001
Organ failures (SOFA organ sub-score \geq 3)				
Respiratory	98 (67)	16 (53)	82 (71)	0.001
Neurologic	91 (62)	15 (50)	76 (66)	0.007
Circulatory	64 (44)	8 (27)	66 (57)	0.003
Renal	47 (32)	4 (13)	43 (37)	0.002
Hepatic	4 (3)	0 (0)	4 (3)	0.28
Hematologic	2 (1)	0 (0)	2 (2)	0.46
SOFA > 9	81 (55)	7 (23)	74 (64)	<0.001
CA history				
Interval from Covid-19 first symptoms to CA, days	21 [14–31]	25 [17–37]	20 [13–31]	0.04
Interval from hospital admission to CA, days	13 [6–24]	19 [10–30]	12 [6–23]	0.04
Interval from ICU admission to CA, days	11 [5–22]	15 [7–29]	9 [5–21]	0.07
Witnessed CA	130 (89)	28 (93)	102 (88)	0.66
Immediate bystander CPR	125 (86)	28 (93)	97 (83)	0.28
VT/VF	14 (10)	5 (17)	9 (8)	0.14
No-flow duration, min	0 [0–0]	0 [0–0]	0 [0–0]	0.53
Low-flow duration, min	4 [2–10]	3 [1–5]	5 [2–13]	0.004
Total epinephrine bolus dose, mg	2 [1–5]	1 [1–2]	2 [2–6]	<0.001
Intubation during or immediately after CPR	22 (15)	7 (23)	15 (13)	0.17
CA circumstances				
At night or during weekend	101 (69)	24 (80)	77 (66)	0.15
\leq 24 h after ICU admission	17 (12)	2 (7)	15 (13)	0.34
Nursing procedure	11 (8)	4 (13)	7 (6)	0.18
Immediately after ICU admission	6 (4)	0 (0)	6 (5)	0.20
During intra-hospital transfer	2 (1)	0 (0)	2 (2)	0.47
Ongoing treatments at the time of CA				
Mechanical ventilation	132 (90)	25 (83)	97 (84)	0.68
Vasopressors	83 (57)	12 (40)	61 (53)	0.04
Renal replacement therapy	27 (18)	1 (3)	26 (22)	0.02
Prone position	24 (16)	2 (7)	22 (19)	0.11
ECMO	13 (9) ^a	2 (7)	11 (9)	0.63
Last available parameters at the time of CA ^b				
Mean arterial pressure, mmHg	76 [63–91]	86 [77–94]	73 [60–87]	<0.001
Heart rate, bpm	94 [79–110]	92 [82–107]	95 [78–110]	0.84
FiO ₂ , %	71 [40–100]	40 [31–60]	90 [50–100]	<0.001
Temperature, °C	37.3 [36.5–38.1]	37.5 [37.0–37.8]	37.2 [36.4–38.1]	0.49
Last available biological parameters prior to in-ICU CA				
pH	7.33 [7.22–7.41]	7.40 [7.31–7.43]	7.31 [7.20–7.41]	0.003
PaCO ₂ , Torr	51 [40–61]	46 [40–58]	53 [40–62]	0.35
PaO ₂ , Torr	73 [60–93]	81 [70–104]	69 [58–90]	0.02
PaO ₂ /FiO ₂	119 [67–208]	210 [141–247]	98 [62–175]	<0.001
Bicarbonate, mmol/l	26 [22–31]	29 [25–31]	25 [22–31]	0.02
Arterial lactate, mmol/l	1.5 [1.0–2.0]	1.1 [0.8–1.7]	1.5 [1.1–2.7]	0.004
Creatinine, μ mol/l	117 [59–263]	87 [43–133]	124 [67–275]	0.02
One or more CA confirmed or suspected etiology				
At least one cause identified	132 (90)	30 (100)	102 (88)	0.05
Acute hypoxia	59 (40)	17 (57)	42 (36)	0.06

Table 2 (continued)

Characteristic	All patients (N = 146)	Favorable (N = 30)	Unfavorable (N = 116)	p value
Endotracheal tube or tracheotomy obstruction	19 (13)	8 (27)	11 (9)	0.18
During intubation procedure	16 (11)	6 (20)	10 (9)	0.48
Unplanned extubation	4 (3)	1 (3)	3 (3)	0.80
Hemoptysis	3 (2)	2 (7)	3 (3)	0.24
Pneumothorax	2 (1)	1 (3)	1 (1)	0.54
Unknown cause	15 (10)	2 (7)	13 (11)	0.09
Refractory septic shock	19 (13)	5 (17)	14 (12)	0.17
Massive pulmonary embolism	24 (16)	1 (3)	23 (20)	0.02
Drug side effect	10 (7)	5 (17)	5 (4)	0.03
Acute metabolic disorder	10 (7)	1 (3)	9 (8)	0.32
Cardiac conductive disorders	7 (5)	3 (10)	4 (3)	0.19
Hemorrhagic shock	2 (1)	0 (0)	2 (2)	0.44
Acute myocarditis	4 (3)	1 (3)	3 (3)	0.91
ECMO dysfunction	5 (3)	0 (0)	5 (4)	0.22
Acute coronary syndrome	3 (2)	1 (3)	2 (2)	0.66
Other etiologies	3 (2)	1 (3)	2 (2)	0.66

Results are expressed as N (%) or median [25–75% interquartile range] unless expressed otherwise. Favorable outcome: modified Rankin scale ranging from 0 to 3 at day 90 after CA; unfavorable outcome: modified Rankin scale ranging from 4 to 6 at day 90 after CA; ICU: intensive care unit; CA: cardiac arrest; SOFA: sepsis-related organ failure assessment score; VT/VF: ventricular tachycardia/ventricular fibrillation; ECMO: extracorporeal membrane of oxygenation; FIO₂: inspired fraction of oxygen; PaCO₂: partial pressure of arterial carbon dioxide; PaO₂: partial pressure of arterial oxygen

^a Including 12 patients treated with veno-venous ECMO and one patient treated with veno-arterial ECMO

^b Within one hour before the CA occurrence

outcome (5 min [2–13] vs. 3 min [1–5], and 2 mg [2–6] vs. 1 mg [1, 2], respectively). SOFA > 9 before CA occurrence was the single parameter constantly and significantly associated with an unfavorable outcome at day 90 after CA in multivariate analysis (Additional file 1: Table S4 in the online supplemental data).

Organ support and outcomes

Organ support and patients' outcomes are detailed in Table 3. Among the 146 patients with CPR attempt, 102 (70%) patients died in the ICU, including 48 (33%) patients dying within the first day after CA occurrence, 29 (20%) dying without sustained ROSC and 21 (14%) patients dying from WLST. At day 90 after CA, 40 patients (27%) survived, and 30 patients (21%) had a favorable outcome. Among patients with CPR attempt, favorable outcome rates were, respectively, 63%, 18%, 18% and 0% in patients < 45 years, between 45–64 years, between 65–79 years, and > 79 years (Additional file 1 Figure S1 in the online supplemental data).

Six patients out of 40 were lost to follow-up at day 180 (4 and 2 patients in the favorable and unfavorable outcome group, respectively). Among the 8 remaining patients who survived at hospital discharge with unfavorable outcome at day 90, 6 patients improved to a good functional status at day 180. All of 26 remaining patients

with good functional status at day 90 were still experiencing favorable outcome at day 180 (Fig. 2).

Discussion

Main findings

In this multicenter cohort screening 2425 COVID-19 French adult patients, 6% experienced in-ICU CA of whom 80% had sustained ROSC. Initial rhythm was mostly non-shockable, and hypoxia was the most frequent CA etiology. More than 20% patients with CPR survived with good functional status at day 90 or thereafter. SOFA > 9 before CA occurrence was the single factor significantly and constantly associated with unfavorable outcome.

Current literature: in-ICU CA incidence and outcome

In-ICU CA incidence varied before the COVID-19 outbreak from 0.5 to 5% according to previous reports [1–4]. In the recent French multicenter “ACIR” study including 31.399 ICU patients admitted for shock, respiratory failure, out-of-hospital or in-hospital resuscitated CA outside COVID-19, 677 patients (2%) experienced in-ICU CA with CPR attempt [3], compared to 6% of COVID-19 patients in our study. In-ICU CA seems common in hospitalized COVID-19 patients, and possibly be more frequent than in other pathologies. Indeed, the incidence

Table 3 Organ support and clinical outcomes in the cohort according to favorable or unfavorable outcome at day 90 after in-ICU CA

Variable	All patients (N = 146)	Favorable (N = 30)	Unfavorable (N = 116)	p value
Organ support				
Duration of mechanical ventilation, days	15 [7–36]	33 [19–45]	14 [5–28]	<0.001
Vasopressors	109 (82)	25 (83)	84 (72)	0.06
Duration of vasopressor treatment, days	6 [3–11]	7 [4–16]	6 [2–11]	0.09
Neuromuscular blocking agent	131 (90)	26 (87)	105 (91)	0.54
Prone positioning	111 (76)	24 (80)	87 (75)	0.57
Renal replacement therapy	66 (45)	12 (40)	54 (47)	0.52
Duration of renal replacement therapy, days	5 [2–11]	6 [3–21]	5 [2–10]	0.29
ECMO	20 (14)	4 (13)	16 (14)	0.95
Targeted temperature management	7 (5)	3 (10)	4 (3)	0.13
Outcome at ICU discharge				
Death	102 (70)	–	102 (88)	–
New in-ICU CA occurrence	31 (21)	–	31 (27)	–
Unsuccessful CPR attempt	29 (20)	–	29 (25)	–
From WLST	21 (14) ^a	–	21 (18)	–
From multi-organ failure	18 (12)	–	18 (16)	–
From refractory ARDS	3 (2)	–	3 (3)	–
Duration of ICU hospitalization, days	20 [8–42]	45 [28–71]	16 [7–33]	<0.001
Outcome at day 90 after in-ICU CA				
Died	106 (73)	–	106 (91)	–
Remained hospitalized	2 (1)	0 (0)	2 (2)	0.47
Duration of hospitalization, days	26 [10–54]	59 [46–94]	17 [8–38]	<0.001
Modified Rankin scale				
0	6 (4)	6 (20)	–	–
1	9 (6)	9 (30)	–	–
2	10 (7)	10 (33)	–	–
3	5 (3)	5 (16)	–	–
4	6 (4)	–	6 (7)	–
5	4 (3)	–	4 (3)	–

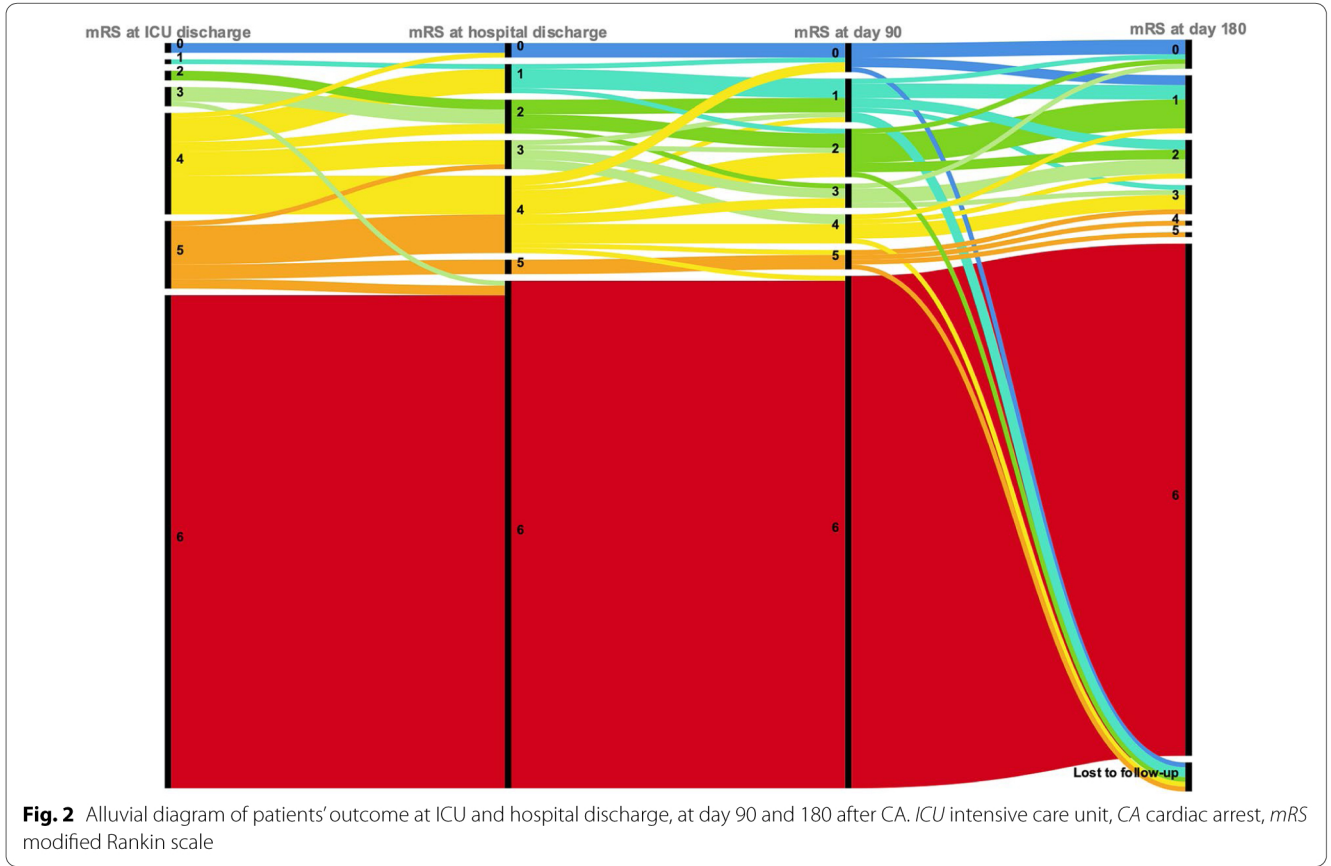
Results are expressed as N (%) or median [25–75% interquartile range] unless expressed otherwise. Favorable: modified Rankin scale ranging from 0 to 3 at day 90 after CA; Unfavorable: modified Rankin scale ranging from 4 to 6 at day 90 after CA; ICU: intensive care unit; CA: cardiac arrest; ECMO: extracorporeal membrane of oxygenation; CPR: cardiopulmonary resuscitation; WLST: withdrawal of life-sustaining therapy; ARDS: acute respiratory distress syndrome

^a Including 4 WLST for neurological impairment and 17 WLST for other reasons

of overall in-ICU CA and those with CPR attempt was 14, and 8%, respectively, in the only other published multicenter in-ICU CA cohort of patients admitted for COVID-19 in USA [16]. Moreover, a recent review of the incidence of IHCA in patient with COVID-19 reported between 8 and 11% among ICU patients [22].

Regarding outcome of in-ICU CA patients, our results are similar to those published before the COVID-19 outbreak. In the previously cited “ACIR” cohort, 118 patients (17%) were alive at 6 months with good functional status [3], which is concordant with our results. However, all the recent small or monocentric reports regarding IHCA in COVID-19 patients outcome have described very low survival rates at discharge, near or equal to 0%

even in patients with sustained ROSC [5–7]. This major difference with our results regarding the global outcome does not seem related to CA etiologies: as observed in our study, non-shockable rhythm and hypoxia were also described as the most frequent initial rhythm and etiology responsible for in-ICU CA [5–8, 16, 17]. Conversely, this difference in outcome could mainly be explained by our inclusion criteria and selection of patients: only in-ICU CA patients with CPR attempt have been included here in our study. By contrast, most of previous studies have included a limited number of in-ICU CA (with or without CPR attempt) or only IHCA in unmonitored wards which are known to be associated with poorer outcome [22, 23].



In the largest multicenter cohort of 701 in-ICU CA patients admitted for COVID-19 in the USA, 400 patients (57%) received CPR (the 301 remaining had a “do not resuscitate” status at the time of CA) of whom 135 (34%) had sustained ROSC and only 28 (7%) survived at hospital discharge with good neurological status [16]. Our study reports a relative higher proportion of patients with CPR attempt (78%), sustained ROSC (80%), and higher survival rate with good functional status (21%). Several differences between our study and the study published by Hayek et al. can be noted, despite similar median age and SOFA at ICU admission. First, Hayek and co-workers have only included in-ICU CA occurring during the early phase of COVID-19 history (i.e., within 14 days from ICU admission) with a mean ICU length of stay of 6 days. Conversely in our cohort, the median ICU length of stay was 20 days, and CA occurred later than 14 days after ICU admission in patients with good outcome. Moreover, patients' therapeutic management performed in the Hayek's study was different compared to our study: more patients received almost two vasopressors (52 vs. 4%), but less patients were mechanically ventilated (72 vs. 90%), and less patients were treated with ECMO at CA occurrence (0.5 vs. 9%). This suggests that CA occurred possibly at a later stage of COVID-19 in

our population, and that the delay between ICU admission and CA occurrence may have influenced outcome in such patients. Finally, we reported that almost 18% of patients with unfavorable outcome died in ICU from WLST. Although WLST decisions during the post-CA period could also explain the discrepancies between Hayek's study and ours regarding patients' outcome, this data was not described by Hayek and co-workers.

Patients' age is another important parameter that could partly explain our higher favorable outcome rate. Indeed, in the study published by Hayek and co-workers where age ≥ 80 years was independently associated with an increased risk of death, patients with CPR attempt and favorable outcome were younger compared to those with CPR attempt and unfavorable outcome [16]. Despite similar median age between our cohort and the Hayek's study, our univariate analysis did not find any difference regarding patients' age and outcome. This difference could be explained by the low proportion of patients ≥ 80 years requiring CPR attempt in our cohort compared to patients described in the Hayek's study (1 vs. 8%, respectively). In another multicenter cohort of 260 IHCA in COVID-19 patients, Mitchell et al. have also found that older patients were at higher risk of 30-day mortality [17]. However, several differences with our study can also

be described: authors have included older patients than those of our cohort (median age 69 vs. 63 years, respectively), and a large proportion of patients (36%) experienced CA in unmonitored wards, whereas all our CA patients were monitored.

Practical implications

Finally in our study, among the 10 patients of our cohort with $mRS \geq 4$ at day 90 after CA, six patients later improved to a good functional status at 6 months. Considering these latter six patients, the overall favorable outcome rate should finally reach 25% of patients with CPR attempt and 31% of patients with sustained ROSC. These results as other previous cited works [16, 17] strongly suggest to not systematically apply a “do-not-resuscitate” order among ICU patients with severe COVID-19, and to promote specific and safe CPR protocols for healthcare givers. More studies are warranted to clearly identify factors to guide physicians in their decisions to initiate or not CPR in such patients.

Limitations

Several limitations in our study also must be acknowledged. First, we did not assess the ICU overflow of the participating centers during the study period. Indeed, Hayek et al. also identified admission to hospital with a smaller number of ICU beds as a risk factor for higher in-ICU CA incidence and mortality [16]. This result has probably highlighted the impact of the ICU overflow on COVID-19 patient’s outcome. However, there were no differences in our study between ICUs according to their type and number of beds. Second, all data were collected during the first months of the COVID-19 outbreak in France and might not reflect current practices regarding this pathology, since non-invasive oxygenation strategies or corticosteroids use have been modified during time. Third, a very small number of patients with sustained ROSC were treated using targeted temperature management in our cohort although recent data suggest that it may be effective especially in CA with non-shockable rhythm [24]. Fourth, despite that most CA in our cohort were related to COVID-19 consequences (acute hypoxia, pulmonary embolism, etc.), our results could not clearly differentiate deaths related to COVID-19 severity versus those related to post-CA syndrome and help to better understand these different and often intricate mechanisms of mortality. Moreover, our study was not designed to predict survival with poor outcome, which is related to significant workload and high treatment costs [25]. Fifth, results of our multivariate analysis must be carefully interpreted. Indeed, our limited sample size cohort only allowed us to implement a limited number of significant and clinically relevant parameters in our multivariate

analysis, as generally recommended [26]. As in our study, Leloup et al. also identified before the COVID-19 outbreak, SOFA before in-ICU CA occurrence as a risk factor associated with an unfavorable outcome [3]. But regardless of high SOFA or multi-organ failure diagnosis, our study confirms that the presence of simple abnormal parameters prior to in-ICU CA, such as PaO_2 or FiO_2 setting, seems also relevant to predict COVID-19 patients’ outcome, as previously described [27]. Sixth, we did not assess patients’ functional capacity before CA. However, previous studies regarding IHCA patients without COVID-19, or COVID-19 patients regardless of CA occurrence, have already suggested a statistical association between such parameters (like age, comorbidities and functional status prior to ICU admission) and patients’ outcome [28, 29]. Finally, we have exclusively included in-ICU CA, and our results cannot be extrapolated in IHCA occurring in unmonitored wards.

Conclusion

In-ICU CA incidence remains high among adults with COVID-19. However, 21% of patients with CPR attempt were alive at 3 months follow-up with good functional status. This suggests to not systematically apply a “do-not-resuscitate” order among ICU patients with severe COVID-19.

Abbreviations

CA: Cardiac arrest; CI: Confidence interval; COVID-19: Coronavirus disease 2019; CPR: Cardiopulmonary resuscitation; FiO_2 : Fraction of inspired oxygen; ICU: Intensive care unit; IHCA: In-hospital cardiac arrest; mRS: Modified Rankin scale; MV: Mechanical ventilation; OR: Odds ratio; PaO_2 : Arterial partial pressure of oxygen; ROSC: Return of spontaneous circulation; SAPS-2: Simplified Acute Physiology Score 2; SOFA: Sepsis-related Organ Failure Assessment Score; WLST: Withdrawal of life-sustaining therapy.

Acknowledgements

ACICOID-19 Study Group (acicovid19@gmail.com): Jean-Michel Arnal, MD, Intensive Care Unit, Centre Hospitalier Toulon La Seyne sur Mer, Toulon; Julio Badie, MD, Intensive Care Unit, Hôpital Nord Franche-Comté, Trévenans; Audrey Berric, MD, Intensive Care Unit, Centre Hospitalier Toulon La Seyne sur Mer, Toulon; Jennifer Brunet, MD, Intensive Care Unit, Centre Hospitalier Privé

St Martin, Caen; Thibault Bertrand, MD, Intensive Care Unit, Centre Hospitalier Toulon La Seyne sur Mer, Toulon; Dorothée Carpentier, MD, Intensive Care Unit, Hôpital Charles Nicolle, Centre Hospitalier Universitaire-Hôpitaux de Rouen, Rouen; Karim Chaoui, MD, Intensive Care Unit, Centre Hospitalier de Cahors, Cahors; Anaïs Chapelle, MD, Emergency Medicine Department, Centre Hospitalier Toulon La Seyne sur Mer, Toulon; Riad Chelha, MD, Intensive Care Unit, Hôpital Privé Claude Galien, Quincy sous Sénart; Gaëlle Corno, MD, Intensive Care Unit, Centre Hospitalier Toulon La Seyne sur Mer, Toulon; Cédric Daubin, MD, Department of Medical Intensive Care Unit, Centre Hospitalier Universitaire de Caen, Caen; Richard Descamps, MD, Department of Medical Intensive Care Unit, Centre Hospitalier Universitaire de Caen, Caen; Alexandre Demoule, MD PhD, Medical Intensive Care Unit, AP-HP 6 Sorbonne Université, site Pitié-Salpêtrière, Département R3S and Sorbonne Université, Paris; Stéphanie Deryckere, MD, Department of Anaesthesia and Intensive Care Unit, Centre Hospitalier Universitaire de Caen, Caen; Stéphane-Yannis Donati, MD, Intensive Care Unit, Centre Hospitalier Toulon La Seyne sur Mer, Toulon; Laurent Ducros, MD, Intensive Care Unit, Centre Hospitalier Toulon La Seyne sur Mer, Toulon; Nathalie Embriaco, MD, Intensive Care Unit, Centre Hospitalier Toulon La Seyne sur Mer, Toulon; Nicolas Engrand, MD, Neuro-Intensive Care Unit, Hôpital Fondation Rothschild, Paris; Camille Foucault, MD, Intensive Care Unit, Centre Hospitalier de Cahors, Cahors; Sean Anthony Freeman, PhD, Department of Neurology, Centre Hospitalier Régional Universitaire de Lille, Lille; Santiago Freitas Ramos, MD, Intensive Care Unit, Centre Hospitalier Louis Mourier, AP-HP, Colombes; Arnaud Galbois, MD, Intensive Care Unit, Ramsay Santé-Hôpital Privé Claude Galien, Quincy-sous-Sénart; Aude Garnero, MD, Intensive Care Unit, Centre Hospitalier Toulon La Seyne sur Mer, Toulon; Cyrille Geay, MD, Intensive Care Unit, Centre Hospitalier Toulon La Seyne sur Mer, Toulon; Laurent Guérin, MD, Medical Intensive Care Unit, Hôpital de Bicêtre, Université Paris-Saclay, AP-HP, Le Kremlin-Bicêtre; Vivien Hong Tuan Ha, MD, Intensive Care Unit, Grand Hôpital de l'Est Francilien – site de Meaux, Meaux; Thomas Hullin, MD, Medical-Surgical Intensive Care Unit, Centre Hospitalier Sud Essonne, Etampes; Sébastien Jochmans, MD, Intensive Care Unit, Groupe Hospitalier Sud Ile de France, Melun; Michel Kaidomar, MD, Intensive Care Unit, Centre Hospitalier Intercommunal de Fréjus Saint Raphaël, Frejus; Charlotte Kelway, MD, Intensive Care Unit, Centre Hospitalier Toulon La Seyne sur Mer, Toulon; Marie Labruyere, MD, Intensive Care Unit, Centre Hospitalier Universitaire François Mitterrand, Dijon; Romaric Larcher, MD, Medical Intensive Care Unit, Hôpital Lapeyronie, CHU de Montpellier, Montpellier; Stéphane Legriel, MD PhD, Intensive Care Unit, Centre Hospitalier de Versailles-site André Mignot, Le Chesnay; Maxime Leloup, MD, Intensive Care Unit, Groupe Hospitalier La Rochelle Ré Aunis, La Rochelle; Olivier Lesieur, MD, Intensive Care Unit, Groupe Hospitalier La Rochelle Ré Aunis, La Rochelle; Isabelle Malissin, MD, Medical and Toxicological Intensive Care Unit, Centre Hospitalier Universitaire Lariboisière, AP-HP, Paris; Sandie Mazerand, MD, Medical Intensive Care Unit, Centre Hospitalier Universitaire Antoine, AP-HP, Paris; Bruno Mégarbane, MD PhD, Medical and Toxicological Intensive Care Unit, Centre Hospitalier Universitaire Lariboisière, AP-HP, Paris; Marie-Anne Mélone, MD, Intensive Care Unit, Hôpital Charles Nicolle, Centre Hospitalier Universitaire-Hôpitaux de Rouen, Rouen; Edoard Menoret, MD, Neuro-Intensive Care Unit, Hôpital Fondation Rothschild, Paris; Matthieu Metzeldar, MD, Intensive Care Unit, Centre Hospitalier Universitaire d'Amiens-Picardie, Amiens; Nicolas Mongardon, MD PhD, Department of Anaesthesiology and Critical Care Medicine, Hôpitaux Universitaires Henri Mondor, AP-HP, Créteil; Ly Van Phack Vong, MD, Intensive Care Unit, Grand Hôpital de l'Est Francilien – site de Marne la Vallée, Jossigny; Romain Persichini, MD, Intensive Care Unit, Medical-surgical Intensive Care Unit, CHU de La Réunion, Félix Guyon Hospital, Saint-Denis, La Réunion; Nicolas Pichon, MD, Intensive Care Unit, Centre Hospitalier Dubois, Brive La Gaillarde; Santiago Picos Gil, MD, Intensive Care Unit, Centre Hospitalier de la Dracéne, Draguignan; Jean-Pierre Quenot, MD PhD, Intensive Care Unit, Centre Hospitalier Universitaire François Mitterrand, Dijon; Damien Roux, MD PhD, Intensive Care Unit, Hôpital Louis Mourier, AP-HP, Colombes; David Schnell, MD, Intensive Care Unit, Centre Hospitalier d'Angoulême, Angoulême; Florian Sigaud, MD, Medical Intensive Care Unit, Centre Hospitalier Universitaire Grenoble-Alpes, Grenoble; Clement Suply, MD, Intensive Care Unit, Centre Hospitalier Intercommunal Fréjus Saint Raphaël, Frejus; Benjamin Sztrymf, MD PhD, Intensive Care Unit, Hôpital Antoine Bécclère, Clamart; Nicolas Terzi, MD PhD, Medical Intensive Care Unit, Centre Hospitalier Universitaire Grenoble-Alpes, La Tronche; Didier Thevenin, MD, Intensive Care Unit, Centre Hospitalier Dr Schaffner, Lens; Sebastian Voicu, MD, Medical and Toxicological Intensive Care Unit, Centre Hospitalier Universitaire Lariboisière, AP-HP, Paris.

Author's contributions

JC and ND designed the study and wrote the manuscript. CJ, GP, TK, CB, SN, CL, GC, ES, SE, FB, JL, MP and ND performed the data collection. AA performed the statistical analysis. All authors and collaborators contributed to drafting of the work, revising it critically for important intellectual content and approved the final version of the manuscript. All authors read and approved the final manuscript.

Funding

This registry was supported by the Centre Hospitalier Intercommunal Toulon La Seyne sur Mer (CHITS).

Availability of data and materials

Research data and other material will be made available to the scientific community, immediately on publication, with as few restrictions as possible. All requests should be submitted to the corresponding author who will review with the other investigators for consideration. A data use agreement will be required before the release of participant data and institutional review board approval as appropriate.

Declarations

Ethics approval and consent to participate

This study was approved by the ethical committee of the French Intensive Care Society (CE SRLF 20-34) in April 2020 and was registered in ClinicalTrials.gov (NTC04373759) in May 2020. In accordance with French and European legislation on the use of health data for epidemiological research, patients, or relatives, as applicable, have been specifically informed of the details of this study and of their unconditional right to object to the use of their data.

Consent for publication

Not applicable.

Competing interests

The authors declare that they have no conflicts of interest.

Author details

¹Intensive Care Unit, Centre Hospitalier Intercommunal Toulon-La Seyne sur Mer, Hôpital Sainte Musse, 54 rue Henri Sainte Claire Deville, 83056 Toulon, France. ²Intensive Care Unit, Centre Hospitalier Victor Dupouy, Argenteuil, France. ³Intensive Care Unit, Centre Hospitalier Régional d'Orléans, Orléans, Inserm UMR1153, ECSTERRA, Université de Paris, Paris, France. ⁴Intensive Care Unit, Groupe Hospitalier Paris Saint Joseph, Paris, France. ⁵Médecine Intensive Réanimation, CHU Lille, Inserm U1285, Université de Lille, CNRS, UMR 8576-UGSF, Unité de Glycobiologie Structurale et Fonctionnelle, Lille, France. ⁶Medical Intensive Care Unit, Hôpital de Bicêtre, Université Paris-Saclay, Assistance Publique Hôpitaux de Paris (AP-HP), Le Kremlin-Bicêtre, France. ⁷Intensive Care Department, Groupe Hospitalier Sud Ile de France, Melun, France. ⁸Service d'anesthésie-réanimation chirurgicale, DMU CARE, DHU A-TVb, Assistance Publique Hôpitaux de Paris (AP-HP), Hôpitaux Universitaires Henri Mondor, Créteil, France. ⁹Intensive Care Unit, Grand Hôpital de l'Est Francilien-site de Marne la Vallée, Jossigny, France. ¹⁰Intensive Care Unit, Hôpital Nord Franche-Comté, Trévenans, France. ¹¹Intensive Care Unit, Département R3S, Pitié-Salpêtrière hospital, Assistance Publique Hôpitaux de Paris (AP-HP), Sorbonne Université, Paris, France. ¹²Intensive Care Unit, Centre Hospitalier de Versailles-site André Mignot, Le Chesnay, France. ¹³Clinical Research Department, Centre Hospitalier Intercommunal Toulon-La Seyne sur Mer, Toulon, France. ¹⁴Medical and Toxicological Intensive Care Unit, Inserm U942, Assistance Publique Hôpitaux de Paris (AP-HP), Centre Hospitalier Universitaire Lariboisière, Paris, France.

References

1. Eftendijev I, Nurmi J, Castrén M, Skrifvars MB. Incidence and outcome from adult cardiac arrest occurring in the intensive care unit: a systematic review of the literature. *Resuscitation*. 2014;85:472–9.

2. Kleinman ME, Perkins GD, Bhanji F, Billi JE, Bray JE, Callaway CW, et al. ILCOR scientific knowledge gaps and clinical research priorities for cardiopulmonary resuscitation and emergency cardiovascular care: a consensus statement. *Resuscitation*. 2018;127:132–46.
3. ACIR study group, Leloup M, Briatte I, Langlois A, Cariou A, Lesieur O. Unexpected cardiac arrests occurring inside the ICU: outcomes of a French prospective multicenter study. *Intensive Care Med*. 2020;46:1005–15.
4. Roedl K, Jarczak D, Blohm R, Winterland S, Müller J, Fuhrmann V, et al. Epidemiology of intensive care unit cardiac arrest: characteristics, comorbidities, and post-cardiac arrest organ failure—a prospective observational study. *Resuscitation*. 2020;156:92–8.
5. Shao F, Xu S, Ma X, Xu Z, Lyu J, Ng M, et al. In-hospital cardiac arrest outcomes among patients with COVID-19 pneumonia in Wuhan, China. *Resuscitation*. 2020;151:18–23.
6. Sheth V, Chishti I, Rothman A, Redlener M, Liang J, Pan D, et al. Outcomes of in-hospital cardiac arrest in patients with COVID-19 in New York City. *Resuscitation*. 2020;155:3–5.
7. Thapa SB, Kakar TS, Mayer C, Khanal D. Clinical outcomes of in-hospital cardiac arrest in COVID-19. *JAMA Intern Med*. 2020;181:279–81.
8. Shah P, Smith H, Olarewaju A, Jani Y, Cobb A, Owens J, et al. Is cardiopulmonary resuscitation futile in coronavirus disease 2019 patients experiencing in-hospital cardiac arrest? *Crit Care Med*. 2021;49:201–8.
9. Mahase E, Kmiotowicz Z. Covid-19: doctors are told not to perform CPR on patients in cardiac arrest. *BMJ*. 2020;368:m1282.
10. Kramer DB, Lo B, Dickert NW. CPR in the COVID-19 era—an ethical framework. *N Engl J Med*. 2020;383:e6.
11. Hassager C, Price S, Huber K. Cardiac arrest in the COVID-19 era. *Eur Heart J Acute Cardiovasc Care*. 2020;9:239–40.
12. Girotra S, Tang Y, Chan PS, Nallamothu BK. Survival after in-hospital cardiac arrest in critically ill patients: implications for COVID-19 outbreak? *Circ Cardiovasc Qual Outcomes*. 2020;13:e006837.
13. Chan PS, Berg RA, Nadkarni VM. Code blue during the COVID-19 pandemic. *Circ Cardiovasc Qual Outcomes*. 2020;13:e006779.
14. Wydo SM, Peterson L-KN. Cardiopulmonary resuscitation in coronavirus disease 2019: rebalancing risk, reward, and autonomy. *Crit Care Med*. 2021;49:347–51.
15. Modes ME, Lee RY, Curtis JR. Outcomes of cardiopulmonary resuscitation in patients with COVID-19—limited data, but further reason for action. *JAMA Intern Med*. 2021;181:282–92.
16. Hayek SS, Brenner SK, Azam TU, Shadid HR, Anderson E, Berlin H, et al. In-hospital cardiac arrest in critically ill patients with COVID-19: multicenter cohort study. *BMJ*. 2020;371:m3513.
17. Mitchell OJL, Yuriditsky E, Johnson NJ, Doran O, Buckler DG, Neefe S, et al. In-hospital cardiac arrest in patients with coronavirus 2019. *Resuscitation*. 2021;160:72–8.
18. Perkins GD, Morley PT, Nolan JP, Soar J, Berg K, Olasveengen T, et al. International Liaison Committee on Resuscitation: COVID-19 consensus on science, treatment recommendations and task force insights. *Resuscitation*. 2020;151:145–7.
19. Sultanian P, Lundgren P, Strömsöe A, Aune S, Bergström G, Hagberg E, et al. Cardiac arrest in COVID-19: characteristics and outcomes of in- and out-of-hospital cardiac arrest. A report from the Swedish Registry for Cardiopulmonary Resuscitation. *Eur Heart J*. 2021;42:1094–106.
20. Nolan JP, Berg RA, Andersen LW, Bhanji F, Chan PS, Donnino MW, et al. Cardiac arrest and cardiopulmonary resuscitation outcome reports: update of the Utstein Resuscitation Registry template for in-hospital cardiac arrest. *Resuscitation*. 2019;144:166–77.
21. Van Swieten JC, Koudstaal PJ, Visser MC, Schouten HJA, van Gijn J. Interobserver agreement for the assessment of handicap in stroke patients. *Stroke*. 1988;19:604–7.
22. Lim ZJ, Ponnappa Reddy M, Curtis JR, Afroz A, Billah B, Sheth V, et al. A systematic review of the incidence and outcomes of in-hospital cardiac arrests in patients with coronavirus disease 2019. *Crit Care Med*. 2021;49:901–11.
23. Andersen LW, Holmberg MJ, Berg KM, Donnino MW, Granfeldt A. In-hospital cardiac arrest: a review. *JAMA*. 2019;321:1200–10.
24. Lascarrou J-B, Merdji H, Le Gouge A, Colin G, Grillet G, Girardie P, et al. Targeted temperature management for cardiac arrest with nonshockable rhythm. *N Engl J Med*. 2019;381:2327–37.
25. Efendijev I, Folger D, Raj R, Rejnikaianen M, Pekkarinen PT, Litonius E, Skrifvars MB. Outcomes and healthcare-associated costs one year after intensive care-treated cardiac arrest. *Resuscitation*. 2018;131:128–34.
26. Bewick V, Cheek L, Ball J. Statistics review 14: logistic regression. *Crit Care*. 2005;9:112–8.
27. Skrifvars MB, Nurmi J, Ikola K, Saarinen K, Castrén M. Reduced survival following resuscitation in patients with documented clinically abnormal observations prior to in-hospital cardiac arrest. *Resuscitation*. 2006;70(2):215–22.
28. Skrifvars MB, Castren M, Nurmi J, Thoren AB, Aune S, Herlitz J. Do patient characteristics or factors at resuscitation influence long-term outcome in patients surviving to be discharged following in-hospital cardiac arrest? *J Intern Med*. 2007;262(4):488–95.
29. Covid-ICU group on behalf the REVA Network and the COVID-ICU Investigators. Clinical characteristics and day-90 outcomes of 4244 critically ill adults with COVID-19: a prospective cohort study. *Intensive Care Med*. 2021;47(1):60–73.