



HAL
open science

Adjustment of K⁺ Fluxes and Grapevine Defense in the Face of Climate Change

Houssein Monder, Morgan Maillard, Isabelle Chérel, Sabine D Zimmermann, Nadine Paris, Teresa Cuéllar, Isabelle Gaillard

► **To cite this version:**

Houssein Monder, Morgan Maillard, Isabelle Chérel, Sabine D Zimmermann, Nadine Paris, et al.. Adjustment of K⁺ Fluxes and Grapevine Defense in the Face of Climate Change. International Journal of Molecular Sciences, In press, 22 (19), 10.3390/ijms221910398 . hal-03417409

HAL Id: hal-03417409

<https://hal.science/hal-03417409>

Submitted on 5 Nov 2021

HAL is a multi-disciplinary open access archive for the deposit and dissemination of scientific research documents, whether they are published or not. The documents may come from teaching and research institutions in France or abroad, or from public or private research centers.

L'archive ouverte pluridisciplinaire **HAL**, est destinée au dépôt et à la diffusion de documents scientifiques de niveau recherche, publiés ou non, émanant des établissements d'enseignement et de recherche français ou étrangers, des laboratoires publics ou privés.



Distributed under a Creative Commons Attribution 4.0 International License



Review

Adjustment of K⁺ Fluxes and Grapevine Defense in the Face of Climate Change

Houssein Monder¹, Morgan Maillard¹ , Isabelle Chérel¹, Sabine Dagmar Zimmermann¹ , Nadine Paris¹ ,
Teresa Cuéllar² and Isabelle Gaillard^{1,*}

¹ BPMP, Univ Montpellier, CNRS, INRAE, Institut Agro, F-34060 Montpellier, France; houssein.monder@inrae.fr (H.M.); morgan.maillard@inrae.fr (M.M.); isabelle.cherel@inrae.fr (I.C.); sabine.zimmermann@cnrs.fr (S.D.Z.); nadine.paris@cnrs.fr (N.P.)

² CIRAD, UMR AGAP, Univ Montpellier, INRAE, Institut Agro, F-34398 Montpellier, France; teresa.cuellar@cirad.fr

* Correspondence: isabelle.gaillard@inrae.fr

Abstract: Grapevine is one of the most economically important fruit crops due to the high value of its fruit and its importance in winemaking. The current decrease in grape berry quality and production can be seen as the consequence of various abiotic constraints imposed by climate changes. Specifically, produced wines have become too sweet, with a stronger impression of alcohol and fewer aromatic qualities. Potassium is known to play a major role in grapevine growth, as well as grape composition and wine quality. Importantly, potassium ions (K⁺) are involved in the initiation and maintenance of the berry loading process during ripening. Moreover, K⁺ has also been implicated in various defense mechanisms against abiotic stress. The first part of this review discusses the main negative consequences of the current climate, how they disturb the quality of grape berries at harvest and thus ultimately compromise the potential to obtain a great wine. In the second part, the essential electrical and osmotic functions of K⁺, which are intimately dependent on K⁺ transport systems, membrane energization, and cell K⁺ homeostasis, are presented. This knowledge will help to select crops that are better adapted to adverse environmental conditions.

Keywords: potassium homeostasis; potassium transport; fruit; quality; climate change



Citation: Monder, H.; Maillard, M.; Chérel, I.; Zimmermann, S.D.; Paris, N.; Cuéllar, T.; Gaillard, I. Adjustment of K⁺ Fluxes and Grapevine Defense in the Face of Climate Change. *Int. J. Mol. Sci.* **2021**, *22*, 10398. <https://doi.org/10.3390/ijms221910398>

Academic Editors: Giampiero Cai, Luigi Parrotta and Lavinia Mareri

Received: 30 July 2021

Accepted: 20 September 2021

Published: 27 September 2021

Publisher's Note: MDPI stays neutral with regard to jurisdictional claims in published maps and institutional affiliations.



Copyright: © 2021 by the authors. Licensee MDPI, Basel, Switzerland. This article is an open access article distributed under the terms and conditions of the Creative Commons Attribution (CC BY) license (<https://creativecommons.org/licenses/by/4.0/>).

1. Introduction

In plants, potassium (K⁺) is the most abundant inorganic cation in plant cells. In the cytosol, the K⁺ concentration is found in the 80–100 mM range [1,2], and the control of the cytosolic K⁺ homeostasis is essential to keep the cell alive [3–5]. This ion is involved in a plethora of metabolic, physiological, and developmental processes. K⁺ is a highly mobile osmolyte and a major component of the cation/anion balance. K⁺ is also crucial for the control of the membrane polarization and the neutralization of organic acids and anionic groups [6–8]. It contributes to cell turgor maintenance, cell elongation, or expansion, to mechanical processes such as stomatal opening/closure or leaf movements, and to the control and maintenance of cytosolic pH homeostasis. High K⁺ concentrations are required for optimal protein synthesis, activation of more than 70 enzymes, and photosynthesis [6,9]. Moreover, K⁺ is involved in the plant responses to biotic and abiotic constraints inducing quite often a K⁺ loss from the cell [3,10–12]. More generally, K⁺ starvation is known to affect crop yield and the use of potassium fertilizers is a vital input in agriculture aiming to maintain optimal levels of nutrient.

Many studies indicate that the universal functions of potassium are dependent on the K⁺ translocation allowing its distribution in all plant tissues and subcellular compartments of cells [4,5]. In plants, K⁺ translocation processes are achieved by the fine control of a specialized network of K⁺ transport systems, whose members can differ in transport affinity, energetic coupling, voltage-sensitivity or ionic selectivity [7,8,13]. Among the

many plant K⁺ transporters and channels, Shaker-like voltage-dependent K⁺ channels have been extensively studied [7,8,14–16]. These ion channels allow large passive fluxes of K⁺ that dominate the K⁺ conductance at the cell plasma membrane and are implicated in the control of long-distance K⁺ transport [7,8]. Mechanistically, such voltage-gated K⁺ channels mediate the inwardly or outwardly rectifying K⁺ fluxes of the plasma membrane according to the electro-chemical gradient, thus allowing the inward or outward K⁺ translocation of the cell [7,8]. They are involved in the fine-tuning of K⁺ fluxes, which adjust the cytosolic K⁺ homeostasis necessary to maintain cell viability.

However, nowadays, persistent climate changes and abrupt fluctuations in climatic conditions are imposing greater environmental constraints, with increasing temperatures, multiple droughts, and intense solar radiation. All these abiotic stressors represent serious threats to plants, impacting plant growth and development worldwide. Among other effects, abiotic stress disturbs K⁺ translocation and homeostasis, modifying the activities of K⁺ Shaker channels either by inducing transcriptional changes or modifying post-translational regulatory mechanisms [17]. In grapevine (*Vitis vinifera* L.), which is one of the most economically important fruit crops, climate change factors disturb the synthesis and degradation of primary and secondary metabolites directly, via the regulation of their biosynthetic pathways, or indirectly, via their effects on vine physiology and phenology [18–21]. In particular, grape harvest occurs nowadays on average three weeks earlier in the summer as compared to the situation 25 years ago [22,23]. This means that the entire period of berry ripening has been shifted toward warmer periods. Moreover, plants must endure more frequent heat waves associated with excessive solar radiation and soil dehydration, which leads to plant transpiration and water stress [14,24–26]. The current climate constraints directly increase K⁺ loading in the berry. This excess K⁺ during ripening leads to a decrease in grape acidity at harvest [14,15,27,28]. In addition, an increase of sugar loading in the berry is observed [29]. This disturbs the grape berry composition and has a strong impact on the final quality of the obtained wine. Thus, adaptation to climate changes is becoming a major challenge for viticulture.

This review deals with the fine control of K⁺ fluxes at the plasma membrane of grape berry cells in relation with climate changes. Because this control is strongly dependent on K⁺ transport systems and that the Shaker-like voltage-dependent K⁺ channels have been intensively studied, their involvement is particularly discussed. After a short description of grape berry development and its requirement for K⁺, the first part of this review discusses the detrimental climate constraints on grapes during their development and ripening which in turn disturb the production of wine. The second part focuses on the role of K⁺ in the initiation and the maintenance of berry loading during ripening, and its involvement in the defense mechanisms against abiotic stresses in relation to climate change.

2. Grape Berry and Climate Change

2.1. The Development of Grape Berries

The development of grape berries consists of two successive growth periods separated by a lag phase. The first period comprises a rapid cell division phase followed by marked cell enlargement, and is characterized by the synthesis and vacuolar storage of the two main grape organic acids, tartaric acid and malic acid. At the onset of ripening, the berry starts to change color and soften, and the fruit undergoes major biochemical changes [30]. From this step, berry growth is only due to cell expansion and potassium as an osmoticum in driving cell growth and turgor, is expected to be essential for this process [15,27,30–32]. During ripening, grape berry, becomes a strong sink for K⁺ and this cation also drives sugar accumulation via the phloem [1,15,27,33,34]. Moreover, transport mechanisms switch from the symplastic to the apoplastic mode [35], meaning that solutes must cross plasma membranes at least twice before accumulating within the berry flesh cells. Previous reports have indicated that berry loading via an apoplastic mode should improve the control of efficient long-distance phloem transport from source leaves to ripening berries [27,35]. It is important to note that K⁺ channels are involved in the control of K⁺ and sugar translocat-

tion from source to sink via the phloem [1,36], using the transmembrane electrochemical gradient for K^+ between phloem cytosol and berry apoplast that allows the berry loading process [33,37,38].

For the whole grape maturing period, an adequate K^+ availability is a prerequisite for a normal berry development. Grapevine is able to adapt to different availabilities of K^+ via responses that mainly involve changes in root architecture and regulation of K^+ transport systems. This plant also invests energy for the uptake of K^+ and its distribution throughout the plant. Indeed, although the K^+ concentrations of the soil solution are generally very low, highly variable, and usually in the range of 1 to 0.1 mM [39], grapevine can accumulate K^+ to maintain high cytosolic concentrations at around 100 mM [40,41]. Viticultural practices attempt to mitigate the variability in K^+ availability using fertilizers to try to maintain an optimal K^+ level. But, with regard to vines cultivated on sandy soils located on the sea front, the occurrence of additional salt stress disturbs K^+ nutrition causing deficiency [42,43]. Drought stressed grapevine may also need additional K^+ . It is widely known that potassium fertilization improves water relations and osmotic adjustment and the response of vine are often variety dependent [43]. Tightly linked, it is important to note that K^+ starvation reduces also the ability to use N and induces chlorosis at the tip of older leaves disturbing plant metabolism [44].

2.2. The Impact of Climate Change on Grapevine

Due to the greenhouse effect, higher atmospheric CO_2 concentrations have led to increased global temperatures associated with episodes of poor water availability and drought. In addition, the incidence, intensity, and duration of extreme heat waves have increased [45,46]. Grapevine is a perennial crop known for its ability to survive long periods of drought and high temperature exposure. However, for optimal fruit production and quality, grapevine needs to grow in a suitable environment that provides a good range of atmospheric temperatures, appropriate radiation intensities and duration, and water availability [47]. Among the climate parameters that mostly affect berry content at harvest, temperature and water availability play a prominent role.

In grapevine, heat stress causes permanent injuries that affect its phenology and grape yield. Heat stress also promotes vegetative growth, disturbing flower set, and the development of young berries [48]. In addition, phloem transport is increased and berry primary and secondary metabolisms are modified [30]. This results in higher accumulation of sugars and K^+ during fruit ripening, and leads to wines whose ethanol content increases steadily over the vintages, which is associated with reduced acidity because over-accumulated K^+ ion leads to an excessive neutralization of organic acids. This loss of acidity strongly affects wine quality since acidity normally allows the flavor and the aroma to develop during vinification. Upon high-temperature exposure, various damages that disturb the plant's carbon balance and cellular homeostasis also occur, potentially leading to a severe delay in growth and development [49]. The maintenance of cellular homeostasis is essential for the resilience of plant life to adverse environments. In particular, the control of K^+ homeostasis is crucial for maintaining the many physiological processes in which K^+ is involved [4,5,50].

In addition to an increase in atmospheric temperature, a warmer climate leads to more solar exposure for grape berries, which can be detrimental to grape quality. However, the classical viticultural practice of removing leaves in the fruit zone is known to control the source-sink balance and improves grape composition and the resulting wines [51,52]. When exposed to sunlight that contains a fraction of emitted radiation in the UV spectrum (110–400 nm), grapevine plants activate enzymes and secondary metabolites that belong to antioxidants and defense-related phytochemicals. Indeed, the observed changes in berry composition improve grape berry quality at harvest and explain why grapevine is generally considered to be well-adapted to UV radiation [53–56]. However, this cultural defoliation practice is under question since the infrared portion of sunlight radiation is also increased and transmits thermal energy to grape berries, resulting in an intrinsic increase in their

temperature. This strongly desynchronizes the metabolism of sugar and organic acids and decreases anthocyanin content, disturbing fruit quality [57,58].

The water requirements of plants increase in warmer climates since higher temperatures promote plant transpiration and contribute to soil dehydration, resulting in the occurrence of longer and more frequent water stresses. Water restriction has major effects, which are not always detrimental, on grape production and composition. The impact of water stress on grapevine depends on its intensity, duration, and occurrence within the development cycle [59]. Indeed, a moderate water stress that occurs near the start of ripening or at later development stages in berries improves sugar and K^+ content, flavonoid compounds, and the organoleptic quality of the produced wines [59].

In contrast, even moderate water stress close to bloom time leads to poor fruit setting and the abortion of the entire clusters. Stress applied during the short initial berry cell division phase results in the significant reduction of berry size and quality [59]. Indeed, an early water deficit can have detrimentally irreversible effects associated with stomatal closure, due to abscisic acid (ABA) long-distance signaling produced by dehydrating roots [60]. This further induces a decrease in CO_2 uptake and the downregulation of photosynthetic capacity and growth. It must be noted that the stomata are key players in the plant response to drought, and they close in order to reduce transpiration and avoid water loss. In grapevine, the different varieties exhibit various sensitivities to water deficit, meaning that some of them tend to close their stomata earlier than others [61–63].

Abundant documentation exists on the description of vine responses to abiotic stresses, which involves adaptive changes and/or deleterious effects to grape quality [26,46,56,63–65]. Under field conditions and in the context of climate change, these responses could be modified by the simultaneous combination of different climatic stresses. Until now, most existing data have been restricted to the impact of a unique stress on grape development and quality. However, recent reports indicate that plant responses to combined stresses are not the summation of the plant responses to each isolated stress; instead, various types of antagonistic, synergistic, and null responses can occur [66,67]. Gene regulatory networks that control individual and multiple stress responses can be different. Generally, it is reported that combined stresses lead to the contribution of more integrative networks in the model plant *Arabidopsis thaliana* [68] and other plants including grapevine [69–71]. Indeed, in tomato plants, under the combination of heat and salt stress, a high K^+ concentration is observed leading to a lower Na^+/K^+ ratio, a better performance of cell water status and photosynthesis as compared to salinity alone [69]. Moreover, when K^+ is added to watering, a better performance of the antioxidant enzymes and photosynthesis parameters are noted for this stress [70].

In the plant model *A. thaliana*, an extensive study on the impact of multi factorial stress, including heat and high light stress combination, shows that the expression of genes belonging to the ABA signaling are significantly regulated [72]. The phytohormone ABA plays an essential role in responses to abiotic stresses [73,74] operating at the whole plant level and regulating processes such as leaf transpiration and water loss through stomatal closure. ABA is translocated to target tissues in both xylem and phloem, allowing transport in both direction between roots and shoots [75]. At the end of the ABA pathway, coordinated K^+ and anion fluxes across cell membranes occur, mediated by different transport systems. Zandalinas et al. showed in their RNA-seq analyses that genes coding for targets of environmental stresses, including Shaker-like K^+ channels and their molecular regulators, are significantly up- or down-regulated in combined stress conditions [72]. In grapevine, salt and drought stress responses seem to be regulated by the stress phytohormone ABA [76]. Moreover, a recent study analyzed the responses of two contrasted vine varieties under drought, heat stress, and high light either individually or in a combination of two or three stresses. These results are in accordance with an involvement of ABA pathways and revealed contrasted responses between the two studied varieties [71].

To cope with solar radiation, warm temperature, and water stresses imposed by the current climate, plants need to sense nutrient levels in the surrounding organs and

tissues and inside their cells. Then, they must accordingly adjust various transport steps leading to nutrient accumulation into the cells with respect to their homeostasis range. Maintenance of high cytosolic K^+ is achieved by the precise adjustment of K^+ fluxes that are controlled by K^+ transport systems expressed in the different membranes. Shaker-like voltage-dependent K^+ channels allow large passive fluxes at the cell plasma membrane and have been therefore intensively studied.

3. Structure and Function of Plant K^+ Shaker Channels

Plant voltage-gated K^+ channels are referred to as “plant Shakers” in reference to animal Shaker channels, which were named for a phenotype of jerky movements and shaking observed in fruit flies deficient in K^+ -channel activity [77]. Although they belong to the same superfamily, it is now recognized that plant voltage-gated K^+ channels and metazoan Shaker channels are derived from distinct prokaryotic ancestors [78,79]. Plant voltage-gated K^+ channels, which are localized in the plasma membrane of expressing cells, play crucial roles in sustained K^+ transport [7,8,14,80]. Functional channels are tetramers composed of four often non-identical α -subunits. In *planta*, the preferential assembly of these subunits as heterotetrameric structures increases channel functional diversity since the newly obtained channels acquire functional properties that differ from those of homotetrameric channels [81–83]. Shaker subunits have an identical structure and contain six membrane-spanning domains (S1–S6) and a long hydrophilic C-terminal cytosolic region in which several domains have been identified. The first domain, named C-linker (around 80 amino acids in length) [84,85] is followed by a cyclic nucleotide-binding domain (CNBD), and then by an ankyrin domain (involved in protein–protein interaction; [86,87]), and finally by a domain named K_{HA} that is rich in hydrophobic and acidic residues and involved in channel clustering [88]. At the level of the transmembrane region, there is a highly conserved domain named P (pore), located between S5 and S6, comprising a GYGD motif, which is the hallmark of highly K^+ -selective channels. In addition, a voltage sensor is found within the S1–S4 region with the S4 transmembrane segment containing important positive charges [7,8].

Nine Shaker subunits have been identified in the genome of *A. thaliana*, as in grapevine. Phylogenetic analyses have shown that they belong to five subfamilies, although the number of members within each subgroup is not strictly conserved between the two species (Table 1, Figure 1). Groups 1 and 2 (AKT1, AKT5, SPIK, KAT1, and KAT2 in *A. thaliana* [7] and VvK1.1, VvK1.2, and VvK2.1 in grapevine [28,32,89] comprise the inwardly rectifying channels (K_{in}) that are activated by hyperpolarizing potentials and are closed when the driving force for K^+ becomes outwardly directed. They can only mediate an inward K^+ flux allowing the uptake of K^+ into the cytosol. The members of group 1 and 2 differ in their cytosolic part as the KAT1-like channels (group 2) lack the ankyrin repeat domain which is present in AKT1-like channels (group 1). In *A. thaliana* and in grapevine, group 3 contains only one subunit. These subunits form a weakly inwardly rectifying potassium channel (K_{weak}) at the plasma membrane. Depending on their phosphorylation status, these channels named AKT2 in Arabidopsis and VvK3.1 in grapevine can exist in two different gating modes: a time-dependent voltage-activated mode mediating K^+ influx (K_{in}) into the cell (mode 1), or a non-rectifying mode with a channel locked in the open state in its phosphorylated form (mode 2) across the entire physiological voltage range allowing influx and efflux dependent on the K^+ electrochemical gradient [90]. These two gating modes allow K_{weak} channels to mediate both, K^+ efflux and K^+ influx, and so they can function in both phloem K^+ loading in source tissues and phloem K^+ unloading in sinks [1,33,37,38]. Group 4 contains the “silent” subunits (K_{silent} ; AtKC1 in *A. thaliana* [91] and VvK4.1 in grapevine), which are nonfunctional when expressed alone in heterologous functional studies but can form functional heterotetrameric channels with K_{in} and K_{weak} subunits, thus modulating their activity.

Table 1. Arabidopsis and grapevine Shaker-like voltage-gated K⁺ channels. Abbreviations: Channel subunits K_{in}, K_{weak}, and K_{out} form homomeric inwardly rectifying, weakly inwardly rectifying, or outwardly rectifying channels. The channel K_{silent} is silent (non-functional) when expressed alone but forms a functional heterotetrameric channel with K_{in} and K_{weak} subunits.

Gene	ID	Species	Group	Voltage Dependence	Main Tissue Localization	Function	References
AKT1	<i>At2g26650</i>	<i>A. thaliana</i>	1	K _{in}	Root cortex, root hairs, guard cells	K ⁺ loading by roots	[92,93]
VvK1.1	<i>VIT_11s0016g04750</i>	<i>V. vinifera</i>	1	K _{in}	Root cortex and grape berry phloem	K ⁺ loading by roots	[28]
VvK1.2	<i>VIT_04s0008g04990</i>	<i>V. vinifera</i>	1	K _{in}	Flesh cells and perivascular cells in berries	K ⁺ loading by flesh cells	[32]
AKT5	<i>At4g32500</i>	<i>A. thaliana</i>	1	K _{in}	Developing seed	-	https://bar.utoronto.ca/
SPIK	<i>At2g25600</i>	<i>A. thaliana</i>	1	K _{in}	Pollen	K ⁺ uptake for pollen tube growth	[94]
KAT1	<i>At5g46240</i>	<i>A. thaliana</i>	2	K _{in}	Guard cells	stomatal opening	[95]
KAT2	<i>At4g18290</i>	<i>A. thaliana</i>	2	K _{in}	Guard cells, phloem and flower	stomatal opening	[96]
VvK2.1	<i>VIT_10s0003g03270</i>	<i>V. vinifera</i>	2	K _{in}	Guard cells and seeds	stomatal opening	[89]
AKT2	<i>At4g22200</i>	<i>A. thaliana</i>	3	K _{weak}	Phloem	Phloem K ⁺ unloading and loading	[97]
VvK3.1	<i>VIT_12s0034g02240</i>	<i>V. vinifera</i>	3	K _{weak}	Phloem and pulvinus	Phloem K ⁺ unloading and loading and leaf movements	[33]
AtKC1	<i>At4g32650</i>	<i>A. thaliana</i>	4	K _{silent}	Root cortex, Roots hairs, and leaf trichomes	regulatory subunit	[98,99]
VvK4.1	<i>VIT_04s0008g04510</i>	<i>V. vinifera</i>	4	K _{silent}	-	-	-
GORK	<i>At5g37500</i>	<i>A. thaliana</i>	5	K _{out}	Roots and root hairs and guard cells	stomatal closure—root K ⁺ efflux	[100,101]
SKOR	<i>At3g02850</i>	<i>A. thaliana</i>	5	K _{out}	Root stele (xylem parenchyma)	K ⁺ secretion to the xylem	[102]
VvK5.1	<i>VIT_14s0006g00100</i>	<i>V. vinifera</i>	5	K _{out}	Roots, phloem and flowers	K ⁺ secretion to the xylem, lateral root, phloem repolarization	[103]
VvK5.2	<i>VIT_18s0089g01300</i>	<i>V. vinifera</i>	5	K _{out}	-	-	-
VvK5.3	<i>VIT_11s0016g05810</i>	<i>V. vinifera</i>	5	K _{out}	-	-	-
VvK5.4	<i>VIT_17s0000g01980</i>	<i>V. vinifera</i>	5	K _{out}	-	-	-

Finally, group 5 contains the outwardly rectifying channels (K_{out}), which includes SKOR and GORK in *A. thaliana* [102,104] and VvK5.1, VvK5.2, VvK5.3, and VvK5.4 in grapevine [103]. These channels are activated under membrane depolarization and are closed when the driving force for potassium is inwardly directed. These K_{out} channels mediate only outward K^+ fluxes from the cytosol to the apoplast.

In *A. thaliana*, the role of these channels has been investigated *in planta*. The obtained results indicate that the K_{in} channel AKT1 is involved in K^+ uptake from the soil, preferentially in a heterotetramer structure together with the regulatory subunit AtKC1 [99,105]. K^+ secretion in the xylem sap is driven by the K_{out} channel SKOR [102]. Finally, AKT2, a K_{weak} channel that allows K^+ influx and efflux, is involved in K^+ (re)circulation, by controlling the phloem K^+ loading/unloading, and in regulation of the cell membrane polarization [36,37,97]. In the extensively studied model of guard cells, K^+ fluxes responsible for stomatal movements are mediated by the K_{in} channels KAT1 and KAT2 and the K_{out} channel GORK [82,93,104,106,107].

In grapevine, since excess K^+ levels in berries may have a negative impact on wine quality, the molecular determinants of K^+ transport are currently under investigation. The grapevine VvK3.1 channel is a weakly rectifying channel (K_{weak}) that mediates both inward and outward K^+ currents and is highly expressed in the phloem [33]. Starting from the onset of ripening, VvK3.1 is involved in the massive K^+ efflux from the phloem cell cytosol to the berry apoplast. Switching to its non-rectifying mode, VvK3.1 drives the K^+ efflux that allows K^+ ions to move down their transmembrane concentration gradient (100 mM in the phloem cell cytoplasm and 0.1–1 mM in the apoplast; [1,108]). This is a major concern for grapevine, as the fruit is energetically limited due to stomata disappearance after the onset of ripening. As of this stage, when photosynthesis is stopped, ATP synthesis mainly depends on cellular respiration with malic acid as the substrate [109], which explains why K^+ secretion into berry apoplast is dominated by “passive” K^+ channels.

The additional energy stored in the electrochemical gradient for K^+ can also allow sucrose retrieval in energy-limited conditions [33,38], and it can maintain sucrose levels in the phloem vessels until reaching the different sites of unloading. At the same time, the K_{in} channel VvK1.2, an AKT1-like channel (group 1) that mediates inwardly rectifying K^+ flux, is expressed in the plasma membrane of perivascular and flesh cells. The activity of this channel is regulated by its interactions with specific VvCIPK/VvCBL pairs, and is strongly enhanced by protons at the membrane vicinity [32] (Figure 2). In addition, it drives the rapid absorption of K^+ into these cells to maintain the apoplastic K^+ concentration at low levels (0.1–1 mM; [33]). Thus, the phloem stream flux toward the sink should be triggered but also retained as long as the K^+ electrochemical gradient is maintained at the phloem plasma membrane. In parallel, a third channel belonging to the family of K_{out} channels is expressed in the phloem at the berry unloading sites. This channel, named VvK5.1, is an outwardly rectifying channel that is voltage-dependent and opens upon membrane depolarization. It is unlikely that this channel is involved in phloem unloading, since the massive K^+ flux in the berry apoplast hyperpolarizes the plasma membrane potential. This channel is K^+ selective and dependent on extracellular K^+ [103,110,111]). When VvK5.1 is expressed in the phloem, it behaves like the outwardly rectifying channel GORK and is involved in the control of membrane potential via the repolarization phase [103,112].

It is important to note that once loaded into grape flesh cells by the VvK1.2 channel, K^+ is stored in the vacuole of these cells by the transporter NHX1, a member of the NHX family [113] (Figure 2) VvNHX1 is a vacuolar cation/ H^+ antiporter that mediates Na^+/H^+ and K^+/H^+ -coupled exchange, with a higher affinity for K^+ than Na^+ [114]. VvNHX1 expression is strongly increased starting from the onset of ripening and during berry maturation, indicating that this transporter may be responsible for the vacuolar accumulation of K^+ during ripening, driving the uptake of water that generates vacuolar expansion [114].

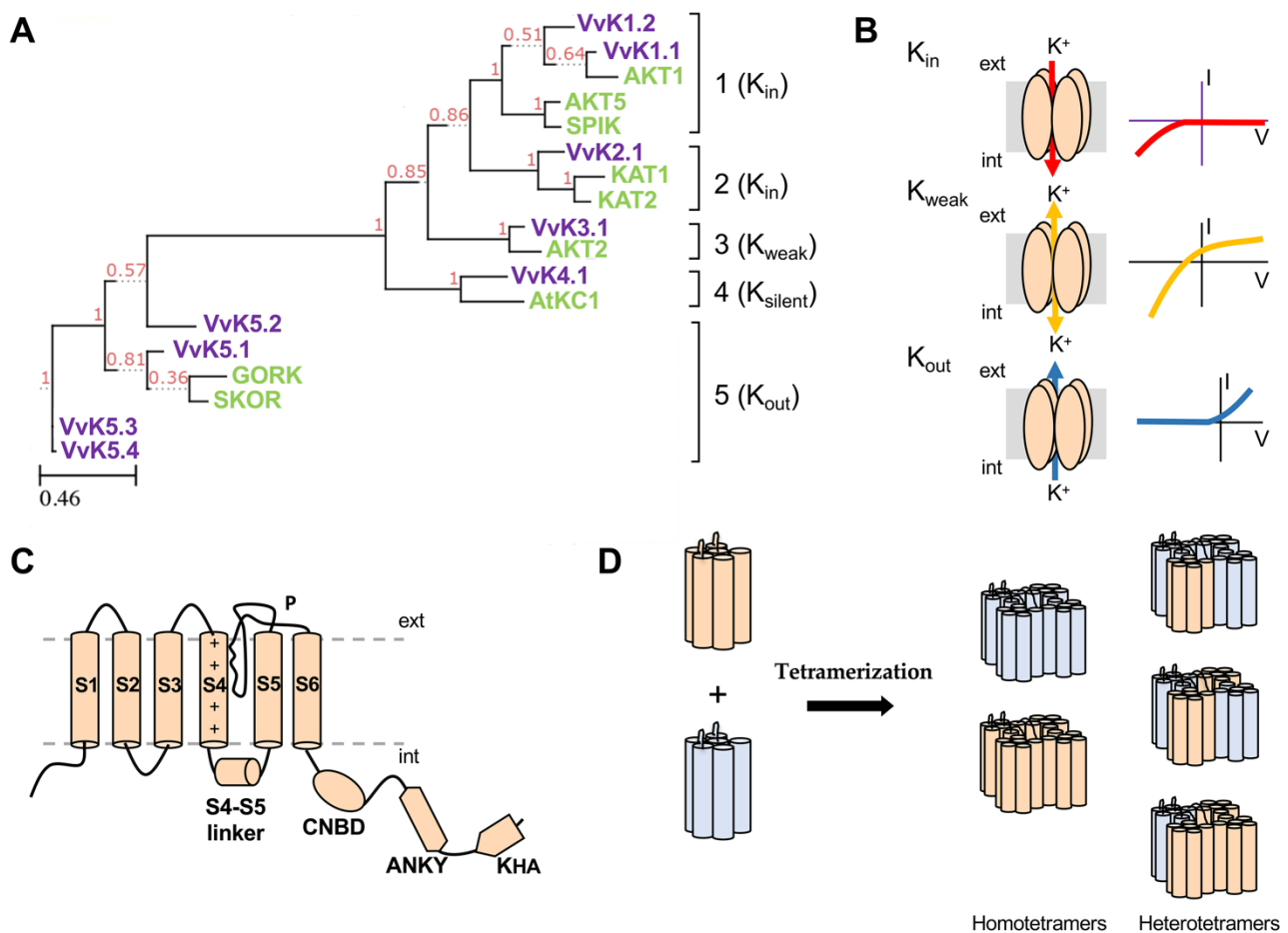


Figure 1. The Shaker K^+ channel family. **(A)** Phylogenetic relationships in the grapevine (in green) and *A. thaliana* (in blue) Shaker K^+ channel families. The Shaker family displays five groups in plants [115] named 1 to 5. Accession references are listed in Table 1. The abbreviations K_{in} , K_{out} , K_{weak} , and K_{silent} are explained in the legend of Table 1. To find the conserved region, *A. thaliana* and grapevine Shaker polypeptide sequences were first aligned using MUSCLE 3.8.31 in full mode and then treated with Gblocks for alignment curation. The phylogenetic analyses were carried out using maximum likelihood with Phy ML 3.1/3.0 aLRT software. Tree rendering was performed using the tree drawing engine ETE 3 [116]). Bootstrap values are indicated at the corresponding nodes. The scale bar corresponds to a distance of 4.6 changes per 100 amino acid positions. **(B)** Functional Shaker channels are multimeric proteins formed by the assembly of four Shaker subunits. Current–voltage (I – V) curves illustrate the functional types found in the homotetrameric Shaker channels that form inwardly rectifying, weakly inwardly rectifying, or outwardly rectifying conductances. Int and ext: internal and external face of the plasma membrane. **(C)** Structural domains of a Shaker channel subunit. S1 to S6: transmembrane segments, CNBD: cyclic nucleotide-binding domain, ANKY: ankyrin domain (involved in protein–protein interactions, not found in all Shaker subunits), KHA: hydrophobic and acidic domain. **(D)** Assembly of four Shaker alpha-subunit is a prerequisite for channel functioning. Three-dimensional representation of S1–S6 segments in a single subunit (left) or Shaker tetramers (right). Subunits are encoded either by the same gene (homotetrameric channel) or by different genes (heterotetrameric channel). K_{in} sub-units (Groups 1, 2, 3 and 4 in A) assemble as K_{in} channels, whereas K_{out} sub-units (Group 5) form K_{out} channels. No assembly could be detected between K_{in} and K_{out} channel subunits [117]. Stoichiometry studies have revealed the various possible combinations between the different subunits [117–119].

Several other transport systems have been reported in grapevine, although they do not appear to be expressed in berries at the onset of ripening or throughout the grape ripening period. The current literature can therefore be briefly summarized in the following three points. (i) The K_{in} Shaker channel VvK1.1 is an AKT1-like channel and, like its counterpart, is expressed in the root cortical cells. Similar to AKT1, VvK1.1 is involved in K^+ absorption from the soil. In aerial parts, its expression is very low and restricted to the phloem and the

pip teguments. Interestingly, upon drought stress or ABA treatment, *VvK1.1* expression is strongly increased by about ten-fold in the berries, including during the ripening period, which could suggest a role for this channel during drought episodes [28]. (ii) The K_{in} Shaker channel *VvK2.1* is an inwardly rectifying channel that displays functional properties very similar to those of *KAT2*. Like other *KAT*-like channels, *VvK2.1* is expressed in guard cells and is involved in stomata opening. *VvK2.1* is not expressed during grape berry ripening because the berry stomata develop into lenticels at the onset of ripening and become non-functional [89]. (iii) Two *KUP/KT/HAK*-type potassium transporters have also been reported [31]. *HAK-KUP-KT* transporters are typically selective for K^+ and some of them are crucial when facing external solutions that contain very low K^+ concentrations (μM range). *HAK5*, the most studied transporter, has been shown to mediate K^+ uptake in roots [120,121]. In grapevine, the two studied *KUP* transporters *VvKUP1* and *VvKUP2* are expressed in the berry skin during the first period of berry development and appear to be involved in compartmentation of potassium into the skin cells during this period [31].

4. Regulation of K^+ Transport in Grapevine

To maintain the K^+ homeostasis, plants control their K^+ transport activity via a plethora of regulators that can precisely adjust K^+ translocation at subcellular and cellular levels [17,122]. Studies aimed at revealing the molecular determinants of these regulations have highlighted mechanisms that likely target Shaker-like K^+ channels at both the transcriptional and posttranslational levels. In particular, expression studies have revealed that transcript levels of the K^+ channels *AKT1*, *AKT2*, *KAT1*, *KAT2*, *SKOR*, and *GORK* in *A. thaliana* and *VvK1.1* and *VvK1.2* in grapevine are sensitive to ABA [28,32,97,98,101,102,123,124]. Moreover, the K_{weak} (*AKT2*) and K_{out} (*GORK*) channel transcripts are upregulated under heat and drought stresses [101,125,126]. Likewise, the vine K^+ channels *VvK1.1*, *VvK1.2*, and *VvK3.1* are upregulated upon drought stress [28,32,33].

As end effectors of environmental signals, channel proteins also undergo post-translational regulations, mainly governed by phosphorylation/dephosphorylation mechanisms, in response to stresses induced by climate change (Figure 2).

4.1. Calcium-Dependent Activation by Calcineurin B-like (CBL) Proteins and CBL-Interacting Protein Kinases (CIPKs)

To date, the CIPK family is the only described family of kinases known to have an effect on the activity of grapevine Shaker channels. CIPKs are soluble protein kinases that are activated by interacting with CBL calcium sensors within network hubs that control the transport of most major ions [127]. The binding of CBL proteins to calcium allows them to bind the auto-inhibitory domain of CIPKs, thereby leading to the activation of these kinases [128]. Activated CIPKs are positive effectors of Shaker-like channels [129,130]. These interactions are associated with certain specificities, as shown for *A. thaliana* CIPK/CBL/Shaker partners, since not all CIPKs interact with a given channel, and not all CBLs interact with a given CIPK [86,130]. CBLs also directly interact with Shaker channels [33,87]. The CIPK/CBL couple (*AtCIPK23* and *AtCBL1*), compatible with *AKT1* [28,129], was able to trigger the functional expression of *VvK1.1*, the orthologue of *AKT1*, when expressed heterologously in *Xenopus laevis* oocytes. This demonstrated that the regulatory actions of CIPK/CBL complexes are conserved in the plant kingdom.

The other inwardly rectifying channel of phylogenetic group 1, *VvK1.2*, is less closely related to *AKT1* than *VvK1.1* [32], and needs to be phosphorylated by exogenous CIPKs and CBLs in order to be active in *X. laevis* oocytes. Among the 20 CIPKs and 8 CBLs within the grapevine genome, two couples have been selected and tested: *VvCIPK03/VvCBL02* and *VvCIPK04/VvCBL01* (close relatives of *AtCIPK6/AtCBL2* and *AtCIPK23/AtCBL1*, respectively), of which the latter couple is more efficient at *VvK1.2* activation [32]. Thus, group 1 of vine Shaker K^+ channels are preferentially activated by the CIPK/CBL couple, which is the most similar to that found for *AKT1*; the activation mechanism is likely phosphorylation as in *Arabidopsis* [129].

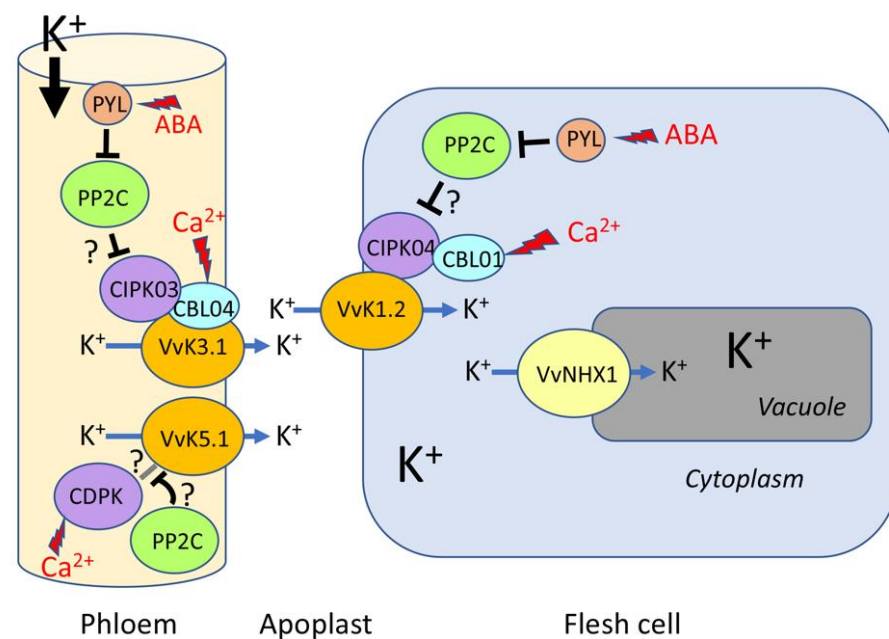


Figure 2. Schematic representation of known and expected K^+ transport pathways in grape berries after the onset of ripening. K^+ is delivered to berries via the phloem [15] and must cross the phloem plasma membrane barrier before accumulating in mesocarp cells [35]. This K^+ flux to the apoplastic space involves the Shaker VvK3.1 channel. The activity of this channel can be enhanced by CIPK/CBL couples, possibly via an unusual mechanism of CBL anchoring in the plasma membrane [33]. Moreover, the depolarization-activated VvK5.1 channel present in phloem cells could control the plasma membrane potential [103]. By analogy with its GORK counterpart, VvK5.1 is expected to be modulated by CPKs [17]. Once in the apoplast, K^+ is taken up by the flesh cells owing to the VvK1.2 Shaker channel [32], which recruits CIPK/CBL partners for its activation. CIPKs are also known to be inhibited by their interaction with PP2Cs of the ABA signaling pathway [17]. PP2Cs are, in an ABA-dependent manner, under the negative control of PYR/PYL/RCAR receptors. The VvNHX1 H^+/K^+ exchanger mediates K^+ transfer to the vacuole, where this ion is accumulated [114].

The mechanism of activation by CIPKs is expected to be quite different for VvK3.1, a member of group 3 [33]. The orthologue of VvK3.1 in Arabidopsis is the AKT2 channel. Held et al. [130] reported that the CIPK/CBL couple CIPK6/CBL4 can strongly activate AKT2 in *X. laevis* oocytes. Surprisingly, the kinase catalytic domain of AtCIPK6 was not required for the activating effect, which rules out the activation by a phosphorylation/dephosphorylation mechanism. Instead, the C-terminal regulatory domain of AtCIPK6 could interact with the AtCBL4 protein, and AtCBL4 could drive the AKT2-CIPK complex to the plasma membrane via the myristoylation and palmitoylation sites in its polypeptide sequence. Similar to AKT2 (albeit to a lower extent), VvK3.1 is activated in *X. laevis* oocytes by VvCIPK03 (or VvCIPK02/05) and VvCBL04, the closest relatives of AtCIPK6 and AtCBL4 [33]. This activation could also involve the promotion of channel targeting through the myristoylation and palmitoylation sites conserved in VvCBL04.

4.2. Expected Regulatory Proteins Inferred from Arabidopsis

Type 2C protein phosphatases (PP2Cs) involved in abscisic acid signaling: ABA plays a prominent role in the initiation of berry ripening [131,132] and in maintaining the maturation process [132,133]. During ripening, the ABA level in berries was found to be enhanced by heat stress [133]. In the ABA signaling pathway, clade A PP2Cs are central elements that are directly in contact with ABA receptors of the PYrabactin Resistance/PYR1-Like/Regulatory Component of the ABA Receptor (PYR/PYL/RCAR) family, and are inhibited by these receptors in an ABA-dependent manner [134]. PP2Cs control the activity of downstream kinases and phosphatases involved in the activation of K^+ channels [17]. In

A. thaliana, clade A PP2Cs of the ABA signaling pathway directly regulate the activity of Shaker-like K⁺ channels [135,136] and also inhibit or counteract the effect of kinases that activate the channels (for review see [17]. Twelve clade A PP2C genes have been identified in the grapevine genome (VvPP2C57-68 [137]). At the transcriptional level, grapevine PP2C genes are expressed in berries, and some of them respond to drought, heat, cold, and ABA treatments [132,137–139]. Functional studies in oocytes have shown that clade A PP2Cs inhibit the activities of AtCIPK23 (activating AKT1) and AtCIPK6 (activating AKT1 and AKT2) [140], and the ABI2 PP2C dephosphorylates CIPK23 in vitro [141]. It is therefore expected that similar regulations exist in the berry for the control of K⁺ channels during the initiation and maturation of grape berries, or in response to abiotic stresses.

SnF1-related protein kinase 2 (SnRK2) kinases: The OST1/SnRK2E/SnRK2.6 kinase, which is directly regulated by clade A PP2Cs [142], interacts with the *A. thaliana* channel KAT1 [143] and phosphorylates a threonine residue (T306) important for the activity of this channel [144]. However, when expressed heterologously in oocytes, this kinase has no direct effect on the activity of KAT1 [145], suggesting that T306 is not directly involved in the control of channel activity by OST1. In plants, OST1 is required for the ABA-dependent negative regulation of inward channels [143]. Two-hybrid tests have found interactions between VvK2.1 [89], the grapevine orthologue of KAT1, and two members of the SnRK2 family in grapevine, VvSnRK2.1 and VvSnRK2.4 [146].

Calcium-dependent protein kinases (CPK/CDPK): Besides CIPKs, other calcium-dependent kinases involved in ABA and calcium signaling are known to control the activity of Shaker K⁺ channels in Arabidopsis. These CDPKs (or CPKs) have different effects (activating or inhibiting) on channel activities expressed in *X. laevis* oocytes [147,148]. Additionally, CDPKs display different sensitivities to calcium. Calcium ions directly interact with EF-hands present in the sequence of the kinase, which relieves the auto-inhibition [149]. CDPKs can be countered by clade A PP2Cs in oocytes [150]. The grapevine genome comprises 19 CDPK genes [151], including 5 that are highly expressed in berries at mid-ripening [152]. Most of them positively respond to ABA in leaves, and a few respond to heat stress [151]. Some of these CDPKs might therefore play a role in grapevine channel regulation in response to stresses associated with global warming.

5. K⁺ Ions Play a Major Role in Defense Mechanisms Used to Resist Climate Change Constraints

Because nutrient homeostasis is crucial for maintaining the internal, physical, and chemical conditions of living systems, the underlying mechanisms involved in this control have been a topic of investigation in the past decade. In particular, K⁺, which is the most abundant cation in plant cells and is involved in multiple functions, needs to have its cytosolic homeostasis maintained in a concentration range compatible with biochemical processes necessary to cell life. This process is crucial to the development of plants and their resilience to hostile environments. Under stressful conditions, the plant adaptation response helps to protect K⁺ homeostasis via significant changes in the activity of K⁺ transport systems in stressed tissues and cells (see above and [41,50,153,154]). One recent study using mathematical models of membrane transporter systems has provided new insight into the functional interplay between these channels/transporters [5]. This study confirms that a single K⁺ channel or transporter cannot control the K⁺ concentration of the cytosol. At least two to three differently energized transport systems (e.g. a K⁺ channel, a H⁺/K⁺ symporter, and a H⁺/K⁺ antiporter) would be needed to adjust the cytosolic K⁺ concentration in an energy-consuming process [5,155].

Nevertheless, climate change can disturb this K⁺ homeostasis. Specifically, plants respond to warmer climates by producing reactive oxygen species (ROS), which are key players in both developmental processes and stress responses [156]. ROS are highly reactive molecules that can be reduced or excited forms of O₂, including singlet oxygen (¹O₂), hydrogen peroxide (H₂O₂), the superoxide anion (O₂^{•-}), and the hydroxyl radical (OH[•]) [157]. Additionally, ROS have a dual action in abiotic stresses that depends on their cellular concentration [158]. Whereas low levels of ROS could be involved in the stress-

signaling pathway by triggering acclimation responses, ROS become extremely harmful to cellular membranes when their concentrations reach the point of toxicity, which can lead to oxidative stress and possibly cell death [159].

Like all fruits, grape berries are a source of antioxidants including anthocyanin and phenolic compounds, with numerous adequate metabolites that allow their synthesis and regeneration. These antioxidant compounds can process ROS to delay or avoid cell damage, and for signaling processes [160]. At the same time, an abiotic stress has been observed to induce K^+ loss in stress-affected tissues [10]. Initially observed as a part of salt stress in roots [10], this K^+ efflux from the cytosol of stress-affected cells has been confirmed for multiple stresses including anoxia, heavy metals, drought, and temperature extremes [11,161–164], making it a common sign of plant stress responses. This K^+ efflux is activated by hydroxyl radical ($OH\bullet$) [10] and leads to a decrease in K^+ cytosolic concentration, consequently resulting in significant changes in metabolic reactions and physiological processes. In *A. thaliana*, this K^+ efflux is mediated by the outwardly rectifying Shaker channel GORK (K_{out}) [10,100]. Under normal conditions, this channel is activated by membrane depolarization and is involved in both stomatal closure [104] and phloem membrane repolarization [103,112]. However, cytosolic K^+ homeostasis is crucial to maintain cell viability, and it is known that dramatic K^+ loss from the cytosol activates the catabolic enzymes involved in programmed cell death (PCD) [158,165,166].

In plants, the GORK channels are modulated by K^+ sensing, voltage gating, phosphorylation, hormonal signaling, calcium, and ROS [3,162,167,168]. Recently, it was proposed that the strong cytosolic K^+ efflux from the cytosol of stressed cells could be a switch that inhibits metabolic reactions in order to favor defense and adaptation mechanisms [3,12]. The authors explain that this switch functions to slow down or stop the energy-consuming metabolic reactions in order to redirect ATP pools for defense mechanisms [3]. One way to decipher this mechanism may be to design appropriate strategies that will decrease the negative impact of the current climate on crop plants to avoid any significant damage. This will provide an improved basis for the selection of crops adapted to our future environment.

6. Conclusions

The negative impacts induced by climate change are among the major causes of crop yield decrease worldwide. Many researchers are working on this issue, investigating and testing various solutions to reach more crop resilience to challenging environment. In grapevine, temperature, high solar radiations, heat waves, and drought stresses are the climatic parameters that disturb the grape composition the most at harvest with a detrimental impact on wine quality. Since, K^+ is involved in integrated mechanisms necessary for grape development and maturation, it explains why it is so important for berry and wine quality. Starting at ripening, K^+ is a major actor of the initiation and the maintenance of berry loading from the phloem owing to the fine tuning of K^+ fluxes by K^+ transport systems. This participates both to the control of membrane potential and the maintenance of the transmembrane K^+ gradient at the phloem cells. During ripening, K^+ as an osmolyte is involved in osmotic adjustment and osmoprotection of the flesh cells by the control of the vacuole turgor of mesocarp cells together with sugars. This also means that K^+ ion accumulation, in the flesh cell vacuoles, surpasses purely nutritional requirements and participates in cell expansion mechanisms. At the whole plant level, K^+ fluxes are involved in leaves in stomata opening and closure, and root K^+ transport systems drive K^+ uptake from the soil and control the emergence of root lateral primordium [103]. Given the necessity for K^+ to be present in high concentrations in all cell types, it is necessary for the grape growers to ensure that K^+ availability is sufficient to allow appropriate berry growth and functioning. On the other hand, upon the current and ongoing climate change period, it is a true challenge since an excess of K^+ in the fruit will neutralize the organic acids, thus increasing berry pH and a decline of wine quality. Considering the importance of berry composition at harvest as a prerequisite of the production of great wines, the

grape community is active on this issue. Many research focalize on the improvement of our understanding of the underlying mechanisms controlling the vine and grape responses to climatic parameters that can appear individually or in combination. QTL analyses to identify key genes involved in the control of the characters studied [169] and adequate breeding programs or the definition of specific cultural practices are required [170–172]. Altogether, this information will be relevant to understand grape varietal adaptation to climate changes and to assist vine growers in choosing the best genotypes.

Funding: This work was supported by SweetKaliGrape ANR (ANR-33 14-CE20-0002-02), by PARASOL ANR (ANR-20-CE21-0003-02) and by BAP department of INRAE (Starting project BerryKAcid). HM is the recipient of a PhD fellowship from INRAE and from the Occitanie region in the context of Kwine grant. MM is the recipient of PARASOL ANR (ANR-20-CE21-0003-02).

Institutional Review Board Statement: Not applicable.

Informed Consent Statement: Not applicable.

Conflicts of Interest: The authors declare no conflict of interest.

References

1. Ache, P.; Becker, D.; Deeken, R.; Dreyer, I.; Weber, H.; Fromm, J.; Hedrich, R. VFK1, a *Vicia faba* K⁺ channel involved in phloem unloading. *Plant J.* **2001**, *27*, 571–580. [[CrossRef](#)]
2. Kronzucker, H.J.; Szczerba, M.W.; Moazami-Goudarzi, M.; Britto, D.T. The cytosolic Na⁺: K⁺ ratio does not explain salinity-induced growth impairment in barley: A dual-tracer study using ⁴²K⁺ and ²⁴Na⁺. *Plant Cell Environ.* **2006**, *29*, 2228–2237. [[CrossRef](#)]
3. Adem, G.D.; Chen, G.; Shabala, L.; Chen, Z.-H.; Shabala, S. GORK channel: A master switch of plant metabolism? *Trends Plant Sci.* **2020**, *25*, 434–445. [[CrossRef](#)]
4. Britto, D.T.; Coskun, D.; Kronzucker, H.J. Potassium physiology from Archean to Holocene: A higher-plant perspective. *J. Plant Physiol.* **2021**, *262*, 153432. [[CrossRef](#)]
5. Dreyer, I. Nutrient cycling is an important mechanism for homeostasis in plant cells. *Plant Physiol.* **2021**, in press. [[CrossRef](#)]
6. Szczerba, M.W.; Britto, D.T.; Kronzucker, H.J. K⁺ transport in plants: Physiology and molecular biology. *J. Plant Physiol.* **2009**, *166*, 447–466. [[CrossRef](#)]
7. Very, A.A.; Nieves-Cordones, M.; Daly, M.; Khan, I.; Fizames, C.; Sentenac, H. Molecular biology of K⁺ transport across the plant cell membrane: What do we learn from comparison between plant species? *J. Plant Physiol.* **2014**, *171*, 748–769. [[CrossRef](#)]
8. Sharma, T.; Dreyer, I.; Riedelsberger, J. The role of K⁺ channels in uptake and redistribution of potassium in the model plant *Arabidopsis thaliana*. *Front. Plant Sci.* **2013**, *4*, 224. [[CrossRef](#)] [[PubMed](#)]
9. Cui, J.; Tcherkez, G. Potassium dependency of enzymes in plant primary metabolism. *Plant Physiol. Biochem.* **2021**, *166*, 522–530. [[CrossRef](#)] [[PubMed](#)]
10. Demidchik, V.; Cuin, T.A.; Svistunenko, D.; Smith, S.J.; Miller, A.J.; Shabala, S.; Sokolik, A.; Yurin, V. *Arabidopsis* root K⁺-efflux conductance activated by hydroxyl radicals: Single-channel properties, genetic basis and involvement in stress-induced cell death. *J. Cell Sci.* **2010**, *123*, 1468–1479. [[CrossRef](#)] [[PubMed](#)]
11. Shabala, L.; Zhang, J.; Pottosin, I.; Bose, J.; Zhu, M.; Fuglsang, A.T.; Velarde-Buendia, A.; Massart, A.; Hill, C.B.; Roessner, U.; et al. Cell-type-specific H⁺-ATPase activity in root tissues enables K⁺ retention and mediates acclimation of barley (*Hordeum vulgare*) to salinity stress. *Plant Physiol.* **2016**, *172*, 2445–2458. [[CrossRef](#)]
12. Shabala, S. Signalling by potassium: Another second messenger to add to the list? *J. Exp. Bot.* **2017**, *68*, 4003–4007. [[CrossRef](#)]
13. Dreyer, I. Potassium K⁺ in plants. *J. Plant Physiol.* **2014**, *171*, 655. [[CrossRef](#)]
14. Villette, J.; Cuéllar, T.; Verdeil, J.-L.; Delrot, S.; Gaillard, I. Grapevine potassium nutrition and fruit quality in the context of climate change. *Front. Plant Sci.* **2020**, *11*, 123. [[CrossRef](#)]
15. Rogiers, S.Y.; Coetzee, Z.A.; Walker, R.R.; Deloire, A.; Tyerman, S.D. Potassium in the grape (*Vitis vinifera* L.) berry: Transport and function. *Front. Plant Sci.* **2017**, *8*, 1629. [[CrossRef](#)] [[PubMed](#)]
16. Dreyer, I.; Uozumi, N. Potassium channels in plant cells. *FEBS J.* **2011**, *278*, 4293–4303. [[CrossRef](#)] [[PubMed](#)]
17. Chérel, I.; Gaillard, I. The complex fine-tuning of K⁺ fluxes in plants in relation to osmotic and ionic abiotic stresses. *Int. J. Mol. Sci.* **2019**, *20*, 715. [[CrossRef](#)] [[PubMed](#)]
18. Dai, Z.W.; Léon, C.; Feil, R.; Lunn, J.E.; Delrot, S.; Gomès, E. Metabolic profiling reveals coordinated switches in primary carbohydrate metabolism in grape berry (*Vitis vinifera* L.), a non-climacteric fleshy fruit. *J. Exp. Bot.* **2013**, *64*, 1345–1355. [[CrossRef](#)]
19. Degu, A.; Hochberg, U.; Sikron, N.; Venturini, L.; Buson, G.; Ghan, R.; Plaschkes, I.; Batushansky, A.; Chalifa-Caspi, V.; Mattivi, F.; et al. Metabolite and transcript profiling of berry skin during fruit development elucidates differential regulation between Cabernet Sauvignon and Shiraz cultivars at branching points in the polyphenol pathway. *BMC Plant Biol.* **2014**, *14*, 188. [[CrossRef](#)] [[PubMed](#)]

20. Cuadros-Inostroza, A.; Ruíz-Lara, S.; González, E.; Eckardt, A.; Willmitzer, L.; Peña-Cortés, H. GC-MS metabolic profiling of Cabernet Sauvignon and Merlot cultivars during grapevine berry development and network analysis reveals a stage- and cultivar-dependent connectivity of primary metabolites. *Metabolomics* **2016**, *12*, 39. [[CrossRef](#)] [[PubMed](#)]
21. Rienth, M.; Vigneron, N.; Darriet, P.; Sweetman, C.; Burbidge, C.; Bonghi, C.; Walker, R.P.; Famiani, F.; Castellarin, S.D. Grape berry secondary metabolites and their modulation by abiotic factors in a climate change scenario—a review. *Front. Plant Sci.* **2021**, *12*, 262. [[CrossRef](#)]
22. Chuine, I.; Yiou, P.; Viovy, N.; Seguin, B.; Daux, V.; Le Roy Ladurie, E. Historical phenology: Grape ripening as a past climate indicator. *Nature* **2004**, *432*, 289–290. [[CrossRef](#)]
23. Webb, L.B.; Whetton, P.H.; Barlow, E.W.R. Modelled impact of future climate change on the phenology of winegrapes in Australia. *Aust. J. Grape Wine Res.* **2007**, *13*, 165–175. [[CrossRef](#)]
24. Van Leeuwen, C.; Seguin, G. The concept of terroir in viticulture. *J. Wine Res.* **2006**, *17*, 1–10. [[CrossRef](#)]
25. Duchêne, E.; Huard, F.; Dumas, V.; Schneider, C.; Merdinoglu, D. The challenge of adapting grapevine varieties to climate change. *Clim. Res.* **2010**, *41*, 193–204. [[CrossRef](#)]
26. Lecourieux, F.; Kappel, C.; Pieri, P.; Charon, J.; Pillet, J.; Hilbert, G.; Renaud, C.; Gomès, E.; Delrot, S.; Lecourieux, D. Dissecting the biochemical and transcriptomic effects of a locally applied heat treatment on developing Cabernet Sauvignon grape berries. *Front. Plant Sci.* **2017**, *8*, 53. [[CrossRef](#)]
27. Mpelasoka, B.S.; Schachtman, D.P.; Treeby, M.T.; Thomas, M.R. A review of potassium nutrition in grapevines with special emphasis on berry accumulation. *Aust. J. Grape Wine Res.* **2003**, *9*, 154–168. [[CrossRef](#)]
28. Cuellar, T.; Pascaud, F.; Verdeil, J.L.; Torregrosa, L.; Adam-Blondon, A.F.; Thibaud, J.B.; Sentenac, H.; Gaillard, I. A grapevine Shaker inward K⁺ channel activated by the calcineurin B-like calcium sensor 1-protein kinase CIPK23 network is expressed in grape berries under drought stress conditions. *Plant J.* **2010**, *61*, 58–69. [[CrossRef](#)] [[PubMed](#)]
29. Lecourieux, F.; Kappel, C.; Lecourieux, D.; Serrano, A.; Torres, E.; Arce-Johnson, P.; Delrot, S. An update on sugar transport and signalling in grapevine. *J. Exp. Bot.* **2014**, *65*, 821–832. [[CrossRef](#)]
30. Conde, C.; Silva, P.; Fontes, N.; Dias, A.; Tavares, R.; Sousa, M.; Agasse, A.; Delrot, S.; Gerós, H. Biochemical changes throughout grape berry development and fruit and wine quality. *Food* **2007**, *1*, 1–22.
31. Davies, C.; Shin, R.; Liu, W.; Thomas, M.R.; Schachtman, D.P. Transporters expressed during grape berry (*Vitis vinifera* L.) development are associated with an increase in berry size and berry potassium accumulation. *J. Exp. Bot.* **2006**, *57*, 3209–3216. [[CrossRef](#)]
32. Cuellar, T.; Azeem, F.; Andrianteranagna, M.; Pascaud, F.; Verdeil, J.L.; Sentenac, H.; Zimmermann, S.; Gaillard, I. Potassium transport in developing fleshy fruits: The grapevine inward K⁺ channel VvK1.2 is activated by CIPK-CBL complexes and induced in ripening berry flesh cells. *Plant J.* **2013**, *73*, 1006–1018. [[CrossRef](#)]
33. Nieves-Cordones, M.; Andrianteranagna, M.; Cuellar, T.; Chérel, I.; Gibrat, R.; Boeglin, M.; Moreau, B.; Paris, N.; Verdeil, J.; Zimmermann, S.; et al. Characterization of the grapevine Shaker K⁺ channel VvK3.1 supports its function in massive potassium fluxes necessary for berry potassium loading and pulvinus-actuated leaf movements. *New Phytol.* **2019**, *222*, 286–300. [[CrossRef](#)]
34. Coetzee, Z.A.; Walker, R.R.; Liao, S.; Barril, C.; Deloire, A.J.; Clarke, S.J.; Tyerman, S.D.; Rogiers, S.Y. Expression patterns of genes encoding sugar and potassium transport proteins are simultaneously upregulated or downregulated when carbon and potassium availability is modified in Shiraz (*Vitis vinifera* L.) Berries. *Plant Cell Physiol.* **2019**, *60*, 2331–2342. [[CrossRef](#)] [[PubMed](#)]
35. Zhang, X.Y.; Wang, X.L.; Wang, X.F.; Xia, G.H.; Pan, Q.H.; Fan, R.C.; Wu, F.Q.; Yu, X.C.; Zhang, D.P. A shift of phloem unloading from symplasmic to apoplasmic pathway is involved in developmental onset of ripening in grape berry. *Plant Physiol.* **2006**, *142*, 220–232. [[CrossRef](#)] [[PubMed](#)]
36. Deeken, R.; Geiger, D.; Fromm, J.; Koroleva, O.; Ache, P.; Langenfeld-Heyser, R.; Sauer, N.; May, S.; Hedrich, R. Loss of the AKT2/3 potassium channel affects sugar loading into the phloem of *Arabidopsis*. *Planta* **2002**, *216*, 334–344. [[CrossRef](#)] [[PubMed](#)]
37. Gajdanowicz, P.; Michard, E.; Sandmann, M.; Rocha, M.; Correa, L.G.; Ramirez-Aguilar, S.J.; Gomez-Porras, J.L.; Gonzalez, W.; Thibaud, J.B.; van Dongen, J.T.; et al. Potassium K⁺ gradients serve as a mobile energy source in plant vascular tissues. *Proc. Natl. Acad. Sci. USA* **2011**, *108*, 864–869. [[CrossRef](#)]
38. Dreyer, I.; Gomez-Porras, J.L.; Riedelsberger, J. The potassium battery: A mobile energy source for transport processes in plant vascular tissues. *New Phytol.* **2017**, *216*, 1049–1053. [[CrossRef](#)]
39. Maathuis, F.J. Physiological functions of mineral macronutrients. *Curr. Opin. Plant Biol.* **2009**, *12*, 250–258. [[CrossRef](#)] [[PubMed](#)]
40. Britto, D.T.; Kronzucker, H.J. Cellular mechanisms of potassium transport in plants. *Physiol. Plant.* **2008**, *133*, 637–650. [[CrossRef](#)]
41. Nieves-Cordones, M.; Alemán, F.; Martínez, V.; Rubio, F. K⁺ uptake in plant roots. The systems involved, their regulation and parallels in other organisms. *J. Plant Physiol.* **2014**, *171*, 688–695. [[CrossRef](#)]
42. Leibar, U.; Pascual, I.; Aizpurua, A.; Morales, F.; Unamunzaga, O. Grapevine nutritional status and K concentration of must under future expected climatic conditions texturally different soils. *J. Soil Sci. Plant Nutr.* **2017**, *17*, 385–397. [[CrossRef](#)]
43. Oddo, E.; Abbate, L.; Inzerillo, S.; Carimi, F.; Motisi, A.; Sajeva, M.; Nardini, A. Water relations of two sicilian grapevine cultivars in response to potassium availability and drought stress. *Plant Physiol. Biochem.* **2020**, *148*, 282–290. [[CrossRef](#)] [[PubMed](#)]
44. Armengaud, P.; Sulpice, R.; Miller, A.J.; Stitt, M.; Amtmann, A.; Gibon, Y. Multilevel analysis of primary metabolism provides new insights into the role of potassium nutrition for glycolysis and nitrogen assimilation in *Arabidopsis* roots. *Plant Physiol.* **2009**, *150*, 772–785. [[CrossRef](#)] [[PubMed](#)]

45. Lobell, D.B.; Burke, M.B.; Tebaldi, C.; Mastrandrea, M.D.; Falcon, W.P.; Naylor, R.L. Prioritizing climate change adaptation needs for food security in 2030. *Science* **2008**, *319*, 607–610. [[CrossRef](#)]
46. Martínez-Lüscher, J.; Chen, C.C.L.; Brillante, L.; Kurtural, S.K. Mitigating heat wave and exposure damage to “Cabernet Sauvignon” wine grape with partial shading under two irrigation amounts. *Front. Plant Sci.* **2020**, *11*, 1760. [[CrossRef](#)] [[PubMed](#)]
47. Kuhn, N.; Guan, L.; Dai, Z.W.; Wu, B.H.; Lauvergeat, V.; Gomès, E.; Li, S.H.; Godoy, F.; Arce-Johnson, P.; Delrot, S. Berry ripening: Recently heard through the grapevine. *J. Exp. Bot.* **2013**, *65*, 4543–4559. [[CrossRef](#)] [[PubMed](#)]
48. Greer, D.H.; Weedon, M.M. Modelling photosynthetic responses to temperature of grapevine (*Vitis vinifera* cv. Semillon) leaves on vines grown in a hot climate. *Plant Cell Environ.* **2012**, *35*, 1050–1064. [[CrossRef](#)]
49. Wahid, A.; Gelani, S.; Ashraf, M.; Foolad, M.R. Heat tolerance in plants: An overview. *Environ. Exp. Bot.* **2007**, *61*, 199–223. [[CrossRef](#)]
50. Rubio, F.; Nieves-Cordones, M.; Horie, T.; Shabala, S. Doing ‘business as usual’ comes with a cost: Evaluating energy cost of maintaining plant intracellular K⁺ homeostasis under saline conditions. *New Phytol.* **2020**, *225*, 1097–1104. [[CrossRef](#)]
51. Sivilotti, P.; Herrera, J.C.; Lisjak, K.; Baša Česnik, H.; Sabbatini, P.; Peterlunger, E.; Castellarin, S.D. Impact of leaf removal, applied before and after flowering, on anthocyanin, tannin, and methoxyypyrazine concentrations in ‘Merlot’ (*Vitis vinifera* L.) grapes and wines. *J. Agric. Food Chem.* **2016**, *64*, 4487–4496. [[CrossRef](#)]
52. Pastore, C.; Zenoni, S.; Fasoli, M.; Pezzotti, M.; Torielli, G.B.; Filippetti, I. Selective defoliation affects plant growth, fruit transcriptional ripening program and flavonoid metabolism in grapevine. *BMC Plant Biol.* **2013**, *13*, 30. [[CrossRef](#)]
53. Pontin, M.A.; Piccoli, P.N.; Francisco, R.; Bottini, R.; Martinez-Zapater, J.M.; Lijavetzky, D. Transcriptome changes in grapevine (*Vitis vinifera* L.) cv. Malbec leaves induced by ultraviolet-B radiation. *BMC Plant Biol.* **2010**, *10*, 224. [[CrossRef](#)] [[PubMed](#)]
54. Carbonell-Bejerano, P.; Diago, M.-P.; Martínez-Abaigar, J.; Martínez-Zapater, J.M.; Tardáguila, J.; Núñez-Olivera, E. Solar ultraviolet radiation is necessary to enhance grapevine fruit ripening transcriptional and phenolic responses. *BMC Plant Biol.* **2014**, *14*, 183. [[CrossRef](#)] [[PubMed](#)]
55. Suzuki, M.; Nakabayashi, R.; Ogata, Y.; Sakurai, N.; Tokimatsu, T.; Goto, S.; Suzuki, M.; Jasinski, M.; Martinoia, E.; Otagaki, S.; et al. Multiomics in grape berry skin revealed specific induction of the stilbene synthetic pathway by ultraviolet-C irradiation. *Plant Physiol.* **2015**, *168*, 47–59. [[CrossRef](#)]
56. Matus, J.T. Transcriptomic and metabolomic networks in the grape berry illustrate that it takes more than flavonoids to fight against ultraviolet radiation. *Front. Plant Sci.* **2016**, *7*, 1337. [[CrossRef](#)] [[PubMed](#)]
57. Gouot, J.C.; Smith, J.P.; Holzapfel, B.P.; Walker, A.R.; Barril, C. Grape berry flavonoids: A review of their biochemical responses to high and extreme high temperatures. *J. Exp. Bot.* **2019**, *70*, 397–423. [[CrossRef](#)]
58. Lecourieux, D.; Kappel, C.; Claverol, S.; Pieri, P.; Feil, R.; Lunn, J.E.; Bonneau, M.; Wang, L.; Gomès, E.; Delrot, S.; et al. Proteomic and metabolomic profiling underlines the stage- and time-dependent effects of high temperature on grape berry metabolism. *J. Integr. Plant Biol.* **2020**, *62*, 1132–1158. [[CrossRef](#)] [[PubMed](#)]
59. Ojeda, H.; Andary, C.; Kraeva, E.; Carbonneau, A.; Deloire, A. Influence of pre- and post-veraison water deficit on synthesis and concentration of skin phenolic compounds during berry growth of *Vitis vinifera* cv. Shiraz. *Am. J. Enol. Vitic.* **2002**, *53*, 261–267.
60. Sobeih, W.Y.; Dodd, I.C.; Bacon, M.A.; Grierson, D.; Davies, W.J. Long-distance signals regulating stomatal conductance and leaf growth in tomato (*Lycopersicon esculentum*) plants subjected to partial root-zone drying. *J. Exp. Bot.* **2004**, *55*, 2353–2363. [[CrossRef](#)] [[PubMed](#)]
61. Tardieu, F.; Simonneau, T. Variability among species of stomatal control under fluctuating soil water status and evaporative demand: Modelling isohydric and anisohydric behaviours. *J. Exp. Bot.* **1998**, *49*, 419–432. [[CrossRef](#)]
62. Dal Santo, S.; Palliotti, A.; Zenoni, S.; Torielli, G.B.; Fasoli, M.; Paci, P.; Tombesi, S.; Frioni, T.; Silvestroni, O.; Bellincontro, A.; et al. Distinct transcriptome responses to water limitation in isohydric and anisohydric grapevine cultivars. *BMC Genom.* **2016**, *17*, 815. [[CrossRef](#)] [[PubMed](#)]
63. Gambetta, G.A.; Herrera, J.C.; Dayer, S.; Feng, Q.; Hochberg, U.; Castellarin, S.D. The physiology of drought stress in grapevine: Towards an integrative definition of drought tolerance. *J. Exp. Bot.* **2020**, *71*, 4658–4676. [[CrossRef](#)] [[PubMed](#)]
64. Gashu, K.; Sikron Persi, N.; Drori, E.; Harcavi, E.; Agam, N.; Bustan, A.; Fait, A. Temperature shift between vineyards modulates berry phenology and primary metabolism in a varietal collection of wine grapevine. *Front. Plant Sci.* **2020**, *11*, 1739. [[CrossRef](#)]
65. Suter, B.; Destrac Irvine, A.; Gowdy, M.; Dai, Z.; van Leeuwen, C. Adapting wine grape ripening to global change requires a multi-trait approach. *Front. Plant Sci.* **2021**, *12*, 624867. [[CrossRef](#)] [[PubMed](#)]
66. Anwar, K.; Joshi, R.; Dhankher, O.P.; Singla-Pareek, S.L.; Pareek, A. Elucidating the response of crop plants towards individual, combined and sequentially occurring abiotic stresses. *Int. J. Mol. Sci.* **2021**, *22*, 6119. [[CrossRef](#)] [[PubMed](#)]
67. Balfagón, D.; Zandalinas, S.I.; Mittler, R.; Gómez-Cadenas, A. High temperatures modify plant responses to abiotic stress conditions. *Physiol. Plant.* **2020**, *170*, 335–344. [[CrossRef](#)] [[PubMed](#)]
68. Bouain, N.; Krouk, G.; Lacombe, B.; Rouached, H. Getting to the root of plant mineral nutrition: Combinatorial nutrient stresses reveal emergent properties. *Trends Plant Sci.* **2019**, *24*, 542–552. [[CrossRef](#)]
69. Rivero, R.M.; Mestre, T.C.; Mittler, R.; Rubio, F.; Garcia-Sanchez, F.; Martinez, V. The combined effect of salinity and heat reveals a specific physiological, biochemical and molecular response in tomato plants. *Plant Cell Environ.* **2014**, *37*, 1059–1073. [[CrossRef](#)]
70. García-Martí, M.; Piñero, M.C.; García-Sanchez, F.; Mestre, T.C.; López-Delacalle, M.; Martínez, V.; Rivero, R.M. Amelioration of the oxidative stress generated by simple or combined abiotic stress through the K⁺ and Ca²⁺ supplementation in tomato plants. *Antioxidants* **2019**, *8*, 81. [[CrossRef](#)]

71. Carvalho, L.C.; Coito, J.L.; Gonçalves, E.F.; Chaves, M.M.; Amâncio, S. Differential physiological response of the grapevine varieties Touriga Nacional and Trincadeira to combined heat, drought and light stresses. *Plant Biol.* **2016**, *18*, 101–111. [[CrossRef](#)]
72. Zandalinas, S.I.; Sengupta, S.; Fritsch, F.B.; Azad, R.K.; Nechushtai, R.; Mittler, R. The impact of multifactorial stress combination on plant growth and survival. *New Phytol.* **2021**, *230*, 1034–1048. [[CrossRef](#)]
73. Zhu, J.-K. Abiotic stress signaling and responses in plants. *Cell* **2016**, *167*, 313–324. [[CrossRef](#)]
74. Sah, S.K.; Reddy, K.R.; Li, J. Abscisic acid and abiotic stress tolerance in crop plants. *Front. Plant Sci.* **2016**, *7*, 571. [[CrossRef](#)] [[PubMed](#)]
75. Lacombe, B.; Achard, P. Long-distance transport of phytohormones through the plant vascular system. *Curr. Opin. Plant Biol.* **2016**, *34*, 1–8. [[CrossRef](#)]
76. Marusig, D.; Tombesi, S. Abscisic acid mediates drought and salt stress responses in *Vitis vinifera*-A review. *Int. J. Mol. Sci.* **2020**, *21*, 8648. [[CrossRef](#)] [[PubMed](#)]
77. Jan, L.Y.; Jan, Y.N. Voltage-gated and inwardly rectifying potassium channels. *J. Physiol.* **1997**, *505*, 267–282. [[CrossRef](#)]
78. Jegla, T.; Busey, G.; Assmann, S.M. Evolution and structural characteristics of plant voltage-gated K⁺ channels. *Plant Cell* **2018**, *30*, 2898–2909. [[CrossRef](#)] [[PubMed](#)]
79. Dreyer, I.; Sussmilch, F.C.; Fukushima, K.; Riadi, G.; Becker, D.; Schultz, J.; Hedrich, R. How to grow a tree: Plant voltage-dependent cation channels in the spotlight of evolution. *Trends Plant Sci.* **2021**, *26*, 41–52. [[CrossRef](#)] [[PubMed](#)]
80. Hedrich, R. Ion channels in plants. *Physiol. Rev.* **2012**, *92*, 1777–1811. [[CrossRef](#)]
81. Jeanguenin, L.; Lebaudy, A.; Xicluna, J.; Alcon, C.; Hossy, E.; Duby, G.; Michard, E.; Lacombe, B.; Dreyer, I.; Thibaud, J.B. Heteromerization of *Arabidopsis* Kv channel α -subunits: Data and prospects. *Plant Signal. Behav.* **2008**, *3*, 622–625. [[CrossRef](#)]
82. Lebaudy, A.; Pascaud, F.; Véry, A.-A.; Alcon, C.; Dreyer, I.; Thibaud, J.-B.; Lacombe, B. Preferential KAT1-KAT2 heteromerization determines inward K⁺ current properties in *Arabidopsis* guard cells. *J. Biol. Chem.* **2010**, *285*, 6265–6274. [[CrossRef](#)] [[PubMed](#)]
83. Xicluna, J.; Lacombe, B.; Dreyer, I.; Alcon, C.; Jeanguenin, L.; Sentenac, H.; Thibaud, J.-B.; Chérel, I. Increased functional diversity of plant K⁺ channels by preferential heteromerization of the Shaker-like subunits AKT2 and KAT2. *J. Biol. Chem.* **2007**, *282*, 486–494. [[CrossRef](#)] [[PubMed](#)]
84. Nieves-Cordones, M.; Chavanieu, A.; Jeanguenin, L.; Alcon, C.; Szponarski, W.; Estaran, S.; Chérel, I.; Zimmermann, S.; Sentenac, H.; Gaillard, I. Distinct amino acids in the C-linker domain of the *Arabidopsis* K⁺ channel KAT2 determine its subcellular localization and activity at the plasma membrane. *Plant Physiol.* **2014**, *164*, 1415–1429. [[CrossRef](#)] [[PubMed](#)]
85. Nieves-Cordones, M.; Gaillard, I. Involvement of the S4-S5 linker and the C-linker domain regions to voltage-gating in plant Shaker channels: Comparison with animal HCN and Kv channels. *Plant Signal. Behav.* **2014**, *9*, e972892. [[CrossRef](#)]
86. Lee, S.C.; Lan, W.-Z.; Kim, B.-G.; Li, L.; Cheong, Y.H.; Pandey, G.K.; Lu, G.; Buchanan, B.B.; Luan, S. A protein phosphorylation/dephosphorylation network regulates a plant potassium channel. *Proc. Natl. Acad. Sci. USA* **2007**, *104*, 15959–15964. [[CrossRef](#)]
87. Grefen, C.; Blatt, M.R. Do calcineurin B-like proteins interact independently of the serine threonine kinase CIPK23 with the K⁺ channel AKT1? Lessons learned from a ménage à trois. *Plant Physiol.* **2012**, *159*, 915–919. [[CrossRef](#)]
88. Ehrhardt, T.; Zimmermann, S.; Müller-Röber, B. Association of plant K⁺ in channels is mediated by conserved C-termini and does not affect subunit assembly. *FEBS Lett.* **1997**, *409*, 166–170. [[CrossRef](#)]
89. Pratelli, R.; Lacombe, B.; Torregrosa, L.; Gaymard, F.; Romieu, C.; Thibaud, J.B.; Sentenac, H. A grapevine gene encoding a guard cell K⁺ channel displays developmental regulation in the grapevine berry. *Plant Physiol.* **2002**, *128*, 564–577. [[CrossRef](#)]
90. Dreyer, I.; Michard, E.; Lacombe, B.; Thibaud, J.B. A plant Shaker-like K⁺ channel switches between two distinct gating modes resulting in either inward-rectifying or “leak” current. *FEBS Lett.* **2001**, *505*, 233–239. [[CrossRef](#)]
91. Jeanguenin, L.; Alcon, C.; Duby, G.; Boeglin, M.; Chérel, I.; Gaillard, I.; Zimmermann, S.; Sentenac, H.; Véry, A.-A. AtKC1 is a general modulator of *Arabidopsis* inward Shaker channel activity. *Plant J.* **2011**, *67*, 570–582. [[CrossRef](#)] [[PubMed](#)]
92. Lagarde, D.; Basset, M.; Lepetit, M.; Conejero, G.; Gaymard, F.; Astruc, S.; Grignon, C. Tissue-specific expression of *Arabidopsis* AKT1 gene is consistent with a role in K⁺ nutrition. *Plant J.* **1996**, *9*, 195–203. [[CrossRef](#)] [[PubMed](#)]
93. Szyroki, A.; Ivashikina, N.; Dietrich, P.; Roelfsema, M.R.G.; Ache, P.; Reintanz, B.; Deeken, R.; Godde, M.; Felle, H.; Steinmeyer, R.; et al. KAT1 is not essential for stomatal opening. *Proc. Natl. Acad. Sci. USA* **2001**, *98*, 2917–2921. [[CrossRef](#)]
94. Mouline, K.; Véry, A.-A.; Gaymard, F.; Boucherez, J.; Pilot, G.; Devic, M.; Bouchez, D.; Thibaud, J.-B.; Sentenac, H. Pollen tube development and competitive ability are impaired by disruption of a Shaker K⁺ channel in *Arabidopsis*. *Genes Dev.* **2002**, *16*, 339–350. [[CrossRef](#)]
95. Nakamura, R.L.; McKendree, W.L.; Hirsch, R.E.; Sedbrook, J.C.; Gaber, R.F.; Sussman, M.R. Expression of an *Arabidopsis* potassium channel gene in guard cells. *Plant Physiol.* **1995**, *109*, 371–374. [[CrossRef](#)]
96. Pilot, G.; Lacombe, B.; Gaymard, F.; Chérel, I.; Boucherez, J.; Thibaud, J.-B.; Sentenac, H. Guard cell inward K⁺ channel activity in *Arabidopsis* involves expression of the twin channel subunits KAT1 and KAT2. *J. Biol. Chem.* **2001**, *276*, 3215–3221. [[CrossRef](#)]
97. Lacombe, B.; Pilot, G.; Michard, E.; Gaymard, F.; Sentenac, H.; Thibaud, J.-B. A Shaker-like K⁺ channel with weak rectification is expressed in both source and sink phloem tissues of *Arabidopsis*. *Plant Cell* **2000**, *12*, 837–851. [[CrossRef](#)]
98. Pilot, G.; Gaymard, F.; Mouline, K.; Chérel, I.; Sentenac, H. Regulated expression of *Arabidopsis* Shaker K⁺ channel genes involved in K⁺ uptake and distribution in the plant. *Plant Mol. Biol.* **2003**, *51*, 773–787. [[CrossRef](#)]

99. Geiger, D.; Becker, D.; Vosloh, D.; Gambale, F.; Palme, K.; Rehers, M.; Anschuetz, U.; Dreyer, I.; Kudla, J.; Hedrich, R. Heteromeric AtKC1·AKT1 channels in *Arabidopsis* roots facilitate growth under K⁺-limiting conditions. *J. Biol. Chem.* **2009**, *284*, 21288–21295. [[CrossRef](#)]
100. Ache, P.; Becker, D.; Ivashikina, N.; Dietrich, P.; Roelfsema, M.R.G.; Hedrich, R. GORK, a delayed outward rectifier expressed in guard cells of *Arabidopsis thaliana*, is a K⁺-selective, K⁺-sensing ion channel. *FEBS Lett.* **2000**, *486*, 93–98. [[CrossRef](#)]
101. Becker, D.; Hoth, S.; Ache, P.; Wenkel, S.; Roelfsema, M.R.G.; Meyerhoff, O.; Hartung, W.; Hedrich, R. Regulation of the ABA-sensitive *Arabidopsis* potassium channel gene GORK in response to water stress. *FEBS Lett.* **2003**, *554*, 119–126. [[CrossRef](#)]
102. Gaymard, F.; Pilot, G.; Lacombe, B.; Bouchez, D.; Bruneau, D.; Boucherez, J.; Michaux-Ferriere, N.; Thibaud, J.B.; Sentenac, H. Identification and disruption of a plant Shaker-like outward channel involved in K⁺ release into the xylem sap. *Cell* **1998**, *94*, 647–655. [[CrossRef](#)]
103. Villette, J.; Cuéllar, T.; Zimmermann, S.D.; Verdeil, J.-L.; Gaillard, I. Unique features of the grapevine VvK5.1 channel support novel functions for outward K⁺ channels in plants. *J. Exp. Bot.* **2019**, *70*, 6181–6193. [[CrossRef](#)] [[PubMed](#)]
104. Hosal, E.; Vavasseur, A.; Mouline, K.; Dreyer, I.; Gaymard, F.; Poree, F.; Boucherez, J.; Lebaudy, A.; Bouchez, D.; Very, A.A.; et al. The *Arabidopsis* outward K⁺ channel GORK is involved in regulation of stomatal movements and plant transpiration. *Proc. Natl. Acad. Sci. USA* **2003**, *100*, 5549–5554. [[CrossRef](#)] [[PubMed](#)]
105. Duby, G.; Hosal, E.; Fizames, C.; Alcon, C.; Costa, A.; Sentenac, H.; Thibaud, J.-B. AtKC1, a conditionally targeted Shaker-type subunit, regulates the activity of plant K⁺ channels. *Plant J.* **2008**, *53*, 115–123. [[CrossRef](#)] [[PubMed](#)]
106. Kwak, J.M.; Murata, Y.; Baizabal-Aguirre, V.M.; Merrill, J.; Wang, M.; Kemper, A.; Hawke, S.D.; Tallman, G.; Schroeder, J.I. Dominant negative guard cell K⁺ channel mutants reduce inward-rectifying K⁺ currents and light-induced stomatal opening in *Arabidopsis*. *Plant Physiol.* **2001**, *127*, 473–485. [[CrossRef](#)]
107. Lebaudy, A.; Vavasseur, A.; Hosal, E.; Dreyer, I.; Leonhardt, N.; Thibaud, J.-B.; Véry, A.-A.; Simonneau, T.; Sentenac, H. Plant adaptation to fluctuating environment and biomass production are strongly dependent on guard cell potassium channels. *Proc. Natl. Acad. Sci. USA* **2008**, *105*, 5271–5276. [[CrossRef](#)]
108. Wada, H.; Shackel, K.A.; Matthews, M.A. Fruit ripening in *Vitis vinifera*: Apoplastic solute accumulation accounts for pre-veraison turgor loss in berries. *Planta* **2008**, *227*, 1351–1361. [[CrossRef](#)]
109. Sweetman, C.; Deluc, L.G.; Cramer, G.R.; Ford, C.M.; Soole, K.L. Regulation of malate metabolism in grape berry and other developing fruits. *Phytochemistry* **2009**, *70*, 1329–1344. [[CrossRef](#)]
110. Gajdanowicz, P.; Garcia-Mata, C.; Gonzalez, W.; Morales-Navarro, S.E.; Sharma, T.; González-Nilo, F.D.; Gutowicz, J.; Mueller-Roeber, B.; Blatt, M.R.; Dreyer, I. Distinct roles of the last transmembrane domain in controlling *Arabidopsis* K⁺ channel activity. *New Phytol.* **2009**, *182*, 380–391. [[CrossRef](#)] [[PubMed](#)]
111. Johansson, I.; Wulfetange, K.; Porée, F.; Michard, E.; Gajdanowicz, P.; Lacombe, B.; Sentenac, H.; Thibaud, J.-B.; Mueller-Roeber, B.; Blatt, M.R.; et al. External K⁺ modulates the activity of the *Arabidopsis* potassium channel SKOR via an unusual mechanism. *Plant J.* **2006**, *46*, 269–281. [[CrossRef](#)]
112. Cuin, T.; Dreyer, I.; Michard, E. The role of potassium channels in *Arabidopsis thaliana* long distance electrical signalling: AKT2 modulates tissue excitability while GORK shapes action potentials. *Int. J. Mol. Sci.* **2018**, *19*, 926. [[CrossRef](#)]
113. Isayenkov, S.V.; Dabravolski, S.A.; Pan, T.; Shabala, S. Phylogenetic diversity and physiological roles of plant monovalent cation/H⁺ antiporters. *Front. Plant Sci.* **2020**, *11*, 1451. [[CrossRef](#)]
114. Hanana, M.; Cagnac, O.; Yamaguchi, T.; Hamdi, S.; Ghorbel, A.; Blumwald, E. A grape berry (*Vitis vinifera* L.) cation/proton antiporter is associated with berry ripening. *Plant Cell Physiol.* **2007**, *48*, 804–811. [[CrossRef](#)]
115. Pilot, G.; Pratelli, R.; Gaymard, F.; Meyer, Y.; Sentenac, H. Five-group distribution of the Shaker-like K⁺ channel family in higher plants. *J. Mol. Evol.* **2003**, *56*, 418–434. [[CrossRef](#)] [[PubMed](#)]
116. Huerta-Cepas, J.; Serra, F.; Bork, P. ETE 3: Reconstruction, analysis, and visualization of phylogenomic data. *Mol. Biol. Evol.* **2016**, *33*, 1635–1638. [[CrossRef](#)] [[PubMed](#)]
117. Dreyer, I.; Poree, F.; Schneider, A.; Mittelstadt, J.; Bertl, A.; Sentenac, H.; Thibaud, J.B.; Mueller-Roeber, B. Assembly of plant Shaker-like K_{out} channels requires two distinct sites of the channel α -subunit. *Biophys. J.* **2004**, *87*, 858–872. [[CrossRef](#)] [[PubMed](#)]
118. Urbach, S.; Chérel, I.; Sentenac, H.; Gaymard, F. Biochemical characterization of the *Arabidopsis* K⁺ channels KAT1 and AKT1 expressed or co-expressed in insect cells. *Plant J. Cell Mol. Biol.* **2000**, *23*, 527–538. [[CrossRef](#)]
119. Naso, A.; Montisci, R.; Gambale, F.; Picco, C. Stoichiometry studies reveal functional properties of KDC1 in plant shaker potassium channels. *Biophys. J.* **2006**, *91*, 3673–3683. [[CrossRef](#)]
120. Nieves-Cordones, M.; Alemán, F.; Martínez, V.; Rubio, F. The *Arabidopsis thaliana* HAK5 K⁺ transporter is required for plant growth and K⁺ acquisition from low K⁺ solutions under saline conditions. *Mol. Plant* **2010**, *3*, 326–333. [[CrossRef](#)]
121. Ródenas, R.; Ragel, P.; Nieves-Cordones, M.; Martínez-Martínez, A.; Amo, J.; Lara, A.; Martínez, V.; Quintero, F.J.; Pardo, J.M.; Rubio, F. Insights into the mechanisms of transport and regulation of the *Arabidopsis* high-affinity K⁺ transporter HAK51. *Plant Physiol.* **2021**, *185*, 1860–1874. [[CrossRef](#)] [[PubMed](#)]
122. Chérel, I.; Lefoulon, C.; Boeglin, M.; Sentenac, H. Molecular mechanisms involved in plant adaptation to low K⁺ availability. *J. Exp. Bot.* **2014**, *65*, 833–848. [[CrossRef](#)] [[PubMed](#)]
123. Winter, D.; Vinegar, B.; Nahal, H.; Ammar, R.; Wilson, G.V.; Provart, N.J. An “electronic fluorescent pictograph” browser for exploring and analyzing large-scale biological data sets. *PLoS ONE* **2007**, *2*, e718. [[CrossRef](#)]

124. Leonhardt, N.; Kwak, J.M.; Robert, N.; Waner, D.; Leonhardt, G.; Schroeder, J.I. Microarray expression analyses of *Arabidopsis* guard cells and isolation of a recessive abscisic acid hypersensitive protein phosphatase 2C mutant. *Plant Cell* **2004**, *16*, 596–615. [[CrossRef](#)] [[PubMed](#)]
125. Kilian, J.; Whitehead, D.; Horak, J.; Wanke, D.; Weinl, S.; Baticic, O.; D'Angelo, C.; Bornberg-Bauer, E.; Kudla, J.; Harter, K. The AtGenExpress global stress expression data set: Protocols, evaluation and model data analysis of UV-B light, drought and cold stress responses. *Plant J.* **2007**, *50*, 347–363. [[CrossRef](#)] [[PubMed](#)]
126. Suzuki, N.; Bassil, E.; Hamilton, J.S.; Inupakutika, M.A.; Zandalinas, S.I.; Tripathy, D.; Luo, Y.; Dion, E.; Fukui, G.; Kumazaki, A.; et al. ABA is required for plant acclimation to a combination of salt and heat stress. *PLoS ONE* **2016**, *11*, e0147625. [[CrossRef](#)]
127. Dong, Q.; Bai, B.; Almutairi, B.O.; Kudla, J. Emerging roles of the CBL-CIPK calcium signaling network as key regulatory hub in plant nutrition. *J. Plant Physiol.* **2021**, *257*, 153335. [[CrossRef](#)]
128. Chaves-Sanjuan, A.; Sanchez-Barrena, M.J.; Gonzalez-Rubio, J.M.; Moreno, M.; Ragel, P.; Jimenez, M.; Pardo, J.M.; Martinez-Ripoll, M.; Quintero, F.J.; Albert, A. Structural basis of the regulatory mechanism of the plant CIPK family of protein kinases controlling ion homeostasis and abiotic stress. *Proc. Natl. Acad. Sci. USA* **2014**, *111*, E4532–E4541. [[CrossRef](#)]
129. Xu, J.; Li, H.-D.; Chen, L.-Q.; Wang, Y.; Liu, L.-L.; He, L.; Wu, W.-H. A protein kinase, interacting with two calcineurin B-like proteins, regulates K⁺ transporter AKT1 in *Arabidopsis*. *Cell* **2006**, *125*, 1347–1360. [[CrossRef](#)]
130. Held, K.; Pascaud, F.; Eckert, C.; Gajdanowicz, P.; Hashimoto, K.; Corratgé-Faillie, C.; Offenborn, J.N.; Lacombe, B.; Dreyer, I.; Thibaud, J.-B.; et al. Calcium-dependent modulation and plasma membrane targeting of the AKT2 potassium channel by the CBL4/CIPK6 calcium sensor/protein kinase complex. *Cell Res.* **2011**, *21*, 1116–1130. [[CrossRef](#)] [[PubMed](#)]
131. Wheeler, S.; Loveys, B.; Ford, C.; Davies, C. The relationship between the expression of abscisic acid biosynthesis genes, accumulation of abscisic acid and the promotion of *Vitis vinifera* L. berry ripening by abscisic acid. *Aust. J. Grape Wine Res.* **2009**, *15*, 195–204. [[CrossRef](#)]
132. Pilati, S.; Bagagli, G.; Sonego, P.; Moretto, M.; Brazzale, D.; Castorina, G.; Simoni, L.; Tonelli, C.; Guella, G.; Engelen, K.; et al. Abscisic acid is a major regulator of grape berry ripening onset: New insights into ABA signaling network. *Front. Plant Sci.* **2017**, *8*, 1093. [[CrossRef](#)] [[PubMed](#)]
133. Carbonell-Bejerano, P.; Santa María, E.; Torres-Pérez, R.; Royo, C.; Lijavetzky, D.; Bravo, G.; Aguirreolea, J.; Sánchez-Díaz, M.; Antolín, M.C.; Martínez-Zapater, J.M. Thermotolerance responses in ripening berries of *Vitis vinifera* L. cv Muscat Hamburg. *Plant Cell Physiol.* **2013**, *54*, 1200–1216. [[CrossRef](#)] [[PubMed](#)]
134. Ma, Y.; Szostkiewicz, I.; Korte, A.; Moes, D.; Yang, Y.; Christmann, A.; Grill, E. Regulators of PP2C phosphatase activity function as abscisic acid sensors. *Science* **2009**, *324*, 1064–1068. [[CrossRef](#)] [[PubMed](#)]
135. Cherel, I.; Michard, E.; Platet, N.; Mouline, K.; Alcon, C.; Sentenac, H.; Thibaud, J.B. Physical and functional interaction of the *Arabidopsis* K⁺ channel AKT2 and phosphatase AtPP2CA. *Plant Cell* **2002**, *14*, 1133–1146. [[CrossRef](#)]
136. Lefoulon, C.; Boeglin, M.; Moreau, B.; Véry, A.-A.; Szponarski, W.; Dauzat, M.; Michard, E.; Gaillard, I.; Chérel, I. The *Arabidopsis* AtPP2CA protein phosphatase inhibits the GORK K⁺ efflux channel and exerts a dominant suppressive effect on phosphomimetic-activating mutations. *J. Biol. Chem.* **2016**, *291*, 6521–6533. [[CrossRef](#)] [[PubMed](#)]
137. Zhang, R.; Wang, Y.; Li, S.; Yang, L.; Liang, Z. ABA signaling pathway genes and function during abiotic stress and berry ripening in *Vitis vinifera*. *Gene* **2021**, *769*, 145226. [[CrossRef](#)]
138. Gambetta, G.A.; Matthews, M.A.; Shaghasi, T.H.; McElrone, A.J.; Castellarin, S.D. Sugar and abscisic acid signaling orthologs are activated at the onset of ripening in grape. *Planta* **2010**, *232*, 219–234. [[CrossRef](#)] [[PubMed](#)]
139. Nicolas, P.; Lecourieux, D.; Kappel, C.; Cluzet, S.; Cramer, G.; Delrot, S.; Lecourieux, F. The basic leucine zipper transcription factor abscisic acid response element-binding factor2 is an important transcriptional regulator of abscisic acid-dependent grape berry ripening processes. *Plant Physiol.* **2014**, *164*, 365–383. [[CrossRef](#)]
140. Lan, W.-Z.; Lee, S.-C.; Che, Y.-F.; Jiang, Y.-Q.; Luan, S. Mechanistic analysis of AKT1 regulation by the CBL-CIPK-PP2CA interactions. *Mol. Plant* **2011**, *4*, 527–536. [[CrossRef](#)]
141. Lérant, S.; Edel, K.H.; Pervent, M.; Hashimoto, K.; Corratgé-Faillie, C.; Offenborn, J.N.; Tillard, P.; Gojon, A.; Kudla, J.; Lacombe, B. Nitrate sensing and uptake in *Arabidopsis* are enhanced by ABI2, a phosphatase inactivated by the stress hormone abscisic acid. *Sci. Signal.* **2015**, *8*, ra43. [[CrossRef](#)]
142. Soon, F.-F.; Ng, L.-M.; Zhou, X.E.; West, G.M.; Kovach, A.; Tan, M.H.E.; Suino-Powell, K.M.; He, Y.; Xu, Y.; Chalmers, M.J.; et al. Molecular mimicry regulates ABA signaling by SnRK2 kinases and PP2C phosphatases. *Science* **2012**, *335*, 85–88. [[CrossRef](#)]
143. Acharya, B.R.; Jeon, B.W.; Zhang, W.; Assmann, S.M. Open Stomata 1 (OST1) is limiting in abscisic acid responses of *Arabidopsis* guard cells. *New Phytol.* **2013**, *200*, 1049–1063. [[CrossRef](#)]
144. Sato, A.; Sato, Y.; Fukao, Y.; Fujiwara, M.; Umezawa, T.; Shinozaki, K.; Hibi, T.; Taniguchi, M.; Miyake, H.; Goto, D.B.; et al. Threonine at position 306 of the KAT1 potassium channel is essential for channel activity and is a target site for ABA-activated SnRK2/OST1/SnRK2.6 protein kinase. *Biochem. J.* **2009**, *424*, 439–448. [[CrossRef](#)]
145. Zhang, A.; Ren, H.-M.; Tan, Y.-Q.; Qi, G.-N.; Yao, F.-Y.; Wu, G.-L.; Yang, L.-W.; Hussain, J.; Sun, S.-J.; Wang, Y.-F. S-type anion channels SLAC1 and SLAH3 function as essential negative regulators of inward K⁺ channels and stomatal opening in *Arabidopsis*. *Plant Cell* **2016**, *28*, 949–965. [[CrossRef](#)]
146. Boneh, U.; Biton, I.; Zheng, C.; Schwartz, A.; Ben-Ari, G. Characterization of potential ABA receptors in *Vitis vinifera*. *Plant Cell Rep.* **2012**, *31*, 311–321. [[CrossRef](#)]

147. Ronzier, E.; Corratgé-Faillie, C.; Sanchez, F.; Prado, K.; Brière, C.; Leonhardt, N.; Thibaud, J.-B.; Xiong, T.C. CPK13, a noncanonical Ca^{2+} -dependent protein kinase, specifically inhibits KAT2 and KAT1 Shaker K^+ channels and reduces stomatal opening. *Plant Physiol.* **2014**, *166*, 314–326. [[CrossRef](#)] [[PubMed](#)]
148. Corratgé-Faillie, C.; Ronzier, E.; Sanchez, F.; Prado, K.; Kim, J.-H.; Lanciano, S.; Leonhardt, N.; Lacombe, B.; Xiong, T.C. The *Arabidopsis* guard cell outward potassium channel GORK is regulated by CPK33. *FEBS Lett.* **2017**, *591*, 1982–1992. [[CrossRef](#)]
149. Boudsoq, M.; Sheen, J. CDPKs in immune and stress signaling. *Trends Plant Sci.* **2013**, *18*, 30–40. [[CrossRef](#)] [[PubMed](#)]
150. Scherzer, S.; Maierhofer, T.; Al-Rasheid, K.A.S.; Geiger, D.; Hedrich, R. Multiple calcium-dependent kinases modulate ABA-activated guard cell anion channels. *Mol. Plant* **2012**, *5*, 1409–1412. [[CrossRef](#)] [[PubMed](#)]
151. Zhang, K.; Han, Y.-T.; Zhao, F.-L.; Hu, Y.; Gao, Y.-R.; Ma, Y.-F.; Zheng, Y.; Wang, Y.-J.; Wen, Y.-Q. Genome-wide identification and expression analysis of the CDPK gene family in grape, *Vitis* spp. *BMC Plant Biol.* **2015**, *15*, 164. [[CrossRef](#)]
152. Zhao, Y.; Xu, Z.; Mo, Q.; Zou, C.; Li, W.; Xu, Y.; Xie, C. Combined small RNA and degradome sequencing reveals novel miRNAs and their targets in response to low nitrate availability in maize. *Ann. Bot.* **2013**, *112*, 633–642. [[CrossRef](#)]
153. Anschutz, U.; Becker, D.; Shabala, S. Going beyond nutrition: Regulation of potassium homeostasis as a common denominator of plant adaptive responses to environment. *J. Plant Physiol.* **2014**, *171*, 670–687. [[CrossRef](#)] [[PubMed](#)]
154. Sardans, J.; Peñuelas, J. Potassium control of plant functions: Ecological and agricultural implications. *Plants* **2021**, *10*, 419. [[CrossRef](#)] [[PubMed](#)]
155. Dreyer, I. Potassium in plants—Still a hot topic. *J. Plant Physiol.* **2021**, *261*, 153435. [[CrossRef](#)] [[PubMed](#)]
156. Decros, G.; Baldet, P.; Beauvoit, B.; Stevens, R.; Flandin, A.; Colombié, S.; Gibon, Y.; Pétriacq, P. Get the balance right: ROS homeostasis and redox signalling in fruit. *Front. Plant Sci.* **2019**, *10*, 1091. [[CrossRef](#)]
157. Apel, K.; Hirt, H. Reactive oxygen species: Metabolism, oxidative stress, and signal transduction. *Annu. Rev. Plant Biol.* **2004**, *55*, 373–399. [[CrossRef](#)] [[PubMed](#)]
158. Dat, J.; Vandenabeele, S.; Vranová, E.; Van Montagu, M.; Inzé, D.; Van Breusegem, F. Dual action of the active oxygen species during plant stress responses. *Cell. Mol. Life Sci.* **2000**, *57*, 779–795. [[CrossRef](#)]
159. Mittler, R. Oxidative stress, antioxidants and stress tolerance. *Trends Plant Sci.* **2002**, *7*, 405–410. [[CrossRef](#)]
160. Nimse, S.B.; Pal, D. Free radicals, natural antioxidants, and their reaction mechanisms. *RSC Adv.* **2015**, *5*, 27986–28006. [[CrossRef](#)]
161. Britto, D.T.; Ebrahimi-Ardebili, S.; Hamam, A.M.; Coskun, D.; Kronzucker, H.J. ^{42}K analysis of sodium-induced potassium efflux in barley: Mechanism and relevance to salt tolerance. *New Phytol.* **2010**, *186*, 373–384. [[CrossRef](#)]
162. Demidchik, V. Mechanisms and physiological roles of K^+ efflux from root cells. *J. Plant Physiol.* **2014**, *171*, 696–707. [[CrossRef](#)]
163. Shabala, S.; Pottosin, I. Regulation of potassium transport in plants under hostile conditions: Implications for abiotic and biotic stress tolerance. *Physiol. Plant.* **2014**, *151*, 257–279. [[CrossRef](#)]
164. Yemelyanov, V.V.; Chirkova, T.V.; Shishova, M.F.; Lindberg, S.M. Potassium efflux and cytosol acidification as primary anoxia-induced events in wheat and rice seedlings. *Plants* **2020**, *9*, 1216. [[CrossRef](#)] [[PubMed](#)]
165. Demidchik, V.; Straltsova, D.; Medvedev, S.S.; Pozhvanov, G.A.; Sokolik, A.; Yurin, V. Stress-induced electrolyte leakage: The role of K^+ -permeable channels and involvement in programmed cell death and metabolic adjustment. *J. Exp. Bot.* **2014**, *65*, 1259–1270. [[CrossRef](#)] [[PubMed](#)]
166. Shabala, S. Salinity and programmed cell death: Unravelling mechanisms for ion specific signalling. *J. Exp. Bot.* **2009**, *60*, 709–712. [[CrossRef](#)]
167. Ragel, P.; Raddatz, N.; Leidi, E.O.; Quintero, F.J.; Pardo, J.M. Regulation of K^+ nutrition in plants. *Front. Plant Sci.* **2019**, *10*, 281. [[CrossRef](#)] [[PubMed](#)]
168. Demidchik, V. ROS-activated ion channels in plants: Biophysical characteristics, physiological functions and molecular nature. *Int. J. Mol. Sci.* **2018**, *19*, 1263. [[CrossRef](#)]
169. Duchêne, É.; Dumas, V.; Butterlin, G.; Jaegli, N.; Rustenholz, C.; Chauveau, A.; Bérard, A.; Le Paslier, M.C.; Gaillard, I.; Merdinoglu, D. Genetic variations of acidity in grape berries are controlled by the interplay between organic acids and potassium. *Theor. Appl. Genet.* **2020**, *133*, 993–1008. [[CrossRef](#)]
170. Bigard, A.; Berhe, D.T.; Maoddi, E.; Sire, Y.; Boursiquot, J.-M.; Ojeda, H.; Péros, J.-P.; Doligez, A.; Romieu, C.; Torregrosa, L. *Vitis vinifera* L. fruit diversity to breed varieties anticipating climate changes. *Front. Plant Sci.* **2018**, *9*, 455. [[CrossRef](#)]
171. Ausseil, A.-G.E.; Law, R.M.; Parker, A.K.; Teixeira, E.I.; Sood, A. Projected wine grape cultivar shifts due to climate change in New Zealand. *Front. Plant Sci.* **2021**, *12*, 618039. [[CrossRef](#)] [[PubMed](#)]
172. Naulleau, A.; Gary, C.; Prévot, L.; Hossard, L. Evaluating strategies for adaptation to climate change in grapevine production—A systematic review. *Front. Plant Sci.* **2021**, *11*, 2154. [[CrossRef](#)] [[PubMed](#)]