



**HAL**  
open science

## Regenerative medicine for digestive fistulae therapy : benefits, challenges and promises of stem/stromal cells and emergent perspectives via their extracellular vesicles

Anna C. Sebbagh, Boris Rosenbaum, Guillaume Péré, Hadrien Alric, Arthur Berger, Claire Wilhelm, Florence Gazeau, Noëlle Mathieu, Gabriel Rahmi,  
Amanda K. A. Silva

### ► To cite this version:

Anna C. Sebbagh, Boris Rosenbaum, Guillaume Péré, Hadrien Alric, Arthur Berger, et al.. Regenerative medicine for digestive fistulae therapy : benefits, challenges and promises of stem/stromal cells and emergent perspectives via their extracellular vesicles. *Advanced Drug Delivery Reviews*, 2021, 179, pp.113841. 10.1016/j.addr.2021.113841 . hal-03415371

**HAL Id: hal-03415371**

**<https://hal.science/hal-03415371>**

Submitted on 4 Nov 2021

**HAL** is a multi-disciplinary open access archive for the deposit and dissemination of scientific research documents, whether they are published or not. The documents may come from teaching and research institutions in France or abroad, or from public or private research centers.

L'archive ouverte pluridisciplinaire **HAL**, est destinée au dépôt et à la diffusion de documents scientifiques de niveau recherche, publiés ou non, émanant des établissements d'enseignement et de recherche français ou étrangers, des laboratoires publics ou privés.



Distributed under a Creative Commons Attribution - NonCommercial - NoDerivatives 4.0  
International License

# Regenerative medicine for digestive fistulae therapy: benefits, challenges and promises of stem/stromal cells and emergent perspectives via their extracellular vesicles

Anna C Sebbagh<sup>a</sup>, Boris Rosenbaum<sup>b</sup>, Guillaume Péré<sup>a,b,c</sup>, Hadrien Alric<sup>a,b,d</sup>, Arthur Berger<sup>b</sup>, Claire Wilhelm<sup>a</sup>, Florence Gazeau<sup>a</sup>, Noëlle Mathieu<sup>e</sup>, Gabriel Rahmi<sup>\*.b,d,†</sup>, Amanda K A Silva<sup>\*.a,†</sup>

<sup>a</sup>Laboratoire Matière et Systèmes Complexes (MSC), Université de Paris / CNRS (UMR 7057), Paris, France

<sup>b</sup>Laboratoire Imagerie de l'Angiogenèse, Plateforme d'Imagerie du Petit Animal, Inserm UMR970, Paris Cardiovascular Research Center, Paris, France

<sup>c</sup>Department of Digestive Surgery, Esogastric bariatric and endocrinal surgery unit, Toulouse-Rangueil University Hospital, Toulouse, France

<sup>d</sup>Department of Gastroenterology and Endoscopy, Hôpital Européen Georges Pompidou, Assistance Publique Hôpitaux de Paris, Paris, France

<sup>e</sup>Human Health Department, SERAMED, LRMED, Institute for Radiological Protection and Nuclear Safety, Fontenay-aux-Roses, France

† These authors contributed equally to this work

## Abstract

Despite current management strategies, digestive fistulae remain extremely debilitating complications associated with significant morbidity and mortality, generating a need to develop innovative therapies in these indications. A number of clinical trials and experimental studies have thus investigated the potential of stem/stromal cells (SCs) or SC-derived extracellular vesicles (EVs) administration for post-surgical and Crohn's-associated fistulae. This review summarizes the physiopathology and current standards-of-care for digestive fistulae, along with relevant evidence from animal and clinical studies regarding SC or EV treatment for post-surgical digestive fistulae. Additionally, existing preclinical models of fistulizing Crohn's disease and results of SC therapy trials in this indication will be presented. The optimal formulation and administration protocol of SC therapy products for gastrointestinal fistula treatment and the challenges for a widespread use of darvadstrocel (Alofisel) in clinical practice will be discussed. Finally, the potential advantages of EV therapy and the obstacles towards their clinical translation will be introduced.

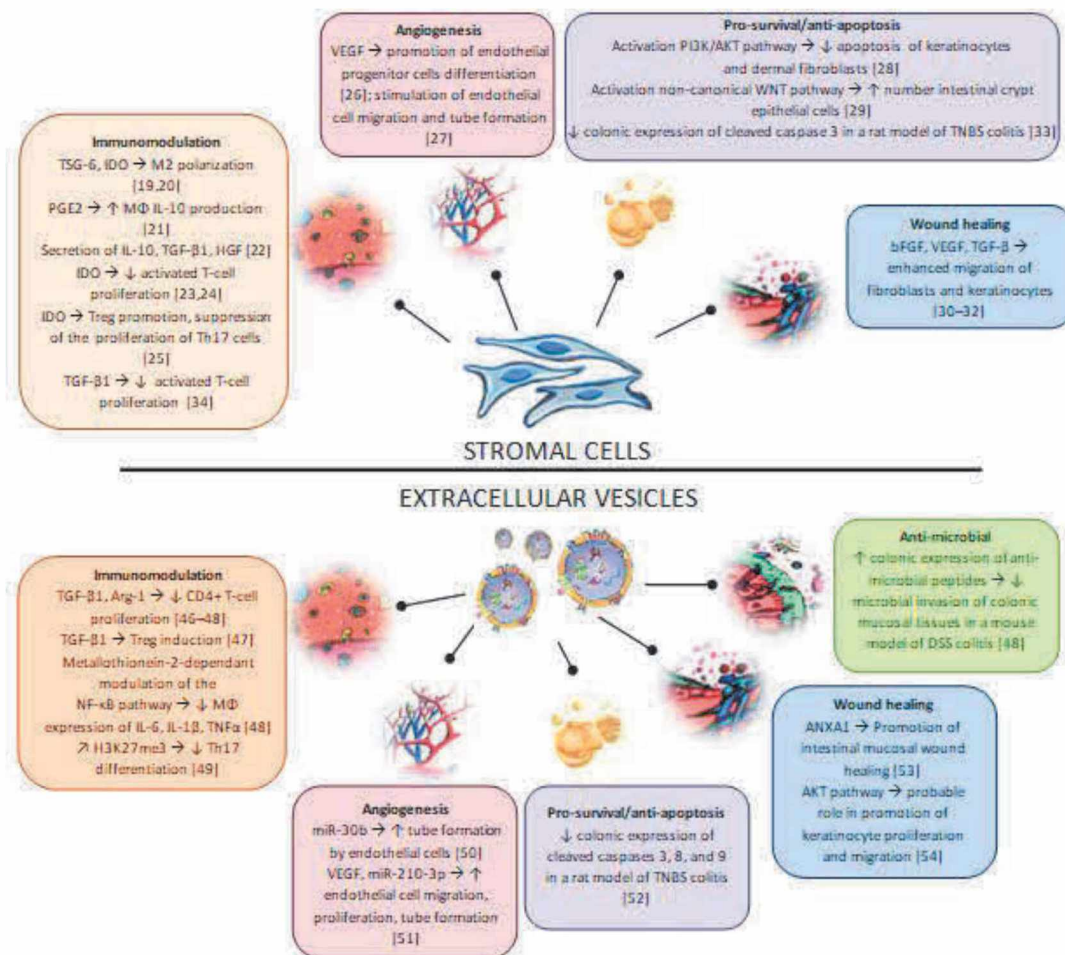
**Keywords:** Gastrointestinal fistulae, Crohn's disease, stem/stromal cells, post-surgical fistulae, extracellular vesicles

\* Correspondence: [amanda.silva@univ-paris-diderot.fr](mailto:amanda.silva@univ-paris-diderot.fr), [gabriel.rahmi@aphp.fr](mailto:gabriel.rahmi@aphp.fr)

# 1. Introduction

A fistula corresponds to an abnormal communication between two epithelialized surfaces [1]. Specifically, gastrointestinal fistulae arise as iatrogenic complications following surgery in approximately 75-85% of the cases [2,3]. Crohn's disease represents the main aetiology for primary gastrointestinal fistula occurrence in developed countries [4]. Other potential causes include neoplasia, trauma, infections, exposure to ionizing radiation, foreign bodies, etc [2-6]. Internal gastrointestinal fistulae can develop between any two parts of the gastrointestinal tract (entero-enteric fistulae, gastrojejunal fistulae, etc) or between any part of the gastrointestinal tract and another hollow structure (rectovaginal fistulae, colovesical fistulae, aorto-duodenal fistulae, etc) [1,4,7,8]. External gastrointestinal fistulae, or enterocutaneous fistulae, correspond to those fistulae that drain to the skin [1].

Gastrointestinal fistulae are challenging to manage and constitute an extremely debilitating complication for the patient, associated with prolonged hospital stays and dramatically increased morbidity and mortality rates [2,5]. Healing is not always achieved and a significant proportion of



**Figure 1: Some of the putative mechanisms of action of stromal cells and extracellular vesicles of interest for digestive fistula therapy.** TSG-6: tumor necrosis factor-stimulated gene 6; IDO: indoleamine 2,3-dioxygenase; PGE2: prostaglandin E2; MΦ: macrophage; IL-10: interleukin 10; TGF-β: transforming growth factor β; HGF: hepatocyte growth factor; Treg: regulatory T-cells; Th17: T-helper 17; VEGF: vascular endothelial growth factor; PI3K: phosphoinositide 3-kinase; bFGF: basic fibroblast growth factor; Arg-1: arginase 1; NF-κB: nuclear factor-kappa B; IL-6: interleukin 6; IL-1β: interleukin 1β; TNFα: tumor necrosis factor α; H3K27me3: histone 3 lysine 27 trimethylation; miR-30b: microRNA 30b; miR-210-3p: microRNA 210-3p; TNBS: 2,4,6-trinitrobenzene sulfonic acid; ANXA1: annexin A1; DSS: dextran sulfate sodium

patients will have to live with a permanent diverting stoma [9], with a significant impact on their

1 quality of life. **Moreover, especially in Crohn's disease,** the recurrence of previously healed fistulae  
2 constitutes a common occurrence [10,11]. These poor outcomes associated with gastrointestinal  
3 fistulae have prompted continued experimental and clinical research for the development of innovative  
4 treatment approaches, notably based on stem cell therapy, so as to add effective new alternatives to  
5 current management algorithms.

6 Stem cell therapy has brought along tremendous hope in the medical community as a potential  
7 solution for the treatment of a wide range of complex pathologies. Due to the ethical and safety issues  
8 linked with the use of pluripotent stem cells [12], many clinical studies have focused on the use of  
9 adult stem cells, such as stromal cells (SCs), a heterogeneous cell population also known as  
10 mesenchymal stem cells. SCs are adult, non-hematopoietic, multipotent cells that can differentiate into  
11 several cell types – such as osteoblasts, chondroblasts, adipocytes, tenocytes, etc. They are further  
12 characterized by an adherent, spindle-shaped morphology, along with the expression of surface  
13 markers such as CD73, CD90 and CD105 and the absence of expression of markers of the  
14 hematopoietic lineage (CD45, CD19, CD14, CD11b, CD79 $\alpha$ , HLA-DR, etc) [13]. SCs were  
15 historically isolated from the bone marrow. Other sources notably include umbilical cord blood,  
16 **Wharton's jelly, tendons, the synovial membrane, the periosteum, etc.** Of particular interest for  
17 regenerative medicine, a population of SC-like cells called adipose-derived stromal cells (AdSCs) can  
18 easily be harvested at high yields from the adipose tissue through liposuction [14]. Initially, the  
19 therapeutic effects of SCs were mostly attributed to their differentiation potential [14], thus providing  
20 a replacement for compromised functional cells through homing to the injured tissues. However, the  
21 prominent interest of SCs for regenerative medicine has rapidly gone beyond their ability to  
22 differentiate into multiple cell types, with the preclinical and clinical demonstration of their propensity  
23 to promote endogenous wound healing and angiogenesis, along with their immunomodulatory  
24 properties and anti-fibrotic effects (**Figure 1**, [15–34]). Moreover, the results from several animal  
25 studies and clinical trials led to challenge the assumption of a direct contribution of SCs to tissue  
26 regeneration. On the one hand, it was shown that only very few SCs would durably engraft at the  
27 injury site [29,35]. Indeed, after systemic administration, most of the injected cells become entrapped  
28 in the pulmonary capillaries [29,35,36], and the presence of an inflammatory environment at the injury  
29 site is highly deleterious to stem cell survival [29]. On the other hand, the therapeutic effect of SCs  
30 often seemed to occur in an overly short time frame to be solely attributed to their direct differentiation  
31 into functional cells [35]. These preclinical results, along with the observation of equivalent  
32 therapeutic effects with SC-conditioned medium, prompted a change of paradigm in stem cell therapy  
33 towards mostly paracrine mechanisms of action [37].

34  
35  
36  
37  
38  
39  
40  
41  
42  
43  
44 Amongst all the potential effectors for these paracrine effects, SC-derived extracellular vesicles  
45 (EVs) have gained increasing interest for regenerative medicine in recent years. EVs correspond to a  
46 heterogeneous group of subcellular entities that are secreted by cells in a constitutive or induced  
47 manner [38,39]. They are outlined by a membrane and are usually of a nanometric scale (40-5000nm).  
48 Several subsets of EVs have been described depending on their biogenesis pathway, like exosomes,  
49 which stem from the endosomal network and are released upon fusion of late endosomes with the  
50 plasma membrane; microvesicles, which are formed by outward budding and rupture of the plasma  
51 membrane; or apoptotic bodies, resulting from cell blebbing during programmed cell death [38,39].  
52 However, it is now recommended to favor a classification of EVs based on parameters such as size or  
53 biochemical composition, which are technically easier to assess [40]. EVs carry lipids, proteins,  
54 mRNAs, miRNAs, and their contents depend both on their parent cells and on their method of  
55 production [38,39]. Physiologically, EVs serve as mediators for intercellular communication [38,39].  
56 SC-derived EVs have demonstrated anti-apoptotic properties, along with a propensity to increase cell  
57 survival through the activation of the PI3K/Akt pathway, and to promote cell proliferation and wound  
58  
59  
60  
61  
62  
63  
64  
65

healing [41–43]. They have also demonstrated anti-inflammatory, immunomodulatory and anti-fibrotic properties (Figure 1, [37,42,44–54]). Their potential for regenerative medicine has thus been shown in preclinical studies for a wide variety of pathologies, including myocardial ischemia/reperfusion injury, acute kidney injury, type 2 diabetes mellitus, liver fibrosis, intervertebral disk degeneration, etc [41,42,45,55,56], and emerging evidence tends to indicate their interest for the treatment of gastrointestinal fistulae [57,58].

This review aims at summarizing current knowledge and discussing the benefits, challenges and promises of SC-based and EV-based therapies for the treatment of fistulae of the digestive system. It will mostly focus on fistulae of post-surgical aetiology, including both gastrointestinal and pancreatic fistulae, and on fistulizing Crohn’s disease. The use of SC therapy for perianal fistulae of cryptoglandular origin, already reviewed in details elsewhere [59,60], will be shortly described in the supplementary materials (Supplementary table 1). First, we will present the physiopathology and treatment of post-surgical and Crohn’s-associated fistulae, then available evidence supporting their therapy with SCs and EVs will be exposed. Finally, current challenges and perspectives for their clinical translation will be discussed.

## 2. Digestive fistulae

Different types of digestive fistulae and the associated surgical treatment modalities are presented in Figure 2.

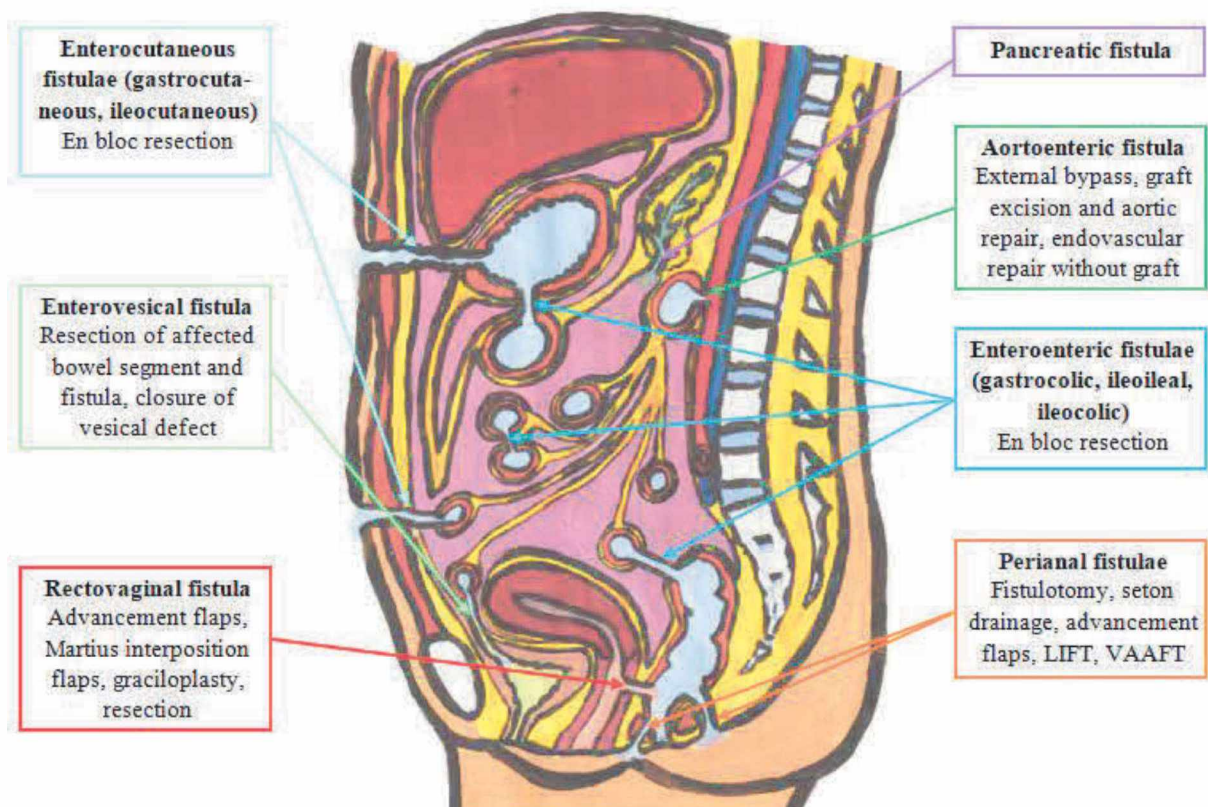


Figure 2 : Digestive fistulae – main strategies for definitive surgical closure. LIFT: Ligation of the intersphincteric fistula tract. VAAFT: Video-assisted anal fistula treatment.

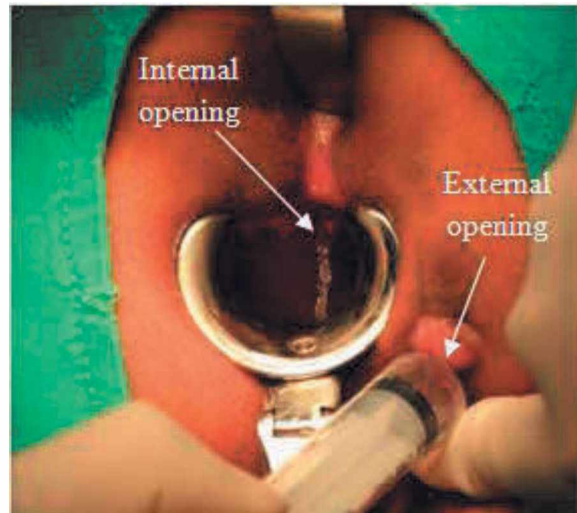
### 2.1 Epidemiology and physiopathology

Gastrointestinal fistulae occur mostly as post-surgical complications (75-85% of the cases), especially following surgery for cancer, inflammatory bowel diseases and lysis of adhesions [2,3].

1  
2  
3  
4  
5  
6  
7  
8  
9  
10  
11  
12  
13  
14  
15  
16  
17  
18  
19  
20  
21  
22  
23  
24  
25  
26  
27  
28  
29  
30  
31  
32  
33  
Fistula incidence can vary drastically depending on the procedure (6.3% in non-colorectal abdominal surgery including bowel suture or anastomosis [61], 10-11% following surgery for gastric cancer [62,63], and about 15% of anastomotic failure following colorectal surgery [64]). Post-surgical fistulae are often linked with anastomotic failure or inadvertent enterotomies, leading to the leakage of luminal contents outside of the gastrointestinal tract [3–5]. Such leakages can cause severe, potentially lethal, infectious complications like abscesses or peritonitis. Progressive extension of an abscess by erosion of neighboring tissues results in the formation of a fistula tract [65]. Inadequate surgical technique (tension on the suture lines, devascularization resulting in local ischemia) and local factors (perianastomotic infection, involvement of diseased segments of the gastrointestinal tract) constitute predisposing factors to anastomotic failure [4]. Additionally, dense adhesions and/or distal obstruction [66,67], emergency surgery without adequate preoperative preparation, along with patient-related factors such as malnutrition or systemic hypotension [4], have been implicated in the physiopathology of post-surgical fistulae. The development of post-surgical fistulae significantly alters the patient's prognosis. Mortality rates ranging from 10 to over 30% have been reported for enterocutaneous fistulae in recent years [63,68–71], depending on their localization and output. Morbidity and mortality are often linked to malnutrition, fluid and electrolyte imbalances and infectious complications leading to sepsis [2,3]. Moreover, probably owing to these complications and the associated deterioration of the patient's overall condition, post-surgical fistulae incidence in cancer patients may result in their not receiving adjuvant chemotherapy [72], which will further decrease their prognosis. Gastrointestinal fistulae might cause malnutrition or fluid and electrolyte imbalances through several mechanisms [1,2]: internal fistulae bypassing large portions of the digestive tract may result in malabsorption and diarrhea; considerable loss of fluids, electrolytes and nutrients may be observed, especially in the case of high-output fistulae; poor oral intake is common; and finally, patients might be hypercatabolic due to septic complications. Severe haemorrhagic complications may also occur, notably in the case of aorto-enteric fistulae or arterial exposure to pancreatic secretions in the case of post-surgical pancreatic fistulae [4,73].

34  
35  
36  
37  
38  
39  
40  
41  
42  
43  
44  
45  
46  
47  
48  
49  
50  
51  
52  
53  
54  
55  
56  
57  
58  
59  
60  
61  
62  
63  
64  
65  
In 15 to 25% of the cases, gastrointestinal fistulae will develop spontaneously, notably in the course of Crohn's disease [2,3]. Crohn's disease is a chronic inflammatory bowel disease affecting over 1,000,000 patients in Europe with over 75,000 new cases each year [74]. It is considered a multifactorial pathology, linked with an association of genetic and environmental determinants, alterations of the gut microbiota, an increased intestinal permeability, and a dysregulated immune response, resulting in lesions potentially all along the digestive tract [75–80]. Fistulization constitutes a relatively common complication, affecting up to 35-40% of Crohn's patients [1]. Penetrating Crohn's disease mainly includes fistulae of the ano-perineal sphere (Figure 3), but also rectovaginal fistulae, entero-enteric fistulae, enterocutaneous fistulae, etc. The pathogenesis of penetrating Crohn's disease is quite complex. Crohn's patients present impaired wound healing mechanisms, notably linked to a decreased migratory potential of colonic lamina propria fibroblasts [81,82]. These impaired wound repair mechanisms might trigger an epithelial-to-mesenchymal transition (EMT) in intestinal epithelial cells, initially in an attempt to repair an intestinal lesion [82,83]. EMT of intestinal epithelial cells is notably induced by TGF $\beta$  and further increased by pro-inflammatory cytokines such as TNF $\alpha$  or IL-

13, resulting in the formation of myofibroblast-like cells called transitional cells [82,83]. Transitional cells then deeply penetrate into the gut mucosa and form a tube-like structure, which might extend to an adjacent organ or the abdominal wall [82,84]. This process is further facilitated by extracellular matrix remodeling through increased expression of matrix metalloproteinases such as MMP-3 and MMP-9 [82,83]. **The presence of underlying Crohn's disease constitutes a low prognosis factor for spontaneous fistula healing, especially in the case of uncontrolled inflammation [85].**



**Figure 3: Perianal fistula.** The injection of water, saline or dyes through the external opening facilitates the identification of the internal opening. Adapted with permission from Springer, *Techniques in Coloproctology* “LIFT procedure: a simplified technique for fistula-in-ano” A. Rojanasakul ©2009

## 2.2 Current management principles

Gastrointestinal fistulae management is a complex procedure necessitating combined medical, radiological, endoscopic and surgical treatment modalities. The main principles are first to limit the associated complications, and then to reestablish continuity of the gastrointestinal tract. In the acute phase, infection should first be controlled, notably through percutaneous, endoscopic or surgical drainage of the abscesses [2,3]. In the presence of signs of sepsis, broad-spectrum antibiotherapy should be rapidly initiated then adapted to microbiological tests results [3,5]. The patient should then be provided with nutritional support adapted to the anatomical location of the fistula, to the volume and contents of fistula output, and to their overall state [2,3,5].

To promote spontaneous fistula healing and reduce morbidity, fistula output should be decreased, and in the case of external fistulae, exposure of the skin to fistula secretions should be avoided to limit local complications, such as pain or infection [3,5]. Despite proper conservative care, spontaneous healing, which usually occurs in 4 to 6 weeks, remains rare (about 20-30% of the cases for enterocutaneous fistulae [5], depending on fistula localization [71]), with a frequent chronicization of the fistula.

Definitive surgical closure is therefore often necessitated [5]. Only patients with an adequate nutritional status and an absence of sepsis are eligible for definitive surgical closure [3]. These invasive procedures notably include en-bloc resection of the fistula tract and the involved bowel segments with restoration of bowel continuity through anastomosis, and may be associated with severe complications such as fistula recurrence or short bowel syndrome [3,5,65,66]. Temporary proximal intestinal diversion may sometimes be required to control fistula output before surgical treatment, and the risk of permanent stoma remains very high [9].

**The treatment of primary fistulae arising in the context of Crohn's disease differs due to the presence of inflammation. Recent guidelines promote a combined medical and surgical therapy [86,87], to manage infectious complications, control luminal inflammation and promote fistula closure. Anti-TNF $\alpha$  biotherapies such as infliximab are currently recommended as first-line therapies for the induction and maintenance of remission in complex perianal fistulae in Crohn's disease [86].** However, results from the randomized controlled trial ACCENT II revealed significant rates of failure (30%) or loss of response (42%) [88] and data on their use in non-perianal fistulae remains limited [1].

1 Other biological agents, such as ustekinumab (anti-IL12 and IL23) or vedolizumab (anti-integrin  $\alpha_4\beta_7$ )  
2 are currently under exploration for fistulizing Crohn's disease, however there is still insufficient  
3 evidence to recommend their use in this indication [86].

4 Emerging therapies for persisting fistulae tend to advocate minimally invasive treatments through  
5 endoscopic placement of stents, through-the-scope or over-the-scope clips [89], or the use of various  
6 sealing agents such as fibrin glue [90], cyanoacrylic glue [91] or the thermoresponsive hydrogel  
7 poloxamer 407 [92]. Amongst them, the possibility of stem/stromal cell therapy has received growing  
8 attention over the years.  
9

### 11 3. Post-surgical fistulae: a new hope provided by stem/stromal cells

#### 13 3.1 Stem/stromal cells for the treatment of post-surgical fistulae – Evidence from animal studies

14 Due to the high morbidity and mortality rates still observed with post-surgical fistulae, preventing  
15 their development constitutes a very attractive treatment strategy [5,73].  
16

17 In this regard, the potential of stem/stromal cells to improve colonic anastomoses healing has been  
18 studied in rat models, however a preventive effect of stem cells on the development of anastomotic  
19 fistulae could not be found, though the low basal rates of post-surgical fistulae incidence in those  
20 models might have biased the results [93].  
21

22 Some better results were obtained in experimental studies of per-operative local cell sheet  
23 placement to prevent post-surgical pancreatic fistulae development [94–96]. Rat models of post-  
24 surgical pancreatic fistulae were established by splenic pancreatic duct transection [94,95] or gastric  
25 and splenic pancreatic ducts division with distal pancreatectomy and splenectomy [96]. One study  
26 investigated sheets formed with 1 million rat myoblasts on thermoresponsive culture plates [94].  
27 Another compared murine AdSC multilayered sheets in the presence or absence of mannose, formed  
28 with 0.5 million magnetically-labeled AdSCs in a collagen/Matrigel solution [95]. A third study  
29 compared rat AdSC and bone marrow-derived stromal cell (BM-SC) sheets, formed with 1.1 million  
30 cells on thermoresponsive culture plates [96]. With cell sheet treatment, less pancreatic leakage was  
31 observed in the early post-operative course, as evidenced by intra-abdominal fluid volume [96] and  
32 ascitic pancreatic amylase and lipase concentrations [94,95]. It also led to less associated intra-  
33 abdominal damage [94,95], less inflammatory cell infiltration [94–96], an increased tissue  
34 regeneration [96] and better survival at 1 month [94]. A different cell source [96] or the adjunction of  
35 mannose [95] did not significantly alter these results. Moreover, a control experiment using collagen  
36 sheets without cells enabled to exclude a mere physical effect as the mechanism of action of the cell  
37 sheets [95].  
38

39 Overall, these 3 studies tend to show some beneficial effects of cell sheets for the prevention of  
40 post-operative pancreatic fistula development. However, as underlined by Kim *et al.* [96], the  
41 experimental models used in those studies were not completely representative of the clinical situation.  
42 Therefore, further studies with a longer follow-up in more clinically relevant, large animal models are  
43 needed before an eventual clinical translation.  
44

45 The potential of stem/stromal cell therapy has also been studied in experimental models of  
46 enterocutaneous fistulae, this time as a curative treatment modality [97–100]. These experimental  
47 models, due to the absence of underlying pathology, were more representative of fistulae of post-  
48 surgical origin. In spite of extensive differences in terms of protocol, all 4 studies evidenced some  
49 promising results.  
50

51 A first study, in a rat model of enterocutaneous fistula established by performing a 5 mm  
52 enterotomy on the caecum and suturing it to the abdominal wall, investigated the local administration  
53 of 1 million human AdSCs either through local injection or through their adhesion to the suture  
54 material used [97]. At 21 days post-administration, the area of the fistula had decreased considerably  
55  
56  
57  
58  
59  
60  
61  
62  
63  
64  
65



1 in both groups treated with cells, especially in the suture group, compared to the control; however this  
2 was only evidenced by image analysis of successive photographs of the external opening, therefore  
3 these results, though promising, still remain very preliminary. In another study, gastrocutaneous  
4 fistulae were created in rabbits by gastrotomy, and, after two hours for leakage formation, the insertion  
5 of a tube in the lesion as a drain. 2 weeks later, the drain was removed and autologous stromal  
6 vascular fraction (SVF, containing AdSCs) was injected into the fistula tract [98]. At 3 weeks post  
7 treatment, examination of the external openings and histological analysis of the fistula tract evidenced  
8 patent tracts with draining, inflamed external openings in the untreated control group and near-  
9 complete healing in the SVF group. However, this study presents a limited precision preventing a fully  
10 objective comparison between both groups (for instance, the mean percentage of tract closure is given  
11 for each group without any indication on intra-group variability). A more thorough study evaluated the  
12 potential of human BM-SC sheets in a murine model of enterocutaneous fistulae created by  
13 caecostomy [99]. On the third post-operative day, bi-layered sheets, containing 2 million cells either  
14 labeled with both magnetic nanoparticles and a fluorescent dye or unlabeled, were positioned into the  
15 fistula orifice. 2 weeks after transplantation, clinical evaluation, MRI, histological analysis and probe-  
16 based confocal laser endomicroscopy results indicated better healing in both the labeled and unlabeled  
17 sheet groups compared to the control with less inflammation and fibrosis, enhanced  
18 microvascularisation, a lower fistula surface and a decreased maximal size of the fistulous orifice. The  
19 mechanism of action of the sheets was investigated by following the fate of labeled cells post  
20 transplantation and analyzing the expression of diverse signaling molecules, suggesting an indirect up-  
21 regulation of host trophic factors rather than a direct contribution of cells to fistula repair. Such  
22 experiments unraveling the fate and mechanism of action of the administered stem cells will be crucial  
23 in the long run for clinical translation. A fourth study evaluated the benefits of local injection of  
24 allogeneic rat AdSCs (4 million cells) in the perifistular tissues in a similar model of caeco-cutaneous  
25 fistula in the rat 4 weeks after fistula creation [100]. The control group was injected with a similar  
26 amount of saline instead. One month after treatment, 6 fistulae out of 16 had closed in the AdSC group  
27 against 1 out of 16 in the control group (p=0.033); and no deaths or treatment-related adverse effects  
28 were reported in either group. However, these clinical observations were not completed by either  
29 radiological or histological analyses of the fistulous tract.

30 Overall, current evidence from small animal models highlights the potential of the local  
31 administration of stromal cells as a curative treatment for enterocutaneous fistulae. However, more  
32 experimental studies are warranted in large animal models, with longer follow-up periods, thorough  
33 investigation of fistula healing through different modalities, and a more in-depth analysis of the  
34 mechanism of action through which cells contribute to fistula healing.

### 35 3.2 Stem/stromal cells for the treatment of post-surgical fistulae – Evidence from clinical trials

36 As of today, few clinical trials assessing the potential of stem/stromal cell therapy for the  
37 treatment of post-surgical fistulae have been conducted, however, current evidence, though scarce,  
38 remains promising.

39 A first open-label phase I clinical trial investigated the safety and efficacy of autologous adipose-  
40 derived cells (AdRCs) for post-surgical enterocutaneous fistulae [101]. Autologous AdRCs (similar to  
41 SVF, non-expanded mononuclear cells from the adipose tissue containing a heterogeneous cell  
42 population with relatively high concentrations of AdSCs) were isolated from gluteal subcutaneous  
43 adipose tissue samples using the Celution® system. 6 patients with persisting refractory  
44 enterocutaneous fistulae secondary to gastrointestinal surgery were included. All patients had  
45 underlying inflammatory bowel disease (4 cases of ulcerative colitis, including one with a concomitant  
46 rectal carcinoid, and 2 cases of Crohn's disease), and had developed enterocutaneous fistulae  
47 following total proctocolectomy with ileal pouch-anal anastomosis, or low anterior resection, or  
48  
49  
50  
51  
52  
53  
54  
55  
56  
57  
58  
59  
60  
61  
62  
63  
64  
65

1 ileocecal resection (with or without anterior resection). Fistula duration was 5-44 months. Treatment  
2 was administered locally, with half of the cells injected in the neighboring tissues (endoscopically and  
3 percutaneously), and the other half mixed with fibrin glue and injected into the fistula tract to seal it,  
4 before closure of the external opening. The dose ranged from 9.6 to 142 million AdRCs. Fistula  
5 closure was defined as the cessation of drainage with no recurrence of an abscess or fistula observed at  
6 endoscopy or computed tomography. 5 patients out of 6 achieved fistula closure at 4 weeks, which  
7 persisted to the end of the follow-up period (24 weeks) associated with ileostomy closure in 4 patients  
8 and the possibility to resume oral food intake in 1. The 6<sup>th</sup> patient achieved complete re-  
9 epithelialization only at week 24 and presented a recurrence at 10 months due to pouchitis relapse. No  
10 serious adverse effect related to treatment was reported. Adverse effects related to treatment consisted  
11 in pain and mild subcutaneous haemorrhage linked to liposuction. Overall, this pilot clinical trial  
12 reveals encouraging preliminary results in terms of safety and efficacy of local AdRC therapy in this  
13 indication, warranting further investigation to confirm them at a larger scale in randomized, placebo-  
14 controlled clinical trials.

15  
16  
17  
18 Another phase I clinical trial, led by W.A. Faubion at the Mayo Clinic, investigating local AdSC  
19 administration via a bioabsorbable fistula plug for post-surgical fistula treatment has recently been  
20 completed (n°NCT02807389). These results are yet to be published. Their protocol was based on  
21 previous clinical trials investigating AdSC delivery through a fistula plug for the treatment of  
22 **fistulizing Crohn's disease (perianal and rectovaginal fistulae [102,103])** and cryptoglandular perianal  
23 fistulae [104]. 15 patients were to be enrolled. The main inclusion criteria consisted in the presence of  
24 a single-tract persisting symptomatic fistula secondary to gastro-esophageal resection, enteric or  
25 colonic resection, or bariatric surgeries and refractory to standard therapy (including at least one  
26 endoscopic attempt at fistula closure). Patients with inflammatory bowel diseases, with a malignancy  
27 or previous irradiation at the location of the fistula, with sepsis, immunosuppressive treatments or  
28 chemotherapy were excluded. Other exclusion criteria included non-enterocutaneous, multiple or end  
29 fistulae, fistula tract below 2 cm in length and/or over 1 cm in diameter, fistula opening into an  
30 abdominal wall defect or fistula output over 2L per day. The fistula plug, loaded with 20 million  
31 AdSCs, was to be placed endoscopically. The follow-up period was scheduled to extend for 18  
32 months. The primary endpoint was to be safety and tolerability, and efficiency was to be evaluated as a  
33 secondary endpoint through the number of patients with fistula closure (defined as the cessation of  
34 drainage).

#### 4. Extracellular vesicles for the treatment of post-surgical fistulae

45  
46  
47  
48  
49  
50  
51  
52  
53  
54  
55  
56  
57  
58  
59  
60  
61  
62  
63  
64  
65  
66  
67  
68  
69  
70  
71  
72  
73  
74  
75  
76  
77  
78  
79  
80  
81  
82  
83  
84  
85  
86  
87  
88  
89  
90  
91  
92  
93  
94  
95  
96  
97  
98  
99  
100  
101  
102  
103  
104  
105  
106  
107  
108  
109  
110  
111  
112  
113  
114  
115  
116  
117  
118  
119  
120  
121  
122  
123  
124  
125  
126  
127  
128  
129  
130  
131  
132  
133  
134  
135  
136  
137  
138  
139  
140  
141  
142  
143  
144  
145  
146  
147  
148  
149  
150  
151  
152  
153  
154  
155  
156  
157  
158  
159  
160  
161  
162  
163  
164  
165  
166  
167  
168  
169  
170  
171  
172  
173  
174  
175  
176  
177  
178  
179  
180  
181  
182  
183  
184  
185  
186  
187  
188  
189  
190  
191  
192  
193  
194  
195  
196  
197  
198  
199  
200  
201  
202  
203  
204  
205  
206  
207  
208  
209  
210  
211  
212  
213  
214  
215  
216  
217  
218  
219  
220  
221  
222  
223  
224  
225  
226  
227  
228  
229  
230  
231  
232  
233  
234  
235  
236  
237  
238  
239  
240  
241  
242  
243  
244  
245  
246  
247  
248  
249  
250  
251  
252  
253  
254  
255  
256  
257  
258  
259  
260  
261  
262  
263  
264  
265  
266  
267  
268  
269  
270  
271  
272  
273  
274  
275  
276  
277  
278  
279  
280  
281  
282  
283  
284  
285  
286  
287  
288  
289  
290  
291  
292  
293  
294  
295  
296  
297  
298  
299  
300  
301  
302  
303  
304  
305  
306  
307  
308  
309  
310  
311  
312  
313  
314  
315  
316  
317  
318  
319  
320  
321  
322  
323  
324  
325  
326  
327  
328  
329  
330  
331  
332  
333  
334  
335  
336  
337  
338  
339  
340  
341  
342  
343  
344  
345  
346  
347  
348  
349  
350  
351  
352  
353  
354  
355  
356  
357  
358  
359  
360  
361  
362  
363  
364  
365  
366  
367  
368  
369  
370  
371  
372  
373  
374  
375  
376  
377  
378  
379  
380  
381  
382  
383  
384  
385  
386  
387  
388  
389  
390  
391  
392  
393  
394  
395  
396  
397  
398  
399  
400  
401  
402  
403  
404  
405  
406  
407  
408  
409  
410  
411  
412  
413  
414  
415  
416  
417  
418  
419  
420  
421  
422  
423  
424  
425  
426  
427  
428  
429  
430  
431  
432  
433  
434  
435  
436  
437  
438  
439  
440  
441  
442  
443  
444  
445  
446  
447  
448  
449  
450  
451  
452  
453  
454  
455  
456  
457  
458  
459  
460  
461  
462  
463  
464  
465  
466  
467  
468  
469  
470  
471  
472  
473  
474  
475  
476  
477  
478  
479  
480  
481  
482  
483  
484  
485  
486  
487  
488  
489  
490  
491  
492  
493  
494  
495  
496  
497  
498  
499  
500  
501  
502  
503  
504  
505  
506  
507  
508  
509  
510  
511  
512  
513  
514  
515  
516  
517  
518  
519  
520  
521  
522  
523  
524  
525  
526  
527  
528  
529  
530  
531  
532  
533  
534  
535  
536  
537  
538  
539  
540  
541  
542  
543  
544  
545  
546  
547  
548  
549  
550  
551  
552  
553  
554  
555  
556  
557  
558  
559  
560  
561  
562  
563  
564  
565  
566  
567  
568  
569  
570  
571  
572  
573  
574  
575  
576  
577  
578  
579  
580  
581  
582  
583  
584  
585  
586  
587  
588  
589  
590  
591  
592  
593  
594  
595  
596  
597  
598  
599  
600  
601  
602  
603  
604  
605  
606  
607  
608  
609  
610  
611  
612  
613  
614  
615  
616  
617  
618  
619  
620  
621  
622  
623  
624  
625  
626  
627  
628  
629  
630  
631  
632  
633  
634  
635  
636  
637  
638  
639  
640  
641  
642  
643  
644  
645  
646  
647  
648  
649  
650  
651  
652  
653  
654  
655  
656  
657  
658  
659  
660  
661  
662  
663  
664  
665  
666  
667  
668  
669  
670  
671  
672  
673  
674  
675  
676  
677  
678  
679  
680  
681  
682  
683  
684  
685  
686  
687  
688  
689  
690  
691  
692  
693  
694  
695  
696  
697  
698  
699  
700  
701  
702  
703  
704  
705  
706  
707  
708  
709  
710  
711  
712  
713  
714  
715  
716  
717  
718  
719  
720  
721  
722  
723  
724  
725  
726  
727  
728  
729  
730  
731  
732  
733  
734  
735  
736  
737  
738  
739  
740  
741  
742  
743  
744  
745  
746  
747  
748  
749  
750  
751  
752  
753  
754  
755  
756  
757  
758  
759  
760  
761  
762  
763  
764  
765  
766  
767  
768  
769  
770  
771  
772  
773  
774  
775  
776  
777  
778  
779  
780  
781  
782  
783  
784  
785  
786  
787  
788  
789  
790  
791  
792  
793  
794  
795  
796  
797  
798  
799  
800  
801  
802  
803  
804  
805  
806  
807  
808  
809  
810  
811  
812  
813  
814  
815  
816  
817  
818  
819  
820  
821  
822  
823  
824  
825  
826  
827  
828  
829  
830  
831  
832  
833  
834  
835  
836  
837  
838  
839  
840  
841  
842  
843  
844  
845  
846  
847  
848  
849  
850  
851  
852  
853  
854  
855  
856  
857  
858  
859  
860  
861  
862  
863  
864  
865  
866  
867  
868  
869  
870  
871  
872  
873  
874  
875  
876  
877  
878  
879  
880  
881  
882  
883  
884  
885  
886  
887  
888  
889  
890  
891  
892  
893  
894  
895  
896  
897  
898  
899  
900  
901  
902  
903  
904  
905  
906  
907  
908  
909  
910  
911  
912  
913  
914  
915  
916  
917  
918  
919  
920  
921  
922  
923  
924  
925  
926  
927  
928  
929  
930  
931  
932  
933  
934  
935  
936  
937  
938  
939  
940  
941  
942  
943  
944  
945  
946  
947  
948  
949  
950  
951  
952  
953  
954  
955  
956  
957  
958  
959  
960  
961  
962  
963  
964  
965  
966  
967  
968  
969  
970  
971  
972  
973  
974  
975  
976  
977  
978  
979  
980  
981  
982  
983  
984  
985  
986  
987  
988  
989  
990  
991  
992  
993  
994  
995  
996  
997  
998  
999  
1000

1 gel+EVs group. Of note, a decrease in inflammatory cell infiltration and in fibrosis along with  
2 increased wound healing and angiogenesis were observed in the treatment groups compared to the  
3 control, but this was significant only for the gel+EVs group. Overall, this study provided the first *in*  
4 *vivo* evidence of the interest of local EV administration for the treatment of post-surgical digestive  
5 fistulae. A second study in a rat model of post-surgical enterocutaneous fistulae created by caecostomy  
6 tended to confirm these results with a decrease in fistula diameter and drainage after administration of  
7  $6 \times 10^{11}$  murine C3H/10T1/2- derived EVs in poloxamer 407 compared to poloxamer 407 alone or  
8 saline [58]. A decrease in fibrosis and inflammation along with an increased angiogenesis could also  
9 be evidenced histologically. Moreover, a biodistribution study over 7 days after radiolabeling with  
10 [ $^{89}\text{Zr}$ ] zirconium evidenced that local EV administration within poloxamer 407 enabled a better  
11 retention of EVs at the fistula site than either local injection in saline or intravenous administration  
12 [58]. However, further studies are warranted to replicate these promising results with higher numbers  
13 of animals and longer follow-up periods. Notably, a more thorough investigation of the mechanism of  
14 action of EVs should be performed before any attempts at a potential clinical translation. Additionally,  
15 it would be interesting to vary the amount of EVs administered so as to study a potential dose/response  
16 relationship, to compare the therapeutic potential of EVs with that of parent cells in this indication, or  
17 to further investigate potential links between mode of delivery, EV retention within the fistula tract  
18 and therapeutic effect.

## 24 5. Stem/stromal cells and EVs for the treatment of fistulizing Crohn's disease

### 26 5.1 Preclinical models of fistulizing Crohn's disease for stem/stromal cell therapy applications

27 A number of experimental models of digestive fistulae have been established over the years to  
28 gain a more thorough understanding of the pathophysiology of fistulizing diseases, explore potential  
29 new therapies and unravel the mechanisms of action of the therapies used in clinical settings  
30 (Supplementary Table 2). However, most of them are not relevant for the study of Crohn's-related  
31 fistulae due to the lack of underlying inflammatory bowel diseases.

32 A first model of fistulizing Crohn's disease was reported by Rivera-Nieves *et al.* in 2003 in  
33 rodents [105]. Mice of the Samp1/YitFc strain spontaneously develop severe chronic ileitis whose  
34 histological features strongly resemble those of Crohn's disease. Less than 5% of these mice  
35 additionally presented perianal involvement, which included the occurrence of ano-cutaneous fistulae  
36 in 40% of the cases. Therefore, though this mouse strain certainly constitutes an interesting model of  
37 Crohn's disease, its relevance for the development of new therapies for perianal fistulizing disease is  
38 hampered by this limited overall fistula incidence.

39 Canine anal furunculosis has also been suggested as a relevant model for perianal fistulizing  
40 Crohn's disease [106,107], although the cutaneous sinus tracts do not usually communicate with the  
41 rectum in this condition, unlike in Crohn's fistula-in-ano [107]. However, owing to the preclusion of  
42 systematic autopsy, the financial costs and the logistics involved in trials with companion animals  
43 [108], its widespread use for preclinical pharmacological studies for the treatment of fistulizing  
44 Crohn's disease might not be feasible.

45 In 2019, Flacs *et al.* developed an experimental model of perianal fistulizing Crohn's disease by  
46 inserting a surgical thread for 28 days across the anal sphincter of rats with 2,4,6-  
47 trinitrobenzenesulfonic acid (TNBS)-induced chemical colitis [109], with biweekly instillations of  
48 TNBS to maintain inflammation. Persistence of the fistulous tract 1 week post thread removal was  
49 proven by MRI in all 9 animals, and the radiopathological findings strongly resembled those observed  
50 in perianal fistulizing Crohn's disease. The main limitation of this model, besides those classically  
51 associated with the TNBS colitis model [110,111], is the lack of study of the persistence of the fistula  
52 tract beyond one week post thread removal. Nevertheless, provided these results can be validated in  
53  
54  
55  
56  
57  
58  
59  
60  
61  
62  
63  
64  
65

1 further studies, this straightforward fistula induction protocol and these high fistula persistence rates at  
2 1 week render it very interesting for the investigation of new therapies for Crohn's fistulae.

3 Finally, a mouse model of enterocutaneous fistula was established in 2019 by the subcutaneous  
4 xenotransplantation of fetal human gut in immunodeficient mice, which resulted in spontaneous fistula  
5 development between the transplant and the skin in 17% of the cases, associated with lymphocytic  
6 enteritis and histopathological features close to those of fistulizing Crohn's disease [112]. The  
7 relatively low fistulization rate and the ethical and practical concerns raised by the use of human fetal  
8 gut are the two main drawbacks to the widespread use of this model. However, it remains the only  
9 preclinical model of enterocutaneous Crohn's-associated fistulae described to this day.

10 To the best of our knowledge, only one study investigated the potential of stem/stromal cell  
11 therapy in an animal model of fistulizing Crohn's disease [106]. This open-label, uncontrolled, single-  
12 center clinical trial included 6 dogs with canine anal furunculosis resistant to standard therapy  
13 (cyclosporine). Its main endpoints were the number and depth of fistulae at 6 months post  
14 stem/stromal cell therapy and the average dose of cyclosporine necessary to keep the dogs in  
15 remission. The dogs were treated with a single local injection of 20 million human embryonic stem  
16 cells (hESC)-derived mesenchymal stem/stromal cells and fibrin glue. No adverse event was reported  
17 except one mild perianal erythema, and no open fistula or ulcer was observed in any of the dogs at 3  
18 months post treatment. Two recurrences were reported at 6 months of follow-up and the mean dose of  
19 cyclosporine received by the dogs did not decrease significantly. Overall, this study demonstrated the  
20 safety and efficiency of the mentioned approach as an add-on therapy to immunosuppressive drugs for  
21 the treatment of perianal fistulizing Crohn's disease in a large animal model. Its main limitations  
22 reside in the low number of animals included, the lack of a control group, and the use of SCs derived  
23 *in vitro* from hESC which might hamper any eventual clinical translation.

## 30 5.2 Stem/stromal cell therapy for the treatment of fistulizing Crohn's disease – Evidence from 31 clinical trials 32

33 Since the first case report in 2003 showing the potential of local autologous AdSCs injection for  
34 the repair of recurrent Crohn's-related rectovaginal fistula [113], a number of clinical studies have  
35 investigated the safety and efficacy of stem cell therapy in fistulizing Crohn's disease (Table 1,  
36 [102,103,114–136]). Notably, in 2009, a multicenter, open-label, controlled phase II clinical trial on  
37 49 patients with perianal fistulae either Crohn's-related (n=14) or of cryptoglandular origin (n=35)  
38 investigated the potential of autologous AdSCs as an add-on therapy to fibrin glue and demonstrated a  
39 better healing in the AdSC group (71% in the Crohn's disease subset) than in the control group (14%  
40 in the Crohn's disease subset) 8 weeks after treatment, with a recurrence rate of only 17.6% at one  
41 year [115]. An uncontrolled multicenter phase II study from another group confirmed those  
42 encouraging results in 2013 with complete healing observed in 28 patients out of 42 (intention-to-treat  
43 analysis, 66.7%) at 8 weeks [122] with no recurrence at 2 years in 83.3% of the cases [124]. Other  
44 trials explored the local injection of autologous AdSCs in conjunction with serum [136] or platelet-  
45 rich plasma [131,132] instead of fibrin glue (Table 1). Interestingly, the combination of cell  
46 administration with another sphincter-preserving technique for Crohn's-associated fistula repair has  
47 also been studied: indeed, Dietz *et al.* and Lightner *et al.* reported the use of autologous AdSC-coated  
48 fistula plugs in phase I clinical trials, for the repair of perianal and rectovaginal fistulizing Crohn's  
49 disease (Table 1, [102,103]).

50 The use of autologous SVF or AdRCs, both obtained from adipose tissue without the need for cell  
51 expansion, and/or of autologous adipose tissue injection for fistulizing Crohn's disease has also been  
52 described [116,129,133–135,137–139].

53 In 2011, a pilot phase I/II clinical trial of multiple BM-SC injections for the treatment of perianal  
54 and enterocutaneous Crohn's-related fistulae on 10 patients evidenced complete healing at 1 year in 7  
55  
56  
57  
58  
59  
60  
61  
62  
63  
64  
65

1 patients and a decrease of >50% of fistula drainage in 3 [118]. Allogeneic BM-SCs injections have  
2 **also been investigated in refractory perianal fistulizing Crohn's disease in a double-blind, placebo-**  
3 **controlled, dose-escalating clinical trial [126], and were found to induce a significantly better healing**  
4 **at week 6 at a dose of 30 million cells compared to placebo (though the low numbers of patients**  
5 **included impeded the generalization of this difference to subsequent endpoints).**

6 Two phase I/IIa clinical trials have been conducted on patients with perianal [121] or rectovaginal  
7 [128] **fistulizing Crohn's disease to study the safety and efficacy of allogeneic AdSCs local injection**  
8 **without fibrin glue adjunction.** For perianal fistulae, at 24 weeks post injection, a total of 9 patients  
9 (56.3% of the full analysis population) demonstrated closure of the external openings with combined  
10 remission – defined as the complete re-epithelialisation of external orifices, the absence of fistula  
11 drainage, either spontaneous or upon compression, and the absence of collections above 2cm  
12 communicating with the treated fistula tract at MRI – found in 6 patients (30% of the full analysis  
13 population) [121]. For rectovaginal fistulae, the final efficacy rate was of 60% (3 patients healed out of  
14 5 at 52 weeks of follow-up), however the reliability of those results can be questioned since half of the  
15 included patients dropped out of the study before completing the follow-up period due to a flare-up of  
16 luminal disease and/or the need for biological medication [128]. A pilot, dose-escalation trial from  
17 another group in 2016 investigated the safety and efficacy of allogeneic AdSCs local injection with  
18 fibrin glue for **perianal fistulizing Crohn's disease.** However, the limited number of patients included  
19 in each group precluded them from drawing any firm conclusion on the effectiveness of the 2 different  
20 concentrations of cells they tested [127].

21 The first results from the pivotal ADMIRE-CD trial (n°NCT01541579), a large, phase III,  
22 randomised, double-blind, placebo-controlled, multicenter (49 different centers in 8 countries) clinical  
23 trial evaluating the potential of allogeneic AdSCs **for the treatment of refractory complex Crohn's-**  
24 **associated perianal fistula** were published in 2016 [130]. 212 patients were included, and received a  
25 single local injection of 120 million allogeneic AdSCs (n=107) or an equivalent volume of saline  
26 (24mL, n=105). The primary endpoint of combined remission at week 24 was achieved in 50% (53 out  
27 of 107 patients) in the AdSC group versus 34% of the control group (36 out of 105 patients, p=0.024)  
28 in the intention-to-treat analysis. Higher clinical remission rates (53% versus 41%) and clinical  
29 response rates (66% versus 53%) were observed by week 24 in the AdSC group than in the control,  
30 however, the difference was not significant. 131 patients from the phase III trial completed a long-term  
31 follow-up study (70 in the treatment group and 61 in the placebo group). This study evidenced a lower  
32 recurrence rate in the AdSC group than in the control group at 52 weeks of follow-up [140]. These  
33 **positive efficacy results for Crohn's-associated fistulae** have mainly been attributed to the  
34 immunomodulatory properties of SCs, and notably to indoleamine 2,3-dioxygenase-dependant  
35 regulation of T-cell activity[141,142].

36 Most studies have reported a good safety profile of local stem/stromal cells administration for the  
37 treatment of **fistulizing Crohn's disease (Table 1,[102,103,114–136]).** In particular, the ADMIRE-CD  
38 trial reported treatment-related adverse events in 18 out of 103 patients included in the safety analysis  
39 in the AdSC group (17%) versus 30 out of 102 in the control group (29%), including 5 cases of serious  
40 treatment-related adverse events in the AdSC group against 7 in the control, by week 24 [130]. After  
41 52 weeks of follow-up, a total of 21 treatment-related adverse effects had been described out of 103  
42 patients (20.4%) in the AdSC group versus 27 out of 102 (26.5%) in the control, including 7 cases of  
43 serious treatment-related adverse events in each group [140]. One of the greatest concerns with  
44 stem/stromal cell therapy is neoplasia development. Biopsies taken from the injection area of 5  
45 patients included in a phase II clinical trial of autologous AdSC and fibrin glue injection for the  
46 treatment of complex perianal fistulae [115] showed no evidence of neoplastic tissues up to 2 years  
47 after treatment [143], and similarly, no signs of cytologic transformation were observed in biopsies  
48 taken at 7 months and 1 year from treatment with autologous AdSCs of, respectively, an

1 enterocutaneous fistula and a rectovaginal fistula in the initial phase I trial of 2005 [114]. However,  
2 following allogeneic BM-SCs injections for the treatment of refractory perianal fistulizing Crohn's  
3 disease, 2 cases of neoplasia were reported: a cecal adenocarcinoma with peritoneal carcinomatosis  
4 >15 months after the intervention [126] and a rectal Epstein-Barr virus-associated B-cell  
5 lymphoproliferative disease 4 years after the intervention [144]. In the first case, a family  
6 predisposition was suggested while for the rectal lymphoproliferative disease, it was imputed to  
7 **Crohn's disease and prolonged immunosuppressive treatments without totally excluding a potential**  
8 **contribution of allogeneic BM-SC injection.** Recently, a case series gave some first encouraging  
9 insights on the safety profile of SC therapy in terms of fertility and pregnancies [145].

10 Several systematic literature reviews and meta-analyses in the past 3 years underlined the  
11 acceptable safety profile of **SC therapy for perianal fistulizing Crohn's disease** [146–149]. For  
12 instance, a meta-analysis from 3 controlled trials by Lightner *et al.* reported an absence of significant  
13 increase of either adverse events (OR = 1.07, 95% confidence interval [0.61;1.89], p=0.81) or serious  
14 adverse events (OR= 0.53, 95% confidence interval [0.28;0.98]; p=0.04) after treatment with SCs  
15 [148].

16 Those positive results in terms of efficacy and security led to the market approval by the  
17 European Medicines Agency of expanded allogeneic AdSCs for the treatment of refractory complex  
18 **Crohn's-associated perianal fistulae** in 2018 (market authorization n° EU/1/17/1261/001).

### 24 5.3 Extracellular vesicles therapy for fistulizing Crohn's disease – A future direction?

25 Evidence from small animal models tends to indicate a potentially beneficial effect of systemic,  
26 intra-peritoneal or local stem cells-derived EVs administration for luminal Crohn's disease [150–152].  
27 Thus, in view of emerging experimental data on the use of EVs for post-surgical gastrointestinal  
28 fistula treatment [57,58], we consider that EV therapy for perianal and non-perianal fistulizing  
29 Crohn's disease could constitute an interesting future preclinical research axis.

## 33 6. Limits, challenges and perspectives for clinical translation

### 34 6.1 Defining the optimal cell source, formulation and administration protocol – An ongoing 35 challenge

36 As of today, the question of the optimal formulation and  
37 administration protocol for stem/stromal cell therapy  
38 products for post-surgical and/or Crohn's-associated  
39 digestive fistula treatment remains to be solved. Indeed,  
40 though clinical trials have investigated a variety of potential  
41 cell sources (adipose-derived versus bone marrow-derived,  
42 autologous versus allogeneic, with or without expansion,  
43 etc), no controlled trial has formally compared them with  
44 one another to investigate potential differences in terms of  
45 safety and/or efficacy. In the absence of such evidence,  
46 other considerations, such as availability, number and cost  
47 of procedures, should be taken into account for clinical  
48 studies or compassionate use programs. AdSCs can usually  
49 be obtained at high yields through liposuction [14];  
50 however, this might not be feasible in some patients with  
51 insufficient levels of adipose tissue. The procedure to  
52 harvest BM-SCs, requiring bone marrow aspiration, is classically more invasive [14]. While  
53 autologous stem/stromal cells are usually considered safer, results from clinical trials of allogeneic  
54  
55  
56  
57  
58  
59  
60  
61  
62  
63  
64  
65

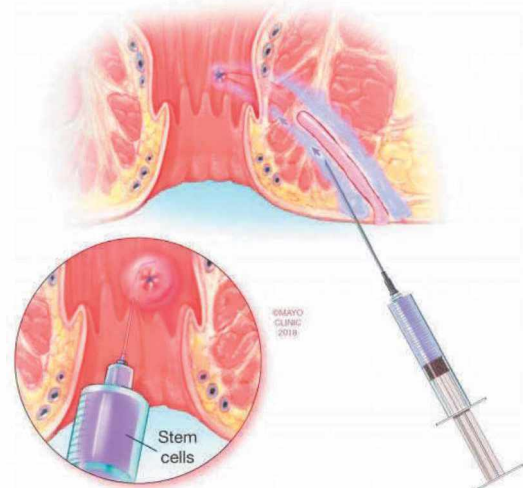


Figure 4: Stem cell application to the internal orifice and fistula tract walls according to standardized protocols. Reprinted with permission from Springer, [153] ©2018

ones administrated **in perianal fistulizing Crohn's disease demonstrated an acceptable safety profile** [121,126–128,130,140]. Although some patients developed donor-specific antibodies directed against HLA-I, it was not correlated with therapeutic efficacy [153]. The use of an allogeneic cell source might therefore present several advantages, such as immediate, off-the-shelf availability, avoiding potential age-related or disease-related effects on stem/stromal **cells' therapeutic potential**, and limiting the number of interventions performed on the patient [121,126]. The use of autologous SVF/AdRCs avoids the need for cumbersome, expensive expansion procedures, while permitting re-implantation in the same day, thus limiting the therapeutic delay observed with expanded autologous cells. Moreover, their isolation can be performed in completely closed systems, which will further decrease the risk of sample contamination [134,135,154].

The question of the best administration protocol to maximize therapeutic efficacy while limiting complications and invasiveness constitutes yet another fundamental consideration. Of note, all trials so far have focused on a local administration route for fistula treatment. Indeed, a local administration would seem more relevant in this indication, by limiting off-target effects [155] and enabling the delivery of larger numbers of cells without additional risks of thrombus formation and pulmonary embolism, as sometimes observed after systemic high dose cell treatment [36,156]. Several clinical trials have investigated a concomitant use of tissue sealing agents such as fibrin glue. Fibrin glue consists in a solution of human fibrinogen, which will form a clot upon adjunction of thrombin and calcium chloride [157]. It has shown a good safety profile but a limited efficacy as a stand-alone treatment for gastrointestinal fistulae [3,73,87,158]. In stem/stromal cell therapy trials, both its use solely as a fistula sealing agent after local cell injection in the perifistular tissues [114,115,120] or as a scaffold to retain part of the cells within the fistula tract [101,116,122,124,127] have been described. However, the added benefits of these approaches to stem/stromal cell therapy alone are yet to be investigated. The administration of AdSC-coated fistula plugs has been described for several different fistula types to permit sustained local retention of high concentrations of cells [102–104]. Though the theoretic rationale behind this approach is certainly attractive, caution is advised in regard of the limited efficacy results reported with fistula plug placement as a treatment for gastrointestinal fistulae [87,158], mostly imputable to early plug extrusion. Of note, this adverse effect, which would lead to a complete loss of all cells administered in this manner prior to fistula healing, has already been reported in the early phase trials of AdSC-coated fistula plugs [103,104]. The question of the benefits of multiple administrations and their intervals, which would seem relevant due to the chronicity of gastrointestinal fistulae, has already been raised [115,118,119,121,122,124,125,128] but never properly studied. However, in view of the costs linked with cell therapy and the demonstration of long-term efficacy in the ADMIRE-CD phase 3 randomized controlled trial after a single dose [130,140], it would seem more relevant to consider a repeat administration only in case of a failure of the first one, as was done in the aforementioned trials. In spite of the variety of administration protocols described in clinical trials, adequate prior seton drainage [102,103,115,119,126,130–132,134–136,140], thorough tract curettage and irrigation [101–103,114–116,118–122,124–128,130–132,134–136,140], and internal opening closure through sutures and/or an advancement flap [114,115,119–122,124,126–128,130–132,134–136,140] constitute commonly accepted preliminary steps, to, respectively, control sepsis, destroy the granulation tissues or neo-epithelialized tissues lining the fistula tract, and prevent the passage of gastrointestinal luminal contents through the tracts. In the **case of perianal fistulizing Crohn's disease, some efforts have been made towards more standardized administration protocols** [155,159]. Both articles stressed the importance of the aforementioned steps, along with the necessity to thoroughly map and identify the fistula tract and openings prior to treatment for an optimal administration. A precise injection protocol was advocated, with injection of half of the cells around the closed internal orifices and of the other half in the perifistular tissues along the fistula walls (**Figure 4**). On the other hand, injection of the cells directly within the fistula lumen

was strongly discouraged in both articles since it would result in their being washed out of the tract. Other important considerations notably included favoring preoperative antibiotherapies, anesthesia techniques and antiseptic agents that will not affect the viability and therapeutic potential of the cell therapy product [155]. A more widespread use of such standardized protocols, validated in clinical trials, would enable an easier comparison of efficacy results between subsequent studies. They may also constitute the first golden standards to serve as a reference for studies aiming at optimizing the administration strategy.

1  
2  
3  
4  
5  
6  
7  
8  
9  
10  
11  
12  
13  
14  
15  
16  
17  
18  
19  
20  
21  
22  
23  
24  
25  
26  
27  
28  
29  
30  
31  
32  
33  
34  
35  
36  
37  
38  
39  
40  
41  
42  
43  
44  
45  
46  
47  
48  
49  
50  
51  
52  
53  
54  
55  
56  
57  
58  
59  
60  
61  
62  
63  
64  
65



16  
17  
18  
19  
20  
21  
22  
23  
24  
25  
26  
27  
28  
29  
30  
31  
32  
33  
34  
35  
36  
37  
38  
39  
40  
41  
42  
43  
44  
45  
46  
47  
48  
49  
50  
51  
52  
53  
54  
55  
56  
57  
58  
59  
60  
61  
62  
63  
64  
65

**Table 1: Stem cell therapy trials for Crohn's-associated fistulae.** Case reports, case series which do not present a detailed protocol, and studies focusing on the sole administration of adipose tissue were not included. Only the adverse events (AE) and serious adverse events (SAE) that were originally reported as related or possibly related to treatment (stem cell administration or control treatment) are accounted for. Except when stated otherwise, efficacy data are given with regard to the number of patients and not to the number of fistulae. Partial responses (*i.e.* a decrease in fistula output) are not reported here. Recurrence is defined as the reopening of a previously healed fistula. **RCT**: randomized controlled trial; **RVF**: rectovaginal fistulae; **PF**: perianal fistulae; **ECF**: enterocutaneous fistulae; **AdSC**: adipose-derived stromal cells; **SVF**: stromal vascular fraction; **BM-SC**: bone marrow-derived stromal cells. **N.A.**: not applicable; **FG**: fibrin glue. \*: the safety and efficacy data and follow-up periods presented between brackets correspond to subsequent long term follow-up studies prolonging the original trial. \*\*: these results correspond to the whole study population, which also included PF of cryptoglandular origin. \*\*\*: Half of the patients were excluded during the follow-up period due to severe luminal disease flare-up.

Study	Fistulae	Treatment	Source	Administration	Dose of cells	Treatment-related AE	Treatment-related SAE	Complete healings	Recurrences	Follow-up	Reference(s)
Phase I	RVF/PF/ECF	AdSC (n=4)	Autologous	Local ± FG (1×)	3-30×10 <sup>6</sup>	None	None	75% of the fistulae	N.A.	12-30 months	[114]
Phase II*	PF	AdSC (n=7)	Autologous	Local + FG (1-2×)	2×10 <sup>7</sup> ± 4×10 <sup>7</sup>	None	None	5 out of 7	17.6%** (5 out of 12**)	1 year (approx. 40 months)	[115,119]
		Control (n=7)	N.A.		N.A.	6**	1	1 out of 7	0 (1 out of 3**)		
2 case series	ECF	AdSC (n=2)	Autologous	Local + FG (1×)	3.5-30×10 <sup>6</sup>	None	None	75%	0	1 year	[116]
		SVF (n=4)			5.5-176×10 <sup>6</sup>			25%	0		
Phase I/II*	PF/ECF	BM-SC (n=10)	Autologous	Local (2-5×)	1.5-3×10 <sup>7</sup>	None (none)	None (none)	7 out of 10	0 (63% after 2 years)	1 year (5 years)	[118,125]
Phase I	PF	AdSC (n=10)	Autologous	Local + FG (1×)	1-4×10 <sup>7</sup> /mL	None	None	3 out of 10	0	8 weeks ± 6 months	[120]
Phase I/IIa	PF	AdSC (n=24)	Allogeneic	Local (1-2×)	2×10 <sup>7</sup> ± 4×10 <sup>7</sup>	5	2	9 out of 24	N.A.	24 weeks	[121]
Phase II*	PF	AdSC (n=42)	Autologous	Local + FG (1-2×)	3-6×10 <sup>7</sup> /cm fistula length ± 1.5× as much	None (none)	None (none)	28 out of 42	3 out of 26 (4 out of 24)	8 weeks up to a year (2 years)	[122,124]
RCT	PF	BM-SC (n=15)	Allogeneic	Local (1×)	1×10 <sup>7</sup>	None	None	6 PF out of 9	0	24 weeks	[126]
					3×10 <sup>7</sup>	None	None	6 PF out of 7	0		
					9×10 <sup>7</sup>	None	None	2 PF out of 7	0		
					N.A.	None	None	3 PF out of 9	0		
Pilot	PF	AdSC (n=6)	Allogeneic	Local + FG (1×)	1-3×10 <sup>7</sup> /mL	None	None	3 out of 6	0	8 months	[127]
Phase 3 RCT*	PF	AdSC (n=107)	Allogeneic	Local (1×)	1.2×10 <sup>8</sup>	18 (21)	5 (7)	53 out of 107	0 (13/52)	24 weeks (52 weeks)	[130,140]
		Control (n=105)	N.A.		N.A.	30 (27)	7 (7)	36 out of 105	0 (15/34)		
Phase I/IIa	RVF	AdSC (n=10)	Allogeneic	Local (1-2×)	2×10 <sup>7</sup> ± 4×10 <sup>7</sup>	None	None	3 out of 5***	N.A.***	52 weeks	[128]
Phase I	PF	AdSC (n=12)	Autologous	Local on a fistula plug (1×)	2×10 <sup>7</sup>	None	None	10 out of 12	0	6 months	[102]
Pilot	PF/pouch-vaginal	AdSC (n=9)	Autologous	Local + platelet-rich plasma (1×)	1-2×10 <sup>8</sup>	None	None	10 fistulae out of 11	0	21-37 months	[131,132]
Phase I	PF	SVF (n=10)	Autologous	Local + adipose tissue (1×)	1.09-4.78×10 <sup>7</sup>	5	1	6 out of 10	0	48 weeks	[134,135]
Phase I	RVF	AdSC (n=5)	Autologous	Local on a fistula plug (1×)	3.5×10 <sup>7</sup>	None	None	0 out of 5	0	6 months	[103]
RCT	PF	AdSC (n=11)	Autologous	Local + serum (1×)	5-10×10 <sup>6</sup> /cm length	None	None	10 out of 11	3 out of 10	1 year	[136]
		Control (n=11)	N.A.	N.A.	N.A.	11	None	6 out of 11	0		

## 6.2 *Towards a more widespread use – Darvadstrocel and stem/stromal cell therapy for fistula treatment in clinical reality*

To this day, allogeneic AdSC administration as described in the ADMIRE-CD phase III randomized controlled trial [130,140] constitutes the only stem/stromal cell therapy product to have received marketing authorization for gastrointestinal fistulae treatment, as a second line treatment for complex Crohn's-associated perianal fistulae refractory to conventional therapeutic agents and/or biotherapies, under the designation "darvadstrocel" (Alofisel). This relatively restrictive indication constitutes one of the major obstacles towards a more widespread use of darvadstrocel and stems directly from the very specific patient populations enrolled in the ADMIRE-CD trial. Indeed, this trial, like most clinical studies so far, has solely focused on perianal fistulizing Crohn's disease, thus there is not enough clinical evidence yet to recommend the use of this cell therapy for other types of gastrointestinal fistulae outside of clinical studies or compassionate use programs. Moreover, no results have been published to this date in the paediatric population, thus the use of darvadstrocel is currently only indicated for adult patients. Additionally, like most innovative therapies involving cells, darvadstrocel remains very expensive. The reported price for a single dose containing 120 million cells reaches 54,000€. Thus, the feasibility of routine use in clinical practice will depend on the possibility of reimbursement and funding, which may not be approved in some countries.

For instance, while the French National Authority for Health has considered darvadstrocel sufficiently beneficial to be eligible for reimbursement by the Social Security, the National Institute for Health and Care Excellence has not given a positive recommendation for funding in the United Kingdom. The medical community nevertheless seems rather favorable to the possibility of allogeneic AdSC injections in this indication. It was indeed already described as a potentially safe and efficient alternative in the most recent guidelines by the European Crohn's and Colitis Organization, although the need for longer term follow-up studies has been emphasized [87]. In this regard, several clinical trials have been launched to answer remaining issues: a multicenter single group open-label trial of single-dose darvadstrocel injection in adult patients with complex refractory perianal fistulizing Crohn's disease is currently being conducted in Japan with a follow-up of safety extending over 3 years (trial n°NCT03706456). A second phase III randomized controlled trial is currently recruiting to confirm the safety and efficacy data of darvadstrocel at a wider scale (trial n°NCT03279081). Finally, an open-label phase 4 study is planned to investigate the long-term safety of repeated administration of darvadstrocel (trial n°NCT04118088).

## 6.3 *EVs for fistula treatment – a promising research axis despite ongoing translational hurdles*

Beyond their therapeutic potential and the emerging preclinical evidence of their efficacy for fistula treatment, EVs present several advantages which justify ongoing research in spite of the drastically more advanced results already obtained with stem/stromal cell therapy. First and foremost, as a cell-free therapeutic modality, EVs could alleviate most of the remaining safety concerns associated with cells, such as the risks of proliferation and inadequate differentiation; while offering an easier storage and limiting the complex handling issues linked with viable stem cell therapy products [57,160,161]. Additionally, EVs can be loaded with drugs, nanoparticles or other agents for controlled drug delivery or imaging purpose [38]. Specifically, in the field of fistula therapy, it could be envisioned to load EVs with anti-bacterial agents to help control sepsis or with immunomodulators in the case of fistulizing Crohn's disease. Of note, their structure comprises a bilayered phospholipidic membrane, allowing local drug delivery through possible fusion with the cell membrane, and protecting their contents from potentially aggressive extracellular environments [38] – here, a fistula tract exposed to gastrointestinal secretions containing enzymes, feces, etc. Moreover, they are produced physiologically and, as such, are less likely to be immunogenic than artificial vectors [38]. In this regard, stem/stromal cell-derived EVs may present an immune-privileged status potentially compatible with their use in allogeneic settings, thus providing off-the-shelf availability which would tremendously facilitate any eventual clinical translation [57]. However, several technical challenges still remain to be overcome before their use in clinical trials (not to mention routine clinical practice) can be envisioned. On the one hand, most

EV production methods, like parental cell culture in hollow-fiber bioreactors, or under serum starvation, remain very time-consuming, and do not permit to obtain high yields of EVs [38]. Though emerging methods based on the use of physical triggers such as shear stress have drastically improved the yields [38], exposing cells to intense physical stresses might alter their viability and integrity, with a potential impact on the quality of produced EVs, which should therefore properly be characterized. The development of optimized production processes, to obtain high yields of EVs, implementable at a wide scale and compatible with the good manufacturing practices, therefore constitutes a necessary first step to launch wide scale preclinical studies or clinical trials. The same considerations should apply to subsequent isolation steps (which classically include ultracentrifugation, tangential flow filtration, and/or chromatography as of today) [161], while keeping in mind that many different factors throughout the fabrication process – from the choice of parental cells to the final isolation and concentration steps – may contribute to alter the EVs’ contents and therefore their therapeutic potential, thus stressing the need for extensive characterization all throughout the development of the product [40]. On the other hand, ensuring patients’ safety during early phase clinical trials constitutes a major concern for such an exploratory treatment. Beyond the collection of extensive preclinical safety data, a consensus should be reached on the best characterization assays and quality controls to perform to check batch quality and sterility. These assays should ideally associate low cost, straightforward protocols, and not be overly time-consuming to remain compatible with clinical practice. Overcoming such hurdles would enable a smooth clinical translation, both for fistula therapy and in other indications.

## 7. Conclusion

Innovative stem/stromal cell-based therapies have provided a major hope for digestive fistulae management. Especially encouraging results were obtained both in terms of safety and efficacy for perianal fistulizing Crohn’s disease, where local allogeneic AdSC injection constitutes a clinically accepted therapeutic alternative for patients who are refractory to standard treatment. Though some tentative steps have been made towards the development of a standardized administration protocol, optimizing delivery strategies may tremendously affect treatment efficacy. The cost of such therapies remains one of the major obstacles towards a widespread use in clinical practice. Recently, emerging preclinical evidence has stressed the therapeutic interest of EVs for post-surgical digestive fistulae. While further exploratory studies are warranted, both for post-surgical and Crohn’s-associated fistulae, the development of adequate production, isolation and characterization processes still constitutes a necessary first step before clinical translation can be envisioned.

## Funding

This project has received funding from the European Research Council (ERC) under the European Union’s Horizon 2020 research and innovation programme (grant agreement No. 852791). This work was supported by Ecole Doctorale Frontières de l’Innovation en Recherche et Education –Programme Bettencourt. This study was supported by the IdEx Université de Paris, ANR-18-IDEX-0001 and by the Region Ile de France under the convention SESAME 2019 - IVETH (n° EX047011).

## Declaration of interest

Florence Gazeau, Amanda Karine Andriola Silva, Claire Wilhelm and Gabriel Rahmi are co-founders of the spin-off Evora Biosciences. Amanda Karine Andriola Silva and Claire Wilhelm are co-founders of the spin-off EverZom. The other authors have no conflicts to declare.

## References

- [1] R.P. Hirten, S. Shah, D.B. Sachar, J.-F. Colombel, The Management of Intestinal Penetrating Crohn’s Disease, *Inflamm Bowel Dis.* 24 (2018) 752–765. <https://doi.org/10.1093/ibd/izx108>.
- [2] I. González-Pinto, E.M. González, Optimising the treatment of upper gastrointestinal fistulae, *Gut.* 49 (2001) iv21–iv28. [https://doi.org/10.1136/gut.49.suppl\\_4.iv21](https://doi.org/10.1136/gut.49.suppl_4.iv21).

- 1 [3] C.I. Haack, J.R. Galloway, J. Srinivasan, Enterocutaneous Fistulas: A Look at Causes and  
2 Management, *Curr Surg Rep.* 2 (2014) 71. <https://doi.org/10.1007/s40137-014-0071-0>.
- 3 [4] S.M. Berry, J.E. Fischer, Classification and pathophysiology of enterocutaneous fistulas, *Surg.*  
4 *Clin. North Am.* 76 (1996) 1009–1018. [https://doi.org/10.1016/s0039-6109\(05\)70495-3](https://doi.org/10.1016/s0039-6109(05)70495-3).
- 5 [5] J. Heimroth, E. Chen, E. Sutton, Management Approaches for Enterocutaneous Fistulas, *Am*  
6 *Surg.* 84 (2018) 326–333.
- 7 [6] S. Cox, R. Brown, A. Millar, A. Numanoglu, A. Alexander, A. Theron, The risks of  
8 gastrointestinal injury due to ingested magnetic beads, *S. Afr. Med. J.* 104 (2014) 277–278.  
9 <https://doi.org/10.7196/samj.7500>.
- 10 [7] J.-M. Wu, M.-Y. Wang, P.-H. Lee, M.-T. Lin, Gastrojejunocolic fistula after gastrojejunostomy:  
11 a case series, *J Med Case Rep.* 2 (2008) 193. <https://doi.org/10.1186/1752-1947-2-193>.
- 12 [8] G. Garcea, I. Majid, C.D. Sutton, C.J. Pattenden, W.M. Thomas, Diagnosis and management of  
13 colovesical fistulae; six-year experience of 90 consecutive cases, *Colorectal Dis.* 8 (2006) 347–  
14 352. <https://doi.org/10.1111/j.1463-1318.2005.00928.x>.
- 15 [9] S. Singh, N.S. Ding, K.L. Mathis, P.S. Dulai, A.M. Farrell, J.H. Pemberton, A.L. Hart, W.J.  
16 Sandborn, E.V. Loftus, Systematic review with meta-analysis: faecal diversion for management  
17 of perianal Crohn's disease, *Aliment. Pharmacol. Ther.* 42 (2015) 783–792.  
18 <https://doi.org/10.1111/apt.13356>.
- 19 [10] D.A. Schwartz, C.R. Herdman, Review article: The medical treatment of Crohn's perianal  
20 fistulas, *Aliment. Pharmacol. Ther.* 19 (2004) 953–967. <https://doi.org/10.1111/j.1365-2036.2004.01917.x>.
- 21 [11] I. Molendijk, V.J.A.A. Nuij, A.E. van der Meulen-de Jong, C.J. van der Woude,  
22 **Disappointing durable remission rates in complex Crohn's disease fistula**, *Inflamm. Bowel Dis.*  
23 20 (2014) 2022–2028. <https://doi.org/10.1097/MIB.0000000000000148>.
- 24 [12] F. Bifari, L. Pacelli, M. Krampera, Immunological properties of embryonic and adult stem  
25 cells, *World Journal of Stem Cells.* 2 (2010) 50. <https://doi.org/10.4252/wjsc.v2.i3.50>.
- 26 [13] M. Dominici, K. Le Blanc, I. Mueller, I. Slaper-Cortenbach, F. Marini, D. Krause, R. Deans,  
27 A. Keating, D. Prockop, E. Horwitz, Minimal criteria for defining multipotent mesenchymal  
28 stromal cells. The International Society for Cellular Therapy position statement, *Cytotherapy.* 8  
29 (2006) 315–317. <https://doi.org/10.1080/14653240600855905>.
- 30 [14] A.G. Via, A. Frizziero, F. Oliva, Biological properties of mesenchymal Stem Cells from  
31 different sources, *Muscles, Ligaments and Tendons Journal.* 2 (2012) 154.
- 32 [15] S.-S. Hashemi, A.A. Mohammadi, H. Kabiri, M.R. Hashemipoor, M. Mahmoodi, M. Amini,  
33 **D. Mehrabani, The healing effect of Wharton's jelly stem cells seeded on biological scaffold in**  
34 **chronic skin ulcers: A randomized clinical trial**, *J Cosmet Dermatol.* 18 (2019) 1961–1967.  
35 <https://doi.org/10.1111/jocd.12931>.
- 36 [16] A. Saad, A.B. Dietz, S.M.S. Herrmann, L.J. Hickson, J.F. Glockner, M.A. McKusick, S.  
37 Misra, H. Bjarnason, A.S. Armstrong, D.A. Gastineau, L.O. Lerman, S.C. Textor, Autologous  
38 Mesenchymal Stem Cells Increase Cortical Perfusion in Renovascular Disease, *J. Am. Soc.*  
39 *Nephrol.* 28 (2017) 2777–2785. <https://doi.org/10.1681/ASN.2017020151>.
- 40 [17] M. Wang, Q. Yuan, L. Xie, Mesenchymal Stem Cell-Based Immunomodulation: Properties  
41 and Clinical Application, *Stem Cells Int.* 2018 (2018). <https://doi.org/10.1155/2018/3057624>.
- 42 [18] X. Li, G. An, Y. Wang, D. Liang, Z. Zhu, L. Tian, Targeted migration of bone marrow  
43 mesenchymal stem cells inhibits silica-induced pulmonary fibrosis in rats, *Stem Cell Res Ther.* 9  
44 (2018) 335. <https://doi.org/10.1186/s13287-018-1083-y>.
- 45 [19] W.-J. Song, Q. Li, M.-O. Ryu, J.-O. Ahn, D. Ha Bhang, Y. Chan Jung, H.-Y. Youn, TSG-6  
46 Secreted by Human Adipose Tissue-derived Mesenchymal Stem Cells Ameliorates DSS-induced  
47 colitis by Inducing M2 Macrophage Polarization in Mice, *Sci Rep.* 7 (2017).  
48 <https://doi.org/10.1038/s41598-017-04766-7>.
- 49  
50  
51  
52  
53  
54  
55  
56  
57  
58  
59  
60  
61  
62  
63  
64  
65

- 1 [20] M. François, R. Romieu-Mourez, M. Li, J. Galipeau, Human MSC Suppression Correlates  
2 With Cytokine Induction of Indoleamine 2,3-Dioxygenase and Bystander M2 Macrophage  
3 Differentiation, *Molecular Therapy*. 20 (2012) 187–195. <https://doi.org/10.1038/mt.2011.189>.
- 4 [21] K. Németh, A. Leelahavanichkul, P.S.T. Yuen, B. Mayer, A. Parmelee, K. Doi, P.G. Robey,  
5 K. Leelahavanichkul, B.H. Koller, J.M. Brown, X. Hu, I. Jelinek, R.A. Star, É. Mezey, Bone  
6 marrow stromal cells attenuate sepsis via prostaglandin E2—dependent reprogramming of host  
7 macrophages to increase their interleukin-10 production, *Nat Med*. 15 (2009) 42–49.  
8 <https://doi.org/10.1038/nm.1905>.
- 9 [22] J.M. Ryan, F. Barry, J.M. Murphy, B.P. Mahon, Interferon- $\gamma$  does not break, but promotes the  
10 immunosuppressive capacity of adult human mesenchymal stem cells, *Clin Exp Immunol*. 149  
11 (2007) 353–363. <https://doi.org/10.1111/j.1365-2249.2007.03422.x>.
- 12 [23] M. Krampera, L. Cosmi, R. Angeli, A. Pasini, F. Liotta, A. Andreini, V. Santarlasci, B.  
13 Mazinghi, G. Pizzolo, F. Vinante, P. Romagnani, E. Maggi, S. Romagnani, F. Annunziato, Role  
14 for Interferon- $\gamma$  in the Immunomodulatory Activity of Human Bone Marrow Mesenchymal Stem  
15 Cells, *STEM CELLS*. 24 (2006) 386–398. <https://doi.org/10.1634/stemcells.2005-0008>.
- 16 [24] A.G. Laing, G. Fanelli, A. Ramirez-Valdez, R.I. Lechler, G. Lombardi, P.T. Sharpe,  
17 Mesenchymal stem cells inhibit T-cell function through conserved induction of cellular stress,  
18 *PLoS One*. 14 (2019). <https://doi.org/10.1371/journal.pone.0213170>.
- 19 [25] N. Milosavljevic, M. Gazdic, B.S. Markovic, A. Arsenijevic, J. Nurkovic, Z. Dolicanin, N.  
20 Jovicic, I. Jeftic, V. Djonov, N. Arsenijevic, M.L. Lukic, V. Volarevic, Mesenchymal stem cells  
21 attenuate liver fibrosis by suppressing Th17 cells – an experimental study, *Transplant  
22 International*. 31 (2018) 102–115. <https://doi.org/10.1111/tri.13023>.
- 23 [26] Q. Ge, H. Zhang, J. Hou, L. Wan, W. Cheng, X. Wang, D. Dong, C. Chen, J. Xia, J. Guo, X.  
24 Chen, X. Wu, VEGF secreted by mesenchymal stem cells mediates the differentiation of  
25 endothelial progenitor cells into endothelial cells via paracrine mechanisms, *Mol Med Rep*. 17  
26 (2018) 1667–1675. <https://doi.org/10.3892/mmr.2017.8059>.
- 27 [27] H. Li, R. Daculsi, M. Grellier, R. Bareille, C. Bourget, M. Remy, J. Amedee, The Role of  
28 Vascular Actors in Two Dimensional Dialogue of Human Bone Marrow Stromal Cell and  
29 Endothelial Cell for Inducing Self-Assembled Network, *PLoS One*. 6 (2011).  
30 <https://doi.org/10.1371/journal.pone.0016767>.
- 31 [28] J.-Y. Li, K.-K. Ren, W.-J. Zhang, L. Xiao, H.-Y. Wu, Q.-Y. Liu, T. Ding, X.-C. Zhang, W.-J.  
32 Nie, Y. Ke, K.-Y. Deng, Q.-W. Liu, H.-B. Xin, Human amniotic mesenchymal stem cells and  
33 their paracrine factors promote wound healing by inhibiting heat stress-induced skin cell  
34 apoptosis and enhancing their proliferation through activating PI3K/AKT signaling pathway,  
35 *Stem Cell Res Ther*. 10 (2019). <https://doi.org/10.1186/s13287-019-1366-y>.
- 36 [29] A. Sémont, C. Demarquay, R. Bessout, C. Durand, M. Benderitter, N. Mathieu,  
37 Mesenchymal Stem Cell Therapy Stimulates Endogenous Host Progenitor Cells to Improve  
38 Colonic Epithelial Regeneration, *PLoS One*. 8 (2013).  
39 <https://doi.org/10.1371/journal.pone.0070170>.
- 40 [30] M.N.M. Walter, K.T. Wright, H.R. Fuller, S. MacNeil, W.E.B. Johnson, Mesenchymal stem  
41 cell-conditioned medium accelerates skin wound healing: an in vitro study of fibroblast and  
42 keratinocyte scratch assays, *Exp Cell Res*. 316 (2010) 1271–1281.  
43 <https://doi.org/10.1016/j.yexcr.2010.02.026>.
- 44 [31] E.Y. Lee, Y. Xia, W.-S. Kim, M.H. Kim, T.H. Kim, K.J. Kim, B.-S. Park, J.-H. Sung,  
45 Hypoxia-enhanced wound-healing function of adipose-derived stem cells: Increase in stem cell  
46 proliferation and up-regulation of VEGF and bFGF, *Wound Repair and Regeneration*. 17 (2009)  
47 540–547. <https://doi.org/10.1111/j.1524-475X.2009.00499.x>.
- 48 [32] E.K. Jun, Q. Zhang, B.S. Yoon, J.-H. Moon, G. Lee, G. Park, P.J. Kang, J.H. Lee, A. Kim, S.  
49 You, Hypoxic Conditioned Medium from Human Amniotic Fluid-Derived Mesenchymal Stem  
50 Cells Accelerates Skin Wound Healing through TGF- $\beta$ /SMAD2 and PI3K/Akt Pathways, *Int J  
51 Mol Sci*. 15 (2014) 605–628. <https://doi.org/10.3390/ijms15010605>.
- 52  
53  
54  
55  
56  
57  
58  
59  
60  
61  
62  
63  
64  
65

- [33] J.-G. Gao, M.-S. Yu, M.-M. Zhang, X.-W. Gu, Y. Ren, X.-X. Zhou, D. Chen, T.-L. Yan, Y.-M. Li, X. Jin, Adipose-derived mesenchymal stem cells alleviate TNBS-induced colitis in rats by influencing intestinal epithelial cell regeneration, Wnt signaling, and T cell immunity, *World J Gastroenterol.* 26 (2020) 3750–3766. <https://doi.org/10.3748/wjg.v26.i26.3750>.
- [34] M. Di Nicola, C. Carlo-Stella, M. Magni, M. Milanesi, P.D. Longoni, P. Matteucci, S. Grisanti, A.M. Gianni, Human bone marrow stromal cells suppress T-lymphocyte proliferation induced by cellular or nonspecific mitogenic stimuli, *Blood.* 99 (2002) 3838–3843. <https://doi.org/10.1182/blood.V99.10.3838>.
- [35] R.C. Lai, T.S. Chen, S.K. Lim, Mesenchymal stem cell exosome: a novel stem cell-based therapy for cardiovascular disease, *Regen Med.* 6 (2011) 481–492. <https://doi.org/10.2217/rme.11.35>.
- [36] L. Liao, B. Shi, H. Chang, X. Su, L. Zhang, C. Bi, Y. Shuai, X. Du, Z. Deng, Y. Jin, Heparin improves BMSC cell therapy: Anticoagulant treatment by heparin improves the safety and therapeutic effect of bone marrow-derived mesenchymal stem cell cytototherapy, *Theranostics.* 7 (2017) 106–116. <https://doi.org/10.7150/thno.16911>.
- [37] R.C. Lai, R.W.Y. Yeo, S.K. Lim, Mesenchymal stem cell exosomes, *Semin. Cell Dev. Biol.* 40 (2015) 82–88. <https://doi.org/10.1016/j.semcdb.2015.03.001>.
- [38] M. Piffoux, A. Nicolás-Boluda, V. Mulens-Arias, S. Richard, G. Rahmi, F. Gazeau, C. Wilhelm, A.K.A. Silva, Extracellular vesicles for personalized medicine: The input of physically triggered production, loading and theranostic properties, *Adv. Drug Deliv. Rev.* 138 (2019) 247–258. <https://doi.org/10.1016/j.addr.2018.12.009>.
- [39] M. Yáñez-Mó, P.R.-M. Siljander, Z. Andreu, A.B. Zavec, F.E. Borràs, E.I. Buzas, K. Buzas, E. Casal, F. Cappello, J. Carvalho, E. Colás, A.C. Silva, S. Fais, J.M. Falcon-Perez, I.M. Ghobrial, B. Giebel, M. Gimona, M. Graner, I. Gursel, M. Gursel, N.H.H. Heegaard, A. Hendrix, P. Kierulf, K. Kokubun, M. Kosanovic, V. Kralj-Iglic, E.-M. Krämer-Albers, S. Laitinen, C. Lässer, T. Lener, E. Ligeti, A. Linē, G. Lipps, A. Llorente, J. Lötvall, M. Manček-Keber, A. Marcilla, M. Mittelbrunn, I. Nazarenko, E.N.M.N.-'t Hoen, T.A. Nyman, L. O'Driscoll, M. Olivan, C. Oliveira, É. Pállinger, H.A. del Portillo, J. Reventós, M. Rigau, E. Rohde, M. Sammar, F. Sánchez-Madrid, N. Santarém, K. Schallmoser, M.S. Ostendorf, W. Stoorvogel, R. Stukelj, S.G. Van der Grein, M.H. Vasconcelos, M.H.M. Wauben, O. De Wever, Biological properties of extracellular vesicles and their physiological functions, *J Extracell Vesicles.* 4 (2015). <https://doi.org/10.3402/jev.v4.27066>.
- [40] C. Théry, K.W. Witwer, E. Aikawa, M.J. Alcaraz, J.D. Anderson, R. Andriantsitohaina, A. Antoniou, T. Arab, F. Archer, G.K. Atkin-Smith, D.C. Ayre, J.-M. Bach, D. Bachurski, H. Baharvand, L. Balaj, S. Baldacchino, N.N. Bauer, A.A. Baxter, M. Bebawy, C. Beckham, A.B. Zavec, A. Benmoussa, A.C. Berardi, P. Bergese, E. Bielska, C. Blenkiron, S. Bobis-Wozowicz, E. Boilard, W. Boireau, A. Bongiovanni, F.E. Borràs, S. Bosch, C.M. Boulanger, X. Breakefield, A.M. Breglio, M.Á. Brennan, D.R. Brigstock, A. Brisson, M.L. Broekman, J.F. Bromberg, P. Bryl-Górecka, S. Buch, A.H. Buck, D. Burger, S. Busatto, D. Buschmann, B. Bussolati, E.I. Buzás, J.B. Byrd, G. Camussi, D.R. Carter, S. Caruso, L.W. Chamley, Y.-T. Chang, C. Chen, S. Chen, L. Cheng, A.R. Chin, A. Clayton, S.P. Clerici, A. Cocks, E. Cocucci, R.J. Coffey, A. Cordeiro-da-Silva, Y. Couch, F.A. Coumans, B. Coyle, R. Crescitelli, M.F. Criado, C. D'Souza-Schorey, S. Das, A.D. Chaudhuri, P. de Candia, E.F.D.S. Junior, O.D. Wever, H.A. del Portillo, T. Demaret, S. Deville, A. Devitt, B. Dhondt, D.D. Vizio, L.C. Dieterich, V. Dolo, A.P.D. Rubio, M. Dominici, M.R. Dourado, T.A. Driedonks, F.V. Duarte, H.M. Duncan, R.M. Eichenberger, K. Ekström, S.E. Andaloussi, C. Elie-Caille, U. Erdbrügger, J.M. Falcón-Pérez, F. Fatima, J.E. Fish, M. Flores-Bellver, A. Försonits, A. Frelet-Barrand, F. Fricke, G. Fuhrmann, S. Gabrielsson, A. Gámez-Valero, C. Gardiner, K. Gärtner, R. Gaudin, Y.S. Gho, B. Giebel, C. Gilbert, M. Gimona, I. Giusti, D.C. Goberdhan, A. Görgens, S.M. Gorski, D.W. Greening, J.C. Gross, A. Gualerzi, G.N. Gupta, D. Gustafson, A. Handberg, R.A. Haraszti, P. Harrison, H. Hegyesi, A. Hendrix, A.F. Hill, F.H. Hochberg, K.F. Hoffmann, B. Holder, H. Holthofer, B.

Hosseinkhani, G. Hu, Y. Huang, V. Huber, S. Hunt, A.G.-E. Ibrahim, T. Ikezu, J.M. Inal, M. Isin, A. Ivanova, H.K. Jackson, S. Jacobsen, S.M. Jay, M. Jayachandran, G. Jenster, L. Jiang, S.M. Johnson, J.C. Jones, A. Jong, T. Jovanovic-Talisman, S. Jung, R. Kalluri, S. Kano, S. Kaur, Y. Kawamura, E.T. Keller, D. Khamari, E. Khomyakova, A. Khvorova, P. Kierulf, K.P. Kim, T. Kislinger, M. Klingeborn, D.J.K. II, M. Kornek, M.M. Kosanović, Á.F. Kovács, E.-M. Krämer-Albers, S. Krasemann, M. Krause, I.V. Kurochkin, G.D. Kusuma, S. Kuypers, S. Laitinen, S.M. Langevin, L.R. Languino, J. Lannigan, C. Lässer, L.C. Laurent, G. Lavieu, E. Lázaro-Ibáñez, S.L. Lay, M.-S. Lee, Y.X.F. Lee, D.S. Lemos, M. Lenassi, A. Leszczynska, I.T. Li, K. Liao, S.F. Librechts, E. Ligeti, R. Lim, S.K. Lim, A. Linē, K. Linnemannstöns, A. Llorente, C.A. Lombard, M.J. Lorenowicz, Á.M. Lőrincz, J. Lötvall, J. Lovett, M.C. Lowry, X. Loyer, Q. Lu, B. Lukomska, T.R. Lunavat, S.L. Maas, H. Malhi, A. Marcilla, J. Mariani, J. Mariscal, E.S. Martens-Uzunova, L. Martin-Jaular, M.C. Martinez, V.R. Martins, M. Mathieu, S. Mathivanan, M. Maugeri, L.K. McGinnis, M.J. McVey, D.G.M. Jr, K.L. Meehan, I. Mertens, V.R. Minciacchi, A. Möller, M.M. Jørgensen, A. Morales-Kastresana, J. Morhayim, F. Mullier, M. Muraca, L. Musante, V. Mussack, D.C. Muth, K.H. Myburgh, T. Najrana, M. Nawaz, I. Nazarenko, P. Nejsun, C. Neri, T. Neri, R. Nieuwland, L. Nimrichter, J.P. Nolan, E.N.N.-'t Hoen, N.N. Hooten, L. O'Driscoll, T. O'Grady, A. O'Loghlen, T. Ochiya, M. Olivier, A. Ortiz, L.A. Ortiz, X. Osteikoetxea, O. Østergaard, M. Ostrowski, J. Park, D.M. Pegtel, H. Peinado, F. Perut, M.W. Pfaffl, D.G. Phinney, B.C. Pieters, R.C. Pink, D.S. Pisetsky, E.P. von Strandmann, I. Polakovicova, I.K. Poon, B.H. Powell, I. Prada, L. Pulliam, P. Quesenberry, A. Radeghieri, R.L. Raffai, S. Raimondo, J. Rak, M.I. Ramirez, G. Raposo, M.S. Rayyan, N. Regev-Rudzki, F.L. Ricklefs, P.D. Robbins, D.D. Roberts, S.C. Rodrigues, E. Rohde, S. Rome, K.M. Rouschop, A. Rughetti, A.E. Russell, P. Saá, S. Sahoo, E. Salas-Huenuleo, C. Sánchez, J.A. Saugstad, M.J. Saul, R.M. Schiffelers, R. Schneider, T.H. Schøyen, A. Scott, E. Shahaj, S. Sharma, O. Shatnyeva, F. Shekari, G.V. Shelke, A.K. Shetty, K. Shiba, P.R.-M. Siljander, A.M. Silva, A. Skowronek, O.L.S. II, R.P. Soares, B.W. Sódar, C. Soekmadji, J. Sotillo, P.D. Stahl, W. Stoorvogel, S.L. Stott, E.F. Strasser, S. Swift, H. Tahara, M. Tewari, K. Timms, S. Tiwari, R. Tixeira, M. Tkach, W.S. Toh, R. Tomasini, A.C. Torrecilhas, J.P. Tosar, V. Toxavidis, L. Urbanelli, P. Vader, B.W. van Balkom, S.G. van der Grein, J.V. Deun, M.J. van Herwijnen, K.V. Keuren-Jensen, G. van Niel, M.E. van Royen, A.J. van Wijnen, M.H. Vasconcelos, I.J.V. Jr, T.D. Veit, L.J. Vella, É. Velot, F.J. Verweij, B. Vestad, J.L. Viñas, T. Visnovitz, K.V. Vukman, J. Wahlgren, D.C. Watson, M.H. Wauben, A. Weaver, J.P. Webber, V. Weber, A.M. Wehman, D.J. Weiss, J.A. Welsh, S. Wendt, A.M. Wheelock, Z. Wiener, L. Witte, J. Wolfram, A. Xagorari, P. Xander, J. Xu, X. Yan, M. Yáñez-Mó, H. Yin, Y. Yuana, V. Zappulli, J. Zarubova, V. Žekas, J. Zhang, Z. Zhao, L. Zheng, A.R. Zheutlin, A.M. Zickler, P. Zimmermann, A.M. Zivkovic, D. Zocco, E.K. Zuba-Surma, Minimal information for studies of extracellular vesicles 2018 (MISEV2018): a position statement of the International Society for Extracellular Vesicles and update of the MISEV2014 guidelines, *Journal of Extracellular Vesicles*. 7 (2018) 1535750. <https://doi.org/10.1080/20013078.2018.1535750>.

[41] X. Cheng, G. Zhang, L. Zhang, Y. Hu, K. Zhang, X. Sun, C. Zhao, H. Li, Y.M. Li, J. Zhao, Mesenchymal stem cells deliver exogenous miR- 21 via exosomes to inhibit nucleus pulposus cell apoptosis and reduce intervertebral disc degeneration, *J Cell Mol Med*. 22 (2018) 261–276. <https://doi.org/10.1111/jcmm.13316>.

[42] F. Arslan, R.C. Lai, M.B. Smeets, L. Akeroyd, A. Choo, E.N.E. Aguor, L. Timmers, H.V. van Rijen, P.A. Doevendans, G. Pasterkamp, S.K. Lim, D.P. de Kleijn, Mesenchymal stem cell-derived exosomes increase ATP levels, decrease oxidative stress and activate PI3K/Akt pathway to enhance myocardial viability and prevent adverse remodeling after myocardial ischemia/reperfusion injury, *Stem Cell Research*. 10 (2013) 301–312. <https://doi.org/10.1016/j.scr.2013.01.002>.

- [43] S. Kim, S.K. Lee, H. Kim, T.M. Kim, Exosomes Secreted from Induced Pluripotent Stem Cell-Derived Mesenchymal Stem Cells Accelerate Skin Cell Proliferation, *Int J Mol Sci.* 19 (2018). <https://doi.org/10.3390/ijms19103119>.
- [44] X. Li, L. Liu, J. Yang, Y. Yu, J. Chai, L. Wang, L. Ma, H. Yin, Exosome Derived From Human Umbilical Cord Mesenchymal Stem Cell Mediates MiR-181c Attenuating Burn-induced Excessive Inflammation, *EBioMedicine.* 8 (2016) 72–82. <https://doi.org/10.1016/j.ebiom.2016.04.030>.
- [45] T. Li, Y. Yan, B. Wang, H. Qian, X. Zhang, L. Shen, M. Wang, Y. Zhou, W. Zhu, W. Li, W. Xu, Exosomes Derived from Human Umbilical Cord Mesenchymal Stem Cells Alleviate Liver Fibrosis, *Stem Cells Dev.* 22 (2013) 845–854. <https://doi.org/10.1089/scd.2012.0395>.
- [46] Y. Wang, J. Tian, X. Tang, K. Rui, X. Tian, J. Ma, B. Ma, H. Xu, L. Lu, S. Wang, Exosomes released by granulocytic myeloid-derived suppressor cells attenuate DSS-induced colitis in mice, *Oncotarget.* 7 (2016) 15356–15368. <https://doi.org/10.18632/oncotarget.7324>.
- [47] L. Jiang, Y. Shen, D. Guo, D. Yang, J. Liu, X. Fei, Y. Yang, B. Zhang, Z. Lin, F. Yang, X. Wang, K. Wang, J. Wang, Z. Cai, EpCAM-dependent extracellular vesicles from intestinal epithelial cells maintain intestinal tract immune balance, *Nat Commun.* 7 (2016) 13045. <https://doi.org/10.1038/ncomms13045>.
- [48] H. Liu, Z. Liang, F. Wang, C. Zhou, X. Zheng, T. Hu, X. He, X. Wu, P. Lan, Exosomes from mesenchymal stromal cells reduce murine colonic inflammation via a macrophage-dependent mechanism, *JCI Insight.* 4 (2019). <https://doi.org/10.1172/jci.insight.131273>.
- [49] Q. Chen, X. Duan, M. Xu, H. Fan, Y. Dong, H. Wu, M. Zhang, Y. Liu, Z. Nan, S. Deng, X. Liu, BMSC-EVs regulate Th17 cell differentiation in UC via H3K27me3, *Mol. Immunol.* 118 (2020) 191–200. <https://doi.org/10.1016/j.molimm.2019.12.019>.
- [50] M. Gong, B. Yu, J. Wang, Y. Wang, M. Liu, C. Paul, R.W. Millard, D.-S. Xiao, M. Ashraf, M. Xu, Mesenchymal stem cells release exosomes that transfer miRNAs to endothelial cells and promote angiogenesis, *Oncotarget.* 8 (2017) 45200–45212. <https://doi.org/10.18632/oncotarget.16778>.
- [51] P. Gangadaran, R.L. Rajendran, H.W. Lee, S. Kalimuthu, C.M. Hong, S.Y. Jeong, S.-W. Lee, J. Lee, B.-C. Ahn, Extracellular vesicles from mesenchymal stem cells activates VEGF receptors and accelerates recovery of hindlimb ischemia, *J Control Release.* 264 (2017) 112–126. <https://doi.org/10.1016/j.jconrel.2017.08.022>.
- [52] J. Yang, X.-X. Liu, H. Fan, Q. Tang, Z.-X. Shou, D.-M. Zuo, Z. Zou, M. Xu, Q.-Y. Chen, Y. Peng, S.-J. Deng, Y.-J. Liu, Extracellular Vesicles Derived from Bone Marrow Mesenchymal Stem Cells Protect against Experimental Colitis via Attenuating Colon Inflammation, Oxidative Stress and Apoptosis, *PLoS ONE.* 10 (2015) e0140551. <https://doi.org/10.1371/journal.pone.0140551>.
- [53] G. Leoni, P.-A. Neumann, N. Kamaly, M. Quiros, H. Nishio, H.R. Jones, R. Sumagin, R.S. Hilgarth, A. Alam, G. Fredman, I. Argyris, E. Rijcken, D. Kusters, C. Reutelingsperger, M. Perretti, C.A. Parkos, O.C. Farokhzad, A.S. Neish, A. Nusrat, Annexin A1-containing extracellular vesicles and polymeric nanoparticles promote epithelial wound repair, *J Clin Invest.* 125 (2015) 1215–1227. <https://doi.org/10.1172/JCI76693>.
- [54] A. da F. Ferreira, P. da S. Cunha, V.M. Carregal, P. de C. da Silva, M.C. de Miranda, M. Kunrath-Lima, M.I.A. de Melo, C.C.F. Faraco, J.L. Barbosa, F. Frezard, V. Resende, M.A. Rodrigues, A.M. de Goes, D.A. Gomes, Extracellular Vesicles from Adipose-Derived Mesenchymal Stem/Stromal Cells Accelerate Migration and Activate AKT Pathway in Human Keratinocytes and Fibroblasts Independently of miR-205 Activity, *Stem Cells Int.* 2017 (2017). <https://doi.org/10.1155/2017/9841035>.
- [55] S. Bruno, C. Grange, M.C. Deregisbus, R.A. Calogero, S. Saviozzi, F. Collino, L. Morando, A. Busca, M. Falda, B. Bussolati, C. Tetta, G. Camussi, Mesenchymal Stem Cell-Derived Microvesicles Protect Against Acute Tubular Injury, *J Am Soc Nephrol.* 20 (2009) 1053–1067. <https://doi.org/10.1681/ASN.2008070798>.



- 1 [56] Y. Sun, H. Shi, S. Yin, C. Ji, X. Zhang, B. Zhang, P. Wu, Y. Shi, F. Mao, Y. Yan, W. Xu, H.  
2 Qian, Human Mesenchymal Stem Cell Derived Exosomes Alleviate Type 2 Diabetes Mellitus by  
3 Reversing Peripheral Insulin Resistance and Relieving  $\beta$ -Cell Destruction, *ACS Nano*. 12 (2018)  
4 7613–7628. <https://doi.org/10.1021/acsnano.7b07643>.
- 5 [57] A.K.A. Silva, S. Perretta, G. Perrod, L. Pidal, V. Lindner, F. Carn, S. Lemieux, D. Alloyeau,  
6 I. Boucenna, P. Menasché, B. Dallemagne, F. Gazeau, C. Wilhelm, C. Cellier, O. Clément, G.  
7 Rahmi, Thermoresponsive Gel Embedded with Adipose Stem-Cell-Derived Extracellular  
8 Vesicles Promotes Esophageal Fistula Healing in a Thermo-Actuated Delivery Strategy, *ACS*  
9 *Nano*. 12 (2018) 9800–9814. <https://doi.org/10.1021/acsnano.8b00117>.
- 10 [58] A. Berger, I. Araújo-Filho, M. Piffoux, A. Nicolás-Boluda, A. Grangier, I. Boucenna, C.C.  
11 Real, F.L.N. Marques, D. de Paula Faria, A.C.M. do Rego, C. Broudin, F. Gazeau, C. Wilhelm,  
12 O. Clément, C. Cellier, C.A. Buchpiguel, G. Rahmi, A.K.A. Silva, Local administration of stem  
13 cell-derived extracellular vesicles in a thermoresponsive hydrogel promotes a pro-healing effect  
14 in a rat model of colo-cutaneous post-surgical fistula, *Nanoscale*. 13 (2021) 218–232.  
15 <https://doi.org/10.1039/d0nr07349k>.
- 16 [59] S. Choi, B.G. Jeon, G. Chae, S.-J. Lee, The clinical efficacy of stem cell therapy for complex  
17 perianal fistulas: a meta-analysis, *Tech Coloproctol*. 23 (2019) 411–427.  
18 <https://doi.org/10.1007/s10151-019-01994-z>.
- 19 [60] S.K. Narang, K. Keogh, N.N. Alam, S. Pathak, I.R. Daniels, N.J. Smart, A systematic review  
20 of new treatments for cryptoglandular fistula in ano, *Surgeon*. 15 (2017) 30–39.  
21 <https://doi.org/10.1016/j.surge.2016.02.002>.
- 22 [61] P. Pessaux, S. Msika, D. Atalla, J.-M. Hay, Y. Flamant, French Association for Surgical  
23 Research, Risk factors for postoperative infectious complications in noncolorectal abdominal  
24 surgery: a multivariate analysis based on a prospective multicenter study of 4718 patients, *Arch*  
25 *Surg*. 138 (2003) 314–324. <https://doi.org/10.1001/archsurg.138.3.314>.
- 26 [62] V.M. Prunoiu, A.M. Marincas, C. Pantis, A. Bene, E. Bratucu, S. Ionescu, A. Grigorescu,  
27 The Importance of the Nutritional Factor and the Stage of the Disease in Postoperative Fistula in  
28 Patients with Gastric Cancer, *Chirurgia (Bucur)*. 114 (2019) 259–267.  
29 <https://doi.org/10.21614/chirurgia.114.2.259>.
- 30 [63] M.F.K.P. Ramos, M.A. Pereira, L.C. Barchi, O.K. Yagi, A.R. Dias, D.J. Szor, B. Zilberstein,  
31 U. Ribeiro-Júnior, I. Cecconello, Duodenal fistula: The most lethal surgical complication in a  
32 case series of radical gastrectomy, *Int J Surg*. 53 (2018) 366–370.  
33 <https://doi.org/10.1016/j.ijssu.2018.03.082>.
- 34 [64] M. Penna, R. Hompes, S. Arnold, G. Wynn, R. Austin, J. Warusavitarne, B. Moran, G.B.  
35 Hanna, N.J. Mortensen, P.P. Tekkis, International TaTME Registry Collaborative, Incidence and  
36 Risk Factors for Anastomotic Failure in 1594 Patients Treated by Transanal Total Mesorectal  
37 Excision: Results From the International TaTME Registry, *Ann. Surg*. 269 (2019) 700–711.  
38 <https://doi.org/10.1097/SLA.0000000000002653>.
- 39 [65] N. Pal, Intestinal Fistula Surgery: Practice Essentials, Pathophysiology, Etiology, (2019).  
40 <https://emedicine.medscape.com/article/197486-overview#a8> (accessed June 11, 2020).
- 41 [66] T.B. Hugh, M.J. Coleman, A. Cohen, Persistent postoperative enterocutaneous fistula:  
42 pathophysiology and treatment, *Aust N Z J Surg*. 56 (1986) 901–906.  
43 <https://doi.org/10.1111/j.1445-2197.1986.tb01852.x>.
- 44 [67] I.T.A. Pereboom, H.S. Hofker, A Mechanical Explanation for the Development of  
45 Enteroatmospheric Fistulas in Open Abdomen, *Dis. Colon Rectum*. 59 (2016) 471–475.  
46 <https://doi.org/10.1097/DCR.0000000000000559>.
- 47 [68] P. Hollington, J. Mawdsley, W. Lim, S.M. Gabe, A. Forbes, A.J. Windsor, An 11-year  
48 experience of enterocutaneous fistula, *Br J Surg*. 91 (2004) 1646–1651.  
49 <https://doi.org/10.1002/bjs.4788>.
- 50 [69] N. Kaur, V.R. Minocha, Review of a hospital experience of enterocutaneous fistula, *Trop*  
51 *Gastroenterol*. 21 (2000) 197–200.

- 1 [70] P. Kumar, N.K. Maroju, V. Kate, Enterocutaneous fistulae: etiology, treatment, and outcome  
2 - a study from South India, *Saudi J Gastroenterol.* 17 (2011) 391–395.  
3 <https://doi.org/10.4103/1319-3767.87180>.
- 4 [71] M. Quinn, S. Falconer, R.F. McKee, Management of Enterocutaneous Fistula: Outcomes in  
5 276 Patients, *World J Surg.* 41 (2017) 2502–2511. <https://doi.org/10.1007/s00268-017-4063-y>.
- 6 [72] T.M. Mackay, F.J. Smits, D. Roos, B.A. Bonsing, K. Bosscha, O.R. Busch, G.-J. Creemers,  
7 R.M. van Dam, C.H.J. van Eijck, M.F. Gerhards, J.W.B. de Groot, B. Groot Koerkamp, N. Haj  
8 Mohammad, E. van der Harst, I.H.J.T. de Hingh, M.Y.V. Homs, G. Kazemier, M.S.L. Liem,  
9 V.E. de Meijer, I.Q. Molenaar, V.B. Nieuwenhuijs, H.C. van Santvoort, G.P. van der Schelling,  
10 M.W.J. Stommel, A.J. Ten Tije, J. de Vos-Geelen, F. Wit, J.W. Wilmink, H.W.M. van  
11 Laarhoven, M.G. Besselink, Dutch Pancreatic Cancer Group, The risk of not receiving adjuvant  
12 chemotherapy after resection of pancreatic ductal adenocarcinoma: a nationwide analysis, *HPB*  
13 (Oxford). 22 (2020) 233–240. <https://doi.org/10.1016/j.hpb.2019.06.019>.
- 14 [73] C.B. Nahm, S.J. Connor, J.S. Samra, A. Mittal, Postoperative pancreatic fistula: a review of  
15 traditional and emerging concepts, *Clin Exp Gastroenterol.* 11 (2018) 105–118.  
16 <https://doi.org/10.2147/CEG.S120217>.
- 17 [74] J. Burisch, T. Jess, M. Martinato, P.L. Lakatos, The burden of inflammatory bowel disease in  
18 Europe, *Journal of Crohn's and Colitis.* 7 (2013) 322–337.  
19 <https://doi.org/10.1016/j.crohns.2013.01.010>.
- 20 [75] M. Rohr, C.A. Narasimhulu, D. Sharma, M. Doomra, A. Riad, S. Naser, S. Parthasarathy,  
21 Inflammatory Diseases of the Gut, *J Med Food.* 21 (2018) 113–126.  
22 <https://doi.org/10.1089/jmf.2017.0138>.
- 23 [76] S. Flynn, S. Eisenstein, Inflammatory Bowel Disease Presentation and Diagnosis, *Surg. Clin.*  
24 North Am. 99 (2019) 1051–1062. <https://doi.org/10.1016/j.suc.2019.08.001>.
- 25 [77] J.-P. Hugot, M. Chamaillard, H. Zouali, S. Lesage, J.-P. Cézard, J. Belaiche, S. Almer, C.  
26 Tysk, C.A. O'Morain, M. Gassull, V. Binder, Y. Finkel, A. Cortot, R. Modigliani, P. Laurent-  
27 Puig, C. Gower-Rousseau, J. Macry, J.-F. Colombel, M. Sahbatou, G. Thomas, Association of  
28 NOD2 leucine-rich repeat variants with susceptibility to Crohn's disease, *Nature.* 411 (2001)  
29 599–603. <https://doi.org/10.1038/35079107>.
- 30 [78] A.N. Ananthakrishnan, C.N. Bernstein, D. Iliopoulos, A. Macpherson, M.F. Neurath, R.A.R.  
31 Ali, S.R. Vavricka, C. Fiocchi, Environmental triggers in IBD: a review of progress and  
32 evidence, *Nat Rev Gastroenterol Hepatol.* 15 (2018) 39–49.  
33 <https://doi.org/10.1038/nrgastro.2017.136>.
- 34 [79] R.J. Xavier, D.K. Podolsky, Unravelling the pathogenesis of inflammatory bowel disease,  
35 *Nature.* 448 (2007) 427–434. <https://doi.org/10.1038/nature06005>.
- 36 [80] R.B. Sartor, G.D. Wu, Roles for Intestinal Bacteria, Viruses, and Fungi in Pathogenesis of  
37 Inflammatory Bowel Diseases and Therapeutic Approaches, *Gastroenterology.* 152 (2017) 327-  
38 339.e4. <https://doi.org/10.1053/j.gastro.2016.10.012>.
- 39 [81] S.N. Leeb, D. Vogl, M. Gunckel, S. Kiessling, W. Falk, M. Göke, J. Schölmerich, C.M.  
40 Gelbmann, G. Rogler, Reduced migration of fibroblasts in inflammatory bowel disease: role of  
41 inflammatory mediators and focal adhesion kinase1, *Gastroenterology.* 125 (2003) 1341–1354.  
42 <https://doi.org/10.1016/j.gastro.2003.07.004>.
- 43 [82] M. Scharl, G. Rogler, Pathophysiology of fistula formation in Crohn's disease, *World J*  
44 *Gastrointest Pathophysiol.* 5 (2014) 205–212. <https://doi.org/10.4291/wjgp.v5.i3.205>.
- 45 [83] J. Panés, J. Rimola, Perianal fistulizing Crohn's disease: pathogenesis, diagnosis and therapy,  
46 *Nat Rev Gastroenterol Hepatol.* 14 (2017) 652–664. <https://doi.org/10.1038/nrgastro.2017.104>.
- 47 [84] F. Bataille, C. Rohrmeier, R. Bates, A. Weber, F. Rieder, J. Brenmoehl, U. Strauch, S.  
48 Farkas, A. Fürst, F. Hofstädter, J. Schölmerich, H. Herfarth, G. Rogler, Evidence for a role of  
49 epithelial mesenchymal transition during pathogenesis of fistulae in Crohn's disease, *Inflamm.*  
50 *Bowel Dis.* 14 (2008) 1514–1527. <https://doi.org/10.1002/ibd.20590>.

- 1 [85] F. Makowiec, E.C. Jehle, M. Starlinger, **Clinical course of perianal fistulas in Crohn's**  
2 disease, *Gut*. 37 (1995) 696–701. <https://doi.org/10.1136/gut.37.5.696>.
- 3 [86] J. Torres, S. Bonovas, G. Doherty, T. Kucharzik, J.P. Gisbert, T. Raine, M. Adamina, A.  
4 Armuzzi, O. Bachmann, P. Bager, L. Biancone, B. Bokemeyer, P. Bossuyt, J. Burisch, P.  
5 Collins, A. El-Hussuna, P. Ellul, C. Frei-Lanter, F. Furfaro, C. Gingert, P. Gionchetti, F.  
6 Gomollon, M. González-Lorenzo, H. Gordon, T. Hlavaty, P. Juillerat, K. Katsanos, U. Kopylov,  
7 E. Krustins, T. Lytras, C. Maaser, F. Magro, J. Kenneth Marshall, P. Myrelid, G. Pellino, I. Rosa,  
8 J. Sabino, E. Savarino, A. Spinelli, L. Stassen, M. Uzzan, S. Vavricka, B. Verstockt, J.  
9 Warusavitarne, O. Zmora, G. Fiorino, **ECCO Guidelines on Therapeutics in Crohn's Disease:**  
10 **Medical Treatment**, *Journal of Crohn's and Colitis*. 14 (2020) 4–22.  
11 <https://doi.org/10.1093/ecco-jcc/jjz180>.
- 12 [87] M. Adamina, S. Bonovas, T. Raine, A. Spinelli, J. Warusavitarne, A. Armuzzi, O. Bachmann,  
13 P. Bager, L. Biancone, B. Bokemeyer, P. Bossuyt, J. Burisch, P. Collins, G. Doherty, A. El-  
14 Hussuna, P. Ellul, G. Fiorino, C. Frei-Lanter, F. Furfaro, C. Gingert, P. Gionchetti, J.P. Gisbert,  
15 F. Gomollon, M. González Lorenzo, H. Gordon, T. Hlavaty, P. Juillerat, K. Katsanos, U.  
16 Kopylov, E. Krustins, T. Kucharzik, T. Lytras, C. Maaser, F. Magro, J.K. Marshall, P. Myrelid,  
17 G. Pellino, I. Rosa, J. Sabino, E. Savarino, L. Stassen, J. Torres, M. Uzzan, S. Vavricka, B.  
18 Verstockt, O. Zmora, **ECCO Guidelines on Therapeutics in Crohn's Disease: Surgical**  
19 **Treatment**, *Journal of Crohn's and Colitis*. 14 (2020) 155–168. <https://doi.org/10.1093/ecco->  
20 [jcc/jjz187](https://doi.org/10.1093/ecco-jcc/jjz187).
- 21 [88] B.E. Sands, F.H. Anderson, C.N. Bernstein, W.Y. Chey, B.G. Feagan, R.N. Fedorak, M.A.  
22 Kamm, J.R. Korzenik, B.A. Lashner, J.E. Onken, D. Rachmilewitz, P. Rutgeerts, G. Wild, D.C.  
23 Wolf, P.A. Marsters, S.B. Travers, M.A. Blank, S.J. van Deventer, **Infliximab maintenance**  
24 **therapy for fistulizing Crohn's disease**, *N Engl J Med*. 350 (2004) 876–885.  
25 <https://doi.org/10.1056/NEJMoa030815>.
- 26 [89] P. Rogalski, J. Daniluk, A. Baniukiewicz, E. Wroblewski, A. Dabrowski, Endoscopic  
27 management of gastrointestinal perforations, leaks and fistulas, *World J. Gastroenterol*. 21  
28 (2015) 10542–10552. <https://doi.org/10.3748/wjg.v21.i37.10542>.
- 29 [90] J. Avalos-González, E. Portilla-deBuen, C.A. Leal-Cortés, A. Orozco-Mosqueda, M. del C.  
30 Estrada-Aguilar, G.A. Velázquez-Ramírez, G. Ambriz-González, C. Fuentes-Orozco, A.E.  
31 Guzmán-Gurrola, A. González-Ojeda, Reduction of the closure time of postoperative  
32 enterocutaneous fistulas with fibrin sealant, *World J. Gastroenterol*. 16 (2010) 2793–2800.  
33 <https://doi.org/10.3748/wjg.v16.i22.2793>.
- 34 [91] G. Mauri, L.C. Pescatori, C. Mattiuz, D. Poretti, V. Pedicini, F. Melchiorre, U. Rossi, L.  
35 Solbiati, L.M. Sconfienza, Non-healing post-surgical fistulae: treatment with image-guided  
36 percutaneous injection of cyanoacrylic glue, *Radiol Med*. 122 (2017) 88–94.  
37 <https://doi.org/10.1007/s11547-016-0693-7>.
- 38 [92] A. Berger, E. Caudron, G. Perrod, I. Boucenna, F. Gazeau, C. Wilhelm, A. Berger, O.  
39 Clément, C. Cellier, A.K.A. Silva, G. Rahmi, Enhancing digestive fistula healing by the off-label  
40 use of a thermoresponsive vessel occluder polymer associated with esophageal stent placement:  
41 A case report, *Clin Res Hepatol Gastroenterol*. (2020) 101474.  
42 <https://doi.org/10.1016/j.clinre.2020.06.001>.
- 43 [93] A. Caziuc, G. Calin Dindelegan, E. Pall, A. Mironiuc, Stem cells improve the quality of  
44 colonic anastomoses - A systematic review, *J BUON*. 20 (2015) 1624–1629.
- 45 [94] T. Tanaka, T. Kuroki, T. Adachi, S. Ono, A. Kitasato, M. Hirabaru, M. Takatsuki, S. Eguchi,  
46 Development of a novel rat model with pancreatic fistula and the prevention of this complication  
47 using tissue-engineered myoblast sheets, *J. Gastroenterol*. 48 (2013) 1081–1089.  
48 <https://doi.org/10.1007/s00535-012-0706-9>.
- 49 [95] H. Kaneko, T. Kokuryo, Y. Yokoyama, J. Yamaguchi, T. Yamamoto, R. Shibata, M. Gotoh,  
50 T. Murohara, A. Ito, M. Nagino, Novel therapy for pancreatic fistula using adipose-derived stem  
51 cells, *World J. Gastroenterol*. 16 (2010) 2793–2800.

cell sheets treated with mannose, *Surgery*. 161 (2017) 1561–1569.

<https://doi.org/10.1016/j.surg.2016.12.022>.

- [96] S.-R. Kim, H.-J. Yi, Y.N. Lee, J.Y. Park, R.M. Hoffman, T. Okano, I.K. Shim, S.C. Kim, Engineered mesenchymal stem-cell-sheets patches prevents postoperative pancreatic leakage in a rat model, *Sci Rep*. 8 (2018) 360. <https://doi.org/10.1038/s41598-017-18490-9>.
- [97] B.B. Volpe, A. da S.S. Duarte, T.B. Ribeiro, I. Stocchero, P. Kharmandayan, S.T.O. Saad, J.M. Bustorff-Silva, Â.C.M. Luzo, Mesenchymal stromal cells from adipose tissue attached to suture material enhance the closure of enterocutaneous fistulas in a rat model, *Cytotherapy*. 16 (2014) 1709–1719. <https://doi.org/10.1016/j.jcyt.2014.08.004>.
- [98] S.M. Aldaqal, M.F. Khayat, R.Y. Bokhary, M.M. Wakka, A.A. Merdad, L.A. Merdad, Management of postoperative gastrointestinal leakage with autologous stromal vascular fraction, *Int Surg*. 100 (2015) 748–754. <https://doi.org/10.9738/INTSURG-D-14-00120.1>.
- [99] G. Rahmi, L. Pidial, A.K.A. Silva, E. Blondiaux, B. Meresse, F. Gazeau, G. Autret, D. Balvay, C.A. Cuenod, S. Perretta, B. Tavitian, C. Wilhelm, C. Cellier, O. Clément, Designing 3D Mesenchymal Stem Cell Sheets Merging Magnetic and Fluorescent Features: When Cell Sheet Technology Meets Image-Guided Cell Therapy, *Theranostics*. 6 (2016) 739–751. <https://doi.org/10.7150/thno.14064>.
- [100] O. Ryska, Z. Serclova, O. Mestak, E. Matouskova, P. Vesely, I. Mrazova, Local application of adipose-derived mesenchymal stem cells supports the healing of fistula: prospective randomised study on rat model of fistulising Crohn's disease, *Scandinavian Journal of Gastroenterology*. 52 (2017) 543–550. <https://doi.org/10.1080/00365521.2017.1281434>.
- [101] T. Mizushima, H. Takahashi, H. Takeyama, A. Naito, N. Haraguchi, M. Uemura, J. Nishimura, T. Hata, I. Takemasa, H. Yamamoto, Y. Doki, M. Mori, A clinical trial of autologous adipose-derived regenerative cell transplantation for a postoperative enterocutaneous fistula, *Surg. Today*. 46 (2016) 835–842. <https://doi.org/10.1007/s00595-015-1246-8>.
- [102] A.B. Dietz, E.J. Dozois, J.G. Fletcher, G.W. Butler, D. Radel, A.L. Lightner, M. Dave, J. Friton, A. Nair, E.T. Camilleri, A. Dudakovic, A.J. van Wijnen, W.A. Faubion, Autologous Mesenchymal Stem Cells, Applied in a Bioabsorbable Matrix, for Treatment of Perianal Fistulas in Patients With Crohn's Disease, *Gastroenterology*. 153 (2017) 59-62.e2. <https://doi.org/10.1053/j.gastro.2017.04.001>.
- [103] A.L. Lightner, E.J. Dozois, A.B. Dietz, J.G. Fletcher, J. Friton, G. Butler, W.A. Faubion, Matrix-Delivered Autologous Mesenchymal Stem Cell Therapy for Refractory Rectovaginal Crohn's Fistulas, *Inflamm. Bowel Dis.* (2019). <https://doi.org/10.1093/ibd/izz215>.
- [104] E.J. Dozois, A.L. Lightner, K.L. Mathis, H.K. Chua, S.R. Kelley, J.G. Fletcher, A.B. Dietz, J.J. Friton, G.W. Butler, W.A. Faubion, Early Results of a Phase I Trial Using an Adipose-Derived Mesenchymal Stem Cell-Coated Fistula Plug for the Treatment of Transsphincteric Cryptoglandular Fistulas, *Dis. Colon Rectum*. 62 (2019) 615–622. <https://doi.org/10.1097/DCR.0000000000001333>.
- [105] J. Rivera-Nieves, G. Bamias, A. Vidrich, M. Marini, T.T. Pizarro, M.J. McDuffie, C.A. Moskaluk, S.M. Cohn, F. Cominelli, Emergence of perianal fistulizing disease in the SAMP1/YitFc mouse, a spontaneous model of chronic ileitis, *Gastroenterology*. 124 (2003) 972–982. <https://doi.org/10.1053/gast.2003.50148>.
- [106] L. Ferrer, E.A. Kimbrel, A. Lam, E.B. Falk, C. Zewe, T. Juopperi, R. Lanza, A. Hoffman, Treatment of perianal fistulas with human embryonic stem cell-derived mesenchymal stem cells: a canine model of human fistulizing Crohn's disease, *Regen Med*. 11 (2016) 33–43. <https://doi.org/10.2217/rme.15.69>.
- [107] C.L. Cain, Canine Perianal Fistulas: Clinical Presentation, Pathogenesis, and Management, *Vet. Clin. North Am. Small Anim. Pract.* 49 (2019) 53–65. <https://doi.org/10.1016/j.cvsm.2018.08.006>.
- [108] A.M. Hoffman, S.W. Dow, Concise Review: Stem Cell Trials Using Companion Animal Disease Models, *Stem Cells*. 34 (2016) 1709–1729. <https://doi.org/10.1002/stem.2377>.

- 1 [109] M. Flacs, M. Collard, S. Doblas, M. Zappa, D. Cazals-Hatem, L. Maggiori, Y. Panis, X.  
2 Treton, E. Ogier-Denis, **Preclinical Model of Perianal Fistulizing Crohn's Disease**, *Inflamm.*  
3 *Bowel Dis.* (2019). <https://doi.org/10.1093/ibd/izz288>.
- 4 [110] J.C. Hoffmann, N.N. Pawlowski, A.A. Kühl, W. Höhne, M. Zeitz, Animal models of  
5 inflammatory bowel disease: an overview, *Pathobiology.* 70 (2002) 121–130.  
6 <https://doi.org/10.1159/000068143>.
- 7 [111] E. Antoniou, G.A. Margonis, A. Angelou, A. Pikouli, P. Argiri, I. Karavokyros, A. Papalois,  
8 E. Pikoulis, The TNBS-induced colitis animal model: An overview, *Annals of Medicine and*  
9 *Surgery.* 11 (2016) 9–15. <https://doi.org/10.1016/j.amsu.2016.07.019>.
- 10 [112] R.S. Bruckner, E. Nissim-Eliraz, N. Marsiano, E. Nir, H. Shemesh, M. Leutenegger, C.  
11 Gottier, S. Lang, M.R. Spalinger, S. Leibl, G. Rogler, S. Yagel, M. Scharl, N.Y. Shpigel,  
12 Transplantation of Human Intestine Into the Mouse: A Novel Platform for Study of  
13 Inflammatory Enterocutaneous Fistulas, *J Crohns Colitis.* 13 (2019) 798–806.  
14 <https://doi.org/10.1093/ecco-jcc/jjy226>.
- 15 [113] D. García-Olmo, M. García-Arranz, L.G. García, E.S. Cuellar, I.F. Blanco, L.A. Prianes,  
16 J.A.R. Montes, F.L. Pinto, D.H. Marcos, L. García-Sancho, Autologous stem cell transplantation  
17 for treatment of rectovaginal fistula in perianal Crohn's disease: a new cell-based therapy, *Int J*  
18 *Colorectal Dis.* 18 (2003) 451–454. <https://doi.org/10.1007/s00384-003-0490-3>.
- 19 [114] D. García-Olmo, M. García-Arranz, D. Herreros, I. Pascual, C. Peiro, J.A. Rodríguez-Montes,  
20 **A phase I clinical trial of the treatment of Crohn's fistula by adipose mesenchymal stem cell**  
21 **transplantation**, *Dis. Colon Rectum.* 48 (2005) 1416–1423. [https://doi.org/10.1007/s10350-005-](https://doi.org/10.1007/s10350-005-0052-6)  
22 [0052-6](https://doi.org/10.1007/s10350-005-0052-6).
- 23 [115] D. Garcia-Olmo, D. Herreros, I. Pascual, J.A. Pascual, E. Del-Valle, J. Zorrilla, P. De-La-  
24 Quintana, M. Garcia-Arranz, M. Pascual, Expanded adipose-derived stem cells for the treatment  
25 of complex perianal fistula: a phase II clinical trial, *Dis. Colon Rectum.* 52 (2009) 79–86.  
26 <https://doi.org/10.1007/DCR.0b013e3181973487>.
- 27 [116] D. Garcia-Olmo, D. Herreros, M. Pascual, I. Pascual, P. De-La-Quintana, J. Trebol, M.  
28 Garcia-Arranz, **Treatment of enterocutaneous fistula in Crohn's Disease with adipose-derived**  
29 **stem cells: a comparison of protocols with and without cell expansion**, *Int J Colorectal Dis.* 24  
30 (2009) 27–30. <https://doi.org/10.1007/s00384-008-0559-0>.
- 31 [117] D. García-Olmo, D. Herreros, P. De-La-Quintana, H. Guadalajara, J. Trébol, T. Georgiev-  
32 Hristov, M. García-Arranz, **Adipose-derived stem cells in Crohn's rectovaginal fistula**, *Case Rep*  
33 *Med.* 2010 (2010) 961758. <https://doi.org/10.1155/2010/961758>.
- 34 [118] R. Ciccocioppo, M.E. Bernardo, A. Sgarella, R. Maccario, M.A. Avanzini, C. Ubezio, A.  
35 Minelli, C. Alvisi, A. Vanoli, F. Calliada, P. Dionigi, C. Perotti, F. Locatelli, G.R. Corazza,  
36 Autologous bone marrow-derived mesenchymal stromal cells in the treatment of fistulising  
37 **Crohn's disease**, *Gut.* 60 (2011) 788–798. <https://doi.org/10.1136/gut.2010.214841>.
- 38 [119] H. Guadalajara, D. Herreros, P. De-La-Quintana, J. Trebol, M. Garcia-Arranz, D. Garcia-  
39 Olmo, Long-term follow-up of patients undergoing adipose-derived adult stem cell  
40 administration to treat complex perianal fistulas, *Int J Colorectal Dis.* 27 (2012) 595–600.  
41 <https://doi.org/10.1007/s00384-011-1350-1>.
- 42 [120] Y.B. Cho, W.Y. Lee, K.J. Park, M. Kim, H.-W. Yoo, C.S. Yu, Autologous adipose tissue-  
43 **derived stem cells for the treatment of Crohn's fistula: a phase I clinical study**, *Cell Transplant.*  
44 22 (2013) 279–285. <https://doi.org/10.3727/096368912X656045>.
- 45 [121] F. de la Portilla, F. Alba, D. García-Olmo, J.M. Herreras, F.X. González, A. Galindo,  
46 Expanded allogeneic adipose-derived stem cells (eASCs) for the treatment of complex perianal  
47 **fistula in Crohn's disease: results from a multicenter phase I/IIa clinical trial**, *Int J Colorectal*  
48 *Dis.* 28 (2013) 313–323. <https://doi.org/10.1007/s00384-012-1581-9>.
- 49 [122] W.Y. Lee, K.J. Park, Y.B. Cho, S.N. Yoon, K.H. Song, D.S. Kim, S.H. Jung, M. Kim, H.-W.  
50 Yoo, I. Kim, H. Ha, C.S. Yu, Autologous adipose tissue-derived stem cells treatment

demonstrated favorable and sustainable therapeutic effect for Crohn's fistula, *Stem Cells*. 31 (2013) 2575–2581. <https://doi.org/10.1002/stem.1357>.

- [123] D. Garcia-Olmo, H. Guadalajara, I. Rubio-Perez, M.D. Herreros, P. de-la-Quintana, M. Garcia-Arranz, Recurrent anal fistulae: limited surgery supported by stem cells, *World J. Gastroenterol.* 21 (2015) 3330–3336. <https://doi.org/10.3748/wjg.v21.i11.3330>.
- [124] Y.B. Cho, K.J. Park, S.N. Yoon, K.H. Song, D.S. Kim, S.H. Jung, M. Kim, H.Y. Jeong, C.S. Yu, Long-term results of adipose-derived stem cell therapy for the treatment of Crohn's fistula, *Stem Cells Transl Med.* 4 (2015) 532–537. <https://doi.org/10.5966/sctm.2014-0199>.
- [125] R. Ciccocioppo, A. Gallia, A. Sgarella, P. Kruzliak, P.G. Gobbi, G.R. Corazza, Long-Term Follow-Up of Crohn Disease Fistulas After Local Injections of Bone Marrow-Derived Mesenchymal Stem Cells, *Mayo Clin. Proc.* 90 (2015) 747–755. <https://doi.org/10.1016/j.mayocp.2015.03.023>.
- [126] I. Molendijk, B.A. Bonsing, H. Roelofs, K.C.M.J. Peeters, M.N.J.M. Wasser, G. Dijkstra, C.J. van der Woude, M. Duijvestein, R.A. Veenendaal, J.-J. Zwaginga, H.W. Verspaget, W.E. Fibbe, A.E. van der Meulen-de Jong, D.W. Hommes, Allogeneic Bone Marrow-Derived Mesenchymal Stromal Cells Promote Healing of Refractory Perianal Fistulas in Patients With Crohn's Disease, *Gastroenterology*. 149 (2015) 918–927.e6. <https://doi.org/10.1053/j.gastro.2015.06.014>.
- [127] K.J. Park, S.-B. Ryoo, J.S. Kim, T.I. Kim, S.H. Baik, H.J. Kim, K.Y. Lee, M. Kim, W.H. Kim, Allogeneic adipose-derived stem cells for the treatment of perianal fistula in Crohn's disease: a pilot clinical trial, *Colorectal Dis.* 18 (2016) 468–476. <https://doi.org/10.1111/codi.13223>.
- [128] M. García-Arranz, M.D. Herreros, C. González-Gómez, P. de la Quintana, H. Guadalajara, T. Georgiev-Hristov, J. Trébol, D. Garcia-Olmo, Treatment of Crohn's-Related Rectovaginal Fistula With Allogeneic Expanded-Adipose Derived Stem Cells: A Phase I-IIa Clinical Trial, *Stem Cells Transl Med.* 5 (2016) 1441–1446. <https://doi.org/10.5966/sctm.2015-0356>.
- [129] A. Moniuszko, A. Sarnowska, W. Rogowski, M. Durlík, A. Wluka, G. Rydzewska, Successful treatment of an enterovesical fistula due to Crohn's disease with stem cell transplantation: a case report, *Prz Gastroenterol.* 13 (2018) 332–336. <https://doi.org/10.5114/pg.2018.79814>.
- [130] J. Panés, D. García-Olmo, G.V. Assche, J.F. Colombel, W. Reinisch, D.C. Baumgart, A. Dignass, M. Nachury, M. Ferrante, L. Kazemi-Shirazi, J.C. Grimaud, F. de la Portilla, E. Goldin, M.P. Richard, A. Leselbaum, S. Danese, Expanded allogeneic adipose-derived mesenchymal stem cells (Cx601) for complex perianal fistulas in Crohn's disease: a phase 3 randomised, double-blind controlled trial, *The Lancet*. 388 (2016) 1281–1290. [https://doi.org/10.1016/S0140-6736\(16\)31203-X](https://doi.org/10.1016/S0140-6736(16)31203-X).
- [131] C. Wainstein, R. Quera, U. Kronberg, A. Conejero, F. López-Kostner, C. Jofre, A.J. Zarate, Mesenchymal stem cells and platelet-rich plasma in the treatment of patients with perineal Crohn's disease, *Int J Colorectal Dis.* 31 (2016) 725–726. <https://doi.org/10.1007/s00384-015-2221-y>.
- [132] C. Wainstein, R. Quera, D. Fluxá, U. Kronberg, A. Conejero, F. López-Köstner, C. Jofre, A.J. Zarate, Stem Cell Therapy in Refractory Perineal Crohn's Disease: Long-term Follow-up, *Colorectal Dis.* (2018). <https://doi.org/10.1111/codi.14002>.
- [133] M.D. Herreros, D. Garcia-Olmo, H. Guadalajara, T. Georgiev-Hristov, L. Brandariz, M. Garcia-Arranz, Stem Cell Therapy: A Compassionate Use Program in Perianal Fistula, *Stem Cells Int.* 2019 (2019) 6132340. <https://doi.org/10.1155/2019/6132340>.
- [134] C. Philandrianos, M. Serrero, F. Grimaud, J. Magalon, C. Visée, M. Velier, P. Francois, P. Orsoni, G. Magalon, J.-C. Grimaud, A. Desjeux, J. Véran, F. Sabatier, First clinical case report of local microinjection of autologous fat and adipose-derived stromal vascular fraction for perianal fistula in Crohn's disease, *Stem Cell Res Ther.* 9 (2018) 4. <https://doi.org/10.1186/s13287-017-0736-6>.

- [135] M. Serrero, F. Grimaud, C. Philandrianos, C. Visée, F. Sabatier, J.-C. Grimaud, Long-term Safety and Efficacy of Local Microinjection Combining Autologous Microfat and Adipose-Derived Stromal Vascular Fraction for the Treatment of Refractory Perianal Fistula in Crohn's Disease, *Gastroenterology*. 156 (2019) 2335-2337.e2. <https://doi.org/10.1053/j.gastro.2019.01.032>.
- [136] C. Zhou, M. Li, Y. Zhang, M. Ni, Y. Wang, D. Xu, Y. Shi, B. Zhang, Y. Chen, Y. Huang, S. Zhang, H. Shi, B. Jiang, Autologous adipose-derived stem cells for the treatment of Crohn's fistula-in-ano: an open-label, controlled trial, *Stem Cell Res Ther*. 11 (2020) 124. <https://doi.org/10.1186/s13287-020-01636-4>.
- [137] A. Dige, H.T. Hougaard, J. Agnholt, B.G. Pedersen, M. Tencerova, M. Kassem, K. Krogh, L. Lundby, Efficacy of Injection of Freshly Collected Autologous Adipose Tissue Into Perianal Fistulas in Patients With Crohn's Disease, *Gastroenterology*. 156 (2019) 2208-2216.e1. <https://doi.org/10.1053/j.gastro.2019.02.005>.
- [138] S. Norderval, L. Lundby, H. Hougaard, S. Buntzen, S. Weum, L. de Weerd, Efficacy of autologous fat graft injection in the treatment of anovaginal fistulas, *Tech Coloproctol*. 22 (2018) 45–51. <https://doi.org/10.1007/s10151-017-1739-0>.
- [139] P. Sileri, S. Mastrovito, F. Nicoli, A. Orlandi, M. Shalaby, Autotransplantation of autologous adipose tissue-derived mesenchymal stem cells to treat complex fistula-in-ano - the FLiRT technique - a video vignette, *Colorectal Dis*. 21 (2019) 247–249. <https://doi.org/10.1111/codi.14531>.
- [140] J. Panés, D. García-Olmo, G.V. Assche, J.F. Colombel, W. Reinisch, D.C. Baumgart, A. Dignass, M. Nachury, M. Ferrante, L. Kazemi-Shirazi, J.C. Grimaud, F. de la Portilla, E. Goldin, M.P. Richard, M.C. Diez, I. Tagarro, A. Leselbaum, S. Danese, J. Panés, D.C. Baumgart, J.F. Colombel, S. Danese, G.V. Assche, W. Reinisch, D. García-Olmo, A. Stift, J. Tschmelitsch, K. Mrak, H. Tilg, I. Kroberger, A. D'Hoore, D.D. Looze, F. Baert, P. Pattyn, P. Zerbib, F. Zerbib, S. Viennot, J.-L. Dupas, P.-C. Orsoni, X. Hebuterne, A. Rahili, M. Allez, Y. Panis, M. Reinshagen, R. Scherer, A. Sturm, W. Kruis, D.-S. Duek, M. Waterman, A. Lahat-Zok, O. Zmora, H. Tulchinsky, Y. Edden, A. Spinelli, V. Annese, I. Angriman, G. Riegler, F. Selvaggi, B. Oldenburg, L. Gilissen, G.V. Montfort, M. Lowenberg, A.W. Bemelman, R. Almenara, M.D.M. Arranz, M. García-Arranz, J.P. Gisbert, R. Palasí, C.T. Samsó, J.M.H. Justiniano, R. Rada, M.T. Butrón, D.C. López, A. López-Sanromán, J.H. de Val, A. Solana, F.X.G. Argenté, C. Pastor, H. Guadalajara, Long-term Efficacy and Safety of Stem Cell Therapy (Cx601) for Complex Perianal Fistulas in Patients With Crohn's Disease, *Gastroenterology*. 154 (2018) 1334-1342.e4. <https://doi.org/10.1053/j.gastro.2017.12.020>.
- [141] R. Meisel, A. Zibert, M. Laryea, U. Göbel, W. Däubener, D. Dilloo, Human bone marrow stromal cells inhibit allogeneic T-cell responses by indoleamine 2,3-dioxygenase-mediated tryptophan degradation, *Blood*. 103 (2004) 4619–4621. <https://doi.org/10.1182/blood-2003-11-3909>.
- [142] R. Ciccocioppo, G.C. Cangemi, P. Kruzliak, A. Gallia, E. Betti, C. Badulli, M. Martinetti, M. Cervio, A. Pecci, V. Bozzi, P. Dionigi, L. Visai, A. Gurrado, C. Alvisi, C. Picone, M. Monti, M.E. Bernardo, P. Gobbi, G.R. Corazza, Ex vivo immunosuppressive effects of mesenchymal stem cells on Crohn's disease mucosal T cells are largely dependent on indoleamine 2,3-dioxygenase activity and cell-cell contact, *Stem Cell Res Ther*. 6 (2015) 137. <https://doi.org/10.1186/s13287-015-0122-1>.
- [143] M. García-Arranz, U. Gómez-Pinedo, D. Hardisson, D. Herreros, H. Guadalajara, I. García-Gómez, J.M. García-Verdugo, D. García-Olmo, Histopathological analysis of human specimens removed from the injection area of expanded adipose-derived stem cells, *Histopathology*. 56 (2010) 979–982. <https://doi.org/10.1111/j.1365-2559.2010.03573.x>.
- [144] M.C. Barnhoorn, A.G.S. Van Halteren, M. Van Pel, I. Molendijk, A.C. Struijk, P.M. Jansen, H.W. Verspaget, G. Dijkstra, L.E.M. Oosten, A.E. Van der Meulen-de Jong, Lymphoproliferative Disease in the Rectum 4 Years After Local Mesenchymal Stromal Cell

- 1 Therapy for Refractory Perianal Crohn's Fistulas: A Case Report, *J Crohns Colitis*. 13 (2019)  
2 807–811. <https://doi.org/10.1093/ecco-jcc/jjy220>.
- 3 [145] R. Sanz-Baro, M. García-Arranz, H. Guadalajara, P. de la Quintana, M.D. Herreros, D.  
4 García-Olmo, First-in-Human Case Study: Pregnancy in Women With Crohn's Perianal Fistula  
5 Treated With Adipose-Derived Stem Cells: A Safety Study, *Stem Cells Transl Med*. 4 (2015)  
6 598–602. <https://doi.org/10.5966/sctm.2014-0255>.
- 7 [146] R. Ciccocioppo, C. Klersy, D.A. Leffler, R. Rogers, D. Bennett, G.R. Corazza, Systematic  
8 review with meta-analysis: Safety and efficacy of local injections of mesenchymal stem cells in  
9 perianal fistulas, *JGH Open*. 3 (2019) 249–260. <https://doi.org/10.1002/jgh3.12141>.
- 10 [147] F. Cheng, Z. Huang, Z. Li, Mesenchymal stem-cell therapy for perianal fistulas in Crohn's  
11 disease: a systematic review and meta-analysis, *Tech Coloproctol*. 23 (2019) 613–623.  
12 <https://doi.org/10.1007/s10151-019-02024-8>.
- 13 [148] A.L. Lightner, Z. Wang, A.C. Zubair, E.J. Dozois, A Systematic Review and Meta-analysis  
14 of Mesenchymal Stem Cell Injections for the Treatment of Perianal Crohn's Disease: Progress  
15 Made and Future Directions, *Dis. Colon Rectum*. 61 (2018) 629–640.  
16 <https://doi.org/10.1097/DCR.0000000000001093>.
- 17 [149] Y. Cao, Q. Su, B. Zhang, F. Shen, S. Li, Efficacy of stem cells therapy for Crohn's fistula: a  
18 meta-analysis and systematic review, *Stem Cell Res Ther*. 12 (2021) 32.  
19 <https://doi.org/10.1186/s13287-020-02095-7>.
- 20 [150] J. Yang, X.-X. Liu, H. Fan, Q. Tang, Z.-X. Shou, D.-M. Zuo, Z. Zou, M. Xu, Q.-Y. Chen, Y.  
21 Peng, S.-J. Deng, Y.-J. Liu, Extracellular Vesicles Derived from Bone Marrow Mesenchymal  
22 Stem Cells Protect against Experimental Colitis via Attenuating Colon Inflammation, Oxidative  
23 Stress and Apoptosis, *PLoS ONE*. 10 (2015) e0140551.  
24 <https://doi.org/10.1371/journal.pone.0140551>.
- 25 [151] F. Mao, Y. Wu, X. Tang, J. Kang, B. Zhang, Y. Yan, H. Qian, X. Zhang, W. Xu, Exosomes  
26 Derived from Human Umbilical Cord Mesenchymal Stem Cells Relieve Inflammatory Bowel  
27 Disease in Mice, *Biomed Res Int*. 2017 (2017) 5356760. <https://doi.org/10.1155/2017/5356760>.
- 28 [152] M.C. Barnhoorn, L. Plug, E.S.M.M. Jonge, D. Molenkamp, E. Bos, M.J.A. Schoonderwoerd,  
29 W.E. Corver, A.E. van der Meulen-de Jong, H.W. Verspaget, L.J. a. C. Hawinkels,  
30 Mesenchymal Stromal Cell-Derived Exosomes Contribute to Epithelial Regeneration in  
31 Experimental Inflammatory Bowel Disease, *Cell Mol Gastroenterol Hepatol*. 9 (2020) 715-  
32 717.e8. <https://doi.org/10.1016/j.jcmgh.2020.01.007>.
- 33 [153] A. Avivar-Valderas, C. Martín-Martín, C. Ramírez, B. Del Río, R. Menta, P. Mancheño-  
34 Corvo, M. Ortiz-Virumbrales, Á. Herrero-Méndez, J. Panés, D. García-Olmo, J.L. Castañer, I.  
35 Palacios, E. Lombardo, W. Dalemans, O. DelaRosa, Dissecting Allo-Sensitization After Local  
36 Administration of Human Allogeneic Adipose Mesenchymal Stem Cells in Perianal Fistulas of  
37 Crohn's Disease Patients, *Front Immunol*. 10 (2019) 1244.  
38 <https://doi.org/10.3389/fimmu.2019.01244>.
- 39 [154] D.W. Borowski, T.S. Gill, A.K. Agarwal, P. Bhaskar, Autologous adipose-tissue derived  
40 regenerative cells for the treatment of complex cryptoglandular fistula-in-ano: a report of three  
41 cases, *BMJ Case Rep*. 2012 (2012). <https://doi.org/10.1136/bcr-2012-006988>.
- 42 [155] T. Georgiev-Hristov, H. Guadalajara, M.D. Herreros, A.L. Lightner, E.J. Dozois, M. García-  
43 Arranz, D. García-Olmo, A Step-By-Step Surgical Protocol for the Treatment of Perianal Fistula  
44 with Adipose-Derived Mesenchymal Stem Cells, *J Gastrointest Surg*. 22 (2018) 2003–2012.  
45 <https://doi.org/10.1007/s11605-018-3895-6>.
- 46 [156] J.W. Jung, M. Kwon, J.C. Choi, J.W. Shin, I.W. Park, B.W. Choi, J.Y. Kim, Familial  
47 Occurrence of Pulmonary Embolism after Intravenous, Adipose Tissue-Derived Stem Cell  
48 Therapy, *Yonsei Med J*. 54 (2013) 1293–1296. <https://doi.org/10.3349/ymj.2013.54.5.1293>.
- 49 [157] M. Brennan, Fibrin glue, *Blood Rev*. 5 (1991) 240–244. [https://doi.org/10.1016/0268-960x\(91\)90015-5](https://doi.org/10.1016/0268-960x(91)90015-5).
- 50  
51  
52  
53  
54  
55  
56  
57  
58  
59  
60  
61  
62  
63  
64  
65



- 1 [158] S. Shawki, S.D. Wexner, Idiopathic fistula-in-ano, *World J. Gastroenterol.* 17 (2011) 3277–  
2 3285. <https://doi.org/10.3748/wjg.v17.i28.3277>.
- 3 [159] I. Molendijk, A.E. van der Meulen-de Jong, H.W. Verspaget, R.A. Veenendaal, D.W.  
4 Hommes, B.A. Bonsing, K.C.M.J. Peeters, Standardization of mesenchymal stromal cell therapy  
5 for perianal fistulizing Crohn's disease, *Eur J Gastroenterol Hepatol.* 30 (2018) 1148–1154.  
6 <https://doi.org/10.1097/MEG.0000000000001208>.
- 7 [160] D.G. Phinney, M.F. Pittenger, Concise Review: MSC- Derived Exosomes for Cell- Free  
8 Therapy, *STEM CELLS.* 35 (2017) 851–858. <https://doi.org/10.1002/stem.2575>.
- 9 [161] E. Rohde, K. Pachler, M. Gimona, Manufacturing and characterization of extracellular  
10 vesicles from umbilical cord-derived mesenchymal stromal cells for clinical testing,  
11 *Cytotherapy.* 21 (2019) 581–592. <https://doi.org/10.1016/j.jcyt.2018.12.006>.
- 12  
13  
14  
15  
16  
17  
18  
19  
20  
21  
22  
23  
24  
25  
26  
27  
28  
29  
30  
31  
32  
33  
34  
35  
36  
37  
38  
39  
40  
41  
42  
43  
44  
45  
46  
47  
48  
49  
50  
51  
52  
53  
54  
55  
56  
57  
58  
59  
60  
61  
62  
63  
64  
65