



HAL
open science

Nonparametric Estimation for I.I.D. Paths of a Martingale Driven Model with Application to Non-Autonomous Financial Models

Nicolas Marie

► **To cite this version:**

Nicolas Marie. Nonparametric Estimation for I.I.D. Paths of a Martingale Driven Model with Application to Non-Autonomous Financial Models. 2022. hal-03412261v2

HAL Id: hal-03412261

<https://hal.science/hal-03412261v2>

Preprint submitted on 6 Jul 2022 (v2), last revised 24 Nov 2022 (v3)

HAL is a multi-disciplinary open access archive for the deposit and dissemination of scientific research documents, whether they are published or not. The documents may come from teaching and research institutions in France or abroad, or from public or private research centers.

L'archive ouverte pluridisciplinaire **HAL**, est destinée au dépôt et à la diffusion de documents scientifiques de niveau recherche, publiés ou non, émanant des établissements d'enseignement et de recherche français ou étrangers, des laboratoires publics ou privés.

NONPARAMETRIC ESTIMATION FOR I.I.D. PATHS OF A MARTINGALE DRIVEN MODEL WITH APPLICATION TO NON-AUTONOMOUS FINANCIAL MODELS

NICOLAS MARIE[†]

ABSTRACT. This paper deals with a projection least square estimator of the function J_0 computed from multiple independent observations on $[0, T]$ of the process Z defined by $dZ_t = J_0(t)d\langle M \rangle_t + dM_t$, where M is a centered, continuous and square integrable martingale vanishing at 0. Risk bounds are established on this estimator, on an associated adaptive estimator and on an associated discrete time version used in practice. An appropriate transformation allows to rewrite the differential equation $dX_t = V(X_t)(b_0(t)dt + \sigma(t)dB_t)$, where B is a fractional Brownian motion of Hurst parameter $H \in [1/2, 1)$, as a model of the previous type. So, the second part of the paper deals with risk bounds on a nonparametric estimator of b_0 derived from the results on the projection least square estimator of J_0 . In particular, our results apply to the estimation of the drift function in a non-autonomous Black-Scholes model and to nonparametric estimation in a non-autonomous fractional stochastic volatility model.

CONTENTS

1. Introduction	2
2. A projection least square estimator of the map J_0	3
2.1. The objective function	4
2.2. The projection least square estimator	4
3. Risk bounds and model selection	5
4. Application to differential equations driven by the fractional Brownian motion	6
4.1. Auxiliary model	6
4.2. An estimator of Q_0	7
4.3. Example 1: drift estimation in a non-autonomous Black-Scholes model	8
4.4. Example 2: nonparametric estimation in a non-autonomous fractional stochastic volatility model	9
5. Numerical experiments	11
5.1. Experiments in Model (1) driven by the Molchan martingale	11
5.2. Experiments in the non-autonomous Black-Scholes model	12
References	12
Appendix A. Proofs	13
A.1. Proof of Proposition 3.1	13
A.2. Proof of Corollary 3.2	14
A.3. Proof of Theorem 3.4	14
A.4. Proof of Proposition 3.5	17
A.5. Proof of Proposition 4.1	19
A.6. Proof of Proposition 4.2	19
A.7. Proof of Proposition 4.3	20
Appendix B. Figures and tables	21

Key words and phrases. Projection least square estimator ; Model selection ; Fractional Brownian motion ; Stochastic differential equations ; Fractional Black-Scholes model.

1. INTRODUCTION

Since the 1980's, the statistical inference for stochastic differential equations (SDE) driven by a Brownian motion has been widely investigated by many authors in the parametric and in the nonparametric frameworks. Classically (see Hoffmann [20], Kessler [21], Kutoyants [24], Dalalyan [10], Comte et al. [7], etc.), the estimators of the drift function are computed from one path of the solution to the SDE and converge when the time horizon $T > 0$ goes to infinity. The existence and the uniqueness of the stationary solution to the SDE are then required, and obtained thanks to restrictive conditions on the drift function. Since few years, a new type of parametric and nonparametric estimators is investigated ; those computed from multiple independent observations on $[0, T]$ of the SDE solution. Indeed, this functional data analysis problem has been well studied in the parametric framework (see Ditlevsen and De Gaetano [18], Overgaard et al. [27], Picchini, De Gaetano and Ditlevsen [28], Picchini and Ditlevsen [29], Comte, Genon-Catalot and Samson [8], Delattre and Lavielle [13], Delattre, Genon-Catalot and Samson [12], Dion and Genon-Catalot [17], Delattre, Genon-Catalot and Larédo [11], etc.), and more recently in the nonparametric one (see Comte and Genon-Catalot [5, 6], Della Maestra and Hoffmann [14], Denis et al. [15] and Marie and Rosier [25]). In [5, 6], F. Comte and V. Genon-Catalot have extended to the diffusion processes framework the projection least squares estimation method initially designed for the nonparametric regression (see Cohen et al. [2], Comte and Genon-Catalot [4], etc.). Our paper deals with a nonparametric estimation problem of similar kind.

Consider the stochastic process $Z = (Z_t)_{t \in [0, T]}$, defined by

$$(1) \quad Z_t = \int_0^t J_0(s) d\langle M \rangle_s + M_t ; \forall t \in [0, T],$$

where $M = (M_t)_{t \in [0, T]} \neq 0$ is a centered, continuous and square integrable martingale vanishing at 0, and J_0 is an unknown function which belongs to $\mathbb{L}^2([0, T], d\langle M \rangle_t)$. Under these conditions on M and J_0 , the quadratic variation $\langle M \rangle_t$ of M is well-defined for any $t \in [0, T]$, and the Riemann-Stieljès integral of J_0 with respect to $s \mapsto \langle M \rangle_s$ on $[0, t]$ exists and is finite. So, the existence and the uniqueness of the process Z are ensured. By assuming that $\langle M \rangle_t$ is deterministic for every $t \in [0, T]$, our paper deals with the estimator $\widehat{J}_{m, N}$ of J_0 minimizing the objective function

$$J \longmapsto \gamma_N(J) := \frac{1}{N} \sum_{i=1}^N \left(\int_0^T J(s)^2 d\langle M^i \rangle_s - 2 \int_0^T J(s) dZ_s^i \right)$$

on a m -dimensional function space \mathcal{S}_m , where M^1, \dots, M^N (resp. Z^1, \dots, Z^N) are $N \in \mathbb{N}^*$ independent copies of M (resp. Z) and $m \in \{1, \dots, N\}$. Precisely, risk bounds are established on $\widehat{J}_{m, N}$ and on the adaptive estimator $\widehat{J}_{\widehat{m}, N}$, where

$$\widehat{m} = \arg \min_{m \in \mathcal{M}_N} \{ \gamma_N(\widehat{J}_{m, N}) + \text{pen}(m) \}$$

with $\mathcal{M}_N \subset \{1, \dots, N\}$,

$$\text{pen}(m) := \mathbf{c}_{\text{cal}} \frac{m}{N} ; \forall m \in \mathbb{N}$$

and $\mathbf{c}_{\text{cal}} > 0$ is a constant to calibrate in practice. Now, consider the differential equation

$$(2) \quad X_t = X_0 + \int_0^t V(X_s)(b_0(s)ds + \sigma(s)dB_s) ; t \in [0, T],$$

where X_0 is a \mathbb{R}^* -valued random variable, $B = (B_t)_{t \in [0, T]}$ is a fractional Brownian motion of Hurst parameter $H \in [1/2, 1)$, the stochastic integral with respect to B is taken pathwise (in Young's sense) when $H > 1/2$ and in Itô's sense when $H = 1/2$, and $V : \mathbb{R} \rightarrow \mathbb{R}$, $\sigma : [0, T] \rightarrow \mathbb{R}^*$ and $b_0 : [0, T] \rightarrow \mathbb{R}$ are at least continuous. An *appropriate* transformation (see Subsection 4.1) allows to rewrite Equation (2) as a model of type (1) driven by the Molchan martingale which quadratic variation is t^{2-2H} for every $t \in [0, T]$. So, our paper also deals with a risk bound on an estimator of b_0/σ derived from $\widehat{J}_{m, N}$. Up to our knowledge, only Comte and Marie [9] deals with a nonparametric estimator of the drift function computed from multiple independent observations on $[0, T]$ of the solution to a fractional SDE. Finally,

applications in mathematical finance are provided. On the one hand, an estimator of the drift function in a non-autonomous Black-Scholes model is given at Subsection 4.3. On the other hand, let us consider the fractional stochastic volatility model

$$(3) \quad \begin{cases} dS_t = S_t(b(t)dt + \sigma_t dW_t) \\ d\sigma_t = \sigma_t(\rho_0(t)dt + \nu dB_t) \end{cases},$$

where S_0 and σ_0 are $(0, \infty)$ -valued random variables, $W = (W_t)_{t \in [0, T]}$ is a Brownian motion, $\nu > 0$ and $b, \rho_0 \in C^0(\mathbb{R}_+; \mathbb{R})$. This is a non-autonomous extension, with fractional volatility, of the stochastic volatility model studied in Wiggins [32]. To take $H \in [1/2, 1)$ allows to take into account the persistence in volatility phenomenon (see Comte et al. [3]). An estimator of ρ_0 is given at Subsection 4.4.

At Section 2, a detailed definition of the projection least square estimator of J_0 is provided. Section 3 deals with risk bounds on $\hat{J}_{m, N}$, on the adaptive estimator $\hat{J}_{\hat{m}, N}$ and on a discrete time version of $\hat{J}_{m, N}$ used in practice. At Section 4, the results of Section 3 on the estimator of J_0 are applied to the estimation of b_0 in Equation (2) and then to the estimator of the drift function (resp. ρ_0) in the non-autonomous Black-Scholes model (resp. in Equation (3)). Finally, some numerical experiments are provided at Section 5 ; in Model (1) when M is the Molchan martingale, and in the non-autonomous Black-Scholes model. Proofs (resp. tables and figures) are postponed to Appendix A (resp. Appendix B).

2. A PROJECTION LEAST SQUARE ESTIMATOR OF THE MAP J_0

In the sequel, the quadratic variation $\langle M \rangle = (\langle M \rangle_t)_{t \in [0, T]}$ of M fulfills the following assumption.

Assumption 2.1. *The (nonnegative, increasing and continuous) process $\langle M \rangle$ is a deterministic function.*

Assumption 2.1 is fulfilled by the Brownian motion and, more generally, by any martingale $(M_t)_{t \in [0, T]}$ such that

$$M_t = \int_0^t \zeta(s) dW_s ; \forall t \in [0, T],$$

where W is a Brownian motion and $\zeta \in \mathbb{L}^2([0, T], dt)$. For some results, $\langle M \rangle$ fulfills the following stronger assumption.

Assumption 2.2. *There exists $\mu \in C^0([0, T]; \mathbb{R}_+)$ such that $\mu(\cdot)^{-1}$ is continuous from $[0, T]$ into \mathbb{R}_+ , and such that*

$$\langle M \rangle_t = \int_0^t \mu(s) ds ; \forall t \in [0, T].$$

Here again, Assumption 2.2 is fulfilled by the Brownian motion. Assumption 2.2 is also fulfilled by any martingale $(M_t)_{t \in [0, T]}$ such that

$$M_t = \int_0^t \zeta(s) dW_s ; \forall t \in [0, T],$$

where W is a Brownian motion, $\zeta \in C^0([0, T]; \mathbb{R})$ and $\zeta(\cdot)^{-1}$ is continuous from $[0, T]$ into \mathbb{R} . This last condition is satisfied, for instance, when ζ is a (c, ∞) -valued function with $c > 0$, or when $\zeta(t) = t^{-\kappa}$ for every $t \in (0, T]$ ($\kappa > 0$). For instance, let M be the Molchan martingale defined by

$$M_t := \int_0^t \ell(t, s) dB_s ; \forall t \in [0, T],$$

where B is a fractional Brownian motion of Hurst parameter $H \in [1/2, 1)$, and

$$\ell(t, s) := \mathbf{c}_H s^{1/2-H} (t-s)^{1/2-H} \mathbf{1}_{(0, t)}(s) ; \forall s, t \in [0, T]$$

with

$$\mathbf{c}_H = \left(\frac{\Gamma(3-2H)}{2H\Gamma(3/2-H)^3\Gamma(H+1/2)} \right)^{1/2}.$$

Since

$$M_t = (2-2H)^{1/2} \int_0^t s^{1/2-H} dW_s ; \forall t \in [0, T],$$

where W the Brownian motion driving the Mandelbrot-Van Ness representation of the fractional Brownian motion B , the Molchan martingale fulfills Assumption 2.2 with $\mu(t) = (2 - 2H)t^{1-2H}$ for every $t \in (0, T]$.

2.1. The objective function. In order to define a least square projection estimator of J_0 , let us consider $N \in \mathbb{N}^*$ independent copies M^1, \dots, M^N (resp. Z^1, \dots, Z^N) of M (resp. Z), and the objective function γ_N defined by

$$\gamma_N(J) := \frac{1}{N} \sum_{i=1}^N \left(\int_0^T J(s)^2 d\langle M^i \rangle_s - 2 \int_0^T J(s) dZ_s^i \right)$$

for every $J \in \mathcal{S}_m$, where $m \in \{1, \dots, N\}$, $\mathcal{S}_m := \text{span}\{\varphi_1, \dots, \varphi_m\}$ and $\varphi_1, \dots, \varphi_m$ are continuous functions from $[0, T]$ into \mathbb{R} such that $(\varphi_1, \dots, \varphi_m)$ is an orthonormal family in $\mathbb{L}^2([0, T], dt)$.

Remark. Note that since $t \in [0, T] \mapsto \langle M \rangle_t$ is nonnegative, increasing and continuous, and since the φ_j 's are continuous from $[0, T]$ into \mathbb{R} , the objective function γ_N is well-defined.

For any $J \in \mathcal{S}_m$,

$$\begin{aligned} \mathbb{E}(\gamma_N(J)) &= \int_0^T J(s)^2 d\langle M \rangle_s - 2 \int_0^T J(s) J_0(s) d\langle M \rangle_s - 2 \mathbb{E} \left(\int_0^T J(s) dM_s \right) \\ &= \int_0^T (J(s) - J_0(s))^2 d\langle M \rangle_s - \int_0^T J_0(s)^2 d\langle M \rangle_s. \end{aligned}$$

Then, the more J is close to J_0 , the more $\mathbb{E}(\gamma_N(J))$ is small. For this reason, the estimator of J_0 minimizing γ_N is studied in this paper.

2.2. The projection least square estimator. Consider

$$J := \sum_{j=1}^m \theta_j \varphi_j \quad \text{with } \theta_1, \dots, \theta_m \in \mathbb{R}.$$

Then,

$$\begin{aligned} \nabla \gamma_N(J) &= \left(\frac{1}{N} \sum_{i=1}^N \left(2 \sum_{k=1}^m \theta_k \int_0^T \varphi_j(s) \varphi_k(s) d\langle M^i \rangle_s - 2 \int_0^T \varphi_j(s) dZ_s^i \right) \right)_{j \in \{1, \dots, m\}} \\ &= 2(\Psi_m(\theta_1, \dots, \theta_m)^* - \mathbf{z}_{m,N}) \end{aligned}$$

where

$$\Psi_m := \left(\int_0^T \varphi_j(s) \varphi_k(s) d\langle M \rangle_s \right)_{j,k \in \{1, \dots, m\}} \quad \text{and} \quad \mathbf{z}_{m,N} := \left(\frac{1}{N} \sum_{i=1}^N \int_0^T \varphi_j(s) dZ_s^i \right)_{j \in \{1, \dots, m\}}.$$

Moreover, the symmetric matrix Ψ_m is nonnegative because under Assumption 2.1,

$$\mathbf{u}^* \Psi_m \mathbf{u} = \int_0^T \left(\sum_{j=1}^m \mathbf{u}_j \varphi_j(s) \right)^2 d\langle M \rangle_s \geq 0$$

for every $\mathbf{u} \in \mathbb{R}^m$. In fact, since $\varphi_1, \dots, \varphi_m$ are linearly independent, Ψ_m is even a positive-definite matrix, and thus γ_N has a unique minimum in \mathcal{S}_m . This legitimates to consider the estimator

$$(4) \quad \hat{J}_{m,N} = \arg \min_{J \in \mathcal{S}_m} \gamma_N(J)$$

of J_0 . Moreover, since $\nabla \gamma_N(\hat{J}_{m,N}) = 0$,

$$\hat{J}_{m,N} = \sum_{j=1}^m \hat{\theta}_j \varphi_j$$

with

$$\hat{\theta}_{m,N} := (\hat{\theta}_1, \dots, \hat{\theta}_m)^* = \Psi_m^{-1} \mathbf{z}_{m,N}.$$

In practice, since the process Z cannot be observed continuously on the time interval $[0, T]$, the vector $\mathbf{z}_{m,N}$ has to be replaced by the approximation

$$\mathbf{z}_{m,N,n} := \left(\frac{1}{N} \sum_{i=1}^N \sum_{l=0}^{n-1} \varphi_j(t_l) (Z_{t_{l+1}}^i - Z_{t_l}^i) \right)_{j \in \{1, \dots, m\}}$$

in the definition of $\widehat{J}_{m,N}$, where $t_l := lT/n$ for every $l \in \{0, \dots, n\}$. This leads to the discrete time estimator

$$\widehat{J}_{m,N,n} := \sum_{j=1}^m \widehat{\theta}_{m,N,n} \varphi_j \quad \text{with} \quad \widehat{\theta}_{m,N,n} := \Psi_m^{-1} \mathbf{z}_{m,N,n}.$$

3. RISK BOUNDS AND MODEL SELECTION

In the sequel, the space $\mathbb{L}^2([0, T], d\langle M \rangle_t)$ is equipped with the scalar product $\langle \cdot, \cdot \rangle_{\langle M \rangle}$ defined by

$$\langle \varphi, \psi \rangle_{\langle M \rangle} := \int_0^T \varphi(s) \psi(s) d\langle M \rangle_s$$

for every $\varphi, \psi \in \mathbb{L}^2([0, T], d\langle M \rangle_t)$. The associated norm is denoted by $\|\cdot\|_{\langle M \rangle}$.

First, the following proposition provides a risk bound on $\widehat{J}_{m,N}$ for a fixed $m \in \{1, \dots, N\}$.

Proposition 3.1. *Under Assumption 2.1,*

$$(5) \quad \mathbb{E}(\|\widehat{J}_{m,N} - J_0\|_{\langle M \rangle}^2) \leq \min_{J \in \mathcal{S}_m} \|J - J_0\|_{\langle M \rangle}^2 + \frac{2m}{N}.$$

Note that Inequality (5) says first that the bound on the variance of our least square estimator of J_0 is of order m/N , as in the usual nonparametric regression framework. Under Assumption 2.2, the following corollary provides a more understandable expression of the bound on the bias in Inequality (5).

Corollary 3.2. *Under Assumption 2.2,*

$$\mathbb{E}(\|\widehat{J}_{m,N} - J_0\|_2^2) \leq \|\mu(\cdot)^{-1}\|_{\infty, T} \|p_{\mathcal{S}_m}^\perp(\mu)(\mu^{1/2} J_0) - \mu^{1/2} J_0\|_2^2 + 2\|\mu(\cdot)^{-1}\|_{\infty, T} \frac{m}{N}$$

where

$$\mathcal{S}_m(\mu) := \{\iota \in \mathbb{L}^2([0, T], dt) : \exists \varphi \in \mathcal{S}_m, \forall t \in (0, T], \iota(t) = \mu(t)^{1/2} \varphi(t)\}.$$

For instance, assume that $\mathcal{S}_m = \text{span}\{\bar{\varphi}_1, \dots, \bar{\varphi}_m\}$, where

$$\bar{\varphi}_1(t) := \sqrt{\frac{1}{\mu(t)T}}, \quad \bar{\varphi}_{2j}(t) := \sqrt{\frac{2}{\mu(t)T}} \cos\left(2\pi j \frac{t}{T}\right) \quad \text{and} \quad \bar{\varphi}_{2j+1}(t) := \sqrt{\frac{2}{\mu(t)T}} \sin\left(2\pi j \frac{t}{T}\right)$$

for every $t \in [0, T]$ and $j \in \mathbb{N}^*$ satisfying $2j + 1 \leq m$. The basis $(\varphi_1, \dots, \varphi_m)$ of \mathcal{S}_m , orthonormal in $\mathbb{L}^2([0, T], dt)$, is obtained from $(\bar{\varphi}_1, \dots, \bar{\varphi}_m)$ via the Gram-Schmidt process. Consider also the Sobolev space

$$\mathbb{W}_2^\beta([0, T]) := \left\{ \iota \in C^{\beta-1}([0, T]; \mathbb{R}) : \int_0^T \iota^{(\beta)}(t)^2 dt < \infty \right\}; \quad \beta \in \mathbb{N}^*,$$

and assume that there exists $\iota_0 \in \mathbb{W}_2^\beta([0, T])$ such that $\iota_0(t) = \mu(t)^{1/2} J_0(t)$ for every $t \in (0, T]$. Then, by DeVore and Lorentz [16], Theorem 2.3 p. 205, there exists a constant $\mathbf{c}_{\beta, T} > 0$, not depending on m , such that

$$\|p_{\mathcal{S}_m}^\perp(\mu)(\mu^{1/2} J_0) - \mu^{1/2} J_0\|_2^2 = \|p_{\mathcal{S}_m}^\perp(\mu)(\iota_0) - \iota_0\|_2^2 \leq \mathbf{c}_{\beta, T} m^{-2\beta}.$$

Therefore, by Corollary 3.2,

$$\mathbb{E}(\|\widehat{J}_{m,N} - J_0\|_2^2) \leq \|\mu(\cdot)^{-1}\|_{\infty, T} \left(\mathbf{c}_{\beta, T} m^{-2\beta} + \frac{2m}{N} \right).$$

Now, consider $m_N \in \{1, \dots, N\}$, $\mathcal{M}_N := \{1, \dots, m_N\}$ and

$$(6) \quad \widehat{m} = \arg \min_{m \in \mathcal{M}_N} \{\gamma_N(\widehat{J}_{m,N}) + \text{pen}(m)\} \quad \text{with} \quad \text{pen}(\cdot) := \mathbf{c}_{\text{cal}} \frac{\cdot}{N},$$

where $\mathfrak{c}_{\text{cal}} > 0$ is a constant to calibrate in practice via, for instance, the *slope heuristic*. In the sequel, the φ_j 's fulfill the following assumption.

Assumption 3.3. *For every $m, m' \in \{1, \dots, N\}$, if $m > m'$, then $\mathcal{S}_{m'} \subset \mathcal{S}_m$.*

The following theorem provides a risk bound on the adaptive estimator $\widehat{J}_{\widehat{m}, N}$.

Theorem 3.4. *Under Assumptions 2.1 and 3.3, there exists a deterministic constant $\mathfrak{c}_{3.4} > 0$, not depending on N , such that*

$$\mathbb{E}(\|\widehat{J}_{\widehat{m}, N} - J_0\|_{\langle M \rangle}^2) \leq \mathfrak{c}_{3.4} \left(\min_{m \in \mathcal{M}_N} \{\mathbb{E}(\|\widehat{J}_{m, N} - J_0\|_{\langle M \rangle}^2) + \text{pen}(m)\} + \frac{1}{N} \right).$$

Moreover, under Assumption 2.2,

$$\mathbb{E}(\|\widehat{J}_{\widehat{m}, N} - J_0\|_2^2) \leq \mathfrak{c}_{3.4} \|\mu(\cdot)^{-1}\|_{\infty, T} \left(\min_{m \in \mathcal{M}_N} \left\{ \|p_{\mathcal{S}_m}^\perp(\mu^{1/2} J_0) - \mu^{1/2} J_0\|_2^2 + (2 + \mathfrak{c}_{\text{cal}}) \frac{m}{N} \right\} + \frac{1}{N} \right).$$

As in the usual nonparametric regression framework, since $\text{pen}(m)$ is of same order than the bound on the variance term of $\widehat{J}_{m, N}$ for every $m \in \mathcal{M}_N$, Theorem 3.4 says that the risk of our adaptive estimator is controlled by the minimal risk of $\widehat{J}_{\cdot, N}$ on \mathcal{M}_N up to a multiplicative constant not depending on N .

Finally, the following proposition provides a risk bound on the discrete time estimator $\widehat{J}_{m, N, n}$.

Proposition 3.5. *Under Assumption 2.2, there exists a deterministic constant $\mathfrak{c}_{3.5} > 0$, not depending on m , N and n , such that*

$$\mathbb{E}(\|\widehat{J}_{m, N, n} - J_0\|_{\langle M \rangle}^2) \leq 2 \min_{J \in \mathcal{S}_m} \|J - J_0\|_{\langle M \rangle}^2 + \mathfrak{c}_{3.5} \left(\frac{m}{N} + \frac{mR(m)}{n^2} \right),$$

where

$$R(m) := \sup_{t \in [0, T]} \sum_{j=1}^m \varphi_j'(t)^2.$$

For instance, assume that $(\varphi_1, \dots, \varphi_m)$ is the trigonometric basis. As established in Comte and Marie [9], Subsubsection 3.2.1, $R(m)$ is of order m^3 . Then, for n of order N^2 , the variance term in the risk bound of Proposition 3.5 is of order m/N as in the risk bound on the continuous time estimator of Proposition 3.1.

4. APPLICATION TO DIFFERENTIAL EQUATIONS DRIVEN BY THE FRACTIONAL BROWNIAN MOTION

Throughout this section, M is the Molchan martingale defined at Section 2. For $H = 1/2$, we assume that $V : \mathbb{R} \rightarrow \mathbb{R}$ is continuously differentiable, V' is bounded, $\sigma : [0, T] \rightarrow \mathbb{R}^*$ and $b_0 : [0, T] \rightarrow \mathbb{R}$ are continuous, and then Equation (2) has a unique solution (see Revuz and Yor [30], Theorem 2.1, p. 375). For $H \in (1/2, 1)$, we assume that $V : \mathbb{R} \rightarrow \mathbb{R}$ is twice continuously differentiable, V' and V'' are bounded, $\sigma : [0, T] \rightarrow \mathbb{R}^*$ is γ -Hölder continuous with $\gamma \in (1 - H, 1]$, $b_0 : [0, T] \rightarrow \mathbb{R}$ is continuous, and then Equation (2) has a unique solution which paths are α -Hölder continuous from $[0, T]$ into \mathbb{R} for every $\alpha \in (1/2, H)$ (see Kūbilius et al. [23], Theorem 1.42). In the sequel, the maps V and σ are known and our purpose is to provide a nonparametric estimator of b_0 .

4.1. Auxiliary model. The model transformation used in the sequel has been introduced in Kleptsyna and Le Breton [22] in the parametric estimation framework. Consider the function space

$$\mathcal{Q} := \{Q : \text{the function } t \mapsto t^{1/2-H} Q(t) \text{ belongs to } \mathbb{L}^1([0, T], dt)\},$$

let $Q_0 : [0, T] \rightarrow \mathbb{R}$ be the map defined by

$$Q_0(t) := \frac{b_0(t)}{\sigma(t)} ; \forall t \in [0, T],$$

and assume that $Q_0 \in \mathcal{Q}$. Consider also the process Z such that for every $t \in [0, T]$,

$$Z_t := \int_0^t \ell(t, s) dY_s$$

with

$$Y_t = \int_0^t \frac{dX_s}{V(X_s)\sigma(s)} = \int_0^t \left(\frac{b_0(s)}{\sigma(s)} ds + dB_s \right) = \int_0^t Q_0(s) ds + B_t.$$

Then, Equation (2) leads to

$$(7) \quad \begin{aligned} Z_t &= j(Q_0)(t) + M_t \\ &= \int_0^t J(Q_0)(s) d\langle M \rangle_s + M_t, \end{aligned}$$

where

$$j(Q)(t) := \int_0^t \ell(t, s) Q(s) ds \quad \text{and} \quad J(Q)(t) := (2 - 2H)^{-1} t^{2H-1} j(Q)'(t)$$

for every $Q \in \mathcal{Q}$ and almost every $t \in [0, T]$.

4.2. An estimator of Q_0 . For $H = 1/2$, $\langle M \rangle_t = \langle B \rangle_t = t$ for every $t \in [0, T]$, and $J(Q) = Q$ for every $Q \in \mathcal{Q} = \mathbb{L}^1([0, T], dt)$. Then, in Model (7), for any $m \in \{1, \dots, N\}$, the solution to Problem (4) is a nonparametric estimator of Q_0 . So, no additional investigations are required when $H = 1/2$. For $H \in (1/2, 1)$, in Model (7), the solution $\widehat{J}_{m,N}$ to Problem (4) is a nonparametric estimator of $J(Q_0)$. So, for $H \in (1/2, 1)$, this subsection deals with an estimator of Q_0 solving the inverse problem

$$(8) \quad J(\widehat{Q}) = \widehat{J}_{m,N}.$$

Let us consider the function space

$$\mathcal{J} := \left\{ \iota : \text{the function } t \in [0, T] \mapsto \int_0^t s^{1-2H} \iota(s) ds \text{ belongs to } \mathcal{I}_{0+}^{3/2-H}(\mathbb{L}^1([0, T], dt)) \right\},$$

where $\mathcal{I}_{0+}^{3/2-H}(\cdot)$ is the Riemann-Liouville left-sided fractional integral of order $3/2 - H$. The reader can refer to Samko et al. [31] on fractional calculus.

In order to provide an estimator of Q_0 with a closed-form expression, let us establish first the following technical proposition.

Proposition 4.1. *The map $J : Q \mapsto J(Q)$ is one-to-one from \mathcal{Q} into \mathcal{J} . Moreover, for every $\iota \in \mathcal{J}$ and almost every $t \in [0, T]$,*

$$J^{-1}(\iota)(t) = \bar{c}_H t^{H-1/2} \int_0^t (t-s)^{H-3/2} s^{1-2H} \iota(s) ds$$

with

$$\bar{c}_H = \frac{2 - 2H}{c_H \Gamma(3/2 - H) \Gamma(H - 1/2)}.$$

By Proposition 4.1, if $\varphi_1, \dots, \varphi_m \in \mathcal{J}$, then

$$\widehat{Q}_{m,N}(t) := \bar{c}_H t^{H-1/2} \int_0^t (t-s)^{H-3/2} s^{1-2H} \widehat{J}_{m,N}(s) ds ; t \in [0, T]$$

is the solution to Problem (8) in \mathcal{Q} . Note that even if the φ_j 's don't belong to \mathcal{J} , since these functions are continuous from $[0, T]$ into \mathbb{R} , $\widehat{Q}_{m,N}$ is well-defined but not necessarily a solution to Problem (8). A simple vector subspace of \mathcal{J} is provided at the end of this subsection.

The following proposition provides risk bounds on $\widehat{Q}_{m,N}$, $m \in \{1, \dots, N\}$, and on the adaptive estimator $\widehat{Q}_{\widehat{m},N}$.

Proposition 4.2. *If the φ_j 's belong to \mathcal{J} , then there exists a deterministic constant $\mathfrak{c}_{4.2,1} > 0$, not depending on N , such that*

$$\mathbb{E}(\|\widehat{Q}_{m,N} - Q_0\|_2^2) \leq \mathfrak{c}_{4.2,1} \left(\min_{\iota \in \mathcal{S}_m} \|\iota - J(Q_0)\|_{\langle M \rangle}^2 + \frac{m}{N} \right); \forall m \in \{1, \dots, N\}.$$

If in addition the φ_j 's fulfill Assumption 3.3, then there exists a deterministic constant $\mathfrak{c}_{4.2,2} > 0$, not depending on N , such that

$$\mathbb{E}(\|\widehat{Q}_{\widehat{m},N} - Q_0\|_2^2) \leq \mathfrak{c}_{4.2,2} \left(\min_{m \in \mathcal{M}_N} \left\{ \min_{\iota \in \mathcal{S}_m} \|\iota - J(Q_0)\|_{\langle M \rangle}^2 + \frac{m}{N} \right\} + \frac{1}{N} \right).$$

Proposition 4.2 says that the MISE of $\widehat{Q}_{m,N}$, $m \in \{1, \dots, N\}$, (resp. $\widehat{Q}_{\widehat{m},N}$) has at most the same bound than the MISE of $\widehat{J}_{m,N}$ (resp. $\widehat{J}_{\widehat{m},N}$).

Finally, the following proposition provides a simple vector subspace of \mathcal{J} .

Proposition 4.3. *The function space*

$$\mathbb{J} := \left\{ \iota \in C^1([0, T]; \mathbb{R}) : \lim_{t \rightarrow 0^+} t^{-2H} \iota(t) \text{ and } \lim_{t \rightarrow 0^+} t^{1-2H} \iota'(t) \text{ exist and are finite} \right\}$$

is a subset of \mathcal{J} .

Consider $m \in \{1, \dots, N\}$ and $\psi_1, \dots, \psi_m \in C^1([0, T]; \mathbb{R})$ such that (ψ_1, \dots, ψ_m) is an orthonormal family of $\mathbb{L}^2([0, T], dt)$. In particular, note that ψ_1, \dots, ψ_m are linearly independent. Moreover, assume that $\mathcal{S}_m = \text{span}\{\bar{\varphi}_1, \dots, \bar{\varphi}_m\}$ with $\bar{\varphi}_j(t) := t^{2H} \psi_j(t)$ for every $j \in \{1, \dots, m\}$ and $t \in [0, T]$. The basis $(\varphi_1, \dots, \varphi_m)$ of \mathcal{S}_m , orthonormal in $\mathbb{L}^2([0, T], dt)$, is obtained from $(\bar{\varphi}_1, \dots, \bar{\varphi}_m)$ via the Gram-Schmidt process, and the φ_j 's belong to $\mathbb{J} \subset \mathcal{J}$. For every $\iota \in \mathcal{S}_m$, there exist $\alpha_1(\iota), \dots, \alpha_m(\iota) \in \mathbb{R}$ such that

$$\iota = \sum_{j=1}^m \alpha_j(\iota) \bar{\varphi}_j = v \mu^{-1/2} \bar{\iota},$$

where $v(t) := (2 - 2H)^{1/2} t^{H+1/2}$ for every $t \in [0, T]$, and

$$\bar{\iota} := \sum_{j=1}^m \alpha_j(\iota) \psi_j \in \mathbb{S}_m \quad \text{with} \quad \mathbb{S}_m := \text{span}\{\psi_1, \dots, \psi_m\}.$$

So, by assuming that $J(Q_0) \in \mathbb{J}$, the bound on the bias term of $\widehat{J}_{m,N}$ in the inequalities of Proposition 4.2 can be controlled the following way:

$$\begin{aligned} \min_{\iota \in \mathcal{S}_m} \|\iota - J(Q_0)\|_{\langle M \rangle}^2 &= \min_{\bar{\iota} \in \mathbb{S}_m} \|v(\bar{\iota} - v^{-1} \mu^{1/2} J(Q_0))\|_2^2 \\ &\leq (2 - 2H) T^{2H+1} \min_{\bar{\iota} \in \mathbb{S}_m} \|\bar{\iota} - \bar{\mu} J(Q_0)\|_2^2 = (2 - 2H) T^{2H+1} \|p_{\mathbb{S}_m}^\perp(\bar{\mu} J(Q_0)) - \bar{\mu} J(Q_0)\|_2^2 \end{aligned}$$

where, for every $t \in (0, T]$,

$$\bar{\mu}(t) := v(t)^{-1} \mu(t)^{1/2} = t^{-2H}.$$

If (ψ_1, \dots, ψ_m) is the m -dimensional trigonometric basis, and if there exists $\iota_0 \in \mathbb{W}_2^\beta([0, T])$ such that $\iota_0(t) = t^{-2H} J(Q_0)(t)$ for every $t \in (0, T]$, then

$$\min_{\iota \in \mathcal{S}_m} \|\iota - J(Q_0)\|_{\langle M \rangle}^2 \leq (2 - 2H) T^{2H+1} \|p_{\mathbb{S}_m}^\perp(\iota_0) - \iota_0\|_2^2 \leq \mathfrak{c}_{\beta, T} (2 - 2H) T^{2H+1} m^{-2\beta}.$$

4.3. Example 1: drift estimation in a non-autonomous Black-Scholes model. Let us consider a financial market model in which the prices process $S = (S_t)_{t \in \mathbb{R}_+}$ of the risky asset satisfies

$$(9) \quad S_t = S_0 + \int_0^t S_u (b_0(u) du + \sigma dW_u); \quad t \in \mathbb{R}_+,$$

where S_0 is a $(0, \infty)$ -valued random variable, $W = (W_t)_{t \in \mathbb{R}_+}$ is a Brownian motion, $\sigma > 0$ and $b_0 \in C^0(\mathbb{R}_+; \mathbb{R})$. This is a non-autonomous extension of the Black-Scholes model.

Note that, in practice, several independent copies of the prices process S cannot be observed on $[0, T]$. So, in order to define a suitable estimator of b_0 on $[0, T]$, let us assume that S is observed on $[0, NT]$ and, for any $i \in \{1, \dots, N\}$, consider $T_i := (i-1)T$ and the process $S^i = (S_t^i)_{t \in [0, T]}$ defined by

$$S_t^i := S_{T_i+t} ; \forall t \in [0, T].$$

By Equation (9), for every $t \in [0, T]$,

$$\begin{aligned} S_t^i &= S_{T_i} + \int_{T_i}^{T_i+t} S_u(b_0(u)du + \sigma dW_u) \\ &= S_0^i + \int_0^t S_u^i(b_0(T_i+u)du + \sigma dW_u^i) \quad \text{with} \quad W^i := W_{T_i+\cdot} - W_{T_i}. \end{aligned}$$

Moreover, let $Z^i = (Z_t^i)_{t \in [0, T]}$ be the process defined by

$$(10) \quad Z_t^i := \frac{1}{\sigma} \int_0^t \frac{dS_u^i}{S_u^i} = \frac{1}{\sigma} \int_0^t b_0(T_i+u)d\langle W^i \rangle_u + W_t^i$$

for every $t \in [0, T]$. Since W^1, \dots, W^N are N independent Brownian motions, by assuming that the volatility constant σ is known and that b_0 is T -periodic, a suitable nonparametric estimator of b_0 on $[0, T]$ is given by

$$\widehat{b}_{m,N}(t) := \sigma \widehat{J}_{m,N}(t) ; t \in [0, T],$$

where $m \in \{1, \dots, N\}$ and

$$\widehat{J}_{m,N} = \arg \min_{J \in \mathcal{S}_m} \left\{ \frac{1}{N} \sum_{i=1}^N \left(\int_0^T J(s)^2 ds - 2 \int_0^T J(s) dZ_s^i \right) \right\}.$$

Since

$$\|\widehat{b}_{m,N} - b_0\|_2^2 = \sigma^2 \|\widehat{J}_{m,N} - J_0\|_2^2 \quad \text{with} \quad J_0 = \frac{b_0}{\sigma},$$

Proposition 3.1 provides a risk bound on $\widehat{b}_{m,N}$, and Theorem 3.4 provides a risk bound on $\widehat{b}_{\widehat{m},N}$ with \widehat{m} selected in $\mathcal{M}_N \subset \{1, \dots, N\}$ via (6).

Finally, to assume that b_0 is T -periodic means that Model (9) is appropriate for assets with a prices process having *similar* trends on each interval $[T_i, T_{i+1}]$, typically each day ($T = 24\text{h}$). Obviously, since constant functions are T -periodic, $\widehat{b}_{m,N}$ is an estimator of the drift constant in the usual Black-Scholes model.

4.4. Example 2: nonparametric estimation in a non-autonomous fractional stochastic volatility model. Let us consider a financial market model in which the prices process $S = (S_t)_{t \in [0, T]}$ of the risky asset satisfies Equation (3), that is

$$\begin{cases} dS_t = S_t(b(t)dt + \sigma_t dW_t) \\ d\sigma_t = \sigma_t(\rho_0(t)dt + \nu dB_t) \end{cases},$$

where S_0 and σ_0 are $(0, \infty)$ -valued random variables, $W = (W_t)_{t \in \mathbb{R}_+}$ (resp. $B = (B_t)_{t \in \mathbb{R}_+}$) is a Brownian motion (resp. a fractional Brownian motion of Hurst parameter $H \in [1/2, 1)$), $\nu > 0$ and $b, \rho_0 \in C^0(\mathbb{R}_+; \mathbb{R})$.

Here again, in practice, it is not possible to get several independent copies of the volatility process σ on $[0, T]$. So, in order to define a suitable estimator of ρ_0 on $[0, T]$, let us assume that (S, σ) is observed on $[0, N(T + \Delta)]$ with $\Delta \in \mathbb{R}_+$, and for any $i \in \{1, \dots, N\}$, consider $T_i(\Delta) := (i-1)(T + \Delta)$ and the process $\sigma^i = (\sigma_t^i)_{t \in [0, T]}$ defined by

$$\sigma_t^i := \sigma_{T_i(\Delta)+t} ; \forall t \in [0, T].$$

By Equation (3), for every $t \in [0, T]$,

$$\begin{aligned}\sigma_t^i &= \sigma_{T_i(\Delta)} + \int_{T_i(\Delta)}^{T_i(\Delta)+t} \sigma_s(\rho_0(s)ds + vdB_s) \\ &= \sigma_0^i + \int_0^t \sigma_s^i(\rho_0(T_i(\Delta) + s)ds + vdB_s^i) \quad \text{with } B^i := B_{T_i(\Delta)+\cdot} - B_{T_i(\Delta)}.\end{aligned}$$

Moreover, let $Z^i = (Z_t^i)_{t \in [0, T]}$ be the process such that, for every $t \in [0, T]$,

$$\begin{aligned}Z_t^i &:= \frac{c_H}{v} \int_0^t \frac{s^{1/2-H}(t-s)^{1/2-H}}{\sigma_s^i} d\sigma_s^i \\ &= \frac{1}{v} \int_0^t \ell(t, s)\rho_0(T_i(\Delta) + s)ds + M_t^i \quad \text{with } M^i := \int_0^\cdot \ell(\cdot, s)dB_s^i.\end{aligned}$$

In the sequel, ρ_0 is $(T + \Delta)$ -periodic, and then

$$Z_t^i = \frac{1}{v} \int_0^t J(\rho_0)(s)d\langle M^i \rangle_s + M_t^i ; \forall t \in [0, T].$$

Since B has stationary increments, M^1, \dots, M^N have the same distribution, but these Molchan martingales are not independent when $H > 1/2$. However, for any $i, k \in \{1, \dots, N\}$ such that $i < k$, and any $s, t \in [0, T]$ such that $s < t$,

$$\begin{aligned}\mathbb{E}(B_s^i B_t^k) &= \mathbb{E}(B_s(B_{t+T_{i,k}(\Delta)} - B_{T_{i,k}(\Delta)})) \quad \text{with } T_{i,k}(\Delta) = T_k(\Delta) - T_i(\Delta) \\ &= 1/2[s^{2H} + (t + T_{i,k}(\Delta))^{2H} - (t + T_{i,k}(\Delta) - s)^{2H} - (s^{2H} + T_{i,k}(\Delta)^{2H} - (T_{i,k}(\Delta) - s)^{2H})] \\ &= 1/2[(T_{i,k}(\Delta) + t)^{2H} + (T_{i,k}(\Delta) - s)^{2H} - (T_{i,k}(\Delta) + t - s)^{2H} - T_{i,k}(\Delta)^{2H}] \\ &= 1/2T_{i,k}(\Delta)^{2H}[(1 + t/T_{i,k}(\Delta))^{2H} + (1 - s/T_{i,k}(\Delta))^{2H} - (1 + (t - s)/T_{i,k}(\Delta))^{2H} - 1] \\ &= H(2H - 1)/2T_{i,k}(\Delta)^{2H}[(t/T_{i,k}(\Delta))^2 + (s/T_{i,k}(\Delta))^2 \\ &\quad - ((t - s)/T_{i,k}(\Delta))^2 + o((1/T_{i,k}(\Delta))^2)] \quad \text{when } \Delta \rightarrow \infty \\ &\sim_{\Delta \rightarrow \infty} H(2H - 1) \cdot st \cdot (k - i)^{2H-2}(T + \Delta)^{2H-2}.\end{aligned}$$

Since $(T + \Delta)^{2H-2} \rightarrow 0$ when $\Delta \rightarrow \infty$, the more Δ is large, the more B^i and B^k (and then M^i and M^k) become independent. So, for Δ large enough, if the constant v is known, thanks to Subsection 4.2, a *satisfactory* nonparametric estimator of ρ_0 is given by

$$\widehat{\rho}_{m,N}(t) := v\widehat{Q}_{m,N}(t) ; t \in [0, T],$$

where $m \in \{1, \dots, N\}$,

$$\widehat{Q}_{m,N}(t) := \begin{cases} \widehat{J}_{m,N}(t) & \text{if } H = 1/2 \\ \bar{c}_H t^{H-1/2} \int_0^t (t-s)^{H-3/2} s^{1-2H} \widehat{J}_{m,N}(s)ds & \text{if } H > 1/2 \end{cases} ; t \in [0, T]$$

and

$$\widehat{J}_{m,N} = \arg \min_{J \in \mathcal{S}_m} \left\{ \frac{1}{N} \sum_{i=1}^N \left((2 - 2H) \int_0^T J(s)^2 s^{1-2H} ds - 2 \int_0^T J(s)dZ_s^i \right) \right\}.$$

Assume that the φ_j 's belong to \mathcal{J} . Since

$$\|\widehat{\rho}_{m,N} - \rho_0\|_2^2 = v^2 \|\widehat{Q}_{m,N} - Q_0\|_2^2 \quad \text{with } Q_0 = \frac{\rho_0}{v},$$

if M^1, \dots, M^N were independent, then Proposition 4.2 would provide risk bounds on $\widehat{\rho}_{m,N}$ and on the adaptive estimator $\widehat{\rho}_{\widehat{m},N}$ with \widehat{m} selected in \mathcal{M}_N via (6). Of course M^1, \dots, M^N are not independent when $H > 1/2$, but the risk bounds of Proposition 4.2 remain relevant for Δ large enough as explained above.

Finally, the $(T + \Delta)$ -periodicity condition on ρ_0 makes sense in the following special case ; when ρ_0

is T -periodic and $\Delta = \delta T$ with $\delta \in \mathbb{N}^*$ large enough. As at Subsection 4.3, to assume that ρ_0 is T -periodic means that Model (3) is appropriate for assets with a volatility process having *similar* trends on each interval $[(i-1)T, iT]$, typically each day ($T = 24\text{h}$). When $T = 24\text{h}$, to assume δ large enough means to avoid enough days between two days during which the volatility process is observed in order to estimate ρ_0 with our method.

5. NUMERICAL EXPERIMENTS

This section deals with numerical experiments in Model (1) when M is the Molchan martingale, and in the non-autonomous Black-Scholes model. Recall that tables and figures related to this section are postponed to Appendix B.

5.1. Experiments in Model (1) driven by the Molchan martingale. Some numerical experiments on our estimation method of J_0 in Equation (1) are presented in this subsection when M is the Molchan martingale:

$$M_t = \int_0^t \ell(t, s) dB_s = (2 - 2H)^{1/2} \int_0^t s^{1/2-H} dW_s ; t \in [0, 1]$$

with $H \in \{0.6, 0.9\}$ and W the Brownian motion driving the Mandelbrot-Van Ness representation of the fractional Brownian motion B . The estimation method investigated on the theoretical side at Section 3 is implemented here for the three following examples of functions J_0 :

$$J_{0,1} : t \in [0, 1] \mapsto 10t^2, \quad J_{0,2} : t \in (0, 1] \mapsto 10(-\log(t))^{1/2} \quad \text{and} \quad J_{0,3} : t \in (0, 1] \mapsto 20t^{-0.05}.$$

These functions belong to $\mathbb{L}^2([0, 1], d\langle M \rangle_t)$ as required. Indeed, on the one hand, $J_{0,1}$ is continuous on $[0, 1]$ and

$$\begin{aligned} - \int_0^1 \log(t) d\langle M \rangle_t &= -(2 - 2H) \int_0^1 \log(t) t^{1-2H} dt \\ &= \lim_{\varepsilon \rightarrow 0^+} \log(\varepsilon) \varepsilon^{2-2H} + \int_0^1 t^{1-2H} dt = \frac{1}{2-2H} < \infty. \end{aligned}$$

On the other hand, for every $\alpha \in (0, 1/2)$ such that $H \in (1/2, 1 - \alpha)$,

$$\begin{aligned} \int_0^1 t^{-2\alpha} d\langle M \rangle_t &= (2 - 2H) \int_0^1 t^{1-2\alpha-2H} dt \\ &= \frac{2-2H}{2(1-\alpha-H)} \left(1 - \lim_{\varepsilon \rightarrow 0^+} \varepsilon^{2(1-\alpha-H)} \right) = \frac{1-H}{1-\alpha-H} < \infty. \end{aligned}$$

Since for every $t \in (0, 1]$, $J_{0,3}(t) = 20t^{-\alpha}$ with $\alpha = 0.05$, and since $H \in \{0.6, 0.9\} \subset (0.5, 0.95)$ in our numerical experiments, $J_{0,3}$ is square-integrable with respect to $d\langle M \rangle_t$.

Our adaptive estimator is computed for $J_0 = J_{0,1}$, $J_{0,2}$ and $J_{0,3}$ on $N = 100$ paths of the process Z observed along the dissection $\{l/n ; l = 1, \dots, n\}$ of $[1/n, 1]$ with $n = 5000$, when $(\varphi_1, \dots, \varphi_m)$ is the m -dimensional trigonometric basis for every $m \in \{2, \dots, 12\}$. Note that n is of order N^2 as suggested in the remark following Proposition 3.5. This experiment is repeated 100 times, and the means and the standard deviations of the MISE of $\widehat{J}_{\widehat{m}, N, n}$ (see Subsection 2.2) are stored in Table 1. Moreover, for $H = 0.6$, 10 estimations (dashed black curves) of $J_{0,1}$, $J_{0,2}$ and $J_{0,3}$ (red curves) are respectively plotted on Figures 1, 2 and 3.

On average, the MISE of our adaptive estimator is lower for the three examples of functions J_0 when $H = 0.6$ than when $H = 0.9$. The standard deviation of the MISE of $\widehat{J}_{\widehat{m}, N, n}$ is also higher when $H = 0.9$. For $H = 0.6$, our estimation method seems stable in the sense that the standard deviation of the MISE of our adaptive estimator is almost the same for the three examples of functions J_0 . This can be observed on Figures 1, 2 and 3. For $H = 0.9$, our estimation method seems less stable. Finally, for both $H = 0.6$ and $H = 0.9$, on average, the MISE of $\widehat{J}_{\widehat{m}, N, n}$ is higher for $J_{0,2}$ than for $J_{0,1}$ and $J_{0,3}$. This is probably related to the fact that $J_{0,2}(t)$ goes faster to infinity when $t \rightarrow 0^+$ than $J_{0,3}(t)$, and of course than $J_{0,1}(t)$ which doesn't go. In conclusion, the numerical experiments show that when Z is driven by the Molchan

martingale, our estimation method of J_0 is satisfactory on several types of functions, but the MISE of $\widehat{J}_{\widehat{m},N,n}$ seems to increase when H is near to 1.

5.2. Experiments in the non-autonomous Black-Scholes model. Some numerical experiments on our estimation method of b_0 in the non-autonomous Black-Scholes model (9) are presented in this subsection on simulated prices datasets with $S_0 = 10$, $\sigma \in \{0.2, 1\}$ and $b_0 = \mathbf{b}$, where

$$\mathbf{b}(t) := \sin(2\pi t) + \cos(2\pi t) ; \forall t \in \mathbb{R}_+.$$

The function \mathbf{b} is estimated on $[0, 1]$ (1 day), but the prices process S of the asset is simulated on $N = 100$ days via the non-autonomous Black-Scholes model (9). As explained at Subsection 4.3, here, Z^1, \dots, Z^N are obtained via (10) from the i.i.d. processes S^1, \dots, S^N defined by

$$S_t^i := S_{i-1+t} ; \forall t \in [0, 1].$$

Our adaptive estimator is computed for $S_0 = 10$ and $\sigma \in \{0.2, 1\}$ on the paths of Z^1, \dots, Z^N obtained from one path of the prices process observed along the dissection $\{100l/n ; l = 0, \dots, n\}$ of $[0, 100]$ with $n = N^2 = 10000$, when $(\varphi_1, \dots, \varphi_m)$ is the m -dimensional trigonometric basis for every $m \in \{2, \dots, 12\}$. Note that for $\sigma = 0.2$, the path of S is plotted on Figure 4, and the associated paths of Z^1, \dots, Z^N are plotted on Figure 5. This experiment is repeated 100 times, and the means and the standard deviations of the MISE of $\widehat{b}_{\widehat{m},N,n} := \sigma \widehat{J}_{\widehat{m},N,n}$ are stored in Table 2. Moreover, for $\sigma = 0.2$ and $\sigma = 1$, 10 estimations (dashed black curves) of $b_0 = \mathbf{b}$ (red curve) are respectively plotted on Figures 6 and 7. On average, the MISE of our adaptive estimator is obviously lower when $\sigma = 0.2$ than when $\sigma = 1$, but it remains globally small.

Assume now that σ is unknown as in practice. Then, it is estimated directly on the observed path of S on $[0, 100]$ by

$$\widehat{\sigma}_{N,n} := \sqrt{\frac{1}{T_{N,n}} \sum_{l=0}^{n-1} [\log(S_{(l+1)N/n}) - \log(S_{lN/n})]^2} \quad \text{with} \quad T_{N,n} = nN$$

as usual (see Genon-Catalot [19], Subsubsection 3.2.2). The same experiment is then repeated on

$$\widetilde{b}_{\widehat{m},N,n} := \widehat{\sigma}_{N,n} \widehat{J}_{\widehat{m},N,n}$$

instead of $\widehat{b}_{\widehat{m},N,n}$. The means and the standard deviations of the MISE of $\widetilde{b}_{\widehat{m},N,n}$ remain of same order (see Table 3).

Acknowledgments. Thank you to Fabienne Comte for her valuable comments on this paper.

REFERENCES

- [1] Y. Baraud, F. Comte and G. Viennet. *Model Selection for (Auto-)Regression with Dependent Data*. ESAIM:PS 5, 33-49, 2001.
- [2] A. Cohen, M.A. Leviatan and D. Leviatan. *On the Stability and Accuracy of Least Squares Approximations*. Found. Comput. Math. 13, 819-834, 2013.
- [3] F. Comte, L. Coutin and E. Renault. *Affine Fractional Stochastic Volatility Models*. Annals of Finance 8, 337-378, 2012.
- [4] F. Comte and V. Genon-Catalot. *Regression Function Estimation on Non Compact Support as a Partly Inverse Problem*. The Annals of the Institute of Statistical Mathematics 72, 4, 1023-1054, 2020.
- [5] F. Comte and V. Genon-Catalot. *Nonparametric Drift Estimation for i.i.d. Paths of Stochastic Differential Equations*. The Annals of Statistics 48, 6, 3336-3365, 2020.
- [6] F. Comte and V. Genon-Catalot. *Drift Estimation on Non Compact Support for Diffusion Models*. Stoch. Proc. Appl. 134, 174-207, 2021.
- [7] F. Comte, V. Genon-Catalot and Y. Rozenholc. *Penalized Nonparametric Mean Square Estimation of the Coefficients of Diffusion Processes*. Bernoulli 12, 2, 514-543, 2007.
- [8] F. Comte, V. Genon-Catalot and A. Samson. *Nonparametric Estimation for Stochastic Differential Equations with Random Effects*. Stoch. Proc. Appl. 123, 2522-2551, 2013.
- [9] F. Comte and N. Marie. *Nonparametric Estimation for I.I.D. Paths of Fractional SDE*. Statistical Inference for Stochastic Processes 24, 3, 669-705, 2021.
- [10] A. Dalalyan. *Sharp Adaptive Estimation of the Trend Coefficient for Ergodic Diffusion*. The Annals of Statistics 33, 6, 2507-2528, 2005.

- [11] M. Delattre, V. Genon-Catalot and C. Larédo. *Parametric Inference for Discrete Observations of Diffusion Processes with Mixed Effects*. Stoch. Proc. Appl. 128, 1929-1957, 2018.
- [12] M. Delattre, V. Genon-Catalot and A. Samson. *Maximum Likelihood Estimation for Stochastic Differential Equations with Random Effects*. Scand. J. Stat. 40, 322-343, 2013.
- [13] M. Delattre and M. Lavielle. *Coupling the SAEM Algorithm and the Extended Kalman Filter for Maximum Likelihood Estimation in Mixed-Effects Diffusion Models*. Stat. Interface 6, 519-532, 2013.
- [14] L. Della Maestra and M. Hoffmann. *Nonparametric Estimation for Interacting Particle Systems: McKean-Vlasov Models*. To appear in Probability Theory and Related Fields, 2021.
- [15] C. Denis, C. Dion and M. Martinez. *A Ridge Estimator of the Drift from Discrete Repeated Observations of the Solutions of a Stochastic Differential Equation*. To appear in Bernoulli, 2021.
- [16] R.A. DeVore and G.G. Lorentz. *Constructive Approximation*. Springer, 1993.
- [17] C. Dion and V. Genon-Catalot. *Bidimensional Random Effect Estimation in Mixed Stochastic Differential Model*. Stat. Inference Stoch. Process. 19, 131-158, 2016.
- [18] S. Ditlevsen and A. De Gaetano. *Mixed Effects in Stochastic Differential Equation Models*. REVSTAT 3, 137-153, 2005.
- [19] V. Genon-Catalot. *Cours de statistique des diffusions*. MSc. lecture notes, université Paris Cité, 2012.
- [20] M. Hoffmann. *Adaptive Estimation in Diffusion Processes*. Stoch. Proc. Appl. 79, 135-163, 1999.
- [21] M. Kessler. *Simple and Explicit Estimating Functions for a Discretely Observed Diffusion Process*. Scandinavian Journal of Statistics 27, 1, 65-82, 2000.
- [22] M.L. Kleptsyna and A. Le Breton. *Some Explicit Statistical Results About Elementary Fractional Type Models*. Non-linear Analysis 47, 4783-4794, 2001.
- [23] K. Kubilius, Y. Mishura and K. Ralchenko. *Parameter Estimation in Fractional Diffusion Models*. Springer, 2017.
- [24] Y. Kutoyants. *Statistical Inference for Ergodic Diffusion Processes*. Springer, 2004.
- [25] N. Marie and A. Rosier. *Nadaraya-Watson Estimator for I.I.D. Paths of Diffusion Processes*. Submitted, arXiv:2105.06884.
- [26] I. Norros, E. Valkeila and J. Virtamo. *An Elementary Approach to a Girsanov Formula and Other Analytical Results on Fractional Brownian Motions*. Bernoulli 5, 4, 571-587, 1999.
- [27] R. Overgaard, N. Jonsson, C. Tornøe, H. Madsen. *Non-Linear Mixed Effects Models with Stochastic Differential Equations: Implementation of an Estimation Algorithm*. J. Pharmacokinet. Pharmacodyn. 32, 85-107, 2005.
- [28] U. Picchini, A. De Gaetano and S. Ditlevsen. *Stochastic Differential Mixed-Effects Models*. Scand. J. Stat. 37, 67-90, 2010.
- [29] U. Picchini and S. Ditlevsen. *Practical Estimation of High Dimensional Stochastic Differential Mixed-Effects Models*. Comput. Statist. Data Anal. 55, 1426-1444, 2011.
- [30] D. Revuz and M. Yor. *Continuous Martingales and Brownian Motion*. Springer, 1999.
- [31] S.G. Samko, A.A. Kilbas and O.I. Marichev. *Fractional Integrals and Derivatives: Theory and Applications*. CRC Press, 1993.
- [32] J.B. Wiggins. *Option Values Under Stochastic Volatility. Theory and Empirical Estimates*. Journal of Financial Economics 19, 351-372, 1987.

APPENDIX A. PROOFS

A.1. **Proof of Proposition 3.1.** For every $J, K \in \mathcal{S}_m$,

$$\begin{aligned} \gamma_N(J) - \gamma_N(K) &= \|J\|_{\langle M \rangle}^2 - \|K\|_{\langle M \rangle}^2 - \frac{2}{N} \sum_{i=1}^N \int_0^T (J(s) - K(s)) dZ_s^i \\ &= \|J - J_0\|_{\langle M \rangle}^2 - \|K - J_0\|_{\langle M \rangle}^2 - \frac{2}{N} \sum_{i=1}^N \int_0^T (J(s) - K(s)) dM_s^i. \end{aligned}$$

Moreover,

$$\gamma_N(\hat{J}_{m,N}) \leq \gamma_N(J) ; \forall J \in \mathcal{S}_m.$$

So,

$$\|\hat{J}_{m,N} - J_0\|_{\langle M \rangle}^2 \leq \|J - J_0\|_{\langle M \rangle}^2 + \frac{2}{N} \sum_{i=1}^N \int_0^T (\hat{J}_{m,N}(s) - J(s)) dM_s^i$$

for any $J \in \mathcal{S}_m$, and then

$$\mathbb{E}(\|\hat{J}_{m,N} - J_0\|_{\langle M \rangle}^2) \leq \|J - J_0\|_{\langle M \rangle}^2 + 2\mathbb{E} \left(\frac{1}{N} \sum_{i=1}^N \int_0^T \hat{J}_{m,N}(s) dM_s^i \right).$$

Consider $\mathbf{j}_0 = (\langle \varphi_j, J_0 \rangle_{\langle M \rangle})_{j=1, \dots, m}$, and $\mathbf{e} = (\mathbf{e}_1, \dots, \mathbf{e}_m)^*$ such that

$$\mathbf{e}_j := \frac{1}{N} \sum_{i=1}^N \int_0^T \varphi_j(s) dM_s^i; \forall j \in \{1, \dots, m\}.$$

Since \mathbf{e} is a centered random vector,

$$\begin{aligned} \mathbb{E} \left(\frac{1}{N} \sum_{i=1}^N \int_0^T \widehat{J}_{m,N}(s) dM_s^i \right) &= \sum_{j=1}^m \mathbb{E} \left(\widehat{\theta}_j \cdot \frac{1}{N} \sum_{i=1}^N \int_0^T \varphi_j(s) dM_s^i \right) \\ &= \mathbb{E}(\langle \widehat{\theta}, \mathbf{e} \rangle_{2,m}) = \mathbb{E}(\mathbf{e}^* \Psi_m^{-1} (\mathbf{j}_0 + \mathbf{e})) = \mathbb{E}(\mathbf{e}^* \Psi_m^{-1} \mathbf{e}). \end{aligned}$$

Moreover, since M_1, \dots, M_N are independent copies of M , and since Ψ_m is a symmetric matrix,

$$\begin{aligned} \mathbb{E}(\mathbf{e}^* \Psi_m^{-1} \mathbf{e}) &= \sum_{j,k=1}^m [\Psi_m^{-1}]_{j,k} \mathbb{E}(\mathbf{e}_j \mathbf{e}_k) = \frac{1}{N} \sum_{j,k=1}^m [\Psi_m^{-1}]_{j,k} \int_0^T \varphi_j(s) \varphi_k(s) d\langle M \rangle_s \\ &= \frac{1}{N} \sum_{k=1}^m \sum_{j=1}^m [\Psi_m]_{k,j} [\Psi_m^{-1}]_{j,k} = \frac{1}{N} \sum_{k=1}^m [\Psi_m \Psi_m^{-1}]_{k,k} = \frac{m}{N}. \end{aligned}$$

Therefore,

$$\mathbb{E}(\|\widehat{J}_{m,N} - J_0\|_{\langle M \rangle}^2) \leq \min_{J \in \mathcal{S}_m} \|J - J_0\|_{\langle M \rangle}^2 + \frac{2m}{N}.$$

A.2. Proof of Corollary 3.2. Under Assumption 2.2,

$$\min_{J \in \mathcal{S}_m} \|J - J_0\|_{\langle M \rangle}^2 = \min_{J \in \mathcal{S}_m} \|\mu^{1/2}(J - J_0)\|_2^2 = \min_{\iota \in \mathcal{S}_m(\mu)} \|\iota - \mu^{1/2} J_0\|_2^2$$

with

$$\mathcal{S}_m(\mu) = \{\iota \in \mathbb{L}^2([0, T], dt) : \exists \varphi \in \mathcal{S}_m, \forall t \in (0, T], \iota(t) = \mu(t)^{1/2} \varphi(t)\}.$$

Since $\mathcal{S}_m(\mu)$ is a closed vector subspace of $\mathbb{L}^2([0, T], dt)$,

$$(11) \quad \min_{\iota \in \mathcal{S}_m(\mu)} \|\iota - \mu^{1/2} J_0\|_2^2 = \|p_{\mathcal{S}_m(\mu)}^\perp(\mu^{1/2} J_0) - \mu^{1/2} J_0\|_2^2.$$

Moreover, since $\mu(\cdot)^{-1}$ is continuous from $[0, T]$ into \mathbb{R}_+ under Assumption 2.2,

$$(12) \quad \begin{aligned} \|\widehat{J}_{m,N} - J_0\|_2^2 &= \|\mu^{-1/2}(\widehat{J}_{m,N} - J_0)\|_{\langle M \rangle}^2 \\ &\leq \|\mu(\cdot)^{-1}\|_{\infty, T} \|\widehat{J}_{m,N} - J_0\|_{\langle M \rangle}^2. \end{aligned}$$

Equality (11) together with Inequality (12) allow to conclude.

A.3. Proof of Theorem 3.4. The proof of Theorem 3.4 relies on the following lemma, which is a straightforward consequence of a Bernstein type inequality established in Revuz and Yor [30], p. 153, for continuous local martingales vanishing at 0.

Lemma A.1. *For every $\varepsilon > 0$ and every $\varphi \in \mathbb{L}^2([0, T], d\langle M \rangle_t)$,*

$$\mathbb{P} \left(\frac{1}{N} \sum_{i=1}^N \int_0^T \varphi(s) dM_s^i \geq \varepsilon \right) \leq \exp \left(-\frac{N\varepsilon^2}{2\|\varphi\|_{\langle M \rangle}^2} \right).$$

The proof of Theorem 3.4 is dissected in three steps.

Step 1. As established in the proof of Proposition 3.1, for every $J, K \in \mathcal{S}_m$,

$$\gamma_N(J) - \gamma_N(K) = \|J - J_0\|_{\langle M \rangle}^2 - \|K - J_0\|_{\langle M \rangle}^2 - \frac{2}{N} \sum_{i=1}^N \int_0^T (J(s) - K(s)) dM_s^i.$$

Moreover,

$$\gamma_N(\widehat{J}_{\widehat{m}, N}) + \text{pen}(\widehat{m}) \leq \gamma_N(\widehat{J}_{m, N}) + \text{pen}(m)$$

for any $m \in \mathcal{M}_N$, and then

$$\gamma_N(\widehat{\mathcal{J}}_{\widehat{m},N}) - \gamma_N(\widehat{\mathcal{J}}_{m,N}) \leq \text{pen}(m) - \text{pen}(\widehat{m}).$$

So, since $\mathcal{S}_m + \mathcal{S}_{\widehat{m}} \subset \mathcal{S}_{m \vee \widehat{m}}$ under Assumption 3.3, and since $2ab \leq a^2 + b^2$ for every $a, b \in \mathbb{R}$,

$$\begin{aligned} \|\widehat{\mathcal{J}}_{\widehat{m},N} - J_0\|_{\langle M \rangle}^2 &\leq \|\widehat{\mathcal{J}}_{m,N} - J_0\|_{\langle M \rangle}^2 + \frac{2}{N} \sum_{i=1}^N \int_0^T (\widehat{\mathcal{J}}_{\widehat{m},N}(s) - \widehat{\mathcal{J}}_{m,N}(s)) dM_s^i + \text{pen}(m) - \text{pen}(\widehat{m}) \\ &\leq \|\widehat{\mathcal{J}}_{m,N} - J_0\|_{\langle M \rangle}^2 + 2 \cdot \frac{1}{2} \|\widehat{\mathcal{J}}_{\widehat{m},N} - \widehat{\mathcal{J}}_{m,N}\|_{\langle M \rangle} \cdot 2 \sup_{\varphi \in \mathcal{B}_{m, \widehat{m}}} |\nu_N(\varphi)| + \text{pen}(m) - \text{pen}(\widehat{m}) \\ &\leq \|\widehat{\mathcal{J}}_{m,N} - J_0\|_{\langle M \rangle}^2 + \frac{1}{4} \|\widehat{\mathcal{J}}_{\widehat{m},N} - \widehat{\mathcal{J}}_{m,N}\|_{\langle M \rangle}^2 \\ &\quad + 4 \left(\left[\sup_{\varphi \in \mathcal{B}_{m, \widehat{m}}} |\nu_N(\varphi)| \right]^2 - p(m, \widehat{m}) \right)_+ + \text{pen}(m) + 4p(m, \widehat{m}) - \text{pen}(\widehat{m}), \end{aligned}$$

where

$$\mathcal{B}_{m, m'} := \{\varphi \in \mathcal{S}_{m \vee m'} : \|\varphi\|_{\langle M \rangle} = 1\} \quad \text{and} \quad p(m, m') := \frac{\mathbf{c}_{\text{cal}}}{4} \cdot \frac{m \vee m'}{N}$$

for every $m' \in \mathcal{M}_N$, and

$$\nu_N(\varphi) := \frac{1}{N} \sum_{i=1}^N \int_0^T \varphi(s) dM_s^i$$

for every $\varphi \in \mathbb{L}^2([0, T], d\langle M \rangle_t)$. Therefore, since $(a + b)^2 \leq 2a^2 + 2b^2$ for every $a, b \in \mathbb{R}$, and since $4p(m, \widehat{m}) \leq \text{pen}(m) + \text{pen}(\widehat{m})$,

$$(13) \quad \|\widehat{\mathcal{J}}_{\widehat{m},N} - J_0\|_{\langle M \rangle}^2 \leq 3\|\widehat{\mathcal{J}}_{m,N} - J_0\|_{\langle M \rangle}^2 + 4\text{pen}(m) + 8 \left(\left[\sup_{\varphi \in \mathcal{B}_{m, \widehat{m}}} |\nu_N(\varphi)| \right]^2 - p(m, \widehat{m}) \right)_+.$$

Step 2. By using Lemma A.1, and by following the pattern of the proof of Baraud et al. [1], Proposition 6.1, the purpose of this step is to find a suitable bound on

$$\mathbb{E} \left[\left(\left[\sup_{\varphi \in \mathcal{B}_{m, m'}} |\nu_N(\varphi)| \right]^2 - p(m, m') \right)_+ \right]; \quad m' \in \mathcal{M}_N.$$

Consider $\delta_0 \in (0, 1)$ and let $(\delta_n)_{n \in \mathbb{N}^*}$ be the real sequence defined by

$$\delta_n := \delta_0 2^{-n}; \quad \forall n \in \mathbb{N}^*.$$

Since $\mathcal{S}_{m \vee m'}$ is a vector subspace of $\mathbb{L}^2([0, T], d\langle M \rangle_t)$ of dimension $m \vee m'$, for any $n \in \mathbb{N}$, there exists $T_n \subset \mathcal{B}_{m, m'}$ such that $|T_n| \leq (3/\delta_n)^{m \vee m'}$ and, for any $\varphi \in \mathcal{B}_{m, m'}$,

$$\exists f_n \in T_n : \|\varphi - f_n\|_{\langle M \rangle} \leq \delta_n.$$

In particular, note that

$$\varphi = f_0 + \sum_{n=1}^{\infty} (f_n - f_{n-1}).$$

Then, for any sequence $(\Delta_n)_{n \in \mathbb{N}}$ of elements of $(0, \infty)$ such that $\Delta := \sum_{n \in \mathbb{N}} \Delta_n < \infty$,

$$\begin{aligned} & \mathbb{P} \left(\left[\sup_{\varphi \in \mathcal{B}_{m, m'}} \nu_N(\varphi) \right]^2 > \Delta^2 \right) \\ &= \mathbb{P} \left(\exists (f_n)_{n \in \mathbb{N}} \in \prod_{n=0}^{\infty} T_n : \nu_N(f_0) + \sum_{n=1}^{\infty} \nu_N(f_n - f_{n-1}) > \Delta \right) \\ &\leq \mathbb{P} \left(\exists (f_n)_{n \in \mathbb{N}} \in \prod_{n=0}^{\infty} T_n : \nu_N(f_0) > \Delta_0 \text{ or } [\exists n \in \mathbb{N}^* : \nu_N(f_n - f_{n-1}) > \Delta_n] \right) \\ &\leq \sum_{f_0 \in T_0} \mathbb{P}(\nu_N(f_0) > \Delta_0) + \sum_{n=1}^{\infty} \sum_{(f_{n-1}, f_n) \in \mathbb{T}_n} \mathbb{P}(\nu_N(f_n - f_{n-1}) > \Delta_n) \end{aligned}$$

with $\mathbb{T}_n = T_{n-1} \times T_n$ for every $n \in \mathbb{N}^*$. Moreover, $\|f_0\|_{\langle M \rangle}^2 \leq \delta_0^2$ and

$$\|f_n - f_{n-1}\|_{\langle M \rangle}^2 \leq 2\delta_{n-1}^2 + 2\delta_n^2 = \frac{5}{2}\delta_{n-1}^2$$

for every $n \in \mathbb{N}^*$. So, by Lemma A.1,

$$\begin{aligned} (14) \quad & \mathbb{P} \left(\left[\sup_{\varphi \in \mathcal{B}_{m, m'}} \nu_N(\varphi) \right]^2 > \Delta^2 \right) \leq \sum_{f_0 \in T_0} \exp \left(-\frac{N\Delta_0^2}{2\|f_0\|_{\langle M \rangle}^2} \right) \\ & \quad + \sum_{n=1}^{\infty} \sum_{(f_{n-1}, f_n) \in \mathbb{T}_n} \exp \left(-\frac{N\Delta_n^2}{2\|f_n - f_{n-1}\|_{\langle M \rangle}^2} \right) \\ & \leq \exp \left(h_0 - \frac{N\Delta_0^2}{2\delta_0^2} \right) + \sum_{n=1}^{\infty} \exp \left(h_{n-1} + h_n - \frac{N\Delta_n^2}{5\delta_{n-1}^2} \right) \end{aligned}$$

with $h_n = \log(|T_n|)$ for every $n \in \mathbb{N}$. Now, let us take Δ_0 such that

$$h_0 - \frac{N\Delta_0^2}{2\delta_0^2} = -(m \vee m' + x) \quad \text{with } x > 0,$$

which leads to

$$\Delta_0 = \left[\frac{2\delta_0^2}{N} (m \vee m' + x + h_0) \right]^{1/2},$$

and for every $n \in \mathbb{N}^*$, let us take Δ_n such that

$$h_{n-1} + h_n - \frac{N\Delta_n^2}{5\delta_{n-1}^2} = -(m \vee m' + x + n),$$

which leads to

$$\Delta_n = \left[\frac{5\delta_{n-1}^2}{N} (m \vee m' + x + h_{n-1} + h_n + n) \right]^{1/2}.$$

For this appropriate sequence $(\Delta_n)_{n \in \mathbb{N}}$,

$$\mathbb{P} \left\{ \left[\sup_{\varphi \in \mathcal{B}_{m, m'}} \nu_N(\varphi) \right]^2 > \Delta^2 \right\} \leq e^{-x} e^{-(m \vee m')} \left(1 + \sum_{n=1}^{\infty} e^{-n} \right) \leq 1.6e^{-x} e^{-(m \vee m')}$$

by Inequality (14), and

$$\begin{aligned} \Delta^2 &\leq \frac{1}{N} \left[\sqrt{2}\delta_0 [(m \vee m' + x)^{1/2} + h_0^{1/2}] + \sqrt{5} \sum_{n=1}^{\infty} \delta_{n-1} [(m \vee m' + x)^{1/2} + (h_{n-1} + h_n + n)^{1/2}] \right]^2 \\ &\leq \frac{\delta^{(1)}}{N} (m \vee m' + x) + \frac{\delta^{(2)}}{N} \leq \frac{\delta^{(1)} + \delta^{(2)}}{N} (m \vee m' + x) \end{aligned}$$

with

$$\delta^{(1)} = 2 \left(\sqrt{2}\delta_0 + \sqrt{5} \sum_{n=1}^{\infty} \delta_{n-1} \right)^2 \quad \text{and} \quad \delta^{(2)} = 2 \left(\sqrt{2}\delta_0 h_0^{1/2} + \sqrt{5} \sum_{n=1}^{\infty} \delta_{n-1} (h_{n-1} + h_n + n)^{1/2} \right)^2.$$

So,

$$\mathbb{P} \left(\left[\sup_{\varphi \in \mathcal{B}_{m,m'}} \nu_N(\varphi) \right]^2 - \frac{\delta^{(1)} + \delta^{(2)}}{\mathbf{c}_{\text{cal}}} p(m, m') > \frac{\delta^{(1)} + \delta^{(2)}}{N} x \right) \leq 1.6e^{-x} e^{-(m \vee m')}.$$

and then, by taking $\mathbf{c}_{\text{cal}} > \rho := \delta^{(1)} + \delta^{(2)}$ and $y = \rho x/N$,

$$\mathbb{P} \left(\left[\sup_{\varphi \in \mathcal{B}_{m,m'}} \nu_N(\varphi) \right]^2 - p(m, m') > y \right) \leq 1.6e^{-Ny/\rho} e^{-(m \vee m')}.$$

Therefore,

$$\begin{aligned} \mathbb{E} \left[\left(\left[\sup_{\varphi \in \mathcal{B}_{m,m'}} \nu_N(\varphi) \right]^2 - p(m, m') \right)_+ \right] &= \int_0^{\infty} \mathbb{P} \left(\left[\sup_{\varphi \in \mathcal{B}_{m,m'}} \nu_N(\varphi) \right]^2 - p(m, m') > y \right) dy \\ (15) \qquad \qquad \qquad &\leq 1.6\rho \frac{e^{-(m \vee m')}}{N}. \end{aligned}$$

Step 3. By Inequality (15), there exists a deterministic constant $\mathbf{c}_1 > 0$, not depending on m and N , such that

$$\begin{aligned} \mathbb{E} \left[\left(\left[\sup_{\varphi \in \mathcal{B}_{m,\hat{m}}} |\nu_N(\varphi)| \right]^2 - p(m, \hat{m}) \right)_+ \right] &\leq \sum_{m' \in \mathcal{M}_N} \mathbb{E} \left[\left(\left[\sup_{\varphi \in \mathcal{B}_{m,m'}} \nu_N(\varphi) \right]^2 - p(m, m') \right)_+ \right] \\ &\leq \frac{1.6\rho}{N} \sum_{m' \in \mathcal{M}_N} e^{-(m \vee m')} \leq \frac{1.6\rho}{N} \left(me^{-m} + \sum_{m' > m} e^{-m'} \right) \leq \frac{\mathbf{c}_1}{N}. \end{aligned}$$

Therefore, by Inequality (13),

$$\mathbb{E}(\|\widehat{J}_{\hat{m},N} - J_0\|_{\langle M \rangle}^2) \leq \min_{m \in \mathcal{M}_N} \{3\mathbb{E}(\|\widehat{J}_{m,N} - J_0\|_{\langle M \rangle}^2) + 4\text{pen}(m)\} + \frac{8\mathbf{c}_1}{N}.$$

A.4. Proof of Proposition 3.5. The proof of Proposition 3.5 relies on the following lemma.

Lemma A.2. *Under Assumptions 2.2,*

$$\int_0^T \|\Psi_m^{-1} \varphi(t)\|^2 d\langle M \rangle_t = \text{trace}(\Psi_m^{-1}) \leq \|\mu(\cdot)^{-1}\|_{\infty, Tm}$$

with $\varphi = (\varphi_1, \dots, \varphi_m)$.

The proof of Lemma A.2 is postponed to the end of the subsection. First of all, note that

$$\begin{aligned} \mathbb{E}(\|\widehat{J}_{m,N,n} - J_0\|_{\langle M \rangle}^2) &\leq 2\mathbb{E}(\|\widehat{J}_{m,N} - J_0\|_{\langle M \rangle}^2) + 2\mathbb{E}(\|\widehat{J}_{m,N} - \widehat{J}_{m,N,n}\|_{\langle M \rangle}^2) \\ &\leq 2 \left(\min_{J \in \mathcal{S}_m} \|J - J_0\|_{\langle M \rangle}^2 + \frac{2m}{N} + \Delta_{m,N,n} \right), \end{aligned}$$

where

$$\Delta_{m,N,n} := \int_0^T \mathbb{E}(\langle \Psi_m^{-1}(\mathbf{z}_{m,N} - \mathbf{z}_{m,N,n}), \varphi(t) \rangle^2) d\langle M \rangle_t.$$

Since Z^1, \dots, Z^N are independent copies of Z , and since Ψ_m^{-1} is a symmetric matrix,

$$\begin{aligned} \Delta_{m,N,n} &= \frac{1}{N^2} \int_0^T \mathbb{E} \left[\left| \sum_{i=1}^N \sum_{l=0}^{n-1} \int_{t_l}^{t_{l+1}} \langle \Psi_m^{-1}(\varphi(s) - \varphi(t_l)), \varphi(t) \rangle dZ_s^i \right|^2 \right] d\langle M \rangle_t \\ &\leq 2 \int_0^T \left(\sum_{l=0}^{n-1} \int_{t_l}^{t_{l+1}} \langle \varphi(s) - \varphi(t_l), \Psi_m^{-1} \varphi(t) \rangle J_0(s) d\langle M \rangle_s \right)^2 d\langle M \rangle_t \\ &\quad + 2 \int_0^T \mathbb{E} \left[\left| \sum_{l=0}^{n-1} \int_{t_l}^{t_{l+1}} \langle \varphi(s) - \varphi(t_l), \Psi_m^{-1} \varphi(t) \rangle dM_s \right|^2 \right] d\langle M \rangle_t \\ &=: 2A_{m,n} + 2B_{m,n}. \end{aligned}$$

Now, let us find suitable bounds on $A_{m,n}$ and $B_{m,n}$:

- **Bound on $A_{m,n}$.** By Cauchy-Schwarz's inequality and Lemma A.2,

$$\begin{aligned} A_{m,n} &\leq \|J_0\|_{\infty,T}^2 \left(\int_0^T \|\Psi_m^{-1} \varphi(t)\|^2 d\langle M \rangle_t \right) \left(\sum_{l=0}^{n-1} \int_{t_l}^{t_{l+1}} \|\varphi(s) - \varphi(t_l)\|^2 d\langle M \rangle_s \right)^2 \\ &\leq \|J_0\|_{\infty,T}^2 \text{trace}(\Psi_m^{-1}) \|\varphi'\|_{\infty,T}^2 \left(\sum_{l=0}^{n-1} \int_{t_l}^{t_{l+1}} (s - t_l) d\langle M \rangle_s \right)^2 \\ &\leq \|J_0\|_{\infty,T}^2 \text{trace}(\Psi_m^{-1}) R(m) \frac{T^2}{n^2} \left(\sum_{l=0}^{n-1} \int_{t_l}^{t_{l+1}} d\langle M \rangle_s \right)^2 = \|\mu(\cdot)^{-1}\|_{\infty,T} \|J_0\|_{\infty,T}^2 T^2 \langle M \rangle_T^2 \frac{mR(m)}{n^2}. \end{aligned}$$

- **Bound on $B_{m,n}$.** By the isometry property of Itô's integral, Cauchy-Schwarz's inequality and Lemma A.2,

$$\begin{aligned} B_{m,n} &= \int_0^T \mathbb{E} \left[\left| \int_0^T \left(\sum_{l=0}^{n-1} \langle \varphi(s) - \varphi(t_l), \Psi_m^{-1} \varphi(t) \rangle \mathbf{1}_{[t_l, t_{l+1}]}(s) \right) dM_s \right|^2 \right] d\langle M \rangle_t \\ &= \int_0^T \int_0^T \left(\sum_{l=0}^{n-1} \langle \varphi(s) - \varphi(t_l), \Psi_m^{-1} \varphi(t) \rangle^2 \mathbf{1}_{[t_l, t_{l+1}]}(s) \right) d\langle M \rangle_s d\langle M \rangle_t \\ &\leq \left(\int_0^T \|\Psi_m^{-1} \varphi(t)\|^2 d\langle M \rangle_t \right) \left(\sum_{l=0}^{n-1} \int_{t_l}^{t_{l+1}} \|\varphi(s) - \varphi(t_l)\|^2 d\langle M \rangle_s \right) \\ &\leq \text{trace}(\Psi_m^{-1}) \|\varphi'\|_{\infty,T}^2 \sum_{l=0}^{n-1} \int_{t_l}^{t_{l+1}} (s - t_l)^2 d\langle M \rangle_s \\ &\leq \text{trace}(\Psi_m^{-1}) R(m) \frac{T^2}{n^2} \sum_{l=0}^{n-1} \int_{t_l}^{t_{l+1}} d\langle M \rangle_s \leq \|\mu(\cdot)^{-1}\|_{\infty,T} T^2 \langle M \rangle_T \frac{mR(m)}{n^2}. \end{aligned}$$

In conclusion, there exists a deterministic constant $\mathbf{c}_1 > 0$, not depending on m , N and n , such that

$$\mathbb{E}(\|\widehat{J}_{m,N,n} - J_0\|_{\langle M \rangle}^2) \leq 2 \min_{J \in \mathcal{S}_m} \|J - J_0\|_{\langle M \rangle}^2 + \mathbf{c}_1 \left(\frac{m}{N} + \frac{mR(m)}{n^2} \right).$$

A.4.1. *Proof of Lemma A.2.* Since Ψ_m is a symmetric matrix,

$$\begin{aligned} \int_0^T \|\Psi_m^{-1}\varphi(t)\|^2 d\langle M \rangle_t &= \sum_{j=1}^m \int_0^T \left(\sum_{k=1}^m [\Psi_m^{-1}]_{j,k} \varphi_k(t) \right)^2 d\langle M \rangle_t \\ &= \sum_{j,k,k'=1}^m [\Psi_m^{-1}]_{j,k} [\Psi_m^{-1}]_{j,k'} \int_0^T \varphi_k(t) \varphi_{k'}(t) d\langle M \rangle_t \\ &= \sum_{j,k=1}^m [\Psi_m^{-1}]_{j,k} \sum_{k'=1}^m [\Psi_m^{-1}]_{j,k'} [\Psi_m]_{k',k} \\ &= \sum_{j,k=1}^m [\Psi_m^{-1}]_{j,k} \mathbf{I}_{j,k} = \text{trace}(\Psi_m^{-1}) \end{aligned}$$

and

$$\begin{aligned} \|\Psi_m^{-1}\|_{\text{op}} &= \sup_{\|\theta\|_{2,m}=1} \theta^* \Psi_m^{-1} \theta = \sup_{\|\theta\|_{2,m}=1} \|\Psi_m^{-1/2} \theta\|_{2,m}^2 = \sup_{\|\Psi_m^{1/2} \theta\|_{2,m}=1} \|\theta\|_{2,m}^2 \\ &= \sup_{J \in \mathcal{S}_m: \|J\|_{\langle M \rangle} = 1} \|J\|_2^2 = \sup_{J \in \mathcal{S}_m: \|J\|_{\langle M \rangle} = 1} \int_0^T J(s)^2 \mu(s)^{-1} d\langle M \rangle_s \leq \|\mu(\cdot)^{-1}\|_{\infty, T}. \end{aligned}$$

Therefore,

$$\int_0^T \|\Psi_m^{-1}\varphi(t)\|^2 d\langle M \rangle_t = \text{trace}(\Psi_m^{-1}) \leq m \|\Psi_m^{-1}\|_{\text{op}} \leq m \|\mu(\cdot)^{-1}\|_{\infty, T}.$$

A.5. **Proof of Proposition 4.1.** First of all, recall that

$$\mathcal{Q} = \{Q : \text{the function } t \mapsto t^{1/2-H} Q(t) \text{ belongs to } \mathbb{L}^1([0, T], dt)\}$$

and

$$\mathcal{J} = \left\{ \iota : \text{the function } t \in [0, T] \mapsto \int_0^t s^{1-2H} \iota(s) ds \text{ belongs to } \mathcal{I}_{0+}^{3/2-H}(\mathbb{L}^1([0, T], dt)) \right\}.$$

In the sequel, $\mathcal{I}_{0+}^\alpha(\cdot)$ (resp. $\mathcal{D}_{0+}^\alpha(\cdot)$) is the Riemann-Liouville left-sided fractional integral (resp. derivative) of order $\alpha > 0$. Consider $Q \in \mathcal{Q}$. Then, the map $Q_H : t \mapsto t^{1/2-H} Q(t)$ belongs to $\mathbb{L}^1([0, T], dt)$,

$$\begin{aligned} J(Q)(t) &= \frac{\mathfrak{c}_H}{2-2H} t^{2H-1} \frac{\partial}{\partial t} \int_0^t s^{1/2-H} (t-s)^{1/2-H} Q(s) ds \\ &= \frac{\mathfrak{c}_H}{2-2H} \Gamma(3/2-H) t^{2H-1} \mathcal{I}_{0+}^{3/2-H}(Q_H)'(t) \end{aligned}$$

for almost every $t \in [0, T]$, and $J(Q) \in \mathcal{J}$. Therefore, the map J is one-to-one from \mathcal{Q} into \mathcal{J} , and

$$\begin{aligned} J^{-1}(\iota)(t) &= \frac{2-2H}{\mathfrak{c}_H \Gamma(3/2-H)} t^{H-1/2} \mathcal{D}_{0+}^{3/2-H} \left(\int_0^\cdot s^{1-2H} \iota(s) ds \right) (t) \\ &= \bar{\mathfrak{c}}_H t^{H-1/2} \int_0^t (t-s)^{H-3/2} s^{1-2H} \iota(s) ds \end{aligned}$$

for every $\iota \in \mathcal{J}$ and almost every $t \in [0, T]$.

A.6. **Proof of Proposition 4.2.** Since $\langle M \rangle_t = t^{2-2H}$ for every $t \in [0, T]$ (see Norros et al. [26]), the Molchan martingale M fulfills Assumption 2.2 with $\mu(t) = (2-2H)t^{1-2H}$ for every $t \in (0, T]$. Consider $\iota \in \mathcal{J} \cap \mathbb{L}^2([0, T], d\langle M \rangle_t)$, and note that $J^{-1}(\iota) \in \mathcal{Q}$ thanks to Proposition 4.1. By Cauchy-Schwarz's inequality,

$$\begin{aligned} \|J^{-1}(\iota)\|_2^2 &= \bar{\mathfrak{c}}_H^2 \int_0^T t^{2H-1} \left(\int_0^t (t-s)^{H-3/2} s^{1-2H} \iota(s) ds \right)^2 dt \\ &\leq \bar{\mathfrak{c}}_H^2 \int_0^T t^{2H-1} \theta(t) \int_0^t (t-s)^{H-3/2} s^{1-2H} \iota(s)^2 ds dt \end{aligned}$$

with

$$\theta(t) := \int_0^t (t-s)^{H-3/2} s^{1-2H} ds ; \forall t \in (0, T].$$

Note that $\bar{\theta} : t \mapsto t^{2H-1}\theta(t)$ is bounded on $(0, T]$. Indeed, for every $t \in (0, T]$,

$$\begin{aligned} |\bar{\theta}(t)| &\leq t^{2H-1} \left[\left(\frac{t}{2}\right)^{H-3/2} \int_0^{t/2} s^{1-2H} ds + \left(\frac{t}{2}\right)^{1-2H} \int_{t/2}^t (t-s)^{H-3/2} ds \right] \\ &= t^{2H-1} \left[\frac{1}{2-2H} \left(\frac{t}{2}\right)^{H-3/2} \left(\frac{t}{2}\right)^{2-2H} + \frac{1}{H-1/2} \left(\frac{t}{2}\right)^{1-2H} \left(\frac{t}{2}\right)^{H-1/2} \right] \\ &= \frac{1}{2^{1/2-H}} \left(\frac{1}{2-2H} + \frac{1}{H-1/2} \right) t^{H-1/2} \xrightarrow{t \rightarrow 0^+} 0. \end{aligned}$$

So, by Fubini's theorem,

$$\begin{aligned} \|J^{-1}(\iota)\|_2^2 &\leq \bar{c}_H^2 \|\bar{\theta}\|_{\infty, T} \int_0^T \int_0^T (t-s)^{H-3/2} s^{1-2H} \iota(s)^2 \mathbf{1}_{(s, T]}(t) ds dt \\ &= \bar{c}_H^2 \|\bar{\theta}\|_{\infty, T} \int_0^T s^{1-2H} \iota(s)^2 \int_s^T (t-s)^{H-3/2} dt ds \\ &\leq (H-1/2)^{-1} \bar{c}_H^2 T^{H-1/2} \|\bar{\theta}\|_{\infty, T} \int_0^T s^{1-2H} \iota(s)^2 ds. \end{aligned}$$

Then, $J^{-1}(\iota) \in \mathcal{Q} \cap \mathbb{L}^2([0, T], dt)$ and

$$(16) \quad \|J^{-1}(\iota)\|_2^2 \leq \mathbf{c}_1 \|\iota\|_{\langle M \rangle}^2 \quad \text{with} \quad \mathbf{c}_1 = (H-1/2)^{-1} (2-2H)^{-1} \bar{c}_H^2 T^{H-1/2} \|\bar{\theta}\|_{\infty, T}.$$

The conclusion comes from Inequality (16), Proposition 3.1 and Theorem 3.4.

A.7. Proof of Proposition 4.3. Thanks to Samko et al. [31], Theorem 2.3,

$$\mathcal{J} = \left\{ \iota : \mathcal{I}_{0+}^{H-1/2} \left(\int_0^\cdot s^{1-2H} \iota(s) ds \right) \text{ is absolutely continuous from } [0, T] \text{ into } \mathbb{R} \right\}.$$

So, since Lipschitz continuous functions are absolutely continuous,

$$\mathcal{J}_{\text{Lip}} := \left\{ \iota : \mathcal{I}_{0+}^{H-1/2} \left(\int_0^\cdot s^{1-2H} \iota(s) ds \right) \text{ is Lipschitz continuous from } [0, T] \text{ into } \mathbb{R} \right\}$$

is a subset of \mathcal{J} . Moreover, for every $\iota \in \mathcal{J}_{\text{Lip}}$ and $t \in [0, T]$, by Fubini's theorem,

$$\begin{aligned} \mathcal{I}_{0+}^{H-1/2} \left(\int_0^\cdot s^{1-2H} \iota(s) ds \right) (t) &= \frac{1}{\Gamma(H-1/2)} \int_0^t (t-u)^{H-3/2} \int_0^u s^{1-2H} \iota(s) ds du \\ &= \frac{1}{\Gamma(H-1/2)} \int_0^t s^{1-2H} \iota(s) \int_s^t (t-u)^{H-3/2} du ds \\ &= \frac{1}{(H-1/2)\Gamma(H-1/2)} \int_0^t (t-s)^{H-1/2} s^{1-2H} \iota(s) ds. \end{aligned}$$

Then,

$$\mathcal{J}_{\text{Lip}} = \left\{ \iota : \text{the function } t \in [0, T] \mapsto \int_0^t (t-s)^{H-1/2} s^{1-2H} \iota(s) ds \text{ is Lipschitz continuous} \right\}.$$

Now, recall that

$$\mathbb{J} = \left\{ \iota \in C^1([0, T]; \mathbb{R}) : \lim_{t \rightarrow 0^+} t^{-2H} \iota(t) \text{ and } \lim_{t \rightarrow 0^+} t^{1-2H} \iota'(t) \text{ exist and are finite} \right\}$$

and let us show that $\mathbb{J} \subset \mathcal{J}_{\text{Lip}} \subset \mathcal{J}$. For any $\iota \in \mathbb{J}$ and every $t \in [0, T]$,

$$\begin{aligned} \bar{\iota}(t) &:= \int_0^t (t-s)^{H-1/2} s^{1-2H} \iota(s) ds \\ &= -\lim_{\varepsilon \rightarrow 0} \left[s^{1-2H} \iota(s) \frac{(t-s)^{H+1/2}}{H+1/2} \right]_{\varepsilon}^t \\ &\quad + \int_0^t ((1-2H)s^{-2H} \iota(s) + s^{1-2H} \iota'(s)) \frac{(t-s)^{H+1/2}}{H+1/2} ds = \int_0^t \theta(s) (t-s)^{H+1/2} ds \end{aligned}$$

with

$$\theta(s) := \frac{1}{H+1/2} ((1-2H)s^{-2H} \iota(s) + s^{1-2H} \iota'(s)); \forall s \in (0, T].$$

Since $\iota \in \mathbb{J}$, the map $\theta : t \mapsto \theta(t)$ is bounded on $(0, T]$, and for every $t_1, t_2 \in [0, T]$ such that $t_2 > t_1$,

$$\begin{aligned} |\bar{\iota}(t_2) - \bar{\iota}(t_1)| &\leq \int_{t_1}^{t_2} \theta(s) (t_2-s)^{H+1/2} ds + \int_0^{t_1} \theta(s) |(t_2-s)^{H+1/2} - (t_1-s)^{H+1/2}| ds \\ &\leq (H+3/2) \|\theta\|_{\infty, T} T^{H+1/2} |t_2 - t_1|. \end{aligned}$$

So, the function $t \mapsto \bar{\iota}(t)$ is Lipschitz continuous from $[0, T]$ into \mathbb{R} , which leads to $\iota \in \mathcal{J}_{\text{Lip}}$.

APPENDIX B. FIGURES AND TABLES

$J_0; H$	$J_{0,1}; 0.6$	$J_{0,2}; 0.6$	$J_{0,3}; 0.6$	$J_{0,1}; 0.9$	$J_{0,2}; 0.9$	$J_{0,3}; 0.9$
Mean MISE	0.047	0.103	0.076	0.135	0.300	0.287
StD MISE	0.031	0.029	0.033	0.076	0.118	0.084

TABLE 1. Means and StD of the MISE of $\widehat{J}_{\widehat{m}, N, n}$ (100 repetitions).

σ	0.2	1
Mean MISE	0.002	0.042
StD MISE	0.002	0.046

TABLE 2. Means and StD of the MISE of $\widehat{b}_{\widehat{m}, N, n}$ (100 repetitions).

σ (mean $\widehat{\sigma}_{N, n}$)	0.2 (0.223)	1 (1.005)
Mean MISE	0.001	0.042
StD MISE	0.001	0.038

TABLE 3. Means and StD of the MISE of $\widetilde{b}_{\widehat{m}, N, n}$ (100 repetitions).

[†]LABORATOIRE MODAL'X, UNIVERSITÉ PARIS NANTERRE, NANTERRE, FRANCE
Email address: mmarie@parisnanterre.fr

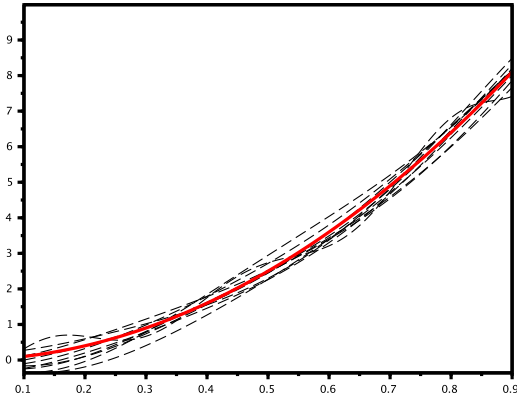


FIGURE 1. Plots of $J_{0,1}$ and of 10 adaptive estimations when $H = 0.6$ ($\widehat{m} = 5.4$).

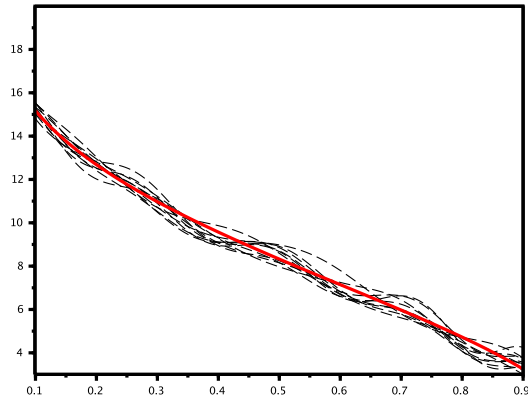


FIGURE 2. Plots of $J_{0,2}$ and of 10 adaptive estimations when $H = 0.6$ ($\widehat{m} = 11.2$).

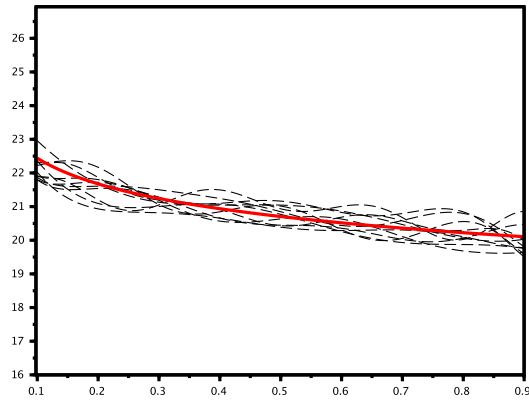


FIGURE 3. Plots of $J_{0,3}$ and of 10 adaptive estimations when $H = 0.6$ ($\widehat{m} = 8.2$).

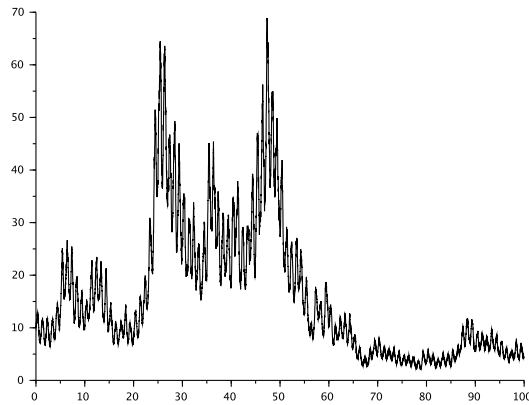


FIGURE 4. Plot of one path of the non-autonomous Black-Scholes model with $\sigma = 0.2$.

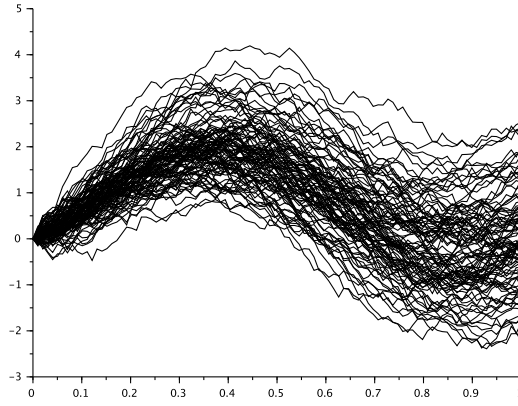


FIGURE 5. Plots of the paths of Z^1, \dots, Z^N associated to the path of S at Figure 4.

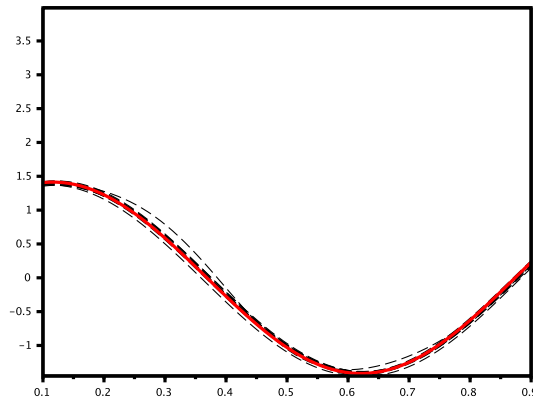


FIGURE 6. Plots of \mathfrak{b} and of 10 adaptive estimations when $\sigma = 0.2$ ($\overline{m} = 3.3$).

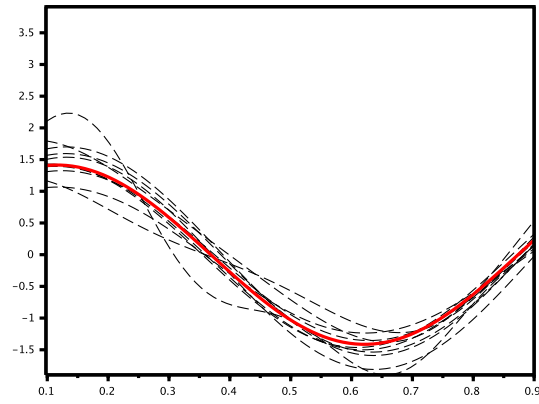


FIGURE 7. Plots of b and of 10 adaptive estimations when $\sigma = 1$ ($\widehat{m} = 3.5$).