



Decay of similarity across tropical forest communities: integrating spatial distance with soil nutrients

Guille Peguero, Miquel Ferrín, Jordi Sardans, Erik Verbruggen, Irene Ramírez-Rojas, Leandro van Langenhove, Lore T Verryckt, Jerome Murienne, Amaia Iribar, Lucie Zinger, et al.

► To cite this version:

Guille Peguero, Miquel Ferrín, Jordi Sardans, Erik Verbruggen, Irene Ramírez-Rojas, et al.. Decay of similarity across tropical forest communities: integrating spatial distance with soil nutrients. Ecology, inPress, 10.6084/m9.figshare.16615873.v1 . hal-03411548

HAL Id: hal-03411548

<https://hal.science/hal-03411548>

Submitted on 2 Nov 2021

HAL is a multi-disciplinary open access archive for the deposit and dissemination of scientific research documents, whether they are published or not. The documents may come from teaching and research institutions in France or abroad, or from public or private research centers.

L'archive ouverte pluridisciplinaire **HAL**, est destinée au dépôt et à la diffusion de documents scientifiques de niveau recherche, publiés ou non, émanant des établissements d'enseignement et de recherche français ou étrangers, des laboratoires publics ou privés.



Distributed under a Creative Commons Attribution 4.0 International License

Running head: Similarity decay in tropical forests

Decay of similarity across tropical forest communities: integrating spatial distance with soil nutrients

Guille Peguero* ^{1,2, C}, Miquel Ferrín* ^{1,2}, Jordi Sardans^{2,3}, Erik Verbruggen⁴, Irene Ramírez-Rojas⁴, Leandro Van Langenhove⁴, Lore T. Verryckt⁴, Jerome Murienne⁵, Amaia Iribar⁵, Lucie Zinger⁶, Oriol Grau^{2,3,7}, Jerome Orivel⁷, Clément Stahl⁷, Elodie A. Courtois⁸, Dolores Asensio^{2,3}, Albert Gargallo-Garriga^{2,3}, Joan Llusà^{2,3}, Olga Margalef^{2,3}, Romà Ogaya^{2,3}, Andreas Richter⁹, Ivan A. Janssens⁴, Josep Peñuelas^{2,3}

* authors with equal contribution

^C corresponding author e-mail: guile.peguero@gmail.com

¹ Departament de Biologia Animal, Biologia Vegetal i Ecologia, Universitat Autònoma de Barcelona, 08193 Bellaterra, Spain

² CSIC, Global Ecology Unit CREAM-CSIC-UAB, 08913 Bellaterra, Spain.

³ CREAM, 08913 Cerdanyola del Vallès, Spain.

⁴ Centre of Excellence PLECO (Plants and Ecosystems), Department of Biology, University of Antwerp, 2610 Wilrijk, Belgium.

⁵ Laboratoire Evolution et Diversité Biologique (UMR5174) - Université de Toulouse, CNRS, IRD, UPS - Toulouse, France

⁶ Institut de Biologie de l'Ecole Normale Supérieure (IBENS), Ecole Normale Supérieure, CNRS, INSERM, PSL Université Paris, Paris, France

⁷ UMR EcoFoG, AgroParisTech, CIRAD, CNRS, INRAE, Université des Antilles, Université de Guyane, 97310 Kourou, France.

⁸ Laboratoire Ecologie, évolution, Interactions des Systèmes Amazoniens (LEEISA), Université de Guyane, CNRS, IFREMER, 97300 Cayenne, French Guiana

⁹ Department of Microbiology and Ecosystem Science, University of Vienna, 1090 Vienna, Austria.

OPEN RESEARCH: All data and code supporting the analyses and figures contained in this contribution are available in the Figshare repository:
<https://doi.org/10.6084/m9.figshare.16615873.v1>

ABSTRACT

Understanding the mechanisms that drive the change of biotic assemblages over space and time is the main quest of community ecology. Assessing the relative importance of dispersal and environmental species selection in a range of organismic sizes and motilities has been a fruitful strategy. A consensus for whether spatial and environmental distances operate similarly across spatial scales and taxa, however, has yet to emerge. We used censuses of four major groups of organisms (soil bacteria and fungi, ground insects and trees) at two observational scales (1-m² sampling point vs 2500-m² plots) in a topographically standardized sampling design replicated in two tropical rainforests with contrasting relationships between spatial distance and nutrient availability. We modeled the decay of assemblage similarity for each taxon set and site to assess the relative contributions of spatial distance and nutrient availability distance and evaluated the potentially structuring effect of tree composition over all other taxa. Similarity of nutrient content in the litter and topsoil had a stronger and more consistent selective effect than did dispersal limitation, particularly for bacteria, fungi and trees at the plot level. Ground insects, the only group assessed with the capacity of active dispersal, had the highest species turnover and the flattest non-significant distance-decay relationship, suggesting that neither dispersal limitation nor nutrient availability were fundamental drivers of their community assembly at this scale of analysis. Only the fungal communities at one of our study sites were clearly coordinated with tree composition. Spatial distance at the smallest scale was more important than nutrient selection for the bacteria, fungi and insects. The lower initial similarity and the moderate variation in composition identified by these distance-decay models, however, suggested that the effects of stochastic sampling were important at this smaller spatial scale. Our results highlight the importance of nutrients as one of the main

environmental drivers of rainforest communities irrespective of organismic or propagule size and how the overriding effect of the analytical scale influences the interpretation, leading to the perception of a greater importance of dispersal limitation and ecological drift over selection associated with environmental niches at decreasing observational scales.

Key words: community assembly, dispersion, environmental filtering, French Guiana, metabarcoding, nutrients, scale-dependency, soil biodiversity

INTRODUCTION

The central quest of community ecology is to elucidate the mechanisms that drive the change of species assemblages over space and time (Vellend 2017). A recurrent pattern identified in such inquiries is the nearly universal decay of similarity between assemblages with the increase in the spatial or environmental distance separating them (Nekola and White 1999). This macroecological pattern has been found in a broad variety of organisms, from bacteria and fungi to plants and animals (Condit et al. 2002, Green et al. 2004, Novotny et al. 2007, Bahram et al. 2013). Whether this pattern emerges from the same mechanisms of community assembly across the entire range of organismic size remains an open debate due to the paucity of studies simultaneously studying multiple co-occurring taxonomic groups. A few attempts to do so have found mixed and sometimes conflicting results usually dependent on their specific ecological contexts (Beisner et al. 2006, Soininen et al. 2007, Bryant et al. 2008, Astorga et al. 2012, Zinger et al. 2019, Vleminckx et al. 2019, Luan et al. 2020). Moreover, many patterns of biodiversity are scale-dependent and thus vary with the sampling grain (i.e. the area of the observation unit) and extent (Nekola and McGill 2014, Chase et al. 2018). However, the scale-dependency of distance-decay patterns is seldom analyzed, hence hindering the interpretation of the contrasting results gathered to date (Nekola and

McGill 2014). This prevents drawing general conclusions about the relative importance of the different mechanisms of community assembly and of the scaling of these processes into biogeographic patterns.

A recent conceptual synthesis (Vellend 2017) identified four high-level processes driving the structure and composition of ecological communities: the movement of organisms (dispersal), random or stochastic changes in the abundances of species (drift), deterministic differences in fitness between individuals of different species due to their biotic or abiotic context (selection) and the evolution of populations into new species that operates over larger spatiotemporal scales than does local community assembly (speciation). The decreasing form of the distance-decay relationship has usually been associated with dispersal limitation and environmental selection (Nekola and White 1999). In the first case, the decay of similarity between assemblages with increasing spatial distance would be explained by the reduction of the probability of species reaching more distant localities due to their limited dispersal ability (Condit et al. 2002, Gómez-Rodríguez and Baselga 2018). Alternatively, the decay of similarity with spatial distance would derive from similar biotic and abiotic properties in closer localities. The environment would thereby broadly select species based on their ecological niches, making assemblages more dissimilar when biotic and abiotic conditions are more different (Tuomisto et al. 2003, Astorga et al. 2012, Gómez-Rodríguez and Baselga 2018). The relative importance of dispersal limitation and environmental selection has thus usually been assessed by measuring how well spatial or multivariate environmental distances account for the dissimilarity between assemblages (Tuomisto et al. 2003, Astorga et al. 2012, Gómez-Rodríguez and Baselga 2018). Nevertheless, environmental conditions are often spatially autocorrelated, which confounds the effect of these assembly mechanisms and hampers assessing their relative importance with current

statistical techniques (e.g. simple and partial Mantel tests; Guillot and Rousset 2013,
Legendre et al. 2015). A simple alternative is to specifically design spatially
standardized samplings for sites that vary in the level of co-variation between the spatial
distance separating plots and their environmental features, and then to compare the
strength of the distance-decay relationships for multiple taxonomic groups assuming
that their dispersal abilities are constant in these contrasting scenarios.

Variation in distance-decay relationships among taxonomic groups may arise from basic
biological properties such as differences in dispersal ability or traits associated with
their environmental sensitivity (Nekola and White 1999, Soininen et al. 2007). Yet,
there is no consensus regarding the relative importance of dispersal limitation versus
environmental selection across the range of body size from micro to macroorganisms.
For instance, the small size of microbial propagules, along with large populations and
short generation times, are thought to lead to homogeneous regional species pools from
which local communities are assembled by environmental selection (Martiny et al.
2006). This view, however, has been recently challenged by findings suggesting that the
community assembly of small organisms such as bacteria would be more influenced by
dispersal limitation than by environmental selection (Luan et al. 2020). Microorganisms
are mostly passive dispersers and at least some groups like fungi have shown variable
degrees of dispersal limitation and sometimes even a strong co-variation with plant
community composition (Peay et al. 2010, Bahram et al. 2013, Powell et al. 2015,
Tedersoo et al. 2016, Vleminckx et al. 2019). By contrast, macroorganisms should
generally have higher initial similarities and steeper distance-decay relationships
compared to microorganisms, presumably due to lower mobility and responsiveness to
fine-scale environmental variation (Soininen et al. 2007). Dispersal limitation may
accordingly be the main determinant of beetle similarity at a biogeographic scale in

Europe (Gómez-Rodríguez and Baselga 2018). Low levels of species turnover, however, have been reported for herbivorous insects in tropical rainforests, suggesting that dispersal limitation does not have a substantial role in community assembly from local to regional scales in these diverse ecosystems (Novotny et al. 2007). The compositions of plant and insect communities may also be strongly correlated at a landscape level (Zhang et al. 2016), but a comprehensive study at a smaller spatial scale found that ecological drift, not dispersal or environmental selection, may be the only detectable driver of the otherwise highly stochastic assemblages of soil arthropods in tropical rainforests (Zinger et al. 2019). As with microorganisms, it is likely that these disparities between studies may be related to the spatial scale at which communities are analyzed, since how distinct assembly processes structure community types is fundamentally dependent on the sampling grain and extent at which communities are investigated (Chase et al. 2018, Zinger et al. 2019, Luan et al. 2020). This complex scenario therefore illustrates the need for more research if we are to understand whether the processes linking local community assembly with biogeographic patterns differ between the most common types of organisms.

Tropical rainforests are an ideal setting to conduct intertaxonomic and cross-site comparisons of distance-decay patterns, because we can find high levels of species richness and turnover associated with high levels of environmental heterogeneity at very small spatial scales of a few hundred meters (Jucker et al. 2018). Since climate, soil parent material and geologic time are largely constant at a landscape level, topography emerges as the main driver of environmental variability in these ecosystems (Weintraub et al. 2015). Topographic features such as slope and ruggedness influence the hydrologic regime and thereby also soil weathering, mineralogy and texture. Accordingly, topography ultimately determine the content and availability of key

nutrients such as N and P (Weintraub et al. 2015), which strongly affect the composition, structure and dynamics of tree communities (John et al. 2007, Grau et al. 2017, Jucker et al. 2018, Soong et al. 2020). Tree communities may in turn co-determine the composition of other associated taxonomic groups, as suggested by their sometimes coupled spatial distributions (Peay et al. 2013, Zhang et al. 2016, Zinger et al. 2019, Vleminckx et al. 2019). The content of main soil elements and ratios correlate with many relevant environmental features such as soil texture, pH, organic matter and water storage, and thus are major ecological factors and reliable multivariate proxies of environmental heterogeneity.

Here, we assessed the relative importance of dispersal limitation and environmental selection to the assembly of communities of soil bacteria, fungi, ground insects and trees. We analyzed their distance-decay patterns across a spatially standardized system of twelve 0.25-ha plots, each containing 3–5 sampling points, thus providing two nested scales. This analysis was replicated at two tropical rainforest sites in French Guiana, one for which the nutrient environment was completely uncorrelated with the spatial distance among plots, while the other exhibited some correlation, hence providing a unique naturally controlled opportunity to tease apart spatial vs. environmental effects. We assessed the co-variation of community similarity patterns with spatial distances or environmental dissimilarity based on the concentrations and ratios of 21 macro- and micronutrients in the topsoil and organic horizons. We expected greater environmental selection effects for microorganisms, and higher dispersal limitation for macroorganisms with passive motility (e.g. trees). We likewise expected higher initial similarities and faster distance-decay rates for trees and ground insects compared with fungi and bacteria. We also evaluated the potential coupling between communities of trees, the main structuring organisms in rainforests and thus a kind of environmental

selection agent, with the composition of ground insects, soil bacteria and fungi. Finally, we also assessed if shifting the observational unit from plot to sampling point modified the patterns of distance decay.

MATERIALS AND METHODS

Study sites

This study was conducted in two primary tropical rainforests in French Guiana in the research stations of Paracou (05°16'38"N, 52°55'38"W) and Nouragues (04°04'53"N, 52°41'13"W). Both sites share the same tropical climate, with a wet season from December to June and a dry season from August to November. Mean annual precipitation and temperature are similar at Paracou and Nouragues (3102 mm and 25.7 °C vs 3000 mm and 25.2 °C, respectively). The bedrock is Precambrian schist at Paracou and Caribbean granite and gneiss at Nouragues. Acrisols dominated at both sites, but with higher sand content and more extractable N and P in the soil at the bottom of hills and clayey minerals (e.g. kaolinite) and oxides increasing toward the tops, where total nutrient and micronutrient concentrations are highest (Van Langenhove 2020). We established 12 plots of 0.25 ha at each site stratified by three topographic positions to account for this heterogeneity: at the top, slope and bottom of hills. We set a central 20-m quadrat in each plot where we marked and geolocated five evenly spaced sampling points around which we focused our measurements. This design thus contained between 72 and 120 sampling points (2 sites × 3 topographic positions × 4 replicate plots per position × 3-5 sampling points in each plot).

Nutrient variables

We assessed the environmental similarity between the plots and sampling points by compiling data for 21 variables describing the total nutrient concentrations and ratios in

soil and litter compartments. We collected three randomized soil cores (4 cm in diameter and 15 cm in length) at each sampling point. These three cores were combined as a single composite sample, forming one sample per sampling point. Litter samples for nutrient analysis were collected at each sampling point within a randomly placed PVC square of 20 cm². We then determined the concentrations of nutrients (C, N, P, K, Ca, Mg and Na) in the litter and soil pools for each sampling point using inductively coupled plasma mass spectrometry (ICP-MS Agilent 7500; Thermo Fisher Scientific, Germany) and also by inductively coupled plasma optical emission spectrometry (iCAP 6300 Duo; Thermo Fisher Scientific, Germany)(see Urbina et al. 2021 for further methodological details). The concentration of available P in the soil was determined using both the Olsen and Bray methods. We also derived some nutrient ratios (C:N, C:P and N:P) due to their relevance to nutrient cycling (Peguero et al. 2019).

Taxa sampling

We sampled the communities of soil bacteria and fungi, ground insects and trees at the end of the dry season in 2015. All trees with a diameter at breast height >10 cm within the 0.25-ha plots were mapped, tagged and identified to species or genus using herbarium vouchers with the help of local botanical experts. The communities of ground insects were sampled from the litter surrounding three sampling points per plot. We collected all litter inside four randomly placed 0.25-m² PVC frames and sifted it through a 0.7-cm mesh Winkler bag, manually catching all escaping macrofauna. The sifted litter was hung in Moczarsky traps for 48 h and then carefully inspected for any remaining specimens. The bulk ground insect communities were stored in 70% ethanol. These samples included specimens from Class Insecta and Class Entognatha, i.e. subphylum Hexapoda, but are referred as insects for simplicity. Soil cores were extracted for all five sampling points per plot for collecting soil bacteria and fungi, and

a 1-g aliquot of fresh topsoil was tagged, set inside a sealed plastic bag, immediately stored in liquid nitrogen to prevent microbial growth and frozen until lyophilized in the laboratory.

Molecular analyses

The communities of soil bacteria, fungi and ground insects were molecularly characterized to delimit species-level taxa or operational taxonomic units (OTU) using DNA metabarcoding. See Appendix S1: Section S1.1 Molecular Analyses for detailed information of the procedures.

Data analyses

All data handling, visualization and statistical analyses were carried out using R v4.0.0 (R Core Team 2020). We first assessed the correlation between the spatial distance separating two plots with their environmental dissimilarity based on the concentrations and ratios of 21 macro- and micronutrients in the topsoil and organic horizons (hereafter referred as nutrient distance). Spatial distance was calculated as the Euclidean distance separating the coordinates of each plot in meters. Nutrient distance was also calculated as Euclidean distance, but with all nutrient variables previously standardized to z-scores. We then built a simple general linear model (GLM), with nutrient dissimilarity between plots as a function of their spatial distance, with site as a fixed-effects term and its interaction with spatial distance to detect potential differences between and within sites in the nutrient-space correlation.

We calculated the alpha and gamma richness (i.e. the number of species or OTUs at the plot level and the regional pool, respectively) for each sampled community and site, and we drew their rarefaction curves using the iNEXT package (Hsieh et al. 2016) to evaluate the sampling coverage prior to rarefaction. We partitioned total β -diversity

(Sørensen index) of each community into its turnover (Simpson index) and nestedness components for each site separately using the betapart package (Baselga and Orme 2012). The turnover component of β -diversity corresponds to the replacement of species between sites, whereas nestedness accounts for species-poor sites resembling subsets of assemblages found at richer sites. By partitioning β -diversity we quantify the compositional dissimilarities between plots and between points, thus exploring the species distribution across assemblages, accounting for all potential drivers, and going beyond their relationship to spatial and nutrient distances.

Although it is a debated matter, metabarcoding data may not provide reliable quantitative estimates of the original relative abundances (Lamb et al. 2019). So, to avoid any potentially misleading effect, for each community type we used presence/absence matrices for building the distance-decay models (Gómez-Rodríguez and Baselga 2018). We ran these distance-decay models with mean and median rarefied community data sets in addition to observed nonrarefied data to control for biases in sampling intensity, thereby providing a series of sensitivity analyses. We calculated Simpson's index of assemblage similarity between plots and between sampling points for each taxon group and site as: $(1 - \beta_{sim} = a/[a + \min(b, c)])$, where a is the number of species or OTUs present in both plots, and b and c are the numbers of species unique to one or the other plot as defined in the package betapart (Baselga and Orme 2012). We then assessed the relationship between pairwise similarity and spatial or nutrient distance by fitting a negative exponential or power-law function (i.e. the two main forms describing the decay in similarity; Nekola and White 1999, Nekola and McGill 2014) using the *decay.model* function of the betapart package, which adjusts a GLM with similarity as a response variable and a distance matrix as a predictor with log link

and Gaussian error (Gómez-Rodríguez and Baselga 2018). See Appendix S1: Section S1.2 Data Analyses for further details.

RESULTS

The relationship between the spatial distance among plots and the similarity of their nutrient concentrations and ratios differed at our two sites (interaction between site and spatial distance: $df = 128$, $F = 14.8$, $P < 0.001$, Figure 1). Spatial distance was not correlated with nutrient distance at Paracou, so nearby plots did not necessarily have a similar nutrient environment ($df = 64$, $F = 2.6$, $P > 0.05$). At Nouragues, however, the further the distance between two plots, the greater the dissimilarity in their nutrient concentration in the litter and topsoil. Only 40% of the variation in nutrient concentration at Nouragues was due to spatial distance ($df = 64$, $F = 42.4$, $P < 0.001$), thus stressing the high heterogeneity of biogeochemical processes operating at small scales at both sites. The same analysis performed at the smallest observational scale available reinforced this finding, indicating that spatial distances between sampling points at Paracou were not correlated with the nutrient similarity ($df = 1768$, $F = 78.2$, $P > 0.05$, Appendix S1: Figure S1) and that only 19% of the variation in overall nutrient concentration at Nouragues was explained by the spatial distance between sampling points ($df = 1768$, $F = 431.1$, $P < 0.001$, Appendix S1: Figure S1). The distribution of specific nutrients across the topographic levels differed between sites (Appendix S1: Table S1 and S2), even though the ranges of spatial extent and nutrient content were similar at Paracou and Nouragues (Appendix S1: Figures S3 and S4).

We found global totals of 627 tree species and 3512, 6794 and 12268 OTUs for ground insects, bacteria and fungi, respectively (Table 1). Local species richness differed significantly between sites, with the plots at Paracou having more OTUs for all taxa except tree species ($df = 22$ and $P < 0.01$ for all groups, see Appendix S1: Table S3 for

extended outputs). Evenness patterns, however, were highly similar between sites and for all community types (Appendix S1: Figure S5). Mean Sørensen β -diversity for all communities was 0.85 ± 0.05 , and its partitioning indicated that species turnover was the main component compared to nestedness (96.7 vs 3.3% for averages in turnover and nestedness components across taxa, respectively). This pattern was consistent at both sites and for all communities (Appendix S1: Figure S2). However, total β -diversity differed greatly between taxa. Ground insect assemblages had the highest β -diversity, followed by fungi, trees and bacteria. This ranking was consistent among sites and was not related with any biological property of each community, such as organism, propagule or community sizes, or with their γ or α richness (Table 1).

The analysis of the patterns of decay of similarity indicated that the effect of spatial distance differed among sites, taxa and scales. All taxa but bacteria had significantly lower similarities with increasing spatial distance between plots at Nouragues ($df = 64$, $P < 0.05$, Appendix S1: Table S4), and only fungal communities exhibited such a pattern at Paracou ($df = 64$, $t = 3.449$, $P < 0.01$, Figure 2). The slope of the distance-decay at Nouragues was more negative for the communities of trees and ground insects, despite exhibiting a greater variability when compared with fungi and bacteria (Figure 2a). Bacterial communities had the highest pairwise similarities and an almost flat response with increasing distance among plots at both sites. Our analysis of bacterial, fungal and ground insect data at the level of sampling point, the smallest observational unit available, found that the values of initial similarities substantially decreased in all groups (Figure 4 and Appendix S1: Figure S6), indicating that compositional variability was high within the plots. The similarity between sampling points within a plot, i.e. separated by only 15–20 m, was notably lower than aggregated communities between plots, at distances averaging about 60 m (Figure 3). All three groups had a significant

decaying relationship with spatial distance at both sites at the smallest scale of analysis (df = 1429, $P < 0.01$, Appendix S1: Table S5), although the slope and the explanatory power of the models was generally lower than when using data aggregated to plot level. The models of similarity decay with nutrient distance at the plot level indicated that the filtering effect of the environment was greater and more consistent than spatial distance at both sites and across community types. All taxa at Nouragues had a significant decay of assemblage similarity, with increasing differences in nutrient concentrations between plots, albeit this relationship was weak for ground insects (Figure 4, $t = 1.884$, $P = 0.05$, Pseudo- $R^2 = 0.05$; Appendix S1: Table S4). All taxa at Paracou except insects had the same pattern of decay, which was particularly strong for fungi (df = 64, $t = 3.449$, $P < 0.01$, Pseudo- $R^2 = 0.26$). Even the more homogeneous bacterial communities significantly correlated with nutrients at both sites (Figure 4, df = 1429, $P < 0.01$, Pseudo- $R^2 = 0.13$). By contrast, the distance-decay models obtained for bacteria, fungi and insects were similar at the sampling point scale (Appendix S1: Table S5) and exhibited lower initial similarity values and explanatory power than at the plot level, although the effect of nutrient condition was still significant for the bacterial and fungal communities at both sites (df = 1429, $P < 0.01$, Appendix S1: Figures S7). Finally, the relationship between the similarity of the tree communities with the similarity of bacterial, fungal and insect communities was variable (Appendix S1: Figure S8). Fungal assemblages were strongly coordinated with the composition of the tree community, but only at Paracou (df = 64, $t = 3.449$, $P < 0.01$, Pseudo- $R^2 = 0.24$, Appendix S1: Table S4), and insects had a statistically marginal relationship at Nouragues (df = 64, $t = 2.295$, $P = 0.06$, Pseudo- $R^2 = 0.05$).

The comparison of the amount of variance explained by our distance-decay models reasserted that the spatial distance at the plot level was generally less important than

nutrients in accounting for the composition of the communities (Appendix S1: Figure S9). This finding was particularly clear for bacteria because spatial distance had no effect, while >10% of their compositional similarity was due to nutrient differences between plots. Importantly, the explanatory power reached by the same models at sampling point level was lower (Appendix S1: Figure S10). Additionally, the sensitivity analyses done with median rarefied community data sets and observed non rarefied data yielded qualitatively identical results (Appendix S1: Table S6-S9) indicating that differences in sampling intensity between taxa were not relevant.

DISCUSSION

There is an open debate about whether micro- and macroorganisms communities are assembled based on the same mechanisms and if these mechanisms operate equally across spatial scales in all kinds of organisms (Soininen et al. 2007, Nekola and McGill 2014, Shade et al. 2018). Our results indicated that trees, soil bacteria and fungi have largely similar distance-decay patterns, with soil nutrient concentrations exerting a stronger control than dispersal limitation over the assembly of these communities in tropical rainforests. The large range of sizes of organisms and propagules did not lead to fundamental differences between micro- and macroorganisms. Insects, the only group assessed that has active dispersal capacity, had the highest species turnover and the flattest, mostly nonsignificant, distance-decay relationships. These results suggest that neither dispersal limitation nor nutrient availability were important drivers of their community assembly, at least at the scales of our analyses. At the smallest observational unit of our study, we found by contrast a greater weight of dispersal limitation. The lower initial similarity and the small amount of variation explained by most of these distance-decay models, however, suggest that stochastic sampling effects, not dispersal limitation, are important for bacteria, fungi and insects at this finer spatial scale (Nekola

and McGill 2014). Our study highlights the direct role of nutrient supply capacity or its ability to capture additional environmental factors that drive the assembly of rainforest communities. And in addition, we show that the structuring effect of these nutrients is independent of the propagule size and local or regional richness of particular groups of organisms. Our study also emphasizes how the overriding effect of analytical scale may strongly influence the interpretation of data. This ultimately leads to the perception of a greater importance of dispersal limitation and ecological drift than niche-related environmental selection with decreasing observational scales (Chase 2014).

The communities of soil bacteria analyzed at the plot level supported the widely accepted view eloquently synthesized in the Baas-Becking hypothesis: “everything is everywhere but the environment selects” (Martiny et al. 2006). A recent study at the global scale has partly challenged this view (Luan et al. 2020). Nonetheless, several previous studies with a smaller geographic scope have reported that bacterial taxa-area relationships were mainly driven by environmental heterogeneity rather than dispersal limitation (Horner-Devine et al. 2004, Powell et al. 2015). The small size of bacterial propagules is assumed to be associated with a high mobility, which along with large populations and short generation times should lead to homogeneous regional pools of taxa. The environment would then filter the species of bacteria that are best adapted to the local conditions (Martiny et al. 2006). The resulting mechanism, commonly referred as species sorting in metacommunity theory, has been successfully applied to describe the contrasting assemblage dynamics of bacterial specialists and generalists, which are respectively more and less influenced by the environment (Leibold et al. 2004, Székely and Langenheder 2014). Soil pH and C and N content are key factors controlling the distribution of soil bacteria (Fierer and Jackson 2006). In tropical forests they are also particularly limited by P, whose availability is linked with pH, which also depends on

topography and soil texture (Camenzind et al. 2018). Our results therefore support the conclusion that in tropical forests, soil nutrients are the main driver of bacterial communities, which are not dispersal-limited at the scale of our study. Thus, bacteria may achieve an effective long-distance passive dispersal via wind, air-driven particles, surface and underground runoffs, and also through animal phoresis (Lindström and Langenheder 2012).

We expected to find similar patterns between fungi and bacteria due to their shared biological features, but instead found that fungi were more dispersal-limited than bacteria. This finding agrees with previous research also reporting dispersal limitation in fungi, which may need the mediation of active vectors such as soil fauna to enhance the dispersion of their spores (Peay et al. 2010, Bahram et al. 2013, Powell et al. 2015). Actually, most fungi do not have aboveground fruiting bodies and while every bacterium might be a propagule in itself for filamentous fungi this is not the case. Environmental selection was yet a strong driver of fungal communities in our study. The structuring force of soil nutrients over fungal communities may nevertheless differ depending on the location with reports of contrasting results even within the same ecosystem and study site (Tedersoo et al. 2016). Likewise, our finding of context-dependency also in the relationship between the tree and soil fungi supports the view that the drivers of fungal communities may vary among sites but also across lineages, depending on whether their trophic strategy imply strong bonds with plants or not (Peay et al. 2013, Tedersoo et al. 2016). The simultaneous control of fungi by spatial and nutrient distances, and indirectly by the composition of tree species, thus hinder our ability to determine the relative contributions of dispersion and environmental selection either related with soil nutrients or tree identities.

Arthropods, as macroorganisms, are hypothesized to have a low mobility and sensitivity to fine-scale environmental variation (Soininen et al. 2007). Accordingly, dispersal limitation have been suggested to be preponderant over environmental selection in the assembly of communities of freshwater crustaceans and terrestrial beetles analyzed from a watershed to a continental scale (Beisner et al. 2006, Gómez-Rodríguez and Baselga 2018). Nevertheless, a broad study documented low levels of β -diversity for herbivorous insects from highly diverse tropical forests, suggesting that dispersal limitation did not have a substantial role in community assembly from local to regional scales (up to 500-1000 km) (Novotny et al. 2007). In addition, the compositions of plant and insect communities can be strongly correlated (Zhang et al. 2016). Our results for insects demonstrated very high species turnover and mostly non significant distance-decay relationships with spatial, nutrient or tree-composition distances. Our findings hence apparently disagree with all these previous studies by indicating that neither dispersal limitation nor environmental selection are important drivers of the community assembly of ground insects, at least at the smallest observational scale of our analyses (1 m²). This difference is consistent with a comprehensive study at a single site but with a very high spatial resolution, which similarly documented that ecological drift without dispersal limitation was prominent in the assembly of soil arthropod communities in a tropical rainforest (Zinger et al. 2019).

Our analyses also provide cues that decreasing the observational scale may lead to the perception of a greater influence of drift processes that could be due only to stochastic sampling effects (Chase 2014, Nekola and McGill 2014). Insect communities in tropical forests are extremely diverse and complex, with high levels of taxonomic and functional turnover even at small spatial scales (Lamarre et al. 2016). Insects are all active dispersers but their dispersal capacity is variable even within taxonomic orders

(Novotny et al. 2007, Gómez-Rodríguez and Baselga 2018). Accordingly, the communities of oribatid mites from forest canopies, whose species usually have a high dispersal capacity, show a lower spatial structure and are more influenced by specific environmental features than the communities of ground-dwelling oribatids, which present a greater dispersal limitation (Lindo and Winchester 2009). In addition, the trophic niches of ground insects are likewise equally diverse, ranging from detritivores, potentially prone to be influenced by nutrient availability, to predators and parasites whose abundances are likely independent of environmental constraints such as soil nutrients or the tree species growing above. Thus, the relative influence of dispersal limitation and environmental selection within such an ecologically variable group is also a function of traits (e.g. dispersal capacity, life-history strategy, trophic niche) other than only body or propagule size (Astorga et al. 2012, Gómez-Rodríguez and Baselga 2018). Altogether, this makes insects a particularly challenging group and studies with a narrower taxonomic focus but embracing these functional differences among lineages could help to untangle the relative importance of the different assembly mechanisms.

We expected that nutrient selection and dispersal limitation would simultaneously affect the assembly of tree communities (Tuomisto et al. 2003, John et al. 2007). Accordingly, we found a significant effect of nutrient availability at both sites, although the effect of nutrients was moderate. The relationship between tree communities and soil nutrient stocks in tropical forests has long been known to be bidirectional. Nutrients select tree species thus driving assemblage composition, while tree species also modulate nutrient availability through their inputs as litter and root exudates and their belowground symbiotic interactions influence the dynamics of organic matter decomposition (John et al. 2007). Our results for dispersal limitation, however, were mixed being significant only at Nouragues. About 87.7% of the species at Nouragues depend on faunal vectors

to disperse their seeds (Charles-Dominique 2001), and similar levels of zoochory are expected for Paracou. Predicting the influence of faunal vectors on tree communities requires knowing the status of the local community of seed dispersers (Gelmi-Candusso et al. 2017). The contrast in dispersal limitation between sites could thus be due more to variation in the composition, structure and behavior of the local community of dispersers rather than to differences in the tree species attributes. Anyhow, nutrient concentrations at Nouragues were significantly correlated with spatial distances, so this effect of dispersal limitation also likely involved masked environmental selection.

Integrating different scales in the analyses illustrated how dispersal limitation and nutrient-based selection influence varied not only across taxa but also depending on the area of the observational unit (Nekola and McGill 2014, Chase et al. 2018). The large residual variance of our models was similar to previous studies using similar approaches (Beisner et al. 2006, Astorga et al. 2012, Zinger et al. 2019) but also emphasizes the many unidentified predictors we still need to take into account. Other abiotic soil properties such as moisture, pH or toxic elements like Aluminum (Zinger et al. 2019), and biotic interactions, are only assessable through detailed studies sustained over relevant time periods (Vellend 2017), may be important. Hence, further research ideally including functional traits for as many lineages as possible within different co-occurring taxonomic groups, could help us to elucidate which part of this unexplained variation is truly ecological drift (Zinger et al. 2019, Luan et al. 2020), and which part is due to selection exerted by these unidentified abiotic and biotic factors.

ACKNOWLEDGEMENTS

This research was supported by the Spanish Government grant PID2019-110521GB-I00, the European Research Council Synergy grant ERC-2013-SyG 610028-IMBALANCE-P, and the Catalan Government grant SGR 2017-1005. We thank the

staff of the Nouragues (USR mixte LEEISA, CNRS, Cayenne) and Paracou (UMR Ecofog, CIRAD, INRA, Kourou) research stations. Both facilities received support from “Investissement d’Avenir” grants provided by the Agence Nationale de la Recherche (CEBA: ANR-10-LABX- 25-01, ANAEE-France: ANR-11-INBS-0001). We thank Vincent Freycon for the identification and characterization of each topographical position and Pascal Petronelli for the botanical determination.

AUTHOR CONTRIBUTIONS

G.P., M.F., J.P. and I.A.J. designed the study. G.P., O.G., E.V., I.R., L.V.L., J.M., A.I., D.A., A.G-G., J.LI., O.M. and R.O. conducted the field and laboratory work and contributed data. G.P. and M.F. analyzed the data. J.S., L.Z., J.M., J.O. and A.R. provided useful ideas for the analyses and interpretation. G.P. and M.F. wrote the first draft of the manuscript, with substantial inputs from J.P., and all other authors contributed to revisions.

LITERATURE CITED

- Astorga, A., J. Oksanen, M. Luoto, J. Soininen, R. Virtanen, and T. Muotka. 2012. Distance decay of similarity in freshwater communities: do macro- and microorganisms follow the same rules?: Decay of similarity in freshwater communities. *Global Ecology and Biogeography* 21:365–375.
- Bahram, M., U. Kõljalg, P.-E. Courty, A. G. Diédhiou, R. Kjølner, S. Pölme, M. Ryberg, V. Veldre, and L. Tedersoo. 2013. The distance decay of similarity in communities of ectomycorrhizal fungi in different ecosystems and scales. *Journal of Ecology* 101:1335–1344.
- Baselga, A., and C. D. L. Orme. 2012. betapart: an R package for the study of beta diversity. *Methods in Ecology and Evolution* 3:808–812.
- Beisner, B. E., P. R. Peres-Neto, E. S. Lindström, A. Barnett, and M. L. Longhi. 2006.

527 The Role of Environmental and Spatial Processes in Structuring Lake Communities
528 from Bacteria to Fish. *Ecology* 87:2985–2991.

529 Bryant, J. A., C. Lamanna, H. Morlon, A. J. Kerkhoff, B. J. Enquist, and J. L. Green.
530 2008. Microbes on mountainsides: Contrasting elevational patterns of bacterial and
531 plant diversity. *Proceedings of the National Academy of Sciences* 105:11505–11511.

532 Camenzind, T., S. Hättenschwiler, K. K. Treseder, A. Lehmann, and M. C. Rillig. 2018.
533 Nutrient limitation of soil microbial processes in tropical forests. *Ecological*
534 *Monographs* 88:4–21.

535 Charles-Dominique, P. 2001. Relationships between Seed Dispersal and Behavioural
536 Ecology. Pages 191–196 in F. Bongers, P. Charles-Dominique, P.-M. Forget, and M.
537 Théry, editors. *Nouragues: Dynamics and Plant-Animal Interactions in a Neotropical*
538 *Rainforest*. Springer Netherlands, Dordrecht.

539 Chase, J. M. 2014. Spatial scale resolves the niche versus neutral theory debate. *Journal*
540 *of Vegetation Science* 25:319–322.

541 Chase, J. M., B. J. McGill, D. J. McGlinn, F. May, S. A. Blowes, X. Xiao, T. M.
542 Knight, O. Purschke, and N. J. Gotelli. 2018. Embracing scale-dependence to achieve
543 a deeper understanding of biodiversity and its change across communities. *Ecology*
544 *Letters* 21:1737–1751.

545 Condit, R., N. Pitman, E. G. Leigh, J. Chave, J. Terborgh, R. B. Foster, P. Núñez, S.
546 Aguilar, R. Valencia, G. Villa, H. C. Muller-Landau, E. Losos, and S. P. Hubbell.
547 2002. Beta-Diversity in Tropical Forest Trees. *Science* 295:666–669.

548 Fierer, N., and R. B. Jackson. 2006. The diversity and biogeography of soil bacterial
549 communities. *Proceedings of the National Academy of Sciences* 103:626–631.

550 Gelmi-Candusso, T. A., E. W. Heymann, and K. Heer. 2017. Effects of zoochory on the
551 spatial genetic structure of plant populations. *Molecular Ecology* 26:5896–5910.

552 Gómez-Rodríguez, C., and A. Baselga. 2018. Variation among European beetle taxa in
553 patterns of distance decay of similarity suggests a major role of dispersal processes.
554 *Ecography* 41:1825–1834.

555 Grau, O., J. Peñuelas, B. Ferry, V. Freycon, L. Blanc, M. Desprez, C. Baraloto, J.
556 Chave, L. Descroix, A. Dourdain, S. Guitet, I. A. Janssens, J. Sardans, and B. Hérault.
557 2017. Nutrient-cycling mechanisms other than the direct absorption from soil may
558 control forest structure and dynamics in poor Amazonian soils. *Scientific Reports*
559 7:45017.

560 Green, J. L., A. J. Holmes, M. Westoby, I. Oliver, D. Briscoe, M. Dangerfield, M.
561 Gillings, and A. J. Beattie. 2004. Spatial scaling of microbial eukaryote diversity.
562 *Nature* 432:747–750.

563 Guillot, G., and F. Rousset. 2013. Dismantling the Mantel tests. *Methods in Ecology*
564 and *Evolution* 4:336–344.

565 Horner-Devine, M. C., M. Lage, J. B. Hughes, and B. J. M. Bohannan. 2004. A taxa–
566 area relationship for bacteria. *Nature* 432:750–753.

567 Hsieh, T. C., K. H. Ma, and A. Chao. 2016. iNEXT: an R package for rarefaction and
568 extrapolation of species diversity (Hill numbers). *Methods in Ecology and Evolution*
569 7:1451–1456.

570 John, R., J. W. Dalling, K. E. Harms, J. B. Yavitt, R. F. Stallard, M. Mirabello, S. P.
571 Hubbell, R. Valencia, H. Navarrete, M. Vallejo, and R. B. Foster. 2007. Soil nutrients
572 influence spatial distributions of tropical tree species. *Proceedings of the National*
573 *Academy of Sciences* 104:864–869.

574 Jucker, T., B. Bongalov, D. F. R. P. Burslem, R. Nilus, M. Dalponte, S. L. Lewis, O. L.
575 Phillips, L. Qie, and D. A. Coomes. 2018. Topography shapes the structure,
576 composition and function of tropical forest landscapes. *Ecology Letters* 21:989–1000.

577 Lamarre, G. P. A., B. Hérault, P. V. A. Fine, V. Vedel, R. Lupoli, I. Mesones, and C.
 578 Baraloto. 2016. Taxonomic and functional composition of arthropod assemblages
 579 across contrasting Amazonian forests. *Journal of Animal Ecology* 85:227–239.
 580 Lamb, P. D., E. Hunter, J. K. Pinnegar, S. Creer, R. G. Davies, and M. I. Taylor. 2019.
 581 How quantitative is metabarcoding: A meta-analytical approach. *Molecular Ecology*
 582 28:420–430.
 583 Legendre, P., M.-J. Fortin, and D. Borcard. 2015. Should the Mantel test be used in
 584 spatial analysis? *Methods in Ecology and Evolution* 6:1239–1247.
 585 Leibold, M. A., M. Holyoak, N. Mouquet, P. Amarasekare, J. M. Chase, M. F. Hoopes,
 586 R. D. Holt, J. B. Shurin, R. Law, D. Tilman, M. Loreau, and A. Gonzalez. 2004. The
 587 metacommunity concept: a framework for multi-scale community ecology. *Ecology*
 588 Letters 7:601–613.
 589 Lindo, Z., and N. N. Winchester. 2009. Spatial and environmental factors contributing
 590 to patterns in arboreal and terrestrial oribatid mite diversity across spatial scales.
 591 *Oecologia* 160:817–825.
 592 Lindström, E. S., and S. Langenheder. 2012. Local and regional factors influencing
 593 bacterial community assembly. *Environmental Microbiology Reports* 4:1–9.
 594 Luan, L., Y. Jiang, M. Cheng, F. Dini-Andreote, Y. Sui, Q. Xu, S. Geisen, and B. Sun.
 595 2020. Organism body size structures the soil microbial and nematode community
 596 assembly at a continental and global scale. *Nature Communications* 11:6406.
 597 Martiny, J. B. H., B. J. M. Bohannan, J. H. Brown, R. K. Colwell, J. A. Fuhrman, J. L.
 598 Green, M. C. Horner-Devine, M. Kane, J. A. Krumins, C. R. Kuske, P. J. Morin, S.
 599 Naeem, L. Øvreås, A.-L. Reysenbach, V. H. Smith, and J. T. Staley. 2006. Microbial
 600 biogeography: putting microorganisms on the map. *Nature Reviews Microbiology*
 601 4:102–112.

602 Nekola, J. C., and B. J. McGill. 2014. Scale dependency in the functional form of the
603 distance decay relationship. *Ecography* 37:309–320.

604 Nekola, J. C., and P. S. White. 1999. The distance decay of similarity in biogeography
605 and ecology. *Journal of Biogeography* 26:867–878.

606 Novotny, V., S. E. Miller, J. Hulcr, R. A. I. Drew, Y. Basset, M. Janda, G. P. Setliff, K.
607 Darrow, A. J. A. Stewart, J. Auga, B. Isua, K. Molem, M. Manumbor, E. Tamtiai, M.
608 Mogia, and G. D. Weiblen. 2007. Low beta diversity of herbivorous insects in tropical
609 forests. *Nature* 448:692–695.

610 Peay, K. G., C. Baraloto, and P. V. Fine. 2013. Strong coupling of plant and fungal
611 community structure across western Amazonian rainforests. *The ISME Journal*
612 7:1852–1861.

613 Peay, K. G., M. Garbelotto, and T. D. Bruns. 2010. Evidence of dispersal limitation in
614 soil microorganisms: Isolation reduces species richness on mycorrhizal tree islands.
615 *Ecology* 91:3631–3640.

616 Peguero, G., J. Sardans, D. Asensio, M. Fernández-Martínez, A. Gargallo-Garriga, O.
617 Grau, J. Llusà, O. Margalef, L. Márquez, R. Ogaya, I. Urbina, E. A. Courtois, C.
618 Stahl, L. Van Langenhove, L. T. Verryckt, A. Richter, I. A. Janssens, and J. Peñuelas.
619 2019. Nutrient scarcity strengthens soil fauna control over leaf litter decomposition in
620 tropical rainforests. *Proceedings of the Royal Society B: Biological Sciences*
621 286:20191300.

622 Powell, J. R., S. Karunaratne, C. D. Campbell, H. Yao, L. Robinson, and B. K. Singh.
623 2015. Deterministic processes vary during community assembly for ecologically
624 dissimilar taxa. *Nature Communications* 6:8444.

625 R Core Team. 2020. R: A language and environment for statistical computing. R
626 Foundation for Statistical Computing. Vienna, Austria.

627 Shade, A., R. R. Dunn, S. A. Blowes, P. Keil, B. J. M. Bohannan, M. Herrmann, K.
628 Küsel, J. T. Lennon, N. J. Sanders, D. Storch, and J. Chase. 2018. Macroecology to
629 Unite All Life, Large and Small. *Trends in Ecology & Evolution* 33:731–744.

630 Soininen, J., R. McDonald, and H. Hillebrand. 2007. The distance decay of similarity in
631 ecological communities. *Ecography* 30:3–12.

632 Soong, J. L., I. A. Janssens, O. Grau, O. Margalef, C. Stahl, L. Van Langenhove, I.
633 Urbina, J. Chave, A. Dourdain, B. Ferry, V. Freycon, B. Herault, J. Sardans, J.
634 Peñuelas, and E. Verbruggen. 2020. Soil properties explain tree growth and mortality,
635 but not biomass, across phosphorus-depleted tropical forests. *Scientific Reports*
636 10:2302.

637 Székely, A. J., and S. Langenheder. 2014. The importance of species sorting differs
638 between habitat generalists and specialists in bacterial communities. *FEMS*
639 *Microbiology Ecology* 87:102–112.

640 Tedersoo, L., M. Bahram, T. Cajthaml, S. Põlme, I. Hiiesalu, S. Anslan, H. Harend, F.
641 Buegger, K. Pritsch, J. Koricheva, and K. Abarenkov. 2016. Tree diversity and species
642 identity effects on soil fungi, protists and animals are context dependent. *The ISME*
643 *Journal* 10:346–362.

644 Tuomisto, H., K. Ruokolainen, and M. Yli-Halla. 2003. Dispersal, Environment, and
645 Floristic Variation of Western Amazonian Forests. *Science* (New York, N.Y.)
646 299:241–4.

647 Van Langenhove, L. 2020. Towards a better understanding of nutrient cycling in the
648 lowland tropical rainforests of French Guiana. University of Antwerp.

649 Vellend, M. 2017. *The Theory of Ecological Communities*. Princeton University Press.

650 Vleminckx, J., H. Schimann, T. Decaëns, M. Fichaux, V. Vedel, G. Jaouen, M. Roy, E.
651 Lapied, J. Engel, A. Dourdain, P. Petronelli, J. Orivel, and C. Baraloto. 2019.

652 Coordinated community structure among trees, fungi and invertebrate groups in
 653 Amazonian rainforests. *Scientific Reports* 9:11337.
 654 Weintraub, S. R., P. G. Taylor, S. Porder, C. C. Cleveland, G. P. Asner, and A. R.
 655 Townsend. 2015. Topographic controls on soil nitrogen availability in a lowland
 656 tropical forest. *Ecology* 96:1561–1574.
 657 Zhang, K., S. Lin, Y. Ji, C. Yang, X. Wang, C. Yang, H. Wang, H. Jiang, R. D.
 658 Harrison, and D. W. Yu. 2016. Plant diversity accurately predicts insect diversity in
 659 two tropical landscapes. *Molecular Ecology* 25:4407–4419.
 660 Zinger, L., P. Taberlet, H. Schimann, A. Bonin, F. Boyer, M. De Barba, P. Gaucher, L.
 661 Gielly, C. Giguët-Covex, A. Iribar, M. Réjou-Méchain, G. Rayé, D. Rioux, V.
 662 Schilling, B. Tymen, J. Viers, C. Zouiten, W. Thuiller, E. Coissac, and J. Chave. 2019.
 663 Body size determines soil community assembly in a tropical forest. *Molecular Ecology*
 664 28:528–543.
 665

666 **TABLE 1**

Table 1. Characteristics of the communities at each site.					
Taxon	Dispersal mode	Propagule size (μm)	Richness (γ)	Site	Richness (α)
Bacteria	Passive	10 ⁻¹ –1	6794	Nouragues	1245 ± 59
				Paracou	1267 ± 26
Fungi	Passive	1-10 ²	12268	Nouragues	991 ± 47
				Paracou	1171 ± 23
Insects	Active	10 ³ –10 ⁴	3512	Nouragues	276 ± 22
				Paracou	333 ± 20
Trees	Passive	10 ³ –10 ⁵	627	Nouragues	41 ± 4
				Paracou	35 ± 3
Gamma richness is the total number of either tree species or molecularly delimited operational taxonomic units (OTUs) of bacteria, fungi and insects.					
Alpha richness is the mean number of OTUs or species at the plot level with all sampling units combined, at Nouragues and Paracou (French Guiana).					

667

FIGURES

Figure 1. Relationship between pairwise spatial distances among plots and their corresponding similarity of nutrient environment at the two study sites, Nouragues and Paracou (French Guiana). Nutrient-based environmental distances are scaled Euclidean distances of elemental concentrations (C, N, P, K, Mg, Ca and Na) and the ratios of the main macronutrients (C:N, C:P and N:P) in the litter and soil stocks at the plot level (see Methods for further details). The interaction between site and the covariate spatial distance was tested using a general linear model. The site-specific equations and coefficients of determination (R^2) for the relationship between spatial and nutrient distances were calculated with separate linear models for each site. R^2 represents the amount of nutrient variability explained by the spatial distance between plots.

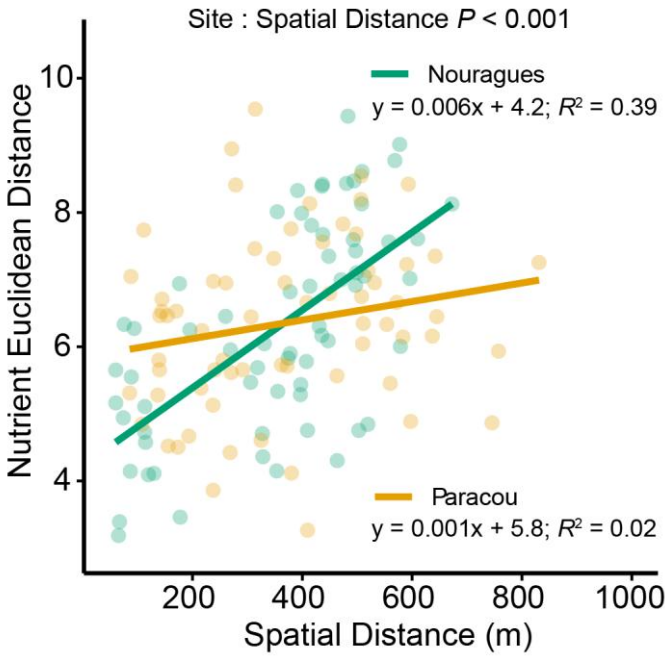
Figure 2. Patterns of decay of similarity across spatial distances and bootstrapped distribution of their slope for each community at Nouragues (a) and Paracou (b). Dots represent pairs of plots, and lines are their fitted negative exponential functions. **, $P < 0.01$; *, $P < 0.05$; •, $0.05 < P < 0.10$ and n.s., $P \geq 0.10$.

Figure 3. Differences in initial similarity across spatial scales of analysis. Initial similarity distributions from bootstrapping the distance-decay models to estimate their intercepts, i.e. the similarity between assemblages at the minimum distance. Point represents the 1-m² sampling points within the 0.25-ha plots. Minimum distance is <10 m between points and >50 between plots. The initial similarity of all taxonomic groups differed significantly ($P < 0.001$) at both sites, depending on the scale of analysis based on the linear models (visit Appendix S1 Table S10 for models' outputs).

Figure 4. Patterns of decay of similarity across nutrient distances and bootstrapped distribution of their slope for each community at Nouragues (a) and Paracou (b). Dots

692 represent pairs of plots, and lines are their fitted negative exponential functions. **, $P <$
693 0.01; *, $P < 0.05$; •, $0.05 < P < 0.10$ and n.s., $P \geq 0.10$.

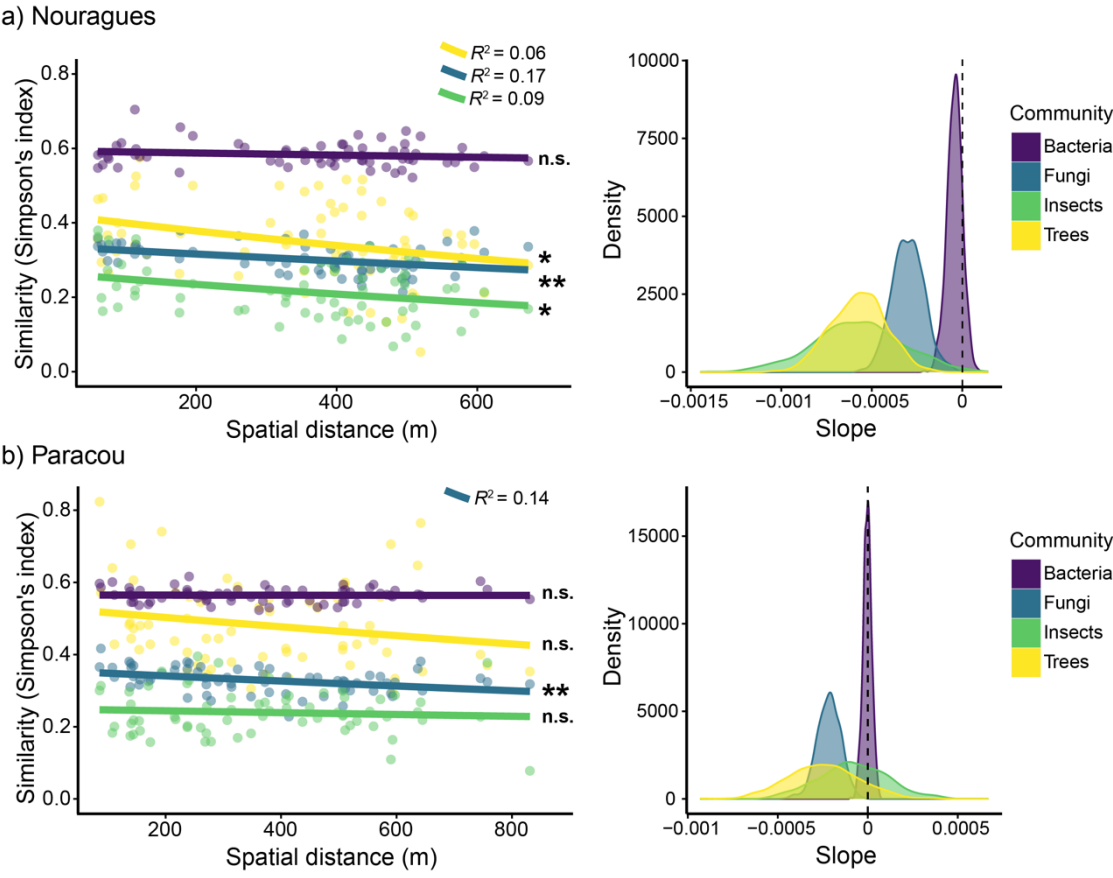
694 FIGURE 1



695

696

697 FIGURE 2

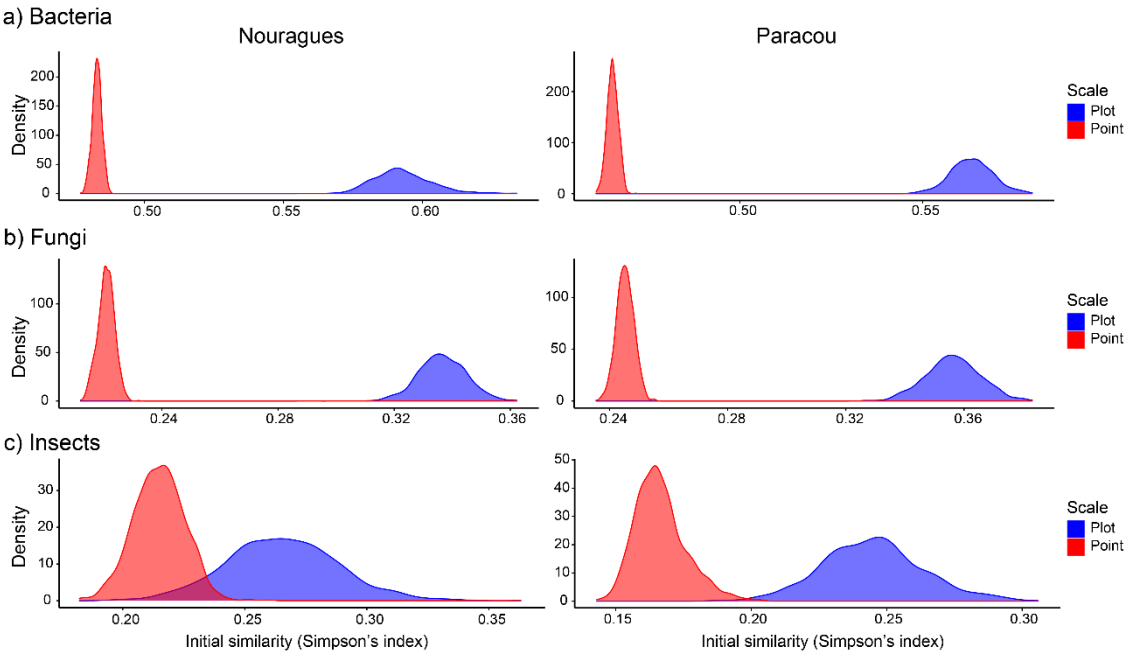


698

699

700

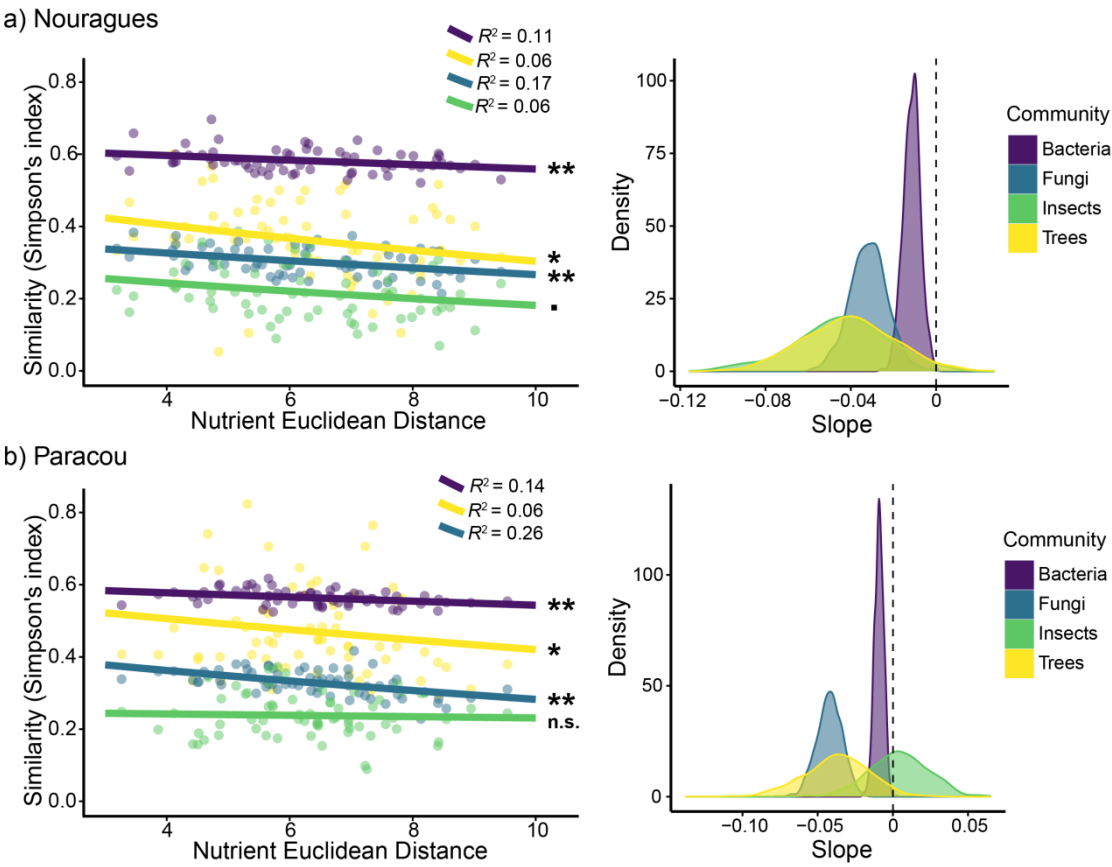
701 **FIGURE 3**



702

703

704 FIGURE 4



705

706