



A new ant-butterfly symbiosis in the forest canopy fills an evolutionary gap

Gabriela Pérez-Lachaud, Franklin H Rocha, Carmen Pozo, Lucas A Kaminski, Noemy Seraphim, Jean-Paul Lachaud

► To cite this version:

Gabriela Pérez-Lachaud, Franklin H Rocha, Carmen Pozo, Lucas A Kaminski, Noemy Seraphim, et al.. A new ant-butterfly symbiosis in the forest canopy fills an evolutionary gap. Scientific Reports, 2021, 11, pp.20770. 10.1038/s41598-021-00274-x . hal-03407133

HAL Id: hal-03407133

<https://hal.science/hal-03407133>

Submitted on 28 Oct 2021

HAL is a multi-disciplinary open access archive for the deposit and dissemination of scientific research documents, whether they are published or not. The documents may come from teaching and research institutions in France or abroad, or from public or private research centers.

L'archive ouverte pluridisciplinaire **HAL**, est destinée au dépôt et à la diffusion de documents scientifiques de niveau recherche, publiés ou non, émanant des établissements d'enseignement et de recherche français ou étrangers, des laboratoires publics ou privés.



OPEN

A new ant-butterfly symbiosis in the forest canopy fills an evolutionary gap

Gabriela Pérez-Lachaud^{1✉}, Franklin H. Rocha^{1,5}, Carmen Pozo¹, Lucas A. Kaminski², Noemy Seraphim³ & Jean-Paul Lachaud^{1,4✉}

Myrmecophilous butterflies can establish complex symbiotic relationships with ants. A caterpillar wandering among the brood of the aggressive ponerine ant *Neoponera villosa* was found inside the core of a nest built in the myrmecophytic bromeliad *Aechmea bracteata*. This is the first caterpillar found living inside a ponerine ant nest. Its DNA barcode was sequenced, and an integrative approach was used to identify it as *Pseudonymphidia agave*, a poorly known member of the subtribe Pachythinina in the riordinid tribe Nymphidiini. The cuticle of the tank-like caterpillar lacks projections or tubercles and is covered dorsally by specialized flat setae that form an armor of small plates. Ant-organs potentially related to caterpillar-ant signaling, such as perforated cupola organs and tentacle nectary organs, are present. These morphological traits, together with evidence of social integration (direct contact with host brood, protective morphology, slow movement, no host aggressiveness), suggest that *P. agave* is a symbiotic, social parasite of *N. villosa*, preying on its host brood. However, several knowledge gaps remain, including oviposition site, dependence on bromeliad association, steps to colony integration, and larval diet through development. Carnivory has been reported in all known members of the subtribe Pachythinina (caterpillars prey on honeydew-producing hemipterans) suggesting a shift to myrmecophagy inside the ant nests as a possible evolutionary transition.

Animals of several classes, especially arthropods, establish long-term associations with ants and benefit from these facultative or obligate associations in several ways. These so-called myrmecophiles (for a detailed definition, see^{1,2}) circumvent the behavioral and chemical defenses of ants and thrive in their homeostatic, stable nests or in their surrounding territories^{3,4}. Living in concealed environments –the ant nests–, most specialized myrmecophiles are rarely encountered, restricted to specific habitats or microhabitats. Moreover, they are unevenly distributed in time and space, presenting challenges for their study⁵.

Initially restricted to social insect species that parasitize closely related sister-taxa^{3,6,7}, the term ‘social parasite’ has been extended to distantly related organisms⁸. In a very broad sense, all specialized organisms that are equipped to infiltrate insect societies and take advantage of their social host over an extended period of time can be considered social parasites^{2,8}. This term has been widely applied to many ant-associated lycaenid and riordinid butterflies^{9–11} but also to other organisms such as microdentine syrphid flies^{12–14} or beetles^{2,15–17}. Symbiotic associations between lepidopteran caterpillars and ants are diverse and widespread, spanning at least six lepidopteran superfamilies: Noctuoidea, Papilionoidea, Pyraloidea, Tineoidea, Gelechioidea, and Zygaenoidea^{18–20}. These interactions range from commensalism or mutualism to social parasitism, and relationships may be facultative or obligate, occurring during only a portion or the whole life cycle of the myrmecophile^{21,22}. These associations are noticeably prominent in two sister butterfly families: Lycaenidae and Riordinidae (Papilionoidea)¹⁸. Myrmecophilous caterpillars of these families typically form symbioses with ants on host plants where the ants, and sometimes also the caterpillars, harvest liquid food from plants (extrafloral nectar) and exudates from hemipterans (aphids, treehoppers, scale insects, and relatives)^{23–25}. In trophobiotic interactions, the caterpillars secrete nutritional food rewards for ants and gain potential protection against predators and parasitoids^{23,26,27}.

¹Departamento de Conservación de La Biodiversidad, El Colegio de la Frontera Sur, Avenida Centenario Km 5.5, 77014 Chetumal, Quintana Roo, Mexico. ²Departamento de Zoologia, Instituto de Biociências, Universidade Federal do Rio Grande do Sul, Porto Alegre, RS, Brazil. ³Instituto Federal de Educação, Ciência e Tecnologia de São Paulo, São Paulo, Brazil. ⁴Centre de Recherches sur la Cognition Animale (CRCA), Centre de Biologie Intégrative (CBI), Université de Toulouse, CNRS, UPS, Toulouse, France. ⁵Present address: Departamento de Apicultura, Universidad Autónoma de Yucatán, Campus de Ciencias Biológicas y Agropecuarias, Mérida, Yucatán, Mexico. ✉email: igperez@ecosur.mx; jean-paul.lachaud@univ-tlse3.fr

From this ancestral pattern (phytophagous caterpillars), several Lepidopteran lineages have evolved to exploit the colony resources inside the ant nests, either as social parasites that elicit trophallaxis from workers or as brood predators^{28–30}. Although more than 99% of lepidopteran caterpillars are phytophagous, evolutionary transition from feeding on plant parts to aphitophagy has occurred several times, with carnivorous caterpillars found scattered throughout the butterfly phylogeny^{11,31}. Predation on ant brood has been documented in Lycaenidae, but not in the Riodinidae; however members of both families exhibit complex myrmecophily with the evolution of specific ant-organs and behavioral strategies to integrate and exploit ant host colonies¹¹ such as chemical signaling, vibrational and tactile mimicry, ant-dependent oviposition, release of brood-carrying behavior, trophallaxis and others^{32–34}. These obligate social parasite species are completely dependent on the ants to complete their life cycle³⁵.

Metalmark butterflies (Riodinidae) are classified into two subfamilies: the exclusively Neotropical Riodininae with ca. 1200 described species, and the Nemeobiinae which include both Old-World and Neotropical taxa^{36–38}. Trophobiosis with ants in this family has evolved in parallel with the Lycaenidae^{11,24,39,40}. According to Espeland et al.⁴¹, caterpillar-ant association has evolved once in the Lycaenidae and twice in the Riodinidae (in the tribes Eurybiini and Nymphidiini, both Riodininae).

Riodinid immatures for which life histories have been documented are defoliators, nectarivores, lichen feeders, detritivores, exploiters, and predators of hemipterans^{39,42}. Approximately 20% of the known Riodinidae species are involved in symbiotic associations with ants⁴¹. Several recent studies have played a role in unveiling the nature of riodinid-ant associations^{11,42–44}, confirming the evolution of social parasitism in this family (cleptoparasitism via trophallaxis with ants inside their nest)¹¹. Myrmecophagy, though suspected in several instances, has not been confirmed through field observations⁴⁵. Individuals of several ant subfamilies are frequently observed tending riodinids on host plants. Such associations are recurrent in members of the subfamilies Myrmicinae, Formicinae, Dolichoderinae and Ectatomminae, all of which are territorially dominant ants that harvest animal and plant secretions. On the contrary, associations with riodinids are very uncommon in the subfamily Ponerinae (see³⁹ and Supplementary Table S1), and this is also true for associations with lycaenids as only two ponerine species of the genus *Odontomachus* (*O. haematodes* and *O. ruficeps*) have been reported to facultatively attend larvae of *Anthene* (*A. flavomaculatus* and *A. lycaenoides*, respectively) on host plants^{46,47}. In a few instances, more intimate and stable relationships between riodinids and their ant hosts have also been described. For example, some riodinid species rest and pupate in shelters constructed by ants, and others have been collected inside the nests of various formicine, myrmicine and dolichoderine species^{11,48–51}. However, to the best of our knowledge, there is no record of riodinid or lycaenid larvae living within ponerine ant colonies, which may be related, as has been noted for obligate social parasite species of lycaenids, to the fact that their ant hosts typically share certain attributes such as large colony size, ecological dominance, territorial defense, and monopolization of food resources, traits that are not exhibited by most ponerine ants⁵².

Through extensive fieldwork during which colonies of the Neotropical ponerine ant *Neoponera villosa* were collected in the southern region of the Yucatan Peninsula^{53,54}, we recorded a single butterfly caterpillar wandering among the ant brood. In this study we: (1) establish the identity of this symbiont through an integrative approach; (2) present some notes on the natural history and behavior of the caterpillar; (3) describe and illustrate its external morphology; (4) discuss the putative functional significance of morphological traits that may have allowed this species to invade aggressive ant societies; and (5) compare them to other described socially parasitic caterpillars.

Material and methods

The ant-plant symbiotic system. *Neoponera villosa* is widely distributed from Mexico to Argentina⁵⁵. This is the largest Mexican ant; workers measure 1.2 to 1.3 cm⁵⁶ and have a powerful and painful sting. They are generalist predators and forage mainly in the canopy collecting liquid carbohydrate food sources^{57–59}. Throughout its distribution range, this species nests opportunistically in pre-existing cavities in live or dead trees, hollow branches, or cacao pods^{57,60–63}, among other plant cavities. However, in the southern part of the Yucatan Peninsula, Mexico, it preferentially uses the myrmecophytic tank-bromeliad *Aechmea bracteata* as a nest site and very few colonies are established on other plants^{53,54,61,64–68}. Founding queens show a clear spontaneous preference for *A. bracteata* material⁶⁴ and workers also significantly prefer this bromeliad over other species during nest relocation⁵⁴.

The tightly intertwined leaves of *A. bracteata* collect rainwater and constitute true water reservoirs that are extremely attractive to a wide range of living organisms, from aquatic life forms to terrestrial invertebrates (especially ants) and even vertebrates^{61,65,69–71}. In the *A. bracteata* microcosm, a particularly diverse array of specialized and facultative myrmecophiles, mostly antagonists, establish complex trophic interactions with *N. villosa*⁵³. To date, various invertebrates have been recorded in direct association with the brood of this species and can be considered as true myrmecophiles⁵³. Three of them are brood parasitoids: an unidentified species of *Kapala* (Hymenoptera: Eucharitidae)⁵³, an unidentified species of *Blanchardiscus* (Hymenoptera: Encyrtidae)⁶⁸, and the hoverfly *Hypselysyrphus trigonus* (Diptera: Syrphidae)^{67,68}. Two species (the pseudoscorpion, *Chelodamus mexicolens*, and an unidentified tenebrionid beetle possibly in the subfamily Alleculinae) are brood predators, while two mites (an unidentified species of the genus *Oplitis* and an unidentified galumnid species) are phoretic on the host adults or larvae and a third unidentified mite species (of the genus *Cosmolaelaps*) is cleptoparasite on the ant larvae. Finally, two other species (a staphylinid beetle of the genus *Myrmigaster* and a diapiiid wasp of the genus *Trichopria*) have unclear relationships but have been found wandering on the cocoons with their antennae in direct contact with the host cocoon surface⁵³.

Sampling. Eighty-two colonies of *N. villosa*, all of them nesting in the core of a tank-bromeliad *A. bracteata* (Fig. 1A,B) were collected between January 2016 and April 2018 in several sites in the southern part of the

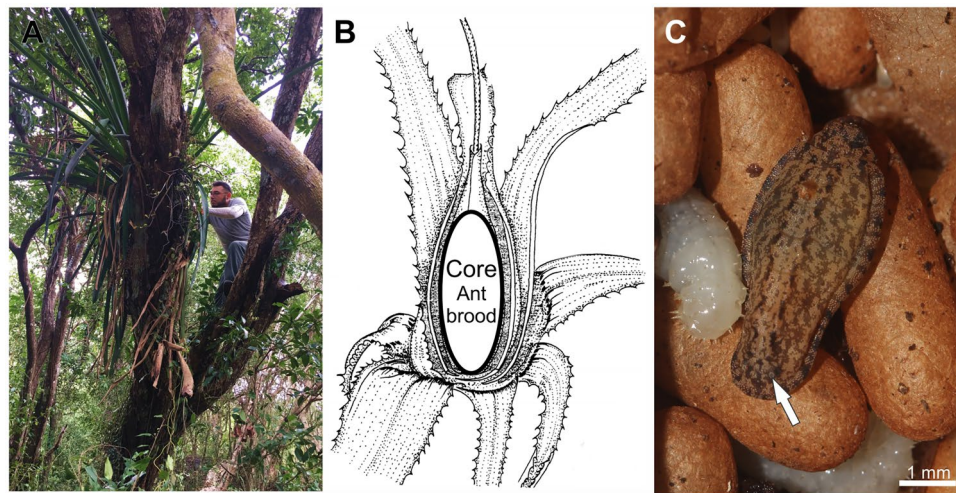


Figure 1. *Pseudonymphidia agave* caterpillar and the ant-plant system. (A) Habitat of *Aechmea bracteata* (collector: F.H. Rocha). (B) Ant nesting site in the bromeliad (modified from⁴¹). (C) Mature larva of *P. agave* among the ant brood; the arrow indicates the opening of a tentacle nectary organ on the A8 abdominal segment. Photos: (A) G. Pérez-Lachaud; (C) F. H. Rocha.

Yucatan Peninsula as part of a larger project^{53,54}. *Aechmea bracteata* bromeliads were examined for the presence of *N. villosa* and a ramet of the epiphyte, housing the ants' colony, was cut off from the supporting branch and dismantled leaf-by-leaf; ants, their brood, and any invertebrate found in the nest were collected and preserved in 96% alcohol.

DNA barcoding. DNA extraction was performed on two of the thoracic legs of the larva using a standard glass fiber method⁷². Polymerase chain reactions were performed to amplify the mitochondrial cytochrome c oxidase subunit I (COI) gene, using the primers LepF1 and LepR1 developed for Lepidoptera by Hebert et al.⁷³, and PCR protocols as in Montes-Ortiz and Elías-Gutiérrez⁷⁴. The PCR products were visualized on a 2% agarose gel (E-Gel 96 Invitrogen), and were sequenced bidirectionally on an ABI 3730XL automated sequencer using LepF1 and LepR1 primers at the Instituto de Biología at the Universidad Nacional Autónoma de México. The sequence was edited using CodonCode v. 3.0.1 (CodonCode Corporation, Dedham, MA, USA) and uploaded to the Barcode of Life Database (BOLD, boldsystems.org) and to GenBank (www.ncbi.nlm.nih.gov; accession number MW627452). We added this larval sequence to a database of published COI barcodes and unpublished sequences (C. Pozo et al., unpubl. data; N. Seraphim, unpubl. data; Supplementary Table S2). Sequences were then combined with a larger matrix of Riodinidae species for a total of 269 specimens comprising all previously sequenced Riodinidae^{36,37,41} including eight nuclear genes as well as the mitochondrial barcode region as described in Seraphim et al.³⁷: ArgKin, CAD, GAPDH, Efla, IDH, MDH, RpS5, wingless and COI. This expanded matrix was used to obtain a maximum likelihood tree using IQ-TREE software version 1.6.12⁷⁵, with *Curetis barsine* (Lycaenidae: Curetinae) as an outgroup. The model of nucleotide substitution was estimated using the model selection implemented in IQ-TREE⁷⁶. Support was estimated using 10,000 ultrafast bootstraps⁷⁷ and the SH-aLRT test⁷⁸. The resulting tree was compressed for clarity.

Morphology. The caterpillar was examined using a Nikon dissecting stereomicroscope (8–64X) and a JEOL-JSM6010 scanning electron microscope (SEM) equipped with a freezing plate; it was examined under low vacuum at 20 kV and – 31 °C to preserve the integrity of the specimen. Approximate measurements and ratios of measurements were obtained using SEM images. Photos of the larva were taken with a Nikon 850D equipped with a Rodenstok Rodagon 2.8 50 mm lens adapted to a Beseler bellows. A metric scale was included in the photos for calibration. Photos were stacked with HeliconFocus 6.2.2 and processed in Photoshop®. Voucher specimens (the riodinid larva and *N. villosa* ants) were deposited at the Formicidae and Lepidoptera Collections of El Colegio de la Frontera Sur at Chetumal, Quintana Roo, Mexico (ECO-CH-F and ECO-CH-L, respectively). Terminology for the description follows Stehr⁷⁹ for general morphology of the larva and DeVries⁸⁰ for ant-organs.

Flight period and distribution map. To provide a distribution map and data on adult flight phenology, we compiled distribution data from the literature and from records in the MARIPOSA Data Base at the Museo de Zoología “Alfonso L. Herrera,” Facultad de Ciencias, UNAM, Mexico. This database synthesizes information from Mexican specimens housed in natural history collections around the world. In addition, we used information from the database of the Lepidoptera Collection at ECOSUR and data bases available on internet or published literature for specimens of countries other than Mexico: <https://www.gbif.org/> for Honduras, Nicaragua, Trinidad & Tobago; <https://www.butterfliesofamerica.com/> for Costa Rica; Godman and Salvin⁸¹ and D’Abrera⁸² for Panamá; Lamas⁸³ for Colombia.

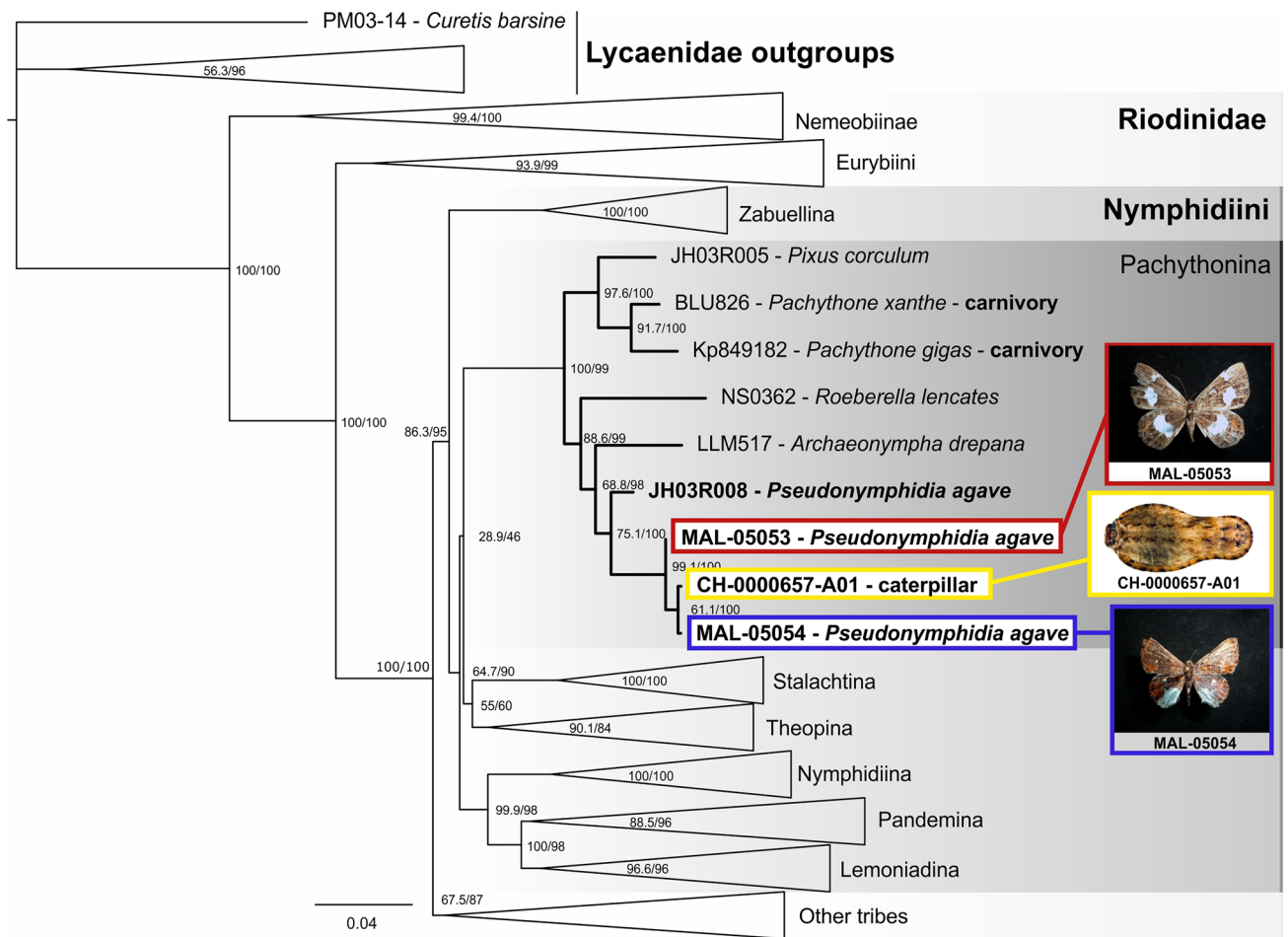


Figure 2. Maximum likelihood tree of the Riodinidae, used to identify the collected larva, showing its systematic position within the subtribe Pachythytonina. The remaining clades within the Riodinidae have been compressed for clarity. *Pseudonymphidia agave* sequences are illustrated with photos of the adults: MAL-05053, MAL-05054 (Photos: B. R. Prado-Cuellar) and the caterpillar (Photo: H. Bahena Basave).

Results

A myrmecophilous caterpillar (Fig. 1) was found among the ant brood in a *Neoponera villosa* colony collected on June 10, 2017 at Ejido Blasillo, Campeche, Mexico (18°7'13.6056" N, 89°19'47.791" W, 263 m asl). The caterpillar was isolated in a small humidified petri dish. After several days, the larva appeared to be in a poor condition and was preserved in alcohol. After this myrmecophilous larva was discovered, intensified collecting efforts uncovered 19 additional *N. villosa* colonies in the same locality⁵², but no additional riodinid larva.

Caterpillar identification. We sequenced the COI DNA barcode of the caterpillar and included it with a dataset of other riodinid sequences prior to inferring a phylogenetic tree. This tree placed our caterpillar within the subtribe Pachythytonina, sister to *Pseudonymphidia agave* from Mexico (C. Pozo et al., unpubl. data; specimens MAL-05053 and MAL-05054, Fig. 2 and Supplementary Table S2). Indeed, the caterpillar barcode was identical to the barcode of a Mexican *P. agave* adult (MAL-05054), from Calakmul, Campeche, collected in 1998.

Pseudonymphidia agave was originally described as *Lemonias agave* Godman and Salvin, 1886. Two *P. agave* subspecies are currently recognized: the nominate subspecies and *leucogonia* (Stichel, 1911). Based on similarities in genital morphology, antennal length and wing pattern, Hall and Harvey⁸⁴ temporarily placed *agave* and *leucogonia* in the genus *Pseudonymphidia*. This genus forms a monophyletic clade along with *Pachythone*, *Roeberella* and *Pixus* in the phylogenetic hypothesis of Seraphim et al.³⁷, who erected the subtribe Pachythytonina to include several genera placed as *incertae sedis* in previous revisions of the family (see also³⁶). In two recent controversial studies, Zhang et al.^{85,86} placed several species of the subtribe Pachythytonina in the genus *Pachythone*, including the two currently valid species of *Pseudonymphidia* (*P. agave* and *P. clearista*) (see Figs. 9 and 32 in⁸⁵ and Fig. 30 in⁸⁶), but without considering the distribution nor the diversity or natural histories of the species of the whole genus, and without formally presenting the novel combinations or providing a reason for transferring the two species from the genus *Pseudonymphidia*. Here, we decided not to follow Zhang et al.^{85,86} and use '*Pseudonymphidia agave*' until new concrete integrative taxonomic evidence is presented. According to the phylogenetic tree obtained here (Fig. 2), the closest relative of the genus *Pseudonymphidia* is *Archaeonympha drepana*, a genus not included in the study of Seraphim et al.³⁷ that needs to be revised since its type has not yet been sequenced and

its other two species are placed in different subtribes within the Nymphidiini (*Archaeonympha urichi* is in the subtribe Theopina according to Zhang et al.⁸⁶).

Prevalence, natural history, and behavioral observations. Of the 82 *N. villosa* colonies collected between January 2016 and April 2018 around the southern part of the Yucatan Peninsula, only one colony was infested with a riodinid larva, even though 19 of the colonies were from the same locality (Ejido Blasillo) and its surroundings. The caterpillar of *P. agave* was wandering among the host cocoons and larvae in the presence of workers; no aggression was detected during a 3 h observation period. The host colony where the riodinid caterpillar was discovered nested in an *Aechmea bracteata* bromeliad established at a height of 4 m on a *Haematoxylum campechianum* (Fabaceae) tree, situated in a patch of deciduous forest. The colony was composed of 11 dealated queens, three gynes, 165 workers, 265 larvae, 173 pupae (in cocoons), and many eggs. Larvae and pupae were apparently not parasitized by endo- or ectoparasites. Apart from the riodinid larva, very few other myrmecophiles were found in the colony: only the cleptoparasitic mite *Cosmolaelaps* sp. (present on ant larvae, N = 5) and two species of staphylinid beetles (*Myrmigaster* sp. and *Tyropsis* sp., N = 2 and N = 1, respectively) were found in the nest chambers. Additionally, 17 adults of an unidentified species of Nitidulidae (Coleoptera), and 16 pseudoscorpions (*Chelodamus mexicolens*) were found in the nest refuse.

Morphology of the *Pseudonymphidia agave* caterpillar. Head capsule width: 2.06 mm, total length: 17.81 mm (N = 1). Head brown; body pale brown with mottled dark spots corresponding to the color of the microscopic setae present in each region (Fig. 3A). Body onisciform without projections or tubercles (small knoblike or rounded protuberances), similar in size to the host cocoons (Figs. 1C, 3A). Head and appendages (legs and prolegs) concealed under the body, not visible dorsally (Fig. 3A, D, F). Anterior portion of the body wider than the posterior segments in dorsal view (Fig. 3A). Prothoracic shield bilobed (Fig. 3B). Tegument covered dorsally by arborescent flat setae that form an armor of small plates and perforated cupola organs (PCOs) (Fig. 3C, E, G). Downward pointing setae forming a ventral-lateral fringe (Fig. 3F), and elongated arborescent setae associated with the opening of tentacle nectary organs (TNOs) on A8 (Fig. 3H–J). Prothoracic spiracle located ventrally (Fig. 3D), abdominal spiracles aligned laterally, with exception of those on A2 and A8, which are located subdorsally; openings elevated with elliptical peritreme (Fig. 3I). The larval instar could not be determined with certainty, but from its size it corresponded clearly to an advanced instar.

Distribution records for *Pseudonymphidia agave* adults. *Pseudonymphidia agave*, the white-trailed metalmark or agave metalmark, is a rare species, recorded from a few localities. Based on museum specimens, *P. agave* has been recorded from as far north as San Luis Potosi in Mexico and as far south as Colombia (Fig. 4). Specimens have been collected between 0 and 1 600 m⁸⁷. This species seems restricted to specific habitats in tropical forests; adult specimens have been collected in evergreen, semi-evergreen, deciduous, semideciduous, and cloud forests. Adults have been collected on rambutan flowers, *Nephelium lappaceum* (Sapindaceae), in a commercial plantation⁸⁷, but caterpillar host plants are unknown and natural history information was not available prior to this study. Only 52 *P. agave* specimens from Mexico currently exist in museum collections (Supplementary Tables S3, S4). Regarding the museum specimens, flight activities have been recorded almost the whole year, with a significant peak in June and a smaller one in October (Supplementary Fig. S1), a pattern previously observed for the Neotropical riodinids and other small butterflies whereby the greatest number of individuals has been recorded during the wettest season of the year⁸⁸.

Discussion

The biodiversity of tropical forest canopies is a frontier of knowledge that can still reveal great surprises⁸⁹. In these environments, ants are species rich and abundant, connecting species and trophic levels through antagonistic and mutualistic interactions (reviewed in⁹⁰). Our description of this specific type of biodiversity unveiled an unexpected symbiotic interaction between a butterfly caterpillar and an aggressive ant. Our report that *Pseudonymphidia agave* caterpillars are guests in the nests of *Neoponera villosa* is, to the best of our knowledge, the first case of a butterfly caterpillar in direct contact with the host brood inside a ponerine ant nest. Our finding is the first to provide information on the life cycle of a member of the genus *Pseudonymphidia*, of which the immature stages were previously unknown, and sheds light upon the possible evolutionary steps of social parasitism in riodinids.

In recent years, much new information about the immature stages of Riodinidae has been discovered^{11,91–96}. Nevertheless, immatures of some lineages remain completely unknown, principally in the Nymphidiini, suggesting that species are rare or that immature stages have not been found yet because they feed in the canopy. On the other hand, the presence of a *P. agave* larva among the members of a *N. villosa* colony is consistent with the idea that these taxa may exhibit specialized associations with ants, including long periods inside the ant nests^{11,39,96}. *Pseudonymphidia agave* belongs to the recently erected subtribe Pachythinina (Nymphidiini), a clade diagnosed on the basis of genetic characters³⁷. This group comprises rare and range-restricted taxa associated with tropical forests and is the latest subtribe of Nymphidiini whose natural history information has been published⁴². Species in the Pachythinina for which some life history information is known have armored carnivorous caterpillars specialized in preying on honeydew-producing hemipterans (e.g., *Pachythone* spp.^{42,97}) and are thought to carry out ant-mediated oviposition on harmful ant-plant symbioses, using specific ants as oviposition cues (e.g., *Minstrellus grandis*⁴⁴), or preying on ant brood (e.g., *P. agave*; this study). Although scattered, the available information indicates that Pachythinina species demonstrate morphological and behavioral traits allowing coexistence with extremely aggressive ants, including unusual associations with pseudomyrmecine and ponerine ants (Supplementary Table S1). In the miletine lycaenid *Liphya brassolis* found in the nests of the arboreal formicine *Oecophylla smaragdina*, the tank-like morphology of the caterpillar is considered to be

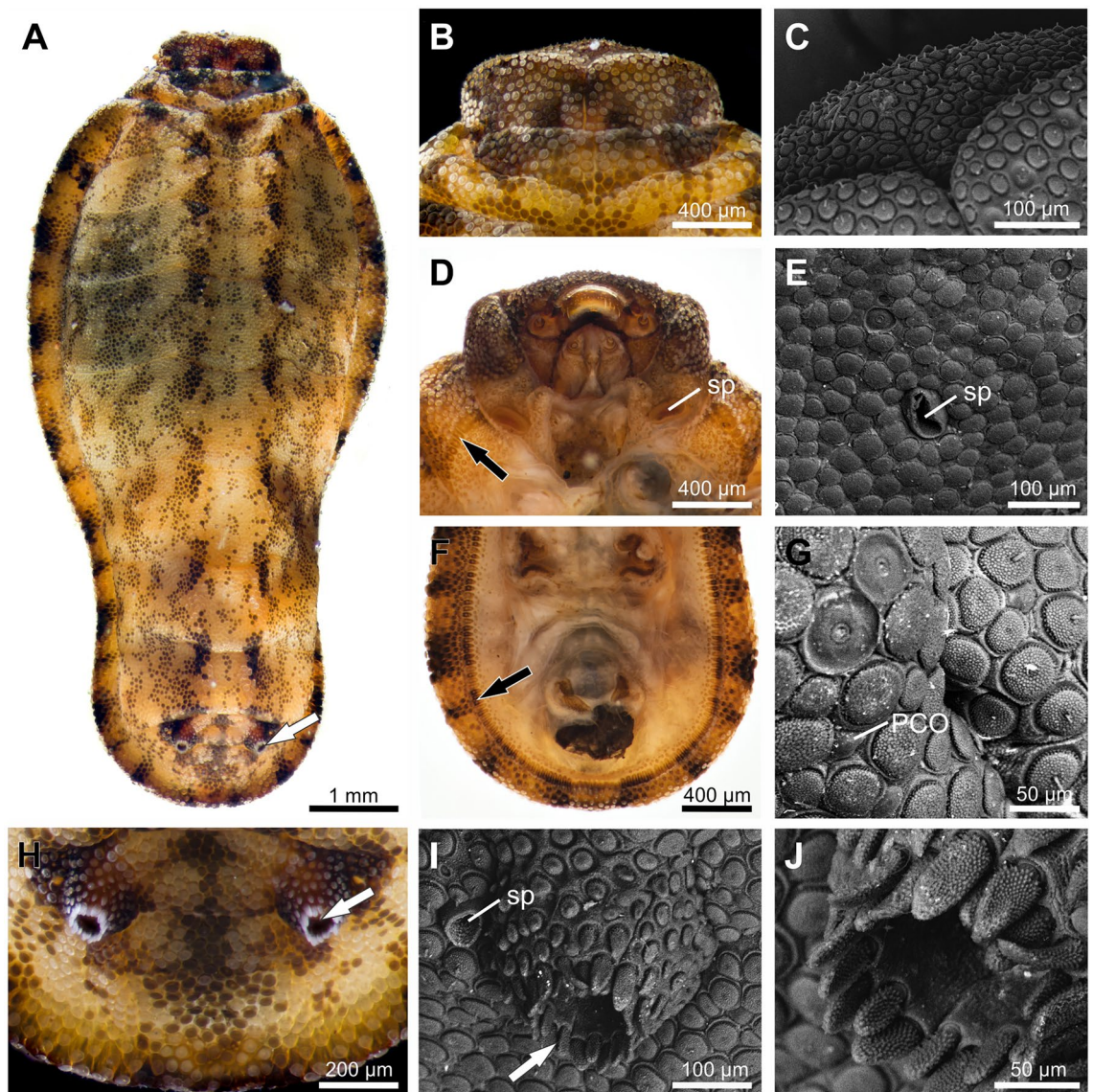


Figure 3. Morphology of the *Pseudonymphidia agave* caterpillar and details in scanning electron microscopy (SEM). (A) Dorsal view, the arrow indicates the openings of the tentacle nectary organs (TNOs) on the A8 abdominal segment. (B) Bilobed prothoracic shield in dorsal view. (C) SEM of the bilobed prothoracic shield. (D) Ventral view of the head and thoracic segments, showing the prothoracic spiracle (sp) and fringe of setae (black arrow). (E) SEM of the spiracle (sp) on the A3 abdominal segment. (F) Ventral view of the last abdominal segments; note lateral fringe of setae (black arrow). (G) SEM of the integument covered dorsally by arborescent flat setae and perforated cupola organs (PCO). (H) Opening of TNO (arrow); (I) and (J) SEMs of the opening of TNO (arrow), showing spiracle (sp) and elongated arborescent setae. Photos: (A,B,D,F,H) H. Bahena Basave; (C,E,G,I,J) M. Elias-Gutiérrez.

linked to its brutish, myrmecophagous lifestyle⁹⁸. The caterpillar uses its unusual antennae to pull the host brood under the thick cuticle concealing its head and consumes the larvae of its host without being disturbed by the ant workers. However, unlike the unaggressive behavior of *N. villosa* workers confronted to the *P. agave* caterpillar, *L. brassolis* larvae can suffer some aggression by the *O. smaragdina* workers that try to overturn the ant-eating larvae to gain access to their presumably vulnerable underside⁹⁸. Although a commensal or scavenger lifestyle may be considered a preadaptation to stealing food stores or preying on the brood present in ant host nests¹⁹, the larvae of only a few species in various lepidopteran families (Tineidae, Psychidae, Pyralidae and Noctuidae) are known to eat on food stores or nest material or scavenge on dead organic matter^{19,21}. Although the larvae of some non-myrmecophilous riodinids are detritivores as is the case for *Detritivora barnesi*^{39,99}, ant-associated riodinid caterpillars have never been considered as scavengers and the possibility that the larva of *P. agave* that we observed could eat stored food or wastes in *N. villosa* nests seems unlikely.

Ponerine ants are a group of large aggressive ants with a powerful sting³. Most species are specialized or generalist predators, occupying a high trophic position^{100,101}. The use of liquid foods on foliage, however, has been recorded for some species such as *N. villosa* that harvest liquid secretions from extrafloral nectaries, exudates

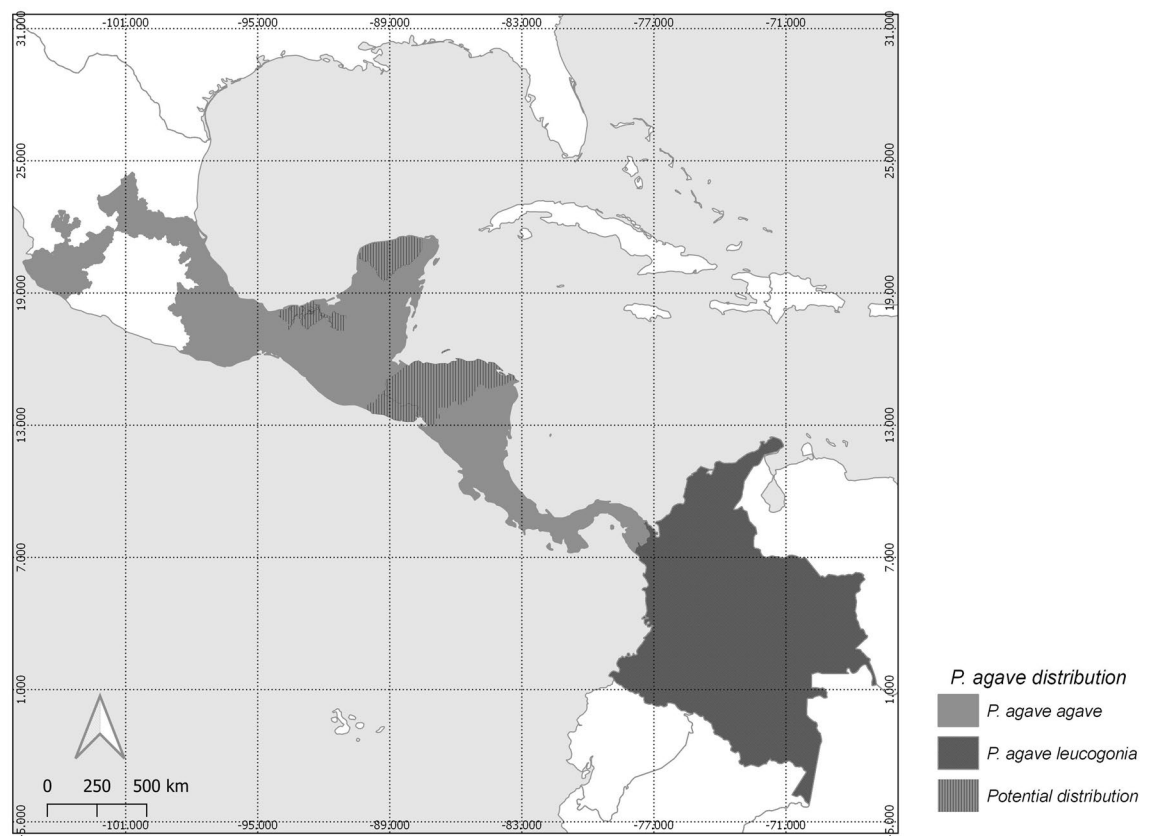


Figure 4. Known distribution of *Pseudonymphidia agave*. Records were compiled from published literature, Museum databases and internet catalogs (see Material and methods for more details). Map created using the free and open source QGIS, version 3.12.0, <http://www.qgis.org>. Map credit: B. R. Prado-Cuellar.

from honeydew-producing hemipterans and secretions of some facultatively myrmecophilous caterpillars^{57–59} (Supplementary Table S1). According to DeVries²³ and Eastwood & Fraser⁴⁷ the evolution of symbiosis between caterpillars and ants is associated with ant genera that harvest liquid food on vegetation. The aggressiveness and conspicuous appearance of *N. villosa* ants associated with liquid feeding on plants may have generated an ecological opportunity for the evolution of exploitation by preadapted caterpillars^{23,27,102,103}. This hypothesis can be corroborated both in ecological time¹⁰⁴ and evolutionary time if the specialization between *P. agave* caterpillars on *N. villosa* ants is confirmed.

Detailed behavioral interactions between the *P. agave* caterpillar and *N. villosa* ants, could not be analyzed, and neither tentacle eversion nor liquid or volatile compounds released by the TNOs were observed. However, much evidence suggests that the nature of the relationship between caterpillars of this riordinid and *N. villosa* is not facultative or simply casual: (i) the larva was found among the brood in the core of the ant nest, (ii) it has a general protective morphology, with the head retracted or maintained under the shield-like, thick cuticle of the body much like the ant-brood feeding lycaenid *L. brassolis*⁹⁸, (iii) it had a slow, gradual, slug-like movement behavior, and (iv) the ants did not behave aggressively. These traits indicate that the myrmecophile is well adapted to life inside the ant nest and are consistent with a symbiotic relationship with its host. Exchange of liquid food through regurgitation (stomodeal trophallaxis) is a highly evolved form of social food sharing, but it is infrequent in ponerine ants^{58,105}. The first case of social parasitism in riordinids (exploitation of the colony resources through trophallaxis inside the ant host nest) has been recently reported in *Aricoris arenarum* (Riordininae: Lemoniadinina)¹¹, in nests of the formicine ant *Camponotus punctulatus*, and a similar “cuckoo” life-style could be possible for the *P. agave* caterpillar. However, stomodeal trophallaxis is not known to occur in *N. villosa*⁵⁸; instead, workers share liquid food by means of mandibular pseudo-trophallaxis: workers gather and transport liquid substances with surface tension to maintain a drop between the mandibles. In the nest, they offer the liquid to other workers who “spoon” some of the liquid⁵⁸, but as the head of the *P. agave* larva is protected in a concealed, ventral position, and its rigid armoured cuticle does not allow the larva to bend its body easily, it is unlikely that the caterpillar’s mouthparts could come in contact with the droplet of liquid that is occasionally held by the workers between their mandibles. Since the colony had no other source of food for the caterpillar aside from the ants themselves, and the general rigid morphology of the former likely prevents obtaining food by pseudo-trophallaxis, we further hypothesize that the caterpillar is most probably a brood predator (myrmecophagy), at least during the advanced larval instar as found in our study. Furthermore, in adults of *P. agave*, the wings present a greasy appearance, a trait that has been considered as a potential sign of carnivory^{106,107}. Carnivory in riordinid caterpillars has been

documented in five Nymphidiini lineages preying on ant-tended hemipterans on plants⁴², but myrmecophagy has only been recorded under artificial conditions^{45,108}.

The larva of *P. agave* differs from all other known riordinid caterpillars, though the general tank-like appearance is similar to other riordinids in the Lemoniinae (e.g., *Menander* spp.^{39,109}), and Pachythronina subtribes (e.g., *Pachythron xanthe*⁴²). Although phytophagous, *Menander* caterpillars are covered with a prominent carapace that flares outward to the substrate and covers the body and legs; they are thus heavily armored and possess a complete set of ant-organs^{39,109}. In *P. xanthe* caterpillars, the prothoracic shield divided vertically into two movable plates, the absence of vibratory papillae and a carapace that protects the head and appendages are undoubtedly the most remarkable traits⁴². Some of these larval characters such as the body shape, the morphology of the lateral fringe setae, and the positioning of the spiracles, are shared with *P. agave*, suggesting that they may be morphological synapomorphies for the subtribe. In fact, these morphological characters led us to think that the larva potentially belonged to the subtribe Pachythronina before corroboration through molecular data.

Among myrmecophilous caterpillars, two strategies can be discerned: (i) free-living caterpillars that establish commensal or trophobiotic associations with ants on plants; and (ii) social parasite caterpillars that at some point of their development live within an ant nest¹¹. This seems to be related to the progressive activation of ant-organs and the production of putative chemical compounds that trigger ant adoption at a specific moment of the caterpillar development¹¹⁰. The life cycle of *P. agave* appears to conform to the latter strategy, but details of the adoption process by the ant colony are unknown. In summary, our data strongly suggest that *P. agave* is an obligate symbiont in *N. villosa* nests and that the advanced larval instar studied here is myrmecophagous. Whether females lay eggs directly on the leaves or inflorescences of the bromeliad is not known but seems possible. As suggested for obligate myrmecophilous lycaenids¹¹¹, the paucity of records of this butterfly might be explained by its highly specialized life history, making the butterfly distribution dependent on the myrmecophytic association between *N. villosa* and the bromeliad *A. bracteata*. Such an assumption seems consistent with the known range of *P. agave*. The range of this species is much narrower than that of its ant host, *N. villosa*, which is consistent with what would be expected of an obligate and host-specific myrmecophilous butterfly, but it extends well beyond the Yucatan Peninsula and, in fact, overlaps perfectly the range of *A. bracteata*, from the 'Huasteca Potosina' area on the Mexican Gulf Coast and the southern part of Sinaloa on the Pacific Coast to northern Colombia⁷⁰.

Received: 18 March 2021; Accepted: 7 October 2021

Published online: 21 October 2021

References

- Kronauer, D. J. C. & Pierce, N. E. Myrmecophiles. *Curr. Biol.* **21**, R208–209 (2011).
- Parker, J. Myrmecophily in beetles (Coleoptera): evolutionary patterns and biological mechanisms. *Myrmecol. News* **22**, 65–108 (2016).
- Hölldobler, B. & Wilson, E. O. *The Ants* (Harvard University Press, 1990).
- Hughes, D. P., Pierce, N. E. & Boomsma, J. J. Social insect symbionts: evolution in homeostatic fortresses. *Trends Ecol. Evol.* **23**, 672–677 (2008).
- Lachaud, J.-P., Lenoir, A. & Witte, V. Ants and their parasites. *Psyche* **2012**, Article ID 342157; <https://doi.org/10.1155/2012/342157> (2012).
- Wheeler, W. M. *Ants, their Structure, Development and Behavior*. (Columbia University Press, 1910).
- Buschinger, A. Social parasitism among ants: A review (Hymenoptera: Formicidae). *Myrmecol. News* **12**, 219–235 (2009).
- Nash, D. R. & Boomsma, J. J. Communication between hosts and social parasites. In *Sociobiology of Communication: An Interdisciplinary Perspective* (eds d'Ettorre, P. & Hughes, D. P.) 55–79 (Oxford University Press, 2008).
- Akino, T., Knapp, J. J., Thomas, J. A. & Elmes, G. W. Chemical mimicry and host specificity in the butterfly *Maculinea rebeli*, a social parasite of *Myrmica* ant colonies. *Proc. R. Soc. Lond. B* **266**, 1419–1426 (1999).
- Barbero, F., Thomas, J. A., Bonelli, S., Balletto, E. & Schönrogge, K. Queen ants make distinctive sounds that are mimicked by a butterfly social parasite. *Science* **323**, 782–785 (2009).
- Kaminski, L. A., Volkmann, L., Callaghan, C. J., DeVries, P. J. & Vila, R. The first known riordinid 'cuckoo' butterfly reveals deep-time convergence and parallelism in ant social parasites. *Zool. J. Linn. Soc.* **192**, 1–20. <https://doi.org/10.1093/zoolinlean/zlaa150> (2021).
- Elmes, G. W., Barr, B., Thomas, J. A. & Clark, R. T. Extreme host specificity by *Microdon mutabilis* (Diptera, Syrphidae), a social parasite of ants. *Proc. R. Soc. Lond. B* **266**, 447–453 (1999).
- Schönrogge, K. *et al.* Host propagation permits extreme local adaptation in a social parasite of ants. *Ecol. Lett.* **9**, 1032–1040 (2006).
- Bonelli, S. *et al.* Distribution, host specificity, and the potential for cryptic speciation in hoverfly *Microdon myrmicae* (Diptera: Syrphidae), a social parasite of *Myrmica* ants. *Ecol. Entomol.* **36**, 135–143 (2011).
- Di Giulio, A. *et al.* The pied piper: A parasitic beetle's melodies modulate ant behaviours. *PLoS ONE* **10**, e0130541 (2015).
- Van Oystaeyen, A. *et al.* Chemical strategies of the beetle *Metoecus paradoxus*, social parasite of the wasp *Vespula vulgaris*. *J. Chem. Ecol.* **41**, 1137–1147 (2015).
- Yamamoto, S., Maruyama, M. & Parker, J. Evidence for social parasitism of early insect societies by Cretaceous rove beetles. *Nat. Commun.* **7**, 13658 (2016).
- Hinton, H. E. Myrmecophilous Lycaenidae and other Lepidoptera—A summary. *Proc. Trans. South Lond. Entomol. Nat. Hist. Soc.* **1949–1950**, 111–175 (1951).
- Pierce, N. E. Predatory and parasitic Lepidoptera: Carnivores living on plants. *J. Lepid. Soc.* **49**, 412–453 (1995).
- Dejean, A. *et al.* Ant-lepidopteran associations along African forest edges. *Sci. Nat.* **104**, 7 (2017).
- Fiedler, K. Systematic, evolutionary, and ecological implications of myrmecophily within the Lycaenidae (Insecta: Lepidoptera: Papilionoidea). *Bonn. Zool. Monogr.* **31**, 1–210 (1991).
- Pierce, N. E. *et al.* The ecology and evolution of ant association in the Lycaenidae (Lepidoptera). *Annu. Rev. Entomol.* **47**, 733–771 (2002).
- DeVries, P. J. Mutualism between *Thysbe irenea* butterflies and ants, and the role of ant ecology in the evolution of larval-ant associations. *Biol. J. Linn. Soc.* **43**, 179–195 (1991).
- DeVries, P. J. Evolutionary and ecological patterns in myrmecophilous riordinid butterflies. In *Ant-Plant Interactions* (eds Huxley, C. R. & Cutler, D. E.) 143–156 (Oxford University Press, 1991).

25. DeVries, P.J. Butterflies. *Encyclopedia of Biodiversity* **1**, 559–573 (2001).
26. Pierce, N. E. & Mead, P. S. Parasitoids as selective agents in the symbiosis between lycaenid butterfly larvae and ants. *Science* **211**, 1185–1187 (1981).
27. Kaminski, L. A., Freitas, A. V. L. & Oliveira, P. S. Interaction between mutualisms: Ant-tended butterflies exploit enemy-free space provided by ant-treehopper associations. *Am. Nat.* **176**, 322–334 (2010).
28. Balduf, W. V. The rise of entomophagy among Lepidoptera. *Am. Nat.* **72**, 358–379 (1938).
29. Cottrell, C. B. Aphytophagy in butterflies: Its relationship to myrmecophily. *Zool. J. Linn. Soc.* **79**, 1–57 (1984).
30. Fiedler, K. Lycaenid–ant interactions of the *Maculinea* type: Tracing their historical roots in a comparative framework. *J. Insect Conserv.* **2**, 3–14 (1998).
31. Kaliszewska, Z. A. *et al.* When caterpillars attack: Biogeography and life history evolution of the Miletinae (Lepidoptera: Lycaenidae). *Evolution* **69**, 571–588 (2015).
32. Sala, M., Casacci, L. P., Balleto, E., Bonelli, S. & Barbero, F. Variation in butterfly larval acoustics as a strategy to infiltrate and exploit host ant colony resources. *PLoS ONE* **9**, e94341 (2014).
33. Schönrogge, K., Barbero, F., Casacci, L. P., Settele, J. & Thomas, J. A. Acoustic communication within ant societies and its mimicry by mutualistic and socially parasitic myrmecophiles. *Anim. Behav.* **134**, 249–256 (2017).
34. Casacci, L. P., Bonelli, S., Balleto, E. & Barbero, F. Multimodal signaling in myrmecophilous butterflies. *Front. Ecol. Evol.* **7**, 454 (2019).
35. Thomas, J. A., Elmes, G. W. & Wardlaw, J. C. Polymorphic growth in larvae of the butterfly *Maculinea rebeli*, a social parasite of *Myrmica* ant colonies. *Proc. R. Soc. Lond. B* **265**, 1895–1901 (1998).
36. Espeland, M. *et al.* Ancient Neotropical origin and recent recolonisation: Phylogeny, biogeography and diversification of the Riodinidae (Lepidoptera: Papilionoidea). *Mol. Phylogenet. Evol.* **93**, 296–306 (2015).
37. Seraphim, N. *et al.* Molecular phylogeny and higher systematics of the metalmark butterflies (Lepidoptera: Riodinidae). *Syst. Entomol.* **43**, 407–425 (2018).
38. Seraphim, N. Riodinidae Species Checklist: a preliminary species checklist for the Riodinidae (2019). Available at: https://www2.ib.unicamp.br/labor/site/?page_id=805.
39. DeVries P.J. The butterflies of Costa Rica and their natural history. Vol II: Riodinidae. Princeton University Press (1997).
40. Campbell, D. L., Brower, A. V. Z. & Pierce, N. E. Molecular evolution of the wingless gene and its implications for the phylogenetic placement of the butterfly family Riodinidae (Lepidoptera: Papilionoidea). *Mol. Biol. Evol.* **17**, 684–696 (2000).
41. Espeland, M. *et al.* A comprehensive and dated phylogenomic analysis of butterflies. *Curr. Biol.* **28**, 770–778 (2018).
42. Mota, L. L., Kaminski, L. A. & Freitas, A. V. L. The tortoise caterpillar: carnivory and armoured larval morphology of the metalmark butterfly *Pachythone xanthe* (Lepidoptera: Riodinidae). *J. Nat. Hist.* **54**, 309–319 (2020).
43. Nielsen, G. J. & Kaminski, L. A. Immature stages of the Rubiaceae-feeding metalmark butterflies (Lepidoptera: Riodinidae), and a new function for the tentacle nectary organs. *Zootaxa* **4524**, 1–32 (2018).
44. Kaminski, L. A., Carneiro, E., Dolibaina, D. R., Casagrande, M. M. & Mielke, O. H. H. Oviposition of *Minstrellus grandis* (Lepidoptera: Riodinidae) in a harmful ant-plant symbiosis. *Acta Amazon.* **50**, 256–259 (2020).
45. Kaminski, L. A. & Lima, L. D. Larval omnivory in the myrmecophilous butterfly *Setabis lagus lagus* (Riodinidae: Nymphidiini). *J. Lepid. Soc.* **73**, 276–279 (2019).
46. Lamborn, W. A. On the relationship between certain West African insects, especially ants, Lycaenidae, and Homoptera. *Trans. Ent. Soc. Lond.* **1913**, 436–498 (1914).
47. Eastwood, R. & Fraser, A. M. Associations between lycaenid butterflies and ants in Australia. *Austral. Ecol.* **24**, 503–537 (1999).
48. Bruch, C. Orugas mirmecófilas de *Hameris epulus signatus* - Stich. *Rev. Soc. Entomol. Argent.* **1**, 2–9 (1926).
49. Bourquin, F. Notas sobre la metamorfosis de *Hamearis susanae* Orfila, 1953, con oruga mirmicófila (Lep. Riodin.). *Rev. Soc. Entomol. Argent.* **16**, 83–87 (1953).
50. Ross, G. N. Life-history studies on Mexican butterflies. IV. The ecology and ethology of *Anatole rossi*, a myrmecophilous metalmark (Lepidoptera: Riodinidae). *Ann. Entomol. Soc. Am.* **59**, 985–1004 (1966).
51. Kaminski, L. A. & Carvalho-Filho, F. S. Life history of *Aricoris propitia* (Lepidoptera: Riodinidae)—A myrmecophilous butterfly obligately associated with fire ants. *Psyche* **2012**, Article ID 126876; <https://doi.org/10.1155/2012/126876> (2012).
52. Fiedler, K. The host genera of ant-parasitic Lycaenidae butterflies: a review. *Psyche* **2012**, Article ID 153975; <https://doi.org/10.1155/2012/153975> (2012).
53. Rocha, F. H., Lachaud, J.-P. & Pérez-Lachaud, G. Myrmecophilous organisms associated with colonies of the ponerine ant *Neoponera villosa* (Hymenoptera: Formicidae) nesting in *Aechmea bracteata* bromeliads: a biodiversity hotspot. *Myrmecol. News* **30**, 73–92 (2020).
54. Rocha, F. H., Lachaud, J.-P., Hénaut, Y., Pozo, C. & Pérez-Lachaud, G. Nest site selection during colony relocation in Yucatan Peninsula populations of the ponerine ant *Neoponera villosa* (Hymenoptera: Formicidae). *Insects* **11**, 200; <https://doi.org/10.3390/insects11030200> (2020).
55. Mackay, W. P. & Mackay, E. E. *The systematics and biology of the New World ants of the genus Pachycondyla* (Hymenoptera: Formicidae) (The Edwin Mellen Press, 2010).
56. Wheeler, W. M. The ants of Texas, New Mexico and Arizona. Part I. *Bull. Am. Mus. Nat. Hist.* **24**, 399–485 (1908).
57. Lachaud, J.-P., Fresneau, D. & García-Pérez, J. Étude des stratégies d'approvisionnement chez 3 espèces de fourmis ponérines (Hymenoptera: Formicidae). *Folia Entomol. Mex.* **61**, 159–177 (1984).
58. Hölldobler, B. Liquid food transmission and antennation signals in ponerine ants. *Isr. J. Entomol.* **19**, 89–99 (1985).
59. Dejean, A. & Corbara, B. Predatory behavior of a Neotropical arboricolous ant: *Pachycondyla villosa* (Formicidae: Ponerinae). *Sociobiology* **17**, 271–286 (1990).
60. Pérez-Bautista, M., Lachaud, J.-P. & Fresneau, D. L. división del trabajo en la hormiga primitiva *Neoponera villosa* (Hymenoptera: Formicidae). *Folia Entomol. Mex.* **65**, 119–130 (1985).
61. Dejean, A., Olmsted, I. & Snelling, R. R. Tree-epiphyte-ant relationships in the low inundated forest of Sian Ka'an biosphere reserve, Quintana Roo, Mexico. *Biotropica* **27**, 57–70 (1995).
62. Fernandes, I. O., De Oliveira, M. L. & Delabie, J. H. C. Notes on the biology of Brazilian ant populations of the *Pachycondyla foetida* species complex (Formicidae: Ponerinae). *Sociobiology* **60**, 380–386 (2013).
63. Castaño-Meneses, G. *et al.* The ant community and their accompanying arthropods in cacao dry pods: An unexplored diverse habitat. *Dugesiana* **22**, 29–35 (2015).
64. Dejean, A. Influence de l'environnement pré-imaginal et précoce dans le choix du site de nidification de *Pachycondyla* (= *Neoponera*) *villosa* (Fabr.) (Formicidae, Ponerinae). *Behav. Process.* **21**, 107–125 (1990).
65. Dejean, A. & Olmsted, I. Ecological studies on *Aechmea bracteata* (Swartz) (Bromeliaceae). *J. Nat. Hist.* **31**, 1313–1334 (1997).
66. Hénaut, Y. *et al.* A tank bromeliad favors spider presence in a Neotropical inundated forest. *PLoS ONE* **9**, e114592 (2014).
67. Pérez-Lachaud, G., Jervis, M. A., Reemer, M. & Lachaud, J.-P. An unusual, but not unexpected, evolutionary step taken by syrphid flies: the first record of true primary parasitoidism of ants by Microdontinae. *Biol. J. Linn. Soc.* **111**, 462–472 (2014).
68. Pérez-Lachaud, G. & Lachaud, J.-P. Hidden biodiversity in entomological collections: The overlooked co-occurrence of dipteran and hymenopteran ant parasitoids in stored biological material. *PLoS ONE* **12**, e0184614 (2017).
69. Benzing, D. H., Derr, J. A. & Titus, J. E. The water chemistry of microcosms associated with the bromeliad *Aechmea bracteata*. *Am. Midl. Nat.* **87**, 60–70 (1972).

70. Beutelspacher Baigts, C. R. Bromeliáceas Como Ecosistemas, con Especial Referencia a *Aechmea bracteata* (Swartz) Griseb. *Plaza y Valdés, México* (1999).
71. Dézerald, O. *et al.* Environmental drivers of invertebrate population dynamics in Neotropical tank bromeliads. *Freshw. Biol.* **62**, 229–242 (2017).
72. Ivanova, N. V., DeWaard, J. R. & Hebert, P. D. N. An inexpensive, automation-friendly protocol for recovering high-quality DNA. *Mol. Ecol. Notes* **6**, 998–1002 (2006).
73. Hebert, P. D. N., Penton, E. H., Burns, J. M., Janzen, D. H. & Hallwachs, W. T. species in one: DNA barcoding reveals cryptic species in the neotropical skipper butterfly *Astraptes fulgerator*. *Proc. Nat. Acad. Sci. USA* **101**, 14812–14817 (2004).
74. Montes-Ortiz, L. & Elías-Gutiérrez, M. Faunistic survey of the zooplankton community in an oligotrophic sinkhole, Cenote Azul (Quintana Roo, Mexico), using different sampling methods, and documented with DNA barcodes. *J. Limnol.* **77**, 428–440 (2018).
75. Nguyen, L.-T., Schmidt, H. A., von Haeseler, A. & Minh, B. Q. IQ-TREE: a fast and effective stochastic algorithm for estimating maximum-likelihood phylogenies. *Mol. Biol. Evol.* **32**, 268–274 (2015).
76. Kalyaanamoorthy, S., Minh, B. Q., Wong, T. K. F., von Haeseler, A. & Jermini, L. S. ModelFinder: fast model selection for accurate phylogenetic estimates. *Nat. Methods* **14**, 587–589 (2017).
77. Hoang, D. T., Chernomor, O., von Haeseler, A., Minh, B. Q. & Vinh, L. S. UFBoot2: Improving the ultrafast bootstrap approximation. *Mol. Biol. Evol.* **35**, 518–522 (2018).
78. Guindon S. *et al.* New algorithms and methods to estimate maximum-likelihood phylogenies: assessing the performance of PhyML 3.0. *Syst. Biol.* **59**, 307–321 (2010).
79. Stehr, F. W. Order Lepidoptera. In: Stehr, F. W. (ed.) *Immature insects*. Vol. 1. Kendall-Hunt Publishing Company (1987).
80. DeVries, P. J. The larval ant-organs of *Thisbe irenea* (Lepidoptera: Riodinidae) and their effects upon attending ants. *Zool. J. Linn. Soc.* **94**, 379–393 (1988).
81. Godman, F. D. & Salvin, O. *Biología Centrali-Americana. Insecta. Lepidoptera-Rhopalocera 1*: 462, pl. 47, fig. 7–8. Published for the editors by R.H. Porter, London (1886).
82. D'Abreu, B. Butterflies of the Neotropical Region. Part VI (Riodinidae). Hill House (1994).
83. Lamas, G. Hesperioidea – Papilionoidea. In: Heppner, J. B. (ed.) *Atlas of Neotropical Lepidoptera. Checklist: Part 4A. Association for Tropical Lepidoptera* (2004).
84. Hall, J. P. W. & Harvey, D. J. A phylogenetic analysis of the Neotropical riodinid butterfly genera *Juditha*, *Lemonias*, *Thisbe* and *Uraneis*, with a revision of *Juditha* (Lepidoptera: Riodinidae: Nymphidiini). *Syst. Entomol.* **26**, 453–490 (2001).
85. Zhang, J., Cong, Q., Shen, J., Opler, P. A. & Grishin, N. V. Genomic evidence suggests further changes of butterfly names. *Taxon. Rep. Intern. Lepid. Surv.* **8**(7), 1–40 (2020).
86. Zhang, J., Cong, Q., Shen, J., Opler, P. A. & Grishin, N. V. Genomics-guided refinement of butterfly taxonomy. *Taxon. Rep. Intern. Lepid. Surv.* **9**(3), 1–54 (2021).
87. Arellano-Covarrubias, A., Llorente-Bousquets, J. & Luis-Martínez, A. Distribución y fenología de la familia Riodinidae (Lepidoptera: Papilionoidea) en el bosque tropical subcaducifolio de Oaxaca, México. *Rev. Biol. Trop.* **66**, 503–558 (2018).
88. Pozo, C. *et al.* Seasonality and phenology of the butterflies (Lepidoptera: Papilionoidea and Hesperioidea) of Mexico's Calakmul Region. *Fla. Entomol.* **91**, 407–422 (2008).
89. Erwin, T. L. Tropical forest canopies: the last biotic frontier. *Bull. Entomol. Soc. Am.* **29**, 14–19 (1983).
90. Rico-Gray, V. & Oliveira, P. S. *The Ecology and Evolution of Ant-Plant Interactions* (The University of Chicago Press, 2007).
91. DeVries, P. J., Cabral, B. C. & Penz, C. M. The early stages of *Apodemia paucipuncta* (Riodinidae): myrmecophily, a new caterpillar ant-organ and consequences for classification. *Milw. Public Mus. Contrib. Biol. Geol.* **102**, 1–13 (2004).
92. Kaminski, L. A., Mota, L. L., Freitas, A. V. L. & Moreira, G. R. P. Two ways to be a myrmecophilous butterfly: natural history and comparative immature-stage morphology of two species of *Theope* (Lepidoptera: Riodinidae). *Biol. J. Linn. Soc.* **108**, 844–870 (2013).
93. Kaminski, L. A., Mota, L. L. & Freitas, A. V. L. Larval cryptic coloration and mistletoe use in the metalmark butterfly *Dachetola azora* (Lepidoptera: Riodinidae). *Entomol. Am.* **120**, 18–23 (2014).
94. Torres, P. J. & Pomerantz, A. F. Butterfly kleptoparasitism and first account of immature stages, myrmecophily, and bamboo host plant of the metalmark *Adelotypa annulifera* (Riodinidae). *J. Lepid. Soc.* **70**, 130–138 (2016).
95. Gallard, J.-Y. Les Riodinidae de Guyane. *Pensoft, Sofia* (2017).
96. Hall, J. P. W. *A monograph of the Nymphidiina (Lepidoptera: Riodinidae: Nymphidiini): Phylogeny, taxonomy, biology, and biogeography* (The Entomological Society of Washington, 2018).
97. Moraga Medina, R. 2014. *Pachythone gigas* (Riodinidae). Área de Conservación Guanacaste (2014). <https://www.acguanacaste.ac.cr/paginas-de-especies/insectos/111-160riodinidae/581-i-pachythone-gigas-i-riodinidae>
98. Dupont, S. T., Zemeitat, D. S., Lohman, D. J. & Pierce, N. E. The setae of parasitic *Liphyra brassolis* butterfly larvae form a flexible armour for resisting attack by their ant hosts (Lycaenidae: Lepidoptera). *Biol. J. Linn. Soc.* **117**, 607–619 (2016).
99. DeVries, P. J., Chacon, I. A. & Murray, D. Toward a better understanding of host use and biodiversity in riodinid butterflies (Lepidoptera). *J. Res. Lepid.* **31**, 103–126 (1992).
100. Davidson, D. W., Cook, S. C., Snelling, R. R. & Chua, T. H. Explaining the abundance of ants in lowland tropical rainforest canopies. *Science* **300**, 969–972 (2003).
101. Schmidt, C. A. & Shattuck, S. O. The higher classification of the ant subfamily Ponerinae (Hymenoptera: Formicidae), with a review of ponerine ecology and behavior. *Zootaxa* **3817**, 1–242 (2014).
102. Atsatt, P. R. Lycaenid butterflies and ants: Selection for enemy-free space. *Am. Nat.* **118**, 638–654 (1981).
103. Dáttilo, W. *et al.* Trait-mediated indirect interactions of ant shape on the attack of caterpillars and fruits. *Biol. Lett.* **12**, 20160401 (2016).
104. Orivel, J. & Dejean, A. Myrmecophily in Hesperioidea. The case of *Vettius tertianus* in ant gardens. *C. R. Acad. Sci. Paris* **323**, 705–715 (2000).
105. Meurville, M.-P. & LeBoeuf, A. C. Trophallaxis: The functions and evolution of social fluid exchange in ant colonies (Hymenoptera: Formicidae). *Myrmecol. News* **31**, 1–30 (2021).
106. Hall, J. P. W. & Harvey, D. J. Basal subtribes of the Nymphidiini (Lepidoptera: Riodinidae): Phylogeny and myrmecophily. *Cladistics* **18**, 539–569 (2002).
107. Hall, J. P. W. Phylogenetic revision of the new Neotropical riodinid genus *Minstrellus* (Lepidoptera: Riodinidae). *Ann. Entomol. Soc. Am.* **100**, 773–786 (2007).
108. Ballmer, G. R. & Wright, D. M. Notes on the immature stages of *Setabis* sp., a myrmecophagous riodinid butterfly (Lepidoptera: Riodinidae). *J. Res. Lepid.* **47**, 11–15 (2014).
109. Callaghan, C. J. Studies on Restinga butterflies: I. Life cycle and immature biology of *Menander felsina* (Riodinidae), a myrmecophilous metalmark. *J. Lepid. Soc.* **31**, 173–182 (1977).
110. Hojo, M. K., Yamaguchi, S., Akino, T. & Yamaoka, R. Adoption of lycaenid *Niphanda fusca* (Lepidoptera: Lycaenidae) caterpillars by the host ant *Camponotus japonicus* (Hymenoptera: Formicidae). *Entomol. Sci.* **17**, 59–65 (2014).
111. Maschwitz, U., Näsigg, W. A., Dumpert, K. & Fiedler, K. Larval carnivory and myrmecoxeny, and imaginal myrmecophily in milene lycaenids (Lepidoptera, Lycaenidae) on the Malay Peninsula. *Tyô to Ga* **39**, 167–181 (1988).

Acknowledgements

We are grateful to Humberto Bahena Basave (ECOSUR) for help with the photos; to Alma Estrella García-Morales, from the Laboratory for DNA barcoding at ECOSUR-Chetumal that forms part of the Mexican Barcode of Life (MEXBOL) network, for DNA extraction; to Blanca R. Prado-Cuellar for sample processing, pictures of the riodinid adults (MAL-05053 and MAL-05054) and design of Fig. 4; to Sandra López and León Ibarra for help with field work. SEM photographs were taken with a JEOL 6010 microscope at ECOSUR Chetumal by Manuel Elías-Gutiérrez to whom we are deeply indebted. FHRV was supported by a CONACyT grant during his PhD (Grant number 269825). LAK was supported by Coordenação de Aperfeiçoamento de Pessoal de Nível Superior (PNPD-CAPES), and by the National Geographic Society (#WW-224R-17). Ants and their associated fauna were collected under Mexican government research permit granted to GP-L (SEMARNAT, DGVS, License number FAUT-0277).

Author contributions

G.P.-L. and J.-P.L. designed the research; G.P.-L., J.-P.L., F.H.R., and C.P. analyzed the data; F.H.R. collected the material and made the preliminary interaction observations; G.P.-L., J.-P.L., C.P. and L.A.K. examined the material; L.A.K. and N.S. performed phylogenetic analyses and identified the caterpillar; J.-P.L. identified the ant; G.P.-L., J.-P.L. and L.A.K. wrote the first draft of the paper; all authors contributed substantially to the text and revised it.

Competing interests

The authors declare no competing interests.

Additional information

Supplementary Information The online version contains supplementary material available at <https://doi.org/10.1038/s41598-021-00274-x>.

Correspondence and requests for materials should be addressed to G.P.-L. or J.-P.L.

Reprints and permissions information is available at www.nature.com/reprints.

Publisher's note Springer Nature remains neutral with regard to jurisdictional claims in published maps and institutional affiliations.



Open Access This article is licensed under a Creative Commons Attribution 4.0 International License, which permits use, sharing, adaptation, distribution and reproduction in any medium or format, as long as you give appropriate credit to the original author(s) and the source, provide a link to the Creative Commons licence, and indicate if changes were made. The images or other third party material in this article are included in the article's Creative Commons licence, unless indicated otherwise in a credit line to the material. If material is not included in the article's Creative Commons licence and your intended use is not permitted by statutory regulation or exceeds the permitted use, you will need to obtain permission directly from the copyright holder. To view a copy of this licence, visit <http://creativecommons.org/licenses/by/4.0/>.

© The Author(s) 2021