



**HAL**  
open science

## Cooperation of conical and polyunsaturated lipids to regulate initiation and processing of membrane fusion

Claire François-Martin, Amélie Bacle, James E Rothman, Patrick Fuchs,  
Frederic Pincet

► **To cite this version:**

Claire François-Martin, Amélie Bacle, James E Rothman, Patrick Fuchs, Frederic Pincet. Cooperation of conical and polyunsaturated lipids to regulate initiation and processing of membrane fusion. *Frontiers in Molecular Biosciences*, 2021, 8, pp.763115. 10.3389/fmolb.2021.763115 . hal-03405669

**HAL Id: hal-03405669**

**<https://hal.science/hal-03405669v1>**

Submitted on 27 Oct 2021

**HAL** is a multi-disciplinary open access archive for the deposit and dissemination of scientific research documents, whether they are published or not. The documents may come from teaching and research institutions in France or abroad, or from public or private research centers.

L'archive ouverte pluridisciplinaire **HAL**, est destinée au dépôt et à la diffusion de documents scientifiques de niveau recherche, publiés ou non, émanant des établissements d'enseignement et de recherche français ou étrangers, des laboratoires publics ou privés.

# Cooperation of conical and polyunsaturated lipids to regulate initiation and processing of membrane fusion

Claire François-Martin<sup>1</sup>, Amélie Bacle<sup>2</sup>, James E. Rothman<sup>3,4</sup>, Patrick Fuchs<sup>5,6</sup>, and Frédéric Pincet<sup>1\*</sup>

<sup>1</sup>Laboratoire de Physique de l'Ecole normale supérieure, ENS, Université PSL, CNRS, Sorbonne Université, Université de Paris, F-75005 Paris, France

<sup>2</sup>Laboratoire Coopératif "Lipotoxicity and Channelopathies - ConicMeds", Université de Poitiers, 1 rue Georges Bonnet, F-86000 Poitiers, France.

<sup>3</sup>Department of Cell Biology, School of Medicine, Yale University, 333 Cedar Street, New Haven, CT 06520, USA

<sup>4</sup>Nanobiology Institute, Yale School of Medicine, West Haven, CT 06516, USA

<sup>5</sup>Sorbonne Université, Ecole Normale Supérieure, PSL Research University, CNRS, Laboratoire des Biomolécules (LBM), F-75005 Paris, France

<sup>6</sup>Université de Paris, UFR Sciences du Vivant, F-75013 Paris, France

[\\*Corresponding author: frederic.pincet@ens.fr](mailto:frederic.pincet@ens.fr)

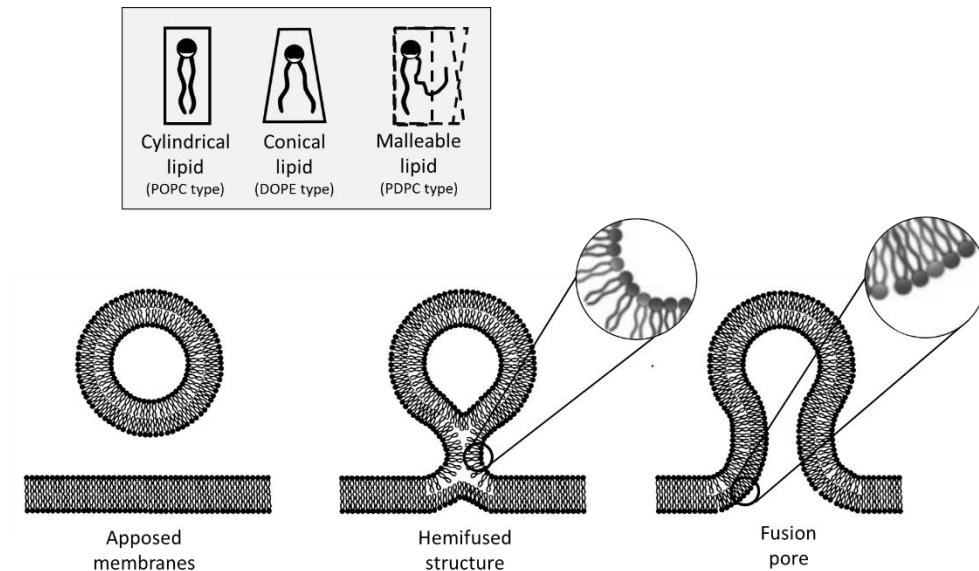
## ABSTRACT

The shape of lipids has long been suspected to be a critical determinant for the control of membrane fusion. To experimentally test this assertion, we used conical and malleable lipids and measured their influence on the fusion kinetics. We found that, as previously suspected, both types of lipids accelerate fusion. However, the implicated molecular mechanisms are strikingly different. Malleable lipids, with their ability to change shape with low energy cost, favor fusion by decreasing the overall activation energy. On the other hand, conical lipids, with their small polar head relative to the area occupied by the hydrophobic chains, tend to make fusion less energetically advantageous because they tend to migrate towards the most favorable lipid leaflet, hindering fusion pore opening. They could however facilitate fusion by generating hydrophobic defects on the membranes; this is suggested by the similar trend observed between the experimental rate of fusion nucleation and the surface occupied by hydrophobic defects obtained by molecular simulations. The synergy of dual-process, activation energy and nucleation kinetics, could facilitate membrane fusion regulation *in vivo*.

## Introduction

Membrane fusion is one of the means used by cells, organelles and lipid-bound objects to interact and transmit information (1). Communication takes place as the contents of the newly fused compartments freely mix or react after the lipids leaflets of two compartments have coalesced to form a unique and continuous membrane. Erratic membrane fusion is prevented by the energy barriers that ought to be overcome on the pathway to fusion (2). It is now quite commonly assumed that fusion proceeds in steps: first, through the approach and binding of the apposed membranes, then by the formation of an hemifused-like structure in which only the outer monolayers have fused,

and finally by the completion of fusion through the merging of the inner monolayers thereby forming a fusion pore (Fig. 1). *In vivo*, the necessary energy can be brought by proteins. For instance, in the case of intracellular vesicular transport and exocytosis, SNARE proteins that are present on two apposing membranes spontaneously assemble into an energetically favorable coiled-coil structure (3-5). The energy released during the formation of this protein complex is harvested to overcome the energy barriers separating the different intermediates on the fusion pathway (6-8).



**Figure 1: Steps of the membrane fusion process and considerations on the energy impact of lipid geometry.** The fusion process starts by the formation of an hemifused-like structure (only the outer leaflets have merged). This highly curved structure spatially constrains the hydrophilic heads of the lipids that are situated on the outer leaflet. Due to their spontaneous curvature, it is more favorable energetically for conical lipids to adopt this configuration than cylindrical lipids. Fusion is completed by the opening of a pore. At this step, the inner leaflets of the bilayer are now curved, and in this case, it is less favorable for conical lipids to adopt this configuration as their hydrophobic tails are now more accessible to water. On the other hand, malleable lipids could favor any bent configuration as they can adapt their geometry to that of the membrane without significant energy cost.

At the molecular level, many pathways can be envisioned for the fusion process which make the resulting energy landscape difficult to accurately apprehend. A simplified view in which the molecular details are averaged is probably the best approach to provide a good description of the fusion kinetics. We recently showed experimentally on membranes made of a single lipid type (DOPC or POPC, see Material and Methods for the definition of lipid acronyms) that the fusion kinetics are well-described by an Arrhenius law, *i.e.* that the energy landscape for fusion can be approximated by a single energy barrier over a range of physiologically relevant temperatures (27°C to 47°C) (9). The corresponding activation energy, about 30  $k_B T$ , is high enough to prevent spontaneous fusion but sufficiently low to be tunable by proteins for rapid fusion.

Here we address the question whether the lipid composition of the membrane can affect the energy landscape for fusion. We focus specifically on the role of lipid geometry and flexibility/malleability. Using bulk fusion assay, we show that both conical shape lipids and malleable lipids accelerate fusion kinetics. However, they act on the fusion process through different mechanisms. While flexible lipids reduce the activation energy for fusion, conical lipids increase the nucleation rate of fusion, *i.e.* the prefactor in the Arrhenius law, by increasing the density of hydrophobic defects exposed to the outer medium. This led us to propose that both processes for changing fusion kinetics could actually be

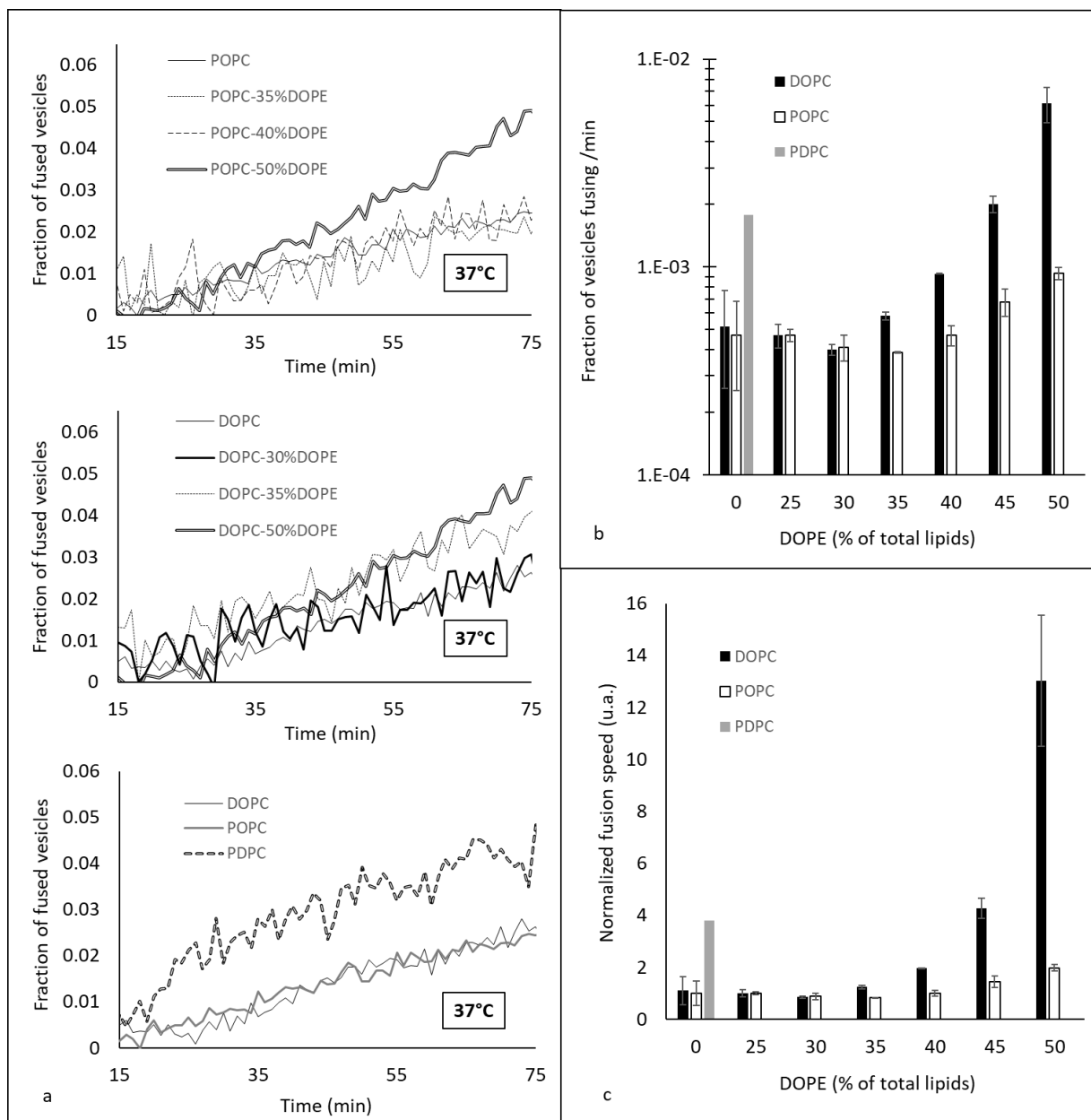
modulated *in vivo* to facilitate fusion regulation. To test this hypothesis, we mimicked the fusion of a synaptic vesicle and a typical plasma membrane. We find that, in this case, fusion displays both a low activation energy (about 23  $k_B T$ ) and a low initiation constant (about  $10^6 \text{ min}^{-1}$  compared to  $10^{12} \text{ min}^{-1}$  for DOPC and  $10^8 \text{ min}^{-1}$  for POPC membranes). This feature could enable a tight control of the pre-synaptic fusion and allow neurotransmission's fine regulation. Indeed, having a low activation energy facilitates vesicle fusion. Yet, the low initiation rate renders spontaneous fusion highly improbable, the latter potentially only being nucleated after membrane destabilization by SNARE proteins.

## Results and Discussion

### Conical and malleable lipids accelerate fusion kinetics

The ability of lipids to exhibit favored shapes has long been suspected to play a role in controlling membrane fusion by promoting or inhibiting some steps of the fusion process. The mismatch between the small polar head and the larger hydrophobic chains provides the lipid with a conical shape and drives a local spontaneous curvature of the membrane. This conical shape can favor or hinder fusion according to the correlation between the lipids' spontaneous curvature and the curvature of the different intermediate structures (10, 11). Previous studies suggest that conical lipids, *e.g.* lipids having a small polar head compared to their hydrophobic tails and thus having a natural negative curvature, favor fusion (12). It was also suggested that malleable lipids, *i.e.* lipids that can adopt various shapes with limited energy cost, may also favor fusion (13). Our goal is to test this hypothesis that lipid shape and malleability can play a critical role in the fusion process. Hence, we focused on these two features, shape and malleability of the lipid, and picked two lipids that are known to be either conical (DOPE) or malleable (a polyunsaturated lipid, PDPC).

To measure fusion kinetics, we used a well-established protocol (14) which consists in following a change in Förster resonance energy transfer (FRET) signal, that can be linked to the number of fusion events. In brief, two sets of vesicles were mixed together – one containing N-(7-Nitrobenz-2-Oxa-1,3-Diazol-4-yl) (NBD) and Lissamine Rhodamine (Rh) lipids at a concentration where NBD is quenched by the presence of Rh, and one containing no dyes. The fusion between a vesicle of each population leads to a dilution of the dyes and hence to an increase in the NBD signal (9, 15). We made vesicles having POPC:DOPE and DOPC:DOPE mixtures with 0%, 25%, 30%, 35%, 40%, 45% and 50% DOPE, and vesicles made of PDPC. All experiments were performed with 18 mM lipids in an HEPES 25mM - KCl 100mM -pH 7.4 buffer. The NBD dequenching, monitored in time at 37°C, shows that the kinetics of fusion is accelerated when DOPE is added beyond 35% and with PDPC (Fig. 2a). To quantify this increase, we plotted the initial slope and translated it in terms of fraction of vesicles fusing per minute (Fig. 2b). Fig. 2c represents the ratio of increase of the fusion speed compared to that of pure POPC membranes. Both DOPE and PDPC are able to enhance the rate of fusion by one order of magnitude compared to POPC alone. This result confirms that, in agreement with the common wisdom, conical and malleable lipids favor membrane fusion. However, we will show in the next sections that this facilitation of membrane fusion is not necessarily attributed to the correct underlying causes.



**Figure 2:** Adding DOPE in a phosphatidylcholine (PC) membrane or increasing the degree of unsaturation of the PC tails leads to an increase of the fusion speed. (a) Dequenching curves at 37°C for different lipid compositions. For the sake of clarity, not all the intermediate curves are represented. However, all the data are presented in (b) and (c). (b-c) Speed of fusion (in fraction of the total vesicles which undergo a fusion event in one minute) for different compositions on a semi-log scale (b) and on a linear scale with values normalized by that of pure POPC fusion speed (c).

### Thermodynamic origin of the enhanced fusion

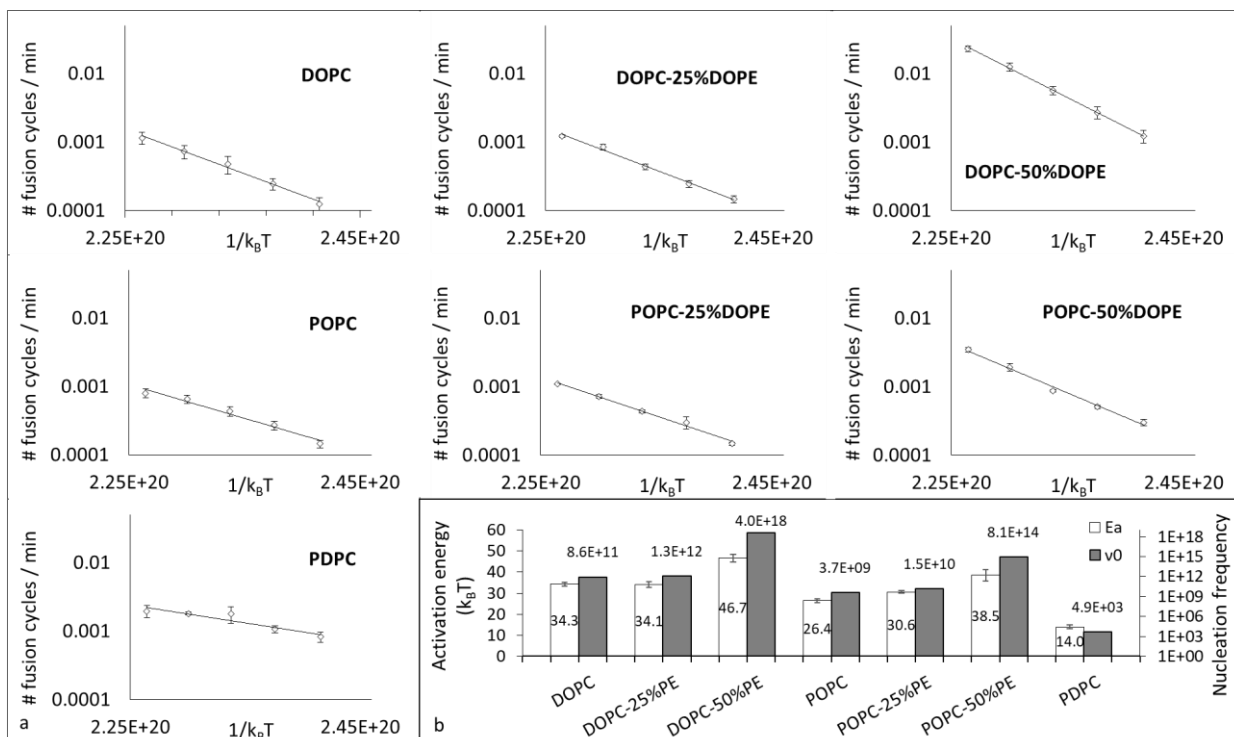
Our goal is now to explain how these lipids can favor fusion. Before detailing the experimental results, it is necessary to provide a description of membrane fusion at the molecular level and introduce the notions of activation energy and nucleation rates for the fusion process. Let's consider the case of two non-adhering 80 nm vesicles that collide. Fusion must occur during the time their membranes are in direct interaction, *i.e.* typically are less than 1 to 10 nm apart (16) which corresponds to a few characteristics decay length of the short-range hydration and protrusion repulsions (17). Depending on their incidence angle, this corresponds to a travel distance of about 2-

20 nm and, according to the Stokes-Einstein relation, a travel time between 60 ns and 6  $\mu$ s. The fusion process must be nucleated during these 1  $\mu$ s. Hence, at the molecular level, the lipids must reorganize so that the membranes reach a quasi-irreversible state leading to fusion. In the membrane plane, lipids exchange position on the scale of 100 ns. Similarly, the orthogonal movement of the lipid (protrusions) also takes place on 100 ns timescale (18). Thus, while the vesicles are interacting during a collision event, lipids can reorganize but with only a limited number of accessible conformations. This shows that, when a fusion event occurs, membrane remodeling at the molecular level will be very dependent on the local lipid conformation at the time of collision. This dependency on the initial state explains why two membrane fusion events will follow a different pathway at the molecular level and makes detailed modeling extremely complex. To circumvent this issue, we chose not to focus on a single fusion event but, instead, consider an average fusion pathway over many events disregarding the specific lipid arrangement of every single event. On the example of vesicles made of standard neutral phospholipids, POPC or DOPC, we have previously monitored trillions of fusion events at various temperatures in the vicinity of 37°C and showed that the speed of fusion expressed in rounds of fusion per second per molar follows an Arrhenius-like law:  $v = v_0 \exp(-E_A/k_B T)$  (9). This result justifies the use of a simplified model in which the detailed molecular organization is not defined but can be mathematically described by a single global energy barrier. In this context fusion kinetics are simply described by two parameters:  $E_A$  that appears as the apparent activation energy of the fusion process and  $v_0$  which is the nucleation frequency, *i.e.* the frequency at which the lipids in the interacting regions of the vesicles adopt a conformation susceptible to lead to fusion. Because the model is simplified, these values are only valid at 37°C. For instance,  $v_0$ , which should not depend on the temperature, will actually vary with the temperature, though it can be considered constant over the range used here (27 – 47°C) because of the exponential variation of the speed of fusion in the experiments. The variations of  $v_0$  are due to the changes in lipid organization and dynamics with temperature.

According to this paradigm, the change in fusion kinetics with conical and malleable lipids can only be attributed to the activation energy and/or the nucleation frequency. To test this hypothesis, we performed the same fusion measurements as before, but over a range of temperatures running from 27°C to 47°C with a 5°C step for DOPC, POPC, DOPC:DOPE (75:25), POPC:DOPE (75:25), DOPC:DOPE (50:50), POPC:DOPE (50:50) and PDPC. We found that all the corresponding fusion speeds displayed an Arrhenius law behavior (Fig. 3a). Both the corresponding energy barriers and nucleation frequencies (Fig. 3b) display large variations with the shape and malleability of lipids.

The only result that can be readily explained in this set of data is the decreased activation energy with PDPC. Indeed, because polyunsaturated are known to be very malleable, *i.e.* they can change shape with little energy cost, it is intuitively clear that the molecular remodeling required during the fusion process will require much fewer thermal fluctuations to be spontaneously achieved than with non-malleable lipids.

Uncovering the molecular origin of the increased of activation energy with conical lipids and changes in nucleation rate is not straight-forward and requires additional experiments.



**Figure 3: Lipid composition impacts the activation energy and the nucleation rate of fusion.** (a) The variation of the initial spontaneous fusion speeds are plotted against the temperature (from 27 to 47 °C) for DOPC , DOPC-25%DOPE , DOPC-50%DOPE , POPC , POPC-25%DOPE , POPC-50% DOPE and PDPC. One fusion cycle corresponds to 100% of the vesicles of the sample which have undergone fusion. For the sake of clarity, the averages of the fusion speeds of the independent experiments are represented (error bars are standard errors on the mean) even though the activation energies values in (b) were deduced from independent fits. (b) The activation energy values and nucleation frequencies are represented for the different lipid compositions. Activation energies (empty bars) are determined through independent fits of 3 to 9 different experiments and the error bars correspond to the standard errors on the mean. Nucleation frequencies (filled bars) are determined from the average fit.

### Lipids with negative spontaneous curvature are preferentially located on the inner leaflet of liposomes which increases the activation energy for fusion

The current hypothesis is that the geometry of conical lipids could promote fusion by lowering the energy of hemifusion (19-21). However, hemifusion is not necessarily the limiting step in the fusion process. Notably, the presence of conical lipids with negative curvatures could also hinder the merging of the inner leaflets, *i.e.* the opening of the fusion pore. Our results show that adding DOPE monotonically increases the fusion activation energy (Fig. 3b).

Intuitively, it makes sense that, when distributed between the membrane leaflets of a liposome, lipids favoring negative curvature will spontaneously tend to insert in the negatively curved inner leaflet rather than in the positively curved outer leaflet. This effect should be more significant as the curvature of the membrane is increased. Thus, conical shape lipids could stabilize membranes and, against the common wisdom, actually inhibit fusion by increasing the overall activation energy. This uneven distribution of the lipids can be estimated by a simple model assuming a binary system in which the spontaneous curvature of the other lipid is zero, which is a good approximation for DOPC or POPC, and ignoring the area difference between the inner and outer leaflet. In this model, the energy of the conical lipid in the inner leaflet and the outer leaflet are respectively:  $e_i =$

$2\kappa\alpha\left(c_0 + \frac{1}{R}\right)^2$  and  $e_o = 2\kappa\alpha\left(c_0 - \frac{1}{R}\right)^2$ , where  $\kappa$  is the bending modulus,  $c_0$  the spontaneous curvature of the conical lipid and  $R$  the local mean radius of the membrane. Hence the energy change when a lipid flips from the inner to the outer leaflet is  $\Delta e = e_o - e_i = -\frac{8\kappa\alpha c_0}{R}$ . As expected, this change is positive for a conical lipid with a negative spontaneous curvature, indicating it will preferably insert in the inner leaflet. Hence,  $r$ , the ratio between the number of conical lipids in the outer leaflet and in the inner leaflet is:

$$r = \exp\left(-\Delta e/k_B T\right) \quad (1)$$

the fraction of conical lipid in the outer leaflet is:

$$f_o = \frac{2fr}{1+r} \quad (2)$$

and the fraction of conical lipid in the inner leaflet is:

$$f_i = \frac{2f}{1+r} \quad (2)$$

where  $f$  is the input fraction of conical lipid.

Note that, in this simple model,  $r$  does not depend on  $f$ . For DOPE,  $c_0$  is of the order of  $-0.4 \text{ nm}^{-1}$  (22), *i.e.* a spontaneous curvature of 2.5 nm.  $\kappa$  is about  $20 k_B T$ , and  $a \sim 0.65 \text{ nm}^2$ . The typical radius of the liposomes we used was 40 nm (9). The distribution of DOPE predicted by this model in our experiments is indicated in Table 1.

To check the validity of the predictions of this model, we directly measured the distribution of DOPE in our DOPC liposomes by sequentially labelling the external DOPE and then the DOPE situated on the internal leaflets of our vesicles. In brief, external DOPE was first labeled by incubating the vesicles with Alexa 647-NHS. The unbound dyes were then removed by dialysis. The quantification of the labeled DOPE was done by measuring Alexa's fluorescence intensity in bulk after membrane solubilization. The samples were then labeled again by Alexa 647-NHS which could now bind to the newly reachable internal DOPE. After a new dialysis to get rid of the unbound dyes and a re-solubilization, the fluorescence was read again thus allowing to quantify the total amount of DOPE in the solution. The ratio of these two intensities gives the fraction of the DOPE that is present on the external leaflets. Accounting for the total fraction of DOPE in the respective samples, one can determine which fraction of both monolayers are occupied by PE lipids. The results are displayed in Table 1 next to the theoretical predictions.

DOPE input fraction ( $f$ )	DOPE fraction in the inner leaflet ( $f_i$ )		DOPE fraction in the outer leaflet ( $f_o$ )		Ratio between the outer and inner leaflets ( $r$ )	
	model	experiment	model	experiment	model	experiment
0.25	0.37	$0.42 \pm 0.01$	0.13	$0.10 \pm 0.01$	0.35	$0.24 \pm 0.04$
0.5	0.74	$0.84 \pm 0.02$	0.26	$0.27 \pm 0.02$	0.35	$0.33 \pm 0.03$

**Table 1: DOPE is preferentially situated on the inner leaflet of vesicles.**  $f_o$  corresponds to the fraction of the outer leaflet that is occupied by PE lipids whereas  $f_i$  corresponds to the fraction of the inner leaflet that is occupied by PE lipids. The theoretical values are obtained thanks to curvature energy calculations. The experimental values are obtained thanks to the comparison of the fluorescence intensities of a sample after external PE labeling followed by total PE labeling. The errors correspond to the standard error on the mean of the different experiments. The ratio between the PE occupation of the outer leaflet compared to that of the inner leaflet confirms that there is an enrichment of PE on the inner leaflet.



The results, in strikingly good agreement with the predictions, confirm that the majority of the DOPE is located in the inner leaflet of the membrane. Hence, even though conical lipids with a negative spontaneous curvature are likely to favor hemifusion, they tend to migrate towards the inner leaflet at equilibrium where they are unfavorable to fusion because they hinder pore opening. This uneven distribution of conical lipids explains why the activation energy of fusion increases with the DOPE fraction.

In addition, this observation may also explain the subtle differences between DOPC and POPC. Even though both lipids are globally cylindrical, DOPC is slightly more conical with a spontaneous curvature of  $-0,091 \pm 0,008 \text{ nm}^{-1}$ , compared to  $-0,022 \pm 0,01 \text{ nm}^{-1}$  for POPC (22). This could potentially explain the different effect of DOPE in DOPC versus POPC membranes. Indeed, the difference of geometry is slightly less important between DOPC and DOPE than between POPC and DOPE so the tendency of DOPE to move in the internal leaflet could be less pronounced in DOPC membranes. This is totally in line with the fact that the addition of 50% of DOPE in DOPC (respectively POPC) membranes leads to an increase of the activation energy of 36% (respectively 46%).

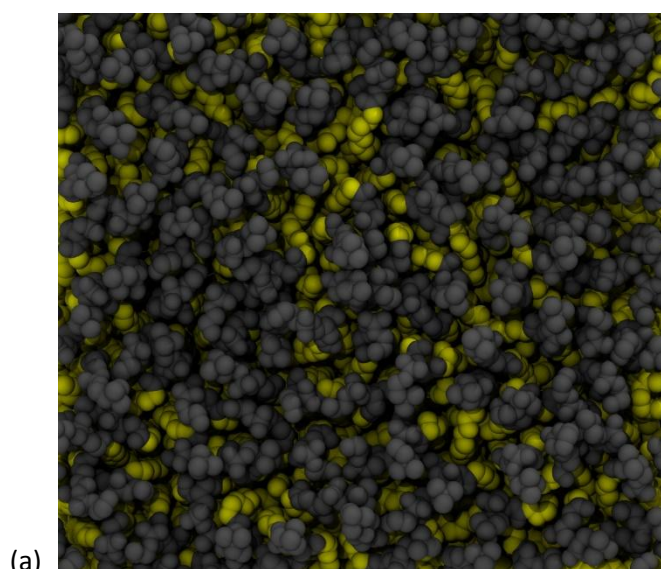
### **The nucleation rate is correlated with membrane surface hydrophobicity**

Understanding the variation of the nucleation rate requires to focus on the outer leaflet where the first contact between the two membranes occurs. A striking result is that the nucleation rate monotonically increases with the concentration of lipid favoring negative spontaneous curvatures. Since the nucleation rate is likely due to the local lipid organization, we conducted molecular dynamics simulations of DOPC bilayers with various fractions of DOPE lipids. Following Leikin's insight that curved membranes composed of cylindrical lipids display many defects (23), conical lipids could, in flat bilayers, expose more of their hydrophobic tails to the aqueous solution than would cylindrical lipids. Intuitively, one could sense that these "hydrophobic defects", that are not favorable energy-wise, could be preferential zones to nucleate fusion and thus promote fusion. In our numerical simulations, we identified hydrophobic defects, also known as packing defects (24, 25), as areas where the first atoms of the lipids viewed perpendicularly from the surface are in the alkyl chains (yellow atoms in Fig. 4a). We then compared the fraction of the total surface area occupied by defects in membranes containing increasing fractions of DOPE lipids (from 0% to 50%) and the results, presented in Fig. 4b, show that the surface occupied by defects increases with the fraction of DOPE lipids in the flat bilayers. This is qualitatively in line with our hypothesis that defects could favor fusion by allowing its nucleation. It should be noted that since membranes containing 50% of DOPE (resp. 25% DOPE) actually exhibit outer leaflet that present only 27% (resp 10%) of DOPE, the surface fraction occupied by defects in membranes with input fractions of 25% (resp 12%) are of most interest.

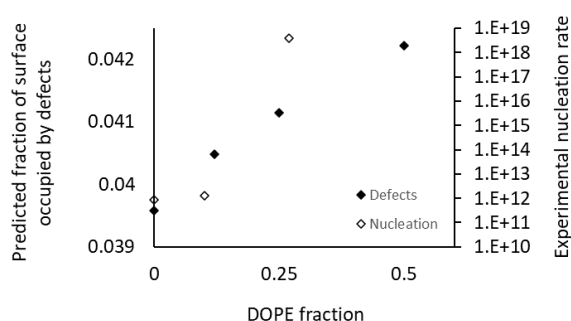
Explaining quantitatively the extremely large variations of the nucleation rates over seven orders of magnitude ( $10^7$ ) between the various cases we tested requires a better understanding of the implications of an increased number of hydrophobic defects. It is well established that a lipid exposing more hydrophobic areas (*i.e.* hydrophobic defects) to the solvent, such as DOPE over DOPC, will bind less water molecules and will also tend to hide closer to the hydrophobic. As a result, the range of strong short-range repulsion that originates from hydration and protrusion forces between apposing membranes decreases sharply. This decrease, established more than 3 decades ago by Rand and Parsegian (17), greatly facilitates the close contacts between hydrophobic defects and induces non-linear and monotonic dependencies between the defect density and the nucleation rate. In agreement with this view, it was recently shown that the reduction of the short-range repulsion range induced by surface hydrophobicity induced an exponentially increasing rate of vesicle collisions (26). This is a critical point showing that the short-range repulsions between the apposing

membranes can play a part as important as the energy barriers in the fusion process. In spite of this importance, most simulations of the fusion process currently omit the role of the short-range repulsion, indicating there is little awareness about the “rate” crisis which is reminiscent of the “energy” crisis within elastic continuum models that was resolved 20 years ago (27). Hence we explain the large variation in fusion rate by the presence of hydrophobic defects that, not only change the energy for shape change, but, more critically, also have a profound impact on the short-range repulsion and therefore the short-range collision rate.

A different but related aspect needs to be discussed here. The density of defects is also related to the membrane curvature. Hence, the values established here for the nucleation rate will depend on the curvature. This is similar to what is observed with ‘curvature-sensing’ proteins. Actually, these proteins often sense membrane hydrophobicity rather than curvature (24). Hence, depending on the membrane composition they may bind to a highly curved membrane with cylindrical lipids or a flat membrane with conical lipids. The exact same effect is at play here: the more curved the membrane, the higher the hydrophobic defect density and the higher the nucleation rate.



(a)



(b)

**Figure 4: Simulations of defects for 0, 12.5, 25 and 50% DOPE.** (a) Top view of a simulation snapshot from the DOPC:DOPE (50:50 mol:mol) system. Hydrophobic atoms (starting from the C2 till the end methyl of either sn-1 or sn-2) are represented in yellow van der Waals spheres, polar heads are in gray. The visible yellow atoms represent hydrophobic defects. (b) Evolution of the surface fraction occupied by defects in function of the fraction of DOPE lipids. It should be noted that these values may underestimate the actual values in our experiments, where the bilayers are actually curved, therefore increasing the inadequation between the geometry of the external DOPE lipids and that of the

membrane. The experimentally measured nucleation rates (from Fig. 3b) for total fractions of DOPE of 0%, 25% and 50%, corresponding to DOPE fractions on the outer leaflet of respectively 0%, 10% and 27% (from Table 1) are also presented and qualitatively exhibit similar variation.

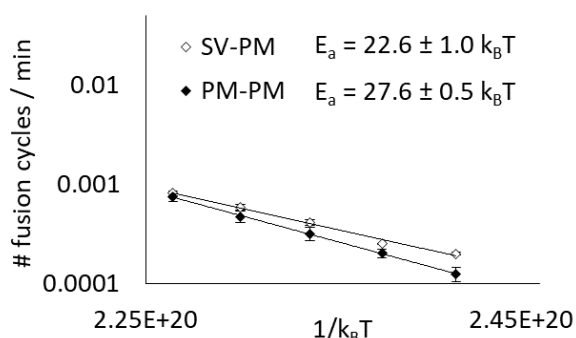
The fact that PDPC membranes show a very low nucleation rate seems in line with our hydrophobic defects hypothesis. Indeed, polyunsaturated lipids are very flexible and should thus freely reorganize to reduce the water/hydrophobic chains contacts. We can suppose there are very few defects and that it is why  $v_0$  is so low.

### Optimizing fusion *in vivo* requires both the presence of conical shape lipids and malleable lipids

Since fusion-specialized organelles as synaptic vesicles and sperm cells have specific lipid compositions and since lipids seem to be able to impact fusion propensity both through the activation energy and the nucleation rate, we wondered if this double control could play a role *in vivo*. It is noteworthy that synaptic vesicles and sperm cells exhibit a large proportion of polyunsaturated lipids (13) which, according to our predictions, facilitate the processing of fusion from an energy point of view. However, these lipids have a very low nucleation rate, which should not help the organelle to fuse easily. From our conclusions, we hypothesize that lipid malleability may facilitate fusion but requires other lipids to lead to optimum fusion speed and, actually, synaptic also contain a quite large fraction of PE lipids, which is in line with the requirement stated above.

We therefore decided to study a more physiological fusion event and mimicked the fusion that takes place between a synaptic vesicle and the plasma membrane of a neuron during exocytosis of neurotransmitters. We measured the activation energy of the fusion taking place between synaptic vesicle-type vesicles (SV), based on the lipid composition of rat synaptic vesicles (28) and plasma membrane-type vesicles (PM), relying on average plasma membranes (29).

We measured an activation energy of  $22.6 \pm 1.0$   $k_B T$  (Fig. 5). To be able to discuss this value and infer on synaptic vesicles' fusion ability, we compared this value to the activation energy of the fusion between two plasma membrane-type vesicles, which is  $27.6 \pm 0.5$   $k_B T$ . Our measurements show that synaptic vesicle compositions present a lower fusion activation energy than that of typical plasma membrane compositions, which could potentially help these organelles to fuse easily with the neurons' plasma membranes to release the neurotransmitters in the synaptic cleft. Nevertheless, it must still be noted that, fortunately, the activation energy is still too high to allow extended spontaneous fusion.



**Figure 5: Synaptic vesicle's composition has a lower fusion activation energy than that of a typical membrane.** Average initial spontaneous fusion speeds (in cycles of fusion per minute, i.e. corresponding to the fraction of fusing vesicles per minute) are represented in function of the temperature (from 27 to 47 °C) for asymmetrical fusion events between PM and SV-type membranes and for PM-PM events, as a control. Activation energy values are determined thanks to independent

*fits of the different experiments even though, for the sake of clarity, the average fusion speeds are represented (error bars are standard errors on the mean).*

We propose that this could have an importance *in vivo*, where it could allow an easy but tightly regulated membrane fusion, by having a less energy-demanding fusion course than other membranes but requiring external actors to create defects and nucleate fusion when and where it is necessary - let's say proteins by disturbing the membranes thanks to their trans-membrane anchoring.

Lipid composition could thus be a good parameter that biological membranes adjust *in vivo* to regulate their fusion. The presence of two levers could allow to facilitate fusion without enabling it to take place in an anarchic way, by requiring a destabilizing step that could be conducted by proteins.

## **Materials and Methods**

### *Materials*

DOPC (1,2-di-(9Z-octadecenoyl)-sn-glycero-3-phosphocholine), POPC (1-palmitoyl-2-oleoyl-sn-glycero-3-phosphocholine), DOPE (1,2-dioleoyl-sn-glycero-3-phosphoethanolamine), PDPC (1-palmitoyl-2-docosahexaenoyl-sn-glycero-3-phosphocholine), NBD-DOPE (1,2-dioleoyl-sn-glycero-3-phosphoethanolamine-N-(7-nitro-2-1,3-benzoxadiazol-4-yl) and Rho-DOPE (1,2-dioleoyl-sn-glycero-3-phosphoethanolamine-N-(lissamine rhodamine B sulfonyl), DPPC (1,2-dipalmitoyl-sn-glycero-3-phosphocholine), 18:0-22:6PE (1-stearoyl-2-docosahexaenoyl-sn-glycero-3-phosphoethanolamine), 18:0-20:4PE (1-stearoyl-2-arachidonoyl-sn-glycero-3-phosphoethanolamine), 18(PI)-22:6 PE (1-(1Z-octadecenyl)-2-docosahexaenoyl-sn-glycero-3-phosphoethanolamine), 18(PI)-20:4 PE (1-(1Z-octadecenyl)-2-arachidonoyl-sn-glycero-3-phosphoethanolamine), 18:0-22:6 PS (1-stearoyl-2-docosahexaenoyl-sn-glycero-3-phospho-L-serine), SM (N-stearoyl-D-erythro-sphingosylphosphorylcholine), Chol (cholesterol), BrainPC (Sphingomyelin extracted from porcine brain), BrainPE (L- $\alpha$ -phosphatidylethanolamine from porcine brain), BrainPIP2 (L- $\alpha$ -phosphatidylinositol-4,5-bisphosphate from porcine brain), BrainPS (L- $\alpha$ -phosphatidylserine from porcine brain), BrainSM (Sphingomyelin from porcine brain) were purchased from Avanti Polar Lipids and stocked in chloroform and under argon at -20°C. HEPES, KCl and Triton (Triton™ X-100) were purchased from Sigma Aldrich. A ready to use solution (Triton 4% vol/vol) was prepared by diluting 40 $\mu$ L of Triton in 1mL of pure water.

Alexa 647-NHS (Alexa Fluor™ 647 NHS Ester (Succinimidyl Ester)) was purchased from ThermoFisher.

### *Lipid vesicles formation*

Lipids are mixed and dried at the bottom of a glass tube. The solvent is evaporated under a flow of nitrogen before staying under vacuum for at least two hours. The lipid film is then rehydrated in an HEPES 25mM - KCl 100mM buffer at pH=7.4 to form multilamellar vesicles at 18mM lipid and vigorously vortexed. The solution is then frozen with liquid nitrogen and thawed 5 times before being extruded 21 times through a 50 nm pore polycarbonate membrane (Avanti Polar Lipids) and let to rest overnight at 4°C for stabilization.

Lipid composition of model plasma membrane vesicles (PM) were determined from the polar head study from Gerrit et al.'s (29). The composition of the model synaptic vesicles (SV) was determined according to the findings of Takamori et al. (28). SV vesicles contained 33% of Chol, 16% of POPC, 5.5% of DPPC, 11% of 18:0-22:6PE, 5.5% 18:0-20:4PE, 9% 18(PI)-22:6 PE, 4.5% 18(PI)-20:4 PE, 8% 18:0-22:6 PS, 4.5% SM, 1.5% NBD-DOPE and 1.5% Rho-DOPE. PM vesicles contained 50% Chol, 20% BrainPC, 12% BrainPE, 2% BrainPIP2, 5% BrainPS and 11% BrainSM.

### *Lipid mixing assay*

Fluorescent intensities are measured from the bottom in 96-well clear plates (#353072, Falcon) with a 96-well plate reader (SpectraMax M5e, Molecular Devices). NBD is excited at 460 nm and its emission is read at 538 nm. For the lipid mixing assays, non-labeled liposomes are mixed with fluorescent liposomes.

### *Data treatment*

The NBD signal is normalized by its maximum dequenching by adding detergent (Triton 0.66% vol/vol) at the end of the assay. Since the different experiments are done at different temperatures, care should be taken to convert the fraction of NBD dequenching in comparable speeds of fusion (15, 30). The initial speeds of fusion were deduced from the initial slopes of the fusion curves (representing the fraction of already fused vesicles per minute). They are plotted in function of the temperature and fitted by an exponential curve to determine two parameters: the activation energy and the nucleation rate.

### *Molecular dynamics simulations*

Molecular dynamics (MD) simulations were performed with GROMACS 2018.5 (31). The CHARMM36 force field (32) was used for all simulations. Each system was constructed with the CHARMM-GUI webserver (33). It consisted of 256 lipids surrounded by 10240 water molecules (40 waters per lipid) and KCl ions at 100 mM. Four systems were considered made of DOPC / DOPE mixtures at various ratios, namely in terms of number of lipids 256:0, 224:32, 192:64, 128:128, which translate to 0%, 12.5%, 25% and 50% of DOPE. The systems were equilibrated using the CHARMM-GUI protocol, that is, an energy minimization followed by several short MD simulations with position restraints on lipids that are progressively released. Then, a MD production run of 500 ns in the NPT ensemble was performed. Electrostatic interactions were calculated with the particle-mesh-Ewald (PME) method (34, 35), with a real-space cutoff of 1 nm. van der Waals interactions were computed using a Lennard-Jones force-switching function over 10 to 12 Å. Bond lengths were constrained using the LINCS algorithm (36). The integration time step was set to 2 fs. Water molecules were kept rigid with the SETTLE algorithm (37). The system was coupled to a Bussi thermostat (38) and to a semi-isotropic Parrinello–Rahman barostat (39) at a temperature of 303.15 K and a pressure of 1 atm. MD frames were saved every 100 ps for further analysis.

MD simulations were analyzed in terms of lipid packing defects using PackMem (25). Briefly, packing defects are small hydrophobic patches which are vertically accessible from the outside of the membrane. PackMem evaluates the area of each packing defect from a given MD frame. Then statistics can be accumulated from the many frames of each MD trajectory so that we can extract a distribution of defects which depends on lipid composition and curvature. Note that we used flat membranes in this work. Usually, packing defects are classified as “deep” defects when the hydrophobic patch is at least 1 Å below the central glycerol carbon, or “shallow” defects otherwise. Both deep and shallow defects can be merged into another category that is called “all” defects. It is this latter category that has been used in this study. Rather than characterizing the distribution for each lipid composition as is usually done (24, 25), we simply used the fraction of membrane area occupied by defects. In this work, we have decided to call these lipid packing defects “hydrophobic defects”. Molecular graphics were rendered using VMD (40).

### *DOPE labelling and quantification*

DOPC liposomes containing a various amount of DOPE (0%, 25% and 50%) are prepared as explained above. 1.5% of NBD lipids are included in the lipid mixture to be able to compare samples which do not necessarily have the same lipid concentration. The vesicle solutions are then diluted in buffer to reach a lipid concentration of 1mM. First, the external DOPE lipids are labeled by adding 100µg of Alexa 647-NHS to 50µL of these liposomes. The solution is incubated for 4h at room temperature under agitation. Then, to get rid of the unbound dyes, the solution is dialyzed over night against 4L Buffer (cutoff 10,000 kD). The quantification of the DOPE is done thanks to the measurement of the fluorescence intensity  $I_{Alexa_{ext}}$  of the remaining Alexa 647-NHS (excitation at 647 nm and emission at 671 nm). The liposomes are solubilized through detergent action (Triton at 0.67% v/v), to avoid any fluorescence quenching effect.  $I_{Alexa_{ext}}$  is normalized by  $I_{NBD_1}$ , the fluorescence intensity of NBD, that is linked to the total lipid concentration. Then, the remaining unlabeled DOPE (*i.e.* that that was initially present on the inner leaflets of the liposomes) are labeled by incubating the sample with another 100µg of Alexa 647-NHS for 4h at room temperature under agitation. The solution is dialyzed again over night against 4L Buffer (cutoff 10,000 kD), leading to a novel formation of liposomes and a very important extraction of the unbound dyes. The total DOPE of the samples is quantified by measuring Alexa's fluorescence intensity ( $I_{Alexa_{tot}}$ ), which is again normalized by NBD intensity

( $I_{NBD_2}$ ), to be able to calculate the external fraction of DOPE, that is given through: 
$$\frac{I_{Alexa_{ext}}/I_{NBD_1}}{I_{Alexa_{tot}}/I_{NBD_2}}$$

## Acknowledgement

C.F.-M. thanks the Direction Générale de l'Armement for financial support. This work was supported by Grant ANR-14-1CHN-0022-01 (to J.E.R.). The authors are grateful to one of the reviewers who provided several suggestions that greatly enhanced the quality of the discussion.

1. S. Martens and H. T. McMahon: Mechanisms of membrane fusion: disparate players and common principles. *Nat Rev Mol Cell Biol*, 9(7), 543-56 (2008) doi:10.1038/nrm2417
2. P. I. Kuzmin, J. Zimmerberg, Y. A. Chizmadzhev and F. S. Cohen: A quantitative model for membrane fusion based on low-energy intermediates. *Proc Natl Acad Sci U S A*, 98(13), 7235-40 (2001) doi:10.1073/pnas.121191898
3. T. Sollner, S. W. Whiteheart, M. Brunner, H. Erdjument-Bromage, S. Geromanos, P. Tempst and J. E. Rothman: SNAP receptors implicated in vesicle targeting and fusion. *Nature*, 362(6418), 318-24 (1993) doi:10.1038/362318a0
4. T. Weber, B. V. Zemelman, J. A. McNew, B. Westermann, M. Gmachl, F. Parlati, T. H. Sollner and J. E. Rothman: SNAREpins: minimal machinery for membrane fusion. *Cell*, 92(6), 759-72 (1998)
5. F. Li, F. Pincet, E. Perez, W. S. Eng, T. J. Melia, J. E. Rothman and D. Tareste: Energetics and dynamics of SNAREpin folding across lipid bilayers. *Nat Struct Mol Biol*, 14(10), 890-6 (2007) doi:10.1038/nsmb1310
6. R. J. Ryham, T. S. Klotz, L. Yao and F. S. Cohen: Calculating Transition Energy Barriers and Characterizing Activation States for Steps of Fusion. *Biophys J*, 110(5), 1110-24 (2016) doi:10.1016/j.bpj.2016.01.013
7. H. J. Risselada and H. Grubmuller: How SNARE molecules mediate membrane fusion: recent insights from molecular simulations. *Curr Opin Struct Biol*, 22(2), 187-96 (2012) doi:10.1016/j.sbi.2012.01.007
8. K. Wiederhold and D. Fasshauer: Is assembly of the SNARE complex enough to fuel membrane fusion? *J Biol Chem*, 284(19), 13143-52 (2009) doi:10.1074/jbc.M900703200
9. C. Francois-Martin, J. E. Rothman and F. Pincet: Low energy cost for optimal speed and control of membrane fusion. *Proc Natl Acad Sci U S A*, 114(6), 1238-1241 (2017) doi:10.1073/pnas.1621309114

10. L. V. Chernomordik and J. Zimmerberg: Bending membranes to the task: structural intermediates in bilayer fusion. *Curr Opin Struct Biol*, 5(4), 541-7 (1995) doi:10.1016/0959-440x(95)80041-7
11. L. Chernomordik: Non-bilayer lipids and biological fusion intermediates. *Chem Phys Lipids*, 81(2), 203-13 (1996) doi:10.1016/0009-3084(96)02583-2
12. P. L. Yeagle: Lipid regulation of cell membrane structure and function. *FASEB J*, 3(7), 1833-42 (1989)
13. M. Pinot, S. Vanni, S. Pagnotta, S. Lacas-Gervais, L. A. Payet, T. Ferreira, R. Gautier, B. Goud, B. Antonny and H. Barelli: Lipid cell biology. Polyunsaturated phospholipids facilitate membrane deformation and fission by endocytic proteins. *Science*, 345(6197), 693-7 (2014) doi:10.1126/science.1255288
14. D. K. Struck, D. Hoekstra and R. E. Pagano: Use of resonance energy transfer to monitor membrane fusion. *Biochemistry*, 20(14), 4093-9 (1981)
15. C. Francois-Martin and F. Pincet: Actual fusion efficiency in the lipid mixing assay - Comparison between nanodiscs and liposomes. *Sci Rep*, 7, 43860 (2017) doi:10.1038/srep43860
16. S. Aeffner, T. Reusch, B. Weinhausen and T. Salditt: Energetics of stalk intermediates in membrane fusion are controlled by lipid composition. *Proc Natl Acad Sci U S A*, 109(25), E1609-18 (2012) doi:10.1073/pnas.1119442109
17. R. P. Rand and V. A. Parsegian: Hydration Forces between Phospholipid-Bilayers. *Biochimica Et Biophysica Acta*, 988(3), 351-376 (1989) doi:10.1016/0304-4157(89)90010-5
18. M. A. Tahir, R. C. Van Lehn, S. H. Choi and A. Alexander-Katz: Solvent-exposed lipid tail protrusions depend on lipid membrane composition and curvature. *Biochim Biophys Acta*, 1858(6), 1207-15 (2016) doi:10.1016/j.bbamem.2016.01.026
19. D. P. Siegel: Energetics of intermediates in membrane fusion: comparison of stalk and inverted micellar intermediate mechanisms. *Biophys J*, 65(5), 2124-40 (1993) doi:10.1016/S0006-3495(93)81256-6
20. Y. Kozlovsky, L. V. Chernomordik and M. M. Kozlov: Lipid intermediates in membrane fusion: formation, structure, and decay of hemifusion diaphragm. *Biophys J*, 83(5), 2634-51 (2002) doi:10.1016/S0006-3495(02)75274-0
21. M. E. Haque, A. J. McCoy, J. Glenn, J. Lee and B. R. Lentz: Effects of hemagglutinin fusion peptide on poly(ethylene glycol)-mediated fusion of phosphatidylcholine vesicles. *Biochemistry*, 40(47), 14243-51 (2001) doi:10.1021/bi011308l
22. B. Kollmitzer, P. Heftberger, M. Rappolt and G. Pabst: Monolayer spontaneous curvature of raft-forming membrane lipids. *Soft Matter*, 9(45), 10877-10884 (2013) doi:10.1039/C3SM51829A
23. S. L. Leikin, M. M. Kozlov, L. V. Chernomordik, V. S. Markin and Y. A. Chizmadzhev: Membrane fusion: overcoming of the hydration barrier and local restructuring. *J Theor Biol*, 129(4), 411-25 (1987) doi:10.1016/s0022-5193(87)80021-8
24. L. Vamparys, R. Gautier, S. Vanni, W. F. Bennett, D. P. Tieleman, B. Antonny, C. Etchebest and P. F. Fuchs: Conical lipids in flat bilayers induce packing defects similar to that induced by positive curvature. *Biophys J*, 104(3), 585-93 (2013) doi:10.1016/j.bpj.2012.11.3836
25. R. Gautier, A. Bacle, M. L. Tiberti, P. F. Fuchs, S. Vanni and B. Antonny: PackMem: A Versatile Tool to Compute and Visualize Interfacial Packing Defects in Lipid Bilayers. *Biophys J*, 115(3), 436-444 (2018) doi:10.1016/j.bpj.2018.06.025
26. Y. G. Smirnova, H. J. Risselada and M. Muller: Thermodynamically reversible paths of the first fusion intermediate reveal an important role for membrane anchors of fusion proteins. *Proc Natl Acad Sci U S A*, 116(7), 2571-2576 (2019) doi:10.1073/pnas.1818200116
27. Y. Kozlovsky and M. M. Kozlov: Stalk model of membrane fusion: solution of energy crisis. *Biophys J*, 82(2), 882-95 (2002) doi:10.1016/S0006-3495(02)75450-7
28. S. Takamori, M. Holt, K. Stenius, E. A. Lemke, M. Gronborg, D. Riedel, H. Urlaub, S. Schenck, B. Brugger, P. Ringler, S. A. Muller, B. Rammner, F. Grater, J. S. Hub, B. L. De Groot, G. Mieskes, Y. Moriyama, J. Klingauf, H. Grubmuller, J. Heuser, F. Wieland and R. Jahn: Molecular anatomy of a trafficking organelle. *Cell*, 127(4), 831-46 (2006) doi:10.1016/j.cell.2006.10.030

29. G. van Meer, D. R. Voelker and G. W. Feigenson: Membrane lipids: where they are and how they behave. *Nat Rev Mol Cell Biol*, 9(2), 112-24 (2008) doi:10.1038/nrm2330
30. F. Parlati, T. Weber, J. A. McNew, B. Westermann, T. H. Sollner and J. E. Rothman: Rapid and efficient fusion of phospholipid vesicles by the alpha-helical core of a SNARE complex in the absence of an N-terminal regulatory domain. *Proc Natl Acad Sci U S A*, 96(22), 12565-70 (1999) doi:10.1073/pnas.96.22.12565
31. M. J. Abraham, T. Murtola, R. Schulz, S. Pall, J. C. Smith, B. Hess and E. Lindahl: GROMACS: High performance molecular simulations through multi-level parallelism from laptops to supercomputers. *SoftwareX*, 1-2, 19-25 (2015)
32. J. B. Klauda, R. M. Venable, J. A. Freites, J. W. O'Connor, D. J. Tobias, C. Mondragon-Ramirez, I. Vorobyov, A. D. MacKerell and R. W. Pastor: Update of the CHARMM All-Atom Additive Force Field for Lipids: Validation on Six Lipid Types. *Journal of Physical Chemistry B*, 114(23), 7830-7843 (2010) doi:10.1021/jp101759q
33. S. Jo, T. Kim, V. G. Iyer and W. Im: CHARMM-GUI: a web-based graphical user interface for CHARMM. *J Comput Chem*, 29(11), 1859-65 (2008) doi:10.1002/jcc.20945
34. T. Darden, D. York and L. Pedersen: Particle Mesh Ewald - an N.Log(N) Method for Ewald Sums in Large Systems. *Journal of Chemical Physics*, 98(12), 10089-10092 (1993) doi:Doi 10.1063/1.464397
35. U. Essmann, L. Perera, M. L. Berkowitz, T. Darden, H. Lee and L. G. Pedersen: A Smooth Particle Mesh Ewald Method. *Journal of Chemical Physics*, 103(19), 8577-8593 (1995) doi:Doi 10.1063/1.470117
36. B. Hess, H. Bekker, H. J. C. Berendsen and J. G. E. M. Fraaije: LINCS: A linear constraint solver for molecular simulations. *Journal of Computational Chemistry*, 18(12), 1463-1472 (1997) doi:Doi 10.1002/(Sici)1096-987x(199709)18:12<1463::Aid-Jcc4>3.0.Co;2-H
37. S. Miyamoto and P. A. Kollman: Settle - an Analytical Version of the Shake and Rattle Algorithm for Rigid Water Models. *Journal of Computational Chemistry*, 13(8), 952-962 (1992) doi:DOI 10.1002/jcc.540130805
38. G. Bussi, D. Donadio and M. Parrinello: Canonical sampling through velocity rescaling. *J Chem Phys*, 126(1), 014101 (2007) doi:10.1063/1.2408420
39. M. Parrinello and A. Rahman: Polymorphic Transitions in Single-Crystals - a New Molecular-Dynamics Method. *Journal of Applied Physics*, 52(12), 7182-7190 (1981) doi:Doi 10.1063/1.328693
40. W. Humphrey, A. Dalke and K. Schulten: VMD: visual molecular dynamics. *J Mol Graph*, 14(1), 33-8, 27-8 (1996) doi:10.1016/0263-7855(96)00018-5