



HAL
open science

Search for a high-mass calibrant for NALIM (Native Liquid MALDI MS): the case of mouse IgA

Edison F Zhamungui, Martine Beaufour, Martine Cadene

► To cite this version:

Edison F Zhamungui, Martine Beaufour, Martine Cadene. Search for a high-mass calibrant for NALIM (Native Liquid MALDI MS): the case of mouse IgA. Journées Françaises de Spectrométrie de Masse, Jun 2021, Virtual, France. , 2020, 10.7554/elife.56098 . hal-03404684

HAL Id: hal-03404684

<https://hal.science/hal-03404684v1>

Submitted on 28 Oct 2021

HAL is a multi-disciplinary open access archive for the deposit and dissemination of scientific research documents, whether they are published or not. The documents may come from teaching and research institutions in France or abroad, or from public or private research centers.

L'archive ouverte pluridisciplinaire **HAL**, est destinée au dépôt et à la diffusion de documents scientifiques de niveau recherche, publiés ou non, émanant des établissements d'enseignement et de recherche français ou étrangers, des laboratoires publics ou privés.

Search for a high-mass calibrant for NALIM (Native Liquid MALDI MS): the case of mouse IgA



Edison Zhamungui, Martine Beaufour, Martine Cadène
Centre de Biophysique Moléculaire, CNRS UPR4301, affiliated to Université d'Orléans, rue Charles Sadron,
45071 Orléans cedex 2 France



Introduction

Native mass spectrometry (native MS) has the unique ability to directly observe a wide range of non-covalent biomolecular complexes formed of proteins, DNA/RNA, small molecules..., while covering a wide range of applications (dynamics, stoichiometry, affinity binding,...). So far, the go-to ionization method for native MS has been electrospray [1-3]. Recently, we developed a new native MS MALDI method using liquid spots called **Native Liquid MALDI (NALIM)**. The success of this method relies mainly on a liquid matrix that enables the gentle transfer of complexes in the gas phase while avoiding the transition through the solid state, which is the basis of classical solid-spot deposition methods. By using a soluble heterodimer, we demonstrated the proof-of-concept of this new native MALDI method [4].

One of our **research axes** is to extend applications of native liquid MALDI MS methods to the observation of membrane protein complexes. Many of these molecular assemblies have expected masses in the 100 - 300 kDa mass range. Moreover, in NALIM we mainly observe 1⁺ and 2⁺ charge states, the monocharged state being largely predominant. Consequently, this type of application requires calibrant standards at high *m/z* ratios. As no commercial calibrant exists in this mass range, we decided to produce our own calibrants, and started by investigating the usability of an immunoglobulin A as calibrant.

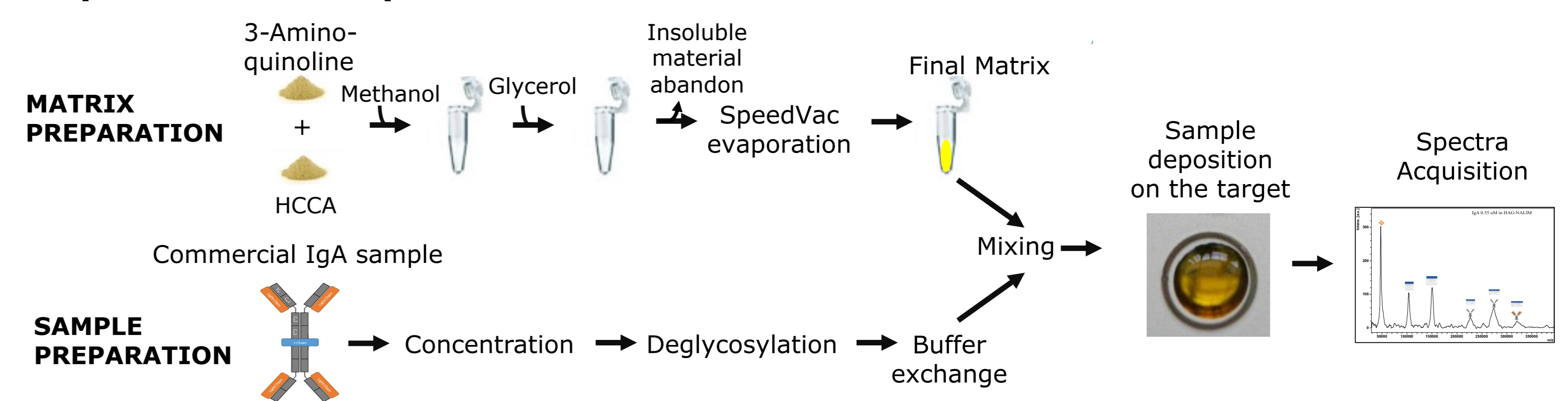
IgA: we focused our attention on this immunoglobulin as the predominant IgA forms are monomers and dimers. The monomers assemble in dimers via covalent binding with the J-Chain. The mass of this glycosylated assembly is expected to be around 360 kDa. Thus, we envisioned that this mixture, after a deglycosylation step, could be a potential calibrant covering a wide mass range in NALIM applications.

Objectives and means: find a suitable calibrant for high mass range applications in NALIM by optimizing biochemical preparation, matrix composition and extraction delay.

Materials and Methods

- The **IgA sample** is a commercial monoclonal antibody produced in mice.
- The **matrix** is a mixture of HCCA/3AQ/glycerol (1:4:6, m/m). Methanol is used to solubilize the solid chemicals and then is discarded by a vacuum concentrator system.
- Mass spectrometry instrumentation** : MALDI-TOF/TOF UltrafleXtreme (Bruker)

Experimental setup



Results

We began by optimizing the extraction delay for these high molecular mass assemblies.

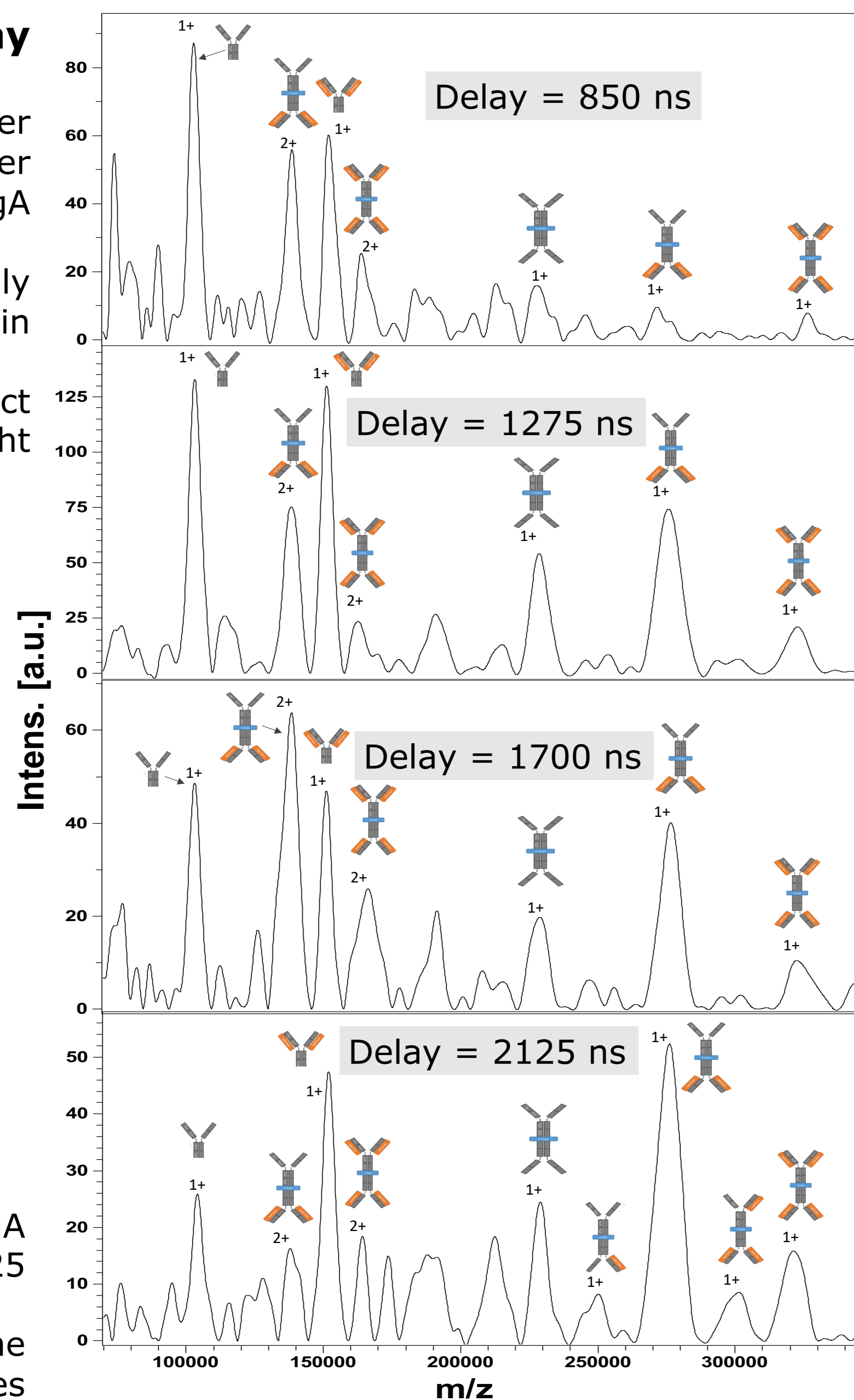
At the beginning, deglycosylation was performed using PNGase F during 24h at 37°C in soft denaturation conditions (1M urea).

Pulsed ion extraction delay (PIE delay) variation

- Spectra were recorded after deglycosylation and buffer exchange at a final IgA concentration of 0.5 μM.
- As mentioned above, we mainly observe 1⁺ and 2⁺ charge states in NALIM.
- Surprisingly, we also detect species missing 1 or more light chains (Lc).

	Monomer – 2 Lc
	Monomer
	Dimer – 4 Lc
	Dimer – 2 Lc
	Dimer

- Deglycosylation produces an IgA dimer with a mass around 325 kDa.
- By increasing the delay, the intensities of higher mass species are favored, as expected. As we are interested to have a good overview of all oligomers present in the sample, we choose an intermediate value of 1770 ns for the PIE delay for further experiments.



References

- Marcoux, J. and Robinson, C.V. *Structure*. 21, 1541–1550 (2013)
- Leney, A.C. and Heck, A.J.R. *J. Am. Soc. Mass Spectrom.* 28, 5–13 (2017)
- Chait, B.T., Cadene, M., Olinares, P.D., Rout, M.P., Shi, Y. *J. Am. Soc. Mass Spectrom.* 27, 952–965 (2016)
- Beaufour, M., Ginguené, D., Le Meur, R., Castaing, B., and Cadene, M. (2018). *J. Am. Soc. Mass Spectrom.* 29, 1981–1994.
- Cadene, M., and Chait, B.T. (2000). *Anal. Chem.* 72, 5655–5658.
- <https://www.uniprot.org/uniprot/P01878>
- Bharathkar, S.K., Parker, P.W., Malyutin, A.G., Haloi, N., Huey-Tubman, K.E., Tajkhorshid, E., Stadtmueller, B.M. *eLife*. 2020; 9: e56098. doi: 10.7554/eLife.56098

Acknowledgments

EZ is financed through a University of Orléans (UO) ministerial PhD grant complemented by the UO Edifice program. The mass spectrometer was financed by the Région Centre Val de Loire/FEDER equipment program MALDITOF.

The **biochemical preparation** was further optimized by adding steps of concentration and/or buffer exchange.

Optimal parameters included 2M urea concentration and 24h of deglycosylation time at 37°C.

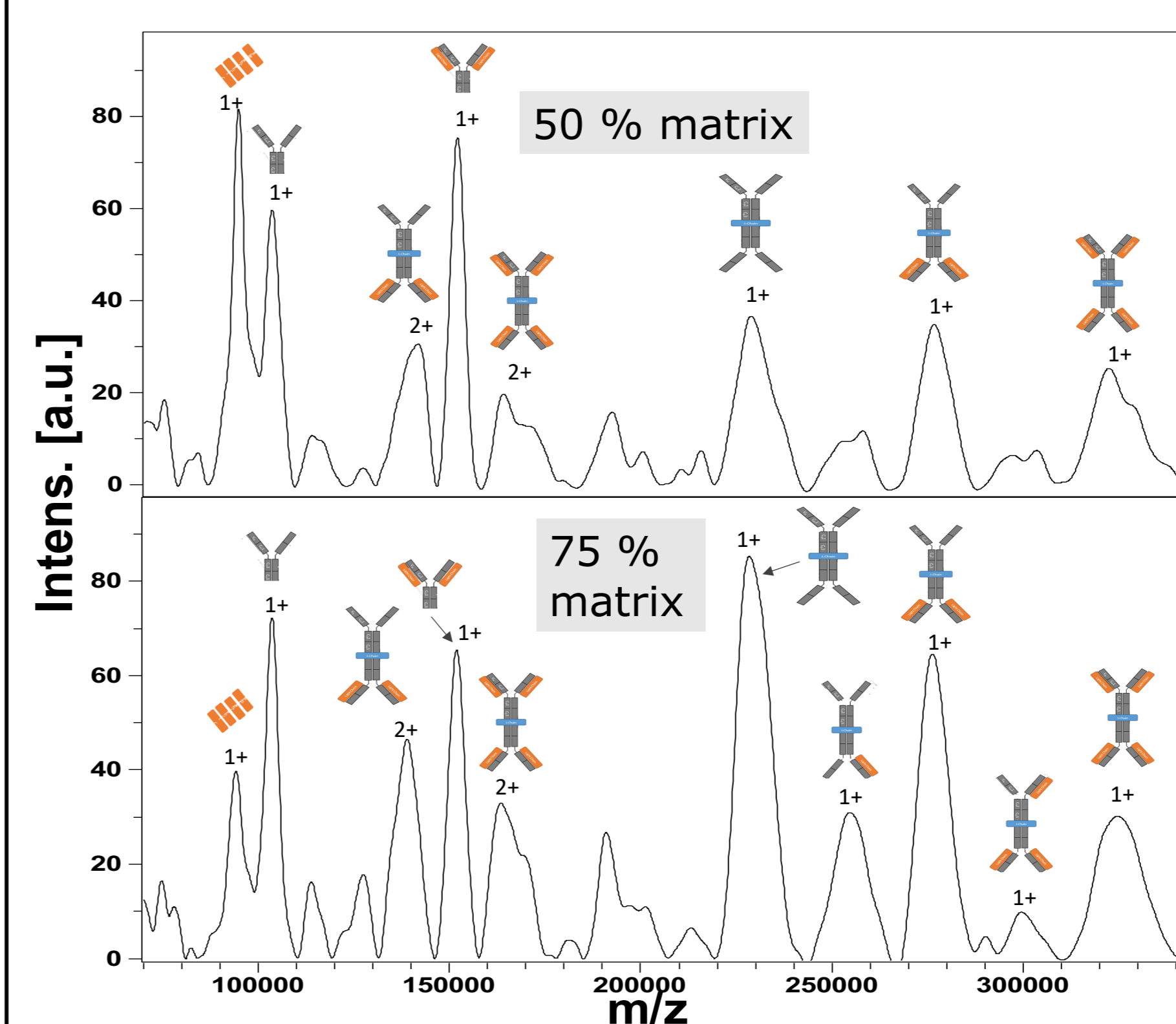
Mass determination

Here are listed the species for which masses were determined by using spots on an ultra-thin layer of HCCA [5] and then used as calibrant points.

Species (1 ⁺ charge)					
Used as calibrant point	<input checked="" type="checkbox"/>	<input checked="" type="checkbox"/>	<input type="checkbox"/>	<input checked="" type="checkbox"/>	<input type="checkbox"/>

Matrix composition variation

- When mixing sample and matrix, we can set different sample factor dilutions :
- 1/2 -> 50 % matrix final concentration
- 1/4 -> 75 % matrix final concentration



- Spectra were recorded after deglycosylation and buffer exchange at a final IgA concentration of 0.55 μM.
- A higher concentration of matrix increases the dimer/monomer ratio, mostly by increasing the dimers intensity. This effect is less marked for species which have lost 1 to 3 Lc.
- Despite increasing urea concentration during the deglycosylation step, we still have broad peaks for the dimer species.

Discussion/Conclusion

We chose an IgA as a potential calibrant to cover the 300 kDa range thanks to Ig dimerization. NALIM analysis of a commercial mouse IgA shows that some species missing one or more Lc are present. A literature search provides the explanation: while in humans IgAs, a Lc is always bound to an Hc (heavy chain) *via* disulfide bridges, in mouse IgA Lc binds to Hc in a noncovalent manner [6]. NALIM thus clearly shows its ability to conserve noncovalent biomolecular complexes.

While this IgA preparation covers a wide mass range, the dimer species still appear as broad peaks, affecting accuracy and the quality of the calibration. The recently solved cryoEM structure of mouse IgA reveals that several N-glycosylation sites are much less accessible when the J-chain is present [7], so that dimers may be more resistant to deglycosylation than monomers.

