



HAL
open science

Deposition, recycling, and archival of nitrate stable isotopes between the air–snow interface: comparison between Dronning Maud Land and Dome C, Antarctica

V. Holly L. Holly L Winton, Alison Ming, Nicolas Caillon, Lisa Hauge, Anna E Jones, Joel Savarino, Xin Yang, Markus M Frey

► To cite this version:

V. Holly L. Holly L Winton, Alison Ming, Nicolas Caillon, Lisa Hauge, Anna E Jones, et al.. Deposition, recycling, and archival of nitrate stable isotopes between the air–snow interface: comparison between Dronning Maud Land and Dome C, Antarctica. *Atmospheric Chemistry and Physics*, 2020, 20 (9), pp.5861 - 5885. 10.5194/acp-20-5861-2020 . hal-03402284

HAL Id: hal-03402284

<https://hal.science/hal-03402284v1>

Submitted on 25 Oct 2021

HAL is a multi-disciplinary open access archive for the deposit and dissemination of scientific research documents, whether they are published or not. The documents may come from teaching and research institutions in France or abroad, or from public or private research centers.

L'archive ouverte pluridisciplinaire **HAL**, est destinée au dépôt et à la diffusion de documents scientifiques de niveau recherche, publiés ou non, émanant des établissements d'enseignement et de recherche français ou étrangers, des laboratoires publics ou privés.



Deposition, recycling, and archival of nitrate stable isotopes between the air–snow interface: comparison between Dronning Maud Land and Dome C, Antarctica

V. Holly L. Winton¹, Alison Ming¹, Nicolas Caillon², Lisa Hauge¹, Anna E. Jones¹, Joel Savarino², Xin Yang¹, and Markus M. Frey¹

¹British Antarctic Survey, Cambridge, CB3 0ET, UK

²University of Grenoble Alpes, CNRS, IRD, Grenoble INP, IGE, 38000 Grenoble, France

Correspondence: V. Holly L. Winton (holly.winton@vuw.ac.nz)

Received: 23 July 2019 – Discussion started: 10 September 2019

Revised: 31 March 2020 – Accepted: 14 April 2020 – Published: 15 May 2020

Abstract. The nitrogen stable isotopic composition in nitrate ($\delta^{15}\text{N-NO}_3^-$) measured in ice cores from low-snow-accumulation regions in East Antarctica has the potential to provide constraints on past ultraviolet (UV) radiation and thereby total column ozone (TCO) due to the sensitivity of nitrate (NO_3^-) photolysis to UV radiation. However, understanding the transfer of reactive nitrogen at the air–snow interface in polar regions is paramount for the interpretation of ice core records of $\delta^{15}\text{N-NO}_3^-$ and NO_3^- mass concentrations. As NO_3^- undergoes a number of post-depositional processes before it is archived in ice cores, site-specific observations of $\delta^{15}\text{N-NO}_3^-$ and air–snow transfer modelling are necessary to understand and quantify the complex photochemical processes at play. As part of the Isotopic Constraints on Past Ozone Layer Thickness in Polar Ice (ISOLICE) project, we report new measurements of NO_3^- mass concentration and $\delta^{15}\text{N-NO}_3^-$ in the atmosphere, skin layer (operationally defined as the top 5 mm of the snowpack), and snow pit depth profiles at Kohnen Station, Dronning Maud Land (DML), Antarctica. We compare the results to previous studies and new data, presented here, from Dome C on the East Antarctic Plateau. Additionally, we apply the conceptual 1D model of TRansfer of Atmospheric Nitrate Stable Isotopes To the Snow (TRANSITS) to assess the impact of NO_3^- recycling on $\delta^{15}\text{N-NO}_3^-$ and NO_3^- mass concentrations archived in snow and firn. We find clear evidence of NO_3^- photolysis at DML and confirmation of previous theoretical, field, and laboratory studies that UV photolysis is driving NO_3^- recycling and redistribution at DML. Firstly, strong denitrification of the snowpack is observed through

the $\delta^{15}\text{N-NO}_3^-$ signature, which evolves from the enriched snowpack (-3% to 100%), to the skin layer (-20% to 3%), to the depleted atmosphere (-50% to -20%), corresponding to mass loss of NO_3^- from the snowpack. Based on the TRANSITS model, we find that NO_3^- is recycled two times, on average, before it is archived in the snowpack below 15 cm and within 0.75 years (i.e. below the photic zone). Mean annual archived $\delta^{15}\text{N-NO}_3^-$ and NO_3^- mass concentration values are 50% and 60 ng g^{-1} , respectively, at the DML site. We report an *e*-folding depth (light attenuation) of 2–5 cm for the DML site, which is considerably lower than Dome C. A reduced photolytic loss of NO_3^- at DML results in less enrichment of $\delta^{15}\text{N-NO}_3^-$ than at Dome C mainly due to the shallower *e*-folding depth but also due to the higher snow accumulation rate based on TRANSITS-modelled sensitivities. Even at a relatively low snow accumulation rate of 6 cm yr^{-1} (water equivalent; w.e.), the snow accumulation rate at DML is great enough to preserve the seasonal cycle of NO_3^- mass concentration and $\delta^{15}\text{N-NO}_3^-$, in contrast to Dome C where the depth profiles are smoothed due to longer exposure of surface snow layers to incoming UV radiation before burial. TRANSITS sensitivity analysis of $\delta^{15}\text{N-NO}_3^-$ at DML highlights that the dominant factors controlling the archived $\delta^{15}\text{N-NO}_3^-$ signature are the *e*-folding depth and snow accumulation rate, with a smaller role from changes in the snowfall timing and TCO. Mean TRANSITS model sensitivities of archived $\delta^{15}\text{N-NO}_3^-$ at the DML site are 100% for an *e*-folding depth change of 8 cm, 110% for an annual snow accumulation rate change of 8.5 cm yr^{-1} w.e., 10% for a change in the dominant snow deposition season between

winter and summer, and 10‰ for a TCO change of 100 DU (Dobson units). Here we set the framework for the interpretation of a 1000-year ice core record of $\delta^{15}\text{N-NO}_3^-$ from DML. Ice core $\delta^{15}\text{N-NO}_3^-$ records at DML will be less sensitive to changes in UV than at Dome C; however the higher snow accumulation rate and more accurate dating at DML allows for higher-resolution $\delta^{15}\text{N-NO}_3^-$ records.

1 Introduction

Nitrate (NO_3^-) is a naturally occurring ion and plays a major role in the global nitrogen cycle. It is one of the most abundant ions in Antarctic snow and is commonly measured in ice cores (e.g. Wolff, 1995). Nitrate in polar ice provides constraints on past solar activity (Traversi et al., 2012), NO_3^- sources, and the oxidative capacity of the atmosphere (Geng et al., 2017; Mulvaney and Wolff, 1993; Hastings et al., 2009, 2004; McCabe et al., 2007; Savarino et al., 2007; Morin et al., 2008). However, NO_3^- is a nonconservative ion in snow, and due to post-depositional processes (e.g. Mulvaney et al., 1998; Zatko et al., 2016), the interpretation of NO_3^- mass concentration records from ice core records is challenging (Erbland et al., 2015). The recent development of the analysis of the nitrogen isotopic composition of NO_3^- ($\delta^{15}\text{N-NO}_3^-$) in snow, ice, and aerosol provides a powerful means to understand the sources and processes involved in NO_3^- post-depositional processes, i.e. NO_3^- recycling at the interface between air and snow.

Primary sources of reactive nitrogen species to the Antarctic lower atmosphere and snowpack include the sedimentation of polar stratospheric clouds (PSCs) in late winter (Savarino et al., 2007), in addition to tropospheric transport of inorganic NO_3^- from lightning, biomass burning and soil emissions (Lee et al., 2014), and, to a minor extent, advection of oceanic organic nitrate such as methyl nitrate (CH_3NO_3) and peroxyacyl nitrates (PAN) (Jacobi et al., 2000; Jones et al., 1999; Beyersdorf et al., 2010). In the stratosphere, NO_3^- is produced through the stratospheric oxidation of nitrous oxide (N_2O) from extraterrestrial fluxes of energetic particles and solar radiation (Savarino et al., 2007; Wolff, 1995; Wagenbach et al., 1998). A local secondary source of reactive nitrogen (nitrous acid, HONO, and nitrogen oxides, NO_x) originates from post-depositional processes driven by sunlight, leading to re-emission from the snowpack and subsequent deposition to surface snow (Jones et al., 2001; Honrath et al., 1999; Oncley et al., 2004; Frey et al., 2009; Savarino et al., 2007; Mulvaney et al., 1998).

Local NO_x emissions, produced from NO_3^- photolysis in polar regions, are expected to have a lifetime in the polar troposphere of < 1 d before they are oxidized to nitric acid (HNO_3) at Dome C and South Pole station (Davis et al., 2004b). Nitrate photolysis occurs at wavelengths (λ) of 290–345 nm with a maximum at 320 nm. Photolysis rate (J) de-

pends on the adsorption cross section of NO_3^- , the quantum yield, and actinic flux within the snowpack. Photochemical production of nitrogen dioxide (NO_2) is dependent on the NO_3^- mass concentration in the snowpack, the snowpack properties, and the intensity of solar radiation within the snowpack. The last of which is sensitive to solar zenith angle and snow optical properties, i.e. scattering and adsorption coefficients, which depend on snow density and morphology, and the light-absorbing impurity content (e.g. dust and black carbon) (France et al., 2011; Erbland et al., 2015; Zatko et al., 2013). Model results from Zatko et al. (2016) suggest that the range of modelled NO_x fluxes from the snowpack to the overlying air are similar in both polar regions due to the opposing effects of higher concentrations of both photolabile NO_3^- and light-absorbing impurities in Antarctica and Greenland, respectively. At Dome C, the light penetration depth (e -folding depth) is ~ 10 cm for windpack layers and ~ 20 cm for hoar layers (France et al., 2011). Based on the propagation of light into the snowpack, the snowpack can be divided into three layers. The first layer is known as the skin layer (5 mm thick), where direct solar radiation is converted into diffuse radiation. The second layer is called the active photic zone (below the skin layer), where solar radiation is effectively diffuse, and the intensity of the radiation decays exponentially (Warren, 1982). The third layer is called the archived zone (below the active photic zone), where no photochemistry occurs.

Previous research has focused predominantly at Dome C on the high-elevation polar plateau. Here, the exponential decay of NO_3^- mass concentrations in the snowpack were attributed to either evaporation or ultraviolet (UV) photolysis (Röthlisberger et al., 2000, 2002). The open debate of which post-depositional process controlled NO_3^- mass concentrations in the snowpack led to the use of a new isotopic tool, the nitrogen isotopic composition of NO_3^- ($\delta^{15}\text{N-NO}_3^-$; Blunier et al., 2005). More recently, theoretical (Frey et al., 2009), laboratory (Meusinger et al., 2014; Erbland et al., 2013, 2015; Shi et al., 2019; Berhanu et al., 2014), and field (Erbland et al., 2013; Frey et al., 2009; Shi et al., 2015) evidence has shown that NO_3^- mass loss from the surface snow to the overlying atmosphere and its associated isotopic fractionation is driven by photolysis. Fractionation constants, which assume a Rayleigh single loss and irreversible process of NO_3^- removal from the snow between phases during evaporation–condensation processes, have been calculated to separate the isotopic signature of evaporation and photolysis processes. As this approach may oversimplify the processes occurring at the air–snow interface, Erbland et al. (2013) referred to the quantity as an “apparent” fractionation constant ($^{15}\epsilon_{\text{app}}$). Thus, the apparent fractionation constant represents the integrated isotopic effect of the processes involving NO_3^- in the surface of the snowpack and in the lower atmosphere. Fractionation constants associated with laboratory studies and field observations of NO_3^- photolysis are large, $^{15}\epsilon_{\text{app}} = -34\text{‰}$ (Berhanu et al., 2014; Meusinger et

al., 2014) and $-54 < {}^{15}\epsilon_{\text{app}} < -60\%$ (Frey et al., 2009; Erbland et al., 2013), respectively. The negative fractionation constant obtained from photolysis implies that the remaining NO_3^- in the skin layer snow is enriched in $\delta^{15}\text{N-NO}_3^-$. In turn, the atmosphere is left with the source of NO_x that is highly depleted in $\delta^{15}\text{N-NO}_3^-$. In comparison, nitrate evaporation from the snowpack has a ${}^{15}\epsilon_{\text{app}}$ of ~ 0 as determined by two independent studies (Erbland et al., 2013; Shi et al., 2019). This indicates that during NO_3^- evaporation, the air above the snow is not replenished, and thus there is only a small NO_3^- mass loss. As the fractionation associated with photolytic loss is large, and the isotope effects of evaporation are negligible (Shi et al., 2019), it follows that evaporation of NO_3^- is negligible on high-elevation Antarctic sites (Erbland et al., 2013; Shi et al., 2019).

Year-round measurements of NO_3^- mass concentrations and $\delta^{15}\text{N-NO}_3^-$ in the skin layer and atmosphere at Dome C have provided insights into the annual NO_3^- cycle in Antarctica (Fig. 1; Erbland et al., 2013). Additional to year-round troposphere transport of NO_3^- (Lee et al., 2014), in the early winter, the stratosphere undergoes denitrification via formation of PSCs. As PSCs sediment slowly, there is a delay between the maximum stratospheric NO_3^- mass concentration and the maximum NO_3^- mass concentration deposited in the skin layer in late winter (Mulvaney and Wolff, 1993; Savarino et al., 2007). In spring, surface UV increases and initiates photolysis-driven post-depositional processes, which redistribute NO_3^- between the snowpack and overlying air throughout the sunlit summer season. This results in the $\delta^{15}\text{N-NO}_3^-$ isotopic enrichment of the NO_3^- skin layer reservoir and maximum atmospheric NO_3^- mass concentrations in October–November. In summer, NO_3^- resembles a strongly asymmetric distribution within the atmosphere–snow column, with the bulk residing in the skin layer and only a small fraction in the atmospheric column above. Furthermore, snow pit profiles display an exponential decrease in NO_3^- mass concentration and an enrichment in the $\delta^{15}\text{N-NO}_3^-$ composition with depth, indicating that post-depositional processes significantly modify the original NO_3^- mass concentration and $\delta^{15}\text{N-NO}_3^-$ composition there (Erbland et al., 2013; Frey et al., 2009).

This research at Dome C laid the foundation for Erbland et al. (2015) to derive a conceptual model of UV-photolysis-induced post-depositional processes of NO_3^- at the air–snow interface. Transfer of Atmospheric Nitrate Stable Isotopes To the Snow (TRANSITS) is a conceptual multilayer 1D model which aims to represent NO_3^- recycling at the air–snow interface including processes relevant for NO_3^- snow photochemistry (UV photolysis of NO_3^- , emission of NO_x , local re-oxidation, and deposition of HNO_3) and explicitly calculates NO_3^- mass concentrations and $\delta^{15}\text{N-NO}_3^-$ in snow. The term “ NO_3^- recycling” refers to the following processes. Nitrate on the surface of a snow crystal can be lost from the snowpack (Dubowski et al., 2001), either by UV photolysis or evaporation. UV photolysis produces NO , NO_2 , and

HONO , while only HNO_3 can evaporate. Both of these processes produce reactive nitrogen that can be released from snow crystal into the interstitial air and rapidly transported out of the snowpack to the overlying air via wind pumping (Zatko et al., 2013; Jones et al., 2000, 2001; Honrath et al., 1999). Here, NO_2 is either oxidized to HNO_3 , which undergoes wet or dry deposition back to the skin layer within a day, or transported away from the site (Davis et al., 2004a). If HNO_3 is redeposited to the skin layer, it is available for NO_3^- photolysis and/or evaporation again. Any locally produced NO_2 and NO_3^- that is transported away from the site of emission represents a loss of NO_3^- from the snowpack. Nitrate recycling can occur multiple times before NO_3^- is eventually archived below the active photic zone in firm/ice cores (Davis et al., 2008; Erbland et al., 2015; Zatko et al., 2016; Sofen et al., 2014).

The NO_3^- signal in the snowpack is dependent on the snow accumulation rate. At sites with very low snow accumulation rates (i.e. Dome C: $2.5\text{--}3\text{ cm yr}^{-1}$), NO_3^- is not preserved in the snowpack because snow layers remain close to the surface and in contact with the overlying atmosphere for a relatively long time, enhancing the effect of post-depositional processes which erase the source signature of $\delta^{15}\text{N-NO}_3^-$. Three distinct transects from coastal Antarctica to the East Antarctic Plateau show that NO_3^- isotopic fractionation is strongest with decreasing snow accumulation (Shi et al., 2018; Erbland et al., 2013; Noro et al., 2018). Skin layer NO_3^- mass concentrations are significantly higher at low-snow-accumulation sites, for example ~ 160 (winter) to 1400 ng g^{-1} (summer) at Dome C compared to 50 (winter) to 300 ng g^{-1} (summer) at Dumont d’Urville (DDU) on the Antarctic coast. In contrast to low-snow-accumulation sites, NO_3^- loss is less pronounced on the coast, and seasonal cycles of NO_3^- mass concentration and $\delta^{15}\text{N-NO}_3^-$ are preserved in the snowpack (Shi et al., 2015; Erbland et al., 2013). Erbland et al. (2013) suggested that NO_3^- loss at the coast reflects both photolysis and evaporation processes, while Shi et al. (2015) proposed that NO_3^- loss at the coast cannot be fully explained by local post-deposition processes and that seasonal cycles in the snowpack reflect stratospheric and troposphere NO_3^- sources during the cold and warm seasons, respectively. Furthermore, the strong inverse linear relationship between ice core NO_3^- mass concentration and accumulation rate was revealed in a composite of seven ice cores across Dronning Maud Land (DML; Pasteris et al., 2014). Over longer timescales, UV-driven post-depositional processing of NO_3^- is also driven by changes in the degree of post-depositional loss of NO_3^- with greater NO_3^- loss during the glacial period relative to the Holocene. The observed glacial–interglacial difference in post-depositional processing of NO_3^- is dominated by variations in snow accumulation rate (Geng et al., 2015).

Yet, NO_3^- photolysis leaves its own process-specific imprint in the snowpack (Shi et al., 2019; Erbland et al., 2015, 2013), which opens up the possibility of using $\delta^{15}\text{N-NO}_3^-$ to

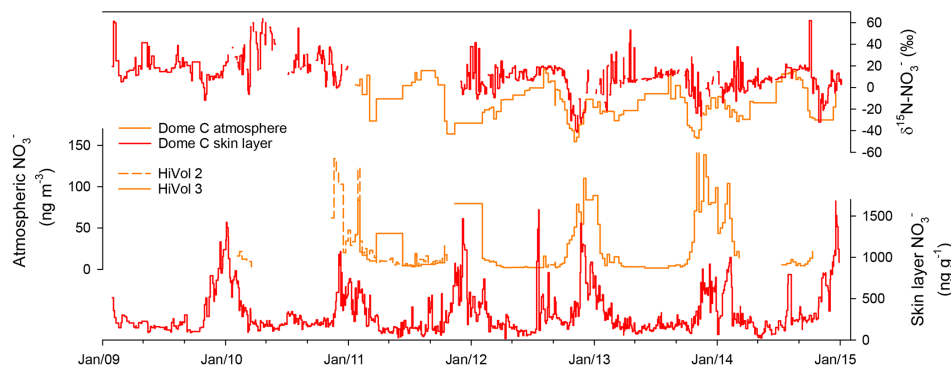


Figure 1. Year-round atmospheric and skin layer NO_3^- mass concentration and $\delta^{15}\text{N-NO}_3^-$ at Dome C. Two high-volume aerosol samplers were used at Dome C (HiVol 2 and HiVol 3) over the campaign and showed good reproducibility. Data sources: Erbland et al. (2013) (for years 2009–2010); this study (for 2011–2015).

infer past surface UV variability (Frey et al., 2009). However, NO_3^- photolysis rates in snow depend on a number of site-specific factors as does the degree of photolytic isotopic fractionation of NO_3^- eventually preserved in ice cores (Erbland et al., 2013; Berhanu et al., 2014). These factors need to be quantitatively understood at a given ice core site to enable quantitative interpretation of ice core records. Here, we carry out a comprehensive study of the air–snow transfer of NO_3^- at Kohnen Station in DML, East Antarctica, through NO_3^- mass concentration and $\delta^{15}\text{N-NO}_3^-$ measurements in the atmosphere, skin layer, and snow pits and compare the observations to new and published (Erbland et al., 2015, 2013; Frey et al., 2009) observations from Dome C. Published data from Dome C comprises year-round atmospheric and skin layer measurements from 2009 to 2010 (Erbland et al., 2013) and multiple snow pit profiles (Erbland et al., 2013; Frey et al., 2009). New data from Dome C encompass an extended time series at Dome C of year-round atmospheric and skin layer NO_3^- mass concentration and $\delta^{15}\text{N-NO}_3^-$ from 2011 to 2015 (Fig. 1). Due to the previous research outlined above, we assume that the photolysis is the dominant driver of NO_3^- post-depositional processes and later assess the validity of this assumption (Sect. 3.3). We apply the TRANSITS model (Erbland et al., 2015) to (i) understand how NO_3^- mass concentrations and $\delta^{15}\text{N-NO}_3^-$ values are archived in deeper snow and ice layers and (ii) investigate the sensitivity of changes in the past snow accumulation rate, snowfall timing, e -folding depth of the snow photic zone, and total column ozone (TCO) to the $\delta^{15}\text{N-NO}_3^-$ signature. In order to interpret this novel UV proxy, it is paramount to understand the air–snow transfer processes specific to an ice core site and how $\delta^{15}\text{N-NO}_3^-$ is archived in the deeper snow and ice layers (Geng et al., 2015; Morin et al., 2009; Erbland et al., 2015). Within the framework of the Isotopic Constraints on Past Ozone Layer Thickness in Polar Ice (ISOL-ICE) project, which aims to understand natural causes of past TCO variability, this study provides a basis for the interpretation of $\delta^{15}\text{N-NO}_3^-$ from a

1000-year ice core recovered in 2016/2017 at Kohnen Station.

2 Methods

2.1 Study sites

The ISOL-ICE campaign was carried out at the summer-only, continental Kohnen Station where the deep European Project for Ice Coring in Antarctica (EPICA) Dronning Maud Land (EDML; $75^\circ 00' \text{ S}$, $0^\circ 04' \text{ E}$; 2982 m a.s.l.; <https://www.awi.de/en/expedition/stations/kohnen-station.html>, last access: 8 April 2019) ice core was recovered in 2001–2006 to a depth of $\sim 2800 \text{ m}$ (Wilhelms et al., 2017). As part of the ISOL-ICE campaign, a new ice core (ISOL-ICE; Winton et al., 2019a) was drilled 1 km from the EDML borehole (Fig. 2a–b). In addition, the ISOL-ICE air–snow transfer study site was located $\sim 200 \text{ m}$ from the EDML ice core site (Fig. 2c). Here we compare two ice core drilling sites in Antarctica: Kohnen Station (referred to as DML henceforth) and Dome C ($75^\circ 05' 59'' \text{ S}$, $123^\circ 19' 56'' \text{ E}$; Fig. 2). Both sites are similar in terms of the latitude and therefore in terms of radiative forcing at the top of the atmosphere (Table 1). Satellite images of TCO over Antarctica show that the lowest annual TCO values are centred over the South Pole region encompassing DML and usually Dome C, although the spatial variability is significant from year to year (<https://ozonewatch.gsfc.nasa.gov/>, last access: 4 March 2019). The sites are different in terms of their location with respect to moisture source, elevation, and precipitation regime. The DML site is situated $\sim 550 \text{ km}$ from the ice shelf edge, is subject to cyclonic activity, and receives $\sim 80 \%$ of its precipitation from frontal clouds (Reijmer and Oerlemans, 2002). Dome C is more remote ($\sim 1100 \text{ km}$ from the coast), and diamond dust is the dominant form of precipitation. The annual snow accumulation rate also differs between the sites; while both sites have exceptionally low accumulation compared to

the coast, DML (annual mean: 6 cm yr^{-1} w.e.; Hofstede et al., 2004; Sommer et al., 2000) receives more than double that of Dome C (annual mean: 2.5 cm yr^{-1} w.e.; Le Meur et al., 2018).

2.2 Snow and aerosol sampling

Daily skin layer samples, operationally defined as the top 5 mm of the snowpack following Erbland et al. (2013), were collected from the DML site (Fig. 2c) in January 2017 during the ISOL-ICE ice core drilling and air–snow transfer campaign. To prevent contamination from the nearby Kohnen Station, snow samples were collected from the “flux site” within the station’s designated clean air sector (defined as 45° from both ends of the station building) located $\sim 1 \text{ km}$ from the station (Fig. 2c). The skin layer samples were collected in polyethylene bags (Whirl-pak[®]) using a stainless steel trowel. A total of 45 skin layer samples were collected daily between 31 December 2016 and 29 January 2017 from a designated sampling site during the campaign ($75^\circ 00.184' \text{ S}$, $000^\circ 04.527' \text{ E}$; Fig. 2c). To determine the spatial variability of NO_3^- in the skin layer at the flux site, an additional five skin layer samples were collected in a $\sim 2500 \text{ m}^2$ area of the flux site ($75^\circ 00.161' \text{ S}$ – $000^\circ 04.441' \text{ E}$, $75^\circ 00.175' \text{ S}$ – $000^\circ 04.518' \text{ E}$; Fig. 2c).

Adjacent to the skin layer samples, snow was sampled from a 1.6 m snow pit at the flux site (snow pit B; Fig. 2c) and a 2 m snow pit at the “ice core” site (snow pit A; Fig. 2b). Two parallel profiles were sampled for (i) major ion mass concentrations (including NO_3^-) collected in prewashed 50 mL Corning[®] centrifuge tubes at 3 cm resolution by inserting the tube directly into the snow face and (ii) stable NO_3^- isotope analysis collected in Whirl-pak[®] bags at 2 cm resolution using a custom-made stainless-steel tool. Exposure blanks (following the same method as the samples by opening the tube/Whirl-pak[®] bag at the field site but not filling the sample container with snow) were also collected for both types of samples. Snow density and temperature were measured every 3 cm, and a visual log of snow pit stratigraphy was recorded.

Daily aerosol filters were collected using high-volume aerosol samplers custom built at the Institute of Environmental Geosciences (IGE), University of Grenoble Alpes, France, described previously (Frey et al., 2009; Erbland et al., 2013). The high-volume aerosol sampler collected atmospheric aerosol on glass fibre filters (Whatman GF/A filter sheets; $20.3 \text{ cm} \times 25.4 \text{ cm}$) at an average flow rate of $1.2 \text{ m}^3 \text{ min}^{-1}$ at standard temperature and pressure (STP; temperature: 273.15 K ; pressure: 1 bar) to determine the mass concentration and isotopic composition of atmospheric NO_3^- . It is assumed that the atmospheric NO_3^- collected on glass fibre filters represents the sum of atmospheric particulate NO_3^- and HNO_3 (gas phase). The bulk of HNO_3 present in the gas phase is most likely adsorbed to aerosols on the filter, as described previously (Frey et al., 2009). Following the terminology of Erbland et al. (2013), we refer to “atmo-

spheric NO_3^- ” as the combination (i.e. total) of HNO_3 (gas phase) and particulate NO_3^- , and it is represented by the NO_3^- mass concentrations measured on aerosol filters.

The high-volume aerosol sampler was located 1 m above the snow surface at the flux site at the DML site (Fig. 2c), where a total of 35 aerosol filters were sampled daily between 3 and 27 January 2017. In addition, we coordinated an intensive 4 h sampling campaign in phase with Dome C, East Antarctica (Fig. 2), between 21 and 23 January 2017. At Dome C, a high-volume aerosol sampler was located on the roof of the atmospheric shelter (6 m above the snow surface), where a total of 12 samples were collected. At DML, loading and changing of aerosol collection substrates was carried out in a designated clean area. Aerosol-laden filters were transferred into individual double ziplock plastic bags immediately after collection and stored frozen until analysis at the British Antarctic Survey (BAS; major ions) and IGE (NO_3^- isotopic composition). For the atmospheric NO_3^- work, three types of filter blanks were carried out, (i) laboratory filter blanks ($n = 3$; Whatman GF/A filters that underwent the laboratory procedures without going into the field), (ii) procedural filter blanks (DML: $n = 4$; Dome C: $n = 1$; filters that had been treated as for normal samples but which were not otherwise used; once a week, during daily filter change-over, a procedural blank filter was mounted in the aerosol collector for 5 min without the collector pump in operation – this type of filter provides an indication of the operational blank associated with the sampling procedure), and (iii) 24 h exposure filter blanks sampled at the beginning and end of the field campaign (DML: $n = 2$; Dome C: $n = 1$; filters treated like a procedural blank but left in the collector for 24 h). All samples were kept frozen below -20°C during storage and transport prior to analysis.

In addition, skin layer and aerosol samples were sampled continuously at Dome C over the period 2009–2015 following Erbland et al. (2013) and Frey et al. (2009). The sampling resolution for the skin layer was every 2–4 d and weekly for aerosol samples. Data from 2009 to 2010 have previously been published by Erbland et al. (2013), and we report the 2011–2015 data here (Fig. 1).

2.3 Major ion mass concentrations in snow and aerosol

Atmospheric NO_3^- and other major ions were extracted in 40 mL of ultrapure water (resistivity of $18.2 \text{ M}\Omega$; Milli-Q water) by centrifugation using Millipore Centricon[®] Plus-70 filter units (10 kD filters) in a class-100 clean room at BAS. Major ion mass concentrations in DML snow samples were determined in an aliquot of melted snow from skin layer and snow pit samples and aerosol extracts by suppressed ion chromatography (IC) using a Dionex[™] ICS-4000 Integrated Capillary HPLC[™] System ion chromatograph. A suite of anions, including NO_3^- , chloride (Cl^-), methanesulfonic acid (MSA), and sulfate (SO_4^{2-}), were determined using an AS11-HC column and a CES 500 suppressor. Cations, including

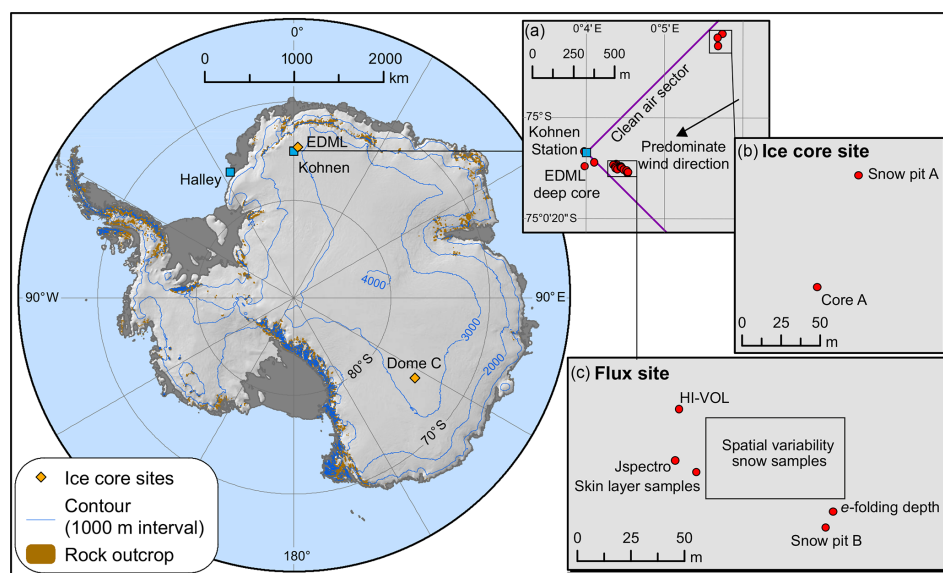


Figure 2. Map of ISOL-ICE ice core drilling and atmospheric campaign and ice core sites and Antarctica stations mentioned in this study. (a) Insert of Kohnen Station in Dronning Maud Land (DML) highlighting the predominate wind direction, deep EDML ice core site, and the ISOL-ICE (b) “ice core” and (c) “flux” sites. (b) ISOL-ICE “ice core” site showing ice core, firn core, and snow pit A locations. (c) ISOL-ICE “flux” site showing location of in situ atmospheric instruments, surface snow, snow pit, and aerosol sampling locations, and e -folding depth measurements.

Table 1. Site characteristics of Dronning Maud Land (DML) and Dome C ice core sites.

	DML	Dome C
Latitude ($^{\circ}$ S)	75	75
Elevation (m a.s.l.)	2892	3233
Distance from the coast (km)	550	900
Mean snow accumulation (cm yr^{-1} ; w.e.)	6 ^a	2.5 ^b
Predominate wind direction ($^{\circ}$)	45	180–200
Mean summer temperature ($^{\circ}$ C)	−28 ^c	−30 ^d
Annual mean temperature ($^{\circ}$ C)	−41 ^c	−52 ^d
Maximum summer temperature ($^{\circ}$ C)	−9 ^c	−17 ^d
Minimum winter temperature ($^{\circ}$ C)	−74 ^c	−80 ^d
e -folding depth (cm)	2–5 ^d	10–20 ^f
Average January nitrate mass concentration in skin layer (ng g^{-1})	230 ^d	600 ^e
Average annual nitrate mass concentration in firn (ng g^{-1})	60 ^d	50 ^g
Average January nitrate mass concentration in atmosphere (ng m^{-3})	10 ^d	60 ^e

^a Sommer et al. (2000); Hofstede et al. (2004). ^b Le Meur et al. (2018). ^c University of Utrecht (AWS9; DML05/Kohnen). ^d Erbland et al. (2013). ^e This study. ^f France et al. (2011). ^g Frey et al. (2009).

sodium (Na^+), were determined using a CS12A column and a CES 500 suppressor. During the course of the sample sequence, instrumental blank solutions and certified reference materials (CRM; ERM-CA616 groundwater standard and ERM-CA408 simulated rainwater standard; Sigma-Aldrich) were measured regularly for quality control and yielded an accuracy of 97 % for NO_3^- . Nitrate mass concentrations in Dome C samples were determined by colorimetry at IGE following the procedure described in Frey et al. (2009). Blank concentrations for exposure blank, procedural blank, and lab-

oratory blank and detection limits are reported in Table S1 in the Supplement.

Atmospheric NO_3^- mass concentrations (C_{aerosol}) were estimated from high-volume aerosol filters by the ratio of total NO_3^- mass loading to the total volume of air pumped through the filter at STP conditions following Eq. (1) and assuming a uniform loading of the aerosol filter.

$$C_{\text{aerosol}} = \text{NO}_3^- \text{ mass loading/air volume (STP)} \quad (1)$$

The non-sea-salt sulfate (nss-SO₄²⁻) fraction of SO₄²⁻ was obtained by subtracting the contribution of sea-salt-derived SO₄²⁻ from the measured SO₄²⁻ mass concentrations (nss-SO₄²⁻ = SO₄²⁻ - 0.252 × Na⁺, where Na⁺ and SO₄²⁻ are the measured concentrations in snow pit samples, and 0.252 is the SO₄²⁻/Na⁺ ratio in bulk seawater (Keene et al., 1986).

2.4 Nitrate isotopic composition in snow and aerosol

Samples were shipped frozen to IGE where the NO₃⁻ isotope analysis was performed. The denitrifier method was used to determine the stable NO₃⁻ isotopic composition in samples at IGE following Morin et al. (2008). Briefly, samples were preconcentrated due to the low NO₃⁻ mass concentrations found in the atmosphere and snow over Antarctica. To obtain 100 nmol of NO₃⁻ required for NO₃⁻ isotope analysis, the meltwater of snow samples and aerosol extracts were sorbed onto 0.3 mL of anion exchange resin (AG1-X8 chloride form; Bio-Rad) and eluted with 5 × 2 mL of 1 M NaCl (high purity grade 99.0%; American Chemical Society – ACS grade; AppliChem Panreac) following Silva et al. (2000). Recovery tests yielded 100 % recovery of NO₃⁻ (Frey et al., 2009; Erbland et al., 2013). Once preconcentrated, NO₃⁻ was converted to N₂O gas by denitrifying bacteria, *Pseudomonas aureofaciens*. The N₂O was split into O₂ and N₂ on a gold furnace heated to 900 °C followed by gas chromatographic separation and injection into the isotope ratio mass spectrometer (IRMS) for dual O and N analysis using a Thermo Finnigan™ MAT 253 IRMS equipped with a GasBench II™ and coupled to an in-house-built NO₃⁻ interface (Morin et al., 2009).

Certified reference materials (IAEA USGS-32, USGS-34, and USGS-35; Böhlke et al., 1993, 2003) were prepared (matrix match 1 M NaCl in identical water isotopic composition as samples; ACS grade) and subject to the same analytical procedures as snow and aerosol samples. The nitrogen isotopic ratio was referenced against N₂-Air (Mariotti, 1983). We report ¹⁵N/¹⁴N of NO₃⁻ (δ¹⁵N-NO₃⁻) as δ values following Eq. (2).

$$\delta^{15}\text{N} - \text{NO}_3^- = \left(\frac{{}^{15}\text{N}/{}^{14}\text{N}_{\text{sample}}}{{}^{15}\text{N}/{}^{14}\text{N}_{\text{standard}}} - 1 \right) \quad (2)$$

For each batch of 60 samples, the overall accuracy of the method was estimated as the reduced standard deviation of the residuals from the linear regression between the measured reference materials ($n = 16$) and their expected values. For the snow ($n = 118$) and aerosol samples ($n = 35$), the average uncertainty value obtained for δ¹⁵N was 0.5 ‰ for both datasets.

2.5 Nitrate mass flux estimates

The total deposition flux (F) of NO₃⁻ is partitioned into wet and dry deposition fluxes (F_{wet} and F_{dry} , respectively; Eq. 3),

and can be estimated using the measured mass concentration of NO₃⁻ in the snowpack (C_{snow}) and the local snow accumulation rate (A ; Eq. 4). Estimates of the dry deposition rate (F_{dry}) of NO₃⁻ were calculated using Eq. (5) using the atmospheric mass concentrations of NO₃⁻ (C_{aerosol}) and a dry deposition velocity ($V_{\text{dry deposition}}$) of 0.8 cm s⁻¹ and are reported in Table S2. This deposition velocity is based on the dry deposition of HNO₃ at South Pole station (Huey et al., 2004), which has a similar snow accumulation rate (6.4 cm yr⁻¹ w.e.; Mosley-Thompson et al., 1999) to DML. Other estimates of dry deposition velocities include 0.05–0.5 cm s⁻¹ for HNO₃ over snow (Hauglustaine et al., 1994; Seinfeld and Pandis, 1998), 1.0 cm s⁻¹ for NO₃⁻ over the open ocean (Duce et al., 1991), and an apparent deposition velocity of 0.15 cm s⁻¹ for summer HNO₃ at Dome C (Erbland et al., 2013). The estimated apparent NO₃⁻ deposition velocity at Dome C is low because of the strong recycling of NO₃⁻ on the polar plateau in summer; i.e. reactive nitrogen is re-emitted from the skin layer to the atmosphere. Although gas-phase HNO₃ and particulate NO₃⁻ have different dry deposition rates, the dry deposition velocity at DML is likely to lie between 0.15 and 0.8 cm s⁻¹. We assume that a constant deposition velocity throughout the campaign is appropriate for DML.

$$F = F_{\text{wet}} + F_{\text{dry}} \quad (3)$$

$$C_{\text{snow}} = F/A \quad (4)$$

$$F_{\text{dry}} = C_{\text{aerosol}} V_{\text{dry deposition}} \quad (5)$$

Note that Eq. (4) does not take into account post-depositional processes of nonconservative ions, such as NO₃⁻. We follow the approach of Erbland et al. (2013), using an archived NO₃⁻ mass flux (F_a) to represent the downward NO₃⁻ mass flux which escapes the photic zone towards deeper snow layers. Using simple mass balance, we can then estimate the mass flux of NO₃⁻ ($F_{\text{re-emit}}$), which is re-emitted from the snowpack to the overlying atmosphere (Eq. 6).

$$F_{\text{re-emit}} = F - F_a \quad (6)$$

2.6 Fractionation constants

Fractionation constants were calculated following the approach of Erbland et al. (2013). The apparent fractionation constant is denoted as ¹⁵ε_{app} and calculated using Eq. (7).

$$\ln(\delta^{15}\text{N}_f + 1) = {}^{15}\epsilon \times \ln f + \ln(\delta^{15}\text{N}_0 + 1), \quad (7)$$

where δ¹⁵N_{*f*} and δ¹⁵N_{*0*} are the δ values in the initial and remaining NO₃⁻, and f is the remaining NO₃⁻ mass concentration. The ε values are related to the commonly used fractionation factor α by ε = α - 1. The ¹⁵ε_{app} derived for snow pits in the photic zone is 12 ‰.

2.7 Light attenuation through the snowpack (*e*-folding depth)

Measurements of light attenuation through the snowpack were made at the two snow pit sites during the ISOL-ICE campaign following a similar approach of previous studies (France and King, 2012; France et al., 2011). Vertical profiles of downwelling irradiance in the top 0.4 m of the snowpack were measured using a high-resolution spectrometer (HR4000; Ocean Optics) covering a spectral range of 280 to 710 nm. To do this, a fibre optic probe attached to the spectrometer and equipped with a cosine corrector with Spectralon diffusing material (CC-3-UV-S; Ocean Optics) was inserted into the snow to make measurements at approximately 0.03 m depth intervals. The fibre optic probe was either inserted horizontally into pre-cored holes, at least 0.5 m in length to prevent stray light, into the side wall of a previously dug snow pit, or pushed gradually into the undisturbed snowpack starting at the surface at a 45° angle, which was maintained by a metal frame. Most measurements with integration time ranging between 30 and 200 ms were carried out at noon to minimize changing sky conditions, and each vertical snow profile was completed within 0.5 h. The spectrometer was calibrated against a known reference spectrum from a Mercury Argon calibration source (HG-1; Ocean Optics), dark spectra were recorded in the field by capping the fibre optic probe, and spectral irradiance was then recorded at depth relative to that measured right above the snow surface.

The *e*-folding depth was then calculated according to the Beer–Bouguer–Lambert law. Stratigraphy of the snowpack recorded at each site showed presence of several thin (10 mm) wind crust layers over the top 0.4 m of snowpack. However, calculating *e*-folding depths for each layer in between wind crusts yielded inconclusive results. Therefore, reported *e*-folding depths (Fig. S1, Table S3) are based on complete profiles integrating potential effects from wind crust layers. We use *e*-folding depths observed in this study at DML and those reported previously at Dome C as guidance for our model sensitivity study to quantify the impact of the variability in *e*-folding depth on archived $\delta^{15}\text{N-NO}_3^-$ in snow.

2.8 Nitrate photolysis rate coefficient

Hemispheric or 2π spectral actinic flux from 270 to 700 nm was measured at 2.1 m above the snow surface using an actinic flux spectroradiometer (Meteorologieconsult GmbH; Hofzumahaus et al., 2004). The 2π NO_3^- photolysis rate coefficients $J(\text{NO}_3^-)$ were then computed using the NO_3^- absorption cross section and quantum yield on ice estimated for -30°C from Chu and Anastasio (2003). The mean $2\pi J(\text{NO}_3^-)$ value at DML during January 2017 was $1.02 \times 10^{-8} \text{ s}^{-1}$, and it was $0.98 \times 10^{-8} \text{ s}^{-1}$ during the 1 to 14 January 2017 period. The observed $2\pi J(\text{NO}_3^-)$ at DML was a factor of 3 lower than Dome C ($2.97 \times 10^{-8} \text{ s}^{-1}$; 1 to 14 January 2012), which was previously measured using

the same instrument make and model and at the same latitude (Kukui et al., 2013). Only $\sim 5\%$ of the apparent intersite difference can be attributed to TCO being ~ 25 DU larger at DML (306 DU) than at Dome C (287 DU) during the comparison period. The remainder was possibly due to greater cloudiness at DML and differences in calibration. In this study, the observed $2\pi J(\text{NO}_3^-)$ is used to estimate the snow emission flux of NO_2 .

2.9 Snow emission of NO_2

The potential snow emission flux of NO_2 (F_{NO_2}) from NO_3^- photolysis in snow was estimated using Eq. (8).

$$F_{\text{NO}_2} = \int_{z=0\text{m}}^{z=1\text{m}} [\text{NO}_3^-]_z J(\text{NO}_3^-) dz, \quad (8)$$

where $J_z(\text{NO}_3^-)$ is the photolysis rate coefficient of reaction $\text{NO}_3^- + h\nu \rightarrow \text{NO}_2 + \text{O}^-$ at depth, z , in the snowpack, and is derived by scaling surface measurements (Sect. 2.8) with *e*-folding depth (2–10 cm), and $[\text{NO}_3^-]_z$ is the amount of NO_3^- per unit volume of snow at depth, z , in the snowpack. The calculated F_{NO_2} is a potential emission flux assuming that all NO_3^- within the snow grain is photo-available, no cage effects are present and NO_2 is vented immediately after release from the snow grain to the air above the snowpack without undergoing any secondary reactions.

2.10 Air–snow transfer modelling

In order to evaluate the driving parameters of isotope air–snow transfer at DML we used the TRANSITS model (Erbland et al., 2015) to simulate snow depth profiles of NO_3^- mass concentration and $\delta^{15}\text{N-NO}_3^-$ and compare them to our observations. Due to the reproducible depth profile of observed $\delta^{15}\text{N-NO}_3^-$ within 1 km (Sect. 3.1.2), we assume the $\delta^{15}\text{N-NO}_3^-$ composition is spatially uniform at DML, and thus a 1D model is appropriate for the site. The atmospheric boundary layer in the model is represented by a single box above the snowpack. The 1 m snowpack is divided into 1000 layers of 1 mm thickness. Below the photic zone of the snowpack, the NO_3^- mass concentrations and $\delta^{15}\text{N-NO}_3^-$ values are assumed to be constant and thus archived during the model run. The model is run for 25 years (with a time step of 1 week), which is sufficient to reach steady state. The input data are provided in Table S4.

Photolysis rate coefficients of NO_3^- , i.e. $J(\text{NO}_3^-)$, above and within the snowpack are used by the TRANSITS model runs as input for this study and are modelled offline using the tropospheric ultraviolet and visible (TUV)-snow radiative transfer model (Lee-Taylor and Madronich, 2002). The following assumptions were made: (i) a clear aerosol-free sky, (ii) extraterrestrial irradiance from Chance and Kucucz (2010), and (iii) a constant Earth–Sun distance as that on 27 December 2010 (Erbland et al., 2015). The TUV-snow

radiative transfer model was constrained by optical properties of the Dome C snowpack (France et al., 2011), notably an e -folding depth of (i) 10 cm in the top 0.3 m and (ii) 20 cm below 0.3 m (Erbland et al., 2015), to compute $J(^{14/15}\text{NO}_3^-)$ profiles as a function of solar zenith angle (SZA) and TCO (Erbland et al., 2015) (Fig. S2; dashed lines).

The set-up used in this paper is similar to Erbland et al. (2015) except for the following modifications. We use the TCO from the NIWA Bodeker combined dataset version 3.3, at the location of the snow pit site, averaged from 2000 to 2016 (<http://www.bodekerscientific.com/data/total-column-ozone>, last access: 15 January 2019). The year-round atmospheric NO_3^- mass concentrations are taken from Weller and Wagenbach (2007), and the meteorology data are taken from Utrecht University Automatic Weather Station (AWS) at DML05/Kohnen (AWS9; https://www.projects.science.uu.nl/iceclimate/aws/files_oper/oper_20632, last access: 29 March 2017). The snow accumulation rate is set to 6 cm yr^{-1} w.e.; Sommer et al. (2000), and we refer to this simulation as our “base case” scenario. We carried out a sensitivity analysis to evaluate the impact of variable accumulation rate, timing of snowfall, and e -folding depth on the snow profile of NO_3^- mass concentrations and $\delta^{15}\text{N-NO}_3^-$. Our first set of sensitivity tests account for the new e -folding depth measurements at the DML site; the e -folding depth was varied within the range of observations from this study and previously at Dome C. The second set of sensitivity tests use an e -folding depth of 5 cm and were as follows: the snow accumulation rate was varied between the bounds seen in the last 1000 years at DML; the snow accumulation rate was varied from year to year according to observations from our snow pit profile, which ranged between 6.0 and 7.1 cm yr^{-1} w.e.; and the timing of the snow accumulation was varied throughout the year. We compare the second set of sensitivity tests to the 5 cm e -folding depth scenario and refer to this as our “5 cm EFD (e -folding depth) case” (Sect. 3.5.1). To evaluate the sensitivity of archived $\delta^{15}\text{N-NO}_3^-$ to e -folding depth, changes in the $J(^{14/15}\text{NO}_3^-)$ profiles for Dome C (Erbland et al., 2015) were recalculated and used as TRANSITS input by scaling the surface value of $J(^{14/15}\text{NO}_3^-)$ with a new e -folding depth (2, 5, 10, 20 cm). An example is shown in Fig. S2a for SZA = 70° , TCO = 300 DU, and an e -folding depth of 5 cm. The top 2 mm are retained from the Dome C case in Erbland et al. (2015) to account for nonlinearities in snow radiative transfer in snow, which are strongest in the non-diffuse zone right below the snow surface (Fig. S2b). It is noted that TUV-snow model estimates of downwelling or $2\pi J(\text{NO}_3^-)$ above the snow surface at the latitude of Dome C or DML (75° S) compare well to observations at Dome C in January 2012, whereas they are 3 times higher than measurements at DML in January 2017 (Table S5 and Sect. 3.3.2). This should not affect the results of the sensitivity study, which aims to explore relative changes in archived $\delta^{15}\text{N-NO}_3^-$ due to a prescribed change in e -folding depth.

TRANSITS calculates the average number of recyclings before NO_3^- is archived, i.e. below the zone of active photochemistry. In TRANSITS, the average number of recyclings undergone by NO_3^- in a given box (snow layer or atmosphere) is represented by a tracer (or counter) called CYCL. The CYCL value for primary NO_3^- is set to 0, and CYCL variables in the boxes are incremented by 1 each time NO_2 molecules cross the air–snow interface. The average number of recyclings is calculated as a mass-weighted average of the CYCL values of the 52 snow layers (representing 1 week of snowfall) which are archived below 1 m over the course of 1 year, in order to average out any seasonal variability. Erbland et al. (2015) noted that the number of recyclings represents an average value for the archived NO_3^- ; i.e. considering individual ions in the archived NO_3^- , the number of recyclings could be variable as some ions may have travelled through the entire snowpack zone of active photochemistry without being recycled, while some underwent many recyclings.

2.11 Snow pit dating

Dating of the snow pits was based on the measured concentrations of Na^+ , MSA, and nss-SO_4^{2-} following previous aerosol and ice core studies at DML (Göktas et al., 2002; Weller et al., 2018). Here, Na^+ mass concentrations have a sharp, well-defined peak in the austral spring/late winter, while MSA and nss-SO_4^{2-} , primarily derived from the biogenic production of dimethylsulfide (DMS), record maximum concentrations in the austral autumn. Non-sea-salt SO_4^{2-} (nss-SO_4^{2-}) often displays a second peak corresponding to late austral spring/summer sometimes linked to MSA. Spring seasons were defined as 1 September and positioned at the Na^+ peak, while autumn seasons were defined as 1 April and positioned where a MSA and nss-SO_4^{2-} peak aligned (Fig. S3).

3 Results and discussion

3.1 Evaluation of TRANSITS model results

Nitrate mass concentration and $\delta^{15}\text{N-NO}_3^-$ composition data for aerosol, skin layer, and snow pit samples are available in Winton et al. (2019b).

3.1.1 Nitrate mass concentrations

Skin layer and atmospheric measurements of NO_3^- mass concentrations during the January 2017 ISOL-ICE campaign at DML are presented in Fig. 3. Aerosol mass concentrations of NO_3^- range from 0.5 to 19 ng m^{-3} and show a downward trend throughout January 2017 ($R^2 = 0.55$; $p < 0.001$; Fig. 3). In contrast, NO_3^- mass concentrations in the skin layer increase during the month from 136 to 290 ng g^{-1} . Nitrate mass concentrations in both snow pits, which range

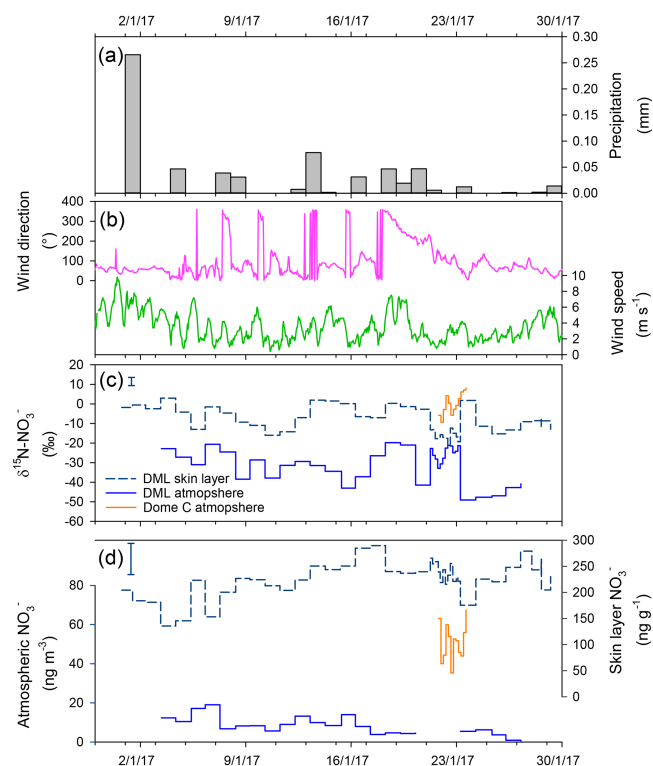


Figure 3. January 2017 time series in Dronning Maud Land (DML) of (a) daily precipitation, (b) hourly wind direction and wind speed, (c) atmospheric and skin layer $\delta^{15}\text{N-NO}_3^-$, and (d) atmospheric and skin layer NO_3^- mass concentration. Error bars in panels (c)–(d) indicate the spatial variability in the site determined by multiple skin layer samples collected on 28 January 2017. The spatial variability exceeds the instrumental error, which is smaller than the symbol size. Meteorological data source: University of Utrecht (AWS9; DML05/Kohnen; $75^\circ 00' \text{ S}$, $00^\circ 00' \text{ E/W}$; $\sim 2900 \text{ m a.s.l.}$). Precipitation data source: RACMO2 (<https://doi.org/10/c2pv>, van de Berg et al., 2019).

from 23 to 142 ng g^{-1} , are substantially lower than those in the skin layer. Our measurements agree well with published measurements of NO_3^- mass concentrations in snow pits at DML (Weller et al., 2004). While our January 2017 observations of atmospheric NO_3^- mass concentrations are $20\text{--}30 \text{ ng g}^{-1}$ lower than those observed in 2003 by Weller and Wagenbach (2007), which could be due to interannual variability of atmospheric NO_3^- mass concentrations, which varied by 30 ng g^{-1} over summer between 2003 and 2005.

A comparison of Dome C and DML observations in skin layer, aerosol, and depth profiles is illustrated in Fig. 4, while archived NO_3^- mass concentrations and $\delta^{15}\text{N-NO}_3^-$ values are reported in Table 2. Compared to Dome C, average annual atmospheric, skin layer, and snow pit mass concentrations are lower at DML, in agreement with observational and modelling studies where higher NO_3^- mass concentrations are found at lower snow accumulation sites (Erbland et al., 2013). The NO_3^- mass concentration profile in the up-

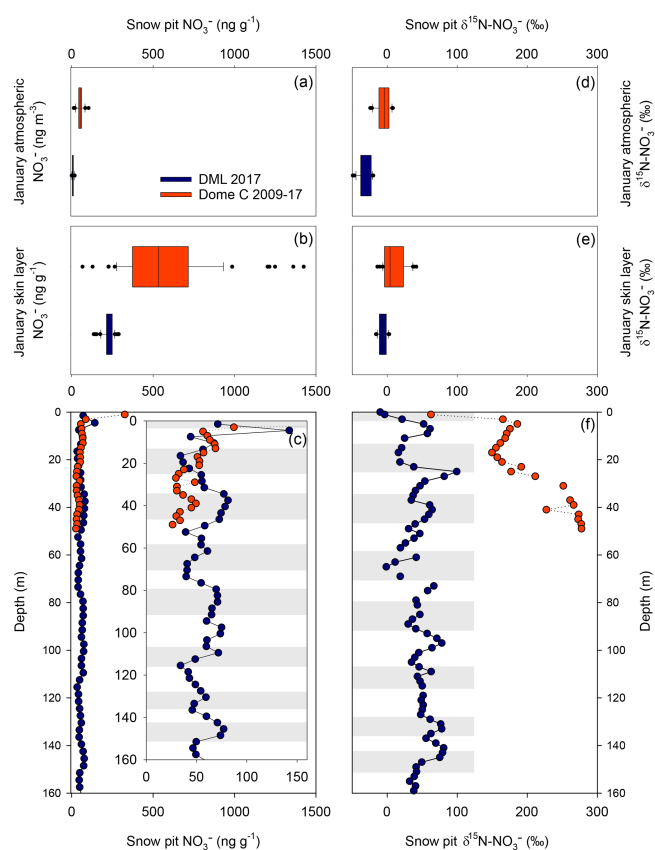


Figure 4. Comparison of NO_3^- mass concentration and $\delta^{15}\text{N-NO}_3^-$ at Dronning Maud Land (DML) and Dome C in January 2017. NO_3^- mass concentration in (a) atmosphere, (b) skin layer, and (c) depth profiles. Insert: depth profile of NO_3^- mass concentration highlighting seasonal variability. $\delta^{15}\text{N-NO}_3^-$ in (d) atmosphere, (e) skin layer, and (f) depth profiles. Grey bars indicate summer seasons for DML depth profiles.

per 50 cm of the snowpack at Dome C shows an exponential decrease with depth and becomes relatively constant at 35 ng g^{-1} at 20 cm compared to $160\text{--}1400 \text{ ng g}^{-1}$ in the skin layer (Figs. 1 and 4; Erbland et al., 2013; Frey et al., 2009). While the highest NO_3^- mass concentrations in the snowpack at DML are also found in the skin layer, the mass concentration profile exhibits a different pattern. The sharp decrease in NO_3^- mass concentration occurs in the top $\sim 5 \text{ mm}$ at which point the snow pit records interannual variability in the NO_3^- mass concentration. Nitrate mass concentrations in DML snow pits exhibit a maximum in summer and minimum in winter.

While the precision of the IC measurement of NO_3^- is better than 2 %, the spatial variability at DML in NO_3^- in the skin layer exceeds this. During the sampling campaign, five skin layer samples were taken from an area of $\sim 2500 \text{ m}^2$ at the flux site (snow surface had sastrugi of up to 10 cm) to understand how representative the snow pit mass concentrations are of the greater study area. We found that the spatial vari-

Table 2. Summary of observed and simulated archived, aerosol, and skin layer NO_3^- mass concentrations, $\delta^{15}\text{N-NO}_3^-$ composition, and NO_3^- mass fluxes at Dronning Maud Land (DML) and Dome C. Abbreviation n.d.: no data. Base case refers to the TRANSITS simulation with a snow accumulation rate of 6 cm yr^{-1} w.e. and an e -folding depth of 10 cm, while the 5 cm EFD case refers to a TRANSITS simulation with an observed snow accumulation rate that varied year to year between 6.0 and 7.1 cm yr^{-1} w.e. and an e -folding depth of 5 cm.

Archived (> 30 cm)	NO_3^- (ng g^{-1})	$\delta^{15}\text{N-NO}_3^-$ (‰)	Flux ($\text{pg m}^{-2} \text{s}^{-1}$)	Reference
DML Pit A	60	50	110	This study
DML Pit B	50	n.d.	120	This study
DML TRANSITS (base case)	120	130	210	This study
DML TRANSITS (5 cm EFD case)	280	50	480	This study
DML expected*	100	100	140	Erbland et al. (2015, 2013)
Dome C	50	280	<140	Erbland et al. (2013)
Aerosol (January mean)	NO_3^- (ng m^{-3})	$\delta^{15}\text{N-NO}_3^-$ (‰)	Flux ($\text{pg m}^{-2} \text{s}^{-1}$)	Reference
DML	10	−30	70	This study
DML TRANSITS (base case)	30	−20	190	This study; Weller and Wagenbach (2007)
DML TRANSITS (5 cm EFD case)	30	−40	50	This study; Weller and Wagenbach (2007)
Dome C	60	−10	90	This study; Erbland et al. (2013)
Skin layer (January mean)	NO_3^- (ng g^{-1})	$\delta^{15}\text{N-NO}_3^-$ (‰)	Flux ($\text{pg m}^{-2} \text{s}^{-1}$)	Reference
DML	230	−10	360	This study
DML TRANSITS (base case)	2800	10	4800	This study
DML TRANSITS (5 cm EFD case)	1650	−10	2900	This study
Dome C	590	10	470	This study; Erbland et al. (2013)

* Expected values for a site with an accumulation rate of 6 cm yr^{-1} w.e. based on the spatial transect of Erbland et al. (2015).

ability in NO_3^- mass concentrations and $\delta^{15}\text{N-NO}_3^-$ at DML was 10 % and 17 %, respectively (Fig. 3c–d). At Dome C, the spatial variability in NO_3^- mass concentrations was between 15 % and 20 %. We note that this variability includes the natural spatial variability and the operator sampling technique.

Simulated TRANSITS results for the base case and 5 cm EFD case scenarios at the air–snow interface are illustrated in Fig. 5 along with TCO data (Fig. 5a). In the atmosphere, the TRANSITS model is forced with the smoothed profile of year-round atmospheric NO_3^- measurements from the DML site (Weller and Wagenbach, 2007) where the highest mass concentrations are in spring and summer with a maximum of 80 ng m^{-3} in November and a minimum of 2 ng m^{-3} in winter (Fig. 5b). Overall, the simulated values in the base case scenario are higher than the 5 cm EFD case in summer and autumn and converge to similar values in winter. In the skin layer, the simulated annual cycle of NO_3^- mass concentrations steadily rise in spring and reach a peak in January when they begin to decline to the lowest mass concentration in winter (Fig. 5d). The simulated NO_3^- mass concentrations in the skin layer are an order of magnitude greater than our observations in January. The discrepancy between the significantly higher simulated NO_3^- mass concentrations than observations in the skin layer was also found at Dome C. Erbland et al. (2015) suggested that this discrepancy could be related to a sampling artefact, snow erosion, or a modelled time response to changes in past primary inputs. We provide an alternative explanation for the extremely high simulated

NO_3^- mass concentrations in the skin layer using daily measurements of NO_3^- mass concentration in diamond dust and hoar frost collected from Polyvinyl chloride (PVC) sheets at Dome C in summer 2007/2008, i.e. new deposition. New deposition of diamond dust had NO_3^- mass concentrations of up to 2000 ng g^{-1} , which is 4 times greater than that observed in natural snow from the skin layer at the same time (Fig. S4). Similarly, new deposition of hoar frost had NO_3^- mass concentrations of up to 900 ng g^{-1} , which is 3 times greater than the skin layer snow. The formation of surface hoar frost occurs by co-condensation, i.e. the simultaneous condensation of water vapour and NO_3^- at the air–snow interface. Recent modelling suggests that co-condensation is the most important process explaining NO_3^- incorporation in snow undergoing temperature gradient metamorphism at Dome C (Bock et al., 2016). Diamond dust can also scavenge high concentrations of HNO_3 at Dome C (Chan et al., 2018). Furthermore, the top layer of the snowpack is only 1 mm thick in the TRANSITS model, whereas our observations of the skin layer are 5 mm thick. Due to the photochemical loss of NO_3^- mass concentrations with depth, the highest NO_3^- mass concentrations are expected in the top 1 mm layer, which is the layer best in equilibrium with the atmosphere. Here, extremely high mass concentrations of NO_3^- from new deposition from diamond dust and hoar frost are also found. In summary, it is likely that we do not measure such high NO_3^- mass concentrations in hoar frost and diamond dust in the skin layer because of sampling artefacts or blowing snow,

which can dilute or remove the diamond dust and hoar frost. It is interesting to note that the higher simulated values in the skin layer do not impact the simulated depth profiles.

3.1.2 Isotopic composition of nitrate

The seasonal evolution of observed and simulated air–snow $\delta^{15}\text{N-NO}_3^-$ values are presented in Figs. 3 and 5, respectively. Atmospheric $\delta^{15}\text{N-NO}_3^-$ ranges from -49‰ to -20‰ at DML and -9‰ to 8‰ at Dome C during the January campaign and is depleted with respect to the skin layer, which ranges from -22‰ to 3‰ at DML (Fig. 3). The simulated atmospheric $\delta^{15}\text{N-NO}_3^-$ values in the base case for January are greater than our measurements, while the $\delta^{15}\text{N-NO}_3^-$ values in the 5 cm EFD case fall within the range of observations (Fig. 5). The annual cycle of simulated atmospheric $\delta^{15}\text{N-NO}_3^-$ for the 5 cm EFD case shows a 50‰ dip in spring to -42‰ from winter values, which coincides with the simulated atmospheric NO_3^- mass concentration increase in spring (Fig. 5c). The highest simulated atmospheric $\delta^{15}\text{N-NO}_3^-$ values (7‰) occur in winter, for both scenarios. While the simulated skin layer $\delta^{15}\text{N-NO}_3^-$ values in January for the base case are $\sim 10\text{‰}$ higher than our highest observations for that month, but the average January value in the 5 cm EFD case (-7‰) falls in the range of observed values (-10‰) (Fig. 5e). For the 5 cm EFD case, they begin to decrease by 30‰ in spring at the same time as atmospheric $\delta^{15}\text{N-NO}_3^-$ values decrease. In October and November, the skin layer $\delta^{15}\text{N-NO}_3^-$ values begin to rise up to -11‰ in February in the 5 cm EFD case.

The $\delta^{15}\text{N-NO}_3^-$ values in both snow pits at DML show extremely good reproducibility, with depth indicating there is little spatial variability within 1 km at the site (Fig. 4). The depth profiles of $\delta^{15}\text{N-NO}_3^-$ values at DML exhibit large variability between seasons (-3‰ to 99‰) with more enriched values in spring and summer with respect to winter (Fig. 4). In comparison, the $\delta^{15}\text{N-NO}_3^-$ values in snow pits at Dome C do not preserve a seasonal cycle. However, in parallel with the exponential decay of NO_3^- mass concentrations with depth at Dome C, there is a strong increase in the $\delta^{15}\text{N-NO}_3^-$ with depth. At Dome C, $\delta^{15}\text{N-NO}_3^-$ increases up to 250‰ in the top 50 cm; this increase is weaker at DML (up to 100‰ in the top 30 cm at which point seasonal cycles are evident). Although no annual cycle is preserved in the snowpack at Dome C, the year-round measurements of atmospheric $\delta^{15}\text{N-NO}_3^-$ show a decrease during sunlit conditions in spring and summer (Fig. 1). While the $\delta^{15}\text{N-NO}_3^-$ in the skin layer has a spring minimum that increases to a maximum at the end of summer (Fig. 1). Skin layer $\delta^{15}\text{N-NO}_3^-$ is about 25‰ higher than atmospheric $\delta^{15}\text{N-NO}_3^-$.

Sensitivity results of the depth profiles for the base case and 5 cm EFD case scenarios are discussed in Sect. 3.5.1, and we refer the reader to that section for an in-depth discussion of the TRANSITS sensitivity tests. We briefly describe differences between the depth profiles of the base case and

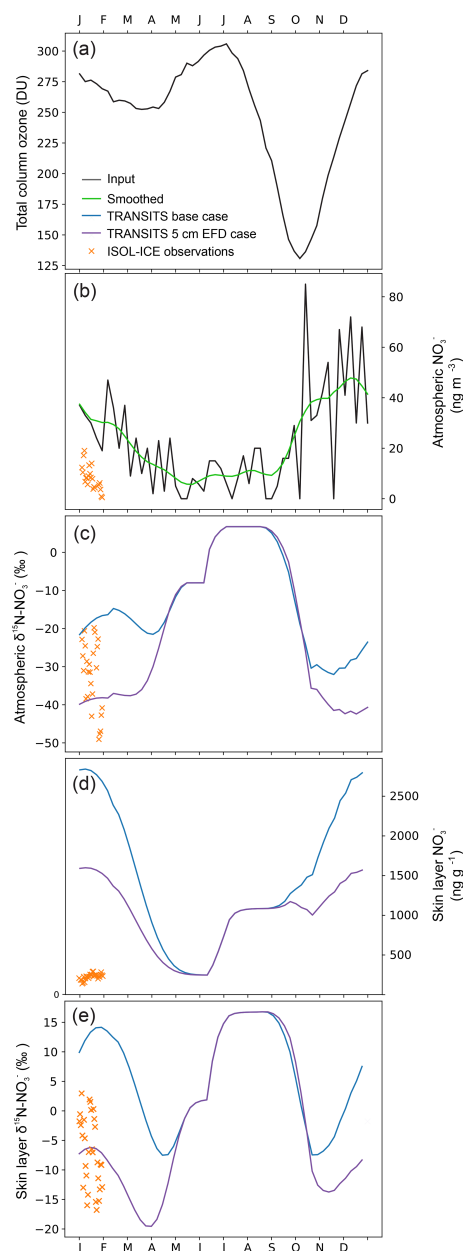


Figure 5. ISOL-ICE observations and simulated annual cycle of skin layer and atmospheric NO_3^- mass concentration and $\delta^{15}\text{N-NO}_3^-$ at Dronning Maud Land (DML) from the base case and 5 cm EFD case TRANSITS model simulations for January 2017. (a) Total column ozone: NIWA Bodeker combined dataset version 3.3 at DML averaged from 2000 to 2016 (<http://www.bodekerscientific.com/data/total-column-ozone>, last access: 15 January 2019). (b) Atmospheric NO_3^- mass concentrations are observations from Kohlen Station (Weller and Wagenbach, 2007) that are used as input into the model. ISOL-ICE observations and TRANSITS simulations of (c) atmospheric $\delta^{15}\text{N-NO}_3^-$, (d) skin layer NO_3^- mass concentration, and (e) skin layer $\delta^{15}\text{N-NO}_3^-$.

5 cm EFD case here to set the scene for the discussion. Overall, TRANSITS modelling shows that (i) the simulated $\delta^{15}\text{N-NO}_3^-$ values in the base case scenario are higher than the 5 cm EFD case, (ii) the 5 cm EFD case falls within the range of observations for $\delta^{15}\text{N-NO}_3^-$ but is significantly higher than the observed NO_3^- mass concentrations, and (iii) TRANSITS modelling simulations using the observed e -folding depth of 5 cm (Sect. 3.3.2) are good fit with $\delta^{15}\text{N-NO}_3^-$ observations.

3.1.3 Snow pit accumulation rate and nitrate mass fluxes

Annual layer counting of Na^+ layers shows that snow pit A spans 8 years from autumn 2009 to summer 2017 and snow pit B spans 9 years from summer 2008 to summer 2017 with an age uncertainty of ± 1 year at the base of the snow pit. The mean snow accumulation rate for the snow pits is estimated to be $6.3 \pm 1.4 \text{ cm yr}^{-1}$ w.e., consistent with published accumulation rates of $6.0\text{--}7.1 \text{ cm yr}^{-1}$ w.e. from snow pits and ice cores from DML (Sommer et al., 2000; Hofstede et al., 2004; Oerter et al., 2000).

Taking the simple mass balance approach, a schematic of NO_3^- mass fluxes for two scenarios is illustrated in Fig. 6. Scenario 1 is an average annual budget for DML (Fig. 6a). As the atmospheric campaign did not cover an entire annual cycle, we use estimates of atmospheric NO_3^- mass fluxes at DML reported by Pasteris et al. (2014) and Weller and Wagenbach (2007) of 43 and $45 \text{ pg m}^{-2} \text{ s}^{-1}$, respectively, as year-round dry deposition fluxes. Due to the linear relationship of ice core NO_3^- mass concentrations with the inverse accumulation, the authors assume that the magnitude of the dry deposition flux is homogenous over the DML region. Mean annual mass concentrations of NO_3^- in our snow pits suggest a total NO_3^- deposition mass flux of $110 \text{ pg m}^{-2} \text{ s}^{-1}$ and therefore a wet deposition mass flux of $65 \text{ pg m}^{-2} \text{ s}^{-1}$.

However, at relatively low snow accumulation sites where photolysis drives the fractionation of NO_3^- from the surface snow to atmosphere (Frey et al., 2009), it is necessary to take into account the skin layer in the NO_3^- mass flux budget as this air–snow interface is where air–snow transfer of NO_3^- takes place. In scenario 2, we utilize the available NO_3^- mass concentrations measured in aerosol, skin layer, and snow pits from the ISOL-ICE campaign to estimate the mass flux budget for January 2017 (Fig. 6b). The dry deposition mass flux of atmospheric NO_3^- during January 2017 at DML averages $64 \pm 38 \text{ pg m}^{-2} \text{ s}^{-1}$ (Table S2) and is greater than the annual mean flux estimated by Pasteris et al. (2014) and Weller and Wagenbach (2007), which is to be expected given the higher atmospheric NO_3^- mass concentrations in summer (Fig. 5). Our wet deposition mass flux of $296 \text{ pg m}^{-2} \text{ s}^{-1}$ is also greater than the wet deposition flux calculated for the greater DML region by Pasteris et al. (2014). Like Dome C, the greatest deposition flux of NO_3^- is to the skin layer, and it is $360 \text{ pg m}^{-2} \text{ s}^{-1}$; however only $110 \text{ pg m}^{-2} \text{ s}^{-1}$ of NO_3^- is archived. Considering the ac-

tive skin layer, only 30 % of deposited NO_3^- is archived in the snowpack, while $250 \text{ pg m}^{-2} \text{ s}^{-1}$ is re-emitted to the overlaying atmosphere.

Furthermore, the TRANSITS-simulated archived NO_3^- mass flux at DML of $210 \text{ pg m}^{-2} \text{ s}^{-1}$ for the base case and $480 \text{ pg m}^{-2} \text{ s}^{-1}$ for the 5 cm EFD case overpredict the observed NO_3^- archived mass flux due to the higher simulated archived NO_3^- mass concentrations. Interestingly, the simulated archived mass flux at Dome C ($88 \text{ pg m}^{-2} \text{ s}^{-1}$) is lower than DML, yet the NO_3^- deposition flux to the skin layer in January at Dome C is similar to DML. We continue our discussion focusing on the recycling and redistribution of NO_3^- that occurs in the active skin layer, emphasizing its importance.

3.2 Nitrate deposition

3.2.1 Wet and dry deposition

Here we discuss the various processes in which NO_3^- can be deposited to the skin layer at DML. Firstly, we first look at atmospheric NO_3^- deposition in relation to the source region of the air mass. The mean annual wind direction at the site is 65° within the clean air sector (Figs. 3 and S5). There are two excursions from the predominant wind direction. The first excursion is between 19 and 22 January, where the wind direction switches to the southwest, i.e. atmosphere transport from the plateau. We do not see elevated NO_3^- mass concentrations during this period nor do we see a marked difference in isotopic signature that is similar to Dome C at this time (Fig. 4). This, in line with air mass back trajectories (not shown), suggests that transport of NO_3^- re-emitted from inland sites of the Antarctic, carrying a distinctively enriched $\delta^{15}\text{N-NO}_3^-$ signature, did not influence DML during our campaign. The second excursion occurs during a few short periods when the wind direction switches upwind of the station; however, there are no spikes in the NO_3^- mass concentration or a change in the $\delta^{15}\text{N-NO}_3^-$ signature, and so we can also rule out any downwind contamination from the station.

Secondly, we use modelled daily precipitation at the nearest Regional Atmospheric Climate Model (RACMO2; Van Meijgaard et al., 2008) grid point (75.0014° S , 0.3278° W ; Fig. 3a) to identify the influence of cyclonic intrusions of marine air masses to wet deposition of NO_3^- . We observe that some peaks in the skin layer NO_3^- mass concentration are accompanied by fresh snow laden with relatively high sea salt aerosol mass concentrations and atmospheric NO_3^- mass concentrations, for example on 1, 13, and 18 January 2017 (Fig. S6). However, on other precipitation days, we observe lower atmospheric NO_3^- mass concentrations and higher skin layer NO_3^- mass concentrations that could be a result of HNO_3 scavenging. With only 1 month of data it is difficult to see the impact of wet deposition on the NO_3^- mass concentration in the skin layer; i.e. whether fresh snowfall dilutes the NO_3^- mass concentration in the skin layer or whether it

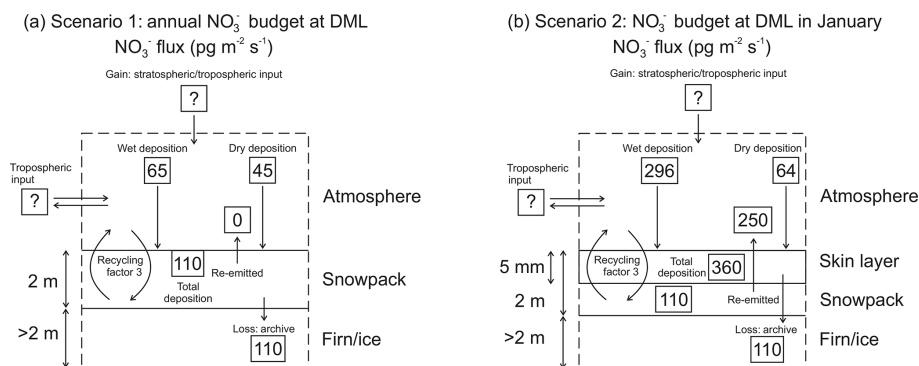


Figure 6. Schematic of NO_3^- mass fluxes at Dronning Maud Land (DML) for (a) annual mean scenario and (b) January scenario.

scavenges HNO_3 (gas-phase), resulting in higher mass concentrations of NO_3^- in the skin layer.

Thirdly, we investigate daily changes in the atmospheric and skin layer NO_3^- mass concentrations and $\delta^{15}\text{N}-\text{NO}_3^-$ over the campaign to see the influence of dry deposition, by adsorption of atmospheric NO_3^- to the snow surface, on the high mass concentrations observed in the skin layer. Temporal variation in the mass concentration and isotopic signature of aerosol and surface snow at DML over January 2017 suggests atmospheric NO_3^- is the source of NO_3^- to the skin layer. Throughout the month, the increase in the skin layer mass concentration of summer NO_3^- appears to be closely related to the decrease in the atmospheric NO_3^- mass concentrations (Fig. 3). There is a lag between atmospheric and skin layer NO_3^- ; i.e. atmospheric NO_3^- mass concentrations precede skin layer NO_3^- mass concentrations by a day or two; however a longer time series is required to confirm this. The lag suggests that atmospheric NO_3^- is a source of NO_3^- to the skin layer, in line with Dome C where the underlying snowpack is the dominant source of NO_3^- to the skin layer via photolytic recycling and redeposition. Furthermore, as atmospheric NO_3^- is deposited to the snow surface, ^{15}N is preferentially removed first, leaving the air isotopically depleted relative to the isotopically enriched snow (Frey et al., 2009). Figures 3 and 4 illustrate that the $\delta^{15}\text{N}-\text{NO}_3^-$ in the atmosphere is depleted with respect to the $\delta^{15}\text{N}-\text{NO}_3^-$ in the skin layer snow. In the short time series, there are some periods where the $\delta^{15}\text{N}-\text{NO}_3^-$ in the snow and atmosphere are in phase, for example, 3–13 January 2017. During other periods, the $\delta^{15}\text{N}-\text{NO}_3^-$ in the snow and atmosphere switch to being out of phase, emphasizing NO_3^- isotopic fractionation during those periods. Both HNO_3 and peroxyntic acid (HNO_4) can be adsorbed to the snow surface in tandem (Jones et al., 2014), and although we have no direct measurements of these during the campaign, based on previous studies we suggest that HNO_3 is dominantly adsorbed to the skin layer (Jones et al., 2007; Chan et al., 2018).

We conclude that HNO_3 scavenging, adsorption, and cyclonic intrusions of marine air masses deliver NO_3^- to the

skin layer at DML in summer. During the campaign, deposition is not influenced by the transport of air masses from the polar plateau, which carry a distinct atmospheric $\delta^{15}\text{N}-\text{NO}_3^-$ signature. Interestingly, model results from Zatko et al. (2016), which account for transport of snow-sourced NO_3^- emissions and deposition, show that the deposition of recycled NO_3^- to snow is lowest on the East Antarctic Plateau including the high-elevation DML region.

3.2.2 Temporal variability in nitrate deposition

The simulations in Fig. 5 and observations in Fig. 1 describe the seasonal evolution of NO_3^- deposition to the skin layer from the atmosphere at DML (Sect. 3.1.1 and 3.1.2). The annual cycle is consistent both (i) spatially across a vast area of Antarctica, i.e. South Pole, Dome C, Halley Station, and Neumayer Station (McCabe et al., 2007; Wolff et al., 2008; Erbland et al., 2013; Frey et al., 2009; Wagenbach et al., 1998), and (ii) temporally over last 7 years at Dome C (Fig. 1) (Erbland et al., 2015, 2013; Frey et al., 2009).

We also observe variability on shorter timescales. While not yet observed elsewhere on the Antarctic continent, over the short intensive sampling period at DML we observe significant variability in NO_3^- mass concentrations and $\delta^{15}\text{N}-\text{NO}_3^-$ values that resembles a diurnal cycle. Over 4 h, the skin layer NO_3^- mass concentrations varied by 46 ng g^{-1} , the skin layer $\delta^{15}\text{N}-\text{NO}_3^-$ by 21%, and the atmospheric $\delta^{15}\text{N}-\text{NO}_3^-$ by 18%. Other coastal studies have attributed daily variability to individual storm events (Mulvaney et al., 1998; Weller et al., 1999). The sampling duration in this study is too short to confirm any diurnal patterns, but it would be interesting to investigate this further in future work. We note that due to post-depositional processes (Sect. 3.3) any short-term signals observed in the skin layer are unlikely to be preserved.

3.3 Post-depositional processes

3.3.1 Nitrate redistribution

In corroboration with earlier work on the East Antarctic Plateau, we find clear evidence of NO_3^- redistribution via photolysis at DML and confirmation of our hypothesis that UV photolysis is driving NO_3^- recycling at DML. Firstly, the highly enriched $\delta^{15}\text{N}\text{-NO}_3^-$ values of snow at DML (-3% to 99%) and the highly depleted atmospheric $\delta^{15}\text{N}\text{-NO}_3^-$ values at DML (-20% to -49%) are unique to post-depositional processes at low accumulation sites in Antarctica (Fig. S7) and lie outside the range of known anthropogenic, marine, or other natural source end members (e.g. Hastings et al., 2013; Kendall et al., 2007; Hoering, 1957; Miller et al., 2017, 2018; Yu and Elliott, 2017; Li and Wang, 2008; Freyer, 1991; Savarino et al., 2007).

Secondly, denitrification of the snowpack is seen through the $\delta^{15}\text{N}\text{-NO}_3^-$ signature, which evolves from the enriched snowpack (-3% to 99%), to the skin layer (-22% to 3%), to the depleted atmosphere (-49% to -20%), corresponding to mass loss from the snowpack (Figs. 4 and S7). Denitrification causes the $\delta^{15}\text{N}\text{-NO}_3^-$ of the residual snowpack NO_3^- to increase exponentially as NO_3^- mass concentrations decrease.

Thirdly, sensitivity analysis with TRANSITS, where photolysis is the driving process, is able to explain the observed snow pit $\delta^{15}\text{N}\text{-NO}_3^-$ variability when the e -folding depth is taken into account (Sect. 3.5).

Fourthly, enrichment of $\delta^{15}\text{N}\text{-NO}_3^-$ is observed in the top 30 cm of the snowpack at DML indicating NO_3^- photolytic redistribution at DML in the photic zone of the snowpack (Fig. 4). In the photic zone, the $\delta^{15}\text{N}\text{-NO}_3^-$ observations closely match the simulated $\delta^{15}\text{N}\text{-NO}_3^-$ values from TRANSITS (Sect. 3.5).

Lastly, calculated fractionation constants ($^{15}\epsilon_{\text{app}}$) using our simulated results from the TRANSITS model base case ($^{15}\epsilon_{\text{app}}$ average of -19% for the top 30 cm, i.e. active photic zone with an e -folding depth of 10 cm) fall in the range of expected $^{15}\epsilon_{\text{app}}$ values ($-59 < ^{15}\epsilon_{\text{app}} < -16\%$) within the “transition zone” characterized by snow accumulation rates typical of sites located between the Antarctic Plateau and coast ($5\text{--}20\text{ cm yr}^{-1}$ w.e.; Erbland et al. 2015). However, the $^{15}\epsilon_{\text{app}}$ for the 5 cm EFD case ($^{15}\epsilon_{\text{app}}$ average of -11%) is lower than predicted for a site with the same snow accumulation rate, highlighting the sensitivity of e -folding depth on NO_3^- redistribution. Erbland et al. (2013) noted that uncertainties in the $^{15}\epsilon_{\text{app}}$ for snow pits in the transition zone were greater than coastal and plateau zones, indicating that the assumed single-loss Rayleigh model is not appropriate for transition zones. The discrepancy between our observed (12%) and simulated (-19% and -11% for the base case and 5 cm EFD case, respectively) $^{15}\epsilon_{\text{app}}$ is due to the higher snow accumulation rate, which preserves seasonality, and with a

noisy signal, there is no pure separation of the loss processes assuming Rayleigh isotopic fractionation.

3.3.2 Nitrate recycling

Only three studies have attempted to quantify the degree of NO_3^- recycling between the air and snow (Davis et al., 2008; Erbland et al., 2015; Zatko et al., 2016). Erbland et al. (2015) used the TRANSITS model to estimate that NO_3^- is recycled four times on average before burial beneath the photic zone at Dome C, similar to the findings of Davis et al. (2008) for the same site. Using the approach of Erbland et al. (2015), we find that NO_3^- is recycled three times on average before it is archived at DML for the base case and two times on average for the 5 cm EFD case. Thus, a shallower e -folding depth reduces the recycling strength. Although these findings are consistent with spatial patterns of NO_3^- recycling factors across Antarctica reported by Zatko et al. (2016), predictions for the DML region are almost double our estimates. As Dome C and DML lie on the same latitude (75° S), incoming UV radiation (except for cloud cover) should not impact the efficiency of photolysis and thus recycling at the two sites. Below we provide some explanations for the weakened recycling at DML.

1. *Higher snow accumulation rate.* The TRANSITS modelling shows the influence of the snow accumulation rate on the depth profile of NO_3^- mass concentration and $\delta^{15}\text{N}\text{-NO}_3^-$, including the preservation of a seasonal cycle at higher snow accumulation rates (Sect. 3.5.2). At low-accumulation sites, i.e. Dome C, the annual layer thickness is thinner so that NO_3^- in those layers is exposed to sunlight (and the actinic flux) and photochemical processes for longer, resulting in strong NO_3^- recycling and $\delta^{15}\text{N}\text{-NO}_3^-$ enrichment in the snowpack. At DML, which has a higher snow accumulation rate than Dome C, the snow layers are buried more rapidly, leaving less time for HNO_3 to adsorb to the skin layer and less time for photolysis to redistribute snowpack NO_3^- to the overlying air for re-adsorption to the skin layer. Therefore, photolysis-driven recycling of NO_3^- is largely dependent on the time that NO_3^- remains in the snow photic zone.
2. *Shallower e -folding depth.* Based on measurements we derived an e -folding depth for DML ranging between 2 and 5 cm (Fig. S1). The standard deviations and variability between profiles (Table S3), reflect both systematic experimental errors and spatial variability in snow optical properties. e -folding depths at DML are similar to previous model estimates for South Pole (Wolff et al., 2002); however mean summer e -folding depths predicted for the DML region by Zatko et al. (2016) are overestimated by an order of magnitude. However, the e -folding depth at Dome C is considerably deeper, ranging between 10 and 20 cm depending on

the snow properties (France et al., 2011). The origin of the reduced e -folding depth relative to Dome C is not known but is likely due to greater HUMic-Like Substances (HULIS)/impurity content or different snow morphology (density and grain size of snow crystals) (Libois et al., 2013; Zatko et al., 2013; Brucker et al., 2010). In terms of published values, impurity concentrations are generally higher at DML, for example dust and major ion concentrations (Delmonte et al., 2019; Legrand and Delmas, 1988), due to proximity of marine sources. Yet station pollution is greater at Dome C (Helmig et al., 2020). Spatial patterns of modelled e -folding depths across Antarctica predict shallower e -folding depths in regions of relatively high black carbon concentrations located on the plateau in Antarctica (Zatko et al., 2016). In contrast, we observe a opposite pattern of higher black carbon concentrations and a deeper e -folding depth at Dome C compared to a shallower e -folding depth at DML. Therefore, the observed shallower e -folding depth at DML appears unrelated to black carbon concentrations as the modelling by Zatko et al. (2016) predicts a greater e -folding depth in the DML region where black carbon concentrations are lower. Furthermore, there is considerable variability in snow grain size across Antarctica. The larger e -folding depth in wind crust layers at Dome C is due to larger grain sizes in those layers (France et al., 2011). Snow grain size may be smaller at DML, which will increase scattering (Brucker et al., 2010), but further work is required to confirm if this is the dominate factor influencing the lower e -folding depth at DML. Sensitivity studies show that NO_3^- impurities make a small contribution to the e -folding depth compared to scattering by snow grains which dominate (France et al., 2011; Chan et al., 2015; Zatko et al., 2013).

3. *Lower photolysis rate.* For the 1 to 14 January 2017 period, model estimates of F_{NO_2} scaled approximately linearly with e -folding depth were 0.4, 1.0, and 1.9×10^{11} molecule $\text{m}^{-2} \text{s}^{-1}$ for e -folding depths of 2, 5, and 10 cm, respectively. Spatial variability in NO_3^- in the top 30 cm of surface snow at DML based on snow pits A and B is on the order of 13 % inducing similar variability in the model estimates of F_{NO_2} . Estimates of F_{NO_2} at Dome C, based on the same model during 1 to 14 January 2012, were larger with 1.2 – 7.3×10^{11} molecule $\text{m}^{-2} \text{s}^{-1}$ (Frey et al., 2013), mostly due to larger $J(\text{NO}_3^-)$ values observed above the surface as well as a larger e -folding depth (10 cm near the surface). It should be borne in mind that the above simple model estimates (Eq. 8) may significantly underestimate the real emission flux. Previous comparisons of F_{NO_2} computed with Eq. (8) and F_{NO_x} measured at Dome C showed that observations can exceed model predictions by up to a factor 50 (Frey et al., 2015, 2013).

While NO_3^- mass concentrations in snow, the surface actinic flux, and the e -folding depth were measured at the DML field site, the quantum yield of NO_3^- photolysis in surface snow (ΦNO_3^-) was not but introduces significant uncertainty in the model estimates. Previous lab measurements on natural snow samples collected at Dome C showed ΦNO_3^- to vary between 0.003 and 0.05 (Meusinger et al., 2014). As described above (Sect. 2.8) $J(\text{NO}_3^-)$ used in Eq. (8) was calculated with ΦNO_3^- at -30°C ($= 2 \times 10^{-3}$) after Chu and Anastasio (2003), which is near the lower end of the observed range. Thus, up to half of the mismatch between Eq. (8) and Dome C observations can be explained by adjusting ΦNO_3^- . Another factor contributing to larger fluxes and not included in Eq. (8) is forced ventilation.

In the more sophisticated TRANSITS model, Erbland et al. (2015) found that the photolytic quantum yield was one of the major controls on archived flux and primary input flux at Dome C. Erbland et al. (2015) initially used a quantum yield of 2.1×10^{-3} at 246 K (France et al., 2011), but it underestimated NO_3^- recycling and overestimated primary NO_3^- trapped in snow. Adjusting the quantum yield to 0.026, within the range observed in the lab (Meusinger et al., 2014), gave more realistic archived $\delta^{15}\text{N}-\text{NO}_3^-$ values. However, at Dome C TRANSITS-simulated F_{NO_2} fluxes were about a factor of 9–18 higher than observed F_{NO_x} . Erbland et al. (2015) suggested that the discrepancy could result from the simplifications made in the TRANSITS model regarding the fate of NO_3^- photolysis products.

Therefore, at DML, NO_3^- photolysis produces a lower snow emission flux of NO_2 to the atmosphere than at Dome C. This is due to (i) the shallower e -folding depth compared to Dome C, which implies reduced emission flux of NO_x , and (ii) the reduced UV exposure time of surface snow due to higher annual snow accumulation compared to Dome C. Furthermore, the large $^{15}\epsilon_{\text{app}}$ associated with NO_3^- photolysis has been determined for snow at Dome C (Berhanu et al., 2014; Frey et al., 2009; Erbland et al., 2013) and DML. At both sites, $\delta^{15}\text{N}-\text{NO}_3^-$ is enriched in the remaining skin layer. However, at DML, the $^{15}\epsilon_{\text{app}}$ is lower, which implies a weaker photolytic loss of NO_3^- associated with a higher snow accumulation rate. The lower snow emission flux of NO_2 and lower $^{15}\epsilon_{\text{app}}$ are evidence of a reduced recycling strength at DML relative to Dome C.

4. *Lower nitrate uptake at warmer temperatures.* The adsorption of HNO_3 on ice surfaces is temperature dependent with higher uptake at lower temperatures (Abbatt, 1997; Jones et al., 2014). Nitrate loss by evaporation is also dependent on temperature, with maximum NO_3^- loss at higher temperatures (Thibert and Domine, 1998; Röthlisberger et al., 2000). The seasonal temperature difference at an individual site (i.e. DML or Dome C)

could allow a seasonal dependence on the uptake and loss of NO_3^- in the skin layer, which results in the retention of a greater proportion of NO_3^- in summer (Chan et al., 2018). However, there is only a relatively small temperature difference between Dome C and DML (Table 1), which is not enough to drive a large difference in HNO_3 uptake (Jones et al., 2014).

5. *Lower export of locally produced nitrate.* The degree of NO_3^- recycling is also determined by atmospheric transport patterns across Antarctica. Export of locally produced NO_x on the Antarctic Plateau leads to greater enrichment in the depth profile of $\delta^{15}\text{N-NO}_3^-$ relative to the coast due to isotopic mass balance (Savarino et al., 2007; Zatkan et al., 2016). Observations of enriched atmospheric $\delta^{15}\text{N-NO}_3^-$ at the coast suggest that NO_x has been sourced from in situ production on the Antarctic Plateau (Savarino et al., 2007; Morin et al., 2009; Shi et al., 2018). If there was less export of NO_3^- away from the DML site than Dome C, locally sourced NO_x would be redeposited back to the skin layer at the site, and the depth profile of the $\delta^{15}\text{N-NO}_3^-$ would not be as dramatically impacted as sites where there is substantial loss of NO_3^- .

3.4 Preservation and archival

We provide new constraints on the archival values and archival time of NO_3^- at DML. By modifying the approach of Weller et al. (2004) by taking the high observed skin layer NO_3^- mass concentrations into account (average of 230 ng g^{-1} in January for DML), we calculate a post-depositional NO_3^- loss of 60 ng g^{-1} (or 75 %) and enrichment of 170 ‰ from the snowpack at DML. There is a clear signal of $\delta^{15}\text{N-NO}_3^-$ enrichment in the top 30 cm of the snowpack where the simulated 5 cm EFD case depth profile parallels the observed depth profile, indicating NO_3^- photolytic redistribution at DML in the photic zone of the snowpack (Sect. 3.5.1). Assuming all NO_3^- is archived below the photic zone, i.e. an *e*-folding depth of 5 cm, archival occurs below a depth of 15 cm, where NO_3^- has a residence time of 0.75 years in the photic zone corresponding to one summer. At this point, the amplitude of the annual cycle of observed $\delta^{15}\text{N-NO}_3^-$ at DML does not vary. Archived values were calculated by averaging the NO_3^- mass concentration and $\delta^{15}\text{N-NO}_3^-$ values below the photic zone, i.e. 15 cm. Our observed archived values of 50 ‰ and 60 ng g^{-1} for snow pit A and 50 ng g^{-1} for snow pit B agree well with the mean values of the snow pit below the photic zone and the archived $\delta^{15}\text{N-NO}_3^-$ value of the 5 cm EFD case. Note that no $\delta^{15}\text{N-NO}_3^-$ values were measured below 30 cm in snow pit B. For the base case scenario, the simulated archived (i.e. annual average of the first year below 1 m) NO_3^- mass concentration, $\delta^{15}\text{N-NO}_3^-$, and NO_3^- mass flux values are 120 ng g^{-1} , 130 ‰, and $210\text{ pg m}^{-2}\text{ yr}^{-1}$, respectively. In comparison,

in the 5 cm EFD case, the simulated archived NO_3^- mass concentration, $\delta^{15}\text{N-NO}_3^-$, and NO_3^- mass flux values are 280 ng g^{-1} , 50 ‰, and $480\text{ pg m}^{-2}\text{ yr}^{-1}$, respectively. The seasonal variability in the simulated $\delta^{15}\text{N-NO}_3^-$ depth profile for the 5 cm EFD case is constant between 30 ‰ and 80 ‰ below the photic zone, indicating that no further enrichment or NO_3^- redistribution is taking place in the archived section of the snowpack. The DML site has a lower observed archived $\delta^{15}\text{N-NO}_3^-$ value and is less sensitive to NO_3^- recycling than expected from TRANSITS modelling of $\delta^{15}\text{N-NO}_3^-$ along a snow accumulation gradient (Table 2; Erbland et al., 2015), and we suggest this is due to the lower observed *e*-folding depth than modelled.

Despite the relatively high NO_3^- mass concentrations and enriched $\delta^{15}\text{N-NO}_3^-$ in the skin layer at DML, clear seasonal cycles remain in the depth profile in contrast to the lower snow accumulation site of Dome C where the depth profile is relatively constant below the photic zone (Fig. 4). At higher snow accumulation rates, the seasonality of atmospheric NO_3^- mass concentrations and $\delta^{15}\text{N-NO}_3^-$ is preserved due to faster burial. Even at 6 cm yr^{-1} w.e., the snow layers remain in the active photic zone for 0.75 years, and the weaker recycling factor is low enough to conserve the seasonality. However, at Dome C, snow layers remain within the photic zone for longer (about 3 years or three summers), due to the deeper *e*-folding depth, and NO_2 emission, and redistribution continues until the seasonal cycle becomes smoothed (Fig. 4). At Dome C, archival of NO_3^- occurs below a depth of 30 cm. Compared to Dome C, the archived values at DML have a similar mass concentration (Dome C: 35 ng g^{-1}) but lower $\delta^{15}\text{N-NO}_3^-$ value (Dome C: 300 ‰), due to the deeper photic zone, stronger redistribution, and recycling there. The greater residence time of NO_3^- in the photic zone at Dome C relative to DML is consistent with modelled spatial patterns of the lifetime of NO_3^- burial across Antarctica where NO_3^- remains in the photic zone for the longest in the lower snow accumulation regions (Zatkan et al., 2016). The model predicts NO_3^- archival time to be 3–4 years at DML, which is considerably greater than our estimates.

3.5 Sensitivity of $\delta^{15}\text{N-NO}_3^-$ to deposition parameters and implications for interpreting ice core records of $\delta^{15}\text{N-NO}_3^-$ at DML

As first proposed by Frey et al. (2009) and later confirmed by field and lab studies (Erbland et al., 2015; Berhanu et al., 2014; Shi et al., 2019) it is UV photolysis of NO_3^- that dominates post-depositional fractionation of $\delta^{15}\text{N-NO}_3^-$ in snow and firn. Yet the extent of photolytic fractionation and the $\delta^{15}\text{N-NO}_3^-$ signature ultimately preserved in firn and ice depends on the UV spectrum of downwelling irradiance and on the time snow layers are exposed to incoming UV radiation. Previous studies showed that $\delta^{15}\text{N-NO}_3^-$ is sensitive not only to TCO but also to deposition parameters such as the annual snow accumulation rate (Shi et al., 2018; Noro et

al., 2018; Erbland et al., 2013). Thus, if all deposition parameters remained constant or are well constrained, it should be theoretically possible to use $\delta^{15}\text{N-NO}_3^-$ as an ice core proxy for past surface UV radiation and stratospheric ozone. Understanding the depositional parameters and their impact on $\delta^{15}\text{N-NO}_3^-$ is paramount for the interpretation of $\delta^{15}\text{N-NO}_3^-$ signals preserved in ice cores. As the interpretation of $\delta^{15}\text{N-NO}_3^-$ is site specific, we investigate the sensitivity of the $\delta^{15}\text{N-NO}_3^-$ signature at DML to snow accumulation rate, e -folding depth, and TCO. Throughout Sect. 3.5 we compare sensitivity results to a “base case” simulation which was simulated using the mean annual snow accumulation rate at DML of 6 cm w.e. yr^{-1} and an e -folding depth of 10 cm. The base case simulation and snow pit $\delta^{15}\text{N-NO}_3^-$ depth profiles parallel each other in the top 30 cm of the snowpack, but below the active photic zone, there is an offset between the depth profiles in terms of (i) the amplitude of the summer and winter $\delta^{15}\text{N-NO}_3^-$ values and (ii) the mean $\delta^{15}\text{N-NO}_3^-$ value (Fig. 7).

3.5.1 Sensitivity of the ice core $\delta^{15}\text{N-NO}_3^-$ signal to e -folding depth

We measured an e -folding depth at DML between 2 and 5 cm, which is lower than that employed in the base case TRANSITS model simulation (10 cm). Furthermore, a range of e -folding depth values, between 3.7 and 20 cm, have been reported for Antarctica (Wolff et al., 2002; France et al., 2011; Zatko et al., 2016). Although the spatial trends predicted by the modelling of Zatko et al. (2016) are represented at Dome C and DML, an exception is the spatial pattern of the e -folding depth, where we observed a lower e -folding at DML than Dome C, opposite to what the model predicts. At DML, the Zatko et al. (2016) model results overestimate the archival time and recycling factor of NO_3^- , and we suggest this is due to the lower observed than modelled e -folding depth. Furthermore, the positive bias of the TRANSITS base case simulation in archived $\delta^{15}\text{N-NO}_3^-$ at DML may be due to e -folding depth being smaller than at Dome C as indicated by direct observations. In order to test this assumption, the sensitivity of archived $\delta^{15}\text{N-NO}_3^-$ to the e -folding depth parameter needs to be quantified, which has not been done before as far as we know. Zatko et al. (2016) modelled the e -folding depth over Antarctica and investigated the impact of snow-sourced NO_x fluxes but not on $\delta^{15}\text{N-NO}_3^-$.

Sensitivity results of NO_3^- mass concentrations and $\delta^{15}\text{N-NO}_3^-$ values in the depth profiles for the base case and 5 cm EFD case scenarios are illustrated in Fig. 7. The NO_3^- mass concentration and $\delta^{15}\text{N-NO}_3^-$ depth profiles for the base case show seasonal variability in the first year with a range of 380 ng g^{-1} and 20‰, which decreases with depth to a range of 95 ng g^{-1} and 10‰ in the fourth year. In comparison, in the 5 cm EFD case, the seasonality of $\delta^{15}\text{N-NO}_3^-$ and NO_3^- mass concentrations in the first year ranges from 290 ng g^{-1} and 40‰ to 75 ng g^{-1} and 20‰ in the fourth year. Fig-

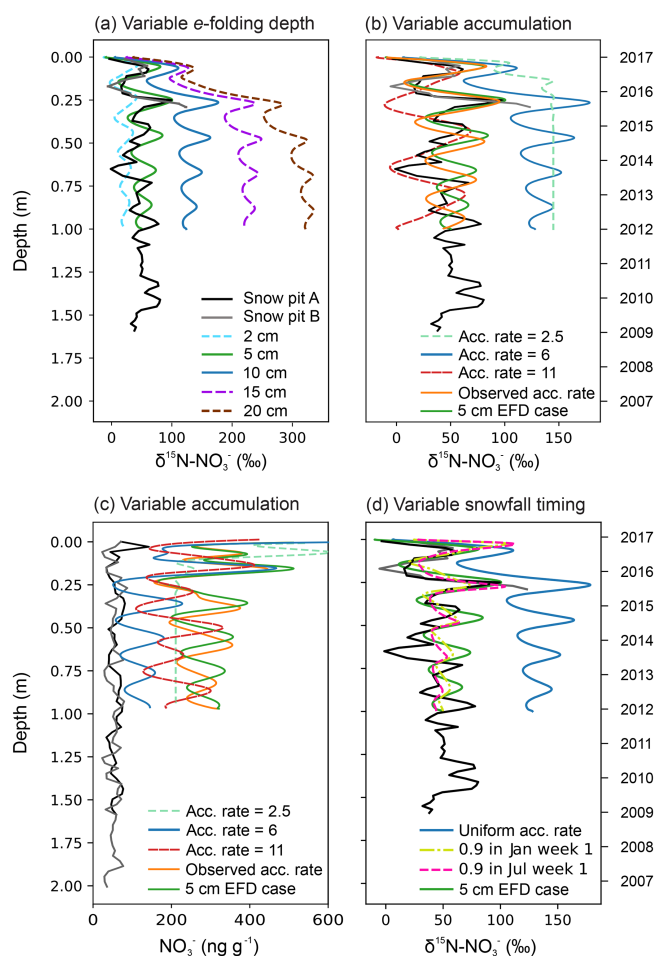


Figure 7. Snow pit depth profiles of observations and simulations from TRANSITS. **(a)** Sensitivity of $\delta^{15}\text{N-NO}_3^-$ to the e -folding depth. **(b)** Sensitivity of $\delta^{15}\text{N-NO}_3^-$ and **(c)** sensitivity of NO_3^- mass concentration to the upper and lower bounds of accumulation rates observed over the last 1000 years at Dronning Maud Land (DML). Also shown are the depth profiles of the simulated $\delta^{15}\text{N-NO}_3^-$ values and NO_3^- mass concentration using the observed accumulation rate in our snow pits, i.e. variable accumulation rate with depth (orange line). The observed snow accumulation rate from the snow pits varied between 3.5 and 7.1 cm yr^{-1} w.e. **(d)** Sensitivity of $\delta^{15}\text{N-NO}_3^-$ to the timing of snow accumulation. In each panel, blue is the base case simulation and green is the 5 cm EFD case simulation, which we refer to throughout the study. Note that the nominal date refers to the base case simulation.

ure 7a shows that the e -folding depth has a large influence on the $\delta^{15}\text{N-NO}_3^-$ depth profile in terms of (i) depth of the photic zone and thus depth of the $\delta^{15}\text{N-NO}_3^-$ enrichment and (ii) the mean archived $\delta^{15}\text{N-NO}_3^-$ value below the photic zone. A larger e -folding depth increases the $\delta^{15}\text{N-NO}_3^-$ enrichment in the photic zone and increases the archived mean $\delta^{15}\text{N-NO}_3^-$ value. For example, an e -folding depth of 10 cm at DML gives $\delta^{15}\text{N-NO}_3^-$ enrichment down to 30 cm and an archived mean $\delta^{15}\text{N-NO}_3^-$ value of 125‰ in the snowpack

compared to an e -folding depth of 20 cm, which enriches the snowpack down to 45 cm and more than doubles the archived mean $\delta^{15}\text{N-NO}_3^-$ value to 320‰. Meanwhile, an e -folding depth of 2 cm gives minimal enrichment and a low archived mean $\delta^{15}\text{N-NO}_3^-$ value of 25‰. In comparison to the base case simulation, which has an e -folding depth of 10 cm, a lower e -folding depth of 5 cm decreases the archived mean $\delta^{15}\text{N-NO}_3^-$ in the snowpack to ~ 50 ‰, closely matching our snow pit observations. Hence, a shallower e -folding depth in the range of that observed at DML, i.e. 2–5 cm can explain the more depleted $\delta^{15}\text{N-NO}_3^-$ snow pit profile, relative to the base case simulation, as NO_3^- photolysis occurs in a shallower depth. Therefore, e -folding depth knowledge is required to understand the sensitivity of archived $\delta^{15}\text{N-NO}_3^-$ at specific sites. We continue our sensitivity analysis using an e -folding depth of 5 cm and observed accumulation rate and refer to this scenario as our “5 cm EFD case”.

3.5.2 Sensitivity of the ice core $\delta^{15}\text{N-NO}_3^-$ signal to accumulation rate

The $\delta^{15}\text{N-NO}_3^-$ signal is also sensitive to the snow accumulation rate at DML. Plotted in Fig. 7b–c are the simulated NO_3^- mass concentration and $\delta^{15}\text{N-NO}_3^-$ depth profiles for accumulation rates of 2.5 and 11 cm yr^{-1} w.e. for the 5 cm EFD case. As the accumulation rate increases, the annual layers of $\delta^{15}\text{N-NO}_3^-$ become thicker, the seasonal amplitude increases, the mean annual $\delta^{15}\text{N-NO}_3^-$ value decreases, and there is less $\delta^{15}\text{N-NO}_3^-$ enrichment in the photic zone (Fig. 7b). At very low snow accumulation rates, the seasonal cycle is smoothed, as in the case of Dome C (Fig. 7b). A similar pattern is observed for the simulated NO_3^- mass concentrations with depth: seasonal cycles of NO_3^- mass concentrations are more pronounced at higher snow accumulation rates, while inter-annual variability is smoothed at very low accumulation rates such as Dome C (Fig. 7c). The relationship between the snow accumulation rate and $\delta^{15}\text{N-NO}_3^-$ is nonlinear (Fig. 7b–c).

Even in the 5 cm EFD case, there is still an offset with the snow pit $\delta^{15}\text{N-NO}_3^-$ depth profile below the active photic zone. To account for the offset, we investigated how the timing of snow deposition altered the $\delta^{15}\text{N-NO}_3^-$ depth profile. Rather than assuming a constant accumulation rate of 6 cm yr^{-1} w.e., as in the 5 cm EFD case, we find that a variable snow accumulation rate, based on our observations from the snow pit, alters the depth of the summer and winter $\delta^{15}\text{N-NO}_3^-$ peaks (Fig. 7b). Using the actual annual snow accumulation rate improves the model fit in the top 30 cm. Furthermore, the timing of the snow accumulation throughout the year has significant control over the amplitude of the seasonal $\delta^{15}\text{N-NO}_3^-$ cycle. Snowfall at DML has a bimodal distribution with higher accumulation in austral autumn and early austral summer (Fig. S8). In Fig. 7d, we modified the timing of the snow accumulation during the year by depositing 90% of the annual snowfall in (i) the first week of winter and (ii) the first week of summer, which represents the up-

per bound for snow accumulation in winter and summer, respectively. The remaining 10% of the annual snowfall is distributed evenly across the rest of the weeks of the year. Summer snow accumulation results in a higher $\delta^{15}\text{N-NO}_3^-$ enrichment compared to winter snow accumulation, as the exposure of summer layers to UV is longer, and thus NO_3^- photolysis is stronger. Therefore, the timing and rate of snowfall can explain the misalignment between snow pit observations and 5 cm EFD case simulation, which shifts the depth and amplitude of the $\delta^{15}\text{N-NO}_3^-$ peaks in the depth profile.

On centennial to millennial timescales, the snow accumulation rate has varied in regions of Antarctica (e.g. Thomas et al., 2017), which could potentially modify the degree of post-depositional processing and thus impact the archival and temporal variability in $\delta^{15}\text{N-NO}_3^-$ in ice cores. For example, the snow accumulation rate varied between 2.5 and 11 cm yr^{-1} w.e. over the last 1000 years at DML (Sommer et al., 2000). At DML, higher snow accumulation rates would result in lower NO_3^- mass concentrations and more depleted $\delta^{15}\text{N-NO}_3^-$ values in the skin layer, thus reducing the recycling strength and lowering the sensitivity of the UV proxy recorded in the ice over time and vice versa. TRANSITS modelling predicts that the upper and lower bounds of $\delta^{15}\text{N-NO}_3^-$ values in a 1000-year ice core from DML that has an accumulation rate between 2.5 and 11 cm yr^{-1} w.e. and e -folding depth of 5 cm to be between 30‰ and 140‰. Furthermore, $\delta^{15}\text{N-NO}_3^-$ values could range between 40‰ and 50‰ depending on the timing of snowfall and extreme precipitation events, which are known to play a dominant role in snowfall variability across Antarctica (Turner et al., 2019). At DML, snow pit observations suggest that the variation in $\delta^{15}\text{N-NO}_3^-$ between the polar day and polar night is 20‰. This seasonality is less than $\delta^{15}\text{N-NO}_3^-$ values expected for changes in snow accumulation rates over time. Therefore, any variation in snow accumulation will need to be accounted for in order to observe decadal-, centennial-, and millennial-scale trends in $\delta^{15}\text{N-NO}_3^-$.

3.5.3 Sensitivity of ice core $\delta^{15}\text{N-NO}_3^-$ signal to TCO

Figure 8 shows the sensitivity of $\delta^{15}\text{N-NO}_3^-$ to variations in TCO. For each week, a constant amount of ozone (e.g. 100 DU) was added or subtracted from these present-day values. A decrease in TCO will increase UV radiation reaching the surface at an ice core site. As a result, stronger photolysis enhances NO_3^- loss, redistribution, and recycling from the snowpack and ultimately decreases the archived NO_3^- mass concentration. Furthermore, a decrease in TCO enriches the $\delta^{15}\text{N-NO}_3^-$ signature as the snow is exposed to a greater UV dose. We predict that a change of 100 Dobson Units (DU), i.e. the amount that ozone decreases each spring as a result of stratospheric ozone destruction processes, will result in a 10‰ change in $\delta^{15}\text{N-NO}_3^-$ at DML. The variability in $\delta^{15}\text{N-NO}_3^-$ induced by TCO is less than the seasonal variability of $\delta^{15}\text{N-NO}_3^-$ recorded in the snow pit (20‰) and less than the

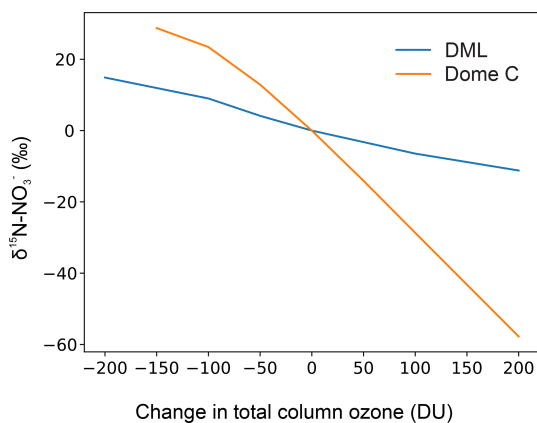


Figure 8. Expected response of archived $\delta^{15}\text{N-NO}_3^-$ to changes in total column ozone at Dronning Maud Land (DML) and Dome C. Calculated sensitivities represent an upper range as the real ozone hole lasts from September to November before recovery and not as modelled using the entire sunlit season. Archived DML $\delta^{15}\text{N-NO}_3^-$ values were simulated using the observed accumulation rate, e -folding depth of 5 cm (5 cm EFD case), and present-day TCO values. These TCO values, which were used in all our calculations, vary weekly and can be found in Table S4. For each week, a constant amount of ozone (e.g. 100 DU) was added or subtracted from these present-day values. Dome C data source: Erbland et al. (2015).

predicted variability in $\delta^{15}\text{N-NO}_3^-$ due to changes in snow accumulation (110%) or e -folding depth (100%). As the above sensitivities have been evaluated individually, TCO depletion over many years may still be recoverable from ice core $\delta^{15}\text{N-NO}_3^-$ if the other factors are constrained. For example, the e -folding depth at the DML site appears stable over the 8-year snow pit; the modelled $\delta^{15}\text{N-NO}_3^-$ sensitivity of 100% represents an upper limit for changes in the e -folding depth ranging between 2 and 10 cm, and if the e -folding depth had changed recently, in an irregular manner, a regular annual cycle in $\delta^{15}\text{N-NO}_3^-$ would not be evident (Fig. 4). Although additional studies of e -folding depth are required to confirm the variability in e -folding depth. The sensitivity of $\delta^{15}\text{N-NO}_3^-$ to TCO is greater at Dome C than DML (Fig. 8) due to the longer duration of surface snow exposure to UV radiation, stronger recycling and greater enrichment of $\delta^{15}\text{N-NO}_3^-$ in the photic zone. The sensitivity of $\delta^{15}\text{N-NO}_3^-$ to NO_3^- recycling at DML is lower than expected from TRANSITS modelling for the same snow accumulation rate by Erbland et al. (2015), namely due to a lower e -folding depth than modelled, and thus the sensitivity of $\delta^{15}\text{N-NO}_3^-$ as a UV proxy is also lower than expected (Fig. 8). In addition, the oxygen isotopic composition of NO_3^- ($\delta^{17}\text{O-NO}_3^-$) has been proposed as a proxy for stratospheric ozone at South Pole station (McCabe et al., 2007); however post depositional processes related to $\delta^{17}\text{O-NO}_3^-$ need to be quantified to fully understand the sources and processes responsible for depositing and archiving the $\delta^{17}\text{O-NO}_3^-$ signature in Antarctica.

3.5.4 Implications for interpreting ice core $\delta^{15}\text{N-NO}_3^-$

Site-specific air–snow transfer studies provide an understanding of the mechanisms that archive $\delta^{15}\text{N-NO}_3^-$ in ice cores, thus allowing for the interpretation of longer records of $\delta^{15}\text{N-NO}_3^-$ from the site. Ice core records of archived NO_3^- mass concentrations and $\delta^{15}\text{N-NO}_3^-$ at DML are a result of two uptake and loss cycles that occur in the top 15 cm during sunlit conditions. While we do not observe further redistribution of NO_3^- in layers deeper than the photic zone, any further NO_3^- diffusion within the firn or ice sections of an ice core can be constrained based on the temperature and snow accumulation rate at DML (Domine et al., 2008). This redistribution unlikely results in a loss of NO_3^- but could migrate NO_3^- to different layers, for example in acidic layers around volcanic horizons (Wolff, 1995).

There are a number of factors that will control the variability in the archived $\delta^{15}\text{N-NO}_3^-$ signature in ice cores recovered from DML. The $\delta^{15}\text{N-NO}_3^-$ signature in the snowpack is most sensitive to changes in the snow accumulation rate and e -folding depth, with snowfall timing and TCO playing a smaller role. The e -folding depth could change over time due to higher or lower dust or black carbon concentrations or a change in the snow grain size in a particular snow layer. The snow accumulation rate and e -folding depth could influence the archived $\delta^{15}\text{N-NO}_3^-$ composition by up to 110% and 100%, respectively, over the last 1000 years. This magnitude is comparable to modelled enrichment in ice core $\delta^{15}\text{N-NO}_3^-$ (0% to 363%) due to photolysis-driven loss of NO_3^- at low-accumulation sites in Antarctica by Zatko et al. (2016), while the timing of snowfall and changes in TCO will have a smaller impact of 10% on archived $\delta^{15}\text{N-NO}_3^-$. Ice core $\delta^{15}\text{N-NO}_3^-$ records at DML will be less sensitive to changes in UV than those at Dome C (Fig. 8); however the higher snow accumulation rate and more accurate dating at DML allows for higher resolution ice core $\delta^{15}\text{N-NO}_3^-$ records. We acknowledge that in addition, other factors such as light-absorbing impurities (Zatko et al., 2013), local meteorology, source of emissions and transport of NO_x and NO_3^- , atmospheric oxidant concentrations, and polar NO_3^- formation can influence the rate of recycling and export of snow-sourced NO_x . We discussed above that atmospheric $\delta^{15}\text{N-NO}_3^-$ values are unlikely to be influenced or sourced from snow exported upwind from the polar plateau due to the local meteorology at DML at least for the duration of the campaign. Yet these factors may have changed over time.

Given a variable snow accumulation rate and shallower e -folding depth, which we provide evidence for at DML, the TRANSITS model is able to reproduce our snow pit observations, justifying our previous assumption that photolysis is the main driver of NO_3^- post-depositional processes at DML. In fact, TRANSITS does such a good job at simulating NO_3^- recycling in Antarctica that we recommend that this tool is employed before the commencement of future ice core $\delta^{15}\text{N-NO}_3^-$ studies to understand the sensitivity of the signal to

various factors. Taking changes in snow accumulation into account, it may be possible to reconstruct past UV and TCO on longer timescales from the $\delta^{15}\text{N-NO}_3^-$ signal in DML ice cores, provided other factors such as the e -folding depth have remained the same.

4 Conclusions

The nitrogen stable isotopic composition of NO_3^- is a powerful tool for disentangling post-depositional processes affecting ice core signals of NO_3^- at low-accumulation sites in Antarctica. At DML, post-depositional loss of NO_3^- is controlled predominantly by NO_3^- photolysis. Photolysis redistributes NO_3^- between the snowpack and atmosphere, resulting in an enrichment of $\delta^{15}\text{N-NO}_3^-$ in the skin layer. Nitrate is recycled two times before it is archived in the snowpack below 15 cm and within 0.75 years. Once archived, the seasonal variabilities in $\delta^{15}\text{N-NO}_3^-$ values and NO_3^- mass concentrations oscillate between -1% and 80% and 30 to 80 ng g^{-1} , respectively. The e -folding depth at DML ranges between 2 and 5 cm, which is lower than previous observations at Dome C (10 and 20 cm). As constraints on e -folding depth are critical for calculating photolytic loss of snowpack NO_3^- and for interpreting $\delta^{15}\text{N-NO}_3^-$ preserved in ice cores, additional studies of e -folding depth across a range of Antarctic sites would help determine key factors influencing this parameter. TRANSITS, a photolysis-driven model, can explain the observed snow depth profiles of $\delta^{15}\text{N-NO}_3^-$ at DML constrained by an e -folding depth of 5 cm, the observed snow accumulation rate, and variable snowfall timing. TRANSITS sensitivity analysis showed that the $\delta^{15}\text{N-NO}_3^-$ signature in the snowpack is most sensitive to changes in the e -folding depth (100% for an 8 cm change in e -folding depth) and the snow accumulation rate (100% for an 8.5 cm yr^{-1} w.e. change in annual snow accumulation rate), with snowfall timing (10% for a change in dominant snowfall season) and total column ozone (10% for a 100 DU change in TCO) playing a smaller role. The NO_3^- recycling process at DML is weaker than Dome C, largely because of the higher snow accumulation rate and lower e -folding depth. TRANSITS has now been tested at two sites in Antarctica, namely DML and Dome C, and we recommend applying this model to new ice core sites to understand the sensitivity of the $\delta^{15}\text{N-NO}_3^-$ signal before embarking on new ice core projects. By accounting for variability in the snow accumulation rate and assuming a constant e -folding depth, it may be possible to reconstruct past UV radiation at ice core sites with very a low accumulation rate and low accumulation variability, as low accumulation variability will have little effect on $\delta^{15}\text{N-NO}_3^-$ in comparison to the UV dose reaching the ground.

Code and data availability. The dataset for the DML nitrate isotopic ratios and nitrate mass concentrations in aerosol, skin layer, and snow pits is available through the Polar Data Centre at <https://doi.org/10.5285/1467b446-54eb-45c1-8a31-f4af21e60e60> (Winton et al., 2019a), and supporting data are also included as figures and tables in the Supplement.

Supplement. The supplement related to this article is available online at: <https://doi.org/10.5194/acp-20-5861-2020-supplement>.

Author contributions. VHLW, JS, and MF designed the research. VHLW and MF and JS and NC collected samples at DML and Dome C, respectively. VHLW analysed the major ion data. VHLW, LH, and NC analysed the nitrate isotope data. AM and VHLW designed the TRANSITS experiments. AM performed the TRANSITS experiments. MMF did e -folding depth and snow emission flux calculations. VHLW prepared the paper with contributions from all coauthors.

Competing interests. The authors declare that they have no conflict of interest.

Acknowledgements. We would like to thank British Antarctic Survey (BAS) and Alfred Wegener Institute (AWI) staff for their field and logistics support at Halley Station and Kohnen Station, respectively. Technical support for nitrate isotope analysis at the Institut des Géosciences de l'Environnement (IGE), Grenoble, was provided by Joris Leglise, Ines Ollivier, and Ilan Bourgeois. We thank Joseph Erbland for providing the TRANSITS model. All winter-over personnel who collected the year-round Dome C samples in extreme conditions, year after year, are deeply acknowledged. In addition, we thank Emily Ludlow, Shaun Miller, Catriona Sinclair, Rebecca Tuckwell, and Neil Brough for technical support at BAS. Thanks to James France for discussions around the e -folding depth measurements and interpretation and to John Turner for discussions of the local meteorology. We acknowledge Utrecht University who supplied the AWS data for AWS9 at DML05/Kohnen (https://www.projects.science.uu.nl/iceclimate/aws/files_oper/oper_20632, last access: 29 March 2017), and the precipitation data from the RACMO2 model (<https://doi.org/10/c2pv>, van der Berg et al., 2019). We would like to thank Bodeker Scientific, funded by the New Zealand Deep South National Science Challenge, for providing the combined NIWA-BS total column ozone database. Wind roses were plotted using the openair package in R. We thank two anonymous reviewers whose suggestions improved the paper.

Financial support. This project was supported by a National Environment Research Council (NERC) Standard Grant (NE/N011813/1) to Markus M. Frey. V. Holly L. Winton would like to thank the University of Cambridge Doctoral Training Programme (DTP) for funding a NERC Research Experience Project (REP) that contributed to this research. Field collection of samples at Dome C was made possible through the programme

SUNITEDC/CAPOXI (grant 1011/1177) funded by the Institut Polaire Français IPEV. Joel Savarino and Nicolas Caillon thank the French National Research Agency (Investissements d'avenir grant ANR-15-IDEX-02 and EAIIST grant ANR-16-CE01-0011-01) and the INSU programme LEFE-CHAT for supporting the stable isotope laboratory. This is publication 1 of PANDA platform on which isotope analyses were performed. PANDA was partially funded by the LabEx OSUG@2020 (ANR10 LABX56).

Review statement. This paper was edited by Markus Ammann and reviewed by two anonymous referees.

References

- Abbatt, J. P.: Interaction of HNO₃ with water-ice surfaces at temperatures of the free troposphere, *Geophys. Res. Lett.*, 24, 1479–1482, 1997.
- Berhanu, T. A., Meusinger, C., Erbland, J., Jost, R., Bhattacharya, S., Johnson, M. S., and Savarino, J.: Laboratory study of nitrate photolysis in Antarctic snow. II. Isotopic effects and wavelength dependence, *J. Chem. Phys.*, 140, 244306, <https://doi.org/10.1063/1.4882899>, 2014.
- Beyersdorf, A. J., Blake, D. R., Swanson, A., Meinardi, S., Rowland, F., and Davis, D.: Abundances and variability of tropospheric volatile organic compounds at the South Pole and other Antarctic locations, *Atmos. Environ.*, 44, 4565–4574, 2010.
- Bohlke, J. K., Gwinn, C. J., and Coplen, T. B.: New reference materials for nitrogen-isotope-ratio measurements, *Geostandards Newsletter*, 17, 159–164, 1993.
- Böhlke, J. K., Mroczkowski, S. J. and Coplen, T. B.: Oxygen isotopes in nitrate: New reference materials for 18O: 17O: 16O measurements and observations on nitrate-water equilibration, *Rapid Commun. Mass Sp.*, 17, 1835–1846, 2003.
- Blunier, T., Floch, G. L., Jacobi, H. W., and Quansah, E.: Isotopic view on nitrate loss in Antarctic surface snow, *Geophys. Res. Lett.*, 32, L13501, <https://doi.org/10.1029/2005GL023011>, 2005.
- Bock, J., Savarino, J., and Picard, G.: Air–snow exchange of nitrate: a modelling approach to investigate physicochemical processes in surface snow at Dome C, Antarctica, *Atmos. Chem. Phys.*, 16, 12531–12550, <https://doi.org/10.5194/acp-16-12531-2016>, 2016.
- Brucker, L., Picard, G., and Fily, M.: Snow grain-size profiles deduced from microwave snow emissivities in Antarctica, *J. Glaciol.*, 56, 514–526, 2010.
- Chan, H. G., King, M. D., and Frey, M. M.: The impact of parameterising light penetration into snow on the photochemical production of NO_x and OH radicals in snow, *Atmos. Chem. Phys.*, 15, 7913–7927, <https://doi.org/10.5194/acp-15-7913-2015>, 2015.
- Chan, H. G., Frey, M. M., and King, M. D.: Modelling the physical multiphase interactions of HNO₃ between snow and air on the Antarctic Plateau (Dome C) and coast (Halley), *Atmos. Chem. Phys.*, 18, 1507–1534, <https://doi.org/10.5194/acp-18-1507-2018>, 2018.
- Chance, K. and Kurucz, R. L.: An improved high-resolution solar reference spectrum for earth's atmosphere measurements in the ultraviolet, visible, and near infrared, *J. Quant. Spectrosc. Ra.*, 111, 1289–1295, 2010.
- Chu, L. and Anastasio, C.: Quantum yields of hydroxyl radical and nitrogen dioxide from the photolysis of nitrate on ice, *J. Phys. Chem. A*, 107, 9594–9602, 2003.
- Davis, D., Chen, G., Buhr, M., Crawford, J., Lenschow, D., Lefer, B., Shetter, R., Eisele, F., Mauldin, L., and Hogan, A.: South Pole NO_x chemistry: an assessment of factors controlling variability and absolute levels, *Atmos. Environ.*, 38, 5375–5388, 2004a.
- Davis, D., Eisele, F., Chen, G., Crawford, J., Huey, G., Tanner, D., Slusher, D., Mauldin, L., Oncley, S., and Lenschow, D.: An overview of ISCAT 2000, *Atmos. Environ.*, 38, 5363–5373, 2004b.
- Davis, D. D., Seelig, J., Huey, G., Crawford, J., Chen, G., Wang, Y., Buhr, M., Helmig, D., Neff, W., and Blake, D.: A reassessment of Antarctic plateau reactive nitrogen based on ANTCI 2003 airborne and ground based measurements, *Atmos. Environ.*, 42, 2831–2848, 2008.
- Delmonte, B., Winton, H., Baroni, M., Baccolo, G., Hansson, M., Andersson, P., Baroni, C., Salvatore, M. C., Lanci, L., and Maggi, V.: Holocene dust in East Antarctica: Provenance and variability in time and space, *Holocene*, 30, 546–558, <https://doi.org/10.1177/0959683619875188>, 2019.
- Domine, F., Albert, M., Huthwelker, T., Jacobi, H.-W., Kokhanovsky, A. A., Lehning, M., Picard, G., and Simpson, W. R.: Snow physics as relevant to snow photochemistry, *Atmos. Chem. Phys.*, 8, 171–208, <https://doi.org/10.5194/acp-8-171-2008>, 2008.
- Dubowski, Y., Colussi, A., and Hoffmann, M.: Nitrogen dioxide release in the 302 nm band photolysis of spray-frozen aqueous nitrate solutions. Atmospheric implications, *J. Phys. Chem. A*, 105, 4928–4932, 2001.
- Duce, R. A., Liss, P. S., Merrill, J. T., Atlas, E. L., Buat-Menard, P., Hicks, B. B., Miller, J. M., Prospero, J. M., Arimoto, R., Church, T. M., Ellis, W., Galloway, J. N., Hansen, L., Jickells, T. D., Knap, A. H., Reinhardt, K. H., Schneider, B., Soudine, A., Tokos, J. J., Tsunogai, S., Wollast, R., and Zhou, M.: The atmospheric input of trace species to the world ocean, *Global Biogeochem. Cy.*, 5, 193–259, <https://doi.org/10.1029/91gb01778>, 1991.
- Erbland, J., Vicars, W. C., Savarino, J., Morin, S., Frey, M. M., Frosini, D., Vince, E., and Martins, J. M. F.: Air–snow transfer of nitrate on the East Antarctic Plateau – Part 1: Isotopic evidence for a photolytically driven dynamic equilibrium in summer, *Atmos. Chem. Phys.*, 13, 6403–6419, <https://doi.org/10.5194/acp-13-6403-2013>, 2013.
- Erbland, J., Savarino, J., Morin, S., France, J. L., Frey, M. M., and King, M. D.: Air–snow transfer of nitrate on the East Antarctic Plateau – Part 2: An isotopic model for the interpretation of deep ice-core records, *Atmos. Chem. Phys.*, 15, 12079–12113, <https://doi.org/10.5194/acp-15-12079-2015>, 2015.
- France, J. and King, M.: The effect of measurement geometry on recording solar radiation attenuation in snowpack (*e*-folding depth) using fibre-optic probes, *J. Glaciol.*, 58, 417–418, 2012.
- France, J. L., King, M. D., Frey, M. M., Erbland, J., Picard, G., Preunkert, S., MacArthur, A., and Savarino, J.: Snow optical properties at Dome C (Concordia), Antarctica; implications for snow emissions and snow chemistry of reactive nitrogen, *Atmos. Chem. Phys.*, 11, 9787–9801, <https://doi.org/10.5194/acp-11-9787-2011>, 2011.
- Frey, M. M., Savarino, J., Morin, S., Erbland, J., and Martins, J. M. F.: Photolysis imprint in the nitrate stable isotope signal in

- snow and atmosphere of East Antarctica and implications for reactive nitrogen cycling, *Atmos. Chem. Phys.*, 9, 8681–8696, <https://doi.org/10.5194/acp-9-8681-2009>, 2009.
- Frey, M. M., Brough, N., France, J. L., Anderson, P. S., Traulle, O., King, M. D., Jones, A. E., Wolff, E. W., and Savarino, J.: The diurnal variability of atmospheric nitrogen oxides (NO and NO₂) above the Antarctic Plateau driven by atmospheric stability and snow emissions, *Atmos. Chem. Phys.*, 13, 3045–3062, <https://doi.org/10.5194/acp-13-3045-2013>, 2013.
- Frey, M. M., Roscoe, H. K., Kukui, A., Savarino, J., France, J. L., King, M. D., Legrand, M., and Preunkert, S.: Atmospheric nitrogen oxides (NO and NO₂) at Dome C, East Antarctica, during the OPALE campaign, *Atmos. Chem. Phys.*, 15, 7859–7875, <https://doi.org/10.5194/acp-15-7859-2015>, 2015.
- Freyer, H.: Seasonal variation of ¹⁵N/¹⁴N ratios in atmospheric nitrate species, *Tellus B*, 43, 30–44, 1991.
- Geng, L., Zatkan, M. C., Alexander, B., Fudge, T., Schauer, A. J., Murray, L. T., and Mickley, L. J.: Effects of postdepositional processing on nitrogen isotopes of nitrate in the Greenland Ice Sheet Project 2 ice core, *Geophys. Res. Lett.*, 42, 5346–5354, 2015.
- Geng, L., Murray, L. T., Mickley, L. J., Lin, P., Fu, Q., Schauer, A. J., and Alexander, B.: Isotopic evidence of multiple controls on atmospheric oxidants over climate transitions, *Nature*, 546, 133–136, <https://doi.org/10.1038/nature22340>, 2017.
- Göktas, F., Fischer, H., Oerter, H., Weller, R., Sommer, S., and Miller, H.: A glacio-chemical characterization of the new EPICA deep-drilling site on Amundsenisen, Dronning Maud Land, Antarctica, *Ann. Glaciol.*, 35, 347–354, 2002.
- Hastings, M., Jarvis, J., and Steig, E.: Anthropogenic impacts on nitrogen isotopes of ice-core nitrate, *Science*, 324, 1288–1288, 2009.
- Hastings, M. G., Steig, E., and Sigman, D.: Seasonal variations in N and O isotopes of nitrate in snow at Summit, Greenland: Implications for the study of nitrate in snow and ice cores, *J. Geophys. Res.-Atmos.*, 109, D20306, <https://doi.org/10.1029/2004JD004991>, 2004.
- Hastings, M. G., Casciotti, K. L., and Elliott, E. M.: Stable isotopes as tracers of anthropogenic nitrogen sources, deposition, and impacts, *Elements*, 9, 339–344, 2013.
- Hauglustaine, D., Granier, C., Brasseur, G., and Megie, G.: The importance of atmospheric chemistry in the calculation of radiative forcing on the climate system, *J. Geophys. Res.-Atmos.*, 99, 1173–1186, 1994.
- Helmig, D., Liptzin, D., Hueber, J., and Savarino, J.: Impact of exhaust emissions on chemical snowpack composition at Concordia Station, Antarctica, *The Cryosphere*, 14, 199–209, <https://doi.org/10.5194/tc-14-199-2020>, 2020.
- Hoering, T.: The isotopic composition of the ammonia and the nitrate ion in rain, *Geochim. Cosmochim. Ac.*, 12, 97–102, 1957.
- Hofstede, C. M., van de Wal Roderik, S., Kaspers, K. A., Van Den Broeke, M. R., Karlöf, L., Winther, J.-G., Isaksson, E., Lappégard, G., Mulvaney, R., and Oerter, H.: Firm accumulation records for the past 1000 years on the basis of dielectric profiling of six cores from Dronning Maud Land, Antarctica, *J. Glaciol.*, 50, 279–291, 2004.
- Hofzumahaus, A., Lefer, B., Monks, P., Hall, S., Kylling, A., Mayer, B., Shetter, R., Junkermann, W., Bais, A., and Calvert, J.: Photolysis frequency of O₃ to O(¹D): Measurements and modeling during the International Photolysis Frequency Measurement and Modeling Intercomparison (IPMMI), *J. Geophys. Res.-Atmos.*, 109, D08S90, <https://doi.org/10.1029/2003JD004333>, 2004.
- Honrath, R., Peterson, M. C., Guo, S., Dibb, J. E., Shepson, P., and Campbell, B.: Evidence of NO_x production within or upon ice particles in the Greenland snowpack, *Geophys. Res. Lett.*, 26, 695–698, 1999.
- Huey, L. G., Tanner, D., Slusher, D., Dibb, J. E., Arimoto, R., Chen, G., Davis, D., Buhr, M., Nowak, J., and Mauldin Iii, R.: CIMS measurements of HNO₃ and SO₂ at the South Pole during ISCAT 2000, *Atmos. Environ.*, 38, 5411–5421, 2004.
- Jacobi, H.-W., Weller, R., Jones, A., Anderson, P., and Schrems, O.: Peroxyacetyl nitrate (PAN) concentrations in the Antarctic troposphere measured during the photochemical experiment at Neumayer (PEAN’99), *Atmos. Environ.*, 34, 5235–5247, 2000.
- Jones, A., Weller, R., Minikin, A., Wolff, E., Sturges, W., McIntyre, H., Leonard, S., Schrems, O., and Bauguitte, S.: Oxidized nitrogen chemistry and speciation in the Antarctic troposphere, *J. Geophys. Res.-Atmos.*, 104, 21355–21366, 1999.
- Jones, A., Weller, R., Wolff, E., and Jacobi, H. W.: Speciation and rate of photochemical NO and NO₂ production in Antarctic snow, *Geophys. Res. Lett.*, 27, 345–348, 2000.
- Jones, A., Weller, R., Anderson, P., Jacobi, H. W., Wolff, E., Schrems, O., and Miller, H.: Measurements of NO_x emissions from the Antarctic snowpack, *Geophys. Res. Lett.*, 28, 1499–1502, 2001.
- Jones, A. E., Wolff, E. W., Ames, D., Bauguitte, S. J.-B., Clemitshaw, K. C., Fleming, Z., Mills, G. P., Saiz-Lopez, A., Salmon, R. A., Sturges, W. T., and Worton, D. R.: The multi-seasonal NO_y budget in coastal Antarctica and its link with surface snow and ice core nitrate: results from the CHABLIS campaign, *Atmos. Chem. Phys. Discuss.*, 7, 4127–4163, 2007.
- Jones, A. E., Brough, N., Anderson, P. S., and Wolff, E. W.: HO₂NO₂ and HNO₃ in the coastal Antarctic winter night: a “lab-in-the-field” experiment, *Atmos. Chem. Phys.*, 14, 11843–11851, <https://doi.org/10.5194/acp-14-11843-2014>, 2014.
- Keene, W. C., Pszenny, A. A., Galloway, J. N., and Hawley, M. E.: Sea-salt corrections and interpretation of constituent ratios in marine precipitation, *J. Geophys. Res.-Atmos.*, 91, 6647–6658, 1986.
- Kendall, C., Elliott, E. M., and Wankel, S. D.: Tracing anthropogenic inputs of nitrogen to ecosystems, *Stable isotopes in ecology and environmental science*, 2, 375–449, 2007.
- Kukui, A., Loisel, R., Kerbrat, M., Frey, M., Gil Roca, J., Jourdain, B., Ancellet, G., Bekki, S., Legrand, M., and Preunkert, S.: OH and RO₂ radicals at Dome C (East Antarctica): first observations and assessment of photochemical budget, EGU General Assembly, Vienna, Austria, 2013.
- Lee, H.-M., Henze, D. K., Alexander, B., and Murray, L. T.: Investigating the sensitivity of surface-level nitrate seasonality in Antarctica to primary sources using a global model, *Atmos. Environ.*, 89, 757–767, 2014.
- Lee-Taylor, J. and Madronich, S.: Calculation of actinic fluxes with a coupled atmosphere–snow radiative transfer model, *J. Geophys. Res.-Atmos.*, 107, 4796, <https://doi.org/10.1029/2002JD002084>, 2002.
- Legrand, M. R. and Delmas, R. J.: Soluble impurities in four Antarctic ice cores over the last 30 000 years, *Ann. Glaciol.*, 10, 116–120, 1988.

- Le Meur, E., Magand, O., Arnaud, L., Fily, M., Frezzotti, M., Cavitte, M., Mulvaney, R., and Urbini, S.: Spatial and temporal distributions of surface mass balance between Concordia and Vostok stations, Antarctica, from combined radar and ice core data: first results and detailed error analysis, *The Cryosphere*, 12, 1831–1850, <https://doi.org/10.5194/tc-12-1831-2018>, 2018.
- Li, D. and Wang, X.: Nitrogen isotopic signature of soil-released nitric oxide (NO) after fertilizer application, *Atmos. Environ.*, 42, 4747–4754, <https://doi.org/10.1016/j.atmosenv.2008.01.042>, 2008.
- Libois, Q., Picard, G., France, J. L., Arnaud, L., Dumont, M., Carmagnola, C. M., and King, M. D.: Influence of grain shape on light penetration in snow, *The Cryosphere*, 7, 1803–1818, <https://doi.org/10.5194/tc-7-1803-2013>, 2013.
- Mariotti, A.: Atmospheric nitrogen is a reliable standard for natural ^{15}N abundance measurements, *Nature*, 303, 685–687, 1983.
- McCabe, J. R., Thiemens, M. H., and Savarino, J.: A record of ozone variability in South Pole Antarctic snow: Role of nitrate oxygen isotopes, *J. Geophys. Res.-Atmos.*, 112, D12303, <https://doi.org/10.1029/2006JD007822>, 2007.
- Meusinger, C., Berhanu, T. A., Erbland, J., Savarino, J., and Johnson, M. S.: Laboratory study of nitrate photolysis in Antarctic snow. I. Observed quantum yield, domain of photolysis, and secondary chemistry, *J. Chem. Phys.*, 140, 244305, <https://doi.org/10.1063/1.4882898>, 2014.
- Miller, D. J., Wojtal, P. K., Clark, S. C., and Hastings, M. G.: Vehicle NO_x emission plume isotopic signatures: Spatial variability across the eastern United States, *J. Geophys. Res.-Atmos.*, 122, 4698–4717, 2017.
- Miller, D. J., Chai, J., Guo, F., Dell, C. J., Karsten, H., and Hastings, M. G.: Isotopic Composition of In Situ Soil NO_x Emissions in Manure-Fertilized Cropland, *Geophys. Res. Lett.*, 45, 12058–12066, 2018.
- Morin, S., Savarino, J., Frey, M. M., Yan, N., Bekki, S., Bottenheim, J. W., and Martins, J. M.: Tracing the origin and fate of NO_x in the Arctic atmosphere using stable isotopes in nitrate, *Science*, 322, 730–732, 2008.
- Morin, S., Savarino, J., Frey, M. M., Domine, F., Jacobi, H. W., Kaleschke, L., and Martins, J. M.: Comprehensive isotopic composition of atmospheric nitrate in the Atlantic Ocean boundary layer from 65 S to 79 N, *J. Geophys. Res.-Atmos.*, 114, D05303, <https://doi.org/10.1029/2008JD010696>, 2009.
- Mosley-Thompson, E., Paskievitch, J. F., Gow, A. J., and Thompson, L. G.: Late 20th century increase in South Pole snow accumulation, *J. Geophys. Res.-Atmos.*, 104, 3877–3886, 1999.
- Mulvaney, R. and Wolff, E. W.: Evidence for winter/spring denitrification of the stratosphere in the nitrate record of Antarctic firn cores, *J. Geophys. Res.-Atmos.*, 98, 5213–5220, 1993.
- Mulvaney, R., Wagenbach, D., and Wolff, E.: Postdepositional change in snowpack nitrate from observation of year-round near-surface snow in coastal Antarctica, *J. Geophys. Res.-Atmos.*, 103, 11021–11031, 1998.
- Noro, K., Hattori, S., Uemura, R., Fukui, K., Hirabayashi, M., Kawamura, K., Motoyama, H., Takenaka, N., and Yoshida, N.: Spatial variation of isotopic compositions of snowpack nitrate related to post-depositional processes in eastern Dronning Maud Land, East Antarctica, *Geochem. J.*, 52, e7–e14, <https://doi.org/10.2343/geochemj.2.0519>, 2018.
- Oerter, H., Wilhelms, F., Jung-Rothenhäusler, F., Göktas, F., Miller, H., Graf, W., and Sommer, S.: Accumulation rates in Dronning Maud Land, Antarctica, as revealed by dielectric-profiling measurements of shallow firn cores, *Ann. Glaciol.*, 30, 27–34, 2000.
- Oncley, S., Buhr, M., Lenschow, D., Davis, D., and Semmer, S.: Observations of summertime NO fluxes and boundary-layer height at the South Pole during ISCAT 2000 using scalar similarity, *Atmos. Environ.*, 38, 5389–5398, 2004.
- Pasteris, D., McConnell, J. R., Edwards, R., Isaksson, E., and Albert, M. R.: Acidity decline in Antarctic ice cores during the Little Ice Age linked to changes in atmospheric nitrate and sea salt concentrations, *J. Geophys. Res.-Atmos.*, 119, 5640–5652, 2014.
- Reijmer, C. and Oerlemans, J.: Temporal and spatial variability of the surface energy balance in Dronning Maud Land, East Antarctica, *J. Geophys. Res.-Atmos.*, 107, ACL 9-1–ACL 9-12, 2002.
- Röthlisberger, R., Hutterli, M. A., Sommer, S., Wolff, E. W., and Mulvaney, R.: Factors controlling nitrate in ice cores: Evidence from the Dome C deep ice core, *J. Geophys. Res.-Atmos.*, 105, 20565–20572, 2000.
- Röthlisberger, R., Hutterli, M. A., Wolff, E. W., Mulvaney, R., Fischer, H., Bigler, M., Goto-Azuma, K., Hansson, M. E., Ruth, U., and Siggaard-Andersen, M.-L.: Nitrate in Greenland and Antarctic ice cores: a detailed description of post-depositional processes, *Ann. Glaciol.*, 35, 209–216, 2002.
- Savarino, J., Kaiser, J., Morin, S., Sigman, D. M., and Thiemens, M. H.: Nitrogen and oxygen isotopic constraints on the origin of atmospheric nitrate in coastal Antarctica, *Atmos. Chem. Phys.*, 7, 1925–1945, <https://doi.org/10.5194/acp-7-1925-2007>, 2007.
- Seinfeld, J. H. and Pandis, S. N.: From air pollution to climate change, *Atmospheric Chemistry and Physics*, Wiley, New York, 724–743, 1998.
- Shi, G., Buffen, A. M., Hastings, M. G., Li, C., Ma, H., Li, Y., Sun, B., An, C., and Jiang, S.: Investigation of post-depositional processing of nitrate in East Antarctic snow: isotopic constraints on photolytic loss, re-oxidation, and source inputs, *Atmos. Chem. Phys.*, 15, 9435–9453, <https://doi.org/10.5194/acp-15-9435-2015>, 2015.
- Shi, G., Buffen, A., Ma, H., Hu, Z., Sun, B., Li, C., Yu, J., Ma, T., An, C., and Jiang, S.: Distinguishing summertime atmospheric production of nitrate across the East Antarctic Ice Sheet, *Geochim. Cosmochim. Ac.*, 231, 1–14, 2018.
- Shi, G., Chai, J., Zhu, Z., Hu, Z., Chen, Z., Yu, J., Ma, T., Ma, H., An, C., and Jiang, S.: Isotope fractionation of nitrate during volatilization in snow: a field investigation in Antarctica, *Geophys. Res. Lett.*, 46, 3287–3297, 2019.
- Silva, S., Kendall, C., Wilkison, D., Ziegler, A., Chang, C. C., and Avanzino, R.: A new method for collection of nitrate from fresh water and the analysis of nitrogen and oxygen isotope ratios, *J. Hydrol.*, 228, 22–36, 2000.
- Sofen, E. D., Alexander, B., Steig, E. J., Thiemens, M. H., Kunasek, S. A., Amos, H. M., Schauer, A. J., Hastings, M. G., Bautista, J., Jackson, T. L., Vogel, L. E., McConnell, J. R., Pasteris, D. R., and Saltzman, E. S.: WAIS Divide ice core suggests sustained changes in the atmospheric formation pathways of sulfate and nitrate since the 19th century in the extratropical Southern Hemisphere, *Atmos. Chem. Phys.*, 14, 5749–5769, <https://doi.org/10.5194/acp-14-5749-2014>, 2014.
- Sommer, S., Appenzeller, C., Röthlisberger, R., Hutterli, M. A., Stauffer, B., Wagenbach, D., Oerter, H., Wilhelms,

- F., Miller, H., and Mulvaney, R.: Glacio-chemical study spanning the past 2 kyr on three ice cores from Dronning Maud Land, Antarctica: 1. Annually resolved accumulation rates, *J. Geophys. Res.-Atmos.*, 105, 29411–29421, <https://doi.org/10.1029/2000jd900449>, 2000.
- Thibert, E. and Domine, F.: Thermodynamics and kinetics of the solid solution of HNO_3 in ice, *J. Phys. Chem. B*, 102, 4432–4439, 1998.
- Thomas, E. R., van Wessel, J. M., Roberts, J., Isaksson, E., Schlosser, E., Fudge, T. J., Vallelonga, P., Medley, B., Lenaerts, J., Bertler, N., van den Broeke, M. R., Dixon, D. A., Frezzotti, M., Stenni, B., Curran, M., and Ekaykin, A. A.: Regional Antarctic snow accumulation over the past 1000 years, *Clim. Past*, 13, 1491–1513, <https://doi.org/10.5194/cp-13-1491-2017>, 2017.
- Traversi, R., Usoskin, I., Solanki, S., Becagli, S., Frezzotti, M., Severi, M., Stenni, B., and Udisti, R.: Nitrate in polar ice: a new tracer of solar variability, *Sol. Phys.*, 280, 237–254, 2012.
- Turner, J., Phillips, T., Thamban, M., Rahaman, W., Marshall, G. J., Wille, J. D., Favier, V., Winton, H., Thomas, E., and Wang, Z.: The Dominant Role of Extreme Precipitation Events in Antarctic Snowfall Variability, *Geophys. Res. Lett.*, 46, 350–3511, <https://doi.org/10.1029/2018GL081517>, 2019.
- van de Berg, W., van Wessel, M., van den Broeke, M., Turner, J., and Phillips, T.: Antarctic daily precipitation amounts for January 1979–July 2017 from the RACMO version 3p2 limited area atmospheric model, along with flags that indicate extreme precipitation events, UK Polar Data Centre, Natural Environment Research Council, UK Research & Innovation <https://doi.org/10.5285/bbf12a6f-7d97-4951-9bd1-e4224e2abac9>, 2019.
- Van Meijgaard, E., Van Uft, L., Van de Berg, W., Bosveld, F., Van den Hurk, B., Lenderink, G., and Siebesma, A.: The KNMI regional atmospheric climate model RACMO version 2.1, *Koninklijk Nederlands Meteorologisch Instituut*, 43, 2008.
- Wagenbach, D., Legrand, M., Fischer, H., Pichlmayer, F., and Wolff, E.: Atmospheric near-surface nitrate at coastal Antarctic sites, *J. Geophys. Res.-Atmos.*, 103, 11007–11020, 1998.
- Warren, S. G.: Optical properties of snow, *Rev. Geophys.*, 20, 67–89, 1982.
- Weller, R. and Wagenbach, D.: Year-round chemical aerosol records in continental Antarctica obtained by automatic samplings, *Tellus B*, 59, 755–765, 2007.
- Weller, R., Minikin, A., König-Langlo, G., Schrems, O., Jones, A., Wolff, E., and Anderson, P.: Investigating possible causes of the observed diurnal variability in Antarctic NO_y , *Geophys. Res. Lett.*, 26, 2853–2856, 1999.
- Weller, R., Traufetter, F., Fischer, H., Oerter, H., Piel, C., and Miller, H.: Postdepositional losses of methane sulfonate, nitrate, and chloride at the European Project for Ice Coring in Antarctica deep-drilling site in Dronning Maud Land, Antarctica, *J. Geophys. Res.-Atmos.*, 109, D07301, <https://doi.org/10.1029/2003JD004189>, 2004.
- Weller, R., Legrand, M., and Preunkert, S.: Size distribution and ionic composition of marine summer aerosol at the continental Antarctic site Kohnen, *Atmos. Chem. Phys.*, 18, 2413–2430, <https://doi.org/10.5194/acp-18-2413-2018>, 2018.
- Wilhelms, F., Miller, H., Gerasimoff, M. D., Drücker, C., Frenzel, A., Fritzsche, D., Grobe, H., Hansen, S. B., Hilmarsen, S. Æ., Hoffmann, G., Hörnby, K., Jaeschke, A., Jakobsdóttir, S. S., Juckschat, P., Karsten, A., Karsten, L., Kaufmann, P. R., Karlin, T., Kohlberg, E., Kleffel, G., Lambrecht, A., Lambrecht, A., Lawer, G., Schärmeli, I., Schmitt, J., Sheldon, S. G., Takata, M., Trenke, M., Twarloh, B., Valero-Delgado, F., and Wilhelms-Dick, D.: The EPICA Dronning Maud Land deep drilling operation, *Ann. Glaciol.*, 55, 355–366, <https://doi.org/10.3189/2014AoG68A189>, 2017.
- Winton, V. H. L. W., Caillon, N., Hauge, L., Mulvaney, R., Rix, J., Tuckwell, R., Savarino, J., and Frey, M.: Ice core chemistry, density, conductivity, dust, snow accumulation rate, and stable nitrate isotopic composition of the 120 m ISOL-ICE ice core, Dronning Maud Land, Antarctica (Version 1.0) [Data set], UK Polar Data Centre, Natural Environment Research Council, UK Research & Innovation, <https://doi.org/10.5285/9c972cfb-0ffa-4144-a943-da6eb82431d2>, 2019a.
- Winton, V. H. L. W., Frey, M., Hauge, L., Caillon, N., and Savarino, J.: Major ion chemistry and stable nitrate isotopic composition of aerosol, skin layer snow and snow pits at Dronning Maud Land, Antarctica (Version 1.0) [Data set], UK Polar Data Centre, Natural Environment Research Council, UK Research & Innovation, <https://doi.org/10.5285/1467b446-54eb-45c1-8a31-f4af21e60e60>, 2019b.
- Wolff, E. W.: Nitrate in polar ice, in: *Ice core studies of global biogeochemical cycles*, Springer, 195–224, 1995.
- Wolff, E. W., Jones, A. E., Martin, T. J., and Grenfell, T. C.: Modelling photochemical NO_x production and nitrate loss in the upper snowpack of Antarctica, *Geophys. Res. Lett.*, 29, 5-1–5-4, 2002.
- Wolff, E. W., Jones, A. E., Bauguitte, S. J.-B., and Salmon, R. A.: The interpretation of spikes and trends in concentration of nitrate in polar ice cores, based on evidence from snow and atmospheric measurements, *Atmos. Chem. Phys.*, 8, 5627–5634, <https://doi.org/10.5194/acp-8-5627-2008>, 2008.
- Yu, Z. and Elliott, E. M.: Novel method for nitrogen isotopic analysis of soil-emitted nitric oxide, *Environ. Sci. Technol.*, 51, 6268–6278, 2017.
- Zatko, M., Geng, L., Alexander, B., Sofen, E., and Klein, K.: The impact of snow nitrate photolysis on boundary layer chemistry and the recycling and redistribution of reactive nitrogen across Antarctica and Greenland in a global chemical transport model, *Atmos. Chem. Phys.*, 16, 2819–2842, <https://doi.org/10.5194/acp-16-2819-2016>, 2016.
- Zatko, M. C., Grenfell, T. C., Alexander, B., Doherty, S. J., Thomas, J. L., and Yang, X.: The influence of snow grain size and impurities on the vertical profiles of actinic flux and associated NO_x emissions on the Antarctic and Greenland ice sheets, *Atmos. Chem. Phys.*, 13, 3547–3567, <https://doi.org/10.5194/acp-13-3547-2013>, 2013.