



HAL
open science

Prolonged in-hospital stay and higher mortality after Covid-19 among patients with non-Hodgkin lymphoma treated with B-cell depleting immunotherapy

Rémy Duléry, Sylvain Lamure, Marc Delord, Roberta Di Blasi, Adrien Chauchet, Thomas Hueso, Cédric Rossi, Bernard Drenou, Bénédicte Deau Fischer, Carole Soussain, et al.

► To cite this version:

Rémy Duléry, Sylvain Lamure, Marc Delord, Roberta Di Blasi, Adrien Chauchet, et al.. Prolonged in-hospital stay and higher mortality after Covid-19 among patients with non-Hodgkin lymphoma treated with B-cell depleting immunotherapy. *American Journal of Hematology*, 2021, 96 (8), pp.934-944. 10.1002/ajh.26209 . hal-03401859

HAL Id: hal-03401859

<https://hal.science/hal-03401859>

Submitted on 29 Sep 2022

HAL is a multi-disciplinary open access archive for the deposit and dissemination of scientific research documents, whether they are published or not. The documents may come from teaching and research institutions in France or abroad, or from public or private research centers.

L'archive ouverte pluridisciplinaire **HAL**, est destinée au dépôt et à la diffusion de documents scientifiques de niveau recherche, publiés ou non, émanant des établissements d'enseignement et de recherche français ou étrangers, des laboratoires publics ou privés.

Prolonged in-hospital stay and higher mortality after Covid-19 among patients with non-Hodgkin lymphoma treated with B-cell depleting immunotherapy

Rémy Duléry,^{1*} Sylvain Lamure,^{2*} Marc Delord,^{3#} Roberta Di Blasi,^{4#} Adrien Chauchet,⁵ Thomas Hueso,⁶ Cédric Rossi,⁷ Bernard Drenou,⁸ Bénédicte Deau Fischer,⁹ Carole Soussain,¹⁰ Pierre Feugier,¹¹ Nicolas Noël,¹² Sylvain Choquet,¹³ Serge Bologna,¹⁴ Bertrand Joly,¹⁵ Laure Philippe,¹⁶ Milena Kohn,¹⁷ Sandra Malak,¹⁰ Guillemette Fouquet,⁹ Etienne Daguindau,⁵ Yassine Taoufik,¹⁸ Karine Lacombe,¹⁹ Guillaume Cartron,² Catherine Thiéblemont,⁴ and Caroline Besson.^{17,20}

** these authors contributed equally and are co-first authors*

these authors contributed equally and are co-third authors

1. Service d'Hématologie Clinique et de Thérapie Cellulaire, Hôpital Saint Antoine, Assistance Publique - Hôpitaux de Paris, Sorbonne Université, Inserm UMRs 938, Paris, France
2. Département d'Hématologie Clinique, CHU de Montpellier, UMR-CNRS 5535, Université de Montpellier, Montpellier, France
3. Clinical Research Center, Centre Hospitalier de Versailles, Le Chesnay, France
4. Service d'Hématologie-Oncologie, Hôpital Saint Louis, Assistance Publique - Hôpitaux de Paris ; Université de Paris – Diderot ; Paris, France
5. Service d'Hématologie, CbmiU de Besançon, Besançon, France
6. Service d'Hématologie Adulte, Institut Gustave Roussy, Université Paris-Sud, Université Paris-Saclay, Villejuif, France
7. Service d'Hématologie Clinique, CHU de Dijon Bourgogne, Dijon, France
8. Département d'Hématologie, Groupe Hospitalier de Mulhouse Sud Alsace, Mulhouse, France
9. Service d'Hématologie Clinique, Hôpital Cochin, Assistance Publique - Hôpitaux de Paris, Paris, France
10. Département d'Oncologie Médicale - Hématologie, Institut Curie, Saint Cloud, France
11. Service d'Hématologie, CHRU de Nancy, Nancy, France
12. Service de Médecine Interne – Immunologie, Hôpital Bicêtre, Assistance Publique - Hôpitaux de Paris, Le Kremlin-Bicêtre, France
13. Service d'Hématologie Clinique, Hôpital Pitié-Salpêtrière, Assistance Publique - Hôpitaux de Paris, Paris, France
14. Service d'Hématologie, Centre d'Oncologie de Gentilly, Nancy, France
15. Service d'Hématologie, Centre Hospitalier Sud Francilien, Corbeil-Essonnes, France
16. Service d'Hématologie, Centre Hospitalier d'Annecy, Annecy, France
17. Service d'Hématologie Oncologie, Centre Hospitalier de Versailles, Le Chesnay, France
18. Service d'Hématologie et Immunologie Biologique, Hôpital Bicêtre, Assistance Publique-Hôpitaux de Paris, INSERM 1186, Institut Gustave Roussy, Villejuif, France
19. Sorbonne Université, Inserm IPLESP, Service des Maladies Infectieuses et Tropicales, Hôpital Saint Antoine, Assistance Publique - Hôpitaux de Paris, Paris, France
20. Université Paris-Saclay, UVSQ, Inserm, Équipe "Exposome et Hérité", CESP, 94805, Villejuif, France

Corresponding author

Pr Caroline BESSON

Service d'Hématologie Oncologie

Centre Hospitalier de Versailles

177, rue de Versailles

78157 Le Chesnay CEDEX, France

Tel: 01.39.63.89.09 Fax: 01.39.63.94.08

Mail: cbesson@ch-versailles.fr

Running Title: Prolonged Covid-19 among patients with lymphoma

Key words: Covid-19; lymphoma; anti-CD20 therapy; B-cell depleting immunotherapy; vaccination

Abstract word count: 250

Main text word count: 3583

Tables: 2

Figures: 4

Abstract

Introduction

Prolonged Covid-19 is an emerging issue for patients with lymphoma or immune deficiency. We aimed to examine prolonged length of in-hospital stay (LOS) due to Covid-19 among patients with lymphoma and assess its determinants and outcomes.

Methods

Adult patients with lymphoma admitted for Covid-19 to 16 French hospitals in March and April 2020 were included. LOS was analyzed as a competitor versus death.

Findings

The study included 111 patients. The median age was 65 years (range, 19-92). Ninety-four patients (85%) had B-cell non-Hodgkin lymphoma. Within the 12 months prior to hospitalization for Covid-19, 79 patients (71%) were treated for their lymphoma. Among them, 63 (57%) received an anti-CD20 therapy. Fourteen patients (12%) had relapsed/refractory disease. The median LOS was 14 days (range, 1-235). After a median follow-up of 191 days (3-260), the 6-month overall survival was 69%. In multivariable analyses, recent administration of anti-CD20 therapy was associated with prolonged LOS (subdistribution hazard ratio 2.26, 95% confidence interval 1.42-3.6, $p < 0.001$) and higher risk of death (hazard ratio 2.17, 95% confidence interval 1.04-4.52, $p = 0.039$). An age ≥ 70 years and relapsed/refractory lymphoma were also associated with prolonged LOS and decreased overall survival.

Conclusions

An age ≥ 70 years, a relapsed/refractory lymphoma and recent administration of anti-CD20 therapy are risk factors for prolonged LOS and death for lymphoma patients hospitalized for Covid-19. These findings may contribute to guide the management of lymphoma during the pandemic, support evaluating specific therapeutic approaches, and raise questions on the efficacy and timing of vaccination of this particular population.

Introduction

Patients with hematological malignancies have a higher risk of death from Coronavirus Disease 2019 (Covid-19) than the general population.^{1,2} Patients with lymphoma have an immune-deficiency due to the biological features of lymphoma *per se* (hypogammaglobulinemia, neutropenia, lymphopenia) and its treatments, leading to an increased incidence and severity of infections.^{3,4} High in-hospital mortality related to severe Covid-19 among patients with lymphoma has been reported in several countries, with 30-day overall survivals (OS) ranging from 62 to 81%.^{2,5-10} The risk of early death for patients with severe Covid-19 and lymphoma increases with age and relapsed/refractory lymphoma disease.⁵

The median length of in-hospital stay (LOS) for Covid-19 is reported to be 5 to 20 days depending on the requirement of intensive care.^{11,12} With longer hindsight, the persistence of SARS-CoV-2 appears to be an emerging clinical issue for immunocompromised patients: the persistence of SARS-CoV-2 replication for at least two months was recently reported in a series of 20 immunocompromised patients treated for hematological malignancies.¹³ Hueso et al. also reported a series of 17 patients with profound B-cell depletion, prolonged Covid-19 symptoms, negative SARS-CoV-2 serology, and positive SARS-CoV-2 polymerase chain reaction (PCR) in blood.¹⁴ Moreover, among lymphoma treatments, anti-CD20 monoclonal antibodies, such as rituximab and obinutuzumab, induce rapid B-cell depletion, which may alter the generation of antibody responses to new pathogens,^{15,16} possibly impacting the clinical course of Covid-19. Indeed, at least nine case studies have reported that patients with B-lineage hematological malignancies or auto-immune diseases treated with B-cell depletion experienced prolonged course of Covid-19 with persistence of SARS-CoV-2 replication.¹⁷⁻²⁵

The incidence, risk factors, and outcomes of prolonged forms of Covid-19 for patients with lymphoma are still only poorly assessed. In a previously published retrospective multicentric cohort, we reported a prolonged LOS of more than 30 days for 22% of patients with lymphoma and Covid-19.⁵ By increasing the follow-up of this population from one to six months and following the inclusion of additional lymphoma patients from more centers in France, we aimed to examine prolonged LOS due to Covid-19, and assess its determinants and outcomes.

Methods

Setting

This retrospective multicentric study was conducted in 16 French hospitals. Briefly, adult patients with a past or current diagnosis of lymphoma, who were admitted for Covid-19 in March and April 2020, were identified in each hospital, as previously described.⁵ Each local investigator confirmed the Covid-19 based on a positive PCR test result for SARS-CoV-2 from nasopharyngeal or oropharyngeal swabs or on typical clinical history associated with chest computed tomography (CT) showing Covid-19 lesions. Patients with any lymphoma subtype could be enrolled in the study, except those with lymphoblastic and lymphocytic lymphomas, which were investigated in other studies. Patients or their

relatives (for those who were sedated) were informed according to French law on biomedical research. The ethics committee for research of the Université Paris-Saclay approved this study (CER-Paris-Saclay-2020-045) and it was conducted in accordance with the Declaration of Helsinki. Information on the study is available at clinicaltrials.gov (NCT 04386512).

Data sources, assessment of variables, and definitions

Data were extracted from the patients' medical charts in each hospital by the local investigator.⁵ Briefly, for each patient, data were obtained on their demographics, comorbidities, lymphoma history, including detailed chemotherapy and anti-CD20 monoclonal antibody use (date of first and last administration), and lymphoma status at admission for Covid-19 and at last follow-up. Relapsed/refractory lymphoma was defined as progressive disease after more than two lines of treatment or progressive disease in palliative care due to comorbidities, regardless of the number of lines of treatment. Covid-19-related data included symptoms, laboratory tests, including complete blood counts, total immunoglobulin levels, SARS-CoV-2 RNA detection by PCR from nasal swabs, blood or bronchoalveolar lavage, and SARS-CoV-2 serology, imaging results, specific medications, oxygenation supply, and the modality of hospital discharge. Prolonged LOS due to Covid-19 was defined as persisting or recurring Covid-19 symptoms requiring a total LOS of more than 30 days.

Statistical Analysis

Continuous variables are given as their medians and ranges and categorical variables as their frequencies and percentages. Qualitative variables were compared using Fisher's exact test. OS was evaluated using Kaplan-Meier estimates from the time of hospitalization for Covid-19 (or the time of the first SARS-CoV-2 PCR when symptoms of Covid-19 occurred after admission for a cause other than Covid-19) to the last follow-up or date of death from any cause. LOS was defined as the time between first admission and final discharge for Covid-19 symptoms and analyzed as a competitor versus death. Living patients not discharged from the hospital at the time of the last follow up were censored at that time. The cumulative incidence of discharge from the hospital was estimated using the Kalbfleisch and Prentice method.²⁶ Factors associated with LOS were evaluated using a Fine and Gray proportional subdistribution hazard model.²⁷ Covariates considered in this analysis were gender, age (≥ 70 years versus below), body mass index (≥ 30 kg/m² versus below), smoking status, presence of comorbidities (overall or hypertension only), main lymphoma subtypes (Hodgkin lymphoma, B-cell non-Hodgkin lymphoma (NHL), or T-cell NHL), lymphopenia (< 1 G/L) hypogammaglobulinemia (< 4 g/L), recent (within one year) administration of any treatment for lymphoma or bendamustine, or anti-CD20 monoclonal antibody, time between diagnosis of lymphoma and hospitalization for Covid-19 (< 2 years versus ≥ 2 years), and lymphoma status (relapsed/refractory versus others). Multivariable analysis was performed from the subset of independent variables having univariate significance < 0.1 and no missing data after a stepwise procedure of variable selection based on the Akaike information criterion. The

impact of these selected variables on OS was also analyzed by a multivariable analysis using a Cox proportional hazard model. Statistical tests were two-tailed and P values < 0.05 were considered to denote statistical significance. Statistical analysis was performed using the R language and environment for statistical computing version 4.03 (R Core Team (2020). R: A language and environment for statistical computing. R Foundation for Statistical Computing, Vienna, Austria. URL <https://www.R-project.org/>).

Results

Characteristics of the study population

The characteristics of the 111 included patients are summarized in Table 1. Briefly, their median age was 65 years and 63% were male. Ninety-four patients had B-cell NHL (85%) and half (50%) were diagnosed with lymphoma more than two years before Covid-19. The median LOS was 14 days (range, 1-235). After a median follow-up of 191 days (range, 3-260), the 6-month OS was 69% (95% Confidence Interval 60-78%) (Figure 1). Twenty-four patients died within 30 days after admission for Covid-19. Among the 87 living patients 30 days after Covid-19 diagnosis, 55 had been definitively discharged from the hospital, 31 were still hospitalized for Covid-19 symptoms, and one was later re-hospitalized for Covid-19 symptoms recurrence. These 32 patients were considered as having prolonged LOS due to Covid-19 (Supplementary Figure 1).

Description and clinical evolution of patients with prolonged LOS for Covid-19

The proportion of patients who had a prolonged LOS for Covid-19 symptoms (> 30 days) was 29%. Their median LOS was 58 days (range, 31-235). As shown in Table 1, they had a median age of 64 years (range, 43-87) and 63% were male. Twenty-two patients (69%) had at least one significant comorbidity. Noteworthy, three patients had an ongoing autoimmune disease (rheumatoid polyarthritis, Crohn's disease and ankylosing spondylitis) and another was being treated for human immunodeficiency virus infection. All patients had B-cell NHL, except one, who had nodular lymphocyte-predominant Hodgkin lymphoma, versus 42/55 (76%) among patients alive 30 days after Covid-19 diagnosis who did not experience prolonged LOS for Covid-19 ($p = 0.01$). Within the 12 months prior to hospitalization for Covid-19, 26 patients (81%) were treated for their lymphoma. Among them, all patients received an anti-CD20 monoclonal antibody, either administered as induction in association with chemotherapy for 18 (56%) (including the patient with nodular lymphocyte-predominant Hodgkin lymphoma) or as maintenance following induction chemo-immunotherapy for eight (25%). By contrast, only 22 of 55 patients (40%) alive 30 days after Covid-19 diagnosis who did not experience prolonged LOS for Covid-19 recently received an anti-CD20 monoclonal antibody ($p < 0.001$). During the follow-up after Covid-

19 diagnosis, seven patients received treatment for their lymphoma (Bruton's tyrosine kinase inhibitors for two patients and anti-CD20 immunochemotherapy for five). One of them had a recurrent form of Covid-19 after receiving anti-CD20 immunochemotherapy for relapsing follicular lymphoma, four months after the initial Covid-19 diagnosis.

The detailed clinical and biological characteristics at admission to the hospital of patients with prolonged LOS for Covid-19 are detailed in Supplementary Table S1. Of note, three patients had a prolonged LOS due both to long-lasting Covid-19 symptoms and evolution of the lymphoma (Patients 20, 30 and 31 in Supplementary Table S1). Fever and respiratory symptoms were common at admission, but seven patients (21%) initially had no fever. Four patients (12%) with fever had no respiratory symptoms. All 32 patients had chest CT showing bilateral ground-glass opacities that were consistent with the diagnosis of Covid-19.²⁸ Five patients (15%) did not require oxygen support, 11 (30%) required low-dose supplemental oxygen, two (12%) non-invasive ventilation or high-flow oxygen, and 14 (42%) invasive mechanical ventilation. Corticosteroids were given to eight patients, all of whom recovered, most (n=7) after receiving other treatments. Convalescent plasma was administered to nine patients, of whom eight recovered from their symptoms, and one died of prolonged Covid-19 complicated by multiple organ failure six days after receiving half of the scheduled dose of convalescent plasma. Other treatments are detailed in Supplementary Table S1.

Overall, 19 patients (58%) with prolonged LOS for Covid-19 were admitted to the intensive care unit (ICU): 16 patients were admitted during the first 30 days of hospitalization for Covid-19 and the other three at days 31, 34, and 42. Nine patients with prolonged LOS for Covid-19 died (27%): six deaths (18%) were related to Covid-19, two (6%) to multiple causes, including Covid-19 and lymphoma progression, and one to lymphoma progression (Patient 32, Supplementary Table S1).

Laboratory findings and virological monitoring of patients with prolonged LOS for Covid-19

The most common laboratory findings at admission were elevated C-reactive protein (> 5mg/L) for 29/32 evaluated patients (91%), profound hypogammaglobulinemia (< 4g/L) for 8/25 (32%), and lymphopenia (< 1 G/L) for 21/30 (70%). Twenty-seven patients had positive nasal swab PCR tests at diagnosis, whereas it was negative for five patients, although they all had typical clinical symptoms of Covid-19. In those PCR negative patients, the diagnosis of SARS-CoV-2 pneumonia was established by an infectiologist expert based on clinical background and chest CT.²⁸ Covid-19 was later confirmed for three of these five patients by SARS-CoV-2 positive blood PCR and for one of these five patients by positive PCR in bronchoalveolar lavage.

Twenty-six of the 32 patients with prolonged LOS had multiple PCR tests during the follow-up and six had only a single SARS-CoV-2 PCR test performed. Among the patients with repeated testing, SARS-CoV-2 PCR from nasal swabs or bronchoalveolar lavage was positive up to 143 days after initial

diagnosis. SARS-CoV-2 RNA was positive in blood for 10 of 13 evaluated patients and remained positive for a median of 35 days (range, 4-123) after the diagnosis of Covid-19 (of note, seven of the positive cases were in ICU). SARS-CoV-2 IgG-IgM serology was assessed for 19 patients and remained negative for 13 (up to 172 days after the diagnosis of Covid-19), whereas only two patients reached positive serology (four other patients became antibody positive shortly after receiving convalescent plasma administration). The clinical and virological evolution of six representative patients with prolonged LOS for Covid-19 is illustrated in Figure 2.

Risk factors for prolonged LOS and death of Covid-19

Univariate and multivariable analyses of the factors associated with LOS are shown in Table 2 and Figure 3. An age ≥ 70 , hypertension, the presence of comorbidity, NHL subtype, relapsed/refractory lymphoma, recent use of bendamustine, and recent anti-CD20 treatment were all associated with a longer LOS in univariate analysis. Recent anti-CD20 treatment administered as induction with chemotherapy was associated with increased LOS (subdistribution hazard ratio (sHR) 1.79, 95% Confidence Interval (CI) 1.1-2.91, $p = 0.019$, versus no anti-CD20 within 12 months) whereas recent anti-CD20 treatment as maintenance following induction chemo-immunotherapy tended to be associated with increased LOS (sHR 1.87, 95% CI 0.9-3.89, $p = 0.095$) (data not shown). In the multivariable analysis, an age ≥ 70 years (2.34, 95% CI 1.32-4.17, $p = 0.004$), relapsed/refractory lymphoma (sHR 3.12, 95% CI 1.13-8.61, $p = 0.028$), and recent administration of anti-CD20 monoclonal antibody (sHR 2.26, 95% CI 1.42-3.60, $p < 0.001$) were significantly associated with increased LOS. These variables were also found to be associated with an increased risk of death in a multivariable analysis (Table 2): age ≥ 70 years (HR 4.08, 95% CI 1.94-8.57, $p < 0.001$), relapsed/refractory lymphoma (HR 3.34, 95% CI 1.58-7.06, $p = 0.002$) and recent administration of anti-CD20 monoclonal antibody (HR 2.17, 95% CI 1.04-4.52, $p = 0.039$). Of note, there was a trend toward an association between the presence of comorbidities and both increased LOS (sHR 1.50, 95% CI 0.91-2.48, $p = 0.109$) and risk of death (HR 2.50, 95% CI 0.95-6.57, $p = 0.064$) (Figure 2). Figure 4 summarizes the clinical evolution of the patients who recently received or not an anti-CD20 monoclonal antibody.

Discussion

Long-lasting Covid-19 symptoms are a major emerging concern for many individuals who have survived a SARS-Cov-2 infection.²⁹⁻³¹ Apart from mild-to-moderate long-lasting symptoms reported for the general population, several reports described the persistence of SARS-CoV-2 replication with severe

symptoms for immunocompromised patients, including those with lymphoma.^{13,14,17-25} Here, we analyzed the determinants of LOS due to-Covid-19 symptoms in a multicentric retrospective cohort of patients with lymphoma. The major findings are the high incidence of prolonged LOS for Covid-19 symptoms in this population (29% of patients required more than 30 days of hospitalization for Covid-19 symptoms), and the association between longer LOS and recent administration of anti-CD20 therapy, an age ≥ 70 years, and relapsed/refractory lymphoma status.

A prolonged evolution of Covid-19 requiring a longer LOS has been reported in several case studies on immune-compromised patients.^{13,14,17-23,25} In the present study, the median LOS was 14 days for the whole cohort and 20 days (range, 2-235) for patients who received recent anti-CD20 treatment, whereas in the general population the reported Covid-19 median LOS was 5 days worldwide (outside of China)¹¹ and, in France 11 days for all patients hospitalized between March 1 and June 15, 2020. The proportion of patients requiring more than 30 days of hospitalization for Covid-19 was 29% in this study whereas it was 8% in the general population in France.¹² Most patients with prolonged LOS for Covid-19 had B-cell NHL (31/32) and were recently treated for their lymphoma (26/32). All of them received a B-cell depletion therapy, either combined with chemotherapy (n=18) or alone as maintenance (n=8). The only patient with prolonged LOS for Covid-19 without B-cell NHL had a nodular lymphocyte-predominant Hodgkin lymphoma recently treated with anti-CD20 based chemotherapy. These observations suggest an association between B-cell depletion and the risk of prolonged LOS for Covid-19.

The analysis of the risk factors associated with prolonged LOS for Covid-19 in competition with death ~~as a~~ confirmed that one of the main risk factors for prolonged hospitalization for Covid-19 symptoms was the administration of anti-CD20 monoclonal antibody within the previous 12 months (sHR: 2.26). This finding was supported by associations of similar magnitude observed between LOS and anti-CD20 monoclonal antibody, given either combined with chemotherapy (sHR: 1.79) or as maintenance treatment (sHR: 1.87), although the latter did not reach statistical significance ($p = 0.095$). In accordance with these findings, a recent case series reported 17 consecutive patients with profound B-cell depletion and prolonged Covid-19 symptoms, among whom 15 previously received an anti-CD20 monoclonal antibody.¹⁴ Fourteen of these patients were treated for lymphoma, one for Waldenström macroglobulinemia, one for multiple sclerosis and one was diagnosed with common variable immune deficiency. All patients had positive SARS-CoV-2 RNA in blood, and none had developed a neutralizing antibody response. Patients with B-cell NHL were also shown to have lower rates of seroconversion and antibody levels compared to other hematological patients.³² Consistently with these findings, in the present study, 10 of 13 evaluated patients had positive SARS-CoV-2 RNA in blood lasting up to 123 days after Covid-19 diagnosis. The persistence of positive SARS-CoV-2 PCR in nasal swabs or in bronchoalveolar lavage was also observed up to 143 days after initial admission. Moreover, only 2

patients (out of 19 with available results) with prolonged LOS for Covid-19 developed a positive serology against SARS-CoV-2.³³ A lower rate of seroconversion and a longer shedding of the virus (61 days vs. 33 days) had also been reported in patients treated with anti-CD20 monoclonal antibodies in a large study assessing the seroconversion after Covid-19 in patients with cancer.³⁴

Further supporting the specific impact of B-cell depletion on the course of Covid-19, cases of severe Covid-19 have also been reported for patients treated with anti-CD20 therapy for various auto-immune diseases, including fatal cases for two patients with rheumatoid arthritis.^{35–38} In the present study, recent anti-CD20 therapy also had a detrimental impact on long-term OS (HR: 2.17) regardless of age and relapsed/refractory status. Overall, these findings raise questions about the management of patients with lymphoma during the Covid-19 pandemic, for whom there are currently no consensus guidelines. Although avoiding or delaying the administration of anti-CD20 monoclonal antibodies might be discussed in certain circumstances in order to prevent prolonged Covid-19, further studies are necessary before recommendation can be made to change clinical practice. The decision concerning the use of anti-CD20 therapy should not preclude the patient from receiving the most efficacious treatment strategy and requires consideration of the disease characteristics and the patient's history.

Vaccination against SARS-CoV-2 was shown to prevent Covid-19 in the general population.^{39,40} We can hypothesize that vaccination of patients, their proxies and hospital workers might therefore benefit directly to patients, who receive or are planned to receive an anti-CD20 treatment. However, several studies have shown a blunted response to vaccination in patients with lymphoma or autoimmune disease treated with rituximab.^{41,42} B-cell depletion at the time of vaccine may strongly impact the generation of B-cell memory and the levels of neutralizing high-affinity antibodies. As recently reported in patients with chronic lymphocytic leukemia, none of the patients exposed to anti-CD20 antibodies within the 12 months prior to vaccination had an antibody-mediated response to BNT162b2 mRNA Covid-19 vaccine.⁴³ It may also hamper the formation of functional memory CD8+ T-cells⁴⁴ and the maintenance of follicular helper CD4+ T-cells responses.⁴⁵ Therefore, whenever possible, SARS-CoV-2 vaccination might be considered before the onset of anti-CD20 monoclonal antibody therapy although therapeutic B-cell depletion may also alter the efficacy of already established antiviral memory T-cell responses.⁴⁴ Likely, forthcoming studies will determine the optimal SARS-CoV-2 vaccination schedule in lymphoma patients.

Apart from B-cell depletion, other factors were found to contribute to LOS for Covid-19. In the present study, an age \geq 70 years (sHR: 2.34) and a relapsed/refractory lymphoma status (sHR: 3.12) were both associated with longer LOS. Moreover, although recent overall administration of lymphoma treatment

per se was not associated with a prolonged LOS, recent use of bendamustine was associated with longer LOS in univariate analysis (sHR: 3.37). However, among the 10 patients who had received bendamustine, eight had also received anti-CD20 therapy, six had a relapsed/refractory lymphoma and only three patients (including two with relapsed/refractory lymphoma) were hospitalized for more than 30 days. Further studies are needed to explore the impact of bendamustine on the evolution of Covid-19. Cases of prolonged shedding of viable SARS-CoV-2 for at least two months have also been described for patients undergoing hematopoietic cell transplantation or receiving chimeric antigen receptor T-cell therapy for various hematological malignancies.¹³ In the present study, prolonged Covid-19 was also observed for patients who had previously undergone hematopoietic cell transplantation (autologous for eight and allogeneic for one) or received cellular therapy (n=2).

Among the attempts to treat prolonged Covid-19, corticosteroids administration and/or convalescent plasma led to favorable outcomes in our study, but the small number of patients treated precludes drawing definitive conclusions. In particular, administration of Covid-19 convalescent plasma was shown to lead to rapid clinical improvement for eight of nine patients, in line with the results reported by Hueso et al.¹⁴ A larger study comparing convalescent plasma to other treatment approaches is warranted to evaluate the short- and long-term benefits of this innovative strategy for lymphoma patients experiencing prolonged Covid-19. The benefit of an earlier administration of convalescent plasma therapy for B-cell depleted patients remains also to be determined.⁴⁶

Limitations of the study include its retrospective nature and the selection of hospitalized patients, excluding patients with mild symptoms. Other limitations were the lack of systematic monitoring of SARS-CoV-2 PCR and the anti-SARS-CoV-2 immune responses, and the heterogeneity of treatments received for Covid-19. In conclusion, a high proportion of patients with B-cell lymphoma have a prolonged LOS for Covid-19. Administration of anti-CD20 therapy within the previous 12 months before Covid-19 is one of the main risk factors for longer LOS and death from Covid-19. The risk of prolonged LOS for Covid-19 was also higher for patients ≥ 70 years of age and with relapsed/refractory disease. Our findings may contribute to the elaboration of guidelines for the management of lymphoma patients during the Covid-19 pandemic. Although convalescent plasma may be a promising approach to treat B-cell depleted patients with prolonged Covid-19, further studies are needed to compare its efficacy to other strategies. As B-cell depletion may also affect the generation of primary and memory B and T-cell responses, unresolved issues are whether these patients are protected against re-infection after SARS-CoV-2 infection or gain effective immunological memory after SARS-CoV-2 vaccination.

Acknowledgements

We thank all the clinicians and patients in the participating centers for their contributions to this multicenter study. We are grateful to the Centre Hospitalier de Versailles, in particular Philippe Rousselot and Laure Morisset for promoting the research and for supporting the editing. We thank France Lymphome Espoir for reviewing the study material, LYSA for discussions on the design of this study, and Sophie Rigaudeau and Cécile Lauréana for their contribution to the collection of the cases.

Authors contributions

Sylvain Lamure and Rémy Duléry designed the data collection, collected and analyzed the data, and wrote the article. Marc Delord analyzed the data, performed statistical analysis, and commented on the manuscript. Roberta Di Blasi, Adrien Chauchet, Thomas Hueso, Bénédicte Deau-Fisher, Bernard Drenou, Carole Soussain, Pierre Feugier, Cédric Rossi, Nicolas Noël, Sylvain Choquet, Serge Bologna, Bertrand Joly, Laure Philippe, Milena Kohn, Sandra Malak, Guillemette Fouquet, Etienne Daguindau, and Yassine Taoufik performed the data collection and some of the data interpretation and reviewed the manuscript. Catherine Thiéblemont, Guillaume Cartron, and Karine Lacombe reviewed the study design and the article. Caroline Besson designed the study, contributed to the analysis, and wrote the article.

Conflict of interest disclosure statement

The authors certify that there is no conflict of interest with any organization concerning the material presented in this manuscript.

Rémy Duléry reports personal fees from Takeda, Novartis, and Biotest and non-financial support from Gilead outside the submitted work. Roberta Di Blasi reports personal fees from Gilead and Novartis outside the submitted work. Serge Bologna reports personal fees from Janssen and Roche outside the submitted work. Guillaume Cartron reports personal fees from Roche, Celgene, Sanofi, Gilead, Janssen, and Abbvie outside the submitted work. Karine Lacombe reports personal fees and non-financial support from Gilead, MSD, Abbvie, ViiV Healthcare, and Janssen outside the submitted work. Caroline Besson reports research funding from Roche and non-financial support from Takeda and Roche outside the submitted work.

Data sharing statement

The dataset supporting this article is available upon demand to the corresponding author and to the promoter (Centre Hospitalier de Versailles).

References

- 1 Williamson EJ, Walker AJ, Bhaskaran K, *et al.* Factors associated with COVID-19-related death using OpenSAFELY. *Nature* 2020; **584**: 430–6.
- 2 Passamonti F, Cattaneo C, Arcaini L, *et al.* Clinical characteristics and risk factors associated with COVID-19 severity in patients with haematological malignancies in Italy: a retrospective, multicentre, cohort study. *Lancet Haematol* 2020; **7**: e737–45.
- 3 Averbuch D, Orasch C, Cordonnier C, *et al.* European guidelines for empirical antibacterial therapy for febrile neutropenic patients in the era of growing resistance: summary of the 2011 4th European Conference on Infections in Leukemia. *Haematologica* 2013; **98**: 1826–35.
- 4 Maschmeyer G, De Greef J, Mellingshoff SC, *et al.* Infections associated with immunotherapeutic and molecular targeted agents in hematology and oncology. A position paper by the European Conference on Infections in Leukemia (ECIL). *Leukemia* 2019; **33**: 844–62.
- 5 Lamure S, Duléry R, Di Blasi R, *et al.* Determinants of outcome in Covid-19 hospitalized patients with lymphoma: A retrospective multicentric cohort study. *EClinicalMedicine* 2020; **27**: 100549.
- 6 Glenthøj A, Jakobsen LH, Sengeløv H, *et al.* SARS-CoV-2 infection among patients with haematological disorders: Severity and one-month outcome in 66 Danish patients in a nationwide cohort study. *Eur J Haematol* 2020; published online Sept 16. DOI:10.1111/ejh.13519.
- 7 Wood WA, Neuberg DS, Thompson JC, *et al.* Outcomes of patients with hematologic malignancies and COVID-19: a report from the ASH Research Collaborative Data Hub. *Blood Adv* 2020; **4**: 5966–75.
- 8 Rüttrich MM, Giessen-Jung C, Borgmann S, *et al.* COVID-19 in cancer patients: clinical characteristics and outcome-an analysis of the LEOSS registry. *Ann Hematol* 2020; published online Nov 7. DOI:10.1007/s00277-020-04328-4.
- 9 García-Suárez J, de la Cruz J, Cedillo Á, *et al.* Impact of hematologic malignancy and type of cancer therapy on COVID-19 severity and mortality: lessons from a large population-based registry study. *J Hematol Oncol* *J Hematol Oncol* 2020; **13**: 133.
- 10 Lee LYW, Cazier J-B, Starkey T, *et al.* COVID-19 prevalence and mortality in patients with cancer and the effect of primary tumour subtype and patient demographics: a prospective cohort study. *Lancet Oncol* 2020; **21**: 1309–16.
- 11 Rees EM, Nightingale ES, Jafari Y, *et al.* COVID-19 length of hospital stay: a systematic review and data synthesis. *BMC Med* 2020; **18**: 270.
- 12 Golberg E (DREES/DIRECTION). Parcours hospitalier des patients atteints de la Covid-19 lors de la première vague de l'épidémie. 2020; : 39.
- 13 Aydililo T, Gonzalez-Reiche AS, Aslam S, *et al.* Shedding of Viable SARS-CoV-2 after Immunosuppressive Therapy for Cancer. *N Engl J Med* 2020; published online Dec 1. DOI:10.1056/NEJMc2031670.
- 14 Hueso T, Poudroux C, Péré H, *et al.* Convalescent plasma therapy for B-cell-depleted patients with protracted COVID-19. *Blood* 2020; **136**: 2290–5.
- 15 Gea-Banacloche JC. Rituximab-associated infections. *Semin Hematol* 2010; **47**: 187–98.
- 16 Tudesq J-J, Cartron G, Rivière S, *et al.* Clinical and microbiological characteristics of the infections in patients treated with rituximab for autoimmune and/or malignant hematological disorders. *Autoimmun Rev* 2018; **17**: 115–24.
- 17 Helleberg M, Niemann CU, Moestrup KS, *et al.* Persistent COVID-19 in an Immunocompromised Patient Temporarily Responsive to Two Courses of Remdesivir

Therapy. *J Infect Dis* 2020; **222**: 1103–7.

18 Tepassee P-R, Hafezi W, Lutz M, *et al.* Persisting SARS-CoV-2 viraemia after rituximab therapy: two cases with fatal outcome and a review of the literature. *Br J Haematol* 2020; **190**: 185–8.

19 Baang JH, Smith C, Mirabelli C, *et al.* Prolonged SARS-CoV-2 replication in an immunocompromised patient. *J Infect Dis* 2020; published online Oct 22.

DOI:10.1093/infdis/jiaa666.

20 Avanzato VA, Matson MJ, Seifert SN, *et al.* Case Study: Prolonged Infectious SARS-CoV-2 Shedding from an Asymptomatic Immunocompromised Individual with Cancer. *Cell* 2020; published online Nov 4. DOI:10.1016/j.cell.2020.10.049.

21 Moore JL, Ganapathiraju PV, Kurtz CP, Wainscoat B. A 63-Year-Old Woman with a History of Non-Hodgkin Lymphoma with Persistent SARS-CoV-2 Infection Who Was Seronegative and Treated with Convalescent Plasma. *Am J Case Rep* 2020; **21**: e927812.

22 Kos I, Balensiefer B, Roth S, *et al.* Prolonged Course of COVID-19-Associated Pneumonia in a B-Cell Depleted Patient After Rituximab. *Front Oncol* 2020; **10**: 1578.

23 Yasuda H, Tsukune Y, Watanabe N, *et al.* Persistent COVID-19 Pneumonia and Failure to Develop Anti-SARS-CoV-2 Antibodies During Rituximab Maintenance Therapy for Follicular Lymphoma. *Clin Lymphoma Myeloma Leuk* 2020; **20**: 774–6.

24 Karataş A, İnkaya AÇ, Demiroğlu H, *et al.* Prolonged viral shedding in a lymphoma patient with COVID-19 infection receiving convalescent plasma. *Transfus Apher Sci Off J World Apher Assoc Off J Eur Soc Haemapheresis* 2020; **59**: 102871.

25 Betrains A, Godinas L, Woei-A-Jin FJSH, *et al.* Convalescent plasma treatment of persistent severe acute respiratory syndrome coronavirus-2 (SARS-CoV-2) infection in patients with lymphoma with impaired humoral immunity and lack of neutralising antibodies. *Br J Haematol* 2020; published online Dec 13. DOI:10.1111/bjh.17266.

26 Prentice RL, Kalbfleisch JD, Peterson AV, Flournoy N, Farewell VT, Breslow NE. The analysis of failure times in the presence of competing risks. *Biometrics* 1978; **34**: 541–54.

27 Fine J, Gray RJ. A Proportional Hazards Model for the Subdistribution of A Competing Risk. *J Am Stat Assoc* 1999; **94**: 496–509.

28 Lei J, Li J, Li X, Qi X. CT Imaging of the 2019 Novel Coronavirus (2019-nCoV) Pneumonia. *Radiology* 2020; **295**: 18.

29 Malta M. My journey with COVID-19. *EClinicalMedicine* 2020; **27**: 100599.

30 Sudre CH, Murray B, Varsavsky T, *et al.* Attributes and predictors of Long-COVID: analysis of COVID cases and their symptoms collected by the Covid Symptoms Study App. *medRxiv* 2020; : 2020.10.19.20214494.

31 Huang C, Huang L, Wang Y, *et al.* 6-month consequences of COVID-19 in patients discharged from hospital: a cohort study. *The Lancet* 2021; **0**. DOI:10.1016/S0140-6736(20)32656-8.

32 Cattaneo C. Longitudinal Serological Response to Sars-COV-2 in Patients Affected By Hematologic Diseases. ASH, 2020.

<https://ash.confex.com/ash/2020/webprogram/Paper141355.html> (accessed Jan 22, 2021).

33 Ni L, Ye F, Cheng M-L, *et al.* Detection of SARS-CoV-2-Specific Humoral and Cellular Immunity in COVID-19 Convalescent Individuals. *Immunity* 2020; **52**: 971-977.e3.

34 Thakkar A, Pradhan K, Jindal S, *et al.* Patterns of seroconversion for SARS-CoV-2 IgG in patients with malignant disease and association with anticancer therapy. *Nat Cancer* 2021; : 1–8.

35 Schulze-Koops H, Krueger K, Vallbracht I, Hasseli R, Skapenko A. Increased risk for severe COVID-19 in patients with inflammatory rheumatic diseases treated with rituximab. *Ann Rheum Dis* 2020; published online June 26. DOI:10.1136/annrheumdis-2020-218075.

36 Guilpain P, Le Bihan C, Foulongne V, *et al.* Rituximab for granulomatosis with

polyangiitis in the pandemic of covid-19: lessons from a case with severe pneumonia. *Ann Rheum Dis* 2021; **80**: e10.

37 Avouac J, Airó P, Carlier N, Matucci-Cerinic M, Allanore Y. Severe COVID-19-associated pneumonia in 3 patients with systemic sclerosis treated with rituximab. *Ann Rheum Dis* 2020; published online June 5. DOI:10.1136/annrheumdis-2020-217864.

38 Benucci M, Quartuccio L, Li Gobbi F, *et al.* Persistence of rT-PCR-SARS-CoV-2 infection and delayed serological response, as a possible effect of rituximab according to the hypothesis of Schulze-Koops *et al.* *Ann Rheum Dis* 2020; published online Aug 4. DOI:10.1136/annrheumdis-2020-218590.

39 Polack FP, Thomas SJ, Kitchin N, *et al.* Safety and Efficacy of the BNT162b2 mRNA Covid-19 Vaccine. *N Engl J Med* 2020; **383**: 2603–15.

40 Voysey M, Clemens SAC, Madhi SA, *et al.* Safety and efficacy of the ChAdOx1 nCoV-19 vaccine (AZD1222) against SARS-CoV-2: an interim analysis of four randomised controlled trials in Brazil, South Africa, and the UK. *The Lancet* 2021; **397**: 99–111.

41 Yri OE, Torfoss D, Hungnes O, *et al.* Rituximab blocks protective serologic response to influenza A (H1N1) 2009 vaccination in lymphoma patients during or within 6 months after treatment. *Blood* 2011; **118**: 6769–71.

42 Nazi I, Kelton JG, Larché M, *et al.* The effect of rituximab on vaccine responses in patients with immune thrombocytopenia. *Blood* 2013; **122**: 1946–53.

43 Herishanu Y, Avivi I, Aharon A, *et al.* Efficacy of the BNT162b2 mRNA COVID-19 Vaccine in Patients with Chronic Lymphocytic Leukemia. *Blood* 2021; published online April 16. DOI:10.1182/blood.2021011568.

44 Durali D, de Goër de Herve M-G, Gasnault J, Taoufik Y. B cells and progressive multifocal leukoencephalopathy: search for the missing link. *Front Immunol* 2015; **6**: 241.

45 Choi YS, Kageyama R, Eto D, *et al.* ICOS Receptor Instructs T Follicular Helper Cell versus Effector Cell Differentiation via Induction of the Transcriptional Repressor Bcl6. *Immunity* 2011; **34**: 932–46.

46 Libster R, Marc GP, Wappner D, *et al.* Early High-Titer Plasma Therapy to Prevent Severe Covid-19 in Older Adults. *N Engl J Med* 2021; published online Jan 6. DOI:10.1056/NEJMoa2033700.

Table 1. Baseline characteristics of patients with lymphoma and Covid-19 according to their clinical evolution

	Total population	Died within 30 days	Prolonged LOS for Covid-19 > 30 days	Survived > 30 days with LOS for Covid-19 ≤ 30 days
	(n=111)	(n=24)	(n=32)	(n=55)
Demographic characteristics				
Age, years				
Median (range)	65 (19-92)	76 (53-92)	64 (43-87)	64 (19-87)
≥ 70, n (%)	42 (38)	17 (71)	10 (31)	15 (27)
Male gender, n (%)	70 (63)	16 (67)	20 (63)	34 (62)
Body mass index (kg/m2)				
Median (range)	23.6 (15.9-41.6)	24.1 (16.7-38.6)	23.2 (16-41.5)	24.5 (15.9-41.6)
≥ 30, n (%)	16 (14)	3 (13)	5 (16)	8 (15)
Data missing, n (%)	3 (3)	2 (8)	1 (3)	0 (0)
Smoking status, n (%)				
Never smoked	54 (49)	10 (42)	17 (53)	27 (49)
Former smoker	31 (28)	9 (37)	9 (28)	13 (24)
Current smoker	5 (4)	1 (4)	1 (3)	3 (5)
Unknown	21 (19)	4 (17)	5 (16)	12 (22)
Comorbidities				
Comorbidity ≥ 1, n (%)	75 (68)	21 (88)	22 (69)	32 (58)
Hypertension	45 (41)	15 (63)	10 (31)	20 (36)
Diabetes	22 (20)	8 (33)	5 (16)	9 (16)
Chronic lung disease†	10 (9)	3 (13)	3 (9)	4 (7)
Cancer	14 (13)	6 (25)	2 (6)	6 (11)
HIV infection	2 (2)	0 (0)	1 (3)	1 (2)
Lymphoma characteristics				
Histological subtypes, n (%)				
Hodgkin lymphoma	9 (8)	1 (4)	1* (3)	7 (13)
Diffuse large B-cell lymphoma	42 (38)	15 (63)	10 (31)	17 (31)

Follicular lymphoma	22 (20)	0 (0)	12 (38)	10 (18)
Marginal zone lymphoma	14 (13)	2 (8)	3 (9)	9 (17)
Mantle cell lymphoma	10 (9)	3 (13)	4 (13)	3 (5)
Other B-cell lymphoma	6 (5)	1 (4)	2 (6)	3 (5)
T-cell lymphoma	8 (7)	2 (8)	0 (0)	6 (11)
Number of previous lymphoma treatment lines, n (%)				
0	12 (11)	1 (4)	2 (6)	9 (16)
1	65 (59)	16 (67)	17 (53)	32 (58)
2	16 (14)	3 (12)	5 (16)	8 (15)
≥ 3	18 (16)	4 (17)	8 (25)	6 (11)
Lymphoma treatment, n (%)				
Any lymphoma therapy#	79 (71)	18 (75)	26 (81)	35 (64)
Anti-CD20 monoclonal antibody#	63 (57)	15 (62)	26 (81)	22 (40)
as part of induction immuno-chemotherapy	50 (45)	13 (54)	18 (56)	19 (35)
as maintenance following induction	13 (12)	2 (8)	8 (25)	3 (5)
Bendamustine#	10 (9)	5 (21)	3 (9)	2 (4)
Autologous stem cell transplant	21 (19)	5 (21)	8 (25)	8 (15)
Allogeneic stem cell transplant	4 (4)	1 (4)	1 (3)	2 (4)
CAR T-cell	5 (5)	1 (4)	2 (6)	2 (4)
Lymphoma status at Covid-19 diagnosis, n (%)				
Complete remission	52 (47)	8 (33)	19 (59)	25 (46)
Partial remission	3 (3)	0 (0)	2 (6)	1 (2)
Ongoing therapy < 3 lines	30 (27)	10 (42)	5 (16)	15 (27)
Watch and wait	12 (11)	1 (4)	1 (3)	10 (18)
Relapsed/refractory	14 (12)	5 (21)	5 (16)	4 (7)
Time between diagnosis of lymphoma and hospitalization for Covid-19 (months), median (range)	24 (0-285)	15 (1-246)	35 (3-285)	13 (0-201)

LOS: length of in-hospital stay, HIV: human immunodeficiency virus, CAR: chimeric antigen receptor.

† Chronic lung disease was defined as chronic obstructive pulmonary disease, asthma, or chronic bronchitis.

treatment administered within the previous 12 months before hospitalization for Covid-19.

* nodular lymphocyte-predominant Hodgkin lymphoma

Table 2. Univariate and multivariable analyses of the determinants of length of in hospital stay and overall survival.

	Length of in-hospital stay				Overall survival			
	Univariate analysis		Multivariable analysis		Univariate analysis		Multivariable analysis*	
	sHR (95% CI)	p-value	sHR (95% CI)	p-value	HR (95% CI)	p-value	HR (95% CI)	p-value
Gender (male versus female)	1.11 (0.70-1.76)	0.665	-	-	1.47 (0.70-3.07)	0.307	-	-
Age ≥ 70 years	2.49 (1.47-4.21)	0.001	2.34 (1.32-4.17)	0.004	4.73 (2.30-9.75)	<0.001	4.08 (1.94-8.57)	<0.001
Comorbidities (≥ 1 versus 0)	1.98 (1.24-3.14)	0.004	1.50 (0.91-2.48)	0.109	3.42 (1.32-8.85)	0.011	2.50 (0.95-6.57)	0.064
Hypertension	1.64 (1.01-2.66)	0.044	-	-	2.34 (1.19-4.62)	0.014	-	-
Obesity (BMI ≥ 30 kg/m ²)	1.01 (0.97-1.06)	0.546	-	-	1.02 (0.96-1.08)	0.579	-	-
Smoking status (versus never smoker)								
Former smoker	1.45 (0.81-2.60)	0.215	-	-	1.77 (0.85-3.66)	0.126	-	-
Current smoker	0.76 (0.27-2.14)	0.608	-	-	0.68 (0.09-5.15)	0.709	-	-
Histological subtype (versus B-cell NHL)								
T-cell lymphoma	0.65 (0.28-1.51)	0.318	-	-	0.71 (0.17-2.96)	0.636	-	-
Hodgkin, lymphoma	0.43 (0.20-0.90)	0.024	-	-	0.28 (0.04-2.07)	0.214	-	-
Time from lymphoma diagnosis to admission for Covid-19 (> 12 months)	1.00 (1.00-1.01)	0.480	-	-	1.00 (1.00-1.01)	0.455	-	-
Lymphopenia (< 1 G/L) †	1.55 (0.96-2.51)	0.071	-	-	2.67 (1.02-6.97)	0.044	-	-
Hypogammaglobulinemia (< 4 g/L) ‡	1.45 (0.67-3.13)	0.339	-	-	1.30 (0.42-4.03)	0.649	-	-
Lymphoma treatment								
Anti-CD20 monoclonal antibody#	1.83 (1.16-2.89)	0.009	2.26 (1.42-3.60)	<0.001	1.60 (0.78-3.29)	0.198	2.17 (1.04-4.52)	0.039
Bendamustine#	3.37 (1.06-10.73)	0.039	-	-	3.26 (1.42-7.52)	0.006	-	-
Any lymphoma therapy#	1.45 (0.89-2.37)	0.140	-	-	1.27 (0.58-2.81)	0.55	-	-
Relapsed/refractory lymphoma	3.64 (1.32-9.98)	0.012	3.12 (1.13-8.61)	0.028	3.43 (1.63-7.18)	0.001	3.34 (1.58-7.06)	0.002

BMI: body mass index; CI: confidence interval; sHR: sub-distribution hazard ratio; NHL: non-Hodgkin lymphoma

treatment administrated within the previous 12 months before hospitalization for COVID-19

*: performed with the subset of independent variables found associated with length of in-hospital stay at the 0.1% level

†: Missing data in 6 patients

‡: Missing data in 45 patients

Figure 1. Overall survival of patients with Covid-19 and lymphoma and cumulative numbers of patients discharged from hospital.

After a median follow-up of 191 days (range, 3-260), the 6-month OS of the entire study population was 69% (95% CI 60-78%). Among the 32 patients with prolonged LOS for Covid-19, the median time between first admission and final discharge for Covid-19 was 58 days (range, 31-235).

LOS: length of in-hospital stay.

Figure 2. Clinical and biological evolution of six illustrative patients with prolonged LOS for Covid-19

These six patients had repeated SARS-CoV-2 PCR testing as per institutional policies to document clearance of infection. SARS-CoV-2 PCR from nasal swabs or bronchoalveolar lavage remained positive for more than one month and up to 143 days after initial diagnosis. SARS-CoV-2 IgG-IgM serology remained negative for all six patients, except one who had a transient positive serology after receiving convalescent plasma therapy. The lymphoma subtype, history of treatments and biological characteristic are detailed in the Supplementary Table.

LOS: length of in-hospital stay.

Figure 3. Forest plots for determinants of length of in-hospital stay and overall survival

AIC: Akaike information criterion.

Figure 4. Evolution of the patients according to B-cell depleting treatment within 12 months before Covid-19.

Proportions of patients discharged, hospitalized in a conventional unit, hospitalized in intensive care unit or dead are represented at 1, 3 and 6 months after hospitalization for Covid-19, on the left panel, among patients who received an anti-CD20 treatment within 12 months and on the right panel, among patients who did not receive anti-CD20 treatment within 12 months. The median LOS was 20 days (range, 2-235) for patients who received recent anti-CD20 treatment and 11 days (range, 1-155) for patient who did not. LOS: length of in-hospital stay.

Figure 1

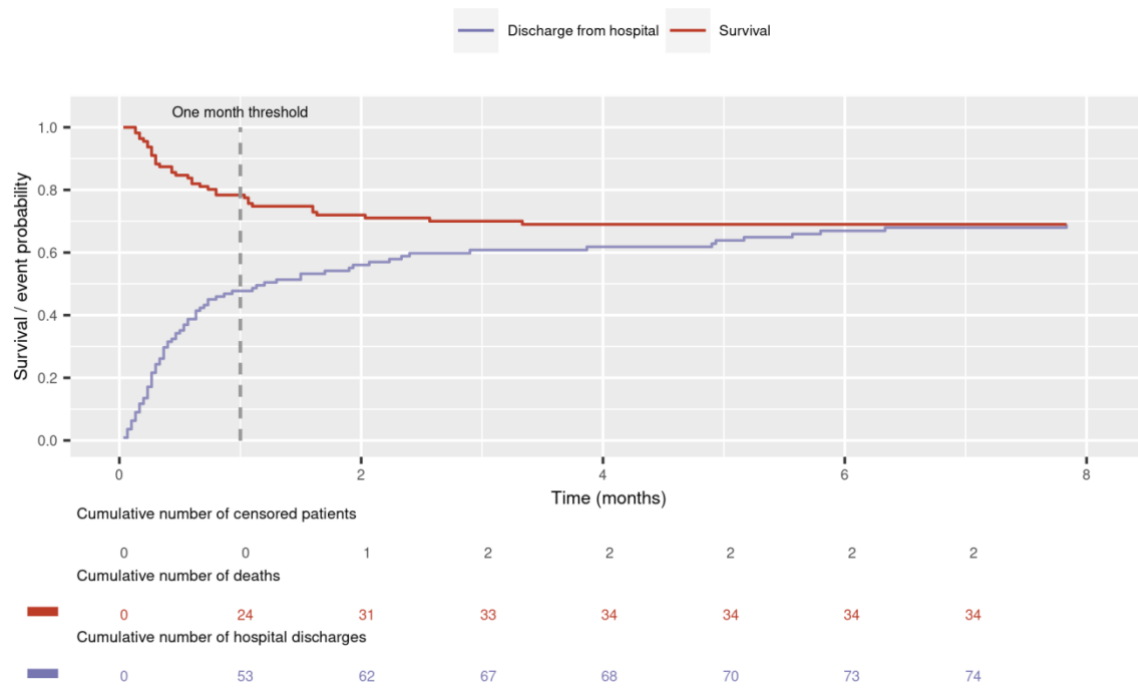


Figure 2

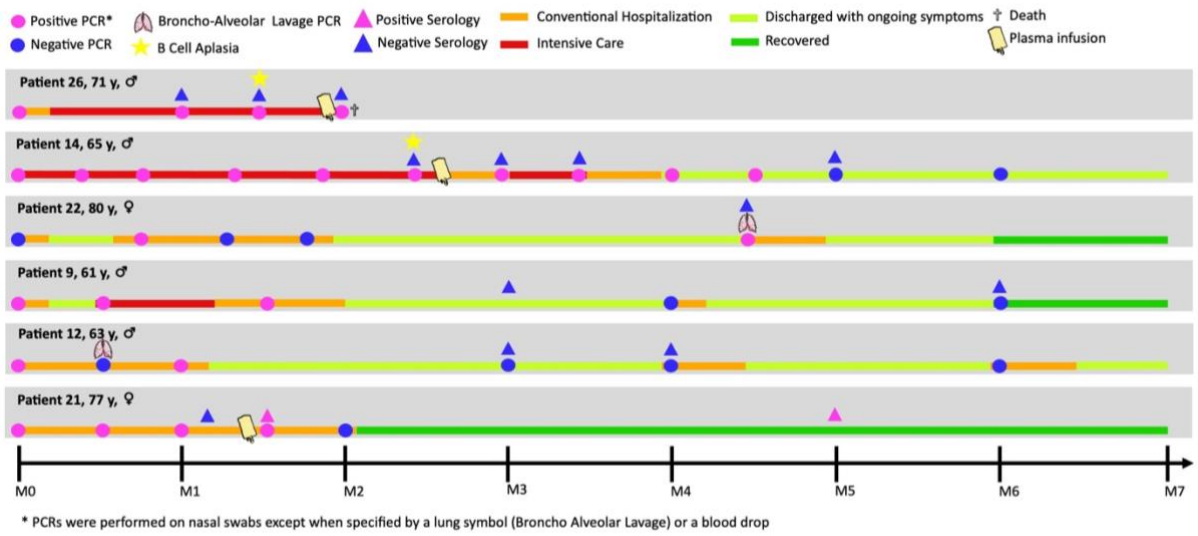
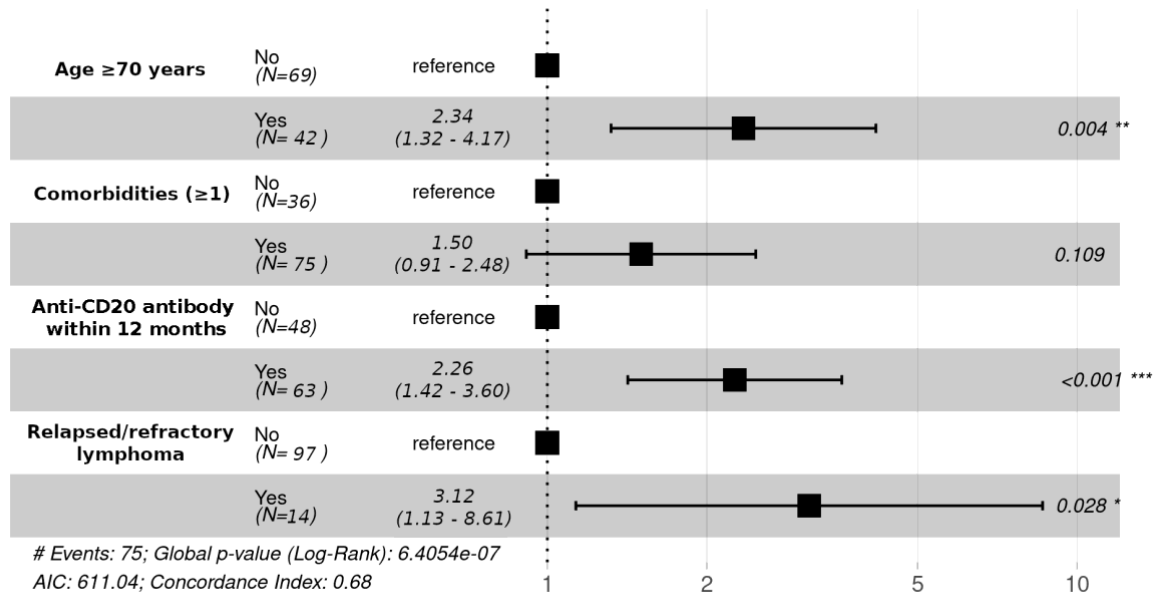


Figure 3

Subdistribution hazard ratio - In hospital stay



Hazard ratio - Overall survival

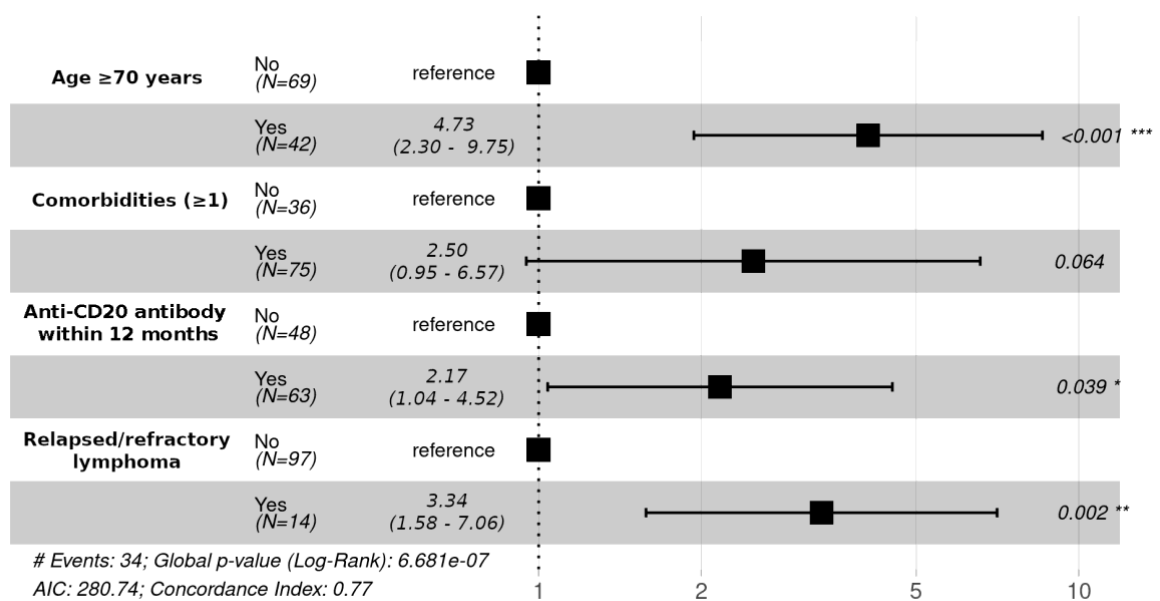


Figure 4

