

FIG 2a

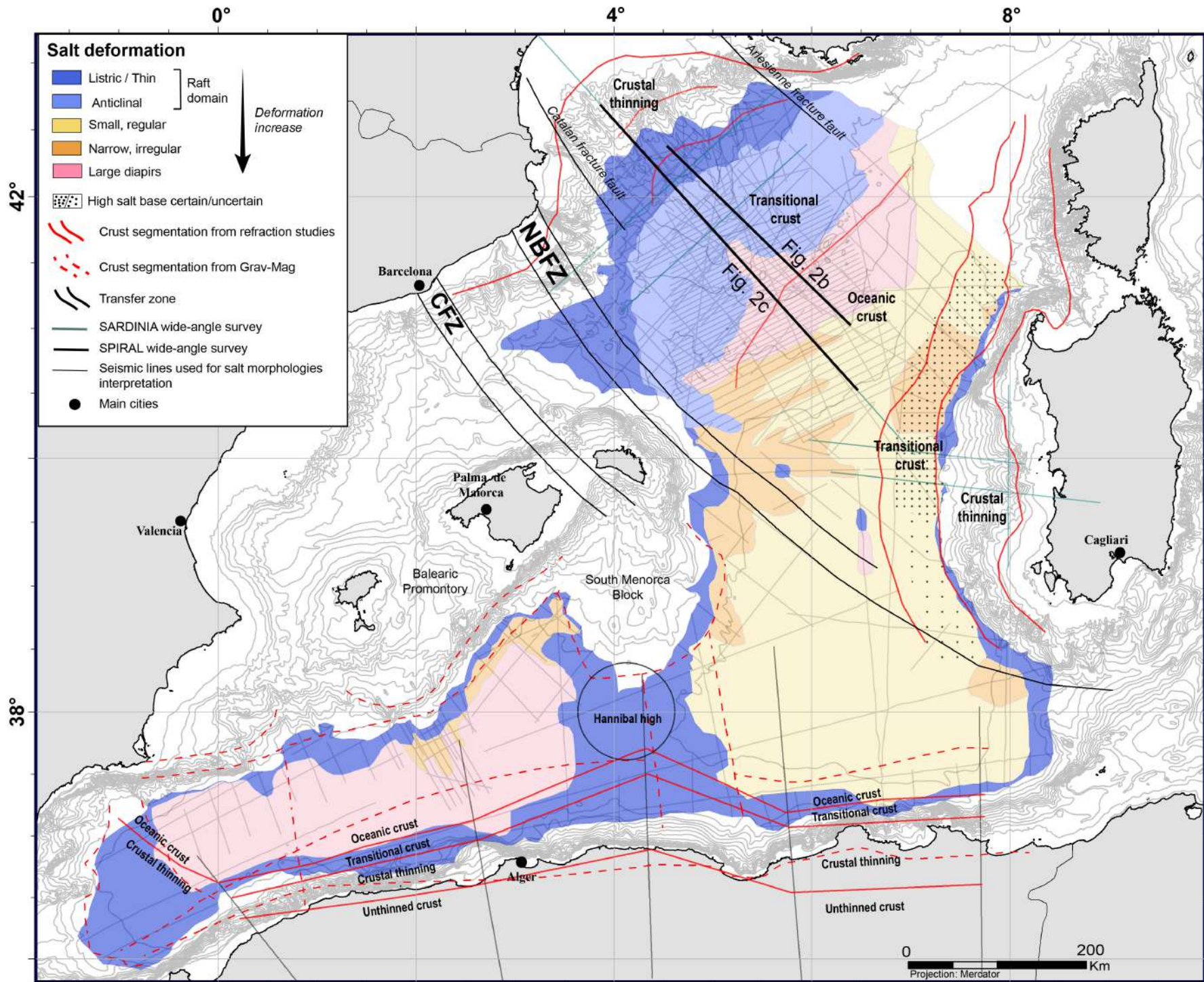


FIG 2b/c

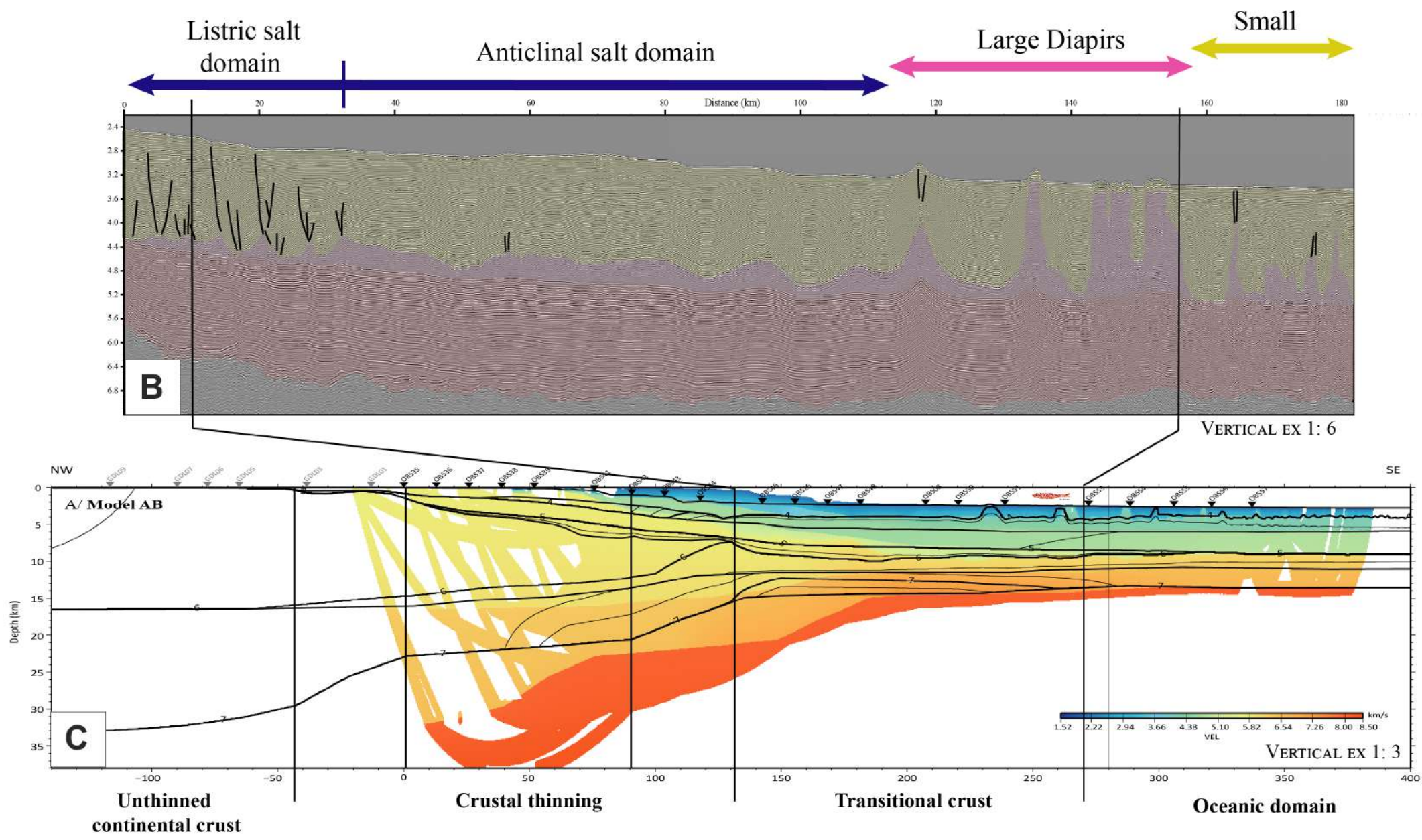
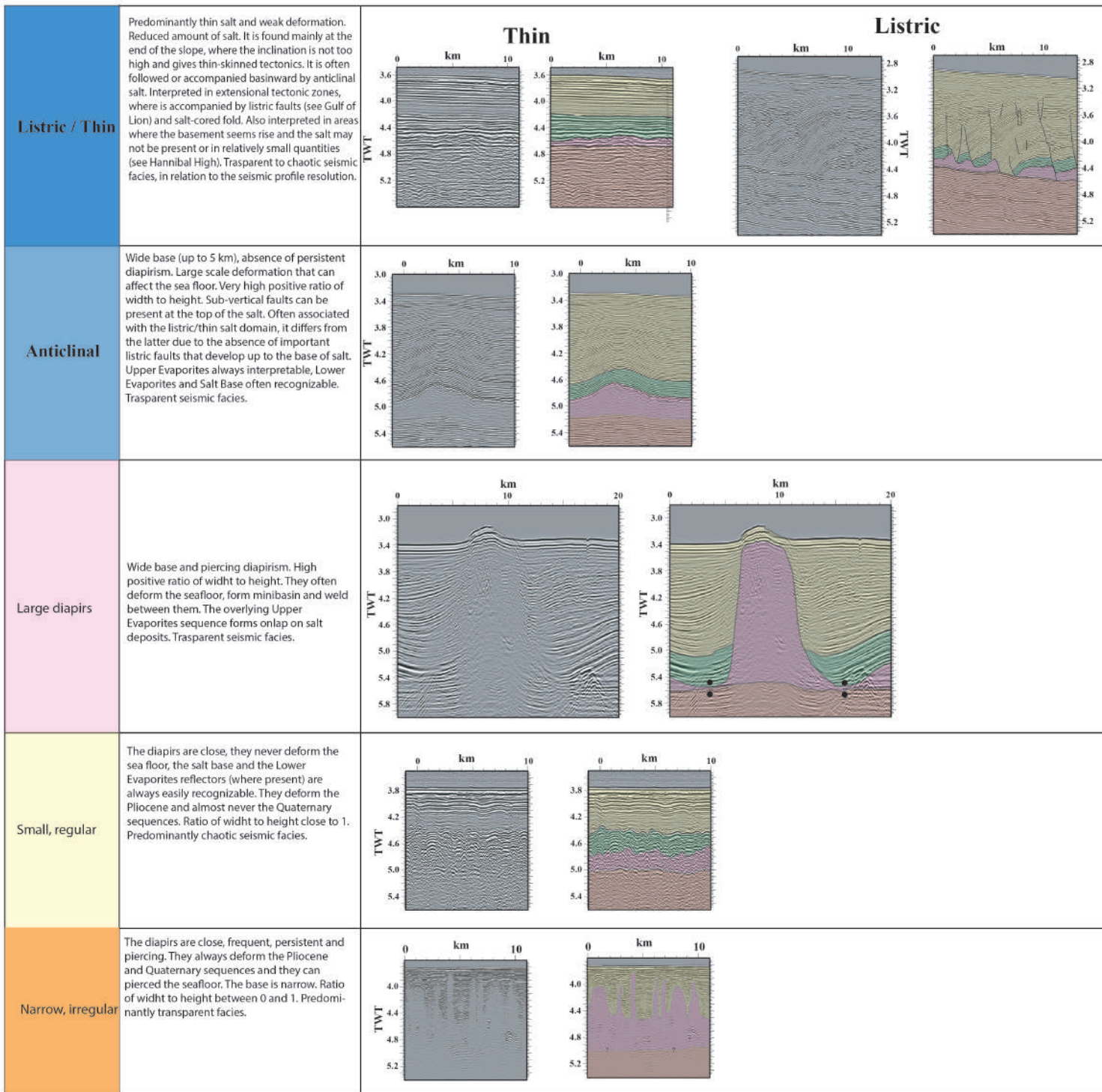


FIG 3



48°W

44°W

40°W









36°W

30°S

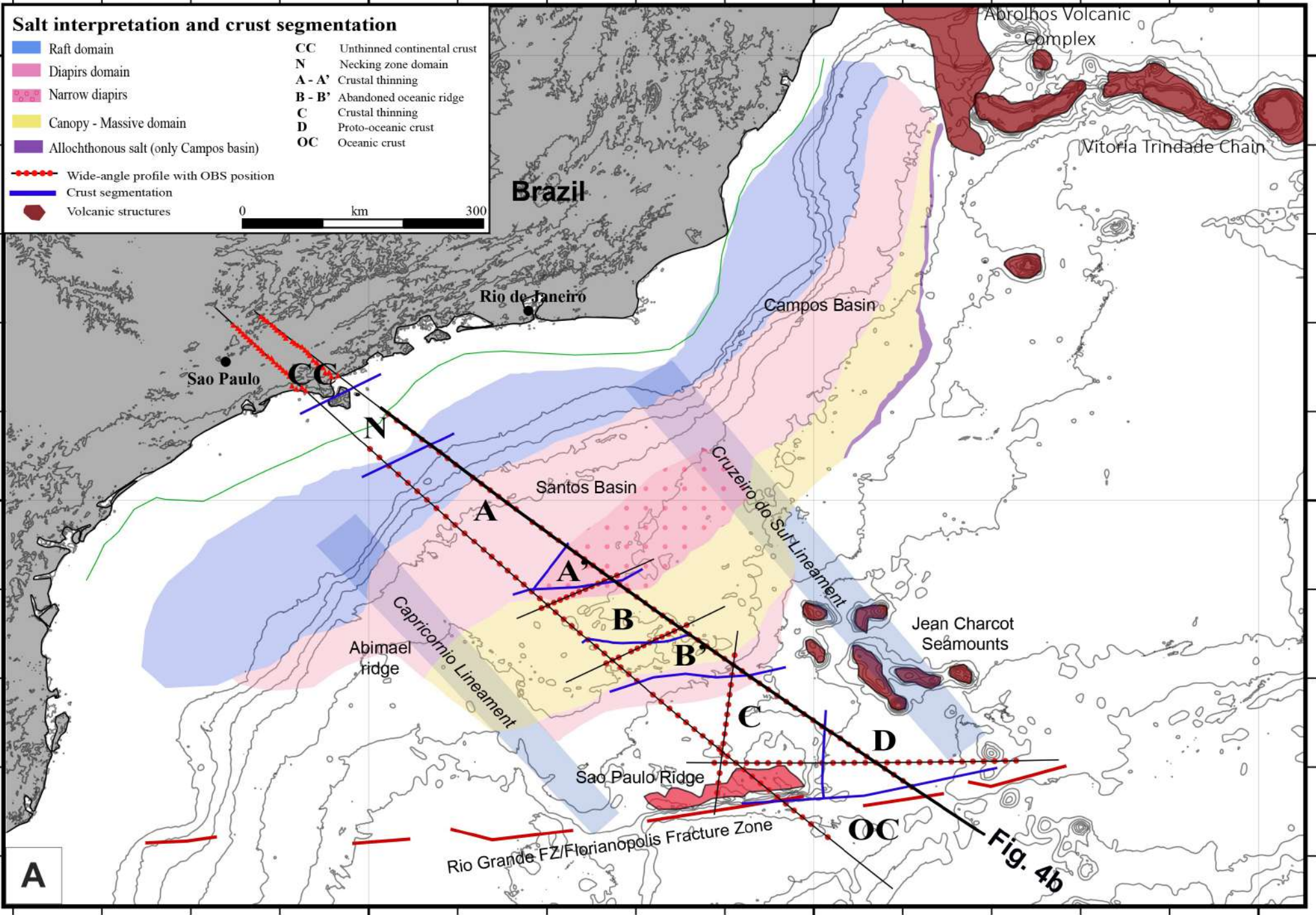
26°S

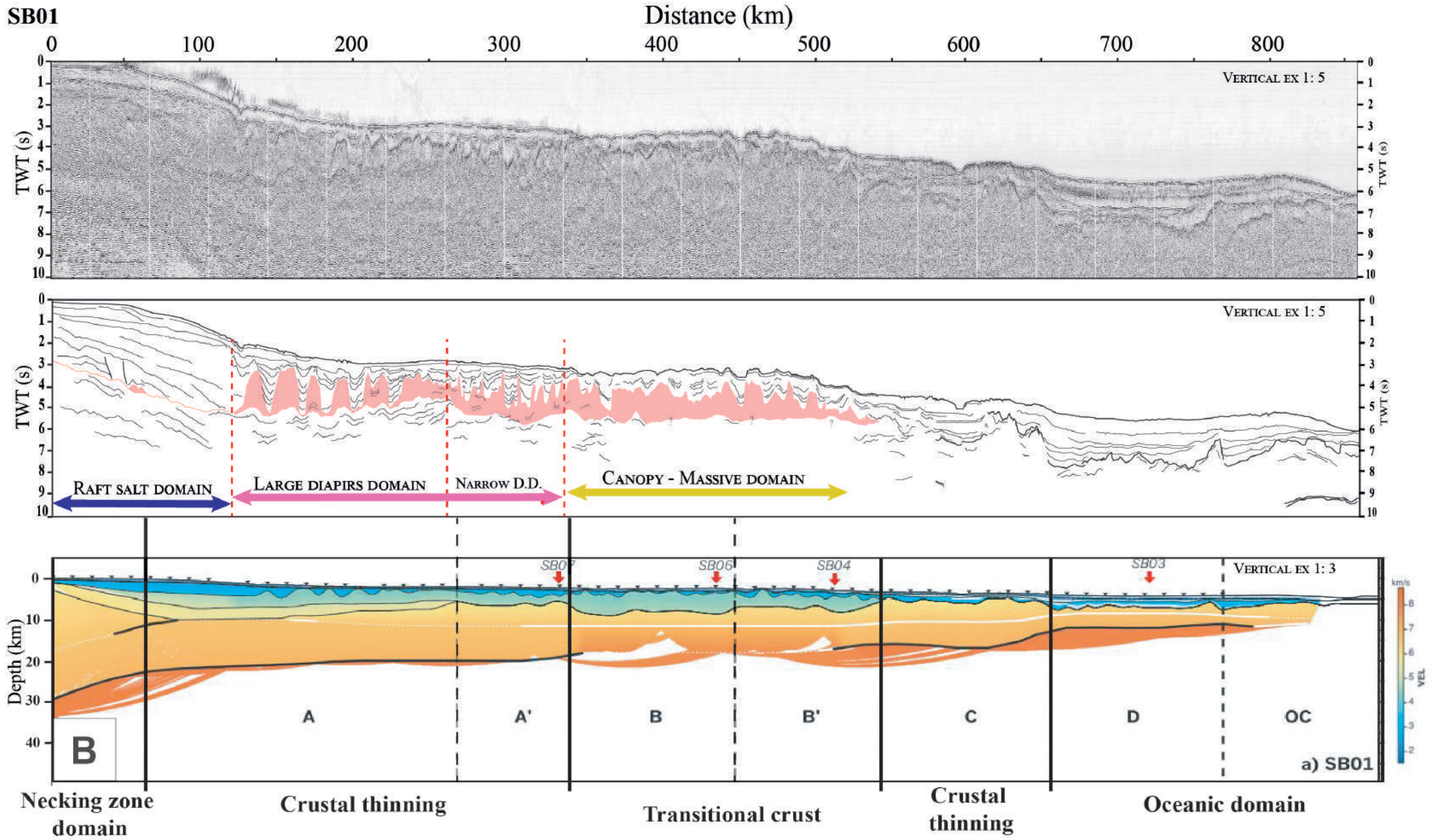
22°S

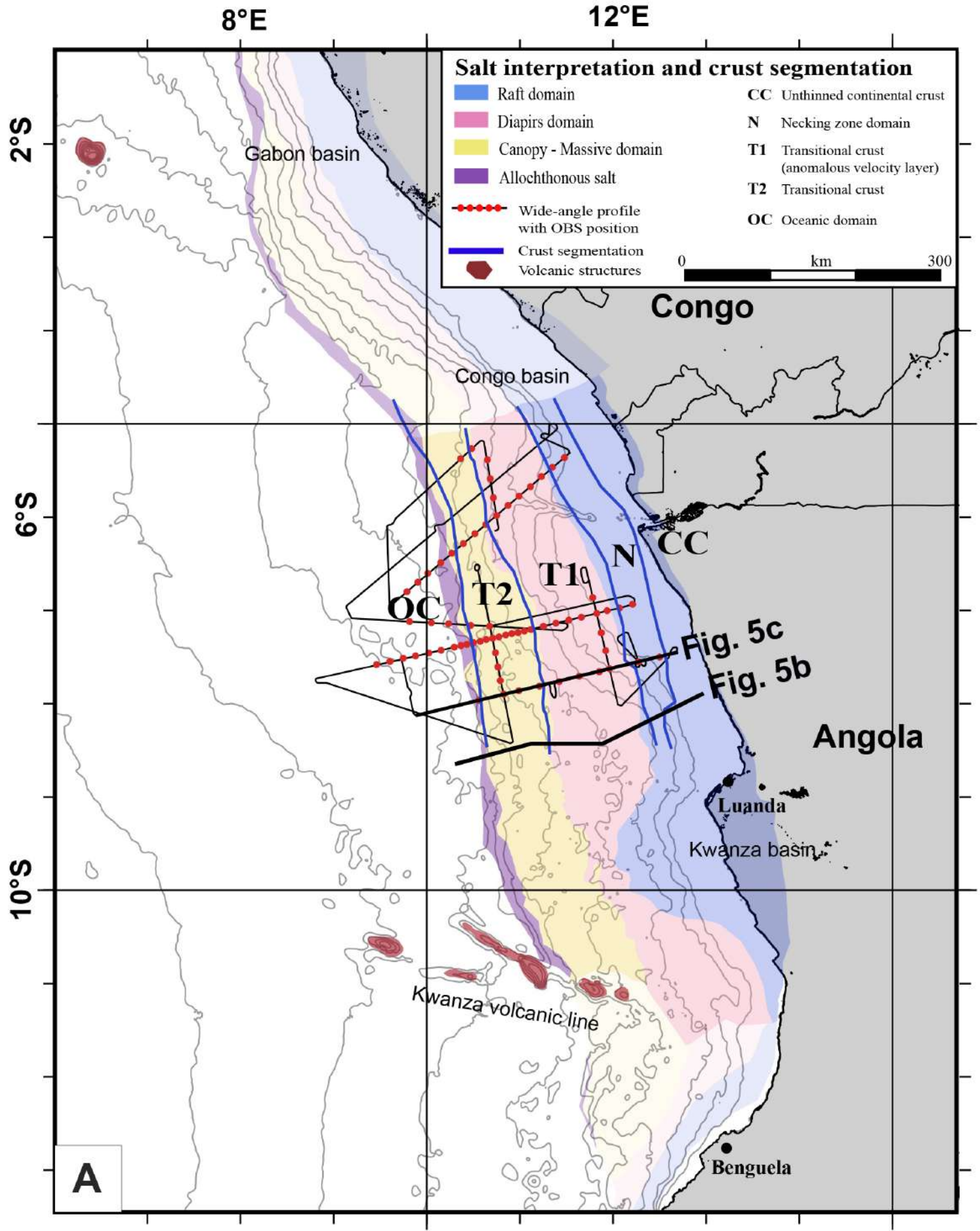
Salt interpretation and crust segmentation

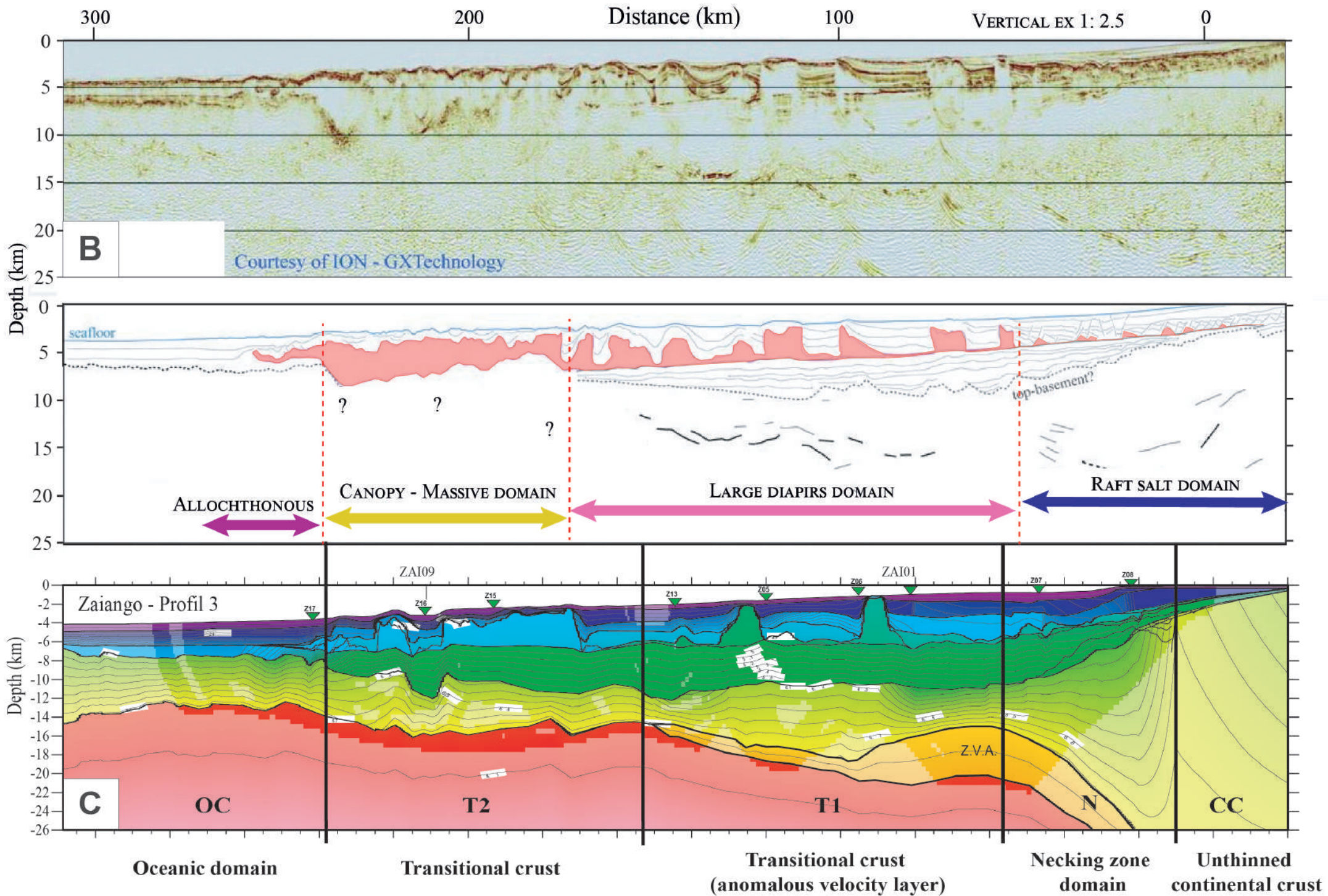
	Raft domain	CC	Unthinned continental crust
	Diapirs domain	N	Necking zone domain
	Narrow diapirs	A - A'	Crustal thinning
	Canopy - Massive domain	B - B'	Abandoned oceanic ridge
	Allochthonous salt (only Campos basin)	C	Crustal thinning
	Wide-angle profile with OBS position	D	Proto-oceanic crust
	Crust segmentation	OC	Oceanic crust
	Volcanic structures		

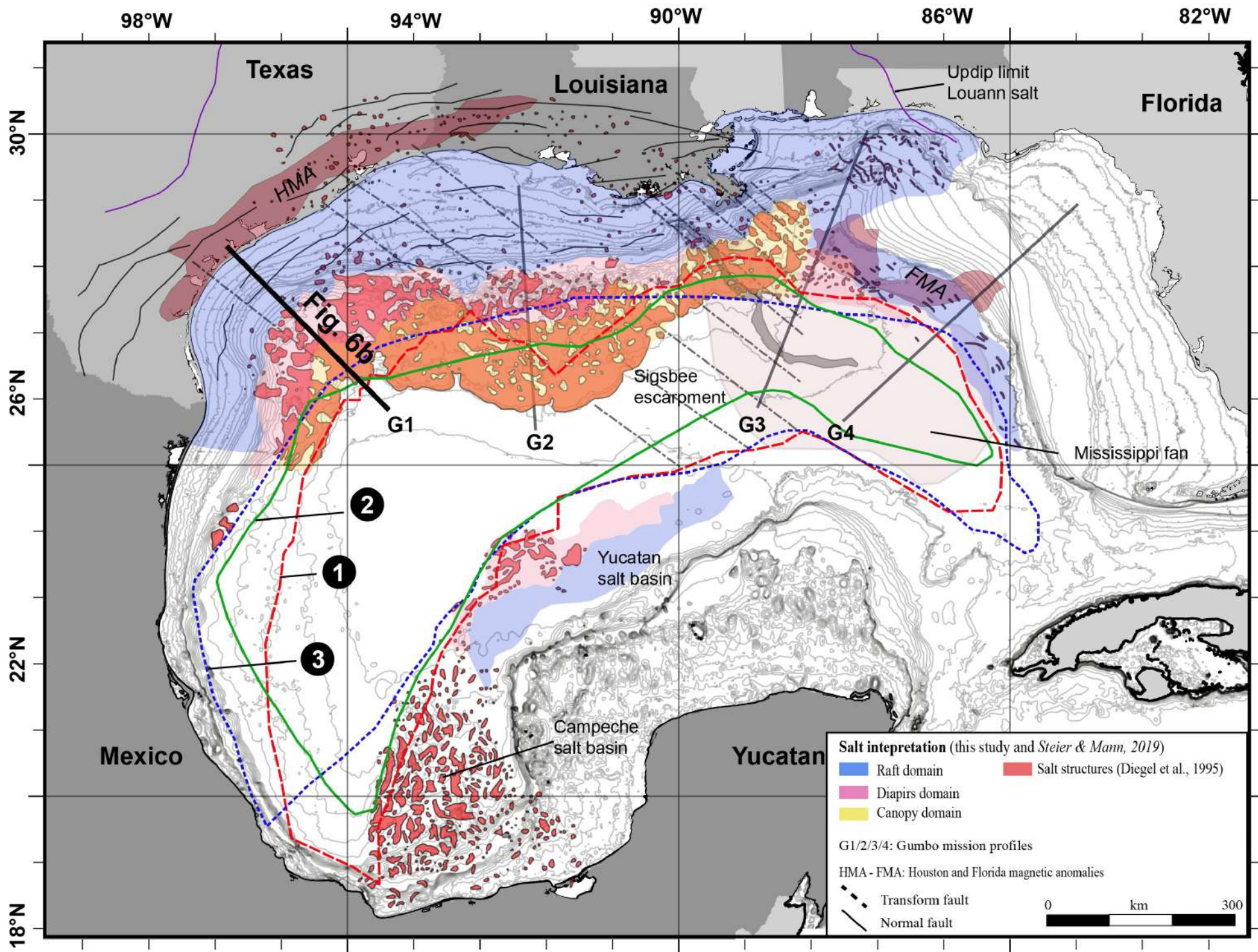
0 km 300











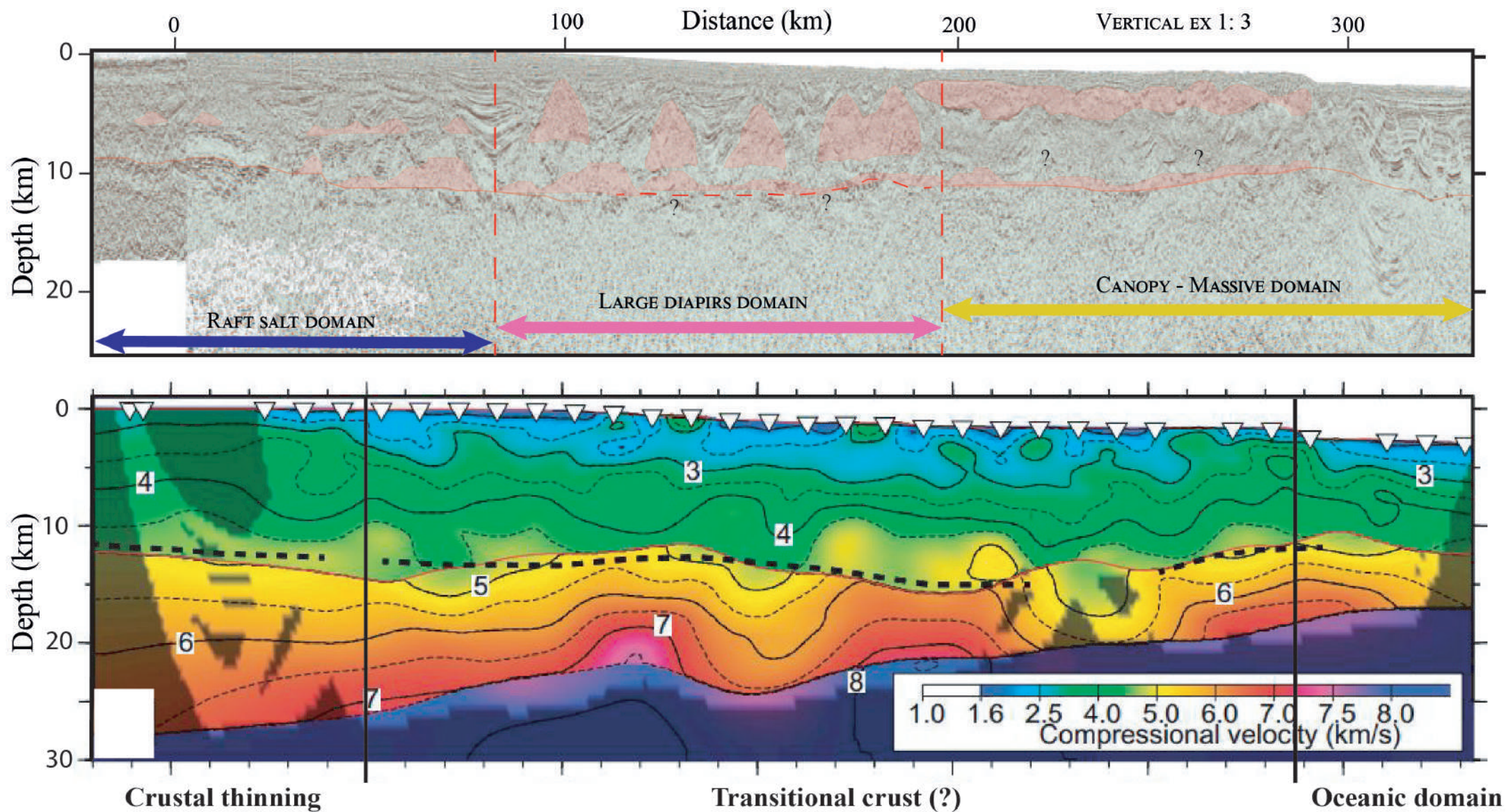


FIG 7a/b

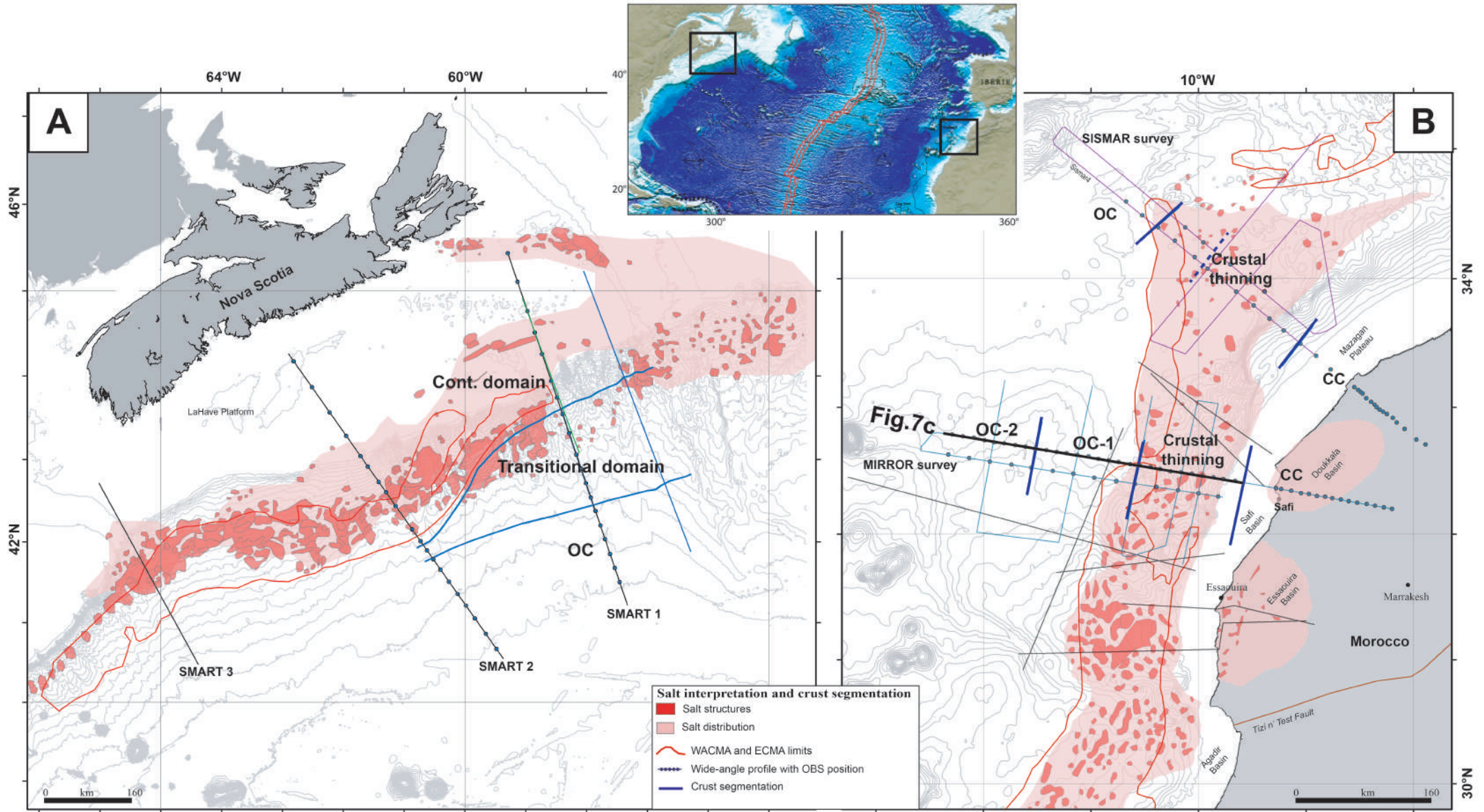
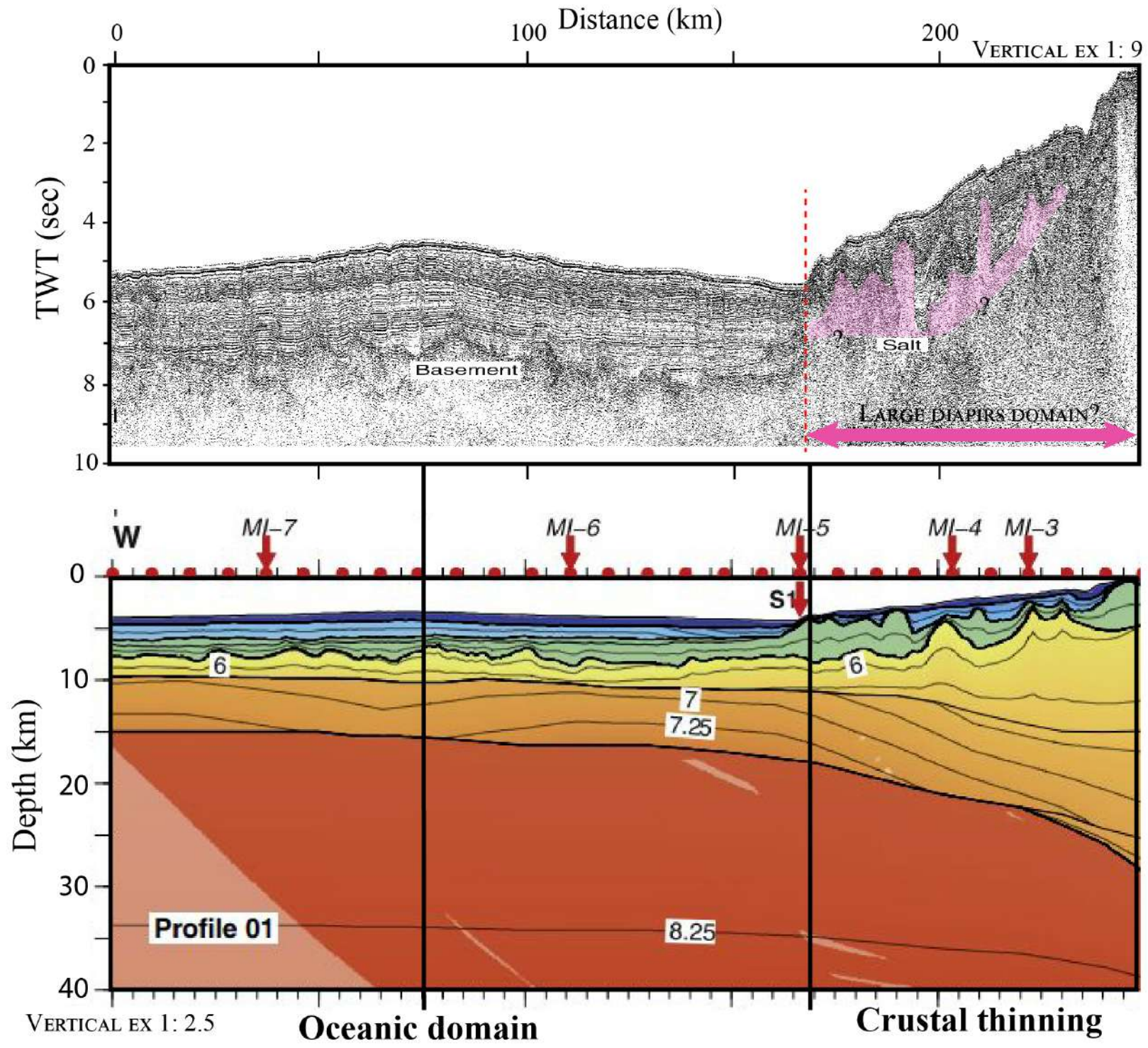
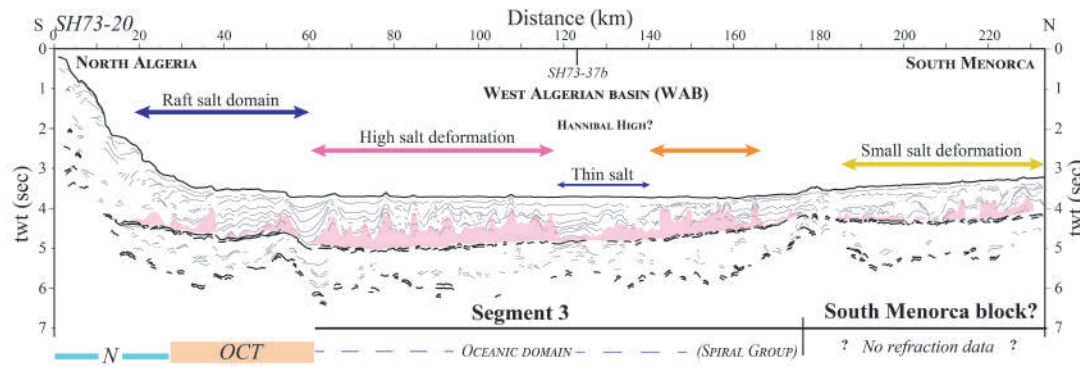
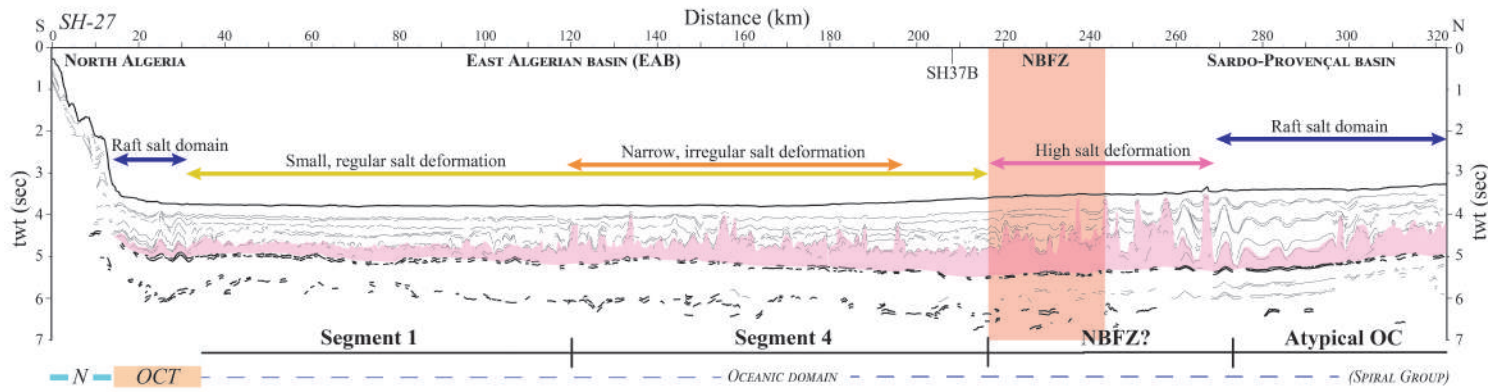
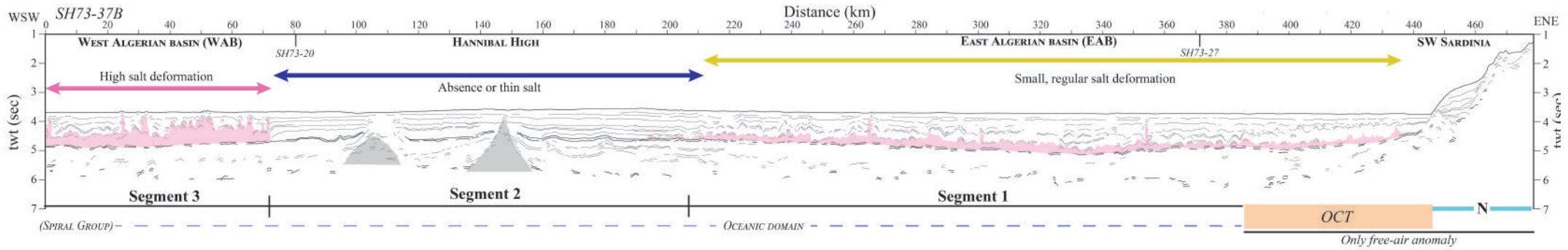
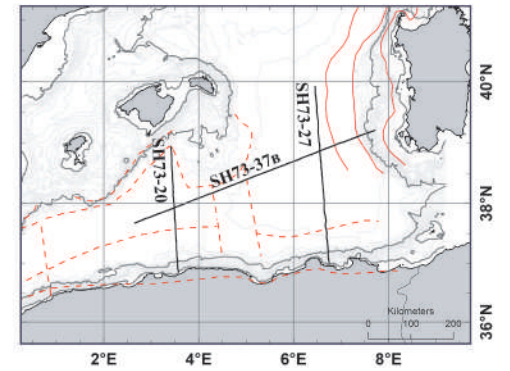


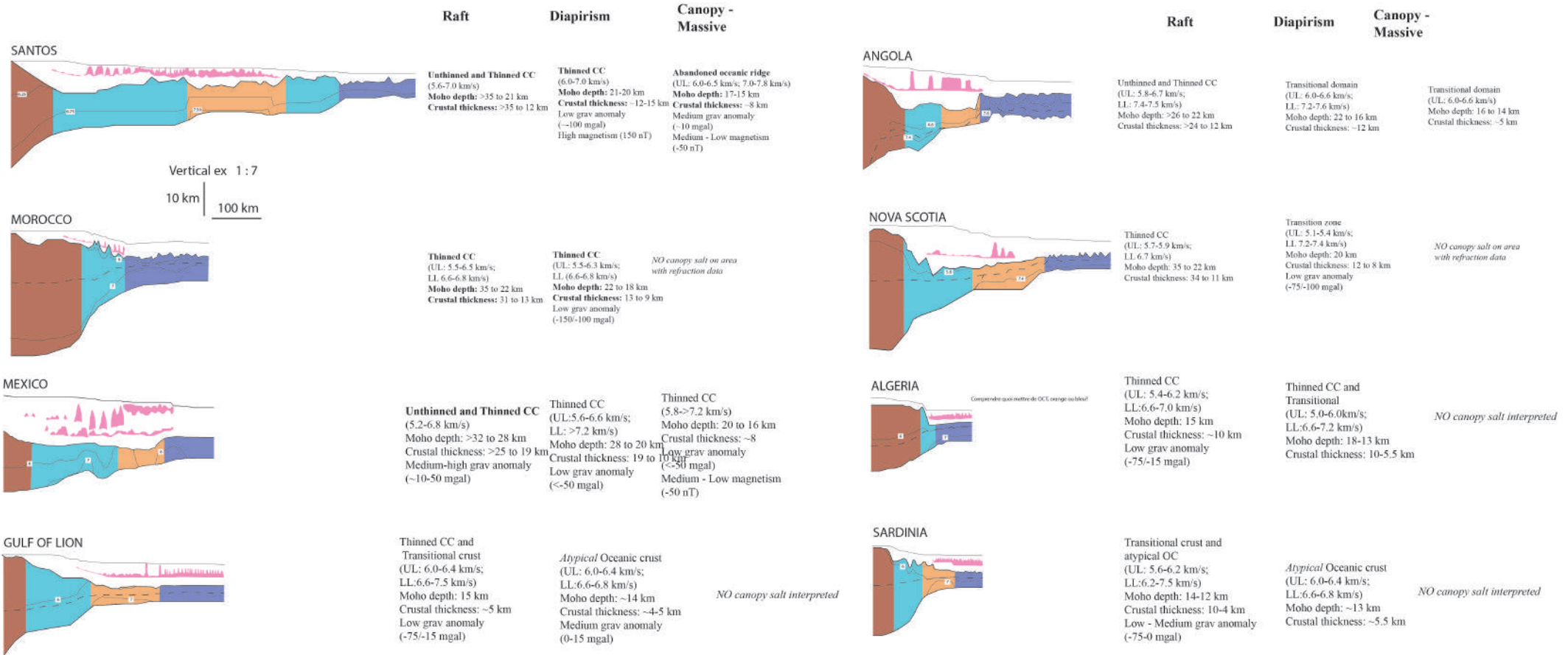
FIG 7c





VERTICAL EX 1: 6





	Morocco Nova Scotia	South Atlantic	Gulf of Mexico	Western Mediterranean Sea
Age deposition salt	Late Triassic- Early Jurassic (~200 Ma)	Aptian (117-112.2 Ma)	Callovian (163-161 Ma)	Messinian (~5.6 Ma)
Salt deposition context	Involved in margin opening	Involved in margin opening	Involved in margin opening	Post basin opening
Original thickness variations	Significant	Minor	Minor	Minor
Original base salt geometry	Relief, salt deposited in syn-rift half grabens	Low-relief	Low-relief	Low-relief
Present base-salt geometry	High relief	Low-relief	Low-relief	Low-relief
Sag basin geometry	Not evolved	Flatly layered sediments, unfaulted	Flatly layered sediments, unfaulted	Flatly layered sediments, unfaulted
Raft salt domain distribution	Upper slope	Slope	Upper slope	Lower slope
Diapir salt domain distribution	Lower slope	Deep basin	Slope, deep basin	Deep basin
Canopy salt domain distribution	Rare	Deep basin	Deep basin	Rare
Margin evolution	Tilting	Tilting on the slope and purely vertical on the deep basin	??	Tilting on the slope and purely vertical on the deep basin (demonstrated in the GoL)