



**HAL**  
open science

## Intracavity incoherent supercontinuum dynamics and rogue waves in a broadband dissipative soliton laser

Fanchao Meng, Coraline Lapre, Cyril Billet, Thibaut Sylvestre, Jean-Marc Merolla, Christophe Finot, Sergei K Turitsyn, Goëry Genty, John Michaël Dudley

► **To cite this version:**

Fanchao Meng, Coraline Lapre, Cyril Billet, Thibaut Sylvestre, Jean-Marc Merolla, et al.. Intracavity incoherent supercontinuum dynamics and rogue waves in a broadband dissipative soliton laser. *Nature Communications*, 2021, 12, pp.5567. 10.1038/s41467-021-25861-4 . hal-03390572

**HAL Id: hal-03390572**

**<https://hal.science/hal-03390572>**

Submitted on 21 Oct 2021

**HAL** is a multi-disciplinary open access archive for the deposit and dissemination of scientific research documents, whether they are published or not. The documents may come from teaching and research institutions in France or abroad, or from public or private research centers.

L'archive ouverte pluridisciplinaire **HAL**, est destinée au dépôt et à la diffusion de documents scientifiques de niveau recherche, publiés ou non, émanant des établissements d'enseignement et de recherche français ou étrangers, des laboratoires publics ou privés.

# Intracavity incoherent supercontinuum dynamics and rogue waves in a broadband dissipative soliton laser

Fanchao Meng,<sup>1</sup> Coraline Lapre,<sup>1</sup> Cyril Billet,<sup>1</sup> Thibaut Sylvestre,<sup>1</sup> Jean-Marc Merolla,<sup>1</sup>  
Christophe Finot,<sup>2</sup> Sergei K. Turitsyn,<sup>3,4</sup> Goëry Genty,<sup>5</sup> and John M. Dudley<sup>1,\*</sup>

<sup>1</sup>*Institut FEMTO-ST, Université Bourgogne Franche-Comté  
CNRS UMR 6174, 25000 Besançon, France*

<sup>2</sup>*Laboratoire Interdisciplinaire Carnot de Bourgogne,  
Université Bourgogne Franche-Comté CNRS UMR 6303, 21078 Dijon, France*

<sup>3</sup>*Aston Institute of Photonic Technologies, Aston University, Birmingham, UK*

<sup>4</sup>*Aston-NSU International Centre for Photonics,  
Novosibirsk State University, Novosibirsk, Russia.*

<sup>5</sup>*Photonics Laboratory, Tampere University, FI-33104 Tampere, Finland*

(Dated: August 31, 2021)

## Abstract

Understanding dynamical complexity is one of the most important challenges in science. Significant progress has recently been made in optics through the study of dissipative soliton laser systems, where dynamics are governed by a complex balance between nonlinearity, dispersion, and energy exchange. A particularly complex regime of such systems is associated with noise-like pulse multiscale instabilities, where sub-picosecond pulses with random characteristics evolve chaotically underneath a much longer envelope. However, although observed for decades in experiments, the physics of this regime remains poorly understood, especially for highly-nonlinear cavities generating broadband spectra. Here, we address this question directly with a combined numerical and experimental study that reveals the physical origin of instability as nonlinear soliton dynamics and supercontinuum turbulence. Real-time characterisation reveals intracavity extreme events satisfying statistical rogue wave criteria, and both real-time and time-averaged measurements are in quantitative agreement with modelling.

---

\* Corresponding Author: john.dudley@univ-fcomte.fr

## INTRODUCTION

Recent years have seen tremendous advances in understanding nonlinear complexity through studies in optical systems that allow real-time observation of ultrafast instabilities. For example, studies in optical fibres have yielded new insights into the modulation instability of the nonlinear Schrödinger equation (NLSE) [1–5], improving our understanding of noise-driven nonlinear dynamics, and stimulating new approaches to classify localised soliton structures using machine learning [6].

Other studies have focused on instabilities in dissipative soliton lasers, where the laser operation is governed by the balance between nonlinearity and dispersion, and energy input and loss [7–12]. Such lasers are usually configured to produce highly regular pulse trains of ultrafast solitons [13, 14], but they can also exhibit a range of more complex temporal and spectral characteristics. Specifically, the coupling between nonlinearity and dispersion in the cavity can result in instabilities arising from the intrinsic chaotic dynamics of NLSE and NLSE-like systems [15, 16]. The particular dynamics that are observed depend on the dimensionality of the system under study [17], and for certain laser designs, it has been possible to see clear signatures of low-dimensional nonlinear dynamics such as the development of complex temporal pattern formation [18], and bifurcation routes to chaos [19].

More commonly, however, fibre lasers possess a very large number of degrees of freedom so that instabilities are high-dimensional such that the particular operating point of stable pulse train generation can be viewed as an attractor in a multi-dimensional parameter space. In some cases, variation of the cavity parameters about these stable points can induce transition into unstable regimes involving interactions between a small number of circulating pulses (typically 1–10) in the cavity. Studying these instabilities with real-time measurement techniques has led to improved insight into processes such as soliton molecule coupling [20–22], complex temporal pattern formation in lasers [23–25], soliton explosion and rogue wave emergence [24, 26], and complex intermittence [27, 28]. In fact, from a more general perspective, these regimes are neither pure mode-locked pulses, nor continuous wave generation. These highly complex lasing regimes are characterised by the co-existence of both localised nonlinear structures and linear dispersive waves.

In addition to regimes involving only a small number of interacting pulses, a more complex multiscale laser instability has been shown to involve a much greater number (100–1000) of ultrafast pulses evolving randomly underneath a much broader envelope. This multiscale regime of noise-

like pulse operation was first discovered by Silberberg *et al.* in 1997 [29], and has since been seen in a wide range of different laser configurations, and with both normal and anomalous dispersion [30]. The majority of studies have typically focused on instabilities generating spectral bandwidths of 10's of nm [31–37], but in a highly nonlinear regime with significant spectral broadening in the cavity, bandwidths much greater than the gain bandwidth (100's of nm) have been observed [38–41]. In addition to their clear interest from a dynamical systems perspective, such lasers have found several important applications [30, 42]. Significantly, while some applications such as tomography and metrology explicitly build on the low temporal coherence of such sources [43], applications in material processing exploiting the burst-like nature of the pulsed output have also been demonstrated [44].

Somewhat paradoxically, the large number of experimental studies of noise-like pulse lasers under so many different conditions has made it difficult to clearly identify the underlying physics. Also, the multiscale nature of the laser operation has not always been appreciated in experiments measuring only the envelope or burst output characteristics. Nonetheless, the underlying role of NLSE-like instabilities has been suggested from numerical studies, using both cubic-quintic Ginzburg-Landau equation modelling [45–47] and iterative cavity simulations [30, 31]. Further modelling [48, 49] has revealed how these dynamics can lead to rogue wave statistics, confirming previous experiments in the narrowband noise-like pulse regime [34, 35, 50].

Significantly, the results of these previous studies have now extended traditional notions of laser operation beyond average dynamical models to include concepts such as strong dissipation, regenerative saturable absorption [51], random lasing [52], and intracavity turbulence [53]. The study of turbulent behaviour in lasers is a subject of particular interest, and can be physically interpreted as a consequence of the large number ( $\sim 10^4 - 10^6$ ) of interacting frequency modes underneath the evolving broadband field [54–56]. Moreover, linking irregular dynamics to turbulence is also interesting from the perspective of understanding intracavity extreme events, which have already been observed in single-pass experiments [57, 58].

A particular challenge is to understand the dynamics of noise-like pulse lasers generating the broadest bandwidths, because the presence of highly nonlinear fibre in the cavities used suggests a major role played by supercontinuum broadening. In this case, any modelling in a laser context is computationally very expensive, and measuring these multiscale instabilities in the laboratory is also extremely challenging. These different factors clearly represent a serious limitation when a full understanding of such a rich dynamical laser system is of evident interest from both fundamental and applied perspectives.

Here, we report a combined numerical and experimental study of an extreme dissipative soliton noise-like pulse laser generating an output supercontinuum spectrum of  $\sim 1000$  nm bandwidth, and with intracavity spectral width varying two orders of magnitude over one roundtrip. Our stochastic numerical simulations allow us to identify the origin of the laser instability as due to the sensitivity to noise of nonlinear soliton dynamics, particularly multiple interactions and collisions between incoherently evolving sub-picosecond Raman solitons. Our experiments use time and frequency domain techniques to characterise the multiscale dynamics, and our simulations reproduce quantitatively the supercontinuum broadening, and the probability distributions of temporal and spectral fluctuations, including rogue wave events.

## RESULTS

### Modelling and Dynamics

We first use numerical modelling to illustrate the general features of the noise-like pulse instability regime. Figure 1 shows the dissipative laser system upon which our modelling is based. Typical of dissipative soliton systems, we consider a unidirectional ring cavity consisting of a number of discrete segments where the intracavity field experiences qualitatively different evolution [9, 13]. The modelling uses an iterative map approach describing each cavity element by a suitable transfer function. For a given set of system parameters, the model seeks convergence to a particular operating state after injection of an initial seed (see Methods). Although scalar models have been shown to reproduce aspects of dissipative soliton laser dynamics qualitatively [59], for quantitative comparison with experiments we implement a more complete approach based on coupled generalised vector nonlinear Schrödinger equations (NLSE). This was found essential to obtain quantitative agreement with experiments. Indeed, it is important to stress that although mean-field models such as those based on the Ginzburg-Landau equation are able to reproduce general features of dissipative soliton lasers [46], the iterative cavity approach is necessary when describing a system with such dramatic variation in evolution between the different cavity segments.

The simulations use a standard approach, with initiation from a low amplitude noise seed [60] injected at point A before the EDF. The intracavity field then evolves over multiple roundtrips until convergence to a particular operating state. For a stable state, the spectral and temporal field characteristics at any point in the cavity reproduce themselves after one roundtrip, whilst in a noise-like pulse state, the temporal and spectral characteristics at any point fluctuate significantly with roundtrip but the energy nonetheless has a well-defined mean. Typical energy fluctuations

after build-up to the noise-like pulse regime are  $\sim 10\%$ , and the physical origin of this behaviour is the chaotic nature of the NLSE and gain/loss dynamics when seeded by noise.

In our experiments, segment AB consists of 11 m of Erbium-doped fibre (EDF), segment BC consists of 2.87 m of standard single mode fibre (SMF), segment CD consists of 10.3 m of highly nonlinear fibre (HNLF), and segments DE and FA consist of 4.45 m and 7.80 m of SMF. A 28.1 cm bulk-optics free space segment EF includes a nonlinear polarisation rotation based saturable absorber (using waveplates and a polarisation beamsplitter) [61], and a narrowband spectral filter to control the bandwidth of the pulses reinjected into the EDF [13, 62]. The cavity uses non-polarisation-preserving fibre, and the repetition rate is 5.59 MHz (roundtrip time of  $\sim 179$  ns.) The dispersion and nonlinearity parameters of the fibres used are given in Methods. The loss due to splicing and output coupling was  $\sim 6$  dB (with primary output coupling of 40% in segment DE), and the total energy loss at the spectral filtering stage is  $\sim 10$  dB (associated with the bandwidth reduction from the supercontinuum spectrum at the HNLF output to the much narrower bandwidth at the EDF input.)

Our study of this particular design is motivated by the need to understand noise-like pulse dynamics in the broadband regime. Specifically, the majority of previous studies of noise-like pulse lasers have focussed on narrowband systems with 10's of nm bandwidth [30], where modelling and simulations have shown how the dynamics arise from the interaction between self-phase modulation and group-velocity dispersion in the cavity [13, 30, 45–47], with only minor contributions from higher-order effects. With the addition of anomalous dispersion HNLF, however, the dynamics change qualitatively and quantitatively with the processes of incoherent soliton fission and the Raman soliton self-frequency shift combine to dominate the intracavity spectral broadening [63, 64]. Moreover, in contrast to other dissipative soliton laser designs that can exhibit both stable soliton and noise-like pulse operation [65], the use of such a long length of HNLF results in this system operating only in the noise-like instability regime, irrespective of the laser gain or waveplate orientations. In the simulation results that follow, we therefore focus on the dynamics of this unstable broadband operating state with parameters corresponding to our experiments, although we refer when appropriate to Supplementary Information which show simulations for other parameters in order to clarify certain features of the underlying physics.

We begin by showing typical simulation results in the noise-like pulse regime for our experimental parameters as above. Figure 2(a) shows typical simulated spectral and temporal evolution over one cavity round trip, after build-up when the pulse has entered the regime of constant mean energy. These results were obtained after scanning the simulation parameters to obtain energy and noisy

envelope durations comparable to experiment (see Methods), and correspond to a mean intracavity energy (over 1000 roundtrips) at the EDF output of 10.5 nJ. We plot the total intensity of both polarisation components (see Methods). The different propagation steps A-F refer to the different points in the cavity shown in Fig. 1.

In the frequency domain, Fig. 2(a) shows how the spectral characteristics vary significantly over one roundtrip. We see amplification in the EDF (segment AB), dramatic supercontinuum spectral broadening in the HNLF (segment CD), and the strong effect of spectral filtering in the bulk segment EF. Indeed the spectral extent varies by two orders of magnitude over one roundtrip, from  $\sim 10$  nm FWHM immediately after the spectral filter, to a supercontinuum with spectral components spanning  $\sim 1000$  nm at the HNLF output. In segment DE, the reduced nonlinearity of the SMF (coupled with reduced power due to output coupling) yields essentially linear propagation without additional spectral broadening. As we will see in Figs 3 and 4, the shot-to-shot spectra exhibit significant fine structure, but this is not apparent in Fig. 2 because of the false-color visualisation used.

The associated time-domain evolution in Fig. 2(a) reveals significant variation in the sub-picosecond temporal structure over one roundtrip, while the slower  $\sim 300$  ps envelope remains largely unchanged. The simulations also reveal the presence of clusters of solitons under the envelope (see for example timebase values in the range  $\sim [-150, -50]$  ps), an effect previously suggested by low-resolution temporal measurements, and associated with an additional scale of time-domain structure [66]. Note that we also confirm the presence of these clusters in our experiments below.

After the HNLF propagation phase, the linear evolution in the subsequent SMF segment DE is associated with dispersive broadening of the solitons formed in the HNLF. Note that the apparent temporal refraction of the pulse trajectories across the HNLF-SMF boundary (point D) arises from the differences in group velocity dispersion in the two fibres. We also see how the spectral filtering in the bulk segment EF has a significant effect on the temporal evolution by removing all field components outside the filter bandwidth, particularly the long-wavelength shifted highest intensity Raman solitons. To more clearly show the temporal evolution after this filtering step, the intensity colormap in segment FA has been scaled by a factor of  $\times 10$ .

Figure 2(b) provides an expanded view of the evolution in the HNLF segment CD over a 40 ps time window, together with the input and output intensity profiles. These results clearly reveal the dominant physics associated with the temporal compression of the  $T_{\text{FWHM}} \sim 500$  fs random pulses at the input to yield ejection of strongly-localised sub-100 fs pulses that then undergo typical supercontinuum dynamics of soliton collisions and Raman shifting to longer wavelengths

[67]. Indeed, using  $P_0 \sim 70$  W and  $T_0 = T_{\text{FWHM}}/1.76 \sim 300$  fs as estimates of the mean peak power and duration of the random pulses at the input to the HNLF, the corresponding soliton number is  $N = (\gamma P_0 T_0^2 / |\beta_2|)^{1/2} \approx 4.5$ , supporting this interpretation [68]. Associated with these multiple soliton dynamics in the HNLF is the generation of multiple dispersive waves at shorter wavelengths extending to below  $\sim 1100$  nm, as seen clearly in the spectral evolution in Fig. 2(a). We note here that the evolution of the Raman soliton trajectory in Fig. 2(a) appears to show spectral broadening, but this is in fact an artefact associated with the fact that we are plotting spectral evolution against wavelength. When plotted against frequency, the soliton bandwidth remains constant once it has clearly separated from the central spectral region. On the other hand, soliton evolution in the presence of the Raman effect and higher-order dispersion can exhibit complex accelerating beam characteristics [69], and this is especially apparent in the trajectories of the time-domain solitons seen in the false colour plot in Fig. 2(b).

The results in Fig. 2(b) clearly show that the input field to the HNLF consists of a large number of irregular localised pulses. As a result, the field injected in the HNLF does not excite narrowband processes such as modulation instability [11, 70, 71], but rather the dynamics are dominated by incoherent soliton fission. In this case, the decoherence that develops during propagation arises from the effect of noise on soliton interaction and collisions [63, 64] and these results highlight the importance of incoherent soliton fission in noise-like pulse lasers. Of course, under certain conditions, both modulation instability and incoherent soliton fission yield similar characteristics with very large numbers of interacting solitons, and in this case a description in terms of soliton turbulence is more appropriate in both cases [54–56, 70, 72, 73]. This is also the regime where extreme event rogue wave statistics can be observed [57, 58, 74, 75].

Additional insight into these dynamics is shown in Fig. 3. Here we plot the computed time-frequency spectrogram at the HNLF output, together with the corresponding temporal and spectral intensity profiles (see Methods). Note that we also display the temporal intensity on a logarithmic axis to illustrate the strongly-localised burst-like nature of the noise-like pulse emission. The spectrogram reveals a time-frequency structure typical of Raman-dominated supercontinuum dynamics [63], highlighting how each of the solitons generates its own dispersive wave component, and also highlighting the prominent dispersive wave tail associated with the longest wavelength soliton. An accompanying animation (Supplementary Movie 1) shows the evolution of the spectrogram over one cavity roundtrip, and is valuable in revealing the specific dynamics occurring in each segment. To confirm the soliton nature of the sub-picosecond peaks in the temporal intensity, the highest



peak (*A*) is shown in expanded view on a logarithmic scale (black solid line), and compared with a hyperbolic secant soliton fit (red dashed line). In fact, since the spectrogram allows us to determine the wavelength associated with each temporal peak, we can readily compute the associated soliton number using wavelength-corrected HNLF nonlinearity and dispersion parameters (see Methods). This analysis yields  $N \sim 1$  for all the strongly localised temporal peaks seen at the HNLF output, further confirming the importance of intracavity soliton dynamics.

The Raman self-frequency shift of the ejected solitons yields the long wavelength spectral extension. And indeed, reaching short wavelengths around 1100 nm would not be possible without the associated dispersive wave generation. However, the presence of Raman scattering is not in itself a necessary condition to observe noise-like pulse operation, and simulations with no HNLF in the cavity still show unstable pulse characteristics for certain parameter regimes. However, without the HNLF, the system operates only in the narrowband regime (see Supplementary Information and Supplementary Fig. 1), as seen in a number of previous studies [29, 31–37]. The essential design parameter here is of course the HNLF length, but additional simulations show that broadband noise-like pulses can be generated with short lengths of HNLF down to  $\sim 1$  m (see Supplementary Fig. 2). Of course, the role of the Raman soliton dynamics and the overall bandwidth increase with longer lengths of HNLF, as would be expected on physical grounds (see Supplementary Fig. 3).

The key characteristic of the noise-like pulse regime is of course the dramatic shot-to-shot fluctuations, and to illustrate random field evolution over sequential roundtrips, Figs 4(a) and (b) plot the temporal and spectral characteristics at the input and output of the HNLF respectively for 5 sequential roundtrips (after converging to constant mean energy.) The parameters here are the same as in Figs 2 and 3 corresponding to the 10.3 m HNLF used in experiment. These results clearly illustrate the dramatic shot-to-shot variation associated with this operating regime, and the temporal profiles in particular show the expected characteristics of the noise-like pulse regime. Specifically, the temporal profiles (shown over a 500 ps span within the 1.3 ns computation window – see Methods) clearly show the large number ( $\sim 300$ ) of chaotic soliton peaks whose intensities vary dramatically from shot-to-shot. The spectral characteristics also show significant fluctuating fine structure. Note that for the spectral results, we also plot the mean spectrum computed over a much larger number of roundtrips (1000) to highlight the fact that these fluctuations are not at all apparent using average spectral measurements. Comparing Figs. 4(a) and (b) further highlights the extent of the HNLF spectral broadening.

## Experiments and Comparison with Simulations

Both time-averaged and statistical predictions of our numerical model have been confirmed using experiments. The overall design of our laser system has been described above (and in Fig. 1). The EDF was pumped at 976 nm, with a pump power threshold of 40 mW for pulsed operation, although we did not observe stable mode-locked operation at any pump power or waveplate orientation [28]. On the other hand, over a wide range of pump powers up to 500 mW, suitable adjustment of the waveplates yielded noise-like pulse operation with chaotic envelope emission at the cavity repetition rate, and broadband spectral output. The results reported below at a pump power of 225 mW are typical of this regime. For this value of pump, the average power at the primary output in branch DE was 13 mW (see Methods).

We used a range of diagnostics to characterise the laser output. Real time shot-to-shot characterisation was possible for the  $\sim 10$  nm (3 dB) bandwidth pulses input to the HNLF (point C in Fig. 1) using several different techniques: direct measurement of overall envelope fluctuations via a fast photodiode, a time-lens system to measure sub-picosecond soliton structure on the circulating pulses, and a dispersive Fourier transform (DFT) setup for spectral measurements. At the HNLF output, the large spectral bandwidth of the supercontinuum pulses exceeded the measurement bandwidths of our real-time devices, but time-averaged measurements of the spectra over the full bandwidth of 1000–2100 nm were performed using an OSA and a near-infrared spectrometer. In this context, we note that temporal measurements using intensity autocorrelation are of partial utility, as they indicate just the presence of instability through a coherence spike on a broad envelope, and give only an indirect measure of the average sub-structure pulse duration [30].

Figure 5 shows the instability properties of the laser measured using direct photodetection. Figure 5(a) plots data from a fast photodiode over a time span of 20  $\mu$ s to illustrate the emission of highly unstable pulses at the 5.59 MHz repetition rate (period of  $\sim 179$  ns). Although these measurements do not resolve structure faster than the system response time of  $\sim 25$  ps, we can still accurately characterise the  $\sim 300$  ps envelope, and, within the detection bandwidth, we can even observe variation in the envelope structure with roundtrip. Figure 5(b) unwraps the raw photodiode data to plot the roundtrip variation of the envelope, and reveals the presence of sub-cluster structure evolving over  $\sim 500 - 1000$  roundtrips. Although these results clearly reveal shot-to-shot instability on the envelope, the temporal resolution is limited, as seen in the selection of intensity profiles plotted in Fig. 5(c). However, these results are important, because the sub-clusters seen on the envelope confirm previous studies of similar envelope sub-structure [66], and are a clear illustration of random pattern formation and multiscale dynamics in a dissipative soliton

laser [23–25]. In particular, although they are unstable, the sub-clusters are relatively long-lived over multiple roundtrips  $\sim 100$ 's of  $\mu\text{s}$  and they consist of a large number of localised solitons of  $\sim 500$  fs duration. Of course, the photodiode measurements are unable to resolve both these long timescale characteristics as well as to directly measure the ultrafast soliton structure, and it is for this reason that we performed time-lens measurements for shot-to-shot characterisation on the sub-ps scale.

The time-lens system used is described in the Methods section and had a temporal resolution of  $\sim 340$  fs and a physical (i.e. demagnified) measurement window of  $\sim 100$  ps. Although the finite acquisition window precludes characterisation across the full  $\sim 300$  ps pulse envelope, by operating the time-lens asynchronously [10], we are nonetheless able to sample the random pulse structure across the envelope over multiple laser round trips. Because of the time-lens measurement bandwidth of  $\sim 12$  nm, real-time characterisation was possible only for the input pulses to the HNLF, but as we shall see, these measurements clearly reveal both the sub-ps pulse structure and the rogue wave statistics expected from the underlying nonlinear dynamics.

Figure 6(a) shows 5 typical results from the time-lens measurements, plotting the temporal profiles (after demagnification) over a 50 ps timebase. For comparison, 5 typical results from numerical simulations are also shown in Fig. 6(b), and we clearly see the strong visual similarity between the measured and simulated intensity peaks. To compare these results more quantitatively, Fig. 6(c) plots the computed probability density functions for the peak intensities computed from experiment (red) and simulation (black). These density functions were computed from a time series of 21,000 temporal peaks measured experimentally, and 135,000 peaks analysed from simulation. The intensity normalisation was relative to the mean of each respective time series. The inset plots the density functions on a logarithmic scale.

We first note excellent agreement between the simulated and experimental results, with simulations reproducing the experimentally measured intensity probability density function over 3 orders of magnitude. The inset also shows the very good agreement between the simulation statistics and a negative exponential fit (green line), where an exponential distribution is expected here on physical grounds given the randomness of the intensity fluctuations in the noise-like pulse regime. Indeed, such negative exponentially distributed statistics have been seen in previous experiments studying statistics of modulation instability and noise-like pulse lasers [6, 35]. In addition to clearly revealing the statistical behaviour of the sub-ps soliton structure of noise-like pulses, these results also strongly confirm the fidelity of the model in reproducing the time-domain properties of the laser system.

We also see (from both simulation and experiment) that a significant fraction of the measured intensity peaks exceed twice the significant intensity threshold (see Methods), thus meeting the statistical criterion to be formally classified as intracavity rogue waves. Indeed, the rogue wave intensity thresholds computed from experiment ( $I_{\text{RW}}^{\text{exp}} = 3.64$ ) and simulation ( $I_{\text{RW}}^{\text{sim}} = 3.68$ ) are in very good agreement, and the experimental threshold is shown in the figure as the dashed blue line. From this data, it is also straightforward to calculate the fraction of temporal peaks satisfying the rogue wave criterion, which yields 0.43% from simulation, and 0.10% from experiment.

When we are in the noise like pulse regime generating broadband spectra, the temporal probability distribution as shown in Figure 6(c) is largely insensitive to small changes in the design parameters. Specifically, performing numerical simulations with small changes (within  $\pm 10\%$ ) in parameters such as  $f_{\text{R}}$ ,  $E_{\text{sat}}$ ,  $g_0$ , and the length of the HNLF have negligible effect on the temporal pulse characteristics, and thus negligible effect on the associated probability density function. This is also seen in experiments when we make small changes in pump power for example. We attribute this insensitivity to the fact that our cavity configuration contains a long length of HNLF such that we observe noise-like pulse behaviour at all pump powers above threshold.

Complementing the time-domain measurements in Fig. 5, we were also able to record real-time spectral data. Specifically, the DFT method was used to record spectral fluctuations at the HNLF input, and Fig. 7(a) shows a false colour representation of the shot-to-shot variation measured over 1000 roundtrips. The fidelity of the DFT method was confirmed by computing the average over this measurement ensemble and comparing with an averaging optical spectrum analyser. The agreement between these measurements is clear from Fig. 7(b), and this figure also shows the average input spectrum obtained from simulations. There is a small difference between the experimental and simulation bandwidth, but this does not influence the interpretation of our results.

As we saw in the simulation results in Fig. 4, the shot-to-shot spectra also show a strong substructure of spectral peaks. Although analysing spectral peak statistics does not have the same direct physical interpretation in terms of soliton dynamics as analysis of temporal peaks, several studies have characterised spectral peak fluctuations in the context of identifying frequency-domain rogue wave events [34, 50]. From our real-time spectral measurements, we computed peak statistics in a similar way as for the temporal data, and the corresponding probability density function is shown in Fig. 7(b). Here we also compare with simulation, but note that the simulated spectra were convolved before peak analysis with a response function to model the spectral resolution of the experimental DFT data (see Methods.) The figure plots results on both linear and logarithmic

scales, and as with the temporal data, there is very good agreement. The rogue wave spectral peak intensity threshold computed from experiment was ( $S_{\text{RW}}^{\text{exp}} = 3.22$ ) and simulation was ( $S_{\text{RW}}^{\text{sim}} = 3.20$ ); the experimental threshold is shown in the figure as the dashed blue line. From this data, it is also straightforward to calculate the fraction of spectral peaks satisfying the rogue wave criterion, which yields 0.04% from simulation, and 0.07% from experiment. These density functions were computed from a time series of 57,500 spectral peaks measured experimentally, and 44,900 peaks analysed from simulation. The intensity normalisation was relative to the mean of each respective time series.

Finally, we discuss Fig. 7(d) which shows the measured average spectrum at the HNLF output (red curve). The inset uses a logarithmic scale, and plots over an extended wavelength range to show the dispersive wave components by combining measurements from the Anritsu MS9710B OSA and the NIRQuest512 spectrometer (see Methods). The spectrum is highly asymmetric, consisting of a primary spectral peak of  $\sim 40$  nm bandwidth, an extended long wavelength tail, as well as the short wavelength dispersive wave structure. The overall span of the measured spectrum approaches  $\sim 1000$  nm.

These experimental results are reproduced in our modelling, where the solid black line shows the simulated average spectrum (computed over 1000 roundtrips) based on the full generalised propagation model. There is very good agreement between experiment and simulation and, given the complexity of the dissipative soliton system that we are modelling, we stress at this point the significance of these results. Specifically, although there have been a large number of distinct experimental and numerical studies of noise-like lasers, our simulations here quantitatively reproduce the observed energy characteristics, the time averaged broadband spectrum over a span approaching 1000 nm, as well as the intensity statistics of random sub-picosecond soliton structures. Moreover, they clearly show the role of soliton dynamics, allowing us to physically associate the long wavelength tail with the random evolution dynamics of Raman solitons, and the short wavelength structure from the corresponding dispersive waves. Note that the modulation in the dispersive wave spectral structure arises from cross-phase modulation from the generating soliton pulse [76], sometimes described as analogous to event horizon dynamics [77]. The importance of the Raman dynamics is explicitly seen by comparing experiment to simulations performed in the absence of the Raman contribution (i.e.  $f_{\text{R}} = 0$ ). These are shown as the dashed black line, and we clearly see that the long wavelength spectral extension in this case is absent. Note that the stronger dispersive wave component here arises from more efficient dispersive wave energy transfer when there is no Raman-induced wavelength shifting.

## DISCUSSION

Despite the fact that the incoherent noise-like pulse regime of optical fibre lasers has been observed for nearly 25 years, its physics has been understood in only very general terms. Indeed, the very appellation of noise-like is a very generic description, and does not provide information or even any hints about the pulse dynamics or possible underlying instability mechanism.

The experiments and modelling reported here have addressed this problem for the particular case of a broadband dissipative soliton laser operating in a highly nonlinear regime. Our experiments reveal multiple ultrafast localised structures with random characteristics typical of soliton turbulence, and our simulations reveal the associated intracavity dynamics of soliton fission, Raman evolution and supercontinuum generation. The simulations predict both time-averaged and statistical properties in quantitative agreement with experiments.

From an experimental viewpoint, our results have provided a further example of the great utility of ultrafast real-time measurements in providing new insights into complex nonlinear dynamics in optical fibre systems. Although we have applied real-time characterisation to the particular case of a broadband incoherent dissipative soliton laser, these methods are general, and we expect future experiments to study similar instability mechanisms in regimes of noise-like pulse laser operation with narrower bandwidths. In particular, developing a more complete understanding of the relative importance of modulation instability and incoherent soliton fission in driving irregular cavity dynamics is likely to be an important area of future study.

Perhaps most significantly, our results suggest that for this case of broadband instability in a highly nonlinear regime, we can clarify the noise-like pulse regime as one where intracavity supercontinuum dynamics play a dominant role. This work extends our knowledge of dissipative soliton systems, and further highlights the rich dynamics of laser oscillators when operated far from a weakly-perturbative dynamical regime.

## METHODS

### Numerical Modelling.

Numerical simulations of laser pulse evolution used an iterative map with appropriate transfer functions for each cavity element [78]. We write the pulse amplitude as  $\mathbf{A}(z, T) = \hat{\mathbf{x}}u(z, T) + \hat{\mathbf{y}}v(z, T)$  where  $u(z, T)$  and  $v(z, T)$  are the field components along the two principal polarisation axes. The general propagation model for each fibre segment was based on the coupled generalised nonlinear Schrödinger equations (GNLSE) given by:

$$\begin{aligned}
 & (\partial_z - i\Delta\beta_0/2 + \Delta\beta_1/2\partial_T + i\beta_2/2\partial_T^2 - \beta_3/6\partial_T^3 - \hat{g}/2)u(z, T) = \\
 & i\gamma(1 + i/\omega_0\partial_T)\{(1 - f_R) [ (|u|^2 + 2/3|v|^2)u + 1/3v^2u^* ] + \\
 & f_R u(z, T)h_R(T) * (|u(z, T)|^2 + |v(z, T)|^2)\}
 \end{aligned} \tag{1}$$

$$\begin{aligned}
 & (\partial_z + i\Delta\beta_0/2 - \Delta\beta_1/2\partial_T + i\beta_2/2\partial_T^2 - \beta_3/6\partial_T^3 - \hat{g}/2)v(z, T) = \\
 & i\gamma(1 + i/\omega_0\partial_T)\{(1 - f_R) [ (|v|^2 + 2/3|u|^2)v + 1/3u^2v^* ] + \\
 & f_R v(z, T)h_R(T) * (|u(z, T)|^2 + |v(z, T)|^2)\}
 \end{aligned} \tag{2}$$

Here  $\beta_2$  and  $\beta_3$  are the second and third-order dispersion coefficients (assumed identical for each axis), and the weak (bend-induced) birefringence in each segment is included via the parameter  $\Delta\beta_0 = 2\pi/L_B$  where  $L_B$  is the beat length. A value of  $L_B = 5$  m was used for all segments, consistent with previous studies [31, 79, 80]. The group index term was calculated from the approximation  $\Delta\beta_1 \approx \Delta\beta_0/\omega_0$  [81, 82]. Jones calculus was used to model the effect of polarisation-selective elements such as wave plates and the polarising beamsplitter in the bulk cavity segment.

The usual Kerr nonlinear coefficient for each segment is  $\gamma$ , and higher-order nonlinear effects of self-steepening and Raman scattering were also included. The Raman contribution is included via the convolution (\*) with the response function  $h_R(t)$ , which was based on a realistic model for silica [67, 68]. Using a Raman fraction of  $f_R = 0.18$  yielded good agreement with experiments, and we neglected orthogonal Raman gain contributions [83]. We stress that the use of this Raman model was essential to quantitatively reproduce the long wavelength spectral broadening seen experimentally. We also note that although some previous studies have used a linear Raman approximation [84], this cannot accurately describe the dynamics of sub-picosecond pulses [85]. We also stress here that the Raman fraction  $f_R$  is not a fitted parameter, but rather is determined from the peak of the Raman gain profile measured in experiment [86]. Although some small

variation in the numerical value of the Raman fraction has been reported, the value of  $f_R = 0.18$  has been found to yield good agreement with experiments as suggested in Ref. [68].

Our modelling used fibre lengths and parameters based on the experimental cavity design. Segment AB consists of 11 m of OFS R37003 Erbium-doped fibre (EDF) with normal dispersion  $\beta_2 = +40 \times 10^{-3} \text{ps}^2 \text{m}^{-1}$ , and nonlinear parameter  $\gamma = 6.0 \times 10^{-3} \text{W}^{-1} \text{m}^{-1}$ . Third-order dispersion in the EDF was neglected. Standard silica fibre Segments BC, DE, and FA were of lengths 2.87 m, 4.45 m, and 7.8 m respectively, and used SMF-28 parameters  $\beta_2 = -21.7 \times 10^{-3} \text{ps}^2 \text{m}^{-1}$ ,  $\beta_3 = +86.0 \times 10^{-6} \text{ps}^3 \text{m}^{-1}$ , and nonlinear parameter  $\gamma = 1.1 \times 10^{-3} \text{W}^{-1} \text{m}^{-1}$ . Although some cavity components (such as wavelength-selective couplers) used short lengths of other silica-based fibre, this was found to have negligible effect on propagation and was not explicitly included in the modelling. The supercontinuum segment CD models propagation in 10.3 m of OFS Highly Nonlinear Fibre with  $\beta_2 = -5.23 \times 10^{-3} \text{ps}^2 \text{m}^{-1}$ ,  $\beta_3 = +42.8 \times 10^{-6} \text{ps}^3 \text{m}^{-1}$  (zero dispersion wavelength of 1408 nm), and nonlinear parameter  $\gamma = 18.4 \times 10^{-3} \text{W}^{-1} \text{m}^{-1}$ . The net cavity dispersion is  $+0.06 \text{ps}^2$ . Note that all dispersion and nonlinearity parameters above are specified at 1550 nm.

The gain term  $\hat{g}(\omega)$  is non-zero only in the EDF segment, and we model this with a Lorentzian:

$$\hat{g}(\omega) = \frac{1}{1 + E/E_{\text{sat}}} \times \frac{g_0}{1 + \Omega^2/\Omega_g^2}, \quad (3)$$

with  $g_0$  the unsaturated small-signal gain,  $E = \int (|u|^2 + |v|^2) d\tau$  the intracavity pulse energy, and  $E_{\text{sat}}$  a gain saturation energy parameter.  $\Omega = \omega - \omega_0$  is the detuned angular frequency, and  $\omega_0$  is the central transition frequency (corresponding to a wavelength of 1550 nm) and  $\Omega_g$  is the gain (half) bandwidth (corresponding to 20 nm). Note that this approach is widely used in the modelling of EDF amplifiers [13, 87] and is justified physically because gain recovery timescales for an Erbium-doped amplifier are typically  $\sim 100$ 's of  $\mu\text{s}$  [88], orders of magnitude slower than any of the characteristic timescales of our laser dynamics: the roundtrip time (179 ns); the noise-like pulse envelope ( $\sim 100$ 's of ps); the ultrafast soliton substructure ( $\sim 100$ 's of fs). We also note that because of the spectral filtering in the cavity, the bandwidth of the injected signal into the amplifier is effectively reset to  $\sim 10$  nm for every roundtrip, which is significantly less than the 40 nm FWHM of the lineshape function. Moreover, there is no appreciable nonlinear spectral broadening in the EDF such that the pulses remain at  $\sim 10$  nm bandwidth during amplification. This means that gain-bandwidth limiting effects [89] are also negligible. Indeed, the fact that we can neglect nonlinear effects in the amplifier is another factor that allows us to focus more on the physics of the dramatic spectral broadening in the HNLF. We also note that our use of a constant



distributed gain coefficient  $g_0$  is for consistency with previous studies of similar laser systems that have shown good agreement with experiments [13]. In fact, we explicitly checked that for our parameter regime, the average and statistical results from simulations do not significantly depend on the longitudinal gain model used. Finally, we note that typical polarisation-dependent gain in our parameter regime is expected to be below  $\sim 0.3$  dB [90], which can be neglected compared to our small signal and saturated gain of 35 dB and 21 dB respectively over the 11 m EDF length. Moreover, previous studies of polarisation-dependent gain saturation have also shown negligible effect on nonlinear dynamics in dissipative soliton lasers [91].

A bulk-optics free space segment EF (length 28.1 cm) includes a nonlinear-polarisation based saturable absorber [61, 92], and a narrowband spectral filter to control the bandwidth of the pulses reinjected into the EDF [62]. The filter transfer function was modelled on a double supergaussian fit to the experimentally measured intensity transmission function and was given by:  $T(\Omega) = c_1 \exp(-(\Omega^2/\Omega_1^2)^{m_1}) + c_2 \exp(-(\Omega^2/\Omega_2^2)^{m_2})$  with coefficients  $c_1 = 0.7036$ ,  $c_2 = 0.2944$ ,  $m_1 = 1.4483$ ,  $m_2 = 1.0034$ ,  $\Omega_1 = 4.2584 \times 10^{12} \text{ rad s}^{-1}$ , and  $\Omega_2 = 6.8006 \times 10^{12} \text{ rad s}^{-1}$ . Linear losses in the cavity originate mainly from splicing and coupling and are considered at points C (0.84 dB), D (3.02 dB) and F (3.0 dB) in the simulation. The loss at point F includes the linear loss of the filter (20%).

Numerical simulations were performed using a 1.3 ns time window and  $2^{18} = 262144$  points such that the temporal resolution is  $\sim 5$  fs. The frequency grid corresponds to a wavelength span of  $\sim 1019\text{--}3238$  nm with a frequency resolution of 769 MHz (wavelength resolution  $\sim 6 \times 10^{-3}$  nm around 1550 nm). Although computationally very demanding, this level of time and frequency resolution is necessary to span the full noise-like pulse envelope structure, as well as to capture fine structure in the temporal and spectral domains. The numerical techniques used for the solution of GNLSE-like differential equations are well-known, and examples of numerical code for this purpose are widely available [63, 68].

A particular simulation is initiated at the input to the EDF (point A in Fig. 1(a)) using a gaussian noise background in the time-domain distributed across the full 1.3 ns time window [12, 93]. The seed energy (distributed between the two polarisation components) was  $\sim 3$  pJ. Physically, laser operation would be initiated by random amplified spontaneous emission noise from the EDF, but the averaged simulation results and the computed intensity peak statistics were found to be independent of the noise source used. Typically  $\sim 10^2$  roundtrips were required for the simulations to converge to the regime with well defined mean energy, and it was only after entering this regime that statistical analysis was performed.

To compare simulations and experiments, we iteratively scanned the simulation parameter space to yield average spectral characteristics that agreed with experiment (Figure 7). This procedure yielded a small signal gain of  $g_0 = 0.73 \text{ m}^{-1}$  and saturation energy of  $E_{\text{sat}} = 3.5 \text{ nJ}$ . For the 225 mW pump power used in our experiments, these parameters were comparable to previous similar modelling of dissipative soliton lasers [93], and supported by a rate equation analysis of the EDF single pass gain characteristics [88]. The simulations yield a mean intracavity energy (averaged over 1000 roundtrips) of 10.5 nJ at the EDF output, compared with the experimental value of 13.6 nJ. Although exact agreement would not be expected because of the approximate model of the gain lineshape function used, the overall agreement is remarkable between the mean energy, the average broadband spectrum with components spanning  $\sim 1000 \text{ nm}$ , and computed temporal and spectral statistics. For completeness, we give the waveplate orientations for our simulations as: (QWP1, HWP1, HWP2, QWP2) = (5.4°, 16.2°, 64.8°, 27°) although a precise comparison with experiment is not possible here because of the unknown birefringence orientation of each particular fibre segment in the cavity.

### Computation of the Spectrogram.

The simulations yield access to the amplitude and phase of the intracavity field, allowing us to calculate a frequency (or wavelength)–time spectrogram which clearly shows the intensity and phase content of the pulse in the time and frequency domains. We compute in particular the total field spectrogram  $S(\omega, \tau) = S_u(\omega, \tau) + S_v(\omega, \tau)$  where the separate component spectrograms are defined by:

$$S_k(\omega, \tau) = \left| \int_{-\infty}^{\infty} g(T - \tau) f(T) \exp(-i\omega T) dT \right|^2 \quad (4)$$

with  $k = u, v$  and  $f(T)$  representing either  $u(z, T)$  or  $v(z, T)$  respectively, the field components along the two principal polarisation axes. The function  $g(T - \tau)$  a variable delay gate function with delay value  $\tau$ . The spectrogram trace then plots the spectra of a series of time-gated portions of the field and, especially when plotted against the associated temporal and spectral intensities, it provides a highly intuitive way to interpret the time-frequency structure of a complex field. In our calculation of the spectrogram, we used a gate function of 300 fs duration (full width at half maximum) and Gaussian profile. Note that the use of the total spectrogram over both polarisations has the clear physical interpretation that it projects naturally onto the total temporal intensity profile and total spectrum.

Based on the spectrogram, it is possible to identify the wavelength of each of the Raman-shifted

localised temporal peaks in the random HNLF output field, allowing calculation of the associated soliton number using  $N_p = [\gamma(\omega_p)P_pT_p^2/|\beta_2(\omega_p)|]^{1/2}$ . Here  $\gamma(\omega_p)$  and  $\beta_2(\omega_p)$  are respectively the nonlinearity and dispersion parameters at the Raman-shifted peak frequency  $\omega_p$ , and  $P_p$  and  $T_p$  are respectively the pulse peak power and duration. The corrected dispersion parameter is then  $\beta_2(\omega_p) = \beta_2(\omega_0) + (\omega_p - \omega_0)\beta_3(\omega_0)$  where  $\omega_0$  corresponds to a wavelength of 1550 nm. The corrected nonlinearity parameter is then  $\gamma(\omega_p) = (\omega_p/\omega_0)\gamma(\omega_0)$  [94].

### Experimental Setup.

The laser system in Fig. 1 used a unidirectional cavity configuration with fibre lengths as described above. The overall laser repetition rate is 5.59 MHz (roundtrip time of  $\sim 179$  ns). The primary laser output after the HNLF (point D) used a 40% coupler, and we used a 1% coupler at point C for diagnostics and a 5% coupler in segment DE for additional spectral measurement. The spectral filter used (Andover 155FSX-1025) had 10 nm bandwidth (FWHM) and 80% peak transmission. The EDF was co-directionally pumped at 976 nm, and noise-like pulsed behaviour was observed at all values of pump power above the 40 mW pump threshold where pulsed laser operation was first observed. In contrast to similar cavity configurations without the HNLF [28], we did not observe any stable mode-locked regime for any combination of cavity parameters. With suitable adjustment of the waveplates, it was possible to observe noise-like pulse operation with broadband spectral output over a wide range of pump powers up to 500 mW. The observed spectra exhibited qualitatively similar characteristics over the full range of pump powers, although the broad temporal envelope duration (as measured with a photodiode) increased to  $\sim 450$  ps at the highest pump powers. The results reported here at a pump power of 225 mW corresponded to 13 mW average power at the primary output after the HNLF (point D). This corresponds to an intracavity energy of 7.3 nJ at the HNLF output and an energy at the EDF output of 13.6 nJ when accounting for all coupling and splicing losses between the EDF and HNLF.

Direct pulse envelope measurements used a 35 GHz photodiode (New Focus 1474 A) connected to a 20 GHz channel of a real-time oscilloscope (LeCroy 845 Zi-A, 40 GS/s). The DFT setup used 5.13 km of dispersion compensating fibre (DCF) with group velocity dispersion coefficient of  $D = -83.6$  ps/nm/km ( $\beta_2 = +107 \times 10^{-3}$  ps<sup>2</sup> m<sup>-1</sup>) at 1550 nm. The signal under test was attenuated before injection into the DCF to ensure linear propagation. The fidelity of the DFT measurements was confirmed by comparing the DFT spectrum with that measured using an averaging OSA (Anritsu MS9710B) for a separate stable mode-locked laser operating around 1550 nm. This comparison was also performed on the average spectra measured at the HNLF input (see results in

Fig.7(b)). The real-time DFT signal was measured by a 12.5 GHz photodiode (Miteq DR-125G-A) connected to another 20 GHz channel of the real-time oscilloscope, resulting in a spectral resolution of 0.19 nm. For the results in the inset of Fig. 7(d), the broadband spectrum from the HNLF is plotted over an expanded wavelength range by combining measurements from the Anritsu MS9710B OSA below 1550 nm and the Ocean Optics NIRQuest512 spectrometer (resolution of 6.3 nm) above 1550 nm. The measured spectra were matched in the region of 1550 nm.

The time-lens setup was based on a commercial system (Picoluz UTM-1500) described in [95], supplemented by an additional module of dispersion compensating fibre for additional magnification. A time-dependent quadratic phase was applied on the signal after propagation step  $D_1$  by four wave mixing in a silicon waveguide between the signal and linearly-chirped pump pulses from an integrated fibre laser module (a 100 MHz Menlo C-Fiber Sync, a P100-EDFA and a pre-chirping fibre  $D_p$ ). The overall system magnification of  $\times 190$  was determined experimentally by using Fourier-domain pulse shaping (Finisar Waveshaper 4000 series) to create a picosecond pulse doublet with exactly 10 ps separation, and by measuring the increased temporal separation after passage through the time-lens. The magnification  $|M| = D_2/D_1$  is associated with total dispersion for the input and output propagation steps of:  $D_1 = 4.16$  ps/nm and  $D_2 = 790.4$  ps/nm. The time-lens output was then recorded by a 12.5 GHz photodiode (Miteq DR-125G-A) connected to the 20 GHz channel of the real-time oscilloscope at a sampling rate of 40 Gs/s. The calculated overall time-lens resolution [96] was 340 fs, and the demagnified time window was  $\sim 100$  ps (determined by the duration of the chirped pump pulses into the Silicon waveguide). Since the noise-like pulse envelope duration of  $\sim 300$  ps is larger than the time-lens window, we operated in asynchronous mode with free-running acquisition triggered by the arrival of the time-lens signal. To avoid low signal to noise ratio at the edges of the measurement window, all statistical analysis of the time-lens temporal peaks was performed only on the central (70 ps) region of the window.

### **Rogue Wave Criteria.**

Based on the statistical distribution of intensity peaks in both the time and frequency domains, a significant intensity is defined as the associated mean intensity of the upper third of intensity peaks. The temporal and spectral rogue wave thresholds are defined as equal to 2.2 times this significant intensity [97].

**Data availability** Data are available from the corresponding author upon reasonable request.

**Code availability** The GNLSE simulation code used in this manuscript is available from the

corresponding author upon reasonable request.

## **ACKNOWLEDGEMENTS**

F.M, C.L, C.B, T.S., J.M.M and J.M.D.acknowledge support from the French Investissements d’Avenir programme, project ISITE-BFC (contract ANR-15-IDEX-0003) and project EUR (ANR-17-EURE-0002). G.G. acknowledges support from the Academy of Finland (Grants 318082, 333949, Flagship PREIN 320165). J.M.D. and C. F. also acknowledge project ANR-20-CE30-0004. S.K.T. acknowledges the support of the Russian Science Foundation (grant number 17-72-30006).

## **AUTHOR CONTRIBUTIONS STATEMENT**

F. M. developed and performed the experiments, with C.L. and C.B. providing the initial setup and ongoing assistance. F.M. developed and performed the numerical simulations. Data analysis and interpretation of the results was performed by F.M. with contributions by T.S., C.B., J.M.M., C.F., and G.G. S.K.T. contributed to the analysis of the results. J.M.D. participated in all experiments and analysis and also provided overall project supervision. All authors contributed to the interpretation of the results, and writing of the manuscript.

## **COMPETING INTERESTS**

The authors declare no competing interests.

## REFERENCES

- [1] Solli, D. R., Herink, G., Jalali, B. & Ropers, C. Fluctuations and correlations in modulation instability. *Nature Photonics* **6**, 463–468 (2012).
- [2] Närhi, M. *et al.* Real-time measurements of spontaneous breathers and rogue wave events in optical fibre modulation instability. *Nature Communications* **7**, 13675 (2016).
- [3] Tikan, A. *et al.* Universality of the Peregrine Soliton in the Focusing Dynamics of the Cubic Nonlinear Schrödinger Equation. *Physical Review Letters* **119**, 033901 (2017).
- [4] Mussot, A. *et al.* Fibre multi-wave mixing combs reveal the broken symmetry of fermi–pasta–ulam recurrence. *Nature Photonics* **12**, 303–308 (2018).
- [5] Kraych, A. E., Suret, P., El, G. & Randoux, S. Nonlinear evolution of the locally induced modulational instability in fiber optics. *Physical Review Letters* **122** (2019).
- [6] Närhi, M. *et al.* Machine learning analysis of extreme events in optical fibre modulation instability. *Nature Communications* **9**, 4923 (2018).
- [7] Akhmediev, N. & Ankiewicz, A. (eds.) *Dissipative Solitons* (Springer, 2005).
- [8] Grelu, P. & Akhmediev, N. Dissipative solitons for mode-locked lasers. *Nature Photonics* **6**, 84–92 (2012).
- [9] Turitsyn, S. K. *et al.* Dissipative solitons in fiber lasers. *Physics - Uspekhi* **59**, 642–668 (2016).
- [10] Ryzkowski, P. *et al.* Real-time full-field characterization of transient dissipative soliton dynamics in a mode-locked laser. *Nature Photonics* **12**, 221–227 (2018).
- [11] Peng, J. *et al.* Real-time observation of dissipative soliton formation in nonlinear polarization rotation mode-locked fibre lasers. *Communications Physics* **1**, 20 (2018).
- [12] Liu, X. & Cui, Y. Revealing the behavior of soliton buildup in a mode-locked laser. *Advanced Photonics* **1**, 1 – 14 (2019).
- [13] Woodward, R. I. Dispersion engineering of mode-locked fibre lasers. *Journal of Optics* **20**, 033002 (2018).
- [14] Fu, W., Wright, L. G., Sidorenko, P., Backus, S. & Wise, F. W. Several new directions for ultrafast fiber lasers [Invited]. *Optics Express* **26**, 9432 (2018).
- [15] Blow, K. J. & Doran, N. J. Global and local chaos in the pumped nonlinear schrödinger equation. *Physical Review Letters* **52**, 526–529 (1984).
- [16] Herbst, B. M. & Ablowitz, M. J. Numerically induced chaos in the nonlinear schrödinger equation. *Physical Review Letters* **62**, 2065–2068 (1989).
- [17] Strogatz, S. H. *Nonlinear Dynamics and Chaos* (Taylor & Francis Inc., 2014). URL [https://www.ebook.de/de/product/20639922/steven\\_h\\_strogatz\\_nonlinear\\_dynamics\\_and\\_chaos.html](https://www.ebook.de/de/product/20639922/steven_h_strogatz_nonlinear_dynamics_and_chaos.html).
- [18] Haelterman, M., Trillo, S. & Wabnitz, S. Hopf sideband bifurcation and chaos in fiber lasers with injected signal. *Physical Review A* **47**, 2344–2353 (1993).

- [19] Soto-Crespo, J. M., Grapinet, M., Grelu, P. & Akhmediev, N. Bifurcations and multiple-period soliton pulsations in a passively mode-locked fiber laser. *Physical Review E* **70**, 066612 (2004).
- [20] Krupa, K., Nithyanandan, K., Andral, U., Tchofo-Dinda, P. & Grelu, P. Real-Time Observation of Internal Motion within Ultrafast Dissipative Optical Soliton Molecules. *Physical Review Letters* **118**, 243901 (2017).
- [21] Herink, G., Kurtz, F., Jalali, B., Solli, D. R. & Ropers, C. Real-time spectral interferometry probes the internal dynamics of femtosecond soliton molecules. *Science* **356**, 50–54 (2017).
- [22] Liu, X., Yao, X. & Cui, Y. Real-time observation of the buildup of soliton molecules. *Physical Review Letters* **121**, 023905 (2018).
- [23] Huang, Y.-Q., Qi, Y.-L., Luo, Z.-C., Luo, A.-P. & Xu, W.-C. Versatile patterns of multiple rectangular noise-like pulses in a fiber laser. *Optics Express* **24**, 7356–7363 (2016).
- [24] Klein, A. *et al.* Ultrafast rogue wave patterns in fiber lasers. *Optica* **5**, 774 (2018).
- [25] Zhou, R., Liu, X., Yu, D., Li, Q. & Fu, H. Y. Versatile multi-soliton patterns of noise-like pulses in a passively mode-locked fiber laser. *Optics Express* **28**, 912–923 (2020).
- [26] Runge, A. F. J., Aguergaray, C., Broderick, N. G. R. & Erkintalo, M. Coherence and shot-to-shot spectral fluctuations in noise-like ultrafast fiber lasers. *Optics Letters* **38**, 4327 (2013).
- [27] Churkin, D. V. *et al.* Stochasticity, periodicity and localized light structures in partially mode-locked fibre lasers. *Nature Communications* **6**, 7004 (2015).
- [28] Lapre, C. *et al.* Real-time characterization of spectral instabilities in a mode-locked fibre laser exhibiting soliton-similariton dynamics. *Scientific Reports* **9**, 13950 (2019).
- [29] Horowitz, M., Barad, Y. & Silberberg, Y. Noiselike pulses with a broadband spectrum generated from an erbium-doped fiber laser. *Opt. Lett.* **22**, 799–801 (1997).
- [30] Jeong, Y., Vazquez-Zuniga, L. A., Lee, S. & Kwon, Y. On the formation of noise-like pulses in fiber ring cavity configurations. *Optical Fiber Technology* **20**, 575 – 592 (2014).
- [31] Tang, D. Y., Zhao, L. M. & Zhao, B. Soliton collapse and bunched noise-like pulse generation in a passively mode-locked fiber ring laser. *Opt. Express* **13**, 2289–2294 (2005).
- [32] Kobtsev, S., Kukarin, S., Smirnov, S., Turitsyn, S. & Latkin, A. Generation of double-scale femto/pico-second optical lumps in mode-locked fiber lasers. *Opt. Express* **17**, 20707–20713 (2009).
- [33] Pottiez, O., Grajales-Coutiño, R., Ibarra-Escamilla, B., Kuzin, E. & Hernández-García, J. Adjustable noiselike pulses from a figure-eight fiber laser. *Applied Optics* **50**, E24–E31 (2011).
- [34] Lecaplain, C. & Grelu, P. Rogue waves among noiselike-pulse laser emission: An experimental investigation. *Physical Review A* **90**, 013805 (2014).
- [35] Li, B. *et al.* Unveiling femtosecond rogue-wave structures in noise-like pulses by a stable and synchronized time magnifier. *Optics Letters* **44**, 4351–4354 (2019).
- [36] Wang, Z., Nithyanandan, K., Coillet, A., Tchofo-Dinda, P. & Grelu, P. Buildup of incoherent dissipative solitons in ultrafast fiber lasers. *Physical Review Research* **2**, 013101 (2020).



- [37] Du, Y. *et al.* Alternation of the mode synchronization and desynchronization in ultrafast fiber laser. *Laser & Photonics Reviews* **14**, 1900219 (2020).
- [38] Vazquez-Zuniga, L. A. & Jeong, Y. Super-broadband noise-like pulse erbium-doped fiber ring laser with a highly nonlinear fiber for raman gain enhancement. *IEEE Photonics Technology Letters* **24**, 1549–1551 (2012).
- [39] North, T. & Rochette, M. Raman-induced noiselike pulses in a highly nonlinear and dispersive all-fiber ring laser. *Optics Letters* **38**, 890–892 (2013).
- [40] Santiago-Hernandez, H. *et al.* Generation and characterization of erbium-Raman noise-like pulses from a figure-eight fibre laser. *Laser Physics* **25**, 045106 (2015).
- [41] Wang, X. *et al.* Generation of noise-like pulses with 203 nm 3-db bandwidth. *Optics Express* **27**, 24147–24153 (2019).
- [42] Pan, C., Zaytsev, A., You, Y. & Lin, C. Fiber-laser-generated Noise-like Pulses and Their Applications. In Paul, M. (ed.) *Fiber Laser*, 211–243 (InTech, 2016).
- [43] Keren, S. & Horowitz, M. Interrogation of fiber gratings by use of low-coherence spectral interferometry of noiselike pulses. *Optics Letters* **26**, 328–330 (2001).
- [44] Özgören, K., Öktem, B., Yilmaz, S., Ömer Ilday, F. & Eken, K. 83 W, 31 MHz, square-shaped, 1 ns-pulsed all-fiber-integrated laser for micromachining. *Optics Express* **19**, 17647–17652 (2011).
- [45] Chernykh, A. I. & Turitsyn, S. K. Soliton and collapse regimes of pulse generation in passively mode-locking laser systems. *Optics Letters* **20**, 398–399 (1995).
- [46] Chang, W., Soto-Crespo, J. M., Vouzas, P. & Akhmediev, N. Spiny solitons and noise-like pulses. *Journal of the Optical Society of America B* **32**, 1377–1383 (2015).
- [47] Komarov, A., Komarov, K. & Zhao, L. Mechanism of formation of noiselike pulses in passively mode-locked fiber lasers. *Physical Review A* **100**, 033829 (2019).
- [48] Donovan, G. M. Dynamics and statistics of noise-like pulses in modelocked lasers. *Physica D: Nonlinear Phenomena* **309**, 1 – 8 (2015).
- [49] Lauterio-Cruz, J. P. *et al.* Numerical study of complex dynamics and extreme events within noise-like pulses from an erbium figure-eight laser. *Optics Express* **27**, 37196 (2019).
- [50] Runge, A. F. J., Agueraray, C., Broderick, N. G. R. & Erkintalo, M. Raman rogue waves in a partially mode-locked fiber laser. *Optics Letters* **39**, 319 (2014).
- [51] Liu, Z., Ziegler, Z. M., Wright, L. G. & Wise, F. W. Megawatt peak power from a mamyshev oscillator. *Optica* **4**, 649–654 (2017).
- [52] Turitsyn, S. K. *et al.* Random distributed feedback fibre laser. *Nature Photonics* **4**, 231–235 (2010).
- [53] Turitsyna, E. G. *et al.* The laminar–turbulent transition in a fibre laser. *Nature Photonics* **7**, 783–786 (2013).
- [54] Barviau, B., Kibler, B. & Picozzi, A. Wave-turbulence approach of supercontinuum generation: Influence of self-steepening and higher-order dispersion. *Physical Review A* **79**, 063840 (2009).

- [55] Picozzi, A. *et al.* Optical wave turbulence: Towards a unified nonequilibrium thermodynamic formulation of statistical nonlinear optics. *Physics Reports* **542**, 1–132 (2014).
- [56] Churkin, D. V. *et al.* Wave kinetics of random fibre lasers. *Nature Communications* **6**, 6214 (2015).
- [57] Hammani, K., Kibler, B., Finot, C. & Picozzi, A. Emergence of rogue waves from optical turbulence. *Physics Letters A* **374**, 3585–3589 (2010).
- [58] Suret, P. *et al.* Single-shot observation of optical rogue waves in integrable turbulence using time microscopy. *Nature Communications* **7**, 13136 (2016).
- [59] Meng, F., Lapre, C., Billet, C., Genty, G. & Dudley, J. M. Instabilities in a dissipative soliton-similariton laser using a scalar iterative map. *Optics Letters* **45**, 1232–1235 (2020).
- [60] Oktem, B., Ülgüdüür, C. & Ömer İlday, F. Soliton–similariton fibre laser. *Nature Photonics* **4**, 307–311 (2010).
- [61] Hofer, M., Fermann, M. E., Haberl, F., Ober, M. H. & Schmidt, A. J. Mode locking with cross-phase and self-phase modulation. *Opt. Lett.* **16**, 502–504 (1991).
- [62] Chong, A., Wright, L. G. & Wise, F. W. Ultrafast fiber lasers based on self-similar pulse evolution: a review of current progress. *Reports on Progress in Physics* **78**, 113901 (2015).
- [63] Dudley, J. M. & Taylor, J. R. *Supercontinuum Generation in Optical Fiber* (Cambridge University Press, 2010).
- [64] Kelleher, E. J. R., Erkintalo, M. & Travers, J. C. Fission of solitons in continuous-wave supercontinuum. *Optics Letters* **37**, 5217–5219 (2012).
- [65] Smirnov, S. V., Kobtsev, S. M. & Turitsyn, S. K. Wide Variability of Generation Regimes in Mode-Locked Fiber Lasers. In *Shaping Light in Nonlinear Optical Fibers*, 415–433 (John Wiley & Sons, Ltd, 2017).
- [66] Torres-Muñoz, O. S. *et al.* Simultaneous temporal and spectral analysis of noise-like pulses in a mode-locked figure-eight fiber laser. *Optics Express* **27**, 17521–17538 (2019).
- [67] Dudley, J. M., Genty, G. & Coen, S. Supercontinuum generation in photonic crystal fiber. *Reviews of Modern Physics* **78**, 1135–1184 (2006).
- [68] Agrawal, G. P. *Nonlinear Fiber Optics (Fifth Edition)*. Optics and Photonics (Academic Press, Boston, 2013).
- [69] Efremidis, N. K., Chen, Z., Segev, M. & Christodoulides, D. N. Airy beams and accelerating waves: an overview of recent advances. *Optica* **6**, 686–701 (2019).
- [70] Genty, G. *et al.* Collisions and turbulence in optical rogue wave formation. *Physics Letters A* **374**, 989–996 (2010).
- [71] Chouli, S. & Grelu, P. Soliton rains in a fiber laser: An experimental study. *Physical Review A* **81**, 063829 (2010).
- [72] Zakharov, V. E. Turbulence in Integrable Systems. *Studies in Applied Mathematics* **122**, 219–234 (2009).

- [73] Gelash, A. *et al.* Bound state soliton gas dynamics underlying the spontaneous modulational instability. *Physical Review Letters* **123**, 234102 (2019).
- [74] Solli, D. R., Ropers, C., Koonath, P. & Jalali, B. Optical rogue waves. *Nature* **450**, 1054–1057 (2007).
- [75] Erkintalo, M., Genty, G. & Dudley, J. M. On the statistical interpretation of optical rogue waves. *The European Physical Journal Special Topics* **185**, 135–144 (2010).
- [76] Genty, G., Lehtonen, M. & Ludvigsen, H. Effect of cross-phase modulation on supercontinuum generated in microstructured fibers with sub-30 fs pulses. *Optics Express* **12**, 4614–4624 (2004).
- [77] Webb, K. E. *et al.* Nonlinear optics of fibre event horizons. *Nature Communications* **5**, 4969 (2014).
- [78] Komarov, A., Leblond, H. & Sanchez, F. Multistability and hysteresis phenomena in passively mode-locked fiber lasers. *Physical Review A* **71**, 053809 (2005).
- [79] Huttner, B., Reece, J., Gisin, N., Passy, R. & Von der Weid, J. P. Local birefringence measurements in single-mode fibers with coherent optical frequency-domain reflectometry. *IEEE Photonics Technology Letters* **10**, 1458–1460 (1998).
- [80] Man, W. S., Tam, H. Y., Demokan, M. S., Wai, P. K. A. & Tang, D. Y. Mechanism of intrinsic wavelength tuning and sideband asymmetry in a passively mode-locked soliton fiber ring laser. *Journal of the Optical Society of America B* **17**, 28–33 (2000).
- [81] Menyuk, C. Nonlinear pulse propagation in birefringent optical fibers. *IEEE Journal of Quantum Electronics* **23**, 174–176 (1987).
- [82] Tang, D. Y., Zhao, L. M., Zhao, B. & Liu, A. Q. Mechanism of multisoliton formation and soliton energy quantization in passively mode-locked fiber lasers. *Physical Review A* **72**, 043816 (2005).
- [83] Golovchenko, E. A. & Pilipetskii, A. N. Unified analysis of four-photon mixing, modulational instability, and stimulated Raman scattering under various polarization conditions in fibers. *Journal of the Optical Society of America B* **11**, 92–101 (1994).
- [84] Zhao, L., Tang, D., Cheng, T., Tam, H. & Lu, C. 120 nm bandwidth noise-like pulse generation in an erbium-doped fiber laser. *Optics Communications* **281**, 157 – 161 (2008).
- [85] Erkintalo, M., Genty, G., Wetzel, B. & Dudley, J. M. Limitations of the linear Raman gain approximation in modeling broadband nonlinear propagation in optical fibers. *Optics Express* **18**, 25449–25460 (2010).
- [86] Stolen, R. H., Tomlinson, W. J., Haus, H. A. & Gordon, J. P. Raman response function of silica-core fibers. *Journal of the Optical Society of America B* **6**, 1159–1166 (1989).
- [87] Yarutkina, I. A., Shtyrina, O. V., Fedoruk, M. P. & Turitsyn, S. K. Numerical modeling of fiber lasers with long and ultra-long ring cavity. *Optics Express* **21**, 12942 (2013).
- [88] Desurvire, E. *Erbium-Doped Fiber Amplifiers: Principles and Applications* (Wiley, 2002).
- [89] Sidorenko, P., Fu, W. & Wise, F. Nonlinear ultrafast fiber amplifiers beyond the gain-narrowing limit. *Optica* **6**, 1328–1333 (2019).
- [90] Wysocki, P. & Mazurczyk, V. Polarization dependent gain in erbium-doped fiber amplifiers: computer model and approximate formulas. *Journal of Lightwave Technology* **14**, 572–584 (1996).

- [91] Grelu, P., Belhache, F., Gutton, F. & Soto-Crespo, J. M. Relative phase locking of pulses in a passively mode-locked fiber laser. *Journal of the Optical Society of America B* **20**, 863–870 (2003).
- [92] Noske, D., Pandit, N. & Taylor, J. Subpicosecond soliton pulse formation from self-mode-locked erbium fibre laser using intensity dependent polarisation rotation. *Electronics Letters* **28**, 2185–2186 (1992).
- [93] Renninger, W. H., Chong, A. & Wise, F. W. Pulse shaping and evolution in normal-dispersion mode-locked fiber lasers. *IEEE Journal of Selected Topics in Quantum Electronics* **18**, 389–398 (2012).
- [94] Kibler, B., Dudley, J. M. & Coen, S. Supercontinuum generation and nonlinear pulse propagation in photonic crystal fiber: influence of the frequency-dependent effective mode area. *Applied Physics B* **81**, 337–342 (2005).
- [95] Salem, R. *et al.* Optical time lens based on four-wave mixing on a silicon chip. *Optics Letters* **33**, 1047–1049 (2008).
- [96] Salem, R., Foster, M. A. & Gaeta, A. L. Application of space–time duality to ultrahigh-speed optical signal processing. *Advances in Optics and Photonics* **5**, 274 (2013).
- [97] Dudley, J. M., Genty, G., Mussot, A., Chabchoub, A. & Dias, F. Rogue waves and analogies in optics and oceanography. *Nature Reviews Physics* **1**, 675–689 (2019).

## FIGURES

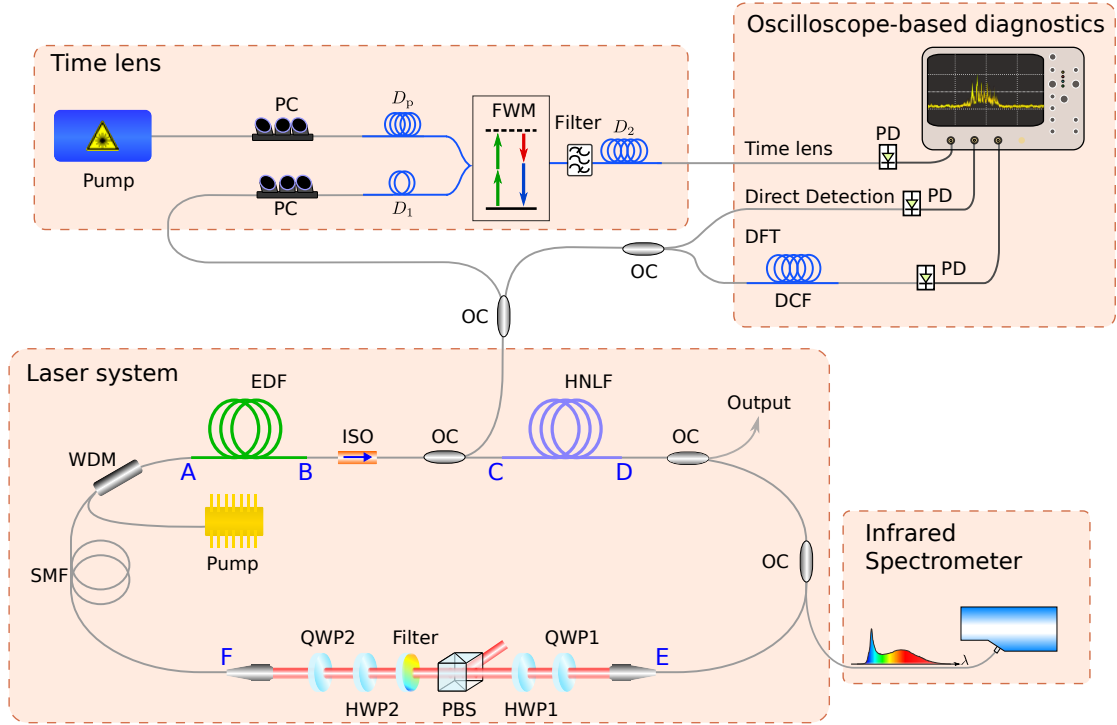


FIG. 1. Schematic of the laser system and of the various diagnostics used. Text labels A-F shown on the cavity refer to the different propagation segments as discussed in the text. Abbreviations: PC: polarisation controller;  $D_p$ ,  $D_1$ ,  $D_2$ : time-lens dispersive elements (see Methods); FWM: Four Wave Mixing; DFT: Dispersive Fourier Transform; DCF: Dispersion Compensating Fibre; ISO: isolator; HWP: half-wave plate; QWP: quarter-wave plate; PBS: polarising beamsplitter. EDF: Erbium-doped fibre; SMF: single-mode fibre; HNLF: highly nonlinear fibre; WDM: wavelength-division multiplexer. OC: optical coupler; PD: photodiode.

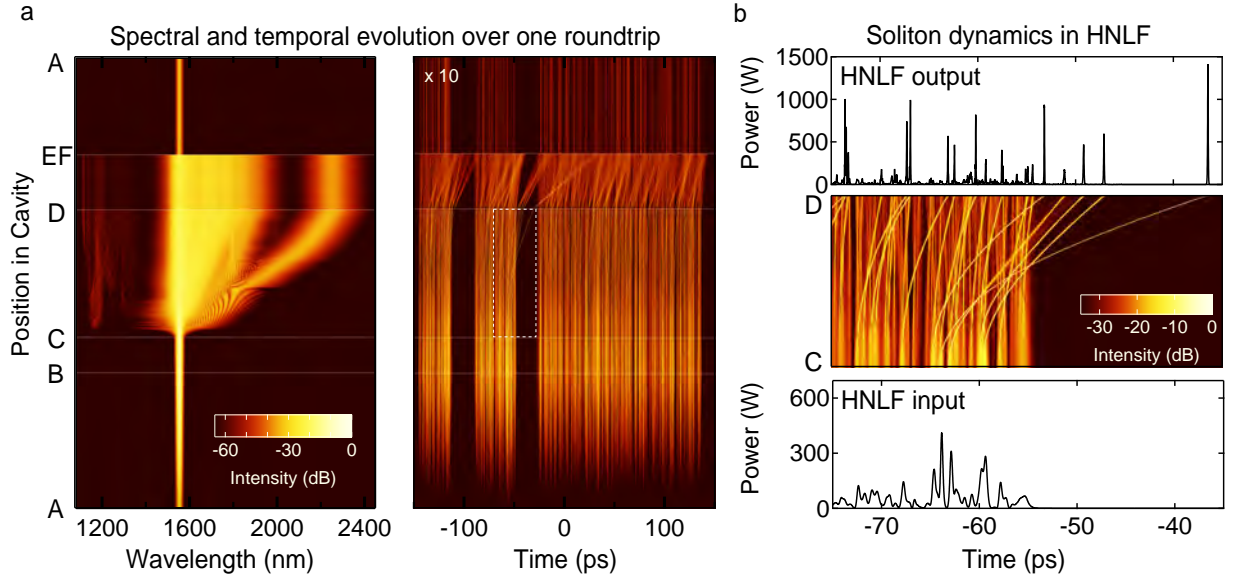


FIG. 2. Typical results from numerical simulations showing evolution over one roundtrip in the noise-like pulse regime. (a) false colour evolution plots in (left) spectral and (right) temporal domains to illustrate the dramatic differences in evolution in the different cavity segments. The labels A–F refer to the cavity schematic in Fig. 1. Because of the significant loss due to the spectral filter in the bulk segment, the temporal intensity in segment FA is scaled by a factor of  $\times 10$ . (b) shows the HNLF evolution in segment C–D over an expanded 40 ps time-window to clearly reveal the soliton dynamics and Raman soliton evolution. This is the region indicated by the dashed white lines in (a). This figure also shows the intensity profiles at the input and output of the HNLF.

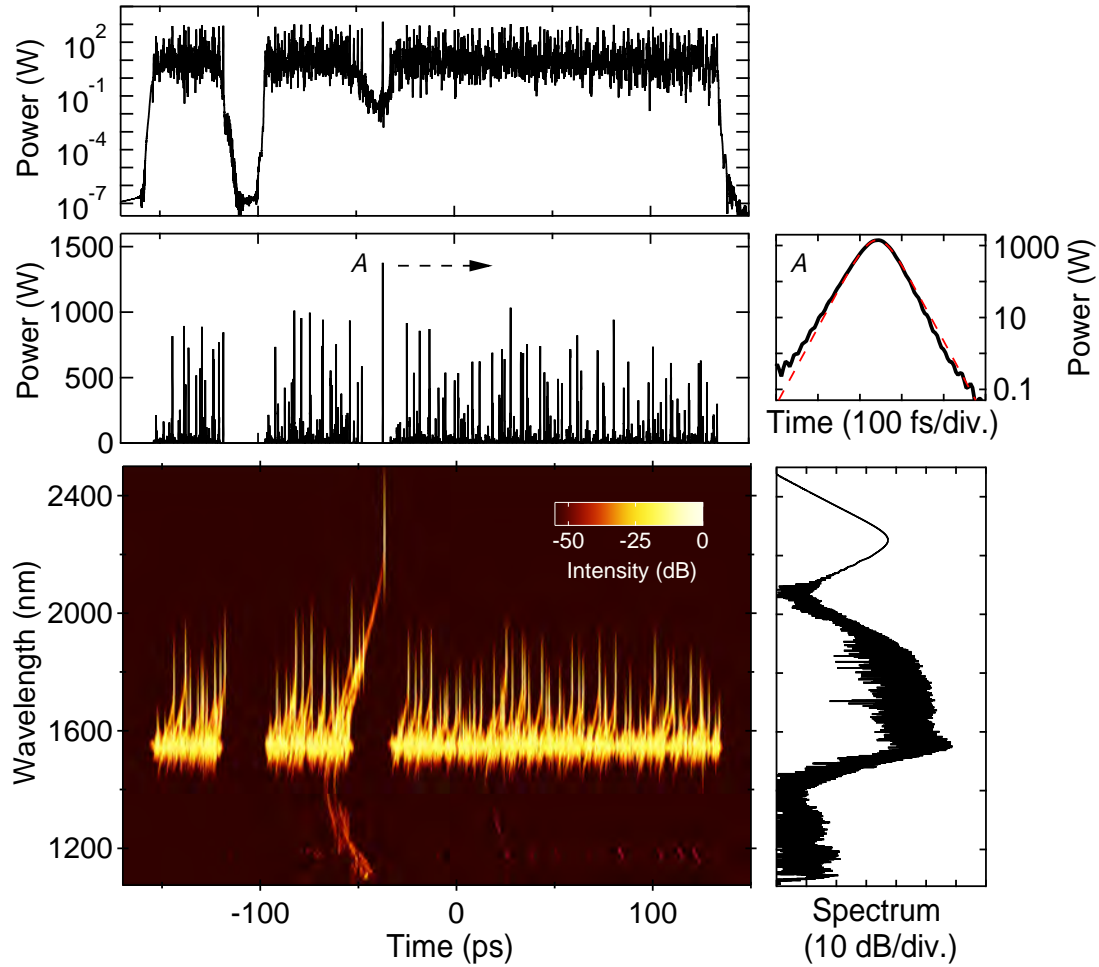


FIG. 3. Simulated single-shot spectrogram at the HNLF output. The spectrogram representation is shown together with the projected temporal intensity (top, shown on both linear and logarithmic scales) and spectrum (right). The highest temporal intensity peak from simulation (*A*) is shown in expanded view on a logarithmic scale (black solid line) and compared with a hyperbolic secant soliton fit (red dashed line). The Supplementary Movie shows the spectrogram evolution over one roundtrip.



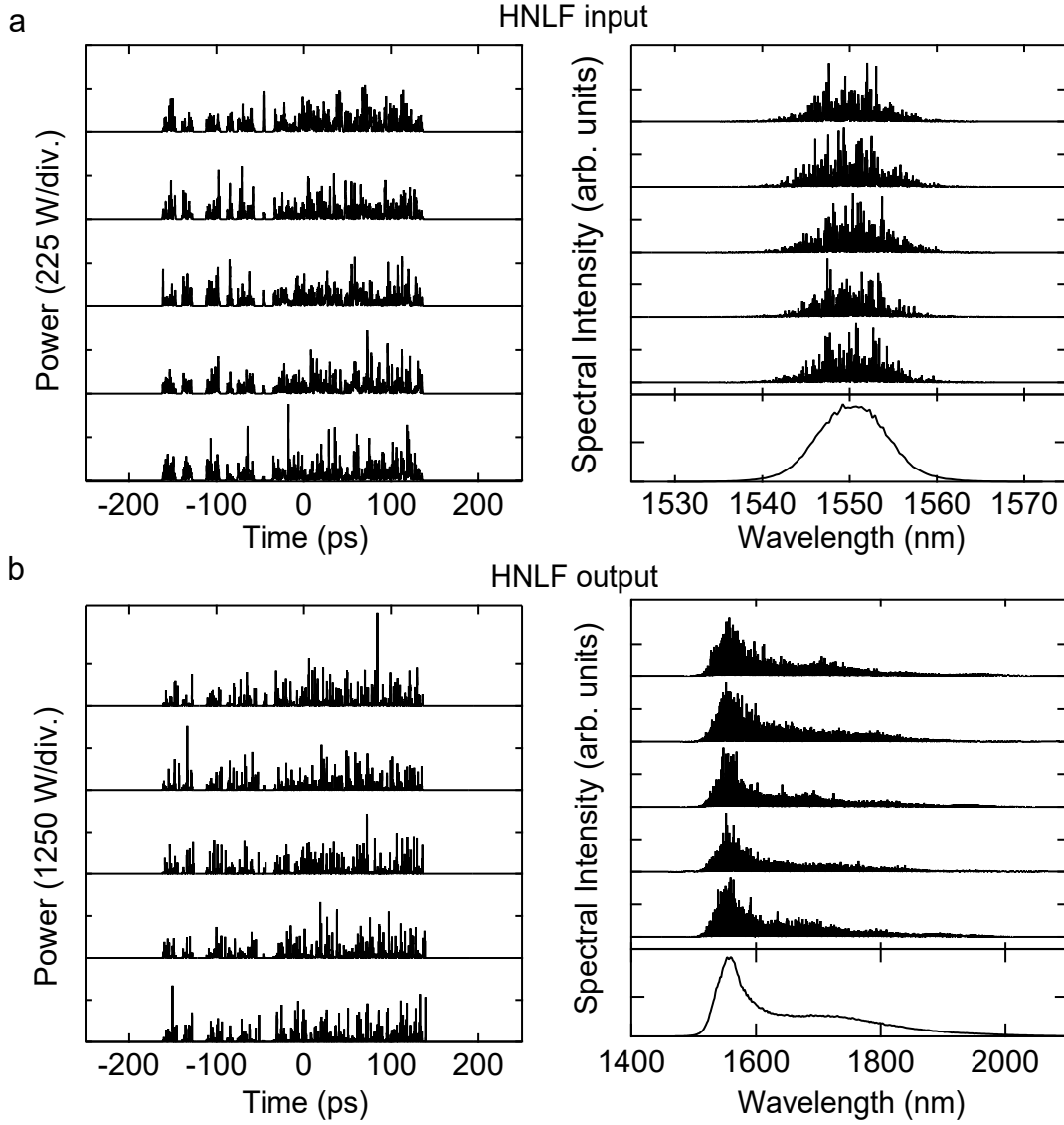


FIG. 4. Results from numerical simulation plotting temporal and spectral characteristics over 5 round trips at (a) the HNLF input and (b) the HNLF output. For the spectral results, we also plot the mean spectrum computed over 1000 roundtrips (bottom subfigure). Because we plot results on a linear scale here to highlight the shot-to-shot fluctuations, we do not include the wavelength range of the low amplitude dispersive wave components.

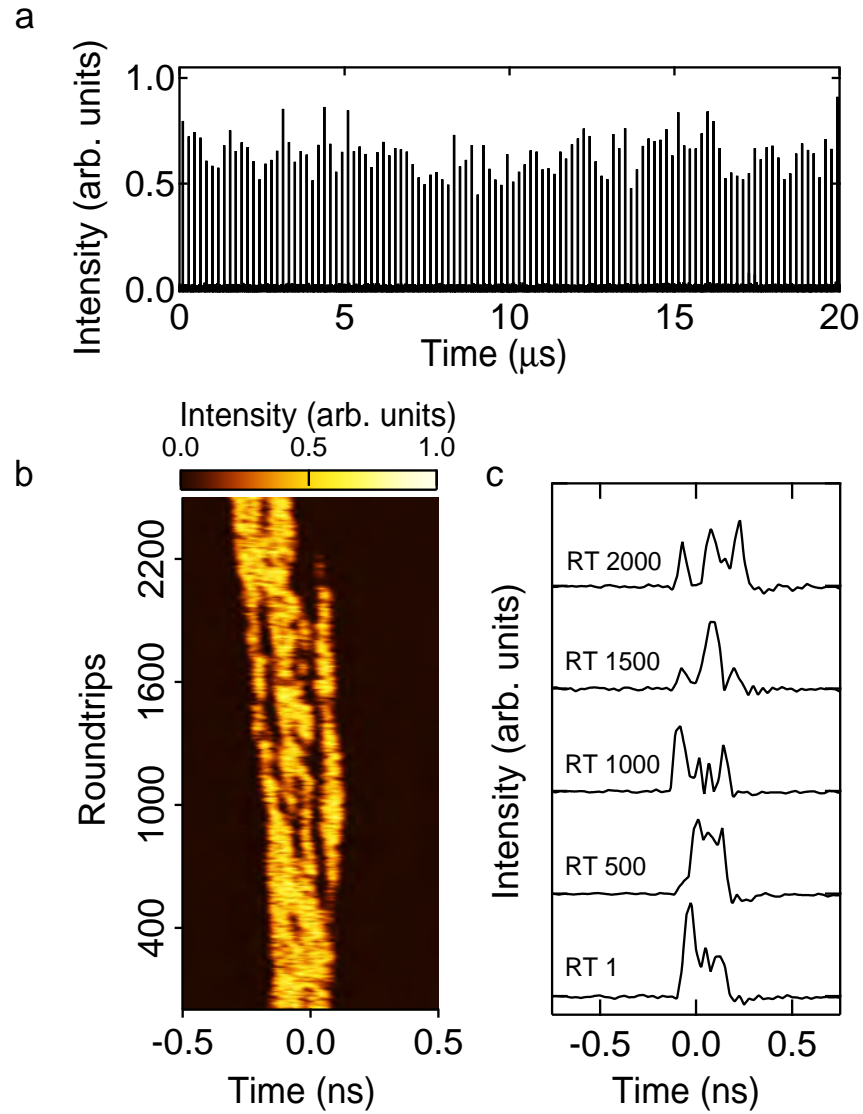


FIG. 5. Photodiode characterisation results after the EDF and before injection in the HNLF. (a) Measured pulse train plotted over a 20  $\mu\text{s}$  time span. (b) False colour representation of the temporal evolution of the pulse envelope over 2500 roundtrips. (c) Temporal intensity profiles at roundtrip (RT) 1, 500, 1000, 1500 and 2000.

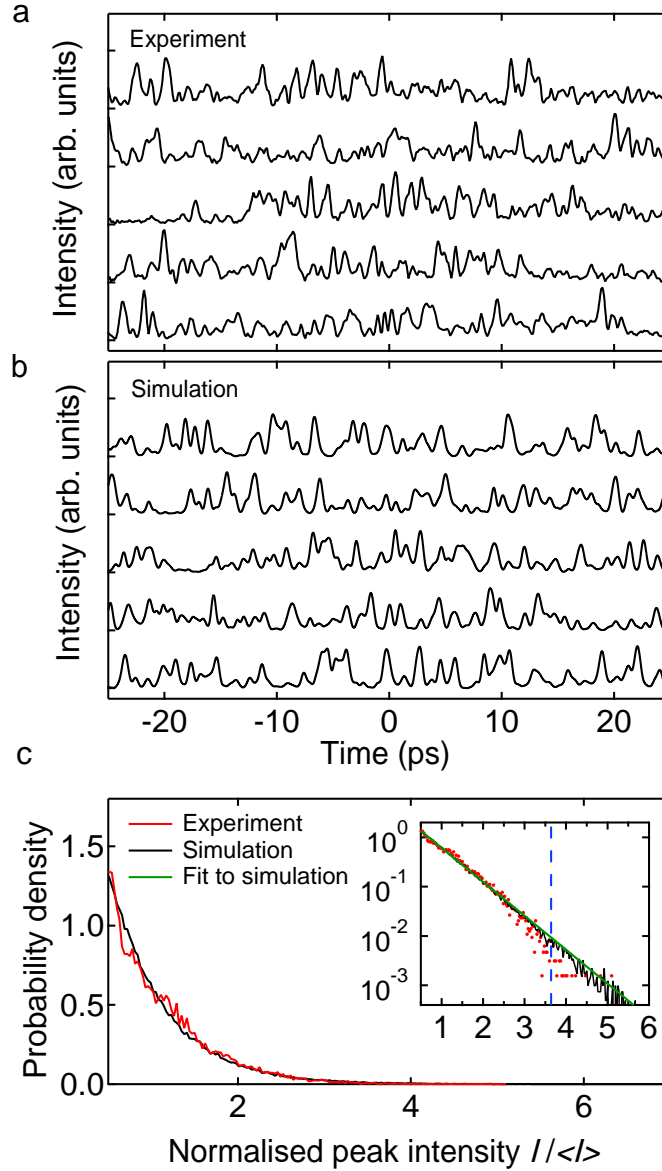


FIG. 6. Random intensity fluctuations for 5 typical roundtrips at the HNLF input from: (a) experiment, and (b) simulation. Experimental data shows time-lens results plotted against time after scaling to account for the temporal magnification. (c) Normalised probability density for the peak intensities from experiment (red line) and simulation (black line). Both experiment and simulation are normalised relative to the mean of the intensity time series. The inset plots the probability density functions on a logarithmic scale to highlight quantitative agreement over 3 orders of magnitude, including the highest intensity peaks. The dashed blue line shows the computed rogue wave threshold from experiment (which on this graph would coincide with that from simulation). The green line shows a fit to a negative exponential distribution as discussed in the text.

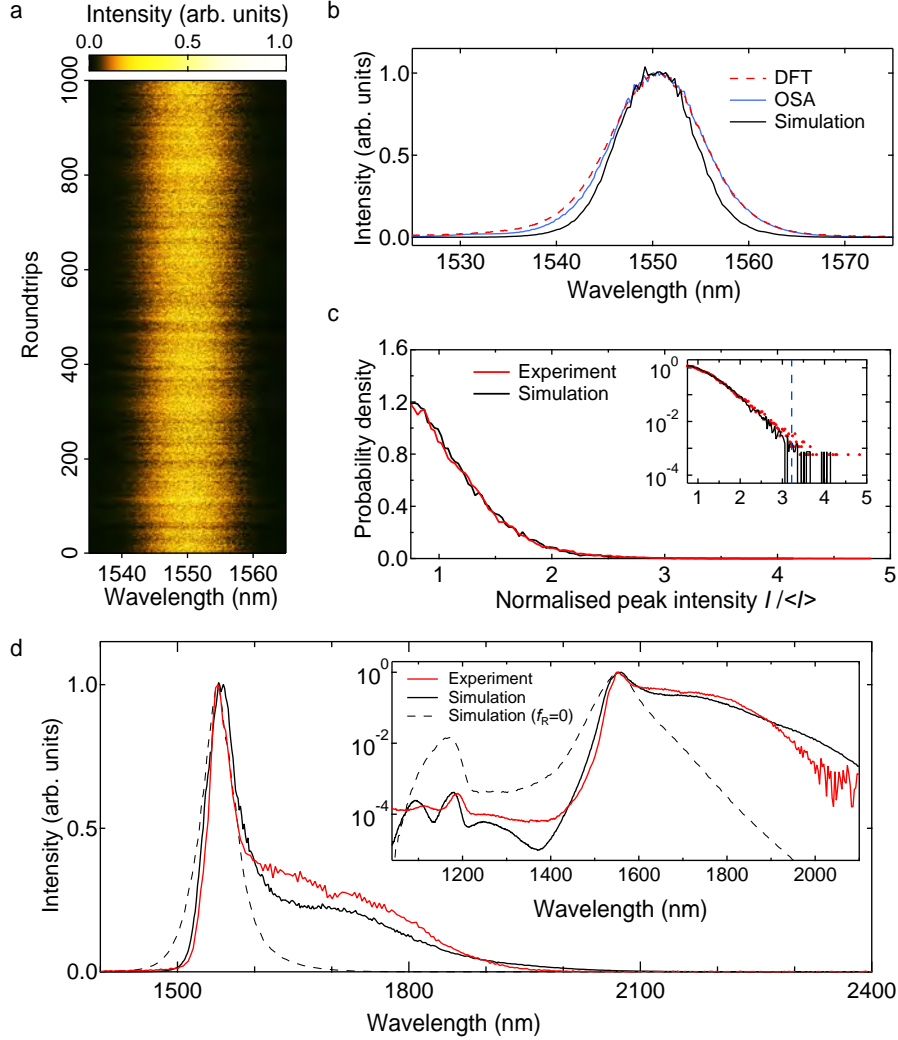


FIG. 7. Spectral characterisation and comparison with simulation. (a) False colour plot of measured shot-to-shot spectral fluctuations over 1000 roundtrips at the HNLF input. (b) Corresponding mean spectrum from DFT (red dashed), time-averaged OSA measurements (blue), and simulations (black). (c) Computed probability density functions for the peak intensities from experiment (red) and simulation (black). Both experiment and simulation are normalised relative to the mean of the intensity time series. The inset plots the results on a logarithmic scale to highlight quantitative agreement over 3 orders of magnitude, including the highest intensity peaks. The dashed blue line shows the experimental rogue wave threshold which on this graph would coincide with that from simulation. (d) Broadband supercontinuum spectra at the HNLF output, comparing experiment (red) and simulation (black). The dashed line shows simulation results without the Raman term ( $f_R = 0$ ). The inset plots the spectra using a logarithmic scale showing also an expanded wavelength range (combining measurements from the Anritsu MS9710B OSA and the NIRQuest512 spectrometer). Simulations reproduce spectral features over a span approaching  $\sim 1000$  nm.