



HAL
open science

Using binaries in Globular Clusters to catch sight of Intermediate-Mass Black Holes

Francisco Aros, Anna Sippel, Alessandra Mastrobuono-Battisti, Paolo Bianchini, Abbas Askar, Glenn van de Ven

► **To cite this version:**

Francisco Aros, Anna Sippel, Alessandra Mastrobuono-Battisti, Paolo Bianchini, Abbas Askar, et al.. Using binaries in Globular Clusters to catch sight of Intermediate-Mass Black Holes. Monthly Notices of the Royal Astronomical Society, 2021, 508 (3), pp.4385-4398. 10.1093/mnras/stab2872 . hal-03389822

HAL Id: hal-03389822

<https://hal.science/hal-03389822v1>

Submitted on 21 Apr 2023

HAL is a multi-disciplinary open access archive for the deposit and dissemination of scientific research documents, whether they are published or not. The documents may come from teaching and research institutions in France or abroad, or from public or private research centers.

L'archive ouverte pluridisciplinaire **HAL**, est destinée au dépôt et à la diffusion de documents scientifiques de niveau recherche, publiés ou non, émanant des établissements d'enseignement et de recherche français ou étrangers, des laboratoires publics ou privés.

Using binaries in globular clusters to catch sight of intermediate-mass black holes

Francisco I. Aros ^{1,2}★, Anna C. Sippel,² Alessandra Mastrobuono-Battisti ^{3,4}, Paolo Bianchini ⁵,
Abbas Askar ³ and Glenn van de Ven ¹

¹Department of Astrophysics, University of Vienna, Türkenschanzstrasse 17, A-1180 Vienna, Austria

²Max Planck Institute for Astronomy, Königstuhl 17, D-69117 Heidelberg, Germany

³Lund Observatory, Department of Astronomy and Theoretical Physics, Lund University, Box 43, SE-221 00 Lund, Sweden

⁴GEPI, Observatoire de Paris, PSL Research University, CNRS, Place Jules Janssen, F-92190 Meudon, France

⁵Observatoire Astronomique de Strasbourg, Université de Strasbourg, CNRS UMR7550, Strasbourg, France

Accepted 2021 September 29. Received 2021 September 15; in original form 2021 March 25

ABSTRACT

The dynamical evolution of globular clusters (GCs) is tied to their binary population, as binaries segregate to the cluster centre, leading to an increased binary fraction in the core. This central overabundance of mainly hard binaries can serve as a source of energy for the cluster and has a significant effect on the observed kinematics, such as artificially increasing the observed line-of-sight velocity dispersion. We analyse the binary fractions and distributions of 95 simulated GCs, with and without an intermediate-mass black hole (IMBH) in their centre. We show that an IMBH will not only halt the segregation of binaries towards the cluster centre, but also, directly and indirectly, disrupt the binaries that segregate, thus, depleting binaries in the cluster core. We illustrate this by showing that clusters with an IMBH have fewer binaries and flatter radial binary distributions than their counterparts without one. These differences in the binary fraction and distribution provide an additional indicator for the presence of a central IMBH in GCs. In addition, we analyse the effects of the binary fraction on the line-of-sight velocity dispersion in the simulated GCs and find that binaries can cause an overestimation of up to 70 per cent of the velocity dispersion within the core radius. Using recent VLT/MUSE observations of NGC 3201 by Giesers et al. (2019), we find an overestimation of 32.2 ± 7.8 per cent in the velocity dispersion that is consistent with the simulations and illustrates the importance of accurately accounting for the binary population when performing kinematic or dynamical analysis.

Key words: binaries: general – globular cluster: general – globular cluster: individual: NGC 3201 – stars: black holes.

1 INTRODUCTION

Intermediate-mass black holes (IMBHs) with masses of 10^2 – $10^5 M_{\odot}$ are one of the missing links in the formation and growth of the supermassive BHs found at the centres of massive galaxies, as early formed IMBHs can serve as seeds capable of growing up to the masses of supermassive BHs supporting the quasars observed at high redshift (e.g. Haiman 2013). The possible formation scenarios of IMBHs (e.g. Portegies Zwart et al. 2004; Giersz et al. 2015; González et al. 2021; Rizzuto et al. 2021) point to dense stellar systems as their place of origin, and therefore, many studies have searched for IMBHs in the centres of globular clusters (GCs).

GCs are dense stellar systems with up to a few million stars and half-light radii of 2–5 pc (Harris 1996, 2010 edition). In the last two decades, many studies have looked at the centres of Galactic GCs to search for kinematic evidence for the presence of an IMBH (Noyola, Gebhardt & Bergmann 2008; van der Marel & Anderson 2010; McNamara et al. 2012; Lanzoni et al. 2013; Lützgendorf et al. 2013; Kamann et al. 2014; to name a few). However, limitations on the observed kinematics (de Vita et al. 2017) and dynamical modelling (Aros et al. 2020) may hinder the robust detection of an

IMBH. No clear evidence for an IMBH has been found so far within Galactic GCs. The possible presence of a black hole system (BHS, see Section 4) in the cluster centre adds to this complex scenario, as it can produce similar velocity dispersions in the cluster core as a central IMBH (Baumgardt et al. 2019; Mann et al. 2019; Zocchi, Gieles & Hénault-Brunet 2019; Vitral & Mamon 2021).

Binary stars play a crucial role in the evolution of GCs. The dynamical evolution of GCs is driven by two-body relaxation that triggers mass segregation (Spitzer 1987). Binaries, being more massive than single stars on average (two stars instead of one), segregate earlier to the cluster centre. Simulations of GCs with primordial binaries (Heggie, Trenti & Hut 2006; Hurley, Aarseth & Shara 2007; Chatterjee et al. 2010; Wang et al. 2016) show how binaries segregate towards the cluster centre while becoming harder or getting disrupted by encounters with other stars in the dense core. These two processes provide energy to the cluster and play a significant role during the core-collapse period of the GCs' evolution.

Observations of binaries in Galactic GCs show that binaries follow the behaviour described in simulations. Measurements of the binary fraction at different radii show a decreasing gradient with radius (see Sollima et al. 2007; Milone et al. 2012; Ji & Bregman 2015) and serve as proof for the mass segregation of binaries in GCs. The connection between binaries and the dynamical evolution of the GC

* E-mail: francisco.aros@univie.ac.at

has also been explored with specific types of binaries and products of binary evolution. Ferraro et al. (2012, 2018) used the distribution of blue-straggler stars (BSS) to study the dynamical age of GCs. As formation channels of BSS include binary interactions (Mapelli et al. 2006; Chatterjee et al. 2013), the tracing of BSS stars is linked to the overall process of mass segregation. In a similar way, the distribution of X-ray binaries in GCs also describes the same process (Cheng et al. 2019a, b). The mass segregation driven by two-body relaxation not only brings binary systems closer to the cluster centre, but it also efficiently accumulates more massive stars and massive stellar remnants such as stellar-mass BHs.

A massive object in the cluster centre such as an IMBH will alter the dynamical evolution of the GC. The IMBH hampers mass segregation by working as a source of energy for the cluster (Baumgardt, Makino & Ebisuzaki 2004; Trenti et al. 2007; Gill et al. 2008) and in the process altering the distribution of binaries within the cluster core. Moreover, simulations of GCs with a central IMBH and primordial binaries show that binaries in the core are disrupted more efficiently than in the case without an IMBH (Trenti et al. 2007). Whereas this is more likely to happen due to the high density of stars near the IMBH, some binaries could strongly interact with the IMBH. The strong interaction with the IMBH breaks the binary producing high-velocity stars (e.g. Hills 1988; Fragione & Gualandris 2019; Šubr, Fragione & Dabringhausen 2019).

In this work, we study the effects that the presence of an IMBH has on the binary population of its host GC. Motivated by the recent observations of binaries in NGC 3201 with VLT/MUSE by Giesers et al. (2019), we use a sample of simulated GCs from the MOCCA-Survey Database I (Askar et al. 2017) with two goals: (1) explore the contamination of binaries in the line-of-sight velocity dispersion and (2) use the detected binary sample to study the binary fraction in GCs with and without an IMBH. The first point is effectively extending the discussion of fig. 4 in Aros et al. (2020) where we show that binaries can systematically increase the observed line-of-sight velocity dispersion.

In Section 2, we describe the sample of simulated GCs and the detection method for binary stars. In Section 3, we explore the contamination of binaries in the observed line-of-sight velocity dispersion and its implication for current observations. In Section 4, we analyse the relation of binaries with the central IMBH and discuss how we could use their co-evolution as an indication for the presence of an IMBH. Finally, in Section 5, we summarize our findings and motivate future work.

2 SIMULATIONS AND BINARY IDENTIFICATION

The dynamical evolution of GCs is determined by two-body interactions leading towards partial energy equipartition (see e.g. Spitzer 1969; Trenti & van der Marel 2013; Bianchini et al. 2016a). A consequence of the drive towards energy equipartition is mass segregation, where more massive stars sink towards the centre of the GC. Binaries being on average more massive than single stars segregate faster to the centre, ultimately increasing the binary fraction towards the cluster core. To study the general behaviour of binaries under the presence of an IMBH, we identify binaries in mock data from simulated GCs as described in the following sections.

2.1 Simulations and mock data

We have selected a sample of 284 simulated clusters from the MOCCA-Survey Database I (Askar et al. 2017) to study the effects

of binaries in the observed kinematics and the interaction of binaries with a central IMBH. These simulations were evolved to 12 Gyr using the MOCCA code (Giersz et al. 2013; Hypki & Giersz 2013), which follows a state-of-the-art implementation of the Monte Carlo method first proposed by Hénon (1971a, b). All 284 simulations have different initial conditions (see Appendix A), but share the same initial binary fraction $f_{\text{bin}} = 10$ per cent, consistent with observations (Sollima et al. 2007; Milone et al. 2012).

As described in detail by Giersz et al. (2015), IMBHs in MOCCA simulations form via dynamical interactions in two kinds of scenarios. The ‘FAST’ scenario starts from the beginning of the simulation and requires an extremely high initial central density ($\gtrsim 10^6 M_{\odot} \text{pc}^{-3}$, see also Hong et al. 2020), where a BHS can form early in the star cluster evolution and drive the formation of an IMBH by the dynamical interactions of single and binary BHs (similar to the runaway collapse proposed by Portegies Zwart et al. 2004). The ‘SLOW’ scenario, on the other hand, happens at later stages in the cluster evolution and in less dense systems (with central densities of $10^5 M_{\odot} \text{pc}^{-3}$). The mass of a single BH can grow through dynamical interactions and mass accretion from a binary companion.

The binary-star evolution code (Hurley, Tout & Pols 2002) models the binary stellar evolution in MOCCA, while the FEWBODY code (Fregeau et al. 2004) drives the dynamical interactions of binaries with single or binary stars. The interplay of both codes allows MOCCA to follow the evolution of binary stars in a realistic way, while also keeping short simulation times. Hypki & Giersz (2013) describe the interplay of both codes within MOCCA extensively.

MOCCA simulations are spherically symmetric and only have three coordinates for each single star and binary system: the radial position r , and the radial velocity (RV; v_r) and tangential velocity (v_t). Therefore, we project each simulated GC into Cartesian coordinates by randomly sampling the missing coordinates. We then project the simulated GC into the sky to receive the position of each single and binary star, along with their RV along the line of sight and the proper motions. We follow the same projection as in Aros et al. (2020; see their fig. 1). For binaries, we consider the centre of mass and we follow the same procedure.

For every binary system in the cluster, we obtain each component’s relative velocity with respect to their centre of mass, drawing the orbit from the known eccentricity, semimajor axis, and masses of each star in the binary. From these orbital parameters, we can obtain the individual positions and velocities of both components of the binary, the period, and angular momentum. We randomly select the current position of the binary by sampling a random time between zero and one orbital period. In the same way, we randomly orientate the binary’s orbital plane. Whereas this approach is similar to the projection described by Askar et al. (2018a), we use the direct solution of the Kepler orbit rather than the parametrization of the orbit using the eccentric anomaly.

We generate mock data for each cluster by adding errors to the velocities that are consistent with current observations. For line-of-sight RVs, we use the error distribution by magnitude from MUSE data (Giesers et al. 2019), with a median value of 3 km s^{-1} at $m_V \sim 18$ mag at a heliocentric distance of ~ 5 kpc (see Fig. B1). For proper motions, we use the projected velocities as given on the simulation (for binary systems we use the centre of mass velocity), and assume the median error from Libralato et al. (2018), which is 0.1 mas yr^{-1} , and that corresponds to 2 km s^{-1} at 5 kpc (see also Appendix B). In both cases, we add noise to the simulation’s velocities by sampling the noise from a Gaussian distribution centred in zero with a dispersion given by the assigned error. While, we have assumed that all the clusters are at a heliocentric distance of 5 kpc to have a comparable

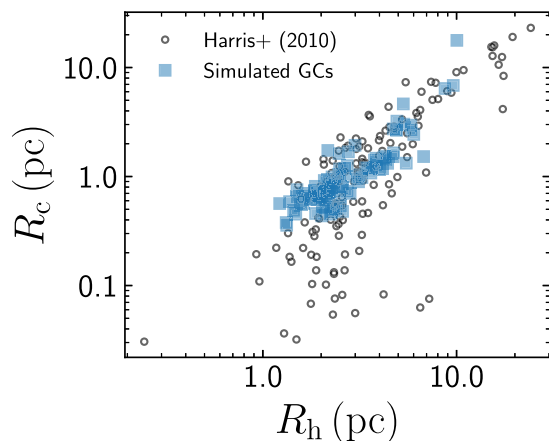


Figure 1. Core R_c and half-light R_h radii for simulated GCs. We have selected a sample of 95 simulated GCs with and without a central IMBH, with initial binary fraction of 10 per cent (light-blue squares) and additional requirements on the quality of the data as described in Section 2.1. As a reference we show Galactic GCs from Harris (1996; 2010 edition, as empty circles). Our selected sample has comparable sizes as real GCs.

sample of stellar masses and observed stars, the simulated clusters have different Galactocentric distances ranging within 1–15 kpc.

We have limited the ‘observed’ stars within each cluster to those with line-of-sight RV errors smaller than 3 km s^{-1} . This sets a lower limit in magnitude around 1 mag below the main-sequence turn-off (or $\sim 18 \text{ mag}$), similar as used by Aros et al. (2020) and motivated by current observations (Libralato et al. 2018; Giesers et al. 2019). From the sample of 284 simulated GCs in the MOCCA-Survey Database I with an initial binary fraction of 10 per cent, we selected a subsample of clusters that have: (i) more than 1000 stellar systems (binary and single) within the selected sample of sufficiently bright stars, and (ii) an intrinsic velocity dispersion higher than 4 km s^{-1} , which is twice the median velocity error in line-of-sight velocities and proper motions at the assumed distance of 5 kpc. These two criteria help to reduce the stochasticity due to low numbers (binary fraction), and to measure velocity dispersion values that are not dominated by observational errors. Our sample then decreases to 95 GCs.

In the following sections of this work, we refer to the projected core (R_c) and half-light radii (R_h) of each cluster. Both radii are extracted from Arca Sedda, Askar & Giersz (2019), who fitted a King profile (King 1962) to the cumulative surface brightness profile, following the method described by Morscher et al. (2015). Fig. 1 shows the core and half-light radii for the subsample of 95 simulated GCs and for Galactic GCs from Harris (1996; 2010 edition). The sizes of our selected sample are comparable to observed GCs.

2.2 Identification of binaries

We identify binaries in the mock data by measuring the observed RV for each star at different observational epochs, i.e. different observations with time-scales of hours, weeks or months.¹ We do not evolve the simulations between epochs; therefore, the positions and velocities of single stars, and the centre of mass position and velocity

of binary systems remain fixed.² Any variation on the RV of single stars is only due to observational errors. For binary stars, while the centre of mass remains fixed, we update the position and velocities of both components at each epoch. We use the orbital parameters and subsequent orbit to follow the binary components relative positions and velocities around the binary centre of mass. The ‘observed’ RV for the binary star is given by the luminosity-weighted velocity along the line of sight:

$$v_{\text{los}} = v_{\text{cm}} + \frac{v_1 L_1 + v_2 L_2}{L_1 + L_2}, \quad (1)$$

where v_{cm} is the centre of mass velocity of the binary, and v_i and L_i are the velocity and luminosity of each component.

Once we calculate the RVs for all epochs for single and binary stars in the simulated cluster, we proceed to assign a probability of variability. To do so, we follow the approach of Giesers et al. (2019), described in the following. The probability of variability is defined by analysing the RV curve and the scatter around the mean velocity for all epochs. For each star with n different epochs, the scatter in RV can be described by

$$\chi_{\text{obs}}^2 = \sum_{i=0}^n \frac{(v_i - \bar{v})^2}{\delta v_i^2}. \quad (2)$$

In a GC with only single stars, the scatter is dominated by errors only, and the distribution of observed χ^2 resembles a theoretical χ^2 distribution with $\xi = n - 1$ degrees of freedom. Variability due to the motion of binaries would show as an extended tail in the observed χ^2 distribution or as a change in the slope of the cumulative distribution, because the scatter will be dominated by the orbital motions rather than observational errors.

Using this idea, Giesers et al. (2019) define the probability of a star to have a variable RV as

$$P(\chi_i^2, \xi_i) = \frac{F(\chi_i^2, \xi_i)_{\text{theo}} - F(\chi_i^2, \xi_i)_{\text{obs}}}{1 - F(\chi_i^2, \xi_i)_{\text{obs}}}, \quad (3)$$

where $F(\chi_i^2, \xi_i)$ is the cumulative χ^2 distribution given ξ_i degrees of freedom, evaluated at the measured χ^2 value of the i -th star. In our case, we use the same number of epochs for each star and cluster, a version which considers a different number of epochs is described in Giesers et al. (2019). In the case of the simulated clusters, we can link the probability of variable RV to the probability of being a binary star, as no other effect could produce the same signature; therefore, we will use $P_{\text{bin}} = P(\chi_i^2, \xi_i)$.

Fig. 2 shows the colour–magnitude diagram for a simulated GC with a binary fraction of $f_{\text{bin}} = 7.8$ per cent at 12 Gyr. This cluster does not have a central IMBH, and neither a significant amount of retained stellar-mass BHs, and represents an average cluster. In a previous work, we built dynamical models for it to study the limitations of dynamical models to measure the mass profile of GCs and detect a central IMBH (see the model named ‘no IMBH/BHS’ in Aros et al. 2020). Each star is colour coded by its probability of being variable in RV given by P_{bin} . The left-hand panel shows all single stars in our luminosity selection, the large majority of single stars have a low probability of being variable in RV and are unlikely to be binaries. On right-hand panel of Fig. 2, we show all binaries in the simulated cluster also colour coded by their probability of being variable in RV, the sizes of the symbols represent the mass ratio between components. While many binaries have indeed a high

¹We use 19 epochs given by $t_{\text{epoch}} = (0, 6, 15, 24, 33, 360, 375, 384, 384.03, 384.06, 384.09, 384.12, 384.15, 384.93, 384.96, 384.99, 385.02, 385.05, \text{ and } 393) \text{ d}$.

²Single stars and the centre of mass of binary systems would not significantly move in this time range since it is much smaller than the dynamical time.

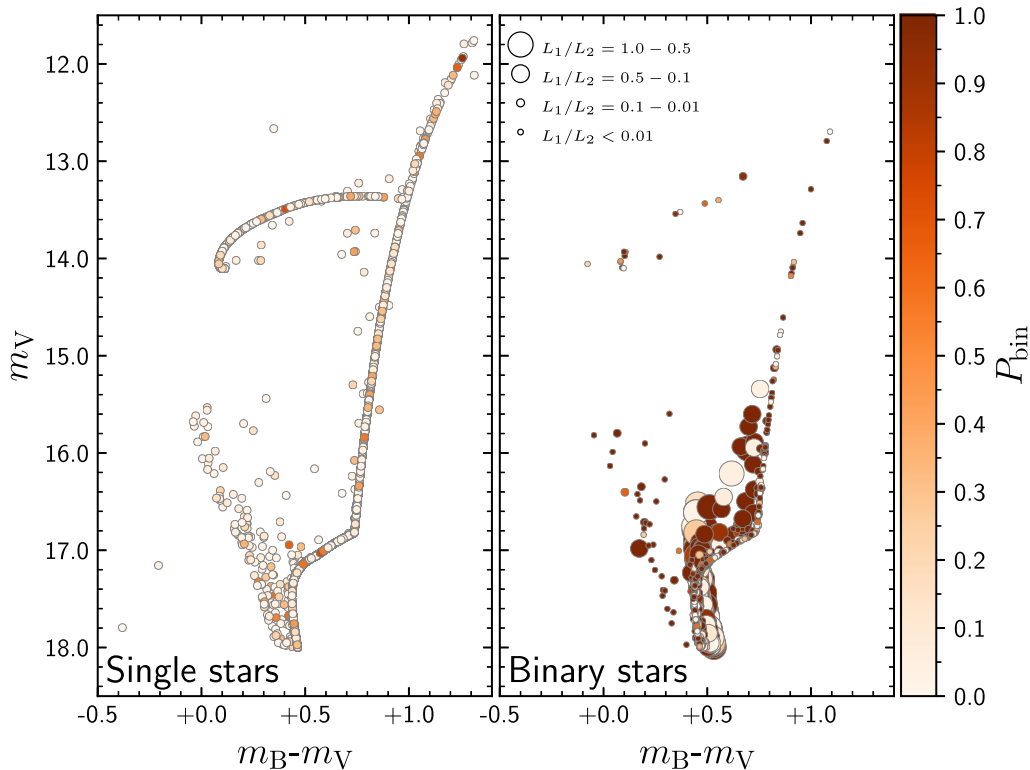


Figure 2. Colour–magnitude diagram for single (left-hand panel) and binary (right-hand panel) stars in a simulated GC at 12 Gyr. The points are colour coded by the probability of being a binary with lighter colours corresponding to single stars. We can see in the left-hand panel that most single stars have a low probability for being a binary. On the other hand, in the right-hand panel not all binaries are identified, this is due to either having long periods or very face-on orbital planes. The size of the symbols on the right-hand panel indicates the mass ratio between the binary components. We do not observe any particular trend with magnitude for the binary detectability. Binaries in the blue straggler branch are likely to be detected (close binaries).

probability of being variable in RV, a significant fraction does not, and therefore, is not identified as binaries. If the velocity amplitude of the binary in the RV curve is not large enough, it will not show as having a high scatter in χ^2 and will be assigned a low probability of variability in RV.

Three main effects play against the detection of binaries using this approach. The first one is the luminosity ratio between the components. If both stars have similar luminosities, then the observed line-of-sight velocity given by equation (1) will be dominated by the centre of mass velocity rather than by their orbital motion. On the other hand, in right-hand panel of Fig. 2, we can see that the mass ratio does not have a significant impact on the binaries detectability.

The second effect comes from the orbital parameters of the binary, which also have a role in their detection. In Fig. 3, we illustrate a selection of orbital parameters that have an impact on the probability of being variable in RV, and therefore, on identifying binaries. We see that most of the binaries with a high probability $P_{\text{bin}} \geq 0.5$ of being variable in RV have short periods and are close binaries, as shown in the top two panels of Fig. 3. Short-period binaries orbit faster around their centre of mass, increasing the amplitude of the variability in RV. All of the binaries detected in this simulated GC have periods below 1 yr. The length of the semimajor axis a goes in hand with the period, as binaries which survive sinking to the centre of the cluster become tighter and have shorter periods.

The third effect that affects the detectability of binaries comes from the inclination of the orbital plane. The orientation of the orbital plane is randomly chosen, therefore, it is not directly related to other orbital parameters of the binaries. In the bottom panel of Fig. 3, all binaries

in the sample have an inclination angle i which follows a uniform distribution (over a sphere and, therefore, is uniform in $\cos(i)$). For most inclination angles, binaries with $P_{\text{bin}} \geq 0.5$ dominate the sample. For inclination angles closer to be face-on ($|\cos i| \sim 1.0$) the detection becomes challenging, and binaries with $P_{\text{bin}} < 0.5$ are comparable in number to the ones with $P_{\text{bin}} \geq 0.5$. This is expected as when the orbital plane becomes face-on, the line-of-sight velocity is perpendicular to the orbital motion of the binary, and no binary would be detected.

Using this approach, we can identify binaries in each mock data set, corresponding to each simulated GC. In the following, we will discuss the effects of the binaries on the kinematics of a cluster (Section 3) and their interaction with an IMBH (Section 4).

3 KINEMATIC EFFECTS OF BINARIES

As we previously discussed in Aros et al. (2020), binaries have two main effects on the observed velocity dispersion of GCs. First, as binaries are more massive than single stars, they have, as a population, a different level of energy equipartition and hence spatial distribution. As this affects the centre of mass velocities of the binaries, both the line-of-sight velocity and the proper motions will show a lower velocity dispersion than what is expected for a cluster populated by single stars only. This effect has been studied for proper motions by Bianchini et al. (2016b). They find in GC simulations a colour bias in the velocity dispersion due to the presence of binaries, i.e. the redder edge of the main sequence (binary stars) has a lower velocity dispersion than the blue edge (single stars). However, they did not

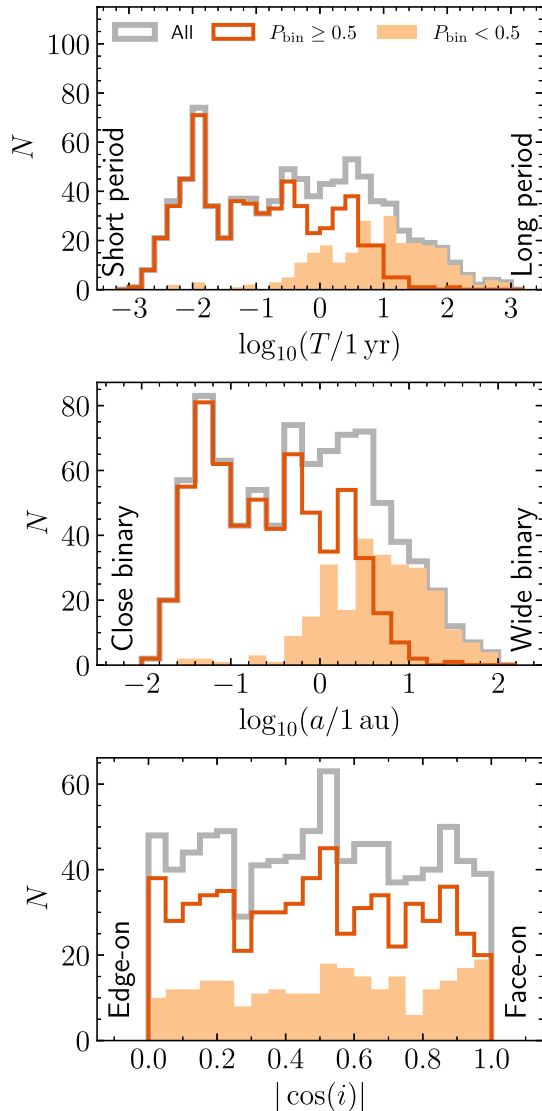


Figure 3. Period, semimajor axis, and orbital plane inclination for all binaries in the same simulated GC shown in Fig. 2. The grey line shows all binaries in the sample, the dark-orange line shows binaries with $P_{\text{bin}} \geq 0.5$, and the filled light-orange region shows binaries with $P_{\text{bin}} < 0.5$. Binaries that have short periods (top panel) and that have a small semimajor axis (middle panel), i.e. hard binaries, are robustly detected with variations in RVs, as the frequency and amplitude of such variations are higher. The inclination (bottom panel), on the other hand, adds a complexity as it limits the detection for any type of binary, as binaries close to a face-on configuration ($|\cos(i)| \sim 1$) are challenging to detect. In our sample, the number of binaries with $P_{\text{bin}} \geq 0.5$ becomes comparable with the ones with $P_{\text{bin}} < 0.5$ for inclinations close to face-on, whereas the former dominates the sample for other inclinations.

detect this in *HST* observations for NGC 7078, which is consistent with the low binary fraction of the cluster. In general, it is challenging to disentangle this effect, as it depends on the binary fraction and level of energy equipartition in the cluster.

The second effect is an increase in the observed velocity dispersion due to the measured line-of-sight velocity of the binaries. For binaries that have a large velocity amplitude, the orbital motion around their centre of mass will dominate the observed line-of-sight velocity, introducing a bias to larger velocity dispersion measurements. To show this effect, we construct velocity dispersion profiles from the

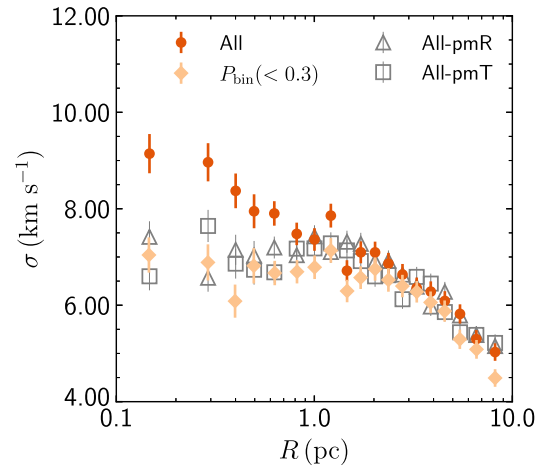


Figure 4. Line-of-sight velocity dispersion for a simulated GC with binaries (same cluster as in Figs 2 and 3). The dark-orange circles show the velocity dispersion when all stars are considered for the kinematics, this includes all binaries in the sample. Once we use the probability of being a binary assigned to each star, we can select stars that have a low probability $P_{\text{bin}} < 0.3$. The light-orange diamonds show the velocity dispersion profile when most binaries are excluded. We can see that once the sample is ‘cleaned’ from binaries, the line-of-sight velocity dispersion is consistent with the proper motion velocity dispersion (grey triangles and squares).

mock data with all the stars (single + binaries) and compare it with a sample that only includes stars with a low probability of being a binary ($P_{\text{bin}} < 0.3$). We exclude stars that have line-of-sight velocities outside of the central 99 per cent of the velocity distribution, centred on the cluster’s mean velocity. This criterion allows us to measure the effects of binary stars without being dominated by stars with observed velocities many times the velocity dispersion of the cluster, which might not be identified as cluster members. All measured velocity dispersion values in this work follow this criterion. A stricter limit on the velocity distribution or an iterative 3σ clipping approach can reduce the binary contamination. However, our focus is the kinematic imprint of the binaries on the observed velocity dispersion, and therefore, we choose to retain most binaries for our analysis.

Fig. 4 shows the observed velocity dispersion for the same cluster used as in Figs 2 and 3. The dark orange circles show the line-of-sight velocity dispersion for all stars in the sample (single + binaries), while the light-orange diamonds show the velocity dispersion when only stars with $P_{\text{bin}} < 0.3$ are selected. The difference between the whole sample and the selection with $P_{\text{bin}} < 0.3$ is a consequence of the bias introduced by the orbital motion of binaries. The bias is stronger towards the cluster centre and it is a consequence of the larger binary fraction within this region. In Section 4.2, we discuss further the correlation between the binary fraction and the bias in the velocity dispersion. For comparison, the radial (grey triangles) and tangential (grey squares) proper motions are also included. Both proper motions behave similarly to the sample with $P_{\text{bin}} < 0.3$.

While the previous example comes from mock data of a simulated GC, it is also possible to observe this effect in current observations of GCs. Using multi-epoch observations of VLT/MUSE data, Giesers et al. (2019) identified binaries in NGC 3201 using the variations in RV. We use the available RV data from their work to analyse the kinematic effect of the binaries in their sample. Fig. 5 shows the line-of-sight velocity dispersion for the sample in Giesers et al. (2019), with the same approach as in Fig. 4 we show the velocity dispersion for all stars (red circles) and for a sample of the stars with

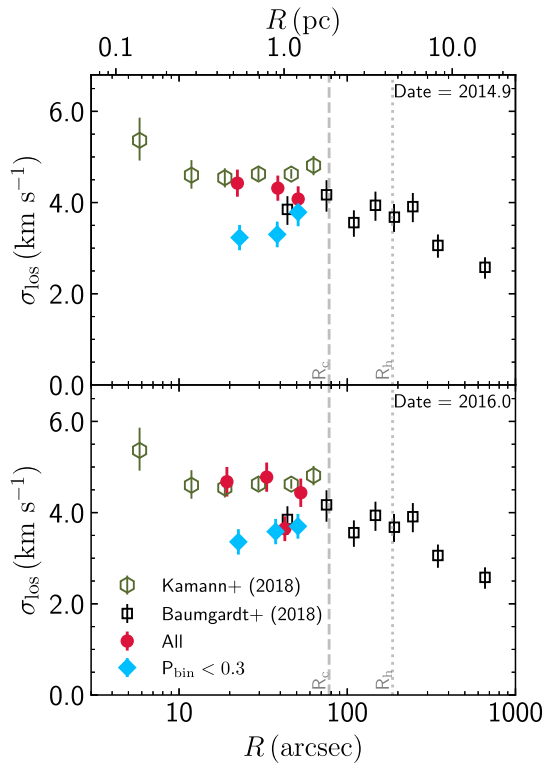


Figure 5. Line-of-sight velocity dispersion of NGC 3201. We include the data from Kamann et al. (2018) (green hexagons) and Baumgardt & Hilker (2018) (black squares), as well as the observations from Giesers et al. (2019) (red circles) in two different epochs (top and bottom panel). Once we exclude stars that have a high probability of being a binary, we observe a drop in the velocity dispersion similar as in Fig. 4 (blue diamonds). This is consistent for both epochs and shows the importance of multi-epoch observations to detect binaries in GCs. The grey dashed and dotted lines show the core and half-light radii of NGC 3201 from Harris (1996; 2010 edition).

a probability of being variable in RV of $P_{\text{bin}} < 0.3$ (blue diamonds). Each data point is calculated from approximately 150 stars for the two epochs that have the largest samples of observations (~ 3000 stars, upper and lower panel). Note that we only select stars with velocity errors smaller than 3 km s^{-1} .

From Fig. 5, we can see that for both epochs the sample with $P_{\text{bin}} < 0.3$ indeed has a lower velocity dispersion and the difference increases towards the centre. For reference, we have also included previous measurements of the line-of-sight velocity dispersion from Kamann et al. (2018) who use VLT/MUSE data, and from Baumgardt & Hilker (2018) who extract velocities from archival data from ESO/VLT instruments and complement them with measurements from literature (Kunder et al. 2017). It is important to highlight that the data from Giesers et al. (2019) are an extension of the data of Kamann et al. (2018), which increase the number of average epochs from 7 to 12. Kamann et al. (2018) already discussed the differences between their velocity dispersion profile and the one from Baumgardt & Hilker (2018), pointing to two probable sources, binaries or partial energy equipartition. For binaries, they excluded stars which were likely to be binaries based on RV variations between epochs; however, the additional epochs in Giesers et al. (2019) might have helped in detecting binaries which remained undetected by Kamann et al. (2018), in particular short-period binaries.

The different effects of binaries on the line-of-sight velocities and proper motions can help constraining the level of contamination caused by binaries and to estimate the binary fraction in the cluster. If, as in Fig. 4, a significant difference in the velocity dispersion between single-epoch line-of-sight observations and proper motions is observed, then follow-up line-of-sight velocity observations will be necessary to identify binaries and to clean up the kinematics. In other words, cleaning up the kinematics would be crucial for a 3D kinematic analysis of the cluster.

4 BINARY FRACTION AND IMBHs

As discussed in the previous section, binaries leave a clear signature on the observed velocity dispersion. Dynamical analysis that considers line-of-sight velocities needs to take into account their presence. While it is possible to clean the kinematic sample by means of multi-epoch observations, the identified binaries can also be utilized to help understand the dynamical state of a GC.

4.1 Radial distribution of binaries

The binary distribution changes during the dynamical evolution of a GC, mainly due to their segregation towards the cluster’s centre and to the formation and destruction of binaries by their interaction with surrounding stars. Consequently, the cluster’s binary fraction increases towards the centre while decreasing at larger radii (see Fig. 6). Early N -body simulations of GCs with binaries by Heggie et al. (2006) already showed how the half-mass radius of the binary population is indeed smaller than that of single stars.

The presence of a central IMBH affects particularly the surviving fraction of binaries in the cluster centre, as the rate of disrupted binaries increases significantly under the presence of a central IMBH. While the increased density of stars around the IMBH mainly drives the disruption of binaries that segregate towards the cluster centre by interactions with other stars (Trenti et al. 2007), close encounters of a binary with the IMBH can also break the binary producing high-velocity stars (see e.g. Hills 1988; Fragione & Gualandris 2019; Šubr et al. 2019). This implies that clusters with a central IMBH can have a reduced binary fraction towards the centre of the cluster.

Using the detected binaries in the sample of simulated GCs, we have constructed binary fraction profiles to analyse the behaviour of GCs with and without an IMBH. The top panel of Fig. 6 shows the binary fraction profiles of our sample of 95 simulated GCs. Each profile is colour coded by the most massive object in the cluster (from a star of $1 M_{\odot}$ in dark blue to an IMBH of $10^4 M_{\odot}$ in red). In clusters without an IMBH, the most massive object is in most cases a stellar-mass BH with, on average, $\sim 20 M_{\odot}$. While all clusters started with the same fraction of 10 per cent primordial binaries, we can observe a large variety of radial distributions. However, a significant difference is the presence of an IMBH, as clusters with one clearly show a lower binary fraction at all radii as well as a flatter profile. To have more clarity in the differences of both populations of GCs (with and without IMBH), we show in the bottom panel of Fig. 6 the median profile for each population. We find that the median distributions are well represented by a power law [$f_{\text{bin}} \propto (R/R_h)^{-k}$], and that clusters without an IMBH have a steeper binary fraction profile ($k = 0.33 \pm 0.03$) compared to those with one ($k = 0.23 \pm 0.02$).

An alternative way to observe the binary fraction profile behaviour is to focus on specific regions of the GCs. From Fig. 6, we can see that the binary fraction at the centre and around the half-light radius matches more for clusters with an IMBH than for GCs without one. We now focus only on those two regions and measure the binary

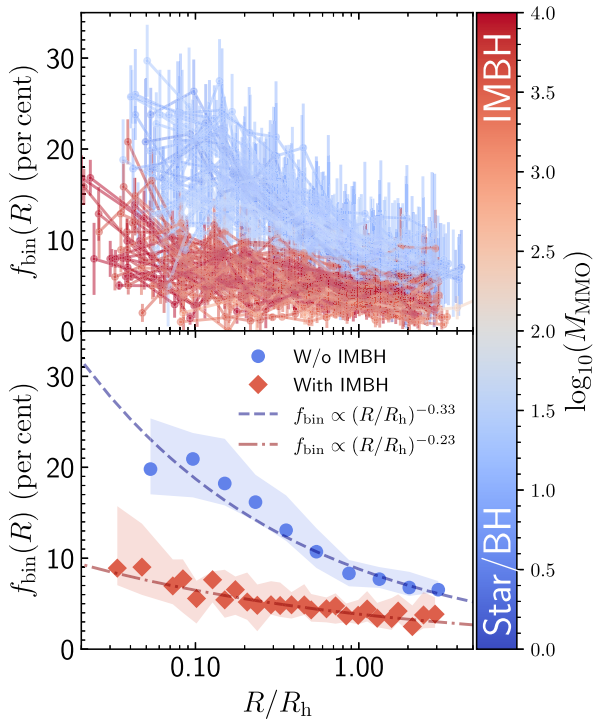


Figure 6. Radial distribution of binaries. The top panel shows the binary fraction f_{bin} profile for each simulated GC in our sample, colour coded by the mass of the most massive object (M_{MMO} , stars in dark blue and IMBHs in red). The symbols mark the binary fraction using $P_{\text{bin}} = 0.5$ as a delimiter for binaries and non-binaries (i.e. stars with $P_{\text{bin}} \geq 0.5$ are binaries, while stars with $P_{\text{bin}} < 0.5$ are single stars); the error bars represent the binary fraction by separating binary and non-binary stars at $P_{\text{bin}} = 0.3$ (top error bar) and $P_{\text{bin}} = 0.7$ (bottom error bar). The bottom panel shows the median binary fraction profile for both types of GCs, with and without an IMBH. We fitted a power law to the median distributions (dashed lines) and showed that clusters with an IMBH have a flatter profile and a lower binary fraction than GCs without one.

fraction within the GC’s core radius and the area within one and two half-light radii. Fig. 7 shows the binary fractions in these regions for all clusters in our sample, plotted against each other. Once again this is colour coded by the most massive object in the GC. We can see that GCs with a central IMBH (in red) have a lower binary fraction and populate the figure’s bottom-left region; furthermore, most of these clusters are close to the one-to-one relation (dashed line). Clusters without an IMBH have a higher binary fraction, particularly in the core, and move away from the one-to-one line, which shows the expected effects and consequences of mass segregation in the binary population. A group of GCs without an IMBH is also located close to the one-to-one line. These clusters have retained many stellar-mass BHs instead of an IMBH, and to identify them, we have marked with a magenta diamond all GCs with more than 50 stellar remnant BHs (i.e. a BHS) within the half-mass radius. While they are closer to the one-to-one line with respect to clusters without a BHS, they still have a higher binary fraction within the core than clusters with an IMBH. On the other hand, they have a lower binary fraction than GCs without so many central BHs or an IMBH. Whereas, the BHS works as an energy source for the cluster to halt mass segregation, and the density within the core is not high enough to trigger an efficient disruption of binaries (see e.g. Mackey et al. 2008; Breen & Heggie

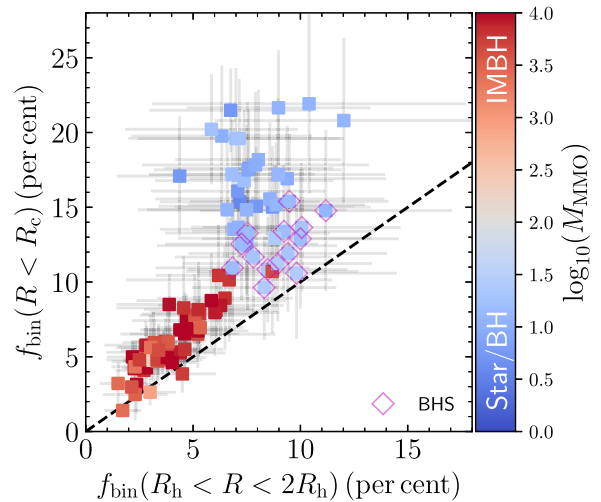


Figure 7. Binary fractions within one and two half-light radii. R_h and within the core radius R_c . Each GC is colour coded by its most massive object. Clusters with an IMBH stay near the dashed line showing the one-to-one ratio between the binary fractions, i.e. less mass segregated than above the line. These clusters also populate the left side of the figure as they have systematically fewer binaries, a difference with respect to GCs with a BHS (magenta diamonds) that are near the one-to-one line, but have retained more binaries overall.

2013; Sippel & Hurley 2013; Morscher et al. 2015; Weatherford et al. 2018).

The central density plays an active role in the dynamical interaction and disruption of binary systems. Therefore, to better isolate the effect of an IMBH on the binary fraction, we select a subsample with comparable initial central density. In our sample, GCs with initial central densities below $\rho_c \sim 10^5 M_\odot \text{pc}^{-3}$ do not form an IMBH within 12 Gyr, while most if not all clusters with initial central densities larger than $\rho_c \sim 10^6 M_\odot \text{pc}^{-3}$ form an IMBH. In the region between these two limits, we have 32 GCs which can either form an IMBH or not. Fig. 8 shows the percentage difference between the initial binary fraction and the binary fraction at 12 Gyr, both calculated within the core radius and defined as

$$\Delta f_{\text{bin,core}}(12 - 0 \text{ Gyr}) = \frac{f_{\text{bin,core}}(12) - f_{\text{bin,core}}(0)}{f_{\text{bin,core}}(0)}, \quad (4)$$

where $f_{\text{bin,core}}(t)$ is the binary fraction within the core radius at a given time in Gyr. GCs that form an IMBH have mainly negative percentage differences, and on average, they have lost ~ 50 per cent of the initial binary fraction. On the other hand, GCs that do not form a central IMBH have their core binary fraction increased by ~ 70 per cent with respect to the initial binary fraction. In this range of initial central densities, the IMBH forms via the ‘SLOW’ scenario late in the evolution of the GC (see Section 2.1 and references therein), preceded by an increased central density due core collapse. For clusters that follow the ‘SLOW’ scenario, we observe that the binary fraction within the core radius increases steadily until the central density is high enough to trigger the formation of an IMBH. During this process, the binary fraction decreases rapidly along with an increase in binary–single and binary–binary interactions. On the other hand, for GCs in Fig. 8 that do not form an IMBH, the presence of stellar-mass BHs helps delaying the core collapse and quenches the central density

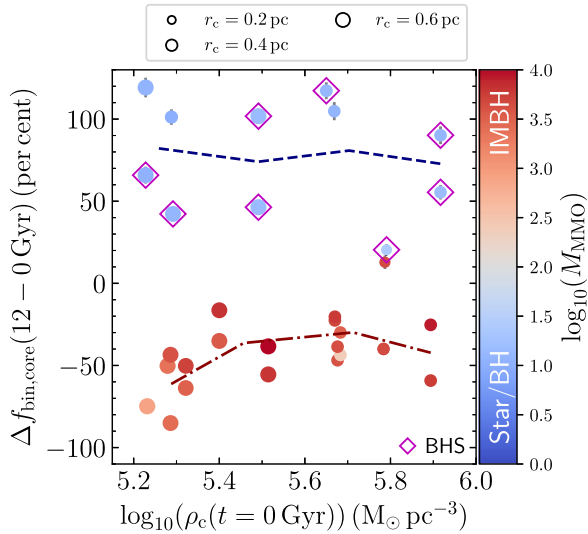


Figure 8. Percentage difference between the initial binary fraction and the binary fraction at 12 Gyr within the core radius as given by equation (4). We selected a subsample of 32 simulated clusters with comparable initial central density. The binary fraction at 12 Gyr corresponds to the observed binary fraction within the core radius as in Fig. 7. All GCs are colour coded by their most massive object. The sizes of the symbols indicate the initial core radius of the GCs, and the magenta diamonds highlight the GCs with a BHS. The red dot-dashed and blue dashed lines represent the mean percentage difference for the population of simulated GCs with and without an IMBH, respectively. The binary fraction within the core radius of GCs with an IMBH halves with respect to their initial conditions. For those without an IMBH, we observe a percentage increase of 70 per cent with respect to the initial value.

rise, preventing the formation of an IMBH and the depletion of binaries.

The advantage of using integrated quantities over different regions of the cluster is that this technique can be applied to explore the behaviour of observed GCs. Milone et al. (2012) surveyed the binary fraction of GCs using *HST* photometry along the main sequence. While there are intrinsic differences in the detected binaries from their method and the one described here, this is a first-order approach to show that it is possible to test our results with photometric data. Fig. 9 shows the binary fraction within the core radius and the region outside the half-mass radius, as given by Milone et al. (2012). We see that almost all clusters are near or above the one-to-one relation (dashed line). Only NGC 288 falls clearly below the one-to-one line. While the error bars are big enough to include the one-to-one line, it is essential to keep in mind that this cluster has tidal tails (see Kaderali et al. 2019; Sollima 2020, for the latest discussion using *Gaia* data) and could have undergone a more complex dynamical evolution than other clusters in the sample. We compared the clusters in Milone et al. (2012) with two studies that estimate the number of remaining stellar-mass BHs: Askar, Arca Sedda & Giersz (2018b; red diamonds) use properties such as the core radius and the central density to estimate the number of retained BHs, whereas Weatherford et al. (2020; green squares) use the mass segregation of the clusters as an indicator for the remaining BHs. Although both studies estimate different numbers of BHs (see Table C1 in the Appendix), the clusters with retained BHs are near the one-to-one line. Most Galactic clusters with candidate IMBHs do not have a measured binary fraction within the core and have been excluded from Fig. 9.

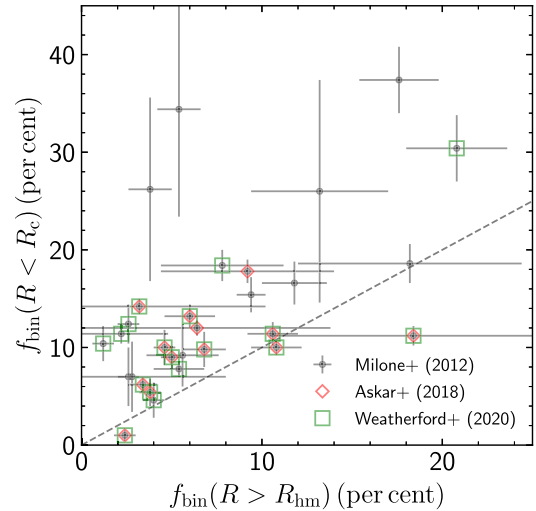


Figure 9. Binary fraction within the core radius R_c and outside the half-mass radius R_{hm} for Galactic GCs. The binary fractions measured by Milone et al. (2012) show the same behaviour as Fig. 7, almost all GCs are above the one-to-one dashed line, following the expected effect of mass segregation with the exception of NGC 288, see Section 4.1 for more details. We have marked GC candidates that may be hosting a BHS as given by Askar et al. (2018b; red diamond) and Weatherford et al. (2020; green squares). Most of the candidate GCs are located near the one-to-one line, in a similar way as in Fig. 7.

4.2 Kinematic effects due to binaries

We discussed how the binary fractions can point to GCs that could host an IMBH or a BHS. However, the observed kinematics is another piece of information that could also show the binaries interaction with a central IMBH. As we discussed in Section 3, binaries affect the line of sight and proper motion velocity dispersions differently. Fig. 4 shows that the difference between line of sight and proper motion velocity dispersions increases significantly towards the centre, which goes in hand with the increase in the binary fraction in the cluster centre. To analyse this effect, we have measured the velocity dispersion within the core radius of each GC, following the same procedure as in Section 3. We define a percentage difference for the velocity dispersion given by $(\sigma_{los} - \sigma_{ref})/\sigma_{ref}$, where σ_{ref} is a reference velocity dispersion, which can be either from proper motions or a clean sample of line-of-sight velocities.

The top panel of Fig. 10 shows the case when we compare the single-epoch line-of-sight velocity dispersion (i.e. including the effect of binaries) with the radial proper motion. We observe that as the binary fraction increases, the difference between the velocity dispersions becomes larger. As discussed before, clusters with an IMBH have a lower binary fraction, and now we can see that they also have a smaller difference between the line of sight and proper motion velocity dispersions. GCs with a BHS (magenta diamonds) populate the region between the clusters with an IMBH and those without one. Obtaining comparable observations for line-of-sight velocities and proper motions is not straightforward, as not many cover the same region of the cluster or even the same stellar-mass range. Due to the GC's evolution towards energy equipartition, it is crucial to sample the same stellar-mass range for both velocities. A way to move around this issue is to only focus on the line-of-sight velocities, given multi-epoch observations to identify binaries. The difference between the line-of-sight velocity dispersion that

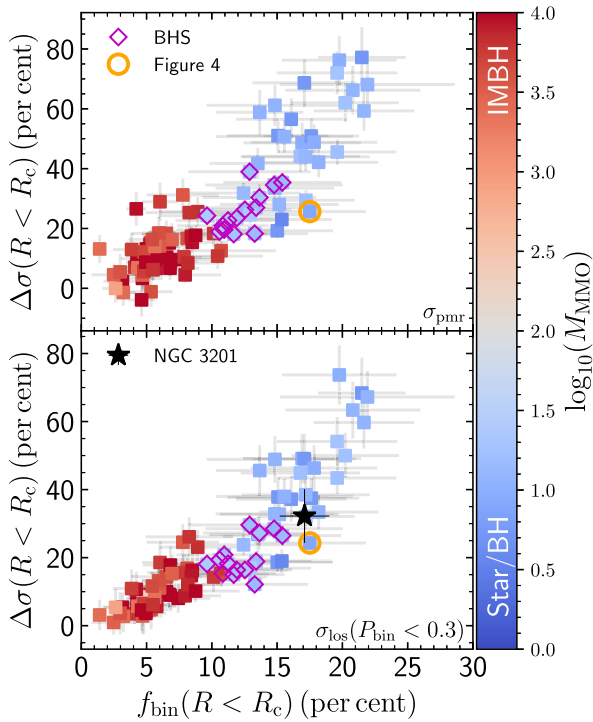


Figure 10. Difference in velocity dispersion and binary fraction within the core radius. By using the differences in velocity dispersion between the full line-of-sight contaminated sample and the proper motions (top panel) or the clean sample with $P_{\text{bin}} < 0.3$ (bottom panel). All clusters are again colour coded by their most massive object. In both panels, as the binary fraction within the core increases also does the difference in velocity dispersion, for some clusters the measured velocity dispersion with binaries overestimates up to 70 per cent the core velocity dispersion. Using proper motions as a reference adds an additional scatter due to variations in the central velocity anisotropy, but when available could provide a first constraint on the velocity difference (in particular when multi-epoch observations are not available). A more self-consistent approach, once multi-epoch observations are available, would be to compare the contaminated velocity dispersion with the clean one as in the bottom panel. This approach is not affected by velocity anisotropy and can be used right away for current and upcoming MUSE data, such as for NGC 3201 (Giesers et al. 2019) marked as a star.

includes all binaries and the cleaned sample will play the same role as the proper motion data. The bottom panel of Fig. 10 shows the case when the reference velocity dispersion for $\Delta\sigma$ is the line-of-sight velocity dispersion after cleaning the binaries as described in Section 3. The GCs’ behaviour is similar to the previous case, but it only depends on one observational data type, which is the RVs. In this case, we can now also include the kinematic data for NGC 3201 from Giesers et al. (2019). We measured the binary fraction and velocity dispersion difference within the core radius from the same stellar sample as in Fig. 5, finding that the binary fraction is $f_{\text{bin}}(R < R_c) = 17.1 \pm 1.9$ per cent while the velocity dispersion difference is $\Delta\sigma(R < R_c) = 32.2 \pm 7.8$ per cent. As shown in the bottom panel of Fig. 10, this cluster follows a relation in line with the simulated GCs. This approach could be more accessible as more GCs get observed in the same way as done by Giesers et al. (2019).

The most extreme cases in Fig. 10 show an overestimation of ~ 70 per cent of the observed line-of-sight velocity dispersion due to the effects of binaries. However, our analysis assumes a strong binary contamination, where we only exclude stars outside the central

99 per cent of the observed velocity distribution (equivalent to a single 3σ clipping). A stricter limit can exclude most binaries, and the bias shown in Fig. 10 will be milder. We estimated the clusters’ velocity dispersion values using an iterative 3σ clipping approach, significantly reducing the binary contamination. While the trend was still similar to the one shown in the bottom panel of Fig. 10, the most extreme cases went down from ~ 70 per cent to a ~ 20 per cent difference in velocity dispersion.

5 SUMMARY

In this work, we explored the dynamical effects of a central IMBH on the binary population of GCs. We used a sample of simulated GCs from the MOCCA-Survey Database I (Askar et al. 2017) and applied the method proposed by Giesers et al. (2019) to identify binaries through multi-epoch RV observations. We have produced mock observations for each cluster considering velocity errors in RVs and proper motions; for these mock observations, we follow the RVs during many epochs, considering long-term observations spanning over months as well as multiple observations during a single night. This approach allows us to identify binaries in the simulated GCs in the same manner as done for real observations.

Two-body relaxation drives the dynamical evolution of GCs; a consequence of this process is mass segregation. Binaries are on average more massive than single stars and segregate quickly towards the centre of the cluster. This phenomenon changes the distribution of binaries and the radial binary fraction. Early N -body simulations of GCs with primordial binaries show binaries migrate towards the cluster core while becoming harder (Heggie et al. 2006). Observations of main-sequence star binaries also show this trend (Sollima et al. 2007; Milone et al. 2012; Ji & Bregman 2015), as the binary fraction is smaller in regions outside the core radius. The higher fraction of binaries within the cluster core affects the observed line-of-sight kinematics, as the relative velocity of hard binaries dominates over their centre of mass velocity, increasing the observed velocity dispersion along the line of sight (see Fig. 4 and discussion therein). While this effect does not affect proper motions, to take full advantage of proper motions and RVs, the identification of binaries is crucial. Whereas the effects on the dynamical modelling are beyond the scope of this work, we expect that due to the increase in the observed line-of-sight velocity dispersion, dynamical models will overestimate the cluster mass (larger mass-to-light ratio) and (or) the mass of a possible IMBH.

An IMBH in the cluster centre acts as an energy source, extending the cluster dynamical life. It halts mass segregation, and therefore, fewer binaries move to the cluster centre, which reduces the binary fraction in the cluster core. Furthermore, the binaries that do segregate encounter a dense environment where interactions with other stars can disrupt them, due to the high central density in GCs that form an IMBH. If a binary manages to get close enough to the IMBH, this could also break the binary and one of the components might be ejected at high velocities (Hills 1988; Fragione & Gualandris 2019; Šubr et al. 2019). Our analysis shows that GCs with a central IMBH have a significantly lower binary fraction than clusters without one (see Fig. 6). Furthermore, for GCs with comparable initial central density, we observe that those which form an IMBH lose ~ 50 per cent of their initial binary fraction within the cluster core, while the ones which do not form an IMBH increase their binary fraction within the cluster core by ~ 70 per cent.

We find that clusters that host a BHS behave in a similar way as those with an IMBH and also show a flat binary fraction profile. However, as binary disruption is less effective than in clusters with a

central IMBH and the presence of stellar-mass BHs in the cluster's core effectively halts the increase in central density, GCs with a BHS have on average higher binary fractions in their cores. This is in agreement with previous simulations of GCs with BHS (see e.g. Mackey et al. 2008; Morscher et al. 2015). The comparison of integrated quantities, such as the binary fraction within the central and outer regions of the GCs, serves as an indication for which cluster may host an IMBH or a BHS (see Fig. 7). We find a handful of Galactic GCs are promising candidates, as they have a similar binary fraction within the cluster's core and outside of the half-mass radius (see Fig. 9). A list of the names and properties of these clusters can be found in Appendix C (see Table C1).

By also taking into account the kinematic data, we can have a similar picture of the dynamical effect of an IMBH on the binary population of a cluster. Due to the lower binary fractions in clusters with a central IMBH, and in particular within the cluster core, we expect that the difference between line of sight and proper motion velocity dispersion will be small. We show that this is the case in Fig. 10. However, comparing line-of-sight velocities and proper motions is not trivial. Different effects such as the intrinsic velocity anisotropy, the cluster regions covered by different observations, the magnitude range that translates to different masses for different observations, and precise distances could add a systematic bias in the observed difference between line of sight and proper motion velocity dispersion.

A solution to these limitations will be to use only line-of-sight velocities once multi-epoch observations will be available as shown in the bottom panel of Fig. 10. This approach will not only help as a method to identify systems that may host an IMBH or a BHS, but by knowing the binary fraction it will be possible to estimate the increase in velocity dispersion due to the effect of binaries; this is crucial for dynamical modelling that uses line-of-sight velocity as a tracer.

We have focused only on binaries brighter than one magnitude below the main-sequence turn-off ($m_V < 18$ mag at 5 kpc). The different mass range and binary detection biases limit the comparison with photometric studies (such as Sollima et al. 2007; Milone et al. 2012; Ji & Bregman 2015) that typically focus on the main sequence. Extending our analysis to other detection techniques for binaries will provide a better link between the estimated binary fraction and kinematics effects of binaries. To do so, we first need to consider multiple populations in the simulations (Hong et al. 2015) as they play a relevant role in the photometric binary detection (Milone et al. 2020). At the same time, it is necessary to check the different biases in the detection methods: RV methods mainly detect binaries with short periods, whereas, photometric methods depend on the mass ratio of binaries (Milone et al. 2012).

We analysed simulations with initial binary fractions of $f_{\text{bin}} = 10$ per cent. These clusters have total binary fractions of $f_{\text{bin}} \sim 7$ per cent at 12 Gyr (or $f_{\text{bin}} \sim 16$ per cent within the half-light radius). While our initial binary fraction is consistent with observations, clusters that have higher binary fractions exist (see Fig. 9). To compare with these observations, we need to study simulations with different initial binary fractions. See Appendix D for a comparison with a sample of clusters with initial $f_{\text{bin}} = 5$ per cent, where we observe the same overall trends.

Here, we presented the properties of the whole detected binary population. The next step will be to study how the relations described here connect with specific types of binaries or binary products. The distribution of BSS traces the dynamical evolution of GCs (Ferraro et al. 2012, 2018). By analysing the distribution of BSS and their relation with the binary fraction, it will be possible to study another

tracer for the dynamical effects of a central IMBH. Similarly, the distribution of X-ray binaries could help separate clusters with a central IMBH from those with a BHS.

ACKNOWLEDGEMENTS

We thank the anonymous referee for their constructive comments and suggestions, which helped us improve this manuscript. We thank the MOCCA-Survey collaboration for making their data available to us and answering all our questions. FIA also thanks Sebastian Kamann for constructive discussions regarding the MUSE data, Alice Zocchi for her helpful suggestions regarding the manuscript, and Nadine Neumayer for helpful discussions and ideas. FIA and GvdV acknowledge funding from the European Research Council (ERC) under the European Union's Horizon 2020 research and innovation programme under grant agreement no. 724857 (Consolidator Grant ArcheoDyn). ACS is supported by the Deutsche Forschungsgemeinschaft (DFG, German Research Foundation) – Project-ID 138713538 – SFB 881 ('The Milky Way System', subproject A08). AMB is supported by the Swedish Research Council (grant 2017-04217) and acknowledges funding from the European Union's Horizon 2020 research and innovation programme under the Marie Skłodowska-Curie grant agreement no. 895174. AA is supported by the Swedish Research Council (grant 2017-04217) and also acknowledges partial support from the Royal Physiographic Society in Lund and the Walter Gyllenberg Foundation for the research grant: 'Evolution of Binaries Containing Massive Stars'.

This research made use of the NUMPY package (van der Walt, Colbert & Varoquaux 2011), while all figures were made using MATPLOTLIB (Hunter 2007).

DATA AVAILABILITY

The simulated GCs data underlying this article were provided by the MOCCA group³ by permission. The data will be shared upon request with permission of the MOCCA group. The observational data are available within their original references.

REFERENCES

- Arca Sedda M., Askar A., Giersz M., 2019, preprint (arXiv:1905.00902)
 Aros F. I., Sippel A. C., Mastrobuono-Battisti A., Askar A., Bianchini P., van de Ven G., 2020, *MNRAS*, 499, 4646
 Askar A., Szkudlarek M., Gondek-Rosińska D., Giersz M., Bulik T., 2017, *MNRAS*, 464, L36
 Askar A., Giersz M., Pych W., Dalessand ro E., 2018a, *MNRAS*, 475, 4170
 Askar A., Arca Sedda M., Giersz M., 2018b, *MNRAS*, 478, 1844
 Baumgardt H., Hilker M., 2018, *MNRAS*, 478, 1520
 Baumgardt H., Makino J., Ebisuzaki T., 2004, *ApJ*, 613, 1143
 Baumgardt H. et al., 2019, *MNRAS*, 488, 5340
 Belczynski K., Kalogera V., Bulik T., 2002, *ApJ*, 572, 407
 Bianchini P., van de Ven G., Norris M. A., Schinnerer E., Varri A. L., 2016a, *MNRAS*, 458, 3644
 Bianchini P., Norris M. A., van de Ven G., Schinnerer E., Bellini A., van der Marel R. P., Watkins L. L., Anderson J., 2016b, *ApJ*, 820, L22
 Breen P. G., Heggie D. C., 2013, *MNRAS*, 436, 584
 Chatterjee S., Fregeau J. M., Umbreit S., Rasio F. A., 2010, *ApJ*, 719, 915
 Chatterjee S., Rasio F. A., Sills A., Glebbeek E., 2013, *ApJ*, 777, 106
 Cheng Z., Li Z., Li X., Xu X., Fang T., 2019a, *ApJ*, 876, 59
 Cheng Z., Li Z., Fang T., Li X., Xu X., 2019b, *ApJ*, 883, 90

³<https://moccacode.net/>

- de Vita R., Trenti M., Bianchini P., Askar A., Giersz M., van de Ven G., 2017, *MNRAS*, 467, 4057
- Ferraro F. R. et al., 2012, *Nature*, 492, 393
- Ferraro F. R. et al., 2018, *ApJ*, 860, 36
- Fragione G., Gualandris A., 2019, *MNRAS*, 489, 4543
- Fregeau J. M., Cheung P., Portegies Zwart S. F., Rasio F. A., 2004, *MNRAS*, 352, 1
- Giersz M., Heggie D. C., Hurley J. R., Hypki A., 2013, *MNRAS*, 431, 2184
- Giersz M., Leigh N., Hypki A., Lützgendorf N., Askar A., 2015, *MNRAS*, 454, 3150
- Giesers B. et al., 2019, *A&A*, 632, A3
- Gill M., Trenti M., Miller M. C., van der Marel R., Hamilton D., Stiavelli M., 2008, *ApJ*, 686, 303
- González E., Kremer K., Chatterjee S., Fragione G., Rodriguez C. L., Weatherford N. C., Ye C. S., Rasio F. A., 2021, *ApJ*, 908, L29
- Haiman Z., 2013, *Astrophysics and Space Science Library*, Vol. 396, The Formation of the First Massive Black Holes. Springer-Verlag, Berlin, p. 293
- Harris W. E., 1996, *AJ*, 112, 1487
- Heggie D. C., Trenti M., Hut P., 2006, *MNRAS*, 368, 677
- Hénon M., 1971a, *Ap&SS*, 13, 284
- Hénon M. H., 1971b, *Ap&SS*, 14, 151
- Hills J. G., 1988, *Nature*, 331, 687
- Hobbs G., Lorimer D. R., Lyne A. G., Kramer M., 2005, *MNRAS*, 360, 974
- Hong J., Vesperini E., Sollima A., McMillan S. L. W., D’Antona F., D’Ercole A., 2015, *MNRAS*, 449, 629
- Hong J., Askar A., Giersz M., Hypki A., Yoon S.-J., 2020, *MNRAS*, 498, 4287
- Hunter J. D., 2007, *Comput. Sci. Eng.*, 9, 90
- Hurley J. R., Tout C. A., Pols O. R., 2002, *MNRAS*, 329, 897
- Hurley J. R., Aarseth S. J., Shara M. M., 2007, *ApJ*, 665, 707
- Hypki A., Giersz M., 2013, *MNRAS*, 429, 1221
- Ji J., Bregman J. N., 2015, *ApJ*, 807, 32
- Kaderali S., Hunt J. A. S., Webb J. J., Price-Jones N., Carlberg R., 2019, *MNRAS*, 484, L114
- Kamann S., Wisotzki L., Roth M. M., Gerssen J., Husser T. O., Sandin C., Weibacher P., 2014, *A&A*, 566, A58
- Kamann S. et al., 2016, *A&A*, 588, A149
- Kamann S. et al., 2018, *MNRAS*, 473, 5591
- King I., 1962, *AJ*, 67, 471
- Kroupa P., 2001, *MNRAS*, 322, 231
- Kunder A. et al., 2017, *AJ*, 153, 75
- Lanzoni B. et al., 2013, *ApJ*, 769, 107
- Libralato M. et al., 2018, *ApJ*, 861, 99
- Lützgendorf N. et al., 2013, *A&A*, 552, A49
- Mackey A. D., Wilkinson M. I., Davies M. B., Gilmore G. F., 2008, *MNRAS*, 386, 65
- Mann C. R. et al., 2019, *ApJ*, 875, 1
- Mapelli M., Sigurdsson S., Ferraro F. R., Colpi M., Possenti A., Lanzoni B., 2006, *MNRAS*, 373, 361
- McNamara B. J., Harrison T. E., Baumgardt H., Khalaj P., 2012, *ApJ*, 745, 175
- Milone A. P. et al., 2012, *A&A*, 540, A16
- Milone A. P. et al., 2020, *MNRAS*, 492, 5457
- Morscher M., Pattabiraman B., Rodriguez C., Rasio F. A., Umbreit S., 2015, *ApJ*, 800, 9
- Noyola E., Gebhardt K., Bergmann M., 2008, *ApJ*, 676, 1008
- Portegies Zwart S. F., Baumgardt H., Hut P., Makino J., McMillan S. L. W., 2004, *Nature*, 428, 724
- Rizzuto F. P. et al., 2021, *MNRAS*, 501, 5257
- Sippel A. C., Hurley J. R., 2013, *MNRAS*, 430, L30
- Sollima A., 2020, *MNRAS*, 495, 2222
- Sollima A., Beccari G., Ferraro F. R., Fusi Pecci F., Sarajedini A., 2007, *MNRAS*, 380, 781
- Spitzer L., 1987, *Dynamical Evolution of Globular Clusters*. Princeton Univ. Press, Princeton
- Spitzer L., Jr, 1969, *ApJ*, 158, L139
- Šubr L., Fragione G., Dabringhausen J., 2019, *MNRAS*, 484, 2974
- Trenti M., van der Marel R., 2013, *MNRAS*, 435, 3272
- Trenti M., Ardi E., Mineshige S., Hut P., 2007, *MNRAS*, 374, 857
- van der Marel R. P., Anderson J., 2010, *ApJ*, 710, 1063
- van der Walt S., Colbert S. C., Varoquaux G., 2011, *Comput. Sci. Eng.*, 13, 22
- Vitral E., Mamon G. A., 2021, *A&A*, 646, A63
- Wang L. et al., 2016, *MNRAS*, 458, 1450
- Weatherford N. C., Chatterjee S., Rodriguez C. L., Rasio F. A., 2018, *ApJ*, 864, 13
- Weatherford N. C., Chatterjee S., Kremer K., Rasio F. A., 2020, *ApJ*, 898, 162
- Zocchi A., Gieles M., Hénault-Brunet V., 2019, *MNRAS*, 482, 4713

APPENDIX A: INITIAL CONDITIONS

All GCs in the MOCCA-Survey Database I have an initial mass function given by Kroupa (2001), with stellar masses ranging from 0.08 to 100 M_{\odot} . While the full survey has a more extensive parameter space for initial conditions, our sample of GCs with initial binary fraction $f_{\text{bin}} = 10$ per cent has a combination of initial conditions given by Table A1. For further details on the MOCCA-Survey Database I, we refer the reader to Askar et al. (2017).

In the simulated GCs, the velocity of stellar-mass BHs due to natal kicks can follow two distinct approaches. If the cluster has a ‘no fallback’ approach, then the natal kick velocities come from a Maxwellian velocity distribution with $\sigma = 265 \text{ km s}^{-1}$ (Hobbs et al. 2005). Alternatively, clusters can follow a ‘fallback’ approach, where stellar-mass BHs can have their masses and natal kick velocities modified by the mass fallback prescription provided by Belczynski, Kalogera & Bulik (2002). The latter allows for a stellar-mass BH retention fraction of 15 to 55 per cent within the first 30 Myr (Askar et al. 2018b).

Table A1. Initial conditions for the simulated GCs in our sample. N is the initial number of objects (single + binaries), r_t is the tidal radius, W_0 is the King parameter, and Z the metallicity. Only one cluster is tidally filling. Natal kicks for neutron stars and stellar-mass BHs follow a mass fallback model (Belczynski et al. 2002) or a Maxwellian distribution (Hobbs et al. 2005).

Parameter	Values
N	400 000, 700 000, 1 200 000
r_t (pc)	30.0, 60.0, 120.0
r_t/r_h	25.0, 50., filling
W_0	3.0, 6.0, 9.0
Z	0.001, 0.005, 0.02
Natal kicks	Fallback and no fallback

APPENDIX B: OBSERVATIONAL ERRORS

In this study, we have included observational errors and noise to the kinematics. For each simulated cluster, we have the 3D velocities to which we add a noise accordingly the observational error expected for either the line-of-sight velocity or the proper motions. In both cases the ‘observed’ velocity will be given by

$$v_{\text{obs}} = v_{\text{sim}} + N(0, \delta^2), \quad (\text{B1})$$

where v_{sim} is the velocity from the simulation and $N(0, \delta^2)$ is a value randomly sampled from a Gaussian distribution centred in 0 with dispersion given by the observational error δ . The latter serve as a noise due to the observational errors.

In the case of the line-of-sight velocities, we use the observational errors of MUSE/VLT data from Giesers et al. (2019). We bin the observed stars by magnitude and get the median error in each magnitude bin, Fig. B1 shows the distribution of errors and their median value. We use the V magnitude of each star in the simulation to assign an error and scatter, assuming the cluster is at a distance of 5 kpc.

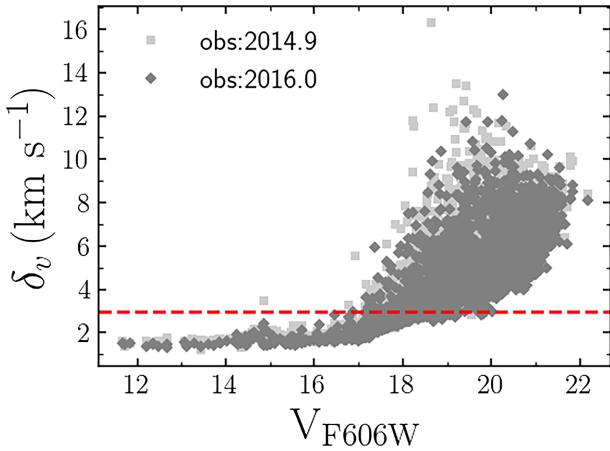


Figure B1. Observational errors of line-of-sight RVs for NGC 3201 from Giesers et al. (2019). We selected the two epochs with the largest sample of observations. The red dashed line represents the error limit for kinematics in this work, assuming a maximum error of $\delta_v \sim 3 \text{ km s}^{-1}$.

We use a fixed error of $\delta_{\text{pm}} = 0.1 \text{ mas yr}^{-1}$, taken from Libralato et al. (2018) for improved *HST* astrometry. We transform this value to km s^{-1} assuming the clusters are at a distance of 5 kpc.

As we added a noise to the observed kinematics we use the following likelihood approach to obtain the intrinsic velocity dispersion σ and mean velocity \bar{v}

$$\mathcal{L}(\sigma, \bar{v} | \bar{v}_{\text{obs}}) = \prod_{i=0}^N \frac{1}{\sqrt{2\pi(\sigma^2 + \delta_i^2)}} \exp\left(-\frac{(v_{\text{obs},i} - \bar{v})^2}{2(\sigma^2 + \delta_i^2)}\right). \quad (\text{B2})$$

APPENDIX C: GCS HOSTING A BH SUBSYSTEM

In Fig. 9, we show the binary fraction within the core radius and outside the half-mass radius for a sample of Galactic GCs (Milone et al. 2012). We have cross-matched these clusters with the list of candidate Galactic GCs from Askar et al. (2018b) and Weatherford et al. (2020) to find those which have retained stellar-mass BHs. We notice that indeed the candidate GCs fall closer to the one-to-one ratio of binary fractions (see Fig. 9). We define an orthogonal distance to the one-to-one line, for each cluster in the sample, as

$$\Delta = \frac{f_{\text{bin}}(R < R_c) - f_{\text{bin}}(R > R_{\text{hm}})}{\sqrt{2}}. \quad (\text{C1})$$

In Table C1, we summarize the clusters used in Fig. 9, indicating their names, binary fractions (core f_c and half-mass f_{hm}) from Milone et al. (2012), and the distance from the one-to-one relation Δ . We have highlighted in bold the clusters that have an off-set of $\Delta < 5$, which is below the median value for the distances to the one-to-one relation. We also include the number of retained BHs (N_{BHs}) and the total mass of the retained BHs (M_{BHs}) from both Askar et al. (2018b) and Weatherford et al. (2020). We include estimated mass of a central IMBH for three GCs in the sample with possible IMBHs in their centre.

Table C1. Galactic GCs in Fig. 9. For each cluster we show its name (GC), the binary fractions within the core radius f_c and outside the half-mass radius f_{hm} from Milone et al. (2012)^(a). We calculated the distance Δ between each GC and the one-to-one line, and highlight those which have $\Delta < 5$. For the clusters from Askar et al. (2018b)^(b) and Weatherford et al. (2020)^(c) we include the estimated number of retained BHs N_{BHs} and the total mass in BHs M_{BHs} . IMBH masses (M_{IMBH}) come from Kamann et al. (2014)^(d) and Kamann et al. (2016)^(e).

GC	$f_c^{(a)}$ (per cent)	$f_{\text{hm}}^{(a)}$ (per cent)	Δ	$N_{\text{BHs}}^{(b)}$	$M_{\text{BHs}}^{(b)} (M_\odot)$	$N_{\text{BHs}}^{(c)}$	$M_{\text{BHs}}^{(c)} (M_\odot)$	$M_{\text{IMBH}} (M_\odot)$
ARP 2	18.6 ± 2.0	18.2 ± 6.2	0.3					
E 3	72.0 ± 8.6	16.4 ± 21.4	39.3					
NGC 288	11.2 ± 1.0	18.4 ± 8.0	5.1	118^{+58}_{-35}	1473.0^{+566}_{-354}	26^{+14}_{-52}	594^{+305}_{-1216}	
NGC 1261	4.6 ± 1.8	4.0 ± 0.6	0.4			39^{+20}_{-81}	845^{+416}_{-1742}	
NGC 2298	15.4 ± 1.8	9.4 ± 0.8	4.2			1^{+0}_{-3}	21^{+4}_{-80}	
NGC 4147	26.2 ± 9.4	3.8 ± 1.2	15.8			2^{+0}_{-9}	55^{+9}_{-235}	
NGC 4590	11.4 ± 1.2	10.6 ± 1.4	0.6	71^{+29}_{-18}	847.8^{+260}_{-166}	17^{+6}_{-38}	338^{+103}_{-888}	
NGC 5272	5.4 ± 1.4	3.8 ± 0.6	1.1	55^{+20}_{-13}	632.9^{+169}_{-109}	25^{+4}_{-112}	587^{+71}_{-2786}	$< 5.3 \times 10^3 (d)$
NGC 5466	14.2 ± 0.8	3.2 ± 7.0	7.8	191^{+110}_{-63}	2512.2^{+1165}_{-703}	19^{+10}_{-67}	423^{+197}_{-1740}	
NGC 5927	10.4 ± 1.8	1.2 ± 0.6	6.5			123^{+69}_{-273}	2499^{+1320}_{-6110}	
NGC 6101	10.0 ± 0.8	10.8 ± 1.4	0.6	89^{+40}_{-24}	1085.6^{+370}_{-234}	125^{+104}_{-236}	3051^{+2497}_{-5880}	
NGC 6144	13.2 ± 1.2	6.0 ± 1.4	5.1	84^{+40}_{-23}	1012.2^{+335}_{-213}	13^{+7}_{-36}	299^{+144}_{-855}	
NGC 6205	1.0 ± 0.6	2.4 ± 0.6	1.0	34^{+10}_{-6}	366.8^{+72}_{-46}	128^{+61}_{-345}	2786^{+1178}_{-8444}	$< 8.1 \times 10^3 (d)$
NGC 6218	11.4 ± 1.0	2.2 ± 2.6	6.5			22^{+11}_{-65}	509^{+233}_{-1507}	
NGC 6254	7.8 ± 0.8	5.4 ± 1.4	1.7			30^{+12}_{-69}	622^{+206}_{-1612}	
NGC 6352	18.4 ± 1.6	7.8 ± 3.4	7.5			14^{+5}_{-39}	298^{+98}_{-875}	
NGC 6362	12.0 ± 0.8	6.4 ± 7.4	4.0	86^{+38}_{-23}	1039.3^{+238}_{-221}			
NGC 6397	7.0 ± 3.6	2.8 ± 5.2	3.0			3^{+0}_{-16}	72^{+0}_{-421}	$600 \pm 200 (e)$
NGC 6496	17.8 ± 1.2	9.2 ± 4.8	6.1	58^{+22}_{-14}	672.2^{+185}_{-119}			
NGC 6535	9.2 ± 3.2	5.6 ± 2.0	2.5			1^{+0}_{-5}	24^{+2}_{-125}	
NGC 6584	9.0 ± 1.2	5.0 ± 0.6	2.8	40^{+13}_{-8}	451.5^{+101}_{-64}	11^{+3}_{-29}	231^{+61}_{-687}	
NGC 6637	12.4 ± 2.0	2.6 ± 0.6	6.9			58^{+25}_{-123}	1154^{+478}_{-2728}	
NGC 6652	34.4 ± 11.0	5.4 ± 1.2	20.5			5^{+1}_{-22}	107^{+13}_{-501}	
NGC 6723	6.2 ± 0.8	3.4 ± 0.8	2.0	51^{+18}_{-11}	577.7^{+147}_{-95}	60^{+24}_{-189}	1243^{+491}_{-4528}	
NGC 6779	10.0 ± 1.8	4.6 ± 0.6	3.8	48^{+17}_{-11}	543.1^{+220}_{-141}	51^{+24}_{-103}	1068^{+430}_{-2329}	
NGC 6838	30.4 ± 3.4	20.8 ± 2.8	6.8			17^{+6}_{-60}	363^{+119}_{-1446}	
NGC 6981	9.8 ± 1.8	6.8 ± 1.2	2.1	84^{+37}_{-22}	1010.6^{+334}_{-212}	27^{+17}_{-61}	573^{+334}_{-1747}	
NGC 7099	7.0 ± 3.0	2.6 ± 0.6	3.1			5^{+0}_{-28}	130^{+1}_{-714}	
PALOMAR 1	66.6 ± 19.2	19.0 ± 6.2	33.7					
PALOMAR 12	26.0 ± 11.4	13.2 ± 3.8	9.1					
TERZAN 7	37.4 ± 3.4	17.6 ± 2.2	14.0					
TERZAN 8	16.6 ± 2.2	11.8 ± 1.8	3.4					

APPENDIX D: INITIAL BINARY FRACTION COMPARISON

In addition to our sample with initial $f_{\text{bin}} = 10$ per cent, we analysed a sample of 65 GCs with initial $f_{\text{bin}} = 5$ per cent. Fig. D1 shows the binary fractions (as in Fig. 7) and velocity dispersion differences (as in Fig. 10) for both samples. We can see that the general behaviour of the parameters is similar between the two samples. However, for the sample with initial $f_{\text{bin}} = 5$ per cent, all points are scaled down, consistently with the initially lower binary fraction. Furthermore, as

shown by the black lines in panels (b.1) and (b.2) in Fig. D1, all clusters with initial $f_{\text{bin}} = 5$ per cent cover the same region in binary fraction space as the GCs hosting an IMBH in the sample with initial $f_{\text{bin}} = 10$ per cent. We expect that simulations with initial $f_{\text{bin}} > 10$ per cent will show the same behaviour but scaled up to larger binary fractions.

To fairly compare GCs with different initial binary fractions, finding a normalization scheme for both binary fraction and velocity dispersion is necessary. While this escapes the aim of this work, it will be crucial for further implementing the analysis shown here.

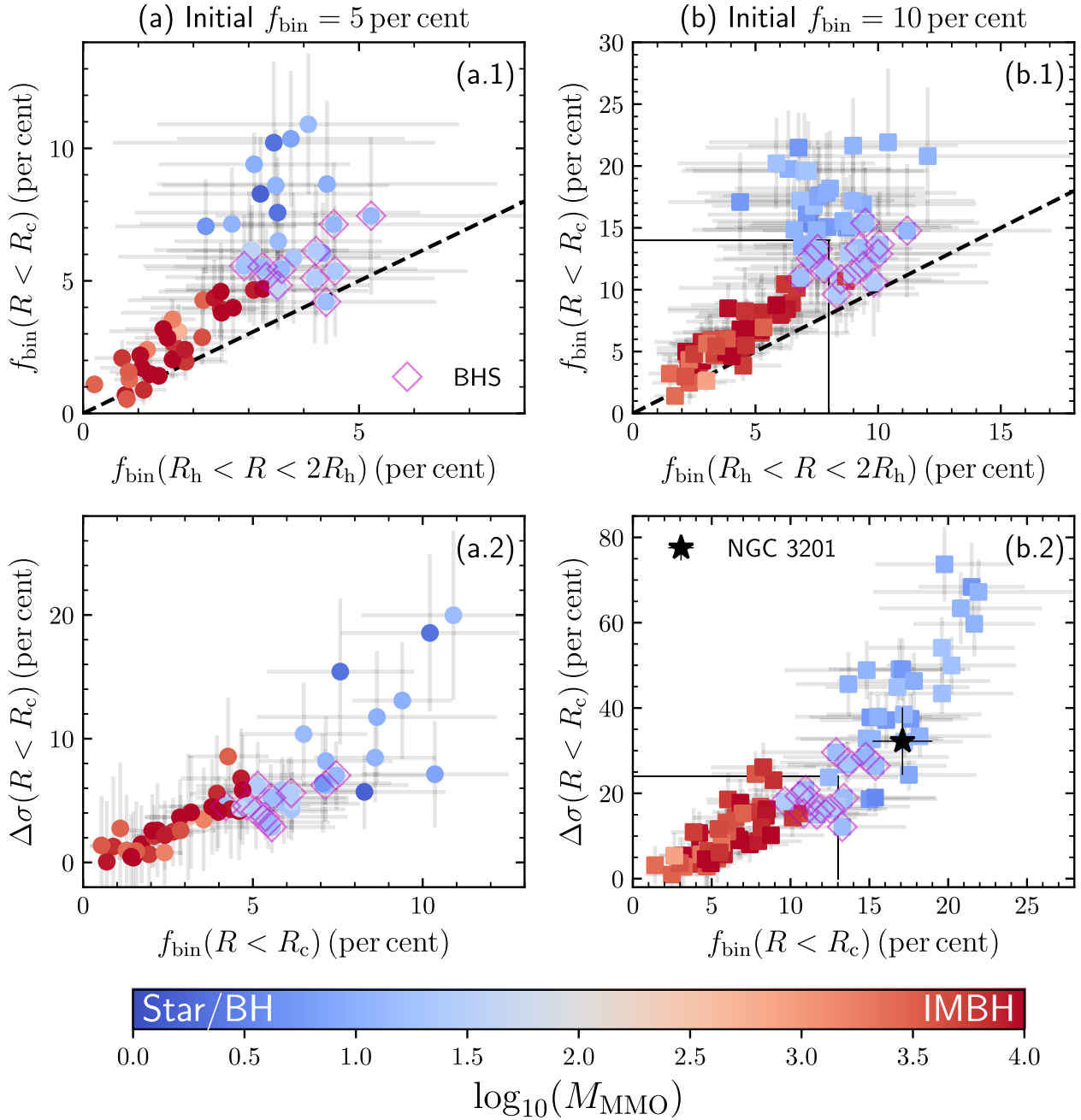


Figure D1. Comparison between a sample of simulated GCs with initial $f_{\text{bin}} = 5$ per cent and GCs with initial $f_{\text{bin}} = 10$ per cent. Panels (a.1) and (b.1) show the binary fractions within the cluster core and around the half-light radius for the cases with $f_{\text{bin}} = 5$ per cent and $f_{\text{bin}} = 10$ per cent, respectively (as in Fig. 7). Panels (a.2) and (b.2) show the velocity dispersion difference for both samples (as in Fig. 10). Both samples show similar trends, where GCs hosting a central IMBH have lower binary fractions and lower velocity dispersion differences. We can notice too that, while their behaviours are similar, the sample with initial $f_{\text{bin}} = 5$ per cent is scaled down to lower binary fractions. For clarity, in panels (b.1) and (b.2), the black lines delimit the region shown in panels (a.1) and (a.2). Note that panel (b.1) corresponds to Fig. 7 and panel (b.2) corresponds to the bottom panel of Fig. 10.

This paper has been typeset from a $\text{\TeX}/\text{\LaTeX}$ file prepared by the author.