



HAL
open science

On the impact of emotional prosody in announcements

Émilie Marty, Caterina Petrone, James German

► **To cite this version:**

Émilie Marty, Caterina Petrone, James German. On the impact of emotional prosody in announcements: The case of the pre-sequence. Journée Annuelle des Doctorants, Dec 2019, Aix-en-Provence, France. 2019. hal-03383155

HAL Id: hal-03383155

<https://hal.science/hal-03383155>

Submitted on 18 Oct 2021

HAL is a multi-disciplinary open access archive for the deposit and dissemination of scientific research documents, whether they are published or not. The documents may come from teaching and research institutions in France or abroad, or from public or private research centers.

L'archive ouverte pluridisciplinaire **HAL**, est destinée au dépôt et à la diffusion de documents scientifiques de niveau recherche, publiés ou non, émanant des établissements d'enseignement et de recherche français ou étrangers, des laboratoires publics ou privés.

On the impact of emotional prosody in announcements

The case of the pre-sequence

Emilie Marty

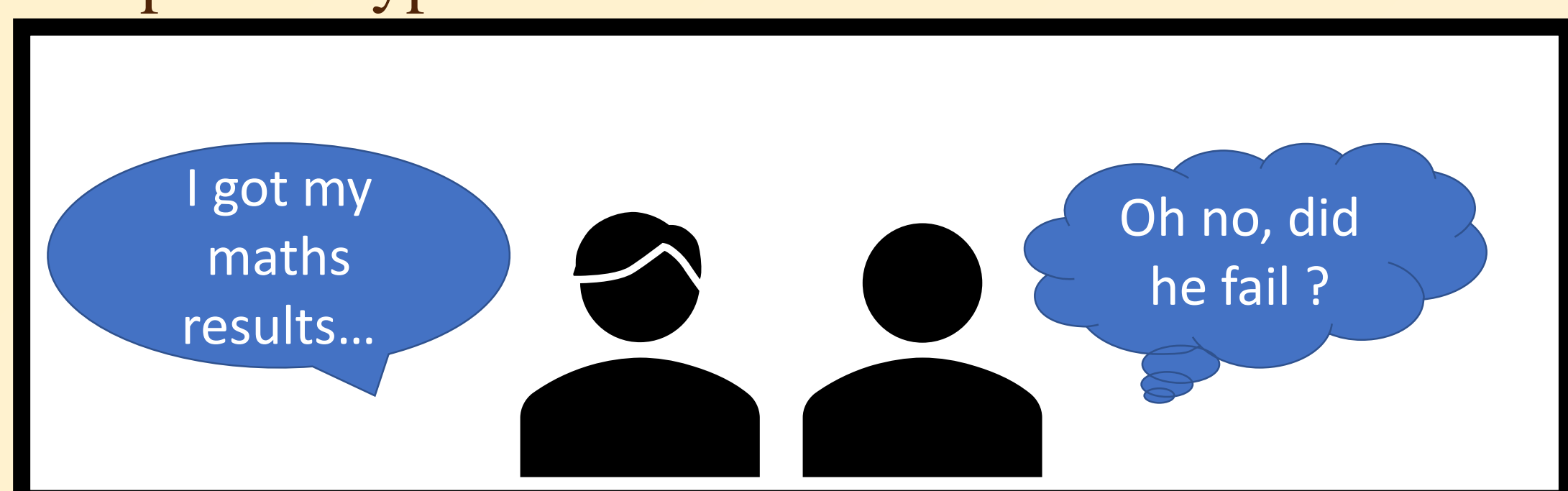
Direction : Caterina Petrone, James German

Aix-Marseille Université, CNRS, LPL UMR 7309, 13100, Aix-en-Provence, France

Contact: emilie.marty@univ-amu.fr

I Introduction

- Conversation Analysis
 - Pre-sequences:** Produced as preliminaries to a projected upcoming sequence of action, thus made “contingent on the response to the pre-sequence initiator” [Schegloff, 1987, p.58]
 - Specific type: **Pre-announcement**

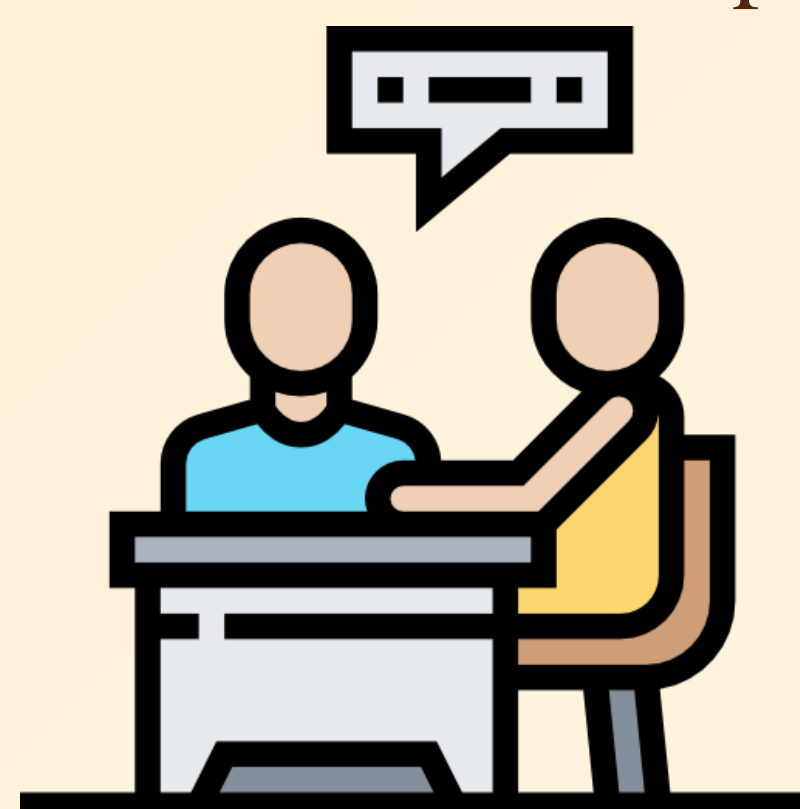


- Stance: Emotional and attitudinal point of view from the speaker on what he is saying [Stivers 2008]
- Projection** of expectations created by an utterance on the following one
 - pre-announcement project announcement
- Phonology
 - Emotional prosody: Research for prosodic patterns used to encode 6 basic emotions and their variants (ex hot vs. Cold anger) [Scherer,2003] → here, study of emotional tendencies

II Issues

- Good news, bad news:** How does it influence the prosodic emotional valence in the pre-announcement? How is it implemented in speech prosody and perceived? What effect on the listener?
- Social role** [Petrone et al. 2018] and **gender** [Polce-Lynch et al. 1998]: To what extent do those two factors influence the pre-announcement?

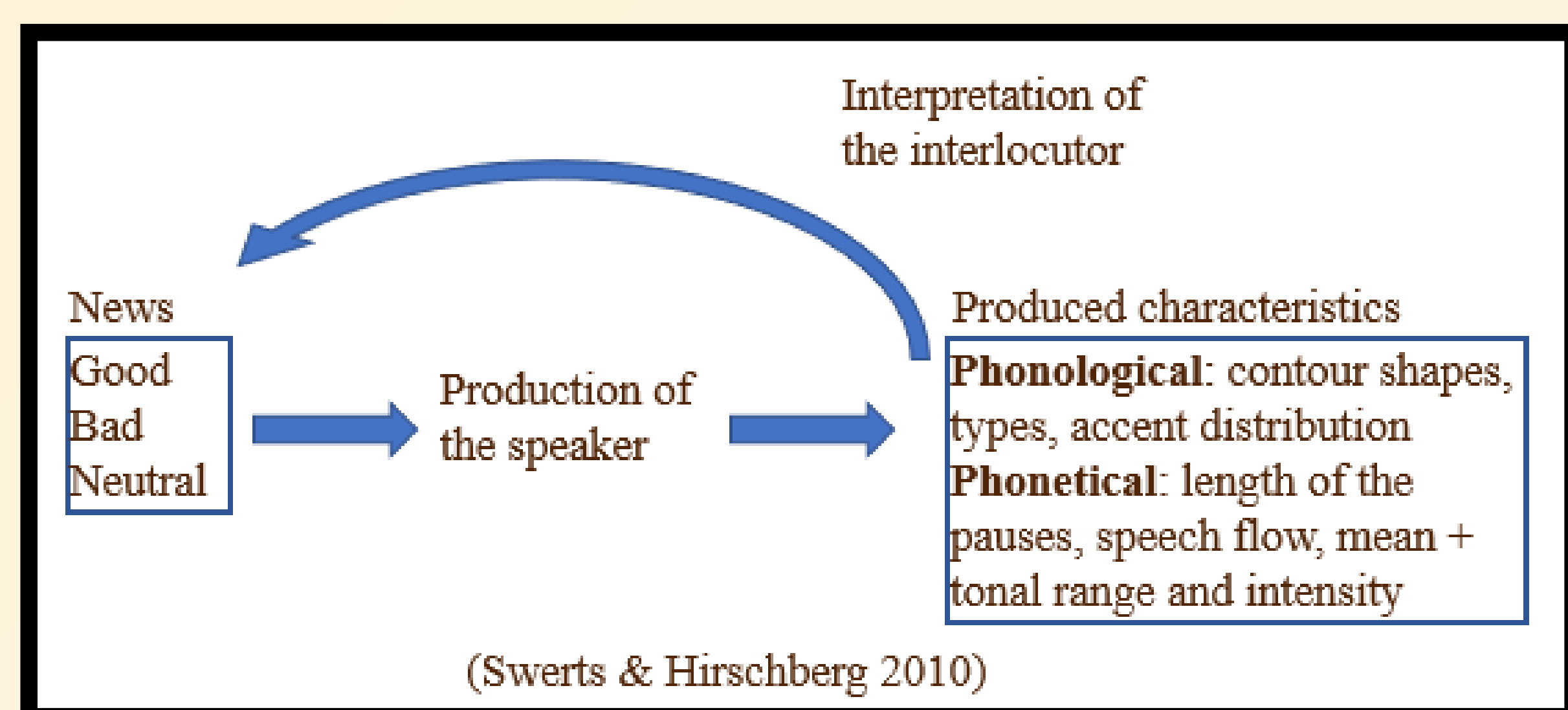
Context of interest: Announcement of **medical** news made by caregivers to their patients.



III Experiment 1 Production task

Prosodic characteristics produced depending on the valence of the news to announce

Corpus creation: Semi-controlled production by caregivers varied in genre (H, F) & social role (nurse, doctor)



IV Experiment 1 Perception task

Prosodic characteristics used by listeners

Method: Forced choice [Swerts & Hirschberg 2010]

“What kind of news do you think your nurse/doctor is going to announce ?”

Good Bad Neutral

Hypothesis

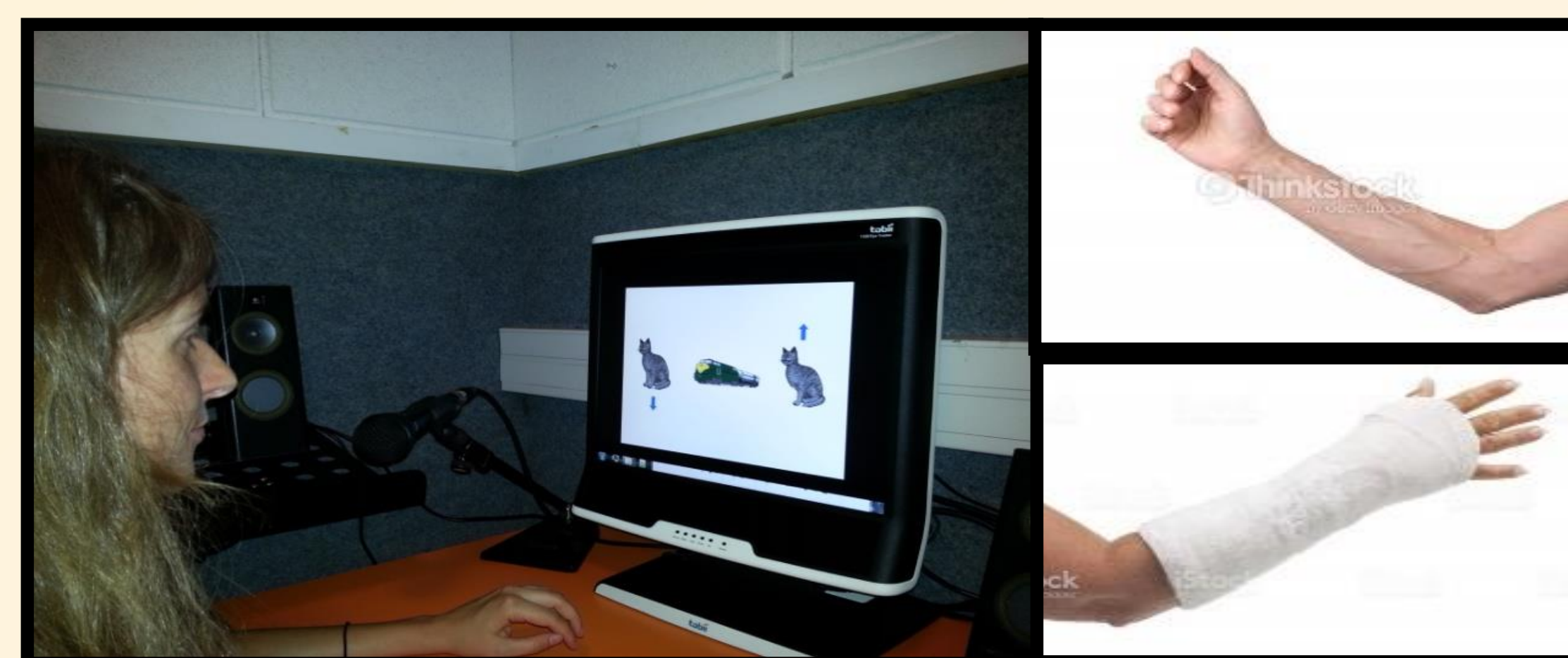
- Pattern found in part 1 used by listeners to infer the valence of the news to be announced
- Gender and social role may influence how many pre-announcement are perceived as predicting each of the valence of the news

V Experiment 2 Online psychophysiological task

Temporal aspects of projection by prosody

Method: Eye-tracking [Paullman et al., 2012, Petrone et al., 2016]

- 72 participants
- Written context + pre-sequence’s audio + sequence’s audio



Hypothesis

- Participants look more often at the image corresponding to the prosodic valence of the pre-sequence

Negative characteristics = more eye-fixations on the broken arm

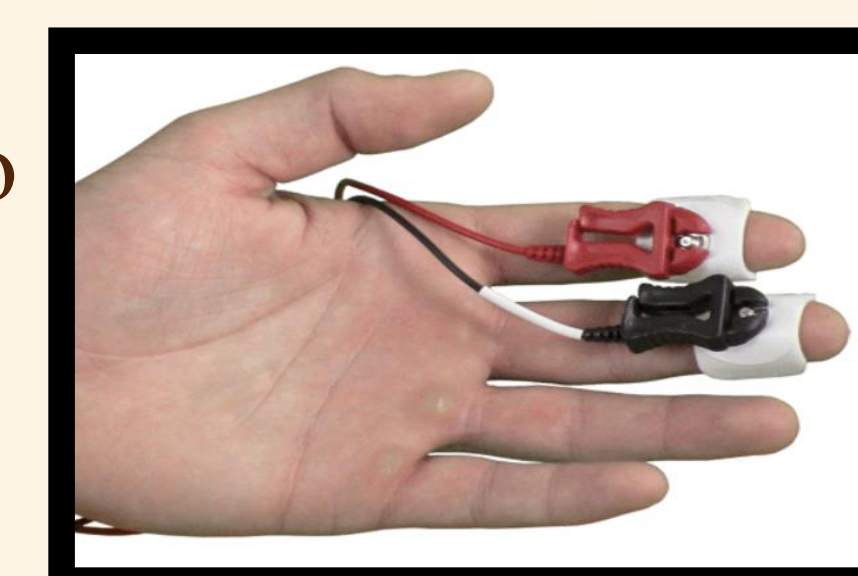
- Stronger differences when the voice is associated to a doctor’s when prosodic characteristics project bad news
- Differences depending on gender

VI Experiment 3 Psychophysiological task

Effect on the interlocutor’s emotional affect

Method: Electrodermal measures (EDA) [Petrone et al., 2016]

- 72 participants
- Written context + pre-sequence’s audio
- Evaluation task:** valence & arousal



Hypothesis

- Stronger reaction to marked valences (negative or positive)
- Stronger reaction when the voice is associated to a doctor’s
- Differences depending on gender

VII Conclusion: PhD structure

- Investigate the phonological and phonetical characteristics of news’ pre-announcement sequences made in a production task
- Validate those characteristics: Perception task. Items from the corpus, contextualized by a short written test, heard in 2 experiments:
 - 1st: Uncover the timing and the way listeners use prosodic characteristics heard
 - 2nd: Analyze emotional reaction to the same items by looking at electrodermal variations on the listeners