



HAL
open science

**LSBB : LABORATOIRE SOUTERRAIN A BAS
BRUIT : Une infrastructure de recherche
interdisciplinaire en région PACA pour la recherche
académique et industrielle en environnement bas bruit**

Stéphane Gaffet

► **To cite this version:**

Stéphane Gaffet. LSBB : LABORATOIRE SOUTERRAIN A BAS BRUIT : Une infrastructure de recherche interdisciplinaire en région PACA pour la recherche académique et industrielle en environnement bas bruit. 4èmes Rencontres Scientifiques et Techniques Résif, Nov 2019, Biarritz, France. , 2019. hal-03383131

HAL Id: hal-03383131

<https://hal.science/hal-03383131>

Submitted on 18 Oct 2021

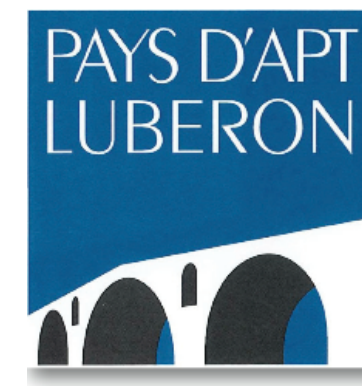
HAL is a multi-disciplinary open access archive for the deposit and dissemination of scientific research documents, whether they are published or not. The documents may come from teaching and research institutions in France or abroad, or from public or private research centers.

L'archive ouverte pluridisciplinaire **HAL**, est destinée au dépôt et à la diffusion de documents scientifiques de niveau recherche, publiés ou non, émanant des établissements d'enseignement et de recherche français ou étrangers, des laboratoires publics ou privés.

THE LSBB UNDERGROUND RESEARCH LABORATORY: A UNIQUE FACILITY FOR FUNDAMENTAL & APPLIED LOW BACKGROUND INTER-DISCIPLINARY GROUND AND UNDERGROUND SCIENCE & TECHNOLOGY

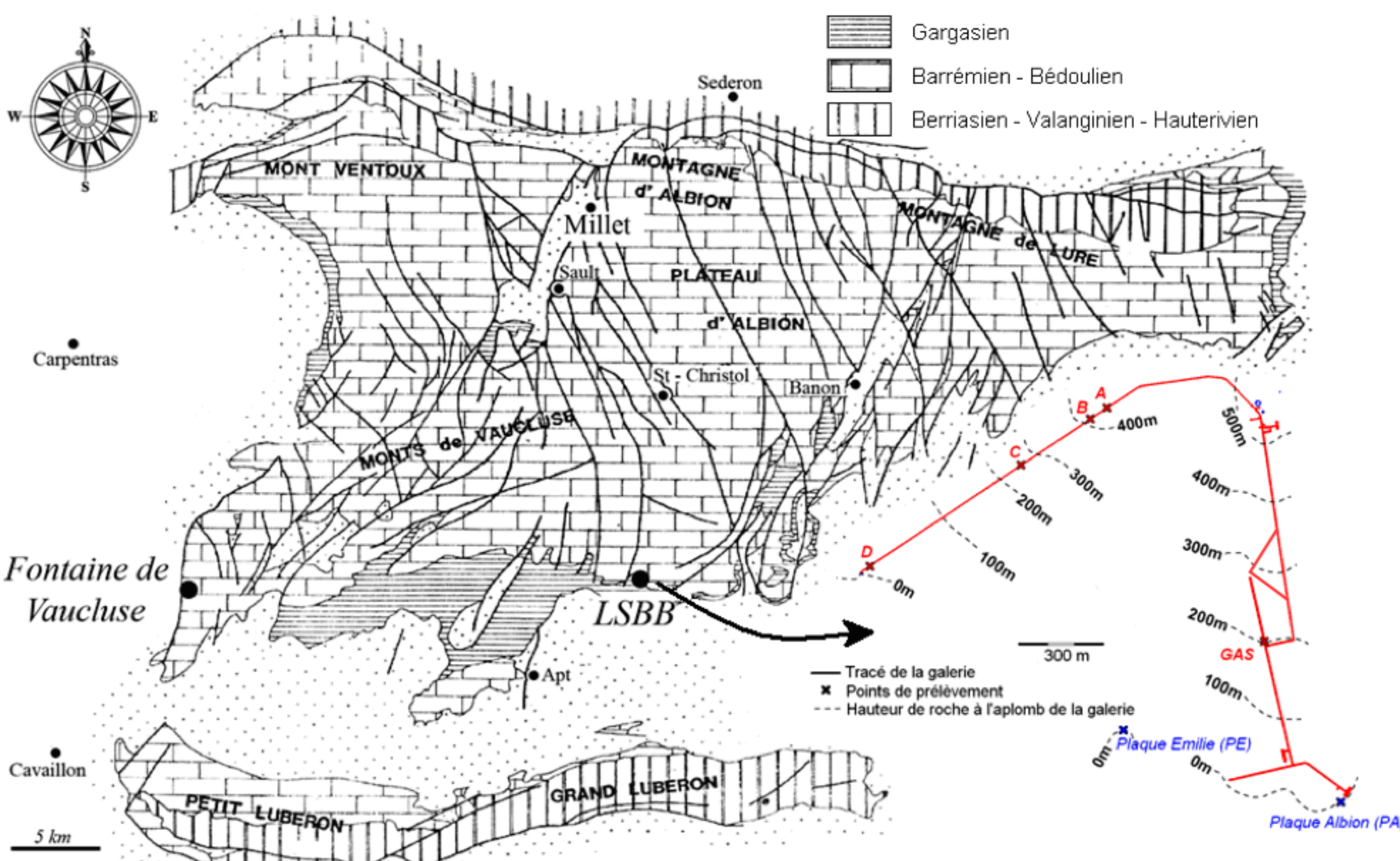
www.lsbb.eu

direction@lsbb.eu



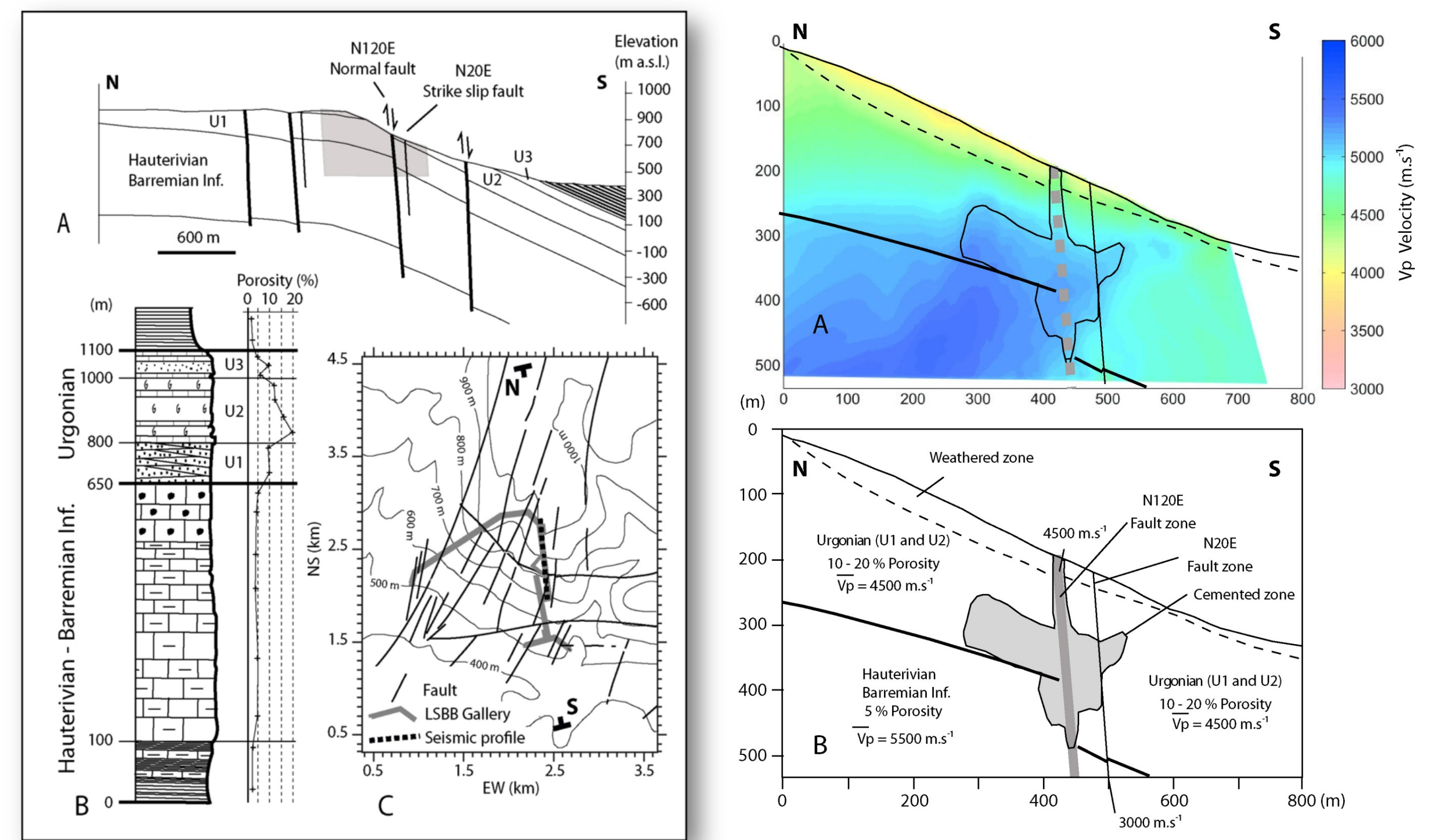
The low background noise interdisciplinary ground and underground based research laboratory (LSBB, CNRS Mixed Service Unit) contributes to the development of knowledge and know-how at national, European and international levels. As an interdisciplinary research facility, the LSBB is able to (i) accommodate large instruments, (ii) host scientific platforms, (iii) provide real-time measurements to national observatories, (iv) develop and to welcome ultra-sensitive multiphysics instrumentations of both academic and industrial collaborations in a low-anthropic-noise environment with particular interest in geological, electromagnetic and hydrogeological fields.

Easy access to the shallow and deep unsaturated zones of the Fontaine-de-Vaucluse aquifer



Garry et al., 2008; Blondel et al., 2010; Carrière et al., 2013; Gaillardet et al., 2018; Jourde et al., 2018; Ollivier et al., 2019; Barbel-Périneau et al., 2019

Access to Urgonian facies analog to oil fields of the Middle East



Maufroy et al., 2012; Bereš et al., 2013; Barruol et al., 2017; Matonti et al., 2017; Frau et al., 2018; Godeau et al., 2018; Tendil et al., 2018

Addressing societal challenges

- Increasing stress on water resources due to climate change and anthropogenic impact
- Seismic hazard
- Optimization of oil bearing in carbonate reservoirs

Interest of LSBB's location

- Access to underground water
- Karstic environment
- Within a main seismogenic zone
- Access to carbonated platform

Research infrastructure

- Accommodation of large experiments in controlled environments
- Underground operation

The LSBB offers

- Potential for multi-scales & multi-depths projects
- Permanent staff to ensure the experiment survey
- Fine monitoring of environmental parameters
- Boreholes at different depths and locations
- Easy access for materials and water, electricity and network availability
- Surface and underground facilities in a low-background noise environment
- Underground vaults, clean room, electromagnetically shielded spaces

Platform for instrumentation characterization

- Development and characterization of high sensitivity technology
- Interdisciplinary test site for benchmarks
- Synergy between academics and industry

LSBB know-how

- Development, implementation & characterization of sensors
- Interactions between research teams
- Data quality and reliability management
- Coupling between instrumentation and environment

Environment and resources characterization

Instrumentation and metrology development

Unique facility and potential for experimentation

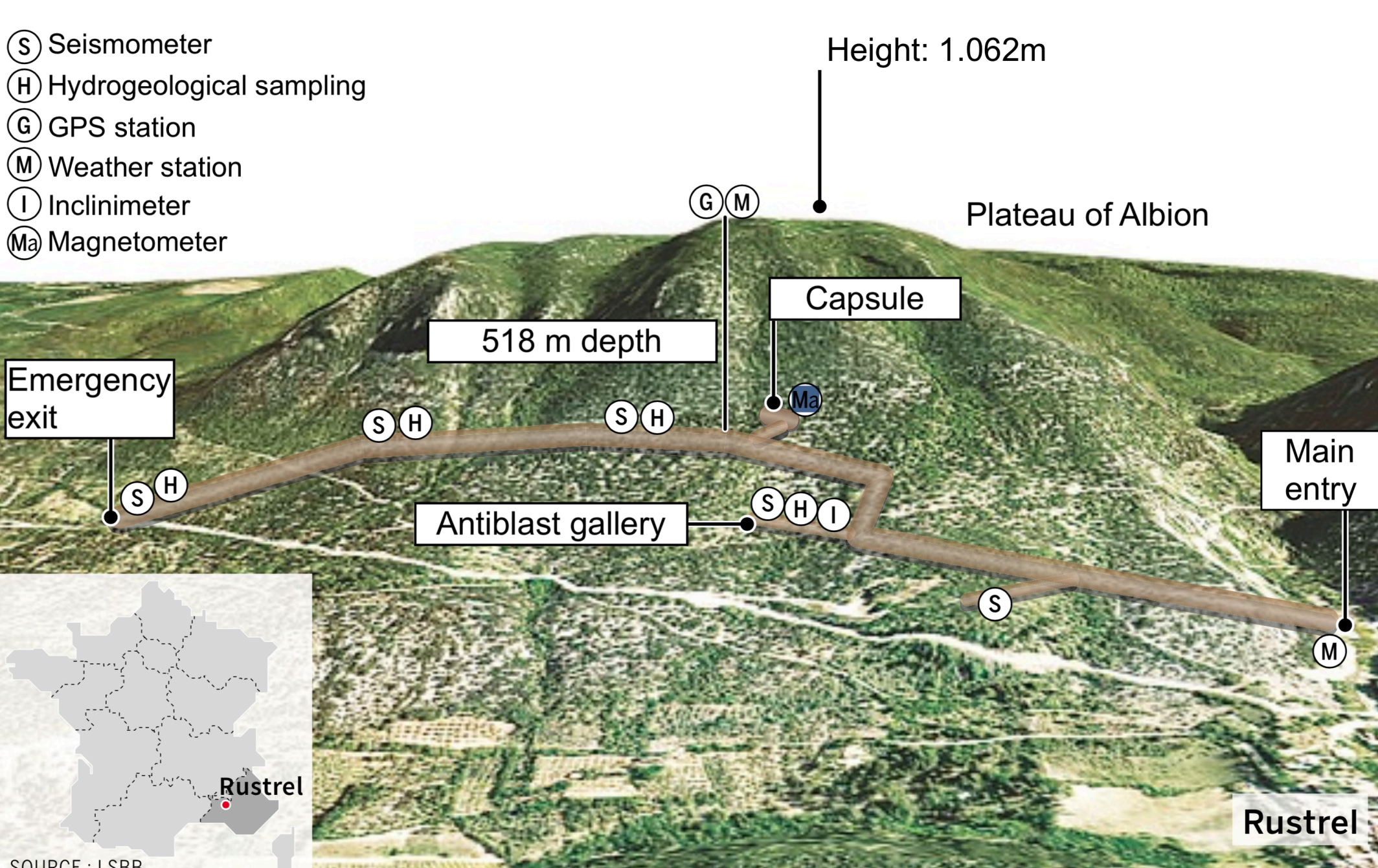
Measurements of waves and radiation

Long term observation

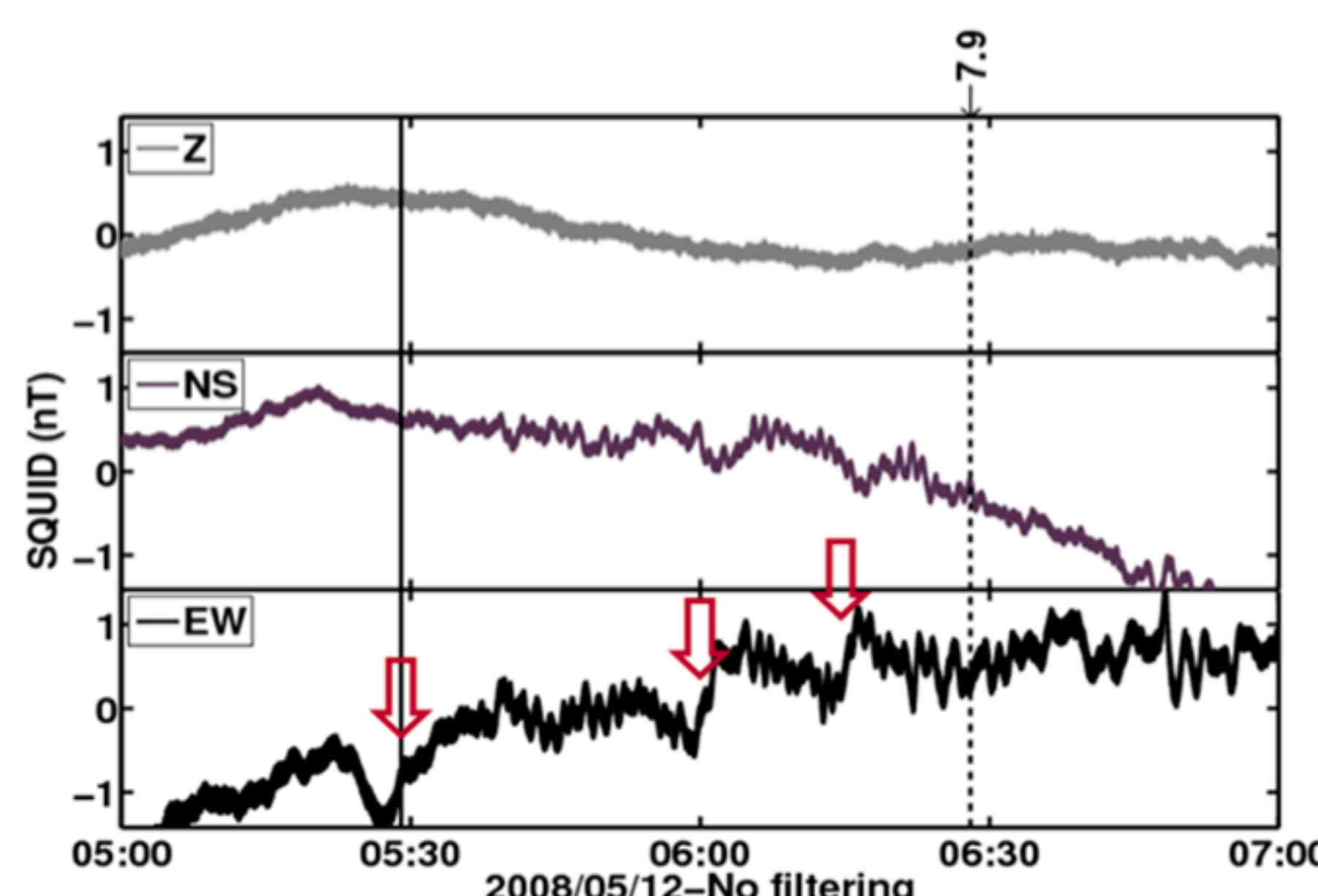
- Assure long term data acquisition provided to SNO

LSBB multi-physics instrumentation

- Magnetometry
- Densitometry
- Gravimetry
- Hydrogeological survey
- Gravitational waves
- Neutron spectrum
- Clinometry
- Seismometry
- Optic fiber
- Muography
- Rotation
- Atm. EM & rad. Phenomena ... and others!

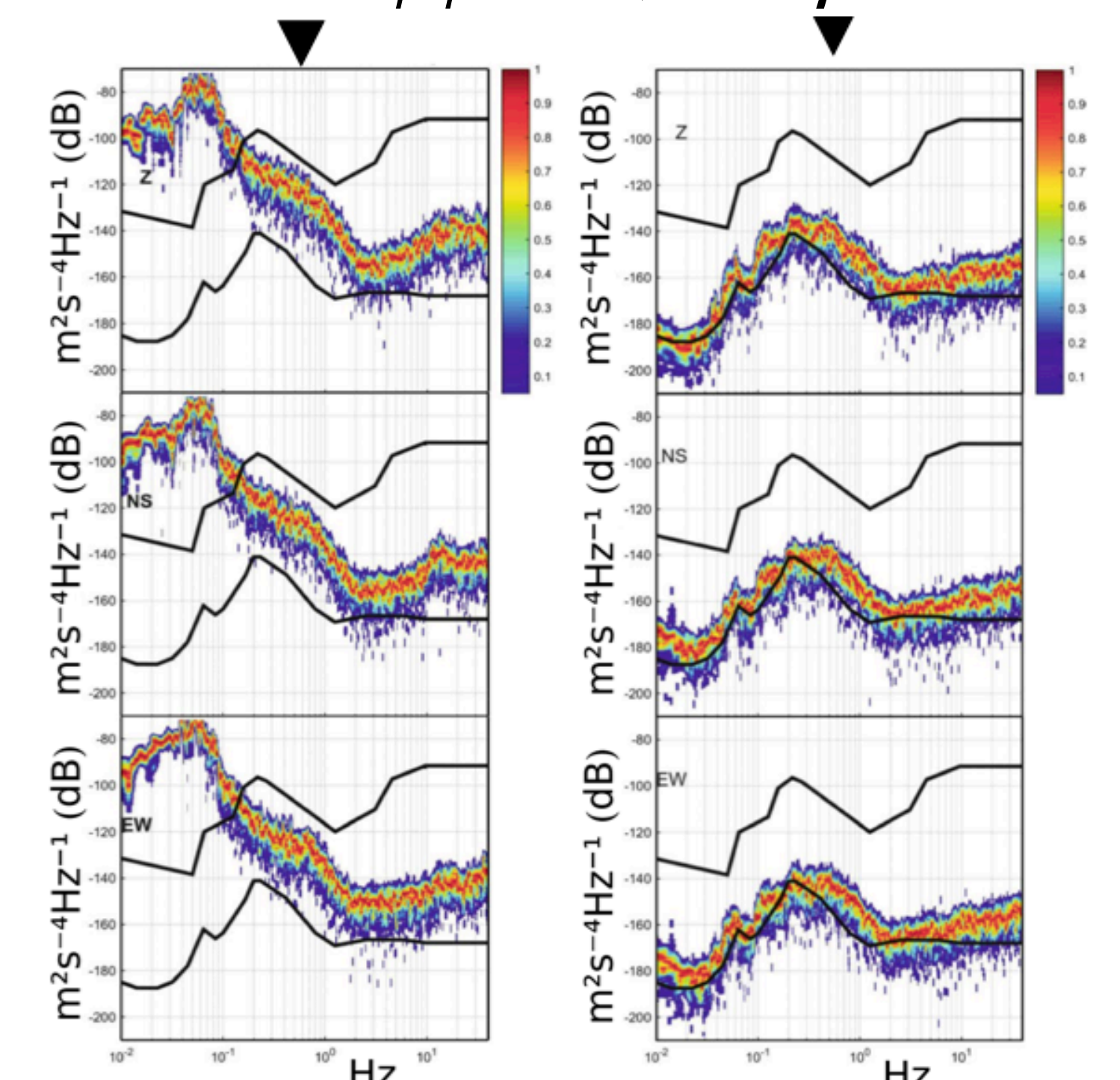


The LSBB counts with 54ha of surface and 4 km of underground galleries with depths ranging from 0 to 518 m



Jumps of magnetic field in time coincidence with "rainbow clouds" observed at different locations before Sichuan earthquake

Tohoku-Oki 11/3/11 Quiet day at LSBB



PSD (top to bottom: Z, NS, EW) vs Peterson's high and low noise models

60 minutes before 500 km from epicenter | 30 minutes before 450 km from epicenter | 10 minutes before 550 km from epicenter