



HAL
open science

Immune Checkpoint and Anti-Angiogenic Antibodies for the Treatment of Non-Small Cell Lung Cancer in the European Union and United States

Marion Ferreira, Thomas Secher, Nathalie Heuzé-Vourc'H, Karen Reckamp

► To cite this version:

Marion Ferreira, Thomas Secher, Nathalie Heuzé-Vourc'H, Karen Reckamp. Immune Checkpoint and Anti-Angiogenic Antibodies for the Treatment of Non-Small Cell Lung Cancer in the European Union and United States. *Pharmaceutics*, 2021, 13 (6), pp.912. <10.3390/pharmaceutics13060912>. <hal-03382451>

HAL Id: hal-03382451

<https://hal.science/hal-03382451v1>

Submitted on 3 Jun 2022

HAL is a multi-disciplinary open access archive for the deposit and dissemination of scientific research documents, whether they are published or not. The documents may come from teaching and research institutions in France or abroad, or from public or private research centers.

L'archive ouverte pluridisciplinaire **HAL**, est destinée au dépôt et à la diffusion de documents scientifiques de niveau recherche, publiés ou non, émanant des établissements d'enseignement et de recherche français ou étrangers, des laboratoires publics ou privés.



HAL Authorization

1 Review

2 **Immune Checkpoint and Anti-Angiogenic Antibodies for the**
3 **Treatment of Non-Small Cell Lung Cancer in the European**
4 **Union and United States**5 **Marion FERREIRA** ^{1,2,3*}, **Thomas SECHER** ^{1,2}, **Nathalie HEUZE-VOURC'H** ^{1,2} and **Karen L. RECKAMP** ⁴6
7¹ INSERM, Centre d'Etude des Pathologies Respiratoires, U1100, F-37032 Tours, France² Université de Tours, F-37032, France³ CHRU de Tours, Département de Pneumologie et Explorations

fonctionnelles Respiratoires, F-37032 Tours, France

⁴ Department of Medicine, Cedars Sinai Medical Center, Los Angeles,

CA USA

* Correspondence: marion-ferreira0404@gmail.com

Citation: Ferreira, M; Secher, S; Heuzé-Vourc'h, N; Reckamp K. Metastatic non-small cell lung cancer management on both sides of the Atlantic: anti-angiogenic and immune checkpoint inhibitors antibodies in European Union and the US. *Pharmaceutics* **2021**, *13*, x. <https://doi.org/10.3390/xxxxx>

Academic Editor: Firstname Lastname

Received: date
Accepted: date
Published: date

Publisher's Note: MDPI stays neutral with regard to jurisdictional claims in published maps and institutional affiliations.



Copyright: © 2021 by the authors. Submitted for possible open access publication under the terms and conditions of the Creative Commons Attribution (CC BY) license (<https://creativecommons.org/licenses/by/4.0/>).

Abstract: Several types of antibodies (Abs) are currently used in non-small cell lung cancer (NSCLC). Anti-angiogenic and immune checkpoint inhibitors (ICI) Abs are the most frequent treatments used alone or with chemotherapy in metastatic NSCLC, for the front line and beyond. Considering the many therapeutic options for locally advanced and metastatic lung cancer and differences in use according to geographic area, we present here a comprehensive review of the marketed ICI and antiangiogenic Abs approved in European Union and the US to treat locally advanced and metastatic NSCLC patients. We briefly describe the different molecules and their development in thoracic oncology and compare pharmacokinetic data, processing decision algorithm and marketing authorizations by the EMA and US Food and Drug Administration (FDA).

Keywords: lung cancer; immune checkpoint inhibitors; anti-angiogenic; antibodies; cancer treatment

1. Introduction

Lung cancer is responsible for significant morbidity and mortality worldwide; it is the leading cause of cancer death. It comprises non-small cell lung cancer (NSCLC), the most frequent subtype, and small cell lung cancer (SCLC). Despite recent therapeutic progresses, it still constitutes a major public health problem, due to a diagnosis frequently made at advanced stage with a high cost to society. A better understanding of tumor and immune signaling pathways has enabled the recent discovery of new molecular targets. Immunotherapy with immune checkpoint inhibitors (ICIs) has changed the treatment paradigm in many tumor types and improved survival in a subset of patients with advanced or metastatic cancers [1]. The choice of standard therapeutic options for patients with locally advanced, and metastatic NSCLC has been expanded by monoclonal antibodies (Abs) like ICIs, but also anti-angiogenic Abs and other targeted Abs [2].

Several types of Abs are currently used for the treatment of NSCLC, but this review will discuss ICI and anti-angiogenic Abs. In fact, some Abs are directed to the epidermal growth factor receptor (EGFR) like necitumumab, a monoclonal antibody (Ab) and blocks the interaction between EGFR and its ligands. It was approved by the FDA in 2015 for first-line treatment of metastatic squamous NSCLC in combination with chemotherapy [3] but the National Comprehensive Cancer Network (NCCN) guidelines recom-

34
35
36
37
38
39
40
41
42
43

mends against the use of this Ab, based on its toxicity, cost and limited improvement in efficacy when compared to chemotherapy.

We will discuss commonly used and marketed ICIs for patients with NSCLC including: nivolumab [4–7], pembrolizumab [8–11], cemiplimab [12], durvalumab [13], atezolizumab [14–16], and ipilimumab [6,17]. They act by targeting immune checkpoints expressed by tumor infiltrating lymphocytes (TILs) – programmed-death 1 (PD-1) or cytotoxic T-lymphocyte-associated protein 4 (CTLA-4) – or expressed by cancer and tumor infiltrating immune cells – programmed-death ligand 1 (PD-L1) [18]. Anti-angiogenic Abs used in NSCLC are bevacizumab [19–21] and ramucirumab [22,23]. The choice of ICI molecule depends on the expression of tumor PD-L1 for some molecules or associations and the choice of anti-angiogenic therapy is based on patients' contraindications and tumor histology. ICIs have proven to be better tolerated than chemotherapy [5,9] but, the response to single-agent ICI is not durable in most patients and only a minority have a durable benefit [14,24]. Even if ICI represent one of the most promising therapeutic approaches in metastatic NSCLC, combination treatments are frequently used including chemotherapy, multiple ICIs or ICI and other Abs, in order to improve their efficacy.

Considering the various therapeutic options for locally advanced and metastatic lung cancer and differences in use according to geographic area, we present a comprehensive review of the marketed ICI and antiangiogenic Abs approved in European Union and the US to treat NSCLC patients. We will focus our discussion on NSCLC without oncogenic drivers except for anti-angiogenic Abs which can be used in combination with tyrosine kinase inhibitors (TKI) in case of EGFR-mutated tumors. The European Medicines Agency (EMA) is a decentralized agency of the European Union (EU) responsible for the scientific evaluation, supervision and safety monitoring of medicines. It serves the EU and other countries: Iceland, Norway, and Liechtenstein. United Kingdom (UK) and Switzerland are therefore not affected by this review. Even before their withdrawal from the EU, UK did not use EMA recommendations for their drug approvals; Switzerland has its own marketing authorization system (Swissmedic's). Herein, we briefly describe the different molecules and their development in thoracic oncology and compare pharmacokinetic data and marketing authorizations by the EMA and US Food and Drug Administration (FDA).

2. Immune checkpoint inhibitors

Cancer growth and spread are not only dependent on tumor cell characteristics but are also affected by the interaction with the immune system [25]. To prevent any unwanted damage caused by activated T cells to surrounding tissues, the immune system has evolved a variety of mechanisms, or 'checkpoints' that are used to modulate the duration and amplitude of the immune responses [26]. This dampens the immune response and protects against damage caused by unwanted inflammation or autoimmunity. This is achieved primarily by upregulation of 'co-inhibitory' receptors (TIGIT, TIM-3...) that act to 'turn off' activated T cells. Ultimately, it is the balance between co-stimulatory and co-inhibitory signals that dictates the fate of activated T cells [18]. In cancer, T-cells primed to respond to tumor cells are exposed continuously to tumor antigens during active malignancy, which may result in upregulation of multiple inhibitory receptors, culminating decreased activity against tumor cells, phenomenon known as T-cell exhaustion [27]. These multifaceted interactions can be manipulated to drive effective anticancer immunity. For example, several agonist antibodies targeting immune co-stimulatory receptors (CD27, CD40, OX40...) have been evaluated clinically in cancer for now more than years; but none have been approved to date, nor have begun any phase III randomized trials [28]. On the other hand, T-cell exhaustion could be overcome by modulating the inhibitory pathways with antagonist Abs [27].

2.1. Anti-CTLA-4 antibodies

97 CTLA-4 protein is expressed on the surface of T cells and competes with CD28 for B7
98 binding in an inhibitory fashion, therefore acting as suppressor of T-cell activation [29].
99 Abs to CTLA-4 block the inhibition of CD28/B7-dependent T-cell activation and in turn
100 prolong anti-tumor activity (Figure 1).

101 In lung cancer, only one anti-CTLA-4 antibody is currently used: ipilimumab; a fully
102 human IgG1 kappa monoclonal (Table 1). The efficiency of ICIs targeting to CTLA-4 were
103 initially demonstrated for the treatment of metastatic melanoma [30] before being ex-
104 panded in metastatic lung cancer.

105 2.2. Anti-PD-1 and PD-L1 antibodies

106 One mechanism of immune suppression in NSCLC is the expression of inhibitory
107 molecules in the tumor microenvironment. PD-L1 (B7-H1) is expressed on tumor cells in
108 approximately half of NSCLC; its expression can contribute to poor prognosis by sup-
109 pressing T-cell function and promoting tumor cell immune escape [31]. Both PD-L1 and
110 PD-L2 (B7-DC) bind to PD-1 but PD-L1 expression is predominantly confined to the tu-
111 mor microenvironment on the contrary of PD-L2 which is mainly expressed on dendritic
112 cells and macrophages [32] (Figure 1).

113 PD-1 checkpoint blockade uses Abs directed against either the receptor (PD-1) or its
114 ligand (PD-L1). Early in the development of these therapies, two anti-PD-1 Abs were
115 investigated and are currently used in metastatic lung cancer. Nivolumab is a fully
116 human IgG4 monoclonal antibody targeting PD-1 (Table 1) and pembrolizumab is a
117 humanized IgG4 antibody targeting PD-1 (Table 1). Recently, another antibody has been
118 approved in the US: cemiplimab is a highly potent, fully human, IgG4, directed against
119 PD-1 [12].

120 There are currently 2 anti-PD-L1 antibodies that are used in locally advanced or
121 metastatic lung cancer: atezolizumab, a humanized IgG1 antibody targeting PD-L1 (Ta-
122 ble 1) and durvalumab, a fully human IgG1 kappa antibody targeting also PD-L1 (Table
123 1).

124 3. Anti-angiogenic antibodies

125 Angiogenesis is frequently upregulated in malignant solid tumors and is critical for
126 tumor growth, proliferation and metastases [33]. The vascular endothelial growth factors
127 (VEGF-A, -B, -C and -D) and their transmembrane tyrosine kinase receptors (VEGFR-1, -2
128 and -3) are critical proangiogenic factors in malignant tissues [34] (Figure 1). In NSCLC,
129 increased VEGF expression is common and associated with adverse clinical outcomes.

130 Two Abs are used in lung cancer: bevacizumab, a recombinant humanized mono-
131 clonal IgG1 antibody that neutralizes VEGF's biologic activity through a steric inhibition
132 of its binding to VEGF receptor. Ramucirumab is a recombinant human monoclonal IgG1
133 antibody with high affinity for the extracellular domain of VEGFR-2, inhibiting ligand
134 binding (VEGF-A, -C and -D) and activation of downstream proangiogenic pathways
135 [33] (Table 1).

97
98
99
100
101
102
103
104
105
106
107
108
109
110
111
112
113
114
115
116
117
118
119
120
121
122
123
124
125
126
127
128
129
130
131
132
133
134
135
136
137
138

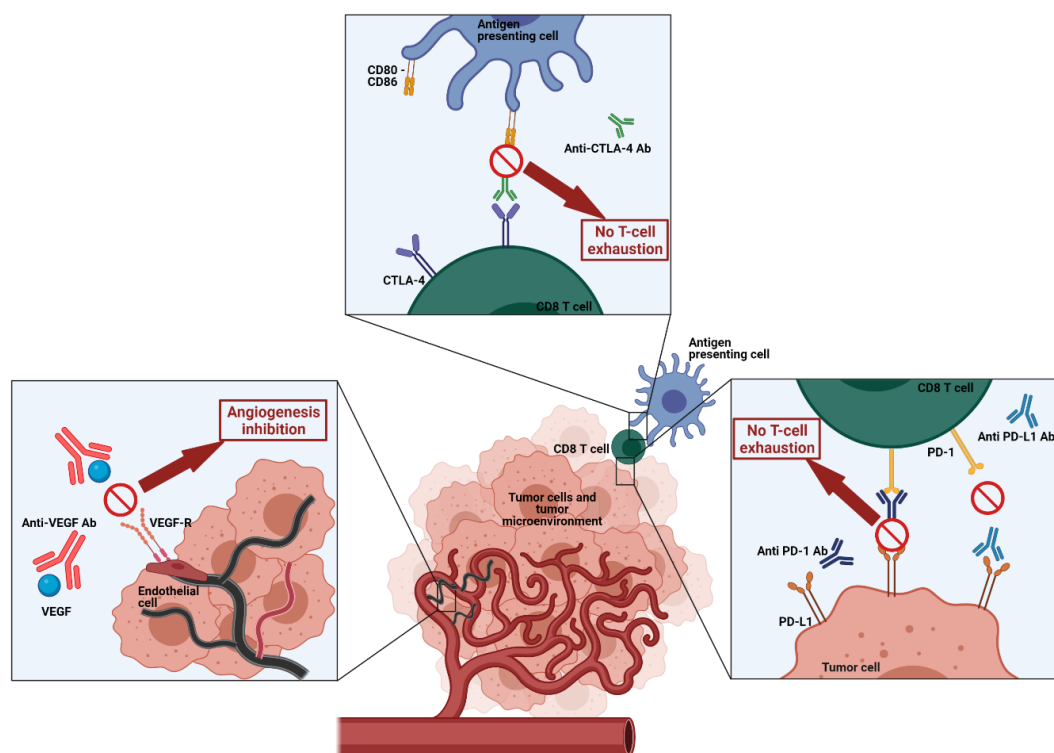


Figure 1. Characteristics of immune checkpoint inhibitors and anti-angiogenic antibodies used in NSCLC. Created with BioRender.com

4. Pharmacokinetics (PK) and precaution for use of antibodies

4.1. PK and precaution for use of ICI

ICI is a versatile class of immunomodulatory agents and have demonstrated clinical benefit in the treatment of several cancers, including metastatic NSCLC. In general, monoclonal Abs, including immunomodulatory Abs, have proven to be well tolerated [35]. The pharmacokinetic (PK) of the approved ICI is similar to that of endogenous immunoglobulin G (IgG). The typical volume of distribution of monoclonal Abs is comparable to the plasma volume (2 to 4 L) [36]. Drug-receptor binding affinity and association-dissociation kinetics have an important role in distribution [37]. Elimination occurs by both specific (target-mediated) and nonspecific (Fc-mediated- routes, accounting for the nonlinear and linear elimination PK [36]. Following target saturation, the linear – nonspecific – route of elimination is predominant; so, the half-life of ICI varies from 3 to 4 weeks approximately [36,38].

Ipilimumab was the first ICI to be made commercially available for the treatment of metastatic melanoma in 2011 in the US. It is administered intravenously, with a mean half-life of 15.4 days [39] (Table 1). The following factors do not represent contraindications to the use because they had no clinically important effect on the clearance of ipilimumab: age, sex, performance status (PS), renal impairment (glomerular filtration rate ≥ 15 mL/min/1.73 m²), or mild hepatic impairment (total bilirubin > 1 to 1.5 times the upper limit of normal or aspartate transaminase levels $>$ upper limit of normal) (data available on Bristol Myers Squibb. YERVOY®(Ipilimumab)).

Nivolumab is given intravenously, with a mean half-life of 25 days [39] (Table 1). No dose adjustment is recommended in patients with renal failure, and mild or moderate hepatic impairment because no side effects are expected under these conditions (data available on Bristol Myers Squibb. OPDIVO™ (Nivolumab)).

168 Pembrolizumab is administered intravenously, with a mean half-life of 22 days [39]
169 (Table 1). No dose adjustment is recommended in patients with renal failure, and mild or
170 moderate hepatic impairment (data available on Merck Sharp & Dohme Corp.
171 KEYTRUDA®(Pembrolizumab)).

172 Cemiplimab is given intravenously, with a half-life of 20.3 days (Table 1). Mild or
173 moderate renal failure (estimated glomerular filtration rate (eGFR) ≥ 30 mL/min/1.73 m²)
174 and mild to moderate liver failure (bilirubin $< 3\times$ upper limit of normal and any aspartate
175 transaminase levels) had no clinically significant effect on the systemic exposure of
176 cemiplimab (data available on accessdata.fda.gov with reference ID: 4750303)

177 Atezolizumab is given intravenously, with a half-life of 27 days [39] (Table 1). Mild
178 or moderate renal failure (estimated glomerular filtration rate (eGFR) ≥ 30 mL/min/1.73
179 m²) and mild to moderate liver failure (bilirubin $< 3\times$ upper limit of normal and any as-
180 partate transaminase levels) had no clinically significant effect on the systemic exposure
181 of atezolizumab (data available on Genentech Inc. TECENTRIQ®(Atezolizumab)).

182 Durvalumab is administered intravenously, with a half-life of 18 days [39] (Table 1).
183 Mild (creatinine clearance 60 to 89 mL/min) or moderate renal impairment (creatinine
184 clearance 30 to 59 mL/min), and mild hepatic impairment (bilirubin \leq upper limit of
185 normal and aspartate transaminase levels $>$ upper limit of normal or bilirubin > 1 to 1.5 x
186 upper limit of normal and any aspartate transaminase levels) had no clinically significant
187 effect on the pharmacokinetics of durvalumab (data available on AstraZeneca Pharma-
188 ceuticals L.P. IMFINZI®(Durvalumab)).

189 ICIs commonly display modest interpatient variability in PK. Some covariates could
190 explain part of the observed variability. They varied between the approved ICIs, but
191 sex, Eastern Cooperative Oncology Group (ECOG) PS, body weight, tumor type, tumor
192 burden, baseline lactate dehydrogenase (LDH), estimated glomerular filtration rate, al-
193 bumin, can be considered in the differences [40–42].

194 4.2. PK and precaution for use of anti-angiogenic Abs

195 Bevacizumab is given intravenously, with a half-life of 19.9 days (Table 1). No dose
196 adjustment is recommended in patients with renal failure, and mild or moderate hepatic
197 impairment [43].

198 Ramucirumab is administered intravenously, with a half-life of 14 days and with no
199 dose adjustment in case of renal failure or mild/moderate hepatic impairment [44] (Table
200 1).

201 The use of anti-angiogenic molecules is indicated in selected patients only, because
202 of its toxicity. Generally, in subjects with NSCLC, they are safe and well tolerated but
203 some clinical or biological adverse events can interfere with the use of these molecules.
204 The most common adverse events are hypertension, proteinuria, and epistaxis. Infre-
205 quent serious adverse events include neutropenia complications, thromboembolic
206 events, and pulmonary hemorrhage. In order to reduce the incidence of severe hemor-
207 rhage, the first randomized clinical trials of bevacizumab in NSCLC excluded: 1) subjects
208 with squamous histology; 2) subjects with significant hemoptysis (≥ 1 teaspoon); 3) sub-
209 jects with tumors invading or abutting major blood vessels or with central tumor locali-
210 zation or with tumor cavitation, based on a radiological assessment; 4) subjects with
211 hemorrhagic disorders or in treatment with anticoagulant therapy; 5) subjects with brain
212 metastases; 6) subjects with ECOG >1 ; and 7) elderly patients (age ≥ 75 years) [46]. But af-
213 ter several years and real-life observations, safety and efficacy of bevacizumab is not af-
214 fected by patient age, PS, anticoagulation therapy, and brain metastases. The only abso-
215 lute contraindications to its use are squamous histology and a history of clinically sig-
216 nificant hemoptysis [47].
217
218
219
220
221

Antibody	Target	Administration	Indication in US	Indication in European Union	Ig class	Half-life (days)	Dose in the US	Dose in European Union	Interval between 2 injections
Ipilimumab	CTLA-4	Intravenous	Front line with nivolumab alone (PD-L1 $\geq 1\%$) or + 2 cycles platinum-based chemotherapy	Front line with nivolumab + 2 cycles platinum-based chemotherapy	IgG1	15.4	1 mg/kg (with nivolumab)	1 mg/kg (with nivolumab)	6 weeks (with nivolumab +/- chemotherapy)
Nivolumab	PD-1	Intravenous	Front line with ipilimumab alone (PD-L1 $\geq 1\%$) or + 2 cycles platinum-based chemotherapy	Front line with ipilimumab + 2 cycles platinum-based chemotherapy	IgG4	25	3 mg/kg (with ipilimumab)	3 mg/kg (with ipilimumab)	2 weeks
							360 mg (with chemotherapy + ipilimumab)	360 mg (with chemotherapy + ipilimumab)	3 weeks (with chemotherapy + ipilimumab)
							240 or 480 mg (monotherapy)	240 mg (monotherapy)	2 weeks (240 mg) 4 weeks (480 mg)
Pembrolizumab	PD-1	Intravenous	Front line alone (PD-L1 $\geq 50\%$ or PD-L1 $\geq 1\%$) or with platinum and pemetrexed (non-squamous NSCLC); with carboplatin and paclitaxel or nab-paclitaxel (squamous NSCLC)	Front line alone (PD-L1 $\geq 50\%$) or with platinum and pemetrexed (non-squamous NSCLC); with carboplatin and paclitaxel or nab-paclitaxel (squamous NSCLC)	IgG4	22	200 or 400 mg (monotherapy or with chemotherapy)	200 mg (monotherapy or with chemotherapy)	3 weeks (200 mg) 6 weeks (400 mg)
								400 mg (in maintenance and if well tolerated)	
			Second line (PD-L1 $\geq 1\%$)	Second line (PD-L1 $\geq 1\%$)					
Cemiplimab	PD-1	Intravenous	Front line alone (PD-L1 $\geq 50\%$)		IgG4	20	350 mg		3 weeks
Atezolizumab	PD-L1	Intravenous	Front line alone (PD-L1 $\geq 50\%$) or	Front line with carboplatin,	IgG1	27	840 mg or	1200 mg	2 weeks (840 mg)

			with carboplatin, paclitaxel and bevacizumab (non-squamous NSCLC); or with carboplatin and nab-paclitaxel (non-squamous NSCLC) Second line	paclitaxel and bevacizumab (non-squamous NSCLC); Second line			1200mg (with chemotherapy) or 1680 mg	3 weeks (with chemotherapy or 1200 mg) 4 weeks (1680 mg)
Durvalumab	PD-L1	Intravenous	Consolidation following concurrent chemoradiation for unresectable stage III NSCLC	Consolidation following concurrent chemoradiation for unresectable stage III NSCLC	IgG1	18	10 mg/kg or 1500 mg	10 mg/kg 2 weeks (10 mg/kg) or 4 weeks (1500 mg)
Bevacizumab	VEGF	Intravenous	Front line with carboplatin and paclitaxel (non-squamous NSCLC) or with atezolizumab, carboplatin and paclitaxel (non-squamous NSCLC)	Front line with carboplatin and paclitaxel (non-squamous NSCLC) or with atezolizumab, carboplatin and paclitaxel (non-squamous NSCLC) or with erlotinib (if <i>EGFR</i> mutation)	IgG1	19.9	15 mg/kg	7,5 or 15 mg/kg (with cisplatin chemotherapy) 15 mg/kg (with carboplatin chemotherapy)
Ramucirumab	VEGFR	Intravenous	Front line with erlotinib (if <i>EGFR</i> mutation) Second line with docetaxel	Second line with docetaxel	IgG1	14	10mg/kg	10mg/kg 2 weeks (with erlotinib); 3 weeks (with docetaxel)

Table 1. Characteristics of marketed antibodies in NSCLC. According to [39]

223
224
225
226
227
228

229
230
231
232
233
234
235
236
237
238
239
240
241
242
243
244
245
246
247
248
249
250
251
252
253
254
255
256
257
258
259
260
261
262
263
264
265
266
267
268
269
270
271
272
273
274
275
276
277
278
279
280
281

5. Treatment paradigm for NSCLC in 2021

The treatment for locally advanced or metastatic NSCLC has changed dramatically in the last 15 years. Since 2007, anti-angiogenic Abs have been used in advanced/metastatic recurrent non-squamous NSCLC [48]. In March 2015, the EMA and FDA approved the first anti-PD-1 antibody as second line option for treatment of patients with advanced squamous NSCLC [4]. Additionally, a series of inhibitors related to CTLA-4 and PD-1/PD-L1 immune checkpoints have led to the use of immunotherapy for most NSCLC patients, and significantly revised the chemotherapy treatment model. The use of therapeutic Abs (anti-angiogenic or ICI) has become the cornerstone of first line treatment, either as a single modality or with chemotherapy. These advances in lung cancer management, along with targeted agents like tyrosine kinase inhibitors for lung cancer with oncogenic drivers or lifestyle alterations such as decreasing smoking among men, resulted in a decrease in population-level mortality from NSCLC in the US [49] similar to European Union. We will review the phase II/III clinical trials that led to the marketing authorizations of anti-angiogenic and ICI Abs currently used in NSCLC in the US and in European Union and in the US only (Table 2). We will present the indications according to the expression levels of PD-L1, using the same strata as in the clinical trials ($\geq 50\%$, 1-49% and $<1\%$).

5.1 Front line treatment in the US and in European Union

5.1.1. PD-L1 $\geq 50\%$

Patients with metastatic NSCLC and with PD-L1 $> 50\%$ have multiple immunotherapy treatment options. In both the US and European Union, monotherapy with pembrolizumab is an approach that may be used, and ICI and chemotherapy could also be given as front-line therapy to these patients.

Pembrolizumab was first used as monotherapy for second-line treatment and beyond (see section below). In the front-line setting, a randomized phase III trial, KEYNOTE-024, recruited 305 previously-untreated patients with NSCLC having PD-L1 expression in more than 50% tumor cells and no EGFR/ALK mutations to either receive pembrolizumab or platinum-based chemotherapy [9]. Patients treated with pembrolizumab showed better progression-free survival (PFS), overall survival (OS), and overall response rate (ORR) than those treated with chemotherapy [9,50]. Based on these results, the FDA and EMA approved pembrolizumab as a single-agent first-line immunotherapy in patients with advanced NSCLC harboring high PDL1 expression (PD-L1 $> 50\%$). The 3-year survival results of KEYNOTE-024 indicated that the pembrolizumab monotherapy significantly prolonged the median OS length (26.3 versus 14.2 months) and the 3-year OS rate (43.7 versus 24.9%) than is those treated with chemotherapy [50]. Moreover, the KEYNOTE-042 phase III trial, with the same patient groups, divided each treatment arm into three subgroups based on the level of PD-L1 expression (PD-L1 $> 50\%$, $> 20\%$, $> 1\%$) [51]. All groups showed significantly better OS with pembrolizumab rather than chemotherapy but the OS of patients who received pembrolizumab in the high PD-L1 expression arm ($>50\%$) showed maximum benefit. These results supported pembrolizumab administration as a single-drug in patients with advanced NSCLC harboring PD-L1 $>50\%$.

The addition of PD-1/PD-L1 inhibition to standard chemotherapy in treatment-naïve NSCLC patients was investigated, regardless of PD-L1 expression. KEYNOTE-189 was a phase III trial that assessed first-line platinum-based chemotherapy with or without pembrolizumab in EGFR/ALK-wild type, non-squamous NSCLC patients [52]. The median OS was not reached at the time of analysis for the pembrolizumab-chemotherapy arm versus 11.3 months for placebo-chemotherapy arm, and the OS advantage was achieved in all PD-L1 subgroups. On the basis of these results, pembrolizumab in combination with pemetrexed and carboplatin as front-line treatment in metastatic

282 non-squamous NSCLC became a new standard, regardless of PD-L1 expression. Similar
283 treatment was then evaluated in squamous NSCLC: the KEYNOTE-407 trial randomized
284 patients to receive 4 cycles of carboplatin and paclitaxel or nab-paclitaxel with or without
285 pembrolizumab [53]. In the same way, patients in the pembrolizumab-containing group
286 showed a significantly improved OS compared with those in the chemotherapy group
287 (15.9 versus 11.3 months). The combination with pembrolizumab and platinum-based
288 chemotherapy is therefore used in the front line setting regardless of the level of PD-L1
289 expression or the tumor histology.

290 Another possible treatment option in the US and in European Union for patients
291 with a PD-L1 greater than 50% is a combination of chemotherapy, atezolizumab and
292 bevacizumab for non-squamous NSCLC. The Impower150 trial randomized patients to 3
293 groups: atezolizumab-bevacizumab-carboplatin-paclitaxel (ABCP),
294 atezolizumab-carboplatin-paclitaxel (ACP) and bevacizumab-carboplatin-paclitaxel
295 (BCP). Both the median PFS and OS were improved in the atezolizumab-containing arm
296 (PFS: 8.3 versus 6.8 months; OS: 19.2 versus 14.7 months) compared with the patients
297 treated with BCP [54]. Therefore, this combination is authorized in the front line setting
298 in the US and in European Union for advanced NSCLC regardless of PD-L1 expression,
299 in the absence of contraindication to bevacizumab. Bevacizumab is the only an-
300 ti-angiogenic agent approved for the first-line treatment of NSCLC in selected patients
301 [55].

302 Recently, another combination of two ICIs and chemotherapy has been approved.
303 The CheckMate-9LA study randomized patients to receive nivolumab plus ipilimumab
304 combined with histology-based, platinum doublet chemotherapy (for two cycles), or
305 chemotherapy alone (for four cycles) [56]. The OS, as well as secondary endpoints of PFS
306 and ORR, were superior for the combination nivolumab plus ipilimumab, given concom-
307 itantly with two cycles of chemotherapy, versus chemotherapy alone. This im-
308 mune-chemotherapy combination is approved regardless the PD-L1 expression and the
309 tumor histology (Table 2).

311 5.1.2. PD-L1 1-49 %

312 For patients with PD-L1 between 1-49%, treatment options shared by the US and the
313 European Union are pembrolizumab and chemotherapy association regardless the his-
314 tology type [52,53], atezolizumab-chemotherapy-bevacizumab only for non-squamous
315 NSCLC [54] and combination of nivolumab, ipilimumab and two cycles of chemotherapy
316 for all PD-L1 expressions [56] (Table 2).

318 5.1.3. PD-L1 < 1%

319 For patients with PD-L1 < 1%, treatment options shared by the US and the European
320 Union are pembrolizumab and chemotherapy association regardless the histology type
321 [52,53], or atezolizumab-chemotherapy-bevacizumab only for non-squamous NSCLC [54]
322 (Table 2). In European Union only, the combination of nivolumab, ipilimumab with two
323 cycles of chemotherapy for all PD-L1 expressions can be used [56].

325 5.2 Front line treatment in the US only

326
327 Most treatment options in the US and in European Union are similar but there are
328 some indications currently specific for the US.

330 5.2.1. PD-L1 ≥ 50%

331 The FDA has granted approval to atezolizumab monotherapy as treatment for pa-
332 tients with metastatic NSCLC whose tumors have PD-L1 expression greater than 50%,
333 without EGFR/ALK mutations. In fact, the Impower110 study compared atezolizumab
334 with chemotherapy among patients with high PD-L1 expression [57]. The median OS was

20.1 months with atezolizumab versus 13.1 months with chemotherapy, at a median follow-up of 15.7 months.

Recently, another ICI monotherapy has been approved in the US. The EMPOWER-Lung 1 phase III open-label study randomized patients to receive cemiplimab or platinum-based chemotherapy. Primary endpoints were assessed in the intention-to-treat population and in a prespecified PD-L1 of at least 50% population [12]. Cemiplimab reduced the risk of death by 43% compared to chemotherapy. This was achieved with crossover rate to cemiplimab greater than 70% following disease progression on chemotherapy, as well as the largest population of patients with pre-treated and clinically stable brain metastases among advanced NSCLC pivotal trials to date. Therefore, in the US, for these patients with PD-L1 expression $\geq 50\%$, the choice between pembrolizumab, cemiplimab and atezolizumab can be made as ICI monotherapy for front line treatment.

An ICI combination without chemotherapy is also possible in the US: ipilimumab and nivolumab (see section below) (Table 2).

5.2.2. PD-L1 1-49 %

For patients with PD-L1 expression 1-49%, 2 additional options are available in the USA compared to European Union. In 2019, FDA expanded pembrolizumab indication for first-line treatment of NSCLC with PD-L1 expression greater than 1%. This approval was based on the KEYNOTE-042 trial [51]: in the PD-L1 $\geq 1\%$ population (overall population), the median OS was 16.7 and 12.1 months for the pembrolizumab and chemotherapy arms, respectively. In the $\geq 50\%$ subgroup, the estimated median OS was 20 months and 12.2 months for those receiving pembrolizumab and chemotherapy, respectively. There were no significant differences in progression-free survival or overall response rate between arms in any population.

The second additional option compared to European Union is the ICI combination nivolumab and ipilimumab, based on the CheckMate227 study [6,58]. This trial recruited treatment-naïve patients with advanced NSCLC. They were randomized to nivolumab plus ipilimumab, nivolumab with or without chemotherapy, and histology-based chemotherapy arms [6,58]. According to PD-L1 expression, patients were enrolled into PD-L1 $> 1\%$ and $< 1\%$ cohorts, and further randomized 1:1:1 to nivolumab plus ipilimumab, platinum-based chemotherapy, or nivolumab monotherapy (PD-L1 $> 1\%$ group) or nivolumab plus platinum-based chemotherapy (PD-L1 $< 1\%$ group). The study protocol was later modified to include a co-primary endpoint of PFS in patients with high tumor-mutational burden (TMB), as defined by ≥ 10 mutations per megabase. Among patients with high TMB, nivolumab plus ipilimumab arm showed a significantly prolonged PFS than chemotherapy arm (7.2 versus 5.5 months) but median OS was not significantly different among high TMB. The final analysis for Checkmate-227 was based on the PD-L1 $\geq 1\%$ cohort and demonstrated a significantly higher median OS in patients who received ipilimumab plus nivolumab arm than in patients treated with chemotherapy alone (median OS: 17.1 months vs 14.9 months) [58]. Median PFS was also improved with nivolumab plus ipilimumab over chemotherapy for all patients regardless of PD-L1 expression, but was numerically higher for patients in the PD-L1 expression $< 1\%$ cohort. The final analysis did not demonstrate improved OS based on TMB. In CheckMate568, the association of efficacy with PD-L1 expression and TMB was assessed in patients who received first-line nivolumab plus ipilimumab [59]. Higher response rates and improved PFS were observed in patients with TMB of 10 or more mutations per megabase versus TMB of fewer than 10 mutations per megabase, irrespective of PD-L1 expression. Currently, nivolumab and ipilimumab combination therapy is approved in the US based on PD-L1 expression alone, for patients with PD-L1 expression $> 1\%$ (Table 2).

5.2.3. PD-L1 $< 1\%$

There is no difference in therapeutic strategy for patients with PD-L1 expression less than 1% (Table 2).

389
390
391
392
393
394

Sub-group	Treatment in the US	Comments	Treatment in European Union	Comments
	Pembrolizumab single agent			
	Atezolizumab single agent		Pembrolizumab single agent	
	Cemiplimab single agent		-	
PD-L1 ≥ 50%	Pembrolizumab ² + chemotherapy ¹		Pembrolizumab ² + chemotherapy ¹	
	Atezolizumab ⁵ + chemotherapy ⁴ +/- bevacizumab ⁶	Non-squamous NSCLC only	Atezolizumab ⁵ + chemotherapy ⁴ + bevacizumab ⁶	Non-squamous NSCLC only
	Nivolumab + ipilimumab			
	Nivolumab + ipilimumab + chemotherapy ⁷		Nivolumab + ipilimumab + chemotherapy ⁷	
	Pembrolizumab single agent		-	
	Pembrolizumab ² + chemotherapy ¹		Pembrolizumab ² + Chemotherapy ¹	
	Atezolizumab ⁴ + chemotherapy ³ +/- bevacizumab ⁵	Non-squamous NSCLC only	Atezolizumab ⁴ + chemotherapy ³ + bevacizumab ⁵	Non-squamous NSCLC only
	Nivolumab + ipilimumab		-	
PD-L1 1-49%	Nivolumab + ipilimumab + chemotherapy ⁷		Nivolumab + ipilimumab + chemotherapy ⁷	
	Pembrolizumab ² + chemotherapy ¹		Pembrolizumab ² + Chemotherapy ¹	
	Atezolizumab ⁴ + chemotherapy ³ +/- bevacizumab ⁵		Atezolizumab ⁴ + chemotherapy ³ + bevacizumab ⁵	Non-squamous NSCLC only
PD-L1 <1%	Nivolumab + ipilimumab + chemotherapy ⁷		Nivolumab + ipilimumab + chemotherapy ⁶	Awaiting a recommendation at the end of January 2021

395
396
397
398
399
400
401
402
403
404
405
406
407

Table 2. Algorithm for front line immune checkpoint inhibitors treatment of patients with NSCLC based on PD-L1 expression

¹Chemotherapy is cisplatin or carboplatin + pemetrexed for non-squamous NSCLC. Chemotherapy is carboplatin + paclitaxel for squamous NSCLC

²Continuation maintenance until progression, unacceptable toxicity, with pemetrexed in non-squamous NSCLC

³ Chemotherapy is carboplatin + paclitaxel

⁴ Continuation maintenance until progression, unacceptable toxicity

⁵Double continuation maintenance with bevacizumab-atezolizumab until progression or unacceptable toxicity

⁶Chemotherapy is cisplatin or carboplatin + pemetrexed for non-squamous NSCLC. Chemotherapy is carboplatin + paclitaxel for squamous NSCLC. 2 cycles of chemotherapy.

5.2.4. Patients who are not eligible to receive ICI

If first-line ICI cannot be used due to contraindications or active autoimmune disease, standard platinum-based doublet therapy is often given. The addition of

408 bevacizumab to chemotherapy can also be discussed in eligible patients. Bevacizumab
409 was evaluated in 2006 in a phase III clinical with stage IIIB-IV non-squamous NSCLC
410 patients [19]. Patients were treated with carboplatin-paclitaxel every three weeks for six
411 cycles with or without bevacizumab at 15 mg/kg. Bevacizumab was then administered as
412 maintenance therapy until evidence of disease progression or unacceptable toxicity oc-
413 curred. OS was significantly higher in bevacizumab group (12.3 versus 10.3 months) and
414 PFS was increased too. The same results were observed in the AVAiL trial with chemo-
415 therapy by cisplatin and gemcitabine, with or without bevacizumab, for the two doses
416 tested (7.5 or 15 mg/kg) [20]. After that, the phase III POINTBREAK trial randomized
417 patients in two arms: pemetrexed-carboplatin-bevacizumab followed by pemetrexed
418 plus bevacizumab in maintenance or paclitaxel-carboplatin-bevacizumab followed by
419 maintenance therapy with bevacizumab alone [60]. The primary end-point of OS did not
420 reach statistical significance, although in the group treat with pemetrexed and
421 bevacizumab in maintenance therapy, an increased PFS was reported. Another important
422 phase III trial was AVAPERL study: patients were randomized, after four cycles of
423 chemotherapy with cisplatin-pemetrexed-bevacizumab, to receive maintenance therapy
424 with bevacizumab alone or with pemetrexed and bevacizumab [61]. The PFS was im-
425 proved in the double maintenance group (10.2 versus 6.6 months) and the result for OS
426 was the same, but it was not statistically significant.
427

428 **5.2.5. VEGF/VEGFR antibody therapy in patients with EGFR mutations**

429 TKI are standard treatment options for NSCLC with EGFR mutations. Some pre-
430 clinical studies had shown that the EGFR signaling pathway can upregulate VEGF ex-
431 pression [62] and that VEGF/VEGFR can play a role in EGFR-TKI resistance [63]. This led
432 to the investigation of combination treatments with EGFR-TKIs and anti-angiogenic Ab.

433 In European Union, bevacizumab in combination with erlotinib, has been indicated
434 for first-line treatment of adult patients with unresectable advanced, metastatic or re-
435 current NSCLC with EGFR mutations since 2016. It is recommended that the treatment
436 with bevacizumab in addition to erlotinib is continued until disease progression. The
437 pivotal JO25567 study was a randomized phase II study conducted to assess the safety
438 and efficacy of first-line bevacizumab in combination with erlotinib compared to
439 erlotinib alone [64] in Japanese patients with advanced NSCLC with EGFR mutations.
440 Seventy-seven patients were randomly assigned to receive erlotinib and bevacizumab
441 and 77 to erlotinib alone. Median PFS was 16.0 months with erlotinib plus bevacizumab
442 and 9.7 months with erlotinib alone. OS was not improved in patients receiving the
443 combination. The safety analysis population comprised 75 patients in erlotinib plus
444 bevacizumab group and 77 in erlotinib group, who received at least one dose of study
445 drug. There was no difference in incidence of serious adverse events between the 2
446 groups. Nevertheless, more grade > 3 adverse events were reported with erlotinib plus
447 bevacizumab (90.7%) than with erlotinib (53.2%). It was primarily due to grade 3 hyper-
448 tension, but it was controllable with antihypertensive medications in most cases. Pro-
449 teinuria and bleeding were also more frequently reported with the association treatment
450 but were manageable and did not lead to early discontinuations [65].

451 More recently, in 2020, the FDA approved ramucirumab in combination with
452 erlotinib for first-line treatment of metastatic NSCLC with EGFR mutations. Efficacy was
453 evaluated in the RELAY trial, a multinational, randomized, double-blind, place-
454 bo-controlled, world-wide, multicenter study in patients with previously untreated met-
455 astatic NSCLC whose tumors have EGFR exon 19 deletion or exon 21 (L858R) substitu-
456 tion mutations [23]. A total of 449 patients were randomized (1:1) to receive either
457 ramucirumab 10 mg/kg or placebo every 2weeks, in combination with erlotinib once
458 daily, until disease progression or unacceptable toxicity. Median PFS was 19.4 months in
459 the ramucirumab plus erlotinib arm compared with 12.4 months in the placebo plus
460 erlotinib arm. ORR was 76% in the ramucirumab plus erlotinib arm and 75% in the pla-

461 cebo plus erlotinib arm, with median duration of response of 18.0 months and 11.1
462 months, respectively. The follow up was not sufficient to determine whether the combi-
463 nation led to an OS benefit. The most common adverse reactions observed in patients
464 treated with ramucirumab with erlotinib at a rate of $\geq 20\%$ and $\geq 2\%$ higher than placebo
465 with erlotinib were infections, hypertension, stomatitis, proteinuria, alopecia, epistaxis,
466 and peripheral edema.

467 5.3 Second-line treatment and beyond in European Union and the US

468
469 Second line treatment for metastatic lung cancer is determined by the type of agents
470 received in the first line setting. There are some challenges in second line-treatment: pa-
471 tients are pre-treated, often with reduced PS, thus tolerability becomes more important;
472 responses rates are lower; thus, tumor control becomes important; and patients can be
473 more symptomatic, thus symptom control and symptom improvement become im-
474 portant.

475
476 Most patients who can receive ICI therapy are treated with first-line immunotherapy
477 with or without chemotherapy, and ICI re-challenge is not a standard second line treat-
478 ment. Ramucirumab is an anti-angiogenic Ab that can be used in the 2nd line setting
479 NSCLC. The REVEL study was a phase III, placebo-controlled trial which included pa-
480 tients with metastatic NSCLC who had progressed during or after platinum-based
481 chemotherapy, with or without bevacizumab [22]. Patients were randomly allocated to
482 receive docetaxel and either ramucirumab or placebo. Median OS was 9.1 months versus
483 10.5 months in the placebo and ramucirumab group respectively. The addition of
484 ramucirumab to docetaxel can be considered in younger patients with good PS as a se-
485 cond line treatment.

486 Using a therapeutic strategy containing bevacizumab or ramucirumab is feasible in
487 selected patients because of the efficacy and safety related to the administration of these
488 Abs [66]. Ramucirumab was safe across all NSCLC histologies in the second line setting.
489 The anti-angiogenic Ab, bevacizumab, is only used in non-squamous NSCLC because of
490 more frequent and severe pulmonary hemorrhage in patients with squamous NSCLC, as
491 shown in a phase II trial in 2004 [67]. In fact, squamous cell tumors are more likely cen-
492 trally located and cavitated compared to adenocarcinoma; but it is not clear whether the
493 histology, as is, is an independent risk factor or a marker of increased risk. Another
494 problem was the presence of brain metastasis, at risk of bleeding: a factor long considered
495 as an exclusion criterion for treatment with bevacizumab. A retrospective analysis of 17
496 studies on the use of bevacizumab in patients with untreated metastases for lung, breast,
497 kidney or colorectal cancer showed that the use of bevacizumab did not increase risk of
498 bleeding [68]. The BRAIN phase II trial enrolled patients with untreated brain metastases
499 and the rate of central nervous system hemorrhage was comparable to that of previous
500 bevacizumab study, in which the presence of untreated brain metastases was an exclu-
501 sion criteria [69]. Without detailing all the studies supporting these results, we can say
502 that many of the factors previously considered as exclusion criteria, such as anticoagulant
503 treatment, central tumor location, the presence of cavitation or brain metastases, and an
504 advanced age, are not currently valid [45,46,70,71]. In fact, the only exclusion criteria that
505 are absolute contraindications to the use of bevacizumab are squamous histology and the
506 presence of hemoptysis [46].

507 If chemotherapy alone has been prescribed in the first line, monotherapy with ICI
508 may be considered. As a second-line therapy for stage IIIB or IV squamous NSCLC with
509 disease recurrence after one prior platinum-containing regimen, in a phase III study,
510 CheckMate 017, nivolumab was compared to docetaxel [4]. Nivolumab was shown to be
511 more efficacious than chemotherapy: OS was improved in the ICI group (9,2 versus 6
512 months), as well as PFS (3,5 versus 2,8 months). Subsequently, the CheckMate 057 phase
513 III study randomized patients with a metastatic non-squamous NSCLC in two groups:
514 nivolumab versus docetaxel [7]. Nivolumab demonstrated superior OS (12,2 versus 9,4

515 months) despite a lower median PFS (2,3 versus 4,2 months). Following these results,
516 nivolumab was approved by the FDA and EMA as second-line therapy for metastatic
517 NSCLC with progression on or after standard chemotherapy. PD-L1 testing was not re-
518 quired for nivolumab administration. This molecule was therefore the first ICI used in
519 thoracic oncology.

520 Unlike nivolumab, which received non-restricted FDA or EMA approval,
521 pembrolizumab received accelerated approval with companion diagnostic PD-L1 assay
522 of 1% or more for advanced NSCLC that progressed during or after front line chemo-
523 therapy. The KEYNOTE-010 study recruited patients with NSCLC in second line setting
524 and evaluated two dosing regimens for pembrolizumab (2 and 10 mg/kg) compared to
525 docetaxel [8]. Pembrolizumab demonstrated an improved OS benefit at both tested doses
526 in the total population compared with chemotherapy: OS was 10,4 and 12,7 months for
527 the 2 and 10 mg/kg pembrolizumab doses respectively, compared with 8,5 months for the
528 docetaxel group. Differences in PFS were not statistically significant between either of the
529 pembrolizumab doses and docetaxel. Thus, on 2016, EMA and FDA approved
530 pembrolizumab for treatment of patients with metastatic NSCLC whose tumors express
531 PD-L1 greater than $\geq 1\%$) with disease progression on or after platinum-containing
532 chemotherapy. Previous analyses indicated that the observed pembrolizumab exposures
533 in patients with squamous cell carcinoma of the head and neck treated with
534 pembrolizumab 200 mg every three weeks were similar to the pembrolizumab exposure
535 data observed in patients with other solid tumors (mainly melanoma and NSCLC) re-
536 ceiving pembrolizumab 2 mg/kg every three weeks, supporting a fixed 200 mg every
537 three dose for the head and neck cancer indication [72]. Based on these data, FDA and
538 EMA recommended a fixed dose of pembrolizumab (200 mg) for the treatment of pa-
539 tients with metastatic NSCLC, irrespective of prior line of therapy.

540 The third monotherapy ICI available is atezolizumab, approved in 2016 by the FDA
541 and EMA for the treatment of patients with NSCLC whose cancer had progressed during
542 or after standard chemotherapy. This approval was based on two trials, phase II POPLAR
543 [15] and phase III OAK study [14]. The randomized OAK trial compared atezolizumab to
544 docetaxel and found a median OS of 13,8 months versus 9,6 months in the chemotherapy
545 group.

546 547 *5.4 locally advanced inoperable NSCLC (IIIA/B/C stages)*

548
549 In patients with stage III NSCLC that is not resectable, ICI has been considered.
550 According to the PACIFIC study [13], durvalumab is given for 12 months if no progres-
551 sion after concomitant radio-chemotherapy is seen, but only if PD-L1 $> 1\%$ in some coun-
552 tries. In the US and France, durvalumab is allowed in patients with a PD-L1 $< 1\%$.

553 554 *5.5 Treatment decision algorithm in European Union and in the US*

555
556 For the use of ICI, contraindications to those molecules should always be kept in
557 mind (uncontrolled autoimmune pathologies, uncontrolled HIV-HBV-HCV infections,
558 for example) but this is to be discussed on a case-by-case basis, during multidisciplinary
559 meeting [73].

560 In the front-line setting, the first selection is then made based on the expression of
561 PD-L1 (Figure 2 and 3). In chemotherapy-immunotherapy trials, patients had a PS 0 or 1
562 and a median age of 65 years [52,53]. Therefore, the pembrolizumab + chemotherapy
563 regimen is mostly reserved for patients who are not too old and in good general condi-
564 tion. However, we observe the same data in the 1st line immunotherapy alone studies (PS
565 0-1 and median age 65 [51]); in practice, immunotherapy as monotherapy seems to have
566 better tolerance and is therefore to be favored in older patients and in less good general
567 condition. In any case, there is no restriction of approvals and marketing authorizations
568 in European Union and in the US based on age or PS. Finally, in case of non-squamous

569 NSCLC, the use of the quadruple combination ABCP must include verification that con-
570 traindications to antiangiogenic agents do not exist [47]. Regarding nivolu-
571 mab-ipilimumab-chemotherapy combination, the study group included 70%
572 non-squamous NSCLC, 40% PD-L1 negative and 20% hepatic metastases [56]; factors
573 should be considered to reserve this combination for certain types of patients (Figure 2
574 and 3).

575 In the second line, the treatment is directly dictated in part by the treatment received
576 in the front line. If chemotherapy as monotherapy has been used, regardless of PD-L1
577 expression, atezolizumab or nivolumab as monotherapy may be considered, in the ab-
578 sence of contraindications to ICI (Figure 2 and 3). Again, the trials included 0-1 PS pa-
579 tients with a median age of 65 years. The OAK study using atezolizumab [14] included
580 nearly 50% of patients over 65 years of age and 10% of them had stable brain metastases.
581 The Checkmate studies with nivolumab [4,7] included 41% of patients over 65 in the
582 nivolumab arm but 93% had no brain metastases. The center-specific experience can then
583 also be taken into account to choose between these 2 ICI. The expression of PD-L1 is not
584 restrictive for the prescription of these 2 molecules, unlike pembrolizumab, where the
585 tumor must express more than 1% of PD-L1 (Figure 2 and 3). The Keynote studies [8] in-
586 cluded 15% of patients with stable brain metastases. The clinician is therefore free to
587 choose ICI as monotherapy in 2nd line if the patient did not receive in the front line set-
588 ting and does not have contraindications.

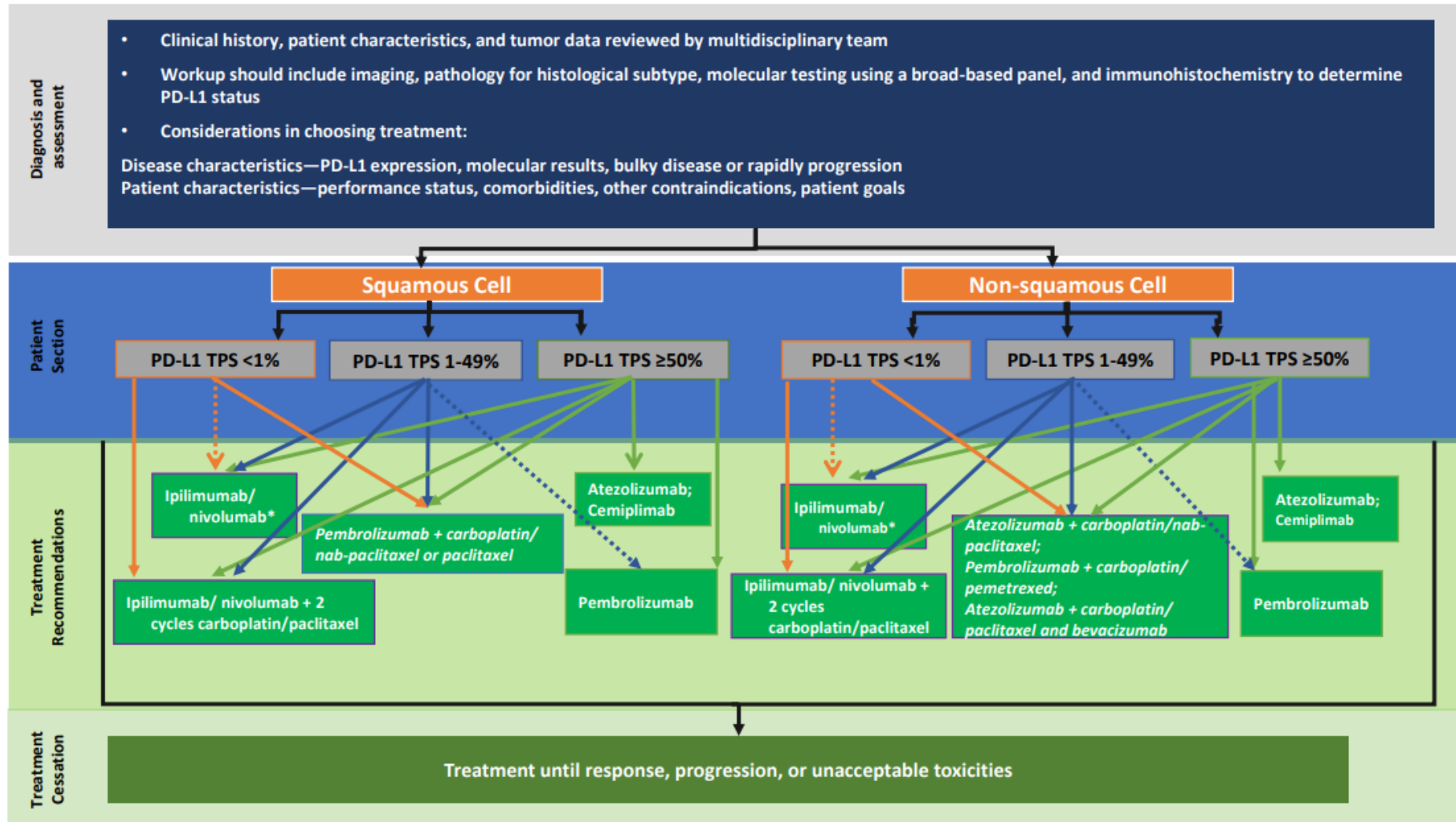
589 If an ICI has been used as a first-line monotherapy, it is possible to treat the patient
590 with a chemotherapy and anti-angiogenic combination. This in the absence of contrain-
591 dications to bevacizumab [47] and for non-squamous NSCLC only [66]: the regimen is
592 then platinum-based chemotherapy, pemetrexed or paclitaxel, and bevacizumab. If
593 platinum-based chemotherapy has been used in first line with an ICI, the second line
594 chemotherapy association could be paclitaxel-bevacizumab. Finally, a last possible che-
595 motherapy anti-angiogenic Ab combination is docetaxel with ramucirumab [22] for
596 non-squamous NSCLC only (Figure 2 and 3). There are therefore more options for
597 non-squamous than for NSCLC squamous in second line of treatment.
598
599
600
601
602
603
604
605
606
607
608
609
610
611
612
613
614
615
616
617
618
619
620
621
622

623

624

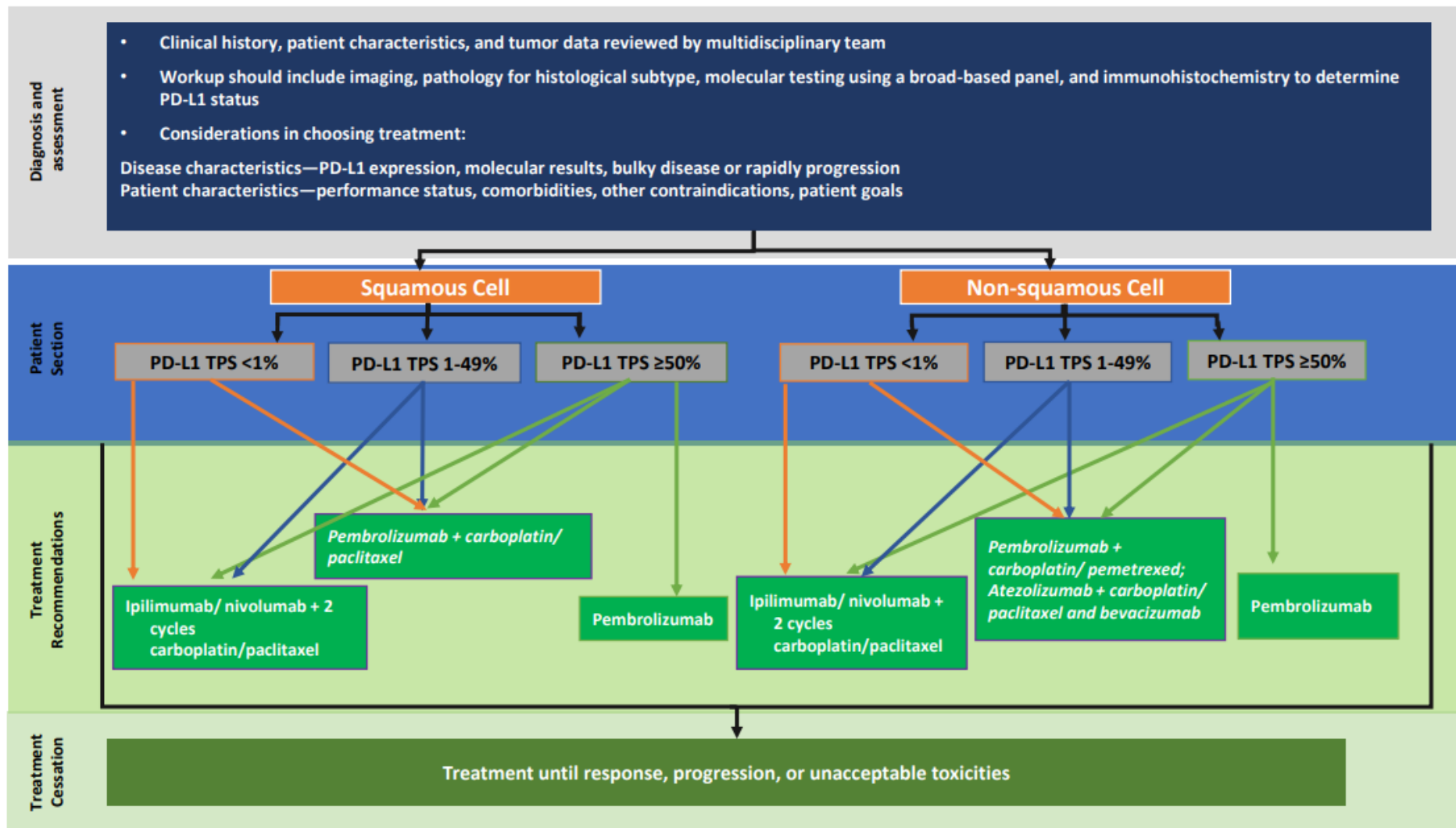


625



626
627
628

Figure 2. Potential treatment paradigm in the US for NSCLC without actionable mutations in front line. Adapted from [74,75]. *Not FDA approved for PD-L1 <1%.



629
630
631

Figure 3. Potential treatment paradigm in European Union for NSCLC without actionable mutations in front line. Adapted from [74,75].

6. Conclusion

The field of antibodies and immunotherapy in NSCLC has demonstrated rapid development since the first US FDA and EMA approvals in 2007 and 2015 of anti-angiogenic and ICI Abs respectively. Though initially available in the 2nd line setting, ICI expanded into the first line setting and increased the therapeutic options and combinations used for metastatic NSCLC patients without driver mutations. The treatment of these patients on both sides of the Atlantic is generally similar, with some broader indications in the US, probably related to the differences in the health insurance system and reimbursement constraints. Now that most patients can benefit from treatment in the first or second line setting with ICI, the key for the years to come is the determination of predictive biomarkers of response to identify the best individual strategy for each patient.

Author Contributions: M.F-KLR. conducted the literature analysis, wrote and discussed the manuscript of this review and designed the images; TS-NHV. analyzed, and corrected the manuscript; P.D.-G. and H.F.-V. conducted the literature analysis and wrote part of the text. All authors have read and agreed to the published version of the manuscript.

Funding: This research received no external funding.

Institutional Review Board Statement: Not applicable.

Informed Consent Statement: Not applicable.

Data Availability Statement: Data sharing not applicable

Acknowledgments: Thanks to BioRender.com for figure creation

Conflicts of Interest: All authors indicated no potential conflicts of interest in publishing this manuscript

References

1. Guo, Z.S. The 2018 Nobel Prize in Medicine Goes to Cancer Immunotherapy (Editorial for BMC Cancer). *BMC Cancer* 2018, 18, 1086, doi:10.1186/s12885-018-5020-3.
2. Pabani, A.; Butts, C.A. Current Landscape of Immunotherapy for the Treatment of Metastatic Non-Small-Cell Lung Cancer. *Curr. Oncol. Tor. Ont* 2018, 25, S94–S102, doi:10.3747/co.25.3750.
3. Thatcher, N.; Hirsch, F.R.; Luft, A.V.; Szczesna, A.; Ciuleanu, T.E.; Dediu, M.; Ramlau, R.; Galiulin, R.K.; Bálint, B.; Losonczy, G.; et al. Necitumumab plus Gemcitabine and Cisplatin versus Gemcitabine and Cisplatin Alone as First-Line Therapy in Patients with Stage IV Squamous Non-Small-Cell Lung Cancer (SQUIRE): An Open-Label, Randomised, Controlled Phase 3 Trial. *Lancet Oncol.* 2015, 16, 763–774, doi:10.1016/S1470-2045(15)00021-2.
4. Brahmer, J.; Reckamp, K.L.; Baas, P.; Crinò, L.; Eberhardt, W.E.E.; Poddubskaya, E.; Antonia, S.; Pluzanski, A.; Vokes, E.E.; Holgado, E.; et al. Nivolumab versus Docetaxel in Advanced Squamous-Cell Non-Small-Cell Lung Cancer. *N. Engl. J. Med.* 2015, 373, 123–135, doi:10.1056/NEJMoa1504627.
5. Carbone, D.P.; Reck, M.; Paz-Ares, L.; Creelan, B.; Horn, L.; Steins, M.; Felip, E.; van den Heuvel, M.M.; Ciuleanu, T.-E.; Badin, F.; et al. First-Line Nivolumab in Stage IV or Recurrent Non-Small-Cell Lung Cancer. *N. Engl. J. Med.* 2017, 376, 2415–2426, doi:10.1056/NEJMoa1613493.
6. Hellmann, M.D.; Ciuleanu, T.-E.; Pluzanski, A.; Lee, J.S.; Otterson, G.A.; Audigier-Valette, C.; Minenza, E.; Linardou, H.; Burgers, S.; Salman, P.; et al. Nivolumab plus Ipilimumab in Lung Cancer with a High Tumor Mutational Burden. *N. Engl. J. Med.* 2018, 378, 2093–2104, doi:10.1056/NEJMoa1801946.
7. Borghaei, H.; Paz-Ares, L.; Horn, L.; Spigel, D.R.; Steins, M.; Ready, N.E.; Chow, L.Q.; Vokes, E.E.; Felip, E.; Holgado, E.; et al. Nivolumab versus Docetaxel in Advanced Nonsquamous Non-Small-Cell Lung Cancer. *N. Engl. J. Med.* 2015, 373, 1627–1639, doi:10.1056/NEJMoa1507643.
8. Herbst, R.S.; Baas, P.; Kim, D.-W.; Felip, E.; Pérez-Gracia, J.L.; Han, J.-Y.; Molina, J.; Kim, J.-H.; Arvis, C.D.; Ahn, M.-J.; et al. Pembrolizumab versus Docetaxel for Previously Treated, PD-L1-Positive, Advanced Non-Small-Cell Lung Cancer (KEY-NOTE-010): A Randomised Controlled Trial. *Lancet Lond. Engl.* 2016, 387, 1540–1550, doi:10.1016/S0140-6736(15)01281-7.

- 681 9. Reck, M.; Rodríguez-Abreu, D.; Robinson, A.G.; Hui, R.; Csőszi, T.; Fülöp, A.; Gottfried, M.; Peled, N.; Tafreshi, A.;
682 Cuffe, S.; et al. Pembrolizumab versus Chemotherapy for PD-L1-Positive Non-Small-Cell Lung Cancer. *N. Engl. J. Med.* 2016,
683 375, 1823–1833, doi:10.1056/NEJMoa1606774.
- 684 10. Langer, C.J.; Gadgeel, S.M.; Borghaei, H.; Papadimitrakopoulou, V.A.; Patnaik, A.; Powell, S.F.; Gentzler, R.D.; Martins,
685 R.G.; Stevenson, J.P.; Jalal, S.I.; et al. Carboplatin and Pemetrexed with or without Pembrolizumab for Advanced,
686 Non-Squamous Non-Small-Cell Lung Cancer: A Randomised, Phase 2 Cohort of the Open-Label KEYNOTE-021 Study. *Lancet*
687 *Oncol.* 2016, 17, 1497–1508, doi:10.1016/S1470-2045(16)30498-3.
- 688 11. Garon, E.B.; Rizvi, N.A.; Hui, R.; Leighl, N.; Balmanoukian, A.S.; Eder, J.P.; Patnaik, A.; Aggarwal, C.; Gubens, M.;
689 Horn, L.; et al. Pembrolizumab for the Treatment of Non-Small-Cell Lung Cancer. *N. Engl. J. Med.* 2015, 372, 2018–2028,
690 doi:10.1056/NEJMoa1501824.
- 691 12. Sezer, A.; Kilickap, S.; Gümüş, M.; Bondarenko, I.; Özgüroğlu, M.; Gogishvili, M.; Turk, H.M.; Cicin, I.; Bentsion, D.;
692 Gladkov, O.; et al. Cemiplimab Monotherapy for First-Line Treatment of Advanced Non-Small-Cell Lung Cancer with PD-L1
693 of at Least 50%: A Multicentre, Open-Label, Global, Phase 3, Randomised, Controlled Trial. *The Lancet* 2021, 397, 592–604,
694 doi:10.1016/S0140-6736(21)00228-2.
- 695 13. Antonia, S.J.; Villegas, A.; Daniel, D.; Vicente, D.; Murakami, S.; Hui, R.; Yokoi, T.; Chiappori, A.; Lee, K.H.; de Wit, M.;
696 et al. Durvalumab after Chemoradiotherapy in Stage III Non-Small-Cell Lung Cancer. *N. Engl. J. Med.* 2017, 377, 1919–1929,
697 doi:10.1056/NEJMoa1709937.
- 698 14. Rittmeyer, A.; Barlesi, F.; Waterkamp, D.; Park, K.; Ciardiello, F.; von Pawel, J.; Gadgeel, S.M.; Hida, T.; Kowalski, D.M.;
699 Dols, M.C.; et al. Atezolizumab versus Docetaxel in Patients with Previously Treated Non-Small-Cell Lung Cancer (OAK): A
700 Phase 3, Open-Label, Multicentre Randomised Controlled Trial. *Lancet Lond. Engl.* 2017, 389, 255–265,
701 doi:10.1016/S0140-6736(16)32517-X.
- 702 15. Fehrenbacher, L.; Spira, A.; Ballinger, M.; Kowanzet, M.; Vansteenkiste, J.; Mazieres, J.; Park, K.; Smith, D.; Artal-Cortes,
703 A.; Lewanski, C.; et al. Atezolizumab versus Docetaxel for Patients with Previously Treated Non-Small-Cell Lung Cancer
704 (POPLAR): A Multicentre, Open-Label, Phase 2 Randomised Controlled Trial. *Lancet Lond. Engl.* 2016, 387, 1837–1846,
705 doi:10.1016/S0140-6736(16)00587-0.
- 706 16. Gandara, D.R.; Paul, S.M.; Kowanzet, M.; Schleifman, E.; Zou, W.; Li, Y.; Rittmeyer, A.; Fehrenbacher, L.; Otto, G.;
707 Malboeuf, C.; et al. Blood-Based Tumor Mutational Burden as a Predictor of Clinical Benefit in Non-Small-Cell Lung Cancer
708 Patients Treated with Atezolizumab. *Nat. Med.* 2018, 24, 1441–1448, doi:10.1038/s41591-018-0134-3.
- 709 17. Hodi, F.S.; Chiarion-Sileni, V.; Gonzalez, R.; Grob, J.-J.; Rutkowski, P.; Cowey, C.L.; Lao, C.D.; Schadendorf, D.;
710 Wagstaff, J.; Dummer, R.; et al. Nivolumab plus Ipilimumab or Nivolumab Alone versus Ipilimumab Alone in Advanced
711 Melanoma (CheckMate 067): 4-Year Outcomes of a Multicentre, Randomised, Phase 3 Trial. *Lancet Oncol.* 2018, 19, 1480–1492,
712 doi:10.1016/S1470-2045(18)30700-9.
- 713 18. Steven, A.; Fisher, S.A.; Robinson, B.W. Immunotherapy for Lung Cancer. *Respirol. Carlton Vic* 2016, 21, 821–833,
714 doi:10.1111/resp.12789.
- 715 19. Sandler, A.; Gray, R.; Perry, M.C.; Brahmer, J.; Schiller, J.H.; Dowlati, A.; Lilienbaum, R.; Johnson, D.H. Paclitax-
716 el-Carboplatin Alone or with Bevacizumab for Non-Small-Cell Lung Cancer. *N. Engl. J. Med.* 2006, 355, 2542–2550,
717 doi:10.1056/NEJMoa061884.
- 718 20. Reck, M.; von Pawel, J.; Zatloukal, P.; Ramlau, R.; Gorbounova, V.; Hirsh, V.; Leighl, N.; Mezger, J.; Archer, V.; Moore,
719 N.; et al. Phase III Trial of Cisplatin plus Gemcitabine with Either Placebo or Bevacizumab as First-Line Therapy for
720 Nonsquamous Non-Small-Cell Lung Cancer: AVAIL. *J. Clin. Oncol. Off. J. Am. Soc. Clin. Oncol.* 2009, 27, 1227–1234,
721 doi:10.1200/JCO.2007.14.5466.
- 722 21. Ferrara, R.; Imbimbo, M.; Malouf, R.; Paget-Bailly, S.; Calais, F.; Marchal, C.; Westeel, V. Single or Combined Immune
723 Checkpoint Inhibitors Compared to First-Line Platinum-Based Chemotherapy with or without Bevacizumab for People with
724 Advanced Non-Small Cell Lung Cancer. *Cochrane Database Syst. Rev.* 2020, 12, CD013257,
725 doi:10.1002/14651858.CD013257.pub2.
- 726 22. Garon, E.B.; Ciuleanu, T.-E.; Arrieta, O.; Prabhaskar, K.; Syrigos, K.N.; Goksel, T.; Park, K.; Gorbunova, V.; Kowalyszyn,
727 R.D.; Pikiel, J.; et al. Ramucirumab plus Docetaxel versus Placebo plus Docetaxel for Second-Line Treatment of Stage IV
728 Non-Small-Cell Lung Cancer after Disease Progression on Platinum-Based Therapy (REVEL): A Multicentre, Double-Blind,
729 Randomised Phase 3 Trial. *Lancet Lond. Engl.* 2014, 384, 665–673, doi:10.1016/S0140-6736(14)60845-X.
- 730 23. Nakagawa, K.; Garon, E.B.; Seto, T.; Nishio, M.; Aix, S.P.; Paz-Ares, L.; Chiu, C.-H.; Park, K.; Novello, S.; Nadal, E.; et al.
731 Ramucirumab plus Erlotinib in Patients with Untreated, EGFR-Mutated, Advanced Non-Small-Cell Lung Cancer (RELAY): A
732 Randomised, Double-Blind, Placebo-Controlled, Phase 3 Trial. *Lancet Oncol.* 2019, 20, 1655–1669,
733 doi:10.1016/S1470-2045(19)30634-5.
- 734 24. Herbst, R.S.; Garon, E.B.; Kim, D.-W.; Cho, B.C.; Gracia, J.L.P.; Han, J.-Y.; Arvis, C.D.; Majem, M.; Forster, M.; Monnet,
735 I.; et al. Long-Term Follow-up in the KEYNOTE-010 Study of Pembrolizumab (Pembro) for Advanced NSCLC, Including in
736 Patients (Pts) Who Completed 2 Years of Pembro and Pts Who Received a Second Course of Pembro. *Ann. Oncol.* 2018, 29,
737 x42–x43, doi:10.1093/annonc/mdy511.003.
- 738 25. Hanahan, D.; Weinberg, R.A. Hallmarks of Cancer: The next Generation. *Cell* 2011, 144, 646–674,
739 doi:10.1016/j.cell.2011.02.013.

- 740 26. 26. Pardoll, D.M. The Blockade of Immune Checkpoints in Cancer Immunotherapy. *Nat. Rev. Cancer* 2012, 12, 252–264,
741 doi:10.1038/nrc3239.
- 742 27. 27. Wherry, E.J.; Kurachi, M. Molecular and Cellular Insights into T Cell Exhaustion. *Nat. Rev. Immunol.* 2015, 15, 486–499,
743 doi:10.1038/nri3862.
- 744 28. 28. Mayes, P.A.; Hance, K.W.; Hoos, A. The Promise and Challenges of Immune Agonist Antibody Development in Can-
745 cer. *Nat. Rev. Drug Discov.* 2018, 17, 509–527, doi:10.1038/nrd.2018.75.
- 746 29. 29. Phan, G.Q.; Yang, J.C.; Sherry, R.M.; Hwu, P.; Topalian, S.L.; Schwartzentruber, D.J.; Restifo, N.P.; Haworth, L.R.;
747 Seipp, C.A.; Freezer, L.J.; et al. Cancer Regression and Autoimmunity Induced by Cytotoxic T Lymphocyte-Associated Antigen
748 4 Blockade in Patients with Metastatic Melanoma. *Proc. Natl. Acad. Sci. U. S. A.* 2003, 100, 8372–8377,
749 doi:10.1073/pnas.1533209100.
- 750 30. 30. Hodi, F.S.; O'Day, S.J.; McDermott, D.F.; Weber, R.W.; Sosman, J.A.; Haanen, J.B.; Gonzalez, R.; Robert, C.;
751 Schadendorf, D.; Hassel, J.C.; et al. Improved Survival with Ipilimumab in Patients with Metastatic Melanoma. *N. Engl. J. Med.*
752 2010, 363, 711–723, doi:10.1056/NEJMoa1003466.
- 753 31. 31. Mu, C.-Y.; Huang, J.-A.; Chen, Y.; Chen, C.; Zhang, X.-G. High Expression of PD-L1 in Lung Cancer May Contribute to
754 Poor Prognosis and Tumor Cells Immune Escape through Suppressing Tumor Infiltrating Dendritic Cells Maturation. *Med.*
755 *Oncol. Northwood Lond. Engl.* 2011, 28, 682–688, doi:10.1007/s12032-010-9515-2.
- 756 32. 32. Brahmer, J.R.; Pardoll, D.M. Immune Checkpoint Inhibitors: Making Immunotherapy a Reality for the Treatment of
757 Lung Cancer. *Cancer Immunol. Res.* 2013, 1, 85–91, doi:10.1158/2326-6066.CIR-13-0078.
- 758 33. 33. Reck, M.; Garassino, M.C.; Imbimbo, M.; Shepherd, F.A.; Socinski, M.A.; Shih, J.-Y.; Tsao, A.; Lee, P.; Winfree, K.B.;
759 Sashegyi, A.; et al. Antiangiogenic Therapy for Patients with Aggressive or Refractory Advanced Non-Small Cell Lung Cancer
760 in the Second-Line Setting. *Lung Cancer Amst. Neth.* 2018, 120, 62–69, doi:10.1016/j.lungcan.2018.03.025.
- 761 34. 34. Bergers, G.; Benjamin, L.E. Tumorigenesis and the Angiogenic Switch. *Nat. Rev. Cancer* 2003, 3, 401–410,
762 doi:10.1038/nrc1093.
- 763 35. 35. Suntharalingam, G.; Perry, M.R.; Ward, S.; Brett, S.J.; Castello-Cortes, A.; Brunner, M.D.; Panoskaltsis, N. Cytokine
764 Storm in a Phase 1 Trial of the Anti-CD28 Monoclonal Antibody TGN1412. *N. Engl. J. Med.* 2006, 355, 1018–1028,
765 doi:10.1056/NEJMoa063842.
- 766 36. 36. Zhao, L.; Ren, T.; Wang, D.D. Clinical Pharmacology Considerations in Biologics Development. *Acta Pharmacol. Sin.*
767 2012, 33, 1339–1347, doi:10.1038/aps.2012.51.
- 768 37. 37. Deng, R.; Jin, F.; Prabhu, S.; Iyer, S. Monoclonal Antibodies: What Are the Pharmacokinetic and Pharmacodynamic
769 Considerations for Drug Development? *Expert Opin. Drug Metab. Toxicol.* 2012, 8, 141–160, doi:10.1517/17425255.2012.643868.
- 770 38. 38. Mould, D.R.; Meibohm, B. Drug Development of Therapeutic Monoclonal Antibodies. *BioDrugs Clin. Immunother.*
771 *Biopharm. Gene Ther.* 2016, 30, 275–293, doi:10.1007/s40259-016-0181-6.
- 772 39. 39. Centanni, M.; Moes, D.J.A.R.; Trocóniz, I.F.; Ciccolini, J.; van Hasselt, J.G.C. Clinical Pharmacokinetics and Pharmaco-
773 dynamics of Immune Checkpoint Inhibitors. *Clin. Pharmacokinet.* 2019, 58, 835–857, doi:10.1007/s40262-019-00748-2.
- 774 40. 40. Feng, Y.; Masson, E.; Dai, D.; Parker, S.M.; Berman, D.; Roy, A. Model-Based Clinical Pharmacology Profiling of
775 Ipilimumab in Patients with Advanced Melanoma. *Br. J. Clin. Pharmacol.* 2014, 78, 106–117, doi:10.1111/bcp.12323.
- 776 41. 41. Bajaj, G.; Wang, X.; Agrawal, S.; Gupta, M.; Roy, A.; Feng, Y. Model-Based Population Pharmacokinetic Analysis of
777 Nivolumab in Patients With Solid Tumors. *CPT Pharmacomet. Syst. Pharmacol.* 2017, 6, 58–66, doi:10.1002/psp4.12143.
- 778 42. 42. Ahmadi, M.; Freshwater, T.; Prohn, M.; Li, C.H.; de Alwis, D.P.; de Greef, R.; Ellassaïss-Schaap, J.; Kondic, A.; Stone,
779 J.A. Model-Based Characterization of the Pharmacokinetics of Pembrolizumab: A Humanized Anti-PD-1 Monoclonal Anti-
780 body in Advanced Solid Tumors. *CPT Pharmacomet. Syst. Pharmacol.* 2017, 6, 49–57, doi:10.1002/psp4.12139.
- 781 43. 43. Lu, J.-F.; Bruno, R.; Eppler, S.; Novotny, W.; Lum, B.; Gaudreault, J. Clinical Pharmacokinetics of Bevacizumab in Pa-
782 tients with Solid Tumors. *Cancer Chemother. Pharmacol.* 2008, 62, 779–786, doi:10.1007/s00280-007-0664-8.
- 783 44. 44. Singh, A.D.; Parmar, S. Ramucirumab (Cyramza). *Pharm. Ther.* 2015, 40, 430–468.
- 784 45. 45. Crinò, L.; Dansin, E.; Garrido, P.; Griesinger, F.; Laskin, J.; Pavlakakis, N.; Stroiakovski, D.; Thatcher, N.; Tsai, C.-M.; Wu,
785 Y.; et al. Safety and Efficacy of First-Line Bevacizumab-Based Therapy in Advanced Non-Squamous Non-Small-Cell Lung
786 Cancer (SAiL, MO19390): A Phase 4 Study. *Lancet Oncol.* 2010, 11, 733–740, doi:10.1016/S1470-2045(10)70151-0.
- 787 46. 46. Reck, M.; Barlesi, F.; Crinò, L.; Henschke, C.I.; Isla, D.; Stiebler, S.; Spigel, D.R. Predicting and Managing the Risk of
788 Pulmonary Haemorrhage in Patients with NSCLC Treated with Bevacizumab: A Consensus Report from a Panel of Experts.
789 *Ann. Oncol. Off. J. Eur. Soc. Med. Oncol.* 2012, 23, 1111–1120, doi:10.1093/annonc/mdr463.
- 790 47. 47. Russo, A.E.; Priolo, D.; Antonelli, G.; Libra, M.; McCubrey, J.A.; Ferràù, F. Bevacizumab in the Treatment of NSCLC:
791 Patient Selection and Perspectives. *Lung Cancer Targets Ther.* 2017, 8, 259–269, doi:10.2147/LCTT.S110306.
- 792 48. 48. Cohen, M.H.; Gootenberg, J.; Keegan, P.; Pazdur, R. FDA Drug Approval Summary: Bevacizumab (Avastin) plus
793 Carboplatin and Paclitaxel as First-Line Treatment of Advanced/Metastatic Recurrent Nonsquamous Non-Small Cell Lung
794 Cancer. *The Oncologist* 2007, 12, 713–718, doi:10.1634/theoncologist.12-6-713.
- 795 49. 49. Howlader, N.; Forjaz, G.; Mooradian, M.J.; Meza, R.; Kong, C.Y.; Cronin, K.A.; Mariotto, A.B.; Lowy, D.R.; Feuer, E.J.
796 The Effect of Advances in Lung-Cancer Treatment on Population Mortality. *N. Engl. J. Med.* 2020, 383, 640–649,
797 doi:10.1056/NEJMoa1916623.
- 798 50. 50. Reck, M.; Rodríguez-Abreu, D.; Robinson, A.G.; Hui, R.; Csőszi, T.; Fülöp, A.; Gottfried, M.; Peled, N.; Tafreshi, A.;
799 Cuffe, S.; et al. Updated Analysis of KEYNOTE-024: Pembrolizumab Versus Platinum-Based Chemotherapy for Advanced

- 800 Non-Small-Cell Lung Cancer With PD-L1 Tumor Proportion Score of 50% or Greater. *J. Clin. Oncol. Off. J. Am. Soc. Clin.*
801 *Oncol.* 2019, 37, 537–546, doi:10.1200/JCO.18.00149.
- 802 51. Mok, T.S.K.; Wu, Y.-L.; Kudaba, I.; Kowalski, D.M.; Cho, B.C.; Turna, H.Z.; Castro, G.; Srimuninnimit, V.; Laktionov,
803 K.K.; Bondarenko, I.; et al. Pembrolizumab versus Chemotherapy for Previously Untreated, PD-L1-Expressing, Locally Ad-
804 vanced or Metastatic Non-Small-Cell Lung Cancer (KEYNOTE-042): A Randomised, Open-Label, Controlled, Phase 3 Trial.
805 *Lancet Lond. Engl.* 2019, 393, 1819–1830, doi:10.1016/S0140-6736(18)32409-7.
- 806 52. Gandhi, L.; Rodríguez-Abreu, D.; Gadgeel, S.; Esteban, E.; Felip, E.; De Angelis, F.; Domine, M.; Clingan, P.; Hochmair,
807 M.J.; Powell, S.F.; et al. Pembrolizumab plus Chemotherapy in Metastatic Non-Small-Cell Lung Cancer. *N. Engl. J. Med.* 2018,
808 378, 2078–2092, doi:10.1056/NEJMoa1801005.
- 809 53. Paz-Ares, L.; Luft, A.; Vicente, D.; Tafreshi, A.; Gümüş, M.; Mazières, J.; Hermes, B.; Çay Şenler, F.; Csósz, T.; Fülöp, A.;
810 et al. Pembrolizumab plus Chemotherapy for Squamous Non-Small-Cell Lung Cancer. *N. Engl. J. Med.* 2018, 379, 2040–2051,
811 doi:10.1056/NEJMoa1810865.
- 812 54. Socinski, M.A.; Jotte, R.M.; Cappuzzo, F.; Orlandi, F.; Stroyakovskiy, D.; Nogami, N.; Rodríguez-Abreu, D.; Mo-
813 ro-Sibilot, D.; Thomas, C.A.; Barlesi, F.; et al. Atezolizumab for First-Line Treatment of Metastatic Nonsquamous NSCLC. *N.*
814 *Engl. J. Med.* 2018, 378, 2288–2301, doi:10.1056/NEJMoa1716948.
- 815 55. Jenab-Wolcott, J.; Giantonio, B.J. Bevacizumab: Current Indications and Future Development for Management of Solid
816 Tumors. *Expert Opin. Biol. Ther.* 2009, 9, 507–517, doi:10.1517/14712590902817817.
- 817 56. Paz-Ares, L.; Ciuleanu, T.-E.; Cobo, M.; Schenker, M.; Zurawski, B.; Menezes, J.; Richardet, E.; Bennouna, J.; Felip, E.;
818 Juan-Vidal, O.; et al. First-Line Nivolumab plus Ipilimumab Combined with Two Cycles of Chemotherapy in Patients with
819 Non-Small-Cell Lung Cancer (CheckMate 9LA): An International, Randomised, Open-Label, Phase 3 Trial. *Lancet Oncol.* 2021,
820 22, 198–211, doi:10.1016/S1470-2045(20)30641-0.
- 821 57. Herbst, R.S.; Giaccone, G.; de Marinis, F.; Reinmuth, N.; Vergnenegre, A.; Barrios, C.H.; Morise, M.; Felip, E.; Andric, Z.;
822 Geater, S.; et al. Atezolizumab for First-Line Treatment of PD-L1-Selected Patients with NSCLC. *N. Engl. J. Med.* 2020, 383,
823 1328–1339, doi:10.1056/NEJMoa1917346.
- 824 58. Hellmann, M.D.; Paz-Ares, L.; Bernabe Caro, R.; Zurawski, B.; Kim, S.-W.; Carcereny Costa, E.; Park, K.; Alexandru, A.;
825 Lupinacci, L.; de la Mora Jimenez, E.; et al. Nivolumab plus Ipilimumab in Advanced Non-Small-Cell Lung Cancer. *N. Engl. J.*
826 *Med.* 2019, 381, 2020–2031, doi:10.1056/NEJMoa1910231.
- 827 59. Ready, N.; Hellmann, M.D.; Awad, M.M.; Otterson, G.A.; Gutierrez, M.; Gainor, J.F.; Borghaei, H.; Jolivet, J.; Horn, L.;
828 Mates, M.; et al. First-Line Nivolumab Plus Ipilimumab in Advanced Non-Small-Cell Lung Cancer (CheckMate 568): Outcomes
829 by Programmed Death Ligand 1 and Tumor Mutational Burden as Biomarkers. *J. Clin. Oncol. Off. J. Am. Soc. Clin. Oncol.* 2019,
830 37, 992–1000, doi:10.1200/JCO.18.01042.
- 831 60. Patel, J.D.; Socinski, M.A.; Garon, E.B.; Reynolds, C.H.; Spigel, D.R.; Olsen, M.R.; Hermann, R.C.; Jotte, R.M.; Beck, T.;
832 Richards, D.A.; et al. PointBreak: A Randomized Phase III Study of Pemetrexed plus Carboplatin and Bevacizumab Followed
833 by Maintenance Pemetrexed and Bevacizumab versus Paclitaxel plus Carboplatin and Bevacizumab Followed by Maintenance
834 Bevacizumab in Patients with Stage IIIB or IV Nonsquamous Non-Small-Cell Lung Cancer. *J. Clin. Oncol. Off. J. Am. Soc. Clin.*
835 *Oncol.* 2013, 31, 4349–4357, doi:10.1200/JCO.2012.47.9626.
- 836 61. Barlesi, F.; Scherpereel, A.; Gorbunova, V.; Gervais, R.; Vikström, A.; Chouaid, C.; Chella, A.; Kim, J.H.; Ahn, M.J.; Reck,
837 M.; et al. Maintenance Bevacizumab-Pemetrexed after First-Line Cisplatin-Pemetrexed-Bevacizumab for Advanced
838 Nonsquamous Nonsmall-Cell Lung Cancer: Updated Survival Analysis of the AVAPERL (MO22089) Randomized Phase III
839 Trial. *Ann. Oncol. Off. J. Eur. Soc. Med. Oncol.* 2014, 25, 1044–1052, doi:10.1093/annonc/mdu098.
- 840 62. Yen, L.; You, X.L.; Al Moustafa, A.E.; Batist, G.; Hynes, N.E.; Mader, S.; Meloche, S.; Alaoui-Jamali, M.A. Heregulin
841 Selectively Upregulates Vascular Endothelial Growth Factor Secretion in Cancer Cells and Stimulates Angiogenesis. *Oncogene*
842 2000, 19, 3460–3469, doi:10.1038/sj.onc.1203685.
- 843 63. Naumov, G.N.; Nilsson, M.B.; Cascone, T.; Briggs, A.; Straume, O.; Akslen, L.A.; Lifshits, E.; Byers, L.A.; Xu, L.; Wu,
844 H.-K.; et al. Combined Vascular Endothelial Growth Factor Receptor and Epidermal Growth Factor Receptor (EGFR) Blockade
845 Inhibits Tumor Growth in Xenograft Models of EGFR Inhibitor Resistance. *Clin. Cancer Res. Off. J. Am. Assoc. Cancer Res.*
846 2009, 15, 3484–3494, doi:10.1158/1078-0432.CCR-08-2904.
- 847 64. Seto, T.; Kato, T.; Nishio, M.; Goto, K.; Atagi, S.; Hosomi, Y.; Yamamoto, N.; Hida, T.; Maemondo, M.; Nakagawa, K.; et
848 al. Erlotinib Alone or with Bevacizumab as First-Line Therapy in Patients with Advanced Non-Squamous Non-Small-Cell
849 Lung Cancer Harboring EGFR Mutations (JO25567): An Open-Label, Randomised, Multicentre, Phase 2 Study. *Lancet Oncol.*
850 2014, 15, 1236–1244, doi:10.1016/S1470-2045(14)70381-X.
- 851 65. Kato, T.; Seto, T.; Nishio, M.; Goto, K.; Yamamoto, N.; Okamoto, I.; Tao, L.; Yu, W.; Khaznadar, T.; Tajima, K.; et al.
852 Erlotinib Plus Bevacizumab Phase I Study in Patients with Advanced Non-Small-Cell Lung Cancer (JO25567): Updated Safety
853 Results. *Drug Saf.* 2018, 41, 229–237, doi:10.1007/s40264-017-0596-0.
- 854 66. Lima, A.B.C.; Macedo, L.T.; Sasse, A.D. Addition of Bevacizumab to Chemotherapy in Advanced Non-Small Cell Lung
855 Cancer: A Systematic Review and Meta-Analysis. *PloS One* 2011, 6, e22681, doi:10.1371/journal.pone.0022681.
- 856 67. Johnson, D.H.; Fehrenbacher, L.; Novotny, W.F.; Herbst, R.S.; Nemunaitis, J.J.; Jablons, D.M.; Langer, C.J.; DeVore, R.F.;
857 Gaudreault, J.; Damico, L.A.; et al. Randomized Phase II Trial Comparing Bevacizumab plus Carboplatin and Paclitaxel with
858 Carboplatin and Paclitaxel Alone in Previously Untreated Locally Advanced or Metastatic Non-Small-Cell Lung Cancer. *J.*
859 *Clin. Oncol. Off. J. Am. Soc. Clin. Oncol.* 2004, 22, 2184–2191, doi:10.1200/JCO.2004.11.022.

- 860 68. Besse, B.; Lasserre, S.F.; Compton, P.; Huang, J.; Augustus, S.; Rohr, U.-P. Bevacizumab Safety in Patients with Central
861 Nervous System Metastases. *Clin. Cancer Res. Off. J. Am. Assoc. Cancer Res.* 2010, 16, 269–278,
862 doi:10.1158/1078-0432.CCR-09-2439.
- 863 69. Besse, B.; Le Moulec, S.; Mazières, J.; Senellart, H.; Barlesi, F.; Chouaid, C.; Dansin, E.; Bérard, H.; Falchero, L.; Gervais,
864 R.; et al. Bevacizumab in Patients with Nonsquamous Non-Small Cell Lung Cancer and Asymptomatic, Untreated Brain Me-
865 tastases (BRAIN): A Nonrandomized, Phase II Study. *Clin. Cancer Res. Off. J. Am. Assoc. Cancer Res.* 2015, 21, 1896–1903,
866 doi:10.1158/1078-0432.CCR-14-2082.
- 867 70. Marom, E.M.; Martinez, C.H.; Truong, M.T.; Lei, X.; Sabloff, B.S.; Munden, R.F.; Gladish, G.W.; Herbst, R.S.; Morice,
868 R.C.; Stewart, D.J.; et al. Tumor Cavitation during Therapy with Antiangiogenesis Agents in Patients with Lung Cancer. *J.*
869 *Thorac. Oncol. Off. Publ. Int. Assoc. Study Lung Cancer* 2008, 3, 351–357, doi:10.1097/JTO.0b013e318168c7e9.
- 870 71. Leighl, N.B.; Zatloukal, P.; Mezger, J.; Ramlau, R.; Moore, N.; Reck, M.; Manegold, C. Efficacy and Safety of
871 Bevacizumab-Based Therapy in Elderly Patients with Advanced or Recurrent Nonsquamous Non-Small Cell Lung Cancer in
872 the Phase III BO17704 Study (A