



HAL
open science

The last 30,000 to 600,000 years ago: unravelling the timing of human settlement for the Palaeolithic site of Kozarnika.

Maryam Heydari, Guillaume Guérin, Nikolay Sirakov, Philippe Fernandez, Catherine Ferrier, Aleta Guadelli, Jean-Claude Leblanc, Stanimira Taneva, Svoboda Sirakova, Jean-Luc Guadelli

► **To cite this version:**

Maryam Heydari, Guillaume Guérin, Nikolay Sirakov, Philippe Fernandez, Catherine Ferrier, et al.. The last 30,000 to 600,000 years ago: unravelling the timing of human settlement for the Palaeolithic site of Kozarnika.. Virtual Conference DEUQUA 2021, Sep 2021, Hannover, Germany. . hal-03376223v1

HAL Id: hal-03376223

<https://hal.science/hal-03376223v1>

Submitted on 13 Oct 2021 (v1), last revised 15 Nov 2022 (v2)

HAL is a multi-disciplinary open access archive for the deposit and dissemination of scientific research documents, whether they are published or not. The documents may come from teaching and research institutions in France or abroad, or from public or private research centers.

L'archive ouverte pluridisciplinaire **HAL**, est destinée au dépôt et à la diffusion de documents scientifiques de niveau recherche, publiés ou non, émanant des établissements d'enseignement et de recherche français ou étrangers, des laboratoires publics ou privés.

Maryam Heydari^{1,2,*}, Guillaume Guérin^{1,3}, Nikolay Sirakov⁴, Philippe Fernandez⁵, Catherine Ferrier⁶, Aleta Guadelli^{4,6}, Jean-Claude Leblanc⁷, Stanilira Taneva⁴, Svoboda Sirakova⁴, Jean-Luc Guadelli⁶

¹Institute of Earth and Environmental Sciences, University of Freiburg, Albertstr. 23b, 79104 Freiburg, Germany | ²CNRS - Université Bordeaux Montaigne, UMR 5060, Iramat-CRP2A, Maison de l'archéologie, Esplanade des Antilles, 33607 Pessac cedex, France | ³Université de Rennes, CNRS, Géosciences Rennes, UMR 6118, 35000 Rennes, France | ⁴National Institute of Archaeology with Museum-Bulgarian Academy of Sciences, 2, Saborna Street, 1000 Sofia, Bulgaria | ⁵LAMPEA-UMR7269 CNRS, MMSH, 5 Rue du Château de L'Horloge, BP 647, 13094 Aix-en-Provence Cedex 2, France | ⁶PACEA-UMR5199 CNRS, Université de Bordeaux, Allée Geoffroy Saint Hilaire, Bâtiment B18, CS50023, 33615 Pessac Cedex, France | ⁷TRACES-UMR5608 CNRS, Université de Toulouse le Mirail, Maison de La Recherche, 5, Allées Antonio Machado, 31048 Toulouse Cedex 1, France

* corresponding author: maryam.heydari@geologie.uni-freiburg.de

1 Introduction

- Kozarnika cave is a renowned prehistoric site in the Balkans. It contributes significantly to our understanding of the human past due to its rich assemblages associated with the Lower to Upper Palaeolithic periods. The cave was first mentioned in the prehistoric survey carried out before 1933. Years after, in 1996, the site was excavated systematically by Bulgarian-French researchers [1].
- Various chronological dating methods have been employed alongside the excavation to unravel the timing of humans' occupation in Kozarnika.
- This study presents our contribution of employing luminescence-dating methods (OSL, IRSL, pIRIR, VSL, IR-RF) to unravel the reliable timeframes for several geological units and archaeological assemblages. A vast body of techniques has been put together, enabling us to date sediment samples containing the assemblages attributed earlier to the Upper, Middle, and Lower Palaeolithic periods [2,3].
- Our results show that the inhabitants of Kozarnika occupied that region from ca 30 to 600 ka, showing general accordance with the previous dating.

2 Site location

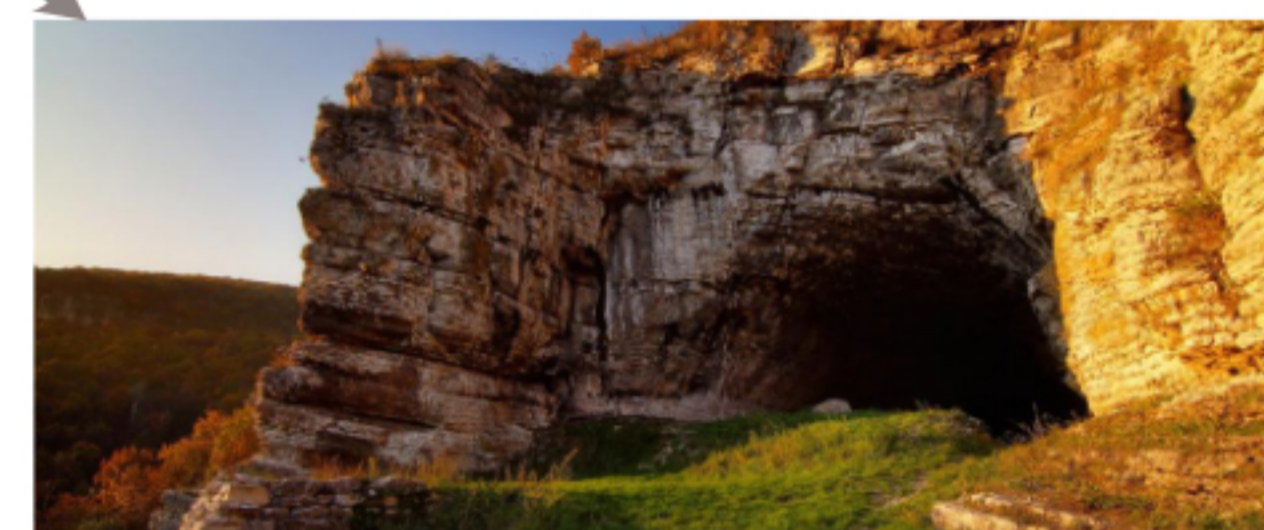
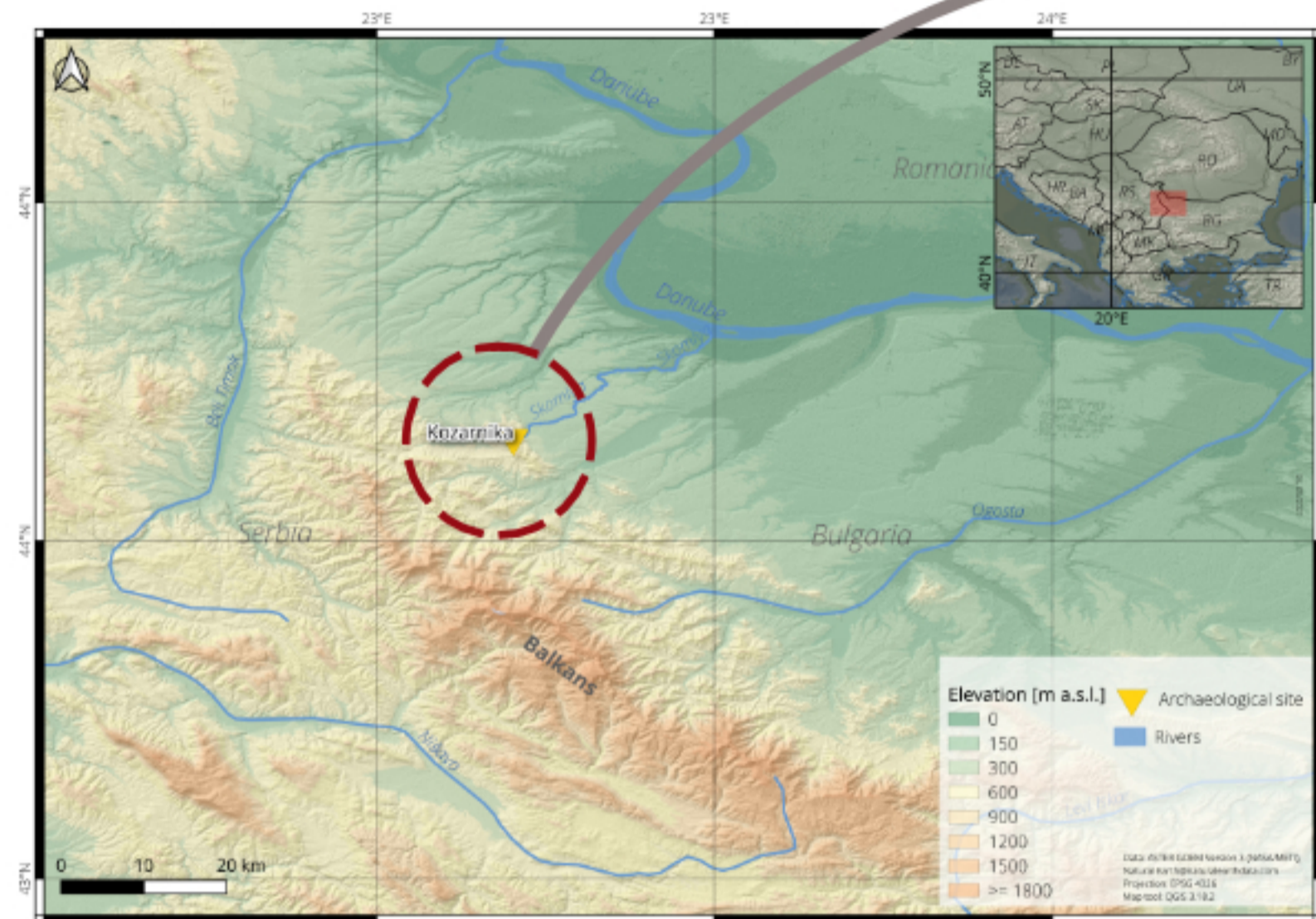
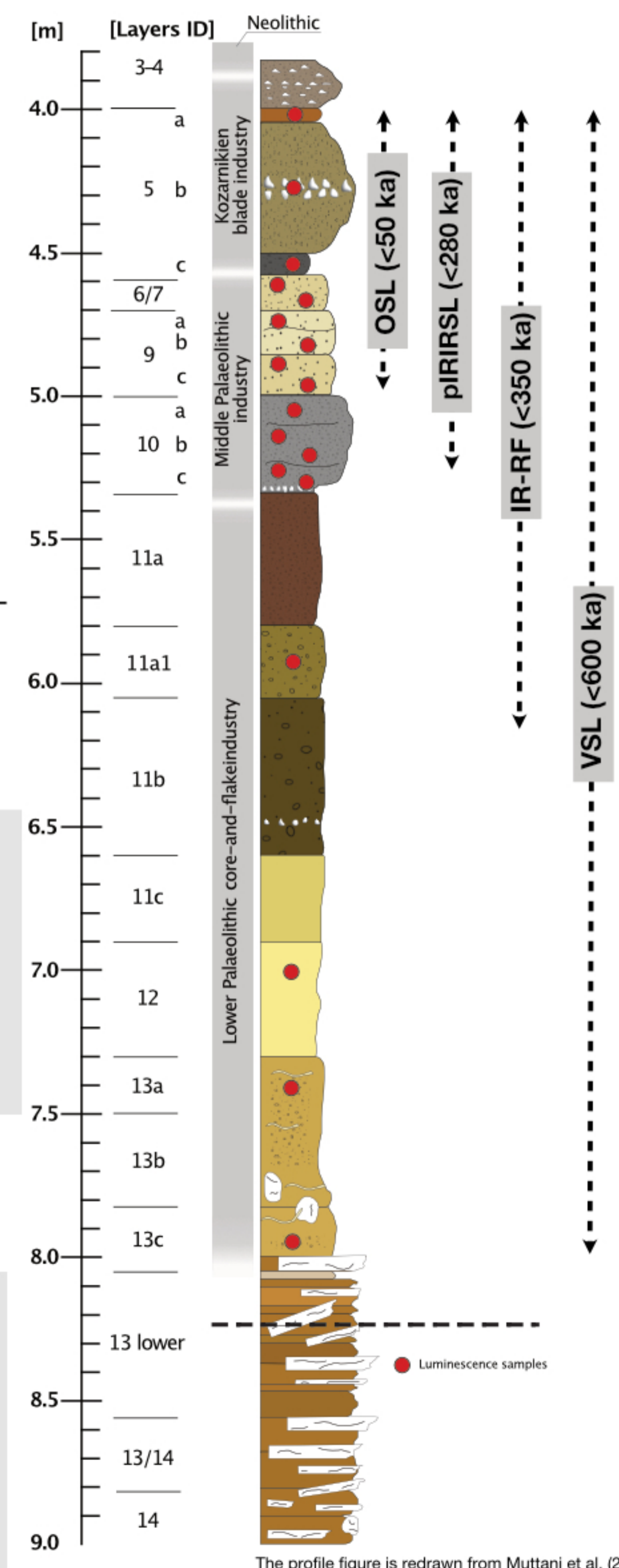


Photo: http://www.fastonline.org/data/files/webthumb_10518.jpg

Sampling

Kozarnika cave is located in the northwest of Bulgaria, 30 km away from the Serbian border. The site is situated in the northern slopes of the Balkan Mountains, merging to the Danubian Plain, which is extended to the Danube River to the north. Sediment samples were taken from the Lower, Middle and Upper Palaeolithic sequences of the cave.

4 Chronology

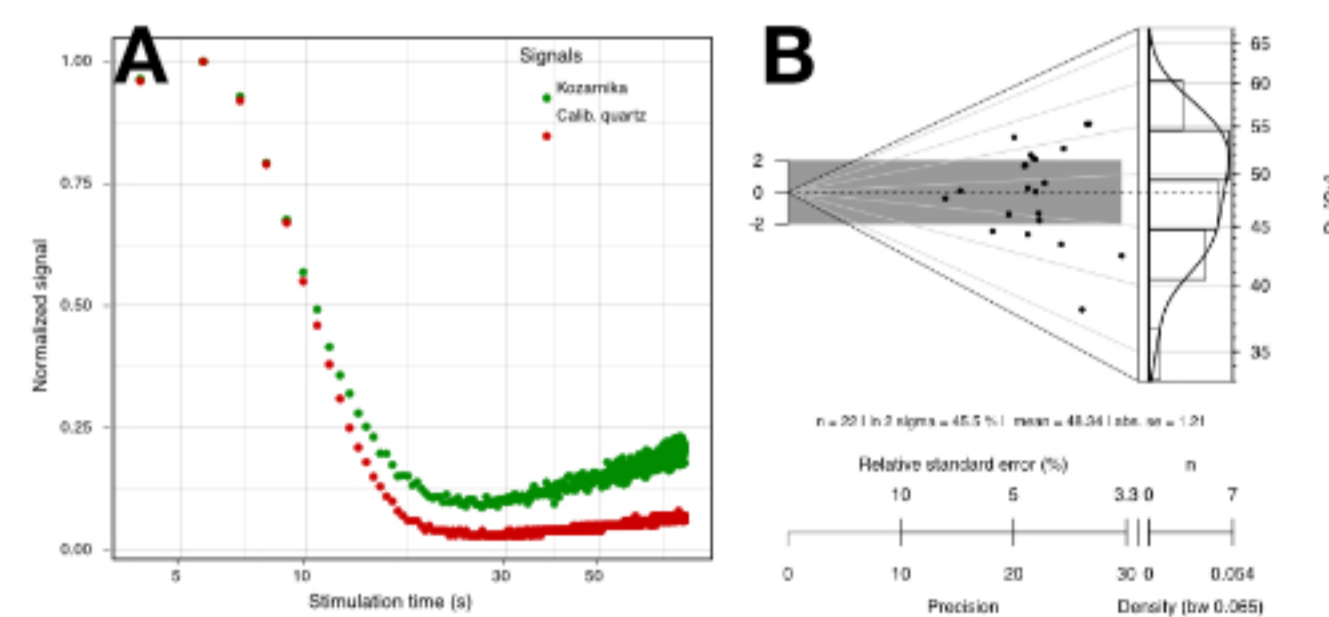


5 Summary

- The luminescence-based chronology at Kozarnika's cave covers 30 to 600 ka
- The overall accordance between the OSL with the pIR₅₀IRSL₂₉₀ ages for the upper part of the sequence makes it likely that both signals were completely bleached before mineral deposition.
- Muttoni et al. (2017) [6] assigned the Brunhes-Matuyama reversal (780 ka) to the layer beneath 13c using Palaeomagnetic dating. VSL in combination with MAAD protocol resulted in ages consistent with the Brunhes-Matuyama reversal.
- The independent age available for layer 13a-c (with the range of 600-750 ka) also might indicate that the IR-RF ages represent the minimum age for the layers.

3 Dating

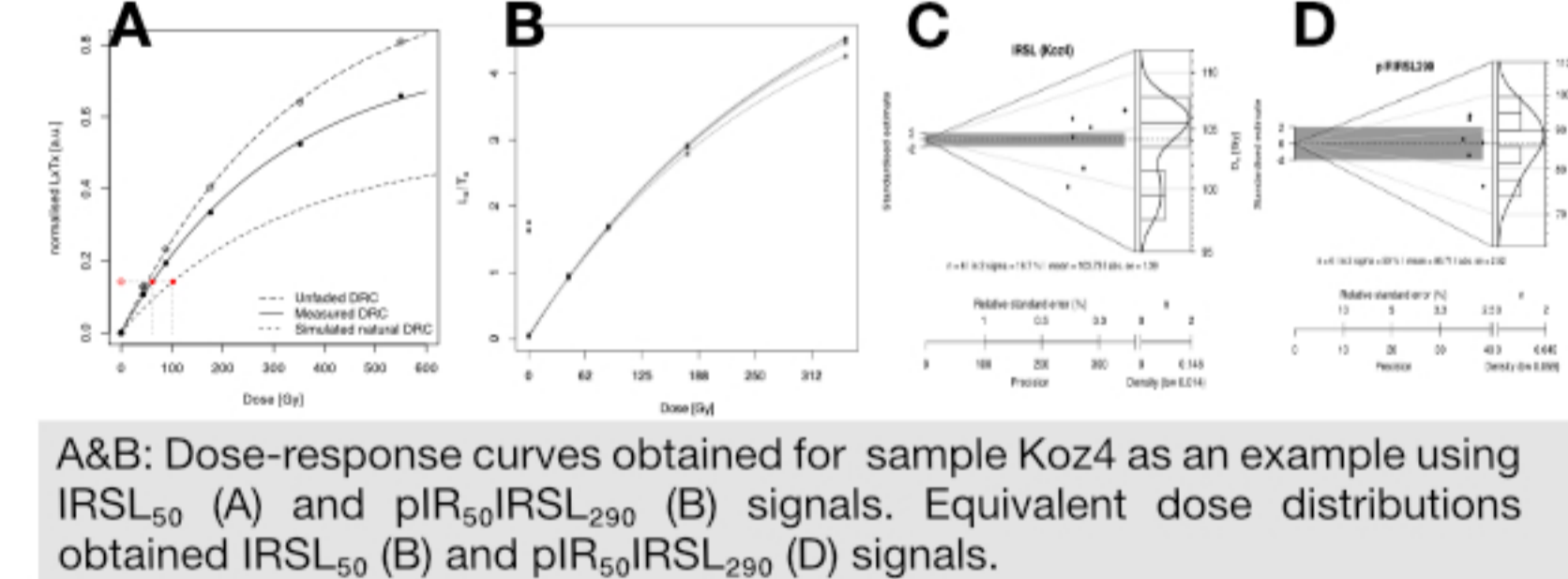
1 Optically stimulated luminescence (OSL)



A The figure illustrates the presence of a fast-decaying signal due its good match with the calibration quartz signal.

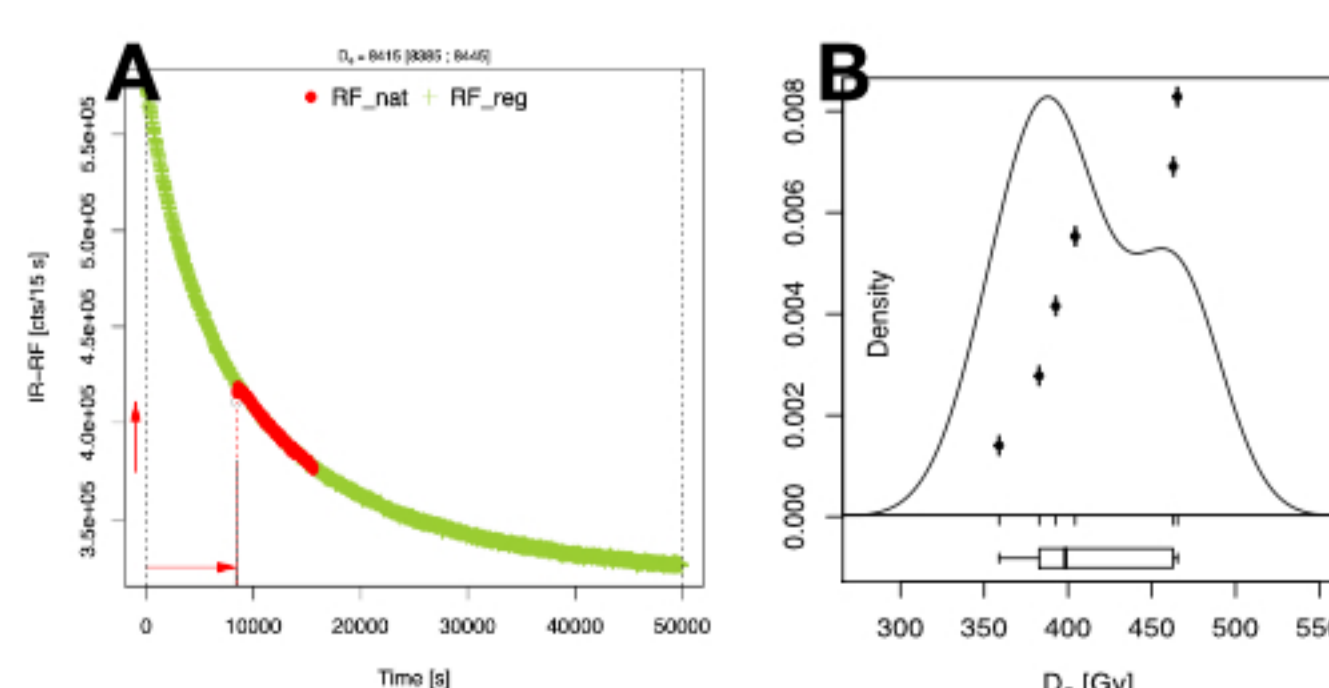
B Quartz OSL equivalent dose distribution using multi-grain approach for Koz4 as an example.

2 IRSL₅₀/pIR₅₀IRSL₂₉₀



A&B: Dose-response curves obtained for sample Koz4 as an example using IRSL₅₀ (A) and pIR₅₀IRSL₂₉₀ (B) signals. Equivalent dose distributions obtained IRSL₅₀ (B) and pIR₅₀IRSL₂₉₀ (D) signals.

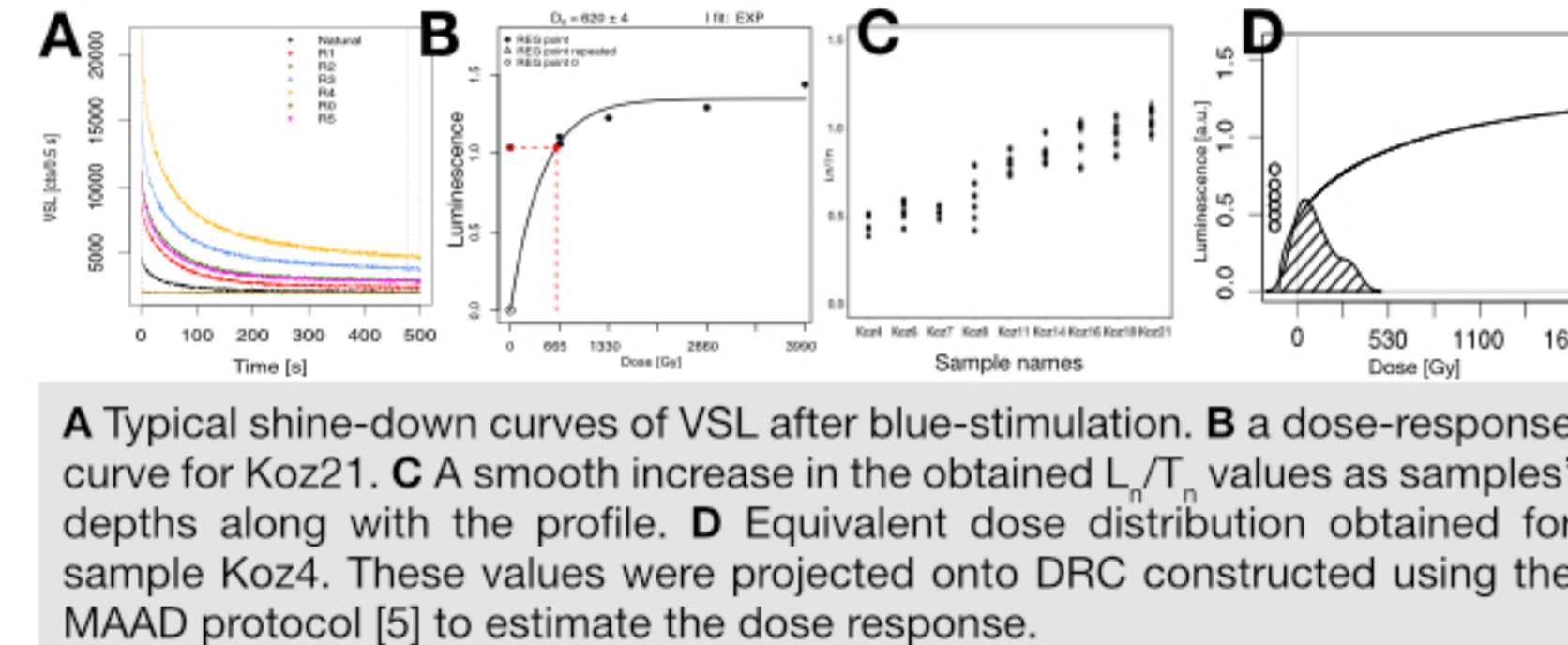
3 Infrared radiofluorescence (IR-RF)



A The IR-RF curve was obtained for one sample (Koz11) using the RF70 protocol [4].

B The kernel density estimate (KDE) plot illustrates the dose distribution for the same sample.

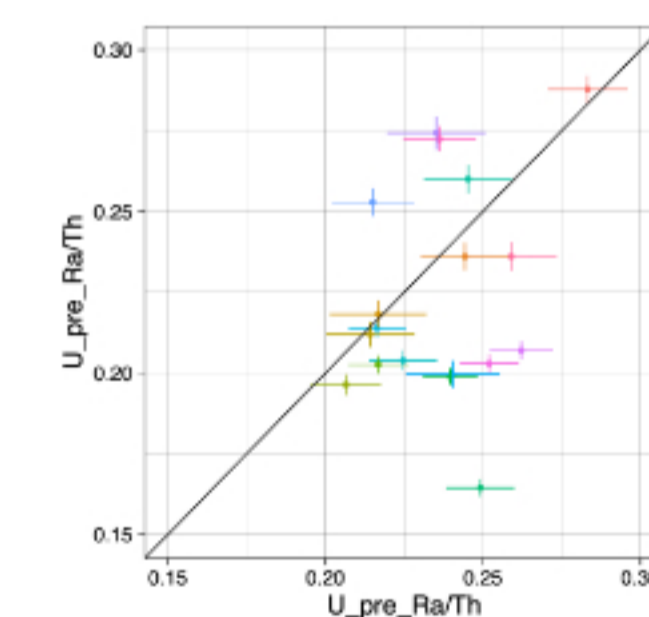
4 Violet OSL (VSL)



A Typical shine-down curves of VSL after blue-stimulation. **B** a dose-response curve for Koz21. **C** A smooth increase in the obtained L_T/D values as samples' depths along with the profile. **D** Equivalent dose distribution obtained for sample Koz4. These values were projected onto DRC constructed using the MAAD protocol [5] to estimate the dose response.

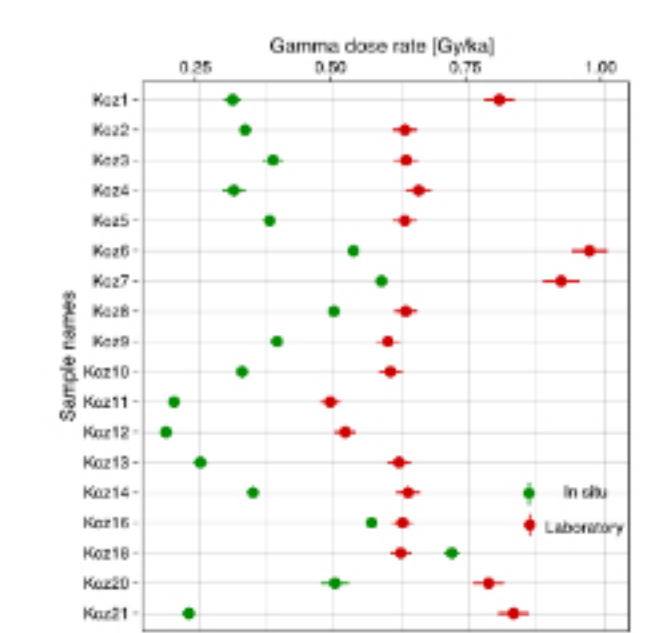
Dose rate

1 Gamma-ray spectrometry



The equivalent ²³⁸U concentration was determined from the top (pre-²²⁶Ra) and the bottom of the chain U decay chain (post-²²⁶Ra). This allows us checking for potential disequilibria in the U chain for our samples.

2 In-situ gamma-dose rate



The *in situ* gamma-dose rate results are significantly lower compared to results obtained in the laboratory, due to the heterogeneous environment observed in the sediment layers. Hence, only the *in situ* results were used to estimate the ages.

References

[1] Guadelli, J.L., Sirakov, N., Ivanova, S., Sirakova, S., Anastassova, E., Courtaud, P., Dimitrova, I., Djabarska, N., Fernandez, P., Ferrier, C., Fontugne, M., Gambier, D., Guadelli, A., Iordanova, D., Iordanova, N., Kovatcheva, M., Krumov, I., Leblanc, J.-C., Malyye, J.B., Marinova, M., Miteva, V., Popov, V., Spassov, R., Taneva, S., Taster-Laborde, N., Taneva, T., 2005. Une séquence du Paléolithique inférieur au Paléolithique récent dans les Balkans: La grotte Kozarnika à oreshets (nord-ouest de la bulgarie), in: Molnes, N., Moncel, M.H., (Eds.), Les Premiers Peuplements En Europe EAR, pp. 87-103. [2] Sirakov, N., Guadelli, J.-L., Ivanova, S., Sirakova, S., Boudadi-Maligne, M., Dimitrova, I., Ph. F., Ferrier, C., Guadelli, A., Iordanova, D., Iordanova, N., Kovatcheva, M., Krumov, I., Leblanc, J.-C., Miteva, V., Popov, V., Spassov, R., Taneva, S., Taneva, T., 2010. An ancient continuous human presence in the Balkans and the beginnings of human settlement in western Eurasia: A Lower Pleistocene example of the Lower Palaeolithic levels in Kozarnika cave (North-western Bulgaria). *Quaternary International* 223-224, 94-106. [3] Tiller, A., Sirakov, N., Guadelli, A., Fernandez, P., Sirakova, S., Dimitrova, I., Ferrier, C., Guérin, G., Heidari, M., Krumov, I., Leblanc, J.-C., Miteva, V., Popov, V., Taneva, S., Guadelli, J.-L., 2017. Evidence of Neanderthals in the Balkans: The infant radius from Kozarnika Cave (Bulgaria). *Journal of Human Evolution* 111, 54-62. <https://doi.org/10.1016/j.jhevol.2017.06.002> [4] Frouin, M., Haot, S., Kreuzer, S., Lahaye, C., Lamothe, M., Philippe, A., Mercier, N., 2017. An improved radiofluorescence single-aliquot regenerative dose protocol for K-feldspars. *Quaternary Geochronology* 38, 13-24. <https://doi.org/10.1016/j.quageo.2016.11.004> [5] Ankjærgaard, C., Guadelli, B., Buyllaert, J.-P., Reimann, T., Yi, S.W., Wallinga, J., 2016. Violet stimulated luminescence dating of quartz from Luochuan (Chinese loess plateau): Agreement with independent chronology up to ~600 ka. *Quaternary Geochronology* 34, 33-46. <https://doi.org/10.1016/j.quageo.2016.03.001> [6] Muttoni, G., Sirakov, N., Guadelli, J.-L., Kent, D.V., Scardia, G., Monesi, E., Zerboni, A., Ferrara, E., 2017. An early Brunhes (<0.78 Ma) age for the Lower Paleolithic tool-bearing Kozarnika cave sediments, Bulgaria. *Quaternary Science Reviews* 13.