



**HAL**  
open science

# Barrier Gesture Relaxation during Vaccination Campaign in France: Modelling Impact of Waning Immunity

Carole Vignals, David W Dick, Rodolphe Thiébaud, Linda Wittkop, Mélanie Prague, Jane M Heffernan

► **To cite this version:**

Carole Vignals, David W Dick, Rodolphe Thiébaud, Linda Wittkop, Mélanie Prague, et al.. Barrier Gesture Relaxation during Vaccination Campaign in France: Modelling Impact of Waning Immunity. COVID, 2021, 1 (2), pp.472-488. 10.3390/covid1020041 . hal-03375281

**HAL Id: hal-03375281**

**<https://hal.science/hal-03375281>**

Submitted on 12 Oct 2021

**HAL** is a multi-disciplinary open access archive for the deposit and dissemination of scientific research documents, whether they are published or not. The documents may come from teaching and research institutions in France or abroad, or from public or private research centers.

L'archive ouverte pluridisciplinaire **HAL**, est destinée au dépôt et à la diffusion de documents scientifiques de niveau recherche, publiés ou non, émanant des établissements d'enseignement et de recherche français ou étrangers, des laboratoires publics ou privés.

---

# Barrier gesture relaxation during vaccination campaign in France: modelling impact of waning immunity

Carole Vignals<sup>1,2</sup>, David W. Dick<sup>3</sup>, Rodolphe Thiébaud<sup>1,2,4,5</sup>, Linda Wittkop<sup>1,2,5\*</sup>,  
Mélanie Prague<sup>1,4,5\*</sup>, Jane M. Heffernan<sup>1,3\*</sup>

<sup>1</sup> Université de Bordeaux, Inserm, Bordeaux Population Health Research Center, Bordeaux, France;

<sup>2</sup> Centre Hospitalier Universitaire Pellegrin, Bordeaux, France;

<sup>3</sup> Mathematics and Statistics, Centre for Disease Modelling, York University, Toronto, Canada;

<sup>4</sup> Inria, SISTM, Talence, France;

<sup>5</sup> Vaccine Research Institute, Creteil, France;

\*Correspondence: [jmheffer@yorku.ca](mailto:jmheffer@yorku.ca), [melanie.prague@inria.fr](mailto:melanie.prague@inria.fr), [linda.wittkop@u-bordeaux.fr](mailto:linda.wittkop@u-bordeaux.fr)

## Abstract

Non-pharmaceutical interventions have been implemented intermittently for more than a year in most countries of the world to mitigate the COVID-19 epidemic. In France, while the vaccination campaign is progressing, the French government has decided to remove many public health restrictions such as business closure, lockdowns, and curfews. Nonetheless, social distancing, mask wearing, and hand washing (also called barrier gestures) are still recommended. We utilize an age-structured compartmental SEIR model that takes into account the SARS-CoV-2 waning immunity, vaccination, and increased transmissibility from variants of concern to estimate if barrier gestures can be relaxed without causing a resurgence of severe infections. This model assumes that the susceptibility to infection is a function of immunity status, which depends on initial infection severity and vaccination status. It is calibrated on confirmed COVID-19 cases from the French surveillance database, and accounts for changes in contact behaviors due to the implementation of nation-wide public health policies. We study the partial and full relaxation of barrier gestures occurring from August to December 2021 under various immunity duration assumptions. Maintaining the application of barrier gestures appears essential to avoid a resurgence of severe infections that would exceed French health care capacities, while surmounting vaccine hesitancy represents the key to consider their relaxation. Immunity duration assumptions significantly influence the short-term dynamic of the epidemic, which should be considered for further modelling.

---

## 1. Introduction

Causing more than 200 million infections and at least 4.4 million deaths worldwide, the COVID-19 epidemic is a global health, economic, and social crisis. The causative agent, SARS-CoV-2, emerged in China's Hubei province in December 2019. Various non-pharmaceutical measures, in particular lockdown and social distancing, have been implemented around the world to effectively control the spread of the virus [1,2]. Nevertheless, all of these measures have negative economic and social consequences, as well as repercussions on the mental health of populations. Considerable efforts in vaccine research have resulted in the development of several effective vaccines against COVID-19 in a few months. As of 30 August 2021, more than 5 billion doses of the vaccine have been administered worldwide [3].

Numerous studies have used compartmental models to either estimate the parameters of the epidemic dynamics [4,5], measure the impact of social distancing [6–8], or evaluate different vaccine strategies [9]. Many of these studies assumed that immunity acquired after an infection was definitive. Indeed, it has been shown that immunity acquired after a first infection protects against reinfection for at least 6 months [10,11]. Nevertheless, several immunological studies have shown that, following natural infection, the anti-SARS-CoV2 antibody titer declines over time [12–15] even though it remains detectable in more than 90% of cases at 7 months [14]. A study suggests that anti-SARS-CoV-2 CD4+ and CD8+ specific T cells decline with a half-life of 3 to 5 months [15], while another study found that they were maintained 10 months post-infection [16]. With regard to other coronaviruses, reinfections are frequent in the year following a seasonal coronavirus infection (common cold) [17], while immunity appears to be prolonged after infection with SARS-CoV or MERS [18–20]. Concerning vaccination, a significant trend of the decline in anti-SARS-CoV2 antibodies was demonstrated with both BNT162b2 and ChAdOx1 nCoV-19 [21]. The latest study endpoint of the BNT162b2 clinical trial suggests that vaccine efficacy against symptomatic infections may decline over time [22]. However, to date, the exact duration of the protection anti-SARS-CoV-2 conferred by an infection or by vaccination remains unknown. As the epidemic has lasted for more than a year, it seems necessary to take this parameter into account to model the epidemic. Indeed, several studies have shown that the future evolution of the epidemic would depend on the duration of immunity, from extinction after a large epidemic wave to the transition to an endemic mode [23–26].

The French government, similar to many others, has successively implemented many restrictions in order to mitigate the epidemic, such as travel restrictions, lockdowns, curfews, obligation to work from home, and the closure of bars, restaurants, cinemas, or schools. In addition to these measures, barrier gestures have been promoted. These barrier gestures include mask wearing, washing hands regularly, using single-use disposable tissues, keeping a distance of at least 2 m between individuals, and avoiding gatherings of more than six people with the aim to reducing human-to-human viral transmission.

---

Four vaccines are currently licensed in France: two messenger RNA vaccines (BNT162b2 and mRNA-1273), and two viral vector vaccines (ChAdOx1 nCoV-19 and Ad26.COV2.S). The vaccination campaign began on January 2021, targeting first the elderly and the subpopulation with comorbidities at risk for severe COVID-19. The program was then progressively extended to the entire adult population over a few months, and then to children over 12 years old. As of 24 August 2021, 71.1% of the French population have received at least one dose of the vaccine, and 62.7% have completed the vaccination schedule [27].

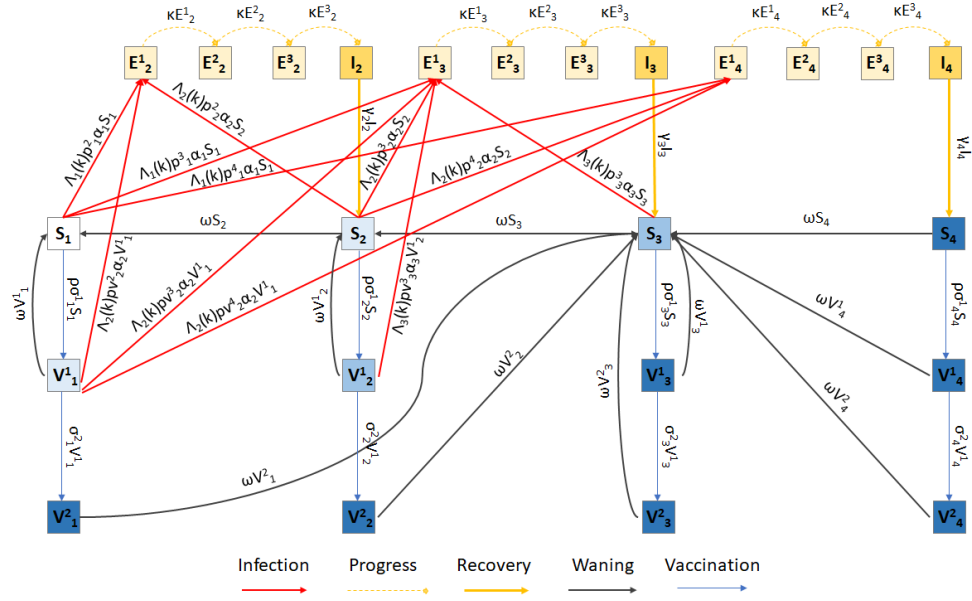
A French modelling study estimated that it would be necessary to vaccinate 90% of individuals over 65 years old and 89% of the 18–64 year olds before all social distancing measures could be relaxed [28]. This study assumes that immunity does not wane over time, which could lead to an underestimation of these thresholds. In addition, Europe is facing the breakthrough of the delta variant, which is estimated to be 1.97 times more transmissible than the historical strain, and is predicted to represent 90% of COVID-19 cases in August 2021 [29]. However, the vaccine coverage reached at the end of the vaccination campaign is uncertain. A survey conducted among the French population estimates that 16% of adults do not want to be vaccinated and that only 74% of parents would agree to have their child under 17 vaccinated [30]. Finally, because immune responses following vaccination are lower in the elderly [31], a booster campaign for this population is being considered by the authorities.

While the vaccine rollout is progressing, the French government has removed public health restrictions, but the application of barrier gestures is recommended [32]. In this study, we aim to estimate the consequences of a barrier gesture relaxation on the evolution of the epidemic in France, taking into account vaccination, the emergence of variants of concern, in particular, the delta variant, and waning immunity. In addition, we aim to investigate in a preliminary analysis the impact of a booster vaccine campaign for the elderly.

## 2. Materials and Methods

### 2.1. Model

We used a compartmental age-structured model of COVID-19 infection previously developed by Childs et al. [33] which is adapted from a model of vaccination and waning immunity applied to pertussis [34]. A flow diagram of the model is shown in Figure 1 for a single age group. The model is based on a Susceptible-Exposed-Infected-Vaccinated-Susceptible model structure (SEIVS) with age structure (i.e., groups 0-4, 5-9, ..., 75+ years). As in Childs et al. [33], we use  $S_{im}$ ,  $E_{jm}^k$ ,  $I_{jm}$ , and  $V_{im}^l$  to denote the number of susceptible, exposed, infectious, and vaccinated individuals in each age group  $m$  ( $1 \leq m \leq 16$ ), where  $i$  ( $1 \leq i \leq 4$ ) denotes immune status,  $j$  ( $2 \leq j \leq 4$ ) denotes symptom severity,  $k$  ( $1 \leq k \leq 3$ ) represents stages in the exposed class, and  $l$  ( $1 \leq l \leq 2$ ) denotes the number of vaccine doses that individuals have received.



**Figure 1.** Schematic of the age-structured SEIVS model for one age group, derived from Childs et al. [33]. Here,  $S_1$ ,  $S_2$ ,  $S_3$ , and  $S_4$  (blue shaded boxes) represent susceptible individuals who are fully susceptible, have some low and moderate immunity, and full immunity, respectively.  $I_2$ ,  $I_3$ , and  $I_4$  (yellow boxes) represent infected individuals with mild, moderate and severe symptoms, respectively, who will develop some low, moderate, or full immunity once recovered (yellow lines), respectively.  $V_1^1$  and  $V_2^1$  represent vaccinated individuals from the  $S_1$  classes ( $1 \leq i \leq 4$ ) after 1 and 2 doses of vaccine, respectively.  $E_j^k$  ( $2 \leq j \leq 4$ ) represent exposed individuals (infected but not-yet-infectious) with progressive stages  $k$  ( $1 \leq k \leq 3$ ) that will experience mild  $I_2$ , moderate  $I_3$ , and severe  $I_4$  symptoms. Susceptible and vaccinated individuals can be infected and move to the exposed classes (red lines). Immunity gained from infection and vaccination can wane (black lines). Susceptible and vaccinated classes in the same shade of blue have similar protection.

A full description of the model is available in Childs et al. [33]. Briefly, the base model consists of an immune continuum, distinguishing four states of susceptibility (fully susceptible ( $S_1$ ), somewhat immune ( $S_2$ ), moderately immune ( $S_3$ ), and fully resistant to infection ( $S_4$ )); three infectious states with mild ( $I_2$ ), moderate ( $I_3$ ), and severe ( $I_4$ ) symptoms (i.e., infections requiring at least one medical consultation); and three infected but not-yet-infectious states ( $E_j^k$ ,  $j = 2,3,4$ ,  $k = 1,2,3$ ). It is assumed that individuals of higher immune status are less susceptible to infection than those of lower status. Co-morbidity statuses by age [35] determine the probability of mild, moderate, and severe symptoms for each age group. Immunity develops after infection. It is assumed that people with mild, moderate, and severe symptoms move to immune classes  $S_2$ ,  $S_3$ , and  $S_4$ , respectively, upon recovery (i.e., the severity of symptoms is proportional to neutralizing immunity development [14,36–38]). Vaccination is implemented into the model using a two-dose structure, where compartments  $V_1^1$  and  $V_2^1$  denote those with one and two doses, respectively, where  $i$  is the level of susceptibility. It is assumed that two doses of the vaccine, or one dose of the vaccine administered to individuals in immune states  $S_3$  and  $S_4$ , provide the same level of immunity or protection from infection as  $S_4$ ; i.e., full resistance to infection. Additionally, it is assumed that one dose of the vaccine given to individuals in  $S_1$  and  $S_2$  provides protection similar to states  $S_2$  and  $S_3$ , respectively, where protective efficacies against infection and/or

severe disease decrease with a lower level of immunity. Finally, it is assumed that the immunity gained from infection or vaccination wanes over time (Figure 1, black lines).

Detailed descriptions of the equations are provided in Appendix A.

## 2.2. Parameters

Parameter values and references are provided in Table 1.

**Table 1.** Parameter definitions, values and references for the age-structured SEIVS model.

Parameter	Definition	Value			References
<b>Fixed parameters</b>					
$\alpha_i$	Susceptibility by immune status i	$\alpha_1$	$\alpha_2$	$\alpha_3$	Hypothesis, taken from Childs et al. [33]
		1	0.66	0.33	
$\beta_j$	Infectivity by infection severity j	$\beta_2$	$\beta_3$	$\beta_4$	[39]
		0.045	0.089	0.009	
$\lambda_{im}$	Force of infection by immune status i and age m	Appendix A			Estimated
$c_{ma}$	Contact-rates between individuals in age group m and age group a	Described in Section 2.3			[40]
$R_0$	Basic reproductive number	2.9			[4]
$p_{im}^j$	Proportion of S going to $I_j$ by age m and by immune status i	Table S2			[35]
$A_m$	Population size by age m	Table S1			INSEE*
$\gamma_j$	Recovery rate by infection severity j	$\gamma_2$	$\gamma_3$	$\gamma_4$	Hypothesis
		1/5	1/10	1/15	
$\kappa$	Rate of progress through the exposed compartments	1/1.5			[41,42,43]
<b>Variable parameters</b>					
$\sigma_{im}^1$	Vaccination rate by age m and by immune status i for first dose	Described in Section 2.2 paragraph 2			VAC-SI**
$\sigma_{im}^2$	Vaccination rate by age m and by immune status i for second dose	1/28			
$\omega$	Waning rate of immunity	Main analysis	Sensitivity analysis		[21,22]
		1/1095	1/365	0	
$\rho$	Vaccine efficacy against infections after 2 doses	Main analysis	Sensitivity analysis		[44,45,46,47]
		0.8	0.9		
1 - $\varepsilon$	Vaccine efficacy against infections after 1 dose	Main analysis	Sensitivity analysis		[44,45,46,47]
		0.5	0.7		
1 - q	Vaccine efficacy against severe cases after 1 dose	Main analysis	Sensitivity analysis		[44,45,46,47]
		0.7	0.7		

\*INSEE = Institut National de la Statistique et des Etudes Economiques. \*\*VAC-SI = Système d'Informations pour le suivi de la VACCination.

---

Susceptibility is assumed to decrease with increasing immunity, but does not depend on age. Thus, the susceptibility  $\alpha$  of an individual somewhat immune ( $S_2$ ) or moderately immune ( $S_3$ ) corresponds respectively to  $1/3$  and  $2/3$  of that of an individual fully susceptible ( $S_1$ ). Infectivity ( $\beta$ ) is assumed to vary by the severity of the disease and is chosen to produce a basic reproduction number,  $R_0$ , equal to 2.9 [4] using the Next Generation Matrix method [48]. By immunity status, we assume that the infectivity of individuals with mild ( $I_2$ ) or severe ( $I_4$ ) infections is 0.5 and 0.1 times the infectivity of moderate infections ( $I_3$ ). Indeed, people with milder symptoms are expected to have lower infectivity [39]. Simultaneously, more severe disease outcomes are expected to induce behavioral changes that lower infectivity, such as limiting mobility. Infectivity is considered in the calculation of the infection force  $\lambda$ , which takes into account the average number of contacts between age classes and the proportion of the population infected and infectious (Appendix A—Model equations). Susceptible individuals  $S_i$ , upon infection, move to the mild, moderate, and severe symptom classes with probabilities  $p_{im}^j$  for each age group  $m$  and each immune status  $i$ . These probabilities are determined by the prevalence of zero, one, and two or more co-morbidities that increase the risk of severe COVID-19 disease within each age group, informed by [35].  $p_{1m}^j$  is directly derived from these prevalences, whereas  $p_{2m}^j$  and  $p_{3m}^j$  are modified in order to assume that people in the  $S_2$  and  $S_3$  compartments are, respectively, 70% protected and fully protected against moving to the severe disease class  $I_4$  (Table S2). The incubation period lasts on average 4.5 days. Therefore, it is assumed that the progression rates through the pre-infectious period  $\kappa$  is equal to  $1/1.5$ . The contagious period is estimated to last 7 to 8 days [41,49,50] and depends on symptom severity, with milder disease associated with shorter infectious periods [51,52]. Thus, we assumed that the recovery rate is respectively equal to  $1/5$ ,  $1/10$ , and  $1/15$  for mild ( $I_2$ ), moderate ( $I_3$ ), and severe infections ( $I_4$ ). Given the short period considered, we assume the absence of natality, mortality, and aging. Finally, we assume that immunity lasts on average 3 years between successive stages, which means that it takes 9 years to pass from a fully resistant to a fully susceptible compartment. For vaccinated classes, we assume that immunity in  $V_1^1$  wanes to  $S_1$ ,  $V_2^1$  wanes to  $S_2$ , and that of all other vaccinated classes wanes to  $S_3$ .

Vaccination is implemented from 1 January 2021 and takes into account the different age groups that are successively eligible in France, starting first from the elderly (Table S3). In order to take into account vaccine hesitancy, we assume that 10% of the over-75s, 20% of the (20–74) year olds, and 30% of the (10–19) year olds will not be vaccinated [30]. We determine the first dose vaccination rate  $\sigma_i^1$  given the desired coverage at the end of each month of the vaccination program. From January to June 2021, the monthly coverage is derived from the VAC-SI (Système d’Informations pour le suivi de la VACCination) database (Table S4). From July, we assume that 15 million doses (including first and second doses) will be administrated each month, which corresponds to the average distribution in the previous 3 months. Monthly coverage is scaled to a daily rate accounting for the portion of the population in the current vaccine-eligible age groups in each eligible compartment ( $S_1$ ,  $S_2$ ,  $S_3$ , and  $S_4$ ). Individuals receive a second dose 28 days after the first one and acquire immunity immediately. The vaccine’s efficacy against all infections is assumed to be 50% after 1 dose and 80%

---

after 2 doses. The vaccine’s efficacy against severe infections is assumed to be 70% after 1 dose. Given the model architecture, the efficacy against severe infections after 2 doses is equal to the efficacy against all infections after 2 doses.

In order to take into account the emergence of the variants of concern (alpha, beta, gamma, and delta), we use the SI-DEP database (Système d’Informations de DEPistage), which provides information about the distribution of these variants among all confirmed COVID-19 cases over time (Figures S1 and S2). For the delta variant, we assume that it will represent 90% of the reported cases at the end of August 2021 [29]. We assume that alpha-beta-gamma variants and the delta variant are, respectively, 50% [53,54] and 97% [55] more transmissible than the historical strain.

### 2.3. Contact matrices and public health mitigation strategies

Age-specific daily contacts for the French population are obtained from pre-pandemic estimations [40]. The model incorporates the contact-rates,  $c_{ma}$ , the governmental measures taken to mitigate the epidemic such as lockdowns, curfews, the closing of schools, businesses, bars, restaurants, or working from home. The schedule of these governmental measures is available at <https://www.gouvernement.fr/info-coronavirus/les-actions-du-gouvernement> [56]. Specific modifications to the contact matrices are provided in the Supplementary Material (Tables S5–S8).

### 2.4. Calibration

The model is calibrated using daily reported COVID-19 cases from the SI-DEP database, from 13 May 2020 to 1 July 2021. SI-DEP is the French surveillance system that gathers all COVID-19 infections confirmed by Polymerase Chain Reaction or antigenic tests at the national level. We assume that reported COVID-19 cases correspond to all severe cases (I4) and 3/5 of the moderate cases (I3). The  $k$ -value is the only model parameter that is fit to COVID-19 data, and reflects the population compliance to barrier gestures. Given that climatic conditions are not implemented in the model, the  $k$ -value also captures part of the influence of the climate on the transmission [57]. This parameter lies between 0 and 1 (1 being pre-pandemic value; i.e., no barrier gesture application), and it linearly scales contact-rates from the contact matrices. Thus, the force of infection  $\lambda_{im}$  depends on the  $k$ -value (Appendix A).

### 2.5. Barrier gesture relaxation scenarios

After 1 August 2021, we formulate different hypotheses for the relaxation of barrier gestures based on the evolution of the  $k$ -value. The baseline scenario corresponds to no relaxation. For this scenario, we chose to set the  $k$ -value for July–August 2021 to those estimated during the same period in the previous year, assuming that barrier gestures will be applied at the same level. After August 2021, we maintain the  $k$ -value at this level until it is modified to reflect a relaxation scenario.

Different scenarios of barrier gesture relaxation are formulated according to the timing of the relaxation (August, September, October, November, or December) and its magnitude ( $k$ -value raised to



---

0.7, 0.8, 0.9, or 1, i.e., the pre-pandemic level). For each relaxation scenario, the  $k$ -value set before the relaxation is identical to the no relaxation scenario. We chose to evaluate the impact of each relaxation scenario on the evolution of severe cases  $I_4$ , i.e., infections requiring at least one medical consultation, and on the number of prevalent intensive care units' (ICU) hospitalizations. Due to the fact that our model does not directly incorporate a hospitalized compartment, we extrapolated the predictive number of ICU hospitalizations by estimating the mean ratio between the past ICU hospitalizations from the SI-VIC database (Système d'Information pour le suivi des VICtimes d'attentats et de situations sanitaires exceptionnelles) and the past  $I_4$  cases.

### 2.6. Sensitivity analyses

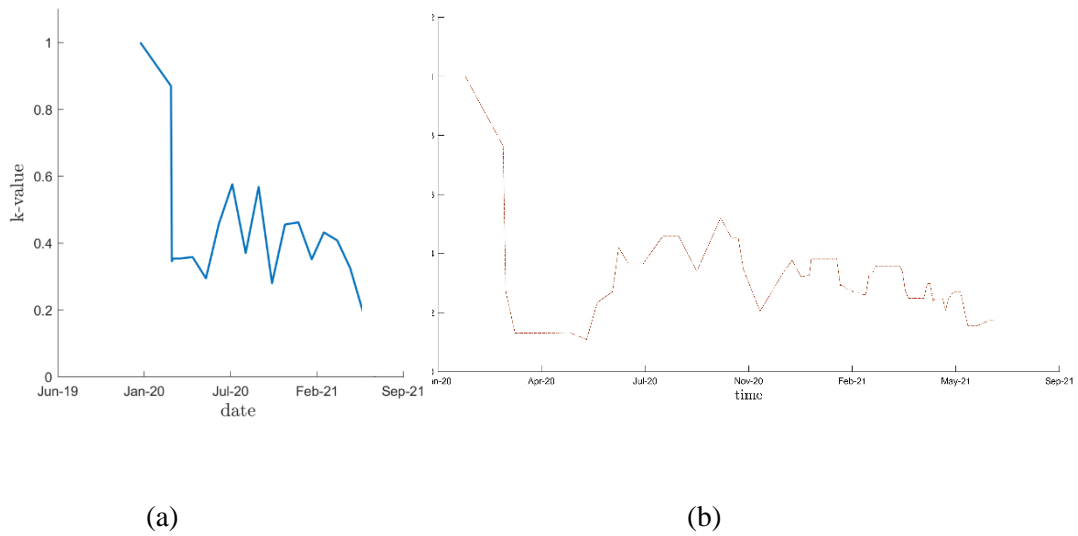
We successively explored a pessimistic immunity duration hypothesis, assuming that immunity wanes totally over 3 years instead of 9, and an optimistic hypothesis assuming that immunity does not wane. We also study one scenario without vaccine hesitancy, thus allowing the vaccination of 100% of each eligible age class, and one analysis with a better vaccine efficacy (Table 1). The model was refitted to estimate the retrospective  $k$ -value for all of these analyses except for the no vaccine hesitancy hypothesis.

Finally, we implemented (crudely) a booster vaccination campaign for people over 75 in order to estimate the upper bound effect of this strategy. In this analysis, we assumed that on 1 September 2021, a fraction of the people over 75 move from the  $S$  compartments to the corresponding  $V^2$  compartments, ultimately returning all 75+ individuals that were previously protected by vaccination back to the  $V^2$  protective classes.

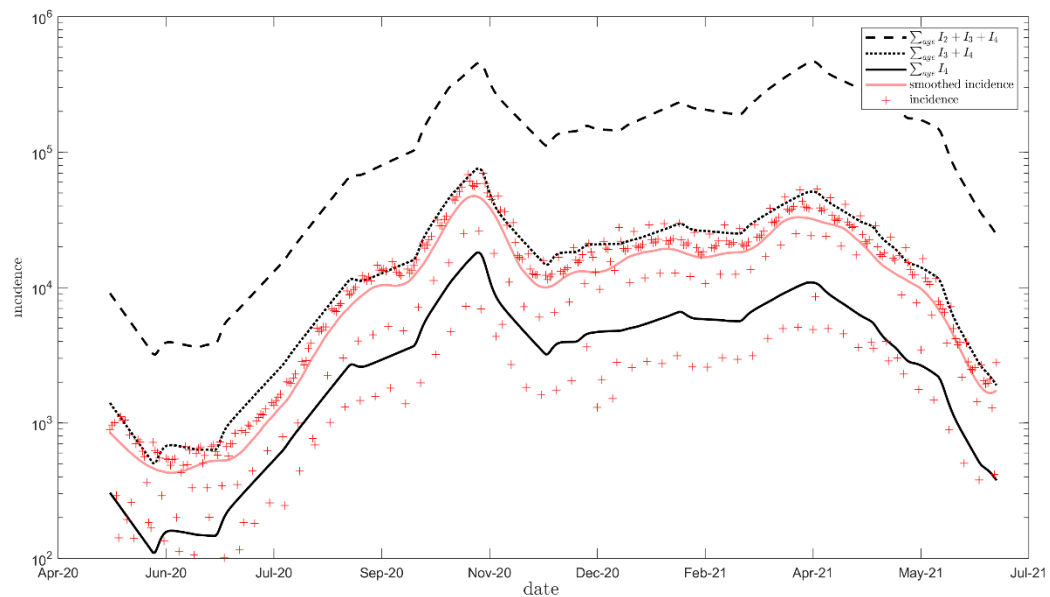
## 3. Results

### 3.1. Calibration

Figures 2a and 3 show the  $k$ -value (reflecting the population compliance to barrier gestures) estimation and the model fit from 13 May 2020 to 1 July 2021 for the main analysis, respectively. Figures showing the  $k$ -value and the fit of the model to the data for the sensitivity analyses are shown in the supplementary material (Figures S3–S5). In addition, Figure 2b plots the reduction in the average number of contacts for the entire population over time, given the combined effect of the modifications in the contact matrices and the fitted  $k$ -value. We note qualitative similarities between this figure and the time-dependent transmission rate of COVID-19 in the French population [8].



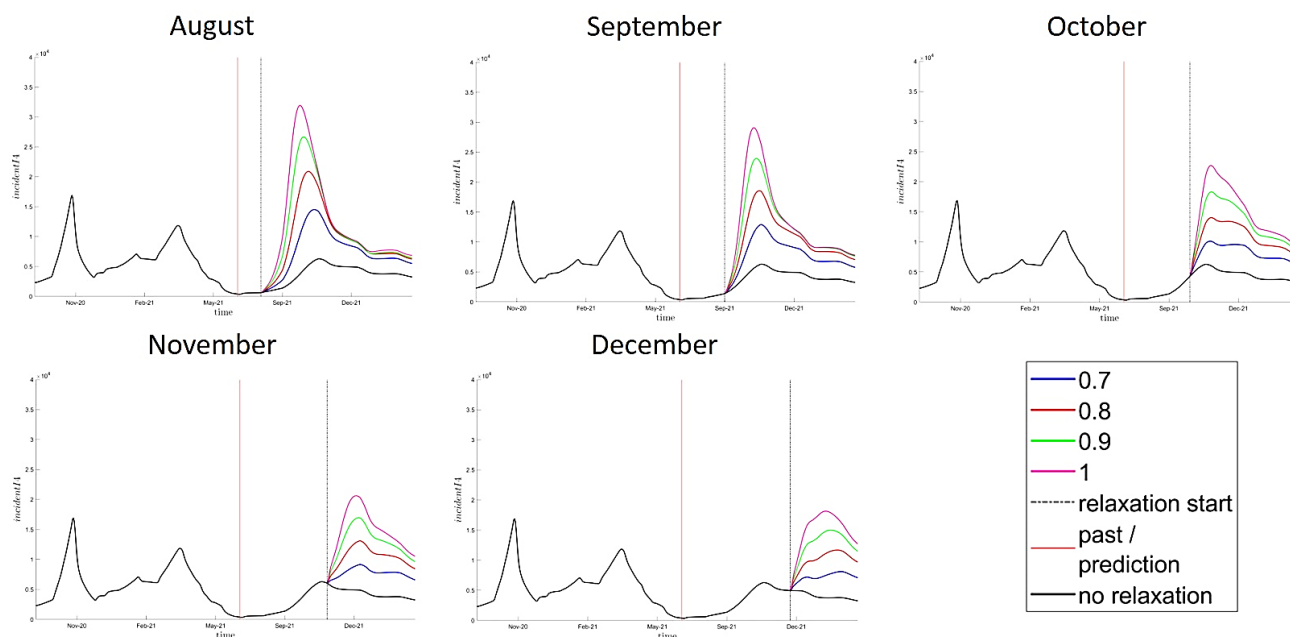
**Figure 2.** (a) Main analysis k-value estimation (reflecting the population compliance to barrier gestures) in France from 13 May 2020 to 1 July 2021; (b) Main analysis estimation of reduction in the average number of contacts consecutively to non-pharmaceutical interventions given the combined effect of the modifications in the contact matrices and the fitted k-value in France from 13 May 2020 to 1 July 2021.



**Figure 3.** Main analysis model fit. Daily incidence of severe ( $I_4$ , solid line), moderate and severe ( $I_3 + I_4$ , dotted line), and all infections ( $I_2 + I_3 + I_4$ , dashed line) from the model and reported COVID-19 cases from French surveillance database (red crosses show daily incidence data, red line shows smoothed incidence data) from 13 May 2020 to 1 July 2021 (logarithmic scale).

### 3.2. Impact of barrier gesture relaxation, main analysis

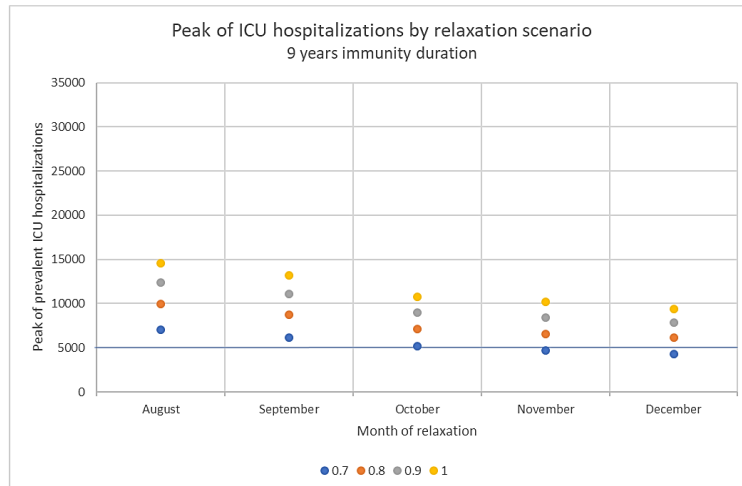
The predicted evolution of the severe case  $I_4$  incidence for each relaxation scenario are presented in Figure 4 from 1 July 2021. Regardless of the timing, the complete relaxation of barrier gestures (setting k-value to 1, pink curve) is followed by an epidemic resurgence whose peak systematically exceeds that of the 2nd and 3rd epidemic waves in France. However, even in the optimistic scenario of no relaxation (defined as a barrier gesture applying at an equivalent level to that



of the same period in 2020), we do observe a significant rebound (black curve).

**Figure 4.** Evolution of incident COVID-19 severe cases ( $I_4$ ) in France for each barrier gesture relaxation scenario in the main analysis (i.e., 9 years waning immunity assumption). Relaxation scenarios: k-value (barrier gesture compliance index) raised either to 0.7, 0.8, 0.9 or 1 in August, September, October, November or December. Relaxation's start is indicated by the vertical dashed black line. No relaxation: k-value equal to previous year estimates at the same period (black line). Prediction starts from 1 July 2021 (vertical red line).

To focus on ICU hospitalizations, we estimated the ratio between ICU hospitalizations (from the SI-VIC database) and prevalent  $I_4$  cases in the past history of the pandemic (Figure S7), which is on average 3.62%. Whatever the scenario (Figure 5), the complete relaxation of barrier gestures leads to a predicted increase of prevalent ICU hospitalizations, and the peak consistently exceeds French health care capacities (which is estimated at a maximum of about 5000 ICU beds at the national level [58]).

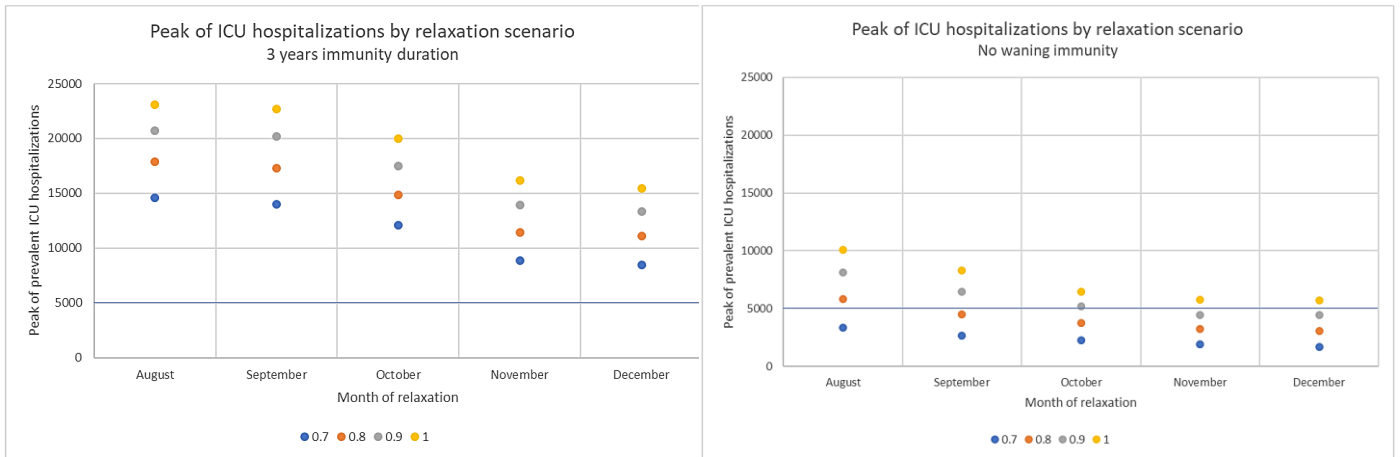


**Figure 5.** Peak of Intensive Care Units' hospitalizations (ICU) predicted in France from July 2021 following each relaxation scenario, assuming that immunity wanes in 9 years. Relaxation scenarios: k-value (barrier gesture compliance index) raised either to 0.7, 0.8, 0.9 or 1 in August, September, October, November or December.

As expected, people over 75 years old represent the major part of severe infections  $I_4$  (Figure S8). While 90% of the 75+ have been vaccinated at least once by the end of June 2021 (Figure S6), about 25% of them are fully susceptible in September 2021 (Figure S9) due both to waning immunity and to the vaccine efficacy hypothesis. Nevertheless, in a sensitivity analysis assuming a 90% vaccine efficacy against infections after two doses, even though the predicted peak ICU hospitalizations following each relaxation scenario is on average 41.0% lower than in the main analysis, a complete relaxation of barrier gestures still overwhelms health care system (Table S10 and Figure S10).

### 3.3. Impact of immunity duration hypothesis

As shown in Figure 6, our predictions are particularly sensitive to changes in our immunity duration assumptions. Assuming that immunity completely wanes over 3 years, we find that the ICU hospitalization peak is, on average, 86.1% higher than the same result when a 9-year immunity duration is assumed. In contrast, ICU hospitalizations peak at an average 46.1% lower when immunity is not allowed to wane (Table S11).



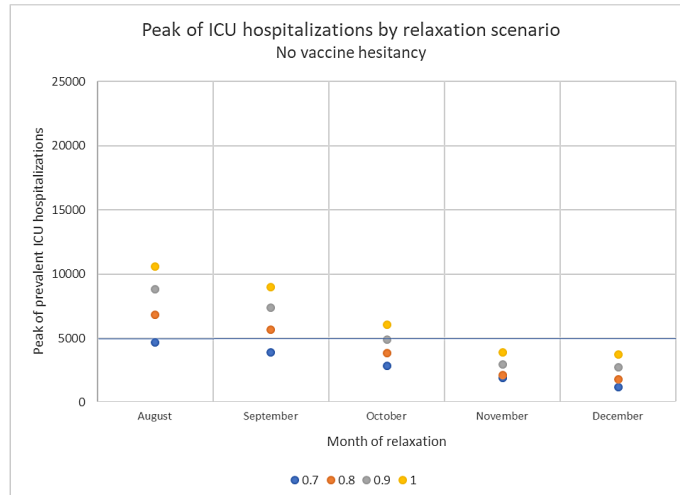
(a)

(b)

**Figure 6.** Peak of Intensive Care Units' hospitalizations (ICU) predicted in France from July 2021 following each relaxation scenario, assuming that immunity wanes in 3 years (a), or assuming that immunity does not wane (b). Relaxation scenarios: k-value (barrier gesture compliance index) raised either to 0.7, 0.8, 0.9 or 1 in August, September, October, November or December.

### 3.4. Impact of vaccine hesitancy

In the absence of vaccine hesitancy, the vaccine coverage of at least one dose reaches 100% of the over 10 years old population at the end of November 2021 (Figure S11 and Table S12). Under this assumption, ICU hospitalizations peak at, on average, 47.7% lower than in the main analysis, which includes vaccine hesitancy. This effect is particularly strong for the November and December relaxation scenarios, for which assuming no vaccine hesitancy reduces the hospitalization peak by about 65% (Table S13). In that case, a complete relaxation of barrier gestures would be possible in November and December 2021 without exceeding the French ICU hospitalization capacities (Figure 7).



**Figure 7.** Peak of Intensive Care Units' hospitalizations (ICU) predicted in France from July 2021 following each relaxation scenario assuming no vaccine hesitancy with a 9 years immunity duration assumption. Relaxation scenarios: k-value (barrier gesture compliance index) raised either to 0.7, 0.8, 0.9 or 1 in August, September, October, November or December.

### 3.5. Booster campaign

Finally, we explored a crude implementation of a booster vaccination campaign for people over 75 years of age on 1 September 2021. In this analysis, we find a 16.3% average reduction in ICU peak hospitalization following barrier gesture relaxation (Table S14 and Figure S12). Even though this analysis is optimistic in that it assumes that all but the vaccine hesitant people over 75+ will receive their booster dose on this date, this crude implementation of a booster dose allows us to estimate the best expected benefit from a booster vaccination campaign among the elderly.

## 4. Discussion

We used an age-structured compartmental model of COVID-19 that takes into account the waning and boosting of immunity from vaccination and infection [33]. We first showed that, considering the context of vaccine hesitancy in France and the delta variant breakthrough, maintaining the application of barrier gestures appears essential to avoid a resurgence of severe infections that would exceed French health care capacities. Our study particularly highlighted the influence of immunity duration assumptions on the future short-term dynamic of the epidemic, which should not be neglected for further modelling. In addition, we reasserted the necessity to strengthen the vaccine rollout whereas current vaccines are effective (at least for severe disease) against the predominant delta variant [59]. Indeed, among our sensitivity analyses, the only scenario that would allow a complete barrier gesture relaxation without overwhelming ICU bed capacities is relaxation occurring from November with a 100% vaccine coverage of the eligible population. Finally, according to our very preliminary analysis, the strategy consisting of the revaccination of people over 75 would not allow us to relax barrier gestures safely, in particular in the context of vaccine hesitancy. Nevertheless, further modelling is needed to evaluate more accurately this last statement.

---

Our work is consistent with other French modelling, having estimated that, given the current vaccine rollout and the progression of the delta variant, barrier gesture application will be necessary to maintain severe cases under health care capacities' limits [60,61]. Nevertheless, our predictions tend to be more pessimistic. One explication is that we took into account the greater transmissibility of the delta variant at the level that has been estimated by ECDC [29], whereas these studies explored an inferior range of effective reproductive numbers. In addition, these studies assumed that the immunity acquired after an infection or vaccination is definitive. Finally, our model, incorporating contact patterns, takes into account both school re-opening and the recovery of on-site work, which leads to increased transmission rates in September. Similar to our findings, a very high vaccination coverage was estimated to be required to allow a complete relaxation of control measures [28], and a high vaccine hesitancy was related to a prolonged need for non-pharmaceutical-interventions [62]. On the other hand, our work highlighted the influence of the immunity duration on the short-term dynamic of the epidemic. Few other studies chose to modelling the COVID-19 epidemic incorporating waning immunity [23–26,33]. Giannitsarou et al. estimated that given the population turnover, the disease would become endemic in the long term with recurrent waves, and its magnitude would depend on how fast immunity wanes [26]. Saad-Roy et al. showed that the shorter immunity duration conferred by vaccination, the higher the vaccine coverage required to achieve herd immunity [25].

Measuring the compliance of the population to barrier gestures is challenging. Our model is fit using a single parameter: the k-value. Due to the fact that we incorporated the changes in contact patterns consequently to governmental measures directly in the contact matrices, this k-value reflects the population compliance to barrier gestures. Nevertheless, it also incorporates temporal variations in testing and variations in climatic conditions which influence transmission [8]. However, even though the detection rate increased significantly during the first months of the epidemic, it remained relatively stable during our calibration period [63]. Concerning climatic conditions, we estimated in another modelling study that transmission is increased on average by 10% during the winter period and decreased by 22% during the summer period [8]. Due to the fact that we did not account for these variations, we expect our predictions to be somewhat overestimated in the summer and underestimated in the winter. However, one can notice that our model indirectly accounts for quarantine using a reduced transmission rate in the severely infected class I4, and by using reduced contact rates using the k-value, which can moderate these over- and under-estimations. Another limitation of our model is that it underestimates vaccine efficacy against severe infections after two doses, assuming that it is equal to vaccine efficacy against all infections (which is set to 80% in the main analysis). However, assuming an optimistic 90% vaccine efficacy after two doses against infections and severe cases leads to similar conclusions with no possibility to fully relax barrier gestures safely. In addition, it ignores the fact that both mRNA and vectored vaccines have been used in France, which may have different immunogenicity. Nevertheless, 90% of the administrated vaccines in France are mRNA vaccines, in great majority BNT162b2 [64], for which we calibrated the model. Thus, we believe it may not have a significant impact on our results. Also, we did not account for the increased risk of hospitalization

---

related to the alpha variant compared to the historical strain [65] which could explain that our ICU hospitalizations/prevalent I4 ratio tends to increase over the calibration period. This could lead to an underestimation of the ICU hospitalizations rebound. We also did not account for the age-related immune response heterogeneity to the SARS-CoV2 infection and vaccine, which will have to be considered in the future to investigate more accurately the impact of a booster vaccination campaign among the elderly. Finally, although it would require more data on the dynamic of the epidemic at a finer level and individual mobility data, the extension of this work from a national to a regional or local level, in the line of Viguerie et al. work [66], could be considered. This would be particularly interesting with respect to the questions of removing the barrier gestures locally when incidence is low, or vaccination uptake is high.

In conclusion, while the durability of immunity provided by an infection or by vaccination remains uncertain, we provide an insight on the predictable dynamic of the epidemic in France assuming that immunity wanes. To date, maintaining the application of barrier gestures seems unavoidable in the French context as to not overwhelm health care capacities. While the possibility of a booster campaign among the elderly is being considered, scientific evidences on its potential benefit are lacking.

**Author Contributions:** Methodology, J.M.H., M.P., L.W. R.T.; software, D.W.D.; formal analysis, C.V.; writing—original draft preparation, C.V.; writing—review and editing, C.V., D.W.D., J.M.H., L.W., M.P., R.T.; All authors have read and agreed to the published version of the manuscript.

**Acknowledgments:** We thank Lauren Childs, Jing Li, Zhilan Feng, John Glasser and Gergely Rost for their discussions and input on this project.

**Funding:** This research is supported by NSERC (J.M.H).

**Data Availability Statement:**

- Variants of concern data for France are publicly available on: <https://www.data.gouv.fr/fr/datasets/donnees-de-laboratoires-pour-le-depistage-indicateurs-sur-les-variants/>

- Reported COVID-19 cases data for France are available on: <https://www.data.gouv.fr/fr/datasets/donnees-relatives-aux-resultats-des-tests-virologiques-covid-19/>

- Prevalent intensive care unit's hospitalization data are for France are publicly available on: [https://geodes.santepubliquefrance.fr/#c=indicator&f=0&i=covid\\_hospit.rea&s=2021-08-03&t=a01&view=map2](https://geodes.santepubliquefrance.fr/#c=indicator&f=0&i=covid_hospit.rea&s=2021-08-03&t=a01&view=map2)

**Conflicts of Interest:** The authors declare no conflict of interest.



---

## Appendix A

Our model tracks age, infection and immune status. Susceptible individuals of status  $i$  and age  $m$  are denoted by  $S_{im}$ . Infectious individuals of symptom severity  $j$  and age  $m$  are denoted by  $I_{jm}$ . Infected but not-yet-infectious individuals of symptom severity  $j$ , age  $m$  and stage  $k$  are denoted by  $E_{kjm}$ . Vaccinated individuals of initial immune status  $i$ , age  $m$  and dose  $l$  are denoted by  $V_{ilm}$ . Parameter descriptions are found in Table 1 in the main text. The system of ODEs for age group  $m$  is given by the following set of equations:

### Susceptible compartments

$$\frac{d}{dt}S_{1m} = -\sum_{j=2}^4 p_{1m}^j \Lambda_{1m} S_{1m} + \omega S_{2m} - \sigma_{1m}^1(t) \rho S_{1m} + \omega V_{1m}^1,$$

$$\frac{d}{dt}S_{2m} = -\sum_{j=2}^4 p_{2m}^j \Lambda_{2m} S_{2m} + \omega S_{3m} - \omega S_{2m} - \sigma_{2m}^1(t) \rho S_{2m} + \gamma_2 I_{2m} + \omega V_{2m}^1,$$

$$\frac{d}{dt}S_{3m} = -p_{3m}^3 \Lambda_{3m} S_{3m} + \omega S_{4m} - \omega S_{3m} - \sigma_{3m}^1(t) \rho S_{3m} + \gamma_3 I_{3m} + \omega \left( \sum_{i=3}^4 V_{im}^1 + \sum_{i=1}^4 V_{im}^2 \right),$$

$$\frac{d}{dt}S_{4m} = -\omega S_{4m} - \sigma_{4m}^1(t) \rho S_{4m} + \gamma_4 I_{4m},$$

### Vaccinated compartments

$$\frac{d}{dt}V_{1m}^1 = \sigma_{1m}^1(t) \rho S_{1m} - \sigma_{1m}^2(t) V_{1m}^1 - \sum_{j=2}^4 p v_{2m}^j \epsilon \Lambda_{2m} V_{1m}^1 - \omega V_{1m}^1,$$

$$\frac{d}{dt}V_{2m}^1 = \sigma_{2m}^1(t) \rho S_{2m} - \sigma_{2m}^2(t) V_{2m}^1 - p v_{3m}^3 \epsilon \Lambda_{3m} V_{2m}^1 - \omega V_{2m}^1,$$

$$\frac{d}{dt}V_{3m}^1 = \sigma_{3m}^1(t) \rho S_{3m} - \sigma_{3m}^2(t) V_{3m}^1 - \omega V_{3m}^1,$$

$$\frac{d}{dt}V_{4m}^1 = \sigma_{4m}^1(t) \rho S_{4m} - \sigma_{4m}^2(t) V_{4m}^1 - \omega V_{4m}^1,$$

$$\frac{d}{dt}V_{1m}^2 = \sigma_{1m}^2(t) V_{1m}^1 - \omega V_{1m}^2,$$

$$\frac{d}{dt}V_{2m}^2 = \sigma_{2m}^2(t) V_{2m}^1 - \omega V_{2m}^2,$$

$$\frac{d}{dt}V_{3m}^2 = \sigma_{3m}^2(t) V_{3m}^1 - \omega V_{3m}^2,$$

$$\frac{d}{dt}V_{4m}^2 = \sigma_{4m}^2(t) V_{4m}^1 - \omega V_{4m}^2,$$

---

### Exposed compartments

$$\frac{d}{dt}E_{2m}^1 = p_{1m}^2 \Lambda_{1m} S_{1m} + p_{2m}^2 \Lambda_{2m} S_{2m} + pv_{2m}^2 \epsilon \Lambda_{2m} V_{1m}^1 - \kappa E_{2m}^1,$$

$$\frac{d}{dt}E_{3m}^1 = p_{1m}^3 \Lambda_{1m} S_{1m} + p_{2m}^3 \Lambda_{2m} S_{2m} + pv_{2m}^3 \epsilon \Lambda_{2m} V_{1m}^1 + p_{3m}^3 \Lambda_{3m} S_{3m} + pv_{3m}^3 \epsilon \Lambda_{3m} V_{2m}^1 - \kappa E_{3m}^1,$$

$$\frac{d}{dt}E_{4m}^1 = p_{1m}^4 \Lambda_{1m} S_{1m} + p_{2m}^4 \Lambda_{2m} S_{2m} + pv_{2m}^4 \epsilon \Lambda_{2m} V_{1m}^1 - \kappa E_{4m}^1,$$

$$\frac{d}{dt}E_{2m}^2 = \kappa E_{2m}^1 - \kappa E_{2m}^2,$$

$$\frac{d}{dt}E_{3m}^2 = \kappa E_{3m}^1 - \kappa E_{3m}^2,$$

$$\frac{d}{dt}E_{4m}^2 = \kappa E_{4m}^1 - \kappa E_{4m}^2,$$

$$\frac{d}{dt}E_{2m}^3 = \kappa E_{2m}^2 - \kappa E_{2m}^3,$$

$$\frac{d}{dt}E_{3m}^3 = \kappa E_{3m}^2 - \kappa E_{3m}^3,$$

$$\frac{d}{dt}E_{4m}^3 = \kappa E_{4m}^2 - \kappa E_{4m}^3,$$

where,

$$pv_{2m}^2 = (1 - 0.5q) p_{1m}^3 + p_{1m}^2,$$

$$pv_{2m}^3 = (1 - q) p_{1m}^4 + 0.5q p_{1m}^3,$$

$$pv_{2m}^4 = qp_{1m}^4,$$

$$pv_{3m}^3 = p_{1m}^4 + 0.5q p_{1m}^3.$$

### Infectious compartments

$$\frac{d}{dt}I_{2m} = \kappa E_{2m}^3 - \gamma_2 I_{2m},$$

$$\frac{d}{dt}I_{3m} = \kappa E_{3m}^3 - \gamma_3 I_{3m},$$

$$\frac{d}{dt}I_{4m} = \kappa E_{4m}^3 - \gamma_4 I_{4m},$$

where for  $1 \leq m \leq 16$ ,

$$\Lambda_{im}(t) = \alpha_i A_m \lambda_{im}(t),$$

$$\lambda_{im}(t) = k(t) \sum_{k=1}^{16} c_{ma} \frac{\sum_{j=2}^4 \beta_j I_{jm}(t)}{\sum_{i=1}^4 T_{im}(t)},$$

$$T_{im}(t) = S_{im}(t) + V_{im}^1(t) + V_{im}^2(t) + E_{im}^1(t) + E_{im}^2(t) + E_{im}^3(t) + I_{im}(t).$$

---

## References

1. Kraemer, M.U.G.; Yang, C.-H.; Gutierrez, B.; Wu, C.H.; Klein, B.; Pigott, D.M.; Open COVID-19 Data Working Group; du Plessis, L.; Faria, N.R.; Li, R.; et al. The Effect of Human Mobility and Control Measures on the COVID-19 Epidemic in China. *Science* **2020**, *368*, 493–497.
2. Pei, S.; Kandula, S.; Shaman, J. Differential Effects of Intervention Timing on COVID-19 Spread in the United States. *Sci. Adv.* **2020**, *6*, eabd6370.
3. World Health Organization. Weekly Operational Update on COVID-19. 30 August 2021. Issue No 70. Available online: <https://www.who.int/publications/m/item/weekly-operational-update-on-covid-19---30-august-2021> (accessed on 7 October 2021).
4. Salje, H.; Kiem, C.T.; Lefrancq, N.; Courtejoie, N.; Bosetti, P.; Paireau, J.; Andronico, A.; Hozé, N.; Richet, J.; Dubost, C.L.; et al. Estimating the Burden of SARS-CoV-2 in France. *Science* **2020**, *369*, 208–211.
5. Davies, N.G.; Klepac, P.; Liu, Y.; Prem, K.; Jit, M.; CMMID COVID-19 working group; Eggo R.M. Age-Dependent Effects in the Transmission and Control of COVID-19 Epidemics. *Nat. Med.* **2020**, *26*, 1205–1211.
6. Davies, N.G.; Kucharski, A.J.; J., Eggo, R.M.; Gimma, A.; Edmunds, W.J.; Centre for the Mathematical Modelling of Infectious Diseases COVID-19 working group. Effects of Non-Pharmaceutical Interventions on COVID-19 Cases, Deaths, and Demand for Hospital Services in the UK: A Modelling Study. *Lancet Public Health* **2020**, *5*, e375–e385.
7. Di Domenico, L.; Pullano, G.; Sabbatini, C.E.; Boëlle, P.Y.; Colizza, V. Impact of Lockdown on COVID-19 Epidemic in Île-de-France and Possible Exit Strategies. *BMC Med.* **2020**, *18*, 240.
8. Collin, A.; Hejblum, B.P.; Vignals, C.; Lehot, L.; Thiebaut, R.; Moireau, P.; Prague M. Using Population Based Kalman Estimator to Model COVID-19 Epidemic in France: Estimating the Effects of Non-Pharmaceutical Interventions on the Dynamics of Epidemic. *MedRxiv* **2021**, submitted. <https://doi.org/10.1101/2021.07.09.21260259>.
9. Bubar, K.M.; Reinholt, K.; Kissler, S.M.; Lipsitch, M.; Cobey, S.; Grad, Y.H.; Larremore, D.B. Model-Informed COVID-19 Vaccine Prioritization Strategies by Age and Serostatus. *Science* **2021**, *371*, 916–921.
10. Harvey, R.A.; Rassen, J.A.; Kabelac, C.A.; Turenne, W.; Leonard, S.; Klesh, R.; Meyer, W.A. 3<sup>rd</sup>; Kaufman, H.W.; Anderson, S.; Cohen, O.; et al. Association of SARS-CoV-2 Seropositive Antibody Test With Risk of Future Infection. *JAMA Intern. Med.* **2021**, *181*, 672–679.
11. Lumley, S.F.; O'Donnell, D.; Stoesser, N.E.; Matthews, P.C.; Howarth, A.; Hatch, S.B.; Marsden, B.D.; Cox, S.; James, T.; Warren, F.; et al. Antibody Status and Incidence of SARS-CoV-2 Infection in Health Care Workers. *N. Engl. J. Med.* **2021**, *384*, 533–540.
12. Seow, J.; Graham, C.; Merrick, B.; Acors, S.; Pickering, S.; Steel, K.J.A.; Hemmings, O.; O'Byrne, A.; Kouphou, N.; Galao R.P.; et al. Longitudinal Observation and Decline of Neutralizing Antibody Responses in the Three Months Following SARS-CoV-2 Infection in Humans. *Nat. Microbiol.* **2020**, *5*, 1598–1607.
13. Long, Q.-X.; Tang, X.-J.; Shi, Q.L.; Li, Q.; Deng, H.J.; Yuan, J.; Hu, J.L.; Xu, W.; Zhang, Y.; Lv, F.J.; et al. Clinical and Immunological Assessment of Asymptomatic SARS-CoV-2 Infections. *Nat. Med.* **2020**, *26*, 1200–1204.
14. den Hartog, G.; Vos, E.R.A.; van den Hoogen, L.L.; van Boven, M.; Schepp, R.M.; Smits, G.; van Vliet, J.; Woudstra, L.; Wijmenga-Monsuur, A.J.; van Hagen, C.C.E.; et al. Persistence of Antibodies to SARS-CoV-2 in Relation to Symptoms in a Nationwide Prospective Study. *Clin. Infect. Dis.* **2021**, doi:10.1093/cid/ciab172.
15. Dan, J.M.; Mateus, J.; Kato, Y.; Hastie, K.M.; Yu, E.D.; Faliti, C.E.; Grifoni, A.; Ramirez, S.I.; Haupt, S.; Frazier, A.; et al. Immunological Memory to SARS-CoV-2 Assessed for up to 8 Months after Infection. *Science* **2021**, *371*, eabf4063.
16. Jung, J.H.; Rha, M.-S.; Sa, M.; Choi, H.K.; Jeon, J.H.; Seok, H.; Park, D.W.; Park, S.H.; Jeong, H.W.; Choi, W.S.; et al. SARS-CoV-2-Specific T Cell Memory Is Sustained in COVID-19 Convalescent Patients for 10 Months with Successful Development of Stem Cell-like Memory T Cells. *Nat. Commun.* **2021**, *12*, 4043.
17. Edridge, A.W.D.; Kaczorowska, J.; Hoste, A.C.; Bakker, M.; Klein, M.; Loens, K.; Jebbink, M.F.; Matser, A.; Kinsella, C.M.; Rueda, P.; et al. Seasonal Coronavirus Protective Immunity Is Short-Lasting. *Nat. Med.* **2020**, *26*, 1691–1693.
18. Sariol, A.; Perlman, S. Lessons for COVID-19 Immunity from Other Coronavirus Infections. *Immunity* **2020**, *53*, 248–263.
19. Liu, W.; Fontanet, A.; Zhang, P.H.; Zhan, L.; Xin, Z.T.; Baril, L.; Tang, F.; Lv, H.; Cao, W.C. Two-Year Prospective Study of the Humoral Immune Response of Patients with Severe Acute Respiratory Syndrome. *J. Infect. Dis.* **2006**, *193*, 792–795.
20. Le Bert, N.; Tan, A.; Kunasegaran, K.; Tham, C.Y.; Hafezi, M.; Chia, A.; Chng, M.H.Y.; Lin, M.; Tan, N.; Linster, M.; et al. T. SARS-CoV-2-Specific T Cell Immunity in Cases of COVID-19 and SARS, and Uninfected Controls. *Nature* **2020**, *584*, 457–462.
21. Shrotri, M.; Navaratnam, A.M.D.; Nguyen, V.; Byrne, T.; Geismar, C.; Fragaszy, E.; Beale, S.; Fong, W.L.E.; Patel, P.; Kovar, J.; et al. Spike-Antibody Waning after Second Dose of BNT162b2 or ChAdOx1. *Lancet* **2021**, *398*, 385–387.
22. Thomas, S.J.; Moreira, E.D.; Kitchin, N.; Absalon, J.; Gurtman, A.; Lockhart, S.; Perez, J.L.; Gonzalo Pérez, M.; Polack, F.P.; Zerbini, C.; et al. Six Month Safety and Efficacy of the BNT162b2 mRNA COVID-19 Vaccine. *MedRxiv* **2021**, to be submitted. <https://doi.org/10.1101/2021.07.28.21261159>.
23. Kissler, S.M.; Tedijanto, C.; Goldstein, E.; Grad, Y.H.; Lipsitch, M. Projecting the Transmission Dynamics of SARS-CoV-2 through the Postpandemic Period. *Science* **2020**, *368*, 860–868.
24. Lavine, J.S.; Bjornstad, O.N.; Antia, R. Immunological Characteristics Govern the Transition of COVID-19 to Endemicity. *Science* **2021**, *371*, 741–745.
25. Saad-Roy, C.M.; Wagner, C.E.; Baker, R.E.; Morris, S.E.; Farrar, J.; Graham, A.L.; Levin, S.A.; Mina, M.J.; Metcalf, C.J.E.; Grenfell, B.T. Immune Life History, Vaccination, and the Dynamics of SARS-CoV-2 over the next 5 Years. *Science* **2020**, *370*, 811–818.

- 
26. Giannitsarou, C.; Kissler, S.; Toxvaerd, F. Waning Immunity and the Second Wave: Some Projections for SARS-CoV-2. University of Cambridge, Faculty of Economics, Centre for Economic Policy Research Discussion Paper No. DP14852. 2020. Available online: <https://ssrn.com/abstract=3628172> (accessed on 7 October 2021).
  27. Santé Publique France. Point Épidémiologique n°78 du 26 août 2021. Available online: <https://www.santepubliquefrance.fr/maladies-et-traumatismes/maladies-et-infections-respiratoires/infection-a-coronavirus/documents/bulletin-national/covid-19-point-epidemiologique-du-26-aout-2021> (accessed on 7 October 2021).
  28. Kiem, C.T.; Massonnaud, A.; Levy-Bruhl, D.; Poletto, C.; Colizza, V.; Bosetti, P.; Fontanet, A.; Gabet, A.; Olié, V.; Zanetti, L.; et al. modelling study investigating short and medium-term challenges for COVID-19 vaccination: From prioritisation to the relaxation of measures. *EClinicalMedicine* **2021**, *38*, 101001.
  29. European Center for Disease prevention and Control. *Implications for the EU-EEA on the Spread of SARS-CoV-2 Delta-VOC*; ECDC: Stockholm, Sweden, 2021.
  30. Santé Publique France. Résultats de la vague 26 de l'enquête CoviPrev (15–21 juillet 2021). Available online: <https://www.santepubliquefrance.fr/etudes-et-enquetes/coviprev-une-enquete-pour-suivre-l-evolution-des-comportements-et-de-la-sante-mentale-pendant-l-epidemie-de-covid-19> (accessed on 7 October 2021).
  31. Collier, D.A.; Ferreira, I.A.T.M.; Kotagiri, P.; Datir, R.; Lim, E.; Touizer, E.; Meng, B.; Abdullahi, A.; CITIID-NIHR BioResource COVID-19 Collaboration; Elmer, A.; et al. Age-Related Immune Response Heterogeneity to SARS-CoV-2 Vaccine BNT162b2. *Nature* **2021**, *596*, 417–422.
  32. Avis Relatif au Contact Tracing et à l'application des Mesures Barrières Chez les Personnes Totalelement Vaccinées Contre le Covid-19. Haut Conseil de Santé Publique, France. Available online: <https://www.hcsp.fr/Explore.cgi/AvisRapportsDomaine?clefr=1069> (accessed on 7 October 2021).
  33. Childs, L.; Dick, D.W.; Feng, Z.; Heffernan, J.M.; Li, J.; Röst G. Modeling Waning and Boosting of COVID-19 in Canada with Vaccination. *medRxiv* **2021**, to be submitted. <https://doi.org/10.1101/2021.05.18.21257426>.
  34. Carlsson, R.-M.; Childs, L.M.; Feng, Z.; Glasser, J.W.; Heffernan, J.M.; Li, J.; Röst, G. Modeling the Waning and Boosting of Immunity from Infection or Vaccination. *J. Theor. Biol.* **2020**, *497*, 110265.
  35. Clark, A.; Jit, M.; Warren-Gash, C.; Guthrie, B.; Wang, H.H.; Mercer, S.W.; Sanderson, C.; McKee, M.; Troeger, C.; Ong, K.L.; et al. Global, Regional, and National Estimates of the Population at Increased Risk of Severe COVID-19 Due to Underlying Health Conditions in 2020: A Modelling Study. *Lancet Glob. Health* **2020**, *8*, e1003–e1017.
  36. Crawford, K.H.D.; Dingens, A.S.; Eguia, R.; Wolf, C.R.; Wilcox, N.; Logue, J.K.; Shuey, K.; Casto, A.M.; Fiala, B.; Wrenn, S.; et al. Dynamics of Neutralizing Antibody Titers in the Months After Severe Acute Respiratory Syndrome Coronavirus 2 Infection. *J. Infect. Dis.* **2021**, *223*, 197–205.
  37. Dufloo, J.; Grzelak, L. Asymptomatic and Symptomatic SARS-CoV-2 Infections Elicit Polyfunctional Antibodies. *Cell Rep. Med.* **2021**, *2*, 100275.
  38. Piccoli, L.; Park, Y.-J.; Tortorici, M.A.; Czudnochowski, N.; Walls, A.C.; Beltramello, M.; Silacci-Fregni, C.; Pinto, D.; Rosen, L.E.; Bowen, J.E.; et al. Mapping Neutralizing and Immunodominant Sites on the SARS-CoV-2 Spike Receptor-Binding Domain by Structure-Guided High-Resolution Serology. *Cell* **2020**, *183*, 1024–1042.e21.
  39. Li, R.; Pei, S.; Chen, B.; Song, Y.; Zhang, T.; Yang, W.; Shaman, J. Substantial Undocumented Infection Facilitates the Rapid Dissemination of Novel Coronavirus (SARS-CoV-2). *Science* **2020**, *368*, 489–493.
  40. Prem, K.; Zandvoort, K.V.; Klepac, P.; Eggo, R.M.; Davies, N.G.; Centre for the Mathematical Modelling of Infectious Diseases COVID-19 Working Group; Cook, A.R.; Jit, M. Projecting contact matrices in 177 geographical regions: An update and comparison with empirical data for the COVID-19 era. *PLoS Comput. Biol.* **2021**, *17*, e1009098.
  41. He, X.; Lau, E.H.Y.; Wu, P.; Deng, X.; Wang, J.; Hao, X.; Lau, Y.C.; Wong, J.Y.; Guan, Y.; Tan, X.; et al. Temporal Dynamics in Viral Shedding and Transmissibility of COVID-19. *Nat. Med.* **2020**, *26*, 672–675.
  42. Bi, Q.; Wu, Y.; Mei, S.; Ye, C.; Zou, X.; Zhang, Z.; Liu, X.; Wei, L.; Truelove, S.A.; Zhang, T.; et al. Epidemiology and Transmission of COVID-19 in 391 Cases and 1286 of Their Close Contacts in Shenzhen, China: A Retrospective Cohort Study. *Lancet Infect. Dis.* **2020**, *20*, 911–919.
  43. Li, Q.; Guan, X.; Wu, P.; Wang, X.; Zhou, L.; Tong, Y.; Ren, R.; Leung, K.S.M.; Lau, E.H.Y.; Wong, J.Y.; et al. Early Transmission Dynamics in Wuhan, China, of Novel Coronavirus-Infected Pneumonia. *N. Engl. J. Med.* **2020**, *382*, 1199–1207.
  44. Hall, V.J.; Foulkes, S.; Saei, A.; Andrews, N.; Oguti, B.; Charlett, A.; Wellington, E.; Stowe, J.; Gilson, N.; Atti, A.; et al. Effectiveness of BNT162b2 mRNA Vaccine Against Infection and COVID-19 Vaccine Coverage in Healthcare Workers in England, Multicentre Prospective Cohort Study (the SIREN Study). *SSRN Electron. J.* **2021**. <http://dx.doi.org/10.2139/ssrn.3790399>. Available online: <https://ssrn.com/abstract=3790399> (accessed on 7 October 2021).
  45. Dagan, N.; Barda, N.; Kepten, E.; Miron, O.; Perchik, S.; Katz, M.A.; Hernán, M.A.; Lipsitch, M.; Reis, B.; Balicer, R.D. BNT162b2 mRNA Covid-19 Vaccine in a Nationwide Mass Vaccination Setting. *N. Engl. J. Med.* **2021**, *384*, 1412–1423.
  46. Pritchard, E.; Matthews, P.C.; Stoesser, N.; Eyre, D.W.; Gethings, O.; Vihta, K.D.; Jones, J.; House, T.; VanSteenHouse, H.; Bell, I.; et al. Impact of Vaccination on New SARS-CoV-2 Infections in the United Kingdom. *Nat. Med.* **2021**, *27*, 1370–1378.
  47. Charmet, T.; Schaeffer, L.; Grant, R.; Galmiche, S.; Chény, O.; Von Platen, C.; Maurizot, A.; Rogoff, A.; Omar, F.; David, C.; et al. Impact of Original, B.1.1.7, and B.1.351/P.1 SARS-CoV-2 Lineages on Vaccine Effectiveness of Two Doses of COVID-19 mRNA Vaccines: Results from a Nationwide Case-Control Study in France. *Lancet Reg. Health-Eur.* **2021**, *8*, 100171.
  48. Diekmann, O.; Heesterbeek, J.A.P.; Roberts, M.G. The Construction of Next-Generation Matrices for Compartmental Epidemic Models. *J. R. Soc. Interface* **2010**, *7*, 873–885.

- 
49. Van Vinh Chau, N.; Lam, V.T.; Dung, N.T.; Yen, L.M.; Minh, N.; Hung, L.M.; Ngoc, N.M.; Dung, N.T.; Man, D.N.H.; Nguyet, L.A.; et al. The Natural History and Transmission Potential of Asymptomatic Severe Acute Respiratory Syndrome Coronavirus 2 Infection. *Clin. Infect. Dis.* **2020**, *71*, 2679–2687.
  50. Cheng, H.-Y.; Jian, S.-W.; Liu, D.P.; Ng, T.C.; Huang, W.T.; Lin, H.H.; Taiwan COVID-19 Outbreak Investigation Team. Contact Tracing Assessment of COVID-19 Transmission Dynamics in Taiwan and Risk at Different Exposure Periods Before and After Symptom Onset. *JAMA Intern. Med.* **2020**, *180*, 1156.
  51. Liu, Y.; Yan, L.-M.; Wan, L.; Xiang, T.X.; Le, A.; Liu, J.M.; Peiris, M.; Poon, L.L.M.; Zhang, W. Viral Dynamics in Mild and Severe Cases of COVID-19. *Lancet Infect. Dis.* **2020**, *20*, 656–657.
  52. Zheng, S.; Fan, J.; Yu, F.; Feng, B.; Lou, B.; Zou, Q.; Xie, G.; Lin, S.; Wang, R.; Yang, X.; et al. Viral Load Dynamics and Disease Severity in Patients Infected with SARS-CoV-2 in Zhejiang Province, China, January–March 2020: Retrospective Cohort Study. *BMJ* **2020**, *369*, m1443.
  53. Davies, N.G.; Abbott, S.; Barnard, R.C.; Jarvis, C.I.; Kucharski, A.J.; Munday, J.D.; Pearson, C.A.B.; Russell, T.W.; Tully, D.C.; Washburne, A.D.; et al. Estimated Transmissibility and Impact of SARS-CoV-2 Lineage B.1.1.7 in England. *Science* **2021**, *372*, eabg3055.
  54. Gaymard, A.; Bosetti, P.; Feri, A.; Destras, G.; Enouf, V.; Andronico, A.; Burrel, S.; Behillil, S.; Sauvage, C.; Bal, A.; et al. Early Assessment of Diffusion and Possible Expansion of SARS-CoV-2 Lineage 20I/501Y.V1 (B.1.1.7, Variant of Concern 202012/01) in France, January to March 2021. *Eurosurveillance* **2021**, *26*, 2100133.
  55. Campbell, F.; Archer, B.; Laurenson-Schafer, H.; Jinnai, Y.; Konings, F.; Batra, N.; Pavlin, B.; Vandemaele, K.; Van Kerkhove, M.D.; Jombart, T.; et al. Increased Transmissibility and Global Spread of SARS-CoV-2 Variants of Concern as at June 2021. *Eurosurveillance* **2021**, *26*, 2100509.
  56. Les actions du gouvernement. Available online: <https://www.gouvernement.fr/info-coronavirus/les-actions-du-gouvernement> (accessed on 7 October 2021).
  57. Liu, X.; Huang, J.; Li, C.; Zhao, Y.; Wang, D.; Huang, Z.; Yang, K. The Role of Seasonality in the Spread of COVID-19 Pandemic. *Environ. Res.* **2021**, *195*, 110874.
  58. Nombre de Lits de Réanimation, de Soins Intensifs et de Soins Continus En France, Fin 2013 et 2019. DRESS, 2021. Available online: <https://drees.solidarites-sante.gouv.fr/article/nombre-de-lits-de-reanimation-de-soins-intensifs-et-de-soins-continus-en-france-fin-2013-et> (accessed on 6 August 2021).
  59. Lopez Bernal, J.; Andrews, N.; Gower, C.; Gallagher, E.; Simmons, R.; Thelwall, S.; Stowe, J.; Tessier, E.; Groves, N.; Dabrera, G.; et al. Effectiveness of Covid-19 Vaccines against the B.1.617.2 (Delta) Variant. *N. Engl. J. Med.* **2021**, *385*, 585–594.
  60. Kiem, C.T.; Bosetti, P.; Hozé, N.; Paireau, J.; Cauchemez, S. *Impact de L'accélération de la Vaccination sur L'épidémie du Variant Delta en France Métropolitaine*; Institut Pasteur: Paris, France, 2021. Available online: [https://modelisation-covid19.pasteur.fr/variant/Institut\\_Pasteur\\_Acceleration\\_vaccination\\_et\\_Delta\\_20210726.pdf](https://modelisation-covid19.pasteur.fr/variant/Institut_Pasteur_Acceleration_vaccination_et_Delta_20210726.pdf) (accessed on 7 October 2021).
  61. Bosetti, P.; Kiem, C.T.; Andronico, A.; Colizza, V.; Yazdanpanah, Y.; Fontanet, A.; Benamouzig, D.; Cauchemez S. *Epidemiology and Control of SARS-CoV-2 Epidemics in Partially Vaccinated Populations: A Modeling Study Applied to France*; Institut Pasteur: Paris, France, 2021; to be submitted. Available online: <https://hal-pasteur.archives-ouvertes.fr/pasteur-03272638> (accessed on 7 October 2021).
  62. Mesa, D.O.; Hogan, A.B.; Watson, O.J.; Charles, G.D.; Hauck, K.; Ghani, A.C.; Winskill, P. Report 43: Quantifying the Impact of Vaccine Hesitancy in Prolonging the Need for Non-Pharmaceutical Interventions to Control the COVID-19 Pandemic. *Imp. Coll. Lond.* **2021**, to be submitted. <https://doi.org/10.21203/rs.3.rs-343127/v1>.
  63. Hozé, N.; Paireau, J.; Lapidus, N.; Kiem, C.T.; Salje, H.; Severi, G.; Touvier, M.; Zins, M.; de Lamballerie, X.; Lévy-Bruhl, D.; et al. Monitoring the Proportion of the Population Infected by SARS-CoV-2 Using Age-Stratified Hospitalisation and Serological Data: A Modelling Study. *Lancet Public Health* **2021**, *6*, e408–e415.
  64. Les Données de la Vaccination Contre la COVID, Assurance Maladie. Available online: <https://datavaccin-covid.ameli.fr/pages/type-vaccins/> (accessed on 7 October 2021).
  65. Nyberg, T.; Twohig, K.A.; Harris, R.J.; Seaman, S.R.; Flannagan, J.; Allen, H.; Charlett, A.; De Angelis, D.; Dabrera, G.; Presanis, A.M. Risk of Hospital Admission for Patients with SARS-CoV-2 Variant B.1.1.7: Cohort Analysis. *BMJ* **2021**, *373*, n1412.
  66. Viguerie, A.; Lorenzo, G.; Auricchio, F.; Baroli, D.; Hughes, T.J.; Patton, A.; Reali, A.; Yankeelov, T.E.; Veneziani, A. Simulating the spread of COVID-19 via a spatially-resolved susceptible–exposed–infected–recovered–deceased (SEIRD) model with heterogeneous diffusion. *Appl. Math. Lett.* **2021**, *111*, 106617.

**Supplementary materials**

**Table S1.** Size of the population in each age group from INSEE French census (Institut National de la Statistique et des Etudes Economiques) as of January 1<sup>st</sup>, 2021.

Age class	Size
[0;4]	3,671,719
[5;9]	4,084,036
[10;14]	4,187,992
[15;19]	4,140,996
[20;24]	3,757,482
[25;29]	3,713,426
[30;34]	4,056,469
[35;39]	4,231,788
[40;44]	4,072,226
[45;49]	4,512,223
[50;54]	4,425,730
[55;59]	4,359,376
[60;64]	4,099,662
[65;69]	3,899,944
[70;74]	3,477,098
$\geq 75$	6,373,536
Total	67,063,703

**Table S2.** Proportions of mild ( $p_{im}^2$ ), moderate ( $p_{im}^3$ ) and severe ( $p_{im}^4$ ) infections by age  $m$  ( $1 \leq m \leq 16$ ) and by susceptibility status  $i$  ( $1 \leq i \leq 4$ ).

Age class	$p_{1m}^2$	$p_{1m}^3$	$p_{1m}^4$
[0;4]	0,985	0,014	0,001
[5;9]	0,979	0,020	0,001
[10;14]	0,976	0,023	0,001
[15;19]	0,960	0,038	0,003
[20;24]	0,930	0,065	0,005
[25;29]	0,900	0,091	0,009
[30;34]	0,874	0,112	0,014
[35;39]	0,848	0,132	0,020
[40;44]	0,808	0,162	0,030
[45;49]	0,766	0,191	0,043
[50;54]	0,710	0,227	0,064
[55;59]	0,622	0,281	0,098
[60;64]	0,527	0,331	0,143
[65;69]	0,435	0,367	0,197
[70;74]	0,348	0,390	0,262

$\geq 75$	0,218	0,364	0,418
-----------	-------	-------	-------

$p_{1m}^j$  are directly informed by Clark et al. [1].

Age class	$p_{2m}^2$	$p_{2m}^3$	$p_{2m}^4$
[0;4]	0,9969	0,0028	0,0003
[5;9]	0,9960	0,0037	0,0003
[10;14]	0,9956	0,0042	0,0003
[15;19]	0,9923	0,0078	0,0009
[20;24]	0,9853	0,0133	0,0015
[25;29]	0,9774	0,0200	0,0027
[30;34]	0,9692	0,0266	0,0042
[35;39]	0,9602	0,0338	0,0060
[40;44]	0,9457	0,0453	0,0090
[45;49]	0,9284	0,0588	0,0129
[50;54]	0,9030	0,0789	0,0192
[55;59]	0,8609	0,1108	0,0294
[60;64]	0,8084	0,1498	0,0429
[65;69]	0,7470	0,1930	0,0591
[70;74]	0,6795	0,2419	0,0786
$\geq 75$	0,5274	0,3472	0,1254

$p_{2m}^j$  are calculated assuming that  $p_{2m}^2 = p_{1m}^2 + (1-0.5*0.3)p_{1m}^3$ ,  $p_{2m}^3 = 0.7*p_{1m}^4 + 0.5*0.3*p_{1m}^3$  and  $p_{2m}^4 = 0.3*p_{1m}^4$ .

Age class	$p_{3m}^2$	$p_{3m}^3$	$p_{3m}^4$
[0;4]	0,985	0,015	0,000
[5;9]	0,979	0,021	0,000
[10;14]	0,976	0,024	0,000
[15;19]	0,960	0,041	0,000
[20;24]	0,930	0,070	0,000
[25;29]	0,900	0,100	0,000
[30;34]	0,874	0,126	0,000
[35;39]	0,848	0,152	0,000
[40;44]	0,808	0,192	0,000
[45;49]	0,766	0,234	0,000
[50;54]	0,710	0,291	0,000
[55;59]	0,622	0,379	0,000
[60;64]	0,527	0,474	0,000
[65;69]	0,435	0,564	0,000
[70;74]	0,348	0,652	0,000
$\geq 75$	0,218	0,782	0,000

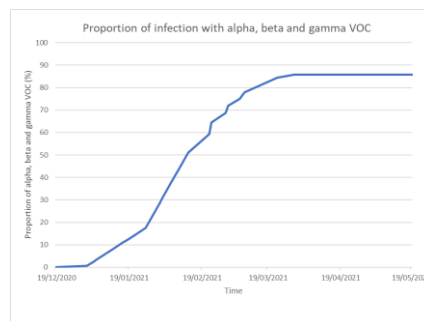
$p_{3m}^j$  are calculated assuming that  $p_{3m}^2 = p_{1m}^2$ ,  $p_{3m}^3 = p_{1m}^4 + p_{1m}^3$  and  $p_{3m}^4 = 0$ .

**Table S3.** Eligible age classes to vaccination by month in the model.

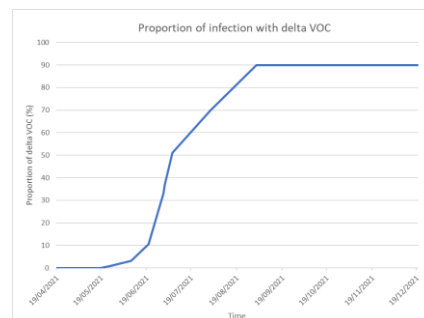
Month	Eligible age class	Month	Eligible age class
January	$\geq 75$	July	$\geq 10$
February	$\geq 75$	August	$\geq 10$
March	$\geq 60$	September	$\geq 10$
April	$\geq 50$	October	$\geq 10$
May	$\geq 20$	November	$\geq 10$
June	$\geq 10$	December	$\geq 10$

**Table S4.** Vaccine coverage with at least one dose at the end of each month informed by vaccination French database VAC-SI (Système d'Informations pour le suivi de la VACCination).

Month	Vaccine coverage with at least one dose at the end of each month (%)
January	2.45
February	4.60
March	12.22
April	23.63
May	38.85
June	50.64



**Figure S1.** Proportion of alpha, beta or gamma Variants Of Concern (VOC) infections among all COVID-19 infections from French surveillance database SI-DEP (Système d'Informations de DEPistage) and Santé Publique France surveys from January 2021 to May 2021.







**Table S6.** Definitions of perturbation matrices for contacts at school (S), at work (W) and other contacts (O).

Perturbation matrices	Definitions
S2	School closure or national vacations
S3	Zone A vacations
S4	Zones A and C vacations
S5	Zones B and C vacations
S6	Zone B vacations
O1	Closure of bars/restaurants, cinemas/theatres, non-essential businesses and travels restriction < 3 hours to < 20km from home (2 <sup>nd</sup> and 3 <sup>rd</sup> lockdowns)
O2	Closure of bars/restaurants, cinemas/theatres, non-essential businesses and strict travels restriction < 1 hours à < 1km (1 <sup>st</sup> lockdown)
O3	Closure of bars/restaurants, cinemas/theatres and curfew
W1	Obligatory to work from home if feasible (2 <sup>nd</sup> and 3 <sup>rd</sup> lockdowns)
W2	Strict obligatory to work from home, lay-off if not feasible (1 <sup>st</sup> lockdown)
W3	Recommendation to work from home

*Zone A: academies of Besançon, Bordeaux, Clermont-Ferrand, Dijon, Grenoble, Limoges, Lyon and Poitiers/  
Zone B: academies of Aix-Marseille, Amiens, Caen, Lille, Nancy-Metz, Nantes, Nice, Orléans-Tours, Reims, Rennes, Rouen and Strasbourg/ Zone C : academies of Créteil, Montpellier, Paris, Toulouse and Versailles*

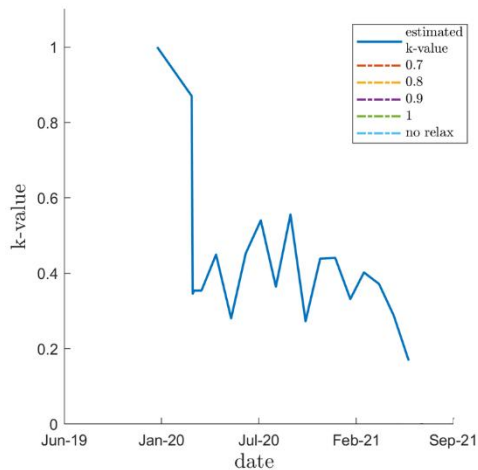
**Table S7.** Percentage reduction in contacts by each perturbation matrices for contacts at school\*, at work and other contacts.

Perturbation matrices	Percentage reduction in contacts at school	Percentage reduction in contacts at work	Percentage reduction in other contacts
S2	-95%		
S3	-24%		
S4	-50%		
S5	-67%		
S6	-44%		
O1			-40% under 65 -70% over 65
O2			-90% under 65 -95% over 65
O3			-20% under 65 -50% over 65
W1		-40%	
W2		-70%	

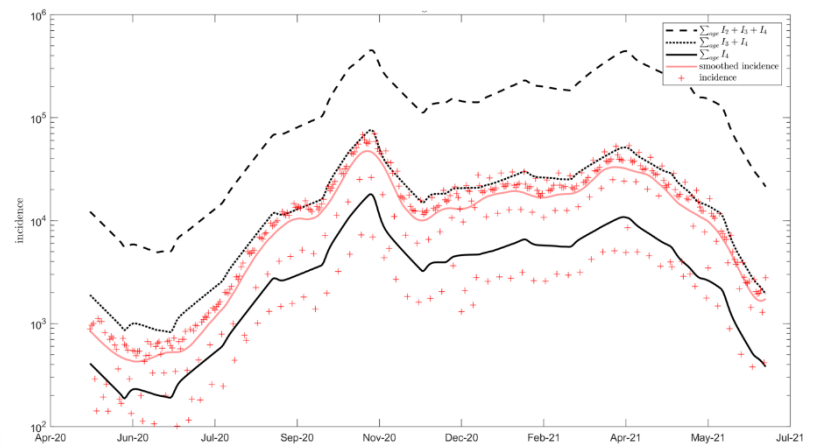
\*For contacts at school, we weighted the percentage reduction in contacts at school for each zone's vacations according to the population's size in each zone

**Table S8.** Application periods of perturbation matrices for contacts at school (S), at work (W) and other contacts (O).

Start	End	S	O	W	Start	End	S	O	W
01/01/2020	12/03/2020	0	0	0	04/04/2021	06/04/2021	2	3	1
12/03/2020	14/03/2020	2	0	0	06/04/2021	26/04/2021	2	1	1
14/03/2020	17/03/2020	2	3	0	26/04/2021	03/05/2021	0	1	1
17/03/2020	02/06/2020	2	2	2	03/05/2021	12/05/2021	0	1	3
02/06/2020	22/06/2020	2	0	3	12/05/2021	16/05/2021	2	1	3
22/06/2020	04/07/2020	0	0	3	16/05/2021	18/05/2021	0	1	3
04/07/2020	01/09/2020	2	0	3	18/05/2021	20/06/2021	0	3	3
01/09/2020	17/10/2020	0	0	3	20/06/2021	06/07/2021	0	0	3
17/10/2020	30/10/2020	2	0	3	06/07/2021	01/09/2021	2	0	3
30/10/2020	01/11/2020	2	1	1	01/09/2021	23/10/2021	0	0	0
01/11/2020	15/12/2020	0	1	1	23/10/2021	08/11/2021	2	0	0
15/12/2020	19/12/2020	0	3	3	08/11/2021	18/12/2021	0	0	0
19/12/2020	04/01/2021	2	3	3	18/12/2021	01/01/2022	2	0	0
04/01/2021	06/02/2021	0	3	3	01/01/2022	07/02/2022	0	0	0
06/02/2021	13/02/2021	3	3	3	07/02/2022	14/02/2022	3	0	0
13/02/2021	22/02/2021	4	3	3	14/02/2022	21/02/2022	5	0	0
22/02/2021	01/03/2021	5	3	3	21/02/2022	28/02/2022	4	0	0
01/03/2021	07/03/2021	6	3	3	28/02/2022	07/03/2022	6	0	0
07/03/2021	04/04/2021	0	3	3	07/03/2022	01/04/2022	0	0	0

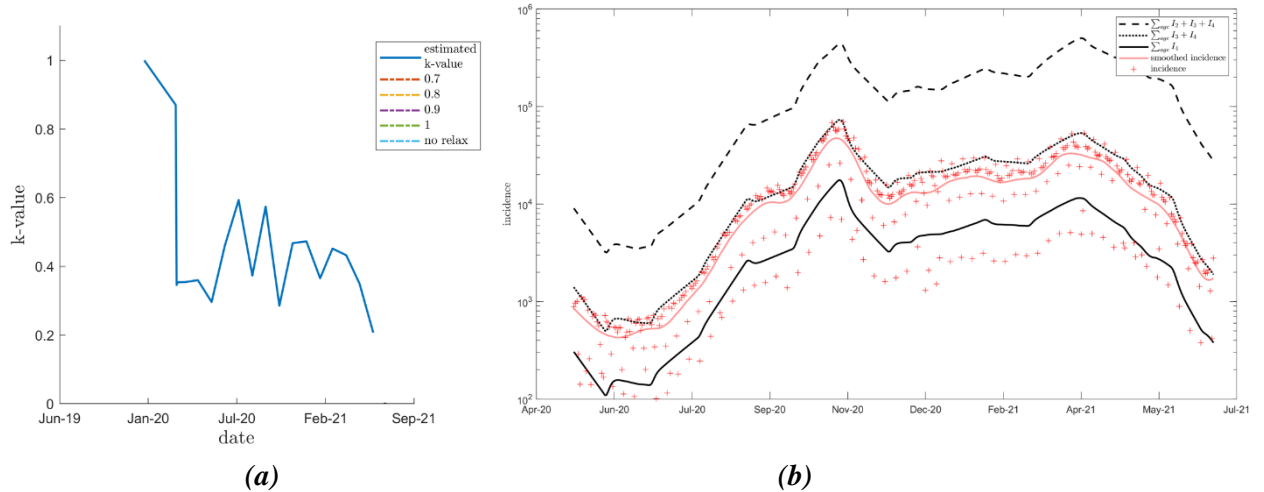


(a)

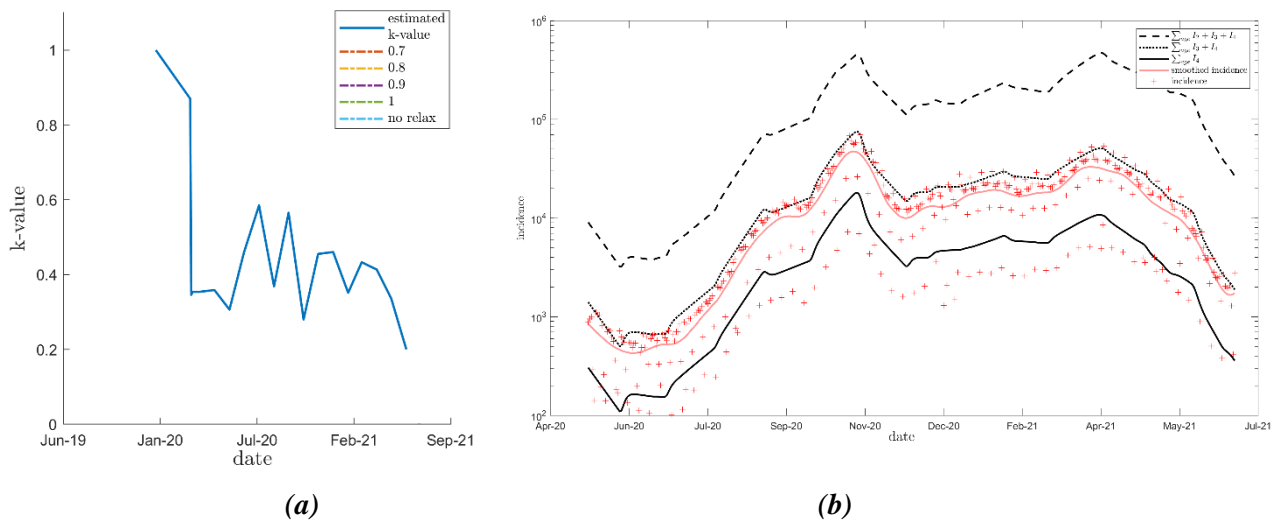


(b)

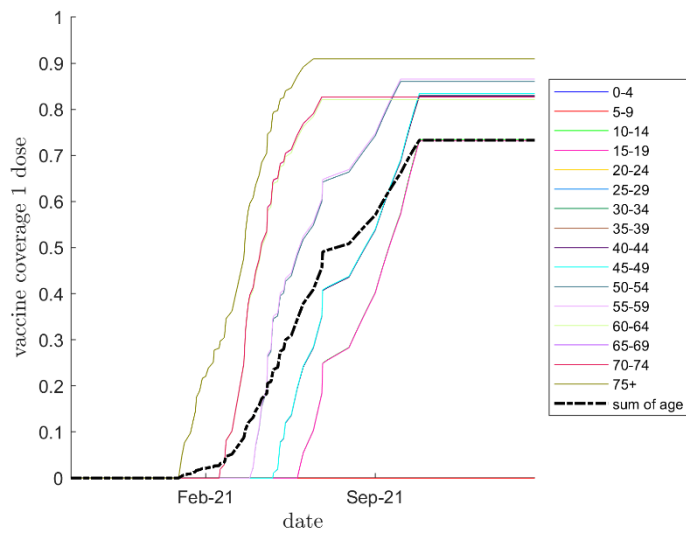
**Figure S3.** Calibration's plot for the 3 years immunity duration analysis. **(a)** K-value estimation from May 13<sup>th</sup>, 2020 to July 1<sup>st</sup>, 2021; **(b)** Model fit (logarithmic scale) from May 13<sup>th</sup>, 2020 to July 1<sup>st</sup>, 2021 to reported COVID-19 cases from French surveillance database (SI-DEP-Système d'Informations de DEPistage).



**Figure S4.** Calibration's plot for the no waning immunity analysis. **(a)** K-value estimation from May 13<sup>th</sup>, 2020 to July 1<sup>st</sup>, 2021; **(b)** Model fit (logarithmic scale) from May 13<sup>th</sup>, 2020 to July 1<sup>st</sup>, 2021 to reported COVID-19 cases from French surveillance database (SI-DEP-Système d'Informations de DEPistage).



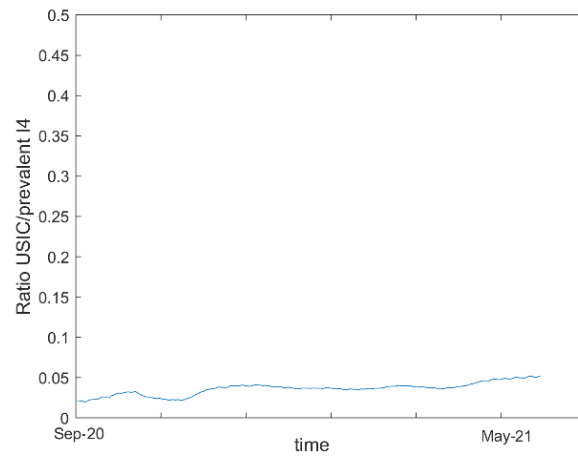
**Figure S5.** Calibration's plot for the 9 years waning immunity analysis with a better vaccine efficacy. **(a)** K-value estimation from May 13<sup>th</sup>, 2020 to July 1<sup>st</sup>, 2021; **(b)** Model fit (logarithmic scale) from May 13<sup>th</sup>, 2020 to July 1<sup>st</sup>, 2021 to reported COVID-19 cases from French surveillance database (SI-DEP-Système d'Informations de DEPistage).



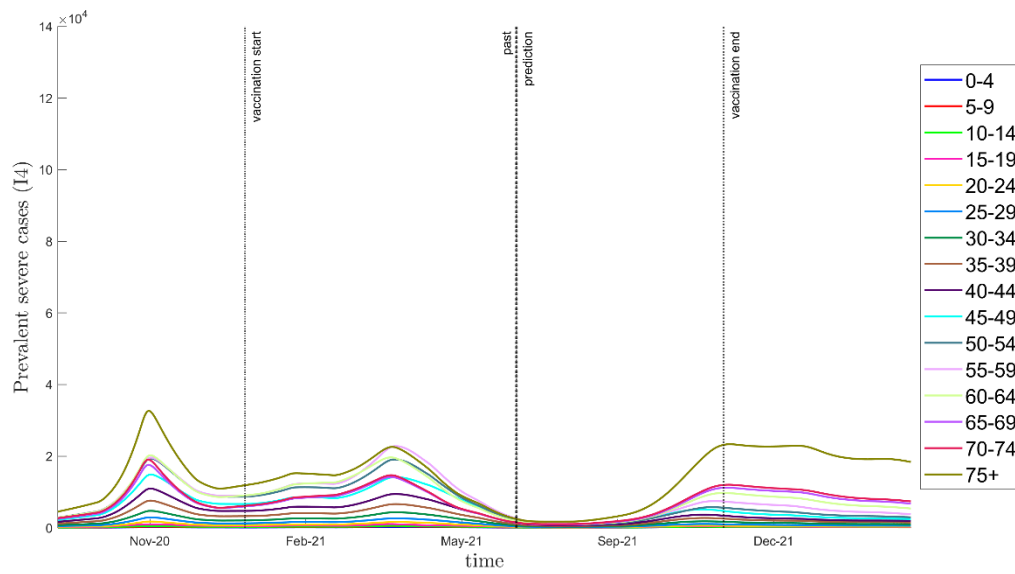
**Figure S6.** Proportion of the population vaccinated with at least one dose by age class, taking into account vaccine hesitancy.

**Table S9.** Proportion of the population vaccinated with at least one dose and vaccinated with 2 doses at the end of each month taking into account vaccine hesitancy.

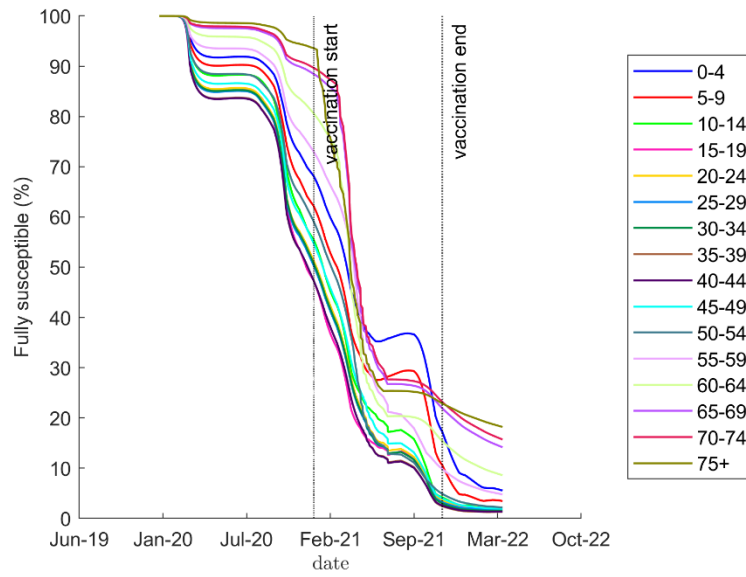
Month	Proportion vaccinated with 1 or 2 doses (%)	Proportion vaccinated with 2 doses (%)
January	1.4	0.4
February	2.7	1.6
March	10.6	4.7
April	20.9	12.3
May	34.4	23.3
June	49.1	34.4
July	50.9	44.1
August	57.1	50.1
September	66.2	57.2
October	73.3	65.4
November	73.3	69.1
December	73.3	70.3



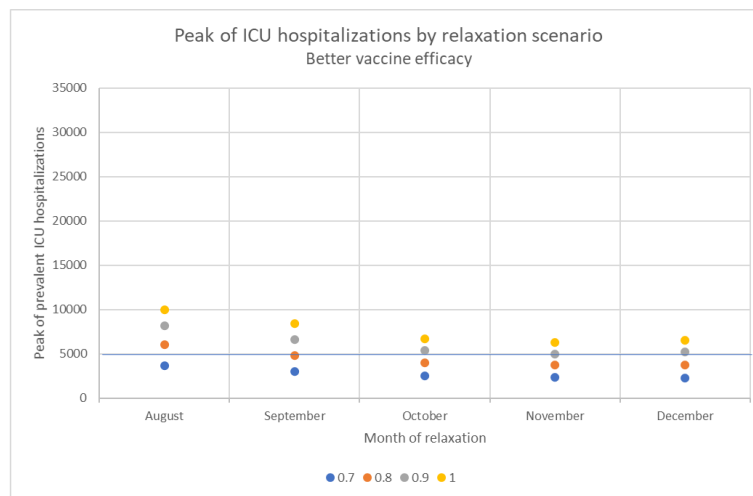
**Figure S7.** Ratio between intensive care units' (ICU) hospitalizations from SI-VIC database and prevalent  $I_4$  cases from September 1<sup>st</sup>, 2020 to May 31<sup>th</sup>, 2021. SI-VIC = Système d'Information pour le suivi des VICTimes d'attentats et de situations sanitaires exceptionnelles.



**Figure S8.** Prevalent severe cases  $I_4$  by age class in the no barrier gesture relaxation scenario, assuming that immunity wanes in 9 years (main analysis).



**Figure S9.** Proportion of fully susceptible individuals ( $S_1$ ) in each age class in the no barrier gesture relaxation scenario, assuming that immunity wanes in 9 years (main analysis).



**Figure S10.** Peak of Intensive Care Units' hospitalizations (ICU) predicted in France from July 2021 following each relaxation scenario assuming a better vaccine efficacy. Relaxation scenarios: k-value (barrier gesture compliance index) raised either to 0.7, 0.8, 0.9 or 1 in August, September, October, November or December. Better vaccine efficacy = 70 and 90% vaccine efficacy against infections after 1 and 2 doses, respectively.

**Table S10.** Average variation of intensive care units' (ICU) hospitalizations peak predicted following each relaxation scenario assuming a better vaccine efficacy compared to the predictions obtained in the main analysis\*.

Vaccine efficacy hypothesis	Average variation of ICU peak compared to main analysis** (%)
70% and 90% vaccine efficacy against infections after respectively 1 and 2 doses	-41.0

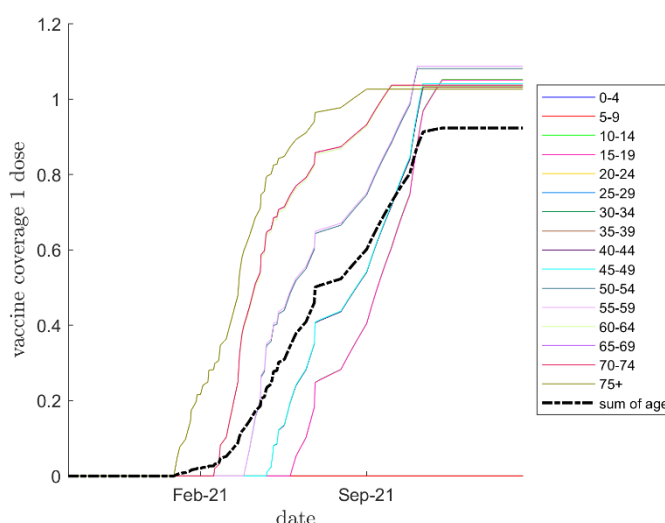
\*Main analysis = 50 and 80% vaccine efficacy against infections after 1 and 2 doses, respectively.

\*\*Average value of the peak of ICU hospitalizations predicted following each relaxation scenario (k-value elevated to 0.7, 0.8, 0.9 or 1 in August, September, October, November and December).

**Table S11.** Average variation of intensive care units' (ICU) hospitalizations peak predicted following each relaxation scenario for each hypothesis of immunity duration compared to the predictions obtained in the 9 years immunity duration analysis (main analysis).

Hypothesis of immunity duration	Average variation of ICU peak compared to main analysis* (%)
3 years immunity duration	+86.1
No waning immunity	-46.1

\*Average value of the peak of ICU hospitalizations predicted following each relaxation scenario (k-value elevated to 0.7, 0.8, 0.9 or 1 in August, September, October, November and December)



**Figure S11.** Proportion of the population vaccinated with at least one dose by age class assuming no vaccine hesitancy.



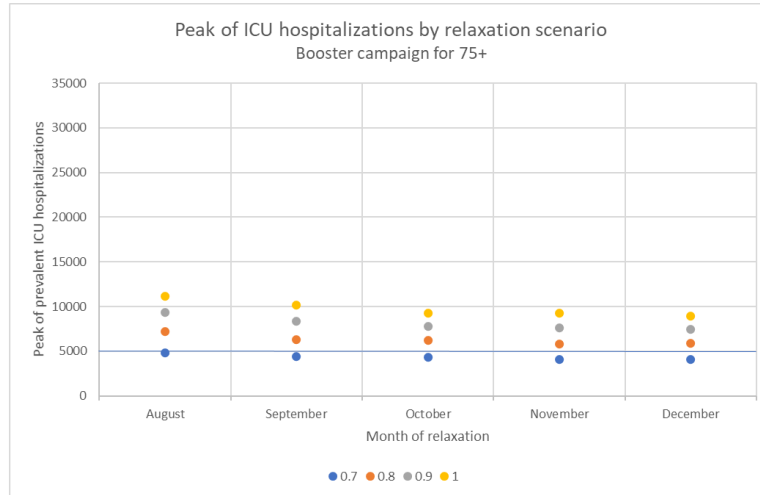
**Table S12.** Proportion of the population vaccinated with at least one dose and vaccinated with 2 doses at the end of each month assuming no vaccine hesitancy.

Month	Proportion vaccinated with 1 or 2 doses (%)	Proportion vaccinated with 2 doses (%)
January	1.4	0.4
February	2.7	1.6
March	10.6	4.8
April	21.0	12.4
May	34.5	23.4
June	50.2	34.5
July	52.4	45.0
August	60.2	52.1
September	72.7	61.3
October	87.6	72.4
November	92.4	83.2
December	92.4	87.4

**Table S13.** Average variation of intensive care units' (ICU) hospitalizations peak predicted following each relaxation scenario assuming no vaccine hesitancy compared to the main analysis with vaccine hesitancy.

Month of relaxation	Average variation of ICU peak compared to main analysis* (%)
August	-30.0
September	-34.1
October	-44.9
November	-63.0
December	-66.5

\*Average value of the peak of ICU hospitalizations predicted following each relaxation scenario (k-value elevated to 0.7, 0.8, 0.9 or 1 for each month of relaxation)



**Figure S12.** Peak of Intensive Care Units’ hospitalizations (ICU) predicted in France from July 2021 following each relaxation scenario assuming a booster vaccination campaign on the September 1<sup>st</sup>, 2021 for the 75+. Relaxation scenarios: k-value (barrier gesture compliance index) raised either to 0.7, 0.8, 0.9 or 1 in August, September, October, November or December.

**Table S14.** Average variation of intensive care units’ (ICU) hospitalizations peak predicted following each relaxation scenario assuming a booster vaccination campaign on the September 1<sup>st</sup>, 2021 for the 75+ compared to the main analysis without booster.

	Average variation of ICU peak compared to main analysis* (%)
Booster vaccination campaign for the 75+	-16.3

\*Average value of the peak of ICU hospitalizations predicted following each relaxation scenario (k-value elevated to 0.7, 0.8, 0.9 or 1 in August, September, October, November and December)

## Reference

1. Clark, A.; Jit, M.; Warren-Gash, C.; Guthrie, B.; Wang, H. H. et al. Global, Regional, and National Estimates of the Population at Increased Risk of Severe COVID-19 Due to Underlying Health Conditions in 2020: A Modelling Study. *Lancet Glob. Health* **2020**, 8 (8), e1003–e1017.
2. Prem, K.; Zandvoort, K. V.; Klepac, P.; Eggo, R. M.; Davies, N. G. et al. Projecting contact matrices in 177 geographical regions: an update and comparison with empirical data for the COVID-19 era. *PLoS computational biology* **2021**, 17(7), e1009098.