



HAL
open science

Dietary lipids as regulators of reward processes: multimodal integration matters

Chloé Berland, Dana Small, Serge Luquet, Giuseppe Gangarossa

► **To cite this version:**

Chloé Berland, Dana Small, Serge Luquet, Giuseppe Gangarossa. Dietary lipids as regulators of reward processes: multimodal integration matters. Trends in Endocrinology and Metabolism = Trends in Endocrinology & Metabolism , 2021, 32 (9), pp.693-705. 10.1016/j.tem.2021.05.008 . hal-03372067

HAL Id: hal-03372067

<https://hal.science/hal-03372067>

Submitted on 22 Aug 2023

HAL is a multi-disciplinary open access archive for the deposit and dissemination of scientific research documents, whether they are published or not. The documents may come from teaching and research institutions in France or abroad, or from public or private research centers.

L'archive ouverte pluridisciplinaire **HAL**, est destinée au dépôt et à la diffusion de documents scientifiques de niveau recherche, publiés ou non, émanant des établissements d'enseignement et de recherche français ou étrangers, des laboratoires publics ou privés.



Distributed under a Creative Commons Attribution - NonCommercial 4.0 International License

1 **Dietary lipids as regulators of reward processes: multimodal integration matters**

2

3 Chloé Berland^{1,2}, Dana M. Small³, Serge Luquet^{1,*}, Giuseppe Gangarossa^{1,*}

4

5

6

7

8 ¹ Université de Paris, BFA, UMR 8251, CNRS, F-75013 Paris, France

9 ² Department of Medicine, The Naomi Berrie Diabetes Center, Columbia University, New
10 York, NY

11 ³ Department of Psychiatry, and the Modern Diet and Physiology Research Center, Yale
12 University School of Medicine, New Haven, CT

13

14

15

16

17

18 * Correspondence to:

19 giuseppe.gangarossa@u-paris.fr (GG, @PeppeGanga), serge.luquet@u-paris.fr (SL)

20

21

22

23

24

25 Keywords (2-6): lipid sensing, feeding behavior, dopamine, nutrients, circuits, integrative
26 physiology

27 **Abstract**

28 The abundance of energy-dense and palatable diets in the modern food environment
29 tightly contributes to the obesity pandemic. The reward circuit [participates](#) to the
30 regulation of body homeostasis by integrating energy-related signals with neural
31 substrates encoding cognitive and motivational components of [feeding](#) behaviors.
32 Obesity and lipids-rich diets alter dopamine (DA) transmission leading to reward
33 dysfunctions and food overconsumption. Recent reports indicate that dietary lipids can
34 act, directly and indirectly, as functional modulators of the DA circuit. This raises the
35 possibility that nutritional or genetic conditions affecting “lipid sensing” mechanisms might
36 lead to maladaptations of the DA system. Here, we discuss the most recent findings
37 connecting dietary lipid sensing with DA signaling and its multimodal influence on circuits
38 regulating [food-reward processes](#).

39 Dietary signals: all roads lead to the brain

40 Physiological mechanisms optimizing feeding behaviors have been selected during
41 evolution. This is exemplified by the natural tropism of mammals toward energy-dense
42 food (rich in lipids and sugar) which represents a promise of maturation and survival.
43 Nowadays, the ubiquitous availability of palatable and energy-dense diets challenges the
44 highly conserved and sophisticated systems controlling food intake. It is clear that,
45 although inheritable genetic traits might contribute as risk factors for the development of
46 metabolic disorders, the consumption of calorie-dense food beyond metabolic needs
47 arises as a primary culprit in the obesity pandemic.

48 During the last decades, the brain has emerged as the master regulator of energy
49 homeostasis by integrating metabolic demands with the reinforcing nutritional properties
50 of food [1]. In fact, while the hypothalamic melanocortin circuit ensures the homeostatic
51 control of ingestive behaviors and metabolism, the mesocorticolimbic dopamine (DA)
52 system integrates and translates metabolic signals into reward values [2] so that
53 associated cues are imbued with incentive salience and the power to drive choices and
54 behaviors [3]. Thus metabolic and reinforcing systems are dynamically integrated so that
55 metabolic requirement is translated into motivated behaviors to obtain nutrients [4]. The
56 ability of organisms to store energy extends this process beyond current needs, making
57 overconsumption adaptive throughout most of history.

58 Dietary signals can modulate brain circuits and functions in distinct ways. In fact, nutrients
59 sensing chemosensory mechanisms operate in compartmentalized cellular elements
60 located throughout our body, notably in the mouth, gastrointestinal (GI) tract and brain,
61 thereby playing a key role in the multimodal regulation and control of ingestive behavior(s)
62 (**Figure 1**). This multimodal integration has been recently highlighted in humans where
63 immediate orosensory and subsequent post-ingestive signals derived from a palatable
64 food (milkshake) led to two temporally separated waves of DA release in the ventral and
65 dorsal striatum, respectively [5].

66 Among nutrients (e.g. glucose, amino acids), dietary and circulating lipids have emerged
67 as critical modulators of brain functions. Indeed, foods rich in fat are highly reinforcing.
68 Despite orosensory perception and organoleptic components of food are known to be
69 intimately associated with the reinforcing values of food, novel physiological routes are

70 emerging as instrumental in conveying the reinforcing aspects of dietary lipids through
71 direct and/or indirect connections with the mesolimbic DA circuit. However, dietary lipids-
72 related functions seem to strongly depend on the nature and source of circulating lipids
73 (pre- to post-prandial availability of circulating lipids, **Box 1**).

74

75 **BOX 1: Triglycerides or free fatty acids: the physiology of timing and nutritional**
76 **states.**

77 Triglyceride (TG)-rich lipoproteins and free fatty acids (FFA) bound to albumin represent
78 the two main sources of circulating lipids in the body [6]. While FFA are released upon
79 adipose tissue lipolysis during periods of nutrients deficiency, lipoproteins are particles
80 released from the liver and the gut to serve as hydrophobic carriers of TG, which are
81 glycerol-esterified long chain fatty acids (LCFA) [7]. TG-rich lipoproteins arise from the
82 gut as chylomicrons (CM) or from the liver as very-low-density lipoproteins (VLDL). As
83 lipoprotein lipase (LPL) hydrolyses TG to provide lipids to metabolically active tissues,
84 CM evolve towards intermediate (IDL) and high-density lipoproteins (HDL) (**Figure 1**). In
85 physiological conditions plasma FFA and TG levels fluctuate in opposite directions.
86 Indeed, plasma FFA drop in post-prandial periods due to the antilipolytic action of insulin
87 onto adipose tissue. On the other hand, plasma TG rise due to lipid re-esterification and
88 complexification into CM in enterocytes after a meal [7].

89 Both FFA and TG-particles were shown to access the brain. The transport of FFA in the
90 brain was demonstrated using radiolabeled lipids [8] and an increased in brain FFA
91 transport was found associated to metabolic disease [9].

92 How TG-rich particles access the brain is still debated. CM are likely too large to cross
93 the blood brain barrier (BBB), but smaller HDL and remnant CM (rCM) were shown to
94 access the brain [6]. The brain expresses high levels of receptors for VLDL, low-density
95 lipoprotein (LDL), oxidized HDL or LDL receptor-related protein (LRP) [6]. Thus, the
96 presence of membrane and mitochondrial machineries dedicated respectively to the
97 transport and oxidation of lipids in neurons suggest a role for FFA as signaling molecules
98 [10]. For example, the TG-processing enzyme LPL is expressed in very defined brain
99 structures [6,11] suggesting that LPL-expressing neurons are selectively equipped to
100 detect and respond to TG-rich particles. Since circulating FFA and TG can access the

101 brain during pre- or post-prandial periods, dietary lipids under either forms seem good
102 candidates to regulate feeding behaviors through a continuum process embedding
103 signals starting from taste buds, gut-brain axis and/or through direct actions on brain cells
104 (neurons and astrocytes).

105

106 **From the mouth to the brain: a taste for fat**

107 Taste is a sense assessing the nature, quality, texture and composition of food, thereby
108 driving either consumption or avoidance. Although five taste modalities are commonly
109 recognized (sour, salty, sweet, bitter, and umami), several studies have shown that
110 dietary LCFA can trigger brain responses and affect digestive functions and feeding
111 behavior [12,13] through the interaction with dedicated receptors located on taste bud
112 cells (TBC) [14] (**Figure 2**). The ability of TG to be locally and rapidly hydrolyzed into FFA
113 represents the major stimulus for the perception of fat-containing food in both humans
114 and rodents [15,16]. Importantly, fat sensing requires complex inter-organized
115 mechanisms since FFA of different chains length can elicit different behavioral responses
116 (consumption vs avoidance/irritation) [17].

117 In the lingual epithelium, taste buds are highly specialized bulb-like structures composed
118 of 50-100 TBC organized into cell types-assembled clusters functionally connected to
119 sensory afferent fibers of cranial nerves VII and IX, also known as the chorda tympani
120 (CT) and glossopharyngeal (GL) nerves (**Figure 2**). At the cytoarchitectural level, the
121 nutrients-exposed apical region of taste buds is mainly composed of type I (glia-like cells),
122 II (gustatory receptors-expressing cells) and III (neuron-like cells) TBC which, through a
123 complex and dynamic inter-TBC networks of transmitters (ATP, acetylcholine,
124 endocannabinoids, serotonin, GABA and norepinephrine), represent the main
125 chemosensory processors [18].

126 Ingestion of very-low concentration of LCFA elicits DA release in the nucleus accumbens
127 (NAc) [19] and fat consumption is rapidly accompanied by the activation of limbic, hedonic
128 and motivational circuits in rodents and humans [12,20–22]. Therefore, it is unsurprising
129 that a preference for high-fat foods is a widely shared and conserved trait in mammals.

130 How do TBCs sense fat? During the prandial period, although TG are the major
131 components of dietary fats, TG-hydrolyzed LCFA seem to drive the oral chemosensory

132 stimulation and its associated behavioral outputs [23,24]. This chemosensory
133 detection/reception of dietary lipids relies, at least in part, on TBC-expressing membrane
134 proteins, notably: GPR40 (or FFA1), GPR120 (or FFA4), CD36 and TRPM5 [17,25–27]
135 (**Figure 2**). While Gq-coupled receptors GPR40/FFA1 (rodent TBCs) and GPR120/FFA4
136 (human and rodent TBCs) have been reported to mediate fat-induced behavioral and
137 cellular responses [25,28], other studies have not led to the same conclusions [29,30],
138 thus complicating the molecular view of fat taste. More is known about the functions of
139 lingual CD36 (also known as fatty acid translocase (FAT)), a transmembrane glycoprotein
140 with high affinity for FFA and whose single nucleotide polymorphism (rs1761667) lowers
141 CD36 expression and fat gustatory perception in humans [24]. At the transductional level,
142 LCFA-activated CD36 and GPR120 both lead to increased Ca^{2+} levels, through two
143 different but complementary intracellular signaling paths [31]. In particular, activation of
144 CD36 promotes PLC-dependent hydrolysis of PIP₂ which gives rise to IP₃ and DAG. In
145 turn, IP₃, by binding to its endoplasmic reticulum receptor, promotes Ca^{2+} release. The
146 rise in Ca^{2+} participates in activating the TRPM5 ion channel which, by
147 depolarizing/activating TBCs, mediates the detection and transmission of gustatory
148 signals [27,32].

149 Fat signal transduction also relies on the activation of MAP kinase cascade (MEKs-ERKs)
150 via a mechanism requiring Ca^{2+} signaling [33]. Importantly, down-regulation of ERK1/2
151 signaling cascade significantly decreased fat preference in mice [33], thereby indicating
152 that chemosensory oral detection of fat requires both Ca^{2+} and ERK dynamics.

153 Once stimulated, TBCs activate sensory afferent fibers conveying fat-taste information to
154 the rostral nucleus tractus solitarius (NTS) which in turn relays such information to
155 secondary brain structures, allowing integration and elaboration of fat signals and
156 encoding of their rewarding/reinforcement values.

157

158 **From the gut to the brain: interoceptive and integrative fat-sensing mechanisms**

159 Food palatability, which promotes positive reinforcement and overeating, is traditionally
160 described in terms of sensory (smell, taste) pleasantness, thereby embracing into the
161 definition of “reward” conscious features such as liking, wanting, predictive value and
162 insensitive salience [3]. However, it is of paramount importance to mention that

163 reinforcement mechanisms can also derive, at least in part, from unconscious and
164 interoceptive processes which rely on the detection of “reinforcers” (nutrients, energy
165 contents, circulating signals) from specialized internal detectors/sensors usually
166 inaccessible to conscious palatable features [2]. This can be easily summarized by the
167 fact that food consumption, preference and/or seeking, although facilitated by sensory
168 pleasantness, tightly depend on energy availability and contents which, by acting as
169 secondary reinforcers, represent conditioned signals predictive of the metabolic effects
170 of ingested nutrients [34–36].

171 The gastrointestinal (GI) tract, a highly heterogeneous chemosensory organ, is
172 specialized in sensing and absorbing nutrients, and, in virtue of its complex
173 endocrine/paracrine networks, initiates several physiological processes (**Figure 3**).
174 Dietary lipids occupy a key place in the complex GI functions that control energy
175 homeostasis and feeding behaviors. Once in the GI lumen and upon the action of
176 intestinal lipases, TG-derived lipids (diacylglycerol, monoacylglycerol and FFA) stimulate
177 specialized gut cells [37], notably enteroendocrine cells (EEC), which initiate hormonal
178 and gut-to-brain responses [38]. Indeed, EEC types are well-equipped with dietary fat
179 cellular sensors as they express FFA1, FFA4, GPR119 and CD36 [39–42] (**Figure 3**). In
180 line with this evidence, post-oral delivery of dietary lipids triggers the release of GLP-1
181 and CCK [35,43]. Such capability of EEC to detect dietary lipids contributes to their
182 modulatory functions.

183 Originally believed to be specific to distinct secretory mediators (CCK, GLP-1, GIP,
184 secretin, PYY), recent breakthroughs have shown that this “*one mediator-one cell type*”
185 theory is outdated as EEC located throughout the GI tract express and actively co-release
186 a combination of different hormonal mediators and neurotransmitters [44–47] and even
187 signal using specialized entero-neuronal synapses named neuropods [48,49]. Overall,
188 these recent evidence indicate that fat-sensing at EEC level may trigger multiple
189 modulatory responses.

190 Beside EEC, dietary lipids are also sensed, absorbed and metabolized by enterocytes
191 (**Figure 3**). In fact, after gastric TG hydrolysis, FFA and 2-monoacylglycerol (2-MAG) are
192 transported into the enterocytes either by passive diffusion or by protein-dependent
193 mechanisms (CD36, FATP4). Within the enterocytes, 2-MAG and the majority of LCFA

194 are re-esterified as TG, and either stored as cytosolic lipid droplets or packaged into
195 lipoproteins (mostly CM). Lipoproteins are therefore secreted into the circulation through
196 the lymphatic system to ultimately reach all organs [50].

197 Aside of FFA transport and metabolism, lipids can directly signal onto specialized
198 receptors. In that regards, studies using intragastric fat infusions have highlighted several
199 redundant mechanisms through which dietary lipid sensing in the gut regulates feeding
200 **(Figure 3)**:

201 (1) Luminal TG-hydrolyzed oleic acid is transported into enterocytes via a CD36-
202 dependent mechanism and converted into oleoylethanolamide (OEA). OEA acts as a
203 satiety signal through a mechanism that is still not fully elucidated, mostly via the
204 activation of the lipid-activated transcription factor peroxisome proliferator-activated
205 receptors- α (PPAR- α) and the mediation of the vagus nerve [51–54]. However, some
206 studies have also suggested alternative mechanisms by which LCFA and byproducts of
207 TG (FFA and 2-MAG), rather than OEA, may function as immediate signals of feeding
208 onto the DA system [35], while non-vagal afferent mechanisms could relay OEA-induced
209 satiety effects [55].

210 (2) The inhibition of gastric emptying by lipids-triggered GPCRs-dependent
211 enteroendocrine release of GLP-1, CCK and PYY [39,42,56].

212 (3) The action of lipid oxidation byproducts from enterocytes or microbiota, such as ketone
213 bodies/beta-hydroxy butyrate (BHB), which signal through spinal afferent fibers [57].

214

215 Lipid sensing in the gut-brain axis can shape how hypothalamic hunger-activated neurons
216 respond to food cues. A recent study using cell type-specific *in vivo* Ca^{2+} dynamics in
217 Agouti-related protein (AgRP)-expressing neurons provides evidence that glucose- and
218 lipids-dependent signals initiated in the gut are routed through redundant and segregated
219 nervous afferent routes to impinge on hypothalamic responses to food cues [58]. This
220 selectivity to nutrients was ascribed to distinct nervous routes of the gut-brain axis where
221 vagal afferents transmitted intestinal lipid detection and spinal gut-brain inputs from the
222 intestinal and hepatic portal vein signaled glucose detection. Both paths serve as
223 modulators of AgRP-neurons activity, thereby promoting fullness and satiation [58]. Of
224 note, obesity and exposure to high-fat have been shown to selectively impair lipids, but

225 not carbohydrates, signaling from gut→AgRP-neurons [59,60]. These results suggest that
226 gut-brain fat sensing represents a privileged substrate for obesity-induced
227 maladaptations.

228 Interestingly, despite promoting satiation, intragastric infusion of lipids elicits dopamine
229 release [35,61], suggesting that reward/reinforcement encoding and satiation are not
230 functional antagonists.

231 Beside their endocrine actions, gut hormones released upon intestinal lipid sensing can
232 also act on sensory vagal afferents which highly express receptors for GLP-1, CCK and
233 PYY [62]. Interestingly, in addition to detecting hormonal and mechanical signals [63],
234 vagal sensory afferents can be directly modulated by dietary signals. In fact, vagal
235 neurons express the molecular machinery required to sense circulating lipids, notably
236 long- and medium-chain fatty acids [64,65], and through a polysynaptic gut-brain circuit
237 they may convey signals that are translated into reinforcement by DA-neurons [66].

238 One would therefore argue that the blunting action of OEA over food intake (satiogenic
239 signal) may also reduce the hedonic drive to food consumption. However, recent
240 breakthroughs have elegantly shown that OEA promotes DA release in the striatum,
241 through a PPAR α -mediated vagus-dependent action [61]. This DA release depends on
242 metabolic states (low-fat vs high-fat fed mice), and rerouting of the GI tract by [Roux-en-
243 Y Gastric Bypass \(RYGB\)](#) mobilized small intestine OEA, an affect associated with a
244 vagus-dependent and diet-mediated enhancement in striatal dopamine release [53].
245 Beside the peripheral OEA-mediating actions onto central DA release, intra-gastric or
246 intraperitoneal administration of fat emulsions also trigger DA activity [34,36,61,67]. This
247 indicates that dietary and diet-derived lipids engage vagus-dependent periphery-to-brain
248 circuits which regulate dopamine release and reward events.

249 Although the detailed mechanisms underlying how gut sensing of dietary lipids may
250 dampen food intake despite promoting reinforcement-like events are not fully elucidated,
251 it is worth to mention that both vagal and spinal sensory afferents may collaborate in
252 detecting food constituents through heterogeneous neuronal networks [68–70].
253 Therefore, according to their intrinsic cell type-specificity, regionalized arborization into
254 NTS territories and specific synaptic contacts onto distinct NTS cell types, they may
255 convey different integrative information to the brainstem. In turn, NTS cell types, by

256 projecting to second order brain regions [71–73], may signal to different downstream
257 structures involved in the regulation of homeostatic (hypothalamus) and hedonic feedings
258 (mesolimbic and nigrostriatal dopamine circuits). Finally, the precise timing by which lipids
259 (and glucose) pass through and signal into digestive segments, might directly account for
260 the different phases by which each nutrient triggers specific brain responses.

261

262 **Central action of dietary lipids: between reward and satiety**

263 Dietary and diet-derived signals can also directly act on distinct brain circuits and discrete
264 cell types which regulate hunger/satiety and reinforcement. In fact, although the
265 mechanisms underlying their entry into the brain remain largely unknown, pioneering
266 studies have indicated that circulating lipids can reach the brain and be uptaken by
267 neurons by crossing the BBB [8,74] (**Figure 4**). Moreover, although not specifically
268 demonstrated for lipids, new evidence highlight the key role of the lymphatic system in
269 allowing brain access to large and small molecules [75]. Neurons are fully equipped with
270 the molecular components capable of recognizing and metabolizing dietary lipids [76].

271 Indeed, among central brain regions, the hypothalamus has been long recognized as a
272 key sensor of circulating lipids [10]. Notably, hypothalamic cells (neurons and/or
273 astrocytes) express a variety of membrane proteins capable of detecting and handling
274 extracellular FFAs [77,78] and also respond to circulating TG [79]. Importantly,
275 hypothalamic cells also contain the lipoprotein lipase LPL which, by locally hydrolyzing
276 TG into 2-MAG and FFAs, contributes to the regulation of food intake and energy balance
277 [80,81]. In fact, downregulation of LPL in hypothalamic astrocytes and/or neurons leads
278 to increased body weight and glucose intolerance [81,82]. Beyond LPL, the hormone-
279 sensitive lipase (HSL), hydrolyzing tri- and diglycerides within the hypothalamus, may
280 also play a fundamental role in regulating food intake and body homeostasis [83]. In fact,
281 HSL deficiency triggers sustained food intake in [high-fat diet \(HFD\)](#)-fed mice, resulting in
282 increased body weight gain [83]. Overall, these results strongly indicate that lipids-
283 sensing functions of hypothalamic cells are pivotal in regulating energy homeostasis as
284 their silencing exacerbates pro-obesity features.

285 Beside the hypothalamus, recent studies have clearly pointed to the [midbrain](#) dopamine
286 system as a central target where circulating dietary TG may act by influencing molecular,

287 cellular and behavioral reinforcement features [11,84–86]. [This dopamine \(reward\)](#) circuit,
288 consists of midbrain nuclei, notably the ventral tegmental area (VTA) and the substantia
289 nigra *pars compacta* (SNc), densely projecting to dopaminoceptive structures such as the
290 nucleus accumbens (NAc) and the dorsal striatum (DS). This brain circuit is strongly
291 impaired by both short- and long-term exposure to HFD [87–89] as well as by perinatal
292 dietary exposure to maternal HFD feeding [90,91].

293 Although the consequences of HFD exposure on the dopaminergic system are well-
294 studied, whether and how dietary lipids *as such* can modulate the activity of the dopamine
295 circuit is still a matter of intense investigations. Interestingly, VTA DA-neurons contain
296 FFA-associated proteins, such as the fatty acid transport proteins (FATP1 and FATP4),
297 fatty acid-binding proteins (FABP3) [86], as well as LPL [11], thereby highlighting the
298 capacity of DA-neurons to detect and metabolize circulating lipids. In fact, LCFA, such as
299 the oleic and palmitic acids (OA, PA), and/or long-term central delivery of TG, modulate
300 the activity of VTA DA-neurons by reducing their neuronal firing rate and therefore by
301 modulating reward-associated events [11,85,86]. Hence, the presence of LPL in
302 dopamine and dopaminoceptive neurons might represent an additional arsenal to
303 selectively respond to postprandially released TG. It is interesting to note that while
304 sensory information routed by the vagus nerve was shown to modulate DA release from
305 SNc DA-neurons [66], *Lpl* mRNA was found to be among the 5 most robust markers
306 differentially expressed in the VTA compared to the SNc [92], thereby suggesting that
307 VTA could directly detect postprandial circulating TG while SNc DA-neurons would rather
308 respond to gut-borne [stimuli](#) routed by vagal afferents.

309
310 At the postsynaptic level and throughout the rostro-caudal axis, DS and NAc
311 dopaminoceptive neurons, also known as GABAergic spiny projection neurons (SPNs),
312 are anatomically and functionally segregated into two major families according to the
313 expression of either DA D1 or D2 receptors (D1R- and D2R-SPNs) [93–95]. Recently,
314 striatal and accumbal SPNs, in both humans and rodents, have been shown to express
315 the LPL and respond to circulating TG [11]. Notably, central delivery of dietary TG resulted
316 in a blunted activity of DA-dependent intracellular signaling pathways (MAPK, PKA and
317 mTOR) and concomitant increase of β -arrestin-dependent signaling (GSK3- β) within the

318 DS/NAc territories. In addition, TG were shown to reduce the excitability of D2R-SPNs,
319 sparing D1R-SPNs [11] (**Figure 4**). Importantly, cell type-specific deletion of LPL in D2R-
320 SPNs increased neuronal excitability [11], thereby indicating that local metabolism of TG
321 may be critical in gating the neuronal activity of dopaminergic neurons. Of interest,
322 central delivery of dietary TG, although associated to dampened food intake and reduced
323 responses to psychostimulants [11,84], was accompanied by enhanced reward sensitivity
324 and positive reinforcement [11], indicating that circulating TG may possess reward-like
325 properties. This evidence suggests that dietary TG, and eventually their TG-derived FFA,
326 may inhibit D2R-SPNs, therefore bypassing the inhibitory action of endogenous DA onto
327 D2R of D2R-SPNs and disinhibiting D2R-SPNs-downstream targets. Such dietary
328 inhibition of D2R-SPNs may then participate in promoting reinforcement as reported by
329 cell type-specific manipulation of D2R-SPNs [96–98]. Of note, D1R-SPNs also express
330 LPL but they do not seem to respond to TG concentrations capable of modulating DRD2-
331 SPNs excitability [11]. In line with that view, cognitive impairments caused by PUFAs
332 deficiency could be corrected by restoring PUFAs balance in D2R-SPNs but not D1R-
333 SPNs [99].

334 It is worth to mention that D2R is also expressed in DS/NAc cholinergic interneurons
335 (ChINs [100]) but that this cell type seems to lack *Lpl* mRNA [11]. Nevertheless, future
336 investigations aimed at unbiasedly studying the impact of dietary lipids on the cellular
337 physiology of distinct striatal cell types are definitely needed.

338 Overall, these recent studies suggest an evolutionary acquired ability of D2R-SPNs to
339 directly respond to circulating dietary lipids. This hypothesis nicely fits with other studies
340 indicating that D2R-neurons are highly susceptible substrates for central maladaptations
341 induced by obesogenic environments and altered cognitive functions. In fact, the D2R is
342 commonly pointed as a molecular culprit potentially involved in the development and/or
343 maintenance of food-related reward deficits and associated metabolic alterations [101–
344 106].

345 D2R abundance predicts compulsive susceptibility in rats [103] and exposure to lipid-rich
346 diet triggers impulsive feeding independently from body weight changes [101]. Moreover,
347 knock down of striatal D2R expression leads to compulsive eating in rats exposed to high-
348 fat food [103].

349 This observation is also supported by studies in humans [showing](#) that TG metabolism
350 correlates with brain responses to food cues in a direction that is influenced by genetic
351 traits affecting D2R signaling [11,107].

352 Whether dietary lipids as such may directly and causally be involved in promoting the
353 dysfunctions of D2R-SPNs and D2R-coupled signaling remains to be fully established. It
354 is interesting to note that central increase of circulating TG counteracts D2R-dependent
355 signaling pathways but does not impact D1R-coupled signaling events [11]. Although
356 molecular mechanistic insights are still under investigation, it is worth to mention that a
357 role for the fatty acid binding protein FABP3 has been highlighted in modulating D2R
358 striatal functions [108]. Indeed, how striatal SPNs compute lipids-carried information at
359 the cellular and circuit level represent the next step in the understanding of neuronal lipid
360 sensing mechanisms.

361

362 **Concluding remarks and future perspectives**

363 In this review, we have highlighted and discussed the most recent discoveries
364 related to whether and how dietary lipids control ingestive behavior. Overall, dietary lipids,
365 notably TG and their derived FFA, can govern appetite and reinforcement through the
366 modulation of DA release/signaling by multimodal mechanisms of lipid sensing. These
367 mechanisms involve nervous inputs arising from the oral cavity and from various
368 compartments of digestive tract (mouth-to-brain and gut-to-brain signals) as well as direct
369 neuromodulatory actions of dietary TG/FFA on cell type-specific neurons of the
370 mesolimbic circuit (central detection). Traditionally believed to solely serve as energy
371 substrates, dietary lipids are nowadays also functionally involved in regulating brain
372 systems. Dietary lipid-dependent actions encompass a variety of intracellular
373 mechanisms ranging from GPCR signaling, direct and indirect allosteric regulation of
374 receptors and channels, release of byproduct messengers from mitochondrial lipid
375 oxidation and transcriptional regulation via lipid sensing transcription factors. This is
376 ensured by the presence of lipids-associated molecular detectors in key cellular elements
377 located at different strategic levels: mouth, gut, brain. Such complexity of integrative
378 mechanisms reveals a highly sophisticated regulation of pre-prandial, prandial and post-
379 prandial fat signals which collectively contribute to the reinforcing aspects of food, and

380 most probably also to cognitive functions associated with the encoding of food cues. It is
381 interesting to highlight that at the physiological level dietary lipid sensing mechanisms
382 may follow a time-dependent process: fast (mouth-to-brain, taste), intermediate (gut-to-
383 brain, interoception) and slow (neuronal sensing) actions. Moreover, this may strongly
384 depend on nutritional/metabolic states and endogenous/exogenous sources of lipids as
385 during postprandial and fed states circulating TG represent the main source of lipids,
386 whilst in fasting and energy-deprived conditions circulating FFAs are increased. However,
387 in conditions of abnormal circulating lipids including (but **not** restricted to) obesity, neural
388 substrates involved in reward and cognitive processing are altered.

389 It is therefore tempting to hypothesize that dietary lipid sensing mechanisms within neural
390 circuits supporting appetite and reinforcing behaviors may undergo functional
391 maladaptations during obesity, as already observed in the tongue [109], gut [110] and
392 hypothalamic arcuate nucleus [59,60]. In fact, whether long-term maladaptive lipids-
393 induced molecular and synaptic responses may occur within the reward system during
394 obesity remain to be established. In line with this hypothesis we have shown that short-
395 term binge consumption of palatable diet was able to downregulate the expression of LPL
396 mRNA in the nucleus accumbens [11]. Future studies are now warranted to unveil in-
397 depth mechanisms of cellular lipid sensing in physiological and pathological contexts.
398 **Moreover, the emerging field of lipid sensing could also pave the way to explore the**
399 **etiopathology of other reward-related psychiatric and metabolic disorders such as**
400 **anorexia nervosa, bulimia and binge eating [111].** Indeed, recent discoveries and current
401 hypotheses also raise new interesting challenges that need to be tackled to fully depict a
402 novel conceptual framework that sees dietary lipids as key modulators of integrative
403 functions (see **Outstanding Questions**).

404 **Acknowledgements**

405 We acknowledge funding supports from the Centre National la Recherche Scientifique
406 (CNRS), the Université de Paris, the Bayerische Forschungstiftung, the Allen
407 Foundation Inc., the Nutricia Research Foundation, the Fyssen Foundation, the Modern
408 Diet and Physiology Research Center (MDPRC), the ANR-16-CE14-0026 “Fat4Brain”
409 and the Fondation pour la Recherche Médicale (FRM).

410

411

412

413

414 **Declaration of Interests**

415 The authors declare no conflicts of interest.

416 **References**

- 417 1 Ferrario, C.R. *et al.* (2016) Homeostasis Meets Motivation in the Battle to Control
418 Food Intake. *J Neurosci* 36, 11469–11481
- 419 2 de Araujo, I.E. *et al.* (2020) Rethinking Food Reward. *Annual Review of*
420 *Psychology* 71, 139–164
- 421 3 Berridge, K.C. and Kringelbach, M.L. (2015) Pleasure systems in the brain. *Neuron*
422 86, 646–664
- 423 4 Rossi, M.A. and Stuber, G.D. (2018) Overlapping Brain Circuits for Homeostatic
424 and Hedonic Feeding. *Cell Metab.* 27, 42–56
- 425 5 Thanarajah, S.E. *et al.* (2019) Food Intake Recruits Orosensory and Post-ingestive
426 Dopaminergic Circuits to Affect Eating Desire in Humans. *Cell Metab* 29, 695-706.e4
- 427 6 Wang, H. and Eckel, R.H. (2014) What are lipoproteins doing in the brain? *Trends*
428 *Endocrinol Metab* 25, 8–14
- 429 7 Ruge, T. *et al.* (2009) Fasted to fed trafficking of Fatty acids in human adipose
430 tissue reveals a novel regulatory step for enhanced fat storage. *J. Clin. Endocrinol. Metab.*
431 94, 1781–1788
- 432 8 Rapoport, S.I. (2001) In vivo fatty acid incorporation into brain phospholipids in
433 relation to plasma availability, signal transduction and membrane remodeling. *J Mol*
434 *Neurosci* 16, 243–261; discussion 279-284
- 435 9 Karmi, A. *et al.* (2010) Increased brain fatty acid uptake in metabolic syndrome.
436 *Diabetes* 59, 2171–2177
- 437 10 Lam, T.K.T. *et al.* (2005) Hypothalamic sensing of fatty acids. *Nat Neurosci* 8, 579–
438 584
- 439 11 Berland, C. *et al.* (2020) Circulating Triglycerides Gate Dopamine-Associated
440 Behaviors through DRD2-Expressing Neurons. *Cell Metab.* 31, 773-790.e11
- 441 12 De Araujo, I.E. and Rolls, E.T. (2004) Representation in the human brain of food
442 texture and oral fat. *J Neurosci* 24, 3086–3093
- 443 13 Tzieropoulos, H. *et al.* (2013) Dietary fat induces sustained reward response in the
444 human brain without primary taste cortex discrimination. *Front Hum Neurosci* 7, 36
- 445 14 Besnard, P. *et al.* (2016) Taste of Fat: A Sixth Taste Modality? *Physiol Rev* 96,
446 151–176

- 447 15 Kulkarni, B.V. and Mattes, R.D. (2014) Lingual lipase activity in the orosensory
448 detection of fat by humans. *Am J Physiol Regul Integr Comp Physiol* 306, R879-885
- 449 16 Kawai, T. and Fushiki, T. (2003) Importance of lipolysis in oral cavity for orosensory
450 detection of fat. *Am J Physiol Regul Integr Comp Physiol* 285, R447-454
- 451 17 Galindo, M.M. *et al.* (2012) G protein-coupled receptors in human fat taste
452 perception. *Chem Senses* 37, 123–139
- 453 18 Roper, S.D. and Chaudhari, N. (2017) Taste buds: cells, signals and synapses.
454 *Nat Rev Neurosci* 18, 485–497
- 455 19 Adachi, S. *et al.* (2013) Increased levels of extracellular dopamine in the nucleus
456 accumbens and amygdala of rats by ingesting a low concentration of a long-chain Fatty
457 Acid. *Biosci Biotechnol Biochem* 77, 2175–2180
- 458 20 Peterschmitt, Y. *et al.* (2018) Fatty Acid Lingual Application Activates Gustatory
459 and Reward Brain Circuits in the Mouse. *Nutrients* 10,
- 460 21 Grabenhorst, F. *et al.* (2010) How the brain represents the reward value of fat in
461 the mouth. *Cereb Cortex* 20, 1082–1091
- 462 22 DiFeliceantonio, A.G. *et al.* (2018) Supra-Additive Effects of Combining Fat and
463 Carbohydrate on Food Reward. *Cell Metab* 28, 33-44.e3
- 464 23 Gaillard, D. *et al.* (2008) The gustatory pathway is involved in CD36-mediated
465 orosensory perception of long-chain fatty acids in the mouse. *FASEB J* 22, 1458–1468
- 466 24 Pepino, M.Y. *et al.* (2012) The fatty acid translocase gene CD36 and lingual lipase
467 influence oral sensitivity to fat in obese subjects. *J Lipid Res* 53, 561–566
- 468 25 Cartoni, C. *et al.* (2010) Taste preference for fatty acids is mediated by GPR40
469 and GPR120. *J Neurosci* 30, 8376–8382
- 470 26 Laugerette, F. *et al.* (2005) CD36 involvement in orosensory detection of dietary
471 lipids, spontaneous fat preference, and digestive secretions. *J Clin Invest* 115, 3177–
472 3184
- 473 27 Liu, P. *et al.* (2011) Transient receptor potential channel type M5 is essential for
474 fat taste. *J Neurosci* 31, 8634–8642
- 475 28 Ozdener, M.H. *et al.* (2014) CD36- and GPR120-mediated Ca²⁺ signaling in human
476 taste bud cells mediates differential responses to fatty acids and is altered in obese mice.
477 *Gastroenterology* 146, 995–1005

- 478 29 Ancel, D. *et al.* (2015) The oral lipid sensor GPR120 is not indispensable for the
479 orosensory detection of dietary lipids in mice. *J Lipid Res* 56, 369–378
- 480 30 Sclafani, A. *et al.* (2013) GPR40 and GPR120 fatty acid sensors are critical for
481 postoral but not oral mediation of fat preferences in the mouse. *Am J Physiol Regul Integr*
482 *Comp Physiol* 305, R1490-1497
- 483 31 Khan, A.S. *et al.* (2020) Preference for dietary fat: From detection to disease. *Prog*
484 *Lipid Res* 78, 101032
- 485 32 Dutta Banik, D. *et al.* (2018) TRPM4 and TRPM5 are both required for normal
486 signaling in taste receptor cells. *Proc Natl Acad Sci U S A* 115, E772–E781
- 487 33 Subramaniam, S. *et al.* (2016) ERK1/2 activation in human taste bud cells
488 regulates fatty acid signaling and gustatory perception of fat in mice and humans. *FASEB*
489 *J* 30, 3489–3500
- 490 34 Tellez, L.A. *et al.* (2013) Flavor-independent maintenance, extinction, and
491 reinstatement of fat self-administration in mice. *Biol Psychiatry* 73, 851–859
- 492 35 Kleberg, K. *et al.* (2015) Sensing of triacylglycerol in the gut: different mechanisms
493 for fatty acids and 2-monoacylglycerol. *J Physiol* 593, 2097–2109
- 494 36 Ferreira, J.G. *et al.* (2012) Regulation of fat intake in the absence of flavour
495 signalling. *J Physiol* 590, 953–972
- 496 37 Feinle-Bisset, C. *et al.* (2005) Fat digestion is required for suppression of ghrelin
497 and stimulation of peptide YY and pancreatic polypeptide secretion by intraduodenal lipid.
498 *Am J Physiol Endocrinol Metab* 289, E948-953
- 499 38 Gribble, F.M. and Reimann, F. (2019) Function and mechanisms of
500 enteroendocrine cells and gut hormones in metabolism. *Nat Rev Endocrinol* 15, 226–237
- 501 39 Liou, A.P. *et al.* (2011) The G-protein-coupled receptor GPR40 directly mediates
502 long-chain fatty acid-induced secretion of cholecystokinin. *Gastroenterology* 140, 903–
503 912
- 504 40 Iwasaki, K. *et al.* (2015) Free fatty acid receptor GPR120 is highly expressed in
505 enteroendocrine K cells of the upper small intestine and has a critical role in GIP secretion
506 after fat ingestion. *Endocrinology* 156, 837–846
- 507 41 Sundaresan, S. *et al.* (2013) CD36-dependent signaling mediates fatty acid-
508 induced gut release of secretin and cholecystokinin. *FASEB J* 27, 1191–1202

- 509 42 Higuchi, S. *et al.* (2020) Bile acid composition regulates GPR119-dependent
510 intestinal lipid sensing and food intake regulation in mice. *Gut* 69, 1620–1628
- 511 43 Vana, V. *et al.* (2021) Post-oral fat-induced satiation is mediated by endogenous
512 CCK and GLP-1 in a fat self-administration mouse model. *Physiol Behav* 234, 113315
- 513 44 Svendsen, B. *et al.* (2015) An analysis of cosecretion and coexpression of gut
514 hormones from male rat proximal and distal small intestine. *Endocrinology* 156, 847–857
- 515 45 Haber, A.L. *et al.* (2017) A single-cell survey of the small intestinal epithelium.
516 *Nature* 551, 333–339
- 517 46 Glass, L.L. *et al.* (2017) Single-cell RNA-sequencing reveals a distinct population
518 of proglucagon-expressing cells specific to the mouse upper small intestine. *Mol Metab*
519 6, 1296–1303
- 520 47 Fothergill, L.J. *et al.* (2017) Costorage of Enteroendocrine Hormones Evaluated at
521 the Cell and Subcellular Levels in Male Mice. *Endocrinology* 158, 2113–2123
- 522 48 Bohórquez, D.V. *et al.* (2015) Neuroepithelial circuit formed by innervation of
523 sensory enteroendocrine cells. *J Clin Invest* 125, 782–786
- 524 49 Kaelberer, M.M. *et al.* (2018) A gut-brain neural circuit for nutrient sensory
525 transduction. *Science* 361,
- 526 50 Ko, C.-W. *et al.* (2020) Regulation of intestinal lipid metabolism: current concepts
527 and relevance to disease. *Nat Rev Gastroenterol Hepatol* 17, 169–183
- 528 51 Schwartz, G.J. *et al.* (2008) The lipid messenger OEA links dietary fat intake to
529 satiety. *Cell Metab* 8, 281–288
- 530 52 Fu, J. *et al.* (2003) Oleylethanolamide regulates feeding and body weight through
531 activation of the nuclear receptor PPAR- α . *Nature* 425, 90–93
- 532 53 Hankir, M.K. *et al.* (2017) Gastric Bypass Surgery Recruits a Gut PPAR- α -Striatal
533 D1R Pathway to Reduce Fat Appetite in Obese Rats. *Cell Metab.* 25, 335–344
- 534 54 Rodríguez de Fonseca, F. *et al.* (2001) An anorexic lipid mediator regulated by
535 feeding. *Nature* 414, 209–212
- 536 55 Azari, E.K. *et al.* (2014) Vagal afferents are not necessary for the satiety effect of
537 the gut lipid messenger oleoylethanolamide. *Am J Physiol Regul Integr Comp Physiol*
538 307, R167-178
- 539 56 Mandøe, M.J. *et al.* (2015) The 2-monoacylglycerol moiety of dietary fat appears

- 540 to be responsible for the fat-induced release of GLP-1 in humans. *Am J Clin Nutr* 102,
541 548–555
- 542 57 Mansouri, A. and Langhans, W. (2014) Enterocyte-afferent nerve interactions in
543 dietary fat sensing. *Diabetes Obes Metab* 16 Suppl 1, 61–67
- 544 58 Goldstein, N. *et al.* (2021) Hypothalamic detection of macronutrients via multiple
545 gut-brain pathways. *Cell Metab* 33, 676-687.e5
- 546 59 Mazzone, C.M. *et al.* (2020) High-fat food biases hypothalamic and mesolimbic
547 expression of consummatory drives. *Nat Neurosci* 23, 1253–1266
- 548 60 Beutler, L.R. *et al.* (2020) Obesity causes selective and long-lasting desensitization
549 of AgRP neurons to dietary fat. *Elife* 9,
- 550 61 Tellez, L.A. *et al.* (2013) A gut lipid messenger links excess dietary fat to dopamine
551 deficiency. *Science* 341, 800–802
- 552 62 Waise, T.M.Z. *et al.* (2018) The metabolic role of vagal afferent innervation. *Nat*
553 *Rev Gastroenterol Hepatol* 15, 625–636
- 554 63 de Lartigue, G. (2016) Role of the vagus nerve in the development and treatment
555 of diet-induced obesity. *J Physiol* 594, 5791–5815
- 556 64 Darling, R.A. *et al.* (2014) Mercaptoacetate and fatty acids exert direct and
557 antagonistic effects on nodose neurons via GPR40 fatty acid receptors. *Am J Physiol*
558 *Regul Integr Comp Physiol* 307, R35-43
- 559 65 Liu, C. *et al.* (2014) PPAR γ in vagal neurons regulates high-fat diet induced
560 thermogenesis. *Cell Metab* 19, 722–730
- 561 66 Han, W. *et al.* (2018) A Neural Circuit for Gut-Induced Reward. *Cell* 175, 665-
562 678.e23
- 563 67 Rada, P. *et al.* (2012) A high-fat meal, or intraperitoneal administration of a fat
564 emulsion, increases extracellular dopamine in the nucleus accumbens. *Brain Sci* 2, 242–
565 253
- 566 68 Kupari, J. *et al.* (2019) An Atlas of Vagal Sensory Neurons and Their Molecular
567 Specialization. *Cell Rep* 27, 2508-2523.e4
- 568 69 Chang, R.B. *et al.* (2015) Vagal Sensory Neuron Subtypes that Differentially
569 Control Breathing. *Cell* 161, 622–633
- 570 70 Bai, L. *et al.* (2019) Genetic Identification of Vagal Sensory Neurons That Control

- 571 Feeding. *Cell* 179, 1129-1143.e23
- 572 71 Roman, C.W. *et al.* (2016) Genetically and functionally defined NTS to PBN brain
573 circuits mediating anorexia. *Nat Commun* 7, 11905
- 574 72 D'Agostino, G. *et al.* (2016) Appetite controlled by a cholecystokinin nucleus of the
575 solitary tract to hypothalamus neurocircuit. *Elife* 5,
- 576 73 Brierley, D.I. *et al.* (2021) Central and peripheral GLP-1 systems independently
577 suppress eating. *Nat Metab* 3, 258–273
- 578 74 Banks, W.A. *et al.* (2018) Triglycerides cross the blood-brain barrier and induce
579 central leptin and insulin receptor resistance. *Int J Obes (Lond)* 42, 391–397
- 580 75 Louveau, A. *et al.* (2015) Structural and functional features of central nervous
581 system lymphatic vessels. *Nature* 523, 337–341
- 582 76 Bruce, K.D. *et al.* (2017) Lipid Processing in the Brain: A Key Regulator of Systemic
583 Metabolism. *Front Endocrinol (Lausanne)* 8, 60
- 584 77 Le Foll, C. *et al.* (2009) Characteristics and mechanisms of hypothalamic neuronal
585 fatty acid sensing. *Am J Physiol Regul Integr Comp Physiol* 297, R655-664
- 586 78 Dragano, N.R.V. *et al.* (2017) Polyunsaturated fatty acid receptors, GPR40 and
587 GPR120, are expressed in the hypothalamus and control energy homeostasis and
588 inflammation. *J Neuroinflammation* 14, 91
- 589 79 Chang, G.-Q. *et al.* (2004) Circulating triglycerides impact on orexigenic peptides
590 and neuronal activity in hypothalamus. *Endocrinology* 145, 3904–3912
- 591 80 Libby, A.E. *et al.* (2015) Lipoprotein lipase is an important modulator of lipid uptake
592 and storage in hypothalamic neurons. *Biochem Biophys Res Commun* 465, 287–292
- 593 81 Laperrousaz, E. *et al.* (2017) Lipoprotein lipase in hypothalamus is a key regulator
594 of body weight gain and glucose homeostasis in mice. *Diabetologia* 60, 1314–1324
- 595 82 Gao, Y. *et al.* (2017) Disruption of Lipid Uptake in Astroglia Exacerbates Diet-
596 Induced Obesity. *Diabetes* 66, 2555–2563
- 597 83 Hundahl, C. *et al.* (2021) Hypothalamic hormone-sensitive lipase regulates
598 appetite and energy homeostasis. *Mol Metab* 47, 101174
- 599 84 Cansell, C. *et al.* (2014) Dietary triglycerides act on mesolimbic structures to
600 regulate the rewarding and motivational aspects of feeding. *Mol. Psychiatry* 19, 1095–
601 1105

- 602 85 Hryhorczuk, C. *et al.* (2016) Dampened Mesolimbic Dopamine Function and
603 Signaling by Saturated but not Monounsaturated Dietary Lipids.
604 *Neuropsychopharmacology* 41, 811–821
- 605 86 Hryhorczuk, C. *et al.* (2018) Oleic Acid in the Ventral Tegmental Area Inhibits
606 Feeding, Food Reward, and Dopamine Tone. *Neuropsychopharmacology* 43, 607–616
- 607 87 Naneix, F. *et al.* (2017) Impact of Early Consumption of High-Fat Diet on the
608 Mesolimbic Dopaminergic System. *eNeuro* 4,
- 609 88 Arcego, D.M. *et al.* (2020) Chronic high-fat diet affects food-motivated behavior
610 and hedonic systems in the nucleus accumbens of male rats. *Appetite* 153, 104739
- 611 89 Fordahl, S.C. *et al.* (2016) High fat diet augments amphetamine sensitization in
612 mice: Role of feeding pattern, obesity, and dopamine terminal changes.
613 *Neuropharmacology* 109, 170–182
- 614 90 Paradis, J. *et al.* (2017) Perinatal Western Diet Consumption Leads to Profound
615 Plasticity and GABAergic Phenotype Changes within Hypothalamus and Reward
616 Pathway from Birth to Sexual Maturity in Rat. *Front Endocrinol (Lausanne)* 8, 216
- 617 91 Lippert, R.N. *et al.* (2020) Maternal high-fat diet during lactation reprograms the
618 dopaminergic circuitry in mice. *J Clin Invest* 130, 3761–3776
- 619 92 Greene, J.G. (2006) Gene expression profiles of brain dopamine neurons and
620 relevance to neuropsychiatric disease. *J Physiol* 575, 411–416
- 621 93 Gerfen, C.R. and Surmeier, D.J. (2011) Modulation of striatal projection systems
622 by dopamine. *Annu. Rev. Neurosci.* 34, 441–466
- 623 94 Valjent, E. and Gangarossa, G. (2021) The Tail of the Striatum: From Anatomy to
624 Connectivity and Function. *Trends Neurosci* 44, 203–214
- 625 95 Gangarossa, G. *et al.* (2013) Distribution and compartmental organization of
626 GABAergic medium-sized spiny neurons in the mouse nucleus accumbens. *Front Neural*
627 *Circuits* 7, 22
- 628 96 Gallo, E.F. *et al.* (2018) Accumbens dopamine D2 receptors increase motivation
629 by decreasing inhibitory transmission to the ventral pallidum. *Nat Commun* 9, 1086
- 630 97 Carvalho Poyraz, F. *et al.* (2016) Decreasing Striatopallidal Pathway Function
631 Enhances Motivation by Energizing the Initiation of Goal-Directed Action. *J Neurosci* 36,
632 5988–6001

- 633 98 Bock, R. *et al.* (2013) Strengthening the accumbal indirect pathway promotes
634 resilience to compulsive cocaine use. *Nat Neurosci* 16, 632–638
- 635 99 Ducrocq, F. *et al.* (2020) Causal Link between n-3 Polyunsaturated Fatty Acid
636 Deficiency and Motivation Deficits. *Cell Metab* 31, 755-772.e7
- 637 100 Pisani, A. *et al.* (2000) Activation of D2-like dopamine receptors reduces synaptic
638 inputs to striatal cholinergic interneurons. *J Neurosci* 20, RC69
- 639 101 Adams, W.K. *et al.* (2015) Long-term, calorie-restricted intake of a high-fat diet in
640 rats reduces impulse control and ventral striatal D2 receptor signalling - two markers of
641 addiction vulnerability. *Eur. J. Neurosci.* 42, 3095–3104
- 642 102 Guo, J. *et al.* (2014) Striatal dopamine D2-like receptor correlation patterns with
643 human obesity and opportunistic eating behavior. *Mol. Psychiatry* 19, 1078–1084
- 644 103 Johnson, P.M. and Kenny, P.J. (2010) Dopamine D2 receptors in addiction-like
645 reward dysfunction and compulsive eating in obese rats. *Nat. Neurosci.* 13, 635–641
- 646 104 de Weijer, B.A. *et al.* (2011) Lower striatal dopamine D2/3 receptor availability in
647 obese compared with non-obese subjects. *EJNMMI Res* 1, 37
- 648 105 Friend, D.M. *et al.* (2017) Basal Ganglia Dysfunction Contributes to Physical
649 Inactivity in Obesity. *Cell Metab* 25, 312–321
- 650 106 Labouesse, M.A. *et al.* (2018) Striatal dopamine 2 receptor upregulation during
651 development predisposes to diet-induced obesity by reducing energy output in mice. *Proc*
652 *Natl Acad Sci U S A* 115, 10493–10498
- 653 107 Sun, X. *et al.* (2014) The neural signature of satiation is associated with ghrelin
654 response and triglyceride metabolism. *Physiol. Behav.* 136, 63–73
- 655 108 Shioda, N. *et al.* (2010) Heart-type fatty acid binding protein regulates dopamine
656 D2 receptor function in mouse brain. *J Neurosci* 30, 3146–3155
- 657 109 Chevrot, M. *et al.* (2013) Obesity alters the gustatory perception of lipids in the
658 mouse: plausible involvement of lingual CD36. *J Lipid Res* 54, 2485–2494
- 659 110 Duca, F.A. *et al.* (2021) The metabolic impact of small intestinal nutrient sensing.
660 *Nat Commun* 12, 903
- 661 111 Duriez, P. *et al.* (2019) A Metabolic Perspective on Reward Abnormalities in
662 Anorexia Nervosa. *Trends Endocrinol Metab* 30, 915–928
- 663

664 **Figure legends**

665

666 **Figure 1. The physiology of fat sensing throughout the body.**

667 Oral perception of dietary fat requires the action of lingual lipases which hydrolyze TG
668 into free fatty acids (FFA) whose presence is detected by taste bud cells. Encoded
669 information is then rapidly sent toward the brain via the chorda tympani (VII) and
670 glossopharyngeal (IX) nerves. After ingestion/digestion, dietary lipids can promote gut-to-
671 brain communication and/or enter into the gut-liver transformative cycles. In the latter,
672 FFA transported and re-esterified by enterocytes are packaged into TG-rich chylomicrons
673 (CM) and released into the lymphatic and circulatory systems. The breakdown of
674 lipoproteins through the action of lipoprotein lipase (LPL) allows the extraction of TG from
675 large CM/VLDL leading to intermediate or high-density particles (IDL, HDL) and
676 chylomicron remnants (rCM) recaptured by the liver. FFA and TG directly or indirectly
677 signal to the brain. This figure was created using BioRender.

678

679 **Figure 2. Fat sensing by taste bud cells.**

680 Type 3 taste bud cells (TBC) express gustatory receptors for sweet, umami and bitter
681 tastes. However, they also express receptors that can be activated by FFA released from
682 dietary TG by the action of lingual lipases. FFA can activate lipid sensor CD36 and G-
683 coupled receptor 40 (GPR40/FFAR1) and 120 (GPR120/FFAR1). The activation of Src
684 kinase as a consequence of CD36 activation leads the recruitment of phospholipase C
685 (PLC), the increase of intracellular Ca^{2+} and the activation of ERK1/2 through the
686 calmodulin activated kinase (CaMKII). PLC promotes the release of intracellular Ca^{2+}
687 through inositol 3 phosphate (IP3). Delayed Rectifying K^+ (DRK, Kv1.5) channels can
688 directly or indirectly respond to FFA. Once activated by the detection of dietary lipids, TBC
689 will release neurotransmitters and **messengers** allowing the transfer of lipids-associated
690 information to the nucleus tactus solitarius (NTS) through the cranial nerves VII et IX. This
691 figure was created using BioRender.

692

693 **Figure 3. Gut lipid sensing: mechanisms and circuits.**

694 During intestinal transit, dietary TG are hydrolyzed by luminal lipases. Released 2-
 695 monoacylglycerol (2-MAG) and FFA will act on lipid sensors expressed onto
 696 enteroendocrine cells (EEC) (1, yellow circles). While TG-derived FFA can initiate
 697 signaling events by binding to CD36, G-coupled receptor 40 (GPR40/FFAR1) and 120
 698 (GPR120/FFAR4), 2-MAG can signal by GPR119 (2, red circles). Upon activation of lipid
 699 receptors located on EEC membranes, gut hormones and neurotransmitters can be
 700 released from EEC (3, blue circles). In turn, gut hormones can enter the general
 701 circulation or directly stimulate vagal afferents.

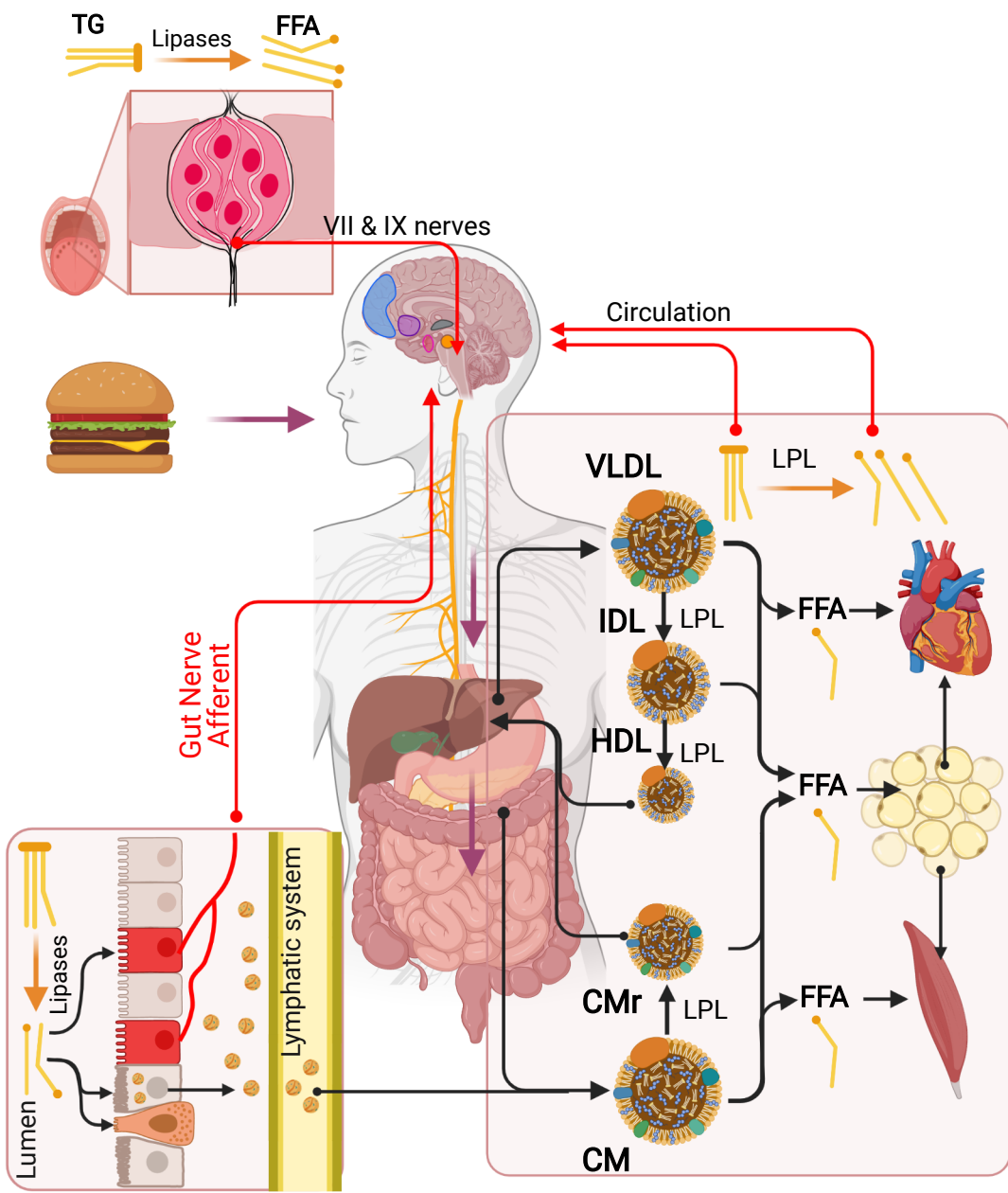
702 Within the enterocytes, FFA are re-esterified and packaged into chylomicrons (CM) to
 703 ultimately reach the lymphatic system (4, green circles). A portion of FFA entering the
 704 enterocytes can serve either as substrate for the synthesis of N-acylethanolamines and
 705 produce the bioactive N-oleoylethanolamine (OEA) (5, grey circles), or enter lipid
 706 oxidation processes whom beta-hydroxy butyrate (BHB) byproduct (6, brown circles) can
 707 also signal through the circulation and/or afferent fibers. Vagal afferent fibers, ascending
 708 through the nodose ganglia (NG), respond to OEA while spinal afferent fibers routed
 709 through the dorsal root ganglia (DRG) respond to BHB produced by enterocytes and
 710 microbiota. OEA, BHB, gut hormones and nutrients also signal through portal vein
 711 metabolic sensors and liver-brain afferent fibers. This figure was created using
 712 BioRender.

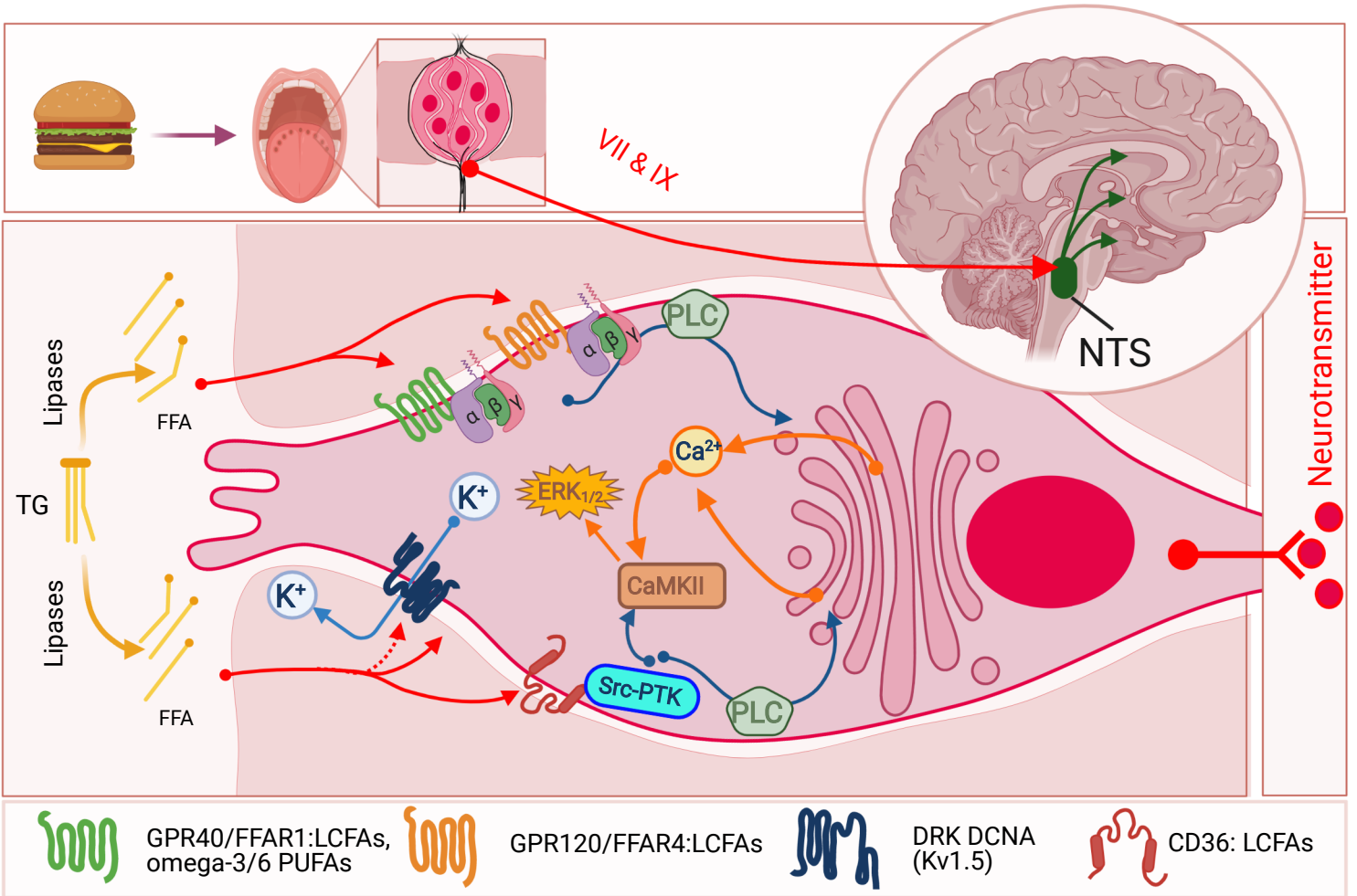
713

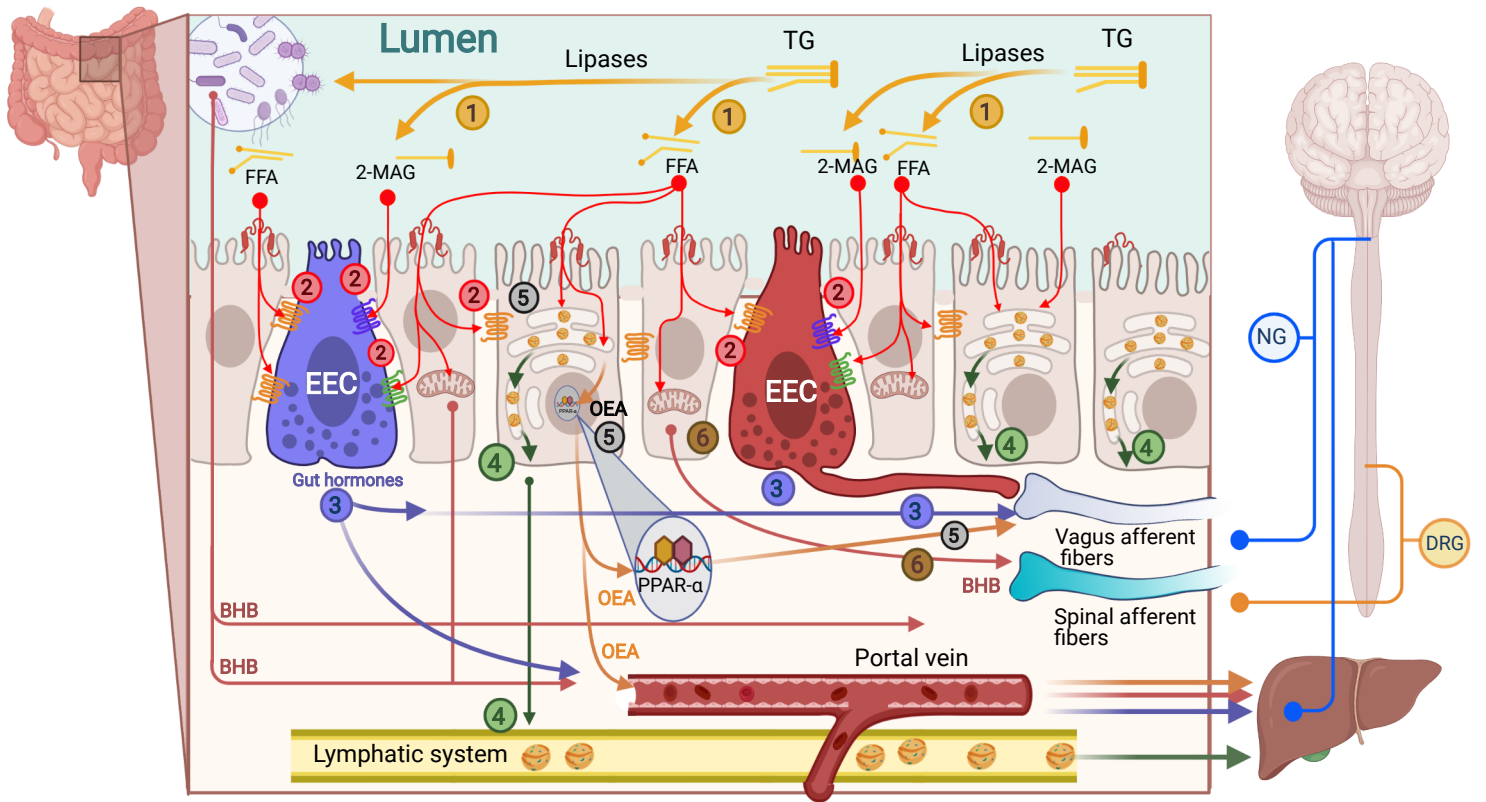
714 **Figure 4. Direct and indirect physiological routes of lipid sensing in the reward**
 715 **system.**

716 (A) Dietary lipid sensing modulates dopamine (DA) release and signaling through
 717 segregated direct and indirect physiological routes. Intestinal detection of lipids is
 718 conveyed to the striatum via a vagus→nucleus tractus solitarius (NTS)→parabrachial
 719 nucleus (PBN)→ substantia nigra (SNc) path (blue). Circulating lipids can also directly
 720 modulate DA-neurons in the ventral tegmental area (VTA) and dopaminoceptive neurons
 721 in the dorsal striatum (DS) and nucleus accumbens (NAc). (B) The lipoprotein lipase
 722 (LPL) in the brain microvasculature releases free fatty acids (FFA) from triglyceride (TG)-
 723 rich circulating particles such as chylomicrons (CM). Smaller in size, high-density
 724 lipoprotein (HDL) can cross the capillaries through transcytosis and via astrocyte endfeet.

725 (C) FFA can enter the neuron through membrane fatty acids transporter (FATP_{1/4}) or via
726 the hydrolysis of TG from TG-particle docked on lipoprotein receptor (LDL-R). In the VTA,
727 TG/FFA-mediated signaling was shown to decrease firing activity. In the striatum,
728 dopamine D2 receptor (D2R)-expressing [spiny projection neurons \(SPNs\)](#) respond to
729 TG/FFA through a mechanism that involves the LPL. TG/FFA modulate *bona fide* D2R-
730 coupled intracellular signaling events [and reduce neuronal excitability](#). [Altogether, lipids-](#)
731 [regulated circuits and neuronal responses concur in scaling reward-driven behaviors](#).
732 [Abbreviations: protein kinase A \(PKA\), extracellular signal-regulated kinase \(ERK\),](#)
733 [ribosomal protein S6 \(rpS6\), ribosomal protein S6 kinase \(S6K\), mechanistic target of](#)
734 [rapamycin \(mTOR\), dopamine- and cAMP-regulated neuronal phosphoprotein \(DARPP-](#)
735 [32\), glycogen synthase kinase 3 beta \(GSK-3b\)](#). This figure was created using
736 BioRender.






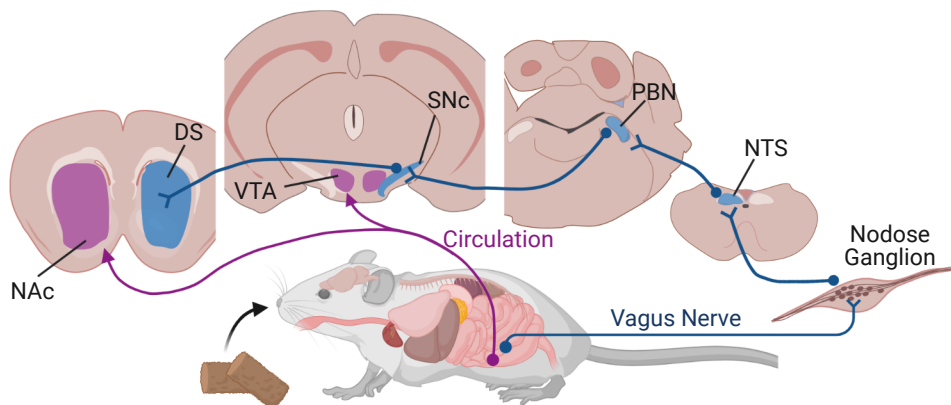
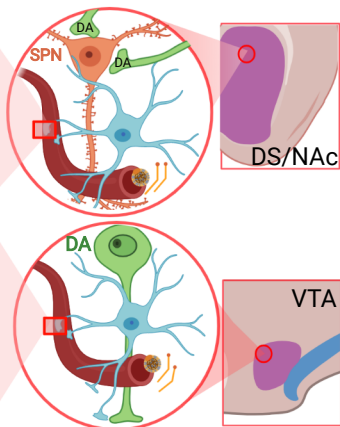
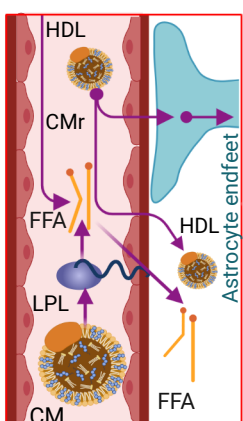


 GPR40/FFAR1:LCFAs, omega-3/6 PUFAs

 GPR120/FFAR4 :LCFAs

 GPR119:N-acylethanol-amines (OEA, PEA)

 CD36: LCFAs

A**B****C**