



**HAL**  
open science

# Alcohol Use and Binge Drinking among First-Year University Students: Prevalence, Risk Factors and the COVID-19 Health Crisis Effect

Nicolas Mauny, Maxime Mauduy, Jessica Mange, H el ene Beaunieux

## ► To cite this version:

Nicolas Mauny, Maxime Mauduy, Jessica Mange, H el ene Beaunieux. Alcohol Use and Binge Drinking among First-Year University Students: Prevalence, Risk Factors and the COVID-19 Health Crisis Effect. 18th European Society for Biomedical Research on Alcoholism congress, Oct 2021, Timisoara, Romania. . hal-03371985

**HAL Id: hal-03371985**

**<https://hal.science/hal-03371985v1>**

Submitted on 9 Oct 2021

**HAL** is a multi-disciplinary open access archive for the deposit and dissemination of scientific research documents, whether they are published or not. The documents may come from teaching and research institutions in France or abroad, or from public or private research centers.

L'archive ouverte pluridisciplinaire **HAL**, est destin ee au d ep ot et  a la diffusion de documents scientifiques de niveau recherche, publi es ou non,  emanant des  tablissements d'enseignement et de recherche fran ais ou  trangers, des laboratoires publics ou priv es.

# Alcohol Use and Binge Drinking among First-Year University Students: Prevalence, Risk Factors and the COVID-19 Health Crisis Effect



Nicolas Mauny



Maxime Mauduy



Jessica Mange



H el ene Beaunieux



October 7 - 9 /2021  
Timisoara, Romania

Normandie Univ, UNICAEN, LPCN - EA7452, 14000 Caen, France



## Aims

To identify the prevalence and risk factors of AUD and BD as well as the COVID-19 effect among first-year students.

## Introduction

- Heavy alcohol use is considered as a major public health issue<sup>1</sup> and take various forms:
  - the **Alcohol Use Disorder** (AUD) with three levels (no, moderate and severe trouble).
  - the **Binge Drinking** (BD) which is a consumption pattern characterized by alternating periods of drunkenness and abstinence.
- Several risks factors have been identified, especially anxiety and depressive disorders, and these psychological disorders:
  - have increased during the COVID-19 pandemic<sup>2</sup>.
  - are more prominent during the transition to adulthood like a first-year university<sup>3</sup>.

## Methods

### Participants:

2247 first-year students  
(18.14 years,  $SD = 0.53$ , 32.75% men).

### Research methodology:

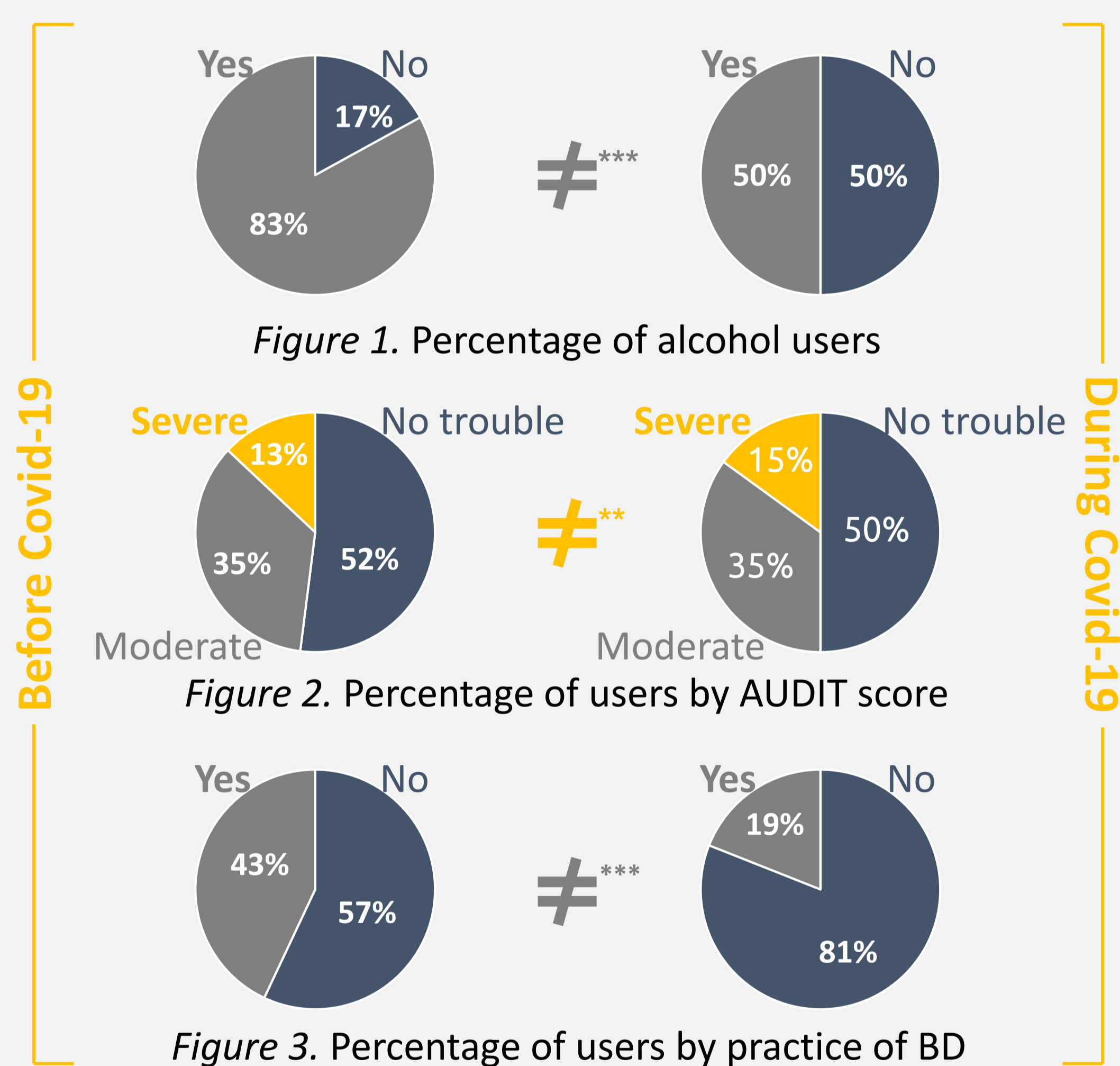
Online survey between 2017 and 2020 created with the Limesurvey<sup>®</sup> application.

### Measures:

- Socio-demographics variables
- Practice of sport
- Year of responses (2017-2019 versus 2020)
- Alcohol related variables
- Psychological measures

## Results

### Prevalence and COVID-19 Effect



### Risk factors

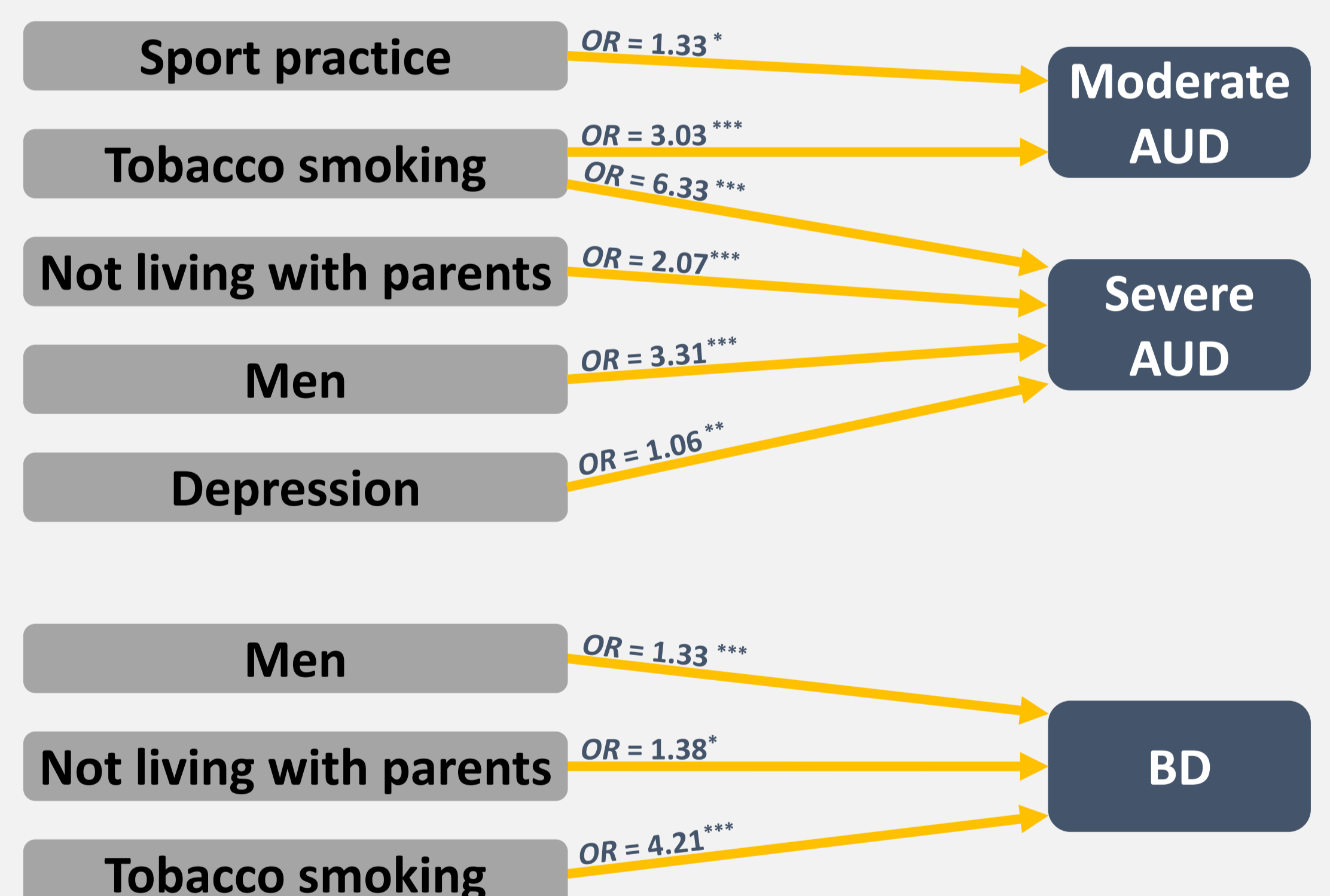


Figure 4. Variables Associated with Alcohol Use Disorder and Binge Drinking

\* $p < .05$ ; \*\* $p < .01$ ; \*\*\* $p < .001$

## Conclusions

- High AUD prevalence is observed among first-year students.
- Common risk factors are evidenced for AUD and BD regardless of the period (tobacco smoking, not living with parents and sex).
- During the health crisis, changes in alcohol consumption are reported with either reduced alcohol use and BD among some students or increase in AUD severity among others who continued to drink.
- Future research should investigate why some students may benefit from the health crisis while others did not, focusing on distinct psychological profiles of alcohol users.

## References

- Peacock A, Leung J, Larney S, et al. Global statistics on alcohol, tobacco and illicit drug use: 2017 status report. *Addiction*. 2018;113(10):1905-1926.
- Le Vigouroux S, Goncalves A, Charbonnier E. The Psychological Vulnerability of French University Students to the COVID-19 Confinement. *Health Education & Behavior*. 2021;48(2):123-131.
- Mondin TC, Konradt CE, Cardoso T de A, et al. Anxiety disorders in young people: a population-based study. *Brazilian Journal of Psychiatry*. 2013;35(4):347-352.

### Contact

- nicolas.mauny@unicaen.fr
- Laboratoire de Psychologie de Caen Normandie
- Universit e de Caen Normandie
- Esplanade de la Paix
- 14032 Caen cedex 05, France