

SUPPLEMENTARY MATERIAL

***Thermococcus camini* sp. nov., a hyperthermophilic and piezophilic archaeon isolated from a deep-sea hydrothermal vent at the Mid-Atlantic Ridge**

Damien Courtine,^{1,2,3} Erwann Vince,^{1,2} Loïs Maignien,^{1,2} Xavier Philippon,^{1,2} Nicolas Gayet,⁴ Zongze Shao,^{5,2} & Karine Alain^{1,2}

¹Univ Brest, CNRS, Ifremer, Laboratoire de Microbiologie des Environnements Extrêmes LM2E, IUEM, Rue Dumont d'Urville, F-29280 Plouzané, France

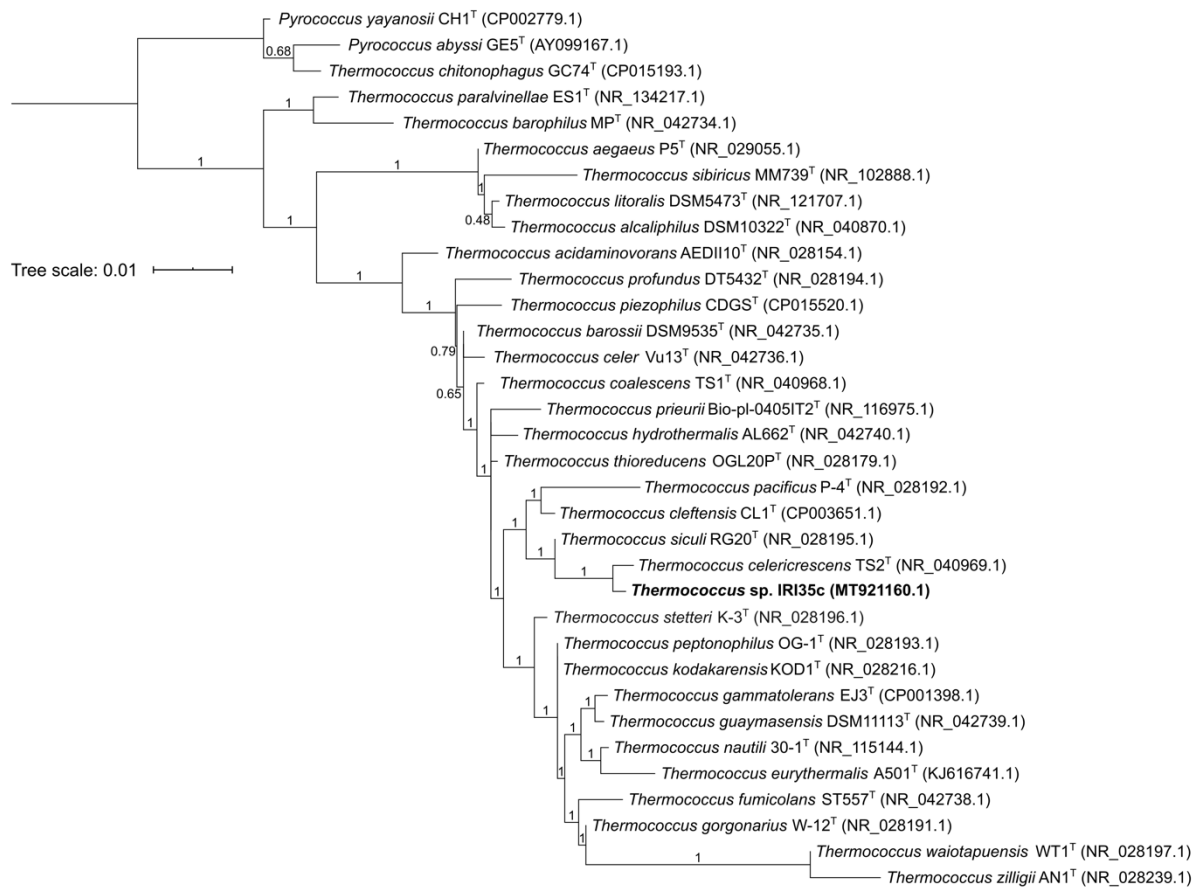
²LIA 1211 MicrobSea, Sino-French Laboratory of Deep-Sea Microbiology, LM2E (Plouzané, France)-KLAMBR (Xiamen, China)

³Aix Marseille Univ, CNRS, INSERM, CIML, Turing Centre for Living Systems, Marseille, France – Current address

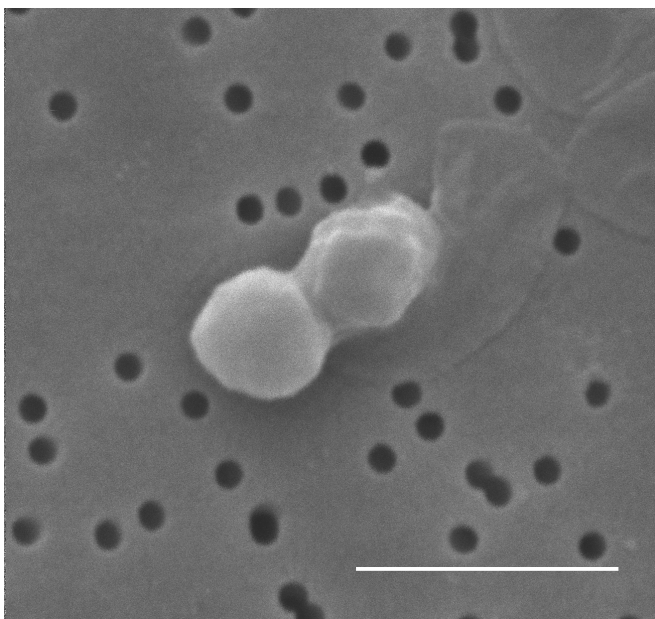
⁴Ifremer, EEP, F-29280 Plouzané, France

⁵Key Laboratory of Marine Genetic Resources, Third Institute of Oceanography, Ministry of Natural Resources, Xiamen 361005, China

Correspondence Karine Alain Karine.Alain@univ-brest.fr



Supplementary Fig. 1. PhyML phylogenetic tree showing the phylogenetic positions of strain Iri35c^T and representatives of some other related taxa, based on 16S rRNA gene sequences. Branch supports, computed with the aLTR SH-like method, are shown at branch nodes. Bar, 0.01 nucleotide substitution rate (K_{nuc}) units.



Supplementary Fig. 2. Scanning electron micrograph of strain Iri35c^T, showing that the strain divides by binary fission. Bar, 2 μm.

Supplementary Table 1. Overall genome relatedness indexes between strain Iri35c^T and its closest relatives. Shaded box corresponds to unavailable genome. Average Nucleotide Identity scores were calculated using the ANI calculator tool provided by the EzBioCloud web server (<https://www.ezbiocloud.net/tools/ani>). Digital DNA-DNA hybridization (dDDH) estimate values were determined using the formula 2 of the genome-to-genome distance calculator GGDC v2.1.

	16S rRNA gene sequence similarity (%)	OrthoANIu (%)	dDDH (%)
<i>T. camini</i> Iri35c ^T (this study)	100	100	100
<i>T. celericrescens</i> TS2 ^T	99.66	88.20	35.10
<i>T. siculi</i> RG-20 ^T	99.26	79.72	22.40
<i>T. barossii</i> SHCK-94 ^T	98.79	81.09	23.70
<i>T. thioeducens</i> DSM 14981 ^T	98.79	83.58	26.40
<i>T. hydrothermalis</i> AL662 ^T	98.75		
<i>T. cleftensis</i> CL1 ^T	98.59	82.50	24.90
<i>T. pacificus</i> P-4 ^T	98.05	79.45	22.20