



**HAL**  
open science

# Transcriptome and Methylome Analysis Reveal Complex Cross-Talks between Thyroid Hormone and Glucocorticoid Signaling at *Xenopus* Metamorphosis

Nicolas Buisine, Alexis Grimaldi, Vincent Jonchere, Muriel Rigolet, Corinne Blugeon, Juliette Hamroune, Laurent Marc Sachs

► **To cite this version:**

Nicolas Buisine, Alexis Grimaldi, Vincent Jonchere, Muriel Rigolet, Corinne Blugeon, et al.. Transcriptome and Methylome Analysis Reveal Complex Cross-Talks between Thyroid Hormone and Glucocorticoid Signaling at *Xenopus* Metamorphosis. *Cells*, 2021, 10 (9), pp.2375. 10.3390/cells10092375 . hal-03364443

**HAL Id: hal-03364443**

**<https://hal.science/hal-03364443>**


Submitted on 23 Nov 2022

**HAL** is a multi-disciplinary open access archive for the deposit and dissemination of scientific research documents, whether they are published or not. The documents may come from teaching and research institutions in France or abroad, or from public or private research centers.

L'archive ouverte pluridisciplinaire **HAL**, est destinée au dépôt et à la diffusion de documents scientifiques de niveau recherche, publiés ou non, émanant des établissements d'enseignement et de recherche français ou étrangers, des laboratoires publics ou privés.

## Article

# Transcriptome and Methylome Analysis Reveal Complex Cross-Talks between Thyroid Hormone and Glucocorticoid Signaling at *Xenopus* Metamorphosis

Nicolas Buisine <sup>1,†</sup>, Alexis Grimaldi <sup>1,†</sup>, Vincent Jonchere <sup>1,†</sup>, Muriel Rigolet <sup>1</sup>, Corinne Blugeon <sup>2</sup>, Juliette Hamroune <sup>2</sup> and Laurent M. Sachs <sup>1,\*</sup>

- <sup>1</sup> UMR7221 Molecular Physiology and Adaption, CNRS, Museum National d'Histoire Naturelle, 57 Rue Cuvier, CEDEX 05, 75231 Paris, France; buisine@mnhn.fr (N.B.); alexis.grimaldi@gmail.com (A.G.); vincent.jonchere@inrae.fr (V.J.); muriel.rigolet@mnhn.fr (M.R.)
- <sup>2</sup> Genomics Core Facility, Département de Biologie, Institut de Biologie de l'ENS (IBENS), École Normale Supérieure, CNRS, INSERM, Université PSL, 75005 Paris, France; blugeon@biologie.ens.fr (C.B.); juliette.hamroune@inserm.fr (J.H.)
- \* Correspondence: sachs@mnhn.fr
- † Co-first authors, alphabetic order.

**Abstract:** Background: Most work in endocrinology focus on the action of a single hormone, and very little on the cross-talks between two hormones. Here we characterize the nature of interactions between thyroid hormone and glucocorticoid signaling during *Xenopus tropicalis* metamorphosis. Methods: We used functional genomics to derive genome wide profiles of methylated DNA and measured changes of gene expression after hormonal treatments of a highly responsive tissue, tailfin. Clustering classified the data into four types of biological responses, and biological networks were modeled by system biology. Results: We found that gene expression is mostly regulated by either T<sub>3</sub> or CORT, or their additive effect when they both regulate the same genes. A small but non-negligible fraction of genes (12%) displayed non-trivial regulations indicative of complex interactions between the signaling pathways. Strikingly, DNA methylation changes display the opposite and are dominated by cross-talks. Conclusion: Cross-talks between thyroid hormones and glucocorticoids are more complex than initially envisioned and are not limited to the simple addition of their individual effects, a statement that can be summarized with the pseudo-equation: TH · GC > TH + GC. DNA methylation changes are highly dynamic and buffered from genome expression.

**Keywords:** *Xenopus* metamorphosis; thyroid hormone; glucocorticoids; cross-talks; functional genomics; DNA methylation



**Citation:** Buisine, N.; Grimaldi, A.; Jonchere, V.; Rigolet, M.; Blugeon, C.; Hamroune, J.; Sachs, L.M.

Transcriptome and Methylome Analysis Reveal Complex Cross-Talks between Thyroid Hormone and Glucocorticoid Signaling at *Xenopus* Metamorphosis. *Cells* **2021**, *10*, 2375. <https://doi.org/10.3390/cells10092375>

Academic Editor: Michelina Plateroti

Received: 15 July 2021

Accepted: 3 September 2021

Published: 9 September 2021

**Publisher's Note:** MDPI stays neutral with regard to jurisdictional claims in published maps and institutional affiliations.



**Copyright:** © 2021 by the authors. Licensee MDPI, Basel, Switzerland. This article is an open access article distributed under the terms and conditions of the Creative Commons Attribution (CC BY) license (<https://creativecommons.org/licenses/by/4.0/>).

## 1. Introduction

Thyroid hormones (TH) and Glucocorticoids (GC) are ubiquitous mediators of endocrine signalling systems coordinating homeostasis, a response to environmental challenges and development throughout life, starting from early development until death. These systems are highly conserved in vertebrates [1–3], where they regulate similar processes across taxa ranging from fish to amphibians to birds and mammals [4]. Their action is very diverse [5–13], and both signalling pathways often cooperate in biological processes (e.g., during bone growth and differentiation [14], brain maturation [15,16], and liver metabolism [17]), where affecting one or the other signalling pathway results in various pathologies and developmental defects [5,18,19]. This is at the very heart of the biological question we ask, and we will list below some molecular details to highlight some sources of functional interactions between pathways.

The action mechanism of these hormones involves specific receptors belonging to the super family of nuclear receptors (NR) transcription factors [20]. They directly regulate the expression of a number of target genes, typically in the order of a few thousands [21–23].

Transcriptional regulation may also be indirect, as direct target encoding transcription factors may induce a secondary wave of transcriptional changes [24,25]. Importantly, nuclear receptors have a natural tendency to functionally interact with each other, thus making their corresponding pathways cross-dependent of one another [26]. For instance, this is the case for GC and estrogen signalling [27,28], TH and estrogens [27,29–31], and GC and androgens [32]. At the mechanistic level, NRs can synergistically bind or compete to DNA at shared response elements [33,34].

TH and GC action is not only dependent on the receptor binding to DNA (for TH [35,36]; for GC [37]). This involves direct action of the hormone at other targets, or a cytoplasmic action of the hormone bound receptor. Even cytosolic factors are potential platforms for functional interactions between pathways, as exemplified by PI3K, which physically interacts with both THR and GR [38,39]. Despite much evidence that TH and GC pathways functionally interact, very little details are known about the mechanisms involved and their general properties.

In this paper, we provide a detailed description of the nature of the functional interactions between TH and GC signaling. Our working model is *Xenopus* metamorphosis because TH is necessary and sufficient to initiate metamorphosis [40,41], while CORT acts synergistically with TH to accelerate progression of TH-induced metamorphosis [42–45] and is essential for survival at the climax [46]. Anuran metamorphosis marks the end of larval developments and coincides with the transition from a water-based to an air-breathing life style and anatomy [41,47]. This process is very fast (<two weeks) and controllable in laboratory settings. Remarkably, organotypic culture of tail explants fully recapitulate tail regression in vitro, without the confounding effects of body-level feedback regulation loops [48]. Here, we choose to focus on tailfin because (1) tail tissue is highly responsive to TH and GC [44,49], and (2) tailfin displays a limited diversity of cell types.

Previous reports [50,51] demonstrated that GC regulates the expression of *dio2* and *dio3* genes, which encode enzymes metabolizing THs and regulate the availability of the biologically active hormone ( $T_3$ ). Through this action, GC increases the activity of the DIO2 enzyme, resulting in enhanced transition from  $T_4$  into biologically more active  $T_3$ , and decreases the activity of DIO3, responsible for the degradation of  $T_3$  into (less) inactive products. In a seminal work, Kulkarni demonstrated that co-treatment of pre-metamorphic tadpoles results in unexpectedly complex biological responses [52].

In this work, we used a combination of hormone treatment on the highly TH responsive tailfin tissue, on whole animals and explant cultures. We measured variations of gene expression by RNA-Seq followed by in-depth modelization of biological signals with system biology technologies. Overall, we demonstrate that the action of TH and GC is not limited to the simple addition of the effects of TH and GC, and that the known action of GC on *dio2/dio3* cannot explain the diversity of transcriptional responses in tailfin. In other words, we identified many novel components of TH and GC interactions. From therein, we will refer to the complete set of functional interactions between pathways with the terms “cross-talks” or “X-talks”, and this accounts for already known mechanisms of action (synergy, cooperation) and well as any novel mechanism of action. At the transcriptional level, we demonstrate that, quantitatively, TH and GC effects are mostly independent or additive (i.e., the independent action of both hormones), and that cross-talks are nonetheless relatively frequent and display a large diversity of biological responses. Surprisingly, we found a strong transcriptional reprogramming of the DNA-methylation machinery. We therefore profiled changes of DNA methylation levels genome-wide. Contrary to our expectations, we found that, quantitatively, the DNA methylation dynamic is dominated by the complex interactions between TH and GC, in complete opposition to the transcriptional response.

We thus propose a new picture of the interactions of TH and GC, and between two hormones in broader terms, which is far more complex than initially realized.

## 2. Methods

### 2.1. Animal Care

*Xenopus tropicalis* (*X. tropicalis*) tadpoles were obtained from the Centre de Ressources Biologiques (Rennes, France), raised at 26 °C in dechlorinated tap water, and fed with nettle powder. Developmental stages were set according to the normal table of *Xenopus laevis* (Daudin) [53]. Animal care was in accordance with institutional and national guidelines (ref: 68008, delivered by the Cuvier Ethic Committee).

### 2.2. Whole Tadpole Hormonal Treatments

The most biologically active TH, 3,3',5'-triiodothyronine (T<sub>3</sub>, T2752, SIGMA, Lezennes, France) was dissolved in 0.1 N NaOH and added to the culture medium or the tank to a final concentration of 10 nM. Corticosterone (CORT, C2505, SIGMA) was dissolved in 100% DMSO (D8418, SIGMA), and added to the culture medium or the tank to a final concentration of 100 nM. All treatments received an equivalent amount of DMSO vehicle (0.001%). For whole tadpole hormonal treatment, 5 tadpoles at stage NF-53-54 were placed in a 1 L beaker containing 500 mL of dechlorinated tap water, where the hormones have been previously added. For transcriptome and DNA methylome analysis, tadpoles were euthanized 24 h later with an overdose of anesthesia (0.01% MS222, SIGMA), prior to dissection of tailfin skin.

### 2.3. Organotypic Tail Culture

The tail of stage NF53-54 *X. tropicalis* tadpoles were amputated just above the posterior legs. The tails were then dipped in 100% ethanol and washed with 65% L15 (11415-049, GIBCO, France) + antibiotic/antimycotic (15240-96, GIBCO). Each tail was then cultured in 24 well culture plates (TPP), with 1 mL 65% L15 + antibiotic/antimycotic and T<sub>3</sub> and/or CORT at 24 °C, protected from light. After 24 h, tailfin skin was dissected from the whole tail, snap frozen in liquid nitrogen, and stored at −80 °C. Three independent biological replicates were used for the RNA-Seq and another set of >8 independent replicates were used for RT-qPCR validations.

### 2.4. RNA Isolation and Measure of Gene Expression

Tissues from either cultured tail explants or whole tadpoles were processed as described in [54]. RNAs were quantified with a NanoDrop spectrofluorometer and their quality controlled with Agilent RNA 6000 nano chips on a Bioanalyzer before treatment with DNase (TURBODNase, Ambion, UK). Reverse transcription of mRNA was carried out with SUPERScript v3 following the manufacturer's recommendations and subject to quantification of cDNA abundance by conventional RT-qPCR. The endogenous control rpl8 was selected based on NormFinder [55] analysis of a panel of candidate genes. Raw results were processed using the  $-2^{\Delta\Delta Ct}$  method. Data were normalized on the endogenous control rpl8 ( $\Delta Ct$ ). For each treatment (T<sub>3</sub>, CORT, T<sub>3</sub> + CORT),  $\Delta Ct$  were normalized on the non-treated control. Resulting values correspond to the expression fold-change compared to the non-treated control in log2 scale. Statistical significance was addressed with a Mann-Whitney test. Primer sequence is described in Supplementary Table S1.

Library preparation and Illumina sequencing were performed at the Paris Genomic Center (France). Messenger (polyA+) RNAs were purified from 1 µg of total RNA using oligo(dT). Libraries were prepared using the strand non-specific RNA-Seq library preparation TruSeq RNA Sample Prep v2 kit (Illumina, France). A 50 bp single read sequencing was performed on a HiSeq 1500 device. A mean of  $67 \pm 5$  million passing Illumina quality filter reads was obtained for each of the 32 samples. Read qualities were assessed with the FASTQC toolkit v0.11.3 (<http://www.bioinformatics.babraham.ac.uk/projects/fastqc/>).

### 2.5. RNA-Seq Data Processing

Redundant reads were filtered by keeping the read with the best quality score. We used the *fastx* toolkit (v 0.0.13) to clip the 3' end of reads when the score dropped below

30 on the Sanger scale (Phred + 33). Preprocessed reads were mapped on the version 4.1 of the *X. tropicalis* genome [56] using bowtie 0.12.3 [57] with the following parameters: “-5 10 -m1 -n2 -l28”. Gene expression call is based on models aggregated from Ensembl, Xenbase, and [58]. Overall, uniquely mapped read mapping efficiency was higher than 75%. Redundancy removal further reduced the mapped read count by a factor of two, resulting in a uniquely mapped and non-redundant read count  $\geq 22 \cdot 10^6$  (not shown). Consistency between replicates and treatments was assessed by Principal Component Analysis (PCA): raw read counts were subjected to a variance-stabilization transformation as described in [59]. Differential expression between treatments was performed with DESeq [59] version 1.12 with the following parameters: method = “pooled”, sharing-mode = “maximum”, and fit-type = “parametric”. Genes with low expression values were discarded as described in the DESeq, with  $\theta = 0.4$ . Genes statistically differentially expressed were called at an FDR of 5%. Genes were grouped in 81 clusters according to their expression profiles.

Culture effects were removed by filtering out genes without similar expression profiles in both cultured tail explants and whole tadpoles. Only genes DE with a fold change higher or equal to two-fold changes were considered in the whole tadpole data sets.

Gene ontology analysis is based on GORILLA software suite [60]. Most significant categories are shown either as a bar graph or a circle plot. In this case, the size of each circle is set by the number of genes in each category, and color is inversely proportional to the *p*-value of the term enrichment.

## 2.6. Clustering

Clustering of DE genes is aimed at classify individual genes into a number of a specific “response types”. Expression values of each gene across the four treatment conditions (CTRL, T<sub>3</sub>, CORT, and T<sub>3</sub>-CORT) were standardized by setting their average to 0 and their variance to 1. For each treatment, the normalized gene expression level is compared to CTRL and used to derive whether it is up- (‘u’), down- (‘d’) or not- (‘n’) regulated after each treatment. Genes are then assigned to a cluster named after the corresponding letters arranged in the T<sub>3</sub>, CORT, and T<sub>3</sub>-CORT order. This compact notation summarizes transcriptional responses. For example, gene transcription only induced with T<sub>3</sub> is labeled u\_n\_u: transcription is up with T<sub>3</sub> (first ‘u’), not affected with CORT (middle ‘n’), and up after T<sub>3</sub>-CORT co-treatment (last ‘u’). Similarly, CORT only responsive genes are n\_u\_u or n\_d\_d, and genes transcription regulated by both T<sub>3</sub> and CORT belong to d\_d\_d or u\_u\_u. Non trivial regulations (i.e., X-talks) also become explicit. For instance, u\_n\_n corresponds to a transcription level up in T<sub>3</sub>, but with no change after CORT and T<sub>3</sub>-CORT treatments. In this case, despite no direct action on its own, CORT cancels the action of T<sub>3</sub>. The threshold used to call u and d is set as the smallest for which the n\_n\_n cluster contains no gene (i.e., zero genes that are not DE at least once). This very simple mathematical transformation has three strong advantages:

- This is a gene-level transformation, with few constraints on the actual number of genes within each cluster. This differs from the widely used k-mean clustering, which tends to produce clusters with similar number of genes. It is clear that there is no reason a priori to impose that each type of biological response should be constrained in term of the number of genes.
- It has better control of false negatives because it does not call multiple times for statistics with limited power, as calling multiple times for differential analysis performed with few biological replicates ( $n = 3$ , as the current standard suggests) would. Thus, statistics may deviate slightly from the differential analysis.
- The biological response of genes can be compared without the confounding effect of their expression level, which range over five orders of magnitude.

## 2.7. Signaling and Metabolic Network

In this work, we focus on two types of biological pathways: signaling and metabolism for modeling biological processes, and protein-protein interactions for modeling molecular

mechanisms. The information needed for building each network are available at dedicated databases: the KEGG pathways database (Kyoto Encyclopedia of genes and Genomes database), which mostly focuses on signaling and metabolism, for biological processes, and BIOGRID, which is a repository of known protein-protein interactions, for modeling molecular mechanisms.

The signaling-metabolic network is built upon pathways extracted from the KEGG pathways database with the JEPETTO plugin [61] of the Cytoscape v3.8.2 environment [62]. All KEGG pathways containing at least one DE gene were collected and merged to create a network, where nodes correspond to gene products and links describe the functional connections between them. This step is easily carried out by populating a square matrix representation of the network. Network properties were computed with in-house scripts, in a manner similar to other published tools (e.g., networkX). Network lay-out computed with the “edge weighted spring-embedded” algorithm. Hubs are defined as nodes (i.e., gene product) with a degree (a.k.a. connectivity) higher than 20. Fitting the degree distribution to a power law function confirms that the network is scale free and displays small world properties (not shown).

### 2.8. PPI Network

Protein-protein interactions (PPI) were from BIOGRID v 4.4.198 [63], downloaded as a CSV dump file. PPI were extracted and formatted with standard Unix tools (grep and gawk) before being loaded into CYTOSCAPE. The gene content of metabolic pathways and apoptosis were from the KEGG pathway database [64]. Fitting a power law function on degree distribution demonstrates that the reconstructed network is scale free and displays small world properties (not shown).

### 2.9. Prediction of Nuclear Receptors Binding Sites

Nuclear receptors binding sites are notoriously difficult to detect because they are composed of two half sites in direct, everted, or inverted orientation, separated from each other by a spacer of a length of 0 to 8 bp [65,66]. The diversity of binding sites topology prevents the direct use of position-specific scoring matrices. Instead, the NHR-scan software [67] relies on a Hidden Markov Model that explicitly models the various topologies. Unfortunately, the published model contains many errors, as the sum of all probabilities of several nodes did not sum up to one, thus making the design improper for probabilistic modeling. Many state transitions were also missing. We corrected the model by adding missing links and setting equal probability between novel links reaching each state, so that the total sum of probabilities at each state equals to 1.

### 2.10. MethylCap-Seq and Identification of Differentially Methylated Regions (DMRs)

Purification of methylated DNA was carried out by affinity columns with methyl-DNA binding proteins (MethylCap Kit), following the manufacturer’s protocol (Diagenode; Denville, NJ, USA). DNA was eluted with buffers of increasing ionic strength, and only the fractions corresponding to moderate to high levels of methylation were kept. Library preparation and Illumina sequencing were performed at the Paris Genomic Center (France). Libraries were prepared using NEXTflex ChIP-Seq Kit (Bioo Scientific), using 30 ng of purified genomic DNA. Libraries were multiplexed by 8 on 2 flowcell lanes. A 50 bp read sequencing was performed on a HiSeq 1500 device (Illumina). A mean of  $209 \pm 20$  million passing Illumina quality filter reads was obtained for each of the 16 samples.

Read mapping was run with bowtie at highest stringency (parameters  $-l\ 50, -n\ 1, -m\ 1, -5\ 0\ -3\ 0$ ), producing a total of 74 to 95 million uniquely mapped and non-redundant reads per sample. Read density profiles were generated for each treatment condition and signal intensity was normalized for sequencing depth. Variations of DNA methylation relative to the control were derived by subtracting the CTRL density profile from each of the T<sub>3</sub>, CORT, and T<sub>3</sub>-CORT profiles. The signal of this differential profile was smoothed by using the average value computed over a 10 bp sliding window. Peaks correspond to

either an increase or decrease of DNA methylation levels. For the sake of computation time, the whole process was implemented in C and automated in a custom shell script. This resulted in a  $\sim 10,000\times$  speed up compared to the same programs written in PYTHON.

In itself, the detection of DMRs is based on non-parametric permutation tests aimed at finding the maximal width and peak height obtained when comparing two profiles without biological contrast. This defines the thresholds of biological and technological noise above which peaks correspond to actual DMRs, with their width and height corresponding to the genome span of the DMR, and the amplitude of DNA methylation changes, respectively. By nature, this DMR detection strategy is fairly conservative, which would limit background noise.

The pipeline works as follows: we created two datasets of reads randomly sampled from the combined pool of all MethylCap-Seq reads (i.e., without biological contrast), before generating the corresponding differential profile and scoring for the longest and highest peaks. This process was iterated 100 times and the highest width and height were kept. Quantitative data are visualized with the JBROWSE genome browser [68].

DMR have then been classified in various response types by following the same procedure as for RNA-Seq (clustering). DMR nomenclature follows the same convention.

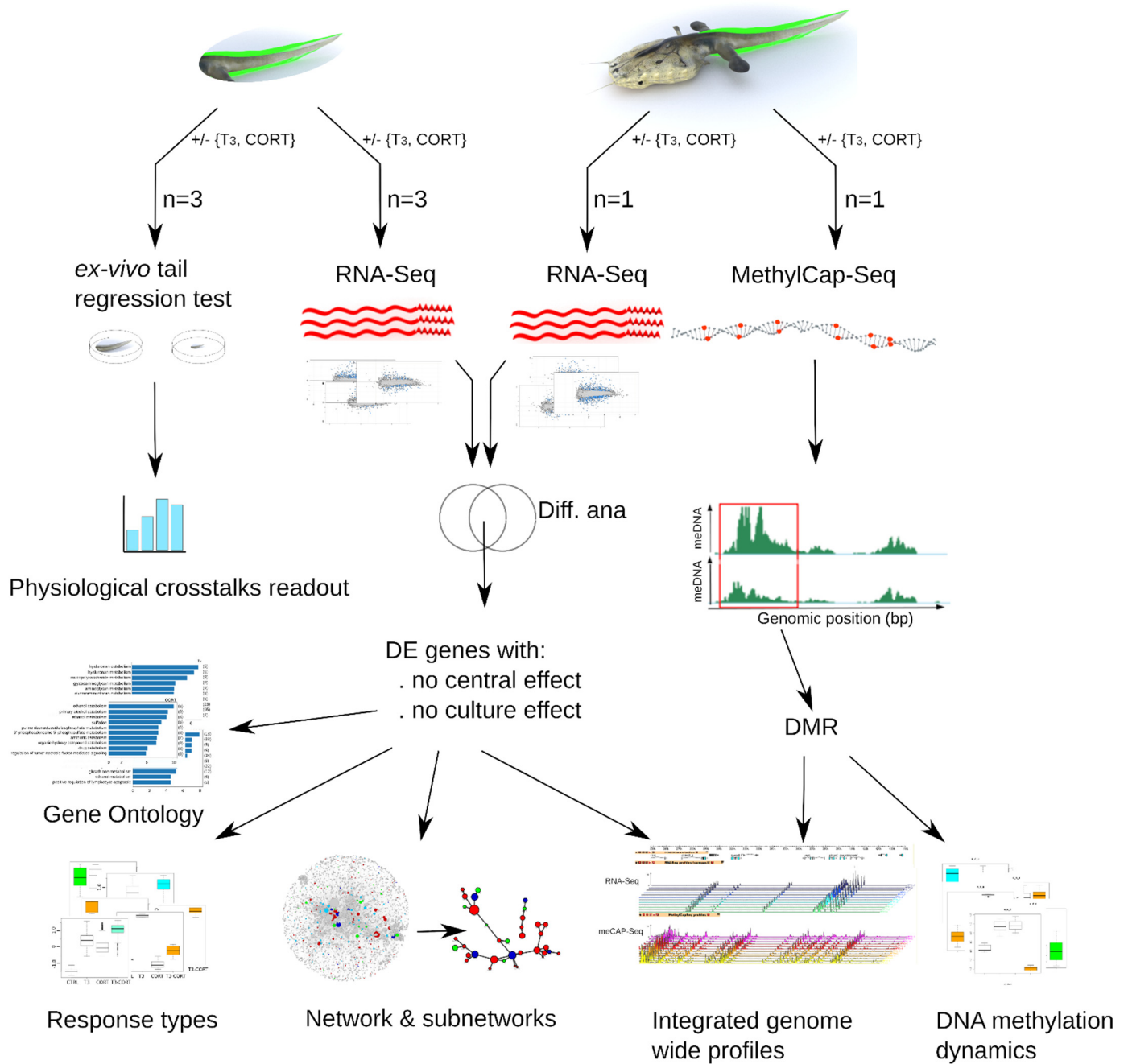
### 3. Results

#### 3.1. Experimental System to Address Tailfin Regression

The experimental system is the following (Figure 1): pre-metamorphic tadpoles were treated with either 10 nM  $T_3$ , 100 nM CORT, or both, and tailfins were collected before measuring the quantitative variations of RNA and methylation levels (by RNA-Seq and MethylCap-Seq, respectively). To differentiate between autonomous changes of tailfin from the effects of feedback loops originating from the central nervous system, hormone treatments were applied to organotypic tail cultures, although this may introduce confounding effects of the culture process itself. To filter them out, whole animals were also treated, and only the genes found consistently regulated in both datasets were kept. Downstream processing and analysis follow state of the art functional genomics workflows coupled to system biology, as well as the use of novel bio-informatic tools.

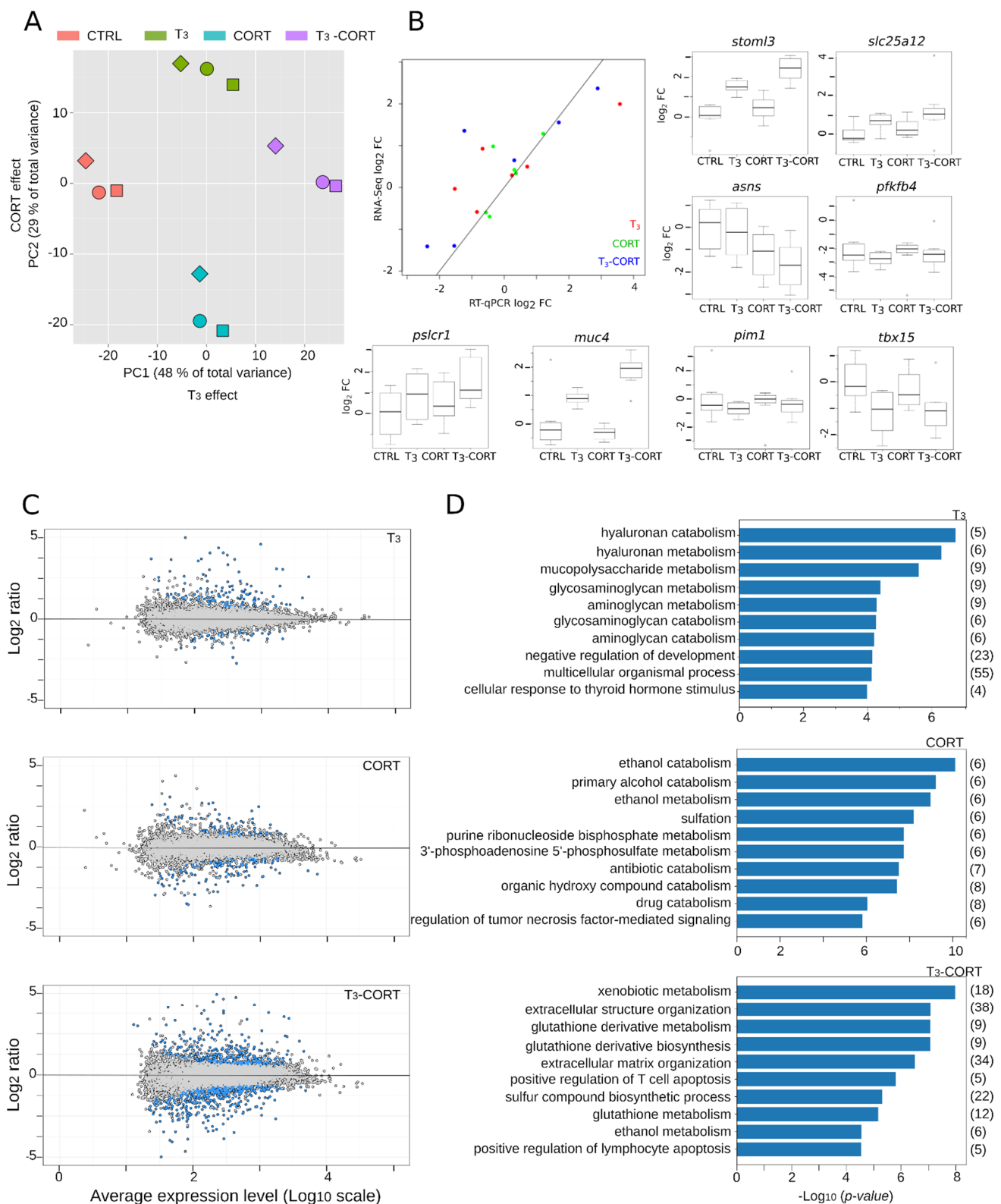
#### 3.2. Standard Analysis Suggests Additive $T_3$ and CORT Effects

RNA abundance per gene was measured by RNA-Seq on tailfins originating from cultured tail explants, following standard protocols and conventional bio-informatic pipelines. We first subjected the reads-count tables to principal component analysis, which aims at controlling the correspondence between components of the total biological variability captured by RNA-Seq and the effects of hormone treatments (Figure 2A). We found that almost 80% of the total variance is projected in the first two principal components, which capture the transcriptional changes induced in response to  $T_3$  (PC1, 48% of the total variance) and CORT (PC2, 29% of the total variance) treatments. This is indicative of strong biological responses, high contrast between treatments, and very little technical and/or biological noise. As a technical validation of the RNA-Seq procedure, we performed independent measures of gene expression changes by RT-qPCR, on a number of genes displaying various amplitudes of transcriptional response (Figure 2B). Results show strong correlation between expected (RNA-Seq) versus observed (RT-qPCR) signals, illustrating the robustness of our measures of gene expression by RNA-Seq. As expected [69], *thbzip* and *thrb* genes expression is strongly induced after treatment with  $T_3$  and  $T_3$ -CORT (Supplementary Table S2).



**Figure 1.** Experimental setup to address T<sub>3</sub> and CORT cross-talks. An experimental and data analysis workflow. Tailfin (green) response to treatments was characterized by functional genomics. For each experiment, samples were collected from pools of five tailfins.





**Figure 2.** Transcriptome analysis following T<sub>3</sub> and/or CORT. (A) Principal Component Analysis (PCA) of RNA-Seq variance from tailfin dissected from cultured tail explants. The two main components capture the effects of both hormones, corresponding to 77% of the total variance. Square, circle, and diamond: biological replicates. (B) Independent validation of RNA-Seq data by RT-qPCR. Scatter plot of the relationship between RNA-Seq versus RT-qPCR expression changes, also shown in box plots. (C) Average expression value versus fold change (MA plot). DE genes are in blue. (D) Gene Ontology analysis.

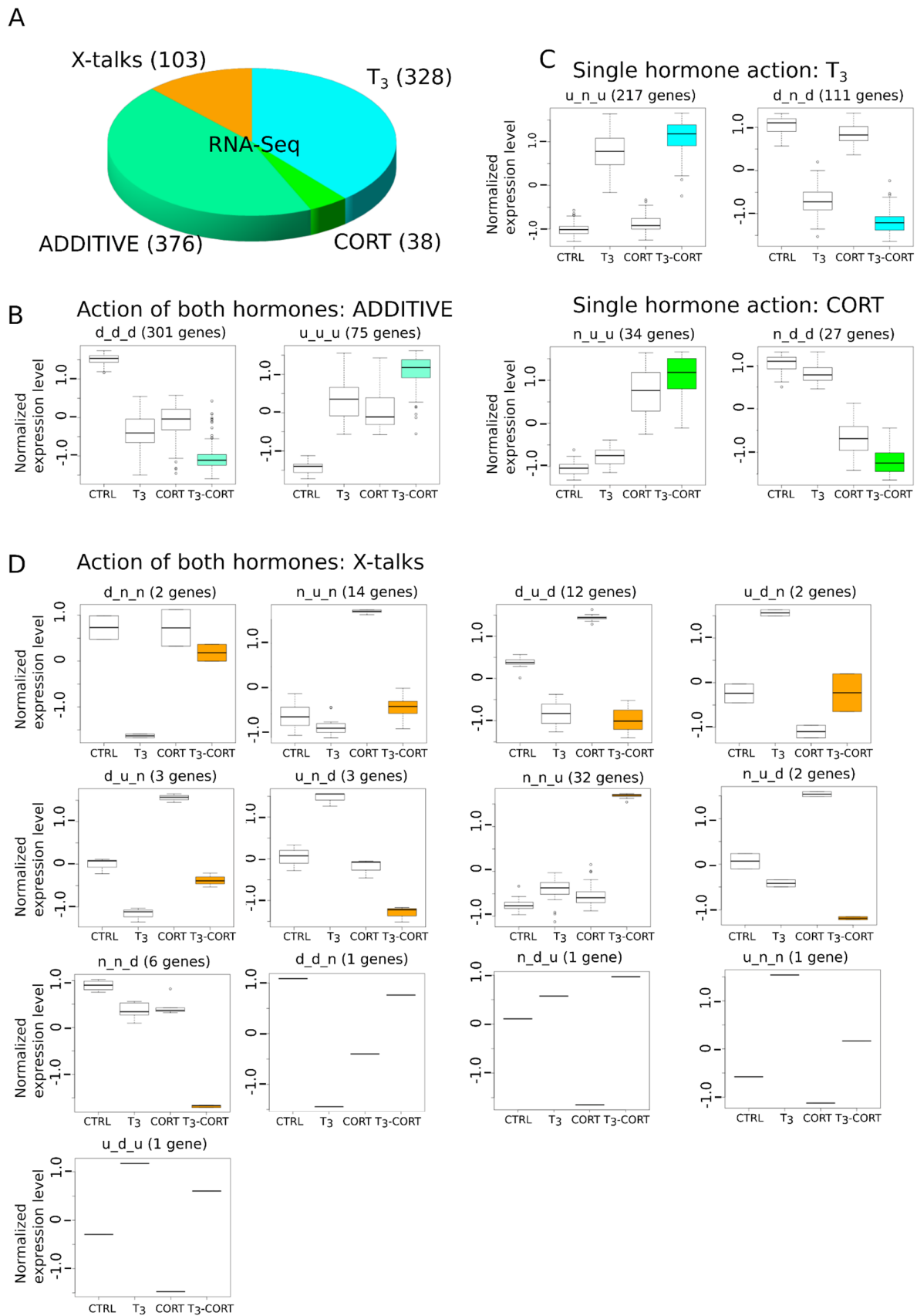
Overall, in tailfin culture, the total number of differentially expressed (DE) genes is relatively modest: 303 DE genes with T<sub>3</sub>, 342 with CORT, and 1163 with T<sub>3</sub>-CORT. This represents a non-redundant set of 1363 DE genes. Filtering out culture effects further reduces the number of DE genes down to 186 for T<sub>3</sub>, 114 for CORT, and 655 for T<sub>3</sub>-CORT (Figure 2C and Supplementary Table S2). This corresponds to a final non-redundant set of 729 DE genes. Despite a limited number of DE genes following treatment with either T<sub>3</sub> or CORT alone, the number of DE genes after co-treatment is about four times higher (655 vs. 186 and 114), indicative of a strong and specific transcriptional reprogramming.

Gene ontology (GO) analysis is often used to summarize the functional categories of the transcriptional response. Despite limited sensitivity, it is useful to highlight the few dominant biological processes acting in the biological responses (Figure 2D, Supplementary Table S3). As expected in the context of tail regression, T<sub>3</sub> responsive genes involve the metabolism of various extracellular matrix components. On the other hand, CORT responsive genes relate to the metabolism of various small molecules (alcohol, sulfur, and detoxification). The most significant biological processes after the T<sub>3</sub>-CORT co-treatment correspond to a combination of the terms found after T<sub>3</sub> (extracellular matrix) or CORT (small molecules metabolism) treatments, and very little terms relative to known TH biology and developmental processes. Overall, this very common type of analysis suggests that the biological output of a T<sub>3</sub>-CORT co-treatment would be as simple as the addition of the effect of each hormone alone. As we will detail below, this view is very broad and partly results from a sub-optimal (albeit classic) analysis design.

### 3.3. Cross-Talks Do Exist, and They Only Represent a Fraction of Transcriptional Responses

The next part of the analysis is aimed at clustering genes based on their expression patterns. Clusters are named with a three letter code depending on whether the (normalized) expression level is higher ('u' for up), lower ('d' for down), or not different ('n') from the control. The three letters are arranged in the following order: T<sub>3</sub>, CORT, and T<sub>3</sub>-CORT. For example, the cluster d\_n\_d corresponds to the set of genes which are down-regulated after treatment with T<sub>3</sub> and T<sub>3</sub>-CORT, but unaffected by CORT alone, and the cluster n\_u\_u contains genes which are up-regulated after treatment with CORT and T<sub>3</sub>-CORT, but unaffected by T<sub>3</sub> alone. These two examples actually correspond to the simple scenario where gene expression is affected by one hormone only, with little or no interaction between them ('T<sub>3</sub>' and 'CORT'). A more complex scenario is 'ADDITIVE' (clusters u\_u\_u and d\_d\_d), where gene expression is induced or repressed by both hormones individually and the resulting expression level corresponds to the addition of their effect. The third scenario, 'X-talks', corresponds to all other cases with functional interactions between TH and GC pathways.

The overall proportions of each category are shown in Figure 3A. A majority of genes belong to ADDITIVE (44.5%, 376/845, Figure 3B), where gene expression is regulated by T<sub>3</sub> and CORT, and T<sub>3</sub>, where genes only respond to T<sub>3</sub> (38.8%, 328/845, Figure 3C). Very little genes belong to the CORT category (4.5%, 38/845, Figure 3C). Surprisingly, a non-negligible fraction of genes (12.2%, 103/845) display alternative biological responses which neither respond to T<sub>3</sub>, CORT or ADDITIVE. We collectively refer to this family of responses as "X-talks" (Figure 3D). This category is composed of multiple clusters, where one hormone cancels the action of the other (clusters d\_n\_n, n\_u\_n, u\_d\_n, u\_n\_n), where the action of one hormone dominates over the other (d\_u\_d, u\_d\_u). Other cases are more complex; for example, the u\_n\_d cluster corresponds to genes where CORT action, which has no effect of its own, and results in a response opposite to that of T<sub>3</sub> alone. The cluster n\_u\_d is a similar case, but with T<sub>3</sub> modulating the CORT response. These clusters are usually composed of only a single gene. Finally, two clusters (36.9% of X-talks genes, 38/103) are particularly notable: n\_n\_u and n\_n\_d (Figure 3D). These genes show differential regulation exclusively when both hormones (T<sub>3</sub> and CORT) are present. Importantly, we found *dio2* to belong to the n\_n\_u cluster, meaning that its expression requires both T<sub>3</sub> and CORT, whereas *dio3* expression only depends on T<sub>3</sub> (cluster u\_n\_u).



**Figure 3.** Gene expression is modulated by one, the other, or both hormones. Only genes displaying consistent expression between explants culture and whole animals were kept. (A) Types of gene regulation by T<sub>3</sub> and CORT. (B) Gene regulation by either T<sub>3</sub> or CORT. (C) Gene regulation by T<sub>3</sub> and CORT. (D) Complex regulation by both hormones (X-talks).

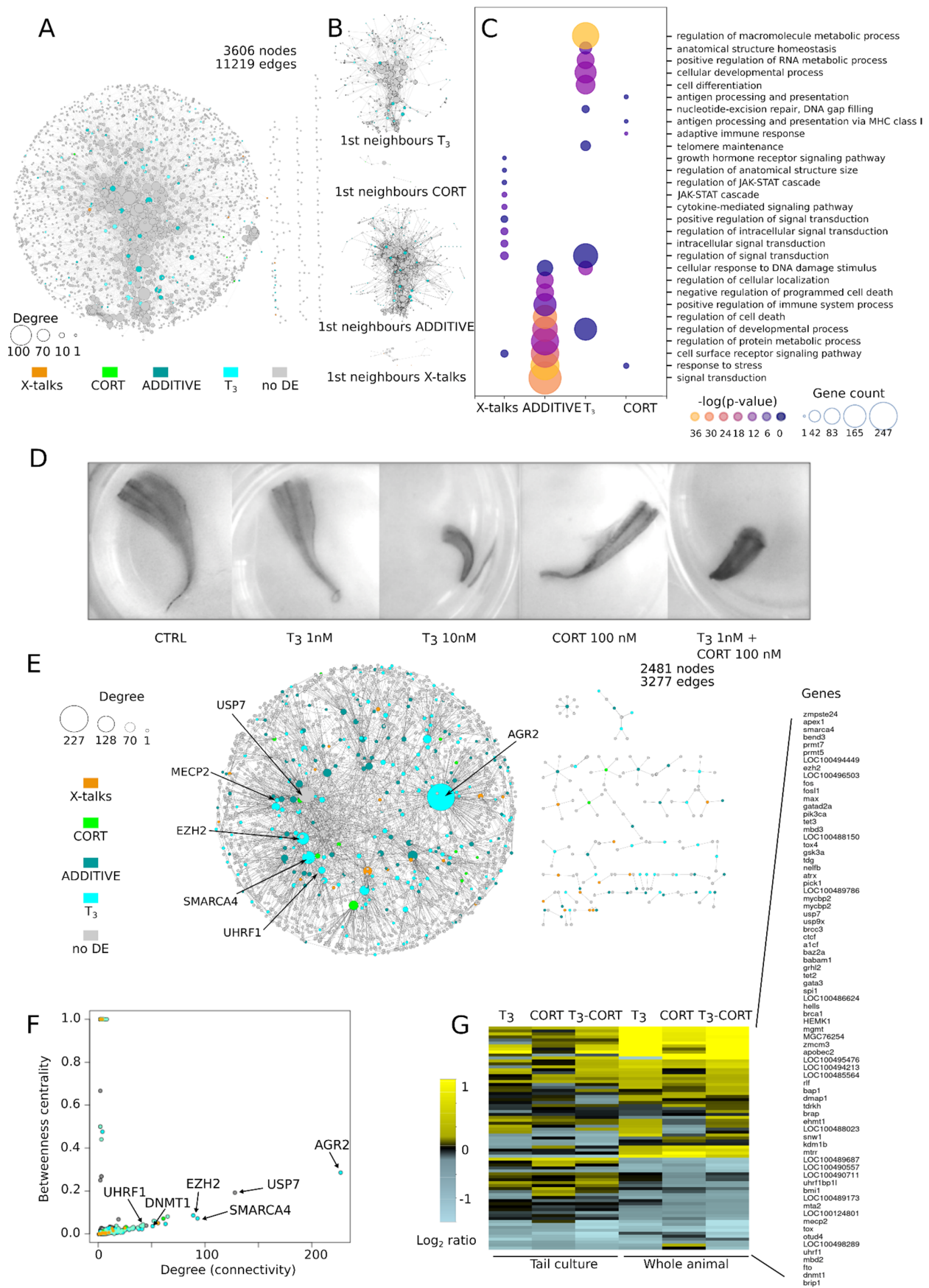
These important results demonstrate that:

- Most of CORT-regulated genes are also regulated by T<sub>3</sub> in tailfin.
- We provide a new list of CORT-only responsive genes, which are notoriously difficult to isolate [70].
- Qualitatively, the effects of T<sub>3</sub> and CORT co-treatment are not limited to the cumulative response from each hormone individually. There is a large palette of biological responses involving complex interactions between pathways (X-talks).
- At the transcriptome level, transcriptional responses are dominated by the T<sub>3</sub> effect and ADDITIVE, and although X-talks do exist, they correspond to ~10% of differentially regulated genes.

### 3.4. Understanding Molecular Phenotypes: From Lists of DE Genes to System Biology

To obtain an understanding of the processes involved for each type of biological response, we modeled a functional interaction network based on signaling and metabolic pathways available from the KEGG resources. Individual pathways summarize our current understanding of signal propagation and functional interactions between gene products in a given biological context (“Insulin signaling”, “Calcium signaling”, “Fructose and mannose metabolism”, etcetera), providing a well-focused and high quality knowledge base readily usable for biologists. An intrinsic property of biological pathways is that many factors are shared between pathways [71], and affecting the biological activity of one such factor can simultaneously affect multiple pathways. These factors often (but not always) correspond to hubs, which act as central communication points between network components. Therefore, pathways are not functionally independent from one another and fail (and are not aimed) to describe the overall complexity of functional interactions within the cell. Pathway analysis, as commonly carried out in RNA-Seq data analysis, cannot provide an integrated description of transcriptional remodeling. In contrast, a network of pathways clearly integrates the functional interactions between pathway components, and can help identify, for example, novel shortest routes between membrane receptors and transcription factors, thus corresponding to new signaling pathways [57]. To this end, all of the KEGG pathways containing at least one DE gene were collected and merged together, in a procedure similar to that of [56] (see Methods and Supplementary Table S4).

The reconstructed network is shown Figure 4A. It is built from 157 pathways and is composed of 3606 nodes (gene products) and 11,216 edges (functional interactions), in which 108 DE genes could be mapped: 50 from T<sub>3</sub> response, 5 from CORT, 47 from ADDITIVE, and 6 from X-talks. Of note, 90% of X-talks genes interact with less than 13 other genes, while 90% of the ADDITIVE genes interact with up to 31 other genes, thus suggesting that ADDITIVE genes may engage more functional interactions within the network than X-talks. Unfortunately, this fails to reach statistical significance ( $p \sim 0.1$ , permutation test, see methods), mostly because of the small number of DE genes mapped into the network. We then collected the first neighbors (i.e., genes DE and non-DE sharing a direct interaction) of each DE gene (Figure 4B). To our surprise, they all form strongly connected sub-networks, implying that they collectively participate in specific cellular functions. The corresponding biological processes are clearly in line with the expected phenotypes induced by treatments with a single hormone (Figure 4C): T<sub>3</sub> effect is associated to developmental processes, signal transduction and metabolic processes, while CORT effect is associated to stress and immune responses. In contrast, ADDITIVE and X-talks effects differ markedly from the specific effect of each hormone alone (Figure 4C): mostly DNA damage, cell death, and metabolism for the former, and JAK-STAT signaling for the latter. This analysis shows that, contrary to what standard GO analysis would suggest (Figure 2D), the effects of the T<sub>3</sub>-CORT co-treatment are more complex and involve multiple components, each corresponding to a very specific biological response. Also, the enrichment of cell death terms in ADDITIVE genes after co-treatment is strongly indicative of a synergy between the two pathways.



**Figure 4.** System level modeling of transcriptional responses identify the DNA methylation dynamic as a major mediator of

tailfin regression. Only transcriptional responses displaying consistent expression between explants culture and whole animals are considered. (A) Network of KEGG pathways. (B) DE genes together with their first neighbors in the network, forming densely connected sub-networks. (C) GO analysis of the sub-networks highlighting terms such as cell death, DNA damages, and DNA repair. (D) Tail regression test in vitro. Synergistic action of T<sub>3</sub> and CORT after 3 day treatments. (E,F) Protein-Protein Interactions network and identification of hubs. Most DE protein complexes relate to DNA methylation. (G) Heatmap of expression levels of genes involved in DNA methylation.

If true, one would predict treatment with sub-optimal T<sub>3</sub> concentration or CORT to have little effect on tail regression, but co-treatment should result in a strong acceleration. We took advantage of the fact that tail explants of pre-metamorphic tadpoles (NF54) can be cultured *ex vivo* for extensive periods of time (up to 7 days [72]) and subject them to various hormone treatments. As expected, treatment with nominal T<sub>3</sub> concentration (10 nM) leads to rapid shrinkage and regression of the tissues (Figure 4D), with no apparent sign of necrosis nor tissue degradation. This recapitulates well the known fact that tail regression is an autonomous and local process [72,73]. When supplemented with 100 nM CORT, tail regression does not speed up, suggesting that at high T<sub>3</sub> concentration, it already reached a maxima (not shown). In contrast, with sub-optimal T<sub>3</sub> concentration (1 nM) or 100 nM CORT alone, explants are phenotypically un-affected, even after extensive incubation time. This indicates that each hormone, when acting alone at these concentrations, does not trigger tail regression. In contrast, co-treatment with sub-optimal T<sub>3</sub> concentration and CORT strongly accelerate tail regression, without apparent necrosis. This is a clear confirmation of the functional synergy between CORT and T<sub>3</sub> [42,49,52], and the implication of ADDITIVE genes in cell death pathways.

To complete the network analysis above and get more a mechanistic insight of each biological response, we reconstructed a PPI network. To this end, we collected all proteins known to physically interact with DE gene products from the BIOGRID database (see Methods). The resulting network is composed of 2481 nodes and 3277 edges, with a giant component followed by a number of smaller disconnected networks (Figure 4E). We used two metrics to characterize hubs: connectivity (a.k.a. degree) and betweenness centrality (Figure 4F) [74,75]. The latter, ranging from 0 to 1, measures how much the corresponding node influences the network, while the former measures how much the node is connected to other nodes of the network. The relationship between degree and betweenness centrality helps discard central nodes in star-like small networks (such as in Figure 4E, right) characterized by a low degree and a high betweenness centrality. Surprisingly, DE hubs are highly enriched in various genes involved in DNA methylation and belonging to the T<sub>3</sub> (DNMT3 up, EZH2 up, MECP2 down, and UHRF1 down) or ADDITIVE (UHRF2 down) response types. This is a clear signal that tail regression might be mediated through changes in DNA methylation.

To further explore this relationship, we plotted a heatmap of the expression Log Ratio of 75 genes annotated in the GO terms related to DNA methylation. Results clearly demonstrate that most of them display increased or decreased expression relative to the non-treated control, and only a few genes display minute (or no) difference of expression (Figure 4G and Supplementary Table S5). With only a few exceptions, gene response is very similar when treatments are applied to tail culture or whole animals. Despite a few differences between treatments, T<sub>3</sub> and T<sub>3</sub>-CORT profiles are very similar. The expression of 15 genes (*dnmt1*, *uhrf1*, *mecp2*, and *mbd2*, to name a few) is consistently decreased in response to all treatments. In contrast, *apobec2* expression is strongly induced in all experimental conditions, although it displays differences between culture vs. whole animal. Importantly, the expression of two key components of the DNA hydroxy-methylation machinery, *tet2* and *tet3*, is also consistently increased and displays clear signs of synergy. These results therefore strongly suggest that the DNA methylation machinery undergoes a strong transcriptional switch.

### 3.5. $T_3$ and CORT Induced Massive and Complex Changes of DNA Methylation

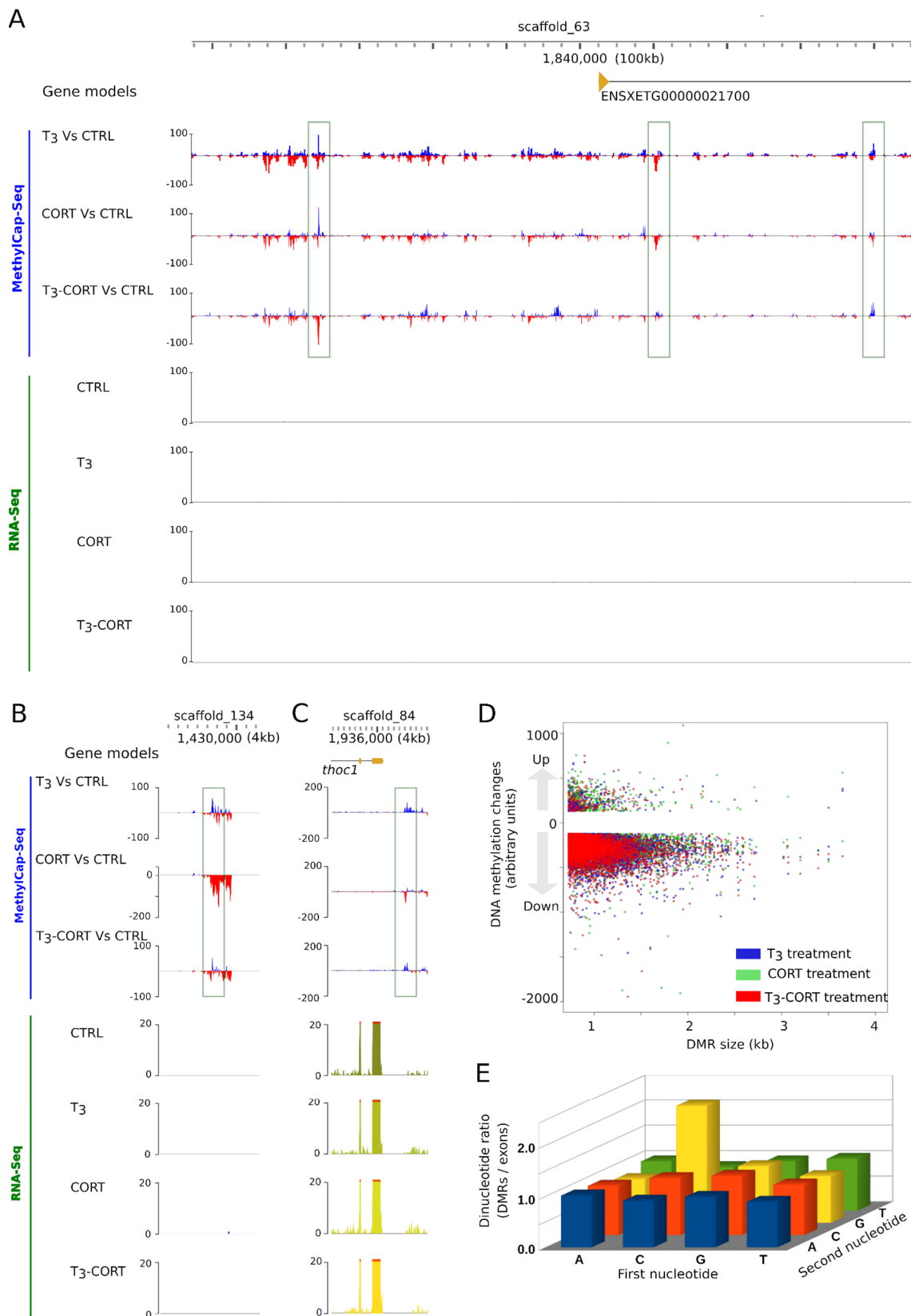
To test whether the action of  $T_3$  and CORT on tail regression is mediated, at least in part, through changes of DNA methylation, we undertook to characterize the DNA methylation dynamics by MethylCap-Seq. Briefly, methylated DNA is captured by affinity column and released with buffers of increasing ionic strength. The methylated DNA captured is then deep sequenced to derive genome wide maps of DNA methylation changes. In this system, a peak corresponds to a region of increased or decreased DNA methylation. Visual examination of genome profiles quickly highlights a complex dynamic of DNA methylation. A few representative examples are shown Figure 5A–C. It is difficult to relate them to changes of gene expression, as they are located in gene deserts (Figure 5B) or nearby genes that do not respond to treatments (Figure 5A,C).

We further processed the data and identified regions of differential methylation levels (DMR). We found a non-redundant set of 17,705 DMRs, with extensive numbers in all treatment conditions: 7000, 6358, 8324 after  $T_3$ , CORT, and  $T_3$ -CORT treatments, respectively (Supplementary Table S6). The dataset is dominated by demethylation (94.3% to 97%), despite a low but non-negligible fraction of re-methylation (3.0% to 5.7%). Most DMRs (90%) are the genomic region up to 1.1 kb large, and there is no shift in DMR size upon treatment (Figure 5D). We also found that the ratio of CpG over other di-nucleotides is higher in DMRs when compared to exonic sequences (Figure 5E), indicating that DMRs are protected from spontaneous deamination of 5 methyl-cytosines.

Altogether, these results unambiguously show that each treatment alone or in combination induces complex and extensive changes of DNA methylation.

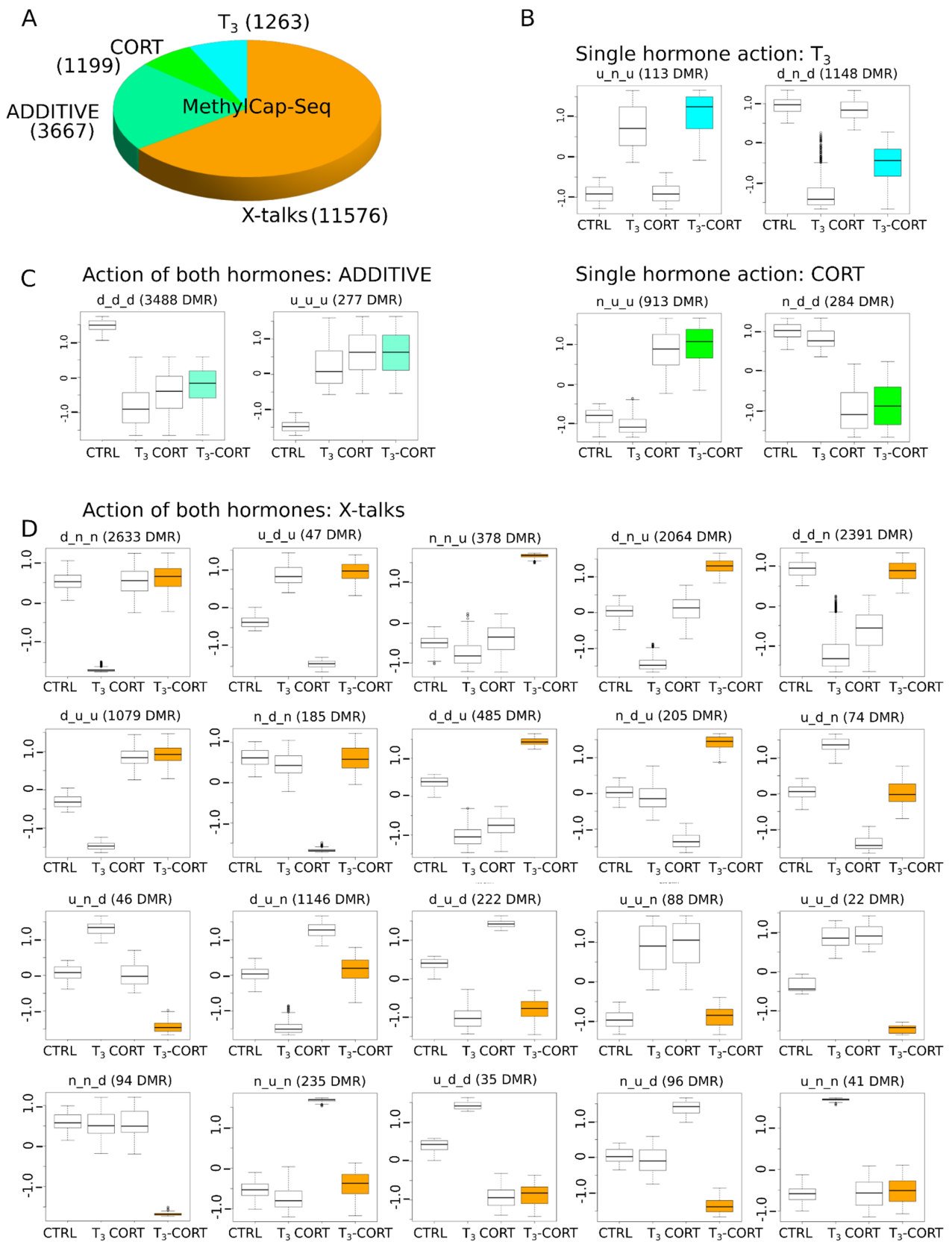
### 3.6. The Cross-Talks-Like Complex Regulations Drive the Majority of DNA Methylation Changes

We next clustered DMRs by using the same procedure as for RNA-Seq, and we derived response types corresponding to  $T_3$ , CORT, ADDITIVE, and X-talks effects (Figure 6). The naming convention based on a 'd', 'u', and 'n' triad is also similar. Qualitatively, DMRs follow an inverse dynamic of transcriptome (Figure 6A–D), where X-talks correspond to the vast majority of DMR responses (65.4%, 11,576/17,705), while  $T_3$  and CORT effects are only a minority of responses (7.1% -1263/17705- and 6.7% -1,199/17,705-, respectively). ADDITIVE responses account for 20.7% of DMRs (3667/17,705). X-talks DMRs are actually composed of a large diversity of responses, which is indicative of multiple regulatory mechanisms (Figure 6D). First, the action of one hormone inhibits the effect of another, as with clusters d\_n\_n (2633 DMRs) and u\_n\_n (41 DMRs), where CORT cancels the effect of  $T_3$ , and inversely for the clusters n\_d\_n (185 DMRs) and n\_u\_n (235 DMRs), where  $T_3$  cancels the effect of CORT. Another category (14.1%, 1632/11,576) corresponds to opposite responses with one or two hormones, as displayed for clusters d\_u\_u, d\_d\_u, u\_n\_d, u\_u\_d. Intriguingly, for 2064 DMRs (17.8%), CORT alone has no effect on the DMRs methylation state but co-treatment ends up with opposite regulation of the  $T_3$  treatment alone (d\_n\_u cluster). Lastly, two clusters, n\_n\_u (378) and n\_n\_d (94 DMRs), only display variations of methylation level when both hormones are present and none otherwise. Overall, these results demonstrate that (1)  $T_3$  and CORT treatments induce a large palette of DNA methylation changes, and (2) transcriptomic and DNA methylation data follow opposite trends, where X-talks correspond to a minority of biological responses in one case, and a majority of responses in the other.



**Figure 5.** T<sub>3</sub> and CORT induce genome wide changes of DNA methylation levels. (A–C) Three independent loci with local changes of DNA methylation (green arrow). Tracks order: gene annotation, DNA methylation changes relative to CTRL (T<sub>3</sub>, CORT, and T<sub>3</sub>-CORT), mRNA abundance (CTRL, T<sub>3</sub>, CORT, and T<sub>3</sub>-CORT). (D) Relationship between the genomic span and the amplitude of differentially methylated regions (DMR). (E) Differential dinucleotide frequency found in DMRs and exonic sequences. DMRs are enriched in CpG.



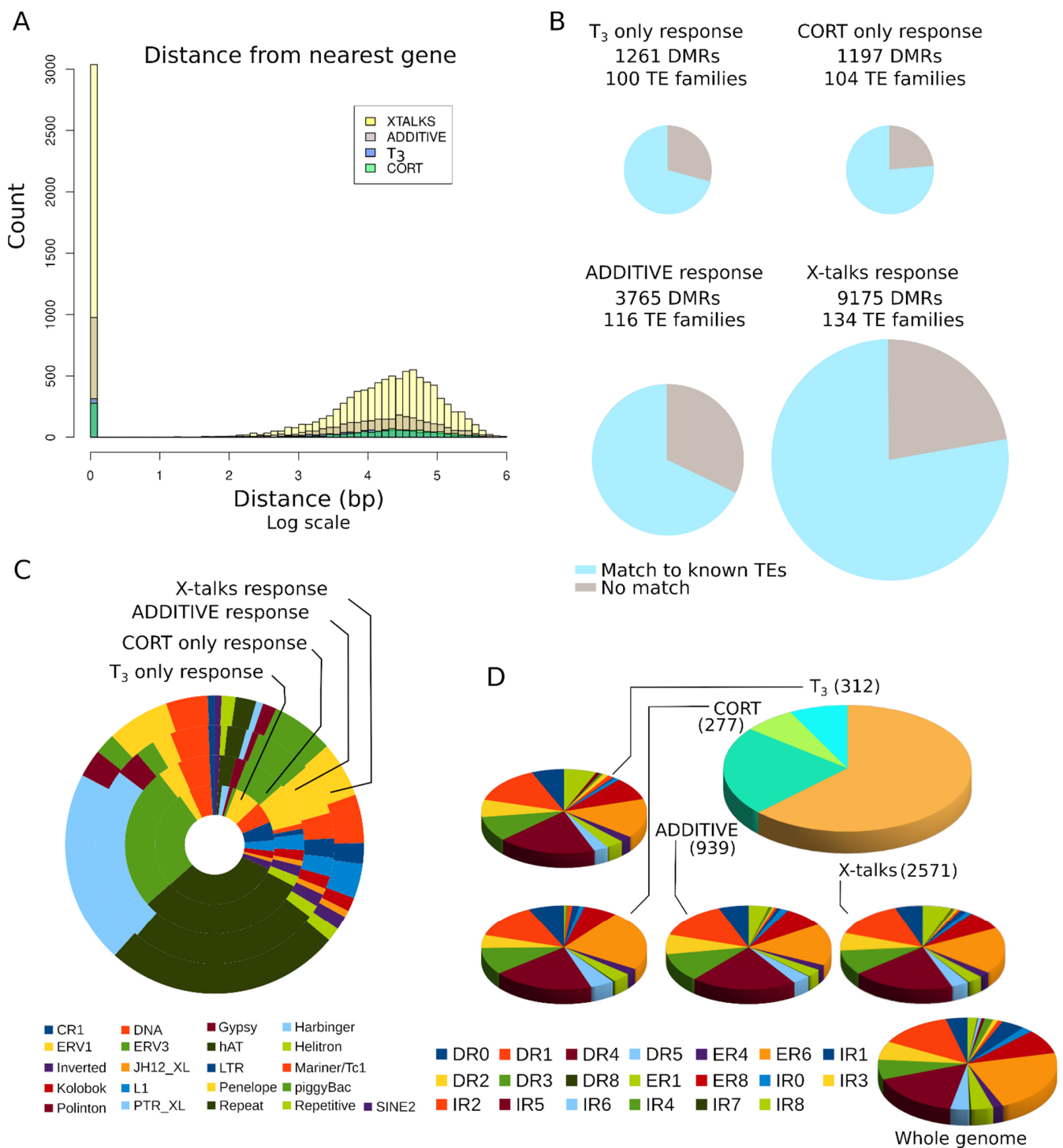


**Figure 6.** The complex dynamics of DNA methylation levels at DMRs. **(A)** Types of gene regulation by T<sub>3</sub> and CORT. **(B)** Gene regulation by either T<sub>3</sub> or CORT. **(C)** Gene regulation by T<sub>3</sub> and CORT. **(D)** Complex regulation by both hormones (X-talks).

### 3.7. DMRs Are Located Far from Genes

To get a better understanding of DMRs distribution, we compared their genomic location to that of genes. We found that 27.7% of DMRs (4913/17,705) overlap with, or are located within, genes (Figure 7A). This is in line with DNA methylation changes reported in the brain of metamorphosing tadpoles [76]. We note, however, that in our case, the repertoire of DE genes is very limited and corresponds to only five genes: *B4GALNT4* (d\_d\_d), *CHTF18* (d\_n\_d), *PAPPA* (n\_n\_u), *ATP12A* (n\_u\_n), and *ANGPTL2* (u\_n\_u). Other DMRs are located far away from genes, typically from 10 to 100 kb away. All four types of biological response provide equivalent genomic distribution. This result is not surprising, as enhancers and response elements are expected to be located at large distances from their target gene, and even enhancers located within a gene may in fact regulate a different target [21,58]. We next addressed whether the presence of transposable elements or other repeated sequences correlate with biological responses. We found that most DMRs, from 60 to 75%, overlap with known transposable elements and repeated sequences (Figure 7B), and they all share similar proportions of individual repeated sequence families (Figure 7C). We did not find any feature shared by DMRs that do not overlap with TEs, with the notable exception of the PTR\_XL family.

We next addressed whether DMRs are enriched in predicted binding sites for nuclear receptors (NRBS), which mediate the nuclear action of CORT and T<sub>3</sub>. NRBS are composed of two AGGTCA half sites in various orientations relative to one another, and spaced by a linker of varying sizes, typically 0 to 8. The glucocorticoid receptor (GR) is preferentially found at inverted repeats with a 3 bp spacer (IR3) [77], whereas thyroid hormone receptor (THR) binding is biased toward direct repeats with a 4 bp spacer (DR4) and sometimes 6 bp (ER6) [78,79]. NRBS are composed of two 6 bp motifs in various orientations and spaced by a linker of varying sizes, typically 0 to 8. As expected [66,80], known DNA binding motifs of THR (DR4, ER6, and IR0) correspond to the vast majority of NRBS found in DMRs (Figure 7D). Only a limited fraction of IR3 motifs (GR binding sequences) could be found in DMRs and the genome. This certainly reflects over-fitting of the model as a result of poor initial training of IR3 motifs [67]. Overall, motifs found in DMRs are slightly enriched in DR4 compared to other motifs (Chi square test,  $p = 0.049$ ), whereas ER6 are somewhat under-represented (Chi square test,  $p = 0.049$ ).



**Figure 7.** DMRs are located close to and far away from genes. (A) Distance between DMRs and the nearest gene. (B) Overlap between DMRs and known transposable element (TE) sequences. (C) TE content of DMRs. (D) Nuclear receptor binding sites predicted in DMRs. Only DMR containing predicted NRBS are shown.

#### 4. Discussion

In this work, we interrogate the functional interactions between TH and GC signaling pathways. Our model is *Xenopus* metamorphosis, a well-known developmental transition dependent on both TH and GC signaling. In addition to their developmental role, GC also mediate stress response, resulting in a set of complex interactions.

GC potentiate the action of TH by modulating its synthesis or the balance between the metabolic activation of the hormone from a (less active) precursor or its degradation. On the other hand, in mammals, TH also exerts a central regulation on GC synthesis [81,82]. This model of TH and GC signaling interactions would predict only a reciprocal modulation of the effect of each hormone individually, not complex types of biological responses at the gene level; this is the point that we are challenging.

#### 4.1. TH and GC X-Talks: A Large Repertoire of Transcriptional Regulations

Anuran metamorphosis is a fast and well-choreographed process. Limb growth and development is a very early process preceding tail resorption by several NF stages, therefore ensuring proper locomotion throughout the entire process [53]. The timing of tail resorption is controlled by modulating the level of available TH with DIO2 and DIO3, which expression is in turn modulated by GC [42,83]. This model implies that tail resorption is fundamentally controlled by TH and does not predict X-talks response genes. Our data clearly demonstrate that this model is incomplete and that T<sub>3</sub> and CORT act on a specific set of genes.

The first indication that gene-level regulation is modulated by TH and GC may be more complex was carried out by Kulkarni and Buchholz [52], where they treated *Xenopus* tadpoles with relatively high doses of T<sub>3</sub> (50 nM) and CORT (100 nM) and examined gene expression in tails with microarrays. They found a large set of genes (~5 k) with altered expression levels in response to one or both hormones. Among these, hundreds of genes (1308) presented an atypical expression profile, where they were exclusively over-expressed (or repressed) when both hormones are present. Unfortunately, these analyses did not benefit from the powerful combination of clustering and system-biology level modeling, thereby preventing deeper analysis.

Therefore, we undertook to address it by deriving a detailed map of the changes of functional state throughout the genome. At the molecular level, we measured gene expression changes in response to hormone treatments, and we modeled RNA-Seq signals into system-wide integrated biological responses. Combining the sharp and contrasted phenotype of tail regression together with the exquisite sensitivity of functional genomics and network analysis, we demonstrate that the transcriptional response to TH and GC of pre-metamorphic tadpoles is more complex than initially envisioned. The key result is that despite the fact that changes of gene expression are dominated by the effect of each hormone individually (T<sub>3</sub>, CORT, or ADDITIVE), an extra set of complex regulations sum up to a significant fraction of transcriptional responses. This can be summarized in the following equation-like format:  $TH \cdot GC > TH + GC$ , meaning that the joint effect of both hormones is more than/not limited to the sum of effect of each hormone individually.

X-talks profiles are not trivial and cannot be accounted for with additive effects. For instance, the u\_n\_d profile (Figure 3D) implies that, despite an apparent lack of action, CORT inverts the regulation. For others, the action of one hormone dominates over the other (e.g., d\_u\_d and u\_d\_u) or they cancel each other (e.g., d\_n\_n and n\_u\_n). All these cases unambiguously correspond to regulatory interactions between TH and GC signaling in individual genes, and not the simple addition of their independent effect on target gene expression.

The two clusters n\_n\_d and n\_n\_u are important: their expression is strictly dependent on the action of both hormones simultaneously and using single hormone treatments will fail to identify them. The corresponding gene products are involved in membrane bound signaling, or correspond to extracellular proteases and components of the extracellular cellular matrix. It is noteworthy that the transmembrane TH transporter MCT8 belongs to the n\_n\_u cluster; this suggests that part of the tailfin resorption program is strictly dependent on the simultaneous action of both hormones. Buchholz previously demonstrated that GR knock out mutants die at metamorphic climax, at the time of tail regression [46]. Strikingly, the phenotype of *pomc* mutants could be rescued with the addition of CORT but also with high doses of T<sub>3</sub>, suggesting that the function of CORT would

only be limited to the potentiation of TH action. Our results suggest that alternative and partly redundant pathways might be involved, instead. In line with this, the expression of the MCT10 transporter, which is functionally redundant with MCT8, is regulated by T<sub>3</sub> but not CORT (u\_n\_u cluster).

The gene regulatory networks controlling transcription can be decomposed into a number of specific genetic sub-circuits implementing various regulatory logics [84]. The transcriptional output can be viewed as the end result of the processing from several sub-circuits integrating regulatory input signals with combinatory logic. Intuitively, X-talks profiles can also be described with boolean operators obeying some regulatory logic. More formally, the n\_n\_u and n\_n\_d responses can be rephrased with an AND boolean operators where change of gene expression (up or down) depends on the regulatory logic T<sub>3</sub> AND CORT. The same is true with n\_u\_n, but with the exclusive OR operator (T<sub>3</sub> XOR CORT), and for u\_n\_n with the NOT operator (NOT (T<sub>3</sub> OR CORT)). More complex responses, especially when signal is inverted (e.g., u -> d) can be further build from a combination of additional logic blocks: d\_d\_u would result from INV (T<sub>3</sub> OR CORT). The point here is that beyond a clear and explicit representation, the simple fact that the different X-talks responses obey different regulatory logic imply that in each case, gene expression is governed by a very specific regulatory circuit(s). Even though the molecular mechanisms of each type of transcriptional response needs to be precisely dissected, there is little doubt that a large number of specific regulatory mechanisms are expected. This clearly extends the initial model much further, where TH and GC pathways would regulate hormone availability.

Our data fit well with the known biology of THR and GR. Regulation of gene expression by THR is well described with a dual model, where the receptor acts as both a repressor and an activator of transcription by the differential recruitment of transcriptional co-repressors and co-activators [85]. The THR can also display very gene specific regulations [69,79]. GR action involves a remarkably large number of molecular pathways which can clearly implement various regulatory logics.

#### 4.2. X-Talks: An Unexpected Large Impact on DNA Methylation

We found that TH and GC signaling cooperate to alter the transcript levels of a majority of the factors involved in DNA methylation and demethylation pathways. Monitoring genome wide DNA methylation changes by MethylCal-Seq further provide strong evidence of massive and large scale demethylation, although some local increases of DNA methylation also occur. Contrary to our expectations, these changes in DNA in methylation follow complex regulations and are mostly dominated by X-talks with little T<sub>3</sub>, CORT, and ADDITIVE responses. This important result, which contrasts sharply with the transcriptome output dominated by T<sub>3</sub> and ADDITIVE responses, implies that distinct regulatory processes occur at each level and that changes of DNA methylation are more dynamic and more dependent on hormonal environment inputs than initially thought. Clearly, the extent of genomic DNA methylation changes is buffered and does not translate directly into changes of the transcriptome.

In xenopus tadpole brain, *klf9* transcription is induced upon treatment with T<sub>3</sub> or CORT, but much stronger with T<sub>3</sub>-CORT [86,87]. At the mechanistic level, *klf9* transcriptional expression is sustained by the binding of THR and/or GR transcription factors at a short genomic region located a few kbs upstream, and containing an enhancer called *klf9* Synergy Module (KSM). The progressive DNA demethylation at the KSM correlates with accumulation of TET3 and the progressive transcriptional induction of the gene [88]. Note that this 'synergy' of action fits with the ADDITIVE response in the terminology we use in this work. Interestingly, DNA methylation levels at KSM do not seem to be affected T<sub>3</sub> nor CORT in tailfin despite a clear ADDITIVE transcriptional induction. Therefore, the DNA methylation dynamic relies (at least in part) on tissue specific factors.

Nonetheless, our data are well in line with previous reports demonstrating a strong DNA demethylation, together with local DNA re-methylation, in gene bodies during

metamorphosis in brain [76]. We also found DMRs located not only at gene coding sequences, since the majority of them are located in non-coding regions of the genome (intergenic). This apparent discrepancy likely reflects differences in the processing pipelines and the fact that we explored non-coding sequences. It is often difficult to interpret the data because these regions are packed with repeated sequences and are poorly annotated, therefore preventing a direct comparison with functional elements. In line with this, most DMRs could not be related to other functional changes or gene features. Nonetheless, we found a clear enrichment of a specific transposable element family (PTR\_XL) in X-talks and ADDITIVE DMR clusters. Although we could not detect any obvious enrichment of predicted nuclear receptor binding sites in these sequences, the demethylation of DNA at these loci strongly suggests they are being transcribed, which is reminiscent of previous work where SINE-like TEs were found to be strongly expressed during metamorphosis in brain [89].

In brain, immuno-reactivity for 5-hmC, 5-caC, and TET3 increase in parallel in the brain of tadpoles undoing spontaneous metamorphosis [49,76], and particularly at the metamorphic climax where TH levels are highest [90]. Their correlation indicates, at least in part, that TET3 might be involved in the demethylation process. MethylCap-Seq analysis in tadpole brain also displayed DNA demethylation, suggesting that this would be a T<sub>3</sub> dependent mechanism. Raj et al., [88] provided additional support by treating animals with T<sub>3</sub> and displaying accumulation of TET2-3 and biochemical DNA demethylation intermediates (5-hmC, 5-caC), strengthening their point. Our work extends from this as we demonstrate that the vast majority of DNA methylation changes are not only dependent on T<sub>3</sub>, but also depend on CORT. This implies that the regulatory processes involved are more complex than initially thought.

What could the regulatory mechanisms involved in the genome wide change of DNA methylation be? Many components of the DNA methylation and demethylation machineries functionally interact with TH signaling. The *dnmt3a* gene is a TH direct target gene [91,92] (but its expression is not regulated by CORT, our data), while TET3 physically interacts with THRA [93]. TH induces TET2 expression [88] and regulates the expression of *gadd45a* and *b* [94,95], *mbd3* [96], and *apobec* [97]. GC signaling, too, is functionally connected to DNA methylation/demethylation [98]. In a more indirect manner, GR also physically interacts with the histone methylase TRIM28 [99] and a component of the chromatin remodeling complex SMARCA4 [100], which in turn impact DNA methylation. GR is a very versatile platform that can accommodate numerous action mechanisms [101,102].

The fact that all but one DE hub acting on DNA methylation display T<sub>3</sub> responses may seem counter intuitive when DMR dynamics display mostly X-talks properties; several lines of evidence can help settle this apparent discrepancy. First, our experiments measure changes of gene expression and many events may be regulated at other levels (post-translational modifications, alterations of intracellular Ca<sup>++</sup> signaling, etcetera). Second, even though UHRF2 is the only non-T<sub>3</sub> hub (ADDITIVE) of the PPI network, it nonetheless makes a functional connection between DNA methylation and transcriptional regulation by T<sub>3</sub> and CORT. Furthermore, the functional response is certainly not limited to hubs, and other non-hub factors may be involved. Two interesting candidates are OTUD4 and ZMPSTE24, for which the transcriptional response is also ADDITIVE (d\_d\_d and u\_u\_u, respectively). A quick BIOGRID survey indicates that in humans, UHRF2 and OTUD4 engage in physical interactions with USP7 (expressed in tailfin, but not DE), thus providing a good starting point to elucidate the molecular cascades involved.

## 5. Conclusions

In this work, we demonstrate that TH and GC pathways cannot be considered in isolation. Rather, they intimately cooperate and produce complex regulatory interactions, both in terms of gene expression and DNA methylation landscape. The sheer level of X-talks changes of DNA methylation is not reflected at the transcriptome level, and was

fully unexpected. This has important implications for all those working in clinical and non-clinical environments manipulating these two signaling pathways.

**Supplementary Materials:** The following are available online at <https://www.mdpi.com/article/10.3390/cells10092375/s1>: Table S1, Primers sequence; Table S2, Measure of gene expression and differential expression call; Table S3, Standard Gene Ontology analysis of DE genes; Table S4, List of KEGG pathways containing at least one DE gene; Table S5, Expression values of genes involved in DNA methylation; Table S6, Regions of differential methylation (DMR) following each treatment software\_compare\_profiles.zip: subtracting density profiles.

**Author Contributions:** Conceptualization, N.B. and L.M.S.; methodology, A.G., V.J., M.R. N.B., C.B. and J.H.; software, N.B.; validation, A.G. and M.R.; formal analysis, N.B.; investigation, A.G., V.J., M.R. and N.B.; writing—original draft preparation, N.B.; writing—review and editing, N.B. and L.M.S.; visualization, N.B.; supervision, N.B. and L.M.S.; project administration, L.M.S.; funding acquisition, L.M.S. All authors have read and agreed to the published version of the manuscript.

**Funding:** The research was supported by the “Centre National de la Recherche Scientifique,” the “Muséum National d’Histoire Naturelle,” “CRESCENDO,” a European Integrated Project funding from FP6 (contract n # LSHM-CT-2005-018652), “IDEAL” a European Large Integrated Project funding from FP7 (contract n # 259679), “TRIGGER” (contract n # ANR-08- JCJC-0100-01), and “MethylDev”, a PICS CNRS funding program. The IBENS genomics core facility was supported by the France Génomique national infrastructure, funded as part of the “Investissements d’Avenir” program managed by the Agence Nationale de la Recherche (contract n # ANR-10-INBS-09).

**Institutional Review Board Statement:** The study was conducted according to the guidelines of the Declaration of Helsinki, and approved by the Ethics Committee COMETH CUVIER of Muséum National d’Histoire Naturelle (ref: 68008).

**Informed Consent Statement:** Not applicable.

**Data Availability Statement:** Raw reads were deposited at SRA under the reference PRJNA748587.

**Acknowledgments:** We thank J.-P. Chaumeil and P. Durand for animal care.

**Conflicts of Interest:** The authors declare no conflict of interest.

## References

1. Crespi, E.J.; Denver, R.J. Ancient Origins of Human Developmental Plasticity. *Am. J. Hum. Biol.* **2005**, *17*, 44–54. [[CrossRef](#)]
2. Zoeller, R.T.; Tan, S.W.; Tyl, R.W. General Background on the Hypothalamic-Pituitary-Thyroid (HPT) Axis. *Crit. Rev. Toxicol.* **2007**, *37*, 11–53. [[CrossRef](#)]
3. Wada, H. Glucocorticoids: Mediators of Vertebrate Ontogenetic Transitions. *Gen. Comp. Endocrinol.* **2008**, *156*, 441–453. [[CrossRef](#)] [[PubMed](#)]
4. Buchholz, D.R. More Similar than You Think: Frog Metamorphosis as a Model of Human Perinatal Endocrinology. *Dev. Biol.* **2015**, *408*, 188–195. [[CrossRef](#)] [[PubMed](#)]
5. Bianco, A.C.; Dumitrescu, A.; Gereben, B.; Ribeiro, M.O.; Fonseca, T.L.; Fernandes, G.W.; Bocco, B.M.L.C. Paradigms of Dynamic Control of Thyroid Hormone Signaling. *Endocr. Rev.* **2019**, *40*, 1000–1047. [[CrossRef](#)]
6. Bassett, J.H.D.; Williams, G.R. Role of Thyroid Hormones in Skeletal Development and Bone Maintenance. *Endocr. Rev.* **2016**, *37*, 135–187. [[CrossRef](#)]
7. Rovet, J.F. The Role of Thyroid Hormones for Brain Development and Cognitive Function. *Paediatr. Thyroidol.* **2014**, *26*, 26–43.
8. Liu, Y.-Y.; Brent, G.A. Thyroid Hormone and the Brain: Mechanisms of Action in Development and Role in Protection and Promotion of Recovery after Brain Injury. *Pharmacol. Ther.* **2018**, *186*, 176–185. [[CrossRef](#)]
9. Ritter, M.J.; Amano, I.; Hollenberg, A.N. Thyroid Hormone Signaling and the Liver. *Hepatology* **2020**, *72*, 742–752. [[CrossRef](#)] [[PubMed](#)]
10. Bloise, F.F.; Cordeiro, A.; Ortiga-Carvalho, T.M. Role of Thyroid Hormone in Skeletal Muscle Physiology. *J. Endocrinol.* **2018**, *236*, R57–R68. [[CrossRef](#)]
11. Juszczak, G.R.; Stankiewicz, A.M. Glucocorticoids, Genes and Brain Function. *Prog. Neuro-Psychopharmacol. Biol. Psychiatry* **2018**, *82*, 136–168. [[CrossRef](#)]
12. Liu, B.; Zhang, T.-N.; Knight, J.K.; Goodwin, J.E. The Glucocorticoid Receptor in Cardiovascular Health and Disease. *Cells* **2019**, *8*, 1227. [[CrossRef](#)] [[PubMed](#)]
13. Whirlledge, S.; DeFranco, D.B. Glucocorticoid Signaling in Health and Disease: Insights from Tissue-Specific GR Knockout Mice. *Endocrinology* **2018**, *159*, 46–64. [[CrossRef](#)]

14. Robson, H.; Siebler, T.; Shalet, S.M.; Williams, G.R. Interactions between GH, IGF-I, Glucocorticoids, and Thyroid Hormones during Skeletal Growth. *Pediatr. Res.* **2002**, *52*, 137–147. [[CrossRef](#)] [[PubMed](#)]
15. Miranda, A.; Sousa, N. Maternal Hormonal Milieu Influence on Fetal Brain Development. *Brain Behav.* **2018**, *8*, e00920. [[CrossRef](#)] [[PubMed](#)]
16. Bagamasbad, P.D.; Espina, J.E.C.; Knoedler, J.R.; Subramani, A.; Harden, A.J.; Denver, R.J. Coordinated Transcriptional Regulation by Thyroid Hormone and Glucocorticoid Interaction in Adult Mouse Hippocampus-Derived Neuronal Cells. *PLoS ONE* **2019**, *14*, e0220378. [[CrossRef](#)]
17. Uyama, N.; Geerts, A.; Reynaert, H. Neural Connections between the Hypothalamus and the Liver. *Anat. Rec.* **2004**, *280A*, 808–820. [[CrossRef](#)]
18. Timmermans, S.; Souffriau, J.; Libert, C. A General Introduction to Glucocorticoid Biology. *Front. Immunol.* **2019**, *10*, 1545. [[CrossRef](#)]
19. Muthusami, S.; Vidya, B.; Shankar, E.M.; Vadivelu, J.; Ramachandran, I.; Stanley, J.A.; Selvamurugan, N. The Functional Significance of Endocrine-Immune Interactions in Health and Disease. *Curr. Protein Pept. Sci.* **2020**, *21*, 52–65. [[CrossRef](#)]
20. Lazar, M.A. Maturing of the Nuclear Receptor Family. *J. Clin. Investig.* **2017**, *127*, 1123–1125. [[CrossRef](#)]
21. Fullwood, M.J.; Liu, M.H.; Pan, Y.F.; Liu, J.; Xu, H.; Mohamed, Y.B.; Orlov, Y.L.; Velkov, S.; Ho, A.; Mei, P.H.; et al. An Oestrogen-Receptor-Alpha-Bound Human Chromatin Interactome. *Nature* **2009**, *462*, 58–64. [[CrossRef](#)]
22. Bernal, J. Thyroid Hormone Regulated Genes in Cerebral Cortex Development. *J. Endocrinol.* **2017**, *232*, R83–R97. [[CrossRef](#)]
23. Lamont, K.R.; Tindall, D.J. Androgen Regulation of Gene Expression. *Adv. Cancer Res.* **2010**, *107*, 137–162. [[PubMed](#)]
24. Hu, F.; Knoedler, J.R.; Denver, R.J. A Mechanism to Enhance Cellular Responsivity to Hormone Action: Krüppel-Like Factor 9 Promotes Thyroid Hormone Receptor- $\beta$  Autoinduction During Postembryonic Brain Development. *Endocrinology* **2016**, *157*, 1683–1693. [[CrossRef](#)] [[PubMed](#)]
25. Buaas, F.W.; Kirsh, A.L.; Sharma, M.; McLean, D.J.; Morris, J.L.; Griswold, M.D.; de Rooij, D.G.; Braun, R.E. Plzf Is Required in Adult Male Germ Cells for Stem Cell Self-Renewal. *Nat. Genet.* **2004**, *36*, 647–652. [[CrossRef](#)] [[PubMed](#)]
26. De Bosscher, K.; Desmet, S.J.; Clarisse, D.; Estébanez-Perpiña, E.; Brunsveld, L. Nuclear Receptor Crosstalk—Defining the Mechanisms for Therapeutic Innovation. *Nat. Rev. Endocrinol.* **2020**, *16*, 363–377. [[CrossRef](#)]
27. Nilsson, O.; Marino, R.; De Luca, F.; Phillip, M.; Baron, J. Endocrine Regulation of the Growth Plate. *Horm. Res. Paediatr.* **2005**, *64*, 157–165. [[CrossRef](#)]
28. Ycaza Herrera, A.; Mather, M. Actions and Interactions of Estradiol and Glucocorticoids in Cognition and the Brain: Implications for Aging Women. *Neurosci. Biobehav. Rev.* **2015**, *55*, 36–52. [[CrossRef](#)]
29. Rabelo, E.M.; Baker, B.S.; Tata, J.R. Interplay between Thyroid Hormone and Estrogen in Modulating Expression of Their Receptor and Vitellogenin Genes during *Xenopus* Metamorphosis. *Mech. Dev.* **1994**, *45*, 49–57. [[CrossRef](#)]
30. Davis, P.J.; Lin, H.-Y.; Mousa, S.A.; Luidens, M.K.; Hercbergs, A.A.; Wehling, M.; Davis, F.B. Overlapping Nongenomic and Genomic Actions of Thyroid Hormone and Steroids. *Steroids* **2011**, *76*, 829–833. [[CrossRef](#)]
31. Duarte-Guterman, P.; Navarro-Martín, L.; Trudeau, V.L. Mechanisms of Crosstalk between Endocrine Systems: Regulation of Sex Steroid Hormone Synthesis and Action by Thyroid Hormones. *Gen. Comp. Endocrinol.* **2014**, *203*, 69–85. [[CrossRef](#)] [[PubMed](#)]
32. Ruiz, D.; Padmanabhan, V.; Sargis, R.M. Stress, Sex, and Sugar: Glucocorticoids and Sex-Steroid Crosstalk in the Sex-Specific Misprogramming of Metabolism. *J. Endocr. Soc.* **2020**, *4*, bvaa087. [[CrossRef](#)]
33. Samarasinghe, R.A.; Witchell, S.F.; DeFranco, D.B. Cooperativity and Complementarity: Synergies in Non-Classical and Classical Glucocorticoid Signaling. *Cell Cycle* **2012**, *11*, 2819–2827. [[CrossRef](#)] [[PubMed](#)]
34. Weikum, E.R.; Knuesel, M.T.; Ortlund, E.A.; Yamamoto, K.R. Glucocorticoid Receptor Control of Transcription: Precision and Plasticity via Allostery. *Nat. Rev. Mol. Cell Biol.* **2017**, *18*, 159–174. [[CrossRef](#)] [[PubMed](#)]
35. Davis, P.J.; Goglia, F.; Leonard, J.L. Nongenomic Actions of Thyroid Hormone. *Nat. Rev. Endocrinol.* **2016**, *12*, 111–121. [[CrossRef](#)] [[PubMed](#)]
36. Flamant, F.; Cheng, S.-Y.; Hollenberg, A.N.; Moeller, L.C.; Samarut, J.; Wondisford, F.E.; Yen, P.M.; Refetoff, S. Thyroid Hormone Signaling Pathways: Time for a More Precise Nomenclature. *Endocrinology* **2017**, *158*, 2052–2057. [[CrossRef](#)]
37. Stahn, C.; Buttgerit, F. Genomic and Nongenomic Effects of Glucocorticoids. *Nat. Clin. Pract. Rheumatol.* **2008**, *4*, 525–533. [[CrossRef](#)]
38. Martin, N.P.; Marron Fernandez de Velasco, E.; Mizuno, F.; Scappini, E.L.; Gloss, B.; Erxleben, C.; Williams, J.G.; Stapleton, H.M.; Gentile, S.; Armstrong, D.L. A Rapid Cytoplasmic Mechanism for PI3 Kinase Regulation by the Nuclear Thyroid Hormone Receptor, TR $\beta$ , and Genetic Evidence for Its Role in the Maturation of Mouse Hippocampal Synapses In Vivo. *Endocrinology* **2014**, *155*, 3713–3724. [[CrossRef](#)]
39. Arancibia, S.; Benítez, D.; Núñez, L.E.; Jewell, C.M.; Langjahr, P.; Candia, E.; Zapata-Torres, G.; Cidlowski, J.A.; González, M.-J.; Hermoso, M.A. Phosphatidylinositol 3-Kinase Interacts with the Glucocorticoid Receptor upon TLR2 Activation. *J. Cell. Mol. Med.* **2011**, *15*, 339–349. [[CrossRef](#)]
40. Sachs, L.M.; Buchholz, D.R. Insufficiency of Thyroid Hormone in Frog Metamorphosis and the Role of Glucocorticoids. *Front. Endocrinol.* **2019**, *10*, 287. [[CrossRef](#)]
41. Shi, Y.-B. *Amphibian Metamorphosis: From Morphology to Molecular Biology*; Wiley-Liss: New York, NY, USA, 2000; ISBN 0471244759.
42. Bonett, R.M.; Hoopfer, E.D.; Denver, R.J. Molecular Mechanisms of Corticosteroid Synergy with Thyroid Hormone during Tadpole Metamorphosis. *Gen. Comp. Endocrinol.* **2010**, *168*, 209–219. [[CrossRef](#)]



43. Kulkarni, S.S.; Denver, R.J.; Gomez-Mestre, I.; Buchholz, D.R. Genetic Accommodation via Modified Endocrine Signalling Explains Phenotypic Divergence among Spadefoot Toad Species. *Nat. Commun.* **2017**, *8*, 993. [[CrossRef](#)]
44. Kulkarni, S.S.; Buchholz, D.R. Corticosteroid Signaling in Frog Metamorphosis. *Gen. Comp. Endocrinol.* **2014**, *203*, 225–231. [[CrossRef](#)]
45. Denver, R.J. Stress Hormones Mediate Environment-Genotype Interactions during Amphibian Development. *Gen. Comp. Endocrinol.* **2009**, *164*, 20–31. [[CrossRef](#)]
46. Sterner, Z.R.; Shewade, L.H.; Mertz, K.M.; Sturgeon, S.M.; Buchholz, D.R. Glucocorticoid Receptor Is Required for Survival through Metamorphosis in the Frog *Xenopus Tropicalis*. *Gen. Comp. Endocrinol.* **2020**, *291*, 113419. [[CrossRef](#)]
47. Tribondeau, A.; Sachs, L.M.; Buisine, N. Are Paedomorphs Actual Larvae? *Dev. Dyn.* **2021**, *250*, 779–787. [[CrossRef](#)]
48. Ulisse, S.; Iwamuro, S.; Tata, J.R. Differential Responses to Ligands of Overexpressed Thyroid Hormone and Retinoid X Receptors in a *Xenopus* Cell Line and in Vivo. *Mol. Cell. Endocrinol.* **1997**, *126*, 17–24. [[CrossRef](#)]
49. Krain, L.P.; Denver, R.J. Developmental Expression and Hormonal Regulation of Glucocorticoid and Thyroid Hormone Receptors during Metamorphosis in *Xenopus Laevis*. *J. Endocrinol.* **2004**, *181*, 91–104. [[CrossRef](#)] [[PubMed](#)]
50. Galton, V.A. Mechanisms Underlying the Acceleration of Thyroid Hormone-Induced Tadpole Metamorphosis by Corticosterone\*. *Endocrinology* **1990**, *127*, 2997–3002. [[CrossRef](#)] [[PubMed](#)]
51. Kühn, E.R.; Geris, K.L.; van der Geyten, S.; Mol, K.A.; Darras, V.M. Inhibition and Activation of the Thyroidal Axis by the Adrenal Axis in Vertebrates. *Comp. Biochem. Physiol. Part A Mol. Integr. Physiol.* **1998**, *120*, 169–174. [[CrossRef](#)]
52. Kulkarni, S.S.; Buchholz, D.R. Beyond Synergy: Corticosterone and Thyroid Hormone Have Numerous Interaction Effects on Gene Regulation in *Xenopus Tropicalis* Tadpoles. *Endocrinology* **2012**, *153*, 5309–5324. [[CrossRef](#)] [[PubMed](#)]
53. Nieuwkoop, P.D.; Faber, J. *Normal Table of Xenopus Laevis (Daudin): A Systematic and Chronological Survey of the Development from the Fertilized Egg Till the End of Metamorphosis*, 1st ed.; North-Holland Pub. Co: Amsterdam, The Netherlands, 1956; ISBN 0815318960.
54. Kerdivel, G.; Blugeon, C.; Fund, C.; Rigolet, M.; Sachs, L.M.; Buisine, N. Opposite T3 Response of ACTG1–FOS Subnetwork Differentiate Tailfin Fate in *Xenopus* Tadpole and Post-Hatching Axolotl. *Front. Endocrinol.* **2019**, *10*, 194. [[CrossRef](#)] [[PubMed](#)]
55. Andersen, C.L.; Jensen, J.L.; Ørntoft, T.F. Normalization of Real-Time Quantitative Reverse Transcription-PCR Data: A Model-Based Variance Estimation Approach to Identify Genes Suited for Normalization, Applied to Bladder and Colon Cancer Data Sets. *Cancer Res.* **2004**, *64*, 5245–5250. [[CrossRef](#)] [[PubMed](#)]
56. Hellsten, U.; Harland, R.M.; Gilchrist, M.J.; Hendrix, D.; Jurka, J.; Kapitonov, V.; Ovcharenko, I.; Putnam, N.H.; Shu, S.; Taher, L.; et al. The Genome of the Western Clawed Frog *Xenopus Tropicalis*. *Science* **2010**, *328*, 633–636. [[CrossRef](#)] [[PubMed](#)]
57. Langmead, B.; Trapnell, C.; Pop, M.; Salzberg, S.L. Ultrafast and Memory-Efficient Alignment of Short DNA Sequences to the Human Genome. *Genome Biol.* **2009**, *10*, R25. [[CrossRef](#)]
58. Buisine, N.; Ruan, X.; Bilesimo, P.; Grimaldi, A.; Alfama, G.; Ariyaratne, P.; Mulawadi, F.; Chen, J.; Sung, W.-K.; Liu, E.T.; et al. *Xenopus Tropicalis* Genome Re-Scaffolding and Re-Annotation Reach the Resolution Required for In Vivo ChIA-PET Analysis. *PLoS ONE* **2015**, *10*, e0137526. [[CrossRef](#)]
59. Anders, S.; McCarthy, D.J.; Chen, Y.; Okoniewski, M.; Smyth, G.K.; Huber, W.; Robinson, M.D. Count-Based Differential Expression Analysis of RNA Sequencing Data Using R and Bioconductor. *Nat. Protoc.* **2013**, *8*, 1765–1786. [[CrossRef](#)]
60. Eden, E.; Navon, R.; Steinfeld, I.; Lipson, D.; Yakhini, Z. GOrilla: A Tool for Discovery and Visualization of Enriched GO Terms in Ranked Gene Lists. *BMC Bioinform.* **2009**, *10*, 48. [[CrossRef](#)]
61. Winterhalter, C.; Widera, P.; Krasnogor, N. JEPETTO: A Cytoscape Plugin for Gene Set Enrichment and Topological Analysis Based on Interaction Networks. *Bioinformatics* **2014**, *30*, 1029–1030. [[CrossRef](#)]
62. Shannon, P.; Markiel, A.; Ozier, O.; Baliga, N.S.; Wang, J.T.; Ramage, D.; Amin, N.; Schwikowski, B.; Ideker, T. Cytoscape: A Software Environment for Integrated Models of Biomolecular Interaction Networks. *Genome Res.* **2003**, *13*, 2498–2504. [[CrossRef](#)] [[PubMed](#)]
63. Oughtred, R.; Rust, J.; Chang, C.; Breitkreutz, B.; Stark, C.; Willems, A.; Boucher, L.; Leung, G.; Kolas, N.; Zhang, F.; et al. The BioGRID Database: A Comprehensive Biomedical Resource of Curated Protein, Genetic, and Chemical Interactions. *Protein Sci.* **2021**, *30*, 187–200. [[CrossRef](#)]
64. Kanehisa, M.; Sato, Y.; Kawashima, M.; Furumichi, M.; Tanabe, M. KEGG as a Reference Resource for Gene and Protein Annotation. *Nucleic Acids Res.* **2016**, *44*, D457–D462. [[CrossRef](#)]
65. Margolis, R.N.; Evans, R.M.; O'Malley, B.W.; NURSA Atlas Consortium. The Nuclear Receptor Signaling Atlas: Development of a Functional Atlas of Nuclear Receptors. *Mol. Endocrinol.* **2005**, *19*, 2433–2436. [[CrossRef](#)] [[PubMed](#)]
66. Becnel, L.B.; Darlington, Y.F.; Ochsner, S.A.; Easton-Marks, J.R.; Watkins, C.M.; McOwiti, A.; Kankanamge, W.H.; Wise, M.W.; DeHart, M.; Margolis, R.N.; et al. Nuclear Receptor Signaling Atlas: Opening Access to the Biology of Nuclear Receptor Signaling Pathways. *PLoS ONE* **2015**, *10*, e0135615. [[CrossRef](#)] [[PubMed](#)]
67. Sandelin, A.; Wasserman, W.W. Prediction of Nuclear Hormone Receptor Response Elements. *Mol. Endocrinol.* **2005**, *19*, 595–606. [[CrossRef](#)]
68. Buels, R.; Yao, E.; Diesh, C.M.; Hayes, R.D.; Munoz-Torres, M.; Helt, G.; Goodstein, D.M.; Elsik, C.G.; Lewis, S.E.; Stein, L.; et al. JBrowse: A Dynamic Web Platform for Genome Visualization and Analysis. *Genome Biol.* **2016**, *17*, 1–12. [[CrossRef](#)] [[PubMed](#)]
69. Bilesimo, P.; Jolivet, P.; Alfama, G.; Buisine, N.; Le Mevel, S.; Havis, E.; Demeneix, B.A.; Sachs, L.M. Specific Histone Lysine 4 Methylation Patterns Define TR-Binding Capacity and Differentiate Direct T3 Responses. *Mol. Endocrinol.* **2011**, *25*, 225–237. [[CrossRef](#)]

70. Schneider, K.A.; Shewade, L.H.; Buisine, N.; Sachs, L.M.; Buchholz, D.R. A Novel Stress Hormone Response Gene in Tadpoles of *Xenopus Tropicalis*. *Gen. Comp. Endocrinol.* **2018**, *260*, 107–114. [[CrossRef](#)]
71. Ma'ayan, A. Insights into the Organization of Biochemical Regulatory Networks Using Graph Theory Analyses. *J. Biol. Chem.* **2009**, *284*, 5451–5455. [[CrossRef](#)]
72. Tata, J.R.; Kawahara, A.; Baker, B.S. Prolactin Inhibits Both Thyroid Hormone-Induced Morphogenesis and Cell Death in Cultured Amphibian Larval Tissues. *Dev. Biol.* **1991**, *146*, 72–80. [[CrossRef](#)]
73. Tata, J.R. Amphibian Metamorphosis as a Model for Studying the Developmental Actions of Thyroid Hormone. *Biochimie* **1999**, *81*, 359–366. [[CrossRef](#)]
74. Zhu, X.; Gerstein, M.; Snyder, M. Getting Connected: Analysis and Principles of Biological Networks. *Genes Dev.* **2007**, *21*, 1010–1024. [[CrossRef](#)] [[PubMed](#)]
75. Charitou, T.; Bryan, K.; Lynn, D.J. Using Biological Networks to Integrate, Visualize and Analyze Genomics Data. *Genet. Sel. Evol.* **2016**, *48*, 27. [[CrossRef](#)]
76. Kyono, Y.; Raj, S.; Sifuentes, C.J.; Buisine, N.; Sachs, L.; Denver, R.J. DNA Methylation Dynamics Underlie Metamorphic Gene Regulation Programs in *Xenopus* Tadpole Brain. *Dev. Biol.* **2020**, *462*, 180–196. [[CrossRef](#)]
77. Meijnsing, S.H.; Pufall, M.A.; So, A.Y.; Bates, D.L.; Chen, L.; Yamamoto, K.R. DNA Binding Site Sequence Directs Glucocorticoid Receptor Structure and Activity. *Science* **2009**, *324*, 407–410. [[CrossRef](#)] [[PubMed](#)]
78. Wahlström, G.M.; Sjöberg, M.; Andersson, M.; Nordström, K.; Vennström, B. Binding Characteristics of the Thyroid Hormone Receptor Homo- and Heterodimers to Consensus AGGTCA Repeat Motifs. *Mol. Endocrinol.* **1992**, *6*, 1013–1022. [[CrossRef](#)] [[PubMed](#)]
79. Shabtai, Y.; Nagaraj, N.K.; Batmanov, K.; Cho, Y.-W.; Guan, Y.; Jiang, C.; Remsberg, J.; Forrest, D.; Lazar, M.A. A Coregulator Shift, Rather than the Canonical Switch, Underlies Thyroid Hormone Action in the Liver. *Genes Dev.* **2021**, *35*, 367–378. [[CrossRef](#)]
80. Ayers, S.; Switnicki, M.P.; Angajala, A.; Lammel, J.; Arumanayagam, A.S.; Webb, P. Genome-Wide Binding Patterns of Thyroid Hormone Receptor Beta. *PLoS ONE* **2014**, *9*, e81186. [[CrossRef](#)] [[PubMed](#)]
81. Lizcano, F.; Rodríguez, J.S. Thyroid Hormone Therapy Modulates Hypothalamo-Pituitary-Adrenal Axis. *Endocr. J.* **2011**, *58*, 137–142. [[CrossRef](#)]
82. Johnson, E.O.; Kamilaris, T.C.; Calogero, A.E.; Gold, P.W.; Chrousos, G.P. Experimentally-Induced Hyperthyroidism Is Associated with Activation of the Rat Hypothalamic–Pituitary–Adrenal Axis. *Eur. J. Endocrinol.* **2005**, *153*, 177–185. [[CrossRef](#)]
83. Darras, V.M.; Van der Geyten, S.; Cox, C.; Segers, I.B.; De Groef, B.; Kühn, E.R. Effects of Dexamethasone Treatment on Iodothyronine Deiodinase Activities and on Metamorphosis-Related Morphological Changes in the Axolotl (*Ambystoma Mexicanum*). *Gen. Comp. Endocrinol.* **2002**, *127*, 157–164. [[CrossRef](#)]
84. Erwin, D.H.; Davidson, E.H. The Evolution of Hierarchical Gene Regulatory Networks. *Nat. Rev. Genet.* **2009**, *10*, 141–148. [[CrossRef](#)]
85. Grimaldi, A.; Buisine, N.; Miller, T.; Shi, Y.-B.; Sachs, L.M. Mechanisms of Thyroid Hormone Receptor Action during Development: Lessons from Amphibian Studies. *Biochim. Biophys. Acta* **2012**, *1830*, 3882–3892. [[CrossRef](#)] [[PubMed](#)]
86. Bonett, R.M.; Hu, F.; Bagamasbad, P.; Denver, R.J. Stressor and Glucocorticoid-Dependent Induction of the Immediate Early Gene Kruppel-like Factor 9: Implications for Neural Development and Plasticity. *Endocrinology* **2009**, *150*, 1757–1765. [[CrossRef](#)] [[PubMed](#)]
87. Bagamasbad, P.; Ziera, T.; Borden, S.A.; Bonett, R.M.; Rozeboom, A.M.; Seasholtz, A.; Denver, R.J. Molecular Basis for Glucocorticoid Induction of the Kruppel-like Factor 9 Gene in Hippocampal Neurons. *Endocrinology* **2012**, *153*, 5334–5345. [[CrossRef](#)] [[PubMed](#)]
88. Raj, S.; Kyono, Y.; Sifuentes, C.J.; Arellanes-Licea, E.d.C.; Subramani, A.; Denver, R.J. Thyroid Hormone Induces DNA Demethylation in *Xenopus* Tadpole Brain. *Endocrinology* **2020**, *161*, bqaa155. [[CrossRef](#)]
89. Denver, R.J.; Pavgi, S.; Shi, Y.B. Thyroid Hormone-Dependent Gene Expression Program for *Xenopus* Neural Development. *J. Biol. Chem.* **1997**, *272*, 8179–8188. [[CrossRef](#)]
90. Leloup, J.; Buscaglia, M. Triiodothyronine, Hormone of Amphibian Metamorphosis. *Comptes Rendus Hebd. Des Seances L Acad. Des Sci. Ser. D* **1977**, *284*, 2261–2263.
91. Kyono, Y.; Sachs, L.M.; Bilesimo, P.; Wen, L.; Denver, R.J. Developmental and Thyroid Hormone Regulation of the DNA Methyltransferase 3a Gene in *Xenopus* Tadpoles. *Endocrinology* **2016**, *157*, 4961–4972. [[CrossRef](#)]
92. Kyono, Y.; Subramani, A.; Ramadoss, P.; Hollenberg, A.N.; Bonett, R.M.; Denver, R.J. Liganded Thyroid Hormone Receptors Transactivate the DNA Methyltransferase 3a Gene in Mouse Neuronal Cells. *Endocrinology* **2016**, *157*, 3647–3657. [[CrossRef](#)]
93. Guan, W.; Guyot, R.; Samarut, J.; Flamant, F.; Wong, J.; Gauthier, K.C. Methylcytosine Dioxygenase TET3 Interacts with Thyroid Hormone Nuclear Receptors and Stabilizes Their Association to Chromatin. *Proc. Natl. Acad. Sci. USA* **2017**, *114*, 8229–8234. [[CrossRef](#)]
94. Barrera-Hernandez, G.; Zhan, Q.; Wong, R.; Cheng, S.-Y. Thyroid Hormone Receptor Is a Negative Regulator in P53-Mediated Signaling Pathways. *DNA Cell Biol.* **1998**, *17*, 743–750. [[CrossRef](#)]
95. Bungay, A.; Selden, C.; Brown, D.; Malik, R.; Hubank, M.; Hodgson, H. Microarray Analysis of Mitogenic Effects of T3 on the Rat Liver. *J. Gastroenterol. Hepatol.* **2008**, *23*, 1926–1933. [[CrossRef](#)]
96. Fu, L.; Li, C.; Na, W.; Shi, Y.-B. Thyroid Hormone Activates *Xenopus* MBD3 Gene via an Intronic TRE in Vivo. *Front. Biosci.* **2020**, *25*, 437–451.

97. Mukhopadhyay, D.; Plateroti, M.; Anant, S.; Nassir, F.; Samarut, J.; Davidson, N.O. Thyroid Hormone Regulates Hepatic Triglyceride Mobilization and Apolipoprotein B Messenger Ribonucleic Acid Editing in a Murine Model of Congenital Hypothyroidism. *Endocrinology* **2003**, *144*, 711–719. [[CrossRef](#)] [[PubMed](#)]
98. Crudo, A.; Petropoulos, S.; Suderman, M.; Moisiadis, V.G.; Kostaki, A.; Hallett, M.; Szyf, M.; Matthews, S.G. Effects of Antenatal Synthetic Glucocorticoid on Glucocorticoid Receptor Binding, DNA Methylation, and Genome-Wide MRNA Levels in the Fetal Male Hippocampus. *Endocrinology* **2013**, *154*, 4170–4181. [[CrossRef](#)] [[PubMed](#)]
99. Chang, C.-J.; Chen, Y.-L.; Lee, S.-C. Coactivator TIF1 $\beta$  Interacts with Transcription Factor C/EBP $\beta$  and Glucocorticoid Receptor to Induce A1-Acid Glycoprotein Gene Expression. *Mol. Cell. Biol.* **1998**, *18*, 5880–5887. [[CrossRef](#)]
100. Hoffman, J.A.; Trotter, K.W.; Ward, J.M.; Archer, T.K. BRG1 Governs Glucocorticoid Receptor Interactions with Chromatin and Pioneer Factors across the Genome. *eLife* **2018**, *7*, e35073. [[CrossRef](#)] [[PubMed](#)]
101. Vettorazzi, S.; Nalbantoglu, D.; Gebhardt, J.C.M.; Tuckermann, J. A Guide to Changing Paradigms of Glucocorticoid Receptor Function—A Model System for Genome Regulation and Physiology. *FEBS J.* **2021**, febs.16100. [[CrossRef](#)]
102. Quatrini, L.; Ugolini, S. New Insights into the Cell- and Tissue-Specificity of Glucocorticoid Actions. *Cell. Mol. Immunol.* **2021**, *18*, 269–278. [[CrossRef](#)]