



APOE4 is associated with elevated blood lipids and lower levels of innate immune biomarkers in a tropical Amerindian subsistence population

Angela Garcia, Caleb Finch, Margaret Gatz, Thomas S. Kraft, Daniel Eid Rodriguez, Daniel Cummings, Mia Charifson, Kenneth Buetow, Bret A. Beheim, Hooman Allayee, et al.

► To cite this version:

Angela Garcia, Caleb Finch, Margaret Gatz, Thomas S. Kraft, Daniel Eid Rodriguez, et al.. APOE4 is associated with elevated blood lipids and lower levels of innate immune biomarkers in a tropical Amerindian subsistence population. eLife, 2021, 10:e68231, pp.1-20. 10.7554/eLife.68231 . hal-03364139

HAL Id: hal-03364139

<https://hal.science/hal-03364139>

Submitted on 4 Oct 2021

HAL is a multi-disciplinary open access archive for the deposit and dissemination of scientific research documents, whether they are published or not. The documents may come from teaching and research institutions in France or abroad, or from public or private research centers.

L'archive ouverte pluridisciplinaire **HAL**, est destinée au dépôt et à la diffusion de documents scientifiques de niveau recherche, publiés ou non, émanant des établissements d'enseignement et de recherche français ou étrangers, des laboratoires publics ou privés.

APOE4 is associated with elevated blood lipids and lower levels of innate immune biomarkers in a tropical Amerindian subsistence population

Angela R Garcia^{1,2*}, Caleb Finch³, Margaret Gatz⁴, Thomas Kraft⁵, Daniel Eid Rodriguez⁶, Daniel Cummings⁷, Mia Charifson⁸, Kenneth Buetow^{1,9}, Bret A Beheim¹⁰, Hooman Allayee^{11,12}, Gregory S Thomas¹³, Jonathan Stieglitz¹⁴, Michael D Gurven^{5†}, Hillard Kaplan^{7†}, Benjamin C Trumble^{15*†}

¹Center for Evolution and Medicine, Arizona State University, Tempe, United States; ²Department of Anthropology, Emory University, Atlanta, United States; ³Leonard Davis School of Gerontology, Dornsife College, University of Southern California, Los Angeles, Los Angeles, United States; ⁴Center for Economic and Social Research, University of Southern California, Los Angeles, Los Angeles, United States; ⁵Department of Anthropology, University of California, Santa Barbara, Santa Barbara, United States; ⁶Department of Medicine, Universidad de San Simón, Cochabamba, Bolivia; ⁷Institute for Economics and Society, Chapman University, Orange, United States; ⁸Vilcek Institute of Graduate Biomedical Sciences, New York University, New York, United States; ⁹School of Life Sciences, Arizona State University, Tempe, United States; ¹⁰Department of Human Behavior, Ecology and Culture, Max Planck Institute for Evolutionary Anthropology, Leipzig, Germany; ¹¹Department of Preventive Medicine and Biochemistry & Molecular Medicine, Keck School of Medicine, University of Southern California, Irvine, Irvine, United States; ¹²Department of Preventive Medicine, Keck School of Medicine, University of Southern California, Irvine, Irvine, United States; ¹³Long Beach Memorial, Long Beach and University of California Irvine, Irvine, United States; ¹⁴Institute for Advanced Study in Toulouse, Université Toulouse, Toulouse, France; ¹⁵School of Human Evolution and Social Change, Arizona State University, Tempe, United States

***For correspondence:**

Angela.Garcia.2@asu.edu (ARG);
trumble@asu.edu (BCT)

[†]These authors contributed
equally to this work

Competing interest: The authors
declare that no competing
interests exist.

Funding: See page 15

Received: 10 March 2021

Preprinted: 20 March 2021

Accepted: 23 August 2021

Published: 29 September 2021

Reviewing Editor: Amy

Goldberg, Duke University,
United States

© Copyright Garcia et al. This
article is distributed under the
terms of the [Creative Commons
Attribution License](#), which
permits unrestricted use and
redistribution provided that the
original author and source are
credited.

Abstract In post-industrial settings, apolipoprotein E4 (APOE4) is associated with increased cardiovascular and neurological disease risk. However, the majority of human evolutionary history occurred in environments with higher pathogenic diversity and low cardiovascular risk. We hypothesize that in high-pathogen and energy-limited contexts, the APOE4 allele confers benefits by reducing innate inflammation when uninfected, while maintaining higher lipid levels that buffer costs of immune activation during infection. Among Tsimane forager-farmers of Bolivia ($N = 1266$, 50 % female), APOE4 is associated with 30 % lower C-reactive protein, and higher total cholesterol and oxidized LDL. Blood lipids were either not associated, or negatively associated with inflammatory biomarkers, except for associations of oxidized LDL and inflammation which were limited to obese adults. Further, APOE4 carriers maintain higher levels of total and LDL cholesterol at low body mass indices (BMIs). These results suggest that the relationship between APOE4 and lipids may be beneficial for pathogen-driven immune responses and unlikely to increase cardiovascular risk in an active subsistence population.

eLife digest Genes contain the instructions needed for a cell to make molecules called proteins, which perform various roles in the body. Different variants of a gene can affect how the protein works, and in some cases, can increase a person's risk to develop certain diseases.

For example, people who carry a version of the apolipoprotein E gene called APOE4 have a greater risk of developing Alzheimer's disease or heart disease. Individuals with two copies of this genetic variant have a 45% higher risk of heart disease and 12 times higher risk of Alzheimer's disease. Studies in industrialized countries suggest this increased risk may be the result of higher cholesterol and inflammation in people with APOE4. But if APOE4 is harmful, why does it continue to be so common worldwide?

One potential explanation is that APOE4, which has been around since before modern humans, may be beneficial in some contexts. Cholesterol is essential for many vital tasks in the body. In physically demanding environments where parasitic infections are common – conditions similar to those experienced by early humans – APOE4 might be beneficial. Under those circumstances, having more cholesterol might help fuel metabolic activities, fight infections, or reduce inflammation caused by infections.

Garcia et al. investigated the link between the APOE4 genetic variant, cholesterol and inflammation in 1,266 Indigenous Tsimane people from 80 villages in Bolivia. Tsimane people live an active lifestyle foraging and farming for food. Parasite infections are a common problem in their communities, but obesity rates are very low. Garcia et al. found that Tsimane people with at least one copy of the APOE4 have lower levels of inflammation and higher levels of cholesterol than those who have two copies of the APOE3 version of the gene. Very lean people with APOE4 had especially high levels of the so called "bad" low density lipoprotein (LDL) cholesterol compared to people with APOE3 only. However, in this situation, storing a little extra cholesterol may not be so bad.

The findings contradict other studies that have linked obesity to higher LDL levels and APOE4 to higher levels of inflammation. For the majority of human history, humans lived in more physically strenuous and calorically restrictive environments, with less access to clean water. Garcia et al. suggest that the harmful effects of APOE4 seen in studies in more industrialized societies – where people tend to be more sedentary and have less exposure to pathogens – may reflect a mismatch between a person's environment and their genes. More studies that capture the diversity of environmental conditions under which people live will help clarify the role of APOE4 health and disease.

Introduction

The apolipoprotein E4 (APOE4) allele is considered a major shared risk factor for both cardiovascular disease (CVD) (Hansson and Libby, 2006) and Alzheimer's disease (AD) (Belloy et al., 2019; Smith et al., 2019), in part due to its role in lipid metabolism and related inflammation (Huebbe and Rimbach, 2017). APOE4+ carriers consistently show higher levels of total cholesterol, low-density lipoprotein (LDL), and oxidized LDL (Safieh et al., 2019; Yassine and Finch, 2020). While some studies suggest APOE4+ carriers have higher inflammatory responses (Gale et al., 2014; Olgiati et al., 2010), the APOE4 allele is also associated with downregulation of aspects of innate immune function, including acute phase proteins (Lumsden et al., 2020; Martiskainen et al., 2018; Vasunilashorn et al., 2011), and toll-like receptor (TLR) signaling molecules (Dose et al., 2018).

APOE, lipids, and immune function may interact differently in contemporary obesogenic post-industrial contexts compared to environments where infections are prevalent. For instance, a prospective U.S.-based cohort study (Framingham Heart Study) found that individuals with APOE4 and low-grade chronic obesity-related inflammation had higher risk of developing AD, with earlier onset than APOE3/3 and APOE4+ carriers without inflammation (Tao et al., 2018). By contrast, APOE4 may protect against cognitive loss among those infected with parasites (Oriá et al., 2005; Trumble et al., 2017) and accelerate recovery from viral infection (Mueller et al., 2016).

These findings suggest that interactive influences of APOE4, lipids, and immune function on disease risks may be environmentally moderated. However, this is difficult to test because most biomedical research is conducted in controlled laboratory settings using animal models, or in post-industrial populations with low-pathogen burden and high obesity prevalence (Gurven and Lieberman, 2020). Here,

we begin to fill this gap by evaluating both immune and lipid profiles of individuals with APOE3/3 and APOE4+ genotypes living in a pathogenically diverse, energy-limited environment.

APOE, cholesterol, and immune function

APOE has three functionally polymorphic allelic variants: E4, E3, and E2 (Demarchi et al., 2005; Safieh et al., 2019). The most prevalent, APOE3, arose ~200 K years ago from a single nucleotide polymorphism (SNP) (C → T) at locus 19q13 from the ancestral APOE4 (Fullerton et al., 2000). The evolutionary success of APOE3 has been attributed to its greater plasticity in response to environmental changes compared to the ancestral APOE4 allele (Huebbe and Rimbach, 2017). However, APOE4 is maintained at frequencies up to 40%, such as those in some central African populations.

Maintenance and distribution of APOE variants may in part be due to the distinct functional capabilities of allelic variants (Trotter et al., 2010). Eisenberg and colleagues have suggested that the benefits of APOE4 may be most appreciable in environments where cholesterol requirements are increased to meet higher metabolic demands, such as at high and low latitudes where there are climatic extremes (e.g. northern Europe and South America) (Eisenberg et al., 2010).

Another leading explanation for APOE4 persistence is based on the theory of antagonistic pleiotropy (Williams, 1957), which posits that the APOE4 allele may persist due to the fitness benefits of lipid buffering in early life relative to APOE3, outweighing any harmful health effects that manifest in a post-reproductive life stage (i.e. 'selection's shadow') (Smith et al., 2019). Consistent with the notion of early life fitness advantage, the APOE4 variant is associated with lower infant mortality and higher fertility among rural Ghanaians experiencing high-pathogen burden (van Exel et al., 2017).

Innate immune responses with fever and systemic inflammation are also energetically expensive (Muehlenbein et al., 2010), and cholesterol and other lipids are necessary for fueling these responses (Tall and Yvan-Charvet, 2014). Helminths and some protozoal parasites also require lipids to fuel their own metabolic activities, either pulling them from the host bloodstream, or modulating host metabolic activities like LDL endocytosis or lipid remodeling to gain access to lipids (Bansal et al., 2005). Thus, in high-pathogen and energy-limited environments, where there may be persistent pathogen-driven immune activation, the ability to maintain peripheral cholesterol levels would presumably be a benefit throughout life (Finch and Martin, 2016; Gurven et al., 2016).

Despite APOE4 being associated with neuroinflammation among those with AD (Kloske and Wilcock, 2020), in 'healthy' individuals the APOE4 allele is associated with downregulated innate immunity. Specifically, blood levels of C-reactive protein (CRP) in APOE4+ carriers are lower in several post-industrial populations (Lumsden et al., 2020; Martiskainen et al., 2018), as well as the Tsimane, an Amerindian population in rural Bolivia (and focus of the present study) (Vasunilashorn et al., 2011). Moreover, among the Tsimane, APOE4+ carriers had lower levels of blood eosinophils (Trumble et al., 2017; Vasunilashorn et al., 2011). Other studies have documented lower levels of certain proinflammatory cytokines (e.g. IL-6, TNF- α) in APOE4+ carriers (Olgiati et al., 2010), and downregulated expression of biomarkers mediating innate immune sensing (TLR-signaling molecules) (Dose et al., 2018).

Experimental studies also showed the associations of APOE4 with heightened innate and complement inflammatory responses to lipopolysaccharide stimulation in Gale et al., 2014; Tzioras et al., 2019. Maintaining lower levels of baseline innate immunity may minimize the accumulative damage caused by low-grade innate inflammation over the long term, while still enabling strong targeted immune responses to pathogens following exposure (Franceschi et al., 2000; Trumble and Finch, 2019), particularly in environments with a diversity of species of pathogens. Further, pathogens like helminthic parasites, may moderate inflammation by triggering Th2-mediated (anti-inflammatory) immunological pathways (Maizels and McSorley, 2016; Motran et al., 2018), which may be important for counterbalancing a strong proinflammatory response.

In energy-limited, pathogenically diverse environments, APOE4+ carriers may thus be better able to tolerate energetic costs imposed by infection by having higher concentrations of circulating lipids to fuel immune responses, while also minimizing damage from exposure to generalized systemic inflammation through downregulation of innate immune function. By contrast, in post-industrialized contexts, without the moderating influences of parasites on both cholesterol and immune functions, non-pathogenic stimuli (e.g. obesity) may be more likely to trigger systemic low-grade inflammatory pathways and, in the absence of a brake, lead to arterial and vascular damage and disease. Thus, the

link between *APOE4* and inflammatory diseases in post-industrialized contexts may in part be due to an environmental mismatch.

Hypothesis and aims

In pathogenically diverse environments, innate immune defenses are likely to be activated owing to more frequent encounters with novel pathogens. This more diverse pathogenic setting may increase selective pressure to favor stronger immune regulation. We hypothesize that in such a context, an *APOE4* variant is less harmful because it (a) minimizes damage caused by chronic innate inflammation and (b) maintains higher circulating cholesterol levels, which buffer energetic costs of pathogen-driven innate immune activation. In post-industrial contexts, where there is a relative absence of diverse pathogens and thus reduced pathogen-mediated lipid regulation, coupled with an overabundance of calories, the effect of *APOE4* on circulating lipids may instead incur a cost. Lifestyle factors that promote obesity and excessive circulating lipids may lead to sterile endogenous inflammation (Trumble and Finch, 2019) that overshadows any potentially positive effects of *APOE4* on immune function. Thus, the *APOE4* variant has greater potential to lead to hyperlipidemia and coincide with related inflammatory diseases in high-calorie, low-pathogen, environments (Figure 1).

This study describes the immunophenotypes and lipid profiles of individuals with *APOE3/3* and *APOE4+* genotypes living in a pathogenically diverse, energy-limited environment. For the purpose of hypothesis testing, we focus on testing genotype-related differences in components of innate immunity (CRP, neutrophils, eosinophils, and erythrocyte sedimentation rate [ESR]) and blood lipids linked to inflammation (total cholesterol, LDL, and oxidized LDL [ox-LDL]). We evaluate the extent to which body mass index (BMI) moderates the association between lipids and innate inflammation (CRP, neutrophils, ESR). Finally, we test whether the *APOE4* allele has a moderating effect on the relationship between BMI and lipids to evaluate the role of *APOE4* in the maintenance of stable lipid levels under energetic restriction.

This research focused on the Tsimane, an Amerindian population in the Bolivian tropics that faces high exposure to a diverse suite of pathogens, and endemic helminthic infections. Tsimane have high rates of infection across all ages, with 70 % helminth prevalence and >50% of adults with co-infections from multiple species of parasite or protozoan (Blackwell et al., 2015; Garcia et al., 2020). Compared to U.S. and European reference populations, the Tsimane have also been found to have upregulated immune function across the life course (Blackwell et al., 2016). In most villages, there is little or no access to running water or infrastructure for sanitation (Dinkel et al., 2020). The Tsimane are primarily reliant on foods acquired through slash-and-burn horticulture, fishing, hunting, gathering, and small animal domestication, supplemented with market goods (e.g. salt, sugar, cooking oil) (Kraft et al., 2018). Tsimane are rarely sedentary, instead engaging in sustained low and moderate physical activity over much of their life course (Gurven et al., 2013), and have minimal atherosclerosis (Kaplan et al., 2017). However, with greater globalization and improvements in technology, the Tsimane are experiencing ongoing lifestyle changes; there is variation in participation in the market economy, and related variation in diet (e.g. access and uptake of processed foods) and activity level. Despite increasing access to markets and towns, infections remain the largest source of morbidity (Gurven et al., 2020).

Results

Data include *APOE* genotype and multiple measurements of BMI, lipids, and immune markers in 1266 Tsimane adults. Mixed effects multiple regression models were used to accommodate for multiple measurements per individual for some biomarkers, as well as community-level differences in pathogen exposures. Leveraging multiple observations per individual over time should better capture individuals' average levels, and minimize the potential of single or few outliers driving results. Models also include covariates which adjust for age, sex, seasonality, and current infection ($WBC > 12 \times 10^9/L$) (see Materials and methods for details). The sample is 50 % female and includes individuals from 80 villages. The mean \pm SD age of the sample is 54 ± 11 years (range: 21–93). Mean \pm SD BMI is 24 ± 3 for both sexes; Tsimane adults are relatively short (women: 150.5 ± 4.8 cm; men: 161.7 ± 5.3 cm) with low body fat (median body fat percentage for men and women is 18% and 26%, respectively). Prevalence of obesity is relatively low (10%). In general, blood immune biomarkers vary significantly across

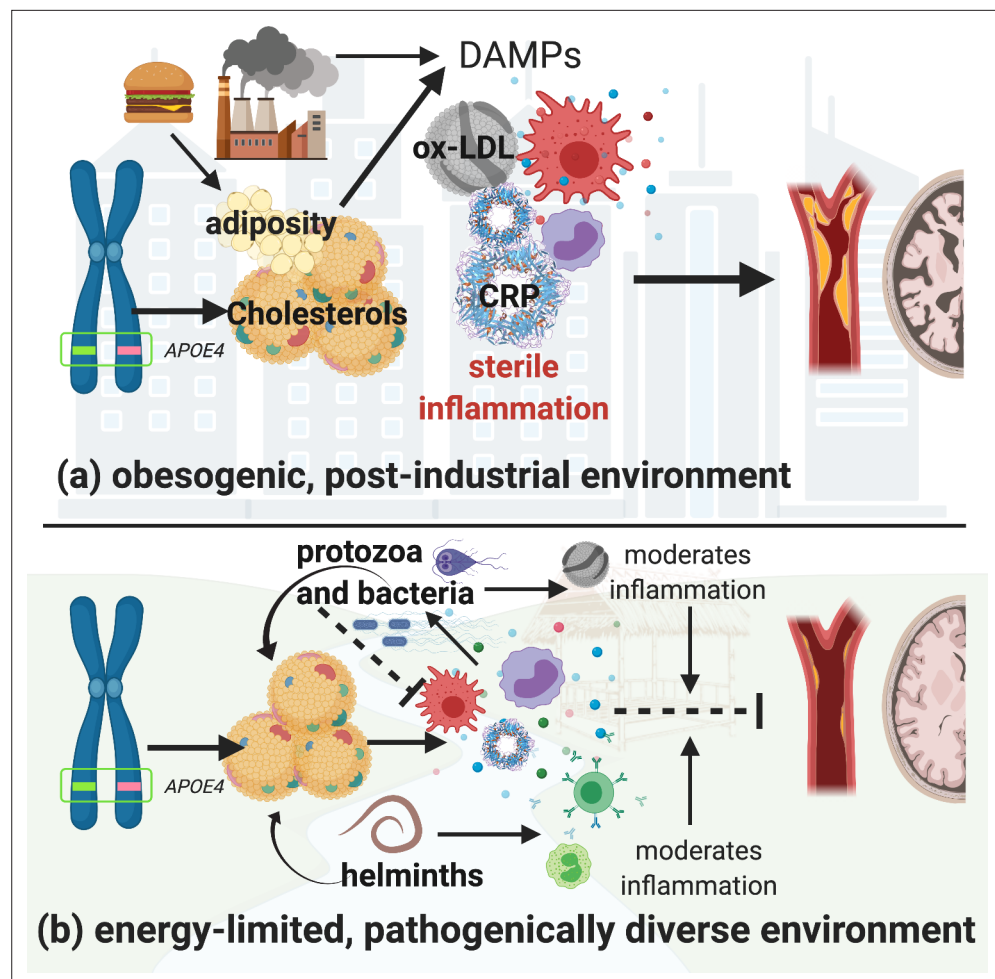


Figure 1. Hypothetical pathways through which the apolipoprotein E4 (APOE4) allele influences lipid processing, immune regulation and disease risk in post-industrialized and non-industrialized contexts. In both contexts, the APOE4 allele leads to increased levels of circulating lipids; however, in post-industrialized contexts (a), lipid levels can reach dangerously high levels due to obesogenic diets, and an absence of moderation by parasites and pathogen-driven immune activation. Immune activation by non-pathogenic elements triggers damage-associated molecular pattern pathways, which generates a proinflammatory 'sterile' immune response. Obesity and hyperlipidemia can simultaneously fuel sterile inflammation and promote oxidation of cholesterol, which, due to their lack of function, cause further tissue damage associated with cardiovascular and neurodegenerative disease risk. In energetically limited, pathogenically diverse contexts (b), the pathway between APOE4 and disease risk is considerably more complex. Briefly, immune responses to parasites and microbes require cholesterol, and there are both direct and indirect effects of different species of parasites which further regulate cholesterol production and utilization. In addition, anti-inflammatory immune responses are generated by ox-LDL (e.g. in response to bacteria and protozoal infections), and helminthic parasites, which balance the immune system's overall response. It is possible that in contexts where there is higher pathogen diversity, an APOE4 phenotype may be less harmful because it minimizes the damage caused by upregulated innate immune function, while also maintaining higher cholesterol levels which would buffer the cost of innate immune activation due to infection. Whereas in high-calorie, low-pathogen environments, the utility of having an APOE4 allele may be muted, and the costs more severe. Image created with [BioRender.com](https://www.biorender.com/).

adult ages (**Supplementary file 1; Figure 2**). **Table 1** provides a full description of lipid and immune levels of individuals by APOE genotype.

In our sample, 21.2 % have at least one APOE4 allele; 245 individuals are heterozygous 3/4, and 23 are homozygous 4/4. The remaining 78.8 % ($n = 998$) are homozygous for APOE3/3. Overall frequency of the APOE4 allele is 11.5 %. The APOE2 allele was absent. Throughout the rest of the paper, APOE genotype is defined categorically, binning individuals as homozygous APOE3 (E3/3) or as APOE4+

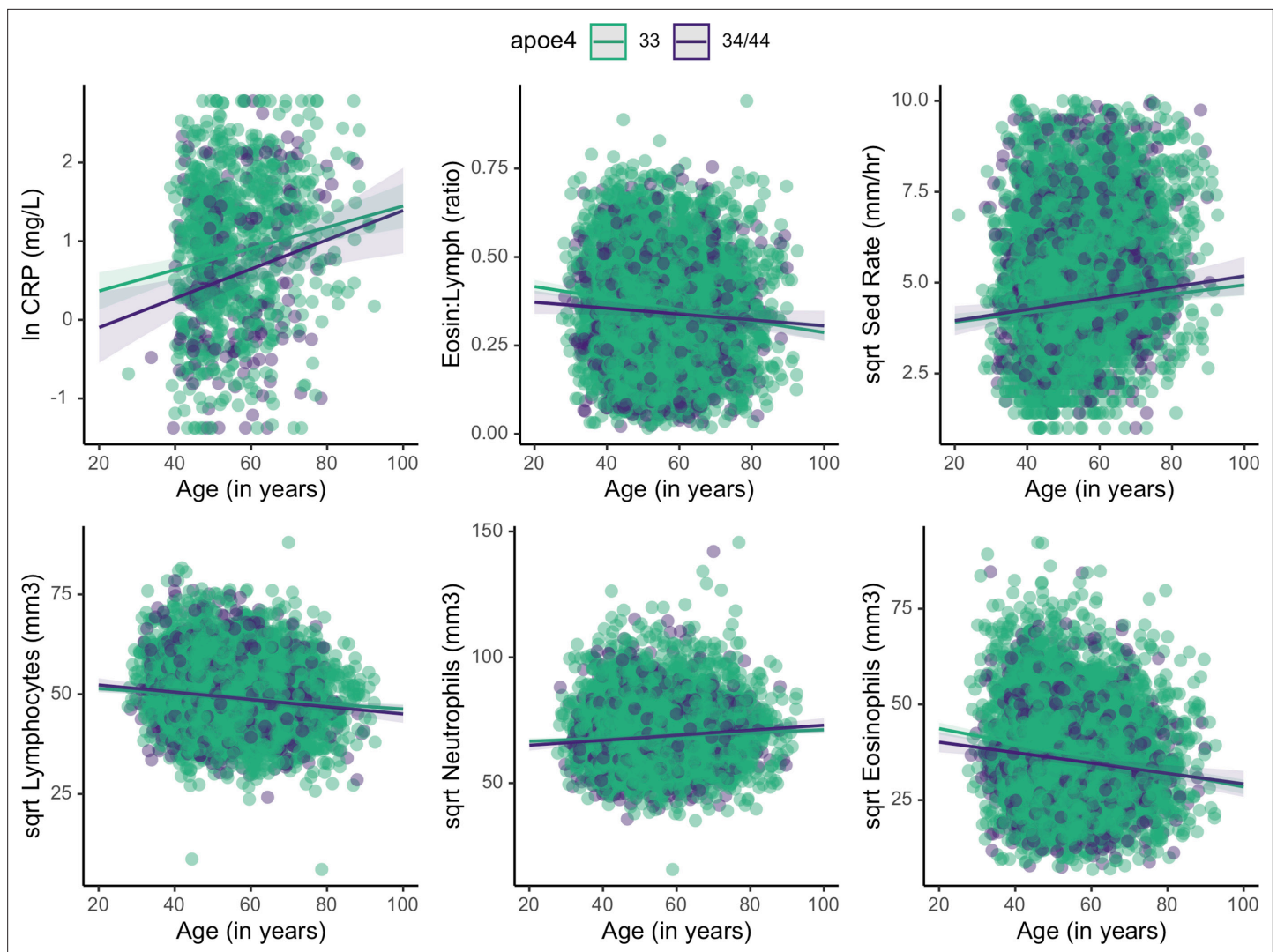


Figure 2. Plots showing estimated change in immune markers across age, split by apolipoprotein *E4* (*APOE*) genotype. Slopes were taken from mixed effects linear regression models and represent estimates of the interactive effects of *APOE* genotype and age on each immune marker. Models adjust for sex, season, and current illness (**Supplementary file 1**). Erythrocyte sedimentation rate is abbreviated as ‘Sed Rate’.

carriers (if they had at least one copy of the *APOE4* allele). Heterozygous and *APOE4* homozygotes were binned together due to the small number of homozygotes (1.8 % of total sample, and thus too small of a group for adequately powered statistical tests).

Characterization of lipid and immune profiles by *APOE* genotype

Relative to *APOE3/3* homozygotes, *APOE4* carriers have higher BMI ($\beta = 0.15$ [CI: 0.02–0.28], $p = 0.02$), total cholesterol ($\beta = 0.15$ [CI: 0.04, 0.27], $p = 0.009$), and oxidized LDL ($\beta = 0.16$ [CI: –0.00, 0.32], $p = 0.05$), yet lower levels of innate immune blood biomarkers: CRP ($\beta = -0.29$ [CI: –0.44, –0.14], $p < 0.001$), eosinophils ($\beta = -0.16$ [CI: –0.24, –0.08], $p < 0.001$) (**Table 1**, **Figure 3**). Similarly, in constrained models that excluded all individuals with CRP >10 mg/L and >5 mg/L, *APOE4* carriers maintained lower levels of CRP relative to *APOE3/3* homozygotes ($\beta = -0.23$ [CI: –0.38, –0.09], $p < 0.001$; $\beta = -0.22$ [CI: –0.36, –0.08], $p = 0.002$, respectively). Adjusting for multiple testing, CRP (FDR adj. $p < 0.001$) and eosinophils (FDR adj. $p < 0.001$) remain significantly different between *APOE* genotypes. *APOE4* is also associated with a lower eosinophil to lymphocyte ratio ($\beta = -0.14$ [CI: –0.23, –0.05], $p = 0.001$) and lower total leukocytes ($\beta = -0.08$ [CI: –0.15, –0.01], $p = 0.02$), but not with LDL, high-density lipoprotein (HDL), or triglycerides (**Figure 3—figure supplement 1**). Full models shown in **Supplementary file 1b–e**.

Table 1. Description of immune and lipid measures for homozygous APOE3/3 and APOE4+ carriers for whom age and sex are available.

Values are reported as mean (standard deviation). Linear mixed effects models fit by REML were used to test for differences between groups, controlling for age, sex, current immune activation, and seasonality, with random effects for community and individual ID. Model to test age differences includes only a random effect for individual ID. Multiple test correction was conducted for models used for hypothesis-testing; False Discovery Rate (FDR) adjusted p-values are reported for these models. No. of observations is reported as: total number of observations for the main biomarker (number of unique individuals) in each model. T-statistics use Satterthwaite's method. Due to skewness of biomarkers, statistical models use transformed and scaled data for normalization, as such, estimates are reported as standardized betas (b) with standard errors (SE). Full models with covariates and 95% confidence intervals can be found in Tables 2-3 in the Supplement. See methods for transformations for each marker.

Variables	APOE 3/3	Apoe4+	No. observations per model	β	SE	t-value	p-value	FDR adj p-value
N	998	268	–	–	–	–	–	–
% female	51%	48%	–	–	–	–	–	–
Age (in years)	54 (11.5)	54 (11.2)	6615 (1268)	0.007	0.07	0.106	0.915	–
BMI (kg/m ²)	23.9 (3.4)	24.6 (3.7)	6224 (1263)	0.15	0.06	2.421	0.016*	–
C-reactive protein (mg/L)	3.7 (3.3)	2.9 (2.6)	1032 (907)	-0.29	0.08	-3.731	<0.001***	<0.001***
Eosinophil (mm ³)	1617 (1060)	1375 (910)	6129 (1259)	-0.16	0.04	-3.871	<0.001***	<0.001***
Neutrophil (mm ³)	5044 (1803)	4816 (1697)	6144 (1259)	-0.03	0.03	-0.816	0.415	0.435
Sed Rate (mm/hr)	29.4 (19.5)	29.7 (19.2)	5987 (1253)	0.06	0.04	1.334	0.182	0.217
Eosin : Lymph ratio	0.36 (0.14)	0.33 (0.14)	6121 (1260)	-0.14	0.04	-3.197	0.001**	----
Leukocytes (1000/mm ³)	9.3 (2.5)	8.8 (2.4)	6229 (1266)	-0.08	0.03	-2.281	0.023*	–
Lymphocytes (mm ³)	2590 (832)	2565 (852)	6136 (1260)	0	0.04	0.104	0.917	–
Hemoglobin (g/dL)	13.2 (1.5)	13.2 (1.4)	6195 (1263)	-0.04	0.05	-0.805	0.421	–
Triglycerides (mg/dL)	107 (51)	114 (61)	2633 (1174)	0.07	0.06	1.157	0.248	–
Total cholesterol (mg/dL)	144 (32)	148 (33)	2581 (1168)	0.15	0.06	2.594	0.010**	0.021
HDL cholesterol (mg/dL)	38 (9)	38 (9)	2477 (1167)	0.05	0.06	0.83	0.407	–
LDL cholesterol (mg/dL)	90 (32)	93 (32)	2390 (1154)	0.08	0.06	1.307	0.192	0.217
Oxidized LDL (U/L)	76 (24)	79 (23)	1033 (907)	0.16	0.08	1.947	0.052*	0.090t

Statistical significance is denoted as: t p<0.10; * p<0.05; ** p<0.01; *** p<0.001.

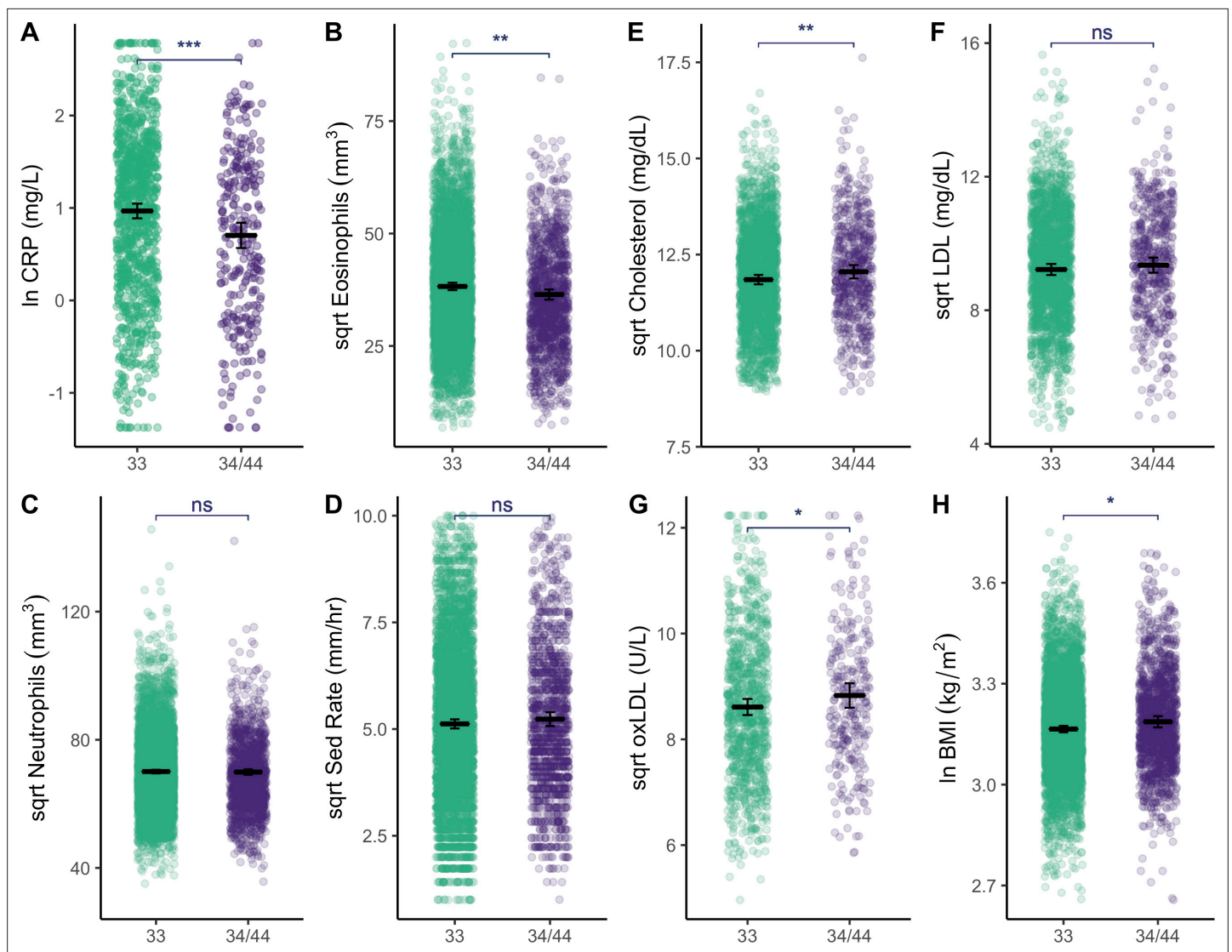


Figure 3. Plots show distributions of biomarker data (raw) grouped by APOE genotype (homozygous APOE 33 versus those that have at least one copy of the E4 allele). All plots include estimated means (horizontal lines) and standard errors (crossbars) per genotype, derived from mixed effects linear regression models that adjust for age, sex, season, and current illness. For full models with covariates, see **Supplementary file 1b, c and e**. Erythrocyte sedimentation rate is abbreviated as 'Sed Rate'. See **Figure 3—figure supplement 1** for additional plots comparing of biomarkers by APOE genotype. Statistical significance is denoted as: *p < 0.05; **p < 0.01; ***p < 0.001.

The online version of this article includes the following figure supplement(s) for figure 3:

Figure supplement 1. Plots show distributions of biomarker data (raw) grouped by APOE genotype (homozygous APOE 33 versus those that have at least one copy of the E4 allele).

Does BMI moderate the association between lipids and inflammation?

For Tsimane with higher (>28) BMI, total cholesterol and LDL did not associate with CRP; however, for individuals with median ($21 \leq \text{BMI} \leq 28$) or low (<21) BMI, higher total cholesterol and LDL associate with lower CRP (**Figure 4**). When considered as a continuous variable, BMI significantly moderates these associations (total cholesterol: $\beta = 0.15$ [CI: 0.08, 0.21], $p < 0.001$; LDL: $\beta = 0.16$ [CI: 0.10, 0.22], $p < 0.001$). BMI also interacts with ox-LDL ($\beta = 0.14$ [CI: 0.08, 0.19], $p < 0.001$) in predicting CRP; however, this relationship is distinct from the other lipids tested. For Tsimane with high BMI, ox-LDL positively associates with CRP, while for those with low BMI the inverse is true (**Figure 3C**). For ESR, total cholesterol ($\beta = 0.05$ [CI: 0.01, 0.08], $p = 0.008$) and LDL ($\beta = 0.03$ [CI: -0.00, 0.07], $p = 0.07$) positively associate with ESR only among Tsimane with higher BMIs. After adjusting for multiple testing,

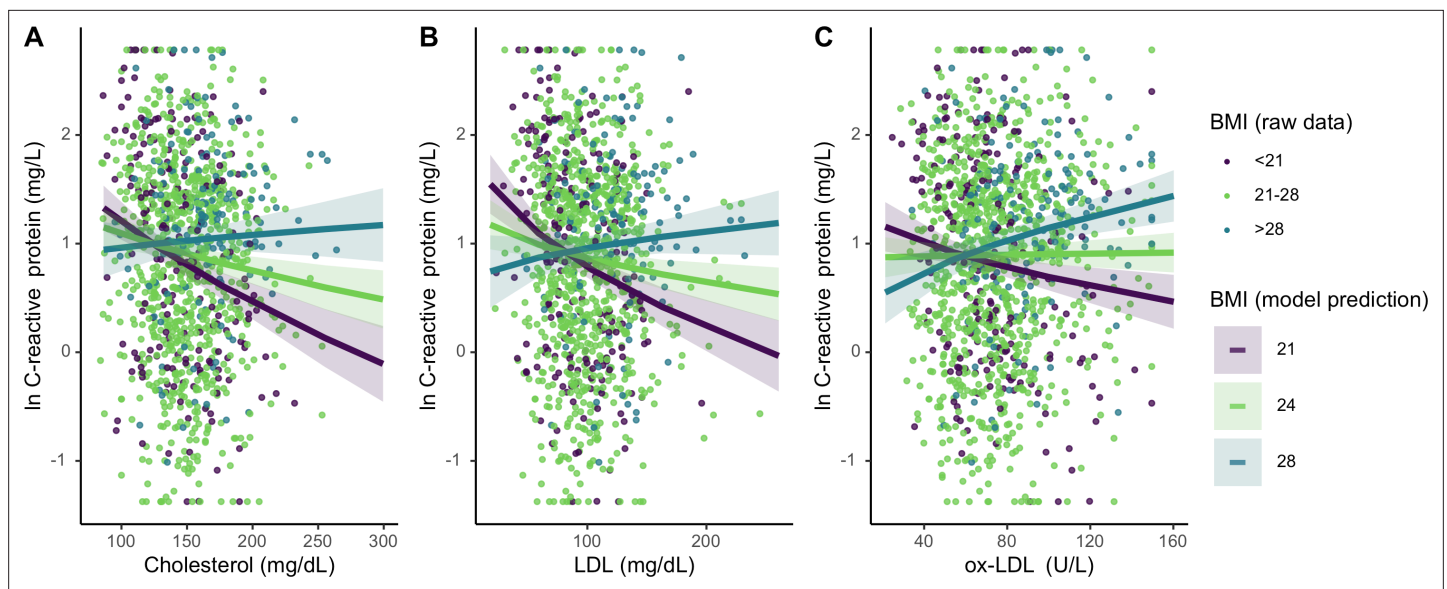


Figure 4. Differing influence of cholesterol on C-reactive protein (CRP), based on three levels of body mass index (BMI) (mean, ± 1 standard deviation). Panels A-C show interaction effects between BMI and (A) total cholesterol, (B) LDL, and (C) oxidized LDL. For total and LDL cholesterol, among those with low (purple line) and mean (lime green line) BMI, cholesterol is negatively associated with CRP. Oxidized LDL is only associated with higher CRP among individuals with high BMI (turquoise line). Lines are predicted from mixed effects linear regressions that adjust for age, sex, seasonality, with random effects for individual and community residence (**Supplementary file 1f-h**). Data points are raw values, color-coded based on BMI level. Variables are transformed and centered. See **Figure 4—figure supplement 1** for independent associations between BMI and cholesterol with markers of inflammation.

The online version of this article includes the following figure supplement(s) for figure 4:

Figure supplement 1. This figure shows independent associations between body mass index (BMI) and cholesterol with markers of inflammation from mixed effects models, adjusting for age, sex, seasonality, and current illness with random effects for community and individual ID.

relationships between cholesterol and CRP all remain significant (all FDR adj. $p < 0.001$), as does the relationship between total cholesterol and ESR (FDR adj. $p = 0.02$).

Concerning independent relationships, there are no direct relationship between ox-LDL and CRP, whereas higher total cholesterol and LDL are associated with lower CRP (total cholesterol: $\beta = -0.13$ [CI: $-0.20, -0.05$], $p < 0.001$; LDL: $\beta = -0.11$ [CI: $-0.18, -0.03$], $p = 0.006$) (**Figure 4—figure supplement 1**). Total cholesterol is also negatively associated with ESR ($\beta = -0.06$ [CI: $-0.10, -0.02$], $p = 0.002$). There are no independent or interactive relationships between BMI, cholesterol, and neutrophils. For full models, see **Supplementary file 1f-h**.

Does APOE genotype moderate the association between BMI and lipids?

Finally, we assess whether APOE genotypes differentially moderate associations between cholesterol and BMI for lean and high BMI individuals. To evaluate the effects of the APOE4 allele on lipid levels across the range of BMI, we added an interaction term between BMI and APOE genotype to the mixed effects linear regression models assessing relationships between BMI and lipids (**Table 2**). These analyses show that APOE4 carriers maintain similar levels of total cholesterol and LDL across BMIs (cholesterol: $\beta = -0.08$ [CI: $-0.18, -0.02$], $p = 0.11$; LDL: $\beta = -0.09$ [CI: $-0.19, 0.00$], $p = 0.06$), whereas APOE3/3 homozygotes show higher cholesterol with BMI. Specifically, APOE4 carriers maintain higher levels of total and LDL cholesterol at lower BMIs, but have lower levels of both at higher BMIs, relative to individuals that are homozygous APOE3/3 (**Figure 5**). However, neither of these associations are significant. Ox-LDL, HDL, and triglycerides do not vary by APOE alleles across BMIs. For full models, see **Supplementary file 1**.

Table 2. Models evaluating the moderating effects of APOE genotype on associations between BMI and cholesterol.

Results are fixed effects estimates from mixed effects linear regressions, which include random effects for ID and community residence. In addition to age, sex, and season, a dummy variable was used as a proxy for current illness (leukocytes > 12 mm3). Results are reported as standardized betas; CI is the 95% confidence interval. All dependent variables were transformed and centered prior to analyses. APOE genotype is coded as a categorical variable, binned as individuals that are homozygous E3 (E3) versus those that have at least one copy of the E4 allele (E4).

Predictors	Total cholesterol			LDL			Oxidized LDL		
	β	CI	p	β	CI	p	β	CI	p
E4 * BMI	−0.08	−0.18–0.02	0.111	−0.09	−0.19–0.00	0.061	0.02	−0.13–0.17	0.786
APOE [E4]	0.14	0.03–0.26	0.013	0.07	−0.04–0.18	0.221	0.13	−0.03–0.29	0.112
BMI	0.18	0.14–0.23	<0.001	0.2	0.15–0.25	<0.001	0.21	0.14–0.28	<0.001
Sex [women]	0.15	0.06–0.24	0.001	0.2	0.11–0.28	<0.001	0.09	−0.03–0.21	0.158
Age [in years]	0.01	0.01–0.01	<0.001	0.01	0.01–0.02	<0.001	0	−0.01–0.01	0.869
Currently ill	0.02	−0.13–0.17	0.773	−0.03	−0.18–0.13	0.744	0.15	−0.09–0.39	0.229
Season [wet]	−0.12	−0.20–−0.04	0.004	−0.29	−0.38–−0.21	<0.001	−0.28	−0.44–−0.13	<0.001
(Intercept)	−0.7	−0.94–−0.46	<0.001	−0.71	−0.95–−0.47	<0.001	0.09	−0.28–0.46	0.626
Observations	2581			2390			1032		
Marginal R2	0.049			0.074			0.07		

Discussion

We hypothesized that the effect of the APOE4 polymorphism on disease risk may be environmentally moderated, and that in an energy-limited and pathogenically diverse context, carrying an APOE4 allele may provide some benefit if it aligns with downregulated innate immune function and higher circulating lipids. In support of this hypothesis, we find that Tsimane with an APOE4 allele have higher levels of lipids, yet lower levels of CRP and eosinophils, compared to individuals that have a homozygous APOE3 genotype. Overall, APOE4 carriers also have an adaptive-biased immune profile (as measured by a lower ratio of eosinophils to lymphocytes). These associations remain when controlling for factors known to contribute to differences in inflammation including age, sex, seasonality, and current infection. The most striking example of immunological differences is for CRP, an acute phase protein that functions as part of the complement system and is a marker of generalized inflammation. Though CRP is higher in the Tsimane relative to U.S. and European populations (Blackwell et al., 2016; Gurven et al., 2008), we find that CRP levels are 30 % lower among APOE4 carriers than individuals that are homozygous APOE3/3. This replicates a similar finding of lower CRP among Tsimane APOE4 carriers from samples collected over a decade prior to the current study (Vasunilashorn et al., 2011). A study of ‘healthy’ (nondiabetic) Finnish men also found that APOE4 carriers had higher LDL cholesterol coupled with lower CRP (Martiskainen et al., 2018).

Further, in support of our hypothesis that lifestyle and ecological (e.g. pathogen exposure) factors affect how lipids influence inflammation, we find that BMI significantly moderates relationships between lipids and markers of innate inflammation. Our results are consistent with expectations for a high infection context: Tsimane with high BMI (~1 SD above the mean) show no relationship between total cholesterol or LDL with CRP and ESR, but those with mean or low BMI have higher lipid levels that are associated with lower CRP and ESR. In contemporary post-industrialized contexts (Figure 1a), these findings may seem counterintuitive. But in a high-pathogen context, higher concentrations of circulating lipids may allow individuals, especially those that are energy-compromised, to better tolerate infection (Gurven et al., 2016). Thus, the negative association between cholesterol and inflammatory markers could indicate lower infectious burden. For the Tsimane, higher cholesterol levels are likely an indicator of robust health (e.g. not fighting an infection) rather than chronic disease. Independently, lipids are either neutral or negatively associated with immune markers in this sample. This is consistent

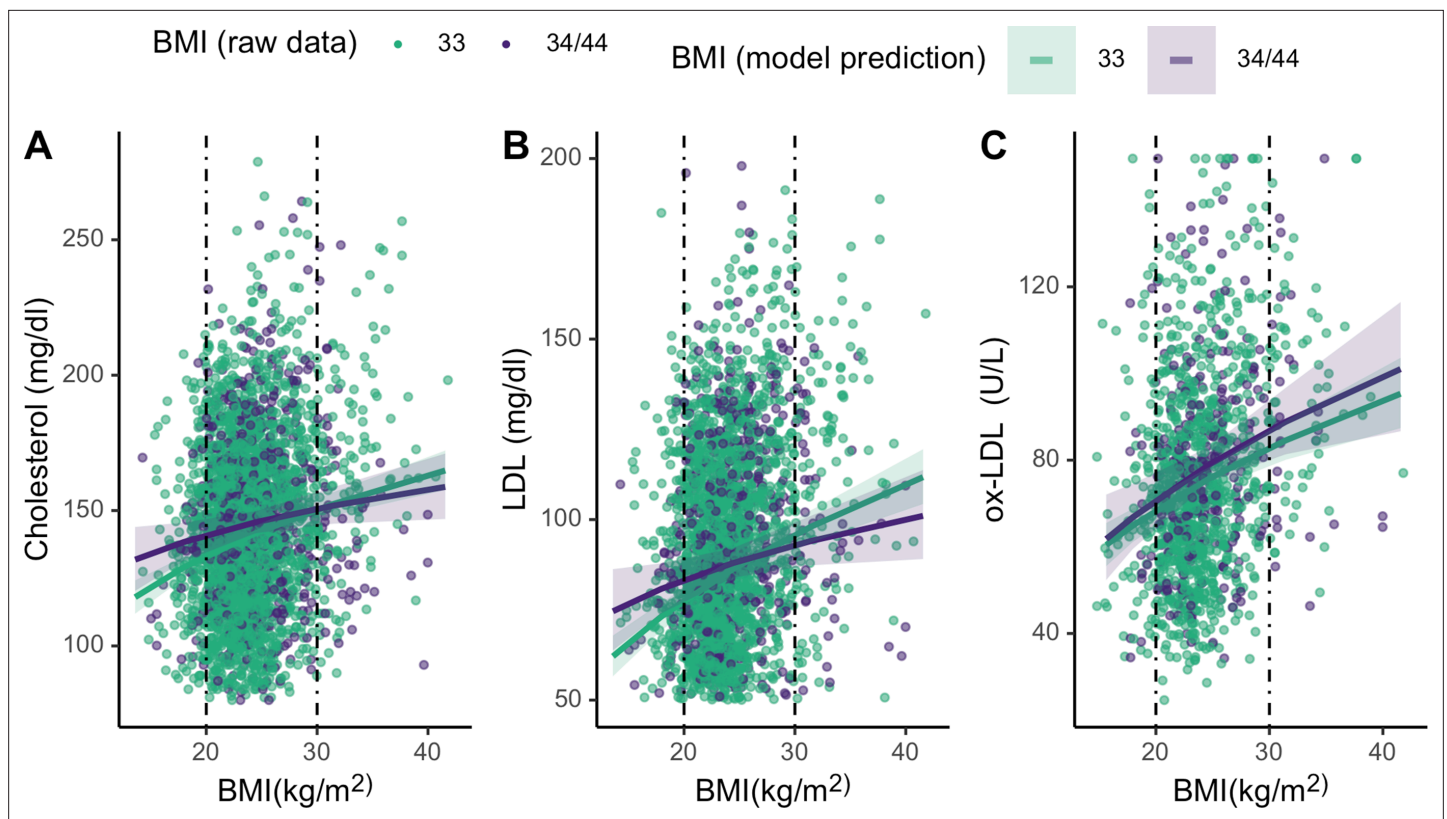


Figure 5. Plots showing moderating effects of APOE genotype on associations between body mass index (BMI) and cholesterol (see Table 2 in the manuscript for models). Dotted vertical lines represent cutoffs for low (<21) and high (>28) BMI. For the primary cholesterol utilized during an immune response to pathogens – total cholesterol (A) and LDL (B) – individuals with an E4 allele maintain slightly higher levels of those cholesterol at low BMIs, compared to homozygous E3. Plotted lines are derived from mixed effects linear regressions that include age, sex, season, and current infection as covariates, as well as random effects for individual and community residence. Data points are raw values, color-coded by APOE genotype.

with previous research among the Tsimane that found blood lipids varied inversely with IgE, eosinophils, and other markers of infection (Vasunilashorn et al., 2010). Overall, the Tsimane maintain low levels of cholesterol relative to U.S. and European standards – less than 5 % of sample had a total cholesterol higher than 200 mg/dL. The lack of hyperlipidemic cholesterol levels likely also explains in part why cholesterol does not associate with higher inflammation in this population.

Notably, the moderation effect of BMI indicates that the relationship between ox-LDL and CRP are inverted at the low and high ends of the BMI range. For individuals with low BMI, higher ox-LDL levels are associated with lower CRP, while for those with high BMI, higher ox-LDL is associated with higher CRP (Figure 3c). One possible explanation for the opposing relationships we find between ox-LDL and CRP is that there may be differences in the underlying causes of oxidation in these groups. Though ox-LDL is often considered a consequence of obesogenic or hyperlipidemic oxidation of LDL (Neuparth et al., 2013), ox-LDL is also produced in response to pathogen-mediated immune activation (Han, 2009), and its relationship with downstream immune functions largely depends on the cause of oxidation. For example, while nonpathogenic oxidation of LDL promotes inflammation (Neuparth et al., 2013; Tall and Yvan-Charvet, 2014), during protozoal or bacterial infections, ox-LDL contributes to lower inflammatory responses (Han, 2009). Thus, those with high BMI may represent the transition to sterile inflammation as lifestyles change with greater participation in a market economy (Trumble and Finch, 2019). Indeed, other studies have documented what may be the start of a nutritional transition among the Tsimane (Kraft et al., 2018; Masterson et al., 2017; Rosinger et al., 2013).

Our finding that innate immune biomarkers are lower among APOE4 carriers is in line with prior reports (Lumsden et al., 2020; Martiskainen et al., 2018; Trumble et al., 2017; Vasunilashorn et al., 2011), however the causes are uncertain. One proximate explanation involves the mevalonate

pathway, which plays a key role in multiple cellular processes, including modulating sterol and cholesterol biosynthesis and innate immune function (*Buhaescu and Izzedine, 2007*). One ultimate explanation that we consider relates to the utility of downregulated baseline inflammation in contexts where there is likely chronic exposure to a wide diversity of novel pathogens. In such a context, the costs of inflammation would be amplified, and elements that are involved in regulating innate inflammation may be under stronger selective pressure. This would be plausible so long as downregulating immune function does not compromise one's 'ability to respond' to immunological threats, as has previously been argued (*Man et al., 2016*). Regarding the main finding for CRP, it is also possible that this is because *APOE4* carriers experience a lower innate immune sensing (*Dose et al., 2018*) or have faster clearance following the resolution of an acute spike. While there is currently no direct evidence for the latter, some studies have found that higher circulating lipids were associated with more rapid clearance of active infections (*Andersen, 2018; Pérez-Guzmán et al., 2005*). The current study design did not allow analysis of these potential pathways.

Though numerous other studies have established links between the *APOE4* polymorphism and neighboring genes (the *APOE* gene cluster) (*Kulminski et al., 2019*), and increased circulating lipids (*Yassine and Finch, 2020; de Chaves and Narayanaswami, 2008; Safieh et al., 2019; Saito et al., 2004*), to our knowledge, this study is the first to assess whether *APOE* moderates lipid levels under energetic constraints. Specifically, our results show that the *APOE4+* genotype is marginally associated with higher relative lipids in a low-energy, pathogenically diverse system. In one study conducted in an obesogenic environment (mean BMI 28 kg/m²), BMI was independently associated with higher total cholesterol, but this relationship did not differ by *APOE* genotype (*Petkeviciene et al., 2012*). While it is difficult to pinpoint the cause for discrepant findings across studies, one possibility is that the Lithuanian study did not capture moderation at low BMI (the mean BMI was 28 for both *E4* *APOE4+* and *APOE3/3* genotypes). Another possibility is that the low-pathogen context of urban Lithuania led to less moderation of cholesterol at high BMIs. As mentioned in Introduction, one proposal for the persistence of the ancestral *E4* allele despite its deleterious health effects at later ages relies on the fitness benefits of lipid buffering in early life relative to the more recent *E3* mutation (*van Exel et al., 2017; Yassine and Finch, 2020*). The ability to maintain adequate lipid reserves under energetic and pathogenic pressures would also provide additional benefits over the life course (*Finch and Kulminski, 2021*).

Finally, nearly one-fourth of individuals in the sample had at least one copy of *APOE4*. The allelic frequency of *APOE4* reported here is similar to what has been previously documented among other South American and Amerindian populations, which ranges from 5% to 30% and varies widely by region and level of genetic admixture (*Corbo and Scacchi, 1999; Gayà-Vidal et al., 2012*). The distribution of *APOE* allelic variants in populations around the world is likely due to a mosaic of factors, from genetic drift, to antagonistic pleiotropy, to potential differences related to environmentally dependent costs and benefits of functionally distinct variants. Certainly some degree of genetic drift or founder effects (*Gayà-Vidal et al., 2012; Singh et al., 2006*), antagonistic pleiotropy (*Smith et al., 2019; van Exel et al., 2017*) and other forces (e.g. genetic relatedness) play an important role in determining population and global frequencies and should be considered jointly to make inferences about the frequency of *E4* in the Tsimane population. While pathogen risk and energetic limitations is one context where the typical costs of *E4* may not be expressed, the high frequency of *E4* allele in populations that are appreciably different in terms of latitude, ecology, and population history (e.g. northern European and central African populations) confirms that more is involved in understanding population differences in *E4* frequency (*Abondio et al., 2019; Eisenberg et al., 2010*).

The commonly reported associations between *APOE4* and disease risk in post-industrialized societies may differ from subsistence populations due to environmental mismatch (*Trotter et al., 2010*). In an environment where calories are limited, and one's innate immune system is already primed by multiple pathogens, the benefit of having an *APOE4* allele – which facilitates upregulated lipids (sufficient for mounting immune responses) and downregulates innate immune function – may be amplified. Such a phenotype could be beneficial particularly if downregulated immune function did not compromise responses to immunological threats. Further, in such an environment, this phenotype may be energetically conservative, maintaining resources to fuel other systems, such as cognitive functioning (*Trumble and Finch, 2019*). Indeed, there is some evidence that *APOE4* carriers may be better able to buffer the negative effects of infection. An *APOE4* polymorphism in Brazilian children with a

history of infection (measured by bouts of diarrhea in infancy) predicted better scores on cognitive exams (*Oria et al., 2011*). Among Tsimane infected with parasites, only *APOE4* carriers performed better on cognitive tests (*Trumble et al., 2017*). However, in hygienic post-industrialized contexts, the risk of helminthic and protozoal infection is low, and most pathogens can be quickly treated with medication. Thus, the potential benefits of the *APOE4* allele are muted, and the costs of higher lipids are much more severe in these obesogenic environments.

Limitations

Though our findings draw from a large sample size and are robust to various controls and model specifications, there are several limitations. First, our findings are correlative and limit causal inference. Because these findings may be important for furthering evolutionary (i.e. why the *APOE4* allele may be maintained) and clinical (i.e. the role of *APOE* in disease pathogenesis) understanding, they require replication and warrant experimental testing. The central thesis presented here – that persistent exposure to pathogens and obesogenic diets moderate the relationship between blood lipids and inflammation – is amenable to experimental manipulation under lab conditions. Specifically, a mammalian model system could be split into two treatments: those raised under sterile conditions versus regimented exposure to non-lethal pathogens. These treatments may then be crossed with dietary or physical activity conditions that produce differential levels of adiposity. Our hypothesis predicts that both decreased adiposity and increased life course pathogen exposure will reduce or even eliminate positive associations between blood lipids and chronic inflammation. Importantly, inflammatory biomarkers can be measured at more frequent intervals in lab conditions to assess long-term differences in the function of both pro- and anti-inflammatory pathways between experimental treatments.

Second, there is some evidence that the *APOE4* allele is positively associated with HDL cholesterol levels (*Hopkins et al., 2002*), and that higher HDL levels reduce risk of severe infection (measured by infectious hospitalizations) (*Trinder et al., 2020*). Inversely, acute infections and systemic inflammation (e.g. acute phase reaction) are associated with a decrease in HDL and HDL remodeling that results in lower cholesterol efflux capacity and higher peripheral levels of LDL cholesterol (*Ronsein and Vaisar, 2017; Zimetti et al., 2017*). While we did not find differences in HDL by *APOE* status among the Tsimane, we cannot completely discount the possibility that HDL remodeling plays a role in the higher lipid levels, in addition to *APOE* allelic variation. Further, given the relative lack of, and difficulty in accessing, medical care facilities, it is difficult to assess degrees of infection severity, and thus it is also possible that *APOE4* may mitigate infectious disease burden. However, the current data cannot provide evidence for either of these potentials, and further research is needed to disentangle the roles of *APOE* and lipids in infection.

Third, proxies for energy availability and pathogen exposures are imperfect. BMI and fat free mass may have a variable relationship across the degree of market integration. However, given that our main goal in the paper – with regard to energy availability – is to investigate *APOE* and lipids at the extreme tails of BMI (lean versus obese), BMI should adequately capture broad differences in energetic availability between these two groups. Because patterns of immune response vary depending on pathogen type and species, the use of a high white blood cell count cutoff as a proxy for current infection overly simplifies immune variation due to different types of infection. To this end, we also adjust for seasonality and cluster by community residence in our models, which should capture additional variation in exposures.

Finally, we were not able to fully adjust for the time of day that samples were collected for the biomarkers used in this paper. Given that peripheral levels of most immune biomarkers vary diurnally to some extent, it is possible that not adjusting for exact time of day may have introduced some noise into analyses. However, CRP (which the main findings centered around) does not appear to follow a circadian rhythm in healthy individuals (*Meier-Ewert et al., 2001*). Further, the largest differences in levels (peak to trough amplitudes) tend to coincide with sleep and wake cycles (*Labrecque and Cermakian, 2015*). Because blood draws routinely occur in the morning, samples are constrained to a narrow window, and thus we are not comparing values across the full range of diurnal variation.

Conclusion

In post-industrial settings, *APOE4* is generally considered a purely deleterious allele, increasing inflammation and lipids, and escalating CVD and neurological disease risk. Yet, in a high-pathogen

environment with minimal obesity, we find that *APOE4* is associated with lower levels of innate inflammation. While *APOE4* carriers do have higher lipid levels, these may be beneficial for immune response and child survival, and unlikely to increase CVD risk in a population without other cardiometabolic risk factors.

Materials and methods

Population and sampling design

The Tsimane are an Amerindian population that live in the tropical lowlands of Bolivia. As of 2015, the Tsimane Health and Life History Project (THLHP) census estimated a total population size of about 16,000 individuals living across 90+ villages (*Gurven et al., 2017*). Data come from the THLHP, a longitudinal study of health and behavior that has run continuously since 2002 (*Gurven et al., 2017*).

Sampling design

Biomarker data used in this paper were collected by the THLHP between 2004 and 2015 (see *Gurven et al., 2017*; *Kraft et al., 2020* for details). A Bolivian and Tsimane mobile medical team travel annually or biannually among study communities conducting clinical health assessments and collecting biochemical and anthropometric information from community members that want to participate. This sample includes all data from individuals for whom we have *APOE* genotyping and measurements of age, sex, and BMI – which is the base criteria for this study. Sample size varies by biomarker and over time for several reasons: sampling strategy varies by data type, absent or sick team personnel needed to collect data, the number of study villages and thus enrolled participants has increased over time, and the data types collected have changed over time (see *Kraft et al., 2020*). There are also fewer repeat measurements for a subset of biomarkers (i.e. CRP and ox-LDL) that were assayed in the United States, due to them being analyzed as part of a prior project. Specific sample sizes are reported in *Table 1*, and full tables report sample size for each model.

APOE genotyping

Whole blood samples were stored in cryovials (Nalgene, Rochester, NY) and frozen in liquid nitrogen before transfer on dry ice to the University of California-Santa Barbara, where they were stored at -80°C until genotyping. SNP genotyping was used to identify *APOE* allelic variants in blood samples. Samples were shipped on dry ice to University of Southern California (2010 and 2013) and University of Texas-Houston (2016), where DNA was extracted, quantified, and haplotype-coded for *APO*- *E2*, *E3*, and *E4* alleles using the TaqMan Allelic Discrimination system (Thermo Fisher Scientific, Carlsbad, CA). Determination of the *APOE2/E3/E4* alleles in the Tsimane derived from two SNPs of 20–30 bp oligonucleotides surrounding the polymorphic site (Cys112Arg/rs429358 and Cys158Arg/rs7412) (*Trumble et al., 2017*; *Vasunilashorn et al., 2011*).

Measurement of blood lipids and immune function

Biomarkers were assayed either in the field at the time of collection or in the Human Biodemography laboratory at UC Santa Barbara in 2016.

Blood was collected by venipuncture in a heparin-coated vacutainer. Immediately following the blood draw, total leukocyte counts and hemoglobin were determined with a QBC Autoread Plus dry hematology system (QBC Diagnostics), with a QBC calibration check performed daily to verify QBC performance. Relative fractions of neutrophils, eosinophils, and lymphocytes were determined manually by microscopy with a hemocytometer by a certified Bolivian biochemist. ESR was calculated following the *Westergren, 1957*, method.

Serum was separated and frozen in liquid nitrogen before transfer to the University of California-Santa Barbara where a commercial immunoassay was used to measure ox-LDL (Mercodia Cat# 10-1143-01, Winston Salem, NC). Serum high sensitivity C-reactive protein (hs-CRP) was assessed via immunoassay (*Brindle et al., 2010*) and was cross-validated by the University of Washington laboratory, using the protocols utilized for the National Health and Nutrition Evaluation Survey (NHANES) (Meridian Life Sciences Cat# M86005M, RRID:AB_150654). Ox-LDL and hs-CRP assays use materials from the same lot across all measures. Total and LDL cholesterol levels from serum samples were

measured (Stat Fax 1908, Awareness Technology, Palm City, FL) in the THLHP laboratory in San Borja, Beni, Bolivia.

Age estimation and anthropometrics

Birth years were assigned based on a combination of methods including using known ages from written records, relative age lists, dated events, photo comparisons of people with known ages, and cross-validation of information from independent interviews of kin (Gurven et al., 2007). Each method provides an independent estimate of age, and when estimates yielded a date of birth within a 3-year range, the average was used. Individuals for whom reliable ages could not be ascertained are not included in analyses.

Weight and height were measured in the field by a member of the THLHP medical team, using a basic digital scale (Tanita, Arlington Heights, IL) and stadiometer to the nearest 0.1 cm. BMI was calculated as weight (kg)/height² (m²).

Statistical analysis

Mixed effects linear regressions with restricted maximum likelihood estimation are used for all analyses. Models adjust for age, sex, seasonality, and current infection (leukocyte count >12,000 cells per microliter of blood) (McKenzie and Williams, 2010), with random intercept effects for individual ID and community. Because Tsimane villages vary in sanitation infrastructure, including access to soap and other hygienic products, and potentially prevalence by pathogen type (e.g. some living very close to the river versus farther out in the forest), individuals were clustered by community to account for variation in such community-level factors. Household-level variation (e.g. cohabitating individuals may have similar exposures) was also tested by including a random household ID as a random variable. However, because inclusion of household ID as a random effect did not alter parameter estimates or p-values, and fit (measured by AIC) was not substantially improved across any model, it was omitted from final analyses. To model moderation effects (sections Does BMI moderate the association between lipids and inflammation? and Does APOE genotype moderate the association between BMI and lipids?) interaction terms are included between the main predictor and moderator.

Immune and lipid measures required transformation to normalize their skewed distributions. Variables were transformed as follows: CRP, BMI, and triglycerides were natural log-transformed; total leukocytes and subsets (lymphocytes neutrophils, eosinophils), ESR, and remaining cholesterol (total cholesterol, LDL, HDL, ox-LDL) were square root-transformed. To compare across models, all dependent variables were then z-scored for analyses, and thus all betas are standardized estimates.

Acknowledgements

We thank Tsimane participants and their communities, and the THLHP field team (including administrators, logistical support, physicians, biochemists, and anthropologists), whose support, expertise, and commitment made this work possible.

Additional information

Funding

Funder	Grant reference number	Author
National Institute on Aging	R01AG024119	Michael D Gurven Hillard Kaplan
National Institute on Aging	R56AG024119	Michael D Gurven
Agence Nationale de la Recherche		Jonathan Stieglitz

The funders had no role in study design, data collection and interpretation, or the decision to submit the work for publication.

Author contributions

Angela R Garcia, Conceptualization, Data curation, Formal analysis, Investigation, Methodology, Software, Visualization, Writing - original draft, Writing - review and editing; Caleb Finch, Conceptualization, Supervision, Writing - review and editing; Margaret Gatz, Kenneth Buetow, Supervision, Writing - review and editing; Thomas Kraft, Data curation, Methodology, Software, Writing - review and editing; Daniel Eid Rodriguez, Investigation, Writing - review and editing; Daniel Cummings, Data curation; Mia Charifson, Bret A Beheim, Data curation, Writing - review and editing; Hooman Allayee, Formal analysis, Resources, Writing - review and editing; Gregory S Thomas, Funding acquisition, Writing - review and editing; Jonathan Stieglitz, Funding acquisition, Project administration, Writing - review and editing; Michael D Gurven, Funding acquisition, Resources, Supervision, Writing - review and editing; Hillard Kaplan, Funding acquisition, Project administration, Resources, Supervision, Writing - review and editing; Benjamin C Trumble, Conceptualization, Funding acquisition, Investigation, Project administration, Resources, Supervision, Writing - review and editing

Author ORCIDs

Angela R Garcia  <http://orcid.org/0000-0002-6685-5533>
Caleb Finch  <http://orcid.org/0000-0002-7617-3958>
Margaret Gatz  <http://orcid.org/0000-0002-1071-9970>
Hooman Allayee  <http://orcid.org/0000-0002-2384-5239>
Jonathan Stieglitz  <http://orcid.org/0000-0001-5985-9643>
Michael D Gurven  <http://orcid.org/0000-0002-5661-527X>

Ethics

Human subjects: This research has been approved by institutional review boards at the University of New Mexico (#07-157) and University of California Santa Barbara (#3-20-0740), as well as the Tsimane government (Tsimane Gran Consejo) and village leaders. Study participants give consent for each part of the research and data collection prior to participating, during every visit by the THLHP.

Decision letter and Author response

Decision letter <https://doi.org/10.7554/68231.sa1>

Author response <https://doi.org/10.7554/68231.sa2>

Additional files

Supplementary files

- Transparent reporting form
- Supplementary file 1. Full models with covariates described in analyses and figures presented in main article.
- Supplementary file 2. Spanish-language abstract. Link to the Spanish version of the article: <https://tsimane.anth.ucsb.edu/results.html#pubs>.

Data availability

Working with indigenous populations requires special care and sensitivity, especially in regards to the public sharing of genetic data. A long history of abuse and mistrust between researchers and indigenous populations behooves us to prioritize the wishes of Tsimane. Given current ethical restrictions on sharing Tsimane genetic data, we cannot upload Tsimane genetic data to a public server at this time. Individuals interested in accessing the APOE genetic data should submit a request to the co-senior authors. Access will be granted for health focused research, subject to approval by THLHP co-Directors and Tsimane Gran Consejo (Tsimane governing body). All other de-identified data and code are openly accessible on Dryad through the following link: https://datadryad.org/stash/share/FqfEp93SdnqkIFbfbjBbenHsZh_10gulo8cf_9LMR3o While we are strong advocates of open science and believe that inclusion of diverse populations in genomics is critical for advancing the goals of public health and health equality, we also need to ensure that all research participants are protected. Our research team is working toward a long-term solution for data-sharing and a streamlined process for requests. This includes the creation of a locally-based ethics and review board comprised of representatives from Tsimane communities and leadership, research collaborators at the Universidad de San Simon (Cochabamba), and THLHP co-directors. The goal of this board is to ensure genomic (and all) data

collected are shared according to both global and culturally-specific ethical standards, and considerations about confidentiality.

The following dataset was generated:

Author(s)	Year	Dataset title	Dataset URL	Database and Identifier
Garcia AR	2021	APOE4 is associated with elevated blood lipids and lower levels of innate immune biomarkers in a tropical Amerindian subsistence population	https://doi.org/10.5061/dryad.pg4f4qrpt	Dryad Digital Repository, 10.5061/dryad.pg4f4qrpt

References

- Abondio P**, Sazzini M, Garagnani P, Boattini A, Monti D, Franceschi C, Luiselli D, Giuliani C. 2019. The genetic variability of APOE in different human populations and its implications for longevity. *Genes* **10**: 10030222. DOI: <https://doi.org/10.3390/genes10030222>, PMID: 30884759
- Andersen CJ**. 2018. Impact of dietary cholesterol on the pathophysiology of infectious and autoimmune disease. *Nutrients* **10**: 10060764. DOI: <https://doi.org/10.3390/nu10060764>, PMID: 29899295
- Bansal D**, Bhatti HS, Sehgal R. 2005. Role of cholesterol in parasitic infections. *Lipids in Health and Disease* **4**: 10. DOI: <https://doi.org/10.1186/1476-511X-4-10>, PMID: 15882457
- Belloy ME**, Napolioni V, Greicius MD. 2019. A Quarter Century of APOE and Alzheimer's Disease: Progress to Date and the Path Forward. *Neuron* **101**: 820–838. DOI: <https://doi.org/10.1016/j.neuron.2019.01.056>, PMID: 30844401
- Blackwell AD**, Tamayo MA, Beheim B, Trumble BC, Stieglitz J, Hooper PL, Martin M, Kaplan H, Gurven M. 2015. Helminth infection, fecundity, and age of first pregnancy in women. *Science* **350**: 970–972. DOI: <https://doi.org/10.1126/science.aac7902>, PMID: 26586763
- Blackwell AD**, Trumble BC, Maldonado Suarez I, Stieglitz J, Beheim B, Snodgrass JJ, Kaplan H, Gurven M. 2016. Immune function in amazonian horticulturalists. *Annals of Human Biology* **43**: 382–396. DOI: <https://doi.org/10.1080/03014460.2016.1189963>, PMID: 27174705
- Brindle E**, Fujita M, Shofer J, O'Connor KA. 2010. Serum, plasma, and dried blood spot high-sensitivity c-reactive protein enzyme immunoassay for population research. *Journal of Immunological Methods* **362**: 112–120. DOI: <https://doi.org/10.1016/j.jim.2010.09.014>, PMID: 20850446
- Buhaescu I**, Izzedine H. 2007. Mevalonate pathway: A review of clinical and therapeutical implications. *Clinical Biochemistry* **40**: 575–584. DOI: <https://doi.org/10.1016/j.clinbiochem.2007.03.016>, PMID: 17467679
- Corbo RM**, Scacchi R. 1999. Apolipoprotein E (APOE) allele distribution in the world. Is APOE * 4 a 'thrifty' allele? *Annals of Human Genetics* **63**: 301–310. DOI: <https://doi.org/10.1046/j.1469-1809.1999.6340301.x>
- de Chaves EP**, Narayanaswami V. 2008. Apolipoprotein E and cholesterol in aging and disease in the brain. *Future Lipidology* **3**: 505–530. DOI: <https://doi.org/10.2217/17460875.3.5.505>, PMID: 19649144
- Demarchi DA**, Salzano FM, Altuna ME, Fiegenbaum M, Hill K, Hurtado AM, Tsunetto LT, Petzl-Erler ML, Hutz MH. 2005. APOE polymorphism distribution among native Americans and related populations. *Annals of Human Biology* **32**: 351–365. DOI: <https://doi.org/10.1080/03014460500097237>, PMID: 16099779
- Dinkel KA**, Costa ME, Kraft TS, Stieglitz J, Cummings DK, Gurven M, Kaplan H, Trumble BC. 2020. Relationship of sanitation, water boiling, and mosquito nets to health biomarkers in a rural subsistence population. *American Journal of Human Biology* **32**: e23356. DOI: <https://doi.org/10.1002/ajhb.23356>, PMID: 31821682
- Dose J**, Schloesser A, Torres GG, Venkatesh G, Häslér R, Flachsbarth F, Lieb W, Nebel A, Rimbach G, Huebbe P. 2018. On a Western diet, APOE ϵ 4 is associated with low innate immune sensing, but not APOE ϵ 3. *The Journal of Allergy and Clinical Immunology* **142**: 1346–1349. DOI: <https://doi.org/10.1016/j.jaci.2018.05.033>, PMID: 29928926
- Eisenberg DTA**, Kuzawa CW, Hayes MG. 2010. Worldwide allele frequencies of the human apolipoprotein E gene: Climate, local adaptations, and evolutionary history. *American Journal of Physical Anthropology* **143**: 100–111. DOI: <https://doi.org/10.1002/ajpa.21298>, PMID: 20734437
- Finch CE**, Martin GM. 2016. Evolutionary thinking in medicine. *Evol. Think. Med* **1**: 277–295. DOI: <https://doi.org/10.1007/978-3-319-29716-3>
- Finch CE**, Kulminski AM. 2021. The ApoE Locus and COVID-19: Are We Going Where We Have Been? *The Journals of Gerontology. Series A, Biological Sciences and Medical Sciences* **76**: e1–e3. DOI: <https://doi.org/10.1093/gerona/glaa200>, PMID: 32777042
- Franceschi C**, Bonafè M, Valensin S, Olivieri F, De Luca M, Ottaviani E, De Benedictis G. 2000. Inflamm-aging. An evolutionary perspective on immunosenescence. *Annals of the New York Academy of Sciences* **908**: 244–254. DOI: <https://doi.org/10.1111/j.1749-6632.2000.tb06651.x>, PMID: 10911963
- Fullerton SM**, Clark AG, Weiss KM, Nickerson DA, Taylor SL, Stengård JH, Salomaa V, Vartiainen E, Perola M, Boerwinkle E, Sing CF. 2000. Apolipoprotein e variation at the sequence haplotype level: Implications for the origin and maintenance of a major human polymorphism. *American Journal of Human Genetics* **67**: 881–900. DOI: <https://doi.org/10.1086/303070>, PMID: 10986041

- Gale SC**, Gao L, Mikacenic C, Coyle SM, Rafaels N, Murray Dudenkov T, Madenspacher JH, Draper DW, Ge W, Aloor JJ, Azzam KM, Lai L, Blackshear PJ, Calvano SE, Barnes KC, Lowry SF, Corbett S, Wurfel MM, Fessler MB. 2014. Apo E 4 is associated with enhanced in vivo innate immune responses in human subjects. *The Journal of Allergy and Clinical Immunology* **134**: 127–134. DOI: <https://doi.org/10.1016/j.jaci.2014.01.032>, PMID: [24655576](https://pubmed.ncbi.nlm.nih.gov/24655576/)
- Garcia AR**, Trumble B, Kraft TS, Murillo S, Marquez M, Gurven M, Blackwell AD. 2020. Does exposure to parasites modify relationships between diurnal cortisol and leukocytes among honduran women. *American Journal of Physical Anthropology* **1**: 1–17. DOI: <https://doi.org/10.1002/ajpa.24110>
- Gayà-Vidal M**, Athanasiadis G, Carreras-Torres R, Via M, Esteban E, Villena M, Vasquez R, Dugoujon JM, Moral P. 2012. Apolipoprotein e/c1/c4/c2 gene cluster diversity in two native andean populations: Aymaras and Quechuas. *Annals of Human Genetics* **76**: 283–295. DOI: <https://doi.org/10.1111/j.1469-1809.2012.00712.x>, PMID: [22681517](https://pubmed.ncbi.nlm.nih.gov/22681517/)
- Gurven M**, Kaplan H, Supa AZ. 2007. Mortality experience of tSIMANE Amerindians of Bolivia: Regional variation and temporal trends. *American Journal of Human Biology* **19**: 376–398. DOI: <https://doi.org/10.1002/ajhb.20600>, PMID: [17421012](https://pubmed.ncbi.nlm.nih.gov/17421012/)
- Gurven M**, Kaplan H, Winking J, Finch C, Crimmins EM. 2008. Aging and inflammation in two epidemiological worlds. *The Journals of Gerontology. Series A, Biological Sciences and Medical Sciences* **63**: 196–199. DOI: <https://doi.org/10.1093/gerona/63.2.196>, PMID: [18314457](https://pubmed.ncbi.nlm.nih.gov/18314457/)
- Gurven M**, Jaeggi AV, Kaplan H, Cummings D. 2013. Physical activity and modernization among bolivian amerindians. *PLOS ONE* **8**: e55679. DOI: <https://doi.org/10.1371/journal.pone.0055679>, PMID: [23383262](https://pubmed.ncbi.nlm.nih.gov/23383262/)
- Gurven MD**, Trumble BC, Stieglitz J, Blackwell AD, Michalik DE, Finch CE, Kaplan HS. 2016. Cardiovascular disease and type 2 diabetes in evolutionary perspective: a critical role for helminths? *Evolution, Medicine, and Public Health* **2016**: 338–357. DOI: <https://doi.org/10.1093/emph/eow028>, PMID: [27666719](https://pubmed.ncbi.nlm.nih.gov/27666719/)
- Gurven M**, Stieglitz J, Trumble B, Blackwell AD, Beheim B, Davis H, Hooper P, Kaplan H. 2017. The TSIMANE Health and Life History project: Integrating anthropology and biomedicine. *Evolutionary Anthropology* **26**: 54–73. DOI: <https://doi.org/10.1002/evan.21515>, PMID: [28429567](https://pubmed.ncbi.nlm.nih.gov/28429567/)
- Gurven M**, Kraft TS, Alami S, Adrian JC, Linares EC, Cummings D, Rodriguez DE, Hooper PL, Jaeggi AV, Gutierrez RQ, Suarez IM, Seabright E, Kaplan H, Stieglitz J, Trumble B. 2020. Rapidly declining body temperature in a tropical human population. *Science Advances* **6**: 1–9. DOI: <https://doi.org/10.1126/sciadv.abc6599>, PMID: [33115745](https://pubmed.ncbi.nlm.nih.gov/33115745/)
- Gurven MD**, Lieberman DE. 2020. WEIRD bodies: mismatch, medicine and missing diversity. *Evolution and Human Behavior* **41**: 330–340. DOI: <https://doi.org/10.1016/j.evolhumbehav.2020.04.001>, PMID: [33100820](https://pubmed.ncbi.nlm.nih.gov/33100820/)
- Han R**. 2009. Plasma lipoproteins are important components of the immune system. *Microbiology and Immunology* **54**: 246–253. DOI: <https://doi.org/10.1111/j.1348-0421.2009.00203.x>
- Hansson GK**, Libby P. 2006. The immune response in atherosclerosis: A double-edged sword. *Nature Reviews. Immunology* **6**: 508–519. DOI: <https://doi.org/10.1038/nri1882>, PMID: [16778830](https://pubmed.ncbi.nlm.nih.gov/16778830/)
- Hopkins PCR**, Huang Y, McGuire JG, Pitas RE. 2002. Evidence for differential effects of apoE3 and apoE4 on HDL metabolism. *Journal of Lipid Research* **43**: 1881–1889. DOI: <https://doi.org/10.1194/jlr.m200172-jlr200>, PMID: [12401887](https://pubmed.ncbi.nlm.nih.gov/12401887/)
- Huebbe P**, Rimbach G. 2017. Evolution of human apolipoprotein e (APOE) isoforms: Gene structure, protein function and interaction with dietary factors. *Ageing Research Reviews* **37**: 146–161. DOI: <https://doi.org/10.1016/j.arr.2017.06.002>, PMID: [28647612](https://pubmed.ncbi.nlm.nih.gov/28647612/)
- Kaplan H**, Thompson RC, Trumble BC, Wann LS, Allam AH, Beheim B, Frohlich B, Sutherland ML, Sutherland JD, Stieglitz J, Rodriguez DE, Michalik DE, Rowan CJ, Lombardi GP, Bedi R, Garcia AR, Min JK, Narula J, Finch CE, Gurven M, et al. 2017. Coronary atherosclerosis in indigenous south American TSIMANE: A cross-sectional cohort study. *Lancet* **389**: 1730–1739. DOI: [https://doi.org/10.1016/S0140-6736\(17\)30752-3](https://doi.org/10.1016/S0140-6736(17)30752-3), PMID: [28320601](https://pubmed.ncbi.nlm.nih.gov/28320601/)
- Kloske CM**, Wilcock DM. 2020. The Important Interface Between Apolipoprotein E and Neuroinflammation in Alzheimer's Disease. *Frontiers in Immunology* **11**: 754. DOI: <https://doi.org/10.3389/fimmu.2020.00754>, PMID: [32425941](https://pubmed.ncbi.nlm.nih.gov/32425941/)
- Kraft TS**, Stieglitz J, Trumble BC, Martin M, Kaplan H, Gurven M. 2018. Nutrition transition in 2 lowland Bolivian subsistence populations. *The American Journal of Clinical Nutrition* **108**: 1183–1195. DOI: <https://doi.org/10.1093/ajcn/nqy250>, PMID: [30383188](https://pubmed.ncbi.nlm.nih.gov/30383188/)
- Kraft TS**, Stieglitz J, Trumble BC, Garcia AR, Kaplan H, Gurven M. 2020. Multi-system physiological dysregulation and ageing in a subsistence population: Physiological aging in perspective. *Philos. Trans. R. Soc. B Biol. Sci* **375**: rstb20190610. DOI: <https://doi.org/10.1098/rstb.2019.0610>
- Kulmiski AM**, Loika Y, Culmiskaya I, Huang J, Arbeev KG, Bagley O, Feitosa MF, Zmuda JM, Christensen K, Yashin AI, Long Life Family Study Research Group. 2019. Independent associations of TOMM40 and APOE variants with body mass index. *Aging Cell* **18**: e12869. DOI: <https://doi.org/10.1111/ace1.12869>, PMID: [30462377](https://pubmed.ncbi.nlm.nih.gov/30462377/)
- Labrecque N**, Cermakian N. 2015. Circadian clocks in the immune system. *Journal of Biological Rhythms* **30**: 277–290. DOI: <https://doi.org/10.1177/0748730415577723>, PMID: [25900041](https://pubmed.ncbi.nlm.nih.gov/25900041/)
- Lumsden AL**, Mulugeta A, Zhou A, Hyppönen E. 2020. Apolipoprotein e (APOE) genotype-associated disease risks: A phenome-wide, registry-based, case-control study utilising the UK biobank. *EBioMedicine* **59**: 102954. DOI: <https://doi.org/10.1016/j.ebiom.2020.102954>, PMID: [32818802](https://pubmed.ncbi.nlm.nih.gov/32818802/)
- Maizels RM**, McSorley HJ. 2016. Regulation of the host immune system by helminth parasites. *The Journal of Allergy and Clinical Immunology* **138**: 666–675. DOI: <https://doi.org/10.1016/j.jaci.2016.07.007>, PMID: [27476889](https://pubmed.ncbi.nlm.nih.gov/27476889/)

- Man K, Loudon A, Chawla A. 2016. Immunity around the clock. *Science* **354**: 999–1003. DOI: <https://doi.org/10.1126/science.aah4966>, PMID: 27885005
- Martiskainen H, Takalo M, Solomon A, Stančáková A, Marttinen M, Natunen T, Haapasalo A, Herukka SK, Kuusisto J, Soininen H, Kivipelto M, Laakso M, Hiltunen M. 2018. Decreased plasma C-reactive protein levels in APOE ε 4 allele carriers. *Annals of Clinical and Translational Neurology* **5**: 1229–1240. DOI: <https://doi.org/10.1002/acn3.639>, PMID: 30349858
- Masterson EE, Leonard WR, Hujoel PP. 2017. Diet, atherosclerosis, and helminth infection in Tsimane. *Lancet* **390**: 2034–2035. DOI: [https://doi.org/10.1016/S0140-6736\(17\)31945-1](https://doi.org/10.1016/S0140-6736(17)31945-1), PMID: 29115238
- McKenzie S, Williams J. 2010. Clinical Laboratory Hematology. Upper Saddle River, NJ: Pearson Education.
- Meier-Ewert HK, Ridker PM, Rifai N, Price N, Dinges DF, Mullington JM. 2001. Absence of Diurnal Variation of C-Reactive Protein Concentrations in Healthy Human Subjects. *Clinical Chemistry* **47**: 426–430. DOI: <https://doi.org/10.1093/clinchem/47.3.426>, PMID: 11238292
- Motran CC, Silvane L, Chiapello LS, Theumer MG, Ambrosio LF, Volpini X, Celias DP, Cervi L. 2018. Helminth infections: Recognition and modulation of the immune response by innate immune cells. *Frontiers in Immunology* **9**: 664. DOI: <https://doi.org/10.3389/fimmu.2018.00664>, PMID: 29670630
- Muehlenbein MP, Hirschtick JL, Bonner JZ, Swartz AM. 2010. Toward quantifying the usage costs of human immunity: Altered metabolic rates and hormone levels during acute immune activation in men. *American Journal of Human Biology* **22**: 546–556. DOI: <https://doi.org/10.1002/ajhb.21045>, PMID: 20309883
- Mueller T, Fischer J, Gessner R, Rosendahl J, Böhm S, van Bömmel F, Knop V, Sarrazin C, Witt H, Marques AM, Kovacs P, Schleinitz D, Stumvoll M, Blüher M, Bugert P, Schott E, Berg T. 2016. Apolipoprotein e allele frequencies in chronic and self-limited hepatitis C suggest a protective effect of apoe4 in the course of hepatitis C virus infection. *Liver International* **36**: 1267–1274. DOI: <https://doi.org/10.1111/liv.13094>, PMID: 26880346
- Neuparth MJ, Proença JB, Santos-Silva A, Coimbra S. 2013. Adipokines, Oxidized Low-Density Lipoprotein, and C-Reactive Protein Levels in Lean, Overweight, and Obese Portuguese Patients with Type 2 Diabetes. *ISRN Obesity* **2013**: 1–7. DOI: <https://doi.org/10.1155/2013/142097>
- Olgiati P, Politis A, Malitas P, Albani D, Dusi S, Polito L, De Mauro S, Zisaki A, Piperi C, Stamouli E, Mailis A, Batelli S, Forloni G, De Ronchi D, Kalofoutis A, Liappas I, Serretti A. 2010. APOE epsilon-4 allele and cytokine production in Alzheimer's disease. *International Journal of Geriatric Psychiatry* **25**: 338–344. DOI: <https://doi.org/10.1002/gps.2344>, PMID: 19618379
- Oriá RB, Patrick PD, Zhang H, Lorntz B, de Castro Costa CM, Brito GAC, Barrett LJ, Lima AAM, Guerrant RL. 2005. APOE4 Protects the Cognitive Development in Children with Heavy Diarrhea Burdens in Northeast Brazil. *Pediatric Research* **57**: 310–316. DOI: <https://doi.org/10.1203/01.PDR.0000148719.82468.CA>, PMID: 15611352
- Oria R, Patrick P, Oria M, Lorntz B, Thompson M, Azevedo O, Lobo R, Pinkerton R, Guerrant R, Lima A. 2011. APOE polymorphisms and diarrheal outcomes in Brazilian Shanty town children. *Brazilian Journal of Medical and Biological Research = Revista Brasileira de Pesquisas Medicas e Biologicas* **43**: 249–256. DOI: <https://doi.org/10.1161/CIRCULATIONAHA.110.956839>
- Pérez-Guzmán C, Vargas MH, Quiñonez F, Bazavilvazo N, Aguilar A. 2005. A cholesterol-rich diet accelerates bacteriologic sterilization in pulmonary tuberculosis. *Chest* **127**: 643–651. DOI: <https://doi.org/10.1378/chest.127.2.643>, PMID: 15706008
- Petkeviciene J, Smalinskiene A, Luksiene DI, Jureniene K, Ramazauskiene V, Klumbiene J, Lesauskaite V. 2012. Associations between apolipoprotein E genotype, diet, body mass index, and serum lipids in lithuanian adult population. *PLOS ONE* **7**: e41525. DOI: <https://doi.org/10.1371/journal.pone.0041525>, PMID: 22844488
- Ronsein GE, Vaisar T. 2017. Inflammation, remodeling, and other factors affecting HDL cholesterol efflux. *Current Opinion in Lipidology* **28**: 52–59. DOI: <https://doi.org/10.1097/MOL.0000000000000382>, PMID: 27906712
- Rosinger A, Tanner S, Leonard WR, TAPS Bolivia Research Team. 2013. Precursors to overnutrition: the effects of household market food expenditures on measures of body composition among Tsimane' adults in lowland Bolivia. *Social Science & Medicine* **92**: 53–60. DOI: <https://doi.org/10.1016/j.socscimed.2013.05.022>, PMID: 23849279
- Safieh M, Korczyn AD, Michaelson DM. 2019. ApoE4: an emerging therapeutic target for Alzheimer's disease. *BMC Medicine* **17**: 1–17. DOI: <https://doi.org/10.1186/s12916-019-1299-4>
- Saito M, Eto M, Nitta H, Kanda Y, Shigeto M, Nakayama K, Tawaramoto K, Kawasaki F, Kamei S, Kohara K, Matsuda M, Matsuki M, Kaku K, Vincent HK, Morgan JW, Vincent KR, Copcu E. 2004. "Effect of apolipoprotein E4 allele on plasma LDLcholesterol response to diet therapy in type 2 diabetic patients." *Apunts. Medicina de l'Esport* **39**: 41–42. DOI: [https://doi.org/10.1016/S1886-6581\(04\)76079-X](https://doi.org/10.1016/S1886-6581(04)76079-X)
- Singh PP, Singh M, Mastana SS. 2006. APOE distribution in world populations with new data from India and the UK. *Annals of Human Biology* **33**: 279–308. DOI: <https://doi.org/10.1080/03014460600594513>, PMID: 17092867
- Smith CJ, Ashford JW, Perfetti TA. 2019. Putative Survival Advantages in Young Apolipoprotein ε4 Carriers are Associated with Increased Neural Stress. *Journal of Alzheimer's Disease* **68**: 885–923. DOI: <https://doi.org/10.3233/JAD-181089>, PMID: 30814349
- Tall AR, Yvan-Charvet L. 2014. Cholesterol metabolism and immunity. *Nature Reviews. Immunology* **15**: 104–116. DOI: <https://doi.org/10.1038/nri3793>.Cholesterol
- Tao Q, Ang TFA, DeCarli C, Auerbach SH, Devine S, Stein TD, Zhang X, Massaro J, Au R, Qiu WQ. 2018. Association of chronic low-grade inflammation with risk of alzheimer disease in apoe4 carriers. *JAMA Network Open* **1**: e183597. DOI: <https://doi.org/10.1001/jamanetworkopen.2018.3597>, PMID: 30646251

- Trinder M**, Walley KR, Boyd JH, Brunham LR. 2020. Causal inference for genetically determined levels of high-density lipoprotein cholesterol and risk of infectious disease. *Arteriosclerosis, Thrombosis, and Vascular Biology* **40**: 267–278. DOI: <https://doi.org/10.1161/ATVBAHA.119.313381>, PMID: 31694394
- Trotter JH**, Liebl AL, Weeber EJ, Martin LB. 2010. Linking ecological immunology and evolutionary medicine: The case for apolipoprotein e. *Functional Ecology* **25**: 40–47. DOI: <https://doi.org/10.1111/j.1365-2435.2010.01780.x>
- Trumble BC**, Stieglitz J, Blackwell AD, Allayee H, Beheim B, Finch CE, Gurven M, Kaplan H. 2017. Apolipoprotein e4 is associated with improved cognitive function in amazonian forager-horticulturalists with a high parasite burden. *FASEB Journal* **31**: 1508–1515. DOI: <https://doi.org/10.1096/fj.201601084R>, PMID: 28031319
- Trumble BC**, Finch CE. 2019. The exposome in human evolution: From dust to diesel. *The Quarterly Review of Biology* **94**: 333–394. DOI: <https://doi.org/10.1086/706768>, PMID: 32269391
- Tzioras M**, Davies C, Newman A, Jackson R, Spires-Jones T. 2019. Invited Review: APOE at the interface of inflammation, neurodegeneration and pathological protein spread in Alzheimer's disease. *Neuropathology and Applied Neurobiology* **45**: 327–346. DOI: <https://doi.org/10.1111/nan.12529>, PMID: 30394574
- van Exel E**, Koopman JJE, van Bodegom D, Meij JJ, Knijff P de, Ziem JB, Finch CE, Westendorp RGJ. 2017. Effect of APOE ε 4 allele on survival and fertility in an adverse environment. *PLOS ONE* **12**: e0179497. DOI: <https://doi.org/10.1371/journal.pone.0179497>, PMID: 28683096
- Vasunilashorn S**, Crimmins EM, Kim JK, Winking J, Gurven M, Kaplan H, Finch CE. 2010. Blood lipids, infection, and inflammatory markers in the Tsimane of Bolivia. *American Journal of Human Biology* **22**: 731–740. DOI: <https://doi.org/10.1002/ajhb.21074>, PMID: 20721985
- Vasunilashorn S**, Finch CE, Crimmins EM, Vikman SA, Stieglitz J, Gurven M, Kaplan H, Allayee H. 2011. Inflammatory gene variants in the tsimane, an indigenous bolivian population with a high infectious load. *Biodemography and Social Biology* **57**: 33–52. DOI: <https://doi.org/10.1080/19485565.2011.564475>, PMID: 21845926
- Westerergren A**. 1957. Diagnostic tests: the erythrocyte sedimentation rate range and limitations of the technique. *Triangle; the Sandoz Journal of Medical Science* **3**: 20–25 PMID: 13455726.,
- Williams GC**. 1957. Pleiotropy, natural selection, and the evolution of senescence. *Evolution (N. Y)* **11**: 398–411. DOI: <https://doi.org/10.2307/2406060>
- Yassine HN**, Finch CE. 2020. APOE Alleles and Diet in Brain Aging and Alzheimer's Disease. *Frontiers in Aging Neuroscience* **12**: 150. DOI: <https://doi.org/10.3389/fnagi.2020.00150>, PMID: 32587511
- Zimetti F**, De Vuono S, Gomaraschi M, Adorni MP, Favari E, Ronda N, Ricci MA, Veglia F, Calabresi L, Lupattelli G. 2017. Plasma cholesterol homeostasis, HDL remodeling and function during the acute phase reaction. *Journal of Lipid Research* **58**: 2051–2060. DOI: <https://doi.org/10.1194/jlr.P076463>, PMID: 28830907