



**HAL**  
open science

## Use of microRNA-encoded peptides to improve agronomic traits

Mélanie Ormancey, Bruno Guillotin, Hélène San Clemente, Patrice Thuleau, Serge Plaza, Jean-philippe Combier

► **To cite this version:**

Mélanie Ormancey, Bruno Guillotin, Hélène San Clemente, Patrice Thuleau, Serge Plaza, et al.. Use of microRNA-encoded peptides to improve agronomic traits. *Plant Biotechnology Journal*, 2021, 19 (9), pp.1687-1689. 10.1111/pbi.13654 . hal-03360224

**HAL Id: hal-03360224**

**<https://hal.science/hal-03360224v1>**

Submitted on 1 Dec 2021

**HAL** is a multi-disciplinary open access archive for the deposit and dissemination of scientific research documents, whether they are published or not. The documents may come from teaching and research institutions in France or abroad, or from public or private research centers.

L'archive ouverte pluridisciplinaire **HAL**, est destinée au dépôt et à la diffusion de documents scientifiques de niveau recherche, publiés ou non, émanant des établissements d'enseignement et de recherche français ou étrangers, des laboratoires publics ou privés.

## Brief Communication

## Use of microRNA-encoded peptides to improve agronomic traits

Mélanie Ormancey<sup>1,†</sup>, Bruno Guillotin<sup>1,2,†</sup>, H  l  ne San Clemente<sup>1</sup>, Patrice Thuleau<sup>1</sup>, Serge Plaza<sup>1</sup> and Jean-Philippe Combier<sup>1,\*</sup> <sup>1</sup>Laboratoire de Recherche en Sciences V  g  tales, CNRS/IUPS, Auzeville-Tolosane, France<sup>2</sup>Micropep Technologies, Auzeville-Tolosane, France

Received 30 March 2021;

revised 21 June 2021;

accepted 21 June 2021.

\*Correspondence (Tel +33 (0)5 34 32 38 11, fax +33 (0)5 34 32 38 02, email combier@lrsv.ups-tlse.fr)

<sup>†</sup>These authors contributed equally to the work**Keywords:** microRNA, peptide, miPEPs.

MicroRNAs (miRNAs) are small regulatory RNA molecules (21–24 nt) regulating the expression of target genes at the post-transcriptional level, by cleaving their mRNA. Because these target genes are mainly regulatory genes, miRNAs are involved at the crossroads of several biological processes (Liu *et al.*, 2018). miRNAs are transcribed as long primary transcripts (pri-miRNAs) (Xie *et al.*, 2005). Recent findings revealed that plant pri-miRNAs encode regulatory peptides called miRNA-encoded peptides (miPEPs) (Laressergues *et al.*, 2015; Sharma *et al.*, 2020). miPEPs specifically enhance the transcription of their pri-miRNA, leading to phenotypes consistent with the functions of their cognate miRNA. Only a few miPEPs have been found as useful tools in agronomy. Indeed, soybean miPEP172c was shown to increase nodulation, aiming for a better yield (Couzigou *et al.*, 2016), and grapevine miPEP171d increased adventitious root formation (Chen *et al.*, 2020). In both cases, the role of the corresponding miRNA was previously known. Here, we questioned whether it would be feasible to screen a whole set of miPEPs for a particular phenotype in *Arabidopsis thaliana*, and whether it was possible to transpose these data to plants of agronomic interest.

We focused our study on the identification of *A. thaliana* miPEPs modulating root development. In the perspective to transpose our results from *A. thaliana* to other species of agronomic interests, we narrowed our analysis on miRNAs present in most plant species (conserved miRNAs). The first step consisted of identifying *A. thaliana* pri-miRNAs, by crossing the data from EST sequences (www.ncbi.nlm.nih.gov/genbank/), Illumina RNA-seq data (Wang *et al.*, 2019) and RACE-PCR data (Xie *et al.*, 2005). Several examples previously established that the first ORF after the transcription start site corresponded to a translated ORF coding a miPEP able to increase pri-miRNA expression (Chen *et al.*, 2020; Couzigou *et al.*, 2016, 2017; Laressergues *et al.*, 2015; Sharma *et al.*, 2020; Zhang *et al.*, 2020). Therefore, we selected the first ORF of each identified pri-miRNA as a high confident candidate to produce functional miPEPs and synthesized the 87 miPEPs corresponding to the 87 conserved *A. thaliana* miRNAs, from miR156a to miR399f. We used an *in vitro* assay to monitor seedling root development after

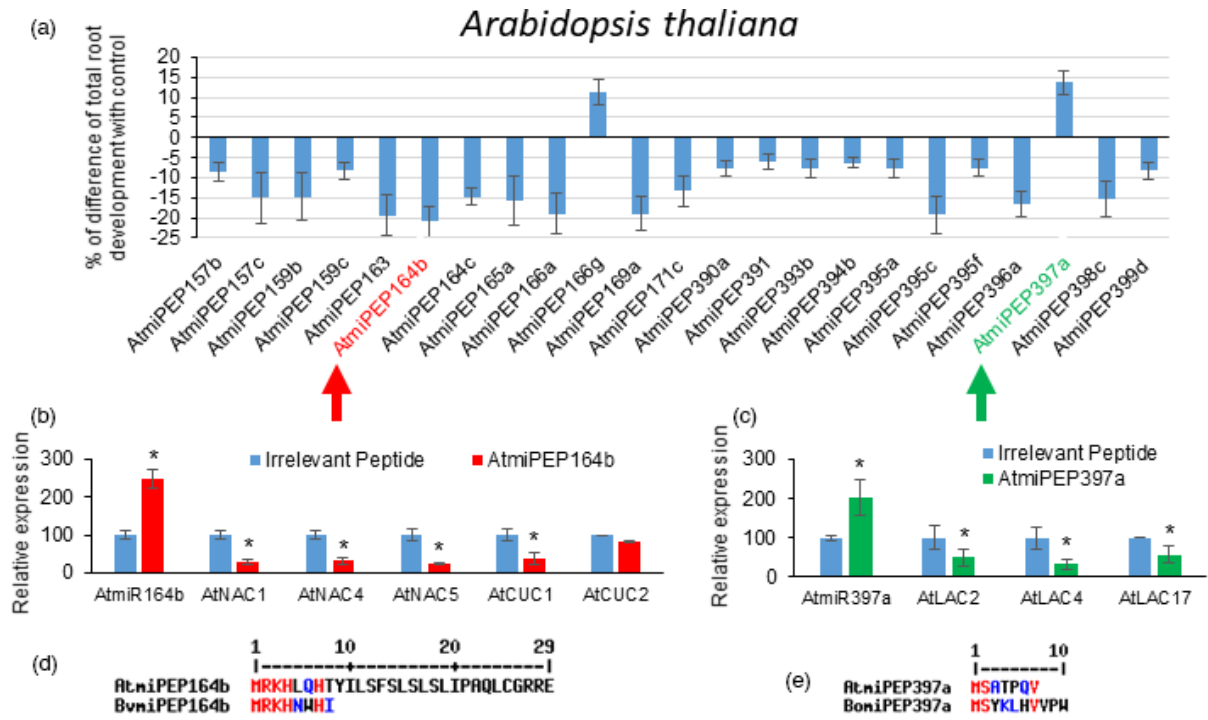
peptide treatments by measuring total root development. As controls, we used water, 0.5% acetonitrile and an irrelevant peptide, consisting of a random 10-amino acid peptide showing no blast hit in any of the available plant genomes. In these conditions, we identified 23 miPEPs significantly modulating total root development, among 87 tested (Fig. 1a). Interestingly, most of the 23 miPEPs had an inhibitory effect on root growth without showing any apparent toxicity.

Among these, we focused our attention on the two miPEPs with the strongest effect on growth, together with the best statistical *P*-value: AtmiPEP164b and AtmiPEP397a as an inhibitor and an activator of root growth, respectively (Fig. 1a). We checked that these miPEPs were able to increase the expression of their nascent pri-miRNAs and, correlatively, decrease the expression of the respective miRNA target genes (Fig. 1b, c).

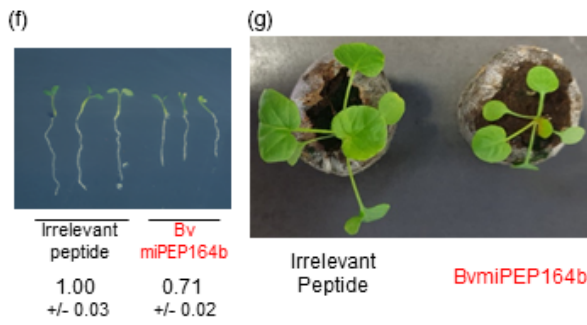
MiRNAs are very well conserved among species, but not miPEPs (Couzigou *et al.*, 2017; Laressergues *et al.*, 2015). In order to identify homologs of AtmiPEP164b and AtmiPEP397a in Brassicaceae of agronomic interest, we searched the corresponding pre-miRNA on the genomes of the wild cabbage *Brassica oleracea*, and *Barbarea vulgaris*, a weed, which can be a seed contaminant (MacDonald and Cavers, 1991). We were able to identify only one miRNA homolog of each in the corresponding genome, and we next searched the corresponding miPEPs in these pre-miRNAs and defined miPEPs in *B. oleracea* and *B. vulgaris* by the identification of the first ORF (Fig. 1d, e). We next cultivated *B. oleracea* and *B. vulgaris* seedlings *in vitro*, treated or not with the corresponding miPEP and monitored their root development. *Barbarea vulgaris* BvmiPEP164b was able to decrease root development (Fig. 1f) while *B. oleracea* BomiPEP397a was able to increase cabbage root development (Fig. 1h), showing that miPEPs exhibit a remarkable functional conservation of their function between species.

The overall development of a plant is closely subordinated to root development, and the modulation of root growth directly affects the development of aerial parts accordingly. So, we tested the effect of BomiPEP397a and BvmiPEP164b on cabbage and *B. vulgaris* growth, respectively. We found that watering *B. vulgaris* plants with BvmiPEP164b led to a 21% decrease in the foliar surface (Fig. 1g, j), while watering cabbage plants with BomiPEP397a led to a 36% increase in the foliar surface (Fig. 1i, k). Finally, we validated that BvmiPEP164b and BomiPEP397a were able to increase the expression of their respective pri-miRNA while decreasing the expression of the corresponding target genes (Fig. 1l, m).

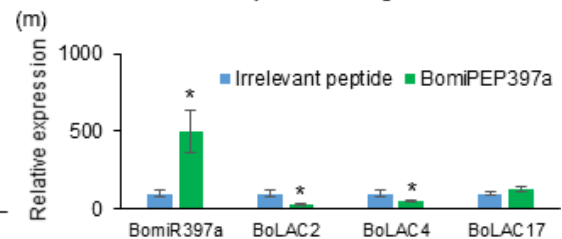
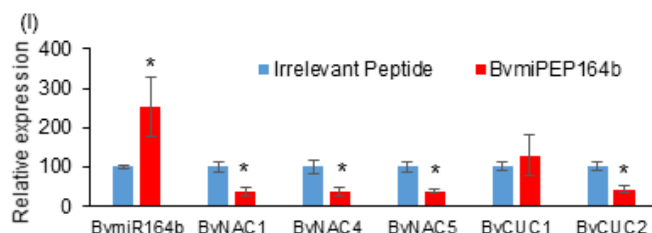
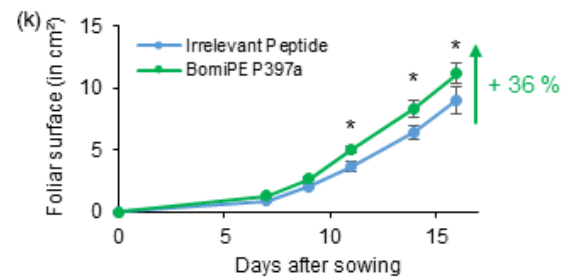
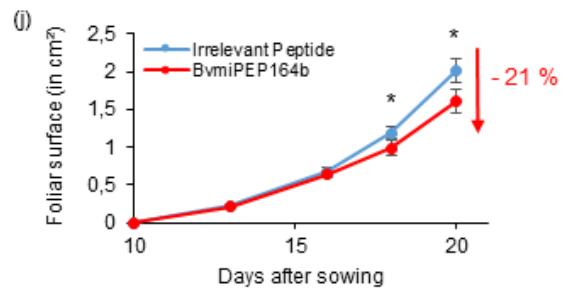
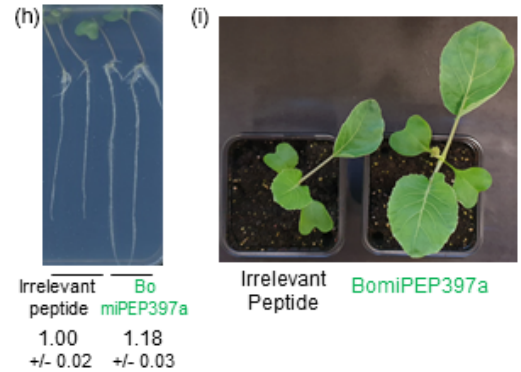
The identification of a whole set of miPEPs in certain plant species can be difficult due to the lack of strong genomic and transcriptomic data. We show here that a screening of a high



**Barbarea vulgaris**



**Brassica oleracea**



**Figure 1** (a) Percentage of difference of total root development between *A. thaliana* plants treated with an irrelevant control peptide and each miPEP. Only miPEPs with significant effects according to the Student *T*-test are shown. Expression of AtmiR164b (b) or AtmiR397a (c) and their target genes after treatment with irrelevant peptide or AtmiPEP164b or AtmiPEP397a. (d) Sequence alignment of miPEP164b from *A. thaliana* (AtmiPEP164b) with miPEP164b from *Barbarea vulgaris* (BvmiPEP164b). (e) Sequence alignment of miPEP397a from *A. thaliana* (AtmiPEP397a) with miPEP397a from *Brassica oleracea* (BomiPEP397a). (f) Root phenotype of *B. vulgaris* seedlings treated with BvmiPEP164b or irrelevant peptide, 21 days after sowing. (g) Picture of *B. vulgaris* plants treated with BvmiPEP164b or irrelevant peptide, 21 days after sowing. (h) Root phenotype of *B. oleracea* seedlings treated with BomiPEP397a or irrelevant peptide. (i) Picture of cabbage plants treated with BomiPEP397a or irrelevant peptide, 19 days after sowing. Evolution of foliar surface of *B. vulgaris* (j) or cabbage (k) plants treated with BvmiPEP164b or BomiPEP397a or irrelevant peptide. Expression of BvmiR164b (l) or BomiR397a (m) and their target genes after treatment with irrelevant peptide or BvmiPEP164b or BomiPEP397a. Error bars represent SEMs, asterisks indicate a significant difference between test conditions and controls according to Wilcoxon test (b, c, l, m) or Student's *T*-test (a, f, h, j, k) (a:  $n = 120$ , b, c, l, m:  $n = 6$ , f–k:  $n = 60$ ;  $P < 0.05$ ). (f, h) Numbers under each image represent the mean value  $\pm$  SEM of root development, normalized to the respective control (irrelevant peptide) set to 1.

number of miPEPs in *A. thaliana* followed by the identification of homologs in plants of interest is an efficient method to identify miPEPs active on a particular phenotype. In that way, we show that watering plants with miPEPs which modulate root growth can lead to an overall change in plant development, thus being a suitable alternative to the use of chemicals in agronomy.

Weeds are one of the major problems of world agriculture. While some countries try to strongly restrict the use of chemicals, more and more plants are starting to be resistant to these chemicals. Since miPEPs are very specific (Lauressergues *et al.*, 2015), we can imagine the use of a cocktail of several peptides to improve the development of crops and their resistance to stresses (pathogens, starvation...) while reducing weed growth.

## Acknowledgements

This work was funded by the French ANR project BiomiPEPs (ANR-16-CE12-0018-01).

## Conflict of interest

Authors declare no conflict of interest.

## Author contributions

JPC designed the research; JPC, BG and MO performed the molecular biology and plant experiments; HSC performed bioinformatics analysis; BG analysed screening data; JPC, PT and SP wrote the paper.

## References

- Chen, Q.-j., Deng, B.-H., Gao, J., Zhao, Z.-Y., Chen, Z.-l., Song, S.-R., Wang, L. *et al.* (2020) A miRNA-encoded small peptide, vi-miPEP171d1, regulates adventitious root formation. *Plant Physiol.* **183**, 656–670.
- Couzigou, J.M., André, O., Guillotin, B., Alexandre, M. and Combiér, J.P. (2016) Use of microRNA-encoded peptide miPEP172c to stimulate nodulation in soybean. *New Phytol.* **211**, 379–381.
- Couzigou, J.M., Lauressergues, D., André, O., Gutjahr, C., Guillotin, B., Bécard, G. and Combiér, J.P. (2017) Positive gene regulation by a natural protective miRNA enables arbuscular mycorrhizal symbiosis. *Cell Host Microbe*, **21**, 106–112.
- Lauressergues, D., Couzigou, J.M., Clemente, H.S., Martinez, Y., Dunand, C., Bécard, G. and Combiér, J.P. (2015) Primary transcripts of microRNAs encode regulatory peptides. *Nature*, **520**, 90–93.
- Liu, H., Yu, H., Tang, G. and Huang, T. (2018) Small but powerful: function of microRNAs in plant development. *Plant Cell Rep.* **37**, 515–528.
- MacDonald, M.A. and Cavers, P.B. (1991) The biology of Canadian weeds. 97. *Barbarea vulgaris* R. Br. *Can. J. Plant Sci.* **71**, 149–166.
- Sharma, A., Badola, P.K., Bhatia, C., Sharma, D. and Trivedi, P.K. (2020) Primary transcript of miR858 encodes regulatory peptide and controls flavonoid biosynthesis and development in *Arabidopsis*. *Nat. Plants*, **6**, 1262–1274.
- Wang, S., Quan, L.i., Li, S., You, C., Zhang, Y., Gao, L., Zeng, L. *et al.* (2019) The PROTEIN PHOSPHATASE4 complex promotes transcription and processing of primary microRNAs in *Arabidopsis*. *Plant Cell*, **31**, 486–501.
- Xie, Z., Allen, E., Fahlgren, N., Calamar, A., Givan, S.A. and Carrington, J.C. (2005) Expression of *Arabidopsis* MIRNA genes. *Plant Physiol.* **138**, 2145–2154.
- Zhang, Q.I., Su, L.y., Zhang, S.T., Xu, X.P., Chen, X.H., Li, X., Jiang, M.Q. *et al.* (2020) Analyses of microRNA166 gene structure, expression, and function during the early stage of somatic embryogenesis in *Dimocarpus longan* Lour. *Plant Physiol Biochem.* **147**, 205–214.