



HAL
open science

Molecular Mechanisms Underpinning the Circulation and Cellular Uptake of Mycobacterium ulcerans Toxin Mycolactone

Bruno Tello Rubio, Florence Bugault, Blandine Baudon, Bertrand Raynal, Sébastien Brûlé, Jean-David Morel, Sarah Saint-Auret, Nicolas Blanchard, Caroline Demangel, Laure Guenin-macé

► To cite this version:

Bruno Tello Rubio, Florence Bugault, Blandine Baudon, Bertrand Raynal, Sébastien Brûlé, et al.. Molecular Mechanisms Underpinning the Circulation and Cellular Uptake of Mycobacterium ulcerans Toxin Mycolactone. *Frontiers in Pharmacology*, 2021, 12, pp.733496. 10.3389/fphar.2021.733496 . hal-03358263

HAL Id: hal-03358263

<https://hal.science/hal-03358263>

Submitted on 29 Sep 2021

HAL is a multi-disciplinary open access archive for the deposit and dissemination of scientific research documents, whether they are published or not. The documents may come from teaching and research institutions in France or abroad, or from public or private research centers.

L'archive ouverte pluridisciplinaire **HAL**, est destinée au dépôt et à la diffusion de documents scientifiques de niveau recherche, publiés ou non, émanant des établissements d'enseignement et de recherche français ou étrangers, des laboratoires publics ou privés.



Distributed under a Creative Commons Attribution 4.0 International License



Molecular Mechanisms Underpinning the Circulation and Cellular Uptake of *Mycobacterium ulcerans* Toxin Mycolactone

Bruno Tello Rubio¹, Florence Bugault¹, Blandine Baudon¹, Bertrand Raynal², Sébastien Brûlé², Jean-David Morel¹, Sarah Saint-Auret³, Nicolas Blanchard³, Caroline Demangel¹ and Laure Guenin-Macé^{1*}

¹Immunobiology of Infection Unit, INSERM U1221, Institut Pasteur, Paris, France, ²Plateforme de Biophysique Moléculaire, UMR 3528 CNRS, Institut Pasteur, Paris, France, ³CNRS, LIMA, UMR 7042, Université de Haute-Alsace, Université de Strasbourg, Mulhouse, France

OPEN ACCESS

Edited by:

Abdur Rauf,
University of Swabi, Pakistan

Reviewed by:

Cesar Lopez,
Los Alamos National Laboratory
(DOE), United States
Sarish Rehman,
McGill University, Canada

*Correspondence:

Laure Guenin-Macé
laure.guenin-mace@pasteur.fr

Specialty section:

This article was submitted to
Experimental Pharmacology and Drug
Discovery,
a section of the journal
Frontiers in Pharmacology

Received: 30 June 2021

Accepted: 06 September 2021

Published: 16 September 2021

Citation:

Tello Rubio B, Bugault F, Baudon B,
Raynal B, Brûlé S,
Morel J-D, Saint-Auret S, Blanchard N,
Demangel C and Guenin-Macé L
(2021) Molecular Mechanisms
Underpinning the Circulation and
Cellular Uptake of *Mycobacterium*
ulcerans Toxin Mycolactone.
Front. Pharmacol. 12:733496.
doi: 10.3389/fphar.2021.733496

Mycolactone is a diffusible lipid toxin produced by *Mycobacterium ulcerans*, the causative agent of Buruli ulcer disease. Although bacterially derived mycolactone has been shown to traffic from cutaneous foci of infection to the bloodstream, the mechanisms underpinning its access to systemic circulation and import by host cells remain largely unknown. Using biophysical and cell-based approaches, we demonstrate that mycolactone specific association to serum albumin and lipoproteins is necessary for its solubilization and is a major mechanism to regulate its bioavailability. We also demonstrate that Scavenger Receptor (SR)-B1 contributes to the cellular uptake of mycolactone. Overall, we suggest a new mechanism of transport and cell entry, challenging the dogma that the toxin enters host cells via passive diffusion.

Keywords: mycolactone, *Mycobacterium ulcerans*, lipid carriers, SR-B1, uptake

INTRODUCTION

Mycolactone is the major virulence factor of *Mycobacterium ulcerans*, the causative agent of a neglected tropical disease called Buruli ulcer (BU) (George et al., 1999). BU manifests as non-healing skin ulcers with massive tissue necrosis surrounding cutaneous infection foci (for review (Guenin-Macé et al., 2019)). Mycolactone is a macrolide composed of a 12-membered ring macrolactone substituted with two polyketide chains that can be isolated from acetone-soluble *M. ulcerans* lipid extracts (George et al., 1998; George et al., 1999). It is responsible for the manifestations of BU disease, including skin necrosis, a relative lack of inflammation and pain at the level of ulcerative lesions, and systemic defects in cellular immune responses (reviewed in (Demangel, 2021)). Mycolactone exerts its immunomodulatory and cytotoxic effects by blocking the Sec61 translocon, a transmembrane channel ensuring the co-translational translocation of nascent secretory proteins into the endoplasmic reticulum (Baron et al., 2016; McKenna et al., 2016; Demangel and High, 2018; Demangel, 2021).

Although bacteria mainly reside in the skin of infected individuals, mycolactone diffuses beyond the sphere of its cytotoxic action (Hong et al., 2008; Sarfo et al., 2011; Colucci-Guyon et al., 2020) and gains access to distant tissues. Structurally intact mycolactone is detected in tissues surrounding BU lesions several weeks after completion of antibiotherapy, suggesting a slow rate of elimination (Sarfo et al., 2011). By grafting a Bodipy fluorophore onto a biologically inert region of mycolactone (Chany et al., 2011; Guenin-Macé et al., 2013; Colucci-Guyon et al., 2020), we have been able to visualize the

rapid and body-wide diffusion of intravenously-delivered Bodipy-mycolactone (Bdpy-ML) in zebrafish larvae (Colucci-Guyon et al., 2020). Compared to its isosteric, biologically inactive saturated version (Sat-Bdpy-ML), Bdpy-ML persisted longer in the tissues of injected larvae, suggesting that mycolactone interaction with Sec61 contribute to its retention in host organisms (Colucci-Guyon et al., 2020). Interestingly, we also observed an increased persistence of Bdpy-ML in the vasculature of injected larvae, raising the possibility that a fraction of the toxin stably binds to plasma proteins, thereby delaying clearance.

The lipophilicity and hydrophobicity of mycolactone suggest that its transport in blood plasma is ensured by lipid carrier proteins (Nitenberg et al., 2018; Kubicek-Sutherland et al., 2019). In line with this hypothesis, early attempts to purify *M. ulcerans* toxin showed that its cytotoxicity (George et al., 2000) is retained in both culture filtrates and purified high-density lipoproteins (HDLs) fractions isolated from bacterial cultures (Hockmeyer et al., 1978). More recently, Kubicek-Sutherland and co-workers found that mycolactone forms insoluble aggregates in water or surfactant-free aqueous solutions. Addition of serum or lipoproteins in solution prevented mycolactone precipitation, suggesting that it binds to serum-contained lipid carrier proteins (Kubicek-Sutherland et al., 2019).

At the cellular level, it is currently assumed that extracellular mycolactone reaches its intracellular target Sec61 by passive diffusion through the plasma membrane. This hypothesis is based on observations that fluorescently labeled mycolactone diffused into the cytoplasm of cultured fibroblasts in a non-saturable and non-competitive manner (Snyder and Small, 2003; Chany et al., 2011). However, recent studies using computational simulations and biophysical approaches showed that mycolactone interacts with lipid membrane and alters their architecture (López et al., 2018; Nitenberg et al., 2018). Whether mycolactone is internalized, at least partially, via specialized cell surface receptors remains an open question. Of particular interest are the scavenger receptors (SRs), a family of transmembrane proteins with a wide range of ligands including lipoproteins. Among them, SR-B1 is a widely expressed SR, mainly involved in the bidirectional flux of free cholesterol between cells and HDLs by a non-endocytic mechanism (for review (Shen et al., 2018)). SR-B1 is also known to mediate the selective transport of other lipids, including phospholipids and α -tocopherol (Reboul et al., 2006).

In the present study, we combined cutting edge biophysical and cell-based approaches to fully characterize mycolactone's behavior in solution and to determine the role of different serum lipid carriers in mycolactone bioavailability. Our findings challenge the current dogma that mycolactone enters host cells via passive diffusion by demonstrating the partial contribution of SR-B1 to its cellular uptake.

MATERIALS AND METHODS

Mycolactone and Fluorescent Derivatives

ML was purified from the Malaysian human isolate *M. ulcerans* 1,615, then quantified by spectrophotometry ($\lambda_{\max} = 362 \text{ nm}$;

$\log \epsilon = 4.29$) (Spangenberg and Kishi, 2010) on a V-650 spectrophotometer (JASCO). Bodipy-mycolactone (Bdpy-ML) ($\lambda_{\text{exc}} = 496 \text{ nm}$; $\lambda_{\text{em}} = 503 \text{ nm}$) was synthesized as previously described (Colucci-Guyon et al., 2020). Stock solutions were prepared in ethanol and diluted at least 1,000x for biophysics or cellular assays. In all cases, controls corresponding to the same volume of vehicle were included.

Taylor Dispersion of Mycolactone in Ethanol

Taylor dispersion were acquired at 20°C with the Viscosizer TD (Malvern Panalytical Ltd., Worcestershire, United Kingdom). Samples were passed through an uncoated capillary (Malvern Panalytical Ltd., Worcestershire, United Kingdom) with internal and outside diameters of 75 and 360 μm , respectively. UV absorption was monitored at 280 nm. Before sample injection, a stray light correction measurement with L-tryptophan at 11 mg/ml was performed on the system. A sizing measurement with caffeine used as a reference at 1 mg/ml was performed during samples measurements to ensure the good quality of the capillary throughout the experiment.

Dynamic Light Scattering on Free and Complexed Mycolactone

The presence/absence of precipitates in solution was confirmed by DLS with the DynaPro Plate Reader (Wyatt Technology, United States). This DLS instrument combines an 830 nm laser, a detector positioned at 158°C to collect the signal, and a multi-tau hardware correlator to analyze this signal. A volume of 20 μL of each sample was loaded onto a 384-well (Corning) covered with a transparent film to avoid any evaporation. The plates were centrifuged for 1 min at 3,000 rpm to remove bubbles. Three replicates were performed per well and measurements were conducted at 20°C. A number of 20 acquisitions and 10 s of acquisition time were set up in the Dynamics software. The autocorrelation function was processed using the Dynamics software version 7.1.9 (Wyatt Technology, United States) and converted into size-distribution for analysis.

Ultracentrifugation—Sedimentation Velocity Experiments

Human serum (10/100 v/v), human albumin (5 mg/ml), human HDL (0.5 mg/ml) or human LDL (0.5 mg/ml) diluted in PBS solution and the subsequent complexes with mycolactone (20 μM) were centrifuged at 42,000 rpm in an Optima AUC analytical ultracentrifuge (Beckman Coulter), at 20°C in an eight-hole AN 50-Ti rotor equipped with 12-mm double-sector aluminum epoxy centerpieces. The concentrations of the individual macromolecules were chosen to be in the range of serum levels and to be detectable by the AUC equipment without saturating the detectors. Detection of the biomolecule concentration as a function of radial position and time was performed by absorbance measurements at 360 nm and by interference detection. At 360 nm, a specific absorbance can be observed for mycolactone in absence of macromolecules' absorption (**Supplementary Figure S1**). Ultracentrifugation

experiments were performed in PBS (Gibco). Sedimentation velocity data analysis was performed by continuous size distribution analysis $c(s)$ using Sedfit 15.0 software (Brown and Schuck, 2006). All the $c(s)$ distributions were calculated with a fitted fractional ratio f/f_0 and a maximum entropy regularization procedure with a confidence level of 0.95. Buffer viscosity and density were calculated from the Sednterp software (www.jphilo.mailway.com/sednterp.htm). Partial specific volumes were also determined with Sednterp.

Fluorescence Spectroscopy on Plasma

Fluorescence spectra were recorded on human and mouse plasma at room temperature on a JASCO FP-6300 spectrofluorometer equipped with a right angle 10 mm cuvette. The fluorescence was monitored with an excitation wavelength of 490 nm and a maximum emission wavelength between 495 and 550 nm. For human blood measurements, Bdpy-ML was added at 50 or 500 ng/ml to total human blood collected in heparinized tubes, then incubated overnight at 37°C to allow equilibration without inducing cell lysis. A fraction of total blood was used to perform flow cytometry analyses on blood cells. The other fraction was centrifuged 10 min at 2,000 g at RT to collect plasma. To estimate concentrations in samples, serial range dilutions of Bdpy-ML (0.015–1 µg/ml) have been done in human and mouse plasma; areas under the curves obtained from fluorescence data were calculated and a linear regression curve was built between areas and concentrations using Prism software (Supplementary Figure S2).

Cell Culture and Cellular Assays

Jurkat T cells (E6.1 clone, ECACC#88042803) and THP-1 cells (ECACC#88081201) were cultured in RPMI GlutaMAXTM (Life Technologies), supplemented with 10% heat-inactivated fetal bovine serum (FBS) (Invitrogen), penicillin (100 U/ml) and streptomycin (100 µg/ml). Human primary macrophages were obtained from peripheral blood-derived monocytes isolated by adhesion to tissue culture plastic-ware and cultured with 10 ng/ml human GM-CSF (PeproTech) for 7–12 days. For uptake assays, cells were rinsed in serum-free medium and resuspended in presence of Bdpy-ML (2.5–250 nM) diluted in medium containing either 0.5% or 10% of human serum (Sigma-Aldrich), 0.5% human serum albumin (Sigma-Aldrich), or 0.5 mg/ml human HDL (Sigma-Aldrich) then incubated at 37°C. For release experiments, cells were loaded with Bdpy-ML diluted in medium containing 10% human serum during 1 h at 37°C. Cells were then rinsed twice in serum-free medium before being resuspended in culture medium containing either 0.5% or 10% of human serum (HS), 0.5% human serum albumin (HSA), or 0.5 mg/ml human HDL. In both uptake and release experiments, intracellular content of Bdpy-ML was measured by flow cytometry (FACS) at different time points following addition or removal of Bdpy-ML. Block lipid transfer (BLT)-1, BLT-4, and BLT-5 (Sigma) were used as SR-B1 inhibitors in uptake assays at non-toxic and biologically active concentrations. Zosuquidar and Valspodar (Sigma) were used as MDR1 inhibitors in efflux assays.

ELISA Assay

Uptake of natural mycolactone was evaluated by measuring the release of IL-2 and TNF- α in Jurkat T cells and THP-1 cells, respectively. Briefly, cells were incubated for 1 h in the presence of 75 ng/ml mycolactone in RPMI medium or in RPMI supplemented with 10% HS, 0.5% HSA (Sigma-Aldrich), or 0.5 mg/ml human HDL, then activated 16 h by addition of PMA (100 ng/ml) and calcimycin (2.5 µg/ml). The release of IL-2 and TNF- α in the culture medium was measured by ELISA using the human IL-2 and TNF- α ELISA Max kits (BioLegend).

Retroviral Transduction of Sec61 α in Primary T Cells

Sec61 wt or R66G Sec61 mutant sequences were cloned upstream of an internal ribosome entry site (IRES) of the pRetroX-IRES-DsRedExpress retroviral vector (Addgene) for simultaneous translation of Sec61 α and DsRed in mouse primary T cells as described in (Baron et al., 2016). Platinum-E ecotropic packaging cells (platE, Biolabs) were transduced with pRetroX-IRES-DsRedExpress plasmids (Addgene) containing Sec61 α sequences to produce retroviral particles. Mouse CD3⁺ primary T cells were isolated from spleens and lymph nodes by negative selection using the Pan T cell Isolation kit (Miltenyi Biotec) then activated with Dynabeads[®] Mouse T-activator CD3/CD28 (Miltenyi Biotec) prior to retroviral transduction as described in (Baron et al., 2016). For uptake assay of Bdpy-ML, transduced cells were incubated with different levels of CellTrace (ThermoFisher) to distinguish populations then mixed in equivalent proportion in culture medium before addition of Bdpy-ML for 24 h.

Western Blot

Cells lysates were prepared in lysis buffer (pH 7.5) containing 20 mM Tris-acetate, 150 mM NaCl, 50 mM NaF, 1 mM EDTA, 1% Triton-X100 and 0.1% protease inhibitors (Sigma-Aldrich). Equal amounts of protein samples were loaded on NuPAGE Bis-Tris gels and transferred to nitrocellulose membranes (Life Technologies). Protein detection was done with anti-actin (#3700, Cell Signaling Technology) and anti-Sec61 α (NB120-15575, Novus Biologicals) and revealed with the ECL Prime detection reagent (Cytiva) and chemiluminescence reading on a Fuji LAS-4000 Luminescent Image Analyzer.

SR-B1 Downregulation by siRNA

siRNA transfections were performed in THP-1 cells using 50 nM of SR-B1 siRNA (On-Target plus human SCARB1, Horizon Discovery) and 1 µl of Lipofectamine RNAiMax reagent (ThermoFischer) in 500 µl of antibiotic-free medium, following the manufacturer's instructions. SR-B1 expression was controlled by flow cytometry after 48 h.

Flow Cytometry

Flow cytometry analysis of THP-1 cells and total blood was performed using the following antibodies. Conjugated anti-human SR-B1 APC (Miltenyi Biotec 130-111-237), CD235a

APC Cy7 (BioLegend 3,49,115), CD45 BUV805 (BD Biosciences 6,12,892), CD56 BUV 737 (BD Biosciences 6,12,767), CD11c PeCy7 (BioLegend 3,37,216), CD11b PE (eBioscience 12-0118-41), CD3 PerCP Cy5.5 (BD Biosciences 5,60,835), CD19 BV786 (BioLegend 3,02,239), HLA-DR BUV 395 (BD Biosciences 7,40,302), CD14 BV605 (BioLegend 3,01,834). Labeling of mouse blood was done using the following conjugated antibodies: CD45.2 PE (eBioscience 12-0454-82), CD115 PerCPeF710 (eBioscience 46-1,152-82), CD11b BV650 (eBioscience 48-0112-20), Ly6G BV510 (BD Biosciences 5,63,402), CD3 APC-eF780 (BioLegend 47-0032-82). Fc receptors were blocked using FCR blocking reagent (Myltenyi Biotec). Surface membrane staining was performed in PBS FBS 2%. The Zombie UV fixable viability dye (BioLegend 4,23,107) was used to exclude dead cells. Samples were acquired on a Cytoflex (Beckman Coulter) and analyzed with FlowJo 10 (BD Biosciences).

Mouse Experiment

Eight-week-old female mice (C57BL/6JRj) were housed and bred under pathogen-free conditions with food and water *ad libitum*. Mice were injected intravenously with 2.5 mg/kg Bdpi-ML first concentrated in ethanol then diluted in physiologic solution (final ethanol concentration 5%). Mice were sacrificed 4, 24, 48, 72, 96 h post-injection (hpi) then 7 days post-injection.

Statistical Analyses

Statistical analyses and graphical representations were performed using GraphPad Prism software (8.3.1, La Jolla, CA). Unpaired non-parametric Mann-Whitney tests or two-way ANOVA were used as statistical tests.

RESULTS

Mycolactone Association With Serum Lipid Carriers Prevents Its Aggregation in Solution

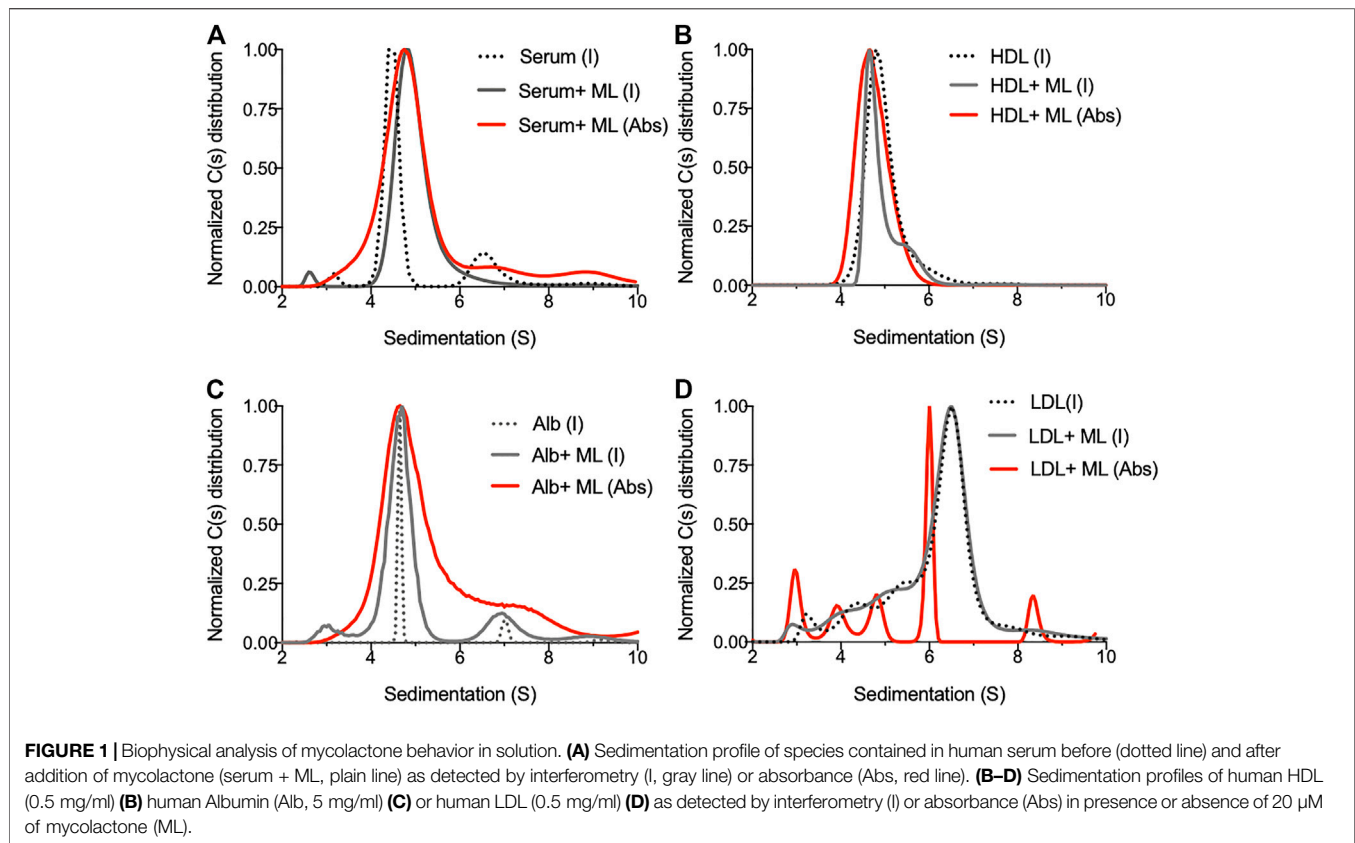
By measuring critical micelle concentrations, Kubicek-Sutherland *et al.* showed that in the 30–60 μM range, mycolactone forms water-insoluble aggregates (Kubicek-Sutherland *et al.*, 2019). Due to this hydrophobic property, mycolactone is highly soluble in ethanol. Indeed, Taylor dispersion analysis showed that solubilized mycolactone has a hydrodynamic radius of 0.48 nm (Supplementary Figure S3A), as expected for well solubilized small components. Dynamic light scattering (DLS) analysis confirmed that mycolactone does not form aggregates in ethanol but forms major aggregates in aqueous solution such as PBS at concentrations >15 nM (Supplementary Figures S3A,B). At a concentration as low as 15 nM in PBS, mycolactone formed particles with radii greater than those of solubilized mycolactone (Supplementary Figure S3). It is therefore likely that mycolactone needs hydrophobic component to be miscible in aqueous buffers. The soluble macromolecules contained in serum that possess hydrophobic patches on their surface or apolar core such as albumin and

lipoproteins (Haskard and Li-Chan, 1998; Wasan *et al.*, 2008) represent good candidates to solubilize mycolactone in serum-containing culture media or blood-circulating mycolactone.

In order to identify the biological macromolecules serving as mycolactone carriers in serum, we took advantage of the high separative capacity of analytical ultracentrifugation (AUC). AUC allows the separation of molecular species in solution, based on their shape, size and density and direct analysis through a dual UV/visible and interference detection system, with a resolution that is superior to that offered by other separative technique (Gandhi *et al.*, 2017). Human serum samples spiked with mycolactone and subjected to AUC were analyzed by interference and absorbance, reflecting the sedimentation of proteins and mycolactone, respectively. In the absence of mycolactone, serum contained three main species with sedimentation peaks at 3.2, 4.5 and 6.7 S (Figure 1A). Addition of mycolactone altered the serum sedimentation profile, indicating that molecular interactions occur between mycolactone and serum proteins. Mycolactone detection by absorbance at 360 nm (Spangenberg and Kishi, 2010) revealed that it associates with serum proteins with sedimentation peaks ranging from 3 S to 10 S, particularly at 4.8 S (Figure 1A). We then analyzed the behavior of mycolactone in PBS solutions containing physiological concentrations of macromolecules present in serum: human albumin, HDL or LDL (Figures 1B–D). Interferometry measures showed that mycolactone slightly perturbs HDL sedimentation (Figure 1B), and strongly increases the heterogeneity of albumin species, as illustrated by the broadening of peaks at 4.5 and 6.6 S corresponding to albumin monomer and dimer, respectively, (Figure 1C). Mycolactone detection by absorbance confirmed that it interacts with HDL (4.8 S), as well as albumin monomers and dimers (Figures 1B,C, respectively). When incubated with LDL in PBS, mycolactone induced multiple sedimentation peaks ranging from 3 to 9 S with a main peak at 6 S (Figure 1D), suggesting that it greatly perturbs LDL structural integrity, probably by integrating the apolar core of the LDL. Our data confirm that HDL and LDL improve mycolactone solubility in aqueous solutions (Kubicek-Sutherland *et al.*, 2019), and identify albumin as an additional carrier protein able to solubilize mycolactone in serum.

Serum Lipid Carriers Impact Bidirectional Transport of Mycolactone Across Cell Membranes

We made the hypothesis that mycolactone binding to serum lipid carriers might condition its partition between extra- and intracellular compartments. To examine the potential impact of serum lipid carriers on cellular import and export of mycolactone, we used Bodipy-mycolactone (Bdpi-ML), a previously described fluorescent derivative of mycolactone retaining its biological activity (Chany *et al.*, 2011; Guenin-Macé *et al.*, 2013; Colucci-Guyon *et al.*, 2020). Bdpi-ML associated with serum lipid carriers comparably to natural mycolactone in AUC (Supplementary Figure S4). Using non-differentiated THP-1 and Jurkat cells as models for human



monocytes and T cells respectively, we next assessed by flow cytometry the effects of serum lipid carriers on cellular incorporation and release of Bdpi-ML. In both cell types, Bdpi-ML diffused intracellularly in a time-dependent manner, reaching a plateau after 24 h (**Figure 2A**). Adding 10% serum to the cell culture medium induced a transient delay Bdpi-ML incorporation of by THP-1 cells (**Figures 2A,B**), an effect that was mimicked by incubation of the cells with albumin at physiological serum concentration (5 mg/ml) (**Figure 2B**). Notably, physiological concentrations of HDL (0.5 mg/ml) also induced a marked decrease in the early uptake of Bdpi-ML, but in this case, the decrease in Bdpi-ML incorporation persisted after 24 h (**Figure 2B**). These experiments using Bdpi-ML suggested that HDL, and albumin to a lower extent, may retain mycolactone in the extracellular compartment.

Production of IL-2 by activated T cells, and production of TNF- α by THP-1 cells, correlate with the amount of intracellular mycolactone (**Supplementary Figure S5**). We used this read-out to determine whether extracellular retention of ML by lipid carriers limits its intracellular diffusion. **Figure 2C** shows that intracellular incorporation of mycolactone, as estimated by its suppressive effect on cytokine production, was decreased by addition of serum and purified lipid carriers, particularly HDL, to the cell culture medium (**Figure 2C**).

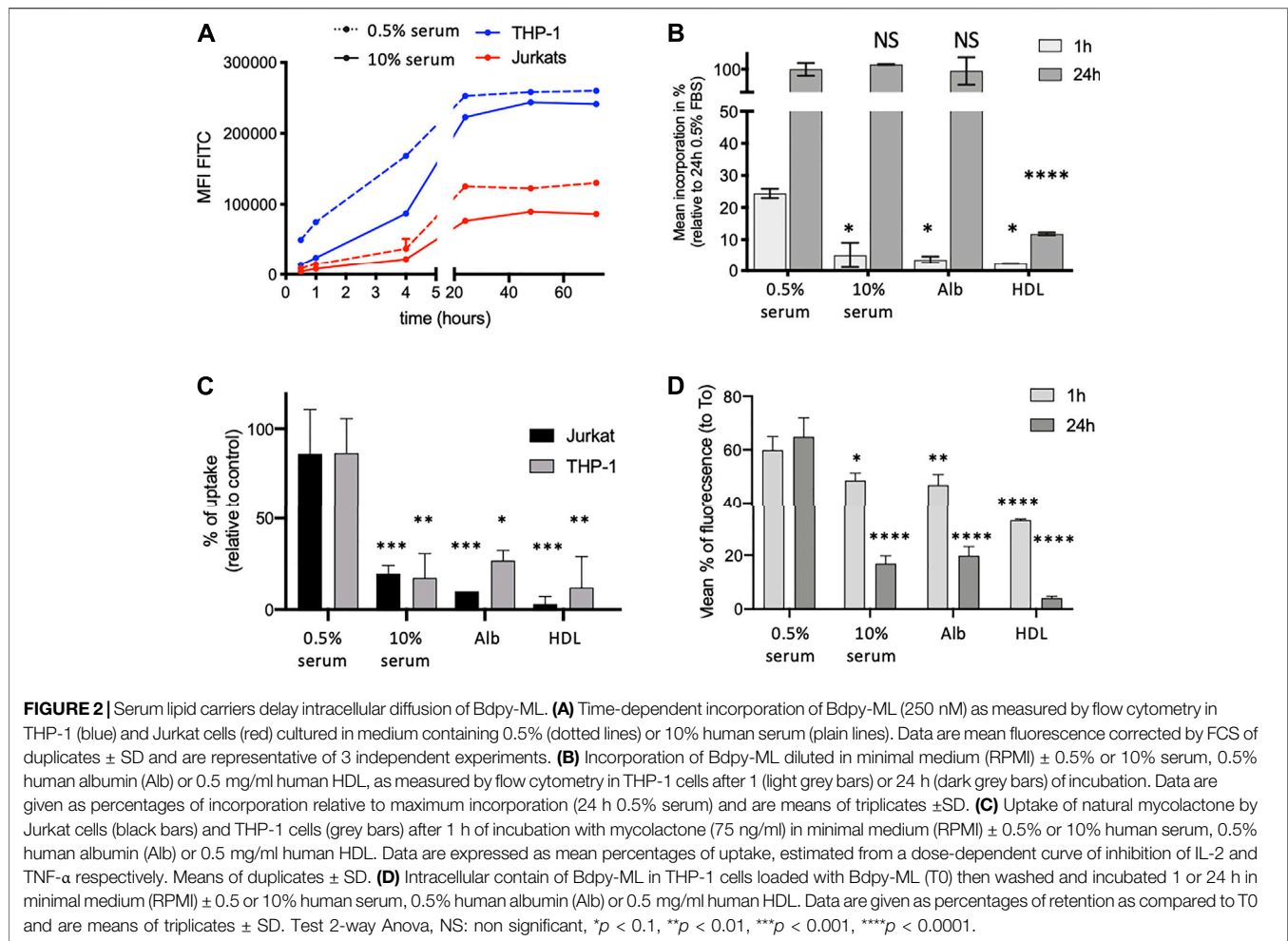
We next examined the impact of serum lipid carriers on the release of intracellular mycolactone in the extracellular medium. To this end, THP-1 cells were loaded with Bdpi-ML then rinsed

before supplementation of the medium with serum, albumin or HDL. The presence of lipid carriers in the extracellular medium promoted the release of Bdpi-ML from THP-1 cells (**Figure 2D**). Compared to albumin and serum, HDL displayed a stronger stimulatory effect on Bdpi-ML export by pre-loaded cells (**Figure 2D**).

Altogether, these data suggested that mycolactone distributes in both the intra- and extracellular compartments, the partition depending on the presence and nature of lipid carriers in the extracellular environment. They supported the view that serum lipid carriers contribute to mycolactone diffusion and persistence *in vivo*.

In Total Blood, Mycolactone Distributes in Both Plasma and Cell Compartments, With a Preference for Monocytes

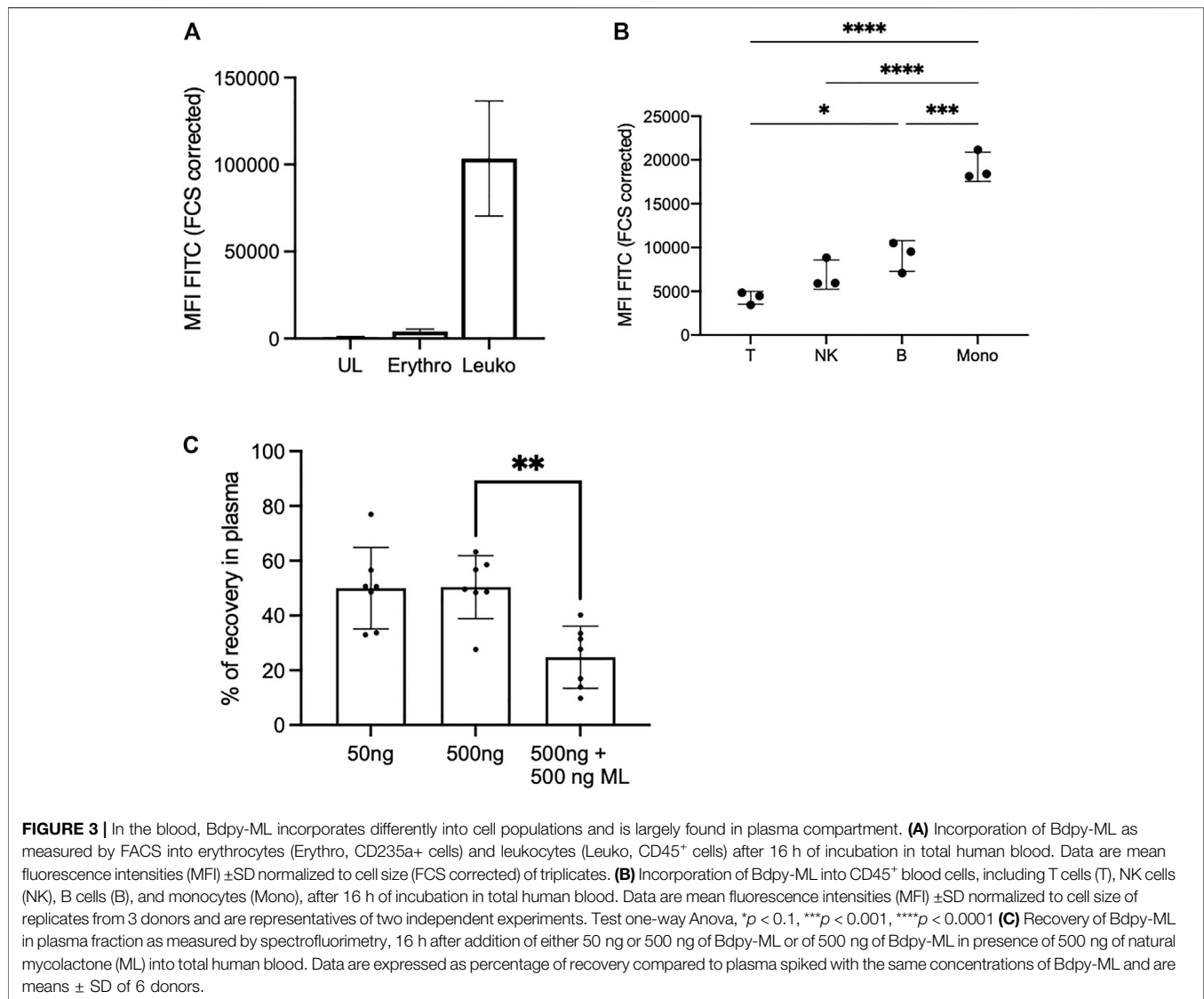
We previously observed that bacterially-produced mycolactone gains access to serum (Sarfo et al., 2011) and peripheral blood cells (Hong et al., 2008) of infected organisms. Having shown that it associates to lipid carrier proteins *in vitro*, we next asked how mycolactone partitions between cells and serum in human blood, and whether it displays a particular tropism for certain cell subsets. To address this question, Bdpi-ML was added to total human blood before measuring fluorescence levels in cells and plasma (**Figure 3**). In agreement with our previous studies using radiolabeled mycolactone and mouse blood (Hong et al., 2008),



flow cytometric analyses of human blood cell populations revealed efficient internalization of Bdpi-ML by leukocytes (CD45⁺ cells), but not erythrocytes (CD235a⁺ cells) (Figure 3A). Interestingly, we noticed a differential accumulation of Bdpi-ML across the different CD45⁺ cell subsets, which was independent of the cell size. Monocytes were the most efficient at internalizing Bdpi-ML, followed by B cells, NK cells and T cells (Figure 3B). To quantify Bdpi-ML in plasma, we used the linear relationship between fluorescence emission signals between 495 and 550 nm (λ_{ex} 490 nm) and Bdpi-ML concentration in the 8–500 ng/ml range (Supplementary Figure S2). In blood incubated with 50 or 500 ng/ml Bdpi-ML, we estimated that 50.4% (\pm 11.5%) of added Bdpi-ML distributed to plasma fractions (Figure 3C). To verify that Bdpi-ML distribution into plasma fractions depended on its mycolactone moiety, we incubated blood samples with 500 ng/ml Bdpi-ML and the same concentration of natural mycolactone. Recovery of Bdpi-ML in plasma decreased by 25% suggesting a competition between Bdpi-ML and mycolactone for association with lipid carriers (Figure 3C). We concluded that mycolactone distributes to both plasma and human blood cells, with a preference for monocytes.

Transport and Persistence of IV-Delivered Mycolactone in Blood Cell and Plasma

We used the mouse model to explore further mycolactone distribution and persistence *in vivo*. Mice were injected intravenously with Bdpi-ML (2.5 mg/kg) and fluorescence levels were measured in blood cells and plasma, as well as splenocytes, at several time points post-injection using the above-described approaches. In agreement with our *in vitro* data (Figure 3B), Bdpi-ML was relatively better internalized by monocytes than T cells, 4 h post-injection (hpi) (Figures 4A,B). After 24 h, Bdpi-ML was almost cleared from T cells (Figure 4B) while persisting up to 72 h in monocytes (Figure 4A). Profiles of Bdpi-ML incorporation were very similar in cells isolated from blood and spleen after 4 hpi, suggesting an efficient distribution of blood-contained Bdpi-ML to this organ. We estimated plasma concentrations of circulating Bdpi-ML with the approach described in Figure 3, and a standard curve made with serial dilutions of Bdpi-ML in mouse plasma (Supplementary Figure S6). At 4 hpi, plasma levels of Bdpi-ML were highly variable with mean values estimated at 238 ng/ml \pm 128 (Figure 4C), which corresponded to 0.78% of injected Bdpi-ML (Mean mouse weight: 18.4 mg \pm 0.6, estimated blood volume 77–80 ml/kg (Mitraka and



Rawnsley, 1981)). Plasma concentrations of Bdpi-ML then decreased overtime to stabilize at 42 ng/ml \pm 13 after 72 h. Notably, Bdpi-ML was still detected 7 days post-injection (Figure 4C). In line with our findings in the zebrafish (Colucci-Guyon et al., 2020), data obtained in intravenously injected mice support a rapid and almost complete diffusion of blood contained mycolactone into body organs. The long persistence of low levels of Bdpi-ML in plasma is consistent with a slow release of tissue-contained mycolactone in the blood compartment, where our *in vitro* data suggest that it largely localizes in the plasma.

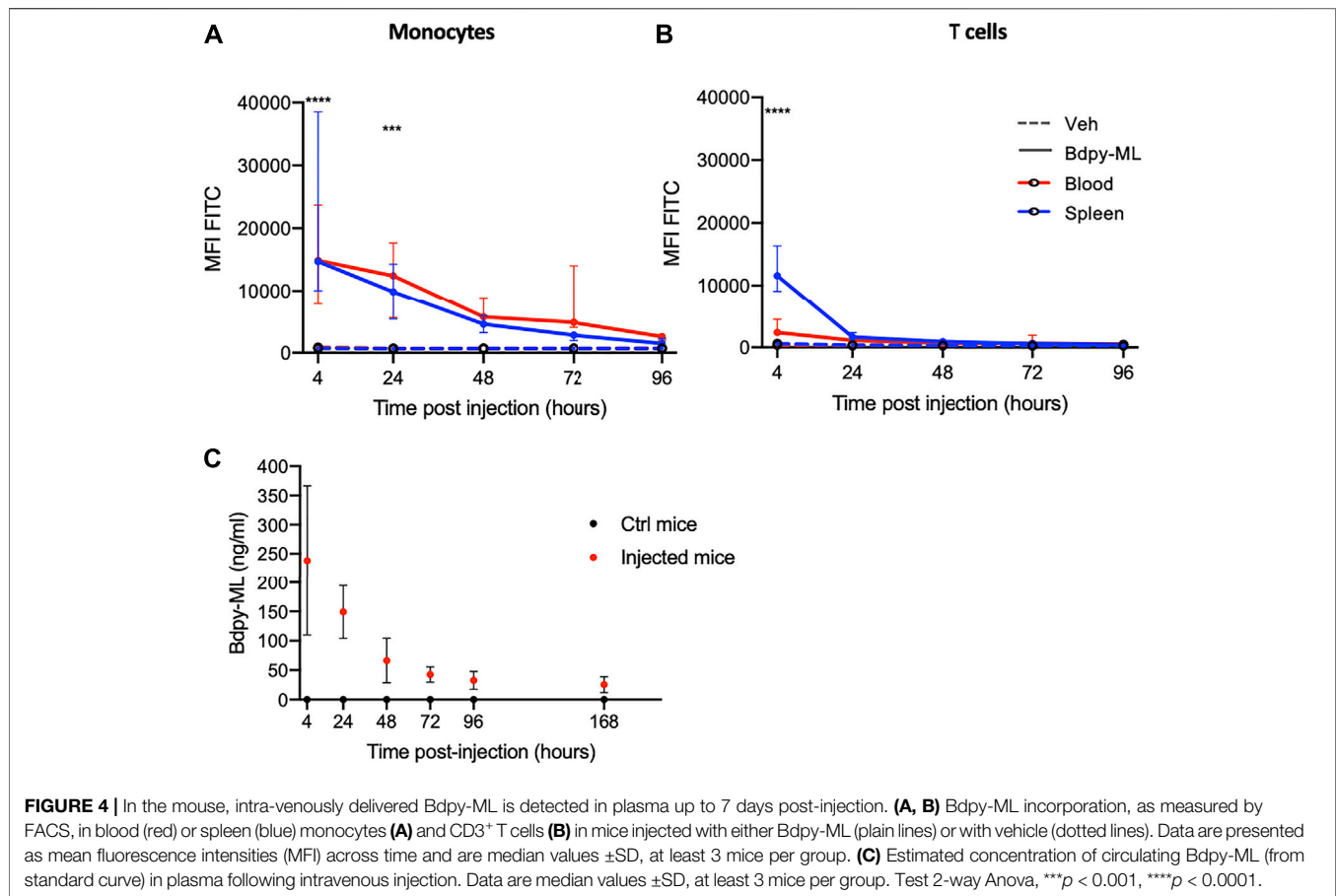
The Differential Incorporation of Bdpi-ML Is Not due to ML Binding to Sec61

Our *in vitro* and *in vivo* data revealed a differential incorporation of Bdpi-ML by monocytes and lymphocytes. We hypothesized that this difference could result from a relatively higher concentration of Sec61 in monocytes. To test this hypothesis,

we compared the incorporation of Bdpi-ML in Jurkat T cells transfected with either the wild type (WT Sec61 α) or the mycolactone-blind R66G mutant of Sec61 α (Baron et al., 2016). We previously demonstrated that over-expression of R66G Sec61 α rescues the cytokine responses of mycolactone-treated T cells (Baron et al., 2016). Compared to untransfected cells, transfected cells showed higher and comparable expression of the WT or the mutant form of Sec6 α as (Figure 5A). Bdpi-ML uptake was comparable in untransfected cells and cells over-expressing WT or R66G Sec61 α (Figure 5B), suggesting that mycolactone uptake is independent of Sec61 α level.

The Scavenger Receptors SR-B1 Partly Contributes to Intracellular Mycolactone's Uptake

Addition of equimolar or higher concentrations of natural mycolactone induced a slight yet significant decrease in



Bdpi-ML uptake by THP-1 cells (**Supplementary Figure S7**), suggesting that mycolactone uptake does not rely exclusively on passive diffusion. The scavenger receptor SR-B1 is an HDL receptor whose primary role is to selectively take up HDL-derived cholesteryl esters into cells and tissues by a non-endothelial mechanism. Since mycolactone associates with HDL, we hypothesized that SR-B1 may contribute to its cellular import. In support of this view, blood cell subsets incorporating the highest levels of Bdpi-ML (**Figure 3**) were those expressing the highest levels of SR-B1 (**Figure 6A**). To assess SR-B1 contribution to cellular import of mycolactone, we used a panel of pharmacological inhibitors (BLT-1, BLT-4, and 5) that specifically block SR-B1-dependent lipid transport from HDL (Nieland et al., 2002; Nieland et al., 2008). We measured the uptake of Bdpi-ML into primary human macrophages after 1 h of incubation. In the presence of the inhibitors, Bdpi-ML uptake showed variable and partial inhibition, with BLT-4 having the greatest effect (**Figure 6B**). BLT-4 also significantly reduced mycolactone uptake by THP-1 cells after 1 h (**Figure 6C**).

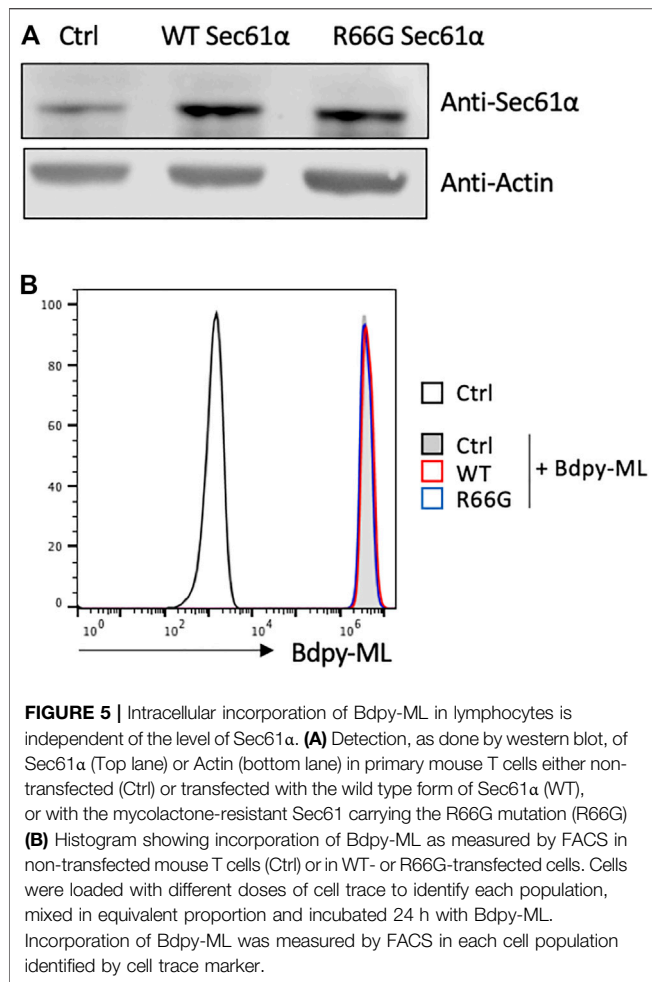
To test the contribution of scavenger receptors SR-B1 to mycolactone uptake by an independent approach, THP-1 cells were transfected with anti-SR-B1 or unrelated siRNAs. Forty-eight hours post-transfection, SR-B1 expression was down-regulated in 72% of cells (**Supplementary Figure S8**). In these cells, anti-SR-B1 siRNAs reduced SR-B1 expression by 92%

($\pm 5\%$) (**Figure 6D**). We then compared cells transfected with anti-SR-B1 or unrelated siRNAs for Bdpi-ML incorporation after 1 and 24 h (**Figure 6E**). Compared to control cells and cells transfected with control siRNAs, cells transfected with anti-SR-B1 siRNAs had a 10% reduction in ability to internalize Bdpi-ML after 1h, which persisted to a lesser extent after 24 h (**Figure 6E**). Collectively, the data reported in **Figure 6** suggest that SR-B1 contributes to the cellular uptake of mycolactone.

DISCUSSION

Here, we used a combination of biophysical and cellular approaches to characterize mycolactone's behavior in solution as well as mechanisms of cellular uptake. Our data obtained *in vitro* strongly support the view that mycolactone cannot circulate as free solubilized macromolecule in the aqueous environment of the circulatory system but rather associated to plasma lipid carriers.

We show that in human blood, a large proportion of mycolactone is delivered to the plasma fraction, in association with serum lipid carriers including albumin, HDL and LDL. This result differs quantitatively from our previous study using mouse blood and natural mycolactone, where the proportion of mycolactone distributing to the extracellular fraction was



considered marginal. At that time, quantitative detection of mycolactone in plasma was performed by ESI-LC-MS analysis of acetone-soluble lipid extracts (Hong et al., 2008), an approach later found to be poorly efficient for recovery of serum associated mycolactone (Sarfo et al., 2011).

Our recent work performed in zebrafish (Colucci-Guyon et al., 2020) had shown that Bdpi-ML diffuses rapidly from the blood compartment toward most tissues. The present study confirms this observation and demonstrates that a part of intravenously-delivered Bdpi-ML persists in mouse plasma for at least 7 days. It supports the notion that serum lipid carriers play a role as transporters and reservoirs of mycolactone in BU patients. This notion is consistent with the body-wide distribution and persistence of mycolactone *in vivo* (Sarfo et al., 2011; Colucci-Guyon et al., 2020). Indeed, albumin distributes into the extravascular spaces of all tissues (for review (5 Human Albumin, 2009)) and its long half-life confers albumin-bound drugs elevated persistence (Larsen et al., 2016). We propose a distribution model where bacterially-produced mycolactone gains access to the peripheral blood to rapidly diffuse into the tissues of infected organisms, and diffuses back slowly from these tissues into the blood compartment. While low, plasmatic

levels of mycolactone in BU patients may be relevant indicators of mycolactone persistence in treated patients.

Albumin, HDL and LDL have in common the presence of apolar regions forming hydrophobic interactions (Wasan et al., 2008). As the most abundant protein in the plasma, albumin likely represents the major carrier of mycolactone in patient blood. Previous studies have demonstrated that albumin contains two hydrophobic patches at its C and N-terminal end able to bind hydrophobic compounds (Haskard and Li-Chan, 1998). In addition, albumin efficiently transports fatty acids (FA) and has about 7 FA binding sites with variable affinity (van der Vusse, 2009). We observed that FA-free albumin is superior to FA-bound albumin for retention of mycolactone in the extracellular compartment (**Supplementary Figure S9**), suggesting that mycolactone can bind to albumin at the same sites as FA. Our *in vitro* and cellular studies also highlighted the potential importance of HDL as mycolactone transporter and reservoir. HDL present a central hydrophobic core mostly composed of nonpolar lipids and a polar monolayer of phospholipids, free cholesterol and apolipoproteins, a structure that is appropriate to the transport of lipophilic compounds (Lund-Katz et al., 2010; Lacko et al., 2015). Depending on their polarity and hydrophobicity, lipophilic molecules transported by HDL preferentially localize within the core or the external layer (Wasan et al., 2008). Our results suggest that mycolactone can form interactions with one or the other of these HDL constituents. Of note, recent studies using artificial monolayers and computational modeling indicated that mycolactone can directly interact with lipid membranes (López et al., 2018; Nitenberg et al., 2018; Aydin et al., 2019). Whether mycolactone stably associates with plasma membranes *in vivo*, and how it partitions within the various cell compartments remains unknown.

We found that interactions between mycolactone and lipid carriers determine mycolactone's bioavailability for peripheral blood cells. When mycolactone gains access to the systemic circulation, reversible binding occurs with plasma proteins. Association/dissociation kinetics of drug binding to plasma carriers determine their biodistribution, those with a high capacity to bind plasma proteins being less able to reach perfused organs. Likewise, mycolactone association with plasma proteins should promote its persistence in the blood circulation.

The mechanisms underpinning mycolactone intracellular diffusion are largely unknown. The diffusion kinetics of a fluorescent derivative of mycolactone and the lack of effect of inhibitors of major signaling pathways suggested a non-endocytic mechanism of diffusion (Snyder and Small, 2003). As suggested by recent studies using computational simulations and model lipid membranes, mycolactone may have ability to cross plasma membranes directly (Nitenberg et al., 2018; López et al., 2018; Nieland et al., 2004). Our observations that mycolactone associates with albumin and lipoproteins suggest that other receptor-mediated mechanisms of mycolactone import occur. In support of this view, we observed an elevated uptake of mycolactone by the monocytic subset of peripheral blood cells, which expresses higher levels of the HDL receptor SR-B1

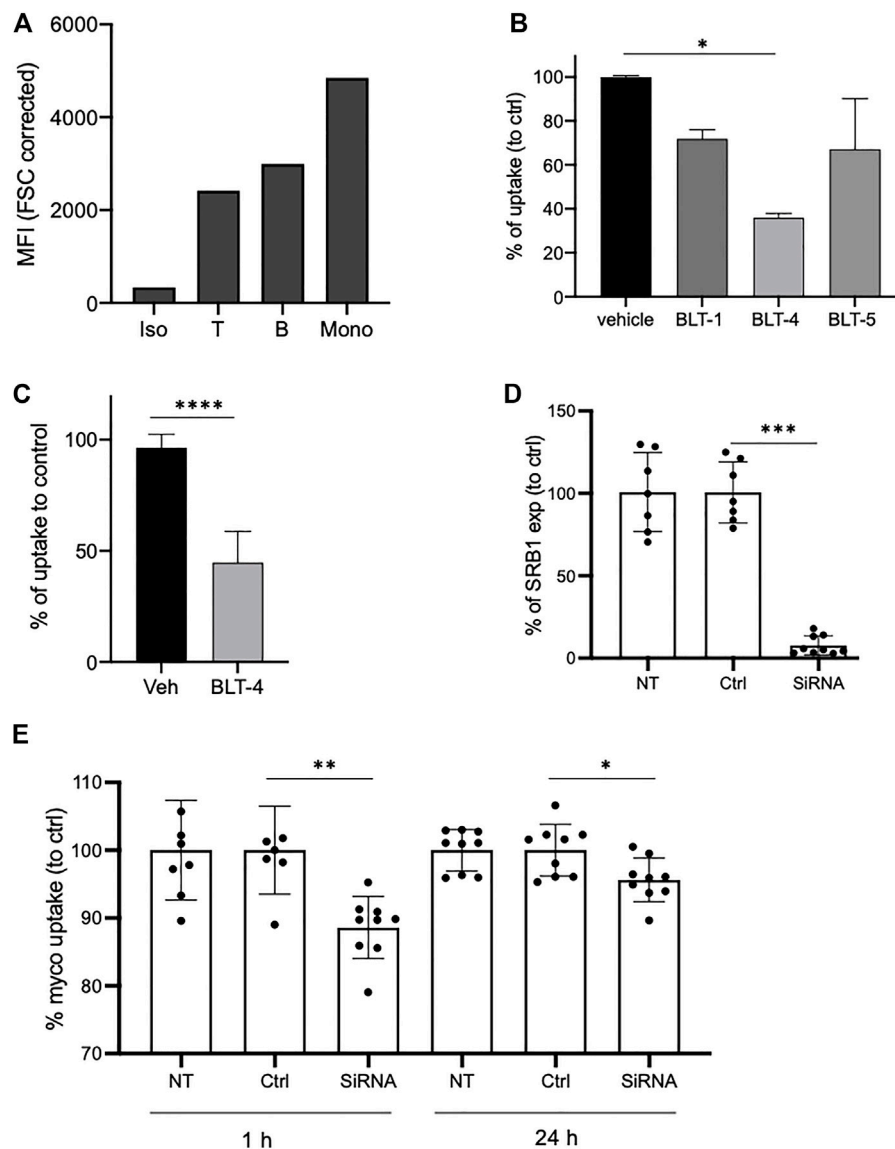


FIGURE 6 | SR-B1 partly contributes to uptake of mycolactone in monocytes. **(A)** SR-B1 expression as measured by flow cytometry in human blood T cells (T), B cells or monocytes (Mono) compared to isotype labeling (Iso). Data are shown as mean fluorescence intensities (MFI) normalized to cell size (FCS corrected). **(B)** Incorporation of Bdp_y-ML into purified human primary monocytes after 1 h in presence of vehicle or of the BLT inhibitors: BLT-1 (10 μ M), BLT-4 (75 μ M), and BLT-5 (150 μ M). Data are shown as percentage of uptake to control (vehicle) and are means \pm SD of triplicates. Test one-way Anova, * p < 0.1. **(C)** Incorporation of Bdp_y-ML into undifferentiated THP-1 cells after 1 h in presence of vehicle (Veh) or BLT-4 (75 μ M). Gate on viable cells. Data are shown as percentage of uptake to control (Veh) and are means \pm SD of 3 independent experiments. Test Mann-Whitney, **** p < 0.0001. **(D)** SR-B1 expression in non-transduced cells (NT), cells transduced with non-targeting siRNA (Ctrl) or with SR-B1 siRNA (siRNA). Data are expressed as percentage to control and are means \pm SD of 3 independent experiments with at least 2 replicates per group. **(E)** Bdp_y-ML uptake in non-transduced (NT) or transduced THP-1 cells with non-targeting siRNA (Ctrl) or with SR-B1 siRNA (siRNA), after 1 or 24 h of incubation with Bdp_y-ML. Data are means \pm SD of 3 independent experiments with at least 2 replicates per group, expressed as percentage to control. Test Mann-Whitney, * p < 0.1, ** p < 0.01, *** p < 0.001.

(Figure 6A). Our siRNA knock-down of SR-B1 led to a moderate but significant reduction of mycolactone uptake by monocytes, showing that SR-B1 is involved. Based on this result, we propose that variations of SR-B1 expression may contribute to the variable uptake of mycolactone across cell populations. How SR-B1 transports mycolactone remains to be clarified but the results with BLT inhibitors suggest a mechanism of import differing from that of cholesterol. Indeed, the most potent inhibitor of

cholesterol uptake (BLT-1) had little impact on mycolactone uptake, while BLT-4, which cross inhibits both SR-B1 and the ATP binding cassette (ABC) transporter ABCA1 (Nieland et al., 2004), had a relatively higher effect. ABCA1 is involved in cholesterol and phospholipid efflux from cells to Apolipoprotein A1 (ApoA-1) to generate HDL (Vedhachalam et al., 2007). In addition to this well-established role, ABCA1 has been proposed to facilitate bidirectional sterol flux through the

plasma membrane (Yamauchi et al., 2015). Although its contribution to mycolactone is quantitatively modest, SR-B1 provides the first example of membrane transporter contributing to mycolactone import into host cells. In addition to this mechanism, albumin and/or lipoproteins membrane receptors other than SR-B1 could mediate mycolactone uptake by host cells, by transfer of mycolactone from carriers to plasma membrane or by endocytosis of mycolactone-carrier complexes. Notably, it will be interesting to investigate the contribution of the broadly-expressed neonatal Fc receptor (FcRn) that plays a key role in homeostatic regulation of albumin (Sand et al., 2015).

In addition to a mechanism of import, we investigated a potential mechanism of mycolactone detoxification through the multidrug resistance protein 1 (MDR1 also known as ABCB1 or P-glycoprotein), an ABC transporter. MDR1 is an efflux pump known to export various amphiphilic compounds including drugs and lipids and to reduce the accumulation of xenobiotics in the cell (Bossennec et al., 2018). To examine a possible contribution of MDR1 in mycolactone efflux, we monitored the decrease of intracellular fluorescence in THP-1 cells loaded with Bdpi-ML, in the presence of Valspodar or Zosuquidar, two specific and highly efficient inhibitors of MDR1 (Bossennec et al., 2018) (**Supplementary Figure S10**). Under the conditions tested, we did not observe any impact of the inhibitors on the release of Bdpi-ML, ruling out a possible involvement of MDR1 in mycolactone efflux.

Beyond the scope of BU disease, we previously demonstrated the therapeutic potential of mycolactone to treat inflammatory disorders in mouse models (Guenin-Macé et al., 2015). A better knowledge of mycolactone interaction with serum carriers is thus essential for the therapeutic use of mycolactone. Many studies report efforts to develop drug delivery systems using albumin or HDLs as a drug carriers (Wasan et al., 2008; Larsen et al., 2016; Hoogenboezem and Duvall, 2018; Tayyab et al., 2021). Accumulation of albumin in solid tumors as well as overexpression of SR-B1 in most malignancies warrant developing carrier-based drug delivery systems for tumor targeting (Larsen et al., 2016; Raut et al., 2018). The combination of mycolactone with albumin and HDLs looks attractive for the therapeutic use of mycolactone as it could promote its delivery toward specific cells or tissues with high affinity for these carriers such as tumors.

In conclusion, our findings reveal the importance of serum lipid carriers in mycolactone biodistribution, at the organism and cellular levels. Here we demonstrate that albumin and lipoproteins act as natural drug delivery systems for mycolactone, having consequence on its biological activity and probably on its pharmacokinetics. Our findings open new

perspectives for the monitoring of BU patients, based on the measurement of plasma levels of mycolactone as well as for the use of mycolactone-based therapeutics.

DATA AVAILABILITY STATEMENT

The original contributions presented in the study are included in the article/**Supplementary Material**, further inquiries can be directed to the corresponding author.

ETHICS STATEMENT

Mouse experiments were approved by the committee on animal experimentation of the Institut Pasteur and by the French Ministry of Research. Authorization #11141.

AUTHOR CONTRIBUTIONS

LG-M and BR conceived and designed the experiments. LG-M, BT-R, FB, BB, SB, J-DM, and BR performed the experiments. SS-A and NB produced Sat-Bdpi-ML. LG-M, FB, BR, and SB analysed and interpreted data. LG-M and CD wrote the article.

FUNDING

This work was supported by the Fondation Raoul Follereau.

ACKNOWLEDGMENTS

The authors would like to thank the DIM IHEALTH region Ile-de-France for funding the Centrifugation project that has allowed the Optima ultracentrifuge investment. Warm thanks to Dr Emmanuelle Reboul Centre de recherche en Cardiovasculaire et Nutrition, UMR 1263 INSERM/1260 INRA, Marseille, France for her precious advice.

SUPPLEMENTARY MATERIAL

The Supplementary Material for this article can be found online at: <https://www.frontiersin.org/articles/10.3389/fphar.2021.733496/full#supplementary-material>

REFERENCES

- 5 Human Albumin (2009). *Transfus. Med. Hemother. Déc* 36 (6), 399–407.
- Aydin, F., Sun, R., and Swanson, J. M. J. (2019). Mycolactone Toxin Membrane Permeation: Atomistic Versus Coarse-Grained MARTINI Simulations. *Biophys. J.* 117 (1), 87–98. doi:10.1016/j.bpj.2019.05.012
- Baron, L., Paatero, A. O., Morel, J. D., Impens, F., Guenin-Macé, L., Saint-Auret, S., et al. (2016). Mycolactone Subverts Immunity by Selectively Blocking the Sec61 Translocon. *J. Exp. Med.* 213 (13), 2885–2896. doi:10.1084/jem.20160662
- Bossennec, M., Di Roio, A., Caux, C., and Ménétrier-Caux, C. (2018). MDR1 in Immunity: Friend or Foe? *Oncoimmunology* 7 (12), e1499388. doi:10.1080/2162402X.2018.1499388
- Brown, P. H., and Schuck, P. (2006). Macromolecular Size-And-Shape Distributions by Sedimentation Velocity Analytical

- Ultracentrifugation. *Biophys. J.* 90 (12), 4651–4661. doi:10.1529/biophysj.106.081372
- Chany, A. C., Casarotto, V., Schmitt, M., Tarnus, C., Guenin-Macé, L., Demangel, C., et al. (2011). A Diverted Total Synthesis of Mycolactone Analogues: An Insight into Buruli Ulcer Toxins. *Chemistry* 17 (51), 14413–14419. doi:10.1002/chem.201102542
- Colucci-Guyon, E., Rifflet, A., Saint-Auret, S., da Costa, A., Boucontet, L., Laval, T., et al. (2020). Spatiotemporal Analysis of Mycolactone Distribution *In Vivo* Reveals Partial Diffusion in the central Nervous System. *Plos Negl. Trop. Dis.* 14 (12), e0008878. doi:10.1371/journal.pntd.0008878
- Demangel, C., and High, S. (2018). Sec61 Blockade by Mycolactone: A Central Mechanism in Buruli Ulcer Disease. *Biol. Cel.* 110 (11), 237–248. doi:10.1111/boc.201800030
- Demangel, C. (2021). Immunity against Mycobacterium Ulcerans: The Subversive Role of Mycolactone. *Immunol. Rev.* 301 (1), 209–221. doi:10.1111/immr.12956
- Gandhi, A. V., Potheary, M. R., Bain, D. L., and Carpenter, J. F. (2017). Some Lessons Learned from a Comparison between Sedimentation Velocity Analytical Ultracentrifugation and Size Exclusion Chromatography to Characterize and Quantify Protein Aggregates. *J. Pharm. Sci.* 106 (8), 2178–2186. doi:10.1016/j.xphs.2017.04.048
- George, K. M., Barker, L. P., Welty, D. M., and Small, P. L. (1998). Partial Purification and Characterization of Biological Effects of a Lipid Toxin Produced by Mycobacterium Ulcerans. *Infect. Immun.* 66 (2), 587–593. doi:10.1128/IAI.66.2.587-593.1998
- George, K. M., Chatterjee, D., Gunawardana, G., Welty, D., Hayman, J., Lee, R., et al. (1999). Mycolactone: A Polyketide Toxin from Mycobacterium Ulcerans Required for Virulence. *Science* 283 (5403), 854–857. doi:10.1126/science.283.5403.854
- George, K. M., Pascopella, L., Welty, D. M., and Small, P. L. (2000). A Mycobacterium Ulcerans Toxin, Mycolactone, Causes Apoptosis in guinea Pig Ulcers and Tissue Culture Cells. *Infect. Immun.* 68 (2), 877–883. doi:10.1128/iai.68.2.877-883.2000
- Guenin-Macé, L., Ruf, M.-T., Pluschke, G., and Demangel, C. (2019). “Mycolactone: More Than Just a Cytotoxin,” in *Buruli Ulcer: Mycobacterium Ulcerans Disease*. Editors G. Pluschke and K. Röltgen (Cham: Springer International Publishing), 117–134. doi:10.1007/978-3-030-11114-4_7
- Guenin-Macé, L., Baron, L., Chany, A. C., Tresse, C., Saint-Auret, S., Jönsson, F., et al. (2015). Shaping Mycolactone for Therapeutic Use against Inflammatory Disorders. *Sci. Transl. Med.* 7 (289), 289ra85. doi:10.1126/scitranslmed.aab0458
- Guenin-Macé, L., Veyron-Churlet, R., Thoulouze, M. I., Romet-Lemonne, G., Hong, H., Leadlay, P. F., et al. (2013). Mycolactone Activation of Wiskott-Aldrich Syndrome Proteins Underpins Buruli Ulcer Formation. *J. Clin. Invest.* 123 (4), 1501–1512. doi:10.1172/JCI66576
- Haskard, C. A., and Li-Chan, E. C. Y. (1998). Hydrophobicity of Bovine Serum Albumin and Ovalbumin Determined Using Uncharged (PRODAN) and Anionic (ANS-) Fluorescent Probes. *J. Agric. Food Chem.* 46 (7), 2671–2677. doi:10.1021/jf970876y
- Hockmeyer, W. T., Krieg, R. E., Reich, M., and Johnson, R. D. (1978). Further Characterization of Mycobacterium Ulcerans Toxin. *Infect. Immun.* 21 (1), 124–128. doi:10.1128/IAI.21.1.124-128.1978
- Hong, H., Coutanceau, E., Leclerc, M., Caleechurn, L., Leadlay, P. F., and Demangel, C. (2008). Mycolactone Diffuses from Mycobacterium Ulcerans-Infected Tissues and Targets Mononuclear Cells in Peripheral Blood and Lymphoid Organs. *Plos Negl. Trop. Dis.* 2 (10), e325. doi:10.1371/journal.pntd.0000325
- Hoogenboezem, E. N., and Duvall, C. L. (2018). Harnessing Albumin as a Carrier for Cancer Therapies. *Adv. Drug Deliv. Rev.* 130, 73–89. doi:10.1016/j.addr.2018.07.011
- Kubiczek-Sutherland, J. Z., Vu, D. M., Anderson, A. S., Sanchez, T. C., Converse, P. J., Martí-Arbona, R., et al. (2019). Understanding the Significance of Biochemistry in the Storage, Handling, Purification, and Sampling of Amphiphilic Mycolactone. *Toxins (Basel)* 11 (4), 202. doi:10.3390/toxins11040202
- Lacko, A. G., Sabnis, N. A., Nagarajan, B., and McConathy, W. J. (2015). HDL as a Drug and Nucleic Acid Delivery Vehicle. *Front. Pharmacol.* 6, 247. Available on: <https://www.ncbi.nlm.nih.gov/pmc/articles/PMC4620406/> (cité févr 9, 2021). doi:10.3389/fphar.2015.00247
- Larsen, M. T., Kuhlmann, M., Hvam, M. L., and Howard, K. A. (2016). Albumin-Based Drug Delivery: Harnessing Nature to Cure Disease. *Mol. Cel. Ther.* 4, 3. doi:10.1186/s40591-016-0048-8
- López, C. A., Unkefer, C. J., Swanson, B. I., Swanson, J. M. J., and Gnanakaran, S. (2018). Membrane Perturbing Properties of Toxin Mycolactone from Mycobacterium Ulcerans. *Plos Comput. Biol.* 14 (2), e1005972. doi:10.1371/journal.pcbi.1005972
- Lund-Katz, S., and Phillips, M. C. (2010). “High Density Lipoprotein Structure-Function and Role in Reverse Cholesterol Transport,” in *Cholesterol Binding and Cholesterol Transport Proteins: Structure and Function in Health and Disease (Subcellular Biochemistry)*. Editors J. R. Harris (Dordrecht: Springer Netherlands), 183–227. Disponible sur [cité 24 août 2021]. doi:10.1007/978-90-481-8622-8_7
- McKenna, M., Simmonds, R. E., and High, S. (2016). Mechanistic Insights into the Inhibition of Sec61-Dependent Co- and Post-Translational Translocation by Mycolactone. *J. Cel. Sci.* 129 (7), 1404–1415. doi:10.1242/jcs.182352
- Mitruka, B. M., and Rawnsley, H. (1981). *Clinical, Biochemical and Haematological Reference Values in Normal Experimental Animals*. New York: Masson Publishing.
- Nieland, T. J., Chroni, A., Fitzgerald, M. L., Maliga, Z., Zannis, V. I., Kirchhausen, T., et al. (2004). Cross-Inhibition of SR-BI- and ABCA1-Mediated Cholesterol Transport by the Small Molecules BLT-4 and Glyburide. *J. Lipid Res.* 45 (7), 1256–1265. doi:10.1194/jlr.M300358-JLR200
- Nieland, T. J., Penman, M., Dori, L., Krieger, M., and Kirchhausen, T. (2002). Discovery of Chemical Inhibitors of the Selective Transfer of Lipids Mediated by the HDL Receptor SR-BI. *Proc. Natl. Acad. Sci. U S A.* 99 (24), 15422–15427. doi:10.1073/pnas.222421399
- Nieland, T. J., Shaw, J. T., Jaipuri, F. A., Duffner, J. L., Koehler, A. N., Banakos, S., et al. (2008). Identification of the Molecular Target of Small Molecule Inhibitors of HDL Receptor SR-BI Activity. *Biochemistry* 47 (1), 460–472. doi:10.1021/bi701277x
- Nitenberg, M., Bénarouche, A., Maniti, O., Marion, E., Marsollier, L., Géan, J., et al. (2018). The Potent Effect of Mycolactone on Lipid Membranes. *Plos Pathog.* 14 (1), e1006814. doi:10.1371/journal.ppat.1006814
- Raut, S., Mooberry, L., Sabnis, N., Garud, A., Dossou, A. S., and Lacko, A. (2018). Reconstituted HDL: Drug Delivery Platform for Overcoming Biological Barriers to Cancer Therapy. *Front. Pharmacol.* 9, 1154. doi:10.3389/fphar.2018.01154
- Reboul, E., Klein, A., Bietrix, F., Gleize, B., Malezet-Desmoulines, C., Schneider, M., et al. (2006). Scavenger Receptor Class B Type I (SR-BI) Is Involved in Vitamin E Transport across the Enterocyte. *J. Biol. Chem.* 281 (8), 4739–4745. doi:10.1074/jbc.M509042200
- Sand, K. M. K., Bern, M., Nilsen, J., Noordzij, H. T., Sandlie, I., and Andersen, J. T. (2015). Unraveling the Interaction Between FcRn and Albumin: Opportunities for Design of Albumin-Based Therapeutics. *Front. Immunol.* 5, 682. doi:10.3389/fimmu.2014.00682
- Sarfo, F. S., Le Chevalier, F., Aka, N., Phillips, R. O., Amoako, Y., Boneca, I. G., et al. (2011). Mycolactone Diffuses into the Peripheral Blood of Buruli Ulcer Patients—Implications for Diagnosis and Disease Monitoring. *Plos Negl. Trop. Dis.* 5 (7), e1237. doi:10.1371/journal.pntd.0001237
- Shen, W. J., Asthana, S., Kraemer, F. B., and Azhar, S. (2018). Scavenger Receptor B Type I: Expression, Molecular Regulation, and Cholesterol Transport Function. *J. Lipid Res.* 59 (7), 1114–1131. doi:10.1194/jlr.R083121
- Snyder, D. S., and Small, P. L. (2003). Uptake and Cellular Actions of Mycolactone, a Virulence Determinant for Mycobacterium Ulcerans. *Microb. Pathog.* 34 (2), 91–101. doi:10.1016/s0882-4010(02)00210-3
- Spangenberg, T., and Kishi, Y. (2010). Highly Sensitive, Operationally Simple, Cost/time Effective Detection of the Mycolactones from the Human Pathogen Mycobacterium Ulcerans. *Chem. Commun. (Camb)* 46 (9), 1410–1412. doi:10.1039/b924896j
- Tayyab, S., and Feroz, S. R. (2021). Serum Albumin: Clinical Significance of Drug Binding and Development as Drug Delivery Vehicle. *Adv. Protein Chem. Struct. Biol.* 123, 193–218. doi:10.1016/bs.apcsb.2020.08.003
- van der Vusse, G. J. (2009). Albumin as Fatty Acid Transporter. *Drug Metab. Pharmacokin.* 24 (4), 300–307. doi:10.2133/dmpk.24.300
- Vedhachalam, C., Duong, P. T., Nickel, M., Nguyen, D., Dhanasekaran, P., Saito, H., et al. (2007). Mechanism of ATP-Binding Cassette Transporter A1-Mediated Cellular Lipid Efflux to Apolipoprotein A-I and Formation of High Density Lipoprotein Particles. *J. Biol. Chem.* 282 (34), 25123–25130.

- Disponibile sur: <https://pubmed.ncbi.nlm.nih.gov/17604270/>(cité juin 23, 2021). doi:10.1074/jbc.M704590200
- Wasan, K. M., Brocks, D. R., Lee, S. D., Sachs-Barrable, K., and Thornton, S. J. (2008). Impact of Lipoproteins on the Biological Activity and Disposition of Hydrophobic Drugs: Implications for Drug Discovery. *Nat. Rev. Drug Discov.* 7 (1), 84–99. doi:10.1038/nrd2353
- Yamauchi, Y., Iwamoto, N., Rogers, M. A., Abe-Dohmae, S., Fujimoto, T., Chang, C. C., et al. (2015). Deficiency in the Lipid Exporter ABCA1 Impairs Retrograde Sterol Movement and Disrupts Sterol Sensing at the Endoplasmic Reticulum. *J. Biol. Chem.* 290 (39), 23464–23477. doi:10.1074/jbc.M115.662668

Conflict of Interest: The authors declare that the research was conducted in the absence of any commercial or financial relationships that could be construed as a potential conflict of interest.

Publisher's Note: All claims expressed in this article are solely those of the authors and do not necessarily represent those of their affiliated organizations, or those of the publisher, the editors and the reviewers. Any product that may be evaluated in this article, or claim that may be made by its manufacturer, is not guaranteed or endorsed by the publisher.

Copyright © 2021 Tello Rubio, Bugault, Baudon, Raynal, Brûlé, Morel, Saint-Auret, Blanchard, Demangel and Guenin-Macé. This is an open-access article distributed under the terms of the Creative Commons Attribution License (CC BY). The use, distribution or reproduction in other forums is permitted, provided the original author(s) and the copyright owner(s) are credited and that the original publication in this journal is cited, in accordance with accepted academic practice. No use, distribution or reproduction is permitted which does not comply with these terms.