



HAL
open science

Mapping the zonal winds of Jupiter's stratospheric equatorial oscillation

B. Benmahi, T. Cavalié, T. Greathouse, V. Hue, R. Giles, S. Guerlet, A. Spiga, R. Cosentino

► **To cite this version:**

B. Benmahi, T. Cavalié, T. Greathouse, V. Hue, R. Giles, et al.. Mapping the zonal winds of Jupiter's stratospheric equatorial oscillation. *Astronomy and Astrophysics - A&A*, 2021, 652, pp.A125. 10.1051/0004-6361/202141523 . hal-03358143

HAL Id: hal-03358143


<https://hal.science/hal-03358143>

Submitted on 5 Oct 2021

HAL is a multi-disciplinary open access archive for the deposit and dissemination of scientific research documents, whether they are published or not. The documents may come from teaching and research institutions in France or abroad, or from public or private research centers.

L'archive ouverte pluridisciplinaire **HAL**, est destinée au dépôt et à la diffusion de documents scientifiques de niveau recherche, publiés ou non, émanant des établissements d'enseignement et de recherche français ou étrangers, des laboratoires publics ou privés.

Mapping the zonal winds of Jupiter's stratospheric equatorial oscillation

B. Benmahi¹ , T. Cavalie^{1,2}, T. K. Greathouse³, V. Hue³, R. Giles³, S. Guerlet⁴, A. Spiga^{4,5}, and R. Cosentino⁶

¹ Laboratoire d'Astrophysique de Bordeaux, Univ. Bordeaux, CNRS, B18N, allée Geoffroy Saint-Hilaire, 33615 Pessac, France
e-mail: bi.lal.benmahi@u-bordeaux.fr

² LESIA, Observatoire de Paris, Université PSL, CNRS, Sorbonne Université, Univ. Paris Diderot, Sorbonne Paris Cité, 5 place Jules Janssen, 92195 Meudon, France

³ Southwest Research Institute, San Antonio, TX 78228, USA

⁴ Laboratoire de Météorologie Dynamique/Institut Pierre-Simon Laplace (LMD/IPSL), Sorbonne Université, Centre National de la Recherche Scientifique (CNRS), Ecole Polytechnique, Ecole Normale Supérieure (ENS), Campus Pierre et Marie Curie BC99, 4 place Jussieu, 75005 Paris, France

⁵ Institut Universitaire de France, Paris, France

⁶ Department of Astronomy, University of Maryland, College Park, MD 20742, USA

Received 11 June 2021 / Accepted 9 July 2021

ABSTRACT

Context. Since the 1950s, quasi-periodic oscillations have been studied in the terrestrial equatorial stratosphere. Other planets of the Solar System present (or are expected to present) such oscillations; for example the Jupiter equatorial oscillation and the Saturn semi-annual oscillation. In Jupiter's stratosphere, the equatorial oscillation of its relative temperature structure about the equator is characterized by a quasi-period of 4.4 yr.

Aims. The stratospheric wind field in Jupiter's equatorial zone has never been directly observed. In this paper, we aim to map the absolute wind speeds in Jupiter's equatorial stratosphere in order to quantify vertical and horizontal wind and temperature shear.

Methods. Assuming geostrophic equilibrium, we apply the thermal wind balance using almost simultaneous stratospheric temperature measurements between 0.1 and 30 mbar performed with Gemini/TEXES and direct zonal wind measurements derived at 1 mbar from ALMA observations, all carried out between March 14 and 22, 2017. We are thus able to self-consistently calculate the zonal wind field in Jupiter's stratosphere where the JEO occurs.

Results. We obtain a stratospheric map of the zonal wind speeds as a function of latitude and pressure about Jupiter's equator for the first time. The winds are vertically layered with successive eastward and westward jets. We find a 200 m s^{-1} westward jet at 4 mbar at the equator, with a typical longitudinal variability on the order of $\sim 50 \text{ m s}^{-1}$. By extending our wind calculations to the upper troposphere, we find a wind structure that is qualitatively close to the wind observed using cloud-tracking techniques.

Conclusions. Almost simultaneous temperature and wind measurements, both in the stratosphere, are a powerful tool for future investigations of the JEO (and other planetary equatorial oscillations) and its temporal evolution.

Key words. planets and satellites: atmospheres – planets and satellites: gaseous planets – planets and satellites: individual: Jupiter

1. Introduction

In Earth's atmosphere, Reed et al. (1961) and Ebdon & Veyard (1961) discovered a quasi-periodic oscillation in the high-altitude equatorial winds that alternates between eastward and westward flows. This ~ 28 -month quasi-periodic phenomenon, known as the quasi-biennial oscillation (QBO), has been observed and studied ever since the 1950s (e.g., Baldwin et al. 2001). The thermal wind balance indicates that atmospheric winds are coupled with temperature gradients. The QBO can therefore also be characterized in terms of the temperature field. From this perspective, the QBO is characterized by a vertical oscillation in temperature which moves downwards in the stratosphere with time.

Using temperature field measurements provided by infrared observations, similar quasi-periodic stratospheric oscillations have been discovered in Jupiter (Leovy et al. 1991; Orton et al. 1991) and Saturn (Fouchet et al. 2008; Orton et al. 2008) and are all localized in the 20°S – 20°N latitudinal range. In Jupiter, the oscillation is characterized by a period of ~ 4 yr and was dubbed the quasi-quadrennial oscillation (QQO). Further temperature

observations have enabled characterization and modeling of the QQO (e.g., Orton et al. 1991; Friedson 1999; Simon-Miller et al. 2006; Fletcher et al. 2016). The Saturn semi-annual oscillation (SSAO) has a period of about 14.7 yr. Both have been observed between 0.01 and 20 mbar.

Planetary and gravity waves were first proposed as the cause of the Earth QBO by Lindzen & Holton (1968) and have since been proposed as causes of the Jupiter and Saturn oscillations as well (Friedson 1999; Li & Read 2000; Flasar et al. 2004; Cosentino et al. 2017; Bardet et al. 2021). On Earth, momentum transfer from the waves to the zonal wind results in downward propagation of the wind velocity peaks. Such downward propagation of the SSAO was observed with the Composite InfraRed Spectrometer (CIRS) over the 13-yr course of the Cassini mission (Guerlet et al. 2011, 2018). The downward propagation of the JEO has also been measured from long-term monitoring temperature observations carried out at the NASA Infrared Telescope Facility (IRTF) using the Texas Echelon Cross-Echelle Spectrograph (TEXES; Cosentino et al. 2017, 2020; Giles et al. 2020), which allow the retrieval of

horizontally and vertically resolved stratospheric temperatures. Recently, [Antuñano et al. \(2021\)](#) showed that Jupiter’s QJO does not have a stable periodicity, and alterations could result from thermal perturbations ([Giles et al. 2020](#)). Here, we therefore refer to the Jupiter equatorial oscillation (JEO) rather than the QJO. We note that such perturbations have also been seen in the SSAO following the Great Storm of 2010–2011 ([Fletcher et al. 2017](#)).

[Flasar et al. \(2004\)](#) derived the JEO wind structure at low latitudes from *Cassini*/CIRS temperature measurements performed during the Jupiter flyby in late 2000. Invoking thermal wind balance, these authors discovered a $\sim 140 \text{ m s}^{-1}$ eastward equatorial jet at 3 mbar by interpolating wind velocities, even though a precise estimate of the jet peak velocity at the equator is made impossible because of the increase in the Rossby number. [Fletcher et al. \(2016\)](#) confirmed the presence of a strong stratospheric jet in the mbar region. [Cosentino et al. \(2017\)](#) were able to reproduce such JEO wind speeds to first order using an atmospheric circulation model with a stochastic parametrization of gravity wave drag.

[Fouchet et al. \(2008\)](#) found a velocity difference of about 200 m s^{-1} in Saturn’s stratosphere between the two equatorial jets located at 0.3 and 3 mbar, also applying the thermal wind balance to the measured temperatures. However, the absolute stratospheric wind speeds remain unknown on Saturn (and were unknown until now for Jupiter), and given the strong eastward cloud-top zonal wind of 400 m s^{-1} observed at $\sim 700 \text{ mbar}$, it is unsure whether the stratospheric wind remains eastward or becomes periodically westward, as observed on Earth.

The main weakness in the methodology used in previous studies to derive the thermal winds, and particularly in the case of Jupiter, is that there is a discontinuity between the pressure range probed by the temperatures (1–20 mbar from CH_4 emission, 80–400 mbar from H_2 collision-induced absorption) and the pressure at which the zonal wind profile is inserted as a boundary condition, i.e., generally at the cloud-top (at 500 mbar) during the thermal wind derivation. The novelty of the approach we present here consists in using a wind measurement performed almost concomitantly and within the altitude range probed by the stratospheric temperature measurements. We are thus able to obtain self-consistent zonal wind field as a function of altitude and latitude in the whole range probed by the temperature measurements. In this paper, we focus on Jupiter’s zonal winds in the altitude and latitude ranges where the JEO takes place in order to constrain the direction and magnitude of the equatorial and tropical jets using the thermal wind balance.

In Sect. 2, we present the wind and temperature observations we used to compute the zonal wind field. Section 3 details the models we developed to compute the equatorial and tropical wind speeds from the thermal wind balance. We present our results and discuss them in Sect. 4, and provide concluding remarks in Sect. 5.

2. Observations

2.1. Zonal wind measurements at 1 mbar in Jupiter’s stratosphere

[Cavalié et al. \(2021\)](#) observed Jupiter’s stratospheric HCN emission at 354.505 GHz with the ALMA interferometer on 22 March 2017. These authors obtained a high spectral and spatial resolution map of Jupiter’s limb from which they achieved the first direct measurement of the stratospheric winds. The wind speeds were retrieved from the wind-induced Doppler-shifted

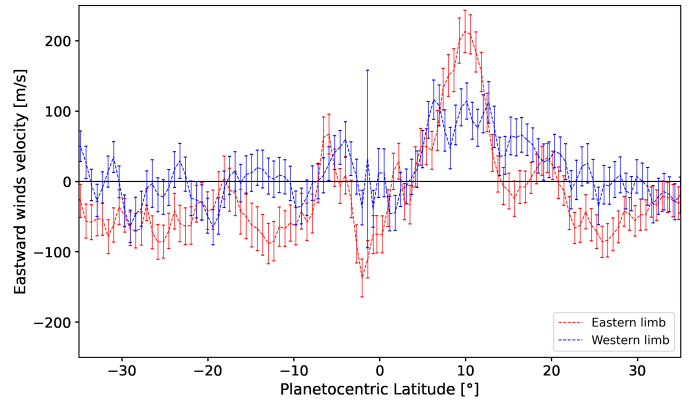


Fig. 1. Eastward wind velocities at 1 mbar as measured with ALMA on 22 March 2017, on the eastern and western limbs of Jupiter (adapted from [Cavalié et al. 2021](#)).

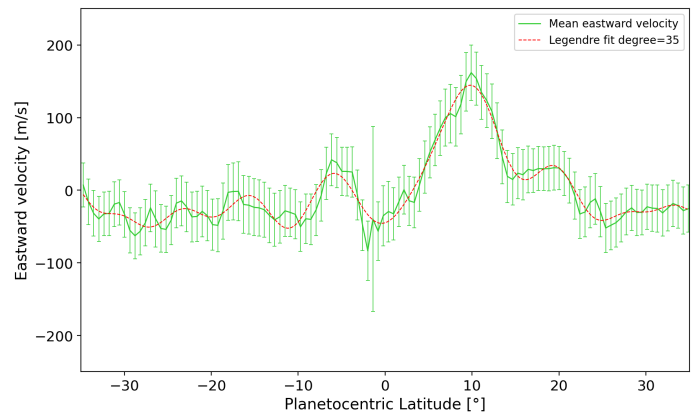


Fig. 2. Mean eastward wind velocities (green line) with uncertainties (green bars) at 1 mbar in Jupiter’s stratosphere on 22 March 2017. A degree 35 Legendre polynomial smoothing is plotted with dashed red lines.

spectral lines formed at the altitude probed by the HCN line. The latitudinal resolution varies from 3° at the equator to 7° at polar latitudes. Contribution function computations demonstrate that the sensitivity to winds peaks at 1 mbar in the 60°S – 50°N latitudinal range, and at 0.1 mbar at polar latitudes. In this paper, we use the data ranging from 35°S to 35°N planetocentric latitude. Although the data were acquired with a short 24-min on-source integration time, the rapid rotation of the planet (9 hr 56 min) results in longitudinal smearing over about 15° . The central meridian longitude thus ranges from 65°W to 80°W (System III). The eastern and western limbs (From the observer’s point of view) span longitudes from 335°W to 350°W and from 155°W to 170°W , respectively. The eastward wind velocities obtained by [Cavalié et al. \(2021\)](#) are shown for both observed limbs in Fig. 1. The average of both limb measurements are shown in Fig. 2.

2.2. Jupiter’s stratospheric temperature field observations

In March 2017, TEXES ([Lacy et al. 2002](#)), mounted on the Gemini North 8 m telescope, carried out high-resolution infrared observations of Jupiter to characterize the temperatures in its stratosphere. These observations were taken as part of a long-term monitoring program carried out primarily at the NASA Infrared Telescope Facility ([Cosentino et al. 2017](#); [Giles et al. 2020](#)). TEXES can observe at wavelengths ranging from 4.5

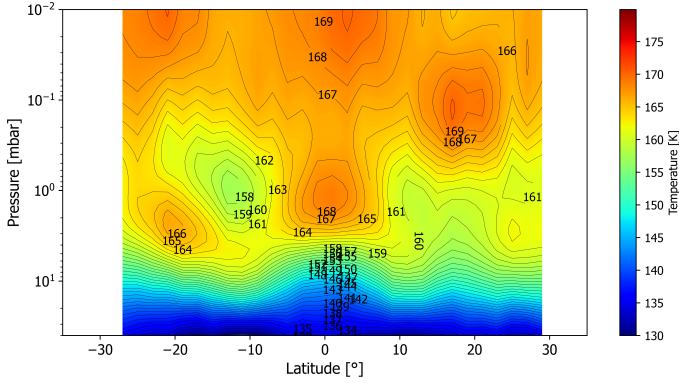


Fig. 3. Average of the temperature fields at the eastern and western limbs covered by the ALMA wind observations. This temperature field is referred to as the east–west limb mean in this paper and results from the average of the fields are shown in Figs. A.3 and A.4. Latitudes are planetocentric.

to 25 μm , with a spectral resolving power ranging from 4000 to 80 000 depending on the operating mode. The observations of Jupiter were centered around 8.02 μm with a bandwidth of about 0.06 μm where several spectral lines of the CH_4 (ν_4 band) P-branch lie (Brown et al. 2003). During the March 2017 observing campaign, TEXES was used in its highest spectral resolution mode ($R = 80\,000$).

The Gemini/TEXES observations were used to retrieve vertically resolved latitude and longitude temperature maps of Jupiter's stratosphere. These maps were compared to the lower spatial resolution maps from the IRTF to show that IRTF/TEXES is capable of fully resolving the meridional structure of the JEO (Cosentino et al. 2020). The pressure range probed by the TEXES data ranges from 0.1 to 30 mbar with a vertical resolution of approximately one scale height. Beyond this pressure range, the temperature vertical profiles converge toward the profile from Moses et al. (2005), which is taken as a priori for the retrievals. The horizontal resolution is 2° in latitude and 4° longitude. The uncertainty on the retrieved temperatures is about 2 K.

The Gemini/TEXES temperature field we use in this paper was retrieved from the combined data taken on 14, 16, and 20 March 2017, i.e., only 2–8 days apart from the ALMA wind measurements. By extracting the temperatures at the longitudes of the limbs probed by ALMA and accounting for the 15° longitudinal smearing, we produced altitude–latitude temperature fields for each limb, and an average of both. The latter, referred to as the east–west limb mean in what follows, is shown in Fig. 3. The former are shown in Figs. A.3 and A.4, and the zonal mean temperature field is shown in Fig. A.1 for comparison. We note, however, that we only have full longitudinal coverage over the eastern limb. Only one-third of the western limb (155°–170°W) is covered by temperature measurements (155°–160°W).

3. Models

3.1. Thermal wind equation

Atmospheric dynamics can be interpreted with the equations of fluid mechanics. The so-called thermal wind equation (TWE) derives from Euler's equations for a frictionless fluid (e.g., Pedlosky 1979). In spherical coordinates and assuming geostrophic equilibrium, the TWE relates the temperature

gradient with the perpendicular velocity in the $(\vec{e}_\theta; \vec{e}_\phi)$ plane¹ of a fluid (such as an atmosphere) in a rotating frame. This equation is given by the following expression:

$$f_0 \sin(\theta) \frac{\partial \vec{v}_\perp(r, \theta, \phi)}{\partial r} = \frac{r}{Tr_0} \vec{r} \wedge \vec{\nabla}_\perp T(r, \theta, \phi), \quad (1)$$

where f_0 is the Coriolis parameter at the north pole, θ is the latitude varying from -90° to 90° , $\vec{v}_\perp(r, \theta, \phi)$ is the horizontal fluid velocity at the planet surface, r_0 is the mean radius of the planet, and T is the temperature field. From this equation, and after projecting on the zonal axis, we can easily relate the zonal wind speed with the latitudinal temperature gradient. Thus, we have the following expression:

$$\frac{\partial v_\phi}{\partial \ln(P)} = \frac{1}{\sin(\theta)} \frac{R(P)}{f_0 r_0} \frac{\partial T}{\partial \theta}, \quad (2)$$

where P is the pressure and v_ϕ is the zonal wind velocity. $R(P) = \frac{k_B}{M(P)}$ is the specific gas constant of the Jovian atmosphere calculated for each altitude. $M(P)$ is the mean molecular mass of Jupiter's atmosphere as a function of pressure. We derive it from the model used in Benmahi et al. (2020). Establishing this equation assumes hydrostatic and geostrophic equilibrium, and the latter is guaranteed by the small Rossby number (Ro) in Jupiter's atmosphere. As the Coriolis force vanishes at the equator because of the $f_0 \sin(\theta)$ factor, this equation diverges at the equator ($\theta = 0$). This is why Flasar et al. (2004) only used the TWE down to latitudes of about 5° in their zonal wind derivation.

3.2. Equatorial thermal wind equation

Marcus et al. (2019) derived an equatorial thermal wind equation (EQTWE). This uses the Laplacian in latitude of the temperatures, which allows the $\frac{1}{\sin(\theta)}$ factor of the TWE to be canceled out. As a result, the EQTWE does not diverge at low latitudes and is thus particularly useful for replacing the TWE in the equatorial zone. Its expression is given by:

$$\frac{\partial v_\phi^M}{\partial \ln(P)} = \frac{R(P)}{f_0 r_0} \frac{\partial^2 T^M}{\partial \theta^2}, \quad (3)$$

where $T^M(P, \theta) = \frac{T(P, \theta) + T(P, -\theta)}{2}$ is the mirror-symmetric component of the temperature about the equator. The anti-mirror-symmetric component of the temperature is $T^A(P, \theta) = \frac{T(P, \theta) - T(P, -\theta)}{2}$. According to Marcus et al. (2019), the EQTWE has a fractional error of $\propto |\frac{T^A}{T^M}|^2$, and is valid in the latitudinal range $\pm 18^\circ$ with an error of less than 10%.

The derivation of the EQTWE requires the same assumptions as for the TWE, except the limitations regarding the Rossby number at the equator, and assumes that the flow is symmetrical around the equator (see Appendix A in Marcus et al. 2019).

3.3. Assumptions and equation solving

To carry out our study, we must also assume that Jupiter's temperature field remains stationary over the time interval between the TEXES thermal and ALMA wind measurements (from 2 to 8 days). This is justified for several reasons: The

¹ The unit vector \vec{e}_ϕ is oriented in the direction of the planet rotation such that positive winds are eastward.

characteristic time of variability of cloud and storm dynamics in the troposphere is about a few days. However, their effects on stratospheric temperatures are transported by wave and energy propagation on timescales comparable to the periodicity of the JEO. Moreover, seasonal effects on Jupiter are weak (e.g., [Hue et al. 2018](#)) and the considered duration is negligible compared to Jupiter’s year, and is considered to be much shorter than the radiative timescales in Jupiter’s stratosphere ([Guerlet et al. 2020](#)).

Before solving the TWE and EQTWE, we smoothed the temperature field and the 1-mbar wind speeds over latitude in order to obtain smooth and continuous derivatives (see Appendix C). We smoothed the various temperature fields (the east–west limb mean of Fig. 3, the zonal average of Fig. A.1, the eastern and western limbs of Figs. A.3 and A.4) with a Legendre polynomial series up to degree 17. An example of fits at several pressures is shown in Fig. 4. For the ALMA wind velocities at 1 mbar, we used a Legendre polynomial series up to degree 35 (see Fig. C.1). We determined the highest degree of the fitting polynomials such that the fits were within observation uncertainties. For temperatures and velocities, we used a latitudinal sampling of 0.25° and we solved the TWE and EQTWE with this sampling from 35°S to 35°N . We integrated the equations upwards and downwards starting with the ALMA wind velocities as initial conditions at $P_0 = 1$ mbar.

Finally, we need to determine the latitude range around the equator in which we solve the EQTWE and then switch to the TWE. The TWE is highly dependent on Ro and its fractional error is about $\propto Ro$. We therefore estimate Ro as a function of latitude by considering a characteristic velocity scale for Jupiter’s atmosphere of 100 m s^{-1} . We find $Ro \sim 0.2$ at $\pm 5^\circ$ latitude. We therefore solve the EQTWE on the mirror-symmetric component of the temperature field $T^M(P, \theta)$ in the latitude interval $[-3^\circ; 3^\circ]$, where the initial velocity condition $v_\theta(\theta, P_0)$ (i.e., the fitted curve in Fig. 2) is actually quasi-symmetrical about the equator. We then solve the TWE in the latitude interval $[-35^\circ; -5^\circ] \cup [5^\circ; 35^\circ]$ using $T(P, \theta)$. Finally, we use a bilinear interpolation between the two results in the $[-5^\circ; -3^\circ] \cup [3^\circ; 5^\circ]$ range to combine the results into a single map.

4. Results and discussion

4.1. Zonal winds in the JEO region

Figure 5 (top) shows the eastward wind velocities that we derive from the east–west limb mean temperature map of Fig. 3 with the EQTWE and TWE and using the wind speeds measured with ALMA at 1 mbar (Fig. 2) as an initial condition. We note that there is no sharp discontinuity between the two equation solutions in the $[-5^\circ; -3^\circ] \cup [3^\circ; 5^\circ]$ latitude range and from 0.5 to 30 mbar. Above the 0.5 mbar pressure level in the united latitude range $[-5^\circ; -3^\circ] \cup [3^\circ; 5^\circ]$, we notice small differences between the two equation solutions. Because the TWE is highly dependent on the Rossby number, its validity also depends on it. Thus, the discrepancy between the TWE and the EQTWE is due to the local variability of the Rossby number.

We present these computations in the 0.05–30 mbar range (e.g., Fig. 5), where the TEXES observations are sensitive to temperatures and have the lowest uncertainties in the retrievals. The JEO can clearly be identified in the zonal wind map by vertically alternating zonal jets. We find a strong westward (i.e., retrograde) jet at the equator centered at about 4 mbar with a peak velocity of 200 m s^{-1} . This jet has a full-width at half-maximum (FWHM) of about 7° in latitude and 50 km in altitude

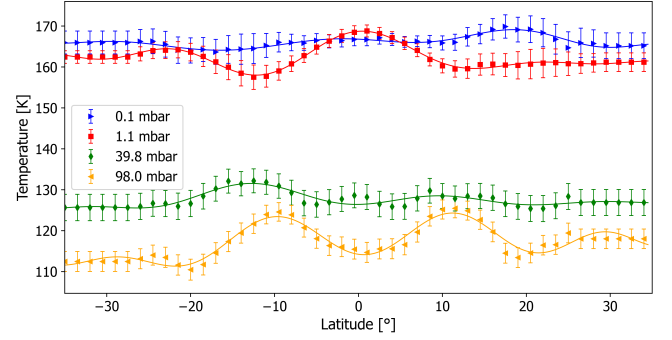


Fig. 4. Examples of Legendre polynomial series fitting of the temperatures as a function of latitude for four different pressure levels. The two lower pressure profiles (0.1 and 1.1 mbar) are from the [Giles et al. \(2020\)](#) dataset that we primarily use in this paper. The higher pressure profiles (39.8 and 98 mbar) are from the [Fletcher et al. \(2020\)](#) dataset. Fits are in solid lines and data are shown with symbols and error bars of corresponding color.

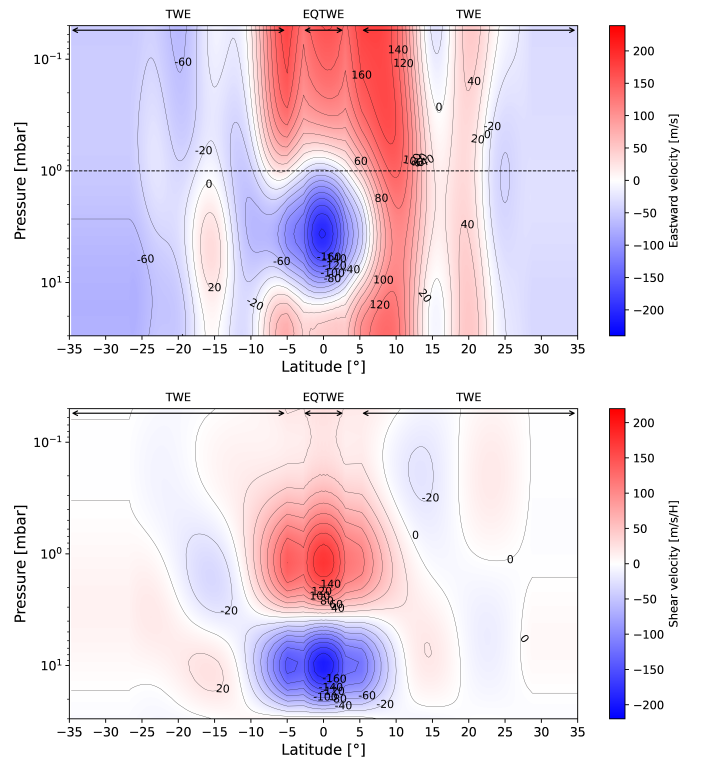


Fig. 5. *Top:* eastward wind velocities derived from the east–west limb mean temperature map of Fig. 2 and the measured winds at 1 mbar of Fig. 3 with the EQTWE and TWE. The dashed horizontal line represents the altitude where stratospheric winds were measured by [Cavalié et al. \(2021\)](#). *Bottom:* wind shear as obtained from the east–west limb mean temperature field.

(two scale heights). At pressures lower than 1 mbar, we find an eastward jet, which is 20° wide in latitude and has a FWHM of about 80 km in altitude (between 0.05 and 0.5 mbar). The vertical stratification about the equator is also unambiguously characterized, with a peak-to-peak difference of 300 m s^{-1} between 4 mbar and 0.1 mbar. The JEO jet in March 2017 is almost perfectly in opposition of phase compared to the state observed by [Flasar et al. \(2004\)](#) in December 2000 at the time of the *Cassini* flyby. The amplitudes of the JEO jet in these two observations are comparable (200 m s^{-1} vs. 140 m s^{-1}), even though the exact velocity

at the equator is not known in Flasar et al. (2004) because of the limitations of the TWE at the equator. At $\sim 10^\circ\text{N}$, the eastward jet is vertically extended over the entire pressure range with an average velocity of 125 m s^{-1} . Beyond $\pm 15^\circ$, winds have amplitudes lower than 40 m s^{-1} .

In Fig. 5 (bottom), we map the wind shear ($\frac{\partial v_\phi}{\partial r}$) as obtained from the east–west limb mean temperature field (Fig. 3). We can clearly see two wind shear spots centered around the equator, with positive and negative amplitudes of $\sim 160\text{ m s}^{-1}/\text{H}$ above and below the $\sim 4\text{ mbar}$ pressure level, respectively, where the westward jet is located (Fig. 5). The two wind shear spots have a FWHM of about 12° in latitude. Beyond $\pm 10^\circ$ latitude, the wind shear is negligible. Such vertical and latitudinal extensions and amplitudes are comparable to previous estimates (Fletcher et al. 2016; Marcus et al. 2019).

The zonal wind map we obtained from the Gemini/TEXES measurements in March 2017 combined with the 1 mbar zonal wind measured by Cavalíe et al. (2021) using ALMA and the result obtained by Fletcher et al. (2016) from the zonal temperature field measured by IRTF/TEXES in December 2014 are of almost opposite phase in the 1–10 mbar range. The time-interval between the two measurements is $\Delta T \sim 2\text{ yr}$ and 4 months. This would lead to a JEO period of 4 yr and 8 months, in agreement with previous measurements (Leovy et al. 1991; Orton et al. 1991). We note that Antuñano et al. (2021) has now demonstrated that this periodicity is variable and can even be disrupted, as observed by Giles et al. (2020). Such disruptions may originate from the outbreak of thermal anomalies like the one seen in May 2017 at 1 mbar pressure, 20°N latitude, and 180°W longitude (See Fig. 7 in Giles et al. 2020).

4.2. Longitudinal variability of zonal winds in the JEO region

The wind velocity maps we derive from the temperature zonal mean, from the eastern limb only, and from the western limb only (Figs. A.1, A.3, and A.4, respectively) are presented in Figs. A.2, and 6, respectively. The two latter wind maps are obtained using the eastern and western ALMA wind measurements of Fig. 1 as initial condition.

We notice in Fig. 6 that the 10°N wind peak observed at 1 mbar with ALMA can be tracked down to the lower stratosphere, where it is centered around 7°N . This latitude is where the northern peak of the double-horned structure is observed around the equator at the cloud-top (Barrado-Izaguirre et al. 2013). The eastward jet at 10°N and 1 mbar and the one at 7°N and 30 mbar seem to be linked. Indeed, the eastward column connecting the two altitudes (1 and 30 mbar) seems to be distorted by the central westward jet at 4 mbar. We think that these two peaks are correlated and connected vertically, and that the presence of the westward jet, and thus of the planetary wave generating the JEO, results in a latitudinal shift between the two eastward peaks at 1 mbar and at 30 mbar. The peak at 7°N and 30 mbar is likely tied to the cloud-top northern branch of the double-horned structure mentioned above.

A subject of debate in Cavalíe et al. (2021) was the limb-to-limb velocity difference at 10°N , which the authors tentatively attributed to local vortices. The lack of full coverage of the western limb temperatures prevents us from settling this claim, although the limited data we have seem to indicate the presence of a hot spot between 10°N and 15°N and between 1 and 2 mbar as seen in Fig. B.1. This hot spot, if anticyclonic, would decelerate the winds about $\sim 10^\circ\text{N}$ and accelerate the wind about $\sim 20^\circ\text{N}$, in qualitative agreement with the ALMA

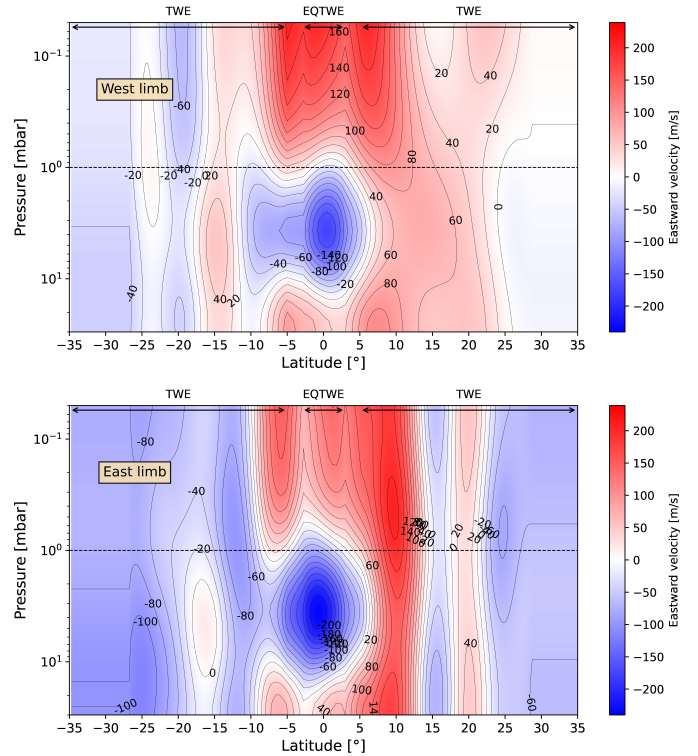


Fig. 6. Eastward zonal wind velocities mapped independently at the western (top) and the eastern (bottom) limbs.

data. Eastward–westward wind velocities at the northern and southern boundaries of an anticyclonic feature can reach $100\text{--}150\text{ m s}^{-1}$, as in the Great Red Spot (Choi et al. 2007). In the stratosphere, the most famous example of an anticyclonic feature was observed in Great Storm on Saturn in 2010–2011. At 2 mbar, Fletcher et al. (2012) estimated zonal wind velocities at the northern and southern boundaries of the vortex in the $200\text{--}400\text{ m s}^{-1}$ range. Therefore, the 100 m s^{-1} lower velocity observed on the 10°N jet on the western limb in the ALMA data (compared to the eastern limb) could be at least partly explained by the presence of an anticyclonic feature centered at 15°N .

The winds obtained from the east–west limb mean (Fig. 5) and those obtained from the zonal mean (Fig. A.2) are very similar in the $\pm 10^\circ$ latitude range, indicating that the east–west limb mean in both winds and temperatures at 1 mbar was a fair representation of the zonal mean on this occasion. The westward equatorial jet at 4 mbar has a similar shape and amplitude. Outside this range, the differences are less than 20 m s^{-1} , which is about the HCN wind measurement uncertainty with ALMA.

More significant differences arise when we compare the winds obtained from the two limb temperatures independently (Fig. 6). The westward equatorial jet at 4 mbar is 50 m s^{-1} stronger on the eastern limb than on the western limb. On the eastern limb, we also notice that the northern equatorial branch centered around $7^\circ\text{--}10^\circ\text{N}$ of the upper stratospheric eastward jet is $50\text{--}75\text{ m s}^{-1}$ stronger than in the western limb. Both extend down to the lower boundary of our calculations (30 mbar). The distinct eastward barotropic jet at 20°N disappears on the western limb.

By comparing the 4 mbar equatorial westward jet velocities in the two limbs (Fig. 6), we find a difference of about 50 m s^{-1} . This results from a combination of the differences between the velocities measured at 1 mbar and the temperatures in the two

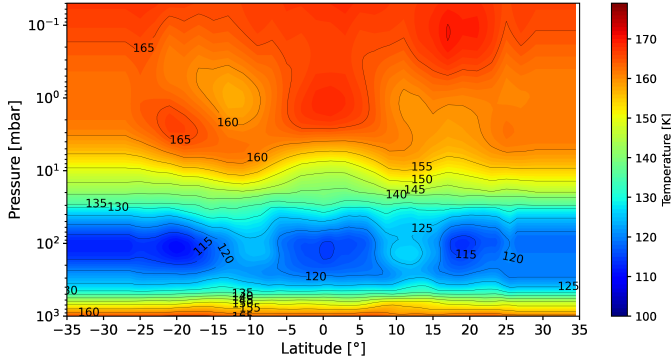


Fig. 7. Temperature field resulting from the combination of retrievals obtained from the high-spectral-resolution observations of [Cosentino et al. \(2020\)](#) (Fig. 3) and the retrievals from the lower spectral resolution observations of [Fletcher et al. \(2020\)](#), all performed between 12 and 20 March, 2017. This temperature field covers the 0.05–1000 mbar pressure range.

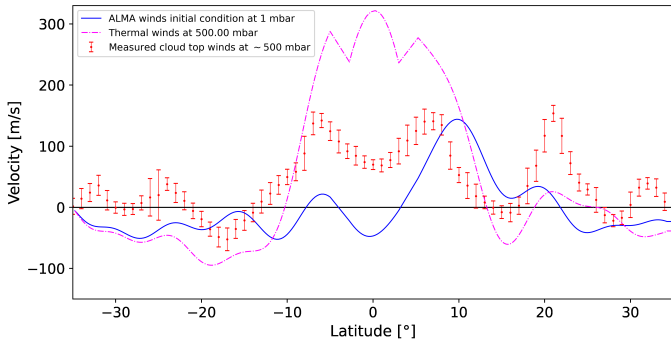


Fig. 8. Comparison between the cloud-top wind speeds measured at 500 mbar in the visible (red points with error bars) with the thermal winds (dashed magenta line) derived from the east–west mean temperature field of Fig. 3 and the 1 mbar wind observations with ALMA of Fig. 2 (blue solid line).

limbs. The differences we find in the equatorial temperatures between the two limbs and between 1 and 4 mbar are twice the longitudinal standard deviation in this pressure range.

4.3. Equatorial cloud-top wind structure

We checked whether the temperature and wind observations combined with our model allow derivation of the cloud-top wind structure. To this end, we extended our east–west limb mean temperature map (Fig. 3) down to upper tropospheric altitudes. To do so, we used the upper tropospheric and lower stratospheric temperatures as retrieved by [Fletcher et al. \(2020\)](#) from lower spectral resolution Gemini/TEXES observations taken on 12–14 March 2017 and probed in the pressure range $p < 1000$ mbar. We combined the two temperature fields by averaging them between 20 and 30 mbar for the relevant longitudes. This pressure range is chosen so as to minimize the overlap and thus favor the temperatures retrieved from the high-spectral-resolution observations at least down to the pressure level of 20 mbar. The resulting thermal map is shown in Fig. 7 and covers pressures from 0.05 to 1000 mbar. We then applied our thermal wind model, still using the ALMA wind measurements as the initial condition at 1 mbar.

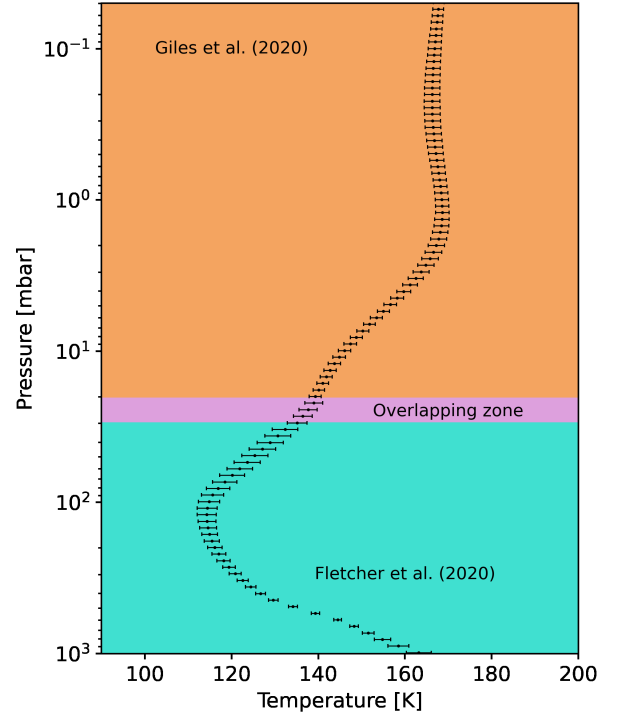


Fig. 9. Vertical profile of the temperature at the equator extracted from the field of Fig. 7 from the combination of retrievals obtained from the high-spectral-resolution observations of [Giles et al. \(2020\)](#) (Fig. 3) and the retrievals from the lower spectral resolution observations of [Fletcher et al. \(2020\)](#), all performed between 12 and 20 March 2017. The two profiles are averaged in the 20–30 mbar pressure range (referred to as the overlapping zone on the plot).

In Fig. 8, we compare the zonal wind profile calculated at 500 mbar with the cloud-top wind observations performed in the visible range (e.g., [Barrado-Izaguirre et al. 2013](#)). Our thermal wind results at 500 mbar show a strong wind speed increase within $\pm 10^\circ$, as expected from observations. However, we do not reproduce the double-horn shaped centered about the equator. Instead, we see that the TWE and EQTWE do not provide consistent results in the $[-5^\circ; -3^\circ] \cup [3^\circ; 5^\circ]$ ranges because of the longer vertical integration that causes larger deviations between the two solutions. In addition, the wind speeds around the equator are overestimated by a factor of approximately two within $\pm 10^\circ$. This deviation probably arises from the different vertical resolutions in the two temperature retrievals that we combined to perform these computations. The lower vertical resolution of the upper tropospheric–lower stratospheric temperatures is in turn caused by the lower spectral resolution of the observations of [Fletcher et al. \(2020\)](#) compared to those of [Giles et al. \(2020\)](#). In addition, the deviation may also result from the higher uncertainties in the temperatures retrieved by [Fletcher et al. \(2020\)](#) (on average ± 4 K compared to the ± 2 K of [Giles et al. \(2020\)](#)). These higher uncertainties in the higher pressures can be better seen in Fig. 9, where we present a vertical temperature profile at the equator resulting from the combination of the temperature fields of [Giles et al. \(2020\)](#) and [Fletcher et al. \(2020\)](#). These higher uncertainties in the higher pressures can also be seen in Fig. 4. We finally tried to integrate the temperature field starting from the cloud-top wind speeds. The wind speeds we obtain at 1 mbar (not shown here) are in total disagreement with the ALMA observations.

5. Conclusion

The main outcomes of this paper can be summarized as follow:

- We used the recent and first measurements of the Jovian stratospheric winds obtained from ALMA observations (Cavalié et al. 2021), with the temperature field obtained almost simultaneously in March 2017 in the mid-infrared from Gemini/TEXES observations (Giles et al. 2020), to derive the zonal wind field as a function of pressure and latitude in the equatorial zone of Jupiter's stratosphere where the Jupiter equatorial oscillation occurs.
- We used the thermal wind equation, complemented by the equatorial thermal wind equation of Marcus et al. (2019) for the latitudes about the equator, to derive the Jovian stratospheric zonal winds from 0.05 to 30 mbar and from 35°S to 35°N.
- We derive the absolute stratospheric zonal wind speeds $\pm 35^\circ$ about the equator, where the JEO takes place. We thus provide the general circulation modeling community with the first full diagnostic of the JEO zonal winds for a given date.
- In March 2017, we find a strong westward (i.e., retrograde) jet centered on the equator and about the 4 mbar level with a peak velocity of 200 m s^{-1} . The vertical stratification of the JEO winds is demonstrated and we find that the westward jet lies beneath a broader eastward (i.e., prograde) jet and the peak-to-peak contrast is $\sim 300 \text{ m s}^{-1}$.
- We find longitudinal variability at the level of $\sim 50 \text{ m s}^{-1}$ when comparing the winds derived independently from the eastern and western limbs of the ALMA observations, even though the overall structure of the JEO remains similar.
- When extending our zonal wind computations to the cloud-top using complementary thermal data (also taken over the same time period), we tentatively find a global wind structure close to observations. We find a strong equator-centered prograde jet. However, the lower spectral resolution of the lower stratospheric and upper tropospheric temperature observations prevent a closer and more quantitative agreement. We recover neither the double-horned equatorial shape nor the 20°N jet.

Such direct stratospheric wind and temperature measurements, performed almost simultaneously, provide a new and promising way to characterize and understand the Jupiter equatorial oscillation and, more globally, its general circulation. Repeated observations on various timescales are now needed to accomplish this goal. These can be achieved first with ALMA and ground-based infrared facilities, and later on with the Submillimetre Wave Instrument on board the Jupiter Icy Moons

Explorer. The technique presented in this paper can certainly be adapted to the other giant planets to study their general circulation and equatorial oscillations.

Acknowledgements. This work was supported by the Programme National de Planétologie (PNP) of CNRS/INSU and by CNES. The authors thank L. N. Fletcher for providing them with the temperature retrievals of his 2016 paper. Coauthors Guerlet and Spiga acknowledge funding from Agence Nationale de la Recherche (ANR) project EMERGIANT ANR-17-CE31-0007.

References

- Antuñano, A., Cosentino, R. G., Fletcher, L. N., et al. 2021, *Nat. Astron.*, **5**, 71
- Baldwin, M. P., Gray, L. J., Dunkerton, T. J., et al. 2001, *Rev. Geophys.*, **39**, 179
- Bardet, D., Spiga, A., Guerlet, S., et al. 2021, *Icarus*, **354**, 114042
- Barrado-Izaguirre, N., Rojas, J. F., Hueso, R., et al. 2013, *A&A*, **554**, A74
- Benmahi, B., Cavalié, T., Dobrijevic, M., et al. 2020, *A&A*, **641**, A140
- Brown, L. R., Benner, D. C., Champion, J. P., et al. 2003, *J. Quant. Spectr. Rad. Transf.*, **82**, 219
- Cavalié, T., Benmahi, B., Hue, V., et al. 2021, *A&A*, **647**, L8
- Choi, D. S., Banfield, D., Gierasch, P., & Showman, A. P. 2007, *Icarus*, **188**, 35
- Cosentino, R. G., Morales-Juberías, R., Greathouse, T., et al. 2017, *J. Geophys. Res.*, **122**, 2719
- Cosentino, R. G., Greathouse, T., Simon, A., et al. 2020, *Planet. Sci. J.*, **1**, 63
- Ebdon, R. A., & Veryard, R. G. 1961, *Nature*, **189**, 791
- Flasar, F. M., Kunde, V. G., Achterberg, R. K., et al. 2004, *Nature*, **427**, 132
- Fletcher, L. N., Hesman, B. E., Achterberg, R. K., et al. 2012, *Icarus*, **221**, 560
- Fletcher, L. N., Greathouse, T. K., Orton, G. S., et al. 2016, *Icarus*, **278**, 128
- Fletcher, L. N., Guerlet, S., Orton, G. S., et al. 2017, *Nat. Astron.*, **1**, 765
- Fletcher, L. N., Orton, G. S., Greathouse, T. K., et al. 2020, *J. Geophys. Res.*, **125**, 8
- Fouchet, T., Guerlet, S., Strobel, D. F., et al. 2008, *Nature*, **453**, 200
- Friedson, A. J. 1999, *Icarus*, **137**, 34
- Giles, R. S., Greathouse, T. K., Cosentino, R. G., Orton, G. S., & Lacy, J. H. 2020, *Icarus*, **350**, 113905
- Guerlet, S., Fouchet, T., Bézard, B., Flasar, F. M., & Simon-Miller, A. A. 2011, *Geophys. Res. Lett.*, **38**, L09201
- Guerlet, S., Fouchet, T., Spiga, A., et al. 2018, *J. Geophys. Res.*, **123**, 246
- Guerlet, S., Spiga, A., Delattre, H., & Fouchet, T. 2020, *Icarus*, **351**, 113935
- Hue, V., Hersant, F., Cavalié, T., Dobrijevic, M., & Sinclair, J. A. 2018, *Icarus*, **307**, 106
- Lacy, J., Richter, M., Greathouse, T., Jaffe, D., & Zhu, Q. 2002, *PASP*, **114**, 153
- Leovy, C. B., Friedson, A. J., & Orton, G. S. 1991, *Nature*, **354**, 380
- Li, X., & Read, P. L. 2000, *Planet. Space Sci.*, **48**, 637
- Lindzen, R. S., & Holton, J. R. 1968, *J. Atmos. Sci.*, **25**, 1095
- Marcus, P. S., Tolleson, J., Wong, M. H., & Pater, I. d. 2019, *Icarus*, **324**, 198
- Moses, J. I., Fouchet, T., Bézard, B., et al. 2005, *J. Geophys. Res.*, **110**, E08001
- Orton, G. S., Friedson, A. J., Caldwell, J., et al. 1991, *Science*, **252**, 537
- Orton, G. S., Yanamandra-Fisher, P. A., Fisher, B. M., et al. 2008, *Nature*, **453**, 196
- Pedlosky, J. 1979, *Geophysical Fluid Dynamics* (New York: Springer-Verlag)
- Reed, R. J., Campbell, W. J., Rasmussen, L. A., & Rogers, D. G. 1961, *J. Geophys. Res.*, **66**, 813
- Simon-Miller, A. A., Conrath, B. J., Gierasch, P. J., et al. 2006, *Icarus*, **180**, 98

**Appendix A:
Thermal wind velocities from alternative
temperature maps**

Figure A.1 presents the zonal mean of the temperatures in Jupiter's stratosphere from 0.01 to 30 mbar on 12-20 March 2017. The corresponding wind velocity map is shown in Figure A.2.

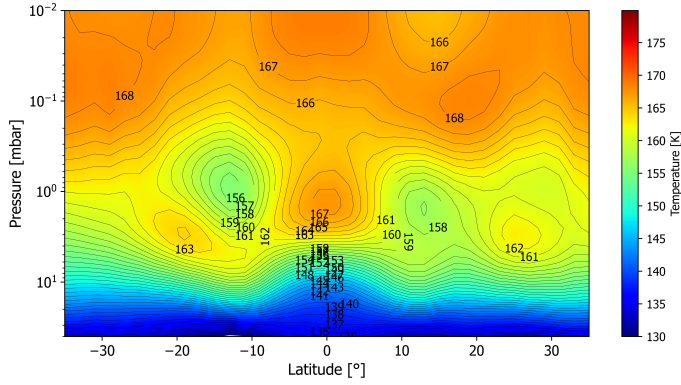


Fig. A.1. Zonal mean of the Jovian stratospheric temperature field, as observed with Gemini/TEXES on 14, 16, and 20 March, 2017.

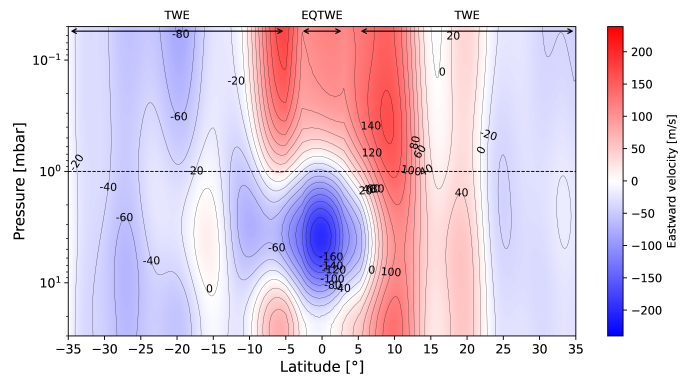


Fig. A.2. Eastward zonal wind velocities derived from the zonal mean temperature field of Figure A.1 and from the 1 mbar winds of Figure 2.

We also produced the temperature maps from the Gemini/TEXES data for the two longitude ranges covered by the limbs observed with ALMA, after accounting for the 15° longitudinal smearing of these observations. These temperature maps are shown in Figures A.3 and A.4. The corresponding wind velocity maps are presented in Figure 6.

**Appendix B:
Longitudinal variability of the temperatures in
March 2017**

We computed the difference between the Gemini/TEXES temperatures averaged over the western limb and the zonal mean, and proceeded similarly for the eastern limb. The results are shown in Figures B.1 and B.2.

We find that the western limb presents a hot spot centered at 15°N and extended over 10-15° in latitude between 1 and 2 mbar.

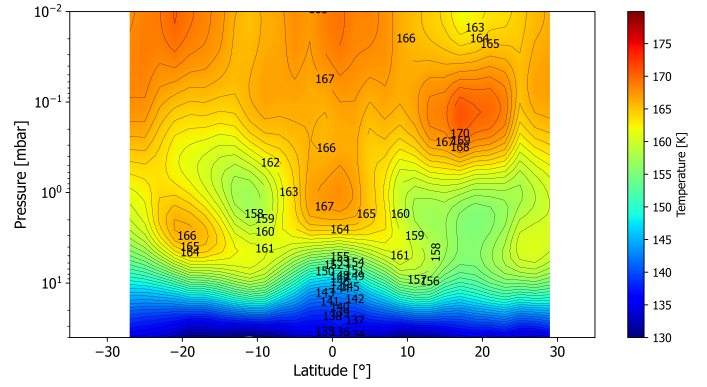


Fig. A.3. Eastern limb temperature field resulting from the average between 335° and 350° longitudes, as observed with Gemini/TEXES on 14, 16, and 20 March 2017.

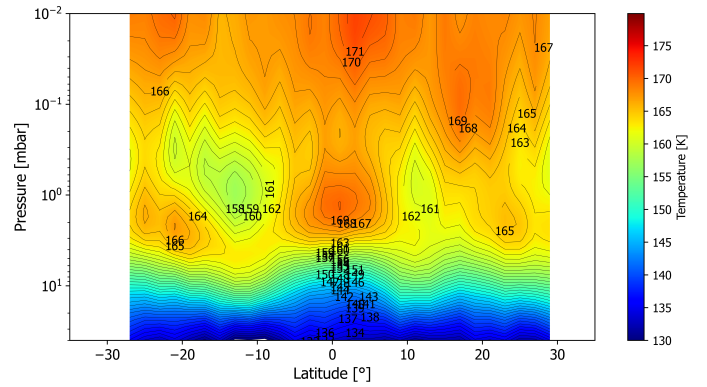


Fig. A.4. Western limb temperature field resulting from the average between 155° and 160° longitudes, as observed with Gemini/TEXES on 14, 16, and 20 March 2017. There is no data between 160° and 170°, preventing thus a full coverage of this limb.

This hot spot may partly explain the differences in wind speeds notably observed around 10°N in the two limbs with ALMA (Figure 1). Anticyclonic motions about this spot would decrease the wind speeds at 10°N, and increase the wind speeds at 20°N on the western limb with respect to the zonal average. On the contrary, the eastern limb shows a cold spot at 2 mbar and centered at 22°N. Here, cyclonic motions about this cold spot would tend to increase wind speeds at ~17°N, and decrease them at ~26°N on the eastern limb with respect to the zonal average. This would qualitatively tend to bring the wind speed profiles from the two limbs of Figure 1 back into agreement, mostly regarding the differences seen on the 10°N prograde jet.

**Appendix C:
Wind and temperature data smoothing method**

Before using the wind speeds and temperatures that come from the observations in our modeling, we smoothed the data with Legendre polynomial series. We first determined the order of the highest order n of the series to smooth our data, such that the fit lies within all uncertainties. For the wind speeds of Figure 2, we set $n = 35$. For the temperature as a function of latitude (and for each altitude), we set $n = 17$. Such polynomials can result in

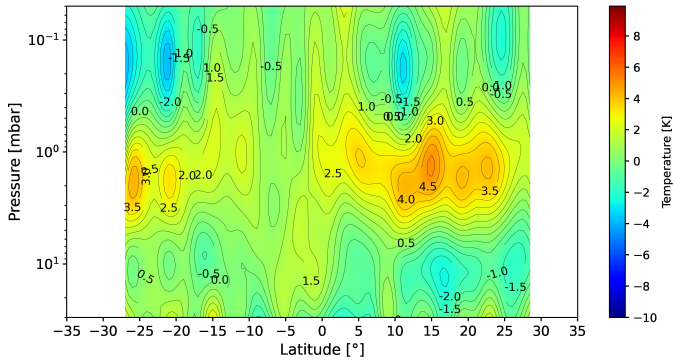


Fig. B.1. Difference between western limb temperatures and the zonal mean.

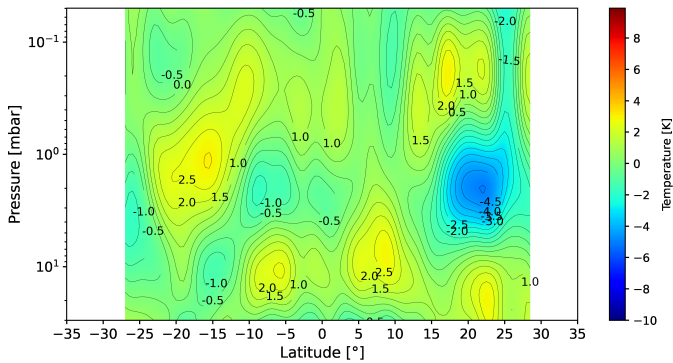


Fig. B.2. Difference between eastern limb temperatures and the zonal mean.

edge effects like the Gibbs phenomenon. To avoid this effect, we had to extrapolate the velocity and temperature curves beyond the latitude range we used in our modeling (i.e., from -35° to $+35^\circ$). We extended the latitudinal range up to $\pm 50^\circ$ and applied the fit. The results regarding the wind speeds can be found in Figure C.1, where the Gibbs-like effect can be seen around $\pm 50^\circ$. This effect is thus avoided in the final latitude range we use in our work.

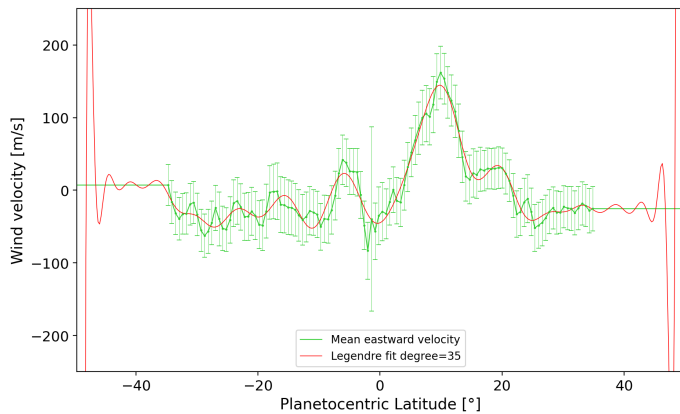


Fig. C.1. Legendre polynomial series smoothing of the ALMA wind speeds. We extend the fitting range from $\pm 35^\circ$ to $\pm 50^\circ$ to limit the edge effects of such a fitting procedure to outside the studied interval. The resulting fit is then truncated to the interval of interest.