

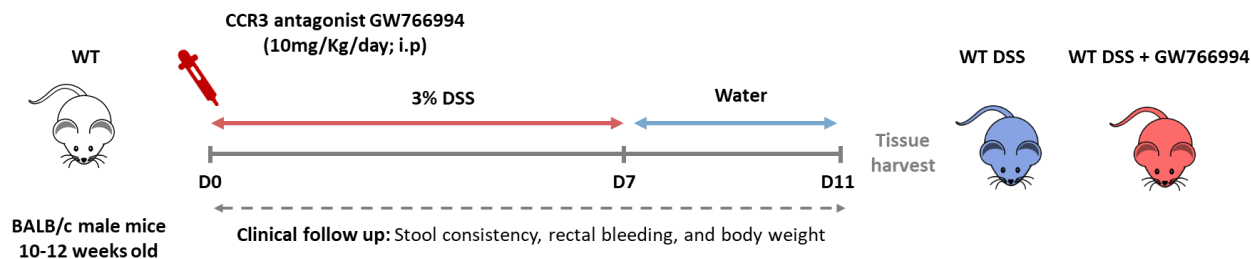
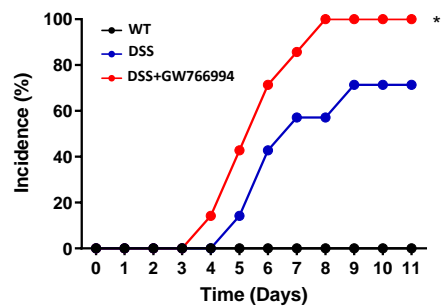
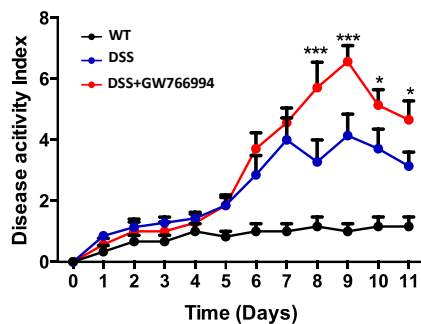
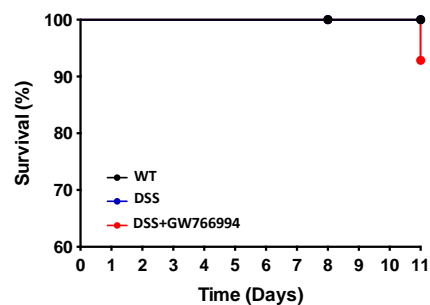
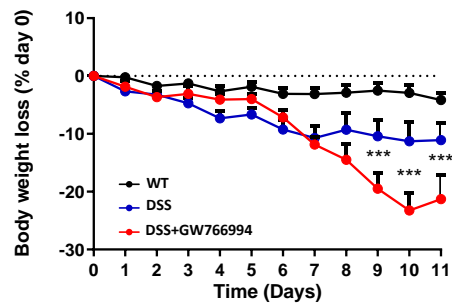
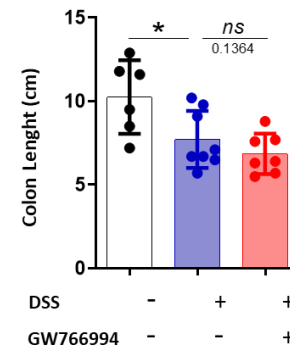
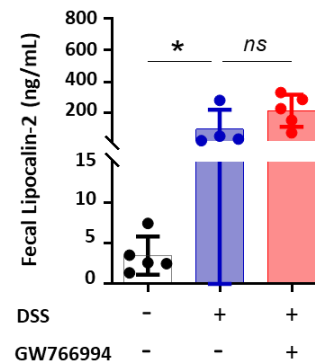
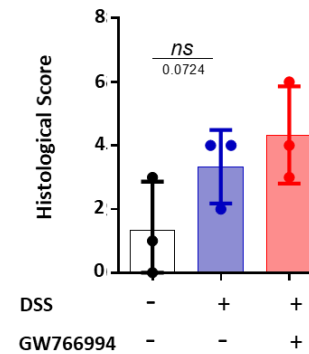
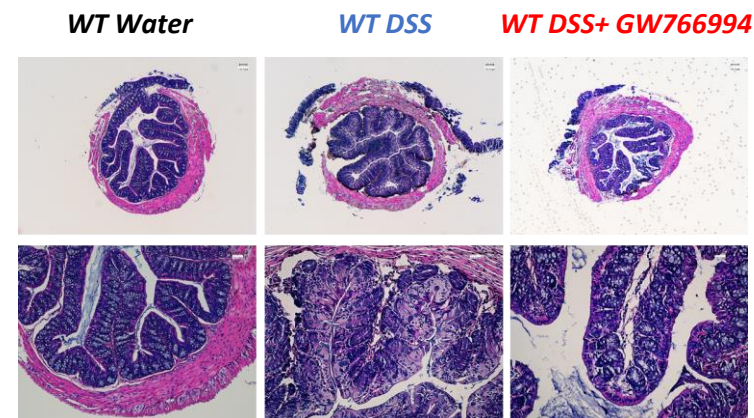
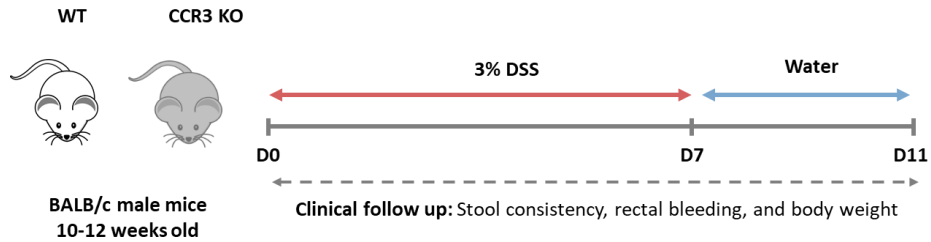
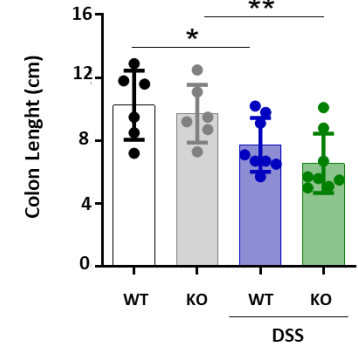
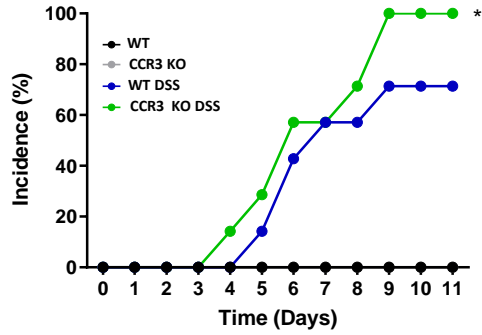
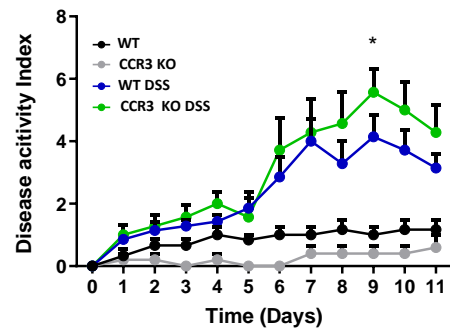
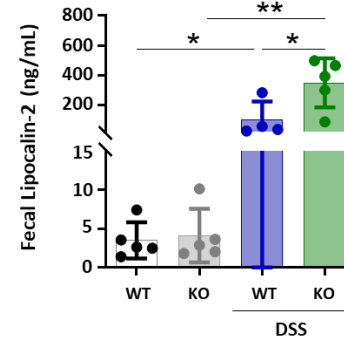
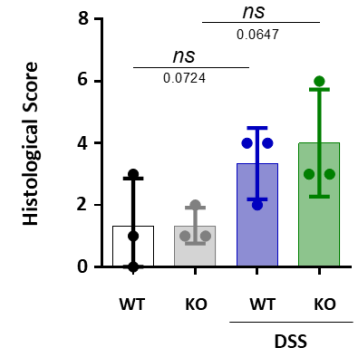
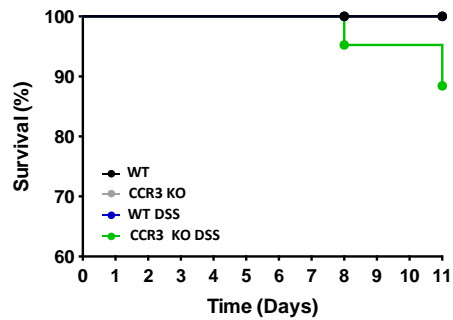
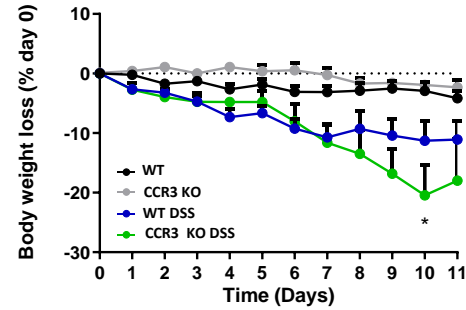
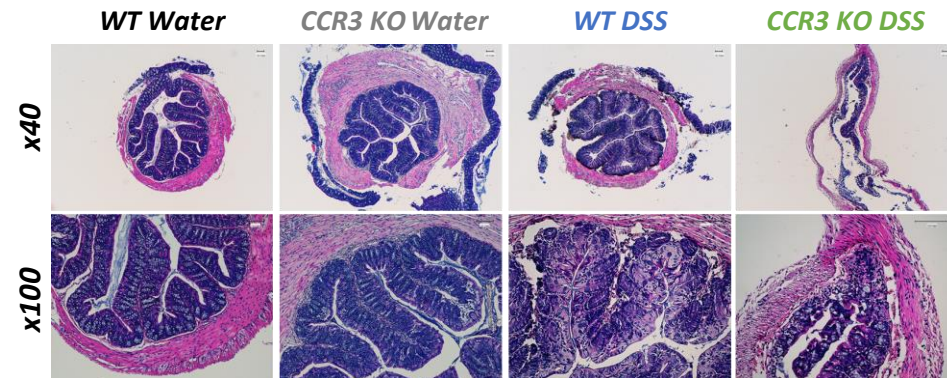
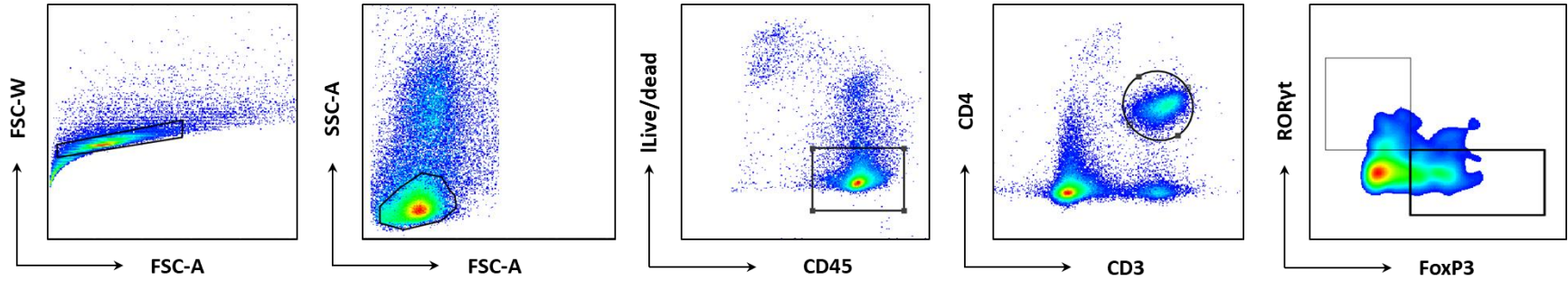
Fig 1**A****B****C****D****E****F****G****H****I**

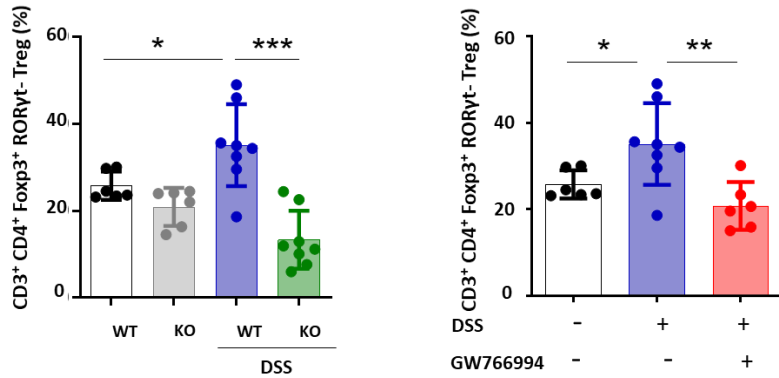
Fig 2**A****F****B****C****G****H****D****E****I**

A



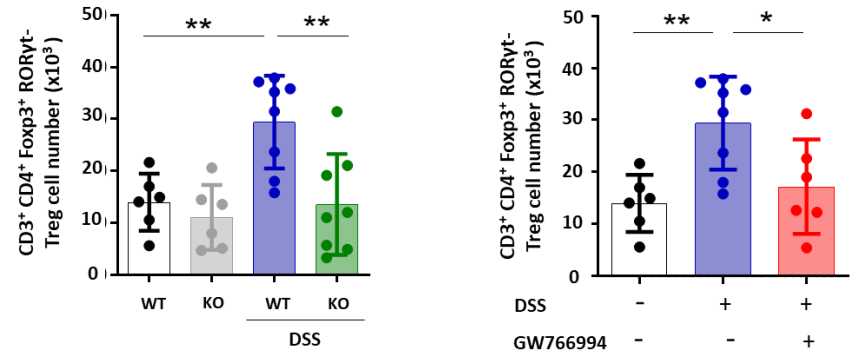
B

Colonic Lamina propria Treg cells (%)



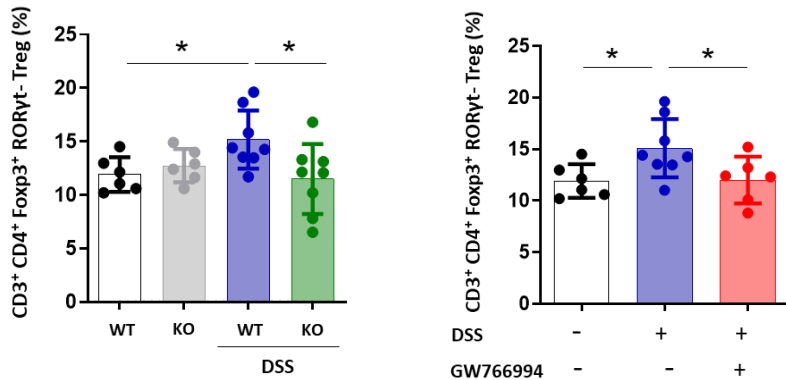
C

Colonic Lamina propria Treg cells (#)



D

Mesenteric Lymph Nodes Treg cells (%)



E

Mesenteric Lymph Nodes Treg cells (#)

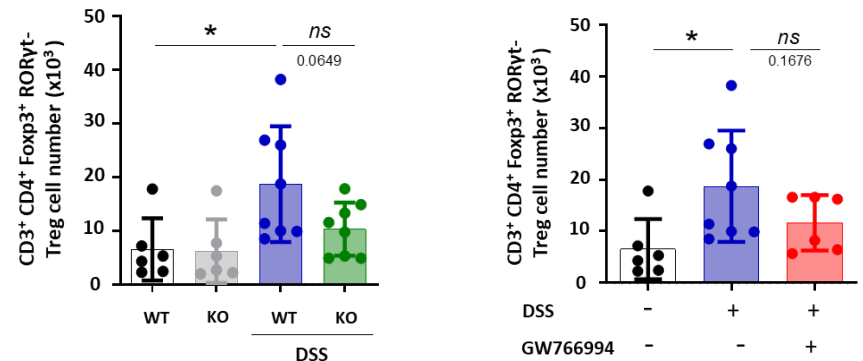
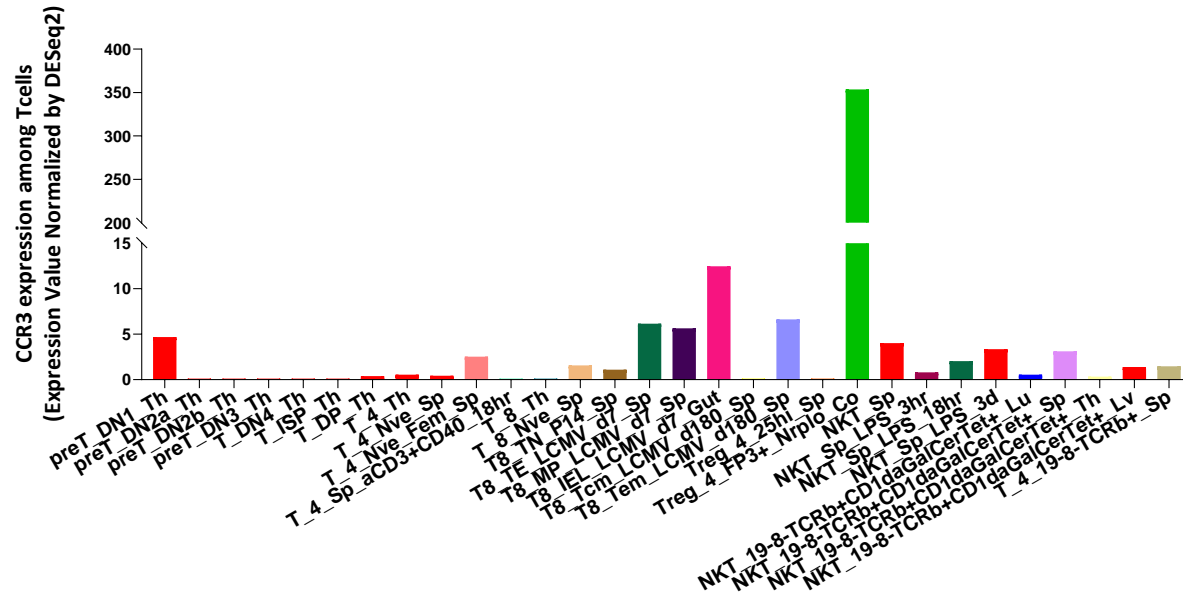


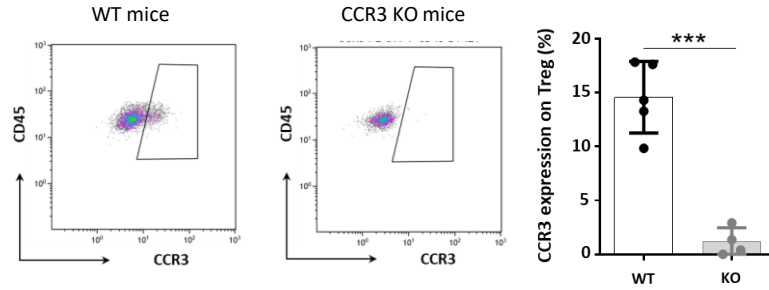
Fig 4

A



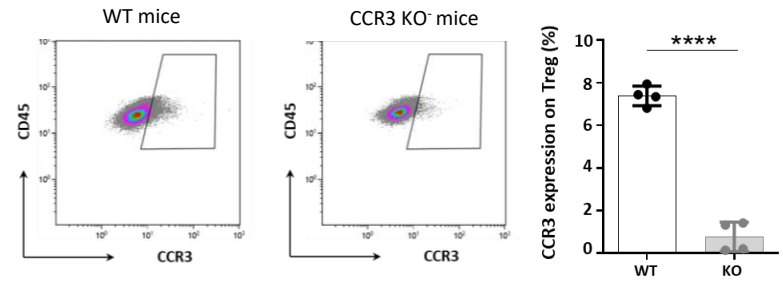
B

Gated on CD3⁺ CD4⁺ FoxP3⁺ Colonic Treg cells



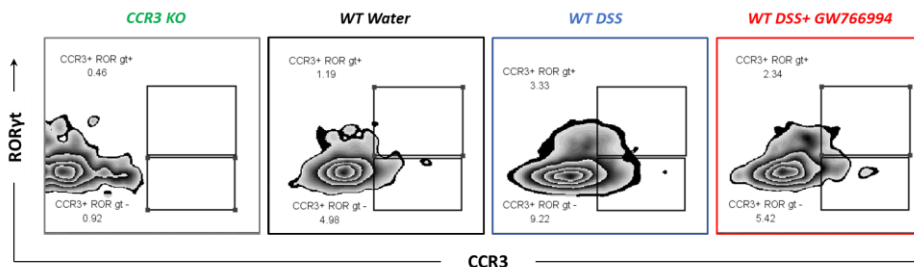
C

Gated on CD3⁺ CD4⁺ FoxP3⁺ MLN Treg cells



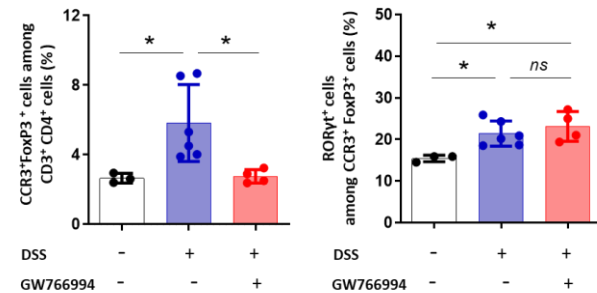
D

Gated on CD3⁺ CD4⁺ FoxP3⁺ Colonic Treg cells

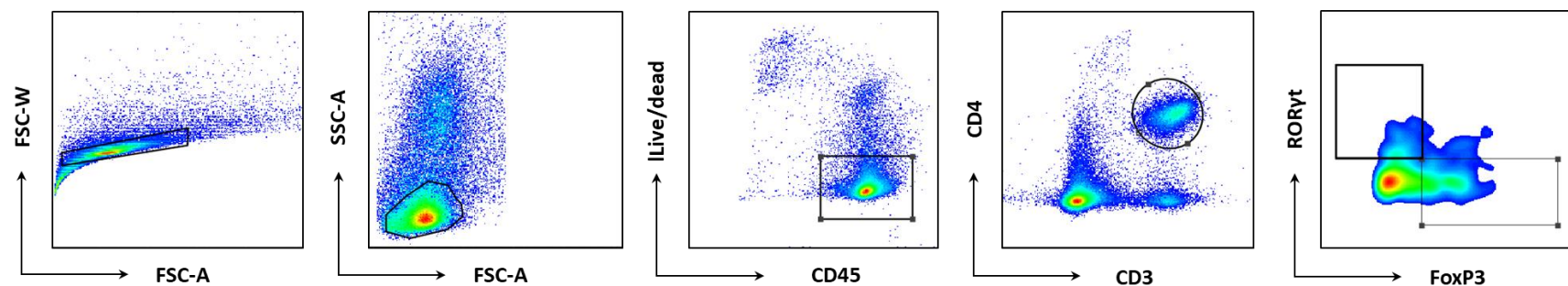


E

Gated on CD3⁺ CD4⁺ Colonic T cells



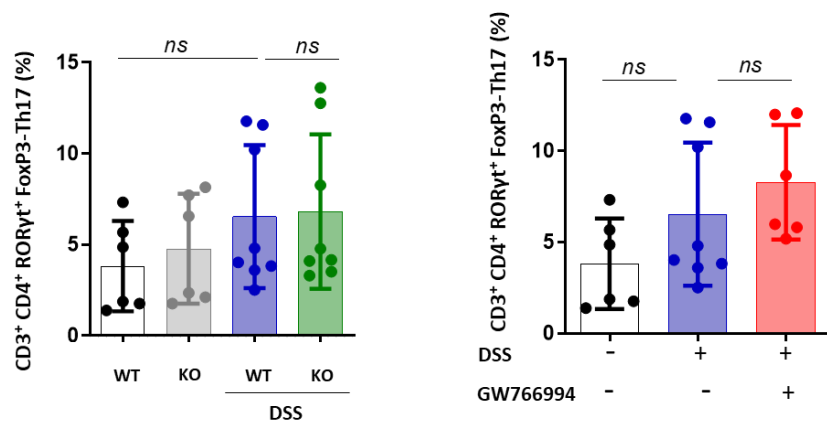
A



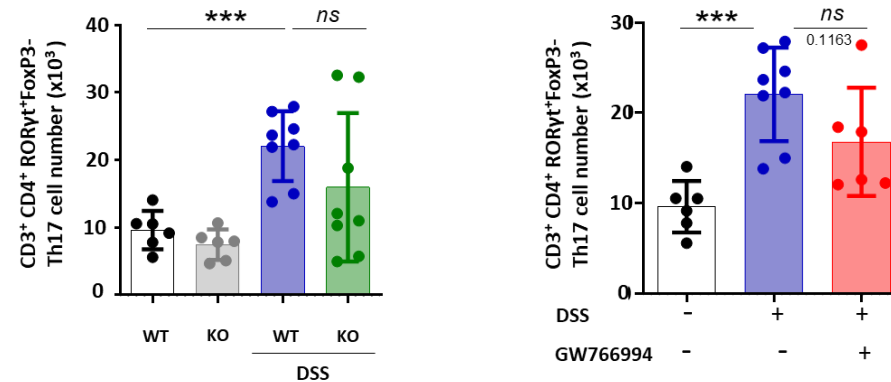
Colonic Lamina propria Th17 cells (%)

Colonic Lamina propria Th17 cells (#)

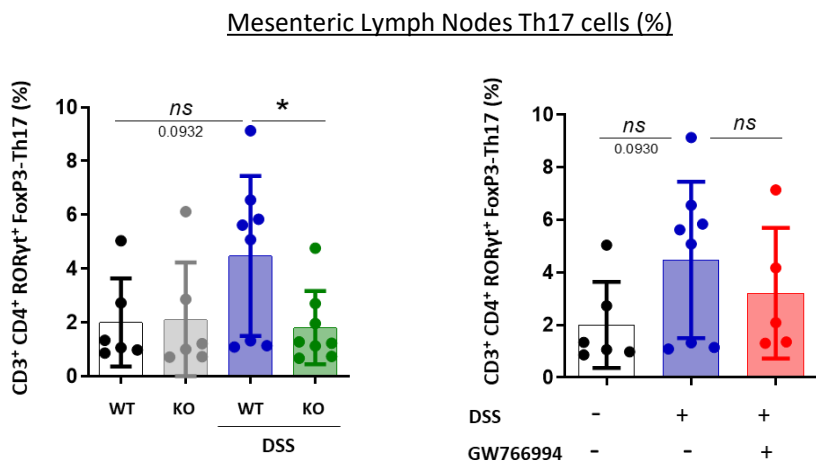
B



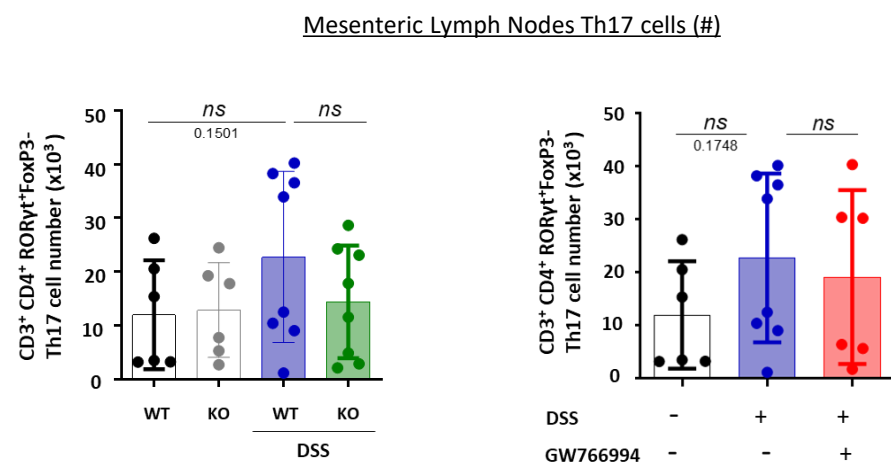
C



D

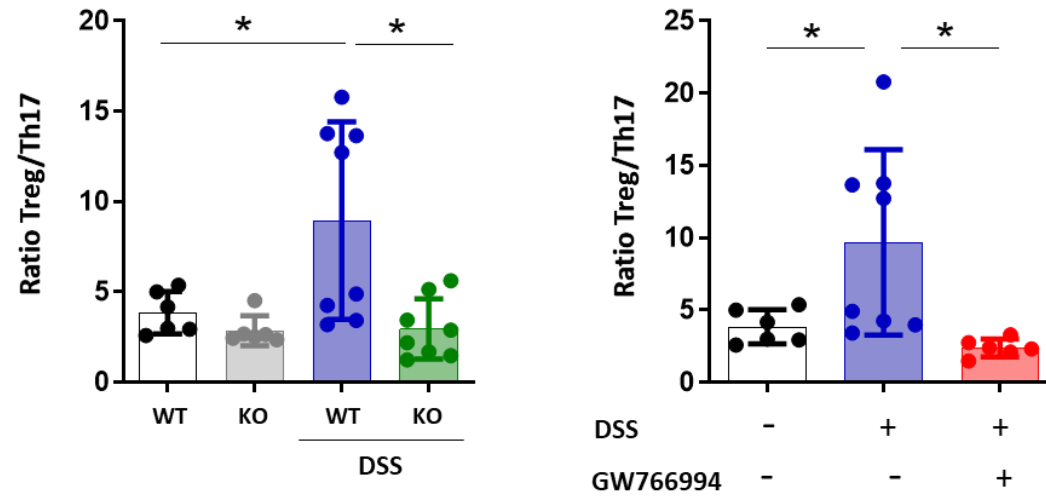


E



A

Colonic Lamina propria Treg/Th17 Ratio



B

Mesenteric Lymph Nodes Treg/Th17 Ratio

