



**HAL**  
open science

## Identifying partners at sea from joint movement metrics of pelagic pair trawlers

Rocío Joo, Nicolas Bez, Marie-Pierre Etienne, Pablo Marin, Nicolas Goascoz, Jérôme Roux, Stéphanie Mahévas

► **To cite this version:**

Rocío Joo, Nicolas Bez, Marie-Pierre Etienne, Pablo Marin, Nicolas Goascoz, et al.. Identifying partners at sea from joint movement metrics of pelagic pair trawlers. *ICES Journal of Marine Science*, 2021, 78 (5), pp.1758-1768. 10.1093/icesjms/fsab068 . hal-03353502

**HAL Id: hal-03353502**

**<https://hal.science/hal-03353502v1>**

Submitted on 11 Apr 2024

**HAL** is a multi-disciplinary open access archive for the deposit and dissemination of scientific research documents, whether they are published or not. The documents may come from teaching and research institutions in France or abroad, or from public or private research centers.

L'archive ouverte pluridisciplinaire **HAL**, est destinée au dépôt et à la diffusion de documents scientifiques de niveau recherche, publiés ou non, émanant des établissements d'enseignement et de recherche français ou étrangers, des laboratoires publics ou privés.



Distributed under a Creative Commons Attribution - NonCommercial 4.0 International License

# Identifying partners at sea from joint movement metrics of pelagic pair trawlers

Joo Rocío <sup>1,2,3,\*</sup>, Bez Nicolas <sup>4</sup>, Etienne Marie-Pierre <sup>5</sup>, Marin Pablo <sup>6</sup>, Goascoz Nicolas <sup>7</sup>, Roux Jerome <sup>1</sup>, Mahévas Stephanie <sup>1</sup>, Jaap Poos Jan

<sup>1</sup> IFREMER, Unité Ecologie et Modèles pour l'Halieutique, Centre Atlantique, Rue de l'Île d'Yeu, BP 21105, 44311 Nantes Cedex 03, France

<sup>2</sup> Department of Wildlife Ecology and Conservation, Fort Lauderdale Research and Education Center, University of Florida, Fort Lauderdale, FL, USA

<sup>3</sup> Global Fishing Watch, Research and Innovation Team, Washington, DC 20036, USA

<sup>4</sup> MARBEC, Univ Montpellier, IRD, Ifremer, CNRS, Sète, France

<sup>5</sup> Univ Rennes, Agrocampus Ouest, CNRS, IRMAR—UMR 6625, F-35000 Rennes, France

<sup>6</sup> Instituto del Mar del Perú (IMARPE), Chucuito, Callao, Peru

<sup>7</sup> IFREMER, Laboratoire de Technologie et de Biologie Halieutique, Station de Lorient, 8, rue François Toullec, 56100 Lorient, France

\* Corresponding author : Rocío Joo, email address : [rocio.joo@globalfishingwatch.org](mailto:rocio.joo@globalfishingwatch.org)

---

## Abstract :

Here, we present an approach to identify partners at sea based on fishing track analysis, and describe this behaviour in several fleets: pelagic pair trawlers, large and small bottom otter trawlers, mid-water otter trawlers, all in the North-East Atlantic Ocean, anchovy purse-seiners in the South-East Pacific Ocean, and tuna purse-seiners in the western Indian Ocean. This type of behaviour is known to exist within pair trawlers, since these vessels are in pairs at least during their fishing operations. To identify partners at sea, we used a heuristic approach based on joint-movement metrics computed from vessel monitoring system data and Gaussian mixture models. The models were fitted to joint-movement metrics of the pelagic pair trawlers, and subsequently used to identify partners at sea in other fleets. We found partners at sea in all of the fleets except for the tuna purse-seiners. We then analysed the connections between vessels and identified exclusive partners. Exclusiveness was more common in pelagic pair trawlers and small bottom otter trawlers, with 82% and 74% of the vessels involved in partnerships having exclusive partners. This work shows that there are collective tactics at least at a pairwise level in diverse fisheries in the world.

**Keywords** : collective behaviour, dyadic joint movement metrics, fishing tactics, Gaussian mixture model, vessel monitoring system

38  
39  
40  
41  
42  
43  
44  
45  
46  
47  
48  
49  
50  
51  
52  
53  
54  
55  
56  
57  
58  
59  
60

## 38 **Introduction**

Understanding fisher spatial behaviour contributes to the development of effective  
40 spatial management tools. The increasing availability of georeferenced data from  
sources like Automatic Identification System (AIS; Robards *et al.* (2016)) and Vessel  
42 Monitoring System (VMS; Hinz *et al.* (2013)) has enabled a proliferation of studies  
that characterise fisher spatial dynamics (e.g. Bertrand *et al.* (2005); Joo *et al.* (2014)),  
44 propose movement models (e.g. Vermard *et al.* (2010); Walker and Bez (2010); Joo *et al.*  
*al.* (2013); Gloaguen *et al.* (2015)), account for it in stock assessment models for

1  
2  
3 46 fisheries management (e.g. Vigier *et al.* (2018)) and discuss management measures  
4  
5 based on it (e.g. Gerritsen *et al.* (2012); Holmes *et al.* (2011)). While individual  
6  
7  
8 48 movement of fishers has been extensively studied by means of trajectory data, the  
9  
10 collective behaviour of fishermen has been rather neglected. Fishers are social  
11  
12 50 individuals that may develop collaboration or competing strategies (e.g. Horta and  
13  
14 Defeo (2012); Hancock *et al.* (1995)). The characterisation of their collective  
15  
16  
17 52 behaviour could provide valuable inputs that would increase the realism of movement  
18  
19 models and make management measures more effective (Salas and Gaertner, 2004;  
20  
21 54 Gezelius, 2007; Rijnsdorp *et al.*, 2011).

22  
23  
24 Collective behaviour can emerge at large or small group scales, and may be reflected  
25  
26  
27 56 in a variety of movement patterns. Here, we focused on a particular collective  
28  
29 behaviour, which is dyadic or pairwise joint movement behaviour, and more  
30  
31 58 specifically, aimed at identifying partners at sea, defined as two fishing vessels that  
32  
33 move together at sea. An extensive review and comparison of metrics for assessing  
34  
35  
36 60 dyadic joint movement (Joo *et al.*, 2018) showed that the metrics varied in their  
37  
38 sensitivity to three aspects of joint movement: proximity, coordination in direction  
39  
40  
41 62 and coordination in speed. Here, we defined partners at sea as showing coordinated  
42  
43 and proximal joint movement. To account for all of these aspects, we chose one  
44  
45 64 metric for each of the three dimensions of joint movement, from the ones  
46  
47 recommended in Joo *et al.* (2018), to characterise the dyadic movement of fishing  
48  
49  
50 66 vessels.

51  
52  
53 Strong partnership at sea was expected to be found in pelagic pair trawlers: since they  
54  
55 68 need to be in pairs at least during each fishing operation, they are likely to be paring  
56  
57 throughout their entire fishing trips. For that reason, in this study, we aimed at  
58  
59  
60

1  
2  
3 70 defining the model parameters that would allow us to identify strong partnership at  
4 sea in pelagic pair trawlers in the North-East Atlantic Ocean through the analysis of  
5  
6  
7  
8 72 their VMS data. After that, the goal was two-fold: assessing whether the same  
9  
10 patterns of partnership were present in other fleets; and, if present, assessing the level  
11  
12  
13 74 of exclusiveness in the partnership within each fleet.

14  
15 Dyads, or potential candidates for partners at sea, were defined as pairs of segments of  
16  
17  
18 76 VMS tracks at sea at the same time. For each dyad, three joint movement metrics  
19  
20 were calculated. Then, we fitted a Gaussian mixture model (GMM) to distinguish  
21  
22  
23 78 three groups of dyads sharing the same types of behaviour. One of these components  
24  
25 was expected to correspond to partners at sea patterns. After characterising at-sea  
26  
27 80 partnership in this fleet, we used the fitted model to identify partners at sea in several  
28  
29 other fisheries: bottom and mid-water otter trawlers in the North-East Atlantic Ocean,  
30  
31  
32 82 anchovy purse-seiners in the South-East Pacific Ocean, and tuna purse-seiners in the  
33  
34 Western Indian Ocean. We showed that this type of behaviour is not exclusive to  
35  
36  
37 84 pelagic pair trawlers, and discuss possible implications of this behaviour in terms of  
38  
39 fishing strategies. Perspectives opened by this work for further research in collective  
40  
41 86 spatial behaviour are also discussed.

## 45 **Materials and Methods**

### 48 88 **Fishing vessels trajectory data**

49  
50  
51 In this section, the VMS data and fishing trip characteristics of the analysed fleets are  
52  
53  
54 90 briefly described. These are: 1) French pelagic pair trawlers, 2) French large bottom  
55  
56 otter trawlers, 3) French small bottom otter trawlers, 4) French mid-water otter  
57  
58  
59  
60

1  
2  
3  
4  
5  
6  
7  
8  
9  
10  
11  
12  
13  
14  
15  
16  
17  
18  
19  
20  
21  
22  
23  
24  
25  
26  
27  
28  
29  
30  
31  
32  
33  
34  
35  
36  
37  
38  
39  
40  
41  
42  
43  
44  
45  
46  
47  
48  
49  
50  
51  
52  
53  
54  
55  
56  
57  
58  
59  
60

92 trawlers, all operating in the North-East Atlantic Ocean, 5) French tuna purse-seiners  
in the Western Indian Ocean, and 6) Peruvian anchovy purse-seiners in the South-East  
94 Pacific Ocean.

For the French fleets, the use of VMS started to be legislated and mandatory in the  
96 European Union since 2000. In practice, records are transmitted at  $\sim 1$  h intervals. In  
the North-East Atlantic Ocean, we analysed VMS data from fishing trips performed  
98 between 2012 and 2013 within the English Channel and the Celtic Sea, while in the  
Indian Ocean, we analysed fishing trips from 2011 to 2013. In Peru, industrial purse-  
100 seiners are also legally obliged to use VMS tracking devices since 2000, transmitting  
their positions at  $\sim 1$  h intervals, but since 2015, VMS positions are recorded each  
102 10 minutes. We focus on Peruvian fishing trips during a specific fishing season in  
2016.

#### 104 **French pelagic pair trawlers**

A pelagic pair trawl is a gear defined by one trawl towed in midwater by two vessels  
106 to target pelagic fish. Thus, vessels of the pelagic pair trawler fleet remain close  
performing almost synchronous movements while operating the trawl. The distance  
108 between vessels during this operation varies between 50 m and 250 m, depending on  
the warp length (which in turn depends on several factors such as the fishing depth  
110 and technique) (Prado, 1988). The vessels do not need to move together throughout  
their whole fishing trips, especially when steaming, using single trawls or exploring  
112 the sea individually looking for shoals (Sainsbury, 1996). These vessels can spend  
part of their fishing trips on individual activities, even targetting other fish that do not  
114 require pair trawling. Most of the pair-trawler fishing trips in the dataset were

1  
2  
3 performed by relatively large vessels (18-24 m; ~ 80%), and they last ~ 99h on  
4  
5  
6 116 average, according to fisher logbooks.  
7

### 8 **French large and small bottom otter trawlers**

9  
10  
11 118 The bottom otter trawl gear is a trawl towed by a single vessel; these vessels target  
12  
13 bottom and demersal species. Vessels performing bottom otter trawl fishing trips had  
14  
15  
16 120 a large variability in their sizes: from 10 to 40 m. The duration of the trips were  
17  
18 proportionally related to the size of the vessels: larger vessels performed longer trips  
19  
20  
21 122 and generally offshore. Since, for this type of gear, the spatial behaviour from smaller  
22  
23 vessels differs from that of larger vessels (e.g. the trips are not only shorter but also  
24  
25 124 closer to the coast), we separated bottom otter trawlers into two groups: one with  
26  
27 vessels smaller than 12 m or performing trips of less than 20 h (we assume that in  
28  
29  
30 126 very short trips even large vessels act like the small ones), and another one with  
31  
32 vessels larger than 12 m or performing trips of larger duration; vessels with these  
33  
34 128 characteristics are considered as composing the small otter trawl and large otter trawl  
35  
36 fishing fleets, respectively. The average duration of fishing trips for both fleets were  
37  
38  
39 130 ~ 16 and ~ 105 hours, respectively, according to fisher logbooks.  
40  
41

### 42 **French mid-water otter trawlers**

43  
44  
45 132 A mid-water otter trawl gear is also operated by an individual vessel. As the vessels in  
46  
47 the pair trawler fleet, mid-water otter trawlers target pelagic fish mostly. As with  
48  
49  
50 134 bottom trawlers, vessels performing mid-water trawling trips had sizes ranging from  
51  
52 10 to 40 m; larger vessels exist (e.g. 90 m long targeting blue whiting) but were not  
53  
54 136 found in this dataset. However, the spatial behaviour of these vessels was not  
55  
56 conditioned by their size, so they were not separated by size. The average duration of  
57  
58  
59  
60

1  
2  
3 138 a fishing trip was ~ 31 hours (fisher logbooks). Since fishing with mid-water or  
4  
5 bottom otter trawls does not require pair-work, if it exists, it would reflect a  
6  
7  
8 140 strategic/tactical choice.  
9

### 11 **French tuna purse-seiners**

12  
13  
14 142 The fleet is composed of ten to twenty vessels operating in the Indian Ocean and the  
15  
16 size of the purse seiners is typically of sixty meters. Tuna purse-seiners' fishing trips  
17  
18 144 usually last several tens of days. The time windows targeted in the present study  
19  
20 (2011-2013) followed a harsh period of strong security issues induced by piracy  
21  
22  
23 146 attacks in the Indian Ocean. During the second half of 2009, it became mandatory for  
24  
25 fishing vessels operating in the Indian Ocean to fish in pairs before some military  
26  
27 148 protection were enforced. However, some vessels could have decided to continue  
28  
29 moving more or less in pairs as a precautionary approach. Since tuna purse-seiners  
30  
31  
32 150 perform long fishing trips, we did not expect vessels to move together throughout  
33  
34 their whole fishing trips, but rather over some shorter opportunist periods of time,  
35  
36  
37 152 eventually changing partners.  
38

### 40 **Peruvian anchovy purse-seiners**

41  
42  
43 154 The ten-minutes frequency of data recording is particularly suiting for monitoring the  
44  
45 anchovy (*Engraulis ringens*) industrial fishery, where fishing trips usually last less  
46  
47 156 than 24 hours (a median of 17 hours for the analysed data), since fish tends to  
48  
49 distribute close to the coast in dense patches (Bertrand *et al.*, 2008; Joo *et al.*, 2014).  
50  
51  
52 158 In this fishery, vessel size is measured in terms of its hold capacity, which varies from  
53  
54 32.5 MT to 900 MT, with a median at ~ 100 MT. We used data from the first fishing  
55  
56  
57 160 season of 2016 (39 days between June and July). Though the race for fish stopped in  
58  
59  
60



1  
2  
3 2009 (the total allowable catch was replaced by an individual vessel quota system;  
4  
5 162 Aranda (2009)), the high abundance of anchovy, the eagerness to save fuel oil and the  
6  
7 habit of performing very short fishing trips, make it common for vessels to go to the  
8  
9  
10 164 same fishing zones or to follow each other as a fishing tactic. Thus here as well, we  
11  
12 expected to find some patterns of joint movement, although not perfectly synchronous  
13  
14  
15 166 or remaining close to each other all the time.  
16  
17

## 18 **Methods**

19  
20  
21 168 Identifying partners at sea basically consists of 1) data pre-processing and dyad  
22  
23 constitution (i.e. the VMS data was first cleaned and interpolated, and then dyadic  
24  
25 170 segments of trajectories were identified); 2) joint-movement metrics derivation for  
26  
27 each dyad; 3) identification of clusters of dyadic joint movement –and particularly  
28  
29 172 partners at sea– via GMMs; and 4) characterisation of partnership at vessel and fleet  
30  
31 scales. All the analyses were performed in R (R Core Team, 2015).  
32  
33  
34  
35

### 36 174 **Data Pre-processing**

37  
38 From the trawler VMS data, fishing trips where at least one pair of consecutive  
39  
40 176 records were lagged by more than three hours were removed ( $\approx 9\%$  of the total  
41  
42 number of fishing trips). For tuna purse-seiners, we used a one-hour threshold. If there  
43  
44 178 were consecutive records separated for more than one hour, those differences had to  
45  
46 represent less than 10% of the trip duration to keep the trip in the dataset ( $\approx 7\%$  of the  
47  
48 180 total number of fishing trips were removed). Then, since location records had  
49  
50 irregular time steps, we linearly interpolated tracks to obtain regular 1-hour time steps  
51  
52  
53 182 and simultaneous VMS positions (i.e. fixes) from vessels at sea. The anchovy purse-  
54  
55 seine data was processed using the vmsR R package (Marin and Joo, 2021) prior to  
56  
57  
58  
59  
60

1  
2  
3 184 this study. The vmsR algorithms apply a two-hour threshold for consecutive records  
4  
5 and use a linear interpolation at 10-minute time steps. From the (interpolated) fixes,  
6  
7  
8 186 we derived motion variables such as displacement (distance between consecutive  
9  
10 fixes) and absolute angle (between the direction of the x-axis and the locations at  
11  
12 188 consecutive fixes). The adehabitatLT package in R (Calenge, 2006) was used to  
13  
14 compute those metrics.  
15  
16  
17 190 We then formed the dyads that would be candidates for partners at sea. Dyads were  
18  
19 defined as the concomitant parts of two vessel tracks crossing each other at least once  
20  
21 during their fishing trips. We considered that, to ‘cross each other’, vessels had to be  
22  
23 192 at a proximity of <5 km at least once for all fleets, except tuna purse-seiners. The  
24  
25 latter have a greater range of motion and do not get so close; for them, the distance  
26  
27 194 threshold was set to 60 km. If both vessels departed from port and then arrived to port  
28  
29 at the same time, the dyad was to be composed of the two tracks of their whole fishing  
30  
31 196 trips; if not, the dyad would have been composed by track segments of their fishing  
32  
33 trips corresponding to moments when both vessels were at sea. To keep only dyads  
34  
35 198 with segments that were long enough for the analysis, an arbitrary 10-hour threshold  
36  
37 was set for all trawlers and anchovy purse-seiner fleets. Tuna purse-seiners performed  
38  
39 200 longer trips, so the 10th percentile, i.e. 106 hours, was used as their threshold. The  
40  
41 number of vessels, dyads and the median duration of a dyad are shown in Table 1.  
42  
43  
44  
45  
46  
47

48  
49 *Table 1. Statistics per fleet of number of vessels, number of dyads, their duration*  
50 204 *(median in hours), the  $\delta$  threshold for Prox, and the frequency of record*  
51 *transmission. The first three statistics are also displayed for each cluster.*

		Total	Cluster 1	Cluster 2	Cluster 3
Pelagic	Vessels	59	56	57	58
pair			(94.9%)	(96.6%)	(98.3%)

		Total	Cluster 1	Cluster 2	Cluster 3
trawlers	Dyads	6,457	495	1681	4281
( $\delta = 5\text{km}$			(7.7%)	(26.0%)	(66.3%)
$\Delta t = 1\text{h}$ )	Duration	87	74	68	97
Large	Vessels	266	38	254	261
bottom			(14.3%)	(95.5%)	(98.1%)
otter trawlers	Dyads	54,478	312	16205	37961
( $\delta = 5\text{km}$			(0.6%)	(29.8%)	(69.7%)
$\Delta t = 1\text{h}$ )	Duration	65	60	47	73
Small	Vessels	202	52	185	183
bottom			(25.7%)	(91.6%)	(90.6%)
otter trawlers	Dyads	17,300	93	7051	10156
( $\delta = 5\text{km}$			(0.5%)	(40.8%)	(58.7%)
$\Delta t = 1\text{h}$ )	Duration	12	12	12	12
Mid(water	Vessels	70	4	56	65
otter			(5.7%)	(80.0%)	(92.9%)
trawlers	Dyads	844	3	409	432
( $\delta = 5\text{km}$			(0.4%)	(48.5%)	(51.2%)
$\Delta t = 1\text{h}$ )	Duration	12	11	12	12
Anchovy	Vessels	757	327	756	756
purse-			(43.2%)	(99.9%)	(99.9%)
seiners	Dyads	572,804	568	168284	403952
( $\delta = 5\text{km}$			(0.1%)	(29.4%)	(70.5%)
$\Delta t = 1\text{h}$ )	Duration	17	16	16	17
Tuna	Vessels	15	0	15	15
purse-				(100.0%)	(100.0%)
seiners	Dyads	1,523	0	39	1484

		Total	Cluster 1	Cluster 2	Cluster 3
$(\delta = 5\text{km})$				(2.6%)	(97.4%)
$\Delta t = 1\text{h})$	Duration	357		224	362

## 206 **Joint movement metrics**

The review made by Joo *et al.* (2018) defined three dimensions of joint movement:

208 proximity (closeness in space-time), coordination in direction and coordination in  
 210 speed. The article evaluated ten metrics used in the literature to assess joint movement  
 212 and showed that some metrics were either redundant or inaccurate for characterising  
 214 joint movement, some others were better suited to assess proximity, and others were  
 216 more sensitive to coordination. Based on that work, we chose three metrics that were  
 positively evaluated and that – together – account for the different aspects of joint  
 movement: 1) the proximity index (proximity), 2) dynamic interaction in  
 displacement (coordination in speed, and in displacement when time steps are  
 regularly spaced), and 3) dynamic interaction in direction (coordination in direction).

The proximity index (Prox) is defined as the proportion of simultaneous fixes that are  
 218 spatially close. To define closeness, we needed to fix a distance threshold  $\delta$ . For pair  
 trawlers, it is expected that at the very moment of fishing, vessels working together  
 220 are separated by less than 1 km from each other. When they were not fishing, they  
 could still move together but not necessarily at  $<1\text{km}$ . Thus, a 5km threshold was  
 222 used for this fleet. We also used a 5km threshold for large bottom otter trawlers to get  
 comparable results to those of pair trawlers. Anchovy purse-seiners, mid-water, and  
 224 small bottom otter trawlers usually perform short and coastal fishing trips, meaning  
 that vessels would not necessarily move together as a strategy, but could sometimes

226 coincide in places due to their short coastal movements. For that reason, we chose a  
 228 smaller threshold, 3km, for those three fleets. For tuna purse-seiners, we chose 10km,  
 as it is roughly the limit of visual detection of neighbouring vessels.

The calculation of the other two metrics did not require an *ad hoc* parametrization as  
 230 for Prox. The dynamic interaction in direction ( $DI_\theta$ ) and in displacement ( $DI_d$ )  
 measured similarity in direction and speed/displacement, respectively, between  
 232 simultaneous fixes (i.e. records of locations) in a dyad. The mathematical definition of  
 each metric is shown in Table 2.

234 *Table 2. Joint movement metrics*

Metric	Range	Interpretation for joint movement
$Prox = (\sum_t 1 \{d_t(A,B) < \delta\}) / T$	[0,1]	From always distant (0) to always close (1)
$DI_d = (\sum_t [1 - ( d_{t,t+1}(A) - d_{t,t+1}(B)  / (d_{t,t+1}(A) + d_{t,t+1}(B)))^\beta]) / (T-1)$	[0,1]	From non-cohesive (0) to cohesive (1) movement in displacement
$DI_\theta = (\sum_t \cos(\theta_{A_t} - \theta_{B_t})) / (T-1)$	[-1,1]	From opposite (-1) to cohesive (1) movement in azimuth

*Note:* A, B: vessels in the dyad; T: number of fixes in the dyad;  $d_t(A,B)$ : distance in  
 236 km between vessels A and B at t-th fixes;  $1 \{ \}$ : index function;  $\delta$ : distance threshold;  
 $d_{t,t+1}(A)$  (resp.  $d_{t,t+1}(B)$ ): displacement of A (resp. B) in km between fixes t and t + 1  
 238 ;  $\beta$  is a scaling parameter for which we assume to take the default value of 1 (Long  
 and Nelson, 2013; Joo *et al.*, 2018);  $\theta_{A_t}$  (resp.  $\theta_{B_t}$ ): heading of vessel A (resp. B) at  
 240 time t.

## Identification of partners at see with Gaussian mixture models

242 Partner identification was addressed through a probabilistic clustering approach using  
 244 GMMs (Biernacki *et al.*, 2006). In this approach, each dyad  $i$  was characterised by its  
 three dimensional metrics  $X_i = (\text{Prox}_i, \text{DI}_{d_i}, \text{DI}_{\theta_i})$  which were assumed to be a  
 realisation of a three-dimensional normal distribution. The mean vector and the  
 246 variance matrix of this distribution depended on the unknown cluster  $Z_i$  to which the  
 dyad  $i$  belonged. Given a fixed number of clusters ( $G$ ) and the three metrics, there  
 248 were three elements to estimate for each cluster  $g$  ( $g = 1, \dots, G$ ): a three-dimensional  
 mean ( $\mu_g$ ), a  $3 \times 3$  covariance matrix ( $\Sigma_g$ ), and the proportion of the cluster in the  
 250 observed dyad population ( $\pi_g$ ).

In this set-up, the probability density function of given metric values  $x_i$  of a dyad  $i$  ( $\phi(x_i)$ ) can be expressed as:

$$\phi(x_i) = \sum_{g=1}^G \pi_g f_g(x_i, \mu_g, \Sigma_g)$$

254 where  $\pi_g = P(Z_i = g)$  and  $f_g(x_i, \mu_g, \Sigma_g)$  is a three-dimensional Gaussian density function.

The probability of being in cluster  $g$  for each dyad  $i$  given the observed metrics,  $P(Z_i = g | X_i = x_i)$ , also called posterior probability, was obtained as a by-product of the  
 256 global estimation of the model and is expressed as follows:

$$258 \quad P(Z_i = g | X_i = x_i) = \frac{\pi_g f_g(x_i, \hat{\mu}_g, \hat{\Sigma}_g)}{\sum_{k=1}^G \pi_k f_k(x_i, \hat{\mu}_k, \hat{\Sigma}_k)}$$

where  $\hat{\mu}_g$  and  $\hat{\Sigma}_g$  stand respectively for the estimated mean in cluster  $g$  and the  
 260 corresponding estimated covariance matrix.

1  
2  
3 In GMMs, the total number of clusters are chosen according to either statistical  
4  
5 262 selection criteria (mostly likelihood-based) or case-study goals. A three-component  
6  
7 GMM structure, i.e.  $G = 3$ , was chosen in order to obtain higher discrepancies  
8  
9  
10 264 between two extreme dyadic-behaviour clusters by allowing to have a cluster in  
11  
12 between corresponding to an intermediate behaviour. This pattern would be consistent  
13  
14  
15 266 with our expectations of joint movement within the pelagic pair trawler fleet: dyads  
16  
17 moving together all along, some others joining each other at some moments—like  
18  
19 268 fishing operations, and others moving independently from each other—likely paired  
20  
21 with other vessels.  
22

23  
24  
25 270 Each covariance matrix  $\Sigma_g$  can be expressed as the product of different components  
26  
27 which specify its orientation, shape and volume (see Biernacki *et al.* (2006)). We  
28  
29 272 chose a general GMM structure of 3 dyadic-behaviour clusters allowing for the  
30  
31 volume, orientation and shape of the clusters to differ from one another, called  
32  
33  
34 274 Gaussian\_pk\_Lk\_Ck in Biernacki *et al.* (2006).  
35

36  
37 The GMMs were fitted to the pelagic pair trawlers dataset, composed of 6457 dyads.  
38  
39 276 Parameter estimation was achieved via the iterative EM algorithm. Because EM is  
40  
41 known to be sensitive to initial conditions (Dempster *et al.*, 1977), we fitted 30  
42  
43  
44 278 different GMMs and kept the one that minimised the integrated complete likelihood  
45  
46 criterion, using the Rmixmod package (Langrognet *et al.*, 2019) and based on  
47  
48  
49 280 Biernacki *et al.* (2006). From the fitted model, henceforth denoted by  $\text{GMM}_{\text{pairtrawlers}}$ ,  
50  
51 we obtained the posterior probability  $P(Z_i = g | X_i = x_i)$  of each dyad  $i$  to belong to each  
52  
53  
54 282 cluster  $g$  given the metric values  $x_i$ . We considered that a dyad was classified as part  
55  
56 of the cluster  $g$  that maximised the posterior probability  $P(Z_i = g | X_i = x_i)$ . The level of  
57  
58  
59  
60

1  
2  
3 284 mixture between pairs of clusters in the final model was quantified as the overlapping  
4  
5 volume between the tri-Gaussian distributions of each cluster. This index ranges  
6  
7  
8 286 between 0 (no mixture) and 1 full (mixing). High levels of mixture would indicate  
9  
10 that the clusters are difficult to distinguish from each other, making the classification  
11  
12 288 poorly relevant.

13  
14  
15 For each cluster, we computed a global average of the Z-scores (i.e. centred and  
16  
17 scaled transformation) of their ( $Prox_i, DI_{d_j}, DI_{0_j}$ )-features, and ordered them  
18 290 accordingly. Based on the definitions of the metrics (Joo *et al.*, 2018), the cluster with  
19  
20 the highest average was associated to partners at sea behaviour.  
21  
22 292

23  
24  
25 The GMM fitted on pelagic pair trawlers ( $GMM_{\text{pairtrawlers}}$ ) was then used on each of  
26  
27 the other fleets to classify their dyads, into the three identified groups. For each dyad  $i$   
28 294 of the other fleets, we computed  $P(Z_i = g | X_i = x_i)$  for  $g = \{1, 2, 3\}$  and assigned the  
29  
30 dyad to the most plausible cluster.  
31  
32 296

33  
34  
35 Using GMMs provided several advantages compared to other common clustering  
36  
37 algorithms. Since it is a model-based clustering approach, we obtained posterior  
38 298 probabilities of belonging to each cluster; it is thus a probabilistic classification  
39  
40 instead of a hard classification. The k-means algorithm can actually be seen as a  
41  
42 300 particular case of a GMM: the former optimizes a loss function which could be seen  
43  
44 as the negative log likelihood of a GMM with spherical shape and same variance  
45  
46 302 among clusters (Steinley, 2006). The GMM fitted to the pair trawler data allowed for  
47  
48 different variances and was not constrained to spherical structures, thus being more  
49  
50 304 flexible than k-means, which should give a better classification performance (Qiu,  
51  
52  
53  
54  
55  
56  
57  
58  
59  
60



1  
2  
3 306 2010). Moreover, the EM algorithm used to estimate the parameters in the GMM runs  
4  
5 a k-mean algorithm to find a suitable starting point (Bishop, 2006).  
6  
7

### 8 9 308 **Vessel and fleet characterisation**

10 We focused on the dyads of each fleet classified as cluster one, i.e. partners at sea.  
11  
12 310 Their relative importance in the fleets were represented by the proportions of vessels  
13  
14 and dyads involved in the cluster. For each fleet, the social relationships between  
15  
16 vessels that engaged at least once in partners at sea behaviour were visually  
17  
18 312 represented as a social network (Scott, 1988; Jacoby and Freeman, 2016). The  
19  
20 elements of the sociomatrix of the network, i.e. adjacency matrix, represented the  
21  
22 314 number of partner-at-sea dyads between the vessels —that had at least one dyad in the  
23  
24 cluster. The Fruchterman and Reingold algorithm was chosen to draw the graph. It  
25  
26 316 positions the nodes of the graph in the space so that all edges are more or less equal  
27  
28 length and there are as few crossing edges as possible, aiming at an aesthetic  
29  
30 representation (Fruchterman and Reingold, 1991). The igraph package was used for  
31  
32 318 this purpose (Csardi and Nepusz, 2006).  
33  
34  
35  
36  
37  
38

39 We identified which and how many vessels were exclusive, i.e. only formed partners  
40  
41 322 at sea with one vessel throughout the whole period of study. In the adjacency matrix  
42  
43 this corresponded to the rows with 0 everywhere except once. To assess how  
44  
45 324 exclusive were partnerships at the fleet level, a loyalty index was defined as the  
46  
47 proportion of vessels that showed exclusiveness in partnership. For this calculation we  
48  
49 326 excluded vessels with only one dyad in the group.  
50  
51  
52  
53  
54  
55  
56  
57  
58  
59  
60

1  
2  
3  
4  
5  
6  
7  
8  
9  
10  
11  
12  
13  
14  
15  
16  
17  
18  
19  
20  
21  
22  
23  
24  
25  
26  
27  
28  
29  
30  
31  
32  
33  
34  
35  
36  
37  
38  
39  
40  
41  
42  
43  
44  
45  
46  
47  
48  
49  
50  
51  
52  
53  
54  
55  
56  
57  
58  
59  
60

All the R codes for partner-at-sea identification via GMMs and vessel and fleet

328 characterisation are available at <https://rociojoo.github.io/partners-at-sea>

(doi:10.5281/zenodo.4016377)

## 330 Results

### Pelagic pair trawlers

332 Table 3. Parameter estimates of GMM for pair trawlers

		Cluster 1	Cluster 2	Cluster 3
	$\pi$	0.077	0.330	0.593
$\mu$	Prox	0.939	0.204	0.086
	DI $_{\theta}$	0.928	0.235	0.177
	DI $_d$	0.915	0.703	0.626
$\Sigma_{ii}$	Prox	0.007	0.016	0.003
	DI $_{\theta}$	0.005	0.063	0.024
	DI $_d$	0.002	0.004	0.010

334 Table 4. Correlations between metrics per cluster obtained from  $\Sigma$  estimates of the GMM for pair trawlers

		Cluster 1			Cluster 2			Cluster 3		
		Prox	DI $_{\theta}$	DI $_d$	Prox	DI $_{\theta}$	DI $_d$	Prox	DI $_{\theta}$	DI $_d$
Prox			0.48	0.36		0.46	0.3		0.35	0.1
DI $_{\theta}$		0.48		0.79	0.46		0.34	0.35		0.47
DI $_d$		0.36	0.79		0.3	0.34		0.1	0.47	

After pre-processing, 6457 dyads were classified with GMMs. The estimated

336 parameters are shown in Table 3. The correlations between features (Table 4) were

not negligible, which supports the joint use of metrics that evaluate different aspects

338 of dyadic movement. There was little overlap between cluster 1 and the other two: 1.9

1  
2  
3  $\times 10^{-3}$  and  $3.7 \times 10^{-10}$ , between clusters 1 and 2, and 1 and 3, respectively. There  
4  
5  
6 340 was higher overlap (0.32) between clusters 2 and 3. Moreover, most dyads were  
7  
8 classified based on high values of their posteriors (1.00, 0.95, and 0.86 as median  
9  
10 342 posteriors for each group, respectively; Fig. 3), and all of them above 0.5.

11  
12  
13 The three clusters obtained corresponded to distinct levels of joint movement (Fig. 1).  
14  
15 344 The first one (purple in Fig. 1) corresponded to high joint movement in its three  
16  
17 dimensions: proximity, coordination in direction and in speed/displacement. This was  
18  
19 346 the expected pattern for partnership at sea. The second one (green in Fig. 1) was  
20  
21 associated to a lower degree of joint movement in all dimensions. The third cluster  
22  
23 348 (yellow in Fig. 1) was overall characterised by low proximity, relatively low  
24  
25 coordination in direction, and low coordination in displacement. In these two metrics,  
26  
27 350 there was a considerable amount of overlap, with Prox being the metric that made  
28  
29 these two groups distinguishable. The tracks of the most representative dyad of each  
30  
31 352 cluster, i.e. the one with the largest  $P(Z = g|X = x)$ , are shown in Fig. 2. Animations  
32  
33 of the trajectories and time series related to the three metrics can be found in  
34  
35 354 <https://rociojoo.github.io/partners-at-sea/>.

36  
37  
38  
39  
40  
41 In total, 8%, 26% and 66% of the examined dyads were classified in the first, second  
42  
43 356 and third cluster, respectively (Table 1). The examined dyads were couples of vessel  
44  
45 tracks coinciding in a common area at the same time. Not all pairs of vessels that  
46  
47 358 cross their paths should be necessarily working together. On the other hand, most of  
48  
49 the vessels of the fleet, 56 (95%), participated at least once in dyads classified as  
50  
51 360 partners at sea. From them, 46 had exclusive partners (Fig. 5), which translated into a  
52  
53 0.82 loyalty index for the fleet.  
54  
55  
56  
57  
58  
59  
60

## 362 **Dyads from other fleets**

364 In this section, we focused only on the first group, i.e. partners at sea. The proportion  
366 of dyads classified in each cluster is presented in Table 1, and examples of dyads in  
each cluster for all fleets can be found in <https://rociojoo.github.io/partners-at-sea/>, a  
companion website for the manuscript.

368 When using  $GMM_{\text{pairtrawlers}}$  to classify dyads from the other fleets, we found partners  
at sea in all of them except for tuna purse seiners. In all the fleets, the posterior  
probabilities computed for classification were relatively high (medians were  $>0.65$   
and all posteriors were  $>0.5$ ; Fig. 3) showing low ambiguity for classification in all  
groups.

372 For large, small bottom, mid-water otter trawlers and anchovy purse-seiners, 312, 93,  
3 and 568 dyads were classified as partners at sea, respectively (Table 1). In all cases,  
it represented less than 1% of the examined dyads, showing that vessels in the same  
area do not always move together, and when they do, they do not do it in large groups.

376 We compared the distribution of values of the metrics in the first group between  
pelagic pair trawlers and the other fleets (large and small bottom otter trawlers, and  
anchovy purse-seiners; Fig. 4). Large bottom otter trawlers showed the most similar  
shapes of the distributions to pair trawlers, for all metrics, though the values of  $DI_d$   
were less skewed to the right than for pair trawlers. This difference in skewness for  $D$   
 $I_d$  was also true for the other two fleets. Moreover, ‘partners at sea’ among anchovy  
purse-seiners took lower values of all the metrics (more skewed to the left). Since  
both fleets target pelagic species, one might have expected to find similar metric  
values for their partners at sea. This difference is not related to the different sampling

1  
2  
3 rate (10 minutes), which we confirmed by re-running the analyses for 60 minute  
4  
5 386 interpolated dyads. It could rather be an indication of a joint movement that does not  
6  
7 occur at a dyadic scale, i.e. a couple of vessels that decide to move together; if larger  
8  
9  
10 388 groups were moving together, this pattern would not have necessarily reflected in  
11  
12 very high values in the dyadic movement metrics.  
13  
14

15 390 The percentage of vessels engaged in at-sea partnership and their exclusiveness varied  
16  
17 greatly among fleets (Fig. 5). 38 out of 266 large bottom otter trawlers (14%) showed  
18  
19  
20 392 at-sea partnership at least once, and from them, 19 had exclusive partners (loyalty =  
21  
22 0.54). A larger percentage of small bottom otter trawlers engaged in partnership (26%  
23  
24  
25 394 , or 52 out of 202). From them, 38 had exclusive partners (35 with >1 dyad; loyalty =  
26  
27 0.74). Only 4 out of 70 mid-water otter trawlers engaged in partnership, which was  
28  
29  
30 396 exclusive (loyalty = 1) and only occurred three times. In contrast, 43% of the anchovy  
31  
32 purse-seiners engaged in partnership (or 327 out of 757 vessels). 134 of these vessels  
33  
34 398 were exclusive (132 with >1 dyad; loyalty = 0.44). Most anchovy purse-seiners  
35  
36 showed joint-movement links with large groups of vessels (Fig. 5d), which would be  
37  
38  
39 400 consistent with the differences in the metrics distribution (Fig. 4).  
40  
41  
42

## 43 **Discussion**

44  
45 402 In this work, we aimed at identifying partners at sea in different fleets around the  
46  
47 world. We presented a simple heuristic approach to identify them by means of joint  
48  
49  
50 404 movement metrics (Joo *et al.*, 2018), use of Gaussian mixture modelling, and taking  
51  
52 pelagic pair trawlers as a ‘training’ dataset.  
53  
54

55 406 Partners at sea were identified in all the examined fisheries, except for tuna purse-  
56  
57 seiners. This could be partly explained by the long duration of their fishing trips and  
58  
59  
60

1  
2  
3 408 large range of movement. While the trip duration in the other fleets ranged between  
4  
5 less than a day and four days, tuna purse-seiner fishing trips lasted about 30 or 40  
6  
7  
8 410 days. Tuna purse-seiners, not bounded to fish together, showed that there was no  
9  
10 strategy involving dyadic joint movement throughout their whole trips. However, data  
11  
12 412 exploration showed that some vessels moved together in pairs for parts of their trips  
13  
14 (see <https://rociojoo.github.io/partners-at-sea/> for an example in group 2). The  
15  
16  
17 414 identification of trip segments associated to joint movement (i.e. redefining a dyad)  
18  
19 was out of the scope of this work, and remains open for future research.  
20  
21  
22 416 Mid-water and small bottom otter trawlers performed equally in terms of trip duration  
23  
24 and distances covered. However, the mid-water otter trawler dataset only contained  
25  
26  
27 418 three partners at sea dyads, suggesting that individual competition could be higher in  
28  
29 this fleet, or that working together would bring them no benefit, which could be due  
30  
31 420 to their smaller fishing zones or the spatial behaviour of their targeted fish. Compared  
32  
33 to mid-water trawlers, a higher percentage of both small and large bottom otter  
34  
35  
36 422 trawlers participated in partnerships, showing that this is a strategy used in these  
37  
38 fleets, though it has not been adopted by the majority of the vessels. These three  
39  
40  
41 424 trawler fleets are composed of vessels that engage in fishing activities (*métiers*) that  
42  
43 target demersal or benthic species (fish, crustaceans, cephalopods). From empirical  
44  
45 426 observations, these *métiers* are likely to require less synchronous collaboration than  
46  
47 pelagic *métiers*. Instead, the observed partner-at-sea behaviours could have been  
48  
49  
50 428 shaped by environmental or physical constraints (e.g. currents, Gloaguen *et al.*  
51  
52 (2016)) that the vessels would be facing in the same fishing area at the same time,  
53  
54  
55 430 rather than a collaborative fishing strategy.  
56  
57  
58  
59  
60

1  
2  
3 A third of anchovy purse-seiners moved in partnership at least once during the  
4  
5  
6 432 analysed fishing season. Though the trips had a short duration ( ~ 17 hours), the  
7  
8 sampling rate from these VMS data was very high ( ~ 10 minutes). At such  
9  
10 434 resolution, joint movement patterns were identified. In this intensive and highly  
11  
12 dynamic monospecific fishery, these findings are somehow a surprise that may be  
13  
14 436 worth studying in more detail in the future. The high number of vessels in this fleet  
15  
16 showing joint movement, and the high number of connections displayed in its social  
17  
18 438 network, makes it appealing to study joint movement in larger groups for this fleet.

21  
22 While it was expected to find partnership in pelagic pair trawlers, the degree of  
23  
24 440 loyalty in this fleet was previously unknown, thus revealing about their partnership  
25  
26 strategies. 82% of the vessels (or fishers) opted for exclusive partnerships, and the  
27  
28 442 ones who did not, exchanged partners in very reduced groups. In large and small  
29  
30 bottom otter trawlers, the loyalty between vessels involved in the partner at sea cluster  
31  
32 444 was lower; small bottom otter trawlers are involved in larger groups (Fig. 5). Non-  
33  
34 exclusive partnerships involved even larger groups in the anchovy purse-seine fleet.  
35  
36 446 These fleets may be revealing two opposed partnership strategies: exclusiveness,  
37  
38 which would involve commitment or long-term partnership, and opportunism, in  
39  
40 448 which a vessel would move jointly with another one (or even a group of vessels)  
41  
42 without any previous history or commitment. We did not assess the associations  
43  
44 450 between partnerships and belonging to a same company, and it could be appealing for  
45  
46 future studies to analyse if this would correspond to a strategy where the ship-owner  
47  
48 452 requires his fishing masters to work together.

51  
52 This work represents a first approach into studying joint movement behaviour and  
53  
54 454 strategies in fisheries. It highlights the fact that not all trajectories can be considered

1  
2  
3 as independent, an assumption made in most modelling studies (e.g. using state space  
4  
5 456 models; Joo *et al.* (2013); Gloaguen *et al.* (2015)). Furthermore, it could be appealing  
6  
7 to apply this approach to select, from a set of trajectories, those that do not show any  
8  
9  
10 458 partnership at sea. This could allow computing Catch per Unit of Effort only drawn  
11  
12 from independent fishing operations. It could also be used to evaluate potential errors  
13  
14  
15 460 in modelling fleet dynamics. For instance, one could fit state-space models using  
16  
17 independent tracks on one hand and using all the tracks on the other, and compare the  
18  
19 462 goodness of fit of both models –and simulation results –to evaluate the biases in state  
20  
21 estimations linked to the dependence between vessels.  
22  
23

24  
25 464 In this study, we focused on a very specific scale of joint movement, the dyad, defined  
26  
27 as a unit composed of fishing trip segments of two vessels occurring at the same time  
28  
29 466 and in a common area. Studying the strategies of fleets like the tuna purse-seiners  
30  
31 could benefit from the development of methods to identify joint movement at smaller  
32  
33  
34 468 scales (e.g. segments of fishing trips). The computation of Prox for each dyad  
35  
36 depended on a fixed distance threshold. Here, we made an ad hoc choice of the  
37  
38 470 threshold for each fleet. This choice is not straightforward; more in-depth studies of  
39  
40 dyadic movement should focus on sensitivity analysis and the development of an  
41  
42  
43 472 automatic choice of the threshold.  
44  
45

46  
47 We consider this work as a first approach to studying partnership at sea, with pelagic  
48  
49 474 pair trawlers' joint movement as a starting point. Future studies could focus on other  
50  
51 types of partnership at sea, pairwise or not. In many fisheries, like the anchovy purse-  
52  
53 476 seine fishery, the characterisation of joint movement in larger groups could help  
54  
55 understanding the scales of collective behaviour in the fisheries. Besides joint  
56  
57 478 movement, leader/following dynamics would also be worth exploring (see a brief  
58  
59  
60



1  
2  
3 discussion in Joo *et al.* (2018)). All of these components would help characterising  
4  
5 480 spatial behaviour patterns, but it would not be enough to understand the triggers of  
6  
7 these behaviours. A next step would be to understand the associations between joint  
8  
9  
10 482 movement (or following movement) and external factors such as the spatial  
11  
12 aggregation of the targeted species, the direction of currents, or management and  
13  
14 484 economic policies. Ultimately, understanding and modelling fisher movement  
15  
16 including its collective components will contribute to better estimations of local  
17  
18 486 exploitation of resources. More realistic movement models would allow better  
19  
20 simulations of fisher spatial behaviour and effort for different management scenarios,  
21  
22  
23  
24 488 thus improving decisions for management.  
25  
26  
27

## 28 **Acknowledgements**

29  
30 490 The authors would like to thank Youen Vermard and Fabien Forget for useful  
31  
32 feedback on the French fleets operating in the North-East Atlantic Ocean and the  
33  
34  
35 492 Indian Ocean, respectively. Youen's feedback on data processing was of great help, as  
36  
37 well. We also acknowledge the collaboration of Ob7 – Observatoire des Ecosystèmes  
38  
39  
40 494 Pélagiques Tropicaux exploités, for the tuna dataset. The tuna data used in this study  
41  
42 were collected through the Data Collection Framework (Reg 2017/1004 and  
43  
44 496 2016/1251) funded by both IRD and the European Union. We are also grateful to  
45  
46 Emily Walker for codes related to the tuna purse-seine fishery. Guidance for use of  
47  
48  
49 498 servers and different computers from Olivier Berthele and Audric Vigier were key in  
50  
51 the first stages of this work, when Rocío Joo's work computer was a mess. Thanks to  
52  
53  
54 500 both of you.  
55  
56  
57  
58  
59  
60

## Authors' contributions

502 RJ, SM and NB conceived the study. NG gave valuable insights on fishing behaviour  
504 at sea that were key to the study design and interpretation of results. RJ led the data  
506 processing and analysis, with contributions from PM and JR. MPE suggested and  
helped implementing the GMM. RJ led the writing of the manuscript. SM, NB and  
MPE made major contributions to the manuscript, and NG and PM made minor  
contributions to it.

## Data and codes availability statement

The dyads' metrics along with all of the R codes for GMM and computation of the  
510 fleet characteristics are available on Zenodo: <https://doi.org/10.5281/zenodo.4016377>.  
The codes can also be viewed from [https://rociojoo.github.io/partners-at-sea/data-  
512 processing-and-analysis.html](https://rociojoo.github.io/partners-at-sea/data-processing-and-analysis.html). Due to confidentiality agreements, the raw VMS data  
cannot be shared.

## References

- Aranda, M. 2009. Developments on fisheries management in Peru: The new  
516 individual vessel quota system for the anchoveta fishery. *Fisheries Research*, 96:  
308–312. <http://dx.doi.org/10.1016/j.fishres.2008.11.004>.
- 518 Bertrand, S., Burgos, J. M., Gerlotto, F., and Atiquipa, J. 2005. Lévy trajectories of  
Peruvian purse-seiners as an indicator of the spatial distribution of anchovy  
520 (*Engraulis ringens*). *ICES Journal of Marine Science*, 62: 477–482.
- Bertrand, S., Diaz, E., and Lengaigne, M. 2008. Patterns in the spatial distribution of  
522 Peruvian anchovy (*Engraulis ringens*) revealed by spatially explicit fishing data.

- 1  
2  
3 Progress In Oceanography, 79: 379–389. Elsevier Ltd.  
4  
5 524 <http://linkinghub.elsevier.com/retrieve/pii/S0079661108001894>.  
6  
7  
8  
9 Biernacki, C., Celeux, G., Govaert, G., and Langrognet, F. 2006. Model-based cluster  
10  
11 526 and discriminant analysis with the MIXMOD software. Computational Statistics  
12  
13 & Data Analysis, 51: 587–600. Elsevier.  
14  
15  
16 528 Bishop, C. M. 2006. Pattern recognition and machine learning. Springer, Singapore.  
17  
18  
19 Calenge, C. 2006. The package adehabitat for the r software: Tool for the analysis of  
20  
21  
22 530 space and habitat use by animals. Ecological Modelling, 197: 1035.  
23  
24  
25 Csardi, G., and Nepusz, T. 2006. The igraph software package for complex network  
26  
27 532 research. InterJournal, Complex Systems: 1695. <http://igraph.org>.  
28  
29  
30 Dempster, A. P., Laird, N. M., and Rubin, D. B. 1977. Maximum likelihood from  
31  
32 534 incomplete data via the EM algorithm. Journal of the Royal Statistical Society:  
33  
34 Series B (Methodological), 39: 1–22. Wiley Online Library.  
35  
36  
37  
38 536 Fruchterman, T. M. J., and Reingold, E. M. 1991. Graph drawing by force-directed  
39  
40 placement. Software: Practice and Experience, 21: 1129–1164.  
41  
42 538 <https://onlinelibrary.wiley.com/doi/abs/10.1002/spe.4380211102> (Accessed 25  
43  
44 November 2018).  
45  
46  
47  
48 540 Gerritsen, H. D., Lordan, C., Minto, C., and Kraak, S. B. M. 2012. Spatial patterns in  
49  
50 the retained catch composition of Irish demersal otter trawlers: High-resolution  
51  
52 542 fisheries data as a management tool. Fisheries Research, 129-130: 127–136.  
53  
54 Elsevier B.V. <http://linkinghub.elsevier.com/retrieve/pii/S0165783612002032>.  
55  
56  
57  
58  
59  
60

- 1  
2  
3 544 Gezelius, S. S. 2007. The social aspects of fishing effort. *Human Ecology*, 35: 587–  
4  
5 599.  
6  
7  
8  
9 546 Gloaguen, P., Mahévas, S., Rivot, E., Woillez, M., Guitton, J., Vermard, Y., and  
10 Etienne, M. P. 2015. An autoregressive model to describe fishing vessel  
11  
12 548 movement and activity. *Environmetrics*, 26: 17–28.  
13  
14 <http://doi.wiley.com/10.1002/env.2319>.  
15  
16  
17  
18 550 Gloaguen, P., Woillez, M., Mahévas, S., Vermard, Y., and Rivot, E. 2016. Is speed  
19 through water a better proxy for fishing activities than speed over ground?  
20  
21  
22 552 *Aquatic Living Resources*, 29: 210. EDP Sciences.
- 23  
24  
25  
26 Hancock, J., Hart, P. J. B., and Antezana, T. 1995. Searching behaviour and catch of  
27  
28 554 horse mackerel (*Trachurus murphyi*) by industrial purse-seiners off south-central  
29 Chile. *ICES Journal of Marine Science*, 52: 991–1004.  
30  
31  
32  
33  
34 556 Hinz, H., Murray, L. G., Lambert, G. I., Hiddink, J. G., and Kaiser, M. J. 2013.  
35 Confidentiality over fishing effort data threatens science and management  
36  
37 558 progress. *Fish and Fisheries*, 14: 110–117. [http://doi.wiley.com/10.1111/j.1467-](http://doi.wiley.com/10.1111/j.1467-2979.2012.00475.x)  
38  
39 [2979.2012.00475.x](http://doi.wiley.com/10.1111/j.1467-2979.2012.00475.x).  
40  
41  
42  
43  
44 560 Holmes, S. J., Bailey, N., Campbell, N., Catarino, R., Barratt, K., Gibb, A., and  
45  
46 Fernandes, P. G. 2011. Using fishery-dependent data to inform the development  
47  
48 562 and operation of a co-management initiative to reduce cod mortality and cut  
49 discards. *ICES Journal of Marine Science*, 68: 1679–1688.  
50  
51  
52 564 <http://icesjms.oxfordjournals.org/cgi/doi/10.1093/icesjms/fsr101>.  
53  
54  
55  
56  
57  
58  
59  
60

- 1  
2  
3 Horta, S., and Defeo, O. 2012. The spatial dynamics of the whitemouth croaker  
4  
5 566 artisanal fishery in Uruguay and interdependencies with the industrial fleet.  
6  
7 Fisheries Research, 125-126: 121–128. Elsevier B.V.  
8  
9  
10 568 <http://linkinghub.elsevier.com/retrieve/pii/S0165783612000823>.  
11  
12  
13 Jacoby, D. M. P., and Freeman, R. 2016. Emerging Network-Based Tools in  
14  
15 570 Movement Ecology. *Trends in Ecology and Evolution*, 31: 301–314.  
16  
17 <http://dx.doi.org/10.1016/j.tree.2016.01.011>.  
18  
19  
20  
21 572 Joo, R., Bertrand, S., Tam, J., and Fablet, R. 2013. Hidden Markov models: the best  
22  
23 models for forager movements? *PLOS ONE*, 8: e71246.  
24  
25  
26 574 Joo, R., Bertrand, A., Bouchon, M., Chaigneau, A., Demarcq, H., Tam, J., Simier, M.,  
27  
28 *et al.* 2014. Ecosystem scenarios shape fishing spatial behavior. The case of the  
29  
30 576 anchovy fishery in the northern Humboldt Current system. *Progress in*  
31  
32 *Oceanography*, 128: 60–73.  
33  
34  
35  
36 578 Joo, R., Etienne, M.-P., Bez, N., and Mahévas, S. 2018. Metrics for describing dyadic  
37  
38 movement: A review. *Movement Ecology*, 6: 26. [https://doi.org/10.1186/s40462-](https://doi.org/10.1186/s40462-018-0144-2)  
39  
40 580 [018-0144-2](https://doi.org/10.1186/s40462-018-0144-2) (Accessed 7 January 2019).  
41  
42  
43  
44 Langrognet, F., Lebret, R., Poli, C., Iovleff, S., Auder, B., and Iovleff, S. 2019.  
45  
46 582 Rmixmod: Classification with mixture modelling. [https://CRAN.R-](https://CRAN.R-project.org/package=Rmixmod)  
47  
48 [project.org/package=Rmixmod](https://CRAN.R-project.org/package=Rmixmod).  
49  
50  
51  
52 584 Long, J. A., and Nelson, T. A. 2013. Measuring Dynamic Interaction in Movement  
53  
54 Data. *Transactions in GIS*, 17: 62–77.  
55  
56  
57 586 Marin, P., and Joo, R. 2021. vmsR: For analysing VMS data.  
58  
59  
60

- 1  
2  
3 Prado, J. 1988. Guide pratique du marin pêcheur. Organisation des Nations unies pour  
4  
5 588 l'Alimentation et l'Agriculture (FAO).  
6  
7  
8  
9 Qiu, D. 2010. A comparative study of the K-means algorithm and the normal mixture  
10  
11 590 model for clustering: Bivariate homoscedastic case. *Journal of Statistical Planning*  
12  
13 and Inference, 140: 1701–1711.  
14  
15 592 <http://www.sciencedirect.com/science/article/pii/S0378375809004054> (Accessed  
16  
17 23 January 2021).  
18  
19  
20  
21 594 R Core Team. 2015. R: A language and environment for statistical computing. R  
22  
23 Foundation for Statistical Computing, Vienna, Austria. [https://www.R-](https://www.R-project.org/)  
24  
25 596 [project.org/](https://www.R-project.org/).  
26  
27  
28  
29 Rijnsdorp, A. D., Poos, J. J., and Quirijns, F. J. 2011. Spatial dimension and  
30  
31 598 exploitation dynamics of local fishing grounds by fishers targeting several flatfish  
32  
33 species. *Canadian Journal of Fisheries and Aquatic Sciences*, 68: 1064–1076.  
34  
35  
36 600 Robards, M. D., Silber, G. K., Adams, J. D., Arroyo, J., Lorenzini, D., Schwehr, K.,  
37  
38 and Amos, J. 2016. Conservation science and policy applications of the marine  
39  
40 602 vessel Automatic Identification System ( AIS )— a review. *Bulletin of Marine*  
41  
42 *Science*, 92: 75–103.  
43  
44  
45  
46 604 Sainsbury, J. C. 1996. Commercial fishing methods: An introduction to vessels and  
47  
48 gears. Oxford (United Kingdom) Fishing News Books.  
49  
50  
51 606 Salas, S., and Gaertner, D. 2004. The behavioural dynamics of fishers : management  
52  
53 implications. *Fish and Fisheries*, 5: 153–167.  
54  
55  
56  
57 608 Scott, J. 1988. Social network analysis. *Sociology*, 22: 109–127.  
58  
59  
60

1  
2  
3 Steinley, D. 2006. K-means clustering: A half-century synthesis. *British Journal of*  
4  
5 610 *Mathematical and Statistical Psychology*, 59: 1–34.

6  
7 <https://bpspsychub.onlinelibrary.wiley.com/doi/abs/10.1348/000711005X48266>

8  
9  
10 612 (Accessed 23 January 2021).

11  
12  
13 Vermard, Y., Rivot, E., Mahévas, S., Marchal, P., and Gascuel, D. 2010. Identifying

14  
15 614 fishing trip behaviour and estimating fishing effort from VMS data using

16  
17 Bayesian hidden Markov models. *Ecological Modelling*, 221: 1757–1769.

18  
19 616 <http://dx.doi.org/>.

20  
21  
22  
23 Vigier, A., Mahévas, S., and Bertignac, M. 2018. Towards a spatial integrated stock

24  
25 618 assessment model for european hake northern stock. *Fisheries Research*, 199:

26  
27 158–170. <http://www.sciencedirect.com/science/article/pii/S0165783617303363>.

28  
29  
30 620 Walker, E., and Bez, N. 2010. A pioneer validation of a state-space model of vessel

31  
32 trajectories (VMS) with observers' data. *Ecological Modelling*, 221: 2008–2017.

33  
34 622 Elsevier B.V. <http://linkinghub.elsevier.com/retrieve/pii/S0304380010002589>.

### 35 36 37 38 39 40 **Figure captions**

41  
42 624 Fig. 1. Histograms of the joint movement metrics for the three clusters (in purple,  
43  
44 green and yellow) for pelagic pair trawlers. It should be noted that only  $DI_0$  ranges

45  
46 626 from -1 to 1, while Prox and  $DI_d$  take values from 0 to 1.

47  
48  
49 Fig. 2. The most representative dyadic example of each cluster for the pelagic pair

50  
51 628 trawler fleet, with the values of the metrics. The coordinates were transformed to

52  
53 avoid disclosing information about the vessels, whose identifiers are not shown either.

54  
55  
56 630 a: Dyad from cluster 1. Prox = 1;  $DI_0$  = 1;  $DI_d$  = 0.98. b: Dyad from cluster 2. Prox =

1  
2  
3  
4  
5  
6  
7  
8  
9  
10  
11  
12  
13  
14  
15  
16  
17  
18  
19  
20  
21  
22  
23  
24  
25  
26  
27  
28  
29  
30  
31  
32  
33  
34  
35  
36  
37  
38  
39  
40  
41  
42  
43  
44  
45  
46  
47  
48  
49  
50  
51  
52  
53  
54  
55  
56  
57  
58  
59  
60

0.57;  $DI_{\theta} = 0$ ;  $DI_d = 0.69$ . c: Dyad from cluster 3. Prox = 0.06;  $DI_{\theta} = -0.07$ ;  $DI_d =$

632 0.24

Fig. 3. Boxplots of the posterior probabilities  $P(Z_i = g | X_i = x_i)$  of each dyad  $i$

634 classified in each group. a: Pelagic pair trawlers. b: Large bottom otter trawlers. c:

Small bottom otter trawlers. d: Mid-water otter trawlers. e: Tuna purse-seiners. f:

636 Anchovy purse-seiners.

Fig. 4. Histograms of the joint movement metrics (Prox,  $DI_{\theta}$ , and  $DI_d$ , in the left,

638 centre and right columns, respectively) for the first group or partners at sea,

comparing the pelagic pair trawlers (blue) with each of the other fleets (mustard). The

640 other fleets are, in row order from top to bottom: large bottom otter trawlers, small

bottom otter trawlers and anchovy purse-seiners. Tuna purse-seiners and mid-water

642 otter trawlers are not shown as no dyad and only three dyads, respectively, were

associated with partnership.

644 Fig. 5. Network representation of partnership for the pelagic pair trawlers (a), small

bottom otter trawlers (b), large bottom otter trawlers (c) and anchovy purse-seiners

646 (d). Tuna purse-seiners and mid-water otter trawlers are not shown as no dyad and

only three dyads, respectively, were associated with partnership. Within each

648 network, only vessels that engaged in partnership at sea at least once were

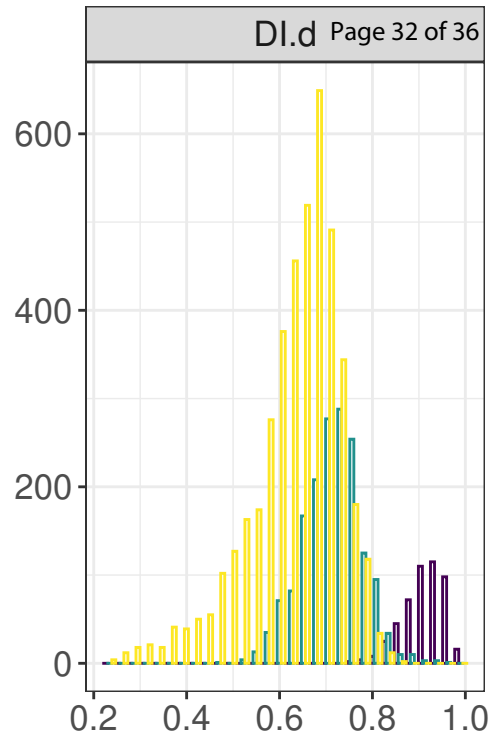
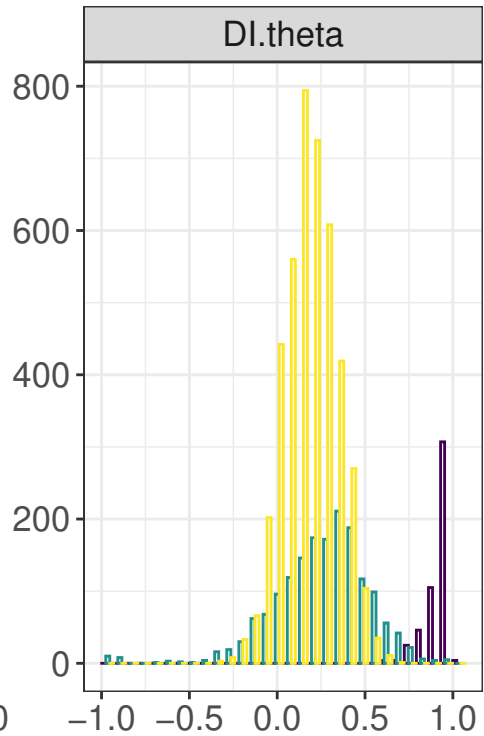
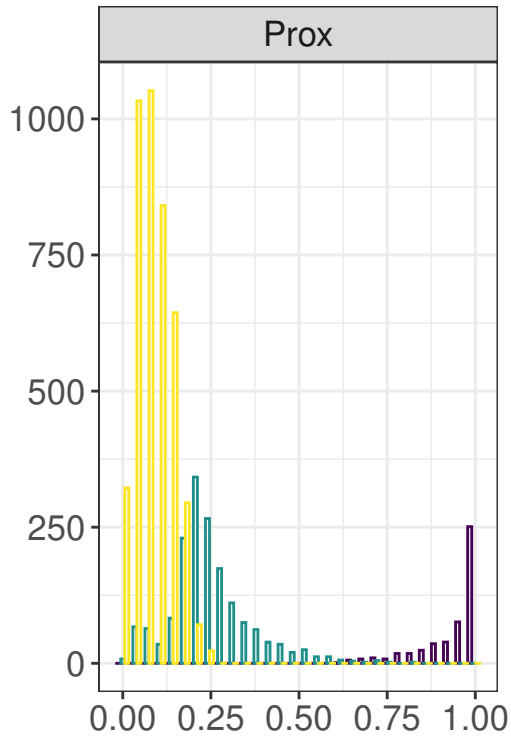
represented. The size of the nodes (vessels) are proportional to the number of times

650 they were involved in partnership. The thickness of the lines between nodes are

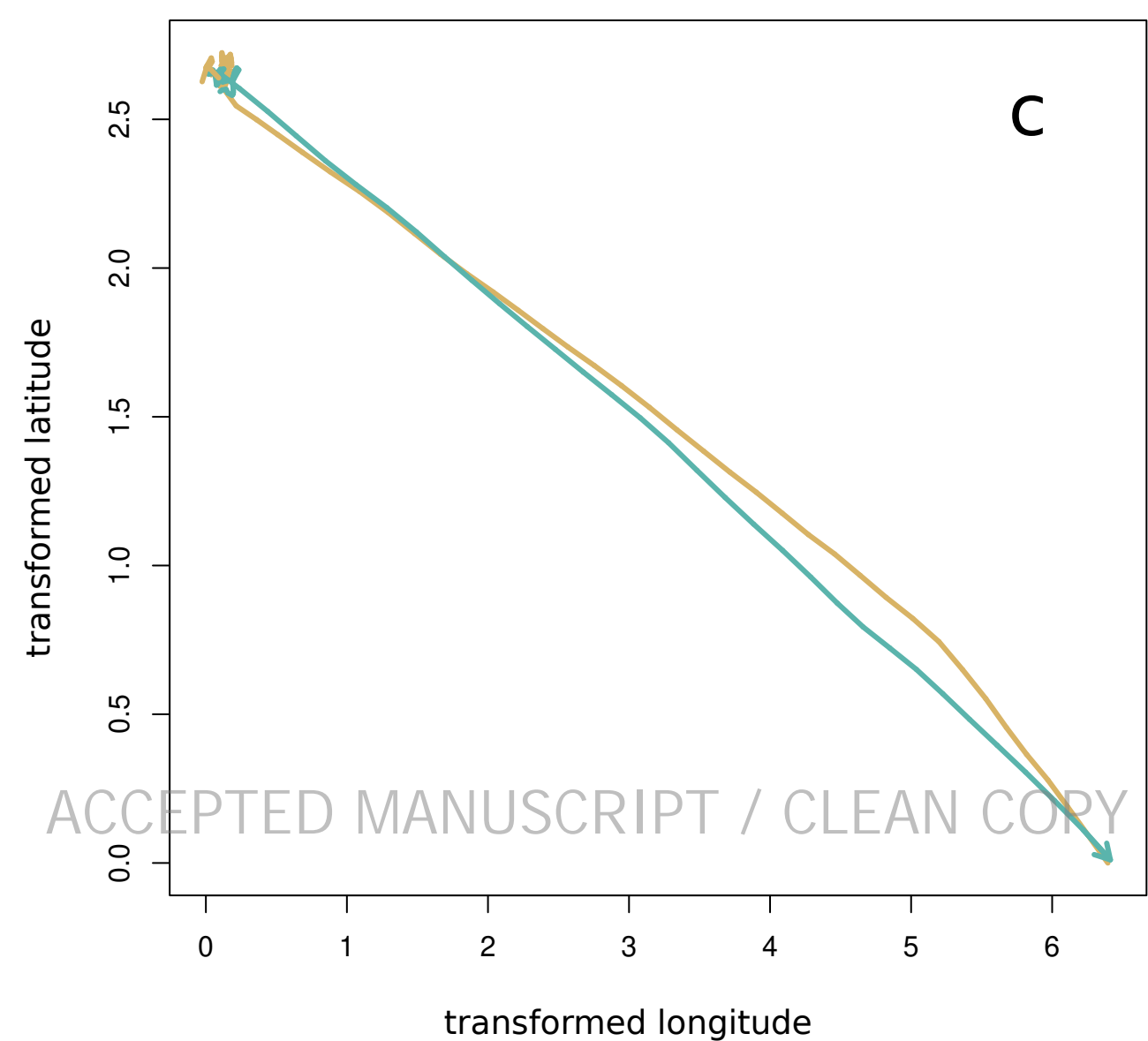
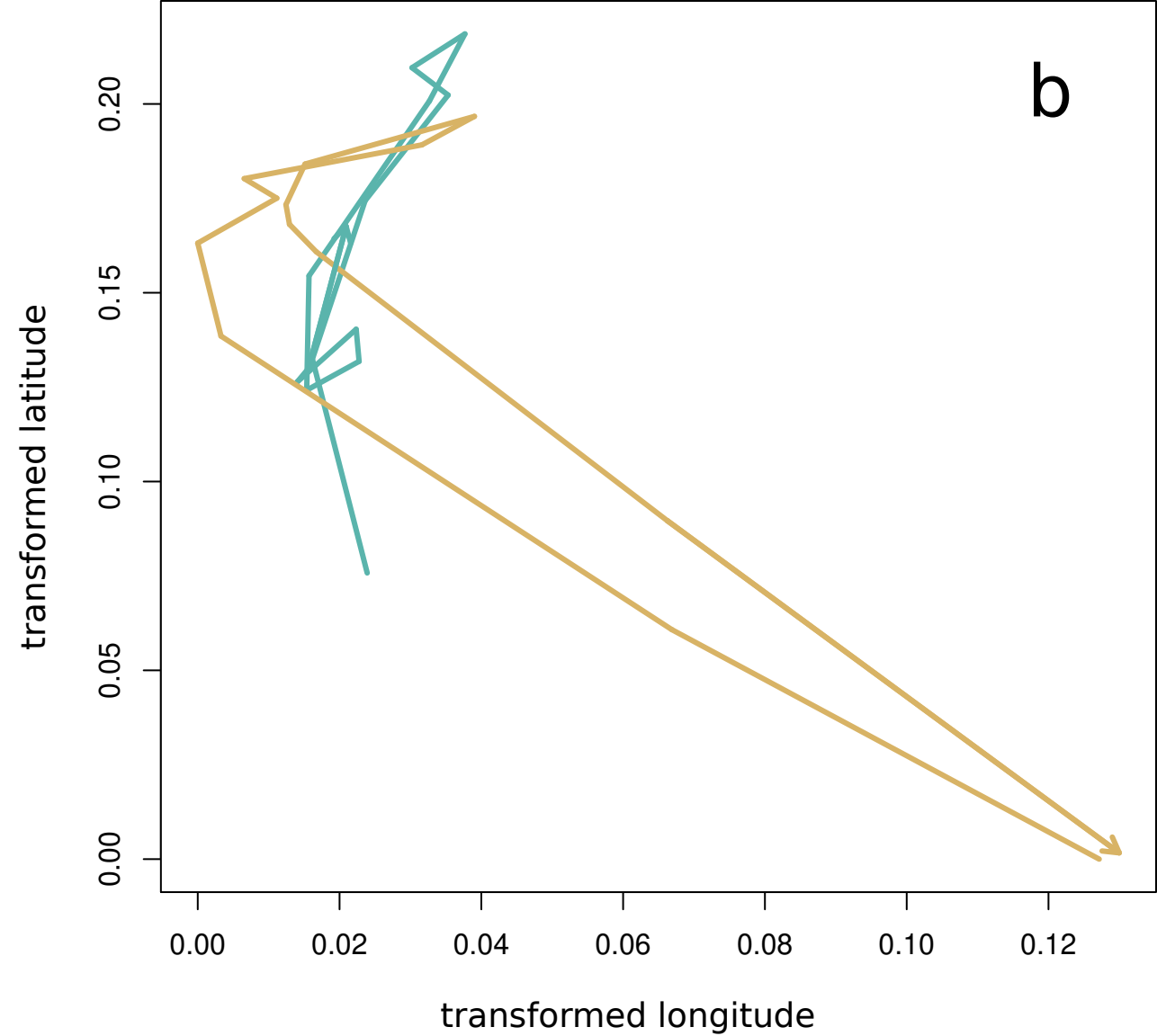
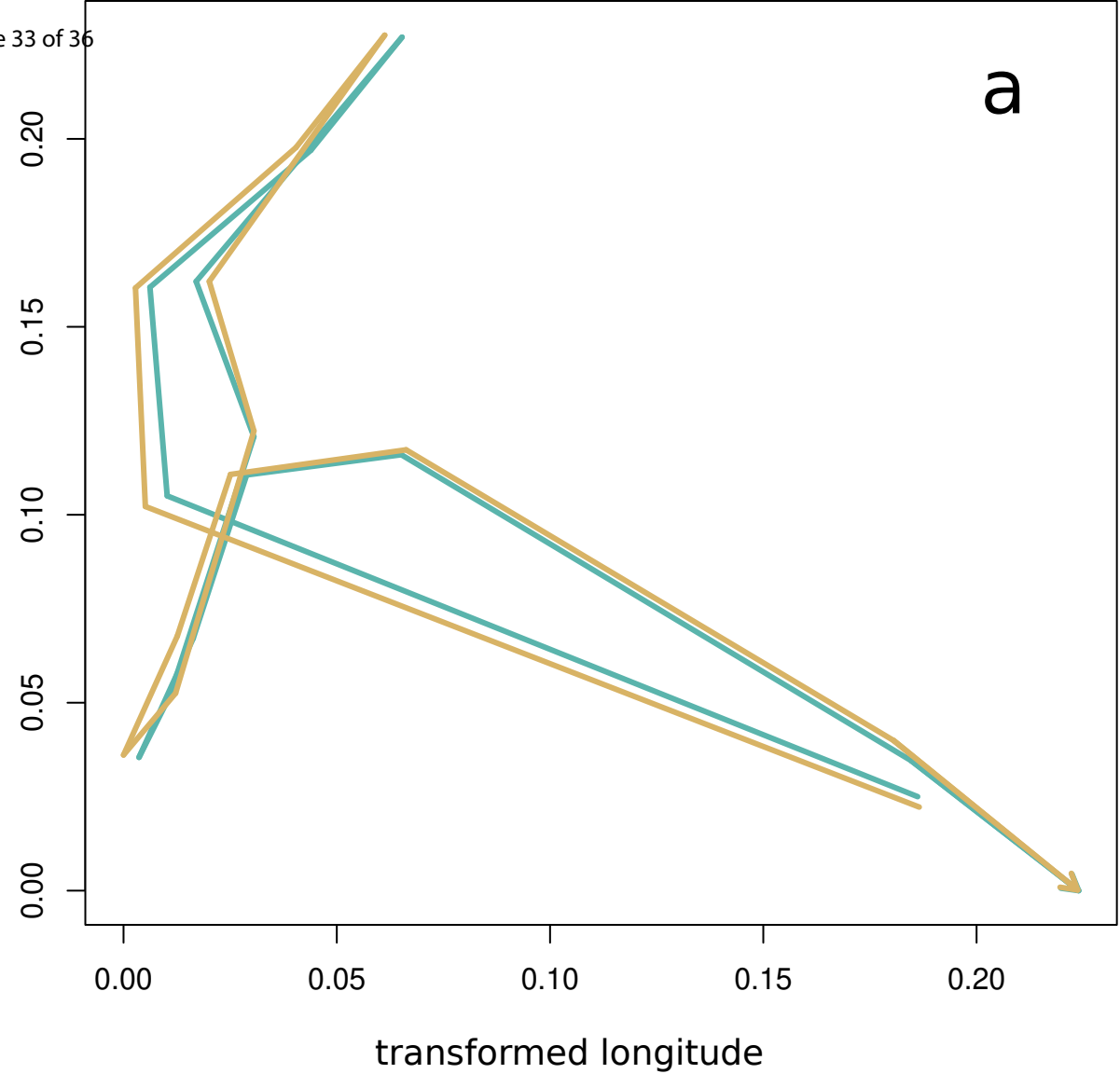
proportional to the number of partnerships between both nodes.



1  
2  
3  
4  
5  
6  
7  
8  
9  
10  
11  
12  
13  
14  
15  
16  
17  
18  
19  
20  
21  
22

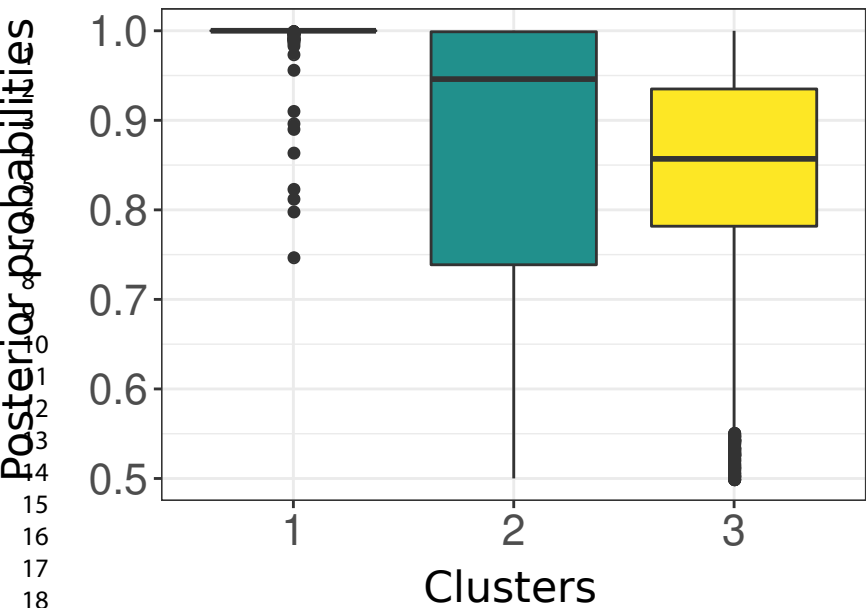


1  
2  
3  
4  
5  
6  
7  
8  
9  
10  
11  
12  
13  
14  
15  
16  
17  
18  
19  
20  
21  
22  
23  
24  
25  
26  
27  
28  
29  
30  
31  
32  
33  
34  
35  
36  
37  
38  
39  
40  
41  
42  
43  
44  
45  
46  
47  
48  
49  
50  
51  
52  
53  
54  
55  
56  
57  
58  
59  
60

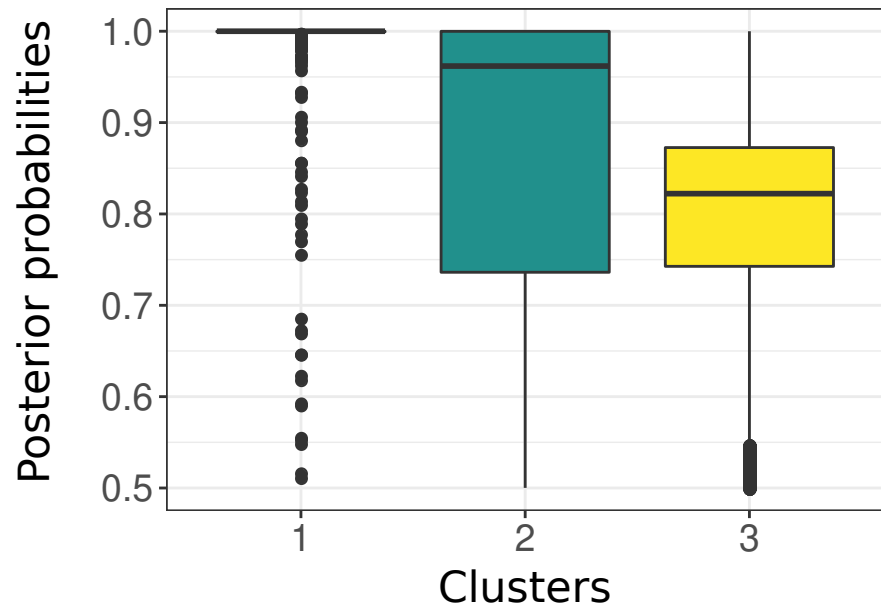


ACCEPTED MANUSCRIPT / CLEAN COPY

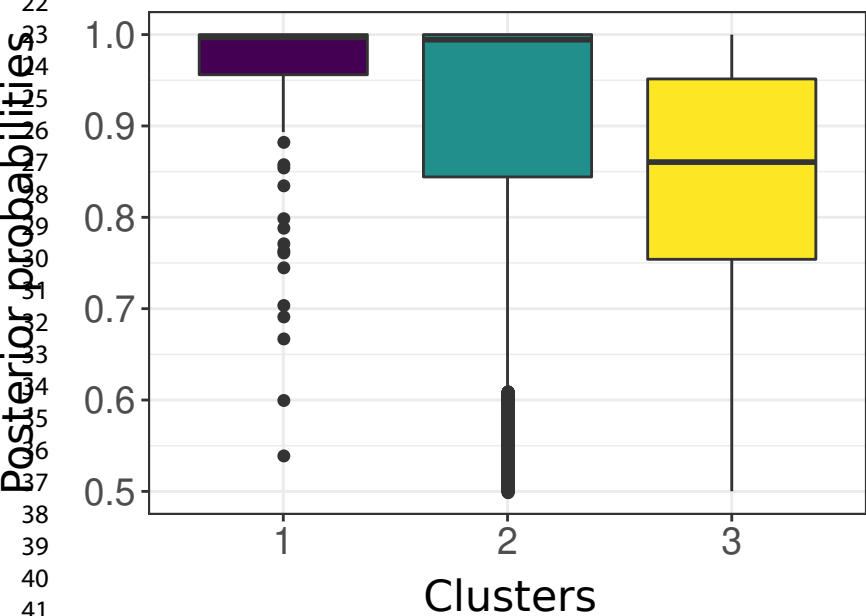
a. Pelagic pair trawlers



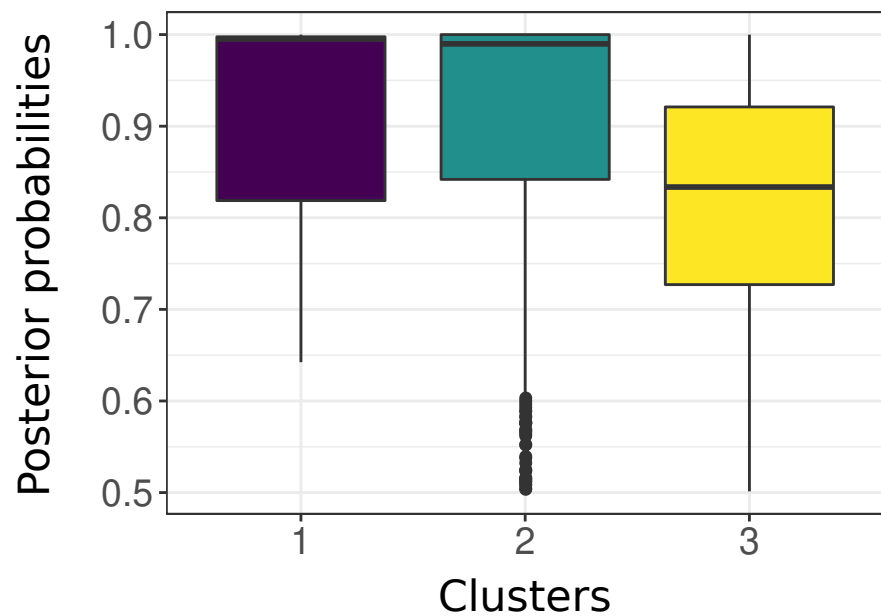
b. Large bottom otter trawlers



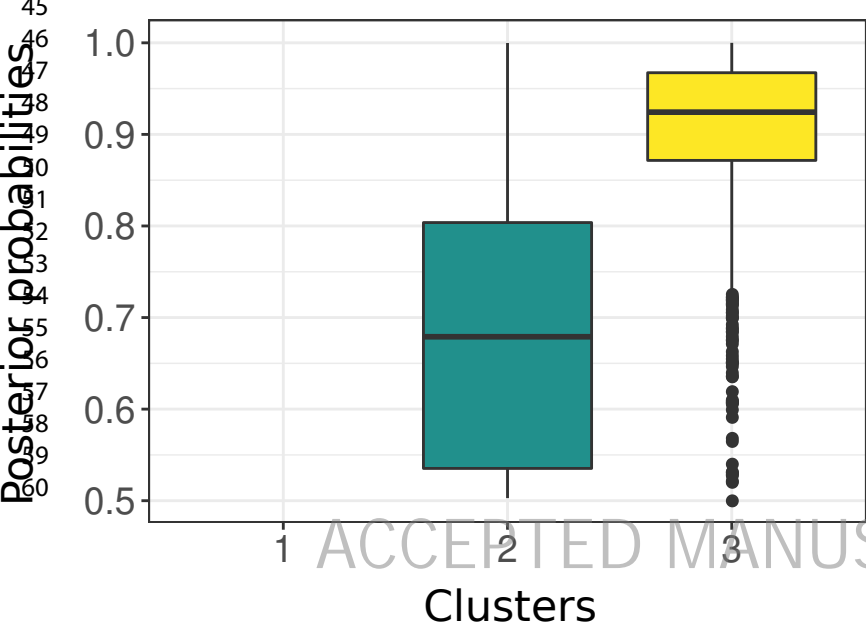
c. Small bottom otter trawlers



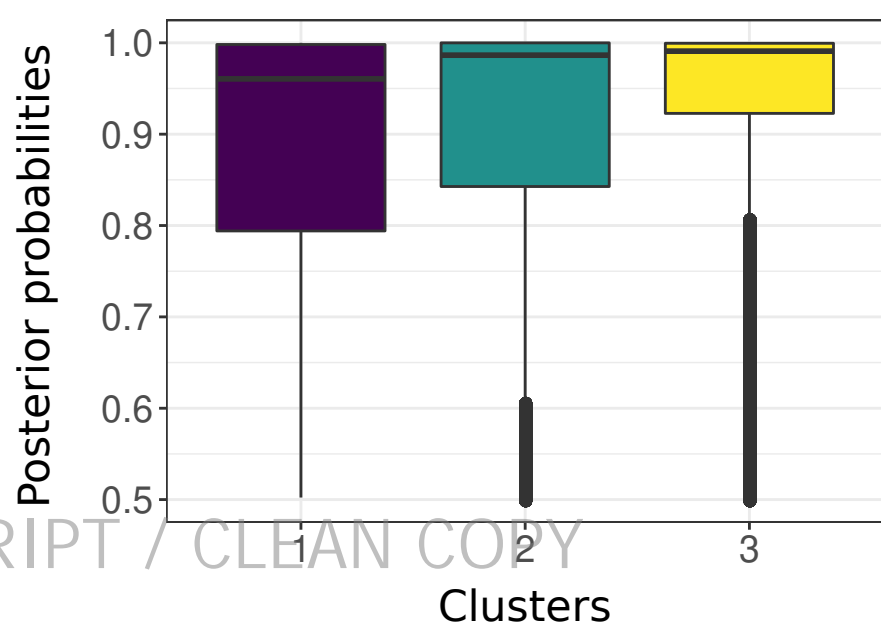
d. Mid-bottom otter trawlers



e. Tuna purse-seiners



f. Anchovy purse-seiners



1  
2  
3  
4  
5  
6  
7  
8  
9 Large bottom  
10 otter trawlers

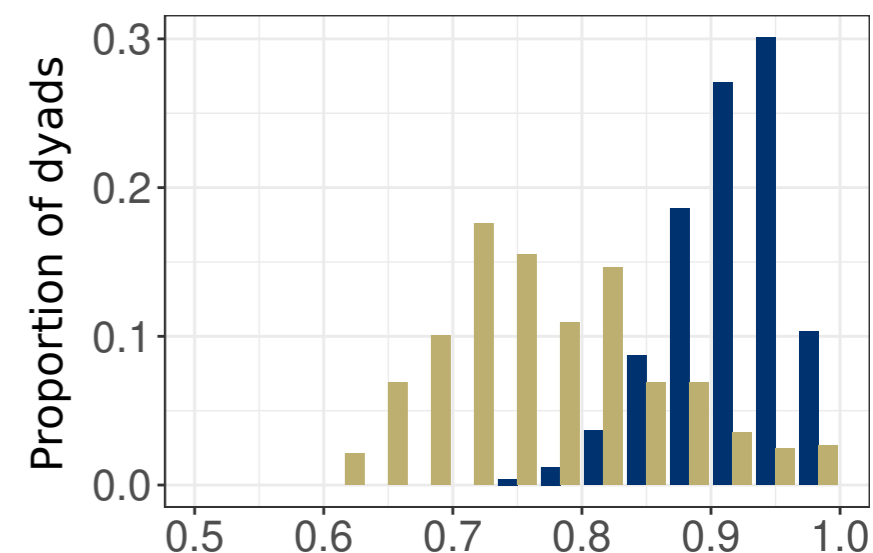
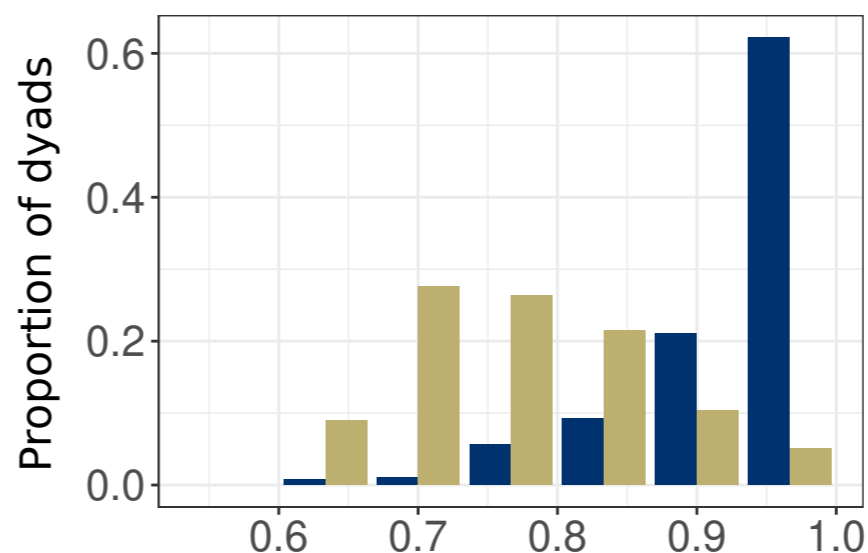
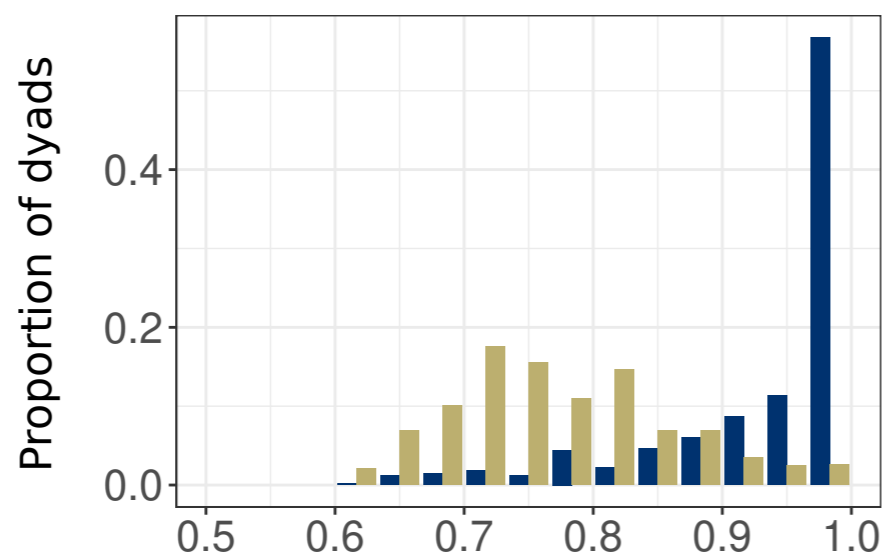
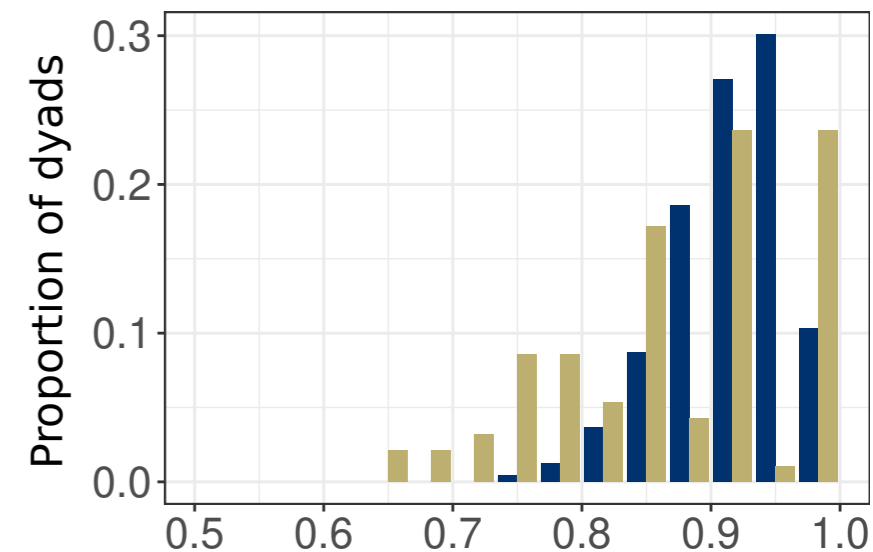
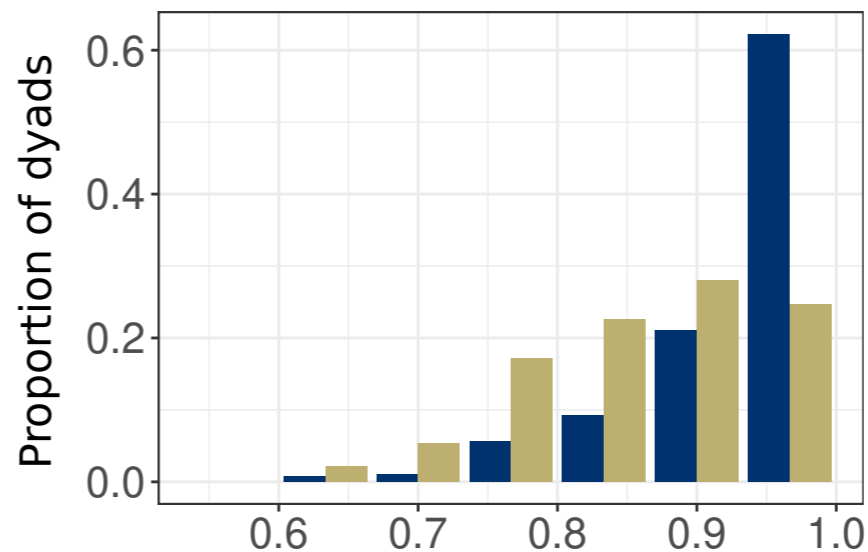
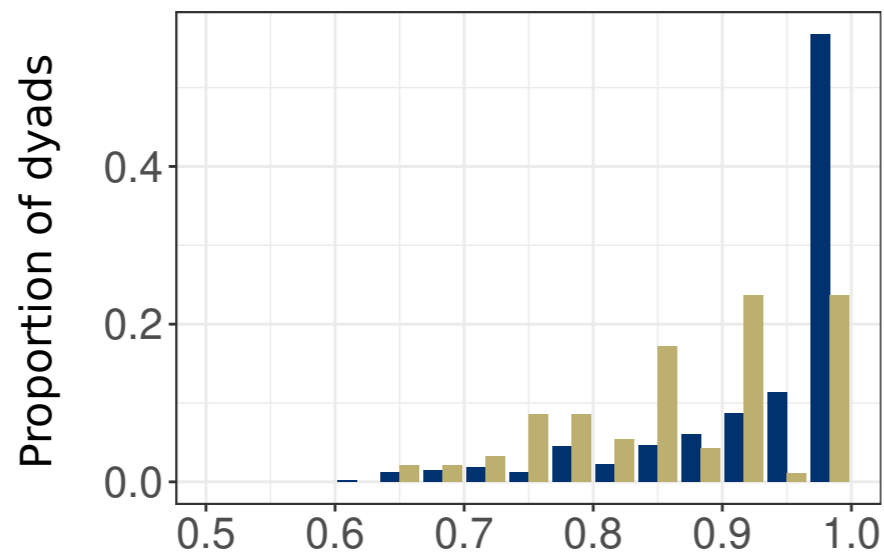
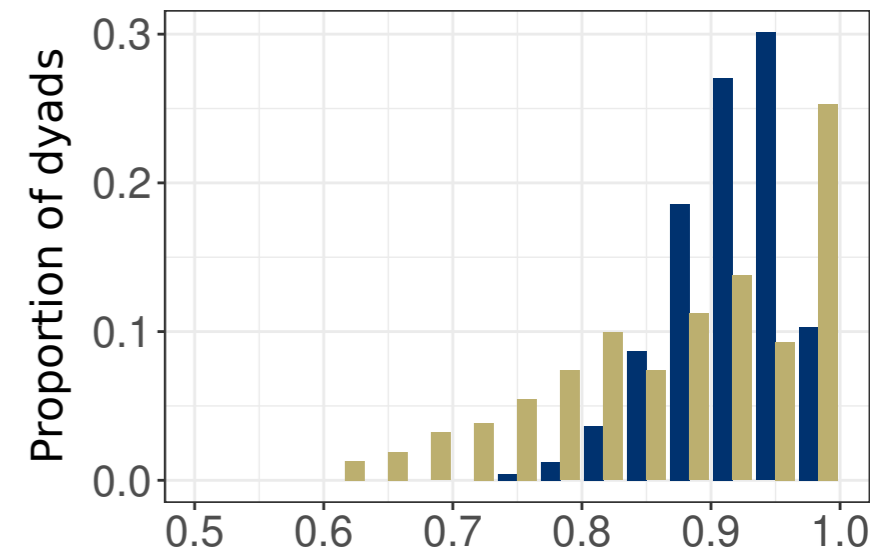
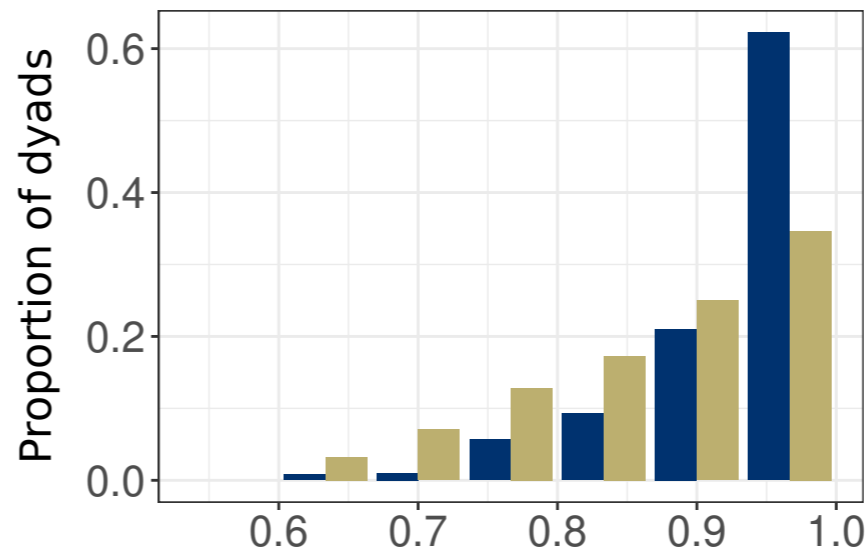
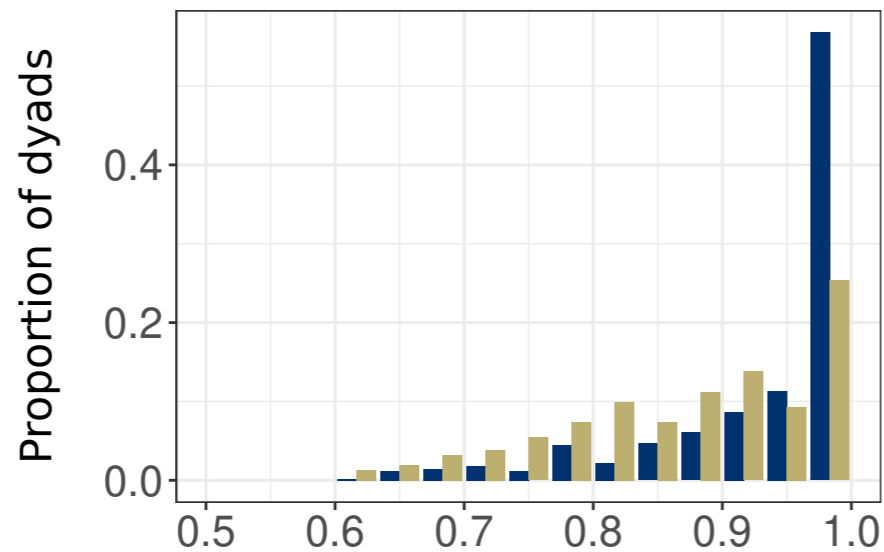
23  
24  
25  
26  
27  
28 Small bottom  
29 otter trawlers

47 Anchovy  
48 purse-seiners

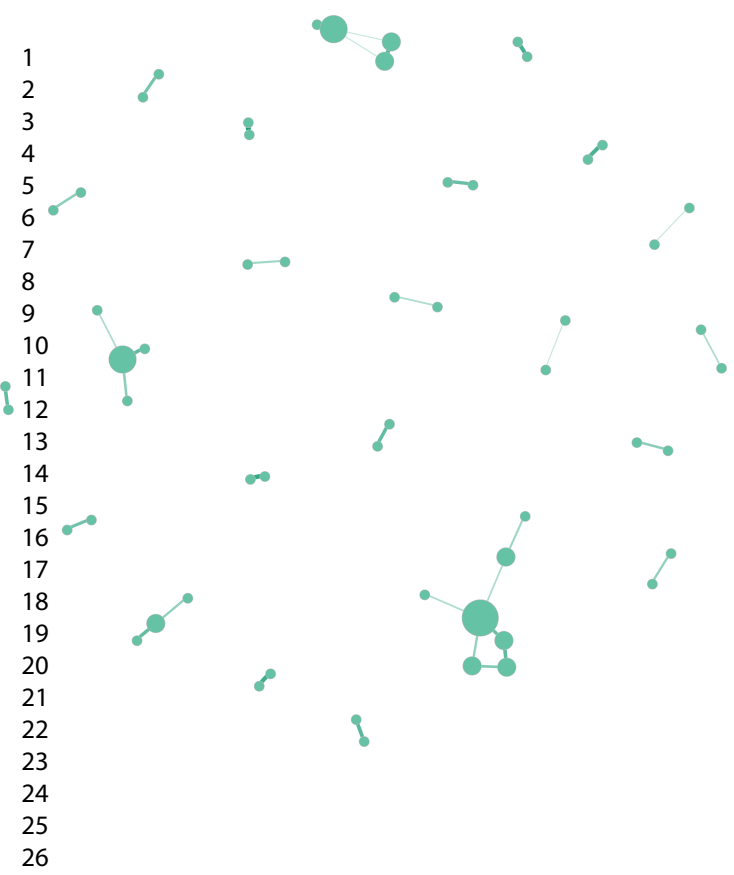
Prox

$DI_{\theta}$

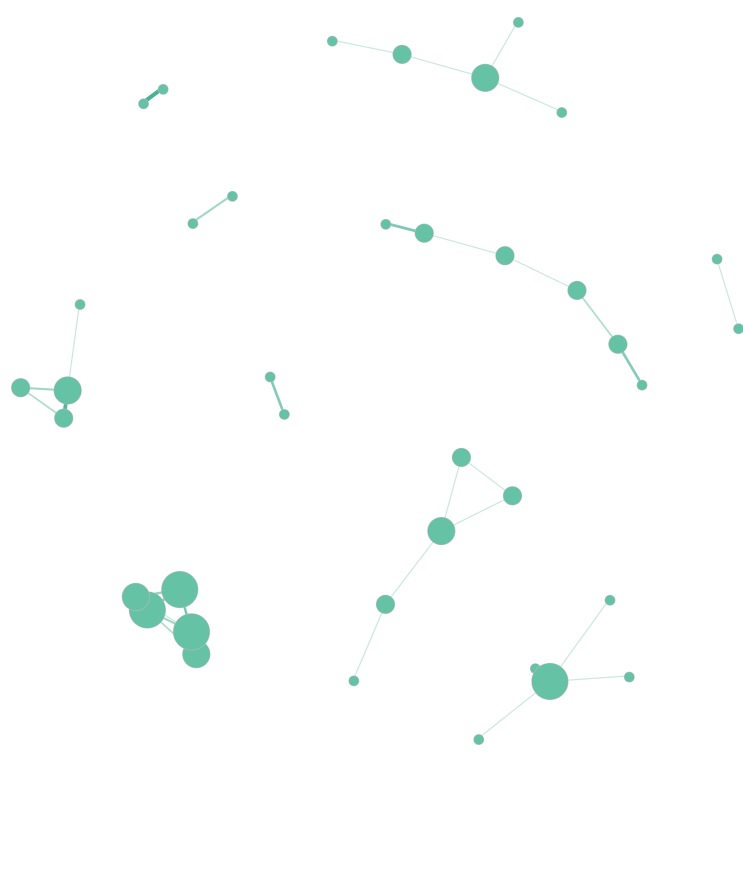
$DI_d$



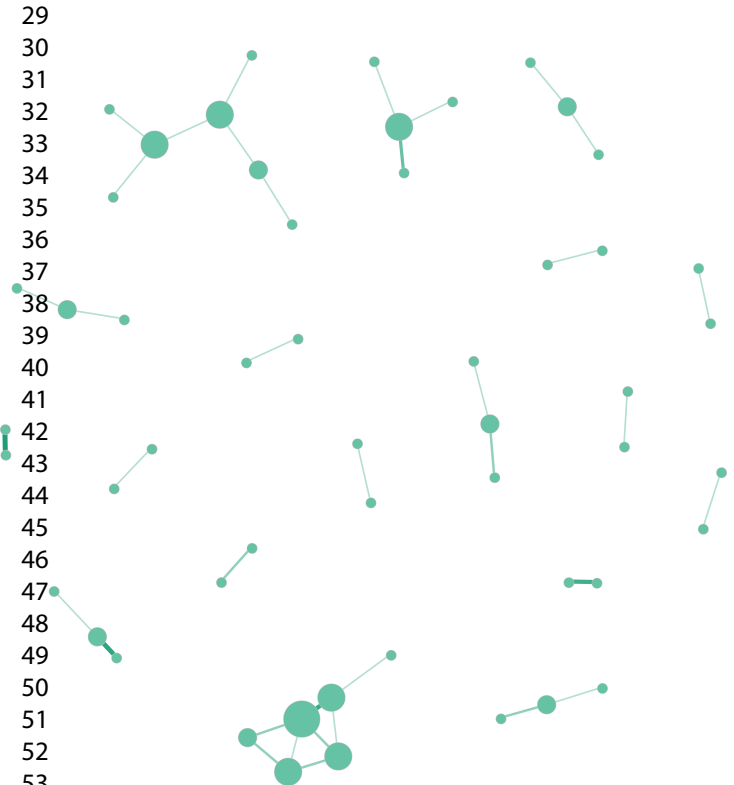
a. Pelagic pair trawlers



b. Large bottom otter trawlers



c. Small bottom otter trawlers



d. Anchovy purse-seiners

