



**HAL**  
open science

## The PRECOS framework: Measuring the impacts of the global changes on soils, water, agriculture on territories to better anticipate the future

Fabienne Trolard, Guilhem Bourri , Antoine Baillieux, Samuel Buis, Andr  Chanzy, Philippe Clastre, Jean-Fran ois Closet, Dominique Courault, Marie-Lorraine Dangeard, Nicola Di Virgilio, et al.

### ► To cite this version:

Fabienne Trolard, Guilhem Bourri , Antoine Baillieux, Samuel Buis, Andr  Chanzy, et al.. The PRECOS framework: Measuring the impacts of the global changes on soils, water, agriculture on territories to better anticipate the future. *Journal of Environmental Management*, 2016, 181, pp.590-601. 10.1016/j.jenvman.2016.07.002 . hal-03353088

**HAL Id: hal-03353088**

**<https://hal.science/hal-03353088>**

Submitted on 24 Sep 2021

**HAL** is a multi-disciplinary open access archive for the deposit and dissemination of scientific research documents, whether they are published or not. The documents may come from teaching and research institutions in France or abroad, or from public or private research centers.

L'archive ouverte pluridisciplinaire **HAL**, est destin e au d p t et   la diffusion de documents scientifiques de niveau recherche, publi s ou non,  manant des  tablissements d'enseignement et de recherche fran ais ou  trangers, des laboratoires publics ou priv s.



Distributed under a Creative Commons Attribution - NonCommercial - NoDerivatives 4.0 International License

# The PRECOS framework: Measuring the impacts of the global changes on soils, water, agriculture on territories to better anticipate the future

Fabienne Trolard<sup>a,\*</sup>, Guilhem Bourrié<sup>a</sup>, Antoine Baillieux<sup>b</sup>, Samuel Buis<sup>a</sup>, André Chanzy<sup>a</sup>, Philippe Clastre<sup>a</sup>, Jean-François Closet<sup>c</sup>, Dominique Courault<sup>a</sup>, Marie-Lorraine Dangeard<sup>a</sup>, Nicola Di Virgilio<sup>d</sup>, Philippe Dussouilliez<sup>e</sup>, Jules Fleury<sup>e</sup>, Jérémy Gasc<sup>f</sup>, Ghislain Géniaux<sup>g</sup>, Rachel Jouan<sup>f</sup>, Catherine Keller<sup>e</sup>, Patrice Lecharpentier<sup>a</sup>, Jean Lecroart<sup>f</sup>, Claude Napoleone<sup>g</sup>, Gihan Mohammed<sup>a</sup>, Albert Olioso<sup>a</sup>, Suzanne Reynders<sup>h</sup>, Federica Rossi<sup>d</sup>, Mike Tennant<sup>i</sup>, Javier de Vicente Lopez<sup>j</sup>

<sup>a</sup>INRA, UAPV, UMR Mediterranean Environment and Modelling of Agro-Hydrosystems, Domaine Saint-Paul, Site Agroparc, 222 Route de l'Aérodrome, 84914 Avignon cedex 9, France

\*e-mail : [trolard@avignon.inra.fr](mailto:trolard@avignon.inra.fr)

<sup>b</sup>SYMCRAU, Istres, France

<sup>c</sup>G2C Ingénierie, groupe Altereo, Venelles, France

<sup>d</sup>CNR, IBIMET, Institute of Bioclimatology, Bologna, Italy

<sup>e</sup>Aix-Marseille University, CNRS, IRD, Collège de France, UM34 CEREGE, Aix-en-Provence, France

<sup>f</sup>ARTELIA, Paris, France

<sup>g</sup>INRA, UR Ecodevelopment, Avignon, France

<sup>h</sup>INRA, DIV and DS Environment, Sophia Antipolis, France

<sup>i</sup>Imperial College, Center for Environmental Policy, London, UK

<sup>j</sup>VAERSA, Valencia, Spain

## ABSTRACT

In a context of increased land and natural resources scarcity, the possibilities for local authorities and stakeholders of anticipating evolutions or testing the impact of envisaged developments through scenario simulation are new challenges.

PRECOS's approach integrates data pertaining to the fields of water and soil resources, agronomy, urbanization, land use and infrastructure etc. It is complemented by a socio-economic and regulatory analysis of the territory illustrating its constraints and stakes. A modular architecture articulates modeling software and spatial and temporal representations tools. It produces indicators in three core domains: soil degradation, water and soil resources and agricultural production.

As a territory representative of numerous situations of the Mediterranean Basin (urban pressures, overconsumption of spaces, degradation of the milieu), a demonstration in the Crau's area (Southeast of France) has allowed to validate a prototype of the approach and to test its feasibility in a real life situation. Results on the Crau area have shown that, since the beginning of the 16<sup>th</sup> century, irrigated grasslands are the cornerstones of the anthropic-system, illustrating how successfully men's multi-secular efforts have maintained a balance between environment and local development. But today the ecosystem services are jeopardized firstly by urban sprawl and secondly by climate change. Pre-diagnosis in regions of Emilia-Romagna (Italy) and Valencia (Spain) show that local end-users and policy-makers are interested by this approach. The modularity of indicator calculations and the availability of geo-databases indicate that PRECOS may be up scaled in other socio-economic contexts.

*Key words:* soil, water, resources, territory, urban sprawl, climate change.

Published in Journal of Environmental Management, July 2016,

doi:10.1016/j.jenvman.2016.07.002

53

54 **1. Introduction**

55

56 Present crisis and transitions all have in common that they concern primary production  
 57 fields (agriculture, raw materials), transformation activities (industry and crafts) and local  
 58 economy (retail, general services and transport...) (Pachauri and Reisinger, 2007; IEA, 2008).  
 59 They impact land use and resources (water, food and energy) and they are mutually  
 60 interdependent. Thus the gradual awareness of the “crisis” dimension leads to a renewed  
 61 approach of resources and regional areas’ management systems (World Bank, 2007, 2009;  
 62 FAO, 2009; Trolard and Dangeard, 2014). To face these challenges, efforts should focus on:

- 63 - Capacity building in relationship to territorial analysis at different organizational  
 64 levels. Systemic analysis, life-cycle analysis (Day, 1981; Ayres, 1995; Ayres et al.,  
 65 1998; von Bahr and Steen, 2004) and integrative concepts (biophysical, biological  
 66 indicators, ecological footprint, virtual water...) (Bell and Morse, 2004; Graymore et  
 67 al., 2008) already are a dominant trend of recent literature (Bouman et al., 1999;  
 68 Crescenzi et al., 2007; Davodi, 2012);
- 69 - Reinforcing expertise provision in different but complementary disciplines, such as  
 70 support for the shaping and monitoring of public policies, critical assessment and  
 71 dissemination of references or devising innovations with attention to their social  
 72 acceptability;
- 73 - Merging and/or adapting technological innovations from other sectors in order to  
 74 develop new analysis or expertise tools for territorial development (e.g. energy  
 75 network models to assess cumulative environmental impact of urbanization on  
 76 carbon emission (Chen and Chen, 2012) or on river ecosystems (Chen et al., 2015)).  
 77 Recent innovation in spatial metrology both in the fields of robotics and of  
 78 information technologies and communication, now makes it possible to propose new  
 79 management practices, assessment, monitoring and decision support tools (Xia Li  
 80 and Gar-On Yeh, 2000; Waddel, 2002; Vohland and Barry, 2009...).

81 Cities, as they develop, have a tendency to degrade environmental assets, and impair the  
 82 essential services provided by ecosystems. The difficulty resides in the evaluation of benefits  
 83 provided by natural and agricultural areas. The changes thus introduced by urban  
 84 development in the agro- and ecosystems increase the risks and retroactively impact the value  
 85 of constructible land and of property because of regulation constraints (extension of non-  
 86 constructible surfaces) and/or conditions attached to the safeguarding of investments  
 87 (insurance, cost of loans...).

88 Cities are drivers for innovation (Glaeser, 2011) and urban growth is a productivity factor,  
 89 enabling producers from rural areas, consumers and companies to access markets and the  
 90 workforce to find employment. Hence, a first series of studies undertaken by ECOLOC (Club  
 91 Sahel and OECD, 2001) has established that the concept of local economy ought to coincide  
 92 with a tangible reality, for instance that of a pilot economic zone— always open towards other

93 areas, regions, countries, world — but populated enough and with activities that are sufficient  
 94 for having the potential for generating value and commercial exchanges.

95 Urbanization develops mainly at the expense of agricultural land at the outskirts of cities  
 96 (Chakir and Madignier, 2006; Ruellan, 2010; Sapoval, 2011) and along coastal areas  
 97 (Pageaud and Carré, 2009). For the moment, assessing the consequences of urban sprawl  
 98 basically boils down to measuring surfaces consumed; it does not take into account the  
 99 qualitative properties associated to soils and associated environmental functions before  
 100 sealing.

101 To overcome such contradictions, it is necessary to identify the impacts of urban and  
 102 agricultural policies over natural environments, to assess externalities and anticipate  
 103 evolutions.

104 The PRECOS framework allows for simulating the likely evolution of indicators in the  
 105 future and, in the light of various constraints, assessing the deterioration risks of local  
 106 environmental assets and the lessening of decision makers' means and levers for potential  
 107 action.

108 The main goal of this paper is to present the different elements of this approach highlighted  
 109 by results obtained on the demonstration area, the Crau (South of France) with the prototype  
 110 (Astuce & Tic, 2011) and some elements for structuring it in a framework (the PRECOS  
 111 approach) applicable in other geo-socio contexts.

112

## 113 **2. Methods**

114

### 115 *2.1 The basic concept*

116 The basic idea is that urban sprawl cannot be considered separately from its immediate  
 117 rural environment, *i.e.* its hinterland (Trolard et al., 2010, Trolard et al., 2013b). The circular  
 118 causality chain DPSIR (Drivers - Pressure - State - Impact - Response) elaborated by the  
 119 OECD (2003) is the working basis of the framework: human activities exert pressures over  
 120 the environment and modify the quality and quantity of natural resources. Society reacts to  
 121 these changes by adopting protection, limitation, confinement, depollution measures... and  
 122 the cycle starts over again. The objective is of course to prompt a virtuous cycle.

123

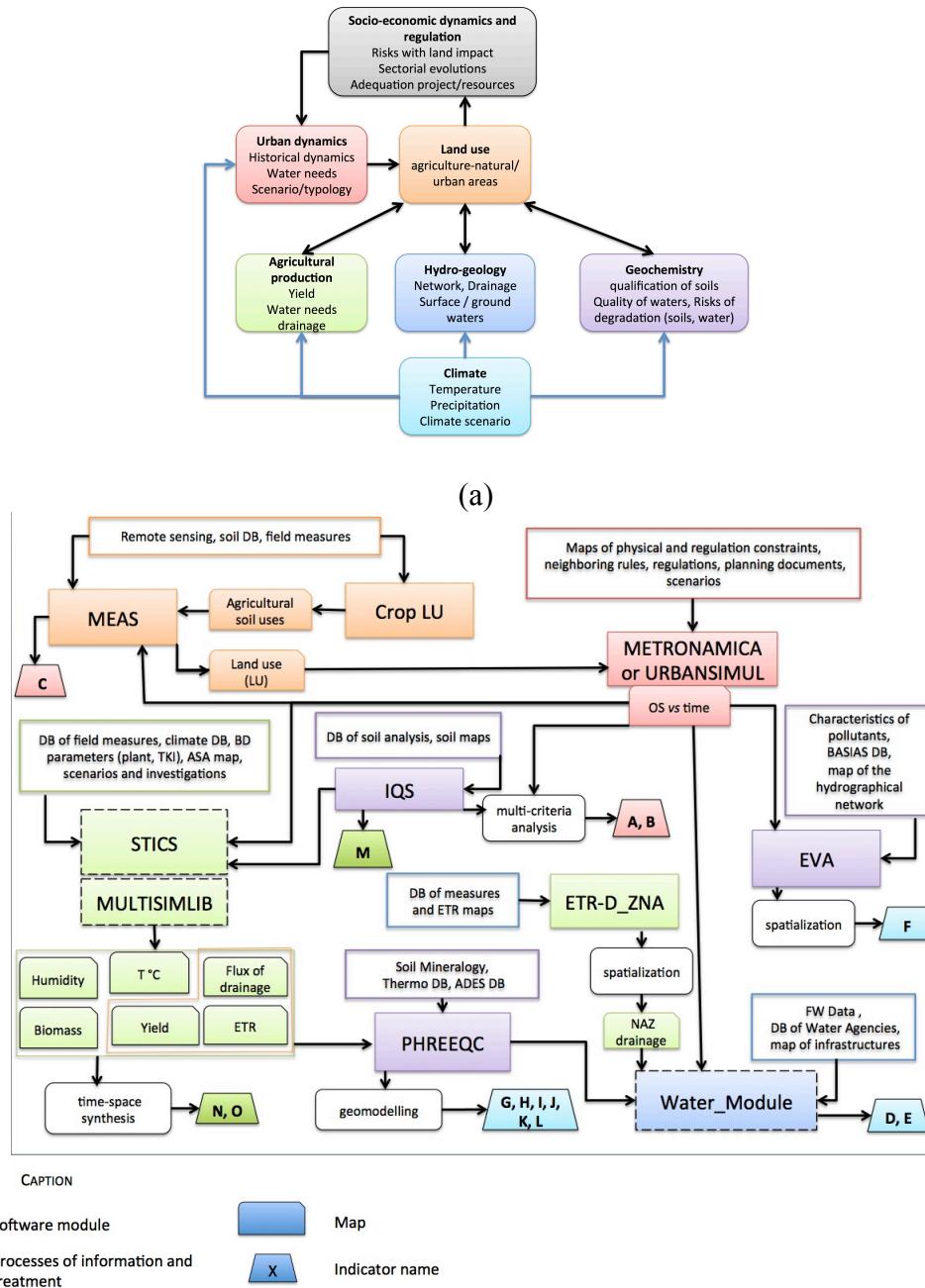
### 124 *2.2 Devising the software's architecture*

125 The fields covered by the PRECOS approach comprise land occupation changes, soil  
 126 sealing levels, agronomic qualification of soils, water geo-chemistry, fresh water needs  
 127 according to the availability of resource and agricultural production requirements (Fig. 1a).

128 The selected models have already proven their efficiency in their respective fields.  
 129 PRECOS integrates them all in an overall scheme (Fig. 1b), ensuring a global approach.

130 Both METRONAMICA (White and Engelen, 1993; White et al., 1997; Straatman et al.,  
 131 2004) and URBANSIMUL (Géniaux, 2011) compute land occupation changes over time. In  
 132 METRONAMICA, this transformation is achieved by the use of a cellular automaton coupled  
 133 with a GIS, which constraints are defined by urbanization (distance to water, electricity  
 134 networks, transport infrastructures...). URBANSIMUL uses probability tests of mutation of

135 plots into urbanization based on tax data. The parameters, obtained from the analysis of the  
 136 results of both software, measure and represent the territory of a land use conversion into  
 137 another (natural, agricultural, urban and/or industrial areas and infrastructures), the share of  
 138 coastline affected by urbanisation and fragmentation of natural areas.  
 139



**Figure 1:** (a) Scheme of interconnections (black arrows) of the different domains considered in PRECOS approach; blue arrows indicated where climate parameters were explicitly taking into account and, (b) declination of this schema in the software architecture in Astuce & Tic's prototype.

141 The method of Assessment of Soil Artificialisation (MEAS) (Astuce & Tic, 2011) takes  
142 into account the diversity and agronomic qualification of soils (SQI) (Balestrat et al., 2011),  
143 soil sealing and urban sprawl, including the fragmentation of agricultural lands. This approach  
144 is complemented by the EVA3 software (developed at Lausanne University) assessment of  
145 polluted sites and soils, which estimates the risk of soil contamination by industrial activities.  
146 MEAS and EVA produce spatially distributed typologies of artificial soil as well as input data  
147 for METRONAMICA or URBANSIMUL.

148 STICS (Brisson et al., 2003; Brisson, 2008) is a crop model that simulates crop biomass  
149 production, agricultural yields, water and nitrogen requirements, surface water flows and  
150 drainage (water percolation below the root zone). Calculations are made at the field plot level  
151 and aggregated on the territory with MultiSimLib model (Buis et al., 2011). The model is  
152 driven by climate parameters, which allows for taking into account climate change scenarios.

153 PHREEQC software (Parkhurst and Appelo, 1999) is a thermodynamical model for  
154 processing water chemistry data. It allows for the construction of geochemical indicators of  
155 water quality (potability, salinity, sodicity...) and the study of soil - solution interactions  
156 (geochemical changes, salinization, sodisation and stability of clays...).

157 For the spatial representations of data and results, specific visualization software  
158 (Mapinfo®, Arcview®, Arcgis®...) and a geo-modelling tool (gOcad®) have been  
159 implemented. gOcad® software, developed by oil and mining geologists (Mallet, 2002) is  
160 more specifically capable for mapping heterogeneous and incomplete data (mesh conditional  
161 objects, interpolation functions and specific kriging, 3D visualization...). It has been adjusted  
162 to the requirements of territorial data mapping such as land distributions, soil properties, the  
163 geometry of soil horizons and of the aquifer, groundwater quality, land uses... (Astuce & Tic,  
164 2011). This software can produce thematic maps in 2D and 3D as well as spatial statistical  
165 analysis.

166 The above-mentioned software retain all the properties that might come in handy for  
167 subsequent in depth sector based studies. The constraint of building a tool around this system  
168 requires the pooling of scientific and technical expertise necessary to use it, define and  
169 produce the indicators. A Web portal presents the results in the form of maps, tables, curves  
170 or diagrams, which are accessible to end-users (e.g. decision-makers, stakeholders or local  
171 authorities), upon request, via key words.

172

### 173 *2.3 Sources of data*

174 Territorial data are abundant but also extremely scattered, very heterogeneous in space  
175 and/or time, albeit lacunar. At times, they can be accessed easily via open Web portals but  
176 quite often they only exist as paper records. The INSPIRE directive is currently driving many  
177 European regions to collect data, organise their regional databases around a homogeneous  
178 grid and make the information it contains available for free, especially when it belongs to the  
179 public domain (INSPIRE, 2007). Setting up a geo-database for the Crau plain involved quite a  
180 lot of information collection and computerization work. Data concern soil occupation, soils  
181 characteristics, geochemical qualities of soils and waters, climate, agricultural activities,  
182 demography, industrial sites characteristics, networks of water distribution. Different data  
183 production methods were implemented: extraction and assembling of information, layout,



184 geo-referencing and digitization of documents, new data acquisition either via specific  
 185 commands (*e.g.* remote sensing pictures), or by *in situ* measurements and laboratory analysis  
 186 (*e.g.* soil thickness in grasslands, chemical composition of irrigation water...).

187

#### 188 2.4 Indicators

189 The PRECOS approach combines heterogeneous data to produce indicators in three  
 190 domains: soil degradation, water and soil resources and agriculture production. Today  
 191 PRECOS is operational and set up to generate 15 indicators (Table 1). The modularity of the  
 192 software's architecture allows for adding or selecting pertinent indicators as function of the  
 193 local characteristics of the area under consideration.

194

195 **Table 1:** List of indicators produced by PRECOS's approach  
 196

Indicators	Definition
<b>A</b> Land occupation	Typology of soil occupations: 30 classes categorised as urban and non-urban environments, surface texture and specific classes (resulting of merge of previous defined classes) for METRONAMICA software, which is able to calculate only with 15 classes.
<b>B</b> Fragmentation of habitats	Measure the discontinuities in natural areas.
<b>C</b> Soil sealing	Soil-sealing ratio in % per surface unit.
<b>D</b> Aquifer evolution	Variation of the aquifer's water volume and flows.
<b>E</b> Drinking water supply	Supply / demand balance checks per infrastructure (drilling point and connection to the fresh water supply networks).
<b>F</b> Pollution risk	Vulnerability of industrial activity: potential of dangerous substances per site, mobilisation potential of environmental assets: air, soil, surface water and groundwater, exposure of assets in need of protection.
<b>G</b> Water drinkability	Estimation of the risk of non-drinkability from physical and chemical characteristics of waters.
<b>H</b> Risk of water salination	Calculation depending of the Ionic force and / or electrical conductivity of waters.
<b>I</b> Risk of soil salination	Estimation of the risks of precipitation of soluble sodium salts, gypsum and salts more soluble than gypsum.
<b>J</b> Risk of soil acidification 1 (calculated with water data)	Calculation of the water saturation index compared to calcite precipitation.
<b>K</b> Risk of soil acidification 2 (calculated with soil data)	Calculation of the "active lime" contents in soils.
<b>L</b> Risk of soil sodicity	Calculation of Sodium Adsorption Ratio (SAR) as an indicator of

		soil structure degradation.
M	Soil agronomic qualification index	Assessing the qualification of soils for agriculture use.
N	Agriculture production	Calculation of yields and biomass products of the different crops.
O	Drainage	Quantification and localisation of waters drained per surface unit.

197

198

199 *2.5 The scenarios' construction method*

200 The PRECOS approach makes a distinction between « constraints » such as climate,  
 201 economic climate upon which local actors have little influence and “levers” on which actors  
 202 can exert some degree of influence such as zoning, land acquisition... (Trolard et al., 2013b).

203 The medium-term was chosen for the scenarios because it is a time horizon where preventive  
 204 and adaptive actions are still possible. By providing an “*a minima*” representation of pressures  
 205 and some notion of additional costs incurred for coping with them, these scenarios can help  
 206 stakeholders to remain under the threshold beyond which damages to strategic resources will  
 207 be irreversible. Indeed, in a space with limited resources, pressures are to a large extent  
 208 predetermined and respond, at this horizon, to rather rigid dynamics determined by  
 209 geography, regulation, demography, real estate market logics, infrastructure and economic  
 210 activities.

211

212 *Table 2: Standard questionnaire used for the test cases*

213

Domains	Questions or needs
Socio-economic context	Rough description of the main economic sectors focusing on agriculture, industry and urbanization
Local vulnerability	Are urban sprawl and/or soil sealing problems in your area? Is it exerting pressure over other sectors, e.g. the consumption of fertile land for food production? Can you identify a hot spot area where to study these relations and related problems and solutions? Is climate change affecting local resources, and main economic sectors? Which are the main climate related problems for agriculture, urban areas and industries? (General and rough answers also.)
State of the art of current tools	Are there similar tools already available in your territory? Which tool managing water use, soil use, soil quality, urban development, e.g. irrigation advice or water use in industry and urban areas? Who is the owner? Who is running it? Is the result for free? Are they considering an inter-sectorial approach or are they only sector based? Is the local government feeling the need to have a tool, which is able to integrate all sectors using land and water resources? (General and rough answers also with a simplified table.)
Territorial data	PRECOS needs to use mainly geographical data, e.g. data on soil and water quality, water use, land use, urban trends, hydrology etc. Are these data easily available? Who is the owner? What is the overall spatial resolution? Are they free? (General and rough answers also with a simplified table)



Main vulnerability and linked indicators	Astuce & Tic (A&T) is the first version of PRECOS approach. The prototype is able to release a list of indicators, which were specifically required in the demonstration area, the Crau area. Which are important locally and which one are missing? Are they obtainable using current available data?
Conclusion	Mainly state the reason for which the application of PRECOS can be important.

214

215

This kind of simulation made by iteration does not take into account major events likely to change drastically the land occupation (*e.g.* natural hazard, political decision). However, the PRECOS approach can re-initialize its tools in such a way that if needed, this new occurrence might be included and accordingly a new simulation achieved.

219

### 2.6 Up-scaling of the PRECOS approach in other contexts

221

222

223

224

225

226

227

### 3. Demonstration area: the Crau plain

228

229

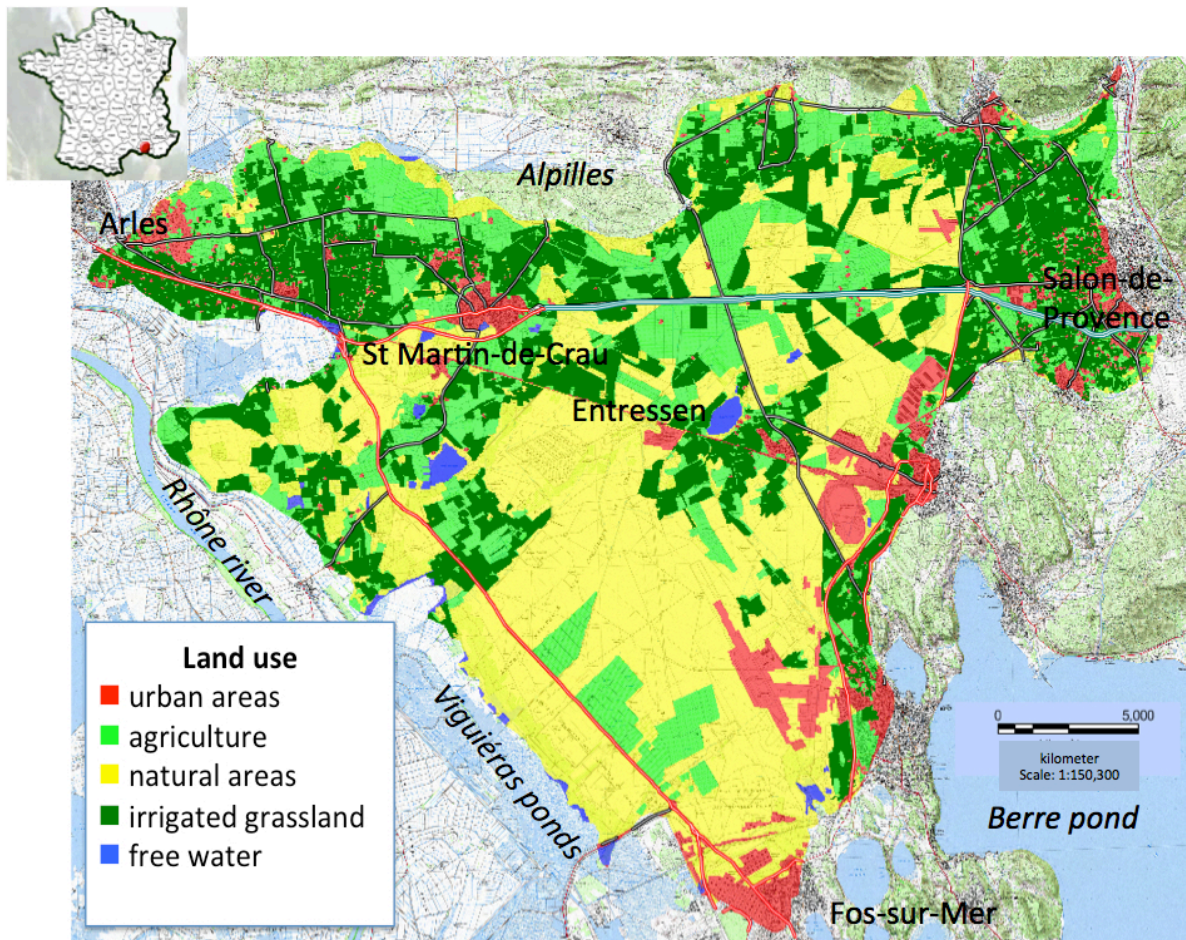
230

231

232

233

Covering a surface of approximately 600 km<sup>2</sup>, the Crau plain is delineated by the Alpilles in the North, the Rhone River in the West, the Mediterranean Sea in the South, and in the East, the Etang de Berre and the La-Fare-les-Oliviers short mountain chain (Fig. 2). The climate is mediterranean (rainfall is less than 600 mm year<sup>-1</sup>), the tree cover quasi non-existent and the Mistral wind blows regularly with great violence.



**Figure 2:** Map of the Crau territory

234

235 The natural Crau landscape is a steppe of 9,200 ha called the « dry Crau »; its ecosystem is  
 236 unique (forming a natural, cultural and economic exception at local, regional and European  
 237 levels), with exemplary endemic organisms of special conservation interest (Wolff et al.,  
 238 2013).

239 The Crau's irrigation system dates back to the 16<sup>th</sup> century. Thus for over 400 years,  
 240 through gravity irrigation, the system brought the Durance water and silt over the Crau's  
 241 gravel. It covers nowadays a surface of 12,500 ha mainly devoted to producing "Crau hay", a  
 242 PDO (Protected Designation of Origin) and sheep rearing, especially that of the PGI  
 243 (Protected Geographical Indication) labelled the "Sisteron lamb" and "Merinos from Arles".  
 244 Locally, part of the pastoral land has been given over to intensive orchards and greenhouse  
 245 vegetable production, most of the irrigation water for these activities being provided by  
 246 directly pumping into the aquifer or by drip irrigation (Bonfillon, 2008). These irrigation  
 247 waters contribute over 75% the Crau's groundwater recharge and supply drinking water to  
 248 approximately 280,000 people as well as to the large industries established at the south of the  
 249 area.

250

251 **Table 3:** Socio-economic scenarios, climate and water use constraints tested on Crau with  
 252 PRECOS approach

<b>Scenario 0</b>	Called “trend” scenario is the scenario that translates the weight of existing constraints over the area and population. The evolution of indicators is obtained by the linear extrapolation up to 2030 of the historical socio-economical evolutions registered over the 1997-2009 period.
<b>Scenario 1</b>	Called the “industrial consolidation and diversification” scenario, assumes a strong industrial development in the South of the area, with as hypothesis that the maritime Great Marseille harbour is the epicentre. This leads to the extension of industrial areas receiving high-risk activities and increases soil sealing.
<b>Scenario 2</b>	Called the “development of services and residential activities” scenario, assumes an important development in services activities in the North, along the Arles – Salon-de-Provence axis, and a stagnation of industrial activities in the South. This scenario examines especially the difficulty to combine development constraints, existing regulatory frameworks in such risk prone areas, with high land-consumptive activities such as logistics and residential activities dedicated to the tourism.
<b>Climate and water use constraints</b>	Climate scenario A1b over 2025-2035 period calculated with reference data (temperature, precipitation) over 2001-2010 period. Estimation of reduction of water resource for irrigation of 30%.

254

255

256

257

258

259

260

261

262

263

264

265

266

267

268

269

270

271

272

273

274

275

276

277

In the Crau area, the constraints appear particularly strong given that four factors currently guide the regional planning choices: (i) a demographic pressure that is not counterbalanced by a socio-economic dynamic growth; (ii) competition for access to land and local resources in an area marked by important physical constraints and vulnerabilities and a particularly high exposure to risks; (iii) the pervasiveness of very international economic activities with weak regional links but strong environmental footprint and an investment backlog in infrastructure (transport, energy) that increase the areas’ marginalization from the main global trade routes and (iv) a legislative and regulatory framework that is supposed to offer in theory a high level of protection but only provides in practice, a low level of safety. This points towards a more rational use of resources (soils, water) (Trolard and Dangeard, 2014).

The regional climate change in Crau, as defined by IPCC’s A1b scenario (Pachauri and Reisinger, 2007) and on the basis of long-term meteorological records (Olioso et al., 2013a), consists in: (i) a temperature increase well established since 1980 with a rate of 0.5°C every 10 years; (ii) no significant change in annual precipitation since the beginning of the 19<sup>th</sup> century; (iii) a recent increase of reference evapotranspiration  $ET_0$ , computed using the FAO56-PM method (Allen et al., 1998) around 1.5 – 2 mm year<sup>-1</sup>. A decrease of water resources for agriculture is to be expected from now to 2030, caused by a new allocation of water resources, due to the increasing competition between (i) maintaining a sufficient flow of water in dry periods and (ii) satisfying the demand for energy production, industrial and touristic needs.

Scenarios for Crau area were defined in Table 3. The situation of reference for the all the variables is defined by the values of the year 2009. The calibration of the dynamics of the models’ parameters was made with reference to the land occupation’s evolution between 1997



278 and 2009 calculated on a yearly basis. The objective of these simulations is to produce likely  
 279 land occupation maps for the medium term, *i.e.* the 2030 time horizon by monitoring the  
 280 dynamics of the indicators.

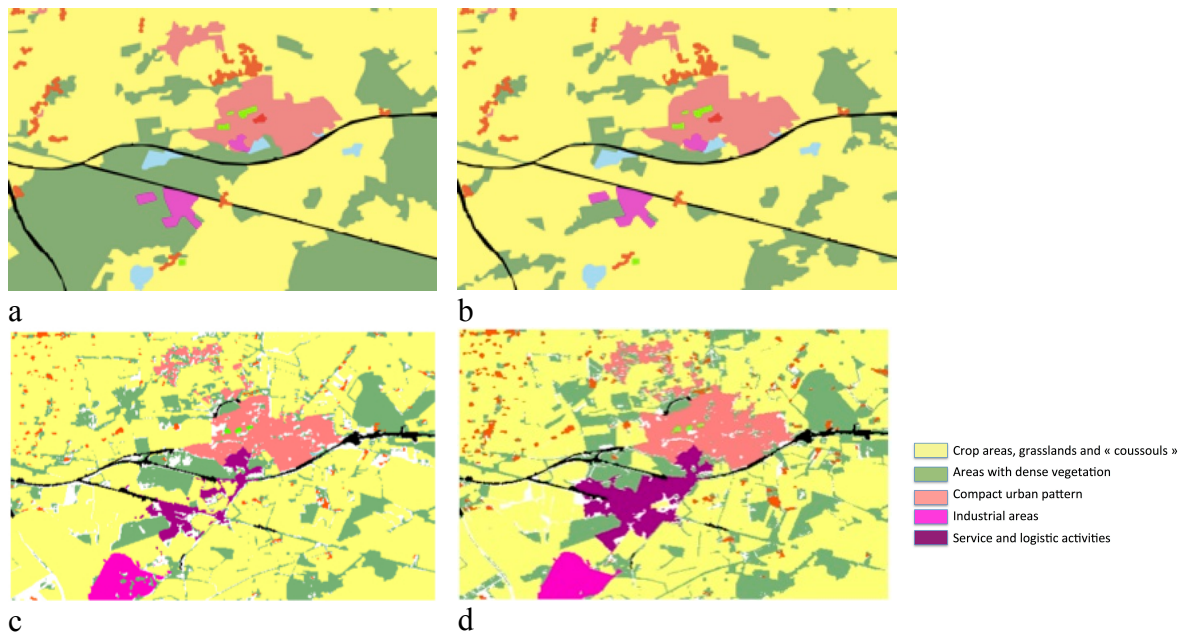
281

## 282 4. Results and discussion

283

### 284 4.1 Urban sprawl impact measures

285



**Figure 3:** Land use maps: it shows (a, b) how urban development is reflected in the Corine Land Cover mapping and (c, d) how it appears when the PRECOS approach is applied for one of the municipalities of the Crau area in 1997 and 2009 respectively (from Trolard et al., 2013b).

286 During the 1997–2009 period over than 1,600 ha of irrigated grasslands and natural areas  
 287 were lost to urban sprawl and the implementation of environmental measures is undermined  
 288 by the “fait accompli” (Fig. 3).

289 Evidence for this was obtained by devising extremely fine land occupation maps of the  
 290 Crau area between 1997 and 2009 (spatial resolution of 0.6 m to 20 m depending on the  
 291 location in the area) (Fig. 3 c, d). Indeed, the data from CORINE Land Cover, as already  
 292 observed by other authors (Pageaud and Carré, 2009), do not meet the needs of urban  
 293 planning. This can be ascribed to the low resolution of the mesh used by CORINE Land  
 294 Cover and to the fact that the classification of land uses is not stable over time. This makes it  
 295 impossible to superimpose maps drawn on two different dates (Fig. 3a, b). The study covering  
 296 the entire Crau area thus shows that between 1997 and 2009, urban sprawl has affected  
 297 approximately 2,300 ha. Similar observations were made in Italy (Biasoli et al., 2006), more  
 298 largely in Mediterranean region (Salvati, 2014) and in Asia (Zhang et al., 2007). Observations  
 299 in the Emilia-Romagna region in Italy have shown that over the 6-year period (2003-2008)  
 300 urbanization led to a loss of crop production potential equivalent to the daily caloric

301 requirements of more than 440,000 people (Malucelli et al., 2014). In addition, the National  
 302 Strategy for Sustainable Development for 2010 - 2013 has highlighted as one of its objectives  
 303 the need to ensure that the land sealing rhythm, which is currently superior to demographic  
 304 dynamics, must be better controlled especially by endeavoring to locate the new  
 305 infrastructures on lands already artificialized (DIDD, 2010).

306

#### 307 *4.2 Multi-secular irrigated agriculture: a factor of sustainability and a source of ecosystem* 308 *services*

309 Thanks to Adam de Craponne's canals built in the Crau area, in the 16<sup>th</sup> century, the multi-  
 310 secular irrigation system warrants a lasting resilience of the biophysical environment. This is  
 311 demonstrated by the integrated analysis of the agronomical, pedological, land use and  
 312 biogeochemical soil and water data (Trolard et al., 2013a).

313 The geochemical study shows that the Durance waters used for irrigation do not have any  
 314 aggressive effect on the soil mineral components and instead, meet most of mineral nutrients  
 315 necessary to the Crau's hay. A comparative balance between the concentration of mineral  
 316 elements exported by the Crau's hay and the rates of mineral matters found in the irrigation  
 317 waters only reveals a slight deficit for potassium and phosphorus (Table 4) (Bourrié et al.,  
 318 2012).

319

320 **Table 4:** Balance of mineral element fluxes brought by the irrigation water compared to the  
 321 needs of Crau's hay for the first cut.

322

Element	Ca <sup>2+</sup>	PO <sub>4</sub> <sup>3-</sup>	Mg <sup>2+</sup>	Na <sup>+</sup>	SO <sub>4</sub> <sup>2-</sup>	K <sup>+</sup>
Balance*	1.41	-0.02	0.30	0.31	0.47	-0.14

323 \*in mol m<sup>-2</sup>

324

325 In the Crau plain, irrigated agriculture for over 400 years, has contributed to four essential  
 326 ecosystems services: (i) soil conservation; (ii) biomass production; (iii) aquifer recharge and  
 327 (iv) wetland preservation.

328

#### 329 *4.3 Soil conservation*

330 Irrigation has two consequences. It brings silt, thus changing the soils' granulometry. It  
 331 changes soils' acido-basic properties because of the geochemical interactions between waters  
 332 and soils. The Durance irrigation waters protect soil against its natural trend towards  
 333 acidification caused by rainwater. When rain enters the topsoil, its acid properties are  
 334 enforced because it equilibrates with pCO<sub>2</sub> of soil atmosphere, which is much larger than  
 335 pCO<sub>2</sub> of external atmosphere; it operates then as a strong solvent. In the Crau area, irrigation  
 336 waters contain dissolved calcium carbonate because of their transfer from the Alps through  
 337 limestones, and their pH is of 8.3. This makes them less aggressive towards soils minerals and  
 338 even instead, makes them rather encrusting depending on the degree of concentration of water  
 339 by evaporation, which depends itself on climatic conditions.

340

#### 341 *4.4 Biomass production*

342 Two parameters are critical for determining the grassland's yield: the soils' characteristics  
 343 and the water turns, *i.e.* time between two irrigations and water quantity per irrigation  
 344 (Astuce & Tic, 2011). The average yields vary between 7.8 t ha<sup>-1</sup> and 9.7 t ha<sup>-1</sup> (Comité du  
 345 Foin de Crau, personal communication). The highest yields are obtained on hydromorphic  
 346 soils or on soils, which have the thickest HA horizon, *i.e.* soils with the highest water holding  
 347 capacity. The productivity is also dependent on the water turns: the greater the intervals, the  
 348 lower the yields.

349

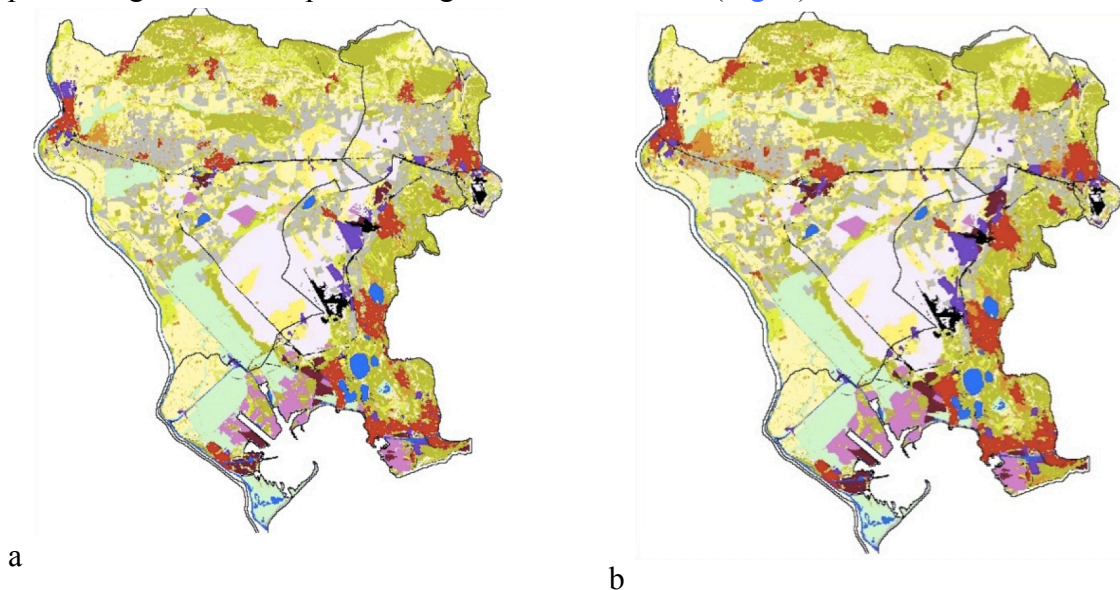
#### 350 4.5 Aquifer recharge

351 The large permeability of the aquifer in the Crau (10<sup>-3</sup> to 10<sup>-2</sup> m s<sup>-1</sup>) and massive inflows of  
 352 water by irrigation (about 20,000 m<sup>3</sup> ha<sup>-1</sup> year<sup>-1</sup>) define a highly dynamic regime of the  
 353 aquifer. Thus even though irrigated grasslands occupy less than 20% of the Crau plain's  
 354 surface, they contribute to over 75% to the aquifer's water replenishment. The sporadic but  
 355 regular charging, which comes from irrigated grasslands, actively supports the groundwater  
 356 levels observed. In the North the piezometrical variations under some irrigated areas can  
 357 reach 10 m (Baillieux et al. 2015). Water charging by irrigation is smaller in grasslands on  
 358 hydromorphic soils and the average recharge of water is 1,337 mm year<sup>-1</sup>, while on other  
 359 types of soils it is over 1,700 mm year<sup>-1</sup>. As the average thickness of the aquifer is between 10  
 360 and 40 m, the operational capacity to use the underground water resources is highly  
 361 dependent on the conduct of the gravity irrigation of grasslands.

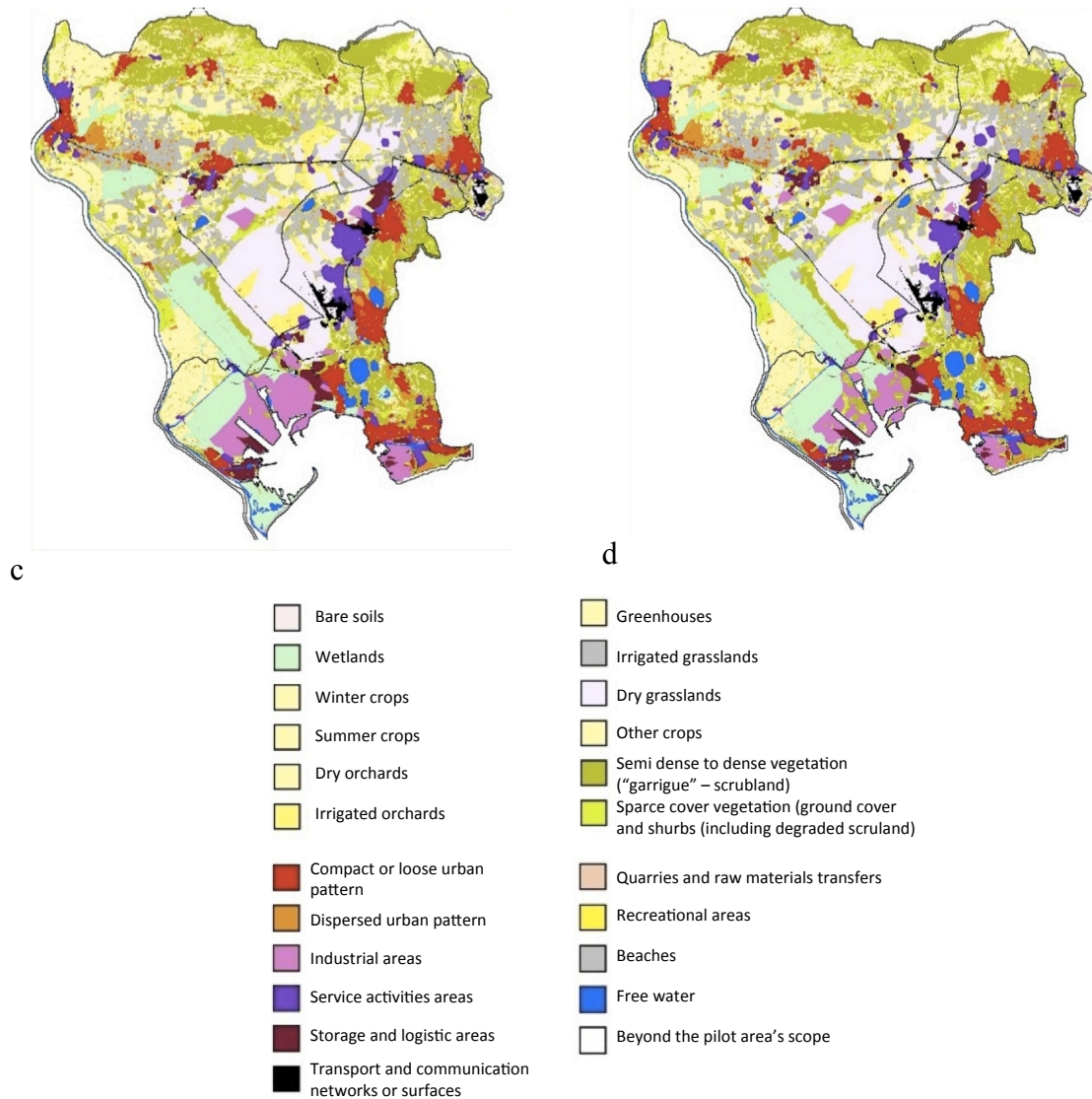
362

#### 363 4.6 Wetland conservation

364 Gravity irrigation for agriculture has a predominant influence on surrounding wetlands. It  
 365 maintains the overflow of groundwater upstream from the aquifer. These waters then reappear  
 366 under the form of resurgences feeding the surrounding ponds (Entressen and Des Aulnes) and  
 367 wetlands, known for their large ecological diversity (Vigueirat pond), 1,000 ha of which are  
 368 classified as a biosphere reserve. Gravity irrigation thus maintains a hydrostatic balance  
 369 preventing the salted aquifer to ingress from the South (Fig. 2).







**Figure 4:** Prediction of land occupation change in 2030 as function of the different scenarios. (a) reference 2009, (b) 2030 – scenario 0, (c) 2030 – scenario 1 and (d) 2030 – scenario 2.

370

371 Furthermore, the supply of calcium by irrigation water percolating through the soil and  
 372 sub-soil down to the aquifer contributes to the groundwater's high quality, by precipitating the  
 373 excess of phosphate in the form of apatite (calcium phosphate) preventing any eutrophication  
 374 of the aquatic systems (Bourrié et al., 2012).

375

#### 376 4.7 Perspectives to 2030 in the Crau area

377 At the 2030 time horizon and whatever the scenario, simulations show an increase of the  
 378 territory's vulnerability and significant alterations of ecosystem services provided by  
 379 agriculture.

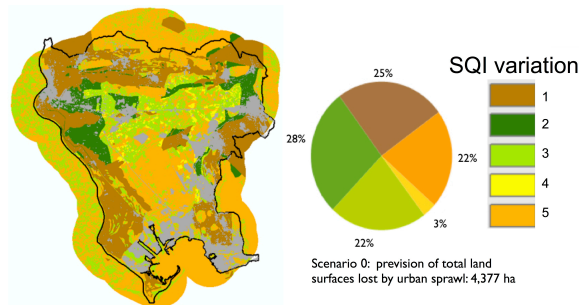
380 Results show that urban sprawl will happen at the expense of protected natural areas,  
 381 cropped lands and irrigated grasslands (Table 5, Fig. 4). Land surface lost to urbanization  
 382 ranges between 4,377 ha for scenario 0 ("trend" scenario) and 7,358 ha for scenario 2, the

383 most space-consuming scenario. In all cases urban sprawl impacts over 50% of the most  
 384 fertile lands in the region, defined by the agronomic qualification index (Fig. 5). Generally,  
 385 these lands correspond to the oldest irrigated grasslands where soils are the result of over 400  
 386 years of cumulated silt deposits.

387  
 388 **Table 5:** Estimate of surface areas that will be used up by urbanization between 2010 and  
 389 2030 by type of land occupation as function of the three scenarios. The surfaces are expressed  
 390 in hectares and in % of the total surface of the considered soil occupation.  
 391

Type of Soil Occupation	Scenario 0		Scenario 1		Scenario 2	
	/ha	/%	/ha	/%	/ha	/%
Irrigated grasslands	1,065	6.8	1,308	8.3	1,826	11.5
Great field crops	23	0.2	43	0.4	62	0.6
Other crops	38	0.9	64	1.5	222	5.2
Dry meadow	113	0.9	585	4.6	563	4.4
Natural areas*	1,341	3.9	2,863	8.4	1,813	5.3
Wetlands	173	1.8	694	7.4	293	3.1
Orchards	147	2.3	332	5.3	798	12.7
Bare soil	1,473	21.0	1,916	27.3	1,778	25.3
TOTAL	4,376		7,805		7,356	

392 \* out of wetlands



**Figure 5:** Qualification and quantification of soils loosed to urban sprawl: results obtained for 2030 with the scenario 0. Soil Qualification Index (SQI): 1. Hydromorphic soils; 2. Soils with 50 cm HA horizon; 3. Soils with 35 cm HA horizon; 4. Soils with 10 cm HA horizon; 5. Fersialitic soils.

393  
 394 For agriculture production, results show that climate change without any water irrigation  
 395 restriction will have a rather positive effect on grassland yields (increase of about 11%) and  
 396 an increase of approximately 1 t ha<sup>-1</sup> of dry matter would be expected. However such positive  
 397 increase of yield would be crushed by the reduction of water quantities allocated to irrigation  
 398 (-30% in our scenarios). Globally, no significant yield change is expected. In all cases, gross  
 399 agricultural production will decrease, due to the loss of agricultural land to urban sprawl in  
 400 2030 (Table 6), and consequently the income of farmers.

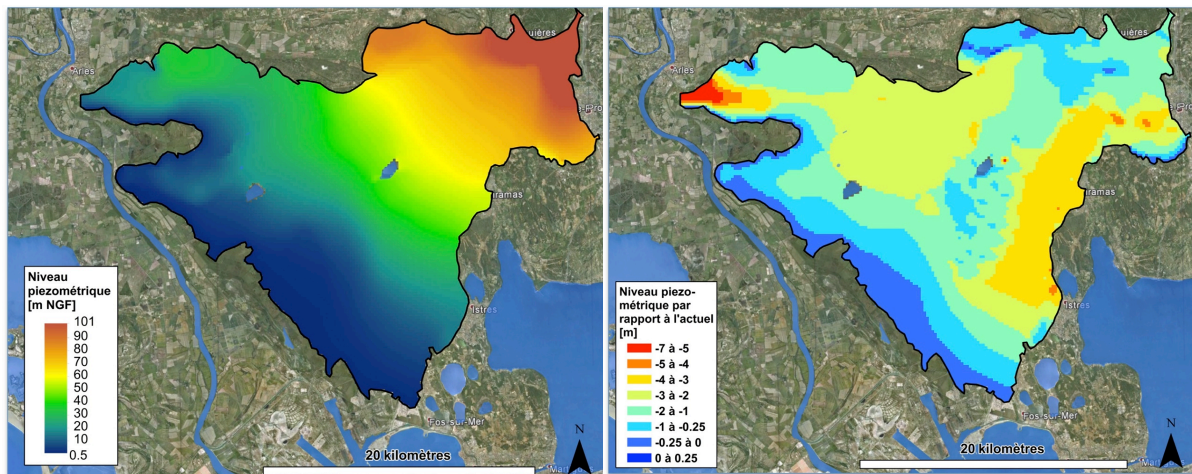
401  
 402 **Table 6:** Inputs and withdrawals of groundwater as function of land occupation and water  
 403 allocations in 2009 and prediction for the scenario 2 in 2030.  
 404

Land occupation	Inputs (mm year <sup>-1</sup> )	
	Reference 2009	Prediction 2030 – scenario 2

Occupation by default	10.0	10.0
Coussouls and sparse vegetation	32.8	-7.6
Irrigated grasslands	2,020.0	1,464.0
Summer crops (e.g. sunflower)	86.4	125.0
Winter crops (e.g. wheat)	63.6	54.6
Wetlands*	-316.0	-491.0
Orchards	-316.0	-434.5
<b>Water allocation</b>	<b>Withdrawals (millions of m<sup>3</sup> year<sup>-1</sup>)</b>	
	Reference 2009	Prediction 2030 – scenario 2
Drinking water	24.8	32.2
Industrial water	7.6	7.6
Agricultural water	27.0	21.8

405 \* the negative drainage values mean that on the concerned surfaces, real evapotranspiration is more  
 406 important than the sum of inputs (rainfall + irrigation)  
 407

408 In addition, simulations of the water table level for 2030 show an important drawdown  
 409 explained by the conjunction of an anticipated decrease of irrigated grassland surface in the  
 410 range of 11%, a decline of about 30% of irrigation water quantities from Durance River and  
 411 30% increase of drinking water requirements (Fig. 6).



**Figure 6:** Piezometric level in permanent regime in reference state 2009 (a) and prediction of the evolution of the water table in permanent regime in 2030 with the scenario 2 (b) (from Oliso et al., 2013b and Baillieux et al., 2015).

412  
 413 The main consequence for industry and cities would be water shortage, with a predicted  
 414 lowering of the groundwater table ranging from 2 to 9 m. If infrastructures must be built to  
 415 bring pressurised water from the East of Provence, the additional cost will be huge.

416 The reduction of the aquifer expansion would have other drastic consequences with: (i) a  
 417 possible progression inland of sea water ingress in the south of the territory and (ii) depriving  
 418 of wetlands of their fresh water supply entailing “catastrophic” impacts on local biotopes and  
 419 associated biocenosis.

420

421 *4.8 Applying the PRECOS approach in other contexts: first step*

422 When looking at urban governance system typologies (Metrex, 2010), it is possible to  
 423 observe that several broad geographical and resource conditions will be favourable for  
 424 integrated approaches such as PRECOS: (i) important rural surfaces devoted to agricultural  
 425 production and /or proximity of protected natural areas; (ii) strong urban sprawl whether or  
 426 not linked to urban growth; (3) the proximity of environmentally taxing industrial (or  
 427 commercial) installations or infrastructure (Seveso installations, logistic platforms, mines etc.)  
 428 and (iv) specific developments, constraints or triggers related to the socio-economic or  
 429 regulatory context.

430

431 **Table 7: Main vulnerability and linked indicators (\* A&T = Astuce & Tic prototype)**  
 432

A&T* indicators		Crau	Emilia-Romagna	Valencia
A	Land occupation	yes	yes	yes
B	Fragmentation of habitats	yes	May be	yes
C	Soil sealing	yes	yes	yes
D	Aquifer evolution	yes	no	no
E	Drinking water supply	yes	no	no
F	Pollution risk	yes	May be, not easy	yes
G	Water drinkability	yes	no	yes
H	Risk of water salinity	yes	no	no
I	Risk of soil salinization	yes	no	yes
J	Risk of soil acidification (soil data)	yes	no	no
K	Risk of soil acidification (water data)	yes	no	no
L	Risk of soil sodicity	yes	no	yes
M	Soil agronomic qualification index	yes	yes	yes
N	Agricultural production	yes	yes	yes
O	Drainage	yes	yes	yes
<b>Locally important indicators not included in A&amp;T</b>				
1	Carbon stock		yes	yes
2	Run off modification		yes	yes
3	Land capability		yes	yes
4	Air quality		Data not ready	-
5	Brown soil		yes	-
6	Eutrophisation		-	yes

433

434 Consultations with potential end-users in regions of Emilia Romagna in Italy and Valencia  
 435 in Spain have shown that the PRECOS approach can be deployed by using existing data and  
 436 by organizing, at local level, a consortium of skills able to analyze the results. Table 7 shows  
 437 that in these new test areas, indicators proposed by the PRECOS approach can be produced. If  
 438 the local situation requires consideration of new indicators, the modularity of the processing  
 439 chain allows for adding new modules and interfaces in the workflow.

440 The consortium had the opportunity to apply the first stages of the PRECOS approach in  
 441 Emilia-Romagna, an Italian region identified as likely to encounter serious climate and  
 442 resource pressures in the future. PRECOS has been identified as useful for policy makers,  
 443 cautioning authorities and developers when planning for future land and water uses... The



444 province of Modena was one of the areas earmarked as well adapted to the introduction of the  
445 PRECOS approach. Indeed, in this province, urban sprawl problems are rendered even more  
446 acute, because of on-going post-earthquake reconstruction operations especially those in  
447 connection to large scale transport infrastructure developments. Several studies have already  
448 shown the extension of the risks of soil sealing and climate change in the region (e.g.  
449 consequences and costs of runoff during extreme events, damages to the water network, soil  
450 degradation...) (Burrato et al., 2012; Ceccarelli et al., 2014; Salvati, 2014; Ungaro et al.,  
451 2014). Moreover, policy and decision-makers are quite aware of this especially considering  
452 the weight of high quality agriculture productions in the local economy.

453 In Valencia region, taking into account the complex scenario of future regional  
454 development with an increase of risks due to the climate change and a difficult balance  
455 between environment and economic growth (e.g. García, 2010; Rico-Amoros et al., 2009;  
456 Vicente Serrano et al., 2004; Luis et al., 2000), the PRECOS approach could play a significant  
457 role supporting decision-makers and politicians to make better decisions. The current lack of  
458 comprehensive tools capable of merging and managing different sources of geo-referenced  
459 data (social, economic, environmental) and of turning them into useful information for  
460 decision-makers has been emphasised.

461

## 462 **5. Conclusions**

463

464 Building on and elaborating from Astuce & Tic prototype, the European consortium in  
465 charge of PRECOS established that the approach could be deployed beyond the Crau pilot  
466 demonstration area and was likely to meet the needs of a variety of local situations.

467 The Crau area was chosen because it is representative of critical situations deriving from  
468 global changes, urban pressures and climate change that are apparent in a number of places in  
469 the world. Conducting this experimental approach on the Crau area has shown that up to the  
470 beginning of the 16<sup>th</sup> century local planning was developed around the Crau irrigation  
471 network. Irrigated grasslands were the cornerstones of the anthropic-system and an example  
472 of how successful men's multi-secular efforts were to maintain a balance with the  
473 environment.

474 The PRECOS integrated approach provides a global vision of urbanization and climate  
475 change' manifold impacts on all ecosystem services; it identifies *hic et nunc* the more  
476 vulnerable and risk-prone areas and takes into account the inter-relationships between all their  
477 components.

478 Method wise, the treatment or acquisition of new data and the integration of multi-sector  
479 information is pooled within a chain of modeling modules that generate pertinent and factual  
480 indicators for a given area and offer the possibility of following their dynamics in real time.  
481 Medium term scenarios then analyze the dynamics of these indicators overtime and lead to a  
482 virtual representation of what future adaptations could lead in terms of "*a minima*" pressures  
483 and potential additional costs before their cumulated impacts drive the area to tipping points.  
484 The representation tools make it possible to visualize these results in terms of time-space and  
485 also provide supporting documents for stakeholders' consultations, discussions or  
486 negotiations.

487 Pre-diagnosis made in regions of Emilia-Romagna (Italy) and Valencia (Spain) show that  
 488 local end-users and policy-makers are interested by this approach. The modularity of indicator  
 489 calculations and the availability of geo-databases indicate that PRECOS may be up scaled in  
 490 other socio-environmental contexts. Moreover, on one hand, the efforts to build up regional  
 491 databases following standardized guidelines defined at international level and, on the other  
 492 hand, the development projects of the use of digital technologies in local communities mean  
 493 that the data is becoming more accessible and free. In addition, the modular software  
 494 architecture allows PRECOS (i) to evolve with advances in modeling sectors considered here;  
 495 (ii) to interchange a simulation module by an equivalent and more appropriate to the local  
 496 context (iii) to integrate new features and compute new indicators based on the needs of  
 497 stakeholders and policy-makers. PRECOS is a valuable tool to turn this data into actionable  
 498 information for territorial management.  
 499

## 500 **Acknowledgements**

501

502 The conception of the prototype has mobilised numerous students and other contributors.  
 503 Thus authors address many thanks to F. Baret, P. Beauclair, R. Bile, M. Conruyt, A. Dangeard,  
 504 B. Descamp, J.C. de Mordant de Massiac, H. Erray, M. Fouletier, R. Hadria, A. Jan, F.  
 505 Nawaz, J.C. Maho, F. Maurel, M. Mayor, T. Ménard, R. Lecerf, B. Le Pors, O. Pascal, P.  
 506 Rosselo, F. Ruget, S. Viseur for their implication in some steps in this work. The authors  
 507 thank the R&D programs supported both by FUI funds (2008-2011) from the French Ministry  
 508 of Industry, (DGCIS) and Provence – Alpes – Côte d’Azur Region, SICMED program (INSU,  
 509 2011-2014) and Climate KIC (Knowledge Innovation Community) of the European Institute  
 510 of Innovation & Technology (EIT) through pathfinders PRECOS (2013-2014) and PRECOS  
 511 Business (2015). The authors thank W. de Lange, associated editor, and the anonymous  
 512 reviewers, who contributed by their suggestions to improve the quality of the paper.  
 513

## 514 **References**

515

- 516 Allen R.G., Pereira L.S., Raes D. (1998) Crop evapotranspiration – Guidelines for computing  
 517 crop water requirements – Irrigation and Drainage paper 56, FAO, Rome, 15 pp.
- 518 Astuce & Tic (2011) Anticipation de l’Aménagement Sécurisé des Territoires Urbanisés, des  
 519 Campagnes et leur Environnement par les Technologies de l’Information et de la  
 520 Communication. De Mordant de Massiac J.C., Trolard F. and Bourrié G. coord., Rapport  
 521 final du programme FUI (2008-2011).
- 522 Ayres, R.U. (1995) Life cycle analysis: A critique. *Resources, Conservation and Recycling*,  
 523 14, 199-223.
- 524 Ayres, R.U., Ayres, L.W., Martinàs, K. (1998) Exergy, waste accounting and life-cycle  
 525 analysis, *Energy*, 23, 5, 355-363.
- 526 Baillieux A., Oliosio, A., Trolard, F., Chanzy, A., Lecerf, R., Lecharpentier P., Banton ,O.,  
 527 Ruget, F., Ruy, S. (2015) Changements globaux : quels impacts sur l’aquifère de la Crau ?  
 528 *Géologues*, 187, 85-92.



- 529 Balestrat, M., Barbe, E., Chery, J.P., Lagacherie, P., Tonneau J.P. (2011) Reconnaissance du  
 530 patrimoine agronomique des sols : une démarche novatrice en Languedoc-Roussillon,  
 531 Norois, 221(4), 83-96.
- 532 Bell, S., Morse, S. (2004) Experiences with sustainability indicators and stakeholder  
 533 participation: a case study relating to a “Blue Plan” project in Malta. Sustainable  
 534 Development, 12, 1, 1-14.
- 535 Biasoli, M., Barberis, R., Ajmone Marsan F. (2006) The influence of a large city on some soil  
 536 properties and metals content? The Sci. of Total Envir., 356,154-164.
- 537 Bonfillon, M.S. (2008) Les cultures irriguées dans l’espace géographique du Canal de  
 538 Craponne: la question des méthodes de travail. In: Plantes exploitées, plantes cultivées,  
 539 cultures, techniques et discours. G. Gomet coord., Presse Universitaire de Provence,  
 540 Marseille.
- 541 Bouman, B., Jansen, H., Schipper, R., Nieuwenhuysse, A., Hengsdijk, Bouma, J. (1999) A  
 542 framework for integrated biophysical and economic land use analysis at different scales.  
 543 Agriculture, Ecosystems & Environment, 75 (1-2), 55-73.
- 544 Bourrié G., Trolard F., Chanzy A., Ruget F., Lecerf R., Charron F. (2012) Sustainable  
 545 intensive agriculture: evidence from aqueous geochemistry. Procedia Earth & Planetary  
 546 Sci., 7, 93-96.
- 547 Brisson, N. (2008) Modéliser la réponse des cultures à la contrainte hydrique avec le modèle  
 548 STICS pour comparer des stratégies et anticiper les changements climatiques. Innovations  
 549 agronomiques, 2, 9-18.
- 550 Brisson, N., Gary, C., Juste, E., Roche, R., Mary, B., Ripoche, D., Zimmer, D., Sierra, J.,  
 551 Bertuzzi, P., Burger, P., Bussièrre, F., Cabidoche, Y.M., Cellier, P., Debaeke, P.,  
 552 Gaudilière, J.P., Maraux, F., Seguin, B., Sinoquet, H. (2003) An overview of the crop  
 553 model STICS. European Journal of Agronomy, 18, 309-332.
- 554 Burrato, P., Vannoli, P., Fracassi, U., Basili, R., & Valensise, G. (2012). Is blind faulting  
 555 truly invisible? Tectonic-controlled drainage evolution in the epicentral area of the  
 556 May 2012, Emilia-Romagna earthquake sequence (northern Italy). Annals of  
 557 Geophysics, 55(4), DOI: 10.4401/ag-6182.
- 558 Ceccarelli, T., Bajocco, S., Luigi Perini, L., & Luca Salvati, L. (2014). Urbanisation and land  
 559 take of high quality agricultural soils-exploring long-term land use changes and land  
 560 capability in Northern Italy. International Journal of Environmental Research, 8(1),  
 561 181-192.
- 562 Chakir R., Madignier A.C. (2006) Analyse des changements d’occupation des sols en France  
 563 entre 1992 et 2003. Economie rurale, 296 pp.
- 564 Chen S., Chen B. (2012) Network environ perspective for urban metabolism and carbon  
 565 emissions: a case study of Vienna, Austria, Environmental Science and Technology, 46,  
 566 4498-4506.
- 567 Chen S., Chen B., Fath B.D. (2015) Assessing the cumulative environmental impact of  
 568 hydropower construction on river systems based on energy network model, Renewable and  
 569 sustainable Energy Reviews, 42, 78-92.

- 570 Crescenzi, R., Rodriguez-Pose, A., Stoper, M. (2007) The territorial dynamics of innovation:  
 571 a Europe – United States comparative analysis, *Journal of Economic Geography*, 7, 6, 673-  
 572 709.
- 573 Davodi, S. (2012) Climate risk and security: new meanings of “the environment” in the  
 574 English Planning System. *European planning studies*, 20, 1, 49-69.
- 575 Day, G.S. (1981) The product life cycle: analysis and application issues, *Journal of Marketing*,  
 576 45, 4, 60-67.
- 577 DIDD (2010) Stratégie nationale de développement durable pour 2010-2013: vers une  
 578 économie verte et équitable, Délégation Interministérielle au Développement Durable,  
 579 report, Paris.
- 580 Club Sahel and OECD (2001) Managing the economy locally in Africa. Assessing local  
 581 economics and their prospects, vol. 1, Summary. Programme municipal, ECOLOC  
 582 handbook, SAH/D, 511, Paris.
- 583 FAO (2009) The state of food insecurity in the World, Report, Roma (Italy).
- 584 García, M. (2010). The breakdown of the Spanish urban growth model: Social and  
 585 territorial effects of the global crisis. *International Journal of Urban and Regional*  
 586 *Research*, 34(4), 967-980.
- 587 Geniaux G. (2011) URBANSIMUL: un modèle prototype de simulation de l’occupation du  
 588 sol à l’échelle parcellaire. <http://www.agris.fao.org>
- 589 Glaeser, E. (2011) Engines of innovation. In: A brighter future with cities, *Scientific Amer. J.*,  
 590 36-41.
- 591 Graymore, M., Sipe, N., Rickson, R. (2008) Regional sustainability: how useful are current  
 592 tools of sustainability assessment at the regional scale? *Ecological Economics*, 67, 3, 362-  
 593 372.
- 594 IEA (2008) Perspectives des technologies de l’énergie. Au service du plan d’action du G8  
 595 - Scénarios et stratégies à l’horizon 2050. Report, Paris, 13pp.
- 596 INSPIRE (2007) Directive 2007/2/CE, JOCE, April 25<sup>th</sup> 2007. [http://www.developpement-](http://www.developpement-durable.gouv.fr/La-directive-europeenne-Inspire-de.html)  
 597 [durable.gouv.fr/La-directive-europeenne-Inspire-de.html](http://www.developpement-durable.gouv.fr/La-directive-europeenne-Inspire-de.html)
- 598 Buis S, Wallach D, Guillaume S, Varella H, Lecharpentier P, Launay M, Guerif M, Bergez J-  
 599 E, Justes E. (2011) The STICS crop model and associated software for analysis,  
 600 parameterisation and evaluation. In: Ma, L (ed), *Methods of Introducing System*  
 601 *Models into Agricultural Research*, *Advances in Agricultural Systems Modeling 2*,  
 602 *American Society of Agronomy, Crop Science Society of America, and Soil Science*  
 603 *Society of America*, Madison, p 395-426.
- 604 Lagacherie, P. and Ménard, T. (2007) Un indice de qualité des sols, work document, Inra,  
 605 UMR Lisah, Montpellier.
- 606 Luis, M. D., Raventós, J., González-Hidalgo, J. C., Sánchez, J. R., & Cortina, J. (2000). Spatial  
 607 analysis of rainfall trends in the region of Valencia (East Spain). *International Journal*  
 608 *of Climatology*, 20(12), 1451-1469.
- 609 Mallet J.L. (2002) *Geomodeling*, Oxford University Press.
- 610 Malucelli, F., Certinin, G., Scalenghe, R. (2014) Soil is brown gold in Emilia-Romagna  
 611 Region, Italy, *Land Use Policy*, dx.doi.org/10.1016/j.landusepol.2014.01.019

- 612 OECD (2003) OECD environmental indicators – development, measurement and use –  
 613 Reference paper, 37 pp., <http://www.oecd.org/env/>
- 614 Oliosio A., Lecerf R., Chanzy A., Ruget F., Huard F., Baillieux A., Rossello P., Lecharpentier  
 615 P., Trolard F., Charron F., Ruy S., Alkacem Alosman M., Cognard-Planck A.L., Seguin B.,  
 616 Courauldt D., Gallego-Elvira B., Garrigues S. (2013a) Bilan hydrique des agrosystèmes de  
 617 Crau face aux changements globaux. In: Ecologie et conservation d'une steppe  
 618 méditerranéenne – La plaine de Crau, Tatin L., Wolff A., Boutin J., Colliot E. and Dutoit  
 619 T. coord., Editions QUAE, Paris.
- 620 Oliosio A., Lecerf R., Baillieux A., Chanzy A., Ruget F., Banton O., Le Chapentier P., Trolard  
 621 F., Cognard-Planck A.L. (2013b) Modelling of drainage and hay production over the  
 622 Crau aquifer for analysing impact of global change on aquifer recharge. *Procedia*,  
 623 *Environ. Sci.*, 19, 691-700.
- 624 Pachauri, D.L. and Reisinger, A.(eds) (2007) Climate change: synthesis report, IPCC,  
 625 Genève.
- 626 Pageaud, D. and Carré, C. (2009) La France vue par CORINE Land Cover, outil européen  
 627 de suivi de l'occupation des sols. In: Le point sur... Commissariat Général au  
 628 Développement Durable, 10, 1-4.
- 629 Parkhurst, D.L. and Appelo, C.A.J. ((1999) User's guide to PHREEQC (version 2): A  
 630 computer program for speciation, batch-reaction, one-dimensional transport, and  
 631 inverse geochemical calculations. Water-Resources Investigations Report 99-4259,  
 632 U.S. Geological Survey.
- 633 Rico-Amoros, A. M., Olcina-Cantos, J., & Sauri, D. (2009). Tourist land use patterns and  
 634 water demand: evidence from the Western Mediterranean. *Land Use Policy*, 26(2),  
 635 493-501.
- 636 Ruellan A. (2010) Des sols et des hommes, un lien menacé, IRD Edition, Marseille.
- 637 Sapoval Y.L. (2011) Comment faire émerger une offre urbaine durable? In: Atlas du  
 638 développement durable et responsable, G. Pennequi and A.T. Mocilnikar coord., 290-  
 639 294.
- 640 Salvati, L. (2014). The spatial pattern of soil sealing along the urban-rural gradient in a  
 641 Mediterranean region. *Journal of Environmental Planning and Management*, 57(6),  
 642 848-861.
- 643 Schmitt, P. (2010) Intra-metropolitan polycentricity in practice-reflections - Challenges  
 644 and conclusions from 12 European metropolitan areas. Final report of the METREX-  
 645 Expert Group on Intra-Metropolitan Polycentricity. Retrieved, November, vol. 28.
- 646 Trolard F. and Astuce & Tic's consortium (2010) Etalement urbain et changements  
 647 globaux : l'urgence de considérer les sols et l'eau dans un modèle intégratif. *Energie*  
 648 *Liaison Francophonie*, 86, 147-153.
- 649 Trolard F. and Dangeard M.L. (2014) Les sols, l'eau et la production agricole : des  
 650 ressources de base face à l'étalement urbain et aux changements climatiques. In:  
 651 Penser une démocratie alimentaire – Thinking a food democracy, Lascaux proposals  
 652 between natural resources and food needs, Colard Dutilleul F. and Bréger F. coord.,  
 653 INIDA ed., San José, Costa Rica, 113-124.

- 654 Trolard F., Dangeard M.L., de Mordant de Massiac J.C., Bourrié G., Lecerf R., Le Pors B.,  
655 Chanzy A., Dangeard A., Keller C., Charron F. and the consortium Astuce & Tic (2013a)  
656 La disparition des habitats naturels et agricoles vue par le programme Astuce & Tic.  
657 In: *Ecologie et conservation d'une steppe méditerranéenne – La plaine de Crau*, Tatin  
658 L., Wolff A., Boutin J., Colliot E. and Dutoit T. coord., Editions QUAE, Paris.
- 659 Trolard F., Reynders S., Dangeard M.L., Bourrié G., Descamps, B., Keller, C., de Mordand  
660 de Massiac, J.C. (2013b) *Territoire, ville et champagne face à l'étalement urbain et aux*  
661 *changements climatiques. Une démarche intégrative pour préserver les sols, l'eau et*  
662 *la production agricole*. Edition Johanet, Paris, 152 pp.
- 663 Ungaro, F., Calzolari, C., Pistocchi, A., & Malucelli, F. (2014). Modelling the impact of  
664 increasing soil sealing on runoff coefficients at regional scale: a hydro-pedological  
665 approach. *Journal of Hydrology and Hydromechanics*, 62(1), 33-42.
- 666 Vicente Serrano, S. M., González-Hidalgo, J. C., Luis, M. D., and Raventós, J. (2004).  
667 Drought patterns in the Mediterranean area: the Valencia region (eastern Spain).  
668 *Climate Research*, 26, 5-15.
- 669 Vohland K. and Barry B. (2009) A review of *in situ* rainwater harvesting (RWH) practices  
670 modifying landscape functions in African drylands. *Agriculture, Ecosystems &*  
671 *Environment*, 131, 119-127.
- 672 Von Bahr, B. and Steen, B. (2004) Reducing epistemological uncertainty in life cycle  
673 inventory, *Journal of cleaner Production*, 12, 4, 369-388.
- 674 Waddel, P. (2002) UrbanSim: modelling urban development for land use, transportation and  
675 environmental planning, *Journal of the American Planning Association*, 68, 3, 297-314.
- 676 White, R., Engelen, G. (1993) Cellular automata and fractal urban form: a cellular  
677 modelling approach to the evolution of urban land use patterns. *Environment and*  
678 *Planning A*, 25(8), 1175-1199.
- 679 White, R., Engelen, G., Uljee, I. (1997) The use of constrained cellular automata for high-  
680 resolution modeling of urban land-use dynamics. *Environment and Planning B:*  
681 *Planning and Design*, 24(3), 323-343.
- 682 Wolff A., Tatin L. and Dutoit T. (2013) *La Crau, une steppe méditerranéenne unique en*  
683 *France*. In: *Ecologie et conservation d'une steppe méditerranéenne – La plaine de*  
684 *Crau*, Tatin L., Wolff A., Boutin J., Colliot E. and Dutoit T. coord., Editions QUAE, Paris.
- 685 World Bank (2007) *Strategy of WB on the environment*, Report 2007.
- 686 World Bank (2009) *Development in the world*, Report 2009.
- 687 Xia Li and Gar-On Yeh A. (2000) Modeling sustainable urban development by the integration  
688 of constrained cellular automata and GIS, *Journal of the American Planning Association*,  
689 14, 2, 131-152.
- 690 Zhang, X., Chen, J., Tan, M., Sun, Y. (2007) Assessing the impact of urban sprawl on soil  
691 resources of Nanjing city using satellite images and digital soil databases. *Catena*, 69, 16-  
692 30.
- 693