



HAL
open science

Coastal geoarchaeology of the Danube delta. Results from Halmyris, Enisala and Istros

Alexandra Bivolaru, Matthieu Giaime, Christophe Morhange, Valérie Andrieu-Ponel, Veronica Rossi, Nick Marriner, Alfred Vespremeanu-Stroe

► **To cite this version:**

Alexandra Bivolaru, Matthieu Giaime, Christophe Morhange, Valérie Andrieu-Ponel, Veronica Rossi, et al.. Coastal geoarchaeology of the Danube delta. Results from Halmyris, Enisala and Istros. Sixth International Congress on Black Sea Antiquities, Sep 2017, Constanta, Romania. pp.533-549. hal-03346899

HAL Id: hal-03346899

<https://hal.science/hal-03346899>

Submitted on 17 Sep 2021

HAL is a multi-disciplinary open access archive for the deposit and dissemination of scientific research documents, whether they are published or not. The documents may come from teaching and research institutions in France or abroad, or from public or private research centers.

L'archive ouverte pluridisciplinaire **HAL**, est destinée au dépôt et à la diffusion de documents scientifiques de niveau recherche, publiés ou non, émanant des établissements d'enseignement et de recherche français ou étrangers, des laboratoires publics ou privés.

The Greeks and Romans in the Black Sea and the Importance of the Pontic Region for the Graeco-Roman World (7th century BC-5th century AD): 20 Years On (1997-2017)

Proceedings of the Sixth International Congress
on Black Sea Antiquities
(Constanța – 18-22 September 2017)



edited by
Gocha R. Tsetskhladze, Alexandru Avram
and James Hargrave



The Greeks and Romans in the Black Sea



The Greeks and Romans in the Black Sea
and the Importance of the Pontic Region
for the Graeco-Roman World
(7th century BC-5th century AD):
20 Years On (1997-2017)

Proceedings of the Sixth International Congress
on Black Sea Antiquities
(Constanța – 18-22 September 2017)

Dedicated to Prof. Sir John Boardman to celebrate his
exceptional achievements and his 90th birthday

edited by

Gocha R. Tsetskhladze, Alexandru Avram
and James Hargrave



ARCHAEOPRESS PUBLISHING LTD
Summertown Pavilion
18-24 Middle Way
Summertown
Oxford OX2 7LG

www.archaeopress.com

ISBN 978-1-78969-758-2
ISBN 978-1-78969-759-9 (e-Pdf)

© Archaeopress and the individual authors 2021

All rights reserved. No part of this book may be reproduced, or transmitted, in any form or by any means, electronic, mechanical, photocopying or otherwise, without the prior written permission of the copyright owners.

This book is available direct from Archaeopress or from our website www.archaeopress.com

Contents

Principal Editor's Preface and Acknowledgments	vi
Gocha R. Tsetsckhladze	
Message from the President of the International Organising Committee.....	vii
John Boardman	
Welcome by the Secretary-General.....	viii
Gocha R. Tsetsckhladze	
List of Abbreviations.....	ix
List of Illustrations.....	xi

Opening Lectures

Pontic studies twenty years on: <i>terra incognita</i>?	2
Gocha R. Tsetsckhladze	
Studies in Pontic epigraphy 1997-2017. Reviews and prospects	10
Alexandru Avram	

Section 1

Foundation of Greek Colonies and the Character of Greek Colonisation; their Relationship with Pontic and Near Eastern Local Populations

The 'Western Cimmerians' and the first Greek settlers in the Troad	20
Jan G. de Boer	
Colonisation and foundation myth in the Pontic regions	27
Ivy Faulkner-Gentry	
Founding the Black Sea settlements. Between literary and archaeological narratives	33
John Brendan Knight	
Colonisation of Miletus in the Propontis and Pontus – the view from Sardis	42
Alexandar Portalsky	
L'onomastique des magistrats monétaires d'Apollonia du Pont	48
Dan Dana, Madalina Dana	
Understanding Greek-native interaction in early Greek Black Sea colonisation. An example from Istros/Histria	55
Lieve Donnellan	
Orgame necropolis: a contextual study of the earliest pottery imports	69
Pierre Dupont and Vasilica Lungu	
Myrmekion during and after Greek colonisation	78
Alexander Butyagin	
Comparative research between the Macedonian tombs and the Scythian <i>kurgans</i>	84
Peli Plika	
Giresun and its vicinity in the Greek colonisation period	94
Salih Kaymakçi	
Between crisis and conflicts: the territory of Apollonia Pontica in the Late Classical and Early Hellenistic periods .	99
Alexandre Baralis, Martin Gyuzelev and Krastina Panayotova	

The farming of the Azov coast of East Crimea: a unique type of ‘agricultural fortress’ 111
Aleksei Kasparov

Women warriors(?) and the Amazon myth: the evidence of female burials with weapons in the Black Sea area. 118
Despoina Vouvoura

Section 2

Pontus and Athens; Pontic Art; Religion; Navigation and Trade; Pontic Kingdoms

Thasos et la mer Noire aux époques classique et hellénistique: ‘grandeur et décadence’ d’un circuit économique . 130
Thibaut Castelli

From the tower of Kronos to the island of Achilles: placing Leuce in the Greek conception of heroic apotheosis. 137
Marios Kamenou

Cultes marins, cultes ioniens en mer Noire 142
Alexandra Lițu, Valentin Bottez and Alexandra Țârlea

Imports and imitations? Some observations on Archaic *kouroi* discovered in the Black Sea region 152
Veronika Sossau

Zur Frühgeschichte der Tempelzone von Histria: Vorläufiger Bericht über zwei ältere Fundkomplexe 161
Konrad Zimmermann

The Paphlagonians and the Greeks’ perception of them 167
Manolis Manoledakis

**Aspects of the economy of the Greek colonies on the west coast of the Black Sea: end of
the Archaic-Hellenistic period** 179
Nicolaie Alexandru

**Trade routes and the historical geography of the south-western coast of the Black Sea and
the mouth of the Bosphorus** 188
Mustafa H. Sayar

Pistiros: urban planning and functional analysis 194
Jan Bouzek(†) and Barbora Weissová

Some observations on the dynamics of trade in transport amphorae on the Berezan settlement 202
Dmitry Chistov

Attic black-glazed import in the European Bosphorus in the 6th-2nd centuries BC 210
Tatiana Egorova

The capital of the Scythian kingdom in the Dobrudja 220
Metodi Manov

Alexander of Macedon, Pharasmanes of Chozem and Zopyrion: the impossible alliance 226
Dan-Tudor Ionescu

The partition of Thrace after the death of Alexander the Great: Lysimachus, heir of the Odrysian kingdom? 232
Aliénor Rufin Solas

Anthropomorphic rod-formed pendants and beads from the West Pontic coast (and Thrace) 235
Mila Chacheva

Euergetism and benefaction in ancient Olbia 245
Oksana Ruchynska

Bithynia: the Phrygian interface 251
Maya Vassileva

Section 3

Later Republic and Early Empire in Pontus and the Relationship with the Local Population; Art; Religion; Navigation and Trade

Quelques remarques sur la population de Topolog et de Mihai Bravu (nord de la Mésie Inférieure)	258
Lucrețiu Mihailescu-Bîrliba	
Roman and Late Roman Pontic cargoes in the Aegean: the evidence from shipwrecks	267
George Koutsouflakis and Peter B. Campbell	
The circulation of counterfeit coins in Roman Dobrudja (1st-3rd centuries AD)	280
Gabriel Custurea and Dan Vasilescu	
Anatolian stonemasons and the West Pontic region: imported models and techniques in the architectural decorations of the early Principate	290
Zdravko Dimitrov	
Rewriting Pontic <i>ethne</i>: problems and prospects	295
Denver Graninger	
Protecting the grave in a Graeco-Roman city: a look at the West Pontic coast	298
Dragoș Hălmagi	
Balbus, A Roman surveyor in Dacia	302
Alexandru Morintz	
Between civil and religious law in funerary practice within Roman settlements on the western shore of the Black Sea	310
Ioana Mureșan and Lucian-Mircea Mureșan	
Anastasius' coins in the eastern Carpathian regions (AD 491-518)	316
Sergiu Musteață	
On some unknown Pontic amphora types from Roman and Early Byzantine times	323
Andrei Opaț	
Die Römer in dem 'linken' Pontus: der Fall des Ovidius	330
Alexander Podossinov	
Buildings for gladiatorial fights in the Roman Black Sea provinces	337
Marius C. Streinu	
Local cultures narrated in art: Dacian architecture as reflected on Trajan's Column	342
Georgia Aristodemou	
The concept of strategic culture and its applicability in the fields of ancient history	352
Lorenzo Boragno	
Amasya in the Early Byzantine period	360
Emine Naza Dönmez	
Moving supplies to the Roman garrison in Dobrogea	366
Stephen Matthews	
The fortification system of the kingdom of Lazika (Egrisi) in the 4th-6th centuries AD	374
Nikoloz Murgulia	
Late Hellenistic and Early Roman pottery at Rachelu. The current state of research on an open settlement close to Noviodunum	378
Alina Streinu and Vasilica Lungu	
Some notes on the 'founder' cult in western Pontic cities in the Roman period	392
Ivo Topalilov	

Section 4

New Excavations and Projects

A Punic necklace from Oluz Höyük: a general evaluation for Anatolia	400
Şevket Dönmez	
The place of amphorae from Oluz Höyük in northern Anatolian and Black Sea archaeology	406
Fidane Abazoğlu	
Amisos terracotta statuettes in Istanbul Archaeological Museums	415
Sümer Atasoy	
The coins found at the excavations of Amasya/Oluz Höyük, 2009-2013	420
Bülent Öztürk	
Terracotta production of the Black Sea coast of Turkey: the example of Sinope	429
Zeynep Koçel Erdem	
The castle of Gököy (Habsamana)/Ordu	435
Davut Yiğitpaşa	
Bemerkungen zu einer Gruppe von Grabstelen aus dem Museum von Sinop	441
Akin Temür	
New data about the western part of Tanais – the fortifications and their vicinity	447
Marcin Matera	
Strabo’s ‘Old Chersonesus’ in historiography and in the light of current research	456
Angelina Zedgenidze	
From Archaeopolis to Onoguris: excavations in the heart of Lazika	466
Paul Everill, David Lomitashvili, Nikoloz Murgulia, Besik Lordkipanidze and Ian Colvin	
A city reconfigured: old and new research concerning Late Roman urbanism in Istros	477
Irina Achim, Valentin Bottez, Mircea Angelescu, Laurențiu Cliante, Alexandra Țârlea and Alexandra Lițu	
New masters – new rules. The beginning of the Roman Imperial cult in Istros	488
Valentin Bottez and Gabriel Talmaçhi	
Cold case reopened: a Late Classical tomb in Apollonia Pontica	493
Margarit Damyanov, Maria Reho and Krastina Panayotova	
Considerations regarding the <i>Domus</i>-type Roman urban house from Scythia Minor (4th-6th centuries AD)	501
Gabriel Talmaçhi	
Concerning Athenian black-figure vases from Panticapaeum	511
Andrey Agafonov and Olga Samar	
Specific features of ceramic materials from the earliest level of Panticapaeum	524
Natalia Astashova	
Coastal Geoarchaeology of the Danube Delta. Results from Halmyris, Enisala and Istros	533
Alexandra Bivolaru, Matthieu Giaime, Christophe Morhange, Valérie Andrieu-Ponel, Veronica Rossi, Nick Marriner and Alfred Vespremeanu-Stroe	
A Hellenistic family tomb and two Early Roman graves from Apollonia Pontica	550
Teodora Bogdanova, Margarita Popova, Dimitar Nedev and Milena Krumova	
Recent finds of Hellenistic mould-made relief bowls from the Ordu/Fatsa Cingirt Kayasi excavations in the southern Black Sea region	561
Ayşe F. Erol and Deniz Tamer	

Late Roman tableware imports (from recent research in Histria/Istros)	571
Iulia Iliescu and Valentin Bottez	
Pichvnari Classical cemetery	576
Amiran Kakhidze and Emzar Kakhidze	
Ash Hill 2 of Myrmekion: analysis of structure and bulk finds	583
Vladimir Kolosov	
Coin finds from the recent excavations of Hermonassa	589
Sergei A. Kovalenko	
Archaeological evidence of Thracian-Greek cultural contacts in the south-eastern part of the Dobrudja plateau during the Hellenistic period	594
Vassil Markov	
Late Archaic relief plaques with warriors from Apollonia Pontica	598
Krastina Panayotova, Daniela Stoyanova and Margarit Damyanov	
Stone anchors and stone and lead stocks from the Archaeological Museum in Varna, Bulgaria	612
Preslav I. Peev	
Attic red-figure pottery from Sinope	616
Suhail Sağlan and Zafer Korkmaz	
Pontic sigillata pottery from a villa rustica in Paphlagonia	628
Füsün Tülek	
Section 5	
Varia	
What's in a name? Who might be Basilissa Ulpia from Mtskheta?	634
Eka Avaliani	
Albanians and Sarmatians: overlapping identities in the eastern Caucasus	641
Lara Fabian	
<i>Studia Straboniana</i>. The didactic character of the <i>Geography</i> and the Romanophilia of its author	651
Lyubov Gratsianskaya	
Ancient pottery from the Balkans: architectural motifs	655
Sasha Lozanova and Stela Tasheva	
The inhospitable and dangerous Salmydessus	662
Miroslav Ivanov Vasilev	
Iconographic personifications in Armenia and Bithynia-Phrygia	683
Viktorya Vasilyan	
Appendix 1 – Congress Programme	697
Appendix 2 – Congress Abstracts of papers	705
List of contributors/lead authors and contact details (published papers)	745

Coastal Geoarchaeology of the Danube Delta. Results from Halmyris, Enisala and Istros*

Alexandra Bivolaru, Matthieu Giaime, Christophe Morhange
and Valérie Andrieu-Ponel
(Aix-Marseille University)

Veronica Rossi
(University of Bologna)

Nick Marriner
(CNRS, Laboratoire Chrono-Environnement, Université de Franche-Comté)

Alfred Vespremeanu-Stroe
(University of Bucharest)

Abstract

This paper presents the preliminary results of the AMIDEX-GEOMED and COFUND geoarchaeological projects investigating the Danube Delta. It is based on cores drilled in this area in 2015 and 2017, as well as on geophysical and archaeological investigations. Our research focuses on the human settlement dynamics in the Danube Delta in relation to the evolution of the geomorphological context from the Neolithic up to the Middle Ages via a multidisciplinary approach. By analysing palaeo-ecological proxies we can see how, since the Neolithic, human activity is an operating factor in shaping the landscape. The multi-proxy research allows us to highlight the importance of geo-climatic factors in influencing the strategy of ancient societies (agriculture, trade, harbour location...) and also on their capacity to adapt to a dynamic environment.

Geographical setting

Since ca. 9000 BP,¹ the Black Sea has been reconnected to the Mediterranean, hence their water bodies respond synchronously to glacio-eustatic changes.² In the context of sea level stabilisation since ca. 6000 BP,³ geomorphic and

climatic phenomena such as deltaic progradation, floods, storms, etc. have severely impacted the coastal system, and along with human activity have had a strong influence on the deltaic environment. Understanding these climatic and geomorphological processes will enhance our understanding of the Danube Delta's evolution and the adaptive responses of different societies to these changes (Figure 1). Interaction of various factors, such as climate, soil erosion, land-use, sediment supply, crustal movements (tectonics and isostasy), waves and currents systems control, in the main, the fluvial and coastal geomorphology of a delta and its related features.⁴

The Danube Delta is the second largest in Europe, after the Volga Delta. It is a unique ecological hotspot, being Europe's largest wetland and reed bed, and since 1991 it has been included on UNESCO's World Heritage List. Its aquatic environment is characterised by various ecosystems, such as freshwater bodies, *limans* and numerous lakes and bays, as well as a large number of brackish water ecosystems. The mosaic-like morphology that we see today, defined in the western part of the Delta by a flat area of fluvial and lagoonal origin, with a series of levees and, in the south-eastern part, by the presence of marine sand bars and coastal dunes, reflects a complex long-term evolutionary process. The formation and development of the Danube Delta represent a source of scientific debate since the beginning of the 20th century, covering a wide range of issues, such as space configuration, the existence and evolution of

* This project received funding from the European Union's Horizon 2020 research and innovation programme under the Marie Skłodowska-Curie grant agreement no. 713750. Also, it was carried out with the financial support of the Regional Council of Provence-Alpes-Côte d'Azur and with the financial support of A*MIDEX (n° ANR- 11-IDEX-0001-02), funded by the Investissements d'Avenir project of the French Government, managed by the French National Research Agency (ANR). Support was also provided by the Institut Universitaire de France, through the project 'Geoarchaeology of Ancient Harbours' (headed by C. Morhange). We thank the Eccorev federation and the sedimentology laboratory of the CEREGE (D. Delanghe, CEREGE) for the funding of the binocular microscope Leica MZ125. We are thankful to Andrei Asăndulesei, Cristian Micu and Alin-Mihu Pintilie from ARHEOINVEST, Iași University, for the geophysical investigations. Also, we thank the University of Bucharest for the support during the archaeological excavation at Istros from June 2017. The archaeological excavation was funded from OT-MED project 'Geoarchaeology of the ancient harbour of Histria (Danube Delta, Romania)'. We would like to thank for help during the fieldwork: Emmanuel Gandouin, Vincent Olivier, Majid Shah-Hosseini, Marius Streinu, Sabin Rotaru, Florin Zăinescu, Adrian Vladu, Liliana Croitoru and Laurențiu Țuțuianu. Warm thanks from C.M. and A.B. for logistics to Geta.

¹ Soulet *et al.* 2011.

² Brückner, Kelterbaum *et al.* 2010.

³ Stanley and Warne 1994; Giosan *et al.* 2006; Brückner, Kelterbaum *et al.* 2010.

⁴ Vespremeanu-Stroe *et al.* 2017a; 2017b; Anthony 2009.

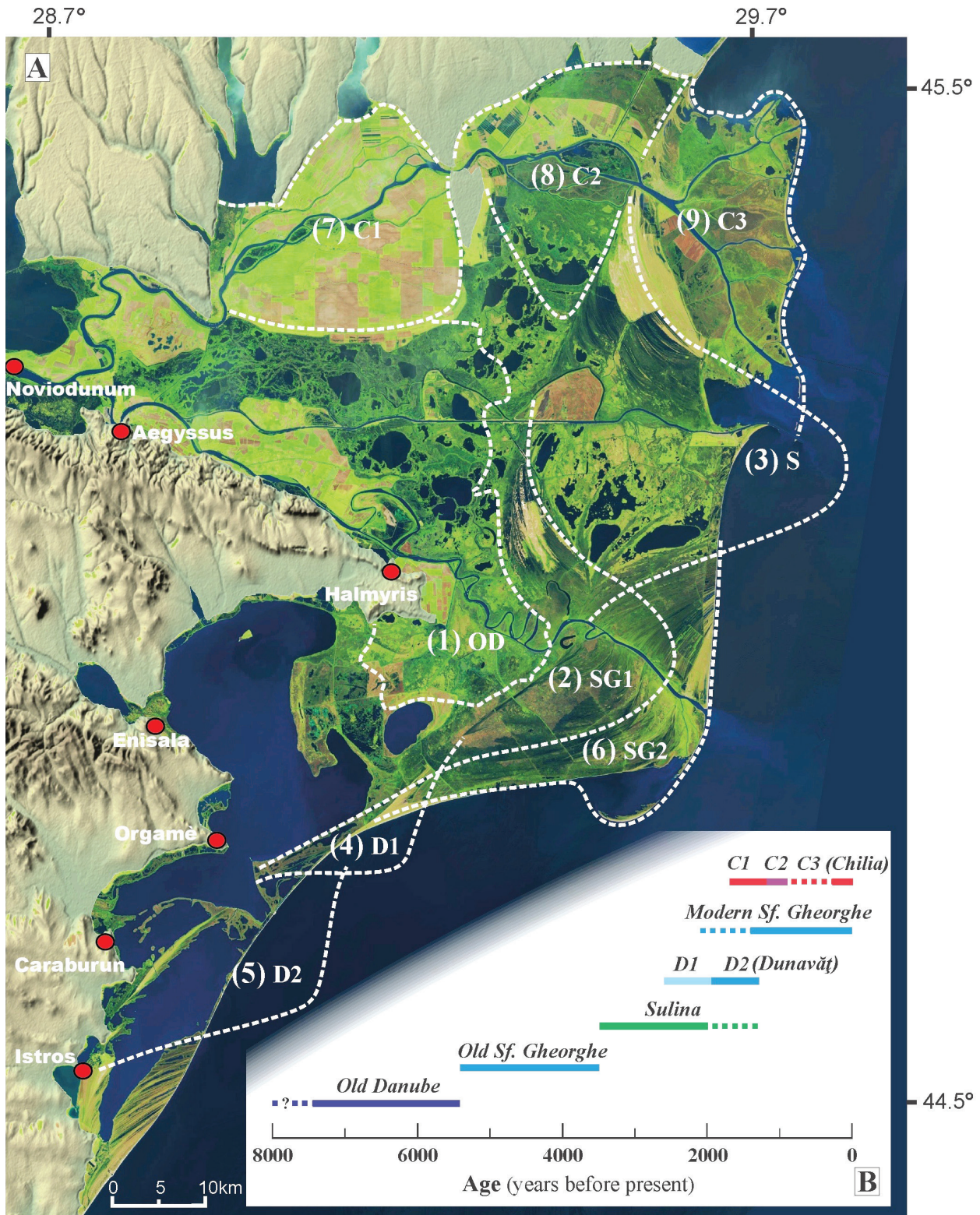


Figure 1: Geomorphological map of the Danube Delta with the studied archaeological sites. The pointed line marks the Danube Delta lobes (including bayhead, lacustrine and open-coast lobes) at their maximum extension: SG1 – Old St. George; S – Sulina; D1 – Old Dunavăț; D2 – New Dunavăț; SG2 – Modern St George; C1 – Chilia 1; C2 – Chilia 2; C3 – Chilia 3. The numbers express their chronological succession (after Vespremeanu-Stroe *et al.* 2017b).

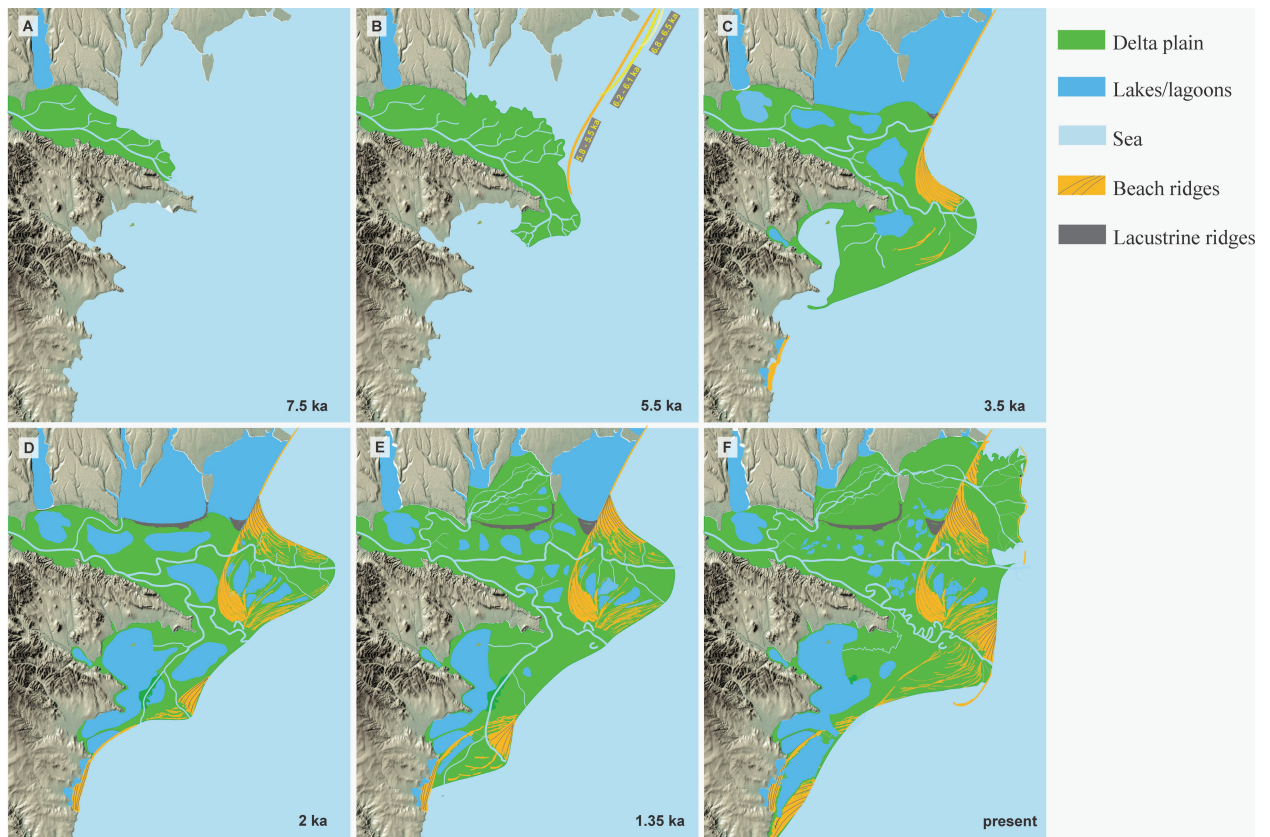


Figure 2: Evolutionary stages of the Danube Delta (after Vespremeanu-Stroe *et al.* 2017a).

spits and barriers, the variability in time and space of the distributaries and the lobes, etc.⁵ However, since Antipa,⁶ scholars have agreed that Danube Delta is composed by two distinct units: a western fluvial delta and a south-eastern maritime delta, separated by the Jibreni-Caraorman barrier. Excepting the problems of geomorphological evolution, another issue is related to the chronology. The first to propose an absolute chronology for the Danube Delta was Panin in 1983,⁷ followed by Giosan *et al.* in 2006, who bring a chronology for the maritime unit.⁸

Recent work by Vespremeanu-Stroe *et al.* minutely reconstructed the evolution of the delta, giving new insights into its chronology and development (Figure 2). For the fluvial delta, the authors determined two phases: i) the period between 8000/7500 BP and 5500 BP, which consists of a bayhead delta front advancing into the Danube Bay, followed by ii) a later phase of fluvial aggradation (ca. 4000 BP-present), with the emergence and southward elongation of the initial spit (first coastal barrier: Jibrieni-Letea-Caraorman) starting around 6700-6500 BP and ending towards 5800 BP.⁹ The maritime unit developed east of the initial spit when the Danube mouths entered under a stronger influence of waves

and nearshore currents, since ca. 6000-5500 BP, creating a landscape dominated by open-coast deltaic lobes.¹⁰

Geoarchaeological Research in the Danube Delta: State of the Art

Tracking the evolution of the Danube Delta is crucial in the context in which this landform was inhabited constantly since the Neolithic period. The spatial distribution of human settlements, reflected in their internal development as well as in their rise and decline, is an indicator not only of the delta's morphogenesis, but also for these area's constraints and potentialities. The fluvial and deltaic sediments are rich archives (bio-indicators, macro-remains, artefacts, etc.) that, corroborated with archaeological data, allow the reconstruction of landscape history. Starting with the foundation of the first Greek colonies (Istros/Histria and Orgame) in this area, the Danube Delta became a hotspot for the circulation of both goods and ideas and thereby, it played a major role in shaping what we call today Balkanic culture. This multidisciplinary study aims to highlight the role of the constraints and the potentialities into the development of the ancient human fluvial and coastal settlements located in such a changing and challenging environment as the Danube Delta.

The study of the relationships between ancient societies and their coastal environment has long been fragmentary in the Black Sea area and mainly in the Danube Delta. In recent

⁵ Vespremeanu-Stroe *et al.* 2017a, 524-26.

⁶ Antipa 1914.

⁷ The ages given by Panin for the beginning of the Danube Delta are 11,700 BP-9800 BP, in Panin *et al.* 1983.

⁸ Giosan *et al.* 2006 date the formation of the Danube Delta around 5200 BP, some 5000 years later than proposed by Panin.

⁹ Vespremeanu-Stroe *et al.* 2017a, 526-34.

¹⁰ Vespremeanu-Stroe *et al.* 2017a, 534-45; 2017b.

years, interdisciplinary and international research teams have started to focus on the geoarchaeological study in the deltaic area, most of the investigations being concentrated on archaeological sites from the Neo-Eneolithic period in Tulcea county.¹¹ For the Graeco-Roman period, two sites constituted the subject of this research: Orgame¹² and Istros.¹³ The only multidisciplinary project of pan-deltaic scope was DELTARCH, 'The Archaeology of the Ancient and Medieval Danube Delta: Modelling Environmental and Historical Change',¹⁴ between 2011 and 2015, based at Alexandru Ioan Cuza University in Iași.

In this general context, a new collaboration started in 2015 between France, Italy and Romania in the framework of the AMIDEX-GEOMED project, 'Geoarchaeology of Mediterranean deltaic environments. A comparative approach including: Turia (Spain), Birgi (Italy), Danube (Romania), Akko (Israel) and Kuban (Russia)', collaboration which continues now under the scheme of the COFUND-DOC2AMU doctoral project 'Environmental Change and Geoarchaeology of the Danube Delta since 6000 years'. The planned research is based on a multidisciplinary approach, including archaeological, historical, geographical, geomorphological and bio-sedimentological data as well as modelling and 3D reconstruction of the delta's human occupation in respect of its geomorphological evolution between the Neolithic and the Middle Ages. Our methodology has been used and developed over two decades.¹⁵ The project presented here integrates sedimentary archives from coastal areas with the archaeological context. Comparative analysis will allow us to cross-examine the economic, social and food supply strategies of the ancient societies that inhabited the Danube Delta in relation to their degree of technical development, hence bring to the fore their adaptability in particularly mobile and changing environments. The stratigraphic sequences in the coastal sedimentary archives comprise, in many places, a clearly identified anthropogenic signature, notably in ancient harbour basins, some of which underwent rapid silting up due to high sediment inputs generated by new agricultural and urban practices since the Bronze Age, inducing, in some cases, successive downstream harbour relocation. Increasing human influence has been, in turn, a dominant driver of change in sediment supply, strongly modulating deltaic development. Human activities in the last 6000 years have determined a transition from a strongly nature-dominated to an increasingly human-dominated environment.¹⁶

In the context of the relative sea level stabilisation around 6000 years ago, the supply of fluvial sediment has been the key agent in mediating human occupation in deltas in general. Understanding and reconstructing the sediment supply's continuity in space and time is rather challenging in light of the involved geomorphological processes: erosion, distributaries' oscillation, lobe-switching, etc.¹⁷ Settlement pattern is a key for a better understanding of these natural processes, as human occupation translates shoreline changes as well as the dynamics of the natural phenomena that have affected the coastline.

Methodology

Deciphering the interdependent relationships between nature and culture begs a multidisciplinary and comparative approach involving archaeology, history, geography, geomorphology and geology. We have combined fieldwork and laboratory research. Our fieldwork is based on coring campaigns, geophysical investigations and archaeological excavations, which are of a paramount importance for obtaining an extensive dataset for our research. For the laboratory work, different type of analyses are performed: every core's sedimentary content, more precisely the granulometry and texture, is analysed. The biological content (micro- and macro-faunal assemblages) is carefully studied the better to define the palaeo-environments; pollen analyses are also performed in order to identify the palaeo-climate and the vegetation cover. Also, analysis of stable isotopes of lead is carried out in order to discriminate more exactly the anthropogenic signature in ancient harbour contexts. The chronological framework is based on radiocarbon dates obtained from the Poznan Laboratory (Poland), CIRCE Laboratory (Italy) and RoAMS Laboratory (Romania).

All these raw data are corroborated with information from archaeological and historical sources (primary sources, inscriptions, etc.), as well as with data from aerial photographs and satellite images, for modelling the diachronic human occupation in rapport with the evolutionary stages of the Danube Delta. The sites taken into account for our research are, from upstream to downstream, Noviodunum, Aegyssus, Halmyris, Enisala, Orgame, Karaburun and Istros. Thus, we shall obtain new local and regional maps, which will translate the geomorphological and as well anthropogenic transformation of the Danube Delta.

In the present paper we render the preliminary results from three of the aforementioned sites: Halmyris, Enisala and Istros.

Halmyris

Halmyris is located on top of low-lying relict cliffs – the Dunavăț promontory – of the ancient Holocene Danube ria and faces the St George arm (Figure 3a), the oldest branch that has had an uninterrupted flow over the last 8000/7500 years.¹⁸ The present-day St George mouth is located approximately 40 km east of Halmyris.

¹¹ Carozza *et al.* 2010; 2012.

¹² The research was conducted in the framework of ANR-Pont Euxin. The geoarchaeological research was led by Christophe Morhange and its results are presented in Bony, Baralis *et al.* 2013; Bony, Morhange *et al.* 2015.

¹³ Hanganu 2012; Preoteasa *et al.* 2012; 2013; Vespremeanu-Stroe *et al.* 2013; <http://histria.geo.unibuc.ro>.

¹⁴ Romanescu 2013; Romanescu *et al.* 2015; www.deltarch.uaic.ro.

¹⁵ For example, the investigations conducted in Marseilles by Morhange (1994; Hesnard 2004; Morhange, Laborel and Hesnard 2001); Miletus (Brückner, Müllenhoff *et al.* 2006; Müllenhoff, Herda and Brückner 2009; Brückner, Herda *et al.* 2014.); Ephesus (Kraft *et al.* 1999; Stöck *et al.* 2013; Steskal 2014; Delile *et al.* 2015); Tyre (Marriner, Morhange *et al.* 2005; Marriner and Morhange 2006; Marriner 2007; Carayon *et al.* 2011); Orgamè (Bony, Baralis *et al.* 2013); Akko/Acre (Morhange, Giaime *et al.* 2016); Morhange, Marriner and Carayon 2016; Morhange, Marriner *et al.* 2016; Marriner, Morhange *et al.* 2017.

¹⁶ Berger and Guilaine 2009.

¹⁷ For further details, Bird 2000, 331-47; Vespremeanu-Stroe *et al.* 2017a, 521-29; Anthony 2017, 37-41.

¹⁸ Vespremeanu-Stroe *et al.* 2017a, 533.

The oldest traces of occupation are dated to the 4th century BC, when the Getae settled on the site of the future fort. Notwithstanding this, the oldest pottery fragment discovered on the site dates back to the 6th century BC, typologically pertaining to the Middle Style II bowl of Oriental style.¹⁹ The first archaeological layer corresponds to the period of the 4th-3rd centuries BC, while the second one corresponds to the dwelling level dated to the 2nd-1st century BC and can possibly be related to a *dava*, a fortified Getic settlement. Regarding the settlement type, scholars suggest that pre-Roman Halmyris could also have been an *emporion*, integrated in the *chora* of Istros or, more probably, in that of Orgame.²⁰ This hypothesis is based on the toponymy (Halmyris is possibly a Greek name, related to the ancient homonymic gulf, which could mean salt water)²¹ and on the Greek pottery discovered (especially amphorae from Chios, Chersonesus and Thassos). Even though the proposal of a Greek foundation in which the Getae mixed with the Greek element is plausible, there is not sufficient archaeological data unequivocally to support it.

During the Early Roman period (1st-3rd century AD), Halmyris played a significant strategic role. Initially an earth fortification (last quarter of the 1st century AD), Halmyris was rebuilt in stone during the 2nd century AD as a fort. The newly built fort had an important role in controlling the last segment of the Danubian *limes*, overseeing the territory between Aegyssus (Tulcea) and the mouth of the St George arm.²²

The most important discoveries dating from this period are eight inscriptions in which a *vicus classicorum* is mentioned.²³ The date of the inscriptions (2nd-3rd century AD) suggests that in this period, near to the *castrum* a civil settlement was founded by the discharged mariners of the *Classis Flavia Moesia*.²⁴

The last phase of occupation covers the interval between the last quarter of the 3rd century AD and the third or fourth decades of the 7th century AD.²⁵ During the Late Roman period, the military character of Halmyris was mixed with civilian dwellings, given the appearance of constructions such as *thermae*. Regarding the harbour, Zosimos (4. 10) informs us that Halmyris was a point of transfer from large maritime vessels to fluvial ones. Moreover, considering the conflicts with the barbarians during the 5th century AD, archaeologists take into account the possibility of the fort also having a military harbour.²⁶ The abandonment of the fort during the first half of the 7th century AD has several aspects. First of all, the change in the composition of the population, attested by the Slavic pottery, indicates a phase of socio-political instability,²⁷ something that is characteristic of the

entirety of Scythia Minor during this period.²⁸ This instability is also perceivable in the decline of urban life, for, at this time, the habitat consists of dugouts built of *spolia* from previous structures.²⁹ As we will see below, we can link these factors with the geomorphological and hydrological changes which took place during the 7th century AD.

The Palaeo-environmental Evolution and the Question of the Harbour

Our research at Halmyris is focused on two main issues: the evolution of the landscape and the identification of possible harbour structures. The core which offered the best insights is HA III, with a length of 575 cm and which is located 100 m in front of the fort's northern gate (Figure 3a, b).

The bio-sedimentological analyses of core HAIII shows five main environments which translate a classic progradational sequence dominated by a marine environment at the base of the core, superposed by fluvial sediments. Starting with the 5th millennium BC, the fluvial progradation led to the development of a floodplain characterised by an amphibious environment, as shown by the organic peat layers recorded in the core and dated between 5210 ± 40 cal BP and 3920 ± 35 cal BP.³⁰ The ages of ca. 6100-5400 cal BP which define the contact between the fluvial muds and the basal peat layers for all three cores (HA I-HA III) are in good agreement with the recent reconstruction of delta plain formation, which indicates that ca. 6000-5500 years ago the deltaic coastline (via the St George arm) advanced beyond the Dunavăț Promontory reaching the open sea and marking the initiation of the first open-coast lobe.

At the top of the peat layer, we identified a sedimentary sequence consistent with a relatively calm freshwater body. The ostracods from this layer attests the presence of slow moving waters coherent with a calm channel between 2400 cal BC and 600 cal AD, that gently flowed in front of the northern gate of the ancient city.³¹ The water depth of this channel was estimated at ca. 175 and 195 ± 10 cm b.s.l.³² The information obtained from the study of core HA III is sustained by the data offered by core HA I, on which the analysis of chironomids (insects, Diptera) was performed.³³ The identified species confirm the presence of a secondary channel of the Danube.³⁴

The first pollen analyses carried out at low resolution on the Halmyris core HA II, between 60 and 840 cm depth, indicate a diversified thermophilous forest with a mixed oak forest (*Quercus*, *Corylus*) associated with *Carpinus* and *Ostrya*. Coniferous forest is also present (*Picea*, *Pinus*, *Abies*). These species are associated with a riparian vegetation with alder and willow. The assemblages show a very woody landscape, with very few herbaceous plants and few elements indicating agricultural practices, which were based mainly on cereal cultivation.

The palaeo-environmental analysis allows us to affirm the presence of a shallow fluvial channel in the northern part of

¹⁹ Suceveanu and Angelescu 1988; Zahariade and Karavas 2015.

²⁰ Zahariade 1991; Suceveanu *et al.* 2003; Zahariade and Karavas 2015.

²¹ For the toponymic discussion, see also Suceveanu and Zahariade 1987; Suceveanu *et al.* 2003; Zahariade and Alexandrescu 2011; Zahariade and Karavas 2015.

²² Suceveanu *et al.* 2003.

²³ Suceveanu and Zahariade 1986; *L'Année Épigraphique* (1988), 987; Zahariade and Alexandrescu 2011, 29-30, no. 6; Matei-Popescu 2016, 217-20,

²⁴ Zahariade and Alexandrescu 2011, 36-38.

²⁵ Suceveanu *et al.* 2003.

²⁶ Suceveanu *et al.* 2003.

²⁷ Zahariade and Phelps 2002; Suceveanu *et al.* 2003

²⁸ Suceveanu and Barnea 1991.

²⁹ Zahariade and Karavas 2015.

³⁰ Giaime 2016.

³¹ Giaime 2016; Vespremeanu-Stroe *et al.* 2017a; 2017b.

³² Giaime 2016.

³³ Magne 2016.

³⁴ Gandouin *et al.* 2006; Magne 2016; Giaime 2016.

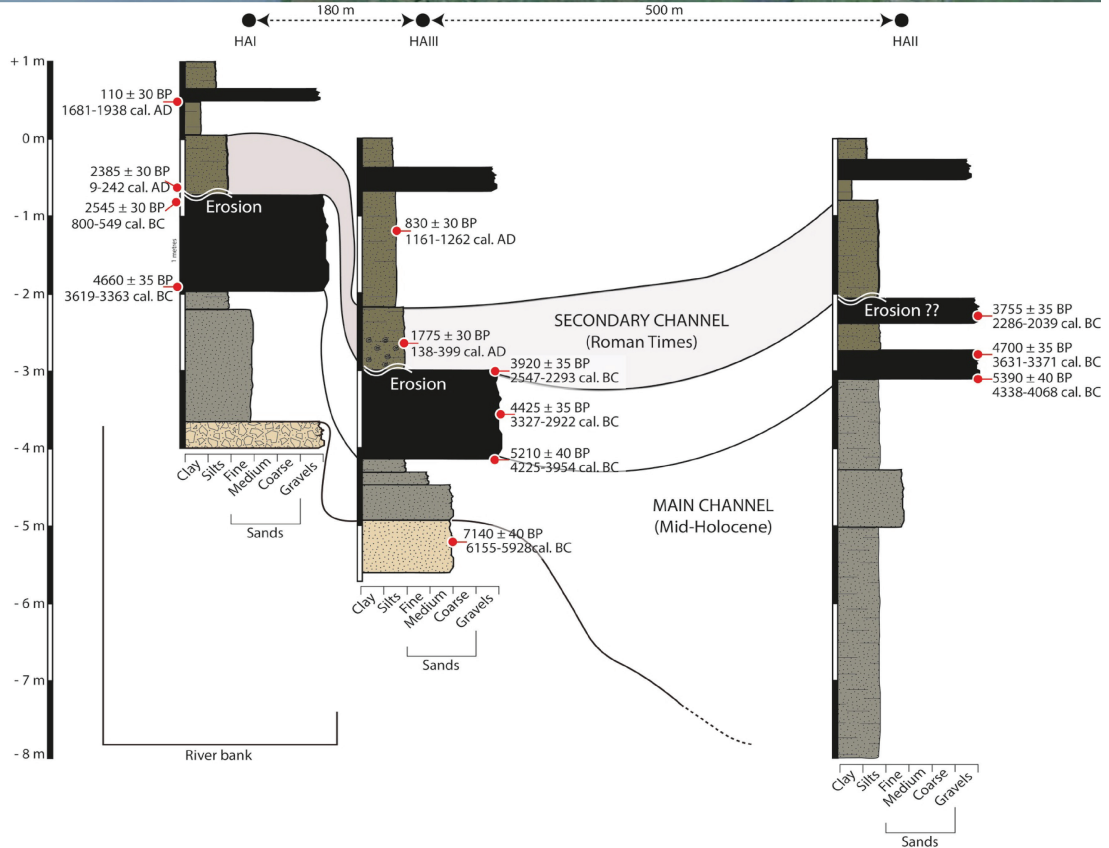


Figure 3: a) Position of Halmyris Fortress on the Dunavăț promontory and the position of the cores; b) The stratigraphy of the cores with the secondary channel unit emphasised (after Giaime 2016).



Figure 4: Trace of the palaeo-meander as seen from Google Earth. In this secondary channel of the St George arm, the harbour structures could have been installed.

the site (Figure 4), as postulated by archaeologists before.³⁵ We might assume that during the Roman period (1st-7th centuries AD) the channel could have been used such as a port-canal. At present, no archaeological structure related to the harbour has been discovered, but human intervention in order to maintain the channel's navigability could be conjectured from the chronological inversions recorded in unit E, core HA III.³⁶ The harbour's confinement due to the disconnection between the secondary channel and the main channel of the St George is contemporaneous with the abandonment of Halmyris during the 7th century AD. Nevertheless, the question of whether the harbour's closure led to the city's abandonment or if the harbour was abandoned because it was no longer used is unclear.

Enisala

Enisala is a village in Tulcea county, located in the northern Dobrudja between the Babadag and Razelm lakes, on whose territory a large volume of archaeological remains from the Neolithic to the Middle Ages have been identified (Figure 5). Considering the density of this material, we positioned core EN I so that the bio-sedimentological data could be correlated with the entire area between the actual village of Enisala and the mediaeval fortress (Figure 5). By contrast with Halmyris, Enisala is located on the proximal margin of the Danube Delta and this site has experienced huge landscape coastal metamorphosis from rocky cliffs to leaky lagoon.

³⁵ Suceveanu *et al.* 2003.

³⁶ Giaime 2016.

The area has been inhabited ever since the Neolithic period: there are traces of dwelling dated to the Neolithic, Bronze Age, Iron Age (one of the largest Getic necropoleis near a Getic settlement), a Roman village probably called a *vicus Novus*, two Romano-Byzantine fortifications and a well-preserved mediaeval fortress.³⁷ The mediaeval fortress, which was founded by the Byzantines and Genoese at the end of the 13th-beginning of the 14th century under the name of Heraklea, was an important harbour in the commercial network of the Black Sea. During the reign of Mircea the Elder (1386-1418) it was included in Wallachia's defensive system and was later conquered by the Ottomans, who renamed it Yeni-Sala. The fortress was abandoned during the 16th century.

The Metamorphosis of the Landscape

Considering the high density of archaeological evidence within this area, we will present it briefly in direct relationship with the metamorphosis of the landscape.

Core EN I is located approximately 1 km north-west of the mediaeval fortress. The stratigraphic sequence measures 15 m long and based on our bio-sedimentological analysis registers six stages of environmental transformation, from 6102 ± 33 cal BP to 391 ± 26 cal BP. The first environmental shift is registered around 6102 ± 33 years BP, when the shallow bay identified at the base of our core (between 15 m and 11 m below soil level), became a brackish lagoon (Figure 6). These findings are in general agreement with an independent recent study which, based on multi-proxy analyses, attests that during the Early

³⁷ Babeş 1971; Baraschi and Cantacuzino 1976; Ailincăi *et al.* 2011.

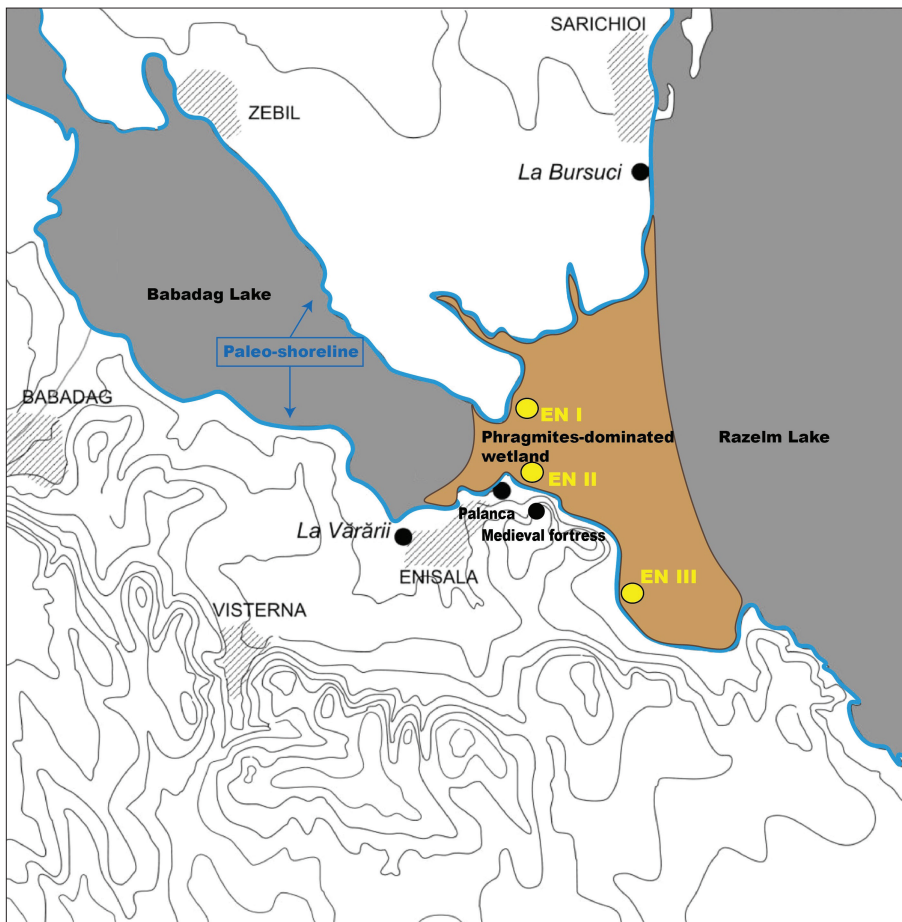


Figure 5: The main Eneolithic sites in Enisala area and the position of the cores (modified after Mihail *et al.* 2012).

Neolithic the first human settlements developed near the Telița-Taița floodplain, which gradually became flooded and turned into brackish marsh and lakes (8000-7500 years ago) in response to the rise in the water table forced by relative sea level rise. Soon after, during 7500-6000 BP interval, the area was transformed into a fully developed marine bay, which is also confirmed by our bio-sedimentological analysis carried on core EN I.

In this milieu, the Neolithic population of Gumelnița culture³⁸ settled in the Enisala area. In respect to the position of our core, we have many archaeological spots, but the most important is the one called La Palancă. It is situated approximately 1.5 km north-east of the village, on the contact zone between the Razelm and Babadag lakes, at the foot of the Gras Hill where the mediaeval fortress was built. Even though the site was noticed in 1947³⁹ and archaeological investigations were conducted in 1979⁴⁰ and during the 2000s,⁴¹ there is little data regarding the Late Neolithic habitation in this area. The research revealed only one archaeological layer specific to the habitation level. The scattered data led the researchers to the hypothesis that the Late Neolithic habitation at Enisala covers a very short timespan.⁴²

³⁸ The main culture of the Dobruđja region during Late Neolithic, which covers the second half of the 5th millennium to the beginning of the 4th millennium BC.

³⁹ Ailincăi and Constantinescu 2008.

⁴⁰ Lăzurcă and Mănușu-Adameșteanu 1980.

⁴¹ Jugănar *et al.* 2004; 2005; 2006; 2007; Mihail *et al.* 2012.

⁴² Mihail *et al.* 2012.

The fact that close to this spot other Late Neolithic traces were discovered, more precisely at La Vărăii (approximately 500 m south-west of La Palancă) and La Bursuci (approximately 4.5 km north of La Palancă), is an indicator of dynamic human activity during this epoch (Figure 5). The main question regarding the Late Neolithic habitations is whether the archaeological traces were poorly preserved because of recent human activity (for example, clay extraction, agriculture, draining, etc.) or are we dealing with some environmental or societal stress that impeached a more powerful human development during Late Neolithic?

An important fluvial activity considering the freshwater ostracod fauna and dated between 5742 ± 34 cal BP – 4799 ± 30 cal BP marks the partial confinement of the lagoon (Figure 6).

The restricted lagoon, formed around 4799 ± 30 cal BP would slowly evolve into a wetland and persist as such up to the Middle Ages (Figure 6). The Bronze Age at Enisala is poorly represented, as generally all over the Dobruđja.⁴³ For the Early and Middle Bronze Age we do not have any discoveries; the first material evidence is dated during the Late Bronze Age, when Coslogeni culture emerges around 14th century BC.⁴⁴ As for the Late Neolithic period, the question regarding the extent and frequency of archaeological discoveries dated

⁴³ Morintz 1972; Lăzurcă 1972; Roman 1986; Irimia 2003; Dobrinescu 2005.

⁴⁴ Morintz and Angelescu 1970.

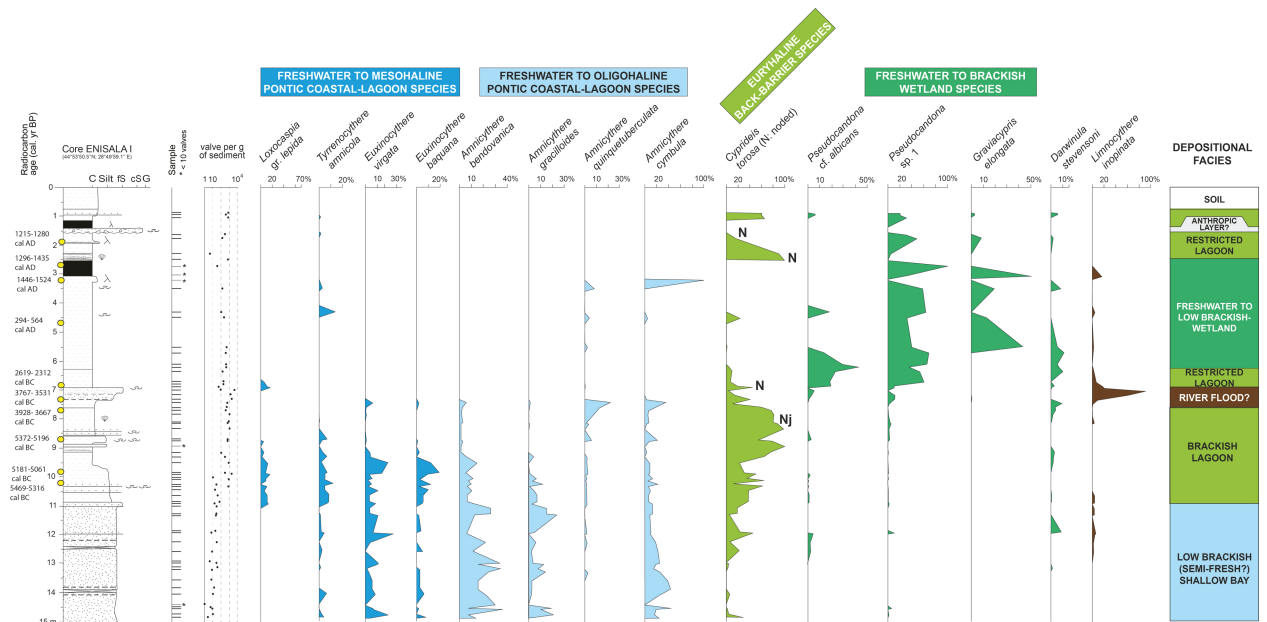


Figure 6: Palaeo-environmental evolution at Enisala based on ostracod fauna and depositional facies (core EN I).

during the Late Bronze Age remains open.⁴⁵ Archaeological remains from Iron Age are more numerous. For the first phase of this period (Babadag culture, 10th century BC-second half of the 7th century BC), the discoveries are concentrated at La Palancă and on the hill where the mediaeval fortress is located. During the second phase (6th/5th century BC-2nd century BC), the majority of archaeological discoveries are of Getic origin. Along with this autochthonous material, we find also Greek artefacts, unsurprising considering the proximity of cities such as Orgame and Istros. One of the most important vestiges of this period is the necropolis, dated to the 4th-3rd century BC, being one of the biggest Getic necropoleis with its architecture and rituals directly influenced by Orgame's necropolis.⁴⁶

Therefore, at La Palancă there is a remarkable uninterrupted period of dwelling since Late Neolithic, with a hiatus during the Early and Middle Bronze Age, while the Getic dwelling settled over the Late Bronze one.

During the Early Roman period (1st-4th century AD), traces of habitation (a large quantity of Roman pottery on the soil surface) were identified at La Biseriçuță site and in the centre of the actual village, as well as at La Palancă.⁴⁷ For the Late Roman period (4th-6th century AD), we have a fortress on a small promontory on the shores of Babadag lake, north-east of the village (La Peșteră site).⁴⁸ In the proximity of the fortress, there is a necropolis dating from the same period.

Until the construction in 1969 of the road between Enisala and Sarichioi, at La Palancă (500 m north-east of La Peșteră)

there was a small fortress (*castellum*), with the dimensions 35 x 40 m, with *fossa* and *vallum*, also Late Roman in date.⁴⁹ Today some traces of it are visible.⁵⁰

An important discussion concerning Enisala during the Roman period is if it was the location of a *vicus Novus*. In the 19th century, an inscription dated in the 3th century AD and mentioning *vicus Nov(us)* was discovered at Babadag (7 km north-west of Enisala). Since then, whether the Roman village was located at Enisala or at Babadag has been debated, considering that there are many instances of inscriptions not discovered in their original place. In support of Enisala, A. Barnea underlines the toponymic continuity: *vicus Nov(us)* – Novó – Novoe Selo – Yeni Sale – Enisala.⁵¹ G. Nuțu, in an article from 2009, argues that even though this hypothesis is very attractive, we cannot ignore the hiatus between the inscription's date and the foundation of Yeni Sale (13th century AD).⁵²

The last transformation of the environment is dated to 565±52 cal BP (Figure 6, core EN I), respectively to 460 cal BP, when the abundant sediment supply derived from massive deforestation and intensive land-use in the Middle Ages finally led to the clogging of the lacustrine area between the Babdag and Razelm lakes and the recent installation of *Phragmites Australis* marsh through which artificial navigation channels are preserved.⁵³ The equivalent age of 1420-1560 cal AD,⁵⁴ corresponds to the last phase of the mediaeval fortress. The former conditions (lagoon) could have been one of the factors encouraging the Genoese to erect here a fortress and a harbour, considering that accessibility to the

⁴⁵ For the discussion concerning the demographic issue during Bronze Age mainly in southern Romania, but also in the Dobruđa region, see Schuster 2011. The author emphasises not only the geographic-climatic influence, but also the nomadic way of life, as well as an unequal repartition of contemporary research.

⁴⁶ Lungu 2010.

⁴⁷ Stănică *et al.* 2005-06.

⁴⁸ Iacob *et al.* 2006.

⁴⁹ Nuțu 2009, 124.

⁵⁰ În Ștefan 1977. On an aerial photograph from 1969 there are still visible the traces of a defensive wall: Nuțu 2009.

⁵¹ Barnea 1998.

⁵² Nuțu 2009.

⁵³ Preoteasa *et al.* 2019.

⁵⁴ Vespremeanu-Stroe *et al.* 2013; 2017b.

open sea was of paramount importance for a commercial and maritime society such as theirs. Also, the poor traces of human occupation from previous periods, especially from the Graeco-Roman period when to the north we have the Roman fortress of Halmyris and to the south the Greek city of Orgame, could indicate that the constraints of the environment hindered a more extensive development of human occupation.

Important information about the landscape's transformation comes from mediaeval written sources regarding maritime and fluvial transport in the Danube Delta. Even though the Genoese preferred to use *bastarda*, a narrow galley with high decks, in the Danube Delta they used *ciguti*, a hybrid type of cargo ship.⁵⁵ Moreover, at Killia, also a Genoese fortress built on the Chilia branch, another type of ship was used: *pamfyloi*, a round-hulled vessel that served to ferry war machines and horses, oar- and sail-powered (between 130 and 160 oarsmen).⁵⁶ The fact that the Genoese used small and round-hulled vessel in this area is an indicator of a shallow but navigable water column.

Istros/Histria

The ancient city of Istros is located on the southern margin of the Razelm-Sinoe lagoon system close by the southern limit of the Danube Delta. This area is defined by the coexistence of distinct geomorphological units, namely two major beach ridge plains (Saele, where Istros is located, and Chituc), sandy barriers (Lupilor) and shallow lakes (Sinoe on the east, Istria and Nuntași on the west) interconnected by natural and artificial channels. The main sedimentary input came from the St George's branch, via the Dunavăț (Peuce) channel which, before its canalisation in 1912, represented a secondary distributary.⁵⁷

The intense coastal progradation (14-20 m/year) of the Istros region associated with a local high discharge of the Dunavăț branch and with the New Dunavăț lobe development (2000-1300 years BP), along with the longshore currents, led to the rapid formation (10-15 m/year: 1000-720 cal BP) of the eastern unit of Saele beach ridge plain, with a maximum length of 9.5 km and a width of 3 km.

The older unit, Saele West, is OSL dated to 5000-2730 cal BP⁵⁸ and connects the green schist palaeo-island (where Istros' Acropolis is located) to the continent. The existence of this coastal plain before the foundation of the city by the Milesians in the second half of the 7th century BC is supported by geomorphological evidence⁵⁹ as well as by archaeological data, as we can see from the dwelling structures dated to the Archaic period (end of 7th-5th century BC), which are built directly on the sand on the Western Plateau.⁶⁰

The continuous occupation of almost 1300 years, which can be grouped into five main archaeological periods, has been

the subject of numerous studies and monographs⁶¹ and, therefore, it will not constitute a topic of the present paper.

Environmental Changes and the Question of the Location of the Harbour Basin(s)

Since the beginning of research at Istros, the issue of landscape transformation and the identification of the harbour were topics of debate. From archaeologists to geographers and geoarchaeologists, different reconstructions were proposed,⁶² none of them unanimously accepted. Identifying the ancient harbour basins is of paramount importance from a palaeo-environmental point of view, as we can clearly delimitate the palaeo-shorelines, but also for the question of coastal progradation: this geomorphological process implies a 'race to the sea' of Istros' harbour(s).

Up to the present, our research at Istros is the first with an integrated approach, as we have managed to corroborate three different methods of investigation: long continuous cores and bio-sedimentological analysis, geophysical survey, and archaeological excavation.

After the first campaign in 2015, in 2017 we undertook 25 more cores (Figure 7a, b), having altogether 29. Based on bio-sedimentological analysis from 2015⁶³ and on the stratigraphical and sedimentological observations made in the field, we proposed a preliminary palaeo-environmental reconstruction and a possible location for the harbour basins (Figure 8). During the Archaic period, we might have a first phase anchorage on a pocket beach, open to the Black Sea, most probably located south from the green schist island, considering the main direction of the storm waves (north-easterly) on the western Pontic coast and the prevalence of northern winds.⁶⁴ Nevertheless, in core HIS XXIII, located in the north-western corner of the island, we identified a stratigraphic sequence quite similar to that identified to the south (cores HIS V, HIS VI, HIS VII), so the possibility of another anchorage spot on the northern side of the island should not be ruled out. A harbour basin could also have been located in the north-western part of the site in the so-called Sărătura spot.

Another important question raised after our field observations is related to the communication between the two nuclei of habitation: the Acropolis (palaeo-island) and the Western Plateau (Old Saele BRP). As we remarked, with the presence of a body of water to the south as well to the north, we attempted to find the route of circulation between the two nuclei. Hence, we took two cores (HIS X and HIS XX) in the more auspicious area, a ridge that forms the northern limit of the Sărătura Basin (Figure 9a), whence communication could have been made and we discovered a completely different sedimentological sequence from the other cores. This led us to the hypothesis of the existence of a dam or causeway linking the two urban nuclei. With the

⁵⁵ Atanasiu 2006.

⁵⁶ Atanasiu 2006.

⁵⁷ Antipa 1914; Hanganu 2012, 24; Vespremeanu-Stroe *et al.* 2013, 248.

⁵⁸ Hanganu 2012; Preoteasa *et al.* 2013; Vespremeanu-Stroe *et al.* 2013.

⁵⁹ Hanganu 2012; Preoteasa *et al.* 2013; Vespremeanu-Stroe *et al.* 2013; Bivolaru 2016.

⁶⁰ Dimitriu 1966, 27-37.

⁶¹ For the history of research, see Angelescu and Avram 2014.

⁶² Moisil 1909; Pârvan 1915; 1916; Lambrino 1938; Condurachi 1954; Canarache 1956; Bleahu 1963; Coteț 1966; Adameșteanu 1967; Alexandrescu 1970; Ștefan 1987; Bounegru 1988; Höckmann, Peschel and Woehl 1996-98; Dabîca 2011; Hanganu 2012; Preoteasa *et al.* 2013; Vespremeanu-Stroe *et al.* 2013.

⁶³ Bivolaru 2016.

⁶⁴ Dinu *et al.* 2013; Zăinescu *et al.* 2017.

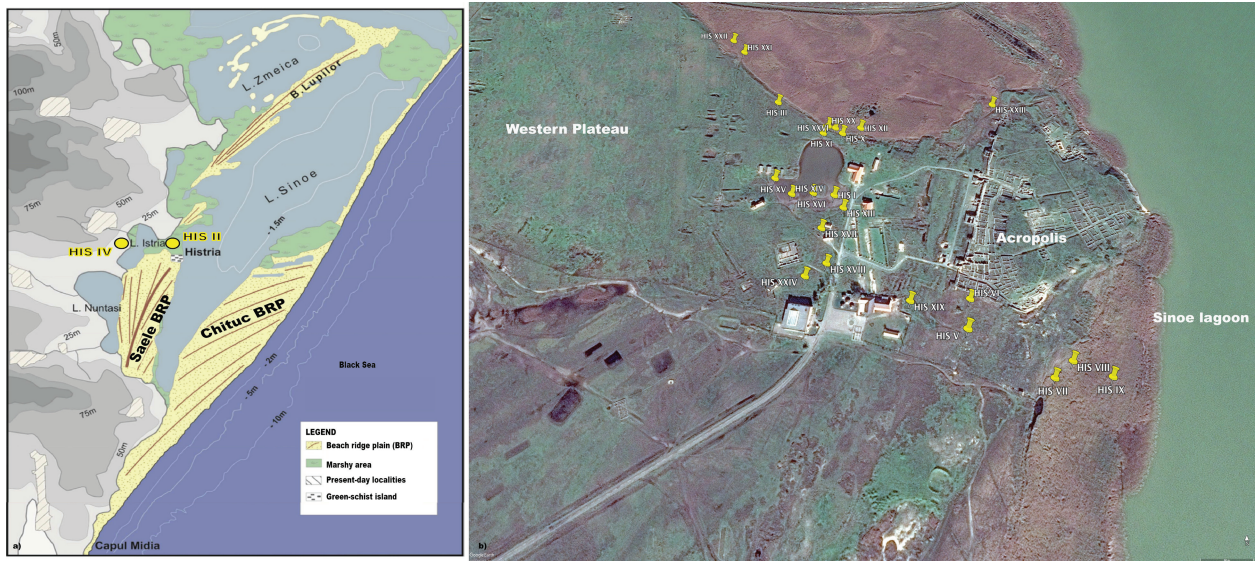


Figure 7: a) Geomorphological map of Istros region (modified after Hanganu 2012, 24) with the position of cores HIS II and HIS IV; b) The position of the cores on the archaeological site.



Figure 8: Proposition of reconstruction of the harbour basins at Istros, based on the stratigraphic observations made during the fieldwork. This hypothesis will be tested by our further bio-sedimentological and geochemical analyses (UAV photography: A. Asăndulesei).

help of a team from ARHEOINVEST, led by Dr Asăndulesei, geophysical investigations (GPR and ERT) were effectuated along the dam/causeway area (Figure 9b). By comparing the geophysical data with the stratigraphy obtained from the cores, we decided to start an archaeological excavation for checking the functionality of the area. Therefore, a trench was excavated: 17 m long orientated north to south (perpendicular on the ridge) with a width of 2 m and a depth of 1.8 m (Figure 10). We discovered three superposed archaeological structures with a north-west to south-east orientation and fashioned just on the western side. Based

on the archaeological material, these can be dated between the Hellenistic period (4th century BC) and the Early Roman (1st century AD). We did not find any archaeological material from the Late Roman period. This is an important indication, as we can deduce that the area was by then no longer useful for some reason or another (economic, environmental?). The use of these structures is still unclear: the small width of the trench has inhibited interpretation. Nevertheless, we took a core (HIS XXVII) inside the trench and another one (HIS XXVIII) at its northern limit in order to see if the dwelling continues under these structures, and we found

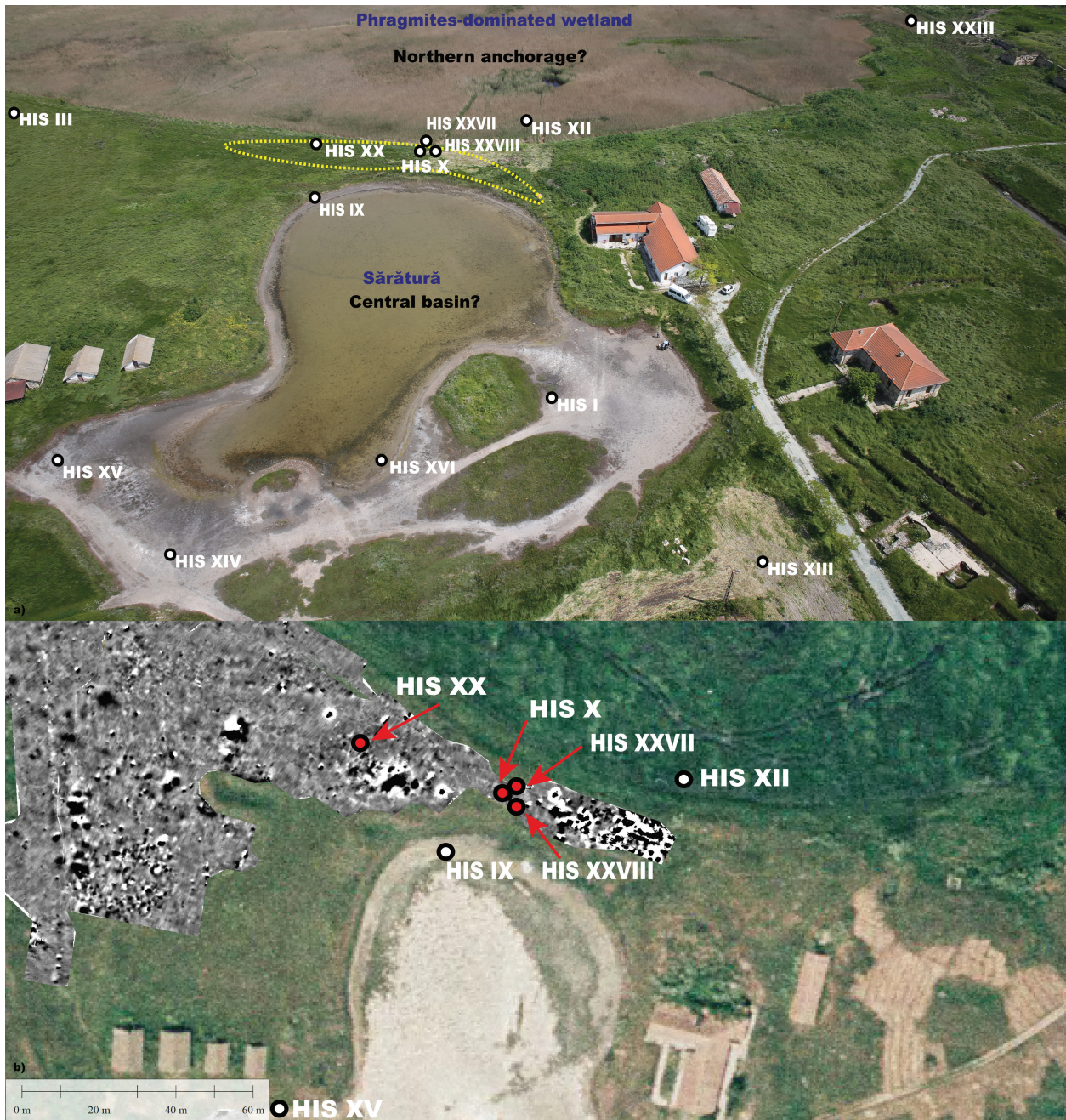


Figure 9: a) Sărătură spot with the position of the cores; the ridge is punctuated in yellow.
 b) Geophysical investigations (electromagnetism) on the ridge and Western Plateau
 (© A. Asăndulesei).

archaeological material⁶⁵ for another metre. The continuation of this excavation in future years is of fundamental importance, as it can test the working hypothesis presented above.

Questions and perspectives

As one can observe, a multidisciplinary approach is relevant in archaeological research in coastal areas from at least two points of view: (1) by corroborating historical, bio-

sedimentological and geophysical data, etc., we are better able to contextualise the archaeological record in a coastal environment; (2) we can examine the economic, social and spatial strategies of these societies in relation to their degree of technical development and hence bring to the fore their adaptability in particularly mobile and changing environments.

Although some preliminary responses were offered by our research, there are still many questions that need to be answered at. An important factor that needs to be taken into account by readers of this paper is the stage of our research. Considering that we took a rather impressive number of cores during the 2017 campaign, more results will be revealed in

⁶⁵ The pottery sherds identified in the cores are impossible to determine due to the fact that they are just atypical fragments, thus a chronology could not be established.



Figure 10: Archaeological excavations on the ridge. We can easily remark the same north-west to south-east orientation of the three structures.

the near future, not just for the sites presented here, but also at a regional scale, for the entire Danube Delta.

Considering the sites, for Halmyris, one of the topics is the trajectory of the palaeo-channel, another is the existence or not of some artificial harbour structures (quays or docks) along the palaeo-riverbanks. The palaeo-ecological study of core HA II will improve evidence of higher resolution changes in eco- and agrosystems. For the palaeo-environmental question, another core was instituted in order to reinforce our results; for the archaeological question, geophysical and archaeological investigations are wanted to determine clearly the existence of a harbour setting.

In the proximal margin of the Delta, in Enisala, we obtained a local-scale palaeo-environmental image in which the anthropogenic impact is hardly sizable. Hence, two other cores were undertaken in the marshy area at the base of the La Palancă site and at the base of Grass Hill, where the mediaeval fortress is located, to obtain a more discriminating picture of the human impact on the environment. Also, a comparison with a core located 1.2 km west of EN I is about

to be finalised, towards a comparative approach of landscape metamorphosis, as this other core is situated further inland than EN I.

For Istros, our preliminary hypothesis presented here will be toughened by bio-sedimentological analysis, as well as by a more robust chronology. As mentioned before, the archaeological excavation needs to be continued, on a larger surface, to offer a more elaborate interpretation.

At a regional scale, the questions of where, when and how ancient societies transformed their deltaic environment form the basis of our research – and how, conversely, this environment restrained or favoured the evolution of these societies. In this respect, we long to distinguish the spatial extent and frequency of these changes by investigating the aforementioned archaeological sites, located in key positions, that may hold new insights into how the history and geomorphological environment of coastal civilisations were interconnected during the Holocene, in the context of deltaic zones.

Archaeological site	Lab code	Sample n°	Depth (cm)	Material	Conventional Age BP	Age cal. BP (2σ)	Age cal. BC/AD (2σ)	Marine reservoir age (Siani et al. 2000)
Halmyris	Poz-79628	HAI(55-60)	55-60	Peat	110(30)	12 - 269 BP	1681-1938 AD	
Halmyris	Poz-79629	HAI(157-163)	157-163	Plan remains	900(30)	740-911 BP	1039 - 1210 AD	
Halmyris	Poz-79163	HAI(157-163)	157-163	Marine shell (<i>Cerastoderma glaucum</i>)	2385(30)	1708 - 1941 BP	9 - 242 AD	498(41)
Halmyris	Poz-79630	HAI(170-175)	170-175	Peat	2545(30)	2498 - 2749 BP	800 - 549 BC	
Halmyris	Poz-79631	HAI(295-300)	295-300	Peat	4660(30)	5315 - 5467 BP	3518 - 3366 BC	
Halmyris	Poz-83374	HAI(225-230)	225-230	Peat	3775(35)	3498 - 3701 BP	2288 - 2039 BC	
Halmyris	Poz-83375	HAI(276-280)	276-280	Charcoal	4700(35)	5320 - 5580 BP	3631 - 3371 BC	
Halmyris	Poz-83376	HAI(310-313)	310-313	Charcoal	5390(40)	6017 - 6287 BP	4338 - 4068 BC	
Halmyris	Poz-81693	HAI(60-63)	60-63	Peat	1230(30)	1069 - 1261 BP	689 - 802 AD	
Halmyris	Poz-79633	HAI(120-125)	120-125	Plant remains	830(30)	688 - 789 BP	1161 - 1262 AD	
Halmyris	Poz-81694	HAI(245-250)	245-250	Organic sediment	1930(30)	1820 - 1946 BP	4 - 130 AD	
Halmyris	Poz-79655	HAI(270-275)	270-275	Charcoal	1775(30)	1611 - 1812 BP	138 - 339 AD	
Halmyris	Poz-81695	HAI(275-280)	275-280	Charcoal	2585(35)	2510 - 1770 BP	821 - 561 BC	
Halmyris	Poz-79656	HAI(300-305)	300-305	Charcoal	3920(35)	4242 - 4496 BP	2547 - 2293 AD	
Halmyris	Poz-79657	HAI(355-360)	355-360	Peat	4425(35)	4871 - 5276 BP	3327 - 2922 BC	
Halmyris	Poz-81696	HAI(405-410)	405-410	Peat	5210(40)	5903 - 6174 BP	4225 - 3954	
Halmyris	Poz-79659	HAI(470-480)	470-480	Organic material	5125(35)	5749 - 5939 BP	3990 - 3800 BC	
Halmyris	Poz-79164	HAI(530-540)	530-540	Freshwater shell (<i>Dreissena polymorpha</i>)	7170(40)	7877 - 8104 BP	6155 - 5928 BC	498(41)
Enisala	RoAMS-519.67	EN_I_195	195	Typha	776(28)	525 - 636 BP	1314 - 1425 AD	
Enisala	RoAMS-518.67	EN_I_245-240	245-240	Marine shell (<i>Cerastoderma glaucum</i>)	391(26)	139 - 227 BP	1723 - 1811 AD	Not applicable
Enisala	RoAMS-517.67	EN_I_320	320	Vegetal remains	379(27)	427 - 504 BP	1446 - 1523 AD	
Enisala	RoAMS-616.67	EN_I_460-455	460-455	Marine shell (<i>Cerastoderma glaucum</i> and fragments)	2473(27)	1928 - 2120 BP	171 BC - 22 AD	498(41)
Enisala	RoAMS-515.67	EN_I_695-690	695-690	Marine shell (<i>Cerastoderma glaucum</i> and fragments)	4799(30)	4852 - 5043 BP	3094 - 2903 BC	498(41)
Enisala	RoAMS-514.67	EN_I_740	740	Marine shell (<i>Cerastoderma glaucum</i> and fragments)	5742(31)	5984 - 6195 BP	4246 - 4035 BC	498(41)
Enisala	RoAMS-513.67	EN_I_775-770	775-770	Marine shell (<i>Cerastoderma glaucum</i> and fragments)	5872(34)	6172 - 6307 BP	4358 - 4223 BC	498(41)
Enisala	DSH7733_SH	EN_I_870-875	870-875	Marine shell (<i>Cerastoderma glaucum</i>)	6280(56)	6493 - 6795 BP	4846 - 4544 BC	498(41)
Enisala	RoAMS-512.67	EN_I_990-985	990-985	Charcoal	6216(33)	6781 - 6972 BP	5023 - 4832 BC	
Enisala	RoAMS-511.67	EN_I_1010-1005	1010-1005	Charcoal	6392(33)	6996 - 7212 BP	5263 - 5047 BC	
Enisala	RoAMS-510.67	EN_I_1050-1045	1050-1045	Charcoal	6102(34)	6658 - 6807 BP	4858 - 4709 BC	
Istros	RoAMS-526.67	HIS_I_156-155	156-155	Wood	5653(33)	6391 - 6498 BP	4549 - 4442 BC	
Istros	RoAMS-525.67	HIS_I_168-158	168-158	Charcoal	2969(29)	3056 - 3227 BP	1278 - 1107 BC	
Istros	Poz-78016	HIS-I-2 168-169	168-169	Organic matter	4230(35)	4800- 4860 BP	2911 - 2851 BC	
Istros	RoAMS-524.67	HIS_I_492-490	492-490	Wood	7045(34)	7826 - 7958 BP	6003 - 5873 BC	
Istros	Poz-78019	HIS-I-4 496-500	496-500	Organic matter	3745(35)	3984 - 4162 BP	2213 - 2035 BC	
Istros	Poz-78020	HIS-I-5 563-567	563-567	Organic matter	9520(50)	10659 - 10902 BP	8953 - 8710 BC	
Istros	RoAMS-523.67	HIS_I_577-567	577-567	vegetal remains	4331(32)	4842 - 4970 BP	3021 - 2893 BC	
Istros	Poz-78021	HIS-I-6(1) 640-650	640-650	Organic matter	3820(35)	4141 - 4300 BP	2351 - 2192 BC	
Istros	Poz-78333	HIS-I-6(2) 640-650	640-650	Marine shell	3110(30)	2139 - 2428 BP	479 - 190 BC	498(41)
Istros	RoAMS-522.67	HIS-I-660-650	660-650	Wood	4706(32)	5322 - 5419 BP	3470 - 3373 BC	
Istros	Poz-78334	HIS-II-2 100-123	100-123	Marine shell (<i>Abra alba</i>)	3780(30)	2947 - 3264 BP	1315 - 998 BC	498(41)
Istros	Poz-78335	HIS-II-2 180-190	180-190	Marine shell (<i>Abra alba</i>)	4305(35)	3600 - 3898 BP	1949 - 1651 BC	498(41)
Istros	Poz-78337	HIS-II-3 260-280	260-280	Marine shell (<i>Abra alba</i>)	4015(30)	3290 - 3543 BP	1594 - 1341 BC	498(41)
Istros	Poz-78338	HIS-II-3 370-380	370-380	Marine shell (<i>Abra alba</i>)	3585(30)	2741 - 2988 BP	1039 - 792 BC	498(41)
Istros	Poz-78022	HIS-III-2 190-200	190-200	Organic matter	2305(30)	2306 - 2357 BP	408 - 357 BC	
Istros	Poz-78023	HIS-III-3 316	316	Organic matter	2150(30)	2039 - 2183 BP	234 - 90 BC	
Istros	Poz-78025	HIS-III-3 355-365	355-365	Organic matter	2250(30)	2156 - 2267 BP	318 - 207 BC	
Istros	RoAMS-528.67	HIS_III_355-365	365-355	Wood	2196(28)	2140 - 2312 BP	363 - 191 BC	

Table 1:
Radiocarbon
determinations
and
calibrations.

Bibliography

- Adameșteanu, D. 1967: Review of Condurachi 1966. *Archeologia Classica* 19.2, 374-80.
- Ailincăi, S. and Constantiescu, M. 2008: 'O groapă cu oseminte umane descoperite în așezarea culturii Babadag de la Enisala-Palanca'. In Ailincăi, S., Micu, C. and Mihail, F. (eds.), *Omagiu lui Gavrilă Simion la a 80-a aniversare* (Tulcea), 121-32.
- Ailincăi, S.C., Jugănar, G., Țârlea, A., Mihail, F., Vernescu, M. and Ailincăi, A. 2011: 'Noi date referitoare la așezarea culturii Babadag de la Enisala-Palanca, com. Sarichioi, jud. Tulcea. Cercetările arheologice din perioada 2003-2006'. *Revista Arheologică* 7.1-2, 157-99.
- Alexandrescu, P. 1970: 'Peisajul histrian în Antichitate'. *Pontica* 3, 77-85.
- Angelescu, M.V. and Avram, A. 2014: 'Histria – un siècle de recherches'. *Materiale și cercetări arheologice* n.s. 10, 35-49.
- Anthony, E.J. 2009: *Shore Processes and Their Palaeoenvironmental Applications* (Amsterdam).
- Antipa, G. 1914: 'Câteva probleme științifice și economice privitoare la Delta Dunării'. *Analele Academiei Române. Memoriile Secțiunii Științifice* 2, 36.
- Atanasiu, A. 2006: 'Nave venețiene și genoveze în bazinul pontic'. In Cristea, O. (ed.), *Marea Neagră. Puteri maritime – Puteri terestre (sec. XIII-XVIII)* (Bucharest), 50-75.
- Babeș, M. 1971: 'Necropola daco-romană de la Enisala'. *Studii și Cercetări de Istorie Veche* 22.1, 19-45.
- Baraschi, S. and Cantacuzino, G.I. 1976: 'Cercetările arheologice din cetatea de la Enisala'. *Peuce* 7, 459-71.
- Barnea, A. 1998: 'Aspects ethniques dans la vie rurale de la Dobroudja romaine (Mésie Inférieure)'. In Baumann, V. H. (ed.), *La politique éditiltaire dans les provinces de l'Empire romain IIème-IVème siècles après J.-C.* (Tulcea), 213-228.
- Berger, J.F. and Guilaine, J. 2009: 'The 8200 cal BP abrupt environmental change and the Neolithic transition: A Mediterranean perspective'. *Quaternary International* 200, 31-49.
- Bird, E. 2000: *Coastal Geomorphology: An Introduction* (Chichester).
- Bivolaru, A. 2016: *Analiza geoarheologică a mobilității paleomediului litoral. Studiu de caz: NV cetății Histria* (Bucharest).
- Bleahu, M. 1962: 'Observații asupra evoluției zonei Histria în ultimele trei milenii'. *Probleme de geografie* 9, 45-56.
- Bony, G., Baralis, A., Lungu, V., Marriner, N. and Morhange, C. 2013: 'Mobilité des paysages et stratégies coloniales au sud du delta du Danube: La colonie grecque d'Orgamè/Argamum (Jurilovca, Département de Tulcea, Roumanie)'. In Saint Martin, J.P. (ed.), *Recherches croisées en Dobrogea* (Bucharest), 133-56.
- Bony, G., Carayon, N., Flux, C., Marriner, N., Morhange, C. and Fourrier, S. 2016: 'Évolution paléo-environnementale de la baie de Kition: mise en évidence d'un possible environnement portuaire (Larnaca, Chypre)'. In Sanchez, C. and Jézégou, M-P. (eds.), *Actes du Colloque International Les Ports dans L'Espace Méditerranéen Antique* (Montpellier), 2-11.
- Bony, G., Morhange, C., Marriner, N., Baralis, A., Kaniewski, D., Rossignol, I. and Lungu, V. 2015: 'History and influence of the Danube delta lobes on the evolution of the ancient harbor of Orgame (Dobrogea, Romania)'. *Journal of Archaeological Science* 61, 186-203.
- Bounegru, O. 1988: 'Portul Histriei în antichitate'. *Studii Clasice* 26, 67-79.
- Brückner, H., Herda, A., Müllenhoff, M., Rabbel, W. and Stümpel, H. 2014: 'On the Lion Harbor and other Harbors in Miletos: recent historical, archaeological, sedimentological and geophysical research'. In Frederiksen, R. and Handberg, S. (eds.), *Proceedings of the Danish Institute at Athens 7* (Aarhus), 49-105.
- Brückner, H., Kelterbaum, D., Marunchak, O., Porotov, A. and Vött, A. 2010: 'The Holocene sea level history since 7500 BP. Lessons from the eastern Mediterranean, the Black and Azov seas'. *Quaternary International* 225.2, 299-319.
- Brückner, H., Müllenhoff, M., Gehrels, R., Herda, A., Knipping, M. and Vott, A. 2006: 'From archipelago to floodplain – geographical and ecological changes in Miletus and its environs during the past six millennia (Western Anatolia, Turkey)'. *Zeitschrift für Geomorphologie* n.s., Suppl. 142, 63-83.
- Canarache, V. 1956: 'Observații noi cu privire la topografia Histriei'. *Studii și Cercetări de Istorie Veche* 7.2-3, 289-315.
- Carayon, N., Marriner, N. and Morhange, C. 2011: 'Geoarchaeology of Byblos, Tyre, Sidon and Beirut'. *Rivista di Studi Fenici* 1, 45-56.
- Carozza, L., Micu, C., Burens, A., Mihail, F., Carozza, J.M., Mihai, F., Ailincăi, S., Furestier, R., Haită, C., Bălășescu, A. and Radu, V. 2010: 'Le projet delta du Danube: Société et environnement durant le Néolithique et les âges des métaux dans le delta du Danube'. *Peuce* n.s. 8, 9-26.
- Carozza, L., Micu, C., Carozza, J.M., Bălășescu, A., Haită, C., Radu, V., Burens, A., Furestier, R., Mihail, F., Ailincăi, S. and Florea, M. 2012: 'L'habitat chalcolithique de Taraschina et le peuplement ancien du delta du Danube: implications paléo-géographiques'. In Carozza, L., Bem, C. and Micu, C. (eds.), *Société et environnement dans la zone du bas Danube durant le 5ème millénaire avant notre ère* (Bucharest), 409-13.
- Condurachi, E. (ed.) 1954: *Histria I: Monografie arheologică* (Bucharest).
- , (ed.), *Histria 2: Monografie arheologică* (Bucharest).
- Coteș, P.V. 1966: 'Țărnuțul Mării Negre și evoluția lui în timpurile istorice (cu privire specială asupra regiunii Histria)'. In Condurachi 1966, 337-52.
- Dabîca, M. 2011: *Instalații portuare în cetățile greco-romane de pe țărmul Pontului Euxin* (Bucharest).
- Delile, H., Blichert-Toft, J., Goiran, J.P., Stock, F., Arnaud-Godet, F., Bravard, J.P., Brückner, H. and Albaredo, F. 2015: 'Demise of a harbor: a geochemical chronicle from Ephesus'. *Journal of Archaeological Science* 53, 202-13.
- Dimitriu, S. 1966: 'Cartierul de locuințe din zona de vest a cetății în epoca arhaică. Săpături 1955-1960'. In Condurachi 1966, 19-133.
- Dinu, I., Bajo, M., Lorenzetti, G., Umgieser, G., Zaggia, L., Maximov, G. and Stănică, A. 2013: 'Discussion concerning the current circulation along the Romanian Black Sea coast'. *Geo-Eco-Marina* 19, 17-37.
- Dobrincescu, C. 2005: 'Noi puncte de vedere privind cronologia bronzului târziu și a începutului epocii fierului în Dobrogea'. *Studii de Preistorie* 2, 203-06.
- Gandouin, E., Maasri, A., Van Vliet-Lanoë, B. and Franquet, E. 2006: 'Chironomid (Insecta: Diptera) assemblages from a gradient of lotic and lentic waterbodies in river floodplains of France: a methodological tool for paleoecological applications'. *Journal of Paleolimnology* 35, 149-66.

- Giaime, M. 2016: *Géoaarchéologie des ports antiques en contextes deltaïques: quelques exemples de Méditerranée et de mer Noire* (Aix-en-Provence).
- Giosan, L., Donnelly, J.P., Constantinescu, Ș., Filip, F., Ovejanu, I., Vespremeanu-Stroe, A., Vespremeanu, E. and Duller, G.A.T. 2006: 'Young Danube delta documents stable Black Sea level since the middle Holocene: Morphodynamic, palaeogeographic and archaeological implications'. *Geology* 34.9, 757-60.
- Hanganu, D. 2012: *Histria - Studiu de geoaarcheologie* (Bucharest).
- Hesnard, A. 2004: 'Terre submergée, mer enterée: une géoaarchéologie du port antique de Marseille'. In De Maria, L. and Turchetti, R. (eds.), *Evolución paleoambiental de los puertos y fondeaderos antiguos en el Mediterráneo occidental* (Soveria Mannelli), 3-29.
- Höckmann, O., Peschel, G. and Woehl, A. 1996-98: 'Zur Lage des Hafens von Histria. Die Prospektionskampagne von 1996'. *Dacia* n.s. 60-62, 55-102.
- Iacob, M., Nuțu, G. and Paraschiv D. 2006: 'Enisala, com. Sarichioi, jud. Tulcea, Punct: Peștera'. *Cronica Cercetărilor Arheologice din România, Campania 2005*, 154.
- Irimia, M. 2002-03: 'Observații privind stadiul cercetării Bronzului Timpuriu în Dobrogea'. *Pontica* 35-36, 35-51.
- Jugănar, G., Ailincăi, S. and Stănică, A. 2004: 'Enisala, com. Sarichioi, jud. Tulcea, punct Palancă'. *Cronica Cercetărilor Arheologice din România, Campania 2003*, 118-19.
- Jugănar, G., Ailincăi, S., Stănică, A. and Pencu-Marc, V. 2005: 'Enisala, com. Sarichioi, jud. Tulcea, Punct: Palancă'. *Cronica Cercetărilor Arheologice din România, Campania 2004*, 144.
- Jugănar, G., Ailincăi, S., Țârlea, A. and Vernescu, M. 2007: 'Enisala, com. Sarichioi, jud. Tulcea, Punct: Palancă'. *Cronica Cercetărilor Arheologice din România, Campania 2006*, 145-46.
- Jugănar, G., Ailincăi, S., Țârlea A., Vernescu, M. and Pencu-Marc, V. 2006: 'Enisala, com. Sarichioi, jud. Tulcea, Punct: Palancă'. *Cronica Cercetărilor Arheologice din România, Campania 2005*, 153-54.
- Kaniewski, D., Van Campo, E., Morhange, C., Guiot, J., Zviely, D., Shaked, I., Otto, T. and Artzy, M. 2013: 'Early urban impact on Mediterranean coastal environments'. *Scientific Reports* 3, #3540.
- Kelterbaum, D., Brückner, H., Porotov, A., Schlotzhauer, U. and Zhuravlev, D. 2011: 'Geoarchaeology of Taman Peninsula (Kerch Strait, South-West Russia) – the Example of the Ancient Greek Settlement of Golubitskaya 2'. *Die Erde* 143.3, 235-58.
- Kraft, J.C., Brückner, H., Kayan, I. and Engelmann, H. 2006: 'The geographies of ancient Ephesus and the Artemision in Anatolia'. *Geoarchaeology* 22, 121-49.
- Lambrino, M.F. 1938: *Les vases archaïque d'Histria* (Bucharest).
- Lăzurcă, E. 1972: 'Mărturii din epoca bronzului pe teritoriul din nordul Dobrogei'. *Pontica* 10, 301-05.
- Lăzurcă, E. and Mănucu-Adameșteanu, G. 1980: 'Noi descoperiri arheologice la Enisala, jud. Tulcea'. *Materiale și Cercetări Arheologice* 14, 146-57.
- Lungu, V. 2010: 'Pratiques funéraires chez les grecs et les indigènes en Dobroudja septentrionale'. In Tréziny, H. (ed.), *Grecs et indigènes de la Catalogne à la mer Noire* (Aix-en-Provence), 537-54.
- Magne, G. 2016: *Histoire environnementale de la cité antique d'Halmyris dans le delta du Danube (Roumanie): approche paléocéologique* (Aix-en-Provence).
- Marriner, N. 2007: *Geoarchaeology of Phoenicia's Buried Harbors: Beirut, Sidon and Tyre. 5000 years of Human-Environment Interactions* (Marseilles).
- Marriner, N. and Morhange, C. 2006: 'Geoarchaeological evidence for dredging in Tyre's ancient harbor, Levant'. *Quaternary Research* 65, 164-71.
- Marriner, N., Morhange, C., Boudagher-Fadel, M., Bourcier, M. and Carbonel, P. 2005: 'Geoarchaeology of Tyre's ancient northern harbour, Phoenicia'. *Journal of Archaeological Science* 32, 1302-27.
- Mariner, N., Morhange, C., Flaux, C. and Carayon, N. 2017: 'Harbors and Ports, Ancient'. In Gillbert, A.S. (ed.), *Encyclopedia of Geoarchaeology* (Amsterdam), 382-403.
- Matei-Popescu, F. 2016: 'Viculus Novus (iodunum) and viculus classicorum. On the origins of the municipium Noviodunum'. *Ancient West and East* 15, 213-22.
- Mihail, F., Ailincăi, S., Micu, C., Carozza, L. and Ailincăi, A. 2012: 'Despre locuirea eneolitică de la Enisala-Palancă. Cercetările arheologice din anul 2010'. *Peuce* n.s. 10, 81-101.
- Moisil, C. 1909: 'Din tezaurul arheologic al Dobrogei. II. Antichități creștine din Istros'. *Buletinul Comisiunii Monumentelor Istorice* 2, 165-70.
- Morhange, C. 1994: *La mobilité des littoraux provençaux: Elements d'analyse geomorphologiques* (Aix-en-Provence).
- Morhange, C., Giaime, N., Marriner, N. and Artzy, M. 2016: 'Geoarchaeological evolution of Tel Akko's ancient harbour (Israel)'. *Journal of Archaeological Science: Reports* 7, 71-81.
- Morhange, C., Laborel, J. and Hesnard, A. 2001: 'Changes of relative sea level during the past 5000 years in the ancient harbour of Marseilles, Southern France'. *Palaeogeography, Palaeoclimatology, Palaeoecology* 166, 319-29.
- Morhange, C., Marriner, N., Bony, G., Flaux, C., Giaime, M. and Kouka, M. 2016: 'Geoarchaeology of ancient harbours in lagoonal contexts: an introduction'. In Franconi, T. (ed.), *Fluvial Landscapes in the Roman World* (Portsmouth, RI), 97-110.
- Morhange, C., Marriner, N. and Carayon, N. 2016: 'Eco-history of ancient Mediterranean harbours'. In Bekker-Nielsen, T. and Gertwagen, R. (eds.), *The Inland Seas: Towards an Ecohistory of the Mediterranean and the Black Sea* (Stuttgart), 85-106.
- Morintz, S. 1972: 'Probleme ale epocii bronzului în Dobrogea'. *Pontica* 5, 53-58.
- Morintz, S. and Angelescu, N. 1970: 'O nouă cultură a epocii bronzului în România. Cultura de tip Coslogeni'. *Studii și Cercetări de Istorie Veche* 21, 3, 333-415.
- Müllenhoff, M., Herda, A. and Brückner, H. 2009: 'Geoarchaeology in the City of Thales. Deciphering Palaeogeographic Changes in the Agora Area of Miletus'. In Matter, T. and Vött, A. (eds.), *Mensch und Umwelt im Spiegel der Zeit. Aspekte geoarchäologischer Forschungen im östlichen Mittelmeergebiet* (Wiesbaden), 97-110.
- Nuțu, G. 2009: 'Cercetări arheologice la limita de sud-vest a orașului Babadag (Viculus Novus?)'. *Peuce* n.s. 7, 123-44.
- Panin, N., Panin, S., Herz, N. and Noakes, J.E. 1983: 'Radiocarbon dating of the Danube delta deposits'. *Quaternary Research* 19, 249-255.
- Pârvan, V. 1915: 'Raport provizoriu asupra primei campanii de săpături la Histria'. *Anuarul Comisiunii Monumentelor Istorice* 7.25-28, 117-21.

- . 1916: 'Campania a II-a de săpături la Histria'. *Raport asupra activității Muzeului Național de Antichități în cursul anului 1915*, 18-20.
- Preoteasa, L., Bîrzescu, I., Hanganu, D. and Vespremeanu-Stroe, A. 2012: 'Schimbări morfologice în regiunea Histria produse în timpul și după declinul cetății'. *Studii și Cercetări de Istorie Veche și Arheologie* 63.3-4, 201-23.
- Preoteasa, L., Vespremeanu-Stroe, A., Hanganu, D., Katona, O. and Timar-Gabor, A. 2013: 'Coastal changes from open coast to present lagoon system in Histria region (Danube delta)'. *Journal of Coastal Research*, Special Issue 65, 564-69.
- Preoteasa, L., Vespremeanu-Stroe, A., Panaiotu, C., Rotaru, S., Țuțianu, L., Sava, T., Bîrzescu, I., Dimofte, D., Sava, G., Mîrea, D.A., Ailincăi, S. 2019: 'Paleogeographic transformations in southern Danube delta since the Neolithic to modern period and their impact on human settlements from Enisala-Babadag region'. *Quaternary International* 504, 139-52.
- Reimer, P.J., Bard, E., Bayliss, A., Beck, J.W., Blackwell, P.G., Ramsey, C.B., Buck, C.E., Cheng, H., Edwards, R.L., Friedrich, M., Grootes, P.M., Guilderson, T.P., Haflidson, H., Hajdas, I., Hatté, C., Heaton, T., Hoffmann, D.L., Hogg, A., Hughen, K.A., Kaiser, K., Kromer, B., Manning, S.W., Niu, M., Reimer, R., Richards, D.A., Scott, E.M., Southon, J.R., Staff, R., Turney, C. and Van der Plicht, J. 2013: 'IntCal13 and Marine13 Radiocarbon Age calibration Curves 0-50,000 years cal BP'. *Radiocarbon* 55, 1869-87.
- Roman, P.I. 1986: 'Perioada timpurie a epocii bronzului pe teritoriul României'. *Studii și Cercetări de Istorie Veche și Arheologie* 37.1, 29-55.
- Romanescu, G. 2013: 'Geoarchaeology of the ancient and medieval Danube Delta: modelling environmental and historical changes. A review'. *Quaternary International* 293, 231-44.
- Romanescu, G., Bounegru, O., Stoleriu, C.C., Mișu-Pintilie, A., Nicu, C.I., Enea, A. and Stan, C.O. 2015: 'The ancient legendary island of PEUCE – myth or reality?'. *Journal of Archaeological Science* 53, 521-35.
- Ruiz, J.M., Carmona, P. and Pérez, A. 2014: 'Flood frequency and seasonality of the Jucar and Turia Mediterranean Rivers during the "Little Ice Age"'. *Méditerranée* 122, 121-30.
- Schuster, C. 2011: 'Landscape and Demographic Dynamics in Southern Romanian Bronze Age'. In Mills, S. and Mîrea, P. (eds.), *The Lower Danube in Prehistory: Landscape Changes and Human-Environment Interactions, Proceedings of the International Conference* (Bucharest), 133-45.
- Soulet, G., Ménot, G., Garreta, V., Rostek, F., Zaragosi, S., Lericolais, G. and Bard, E. 2011: 'Black Sea "Lake" reservoir age evolution since the Last Glacial – Hydrological and climatic implications'. *Earth and Planetary Science Letters* 308-2, 245-58.
- Stănică, A., Ailincăi, S., Ignat, A. and Zvîncă, I. 2005-06: 'Noi descoperiri funerare de pe teritoriul localității Enisala (com. Sarichios, jud. Tulcea)'. *Peuce* n.s. 3-4, 317-30.
- Stanley, J.D. and Warne, A.G. 1994: 'Worldwide initiation of Holocene marine deltas by deceleration of sea-level rise'. *Science* 265, 228-31.
- Ștefan, A.S. 1977: 'Cetățile romane de la Enisala. Studii aerofotografice'. *Revista muzeelor și monumentelor – Monumente istorice și de artă* 12.2, 15-25.
- . 1987: 'Évolution de la côte dans la zone des bouches du Danube durant l'antiquité'. In Euzennat, M., Paskoff, R. and Troussset, P. (eds.), *Déplacements des Lignes de Rivage en Méditerranée d'après les Données de l'Archéologie* (Paris), 191-209.
- Steskal, M. 2014: 'Ephesos and its Harbors: A City in Search of its place'. In Ladstätter, S., Pirson, F. and Schimdt, T. (eds.), *Häfen und Hafenstädte im östlichen Mittelmeerraum von der Antike bis in byzantinische Zeit. Neue Entdeckungen und aktuell Forschungsansätze* (Istanbul), 325-30.
- Stöck, F., Pint, A., Horejs, B., Ladstätter, S. and Brückner, H. 2013: 'In search of the harbors: New evidence of Late Roman and Byzantine harbors of Ephesus'. *Quaternary International* 312, 57-69.
- Suceveanu, A. and Angelescu, M.V. 1988: 'Nouvelles découvertes dans l'établissement gétique d'Independența (dép. de Tulcea)'. *Dacia* n.s. 32, 145-50.
- Suceveanu, A. and Barnea, A. 1991: *La Dobroudja Romaine* (Bucharest).
- Suceveanu, A. and Zahariade, E. 1987: 'Du nom antique de la cité romaine tardive d'Independența'. *Dacia* n.s. 31, 87-96.
- Suceveanu, A., Zahariade, M., Topoleanu, F. and Poenaru-Bordea, G.H. 2003: *Halmyris 1: Monografie arheologică* (Cluj-Napoca).
- Vespremeanu-Stroe, A., Preoteasa, L., Hanganu, D., Brown, T., Bîrzescu, I., Toms, P. and Timar-Gabor, A. 2013: 'The impact of the Late Holocene coastal changes on the rise and decay of the ancient city of Histria (Southern Danube Delta)'. *Quaternary International* 293, 245-56.
- Vespremeanu-Stroe, A., Preoteasa, L., Zăinescu, F. and Tătui, F. 2017a: 'The Evolution of Danube Delta after Black Sea Reconnection to World Ocean'. In Rădoane, M. and Vespremeanu-Stroe, A. (eds.), *Landform Dynamics and Evolution in Romania* (Basel), 521-51.
- Vespremeanu-Stroe, A., Zăinescu, F., Preoteasa, L., Tătui, F., Rotaru, S., Morhange, C., Stoica, M., Hanganu, J., Timar-Gabor, A., Cârđan, I. and Piotrowska, N. 2017b: 'Holocene evolution of the Danube delta: an integral reconstruction and a revised chronology'. *Marine Geology* 388, 38-61.
- Zahariade, M. 1991: 'An Early and Late Roman Fort on the Lower Danube Limes: Halmyris (Independența, Tulcea county, Romania)'. In Maxfield, V.A. and Dobson, M.J. (eds.), *Roman Frontier Studies: Proceedings of the XVth International Congress of Roman Frontier Studies* (Exeter), 311-17.
- Zahariade, M. and Alexandrescu, C.G. (eds.) 2011: *Greek and Latin Inscriptions from Halmyris. Inscriptions on stone, signs and instruments found between 1981 and 2010* (Oxford).
- Zahariade, M. and Karavas, J. 2015: 'A Fort of the Danubian Roman Frontier: Halmyris'. In Zerbini L. (ed.), *Culti e religiosità nelle province danubiane* (Bologna), 575-83.
- Zahariade, M. and Phelps, M.K. 2002: 'Halmyris, a settlement and fort near the mouth of the Danube: interim report'. *Journal of Roman Archaeology* 15, 230-45.
- Zăinescu, F., Tătui, F., Valchev, N. and Vespremeanu-Stroe, A. 2017: 'Storm climate on the Danube delta coast: evidence of recent storminess change and links with large-scale teleconnection patterns'. *Natural Hazards* 87.2, 599-621.