



**HAL**  
open science

## Impact of body mass index on overall survival in patients with metastatic breast cancer

Khalil Saleh, Matthieu Carton, Véronique Dieras, Pierre-Etienne Heudel, Etienne Brain, Véronique D'hondt, Audrey Mailliez, Anne Patsouris, Marie-Ange Mouret-Reynier, Anthony Goncalves, et al.

### ► To cite this version:

Khalil Saleh, Matthieu Carton, Véronique Dieras, Pierre-Etienne Heudel, Etienne Brain, et al.. Impact of body mass index on overall survival in patients with metastatic breast cancer. *The Breast*, 2021, 55, pp.16-24. 10.1016/j.breast.2020.11.014 . hal-03345238

**HAL Id: hal-03345238**

**<https://hal.science/hal-03345238v1>**

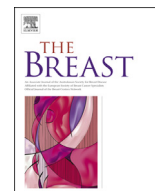
Submitted on 28 Nov 2023

**HAL** is a multi-disciplinary open access archive for the deposit and dissemination of scientific research documents, whether they are published or not. The documents may come from teaching and research institutions in France or abroad, or from public or private research centers.

L'archive ouverte pluridisciplinaire **HAL**, est destinée au dépôt et à la diffusion de documents scientifiques de niveau recherche, publiés ou non, émanant des établissements d'enseignement et de recherche français ou étrangers, des laboratoires publics ou privés.



Distributed under a Creative Commons Attribution - NonCommercial - NoDerivatives 4.0 International License



## Original article

## Impact of body mass index on overall survival in patients with metastatic breast cancer



Khalil Saleh <sup>a</sup>, Matthieu Carton <sup>b</sup>, Véronique Dieras <sup>c</sup>, Pierre-Etienne Heudel <sup>d</sup>, Etienne Brain <sup>e</sup>, Véronique D'Hondt <sup>f</sup>, Audrey Mailliez <sup>g</sup>, Anne Patsouris <sup>h</sup>, Marie-Ange Mouret-Reynier <sup>i</sup>, Anthony Goncalves <sup>j</sup>, Jean Marc Ferrero <sup>k</sup>, Thierry Petit <sup>l</sup>, George Emile <sup>m</sup>, Lionel Uwer <sup>n</sup>, Marc Debled <sup>o</sup>, Florence Dalenc <sup>p</sup>, Christelle Jouannaud <sup>q</sup>, Sylvain Ladoire <sup>r</sup>, Marianne Leheurteur <sup>s</sup>, Paul Cottu <sup>t</sup>, Lucie Veron <sup>a</sup>, Alexia Savignoni <sup>b</sup>, Coralie Courtinard <sup>u</sup>, Mathieu Robain <sup>u</sup>, Suzette Delalogue <sup>a,\*</sup>, Elise Deluche <sup>a,v</sup>

<sup>a</sup> Department of Cancer Medicine, Gustave Roussy, 114 Rue Edouard Vaillant, 94800, Villejuif, France

<sup>b</sup> Department of Biostatistics, Institut Curie, 26 Rue D'Ulm, 75005, Paris & Saint-Cloud, France

<sup>c</sup> Medical Oncology Department, Centre Eugène Marquis, Avenue de La Bataille Flandres-Dunkerque, 35000, Rennes, France

<sup>d</sup> Department of Medical Oncology, Centre Léon Bérard, 28 Prom. Léa et Napoléon Bullukian, 69008, Lyon, France

<sup>e</sup> Department of Medical Oncology, Institut Curie, Saint-Cloud, France

<sup>f</sup> Department of Medical Oncology, Institut Du Cancer de Montpellier, 208 Rue des Apothicaires, 34298, Montpellier, INSERM U1194, University of Montpellier, France

<sup>g</sup> Medical Oncology Department, Centre Oscar Lambret, 3 Rue Frédéric Combemale, 59000, Lille, France

<sup>h</sup> Department of Medical Oncology, Institut de Cancérologie de L'Ouest Nantes & Angers, 15 Rue André Boquel, 49055, Angers, France

<sup>i</sup> Department of Medical Oncology, Centre Jean Perrin, 58 Rue Montalembert, 63011, Clermont Ferrand, France

<sup>j</sup> Department of Medical Oncology, Institut Paoli-Calmettes, 232 Boulevard de Sainte-Marguerite, 13009, Marseille, France

<sup>k</sup> Department of Medical Oncology, Centre Antoine Lacassagne, 33 Avenue de Valambrose, 06189, Nice, France

<sup>l</sup> Department of Medical Oncology, Centre Paul Strauss, 3 Rue de La Porte de L'Hôpital, 67000, Strasbourg, France

<sup>m</sup> Department of Medical Oncology, Centre François Baclesse, 3 Avenue Du Général Harris, 14000, Caen, France

<sup>n</sup> Department of Medical Oncology, Institut de Cancérologie de Lorraine, Vandoeuvre-lès-Nancy, 6 Avenue de Bourgogne, 54519, Vandœuvre-lès-Nancy, France

<sup>o</sup> Department of Medical Oncology, Institut Bergonie, 229 Cours de L'Argonne, F-33000, Bordeaux, France

<sup>p</sup> Department of Medical Oncology, Institut Claudius Regaud – IUCT Oncopole, 1 Avenue Irène-Joliot-Curie, 31059, Toulouse, France

<sup>q</sup> Department of Medical Oncology, Institut de Cancérologie Jean-Godinot, 1 Rue Du Général Koenig, 51100, Reims, France

<sup>r</sup> Department of Medical Oncology, Centre Georges François Leclerc, 1 Rue Professeur Marion, 21079, Dijon, France

<sup>s</sup> Department of Medical Oncology, Centre Henri Becquerel, Rue D'Amiens, 76000, Rouen, France

<sup>t</sup> Department of Medical Oncology, Institut Curie, 26 Rue D'Ulm, 75005, Paris & Saint-Cloud, France

<sup>u</sup> Department of Research and Development, R&D Unicancer, 101 Rue de Tolbiac, 75654, Paris, France

<sup>v</sup> Department of Medical Oncology, CHU de Limoges, 2 Avenue Martin Luther King, Limoges, France

## ARTICLE INFO

## Article history:

Received 14 July 2020

Received in revised form

21 November 2020

Accepted 23 November 2020

Available online 1 December 2020

## Keywords:

Metastatic breast cancer

Overall survival

BMI

## ABSTRACT

**Background:** High Body mass index (BMI) is a risk factor for breast cancer among postmenopausal women and an adverse prognostic factor in early-stage. Little is known about its impact on clinical outcomes in patients with metastatic breast cancer (MBC).

**Methods:** The National ESME-MBC observational cohort includes all consecutive patients newly diagnosed with MBC between Jan 2008 and Dec 2016 in the 18 French comprehensive cancer centers.

**Results:** Of 22 463 patients in ESME-MBC, 12 999 women had BMI data available at MBC diagnosis. Median BMI was 24.9 kg/m<sup>2</sup> (range 12.1–66.5); 20% of women were obese and 5% underweight. Obesity was associated with more *de novo* MBC, while underweight patients had more aggressive cancer features. Median overall survival (OS) of the BMI cohort was 47.4 months (95% CI [46.2–48.5]) (median follow-up: 48.6 months). Underweight was independently associated with a worse OS (median OS 33

**Abbreviations:** BC, breast cancer; BMI, body mass index; ESME, Epidemio-Strategy-Medical-Economical; HR, hormone receptor; MBC, metastatic breast cancer; PFS, progression free-survival; TNBC, triple negative breast cancer; OS, overall survival.

\* Corresponding author. Department of Cancer Medicine, Gustave Roussy 114 rue Edouard Vaillant, Villejuif, 94805, France

E-mail address: [suzette.delalogue@gustaveroussy.fr](mailto:suzette.delalogue@gustaveroussy.fr) (S. Delalogue).

<https://doi.org/10.1016/j.breast.2020.11.014>

0960-9776/© 2020 The Author(s). Published by Elsevier Ltd. This is an open access article under the CC BY-NC-ND license (<http://creativecommons.org/licenses/by-nc-nd/4.0/>).

Underweight  
Obesity

months; HR 1.14, 95%CI, 1.02–1.27) and first line progression-free survival (HR, 1.11; 95%CI, 1.01; 1.22), while overweight or obesity had no effect.

**Conclusion:** Overweight and obesity are not associated with poorer outcomes in women with metastatic disease, while underweight appears as an independent adverse prognostic factor.

© 2020 The Author(s). Published by Elsevier Ltd. This is an open access article under the CC BY-NC-ND license (<http://creativecommons.org/licenses/by-nc-nd/4.0/>).

## 1. Background

Breast cancer is the most commonly diagnosed cancer and the leading cause of cancer death among women in the world [1,2]. The mutual relationship between body mass index (BMI) and breast cancer (BC) risk and outcomes has been widely evaluated. Overweight or obesity is an independent predictor of BC risk in postmenopausal women, while it is protective before menopause [3–5]. BMI has also been demonstrated as an independent prognostic factor for overall survival (OS) in patients with early breast cancer (EBC) [6] [–] [8]. However, recent studies question the association between BMI and survival in EBC in certain BC subtypes [9–11]. Many hypotheses have been formulated and explored to explain these observations. Overweight or obesity may affect treatment dosing [12]. Multiple interactions between obesity-linked inflammation, adipose tissue activation or diet-induced metabolic changes and cancer risk or response to treatment have been described [13–15]. In patients with metastatic breast cancer (MBC), limited data are available regarding the impact of BMI on patients' outcome [16–21].

We therefore interrogated the UNICANCER Epidemio-Strategy-Medical-Economical (ESME)-MBC multicentre national retrospective prospectively maintained cohort, to assess the role of BMI on MBC survival outcomes. This cohort is an academic initiative launched by UNICANCER Group, the French network of cancer centers, to report exhaustive, high quality and centralised real-life data in MBC patients over the past ten years [22,23]. The primary objective of the present study was to evaluate the prognostic impact of BMI at MBC diagnosis on OS of women with metastatic breast cancer. The other objectives were to assess patient characteristics by BMI category, first-line progression-free survival (PFS), and impact of BMI on OS and PFS among the three major BC subtypes.

## 2. Materials and methods

### 2.1. ESME data platform and study population

The UNICANCER ESME-MBC data platform is a real-life retrospective, prospectively maintained database that collects exhaustive data of all consecutive patients, male or female,  $\geq 18$  years who have initiated their treatment for a MBC in one of 18 French Comprehensive Cancer Centers (FCCC) since January 1st, 2008. For the present study, we used the cohort recruited between this date and December 31, 2016. Data were collected until the cut-off date (October 13, 2018), death, or date of last contact in the centre, if lost to follow-up. Patients' demographics, cancer characteristics, pathology, outcomes and treatments were collected. Data were annually updated. The information gathered derived from the integration of data from medical records, multidisciplinary team meeting reports, hospitalization-related data and pharmacy-related data, as previously described [22]. Inclusion criteria for the present study (BMI cohort) were female,  $\geq 18$  years, and for whom BMI was available at diagnosis of the metastatic disease. Patients with phyllodes tumour, angiosarcoma and non-Hodgkin

lymphoma, men and patients with MBC treated before January 2008 were excluded. The database and the data were described previously [22].

Four reported BMI categories were defined at the selection date for ESME (first treatment in FCCC) and according to the World Health Organization's definition: underweight (BMI < 18.5 kg/m<sup>2</sup>), normal weight (18.5–24.9 kg/m<sup>2</sup>), overweight (25.0–29.9 kg/m<sup>2</sup>) and obese ( $\geq 30.0$  kg/m<sup>2</sup>).

## 3. Objectives

Our primary objective was to evaluate whether BMI classified as 4 classes (underweight, normal weight, overweight and obesity) was an independent prognostic factor of OS in patients with MBC regardless of tumour subtype. Secondary objectives were (1) to evaluate whether BMI was an independent prognostic factor of OS in each BC subtype: hormone receptor-positive (estrogen and/or progesterone receptor positive) (HR) and HER2 negative (HR-/HER2-), HER2 positive (HER2+) and triple negative (HR-/HER2-or TNBC); (2) to assess whether BMI classes correlate with other patients and cancer characteristics and (3) to evaluate the potential impact of BMI on progression-free survival under first-line treatment (PFS1) in the overall study population according to the tumour subtype. All details about BC subtype assessment were previously published [23].

### 3.1. Ethical approval

The ESME research program was authorized by the French data protection authority (Registration ID 1704113 and authorization N°DE-2013.-117, NCT03275311) and is conducted by R&D Unicancer in accordance with current best practice guidelines [24,25]. The present analysis was approved by an independent ethics committee (Comité De Protection Des Personnes Sud-Est II- 2015-79).

### 3.2. Statistical analysis

For descriptive analyses, the significance of the difference in the variables between different BMI groups was estimated using Chi-square tests or ANOVA tests. The primary endpoint, OS, was defined as the time between the date of diagnosis of metastatic disease and date of death (any cause) or censored to the date of latest contact. PFS1 was defined as the time from the initiation of this first-line treatment as time (months) and the date of first disease progression or death or censored to date of latest news. Disease progression was defined as appearance of new metastatic site, progression of existing metastasis, local or locoregional recurrence of the primary tumour, discontinuation of chemotherapy and/or targeted therapy due to metastatic progression (judged by the reference physician), or death from any cause.

We used the Kaplan–Meier method to estimate OS and PFS1, and log-rank tests to assess differences between BMI-subgroups. We used multivariable Cox proportional hazards models to identify prognostic factors of OS and PFS in the whole cohort, and to

calculate Hazard ratios (HR) and associated 95% confidence intervals (CI).

Variables of interest were: BMI at MBC diagnosis, classified as 4 classes (underweight, normal weight, overweight and obesity); age at diagnosis of MBC (<or  $\geq 65$  years); performance status (PS) (PS: 0, 1, 2–4); time to MBC, defined as the time from diagnosis of the primary cancer and diagnosis of MBC (<6 [6–24], 24 months); metastatic sites (bone only, bone and non-visceral metastases [skin, lymph nodes ...], visceral metastases [liver, brain metastases] and others); number of metastatic sites (<3,  $\geq 3$ ); MBC subtypes (HR+/HER2-, HER2+ and HR-/HER2-); symptom-versus screening-based diagnosis of MBC (defined as MBC diagnosed on symptoms versus MBC discovered based on the results of a blood or imaging test). All significant factors at 15% level in univariable analysis were included in multivariable analyses. The final models were considered to be reached when including only significant factors at a  $p = 0.05$  significance level. All analyses were performed using R software, version 3.6.1.

## 4. Results

### 4.1. Characteristics and treatments of the overall population and BMI-subgroups

Among the 22 463 patients in the ESME-MBC cohort, 12 999 women had available baseline BMI data and constitute the whole BMI cohort (study population) (Fig. 1). Table 1 summarizes this cohort's patients and tumors' characteristics, as well as treatments, by BMI categories. The median age at initial cancer diagnosis and at MBC diagnosis was respectively 53 (range 16–103) and 60 years (range 19–103). The median time to MBC was 27.8 months (range 0.9–94.8 months). Median BMI at MBC was 24.9 kg/m<sup>2</sup> (range 12.1–66.5 kg/m<sup>2</sup>). Six hundred thirty-seven patients (5%) were underweight; 6020 (46%) had normal weight; 3708 (29%) were overweight and 2634 (20%) were obese. As shown in Table 1, higher BMI categories were independently and inversely associated with symptom-based MBC diagnosis and positively associated with menopausal status, older age and more *de novo* MBC (all  $p < 0.001$ ). Low BMI was associated with the presence of visceral metastases and a higher number of metastatic sites. Conversely, the frequency of bone-only metastases increased with increasing BMI ( $p < 0.001$ ).

Similarly, the prevalence of HR + HER2-subtype increased, while the frequency of TNBC subtype decreased with higher BMI.

### 4.2. Multivariable analysis for OS

The median follow-up of the whole BMI cohort was 48.6 months (range 0–126.1 months). The median OS of the cohort was 47.4 months (95% CI, 46.2–48.5) (Fig. 2A, Supplementary Table A.1). As shown in Fig. 2B, median OS was 33 months (95% CI, 29–40) in the underweight group, 47 months (95% CI, 45–49) in the normal weight group, 49 months (95% CI, 47–51) in the overweight group and 48 months in the obese group (95% CI, 45–51).

In the multivariable analysis, underweight (HR 1.14, 95%CI, 1.02–1.28) was an independent negative predictor for OS, together with PS 2–4 (HR, 3.01; 95% CI, 2.77–3.27), TNBC subtype (HR, 2.18; 95% CI, 2.02–2.36), age at MBC diagnosis  $\geq 65$  years (HR, 1.18; 95% CI, 1.12–1.25), presence of visceral metastases (HR, 1.90; 95% CI, 1.76–2.06), time to MBC 6–24 months (HR: 2.53; 95% CI, 2.34–2.74), and the number of metastatic sites  $\geq 3$  (HR, 1.45; 95% CI, 1.36–1.54) (Table 2). However, overweight or obesity had no impact on OS.

### 4.3. Multivariable analysis for first-line PFS

The median PFS1 of the whole cohort was 12.2 months (95% CI, 11.9–12.5). Underweight was associated with a significantly lower median PFS1 (9.2 months; 95%CI, 8.5–10.6) in comparison with the other 3 classes (normal weight: 12.2 (95%CI, 11.8–12.6), overweight: 12.7 (95%CI, 12.1–13.4) and obese: 12.4 (95%CI: 11.6–13.1) (Fig. 2C).

Multivariable analysis showed that underweight (HR, 1.11; 95% CI, 1.01; 1.22), the presence of visceral metastases (HR, 1.39; 95% CI, 1.31–1.47), metastatic sites  $\geq 3$  (HR, 1.28; 95% CI, 1.22–1.35), PS 2–4 (HR, 1.86; 95% CI, 1.74–1.99) and TNBC subtype (HR, 1.59; 95% CI, 1.5–1.69), were independent predictors of PFS1 (Supplementary Table A.2).

### 4.4. Multivariable analysis of OS among BC subtypes

When tested among each subtype, underweight was no longer an independent predictor of OS, although it tended to be so among



ESME, Epidemiological Strategy and Medical Economics; MBC: metastatic breast cancer

Fig. 1. Study flowchart. ESME, Epidemiological Strategy and Medical Economics; MBC: metastatic breast cancer.

**Table 1**  
Patients, tumors characteristics at MBC diagnoses and treatments.

	Underweight (n = 637)	Normal weight (n = 6020)	Overweight (n = 3708)	Obesity (n = 2634)	P
Median age at MBC (years) (Q1–Q3 range)	58 (47–68)	58 (48–68.2)	61 (51–70)	60 (52–69)	<0.001
Age at MBC, n (%)	422 (66)	3962 (66)	2232 (60)	1680 (64)	<0.001
<65 years	215 (34)	2058 (34)	1476 (40)	954 (36)	
≥65 years					
Median BMI (kg/m <sup>2</sup> ) (Q1–Q3 range)	17.5 (16.7–18)	22.2 (20.8–23.6)	27.1 (26.0–28.3)	33.3 (31.2–36.4)	
Menopausal status at MBC, n (%)	123 (19)	1223 (20)	563 (15)	398 (15)	<0.001
Pre-menopausal	267 (42)	2694 (45)	1843 (50)	1386 (53)	
Post-menopausal	247 (39)	2103 (35)	1302 (35)	850 (32)	
Missing data					
Time to MBC (median, months) (Q1–Q3 range)	24.3 (0.7–81.4)	33 (1.1–103.5)	27.3 (0.8–92.1)	18.4 (0.7–77.2)	<0.001
Type of MBC <sup>a</sup> , n (%)	228 (35.8)	1939 (32.2)	1389 (37.5)	1132 (42.9)	<0.001
De novo	406 (63.7)	4064 (67.5)	2311 (62.3)	1496 (56.8)	
Recurrent	3 (0.5)	17 (0.3)	8 (0.2)	6 (0.3)	
Missing data					
Mode of MBC diagnosis n (%)	355 (55.7)	3366 (55.9)	2125 (57.3)	1593 (60.5)	<0.001
Systematic	272 (42.7)	2529 (42)	1507 (40.6)	1012 (38.4)	
Symptomatic	10 (1.6)	125 (2.1)	76 (2)	29 (1.1)	
Missing data					
Performans Status, n (%)	125 (20)	1827 (30)	1080 (29)	661 (25)	<0.001
0	138 (22)	1366 (23)	883 (24)	691 (26)	
1	133 (21)	664 (11)	415 (11)	344 (13)	
2–4	241 (38)	2163 (36)	1330 (36)	938 (36)	
Missing data					
Breast cancer histological type n (%)	468 (73.5)	4454 (74.0)	2740 (73.9)	2043 (77.6)	0.012
Infiltrating ductal carcinoma	81 (12.7)	765 (12.7)	462 (12.5)	272 (10.3)	
Infiltrating lobular carcinoma	70 (11.0)	682 (11.3)	447 (12.1)	276 (10.5)	
Other	18 (2.8)	119 (2.0)	59 (1.6)	43 (1.6)	
Missing data					
Breast cancer subtype, n (%)	354 (56)	3566 (59)	2311 (62)	1633 (62)	0.001
HR + HER2-HER2+	131 (21)	1295 (22)	725 (20)	545 (21)	
TNBC	105 (16)	860 (14)	499 (13)	345 (13)	
Undetermined	47 (7)	299 (5)	173 (5)	111 (4)	
Metastatic sites, n (%)	130 (20)	1372 (23)	897 (24)	688 (26)	<0.001
Bone only	107 (17)	1105 (18)	663 (18)	462 (18)	
Bone and non-visceral metastases	236 (37)	2060 (34)	1102 (30)	716 (27)	
Visceral-only metastases	164 (26)	1483 (25)	1046 (28)	768 (29)	
Others					
Presence of visceral metastasis, n (%)	400 (63)	3543 (59)	2148 (58)	1484 (56)	0.015
Yes	237 (37)	2477 (41)	1560 (42)	1150 (44)	
No					
No of metastatic sites, n (%)	457 (72)	4684 (78)	2955 (80)	2081 (79)	<0.001
<3	180 (28)	1336 (22)	753 (20)	553 (21)	
≥3					
Received CT during 1st line, n (%)	416 (65)	4112 (68)	2460 (66)	1741 (66)	0.07
Yes	221 (35)	1908 (32)	1248 (34)	893 (34)	
No					
Received ET during 1st line, n (%)	258 (40)	2794 (46)	1791 (48)	1235 (47)	0.003
Yes	379 (60)	3226 (54)	1917 (52)	1399 (53)	
No					
Received targeted therapy during 1st line, n (%)	197 (31)	2073 (34)	1172 (32)	762 (29)	<0.001
Yes	440 (69)	3947 (66)	2536 (68)	1872 (71)	
No					

CT: chemotherapy; ET: endocrine therapy, HER2: Human Epidermal Growth Factor Receptor-2; HR: hormone receptor; MBC: metastatic breast cancer; PS: performance status; TNBC: triple-negative breast cancer.

<sup>a</sup> Type of MBC: MBC is considered 'de novo' if the metastatic condition was detected at the same time as the primary cancer or within the following 6 months.

patients with TNBC (HR 1.24 [95% CI, 0.99–1.6]). Among TNBC patients, overweight however appeared slightly protective (HR 0.86 [95% CI, 0.75–0.98],  $p = 0.01$ ). (Supplementary Tables A.3–A.5).

Comparison of the study cohort's characteristics (N = 12 999) with those of patients with no BMI available (N = 9267).

Patients included in the present study (based on available BMI data) were diagnosed more recently (50.3% versus 32.2% diagnosed during years 2013–2016), were slightly younger (median age 60 years versus 62 years) and presented more frequently *de novo* MBC (36.2 vs 21.1%) as compared to women with no BMI available (Supplementary Tables A.6). Patients in the BMI cohort had better

OS ((47.4 months [46.2–48.5] vs 31.5 [30.6–32.3]) and PFS1 (12.2 months [11.9–12.5] vs 9.3 months [9.0–9.7]) than those excluded.

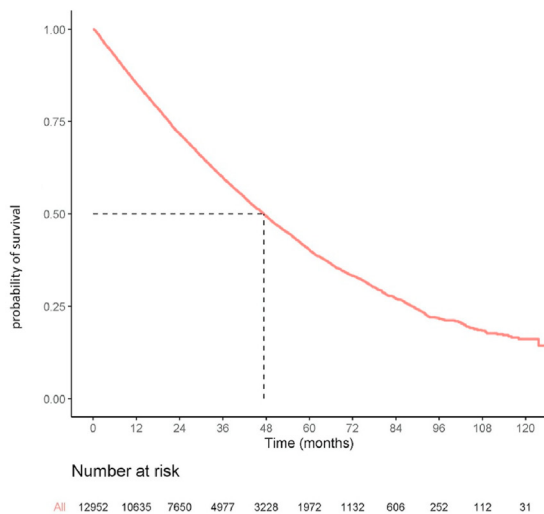
## 5. Discussion

With more than 12 000 patients involved, the present study is the largest assessment yet conducted regarding the impact of BMI on survival outcomes among patients with metastatic breast cancer.

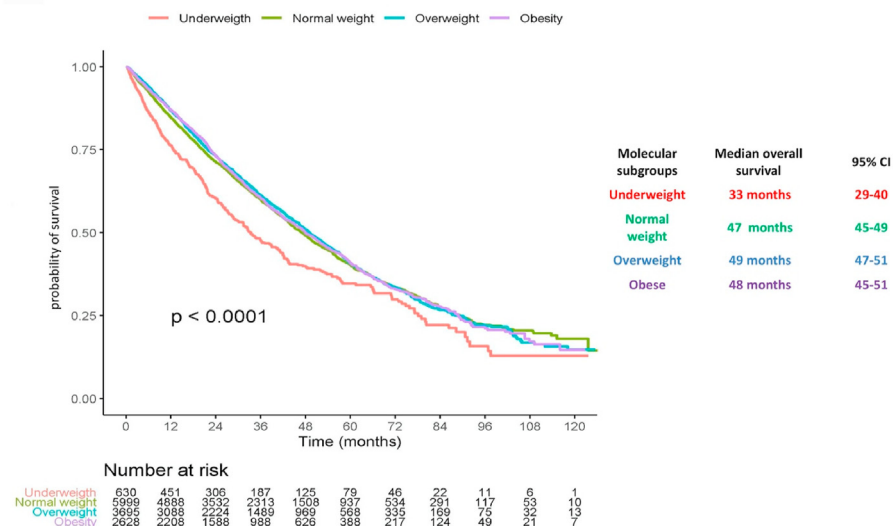
Underweight appears as an independent negative prognostic factor of both OS and first line PFS, while, in contrast, overweight



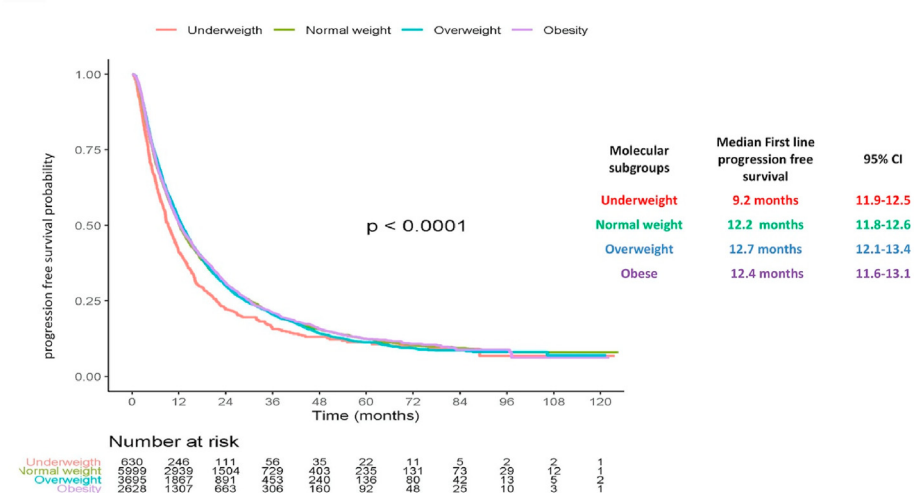
**a Overall survival of the whole study cohort**



**b Overall survival in the 4 BMI classes**



**c First-line progression free survival by BMI classes**



**Fig. 2.** Overall survival in the whole study population and by BMI classes; First-line progression free survival by BMI classes. Fig. 2a Overall survival of the whole study cohort. Fig. 2b Overall survival in the 4 BMI classes. Fig. 2c First-line progression free survival by BMI classes.

**Table 2**  
Multivariable analysis for overall survival of the whole study population.

Factors	Categories	Number	HR	IC	p value
BMI 4 classes	Normal weight	6003	1		0.04
	Underweight	634	1.14	[1.02; 1.28]	
	Pre-Obesity	3700	0.97	[0.91; 1.02]	
	Obesity	2628	0.98	[0.91; 1.04]	
Age at MBC	<65 yrs	8275	1		All <0.001
	≥65 yrs	4690	1.18	[1.12; 1.25]	
Time to MBC	<6 months	4688	1		
	6–24 months	1476	2.53	[2.34; 2.74]	
	24–60 months	2227	1.66	[1.54; 1.78]	
	≥60 months	4574	1.04	[0.97; 1.11]	
Metastatic sites	Bone only	3077	1		
	Non visceral non bone only	2326	1.04	[0.95; 1.13]	
	Liver or brain	4112	1.90	[1.76; 2.06]	
	Other	3450	1.16	[1.08; 1.26]	
No. of organ sites	<3	10 146	1		
	≥3	2819	1.45	[1.36; 1.54]	
Breast cancer subtype	HR + HER2-	7844	1		
	HER2+	2691	0.61	[0.57; 0.66]	
	TNBC	1806	2.18	[2.02; 2.36]	
	Undetermined.	624	1.08	[0.97; 1.21]	
Performans status	PS 0	3687	1		
	PS 1	3071	1.42	[1.32; 1.53]	
	PS 2-4	1551	3.01	[2.77; 3.27]	
	Not available	4656	1.40	[1.31; 1.5]	
1st line CT	No	4250	1		
	Yes	8715	0.80	[0.75; 0.85]	
1st line ET	No	6903	1		
	Yes	6062	0.67	[0.63; 0.72]	
1st line TT	No	8767	1		0.07
	Yes	4198	0.95	[0.89; 1]	

and obese conditions were clearly not associated with prognosis. These results regarding high BMI among MBC patients are however consistent with those reported by Gennari et al. who evaluated the prognostic impact of BMI on OS and PFS in 489 patients with MBC receiving first-line chemotherapy [21]. Martel et al. did also not find an association between BMI and clinical outcomes in HER2-positive MBC [19]. In this retrospective cohort of 329 patients, there was no statistical difference in median PFS and OS between women with BMI <25 and women with BMI ≥25 ( $p = 0.387$  and  $p = 0.525$ , respectively) [19]. Recently, Pizzuti et al. analysed data of 196 women with HER2-negative metastatic BC, treated with paclitaxel and bevacizumab and showed that BMI had no impact on survival particularly in the luminal subgroup [20]. In contrast to our report, these studies did however not distinguish underweight from normal weight patients. Two previous retrospective studies have reported a negative impact of obesity on outcomes in women with MBC but those series were both very small (96 and 55 patients respectively) [16,17]. Recently, Franzoi et al. evaluated the impact of BMI on outcomes in MBC patients treated with endocrine therapy (ET) combined to CDK 4/6 inhibitors. They found no PFS difference between BMI categories in any group [26].

Our results contrast with the reported adverse prognostic effect of overweight or obesity in patients with non-metastatic breast cancer. In a meta-analysis of 82 follow-up studies, obesity was associated with higher total mortality (relative risk (RR), RR 1.41 (95% CI 1.29–1.53)) and BC specific mortality (RR 1.35 (95% CI 1.24–1.47)) as compared to normal weight [8]. Furthermore, Ewertz et al. reported a 30-year follow-up of patients with EBC included in clinical trials within the Danish Breast Cancer Cooperative Group of whom 18 797 patients had available BMI [27]. The risk of developing distant metastases after 10 years was significantly increased by 46% and the risk of dying after 30 years was significantly increased by 38% for obese patients. Chemotherapy and endocrine therapy seemed also to be less effective after 10 or more years for

obese patients [27].

While, in patients with early breast cancer, underweight is not associated with overall and BC specific survival [28], underweight at metastatic diagnosis seems to have a different significance and impact. In other cancers, underweight is also an adverse prognostic factor and has been associated with a higher risk of death [29]. To our knowledge, there are limited data about the impact of underweight on the long-term outcomes in MBC. A single previous study reported a better prognosis among 557 MBC women with a BMI <20 kg/m<sup>2</sup> compared with women with normal weight (HR = 0.52, 95% CI 0.31–0.87,  $p = 0.013$ ). However, patients were included between 1999 and 2008 and treatment regimens were not considered. Furthermore, the definition of underweight used was not standard, with a cut-off at 20 kg/m<sup>2</sup> [30]. With a WHO definition-based cut-off at 18.5 kg/m<sup>2</sup>, we showed that underweight was strongly associated with a worse prognosis as compared to other groups.

In the ESME MBC cohort, the availability of the BMI at MBC diagnosis varied mainly over time, and is much more frequently reported in recent years. BMI at primary cancer diagnosis was not available. Only 5% of patients in our cohort were underweight, which is in line with data in localised BC cohorts such as the national CANTO cohort [31]. In our study, underweight women had more visceral metastases and more metastatic sites. These two adverse prognostic factors may be associated with a lower BMI because of a poorer general condition and/or a marker of disease aggressiveness. However, no causal relationship between low BMI and outcomes, in a way or the other, can be clearly evidenced from our study. Of note, underweight's effect appeared however independent of all other risk factors. Treatments received did not differ between BMI categories.

The strengths of the present study are that it is based on a large, high quality updated nationwide, multicentre cohort of patients with MBC and for whom complete information on characteristics,

treatment and clinical outcomes are available.

One limitation of our study is that the ESME MBC cohort is retrospective, with no systematic data on evolution of weight over time, weight loss before diagnosis nor tolerance and safety data. As well, BMI and performance status are not available at MBC diagnosis in the entire ESME population (9267 patients were excluded for missing BMI). No data regarding body composition are available, although that could be of importance. Indeed, BMI alone cannot estimate the women's muscle mass and adiposity, therefore precluding direct explanation of our results in the underweight population. A large literature has recently assessed the adverse effect of sarcopenia and under-nutritional states in patients with advanced cancer [32–34]. In women with early BC and MBC, an emerging area of research is focusing on body composition rather than overall body weight [35]. Sarcopenia, or low skeletal muscle mass and strength, emerge as an independent prognostic factor in EBC [32,36] as well as MBC in few studies [37–39]. Caan et al. concluded that patients with sarcopenia had a higher overall mortality in a large cohort of non-MBC ( $n = 3248$ ) [40]. In MBC resistant to anthracycline and/or taxane treatment, Prado et al. reported that sarcopenia was a significant predictor of toxicity and time to tumour progression in patients treated with capecitabine [39]. The discrepancy between the effect of obesity among women with early and metastatic cancers may be related to the already described “obesity paradox” (high BMI is associated with significantly longer cancer-specific survival in individuals with advanced disease) [41,42]. A small recent prospective study suggested that being overweight could improve OS in patients with metastatic BC receiving chemotherapy ( $n = 82$ ) [43]. Of note, in ESME, overweight patients with the worse subtype (TNBC) indeed had better OS than normal weight ones (HR 0.86 [95% CI, 0.75–0.98],  $p = 0.01$ ). Another explanation is that BMI is an imprecise measure of body composition. Body composition parameters might help to explain the obesity paradox because in high BMI population, low muscle mass was associated with higher risk of recurrence, overall and cancer-specific mortality [44,45]. Unfortunately we did not have data on cancer-related cachexia in this cohort (muscle strength ...). The differential pharmacokinetics of targeted agents in overweight/obese or underweight patients could be also one possible underlying explanation for different outcomes [46]. However, this study was not designed to provide this type of information.

## 6. Conclusion

The present study identifies underweight (5% of this MBC patients' population) as an adverse independent prognostic factor for OS and first line PFS in patients with metastatic breast cancer. Obesity and overweight did however not predict for survival, except among patients with TNBC, where obesity appeared slightly protective. Because of limitations such as reverse causality and treatment selection bias, it is not possible to conclude that the association showed between underweight and outcome is causal. Underweight conditions should however be the focus of clinical attention at the time of MBC diagnosis. They should be explored, and potentially analysed separately in cohort studies. Targeted interventions could be prompted in this subgroup, including nutritional management and/or exercise intervention. Interventions against sarcopenia and undernutrition should involve dieticians and nutritionists. More specifically for sarcopenia, physiotherapists and fitness counsellors in management of muscle loss would be needed.

## Contributors

KS and SD: conception and design. MR, MC and CC: data

acquisition, interpretation and statistical analysis. VD, PEH, EB, VD, AM, AP, AMR, AG, JMF, TP, EG, LU, MD, FD, CJ, SL, ML, PC, LV and AS: data acquisition, interpretation. KS, SD, ED, MS: interpretation, writing of the first draft of the manuscript. All authors contributed to the manuscript, critically revised the manuscript, and approved the final version.

BMI: body mass index; HR: hazard ratio; MBC: metastatic breast cancer; CI: confidence interval; HR: hormone receptor; HER2: human epidermal growth factor receptor 2; TNBC: triple negative breast cancer.

## Declaration of Competing interest

V.D reports advisory boards from Roche, Genentech, Lilly, Pfizer, Astra Zeneca, MSD, Daiichi Sankyo and Seattle Genetics.

PE-H reports research funding from Pfizer, Novartis

E.B receive honoraria or consultation fees: AstraZeneca, BMS, Celgene, Clinigen, G1 Therapeutics, Hospira, Janssen, Mylan, OBI Pharma, Pfizer, Puma, Roche, Samsung; Receipt of grants/research supports: Amgen, HalioDX (Qiagen/Ipsogen), TEVA (Cephalon); Travel support: AstraZeneca, Novartis, Pfizer, Pierre Fabre, Roche, Sandoz.

A.G reports travel expenses, accommodation and registration meeting from Astra Zeneca, Roche, Pfizer, Novartis.

P.C reports grants from Pfizer and Novartis, personal fees from Pfizer and Lilly, non-financial support from Pfizer.

S.D. reports institutional fees and non-financial support from Roche/Genentech; grants, institutional fees and nonfinancial support from Pfizer; institutional fees and nonfinancial support from Puma; grants, institutional fees and non-financial support from AstraZeneca; grants, institutional fees and non-financial support from Novartis; institutional fees and non-financial support from Amgen.

E.D reports travel expenses from Pfizer, Novartis and Amgen and boards from Novartis and Pfizer.

The other authors declare that they have no conflict of interest to disclose.

## Acknowledgements

We thank all patients who allowed us to build the present ESME real life cohort. We thank the 18 French Comprehensive Cancer Centers for providing the data and each ESME local coordinator for managing the project at the local level. We also thank the ESME Scientific Committee members for their ongoing support. Finally, we thank the funders of the ESME program (Roche, Pfizer, AstraZeneca, MSD, Eisai and Daiichi Sankyo).

## Appendix A. Supplementary data

Supplementary data to this article can be found online at <https://doi.org/10.1016/j.breast.2020.11.014>.

18 Participating French Comprehensive Cancer Centers (FCCC): I. Curie, Paris/Saint-Cloud, G. Roussy, Villejuif, I. Cancérologie de l'Ouest, Angers/Nantes, C. F. Baclesse, Caen, ICM Montpellier, C. L. Bérard, Lyon, C. G-F Leclerc, Dijon, C. H. Becquerel, Rouen; I. C. Regaud, Toulouse; C. A. Lacassagne, Nice; Institut de Cancérologie de Lorraine, Nancy; C. E. Marquis, Rennes; I. Paoli-Calmettes, Marseille; C. J. Perrin, Clermont Ferrand; I. Bergonié, Bordeaux; C. P. Strauss, Strasbourg; I. J. Godinot, Reims; C. O. Lambret, Lille.

ESME central coordinating staff:

Head of Research and Development: Claire Labreuveux.

Program director: Mathieu Robain.

Data Management team: Coralie Courtinard, Emilie Nguyen,



Olivier Payen, Irwin Piot, Dominique Schwob and Olivier Villacroux.

Operational team: Michaël Chevrot, Daniel Couch, Patricia D'Agostino, Pascale Danglot, Tahar Guesmia, Christine Hamonou, Gaëtane Simon and Julie Tort.

Supporting clinical research associates: Elodie Kupfer and Toihiri Said.

Project Associate: Nathalie Bouyer.

Management assistant: Esméralda Pereira.

Software designers: Matou Diop, Blaise Fulpin, José Paredes and Alexandre Vanni.

ESME local coordinators:

Patrick Arveux, Thomas Bachelot, Delphine Berchery, Etienne Brain, Mathias Breton, Loïc Campion, Emmanuel Chamorey, Valérie Dejean, Stéphanie Delaine, Anne-Valérie Guizard, Anne Jaffré, Lilian Laborde, Carine Laurent, Marie-Paule Lebitasy, Agnès Loeb, Muriel Mons, Damien Parent, Geneviève Perrocheau, Marie-Ange Mouret-Reynier, Michel Velten.

### Ethics approval and consent to participate

The ESME research program was authorized by the French data protection authority (Registration ID 1704113 and authorization N°DE-2013.-117, NCT03275311) and conducted by R&D Unicancer in accordance with current best practice guidelines [24,25]. The present analysis was approved by an independent ethics committee (Comité De Protection Des Personnes Sud-Est II- 2015-79).

### Consent for publication

All authors provided consent for publication.

### Data availability

The datasets used and/or analysed during the current study are available from the corresponding author upon reasonable request.

### Funding

The ESME MBC database receives financial support from an industrial consortium (Roche, Pfizer, AstraZeneca, MSD, Eisai and Daiichi Sankyo). Data collection, analysis and publication is managed entirely by R&D UNICANCER independently of the industrial consortium.

### References

- Ferlay J, Colombet M, Soerjomataram I, Mathers C, Parkin DM, Piñeros M, et al. Estimating the global cancer incidence and mortality in 2018: GLOBOCAN sources and methods. *Int J Canc* 2019;144:1941–53.
- Bray F, Ferlay J, Soerjomataram I, Siegel RL, Torre LA, Jemal A. Global cancer statistics 2018: GLOBOCAN estimates of incidence and mortality worldwide for 36 cancers in 185 countries. *CA A Cancer J Clin* 2018;68:394–424.
- Dartois L, Fagherazzi G, Baglietto L, Boutron-Ruault M-C, Delaloge S, Mesrine S, et al. Proportion of premenopausal and postmenopausal breast cancers attributable to known risk factors: estimates from the E3N-EPIC cohort. *Int J Canc* 2016;138:2415–27.
- Lahmann PH, Hoffmann K, Allen N, van Gils CH, Khaw K-T, Tehard B, et al. Body size and breast cancer risk: findings from the European Prospective Investigation into Cancer and Nutrition (EPIC). *Int J Canc* 2004;111:762–71.
- Lauby-Secretan B, Scoccianti C, Loomis D, Grosse Y, Bianchini F, Straif K, et al. Body fatness and cancer—viewpoint of the IARC working group. *N Engl J Med* 2016;375:794–8.
- Berclaz G, Li S, Price KN, Coates AS, Castiglione-Gertsch M, Rudenstam C-M, et al. Body mass index as a prognostic feature in operable breast cancer: the International Breast Cancer Study Group experience. *Ann Oncol* 2004;15:875–84.
- Ewertz M, Jensen M-B, Gunnarsdóttir KÁ, Højris I, Jakobsen EH, Nielsen D, et al. Effect of obesity on prognosis after early-stage breast cancer. *J Clin Oncol* 2011;29:25–31.
- Chan DSM, Vieira AR, Aune D, Bandera EV, Greenwood DC, McTiernan A, et al. Body mass index and survival in women with breast cancer—systematic literature review and meta-analysis of 82 follow-up studies. *Ann Oncol* 2014;25:1901–14.
- Cecchini RS, Swain SM, Costantino JP, Rastogi P, Jeong J-H, Anderson SJ, et al. Body mass index at diagnosis and breast cancer survival prognosis in clinical trial populations from NRG oncology/NSABP B-30, B-31, B-34, and B-38. *Canc Epidemiol Biomarkers Prev* 2016;25:51–9.
- Gennari A, Amadori D, Scarpi E, Farolfi A, Paradiso A, Mangia A, et al. Impact of body mass index (BMI) on the prognosis of high-risk early breast cancer (EBC) patients treated with adjuvant chemotherapy. *Breast Canc Res Treat* 2016;159:79–86.
- Jiralerspong S, Goodwin PJ. Obesity and breast cancer prognosis: evidence, challenges, and opportunities. *J Clin Oncol* 2016;34:4203–16.
- Lyman GH, Dale DC, Crawford J. Incidence and predictors of low dose-intensity in adjuvant breast cancer chemotherapy: a nationwide study of community practices. *J Clin Oncol* 2003;21:4524–31. <https://doi.org/10.1200/JCO.2003.05.002>.
- Strong AL, Ohlstein JF, Biagas BA, Rhodes LV, Pei DT, Tucker HA, et al. Leptin produced by obese adipose stromal/stem cells enhances proliferation and metastasis of estrogen receptor positive breast cancers. *Breast Cancer Res* 2015;17:112.
- Wang Y-Y, Lehuédé C, Laurent V, Dirat B, Dauvillier S, Bochet L, et al. Adipose tissue and breast epithelial cells: a dangerous dynamic duo in breast cancer. *Canc Lett* 2012;324:142–51.
- Tiwari P, Blank A, Cui C, Schoenfelt KQ, Zhou G, Xu Y, et al. Metabolically activated adipose tissue macrophages link obesity to triple-negative breast cancer. *J Exp Med* 2019;216:1345–58.
- von Drygalski A, Tran TB, Messer K, Pu M, Corringham S, Nelson C, et al. Obesity is an independent predictor of poor survival in metastatic breast cancer: retrospective analysis of a patient cohort whose treatment included high-dose chemotherapy and autologous stem cell support. *Int J Breast Cancer* 2011;2011.
- Parolin V, Fiorio E, Mercanti A, Riolfi M, Cetto GL, Surmacz E, et al. Impact of BMI on clinical outcome of HER2-positive breast cancer. *J Clin Orthod* 2010;28.
- Trestini I, Carbognin L, Monteverdi S, Zanelli S, De Toma A, Bonaiuto C, et al. Clinical implication of changes in body composition and weight in patients with early-stage and metastatic breast cancer. *Crit Rev Oncol Hematol* 2018;129:54–66.
- Martel S, Poletto E, Ferreira AR, Lambertini M, Sottotetti F, Bertolini I, et al. Impact of body mass index on the clinical outcomes of patients with HER2-positive metastatic breast cancer. *Breast* 2018;37:142–7.
- Pizzuti L, Sergi D, Sperduti I, Lauro LD, Mazzotta M, Botti C, et al. Body mass index in HER2-negative metastatic breast cancer treated with first-line paclitaxel and bevacizumab. *Canc Biol Ther* 2018;19:328–34.
- Gennari A, Nanni O, Puntoni M, DeCensi A, Scarpi E, Conte P, et al. Body mass index and prognosis of metastatic breast cancer patients receiving first-line chemotherapy. *Canc Epidemiol Biomarkers Prev* 2013;22:1862–7.
- Pérol D, Robain M, Arveux P, Mathoulin-Pélessier S, Chamorey E, Asselain B, et al. The ongoing French metastatic breast cancer (MBC) cohort: the example-based methodology of the Epidemiological Strategy and Medical Economics (ESME). *BMJ Open* 2019;9:e023568.
- Deluche E, Antoine A, Bachelot T, Lardy-Cleaud A, Dieras V, Brain E, et al. Contemporary outcomes of metastatic breast cancer among 22,000 women from the multicentre ESME cohort 2008–2016. *Eur J Canc* 2020;129:60–70.
- Association des Epidémiologistes de Langue Française (ADELF). Déontologie et bonnes pratiques en épidémiologie, recommandations révisées. 2007.
- Guidelines for good pharmacoepidemiology practices. GPP - International Society for Pharmacoepidemiology; 2015.
- Franzoi MA, Eiger D, Ameye L, Ponde N, Caparica R, De Angelis C, et al. Clinical implications of body mass index in metastatic breast cancer patients treated with abemaciclib and endocrine therapy. *J Natl Cancer Inst* 2020. <https://doi.org/10.1093/jnci/djaa116>.
- Ewertz M, Jensen M-B, Gunnarsdóttir KÁ, Højris I, Jakobsen EH, Nielsen D, et al. Effect of obesity on prognosis after early-stage breast cancer. *J Clin Oncol* 2011;29:25–31.
- Chan DSM, Vieira AR, Aune D, Bandera EV, Greenwood DC, McTiernan A, et al. Body mass index and survival in women with breast cancer—systematic literature review and meta-analysis of 82 follow-up studies. *Ann Oncol* 2014;25:1901–14.
- Tsang NM, Pai PC, Chuang CC, Chuang WC, Tseng CK, Chang KP, et al. Overweight and obesity predict better overall survival rates in cancer patients with distant metastases. *Cancer Med* 2016;5:665–75.
- Jung SY, Rosenzweig M, Sereika SM, Linkov F, Brufsky A, Weissfeld JL. Factors associated with mortality after breast cancer metastasis. *Cancer Causes Control* 2012;23:103–12.
- Vaz-Luis I, Cottu P, Mesleard C, Martin AL, Dumas A, Dauchy S, et al. UNICANCER: French prospective cohort study of treatment-related chronic toxicity in women with localised breast cancer (CANTO). *ESMO Open* 2019;4.
- Caan BJ, Cespedes Feliciano EM, Prado CM, Alexeeff S, Kroenke CH, Bradshaw P, et al. Association of muscle and adiposity measured by computed tomography with survival in patients with nonmetastatic breast cancer. *JAMA Oncol* 2018;4:798–804.
- Onishi S, Tajika M, Tanaka T, Hirayama Y, Hara K, Mizuno N, et al. Prognostic significance of sarcopenia in patients with unresectable Advanced esophageal

- cancer. *J Clin Med* 2019;8.
- [34] Shachar SS, Williams GR, Muss HB, Nishijima TF. Prognostic value of sarcopenia in adults with solid tumours: a meta-analysis and systematic review. *Eur J Canc* 2016;57:58–67.
- [35] Rossi F, Valdora F, Bignotti B, Torri L, Succio G, Tagliafico AS. Evaluation of body Computed Tomography-determined sarcopenia in breast cancer patients and clinical outcomes: a systematic review. *Cancer Treat Res Commun* 2019;21:100154.
- [36] Deluche E, Leobon S, Desport JC, Venat-Bouvet L, Usseglio J, Tubiana-Mathieu N. Impact of body composition on outcome in patients with early breast cancer. *Support Care Canc* 2018;26:861–8.
- [37] Shachar SS, Deal AM, Weinberg M, Nyrop KA, Williams GR, Nishijima TF, et al. Skeletal muscle measures as predictors of toxicity, hospitalization, and survival in patients with metastatic breast cancer receiving taxane-based chemotherapy. *Clin Canc Res* 2017;23:658–65.
- [38] Rier HN, Jager A, Sleijfer S, van Rosmalen J, Kock MCJM, Levin M-D. Changes in body composition and muscle attenuation during taxane-based chemotherapy in patients with metastatic breast cancer. *Breast Canc Res Treat* 2018;168:95–105. <https://doi.org/10.1007/s10549-017-4574-0>.
- [39] Prado CMM, Baracos VE, McCargar LJ, Reiman T, Mourtzakis M, Tonkin K, et al. Sarcopenia as a determinant of chemotherapy toxicity and time to tumor progression in metastatic breast cancer patients receiving capecitabine treatment. *Clin Canc Res* 2009;15:2920–6.
- [40] Caan BJ, Cespedes Feliciano EM, Prado CM, Alexeeff S, Kroenke CH, Bradshaw P, et al. Association of muscle and adiposity measured by computed tomography with survival in patients with nonmetastatic breast cancer. *JAMA Oncol* 2018;4:798–804.
- [41] Hayes AJ, Larkin J. BMI and outcomes in melanoma: more evidence for the obesity paradox. *Lancet Oncol* 2018;19:269–70.
- [42] Choi Y, Park B, Jeong BC, Seo SI, Jeon SS, Choi HY, et al. Body mass index and survival in patients with renal cell carcinoma: a clinical-based cohort and meta-analysis. *Int J Canc* 2013;132:625–34.
- [43] Alarfi H, Salamoona M, Kadri M, Alammam M, Haykal MA, Alseoudi A, et al. The impact of baseline body mass index on clinical outcomes in metastatic breast cancer: a prospective study. *BMC Res Notes* 2017;10:550.
- [44] Caan BJ, Feliciano EMC, Kroenke CH. The importance of body composition in explaining the overweight paradox in cancer—counterpoint. *Canc Res* 2018;78:1906–12.
- [45] Caan BJ, Meyerhardt JA, Kroenke CH, Alexeeff S, Xiao J, Weltzien E, et al. Explaining the obesity paradox: the association between body composition and colorectal cancer survival (C-SCANS study). *Canc Epidemiol Biomarkers Prev* 2017;26:1008–15.
- [46] González García J, Gutiérrez Nicolás F, Ramos Díaz R, Nazco Casariego GJ, Viña Romero MM, Llabres Martínez M, et al. Pharmacokinetics of trastuzumab after subcutaneous and intravenous administration in obese patients. *Ann Pharmacother* 2020;54:775–9.