



Protein supplementation during an energy-restricted diet induces visceral fat loss and gut microbiota amino acid metabolism activation: a randomized trial

Pierre Bel Lassen, Eugeni Belda, Edi Prifti, Maria Carlota Dao, Florian Specque, Corneliu Henegar, Laure Rinaldi, Xuedan Wang, Sean P Kennedy, Jean-Daniel Zucker, et al.

► To cite this version:

Pierre Bel Lassen, Eugeni Belda, Edi Prifti, Maria Carlota Dao, Florian Specque, et al.. Protein supplementation during an energy-restricted diet induces visceral fat loss and gut microbiota amino acid metabolism activation: a randomized trial. Scientific Reports, 2021, 11 (1), pp.15620. 10.1038/s41598-021-94916-9 . hal-03342418

HAL Id: hal-03342418

<https://hal.sorbonne-universite.fr/hal-03342418>

Submitted on 13 Sep 2021

HAL is a multi-disciplinary open access archive for the deposit and dissemination of scientific research documents, whether they are published or not. The documents may come from teaching and research institutions in France or abroad, or from public or private research centers.

L'archive ouverte pluridisciplinaire **HAL**, est destinée au dépôt et à la diffusion de documents scientifiques de niveau recherche, publiés ou non, émanant des établissements d'enseignement et de recherche français ou étrangers, des laboratoires publics ou privés.



Distributed under a Creative Commons Attribution 4.0 International License



OPEN

Protein supplementation during an energy-restricted diet induces visceral fat loss and gut microbiota amino acid metabolism activation: a randomized trial

Pierre Bel Lassen^{1,2}, Eugeni Belda^{1,3}, Edi Prifti^{1,4}, Maria Carlota Dao¹, Florian Specque⁴, Corneliu Henegar¹, Laure Rinaldi⁵, Xuedan Wang⁶, Sean P. Kennedy⁷, Jean-Daniel Zucker^{1,4}, Wim Calame⁸, Benoît Lamarche⁹, Sandrine P. Claus^{5✉} & Karine Clément^{1,2✉}

Interactions between diet and gut microbiota are critical regulators of energy metabolism. The effects of fibre intake have been deeply studied but little is known about the impact of proteins. Here, we investigated the effects of high protein supplementation (Investigational Product, IP) in a double blind, randomised placebo-controlled intervention study (NCT01755104) where 107 participants received the IP or an isocaloric normoproteic comparator (CP) alongside a mild caloric restriction. Gut microbiota profiles were explored in a patient subset (n = 53) using shotgun metagenomic sequencing. Visceral fat decreased in both groups (IP group: -20.8 ± 23.2 cm²; CP group: -14.5 ± 24.3 cm²) with a greater reduction ($p < 0.05$) with the IP supplementation in the Per Protocol population. Microbial diversity increased in individuals with a baseline low gene count ($p < 0.05$). The decrease in weight, fat mass and visceral fat mass significantly correlated with the increase in microbial diversity ($p < 0.05$). Protein supplementation had little effects on bacteria composition but major differences were seen at functional level. Protein supplementation stimulated bacterial amino acid metabolism (90% amino acid synthesis functions enriched with IP versus 13% in CP group ($p < 0.01$)). Protein supplementation alongside a mild energy restriction induces visceral fat mass loss and an activation of gut microbiota amino-acid metabolism.

Clinical trial registration: NCT01755104 (24/12/2012). <https://clinicaltrials.gov/ct2/show/record/NCT01755104?term=NCT01755104&draw=2&rank=1>.

Abbreviations

BMI	Body Mass Index
BMR	Basal Metabolic Rate
CP	Comparator Product
CRP	C-reactive Protein
CT scan	Computerized Tomography scan
DNA	Deoxyribonucleic Acid
FAS	Full Analysis Set

¹Sorbonne Université, Inserm, Nutrition and Obesity: Systemic Approaches Research Unit, NutriOmics, Sorbonne Université, 91 boulevard de l'Hôpital, 75013 Paris, France. ²Assistance Publique Hôpitaux de Paris, Nutrition Department, Pitié Salpêtrière Hospital, Assistance Publique Hôpitaux de Paris, 75013 Paris, France. ³Integrative Phenomics, Paris, France. ⁴Sorbonne Université, IRD, UMMISCO, Unité de Modélisation Mathématique et Informatique des Systèmes Complexes, Sorbonne Université, 93143 Bondy, France. ⁵YSOPIA Bioscience, 17 place de la Bourse, 33076 Bordeaux, France. ⁶Department of Food and Nutritional Sciences, School of Chemistry, Food and Pharmacy, The University of Reading, Reading RG6 6AP, UK. ⁷CNRS, Institut Pasteur, Department of Computational Biology, USR 3756, CNRS, 75015 Paris, France. ⁸StatistiCal BV, Strandwal 148, 2241 MN Wassenaar, The Netherlands. ⁹Laval University, Institute On Nutrition and Functional Foods, Laval University, Québec, QC G1V 0A6, Canada. ✉email: sandrine.claus@ysopia.bio; karine.clement@inserm.fr

FDR	False Discovery Rate
GMM	Gut Metabolic Modules
HDL	High Density Lipoprotein
HGC	High Gene Count
IL6	Interleukin 6
IP	Investigational Product
KEGG	Kyoto Encyclopedia of Genes and Genomes
LGC	Low Gene Count
MGS	Metagenomic Species
PP	Per Protocol
SEM	Standard Error of Mean
SD	Standard Deviation
TNF alpha	Tumor Necrosis Factor alpha
VFA	Visceral Fat Area

Obesity is a pandemic disease affecting today an alarming 650 millions adults worldwide and representing the main risk factor for developing chronic metabolic disorders such as type 2 diabetes and other cardiometabolic disorders. Obesity is defined in the western population by an elevated body mass index ($\text{BMI} = \text{body weight (kg)} / [\text{height (m)}]^2$) $> 30 \text{ kg/m}^2$. However, there is increasing evidence that adiposity is a better predictor of developing cardiometabolic diseases¹. One explanation is that the adipose tissue, and particularly visceral fat, is an endocrine organ secreting hormones that regulate appetite and energy metabolism and contributes to systemic low grade inflammation in obese individuals². Consistently, it has been recently documented that visceral obesity and insulin resistance increase the risk of cardiovascular diseases³ and type 2 diabetes⁴. Hence, there is increasing interest in identifying factors that control the expansion of visceral fat mass in the hope that acting on these components will help limit the development of obesity-related metabolic co-morbidities.

Fat mass development is strongly correlated with total body weight but currently available strategies to induce weight loss (i.e. hypocaloric diets, increased physical activity, drug-induced reduction of appetite and bariatric surgery) have shown no specific effect on visceral fat mass⁵.

Recent studies identified that gut microbiota are an important factor influencing visceral fat mass independently of diet⁶ and some specific microbial metabolic pathways are associated with visceral fat⁷. This may explain the contrasting findings about the links between dietary macronutrient intake and visceral fat mass. For example, while Le Roy et al. reported that increasing dietary protein intake is associated with higher visceral fat mass⁶, others have reported the opposite^{8,9}. The protein composition may also be an important element to consider that may be responsible for diverging results in these studies. This has been well illustrated by a Japanese study comparing milk-derived to soy-derived protein formula where only the milk-derived proteins induced significant visceral fat mass reduction¹⁰. Most dietary proteins are digested in the upper gastrointestinal tract but low-digestibility protein intake leads to undigested peptides reaching the colon where they can be metabolised by gut bacteria¹¹. In the distal intestine, they contribute to the overall production of colonic short-chain fatty acids and there is accumulating evidence of protein-derived metabolites influencing host metabolism^{12–16}. Hence, gut microbiota protein metabolism may constitute a key pathophysiological link between obesity, fat mass development and its metabolic complications^{17,18}. Previous studies investigating the effects of high protein diets on gut bacteria community composition have reported increased abundance of bile-tolerant microorganisms (e.g. *Alistipes*, *Bilophila* and *Bacteroides*) and decreased levels of Firmicutes that metabolise dietary plant polysaccharides (e.g. roseburia, *Eubacterium rectale*, bifidobacteria and *Ruminococcus bromii*)^{19–22}. A recent study also reported an increase in *Akkermansia* spp. during a high protein dietary intervention²³.

Therefore, in order to investigate the impact of dietary proteins on visceral fat mass reduction and on the gut microbial ecosystem at both taxonomic and functional levels, we analysed data from a 12-week-long randomized double-blind placebo-controlled energy restriction intervention study in 107 overweight/obese individuals with metabolic syndrome supplemented with high protein formula versus an isocaloric comparative product.

Our hypothesis was that the investigational product (IP) containing a mixture of milk-derived proteins would induce fat mass reduction better than the isocaloric normoproteic comparator containing pea-derived proteins (CP). We also hypothesised that high protein intake would modulate gut microbial functions and questioned whether the protein source would induce a specific functional shift. We observed lower visceral fat mass after 12 weeks of treatment in the IP group. At the gut microbial community level, we observed a modest impact of protein supplementation but a strong functional shift was noted with milk-derived protein supplementation.

Subjects and methods

Patient population. This double-blind controlled, multicentre, interventional, randomized in parallel groups (1:1), clinical study was performed in France (Pitié-Salpêtrière hospital, Center of Research of Clinical Nutrition, Institut de Cardiometabolisme et de Nutrition, Paris) and in Canada (Institute on Nutrition and Functional Foods from Laval University, Québec). Patients aged between 18 and 65 years, overweight or obese (body mass index (BMI) $\geq 25 \text{ kg/m}^2$ and $< 40 \text{ kg/m}^2$) with metabolic syndrome²⁴, were selected for inclusion. A complete list of exclusion criteria and study details are provided in supplemental material. Briefly, patients were expected to be free from any known inflammatory disorder, not diabetic and not treated within the last 3 months with drugs affecting visceral fat mass. Antibiotic exposure within the last month, regular intake of food supplements known to affect body weight, satiety or appetite and probiotics were prohibited. Any form of hypocaloric diet or specific diet such as vegetarian or vegan within the last 6 months were also exclusion criteria. The study was registered at Clinicaltrials.gov as NCT01755104 (24/12/2012). Informed consent was obtained

form all participants before initiation of any study-related procedure. Research was performed in accordance to the Declaration of Helsinki.

Dietary intervention and product allocation. A diagram of the study design is available in Supplemental Figure S1. Eligible subjects were randomized to receive a daily supplement of two sachets per day of the high protein investigational product (IP) or the comparator product (CP). IP was a high protein powder preparation containing 34 g of protein, 2 g of fat and 6 g of carbohydrates (i.e. 75%, 12% and 13% of total energy content, respectively) per sachet. Protein sources for the IP were composed of a mixture of milk protein fractions and free amino acids (patent reference: US 20140287057 A1). CP was an isocaloric mixture containing only 7.3 g of protein, 7.6 g of fat and 24.5 g of carbohydrates designed to not alter the overall balance of a conventional diet (i.e. 15% protein, 35% fat, 50% carbohydrate). Protein sources for the CP were composed of hydrolysed pea proteins and calcium caseinate in equal proportion. Both powders were manufactured by ProDietic (France) and were reconstituted in 250 mL of water and taken twice a day as morning and afternoon snacks. A detailed nutritional composition of the IP and CP is given in Supplemental Table S1. The IP and the CP were administered along with a balanced (50% carbohydrates, 35% fat and 15% proteins) diet with a moderate caloric restriction defined by a reduction of 600 kcal from the estimated daily caloric needs, for 12 weeks and for another 4-week diet-free, maintenance period. Daily caloric needs were estimated by a registered dietician, as product of the energy expenditure (REE) following the Harris and Benedict formula multiplied by a coefficient of 1.3 (for a sedentary lifestyle). The daily portion provided by the IP or the CP (360 kcal/day), was included in the calculation of the total energy intake. Subjects in both study groups were instructed to maintain their usual physical activity habits during the study period. Dietary advice was given to subjects in the investigational centre at the inclusion visit, follow-up visit 1 and follow-up visit 2. A phone call, initiated by the dietitian, was planned every week for the whole period of the study. Before and at the end of the intervention, food intake was quantitatively measured using population-specific validated food frequency questionnaire completed by both French and Canadian subjects online²⁵.

Study endpoints. The primary endpoint was a change in the abdominal visceral fat area (VFA) measured in cm² from baseline to Week 12 (end of intervention). Abdominal VFA was measured 5 cm above L4–L5 intervertebral disc using a computed tomography (CT) scan at both centres. Reading of the CT scan was performed centrally (Philips NCTC 965 Software), for the complete set of subjects, by a single reader (radiologist). Secondary endpoints included changes in body composition, cardiometabolic risk factors, inflammatory parameters and gut microbiota composition. Compliance was assessed by recording the number of delivered and returned sachets, including empty sachets. Safety was assessed based on the reporting of adverse events monitored from the time that the subjects gave informed consent to the end of the study.

Fecal microbiota analysis. Participants to this study in the French centre had faecal sampling before and after the intervention.

Extraction, sequencing and analysis of faecal genomic DNA. Detailed information about extraction, sequencing and analysis of faecal microbiota is provided in the supplementary methods. Briefly, DNA sequencing data were generated using Illumina HiSeq2500. Normalisation and downsizing were performed and the abundance of MGS (metagenomic species) > 500 genes was computed as described²⁶. Alpha-diversity was measured in two ways: gene richness i.e. the average number of genes (meaning at least one read mapped) per sample and MGS richness i.e. the MGS present in each sample. Enterotyping of the cohort was performed following the Dirichlet Multinomial Mixture (DMM) method²⁷ using MGS abundance matrix of the entire cohort collapsed to genus level. Functional characteristics of the metagenomes were assessed for each sample by collapsing gene abundance into KEGG modules as described²⁸ based on KEGG functional mappings of the IGC gene catalog (PMID: 24997786; PMID: 10592173). To complete this functional module matrix (where amino-acid degradation modules are not fully represented), gut metabolic modules as described by Viera-Silva et al.²⁹ were computed for each sample using omixerRPM v0.2.3 R package³⁰. Using functional annotations of the 9.9 M genes catalogue, prevalence matrices (presence/absence) of functional annotation per MGS were computed allowing the bioinformatic constitution of amino-acid synthesis and degradation functional groups of MGS.

In vitro batch fermentation. Detailed information on in vitro anaerobic batch fermentation protocols and faecal microbiota analyses are provided in supplementary methods. Briefly, pre-digested protein mix (0.35 g) was added to the sterile vessels with basal nutrient medium prior to inoculation with 2 mL of faecal inocula from 6 selected donors (3 lean and 3 obese, matched for sex and age). Samples were collected at baseline (T0) and after 48 h fermentation (T48). Following faecal DNA library preparation, metagenomic sequencing was performed with Illumina HiSeq. Microbiota characteristics were assessed using the same process as for clinical study samples.

Statistical methods. Sample size calculation is detailed in supplementary methods. The Full Analysis Set (FAS) population consisted of all randomized subjects who consumed at least one sachet of the study IP. The Per Protocol (PP) population included all subjects who completed the study without any major protocol deviation (as detailed in supplementary methods). Since microbiome samples were only available at T0 and T12 weeks, in the present manuscript we focused entirely on results at these two time points and data from T16 weeks were not considered.

	IP (n = 54)	CP (n = 53)	p value
Age (years)	47.7 (10.2)	48.1 (11.3)	0.64
Male (N,%)	24 (44.4)	20 (37.7)	
Female (N, %)	30 (55.6)	33 (62.3)	
BMI (kg/m ²)	32.4 (3.8)	32.2 (3.7)	0.73
Waist circumference (cm)	104.5 (9.4)	103.4 (8.3)	0.54
Waist/Hip circumference ratio	1.0 (0.1)	0.9 (0.1)	0.56
Visceral fat area (mm ²)*	213.0 (87.7)	181.6 (59.2)	0.10
Fasting plasma glucose (mmol/L)	5.53 (0.71)	5.62 (0.63)	0.49
HDL (mmol/L)	1.2 (0.4)	1.2 (0.4)	0.71
LDL cholesterol (mmol/L)	3.2 (0.8)	3.4 (0.9)	0.62
Triglycerides (mmol/L)	1.6 (0.9)	1.7 (0.8)	0.58
CRP (mg/L)	7.31 (21.54)	4.35 (6.21)	0.34
TNFalpha (pg/mL)	1.85 (1.56)	1.40 (0.66)	0.05*
IL-6 (pg/mL)	2.68 (5.11)	1.72 (0.89)	0.18

Table 1. Baseline subject characteristics for the FAS population. Mean \pm SD; BMI: Body mass index; * $p < 0.05$ between IP and CP; Distribution in men and women was equivalent in both groups ($p = 0.48$).

Statistical analysis of clinical data. Absolute changes of the primary and secondary outcomes, based on FAS population and measured at Week 12, were compared between the two groups using stepwise General Estimating Equations (GEE) analysis in a repeated fashion adjusted for centre (French/Canadian), age, sex, BMI, treatment, time, interaction between treatment and time, and starting value. Additional analyses for the primary endpoint were conducted using the PP population. Quantitative variables were described using mean, standard deviation, median, minimum and maximum. Qualitative variables were described using frequency and percentages. To investigate whether consumption of IP decreased the visceral fat mass to a greater extent than CP, a dummy stepwise multifactorial (GEE) model was applied in a repeated (participant) fashion. The multifactorial model was stratified by centre and adjusted for age, sex, BMI, treatment, time, interaction term of treatment and time, start value. Change in visceral fat mass per person between week 6, week 12 and week 0 was used as dependent parameter. Goodness of Fit of the model was evaluated using a Wald Chi-square statistic. Throughout the study a p value below 0.05 was considered to detect a statistically relevant difference applying two-sided evaluation. Outlier analysis was conducted via the Grubbs test (two-sided with α -level of 0.05). Patients with inconsistent dietary declarations i.e. energy intake $< 0.5 \times$ Basal metabolic rate (BMR; estimated using Harris and Benedict formula) or energy intake $> 3 \times$ BMR were excluded from dietary intake statistical analysis.

Statistical analysis of microbiome data. Microbiome dynamic changes were calculated as the log-ratio of abundance at T12 versus T0 at the different taxonomic levels after filtering for $> 20\%$ prevalence at baseline. For representation of changes over time, cliff delta effect of time was shown for MGS and 16S calculated genera (nonparametric distribution). For other microbiota features, log fold change (i.e. $\log(T12/T0)$) is shown. Microbiota changes were analysed in linear mixed models using fixed effect of time, adjusted for baseline age, sex and baseline for pooled analysis and interaction of time with intervention with same adjustments for between groups analysis. Beta-diversity was computed using Bray–Curtis distance with `vegdist` function of the `vegan` R package (v2.5–6)³¹ from MGS abundance matrix collapsed at genus level. Principal Coordinate Analysis (PCoA) of Bray–Curtis beta-diversity matrix was carried out with the `cmdscale` function of `vegan` R package. When relevant, adjustment for multiple comparison was performed using the False Discovery Rate method (FDR). For FDR adjusted analysis, the statistical significance threshold was set to 0.1. Statistical analyses and conception of figures were carried out using R version 3.3.2, R Core Team (2019), <https://www.R-project.org/>.

Ethics approval and consent to participate. The study was registered at Clinicaltrials.gov as NCT01755104. The study protocol was reviewed and approved in local ethical committee For France, local ethical committee was *CPP IDF 1; 00008522* (study approval reference: 2012-sept-13025) and for Canada, local comitee was the *comité d'éthique de la Recherche de l'UICPQ* (study approval reference: 20922). Informed consent was obtained from each subject before initiation of any study-related procedure.

Results

Results of the main clinical trial analyzing the whole cohort of both French and Canadian patients: effects of protein supplementation on body composition and metabolic parameters. *Baseline characteristics in IP and CP groups.* A total of 107 subjects were included in the Full Analysis Set (FAS) population and 99 in the per protocol (PP) population (Study flow chart, Figure S2). Overall baseline characteristics were similar in both groups (Table 1, Table S2).

Compliance and safety analysis. Median compliance was high, reaching 96.5% at week 12 and was similar in each group. Over 96% of subjects in each group reported good tolerance of the IP and CP products. Detailed

	Baseline (T0)			T12 weeks: diet only			T12 weeks: diet + daily supplement		
	IP n = 48	CP n = 46	p	IP n = 48	CP n = 46	p	IP n = 48	CP n = 46	p
Energy intake (kcal)	2436 (899)	2255 (872)	0.32	1414 (483)	1414 (518)	0.99	1770 (496)	1790 (530)	0.85
Fat (g)	99.9 (43.1)	85.4 (40.1)	0.01	51.2 (22.3)	49.1 (24.6)	0.66	56.9 (23.1)	63.7 (25.0)	0.17
Fat (%)	36.3 (5.30)	33.6 (5.56)	0.02	32.1 (7.33)	30.3 (5.78)	0.17	28.2 (5.91)	31.5 (4.39)	0.003
Carbohydrates (g)	271 (101)	269 (102)	0.92	166 (61.6)	168 (63.8)	0.85	176 (62.0)	214 (65.0)	0.005
Carbohydrates (%)	44.9 (5.90)	48.1 (7.18)	0.02	46.6 (8.60)	47.9 (6.61)	0.42	39.3 (6.93)	48.0 (5.13)	<0.001
Protein (g)	108 (45.7)	97.2 (42.3)	0.25	68.8 (24.0)	73.3 (23.4)	0.36	134 (24.8)	87.5 (23.9)	<0.001
Protein (%)	17.7 (3.77)	17.2 (3.12)	0.43	20.0 (5.81)	21.2 (3.55)	0.23	31.5 (5.50)	19.8 (2.62)	<0.001
Fibre (g)	23.5 (10.8)	23.7 (10.3)	0.91	17.9 (8.14)	18.2 (6.68)	0.83	21.3 (10.4)	18.1 (6.5)	0.09

Table 2. Description of the nutritional intake before and after the intervention. Data is expressed as mean (SD) for continuous variables. Macro-nutrient intake is expressed as g/day or percent of total energy intake when specified. *P* values of Student *t* test.

information about adverse events is provided in Supplementary Table S3 and S4. There were no signs of kidney toxicity with no significant changes in creatininemia in neither IP nor CP groups (Table S5).

Dietary intake. For 9 patients dietary data were missing and 4 were excluded because of inconsistent declarations. Dietary intervention led to an energy restriction that was similar in IP and CP groups, while maintaining constant fibre intake (Table 2). At the end of the intervention (T12), although carbohydrate intake by design also differed, the main difference between the 2 groups was protein intake.

Effect of protein supplementation on body composition and cardiometabolic risks. *Protein supplementation induces changes in visceral fat and body composition.* Mean visceral fat area (VFA) in the FAS population decreased significantly from baseline to Week 12 in both IP ($-20.7 \pm 23.2 \text{ cm}^2$ i.e. -9.7% from baseline, $p < 0.0001$) and CP ($-14.5 \pm 24.3 \text{ cm}^2$ i.e. -8.0% from baseline, $p < 0.0001$) groups. Elimination of 2 outliers (determined via Grubbs test) revealed a significant difference in the absolute reduction of visceral fat area between the IP and CP group (-20.8 vs. -14.2 mm^2 resp, $p < 0.05$). The absolute reduction of visceral fat area from baseline to Week 12 was not significantly higher in the IP compared to CP groups ($p = 0.09$) in the FAS population but was significantly higher in the PP population (-20.5 vs. -12.6 cm^2 resp., $p < 0.05$) (Fig. 1). In the FAS population, the between group adjusted difference was significant for total fat area ($p < 0.05$), Subcutaneous Fat Area ($p < 0.05$) and Fat-free mass ($p < 0.05$) in favour of the IP group (Table 3). There was no absolute change in fat-free mass (i.e. lean mass) from baseline to Week 12 in the IP group, whereas a significant decrease ($p < 0.001$) was observed in the CP group ($p < 0.01$ between groups).

Changes in cardiometabolic risk factors and inflammatory markers. Systolic and diastolic blood pressures, BMI, waist circumference, fasting blood glucose, total cholesterol, LDL cholesterol and triglycerides levels significantly decreased from baseline to 12 weeks ($p < 0.001$) without significant between group effects (IP vs. CP) (Table S5). CRP (C-reactive Protein) and TNF alpha, two inflammatory markers commonly associated with low grade inflammation in obesity, were significantly lower in the IP group versus CP group ($p < 0.05$ and $p < 0.01$ respectively) (Table 3). On the other hand, the decrease in HbA1c was significantly more substantial in CP group versus IP (Table S5).

Results of the ancillary study focusing on the subcohort of French patients: effects of protein supplementation on the gut microbiota. *Effect of protein supplementation on the gut microbiota composition.* Out of the 53 participants with microbiota sampling (i.e. the French participants), 2 were excluded because of an inter-current antibiotic treatment (Figure S3).

Increase in gut microbiota richness associates with visceral fat mass loss. Overall, the dietary intervention was not associated with changes in microbial diversity neither in number of genes or number of species and there was no difference between groups. However, individual trajectories were highly heterogeneous and consistently with previous observations¹⁹, the change in diversity after the intervention depended on the baseline diversity status. Independently of IP or CP supplementation, individuals with a baseline low gene count, had a significant increase in diversity (gene count: $6.6 \pm 13.6\%$ vs. $-2.3 \pm 13.9\%$ for low vs. high baseline gene count individuals; $p = 0.015$; metagenomic richness: $11.6 \pm 17.8\%$ vs. $-0.4\% \pm 12.3\%$ for low vs. high baseline gene count individuals; $p = 0.0009$) (Fig. 2A). Interestingly, individuals that increased their number of metagenomic species during the intervention were those who showed the greatest weight, fat mass and visceral fat mass loss (Fig. 2B,C).

Protein supplementation had modest impact on microbial diversity and composition. Calorie restriction-induced weight loss was similar in IP and CP and the main difference between the two intervention groups in terms of dietary intake changes was protein intake (Table 2). Despite this major low-digestibility protein supplementation, no significant changes were observed in alpha-diversity in IP versus CP group (Fig. 3A). Beta-diversity did not differ between the two groups at baseline (permanova $p = 0.47$; $R^2 = 0.018$) nor at the end of intervention

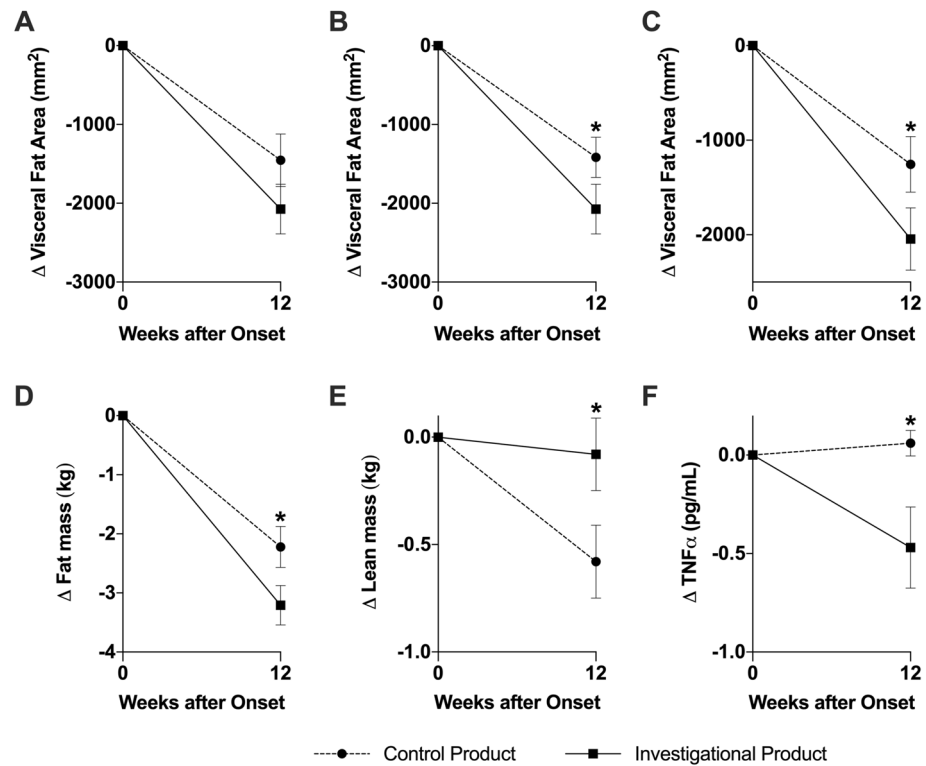


Figure 1. Investigational Product improved fat mass, maintained lean mass and reduced inflammation at week 12 post intervention. Changes in visceral fat area as established via CT scan in the (A) FAS population, (B) FAS without outliers and (C) PP population. Changes in fat mass (D) and lean mass (E) as established via DEXA scan and in TNFα (F) in FAS without outliers. Mean (SEM) for at least n = 51. **p* < 0.05 (GEE model) Key: Circle is Control Product; Square is Investigational Product.

	IP (N = 54)		CP (N = 53)		IP versus CP (N = 107)	
	Mean absolute change (SD)	<i>p</i> value	Mean absolute change (SD)	<i>p</i> value	Mean absolute change	<i>p</i> value
Body weight (kg)	-3.56 (3.12)	<0.001	-3.07 (3.09)	<0.001	0.49	0.701
Total fat mass (kg)	-3.21 (2.47)	<0.001	-2.22 (2.53)	<0.001	0.99	0.004
Visceral Fat Area (cm²)	-20.7 (23.2)	<0.001	-14.5 (24.3)	<0.001	-6.2	0.088
Total Fat Area (cm²)	-46.6 (43.8)	<0.001	-30.8 (48.3)	<0.001	-15.8	0.010
Subcutaneous Fat Area (cm²)	-25.9 (32.3)	<0.001	-16.3 (32.5)	<0.001	-9.6	0.029
Fat-free mass (kg)	-0.08 (1.24)	0.644	-0.58 (1.24)	0.001	0.50	0.003
Fasting glucose (mmol/L)	-0.17 (0.45)	<0.001	-0.3 (0.49)	<0.001	0.47	0.249
HDL cholesterol (mmol/L)	-0.02 (0.19)	0.468	0.03 (0.14)	0.115	0.05	0.301
LDL cholesterol (mmol/L)	-0.3 (0.6)	<0.01	-0.2 (0.7)	<0.01	-0.1	ns
Triglycerides (mmol/L)	-0.28 (0.61)	<0.002	-0.37 (0.55)	<0.001	0.09	0.296
CRP (mg/L)	-3.4 (19.8)	0.205	1.0 (9.9)	0.457	4.4	0.049
TNF alpha (pg/mL)	-0.47 (1.57)	0.023	0.06 (0.48)	0.401	0.53	0.002
IL-6 (pg/ml)	-0.83 (5.03)	0.223	0.17 (1.46)	0.383	1.00	0.151

Table 3. Between-group differences in absolute changes in body composition from baseline to Week 12 in the FAS Population (N = 107). Mean values (standard deviation); Between group difference denotes IP effect versus CP.

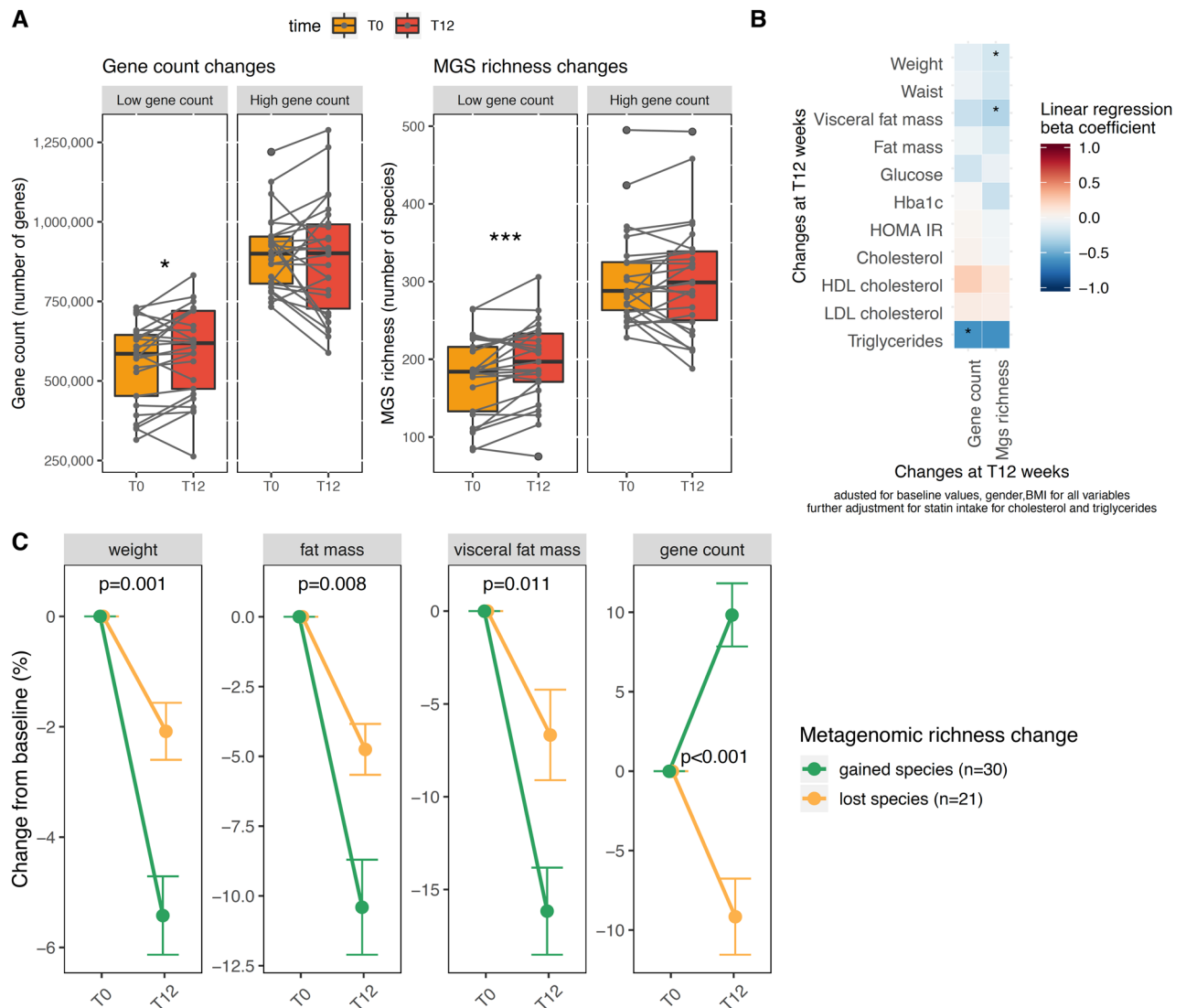


Figure 2. Evolution of metagenomic richness 12 weeks after dietary intervention. **(A)** Evolution of gene count (number of genes) and metagenomic richness (number of MGS) depending on baseline gene richness status. The fixed effect of time (the intervention) was analysed in a mixed linear model with patients as random effects. $*p < 0.05$, $**p < 0.001$. **(B)** Evolution of richness associations with the clinical evolution. Heatmap of standardized beta coefficient from linear regression. Model is adjusted for baseline values + baseline BMI and sex. For cholesterol and triglycerides, the model is also adjusted for baseline statin intake. **(C)** Evolution of weight, fat mass, visceral fat mass and gene count depending on richness response. Change from baseline is $(T12 - T0) / T0 \times 100$. Gained species are individuals who increased their MGS richness. Lost species are individuals who decreased their metagenomic (MGS) richness. P values of the effect of MGS richness change in a linear regression model adjusted for baseline value, sex and BMI. Points are mean, bars are SEM. Figure conceived using R version 3.3.2, R Core Team (2019), <https://www.R-project.org/>.

(T12) ($p = 0.34$, $R^2 = 0.021$). There was no effect of intervention on beta-diversity in the CP group ($p = 0.629$; $R^2 = 0.014$) nor in the IP group ($p = 0.93$; $R^2 = 0.007$) (Figure S4A–D).

After 12 weeks, 8 patients switched their enterotype (15%). The proportion of subjects that changed their enterotype was lower when the baseline enterotype was *Bacteroides* ($n = 1$, 2.0% vs. $n = 7$, 13.7%; p value = 0.024). The proportion of enterotype change was not different between the 2 groups (9.8% in IP group vs. 5.8% in CP group, $p = 0.34$) (Fig. 3B).

We next investigated whether microbiome changes induced by higher protein supplementation with IP could be observed at lower taxonomic levels. The 16S targeted analysis of known taxa associated with metabolic health revealed modest, but interesting, modulations (Figure S5). *Akkermansia* spp. tended to increase with energy restriction (in both groups) while bifidobacteria tended to decrease. *Christensenella* spp. and *Lactobacillus* sp. tended to increase in the IP group, while *Turicibacter* spp. tended to be boosted in the CP group (non-significant trends). Regarding untargeted shotgun metagenomics results, some MGS were increased in the IP versus CP groups, such as *Bilophila wadsworthia* but none of these changes were significant after adjusting for multiple comparisons (False discovery rate < 0.1) (Fig. 3C).

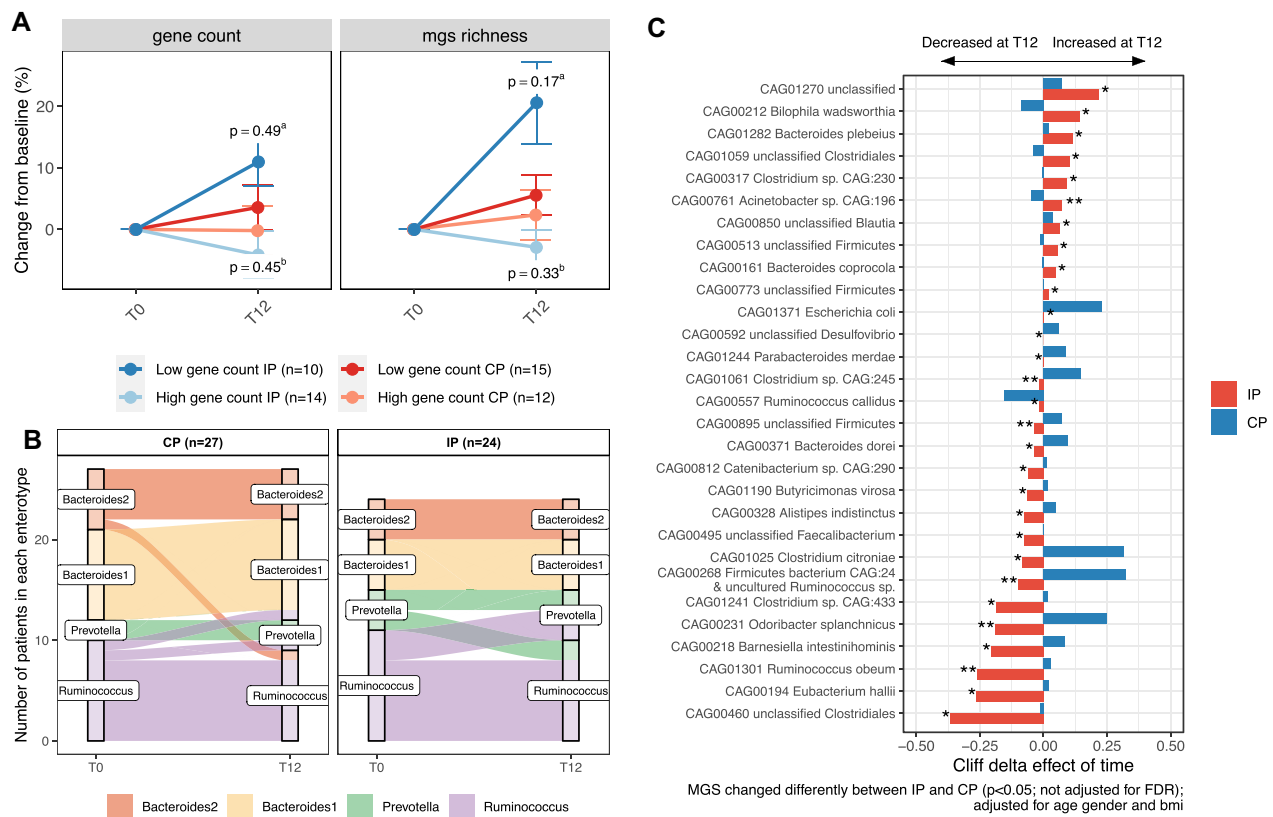


Figure 3. Effects of protein supplementation on gut microbiome composition (IP vs. CP). **(A)** Evolution (relative change at T12) of gene count and MGS richness (number of present species) in investigational product group (IP, red colours) and Comparator group (CP, blue colours) depending on baseline metagenomic richness. LGC: low gene count at baseline (light colours). HGC: high gene count at baseline. p value of the effect intervention interaction with time in LGC patients (a) and HGC patients (b); **(B)** Alluvial plot showing the evolution of enterotype between T0 and T12 in CP group (left panel) and IP group (right panel); **(C)** Untargeted analysis of the effects of IP on metagenomic species (MGS) abundance changes with the intervention. MGS shown are the ones with a significant interaction of time with intervention in a mixed linear model with patients as random effects adjusted for baseline age, sex and BMI ($p < 0.05$ without adjustment for multiple comparisons). Bars represent the cliff delta effect of time (T12 vs T0) on MGS abundance in each group. * $p < 0.05$; ** $p < 0.01$; *** $p < 0.001$ No significant differences resist to adjustment for multiple comparisons. IP: investigational product (high protein); CP: comparator product. Figure conceived using R version 3.3.2, R Core Team (2019), <https://www.R-project.org/>.

IP supplementation induces amino acid metabolism functional changes in the gut microbiota. Twelve KEGG functional modules were induced by the IP with a significant difference compared to the CP group (Fig. 4A) (IP vs. CP adjusted for age, BMI and sex; $p < 0.001$ and FDR < 0.1). Interestingly, most of these modules were involved in amino acid metabolism such as *urea cycle*, amino-acid biosynthesis modules (*histidine*, *leucine*, *lysine*, *proline* and *methionine biosynthesis*). One amino acid degradation module (glutamine degradation II) was induced by the IP based on the same statistical approach on the Gut Metabolic Modules (GMM) repository (Fig. 4A). Moreover, these functional changes were positively correlated with patients' individual % protein intake changes from baseline (Fig. 4B) and were not linked with weight loss. Complementing this approach, we then focused on amino-acid metabolism and compared the evolution of amino acid synthesis and degradation modules in IP versus CP groups. Most amino acid synthesis modules were enriched (i.e. mean abundance higher at T12 vs T0) during intervention in the IP group whereas the opposite was observed for the CP group (90.0% for IP group vs. 13.3% in CP group; chi square $p < 0.001$). A majority of amino acid degradation modules were also enriched in the IP group but this did not reach significance compared to the CP group (68.6% in the IP group vs. 52.9% in the CP group; chi square $p = 0.10$) (Fig. 4C). To further explore these functional changes, we projected amino acid metabolism modules from KEGG and GMM databases on metagenomic species (MGS), computing functional groups of bacteria with the capacity to synthesise (i.e. producers) or degrade (i.e. degraders) amino acids. We observed significant increases in amino-acid producers (Cysteine, Threonine, Isoleucine, Leucine, Histidine and Ornithine) induced by IP (vs. CP) with no effect on amino acid degraders (Fig. 4D). However, when comparing the coverage of these functional modules across MGS gene content, we found that the completion of biosynthesis modules was from far higher than degradation modules (Figure S6A), with a large overlap between biosynthesis and degradation phenotypes for different amino acids (Figure S6B).

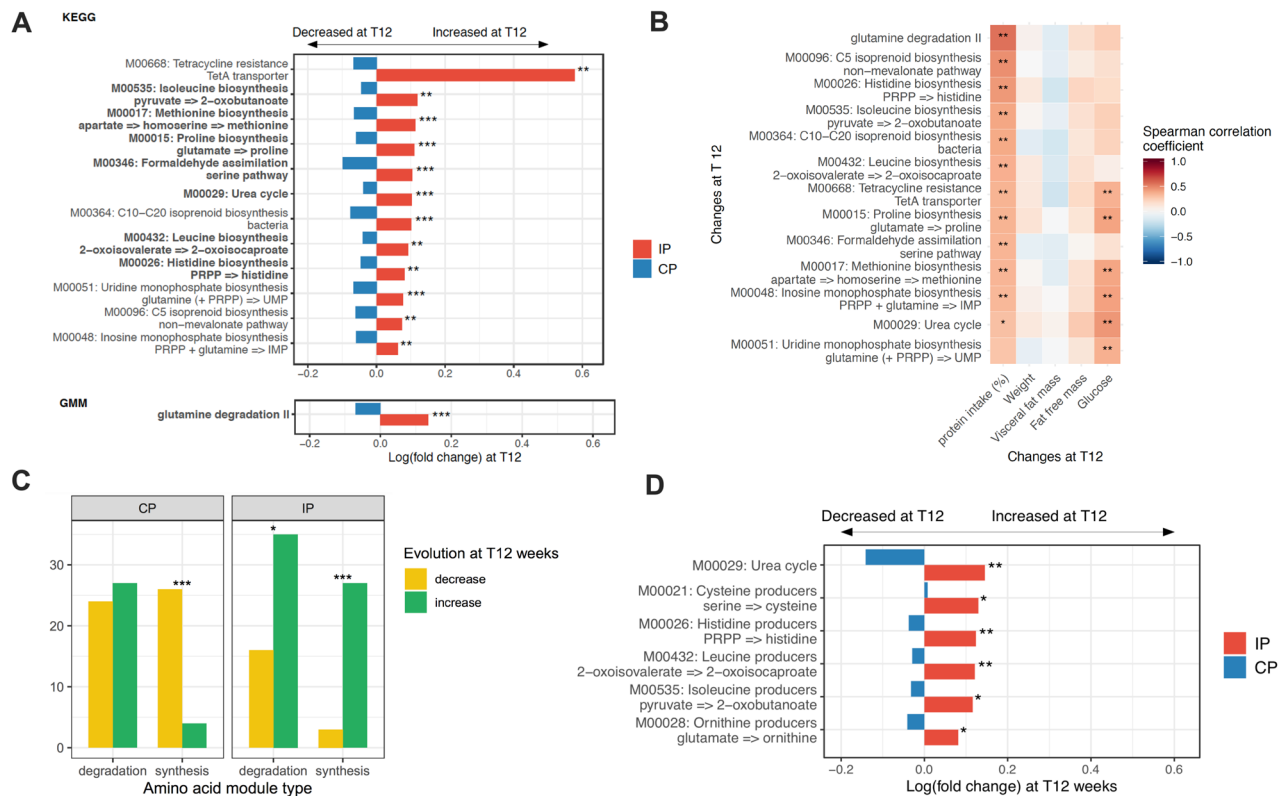


Figure 4. Effects of protein supplementation on gut microbiota function. **(A)** Effects of IP on functional modules from KEGG and GMM databases. Shown modules are those which changed differently (FDR < 0.1) between the two groups (IP vs. CP) adjusted for baseline BMI, age and sex. Bars represent log(fold change) at T12 of modules abundances in each group (IP vs. CP). Modules in bold: amino-acid metabolism modules. * p < 0.05; ** p < 0.01; *** p < 0.001. **(B)** Heatmap of spearman correlations between functional modules fold changes and bio-clinical relative changes after the intervention (T12-T0/T0); * p < 0.05; ** q < 0.05 (adjusted for multiple comparison, FDR method). **(C)** Evolution of the amino acid metabolism (degradation and synthesis) functional modules (KEGG and GMM) with the intervention. Increase is defined by a mean fold change > 0 and decrease by a mean fold change < 0 for each module. The observed proportion of increased module was compared to a theoretical value of 0.5 with a binomial test. * p < 0.05; ** p < 0.01; *** p < 0.001 (adjusted for multiple comparisons, FDR method). **(D)** Effects of IP on amino acid metabolism functional groups of metagenomic species. Shown functional groups are those which changed differently (p < 0.05) between the two groups (IP vs. CP) adjusted for baseline BMI, age and sex. Bars represent log(fold change) at T12 of modules abundances in each group (IP vs. CP). * p < 0.05; ** p < 0.01; *** p < 0.001. IP: investigational product (high protein); CP: comparator product. Figure conceived using R version 3.3.2, R Core Team (2019), <https://www.R-project.org/>.

Results of the in vitro study: effects of the protein fraction alone on the gut microbiota. *Protein supplementation induces functional microbiota changes during in vitro bacterial fermentation.* To confirm that metagenomic changes observed in the IP group were due to an increased amount of protein reaching the colon, we examined the effects of a direct supplementation of the protein extracted from both CP and IP on microbiota function using an in vitro fermentation approach. We confirmed that exposure to proteins from IP or CP was associated with increased amino acid metabolism in both cases (Figure S7), with a moderate specific effect of IP versus CP (Figure S8A,B). This suggests that the differences observed in the clinical dietary intervention study could partially be due to the low digestibility qualities of the proteins contained in the IP. Furthermore, in this experiment where proteins were the only source of carbon for bacteria, most of the increases observed corresponded to amino acid degradation modules with a less marked effect for synthesis modules (Figure S8C).

Discussion

In this 12-week long energy-restricted dietary intervention, we observed visceral fat mass loss without lean mass loss in subjects that received the high milk-derived protein investigational product (IP) in the per protocol population. We observed a strong interaction between a gain in individuals' gut microbiota richness and both body weight and visceral fat mass loss, independently of protein supplementation. Protein supplementation induced significant functional changes on bacterial amino acid metabolism with increases in both amino acid synthesis and degradation, whereas it had a limited impact on the alpha or beta diversity. Since the gut microbiota analyses

concerned only half of the population of the study, we cannot conclude whether these microbiota changes underlined the effects of the IP observed on visceral fat mass at the scale of the full cohort.

The importance of the macronutrient composition for efficiency of such moderate weight loss diets is still subject to debate³². Herein we show that alongside a mild calorie restriction, a high protein supplementation limits lean mass loss in line with previous reports^{8,33–36}. In the per protocol population, we also observed that IP supplementation promoted visceral fat mass loss similarly to previous findings^{9,10}. Interestingly here, this was associated with a decrease in low grade inflammation markers.

Recent studies underline the connection between visceral fat mass and the gut microbiota^{6,7}. We show here for the first time the link between gut microbiota changes and visceral fat mass.

Gut dysbiosis, defined by a low metagenomic diversity and altered composition, has been associated with moderate to severe obesity and its metabolic complications^{19,37,38}. We first confirm here in a distinct human population that a dietary intervention combining energy restriction and protein enrichment improves metagenomic diversity in individuals with a baseline low gene count, in agreement with results from our previous study¹⁹. We also show that while the individual microbiota response to a dietary intervention is highly heterogeneous, it is nonetheless intricately linked with body composition improvement. Subjects who improved their microbial diversity (net gain of species), lost significantly more weight and visceral fat mass compared to those who experienced a net loss of metagenomic species. Consistent with previous findings, we noted few enterotype changes during this dietary intervention¹³. Interestingly, the *Bacteroides* enterotype, shown to be associated with animal protein consumption, was the most resilient to this high protein dietary intervention. More specifically, the *Bacteroides* 2 enterotype, known to be associated with a more severe metabolic phenotype³⁹ was not reversed with this moderate weight loss intervention.

The unique design of this study with an iso-caloric, iso-fibre control diet, and the use of both 16S and metagenome sequencing analyses, allowed us to examine the specific effects of high protein intake on the gut microbiome composition and function. The 16S data analysis revealed modest modulations of interesting genera such as *Akkermansia* spp. that tended to increase in both groups due to diet restriction consistently with recent findings²³ and *Christensenella* spp. that showed a trend for increase in the IP group and which as been previously correlated with an increase in amino acid-derived metabolites in response to high protein intake⁴⁰. Nevertheless, none of these changes were significant. The metagenomic analysis revealed a few changes at the species levels, some of which have already been described in previous studies. *Bilophila wadsworthia*, has been associated with protein intake²⁰ and is one of the metagenomic species with the biggest increase in the high protein IP group in our study. Importantly, this species has been recently linked with glucose dysmetabolism⁴¹. Among the other metagenomic species increased in the IP group, two of them, *Bacteroides coprocola* and *Bacteroides plebeius*, belong to the *Bacteroides* genus, which has previously been associated with a high protein diet²⁰. However, overall, protein supplementation was found to induce only minor modulations in bacterial composition. Although this can be somewhat surprising, it is in line with previous results^{40,42}. However, taxonomic changes do not accurately reflect potential functional changes⁴³ and the protein sources tested here had a different impact at this level. IP supplementation was associated with a functional switch towards increased amino acid metabolism by bacteria. Glutamine degradation was among the main IP-induced functional changes. Interestingly, glutamine degradation was a key over-represented function in the microbiota of a population with a protein-rich diet or carnivorous mammals^{43,44}. Beside glutamine degradation, most specific changes induced by the IP compared to the CP involved amino acid synthesis functional modules and this was confirmed in complementary analysis focusing on functional groups of MGS. However, we highlighted a potential lack of genomic coverage for enzymatic activities involved in amino acid degradation in metagenomic gene catalogues. This is illustrated by the branched-chain dehydrogenase enzyme complex⁴⁵, whose coverage is very sparse across MGS of the IGC gene catalogue. Indeed, none of the MGS harbour all specific subunits of the enzyme complex or additional steps of the degradation pathway but only the first step⁴⁶ as illustrated in (Figure S9). This lack of coverage for critical enzymes of amino acid catabolism together with incompleteness of MGS assemblies and the potential overlap of some amino acid metabolism function (Figure S6) can influence the quantification of degradation modules in quantitative metagenomic studies. Despite these methodological issues, the increase in amino acid synthesis in IP versus CP group suggests a higher bacterial protein anabolism stimulated by milk-derived proteins, that may result from increased availability of nitrogen in the gut, which may prompt de novo synthesis of amino acids. Another hypothesis is the increased urea and ammonia excretion into the gut that has formerly been associated with a high protein diet⁴⁷. This excess nitrogen in the gut can be utilized by bacteria and may explain the observed enhanced amino-acid metabolism in our study. Supporting this hypothesis, changes in microbiota amino acid metabolism specific to the IP were less pronounced in the in vitro batch fermentation study where these functional changes were also found in the CP group, although to a lower extent. This could be explained by the likely absence of increased urea and ammonia excretion in the in vitro experiment. Also, in the fermentation experiment design, proteins were delivered directly to the faecal samples without prior absorption of amino acids that normally occurs in the small gut in vivo. This suggests a different fate for proteins depending on their quality (directly impacted by the protein source) and digestibility, in agreement with previous reports^{40,48}.

It is worth noting that limitations frequently affecting other human dietary interventions are also present in our study. The IP group had somewhat lower carbohydrate intake and could explain some of the observed microbiome changes. Nevertheless, protein intake was the main difference between IP and CP groups and, unlike some previous studies, no differences in fibre intake was observed. It is important to note that although it was not significant, there was a trend for increased fiber intake in CP versus IP. Although overall protein intake was more than 50% higher in the IP group, both interventions were characterised by a rather high proportion of proteins in total energy intake (21% in CP vs. 34% in IP group). Regarding the in vitro fermentation study, the conditions were optimized to reproduce the standard digestion process of proteins in the upper gastrointestinal tract before reaching the colonic microbiota. The 48 h batch fermentation therefore mimics the adaptation of the

gut microbiota to a sudden exposure to high proteins rather than a chronic exposure to a high protein diet over the 12 weeks of the intervention study. Finally, we do not have access to the profile of fecal amino acids, which would be interesting to measure in further intervention studies to confirm the observed functional switches.

In conclusion, in this dietary intervention study, we show that moderate caloric restriction coupled with a high protein supplement decreased visceral fat mass while maintaining lean mass. We confirmed that a gain in metagenomic diversity is a strong marker of a positive response to a dietary intervention in terms of body composition changes and observed for the first time a link between microbiota diversity improvement and visceral fat mass loss. Diet enrichment in proteins had only small effects on bacterial community composition but led to significant functional changes in the gut microbiota with an activation of amino acid metabolism. Deeper studies of the impact of different diets on the gut microbiota composition and function could be key to better understand the heterogeneous responses commonly observed after dietary interventions.

Data availability

Data described in the manuscript, code book, and analytic code will be made available upon request pending. Sequencing data have been deposited in the European Bioinformatics Institute (EBI) European Nucleotide Archive (ENA) under accession number PRJEB35524.

Received: 2 March 2021; Accepted: 12 July 2021

Published online: 02 August 2021

References

- De Lorenzo, A. *et al.* Adiposity rather than BMI determines metabolic risk. *Int. J. Cardiol.* **166**, 111–117 (2013).
- Calder, P. C. *et al.* Dietary factors and low-grade inflammation in relation to overweight and obesity. *Br. J. Nutr.* **106**(Suppl 3), S5–78 (2011).
- Mottillo, S. *et al.* The metabolic syndrome and cardiovascular risk: A systematic review and meta-analysis. *J. Am. Coll. Cardiol.* **56**, 1113–1132 (2010).
- Lorenzo, C., Okoloise, M., Williams, K., Stern, M. P. & Haffner, S. M. The metabolic syndrome as predictor of type 2 diabetes: The San Antonio Heart Study. *Diabetes Care* **26**, 3153–3159 (2003).
- Merlotti, C., Ceriani, V., Morabito, A. & Pontiroli, A. E. Subcutaneous fat loss is greater than visceral fat loss with diet and exercise, weight-loss promoting drugs and bariatric surgery: A critical review and meta-analysis. *Int. J. Obes.* **2005**(41), 672–682 (2017).
- Le Roy, C. I. *et al.* Dissecting the role of the gut microbiota and diet on visceral fat mass accumulation. *Sci. Rep.* **9**, 9758 (2019).
- Nie, X. *et al.* A metagenome-wide association study of gut microbiome and visceral fat accumulation. *Comput. Struct. Biotechnol. J.* **18**, 2596–2609 (2020).
- Campbell, W. W., Kim, J. E., Amankwaah, A. F., Gordon, S. L. & Weinheimer-Haus, E. M. Higher total protein intake and change in total protein intake affect body composition but not metabolic syndrome indexes in middle-aged overweight and obese adults who perform resistance and aerobic exercise for 36 weeks. *J. Nutr.* **145**, 2076–2083 (2015).
- Huang, G. *et al.* Effect of protein intake on visceral abdominal fat and metabolic biomarkers in older men with functional limitations: Results from a randomized clinical trial. *J. Gerontol. A. Biol. Sci. Med. Sci.* <https://doi.org/10.1093/gerona/glab007> (2021).
- Takahira, M. *et al.* Randomized, double-blind, controlled, comparative trial of formula food containing soy protein vs. milk protein in visceral fat obesity. FLAVO study. *Circ. J. Off. J. Jpn. Circ. Soc.* **75**, 2235–2243 (2011).
- Blachier, F. *et al.* High-protein diets for weight management: Interactions with the intestinal microbiota and consequences for gut health. A position paper by the my new gut study group. *Clin. Nutr.* <https://doi.org/10.1016/j.clnu.2018.09.016> (2018).
- Sonnenburg, J. L. & Bäckhed, F. Diet-microbiota interactions as moderators of human metabolism. *Nature* **535**, 56–64 (2016).
- Wu, G. D. *et al.* Linking long-term dietary patterns with gut microbial enterotypes. *Science* **334**, 105–108 (2011).
- Zhernakova, A. *et al.* Population-based metagenomics analysis reveals markers for gut microbiome composition and diversity. *Science* **352**, 565–569 (2016).
- Liu, R. *et al.* Gut microbiome and serum metabolome alterations in obesity and after weight-loss intervention. *Nat. Med.* **23**, 859–868 (2017).
- Koh, A. *et al.* Microbially produced imidazole propionate impairs insulin signaling through mTORC1. *Cell* **175**, 947–961.e17 (2018).
- Karlsson, F. H. *et al.* Gut metagenome in European women with normal, impaired and diabetic glucose control. *Nature* **498**, 99–103 (2013).
- Aron-Wisniewsky, J. & Clément, K. The gut microbiome, diet and links to cardiometabolic and chronic disorders. *Nat. Rev. Nephrol.* **12**, 169–181 (2016).
- Cotillard, A. *et al.* Dietary intervention impact on gut microbial gene richness. *Nature* **500**, 585–588 (2013).
- David, L. A. *et al.* Diet rapidly and reproducibly alters the human gut microbiome. *Nature* **505**, 559–563 (2014).
- Walker, A. W. *et al.* Dominant and diet-responsive groups of bacteria within the human colonic microbiota. *ISME J.* **5**, 220–230 (2011).
- Salonen, A. *et al.* Impact of diet and individual variation on intestinal microbiota composition and fermentation products in obese men. *ISME J.* **8**, 2218–2230 (2014).
- Dong, T. S. *et al.* A high protein calorie restriction diet alters the gut microbiome in obesity. *Nutrients* **12**, 3221 (2020).
- Alberti, K. G. M., Zimmet, P. & Shaw, J. The metabolic syndrome—A new worldwide definition. *Lancet* **366**, 1059–1062 (2005).
- Labonté, M., Cyr, A., Baril-Gravel, L., Royer, M.-M. & Lamarche, B. Validity and reproducibility of a web-based, self-administered food frequency questionnaire. *Eur. J. Clin. Nutr.* **66**, 166–173 (2012).
- Nielsen, H. B. *et al.* Identification and assembly of genomes and genetic elements in complex metagenomic samples without using reference genomes. *Nat. Biotechnol.* **32**, 822–828 (2014).
- Holmes, I., Harris, K. & Quince, C. Dirichlet multinomial mixtures: Generative models for microbial metagenomics. *PLoS ONE* **7**, e30126 (2012).
- Abubucker, S. *et al.* Metabolic reconstruction for metagenomic data and its application to the human microbiome. *PLoS Comput. Biol.* **8**, e1002358 (2012).
- Vieira-Silva, S. *et al.* Species–function relationships shape ecological properties of the human gut microbiome. *Nat. Microbiol.* **1**, 16088 (2016).
- Darzi, Y., Falony, G., Vieira-Silva, S. & Raes, J. Towards biome-specific analysis of meta-omics data. *ISME J.* **10**, 1025–1028 (2016).
- Oksanen, J. *et al.* *vegan: Community Ecology Package* (2020).
- Ajala, O., English, P. & Pinkney, J. Systematic review and meta-analysis of different dietary approaches to the management of type 2 diabetes. *Am. J. Clin. Nutr.* **97**, 505–516 (2013).

33. Leidy, H. J., Carnell, N. S., Mattes, R. D. & Campbell, W. W. Higher Protein Intake Preserves Lean Mass and Satiety with Weight Loss in Pre-obese and Obese Women. *Obesity* **15**, 421–429 (2007).
34. Piatti, P. M. *et al.* Hypocaloric high-protein diet improves glucose oxidation and spares lean body mass: Comparison to hypocaloric high-carbohydrate diet. *Metabolism* **43**, 1481–1487 (1994).
35. Noakes, M., Keogh, J. B., Foster, P. R. & Clifton, P. M. Effect of an energy-restricted, high-protein, low-fat diet relative to a conventional high-carbohydrate, low-fat diet on weight loss, body composition, nutritional status, and markers of cardiovascular health in obese women. *Am. J. Clin. Nutr.* **81**, 1298–1306 (2005).
36. Farnsworth, E. *et al.* Effect of a high-protein, energy-restricted diet on body composition, glycemic control, and lipid concentrations in overweight and obese hyperinsulinemic men and women. *Am. J. Clin. Nutr.* **78**, 31–39 (2003).
37. Le Chatelier, E. *et al.* Richness of human gut microbiome correlates with metabolic markers. *Nature* **500**, 541–546 (2013).
38. Aron-Wisniewsky, J. *et al.* Major microbiota dysbiosis in severe obesity: Fate after bariatric surgery. *Gut* <https://doi.org/10.1136/gutjnl-2018-316103> (2018).
39. Vandeputte, D. *et al.* Quantitative microbiome profiling links gut community variation to microbial load. *Nature* **551**, 507–511 (2017).
40. Beaumont, M. *et al.* Quantity and source of dietary protein influence metabolite production by gut microbiota and rectal mucosa gene expression: A randomized, parallel, double-blind trial in overweight humans. *Am. J. Clin. Nutr.* **106**, 1005–1019 (2017).
41. Natividad, J. M. *et al.* Bilophila wadsworthia aggravates high fat diet induced metabolic dysfunctions in mice. *Nat. Commun.* **9**, 2802 (2018).
42. Windey, K. *et al.* Modulation of protein fermentation does not affect fecal water toxicity: A randomized cross-over study in healthy subjects. *PLoS ONE* **7**, e52387 (2012).
43. Muegge, B. D. *et al.* diet drives convergence in gut microbiome functions across mammalian phylogeny and within humans. *Science* **332**, 970–974 (2011).
44. Yatsunenko, T. *et al.* Human gut microbiome viewed across age and geography. *Nature* **486**, 222 (2012).
45. Massey, L. K., Sokatch, J. R. & Conrad, R. S. Branched-chain amino acid catabolism in bacteria. *Bacteriol. Rev.* **40**, 42–54 (1976).
46. Rudman, D. & Meister, A. Transamination in *Escherichia coli*. *J. Biol. Chem.* **200**, 591–604 (1953).
47. Fouillet, H. *et al.* Urea-nitrogen production and salvage are modulated by protein intake in fed humans: Results of an oral stable-isotope-tracer protocol and compartmental modeling. *Am. J. Clin. Nutr.* **87**, 1702–1714 (2008).
48. Beaumont, M. *et al.* Structure of protein emulsion in food impacts intestinal microbiota, caecal luminal content composition and distal intestine characteristics in rats. *Mol. Nutr. Food Res.* **61**, 1700078 (2017).

Acknowledgements

The clinical investigations were performed at the Human Nutrition Research Center (CRNH Ile de France), Institute of Cardiometabolic and Nutrition, Pitié-Salpêtrière Hospital and at the Clinical Investigation Unit of the Institute on Nutrition and Functional Foods, Université Laval. We thank the medical and paramedical staff of both clinical investigation platforms for their contributions to patients phenotyping data collection, as well as the nurses and technicians, and of course, the patients themselves for their invaluable contribution. We thank Dr Amine Ayed for visceral fat measurements on CT scans. We thank Mrs Pascale Thevenot (YSOPIA Bioscience) who was instrumental for clinical study coordination.

Author contributions

K.C., P.B.L., B.L. and S.P.C. conceived the research question. K.C., P.B.L. and S.P.C. interpreted data and wrote the manuscript. E.B. and E.P. implemented the metagenomics pipeline and E.B., E.P., P.B.L. and M.C.D. performed bioinformatics and metagenomic analysis. W.C. performed statistical analysis of the clinical study. B.L. and K.C. respectively coordinated the clinical study in Canada and France. S.P.C. implemented shotgun metagenomic sequencing. L.R., and X.W. designed, executed and interpreted results from the in vitro batch fermentation study. All authors reviewed and approved the manuscript.

Funding

This study was supported by several sources: YSOPIA Bioscience sponsored the clinical investigation study. Funding for the detailed microbiota study (sequencing and analysis) were obtained from the French National Agency of Research ANR (“Investissement d’Avenir” FORCE, the Metagenopolis Grant ANR-11-DPBS-0001 and ICAN, reference ANR-10-IAHU-05) as well as European Union, FP7-sponsored program METACARDIS (HEALTH-F4-2012-30531). Grants were also obtained by JPI (A healthy diet for a healthy life; 2017-01996_3) and the Leducq Foundation (Transatlantic Networks of Excellence Award 17CVD01).

Competing interests

SPC works as Chief Scientific Officer at YSOPIA Bioscience (Bordeaux, France). LR works as project manager at YSOPIA Bioscience (Bordeaux, France). KC is currently a member of the Scientific Advisory board of YSOPIA Bioscience but this activity is not related to the topic of this publication. All the other authors declare no conflict of interest.

Additional information

Supplementary Information The online version contains supplementary material available at <https://doi.org/10.1038/s41598-021-94916-9>.

Correspondence and requests for materials should be addressed to S.P.C. or K.C.

Reprints and permissions information is available at www.nature.com/reprints.

Publisher’s note Springer Nature remains neutral with regard to jurisdictional claims in published maps and institutional affiliations.



Open Access This article is licensed under a Creative Commons Attribution 4.0 International License, which permits use, sharing, adaptation, distribution and reproduction in any medium or format, as long as you give appropriate credit to the original author(s) and the source, provide a link to the Creative Commons licence, and indicate if changes were made. The images or other third party material in this article are included in the article's Creative Commons licence, unless indicated otherwise in a credit line to the material. If material is not included in the article's Creative Commons licence and your intended use is not permitted by statutory regulation or exceeds the permitted use, you will need to obtain permission directly from the copyright holder. To view a copy of this licence, visit <http://creativecommons.org/licenses/by/4.0/>.

© The Author(s) 2021