



*Supplement of*

## **Mobile atmospheric measurements and local-scale inverse estimation of the location and rates of brief CH<sub>4</sub> and CO<sub>2</sub> releases from point sources**

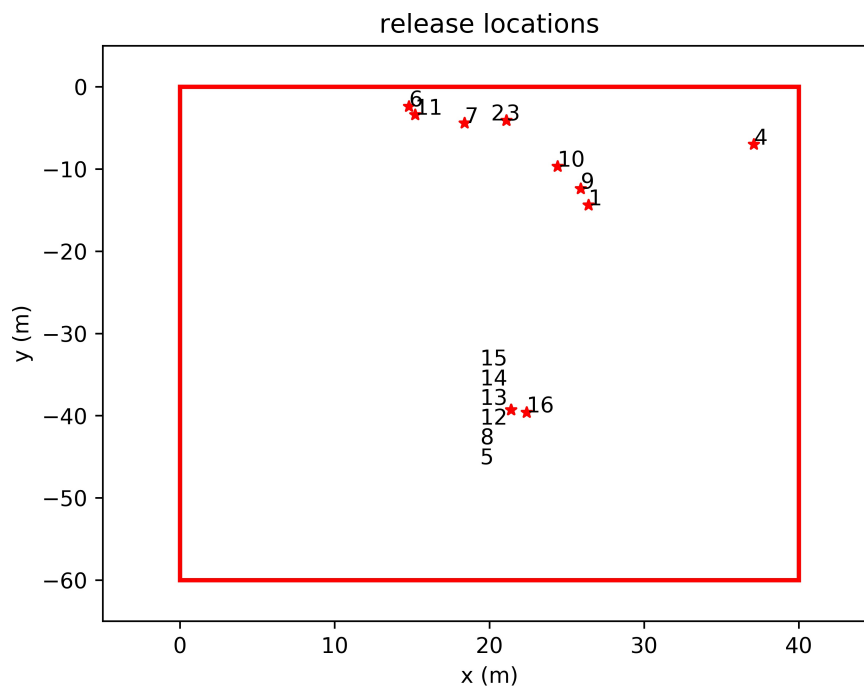
**Pramod Kumar et al.**

*Correspondence to:* Pramod Kumar ([pramod.kumar@lsce.ipsl.fr](mailto:pramod.kumar@lsce.ipsl.fr))

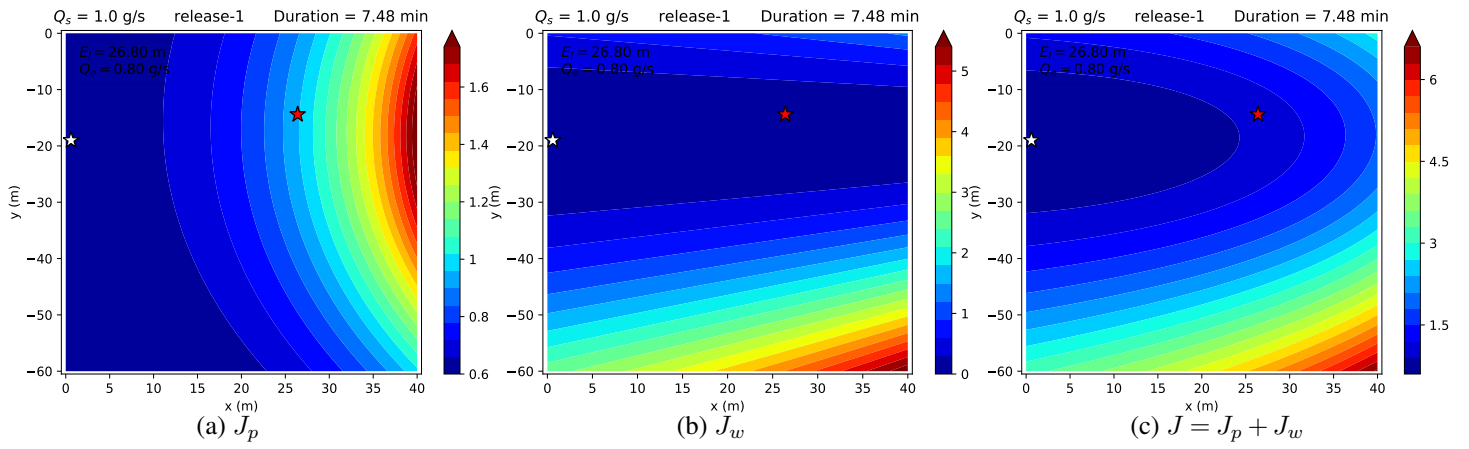
The copyright of individual parts of the supplement might differ from the article licence.

## List of Figures

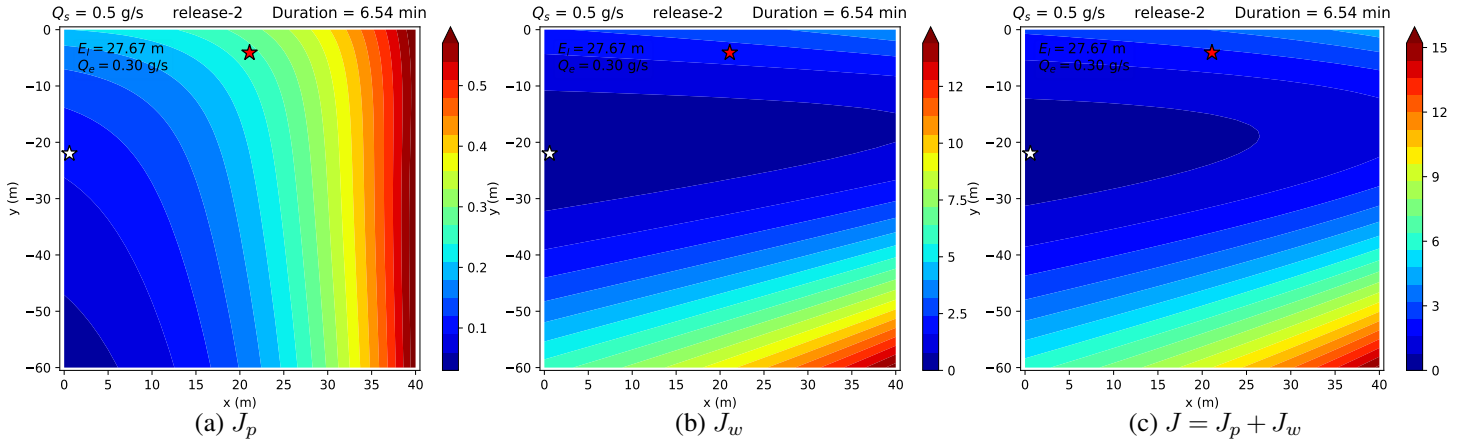
	S1	Release locations (red stars) in the ATEX zone. Different releases can have identical locations. Isolated locations (5, 8, 12-16) correspond to the highest release rates. . . . .	2
5	S2	Contour plots of (a) $J_p$ , (b) $J_w$ , and (c) $J$ when fixing the release rate to its inverted value $Q_e$ for release no. 1. Red and white stars respectively show the actual and inverted source locations. . . . .	3
	S3	Contour plots of (a) $J_p$ , (b) $J_w$ , and (c) $J$ when fixing the release rate to its inverted value $Q_e$ for release no. 2. Red and white stars respectively show the actual and inverted source locations. . . . .	3
	S4	Contour plots of (a) $J_p$ , (b) $J_w$ , and (c) $J$ when fixing the release rate to its inverted value $Q_e$ for release no. 3. Red and white stars respectively show the actual and inverted source locations. . . . .	3
10	S5	Contour plots of (a) $J_p$ , (b) $J_w$ , and (c) $J$ when fixing the release rate to its inverted value $Q_e$ for release no. 4. Red and white stars respectively show the actual and inverted source locations. . . . .	4
	S6	Contour plots of (a) $J_p$ , (b) $J_w$ , and (c) $J$ when fixing the release rate to its inverted value $Q_e$ for release no. 5. Red and white stars respectively show the actual and inverted source locations. . . . .	4
	S7	Contour plots of (a) $J_p$ , (b) $J_w$ , and (c) $J$ when fixing the release rate to its inverted value $Q_e$ for release no. 6. Red and white stars respectively show the actual and inverted source locations. . . . .	4
15	S8	Contour plots of (a) $J_p$ , (b) $J_w$ , and (c) $J$ when fixing the release rate to its inverted value $Q_e$ for release no. 7. Red and white stars respectively show the actual and inverted source locations. . . . .	5
	S9	Contour plots of (a) $J_p$ , (b) $J_w$ , and (c) $J$ when fixing the release rate to its inverted value $Q_e$ for release no. 8. Red and white stars respectively show the actual and inverted source locations. . . . .	5
20	S10	Contour plots of (a) $J_p$ , (b) $J_w$ , and (c) $J$ when fixing the release rate to its inverted value $Q_e$ for release no. 9. Red and white stars respectively show the actual and inverted source locations. . . . .	5
	S11	Contour plots of (a) $J_p$ , (b) $J_w$ , and (c) $J$ when fixing the release rate to its inverted value $Q_e$ for release no. 10. Red and white stars respectively show the actual and inverted source locations. . . . .	6
	S12	Contour plots of (a) $J_p$ , (b) $J_w$ , and (c) $J$ when fixing the release rate to its inverted value $Q_e$ for release no. 11. Red and white stars respectively show the actual and inverted source locations. . . . .	6
25	S13	Contour plots of (a) $J_p$ , (b) $J_w$ , and (c) $J$ when fixing the release rate to its inverted value $Q_e$ for release no. 12. Red and white stars respectively show the actual and inverted source locations. . . . .	6
	S14	Contour plots of (a) $J_p$ , (b) $J_w$ , and (c) $J$ when fixing the release rate to its inverted value $Q_e$ for release no. 13. Red and white stars respectively show the actual and inverted source locations. . . . .	7
30	S15	Contour plots of (a) $J_p$ , (b) $J_w$ , and (c) $J$ when fixing the release rate to its inverted value $Q_e$ for release no. 14. Red and white stars respectively show the actual and inverted source locations. . . . .	7
	S16	Contour plots of (a) $J_p$ , (b) $J_w$ , and (c) $J$ when fixing the release rate to its inverted value $Q_e$ for release no. 15. Red and white stars respectively show the actual and inverted source locations. . . . .	7
	S17	Contour plots of (a) $J_p$ , (b) $J_w$ , and (c) $J$ when fixing the release rate to its inverted value $Q_e$ for release no. 16. Red and white stars respectively show the actual and inverted source locations. . . . .	8
35	S18	Average errors for all (a) $\text{CH}_4$ and (b) $\text{CO}_2$ releases with respect to $\lambda$ in the cost function $J = J_p + \lambda J_w$ . . . . .	9
	S19	Average errors for all (a) $\text{CH}_4$ and (b) $\text{CO}_2$ releases with respect to $\lambda$ in the cost function $J^{log} = J_p^{log} + \lambda J_w$ . . . . .	9
	S20	Contour plots of (a) $J_p$ , (b) $\lambda J_w$ , and (c) $J = J_p + \lambda J_w$ when fixing the release rate to its inverted value $Q_e$ for release no. 2 and when using $\lambda = 1.6\%$ . Red and white stars respectively show the actual and inverted source locations. . . . .	10
40	S21	Contour plots of (a) $J_p^{log}$ , (b) $\lambda J_w$ , and (c) $J^{log} = J_p^{log} + \lambda J_w$ when fixing the release rate to its inverted value $Q_e$ for release no. 2 and when using $\lambda = 0.8\%$ . Red and white stars respectively show the actual and inverted source locations. . . . .	10



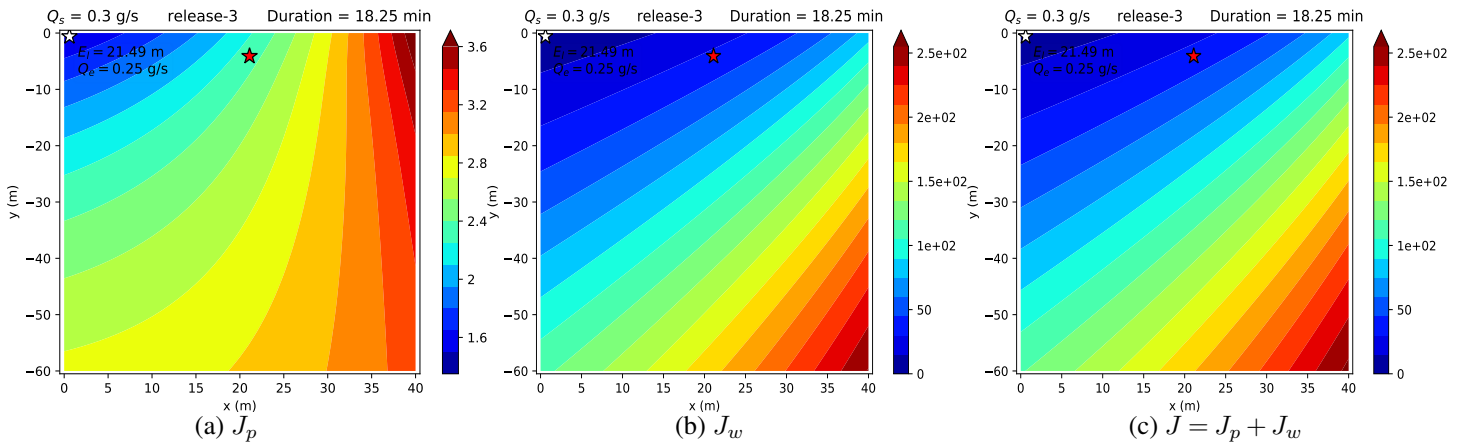
**Figure S1.** Release locations (red stars) in the ATEX zone. Different releases can have identical locations. Isolated locations (5, 8, 12-16) correspond to the highest release rates.



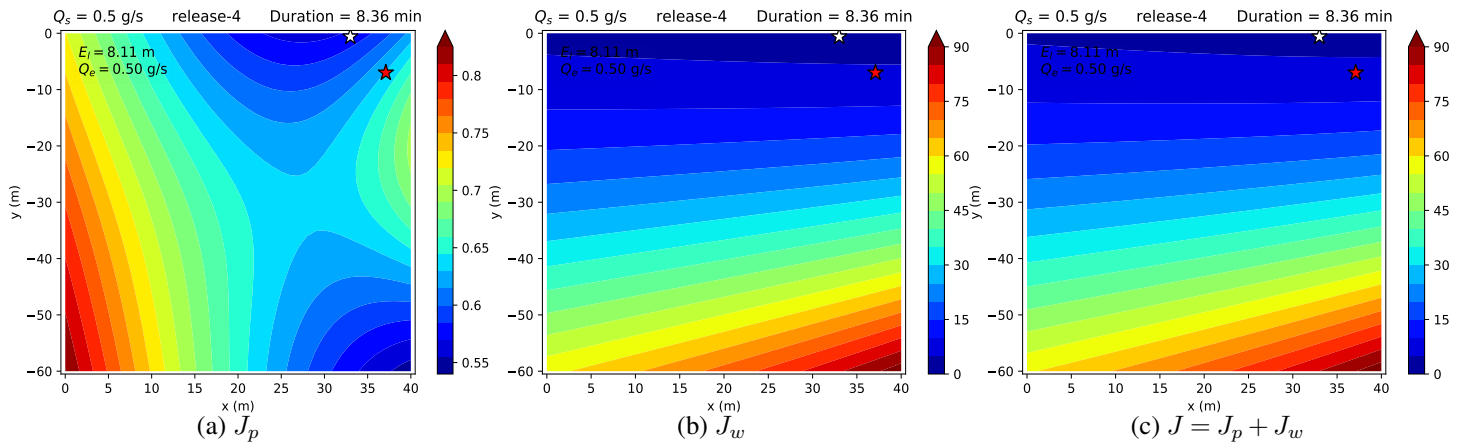
**Figure S2.** Contour plots of (a)  $J_p$ , (b)  $J_w$ , and (c)  $J$  when fixing the release rate to its inverted value  $Q_e$  for release no. 1. Red and white stars respectively show the actual and inverted source locations.



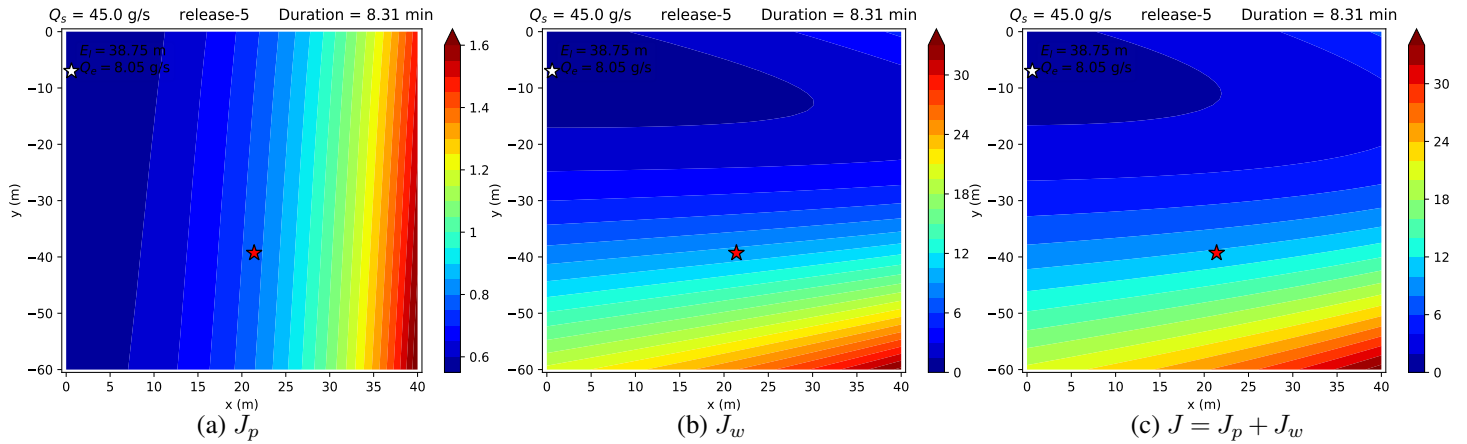
**Figure S3.** Contour plots of (a)  $J_p$ , (b)  $J_w$ , and (c)  $J$  when fixing the release rate to its inverted value  $Q_e$  for release no. 2. Red and white stars respectively show the actual and inverted source locations.



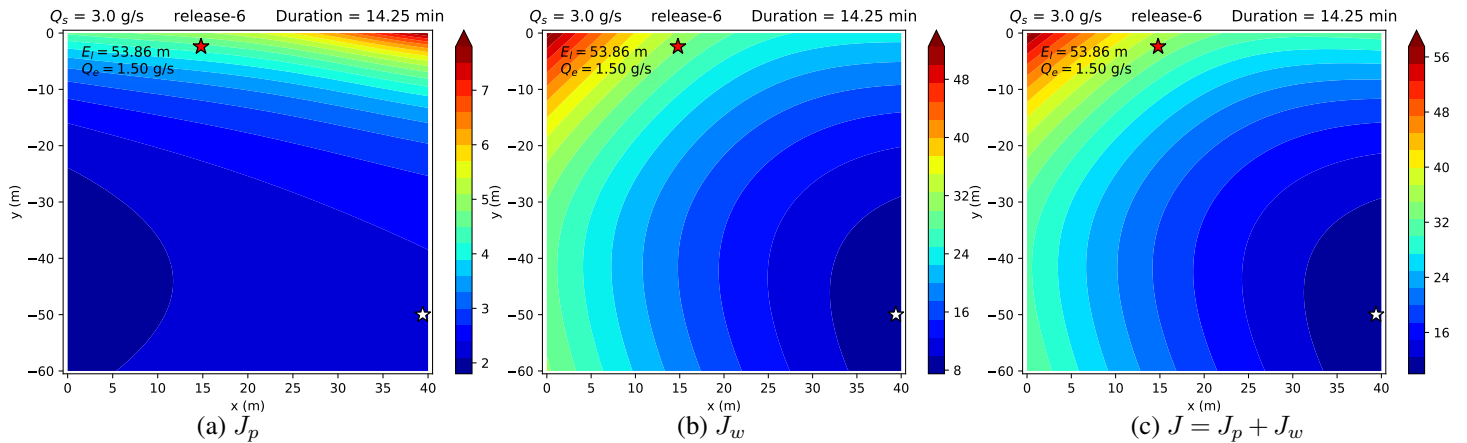
**Figure S4.** Contour plots of (a)  $J_p$ , (b)  $J_w$ , and (c)  $J$  when fixing the release rate to its inverted value  $Q_e$  for release no. 3. Red and white stars respectively show the actual and inverted source locations.



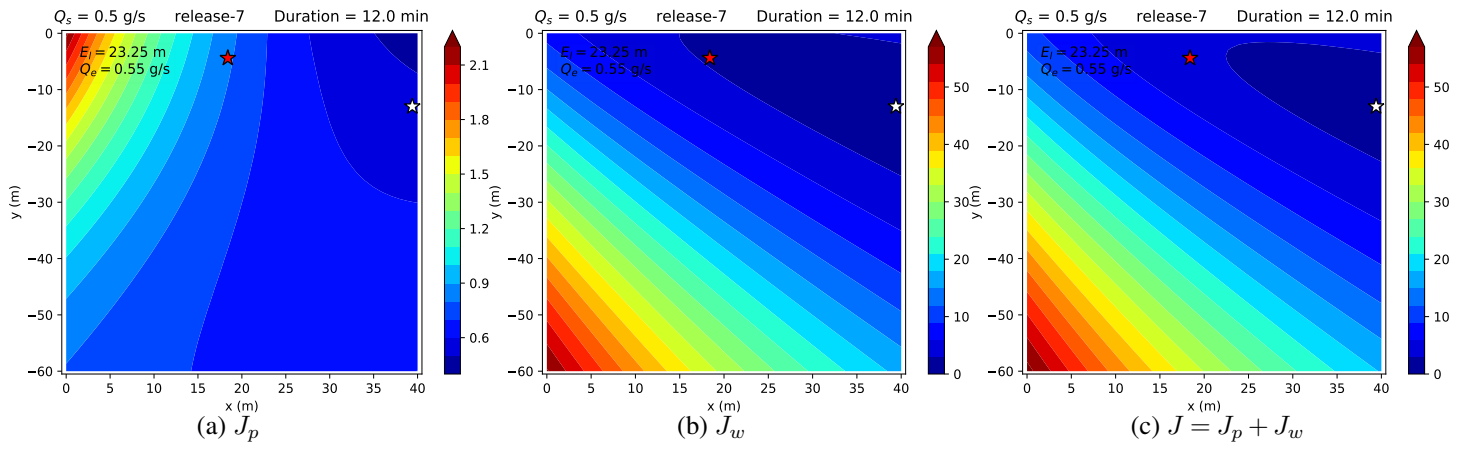
**Figure S5.** Contour plots of (a)  $J_p$ , (b)  $J_w$ , and (c)  $J$  when fixing the release rate to its inverted value  $Q_e$  for release no. 4. Red and white stars respectively show the actual and inverted source locations.



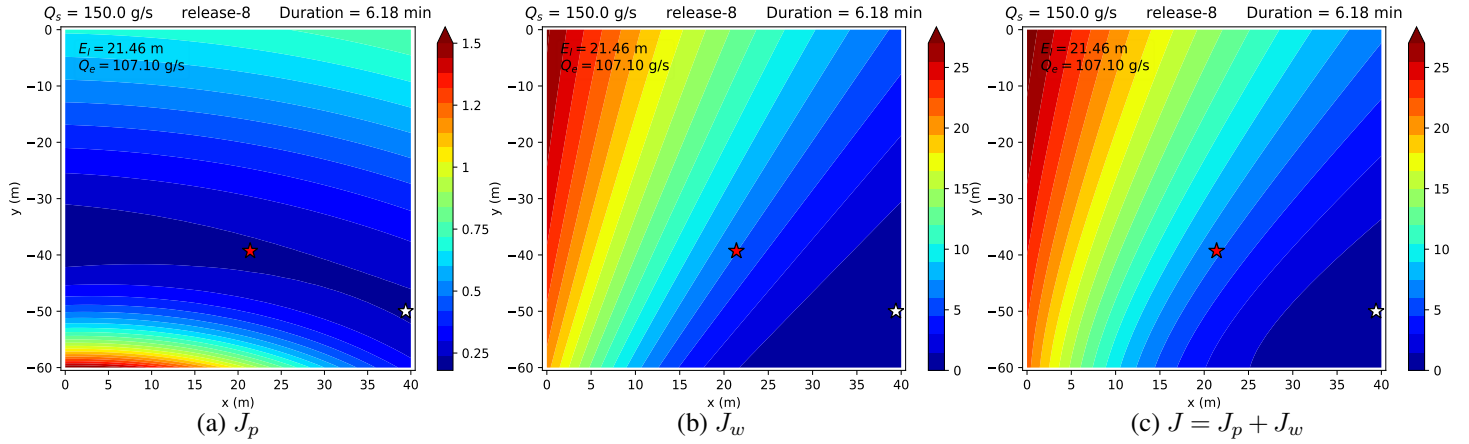
**Figure S6.** Contour plots of (a)  $J_p$ , (b)  $J_w$ , and (c)  $J$  when fixing the release rate to its inverted value  $Q_e$  for release no. 5. Red and white stars respectively show the actual and inverted source locations.



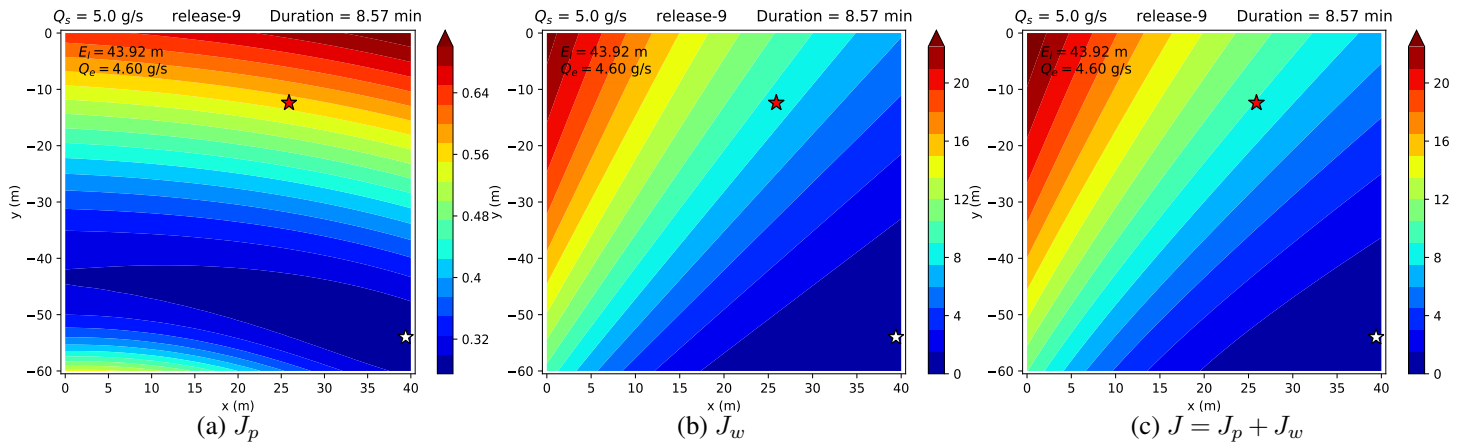
**Figure S7.** Contour plots of (a)  $J_p$ , (b)  $J_w$ , and (c)  $J$  when fixing the release rate to its inverted value  $Q_e$  for release no. 6. Red and white stars respectively show the actual and inverted source locations.



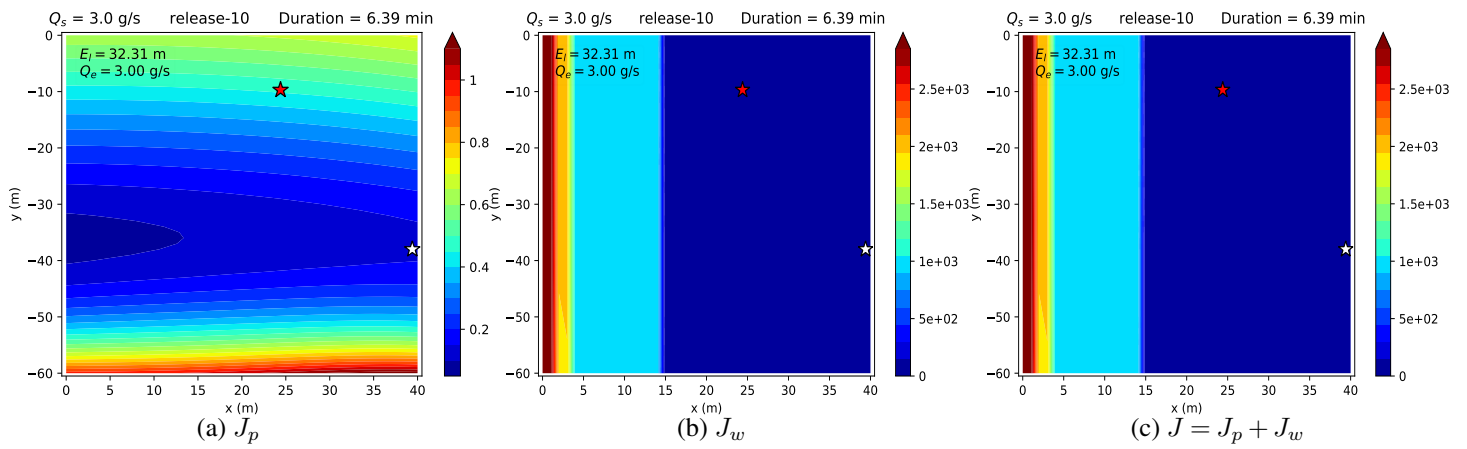
**Figure S8.** Contour plots of (a)  $J_p$ , (b)  $J_w$ , and (c)  $J$  when fixing the release rate to its inverted value  $Q_e$  for release no. 7. Red and white stars respectively show the actual and inverted source locations.



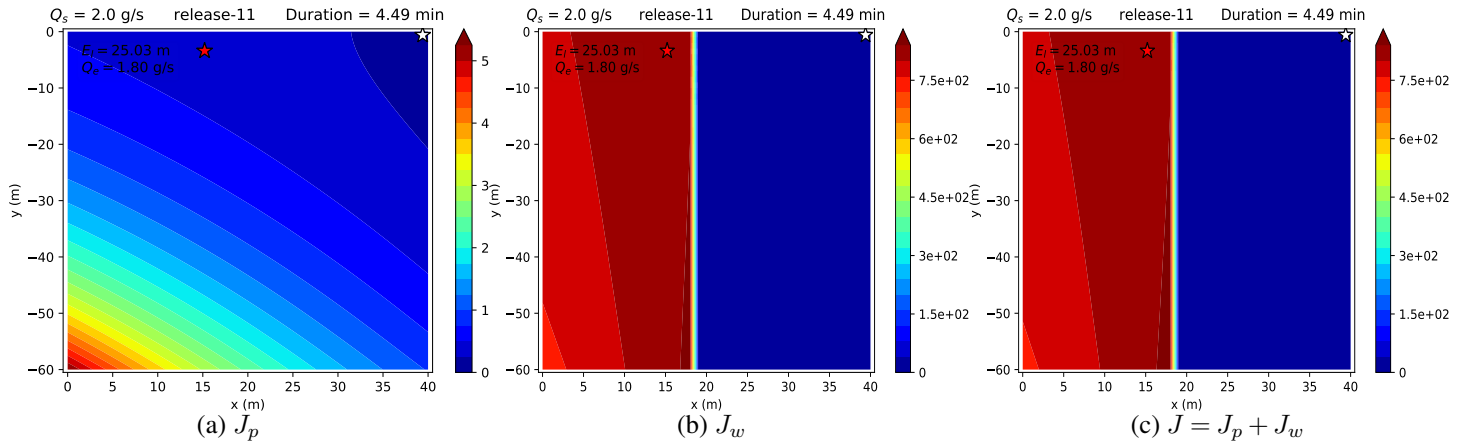
**Figure S9.** Contour plots of (a)  $J_p$ , (b)  $J_w$ , and (c)  $J$  when fixing the release rate to its inverted value  $Q_e$  for release no. 8. Red and white stars respectively show the actual and inverted source locations.



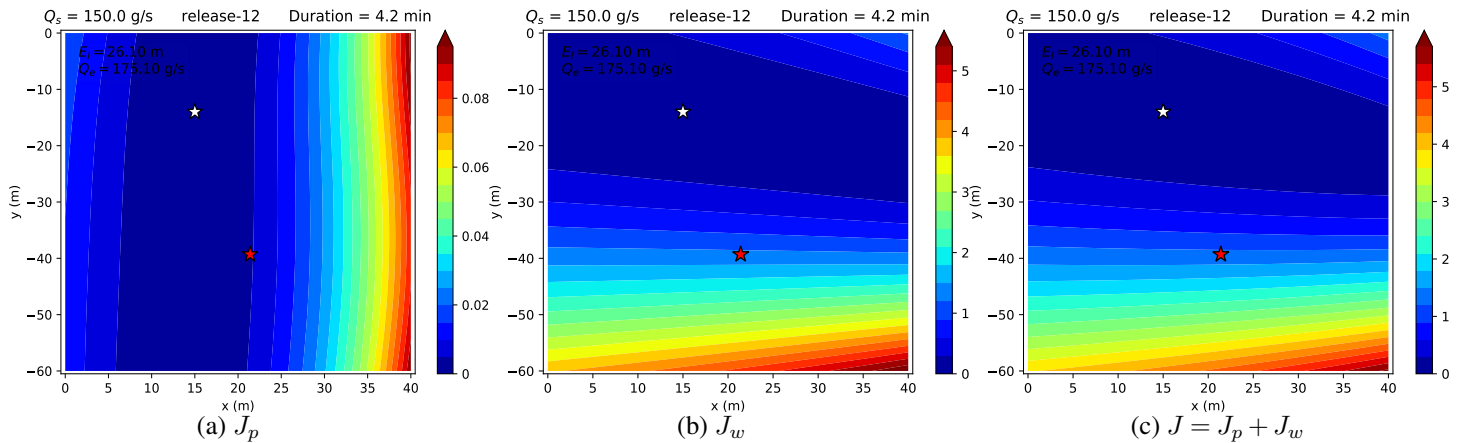
**Figure S10.** Contour plots of (a)  $J_p$ , (b)  $J_w$ , and (c)  $J$  when fixing the release rate to its inverted value  $Q_e$  for release no. 9. Red and white stars respectively show the actual and inverted source locations.



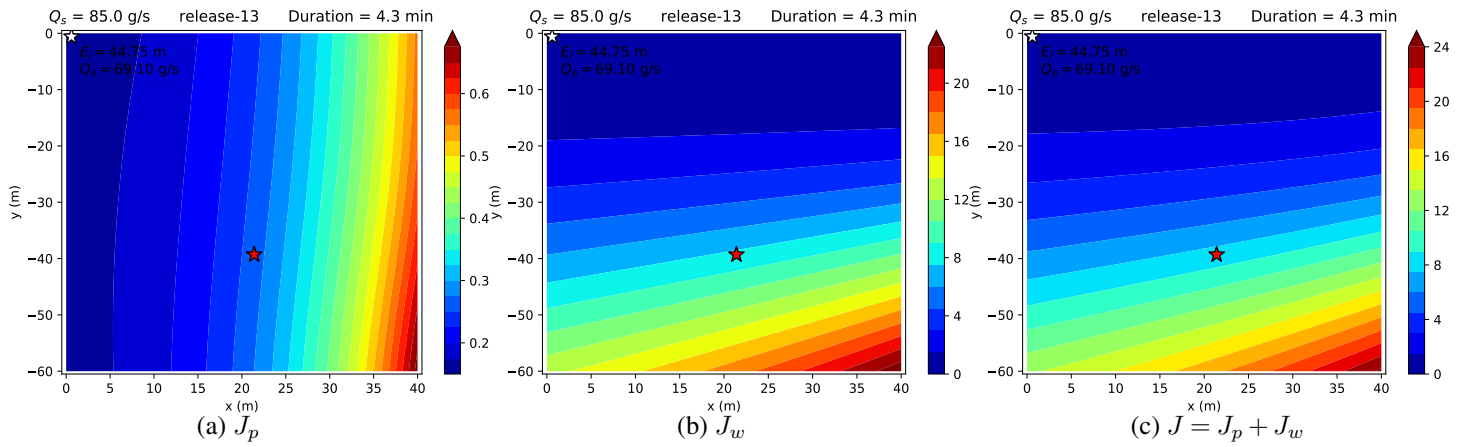
**Figure S11.** Contour plots of (a)  $J_p$ , (b)  $J_w$ , and (c)  $J$  when fixing the release rate to its inverted value  $Q_e$  for release no. 10. Red and white stars respectively show the actual and inverted source locations.



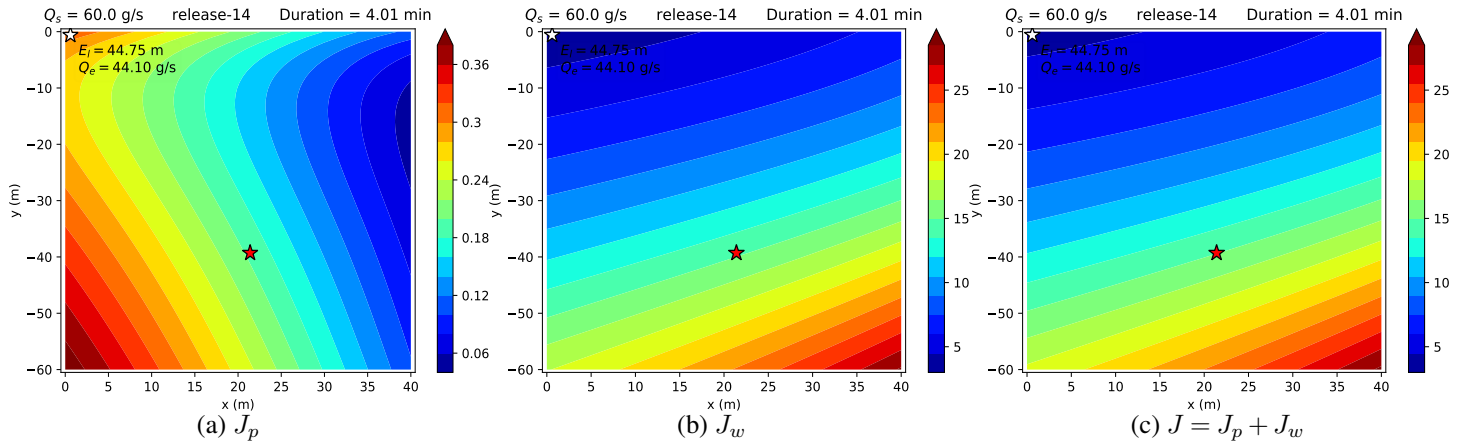
**Figure S12.** Contour plots of (a)  $J_p$ , (b)  $J_w$ , and (c)  $J$  when fixing the release rate to its inverted value  $Q_e$  for release no. 11. Red and white stars respectively show the actual and inverted source locations.



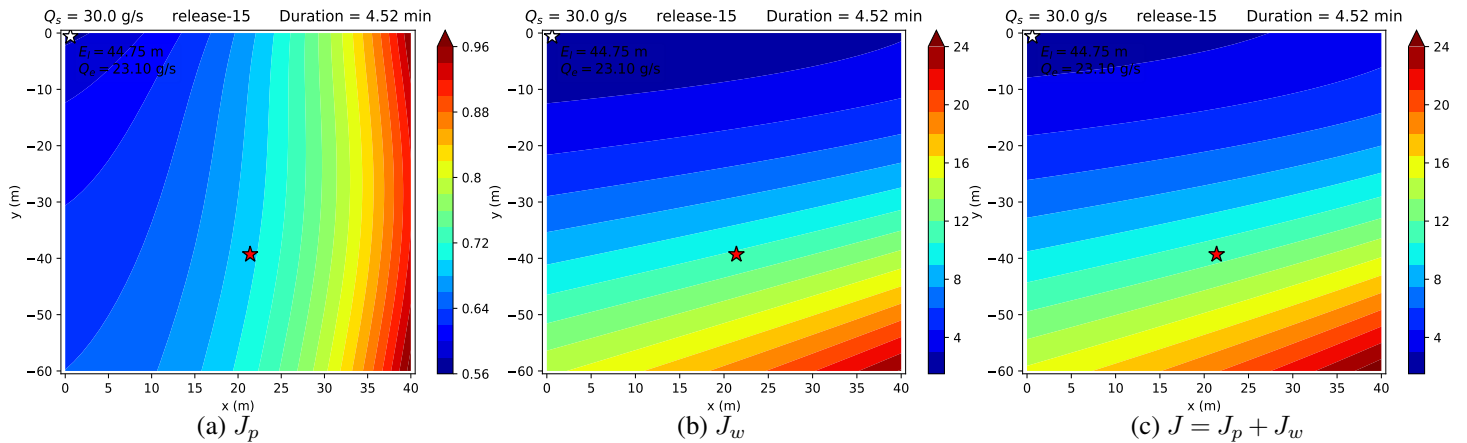
**Figure S13.** Contour plots of (a)  $J_p$ , (b)  $J_w$ , and (c)  $J$  when fixing the release rate to its inverted value  $Q_e$  for release no. 12. Red and white stars respectively show the actual and inverted source locations.



**Figure S14.** Contour plots of (a)  $J_p$ , (b)  $J_w$ , and (c)  $J$  when fixing the release rate to its inverted value  $Q_e$  for release no. 13. Red and white stars respectively show the actual and inverted source locations.

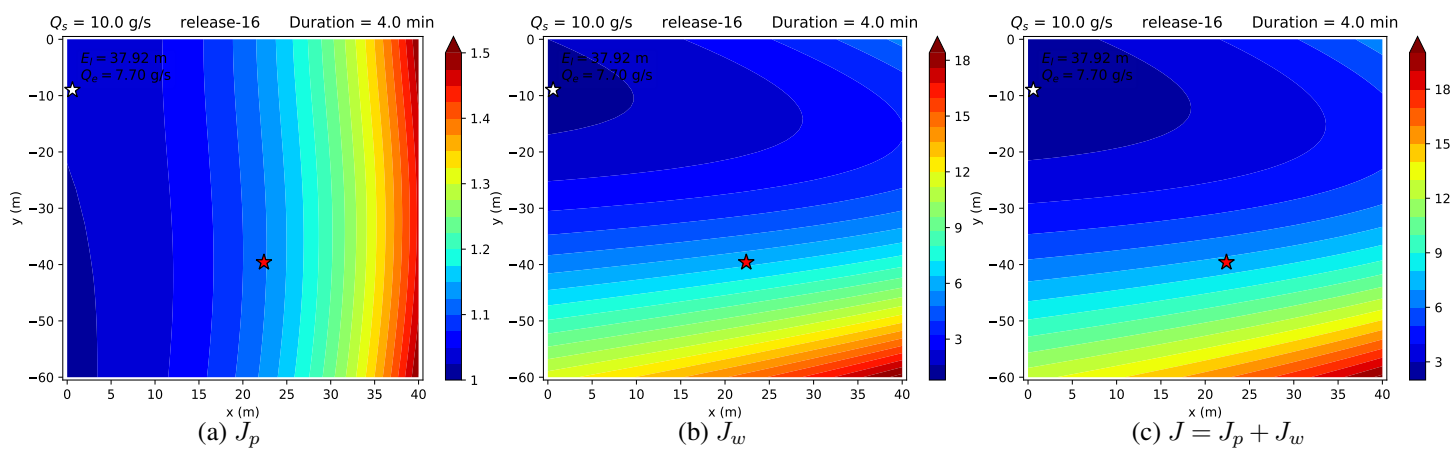


**Figure S15.** Contour plots of (a)  $J_p$ , (b)  $J_w$ , and (c)  $J$  when fixing the release rate to its inverted value  $Q_e$  for release no. 14. Red and white stars respectively show the actual and inverted source locations.

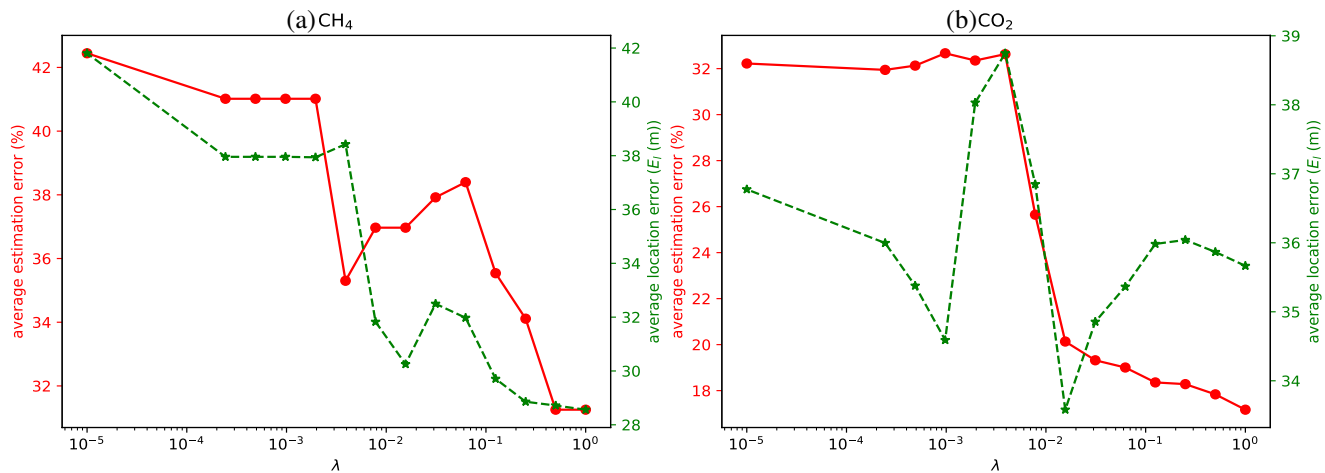


**Figure S16.** Contour plots of (a)  $J_p$ , (b)  $J_w$ , and (c)  $J$  when fixing the release rate to its inverted value  $Q_e$  for release no. 15. Red and white stars respectively show the actual and inverted source locations.

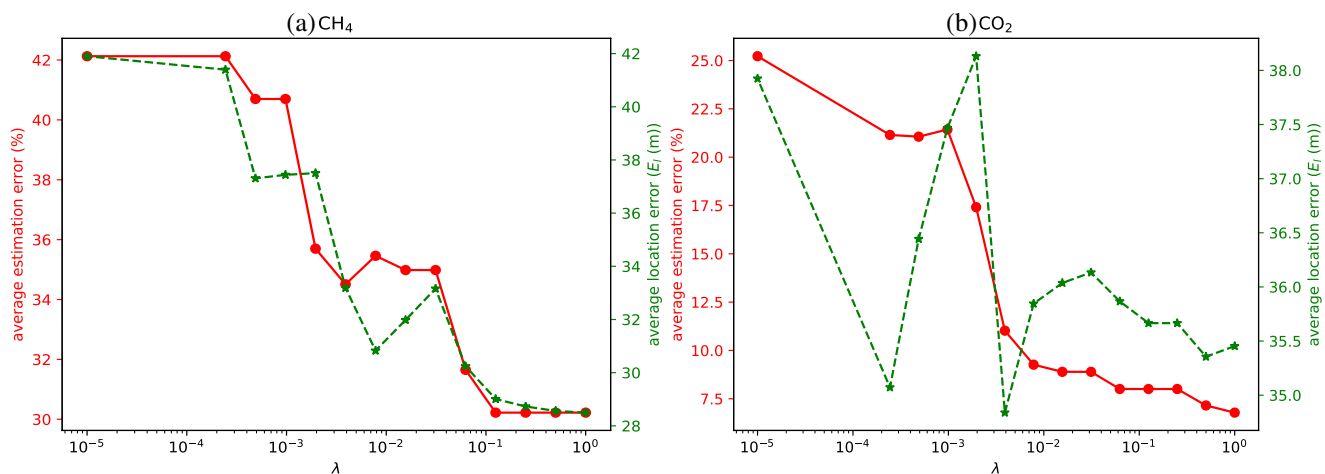




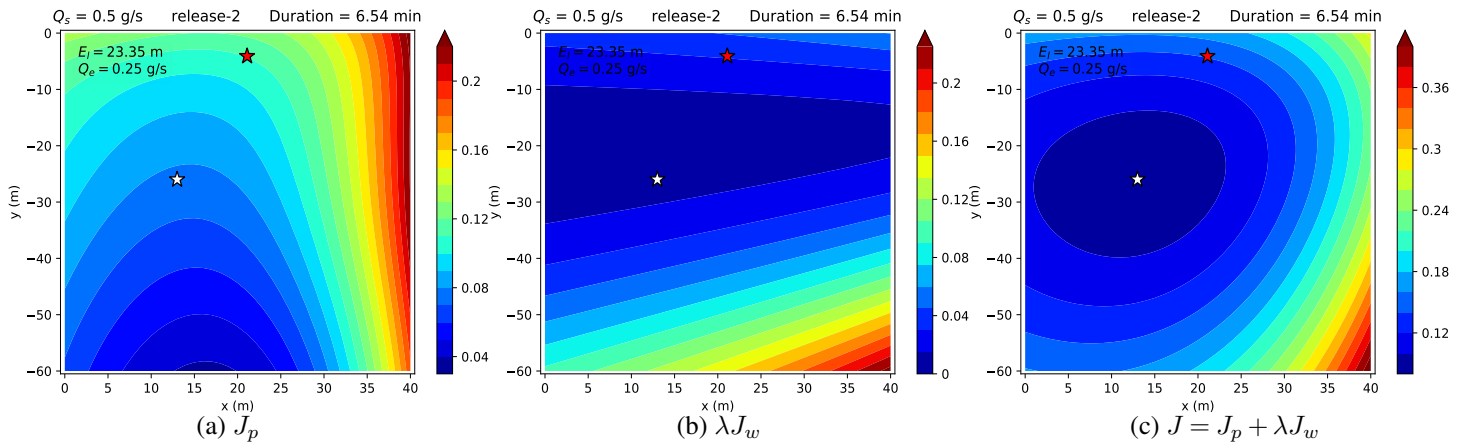
**Figure S17.** Contour plots of (a)  $J_p$ , (b)  $J_w$ , and (c)  $J$  when fixing the release rate to its inverted value  $Q_e$  for release no. 16. Red and white stars respectively show the actual and inverted source locations.



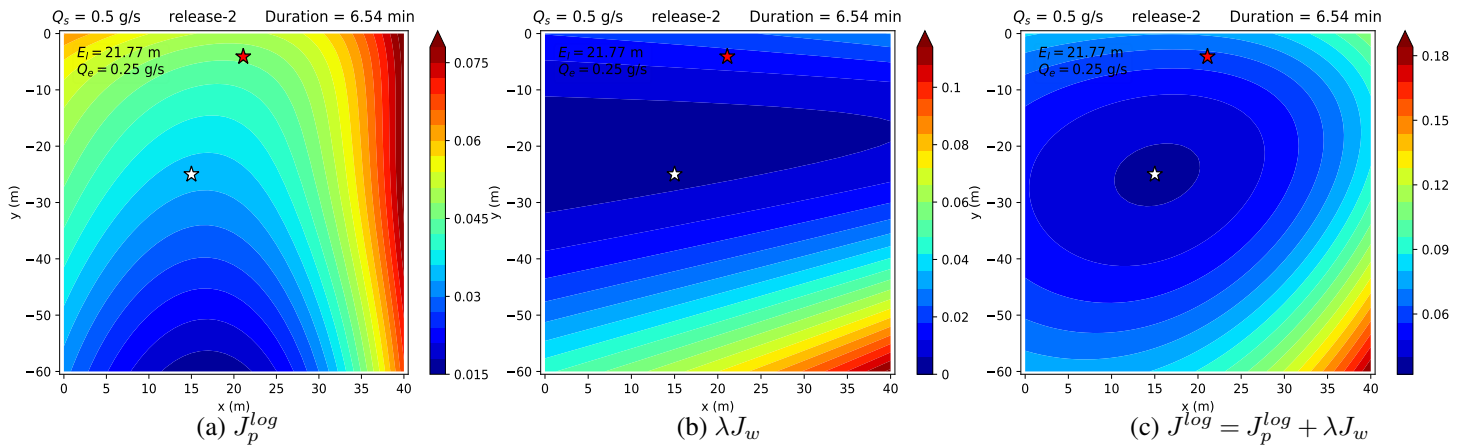
**Figure S18.** Average errors for all (a) CH<sub>4</sub> and (b) CO<sub>2</sub> releases with respect to  $\lambda$  in the cost function  $J = J_p + \lambda J_w$ .



**Figure S19.** Average errors for all (a) CH<sub>4</sub> and (b) CO<sub>2</sub> releases with respect to  $\lambda$  in the cost function  $J^{log} = J_p^{log} + \lambda J_w$ .



**Figure S20.** Contour plots of (a)  $J_p$  (b)  $\lambda J_w$ , and (c)  $J = J_p + \lambda J_w$  when fixing the release rate to its inverted value  $Q_e$  for release no. 2 and when using  $\lambda = 1.6\%$ . Red and white stars respectively show the actual and inverted source locations.



**Figure S21.** Contour plots of (a)  $J_p^{log}$  (b)  $\lambda J_w$ , and (c)  $J^{log} = J_p^{log} + \lambda J_w$  when fixing the release rate to its inverted value  $Q_e$  for release no. 2 and when using  $\lambda = 0.8\%$ . Red and white stars respectively show the actual and inverted source locations.