



# Characteristics and progression-free survival of Afro-Caribbean men with metastatic hormone-sensitive prostate cancer at the time of diagnosis

Thibault Rossignol, Gilles Gourtaud, Cedric Senechal, Yvane Sadreux, Virginie Roux, Pascal Blanchet, Laurent Brureau

## ► To cite this version:

Thibault Rossignol, Gilles Gourtaud, Cedric Senechal, Yvane Sadreux, Virginie Roux, et al.. Characteristics and progression-free survival of Afro-Caribbean men with metastatic hormone-sensitive prostate cancer at the time of diagnosis. *Prostate*, 2021, 81 (14), pp.1091-1096. 10.1002/pros.24206 . hal-03341364

**HAL Id: hal-03341364**

**<https://hal.science/hal-03341364>**

Submitted on 20 Sep 2021

**HAL** is a multi-disciplinary open access archive for the deposit and dissemination of scientific research documents, whether they are published or not. The documents may come from teaching and research institutions in France or abroad, or from public or private research centers.

L'archive ouverte pluridisciplinaire **HAL**, est destinée au dépôt et à la diffusion de documents scientifiques de niveau recherche, publiés ou non, émanant des établissements d'enseignement et de recherche français ou étrangers, des laboratoires publics ou privés.

**Characteristics and progression-free survival of Afro-Caribbean men with metastatic hormone-sensitive prostate cancer (mHSPC) at the time of diagnosis.**

Thibault ROSSIGNOL M.D.<sup>1</sup>, Gilles GOURTAUD M.D.<sup>1</sup>, Cédric SENECHAL M.D.<sup>1</sup>,  
Yvane SADREUX M.D.<sup>1</sup>, Virginie ROUX M.D.<sup>1</sup>, Pascal BLANCHET M.D. Ph.D.<sup>2</sup>, and  
Laurent BRUREAU M.D. Ph.D.<sup>2</sup>

<sup>1</sup>CHU de Pointe-à-Pitre, Service d’Urologie, 97159 Pointe-à-Pitre Cedex  
<sup>2</sup>CHU de Pointe-à-Pitre, Univ Antilles, Univ Rennes, Inserm, EHESP, Irset (Institut de  
Recherche en Santé, Environnement et Travail) - UMR\_S 1085, F-97110 Pointe-à-Pitre,  
France

\*Correspondence should be addressed to Laurent Brureau  
Urology department, University Hospital of Pointe-à-Pitre,  
F-97159 Pointe-à-Pitre,  
Tel : +590 690 70 15 17.  
Fax : +590 590 89 17 87  
Email : [brureau\\_laurent@yahoo.fr](mailto:brureau_laurent@yahoo.fr)

## Abstract

### Introduction and objectives

Metastatic hormone-sensitive prostate cancer (mHSPC) accounts for 12% of prostate cancers diagnosed in Guadeloupe according to the Guadeloupean cancer registry. Most published studies have been conducted on the Caucasian population, whereas data concerning mHSPC in the Afro-Caribbean population are lacking. We aimed to describe the patient characteristics and estimate the progression-free survival of men with mHSPC in an Afro-Caribbean population according to available treatment.

### Patients and methods

This was a monocentric retrospective study that consecutively included 133 men with mHSPC between January 1, 2015 and December 31, 2019 at the University Hospital of Guadeloupe. The primary endpoint was a description of the patients' characteristics with a description of complications at diagnosis. The secondary endpoint was progression-free survival. Kaplan-Meier survival and Cox proportional hazard analyses were performed.

### Results

The median age at diagnosis was 71 years. The median PSA was 147 ng/ml and 37% of patients presented with a disease-related complication at diagnosis. The survival analysis according to treatment showed median survival of 15 months for the androgen deprivation (ADT) + chemotherapy group, 20 months for the ADT + new hormone therapy group, and 21.5 months for the ADT alone group, with no significant difference between the three therapeutic options (log rank test: 0.27). In univariate analysis, none of the patient characteristics at diagnosis (i.e., age, PSA, bone lesions, visceral lesions) were significantly associated with the risk of progression, regardless of the treatment.

### Conclusion

1  
2  
3  
4  
5  
6  
7  
8  
9  
10  
11  
12  
13  
14  
15  
16  
17  
18  
19  
20  
21  
22  
23  
24  
25  
26  
27  
28  
29  
30  
31  
32  
33  
34  
35  
36  
37  
38  
39  
40  
41  
42  
43  
44  
45  
46  
47  
48  
49  
50  
51  
52  
53  
54  
55  
56  
57  
58  
59  
60

There was no significant difference in terms of progression-free survival between currently validated treatments administered in the first line, regardless of the tumor volume or risk group. Future studies with larger numbers of patients and involving molecular factors are required to confirm or invalidate these results and understand the evolution of prostate cancer in our population and thus better prevent complications related to the disease.

**Key words:** prostate cancer, mHSPC, survival, androgen deprivation, docetaxel, abiraterone, enzalutamide

## Introduction

Prostate cancer is the second most prevalent cancer in terms of incidence, with more than one million new cases per year worldwide, all stages included. It is also the fifth most prevalent cause of cancer mortality, with more than 360,000 deaths per year [1]. The incidence varies by region; it is relatively high in the industrialized countries of Europe and North America (75.8 per 100,000 people in 2018), unlike Asia (6.1 per 100,000 people in 2018), where the incidence is the lowest in the world [2, 3]. There is also a disparity according to ethno-geographic origin, with a higher incidence among men of African Sub-Saharan ancestry. Thus, in Guadeloupe, where 90% of the population is of African descent, the standardized incidence is 173 per 100,000 people, which is double that of metropolitan France. Mortality due to prostate cancer is also twice as high in Guadeloupe, with a rate of 23 per 100,000 people [4].

It is now established that age, ethnicity, and a family history of prostate cancer are the main risk factors for this cancer. The reasons for the differences in incidence are largely unknown, but likely involve an interaction between social, hormonal, environmental, and genetic factors. Upon diagnosis, prostate cancer can present in various forms, including de novo metastatic prostate cancer. There is great heterogeneity in this group of patients in terms of the histoprognostic characteristics and location of metastases. Metastatic hormone-sensitive prostate cancer (mHSPC) comprises between 6 and 10% of prostate cancers at diagnosis in Caucasian populations according to the literature. The rate of mHSPC in the Afro-American population is 4.5 to 5 times greater than that in the Caucasian population [5, 6]. There is no data on the rate of mHSPC for Afro-Caribbean men.

For many years, first-generation hormone therapy was the gold standard treatment for metastatic forms of prostate cancer. Since 2015, the advent of recent therapies, such as chemotherapy with docetaxel and second-generation hormone therapies (abiraterone,

enzalutamide, apalutamide) have enriched the management options for metastatic prostate cancer, with an improvement in overall and progression-free survival (PFS). [7, 8, 9, 10, 11].

However, the studies involving these molecules in this clinical situation have been carried out mainly on Caucasians and data is scarce for the Afro-Caribbean population.

The objectives of this study were to describe the characteristics of the disease and estimate the progression-free survival of Guadeloupean patients with de novo metastatic prostate cancer.

**Patients and Methods**

*Study population*

This was a retrospective study of men with mHSPC at the University Hospital of Guadeloupe, corresponding to approximately 60% of new cases. Guadeloupe is a French-Caribbean archipelago of 410,000 inhabitants, for which most of the population (~90%) is of African ancestry. In total, 133 patients were included between January 1, 2015 and December 31, 2019, of whom six were excluded due to missing data.

The inclusion criteria were histologically proven prostate cancer, the presence of at least one bone or visceral metastasis by imaging at diagnosis (bone scan, CT scan, positron emission tomography (PET scan)).

Patients undergoing first-line therapy were divided into three groups: androgen deprivation (ADT) alone, ADT combined with new-generation hormone therapy (NGHT), such as abiraterone or enzalutamide, and ADT combined with chemotherapy by docetaxel. Two patients did not receive specific anti-cancer treatments but solely supportive care.

Progression after the first therapeutic line was defined by: 1) castration resistance, defined, according to the French onco-urology guidelines updated in 2020, by three increases in PSA

1  
2  
3 resulting in two increases of 50% above the nadir, with PSA > 2 ng/mL, the appearance of one  
4  
5 or more new CT lesions, or at least two new lesions on bone scans [12, 13]; or 2) progression  
6  
7 of a lesion according to the RECIST criteria as measured by CT:  $\geq 20\%$  increase in the sum of  
8  
9 the diameters of the target lesions compared to the smallest sum of the diameters observed  
10  
11 during the study (NADIR) and an increase in the sum by at least 0.5 cm.  
12  
13  
14

#### 15 *Data collection*

16  
17 The data collected for each patient included their age, PSA level, and clinical stage by rectal  
18  
19 examination at diagnosis, description and location of metastases, pathological data with  
20  
21 Gleason score, treatments in the initial phase of the disease and changes depending on the  
22  
23 history of the disease (androgen deprivation therapy, abiraterone, enzalutamide or  
24  
25 chemotherapy), side effects of treatments and complications of the course of disease, dates of  
26  
27 diagnosis, and phase of resistance to castration and progression.  
28  
29  
30  
31

32 Missing data concerned the age at diagnosis for four patients, the PSA at diagnosis for three,  
33  
34 the digital rectal examination (DRE) at diagnosis for 39, the Gleason/ISUP score at diagnosis  
35  
36 for eight, and the date and phase of resistance to castration and progression for seven. Only the  
37  
38 medical data from the database of our department were used. The study was approved by the  
39  
40 Ethics Committee of the University Hospital of Guadeloupe and the CNIL (*Commission*  
41  
42 *Nationale de l'informatique et des libertés*); authorization number 2221855.  
43  
44  
45

#### 46 *Statistical analysis*

47  
48 Analyzes were carried out according to the treatment administered in the first line, as well as  
49  
50 the tumor volume and tumor risk.  
51  
52  
53

54 A high-risk tumor corresponds to the presence of at least three bone lesions, visceral metastases,  
55  
56 and ISUP group  $\geq 4$  [14]. A high tumor volume is defined by visceral metastases and/or  $\geq 4$   
57  
58 bone metastases (including at least one outside the pelvis and spine) [8].  
59  
60

1  
2  
3  
4  
5  
6  
7  
8  
9  
10  
11  
12  
13  
14  
15  
16  
17  
18  
19  
20  
21  
22  
23  
24  
25  
26  
27  
28  
29  
30  
31  
32  
33  
34  
35  
36  
37  
38  
39  
40  
41  
42  
43  
44  
45  
46  
47  
48  
49  
50  
51  
52  
53  
54  
55  
56  
57  
58  
59  
60

The definition of ISUP classes according to recommendations are a Gleason score of 6 (3 + 3) for group 1, 7 (majority 3) for group two, 7 (4 majority) for group 3, 8 (4 + 4, 3 + 5, or 5 + 3) for group 4, and 9 or 10 for group 5.

Kaplan-Meier survival analyses were performed to estimate PFS. PFS is defined as the time between the start of first-line treatment and the onset of progression. The two patients who received supportive care were excluded from the survival analyses.

Univariate analyses were performed according to the *Cox proportional-hazards regression* model to search for predictive factors of progression. None of the variables studied were significant in the univariate model and therefore multivariate analysis was not performed. All tests were two-tailed and p values < 0.05 were considered statistically significant. All analyses were performed using StatView software version 5.0 and MedCalc software version 17.5.

**Results**

In total, 127 patients with de novo hormone-naïve prostate cancer were included in our study. The median age at diagnosis was 71.1 years, with a median follow-up of 22.5 months. The median time to start second-line therapy was 16.4 months after diagnosis and administration of first-line therapy. The median PSA at diagnosis of the disease was 147.0 ng/ml. The patients’ characteristics are presented in Table 1.

The distribution of treatment among the patients in the cohort were as follows: 69 patients (54.3%) received ADT alone, 34 (26.8%) ADT + new-generation hormone therapy (including abiraterone for 32 patients and enzalutamide for two), and 22 (17.3%) ADT + docetaxel. Two patients received no specific treatment due to significant deterioration in their general condition and received solely supportive care.

At diagnosis, 37% of patients in the study had disease-related complications. Among them, 40% required an upper or lower urinary tract diversion. The occurrence of spinal cord compression occurred in 17.1% of patients who developed a complication.

The distribution of patients in the three treatment groups was comparable in terms of age and complications (Table 2). On the contrary, the percentage of patients with a high-risk tumor or a high tumor volume was significantly higher for the ADT + new-generation hormone therapy and docetaxel groups.

Survival analysis according to therapy showed median survival of 15 months for the ADT + chemotherapy group, 20 months for the ADT + new hormone therapy group, and 21.5 months for the ADT alone group. There was no significant difference between the three therapeutic options (Log rank test: 0.27) (Figure 1).

In univariate analysis, none of the variables studied were significantly associated with the risk of progression (Table 3).

## Discussion

The arrival of new therapies since 2004 has made it possible to improve the therapeutic management of patients with mHSPC. They consist of the arrival of chemotherapy and hormonotherapy, such as docetaxel in 2004, cabazitaxel in 2010 [15], abiraterone in 2011 [16], enzalutamide in 2012 [17], and more recently, apalutamide and olaparib [10] [18], into the therapeutic arsenal, not to mention adjunct treatment with denosumab and radium 223 [19, 20].

The effectiveness of these new treatments has been shown by numerous studies, conducted primarily on North American, European, and Asian populations. However, data on populations of African ancestry are scarce.

The validated treatments used for mHSPC between 2015 and 2019 (inclusion period of our study) were ADT alone, ADT plus docetaxel [21], ADT plus abiraterone [8, 9], and ADT plus enzalutamide [7, 11]. Apalutamide is another treatment validated for this indication, but we had no patients because our study predated the marketing of this molecule [10].

Our study concerned Afro-Caribbean men with mHSPC. With a cohort of 127 patients included in the final analysis, our study is one of the largest in terms of the number of patients of African descent at this stage of the disease.

We did not observe a significant difference in terms of PFS according to the three first-line therapeutic options: androgen suppression alone, androgen suppression plus second-generation hormone therapy (abiraterone or enzalutamide), and androgen suppression plus docetaxel.

The literature reports a median duration of PFS varying from 14.4 months for ADT alone to 25.8 months for ADT + new-generation hormone therapy [8]. Depending on the risk factors, PFS ranges from 12.8 to 25 months for first-line chemotherapy [22]. The differences between published values and those of this study are certainly explained by the profile of the patients, who presented tumors of higher volume and higher risk in the ADT + chemotherapy and ADT + new-generation hormone therapy groups.

We had significantly more patients with high-risk or high-volume tumors in the group that received new-generation hormone therapy or docetaxel, in accordance with the recommendations of the French Association of Urology at the time of the study. Current recommendations authorize the administration of new-generation hormone therapy, regardless of tumor volume or risk [13].

Subgroup analyses based on risk and tumor volume were not performed in our study because the numbers were not sufficient to allow a relevant analysis.

Our results may be partially explained by the molecular and genetic characteristics of populations of sub-Saharan origin, such as the overexpression of certain genes, such as BRCA1 and BRCA2. Several authors have suggested a greater potential for adhesion, migration, and invasion of cancer cells, which would promote the appearance of metastases in African Americans, in particular [23, 24].

On the other hand, despite the emergence of the PSA assay in the 1990s, which considerably reduced the incidence of patients who are immediately metastatic at diagnosis, a more marked delay in diagnosis and early detection in African American populations has been observed relative to Caucasian populations [25]. Indeed, the percentage of mHSPC at diagnosis varies depending on the population, from 4% for the Caucasian population to 8% for the African American population. Published studies have not shown a significant difference in terms of overall survival between the different populations [26]. In Guadeloupe, the rate of patients who are metastatic from the outset at diagnosis is approximately 12% according to data from the cancer registry.

We found the rate of included patients with complications related to the disease to be 37%. Among them, bone complications were the most common. The presence of spinal cord compression in 6.3% of the patients in the study appears to confirm the data in the literature. Indeed, patients with metastases in the American population developed spinal cord compression in 4.8% of cases, with African-American patients showing a greater tendency to develop spinal cord compression than Caucasian patients: odds ratio of 1.75 (1.39 - 2.19) [27]. Paradoxically, the Caucasian population showed a higher tendency to develop bone and vertebral fractures after the initiation of hormone therapy, whereas the African-American population showed better bone density and a lower risk of vertebral fracture [28].

1  
2  
3  
4  
5  
6  
7  
8  
9  
10  
11  
12  
13  
14  
15  
16  
17  
18  
19  
20  
21  
22  
23  
24  
25  
26  
27  
28  
29  
30  
31  
32  
33  
34  
35  
36  
37  
38  
39  
40  
41  
42  
43  
44  
45  
46  
47  
48  
49  
50  
51  
52  
53  
54  
55  
56  
57  
58  
59  
60

This study had several limitations, including its retrospective nature and the small sample, which rendered certain subgroup analyses impossible. Another study with a large number of participants that takes into account the molecular characteristics of the patients will soon begin and likely lead to a better understanding and better management of de novo hormone-sensitive metastatic prostate cancer.

**Conclusion**

Our study is among the largest in terms of the number of patients with mHSPC in an Afro-Caribbean population. There was no significant difference in terms of PFS between the validated first-line treatment options, regardless of the tumor volume or risk group. Future studies with a larger number of patients that include the study of molecular factors are needed to support these results and provide a better understanding of the evolution of prostate cancer in our population and thus better prevention of complications related to the disease.

**Word count: 2153 words**

### Acknowledgement

There is no particular acknowledgement for this work.

1  
2  
3  
4  
5  
6  
7  
8  
9  
10  
11  
12  
13  
14  
15  
16  
17  
18  
19  
20  
21  
22  
23  
24  
25  
26  
27  
28  
29  
30  
31  
32  
33  
34  
35  
36  
37  
38  
39  
40  
41  
42  
43  
44  
45  
46  
47  
48  
49  
50  
51  
52  
53  
54  
55  
56  
57  
58  
59  
60

**Conflict of interest**

The authors declare that they have no conflict of interest.

## REFERENCES

1. Pernar CH, Ebot EM, Wilson KM, Mucci LA. The Epidemiology of Prostate Cancer. Cold Spring Harb Perspect Med. 2018;8(12).
2. Culp MB, Soerjomataram I, Efstathiou JA, Bray F, Jemal A. Recent Global Patterns in Prostate Cancer Incidence and Mortality Rates. Eur Urol 2020 ;77(1):38-52.
3. Deloumeaux J, Bhakkan B, Eyraud R, Braud F, Manip M'Ebobisse N, et al. Prostate cancer clinical presentation, incidence, mortality and survival in Guadeloupe over the period 2008-2013 from a population-based cancer registry. Cancer Causes Control CCC. 2017;28(11):1265-73.
4. Estimations régionales et départementales de l'incidence et de la mortalité par cancer en France, 2007-2016. Disponible sur: /maladies-et-traumatismes/cancers/estimations-regionales-et-departementales-de-l-incidence-et-de-la-mortalite-par-cancer-en-france-2007-2016
5. Mosillo C, Iacovelli R, Ciccarese C, Fantinel E, Bimbatti D, Brunelli M, et al. De novo metastatic castration sensitive prostate cancer: State of art and future perspectives. Cancer Treat Rev. 2018;70:67-74.
6. Kelly SP, Anderson WF, Rosenberg PS, Cook MB. Past, Current, and Future Incidence Rates and Burden of Metastatic Prostate Cancer in the United States. Eur Urol Focus. 2018;4(1):121-7.
7. Armstrong AJ, Szmulewitz RZ, Petrylak DP, Holzbeierlein J, Villers A, Azad A, et al. ARCHES: A Randomized, Phase III Study of Androgen Deprivation Therapy With Enzalutamide or Placebo in Men With Metastatic Hormone-Sensitive Prostate Cancer. J Clin Oncol. 2019;37(32):2974-86.
8. Fizazi K, Tran N, Fein L, Matsubara N, Rodriguez-Antolin A, Alekseev BY, et al. Abiraterone acetate plus prednisone in patients with newly diagnosed high-risk metastatic castration-sensitive prostate cancer (LATITUDE): final overall survival analysis of a randomised, double-blind, phase 3 trial. Lancet Oncol. 2019;20(5):686-700.
9. Woods BS, Sideris E, Sydes MR, Gannon MR, Parmar MKB, Alzouebi M, et al. Addition of Docetaxel to First-line Long-term Hormone Therapy in Prostate Cancer (STAMPEDE): Modelling to Estimate Long-term Survival, Quality-adjusted Survival, and Cost-effectiveness. Eur Urol Oncol. 2018;1(6):449-58.
10. Agarwal N, McQuarrie K, Bjartell A, Chowdhury S, Pereira de Santana Gomes AJ, Chung BH, et al. Health-related quality of life after apalutamide treatment in patients with metastatic castration-sensitive prostate cancer (TITAN): a randomised, placebo-controlled, phase 3 study. Lancet Oncol. 2019;20(11):1518-30.
11. Davis ID, Martin AJ, Stockler MR, Begbie S, Chi KN, Chowdhury S, et al. Enzalutamide with Standard First-Line Therapy in Metastatic Prostate Cancer. N Engl J Med. 2019;381(2):121-31.

12. Dubreuil J, Cachin F, Berriolo-Ridinger A, Skanjeti A. Critères d'interprétation en imagerie cancérologique solide : RECIST, PERCIST... *Médecine Nucl.* 2017;41(3):241-8.
13. Recommandations françaises du Comité de cancérologie de l'AFU – actualisation 2020–2022 : cancer de la prostate 2020. Disponible sur: <https://www.urofrance.org/base-bibliographique/recommandations-francaises-du-comite-de-cancerologie-de-lafu-actualisation-17>
14. Sweeney CJ, Chen Y-H, Carducci M, Liu G, Jarrard DF, Eisenberger M, et al. Chemohormonal Therapy in Metastatic Hormone-Sensitive Prostate Cancer. *N Engl J Med.* 2015;373(8):737-46.
15. Tannock IF, de Wit R, Berry WR, Horti J, Pluzanska A, Chi KN, et al. Docetaxel plus prednisone or mitoxantrone plus prednisone for advanced prostate cancer. *N Engl J Med.* 2004;351(15):1502-12.
16. de Bono JS, Oudard S, Ozguroglu M, Hansen S, Machiels J-P, Kocak I, et al. Prednisone plus cabazitaxel or mitoxantrone for metastatic castration-resistant prostate cancer progressing after docetaxel treatment: a randomised open-label trial. *Lancet Lond Engl.* 2010;376(9747):1147-54.
17. de Bono JS, Logothetis CJ, Molina A, Fizazi K, North S, Chu L, et al. Abiraterone and increased survival in metastatic prostate cancer. *N Engl J Med.* 2011;364(21):1995-2005.
18. Scher HI, Fizazi K, Saad F, Taplin M-E, Sternberg CN, Miller K, et al. Increased survival with enzalutamide in prostate cancer after chemotherapy. *N Engl J Med.* 2012;367(13):1187-97.
19. de Bono J, Mateo J, Fizazi K, Saad F, Shore N, Sandhu S, et al. Olaparib for Metastatic Castration-Resistant Prostate Cancer. *N Engl J Med.* 2020;382(22):2091-102.
20. Smith MR, Egerdie B, Hernández Toriz N, Feldman R, Tammela TLJ, Saad F, et al. Denosumab in men receiving androgen-deprivation therapy for prostate cancer. *N Engl J Med.* 2009;361(8):745-55.
21. Smith M, Parker C, Saad F, Miller K, Tombal B, Ng QS, et al. Addition of radium-223 to abiraterone acetate and prednisone or prednisolone in patients with castration-resistant prostate cancer and bone metastases (ERA 223): a randomised, double-blind, placebo-controlled, phase 3 trial. *Lancet Oncol.* 2019;20(3):408-19.
22. Gravis G, Boher J-M, Joly F, Soulié M, Albiges L, Priou F, et al. Androgen Deprivation Therapy (ADT) Plus Docetaxel Versus ADT Alone in Metastatic Non castrate Prostate Cancer: Impact of Metastatic Burden and Long-term Survival Analysis of the Randomized Phase 3 GETUG-AFU15 Trial. *Eur Urol.* 2016;70(2):256-62.
23. Smith ZL, Eggener SE, Murphy AB. African-American Prostate Cancer Disparities. *Curr Urol Rep.* 2017;18(10):81.
24. Genes Associated with Prostate Cancer Are Differentially Expressed in African American and European American Men | Cancer Epidemiology, Biomarkers & Prevention. Disponible sur: <https://cebp.aacrjournals.org/content/22/5/891>

- 1  
2  
3 25. Cancer of the Prostate - Cancer Stat Facts SEER Disponible sur:  
4 <https://seer.cancer.gov/statsfacts/html/prost.html>.  
5  
6  
7 26. Bernard B, Muralidhar V, Chen Y-H, Sridhar SS, Mitchell EP, Pettaway CA, et al. Impact  
8 of ethnicity on the outcome of men with metastatic, hormone-sensitive prostate cancer.  
9 Cancer. 2017;123(9):1536-44.  
10  
11 27. Spencer BA, Shim JJ, Hershman DL, Zacharia BE, Lim EA, Benson MC, et al. Metastatic  
12 epidural spinal cord compression among elderly patients with advanced prostate cancer.  
13 Support Care Cancer Off J Multinatl Assoc Support Care Cancer. 2014;22(6):1549-55.  
14  
15 28. Morgans AK, Hancock ML, Barnette KG, Steiner MS, Morton RA, Smith MR. Racial  
16 differences in bone mineral density and fractures in men receiving androgen deprivation  
17 therapy for prostate cancer. J Urol. 2012;187(3):889-93.  
18  
19  
20  
21  
22  
23  
24  
25  
26  
27  
28  
29  
30  
31  
32  
33  
34  
35  
36  
37  
38  
39  
40  
41  
42  
43  
44  
45  
46  
47  
48  
49  
50  
51  
52  
53  
54  
55  
56  
57  
58  
59  
60

1  
2  
3  
4  
5  
6  
7  
8  
9  
10  
11  
12  
13  
14  
15  
16  
17  
18  
19  
20  
21  
22  
23  
24  
25  
26  
27  
28  
29  
30  
31  
32  
33  
34  
35  
36  
37  
38  
39  
40  
41  
42  
43  
44  
45  
46  
47  
48  
49  
50  
51  
52  
53  
54  
55  
56  
57  
58  
59  
60

**Figure legends**

**Figure 1.** Progression-free survival for first-line treatment mHSPC

## Tables and their legends

**Table 1.** Baseline characteristics of all patients

**Table 2.** Patient characteristic according to first line treatment

**Table 3.** Univariate analyses of predictive factors for progression

**Table 1.** Baseline characteristics of all patients

| Variables                                     | TOTAL                 |
|---|-----------------------|
| Number of patients (%)                        | 127 (100%)            |
|   | <b>Median (range)</b> |
| Age at diagnosis (years)                      | 71.1 (50.6 – 91.4)    |
| PSA at diagnosis (ng/ml)                      | 147.0 (1.2 – 5857.0)  |
| Follow-up (months)                            | 22.5 (1.0 – 193.0)    |
| Time to second-line treatment (months)        | 16.4 (0.8 – 181.9)    |
| Time to PSA progression (months)              | 2.2 (1.0 – 15.2)      |
| Time to radiological progression (months)     | 2.4 (1.0 – 10.3)      |
|   |                       |
|   | <b>Number (%)</b>     |
| Clinical stage                                |                       |
| T0/T2   | 22 (25.6)             |
| T3/T4   | 64 (74.4)             |
| ISUP Score                                    |                       |
| 1-2   | 18 (14.8)             |
| 3   | 29 (23.8)             |
| 4-5   | 75 (61.4)             |
| Tumor volume                                  |                       |
| Low   | 38 (29.9)             |
| High  | 89 (70.1)             |
| Tumor risk classification                     |                       |
| Low   | 49 (38.6)             |
| High  | 78 (61.4)             |
| Combined tumor volume and risk classification |                       |
| Low   | 37 (29.1)             |
| High  | 90 (70.9)             |
| First-line treatment for mHSPC                |                       |
| ADT alone                                     | 69 (54.3)             |
| ADT + abiraterone or enzalutamide*            | 34 (26.8)             |
| ADT + docetaxel                               | 22 (17.3)             |
| Palliative care**                             | 2 (1.6)               |
| Adverse events                                |                       |
| Prostate obstruction                          | 9 (19.1)              |
| Obstructive renal failure                     | 10 (21.3)             |
| Bone pain                                     | 11 (23.4)             |
| Spinal-cord compression                       | 8 (17.1)              |
| Others  | 9 (19.1)              |

\* Only two patients received Enzalutamide

\*\* Two patients did not receive any specific treatment and were discharged to palliative care.

**Table 2.** Patient characteristic according to first line treatment

| Variables                 | ADT alone (N = 69)<br>N (%) | ADT + Abiraterone or Enzalutamide (N = 34)<br>N (%) | ADT + Docetaxel (N = 22)<br>N (%) | P value |
|---------------------------|-----------------------------|---|-----------------------------------|---------|
| Age at diagnosis (years)* |                             |   |                                   |         |
| ≤ 70                      | 36 (52.9)                   | 12 (35.3)   | 10 (45.5)                         | 0.24    |
| >70                       | 32 (47.1)                   | 22 (64.7)   | 10 (54.5)                         |         |
| Adverse events            |                             |   |                                   | 0.86    |
| Prostate obstruction      | 6 (23.1)                    | 1 (7.6)   | 2 (25.0)                          |         |
| Obstructive renal failure | 4 (15.4)                    | 3 (23.1)  | 3 (37.5)                          |         |
| Bone pain                 | 7 (26.9)                    | 3 (23.1)  | 1 (12.5)                          |         |
| Spinal-cord compression   | 4 (15.4)                    | 3 (23.1)  | 1 (12.5)                          |         |
| Others                    | 5 (19.2)                    | 3 (23.1)  | 1 (12.5)                          |         |
| Tumor volume              |                             |   |                                   | 0.0009  |
| Low                       | 30 (43.5)                   | 7 (20.6)  | 1 (4.5)                           |         |
| High                      | 39 (56.5)                   | 27 (79.4)   | 21 (95.5)                         |         |
| Tumor risk                |                             |   |                                   | < 0.001 |
| Low                       | 40 (58.0)                   | 7 (20.6)  | 2 (9.1)                           |         |
| High                      | 29 (42.0)                   | 27 (79.4)   | 20 (90.9)                         |         |

\*Missing data: one for age at diagnosis

**Table 3.** Univariate analyses of predictive factors for progression

| Variables                | HR   | 95% CI      | P value |
|--------------------------|------|-------------|---------|
| Age at diagnosis (years) | 1.01 | 0.99 – 1.04 | 0.37    |
| PSA at diagnosis (ng/ml) | 1.01 | 0.99 – 1.01 | 0.12    |
| Gleason score            |      |             |         |
| < 8                      | 1.0  | –           | –       |
| ≥ 8                      | 1.14 | 0.73 – 1.78 | 0.55    |
| Visceral disease         |      |             |         |
| No                       | 1.0  | –           | –       |
| Yes                      | 1.04 | 0.47 – 2.28 | 0.93    |
| Bone lesions             |      |             |         |
| ≤ 3                      | 1.0  | –           | –       |
| > 3                      | 1.44 | 0.94 – 2.22 | 0.09    |
| Tumor volume             |      |             |         |
| Low                      | 1.0  | –           | –       |
| High                     | 1.57 | 0.97 – 2.52 | 0.06    |
| Tumor risk               |      |             |         |
| Low                      | 1.0  | –           | –       |
| High                     | 1.41 | 0.91 – 2.19 | 0.13    |

**Figure 1.** Progression-free survival for first-line treatment mHSPC

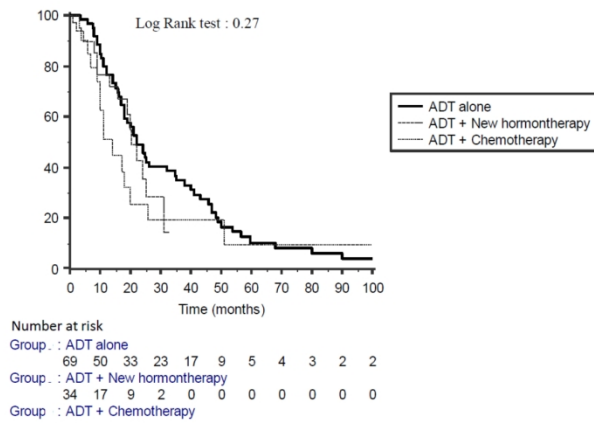


Figure 1. Progression-free survival for first-line treatment mHSPC

583x825mm (72 x 72 DPI)