



Photometric Stereo with Twin-Fisheye Cameras

Jordan Caracotte, Fabio Morbidi, El Mustapha Mouaddib

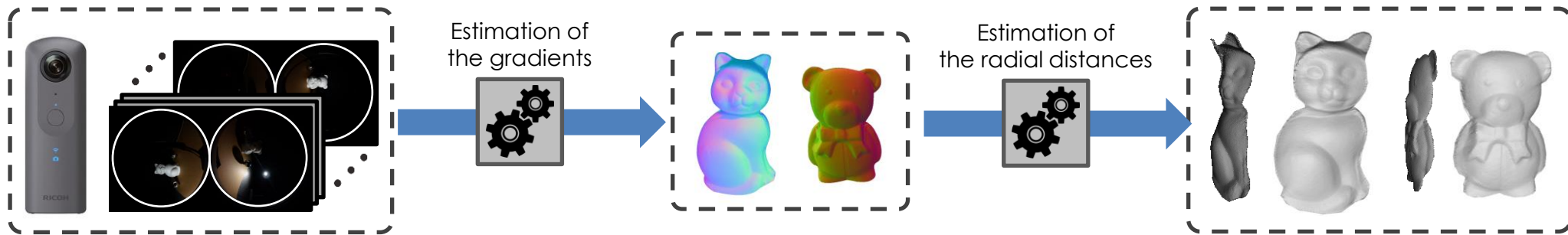
MIS Laboratory

University of Picardie Jules Verne

Amiens, France

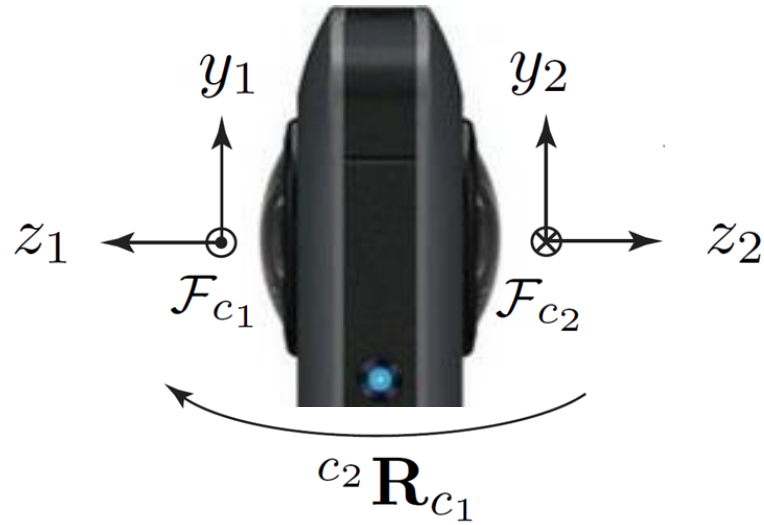
{jordan.caracotte,fabio.morbidi,mouaddib}@u-picardie.fr

Goal: design an omnidirectional photometric stereo algorithm for twin-fisheye cameras

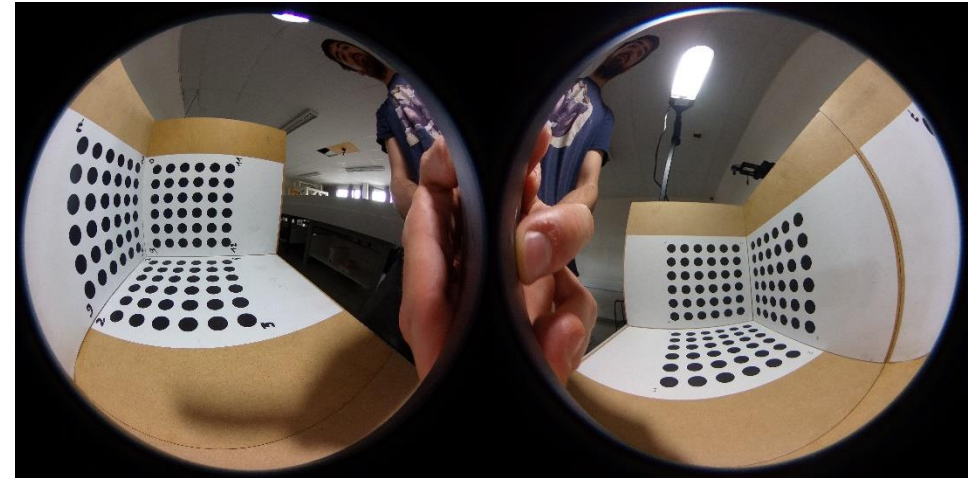


- Extension of the *spherical image irradiance equation* proposed in [Caracotte *et al.* CVIU'20], to fit the model of a twin-fisheye camera
- New reconstruction pipeline
- Mirror balls are used to estimate the direction of the light sources
- Real-world experiments with the Ricoh Theta V

- The translation vector between \mathcal{F}_{c_1} and \mathcal{F}_{c_2} is assumed to be zero



Coordinate frames of the two fisheye lenses



Example of input images used in the calibration process

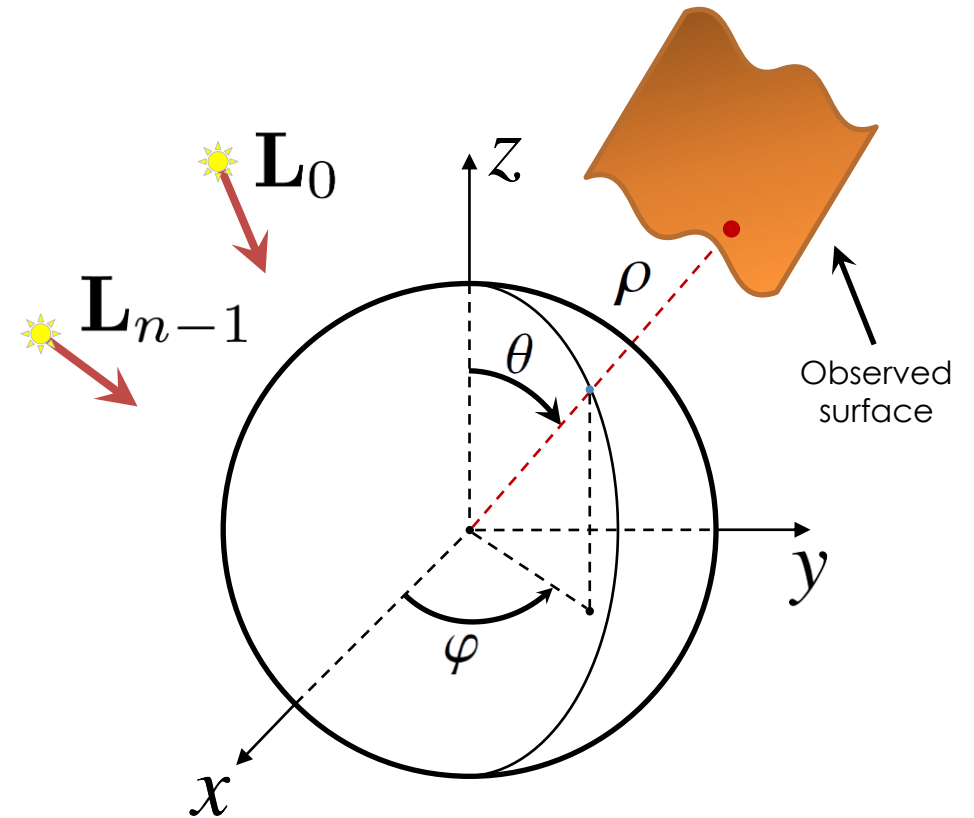
- The *dual-fisheye* images are represented using the spherical coordinate system (ρ, θ, φ) :

$$\begin{cases} x = \rho \sin \theta \cos \varphi, \\ y = \rho \sin \theta \sin \varphi, \\ z = \rho \cos \theta. \end{cases}$$

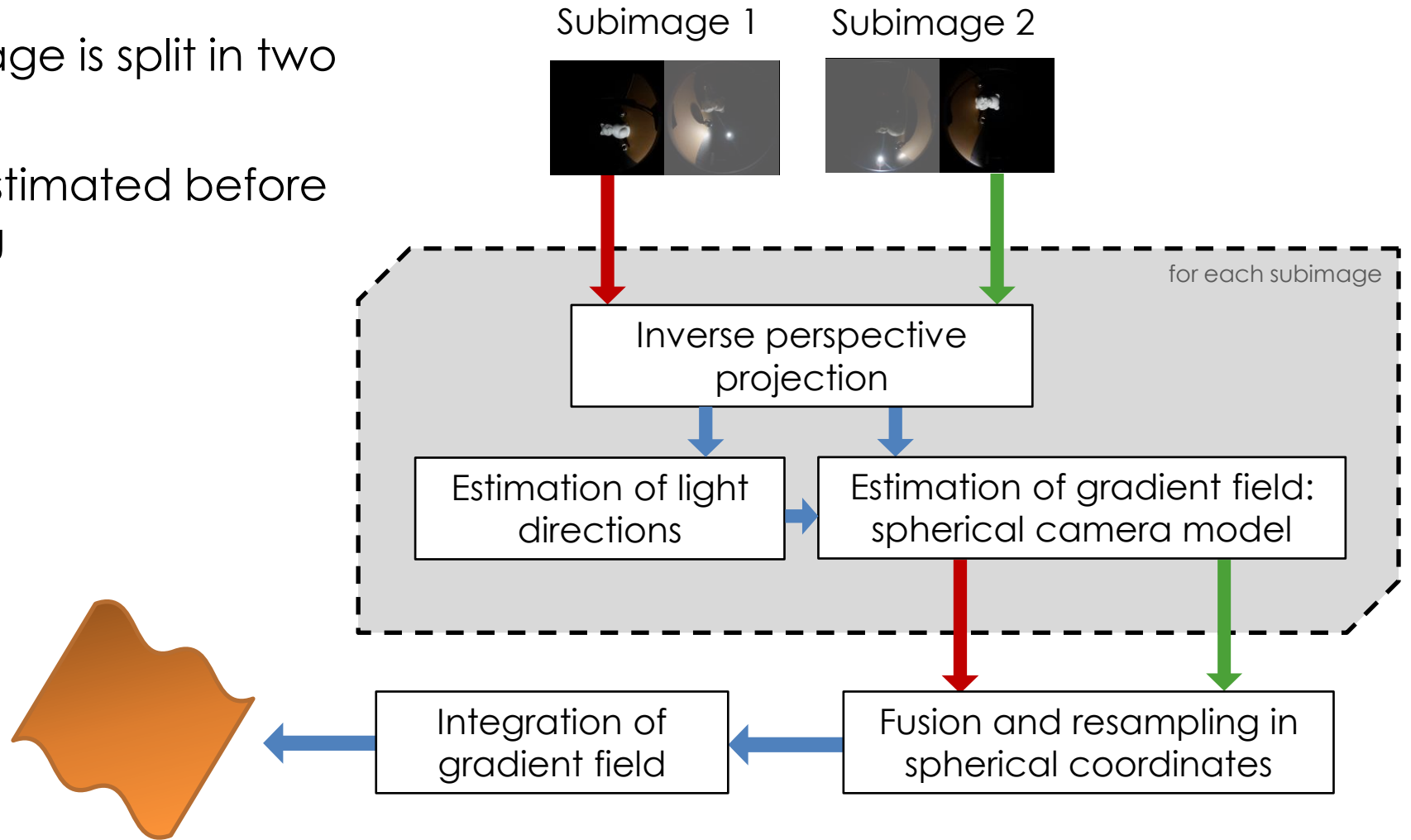
$$I_i(\theta, \varphi) = \frac{\overset{\text{Albedo}}{\alpha(\theta, \varphi)} \overset{\text{Direction of the } i\text{-th light source}}{\mathbf{L}_i^T}}{\|\mathbf{L}_i\| \sqrt{p^2 + \left(\frac{q}{\sin \theta}\right)^2 + 1}} \mathbf{R}_z(\varphi) \mathbf{R}_y(\theta) \begin{bmatrix} p \\ q \\ \sin \theta \\ -1 \end{bmatrix}$$

where

$$p \triangleq \frac{1}{\rho} \frac{\partial \rho}{\partial \theta} = \frac{\partial \ln \rho}{\partial \theta}, \quad q \triangleq \frac{1}{\rho} \frac{\partial \rho}{\partial \varphi} = \frac{\partial \ln \rho}{\partial \varphi}$$

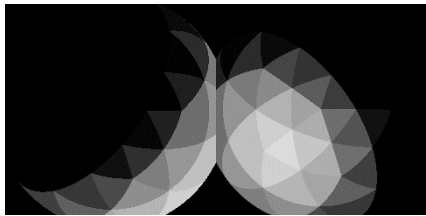


- Each dual-fisheye image is split in two subimages
- The gradient field is estimated before the spatial resampling

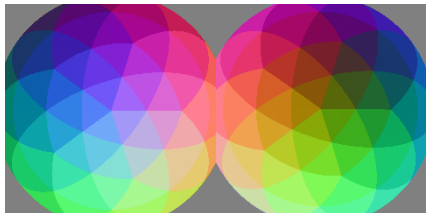


- Simulation experiments

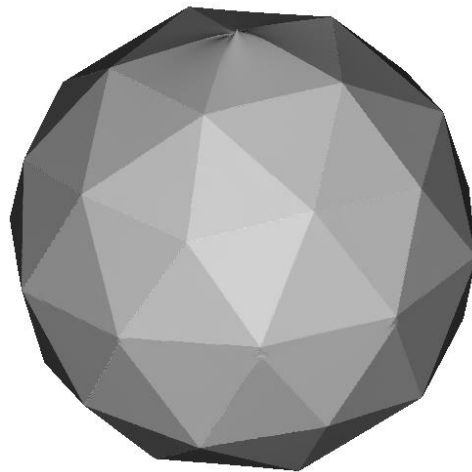
Geodesic Polyhedron



Example of input image



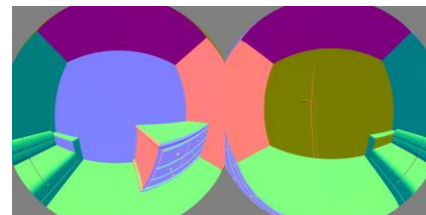
Estimated normal vectors
in false colors



3D reconstruction (external view)

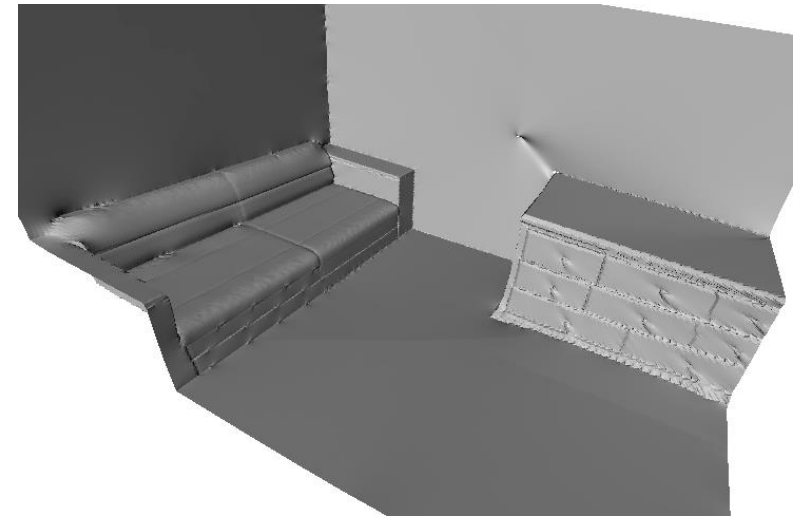


Example of input image



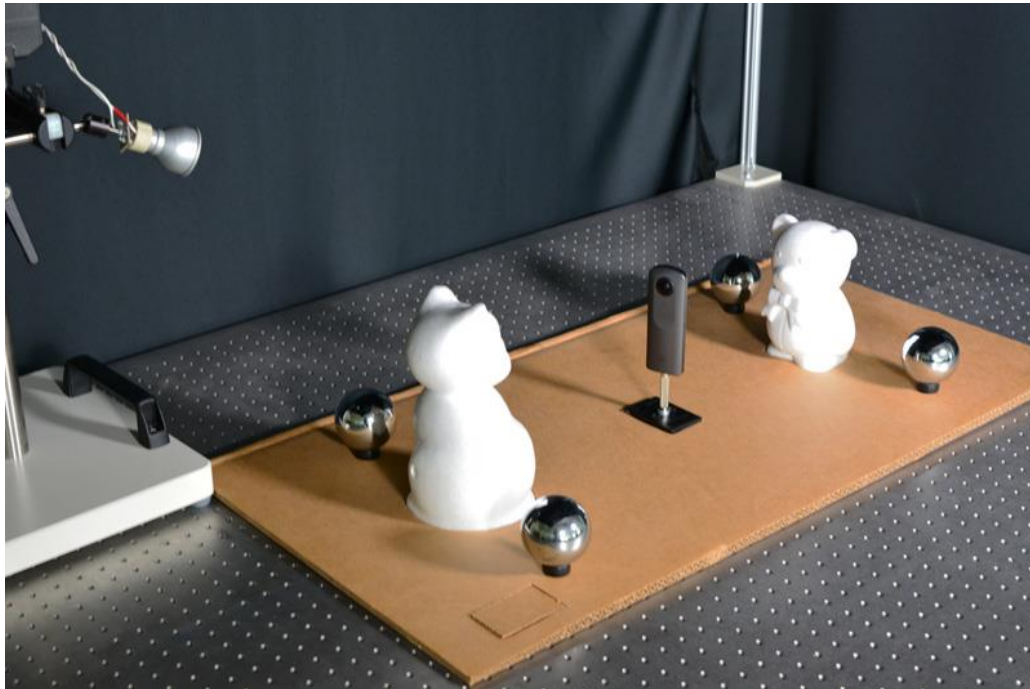
Estimated normal vectors
in false colors

Room

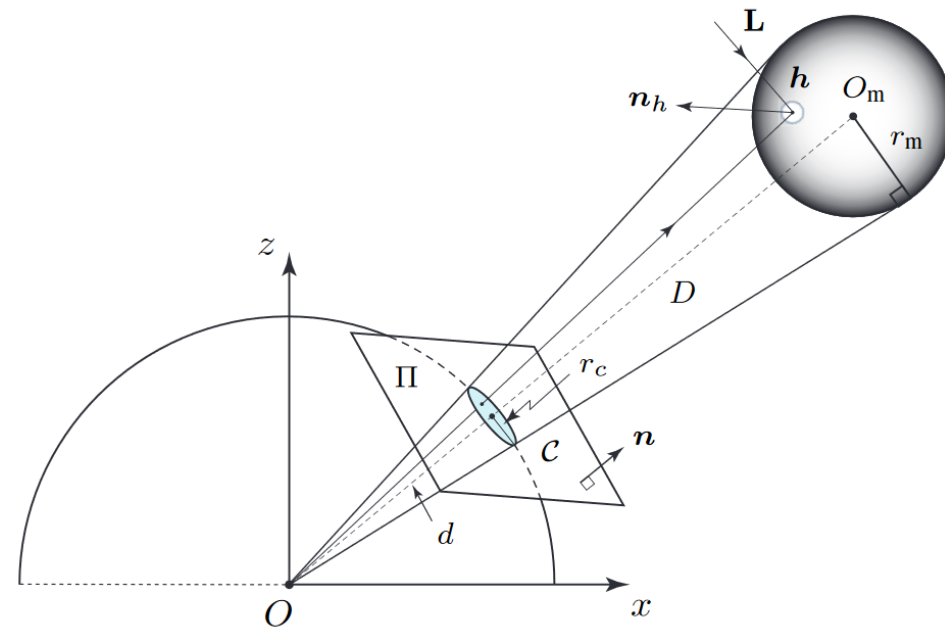


Half of the final 3D reconstruction

- Setup for the experiments and estimation of the light direction



Experimental material



Estimation of light direction using a mirror ball

- Real-world experiments



Example of input image



Normal vectors
in false colors

Albedo estimation
[Schneiders & Wong,
CVIU'13]



3D reconstruction of *Cat* and *Teddy Bear*

- Take light attenuation into account
- Validation using an outdoor scene under natural illumination conditions





Photometric Stereo with Twin-Fisheye Cameras

Jordan Caracotte, Fabio Morbidi, El Mustapha Mouaddib

MIS Laboratory

University of Picardie Jules Verne

Amiens, France

{jordan.caracotte,fabio.morbidi,mouaddib}@u-picardie.fr

Thank you for watching!

ICPR'20